

## FINAL SCORE

**Hofstra**

**42**



**William Mary**

**71**



February 16, 2020 • Kaplan Arena (Kaplan Arena) - Williamsburg

## FINAL STATISTICS

**Official Box Score**  
**Hofstra vs William Mary**  
**Game Totals -- Final Statistics**  
**February 16, 2020 at Kaplan Arena (Kaplan Arena) - Williamsburg**



**Hofstra 42**

No.	Player	S	Pts	FG	3FG	FT	OR	DR	TR	PF	A	TO	Blk	Stl	Min	+/-
03	INEZA, SORELLE	G	5	2-10	0-3	1-2	0	2	2	1	2	5	0	1	32	-15
04	MILLS, SHAWN	G	2	0-3	0-0	2-2	1	1	2	2	0	1	0	0	23	-17
11	HINES, JAYLEN	F	18	7-13	0-0	4-4	3	2	5	3	0	3	1	1	24	-7
53	KALIN, MARIANNE	F	2	1-3	0-0	0-0	1	0	1	1	1	2	0	0	20	-21
54	KARSTEN, SANDRA	G	5	1-5	1-3	2-2	0	2	2	2	3	3	0	2	32	-14
00	REYNOLDS, CARIA	F	7	2-8	0-0	3-4	3	7	10	1	0	1	1	1	28	-19
02	BROWN, JAKAYLA	G	2	1-7	0-0	0-0	1	0	1	1	0	0	0	0	22	-19
05	KRUPENKO, PETJA	G	0	0-0	0-0	0-0	1	0	1	0	1	0	0	0	4	-8
10	HERNANDEZ GIL, ANA	G	0	0-0	0-0	0-0	0	1	1	0	2	1	0	0	7	-15
33	CRUTCHFIELD, BRI	F	1	0-1	0-0	1-2	1	0	1	1	0	3	0	0	7	-10
TEAM								5	4	9	0	2				
<b>TOTALS</b>			<b>42</b>	<b>14-50</b>	<b>1-6</b>	<b>13-16</b>	<b>16</b>	<b>19</b>	<b>35</b>	<b>12</b>	<b>9</b>	<b>21</b>	<b>2</b>	<b>5</b>	<b>200</b>	

*Shooting By Period*

Period	FG	FG%	3FG	3FG%	FT	FT%
1st Qtr	2-12	17%	0-1	00%	0-0	0%
2nd Qtr	4-13	31%	0-1	00%	3-4	75%
3rd Qtr	5-13	38%	0-1	00%	4-4	100%
4th Qtr	3-12	25%	1-3	33%	6-8	75%
1st Half	6-25	24%	0-2	00%	3-4	75%
2nd Half	8-25	32%	1-4	25%	10-12	83%
<b>Game</b>	<b>14-50</b>	<b>28.0%</b>	<b>1-6</b>	<b>16.7%</b>	<b>13-16</b>	<b>81.3%</b>

*Deadball Rebounds: 2,0*  
*Last FG: 4th-02:26*  
*Biggest Run: 6-0*  
*Largest lead: By 0 at -*  
*Technical Fouls: None.*

**William Mary 71**

No.	Player	S	Pts	FG	3FG	FT	OR	DR	TR	PF	A	TO	Blk	Stl	Min	+/-
10	HODGSON, EVA	G	8	3-7	0-3	2-2	0	2	2	0	4	2	1	1	19	27
11	POLLARD, NYLA	G	3	1-5	1-3	0-0	1	0	1	1	4	1	0	2	23	14
20	BELLAMY, BRE	F	18	7-8	2-2	2-2	2	5	7	4	2	1	1	1	27	28
25	ROGERS, GABBY	C	4	2-2	0-0	0-0	1	3	4	1	1	1	1	0	13	20
30	REYNOLDS, VICTORIA	F	13	6-8	1-2	0-0	0	1	1	0	5	0	1	2	21	28
01	WAGNER, SYDNEY	G	6	2-7	2-6	0-0	1	1	2	1	3	0	0	0	22	6
03	TAYLOR, ASHLEY	G	3	1-3	0-2	1-2	1	1	2	0	0	1	2	1	17	4
05	GILLIAM, CHANIQWA	G	8	3-8	2-4	0-0	1	1	2	1	1	2	1	1	26	4
15	KRAUSE, EMMA	F	0	0-3	0-2	0-0	1	2	3	3	0	0	0	1	13	0
21	EICHNER, BAILEY	F	8	3-5	0-0	2-2	1	5	6	1	4	2	2	1	18	14
TEAM								0	0	0	0	1				
<b>TOTALS</b>			<b>71</b>	<b>28-56</b>	<b>8-24</b>	<b>7-8</b>	<b>9</b>	<b>21</b>	<b>30</b>	<b>12</b>	<b>24</b>	<b>11</b>	<b>9</b>	<b>10</b>	<b>200</b>	

*Shooting By Period*

Period	FG	FG%	3FG	3FG%	FT	FT%
1st Qtr	11-13	85%	3-5	60%	2-2	100%
2nd Qtr	6-14	43%	0-6	00%	4-4	100%
3rd Qtr	6-15	40%	3-7	43%	0-0	0%
4th Qtr	5-14	36%	2-6	33%	1-2	50%
1st Half	17-27	63%	3-11	27%	6-6	100%
2nd Half	11-29	38%	5-13	38%	1-2	50%
<b>Game</b>	<b>28-56</b>	<b>50.0%</b>	<b>8-24</b>	<b>33.3%</b>	<b>7-8</b>	<b>87.5%</b>

*Deadball Rebounds: 1,0*  
*Last FG: 4th-00:22*  
*Biggest Run: 19-0*  
*Largest lead: By 31 at 3rd-01:17*  
*Technical Fouls: None.*

*Game Notes:*

Officials: **Mark McClenney, Kristie Weed, Warren Harding, Jr.**  
 Attendance: **1032**

Start Time: **02:08 PM ET**  
 End Time: **03:52 PM ET**  
 Game Duration: **1:44**  
 Conference Game;

Score	1st	2nd	3rd	4th	TOT
HOF	4	11	14	13	<b>42</b>
WM	27	16	15	13	<b>71</b>

HOF led for 0:00. WM led for 39:30.  
 Game was tied for 0:24.  
 Times tied: 0      Lead Changes: 0

Points from	HOF	WM
In the Paint	24	30
Off Turns	9	20
2nd Chance	15	4
Fast Break	6	11
Bench	10	25

**Official Box Score**  
**Hofstra vs William Mary**  
**First Half Statistics Only**  
**February 16, 2020 at Kaplan Arena (Kaplan Arena) - Williamsburg**



### Hofstra 15

No.	Player	S	Pts	FG	3FG	FT	OR	DR	TR	PF	A	TO	Blk	Stl	Min	+/-
00	REYNOLDS, CARIA	F	0	0-5	0-0	0-0	2	2	4	1	0	1	0	0	13	-20
02	BROWN, JAKAYLA	G	2	1-4	0-0	0-0	0	0	0	1	0	0	0	0	12	-20
03	INEZA, SORELLE	G	3	1-2	0-1	1-2	0	0	0	1	0	4	0	1	13	-14
04	MILLS, SHAWN	G	0	0-2	0-0	0-0	0	1	1	0	0	0	0	0	13	-14
05	KRUPENKO, PETJA	G	0	0-0	0-0	0-0	1	0	1	0	1	0	0	0	3	-8
10	HERNANDEZ GIL, ANA	G	0	0-0	0-0	0-0	0	1	1	0	2	1	0	0	7	-15
11	HINES, JAYLEN	F	6	3-6	0-0	0-0	1	0	1	2	0	2	0	1	12	-9
33	CRUTCHFIELD, BRI	F	0	0-0	0-0	0-0	0	0	0	1	0	1	0	0	2	-6
53	KALIN, MARIANNE	F	2	1-3	0-0	0-0	0	0	0	0	0	0	0	0	14	-21
54	KARSTEN, SANDRA	G	2	0-3	0-1	2-2	0	1	1	0	0	1	0	0	12	-13
	TEAM		0	0-0	0-0	0-0	2	3	5	0	0	1	0	0	0	
<b>TOTALS</b>			<b>15</b>	<b>6-25</b>	<b>0-2</b>	<b>3-4</b>	<b>6</b>	<b>8</b>	<b>14</b>	<b>6</b>	<b>3</b>	<b>11</b>	<b>0</b>	<b>2</b>	<b>100</b>	

*Shooting By Period*

Period	FG	FG%	3FG	3FG%	FT	FT%
1st Qtr	2-12	17%	0-1	00%	0-0	0%
2nd Qtr	4-13	31%	0-1	00%	3-4	75%
1st Half	6-25	24%	0-2	00%	3-4	75%
Game	14-50	28.0%	1-6	16.7%	13-16	81.3%

Deadball Rebounds: 2,0  
 Last FG Half: HOF 2nd-00:18

### William Mary 43

No.	Player	S	Pts	FG	3FG	FT	OR	DR	TR	PF	A	TO	Blk	Stl	Min	+/-
01	WAGNER, SYDNEY	G	3	1-3	1-3	0-0	0	1	1	0	3	0	0	0	10	12
03	TAYLOR, ASHLEY	G	2	1-1	0-0	0-0	0	0	0	0	0	0	1	1	5	3
05	GILLIAM, CHANIQWA	G	5	2-4	1-3	0-0	0	0	0	1	0	1	0	0	11	5
10	HODGSON, EVA	G	8	3-6	0-2	2-2	0	2	2	0	3	1	0	1	14	25
11	POLLARD, NYLA	G	0	0-1	0-1	0-0	1	0	1	0	2	0	0	0	13	17
15	KRAUSE, EMMA	F	0	0-0	0-0	0-0	0	0	0	2	0	0	0	0	3	-2
20	BELLAMY, BRE	F	11	4-4	1-1	2-2	0	3	3	1	0	0	0	0	13	24
21	EICHNER, BAILEY	F	4	1-2	0-0	2-2	0	3	3	0	1	0	2	1	9	11
25	ROGERS, GABBY	C	2	1-1	0-0	0-0	1	3	4	0	0	1	0	0	8	19
30	REYNOLDS, VICTORIA	F	8	4-5	0-1	0-0	0	1	1	0	5	0	1	0	14	26
	TEAM		0	0-0	0-0	0-0	0	0	0	0	0	0	0	0	0	
<b>TOTALS</b>			<b>43</b>	<b>17-27</b>	<b>3-11</b>	<b>6-6</b>	<b>2</b>	<b>13</b>	<b>15</b>	<b>4</b>	<b>14</b>	<b>3</b>	<b>4</b>	<b>3</b>	<b>100</b>	

*Shooting By Period*

Period	FG	FG%	3FG	3FG%	FT	FT%
1st Qtr	11-13	85%	3-5	60%	2-2	100%
2nd Qtr	6-14	43%	0-6	00%	4-4	100%
1st Half	17-27	63%	3-11	27%	6-6	100%
Game	28-56	50.0%	8-24	33.3%	7-8	87.5%

Deadball Rebounds: 1,0  
 Last FG Half: WM 2nd-00:52

Game Notes:

Officials: Mark McClenney, Kristie Weed, Warren Harding, Jr.  
 Attendance: 1032

Start Time: 02:08 PM ET  
 End Time: 03:52 PM ET  
 Game Duration: 1:44  
 Conference Game;

Score	1st	2nd	3rd	4th	TOT
HOF	4	11	14	13	42
WM	27	16	15	13	71

Points from (This Period)	HOF	WM
In the Paint	10	20
Off Turns	2	15
2nd Chance	8	0
Fast Break	4	7
Bench	2	14

**Official Box Score**  
**Hofstra vs William Mary**  
**First Quarter Statistics Only**  
**February 16, 2020 at Kaplan Arena (Kaplan Arena) - Williamsburg**



### Hofstra 4

No.	Player	S	Pts	FG	3FG	FT	OR	DR	TR	PF	A	TO	Blk	Stl	Min	+/-
03	INEZA, SORELLE	G	0	0-0	0-0	0-0	0	0	0	0	0	2	0	0	4	-11
04	MILLS, SHAWN	G	0	0-2	0-0	0-0	0	0	0	0	0	0	0	0	7	-12
11	HINES, JAYLEN	F	0	0-0	0-0	0-0	0	0	0	1	0	1	0	0	3	-6
53	KALIN, MARIANNE	F	2	1-3	0-0	0-0	0	0	0	0	0	0	0	0	8	-17
54	KARSTEN, SANDRA	G	0	0-1	0-1	0-0	0	0	0	0	0	0	0	0	5	-7
00	REYNOLDS, CARIA	F	0	0-3	0-0	0-0	1	0	1	0	0	0	0	0	7	-17
02	BROWN, JAKAYLA	G	2	1-3	0-0	0-0	0	0	0	1	0	0	0	0	7	-17
05	KRUPENKO, PETJA	G	0	0-0	0-0	0-0	0	0	0	0	0	0	0	0	2	-6
10	HERNANDEZ GIL, ANA	G	0	0-0	0-0	0-0	0	0	0	0	1	1	0	0	5	-16
33	CRUTCHFIELD, BRI	F	0	0-0	0-0	0-0	0	0	0	1	0	1	0	0	2	-6
TEAM							2	1	3	0		1				
<b>TOTALS</b>			<b>4</b>	<b>2-12</b>	<b>0-1</b>	<b>0-0</b>	<b>3</b>	<b>1</b>	<b>4</b>	<b>3</b>	<b>1</b>	<b>6</b>	<b>0</b>	<b>0</b>	<b>50</b>	

*Shooting By Period*

Period	FG	FG%	3FG	3FG%	FT	FT%
1st Qtr	2-12	17%	0-1	00%	0-0	0%
2nd Qtr	4-13	31%	0-1	00%	3-4	75%
1st Half	2-12	17%	0-1	00%	0-0	0%
1st Half	6-25	24%	0-2	00%	3-4	75%
Game	14-50	28.0%	1-6	16.7%	13-16	81.3%

*Deadball Rebounds: 2,0*

### William Mary 27

No.	Player	S	Pts	FG	3FG	FT	OR	DR	TR	PF	A	TO	Blk	Stl	Min	+/-
10	HODGSON, EVA	G	6	3-3	0-0	0-0	0	1	1	0	2	0	0	1	7	19
11	POLLARD, NYLA	G	0	0-1	0-1	0-0	0	0	0	0	2	0	0	0	7	15
20	BELLAMY, BRE	F	9	3-3	1-1	2-2	0	1	1	0	0	0	0	0	8	22
25	ROGERS, GABBY	C	0	0-0	0-0	0-0	1	2	3	0	0	1	0	0	6	15
30	REYNOLDS, VICTORIA	F	6	3-3	0-0	0-0	0	1	1	0	4	0	1	0	10	23
01	WAGNER, SYDNEY	G	3	1-2	1-2	0-0	0	0	0	0	1	0	0	0	5	9
03	TAYLOR, ASHLEY	G	0	0-0	0-0	0-0	0	0	0	0	0	0	0	0	0	0
05	GILLIAM, CHANIQWA	G	3	1-1	1-1	0-0	0	0	0	0	0	0	0	0	3	4
15	KRAUSE, EMMA	F	0	0-0	0-0	0-0	0	0	0	0	0	0	0	0	0	0
21	EICHNER, BAILEY	F	0	0-0	0-0	0-0	0	2	2	0	0	0	2	0	4	8
TEAM							0	0	0	0		0				
<b>TOTALS</b>			<b>27</b>	<b>11-13</b>	<b>3-5</b>	<b>2-2</b>	<b>1</b>	<b>7</b>	<b>8</b>	<b>0</b>	<b>9</b>	<b>1</b>	<b>3</b>	<b>1</b>	<b>50</b>	

*Shooting By Period*

Period	FG	FG%	3FG	3FG%	FT	FT%
1st Qtr	11-13	85%	3-5	60%	2-2	100%
2nd Qtr	6-14	43%	0-6	00%	4-4	100%
1st Half	11-13	85%	3-5	60%	2-2	100%
1st Half	17-27	63%	3-11	27%	6-6	100%
Game	28-56	50.0%	8-24	33.3%	7-8	87.5%

*Deadball Rebounds: 1,0*

*Game Notes:*

Officials: **Mark McClenney, Kristie Weed, Warren Harding, Jr.**  
 Attendance: **1032**

Start Time: **02:08 PM ET**  
 End Time: **03:52 PM ET**  
 Game Duration: **1:44**  
 Conference Game;

Score	1st	2nd	3rd	4th	TOT
HOF	4	11	14	13	<b>42</b>
WM	27	16	15	13	<b>71</b>

Points from (This Period)	HOF	WM
In the Paint	2	10
Off Turns	0	11
2nd Chance	4	0
Fast Break	0	7
Bench	2	6

**Official Play-By-Play**  
**Hofstra vs William Mary**  
**First Quarter**  
**February 16, 2020 at Kaplan Arena (Kaplan Arena) - Williamsburg**



**Period 1**

**Starters:**

**Hofstra:** 3 INEZA, SORELLE (G); 4 MILLS, SHAWN (G); 11 HINES, JAYLEN (F); 53 KALIN, MARIANNE (F); 54 KARSTEN, SANDRA (G);

**William Mary:** 10 HODGSON, EVA (G); 11 POLLARD, NYLA (G); 20 BELLAMY, BRE (F); 25 ROGERS, GABBY (C); 30 REYNOLDS, VICTORIA (F);

Time	VISITORS: Hofstra	Score	Margin	HOME: William Mary
09:50	TURNOVER (BADPASS) by INEZA, SORELLE			
09:50				STEAL by HODGSON, EVA
09:36		2-0	H 2	GOOD! JUMPER by BELLAMY, BRE
09:36				ASSIST by REYNOLDS, VICTORIA
09:20	MISSED JUMPER by MILLS, SHAWN			
09:17				REBOUND (DEF) by HODGSON, EVA
09:11		4-0	H 4	GOOD! LAYUP by REYNOLDS, VICTORIA [FB]
09:11				ASSIST by HODGSON, EVA
09:06	TIMEOUT 30SEC			
08:35	TURNOVER (SHOTCLOCK) by TEAM			
08:07		6-0	H 6	GOOD! JUMPER by HODGSON, EVA
08:07				ASSIST by REYNOLDS, VICTORIA
07:39	MISSED 3PTR by KARSTEN, SANDRA			
07:35				REBOUND (DEF) by BELLAMY, BRE
07:27				TURNOVER (BADPASS) by ROGERS, GABBY
07:27	SUB OUT: INEZA, SORELLE			
07:27	SUB IN: KRUPENKO, PETJA			
07:01	FOUL (OFF) by HINES, JAYLEN			
07:01	TURNOVER (OFFENSIVE) by HINES, JAYLEN			
07:01	SUB OUT: MILLS, SHAWN			
07:01	SUB OUT: HINES, JAYLEN			
07:01	SUB OUT: KALIN, MARIANNE			
07:01	SUB OUT: KARSTEN, SANDRA			
07:01	SUB IN: REYNOLDS, CARIA			
07:01	SUB IN: BROWN, JAKAYLA			
07:01	SUB IN: HERNANDEZ GIL, ANA			
07:01	SUB IN: CRUTCHFIELD, BRI			
06:41		8-0	H 8	GOOD! JUMPER by HODGSON, EVA
06:41				ASSIST by POLLARD, NYLA
06:23	MISSED LAYUP by REYNOLDS, CARIA			
06:20				REBOUND (DEF) by ROGERS, GABBY
06:14		10-0	H 10	GOOD! LAYUP by REYNOLDS, VICTORIA
05:47	MISSED JUMPER by BROWN, JAKAYLA			
05:44				REBOUND (DEF) by ROGERS, GABBY
05:41		12-0	H 12	GOOD! LAYUP by HODGSON, EVA [FB]
05:40	TIMEOUT 30SEC			
05:26	SUB OUT: KRUPENKO, PETJA			
05:26	SUB IN: INEZA, SORELLE			
05:21	TURNOVER (TRAVEL) by CRUTCHFIELD, BRI			
05:00	FOUL (PERSONAL) by CRUTCHFIELD, BRI			
05:00				SUB OUT: ROGERS, GABBY
05:00				SUB IN: EICHNER, BAILEY
05:00	SUB OUT: CRUTCHFIELD, BRI			
05:00	SUB IN: KALIN, MARIANNE			
05:00		13-0	H 13	GOOD! FT by BELLAMY, BRE
05:00		14-0	H 14	GOOD! FT by BELLAMY, BRE
04:49	TURNOVER (TRAVEL) by HERNANDEZ GIL, ANA			
04:49				SUB OUT: POLLARD, NYLA
04:49				SUB IN: WAGNER, SYDNEY
04:49	SUB OUT: INEZA, SORELLE			
04:49	SUB IN: MILLS, SHAWN			
04:35		17-0	H 17	GOOD! 3PTR by BELLAMY, BRE
04:35				ASSIST by REYNOLDS, VICTORIA
04:03	MISSED JUMPER by KALIN, MARIANNE			
03:58	REBOUND (OFF) by REYNOLDS, CARIA			
03:58	MISSED LAYUP by REYNOLDS, CARIA			
03:58				REBOUND (DEF) by EICHNER, BAILEY
03:54	FOUL (PERSONAL) by BROWN, JAKAYLA			
03:44		19-0	H 19	GOOD! JUMPER by REYNOLDS, VICTORIA
03:44				ASSIST by HODGSON, EVA
03:29	MISSED LAYUP by REYNOLDS, CARIA			
03:29				BLOCK by REYNOLDS, VICTORIA
03:29	REBOUND (OFF) by TEAM			
03:29				SUB OUT: HODGSON, EVA
03:29				SUB IN: GILLIAM, CHANIQWA
03:18	GOOD! LAYUP by KALIN, MARIANNE	19-2	H 17	
03:18	ASSIST by HERNANDEZ GIL, ANA			
02:59		22-2	H 20	GOOD! 3PTR by WAGNER, SYDNEY
02:59				ASSIST by REYNOLDS, VICTORIA
02:32	MISSED LAYUP by KALIN, MARIANNE			

Time	VISITORS: Hofstra	Score	Margin	HOME: William Mary
02:32				BLOCK by EICHNER, BAILEY
02:28				REBOUND (DEF) by REYNOLDS, VICTORIA
02:08		24-2	H 22	GOOD! JUMPER by BELLAMY, BRE [PNT]
02:08				ASSIST by WAGNER, SYDNEY
01:51	MISSED LAYUP by MILLS, SHAWN			
01:51				BLOCK by EICHNER, BAILEY
01:51	REBOUND (OFF) by TEAM			
01:51				SUB OUT: BELLAMY, BRE
01:51				SUB IN: POLLARD, NYLA
01:51	SUB OUT: HERNANDEZ GIL, ANA			
01:51	SUB IN: KARSTEN, SANDRA			
01:38	GOOD! JUMPER by BROWN, JAKAYLA	24-4	H 20	
01:19				MISSED 3PTR by WAGNER, SYDNEY
01:17	REBOUND (DEF) by TEAM			
01:17	SUB OUT: MILLS, SHAWN			
01:17	SUB IN: INEZA, SORELLE			
01:00	MISSED JUMPER by BROWN, JAKAYLA			
00:57				REBOUND (DEF) by EICHNER, BAILEY
00:57				SUB OUT: EICHNER, BAILEY
00:57				SUB IN: ROGERS, GABBY
00:45		27-4	H 23	GOOD! 3PTR by GILLIAM, CHANIQWA [FB]
00:45				ASSIST by POLLARD, NYLA
00:16	TURNOVER (TRAVEL) by INEZA, SORELLE			
00:01				MISSED 3PTR by POLLARD, NYLA
00:01				REBOUND (OFF) by ROGERS, GABBY

### Hofstra 4, William Mary 27

Points from (This Period)	HOF	WM
In the Paint	2	10
Off Turns	0	11
2nd Chance	4	0
Fast Break	0	7
Bench	2	6

**Official Box Score**  
**Hofstra vs William Mary**  
**Second Quarter Statistics Only**  
**February 16, 2020 at Kaplan Arena (Kaplan Arena) - Williamsburg**



### Hofstra 11

No.	Player	S	Pts	FG	3FG	FT	OR	DR	TR	PF	A	TO	Blk	Stl	Min	+/-
03	INEZA, SORELLE	G	3	1-2	0-1	1-2	0	0	0	1	0	2	0	1	9	-3
04	MILLS, SHAWN	G	0	0-0	0-0	0-0	0	1	1	0	0	0	0	0	6	-2
11	HINES, JAYLEN	F	6	3-6	0-0	0-0	1	0	1	1	0	1	0	1	9	-3
53	KALIN, MARIANNE	F	0	0-0	0-0	0-0	0	0	0	0	0	0	0	0	6	-4
54	KARSTEN, SANDRA	G	2	0-2	0-0	2-2	0	1	1	0	0	1	0	0	7	-6
00	REYNOLDS, CARIA	F	0	0-2	0-0	0-0	1	2	3	1	0	1	0	0	6	-3
02	BROWN, JAKAYLA	G	0	0-1	0-0	0-0	0	0	0	0	0	0	0	0	5	-3
05	KRUPENKO, PETJA	G	0	0-0	0-0	0-0	1	0	1	0	1	0	0	0	1	-2
10	HERNANDEZ GIL, ANA	G	0	0-0	0-0	0-0	0	1	1	0	1	0	0	0	2	1
33	CRUTCHFIELD, BRI	F	0	0-0	0-0	0-0	0	0	0	0	0	0	0	0	0	0
TEAM							0	2	2	0		0				
<b>TOTALS</b>			<b>11</b>	<b>4-13</b>	<b>0-1</b>	<b>3-4</b>	<b>3</b>	<b>7</b>	<b>10</b>	<b>3</b>	<b>2</b>	<b>5</b>	<b>0</b>	<b>2</b>	<b>50</b>	

*Shooting By Period*

Period	FG	FG%	3FG	3FG%	FT	FT%
3rd Qtr	5-13	38%	0-1	00%	4-4	100%
4th Qtr	3-12	25%	1-3	33%	6-8	75%
2nd Half	4-13	31%	0-1	00%	3-4	75%
2nd Half	8-25	32%	1-4	25%	10-12	83%
Game	14-50	28.0%	1-6	16.7%	13-16	81.3%

*Deadball Rebounds: 2,0*

### William Mary 16

No.	Player	S	Pts	FG	3FG	FT	OR	DR	TR	PF	A	TO	Blk	Stl	Min	+/-
10	HODGSON, EVA	G	2	0-3	0-2	2-2	0	1	1	0	1	1	0	0	7	6
11	POLLARD, NYLA	G	0	0-0	0-0	0-0	1	0	1	0	0	0	0	0	6	2
20	BELLAMY, BRE	F	2	1-1	0-0	0-0	0	2	2	1	0	0	0	0	5	2
25	ROGERS, GABBY	C	2	1-1	0-0	0-0	0	1	1	0	0	0	0	0	2	4
30	REYNOLDS, VICTORIA	F	2	1-2	0-1	0-0	0	0	0	0	1	0	0	0	4	3
01	WAGNER, SYDNEY	G	0	0-1	0-1	0-0	0	1	1	0	2	0	0	0	5	3
03	TAYLOR, ASHLEY	G	2	1-1	0-0	0-0	0	0	0	0	0	0	1	1	5	3
05	GILLIAM, CHANIQWA	G	2	1-3	0-2	0-0	0	0	0	1	0	1	0	0	8	1
15	KRAUSE, EMMA	F	0	0-0	0-0	0-0	0	0	0	2	0	0	0	0	3	-2
21	EICHNER, BAILEY	F	4	1-2	0-0	2-2	0	1	1	0	1	0	0	1	5	3
TEAM							0	0	0	0		0				
<b>TOTALS</b>			<b>16</b>	<b>6-14</b>	<b>0-6</b>	<b>4-4</b>	<b>1</b>	<b>6</b>	<b>7</b>	<b>4</b>	<b>5</b>	<b>2</b>	<b>1</b>	<b>2</b>	<b>50</b>	

*Shooting By Period*

Period	FG	FG%	3FG	3FG%	FT	FT%
3rd Qtr	6-15	40%	3-7	43%	0-0	0%
4th Qtr	5-14	36%	2-6	33%	1-2	50%
2nd Half	6-14	43%	0-6	00%	4-4	100%
2nd Half	11-29	38%	5-13	38%	1-2	50%
Game	28-56	50.0%	8-24	33.3%	7-8	87.5%

*Deadball Rebounds: 1,0*

*Game Notes:*

Officials: **Mark McClenney, Kristie Weed, Warren Harding, Jr.**  
 Attendance: **1032**

Start Time: **02:08 PM ET**  
 End Time: **03:52 PM ET**  
 Game Duration: **1:44**  
 Conference Game;

Score	1st	2nd	3rd	4th	TOT
HOF	4	11	14	13	<b>42</b>
WM	27	16	15	13	<b>71</b>

Points from (This Period)	HOF	WM
In the Paint	8	10
Off Turns	2	4
2nd Chance	4	0
Fast Break	4	0
Bench	0	8

**Official Play-By-Play**  
**Hofstra vs William Mary**  
**Second Quarter**  
**February 16, 2020 at Kaplan Arena (Kaplan Arena) - Williamsburg**



**Period 2**

**Starters:**

**Hofstra:** 3 INEZA, SORELLE (G); 4 MILLS, SHAWN (G); 11 HINES, JAYLEN (F); 53 KALIN, MARIANNE (F); 54 KARSTEN, SANDRA (G);

**William Mary:** 10 HODGSON, EVA (G); 11 POLLARD, NYLA (G); 20 BELLAMY, BRE (F); 25 ROGERS, GABBY (C); 30 REYNOLDS, VICTORIA (F);

Time	VISITORS: Hofstra	Score	Margin	HOME: William Mary
10:00				SUB OUT: GILLIAM, CHANIQWA
10:00				SUB OUT: REYNOLDS, VICTORIA
10:00				SUB IN: HODGSON, EVA
10:00				SUB IN: BELLAMY, BRE
09:45				MISSED 3PTR by WAGNER, SYDNEY
09:43	REBOUND (DEF) by REYNOLDS, CARIA			
09:22	MISSED JUMPER by REYNOLDS, CARIA			
09:19				REBOUND (DEF) by BELLAMY, BRE
09:08		29-4	H 25	GOOD! JUMPER by ROGERS, GABBY
09:08				ASSIST by WAGNER, SYDNEY
08:49	SUB OUT: REYNOLDS, CARIA			
08:49	SUB IN: HINES, JAYLEN			
08:43	MISSED LAYUP by KARSTEN, SANDRA			
08:40				REBOUND (DEF) by WAGNER, SYDNEY
08:29		31-4	H 27	GOOD! JUMPER by BELLAMY, BRE [PNT]
08:29				ASSIST by WAGNER, SYDNEY
08:14	MISSED LAYUP by BROWN, JAKAYLA			
08:11				REBOUND (DEF) by ROGERS, GABBY
08:06	FOUL (PERSONAL) by HINES, JAYLEN			
08:06				SUB OUT: WAGNER, SYDNEY
08:06				SUB OUT: ROGERS, GABBY
08:06				SUB IN: GILLIAM, CHANIQWA
08:06				SUB IN: KRAUSE, EMMA
08:06	SUB OUT: BROWN, JAKAYLA			
08:06	SUB IN: MILLS, SHAWN			
08:06		32-4	H 28	GOOD! FT by HODGSON, EVA
08:06		33-4	H 29	GOOD! FT by HODGSON, EVA
07:44	MISSED JUMPER by KARSTEN, SANDRA			
07:41				REBOUND (DEF) by BELLAMY, BRE
07:23				MISSED 3PTR by HODGSON, EVA
07:20				REBOUND (OFF) by POLLARD, NYLA
07:08	MISSED JUMPER by HINES, JAYLEN			
07:04				REBOUND (DEF) by HODGSON, EVA
06:53				TURNOVER (BADPASS) by HODGSON, EVA
06:53	STEAL by INEZA, SORELLE			
06:49	GOOD! LAYUP by INEZA, SORELLE [FB]	33-6	H 27	
06:16				MISSED 3PTR by HODGSON, EVA
06:15	REBOUND (DEF) by TEAM			
06:04				FOUL (PERSONAL) by BELLAMY, BRE
06:04	GOOD! FT by KARSTEN, SANDRA	33-7	H 26	
06:04	GOOD! FT by KARSTEN, SANDRA	33-8	H 25	
05:48				TURNOVER (BADPASS) by GILLIAM, CHANIQWA
05:48	STEAL by HINES, JAYLEN			
05:38				FOUL (PERSONAL) by KRAUSE, EMMA
05:38	SUB OUT: KALIN, MARIANNE			
05:38	SUB IN: REYNOLDS, CARIA			
05:26	TURNOVER (3SEC) by HINES, JAYLEN			
05:17				MISSED 3PTR by GILLIAM, CHANIQWA
05:12	REBOUND (DEF) by KARSTEN, SANDRA			
05:00				FOUL (PERSONAL) by KRAUSE, EMMA
05:00				
05:00				SUB OUT: KRAUSE, EMMA
05:00				SUB OUT: BELLAMY, BRE
05:00				SUB IN: TAYLOR, ASHLEY
05:00				SUB IN: EICHNER, BAILEY
04:53	TURNOVER (BADPASS) by KARSTEN, SANDRA			
04:53				STEAL by TAYLOR, ASHLEY
04:42				MISSED LAYUP by HODGSON, EVA
04:39	REBOUND (DEF) by MILLS, SHAWN			
04:15	FOUL (OFF) by INEZA, SORELLE			
04:15	TURNOVER (OFFENSIVE) by INEZA, SORELLE			
04:15				SUB OUT: POLLARD, NYLA
04:15				SUB IN: REYNOLDS, VICTORIA
04:00		35-8	H 27	GOOD! LAYUP by EICHNER, BAILEY
04:00				ASSIST by REYNOLDS, VICTORIA
03:38	MISSED 3PTR by INEZA, SORELLE			
03:34	REBOUND (OFF) by REYNOLDS, CARIA			
03:32	TURNOVER (BADPASS) by REYNOLDS, CARIA			
03:32				STEAL by EICHNER, BAILEY
03:23		37-8	H 29	GOOD! JUMPER by REYNOLDS, VICTORIA [PNT]



Time	VISITORS: Hofstra	Score	Margin	HOME: William Mary
03:23				ASSIST by HODGSON, EVA
03:01				FOUL (PERSONAL) by GILLIAM, CHANIQWA
03:01				SUB OUT: HODGSON, EVA
03:01				SUB IN: WAGNER, SYDNEY
03:01	SUB OUT: MILLS, SHAWN			
03:01	SUB OUT: KARSTEN, SANDRA			
03:01	SUB IN: BROWN, JAKAYLA			
03:01	SUB IN: HERNANDEZ GIL, ANA			
03:01	MISSED FT by INEZA, SORELLE			
03:01	REBOUND (OFF) by TEAM			
03:01	GOOD! FT by INEZA, SORELLE	37-9	H 28	
02:49				MISSED 3PTR by REYNOLDS, VICTORIA
02:47	REBOUND (DEF) by HERNANDEZ GIL, ANA			
02:43	TURNOVER (TRAVEL) by INEZA, SORELLE			
02:23				MISSED LAYUP by EICHNER, BAILEY
02:20	REBOUND (DEF) by REYNOLDS, CARIA			
02:15	GOOD! LAYUP by HINES, JAYLEN [FB]	37-11	H 26	
02:15	ASSIST by HERNANDEZ GIL, ANA			
02:01		39-11	H 28	GOOD! LAYUP by TAYLOR, ASHLEY
02:01				ASSIST by EICHNER, BAILEY
01:32	MISSED LAYUP by REYNOLDS, CARIA			
01:28	REBOUND (OFF) by HINES, JAYLEN			
01:27	GOOD! LAYUP by HINES, JAYLEN	39-13	H 26	
01:16	FOUL (PERSONAL) by REYNOLDS, CARIA			
01:16	SUB OUT: REYNOLDS, CARIA			
01:16	SUB OUT: INEZA, SORELLE			
01:16	SUB IN: KRUPENKO, PETJA			
01:16	SUB IN: KALIN, MARIANNE			
01:16		40-13	H 27	GOOD! FT by EICHNER, BAILEY
01:16		41-13	H 28	GOOD! FT by EICHNER, BAILEY
01:16	SUB OUT: HERNANDEZ GIL, ANA			
01:16	SUB IN: MILLS, SHAWN			
01:01	MISSED LAYUP by HINES, JAYLEN			
01:01				BLOCK by TAYLOR, ASHLEY
00:57				REBOUND (DEF) by EICHNER, BAILEY
00:52		43-13	H 30	GOOD! LAYUP by GILLIAM, CHANIQWA
00:34	MISSED JUMPER by HINES, JAYLEN			
00:31	REBOUND (OFF) by KRUPENKO, PETJA			
00:18	GOOD! LAYUP by HINES, JAYLEN [PNT]	43-15	H 28	
00:18	ASSIST by KRUPENKO, PETJA			
00:01				MISSED 3PTR by GILLIAM, CHANIQWA
00:01	REBOUND (DEF) by TEAM			

### Hofstra 15, William Mary 43

Points from (This Period)	HOF	WM
In the Paint	8	10
Off Turns	2	4
2nd Chance	4	0
Fast Break	4	0
Bench	0	8

**Official Box Score**  
**Hofstra vs William Mary**  
**Second Half Statistics Only**  
**February 16, 2020 at Kaplan Arena (Kaplan Arena) - Williamsburg**



**Hofstra 27**

No.	Player	S	Pts	FG	3FG	FT	OR	DR	TR	PF	A	TO	Blk	Stl	Min	+/-
00	REYNOLDS, CARIA	F	7	2-3	0-0	3-4	1	5	6	0	0	0	1	1	15	1
02	BROWN, JAKAYLA	G	0	0-3	0-0	0-0	1	0	1	0	0	0	0	0	11	1
03	INEZA, SORELLE	G	2	1-8	0-2	0-0	0	2	2	0	2	1	0	0	19	-1
04	MILLS, SHAWN	G	2	0-1	0-0	2-2	1	0	1	2	0	1	0	0	10	-3
05	KRUPENKO, PETJA	G	0	0-0	0-0	0-0	0	0	0	0	0	0	0	0	1	0
10	HERNANDEZ GIL, ANA	G	0	0-0	0-0	0-0	0	0	0	0	0	0	0	0	0	0
11	HINES, JAYLEN	F	12	4-7	0-0	4-4	2	2	4	1	0	1	1	0	12	2
33	CRUTCHFIELD, BRI	F	1	0-1	0-0	1-2	1	0	1	0	0	2	0	0	5	-4
53	KALIN, MARIANNE	F	0	0-0	0-0	0-0	1	0	1	1	1	2	0	0	6	0
54	KARSTEN, SANDRA	G	3	1-2	1-2	0-0	0	1	1	2	3	2	0	2	20	-1
	TEAM		0	0-0	0-0	0-0	3	1	4	0	0	1	0	0	0	
<b>TOTALS</b>			<b>27</b>	<b>8-25</b>	<b>1-4</b>	<b>10-12</b>	<b>10</b>	<b>11</b>	<b>21</b>	<b>6</b>	<b>6</b>	<b>10</b>	<b>2</b>	<b>3</b>	<b>100</b>	

*Shooting By Period*

Period	FG	FG%	3FG	3FG%	FT	FT%
3rd Qtr	5-13	38%	0-1	00%	4-4	100%
4th Qtr	3-12	25%	1-3	33%	6-8	75%
2nd Half	8-25	32%	1-4	25%	10-12	83%
Game	14-50	28.0%	1-6	16.7%	13-16	81.3%

*Deadball Rebounds: 2,0*  
*Last FG Half: HOF 4th-02:26*

**William Mary 28**

No.	Player	S	Pts	FG	3FG	FT	OR	DR	TR	PF	A	TO	Blk	Stl	Min	+/-
01	WAGNER, SYDNEY	G	3	1-4	1-3	0-0	1	0	1	1	0	0	0	0	12	-6
03	TAYLOR, ASHLEY	G	1	0-2	0-2	1-2	1	1	2	0	0	1	1	0	13	1
05	GILLIAM, CHANIQWA	G	3	1-4	1-1	0-0	1	1	2	0	1	1	1	1	15	-1
10	HODGSON, EVA	G	0	0-1	0-1	0-0	0	0	0	0	1	1	1	0	5	2
11	POLLARD, NYLA	G	3	1-4	1-2	0-0	0	0	0	1	2	1	0	2	10	-3
15	KRAUSE, EMMA	F	0	0-3	0-2	0-0	1	2	3	1	0	0	0	1	11	2
20	BELLAMY, BRE	F	7	3-4	1-1	0-0	2	2	4	3	2	1	1	1	14	4
21	EICHNER, BAILEY	F	4	2-3	0-0	0-0	1	2	3	1	3	2	0	0	9	3
25	ROGERS, GABBY	C	2	1-1	0-0	0-0	0	0	0	1	1	0	1	0	5	1
30	REYNOLDS, VICTORIA	F	5	2-3	1-1	0-0	0	0	0	0	0	0	0	2	6	2
	TEAM		0	0-0	0-0	0-0	0	0	0	0	0	1	0	0	0	
<b>TOTALS</b>			<b>28</b>	<b>11-29</b>	<b>5-13</b>	<b>1-2</b>	<b>7</b>	<b>8</b>	<b>15</b>	<b>8</b>	<b>10</b>	<b>8</b>	<b>5</b>	<b>7</b>	<b>100</b>	

*Shooting By Period*

Period	FG	FG%	3FG	3FG%	FT	FT%
3rd Qtr	6-15	40%	3-7	43%	0-0	0%
4th Qtr	5-14	36%	2-6	33%	1-2	50%
2nd Half	11-29	38%	5-13	38%	1-2	50%
Game	28-56	50.0%	8-24	33.3%	7-8	87.5%

*Deadball Rebounds: 1,0*  
*Last FG Half: WM 4th-00:22*

*Game Notes:*

Officials: **Mark McClenney, Kristie Weed, Warren Harding, Jr.**  
 Attendance: **1032**

Start Time: **02:08 PM ET**  
 End Time: **03:52 PM ET**  
 Game Duration: **1:44**  
 Conference Game;

Score	1st	2nd	3rd	4th	TOT
HOF	4	11	14	13	<b>42</b>
WM	27	16	15	13	<b>71</b>

Points from (This Period)	HOF	WM
In the Paint	14	10
Off Turns	7	5
2nd Chance	7	4
Fast Break	2	4
Bench	8	11

**Official Box Score**  
**Hofstra vs William Mary**  
**Third Quarter Statistics Only**  
**February 16, 2020 at Kaplan Arena (Kaplan Arena) - Williamsburg**



**Hofstra 27**

No.	Player	S	Pts	FG	3FG	FT	OR	DR	TR	PF	A	TO	Blk	Stl	Min	+/-
03	INEZA, SORELLE	G	0	0-5	0-1	0-0	0	1	1	0	1	1	0	0	9	-1
04	MILLS, SHAWN	G	0	0-1	0-0	0-0	1	0	1	1	0	0	0	0	4	-2
11	HINES, JAYLEN	F	10	4-4	0-0	2-2	0	1	1	1	0	1	1	0	7	0
53	KALIN, MARIANNE	F	0	0-0	0-0	0-0	1	0	1	1	1	2	0	0	5	-2
54	KARSTEN, SANDRA	G	0	0-0	0-0	0-0	0	1	1	0	2	2	0	1	10	-1
00	REYNOLDS, CARIA	F	4	1-2	0-0	2-2	1	3	4	0	0	0	1	0	7	0
02	BROWN, JAKAYLA	G	0	0-1	0-0	0-0	1	0	1	0	0	0	0	0	6	1
05	KRUPENKO, PETJA	G	0	0-0	0-0	0-0	0	0	0	0	0	0	0	0	1	0
10	HERNANDEZ GIL, ANA	G	0	0-0	0-0	0-0	0	0	0	0	0	0	0	0	0	0
33	CRUTCHFIELD, BRI	F	0	0-0	0-0	0-0	0	0	0	0	0	0	0	0	0	0
TEAM							2	0	2	0		1				
<b>TOTALS</b>			<b>14</b>	<b>5-13</b>	<b>0-1</b>	<b>4-4</b>	<b>6</b>	<b>6</b>	<b>12</b>	<b>3</b>	<b>4</b>	<b>7</b>	<b>2</b>	<b>1</b>	<b>50</b>	

*Shooting By Period*

Period	FG	FG%	3FG	3FG%	FT	FT%
2nd Half	0-0	0%	0-0	0%	0-0	0%
Game	14-50	28.0%	1-6	16.7%	13-16	81.3%

*Deadball Rebounds: 2,0*

**William Mary 28**

No.	Player	S	Pts	FG	3FG	FT	OR	DR	TR	PF	A	TO	Blk	Stl	Min	+/-
10	HODGSON, EVA	G	0	0-1	0-1	0-0	0	0	0	0	1	1	1	0	5	2
11	POLLARD, NYLA	G	3	1-3	1-2	0-0	0	0	0	1	2	1	0	1	8	0
20	BELLAMY, BRE	F	2	1-1	0-0	0-0	0	1	1	1	1	0	0	1	5	2
25	ROGERS, GABBY	C	2	1-1	0-0	0-0	0	0	0	1	1	0	1	0	5	1
30	REYNOLDS, VICTORIA	F	5	2-3	1-1	0-0	0	0	0	0	0	0	0	2	6	2
01	WAGNER, SYDNEY	G	3	1-3	1-2	0-0	1	0	1	0	0	0	0	0	5	0
03	TAYLOR, ASHLEY	G	0	0-1	0-1	0-0	0	0	0	0	0	0	0	0	3	1
05	GILLIAM, CHANIQWA	G	0	0-1	0-0	0-0	1	0	1	0	0	0	1	0	5	-1
15	KRAUSE, EMMA	F	0	0-0	0-0	0-0	0	0	0	0	0	0	0	0	3	-1
21	EICHNER, BAILEY	F	0	0-1	0-0	0-0	1	1	2	1	1	1	0	0	5	-1
TEAM							0	0	0	0		1				
<b>TOTALS</b>			<b>15</b>	<b>6-15</b>	<b>3-7</b>	<b>0-0</b>	<b>3</b>	<b>2</b>	<b>5</b>	<b>4</b>	<b>6</b>	<b>4</b>	<b>3</b>	<b>4</b>	<b>50</b>	

*Shooting By Period*

Period	FG	FG%	3FG	3FG%	FT	FT%
2nd Half	0-0	0%	0-0	0%	0-0	0%
Game	28-56	50.0%	8-24	33.3%	7-8	87.5%

*Deadball Rebounds: 1,0*

Game Notes:

Officials: Mark McClenney, Kristie Weed, Warren Harding, Jr.  
 Attendance: 1032

Start Time: 02:08 PM ET  
 End Time: 03:52 PM ET  
 Game Duration: 1:44  
 Conference Game;

Score	1st	2nd	3rd	4th	TOT
HOF	4	11	14	13	<b>42</b>
WM	27	16	15	13	<b>71</b>

Points from (This Period)	HOF	WM
In the Paint	10	4
Off Turns	4	5
2nd Chance	6	0
Fast Break	0	4
Bench	4	3

**Official Play-By-Play**  
**Hofstra vs William Mary**  
**Third Quarter**  
**February 16, 2020 at Kaplan Arena (Kaplan Arena) - Williamsburg**



**Period 3**

**Starters:**

**Hofstra:** 3 INEZA, SORELLE (G); 4 MILLS, SHAWN (G); 11 HINES, JAYLEN (F); 53 KALIN, MARIANNE (F); 54 KARSTEN, SANDRA (G);

**William Mary:** 10 HODGSON, EVA (G); 11 POLLARD, NYLA (G); 20 BELLAMY, BRE (F); 25 ROGERS, GABBY (C); 30 REYNOLDS, VICTORIA (F);

Time	VISITORS: Hofstra	Score	Margin	HOME: William Mary
10:00				SUB OUT: WAGNER, SYDNEY
10:00				SUB OUT: TAYLOR, ASHLEY
10:00				SUB OUT: GILLIAM, CHANIQWA
10:00				SUB OUT: EICHNER, BAILEY
10:00				SUB IN: HODGSON, EVA
10:00				SUB IN: POLLARD, NYLA
10:00				SUB IN: BELLAMY, BRE
10:00				SUB IN: ROGERS, GABBY
10:00	SUB OUT: BROWN, JAKAYLA			
10:00	SUB OUT: KRUPENKO, PETJA			
10:00	SUB IN: INEZA, SORELLE			
10:00	SUB IN: KARSTEN, SANDRA			
09:44		46-15	H 31	GOOD! 3PTR by POLLARD, NYLA
09:44				ASSIST by ROGERS, GABBY
09:29	TURNOVER (BADPASS) by KALIN, MARIANNE			
09:29				STEAL by BELLAMY, BRE
09:23				TURNOVER (LOSTBALL) by HODGSON, EVA
09:23	STEAL by KARSTEN, SANDRA			
09:15	MISSED JUMPER by INEZA, SORELLE			
09:12	REBOUND (OFF) by MILLS, SHAWN			
08:57	MISSED LAYUP by MILLS, SHAWN			
08:57				BLOCK by HODGSON, EVA
08:57	REBOUND (OFF) by TEAM			
08:54	GOOD! LAYUP by HINES, JAYLEN	46-17	H 29	
08:54	ASSIST by INEZA, SORELLE			
08:47	FOUL (PERSONAL) by KALIN, MARIANNE			
08:39				MISSED 3PTR by HODGSON, EVA
08:36	REBOUND (DEF) by INEZA, SORELLE			
08:27	GOOD! LAYUP by HINES, JAYLEN	46-19	H 27	
08:27	ASSIST by KALIN, MARIANNE			
08:19		48-19	H 29	GOOD! LAYUP by REYNOLDS, VICTORIA [FB]
08:19				ASSIST by POLLARD, NYLA
07:59	GOOD! JUMPER by HINES, JAYLEN [PNT]	48-21	H 27	
07:59	ASSIST by KARSTEN, SANDRA			
07:39		50-21	H 29	GOOD! LAYUP by BELLAMY, BRE
07:39				ASSIST by HODGSON, EVA
07:26				FOUL (PERSONAL) by BELLAMY, BRE
07:26	SUB OUT: MILLS, SHAWN			
07:26	SUB OUT: KALIN, MARIANNE			
07:26	SUB IN: REYNOLDS, CARIA			
07:26	SUB IN: BROWN, JAKAYLA			
07:26				SUB OUT: BELLAMY, BRE
07:26				SUB IN: EICHNER, BAILEY
07:26	GOOD! FT by HINES, JAYLEN	50-22	H 28	
07:26	GOOD! FT by HINES, JAYLEN	50-23	H 27	
07:06				TURNOVER (TRAVEL) by EICHNER, BAILEY
06:42	TURNOVER (BADPASS) by INEZA, SORELLE			
06:42				STEAL by REYNOLDS, VICTORIA
06:34		52-23	H 29	GOOD! JUMPER by ROGERS, GABBY [FB]
06:34				ASSIST by POLLARD, NYLA
05:57	MISSED LAYUP by INEZA, SORELLE			
05:57				BLOCK by ROGERS, GABBY
05:57	REBOUND (OFF) by TEAM			
05:56	TURNOVER (SHOTCLOCK) by TEAM			
05:38				MISSED LAYUP by REYNOLDS, VICTORIA
05:38	BLOCK by HINES, JAYLEN			
05:34	REBOUND (DEF) by HINES, JAYLEN			
05:19	MISSED LAYUP by BROWN, JAKAYLA			
05:19	REBOUND (OFF) by BROWN, JAKAYLA			
05:19				FOUL (PERSONAL) by ROGERS, GABBY
05:19				SUB OUT: POLLARD, NYLA
05:19				SUB OUT: ROGERS, GABBY
05:19				SUB IN: WAGNER, SYDNEY
05:19				SUB IN: KRAUSE, EMMA
05:17				FOUL (PERSONAL) by EICHNER, BAILEY
05:17	GOOD! FT by REYNOLDS, CARIA	52-24	H 28	
05:17	GOOD! FT by REYNOLDS, CARIA	52-25	H 27	
04:57		55-25	H 30	GOOD! 3PTR by REYNOLDS, VICTORIA
04:57				ASSIST by EICHNER, BAILEY
04:41	FOUL (OFF) by HINES, JAYLEN			

Time	VISITORS: Hofstra	Score	Margin	HOME: William Mary
04:41	TURNOVER (OFFENSIVE) by HINES, JAYLEN			
04:41				
04:41				SUB OUT: HODGSON, EVA
04:41				SUB IN: GILLIAM, CHANIQWA
04:28				MISSED LAYUP by GILLIAM, CHANIQWA
04:25	REBOUND (DEF) by REYNOLDS, CARIA			
04:07	TURNOVER (LOSTBALL) by KARSTEN, SANDRA			
04:07				STEAL by REYNOLDS, VICTORIA
03:41				MISSED LAYUP by EICHNER, BAILEY
03:41	BLOCK by REYNOLDS, CARIA			
03:37				REBOUND (OFF) by EICHNER, BAILEY
03:35				TURNOVER (SHOTCLOCK) by TEAM
03:35				SUB OUT: REYNOLDS, VICTORIA
03:35				SUB IN: POLLARD, NYLA
03:22	GOOD! LAYUP by HINES, JAYLEN	55-27	H 28	
03:22	ASSIST by KARSTEN, SANDRA			
03:14				MISSED JUMPER by POLLARD, NYLA
03:11	REBOUND (DEF) by REYNOLDS, CARIA			
02:49	MISSED JUMPER by INEZA, SORELLE			
02:45				REBOUND (DEF) by EICHNER, BAILEY
02:38				MISSED 3PTR by POLLARD, NYLA
02:35	REBOUND (DEF) by KARSTEN, SANDRA			
02:35				SUB OUT: KRAUSE, EMMA
02:35				SUB OUT: EICHNER, BAILEY
02:35				SUB IN: TAYLOR, ASHLEY
02:35				SUB IN: BELLAMY, BRE
02:35	SUB OUT: HINES, JAYLEN			
02:35	SUB IN: KALIN, MARIANNE			
02:24	MISSED JUMPER by REYNOLDS, CARIA			
02:20	REBOUND (OFF) by KALIN, MARIANNE			
02:04	MISSED 3PTR by INEZA, SORELLE			
02:04				BLOCK by GILLIAM, CHANIQWA
02:03				REBOUND (DEF) by BELLAMY, BRE
01:50				MISSED 3PTR by TAYLOR, ASHLEY
01:47				REBOUND (OFF) by WAGNER, SYDNEY
01:44				MISSED LAYUP by WAGNER, SYDNEY
01:42	REBOUND (DEF) by REYNOLDS, CARIA			
01:39				FOUL (PERSONAL) by POLLARD, NYLA
01:39	SUB OUT: BROWN, JAKAYLA			
01:39	SUB IN: MILLS, SHAWN			
01:31	TURNOVER (BADPASS) by KARSTEN, SANDRA			
01:17		58-27	H 31	GOOD! 3PTR by WAGNER, SYDNEY
01:17				ASSIST by BELLAMY, BRE
00:50	MISSED LAYUP by INEZA, SORELLE			
00:46	REBOUND (OFF) by REYNOLDS, CARIA			
00:46	GOOD! LAYUP by REYNOLDS, CARIA	58-29	H 29	
00:36				TURNOVER (BADPASS) by POLLARD, NYLA
00:36	SUB OUT: INEZA, SORELLE			
00:36	SUB IN: KRUPENKO, PETJA			
00:17	TURNOVER (BADPASS) by KALIN, MARIANNE			
00:17				STEAL by POLLARD, NYLA
00:17	FOUL (PERSONAL) by MILLS, SHAWN			
00:02				MISSED 3PTR by WAGNER, SYDNEY
00:02				REBOUND (OFF) by GILLIAM, CHANIQWA

### Hofstra 29, William Mary 58

Points from (This Period)	HOF	WM
In the Paint	10	4
Off Turns	4	5
2nd Chance	6	0
Fast Break	0	4
Bench	4	3

**Official Box Score**  
**Hofstra vs William Mary**  
**Fourth Quarter Statistics Only**  
**February 16, 2020 at Kaplan Arena (Kaplan Arena) - Williamsburg**



**Hofstra 13**

No.	Player	S	Pts	FG	3FG	FT	OR	DR	TR	PF	A	TO	Blk	Stl	Min	+/-
03	INEZA, SORELLE	G	2	1-3	0-1	0-0	0	1	1	0	1	0	0	0	10	0
04	MILLS, SHAWN	G	2	0-0	0-0	2-2	0	0	0	1	0	1	0	0	6	-1
11	HINES, JAYLEN	F	2	0-3	0-0	2-2	2	1	3	0	0	0	0	0	5	2
53	KALIN, MARIANNE	F	0	0-0	0-0	0-0	0	0	0	0	0	0	0	0	1	2
54	KARSTEN, SANDRA	G	3	1-2	1-2	0-0	0	0	0	2	1	0	0	1	10	0
00	REYNOLDS, CARIA	F	3	1-1	0-0	1-2	0	2	2	0	0	0	0	1	8	1
02	BROWN, JAKAYLA	G	0	0-2	0-0	0-0	0	0	0	0	0	0	0	0	5	0
05	KRUPENKO, PETJA	G	0	0-0	0-0	0-0	0	0	0	0	0	0	0	0	0	0
10	HERNANDEZ GIL, ANA	G	0	0-0	0-0	0-0	0	0	0	0	0	0	0	0	0	0
33	CRUTCHFIELD, BRI	F	1	0-1	0-0	1-2	1	0	1	0	0	2	0	0	5	-4
TEAM							1	1	2	0		0				
<b>TOTALS</b>			<b>13</b>	<b>3-12</b>	<b>1-3</b>	<b>6-8</b>	<b>4</b>	<b>5</b>	<b>9</b>	<b>3</b>	<b>2</b>	<b>3</b>	<b>0</b>	<b>2</b>	<b>50</b>	

*Shooting By Period*

Period	FG	FG%	3FG	3FG%	FT	FT%
Game	14-50	28.0%	1-6	16.7%	13-16	81.3%

*Deadball Rebounds: 2,0*

**William Mary 13**

No.	Player	S	Pts	FG	3FG	FT	OR	DR	TR	PF	A	TO	Blk	Stl	Min	+/-
10	HODGSON, EVA	G	0	0-0	0-0	0-0	0	0	0	0	0	0	0	0	0	0
11	POLLARD, NYLA	G	0	0-1	0-0	0-0	0	0	0	0	0	0	0	1	2	-3
20	BELLAMY, BRE	F	5	2-3	1-1	0-0	2	1	3	2	1	1	1	0	9	2
25	ROGERS, GABBY	C	0	0-0	0-0	0-0	0	0	0	0	0	0	0	0	0	0
30	REYNOLDS, VICTORIA	F	0	0-0	0-0	0-0	0	0	0	0	0	0	0	0	0	0
01	WAGNER, SYDNEY	G	0	0-1	0-1	0-0	0	0	0	1	0	0	0	0	7	-6
03	TAYLOR, ASHLEY	G	1	0-1	0-1	1-2	1	1	2	0	0	1	1	0	10	0
05	GILLIAM, CHANIQWA	G	3	1-3	1-1	0-0	0	1	1	0	1	1	0	1	10	0
15	KRAUSE, EMMA	F	0	0-3	0-2	0-0	1	2	3	1	0	0	0	1	8	3
21	EICHNER, BAILEY	F	4	2-2	0-0	0-0	0	1	1	0	2	1	0	0	4	4
TEAM							0	0	0	0		0				
<b>TOTALS</b>			<b>13</b>	<b>5-14</b>	<b>2-6</b>	<b>1-2</b>	<b>4</b>	<b>6</b>	<b>10</b>	<b>4</b>	<b>4</b>	<b>4</b>	<b>2</b>	<b>3</b>	<b>50</b>	

*Shooting By Period*

Period	FG	FG%	3FG	3FG%	FT	FT%
Game	28-56	50.0%	8-24	33.3%	7-8	87.5%

*Deadball Rebounds: 1,0*

Game Notes:

Officials: Mark McClenney, Kristie Weed, Warren Harding, Jr.  
 Attendance: 1032

Start Time: 02:08 PM ET  
 End Time: 03:52 PM ET  
 Game Duration: 1:44  
 Conference Game;

Score	1st	2nd	3rd	4th	TOT
HOF	4	11	14	13	<b>42</b>
WM	27	16	15	13	<b>71</b>

Points from (This Period)	HOF	WM
In the Paint	4	6
Off Turns	3	0
2nd Chance	1	4
Fast Break	2	0
Bench	4	8

**Official Play-By-Play**  
**Hofstra vs William Mary**  
**Fourth Quarter**  
**February 16, 2020 at Kaplan Arena (Kaplan Arena) - Williamsburg**



**Period 4**

**Starters:**

**Hofstra:** 3 INEZA, SORELLE (G); 4 MILLS, SHAWN (G); 11 HINES, JAYLEN (F); 53 KALIN, MARIANNE (F); 54 KARSTEN, SANDRA (G);

**William Mary:** 10 HODGSON, EVA (G); 11 POLLARD, NYLA (G); 20 BELLAMY, BRE (F); 25 ROGERS, GABBY (C); 30 REYNOLDS, VICTORIA (F);

Time	VISITORS: Hofstra	Score	Margin	HOME: William Mary
10:00	SUB OUT: KRUPENKO, PETJA			
10:00	SUB IN: INEZA, SORELLE			
09:44				MISSED 3PTR by TAYLOR, ASHLEY
09:42	REBOUND (DEF) by REYNOLDS, CARIA			
09:15	GOOD! LAYUP by INEZA, SORELLE	58-31	H 27	
08:41				MISSED JUMPER by POLLARD, NYLA
08:41	REBOUND (DEF) by TEAM			
08:41	SUB OUT: KALIN, MARIANNE			
08:41	SUB IN: HINES, JAYLEN			
08:26	GOOD! LAYUP by REYNOLDS, CARIA	58-33	H 25	
08:26	ASSIST by KARSTEN, SANDRA			
08:08	FOUL (PERSONAL) by MILLS, SHAWN			
08:08				MISSED FT by TAYLOR, ASHLEY
08:08				REBOUND (OFF) by TEAM
08:08		59-33	H 26	GOOD! FT by TAYLOR, ASHLEY
07:49	TURNOVER (BADPASS) by MILLS, SHAWN			
07:49				STEAL by POLLARD, NYLA
07:44	FOUL (PERSONAL) by KARSTEN, SANDRA			
07:44				SUB OUT: POLLARD, NYLA
07:44				SUB IN: KRAUSE, EMMA
07:44	SUB OUT: MILLS, SHAWN			
07:44	SUB IN: BROWN, JAKAYLA			
07:22				MISSED 3PTR by WAGNER, SYDNEY
07:19	REBOUND (DEF) by HINES, JAYLEN			
07:15				FOUL (PERSONAL) by BELLAMY, BRE
07:15	GOOD! FT by HINES, JAYLEN [FB]	59-34	H 25	
07:15	GOOD! FT by HINES, JAYLEN [FB]	59-35	H 24	
07:05				TURNOVER (LOSTBALL) by GILLIAM, CHANIQWA
07:05	STEAL by KARSTEN, SANDRA			
06:52	MISSED JUMPER by HINES, JAYLEN			
06:49				REBOUND (DEF) by GILLIAM, CHANIQWA
06:44				MISSED LAYUP by GILLIAM, CHANIQWA
06:41				REBOUND (OFF) by KRAUSE, EMMA
06:40				MISSED LAYUP by KRAUSE, EMMA
06:38	REBOUND (DEF) by REYNOLDS, CARIA			
06:26	MISSED 3PTR by INEZA, SORELLE			
06:23	REBOUND (OFF) by HINES, JAYLEN			
06:22	MISSED LAYUP by HINES, JAYLEN			
06:19				REBOUND (DEF) by KRAUSE, EMMA
06:03				TURNOVER (BADPASS) by BELLAMY, BRE
06:03	SUB OUT: REYNOLDS, CARIA			
06:03	SUB IN: CRUTCHFIELD, BRI			
05:47	MISSED LAYUP by BROWN, JAKAYLA			
05:47				BLOCK by TAYLOR, ASHLEY
05:47	REBOUND (OFF) by TEAM			
05:33	MISSED LAYUP by BROWN, JAKAYLA			
05:33	REBOUND (OFF) by CRUTCHFIELD, BRI			
05:33				FOUL (PERSONAL) by BELLAMY, BRE
05:33	MISSED FT by CRUTCHFIELD, BRI			
05:33	REBOUND (OFF) by TEAM			
05:33	GOOD! FT by CRUTCHFIELD, BRI	59-36	H 23	
05:14				MISSED 3PTR by KRAUSE, EMMA
05:11	REBOUND (DEF) by INEZA, SORELLE			
04:53	MISSED LAYUP by HINES, JAYLEN			
04:53				BLOCK by BELLAMY, BRE
04:49	REBOUND (OFF) by HINES, JAYLEN			
04:47	MISSED 3PTR by KARSTEN, SANDRA			
04:44				REBOUND (DEF) by BELLAMY, BRE
04:30				MISSED LAYUP by GILLIAM, CHANIQWA
04:25				REBOUND (OFF) by BELLAMY, BRE
04:25		61-36	H 25	GOOD! LAYUP by BELLAMY, BRE
04:11	TURNOVER (BADPASS) by CRUTCHFIELD, BRI			
04:11				STEAL by GILLIAM, CHANIQWA
04:05				MISSED LAYUP by BELLAMY, BRE
04:05				REBOUND (OFF) by TAYLOR, ASHLEY
04:05				TURNOVER (TRAVEL) by TAYLOR, ASHLEY
04:03				SUB OUT: BELLAMY, BRE
04:03				SUB IN: EICHNER, BAILEY
04:03	SUB OUT: BROWN, JAKAYLA			

Time	VISITORS: Hofstra	Score	Margin	HOME: William Mary
04:03	SUB OUT: HINES, JAYLEN			
04:03	SUB IN: REYNOLDS, CARIA			
04:03	SUB IN: MILLS, SHAWN			
03:44	TURNOVER (BADPASS) by CRUTCHFIELD, BRI			
03:44				STEAL by KRAUSE, EMMA
03:16				TURNOVER (BADPASS) by EICHNER, BAILEY
03:16	STEAL by REYNOLDS, CARIA			
03:11				FOUL (PERSONAL) by WAGNER, SYDNEY
03:11	GOOD! FT by MILLS, SHAWN	61-37	H 24	
03:11	GOOD! FT by MILLS, SHAWN	61-38	H 23	
02:56	FOUL (PERSONAL) by KARSTEN, SANDRA			
02:56				SUB OUT: WAGNER, SYDNEY
02:56				SUB IN: BELLAMY, BRE
02:50		64-38	H 26	GOOD! 3PTR by BELLAMY, BRE
02:50				ASSIST by EICHNER, BAILEY
02:26	GOOD! 3PTR by KARSTEN, SANDRA	64-41	H 23	
02:26	ASSIST by INEZA, SORELLE			
02:02		66-41	H 25	GOOD! LAYUP by EICHNER, BAILEY
02:02				ASSIST by BELLAMY, BRE
01:46	MISSED LAYUP by CRUTCHFIELD, BRI			
01:42				REBOUND (DEF) by TAYLOR, ASHLEY
01:29		69-41	H 28	GOOD! 3PTR by GILLIAM, CHANIQWA
01:29				ASSIST by EICHNER, BAILEY
01:02				FOUL (PERSONAL) by KRAUSE, EMMA
01:02	SUB OUT: CRUTCHFIELD, BRI			
01:02	SUB IN: BROWN, JAKAYLA			
01:02	GOOD! FT by REYNOLDS, CARIA	69-42	H 27	
01:02	MISSED FT by REYNOLDS, CARIA			
01:01				REBOUND (DEF) by KRAUSE, EMMA
00:42				MISSED 3PTR by KRAUSE, EMMA
00:39				REBOUND (OFF) by BELLAMY, BRE
00:22		71-42	H 29	GOOD! LAYUP by EICHNER, BAILEY
00:22				ASSIST by GILLIAM, CHANIQWA
00:09	MISSED JUMPER by INEZA, SORELLE			
00:06				REBOUND (DEF) by EICHNER, BAILEY

### Hofstra 42, William Mary 71

Points from (This Period)	HOF	WM
In the Paint	4	6
Off Turns	3	0
2nd Chance	1	4
Fast Break	2	0
Bench	4	8



**Official Scoring/Possession Reference Chart**  
**Hofstra vs William Mary**  
**Period 1**  
**February 16, 2020 at Kaplan Arena (Kaplan Arena) - Williamsburg**



**Period 1**

**Starters:**

**Hofstra:** 3 INEZA, SORELLE (G); 4 MILLS, SHAWN (G); 11 HINES, JAYLEN (F); 53 KALIN, MARIANNE (F); 54 KARSTEN, SANDRA (G);

**William Mary:** 10 HODGSON, EVA (G); 11 POLLARD, NYLA (G); 20 BELLAMY, BRE (F); 25 ROGERS, GABBY (C); 30 REYNOLDS, VICTORIA (F);

Time	VISITORS: Hofstra	Score	Margin	HOME: William Mary
09:36		2-0	H 2	GOOD! JUMPER by BELLAMY, BRE
09:11		4-0	H 4	GOOD! LAYUP by REYNOLDS, VICTORIA [FB]
08:07		6-0	H 6	GOOD! JUMPER by HODGSON, EVA
06:41		8-0	H 8	GOOD! JUMPER by HODGSON, EVA
06:14		10-0	H 10	GOOD! LAYUP by REYNOLDS, VICTORIA
05:41		12-0	H 12	GOOD! LAYUP by HODGSON, EVA [FB]
05:00		13-0	H 13	GOOD! FT by BELLAMY, BRE
05:00		14-0	H 14	GOOD! FT by BELLAMY, BRE
04:35		17-0	H 17	GOOD! 3PTR by BELLAMY, BRE
03:44		19-0	H 19	GOOD! JUMPER by REYNOLDS, VICTORIA
03:18	GOOD! LAYUP by KALIN, MARIANNE	19-2	H 17	
02:59		22-2	H 20	GOOD! 3PTR by WAGNER, SYDNEY
02:08		24-2	H 22	GOOD! JUMPER by BELLAMY, BRE [PNT]
01:38	GOOD! JUMPER by BROWN, JAKAYLA	24-4	H 20	
00:45		27-4	H 23	GOOD! 3PTR by GILLIAM, CHANIQWA [FB]

**Hofstra 4, William Mary 27**

**Official Scoring/Possession Reference Chart**  
**Hofstra vs William Mary**  
**Period 2**  
**February 16, 2020 at Kaplan Arena (Kaplan Arena) - Williamsburg**



**Period 2**

**Starters:**

**Hofstra:** 3 INEZA, SORELLE (G); 4 MILLS, SHAWN (G); 11 HINES, JAYLEN (F); 53 KALIN, MARIANNE (F); 54 KARSTEN, SANDRA (G);

**William Mary:** 10 HODGSON, EVA (G); 11 POLLARD, NYLA (G); 20 BELLAMY, BRE (F); 25 ROGERS, GABBY (C); 30 REYNOLDS, VICTORIA (F);

Time	VISITORS: Hofstra	Score	Margin	HOME: William Mary
09:08		29-4	H 25	GOOD! JUMPER by ROGERS, GABBY
08:29		31-4	H 27	GOOD! JUMPER by BELLAMY, BRE [PNT]
08:06		32-4	H 28	GOOD! FT by HODGSON, EVA
08:06		33-4	H 29	GOOD! FT by HODGSON, EVA
06:49	GOOD! LAYUP by INEZA, SORELLE [FB]	33-6	H 27	
06:04	GOOD! FT by KARSTEN, SANDRA	33-7	H 26	
06:04	GOOD! FT by KARSTEN, SANDRA	33-8	H 25	
04:00		35-8	H 27	GOOD! LAYUP by EICHNER, BAILEY
03:23		37-8	H 29	GOOD! JUMPER by REYNOLDS, VICTORIA [PNT]
03:01	GOOD! FT by INEZA, SORELLE	37-9	H 28	
02:15	GOOD! LAYUP by HINES, JAYLEN [FB]	37-11	H 26	
02:01		39-11	H 28	GOOD! LAYUP by TAYLOR, ASHLEY
01:27	GOOD! LAYUP by HINES, JAYLEN	39-13	H 26	
01:16		40-13	H 27	GOOD! FT by EICHNER, BAILEY
01:16		41-13	H 28	GOOD! FT by EICHNER, BAILEY
00:52		43-13	H 30	GOOD! LAYUP by GILLIAM, CHANIQWA
00:18	GOOD! LAYUP by HINES, JAYLEN [PNT]	43-15	H 28	

**Hofstra 15, William Mary 43**

**Official Scoring/Possession Reference Chart**  
**Hofstra vs William Mary**  
**Period 3**  
**February 16, 2020 at Kaplan Arena (Kaplan Arena) - Williamsburg**



**Period 3**

**Starters:**

**Hofstra:** 3 INEZA, SORELLE (G); 4 MILLS, SHAWN (G); 11 HINES, JAYLEN (F); 53 KALIN, MARIANNE (F); 54 KARSTEN, SANDRA (G);

**William Mary:** 10 HODGSON, EVA (G); 11 POLLARD, NYLA (G); 20 BELLAMY, BRE (F); 25 ROGERS, GABBY (C); 30 REYNOLDS, VICTORIA (F);

Time	VISITORS: Hofstra	Score	Margin	HOME: William Mary
09:44		46-15	H 31	GOOD! 3PTR by POLLARD, NYLA
08:54	GOOD! LAYUP by HINES, JAYLEN	46-17	H 29	
08:27	GOOD! LAYUP by HINES, JAYLEN	46-19	H 27	
08:19		48-19	H 29	GOOD! LAYUP by REYNOLDS, VICTORIA [FB]
07:59	GOOD! JUMPER by HINES, JAYLEN [PNT]	48-21	H 27	
07:39		50-21	H 29	GOOD! LAYUP by BELLAMY, BRE
07:26	GOOD! FT by HINES, JAYLEN	50-22	H 28	
07:26	GOOD! FT by HINES, JAYLEN	50-23	H 27	
06:34		52-23	H 29	GOOD! JUMPER by ROGERS, GABBY [FB]
05:17	GOOD! FT by REYNOLDS, CARIA	52-24	H 28	
05:17	GOOD! FT by REYNOLDS, CARIA	52-25	H 27	
04:57		55-25	H 30	GOOD! 3PTR by REYNOLDS, VICTORIA
03:22	GOOD! LAYUP by HINES, JAYLEN	55-27	H 28	
01:17		58-27	H 31	GOOD! 3PTR by WAGNER, SYDNEY
00:46	GOOD! LAYUP by REYNOLDS, CARIA	58-29	H 29	

**Hofstra 29, William Mary 58**

**Official Scoring/Possession Reference Chart**  
**Hofstra vs William Mary**  
**Period 4**  
**February 16, 2020 at Kaplan Arena (Kaplan Arena) - Williamsburg**



**Period 4**

**Starters:**

**Hofstra:** 3 INEZA, SORELLE (G); 4 MILLS, SHAWN (G); 11 HINES, JAYLEN (F); 53 KALIN, MARIANNE (F); 54 KARSTEN, SANDRA (G);

**William Mary:** 10 HODGSON, EVA (G); 11 POLLARD, NYLA (G); 20 BELLAMY, BRE (F); 25 ROGERS, GABBY (C); 30 REYNOLDS, VICTORIA (F);

Time	VISITORS: Hofstra	Score	Margin	HOME: William Mary
09:15	GOOD! LAYUP by INEZA, SORELLE	58-31	H 27	
08:26	GOOD! LAYUP by REYNOLDS, CARIA	58-33	H 25	
08:08		59-33	H 26	GOOD! FT by TAYLOR, ASHLEY
07:15	GOOD! FT by HINES, JAYLEN [FB]	59-34	H 25	
07:15	GOOD! FT by HINES, JAYLEN [FB]	59-35	H 24	
05:33	GOOD! FT by CRUTCHFIELD, BRI	59-36	H 23	
04:25		61-36	H 25	GOOD! LAYUP by BELLAMY, BRE
03:11	GOOD! FT by MILLS, SHAWN	61-37	H 24	
03:11	GOOD! FT by MILLS, SHAWN	61-38	H 23	
02:50		64-38	H 26	GOOD! 3PTR by BELLAMY, BRE
02:26	GOOD! 3PTR by KARSTEN, SANDRA	64-41	H 23	
02:02		66-41	H 25	GOOD! LAYUP by EICHNER, BAILEY
01:29		69-41	H 28	GOOD! 3PTR by GILLIAM, CHANIQWA
01:02	GOOD! FT by REYNOLDS, CARIA	69-42	H 27	
00:22		71-42	H 29	GOOD! LAYUP by EICHNER, BAILEY

**Hofstra 42, William Mary 71**

**Official Substitutions Log**  
**Hofstra vs William Mary**  
**Period 1**  
**February 16, 2020 at Kaplan Arena (Kaplan Arena) - Williamsburg**



VISITORS: Hofstra	Time	Score	HOME: William Mary
3 INEZA, SORELLE			10 HODGSON, EVA
4 MILLS, SHAWN			11 POLLARD, NYLA
11 HINES, JAYLEN			20 BELLAMY, BRE
53 KALIN, MARIANNE			25 ROGERS, GABBY
54 KARSTEN, SANDRA			30 REYNOLDS, VICTORIA
SUB OUT: 3 INEZA, SORELLE	07:27	0-6	
SUB IN: 5 KRUPENKO, PETJA	07:27		
SUB OUT: 4 MILLS, SHAWN	07:01	0-6	
SUB OUT: 11 HINES, JAYLEN	07:01		
SUB OUT: 53 KALIN, MARIANNE	07:01		
SUB OUT: 54 KARSTEN, SANDRA	07:01		
SUB IN: 00 REYNOLDS, CARIA	07:01		
SUB IN: 2 BROWN, JAKAYLA	07:01		
SUB IN: 10 HERNANDEZ GIL, ANA	07:01		
SUB IN: 33 CRUTCHFIELD, BRI	07:01		
SUB OUT: 5 KRUPENKO, PETJA	05:26	0-12	
SUB IN: 3 INEZA, SORELLE	05:26		
	05:00	0-12	SUB OUT: ROGERS, GABBY
	05:00		SUB IN: EICHNER, BAILEY
SUB OUT: 33 CRUTCHFIELD, BRI	05:00		
SUB IN: 53 KALIN, MARIANNE	05:00		
	04:49	0-14	SUB OUT: POLLARD, NYLA
	04:49		SUB IN: WAGNER, SYDNEY
SUB OUT: 3 INEZA, SORELLE	04:49		
SUB IN: 4 MILLS, SHAWN	04:49		
	03:29	0-19	SUB OUT: HODGSON, EVA
	03:29		SUB IN: GILLIAM, CHANIQWA
	01:51	2-24	SUB OUT: BELLAMY, BRE
	01:51		SUB IN: POLLARD, NYLA
SUB OUT: 10 HERNANDEZ GIL, ANA	01:51		
SUB IN: 54 KARSTEN, SANDRA	01:51		
SUB OUT: 4 MILLS, SHAWN	01:17	4-24	
SUB IN: 3 INEZA, SORELLE	01:17		
	00:57	4-24	SUB OUT: EICHNER, BAILEY
	00:57		SUB IN: ROGERS, GABBY

**Hofstra 4, William Mary 27**

**Official Substitutions Log**  
**Hofstra vs William Mary**  
**Period 2**  
**February 16, 2020 at Kaplan Arena (Kaplan Arena) - Williamsburg**



VISITORS: Hofstra	Time	Score	HOME: William Mary
3 INEZA, SORELLE			10 HODGSON, EVA
4 MILLS, SHAWN			11 POLLARD, NYLA
11 HINES, JAYLEN			20 BELLAMY, BRE
53 KALIN, MARIANNE			25 ROGERS, GABBY
54 KARSTEN, SANDRA			30 REYNOLDS, VICTORIA
	10:00	-	SUB OUT: GILLIAM, CHANIQWA
	10:00		SUB OUT: REYNOLDS, VICTORIA
	10:00		SUB IN: HODGSON, EVA
	10:00		SUB IN: BELLAMY, BRE
SUB OUT: 00 REYNOLDS, CARIA	08:49	4-29	
SUB IN: 11 HINES, JAYLEN	08:49		
	08:06	4-31	SUB OUT: WAGNER, SYDNEY
	08:06		SUB OUT: ROGERS, GABBY
	08:06		SUB IN: GILLIAM, CHANIQWA
	08:06		SUB IN: KRAUSE, EMMA
SUB OUT: 2 BROWN, JAKAYLA	08:06		
SUB IN: 4 MILLS, SHAWN	08:06		
SUB OUT: 53 KALIN, MARIANNE	05:38	8-33	
SUB IN: 00 REYNOLDS, CARIA	05:38		
	05:00	8-33	SUB OUT: KRAUSE, EMMA
	05:00		SUB OUT: BELLAMY, BRE
	05:00		SUB IN: TAYLOR, ASHLEY
	05:00		SUB IN: EICHNER, BAILEY
	04:15	8-33	SUB OUT: POLLARD, NYLA
	04:15		SUB IN: REYNOLDS, VICTORIA
	03:01	8-37	SUB OUT: HODGSON, EVA
	03:01		SUB IN: WAGNER, SYDNEY
SUB OUT: 4 MILLS, SHAWN	03:01		
SUB OUT: 54 KARSTEN, SANDRA	03:01		
SUB IN: 2 BROWN, JAKAYLA	03:01		
SUB IN: 10 HERNANDEZ GIL, ANA	03:01		
SUB OUT: 00 REYNOLDS, CARIA	01:16	13-39	
SUB OUT: 3 INEZA, SORELLE	01:16		
SUB IN: 5 KRUPENKO, PETJA	01:16		
SUB IN: 53 KALIN, MARIANNE	01:16		
SUB OUT: 10 HERNANDEZ GIL, ANA	01:16		
SUB IN: 4 MILLS, SHAWN	01:16		

**Hofstra 15, William Mary 43**

**Official Substitutions Log**  
**Hofstra vs William Mary**  
**Period 3**  
**February 16, 2020 at Kaplan Arena (Kaplan Arena) - Williamsburg**



VISITORS: Hofstra	Time	Score	HOME: William Mary
3 INEZA, SORELLE			10 HODGSON, EVA
4 MILLS, SHAWN			11 POLLARD, NYLA
11 HINES, JAYLEN			20 BELLAMY, BRE
53 KALIN, MARIANNE			25 ROGERS, GABBY
54 KARSTEN, SANDRA			30 REYNOLDS, VICTORIA
	10:00	-	SUB OUT: WAGNER, SYDNEY
	10:00		SUB OUT: TAYLOR, ASHLEY
	10:00		SUB OUT: GILLIAM, CHANIQWA
	10:00		SUB OUT: EICHNER, BAILEY
	10:00		SUB IN: HODGSON, EVA
	10:00		SUB IN: POLLARD, NYLA
	10:00		SUB IN: BELLAMY, BRE
	10:00		SUB IN: ROGERS, GABBY
SUB OUT: 2 BROWN, JAKAYLA	10:00		
SUB OUT: 5 KRUPENKO, PETJA	10:00		
SUB IN: 3 INEZA, SORELLE	10:00		
SUB IN: 54 KARSTEN, SANDRA	10:00		
SUB OUT: 4 MILLS, SHAWN	07:26	21-50	
SUB OUT: 53 KALIN, MARIANNE	07:26		
SUB IN: 00 REYNOLDS, CARIA	07:26		
SUB IN: 2 BROWN, JAKAYLA	07:26		
	07:26		SUB OUT: BELLAMY, BRE
	07:26		SUB IN: EICHNER, BAILEY
	05:19	23-52	SUB OUT: POLLARD, NYLA
	05:19		SUB OUT: ROGERS, GABBY
	05:19		SUB IN: WAGNER, SYDNEY
	05:19		SUB IN: KRAUSE, EMMA
	04:41	25-55	SUB OUT: HODGSON, EVA
	04:41		SUB IN: GILLIAM, CHANIQWA
	03:35	25-55	SUB OUT: REYNOLDS, VICTORIA
	03:35		SUB IN: POLLARD, NYLA
	02:35	27-55	SUB OUT: KRAUSE, EMMA
	02:35		SUB OUT: EICHNER, BAILEY
	02:35		SUB IN: TAYLOR, ASHLEY
	02:35		SUB IN: BELLAMY, BRE
SUB OUT: 11 HINES, JAYLEN	02:35		
SUB IN: 53 KALIN, MARIANNE	02:35		
SUB OUT: 2 BROWN, JAKAYLA	01:39	27-55	
SUB IN: 4 MILLS, SHAWN	01:39		
SUB OUT: 3 INEZA, SORELLE	00:36	29-58	
SUB IN: 5 KRUPENKO, PETJA	00:36		

**Hofstra 29, William Mary 58**

**Official Substitutions Log**  
**Hofstra vs William Mary**  
**Period 4**  
**February 16, 2020 at Kaplan Arena (Kaplan Arena) - Williamsburg**



VISITORS: Hofstra	Time	Score	HOME: William Mary
3 INEZA, SORELLE			10 HODGSON, EVA
4 MILLS, SHAWN			11 POLLARD, NYLA
11 HINES, JAYLEN			20 BELLAMY, BRE
53 KALIN, MARIANNE			25 ROGERS, GABBY
54 KARSTEN, SANDRA			30 REYNOLDS, VICTORIA
SUB OUT: 5 KRUPENKO, PETJA	10:00	-	
SUB IN: 3 INEZA, SORELLE	10:00		
SUB OUT: 53 KALIN, MARIANNE	08:41	31-58	
SUB IN: 11 HINES, JAYLEN	08:41		
	07:44	33-59	SUB OUT: POLLARD, NYLA
	07:44		SUB IN: KRAUSE, EMMA
SUB OUT: 4 MILLS, SHAWN	07:44		
SUB IN: 2 BROWN, JAKAYLA	07:44		
SUB OUT: 00 REYNOLDS, CARIA	06:03	35-59	
SUB IN: 33 CRUTCHFIELD, BRI	06:03		
	04:03	36-61	SUB OUT: BELLAMY, BRE
	04:03		SUB IN: EICHNER, BAILEY
SUB OUT: 2 BROWN, JAKAYLA	04:03		
SUB OUT: 11 HINES, JAYLEN	04:03		
SUB IN: 00 REYNOLDS, CARIA	04:03		
SUB IN: 4 MILLS, SHAWN	04:03		
	02:56	38-61	SUB OUT: WAGNER, SYDNEY
	02:56		SUB IN: BELLAMY, BRE
SUB OUT: 33 CRUTCHFIELD, BRI	01:02	41-69	
SUB IN: 2 BROWN, JAKAYLA	01:02		

**Hofstra 42, William Mary 71**



**Official Shot Chart**  
**Hofstra vs William Mary**  
**PERIOD 1 Shots**  
 February 16, 2020 at Kaplan Arena (Kaplan Arena) - Williamsburg



**William Mary**

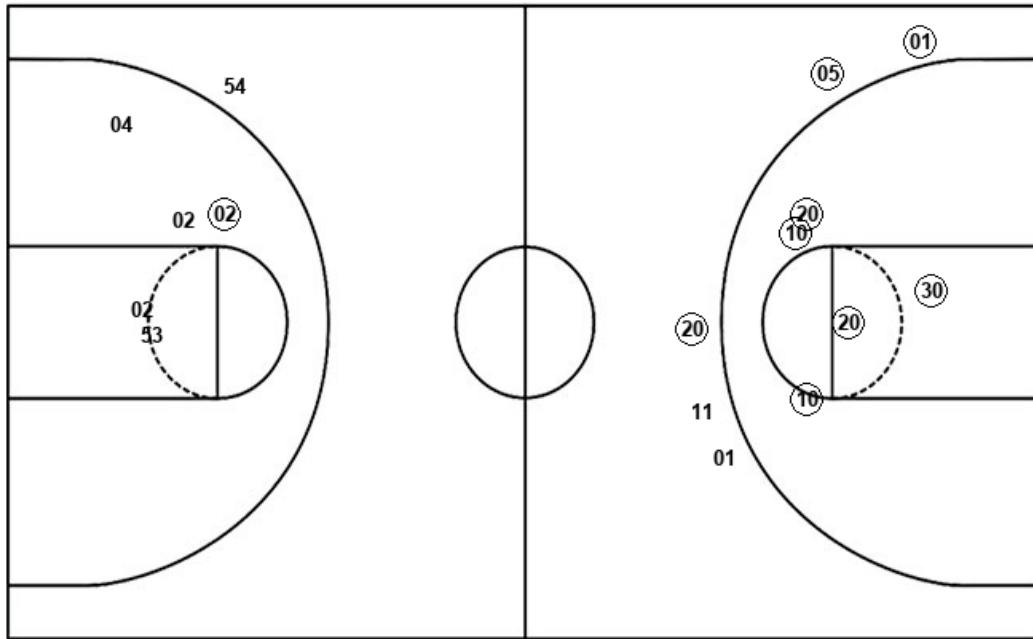
**Hofstra**

Layups  
 (30) (30) (10)

Layups  
 00 00 00 (53) 53  
 04

Dunks

Dunks



WM : Period 1	Made	Att	Pct
Layups	3	3	100.0
Dunks	0	0	0
2PT Field Goals	8	8	100.0
3PT Field Goals	3	5	60.0
<b>Total Field Goals</b>	<b>11</b>	<b>13</b>	<b>84.6</b>

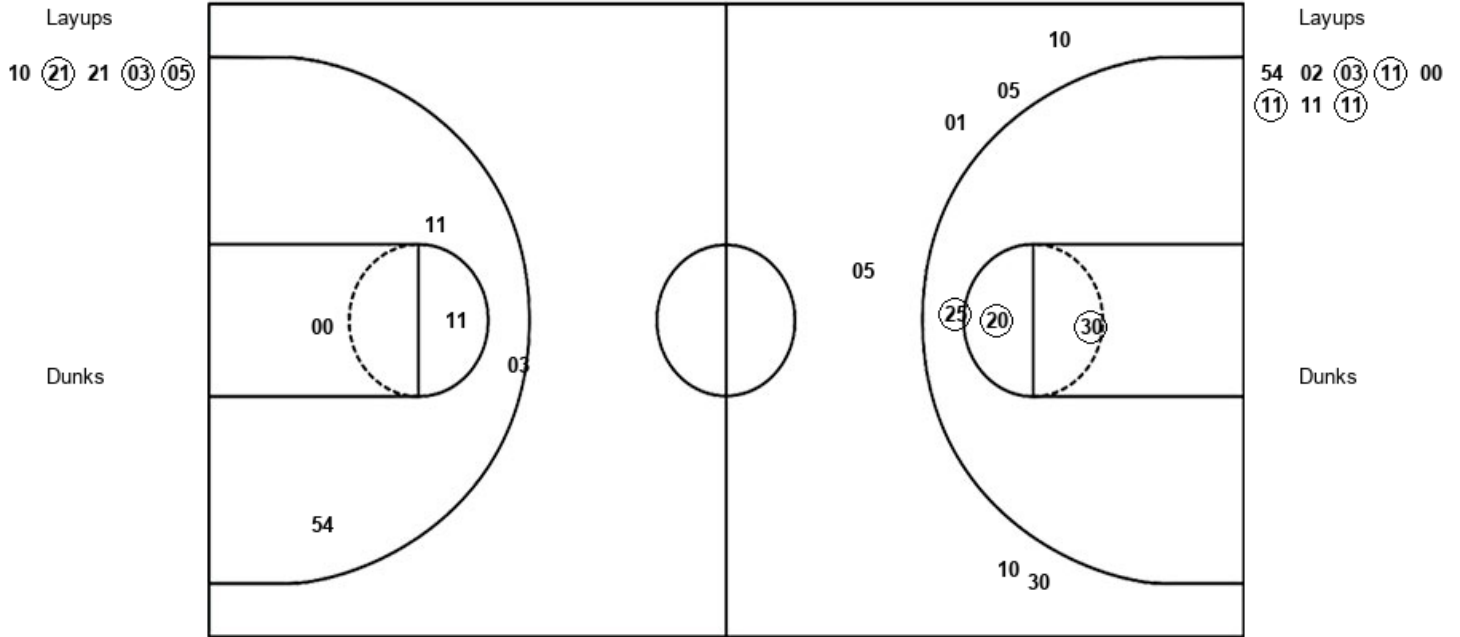
HOF : Period 1	Made	Att	Pct
Layups	1	6	16.7
Dunks	0	0	0
2PT Field Goals	2	11	18.2
3PT Field Goals	0	1	00.0
<b>Total Field Goals</b>	<b>2</b>	<b>12</b>	<b>16.7</b>

Official Shot Chart  
**Hofstra vs William Mary**  
 PERIOD 2 Shots  
 February 16, 2020 at Kaplan Arena (Kaplan Arena) - Williamsburg



**William Mary**

**Hofstra**



WM : Period 2	Made	Att	Pct
Layups	3	5	60.0
Dunks	0	0	0
2PT Field Goals	6	8	75.0
3PT Field Goals	0	6	00.0
<b>Total Field Goals</b>	<b>6</b>	<b>14</b>	<b>42.9</b>

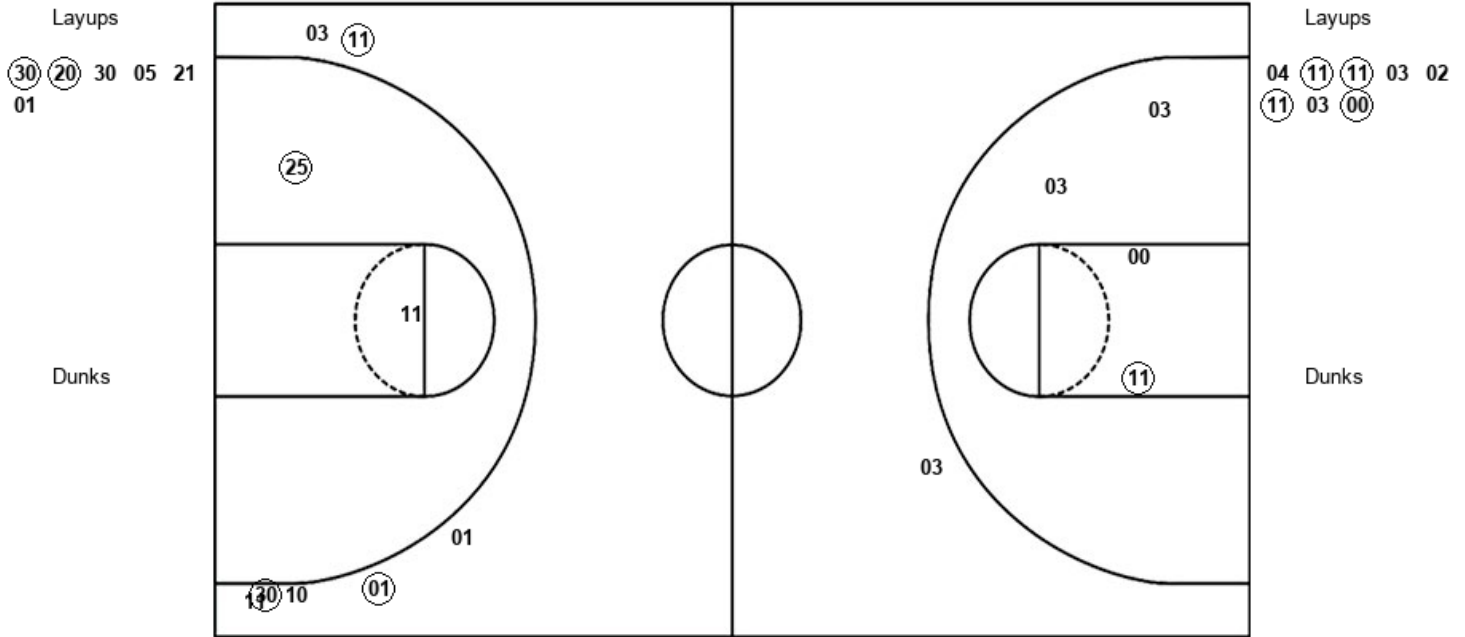
HOF : Period 2	Made	Att	Pct
Layups	4	8	50.0
Dunks	0	0	0
2PT Field Goals	4	12	33.3
3PT Field Goals	0	1	00.0
<b>Total Field Goals</b>	<b>4</b>	<b>13</b>	<b>30.8</b>

**Official Shot Chart**  
**Hofstra vs William Mary**  
**PERIOD 3 Shots**  
 February 16, 2020 at Kaplan Arena (Kaplan Arena) - Williamsburg



**William Mary**

**Hofstra**



WM : Period 3	Made	Att	Pct
Layups	2	6	33.3
Dunks	0	0	0
2PT Field Goals	3	8	37.5
3PT Field Goals	3	7	42.9
<b>Total Field Goals</b>	<b>6</b>	<b>15</b>	<b>40.0</b>

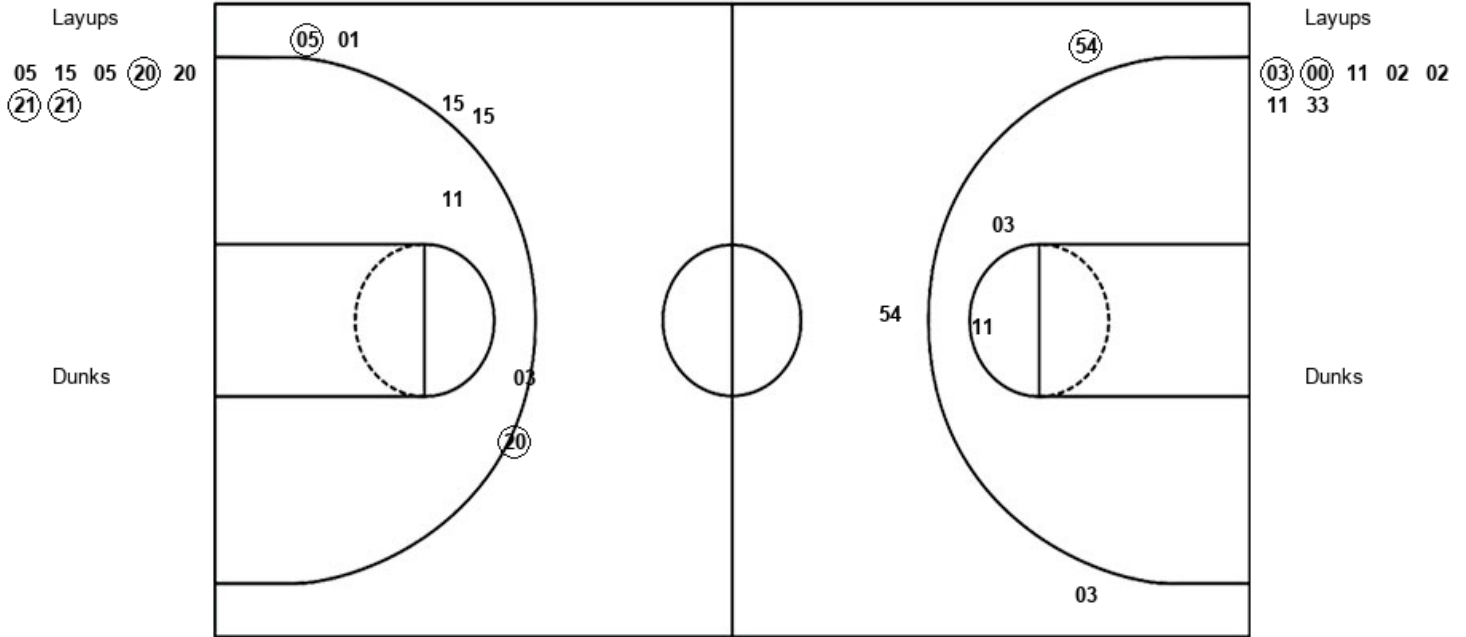
HOF : Period 3	Made	Att	Pct
Layups	4	8	50.0
Dunks	0	0	0
2PT Field Goals	5	12	41.7
3PT Field Goals	0	1	00.0
<b>Total Field Goals</b>	<b>5</b>	<b>13</b>	<b>38.5</b>

**Official Shot Chart**  
**Hofstra vs William Mary**  
**PERIOD 4 Shots**  
 February 16, 2020 at Kaplan Arena (Kaplan Arena) - Williamsburg



**William Mary**

**Hofstra**



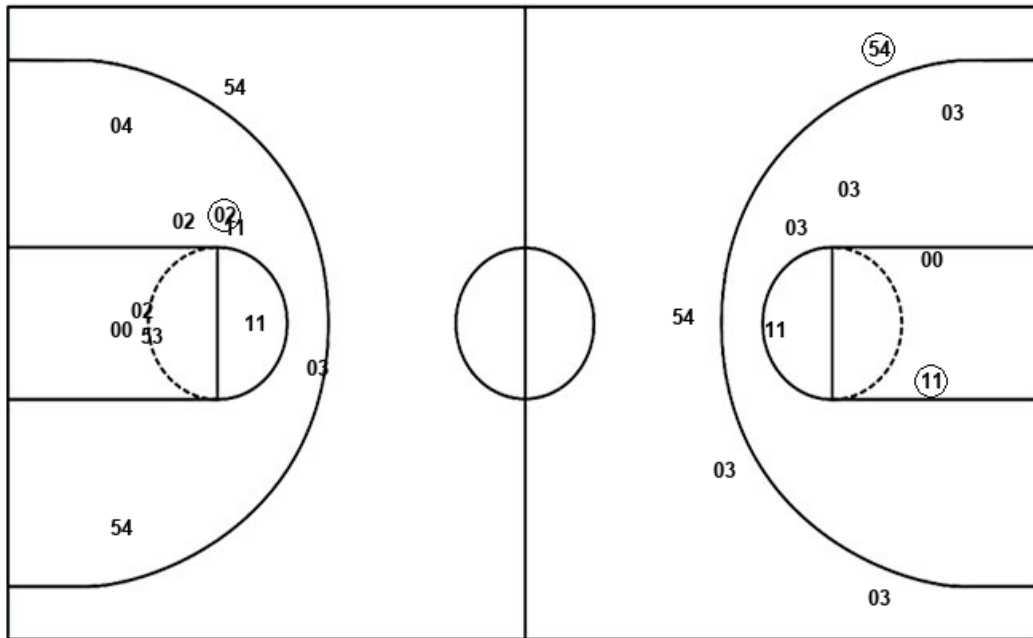
<b>WM : Period 4</b>	<b>Made</b>	<b>Att</b>	<b>Pct</b>
Layups	3	7	42.9
Dunks	0	0	0
2PT Field Goals	3	8	37.5
3PT Field Goals	2	6	33.3
<b>Total Field Goals</b>	<b>5</b>	<b>14</b>	<b>35.7</b>

<b>HOF : Period 4</b>	<b>Made</b>	<b>Att</b>	<b>Pct</b>
Layups	2	7	28.6
Dunks	0	0	0
2PT Field Goals	2	9	22.2
3PT Field Goals	1	3	33.3
<b>Total Field Goals</b>	<b>3</b>	<b>12</b>	<b>25.0</b>

**Official Shot Chart**  
**Hofstra vs William Mary**  
**Hofstra Team Shots**  
 February 16, 2020 at Kaplan Arena (Kaplan Arena) - Williamsburg



Layups



Layups

00	00	00	53	53
04	54	02	03	11
00	11	11	11	04
11	11	03	02	11
03	00	03	00	11
02	02	11	33	

Dunks

Dunks

HOF : Period 1	Made	Att	Pct
Layups	1	6	16.7
Dunks	0	0	0
2PT Field Goals	2	11	18.2
3PT Field Goals	0	1	00.0
<b>Total Field Goals</b>	<b>2</b>	<b>12</b>	<b>16.7</b>

HOF : Period 2	Made	Att	Pct
Layups	4	8	50.0
Dunks	0	0	0
2PT Field Goals	4	12	33.3
3PT Field Goals	0	1	00.0
<b>Total Field Goals</b>	<b>4</b>	<b>13</b>	<b>30.8</b>

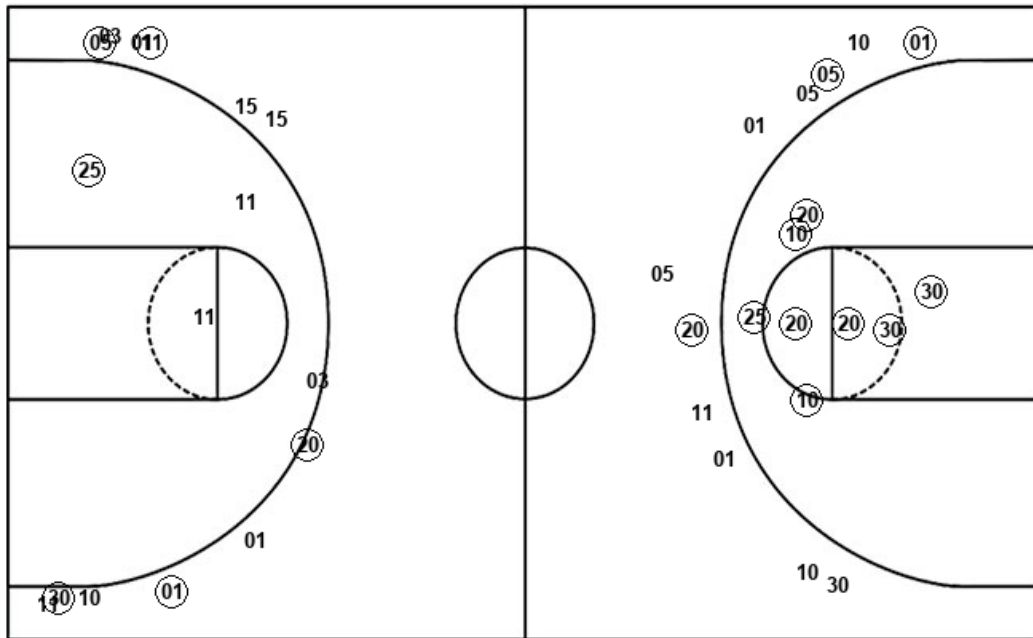
HOF : Period 3	Made	Att	Pct
Layups	4	8	50.0
Dunks	0	0	0
2PT Field Goals	5	12	41.7
3PT Field Goals	0	1	00.0
<b>Total Field Goals</b>	<b>5</b>	<b>13</b>	<b>38.5</b>

HOF : Period 4	Made	Att	Pct
Layups	2	7	28.6
Dunks	0	0	0
2PT Field Goals	2	9	22.2
3PT Field Goals	1	3	33.3
<b>Total Field Goals</b>	<b>3</b>	<b>12</b>	<b>25.0</b>

**Official Shot Chart**  
**Hofstra vs William Mary**  
**William Mary Team Shots**  
 February 16, 2020 at Kaplan Arena (Kaplan Arena) - Williamsburg



Layups



Layups

(30) (30) (10) 10 (21)  
 21 (03) (05) (30) (20)  
 30 05 21 01 05  
 15 05 (20) 20 (21)  
 (21)

Dunks

Dunks

WM : Period 1	Made	Att	Pct
Layups	3	3	100.0
Dunks	0	0	0
2PT Field Goals	8	8	100.0
3PT Field Goals	3	5	60.0
<b>Total Field Goals</b>	<b>11</b>	<b>13</b>	<b>84.6</b>

WM : Period 3	Made	Att	Pct
Layups	2	6	33.3
Dunks	0	0	0
2PT Field Goals	3	8	37.5
3PT Field Goals	3	7	42.9
<b>Total Field Goals</b>	<b>6</b>	<b>15</b>	<b>40.0</b>

WM : Period 2	Made	Att	Pct
Layups	3	5	60.0
Dunks	0	0	0
2PT Field Goals	6	8	75.0
3PT Field Goals	0	6	00.0
<b>Total Field Goals</b>	<b>6</b>	<b>14</b>	<b>42.9</b>

WM : Period 4	Made	Att	Pct
Layups	3	7	42.9
Dunks	0	0	0
2PT Field Goals	3	8	37.5
3PT Field Goals	2	6	33.3
<b>Total Field Goals</b>	<b>5</b>	<b>14</b>	<b>35.7</b>