

FINAL SCORE



Delaware

58



William Mary

68

January 24, 2020 • Kaplan Arena (Kaplan Arena) - Williamsburg

FINAL STATISTICS

Official Box Score
Delaware vs William Mary
Game Totals -- Final Statistics
January 24, 2020 at Kaplan Arena (Kaplan Arena) - Williamsburg



Delaware 58

No.	Player	S	Pts	FG	3FG	FT	OR	DR	TR	PF	A	TO	Blk	Stl	Min	+/-	
02	GONZALES, ABBY	G	0	0-4	0-1	0-0	0	2	2	4	4	3	0	6	32	0	
20	DICKEY, JASMINE	G	18	8-14	0-0	2-4	3	6	9	3	4	4	0	2	38	-4	
22	DEFREESE, SAMONE	F	4	2-5	0-0	0-0	2	2	4	3	1	0	0	0	20	-12	
30	SHAW, KAYLA	G	6	2-10	2-8	0-0	0	0	0	1	1	4	1	2	30	-4	
33	ENABOSI, NICOLE	F	18	8-12	0-0	2-4	1	1	2	3	2	3	1	1	26	-18	
01	DAVENPORT, LOLO	G	2	1-3	0-1	0-0	1	3	4	0	1	0	1	0	11	2	
04	MCBRIDE, PARIS	G	2	0-2	0-1	2-2	0	3	3	0	3	2	0	1	15	-8	
10	JOHNSON, TEE	G	0	0-1	0-0	0-0	0	1	1	0	0	3	0	0	6	-15	
12	OLEARY, LIZZIE	F	8	4-5	0-0	0-0	4	3	7	4	3	3	2	0	21	9	
25	LAWRENCE, REBECCA	F	0	0-0	0-0	0-0	0	0	0	0	0	0	0	0	0	0	
TEAM							1	1	2	0	1						
TOTALS			58	25-56	2-11	6-10	12	22	34	18	19	23	5	12	199		

Shooting By Period

Period	FG	FG%	3FG	3FG%	FT	FT%
1st Qtr	5-12	42%	0-2	00%	0-0	0%
2nd Qtr	6-13	46%	0-2	00%	2-2	100%
3rd Qtr	5-18	28%	1-4	25%	2-4	50%
4th Qtr	9-13	69%	1-3	33%	2-4	50%
1st Half	11-25	44%	0-4	00%	2-2	100%
2nd Half	14-31	45%	2-7	29%	4-8	50%
Game	25-56	44.6%	2-11	18.2%	6-10	60.0%

Deadball Rebounds: 0,0
Last FG: 4th-00:07
Biggest Run: 11-0
Largest lead: By 2 at 1st-08:06
Technical Fouls: None.

William Mary 68

No.	Player	S	Pts	FG	3FG	FT	OR	DR	TR	PF	A	TO	Blk	Stl	Min	+/-	
10	HODGSON, EVA	G	28	7-11	2-4	12-12	2	0	2	0	2	4	1	2	37	11	
11	POLLARD, NYLA	G	4	1-3	0-1	2-4	0	3	3	2	5	3	0	2	29	5	
21	EICHNER, BAILEY	F	2	1-2	0-0	0-0	1	7	8	3	0	1	0	2	31	7	
25	ROGERS, GABBY	C	10	5-11	0-0	0-0	1	2	3	2	1	1	0	1	29	4	
30	REYNOLDS, VICTORIA	F	17	7-13	2-5	1-2	0	3	3	1	5	5	1	4	39	7	
01	WAGNER, SYDNEY	G	7	2-8	2-5	1-2	0	3	3	1	1	2	0	0	23	5	
20	BELLAMY, BRE	F	0	0-3	0-1	0-0	0	0	0	0	2	0	0	1	12	11	
TEAM							3	5	8	0	1						
TOTALS			68	23-51	6-16	16-20	7	23	30	9	16	17	2	12	199		

Shooting By Period

Period	FG	FG%	3FG	3FG%	FT	FT%
1st Qtr	8-15	53%	1-3	33%	4-6	67%
2nd Qtr	5-13	38%	2-6	33%	2-2	100%
3rd Qtr	4-14	29%	2-3	67%	2-2	100%
4th Qtr	6-9	67%	1-4	25%	8-10	80%
1st Half	13-28	46%	3-9	33%	6-8	75%
2nd Half	10-23	43%	3-7	43%	10-12	83%
Game	23-51	45.1%	6-16	37.5%	16-20	80.0%

Deadball Rebounds: 3,0
Last FG: 4th-00:34
Biggest Run: 9-0
Largest lead: By 15 at 2nd-02:39
Technical Fouls: None.

Game Notes:

Officials: Billy Smith, Talisa Green, Luis Gonzalez
Attendance: 906

Start Time: 07:06 PM ET
End Time: 08:48 PM ET
Game Duration: 1:41
Conference Game;

Score	1st	2nd	3rd	4th	TOT
DEL	10	14	13	21	58
WM	21	14	12	21	68

DEL led for 1:14. WM led for 36:38.
Game was tied for 2:01.
Times tied: 2 Lead Changes: 1

Points from	DEL	WM
In the Paint	38	28
Off Turns	21	28
2nd Chance	10	10
Fast Break	8	10
Bench	12	7

Official Box Score
Delaware vs William Mary
First Half Statistics Only
January 24, 2020 at Kaplan Arena (Kaplan Arena) - Williamsburg



Delaware 24

No.	Player	S	Pts	FG	3FG	FT	OR	DR	TR	PF	A	TO	Blk	Stl	Min	+/-
01	DAVENPORT, LOLO	G	2	1-3	0-1	0-0	1	2	3	0	1	0	0	0	10	1
02	GONZALES, ABBY	G	0	0-1	0-0	0-0	0	0	0	2	2	3	0	4	12	-1
04	MCBRIDE, PARIS	G	2	0-0	0-0	2-2	0	3	3	0	3	2	0	1	13	-9
10	JOHNSON, TEE	G	0	0-1	0-0	0-0	0	1	1	0	0	3	0	0	5	-16
12	OLEARY, LIZZIE	F	6	3-3	0-0	0-0	0	3	3	0	0	1	1	0	9	4
20	DICKEY, JASMINE	G	14	7-9	0-0	0-0	1	3	4	2	1	3	0	1	18	-5
22	DEFREESE, SAMONE	F	0	0-2	0-0	0-0	0	0	0	2	0	0	0	0	9	-11
25	LAWRENCE, REBECCA	F	0	0-0	0-0	0-0	0	0	0	0	0	0	0	0	0	0
30	SHAW, KAYLA	G	0	0-4	0-3	0-0	0	0	0	0	0	1	1	1	14	-3
33	ENABOSI, NICOLE	F	0	0-2	0-0	0-0	0	1	1	0	1	2	0	0	11	-15
	TEAM		0	0-0	0-0	0-0	1	1	2	0	0	1	0	0	0	0
TOTALS			24	11-25	0-4	2-2	3	14	17	6	8	16	2	7	100	

Shooting By Period

Period	FG	FG%	3FG	3FG%	FT	FT%
1st Qtr	5-12	42%	0-2	00%	0-0	0%
2nd Qtr	6-13	46%	0-2	00%	2-2	100%
1st Half	11-25	44%	0-4	00%	2-2	100%
Game	25-56	44.6%	2-11	18.2%	6-10	60.0%

Deadball Rebounds: 0,0

Last FG Half: DEL 2nd-01:17

William Mary 35

No.	Player	S	Pts	FG	3FG	FT	OR	DR	TR	PF	A	TO	Blk	Stl	Min	+/-
01	WAGNER, SYDNEY	G	6	2-5	2-4	0-0	0	2	2	1	1	1	0	0	13	4
10	HODGSON, EVA	G	12	4-7	0-1	4-4	0	0	0	0	1	3	1	2	19	11
11	POLLARD, NYLA	G	4	1-2	0-1	2-4	0	2	2	1	4	1	0	2	14	12
20	BELLAMY, BRE	F	0	0-1	0-0	0-0	0	0	0	0	0	0	0	1	7	5
21	EICHNER, BAILEY	F	0	0-0	0-0	0-0	1	3	4	0	0	1	0	2	14	13
25	ROGERS, GABBY	C	6	3-7	0-0	0-0	1	0	1	0	0	1	0	0	14	2
30	REYNOLDS, VICTORIA	F	7	3-6	1-3	0-0	0	2	2	0	3	2	0	2	19	8
	TEAM		0	0-0	0-0	0-0	0	2	2	0	0	0	0	0	0	0
TOTALS			35	13-28	3-9	6-8	2	11	13	2	9	9	1	9	100	

Shooting By Period

Period	FG	FG%	3FG	3FG%	FT	FT%
1st Qtr	8-15	53%	1-3	33%	4-6	67%
2nd Qtr	5-13	38%	2-6	33%	2-2	100%
1st Half	13-28	46%	3-9	33%	6-8	75%
Game	23-51	45.1%	6-16	37.5%	16-20	80.0%

Deadball Rebounds: 3,0

Last FG Half: WM 2nd-02:39

Game Notes:

Officials: Billy Smith, Talisa Green, Luis Gonzalez

Attendance: 906

Start Time: 07:06 PM ET

End Time: 08:48 PM ET

Game Duration: 1:41

Conference Game;

Score	1st	2nd	3rd	4th	TOT
DEL	10	14	13	21	58
WM	21	14	12	21	68

Points from (This Period)	DEL	WM
In the Paint	14	18
Off Turns	6	16
2nd Chance	4	5
Fast Break	4	6
Bench	10	6

Official Box Score
Delaware vs William Mary
First Quarter Statistics Only
January 24, 2020 at Kaplan Arena (Kaplan Arena) - Williamsburg



Delaware 10

No.	Player	S	Pts	FG	3FG	FT	OR	DR	TR	PF	A	TO	Blk	Stl	Min	+/-
02	GONZALES, ABBY	G	0	0-1	0-0	0-0	0	0	0	1	1	2	0	2	8	-6
20	DICKEY, JASMINE	G	8	4-4	0-0	0-0	0	2	2	1	0	2	0	1	10	-11
22	DEFREESE, SAMONE	F	0	0-0	0-0	0-0	0	0	0	2	0	0	0	0	5	-2
30	SHAW, KAYLA	G	0	0-3	0-2	0-0	0	0	0	0	0	0	1	0	10	-11
33	ENABOSI, NICOLE	F	0	0-2	0-0	0-0	0	1	1	0	1	2	0	0	9	-9
01	DAVENPORT, LOLO	G	2	1-2	0-0	0-0	1	0	1	0	0	0	0	0	2	-2
04	MCBRIDE, PARIS	G	0	0-0	0-0	0-0	0	2	2	0	1	1	0	0	4	-5
10	JOHNSON, TEE	G	0	0-0	0-0	0-0	0	0	0	0	0	1	0	0	2	-7
12	OLEARY, LIZZIE	F	0	0-0	0-0	0-0	0	0	0	0	0	0	0	0	1	-2
25	LAWRENCE, REBECCA	F	0	0-0	0-0	0-0	0	0	0	0	0	0	0	0	0	0
TEAM							1	1	2	0		1				
TOTALS			10	5-12	0-2	0-0	2	6	8	4	3	9	1	3	50	

Shooting By Period

Period	FG	FG%	3FG	3FG%	FT	FT%
1st Qtr	5-12	42%	0-2	00%	0-0	0%
2nd Qtr	6-13	46%	0-2	00%	2-2	100%
1st Half	5-12	42%	0-2	00%	0-0	0%
1st Half	11-25	44%	0-4	00%	2-2	100%
Game	25-56	44.6%	2-11	18.2%	6-10	60.0%

Deadball Rebounds: 0,0

William Mary 21

No.	Player	S	Pts	FG	3FG	FT	OR	DR	TR	PF	A	TO	Blk	Stl	Min	+/-
10	HODGSON, EVA	G	10	3-6	0-1	4-4	0	0	0	0	0	2	1	1	10	11
11	POLLARD, NYLA	G	0	0-0	0-0	0-2	0	0	0	0	2	1	0	1	6	9
21	EICHNER, BAILEY	F	0	0-0	0-0	0-0	1	2	3	0	0	0	0	1	6	9
25	ROGERS, GABBY	C	6	3-5	0-0	0-0	1	0	1	0	0	0	0	0	8	4
30	REYNOLDS, VICTORIA	F	5	2-3	1-1	0-0	0	1	1	0	2	0	0	2	10	11
01	WAGNER, SYDNEY	G	0	0-1	0-1	0-0	0	0	0	0	0	0	0	0	4	2
20	BELLAMY, BRE	F	0	0-0	0-0	0-0	0	0	0	0	0	0	0	0	5	9
TEAM							0	2	2	0		0				
TOTALS			21	8-15	1-3	4-6	2	5	7	0	4	3	1	5	50	

Shooting By Period

Period	FG	FG%	3FG	3FG%	FT	FT%
1st Qtr	8-15	53%	1-3	33%	4-6	67%
2nd Qtr	5-13	38%	2-6	33%	2-2	100%
1st Half	8-15	53%	1-3	33%	4-6	67%
1st Half	13-28	46%	3-9	33%	6-8	75%
Game	23-51	45.1%	6-16	37.5%	16-20	80.0%

Deadball Rebounds: 3,0

Game Notes:

Officials: Billy Smith, Talisa Green, Luis Gonzalez
 Attendance: 906

Start Time: 07:06 PM ET
 End Time: 08:48 PM ET
 Game Duration: 1:41
 Conference Game;

Score	1st	2nd	3rd	4th	TOT
DEL	10	14	13	21	58
WM	21	14	12	21	68

Points from (This Period)	DEL	WM
In the Paint	6	12
Off Turns	2	10
2nd Chance	2	5
Fast Break	2	2
Bench	2	0

Official Play-By-Play
Delaware vs William Mary
First Quarter
January 24, 2020 at Kaplan Arena (Kaplan Arena) - Williamsburg



Period 1

Starters:

Delaware: 2 GONZALES, ABBY (G); 20 DICKEY, JASMINE (G); 22 DEFREESE, SAMONE (F); 30 SHAW, KAYLA (G); 33 ENABOSI, NICOLE (F);

William Mary: 10 HODGSON, EVA (G); 11 POLLARD, NYLA (G); 21 EICHNER, BAILEY (F); 25 ROGERS, GABBY (C); 30 REYNOLDS, VICTORIA (F);

Time	VISITORS: Delaware	Score	Margin	HOME: William Mary
09:46	GOOD! JUMPER by DICKEY, JASMINE	0-2	V 2	
09:34				MISSED LAYUP by ROGERS, GABBY
09:30	REBOUND (DEF) by DICKEY, JASMINE			
09:20	TURNOVER (LOSTBALL) by GONZALES, ABBY			
08:59	FOUL (PERSONAL) by DICKEY, JASMINE			
08:59		1-2	V 1	GOOD! FT by HODGSON, EVA
08:59		2-2	T	GOOD! FT by HODGSON, EVA
08:44	MISSED 3PTR by SHAW, KAYLA			
08:42				REBOUND (DEF) by TEAM
08:28				MISSED JUMPER by ROGERS, GABBY
08:23	REBOUND (DEF) by DICKEY, JASMINE			
08:19	MISSED JUMPER by GONZALES, ABBY			
08:19				BLOCK by HODGSON, EVA
08:14				REBOUND (DEF) by EICHNER, BAILEY
08:12				TURNOVER (BADPASS) by POLLARD, NYLA
08:12	STEAL by GONZALES, ABBY			
08:06	GOOD! LAYUP by DICKEY, JASMINE [FB]	2-4	V 2	
08:06	ASSIST by GONZALES, ABBY			
07:39	FOUL (PERSONAL) by GONZALES, ABBY			
07:39		3-4	V 1	GOOD! FT by HODGSON, EVA
07:39		4-4	T	GOOD! FT by HODGSON, EVA
07:05	MISSED JUMPER by ENABOSI, NICOLE			
07:05				REBOUND (DEF) by EICHNER, BAILEY
07:05	FOUL (PERSONAL) by DEFREESE, SAMONE			
06:45		6-4	H 2	GOOD! JUMPER by ROGERS, GABBY
06:45				ASSIST by POLLARD, NYLA
06:27	TURNOVER (LOSTBALL) by DICKEY, JASMINE			
06:27				STEAL by HODGSON, EVA
06:22				TURNOVER (BADPASS) by HODGSON, EVA
06:22	STEAL by GONZALES, ABBY			
06:16	TURNOVER (BADPASS) by GONZALES, ABBY			
06:16				STEAL by EICHNER, BAILEY
05:58				MISSED LAYUP by HODGSON, EVA
05:52				REBOUND (OFF) by ROGERS, GABBY
05:52		8-4	H 4	GOOD! LAYUP by ROGERS, GABBY
05:52	SUB OUT: GONZALES, ABBY			
05:52	SUB IN: MCBRIDE, PARIS			
05:30	GOOD! LAYUP by DICKEY, JASMINE	8-6	H 2	
05:30	ASSIST by ENABOSI, NICOLE			
05:21	FOUL (PERSONAL) by DEFREESE, SAMONE			
05:21				SUB OUT: ROGERS, GABBY
05:21				SUB IN: BELLAMY, BRE
05:21	SUB OUT: DEFREESE, SAMONE			
05:21	SUB IN: JOHNSON, TEE			
05:21				MISSED FT by POLLARD, NYLA
05:21				REBOUND (OFF) by TEAM
05:21				MISSED FT by POLLARD, NYLA
05:19				REBOUND (OFF) by EICHNER, BAILEY
05:11		11-6	H 5	GOOD! 3PTR by REYNOLDS, VICTORIA
05:11				ASSIST by POLLARD, NYLA
04:44	MISSED 3PTR by SHAW, KAYLA			
04:43				REBOUND (DEF) by TEAM
04:43				
04:31		13-6	H 7	GOOD! LAYUP by HODGSON, EVA
04:31				ASSIST by REYNOLDS, VICTORIA
04:09	TURNOVER (BADPASS) by JOHNSON, TEE			
04:09				STEAL by POLLARD, NYLA
03:54		15-6	H 9	GOOD! JUMPER by HODGSON, EVA [PNT]
03:32	TURNOVER (BADPASS) by ENABOSI, NICOLE			
03:32				SUB OUT: POLLARD, NYLA
03:32				SUB OUT: EICHNER, BAILEY
03:32				SUB IN: WAGNER, SYDNEY
03:32				SUB IN: ROGERS, GABBY
03:32	SUB OUT: JOHNSON, TEE			
03:32	SUB IN: GONZALES, ABBY			
03:07				MISSED LAYUP by REYNOLDS, VICTORIA
03:07	BLOCK by SHAW, KAYLA			
03:02	REBOUND (DEF) by MCBRIDE, PARIS			
02:55	TURNOVER (TRAVEL) by ENABOSI, NICOLE			
02:45				MISSED LAYUP by HODGSON, EVA

Time	VISITORS: Delaware	Score	Margin	HOME: William Mary
02:42	REBOUND (DEF) by ENABOSI, NICOLE			
02:23	GOOD! JUMPER by DICKEY, JASMINE	15-8	H 7	
02:23	ASSIST by MCBRIDE, PARIS			
02:07				TURNOVER (BADPASS) by HODGSON, EVA
02:07	STEAL by DICKEY, JASMINE			
02:00	TURNOVER (LOSTBALL) by DICKEY, JASMINE			
02:00				STEAL by REYNOLDS, VICTORIA
01:56				MISSED 3PTR by WAGNER, SYDNEY
01:52	REBOUND (DEF) by MCBRIDE, PARIS			
01:52	TURNOVER (LOSTBALL) by MCBRIDE, PARIS			
01:52				STEAL by REYNOLDS, VICTORIA
01:52		17-8	H 9	GOOD! LAYUP by ROGERS, GABBY
01:52				ASSIST by REYNOLDS, VICTORIA
01:52	TIMEOUT 30SEC			
01:52	SUB OUT: MCBRIDE, PARIS			
01:52	SUB IN: DAVENPORT, LOLO			
01:23	TURNOVER (SHOTCLOCK) by TEAM			
01:23	SUB OUT: ENABOSI, NICOLE			
01:23	SUB IN: OLEARY, LIZZIE			
01:23	MISSED LAYUP by ENABOSI, NICOLE			
01:23	REBOUND (OFF) by TEAM			
01:01		19-8	H 11	GOOD! LAYUP by REYNOLDS, VICTORIA
00:49	MISSED LAYUP by SHAW, KAYLA			
00:45				REBOUND (DEF) by REYNOLDS, VICTORIA
00:42		21-8	H 13	GOOD! LAYUP by HODGSON, EVA [FB]
00:24	MISSED LAYUP by DAVENPORT, LOLO			
00:19	REBOUND (OFF) by DAVENPORT, LOLO			
00:18	GOOD! LAYUP by DAVENPORT, LOLO	21-10	H 11	
00:06				MISSED 3PTR by HODGSON, EVA
00:05	REBOUND (DEF) by TEAM			

Delaware 10, William Mary 21

Points from (This Period)	DEL	WM
In the Paint	6	12
Off Turns	2	10
2nd Chance	2	5
Fast Break	2	2
Bench	2	0

Official Box Score
Delaware vs William Mary
Second Quarter Statistics Only
January 24, 2020 at Kaplan Arena (Kaplan Arena) - Williamsburg



Delaware 14

No.	Player	S	Pts	FG	3FG	FT	OR	DR	TR	PF	A	TO	Blk	Stl	Min	+/-
02	GONZALES, ABBY	G	0	0-0	0-0	0-0	0	0	0	1	1	1	0	2	4	5
20	DICKEY, JASMINE	G	6	3-5	0-0	0-0	1	1	2	1	1	1	0	0	8	6
22	DEFREESE, SAMONE	F	0	0-2	0-0	0-0	0	0	0	0	0	0	0	0	4	-9
30	SHAW, KAYLA	G	0	0-1	0-1	0-0	0	0	0	0	0	1	0	1	4	8
33	ENABOSI, NICOLE	F	0	0-0	0-0	0-0	0	0	0	0	0	0	0	0	2	-6
01	DAVENPORT, LOLO	G	0	0-1	0-1	0-0	0	2	2	0	1	0	0	0	8	3
04	MCBRIDE, PARIS	G	2	0-0	0-0	2-2	0	1	1	0	2	1	0	1	9	-4
10	JOHNSON, TEE	G	0	0-1	0-0	0-0	0	1	1	0	0	2	0	0	3	-9
12	OLEARY, LIZZIE	F	6	3-3	0-0	0-0	0	3	3	0	0	1	1	0	8	6
25	LAWRENCE, REBECCA	F	0	0-0	0-0	0-0	0	0	0	0	0	0	0	0	0	0
TEAM							0	0	0	0		0				
TOTALS			14	6-13	0-2	2-2	1	8	9	2	5	7	1	4	50	

Shooting By Period

Period	FG	FG%	3FG	3FG%	FT	FT%
3rd Qtr	5-18	28%	1-4	25%	2-4	50%
4th Qtr	9-13	69%	1-3	33%	2-4	50%
2nd Half	6-13	46%	0-2	00%	2-2	100%
2nd Half	14-31	45%	2-7	29%	4-8	50%
Game	25-56	44.6%	2-11	18.2%	6-10	60.0%

Deadball Rebounds: 0,0

William Mary 14

No.	Player	S	Pts	FG	3FG	FT	OR	DR	TR	PF	A	TO	Blk	Stl	Min	+/-
10	HODGSON, EVA	G	2	1-1	0-0	0-0	0	0	0	0	1	1	0	1	9	0
11	POLLARD, NYLA	G	4	1-2	0-1	2-2	0	2	2	1	2	0	0	1	8	3
21	EICHNER, BAILEY	F	0	0-0	0-0	0-0	0	1	1	0	0	1	0	1	8	4
25	ROGERS, GABBY	C	0	0-2	0-0	0-0	0	0	0	0	0	1	0	0	6	-2
30	REYNOLDS, VICTORIA	F	2	1-3	0-2	0-0	0	1	1	0	1	2	0	0	9	-3
01	WAGNER, SYDNEY	G	6	2-4	2-3	0-0	0	2	2	1	1	1	0	0	9	2
20	BELLAMY, BRE	F	0	0-1	0-0	0-0	0	0	0	0	0	0	0	1	2	-4
TEAM							0	0	0	0		0				
TOTALS			14	5-13	2-6	2-2	0	6	6	2	5	6	0	4	50	

Shooting By Period

Period	FG	FG%	3FG	3FG%	FT	FT%
3rd Qtr	4-14	29%	2-3	67%	2-2	100%
4th Qtr	6-9	67%	1-4	25%	8-10	80%
2nd Half	5-13	38%	2-6	33%	2-2	100%
2nd Half	10-23	43%	3-7	43%	10-12	83%
Game	23-51	45.1%	6-16	37.5%	16-20	80.0%

Deadball Rebounds: 3,0

Game Notes:

Officials: Billy Smith, Talisa Green, Luis Gonzalez
 Attendance: 906

Start Time: 07:06 PM ET
 End Time: 08:48 PM ET
 Game Duration: 1:41
 Conference Game;

Score	1st	2nd	3rd	4th	TOT
DEL	10	14	13	21	58
WM	21	14	12	21	68

Points from (This Period)	DEL	WM
In the Paint	8	6
Off Turns	4	6
2nd Chance	2	0
Fast Break	2	4
Bench	8	6

Official Play-By-Play
Delaware vs William Mary
Second Quarter
January 24, 2020 at Kaplan Arena (Kaplan Arena) - Williamsburg



Period 2

Starters:

Delaware: 2 GONZALES, ABBY (G); 20 DICKEY, JASMINE (G); 22 DEFREESE, SAMONE (F); 30 SHAW, KAYLA (G); 33 ENABOSI, NICOLE (F);

William Mary: 10 HODGSON, EVA (G); 11 POLLARD, NYLA (G); 21 EICHNER, BAILEY (F); 25 ROGERS, GABBY (C); 30 REYNOLDS, VICTORIA (F);

Time	VISITORS: Delaware	Score	Margin	HOME: William Mary
09:43				MISSED LAYUP by ROGERS, GABBY
09:39	REBOUND (DEF) by OLEARY, LIZZIE			
09:25	GOOD! JUMPER by DICKEY, JASMINE	21-12	H 9	
09:25	ASSIST by GONZALES, ABBY			
09:07				MISSED LAYUP by BELLAMY, BRE
09:03	REBOUND (DEF) by OLEARY, LIZZIE			
08:43	MISSED 3PTR by SHAW, KAYLA			
08:39	REBOUND (OFF) by DICKEY, JASMINE			
08:39	GOOD! LAYUP by DICKEY, JASMINE	21-14	H 7	
08:33				SUB OUT: BELLAMY, BRE
08:33				SUB IN: EICHNER, BAILEY
08:33	SUB OUT: SHAW, KAYLA			
08:33	SUB IN: MCBRIDE, PARIS			
08:23		24-14	H 10	GOOD! 3PTR by WAGNER, SYDNEY
08:23				ASSIST by HODGSON, EVA
08:03	GOOD! JUMPER by DICKEY, JASMINE	24-16	H 8	
08:03	ASSIST by DAVENPORT, LOLO			
07:46				TURNOVER (TRAVEL) by REYNOLDS, VICTORIA
07:46				SUB OUT: WAGNER, SYDNEY
07:46				SUB IN: POLLARD, NYLA
07:30	GOOD! LAYUP by OLEARY, LIZZIE	24-18	H 6	
07:30	ASSIST by DICKEY, JASMINE			
07:08				TURNOVER (LOSTBALL) by HODGSON, EVA
07:08	STEAL by GONZALES, ABBY			
07:06	TURNOVER (TRAVEL) by GONZALES, ABBY			
07:03				SUB OUT: HODGSON, EVA
07:03				SUB IN: WAGNER, SYDNEY
06:48				MISSED 3PTR by REYNOLDS, VICTORIA
06:44	REBOUND (DEF) by MCBRIDE, PARIS			
06:40	MISSED 3PTR by DAVENPORT, LOLO			
06:36				REBOUND (DEF) by WAGNER, SYDNEY
06:35				FOUL (OFF) by WAGNER, SYDNEY
06:35				TURNOVER (OFFENSIVE) by WAGNER, SYDNEY
06:17	MISSED JUMPER by DICKEY, JASMINE			
06:14				REBOUND (DEF) by POLLARD, NYLA
06:05				TURNOVER (LOSTBALL) by ROGERS, GABBY
06:05	STEAL by GONZALES, ABBY			
06:01	TURNOVER (TRAVEL) by MCBRIDE, PARIS			
06:01	SUB OUT: DAVENPORT, LOLO			
06:01	SUB IN: DEFREESE, SAMONE			
05:47	FOUL (PERSONAL) by GONZALES, ABBY			
05:47				SUB OUT: REYNOLDS, VICTORIA
05:47				SUB IN: HODGSON, EVA
05:47	SUB OUT: GONZALES, ABBY			
05:47	SUB IN: JOHNSON, TEE			
05:47		25-18	H 7	GOOD! FT by POLLARD, NYLA
05:47		26-18	H 8	GOOD! FT by POLLARD, NYLA
05:33	MISSED LAYUP by DICKEY, JASMINE			
05:30				REBOUND (DEF) by POLLARD, NYLA
05:06				MISSED LAYUP by ROGERS, GABBY
05:06	BLOCK by OLEARY, LIZZIE			
05:02	REBOUND (DEF) by OLEARY, LIZZIE			
05:01				FOUL (PERSONAL) by POLLARD, NYLA
05:01	GOOD! FT by MCBRIDE, PARIS [FB]	26-19	H 7	
05:01	GOOD! FT by MCBRIDE, PARIS [FB]	26-20	H 6	
04:49		29-20	H 9	GOOD! 3PTR by WAGNER, SYDNEY
04:49				ASSIST by POLLARD, NYLA
04:30	TURNOVER (TRAVEL) by JOHNSON, TEE			
04:30				SUB OUT: ROGERS, GABBY
04:30				SUB IN: REYNOLDS, VICTORIA
04:30	SUB OUT: OLEARY, LIZZIE			
04:30	SUB OUT: DICKEY, JASMINE			
04:30	SUB IN: DAVENPORT, LOLO			
04:30	SUB IN: ENABOSI, NICOLE			
04:18		31-20	H 11	GOOD! LAYUP by REYNOLDS, VICTORIA
04:18				ASSIST by POLLARD, NYLA
04:03	MISSED LAYUP by DEFREESE, SAMONE			
03:59				REBOUND (DEF) by WAGNER, SYDNEY
03:51				MISSED 3PTR by REYNOLDS, VICTORIA

Time	VISITORS: Delaware	Score	Margin	HOME: William Mary
03:47	REBOUND (DEF) by DAVENPORT, LOLO			
03:34	MISSED JUMPER by DEFREESE, SAMONE			
03:31				REBOUND (DEF) by EICHNER, BAILEY
03:25				MISSED 3PTR by POLLARD, NYLA
03:21	REBOUND (DEF) by JOHNSON, TEE			
03:17	TURNOVER (LOSTBALL) by JOHNSON, TEE			
03:17				STEAL by POLLARD, NYLA
03:13		33-20	H 13	GOOD! LAYUP by HODGSON, EVA [FB]
03:13				ASSIST by WAGNER, SYDNEY
02:47	MISSED JUMPER by JOHNSON, TEE			
02:43				REBOUND (DEF) by REYNOLDS, VICTORIA
02:39		35-20	H 15	GOOD! JUMPER by POLLARD, NYLA [FB/PNT]
02:39				ASSIST by REYNOLDS, VICTORIA
02:34	TIMEOUT 30SEC			
02:28	SUB OUT: JOHNSON, TEE			
02:28	SUB OUT: DEFREESE, SAMONE			
02:28	SUB OUT: ENABOSI, NICOLE			
02:28	SUB IN: OLEARY, LIZZIE			
02:28	SUB IN: DICKEY, JASMINE			
02:28	SUB IN: SHAW, KAYLA			
02:10	TURNOVER (LOSTBALL) by DICKEY, JASMINE			
02:10				STEAL by HODGSON, EVA
02:10	FOUL (PERSONAL) by DICKEY, JASMINE			
01:55				MISSED 3PTR by WAGNER, SYDNEY
01:50	REBOUND (DEF) by DAVENPORT, LOLO			
01:42	GOOD! LAYUP by OLEARY, LIZZIE	35-22	H 13	
01:42	ASSIST by MCBRIDE, PARIS			
01:25				TURNOVER (BADPASS) by EICHNER, BAILEY
01:25	STEAL by SHAW, KAYLA			
01:17	GOOD! LAYUP by OLEARY, LIZZIE [PNT]	35-24	H 11	
01:17	ASSIST by MCBRIDE, PARIS			
01:01				MISSED LAYUP by WAGNER, SYDNEY
00:57	REBOUND (DEF) by DICKEY, JASMINE			
00:47	TURNOVER (BADPASS) by SHAW, KAYLA			
00:47				STEAL by EICHNER, BAILEY
00:28				TURNOVER (LOSTBALL) by REYNOLDS, VICTORIA
00:28	STEAL by MCBRIDE, PARIS			
00:28				SUB OUT: WAGNER, SYDNEY
00:28				SUB OUT: EICHNER, BAILEY
00:28				SUB IN: BELLAMY, BRE
00:28				SUB IN: ROGERS, GABBY
00:28	SUB OUT: DAVENPORT, LOLO			
00:28	SUB IN: LAWRENCE, REBECCA			
00:13	TURNOVER (BADPASS) by OLEARY, LIZZIE			
00:13				STEAL by BELLAMY, BRE

Delaware 24, William Mary 35

Points from (This Period)	DEL	WM
In the Paint	8	6
Off Turns	4	6
2nd Chance	2	0
Fast Break	2	4
Bench	8	6

Official Box Score
Delaware vs William Mary
Second Half Statistics Only
January 24, 2020 at Kaplan Arena (Kaplan Arena) - Williamsburg



Delaware 34

No.	Player	S	Pts	FG	3FG	FT	OR	DR	TR	PF	A	TO	Blk	Stl	Min	+/-
01	DAVENPORT, LOLO	G	0	0-0	0-0	0-0	0	1	1	0	0	0	1	0	1	1
02	GONZALES, ABBY	G	0	0-3	0-1	0-0	0	2	2	2	2	0	0	2	20	1
04	MCBRIDE, PARIS	G	0	0-2	0-1	0-0	0	0	0	0	0	0	0	0	3	1
10	JOHNSON, TEE	G	0	0-0	0-0	0-0	0	0	0	0	0	0	0	0	1	1
12	OLEARY, LIZZIE	F	2	1-2	0-0	0-0	4	0	4	4	3	2	1	0	12	5
20	DICKEY, JASMINE	G	4	1-5	0-0	2-4	2	3	5	1	3	1	0	1	20	1
22	DEFREESE, SAMONE	F	4	2-3	0-0	0-0	2	2	4	1	1	0	0	0	11	-1
25	LAWRENCE, REBECCA	F	0	0-0	0-0	0-0	0	0	0	0	0	0	0	0	0	0
30	SHAW, KAYLA	G	6	2-6	2-5	0-0	0	0	0	1	1	3	0	1	16	-1
33	ENABOSI, NICOLE	F	18	8-10	0-0	2-4	1	0	1	3	1	1	1	1	16	-3
	TEAM		0	0-0	0-0	0-0	0	0	0	0	0	0	0	0	0	0
TOTALS			34	14-31	2-7	4-8	9	8	17	12	11	7	3	5	99	

Shooting By Period

Period	FG	FG%	3FG	3FG%	FT	FT%
3rd Qtr	5-18	28%	1-4	25%	2-4	50%
4th Qtr	9-13	69%	1-3	33%	2-4	50%
2nd Half	14-31	45%	2-7	29%	4-8	50%
Game	25-56	44.6%	2-11	18.2%	6-10	60.0%

Deadball Rebounds: 0,0
 Last FG Half: DEL 4th-00:07

William Mary 33

No.	Player	S	Pts	FG	3FG	FT	OR	DR	TR	PF	A	TO	Blk	Stl	Min	+/-
01	WAGNER, SYDNEY	G	1	0-3	0-1	1-2	0	1	1	0	0	1	0	0	11	1
10	HODGSON, EVA	G	16	3-4	2-3	8-8	2	0	2	0	1	1	0	0	18	0
11	POLLARD, NYLA	G	0	0-1	0-0	0-0	0	1	1	1	1	2	0	0	15	-7
20	BELLAMY, BRE	F	0	0-2	0-1	0-0	0	0	0	0	2	0	0	0	5	6
21	EICHNER, BAILEY	F	2	1-2	0-0	0-0	0	4	4	3	0	0	0	0	16	-6
25	ROGERS, GABBY	C	4	2-4	0-0	0-0	0	2	2	2	1	0	0	1	15	2
30	REYNOLDS, VICTORIA	F	10	4-7	1-2	1-2	0	1	1	1	2	3	1	2	20	-1
	TEAM		0	0-0	0-0	0-0	3	3	6	0	0	1	0	0	0	0
TOTALS			33	10-23	3-7	10-12	5	12	17	7	7	8	1	3	99	

Shooting By Period

Period	FG	FG%	3FG	3FG%	FT	FT%
3rd Qtr	4-14	29%	2-3	67%	2-2	100%
4th Qtr	6-9	67%	1-4	25%	8-10	80%
2nd Half	10-23	43%	3-7	43%	10-12	83%
Game	23-51	45.1%	6-16	37.5%	16-20	80.0%

Deadball Rebounds: 3,0
 Last FG Half: WM 4th-00:34

Game Notes:

Officials: Billy Smith, Talisa Green, Luis Gonzalez
 Attendance: 906

Start Time: 07:06 PM ET
 End Time: 08:48 PM ET
 Game Duration: 1:41
 Conference Game:

Score	1st	2nd	3rd	4th	TOT
DEL	10	14	13	21	58
WM	21	14	12	21	68

Points from (This Period)	DEL	WM
In the Paint	24	10
Off Turns	15	12
2nd Chance	6	5
Fast Break	4	4
Bench	2	1

Official Box Score
Delaware vs William Mary
Third Quarter Statistics Only
January 24, 2020 at Kaplan Arena (Kaplan Arena) - Williamsburg



Delaware 34

No.	Player	S	Pts	FG	3FG	FT	OR	DR	TR	PF	A	TO	Blk	Stl	Min	+/-
02	GONZALES, ABBY	G	0	0-3	0-1	0-0	0	2	2	0	1	0	0	1	10	1
20	DICKEY, JASMINE	G	1	0-3	0-0	1-2	1	3	4	0	0	0	0	1	10	1
22	DEFREESE, SAMONE	F	4	2-3	0-0	0-0	2	2	4	0	1	0	0	0	9	0
30	SHAW, KAYLA	G	3	1-3	1-2	0-0	0	0	0	1	0	1	0	0	7	0
33	ENABOSI, NICOLE	F	3	1-2	0-0	1-2	1	0	1	1	0	1	1	0	6	-3
01	DAVENPORT, LOLO	G	0	0-0	0-0	0-0	0	1	1	0	0	0	1	0	1	1
04	MCBRIDE, PARIS	G	0	0-2	0-1	0-0	0	0	0	0	0	0	0	0	3	1
10	JOHNSON, TEE	G	0	0-0	0-0	0-0	0	0	0	0	0	0	0	0	0	0
12	OLEARY, LIZZIE	F	2	1-2	0-0	0-0	3	0	3	2	0	1	1	0	4	4
25	LAWRENCE, REBECCA	F	0	0-0	0-0	0-0	0	0	0	0	0	0	0	0	0	0
TEAM							0	0	0	0	0	0	0	0	0	0
TOTALS			13	5-18	1-4	2-4	7	8	15	4	2	3	3	2	50	

Shooting By Period

Period	FG	FG%	3FG	3FG%	FT	FT%
2nd Half	0-0	0%	0-0	0%	0-0	0%
Game	25-56	44.6%	2-11	18.2%	6-10	60.0%

Deadball Rebounds: 0,0

William Mary 33

No.	Player	S	Pts	FG	3FG	FT	OR	DR	TR	PF	A	TO	Blk	Stl	Min	+/-
10	HODGSON, EVA	G	5	1-1	1-1	2-2	1	0	1	0	1	0	0	0	8	0
11	POLLARD, NYLA	G	0	0-1	0-0	0-0	0	1	1	0	0	1	0	0	5	-7
21	EICHNER, BAILEY	F	0	0-1	0-0	0-0	0	2	2	2	0	0	0	0	7	-5
25	ROGERS, GABBY	C	0	0-2	0-0	0-0	0	1	1	1	0	0	0	0	8	-3
30	REYNOLDS, VICTORIA	F	7	3-5	1-1	0-0	0	1	1	0	0	2	1	0	10	-1
01	WAGNER, SYDNEY	G	0	0-2	0-0	0-0	0	1	1	0	0	0	0	0	8	5
20	BELLAMY, BRE	F	0	0-2	0-1	0-0	0	0	0	0	2	0	0	0	5	6
TEAM							1	2	3	0	0	0	0	0	0	
TOTALS			12	4-14	2-3	2-2	2	8	10	3	3	3	1	0	50	

Shooting By Period

Period	FG	FG%	3FG	3FG%	FT	FT%
2nd Half	0-0	0%	0-0	0%	0-0	0%
Game	23-51	45.1%	6-16	37.5%	16-20	80.0%

Deadball Rebounds: 3,0

Game Notes:

Officials: **Billy Smith, Talisa Green, Luis Gonzalez**
 Attendance: **906**

Start Time: **07:06 PM ET**
 End Time: **08:48 PM ET**
 Game Duration: **1:41**
 Conference Game;

Score	1st	2nd	3rd	4th	TOT
DEL	10	14	13	21	58
WM	21	14	12	21	68

Points from (This Period)	DEL	WM
In the Paint	8	4
Off Turns	4	5
2nd Chance	5	3
Fast Break	1	0
Bench	2	0

Official Play-By-Play
Delaware vs William Mary
Third Quarter
January 24, 2020 at Kaplan Arena (Kaplan Arena) - Williamsburg



Period 3

Starters:

Delaware: 2 GONZALES, ABBY (G); 20 DICKEY, JASMINE (G); 22 DEFREESE, SAMONE (F); 30 SHAW, KAYLA (G); 33 ENABOSI, NICOLE (F);

William Mary: 10 HODGSON, EVA (G); 11 POLLARD, NYLA (G); 21 EICHNER, BAILEY (F); 25 ROGERS, GABBY (C); 30 REYNOLDS, VICTORIA (F);

Time	VISITORS: Delaware	Score	Margin	HOME: William Mary
10:00				SUB OUT: BELLAMY, BRE
10:00				SUB IN: EICHNER, BAILEY
10:00	SUB OUT: MCBRIDE, PARIS			
10:00	SUB OUT: LAWRENCE, REBECCA			
10:00	SUB IN: GONZALES, ABBY			
10:00	SUB IN: DEFREESE, SAMONE			
09:50				TURNOVER (TRAVEL) by POLLARD, NYLA
09:33	MISSED JUMPER by DICKEY, JASMINE			
09:27	REBOUND (OFF) by OLEARY, LIZZIE			
09:27	MISSED LAYUP by OLEARY, LIZZIE			
09:25	GOOD! LAYUP by OLEARY, LIZZIE	35-26	H 9	
09:25	REBOUND (OFF) by OLEARY, LIZZIE			
09:11				MISSED JUMPER by ROGERS, GABBY
09:08	REBOUND (DEF) by DEFREESE, SAMONE			
08:50	MISSED JUMPER by DICKEY, JASMINE			
08:46				REBOUND (DEF) by POLLARD, NYLA
08:40				MISSED LAYUP by POLLARD, NYLA
08:35	REBOUND (DEF) by DICKEY, JASMINE			
08:33	MISSED JUMPER by SHAW, KAYLA			
08:30	REBOUND (OFF) by OLEARY, LIZZIE			
08:20	MISSED LAYUP by GONZALES, ABBY			
08:17	REBOUND (OFF) by DEFREESE, SAMONE			
08:16	GOOD! JUMPER by DEFREESE, SAMONE [PNT]	35-28	H 7	
07:59				TURNOVER (LOSTBALL) by REYNOLDS, VICTORIA
07:59	STEAL by GONZALES, ABBY			
07:54	MISSED JUMPER by GONZALES, ABBY			
07:48	GOOD! LAYUP by DEFREESE, SAMONE	35-30	H 5	
07:48	REBOUND (OFF) by DEFREESE, SAMONE			
07:38				MISSED JUMPER by REYNOLDS, VICTORIA
07:32	REBOUND (DEF) by GONZALES, ABBY			
07:31				FOUL (PERSONAL) by EICHNER, BAILEY
07:31				SUB OUT: POLLARD, NYLA
07:31				SUB OUT: ROGERS, GABBY
07:31				SUB IN: WAGNER, SYDNEY
07:31				SUB IN: BELLAMY, BRE
07:31	GOOD! FT by DICKEY, JASMINE [FB]	35-31	H 4	
07:31	MISSED FT by DICKEY, JASMINE			
07:30				REBOUND (DEF) by EICHNER, BAILEY
07:20				MISSED JUMPER by BELLAMY, BRE
07:20	BLOCK by OLEARY, LIZZIE			
07:14	REBOUND (DEF) by DICKEY, JASMINE			
06:50	FOUL (OFF) by OLEARY, LIZZIE			
06:50	TURNOVER (OFFENSIVE) by OLEARY, LIZZIE			
06:38		38-31	H 7	GOOD! 3PTR by HODGSON, EVA
06:38				ASSIST by BELLAMY, BRE
06:07	FOUL (OFF) by SHAW, KAYLA			
06:07	TURNOVER (OFFENSIVE) by SHAW, KAYLA			
06:07				SUB OUT: EICHNER, BAILEY
06:07				SUB IN: ROGERS, GABBY
05:43	FOUL (PERSONAL) by OLEARY, LIZZIE			
05:43	SUB OUT: OLEARY, LIZZIE			
05:43	SUB IN: ENABOSI, NICOLE			
05:43		39-31	H 8	GOOD! FT by HODGSON, EVA
05:43		40-31	H 9	GOOD! FT by HODGSON, EVA
05:35	MISSED 3PTR by GONZALES, ABBY			
05:32				REBOUND (DEF) by WAGNER, SYDNEY
05:24				MISSED 3PTR by BELLAMY, BRE
05:20				REBOUND (OFF) by HODGSON, EVA
05:13		43-31	H 12	GOOD! 3PTR by REYNOLDS, VICTORIA
05:13				ASSIST by HODGSON, EVA
04:59	MISSED LAYUP by DEFREESE, SAMONE			
04:56	REBOUND (OFF) by DICKEY, JASMINE			
04:51	GOOD! LAYUP by ENABOSI, NICOLE	43-33	H 10	
04:51	ASSIST by GONZALES, ABBY			
04:25				MISSED LAYUP by WAGNER, SYDNEY
04:22	REBOUND (DEF) by GONZALES, ABBY			
04:18	MISSED 3PTR by SHAW, KAYLA			
04:13				REBOUND (DEF) by ROGERS, GABBY
03:53		45-33	H 12	GOOD! LAYUP by REYNOLDS, VICTORIA
03:30	GOOD! 3PTR by SHAW, KAYLA	45-36	H 9	

Time	VISITORS: Delaware	Score	Margin	HOME: William Mary
03:30	ASSIST by DEFREESE, SAMONE			
03:09		47-36	H 11	GOOD! LAYUP by REYNOLDS, VICTORIA
03:09				ASSIST by BELLAMY, BRE
02:52	MISSED LAYUP by DICKEY, JASMINE			
02:50	REBOUND (OFF) by ENABOSI, NICOLE			
02:50				FOUL (PERSONAL) by ROGERS, GABBY
02:50				
02:50				SUB OUT: HODGSON, EVA
02:50				SUB OUT: BELLAMY, BRE
02:50				SUB IN: POLLARD, NYLA
02:50				SUB IN: EICHNER, BAILEY
02:50	SUB OUT: DEFREESE, SAMONE			
02:50	SUB OUT: SHAW, KAYLA			
02:50	SUB IN: DAVENPORT, LOLO			
02:50	SUB IN: MCBRIDE, PARIS			
02:50	GOOD! FT by ENABOSI, NICOLE	47-37	H 10	
02:50	MISSED FT by ENABOSI, NICOLE			
02:49				REBOUND (DEF) by TEAM
02:27				MISSED LAYUP by EICHNER, BAILEY
02:27	BLOCK by DAVENPORT, LOLO			
02:24	REBOUND (DEF) by DAVENPORT, LOLO			
02:12	MISSED LAYUP by ENABOSI, NICOLE			
02:11				REBOUND (DEF) by TEAM
02:11	SUB OUT: DAVENPORT, LOLO			
02:11	SUB IN: DEFREESE, SAMONE			
01:56				MISSED LAYUP by REYNOLDS, VICTORIA
01:53	REBOUND (DEF) by DICKEY, JASMINE			
01:44				FOUL (PERSONAL) by EICHNER, BAILEY
01:33	MISSED 3PTR by MCBRIDE, PARIS			
01:30				REBOUND (DEF) by REYNOLDS, VICTORIA
01:07				MISSED JUMPER by ROGERS, GABBY
01:02	REBOUND (DEF) by DEFREESE, SAMONE			
00:58	FOUL (OFF) by ENABOSI, NICOLE			
00:58	TURNOVER (OFFENSIVE) by ENABOSI, NICOLE			
00:58				SUB OUT: ROGERS, GABBY
00:58				SUB IN: HODGSON, EVA
00:36				TURNOVER (LOSTBALL) by REYNOLDS, VICTORIA
00:36	STEAL by DICKEY, JASMINE			
00:29	MISSED LAYUP by MCBRIDE, PARIS			
00:29				BLOCK by REYNOLDS, VICTORIA
00:24				REBOUND (DEF) by EICHNER, BAILEY
00:03				MISSED LAYUP by WAGNER, SYDNEY
00:03	BLOCK by ENABOSI, NICOLE			
00:03				REBOUND (OFF) by TEAM

Delaware 37, William Mary 47

Points from (This Period)	DEL	WM
In the Paint	8	4
Off Turns	4	5
2nd Chance	5	3
Fast Break	1	0
Bench	2	0

Official Box Score
Delaware vs William Mary
Fourth Quarter Statistics Only
January 24, 2020 at Kaplan Arena (Kaplan Arena) - Williamsburg



Delaware 21

No.	Player	S	Pts	FG	3FG	FT	OR	DR	TR	PF	A	TO	Blk	Stl	Min	+/-
02	GONZALES, ABBY	G	0	0-0	0-0	0-0	0	0	0	2	1	0	0	1	10	0
20	DICKEY, JASMINE	G	3	1-2	0-0	1-2	1	0	1	1	3	1	0	0	10	0
22	DEFREESE, SAMONE	F	0	0-0	0-0	0-0	0	0	0	1	0	0	0	0	2	-1
30	SHAW, KAYLA	G	3	1-3	1-3	0-0	0	0	0	0	1	2	0	1	9	-1
33	ENABOSI, NICOLE	F	15	7-8	0-0	1-2	0	0	0	2	1	0	0	1	10	0
01	DAVENPORT, LOLO	G	0	0-0	0-0	0-0	0	0	0	0	0	0	0	0	0	0
04	MCBRIDE, PARIS	G	0	0-0	0-0	0-0	0	0	0	0	0	0	0	0	0	0
10	JOHNSON, TEE	G	0	0-0	0-0	0-0	0	0	0	0	0	0	0	0	1	1
12	OLEARY, LIZZIE	F	0	0-0	0-0	0-0	1	0	1	2	3	1	0	0	8	1
25	LAWRENCE, REBECCA	F	0	0-0	0-0	0-0	0	0	0	0	0	0	0	0	0	0
TEAM							0	0	0	0	0	0				
TOTALS			21	9-13	1-3	2-4	2	0	2	8	9	4	0	3	49	

Shooting By Period

Period	FG	FG%	3FG	3FG%	FT	FT%
Game	25-56	44.6%	2-11	18.2%	6-10	60.0%

Deadball Rebounds: 0,0

William Mary 21

No.	Player	S	Pts	FG	3FG	FT	OR	DR	TR	PF	A	TO	Blk	Stl	Min	+/-
10	HODGSON, EVA	G	11	2-3	1-2	6-6	1	0	1	0	0	1	0	0	10	0
11	POLLARD, NYLA	G	0	0-0	0-0	0-0	0	0	0	1	1	1	0	0	10	0
21	EICHNER, BAILEY	F	2	1-1	0-0	0-0	0	2	2	1	0	0	0	0	9	-1
25	ROGERS, GABBY	C	4	2-2	0-0	0-0	0	1	1	1	1	0	0	1	7	5
30	REYNOLDS, VICTORIA	F	3	1-2	0-1	1-2	0	0	0	1	2	1	0	2	10	0
01	WAGNER, SYDNEY	G	1	0-1	0-1	1-2	0	0	0	0	0	1	0	0	3	-4
20	BELLAMY, BRE	F	0	0-0	0-0	0-0	0	0	0	0	0	0	0	0	0	0
TEAM							2	1	3	0	1					
TOTALS			21	6-9	1-4	8-10	3	4	7	4	4	5	0	3	49	

Shooting By Period

Period	FG	FG%	3FG	3FG%	FT	FT%
Game	23-51	45.1%	6-16	37.5%	16-20	80.0%

Deadball Rebounds: 3,0

Game Notes:

Officials: Billy Smith, Talisa Green, Luis Gonzalez
 Attendance: 906

Start Time: 07:06 PM ET
 End Time: 08:48 PM ET
 Game Duration: 1:41
 Conference Game;

Score	1st	2nd	3rd	4th	TOT
DEL	10	14	13	21	58
WM	21	14	12	21	68

Points from (This Period)	DEL	WM
In the Paint	16	6
Off Turns	11	7
2nd Chance	1	2
Fast Break	3	4
Bench	0	1

Official Play-By-Play
Delaware vs William Mary
Fourth Quarter
January 24, 2020 at Kaplan Arena (Kaplan Arena) - Williamsburg



Period 4

Starters:

Delaware: 2 GONZALES, ABBY (G); 20 DICKEY, JASMINE (G); 22 DEFREESE, SAMONE (F); 30 SHAW, KAYLA (G); 33 ENABOSI, NICOLE (F);

William Mary: 10 HODGSON, EVA (G); 11 POLLARD, NYLA (G); 21 EICHNER, BAILEY (F); 25 ROGERS, GABBY (C); 30 REYNOLDS, VICTORIA (F);

Time	VISITORS: Delaware	Score	Margin	HOME: William Mary
09:58	SUB OUT: MCBRIDE, PARIS			
09:58	SUB OUT: DEFREESE, SAMONE			
09:58	SUB IN: OLEARY, LIZZIE			
09:58	SUB IN: SHAW, KAYLA			
09:47	FOUL (PERSONAL) by ENABOSI, NICOLE			
09:27				MISSED 3PTR by WAGNER, SYDNEY
09:26				REBOUND (OFF) by TEAM
09:26				TURNOVER (SHOTCLOCK) by TEAM
09:15	GOOD! LAYUP by ENABOSI, NICOLE	47-39	H 8	
09:15	ASSIST by OLEARY, LIZZIE			
09:02	FOUL (PERSONAL) by OLEARY, LIZZIE			
08:54				TURNOVER (LOSTBALL) by WAGNER, SYDNEY
08:54	STEAL by SHAW, KAYLA			
08:45	GOOD! LAYUP by ENABOSI, NICOLE	47-41	H 6	
08:45	ASSIST by SHAW, KAYLA			
08:45				FOUL (PERSONAL) by EICHNER, BAILEY
08:45				SUB OUT: WAGNER, SYDNEY
08:45				SUB IN: ROGERS, GABBY
08:45	GOOD! FT by ENABOSI, NICOLE	47-42	H 5	
08:17				MISSED 3PTR by REYNOLDS, VICTORIA
08:15				REBOUND (OFF) by TEAM
08:06		49-42	H 7	GOOD! JUMPER by ROGERS, GABBY
08:06				ASSIST by POLLARD, NYLA
07:55	MISSED 3PTR by SHAW, KAYLA			
07:55	REBOUND (OFF) by OLEARY, LIZZIE			
07:50	FOUL (OFF) by OLEARY, LIZZIE			
07:50	TURNOVER (OFFENSIVE) by OLEARY, LIZZIE			
07:50	SUB OUT: OLEARY, LIZZIE			
07:50	SUB IN: DEFREESE, SAMONE			
07:28	FOUL (PERSONAL) by DEFREESE, SAMONE			
07:28		50-42	H 8	GOOD! FT by HODGSON, EVA
07:28		51-42	H 9	GOOD! FT by HODGSON, EVA
07:12	TURNOVER (BADPASS) by SHAW, KAYLA			
07:12				STEAL by REYNOLDS, VICTORIA
06:48		53-42	H 11	GOOD! JUMPER by HODGSON, EVA [PNT]
06:23	MISSED LAYUP by ENABOSI, NICOLE			
06:19				REBOUND (DEF) by EICHNER, BAILEY
06:01				TURNOVER (BADPASS) by POLLARD, NYLA
06:01	STEAL by GONZALES, ABBY			
05:56	GOOD! 3PTR by SHAW, KAYLA [FB]	53-45	H 8	
05:56	ASSIST by GONZALES, ABBY			
05:31				SUB OUT: EICHNER, BAILEY
05:31				SUB IN: WAGNER, SYDNEY
05:31	SUB OUT: DEFREESE, SAMONE			
05:31	SUB IN: OLEARY, LIZZIE			
05:25	FOUL (PERSONAL) by DICKEY, JASMINE			
05:25		54-45	H 9	GOOD! FT by HODGSON, EVA
05:25		55-45	H 10	GOOD! FT by HODGSON, EVA
05:25				SUB OUT: WAGNER, SYDNEY
05:25				SUB IN: EICHNER, BAILEY
05:11	TURNOVER (BADPASS) by SHAW, KAYLA			
05:11				STEAL by REYNOLDS, VICTORIA
05:07		57-45	H 12	GOOD! LAYUP by REYNOLDS, VICTORIA [FB]
04:49	GOOD! LAYUP by ENABOSI, NICOLE	57-47	H 10	
04:49	ASSIST by DICKEY, JASMINE			
04:20		60-47	H 13	GOOD! 3PTR by HODGSON, EVA
04:20				ASSIST by ROGERS, GABBY
04:01	GOOD! LAYUP by ENABOSI, NICOLE	60-49	H 11	
04:01	ASSIST by OLEARY, LIZZIE			
04:01				FOUL (PERSONAL) by ROGERS, GABBY
04:01	MISSED FT by ENABOSI, NICOLE			
04:00				REBOUND (DEF) by EICHNER, BAILEY
03:50				FOUL (OFF) by REYNOLDS, VICTORIA
03:50				TURNOVER (OFFENSIVE) by REYNOLDS, VICTORIA
03:39	GOOD! LAYUP by ENABOSI, NICOLE	60-51	H 9	
03:39	ASSIST by DICKEY, JASMINE			
03:16	FOUL (PERSONAL) by GONZALES, ABBY			
03:16				MISSED FT by REYNOLDS, VICTORIA
03:16				REBOUND (OFF) by TEAM

Time	VISITORS: Delaware	Score	Margin	HOME: William Mary
03:16		61-51	H 10	GOOD! FT by REYNOLDS, VICTORIA
03:05	GOOD! LAYUP by ENABOSI, NICOLE	61-53	H 8	
03:05	ASSIST by DICKEY, JASMINE			
02:31		63-53	H 10	GOOD! JUMPER by EICHNER, BAILEY
02:31				ASSIST by REYNOLDS, VICTORIA
02:18	MISSED 3PTR by SHAW, KAYLA			
02:16				REBOUND (DEF) by ROGERS, GABBY
02:10				TIMEOUT 30SEC
02:10				SUB OUT: ROGERS, GABBY
02:10				SUB IN: WAGNER, SYDNEY
02:10	SUB OUT: SHAW, KAYLA			
02:10	SUB IN: JOHNSON, TEE			
01:50				MISSED 3PTR by HODGSON, EVA
01:43				REBOUND (OFF) by HODGSON, EVA
01:28				TURNOVER (LOSTBALL) by HODGSON, EVA
01:28	STEAL by ENABOSI, NICOLE			
01:19	MISSED LAYUP by DICKEY, JASMINE			
01:18	REBOUND (OFF) by DICKEY, JASMINE			
01:18				FOUL (PERSONAL) by POLLARD, NYLA
01:18	GOOD! FT by DICKEY, JASMINE	63-54	H 9	
01:18	MISSED FT by DICKEY, JASMINE			
01:18				REBOUND (DEF) by TEAM
00:55	FOUL (PERSONAL) by ENABOSI, NICOLE			
00:55				SUB OUT: WAGNER, SYDNEY
00:55				SUB IN: ROGERS, GABBY
00:55	SUB OUT: JOHNSON, TEE			
00:55	SUB IN: SHAW, KAYLA			
00:55		64-54	H 10	GOOD! FT by HODGSON, EVA
00:55		65-54	H 11	GOOD! FT by HODGSON, EVA
00:40	GOOD! LAYUP by ENABOSI, NICOLE	65-56	H 9	
00:40	ASSIST by OLEARY, LIZZIE			
00:34		67-56	H 11	GOOD! LAYUP by ROGERS, GABBY [FB]
00:34				ASSIST by REYNOLDS, VICTORIA
00:26	TURNOVER (LOSTBALL) by DICKEY, JASMINE			
00:26				STEAL by ROGERS, GABBY
00:26				SUB OUT: EICHNER, BAILEY
00:26				SUB IN: WAGNER, SYDNEY
00:21	FOUL (PERSONAL) by GONZALES, ABBY			
00:21				MISSED FT by WAGNER, SYDNEY
00:21				REBOUND (OFF) by TEAM
00:21		68-56	H 12	GOOD! FT by WAGNER, SYDNEY
00:07	GOOD! LAYUP by DICKEY, JASMINE	68-58	H 10	
00:07	ASSIST by ENABOSI, NICOLE			

Delaware 58, William Mary 68

Points from (This Period)	DEL	WM
In the Paint	16	6
Off Turns	11	7
2nd Chance	1	2
Fast Break	3	4
Bench	0	1

Official Scoring/Possession Reference Chart
Delaware vs William Mary
Period 1
January 24, 2020 at Kaplan Arena (Kaplan Arena) - Williamsburg



Period 1

Starters:

Delaware: 2 GONZALES, ABBY (G); 20 DICKEY, JASMINE (G); 22 DEFREESE, SAMONE (F); 30 SHAW, KAYLA (G); 33 ENABOSI, NICOLE (F);

William Mary: 10 HODGSON, EVA (G); 11 POLLARD, NYLA (G); 21 EICHNER, BAILEY (F); 25 ROGERS, GABBY (C); 30 REYNOLDS, VICTORIA (F);

Time	VISITORS: Delaware	Score	Margin	HOME: William Mary
09:46	GOOD! JUMPER by DICKEY, JASMINE	0-2	V 2	
08:59		1-2	V 1	GOOD! FT by HODGSON, EVA
08:59		2-2	T	GOOD! FT by HODGSON, EVA
08:06	GOOD! LAYUP by DICKEY, JASMINE [FB]	2-4	V 2	
07:39		3-4	V 1	GOOD! FT by HODGSON, EVA
07:39		4-4	T	GOOD! FT by HODGSON, EVA
06:45		6-4	H 2	GOOD! JUMPER by ROGERS, GABBY
05:52		8-4	H 4	GOOD! LAYUP by ROGERS, GABBY
05:30	GOOD! LAYUP by DICKEY, JASMINE	8-6	H 2	
05:11		11-6	H 5	GOOD! 3PTR by REYNOLDS, VICTORIA
04:31		13-6	H 7	GOOD! LAYUP by HODGSON, EVA
03:54		15-6	H 9	GOOD! JUMPER by HODGSON, EVA [PNT]
02:23	GOOD! JUMPER by DICKEY, JASMINE	15-8	H 7	
01:52		17-8	H 9	GOOD! LAYUP by ROGERS, GABBY
01:01		19-8	H 11	GOOD! LAYUP by REYNOLDS, VICTORIA
00:42		21-8	H 13	GOOD! LAYUP by HODGSON, EVA [FB]
00:18	GOOD! LAYUP by DAVENPORT, LOLO	21-10	H 11	

Delaware 10, William Mary 21

Official Scoring/Possession Reference Chart
Delaware vs William Mary
Period 2
January 24, 2020 at Kaplan Arena (Kaplan Arena) - Williamsburg



Period 2

Starters:

Delaware: 2 GONZALES, ABBY (G); 20 DICKEY, JASMINE (G); 22 DEFREESE, SAMONE (F); 30 SHAW, KAYLA (G); 33 ENABOSI, NICOLE (F);

William Mary: 10 HODGSON, EVA (G); 11 POLLARD, NYLA (G); 21 EICHNER, BAILEY (F); 25 ROGERS, GABBY (C); 30 REYNOLDS, VICTORIA (F);

Time	VISITORS: Delaware	Score	Margin	HOME: William Mary
09:25	GOOD! JUMPER by DICKEY, JASMINE	21-12	H 9	
08:39	GOOD! LAYUP by DICKEY, JASMINE	21-14	H 7	
08:23		24-14	H 10	GOOD! 3PTR by WAGNER, SYDNEY
08:03	GOOD! JUMPER by DICKEY, JASMINE	24-16	H 8	
07:30	GOOD! LAYUP by OLEARY, LIZZIE	24-18	H 6	
05:47		25-18	H 7	GOOD! FT by POLLARD, NYLA
05:47		26-18	H 8	GOOD! FT by POLLARD, NYLA
05:01	GOOD! FT by MCBRIDE, PARIS [FB]	26-19	H 7	
05:01	GOOD! FT by MCBRIDE, PARIS [FB]	26-20	H 6	
04:49		29-20	H 9	GOOD! 3PTR by WAGNER, SYDNEY
04:18		31-20	H 11	GOOD! LAYUP by REYNOLDS, VICTORIA
03:13		33-20	H 13	GOOD! LAYUP by HODGSON, EVA [FB]
02:39		35-20	H 15	GOOD! JUMPER by POLLARD, NYLA [FB/PNT]
01:42	GOOD! LAYUP by OLEARY, LIZZIE	35-22	H 13	
01:17	GOOD! LAYUP by OLEARY, LIZZIE [PNT]	35-24	H 11	

Delaware 24, William Mary 35

Official Scoring/Possession Reference Chart
Delaware vs William Mary
Period 3
January 24, 2020 at Kaplan Arena (Kaplan Arena) - Williamsburg



Period 3

Starters:

Delaware: 2 GONZALES, ABBY (G); 20 DICKEY, JASMINE (G); 22 DEFREESE, SAMONE (F); 30 SHAW, KAYLA (G); 33 ENABOSI, NICOLE (F);

William Mary: 10 HODGSON, EVA (G); 11 POLLARD, NYLA (G); 21 EICHNER, BAILEY (F); 25 ROGERS, GABBY (C); 30 REYNOLDS, VICTORIA (F);

Time	VISITORS: Delaware	Score	Margin	HOME: William Mary
09:25	GOOD! LAYUP by OLEARY, LIZZIE	35-26	H 9	
08:16	GOOD! JUMPER by DEFREESE, SAMONE [PNT]	35-28	H 7	
07:48	GOOD! LAYUP by DEFREESE, SAMONE	35-30	H 5	
07:31	GOOD! FT by DICKEY, JASMINE [FB]	35-31	H 4	
06:38		38-31	H 7	GOOD! 3PTR by HODGSON, EVA
05:43		39-31	H 8	GOOD! FT by HODGSON, EVA
05:43		40-31	H 9	GOOD! FT by HODGSON, EVA
05:13		43-31	H 12	GOOD! 3PTR by REYNOLDS, VICTORIA
04:51	GOOD! LAYUP by ENABOSI, NICOLE	43-33	H 10	
03:53		45-33	H 12	GOOD! LAYUP by REYNOLDS, VICTORIA
03:30	GOOD! 3PTR by SHAW, KAYLA	45-36	H 9	
03:09		47-36	H 11	GOOD! LAYUP by REYNOLDS, VICTORIA
02:50	GOOD! FT by ENABOSI, NICOLE	47-37	H 10	

Delaware 37, William Mary 47

Official Scoring/Possession Reference Chart
Delaware vs William Mary
Period 4
January 24, 2020 at Kaplan Arena (Kaplan Arena) - Williamsburg



Period 4

Starters:

Delaware: 2 GONZALES, ABBY (G); 20 DICKEY, JASMINE (G); 22 DEFRESE, SAMONE (F); 30 SHAW, KAYLA (G); 33 ENABOSI, NICOLE (F);

William Mary: 10 HODGSON, EVA (G); 11 POLLARD, NYLA (G); 21 EICHNER, BAILEY (F); 25 ROGERS, GABBY (C); 30 REYNOLDS, VICTORIA (F);

Time	VISITORS: Delaware	Score	Margin	HOME: William Mary
09:15	GOOD! LAYUP by ENABOSI, NICOLE	47-39	H 8	
08:45	GOOD! LAYUP by ENABOSI, NICOLE	47-41	H 6	
08:45	GOOD! FT by ENABOSI, NICOLE	47-42	H 5	
08:06		49-42	H 7	GOOD! JUMPER by ROGERS, GABBY
07:28		50-42	H 8	GOOD! FT by HODGSON, EVA
07:28		51-42	H 9	GOOD! FT by HODGSON, EVA
06:48		53-42	H 11	GOOD! JUMPER by HODGSON, EVA [PNT]
05:56	GOOD! 3PTR by SHAW, KAYLA [FB]	53-45	H 8	
05:25		54-45	H 9	GOOD! FT by HODGSON, EVA
05:25		55-45	H 10	GOOD! FT by HODGSON, EVA
05:07		57-45	H 12	GOOD! LAYUP by REYNOLDS, VICTORIA [FB]
04:49	GOOD! LAYUP by ENABOSI, NICOLE	57-47	H 10	
04:20		60-47	H 13	GOOD! 3PTR by HODGSON, EVA
04:01	GOOD! LAYUP by ENABOSI, NICOLE	60-49	H 11	
03:39	GOOD! LAYUP by ENABOSI, NICOLE	60-51	H 9	
03:16		61-51	H 10	GOOD! FT by REYNOLDS, VICTORIA
03:05	GOOD! LAYUP by ENABOSI, NICOLE	61-53	H 8	
02:31		63-53	H 10	GOOD! JUMPER by EICHNER, BAILEY
01:18	GOOD! FT by DICKEY, JASMINE	63-54	H 9	
00:55		64-54	H 10	GOOD! FT by HODGSON, EVA
00:55		65-54	H 11	GOOD! FT by HODGSON, EVA
00:40	GOOD! LAYUP by ENABOSI, NICOLE	65-56	H 9	
00:34		67-56	H 11	GOOD! LAYUP by ROGERS, GABBY [FB]
00:21		68-56	H 12	GOOD! FT by WAGNER, SYDNEY
00:07	GOOD! LAYUP by DICKEY, JASMINE	68-58	H 10	

Delaware 58, William Mary 68

Official Substitutions Log
Delaware vs William Mary
Period 1
January 24, 2020 at Kaplan Arena (Kaplan Arena) - Williamsburg



VISITORS: Delaware	Time	Score	HOME: William Mary
2 GONZALES, ABBY			10 HODGSON, EVA
20 DICKEY, JASMINE			11 POLLARD, NYLA
22 DEFREESE, SAMONE			21 EICHNER, BAILEY
30 SHAW, KAYLA			25 ROGERS, GABBY
33 ENABOSI, NICOLE			30 REYNOLDS, VICTORIA
SUB OUT: 2 GONZALES, ABBY	05:52	4-8	
SUB IN: 4 MCBRIDE, PARIS	05:52		
	05:21	6-8	SUB OUT: ROGERS, GABBY
	05:21		SUB IN: BELLAMY, BRE
SUB OUT: 22 DEFREESE, SAMONE	05:21		
SUB IN: 10 JOHNSON, TEE	05:21		
	03:32	6-15	SUB OUT: POLLARD, NYLA
	03:32		SUB OUT: EICHNER, BAILEY
	03:32		SUB IN: WAGNER, SYDNEY
	03:32		SUB IN: ROGERS, GABBY
SUB OUT: 10 JOHNSON, TEE	03:32		
SUB IN: 2 GONZALES, ABBY	03:32		
SUB OUT: 4 MCBRIDE, PARIS	01:52	8-17	
SUB IN: 1 DAVENPORT, LOLO	01:52		
SUB OUT: 33 ENABOSI, NICOLE	01:23	8-17	
SUB IN: 12 OLEARY, LIZZIE	01:23		

Delaware 10, William Mary 21

Official Substitutions Log
Delaware vs William Mary
Period 2
January 24, 2020 at Kaplan Arena (Kaplan Arena) - Williamsburg



VISITORS: Delaware	Time	Score	HOME: William Mary
2 GONZALES, ABBY			10 HODGSON, EVA
20 DICKEY, JASMINE			11 POLLARD, NYLA
22 DEFREESE, SAMONE			21 EICHNER, BAILEY
30 SHAW, KAYLA			25 ROGERS, GABBY
33 ENABOSI, NICOLE			30 REYNOLDS, VICTORIA
	08:33	14-21	SUB OUT: BELLAMY, BRE
	08:33		SUB IN: EICHNER, BAILEY
SUB OUT: 30 SHAW, KAYLA	08:33		
SUB IN: 4 MCBRIDE, PARIS	08:33		
	07:46	16-24	SUB OUT: WAGNER, SYDNEY
	07:46		SUB IN: POLLARD, NYLA
	07:03	18-24	SUB OUT: HODGSON, EVA
	07:03		SUB IN: WAGNER, SYDNEY
SUB OUT: 1 DAVENPORT, LOLO	06:01	18-24	
SUB IN: 22 DEFREESE, SAMONE	06:01		
	05:47	18-24	SUB OUT: REYNOLDS, VICTORIA
	05:47		SUB IN: HODGSON, EVA
SUB OUT: 2 GONZALES, ABBY	05:47		
SUB IN: 10 JOHNSON, TEE	05:47		
	04:30	20-29	SUB OUT: ROGERS, GABBY
	04:30		SUB IN: REYNOLDS, VICTORIA
SUB OUT: 12 OLEARY, LIZZIE	04:30		
SUB OUT: 20 DICKEY, JASMINE	04:30		
SUB IN: 1 DAVENPORT, LOLO	04:30		
SUB IN: 33 ENABOSI, NICOLE	04:30		
SUB OUT: 10 JOHNSON, TEE	02:28	20-35	
SUB OUT: 22 DEFREESE, SAMONE	02:28		
SUB OUT: 33 ENABOSI, NICOLE	02:28		
SUB IN: 12 OLEARY, LIZZIE	02:28		
SUB IN: 20 DICKEY, JASMINE	02:28		
SUB IN: 30 SHAW, KAYLA	02:28		
	00:28	24-35	SUB OUT: WAGNER, SYDNEY
	00:28		SUB OUT: EICHNER, BAILEY
	00:28		SUB IN: BELLAMY, BRE
	00:28		SUB IN: ROGERS, GABBY
SUB OUT: 1 DAVENPORT, LOLO	00:28		
SUB IN: 25 LAWRENCE, REBECCA	00:28		

Delaware 24, William Mary 35

Official Substitutions Log
Delaware vs William Mary
Period 3
January 24, 2020 at Kaplan Arena (Kaplan Arena) - Williamsburg



VISITORS: Delaware	Time	Score	HOME: William Mary
2 GONZALES, ABBY			10 HODGSON, EVA
20 DICKEY, JASMINE			11 POLLARD, NYLA
22 DEFREESE, SAMONE			21 EICHNER, BAILEY
30 SHAW, KAYLA			25 ROGERS, GABBY
33 ENABOSI, NICOLE			30 REYNOLDS, VICTORIA
	10:00	-	SUB OUT: BELLAMY, BRE
	10:00		SUB IN: EICHNER, BAILEY
SUB OUT: 4 MCBRIDE, PARIS	10:00		
SUB OUT: 25 LAWRENCE, REBECCA	10:00		
SUB IN: 2 GONZALES, ABBY	10:00		
SUB IN: 22 DEFREESE, SAMONE	10:00		
	07:31	30-35	SUB OUT: POLLARD, NYLA
	07:31		SUB OUT: ROGERS, GABBY
	07:31		SUB IN: WAGNER, SYDNEY
	07:31		SUB IN: BELLAMY, BRE
	06:07	31-38	SUB OUT: EICHNER, BAILEY
	06:07		SUB IN: ROGERS, GABBY
SUB OUT: 12 OLEARY, LIZZIE	05:43	31-38	
SUB IN: 33 ENABOSI, NICOLE	05:43		
	02:50	36-47	SUB OUT: HODGSON, EVA
	02:50		SUB OUT: BELLAMY, BRE
	02:50		SUB IN: POLLARD, NYLA
	02:50		SUB IN: EICHNER, BAILEY
SUB OUT: 22 DEFREESE, SAMONE	02:50		
SUB OUT: 30 SHAW, KAYLA	02:50		
SUB IN: 1 DAVENPORT, LOLO	02:50		
SUB IN: 4 MCBRIDE, PARIS	02:50		
SUB OUT: 1 DAVENPORT, LOLO	02:11	37-47	
SUB IN: 22 DEFREESE, SAMONE	02:11		
	00:58	37-47	SUB OUT: ROGERS, GABBY
	00:58		SUB IN: HODGSON, EVA

Delaware 37, William Mary 47

Official Substitutions Log
Delaware vs William Mary
Period 4
January 24, 2020 at Kaplan Arena (Kaplan Arena) - Williamsburg



VISITORS: Delaware	Time	Score	HOME: William Mary
2 GONZALES, ABBY			10 HODGSON, EVA
20 DICKEY, JASMINE			11 POLLARD, NYLA
22 DEFREESE, SAMONE			21 EICHNER, BAILEY
30 SHAW, KAYLA			25 ROGERS, GABBY
33 ENABOSI, NICOLE			30 REYNOLDS, VICTORIA
SUB OUT: 4 MCBRIDE, PARIS	09:58	-	
SUB OUT: 22 DEFREESE, SAMONE	09:58		
SUB IN: 12 OLEARY, LIZZIE	09:58		
SUB IN: 30 SHAW, KAYLA	09:58		
	08:45	41-47	SUB OUT: WAGNER, SYDNEY
	08:45		SUB IN: ROGERS, GABBY
SUB OUT: 12 OLEARY, LIZZIE	07:50	42-49	
SUB IN: 22 DEFREESE, SAMONE	07:50		
	05:31	45-53	SUB OUT: EICHNER, BAILEY
	05:31		SUB IN: WAGNER, SYDNEY
SUB OUT: 22 DEFREESE, SAMONE	05:31		
SUB IN: 12 OLEARY, LIZZIE	05:31		
	05:25	45-55	SUB OUT: WAGNER, SYDNEY
	05:25		SUB IN: EICHNER, BAILEY
	02:10	53-63	SUB OUT: ROGERS, GABBY
	02:10		SUB IN: WAGNER, SYDNEY
SUB OUT: 30 SHAW, KAYLA	02:10		
SUB IN: 10 JOHNSON, TEE	02:10		
	00:55	54-63	SUB OUT: WAGNER, SYDNEY
	00:55		SUB IN: ROGERS, GABBY
SUB OUT: 10 JOHNSON, TEE	00:55		
SUB IN: 30 SHAW, KAYLA	00:55		
	00:26	56-67	SUB OUT: EICHNER, BAILEY
	00:26		SUB IN: WAGNER, SYDNEY

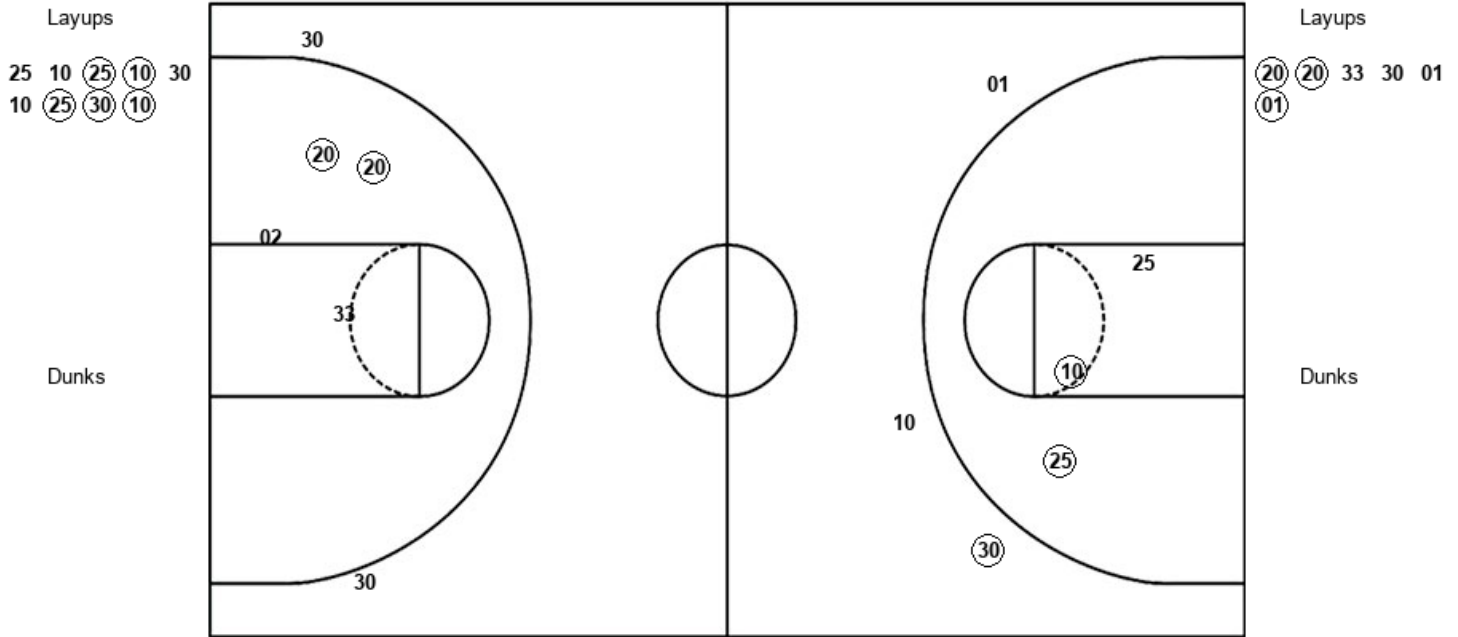
Delaware 58, William Mary 68

Official Shot Chart
Delaware vs William Mary
PERIOD 1 Shots
 January 24, 2020 at Kaplan Arena (Kaplan Arena) - Williamsburg



William Mary

Delaware



WM : Period 1	Made	Att	Pct
Layups	5	9	55.6
Dunks	0	0	0
2PT Field Goals	7	12	58.3
3PT Field Goals	1	3	33.3
Total Field Goals	8	15	53.3

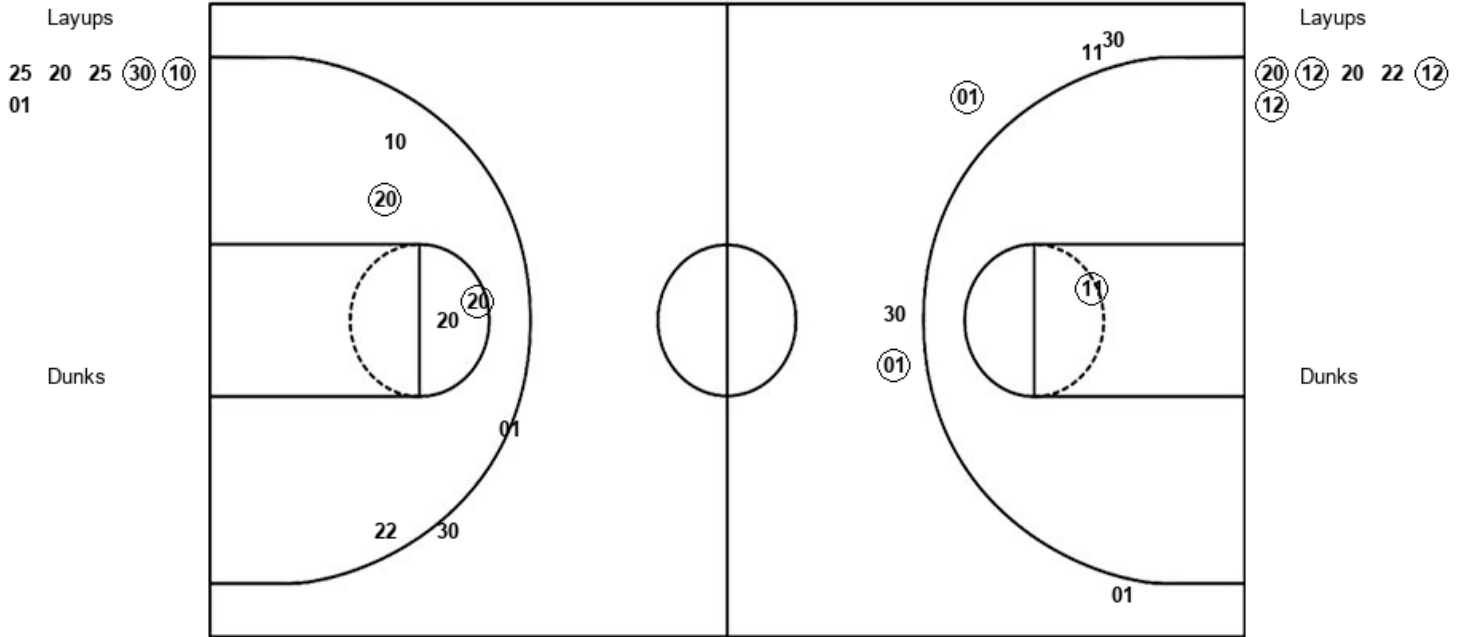
DEL : Period 1	Made	Att	Pct
Layups	3	6	50.0
Dunks	0	0	0
2PT Field Goals	5	10	50.0
3PT Field Goals	0	2	00.0
Total Field Goals	5	12	41.7

Official Shot Chart
Delaware vs William Mary
 PERIOD 2 Shots
 January 24, 2020 at Kaplan Arena (Kaplan Arena) - Williamsburg



William Mary

Delaware



WM : Period 2	Made	Att	Pct
Layups	2	6	33.3
Dunks	0	0	0
2PT Field Goals	3	7	42.9
3PT Field Goals	2	6	33.3
Total Field Goals	5	13	38.5

DEL : Period 2	Made	Att	Pct
Layups	4	6	66.7
Dunks	0	0	0
2PT Field Goals	6	11	54.5
3PT Field Goals	0	2	00.0
Total Field Goals	6	13	46.2

Official Shot Chart
Delaware vs William Mary
PERIOD 3 Shots
 January 24, 2020 at Kaplan Arena (Kaplan Arena) - Williamsburg

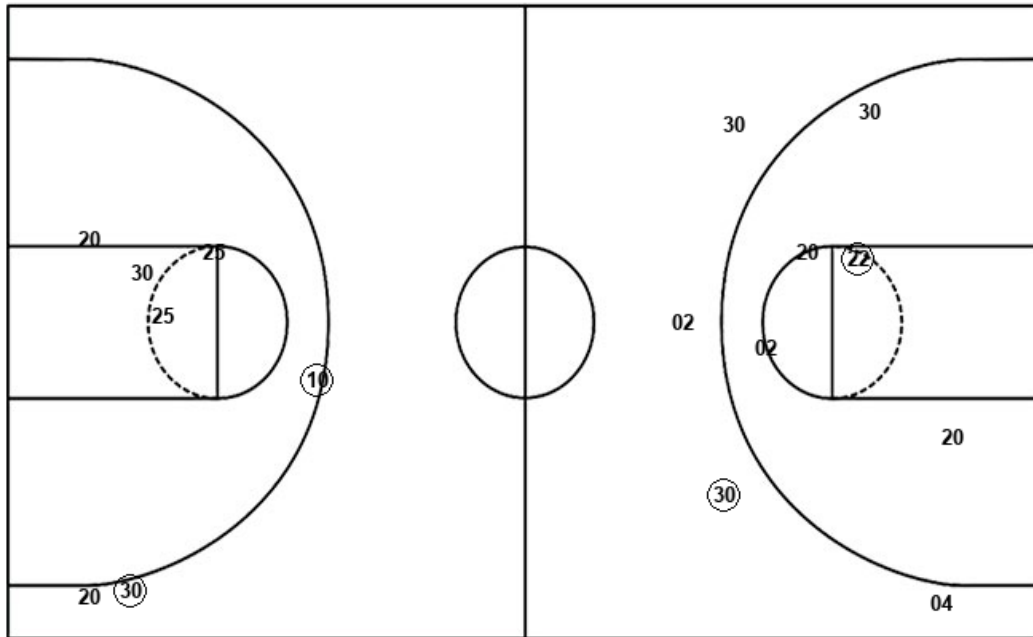


William Mary

Delaware

Layups
 11 01 (30) (30) 21
 30 01

Layups
 12 (12) 02 (22) 22
 (33) 20 33 04



Dunks

Dunks

WM : Period 3	Made	Att	Pct
Layups	2	7	28.6
Dunks	0	0	0
2PT Field Goals	2	11	18.2
3PT Field Goals	2	3	66.7
Total Field Goals	4	14	28.6

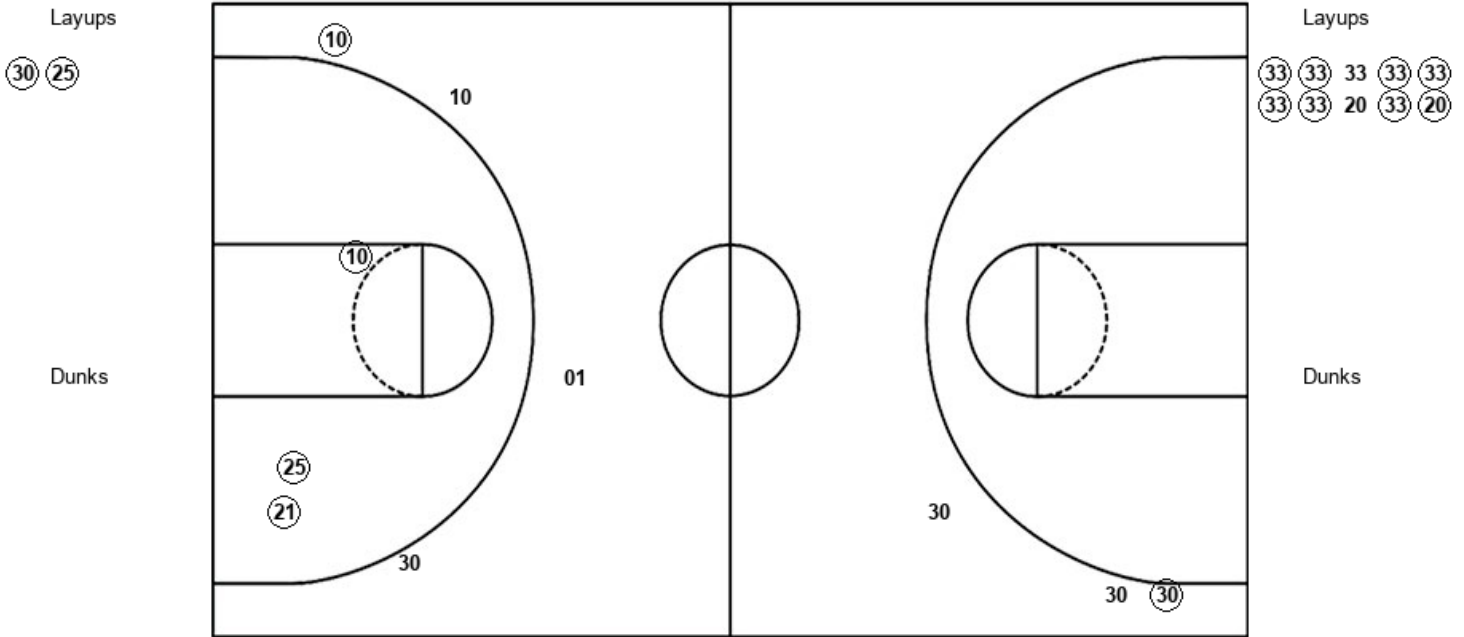
DEL : Period 3	Made	Att	Pct
Layups	3	9	33.3
Dunks	0	0	0
2PT Field Goals	4	14	28.6
3PT Field Goals	1	4	25.0
Total Field Goals	5	18	27.8

Official Shot Chart
Delaware vs William Mary
PERIOD 4 Shots
 January 24, 2020 at Kaplan Arena (Kaplan Arena) - Williamsburg



William Mary

Delaware



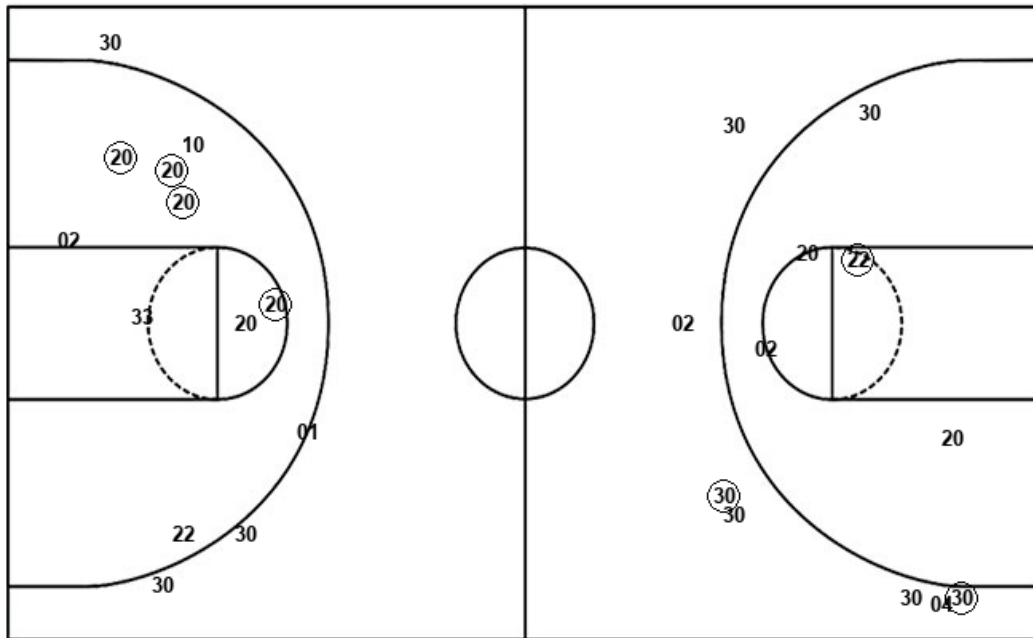
WM : Period 4	Made	Att	Pct
Layups	2	2	100.0
Dunks	0	0	0
2PT Field Goals	5	5	100.0
3PT Field Goals	1	4	25.0
Total Field Goals	6	9	66.7

DEL : Period 4	Made	Att	Pct
Layups	8	10	80.0
Dunks	0	0	0
2PT Field Goals	8	10	80.0
3PT Field Goals	1	3	33.3
Total Field Goals	9	13	69.2

Official Shot Chart
Delaware vs William Mary
Delaware Team Shots
 January 24, 2020 at Kaplan Arena (Kaplan Arena) - Williamsburg



Layups



Layups

- (20) (20) 33 30 01
- (01) (20) (12) 20 22
- (12) (12) 12 (12) 02
- (22) 22 (33) 20 33
- 04 (33) (33) 33 (33)
- (33) (33) (33) 20 (33)
- (20)

Dunks

Dunks

DEL : Period 1	Made	Att	Pct
Layups	3	6	50.0
Dunks	0	0	0
2PT Field Goals	5	10	50.0
3PT Field Goals	0	2	00.0
Total Field Goals	5	12	41.7

DEL : Period 2	Made	Att	Pct
Layups	4	6	66.7
Dunks	0	0	0
2PT Field Goals	6	11	54.5
3PT Field Goals	0	2	00.0
Total Field Goals	6	13	46.2

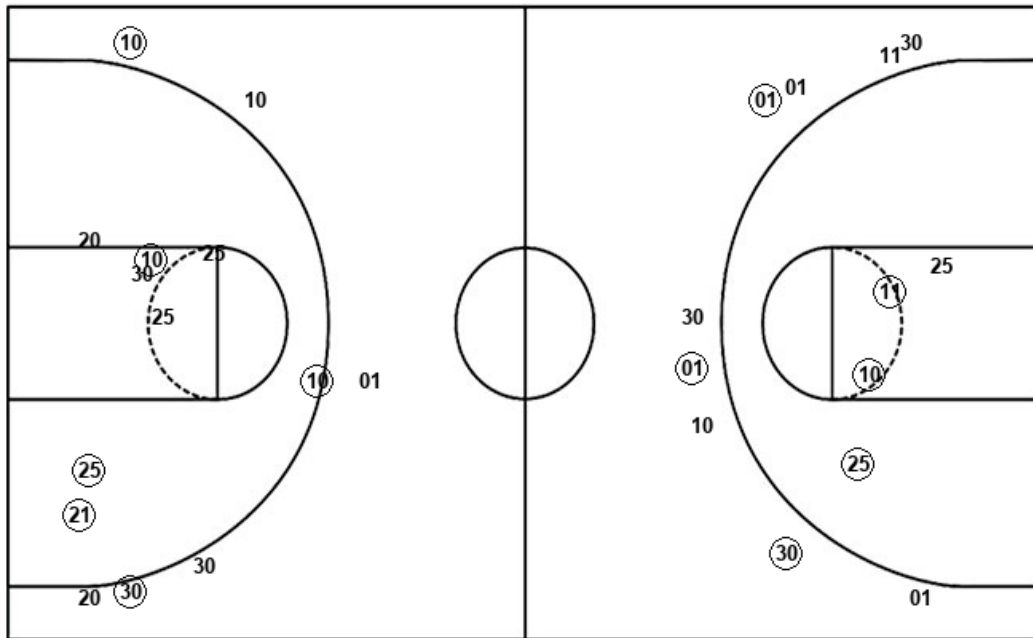
DEL : Period 3	Made	Att	Pct
Layups	3	9	33.3
Dunks	0	0	0
2PT Field Goals	4	14	28.6
3PT Field Goals	1	4	25.0
Total Field Goals	5	18	27.8

DEL : Period 4	Made	Att	Pct
Layups	8	10	80.0
Dunks	0	0	0
2PT Field Goals	8	10	80.0
3PT Field Goals	1	3	33.3
Total Field Goals	9	13	69.2

Official Shot Chart
Delaware vs William Mary
William Mary Team Shots
 January 24, 2020 at Kaplan Arena (Kaplan Arena) - Williamsburg



Layups



Layups

25	10	(25)	(10)	30
10	(25)	(30)	(10)	25
20	25	(30)	(10)	01
11	01	(30)	(30)	21
30	01	(30)	(25)	

Dunks

Dunks

WM : Period 1	Made	Att	Pct
Layups	5	9	55.6
Dunks	0	0	0
2PT Field Goals	7	12	58.3
3PT Field Goals	1	3	33.3
Total Field Goals	8	15	53.3

WM : Period 2	Made	Att	Pct
Layups	2	6	33.3
Dunks	0	0	0
2PT Field Goals	3	7	42.9
3PT Field Goals	2	6	33.3
Total Field Goals	5	13	38.5

WM : Period 3	Made	Att	Pct
Layups	2	7	28.6
Dunks	0	0	0
2PT Field Goals	2	11	18.2
3PT Field Goals	2	3	66.7
Total Field Goals	4	14	28.6

WM : Period 4	Made	Att	Pct
Layups	2	2	100.0
Dunks	0	0	0
2PT Field Goals	5	5	100.0
3PT Field Goals	1	4	25.0
Total Field Goals	6	9	66.7