

FINAL SCORE



UNCW

72



William & Mary

55

January 10, 2020 • Kaplan Arena (Kaplan Arena) - Williamsburg

FINAL STATISTICS

Official Box Score
UNCW vs William & Mary
Game Totals -- Final Statistics
January 10, 2020 at Kaplan Arena (Kaplan Arena) - Williamsburg



UNCW 72

No.	Player	S	Pts	FG	3FG	FT	OR	DR	TR	PF	A	TO	Blk	Stl	Min	+/-
01	POWELL, PAIGE	F	14	6-8	0-0	2-3	2	6	8	2	0	0	3	0	24	10
04	MUNOZ, JESSICA	F	5	2-4	0-1	1-2	4	4	8	3	3	3	1	0	33	14
05	SMITH, GIGI	G	24	8-15	3-6	5-8	1	7	8	2	3	4	1	2	37	18
10	VASON, AHYIONA	G	4	2-6	0-2	0-0	0	4	4	3	0	3	0	0	18	-1
13	SUGGS, LACEY	G	10	3-6	1-3	3-5	1	6	7	2	3	1	0	5	38	12
02	CRISP, MORIAH	G	4	1-3	0-1	2-4	1	2	3	3	3	2	0	2	24	19
22	THYBULLE, ZHANEIA	G	0	0-2	0-1	0-0	0	0	0	0	1	0	0	1	10	-1
24	BELL, CHINYERE	F	11	4-7	1-1	2-2	1	3	4	2	0	2	1	0	12	9
32	OBUSEK, CAROL-ANNE	F	0	0-0	0-0	0-0	0	0	0	1	0	1	0	0	4	5
TEAM							1	0	1	0		2				
TOTALS			72	26-51	5-15	15-24	11	32	43	18	13	18	6	10	200	

Shooting By Period

Period	FG	FG%	3FG	3FG%	FT	FT%
1st Qtr	6-11	55%	4-6	67%	2-2	100%
2nd Qtr	8-17	47%	1-6	17%	2-5	40%
3rd Qtr	6-13	46%	0-0	0%	4-6	67%
4th Qtr	6-10	60%	0-3	00%	7-11	64%
1st Half	14-28	50%	5-12	42%	4-7	57%
2nd Half	12-23	52%	0-3	00%	11-17	65%
Game	26-51	51.0%	5-15	33.3%	15-24	62.5%

Deadball Rebounds: 5,0

Last FG: 4th-04:21

Biggest Run: 11-0

Largest lead: By 20 at 4th-02:00

Technical Fouls: None.

William & Mary 55

No.	Player	S	Pts	FG	3FG	FT	OR	DR	TR	PF	A	TO	Blk	Stl	Min	+/-
10	HODGSON, EVA	G	14	4-9	1-5	5-5	0	3	3	1	6	5	3	3	35	-17
11	POLLARD, NYLA	G	6	2-5	1-4	1-2	0	0	0	3	0	1	0	0	27	-13
20	BELLAMY, BRE	F	2	1-5	0-1	0-0	0	0	0	4	2	1	0	0	25	-2
25	ROGERS, GABBY	C	6	3-5	0-0	0-1	0	3	3	4	2	2	0	1	20	1
30	REYNOLDS, VICTORIA	F	13	4-12	0-1	5-7	4	3	7	2	1	4	0	1	37	-17
01	WAGNER, SYDNEY	G	7	3-9	1-6	0-0	0	1	1	1	0	0	0	0	24	-23
03	TAYLOR, ASHLEY	G	0	0-1	0-1	0-0	1	0	1	0	0	0	0	0	3	0
05	GILLIAM, CHANIQUA	G	3	1-5	1-3	0-0	0	1	1	2	0	0	0	0	12	1
15	KRAUSE, EMMA	F	2	1-1	0-0	0-0	1	1	2	1	0	1	0	1	2	0
21	EICHNER, BAILEY	F	2	0-2	0-0	2-2	0	5	5	4	1	1	0	2	15	-15
TEAM							1	1	2	0		0				
TOTALS			55	19-54	4-21	13-17	7	18	25	22	12	15	3	8	200	

Shooting By Period

Period	FG	FG%	3FG	3FG%	FT	FT%
1st Qtr	7-12	58%	0-1	00%	5-6	83%
2nd Qtr	4-13	31%	1-3	33%	4-5	80%
3rd Qtr	4-13	31%	1-7	14%	3-4	75%
4th Qtr	4-16	25%	2-10	20%	1-2	50%
1st Half	11-25	44%	1-4	25%	9-11	82%
2nd Half	8-29	28%	3-17	18%	4-6	67%
Game	19-54	35.2%	4-21	19.0%	13-17	76.5%

Deadball Rebounds: 0,0

Last FG: 4th-00:12

Biggest Run: 5-0

Largest lead: By 6 at 1st-04:06

Technical Fouls: None.

Game Notes:

Officials: Angela Lewis, Nykesha Thompson, Ken Kelly

Attendance: 607

Start Time: 07:06 PM ET

End Time: 08:56 PM ET

Game Duration: 1:50

Conference Game;

Score	1st	2nd	3rd	4th	TOT
NCW	18	19	16	19	72
W&M	19	13	12	11	55

NCW led for 29:55. W&M led for 7:31.

Game was tied for 2:34.

Times tied: 5 Lead Changes: 2

Points from	NCW	W&M
In the Paint	32	28
Off Turns	13	17
2nd Chance	11	9
Fast Break	16	7
Bench	15	14

Official Box Score
UNCW vs William & Mary
First Half Statistics Only
January 10, 2020 at Kaplan Arena (Kaplan Arena) - Williamsburg



UNCW 37

No.	Player	S	Pts	FG	3FG	FT	OR	DR	TR	PF	A	TO	Blk	Stl	Min	+/-
01	POWELL, PAIGE	F	8	4-5	0-0	0-1	2	4	6	1	0	0	1	0	9	-1
02	CRISP, MORIAH	G	2	1-2	0-1	0-0	0	1	1	2	1	0	0	2	12	12
04	MUNOZ, JESSICA	F	1	0-1	0-1	1-2	3	1	4	1	2	2	0	0	13	5
05	SMITH, GIGI	G	16	5-9	3-5	3-4	0	2	2	0	2	2	1	2	18	4
10	VASON, AHYIONA	G	0	0-1	0-1	0-0	0	1	1	1	0	2	0	0	8	-7
13	SUGGS, LACEY	G	3	1-3	1-2	0-0	0	3	3	1	0	0	0	1	18	0
22	THYBULLE, ZHANEIA	G	0	0-2	0-1	0-0	0	0	0	0	1	0	0	1	9	1
24	BELL, CHINYERE	F	7	3-5	1-1	0-0	0	2	2	2	0	2	0	0	9	5
32	OBUSEK, CAROL-ANNE	F	0	0-0	0-0	0-0	0	0	0	1	0	1	0	0	4	6
	TEAM		0	0-0	0-0	0-0	0	0	0	0	0	1	0	0	0	
TOTALS			37	14-28	5-12	4-7	5	14	19	9	6	10	2	6	100	

Shooting By Period

Period	FG	FG%	3FG	3FG%	FT	FT%
1st Qtr	6-11	55%	4-6	67%	2-2	100%
2nd Qtr	8-17	47%	1-6	17%	2-5	40%
1st Half	14-28	50%	5-12	42%	4-7	57%
Game	26-51	51.0%	5-15	33.3%	15-24	62.5%

Deadball Rebounds: 5,0

Last FG Half: NCW 2nd-01:13

William & Mary 32

No.	Player	S	Pts	FG	3FG	FT	OR	DR	TR	PF	A	TO	Blk	Stl	Min	+/-
01	WAGNER, SYDNEY	G	4	2-3	0-1	0-0	0	1	1	0	0	0	0	0	12	-11
03	TAYLOR, ASHLEY	G	0	0-0	0-0	0-0	0	0	0	0	0	0	0	0	0	0
05	GILLIAM, CHANIQUA	G	3	1-3	1-1	0-0	0	0	0	1	0	0	0	0	5	3
10	HODGSON, EVA	G	11	3-3	0-0	5-5	0	2	2	1	3	3	1	3	19	-4
11	POLLARD, NYLA	G	2	1-2	0-1	0-0	0	0	0	2	0	0	0	0	12	-3
15	KRAUSE, EMMA	F	0	0-0	0-0	0-0	0	0	0	0	0	0	0	0	0	0
20	BELLAMY, BRE	F	0	0-3	0-0	0-0	0	0	0	1	0	1	0	0	13	0
21	EICHNER, BAILEY	F	2	0-2	0-0	2-2	0	3	3	1	1	1	0	2	10	-6
25	ROGERS, GABBY	C	4	2-3	0-0	0-1	0	2	2	2	2	0	0	0	9	1
30	REYNOLDS, VICTORIA	F	6	2-6	0-1	2-3	2	1	3	0	1	3	0	0	20	-5
	TEAM		0	0-0	0-0	0-0	0	1	1	0	0	0	0	0	0	
TOTALS			32	11-25	1-4	9-11	2	10	12	8	7	8	1	5	100	

Shooting By Period

Period	FG	FG%	3FG	3FG%	FT	FT%
1st Qtr	7-12	58%	0-1	00%	5-6	83%
2nd Qtr	4-13	31%	1-3	33%	4-5	80%
1st Half	11-25	44%	1-4	25%	9-11	82%
Game	19-54	35.2%	4-21	19.0%	13-17	76.5%

Deadball Rebounds: 0,0

Last FG Half: W&M 2nd-01:29

Game Notes:

Officials: Angela Lewis, Nykesha Thompson, Ken Kelly
Attendance: 607

Start Time: 07:06 PM ET

End Time: 08:56 PM ET

Game Duration: 1:50

Conference Game;

Score	1st	2nd	3rd	4th	TOT
NCW	18	19	16	19	72
W&M	19	13	12	11	55

Points from (This Period)	NCW	W&M
In the Paint	14	20
Off Turns	5	12
2nd Chance	8	2
Fast Break	4	4
Bench	9	9

Official Box Score
UNCW vs William & Mary
First Quarter Statistics Only
January 10, 2020 at Kaplan Arena (Kaplan Arena) - Williamsburg



UNCW 18

No.	Player	S	Pts	FG	3FG	FT	OR	DR	TR	PF	A	TO	Blk	Stl	Min	+/-
01	POWELL, PAIGE	F	4	2-3	0-0	0-0	1	0	1	1	0	0	0	0	4	-4
04	MUNOZ, JESSICA	F	0	0-1	0-1	0-0	1	1	2	0	1	0	0	0	7	0
05	SMITH, GIGI	G	8	2-2	2-2	2-2	0	1	1	0	1	1	0	1	10	-1
10	VASON, AHYIONA	G	0	0-1	0-1	0-0	0	1	1	1	0	2	0	0	7	-5
13	SUGGS, LACEY	G	3	1-2	1-1	0-0	0	2	2	1	0	0	0	1	10	-1
02	CRISP, MORIAH	G	0	0-0	0-0	0-0	0	1	1	1	1	0	0	0	3	4
22	THYBULLE, ZHANEIA	G	0	0-0	0-0	0-0	0	0	0	0	1	0	0	1	3	-1
24	BELL, CHINYERE	F	3	1-2	1-1	0-0	0	0	0	1	0	2	0	0	4	2
32	OBUSEK, CAROL-ANNE	F	0	0-0	0-0	0-0	0	0	0	0	0	1	0	0	2	1
	TEAM						0	0	0	0		1				
TOTALS			18	6-11	4-6	2-2	2	6	8	5	4	7	0	3	50	

Shooting By Period

Period	FG	FG%	3FG	3FG%	FT	FT%
1st Qtr	6-11	55%	4-6	67%	2-2	100%
2nd Qtr	8-17	47%	1-6	17%	2-5	40%
1st Half	6-11	55%	4-6	67%	2-2	100%
1st Half	14-28	50%	5-12	42%	4-7	57%
Game	26-51	51.0%	5-15	33.3%	15-24	62.5%

Deadball Rebounds: 5,0

William & Mary 19

No.	Player	S	Pts	FG	3FG	FT	OR	DR	TR	PF	A	TO	Blk	Stl	Min	+/-
10	HODGSON, EVA	G	9	2-2	0-0	5-5	0	2	2	1	2	0	0	2	9	2
11	POLLARD, NYLA	G	2	1-2	0-1	0-0	0	0	0	1	0	0	0	0	8	2
20	BELLAMY, BRE	F	0	0-1	0-0	0-0	0	0	0	1	0	1	0	0	8	5
25	ROGERS, GABBY	C	4	2-2	0-0	0-1	0	1	1	0	1	0	0	0	6	6
30	REYNOLDS, VICTORIA	F	2	1-3	0-0	0-0	0	0	0	0	1	1	0	0	10	1
01	WAGNER, SYDNEY	G	2	1-1	0-0	0-0	0	0	0	0	0	0	0	0	4	-5
03	TAYLOR, ASHLEY	G	0	0-0	0-0	0-0	0	0	0	0	0	0	0	0	0	0
05	GILLIAM, CHANIQWA	G	0	0-0	0-0	0-0	0	0	0	0	0	0	0	0	1	-1
15	KRAUSE, EMMA	F	0	0-0	0-0	0-0	0	0	0	0	0	0	0	0	0	0
21	EICHNER, BAILEY	F	0	0-1	0-0	0-0	0	0	0	1	0	1	0	1	4	-5
	TEAM						0	0	0	0		0				
TOTALS			19	7-12	0-1	5-6	0	3	3	4	4	3	0	3	50	

Shooting By Period

Period	FG	FG%	3FG	3FG%	FT	FT%
1st Qtr	7-12	58%	0-1	00%	5-6	83%
2nd Qtr	4-13	31%	1-3	33%	4-5	80%
1st Half	7-12	58%	0-1	00%	5-6	83%
1st Half	11-25	44%	1-4	25%	9-11	82%
Game	19-54	35.2%	4-21	19.0%	13-17	76.5%

Deadball Rebounds: 0,0

Game Notes:

Officials: **Angela Lewis, Nykesha Thompson, Ken Kelly**
Attendance: **607**

Start Time: **07:06 PM ET**
End Time: **08:56 PM ET**
Game Duration: **1:50**
Conference Game;

Score	1st	2nd	3rd	4th	TOT
NCW	18	19	16	19	72
W&M	19	13	12	11	55

Points from (This Period)	NCW	W&M
In the Paint	4	14
Off Turns	2	10
2nd Chance	3	0
Fast Break	2	2
Bench	3	2

Official Play-By-Play
UNCW vs William & Mary
First Quarter

January 10, 2020 at Kaplan Arena (Kaplan Arena) - Williamsburg



Period 1

Starters:

UNCW: 1 POWELL, PAIGE (F); 4 MUNOZ, JESSICA (F); 5 SMITH, GIGI (G); 10 VASON, AHYIONA (G); 13 SUGGS, LACEY (G);

William & Mary: 10 HODGSON, EVA (G); 11 POLLARD, NYLA (G); 20 BELLAMY, BRE (F); 25 ROGERS, GABBY (C); 30 REYNOLDS, VICTORIA (F);

Time	VISITORS: UNCW	Score	Margin	HOME: William & Mary
09:48				MISSED LAYUP by REYNOLDS, VICTORIA
09:44	REBOUND (DEF) by SMITH, GIGI			
09:28	GOOD! LAYUP by POWELL, PAIGE	0-2	V 2	
09:28	ASSIST by SMITH, GIGI			
09:07				MISSED LAYUP by BELLAMY, BRE
09:04	REBOUND (DEF) by VASON, AHYIONA			
08:37	TURNOVER (SHOTCLOCK) by TEAM			
08:17	FOUL (PERSONAL) by POWELL, PAIGE			
08:17		1-2	V 1	GOOD! FT by HODGSON, EVA
08:17		2-2	T	GOOD! FT by HODGSON, EVA
07:50	MISSED LAYUP by SUGGS, LACEY			
07:45	REBOUND (OFF) by POWELL, PAIGE			
07:45	MISSED LAYUP by POWELL, PAIGE			
07:44				REBOUND (DEF) by HODGSON, EVA
07:39		4-2	H 2	GOOD! LAYUP by ROGERS, GABBY
07:39	FOUL (PERSONAL) by SUGGS, LACEY			ASSIST by HODGSON, EVA
07:39				MISSED FT by ROGERS, GABBY
07:35	REBOUND (DEF) by MUNOZ, JESSICA			
07:22	GOOD! JUMPER by POWELL, PAIGE [PNT]	4-4	T	
06:55		6-4	H 2	GOOD! LAYUP by POLLARD, NYLA
06:46	TURNOVER (DRIBBLING) by VASON, AHYIONA			
06:16		8-4	H 4	GOOD! LAYUP by HODGSON, EVA
06:16				ASSIST by ROGERS, GABBY
05:52	MISSED 3PTR by MUNOZ, JESSICA			
05:48				REBOUND (DEF) by ROGERS, GABBY
05:37				TURNOVER (BADPASS) by BELLAMY, BRE
05:37	STEAL by SMITH, GIGI			
05:34				FOUL (PERSONAL) by BELLAMY, BRE
05:34	SUB OUT: POWELL, PAIGE			
05:34	SUB IN: BELL, CHINYERE			
05:34	GOOD! FT by SMITH, GIGI [FB]	8-5	H 3	
05:34	GOOD! FT by SMITH, GIGI [FB]	8-6	H 2	
05:18				MISSED 3PTR by POLLARD, NYLA
05:14	REBOUND (DEF) by SUGGS, LACEY			
04:53	TURNOVER (BADPASS) by VASON, AHYIONA			
04:53				STEAL by HODGSON, EVA
04:48		10-6	H 4	GOOD! LAYUP by REYNOLDS, VICTORIA [FB]
04:48				ASSIST by HODGSON, EVA
04:35	MISSED JUMPER by BELL, CHINYERE			
04:30	REBOUND (OFF) by MUNOZ, JESSICA			
04:26	GOOD! 3PTR by SUGGS, LACEY	10-9	H 1	
04:26	ASSIST by MUNOZ, JESSICA			
04:19		12-9	H 3	GOOD! LAYUP by HODGSON, EVA
04:19	FOUL (PERSONAL) by VASON, AHYIONA			
04:19				
04:19	SUB OUT: VASON, AHYIONA			
04:19	SUB IN: CRISP, MORIAH			
04:19		13-9	H 4	GOOD! FT by HODGSON, EVA
04:11	TURNOVER (BADPASS) by SMITH, GIGI			
04:11				STEAL by HODGSON, EVA
04:06		15-9	H 6	GOOD! LAYUP by ROGERS, GABBY
04:06				ASSIST by REYNOLDS, VICTORIA
03:55	FOUL (OFF) by BELL, CHINYERE			
03:55	TURNOVER (OFFENSIVE) by BELL, CHINYERE			
03:55				SUB OUT: BELLAMY, BRE
03:55				SUB OUT: ROGERS, GABBY
03:55				SUB IN: WAGNER, SYDNEY
03:55				SUB IN: EICHNER, BAILEY
03:38				MISSED LAYUP by EICHNER, BAILEY
03:35	REBOUND (DEF) by CRISP, MORIAH			
03:21	GOOD! 3PTR by BELL, CHINYERE	15-12	H 3	
03:21	ASSIST by CRISP, MORIAH			
03:05				MISSED JUMPER by REYNOLDS, VICTORIA
03:03	REBOUND (DEF) by SUGGS, LACEY			
02:49	GOOD! 3PTR by SMITH, GIGI	15-15	T	
02:39	FOUL (PERSONAL) by CRISP, MORIAH			
02:39	SUB OUT: MUNOZ, JESSICA			
02:39	SUB IN: THYBULLE, ZHANEIA			
02:39	SUB OUT: CRISP, MORIAH			

Time	VISITORS: UNCW	Score	Margin	HOME: William & Mary
02:39	SUB IN: VASON, AHYIONA			
02:39		16-15	H 1	GOOD! FT by HODGSON, EVA
02:39		17-15	H 2	GOOD! FT by HODGSON, EVA
02:20				FOUL (PERSONAL) by POLLARD, NYLA
02:20				SUB OUT: POLLARD, NYLA
02:20				SUB IN: BELLAMY, BRE
01:59	TURNOVER (BADPASS) by BELL, CHINYERE			
01:59				STEAL by EICHNER, BAILEY
01:41				TURNOVER (LOSTBALL) by EICHNER, BAILEY
01:41	STEAL by THYBULLE, ZHANEIA			
01:41				FOUL (PERSONAL) by EICHNER, BAILEY
01:41	SUB OUT: BELL, CHINYERE			
01:41	SUB IN: OBUSEK, CAROL-ANNE			
01:24	MISSED 3PTR by VASON, AHYIONA			
01:20				REBOUND (DEF) by HODGSON, EVA
01:06				TURNOVER (BADPASS) by REYNOLDS, VICTORIA
01:06	STEAL by SUGGS, LACEY			
01:06				FOUL (PERSONAL) by HODGSON, EVA
01:06				SUB OUT: HODGSON, EVA
01:06				SUB IN: GILLIAM, CHANIQWA
01:06	SUB OUT: VASON, AHYIONA			
01:06	SUB IN: CRISP, MORIAH			
00:40	TURNOVER (3SEC) by OBUSEK, CAROL-ANNE			
00:21		19-15	H 4	GOOD! LAYUP by WAGNER, SYDNEY
00:00	GOOD! 3PTR by SMITH, GIGI	19-18	H 1	
00:00	ASSIST by THYBULLE, ZHANEIA			

UNCW 18, William & Mary 19

Points from (This Period)	NCW	W&M
In the Paint	4	14
Off Turns	2	10
2nd Chance	3	0
Fast Break	2	2
Bench	3	2

Official Box Score
UNCW vs William & Mary
Second Quarter Statistics Only
January 10, 2020 at Kaplan Arena (Kaplan Arena) - Williamsburg



UNCW 19

No.	Player	S	Pts	FG	3FG	FT	OR	DR	TR	PF	A	TO	Blk	Stl	Min	+/-
01	POWELL, PAIGE	F	4	2-2	0-0	0-1	1	4	5	0	0	0	1	0	5	3
04	MUNOZ, JESSICA	F	1	0-0	0-0	1-2	2	0	2	1	1	2	0	0	6	5
05	SMITH, GIGI	G	8	3-7	1-3	1-2	0	1	1	0	1	1	1	1	8	5
10	VASON, AHYIONA	G	0	0-0	0-0	0-0	0	0	0	0	0	0	0	0	1	-2
13	SUGGS, LACEY	G	0	0-1	0-1	0-0	0	1	1	0	0	0	0	0	8	1
02	CRISP, MORIAH	G	2	1-2	0-1	0-0	0	0	0	1	0	0	0	2	9	8
22	THYBULLE, ZHANEIA	G	0	0-2	0-1	0-0	0	0	0	0	0	0	0	0	6	2
24	BELL, CHINYERE	F	4	2-3	0-0	0-0	0	2	2	1	0	0	0	0	5	3
32	OBUSEK, CAROL-ANNE	F	0	0-0	0-0	0-0	0	0	0	1	0	0	0	0	2	5
	TEAM						0	0	0	0		0				
TOTALS			19	8-17	1-6	2-5	3	8	11	4	2	3	2	3	50	

Shooting By Period

Period	FG	FG%	3FG	3FG%	FT	FT%
3rd Qtr	6-13	46%	0-0	0%	4-6	67%
4th Qtr	6-10	60%	0-3	00%	7-11	64%
2nd Half	8-17	47%	1-6	17%	2-5	40%
2nd Half	12-23	52%	0-3	00%	11-17	65%
Game	26-51	51.0%	5-15	33.3%	15-24	62.5%

Deadball Rebounds: 5,0

William & Mary 13

No.	Player	S	Pts	FG	3FG	FT	OR	DR	TR	PF	A	TO	Blk	Stl	Min	+/-
10	HODGSON, EVA	G	2	1-1	0-0	0-0	0	0	0	0	1	3	1	1	10	-6
11	POLLARD, NYLA	G	0	0-0	0-0	0-0	0	0	0	1	0	0	0	0	4	-5
20	BELLAMY, BRE	F	0	0-2	0-0	0-0	0	0	0	0	0	0	0	0	5	-5
25	ROGERS, GABBY	C	0	0-1	0-0	0-0	0	1	1	2	1	0	0	0	3	-5
30	REYNOLDS, VICTORIA	F	4	1-3	0-1	2-3	2	1	3	0	0	2	0	0	10	-6
01	WAGNER, SYDNEY	G	2	1-2	0-1	0-0	0	1	1	0	0	0	0	0	8	-6
03	TAYLOR, ASHLEY	G	0	0-0	0-0	0-0	0	0	0	0	0	0	0	0	0	0
05	GILLIAM, CHANIQWA	G	3	1-3	1-1	0-0	0	0	0	1	0	0	0	0	4	4
15	KRAUSE, EMMA	F	0	0-0	0-0	0-0	0	0	0	0	0	0	0	0	0	0
21	EICHNER, BAILEY	F	2	0-1	0-0	2-2	0	3	3	0	1	0	0	1	6	-1
	TEAM						0	1	1	0		0				
TOTALS			13	4-13	1-3	4-5	2	7	9	4	3	5	1	2	50	

Shooting By Period

Period	FG	FG%	3FG	3FG%	FT	FT%
3rd Qtr	4-13	31%	1-7	14%	3-4	75%
4th Qtr	4-16	25%	2-10	20%	1-2	50%
2nd Half	4-13	31%	1-3	33%	4-5	80%
2nd Half	8-29	28%	3-17	18%	4-6	67%
Game	19-54	35.2%	4-21	19.0%	13-17	76.5%

Deadball Rebounds: 0,0

Game Notes:

Officials: Angela Lewis, Nykesha Thompson, Ken Kelly
Attendance: 607

Start Time: 07:06 PM ET
End Time: 08:56 PM ET
Game Duration: 1:50
Conference Game;

Score	1st	2nd	3rd	4th	TOT
NCW	18	19	16	19	72
W&M	19	13	12	11	55

Points from (This Period)	NCW	W&M
In the Paint	10	6
Off Turns	3	2
2nd Chance	5	2
Fast Break	2	2
Bench	6	7

Official Play-By-Play
UNCW vs William & Mary
Second Quarter

January 10, 2020 at Kaplan Arena (Kaplan Arena) - Williamsburg



Period 2

Starters:

UNCW: 1 POWELL, PAIGE (F); 4 MUNOZ, JESSICA (F); 5 SMITH, GIGI (G); 10 VASON, AHYIONA (G); 13 SUGGS, LACEY (G);

William & Mary: 10 HODGSON, EVA (G); 11 POLLARD, NYLA (G); 20 BELLAMY, BRE (F); 25 ROGERS, GABBY (C); 30 REYNOLDS, VICTORIA (F);

Time	VISITORS: UNCW	Score	Margin	HOME: William & Mary
10:00				SUB OUT: GILLIAM, CHANIQWA
10:00				SUB OUT: EICHNER, BAILEY
10:00				SUB IN: HODGSON, EVA
10:00				SUB IN: ROGERS, GABBY
10:00	SUB OUT: SUGGS, LACEY			
10:00	SUB IN: POWELL, PAIGE			
09:31	GOOD! JUMPER by SMITH, GIGI	19-20	V 1	
09:20				MISSED 3PTR by REYNOLDS, VICTORIA
09:16	REBOUND (DEF) by POWELL, PAIGE			
09:07				FOUL (PERSONAL) by ROGERS, GABBY
09:07	MISSED FT by SMITH, GIGI			
09:07	REBOUND (OFF) by TEAM			
09:07	GOOD! FT by SMITH, GIGI	19-21	V 2	
08:52				MISSED LAYUP by ROGERS, GABBY
08:49	REBOUND (DEF) by POWELL, PAIGE			
08:43	GOOD! JUMPER by SMITH, GIGI	19-23	V 4	
08:26	FOUL (PERSONAL) by OBUSEK, CAROL-ANNE			
08:26				SUB OUT: WAGNER, SYDNEY
08:26				SUB IN: POLLARD, NYLA
08:26	SUB OUT: OBUSEK, CAROL-ANNE			
08:26	SUB IN: SUGGS, LACEY			
08:25		21-23	V 2	GOOD! LAYUP by REYNOLDS, VICTORIA
08:25				ASSIST by HODGSON, EVA
08:25	FOUL (PERSONAL) by CRISP, MORIAH			
08:25				MISSED FT by REYNOLDS, VICTORIA
08:23	REBOUND (DEF) by SMITH, GIGI			
08:17	MISSED 3PTR by THYBULLE, ZHANEIA			
08:10				REBOUND (DEF) by ROGERS, GABBY
08:07				TURNOVER (LOSTBALL) by HODGSON, EVA
08:07	SUB OUT: THYBULLE, ZHANEIA			
08:07	SUB IN: MUNOZ, JESSICA			
07:45	MISSED 3PTR by SMITH, GIGI			
07:42	REBOUND (OFF) by POWELL, PAIGE			
07:40	GOOD! LAYUP by POWELL, PAIGE [PNT]	21-25	V 4	
07:26		23-25	V 2	GOOD! LAYUP by HODGSON, EVA
07:26				ASSIST by ROGERS, GABBY
06:58	GOOD! JUMPER by POWELL, PAIGE	23-27	V 4	
06:58				FOUL (PERSONAL) by ROGERS, GABBY
06:58				SUB OUT: ROGERS, GABBY
06:58				SUB IN: EICHNER, BAILEY
06:58	MISSED FT by POWELL, PAIGE			
06:56				REBOUND (DEF) by REYNOLDS, VICTORIA
06:49				MISSED LAYUP by BELLAMY, BRE
06:49	BLOCK by POWELL, PAIGE			
06:45	REBOUND (DEF) by POWELL, PAIGE			
06:22	MISSED JUMPER by SMITH, GIGI			
06:18				REBOUND (DEF) by EICHNER, BAILEY
06:15				MISSED LAYUP by BELLAMY, BRE
06:10	REBOUND (DEF) by SUGGS, LACEY			
06:05	TURNOVER (BADPASS) by MUNOZ, JESSICA			
06:05				STEAL by HODGSON, EVA
06:05				SUB OUT: BELLAMY, BRE
06:05				SUB IN: WAGNER, SYDNEY
06:05	SUB OUT: POWELL, PAIGE			
06:05	SUB IN: BELL, CHINYERE			
06:00				MISSED 3PTR by WAGNER, SYDNEY
05:57	REBOUND (DEF) by BELL, CHINYERE			
05:35	MISSED 3PTR by CRISP, MORIAH			
05:31	REBOUND (OFF) by MUNOZ, JESSICA			
05:30	GOOD! LAYUP by BELL, CHINYERE	23-29	V 6	
05:30	ASSIST by MUNOZ, JESSICA			
05:18				MISSED LAYUP by EICHNER, BAILEY
05:16	REBOUND (DEF) by BELL, CHINYERE			
05:11	GOOD! LAYUP by CRISP, MORIAH [FB/PNT]	23-31	V 8	
04:54				TURNOVER (3SEC) by REYNOLDS, VICTORIA
04:54				
04:49	SUB OUT: SMITH, GIGI			
04:49	SUB IN: THYBULLE, ZHANEIA			
04:24	MISSED 3PTR by SUGGS, LACEY			
04:22	REBOUND (OFF) by MUNOZ, JESSICA			

Time	VISITORS: UNCW	Score	Margin	HOME: William & Mary
04:22				FOUL (PERSONAL) by POLLARD, NYLA
04:22	MISSED FT by MUNOZ, JESSICA			
04:22	REBOUND (OFF) by TEAM			
04:22	GOOD! FT by MUNOZ, JESSICA	23-32	V 9	
04:22				SUB OUT: POLLARD, NYLA
04:22				SUB IN: GILLIAM, CHANIQWA
04:03				TURNOVER (LOSTBALL) by REYNOLDS, VICTORIA
04:03	STEAL by CRISP, MORIAH			
03:42	MISSED LAYUP by BELL, CHINYERE			
03:36				REBOUND (DEF) by EICHNER, BAILEY
03:27				TURNOVER (LOSTBALL) by HODGSON, EVA
03:27	STEAL by CRISP, MORIAH			
03:04	TURNOVER (BADPASS) by MUNOZ, JESSICA			
03:04				STEAL by EICHNER, BAILEY
02:58				MISSED LAYUP by GILLIAM, CHANIQWA
02:58				REBOUND (OFF) by REYNOLDS, VICTORIA
02:58				MISSED LAYUP by REYNOLDS, VICTORIA
02:58				REBOUND (OFF) by REYNOLDS, VICTORIA
02:58	FOUL (PERSONAL) by MUNOZ, JESSICA			
02:58	SUB OUT: MUNOZ, JESSICA			
02:58	SUB IN: SMITH, GIGI			
02:58		24-32	V 8	GOOD! FT by REYNOLDS, VICTORIA [FB]
02:58		25-32	V 7	GOOD! FT by REYNOLDS, VICTORIA [FB]
02:38	GOOD! LAYUP by BELL, CHINYERE	25-34	V 9	
02:38	ASSIST by SMITH, GIGI			
02:25				TURNOVER (LOSTBALL) by HODGSON, EVA
02:25	STEAL by SMITH, GIGI			
02:21				FOUL (PERSONAL) by GILLIAM, CHANIQWA
02:15	MISSED LAYUP by SMITH, GIGI			
02:15				BLOCK by HODGSON, EVA
02:10				REBOUND (DEF) by WAGNER, SYDNEY
02:05		28-34	V 6	GOOD! 3PTR by GILLIAM, CHANIQWA
02:05				ASSIST by EICHNER, BAILEY
01:40	MISSED JUMPER by THYBULLE, ZHANEIA			
01:36				REBOUND (DEF) by EICHNER, BAILEY
01:29		30-34	V 4	GOOD! LAYUP by WAGNER, SYDNEY
01:13	GOOD! 3PTR by SMITH, GIGI	30-37	V 7	
00:57	FOUL (PERSONAL) by BELL, CHINYERE			
00:57	SUB OUT: CRISP, MORIAH			
00:57	SUB OUT: THYBULLE, ZHANEIA			
00:57	SUB OUT: BELL, CHINYERE			
00:57	SUB IN: POWELL, PAIGE			
00:57	SUB IN: MUNOZ, JESSICA			
00:57	SUB IN: VASON, AHYIONA			
00:57		31-37	V 6	GOOD! FT by EICHNER, BAILEY
00:57		32-37	V 5	GOOD! FT by EICHNER, BAILEY
00:57				SUB OUT: EICHNER, BAILEY
00:57				SUB IN: BELLAMY, BRE
00:34	TURNOVER (BADPASS) by SMITH, GIGI			
00:07				MISSED JUMPER by GILLIAM, CHANIQWA
00:07	BLOCK by SMITH, GIGI			
00:02	REBOUND (DEF) by POWELL, PAIGE			
00:01	MISSED 3PTR by SMITH, GIGI			
00:01				REBOUND (DEF) by TEAM

UNCW 37, William & Mary 32

Points from (This Period)	NCW	W&M
In the Paint	10	6
Off Turns	3	2
2nd Chance	5	2
Fast Break	2	2
Bench	6	7

Official Box Score
UNCW vs William & Mary
Second Half Statistics Only
January 10, 2020 at Kaplan Arena (Kaplan Arena) - Williamsburg



UNCW 35

No.	Player	S	Pts	FG	3FG	FT	OR	DR	TR	PF	A	TO	Blk	Stl	Min	+/-
01	POWELL, PAIGE	F	6	2-3	0-0	2-2	0	2	2	1	0	0	2	0	15	11
02	CRISP, MORIAH	G	2	0-1	0-0	2-4	1	1	2	1	2	2	0	0	12	7
04	MUNOZ, JESSICA	F	4	2-3	0-0	0-0	1	3	4	2	1	1	1	0	19	9
05	SMITH, GIGI	G	8	3-6	0-1	2-4	1	5	6	2	1	2	0	0	19	14
10	VASON, AHYIONA	G	4	2-5	0-1	0-0	0	3	3	2	0	1	0	0	10	6
13	SUGGS, LACEY	G	7	2-3	0-1	3-5	1	3	4	1	3	1	0	4	20	12
22	THYBULLE, ZHANEIA	G	0	0-0	0-0	0-0	0	0	0	0	0	0	0	0	1	-2
24	BELL, CHINYERE	F	4	1-2	0-0	2-2	1	1	2	0	0	0	1	0	3	4
32	OBUSEK, CAROL-ANNE	F	0	0-0	0-0	0-0	0	0	0	0	0	0	0	0	1	-1
	TEAM		0	0-0	0-0	0-0	1	0	1	0	0	1	0	0	0	
TOTALS			35	12-23	0-3	11-17	6	18	24	9	7	8	4	4	100	

Shooting By Period

Period	FG	FG%	3FG	3FG%	FT	FT%
3rd Qtr	6-13	46%	0-0	0%	4-6	67%
4th Qtr	6-10	60%	0-3	00%	7-11	64%
2nd Half	12-23	52%	0-3	00%	11-17	65%
Game	26-51	51.0%	5-15	33.3%	15-24	62.5%

Deadball Rebounds: 5,0

Last FG Half: NCW 4th-04:21

William & Mary 23

No.	Player	S	Pts	FG	3FG	FT	OR	DR	TR	PF	A	TO	Blk	Stl	Min	+/-
01	WAGNER, SYDNEY	G	3	1-6	1-5	0-0	0	0	0	1	0	0	0	0	13	-12
03	TAYLOR, ASHLEY	G	0	0-1	0-1	0-0	1	0	1	0	0	0	0	0	3	0
05	GILLIAM, CHANIQWA	G	0	0-2	0-2	0-0	0	1	1	1	0	0	0	0	7	-2
10	HODGSON, EVA	G	3	1-6	1-5	0-0	0	1	1	0	3	2	2	0	17	-13
11	POLLARD, NYLA	G	4	1-3	1-3	1-2	0	0	0	1	0	1	0	0	15	-10
15	KRAUSE, EMMA	F	2	1-1	0-0	0-0	1	1	2	1	0	1	0	1	2	0
20	BELLAMY, BRE	F	2	1-2	0-1	0-0	0	0	0	3	2	0	0	0	11	-2
21	EICHNER, BAILEY	F	0	0-0	0-0	0-0	0	2	2	3	0	0	0	0	5	-9
25	ROGERS, GABBY	C	2	1-2	0-0	0-0	0	1	1	2	0	2	0	1	11	0
30	REYNOLDS, VICTORIA	F	7	2-6	0-0	3-4	2	2	4	2	0	1	0	1	17	-12
	TEAM		0	0-0	0-0	0-0	1	0	1	0	0	0	0	0	0	
TOTALS			23	8-29	3-17	4-6	5	8	13	14	5	7	2	3	100	

Shooting By Period

Period	FG	FG%	3FG	3FG%	FT	FT%
3rd Qtr	4-13	31%	1-7	14%	3-4	75%
4th Qtr	4-16	25%	2-10	20%	1-2	50%
2nd Half	8-29	28%	3-17	18%	4-6	67%
Game	19-54	35.2%	4-21	19.0%	13-17	76.5%

Deadball Rebounds: 0,0

Last FG Half: W&M 4th-00:12

Game Notes:

Officials: **Angela Lewis, Nykesha Thompson, Ken Kelly**
Attendance: **607**

Start Time: **07:06 PM ET**

End Time: **08:56 PM ET**

Game Duration: **1:50**

Conference Game;

Score	1st	2nd	3rd	4th	TOT
NCW	18	19	16	19	72
W&M	19	13	12	11	55

Points from (This Period)	NCW	W&M
In the Paint	18	8
Off Turns	8	5
2nd Chance	3	7
Fast Break	12	3
Bench	6	5

Official Box Score
UNCW vs William & Mary
 Third Quarter Statistics Only
 January 10, 2020 at Kaplan Arena (Kaplan Arena) - Williamsburg



UNCW 35

No.	Player	S	Pts	FG	3FG	FT	OR	DR	TR	PF	A	TO	Blk	Stl	Min	+/-
01	POWELL, PAIGE	F	0	0-1	0-0	0-0	0	1	1	1	0	0	0	0	7	0
04	MUNOZ, JESSICA	F	2	1-1	0-0	0-0	1	3	4	1	1	1	1	0	10	4
05	SMITH, GIGI	G	4	2-4	0-0	0-0	0	3	3	1	0	0	0	0	9	4
10	VASON, AHYIONA	G	2	1-3	0-0	0-0	0	1	1	0	0	1	0	0	3	-1
13	SUGGS, LACEY	G	3	1-1	0-0	1-2	1	0	1	0	0	1	0	2	10	4
02	CRISP, MORIAH	G	1	0-1	0-0	1-2	0	0	0	0	1	1	0	0	7	5
22	THYBULLE, ZHANEIA	G	0	0-0	0-0	0-0	0	0	0	0	0	0	0	0	1	0
24	BELL, CHINYERE	F	4	1-2	0-0	2-2	1	1	2	0	0	0	1	0	3	4
32	OBUSEK, CAROL-ANNE	F	0	0-0	0-0	0-0	0	0	0	0	0	0	0	0	0	0
	TEAM						1	0	1	0		1				
TOTALS			16	6-13	0-0	4-6	4	9	13	3	2	5	2	2	50	

Shooting By Period

Period	FG	FG%	3FG	3FG%	FT	FT%
2nd Half	0-0	0%	0-0	0%	0-0	0%
Game	26-51	51.0%	5-15	33.3%	15-24	62.5%

Deadball Rebounds: 5,0

William & Mary 23

No.	Player	S	Pts	FG	3FG	FT	OR	DR	TR	PF	A	TO	Blk	Stl	Min	+/-
10	HODGSON, EVA	G	3	1-4	1-4	0-0	0	0	0	0	2	1	2	0	10	-4
11	POLLARD, NYLA	G	1	0-1	0-1	1-2	0	0	0	0	0	1	0	0	10	-4
20	BELLAMY, BRE	F	2	1-1	0-0	0-0	0	0	0	2	1	0	0	0	6	0
25	ROGERS, GABBY	C	2	1-1	0-0	0-0	0	0	0	1	0	1	0	1	6	1
30	REYNOLDS, VICTORIA	F	4	1-3	0-0	2-2	1	2	3	1	0	1	0	1	10	-4
01	WAGNER, SYDNEY	G	0	0-3	0-2	0-0	0	0	0	0	0	0	0	0	4	-4
03	TAYLOR, ASHLEY	G	0	0-0	0-0	0-0	0	0	0	0	0	0	0	0	0	0
05	GILLIAM, CHANIQWA	G	0	0-0	0-0	0-0	0	0	0	0	0	0	0	0	2	-3
15	KRAUSE, EMMA	F	0	0-0	0-0	0-0	0	0	0	0	0	0	0	0	0	0
21	EICHNER, BAILEY	F	0	0-0	0-0	0-0	0	1	1	2	0	0	0	0	3	-2
	TEAM						0	0	0	0		0				
TOTALS			12	4-13	1-7	3-4	1	3	4	6	3	4	2	2	50	

Shooting By Period

Period	FG	FG%	3FG	3FG%	FT	FT%
2nd Half	0-0	0%	0-0	0%	0-0	0%
Game	19-54	35.2%	4-21	19.0%	13-17	76.5%

Deadball Rebounds: 0,0

Game Notes:

Officials: Angela Lewis, Nykesha Thompson, Ken Kelly
 Attendance: 607

Start Time: 07:06 PM ET
 End Time: 08:56 PM ET
 Game Duration: 1:50
 Conference Game;

Score	1st	2nd	3rd	4th	TOT
NCW	18	19	16	19	72
W&M	19	13	12	11	55

Points from (This Period)	NCW	W&M
In the Paint	8	4
Off Turns	3	4
2nd Chance	2	0
Fast Break	5	3
Bench	5	0

Official Play-By-Play
UNCW vs William & Mary
Third Quarter

January 10, 2020 at Kaplan Arena (Kaplan Arena) - Williamsburg



Period 3

Starters:

UNCW: 1 POWELL, PAIGE (F); 4 MUNOZ, JESSICA (F); 5 SMITH, GIGI (G); 10 VASON, AHYIONA (G); 13 SUGGS, LACEY (G);

William & Mary: 10 HODGSON, EVA (G); 11 POLLARD, NYLA (G); 20 BELLAMY, BRE (F); 25 ROGERS, GABBY (C); 30 REYNOLDS, VICTORIA (F);

Time	VISITORS: UNCW	Score	Margin	HOME: William & Mary
10:00				SUB OUT: WAGNER, SYDNEY
10:00				SUB OUT: GILLIAM, CHANIQUWA
10:00				SUB IN: POLLARD, NYLA
10:00				SUB IN: ROGERS, GABBY
09:43				MISSED 3PTR by HODGSON, EVA
09:40	REBOUND (DEF) by SMITH, GIGI			
09:15	MISSED LAYUP by VASON, AHYIONA			
09:15				BLOCK by HODGSON, EVA
09:15	REBOUND (OFF) by TEAM			
09:15	TURNOVER (5SEC) by TEAM			
09:06		35-37	V 2	GOOD! 3PTR by HODGSON, EVA
09:06				ASSIST by BELLAMY, BRE
08:38	TURNOVER (TRAVEL) by VASON, AHYIONA			
08:38	SUB OUT: VASON, AHYIONA			
08:38	SUB IN: CRISP, MORIAH			
08:10				TURNOVER (LOSTBALL) by REYNOLDS, VICTORIA
08:10	SUB OUT: POWELL, PAIGE			
08:10	SUB IN: BELL, CHINYERE			
07:53	GOOD! LAYUP by BELL, CHINYERE	35-39	V 4	
07:53	ASSIST by MUNOZ, JESSICA			
07:32		37-39	V 2	GOOD! LAYUP by REYNOLDS, VICTORIA
07:32				ASSIST by HODGSON, EVA
07:12	MISSED LAYUP by CRISP, MORIAH			
07:04	REBOUND (OFF) by MUNOZ, JESSICA			
07:03	TURNOVER (BADPASS) by MUNOZ, JESSICA			
07:03				STEAL by ROGERS, GABBY
07:01	FOUL (PERSONAL) by SMITH, GIGI			
07:01		38-39	V 1	GOOD! FT by POLLARD, NYLA [FB]
07:01				MISSED FT by POLLARD, NYLA
06:59	REBOUND (DEF) by MUNOZ, JESSICA			
06:40	TURNOVER (BADPASS) by SUGGS, LACEY			
06:40				STEAL by REYNOLDS, VICTORIA
06:31				TURNOVER (BADPASS) by POLLARD, NYLA
06:31	STEAL by SUGGS, LACEY			
06:28				FOUL (PERSONAL) by REYNOLDS, VICTORIA
06:28	SUB OUT: BELL, CHINYERE			
06:28	SUB IN: POWELL, PAIGE			
06:28	MISSED FT by SUGGS, LACEY			
06:28	REBOUND (OFF) by TEAM			
06:28	GOOD! FT by SUGGS, LACEY [FB]	38-40	V 2	
06:13		40-40	T	GOOD! LAYUP by ROGERS, GABBY
05:56				FOUL (PERSONAL) by BELLAMY, BRE
05:41	GOOD! JUMPER by MUNOZ, JESSICA	40-42	V 2	
05:41	ASSIST by CRISP, MORIAH			
05:30	FOUL (PERSONAL) by MUNOZ, JESSICA			
05:30				SUB OUT: BELLAMY, BRE
05:30				SUB IN: WAGNER, SYDNEY
05:30		41-42	V 1	GOOD! FT by REYNOLDS, VICTORIA
05:30		42-42	T	GOOD! FT by REYNOLDS, VICTORIA
05:15	GOOD! JUMPER by SMITH, GIGI	42-44	V 2	
04:53				MISSED 3PTR by WAGNER, SYDNEY
04:49	REBOUND (DEF) by SMITH, GIGI			
04:44	GOOD! LAYUP by SMITH, GIGI [FB]	42-46	V 4	
04:24				MISSED LAYUP by REYNOLDS, VICTORIA
04:24	BLOCK by MUNOZ, JESSICA			
04:19				REBOUND (OFF) by REYNOLDS, VICTORIA
04:18				FOUL (OFF) by ROGERS, GABBY
04:18				TURNOVER (OFFENSIVE) by ROGERS, GABBY
04:18				
04:18				SUB OUT: ROGERS, GABBY
04:18				SUB IN: EICHNER, BAILEY
04:04	MISSED LAYUP by SMITH, GIGI			
03:59	REBOUND (OFF) by SUGGS, LACEY			
03:52	TURNOVER (LOSTBALL) by CRISP, MORIAH			
03:36				MISSED 3PTR by HODGSON, EVA
03:32	REBOUND (DEF) by POWELL, PAIGE			
03:15	MISSED LAYUP by SMITH, GIGI			
03:15				REBOUND (DEF) by REYNOLDS, VICTORIA
03:15	FOUL (PERSONAL) by POWELL, PAIGE			
02:50				MISSED 3PTR by POLLARD, NYLA

Time	VISITORS: UNCW	Score	Margin	HOME: William & Mary
02:47	REBOUND (DEF) by MUNOZ, JESSICA			
02:47				FOUL (PERSONAL) by EICHNER, BAILEY
02:27	GOOD! LAYUP by SUGGS, LACEY	42-48	V 6	
02:19				MISSED 3PTR by WAGNER, SYDNEY
02:16	REBOUND (DEF) by SMITH, GIGI			
02:07	MISSED LAYUP by POWELL, PAIGE			
02:03				REBOUND (DEF) by EICHNER, BAILEY
02:01				MISSED JUMPER by WAGNER, SYDNEY
01:57	REBOUND (DEF) by MUNOZ, JESSICA			
01:41				FOUL (PERSONAL) by EICHNER, BAILEY
01:41				SUB OUT: WAGNER, SYDNEY
01:41				SUB OUT: EICHNER, BAILEY
01:41				SUB IN: GILLIAM, CHANIQWA
01:41				SUB IN: BELLAMY, BRE
01:41	SUB OUT: POWELL, PAIGE			
01:41	SUB IN: BELL, CHINYERE			
01:41	MISSED FT by CRISP, MORIAH			
01:41	REBOUND (OFF) by TEAM			
01:41	GOOD! FT by CRISP, MORIAH	42-49	V 7	
01:41	SUB OUT: CRISP, MORIAH			
01:41	SUB IN: VASON, AHYIONA			
01:19				MISSED 3PTR by HODGSON, EVA
01:17	REBOUND (DEF) by VASON, AHYIONA			
01:13	GOOD! LAYUP by VASON, AHYIONA [FB]	42-51	V 9	
00:54				TURNOVER (LOSTBALL) by HODGSON, EVA
00:54	STEAL by SUGGS, LACEY			
00:54	SUB OUT: SMITH, GIGI			
00:54	SUB IN: THYBULLE, ZHANEIA			
00:42	MISSED LAYUP by VASON, AHYIONA			
00:38				REBOUND (DEF) by REYNOLDS, VICTORIA
00:32				MISSED LAYUP by REYNOLDS, VICTORIA
00:32	BLOCK by BELL, CHINYERE			
00:25	REBOUND (DEF) by BELL, CHINYERE			
00:04	MISSED LAYUP by BELL, CHINYERE			
00:04				BLOCK by HODGSON, EVA
00:04	REBOUND (OFF) by BELL, CHINYERE			
00:04				FOUL (PERSONAL) by BELLAMY, BRE
00:04	GOOD! FT by BELL, CHINYERE	42-52	V 10	
00:04	GOOD! FT by BELL, CHINYERE	42-53	V 11	
00:04	SUB OUT: BELL, CHINYERE			
00:04	SUB IN: POWELL, PAIGE			
00:01		44-53	V 9	GOOD! JUMPER by BELLAMY, BRE [FB]
00:01				ASSIST by HODGSON, EVA

UNCW 53, William & Mary 44

Points from (This Period)	NCW	W&M
In the Paint	8	4
Off Turns	3	4
2nd Chance	2	0
Fast Break	5	3
Bench	5	0

Official Box Score
UNCW vs William & Mary
Fourth Quarter Statistics Only
January 10, 2020 at Kaplan Arena (Kaplan Arena) - Williamsburg



UNCW 19

No.	Player	S	Pts	FG	3FG	FT	OR	DR	TR	PF	A	TO	Blk	Stl	Min	+/-
01	POWELL, PAIGE	F	6	2-2	0-0	2-2	0	1	1	0	0	0	2	0	8	11
04	MUNOZ, JESSICA	F	2	1-2	0-0	0-0	0	0	0	1	0	0	0	0	9	5
05	SMITH, GIGI	G	4	1-2	0-1	2-4	1	2	3	1	1	2	0	0	10	10
10	VASON, AHYIONA	G	2	1-2	0-1	0-0	0	2	2	2	0	0	0	0	7	7
13	SUGGS, LACEY	G	4	1-2	0-1	2-3	0	3	3	1	3	0	0	2	10	8
02	CRISP, MORIAH	G	1	0-0	0-0	1-2	1	1	2	1	1	1	0	0	5	2
22	THYBULLE, ZHANEIA	G	0	0-0	0-0	0-0	0	0	0	0	0	0	0	0	0	-2
24	BELL, CHINYERE	F	0	0-0	0-0	0-0	0	0	0	0	0	0	0	0	0	0
32	OBUSEK, CAROL-ANNE	F	0	0-0	0-0	0-0	0	0	0	0	0	0	0	0	1	-1
	TEAM						0	0	0	0		0				
TOTALS			19	6-10	0-3	7-11	2	9	11	6	5	3	2	2	50	

Shooting By Period

Period	FG	FG%	3FG	3FG%	FT	FT%
Game	26-51	51.0%	5-15	33.3%	15-24	62.5%

Deadball Rebounds: 5,0

William & Mary 11

No.	Player	S	Pts	FG	3FG	FT	OR	DR	TR	PF	A	TO	Blk	Stl	Min	+/-
10	HODGSON, EVA	G	0	0-2	0-1	0-0	0	1	1	0	1	1	0	0	7	-9
11	POLLARD, NYLA	G	3	1-2	1-2	0-0	0	0	0	1	0	0	0	0	5	-6
20	BELLAMY, BRE	F	0	0-1	0-1	0-0	0	0	0	1	1	0	0	0	5	-2
25	ROGERS, GABBY	C	0	0-1	0-0	0-0	0	1	1	1	0	1	0	0	5	-1
30	REYNOLDS, VICTORIA	F	3	1-3	0-0	1-2	1	0	1	1	0	0	0	0	7	-8
01	WAGNER, SYDNEY	G	3	1-3	1-3	0-0	0	0	0	1	0	0	0	0	9	-8
03	TAYLOR, ASHLEY	G	0	0-1	0-1	0-0	1	0	1	0	0	0	0	0	3	0
05	GILLIAM, CHANIQWA	G	0	0-2	0-2	0-0	0	1	1	1	0	0	0	0	5	1
15	KRAUSE, EMMA	F	2	1-1	0-0	0-0	1	1	2	1	0	1	0	1	2	0
21	EICHNER, BAILEY	F	0	0-0	0-0	0-0	0	1	1	1	0	0	0	0	2	-7
	TEAM						1	0	1	0		0				
TOTALS			11	4-16	2-10	1-2	4	5	9	8	2	3	0	1	50	

Shooting By Period

Period	FG	FG%	3FG	3FG%	FT	FT%
Game	19-54	35.2%	4-21	19.0%	13-17	76.5%

Deadball Rebounds: 0,0

Game Notes:

Officials: Angela Lewis, Nykesha Thompson, Ken Kelly
Attendance: 607

Start Time: 07:06 PM ET

End Time: 08:56 PM ET

Game Duration: 1:50

Conference Game;

Score	1st	2nd	3rd	4th	TOT
NCW	18	19	16	19	72
W&M	19	13	12	11	55

Points from (This Period)	NCW	W&M
In the Paint	10	4
Off Turns	5	1
2nd Chance	1	7
Fast Break	7	0
Bench	1	5

**Official Play-By-Play
UNCW vs William & Mary
Fourth Quarter**

January 10, 2020 at Kaplan Arena (Kaplan Arena) - Williamsburg



Period 4

Starters:

UNCW: 1 POWELL, PAIGE (F); 4 MUNOZ, JESSICA (F); 5 SMITH, GIGI (G); 10 VASON, AHYIONA (G); 13 SUGGS, LACEY (G);

William & Mary: 10 HODGSON, EVA (G); 11 POLLARD, NYLA (G); 20 BELLAMY, BRE (F); 25 ROGERS, GABBY (C); 30 REYNOLDS, VICTORIA (F);

Time	VISITORS: UNCW	Score	Margin	HOME: William & Mary
10:00				SUB OUT: BELLAMY, BRE
10:00				SUB IN: ROGERS, GABBY
10:00	SUB OUT: THYBULLE, ZHANEIA			
10:00	SUB IN: SMITH, GIGI			
09:50	MISSED 3PTR by SUGGS, LACEY			
09:46				REBOUND (DEF) by HODGSON, EVA
09:32				MISSED 3PTR by GILLIAM, CHANIQWA
09:27	REBOUND (DEF) by VASON, AHYIONA			
09:08	MISSED 3PTR by SMITH, GIGI			
09:05				REBOUND (DEF) by GILLIAM, CHANIQWA
08:54	FOUL (PERSONAL) by VASON, AHYIONA			
08:54				SUB OUT: GILLIAM, CHANIQWA
08:54				SUB IN: WAGNER, SYDNEY
08:49				FOUL (OFF) by ROGERS, GABBY
08:49				TURNOVER (OFFENSIVE) by ROGERS, GABBY
08:18	GOOD! LAYUP by POWELL, PAIGE	44-55	V 11	
08:18	ASSIST by SMITH, GIGI			
07:54				MISSED JUMPER by REYNOLDS, VICTORIA
07:54	BLOCK by POWELL, PAIGE			
07:48	REBOUND (DEF) by VASON, AHYIONA			
07:34	MISSED JUMPER by MUNOZ, JESSICA			
07:31				REBOUND (DEF) by ROGERS, GABBY
07:26				MISSED 3PTR by POLLARD, NYLA
07:22	REBOUND (DEF) by SMITH, GIGI			
07:03				FOUL (PERSONAL) by POLLARD, NYLA
07:03				SUB OUT: ROGERS, GABBY
07:03				SUB IN: EICHNER, BAILEY
07:03	GOOD! FT by SMITH, GIGI	44-56	V 12	
07:03	MISSED FT by SMITH, GIGI			
07:02				REBOUND (DEF) by EICHNER, BAILEY
06:54	FOUL (PERSONAL) by VASON, AHYIONA			
06:51				TURNOVER (BADPASS) by HODGSON, EVA
06:51	STEAL by SUGGS, LACEY			
06:46	GOOD! LAYUP by POWELL, PAIGE [FB]	44-58	V 14	
06:46	ASSIST by SUGGS, LACEY			
06:46				TIMEOUT 30SEC
06:18				MISSED 3PTR by HODGSON, EVA
06:14	REBOUND (DEF) by SUGGS, LACEY			
06:11	GOOD! LAYUP by VASON, AHYIONA [FB]	44-60	V 16	
06:11	ASSIST by SUGGS, LACEY			
05:51		47-60	V 13	GOOD! 3PTR by POLLARD, NYLA
05:51				ASSIST by HODGSON, EVA
05:23	GOOD! LAYUP by SMITH, GIGI	47-62	V 15	
05:14	FOUL (PERSONAL) by SUGGS, LACEY			
05:14				SUB OUT: POLLARD, NYLA
05:14				SUB IN: BELLAMY, BRE
05:14	SUB OUT: VASON, AHYIONA			
05:14	SUB IN: CRISP, MORIAH			
05:09				MISSED LAYUP by HODGSON, EVA
05:09	BLOCK by POWELL, PAIGE			
05:04	REBOUND (DEF) by CRISP, MORIAH			
05:03	GOOD! LAYUP by SUGGS, LACEY [FB]	47-64	V 17	
05:03				FOUL (PERSONAL) by REYNOLDS, VICTORIA
05:03	GOOD! FT by SUGGS, LACEY [FB]	47-65	V 18	
05:03	ASSIST by CRISP, MORIAH			
04:46				MISSED JUMPER by REYNOLDS, VICTORIA
04:46	REBOUND (DEF) by POWELL, PAIGE			
04:46				FOUL (PERSONAL) by EICHNER, BAILEY
04:46				
04:46				SUB OUT: EICHNER, BAILEY
04:46				SUB IN: ROGERS, GABBY
04:21	GOOD! JUMPER by MUNOZ, JESSICA	47-67	V 20	
04:21	ASSIST by SUGGS, LACEY			
03:54	FOUL (PERSONAL) by CRISP, MORIAH			
03:37				MISSED 3PTR by WAGNER, SYDNEY
03:33				REBOUND (OFF) by REYNOLDS, VICTORIA
03:33		49-67	V 18	GOOD! LAYUP by REYNOLDS, VICTORIA
03:27	TURNOVER (TRAVEL) by CRISP, MORIAH			
03:27				SUB OUT: HODGSON, EVA
03:27				SUB IN: GILLIAM, CHANIQWA

Time	VISITORS: UNCW	Score	Margin	HOME: William & Mary
03:23	FOUL (PERSONAL) by MUNOZ, JESSICA			
03:23		50-67	V 17	GOOD! FT by REYNOLDS, VICTORIA
03:22				MISSED FT by REYNOLDS, VICTORIA
03:21	REBOUND (DEF) by SUGGS, LACEY			
02:58	FOUL (OFF) by SMITH, GIGI			
02:58				SUB OUT: REYNOLDS, VICTORIA
02:58				SUB IN: TAYLOR, ASHLEY
02:58	SUB OUT: MUNOZ, JESSICA			
02:58	SUB IN: VASON, AHYIONA			
02:58	TURNOVER (OFFENSIVE) by SMITH, GIGI			
02:44				MISSED LAYUP by ROGERS, GABBY
02:40	REBOUND (DEF) by SMITH, GIGI			
02:26				FOUL (PERSONAL) by BELLAMY, BRE
02:26				SUB OUT: ROGERS, GABBY
02:26				SUB IN: KRAUSE, EMMA
02:26	GOOD! FT by POWELL, PAIGE	50-68	V 18	
02:26	GOOD! FT by POWELL, PAIGE	50-69	V 19	
02:10				MISSED 3PTR by GILLIAM, CHANIQWA
02:04				REBOUND (OFF) by KRAUSE, EMMA
02:02				MISSED 3PTR by WAGNER, SYDNEY
02:00	REBOUND (DEF) by SUGGS, LACEY			
02:00				FOUL (PERSONAL) by KRAUSE, EMMA
02:00	MISSED FT by SUGGS, LACEY			
02:00	REBOUND (OFF) by TEAM			
02:00	GOOD! FT by SUGGS, LACEY	50-70	V 20	
02:00	SUB OUT: POWELL, PAIGE			
02:00	SUB IN: MUNOZ, JESSICA			
01:42				MISSED 3PTR by TAYLOR, ASHLEY
01:39				REBOUND (OFF) by TAYLOR, ASHLEY
01:31		52-70	V 18	GOOD! LAYUP by KRAUSE, EMMA
01:31				ASSIST by BELLAMY, BRE
00:59	TURNOVER (BADPASS) by SMITH, GIGI			
00:59				STEAL by KRAUSE, EMMA
00:54				TURNOVER (BADPASS) by KRAUSE, EMMA
00:54	STEAL by SUGGS, LACEY			
00:36	MISSED 3PTR by VASON, AHYIONA			
00:33	REBOUND (OFF) by SMITH, GIGI			
00:33				FOUL (PERSONAL) by GILLIAM, CHANIQWA
00:33	SUB OUT: VASON, AHYIONA			
00:33	SUB IN: OBUSEK, CAROL-ANNE			
00:33	GOOD! FT by SMITH, GIGI	52-71	V 19	
00:33	MISSED FT by SMITH, GIGI			
00:32				REBOUND (DEF) by KRAUSE, EMMA
00:21				MISSED 3PTR by BELLAMY, BRE
00:18				REBOUND (OFF) by TEAM
00:18	SUB OUT: SMITH, GIGI			
00:18	SUB IN: THYBULLE, ZHANEIA			
00:12		55-71	V 16	GOOD! 3PTR by WAGNER, SYDNEY
00:10				FOUL (PERSONAL) by WAGNER, SYDNEY
00:10	GOOD! FT by CRISP, MORIAH	55-72	V 17	
00:10	MISSED FT by CRISP, MORIAH			
00:08	REBOUND (OFF) by CRISP, MORIAH			

UNCW 72, William & Mary 55

Points from (This Period)	NCW	W&M
In the Paint	10	4
Off Turns	5	1
2nd Chance	1	7
Fast Break	7	0
Bench	1	5

Official Scoring/Possession Reference Chart
UNCW vs William & Mary
Period 1
January 10, 2020 at Kaplan Arena (Kaplan Arena) - Williamsburg



Period 1

Starters:

UNCW: 1 POWELL, PAIGE (F); 4 MUNOZ, JESSICA (F); 5 SMITH, GIGI (G); 10 VASON, AHYIONA (G); 13 SUGGS, LACEY (G);

William & Mary: 10 HODGSON, EVA (G); 11 POLLARD, NYLA (G); 20 BELLAMY, BRE (F); 25 ROGERS, GABBY (C); 30 REYNOLDS, VICTORIA (F);

Time	VISITORS: UNCW	Score	Margin	HOME: William & Mary
09:28	GOOD! LAYUP by POWELL, PAIGE	0-2	V 2	
08:17		1-2	V 1	GOOD! FT by HODGSON, EVA
08:17		2-2	T	GOOD! FT by HODGSON, EVA
07:39		4-2	H 2	GOOD! LAYUP by ROGERS, GABBY
07:22	GOOD! JUMPER by POWELL, PAIGE [PNT]	4-4	T	
06:55		6-4	H 2	GOOD! LAYUP by POLLARD, NYLA
06:16		8-4	H 4	GOOD! LAYUP by HODGSON, EVA
05:34	GOOD! FT by SMITH, GIGI [FB]	8-5	H 3	
05:34	GOOD! FT by SMITH, GIGI [FB]	8-6	H 2	
04:48		10-6	H 4	GOOD! LAYUP by REYNOLDS, VICTORIA [FB]
04:26	GOOD! 3PTR by SUGGS, LACEY	10-9	H 1	
04:19		12-9	H 3	GOOD! LAYUP by HODGSON, EVA
04:19		13-9	H 4	GOOD! FT by HODGSON, EVA
04:06		15-9	H 6	GOOD! LAYUP by ROGERS, GABBY
03:21	GOOD! 3PTR by BELL, CHINYERE	15-12	H 3	
02:49	GOOD! 3PTR by SMITH, GIGI	15-15	T	
02:39		16-15	H 1	GOOD! FT by HODGSON, EVA
02:39		17-15	H 2	GOOD! FT by HODGSON, EVA
00:21		19-15	H 4	GOOD! LAYUP by WAGNER, SYDNEY
00:00	GOOD! 3PTR by SMITH, GIGI	19-18	H 1	

UNCW 18, William & Mary 19

Official Scoring/Possession Reference Chart
UNCW vs William & Mary
Period 2
January 10, 2020 at Kaplan Arena (Kaplan Arena) - Williamsburg



Period 2

Starters:

UNCW: 1 POWELL, PAIGE (F); 4 MUNOZ, JESSICA (F); 5 SMITH, GIGI (G); 10 VASON, AHYIONA (G); 13 SUGGS, LACEY (G);

William & Mary: 10 HODGSON, EVA (G); 11 POLLARD, NYLA (G); 20 BELLAMY, BRE (F); 25 ROGERS, GABBY (C); 30 REYNOLDS, VICTORIA (F);

Time	VISITORS: UNCW	Score	Margin	HOME: William & Mary
09:31	GOOD! JUMPER by SMITH, GIGI	19-20	V 1	
09:07	GOOD! FT by SMITH, GIGI	19-21	V 2	
08:43	GOOD! JUMPER by SMITH, GIGI	19-23	V 4	
08:25		21-23	V 2	GOOD! LAYUP by REYNOLDS, VICTORIA
07:40	GOOD! LAYUP by POWELL, PAIGE [PNT]	21-25	V 4	
07:26		23-25	V 2	GOOD! LAYUP by HODGSON, EVA
06:58	GOOD! JUMPER by POWELL, PAIGE	23-27	V 4	
05:30	GOOD! LAYUP by BELL, CHINYERE	23-29	V 6	
05:11	GOOD! LAYUP by CRISP, MORIAH [FB/PNT]	23-31	V 8	
04:22	GOOD! FT by MUNOZ, JESSICA	23-32	V 9	
02:58		24-32	V 8	GOOD! FT by REYNOLDS, VICTORIA [FB]
02:58		25-32	V 7	GOOD! FT by REYNOLDS, VICTORIA [FB]
02:38	GOOD! LAYUP by BELL, CHINYERE	25-34	V 9	
02:05		28-34	V 6	GOOD! 3PTR by GILLIAM, CHANIQUA
01:29		30-34	V 4	GOOD! LAYUP by WAGNER, SYDNEY
01:13	GOOD! 3PTR by SMITH, GIGI	30-37	V 7	
00:57		31-37	V 6	GOOD! FT by EICHNER, BAILEY
00:57		32-37	V 5	GOOD! FT by EICHNER, BAILEY

UNCW 37, William & Mary 32

Official Scoring/Possession Reference Chart
UNCW vs William & Mary
Period 3
January 10, 2020 at Kaplan Arena (Kaplan Arena) - Williamsburg



Period 3

Starters:

UNCW: 1 POWELL, PAIGE (F); 4 MUNOZ, JESSICA (F); 5 SMITH, GIGI (G); 10 VASON, AHYIONA (G); 13 SUGGS, LACEY (G);

William & Mary: 10 HODGSON, EVA (G); 11 POLLARD, NYLA (G); 20 BELLAMY, BRE (F); 25 ROGERS, GABBY (C); 30 REYNOLDS, VICTORIA (F);

Time	VISITORS: UNCW	Score	Margin	HOME: William & Mary
09:06		35-37	V 2	GOOD! 3PTR by HODGSON, EVA
07:53	GOOD! LAYUP by BELL, CHINYERE	35-39	V 4	
07:32		37-39	V 2	GOOD! LAYUP by REYNOLDS, VICTORIA
07:01		38-39	V 1	GOOD! FT by POLLARD, NYLA [FB]
06:28	GOOD! FT by SUGGS, LACEY [FB]	38-40	V 2	
06:13		40-40	T	GOOD! LAYUP by ROGERS, GABBY
05:41	GOOD! JUMPER by MUNOZ, JESSICA	40-42	V 2	
05:30		41-42	V 1	GOOD! FT by REYNOLDS, VICTORIA
05:30		42-42	T	GOOD! FT by REYNOLDS, VICTORIA
05:15	GOOD! JUMPER by SMITH, GIGI	42-44	V 2	
04:44	GOOD! LAYUP by SMITH, GIGI [FB]	42-46	V 4	
02:27	GOOD! LAYUP by SUGGS, LACEY	42-48	V 6	
01:41	GOOD! FT by CRISP, MORIAH	42-49	V 7	
01:13	GOOD! LAYUP by VASON, AHYIONA [FB]	42-51	V 9	
00:04	GOOD! FT by BELL, CHINYERE	42-52	V 10	
00:04	GOOD! FT by BELL, CHINYERE	42-53	V 11	
00:01		44-53	V 9	GOOD! JUMPER by BELLAMY, BRE [FB]

UNCW 53, William & Mary 44

Official Scoring/Possession Reference Chart
UNCW vs William & Mary
Period 4
January 10, 2020 at Kaplan Arena (Kaplan Arena) - Williamsburg



Period 4

Starters:

UNCW: 1 POWELL, PAIGE (F); 4 MUNOZ, JESSICA (F); 5 SMITH, GIGI (G); 10 VASON, AHYIONA (G); 13 SUGGS, LACEY (G);

William & Mary: 10 HODGSON, EVA (G); 11 POLLARD, NYLA (G); 20 BELLAMY, BRE (F); 25 ROGERS, GABBY (C); 30 REYNOLDS, VICTORIA (F);

Time	VISITORS: UNCW	Score	Margin	HOME: William & Mary
08:18	GOOD! LAYUP by POWELL, PAIGE	44-55	V 11	
07:03	GOOD! FT by SMITH, GIGI	44-56	V 12	
06:46	GOOD! LAYUP by POWELL, PAIGE [FB]	44-58	V 14	
06:11	GOOD! LAYUP by VASON, AHYIONA [FB]	44-60	V 16	
05:51		47-60	V 13	GOOD! 3PTR by POLLARD, NYLA
05:23	GOOD! LAYUP by SMITH, GIGI	47-62	V 15	
05:03	GOOD! LAYUP by SUGGS, LACEY [FB]	47-64	V 17	
05:03	GOOD! FT by SUGGS, LACEY [FB]	47-65	V 18	
04:21	GOOD! JUMPER by MUNOZ, JESSICA	47-67	V 20	
03:33		49-67	V 18	GOOD! LAYUP by REYNOLDS, VICTORIA
03:23		50-67	V 17	GOOD! FT by REYNOLDS, VICTORIA
02:26	GOOD! FT by POWELL, PAIGE	50-68	V 18	
02:26	GOOD! FT by POWELL, PAIGE	50-69	V 19	
02:00	GOOD! FT by SUGGS, LACEY	50-70	V 20	
01:31		52-70	V 18	GOOD! LAYUP by KRAUSE, EMMA
00:33	GOOD! FT by SMITH, GIGI	52-71	V 19	
00:12		55-71	V 16	GOOD! 3PTR by WAGNER, SYDNEY
00:10	GOOD! FT by CRISP, MORIAH	55-72	V 17	

UNCW 72, William & Mary 55

Official Substitutions Log
UNCW vs William & Mary
Period 1
January 10, 2020 at Kaplan Arena (Kaplan Arena) - Williamsburg



VISITORS: UNCW	Time	Score	HOME: William & Mary
1 POWELL, PAIGE			10 HODGSON, EVA
4 MUNOZ, JESSICA			11 POLLARD, NYLA
5 SMITH, GIGI			20 BELLAMY, BRE
10 VASON, AHYIONA			25 ROGERS, GABBY
13 SUGGS, LACEY			30 REYNOLDS, VICTORIA
SUB OUT: 1 POWELL, PAIGE	05:34	4-8	
SUB IN: 24 BELL, CHINYERE	05:34		
SUB OUT: 10 VASON, AHYIONA	04:19	9-12	
SUB IN: 2 CRISP, MORIAH	04:19		
	03:55	9-15	SUB OUT: BELLAMY, BRE
	03:55		SUB OUT: ROGERS, GABBY
	03:55		SUB IN: WAGNER, SYDNEY
	03:55		SUB IN: EICHNER, BAILEY
SUB OUT: 4 MUNOZ, JESSICA	02:39	15-15	
SUB IN: 22 THYBULLE, ZHANEIA	02:39		
SUB OUT: 2 CRISP, MORIAH	02:39		
SUB IN: 10 VASON, AHYIONA	02:39		
	02:20	15-17	SUB OUT: POLLARD, NYLA
	02:20		SUB IN: BELLAMY, BRE
SUB OUT: 24 BELL, CHINYERE	01:41	15-17	
SUB IN: 32 OBUSEK, CAROL-ANNE	01:41		
	01:06	15-17	SUB OUT: HODGSON, EVA
	01:06		SUB IN: GILLIAM, CHANIQWA
SUB OUT: 10 VASON, AHYIONA	01:06		
SUB IN: 2 CRISP, MORIAH	01:06		

UNCW 18, William & Mary 19

Official Substitutions Log
UNCW vs William & Mary
Period 2
January 10, 2020 at Kaplan Arena (Kaplan Arena) - Williamsburg



VISITORS: UNCW	Time	Score	HOME: William & Mary
1 POWELL, PAIGE			10 HODGSON, EVA
4 MUNOZ, JESSICA			11 POLLARD, NYLA
5 SMITH, GIGI			20 BELLAMY, BRE
10 VASON, AHYIONA			25 ROGERS, GABBY
13 SUGGS, LACEY			30 REYNOLDS, VICTORIA
	10:00	-	SUB OUT: GILLIAM, CHANIQWA
	10:00		SUB OUT: EICHNER, BAILEY
	10:00		SUB IN: HODGSON, EVA
	10:00		SUB IN: ROGERS, GABBY
SUB OUT: 13 SUGGS, LACEY	10:00		
SUB IN: 1 POWELL, PAIGE	10:00		
	08:26	23-19	SUB OUT: WAGNER, SYDNEY
	08:26		SUB IN: POLLARD, NYLA
SUB OUT: 32 OBUSEK, CAROL-ANNE	08:26		
SUB IN: 13 SUGGS, LACEY	08:26		
SUB OUT: 22 THYBULLE, ZHANEIA	08:07	23-21	
SUB IN: 4 MUNOZ, JESSICA	08:07		
	06:58	27-23	SUB OUT: ROGERS, GABBY
	06:58		SUB IN: EICHNER, BAILEY
	06:05	27-23	SUB OUT: BELLAMY, BRE
	06:05		SUB IN: WAGNER, SYDNEY
SUB OUT: 1 POWELL, PAIGE	06:05		
SUB IN: 24 BELL, CHINYERE	06:05		
SUB OUT: 5 SMITH, GIGI	04:49	31-23	
SUB IN: 22 THYBULLE, ZHANEIA	04:49		
	04:22	32-23	SUB OUT: POLLARD, NYLA
	04:22		SUB IN: GILLIAM, CHANIQWA
SUB OUT: 4 MUNOZ, JESSICA	02:58	32-23	
SUB IN: 5 SMITH, GIGI	02:58		
SUB OUT: 2 CRISP, MORIAH	00:57	37-30	
SUB OUT: 22 THYBULLE, ZHANEIA	00:57		
SUB OUT: 24 BELL, CHINYERE	00:57		
SUB IN: 1 POWELL, PAIGE	00:57		
SUB IN: 4 MUNOZ, JESSICA	00:57		
SUB IN: 10 VASON, AHYIONA	00:57		
	00:57		SUB OUT: EICHNER, BAILEY
	00:57		SUB IN: BELLAMY, BRE

UNCW 37, William & Mary 32

Official Substitutions Log
UNCW vs William & Mary
Period 3
January 10, 2020 at Kaplan Arena (Kaplan Arena) - Williamsburg



VISITORS: UNCW	Time	Score	HOME: William & Mary
1 POWELL, PAIGE			10 HODGSON, EVA
4 MUNOZ, JESSICA			11 POLLARD, NYLA
5 SMITH, GIGI			20 BELLAMY, BRE
10 VASON, AHYIONA			25 ROGERS, GABBY
13 SUGGS, LACEY			30 REYNOLDS, VICTORIA
	10:00	-	SUB OUT: WAGNER, SYDNEY
	10:00		SUB OUT: GILLIAM, CHANIQWA
	10:00		SUB IN: POLLARD, NYLA
	10:00		SUB IN: ROGERS, GABBY
SUB OUT: 10 VASON, AHYIONA	08:38	37-35	
SUB IN: 2 CRISP, MORIAH	08:38		
SUB OUT: 1 POWELL, PAIGE	08:10	37-35	
SUB IN: 24 BELL, CHINYERE	08:10		
SUB OUT: 24 BELL, CHINYERE	06:28	39-38	
SUB IN: 1 POWELL, PAIGE	06:28		
	05:30	42-40	SUB OUT: BELLAMY, BRE
	05:30		SUB IN: WAGNER, SYDNEY
	04:18	46-42	SUB OUT: ROGERS, GABBY
	04:18		SUB IN: EICHNER, BAILEY
	01:41	48-42	SUB OUT: WAGNER, SYDNEY
	01:41		SUB OUT: EICHNER, BAILEY
	01:41		SUB IN: GILLIAM, CHANIQWA
	01:41		SUB IN: BELLAMY, BRE
SUB OUT: 1 POWELL, PAIGE	01:41		
SUB IN: 24 BELL, CHINYERE	01:41		
SUB OUT: 2 CRISP, MORIAH	01:41		
SUB IN: 10 VASON, AHYIONA	01:41		
SUB OUT: 5 SMITH, GIGI	00:54	51-42	
SUB IN: 22 THYBULLE, ZHANEIA	00:54		
SUB OUT: 24 BELL, CHINYERE	00:04	53-42	
SUB IN: 1 POWELL, PAIGE	00:04		

UNCW 53, William & Mary 44

Official Substitutions Log
UNCW vs William & Mary
Period 4
January 10, 2020 at Kaplan Arena (Kaplan Arena) - Williamsburg



VISITORS: UNCW	Time	Score	HOME: William & Mary
1 POWELL, PAIGE			10 HODGSON, EVA
4 MUNOZ, JESSICA			11 POLLARD, NYLA
5 SMITH, GIGI			20 BELLAMY, BRE
10 VASON, AHYIONA			25 ROGERS, GABBY
13 SUGGS, LACEY			30 REYNOLDS, VICTORIA
	10:00	-	SUB OUT: BELLAMY, BRE
	10:00		SUB IN: ROGERS, GABBY
SUB OUT: 22 THYBULLE, ZHANEIA	10:00		
SUB IN: 5 SMITH, GIGI	10:00		
	08:54	-	SUB OUT: GILLIAM, CHANIQWA
	08:54		SUB IN: WAGNER, SYDNEY
	07:03	55-44	SUB OUT: ROGERS, GABBY
	07:03		SUB IN: EICHNER, BAILEY
	05:14	62-47	SUB OUT: POLLARD, NYLA
	05:14		SUB IN: BELLAMY, BRE
SUB OUT: 10 VASON, AHYIONA	05:14		
SUB IN: 2 CRISP, MORIAH	05:14		
	04:46	65-47	SUB OUT: EICHNER, BAILEY
	04:46		SUB IN: ROGERS, GABBY
	03:27	67-49	SUB OUT: HODGSON, EVA
	03:27		SUB IN: GILLIAM, CHANIQWA
	02:58	67-50	SUB OUT: REYNOLDS, VICTORIA
	02:58		SUB IN: TAYLOR, ASHLEY
SUB OUT: 4 MUNOZ, JESSICA	02:58		
SUB IN: 10 VASON, AHYIONA	02:58		
	02:26	67-50	SUB OUT: ROGERS, GABBY
	02:26		SUB IN: KRAUSE, EMMA
SUB OUT: 1 POWELL, PAIGE	02:00	70-50	
SUB IN: 4 MUNOZ, JESSICA	02:00		
SUB OUT: 10 VASON, AHYIONA	00:33	70-52	
SUB IN: 32 OBUSEK, CAROL-ANNE	00:33		
SUB OUT: 5 SMITH, GIGI	00:18	71-52	
SUB IN: 22 THYBULLE, ZHANEIA	00:18		

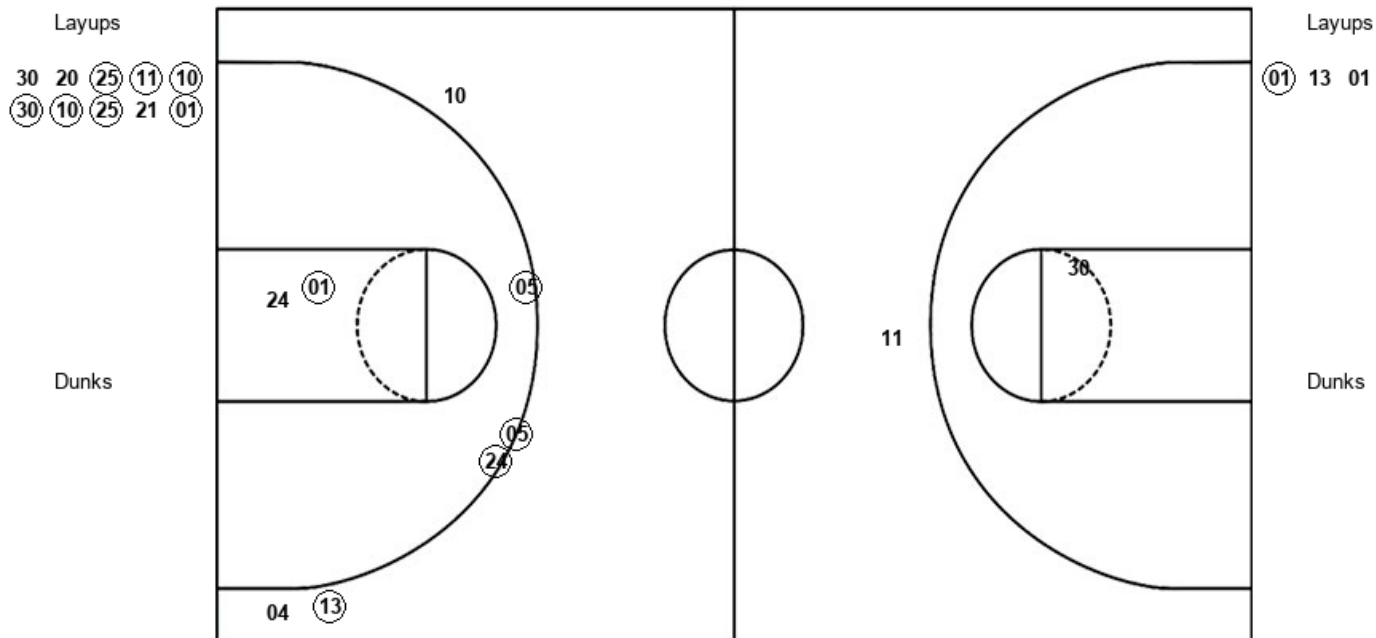
UNCW 72, William & Mary 55

Official Shot Chart
UNCW vs William & Mary
 PERIOD 1 Shots
 January 10, 2020 at Kaplan Arena (Kaplan Arena) - Williamsburg



William & Mary

UNCW



W&M : Period 1	Made	Att	Pct
Layups	7	10	70.0
Dunks	0	0	0
2PT Field Goals	7	11	63.6
3PT Field Goals	0	1	00.0
Total Field Goals	7	12	58.3

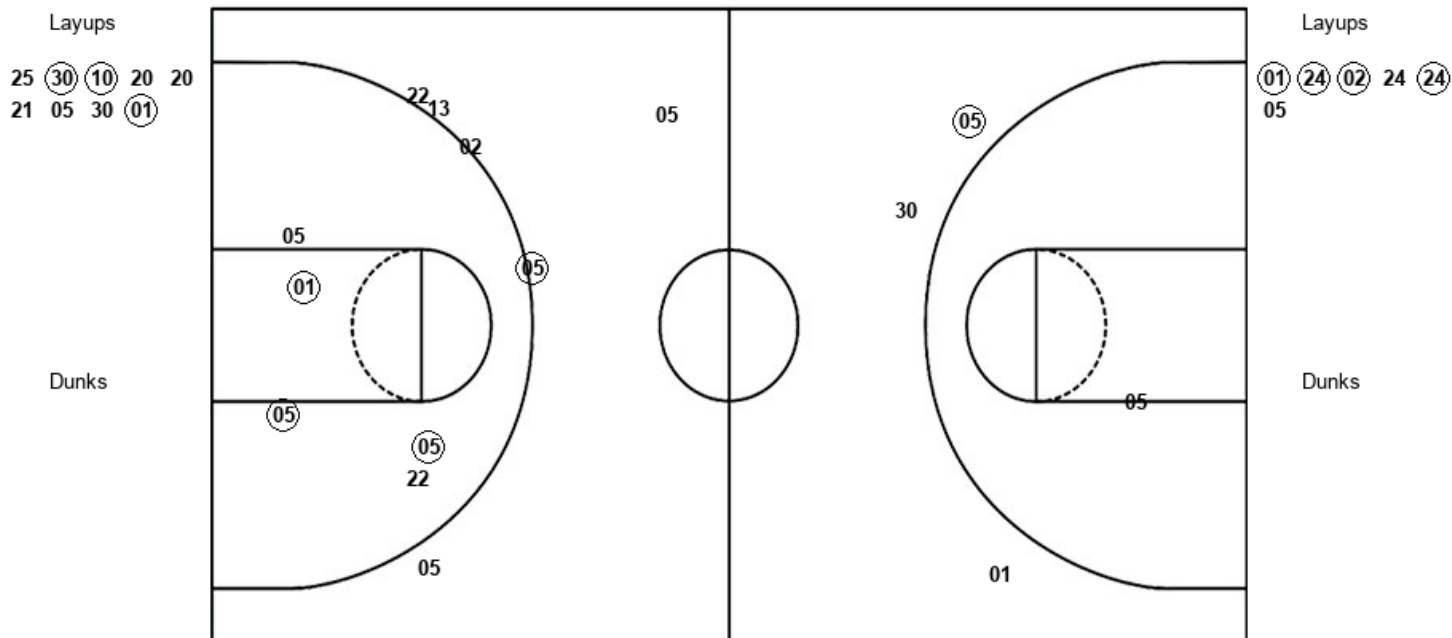
NCW : Period 1	Made	Att	Pct
Layups	1	3	33.3
Dunks	0	0	0
2PT Field Goals	2	5	40.0
3PT Field Goals	4	6	66.7
Total Field Goals	6	11	54.5

Official Shot Chart
UNCW vs William & Mary
 PERIOD 2 Shots
 January 10, 2020 at Kaplan Arena (Kaplan Arena) - Williamsburg



William & Mary

UNCW



W&M : Period 2	Made	Att	Pct
Layups	3	9	33.3
Dunks	0	0	0
2PT Field Goals	3	10	30.0
3PT Field Goals	1	3	33.3
Total Field Goals	4	13	30.8

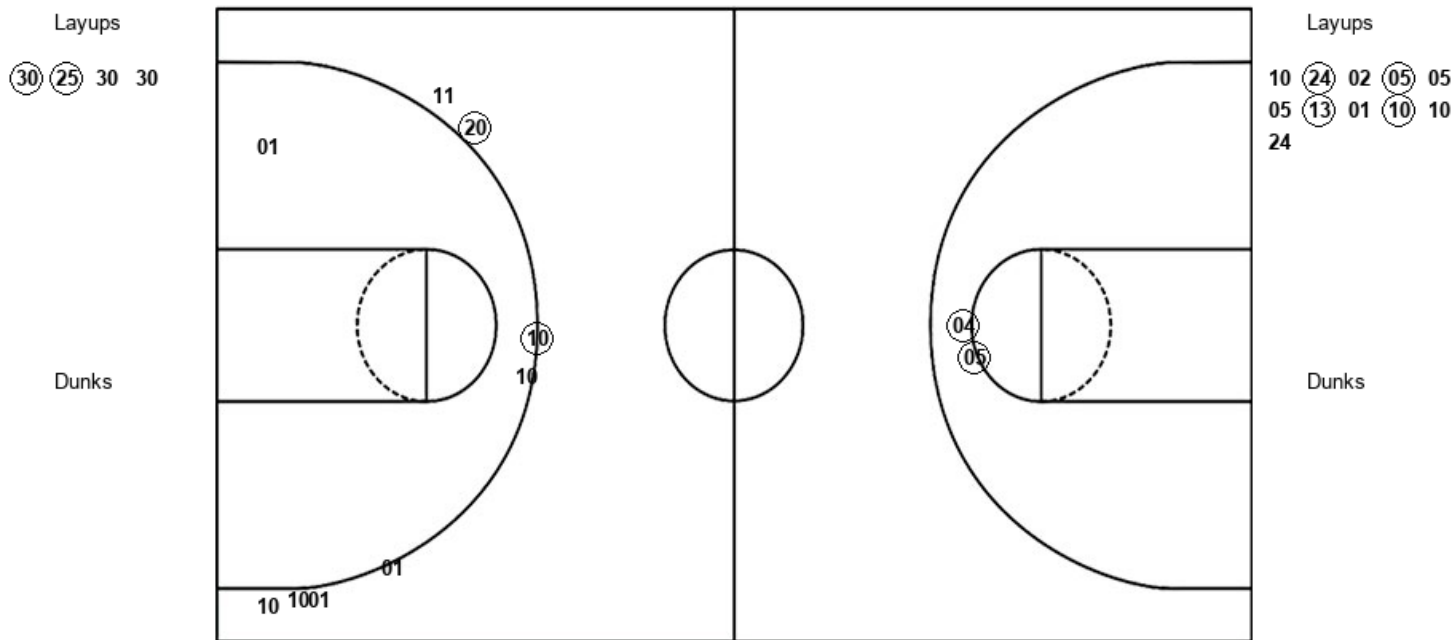
NCW : Period 2	Made	Att	Pct
Layups	4	6	66.7
Dunks	0	0	0
2PT Field Goals	7	11	63.6
3PT Field Goals	1	6	16.7
Total Field Goals	8	17	47.1

Official Shot Chart
UNCW vs William & Mary
 PERIOD 3 Shots
 January 10, 2020 at Kaplan Arena (Kaplan Arena) - Williamsburg



William & Mary

UNCW



W&M : Period 3	Made	Att	Pct
Layups	2	4	50.0
Dunks	0	0	0
2PT Field Goals	3	6	50.0
3PT Field Goals	1	7	14.3
Total Field Goals	4	13	30.8

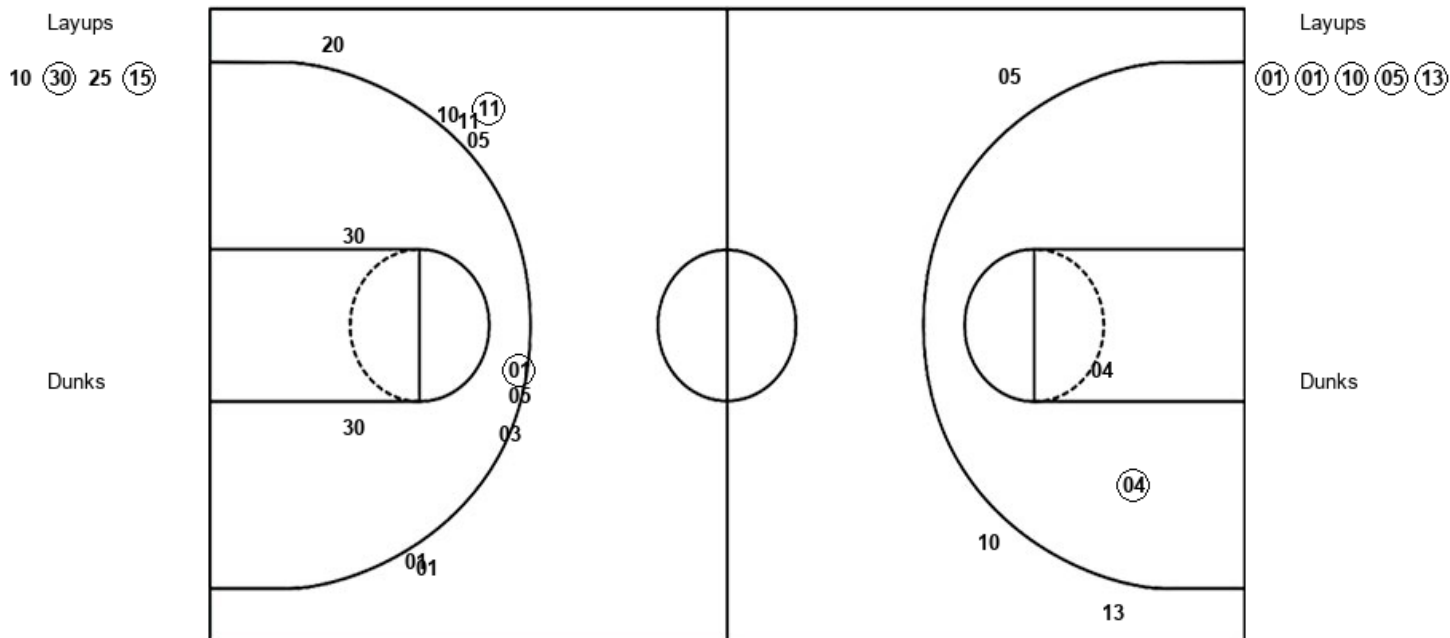
NCW : Period 3	Made	Att	Pct
Layups	4	11	36.4
Dunks	0	0	0
2PT Field Goals	6	13	46.2
3PT Field Goals	0	0	0
Total Field Goals	6	13	46.2

Official Shot Chart
UNCW vs William & Mary
 PERIOD 4 Shots
 January 10, 2020 at Kaplan Arena (Kaplan Arena) - Williamsburg



William & Mary

UNCW



W&M : Period 4	Made	Att	Pct
Layups	2	4	50.0
Dunks	0	0	0
2PT Field Goals	2	6	33.3
3PT Field Goals	2	10	20.0
Total Field Goals	4	16	25.0

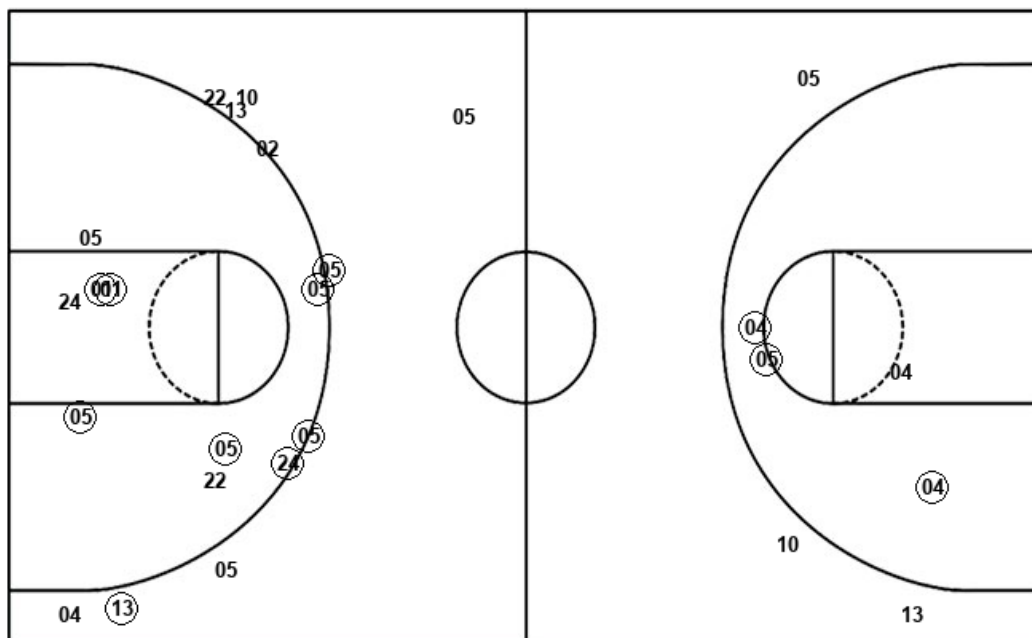
NCW : Period 4	Made	Att	Pct
Layups	5	5	100.0
Dunks	0	0	0
2PT Field Goals	6	7	85.7
3PT Field Goals	0	3	00.0
Total Field Goals	6	10	60.0

Official Shot Chart
UNCW vs William & Mary
 UNCW Team Shots
 January 10, 2020 at Kaplan Arena (Kaplan Arena) - Williamsburg



Layups

Dunks



Layups

Dunks

(01) 13 (01) (24)
 (02) 24 (24) 05 10
 (24) 02 (05) 05 05
 (13) 01 (10) 10 24
 (01) (01) (10) (05) (13)

UNCW : Period 1	Made	Att	Pct
Layups	1	3	33.3
Dunks	0	0	0
2PT Field Goals	2	5	40.0
3PT Field Goals	4	6	66.7
Total Field Goals	6	11	54.5

UNCW : Period 3	Made	Att	Pct
Layups	4	11	36.4
Dunks	0	0	0
2PT Field Goals	6	13	46.2
3PT Field Goals	0	0	0
Total Field Goals	6	13	46.2

UNCW : Period 2	Made	Att	Pct
Layups	4	6	66.7
Dunks	0	0	0
2PT Field Goals	7	11	63.6
3PT Field Goals	1	6	16.7
Total Field Goals	8	17	47.1

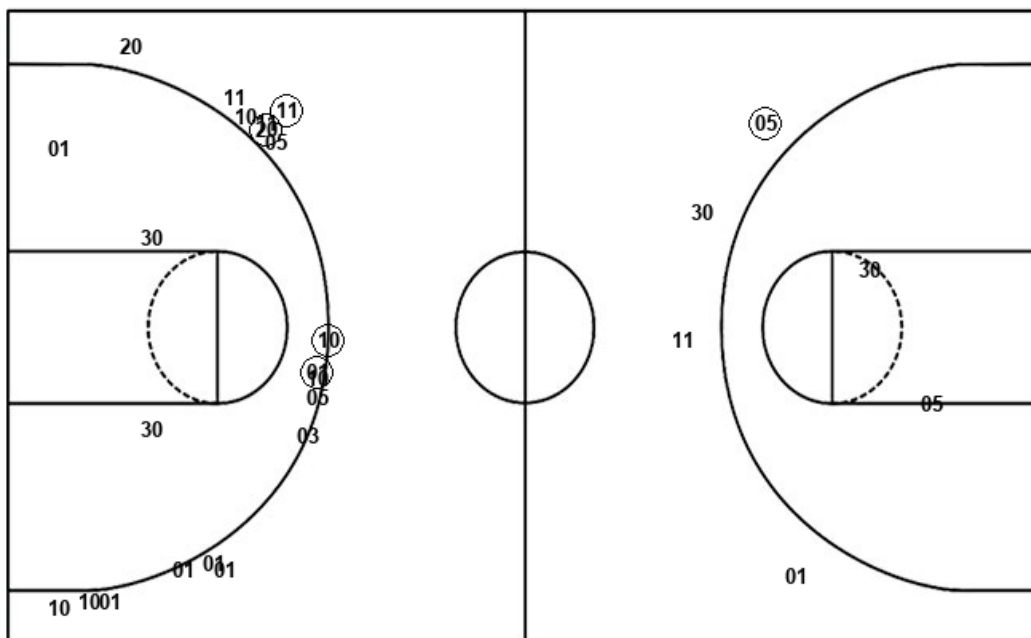
UNCW : Period 4	Made	Att	Pct
Layups	5	5	100.0
Dunks	0	0	0
2PT Field Goals	6	7	85.7
3PT Field Goals	0	3	00.0
Total Field Goals	6	10	60.0

Official Shot Chart
UNCW vs William & Mary
 William & Mary Team Shots
 January 10, 2020 at Kaplan Arena (Kaplan Arena) - Williamsburg



Layups

Dunks



Layups

Dunks

30 20 (25) (11) (10)
 (30) (10) (25) 21 (01)
 25 (30) (10) 20 20
 21 05 30 (01) (30)
 (25) 30 30 10 (30)
 25 (15)

W&M : Period 1	Made	Att	Pct
Layups	7	10	70.0
Dunks	0	0	0
2PT Field Goals	7	11	63.6
3PT Field Goals	0	1	00.0
Total Field Goals	7	12	58.3

W&M : Period 3	Made	Att	Pct
Layups	2	4	50.0
Dunks	0	0	0
2PT Field Goals	3	6	50.0
3PT Field Goals	1	7	14.3
Total Field Goals	4	13	30.8

W&M : Period 2	Made	Att	Pct
Layups	3	9	33.3
Dunks	0	0	0
2PT Field Goals	3	10	30.0
3PT Field Goals	1	3	33.3
Total Field Goals	4	13	30.8

W&M : Period 4	Made	Att	Pct
Layups	2	4	50.0
Dunks	0	0	0
2PT Field Goals	2	6	33.3
3PT Field Goals	2	10	20.0
Total Field Goals	4	16	25.0