

**FINAL SCORE**



**Southern Utah**

**81**



**Portland St.**

**72**

February 08, 2020 • Viking Pavilion - Portland

**FINAL STATISTICS**

**Official Box Score**  
**Southern Utah vs Portland St.**  
**Game Totals -- Final Statistics**  
**February 08, 2020 at Viking Pavilion - Portland**



**Southern Utah 81**

No.	Player	S	Pts	FG	3FG	FT	OR	DR	TR	PF	A	TO	Blk	Stl	Min	+/-
02	CARDENAS, REBECCA	G	19	8-16	3-5	0-0	4	2	6	2	9	4	0	4	39	8
04	LARSEN, ASHLEY	F	22	11-14	0-0	0-3	2	3	5	1	1	4	1	2	28	10
14	FANO, SHALYN	F	5	2-5	1-3	0-0	0	1	1	4	3	0	0	0	12	6
23	HANSEN, HARLEY	G	10	3-10	2-3	2-2	1	1	2	2	6	3	0	1	35	9
24	CHATMAN, JESSICA	F	10	5-8	0-0	0-0	1	6	7	0	3	2	0	2	28	8
10	ARMATO, CLAUDIA	G	0	0-2	0-1	0-0	0	4	4	1	2	2	0	0	21	2
20	EATON, MADELYN	G	2	1-3	0-2	0-0	0	1	1	1	0	1	0	3	15	6
32	BLACK, REBECCA	F	0	0-1	0-0	0-0	0	0	0	1	0	0	0	0	3	-1
40	FRANSEN, DARRI	F	13	5-10	0-0	3-3	3	6	9	1	3	0	0	0	18	-3
<b>TEAM</b>							4	1	5	0		0				
<b>TOTALS</b>			<b>81</b>	<b>35-69</b>	<b>6-14</b>	<b>5-8</b>	<b>15</b>	<b>25</b>	<b>40</b>	<b>13</b>	<b>27</b>	<b>16</b>	<b>1</b>	<b>12</b>	<b>199</b>	

*Shooting By Period*

Period	FG	FG%	3FG	3FG%	FT	FT%
1st Qtr	8-15	53%	2-4	50%	1-1	100%
2nd Qtr	8-19	42%	2-4	50%	2-2	100%
3rd Qtr	10-20	50%	1-3	33%	2-2	100%
4th Qtr	9-15	60%	1-3	33%	0-3	00%
1st Half	16-34	47%	4-8	50%	3-3	100%
2nd Half	19-35	54%	2-6	33%	2-5	40%
<b>Game</b>	<b>35-69</b>	<b>50.7%</b>	<b>6-14</b>	<b>42.9%</b>	<b>5-8</b>	<b>62.5%</b>

*Deadball Rebounds: 2,0*

*Last FG: 4th-00:31*

*Biggest Run: 8-0*

*Largest lead: By 14 at 4th-01:42*

*Technical Fouls: None.*

**Portland St. 72**

No.	Player	S	Pts	FG	3FG	FT	OR	DR	TR	PF	A	TO	Blk	Stl	Min	+/-
03	JIMENEZ, KYLIE	G	16	5-14	2-6	4-5	1	1	2	1	2	2	0	8	40	-9
11	STOTLER, JORDAN	F	18	7-9	1-2	3-4	4	7	11	4	3	3	4	1	31	-14
12	STREUN, TATIANA	F	10	4-10	2-5	0-0	0	5	5	2	0	1	1	2	22	-6
35	FRAZIER, BELLE	G	10	4-9	1-5	1-2	1	4	5	0	6	3	0	2	35	-9
53	HANSEN, DESIRAE	G	10	4-8	1-2	1-2	2	1	3	1	4	3	1	0	32	-4
01	DENSON, LABREA	G	0	0-1	0-0	0-0	0	0	0	0	0	1	0	0	3	3
10	CANZOBRE, MARINA	F	0	0-1	0-0	0-0	0	0	0	0	0	1	0	0	9	5
15	GARDNER, CASSIDY	G	2	1-3	0-2	0-0	0	0	0	1	2	2	0	0	16	-8
22	WALTON, RUCHAE	G	2	0-0	0-0	2-2	0	0	0	0	0	0	0	0	1	0
30	SCHULTZ, SYD	F	4	2-3	0-0	0-0	1	1	2	0	0	0	0	0	10	-3
<b>TEAM</b>							1	0	1	0		0				
<b>TOTALS</b>			<b>72</b>	<b>27-58</b>	<b>7-22</b>	<b>11-15</b>	<b>10</b>	<b>19</b>	<b>29</b>	<b>9</b>	<b>17</b>	<b>16</b>	<b>6</b>	<b>13</b>	<b>199</b>	

*Shooting By Period*

Period	FG	FG%	3FG	3FG%	FT	FT%
1st Qtr	7-14	50%	2-5	40%	1-2	50%
2nd Qtr	7-16	44%	3-8	38%	0-0	0%
3rd Qtr	6-12	50%	1-5	20%	6-7	86%
4th Qtr	7-16	44%	1-4	25%	4-6	67%
1st Half	14-30	47%	5-13	38%	1-2	50%
2nd Half	13-28	46%	2-9	22%	10-13	77%
<b>Game</b>	<b>27-58</b>	<b>46.6%</b>	<b>7-22</b>	<b>31.8%</b>	<b>11-15</b>	<b>73.3%</b>

*Deadball Rebounds: 0,1*

*Last FG: 4th-00:59*

*Biggest Run: 7-0*

*Largest lead: By 5 at 1st-05:58*

*Technical Fouls: None.*

Game Notes:

Officials: Gator Parrish, Robert Scofield, Michol Murray

Attendance: 443

Start Time: 05:04 PM ET

End Time: 06:31 PM ET

Game Duration: 1:26

Conference Game;

Score	1st	2nd	3rd	4th	TOT
SUU	19	20	23	19	<b>81</b>
PSU	17	17	19	19	<b>72</b>

SUU led for 33:44. PSU led for 4:15.

Game was tied for 1:51.

Times tied: 2      Lead Changes: 2

Points from	SUU	PSU
In the Paint	42	34
Off Turns	22	16
2nd Chance	15	16
Fast Break	13	5
Bench	15	8

**Official Box Score**  
**Southern Utah vs Portland St.**  
**First Half Statistics Only**  
**February 08, 2020 at Viking Pavilion - Portland**



**Southern Utah 39**

No.	Player	S	Pts	FG	3FG	FT	OR	DR	TR	PF	A	TO	Blk	Stl	Min	+/-
02	CARDENAS, REBECCA	G	8	3-6	2-3	0-0	0	1	1	1	5	3	0	1	20	5
04	LARSEN, ASHLEY	F	8	4-5	0-0	0-0	1	1	2	0	0	2	0	2	11	7
10	ARMATO, CLAUDIA	G	0	0-1	0-0	0-0	0	2	2	0	1	0	0	0	5	1
14	FANO, SHALYN	F	0	0-3	0-2	0-0	0	1	1	2	2	0	0	0	10	0
20	EATON, MADELYN	G	2	1-2	0-1	0-0	0	0	0	1	0	1	0	2	9	5
23	HANSEN, HARLEY	G	10	3-8	2-2	2-2	1	1	2	0	1	2	0	0	20	5
24	CHATMAN, JESSICA	F	6	3-5	0-0	0-0	0	4	4	0	2	1	0	1	16	4
32	BLACK, REBECCA	F	0	0-0	0-0	0-0	0	0	0	0	0	0	0	0	0	0
40	FRANSEN, DARRI	F	5	2-4	0-0	1-1	3	2	5	0	2	0	0	0	9	-2
	TEAM		0	0-0	0-0	0-0	2	1	3	0	0	0	0	0	0	0
<b>TOTALS</b>			<b>39</b>	<b>16-34</b>	<b>4-8</b>	<b>3-3</b>	<b>7</b>	<b>13</b>	<b>20</b>	<b>4</b>	<b>13</b>	<b>9</b>	<b>0</b>	<b>6</b>	<b>100</b>	

*Shooting By Period*

Period	FG	FG%	3FG	3FG%	FT	FT%
1st Qtr	8-15	53%	2-4	50%	1-1	100%
2nd Qtr	8-19	42%	2-4	50%	2-2	100%
1st Half	16-34	47%	4-8	50%	3-3	100%
Game	35-69	50.7%	6-14	42.9%	5-8	62.5%

*Deadball Rebounds: 2,0*  
*Last FG Half: SUU 2nd-00:43*

**Portland St. 34**

No.	Player	S	Pts	FG	3FG	FT	OR	DR	TR	PF	A	TO	Blk	Stl	Min	+/-
01	DENSON, LABREA	G	0	0-0	0-0	0-0	0	0	0	0	0	0	0	0	0	0
03	JIMENEZ, KYLIE	G	2	1-6	0-2	0-0	1	0	1	1	2	0	0	3	20	-5
10	CANZOBRE, MARINA	F	0	0-1	0-0	0-0	0	0	0	0	0	1	0	0	3	0
11	STOTLER, JORDAN	F	10	4-5	1-2	1-2	0	3	3	1	2	2	2	1	17	-5
12	STREUN, TATIANA	F	6	2-3	2-3	0-0	0	2	2	1	0	1	0	1	11	-2
15	GARDNER, CASSIDY	G	2	1-2	0-1	0-0	0	0	0	0	2	1	0	0	11	-5
22	WALTON, RUCHAE	G	0	0-0	0-0	0-0	0	0	0	0	0	0	0	0	0	0
30	SCHULTZ, SYD	F	0	0-1	0-0	0-0	0	0	0	0	0	0	0	0	12	-6
35	FRAZIER, BELLE	G	7	3-7	1-4	0-0	0	4	4	0	2	3	0	2	19	-6
53	HANSEN, DESIRAE	G	7	3-5	1-1	0-0	2	1	3	1	2	1	0	0	18	1
	TEAM		0	0-0	0-0	0-0	1	0	1	0	0	0	0	0	0	0
<b>TOTALS</b>			<b>34</b>	<b>14-30</b>	<b>5-13</b>	<b>1-2</b>	<b>4</b>	<b>10</b>	<b>14</b>	<b>4</b>	<b>10</b>	<b>9</b>	<b>2</b>	<b>7</b>	<b>110</b>	

*Shooting By Period*

Period	FG	FG%	3FG	3FG%	FT	FT%
1st Qtr	7-14	50%	2-5	40%	1-2	50%
2nd Qtr	7-16	44%	3-8	38%	0-0	0%
1st Half	14-30	47%	5-13	38%	1-2	50%
Game	27-58	46.6%	7-22	31.8%	11-15	73.3%

*Deadball Rebounds: 0,1*  
*Last FG Half: PSU 2nd-00:20*

*Game Notes:*

Officials: Gator Parrish, Robert Scofield, Michol Murray  
 Attendance: 443

Start Time: 05:04 PM ET  
 End Time: 06:31 PM ET  
 Game Duration: 1:26  
 Conference Game;

Score	1st	2nd	3rd	4th	TOT
SUU	19	20	23	19	<b>81</b>
PSU	17	17	19	19	<b>72</b>

Points from (This Period)	SUU	PSU
In the Paint	18	14
Off Turns	12	8
2nd Chance	11	8
Fast Break	4	3
Bench	7	2

**Official Box Score**  
**Southern Utah vs Portland St.**  
**First Quarter Statistics Only**  
**February 08, 2020 at Viking Pavilion - Portland**



**Southern Utah 19**

No.	Player	S	Pts	FG	3FG	FT	OR	DR	TR	PF	A	TO	Blk	Stl	Min	+/-
02	CARDENAS, REBECCA	G	3	1-2	1-1	0-0	0	1	1	1	2	2	0	1	10	2
04	LARSEN, ASHLEY	F	6	3-4	0-0	0-0	1	1	2	0	0	2	0	1	8	2
14	FANO, SHALYN	F	0	0-3	0-2	0-0	0	1	1	2	2	0	0	0	10	0
23	HANSEN, HARLEY	G	3	1-3	1-1	0-0	0	1	1	0	1	0	0	0	10	2
24	CHATMAN, JESSICA	F	2	1-1	0-0	0-0	0	0	0	0	1	1	0	0	6	1
10	ARMATO, CLAUDIA	G	0	0-0	0-0	0-0	0	0	0	0	0	0	0	0	0	0
20	EATON, MADELYN	G	0	0-0	0-0	0-0	0	0	0	1	0	1	0	2	4	3
32	BLACK, REBECCA	F	0	0-0	0-0	0-0	0	0	0	0	0	0	0	0	0	0
40	FRANSEN, DARRI	F	5	2-2	0-0	1-1	1	1	2	0	0	0	0	0	2	0
TEAM							0	1	1	0		0				
<b>TOTALS</b>			<b>19</b>	<b>8-15</b>	<b>2-4</b>	<b>1-1</b>	<b>2</b>	<b>6</b>	<b>8</b>	<b>4</b>	<b>6</b>	<b>6</b>	<b>0</b>	<b>4</b>	<b>50</b>	

*Shooting By Period*

Period	FG	FG%	3FG	3FG%	FT	FT%
1st Qtr	8-15	53%	2-4	50%	1-1	100%
2nd Qtr	8-19	42%	2-4	50%	2-2	100%
1st Half	8-15	53%	2-4	50%	1-1	100%
1st Half	16-34	47%	4-8	50%	3-3	100%
Game	35-69	50.7%	6-14	42.9%	5-8	62.5%

*Deadball Rebounds: 2,0*

**Portland St. 17**

No.	Player	S	Pts	FG	3FG	FT	OR	DR	TR	PF	A	TO	Blk	Stl	Min	+/-
03	JIMENEZ, KYLIE	G	0	0-1	0-0	0-0	1	0	1	1	1	0	0	3	10	-2
11	STOTLER, JORDAN	F	5	2-2	0-0	1-2	0	0	0	0	2	1	0	0	7	-2
12	STREUN, TATIANA	F	3	1-2	1-2	0-0	0	2	2	0	0	0	0	1	8	3
35	FRAZIER, BELLE	G	2	1-3	0-2	0-0	0	3	3	0	1	2	0	1	10	-2
53	HANSEN, DESIRAE	G	7	3-4	1-1	0-0	0	0	0	1	0	1	0	0	10	-2
01	DENSON, LABREA	G	0	0-0	0-0	0-0	0	0	0	0	0	0	0	0	0	0
10	CANZOBRE, MARINA	F	0	0-1	0-0	0-0	0	0	0	0	0	1	0	0	3	0
15	GARDNER, CASSIDY	G	0	0-0	0-0	0-0	0	0	0	0	0	0	0	0	1	-2
22	WALTON, RUCHAE	G	0	0-0	0-0	0-0	0	0	0	0	0	0	0	0	0	0
30	SCHULTZ, SYD	F	0	0-1	0-0	0-0	0	0	0	0	0	0	0	0	2	-3
TEAM							1	0	1	0		0				
<b>TOTALS</b>			<b>17</b>	<b>7-14</b>	<b>2-5</b>	<b>1-2</b>	<b>2</b>	<b>5</b>	<b>7</b>	<b>2</b>	<b>4</b>	<b>5</b>	<b>0</b>	<b>5</b>	<b>50</b>	

*Shooting By Period*

Period	FG	FG%	3FG	3FG%	FT	FT%
1st Qtr	7-14	50%	2-5	40%	1-2	50%
2nd Qtr	7-16	44%	3-8	38%	0-0	0%
1st Half	7-14	50%	2-5	40%	1-2	50%
1st Half	14-30	47%	5-13	38%	1-2	50%
Game	27-58	46.6%	7-22	31.8%	11-15	73.3%

*Deadball Rebounds: 0,1*

Game Notes:

Officials: Gator Parrish, Robert Scofield, Michol Murray  
 Attendance: 443

Start Time: 05:04 PM ET  
 End Time: 06:31 PM ET  
 Game Duration: 1:26  
 Conference Game;

Score	1st	2nd	3rd	4th	TOT
SUU	19	20	23	19	<b>81</b>
PSU	17	17	19	19	<b>72</b>

Points from (This Period)	SUU	PSU
In the Paint	8	8
Off Turns	8	6
2nd Chance	3	2
Fast Break	0	3
Bench	5	0

**Official Play-By-Play**  
**Southern Utah vs Portland St.**  
**First Quarter**  
**February 08, 2020 at Viking Pavilion - Portland**



**Period 1**

**Starters:**

**Southern Utah:** 2 CARDENAS, REBECCA (G); 4 LARSEN, ASHLEY (F); 14 FANO, SHALYN (F); 23 HANSEN, HARLEY (G); 24 CHATMAN, JESSICA (F);

**Portland St.:** 3 JIMENEZ, KYLIE (G); 11 STOTLER, JORDAN (F); 12 STREUN, TATIANA (F); 35 FRAZIER, BELLE (G); 53 HANSEN, DESIRAE (G);

Time	VISITORS: Southern Utah	Score	Margin	HOME: Portland St.
09:48	GOOD! JUMPER by LARSEN, ASHLEY	0-2	V 2	
09:48	ASSIST by CARDENAS, REBECCA			
09:30				MISSED 3PTR by STREUN, TATIANA
09:29	REBOUND (DEF) by TEAM			
08:59	TURNOVER (LOSTBALL) by CARDENAS, REBECCA			
08:59				STEAL by JIMENEZ, KYLIE
08:53	STEAL by CARDENAS, REBECCA			TURNOVER (LOSTBALL) by FRAZIER, BELLE
08:38	TURNOVER (BADPASS) by CHATMAN, JESSICA			
08:38				STEAL by FRAZIER, BELLE
08:26				MISSED 3PTR by FRAZIER, BELLE
08:23				REBOUND (OFF) by TEAM
08:10		2-2	T	GOOD! LAYUP by STOTLER, JORDAN [PNT]
07:55	MISSED LAYUP by LARSEN, ASHLEY			
07:52	REBOUND (OFF) by LARSEN, ASHLEY			
07:38	MISSED 3PTR by FANO, SHALYN			
07:34				REBOUND (DEF) by STREUN, TATIANA
07:20		5-2	H 3	GOOD! 3PTR by HANSEN, DESIRAE
07:20				ASSIST by STOTLER, JORDAN
06:59	GOOD! JUMPER by LARSEN, ASHLEY [PNT]	5-4	H 1	
06:59	ASSIST by FANO, SHALYN			
06:30		7-4	H 3	GOOD! JUMPER by STOTLER, JORDAN [PNT]
06:14	TURNOVER (BADPASS) by LARSEN, ASHLEY			
06:14				STEAL by STREUN, TATIANA
05:58		9-4	H 5	GOOD! LAYUP by HANSEN, DESIRAE
05:58				ASSIST by STOTLER, JORDAN
05:50	GOOD! 3PTR by HANSEN, HARLEY	9-7	H 2	
05:50	ASSIST by CHATMAN, JESSICA			
05:37				MISSED 3PTR by FRAZIER, BELLE
05:34	REBOUND (DEF) by CARDENAS, REBECCA			
05:30	MISSED LAYUP by HANSEN, HARLEY			
05:28				REBOUND (DEF) by STREUN, TATIANA
05:26	FOUL (PERSONAL) by CARDENAS, REBECCA			
05:26		10-7	H 3	GOOD! FT by STOTLER, JORDAN [FB]
05:26				MISSED FT by STOTLER, JORDAN
05:24	REBOUND (DEF) by HANSEN, HARLEY			
05:00	TURNOVER (BADPASS) by LARSEN, ASHLEY			
05:00				STEAL by JIMENEZ, KYLIE
04:49				TURNOVER (BADPASS) by STOTLER, JORDAN
04:49	STEAL by LARSEN, ASHLEY			
04:40	GOOD! LAYUP by CHATMAN, JESSICA	10-9	H 1	
04:40	ASSIST by CARDENAS, REBECCA			
04:21				
04:21	SUB IN: EATON, MADELYN			
04:20				SUB IN: SCHULTZ, SYD
04:15				MISSED JUMPER by SCHULTZ, SYD
04:15	REBOUND (DEF) by LARSEN, ASHLEY			
04:03				FOUL (PERSONAL) by JIMENEZ, KYLIE
03:45	TURNOVER (LOSTBALL) by EATON, MADELYN			
03:45				STEAL by JIMENEZ, KYLIE
03:40		12-9	H 3	GOOD! LAYUP by FRAZIER, BELLE [FB]
03:40				ASSIST by JIMENEZ, KYLIE
03:33	GOOD! JUMPER by LARSEN, ASHLEY	12-11	H 1	
03:33	ASSIST by HANSEN, HARLEY			
03:24				TURNOVER (BADPASS) by HANSEN, DESIRAE
03:24	STEAL by EATON, MADELYN			
03:05	GOOD! 3PTR by CARDENAS, REBECCA	12-14	V 2	
03:05	ASSIST by FANO, SHALYN			
02:53	FOUL (PERSONAL) by FANO, SHALYN			
02:53	SUB OUT: CHATMAN, JESSICA			SUB OUT: STREUN, TATIANA
02:49				TURNOVER (TRAVEL) by CANZOBRE, MARINA
02:49				SUB OUT: STOTLER, JORDAN
02:49				SUB OUT: SCHULTZ, SYD
02:49				SUB IN: CANZOBRE, MARINA
02:49				SUB IN: GARDNER, CASSIDY
02:38	MISSED JUMPER by FANO, SHALYN			
02:33				REBOUND (DEF) by FRAZIER, BELLE
02:27				MISSED JUMPER by JIMENEZ, KYLIE
02:23				REBOUND (OFF) by JIMENEZ, KYLIE

Time	VISITORS: Southern Utah	Score	Margin	HOME: Portland St.
02:17				MISSED LAYUP by CANZOBRE, MARINA
02:12	REBOUND (DEF) by FANO, SHALYN			
02:12	SUB OUT: LARSEN, ASHLEY			
02:12	SUB IN: FRANSEN, DARRI			
02:12	TURNOVER (BADPASS) by CARDENAS, REBECCA			
02:02				TURNOVER (LOSTBALL) by FRAZIER, BELLE
02:02	STEAL by EATON, MADELYN			
01:56	MISSED LAYUP by HANSEN, HARLEY			
01:56	REBOUND (OFF) by FRANSEN, DARRI			
01:56	GOOD! LAYUP by FRANSEN, DARRI	12-16	V 4	
01:56				FOUL (PERSONAL) by HANSEN, DESIRAE
01:56				SUB OUT: GARDNER, CASSIDY
01:56				SUB IN: STREUN, TATIANA
01:56	GOOD! FT by FRANSEN, DARRI	12-17	V 5	
01:45		15-17	V 2	GOOD! 3PTR by STREUN, TATIANA
01:45				ASSIST by FRAZIER, BELLE
01:16	MISSED JUMPER by CARDENAS, REBECCA			
01:13				REBOUND (DEF) by FRAZIER, BELLE
00:59	FOUL (PERSONAL) by EATON, MADELYN			
00:51		17-17	T	GOOD! JUMPER by HANSEN, DESIRAE
00:34	MISSED 3PTR by FANO, SHALYN			
00:31				REBOUND (DEF) by FRAZIER, BELLE
00:28	FOUL (PERSONAL) by FANO, SHALYN			
00:28	SUB OUT: FANO, SHALYN			
00:28	SUB IN: CHATMAN, JESSICA			
00:21				MISSED JUMPER by HANSEN, DESIRAE
00:18	REBOUND (DEF) by FRANSEN, DARRI			
00:02	GOOD! JUMPER by FRANSEN, DARRI [PNT]	17-19	V 2	

### Southern Utah 19, Portland St. 17

Points from (This Period)	SUU	PSU
In the Paint	8	8
Off Turns	8	6
2nd Chance	3	2
Fast Break	0	3
Bench	5	0

**Official Box Score**  
**Southern Utah vs Portland St.**  
**Second Quarter Statistics Only**  
**February 08, 2020 at Viking Pavilion - Portland**



**Southern Utah 20**

No.	Player	S	Pts	FG	3FG	FT	OR	DR	TR	PF	A	TO	Blk	Stl	Min	+/-
02	CARDENAS, REBECCA	G	5	2-4	1-2	0-0	0	0	0	0	3	1	0	0	10	3
04	LARSEN, ASHLEY	F	2	1-1	0-0	0-0	0	0	0	0	0	0	0	1	3	5
14	FANO, SHALYN	F	0	0-0	0-0	0-0	0	0	0	0	0	0	0	0	0	0
23	HANSEN, HARLEY	G	7	2-5	1-1	2-2	1	0	1	0	0	2	0	0	10	3
24	CHATMAN, JESSICA	F	4	2-4	0-0	0-0	0	4	4	0	1	0	0	1	10	3
10	ARMATO, CLAUDIA	G	0	0-1	0-0	0-0	0	2	2	0	1	0	0	0	5	1
20	EATON, MADELYN	G	2	1-2	0-1	0-0	0	0	0	0	0	0	0	0	5	2
32	BLACK, REBECCA	F	0	0-0	0-0	0-0	0	0	0	0	0	0	0	0	0	0
40	FRANSEN, DARRI	F	0	0-2	0-0	0-0	2	1	3	0	2	0	0	0	7	-2
TEAM							2	0	2	0		0				
<b>TOTALS</b>			<b>20</b>	<b>8-19</b>	<b>2-4</b>	<b>2-2</b>	<b>5</b>	<b>7</b>	<b>12</b>	<b>0</b>	<b>7</b>	<b>3</b>	<b>0</b>	<b>2</b>	<b>50</b>	

*Shooting By Period*

Period	FG	FG%	3FG	3FG%	FT	FT%
3rd Qtr	10-20	50%	1-3	33%	2-2	100%
4th Qtr	9-15	60%	1-3	33%	0-3	00%
2nd Half	8-19	42%	2-4	50%	2-2	100%
2nd Half	19-35	54%	2-6	33%	2-5	40%
Game	35-69	50.7%	6-14	42.9%	5-8	62.5%

*Deadball Rebounds: 2,0*

**Portland St. 17**

No.	Player	S	Pts	FG	3FG	FT	OR	DR	TR	PF	A	TO	Blk	Stl	Min	+/-
03	JIMENEZ, KYLIE	G	2	1-5	0-2	0-0	0	0	0	0	1	0	0	0	10	-3
11	STOTLER, JORDAN	F	5	2-3	1-2	0-0	0	3	3	1	0	1	2	1	10	-3
12	STREUN, TATIANA	F	3	1-1	1-1	0-0	0	0	0	1	0	1	0	0	3	-5
35	FRAZIER, BELLE	G	5	2-4	1-2	0-0	0	1	1	0	1	1	0	1	9	-4
53	HANSEN, DESIRAE	G	0	0-1	0-0	0-0	2	1	3	0	2	0	0	0	8	3
01	DENSON, LABREA	G	0	0-0	0-0	0-0	0	0	0	0	0	0	0	0	0	0
10	CANZOBRE, MARINA	F	0	0-0	0-0	0-0	0	0	0	0	0	0	0	0	0	0
15	GARDNER, CASSIDY	G	2	1-2	0-1	0-0	0	0	0	0	2	1	0	0	10	-3
22	WALTON, RUCHAE	G	0	0-0	0-0	0-0	0	0	0	0	0	0	0	0	0	0
30	SCHULTZ, SYD	F	0	0-0	0-0	0-0	0	0	0	0	0	0	0	0	10	-3
TEAM							0	0	0	0		0				
<b>TOTALS</b>			<b>17</b>	<b>7-16</b>	<b>3-8</b>	<b>0-0</b>	<b>2</b>	<b>5</b>	<b>7</b>	<b>2</b>	<b>6</b>	<b>4</b>	<b>2</b>	<b>2</b>	<b>60</b>	

*Shooting By Period*

Period	FG	FG%	3FG	3FG%	FT	FT%
3rd Qtr	6-12	50%	1-5	20%	6-7	86%
4th Qtr	7-16	44%	1-4	25%	4-6	67%
2nd Half	7-16	44%	3-8	38%	0-0	0%
2nd Half	13-28	46%	2-9	22%	10-13	77%
Game	27-58	46.6%	7-22	31.8%	11-15	73.3%

*Deadball Rebounds: 0,1*

Game Notes:

Officials: Gator Parrish, Robert Scofield, Michol Murray  
 Attendance: 443

Start Time: 05:04 PM ET  
 End Time: 06:31 PM ET  
 Game Duration: 1:26  
 Conference Game;

Score	1st	2nd	3rd	4th	TOT
SUU	19	20	23	19	<b>81</b>
PSU	17	17	19	19	<b>72</b>

Points from (This Period)	SUU	PSU
In the Paint	10	6
Off Turns	4	2
2nd Chance	8	6
Fast Break	4	0
Bench	2	2

**Official Play-By-Play**  
**Southern Utah vs Portland St.**  
**Second Quarter**  
**February 08, 2020 at Viking Pavilion - Portland**



**Period 2**

**Starters:**

**Southern Utah:** 2 CARDENAS, REBECCA (G); 4 LARSEN, ASHLEY (F); 14 FANO, SHALYN (F); 23 HANSEN, HARLEY (G); 24 CHATMAN, JESSICA (F);  
**Portland St.:** 3 JIMENEZ, KYLIE (G); 11 STOTLER, JORDAN (F); 12 STREUN, TATIANA (F); 35 FRAZIER, BELLE (G); 53 HANSEN, DESIRAE (G);

Time	VISITORS: Southern Utah	Score	Margin	HOME: Portland St.
10:00				SUB OUT: CANZOBRE, MARINA
10:00				SUB OUT: HANSEN, DESIRAE
10:00				SUB IN: STOTLER, JORDAN
10:00				SUB IN: GARDNER, CASSIDY
09:53				MISSED 3PTR by STOTLER, JORDAN
09:50	REBOUND (DEF) by CHATMAN, JESSICA			
09:38	TURNOVER (TRAVEL) by HANSEN, HARLEY			
09:29				TURNOVER (BADPASS) by GARDNER, CASSIDY
09:29	STEAL by CHATMAN, JESSICA			
09:13	MISSED JUMPER by HANSEN, HARLEY			
09:13				BLOCK by STOTLER, JORDAN
09:08	REBOUND (OFF) by HANSEN, HARLEY			
09:06	MISSED 3PTR by EATON, MADELYN			
09:02				REBOUND (DEF) by STOTLER, JORDAN
09:01				MISSED LAYUP by JIMENEZ, KYLIE
08:57	REBOUND (DEF) by FRANSEN, DARRI			
08:54	MISSED JUMPER by CHATMAN, JESSICA			
08:49				REBOUND (DEF) by FRAZIER, BELLE
08:46				MISSED 3PTR by FRAZIER, BELLE
08:42	REBOUND (DEF) by CHATMAN, JESSICA			
08:39	GOOD! LAYUP by HANSEN, HARLEY [FB]	17-21	V 4	
08:39	ASSIST by CHATMAN, JESSICA			
08:38				TIMEOUT 30SEC
08:38				
08:38	SUB OUT: EATON, MADELYN			
08:38	SUB IN: ARMATO, CLAUDIA			
08:10				MISSED JUMPER by FRAZIER, BELLE
08:07	REBOUND (DEF) by ARMATO, CLAUDIA			
08:05	MISSED LAYUP by HANSEN, HARLEY			
08:05				BLOCK by STOTLER, JORDAN
08:05	REBOUND (OFF) by TEAM			
08:02	GOOD! 3PTR by CARDENAS, REBECCA	17-24	V 7	
08:02	ASSIST by ARMATO, CLAUDIA			
07:49				MISSED 3PTR by JIMENEZ, KYLIE
07:42				REBOUND (OFF) by HANSEN, DESIRAE
07:34				SUB OUT: STREUN, TATIANA
07:34				SUB IN: HANSEN, DESIRAE
07:30		20-24	V 4	GOOD! 3PTR by FRAZIER, BELLE
07:30				ASSIST by GARDNER, CASSIDY
07:17	GOOD! JUMPER by CARDENAS, REBECCA	20-26	V 6	
07:03		22-26	V 4	GOOD! JUMPER by JIMENEZ, KYLIE
06:39	MISSED JUMPER by CHATMAN, JESSICA			
06:32	REBOUND (OFF) by FRANSEN, DARRI			
06:30	MISSED LAYUP by FRANSEN, DARRI			
06:27				REBOUND (DEF) by HANSEN, DESIRAE
06:12		24-26	V 2	GOOD! JUMPER by STOTLER, JORDAN [PNT]
06:12				ASSIST by JIMENEZ, KYLIE
05:54	MISSED JUMPER by ARMATO, CLAUDIA			
05:52	REBOUND (OFF) by TEAM			
05:52				SUB OUT: HANSEN, DESIRAE
05:52				SUB IN: STREUN, TATIANA
05:52	SUB OUT: FRANSEN, DARRI			
05:52	SUB IN: LARSEN, ASHLEY			
05:50	GOOD! JUMPER by CHATMAN, JESSICA [PNT]	24-28	V 4	
05:50	ASSIST by CARDENAS, REBECCA			
05:36				TURNOVER (BADPASS) by FRAZIER, BELLE
05:22				FOUL (PERSONAL) by STOTLER, JORDAN
05:22	GOOD! FT by HANSEN, HARLEY	24-29	V 5	
05:22	GOOD! FT by HANSEN, HARLEY	24-30	V 6	
05:17				SUB OUT: FRAZIER, BELLE
05:17				SUB IN: HANSEN, DESIRAE
04:59		27-30	V 3	GOOD! 3PTR by STREUN, TATIANA
04:59				ASSIST by GARDNER, CASSIDY
04:44	MISSED 3PTR by CARDENAS, REBECCA			
04:40				REBOUND (DEF) by STOTLER, JORDAN
04:28				MISSED JUMPER by JIMENEZ, KYLIE
04:26	REBOUND (DEF) by ARMATO, CLAUDIA			
04:21	GOOD! JUMPER by LARSEN, ASHLEY [PNT]	27-32	V 5	
04:21	ASSIST by CARDENAS, REBECCA			
03:53				FOUL (OFF) by STREUN, TATIANA



Time	VISITORS: Southern Utah	Score	Margin	HOME: Portland St.
03:53				TURNOVER (OFFENSIVE) by STREUN, TATIANA
03:53				SUB OUT: STREUN, TATIANA
03:53				SUB IN: FRAZIER, BELLE
03:53	SUB OUT: ARMATO, CLAUDIA			
03:53	SUB IN: EATON, MADELYN			
03:37	TURNOVER (BADPASS) by CARDENAS, REBECCA			
03:37				STEAL by STOTLER, JORDAN
03:17				TURNOVER (LOSTBALL) by STOTLER, JORDAN
03:17	STEAL by LARSEN, ASHLEY			
03:10	GOOD! LAYUP by EATON, MADELYN [FB]	27-34	V 7	
03:10	ASSIST by CARDENAS, REBECCA			
02:54				MISSED 3PTR by GARDNER, CASSIDY
02:51				REBOUND (OFF) by HANSEN, DESIRAE
02:51	SUB OUT: LARSEN, ASHLEY			
02:51	SUB IN: FRANSEN, DARRI			
02:37		30-34	V 4	GOOD! 3PTR by STOTLER, JORDAN
02:37				ASSIST by FRAZIER, BELLE
02:16	MISSED LAYUP by FRANSEN, DARRI			
02:13				REBOUND (DEF) by STOTLER, JORDAN
01:56				MISSED 3PTR by JIMENEZ, KYLIE
01:52	REBOUND (DEF) by CHATMAN, JESSICA			
01:48	MISSED JUMPER by HANSEN, HARLEY			
01:44	REBOUND (OFF) by FRANSEN, DARRI			
01:42	GOOD! 3PTR by HANSEN, HARLEY	30-37	V 7	
01:42	ASSIST by FRANSEN, DARRI			
01:24				MISSED JUMPER by HANSEN, DESIRAE
01:21	REBOUND (DEF) by CHATMAN, JESSICA			
01:17	TURNOVER (BADPASS) by HANSEN, HARLEY			
01:17				STEAL by FRAZIER, BELLE
01:06		32-37	V 5	GOOD! LAYUP by GARDNER, CASSIDY [PNT]
01:06				ASSIST by HANSEN, DESIRAE
00:43	GOOD! LAYUP by CHATMAN, JESSICA	32-39	V 7	
00:43	ASSIST by FRANSEN, DARRI			
00:20		34-39	V 5	GOOD! JUMPER by FRAZIER, BELLE [PNT]
00:20				ASSIST by HANSEN, DESIRAE
00:03	MISSED JUMPER by CARDENAS, REBECCA			
00:00	REBOUND (OFF) by TEAM			

### Southern Utah 39, Portland St. 34

Points from (This Period)	SUU	PSU
In the Paint	10	6
Off Turns	4	2
2nd Chance	8	6
Fast Break	4	0
Bench	2	2

**Official Box Score**  
**Southern Utah vs Portland St.**  
**Second Half Statistics Only**  
**February 08, 2020 at Viking Pavilion - Portland**



**Southern Utah 42**

No.	Player	S	Pts	FG	3FG	FT	OR	DR	TR	PF	A	TO	Blk	Stl	Min	+/-
02	CARDENAS, REBECCA	G	11	5-10	1-2	0-0	4	1	5	1	4	1	0	3	19	3
04	LARSEN, ASHLEY	F	14	7-9	0-0	0-3	1	2	3	1	1	2	1	0	17	3
10	ARMATO, CLAUDIA	G	0	0-1	0-1	0-0	0	2	2	1	1	2	0	0	16	1
14	FANO, SHALYN	F	5	2-2	1-1	0-0	0	0	0	2	1	0	0	0	2	6
20	EATON, MADELYN	G	0	0-1	0-1	0-0	0	1	1	0	0	0	0	1	6	1
23	HANSEN, HARLEY	G	0	0-2	0-1	0-0	0	0	0	2	5	1	0	1	15	4
24	CHATMAN, JESSICA	F	4	2-3	0-0	0-0	1	2	3	0	1	1	0	1	12	4
32	BLACK, REBECCA	F	0	0-1	0-0	0-0	0	0	0	1	0	0	0	0	3	-1
40	FRANDSEN, DARRI	F	8	3-6	0-0	2-2	0	4	4	1	1	0	0	0	10	-1
	TEAM		0	0-0	0-0	0-0	2	0	2	0	0	0	0	0	0	0
<b>TOTALS</b>			<b>42</b>	<b>19-35</b>	<b>2-6</b>	<b>2-5</b>	<b>8</b>	<b>12</b>	<b>20</b>	<b>9</b>	<b>14</b>	<b>7</b>	<b>1</b>	<b>6</b>	<b>99</b>	

*Shooting By Period*

Period	FG	FG%	3FG	3FG%	FT	FT%
3rd Qtr	10-20	50%	1-3	33%	2-2	100%
4th Qtr	9-15	60%	1-3	33%	0-3	00%
2nd Half	19-35	54%	2-6	33%	2-5	40%
Game	35-69	50.7%	6-14	42.9%	5-8	62.5%

*Deadball Rebounds: 2,0*  
*Last FG Half: SUU 4th-00:31*

**Portland St. 38**

No.	Player	S	Pts	FG	3FG	FT	OR	DR	TR	PF	A	TO	Blk	Stl	Min	+/-
01	DENSON, LABREA	G	0	0-1	0-0	0-0	0	0	0	0	0	1	0	0	3	3
03	JIMENEZ, KYLIE	G	14	4-8	2-4	4-5	0	1	1	0	0	2	0	5	20	-4
10	CANZOBRE, MARINA	F	0	0-0	0-0	0-0	0	0	0	0	0	0	0	0	6	5
11	STOTLER, JORDAN	F	8	3-4	0-0	2-2	4	4	8	3	1	1	2	0	14	-9
12	STREUN, TATIANA	F	4	2-7	0-2	0-0	0	3	3	1	0	0	1	1	11	-4
15	GARDNER, CASSIDY	G	0	0-1	0-1	0-0	0	0	0	1	0	1	0	0	5	-3
22	WALTON, RUCHAE	G	2	0-0	0-0	2-2	0	0	0	0	0	0	0	0	1	0
30	SCHULTZ, SYD	F	4	2-2	0-0	0-0	1	1	2	0	0	0	0	0	11	-6
35	FRAZIER, BELLE	G	3	1-2	0-1	1-2	1	0	1	0	4	0	0	0	16	-3
53	HANSEN, DESIRAE	G	3	1-3	0-1	1-2	0	0	0	0	2	2	1	0	15	-5
	TEAM		0	0-0	0-0	0-0	0	0	0	0	0	0	0	0	0	0
<b>TOTALS</b>			<b>38</b>	<b>13-28</b>	<b>2-9</b>	<b>10-13</b>	<b>6</b>	<b>9</b>	<b>15</b>	<b>5</b>	<b>7</b>	<b>7</b>	<b>4</b>	<b>6</b>	<b>101</b>	

*Shooting By Period*

Period	FG	FG%	3FG	3FG%	FT	FT%
3rd Qtr	6-12	50%	1-5	20%	6-7	86%
4th Qtr	7-16	44%	1-4	25%	4-6	67%
2nd Half	13-28	46%	2-9	22%	10-13	77%
Game	27-58	46.6%	7-22	31.8%	11-15	73.3%

*Deadball Rebounds: 0,1*  
*Last FG Half: PSU 4th-00:59*

Game Notes:

Officials: Gator Parrish, Robert Scofield, Michol Murray  
 Attendance: 443

Start Time: 05:04 PM ET  
 End Time: 06:31 PM ET  
 Game Duration: 1:26  
 Conference Game;

Score	1st	2nd	3rd	4th	TOT
SUU	19	20	23	19	<b>81</b>
PSU	17	17	19	19	<b>72</b>

Points from (This Period)	SUU	PSU
In the Paint	24	20
Off Turns	10	8
2nd Chance	4	8
Fast Break	9	2
Bench	8	6

**Official Box Score**  
**Southern Utah vs Portland St.**  
**Third Quarter Statistics Only**  
**February 08, 2020 at Viking Pavilion - Portland**



**Southern Utah 42**

No.	Player	S	Pts	FG	3FG	FT	OR	DR	TR	PF	A	TO	Blk	Stl	Min	+/-
02	CARDENAS, REBECCA	G	8	4-8	0-1	0-0	3	1	4	0	2	0	0	3	10	4
04	LARSEN, ASHLEY	F	6	3-4	0-0	0-0	0	0	0	0	0	1	0	0	7	3
14	FANO, SHALYN	F	5	2-2	1-1	0-0	0	0	0	2	1	0	0	0	2	6
23	HANSEN, HARLEY	G	0	0-1	0-0	0-0	0	0	0	1	3	1	0	1	10	4
24	CHATMAN, JESSICA	F	2	1-2	0-0	0-0	1	1	2	0	1	1	0	0	7	4
10	ARMATO, CLAUDIA	G	0	0-1	0-1	0-0	0	0	0	1	0	0	0	0	6	1
20	EATON, MADELYN	G	0	0-0	0-0	0-0	0	0	0	0	0	0	0	0	0	0
32	BLACK, REBECCA	F	0	0-1	0-0	0-0	0	0	0	1	0	0	0	0	3	-1
40	FRANSEN, DARRI	F	2	0-1	0-0	2-2	0	3	3	1	1	0	0	0	5	-1
TEAM							1	0	1	0	0					
<b>TOTALS</b>			<b>23</b>	<b>10-20</b>	<b>1-3</b>	<b>2-2</b>	<b>5</b>	<b>5</b>	<b>10</b>	<b>6</b>	<b>8</b>	<b>3</b>	<b>0</b>	<b>4</b>	<b>50</b>	

*Shooting By Period*

Period	FG	FG%	3FG	3FG%	FT	FT%
2nd Half	0-0	0%	0-0	0%	0-0	0%
Game	35-69	50.7%	6-14	42.9%	5-8	62.5%

*Deadball Rebounds: 2,0*

**Portland St. 38**

No.	Player	S	Pts	FG	3FG	FT	OR	DR	TR	PF	A	TO	Blk	Stl	Min	+/-
03	JIMENEZ, KYLIE	G	9	2-3	1-2	4-5	0	1	1	0	0	2	0	2	10	-4
11	STOTLER, JORDAN	F	6	2-2	0-0	2-2	2	2	4	1	1	1	1	0	8	-7
12	STREUN, TATIANA	F	0	0-1	0-0	0-0	0	1	1	1	0	0	1	1	6	-3
35	FRAZIER, BELLE	G	2	1-2	0-1	0-0	0	0	0	0	2	0	0	0	9	0
53	HANSEN, DESIRAE	G	0	0-1	0-1	0-0	0	0	0	0	0	1	0	0	7	-7
01	DENSON, LABREA	G	0	0-1	0-0	0-0	0	0	0	0	0	1	0	0	3	3
10	CANZOBRE, MARINA	F	0	0-0	0-0	0-0	0	0	0	0	0	0	0	0	2	3
15	GARDNER, CASSIDY	G	0	0-1	0-1	0-0	0	0	0	0	0	0	0	0	1	-4
22	WALTON, RUCHAE	G	0	0-0	0-0	0-0	0	0	0	0	0	0	0	0	0	0
30	SCHULTZ, SYD	F	2	1-1	0-0	0-0	0	0	0	0	0	0	0	0	7	-7
TEAM							0	0	0	0	0					
<b>TOTALS</b>			<b>19</b>	<b>6-12</b>	<b>1-5</b>	<b>6-7</b>	<b>2</b>	<b>4</b>	<b>6</b>	<b>2</b>	<b>3</b>	<b>5</b>	<b>2</b>	<b>3</b>	<b>52</b>	

*Shooting By Period*

Period	FG	FG%	3FG	3FG%	FT	FT%
2nd Half	0-0	0%	0-0	0%	0-0	0%
Game	27-58	46.6%	7-22	31.8%	11-15	73.3%

*Deadball Rebounds: 0,1*

*Game Notes:*

Officials: Gator Parrish, Robert Scofield, Michol Murray  
 Attendance: 443

Start Time: 05:04 PM ET  
 End Time: 06:31 PM ET  
 Game Duration: 1:26  
 Conference Game;

Score	1st	2nd	3rd	4th	TOT
SUU	19	20	23	19	<b>81</b>
PSU	17	17	19	19	<b>72</b>

Points from (This Period)	SUU	PSU
In the Paint	12	10
Off Turns	8	4
2nd Chance	2	2
Fast Break	7	0
Bench	2	2

**Official Play-By-Play**  
**Southern Utah vs Portland St.**  
**Third Quarter**  
**February 08, 2020 at Viking Pavilion - Portland**



**Period 3**

**Starters:**

**Southern Utah:** 2 CARDENAS, REBECCA (G); 4 LARSEN, ASHLEY (F); 14 FANO, SHALYN (F); 23 HANSEN, HARLEY (G); 24 CHATMAN, JESSICA (F);  
**Portland St.:** 3 JIMENEZ, KYLIE (G); 11 STOTLER, JORDAN (F); 12 STREUN, TATIANA (F); 35 FRAZIER, BELLE (G); 53 HANSEN, DESIRAE (G);

Time	VISITORS: Southern Utah	Score	Margin	HOME: Portland St.
10:00				SUB OUT: GARDNER, CASSIDY
10:00				SUB IN: STREUN, TATIANA
10:00	SUB OUT: EATON, MADELYN			
10:00	SUB OUT: FRANSEN, DARRI			
10:00	SUB IN: LARSEN, ASHLEY			
10:00	SUB IN: FANO, SHALYN			
09:48	GOOD! JUMPER by CARDENAS, REBECCA	34-41	V 7	
09:48	ASSIST by FANO, SHALYN			
09:34				TURNOVER (BADPASS) by JIMENEZ, KYLIE
09:34	STEAL by HANSEN, HARLEY			
09:19	GOOD! JUMPER by LARSEN, ASHLEY	34-43	V 9	
09:19	ASSIST by CHATMAN, JESSICA			
09:01				MISSED 3PTR by HANSEN, DESIRAE
08:58	REBOUND (DEF) by CARDENAS, REBECCA			
08:51	GOOD! JUMPER by FANO, SHALYN [PNT]	34-45	V 11	
08:51	ASSIST by HANSEN, HARLEY			
08:50				TIMEOUT 30SEC
08:41		36-45	V 9	GOOD! JUMPER by JIMENEZ, KYLIE [PNT]
08:41	FOUL (PERSONAL) by FANO, SHALYN			
08:41		37-45	V 8	GOOD! FT by JIMENEZ, KYLIE
08:23	MISSED JUMPER by HANSEN, HARLEY			
08:20				REBOUND (DEF) by STREUN, TATIANA
08:01				MISSED JUMPER by STREUN, TATIANA
07:58	REBOUND (DEF) by CHATMAN, JESSICA			
07:55	GOOD! 3PTR by FANO, SHALYN [FB]	37-48	V 11	
07:55	ASSIST by HANSEN, HARLEY			
07:43	FOUL (PERSONAL) by FANO, SHALYN			
07:43				SUB OUT: STREUN, TATIANA
07:43				SUB IN: SCHULTZ, SYD
07:43	SUB OUT: FANO, SHALYN			
07:43	SUB IN: BLACK, REBECCA			
07:43		38-48	V 10	GOOD! FT by STOTLER, JORDAN
07:43		39-48	V 9	GOOD! FT by STOTLER, JORDAN
07:17	MISSED JUMPER by CARDENAS, REBECCA			
07:14				REBOUND (DEF) by STOTLER, JORDAN
07:06				TURNOVER (LOSTBALL) by JIMENEZ, KYLIE
07:06	STEAL by CARDENAS, REBECCA			
07:01	GOOD! LAYUP by CARDENAS, REBECCA [FB]	39-50	V 11	
06:42		42-50	V 8	GOOD! 3PTR by JIMENEZ, KYLIE
06:42				ASSIST by STOTLER, JORDAN
06:25	MISSED JUMPER by BLACK, REBECCA			
06:25				BLOCK by STOTLER, JORDAN
06:25	REBOUND (OFF) by TEAM			
06:25	SUB OUT: CHATMAN, JESSICA			
06:25	SUB IN: ARMATO, CLAUDIA			
06:09	MISSED JUMPER by CARDENAS, REBECCA			
06:05	REBOUND (OFF) by CARDENAS, REBECCA			
05:49	MISSED JUMPER by CARDENAS, REBECCA			
05:46	REBOUND (OFF) by CARDENAS, REBECCA			
05:45	GOOD! LAYUP by CARDENAS, REBECCA	42-52	V 10	
05:26		44-52	V 8	GOOD! JUMPER by SCHULTZ, SYD [PNT]
05:26				ASSIST by FRAZIER, BELLE
05:08	GOOD! JUMPER by LARSEN, ASHLEY	44-54	V 10	
05:08	ASSIST by CARDENAS, REBECCA			
04:44				MISSED 3PTR by JIMENEZ, KYLIE
04:42				REBOUND (OFF) by STOTLER, JORDAN
04:42	FOUL (PERSONAL) by BLACK, REBECCA			
04:42				
04:42	SUB OUT: LARSEN, ASHLEY			
04:42	SUB OUT: BLACK, REBECCA			
04:42	SUB IN: CHATMAN, JESSICA			
04:42	SUB IN: FRANSEN, DARRI			
04:31		46-54	V 8	GOOD! LAYUP by STOTLER, JORDAN [PNT]
04:16				SUB OUT: FRAZIER, BELLE
04:16				SUB IN: GARDNER, CASSIDY
04:15	GOOD! LAYUP by CHATMAN, JESSICA	46-56	V 10	
04:15	ASSIST by CARDENAS, REBECCA			
03:50				TURNOVER (LOSTBALL) by HANSEN, DESIRAE
03:50	STEAL by CARDENAS, REBECCA			
03:43	GOOD! LAYUP by CARDENAS, REBECCA [FB]	46-58	V 12	

Time	VISITORS: Southern Utah	Score	Margin	HOME: Portland St.
03:43	ASSIST by HANSEN, HARLEY			
03:22				MISSED 3PTR by GARDNER, CASSIDY
03:21				REBOUND (OFF) by STOTLER, JORDAN
03:21				TURNOVER (OTHER) by STOTLER, JORDAN
03:21				SUB OUT: GARDNER, CASSIDY
03:21				SUB OUT: SCHULTZ, SYD
03:21				SUB OUT: HANSEN, DESIRAE
03:21				SUB IN: DENSON, LABREA
03:21				SUB IN: STREUN, TATIANA
03:21				SUB IN: FRAZIER, BELLE
03:02				FOUL (PERSONAL) by STOTLER, JORDAN
03:02	GOOD! FT by FRANSEN, DARRI	46-59	V 13	
03:02	GOOD! FT by FRANSEN, DARRI	46-60	V 14	
02:53				TURNOVER (LOSTBALL) by DENSON, LABREA
02:53	STEAL by CARDENAS, REBECCA			
02:46	TURNOVER (BADPASS) by CHATMAN, JESSICA			
02:46				STEAL by JIMENEZ, KYLIE
02:46	FOUL (PERSONAL) by HANSEN, HARLEY			
02:36		48-60	V 12	GOOD! LAYUP by STOTLER, JORDAN [PNT]
02:36				ASSIST by FRAZIER, BELLE
02:26	MISSED JUMPER by FRANSEN, DARRI			
02:24				REBOUND (DEF) by STOTLER, JORDAN
02:16	FOUL (PERSONAL) by FRANSEN, DARRI			
02:16				SUB OUT: STOTLER, JORDAN
02:16				SUB IN: CANZOBRE, MARINA
02:16		49-60	V 11	GOOD! FT by JIMENEZ, KYLIE
02:15				MISSED FT by JIMENEZ, KYLIE
02:14	REBOUND (DEF) by FRANSEN, DARRI			
01:56	MISSED JUMPER by CHATMAN, JESSICA			
01:56				BLOCK by STREUN, TATIANA
01:51	REBOUND (OFF) by CHATMAN, JESSICA			
01:48	MISSED 3PTR by ARMATO, CLAUDIA			
01:47	REBOUND (OFF) by CARDENAS, REBECCA			
01:47				FOUL (PERSONAL) by STREUN, TATIANA
01:47	SUB OUT: CHATMAN, JESSICA			
01:47	SUB IN: LARSEN, ASHLEY			
01:43	TURNOVER (LOSTBALL) by LARSEN, ASHLEY			
01:43				STEAL by STREUN, TATIANA
01:32				MISSED 3PTR by FRAZIER, BELLE
01:29	REBOUND (DEF) by FRANSEN, DARRI			
01:18	TURNOVER (LOSTBALL) by HANSEN, HARLEY			
01:18				STEAL by JIMENEZ, KYLIE
01:11	FOUL (PERSONAL) by ARMATO, CLAUDIA			
01:11		50-60	V 10	GOOD! FT by JIMENEZ, KYLIE
01:11		51-60	V 9	GOOD! FT by JIMENEZ, KYLIE
00:54	MISSED JUMPER by LARSEN, ASHLEY			
00:49				REBOUND (DEF) by JIMENEZ, KYLIE
00:37		53-60	V 7	GOOD! JUMPER by FRAZIER, BELLE [PNT]
00:12	GOOD! LAYUP by LARSEN, ASHLEY [PNT]	53-62	V 9	
00:12	ASSIST by FRANSEN, DARRI			
00:03				MISSED JUMPER by DENSON, LABREA
00:00	MISSED 3PTR by CARDENAS, REBECCA			
00:00				REBOUND (DEF) by TEAM
00:00	REBOUND (DEF) by FRANSEN, DARRI			

### Southern Utah 62, Portland St. 53

Points from (This Period)	SUU	PSU
In the Paint	12	10
Off Turns	8	4
2nd Chance	2	2
Fast Break	7	0
Bench	2	2

**Official Box Score**  
**Southern Utah vs Portland St.**  
**Fourth Quarter Statistics Only**  
**February 08, 2020 at Viking Pavilion - Portland**



**Southern Utah 19**

No.	Player	S	Pts	FG	3FG	FT	OR	DR	TR	PF	A	TO	Blk	Stl	Min	+/-
02	CARDENAS, REBECCA	G	3	1-2	1-1	0-0	1	0	1	1	2	1	0	0	9	-1
04	LARSEN, ASHLEY	F	8	4-5	0-0	0-3	1	2	3	1	1	1	1	0	10	0
14	FANO, SHALYN	F	0	0-0	0-0	0-0	0	0	0	0	0	0	0	0	0	0
23	HANSEN, HARLEY	G	0	0-1	0-1	0-0	0	0	0	1	2	0	0	0	5	0
24	CHATMAN, JESSICA	F	2	1-1	0-0	0-0	0	1	1	0	0	0	0	1	5	0
10	ARMATO, CLAUDIA	G	0	0-0	0-0	0-0	0	2	2	0	1	2	0	0	10	0
20	EATON, MADELYN	G	0	0-1	0-1	0-0	0	1	1	0	0	0	0	1	6	1
32	BLACK, REBECCA	F	0	0-0	0-0	0-0	0	0	0	0	0	0	0	0	0	0
40	FRANSEN, DARRI	F	6	3-5	0-0	0-0	0	1	1	0	0	0	0	0	5	0
	TEAM						1	0	1	0		0				
<b>TOTALS</b>			<b>19</b>	<b>9-15</b>	<b>1-3</b>	<b>0-3</b>	<b>3</b>	<b>7</b>	<b>10</b>	<b>3</b>	<b>6</b>	<b>4</b>	<b>1</b>	<b>2</b>	<b>49</b>	

*Shooting By Period*

Period	FG	FG%	3FG	3FG%	FT	FT%
Game	35-69	50.7%	6-14	42.9%	5-8	62.5%

*Deadball Rebounds: 2,0*

**Portland St. 19**

No.	Player	S	Pts	FG	3FG	FT	OR	DR	TR	PF	A	TO	Blk	Stl	Min	+/-
03	JIMENEZ, KYLIE	G	5	2-5	1-2	0-0	0	0	0	0	0	0	0	3	10	0
11	STOTLER, JORDAN	F	2	1-2	0-0	0-0	2	2	4	2	0	0	1	0	6	-2
12	STREUN, TATIANA	F	4	2-6	0-2	0-0	0	2	2	0	0	0	0	0	5	-1
35	FRAZIER, BELLE	G	1	0-0	0-0	1-2	1	0	1	0	2	0	0	0	7	-3
53	HANSEN, DESIRAE	G	3	1-2	0-0	1-2	0	0	0	0	2	1	1	0	8	2
01	DENSON, LABREA	G	0	0-0	0-0	0-0	0	0	0	0	0	0	0	0	0	0
10	CANZOBRE, MARINA	F	0	0-0	0-0	0-0	0	0	0	0	0	0	0	0	4	2
15	GARDNER, CASSIDY	G	0	0-0	0-0	0-0	0	0	0	1	0	1	0	0	4	1
22	WALTON, RUCHAE	G	2	0-0	0-0	2-2	0	0	0	0	0	0	0	0	1	0
30	SCHULTZ, SYD	F	2	1-1	0-0	0-0	1	1	2	0	0	0	0	0	4	1
	TEAM						0	0	0	0		0				
<b>TOTALS</b>			<b>19</b>	<b>7-16</b>	<b>1-4</b>	<b>4-6</b>	<b>4</b>	<b>5</b>	<b>9</b>	<b>3</b>	<b>4</b>	<b>2</b>	<b>2</b>	<b>3</b>	<b>49</b>	

*Shooting By Period*

Period	FG	FG%	3FG	3FG%	FT	FT%
Game	27-58	46.6%	7-22	31.8%	11-15	73.3%

*Deadball Rebounds: 0,1*

*Game Notes:*

Officials: Gator Parrish, Robert Scofield, Michol Murray  
 Attendance: 443

Start Time: 05:04 PM ET  
 End Time: 06:31 PM ET  
 Game Duration: 1:26  
 Conference Game;

Score	1st	2nd	3rd	4th	TOT
SUU	19	20	23	19	<b>81</b>
PSU	17	17	19	19	<b>72</b>

Points from (This Period)	SUU	PSU
In the Paint	12	10
Off Turns	2	4
2nd Chance	2	6
Fast Break	2	2
Bench	6	4

**Official Play-By-Play**  
**Southern Utah vs Portland St.**  
**Fourth Quarter**  
**February 08, 2020 at Viking Pavilion - Portland**



**Period 4**

**Starters:**

**Southern Utah:** 2 CARDENAS, REBECCA (G); 4 LARSEN, ASHLEY (F); 14 FANO, SHALYN (F); 23 HANSEN, HARLEY (G); 24 CHATMAN, JESSICA (F);  
**Portland St.:** 3 JIMENEZ, KYLIE (G); 11 STOTLER, JORDAN (F); 12 STREUN, TATIANA (F); 35 FRAZIER, BELLE (G); 53 HANSEN, DESIRAE (G);

Time	VISITORS: Southern Utah	Score	Margin	HOME: Portland St.
10:00				SUB OUT: DENSON, LABREA
10:00				SUB OUT: CANZOBRE, MARINA
10:00				SUB IN: STOTLER, JORDAN
10:00				SUB IN: HANSEN, DESIRAE
10:00	SUB OUT: HANSEN, HARLEY			
10:00	SUB IN: EATON, MADELYN			
09:50	MISSED JUMPER by FRANSEN, DARRI			
09:50				BLOCK by STOTLER, JORDAN
09:45				REBOUND (DEF) by STREUN, TATIANA
09:31		55-62	V 7	GOOD! JUMPER by STREUN, TATIANA
09:31				ASSIST by HANSEN, DESIRAE
09:06	GOOD! JUMPER by FRANSEN, DARRI	55-64	V 9	
09:06	ASSIST by CARDENAS, REBECCA			
08:50				MISSED 3PTR by STREUN, TATIANA
08:46	REBOUND (DEF) by ARMATO, CLAUDIA			
08:44	TURNOVER (BADPASS) by ARMATO, CLAUDIA			
08:44				STEAL by JIMENEZ, KYLIE
08:25				TURNOVER (LOSTBALL) by HANSEN, DESIRAE
08:25	STEAL by EATON, MADELYN			
08:02	MISSED 3PTR by EATON, MADELYN			
07:57				REBOUND (DEF) by STOTLER, JORDAN
07:46				MISSED JUMPER by STREUN, TATIANA
07:43				REBOUND (OFF) by STOTLER, JORDAN
07:41				MISSED JUMPER by STOTLER, JORDAN
07:38				REBOUND (OFF) by STOTLER, JORDAN
07:37		57-64	V 7	GOOD! LAYUP by STOTLER, JORDAN
07:31	GOOD! JUMPER by FRANSEN, DARRI	57-66	V 9	
07:31	ASSIST by CARDENAS, REBECCA			
07:14				MISSED JUMPER by STREUN, TATIANA
07:10	REBOUND (DEF) by FRANSEN, DARRI			
07:02	GOOD! LAYUP by FRANSEN, DARRI [PNT]	57-68	V 11	
07:02	ASSIST by LARSEN, ASHLEY			
06:44		59-68	V 9	GOOD! LAYUP by HANSEN, DESIRAE
06:44				ASSIST by FRAZIER, BELLE
06:24	GOOD! JUMPER by LARSEN, ASHLEY [PNT]	59-70	V 11	
06:24	ASSIST by ARMATO, CLAUDIA			
06:11				MISSED JUMPER by HANSEN, DESIRAE
06:06				REBOUND (OFF) by FRAZIER, BELLE
06:05		61-70	V 9	GOOD! LAYUP by STREUN, TATIANA
06:05				ASSIST by FRAZIER, BELLE
05:54	MISSED LAYUP by FRANSEN, DARRI			
05:54				BLOCK by HANSEN, DESIRAE
05:49				REBOUND (DEF) by STREUN, TATIANA
05:41				MISSED 3PTR by STREUN, TATIANA
05:37	REBOUND (DEF) by EATON, MADELYN			
05:24				FOUL (PERSONAL) by STOTLER, JORDAN
05:24				SUB OUT: STREUN, TATIANA
05:24				SUB OUT: HANSEN, DESIRAE
05:24				SUB IN: GARDNER, CASSIDY
05:24				SUB IN: SCHULTZ, SYD
05:24	SUB OUT: CARDENAS, REBECCA			
05:24	SUB OUT: FRANSEN, DARRI			
05:24	SUB IN: HANSEN, HARLEY			
05:24	SUB IN: CHATMAN, JESSICA			
05:24	MISSED FT by LARSEN, ASHLEY			
05:24	REBOUND (OFF) by TEAM			
05:24	MISSED FT by LARSEN, ASHLEY			
05:23				REBOUND (DEF) by STOTLER, JORDAN
05:12	FOUL (PERSONAL) by HANSEN, HARLEY			
05:12		62-70	V 8	GOOD! FT by FRAZIER, BELLE
05:12				MISSED FT by FRAZIER, BELLE
05:09	REBOUND (DEF) by LARSEN, ASHLEY			
04:53	GOOD! JUMPER by LARSEN, ASHLEY [PNT]	62-72	V 10	
04:53	ASSIST by HANSEN, HARLEY			
04:32				MISSED JUMPER by JIMENEZ, KYLIE
04:32	BLOCK by LARSEN, ASHLEY			
04:28	REBOUND (DEF) by ARMATO, CLAUDIA			
04:28	TURNOVER (BADPASS) by ARMATO, CLAUDIA			
04:28				
04:28				SUB OUT: STOTLER, JORDAN

Time	VISITORS: Southern Utah	Score	Margin	HOME: Portland St.
04:28				SUB IN: CANZOBRE, MARINA
04:28	SUB OUT: EATON, MADELYN			
04:28	SUB IN: CARDENAS, REBECCA			
04:13				MISSED 3PTR by JIMENEZ, KYLIE
04:09				REBOUND (OFF) by SCHULTZ, SYD
04:08		64-72	V 8	GOOD! LAYUP by SCHULTZ, SYD
03:52	MISSED 3PTR by HANSEN, HARLEY			
03:49				REBOUND (DEF) by SCHULTZ, SYD
03:37				MISSED JUMPER by JIMENEZ, KYLIE
03:33	REBOUND (DEF) by CHATMAN, JESSICA			
03:19	GOOD! 3PTR by CARDENAS, REBECCA	64-75	V 11	
03:19	ASSIST by HANSEN, HARLEY			
03:17				TIMEOUT 30SEC
03:17				SUB OUT: CANZOBRE, MARINA
03:17				SUB OUT: GARDNER, CASSIDY
03:17				SUB OUT: SCHULTZ, SYD
03:17				SUB IN: STOTLER, JORDAN
03:17				SUB IN: STREUN, TATIANA
03:17				SUB IN: HANSEN, DESIRAE
02:51	FOUL (PERSONAL) by CARDENAS, REBECCA			
02:51		65-75	V 10	GOOD! FT by HANSEN, DESIRAE
02:51				MISSED FT by HANSEN, DESIRAE
02:49	REBOUND (DEF) by LARSEN, ASHLEY			
02:32	GOOD! LAYUP by LARSEN, ASHLEY [PNT]	65-77	V 12	
02:32				FOUL (PERSONAL) by STOTLER, JORDAN
02:32	MISSED FT by LARSEN, ASHLEY			
02:31	REBOUND (OFF) by TEAM			
02:31				SUB OUT: STOTLER, JORDAN
02:31				SUB OUT: STREUN, TATIANA
02:31				SUB OUT: FRAZIER, BELLE
02:31				SUB IN: CANZOBRE, MARINA
02:31				SUB IN: GARDNER, CASSIDY
02:31				SUB IN: SCHULTZ, SYD
02:17	MISSED JUMPER by LARSEN, ASHLEY			
02:13	REBOUND (OFF) by CARDENAS, REBECCA			
02:00	TURNOVER (LOSTBALL) by CARDENAS, REBECCA			
02:00				STEAL by JIMENEZ, KYLIE
01:48				TURNOVER (BADPASS) by GARDNER, CASSIDY
01:48	STEAL by CHATMAN, JESSICA			
01:42	GOOD! LAYUP by CHATMAN, JESSICA [FB]	65-79	V 14	
01:25		68-79	V 11	GOOD! 3PTR by JIMENEZ, KYLIE
01:25				ASSIST by HANSEN, DESIRAE
01:04				FOUL (PERSONAL) by GARDNER, CASSIDY
01:02	TURNOVER (BADPASS) by LARSEN, ASHLEY			
01:02				STEAL by JIMENEZ, KYLIE
00:59		70-79	V 9	GOOD! LAYUP by JIMENEZ, KYLIE [FB]
00:51	TIMEOUT TEAM			
00:51				SUB OUT: SCHULTZ, SYD
00:51				SUB IN: WALTON, RUCHAE
00:31	MISSED LAYUP by CARDENAS, REBECCA			
00:31	REBOUND (OFF) by LARSEN, ASHLEY			
00:31	GOOD! LAYUP by LARSEN, ASHLEY	70-81	V 11	
00:10	FOUL (PERSONAL) by LARSEN, ASHLEY			
00:10		71-81	V 10	GOOD! FT by WALTON, RUCHAE
00:10		72-81	V 9	GOOD! FT by WALTON, RUCHAE
00:10				SUB OUT: JIMENEZ, KYLIE
00:10				SUB IN: DENSON, LABREA
00:10	TIMEOUT 30SEC			

### Southern Utah 81, Portland St. 72

Points from (This Period)	SUU	PSU
In the Paint	12	10
Off Turns	2	4
2nd Chance	2	6
Fast Break	2	2
Bench	6	4



**Official Scoring/Possession Reference Chart  
Southern Utah vs Portland St.  
Period 1  
February 08, 2020 at Viking Pavilion - Portland**



**Period 1**

**Starters:**

**Southern Utah:** 2 CARDENAS, REBECCA (G); 4 LARSEN, ASHLEY (F); 14 FANO, SHALYN (F); 23 HANSEN, HARLEY (G); 24 CHATMAN, JESSICA (F);

**Portland St.:** 3 JIMENEZ, KYLIE (G); 11 STOTLER, JORDAN (F); 12 STREUN, TATIANA (F); 35 FRAZIER, BELLE (G); 53 HANSEN, DESIRAE (G);

Time	VISITORS: Southern Utah	Score	Margin	HOME: Portland St.
09:48	GOOD! JUMPER by LARSEN, ASHLEY	0-2	V 2	
08:10		2-2	T	GOOD! LAYUP by STOTLER, JORDAN [PNT]
07:20		5-2	H 3	GOOD! 3PTR by HANSEN, DESIRAE
06:59	GOOD! JUMPER by LARSEN, ASHLEY [PNT]	5-4	H 1	
06:30		7-4	H 3	GOOD! JUMPER by STOTLER, JORDAN [PNT]
05:58		9-4	H 5	GOOD! LAYUP by HANSEN, DESIRAE
05:50	GOOD! 3PTR by HANSEN, HARLEY	9-7	H 2	
05:26		10-7	H 3	GOOD! FT by STOTLER, JORDAN [FB]
04:40	GOOD! LAYUP by CHATMAN, JESSICA	10-9	H 1	
03:40		12-9	H 3	GOOD! LAYUP by FRAZIER, BELLE [FB]
03:33	GOOD! JUMPER by LARSEN, ASHLEY	12-11	H 1	
03:05	GOOD! 3PTR by CARDENAS, REBECCA	12-14	V 2	
01:56	GOOD! LAYUP by FRANSEN, DARRI	12-16	V 4	
01:56	GOOD! FT by FRANSEN, DARRI	12-17	V 5	
01:45		15-17	V 2	GOOD! 3PTR by STREUN, TATIANA
00:51		17-17	T	GOOD! JUMPER by HANSEN, DESIRAE
00:02	GOOD! JUMPER by FRANSEN, DARRI [PNT]	17-19	V 2	

**Southern Utah 19, Portland St. 17**

**Official Scoring/Possession Reference Chart**  
**Southern Utah vs Portland St.**  
**Period 2**  
**February 08, 2020 at Viking Pavilion - Portland**



**Period 2**

**Starters:**

**Southern Utah:** 2 CARDENAS, REBECCA (G); 4 LARSEN, ASHLEY (F); 14 FANO, SHALYN (F); 23 HANSEN, HARLEY (G); 24 CHATMAN, JESSICA (F);  
**Portland St.:** 3 JIMENEZ, KYLIE (G); 11 STOTLER, JORDAN (F); 12 STREUN, TATIANA (F); 35 FRAZIER, BELLE (G); 53 HANSEN, DESIRAE (G);

Time	VISITORS: Southern Utah	Score	Margin	HOME: Portland St.
08:39	GOOD! LAYUP by HANSEN, HARLEY [FB]	17-21	V 4	
08:02	GOOD! 3PTR by CARDENAS, REBECCA	17-24	V 7	
07:30		20-24	V 4	GOOD! 3PTR by FRAZIER, BELLE
07:17	GOOD! JUMPER by CARDENAS, REBECCA	20-26	V 6	
07:03		22-26	V 4	GOOD! JUMPER by JIMENEZ, KYLIE
06:12		24-26	V 2	GOOD! JUMPER by STOTLER, JORDAN [PNT]
05:50	GOOD! JUMPER by CHATMAN, JESSICA [PNT]	24-28	V 4	
05:22	GOOD! FT by HANSEN, HARLEY	24-29	V 5	
05:22	GOOD! FT by HANSEN, HARLEY	24-30	V 6	
04:59		27-30	V 3	GOOD! 3PTR by STREUN, TATIANA
04:21	GOOD! JUMPER by LARSEN, ASHLEY [PNT]	27-32	V 5	
03:10	GOOD! LAYUP by EATON, MADELYN [FB]	27-34	V 7	
02:37		30-34	V 4	GOOD! 3PTR by STOTLER, JORDAN
01:42	GOOD! 3PTR by HANSEN, HARLEY	30-37	V 7	
01:06		32-37	V 5	GOOD! LAYUP by GARDNER, CASSIDY [PNT]
00:43	GOOD! LAYUP by CHATMAN, JESSICA	32-39	V 7	
00:20		34-39	V 5	GOOD! JUMPER by FRAZIER, BELLE [PNT]

**Southern Utah 39, Portland St. 34**

**Official Scoring/Possession Reference Chart  
Southern Utah vs Portland St.  
Period 3  
February 08, 2020 at Viking Pavilion - Portland**



**Period 3**

**Starters:**

**Southern Utah:** 2 CARDENAS, REBECCA (G); 4 LARSEN, ASHLEY (F); 14 FANO, SHALYN (F); 23 HANSEN, HARLEY (G); 24 CHATMAN, JESSICA (F);

**Portland St.:** 3 JIMENEZ, KYLIE (G); 11 STOTLER, JORDAN (F); 12 STREUN, TATIANA (F); 35 FRAZIER, BELLE (G); 53 HANSEN, DESIRAE (G);

Time	VISITORS: Southern Utah	Score	Margin	HOME: Portland St.
09:48	GOOD! JUMPER by CARDENAS, REBECCA	34-41	V 7	
09:19	GOOD! JUMPER by LARSEN, ASHLEY	34-43	V 9	
08:51	GOOD! JUMPER by FANO, SHALYN [PNT]	34-45	V 11	
08:41		36-45	V 9	GOOD! JUMPER by JIMENEZ, KYLIE [PNT]
08:41		37-45	V 8	GOOD! FT by JIMENEZ, KYLIE
07:55	GOOD! 3PTR by FANO, SHALYN [FB]	37-48	V 11	
07:43		38-48	V 10	GOOD! FT by STOTLER, JORDAN
07:43		39-48	V 9	GOOD! FT by STOTLER, JORDAN
07:01	GOOD! LAYUP by CARDENAS, REBECCA [FB]	39-50	V 11	
06:42		42-50	V 8	GOOD! 3PTR by JIMENEZ, KYLIE
05:45	GOOD! LAYUP by CARDENAS, REBECCA	42-52	V 10	
05:26		44-52	V 8	GOOD! JUMPER by SCHULTZ, SYD [PNT]
05:08	GOOD! JUMPER by LARSEN, ASHLEY	44-54	V 10	
04:31		46-54	V 8	GOOD! LAYUP by STOTLER, JORDAN [PNT]
04:15	GOOD! LAYUP by CHATMAN, JESSICA	46-56	V 10	
03:43	GOOD! LAYUP by CARDENAS, REBECCA [FB]	46-58	V 12	
03:02	GOOD! FT by FRANSEN, DARRI	46-59	V 13	
03:02	GOOD! FT by FRANSEN, DARRI	46-60	V 14	
02:36		48-60	V 12	GOOD! LAYUP by STOTLER, JORDAN [PNT]
02:16		49-60	V 11	GOOD! FT by JIMENEZ, KYLIE
01:11		50-60	V 10	GOOD! FT by JIMENEZ, KYLIE
01:11		51-60	V 9	GOOD! FT by JIMENEZ, KYLIE
00:37		53-60	V 7	GOOD! JUMPER by FRAZIER, BELLE [PNT]
00:12	GOOD! LAYUP by LARSEN, ASHLEY [PNT]	53-62	V 9	

**Southern Utah 62, Portland St. 53**

**Official Scoring/Possession Reference Chart**  
**Southern Utah vs Portland St.**  
**Period 4**  
**February 08, 2020 at Viking Pavilion - Portland**



**Period 4**

**Starters:**

**Southern Utah:** 2 CARDENAS, REBECCA (G); 4 LARSEN, ASHLEY (F); 14 FANO, SHALYN (F); 23 HANSEN, HARLEY (G); 24 CHATMAN, JESSICA (F);  
**Portland St.:** 3 JIMENEZ, KYLIE (G); 11 STOTLER, JORDAN (F); 12 STREUN, TATIANA (F); 35 FRAZIER, BELLE (G); 53 HANSEN, DESIRAE (G);

Time	VISITORS: Southern Utah	Score	Margin	HOME: Portland St.
09:31		55-62	V 7	GOOD! JUMPER by STREUN, TATIANA
09:06	GOOD! JUMPER by FRANSEN, DARRI	55-64	V 9	
07:37		57-64	V 7	GOOD! LAYUP by STOTLER, JORDAN
07:31	GOOD! JUMPER by FRANSEN, DARRI	57-66	V 9	
07:02	GOOD! LAYUP by FRANSEN, DARRI [PNT]	57-68	V 11	
06:44		59-68	V 9	GOOD! LAYUP by HANSEN, DESIRAE
06:24	GOOD! JUMPER by LARSEN, ASHLEY [PNT]	59-70	V 11	
06:05		61-70	V 9	GOOD! LAYUP by STREUN, TATIANA
05:12		62-70	V 8	GOOD! FT by FRAZIER, BELLE
04:53	GOOD! JUMPER by LARSEN, ASHLEY [PNT]	62-72	V 10	
04:08		64-72	V 8	GOOD! LAYUP by SCHULTZ, SYD
03:19	GOOD! 3PTR by CARDENAS, REBECCA	64-75	V 11	
02:51		65-75	V 10	GOOD! FT by HANSEN, DESIRAE
02:32	GOOD! LAYUP by LARSEN, ASHLEY [PNT]	65-77	V 12	
01:42	GOOD! LAYUP by CHATMAN, JESSICA [FB]	65-79	V 14	
01:25		68-79	V 11	GOOD! 3PTR by JIMENEZ, KYLIE
00:59		70-79	V 9	GOOD! LAYUP by JIMENEZ, KYLIE [FB]
00:31	GOOD! LAYUP by LARSEN, ASHLEY	70-81	V 11	
00:10		71-81	V 10	GOOD! FT by WALTON, RUCHAE
00:10		72-81	V 9	GOOD! FT by WALTON, RUCHAE

**Southern Utah 81, Portland St. 72**

**Official Substitutions Log  
 Southern Utah vs Portland St.  
 Period 1  
 February 08, 2020 at Viking Pavilion - Portland**



<b>VISITORS: Southern Utah</b>	<b>Time</b>	<b>Score</b>	<b>HOME: Portland St.</b>
2 CARDENAS, REBECCA			3 JIMENEZ, KYLIE
4 LARSEN, ASHLEY			11 STOTLER, JORDAN
14 FANO, SHALYN			12 STREUN, TATIANA
23 HANSEN, HARLEY			35 FRAZIER, BELLE
24 CHATMAN, JESSICA			53 HANSEN, DESIRAE
SUB IN: 20 EATON, MADELYN	04:21	9-10	
	04:20	9-10	SUB IN: SCHULTZ, SYD
	02:53	14-12	SUB OUT: STREUN, TATIANA
SUB OUT: 24 CHATMAN, JESSICA	02:53		
	02:49	14-12	SUB OUT: STOTLER, JORDAN
	02:49		SUB OUT: SCHULTZ, SYD
	02:49		SUB IN: CANZOBRE, MARINA
	02:49		SUB IN: GARDNER, CASSIDY
SUB OUT: 4 LARSEN, ASHLEY	02:12	14-12	
SUB IN: 40 FRANSEN, DARRI	02:12		
	01:56	16-12	SUB OUT: GARDNER, CASSIDY
	01:56		SUB IN: STREUN, TATIANA
SUB OUT: 14 FANO, SHALYN	00:28	17-17	
SUB IN: 24 CHATMAN, JESSICA	00:28		

**Southern Utah 19, Portland St. 17**

**Official Substitutions Log**  
**Southern Utah vs Portland St.**  
**Period 2**  
**February 08, 2020 at Viking Pavilion - Portland**



VISITORS: Southern Utah	Time	Score	HOME: Portland St.
2 CARDENAS, REBECCA			3 JIMENEZ, KYLIE
4 LARSEN, ASHLEY			11 STOTLER, JORDAN
14 FANO, SHALYN			12 STREUN, TATIANA
23 HANSEN, HARLEY			35 FRAZIER, BELLE
24 CHATMAN, JESSICA			53 HANSEN, DESIRAE
	10:00	-	SUB OUT: CANZOBRE, MARINA
	10:00		SUB OUT: HANSEN, DESIRAE
	10:00		SUB IN: STOTLER, JORDAN
	10:00		SUB IN: GARDNER, CASSIDY
SUB OUT: 20 EATON, MADELYN	08:38	21-17	
SUB IN: 10 ARMATO, CLAUDIA	08:38		
	07:34	24-17	SUB OUT: STREUN, TATIANA
	07:34		SUB IN: HANSEN, DESIRAE
	05:52	26-24	SUB OUT: HANSEN, DESIRAE
	05:52		SUB IN: STREUN, TATIANA
SUB OUT: 40 FRANSEN, DARRI	05:52		
SUB IN: 4 LARSEN, ASHLEY	05:52		
	05:17	30-24	SUB OUT: FRAZIER, BELLE
	05:17		SUB IN: HANSEN, DESIRAE
	03:53	32-27	SUB OUT: STREUN, TATIANA
	03:53		SUB IN: FRAZIER, BELLE
SUB OUT: 10 ARMATO, CLAUDIA	03:53		
SUB IN: 20 EATON, MADELYN	03:53		
SUB OUT: 4 LARSEN, ASHLEY	02:51	34-27	
SUB IN: 40 FRANSEN, DARRI	02:51		

**Southern Utah 39, Portland St. 34**

**Official Substitutions Log**  
**Southern Utah vs Portland St.**  
**Period 3**  
**February 08, 2020 at Viking Pavilion - Portland**



VISITORS: Southern Utah	Time	Score	HOME: Portland St.
2 CARDENAS, REBECCA			3 JIMENEZ, KYLIE
4 LARSEN, ASHLEY			11 STOTLER, JORDAN
14 FANO, SHALYN			12 STREUN, TATIANA
23 HANSEN, HARLEY			35 FRAZIER, BELLE
24 CHATMAN, JESSICA			53 HANSEN, DESIRAE
	10:00	-	SUB OUT: GARDNER, CASSIDY
	10:00		SUB IN: STREUN, TATIANA
SUB OUT: 20 EATON, MADELYN	10:00		
SUB OUT: 40 FRANSEN, DARRI	10:00		
SUB IN: 4 LARSEN, ASHLEY	10:00		
SUB IN: 14 FANO, SHALYN	10:00		
	07:43	48-37	SUB OUT: STREUN, TATIANA
	07:43		SUB IN: SCHULTZ, SYD
SUB OUT: 14 FANO, SHALYN	07:43		
SUB IN: 32 BLACK, REBECCA	07:43		
SUB OUT: 24 CHATMAN, JESSICA	06:25	50-42	
SUB IN: 10 ARMATO, CLAUDIA	06:25		
SUB OUT: 4 LARSEN, ASHLEY	04:42	54-44	
SUB OUT: 32 BLACK, REBECCA	04:42		
SUB IN: 24 CHATMAN, JESSICA	04:42		
SUB IN: 40 FRANSEN, DARRI	04:42		
	04:16	54-46	SUB OUT: FRAZIER, BELLE
	04:16		SUB IN: GARDNER, CASSIDY
	03:21	58-46	SUB OUT: GARDNER, CASSIDY
	03:21		SUB OUT: SCHULTZ, SYD
	03:21		SUB OUT: HANSEN, DESIRAE
	03:21		SUB IN: DENSON, LABREA
	03:21		SUB IN: STREUN, TATIANA
	03:21		SUB IN: FRAZIER, BELLE
	02:16	60-48	SUB OUT: STOTLER, JORDAN
	02:16		SUB IN: CANZOBRE, MARINA
SUB OUT: 24 CHATMAN, JESSICA	01:47	60-49	
SUB IN: 4 LARSEN, ASHLEY	01:47		

**Southern Utah 62, Portland St. 53**

**Official Substitutions Log  
Southern Utah vs Portland St.  
Period 4  
February 08, 2020 at Viking Pavilion - Portland**



VISITORS: Southern Utah	Time	Score	HOME: Portland St.
2 CARDENAS, REBECCA			3 JIMENEZ, KYLIE
4 LARSEN, ASHLEY			11 STOTLER, JORDAN
14 FANO, SHALYN			12 STREUN, TATIANA
23 HANSEN, HARLEY			35 FRAZIER, BELLE
24 CHATMAN, JESSICA			53 HANSEN, DESIRAE
	10:00	-	SUB OUT: DENSON, LABREA
	10:00		SUB OUT: CANZOBRE, MARINA
	10:00		SUB IN: STOTLER, JORDAN
	10:00		SUB IN: HANSEN, DESIRAE
SUB OUT: 23 HANSEN, HARLEY	10:00		
SUB IN: 20 EATON, MADELYN	10:00		
	05:24	70-61	SUB OUT: STREUN, TATIANA
	05:24		SUB OUT: HANSEN, DESIRAE
	05:24		SUB IN: GARDNER, CASSIDY
	05:24		SUB IN: SCHULTZ, SYD
SUB OUT: 2 CARDENAS, REBECCA	05:24		
SUB OUT: 40 FRANSEN, DARRI	05:24		
SUB IN: 23 HANSEN, HARLEY	05:24		
SUB IN: 24 CHATMAN, JESSICA	05:24		
	04:28	72-62	SUB OUT: STOTLER, JORDAN
	04:28		SUB IN: CANZOBRE, MARINA
SUB OUT: 20 EATON, MADELYN	04:28		
SUB IN: 2 CARDENAS, REBECCA	04:28		
	03:17	75-64	SUB OUT: CANZOBRE, MARINA
	03:17		SUB OUT: GARDNER, CASSIDY
	03:17		SUB OUT: SCHULTZ, SYD
	03:17		SUB IN: STOTLER, JORDAN
	03:17		SUB IN: STREUN, TATIANA
	03:17		SUB IN: HANSEN, DESIRAE
	02:31	77-65	SUB OUT: STOTLER, JORDAN
	02:31		SUB OUT: STREUN, TATIANA
	02:31		SUB OUT: FRAZIER, BELLE
	02:31		SUB IN: CANZOBRE, MARINA
	02:31		SUB IN: GARDNER, CASSIDY
	02:31		SUB IN: SCHULTZ, SYD
	00:51	79-70	SUB OUT: SCHULTZ, SYD
	00:51		SUB IN: WALTON, RUCHAE
	00:10	81-72	SUB OUT: JIMENEZ, KYLIE
	00:10		SUB IN: DENSON, LABREA

**Southern Utah 81, Portland St. 72**



**Official Shot Chart**  
**Southern Utah vs Portland St.**  
**PERIOD 1 Shots**  
**February 08, 2020 at Viking Pavilion - Portland**



**Portland St.**

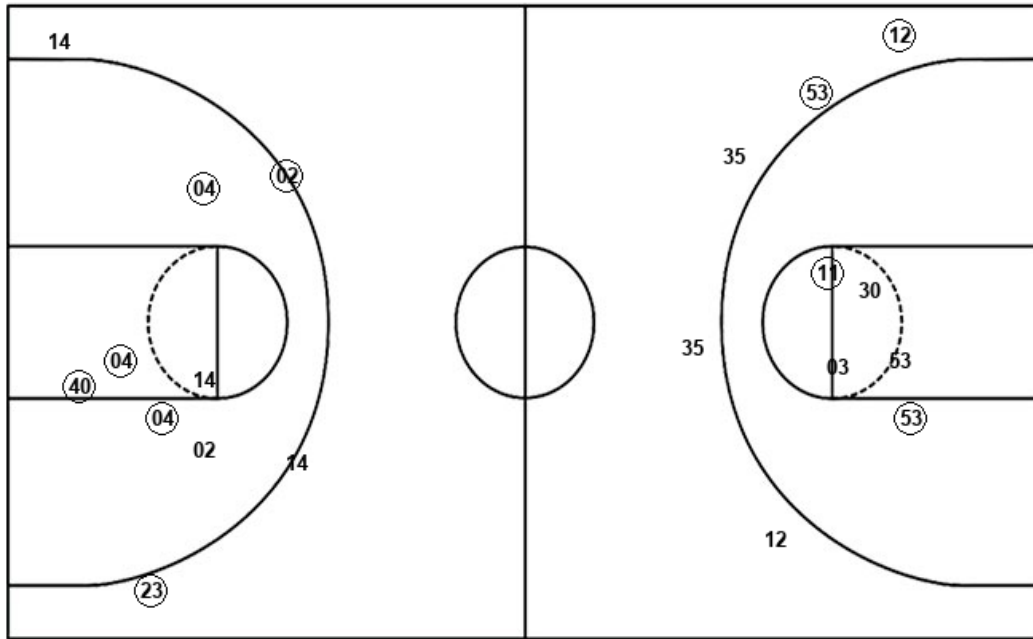
**Southern Utah**

Layups  
 (11) (53) (35) 10

Layups  
 04 23 (24) 23 (40)

Dunks

Dunks



PSU : Period 1	Made	Att	Pct
Layups	3	4	75.0
Dunks	0	0	0
2PT Field Goals	5	9	55.6
3PT Field Goals	2	5	40.0
<b>Total Field Goals</b>	<b>7</b>	<b>14</b>	<b>50.0</b>

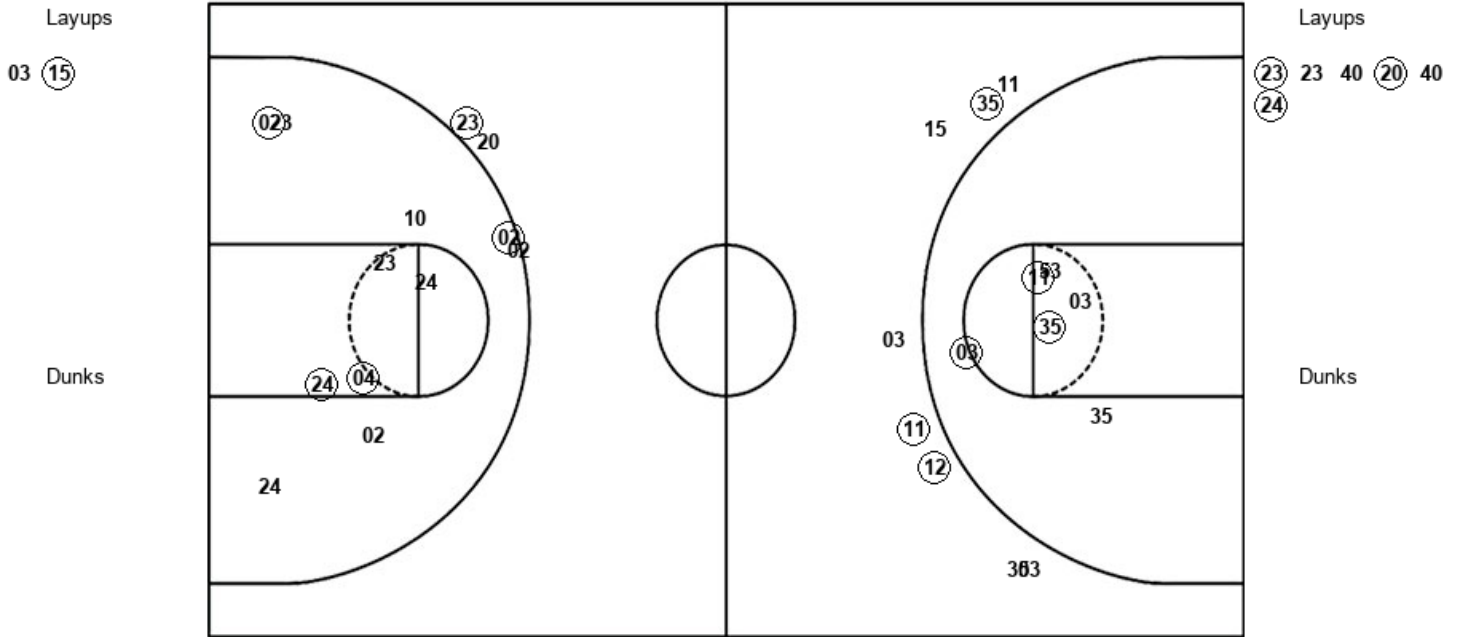
SUU : Period 1	Made	Att	Pct
Layups	2	5	40.0
Dunks	0	0	0
2PT Field Goals	6	11	54.5
3PT Field Goals	2	4	50.0
<b>Total Field Goals</b>	<b>8</b>	<b>15</b>	<b>53.3</b>

Official Shot Chart  
 Southern Utah vs Portland St.  
 PERIOD 2 Shots  
 February 08, 2020 at Viking Pavilion - Portland



Portland St.

Southern Utah



PSU : Period 2	Made	Att	Pct
Layups	1	2	50.0
Dunks	0	0	0
2PT Field Goals	4	8	50.0
3PT Field Goals	3	8	37.5
<b>Total Field Goals</b>	<b>7</b>	<b>16</b>	<b>43.8</b>

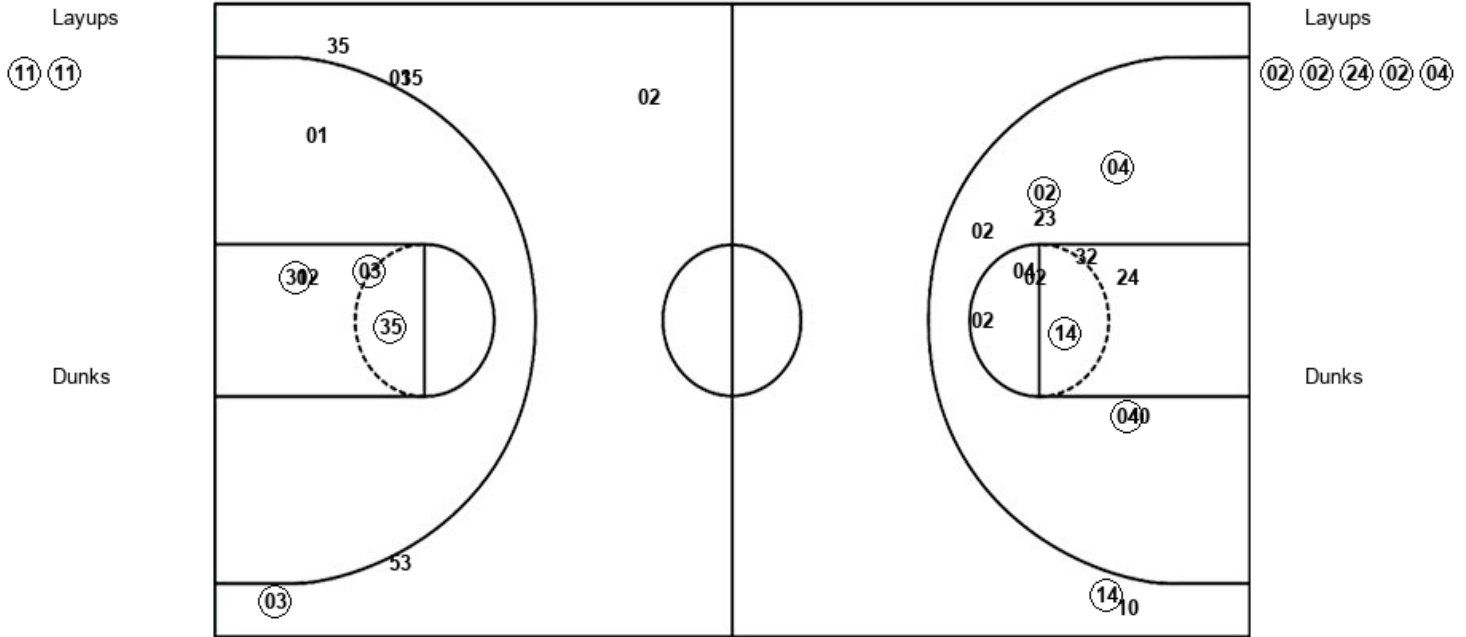
SUU : Period 2	Made	Att	Pct
Layups	3	6	50.0
Dunks	0	0	0
2PT Field Goals	6	15	40.0
3PT Field Goals	2	4	50.0
<b>Total Field Goals</b>	<b>8</b>	<b>19</b>	<b>42.1</b>

Official Shot Chart  
 Southern Utah vs Portland St.  
 PERIOD 3 Shots  
 February 08, 2020 at Viking Pavilion - Portland



Portland St.

Southern Utah



PSU : Period 3	Made	Att	Pct
Layups	2	2	100.0
Dunks	0	0	0
2PT Field Goals	5	7	71.4
3PT Field Goals	1	5	20.0
<b>Total Field Goals</b>	<b>6</b>	<b>12</b>	<b>50.0</b>

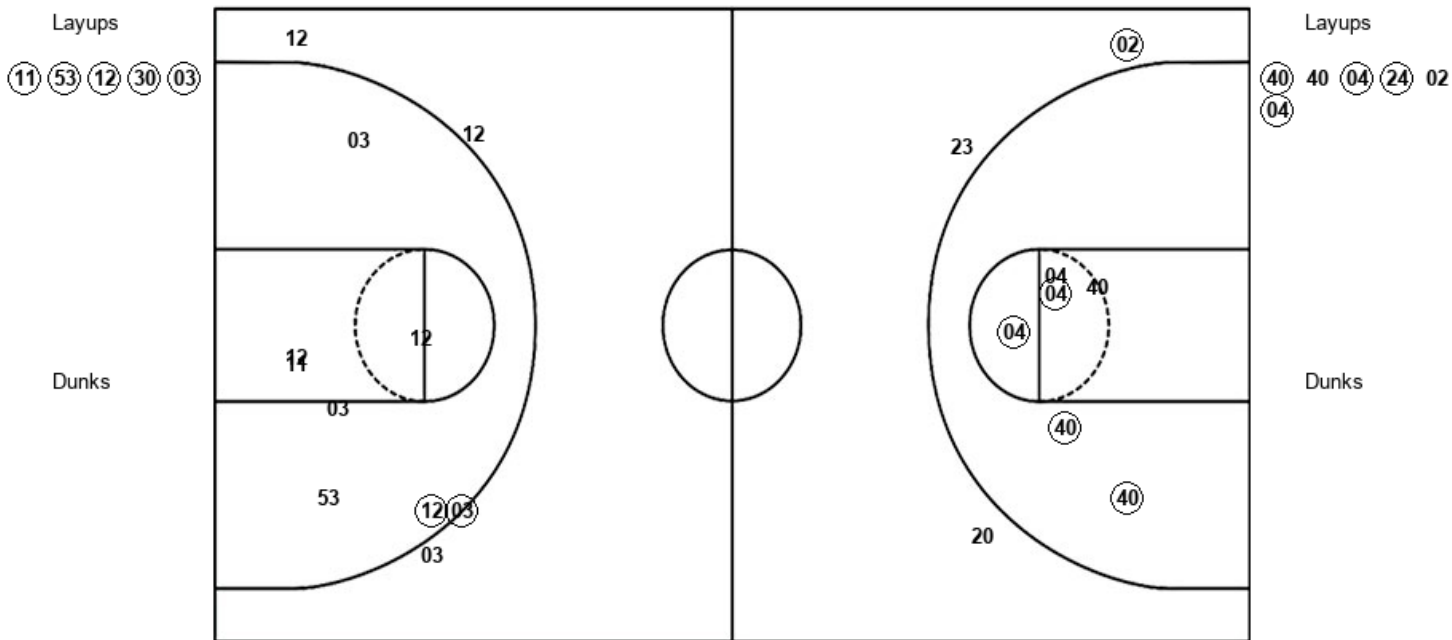
SUU : Period 3	Made	Att	Pct
Layups	5	5	100.0
Dunks	0	0	0
2PT Field Goals	9	17	52.9
3PT Field Goals	1	3	33.3
<b>Total Field Goals</b>	<b>10</b>	<b>20</b>	<b>50.0</b>

Official Shot Chart  
 Southern Utah vs Portland St.  
 PERIOD 4 Shots  
 February 08, 2020 at Viking Pavilion - Portland



Portland St.

Southern Utah



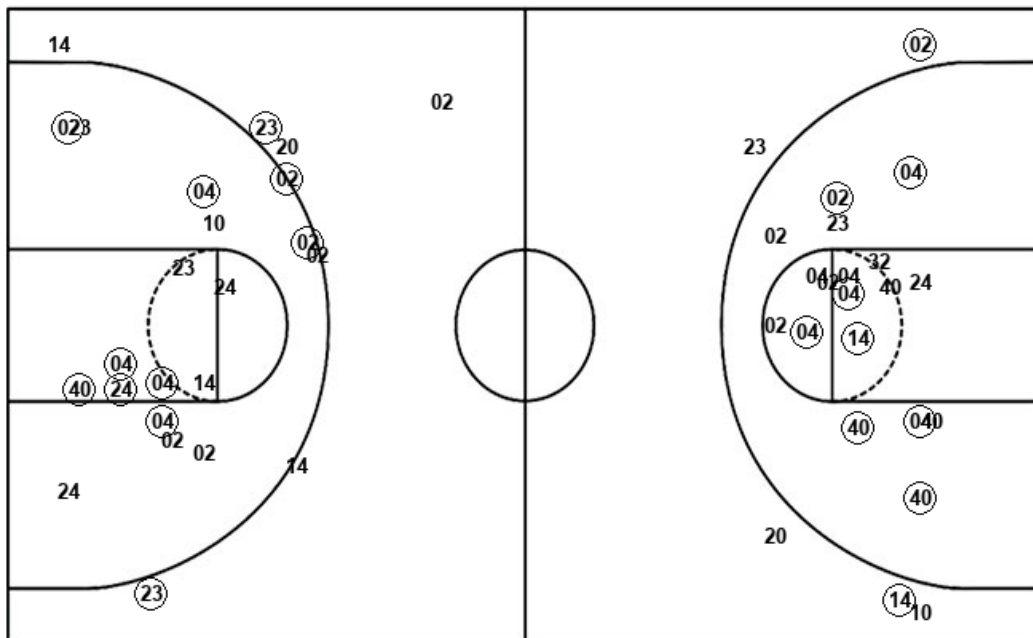
PSU : Period 4	Made	Att	Pct
Layups	5	5	100.0
Dunks	0	0	0
2PT Field Goals	6	12	50.0
3PT Field Goals	1	4	25.0
<b>Total Field Goals</b>	<b>7</b>	<b>16</b>	<b>43.8</b>

SUU : Period 4	Made	Att	Pct
Layups	4	6	66.7
Dunks	0	0	0
2PT Field Goals	8	12	66.7
3PT Field Goals	1	3	33.3
<b>Total Field Goals</b>	<b>9</b>	<b>15</b>	<b>60.0</b>

**Official Shot Chart**  
**Southern Utah vs Portland St.**  
**Southern Utah Team Shots**  
**February 08, 2020 at Viking Pavilion - Portland**



Layups



Layups

- 04 23 (24) 23 (40)
- (23) 23 40 (20) 40
- (24) (02) (02) (24) (02)
- (04) (40) 40 (04) (24)
- 02 (04)

Dunks

Dunks

SUU : Period 1	Made	Att	Pct
Layups	2	5	40.0
Dunks	0	0	0
2PT Field Goals	6	11	54.5
3PT Field Goals	2	4	50.0
<b>Total Field Goals</b>	<b>8</b>	<b>15</b>	<b>53.3</b>

SUU : Period 2	Made	Att	Pct
Layups	3	6	50.0
Dunks	0	0	0
2PT Field Goals	6	15	40.0
3PT Field Goals	2	4	50.0
<b>Total Field Goals</b>	<b>8</b>	<b>19</b>	<b>42.1</b>

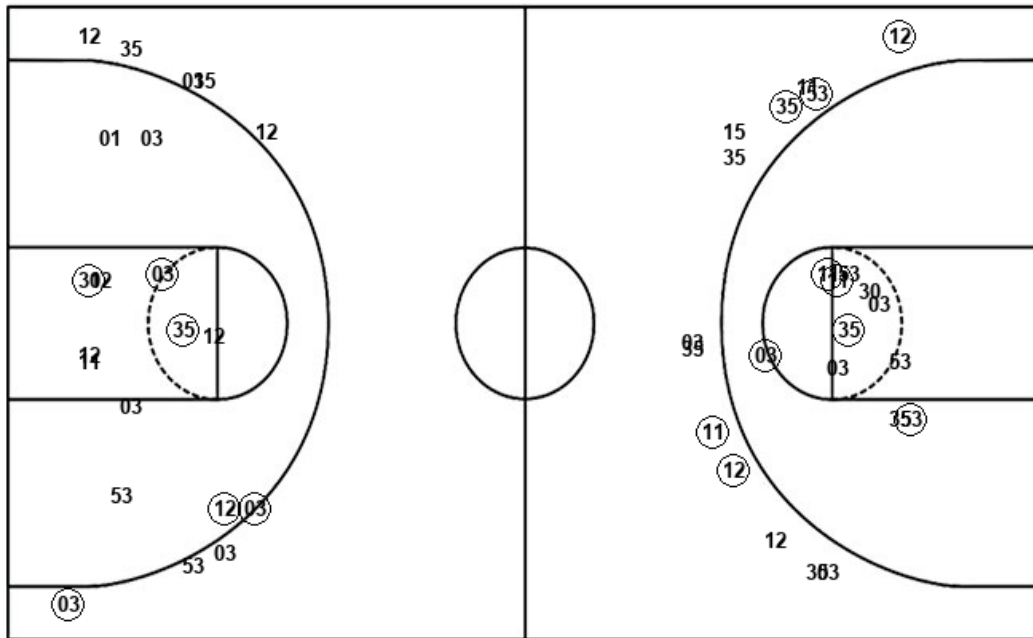
SUU : Period 3	Made	Att	Pct
Layups	5	5	100.0
Dunks	0	0	0
2PT Field Goals	9	17	52.9
3PT Field Goals	1	3	33.3
<b>Total Field Goals</b>	<b>10</b>	<b>20</b>	<b>50.0</b>

SUU : Period 4	Made	Att	Pct
Layups	4	6	66.7
Dunks	0	0	0
2PT Field Goals	8	12	66.7
3PT Field Goals	1	3	33.3
<b>Total Field Goals</b>	<b>9</b>	<b>15</b>	<b>60.0</b>

Official Shot Chart  
 Southern Utah vs Portland St.  
 Portland St. Team Shots  
 February 08, 2020 at Viking Pavilion - Portland



Layups



Layups

Dunks

Dunks

PSU : Period 1	Made	Att	Pct
Layups	3	4	75.0
Dunks	0	0	0
2PT Field Goals	5	9	55.6
3PT Field Goals	2	5	40.0
<b>Total Field Goals</b>	<b>7</b>	<b>14</b>	<b>50.0</b>

PSU : Period 3	Made	Att	Pct
Layups	2	2	100.0
Dunks	0	0	0
2PT Field Goals	5	7	71.4
3PT Field Goals	1	5	20.0
<b>Total Field Goals</b>	<b>6</b>	<b>12</b>	<b>50.0</b>

PSU : Period 2	Made	Att	Pct
Layups	1	2	50.0
Dunks	0	0	0
2PT Field Goals	4	8	50.0
3PT Field Goals	3	8	37.5
<b>Total Field Goals</b>	<b>7</b>	<b>16</b>	<b>43.8</b>

PSU : Period 4	Made	Att	Pct
Layups	5	5	100.0
Dunks	0	0	0
2PT Field Goals	6	12	50.0
3PT Field Goals	1	4	25.0
<b>Total Field Goals</b>	<b>7</b>	<b>16</b>	<b>43.8</b>