

## FINAL SCORE



**Northern Ariz.**

**54**



**Portland St.**

**66**

January 25, 2020 • Viking Pavilion - Portland

## FINAL STATISTICS

**Official Box Score**  
**Northern Ariz. vs Portland St.**  
**Game Totals -- Final Statistics**  
**January 25, 2020 at Viking Pavilion - Portland**



**Northern Ariz. 54**

No.	Player	S	Pts	FG	3FG	FT	OR	DR	TR	PF	A	TO	Blk	Stl	Min	+/-
03	MALVAR, CAITLIN	G	0	0-1	0-1	0-0	0	2	2	4	4	3	0	0	33	-11
11	BAILEY, JACEY	G	16	7-17	2-8	0-0	2	10	12	0	3	3	0	1	35	-2
15	RASHEED, KHIARICA	F	18	5-15	0-0	8-10	3	9	12	3	1	1	1	1	30	-3
20	ORNDOFF, LAUREN	G	2	1-5	0-1	0-0	1	3	4	1	2	2	0	1	29	-9
30	RADFORD, NINA	F	7	3-8	1-2	0-0	1	1	2	3	2	4	1	1	25	6
01	SCHENCK, REGAN	G	2	1-5	0-4	0-0	0	1	1	4	3	3	0	0	20	-24
04	GARY, MORGAN	G	4	2-3	0-0	0-0	1	3	4	2	1	0	0	0	12	-3
21	RODABAUGH, EMILY	G	0	0-0	0-0	0-0	0	0	0	2	0	0	0	0	2	-4
25	LEHEW, BRIANNA	F	0	0-2	0-0	0-0	0	1	1	1	0	0	1	0	3	0
33	CARROLL, PEYTON	F	5	2-6	0-0	1-2	1	0	1	1	0	0	0	0	11	-10
TEAM							0	3	3	0						
<b>TOTALS</b>			<b>54</b>	<b>21-62</b>	<b>3-16</b>	<b>9-12</b>	<b>9</b>	<b>33</b>	<b>42</b>	<b>21</b>	<b>16</b>	<b>16</b>	<b>3</b>	<b>4</b>	<b>199</b>	

*Shooting By Period*

Period	FG	FG%	3FG	3FG%	FT	FT%
1st Qtr	5-13	38%	1-2	50%	5-6	83%
2nd Qtr	3-19	16%	0-7	00%	1-2	50%
3rd Qtr	6-16	38%	2-4	50%	0-0	0%
4th Qtr	7-14	50%	0-3	00%	3-4	75%
1st Half	8-32	25%	1-9	11%	6-8	75%
2nd Half	13-30	43%	2-7	29%	3-4	75%
<b>Game</b>	<b>21-62</b>	<b>33.9%</b>	<b>3-16</b>	<b>18.8%</b>	<b>9-12</b>	<b>75.0%</b>

*Deadball Rebounds: 3,0*  
*Last FG: 4th-00:41*  
*Biggest Run: 9-0*  
*Largest lead: By 11 at 1st-03:53*  
*Technical Fouls: None.*

**Portland St. 66**

No.	Player	S	Pts	FG	3FG	FT	OR	DR	TR	PF	A	TO	Blk	Stl	Min	+/-
03	JIMENEZ, KYLIE	G	12	2-10	2-9	6-8	0	2	2	4	8	5	0	2	38	14
11	STOTLER, JORDAN	F	8	4-8	0-0	0-0	2	7	9	4	0	2	5	2	22	3
12	STREUN, TATIANA	F	8	3-4	0-0	2-5	1	1	2	4	0	0	0	0	15	-15
35	FRAZIER, BELLE	G	13	5-16	2-6	1-2	0	3	3	1	2	1	0	4	36	12
53	HANSEN, DESIRAE	G	9	3-12	2-5	1-2	0	8	8	0	5	4	0	0	35	13
01	DENSON, LABREA	G	0	0-0	0-0	0-0	0	0	0	0	0	0	0	0	1	-2
10	CANZOBRE, MARINA	F	0	0-0	0-0	0-0	0	0	0	1	0	0	0	0	7	-4
15	GARDNER, CASSIDY	G	6	2-5	2-4	0-0	0	2	2	0	0	0	1	1	24	12
30	SCHULTZ, SYD	F	10	3-4	0-0	4-4	3	4	7	2	0	1	0	1	21	27
TEAM							2	5	7	0						
<b>TOTALS</b>			<b>66</b>	<b>22-59</b>	<b>8-24</b>	<b>14-21</b>	<b>8</b>	<b>32</b>	<b>40</b>	<b>16</b>	<b>15</b>	<b>13</b>	<b>6</b>	<b>10</b>	<b>199</b>	

*Shooting By Period*

Period	FG	FG%	3FG	3FG%	FT	FT%
1st Qtr	4-14	29%	1-5	20%	3-7	43%
2nd Qtr	7-16	44%	2-7	29%	5-6	83%
3rd Qtr	6-16	38%	3-7	43%	3-4	75%
4th Qtr	5-13	38%	2-5	40%	3-4	75%
1st Half	11-30	37%	3-12	25%	8-13	62%
2nd Half	11-29	38%	5-12	42%	6-8	75%
<b>Game</b>	<b>22-59</b>	<b>37.3%</b>	<b>8-24</b>	<b>33.3%</b>	<b>14-21</b>	<b>66.7%</b>

*Deadball Rebounds: 3,0*  
*Last FG: 4th-00:14*  
*Biggest Run: 12-0*  
*Largest lead: By 14 at 4th-02:05*  
*Technical Fouls: None.*

Game Notes:

Officials: Michol Murray, NaDerra Carey, Lisa Bishop  
Attendance: 432

Start Time: 05:05 PM ET  
End Time: 06:39 PM ET  
Game Duration: 1:34  
Conference Game;

Score	1st	2nd	3rd	4th	TOT
NAU	16	7	14	17	<b>54</b>
PSU	12	21	18	15	<b>66</b>

NAU led for 15:20. PSU led for 23:39.  
Game was tied for 0:49.  
Times tied: 1      Lead Changes: 1

Points from	NAU	PSU
In the Paint	24	26
Off Turns	10	4
2nd Chance	12	13
Fast Break	4	0
Bench	11	16

**Official Box Score**  
**Northern Ariz. vs Portland St.**  
**First Half Statistics Only**  
**January 25, 2020 at Viking Pavilion - Portland**



**Northern Ariz. 23**

No.	Player	S	Pts	FG	3FG	FT	OR	DR	TR	PF	A	TO	Blk	Stl	Min	+/-
01	SCHENCK, REGAN	G	0	0-3	0-3	0-0	0	1	1	1	2	1	0	0	11	-18
03	MALVAR, CAITLIN	G	0	0-1	0-1	0-0	0	0	0	1	1	2	0	0	19	-9
04	GARY, MORGAN	G	4	2-3	0-0	0-0	1	3	4	1	1	0	0	0	10	-2
11	BAILEY, JACEY	G	0	0-4	0-3	0-0	1	5	6	0	2	0	0	0	16	-5
15	RASHEED, KHIARICA	F	9	2-6	0-0	5-6	1	5	6	1	0	1	0	1	13	-7
20	ORNDOFF, LAUREN	G	2	1-4	0-1	0-0	0	0	0	1	0	2	0	0	12	-13
21	RODABAUGH, EMILY	G	0	0-0	0-0	0-0	0	0	0	1	0	0	0	0	1	1
25	LEHEW, BRIANNA	F	0	0-2	0-0	0-0	0	1	1	1	0	0	1	0	3	0
30	RADFORD, NINA	F	5	2-5	1-1	0-0	1	1	2	3	0	2	0	1	8	7
33	CARROLL, PEYTON	F	3	1-4	0-0	1-2	1	0	1	1	0	0	0	0	9	-4
	TEAM		0	0-0	0-0	0-0	0	2	2	0	0	0	0	0	0	
<b>TOTALS</b>			<b>23</b>	<b>8-32</b>	<b>1-9</b>	<b>6-8</b>	<b>5</b>	<b>18</b>	<b>23</b>	<b>11</b>	<b>6</b>	<b>8</b>	<b>1</b>	<b>2</b>	<b>100</b>	

*Shooting By Period*

Period	FG	FG%	3FG	3FG%	FT	FT%
1st Qtr	5-13	38%	1-2	50%	5-6	83%
2nd Qtr	3-19	16%	0-7	00%	1-2	50%
1st Half	8-32	25%	1-9	11%	6-8	75%
Game	21-62	33.9%	3-16	18.8%	9-12	75.0%

*Deadball Rebounds: 3,0*  
*Last FG Half: NAU 2nd-06:44*

**Portland St. 33**

No.	Player	S	Pts	FG	3FG	FT	OR	DR	TR	PF	A	TO	Blk	Stl	Min	+/-
01	DENSON, LABREA	G	0	0-0	0-0	0-0	0	0	0	0	0	0	0	0	0	0
03	JIMENEZ, KYLIE	G	2	0-5	0-4	2-4	0	2	2	1	4	1	0	1	20	10
10	CANZOBRE, MARINA	F	0	0-0	0-0	0-0	0	0	0	1	0	0	0	0	5	-7
11	STOTLER, JORDAN	F	2	1-3	0-0	0-0	0	4	4	2	0	2	3	1	8	7
12	STREUN, TATIANA	F	3	1-1	0-0	1-3	1	1	2	2	0	0	0	0	7	-9
15	GARDNER, CASSIDY	G	0	0-3	0-2	0-0	0	1	1	0	0	0	1	1	11	9
30	SCHULTZ, SYD	F	8	2-3	0-0	4-4	3	2	5	2	0	1	0	1	12	20
35	FRAZIER, BELLE	G	12	5-10	2-3	0-0	0	2	2	0	0	0	0	0	19	10
53	HANSEN, DESIRAE	G	6	2-5	1-3	1-2	0	5	5	0	1	3	0	0	18	10
	TEAM		0	0-0	0-0	0-0	0	2	2	0	0	0	0	0	0	
<b>TOTALS</b>			<b>33</b>	<b>11-30</b>	<b>3-12</b>	<b>8-13</b>	<b>4</b>	<b>19</b>	<b>23</b>	<b>8</b>	<b>5</b>	<b>7</b>	<b>4</b>	<b>4</b>	<b>100</b>	

*Shooting By Period*

Period	FG	FG%	3FG	3FG%	FT	FT%
1st Qtr	4-14	29%	1-5	20%	3-7	43%
2nd Qtr	7-16	44%	2-7	29%	5-6	83%
1st Half	11-30	37%	3-12	25%	8-13	62%
Game	22-59	37.3%	8-24	33.3%	14-21	66.7%

*Deadball Rebounds: 3,0*  
*Last FG Half: PSU 2nd-00:50*

*Game Notes:*

*Officials: Michol Murray, NaDerra Carey, Lisa Bishop*  
*Attendance: 432*

*Start Time: 05:05 PM ET*  
*End Time: 06:39 PM ET*  
*Game Duration: 1:34*  
*Conference Game:*

Score	1st	2nd	3rd	4th	TOT
NAU	16	7	14	17	<b>54</b>
PSU	12	21	18	15	<b>66</b>

Points from (This Period)	NAU	PSU
In the Paint	8	14
Off Turns	6	2
2nd Chance	6	9
Fast Break	0	0
Bench	7	8

**Official Box Score**  
**Northern Ariz. vs Portland St.**  
**First Quarter Statistics Only**  
**January 25, 2020 at Viking Pavilion - Portland**



**Northern Ariz. 16**

No.	Player	S	Pts	FG	3FG	FT	OR	DR	TR	PF	A	TO	Blk	Stl	Min	+/-
03	MALVAR, CAITLIN	G	0	0-0	0-0	0-0	0	0	0	0	1	1	0	0	9	5
11	BAILEY, JACEY	G	0	0-2	0-1	0-0	0	4	4	0	1	0	0	0	8	4
15	RASHEED, KHIARICA	F	7	1-2	0-0	5-6	1	3	4	1	0	1	0	0	8	2
20	ORNDOFF, LAUREN	G	2	1-1	0-0	0-0	0	0	0	1	0	2	0	0	7	2
30	RADFORD, NINA	F	3	1-3	1-1	0-0	1	0	1	2	0	1	0	1	5	6
01	SCHENCK, REGAN	G	0	0-0	0-0	0-0	0	1	1	0	2	1	0	0	6	-3
04	GARY, MORGAN	G	2	1-1	0-0	0-0	0	0	0	0	0	0	0	0	3	2
21	RODABAUGH, EMILY	G	0	0-0	0-0	0-0	0	0	0	1	0	0	0	0	1	1
25	LEHEW, BRIANNA	F	0	0-1	0-0	0-0	0	0	0	0	0	0	1	0	1	0
33	CARROLL, PEYTON	F	2	1-3	0-0	0-0	0	0	0	1	0	0	0	0	4	1
<b>TEAM</b>							0	2	2	0		0				
<b>TOTALS</b>			<b>16</b>	<b>5-13</b>	<b>1-2</b>	<b>5-6</b>	<b>2</b>	<b>10</b>	<b>12</b>	<b>6</b>	<b>4</b>	<b>6</b>	<b>1</b>	<b>1</b>	<b>50</b>	

*Shooting By Period*

Period	FG	FG%	3FG	3FG%	FT	FT%
1st Qtr	5-13	38%	1-2	50%	5-6	83%
2nd Qtr	3-19	16%	0-7	00%	1-2	50%
1st Half	5-13	38%	1-2	50%	5-6	83%
1st Half	8-32	25%	1-9	11%	6-8	75%
Game	21-62	33.9%	3-16	18.8%	9-12	75.0%

*Deadball Rebounds: 3,0*

**Portland St. 12**

No.	Player	S	Pts	FG	3FG	FT	OR	DR	TR	PF	A	TO	Blk	Stl	Min	+/-
03	JIMENEZ, KYLIE	G	0	0-3	0-2	0-2	0	0	0	0	1	1	0	1	10	-4
11	STOTLER, JORDAN	F	0	0-0	0-0	0-0	0	0	0	1	0	0	0	0	0	-2
12	STREUN, TATIANA	F	3	1-1	0-0	1-3	1	1	2	2	0	0	0	0	7	-9
35	FRAZIER, BELLE	G	5	2-6	1-2	0-0	0	0	0	0	0	0	0	0	9	-4
53	HANSEN, DESIRAE	G	2	1-3	0-1	0-0	0	2	2	0	0	3	0	0	10	-4
01	DENSON, LABREA	G	0	0-0	0-0	0-0	0	0	0	0	0	0	0	0	0	0
10	CANZOBRE, MARINA	F	0	0-0	0-0	0-0	0	0	0	1	0	0	0	0	5	-7
15	GARDNER, CASSIDY	G	0	0-0	0-0	0-0	0	0	0	0	0	0	1	1	4	5
30	SCHULTZ, SYD	F	2	0-1	0-0	2-2	1	1	2	1	0	1	0	1	5	5
<b>TEAM</b>							0	2	2	0		0				
<b>TOTALS</b>			<b>12</b>	<b>4-14</b>	<b>1-5</b>	<b>3-7</b>	<b>2</b>	<b>6</b>	<b>8</b>	<b>5</b>	<b>1</b>	<b>5</b>	<b>1</b>	<b>3</b>	<b>50</b>	

*Shooting By Period*

Period	FG	FG%	3FG	3FG%	FT	FT%
1st Qtr	4-14	29%	1-5	20%	3-7	43%
2nd Qtr	7-16	44%	2-7	29%	5-6	83%
1st Half	4-14	29%	1-5	20%	3-7	43%
1st Half	11-30	37%	3-12	25%	8-13	62%
Game	22-59	37.3%	8-24	33.3%	14-21	66.7%

*Deadball Rebounds: 3,0*

Game Notes:

Officials: Michol Murray, NaDerra Carey, Lisa Bishop  
 Attendance: 432

Start Time: 05:05 PM ET  
 End Time: 06:39 PM ET  
 Game Duration: 1:34  
 Conference Game;

Score	1st	2nd	3rd	4th	TOT
NAU	16	7	14	17	<b>54</b>
PSU	12	21	18	15	<b>66</b>

Points from (This Period)	NAU	PSU
In the Paint	4	4
Off Turns	4	2
2nd Chance	3	5
Fast Break	0	0
Bench	4	2

**Official Play-By-Play**  
**Northern Ariz. vs Portland St.**  
**First Quarter**  
**January 25, 2020 at Viking Pavilion - Portland**



**Period 1**

**Starters:**

**Northern Ariz.:** 3 MALVAR, CAITLIN (G); 11 BAILEY, JACEY (G); 15 RASHEED, KHIARICA (F); 20 ORNDOFF, LAUREN (G); 30 RADFORD, NINA (F);

**Portland St.:** 3 JIMENEZ, KYLIE (G); 11 STOTLER, JORDAN (F); 12 STREUN, TATIANA (F); 35 FRAZIER, BELLE (G); 53 HANSEN, DESIRAE (G);

Time	VISITORS: Northern Ariz.	Score	Margin	HOME: Portland St.
09:49				TURNOVER (BADPASS) by JIMENEZ, KYLIE
09:49	STEAL by RADFORD, NINA			
09:43				FOUL (PERSONAL) by STOTLER, JORDAN
09:43	GOOD! FT by RASHEED, KHIARICA	0-1	V 1	
09:43	GOOD! FT by RASHEED, KHIARICA	0-2	V 2	
09:43				SUB OUT: STOTLER, JORDAN
09:43				SUB IN: CANZOBRE, MARINA
09:16				TURNOVER (TRAVEL) by HANSEN, DESIRAE
09:03	TURNOVER (BADPASS) by ORNDOFF, LAUREN			
08:51				MISSED 3PTR by HANSEN, DESIRAE
08:47	REBOUND (DEF) by BAILEY, JACEY			
08:41				FOUL (PERSONAL) by CANZOBRE, MARINA
08:41	GOOD! FT by RASHEED, KHIARICA	0-3	V 3	
08:41	GOOD! FT by RASHEED, KHIARICA	0-4	V 4	
08:19				MISSED JUMPER by JIMENEZ, KYLIE
08:15	REBOUND (DEF) by RASHEED, KHIARICA			
08:02	MISSED JUMPER by RADFORD, NINA			
07:58	REBOUND (OFF) by RADFORD, NINA			
07:52	TURNOVER (BADPASS) by RADFORD, NINA			
07:30				MISSED 3PTR by FRAZIER, BELLE
07:25	REBOUND (DEF) by BAILEY, JACEY			
07:17	MISSED JUMPER by RASHEED, KHIARICA			
07:16	REBOUND (OFF) by RASHEED, KHIARICA			
07:16				FOUL (PERSONAL) by STREUN, TATIANA
07:14	GOOD! 3PTR by RADFORD, NINA	0-7	V 7	
07:14	ASSIST by MALVAR, CAITLIN			
07:10				TIMEOUT 30SEC
07:10				
06:58				MISSED JUMPER by FRAZIER, BELLE
06:55	REBOUND (DEF) by RASHEED, KHIARICA			
06:50	TURNOVER (BADPASS) by RASHEED, KHIARICA			
06:50				STEAL by JIMENEZ, KYLIE
06:46				TURNOVER (TRAVEL) by HANSEN, DESIRAE
06:46	SUB OUT: ORNDOFF, LAUREN			
06:46	SUB IN: SCHENCK, REGAN			
06:33	MISSED JUMPER by RADFORD, NINA			
06:28				REBOUND (DEF) by HANSEN, DESIRAE
06:13	FOUL (PERSONAL) by RADFORD, NINA			
06:13	SUB OUT: RASHEED, KHIARICA			
06:13	SUB OUT: RADFORD, NINA			
06:13	SUB IN: GARY, MORGAN			
06:13	SUB IN: CARROLL, PEYTON			
06:13				MISSED FT by STREUN, TATIANA
06:13				REBOUND (OFF) by TEAM
06:11				MISSED FT by STREUN, TATIANA
06:10	REBOUND (DEF) by BAILEY, JACEY			
06:05	GOOD! LAYUP by GARY, MORGAN	0-9	V 9	
05:45		2-9	V 7	GOOD! JUMPER by FRAZIER, BELLE [PNT]
05:22	GOOD! JUMPER by CARROLL, PEYTON	2-11	V 9	
05:22	ASSIST by BAILEY, JACEY			
05:12				TURNOVER (OTHER) by HANSEN, DESIRAE
05:12				SUB OUT: CANZOBRE, MARINA
05:12				SUB IN: SCHULTZ, SYD
04:58	MISSED JUMPER by CARROLL, PEYTON			
04:54				REBOUND (DEF) by STREUN, TATIANA
04:45				MISSED JUMPER by FRAZIER, BELLE
04:42	REBOUND (DEF) by SCHENCK, REGAN			
04:22	MISSED JUMPER by BAILEY, JACEY			
04:22				REBOUND (DEF) by TEAM
04:22	FOUL (PERSONAL) by CARROLL, PEYTON			
04:22	SUB OUT: MALVAR, CAITLIN			
04:22	SUB OUT: GARY, MORGAN			
04:22	SUB OUT: BAILEY, JACEY			
04:22	SUB IN: RASHEED, KHIARICA			
04:22	SUB IN: ORNDOFF, LAUREN			
04:22	SUB IN: RADFORD, NINA			
04:06				FOUL (OFF) by SCHULTZ, SYD
04:06				TURNOVER (OFFENSIVE) by SCHULTZ, SYD
03:53	GOOD! JUMPER by ORNDOFF, LAUREN	2-13	V 11	
03:53	ASSIST by SCHENCK, REGAN			

Time	VISITORS: Northern Ariz.	Score	Margin	HOME: Portland St.
03:37				MISSED 3PTR by JIMENEZ, KYLIE
03:34				REBOUND (OFF) by STREUN, TATIANA
03:34		4-13	V 9	GOOD! LAYUP by STREUN, TATIANA
03:34	FOUL (PERSONAL) by RADFORD, NINA			
03:34				SUB OUT: FRAZIER, BELLE
03:34				SUB IN: GARDNER, CASSIDY
03:34		5-13	V 8	GOOD! FT by STREUN, TATIANA
03:34	SUB OUT: RADFORD, NINA			
03:34	SUB IN: RODABAUGH, EMILY			
03:16	TURNOVER (BADPASS) by ORNDOFF, LAUREN			
03:16				STEAL by SCHULTZ, SYD
03:02				MISSED JUMPER by HANSEN, DESIRAE
03:01	REBOUND (DEF) by TEAM			
03:01				FOUL (PERSONAL) by STREUN, TATIANA
03:01	SUB OUT: CARROLL, PEYTON			
03:01	SUB IN: MALVAR, CAITLIN			
03:01	MISSED FT by RASHEED, KHIARICA			
03:01	REBOUND (OFF) by TEAM			
03:01	GOOD! FT by RASHEED, KHIARICA	5-14	V 9	
03:01				SUB OUT: STREUN, TATIANA
03:01				SUB IN: FRAZIER, BELLE
02:46				MISSED JUMPER by FRAZIER, BELLE
02:43	REBOUND (DEF) by RASHEED, KHIARICA			
02:38	TURNOVER (BADPASS) by SCHENCK, REGAN			
02:38				STEAL by GARDNER, CASSIDY
02:29	FOUL (PERSONAL) by RODABAUGH, EMILY			
02:26				MISSED 3PTR by JIMENEZ, KYLIE
02:23				REBOUND (OFF) by SCHULTZ, SYD
02:23	FOUL (PERSONAL) by RASHEED, KHIARICA			
02:23	SUB OUT: RODABAUGH, EMILY			
02:23	SUB IN: BAILEY, JACEY			
02:23		6-14	V 8	GOOD! FT by SCHULTZ, SYD
02:23		7-14	V 7	GOOD! FT by SCHULTZ, SYD
02:13	GOOD! JUMPER by RASHEED, KHIARICA	7-16	V 9	
02:13	ASSIST by SCHENCK, REGAN			
02:00		10-16	V 6	GOOD! 3PTR by FRAZIER, BELLE
02:00				ASSIST by JIMENEZ, KYLIE
01:49	MISSED 3PTR by BAILEY, JACEY			
01:46				REBOUND (DEF) by TEAM
01:22		12-16	V 4	GOOD! JUMPER by HANSEN, DESIRAE
01:17	TURNOVER (BADPASS) by MALVAR, CAITLIN			
00:59	FOUL (PERSONAL) by ORNDOFF, LAUREN			
00:59	SUB OUT: SCHENCK, REGAN			
00:59	SUB OUT: ORNDOFF, LAUREN			
00:59	SUB IN: GARY, MORGAN			
00:59	SUB IN: LEHEW, BRIANNA			
00:59				MISSED FT by JIMENEZ, KYLIE
00:59				REBOUND (OFF) by TEAM
00:57				MISSED FT by JIMENEZ, KYLIE
00:56	REBOUND (DEF) by BAILEY, JACEY			
00:40	MISSED JUMPER by LEHEW, BRIANNA			
00:36				REBOUND (DEF) by SCHULTZ, SYD
00:22				MISSED JUMPER by SCHULTZ, SYD
00:22	BLOCK by LEHEW, BRIANNA			
00:22	REBOUND (DEF) by TEAM			
00:22	SUB OUT: RASHEED, KHIARICA			
00:22	SUB IN: CARROLL, PEYTON			
00:01	MISSED JUMPER by CARROLL, PEYTON			
00:01				BLOCK by GARDNER, CASSIDY
00:00				REBOUND (DEF) by HANSEN, DESIRAE

### Northern Ariz. 16, Portland St. 12

Points from (This Period)	NAU	PSU
In the Paint	4	4
Off Turns	4	2
2nd Chance	3	5
Fast Break	0	0
Bench	4	2

**Official Box Score**  
**Northern Ariz. vs Portland St.**  
**Second Quarter Statistics Only**  
**January 25, 2020 at Viking Pavilion - Portland**



**Northern Ariz. 7**

No.	Player	S	Pts	FG	3FG	FT	OR	DR	TR	PF	A	TO	Blk	Stl	Min	+/-	
03	MALVAR, CAITLIN	G	0	0-1	0-1	0-0	0	0	0	1	0	1	0	0	10	-14	
11	BAILEY, JACEY	G	0	0-2	0-2	0-0	1	1	2	0	1	0	0	0	8	-9	
15	RASHEED, KHIARICA	F	2	1-4	0-0	0-0	0	2	2	0	0	0	0	1	5	-9	
20	ORNDOFF, LAUREN	G	0	0-3	0-1	0-0	0	0	0	0	0	0	0	0	5	-15	
30	RADFORD, NINA	F	2	1-2	0-0	0-0	0	1	1	1	0	1	0	0	3	1	
01	SCHENCK, REGAN	G	0	0-3	0-3	0-0	0	0	0	1	0	0	0	0	5	-15	
04	GARY, MORGAN	G	2	1-2	0-0	0-0	1	3	4	1	1	0	0	0	7	-4	
21	RODABAUGH, EMILY	G	0	0-0	0-0	0-0	0	0	0	0	0	0	0	0	0	0	
25	LEHEW, BRIANNA	F	0	0-1	0-0	0-0	0	1	1	1	0	0	0	0	2	0	
33	CARROLL, PEYTON	F	1	0-1	0-0	1-2	1	0	1	0	0	0	0	0	5	-5	
TEAM							0	0	0	0	0						
<b>TOTALS</b>			<b>7</b>	<b>3-19</b>	<b>0-7</b>	<b>1-2</b>	<b>3</b>	<b>8</b>	<b>11</b>	<b>5</b>	<b>2</b>	<b>2</b>	<b>0</b>	<b>1</b>	<b>50</b>		

*Shooting By Period*

Period	FG	FG%	3FG	3FG%	FT	FT%
3rd Qtr	6-16	38%	2-4	50%	0-0	0%
4th Qtr	7-14	50%	0-3	00%	3-4	75%
2nd Half	3-19	16%	0-7	00%	1-2	50%
2nd Half	13-30	43%	2-7	29%	3-4	75%
Game	21-62	33.9%	3-16	18.8%	9-12	75.0%

*Deadball Rebounds: 3,0*

**Portland St. 21**

No.	Player	S	Pts	FG	3FG	FT	OR	DR	TR	PF	A	TO	Blk	Stl	Min	+/-	
03	JIMENEZ, KYLIE	G	2	0-2	0-2	2-2	0	2	2	1	3	0	0	0	10	14	
11	STOTLER, JORDAN	F	2	1-3	0-0	0-0	0	4	4	1	0	2	3	1	8	9	
12	STREUN, TATIANA	F	0	0-0	0-0	0-0	0	0	0	0	0	0	0	0	0	0	
35	FRAZIER, BELLE	G	7	3-4	1-1	0-0	0	2	2	0	0	0	0	0	10	14	
53	HANSEN, DESIRAE	G	4	1-2	1-2	1-2	0	3	3	0	1	0	0	0	8	14	
01	DENSON, LABREA	G	0	0-0	0-0	0-0	0	0	0	0	0	0	0	0	0	0	
10	CANZOBRE, MARINA	F	0	0-0	0-0	0-0	0	0	0	0	0	0	0	0	0	0	
15	GARDNER, CASSIDY	G	0	0-3	0-2	0-0	0	1	1	0	0	0	0	0	7	4	
30	SCHULTZ, SYD	F	6	2-2	0-0	2-2	2	1	3	1	0	0	0	0	7	15	
TEAM							0	0	0	0	0						
<b>TOTALS</b>			<b>21</b>	<b>7-16</b>	<b>2-7</b>	<b>5-6</b>	<b>2</b>	<b>13</b>	<b>15</b>	<b>3</b>	<b>4</b>	<b>2</b>	<b>3</b>	<b>1</b>	<b>50</b>		

*Shooting By Period*

Period	FG	FG%	3FG	3FG%	FT	FT%
3rd Qtr	6-16	38%	3-7	43%	3-4	75%
4th Qtr	5-13	38%	2-5	40%	3-4	75%
2nd Half	7-16	44%	2-7	29%	5-6	83%
2nd Half	11-29	38%	5-12	42%	6-8	75%
Game	22-59	37.3%	8-24	33.3%	14-21	66.7%

*Deadball Rebounds: 3,0*

Game Notes:

Officials: Michol Murray, NaDerra Carey, Lisa Bishop  
 Attendance: 432

Start Time: 05:05 PM ET  
 End Time: 06:39 PM ET  
 Game Duration: 1:34  
 Conference Game;

Score	1st	2nd	3rd	4th	TOT
NAU	16	7	14	17	<b>54</b>
PSU	12	21	18	15	<b>66</b>

Points from (This Period)	NAU	PSU
In the Paint	4	10
Off Turns	2	0
2nd Chance	3	4
Fast Break	0	0
Bench	3	6

**Official Play-By-Play**  
**Northern Ariz. vs Portland St.**  
**Second Quarter**  
**January 25, 2020 at Viking Pavilion - Portland**



**Period 2**

**Starters:**

**Northern Ariz.:** 3 MALVAR, CAITLIN (G); 11 BAILEY, JACEY (G); 15 RASHEED, KHIARICA (F); 20 ORNDOFF, LAUREN (G); 30 RADFORD, NINA (F);  
**Portland St.:** 3 JIMENEZ, KYLIE (G); 11 STOTLER, JORDAN (F); 12 STREUN, TATIANA (F); 35 FRAZIER, BELLE (G); 53 HANSEN, DESIRAE (G);

Time	VISITORS: Northern Ariz.	Score	Margin	HOME: Portland St.
10:00				SUB OUT: SCHULTZ, SYD
10:00				SUB IN: STOTLER, JORDAN
09:51		14-16	V 2	GOOD! LAYUP by FRAZIER, BELLE
09:51				ASSIST by HANSEN, DESIRAE
09:32	MISSED JUMPER by LEHEW, BRIANNA			
09:29				REBOUND (DEF) by HANSEN, DESIRAE
09:23				MISSED 3PTR by JIMENEZ, KYLIE
09:20	REBOUND (DEF) by BAILEY, JACEY			
09:07	MISSED 3PTR by BAILEY, JACEY			
09:04				REBOUND (DEF) by HANSEN, DESIRAE
08:47				MISSED 3PTR by GARDNER, CASSIDY
08:43	REBOUND (DEF) by LEHEW, BRIANNA			
08:33	MISSED 3PTR by BAILEY, JACEY			
08:31				REBOUND (DEF) by STOTLER, JORDAN
08:31				TURNOVER (TRAVEL) by STOTLER, JORDAN
08:24	MISSED JUMPER by CARROLL, PEYTON			
08:24				BLOCK by STOTLER, JORDAN
08:19	REBOUND (OFF) by GARY, MORGAN			
08:18	GOOD! LAYUP by GARY, MORGAN	14-18	V 4	
07:52	FOUL (PERSONAL) by LEHEW, BRIANNA			
07:52	SUB OUT: LEHEW, BRIANNA			
07:52	SUB OUT: CARROLL, PEYTON			
07:52	SUB IN: RASHEED, KHIARICA			
07:52	SUB IN: RADFORD, NINA			
07:52		15-18	V 3	GOOD! FT by HANSEN, DESIRAE
07:51				MISSED FT by HANSEN, DESIRAE
07:50	REBOUND (DEF) by GARY, MORGAN			
07:32	GOOD! JUMPER by RADFORD, NINA	15-20	V 5	
07:32	ASSIST by GARY, MORGAN			
07:29				SUB OUT: HANSEN, DESIRAE
07:29				SUB IN: SCHULTZ, SYD
07:15				MISSED JUMPER by STOTLER, JORDAN
07:12	REBOUND (DEF) by GARY, MORGAN			
07:03	TURNOVER (BADPASS) by RADFORD, NINA			
07:03				STEAL by STOTLER, JORDAN
06:57				MISSED LAYUP by GARDNER, CASSIDY
06:54	REBOUND (DEF) by RADFORD, NINA			
06:44	GOOD! JUMPER by RASHEED, KHIARICA [PNT]	15-22	V 7	
06:44	ASSIST by BAILEY, JACEY			
06:12				MISSED 3PTR by GARDNER, CASSIDY
06:07	REBOUND (DEF) by GARY, MORGAN			
06:01	MISSED JUMPER by RASHEED, KHIARICA			
05:58				REBOUND (DEF) by JIMENEZ, KYLIE
05:47		17-22	V 5	GOOD! JUMPER by FRAZIER, BELLE [PNT]
05:32	MISSED JUMPER by RADFORD, NINA			
05:32				BLOCK by STOTLER, JORDAN
05:27				REBOUND (DEF) by STOTLER, JORDAN
05:19	FOUL (PERSONAL) by RADFORD, NINA			
05:19				SUB OUT: GARDNER, CASSIDY
05:19				SUB IN: HANSEN, DESIRAE
05:19	SUB OUT: GARY, MORGAN			
05:19	SUB OUT: RADFORD, NINA			
05:19	SUB IN: SCHENCK, REGAN			
05:19	SUB IN: ORNDOFF, LAUREN			
05:19		18-22	V 4	GOOD! FT by SCHULTZ, SYD
05:19		19-22	V 3	GOOD! FT by SCHULTZ, SYD
05:03				FOUL (PERSONAL) by SCHULTZ, SYD
05:00	FOUL (OFF) by MALVAR, CAITLIN			
05:00	TURNOVER (OFFENSIVE) by MALVAR, CAITLIN			
05:00				
04:45				MISSED JUMPER by STOTLER, JORDAN
04:40	REBOUND (DEF) by RASHEED, KHIARICA			
04:32	MISSED JUMPER by ORNDOFF, LAUREN			
04:29				REBOUND (DEF) by STOTLER, JORDAN
04:23		22-22	T	GOOD! 3PTR by FRAZIER, BELLE
04:23				ASSIST by JIMENEZ, KYLIE
04:00	MISSED 3PTR by SCHENCK, REGAN			
03:56				REBOUND (DEF) by HANSEN, DESIRAE
03:51		24-22	H 2	GOOD! LAYUP by STOTLER, JORDAN [PNT]
03:51				ASSIST by JIMENEZ, KYLIE



Time	VISITORS: Northern Ariz.	Score	Margin	HOME: Portland St.
03:37	MISSED JUMPER by RASHEED, KHIARICA			
03:32	REBOUND (OFF) by BAILEY, JACEY			
03:30	MISSED JUMPER by RASHEED, KHIARICA			
03:27				REBOUND (DEF) by SCHULTZ, SYD
03:12				TURNOVER (LOSTBALL) by STOTLER, JORDAN
03:12	STEAL by RASHEED, KHIARICA			
03:04	MISSED 3PTR by ORNDOFF, LAUREN			
02:59				REBOUND (DEF) by JIMENEZ, KYLIE
02:52				MISSED 3PTR by HANSEN, DESIRAE
02:49	REBOUND (DEF) by RASHEED, KHIARICA			
02:44	MISSED LAYUP by ORNDOFF, LAUREN			
02:41				REBOUND (DEF) by STOTLER, JORDAN
02:34		27-22	H 5	GOOD! 3PTR by HANSEN, DESIRAE
02:34				ASSIST by JIMENEZ, KYLIE
02:33	TIMEOUT 30SEC			
02:33	SUB OUT: BAILEY, JACEY			
02:33	SUB OUT: RASHEED, KHIARICA			
02:33	SUB IN: GARY, MORGAN			
02:33	SUB IN: CARROLL, PEYTON			
02:22				SUB OUT: HANSEN, DESIRAE
02:22				SUB IN: GARDNER, CASSIDY
02:19	MISSED JUMPER by GARY, MORGAN			
02:19				BLOCK by STOTLER, JORDAN
02:19	REBOUND (OFF) by CARROLL, PEYTON			
02:19				FOUL (PERSONAL) by JIMENEZ, KYLIE
02:09				FOUL (PERSONAL) by STOTLER, JORDAN
02:09				SUB OUT: STOTLER, JORDAN
02:09				SUB IN: HANSEN, DESIRAE
02:09	GOOD! FT by CARROLL, PEYTON	27-23	H 4	
02:08	MISSED FT by CARROLL, PEYTON			
02:07				REBOUND (DEF) by FRAZIER, BELLE
01:54				MISSED 3PTR by JIMENEZ, KYLIE
01:50				REBOUND (OFF) by SCHULTZ, SYD
01:48		29-23	H 6	GOOD! LAYUP by SCHULTZ, SYD
01:23	MISSED 3PTR by MALVAR, CAITLIN			
01:20				REBOUND (DEF) by FRAZIER, BELLE
00:55				MISSED JUMPER by FRAZIER, BELLE
00:52				REBOUND (OFF) by SCHULTZ, SYD
00:50		31-23	H 8	GOOD! LAYUP by SCHULTZ, SYD
00:30	MISSED 3PTR by SCHENCK, REGAN			
00:25				REBOUND (DEF) by GARDNER, CASSIDY
00:04	FOUL (PERSONAL) by SCHENCK, REGAN			
00:02	FOUL (PERSONAL) by GARY, MORGAN			
00:02		32-23	H 9	GOOD! FT by JIMENEZ, KYLIE
00:02		33-23	H 10	GOOD! FT by JIMENEZ, KYLIE
00:02				SUB OUT: JIMENEZ, KYLIE
00:02				SUB IN: DENSON, LABREA
00:02	SUB OUT: GARY, MORGAN			
00:02	SUB IN: BAILEY, JACEY			
00:00	MISSED 3PTR by SCHENCK, REGAN			
00:00	REBOUND (OFF) by TEAM			

### Northern Ariz. 23, Portland St. 33

Points from (This Period)	NAU	PSU
In the Paint	4	10
Off Turns	2	0
2nd Chance	3	4
Fast Break	0	0
Bench	3	6

**Official Box Score**  
**Northern Ariz. vs Portland St.**  
**Second Half Statistics Only**  
**January 25, 2020 at Viking Pavilion - Portland**



**Northern Ariz. 31**

No.	Player	S	Pts	FG	3FG	FT	OR	DR	TR	PF	A	TO	Blk	Stl	Min	+/-
01	SCHENCK, REGAN	G	2	1-2	0-1	0-0	0	0	0	3	1	2	0	0	8	-6
03	MALVAR, CAITLIN	G	0	0-0	0-0	0-0	0	2	2	3	3	1	0	0	14	-2
04	GARY, MORGAN	G	0	0-0	0-0	0-0	0	0	0	1	0	0	0	0	2	-1
11	BAILEY, JACEY	G	16	7-13	2-5	0-0	1	5	6	0	1	3	0	1	19	3
15	RASHEED, KHIARICA	F	9	3-9	0-0	3-4	2	4	6	2	1	0	1	0	17	4
20	ORNDOFF, LAUREN	G	0	0-1	0-0	0-0	1	3	4	0	2	0	0	1	17	4
21	RODABAUGH, EMILY	G	0	0-0	0-0	0-0	0	0	0	1	0	0	0	0	1	-5
25	LEHEW, BRIANNA	F	0	0-0	0-0	0-0	0	0	0	0	0	0	0	0	0	0
30	RADFORD, NINA	F	2	1-3	0-1	0-0	0	0	0	0	2	2	1	0	18	-1
33	CARROLL, PEYTON	F	2	1-2	0-0	0-0	0	0	0	0	0	0	0	0	3	-6
	TEAM		0	0-0	0-0	0-0	0	1	1	0	0	0	0	0	0	0
<b>TOTALS</b>			<b>31</b>	<b>13-30</b>	<b>2-7</b>	<b>3-4</b>	<b>4</b>	<b>15</b>	<b>19</b>	<b>10</b>	<b>10</b>	<b>8</b>	<b>2</b>	<b>2</b>	<b>99</b>	

*Shooting By Period*

Period	FG	FG%	3FG	3FG%	FT	FT%
3rd Qtr	6-16	38%	2-4	50%	0-0	0%
4th Qtr	7-14	50%	0-3	00%	3-4	75%
2nd Half	13-30	43%	2-7	29%	3-4	75%
Game	21-62	33.9%	3-16	18.8%	9-12	75.0%

*Deadball Rebounds: 3,0*  
*Last FG Half: NAU 4th-00:41*

**Portland St. 33**

No.	Player	S	Pts	FG	3FG	FT	OR	DR	TR	PF	A	TO	Blk	Stl	Min	+/-
01	DENSON, LABREA	G	0	0-0	0-0	0-0	0	0	0	0	0	0	0	0	1	-2
03	JIMENEZ, KYLIE	G	10	2-5	2-5	4-4	0	0	0	3	4	4	0	1	18	4
10	CANZOBRE, MARINA	F	0	0-0	0-0	0-0	0	0	0	0	0	0	0	0	2	3
11	STOTLER, JORDAN	F	6	3-5	0-0	0-0	2	3	5	2	0	0	2	1	14	-4
12	STREUN, TATIANA	F	5	2-3	0-0	1-2	0	0	0	2	0	0	0	0	8	-6
15	GARDNER, CASSIDY	G	6	2-2	2-2	0-0	0	1	1	0	0	0	0	0	13	3
30	SCHULTZ, SYD	F	2	1-1	0-0	0-0	0	2	2	0	0	0	0	0	9	7
35	FRAZIER, BELLE	G	1	0-6	0-3	1-2	0	1	1	1	2	1	0	4	16	2
53	HANSEN, DESIRAE	G	3	1-7	1-2	0-0	0	3	3	0	4	1	0	0	17	3
	TEAM		0	0-0	0-0	0-0	2	3	5	0	0	0	0	0	0	0
<b>TOTALS</b>			<b>33</b>	<b>11-29</b>	<b>5-12</b>	<b>6-8</b>	<b>4</b>	<b>13</b>	<b>17</b>	<b>8</b>	<b>10</b>	<b>6</b>	<b>2</b>	<b>6</b>	<b>99</b>	

*Shooting By Period*

Period	FG	FG%	3FG	3FG%	FT	FT%
3rd Qtr	6-16	38%	3-7	43%	3-4	75%
4th Qtr	5-13	38%	2-5	40%	3-4	75%
2nd Half	11-29	38%	5-12	42%	6-8	75%
Game	22-59	37.3%	8-24	33.3%	14-21	66.7%

*Deadball Rebounds: 3,0*  
*Last FG Half: PSU 4th-00:14*

*Game Notes:*

Officials: Michol Murray, NaDerra Carey, Lisa Bishop  
 Attendance: 432

Start Time: 05:05 PM ET  
 End Time: 06:39 PM ET  
 Game Duration: 1:34  
 Conference Game;

Score	1st	2nd	3rd	4th	TOT
NAU	16	7	14	17	54
PSU	12	21	18	15	66

Points from (This Period)	NAU	PSU
In the Paint	16	12
Off Turns	4	2
2nd Chance	6	4
Fast Break	4	0
Bench	4	8

**Official Box Score**  
**Northern Ariz. vs Portland St.**  
**Third Quarter Statistics Only**  
**January 25, 2020 at Viking Pavilion - Portland**



**Northern Ariz. 31**

No.	Player	S	Pts	FG	3FG	FT	OR	DR	TR	PF	A	TO	Blk	Stl	Min	+/-
03	MALVAR, CAITLIN	G	0	0-0	0-0	0-0	0	2	2	1	2	1	0	0	10	-4
11	BAILEY, JACEY	G	12	5-9	2-4	0-0	0	4	4	0	0	2	0	0	9	1
15	RASHEED, KHIARICA	F	0	0-3	0-0	0-0	1	3	4	0	1	0	1	0	7	2
20	ORNDOFF, LAUREN	G	0	0-1	0-0	0-0	1	0	1	0	1	0	0	0	7	2
30	RADFORD, NINA	F	0	0-1	0-0	0-0	0	0	0	0	1	0	0	0	8	-3
01	SCHENCK, REGAN	G	0	0-0	0-0	0-0	0	0	0	1	1	0	0	0	3	-6
04	GARY, MORGAN	G	0	0-0	0-0	0-0	0	0	0	1	0	0	0	0	2	-1
21	RODABAUGH, EMILY	G	0	0-0	0-0	0-0	0	0	0	1	0	0	0	0	1	-5
25	LEHEW, BRIANNA	F	0	0-0	0-0	0-0	0	0	0	0	0	0	0	0	0	0
33	CARROLL, PEYTON	F	2	1-2	0-0	0-0	0	0	0	0	0	0	0	0	3	-6
TEAM							0	0	0	0		0				
<b>TOTALS</b>			<b>14</b>	<b>6-16</b>	<b>2-4</b>	<b>0-0</b>	<b>2</b>	<b>9</b>	<b>11</b>	<b>4</b>	<b>6</b>	<b>3</b>	<b>1</b>	<b>0</b>	<b>50</b>	

*Shooting By Period*

Period	FG	FG%	3FG	3FG%	FT	FT%
2nd Half	0-0	0%	0-0	0%	0-0	0%
Game	21-62	33.9%	3-16	18.8%	9-12	75.0%

*Deadball Rebounds: 3,0*

**Portland St. 33**

No.	Player	S	Pts	FG	3FG	FT	OR	DR	TR	PF	A	TO	Blk	Stl	Min	+/-
03	JIMENEZ, KYLIE	G	5	1-3	1-3	2-2	0	0	0	0	2	1	0	1	10	4
11	STOTLER, JORDAN	F	4	2-4	0-0	0-0	2	3	5	0	0	0	1	1	9	-1
12	STREUN, TATIANA	F	3	1-2	0-0	1-2	0	0	0	1	0	0	0	0	4	-2
35	FRAZIER, BELLE	G	0	0-4	0-2	0-0	0	0	0	0	1	0	0	1	9	-1
53	HANSEN, DESIRAE	G	0	0-1	0-0	0-0	0	2	2	0	2	0	0	0	8	3
01	DENSON, LABREA	G	0	0-0	0-0	0-0	0	0	0	0	0	0	0	0	0	0
10	CANZOBRE, MARINA	F	0	0-0	0-0	0-0	0	0	0	0	0	0	0	0	1	5
15	GARDNER, CASSIDY	G	6	2-2	2-2	0-0	0	1	1	0	0	0	0	0	6	6
30	SCHULTZ, SYD	F	0	0-0	0-0	0-0	0	1	1	0	0	0	0	0	3	6
TEAM							0	1	1	0		0				
<b>TOTALS</b>			<b>18</b>	<b>6-16</b>	<b>3-7</b>	<b>3-4</b>	<b>2</b>	<b>8</b>	<b>10</b>	<b>1</b>	<b>5</b>	<b>1</b>	<b>1</b>	<b>3</b>	<b>50</b>	

*Shooting By Period*

Period	FG	FG%	3FG	3FG%	FT	FT%
2nd Half	0-0	0%	0-0	0%	0-0	0%
Game	22-59	37.3%	8-24	33.3%	14-21	66.7%

*Deadball Rebounds: 3,0*

*Game Notes:*

Officials: Michol Murray, NaDerra Carey, Lisa Bishop  
 Attendance: 432

Start Time: 05:05 PM ET  
 End Time: 06:39 PM ET  
 Game Duration: 1:34  
 Conference Game;

Score	1st	2nd	3rd	4th	TOT
NAU	16	7	14	17	<b>54</b>
PSU	12	21	18	15	<b>66</b>

Points from (This Period)	NAU	PSU
In the Paint	2	6
Off Turns	0	2
2nd Chance	3	2
Fast Break	0	0
Bench	2	6

**Official By-By-Play**  
**Northern Ariz. vs Portland St.**  
**Third Quarter**  
**January 25, 2020 at Viking Pavilion - Portland**



**Period 3**

**Starters:**

**Northern Ariz.:** 3 MALVAR, CAITLIN (G); 11 BAILEY, JACEY (G); 15 RASHEED, KHIARICA (F); 20 ORNDOFF, LAUREN (G); 30 RADFORD, NINA (F);  
**Portland St.:** 3 JIMENEZ, KYLIE (G); 11 STOTLER, JORDAN (F); 12 STREUN, TATIANA (F); 35 FRAZIER, BELLE (G); 53 HANSEN, DESIRAE (G);

Time	VISITORS: Northern Ariz.	Score	Margin	HOME: Portland St.
10:00				SUB OUT: DENSON, LABREA
10:00				SUB OUT: GARDNER, CASSIDY
10:00				SUB OUT: SCHULTZ, SYD
10:00				SUB IN: JIMENEZ, KYLIE
10:00				SUB IN: STOTLER, JORDAN
10:00				SUB IN: STREUN, TATIANA
10:00	SUB OUT: SCHENCK, REGAN			
10:00	SUB OUT: CARROLL, PEYTON			
10:00	SUB IN: RASHEED, KHIARICA			
10:00	SUB IN: RADFORD, NINA			
09:50	GOOD! LAYUP by BAILEY, JACEY	33-25	H 8	
09:50	ASSIST by RADFORD, NINA			
09:30				MISSED JUMPER by STREUN, TATIANA
09:30	BLOCK by RASHEED, KHIARICA			
09:25	REBOUND (DEF) by RASHEED, KHIARICA			
09:23	MISSED JUMPER by BAILEY, JACEY			
09:20				REBOUND (DEF) by HANSEN, DESIRAE
08:59				MISSED JUMPER by HANSEN, DESIRAE
08:57	REBOUND (DEF) by BAILEY, JACEY			
08:52	GOOD! JUMPER by BAILEY, JACEY	33-27	H 6	
08:52	ASSIST by ORNDOFF, LAUREN			
08:38	FOUL (PERSONAL) by MALVAR, CAITLIN			
08:38		34-27	H 7	GOOD! FT by STREUN, TATIANA
08:38				MISSED FT by STREUN, TATIANA
08:37	REBOUND (DEF) by RASHEED, KHIARICA			
08:16	TURNOVER (BADPASS) by BAILEY, JACEY			
08:16				STEAL by STOTLER, JORDAN
08:07				MISSED 3PTR by JIMENEZ, KYLIE
08:04	REBOUND (DEF) by BAILEY, JACEY			
07:58	TURNOVER (BADPASS) by MALVAR, CAITLIN			
07:58				STEAL by JIMENEZ, KYLIE
07:48		36-27	H 9	GOOD! JUMPER by STOTLER, JORDAN [PNT]
07:48				ASSIST by JIMENEZ, KYLIE
07:30	MISSED JUMPER by ORNDOFF, LAUREN			
07:30				BLOCK by STOTLER, JORDAN
07:26				REBOUND (DEF) by STOTLER, JORDAN
07:14				MISSED JUMPER by STOTLER, JORDAN
07:10				REBOUND (OFF) by STOTLER, JORDAN
07:01		38-27	H 11	GOOD! LAYUP by STREUN, TATIANA
06:52	MISSED JUMPER by RASHEED, KHIARICA			
06:48	REBOUND (OFF) by RASHEED, KHIARICA			
06:44	GOOD! 3PTR by BAILEY, JACEY	38-30	H 8	
06:44	ASSIST by MALVAR, CAITLIN			
06:21				MISSED 3PTR by FRAZIER, BELLE
06:17	REBOUND (DEF) by RASHEED, KHIARICA			
06:10				FOUL (PERSONAL) by STREUN, TATIANA
06:10				SUB OUT: STREUN, TATIANA
06:10				SUB IN: GARDNER, CASSIDY
05:55	GOOD! JUMPER by BAILEY, JACEY	38-32	H 6	
05:55	ASSIST by MALVAR, CAITLIN			
05:32		41-32	H 9	GOOD! 3PTR by JIMENEZ, KYLIE
05:32				ASSIST by HANSEN, DESIRAE
05:15	GOOD! 3PTR by BAILEY, JACEY	41-35	H 6	
05:15	ASSIST by RASHEED, KHIARICA			
04:54				MISSED 3PTR by JIMENEZ, KYLIE
04:51	REBOUND (DEF) by MALVAR, CAITLIN			
04:45	MISSED 3PTR by BAILEY, JACEY			
04:42				REBOUND (DEF) by STOTLER, JORDAN
04:29				MISSED LAYUP by FRAZIER, BELLE
04:26	REBOUND (DEF) by BAILEY, JACEY			
04:19	MISSED JUMPER by RASHEED, KHIARICA			
04:16				REBOUND (DEF) by STOTLER, JORDAN
04:02		43-35	H 8	GOOD! JUMPER by STOTLER, JORDAN [PNT]
04:02				ASSIST by FRAZIER, BELLE
03:35	MISSED JUMPER by RASHEED, KHIARICA			
03:31	REBOUND (OFF) by ORNDOFF, LAUREN			
03:27	MISSED JUMPER by RADFORD, NINA			
03:24				REBOUND (DEF) by GARDNER, CASSIDY
03:13				TURNOVER (BADPASS) by JIMENEZ, KYLIE
03:13				

Time	VISITORS: Northern Ariz.	Score	Margin	HOME: Portland St.
03:13	SUB OUT: RASHEED, KHIARICA			
03:13	SUB OUT: ORNDOFF, LAUREN			
03:13	SUB OUT: RADFORD, NINA			
03:13	SUB IN: SCHENCK, REGAN			
03:13	SUB IN: GARY, MORGAN			
03:13	SUB IN: CARROLL, PEYTON			
03:03	MISSED JUMPER by BAILEY, JACEY			
03:00				REBOUND (DEF) by HANSEN, DESIRAE
02:49				MISSED JUMPER by FRAZIER, BELLE
02:49				REBOUND (OFF) by STOTLER, JORDAN
02:49	FOUL (PERSONAL) by SCHENCK, REGAN			
02:49				SUB OUT: HANSEN, DESIRAE
02:49				SUB IN: SCHULTZ, SYD
02:31				MISSED 3PTR by FRAZIER, BELLE
02:28	REBOUND (DEF) by MALVAR, CAITLIN			
02:15	GOOD! JUMPER by CARROLL, PEYTON	43-37	H 6	
02:15	ASSIST by SCHENCK, REGAN			
01:45		46-37	H 9	GOOD! 3PTR by GARDNER, CASSIDY
01:45				ASSIST by JIMENEZ, KYLIE
01:25	TURNOVER (BADPASS) by BAILEY, JACEY			
01:25				STEAL by FRAZIER, BELLE
01:05				MISSED JUMPER by STOTLER, JORDAN
01:02	REBOUND (DEF) by BAILEY, JACEY			
00:49	MISSED 3PTR by BAILEY, JACEY			
00:48				REBOUND (DEF) by TEAM
00:48	FOUL (PERSONAL) by GARY, MORGAN			
00:48				SUB OUT: STOTLER, JORDAN
00:48				SUB OUT: FRAZIER, BELLE
00:48				SUB IN: CANZOBRE, MARINA
00:48				SUB IN: HANSEN, DESIRAE
00:48	SUB OUT: GARY, MORGAN			
00:48	SUB OUT: BAILEY, JACEY			
00:48	SUB IN: RODABAUGH, EMILY			
00:48	SUB IN: RADFORD, NINA			
00:44		49-37	H 12	GOOD! 3PTR by GARDNER, CASSIDY
00:44				ASSIST by HANSEN, DESIRAE
00:29	MISSED JUMPER by CARROLL, PEYTON			
00:25				REBOUND (DEF) by SCHULTZ, SYD
00:01	FOUL (PERSONAL) by RODABAUGH, EMILY			
00:01		50-37	H 13	GOOD! FT by JIMENEZ, KYLIE
00:01		51-37	H 14	GOOD! FT by JIMENEZ, KYLIE
00:01				SUB OUT: JIMENEZ, KYLIE
00:01				SUB IN: DENSON, LABREA

**Northern Ariz. 37, Portland St. 51**

Points from (This Period)	NAU	PSU
In the Paint	2	6
Off Turns	0	2
2nd Chance	3	2
Fast Break	0	0
Bench	2	6

**Official Box Score**  
**Northern Ariz. vs Portland St.**  
**Fourth Quarter Statistics Only**  
**January 25, 2020 at Viking Pavilion - Portland**



**Northern Ariz. 17**

No.	Player	S	Pts	FG	3FG	FT	OR	DR	TR	PF	A	TO	Blk	Stl	Min	+/-
03	MALVAR, CAITLIN	G	0	0-0	0-0	0-0	0	0	0	2	1	0	0	0	4	2
11	BAILEY, JACEY	G	4	2-4	0-1	0-0	1	1	2	0	1	1	0	1	10	2
15	RASHEED, KHIARICA	F	9	3-6	0-0	3-4	1	1	2	2	0	0	0	0	10	2
20	ORNDOFF, LAUREN	G	0	0-0	0-0	0-0	0	3	3	0	1	0	0	1	10	2
30	RADFORD, NINA	F	2	1-2	0-1	0-0	0	0	0	0	1	2	1	0	10	2
01	SCHENCK, REGAN	G	2	1-2	0-1	0-0	0	0	0	2	0	2	0	0	5	0
04	GARY, MORGAN	G	0	0-0	0-0	0-0	0	0	0	0	0	0	0	0	0	0
21	RODABAUGH, EMILY	G	0	0-0	0-0	0-0	0	0	0	0	0	0	0	0	0	0
25	LEHEW, BRIANNA	F	0	0-0	0-0	0-0	0	0	0	0	0	0	0	0	0	0
33	CARROLL, PEYTON	F	0	0-0	0-0	0-0	0	0	0	0	0	0	0	0	0	0
TEAM							0	1	1	0		0				
<b>TOTALS</b>			<b>17</b>	<b>7-14</b>	<b>0-3</b>	<b>3-4</b>	<b>2</b>	<b>6</b>	<b>8</b>	<b>6</b>	<b>4</b>	<b>5</b>	<b>1</b>	<b>2</b>	<b>49</b>	

*Shooting By Period*

Period	FG	FG%	3FG	3FG%	FT	FT%
Game	21-62	33.9%	3-16	18.8%	9-12	75.0%

*Deadball Rebounds: 3,0*

**Portland St. 15**

No.	Player	S	Pts	FG	3FG	FT	OR	DR	TR	PF	A	TO	Blk	Stl	Min	+/-
03	JIMENEZ, KYLIE	G	5	1-2	1-2	2-2	0	0	0	3	2	3	0	0	8	0
11	STOTLER, JORDAN	F	2	1-1	0-0	0-0	0	0	0	2	0	0	1	0	5	-3
12	STREUN, TATIANA	F	2	1-1	0-0	0-0	0	0	0	1	0	0	0	0	4	-4
35	FRAZIER, BELLE	G	1	0-2	0-1	1-2	0	1	1	1	1	1	0	3	7	3
53	HANSEN, DESIRAE	G	3	1-6	1-2	0-0	0	1	1	0	2	1	0	0	9	0
01	DENSON, LABREA	G	0	0-0	0-0	0-0	0	0	0	0	0	0	0	0	1	-2
10	CANZOBRE, MARINA	F	0	0-0	0-0	0-0	0	0	0	0	0	0	0	0	1	-2
15	GARDNER, CASSIDY	G	0	0-0	0-0	0-0	0	0	0	0	0	0	0	0	7	-3
30	SCHULTZ, SYD	F	2	1-1	0-0	0-0	0	1	1	0	0	0	0	0	6	1
TEAM							2	2	4	0		0				
<b>TOTALS</b>			<b>15</b>	<b>5-13</b>	<b>2-5</b>	<b>3-4</b>	<b>2</b>	<b>5</b>	<b>7</b>	<b>7</b>	<b>5</b>	<b>5</b>	<b>1</b>	<b>3</b>	<b>49</b>	

*Shooting By Period*

Period	FG	FG%	3FG	3FG%	FT	FT%
Game	22-59	37.3%	8-24	33.3%	14-21	66.7%

*Deadball Rebounds: 3,0*

*Game Notes:*

Officials: Michol Murray, NaDerra Carey, Lisa Bishop  
 Attendance: 432

Start Time: 05:05 PM ET  
 End Time: 06:39 PM ET  
 Game Duration: 1:34  
 Conference Game;

Score	1st	2nd	3rd	4th	TOT
NAU	16	7	14	17	<b>54</b>
PSU	12	21	18	15	<b>66</b>

Points from (This Period)	NAU	PSU
In the Paint	14	6
Off Turns	4	0
2nd Chance	3	2
Fast Break	4	0
Bench	2	2

**Official Play-By-Play**  
**Northern Ariz. vs Portland St.**  
**Fourth Quarter**  
**January 25, 2020 at Viking Pavilion - Portland**



**Period 4**

**Starters:**

**Northern Ariz.:** 3 MALVAR, CAITLIN (G); 11 BAILEY, JACEY (G); 15 RASHEED, KHIARICA (F); 20 ORNDOFF, LAUREN (G); 30 RADFORD, NINA (F);  
**Portland St.:** 3 JIMENEZ, KYLIE (G); 11 STOTLER, JORDAN (F); 12 STREUN, TATIANA (F); 35 FRAZIER, BELLE (G); 53 HANSEN, DESIRAE (G);

Time	VISITORS: Northern Ariz.	Score	Margin	HOME: Portland St.
10:00	SUB OUT: MALVAR, CAITLIN			
10:00	SUB OUT: RODABAUGH, EMILY			
10:00	SUB OUT: CARROLL, PEYTON			
10:00	SUB IN: BAILEY, JACEY			
10:00	SUB IN: RASHEED, KHIARICA			
10:00	SUB IN: ORNDOFF, LAUREN			
09:42				MISSED JUMPER by HANSEN, DESIRAE
09:38	REBOUND (DEF) by ORNDOFF, LAUREN			
09:35	GOOD! LAYUP by SCHENCK, REGAN [FB/PNT]	51-39	H 12	
09:35	ASSIST by ORNDOFF, LAUREN			
09:09				MISSED 3PTR by HANSEN, DESIRAE
09:05	REBOUND (DEF) by ORNDOFF, LAUREN			
08:58	MISSED JUMPER by RASHEED, KHIARICA			
08:53	REBOUND (OFF) by BAILEY, JACEY			
08:51	MISSED 3PTR by SCHENCK, REGAN			
08:48				REBOUND (DEF) by HANSEN, DESIRAE
08:39				MISSED LAYUP by HANSEN, DESIRAE
08:38				REBOUND (OFF) by TEAM
08:38				SUB OUT: DENSON, LABREA
08:38				SUB OUT: CANZOBRE, MARINA
08:38				SUB IN: JIMENEZ, KYLIE
08:38				SUB IN: STOTLER, JORDAN
08:33				MISSED JUMPER by HANSEN, DESIRAE
08:30	REBOUND (DEF) by BAILEY, JACEY			
08:24	GOOD! LAYUP by RASHEED, KHIARICA	51-41	H 10	
08:24	ASSIST by BAILEY, JACEY			
08:17	FOUL (PERSONAL) by SCHENCK, REGAN			
08:17				SUB OUT: GARDNER, CASSIDY
08:17				SUB IN: FRAZIER, BELLE
08:06		53-41	H 12	GOOD! LAYUP by SCHULTZ, SYD
08:06				ASSIST by FRAZIER, BELLE
07:49	TURNOVER (LOSTBALL) by SCHENCK, REGAN			
07:49				STEAL by FRAZIER, BELLE
07:45				MISSED LAYUP by FRAZIER, BELLE
07:45	REBOUND (DEF) by TEAM			
07:45				FOUL (PERSONAL) by JIMENEZ, KYLIE
07:45				SUB OUT: SCHULTZ, SYD
07:45				SUB IN: STREUN, TATIANA
07:45	SUB OUT: SCHENCK, REGAN			
07:45	SUB IN: MALVAR, CAITLIN			
07:31				FOUL (PERSONAL) by FRAZIER, BELLE
07:31	MISSED FT by RASHEED, KHIARICA			
07:31	REBOUND (OFF) by TEAM			
07:31	GOOD! FT by RASHEED, KHIARICA	53-42	H 11	
07:18				TURNOVER (BADPASS) by FRAZIER, BELLE
07:18	STEAL by ORNDOFF, LAUREN			
07:13	TURNOVER (BADPASS) by RADFORD, NINA			
07:13				STEAL by FRAZIER, BELLE
06:59	FOUL (PERSONAL) by RASHEED, KHIARICA			
06:59				SUB OUT: FRAZIER, BELLE
06:59				SUB IN: GARDNER, CASSIDY
06:39				MISSED 3PTR by JIMENEZ, KYLIE
06:38	REBOUND (DEF) by RASHEED, KHIARICA			
06:38				FOUL (PERSONAL) by STOTLER, JORDAN
06:18	GOOD! LAYUP by RASHEED, KHIARICA	53-44	H 9	
06:18	ASSIST by MALVAR, CAITLIN			
06:18				FOUL (PERSONAL) by STOTLER, JORDAN
06:18				SUB OUT: STOTLER, JORDAN
06:18				SUB IN: SCHULTZ, SYD
06:18	GOOD! FT by RASHEED, KHIARICA	53-45	H 8	
06:03	FOUL (PERSONAL) by MALVAR, CAITLIN			
05:47	FOUL (PERSONAL) by MALVAR, CAITLIN			
05:47		54-45	H 9	GOOD! FT by JIMENEZ, KYLIE
05:47		55-45	H 10	GOOD! FT by JIMENEZ, KYLIE
05:47				SUB OUT: HANSEN, DESIRAE
05:47				SUB IN: FRAZIER, BELLE
05:47	SUB OUT: MALVAR, CAITLIN			
05:47	SUB IN: SCHENCK, REGAN			
05:31	GOOD! JUMPER by BAILEY, JACEY [PNT]	55-47	H 8	
05:31	ASSIST by RADFORD, NINA			

Time	VISITORS: Northern Ariz.	Score	Margin	HOME: Portland St.
05:07				FOUL (OFF) by JIMENEZ, KYLIE
05:07				TURNOVER (OFFENSIVE) by JIMENEZ, KYLIE
04:53	FOUL (OFF) by SCHENCK, REGAN			
04:53	TURNOVER (OFFENSIVE) by SCHENCK, REGAN			
04:53				
04:53				SUB OUT: STREUN, TATIANA
04:53				SUB IN: HANSEN, DESIRAE
04:32				TURNOVER (LOSTBALL) by HANSEN, DESIRAE
04:20	GOOD! JUMPER by RADFORD, NINA [PNT]	55-49	H 6	
04:02		58-49	H 9	GOOD! 3PTR by HANSEN, DESIRAE
04:02				ASSIST by JIMENEZ, KYLIE
03:40	MISSED 3PTR by BAILEY, JACEY			
03:34				REBOUND (DEF) by SCHULTZ, SYD
03:11		61-49	H 12	GOOD! 3PTR by JIMENEZ, KYLIE
03:11				ASSIST by HANSEN, DESIRAE
02:57	TURNOVER (BADPASS) by RADFORD, NINA			
02:57				STEAL by FRAZIER, BELLE
02:42				SUB OUT: GARDNER, CASSIDY
02:42				SUB OUT: SCHULTZ, SYD
02:42				SUB IN: STOTLER, JORDAN
02:42				SUB IN: STREUN, TATIANA
02:42	SUB OUT: SCHENCK, REGAN			
02:42	SUB IN: MALVAR, CAITLIN			
02:36				MISSED 3PTR by FRAZIER, BELLE
02:32	REBOUND (DEF) by ORNDOFF, LAUREN			
02:23	MISSED JUMPER by RASHEED, KHIARICA			
02:20				REBOUND (DEF) by FRAZIER, BELLE
02:08				MISSED JUMPER by HANSEN, DESIRAE
02:08	BLOCK by RADFORD, NINA			
02:08				REBOUND (OFF) by TEAM
02:05		63-49	H 14	GOOD! LAYUP by STREUN, TATIANA
02:05				ASSIST by JIMENEZ, KYLIE
01:51	MISSED JUMPER by RASHEED, KHIARICA			
01:49	REBOUND (OFF) by RASHEED, KHIARICA			
01:49	GOOD! LAYUP by RASHEED, KHIARICA	63-51	H 12	
01:49				FOUL (PERSONAL) by STREUN, TATIANA
01:49	GOOD! FT by RASHEED, KHIARICA	63-52	H 11	
01:35				FOUL (OFF) by JIMENEZ, KYLIE
01:35				TURNOVER (OFFENSIVE) by JIMENEZ, KYLIE
01:22	MISSED JUMPER by BAILEY, JACEY			
01:22				BLOCK by STOTLER, JORDAN
01:22				REBOUND (DEF) by TEAM
01:22	FOUL (PERSONAL) by RASHEED, KHIARICA			
01:22				MISSED FT by FRAZIER, BELLE
01:22				REBOUND (OFF) by TEAM
01:22		64-52	H 12	GOOD! FT by FRAZIER, BELLE
01:10	MISSED 3PTR by RADFORD, NINA			
01:08				REBOUND (DEF) by TEAM
01:08				SUB OUT: STREUN, TATIANA
01:08				SUB IN: GARDNER, CASSIDY
00:54				TIMEOUT 30SEC
00:44				TURNOVER (BADPASS) by JIMENEZ, KYLIE
00:44	STEAL by BAILEY, JACEY			
00:41	GOOD! LAYUP by BAILEY, JACEY [FB]	64-54	H 10	
00:14		66-54	H 12	GOOD! JUMPER by STOTLER, JORDAN [PNT]
00:14				ASSIST by HANSEN, DESIRAE
00:12	TURNOVER (BADPASS) by BAILEY, JACEY			

### Northern Ariz. 54, Portland St. 66

Points from (This Period)	NAU	PSU
In the Paint	14	6
Off Turns	4	0
2nd Chance	3	2
Fast Break	4	0
Bench	2	2



**Official Scoring/Possession Reference Chart  
Northern Ariz. vs Portland St.  
Period 1  
January 25, 2020 at Viking Pavilion - Portland**



**Period 1**

**Starters:**

**Northern Ariz.:** 3 MALVAR, CAITLIN (G); 11 BAILEY, JACEY (G); 15 RASHEED, KHIARICA (F); 20 ORNDOFF, LAUREN (G); 30 RADFORD, NINA (F);

**Portland St.:** 3 JIMENEZ, KYLIE (G); 11 STOTLER, JORDAN (F); 12 STREUN, TATIANA (F); 35 FRAZIER, BELLE (G); 53 HANSEN, DESIRAE (G);

Time	VISITORS: Northern Ariz.	Score	Margin	HOME: Portland St.
09:43	GOOD! FT by RASHEED, KHIARICA	0-1	V 1	
09:43	GOOD! FT by RASHEED, KHIARICA	0-2	V 2	
08:41	GOOD! FT by RASHEED, KHIARICA	0-3	V 3	
08:41	GOOD! FT by RASHEED, KHIARICA	0-4	V 4	
07:14	GOOD! 3PTR by RADFORD, NINA	0-7	V 7	
06:05	GOOD! LAYUP by GARY, MORGAN	0-9	V 9	
05:45		2-9	V 7	GOOD! JUMPER by FRAZIER, BELLE [PNT]
05:22	GOOD! JUMPER by CARROLL, PEYTON	2-11	V 9	
03:53	GOOD! JUMPER by ORNDOFF, LAUREN	2-13	V 11	
03:34		4-13	V 9	GOOD! LAYUP by STREUN, TATIANA
03:34		5-13	V 8	GOOD! FT by STREUN, TATIANA
03:01	GOOD! FT by RASHEED, KHIARICA	5-14	V 9	
02:23		6-14	V 8	GOOD! FT by SCHULTZ, SYD
02:23		7-14	V 7	GOOD! FT by SCHULTZ, SYD
02:13	GOOD! JUMPER by RASHEED, KHIARICA	7-16	V 9	
02:00		10-16	V 6	GOOD! 3PTR by FRAZIER, BELLE
01:22		12-16	V 4	GOOD! JUMPER by HANSEN, DESIRAE

**Northern Ariz. 16, Portland St. 12**

**Official Scoring/Possession Reference Chart  
Northern Ariz. vs Portland St.  
Period 2  
January 25, 2020 at Viking Pavilion - Portland**



**Period 2**

**Starters:**

**Northern Ariz.:** 3 MALVAR, CAITLIN (G); 11 BAILEY, JACEY (G); 15 RASHEED, KHIARICA (F); 20 ORNDOFF, LAUREN (G); 30 RADFORD, NINA (F);

**Portland St.:** 3 JIMENEZ, KYLIE (G); 11 STOTLER, JORDAN (F); 12 STREUN, TATIANA (F); 35 FRAZIER, BELLE (G); 53 HANSEN, DESIRAE (G);

Time	VISITORS: Northern Ariz.	Score	Margin	HOME: Portland St.
09:51		14-16	V 2	GOOD! LAYUP by FRAZIER, BELLE
08:18	GOOD! LAYUP by GARY, MORGAN	14-18	V 4	
07:52		15-18	V 3	GOOD! FT by HANSEN, DESIRAE
07:32	GOOD! JUMPER by RADFORD, NINA	15-20	V 5	
06:44	GOOD! JUMPER by RASHEED, KHIARICA [PNT]	15-22	V 7	
05:47		17-22	V 5	GOOD! JUMPER by FRAZIER, BELLE [PNT]
05:19		18-22	V 4	GOOD! FT by SCHULTZ, SYD
05:19		19-22	V 3	GOOD! FT by SCHULTZ, SYD
04:23		22-22	T	GOOD! 3PTR by FRAZIER, BELLE
03:51		24-22	H 2	GOOD! LAYUP by STOTLER, JORDAN [PNT]
02:34		27-22	H 5	GOOD! 3PTR by HANSEN, DESIRAE
02:09	GOOD! FT by CARROLL, PEYTON	27-23	H 4	
01:48		29-23	H 6	GOOD! LAYUP by SCHULTZ, SYD
00:50		31-23	H 8	GOOD! LAYUP by SCHULTZ, SYD
00:02		32-23	H 9	GOOD! FT by JIMENEZ, KYLIE
00:02		33-23	H 10	GOOD! FT by JIMENEZ, KYLIE

**Northern Ariz. 23, Portland St. 33**

**Official Scoring/Possession Reference Chart  
Northern Ariz. vs Portland St.  
Period 3  
January 25, 2020 at Viking Pavilion - Portland**



**Period 3**

**Starters:**

**Northern Ariz.:** 3 MALVAR, CAITLIN (G); 11 BAILEY, JACEY (G); 15 RASHEED, KHIARICA (F); 20 ORNDOFF, LAUREN (G); 30 RADFORD, NINA (F);  
**Portland St.:** 3 JIMENEZ, KYLIE (G); 11 STOTLER, JORDAN (F); 12 STREUN, TATIANA (F); 35 FRAZIER, BELLE (G); 53 HANSEN, DESIRAE (G);

Time	VISITORS: Northern Ariz.	Score	Margin	HOME: Portland St.
09:50	GOOD! LAYUP by BAILEY, JACEY	33-25	H 8	
08:52	GOOD! JUMPER by BAILEY, JACEY	33-27	H 6	
08:38		34-27	H 7	GOOD! FT by STREUN, TATIANA
07:48		36-27	H 9	GOOD! JUMPER by STOTLER, JORDAN [PNT]
07:01		38-27	H 11	GOOD! LAYUP by STREUN, TATIANA
06:44	GOOD! 3PTR by BAILEY, JACEY	38-30	H 8	
05:55	GOOD! JUMPER by BAILEY, JACEY	38-32	H 6	
05:32		41-32	H 9	GOOD! 3PTR by JIMENEZ, KYLIE
05:15	GOOD! 3PTR by BAILEY, JACEY	41-35	H 6	
04:02		43-35	H 8	GOOD! JUMPER by STOTLER, JORDAN [PNT]
02:15	GOOD! JUMPER by CARROLL, PEYTON	43-37	H 6	
01:45		46-37	H 9	GOOD! 3PTR by GARDNER, CASSIDY
00:44		49-37	H 12	GOOD! 3PTR by GARDNER, CASSIDY
00:01		50-37	H 13	GOOD! FT by JIMENEZ, KYLIE
00:01		51-37	H 14	GOOD! FT by JIMENEZ, KYLIE

**Northern Ariz. 37, Portland St. 51**

**Official Scoring/Possession Reference Chart**  
**Northern Ariz. vs Portland St.**  
**Period 4**  
**January 25, 2020 at Viking Pavilion - Portland**



**Period 4**

**Starters:**

**Northern Ariz.:** 3 MALVAR, CAITLIN (G); 11 BAILEY, JACEY (G); 15 RASHEED, KHIARICA (F); 20 ORNDOFF, LAUREN (G); 30 RADFORD, NINA (F);

**Portland St.:** 3 JIMENEZ, KYLIE (G); 11 STOTLER, JORDAN (F); 12 STREUN, TATIANA (F); 35 FRAZIER, BELLE (G); 53 HANSEN, DESIRAE (G);

Time	VISITORS: Northern Ariz.	Score	Margin	HOME: Portland St.
09:35	GOOD! LAYUP by SCHENCK, REGAN [FB/PNT]	51-39	H 12	
08:24	GOOD! LAYUP by RASHEED, KHIARICA	51-41	H 10	
08:06		53-41	H 12	GOOD! LAYUP by SCHULTZ, SYD
07:31	GOOD! FT by RASHEED, KHIARICA	53-42	H 11	
06:18	GOOD! LAYUP by RASHEED, KHIARICA	53-44	H 9	
06:18	GOOD! FT by RASHEED, KHIARICA	53-45	H 8	
05:47		54-45	H 9	GOOD! FT by JIMENEZ, KYLIE
05:47		55-45	H 10	GOOD! FT by JIMENEZ, KYLIE
05:31	GOOD! JUMPER by BAILEY, JACEY [PNT]	55-47	H 8	
04:20	GOOD! JUMPER by RADFORD, NINA [PNT]	55-49	H 6	
04:02		58-49	H 9	GOOD! 3PTR by HANSEN, DESIRAE
03:11		61-49	H 12	GOOD! 3PTR by JIMENEZ, KYLIE
02:05		63-49	H 14	GOOD! LAYUP by STREUN, TATIANA
01:49	GOOD! LAYUP by RASHEED, KHIARICA	63-51	H 12	
01:49	GOOD! FT by RASHEED, KHIARICA	63-52	H 11	
01:22		64-52	H 12	GOOD! FT by FRAZIER, BELLE
00:41	GOOD! LAYUP by BAILEY, JACEY [FB]	64-54	H 10	
00:14		66-54	H 12	GOOD! JUMPER by STOTLER, JORDAN [PNT]

**Northern Ariz. 54, Portland St. 66**

**Official Substitutions Log  
Northern Ariz. vs Portland St.  
Period 1  
January 25, 2020 at Viking Pavilion - Portland**



<b>VISITORS: Northern Ariz.</b>	<b>Time</b>	<b>Score</b>	<b>HOME: Portland St.</b>
3 MALVAR, CAITLIN			3 JIMENEZ, KYLIE
11 BAILEY, JACEY			11 STOTLER, JORDAN
15 RASHEED, KHIARICA			12 STREUN, TATIANA
20 ORNDOFF, LAUREN			35 FRAZIER, BELLE
30 RADFORD, NINA			53 HANSEN, DESIRAE
	09:43	2-0	SUB OUT: STOTLER, JORDAN
	09:43		SUB IN: CANZOBRE, MARINA
SUB OUT: 20 ORNDOFF, LAUREN	06:46	7-0	
SUB IN: 1 SCHENCK, REGAN	06:46		
SUB OUT: 15 RASHEED, KHIARICA	06:13	7-0	
SUB OUT: 30 RADFORD, NINA	06:13		
SUB IN: 4 GARY, MORGAN	06:13		
SUB IN: 33 CARROLL, PEYTON	06:13		
	05:12	11-2	SUB OUT: CANZOBRE, MARINA
	05:12		SUB IN: SCHULTZ, SYD
SUB OUT: 3 MALVAR, CAITLIN	04:22	11-2	
SUB OUT: 4 GARY, MORGAN	04:22		
SUB OUT: 11 BAILEY, JACEY	04:22		
SUB IN: 15 RASHEED, KHIARICA	04:22		
SUB IN: 20 ORNDOFF, LAUREN	04:22		
SUB IN: 30 RADFORD, NINA	04:22		
	03:34	13-4	SUB OUT: FRAZIER, BELLE
	03:34		SUB IN: GARDNER, CASSIDY
SUB OUT: 30 RADFORD, NINA	03:34		
SUB IN: 21 RODABAUGH, EMILY	03:34		
SUB OUT: 33 CARROLL, PEYTON	03:01	13-5	
SUB IN: 3 MALVAR, CAITLIN	03:01		
	03:01		SUB OUT: STREUN, TATIANA
	03:01		SUB IN: FRAZIER, BELLE
SUB OUT: 21 RODABAUGH, EMILY	02:23	14-5	
SUB IN: 11 BAILEY, JACEY	02:23		
SUB OUT: 1 SCHENCK, REGAN	00:59	16-12	
SUB OUT: 20 ORNDOFF, LAUREN	00:59		
SUB IN: 4 GARY, MORGAN	00:59		
SUB IN: 25 LEHEW, BRIANNA	00:59		
SUB OUT: 15 RASHEED, KHIARICA	00:22	16-12	
SUB IN: 33 CARROLL, PEYTON	00:22		

**Northern Ariz. 16, Portland St. 12**

**Official Substitutions Log**  
**Northern Ariz. vs Portland St.**  
**Period 2**  
**January 25, 2020 at Viking Pavilion - Portland**



VISITORS: Northern Ariz.	Time	Score	HOME: Portland St.
3 MALVAR, CAITLIN			3 JIMENEZ, KYLIE
11 BAILEY, JACEY			11 STOTLER, JORDAN
15 RASHEED, KHIARICA			12 STREUN, TATIANA
20 ORNDOFF, LAUREN			35 FRAZIER, BELLE
30 RADFORD, NINA			53 HANSEN, DESIRAE
	10:00	-	SUB OUT: SCHULTZ, SYD
	10:00		SUB IN: STOTLER, JORDAN
SUB OUT: 25 LEHEW, BRIANNA	07:52	18-14	
SUB OUT: 33 CARROLL, PEYTON	07:52		
SUB IN: 15 RASHEED, KHIARICA	07:52		
SUB IN: 30 RADFORD, NINA	07:52		
	07:29	20-15	SUB OUT: HANSEN, DESIRAE
	07:29		SUB IN: SCHULTZ, SYD
	05:19	22-17	SUB OUT: GARDNER, CASSIDY
	05:19		SUB IN: HANSEN, DESIRAE
SUB OUT: 4 GARY, MORGAN	05:19		
SUB OUT: 30 RADFORD, NINA	05:19		
SUB IN: 1 SCHENCK, REGAN	05:19		
SUB IN: 20 ORNDOFF, LAUREN	05:19		
SUB OUT: 11 BAILEY, JACEY	02:33	22-27	
SUB OUT: 15 RASHEED, KHIARICA	02:33		
SUB IN: 4 GARY, MORGAN	02:33		
SUB IN: 33 CARROLL, PEYTON	02:33		
	02:22	22-27	SUB OUT: HANSEN, DESIRAE
	02:22		SUB IN: GARDNER, CASSIDY
	02:09	22-27	SUB OUT: STOTLER, JORDAN
	02:09		SUB IN: HANSEN, DESIRAE
	00:02	23-33	SUB OUT: JIMENEZ, KYLIE
	00:02		SUB IN: DENSON, LABREA
SUB OUT: 4 GARY, MORGAN	00:02		
SUB IN: 11 BAILEY, JACEY	00:02		

**Northern Ariz. 23, Portland St. 33**

**Official Substitutions Log  
Northern Ariz. vs Portland St.  
Period 3  
January 25, 2020 at Viking Pavilion - Portland**



<b>VISITORS: Northern Ariz.</b>	<b>Time</b>	<b>Score</b>	<b>HOME: Portland St.</b>
3 MALVAR, CAITLIN			3 JIMENEZ, KYLIE
11 BAILEY, JACEY			11 STOTLER, JORDAN
15 RASHEED, KHIARICA			12 STREUN, TATIANA
20 ORNDOFF, LAUREN			35 FRAZIER, BELLE
30 RADFORD, NINA			53 HANSEN, DESIRAE
	10:00	-	SUB OUT: DENSON, LABREA
	10:00		SUB OUT: GARDNER, CASSIDY
	10:00		SUB OUT: SCHULTZ, SYD
	10:00		SUB IN: JIMENEZ, KYLIE
	10:00		SUB IN: STOTLER, JORDAN
	10:00		SUB IN: STREUN, TATIANA
SUB OUT: 1 SCHENCK, REGAN	10:00		
SUB OUT: 33 CARROLL, PEYTON	10:00		
SUB IN: 15 RASHEED, KHIARICA	10:00		
SUB IN: 30 RADFORD, NINA	10:00		
	06:10	30-38	SUB OUT: STREUN, TATIANA
	06:10		SUB IN: GARDNER, CASSIDY
SUB OUT: 15 RASHEED, KHIARICA	03:13	35-43	
SUB OUT: 20 ORNDOFF, LAUREN	03:13		
SUB OUT: 30 RADFORD, NINA	03:13		
SUB IN: 1 SCHENCK, REGAN	03:13		
SUB IN: 4 GARY, MORGAN	03:13		
SUB IN: 33 CARROLL, PEYTON	03:13		
	02:49	35-43	SUB OUT: HANSEN, DESIRAE
	02:49		SUB IN: SCHULTZ, SYD
	00:48	37-46	SUB OUT: STOTLER, JORDAN
	00:48		SUB OUT: FRAZIER, BELLE
	00:48		SUB IN: CANZOBRE, MARINA
	00:48		SUB IN: HANSEN, DESIRAE
SUB OUT: 4 GARY, MORGAN	00:48		
SUB OUT: 11 BAILEY, JACEY	00:48		
SUB IN: 21 RODABAUGH, EMILY	00:48		
SUB IN: 30 RADFORD, NINA	00:48		
	00:01	37-51	SUB OUT: JIMENEZ, KYLIE
	00:01		SUB IN: DENSON, LABREA

**Northern Ariz. 37, Portland St. 51**

**Official Substitutions Log  
Northern Ariz. vs Portland St.  
Period 4  
January 25, 2020 at Viking Pavilion - Portland**



VISITORS: Northern Ariz.	Time	Score	HOME: Portland St.
3 MALVAR, CAITLIN			3 JIMENEZ, KYLIE
11 BAILEY, JACEY			11 STOTLER, JORDAN
15 RASHEED, KHIARICA			12 STREUN, TATIANA
20 ORNDOFF, LAUREN			35 FRAZIER, BELLE
30 RADFORD, NINA			53 HANSEN, DESIRAE
SUB OUT: 3 MALVAR, CAITLIN	10:00	-	
SUB OUT: 21 RODABAUGH, EMILY	10:00		
SUB OUT: 33 CARROLL, PEYTON	10:00		
SUB IN: 11 BAILEY, JACEY	10:00		
SUB IN: 15 RASHEED, KHIARICA	10:00		
SUB IN: 20 ORNDOFF, LAUREN	10:00		
	08:38	39-51	SUB OUT: DENSON, LABREA
	08:38		SUB OUT: CANZOBRE, MARINA
	08:38		SUB IN: JIMENEZ, KYLIE
	08:38		SUB IN: STOTLER, JORDAN
	08:17	41-51	SUB OUT: GARDNER, CASSIDY
	08:17		SUB IN: FRAZIER, BELLE
	07:45	41-53	SUB OUT: SCHULTZ, SYD
	07:45		SUB IN: STREUN, TATIANA
SUB OUT: 1 SCHENCK, REGAN	07:45		
SUB IN: 3 MALVAR, CAITLIN	07:45		
	06:59	42-53	SUB OUT: FRAZIER, BELLE
	06:59		SUB IN: GARDNER, CASSIDY
	06:18	44-53	SUB OUT: STOTLER, JORDAN
	06:18		SUB IN: SCHULTZ, SYD
	05:47	45-55	SUB OUT: HANSEN, DESIRAE
	05:47		SUB IN: FRAZIER, BELLE
SUB OUT: 3 MALVAR, CAITLIN	05:47		
SUB IN: 1 SCHENCK, REGAN	05:47		
	04:53	47-55	SUB OUT: STREUN, TATIANA
	04:53		SUB IN: HANSEN, DESIRAE
	02:42	49-61	SUB OUT: GARDNER, CASSIDY
	02:42		SUB OUT: SCHULTZ, SYD
	02:42		SUB IN: STOTLER, JORDAN
	02:42		SUB IN: STREUN, TATIANA
SUB OUT: 1 SCHENCK, REGAN	02:42		
SUB IN: 3 MALVAR, CAITLIN	02:42		
	01:08	52-64	SUB OUT: STREUN, TATIANA
	01:08		SUB IN: GARDNER, CASSIDY

**Northern Ariz. 54, Portland St. 66**

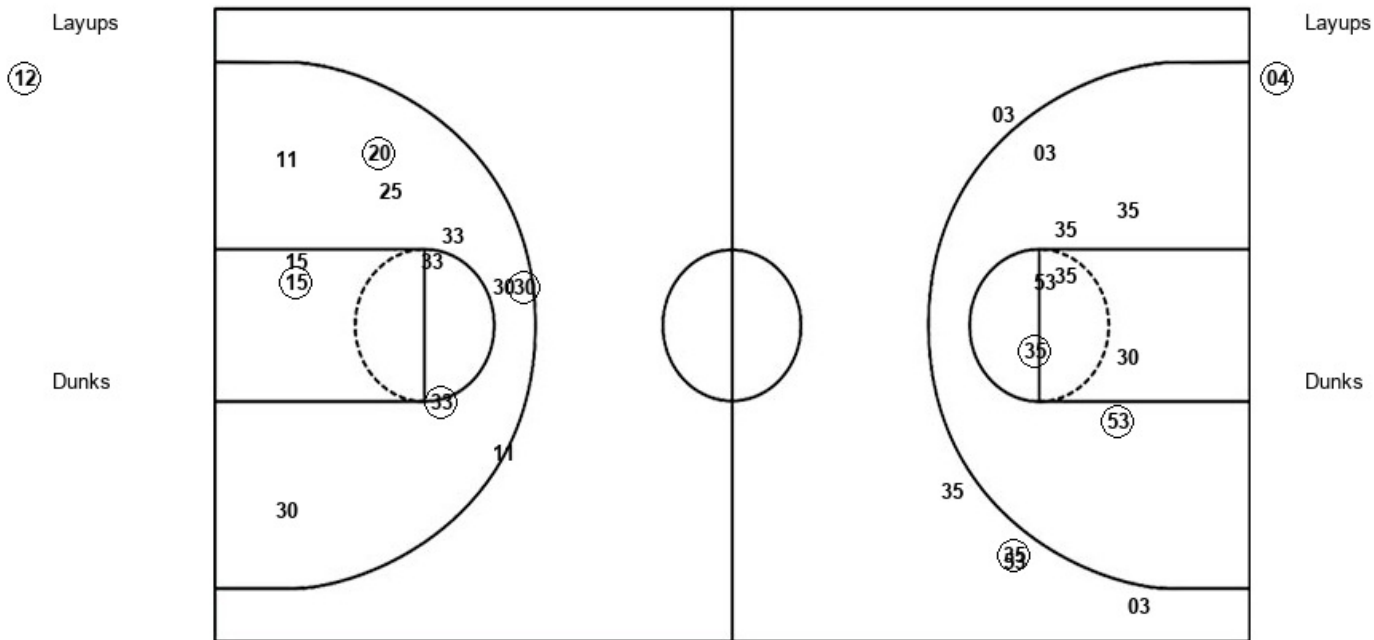


**Official Shot Chart**  
**Northern Ariz. vs Portland St.**  
**PERIOD 1 Shots**  
**January 25, 2020 at Viking Pavilion - Portland**



**Portland St.**

**Northern Ariz.**



<b>PSU : Period 1</b>	<b>Made</b>	<b>Att</b>	<b>Pct</b>
Layups	1	1	100.0
Dunks	0	0	0
2PT Field Goals	3	9	33.3
3PT Field Goals	1	5	20.0
<b>Total Field Goals</b>	<b>4</b>	<b>14</b>	<b>28.6</b>

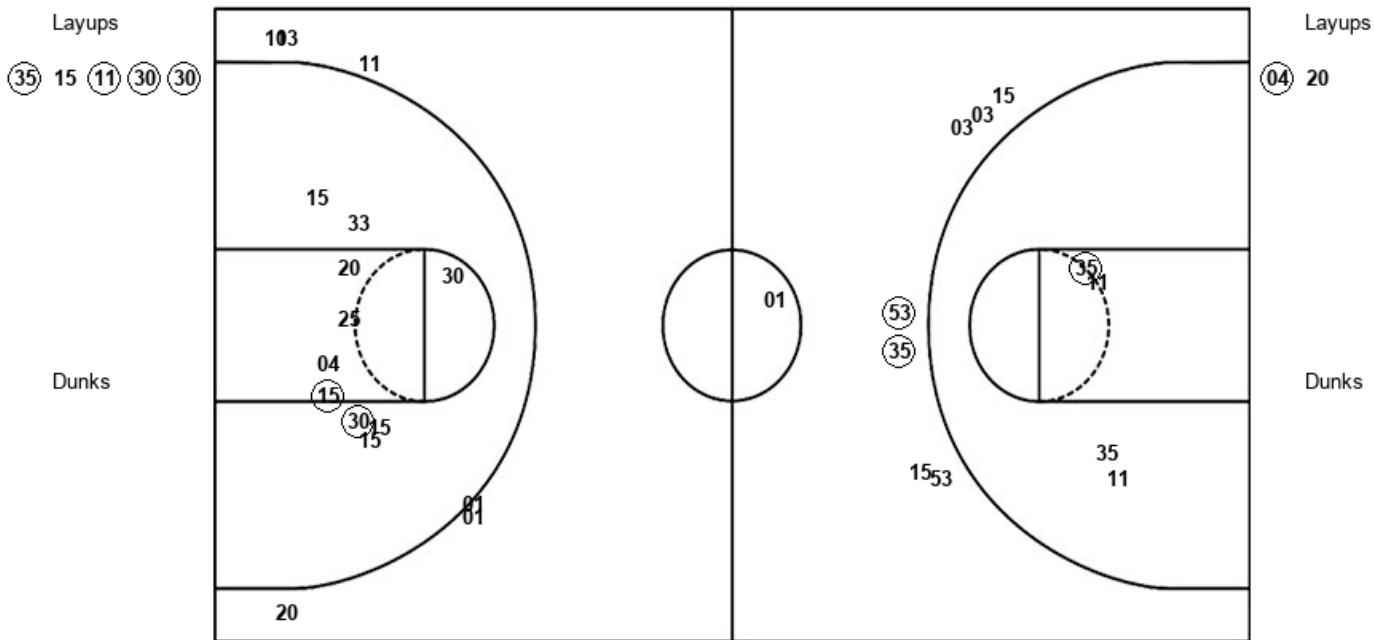
<b>NAU : Period 1</b>	<b>Made</b>	<b>Att</b>	<b>Pct</b>
Layups	1	1	100.0
Dunks	0	0	0
2PT Field Goals	4	11	36.4
3PT Field Goals	1	2	50.0
<b>Total Field Goals</b>	<b>5</b>	<b>13</b>	<b>38.5</b>

**Official Shot Chart**  
**Northern Ariz. vs Portland St.**  
**PERIOD 2 Shots**  
**January 25, 2020 at Viking Pavilion - Portland**



**Portland St.**

**Northern Ariz.**



<b>PSU : Period 2</b>	<b>Made</b>	<b>Att</b>	<b>Pct</b>
Layups	4	5	80.0
Dunks	0	0	0
2PT Field Goals	5	9	55.6
3PT Field Goals	2	7	28.6
<b>Total Field Goals</b>	<b>7</b>	<b>16</b>	<b>43.8</b>

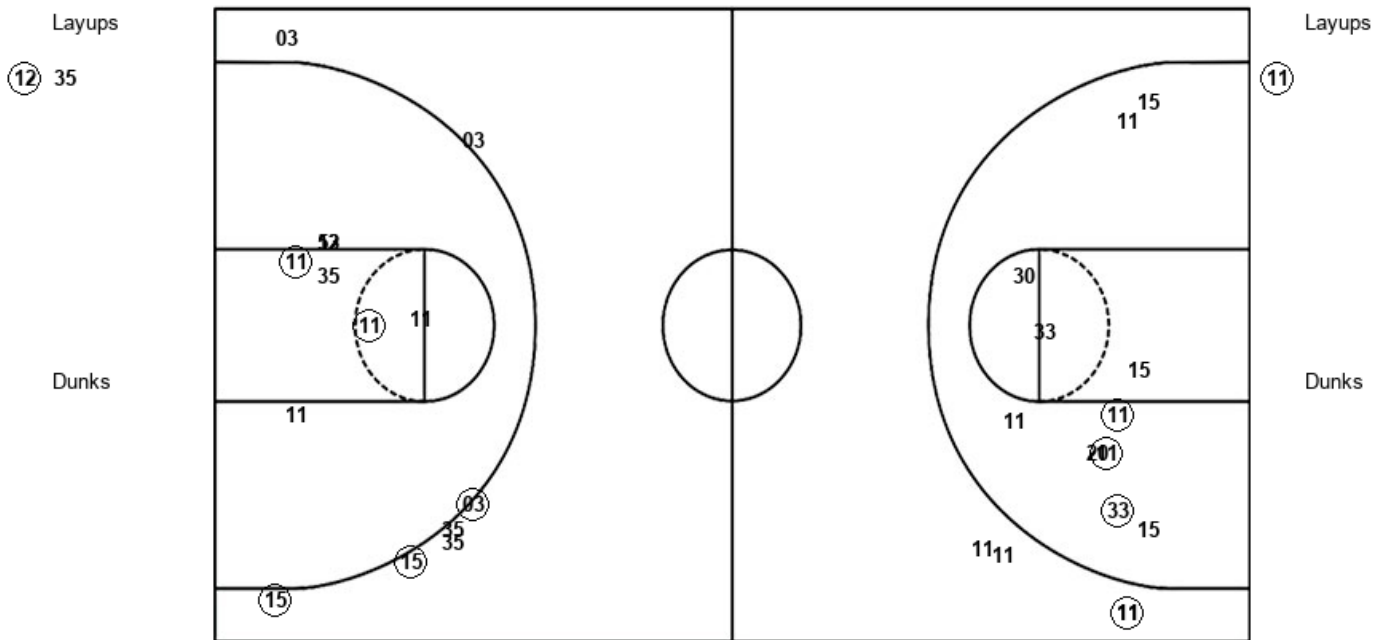
<b>NAU : Period 2</b>	<b>Made</b>	<b>Att</b>	<b>Pct</b>
Layups	1	2	50.0
Dunks	0	0	0
2PT Field Goals	3	12	25.0
3PT Field Goals	0	7	00.0
<b>Total Field Goals</b>	<b>3</b>	<b>19</b>	<b>15.8</b>

**Official Shot Chart**  
**Northern Ariz. vs Portland St.**  
**PERIOD 3 Shots**  
**January 25, 2020 at Viking Pavilion - Portland**



**Portland St.**

**Northern Ariz.**



<b>PSU : Period 3</b>	<b>Made</b>	<b>Att</b>	<b>Pct</b>
Layups	1	2	50.0
Dunks	0	0	0
2PT Field Goals	3	9	33.3
3PT Field Goals	3	7	42.9
<b>Total Field Goals</b>	<b>6</b>	<b>16</b>	<b>37.5</b>

<b>NAU : Period 3</b>	<b>Made</b>	<b>Att</b>	<b>Pct</b>
Layups	1	1	100.0
Dunks	0	0	0
2PT Field Goals	4	12	33.3
3PT Field Goals	2	4	50.0
<b>Total Field Goals</b>	<b>6</b>	<b>16</b>	<b>37.5</b>

**Official Shot Chart**  
**Northern Ariz. vs Portland St.**  
**PERIOD 4 Shots**  
**January 25, 2020 at Viking Pavilion - Portland**



**Portland St.**

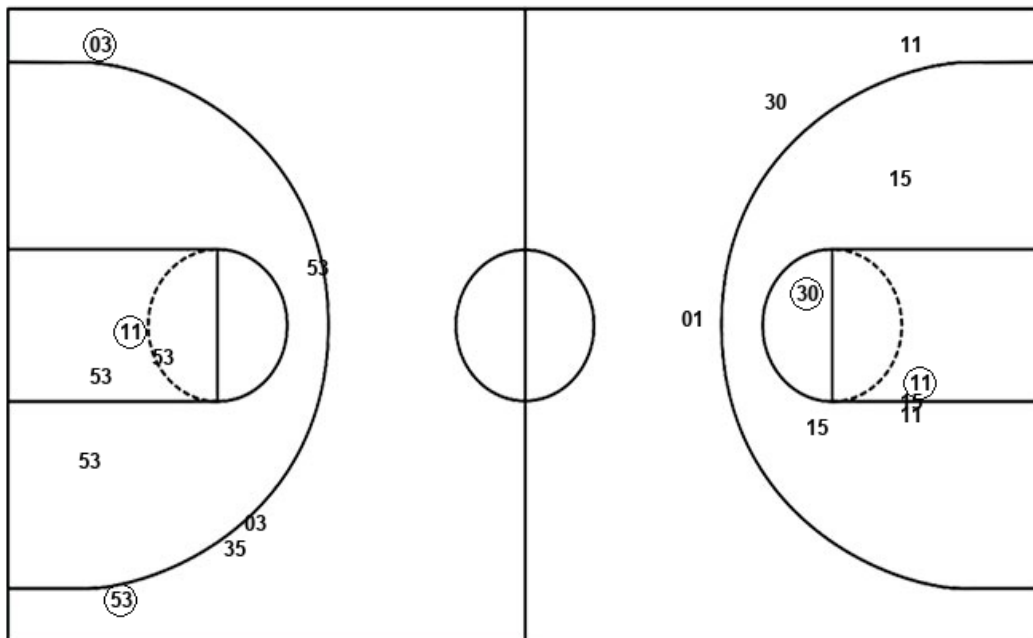
**Northern Ariz.**

Layups  
53 (30) 35 (12)

Layups  
(01) (15) (15) (15) (11)

Dunks

Dunks



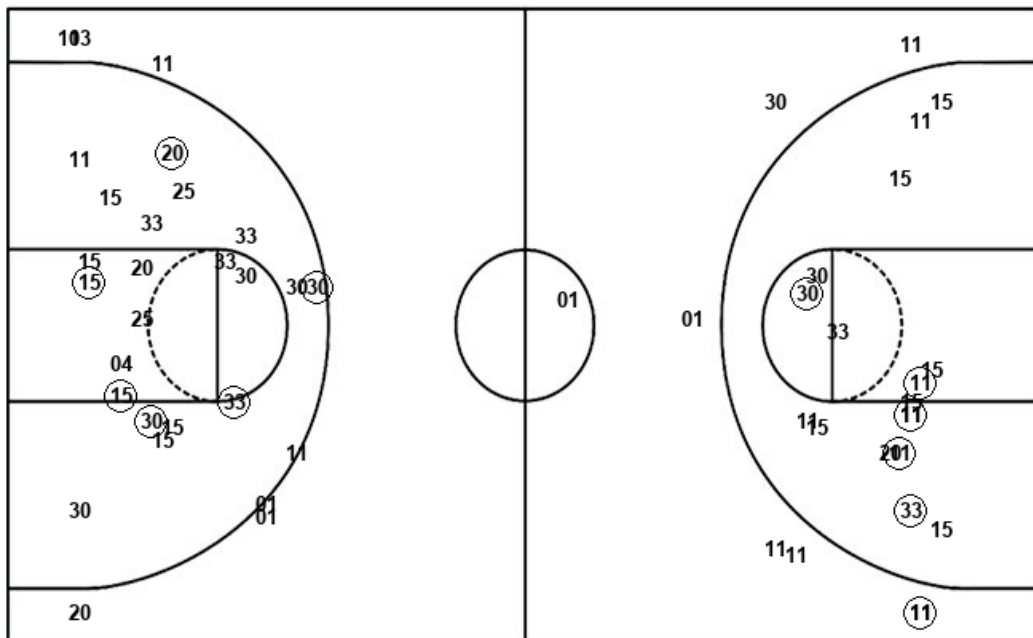
PSU : Period 4	Made	Att	Pct
Layups	2	4	50.0
Dunks	0	0	0
2PT Field Goals	3	8	37.5
3PT Field Goals	2	5	40.0
<b>Total Field Goals</b>	<b>5</b>	<b>13</b>	<b>38.5</b>

NAU : Period 4	Made	Att	Pct
Layups	5	5	100.0
Dunks	0	0	0
2PT Field Goals	7	11	63.6
3PT Field Goals	0	3	00.0
<b>Total Field Goals</b>	<b>7</b>	<b>14</b>	<b>50.0</b>

**Official Shot Chart**  
**Northern Ariz. vs Portland St.**  
 Northern Ariz. Team Shots  
 January 25, 2020 at Viking Pavilion - Portland



Layups



Layups

04 04 20 11 01  
 15 15 15 11

Dunks

Dunks

NAU : Period 1	Made	Att	Pct
Layups	1	1	100.0
Dunks	0	0	0
2PT Field Goals	4	11	36.4
3PT Field Goals	1	2	50.0
<b>Total Field Goals</b>	<b>5</b>	<b>13</b>	<b>38.5</b>

NAU : Period 2	Made	Att	Pct
Layups	1	2	50.0
Dunks	0	0	0
2PT Field Goals	3	12	25.0
3PT Field Goals	0	7	00.0
<b>Total Field Goals</b>	<b>3</b>	<b>19</b>	<b>15.8</b>

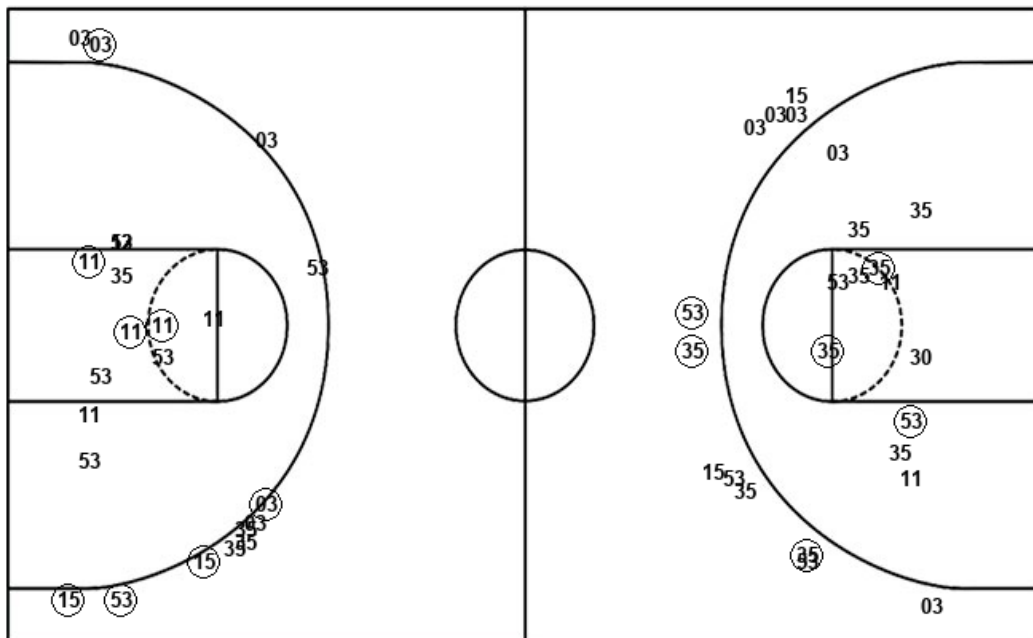
NAU : Period 3	Made	Att	Pct
Layups	1	1	100.0
Dunks	0	0	0
2PT Field Goals	4	12	33.3
3PT Field Goals	2	4	50.0
<b>Total Field Goals</b>	<b>6</b>	<b>16</b>	<b>37.5</b>

NAU : Period 4	Made	Att	Pct
Layups	5	5	100.0
Dunks	0	0	0
2PT Field Goals	7	11	63.6
3PT Field Goals	0	3	00.0
<b>Total Field Goals</b>	<b>7</b>	<b>14</b>	<b>50.0</b>

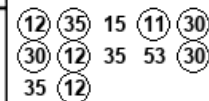
**Official Shot Chart**  
**Northern Ariz. vs Portland St.**  
**Portland St. Team Shots**  
 January 25, 2020 at Viking Pavilion - Portland



Layups



Layups



Dunks

Dunks

PSU : Period 1	Made	Att	Pct
Layups	1	1	100.0
Dunks	0	0	0
2PT Field Goals	3	9	33.3
3PT Field Goals	1	5	20.0
<b>Total Field Goals</b>	<b>4</b>	<b>14</b>	<b>28.6</b>

PSU : Period 2	Made	Att	Pct
Layups	4	5	80.0
Dunks	0	0	0
2PT Field Goals	5	9	55.6
3PT Field Goals	2	7	28.6
<b>Total Field Goals</b>	<b>7</b>	<b>16</b>	<b>43.8</b>

PSU : Period 3	Made	Att	Pct
Layups	1	2	50.0
Dunks	0	0	0
2PT Field Goals	3	9	33.3
3PT Field Goals	3	7	42.9
<b>Total Field Goals</b>	<b>6</b>	<b>16</b>	<b>37.5</b>

PSU : Period 4	Made	Att	Pct
Layups	2	4	50.0
Dunks	0	0	0
2PT Field Goals	3	8	37.5
3PT Field Goals	2	5	40.0
<b>Total Field Goals</b>	<b>5</b>	<b>13</b>	<b>38.5</b>