

FINAL SCORE

Grand Canyon

46



Portland St.

69



December 06, 2019 • Viking Pavilion (Stoller) - Portland

FINAL STATISTICS

Official Box Score
Grand Canyon vs Portland St.
Game Totals -- Final Statistics
December 06, 2019 at Viking Pavilion (Stoller) - Portland



Grand Canyon 46

No.	Player	S	Pts	FG	3FG	FT	OR	DR	TR	PF	A	TO	Blk	Stl	Min	+/-
04	HOLLAND, JADA	G	2	1-7	0-1	0-0	0	2	2	0	5	3	0	1	24	-15
05	PIERA, LAURA	G	2	1-5	0-3	0-0	0	0	0	3	2	2	0	0	24	-10
12	BALAGUE, CARLA	F	8	2-5	0-0	4-6	0	4	4	3	1	1	0	0	20	-11
13	ROWELL, TAVIA	G	0	0-4	0-4	0-0	0	2	2	2	2	0	0	0	13	-13
34	DANIEL, DA'JAH	F	16	8-15	0-0	0-0	2	9	11	2	0	3	0	1	29	-16
00	MITCHELL, MARIAH	G	0	0-5	0-1	0-0	0	0	0	0	1	0	0	1	16	-10
02	SHORTS, KENNEDI	F	2	1-5	0-0	0-2	0	1	1	1	0	1	1	1	14	-7
14	MOSS, JADA	G	1	0-1	0-1	1-2	0	1	1	1	0	1	1	0	13	-7
21	VARIS, VENLA	G	6	2-6	2-6	0-0	0	2	2	0	0	1	0	0	19	-9
23	BROWN, TIANNA	G	9	3-9	0-1	3-4	3	1	4	0	2	1	0	1	29	-17
TEAM												1				
TOTALS			46	18-62	2-17	8-14	10	26	36	12	13	14	2	5	200	

Shooting By Period

Period	FG	FG%	3FG	3FG%	FT	FT%
1st Qtr	3-15	20%	0-5	00%	4-4	100%
2nd Qtr	5-16	31%	2-6	33%	1-2	50%
3rd Qtr	6-17	35%	0-2	00%	1-2	50%
4th Qtr	4-14	29%	0-4	00%	2-6	33%
1st Half	8-31	26%	2-11	18%	5-6	83%
2nd Half	10-31	32%	0-6	00%	3-8	38%
Game	18-62	29.0%	2-17	11.8%	8-14	57.1%

Deadball Rebounds: 5,0
Last FG: 4th-02:08
Biggest Run: 6-0
Largest lead: By 2 at 1-09
Technical Fouls: None.

Portland St. 69

No.	Player	S	Pts	FG	3FG	FT	OR	DR	TR	PF	A	TO	Blk	Stl	Min	+/-
03	JIMENEZ, KYLIE	G	16	6-15	3-6	1-1	2	3	5	1	2	0	0	4	35	21
11	STOTLER, JORDAN	F	9	2-9	0-1	5-6	2	9	11	1	1	3	1	0	27	21
12	STREUN, TATIANA	F	17	6-10	1-1	4-4	5	6	11	3	0	2	0	1	23	18
35	FRAZIER, BELLE	G	3	1-4	1-1	0-0	0	1	1	2	1	1	0	1	19	14
53	HANSEN, DESIRAE	G	10	3-6	1-2	3-4	2	2	4	3	5	4	3	1	32	21
01	DENSON, LABREA	G	4	1-3	0-1	2-2	1	3	4	4	1	1	0	0	15	1
10	CANZOBRE, MARINA	F	3	1-4	0-0	1-2	1	1	2	1	1	1	0	0	13	2
15	GARDNER, CASSIDY	G	3	1-5	1-3	0-0	0	1	1	0	1	0	0	1	16	8
22	WALTON, RUCHAE	G	0	0-0	0-0	0-0	0	0	0	0	0	0	0	0	4	3
30	SCHULTZ, SYD	F	4	2-5	0-1	0-0	0	3	3	0	1	2	0	0	16	6
TEAM												1				
TOTALS			69	23-61	7-16	16-19	13	35	48	15	13	15	4	8	200	

Shooting By Period

Period	FG	FG%	3FG	3FG%	FT	FT%
1st Qtr	4-10	40%	1-1	100%	8-10	80%
2nd Qtr	7-21	33%	2-8	25%	1-2	50%
3rd Qtr	7-16	44%	4-5	80%	5-5	100%
4th Qtr	5-14	36%	0-2	00%	2-2	100%
1st Half	11-31	35%	3-9	33%	9-12	75%
2nd Half	12-30	40%	4-7	57%	7-7	100%
Game	23-61	37.7%	7-16	43.8%	16-19	84.2%

Deadball Rebounds: 2,0
Last FG: 4th-01:06
Biggest Run: 8-0
Largest lead: By 23 at 4-01
Technical Fouls: None.

Game Notes:

Officials: Sydney Mott, Melissa Barlow, Jacob Petz
 Attendance: 395

Start Time: 08:06 PM ET
 End Time: 09:42 PM ET
 Game Duration: 1:35

Score	1st	2nd	3rd	4th	TOT
GCU	10	13	13	10	46
PSU	17	17	23	12	69

GCU led for 0:18. PSU led for 38:16.
 Game was tied for 1:26.
 Times tied: 1 Lead Changes: 1

Points from	GCU	PSU
In the Paint	26	24
Off Turns	2	12
2nd Chance	7	11
Fast Break	0	0
Bench	18	14

Official Box Score
Grand Canyon vs Portland St.
First Half Statistics Only
December 06, 2019 at Viking Pavilion (Stoller) - Portland



Grand Canyon 23

No.	Player	S	Pts	FG	3FG	FT	OR	DR	TR	PF	A	TO	Blk	Stl	Min	+/-
00	MITCHELL, MARIAH	G	0	0-3	0-1	0-0	0	0	0	0	1	0	0	1	8	-2
04	HOLLAND, JADA	G	2	1-4	0-1	0-0	0	1	1	0	1	1	0	1	14	-6
12	BALAGUE, CARLA	F	2	0-0	0-0	2-2	0	0	0	2	0	0	0	0	5	-4
13	ROWELL, TAVIA	G	0	0-3	0-3	0-0	0	2	2	1	0	0	0	0	8	-9
14	MOSS, JADA	G	1	0-0	0-0	1-2	0	1	1	1	0	0	0	0	6	-3
21	VARIS, VENLA	G	6	2-4	2-4	0-0	0	0	0	0	0	0	0	0	12	-2
23	BROWN, TIANNA	G	4	1-4	0-0	2-2	1	1	2	0	2	1	0	1	11	-9
34	DANIEL, DA'JAH	F	8	4-8	0-0	0-0	1	5	6	1	0	2	0	0	17	-9
02	SHORTS, KENNEDI	F	0	0-2	0-0	0-0	0	0	0	1	0	1	0	1	6	-6
05	PIERA, LAURA	G	0	0-3	0-2	0-0	0	0	0	1	2	2	0	0	13	-5
	TEAM		0	0-0	0-0	0-0	1	2	3	0	0	0	0	0	0	
TOTALS			23	8-31	2-11	5-6	3	12	15	7	6	7	0	4	100	

Shooting By Period

Period	FG	FG%	3FG	3FG%	FT	FT%
1st Qtr	3-15	20%	0-5	00%	4-4	100%
2nd Qtr	5-16	31%	2-6	33%	1-2	50%
1st Half	8-31	26%	2-11	18%	5-6	83%
Game	18-62	29.0%	2-17	11.8%	8-14	57.1%

Deadball Rebounds: 5,0
 Last FG Half: GCU 2nd-00:08

Portland St. 34

No.	Player	S	Pts	FG	3FG	FT	OR	DR	TR	PF	A	TO	Blk	Stl	Min	+/-
01	DENSON, LABREA	G	0	0-0	0-0	0-0	1	1	2	1	0	0	0	0	5	-1
03	JIMENEZ, KYLIE	G	2	1-8	0-2	0-0	2	1	3	1	2	0	0	2	20	11
10	CANZOBRE, MARINA	F	1	0-1	0-0	1-2	1	0	1	1	0	1	0	0	5	0
11	STOTLER, JORDAN	F	5	1-4	0-0	3-4	1	6	7	0	1	3	0	0	15	11
12	STREUN, TATIANA	F	13	5-8	1-1	2-2	3	4	7	1	0	2	0	1	15	12
15	GARDNER, CASSIDY	G	3	1-3	1-3	0-0	0	1	1	0	1	0	0	1	10	5
22	WALTON, RUCHAE	G	0	0-0	0-0	0-0	0	0	0	0	0	0	0	0	2	1
30	SCHULTZ, SYD	F	0	0-2	0-1	0-0	0	0	0	0	1	1	0	0	7	-1
35	FRAZIER, BELLE	G	0	0-0	0-0	0-0	0	1	1	2	0	1	0	1	7	6
53	HANSEN, DESIRAE	G	10	3-5	1-2	3-4	1	1	2	2	1	2	1	0	14	11
	TEAM		0	0-0	0-0	0-0	0	4	4	0	0	0	0	0	0	
TOTALS			34	11-31	3-9	9-12	9	19	28	8	6	10	1	5	100	

Shooting By Period

Period	FG	FG%	3FG	3FG%	FT	FT%
1st Qtr	4-10	40%	1-1	100%	8-10	80%
2nd Qtr	7-21	33%	2-8	25%	1-2	50%
1st Half	11-31	35%	3-9	33%	9-12	75%
Game	23-61	37.7%	7-16	43.8%	16-19	84.2%

Deadball Rebounds: 2,0
 Last FG Half: PSU 2nd-01:04

Game Notes:

Officials: Sydney Mott, Melissa Barlow, Jacob Petz
 Attendance: 395

Start Time: 08:06 PM ET
 End Time: 09:42 PM ET
 Game Duration: 1:35

Score	1st	2nd	3rd	4th	TOT
GCU	10	13	13	10	46
PSU	17	17	23	12	69

Points from (This Period)	GCU	PSU
In the Paint	10	12
Off Turns	2	5
2nd Chance	2	7
Fast Break	0	0
Bench	11	4

Official Box Score
Grand Canyon vs Portland St.
First Quarter Statistics Only
December 06, 2019 at Viking Pavilion (Stoller) - Portland



Grand Canyon 10

No.	Player	S	Pts	FG	3FG	FT	OR	DR	TR	PF	A	TO	Blk	Stl	Min	+/-
04	HOLLAND, JADA	G	2	1-3	0-1	0-0	0	0	0	0	1	1	0	1	8	-5
05	PIERA, LAURA	G	0	0-1	0-1	0-0	0	0	0	1	0	2	0	0	7	-6
12	BALAGUE, CARLA	F	2	0-0	0-0	2-2	0	0	0	2	0	0	0	0	5	-4
13	ROWELL, TAVIA	G	0	0-2	0-2	0-0	0	1	1	1	0	0	0	0	5	-4
34	DANIEL, DA'JAH	F	4	2-4	0-0	0-0	1	3	4	1	0	1	0	0	10	-7
00	MITCHELL, MARIAH	G	0	0-0	0-0	0-0	0	0	0	0	0	0	0	1	2	1
02	SHORTS, KENNEDI	F	0	0-1	0-0	0-0	0	0	0	1	0	1	0	1	3	-4
14	MOSS, JADA	G	0	0-0	0-0	0-0	0	0	0	0	0	0	0	0	0	0
21	VARIS, VENLA	G	0	0-1	0-1	0-0	0	0	0	0	0	0	0	0	5	-3
23	BROWN, TIANNA	G	2	0-3	0-0	2-2	1	0	1	0	0	0	0	1	5	-3
TEAM							0	2	2	0		0				
TOTALS			10	3-15	0-5	4-4	2	6	8	6	1	5	0	4	50	

Shooting By Period

Period	FG	FG%	3FG	3FG%	FT	FT%
1st Qtr	3-15	20%	0-5	00%	4-4	100%
2nd Qtr	5-16	31%	2-6	33%	1-2	50%
1st Half	3-15	20%	0-5	00%	4-4	100%
1st Half	8-31	26%	2-11	18%	5-6	83%
Game	18-62	29.0%	2-17	11.8%	8-14	57.1%

Deadball Rebounds: 5,0

Portland St. 17

No.	Player	S	Pts	FG	3FG	FT	OR	DR	TR	PF	A	TO	Blk	Stl	Min	+/-
03	JIMENEZ, KYLIE	G	0	0-2	0-0	0-0	0	0	0	0	0	0	0	2	10	7
11	STOTLER, JORDAN	F	3	0-2	0-0	3-4	0	2	2	0	0	1	0	0	7	6
12	STREUN, TATIANA	F	4	1-2	0-0	2-2	0	2	2	0	0	1	0	1	7	6
35	FRAZIER, BELLE	G	0	0-0	0-0	0-0	0	1	1	2	0	1	0	1	7	6
53	HANSEN, DESIRAE	G	7	2-3	0-0	3-4	1	1	2	1	1	2	1	0	10	7
01	DENSON, LABREA	G	0	0-0	0-0	0-0	0	0	0	0	0	0	0	0	0	0
10	CANZOBRE, MARINA	F	0	0-0	0-0	0-0	0	0	0	1	0	1	0	0	3	1
15	GARDNER, CASSIDY	G	3	1-1	1-1	0-0	0	1	1	0	0	0	0	0	3	1
22	WALTON, RUCHAE	G	0	0-0	0-0	0-0	0	0	0	0	0	0	0	0	0	0
30	SCHULTZ, SYD	F	0	0-0	0-0	0-0	0	0	0	0	1	1	0	0	3	1
TEAM							0	2	2	0		0				
TOTALS			17	4-10	1-1	8-10	1	9	10	4	2	7	1	4	50	

Shooting By Period

Period	FG	FG%	3FG	3FG%	FT	FT%
1st Qtr	4-10	40%	1-1	100%	8-10	80%
2nd Qtr	7-21	33%	2-8	25%	1-2	50%
1st Half	4-10	40%	1-1	100%	8-10	80%
1st Half	11-31	35%	3-9	33%	9-12	75%
Game	23-61	37.7%	7-16	43.8%	16-19	84.2%

Deadball Rebounds: 2,0

Game Notes:

Officials: Sydney Mott, Melissa Barlow, Jacob Petz
 Attendance: 395

Start Time: 08:06 PM ET
 End Time: 09:42 PM ET
 Game Duration: 1:35

Score	1st	2nd	3rd	4th	TOT
GCU	10	13	13	10	46
PSU	17	17	23	12	69

Points from (This Period)	GCU	PSU
In the Paint	4	2
Off Turns	0	3
2nd Chance	2	0
Fast Break	0	0
Bench	2	3

Official Play-By-Play
Grand Canyon vs Portland St.
First Quarter
December 06, 2019 at Viking Pavilion (Stoller) - Portland



Period 1

Starters:

Grand Canyon: 4 HOLLAND, JADA (G); 12 BALAGUE, CARLA (F); 13 ROWELL, TAVIA (G); 34 DANIEL, DA'JAH (F); 5 PIERA, LAURA (G);

Portland St.: 3 JIMENEZ, KYLIE (G); 11 STOTLER, JORDAN (F); 12 STREUN, TATIANA (F); 35 FRAZIER, BELLE (G); 53 HANSEN, DESIRAE (G);

Time	VISITORS: Grand Canyon	Score	Margin	HOME: Portland St.
09:49				MISSED JUMPER by STOTLER, JORDAN
09:46	REBOUND (DEF) by DANIEL, DA'JAH			
09:27				FOUL (PERSONAL) by HANSEN, DESIRAE
09:27	GOOD! FT by BALAGUE, CARLA	0-1	V 1	
09:27	GOOD! FT by BALAGUE, CARLA	0-2	V 2	
09:09		2-2	T	GOOD! JUMPER by STREUN, TATIANA
08:59	MISSED JUMPER by HOLLAND, JADA			
08:55				REBOUND (DEF) by STOTLER, JORDAN
08:50				TURNOVER (TRAVEL) by FRAZIER, BELLE
08:31	MISSED 3PTR by PIERA, LAURA			
08:27				REBOUND (DEF) by FRAZIER, BELLE
08:16	FOUL (PERSONAL) by DANIEL, DA'JAH			
08:16		3-2	H 1	GOOD! FT by STOTLER, JORDAN
08:16		4-2	H 2	GOOD! FT by STOTLER, JORDAN
07:55	MISSED 3PTR by ROWELL, TAVIA			
07:55				BLOCK by HANSEN, DESIRAE
07:49				REBOUND (DEF) by STREUN, TATIANA
07:40		6-2	H 4	GOOD! JUMPER by HANSEN, DESIRAE
07:40	FOUL (PERSONAL) by PIERA, LAURA			
07:40				MISSED FT by HANSEN, DESIRAE
07:39				REBOUND (OFF) by HANSEN, DESIRAE
07:21				MISSED JUMPER by STREUN, TATIANA
07:18	REBOUND (DEF) by ROWELL, TAVIA			
07:07	MISSED 3PTR by ROWELL, TAVIA			
07:03				REBOUND (DEF) by STOTLER, JORDAN
06:45	FOUL (PERSONAL) by BALAGUE, CARLA			
06:45				MISSED FT by STOTLER, JORDAN
06:45				REBOUND (OFF) by TEAM
06:45		7-2	H 5	GOOD! FT by STOTLER, JORDAN
06:26	GOOD! JUMPER by DANIEL, DA'JAH [PNT]	7-4	H 3	
06:26	ASSIST by HOLLAND, JADA			
06:09				TURNOVER (BADPASS) by STOTLER, JORDAN
06:09	STEAL by HOLLAND, JADA			
05:59	TURNOVER (BADPASS) by HOLLAND, JADA			
05:59				STEAL by JIMENEZ, KYLIE
05:54	FOUL (PERSONAL) by ROWELL, TAVIA			
05:54		8-4	H 4	GOOD! FT by HANSEN, DESIRAE
05:54				TURNOVER (OTHER) by STREUN, TATIANA
05:37	TURNOVER (LOSTBALL) by DANIEL, DA'JAH			
05:37				STEAL by JIMENEZ, KYLIE
05:22	FOUL (PERSONAL) by BALAGUE, CARLA			
05:22	SUB OUT: HOLLAND, JADA			
05:22	SUB OUT: BALAGUE, CARLA			
05:22	SUB OUT: ROWELL, TAVIA			
05:22	SUB IN: SHORTS, KENNEDI			
05:22	SUB IN: VARIS, VENLA			
05:22	SUB IN: BROWN, TIANNA			
05:22		9-4	H 5	GOOD! FT by STREUN, TATIANA
05:22		10-4	H 6	GOOD! FT by STREUN, TATIANA
05:07	TURNOVER (BADPASS) by SHORTS, KENNEDI			
04:41				MISSED JUMPER by STOTLER, JORDAN
04:40	REBOUND (DEF) by TEAM			
04:40				FOUL (PERSONAL) by FRAZIER, BELLE
04:40				
04:22	TURNOVER (BADPASS) by PIERA, LAURA			
04:22				STEAL by FRAZIER, BELLE
04:17				MISSED LAYUP by JIMENEZ, KYLIE
04:17	REBOUND (DEF) by TEAM			
04:01	TURNOVER (BADPASS) by PIERA, LAURA			
04:01				STEAL by STREUN, TATIANA
03:40				MISSED JUMPER by HANSEN, DESIRAE
03:36	REBOUND (DEF) by DANIEL, DA'JAH			
03:20	MISSED JUMPER by DANIEL, DA'JAH			
03:15				REBOUND (DEF) by STREUN, TATIANA
03:00				TURNOVER (BADPASS) by HANSEN, DESIRAE
03:00	STEAL by SHORTS, KENNEDI			
03:00				FOUL (PERSONAL) by FRAZIER, BELLE
02:57				SUB OUT: STOTLER, JORDAN
02:57				SUB OUT: STREUN, TATIANA
02:57				SUB OUT: FRAZIER, BELLE

Time	VISITORS: Grand Canyon	Score	Margin	HOME: Portland St.
02:57				SUB IN: CANZOBRE, MARINA
02:57				SUB IN: GARDNER, CASSIDY
02:57				SUB IN: SCHULTZ, SYD
02:57	SUB OUT: PIERA, LAURA			
02:57	SUB IN: HOLLAND, JADA			
02:50	MISSED JUMPER by SHORTS, KENNEDI			
02:50				REBOUND (DEF) by TEAM
02:35				TURNOVER (BADPASS) by CANZOBRE, MARINA
02:35	STEAL by BROWN, TIANNA			
02:29	MISSED JUMPER by BROWN, TIANNA			
02:25				REBOUND (DEF) by GARDNER, CASSIDY
02:14				MISSED JUMPER by JIMENEZ, KYLIE
02:10	REBOUND (DEF) by DANIEL, DA'JAH			
02:05	MISSED 3PTR by VARIS, VENLA			
02:02				REBOUND (DEF) by HANSEN, DESIRAE
02:02	FOUL (PERSONAL) by SHORTS, KENNEDI			
02:02		11-4	H 7	GOOD! FT by HANSEN, DESIRAE
02:02		12-4	H 8	GOOD! FT by HANSEN, DESIRAE
02:02	SUB OUT: SHORTS, KENNEDI			
02:02	SUB IN: MITCHELL, MARIAH			
01:52	GOOD! JUMPER by HOLLAND, JADA	12-6	H 6	
01:40		14-6	H 8	GOOD! LAYUP by HANSEN, DESIRAE [PNT]
01:40				ASSIST by SCHULTZ, SYD
01:25	MISSED JUMPER by DANIEL, DA'JAH			
01:21	REBOUND (OFF) by DANIEL, DA'JAH			
01:20	GOOD! JUMPER by DANIEL, DA'JAH	14-8	H 6	
01:10				TURNOVER (BADPASS) by HANSEN, DESIRAE
01:10	STEAL by MITCHELL, MARIAH			
01:04	MISSED JUMPER by BROWN, TIANNA			
01:01	REBOUND (OFF) by BROWN, TIANNA			
01:01	MISSED JUMPER by BROWN, TIANNA			
01:01				REBOUND (DEF) by TEAM
00:48		17-8	H 9	GOOD! 3PTR by GARDNER, CASSIDY
00:48				ASSIST by HANSEN, DESIRAE
00:33				FOUL (PERSONAL) by CANZOBRE, MARINA
00:33	GOOD! FT by BROWN, TIANNA	17-9	H 8	
00:33	GOOD! FT by BROWN, TIANNA	17-10	H 7	
00:05				TURNOVER (TRAVEL) by SCHULTZ, SYD
00:00	MISSED 3PTR by HOLLAND, JADA			
00:00	REBOUND (OFF) by TEAM			

Grand Canyon 10, Portland St. 17

Points from (This Period)	GCU	PSU
In the Paint	4	2
Off Turns	0	3
2nd Chance	2	0
Fast Break	0	0
Bench	2	3

Official Box Score
Grand Canyon vs Portland St.
Second Quarter Statistics Only
December 06, 2019 at Viking Pavilion (Stoller) - Portland



Grand Canyon 13

No.	Player	S	Pts	FG	3FG	FT	OR	DR	TR	PF	A	TO	Blk	Stl	Min	+/-
04	HOLLAND, JADA	G	0	0-1	0-0	0-0	0	1	1	0	0	0	0	0	6	-1
05	PIERA, LAURA	G	0	0-2	0-1	0-0	0	0	0	0	2	0	0	0	6	1
12	BALAGUE, CARLA	F	0	0-0	0-0	0-0	0	0	0	0	0	0	0	0	0	0
13	ROWELL, TAVIA	G	0	0-1	0-1	0-0	0	1	1	0	0	0	0	0	3	-5
34	DANIEL, DA'JAH	F	4	2-4	0-0	0-0	0	2	2	0	0	1	0	0	7	-2
00	MITCHELL, MARIAH	G	0	0-3	0-1	0-0	0	0	0	0	1	0	0	0	6	-3
02	SHORTS, KENNEDI	F	0	0-1	0-0	0-0	0	0	0	0	0	0	0	0	3	-2
14	MOSS, JADA	G	1	0-0	0-0	1-2	0	1	1	1	0	0	0	0	6	-3
21	VARIS, VENLA	G	6	2-3	2-3	0-0	0	0	0	0	0	0	0	0	7	1
23	BROWN, TIANNA	G	2	1-1	0-0	0-0	0	1	1	0	2	1	0	0	6	-6
TEAM							1	0	1	0						
TOTALS			13	5-16	2-6	1-2	1	6	7	1	5	2	0	0	50	

Shooting By Period

Period	FG	FG%	3FG	3FG%	FT	FT%
3rd Qtr	6-17	35%	0-2	00%	1-2	50%
4th Qtr	4-14	29%	0-4	00%	2-6	33%
2nd Half	5-16	31%	2-6	33%	1-2	50%
2nd Half	10-31	32%	0-6	00%	3-8	38%
Game	18-62	29.0%	2-17	11.8%	8-14	57.1%

Deadball Rebounds: 5,0

Portland St. 17

No.	Player	S	Pts	FG	3FG	FT	OR	DR	TR	PF	A	TO	Blk	Stl	Min	+/-
03	JIMENEZ, KYLIE	G	2	1-6	0-2	0-0	2	1	3	1	2	0	0	0	10	4
11	STOTLER, JORDAN	F	2	1-2	0-0	0-0	1	4	5	0	1	2	0	0	8	5
12	STREUN, TATIANA	F	9	4-6	1-1	0-0	3	2	5	1	0	1	0	0	8	6
35	FRAZIER, BELLE	G	0	0-0	0-0	0-0	0	0	0	0	0	0	0	0	0	0
53	HANSEN, DESIRAE	G	3	1-2	1-2	0-0	0	0	0	1	0	0	0	0	4	4
01	DENSON, LABREA	G	0	0-0	0-0	0-0	1	1	2	1	0	0	0	0	5	-1
10	CANZOBRE, MARINA	F	1	0-1	0-0	1-2	1	0	1	0	0	0	0	0	2	-1
15	GARDNER, CASSIDY	G	0	0-2	0-2	0-0	0	0	0	0	1	0	0	1	7	4
22	WALTON, RUCHAE	G	0	0-0	0-0	0-0	0	0	0	0	0	0	0	0	2	1
30	SCHULTZ, SYD	F	0	0-2	0-1	0-0	0	0	0	0	0	0	0	0	4	-2
TEAM							0	2	2	0						
TOTALS			17	7-21	2-8	1-2	8	10	18	4	4	3	0	1	50	

Shooting By Period

Period	FG	FG%	3FG	3FG%	FT	FT%
3rd Qtr	7-16	44%	4-5	80%	5-5	100%
4th Qtr	5-14	36%	0-2	00%	2-2	100%
2nd Half	7-21	33%	2-8	25%	1-2	50%
2nd Half	12-30	40%	4-7	57%	7-7	100%
Game	23-61	37.7%	7-16	43.8%	16-19	84.2%

Deadball Rebounds: 2,0

Game Notes:

Officials: Sydney Mott, Melissa Barlow, Jacob Petz
 Attendance: 395

Start Time: 08:06 PM ET
 End Time: 09:42 PM ET
 Game Duration: 1:35

Score	1st	2nd	3rd	4th	TOT
GCU	10	13	13	10	46
PSU	17	17	23	12	69

Points from (This Period)	GCU	PSU
In the Paint	6	10
Off Turns	2	2
2nd Chance	0	7
Fast Break	0	0
Bench	9	1

Official Play-By-Play
Grand Canyon vs Portland St.
Second Quarter
December 06, 2019 at Viking Pavilion (Stoller) - Portland



Period 2

Starters:

Grand Canyon: 4 HOLLAND, JADA (G); 12 BALAGUE, CARLA (F); 13 ROWELL, TAVIA (G); 34 DANIEL, DA'JAH (F); 5 PIERA, LAURA (G);

Portland St.: 3 JIMENEZ, KYLIE (G); 11 STOTLER, JORDAN (F); 12 STREUN, TATIANA (F); 35 FRAZIER, BELLE (G); 53 HANSEN, DESIRAE (G);

Time	VISITORS: Grand Canyon	Score	Margin	HOME: Portland St.
10:00				SUB OUT: CANZOBRE, MARINA
10:00				SUB OUT: HANSEN, DESIRAE
10:00				SUB IN: STOTLER, JORDAN
10:00				SUB IN: STREUN, TATIANA
09:51	GOOD! 3PTR by VARIS, VENLA	17-13	H 4	
09:51	ASSIST by BROWN, TIANNA			
09:37				TURNOVER (TRAVEL) by STOTLER, JORDAN
09:24	MISSED JUMPER by DANIEL, DA'JAH			
09:20				REBOUND (DEF) by STOTLER, JORDAN
08:56		20-13	H 7	GOOD! 3PTR by STREUN, TATIANA
08:56				ASSIST by JIMENEZ, KYLIE
08:36	GOOD! JUMPER by DANIEL, DA'JAH	20-15	H 5	
08:36	ASSIST by BROWN, TIANNA			
08:18				MISSED JUMPER by SCHULTZ, SYD
08:12				REBOUND (OFF) by STREUN, TATIANA
08:12		22-15	H 7	GOOD! LAYUP by STREUN, TATIANA
07:58	MISSED JUMPER by DANIEL, DA'JAH			
07:58				REBOUND (DEF) by TEAM
07:58				SUB OUT: SCHULTZ, SYD
07:58				SUB IN: HANSEN, DESIRAE
07:58	SUB OUT: MITCHELL, MARIAH			
07:58	SUB OUT: VARIS, VENLA			
07:58	SUB IN: ROWELL, TAVIA			
07:58	SUB IN: MOSS, JADA			
07:51		25-15	H 10	GOOD! 3PTR by HANSEN, DESIRAE
07:51				ASSIST by GARDNER, CASSIDY
07:32	TURNOVER (TRAVEL) by DANIEL, DA'JAH			
07:32	SUB OUT: DANIEL, DA'JAH			
07:32	SUB IN: SHORTS, KENNEDI			
07:24				MISSED JUMPER by JIMENEZ, KYLIE
07:20				REBOUND (OFF) by STREUN, TATIANA
07:18		27-15	H 12	GOOD! JUMPER by STREUN, TATIANA [PNT]
07:03	MISSED JUMPER by HOLLAND, JADA			
06:59				REBOUND (DEF) by STREUN, TATIANA
06:55				MISSED LAYUP by STOTLER, JORDAN
06:51	REBOUND (DEF) by BROWN, TIANNA			
06:47	TURNOVER (LOSTBALL) by BROWN, TIANNA			
06:47				STEAL by GARDNER, CASSIDY
06:41				MISSED JUMPER by JIMENEZ, KYLIE
06:37				REBOUND (OFF) by JIMENEZ, KYLIE
06:36				MISSED JUMPER by JIMENEZ, KYLIE
06:32				REBOUND (OFF) by JIMENEZ, KYLIE
06:30				MISSED 3PTR by JIMENEZ, KYLIE
06:23	REBOUND (DEF) by ROWELL, TAVIA			
06:19	MISSED JUMPER by SHORTS, KENNEDI			
06:15				REBOUND (DEF) by STREUN, TATIANA
06:08				FOUL (OFF) by STREUN, TATIANA
06:08				TURNOVER (OFFENSIVE) by STREUN, TATIANA
06:07	SUB OUT: BROWN, TIANNA			
06:07	SUB IN: PIERA, LAURA			
05:50	MISSED 3PTR by ROWELL, TAVIA			
05:46				REBOUND (DEF) by STOTLER, JORDAN
05:20				MISSED JUMPER by STREUN, TATIANA
05:17	REBOUND (DEF) by HOLLAND, JADA			
05:05	MISSED JUMPER by PIERA, LAURA			
05:02				REBOUND (DEF) by STOTLER, JORDAN
04:47				MISSED 3PTR by GARDNER, CASSIDY
04:43	REBOUND (DEF) by MOSS, JADA			
04:40				FOUL (PERSONAL) by JIMENEZ, KYLIE
04:40				
04:40				SUB OUT: STOTLER, JORDAN
04:40				SUB OUT: STREUN, TATIANA
04:40				SUB OUT: GARDNER, CASSIDY
04:40				SUB IN: DENSON, LABREA
04:40				SUB IN: CANZOBRE, MARINA
04:40				SUB IN: SCHULTZ, SYD
04:40	SUB OUT: SHORTS, KENNEDI			
04:40	SUB OUT: HOLLAND, JADA			
04:40	SUB OUT: ROWELL, TAVIA			
04:40	SUB IN: MITCHELL, MARIAH			

Time	VISITORS: Grand Canyon	Score	Margin	HOME: Portland St.
04:40	SUB IN: VARIS, VENLA			
04:40	SUB IN: DANIEL, DA'JAH			
04:40	MISSED FT by MOSS, JADA			
04:40	REBOUND (OFF) by TEAM			
04:40	GOOD! FT by MOSS, JADA	27-16	H 11	
04:24				MISSED 3PTR by HANSEN, DESIRAE
04:19	REBOUND (DEF) by DANIEL, DA'JAH			
04:13				FOUL (PERSONAL) by DENSON, LABREA
04:04	MISSED JUMPER by MITCHELL, MARIAH			
04:03	REBOUND (OFF) by TEAM			
04:03				FOUL (PERSONAL) by HANSEN, DESIRAE
04:03				SUB OUT: HANSEN, DESIRAE
04:03				SUB IN: GARDNER, CASSIDY
03:49	MISSED JUMPER by MITCHELL, MARIAH			
03:45				REBOUND (DEF) by DENSON, LABREA
03:36				MISSED 3PTR by SCHULTZ, SYD
03:32				REBOUND (OFF) by DENSON, LABREA
03:16		29-16	H 13	GOOD! LAYUP by JIMENEZ, KYLIE [PNT]
03:02	MISSED 3PTR by VARIS, VENLA			
02:59				REBOUND (DEF) by TEAM
02:50				MISSED 3PTR by GARDNER, CASSIDY
02:46	REBOUND (DEF) by DANIEL, DA'JAH			
02:38	GOOD! 3PTR by VARIS, VENLA	29-19	H 10	
02:38	ASSIST by MITCHELL, MARIAH			
02:22				MISSED JUMPER by CANZOBRE, MARINA
02:21				REBOUND (OFF) by CANZOBRE, MARINA
02:21	FOUL (PERSONAL) by MOSS, JADA			
02:21				SUB OUT: GARDNER, CASSIDY
02:21				SUB OUT: SCHULTZ, SYD
02:21				SUB IN: STREUN, TATIANA
02:21	SUB OUT: MOSS, JADA			SUB IN: WALTON, RUCHAE
02:21	SUB IN: BROWN, TIANNA			
02:21				MISSED FT by CANZOBRE, MARINA
02:21				REBOUND (OFF) by TEAM
02:21		30-19	H 11	GOOD! FT by CANZOBRE, MARINA
02:21				SUB OUT: CANZOBRE, MARINA
02:21				SUB IN: STOTLER, JORDAN
02:05	MISSED 3PTR by PIERA, LAURA			
02:00				REBOUND (DEF) by STOTLER, JORDAN
01:40		32-19	H 13	GOOD! JUMPER by STOTLER, JORDAN [PNT]
01:40				ASSIST by JIMENEZ, KYLIE
01:17	MISSED 3PTR by MITCHELL, MARIAH			
01:14				REBOUND (DEF) by JIMENEZ, KYLIE
01:04		34-19	H 15	GOOD! JUMPER by STREUN, TATIANA
01:04				ASSIST by STOTLER, JORDAN
01:04	TIMEOUT 30SEC			
01:02	SUB OUT: MITCHELL, MARIAH			
01:02	SUB IN: HOLLAND, JADA			
00:43	GOOD! JUMPER by DANIEL, DA'JAH [PNT]	34-21	H 13	
00:43	ASSIST by PIERA, LAURA			
00:28				MISSED 3PTR by JIMENEZ, KYLIE
00:24				REBOUND (OFF) by STREUN, TATIANA
00:23				MISSED JUMPER by STREUN, TATIANA
00:23				REBOUND (OFF) by STOTLER, JORDAN
00:23				TURNOVER (TRAVEL) by STOTLER, JORDAN
00:08	GOOD! JUMPER by BROWN, TIANNA [PNT]	34-23	H 11	
00:08	ASSIST by PIERA, LAURA			

Grand Canyon 23, Portland St. 34

Points from (This Period)	GCU	PSU
In the Paint	6	10
Off Turns	2	2
2nd Chance	0	7
Fast Break	0	0
Bench	9	1

Official Box Score
Grand Canyon vs Portland St.
Second Half Statistics Only
December 06, 2019 at Viking Pavilion (Stoller) - Portland



Grand Canyon 23

No.	Player	S	Pts	FG	3FG	FT	OR	DR	TR	PF	A	TO	Blk	Stl	Min	+/-
00	MITCHELL, MARIAH	G	0	0-2	0-0	0-0	0	0	0	0	0	0	0	0	8	-8
04	HOLLAND, JADA	G	0	0-3	0-0	0-0	0	1	1	0	4	2	0	0	10	-9
12	BALAGUE, CARLA	F	6	2-5	0-0	2-4	0	4	4	1	1	1	0	0	14	-7
13	ROWELL, TAVIA	G	0	0-1	0-1	0-0	0	0	0	1	2	0	0	0	5	-4
14	MOSS, JADA	G	0	0-1	0-1	0-0	0	0	0	0	0	1	1	0	7	-4
21	VARIS, VENLA	G	0	0-2	0-2	0-0	0	2	2	0	0	1	0	0	6	-7
23	BROWN, TIANNA	G	5	2-5	0-1	1-2	2	0	2	0	0	0	0	0	18	-8
34	DANIEL, DA'JAH	F	8	4-7	0-0	0-0	1	4	5	1	0	1	0	1	12	-7
02	SHORTS, KENNEDI	F	2	1-3	0-0	0-2	0	1	1	0	0	0	1	0	7	-1
05	PIERA, LAURA	G	2	1-2	0-1	0-0	0	0	0	2	0	0	0	0	11	-5
	TEAM		0	0-0	0-0	0-0	4	2	6	0	0	1	0	0	0	
TOTALS			23	10-31	0-6	3-8	7	14	21	5	7	7	2	1	100	

Shooting By Period

Period	FG	FG%	3FG	3FG%	FT	FT%
3rd Qtr	6-17	35%	0-2	00%	1-2	50%
4th Qtr	4-14	29%	0-4	00%	2-6	33%
2nd Half	10-31	32%	0-6	00%	3-8	38%
Game	18-62	29.0%	2-17	11.8%	8-14	57.1%

Deadball Rebounds: 5,0

Last FG Half: GCU 4th-02:08

Portland St. 35

No.	Player	S	Pts	FG	3FG	FT	OR	DR	TR	PF	A	TO	Blk	Stl	Min	+/-
01	DENSON, LABREA	G	4	1-3	0-1	2-2	0	2	2	3	1	1	0	0	10	2
03	JIMENEZ, KYLIE	G	14	5-7	3-4	1-1	0	2	2	0	0	0	0	2	16	10
10	CANZOBRE, MARINA	F	2	1-3	0-0	0-0	0	1	1	0	1	0	0	0	8	2
11	STOTLER, JORDAN	F	4	1-5	0-1	2-2	1	3	4	1	0	0	1	0	12	10
12	STREUN, TATIANA	F	4	1-2	0-0	2-2	2	2	4	2	0	0	0	0	8	6
15	GARDNER, CASSIDY	G	0	0-2	0-0	0-0	0	0	0	0	0	0	0	0	6	3
22	WALTON, RUCHAE	G	0	0-0	0-0	0-0	0	0	0	0	0	0	0	0	1	2
30	SCHULTZ, SYD	F	4	2-3	0-0	0-0	0	3	3	0	0	1	0	0	9	7
35	FRAZIER, BELLE	G	3	1-4	1-1	0-0	0	0	0	0	1	0	0	0	12	8
53	HANSEN, DESIRAE	G	0	0-1	0-0	0-0	1	1	2	1	4	2	2	1	19	10
	TEAM		0	0-0	0-0	0-0	0	2	2	0	0	1	0	0	0	
TOTALS			35	12-30	4-7	7-7	4	16	20	7	7	5	3	3	100	

Shooting By Period

Period	FG	FG%	3FG	3FG%	FT	FT%
3rd Qtr	7-16	44%	4-5	80%	5-5	100%
4th Qtr	5-14	36%	0-2	00%	2-2	100%
2nd Half	12-30	40%	4-7	57%	7-7	100%
Game	23-61	37.7%	7-16	43.8%	16-19	84.2%

Deadball Rebounds: 2,0

Last FG Half: PSU 4th-01:06

Game Notes:

Officials: Sydney Mott, Melissa Barlow, Jacob Petz
 Attendance: 395

Start Time: 08:06 PM ET
 End Time: 09:42 PM ET
 Game Duration: 1:35

Score	1st	2nd	3rd	4th	TOT
GCU	10	13	13	10	46
PSU	17	17	23	12	69

Points from (This Period)	GCU	PSU
In the Paint	16	12
Off Turns	0	7
2nd Chance	5	4
Fast Break	0	0
Bench	7	10

Official Box Score
Grand Canyon vs Portland St.
Third Quarter Statistics Only
December 06, 2019 at Viking Pavilion (Stoller) - Portland



Grand Canyon 23

No.	Player	S	Pts	FG	3FG	FT	OR	DR	TR	PF	A	TO	Blk	Stl	Min	+/-
04	HOLLAND, JADA	G	0	0-2	0-0	0-0	0	0	0	0	2	2	0	0	7	-9
05	PIERA, LAURA	G	2	1-1	0-0	0-0	0	0	0	2	0	0	0	0	8	-4
12	BALAGUE, CARLA	F	3	1-3	0-0	1-2	0	2	2	1	1	1	0	0	7	-6
13	ROWELL, TAVIA	G	0	0-0	0-0	0-0	0	0	0	1	1	0	0	0	1	-2
34	DANIEL, DA'JAH	F	6	3-6	0-0	0-0	1	2	3	0	0	0	0	0	7	-5
00	MITCHELL, MARIAH	G	0	0-0	0-0	0-0	0	0	0	0	0	0	0	0	3	-4
02	SHORTS, KENNEDI	F	0	0-0	0-0	0-0	0	0	0	0	0	0	0	0	0	0
14	MOSS, JADA	G	0	0-0	0-0	0-0	0	0	0	0	0	0	0	0	2	-5
21	VARIS, VENLA	G	0	0-2	0-2	0-0	0	2	2	0	0	1	0	0	4	-7
23	BROWN, TIANNA	G	2	1-3	0-0	0-0	1	0	1	0	0	0	0	0	9	-8
TEAM							1	0	1	0	0					
TOTALS			13	6-17	0-2	1-2	3	6	9	4	4	4	0	0	50	

Shooting By Period

Period	FG	FG%	3FG	3FG%	FT	FT%
2nd Half	0-0	0%	0-0	0%	0-0	0%
Game	18-62	29.0%	2-17	11.8%	8-14	57.1%

Deadball Rebounds: 5,0

Portland St. 35

No.	Player	S	Pts	FG	3FG	FT	OR	DR	TR	PF	A	TO	Blk	Stl	Min	+/-
03	JIMENEZ, KYLIE	G	12	4-5	3-3	1-1	0	2	2	0	0	0	0	1	10	10
11	STOTLER, JORDAN	F	2	0-3	0-1	2-2	1	2	3	0	0	0	0	0	8	10
12	STREUN, TATIANA	F	4	1-2	0-0	2-2	2	1	3	2	0	0	0	0	5	5
35	FRAZIER, BELLE	G	3	1-4	1-1	0-0	0	0	0	0	1	0	0	0	8	9
53	HANSEN, DESIRAE	G	0	0-1	0-0	0-0	0	0	0	0	3	2	1	0	10	10
01	DENSON, LABREA	G	0	0-0	0-0	0-0	0	0	0	0	0	0	0	0	0	0
10	CANZOBRE, MARINA	F	0	0-0	0-0	0-0	0	0	0	0	0	0	0	0	2	0
15	GARDNER, CASSIDY	G	0	0-0	0-0	0-0	0	0	0	0	0	0	0	0	2	1
22	WALTON, RUCHAE	G	0	0-0	0-0	0-0	0	0	0	0	0	0	0	0	0	0
30	SCHULTZ, SYD	F	2	1-1	0-0	0-0	0	2	2	0	0	1	0	0	5	5
TEAM							0	1	1	0	0					
TOTALS			23	7-16	4-5	5-5	3	8	11	2	4	3	1	1	50	

Shooting By Period

Period	FG	FG%	3FG	3FG%	FT	FT%
2nd Half	0-0	0%	0-0	0%	0-0	0%
Game	23-61	37.7%	7-16	43.8%	16-19	84.2%

Deadball Rebounds: 2,0

Game Notes:

Officials: Sydney Mott, Melissa Barlow, Jacob Petz
 Attendance: 395

Start Time: 08:06 PM ET
 End Time: 09:42 PM ET
 Game Duration: 1:35

Score	1st	2nd	3rd	4th	TOT
GCU	10	13	13	10	46
PSU	17	17	23	12	69

Points from (This Period)	GCU	PSU
In the Paint	12	4
Off Turns	0	5
2nd Chance	4	4
Fast Break	0	0
Bench	2	2

Official Play-By-Play
Grand Canyon vs Portland St.
Third Quarter
December 06, 2019 at Viking Pavilion (Stoller) - Portland



Period 3

Starters:

Grand Canyon: 4 HOLLAND, JADA (G); 12 BALAGUE, CARLA (F); 13 ROWELL, TAVIA (G); 34 DANIEL, DA'JAH (F); 5 PIERA, LAURA (G);

Portland St.: 3 JIMENEZ, KYLIE (G); 11 STOTLER, JORDAN (F); 12 STREUN, TATIANA (F); 35 FRAZIER, BELLE (G); 53 HANSEN, DESIRAE (G);

Time	VISITORS: Grand Canyon	Score	Margin	HOME: Portland St.
10:00				SUB OUT: DENSON, LABREA
10:00				SUB OUT: WALTON, RUCHAE
10:00				SUB IN: FRAZIER, BELLE
10:00				SUB IN: HANSEN, DESIRAE
10:00	SUB OUT: VARIS, VENLA			
10:00	SUB IN: ROWELL, TAVIA			
09:52	GOOD! JUMPER by BROWN, TIANNA [PNT]	34-25	H 9	
09:52	ASSIST by HOLLAND, JADA			
09:42		36-25	H 11	GOOD! JUMPER by JIMENEZ, KYLIE
09:42	FOUL (PERSONAL) by PIERA, LAURA			
09:42		37-25	H 12	GOOD! FT by JIMENEZ, KYLIE
09:26	GOOD! JUMPER by DANIEL, DA'JAH [PNT]	37-27	H 10	
09:26	ASSIST by ROWELL, TAVIA			
09:11		40-27	H 13	GOOD! 3PTR by FRAZIER, BELLE
09:11				ASSIST by HANSEN, DESIRAE
08:50	TURNOVER (BADPASS) by HOLLAND, JADA			
08:50				STEAL by JIMENEZ, KYLIE
08:45	FOUL (PERSONAL) by ROWELL, TAVIA			
08:45	SUB OUT: HOLLAND, JADA			
08:45	SUB OUT: ROWELL, TAVIA			
08:45	SUB IN: MITCHELL, MARIAH			
08:45	SUB IN: VARIS, VENLA			
08:45		41-27	H 14	GOOD! FT by STREUN, TATIANA
08:45		42-27	H 15	GOOD! FT by STREUN, TATIANA
08:32	MISSED JUMPER by BROWN, TIANNA			
08:28				REBOUND (DEF) by JIMENEZ, KYLIE
08:18				MISSED JUMPER by STREUN, TATIANA
08:15	REBOUND (DEF) by VARIS, VENLA			
08:08	MISSED 3PTR by VARIS, VENLA			
08:04				REBOUND (DEF) by JIMENEZ, KYLIE
07:58				MISSED JUMPER by FRAZIER, BELLE
07:53	REBOUND (DEF) by VARIS, VENLA			
07:46	MISSED JUMPER by DANIEL, DA'JAH			
07:42				REBOUND (DEF) by STOTLER, JORDAN
07:34				MISSED JUMPER by JIMENEZ, KYLIE
07:31				REBOUND (OFF) by STREUN, TATIANA
07:29				TURNOVER (TRAVEL) by HANSEN, DESIRAE
07:29	SUB OUT: DANIEL, DA'JAH			
07:29	SUB IN: BALAGUE, CARLA			
07:19	MISSED JUMPER by BALAGUE, CARLA			
07:16				REBOUND (DEF) by STREUN, TATIANA
07:07				MISSED JUMPER by STOTLER, JORDAN
07:04	REBOUND (DEF) by BALAGUE, CARLA			
06:51				FOUL (PERSONAL) by STREUN, TATIANA
06:51				SUB OUT: STREUN, TATIANA
06:51				SUB IN: SCHULTZ, SYD
06:51	SUB OUT: BROWN, TIANNA			
06:51	SUB IN: MOSS, JADA			
06:51	MISSED FT by BALAGUE, CARLA			
06:51	REBOUND (OFF) by TEAM			
06:51	GOOD! FT by BALAGUE, CARLA	42-28	H 14	
06:35				MISSED JUMPER by FRAZIER, BELLE
06:34				REBOUND (OFF) by STOTLER, JORDAN
06:34	FOUL (PERSONAL) by BALAGUE, CARLA			
06:34		43-28	H 15	GOOD! FT by STOTLER, JORDAN
06:34		44-28	H 16	GOOD! FT by STOTLER, JORDAN
06:21	GOOD! JUMPER by PIERA, LAURA [PNT]	44-30	H 14	
06:02	FOUL (PERSONAL) by PIERA, LAURA			
06:02	SUB OUT: PIERA, LAURA			
06:02	SUB IN: HOLLAND, JADA			
05:49		47-30	H 17	GOOD! 3PTR by JIMENEZ, KYLIE
05:49				ASSIST by HANSEN, DESIRAE
05:34	SUB OUT: MITCHELL, MARIAH			
05:34	SUB IN: BROWN, TIANNA			
05:34	TURNOVER (OTHER) by VARIS, VENLA			
05:21				TURNOVER (LOSTBALL) by SCHULTZ, SYD
05:07	TURNOVER (BADPASS) by HOLLAND, JADA			
05:07	TIMEOUT 30SEC			
04:56		50-30	H 20	GOOD! 3PTR by JIMENEZ, KYLIE
04:56				ASSIST by HANSEN, DESIRAE

Time	VISITORS: Grand Canyon	Score	Margin	HOME: Portland St.
04:33	MISSED JUMPER by BROWN, TIANNA			
04:29	REBOUND (OFF) by BROWN, TIANNA			
04:26	MISSED 3PTR by VARIS, VENLA			
04:25				REBOUND (DEF) by TEAM
04:25				
04:25	SUB OUT: MOSS, JADA			
04:25	SUB OUT: VARIS, VENLA			
04:25	SUB IN: PIERA, LAURA			
04:25	SUB IN: DANIEL, DA'JAH			
04:25				SUB OUT: STOTLER, JORDAN
04:25				SUB IN: CANZOBRE, MARINA
04:11				TURNOVER (BADPASS) by HANSEN, DESIRAE
03:57	MISSED JUMPER by HOLLAND, JADA			
03:54				REBOUND (DEF) by SCHULTZ, SYD
03:26				MISSED JUMPER by FRAZIER, BELLE
03:23	REBOUND (DEF) by BALAGUE, CARLA			
03:12	MISSED JUMPER by DANIEL, DA'JAH			
03:09				REBOUND (DEF) by SCHULTZ, SYD
02:52		52-30	H 22	GOOD! JUMPER by SCHULTZ, SYD [PNT]
02:52				ASSIST by FRAZIER, BELLE
02:37	GOOD! LAYUP by BALAGUE, CARLA	52-32	H 20	
02:37	ASSIST by HOLLAND, JADA			
02:14				MISSED JUMPER by HANSEN, DESIRAE
02:10	REBOUND (DEF) by DANIEL, DA'JAH			
02:07	MISSED LAYUP by BALAGUE, CARLA			
02:07				BLOCK by HANSEN, DESIRAE
02:07	REBOUND (OFF) by TEAM			
02:07				SUB OUT: CANZOBRE, MARINA
02:07				SUB OUT: SCHULTZ, SYD
02:07				SUB OUT: FRAZIER, BELLE
02:07				SUB IN: STOTLER, JORDAN
02:07				SUB IN: STREUN, TATIANA
02:07				SUB IN: GARDNER, CASSIDY
02:05				FOUL (PERSONAL) by STREUN, TATIANA
01:56	GOOD! JUMPER by DANIEL, DA'JAH	52-34	H 18	
01:56	ASSIST by BALAGUE, CARLA			
01:23				MISSED 3PTR by STOTLER, JORDAN
01:20				REBOUND (OFF) by STREUN, TATIANA
01:18		54-34	H 20	GOOD! JUMPER by STREUN, TATIANA [PNT]
01:00	MISSED JUMPER by DANIEL, DA'JAH			
00:56	REBOUND (OFF) by DANIEL, DA'JAH			
00:54	GOOD! JUMPER by DANIEL, DA'JAH	54-36	H 18	
00:42		57-36	H 21	GOOD! 3PTR by JIMENEZ, KYLIE
00:28	TURNOVER (TRAVEL) by BALAGUE, CARLA			
00:28				SUB OUT: JIMENEZ, KYLIE
00:28				SUB IN: DENSON, LABREA
00:08				MISSED JUMPER by STOTLER, JORDAN
00:05	REBOUND (DEF) by DANIEL, DA'JAH			
00:00	MISSED JUMPER by HOLLAND, JADA			
00:00				REBOUND (DEF) by STOTLER, JORDAN

Grand Canyon 36, Portland St. 57

Points from (This Period)	GCU	PSU
In the Paint	12	4
Off Turns	0	5
2nd Chance	4	4
Fast Break	0	0
Bench	2	2

Official Box Score
Grand Canyon vs Portland St.
Fourth Quarter Statistics Only
December 06, 2019 at Viking Pavilion (Stoller) - Portland



Grand Canyon 10

No.	Player	S	Pts	FG	3FG	FT	OR	DR	TR	PF	A	TO	Blk	Stl	Min	+/-
04	HOLLAND, JADA	G	0	0-1	0-0	0-0	0	1	1	0	2	0	0	0	3	0
05	PIERA, LAURA	G	0	0-1	0-1	0-0	0	0	0	0	0	0	0	0	3	-1
12	BALAGUE, CARLA	F	3	1-2	0-0	1-2	0	2	2	0	0	0	0	0	7	-1
13	ROWELL, TAVIA	G	0	0-1	0-1	0-0	0	0	0	0	1	0	0	0	4	-2
34	DANIEL, DA'JAH	F	2	1-1	0-0	0-0	0	2	2	1	0	1	0	1	5	-2
00	MITCHELL, MARIAH	G	0	0-2	0-0	0-0	0	0	0	0	0	0	0	0	5	-4
02	SHORTS, KENNEDI	F	2	1-3	0-0	0-2	0	1	1	0	0	0	1	0	7	-1
14	MOSS, JADA	G	0	0-1	0-1	0-0	0	0	0	0	0	1	1	0	5	1
21	VARIS, VENLA	G	0	0-0	0-0	0-0	0	0	0	0	0	0	0	0	2	0
23	BROWN, TIANNA	G	3	1-2	0-1	1-2	1	0	1	0	0	0	0	0	9	0
TEAM								3	2	5	0	1				
TOTALS			10	4-14	0-4	2-6	4	8	12	1	3	3	2	1	50	

Shooting By Period

Period	FG	FG%	3FG	3FG%	FT	FT%
Game	18-62	29.0%	2-17	11.8%	8-14	57.1%

Deadball Rebounds: 5,0

Portland St. 12

No.	Player	S	Pts	FG	3FG	FT	OR	DR	TR	PF	A	TO	Blk	Stl	Min	+/-
03	JIMENEZ, KYLIE	G	2	1-2	0-1	0-0	0	0	0	0	0	0	0	1	6	0
11	STOTLER, JORDAN	F	2	1-2	0-0	0-0	0	1	1	1	0	0	1	0	4	0
12	STREUN, TATIANA	F	0	0-0	0-0	0-0	0	1	1	0	0	0	0	0	3	1
35	FRAZIER, BELLE	G	0	0-0	0-0	0-0	0	0	0	0	0	0	0	0	4	-1
53	HANSEN, DESIRAE	G	0	0-0	0-0	0-0	1	1	2	1	1	0	1	1	9	0
01	DENSON, LABREA	G	4	1-3	0-1	2-2	0	2	2	3	1	1	0	0	10	2
10	CANZOBRE, MARINA	F	2	1-3	0-0	0-0	0	1	1	0	1	0	0	0	6	2
15	GARDNER, CASSIDY	G	0	0-2	0-0	0-0	0	0	0	0	0	0	0	0	4	2
22	WALTON, RUCHAE	G	0	0-0	0-0	0-0	0	0	0	0	0	0	0	0	1	2
30	SCHULTZ, SYD	F	2	1-2	0-0	0-0	0	1	1	0	0	0	0	0	4	2
TEAM								0	1	1	0	1				
TOTALS			12	5-14	0-2	2-2	1	8	9	5	3	2	2	2	50	

Shooting By Period

Period	FG	FG%	3FG	3FG%	FT	FT%
Game	23-61	37.7%	7-16	43.8%	16-19	84.2%

Deadball Rebounds: 2,0

Game Notes:

Officials: Sydney Mott, Melissa Barlow, Jacob Petz
 Attendance: 395

Start Time: 08:06 PM ET
 End Time: 09:42 PM ET
 Game Duration: 1:35

Score	1st	2nd	3rd	4th	TOT
GCU	10	13	13	10	46
PSU	17	17	23	12	69

Points from (This Period)	GCU	PSU
In the Paint	4	8
Off Turns	0	2
2nd Chance	1	0
Fast Break	0	0
Bench	5	8

Official Play-By-Play
Grand Canyon vs Portland St.
Fourth Quarter
December 06, 2019 at Viking Pavilion (Stoller) - Portland



Period 4

Starters:

Grand Canyon: 4 HOLLAND, JADA (G); 12 BALAGUE, CARLA (F); 13 ROWELL, TAVIA (G); 34 DANIEL, DA'JAH (F); 5 PIERA, LAURA (G);

Portland St.: 3 JIMENEZ, KYLIE (G); 11 STOTLER, JORDAN (F); 12 STREUN, TATIANA (F); 35 FRAZIER, BELLE (G); 53 HANSEN, DESIRAE (G);

Time	VISITORS: Grand Canyon	Score	Margin	HOME: Portland St.
10:00				SUB OUT: GARDNER, CASSIDY
10:00				SUB IN: JIMENEZ, KYLIE
10:00	SUB OUT: HOLLAND, JADA			
10:00	SUB IN: MITCHELL, MARIAH			
09:47				MISSED JUMPER by STOTLER, JORDAN
09:44				REBOUND (OFF) by HANSEN, DESIRAE
09:27				TURNOVER (SHOTCLOCK) by TEAM
09:12	MISSED JUMPER by MITCHELL, MARIAH			
09:12				REBOUND (DEF) by HANSEN, DESIRAE
08:46		59-36	H 23	GOOD! LAYUP by DENSON, LABREA
08:29	MISSED 3PTR by PIERA, LAURA			
08:25				REBOUND (DEF) by STREUN, TATIANA
08:12				MISSED 3PTR by JIMENEZ, KYLIE
08:07	REBOUND (DEF) by DANIEL, DA'JAH			
07:58				FOUL (PERSONAL) by STOTLER, JORDAN
07:58	SUB OUT: MITCHELL, MARIAH			
07:58	SUB IN: HOLLAND, JADA			
07:58	GOOD! FT by BALAGUE, CARLA	59-37	H 22	
07:58	MISSED FT by BALAGUE, CARLA			
07:57				REBOUND (DEF) by STOTLER, JORDAN
07:36				MISSED 3PTR by DENSON, LABREA
07:31	REBOUND (DEF) by HOLLAND, JADA			
07:27	MISSED JUMPER by HOLLAND, JADA			
07:27	REBOUND (OFF) by BROWN, TIANNA			
07:27				FOUL (PERSONAL) by HANSEN, DESIRAE
07:27	SUB OUT: PIERA, LAURA			
07:27	SUB OUT: BALAGUE, CARLA			
07:27	SUB IN: SHORTS, KENNEDI			
07:27	SUB IN: MOSS, JADA			
07:27				SUB OUT: STREUN, TATIANA
07:27				SUB IN: FRAZIER, BELLE
07:27	MISSED FT by BROWN, TIANNA			
07:27	REBOUND (OFF) by TEAM			
07:27	GOOD! FT by BROWN, TIANNA	59-38	H 21	
07:15		61-38	H 23	GOOD! JUMPER by STOTLER, JORDAN [PNT]
07:15				ASSIST by DENSON, LABREA
06:59	GOOD! JUMPER by SHORTS, KENNEDI	61-40	H 21	
06:59	ASSIST by HOLLAND, JADA			
06:30				MISSED JUMPER by DENSON, LABREA
06:26	REBOUND (DEF) by DANIEL, DA'JAH			
06:25	TURNOVER (BADPASS) by DANIEL, DA'JAH			
06:25				STEAL by JIMENEZ, KYLIE
06:15		63-40	H 23	GOOD! JUMPER by JIMENEZ, KYLIE
06:05	GOOD! JUMPER by DANIEL, DA'JAH [PNT]	63-42	H 21	
06:05	ASSIST by HOLLAND, JADA			
05:51	FOUL (PERSONAL) by DANIEL, DA'JAH			
05:51				SUB OUT: STOTLER, JORDAN
05:51				SUB IN: CANZOBRE, MARINA
05:51	SUB OUT: BROWN, TIANNA			
05:51	SUB IN: VARIS, VENLA			
05:51		64-42	H 22	GOOD! FT by DENSON, LABREA
05:51		65-42	H 23	GOOD! FT by DENSON, LABREA
05:35	MISSED 3PTR by MOSS, JADA			
05:32				REBOUND (DEF) by DENSON, LABREA
05:16				TURNOVER (BADPASS) by DENSON, LABREA
05:16	STEAL by DANIEL, DA'JAH			
04:59	MISSED JUMPER by SHORTS, KENNEDI			
04:56				REBOUND (DEF) by TEAM
04:56				
09:12				BLOCK by STOTLER, JORDAN
04:50	SUB OUT: HOLLAND, JADA			
04:50	SUB OUT: DANIEL, DA'JAH			
04:50	SUB IN: BALAGUE, CARLA			
04:50	SUB IN: BROWN, TIANNA			
04:33				MISSED JUMPER by CANZOBRE, MARINA
04:30	REBOUND (DEF) by SHORTS, KENNEDI			
04:21	GOOD! JUMPER by BROWN, TIANNA	65-44	H 21	
04:03				MISSED JUMPER by GARDNER, CASSIDY
03:53	REBOUND (DEF) by BALAGUE, CARLA			
03:49	TURNOVER (BADPASS) by MOSS, JADA			

Time	VISITORS: Grand Canyon	Score	Margin	HOME: Portland St.
03:49				STEAL by HANSEN, DESIRAE
03:44				MISSED JUMPER by GARDNER, CASSIDY
03:44	BLOCK by MOSS, JADA			
03:44	REBOUND (DEF) by TEAM			
03:44				SUB OUT: FRAZIER, BELLE
03:44				SUB IN: SCHULTZ, SYD
03:44	SUB OUT: VARIS, VENLA			
03:44	SUB IN: ROWELL, TAVIA			
03:18				FOUL (PERSONAL) by DENSON, LABREA
03:15				FOUL (PERSONAL) by DENSON, LABREA
02:55	SUB OUT: MOSS, JADA			
02:55	SUB IN: MITCHELL, MARIAH			
02:52	MISSED 3PTR by ROWELL, TAVIA			
02:52	REBOUND (OFF) by TEAM			
02:52	TURNOVER (SHOTCLOCK) by TEAM			
02:28				MISSED JUMPER by SCHULTZ, SYD
02:28	BLOCK by SHORTS, KENNEDI			
02:28	REBOUND (DEF) by TEAM			
02:08	GOOD! JUMPER by BALAGUE, CARLA [PNT]	65-46	H 19	
02:08	ASSIST by ROWELL, TAVIA			
01:45		67-46	H 21	GOOD! JUMPER by CANZOBRE, MARINA [PNT]
01:45				ASSIST by HANSEN, DESIRAE
01:28	MISSED JUMPER by BALAGUE, CARLA			
01:28				BLOCK by HANSEN, DESIRAE
01:28	REBOUND (OFF) by TEAM			
01:28				SUB OUT: HANSEN, DESIRAE
01:28				SUB IN: WALTON, RUCHAE
01:19				FOUL (PERSONAL) by DENSON, LABREA
01:19	MISSED FT by SHORTS, KENNEDI			
01:19	REBOUND (OFF) by TEAM			
01:19	MISSED FT by SHORTS, KENNEDI			
01:19				REBOUND (DEF) by SCHULTZ, SYD
01:06		69-46	H 23	GOOD! JUMPER by SCHULTZ, SYD [PNT]
01:06				ASSIST by CANZOBRE, MARINA
00:46	MISSED JUMPER by MITCHELL, MARIAH			
00:41				REBOUND (DEF) by DENSON, LABREA
00:24				MISSED JUMPER by CANZOBRE, MARINA
00:20	REBOUND (DEF) by BALAGUE, CARLA			
00:14	MISSED 3PTR by BROWN, TIANNA			
00:10	REBOUND (OFF) by TEAM			
00:06	MISSED JUMPER by SHORTS, KENNEDI			
00:00				REBOUND (DEF) by CANZOBRE, MARINA
04:03				SUB OUT: JIMENEZ, KYLIE
04:03				SUB IN: GARDNER, CASSIDY

Grand Canyon 46, Portland St. 69

Points from (This Period)	GCU	PSU
In the Paint	4	8
Off Turns	0	2
2nd Chance	1	0
Fast Break	0	0
Bench	5	8

Official Scoring/Possession Reference Chart
Grand Canyon vs Portland St.
Period 1
December 06, 2019 at Viking Pavilion (Stoller) - Portland



Period 1

Starters:

Grand Canyon: 4 HOLLAND, JADA (G); 12 BALAGUE, CARLA (F); 13 ROWELL, TAVIA (G); 34 DANIEL, DA'JAH (F); 5 PIERA, LAURA (G);

Portland St.: 3 JIMENEZ, KYLIE (G); 11 STOTLER, JORDAN (F); 12 STREUN, TATIANA (F); 35 FRAZIER, BELLE (G); 53 HANSEN, DESIRAE (G);

Time	VISITORS: Grand Canyon	Score	Margin	HOME: Portland St.
09:27	GOOD! FT by BALAGUE, CARLA	0-1	V 1	
09:27	GOOD! FT by BALAGUE, CARLA	0-2	V 2	
09:09		2-2	T	GOOD! JUMPER by STREUN, TATIANA
08:16		3-2	H 1	GOOD! FT by STOTLER, JORDAN
08:16		4-2	H 2	GOOD! FT by STOTLER, JORDAN
07:40		6-2	H 4	GOOD! JUMPER by HANSEN, DESIRAE
06:45		7-2	H 5	GOOD! FT by STOTLER, JORDAN
06:26	GOOD! JUMPER by DANIEL, DA'JAH [PNT]	7-4	H 3	
05:54		8-4	H 4	GOOD! FT by HANSEN, DESIRAE
05:22		9-4	H 5	GOOD! FT by STREUN, TATIANA
05:22		10-4	H 6	GOOD! FT by STREUN, TATIANA
02:02		11-4	H 7	GOOD! FT by HANSEN, DESIRAE
02:02		12-4	H 8	GOOD! FT by HANSEN, DESIRAE
01:52	GOOD! JUMPER by HOLLAND, JADA	12-6	H 6	
01:40		14-6	H 8	GOOD! LAYUP by HANSEN, DESIRAE [PNT]
01:20	GOOD! JUMPER by DANIEL, DA'JAH	14-8	H 6	
00:48		17-8	H 9	GOOD! 3PTR by GARDNER, CASSIDY
00:33	GOOD! FT by BROWN, TIANNA	17-9	H 8	
00:33	GOOD! FT by BROWN, TIANNA	17-10	H 7	

Grand Canyon 10, Portland St. 17

Official Scoring/Possession Reference Chart
Grand Canyon vs Portland St.
Period 2
December 06, 2019 at Viking Pavilion (Stoller) - Portland



Period 2

Starters:

Grand Canyon: 4 HOLLAND, JADA (G); 12 BALAGUE, CARLA (F); 13 ROWELL, TAVIA (G); 34 DANIEL, DA'JAH (F); 5 PIERA, LAURA (G);

Portland St.: 3 JIMENEZ, KYLIE (G); 11 STOTLER, JORDAN (F); 12 STREUN, TATIANA (F); 35 FRAZIER, BELLE (G); 53 HANSEN, DESIRAE (G);

Time	VISITORS: Grand Canyon	Score	Margin	HOME: Portland St.
09:51	GOOD! 3PTR by VARIS, VENLA	17-13	H 4	
08:56		20-13	H 7	GOOD! 3PTR by STREUN, TATIANA
08:36	GOOD! JUMPER by DANIEL, DA'JAH	20-15	H 5	
08:12		22-15	H 7	GOOD! LAYUP by STREUN, TATIANA
07:51		25-15	H 10	GOOD! 3PTR by HANSEN, DESIRAE
07:18		27-15	H 12	GOOD! JUMPER by STREUN, TATIANA [PNT]
04:40	GOOD! FT by MOSS, JADA	27-16	H 11	
03:16		29-16	H 13	GOOD! LAYUP by JIMENEZ, KYLIE [PNT]
02:38	GOOD! 3PTR by VARIS, VENLA	29-19	H 10	
02:21		30-19	H 11	GOOD! FT by CANZOBRE, MARINA
01:40		32-19	H 13	GOOD! JUMPER by STOTLER, JORDAN [PNT]
01:04		34-19	H 15	GOOD! JUMPER by STREUN, TATIANA
00:43	GOOD! JUMPER by DANIEL, DA'JAH [PNT]	34-21	H 13	
00:08	GOOD! JUMPER by BROWN, TIANNA [PNT]	34-23	H 11	

Grand Canyon 23, Portland St. 34

Official Scoring/Possession Reference Chart
Grand Canyon vs Portland St.
Period 3
December 06, 2019 at Viking Pavilion (Stoller) - Portland



Period 3

Starters:

Grand Canyon: 4 HOLLAND, JADA (G); 12 BALAGUE, CARLA (F); 13 ROWELL, TAVIA (G); 34 DANIEL, DA'JAH (F); 5 PIERA, LAURA (G);

Portland St.: 3 JIMENEZ, KYLIE (G); 11 STOTLER, JORDAN (F); 12 STREUN, TATIANA (F); 35 FRAZIER, BELLE (G); 53 HANSEN, DESIRAE (G);

Time	VISITORS: Grand Canyon	Score	Margin	HOME: Portland St.
09:52	GOOD! JUMPER by BROWN, TIANNA [PNT]	34-25	H 9	
09:42		36-25	H 11	GOOD! JUMPER by JIMENEZ, KYLIE
09:42		37-25	H 12	GOOD! FT by JIMENEZ, KYLIE
09:26	GOOD! JUMPER by DANIEL, DA'JAH [PNT]	37-27	H 10	
09:11		40-27	H 13	GOOD! 3PTR by FRAZIER, BELLE
08:45		41-27	H 14	GOOD! FT by STREUN, TATIANA
08:45		42-27	H 15	GOOD! FT by STREUN, TATIANA
06:51	GOOD! FT by BALAGUE, CARLA	42-28	H 14	
06:34		43-28	H 15	GOOD! FT by STOTLER, JORDAN
06:34		44-28	H 16	GOOD! FT by STOTLER, JORDAN
06:21	GOOD! JUMPER by PIERA, LAURA [PNT]	44-30	H 14	
05:49		47-30	H 17	GOOD! 3PTR by JIMENEZ, KYLIE
04:56		50-30	H 20	GOOD! 3PTR by JIMENEZ, KYLIE
02:52		52-30	H 22	GOOD! JUMPER by SCHULTZ, SYD [PNT]
02:37	GOOD! LAYUP by BALAGUE, CARLA	52-32	H 20	
01:56	GOOD! JUMPER by DANIEL, DA'JAH	52-34	H 18	
01:18		54-34	H 20	GOOD! JUMPER by STREUN, TATIANA [PNT]
00:54	GOOD! JUMPER by DANIEL, DA'JAH	54-36	H 18	
00:42		57-36	H 21	GOOD! 3PTR by JIMENEZ, KYLIE

Grand Canyon 36, Portland St. 57

Official Scoring/Possession Reference Chart
Grand Canyon vs Portland St.
Period 4
December 06, 2019 at Viking Pavilion (Stoller) - Portland



Period 4

Starters:

Grand Canyon: 4 HOLLAND, JADA (G); 12 BALAGUE, CARLA (F); 13 ROWELL, TAVIA (G); 34 DANIEL, DA'JAH (F); 5 PIERA, LAURA (G);

Portland St.: 3 JIMENEZ, KYLIE (G); 11 STOTLER, JORDAN (F); 12 STREUN, TATIANA (F); 35 FRAZIER, BELLE (G); 53 HANSEN, DESIRAE (G);

Time	VISITORS: Grand Canyon	Score	Margin	HOME: Portland St.
08:46		59-36	H 23	GOOD! LAYUP by DENSON, LABREA
07:58	GOOD! FT by BALAGUE, CARLA	59-37	H 22	
07:27	GOOD! FT by BROWN, TIANNA	59-38	H 21	
07:15		61-38	H 23	GOOD! JUMPER by STOTLER, JORDAN [PNT]
06:59	GOOD! JUMPER by SHORTS, KENNEDI	61-40	H 21	
06:15		63-40	H 23	GOOD! JUMPER by JIMENEZ, KYLIE
06:05	GOOD! JUMPER by DANIEL, DA'JAH [PNT]	63-42	H 21	
05:51		64-42	H 22	GOOD! FT by DENSON, LABREA
05:51		65-42	H 23	GOOD! FT by DENSON, LABREA
04:21	GOOD! JUMPER by BROWN, TIANNA	65-44	H 21	
02:08	GOOD! JUMPER by BALAGUE, CARLA [PNT]	65-46	H 19	
01:45		67-46	H 21	GOOD! JUMPER by CANZOBRE, MARINA [PNT]
01:06		69-46	H 23	GOOD! JUMPER by SCHULTZ, SYD [PNT]

Grand Canyon 46, Portland St. 69

**Official Substitutions Log
Grand Canyon vs Portland St.
Period 1
December 06, 2019 at Viking Pavilion (Stoller) - Portland**



VISITORS: Grand Canyon	Time	Score	HOME: Portland St.
4 HOLLAND, JADA			3 JIMENEZ, KYLIE
12 BALAGUE, CARLA			11 STOTLER, JORDAN
13 ROWELL, TAVIA			12 STREUN, TATIANA
34 DANIEL, DA'JAH			35 FRAZIER, BELLE
5 PIERA, LAURA			53 HANSEN, DESIRAE
SUB OUT: 4 HOLLAND, JADA	05:22	4-8	
SUB OUT: 12 BALAGUE, CARLA	05:22		
SUB OUT: 13 ROWELL, TAVIA	05:22		
SUB IN: 2 SHORTS, KENNEDI	05:22		
SUB IN: 21 VARIS, VENLA	05:22		
SUB IN: 23 BROWN, TIANNA	05:22		
	02:57	4-10	SUB OUT: STOTLER, JORDAN
	02:57		SUB OUT: STREUN, TATIANA
	02:57		SUB OUT: FRAZIER, BELLE
	02:57		SUB IN: CANZOBRE, MARINA
	02:57		SUB IN: GARDNER, CASSIDY
	02:57		SUB IN: SCHULTZ, SYD
SUB OUT: 5 PIERA, LAURA	02:57		
SUB IN: 4 HOLLAND, JADA	02:57		
SUB OUT: 2 SHORTS, KENNEDI	02:02	4-12	
SUB IN: 0 MITCHELL, MARIAH	02:02		

Grand Canyon 10, Portland St. 17

**Official Substitutions Log
Grand Canyon vs Portland St.
Period 2
December 06, 2019 at Viking Pavilion (Stoller) - Portland**



VISITORS: Grand Canyon	Time	Score	HOME: Portland St.
4 HOLLAND, JADA			3 JIMENEZ, KYLIE
12 BALAGUE, CARLA			11 STOTLER, JORDAN
13 ROWELL, TAVIA			12 STREUN, TATIANA
34 DANIEL, DA'JAH			35 FRAZIER, BELLE
5 PIERA, LAURA			53 HANSEN, DESIRAE
	10:00	-	SUB OUT: CANZOBRE, MARINA
	10:00		SUB OUT: HANSEN, DESIRAE
	10:00		SUB IN: STOTLER, JORDAN
	10:00		SUB IN: STREUN, TATIANA
	07:58	15-22	SUB OUT: SCHULTZ, SYD
	07:58		SUB IN: HANSEN, DESIRAE
SUB OUT: 0 MITCHELL, MARIAH	07:58		
SUB OUT: 21 VARIS, VENLA	07:58		
SUB IN: 13 ROWELL, TAVIA	07:58		
SUB IN: 14 MOSS, JADA	07:58		
SUB OUT: 34 DANIEL, DA'JAH	07:32	15-25	
SUB IN: 2 SHORTS, KENNEDI	07:32		
SUB OUT: 23 BROWN, TIANNA	06:07	15-27	
SUB IN: 5 PIERA, LAURA	06:07		
	04:40	15-27	SUB OUT: STOTLER, JORDAN
	04:40		SUB OUT: STREUN, TATIANA
	04:40		SUB OUT: GARDNER, CASSIDY
	04:40		SUB IN: DENSON, LABREA
	04:40		SUB IN: CANZOBRE, MARINA
	04:40		SUB IN: SCHULTZ, SYD
SUB OUT: 2 SHORTS, KENNEDI	04:40		
SUB OUT: 4 HOLLAND, JADA	04:40		
SUB OUT: 13 ROWELL, TAVIA	04:40		
SUB IN: 0 MITCHELL, MARIAH	04:40		
SUB IN: 21 VARIS, VENLA	04:40		
SUB IN: 34 DANIEL, DA'JAH	04:40		
	04:03	16-27	SUB OUT: HANSEN, DESIRAE
	04:03		SUB IN: GARDNER, CASSIDY
	02:21	19-29	SUB OUT: GARDNER, CASSIDY
	02:21		SUB OUT: SCHULTZ, SYD
	02:21		SUB IN: STREUN, TATIANA
	02:21		SUB IN: WALTON, RUCHAE
SUB OUT: 14 MOSS, JADA	02:21		
SUB IN: 23 BROWN, TIANNA	02:21		
	02:21		SUB OUT: CANZOBRE, MARINA
	02:21		SUB IN: STOTLER, JORDAN
SUB OUT: 0 MITCHELL, MARIAH	01:02	19-34	
SUB IN: 4 HOLLAND, JADA	01:02		

Grand Canyon 23, Portland St. 34

Official Substitutions Log
Grand Canyon vs Portland St.
Period 3
December 06, 2019 at Viking Pavilion (Stoller) - Portland



VISITORS: Grand Canyon	Time	Score	HOME: Portland St.
4 HOLLAND, JADA			3 JIMENEZ, KYLIE
12 BALAGUE, CARLA			11 STOTLER, JORDAN
13 ROWELL, TAVIA			12 STREUN, TATIANA
34 DANIEL, DA'JAH			35 FRAZIER, BELLE
5 PIERA, LAURA			53 HANSEN, DESIRAE
	10:00	-	SUB OUT: DENSON, LABREA
	10:00		SUB OUT: WALTON, RUCHAE
	10:00		SUB IN: FRAZIER, BELLE
	10:00		SUB IN: HANSEN, DESIRAE
SUB OUT: 21 VARIS, VENLA	10:00		
SUB IN: 13 ROWELL, TAVIA	10:00		
SUB OUT: 4 HOLLAND, JADA	08:45	27-40	
SUB OUT: 13 ROWELL, TAVIA	08:45		
SUB IN: 0 MITCHELL, MARIAH	08:45		
SUB IN: 21 VARIS, VENLA	08:45		
SUB OUT: 34 DANIEL, DA'JAH	07:29	27-42	
SUB IN: 12 BALAGUE, CARLA	07:29		
	06:51	27-42	SUB OUT: STREUN, TATIANA
	06:51		SUB IN: SCHULTZ, SYD
SUB OUT: 23 BROWN, TIANNA	06:51		
SUB IN: 14 MOSS, JADA	06:51		
SUB OUT: 5 PIERA, LAURA	06:02	30-44	
SUB IN: 4 HOLLAND, JADA	06:02		
SUB OUT: 0 MITCHELL, MARIAH	05:34	30-47	
SUB IN: 23 BROWN, TIANNA	05:34		
SUB OUT: 14 MOSS, JADA	04:25	30-50	
SUB OUT: 21 VARIS, VENLA	04:25		
SUB IN: 5 PIERA, LAURA	04:25		
SUB IN: 34 DANIEL, DA'JAH	04:25		
	04:25		SUB OUT: STOTLER, JORDAN
	04:25		SUB IN: CANZOBRE, MARINA
	02:07	32-52	SUB OUT: CANZOBRE, MARINA
	02:07		SUB OUT: SCHULTZ, SYD
	02:07		SUB OUT: FRAZIER, BELLE
	02:07		SUB IN: STOTLER, JORDAN
	02:07		SUB IN: STREUN, TATIANA
	02:07		SUB IN: GARDNER, CASSIDY
	00:28	36-57	SUB OUT: JIMENEZ, KYLIE
	00:28		SUB IN: DENSON, LABREA

Grand Canyon 36, Portland St. 57

Official Substitutions Log
Grand Canyon vs Portland St.
Period 4
December 06, 2019 at Viking Pavilion (Stoller) - Portland



VISITORS: Grand Canyon	Time	Score	HOME: Portland St.
4 HOLLAND, JADA			3 JIMENEZ, KYLIE
12 BALAGUE, CARLA			11 STOTLER, JORDAN
13 ROWELL, TAVIA			12 STREUN, TATIANA
34 DANIEL, DA'JAH			35 FRAZIER, BELLE
5 PIERA, LAURA			53 HANSEN, DESIRAE
	10:00	-	SUB OUT: GARDNER, CASSIDY
	10:00		SUB IN: JIMENEZ, KYLIE
SUB OUT: 4 HOLLAND, JADA	10:00		
SUB IN: 0 MITCHELL, MARIAH	10:00		
SUB OUT: 0 MITCHELL, MARIAH	07:58	36-59	
SUB IN: 4 HOLLAND, JADA	07:58		
SUB OUT: 5 PIERA, LAURA	07:27	37-59	
SUB OUT: 12 BALAGUE, CARLA	07:27		
SUB IN: 2 SHORTS, KENNEDI	07:27		
SUB IN: 14 MOSS, JADA	07:27		
	07:27		SUB OUT: STREUN, TATIANA
	07:27		SUB IN: FRAZIER, BELLE
	05:51	42-63	SUB OUT: STOTLER, JORDAN
	05:51		SUB IN: CANZOBRE, MARINA
SUB OUT: 23 BROWN, TIANNA	05:51		
SUB IN: 21 VARIS, VENLA	05:51		
SUB OUT: 4 HOLLAND, JADA	04:50	42-65	
SUB OUT: 34 DANIEL, DA'JAH	04:50		
SUB IN: 12 BALAGUE, CARLA	04:50		
SUB IN: 23 BROWN, TIANNA	04:50		
	03:44	44-65	SUB OUT: FRAZIER, BELLE
	03:44		SUB IN: SCHULTZ, SYD
SUB OUT: 21 VARIS, VENLA	03:44		
SUB IN: 13 ROWELL, TAVIA	03:44		
SUB OUT: 14 MOSS, JADA	02:55	44-65	
SUB IN: 0 MITCHELL, MARIAH	02:55		
	01:28	46-67	SUB OUT: HANSEN, DESIRAE
	01:28		SUB IN: WALTON, RUCHAE
	04:03	46-69	SUB OUT: JIMENEZ, KYLIE
	04:03		SUB IN: GARDNER, CASSIDY

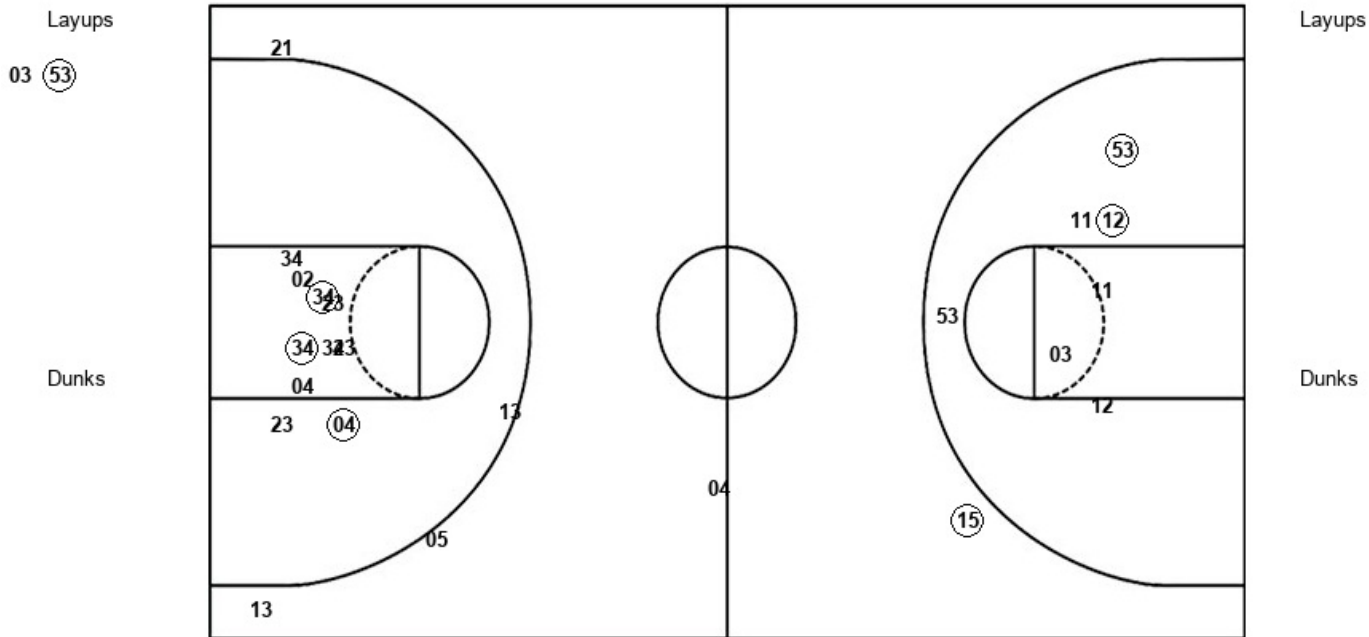
Grand Canyon 46, Portland St. 69

Official Shot Chart
Grand Canyon vs Portland St.
PERIOD 1 Shots
 December 06, 2019 at Viking Pavilion (Stoller) - Portland



Portland St.

Grand Canyon



PSU : Period 1	Made	Att	Pct
Layups	1	2	50.0
Dunks	0	0	0
2PT Field Goals	3	9	33.3
3PT Field Goals	1	1	100.0
Total Field Goals	4	10	40.0

GCU : Period 1	Made	Att	Pct
Layups	0	0	0
Dunks	0	0	0
2PT Field Goals	3	10	30.0
3PT Field Goals	0	5	00.0
Total Field Goals	3	15	20.0

Official Shot Chart
Grand Canyon vs Portland St.
PERIOD 2 Shots
 December 06, 2019 at Viking Pavilion (Stoller) - Portland



Portland St.

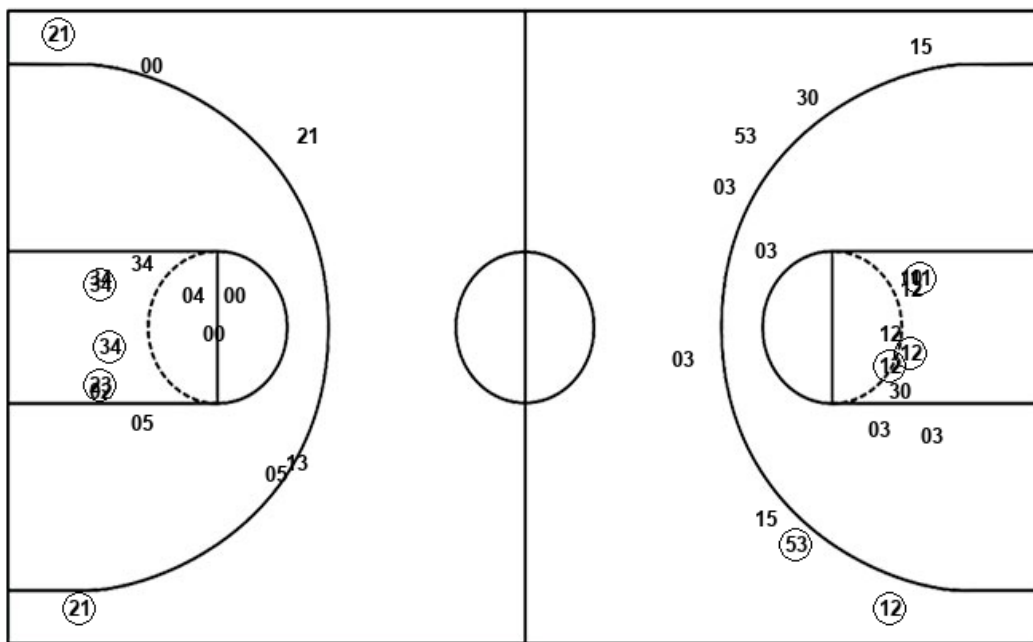
Grand Canyon

Layups
 12 11 03

Layups

Dunks

Dunks



PSU : Period 2	Made	Att	Pct
Layups	2	3	66.7
Dunks	0	0	0
2PT Field Goals	5	13	38.5
3PT Field Goals	2	8	25.0
Total Field Goals	7	21	33.3

GCU : Period 2	Made	Att	Pct
Layups	0	0	0
Dunks	0	0	0
2PT Field Goals	3	10	30.0
3PT Field Goals	2	6	33.3
Total Field Goals	5	16	31.3

Official Shot Chart
Grand Canyon vs Portland St.
PERIOD 3 Shots
 December 06, 2019 at Viking Pavilion (Stoller) - Portland



Portland St.

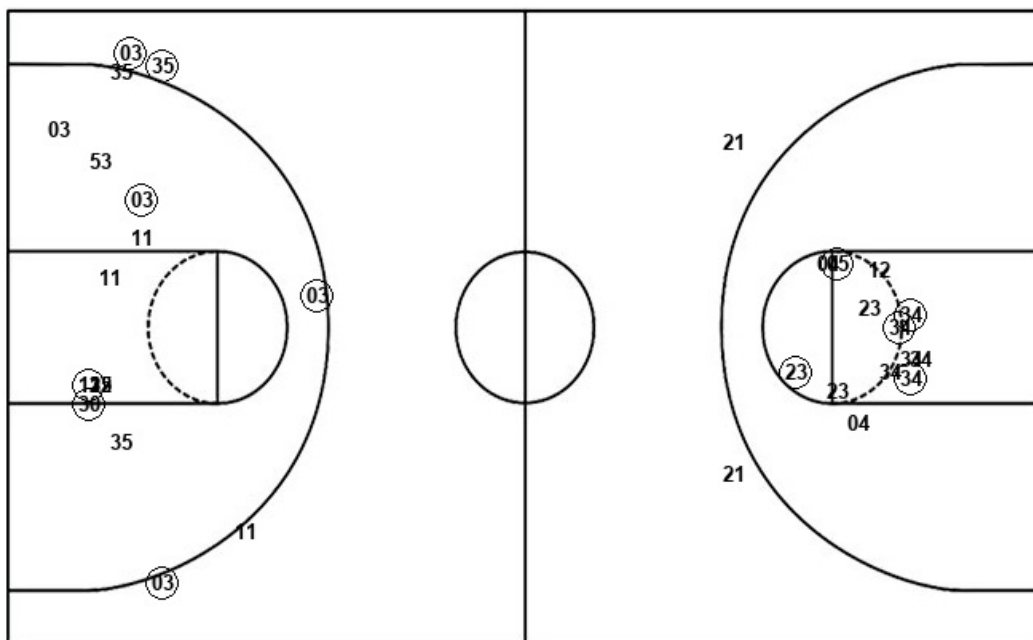
Grand Canyon

Layups

Layups

Dunks

Dunks



PSU : Period 3	Made	Att	Pct
Layups	0	0	0
Dunks	0	0	0
2PT Field Goals	3	11	27.3
3PT Field Goals	4	5	80.0
Total Field Goals	7	16	43.8

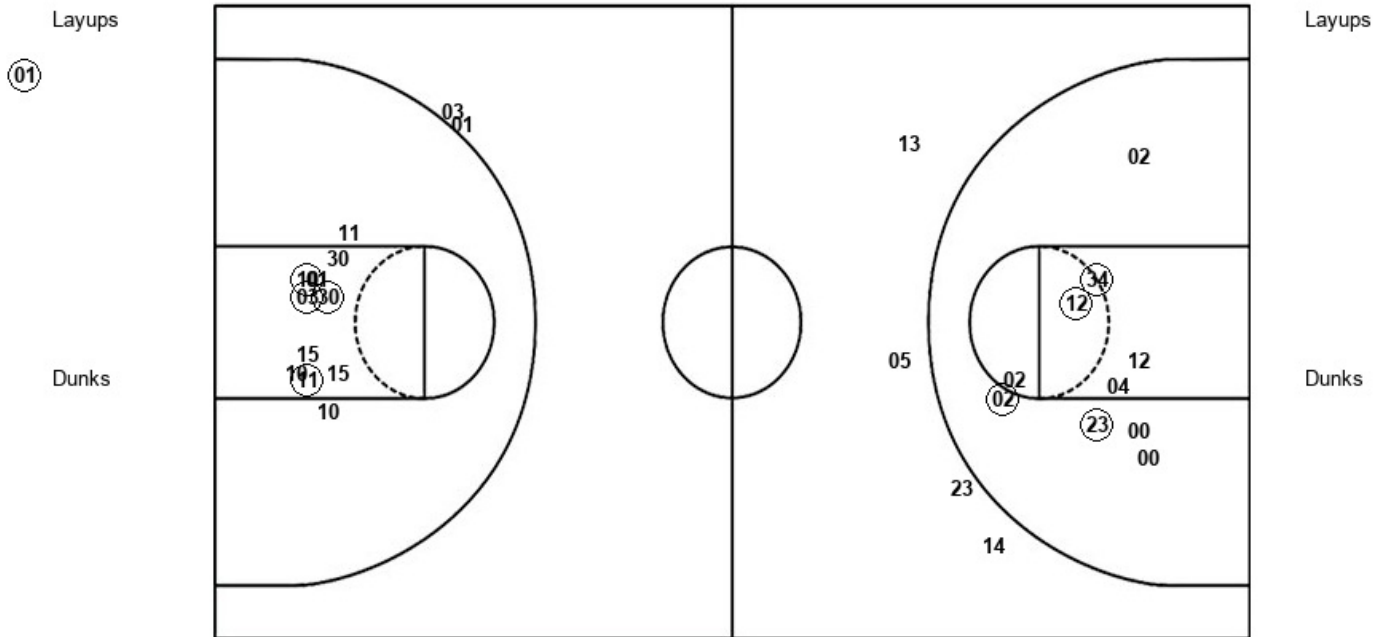
GCU : Period 3	Made	Att	Pct
Layups	1	2	50.0
Dunks	0	0	0
2PT Field Goals	6	15	40.0
3PT Field Goals	0	2	00.0
Total Field Goals	6	17	35.3

Official Shot Chart
Grand Canyon vs Portland St.
PERIOD 4 Shots
 December 06, 2019 at Viking Pavilion (Stoller) - Portland



Portland St.

Grand Canyon



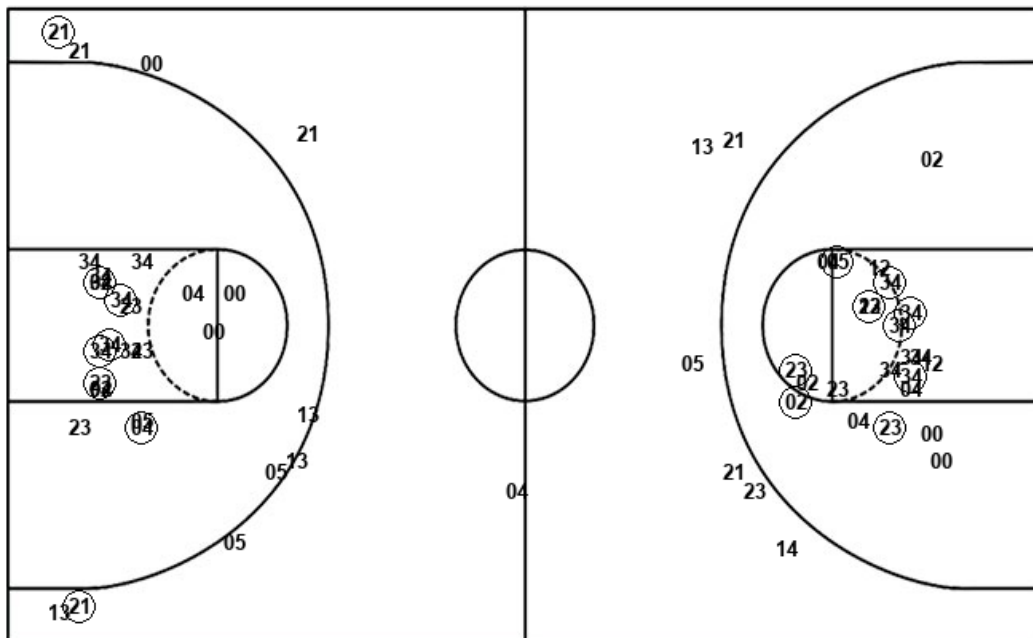
PSU : Period 4	Made	Att	Pct
Layups	1	1	100.0
Dunks	0	0	0
2PT Field Goals	5	12	41.7
3PT Field Goals	0	2	00.0
Total Field Goals	5	14	35.7

GCU : Period 4	Made	Att	Pct
Layups	0	0	0
Dunks	0	0	0
2PT Field Goals	4	10	40.0
3PT Field Goals	0	4	00.0
Total Field Goals	4	14	28.6

Official Shot Chart
Grand Canyon vs Portland St.
Grand Canyon Team Shots
December 06, 2019 at Viking Pavilion (Stoller) - Portland



Layups



Layups

Dunks

Dunks

GCU : Period 1	Made	Att	Pct
Layups	0	0	0
Dunks	0	0	0
2PT Field Goals	3	10	30.0
3PT Field Goals	0	5	00.0
Total Field Goals	3	15	20.0

GCU : Period 2	Made	Att	Pct
Layups	0	0	0
Dunks	0	0	0
2PT Field Goals	3	10	30.0
3PT Field Goals	2	6	33.3
Total Field Goals	5	16	31.3

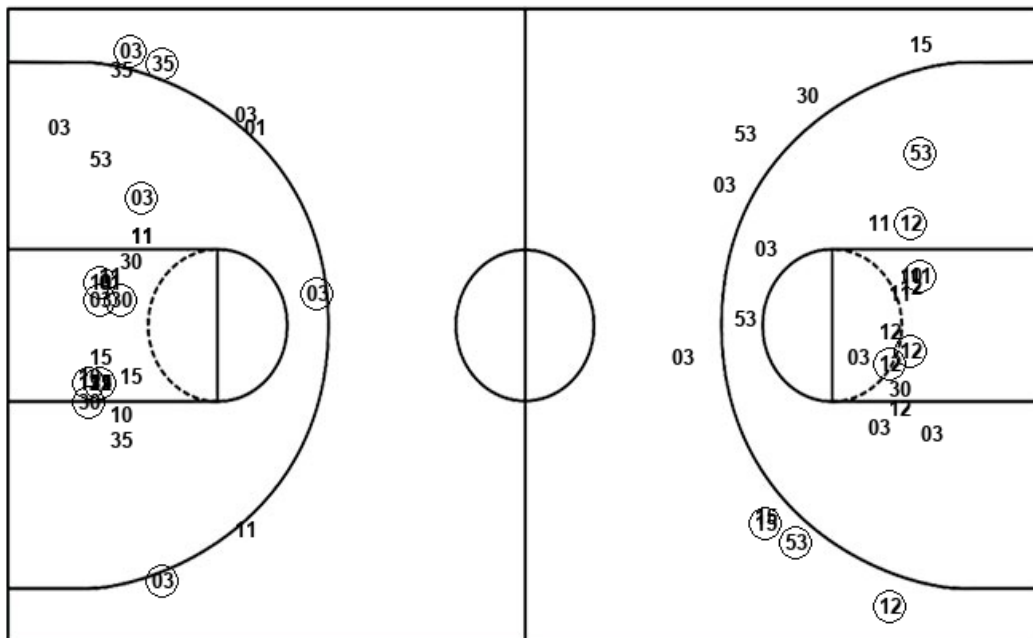
GCU : Period 3	Made	Att	Pct
Layups	1	2	50.0
Dunks	0	0	0
2PT Field Goals	6	15	40.0
3PT Field Goals	0	2	00.0
Total Field Goals	6	17	35.3

GCU : Period 4	Made	Att	Pct
Layups	0	0	0
Dunks	0	0	0
2PT Field Goals	4	10	40.0
3PT Field Goals	0	4	00.0
Total Field Goals	4	14	28.6

Official Shot Chart
Grand Canyon vs Portland St.
Portland St. Team Shots
December 06, 2019 at Viking Pavilion (Stoller) - Portland



Layups



Layups

Dunks

Dunks

PSU : Period 1	Made	Att	Pct
Layups	1	2	50.0
Dunks	0	0	0
2PT Field Goals	3	9	33.3
3PT Field Goals	1	1	100.0
Total Field Goals	4	10	40.0

PSU : Period 2	Made	Att	Pct
Layups	2	3	66.7
Dunks	0	0	0
2PT Field Goals	5	13	38.5
3PT Field Goals	2	8	25.0
Total Field Goals	7	21	33.3

PSU : Period 3	Made	Att	Pct
Layups	0	0	0
Dunks	0	0	0
2PT Field Goals	3	11	27.3
3PT Field Goals	4	5	80.0
Total Field Goals	7	16	43.8

PSU : Period 4	Made	Att	Pct
Layups	1	1	100.0
Dunks	0	0	0
2PT Field Goals	5	12	41.7
3PT Field Goals	0	2	00.0
Total Field Goals	5	14	35.7