

FINAL SCORE

Multnomah

48



Portland St.

104

November 05, 2019 • Viking Pavilion (Stoller Court) - Portland

FINAL STATISTICS

Official Box Score
Multnomah vs Portland St.
Game Totals -- Final Statistics
November 05, 2019 at Viking Pavilion (Stoller Court) - Portland



Multnomah 48

No.	Player	S	Pts	FG	3FG	FT	OR	DR	TR	PF	A	TO	Blk	Stl	Min	+/-
03	ALVAREZ, KAYLA	*	3	1-3	1-2	0-0	1	3	4	0	0	0	0	1	22	-34
11	PORTIS, ALAYGZA	*	12	4-10	1-5	3-5	0	1	1	5	1	1	0	0	27	-38
21	RINCAN, DALIA	*	2	1-3	0-1	0-2	0	3	3	1	0	5	2	0	13	-20
23	TAU, RACHELLE	*	2	1-3	0-0	0-0	0	1	1	0	0	2	0	0	20	-28
43	CAMPBELL, ERYKAH	*	11	3-9	0-0	5-7	6	7	13	2	2	5	3	0	24	-42
00	WENZ, KAITLIN		2	1-1	0-0	0-0	1	1	2	0	0	0	0	1	5	-4
01	WILSON, JAYLA		0	0-4	0-4	0-0	0	1	1	0	0	1	0	0	5	-8
02	WANGLER, PAYTON		2	1-5	0-2	0-0	0	0	0	1	1	0	0	0	11	-20
04	TORRES, TERESA		0	0-4	0-1	0-0	0	2	2	1	2	2	0	0	18	-22
12	WARREN, KAI		2	1-2	0-0	0-0	0	3	3	2	0	0	0	0	8	-11
14	PARKER, JESSICA		2	0-3	0-1	2-2	1	2	3	0	1	1	0	1	8	-19
20	GIBSON, KALENA		6	3-5	0-0	0-0	0	1	1	0	1	7	0	1	18	-17
22	CANTU, KATRINA		4	2-4	0-2	0-0	0	0	0	0	2	1	0	0	12	-8
24	RUIZ, ALEXIS		0	0-4	0-2	0-0	0	1	1	0	2	1	0	1	7	-9
	TEAM						2	3	5	0		0				
TOTALS			48	18-60	2-20	10-16	11	29	40	12	12	26	5	5	200	

Shooting By Period

Period	FG	FG%	3FG	3FG%	FT	FT%
1st Qtr	5-15	33%	1-3	33%	1-4	25%
2nd Qtr	6-15	40%	0-3	00%	0-1	00%
3rd Qtr	3-11	27%	1-4	25%	5-7	71%
4th Qtr	4-19	21%	0-10	00%	4-4	100%
1st Half	11-30	37%	1-6	17%	1-5	20%
2nd Half	7-30	23%	1-14	07%	9-11	82%
Game	18-60	30.0%	2-20	10.0%	10-16	62.5%

Deadball Rebounds: 3,0
Last FG: 4th-03:36
Biggest Run: 6-0
Largest lead: By 0 at 4-01
Technical Fouls: None.

Portland St. 104

No.	Player	S	Pts	FG	3FG	FT	OR	DR	TR	PF	A	TO	Blk	Stl	Min	+/-
03	JIMENEZ, KYLIE	G	10	3-7	2-4	2-2	0	2	2	0	7	1	0	4	18	29
11	STOTLER, JORDAN	F	4	1-10	0-1	2-2	1	2	3	5	0	1	3	1	14	20
12	STREUN, TATIANA	F	19	8-12	0-1	3-4	6	7	13	1	1	2	0	1	25	40
35	FRAZIER, BELLE	G	15	5-15	3-8	2-2	1	0	1	0	2	0	0	4	26	38
53	HANSEN, DESIRAE	G	20	7-13	3-5	3-3	3	2	5	2	6	0	0	3	27	44
01	DENSON, LABREA	G	6	3-5	0-0	0-0	0	1	1	3	2	1	0	0	13	13
10	CANZOBRE, MARINA	F	1	0-5	0-0	1-2	4	2	6	2	1	0	0	0	15	18
15	GARDNER, CASSIDY	G	7	3-5	1-1	0-0	0	1	1	0	4	1	0	0	19	27
22	WALTON, RUCHAE	G	0	0-2	0-2	0-0	0	2	2	0	0	0	0	0	10	9
23	LEWIS, JADA	G	12	4-5	4-5	0-0	1	6	7	1	2	0	0	1	17	17
30	SCHULTZ, SYD	F	10	3-9	0-0	4-4	1	4	5	1	3	2	0	2	16	25
	TEAM						5	5	10	0		0				
TOTALS			104	37-88	13-27	17-19	22	34	56	15	28	8	3	16	200	

Shooting By Period

Period	FG	FG%	3FG	3FG%	FT	FT%
1st Qtr	10-28	36%	3-7	43%	6-7	86%
2nd Qtr	9-20	45%	5-8	63%	3-4	75%
3rd Qtr	10-22	45%	4-8	50%	4-4	100%
4th Qtr	8-18	44%	1-4	25%	4-4	100%
1st Half	19-48	40%	8-15	53%	9-11	82%
2nd Half	18-40	45%	5-12	42%	8-8	100%
Game	37-88	42.0%	13-27	48.1%	17-19	89.5%

Deadball Rebounds: 2,0
Last FG: 4th-01:23
Biggest Run: 15-0
Largest lead: By 56 at -
Technical Fouls: None.

Game Notes:

Officials: Darla Foutz, Kimberly Hobbs, Charles Rydzak
 Attendance: 310

Start Time: 08:04 PM ET
 End Time: 09:34 PM ET
 Game Duration: 1:29

Score	1st	2nd	3rd	4th	TOT
MUL	12	12	12	12	48
PSU	29	26	28	21	104

MUL led for 0:00. PSU led for 39:01.
 Game was tied for 0:59.
 Times tied: 82 Lead Changes: 0

Points from	MUL	PSU
In the Paint	18	40
Off Turns	4	33
2nd Chance	11	18
Fast Break	7	18
Bench	18	36

Official Box Score
Multnomah vs Portland St.
First Half Statistics Only
November 05, 2019 at Viking Pavilion (Stoller Court) - Portland



Multnomah 24

No.	Player	S	Pts	FG	3FG	FT	OR	DR	TR	PF	A	TO	Blk	Stl	Min	+/-
00	WENZ, KAITLIN		0	0-0	0-0	0-0	0	0	0	0	0	0	0	0	0	0
01	WILSON, JAYLA		0	0-0	0-0	0-0	0	0	0	0	0	0	0	0	0	0
02	WANGLER, PAYTON		0	0-2	0-1	0-0	0	0	0	1	1	0	0	0	7	-13
03	ALVAREZ, KAYLA	*	0	0-1	0-0	0-0	1	2	3	0	0	0	0	1	10	-17
04	TORRES, TERESA		0	0-2	0-0	0-0	0	1	1	1	2	1	0	0	10	-14
11	PORTIS, ALAYGZA	*	7	3-6	1-2	0-1	0	1	1	2	1	0	0	0	17	-28
12	WARREN, KAI		0	0-0	0-0	0-0	0	0	0	0	0	0	0	0	0	0
14	PARKER, JESSICA		0	0-2	0-1	0-0	0	1	1	0	1	1	0	1	5	-11
20	GIBSON, KALENA		6	3-4	0-0	0-0	0	0	0	0	1	3	0	1	10	-7
21	RINCAN, DALIA	*	2	1-3	0-1	0-2	0	2	2	1	0	3	2	0	9	-14
22	CANTU, KATRINA		2	1-2	0-1	0-0	0	0	0	0	2	1	0	0	8	-7
23	TAU, RACHELLE	*	2	1-3	0-0	0-0	0	1	1	0	0	1	0	0	13	-18
24	RUIZ, ALEXIS		0	0-0	0-0	0-0	0	0	0	0	0	0	0	0	0	0
43	CAMPBELL, ERYKAH	*	5	2-5	0-0	1-2	3	3	6	2	0	3	1	0	11	-26
	TEAM		0	0-0	0-0	0-0	1	2	3	0	0	0	0	0	0	0
	TOTALS		24	11-30	1-6	1-5	5	13	18	7	8	13	3	3	100	

Shooting By Period

Period	FG	FG%	3FG	3FG%	FT	FT%
1st Qtr	5-15	33%	1-3	33%	1-4	25%
2nd Qtr	6-15	40%	0-3	00%	0-1	00%
1st Half	11-30	37%	1-6	17%	1-5	20%
Game	18-60	30.0%	2-20	10.0%	10-16	62.5%

Deadball Rebounds: 3,0
 Last FG Half: MUL 2nd-02:23

Portland St. 55

No.	Player	S	Pts	FG	3FG	FT	OR	DR	TR	PF	A	TO	Blk	Stl	Min	+/-
10	CANZOBRE, MARINA	F	1	0-1	0-0	1-2	2	0	2	0	0	0	0	0	6	7
11	STOTLER, JORDAN	F	2	0-7	0-0	2-2	0	2	2	3	0	0	3	1	10	14
12	STREUN, TATIANA	F	11	5-8	0-1	1-2	5	6	11	1	1	2	0	0	18	31
15	GARDNER, CASSIDY	G	2	1-3	0-0	0-0	0	0	0	0	2	1	0	0	7	13
22	WALTON, RUCHAE	G	0	0-0	0-0	0-0	0	0	0	0	0	0	0	0	0	0
23	LEWIS, JADA	G	3	1-1	1-1	0-0	1	1	2	0	0	0	0	1	4	1
30	SCHULTZ, SYD	F	0	0-2	0-0	0-0	1	2	3	1	2	0	0	0	5	10
35	FRAZIER, BELLE	G	12	4-11	2-6	2-2	0	0	0	0	0	0	0	1	17	22
53	HANSEN, DESIRAE	G	12	4-7	3-4	1-1	2	1	3	1	4	0	0	2	16	30
01	DENSON, LABREA	G	2	1-2	0-0	0-0	0	0	0	1	0	0	0	0	3	4
03	JIMENEZ, KYLIE	G	10	3-6	2-3	2-2	0	2	2	0	7	1	0	4	14	23
	TEAM		0	0-0	0-0	0-0	5	3	8	0	0	0	0	0	0	0
	TOTALS		55	19-48	8-15	9-11	16	17	33	7	16	4	3	9	100	

Shooting By Period

Period	FG	FG%	3FG	3FG%	FT	FT%
1st Qtr	10-28	36%	3-7	43%	6-7	86%
2nd Qtr	9-20	45%	5-8	63%	3-4	75%
1st Half	19-48	40%	8-15	53%	9-11	82%
Game	37-88	42.0%	13-27	48.1%	17-19	89.5%

Deadball Rebounds: 2,0
 Last FG Half: PSU 2nd-00:30

Game Notes:

Officials: Darla Foutz, Kimberly Hobbs, Charles Rydzak
 Attendance: 310

Start Time: 08:04 PM ET
 End Time: 09:34 PM ET
 Game Duration: 1:29

Score	1st	2nd	3rd	4th	TOT
MUL	12	12	12	12	48
PSU	29	26	28	21	104

Points from (This Period)	MUL	PSU
In the Paint	12	16
Off Turns	2	16
2nd Chance	2	12
Fast Break	5	10
Bench	8	8

Official Box Score
Multnomah vs Portland St.
First Quarter Statistics Only
November 05, 2019 at Viking Pavilion (Stoller Court) - Portland



Multnomah 12

No.	Player	S	Pts	FG	3FG	FT	OR	DR	TR	PF	A	TO	Blk	Stl	Min	+/-
03	ALVAREZ, KAYLA	*	0	0-1	0-0	0-0	1	2	3	0	0	0	0	1	10	-17
11	PORTIS, ALAYGZA	*	3	1-4	1-2	0-0	0	1	1	1	0	0	0	0	10	-15
21	RINCAN, DALIA	*	0	0-1	0-1	0-2	0	0	0	1	0	3	1	0	5	-13
23	TAU, RACHELLE	*	0	0-2	0-0	0-0	0	1	1	0	0	1	0	0	10	-17
43	CAMPBELL, ERYKAH	*	3	1-3	0-0	1-2	2	2	4	2	0	2	1	0	5	-13
00	WENZ, KAITLIN		0	0-0	0-0	0-0	0	0	0	0	0	0	0	0	0	0
01	WILSON, JAYLA		0	0-0	0-0	0-0	0	0	0	0	0	0	0	0	0	0
02	WANGLER, PAYTON		0	0-0	0-0	0-0	0	0	0	0	0	0	0	0	0	0
04	TORRES, TERESA		0	0-0	0-0	0-0	0	0	0	0	0	0	0	0	0	0
12	WARREN, KAI		0	0-0	0-0	0-0	0	0	0	0	0	0	0	0	0	0
14	PARKER, JESSICA		0	0-0	0-0	0-0	0	0	0	0	0	0	0	0	0	0
20	GIBSON, KALENA		4	2-3	0-0	0-0	0	0	0	0	1	1	0	0	5	-4
22	CANTU, KATRINA		2	1-1	0-0	0-0	0	0	0	0	1	1	0	0	5	-6
24	RUIZ, ALEXIS		0	0-0	0-0	0-0	0	0	0	0	0	0	0	0	0	0
	TEAM						1	1	2	0		0				
	TOTALS		12	5-15	1-3	1-4	4	7	11	4	2	8	2	1	50	

Shooting By Period

Period	FG	FG%	3FG	3FG%	FT	FT%
1st Qtr	5-15	33%	1-3	33%	1-4	25%
2nd Qtr	6-15	40%	0-3	00%	0-1	00%
1st Half	5-15	33%	1-3	33%	1-4	25%
1st Half	11-30	37%	1-6	17%	1-5	20%
Game	18-60	30.0%	2-20	10.0%	10-16	62.5%

Deadball Rebounds: 3,0

Portland St. 29

No.	Player	S	Pts	FG	3FG	FT	OR	DR	TR	PF	A	TO	Blk	Stl	Min	+/-
03	JIMENEZ, KYLIE	G	2	1-2	0-0	0-0	0	0	0	0	4	0	0	1	5	13
11	STOTLER, JORDAN	F	2	0-5	0-0	2-2	0	1	1	1	0	0	3	1	6	13
12	STREUN, TATIANA	F	4	2-5	0-1	0-0	4	4	8	0	1	0	0	0	10	15
35	FRAZIER, BELLE	G	12	4-8	2-4	2-2	0	0	0	0	0	0	0	1	10	15
53	HANSEN, DESIRAE	G	6	2-4	1-2	1-1	0	0	0	1	2	0	0	2	10	17
01	DENSON, LABREA	G	0	0-1	0-0	0-0	0	0	0	1	0	0	0	0	0	2
10	CANZOBRE, MARINA	F	1	0-1	0-0	1-2	2	0	2	0	0	0	0	0	4	4
15	GARDNER, CASSIDY	G	2	1-2	0-0	0-0	0	0	0	0	1	1	0	0	5	4
22	WALTON, RUCHAE	G	0	0-0	0-0	0-0	0	0	0	0	0	0	0	0	0	0
23	LEWIS, JADA	G	0	0-0	0-0	0-0	0	0	0	0	0	0	0	0	0	0
30	SCHULTZ, SYD	F	0	0-0	0-0	0-0	0	1	1	0	0	0	0	0	0	2
	TEAM						4	2	6	0		0				
	TOTALS		29	10-28	3-7	6-7	10	8	18	3	8	1	3	5	50	

Shooting By Period

Period	FG	FG%	3FG	3FG%	FT	FT%
1st Qtr	10-28	36%	3-7	43%	6-7	86%
2nd Qtr	9-20	45%	5-8	63%	3-4	75%
1st Half	10-28	36%	3-7	43%	6-7	86%
1st Half	19-48	40%	8-15	53%	9-11	82%
Game	37-88	42.0%	13-27	48.1%	17-19	89.5%

Deadball Rebounds: 2,0

Game Notes:

Officials: Darla Foutz, Kimberly Hobbs, Charles Rydzak
Attendance: 310

Start Time: 08:04 PM ET
End Time: 09:34 PM ET
Game Duration: 1:29

Score	1st	2nd	3rd	4th	TOT
MUL	12	12	12	12	48
PSU	29	26	28	21	104

Points from (This Period)	MUL	PSU
In the Paint	4	10
Off Turns	0	9
2nd Chance	2	7
Fast Break	3	7
Bench	6	3

Official Play-By-Play
Multnomah vs Portland St.
First Quarter
November 05, 2019 at Viking Pavilion (Stoller Court) - Portland



Period 1

Starters:

Multnomah: 3 ALVAREZ, KAYLA; 11 PORTIS, ALAYGZA; 21 RINCAN, DALIA; 23 TAU, RACHELLE; 43 CAMPBELL, ERYKAH;

Portland St.: 11 STOTLER, JORDAN (F); 12 STREUN, TATIANA (F); 35 FRAZIER, BELLE (G); 53 HANSEN, DESIRAE (G); 3 JIMENEZ, KYLIE (G);

Time	VISITORS: Multnomah	Score	Margin	HOME: Portland St.
09:55				MISSED 3PTR by HANSEN, DESIRAE
09:52				REBOUND (OFF) by TEAM
09:48				MISSED JUMPER by STOTLER, JORDAN
09:43				REBOUND (OFF) by STREUN, TATIANA
09:38				MISSED JUMPER by STOTLER, JORDAN
09:33	REBOUND (DEF) by PORTIS, ALAYGZA			
09:24	MISSED JUMPER by CAMPBELL, ERYKAH			
09:24				BLOCK by STOTLER, JORDAN
09:23	REBOUND (OFF) by TEAM			
09:15	MISSED 3PTR by PORTIS, ALAYGZA			
09:11	REBOUND (OFF) by CAMPBELL, ERYKAH			
09:08	TURNOVER (LOSTBALL) by CAMPBELL, ERYKAH			
09:08				STEAL by JIMENEZ, KYLIE
09:01		3-0	H 3	GOOD! 3PTR by FRAZIER, BELLE [FB]
09:01				ASSIST by JIMENEZ, KYLIE
08:50	MISSED JUMPER by CAMPBELL, ERYKAH			
08:45	REBOUND (OFF) by ALVAREZ, KAYLA			
08:31	MISSED JUMPER by TAU, RACHELLE			
08:29				REBOUND (DEF) by TEAM
08:22	FOUL (PERSONAL) by CAMPBELL, ERYKAH			
08:22		4-0	H 4	GOOD! FT by STOTLER, JORDAN [FB]
08:22		5-0	H 5	GOOD! FT by STOTLER, JORDAN [FB]
08:10	MISSED 3PTR by RINCAN, DALIA			
08:07				REBOUND (DEF) by TEAM
08:02		7-0	H 7	GOOD! JUMPER by HANSEN, DESIRAE
08:02	FOUL (PERSONAL) by RINCAN, DALIA			
08:02		8-0	H 8	GOOD! FT by HANSEN, DESIRAE
07:51	MISSED JUMPER by PORTIS, ALAYGZA			
07:51				BLOCK by STOTLER, JORDAN
07:51				REBOUND (DEF) by STOTLER, JORDAN
07:47				MISSED LAYUP by JIMENEZ, KYLIE
07:44				REBOUND (OFF) by TEAM
07:36		10-0	H 10	GOOD! LAYUP by STREUN, TATIANA [PNT]
07:36				ASSIST by JIMENEZ, KYLIE
07:32	TURNOVER (BADPASS) by TAU, RACHELLE			
07:21				MISSED JUMPER by STOTLER, JORDAN
07:17				REBOUND (OFF) by STREUN, TATIANA
07:16				MISSED 3PTR by FRAZIER, BELLE
07:13	REBOUND (DEF) by ALVAREZ, KAYLA			
07:10				FOUL (PERSONAL) by STOTLER, JORDAN
07:10	GOOD! FT by CAMPBELL, ERYKAH [FB]	10-1	H 9	
07:10	MISSED FT by CAMPBELL, ERYKAH			
07:09				REBOUND (DEF) by STREUN, TATIANA
07:00				MISSED LAYUP by STOTLER, JORDAN
07:00	BLOCK by CAMPBELL, ERYKAH			
06:59	REBOUND (DEF) by TEAM			
06:41	MISSED JUMPER by PORTIS, ALAYGZA			
06:41				BLOCK by STOTLER, JORDAN
06:33	REBOUND (OFF) by CAMPBELL, ERYKAH			
06:32	GOOD! JUMPER by CAMPBELL, ERYKAH [PNT]	10-3	H 7	
06:27				MISSED JUMPER by STOTLER, JORDAN
06:27				REBOUND (OFF) by TEAM
06:23		12-3	H 9	GOOD! JUMPER by FRAZIER, BELLE
06:23				ASSIST by JIMENEZ, KYLIE
06:06	TURNOVER (BADPASS) by RINCAN, DALIA			
06:06				STEAL by HANSEN, DESIRAE
06:01		14-3	H 11	GOOD! LAYUP by FRAZIER, BELLE [FB]
06:01				ASSIST by JIMENEZ, KYLIE
05:44	TURNOVER (BADPASS) by RINCAN, DALIA			
05:44				STEAL by STOTLER, JORDAN
05:27				MISSED JUMPER by STREUN, TATIANA
05:26	REBOUND (DEF) by CAMPBELL, ERYKAH			
05:26				FOUL (PERSONAL) by HANSEN, DESIRAE
05:21				SUB OUT: JIMENEZ, KYLIE
05:21				SUB IN: GARDNER, CASSIDY
05:21	SUB OUT: RINCAN, DALIA			
05:21	SUB IN: CANTU, KATRINA			
05:12	TURNOVER (TRAVEL) by CAMPBELL, ERYKAH			
05:00				MISSED 3PTR by FRAZIER, BELLE
04:56	REBOUND (DEF) by CAMPBELL, ERYKAH			

Time	VISITORS: Multnomah	Score	Margin	HOME: Portland St.
04:48	TURNOVER (TRAVEL) by CANTU, KATRINA			
04:47				
04:41				SUB OUT: STOTLER, JORDAN
04:41				SUB IN: CANZOBRE, MARINA
04:36	FOUL (PERSONAL) by CAMPBELL, ERYKAH			
04:36		15-3	H 12	GOOD! FT by FRAZIER, BELLE
04:36		16-3	H 13	GOOD! FT by FRAZIER, BELLE
04:36	SUB OUT: CAMPBELL, ERYKAH			
04:36	SUB IN: GIBSON, KALENA			
04:24	TURNOVER (LOSTBALL) by GIBSON, KALENA			
04:24				STEAL by FRAZIER, BELLE
04:18				MISSED LAYUP by FRAZIER, BELLE
04:15	REBOUND (DEF) by TAU, RACHELLE			
04:11	GOOD! JUMPER by GIBSON, KALENA [FB]	16-5	H 11	
03:59				TURNOVER (LOSTBALL) by GARDNER, CASSIDY
03:59	STEAL by ALVAREZ, KAYLA			
03:50	MISSED JUMPER by ALVAREZ, KAYLA			
03:45				REBOUND (DEF) by STREUN, TATIANA
03:38		19-5	H 14	GOOD! 3PTR by HANSEN, DESIRAE
03:38				ASSIST by GARDNER, CASSIDY
03:23	GOOD! JUMPER by GIBSON, KALENA	19-7	H 12	
03:23	ASSIST by CANTU, KATRINA			
03:13				MISSED JUMPER by FRAZIER, BELLE
03:09				REBOUND (OFF) by STREUN, TATIANA
03:08		21-7	H 14	GOOD! LAYUP by STREUN, TATIANA
02:55	MISSED JUMPER by GIBSON, KALENA			
02:51				REBOUND (DEF) by STREUN, TATIANA
02:31				MISSED JUMPER by STREUN, TATIANA
02:27				REBOUND (OFF) by STREUN, TATIANA
02:24				MISSED 3PTR by STREUN, TATIANA
02:20	REBOUND (DEF) by ALVAREZ, KAYLA			
02:06	MISSED JUMPER by TAU, RACHELLE			
02:03				REBOUND (DEF) by STREUN, TATIANA
01:55		24-7	H 17	GOOD! 3PTR by FRAZIER, BELLE
01:55				ASSIST by HANSEN, DESIRAE
01:39	GOOD! 3PTR by PORTIS, ALAYGZA	24-10	H 14	
01:39	ASSIST by GIBSON, KALENA			
01:15		26-10	H 16	GOOD! LAYUP by GARDNER, CASSIDY
01:15				ASSIST by STREUN, TATIANA
01:00	GOOD! LAYUP by CANTU, KATRINA [PNT]	26-12	H 14	
00:47				MISSED JUMPER by HANSEN, DESIRAE
00:41				REBOUND (OFF) by CANZOBRE, MARINA
00:33				MISSED JUMPER by GARDNER, CASSIDY
00:30				REBOUND (OFF) by CANZOBRE, MARINA
00:29				MISSED LAYUP by CANZOBRE, MARINA
00:28				REBOUND (OFF) by TEAM
00:28	FOUL (PERSONAL) by PORTIS, ALAYGZA			
00:28				MISSED FT by CANZOBRE, MARINA
00:28				REBOUND (OFF) by TEAM
00:28		27-12	H 15	GOOD! FT by CANZOBRE, MARINA
00:13				SUB OUT: CANZOBRE, MARINA
00:13				SUB OUT: STREUN, TATIANA
00:13				SUB OUT: GARDNER, CASSIDY
00:13				SUB OUT: FRAZIER, BELLE
00:13				SUB IN: DENSON, LABREA
00:13				SUB IN: JIMENEZ, KYLIE
00:13				SUB IN: STOTLER, JORDAN
00:13				SUB IN: SCHULTZ, SYD
00:13	SUB OUT: PORTIS, ALAYGZA			
00:13	SUB IN: RINCAN, DALIA			
00:12	TURNOVER (BADPASS) by RINCAN, DALIA			
00:12				STEAL by HANSEN, DESIRAE
00:06		29-12	H 17	GOOD! LAYUP by JIMENEZ, KYLIE
00:06				ASSIST by HANSEN, DESIRAE
00:06				FOUL (PERSONAL) by DENSON, LABREA
00:06	MISSED FT by RINCAN, DALIA			
00:06	REBOUND (OFF) by TEAM			
00:06	MISSED FT by RINCAN, DALIA			
00:06				REBOUND (DEF) by SCHULTZ, SYD
00:00				MISSED JUMPER by DENSON, LABREA
00:00	BLOCK by RINCAN, DALIA			
00:00				REBOUND (OFF) by TEAM

Multnomah 12, Portland St. 29

Points from (This Period)	MUL	PSU
In the Paint	4	10
Off Turns	0	9
2nd Chance	2	7
Fast Break	3	7
Bench	6	3

Official Box Score
Multnomah vs Portland St.
Second Quarter Statistics Only
November 05, 2019 at Viking Pavilion (Stoller Court) - Portland



Multnomah 12

No.	Player	S	Pts	FG	3FG	FT	OR	DR	TR	PF	A	TO	Blk	Stl	Min	+/-
03	ALVAREZ, KAYLA	*	0	0-0	0-0	0-0	0	0	0	0	0	0	0	0	0	0
11	PORTIS, ALAYGZA	*	4	2-2	0-0	0-1	0	0	0	1	1	0	0	0	7	-13
21	RINCAN, DALIA	*	2	1-2	0-0	0-0	0	2	2	0	0	0	1	0	4	-1
23	TAU, RACHELLE	*	2	1-1	0-0	0-0	0	0	0	0	0	0	0	0	3	-1
43	CAMPBELL, ERYKAH	*	2	1-2	0-0	0-0	1	1	2	0	0	1	0	0	6	-13
00	WENZ, KAITLIN		0	0-0	0-0	0-0	0	0	0	0	0	0	0	0	0	0
01	WILSON, JAYLA		0	0-0	0-0	0-0	0	0	0	0	0	0	0	0	0	0
02	WANGLER, PAYTON		0	0-2	0-1	0-0	0	0	0	1	1	0	0	0	7	-13
04	TORRES, TERESA		0	0-2	0-0	0-0	0	1	1	1	2	1	0	0	10	-14
12	WARREN, KAI		0	0-0	0-0	0-0	0	0	0	0	0	0	0	0	0	0
14	PARKER, JESSICA		0	0-2	0-1	0-0	0	1	1	0	1	1	0	1	5	-11
20	GIBSON, KALENA		2	1-1	0-0	0-0	0	0	0	0	0	2	0	1	5	-3
22	CANTU, KATRINA		0	0-1	0-1	0-0	0	0	0	0	1	0	0	0	3	-1
24	RUIZ, ALEXIS		0	0-0	0-0	0-0	0	0	0	0	0	0	0	0	0	0
	TEAM						0	1	1	0		0				
TOTALS			12	6-15	0-3	0-1	1	6	7	3	6	5	1	2	50	

Shooting By Period

Period	FG	FG%	3FG	3FG%	FT	FT%
3rd Qtr	3-11	27%	1-4	25%	5-7	71%
4th Qtr	4-19	21%	0-10	00%	4-4	100%
2nd Half	6-15	40%	0-3	00%	0-1	00%
2nd Half	7-30	23%	1-14	07%	9-11	82%
Game	18-60	30.0%	2-20	10.0%	10-16	62.5%

Deadball Rebounds: 3,0

Portland St. 26

No.	Player	S	Pts	FG	3FG	FT	OR	DR	TR	PF	A	TO	Blk	Stl	Min	+/-
03	JIMENEZ, KYLIE	G	8	2-4	2-3	2-2	0	2	2	0	3	1	0	3	9	10
11	STOTLER, JORDAN	F	0	0-2	0-0	0-0	0	1	1	2	0	0	0	0	4	1
12	STREUN, TATIANA	F	7	3-3	0-0	1-2	1	2	3	1	0	2	0	0	8	16
35	FRAZIER, BELLE	G	0	0-3	0-2	0-0	0	0	0	0	0	0	0	0	7	7
53	HANSEN, DESIRAE	G	6	2-3	2-2	0-0	2	1	3	0	2	0	0	0	6	13
01	DENSON, LABREA	G	2	1-1	0-0	0-0	0	0	0	0	0	0	0	0	3	2
10	CANZOBRE, MARINA	F	0	0-0	0-0	0-0	0	0	0	0	0	0	0	0	2	3
15	GARDNER, CASSIDY	G	0	0-1	0-0	0-0	0	0	0	0	1	0	0	0	2	9
22	WALTON, RUCHAE	G	0	0-0	0-0	0-0	0	0	0	0	0	0	0	0	0	0
23	LEWIS, JADA	G	3	1-1	1-1	0-0	1	1	2	0	0	0	0	1	4	1
30	SCHULTZ, SYD	F	0	0-2	0-0	0-0	1	1	2	1	2	0	0	0	5	8
	TEAM						1	1	2	0		0				
TOTALS			26	9-20	5-8	3-4	6	9	15	4	8	3	0	4	50	

Shooting By Period

Period	FG	FG%	3FG	3FG%	FT	FT%
3rd Qtr	10-22	45%	4-8	50%	4-4	100%
4th Qtr	8-18	44%	1-4	25%	4-4	100%
2nd Half	9-20	45%	5-8	63%	3-4	75%
2nd Half	18-40	45%	5-12	42%	8-8	100%
Game	37-88	42.0%	13-27	48.1%	17-19	89.5%

Deadball Rebounds: 2,0

Game Notes:

Officials: Darla Foutz, Kimberly Hobbs, Charles Rydzak
Attendance: 310

Start Time: 08:04 PM ET
End Time: 09:34 PM ET
Game Duration: 1:29

Score	1st	2nd	3rd	4th	TOT
MUL	12	12	12	12	48
PSU	29	26	28	21	104

Points from (This Period)	MUL	PSU
In the Paint	8	6
Off Turns	2	7
2nd Chance	0	5
Fast Break	2	3
Bench	2	5

Official Play-By-Play
Multnomah vs Portland St.
Second Quarter
November 05, 2019 at Viking Pavilion (Stoller Court) - Portland



Period 2

Starters:

Multnomah: 3 ALVAREZ, KAYLA; 11 PORTIS, ALAYGZA; 21 RINCAN, DALIA; 23 TAU, RACHELLE; 43 CAMPBELL, ERYKAH;

Portland St.: 11 STOTLER, JORDAN (F); 12 STREUN, TATIANA (F); 35 FRAZIER, BELLE (G); 53 HANSEN, DESIRAE (G); 3 JIMENEZ, KYLIE (G);

Time	VISITORS: Multnomah	Score	Margin	HOME: Portland St.
10:00				SUB OUT: HANSEN, DESIRAE
10:00				SUB IN: LEWIS, JADA
10:00	SUB OUT: ALVAREZ, KAYLA			
10:00	SUB IN: TORRES, TERESA			
09:50	GOOD! JUMPER by GIBSON, KALENA [PNT]	29-14	H 15	
09:50	ASSIST by CANTU, KATRINA			
09:33				MISSED 3PTR by JIMENEZ, KYLIE
09:28	REBOUND (DEF) by RINCAN, DALIA			
09:19	GOOD! JUMPER by TAU, RACHELLE [PNT]	29-16	H 13	
09:19	ASSIST by TORRES, TERESA			
09:07				MISSED JUMPER by SCHULTZ, SYD
09:07	BLOCK by RINCAN, DALIA			
09:01	REBOUND (DEF) by TORRES, TERESA			
08:57	MISSED JUMPER by RINCAN, DALIA			
08:53				REBOUND (DEF) by STOTLER, JORDAN
08:41		31-16	H 15	GOOD! JUMPER by DENSON, LABREA
08:41				ASSIST by SCHULTZ, SYD
08:17	TURNOVER (LOSTBALL) by GIBSON, KALENA			
08:17				STEAL by JIMENEZ, KYLIE
08:11				MISSED JUMPER by JIMENEZ, KYLIE
08:10				REBOUND (OFF) by TEAM
08:10				SUB OUT: DENSON, LABREA
08:10				SUB OUT: SCHULTZ, SYD
08:10				SUB IN: STREUN, TATIANA
08:10				SUB IN: FRAZIER, BELLE
08:05				MISSED JUMPER by STOTLER, JORDAN
08:03	REBOUND (DEF) by TEAM			
08:03				FOUL (PERSONAL) by STREUN, TATIANA
07:48	MISSED 3PTR by CANTU, KATRINA			
07:43				REBOUND (DEF) by JIMENEZ, KYLIE
07:35		34-16	H 18	GOOD! 3PTR by LEWIS, JADA
07:35				ASSIST by JIMENEZ, KYLIE
07:18				FOUL (PERSONAL) by STOTLER, JORDAN
07:18	SUB OUT: CANTU, KATRINA			
07:18	SUB OUT: TAU, RACHELLE			
07:18	SUB IN: WANGLER, PAYTON			
07:18	SUB IN: PORTIS, ALAYGZA			
07:14	TURNOVER (LOSTBALL) by GIBSON, KALENA			
07:14				STEAL by LEWIS, JADA
07:08				MISSED JUMPER by FRAZIER, BELLE
07:04				REBOUND (OFF) by STREUN, TATIANA
07:03		36-16	H 20	GOOD! LAYUP by STREUN, TATIANA
06:52	MISSED JUMPER by TORRES, TERESA			
06:47				REBOUND (DEF) by LEWIS, JADA
06:37		38-16	H 22	GOOD! LAYUP by STREUN, TATIANA
06:37				ASSIST by JIMENEZ, KYLIE
06:08	GOOD! JUMPER by RINCAN, DALIA	38-18	H 20	
06:08	ASSIST by PORTIS, ALAYGZA			
05:55				MISSED 3PTR by FRAZIER, BELLE
05:51				REBOUND (OFF) by LEWIS, JADA
05:50				MISSED LAYUP by STOTLER, JORDAN
05:46	REBOUND (DEF) by RINCAN, DALIA			
05:32	GOOD! LAYUP by PORTIS, ALAYGZA	38-20	H 18	
05:32	ASSIST by WANGLER, PAYTON			
05:32				FOUL (PERSONAL) by STOTLER, JORDAN
05:32				SUB OUT: STOTLER, JORDAN
05:32				SUB OUT: LEWIS, JADA
05:32				SUB IN: CANZOBRE, MARINA
05:32				SUB IN: HANSEN, DESIRAE
05:32	SUB OUT: RINCAN, DALIA			
05:32	SUB IN: CAMPBELL, ERYKAH			
05:32	MISSED FT by PORTIS, ALAYGZA			
05:31				REBOUND (DEF) by STREUN, TATIANA
05:21		40-20	H 20	GOOD! LAYUP by STREUN, TATIANA
05:21				ASSIST by HANSEN, DESIRAE
05:04	TURNOVER (TRAVEL) by CAMPBELL, ERYKAH			
04:56				TURNOVER (BADPASS) by STREUN, TATIANA
04:56	STEAL by GIBSON, KALENA			
04:46				
04:46	SUB OUT: GIBSON, KALENA			

Time	VISITORS: Multnomah	Score	Margin	HOME: Portland St.
04:46	SUB IN: PARKER, JESSICA			
04:23	MISSED JUMPER by WANGLER, PAYTON			
04:19				REBOUND (DEF) by STREUN, TATIANA
04:14	FOUL (PERSONAL) by WANGLER, PAYTON			
04:11				MISSED LAYUP by HANSEN, DESIRAE
04:07	REBOUND (DEF) by CAMPBELL, ERYKAH			
03:49	GOOD! JUMPER by PORTIS, ALAYGZA	40-22	H 18	
03:49	ASSIST by TORRES, TERESA			
03:37		43-22	H 21	GOOD! 3PTR by JIMENEZ, KYLIE
03:37				ASSIST by HANSEN, DESIRAE
03:16	MISSED 3PTR by WANGLER, PAYTON			
03:14				REBOUND (DEF) by TEAM
03:14				SUB OUT: CANZOBRE, MARINA
03:14				SUB IN: SCHULTZ, SYD
03:04		46-22	H 24	GOOD! 3PTR by HANSEN, DESIRAE
03:04				ASSIST by JIMENEZ, KYLIE
02:40	MISSED 3PTR by PARKER, JESSICA			
02:36	REBOUND (OFF) by CAMPBELL, ERYKAH			
02:34	MISSED LAYUP by CAMPBELL, ERYKAH			
02:31				REBOUND (DEF) by JIMENEZ, KYLIE
02:30				TURNOVER (BADPASS) by JIMENEZ, KYLIE
02:30	STEAL by PARKER, JESSICA			
02:23	GOOD! LAYUP by CAMPBELL, ERYKAH [FB]	46-24	H 22	
02:23	ASSIST by PARKER, JESSICA			
02:10				MISSED 3PTR by FRAZIER, BELLE
02:06				REBOUND (OFF) by HANSEN, DESIRAE
02:04				MISSED LAYUP by SCHULTZ, SYD
01:58	REBOUND (DEF) by PARKER, JESSICA			
01:42	TURNOVER (BADPASS) by TORRES, TERESA			
01:42				STEAL by JIMENEZ, KYLIE
01:34				SUB OUT: FRAZIER, BELLE
01:34				SUB IN: GARDNER, CASSIDY
01:30		49-24	H 25	GOOD! 3PTR by JIMENEZ, KYLIE
01:30				ASSIST by GARDNER, CASSIDY
01:16				FOUL (PERSONAL) by SCHULTZ, SYD
01:15	TURNOVER (BADPASS) by PARKER, JESSICA			
01:15				STEAL by JIMENEZ, KYLIE
01:12	FOUL (PERSONAL) by TORRES, TERESA			
01:12		50-24	H 26	GOOD! FT by JIMENEZ, KYLIE [FB]
01:12		51-24	H 27	GOOD! FT by JIMENEZ, KYLIE [FB]
01:12				SUB OUT: JIMENEZ, KYLIE
01:12				SUB IN: DENSON, LABREA
00:57	MISSED JUMPER by PARKER, JESSICA			
00:54				REBOUND (DEF) by HANSEN, DESIRAE
00:50	FOUL (PERSONAL) by PORTIS, ALAYGZA			
00:50		52-24	H 28	GOOD! FT by STREUN, TATIANA [FB]
00:50				MISSED FT by STREUN, TATIANA
00:50				REBOUND (OFF) by HANSEN, DESIRAE
00:36				MISSED JUMPER by GARDNER, CASSIDY
00:32				REBOUND (OFF) by SCHULTZ, SYD
00:30		55-24	H 31	GOOD! 3PTR by HANSEN, DESIRAE
00:30				ASSIST by SCHULTZ, SYD
00:14	MISSED JUMPER by TORRES, TERESA			
00:10				REBOUND (DEF) by SCHULTZ, SYD
00:03				TURNOVER (LOSTBALL) by STREUN, TATIANA

Multnomah 24, Portland St. 55

Points from (This Period)	MUL	PSU
In the Paint	8	6
Off Turns	2	7
2nd Chance	0	5
Fast Break	2	3
Bench	2	5

Official Box Score
Multnomah vs Portland St.
Second Half Statistics Only
November 05, 2019 at Viking Pavilion (Stoller Court) - Portland



Multnomah 24

No.	Player	S	Pts	FG	3FG	FT	OR	DR	TR	PF	A	TO	Blk	Stl	Min	+/-
00	WENZ, KAITLIN		2	1-1	0-0	0-0	1	1	2	0	0	0	0	1	5	-4
01	WILSON, JAYLA		0	0-4	0-4	0-0	0	1	1	0	0	1	0	0	5	-8
02	WANGLER, PAYTON		2	1-3	0-1	0-0	0	0	0	0	0	0	0	0	4	-7
03	ALVAREZ, KAYLA	*	3	1-2	1-2	0-0	0	1	1	0	0	0	0	0	12	-17
04	TORRES, TERESA		0	0-2	0-1	0-0	0	1	1	0	0	1	0	0	8	-8
11	PORTIS, ALAYGZA	*	5	1-4	0-3	3-4	0	0	0	3	0	1	0	0	11	-10
12	WARREN, KAI		2	1-2	0-0	0-0	0	3	3	2	0	0	0	0	8	-11
14	PARKER, JESSICA		2	0-1	0-0	2-2	1	1	2	0	0	0	0	0	4	-8
20	GIBSON, KALENA		0	0-1	0-0	0-0	0	1	1	0	0	4	0	0	9	-10
21	RINCAN, DALIA	*	0	0-0	0-0	0-0	0	1	1	0	0	2	0	0	4	-6
22	CANTU, KATRINA		2	1-2	0-1	0-0	0	0	0	0	0	0	0	0	4	-1
23	TAU, RACHELLE	*	0	0-0	0-0	0-0	0	0	0	0	0	1	0	0	7	-10
24	RUIZ, ALEXIS		0	0-4	0-2	0-0	0	1	1	0	2	1	0	1	7	-9
43	CAMPBELL, ERYKAH	*	6	1-4	0-0	4-5	3	4	7	0	2	2	2	0	13	-16
	TEAM		0	0-0	0-0	0-0	1	1	2	0	0	0	0	0	0	0
	TOTALS		24	7-30	1-14	9-11	6	16	22	5	4	13	2	2	100	

Shooting By Period

Period	FG	FG%	3FG	3FG%	FT	FT%
3rd Qtr	3-11	27%	1-4	25%	5-7	71%
4th Qtr	4-19	21%	0-10	00%	4-4	100%
2nd Half	7-30	23%	1-14	07%	9-11	82%
Game	18-60	30.0%	2-20	10.0%	10-16	62.5%

Deadball Rebounds: 3.0

Last FG Half: MUL 4th-03:36

Portland St. 49

No.	Player	S	Pts	FG	3FG	FT	OR	DR	TR	PF	A	TO	Blk	Stl	Min	+/-
10	CANZOBRE, MARINA	F	0	0-4	0-0	0-0	2	2	4	2	1	0	0	0	8	11
11	STOTLER, JORDAN	F	2	1-3	0-1	0-0	1	0	1	2	0	1	0	0	4	6
12	STREUN, TATIANA	F	8	3-4	0-0	2-2	1	1	2	0	0	0	0	1	7	9
15	GARDNER, CASSIDY	G	5	2-2	1-1	0-0	0	1	1	0	2	0	0	0	12	14
22	WALTON, RUCHAE	G	0	0-2	0-2	0-0	0	2	2	0	0	0	0	0	10	9
23	LEWIS, JADA	G	9	3-4	3-4	0-0	0	5	5	1	2	0	0	0	12	16
30	SCHULTZ, SYD	F	10	3-7	0-0	4-4	0	2	2	0	1	2	0	2	11	15
35	FRAZIER, BELLE	G	3	1-4	1-2	0-0	1	0	1	0	2	0	0	3	10	16
53	HANSEN, DESIRAE	G	8	3-6	0-1	2-2	1	1	2	1	2	0	0	1	12	14
01	DENSON, LABREA	G	4	2-3	0-0	0-0	0	1	1	2	2	1	0	0	10	9
03	JIMENEZ, KYLIE	G	0	0-1	0-1	0-0	0	0	0	0	0	0	0	0	4	6
	TEAM		0	0-0	0-0	0-0	0	2	2	0	0	0	0	0	0	0
	TOTALS		49	18-40	5-12	8-8	6	17	23	8	12	4	0	7	100	

Shooting By Period

Period	FG	FG%	3FG	3FG%	FT	FT%
3rd Qtr	10-22	45%	4-8	50%	4-4	100%
4th Qtr	8-18	44%	1-4	25%	4-4	100%
2nd Half	18-40	45%	5-12	42%	8-8	100%
Game	37-88	42.0%	13-27	48.1%	17-19	89.5%

Deadball Rebounds: 2.0

Last FG Half: PSU 4th-01:23

Game Notes:

Officials: Darla Foutz, Kimberly Hobbs, Charles Rydzak
 Attendance: 310

Start Time: 08:04 PM ET
 End Time: 09:34 PM ET
 Game Duration: 1:29

Score	1st	2nd	3rd	4th	TOT
MUL	12	12	12	12	48
PSU	29	26	28	21	104

Points from (This Period)	MUL	PSU
In the Paint	6	24
Off Turns	2	17
2nd Chance	9	6
Fast Break	2	8
Bench	10	28

Official Box Score
Multnomah vs Portland St.
Third Quarter Statistics Only
November 05, 2019 at Viking Pavilion (Stoller Court) - Portland



Multnomah 24

No.	Player	S	Pts	FG	3FG	FT	OR	DR	TR	PF	A	TO	Blk	Stl	Min	+/-
03	ALVAREZ, KAYLA	*	3	1-1	1-1	0-0	0	0	0	0	0	0	0	0	7	-9
11	PORTIS, ALAYGZA	*	1	0-3	0-3	1-2	0	0	0	2	0	0	0	0	7	-9
21	RINCAN, DALIA	*	0	0-0	0-0	0-0	0	1	1	0	0	2	0	0	4	-6
23	TAU, RACHELLE	*	0	0-0	0-0	0-0	0	0	0	0	0	1	0	0	7	-10
43	CAMPBELL, ERYKAH	*	6	1-3	0-0	4-5	3	3	6	0	1	2	2	0	10	-16
00	WENZ, KAITLIN		0	0-0	0-0	0-0	0	0	0	0	0	0	0	0	0	-3
01	WILSON, JAYLA		0	0-0	0-0	0-0	0	0	0	0	0	0	0	0	0	0
02	WANGLER, PAYTON		0	0-1	0-0	0-0	0	0	0	0	0	0	0	0	1	-7
04	TORRES, TERESA		0	0-1	0-0	0-0	0	0	0	0	0	0	0	0	3	-7
12	WARREN, KAI		2	1-1	0-0	0-0	0	2	2	0	0	0	0	0	4	-3
14	PARKER, JESSICA		0	0-0	0-0	0-0	0	0	0	0	0	0	0	0	0	0
20	GIBSON, KALENA		0	0-1	0-0	0-0	0	0	0	0	0	4	0	0	6	-10
22	CANTU, KATRINA		0	0-0	0-0	0-0	0	0	0	0	0	0	0	0	0	0
24	RUIZ, ALEXIS		0	0-0	0-0	0-0	0	0	0	0	0	0	0	0	0	0
	TEAM						0	1	1	0		0				
TOTALS			12	3-11	1-4	5-7	3	7	10	2	1	9	2	0	50	

Shooting By Period

Period	FG	FG%	3FG	3FG%	FT	FT%
2nd Half	0-0	0%	0-0	0%	0-0	0%
Game	18-60	30.0%	2-20	10.0%	10-16	62.5%

Deadball Rebounds: 3,0

Portland St. 49

No.	Player	S	Pts	FG	3FG	FT	OR	DR	TR	PF	A	TO	Blk	Stl	Min	+/-
03	JIMENEZ, KYLIE	G	0	0-1	0-1	0-0	0	0	0	0	0	0	0	0	4	6
11	STOTLER, JORDAN	F	2	1-3	0-1	0-0	1	0	1	2	0	1	0	0	4	6
12	STREUN, TATIANA	F	8	3-4	0-0	2-2	1	1	2	0	0	0	0	1	7	9
35	FRAZIER, BELLE	G	3	1-4	1-2	0-0	1	0	1	0	2	0	0	3	10	16
53	HANSEN, DESIRAE	G	4	1-2	0-1	2-2	0	1	1	1	2	0	0	0	8	9
01	DENSON, LABREA	G	0	0-0	0-0	0-0	0	0	0	0	0	0	0	0	0	0
10	CANZOBRE, MARINA	F	0	0-3	0-0	0-0	2	1	3	2	1	0	0	0	6	10
15	GARDNER, CASSIDY	G	5	2-2	1-1	0-0	0	0	0	0	0	0	0	0	6	10
22	WALTON, RUCHAE	G	0	0-0	0-0	0-0	0	0	0	0	0	0	0	0	0	0
23	LEWIS, JADA	G	6	2-2	2-2	0-0	0	0	0	0	0	0	0	0	2	7
30	SCHULTZ, SYD	F	0	0-1	0-0	0-0	0	0	0	0	1	0	0	1	3	7
	TEAM						0	2	2	0		0				
TOTALS			28	10-22	4-8	4-4	5	5	10	5	6	1	0	5	50	

Shooting By Period

Period	FG	FG%	3FG	3FG%	FT	FT%
2nd Half	0-0	0%	0-0	0%	0-0	0%
Game	37-88	42.0%	13-27	48.1%	17-19	89.5%

Deadball Rebounds: 2,0

Game Notes:

Officials: Darla Foutz, Kimberly Hobbs, Charles Rydzak
 Attendance: 310

Start Time: 08:04 PM ET
 End Time: 09:34 PM ET
 Game Duration: 1:29

Score	1st	2nd	3rd	4th	TOT
MUL	12	12	12	12	48
PSU	29	26	28	21	104

Points from (This Period)	MUL	PSU
In the Paint	2	12
Off Turns	0	15
2nd Chance	5	4
Fast Break	0	6
Bench	2	11

Official Play-By-Play
Multnomah vs Portland St.
Third Quarter
November 05, 2019 at Viking Pavilion (Stoller Court) - Portland



Period 3

Starters:

Multnomah: 3 ALVAREZ, KAYLA; 11 PORTIS, ALAYGZA; 21 RINCAN, DALIA; 23 TAU, RACHELLE; 43 CAMPBELL, ERYKAH;

Portland St.: 11 STOTLER, JORDAN (F); 12 STREUN, TATIANA (F); 35 FRAZIER, BELLE (G); 53 HANSEN, DESIRAE (G); 3 JIMENEZ, KYLIE (G);

Time	VISITORS: Multnomah	Score	Margin	HOME: Portland St.
10:00				SUB OUT: DENSON, LABREA
10:00				SUB OUT: GARDNER, CASSIDY
10:00				SUB OUT: SCHULTZ, SYD
10:00				SUB IN: JIMENEZ, KYLIE
10:00				SUB IN: STOTLER, JORDAN
10:00				SUB IN: FRAZIER, BELLE
10:00	SUB OUT: WANGLER, PAYTON			
10:00	SUB OUT: TORRES, TERESA			
10:00	SUB OUT: PARKER, JESSICA			
10:00	SUB IN: ALVAREZ, KAYLA			
10:00	SUB IN: RINCAN, DALIA			
10:00	SUB IN: TAU, RACHELLE			
09:47	GOOD! 3PTR by ALVAREZ, KAYLA	55-27	H 28	
09:47	ASSIST by CAMPBELL, ERYKAH			
09:31				MISSED 3PTR by JIMENEZ, KYLIE
09:27				REBOUND (OFF) by FRAZIER, BELLE
09:21				MISSED LAYUP by STREUN, TATIANA
09:18	REBOUND (DEF) by CAMPBELL, ERYKAH			
09:15	MISSED 3PTR by PORTIS, ALAYGZA			
09:11	REBOUND (OFF) by CAMPBELL, ERYKAH			
09:11				FOUL (PERSONAL) by HANSEN, DESIRAE
09:11	GOOD! FT by CAMPBELL, ERYKAH	55-28	H 27	
09:11	GOOD! FT by CAMPBELL, ERYKAH	55-29	H 26	
09:00				TURNOVER (BADPASS) by STOTLER, JORDAN
08:40	MISSED 3PTR by PORTIS, ALAYGZA			
08:36				REBOUND (DEF) by HANSEN, DESIRAE
08:28				MISSED 3PTR by STOTLER, JORDAN
08:23	REBOUND (DEF) by RINCAN, DALIA			
08:20	TURNOVER (DRIBBLING) by RINCAN, DALIA			
08:10		57-29	H 28	GOOD! LAYUP by STREUN, TATIANA
08:10				ASSIST by HANSEN, DESIRAE
08:02				FOUL (PERSONAL) by STOTLER, JORDAN
08:02	MISSED FT by PORTIS, ALAYGZA			
08:02	REBOUND (OFF) by TEAM			
08:02	GOOD! FT by PORTIS, ALAYGZA	57-30	H 27	
07:56				MISSED LAYUP by STOTLER, JORDAN
07:56	BLOCK by CAMPBELL, ERYKAH			
07:56				REBOUND (OFF) by STOTLER, JORDAN
07:56		59-30	H 29	GOOD! LAYUP by STOTLER, JORDAN
07:55	MISSED LAYUP by CAMPBELL, ERYKAH			
07:51	REBOUND (OFF) by CAMPBELL, ERYKAH			
07:45	TURNOVER (TRAVEL) by CAMPBELL, ERYKAH			
07:25		61-30	H 31	GOOD! LAYUP by STREUN, TATIANA [PNT]
07:25				ASSIST by HANSEN, DESIRAE
07:11	MISSED 3PTR by PORTIS, ALAYGZA			
07:06				REBOUND (DEF) by STREUN, TATIANA
07:02	FOUL (PERSONAL) by PORTIS, ALAYGZA			
07:02		62-30	H 32	GOOD! FT by HANSEN, DESIRAE
07:02		63-30	H 33	GOOD! FT by HANSEN, DESIRAE
06:47	TURNOVER (BADPASS) by TAU, RACHELLE			
06:38		65-30	H 35	GOOD! LAYUP by HANSEN, DESIRAE
06:13	TURNOVER (BADPASS) by RINCAN, DALIA			
06:13				STEAL by FRAZIER, BELLE
06:06		67-30	H 37	GOOD! LAYUP by STREUN, TATIANA [FB]
06:06				ASSIST by FRAZIER, BELLE
05:54				FOUL (PERSONAL) by STOTLER, JORDAN
05:53				SUB OUT: JIMENEZ, KYLIE
05:53				SUB OUT: STOTLER, JORDAN
05:53				SUB IN: CANZOBRE, MARINA
05:53				SUB IN: GARDNER, CASSIDY
05:53	SUB OUT: RINCAN, DALIA			
05:53	SUB OUT: TAU, RACHELLE			
05:49	SUB IN: WARREN, KAI			
05:49	SUB IN: GIBSON, KALENA			
05:36	FOUL (PERSONAL) by PORTIS, ALAYGZA			
05:35		68-30	H 38	GOOD! FT by STREUN, TATIANA [FB]
05:35		69-30	H 39	GOOD! FT by STREUN, TATIANA [FB]
05:32	MISSED JUMPER by GIBSON, KALENA			
05:30				REBOUND (DEF) by TEAM
05:07				MISSED JUMPER by CANZOBRE, MARINA

Time	VISITORS: Multnomah	Score	Margin	HOME: Portland St.
05:04	REBOUND (DEF) by CAMPBELL, ERYKAH			
04:54	TURNOVER (BADPASS) by GIBSON, KALENA			
04:54				STEAL by STREUN, TATIANA
04:54				
04:41				MISSED JUMPER by FRAZIER, BELLE
04:36				REBOUND (OFF) by CANZOBRE, MARINA
04:34		72-30	H 42	GOOD! 3PTR by FRAZIER, BELLE
03:59	GOOD! JUMPER by WARREN, KAI	72-32	H 40	
03:44				MISSED 3PTR by HANSEN, DESIRAE
03:40	REBOUND (DEF) by CAMPBELL, ERYKAH			
03:22	TURNOVER (3SEC) by CAMPBELL, ERYKAH			
03:22				SUB OUT: STREUN, TATIANA
03:22				SUB IN: SCHULTZ, SYD
03:22	SUB OUT: ALVAREZ, KAYLA			
03:22	SUB OUT: PORTIS, ALAYGZA			
03:22	SUB IN: TORRES, TERESA			
03:22	SUB IN: TAU, RACHELLE			
03:05				MISSED JUMPER by CANZOBRE, MARINA
03:01				REBOUND (OFF) by CANZOBRE, MARINA
02:59				MISSED JUMPER by CANZOBRE, MARINA
02:55	REBOUND (DEF) by WARREN, KAI			
02:45	TURNOVER (BADPASS) by GIBSON, KALENA			
02:45				STEAL by SCHULTZ, SYD
02:38				MISSED 3PTR by FRAZIER, BELLE
02:36	REBOUND (DEF) by TEAM			
02:24				FOUL (PERSONAL) by CANZOBRE, MARINA
02:24				SUB OUT: HANSEN, DESIRAE
02:24				SUB IN: LEWIS, JADA
02:24	MISSED FT by CAMPBELL, ERYKAH			
02:24	REBOUND (OFF) by TEAM			
02:24	GOOD! FT by CAMPBELL, ERYKAH	72-33	H 39	
02:12		75-33	H 42	GOOD! 3PTR by LEWIS, JADA
02:12				ASSIST by CANZOBRE, MARINA
01:55	MISSED JUMPER by CAMPBELL, ERYKAH			
01:51				REBOUND (DEF) by CANZOBRE, MARINA
01:44				MISSED LAYUP by SCHULTZ, SYD
01:44	BLOCK by CAMPBELL, ERYKAH			
01:36	REBOUND (DEF) by WARREN, KAI			
01:28	MISSED JUMPER by TORRES, TERESA			
01:23	REBOUND (OFF) by CAMPBELL, ERYKAH			
01:23	GOOD! JUMPER by CAMPBELL, ERYKAH [PNT]	75-35	H 40	
01:23				FOUL (PERSONAL) by CANZOBRE, MARINA
01:23	SUB OUT: WARREN, KAI			
01:23	SUB IN: WANGLER, PAYTON			
01:23	GOOD! FT by CAMPBELL, ERYKAH	75-36	H 39	
01:13		78-36	H 42	GOOD! 3PTR by LEWIS, JADA
01:13				ASSIST by SCHULTZ, SYD
00:44	TURNOVER (BADPASS) by GIBSON, KALENA			
00:44				STEAL by FRAZIER, BELLE
00:38		80-36	H 44	GOOD! LAYUP by GARDNER, CASSIDY [FB]
00:38				ASSIST by FRAZIER, BELLE
00:20	MISSED JUMPER by WANGLER, PAYTON			
00:17				REBOUND (DEF) by TEAM
00:17	SUB OUT: TAU, RACHELLE			
00:17	SUB IN: WENZ, KAITLIN			
00:04		83-36	H 47	GOOD! 3PTR by GARDNER, CASSIDY

Multnomah 36, Portland St. 83

Points from (This Period)	MUL	PSU
In the Paint	2	12
Off Turns	0	15
2nd Chance	5	4
Fast Break	0	6
Bench	2	11

Official Box Score
Multnomah vs Portland St.
Fourth Quarter Statistics Only
November 05, 2019 at Viking Pavilion (Stoller Court) - Portland



Multnomah 12

No.	Player	S	Pts	FG	3FG	FT	OR	DR	TR	PF	A	TO	Blk	Stl	Min	+/-
03	ALVAREZ, KAYLA	*	0	0-1	0-1	0-0	0	1	1	0	0	0	0	0	5	-8
11	PORTIS, ALAYGZA	*	4	1-1	0-0	2-2	0	0	0	1	0	1	0	0	4	-1
21	RINCAN, DALIA	*	0	0-0	0-0	0-0	0	0	0	0	0	0	0	0	0	0
23	TAU, RACHELLE	*	0	0-0	0-0	0-0	0	0	0	0	0	0	0	0	0	0
43	CAMPBELL, ERYKAH	*	0	0-1	0-0	0-0	0	1	1	0	1	0	0	0	3	0
00	WENZ, KAITLIN		2	1-1	0-0	0-0	1	1	2	0	0	0	0	1	5	-1
01	WILSON, JAYLA		0	0-4	0-4	0-0	0	1	1	0	0	1	0	0	5	-8
02	WANGLER, PAYTON		2	1-2	0-1	0-0	0	0	0	0	0	0	0	0	3	0
04	TORRES, TERESA		0	0-1	0-1	0-0	0	1	1	0	0	1	0	0	5	-1
12	WARREN, KAI		0	0-1	0-0	0-0	0	1	1	2	0	0	0	0	4	-8
14	PARKER, JESSICA		2	0-1	0-0	2-2	1	1	2	0	0	0	0	0	4	-8
20	GIBSON, KALENA		0	0-0	0-0	0-0	0	1	1	0	0	0	0	0	3	0
22	CANTU, KATRINA		2	1-2	0-1	0-0	0	0	0	0	0	0	0	0	4	-1
24	RUIZ, ALEXIS		0	0-4	0-2	0-0	0	1	1	0	2	1	0	1	7	-9
	TEAM						1	0	1	0		0				
	TOTALS		12	4-19	0-10	4-4	3	9	12	3	3	4	0	2	50	

Shooting By Period

Period	FG	FG%	3FG	3FG%	FT	FT%
Game	18-60	30.0%	2-20	10.0%	10-16	62.5%

Deadball Rebounds: 3,0

Portland St. 21

No.	Player	S	Pts	FG	3FG	FT	OR	DR	TR	PF	A	TO	Blk	Stl	Min	+/-
03	JIMENEZ, KYLIE	G	0	0-0	0-0	0-0	0	0	0	0	0	0	0	0	0	0
11	STOTLER, JORDAN	F	0	0-0	0-0	0-0	0	0	0	0	0	0	0	0	0	0
12	STREUN, TATIANA	F	0	0-0	0-0	0-0	0	0	0	0	0	0	0	0	0	0
35	FRAZIER, BELLE	G	0	0-0	0-0	0-0	0	0	0	0	0	0	0	0	0	0
53	HANSEN, DESIRAE	G	4	2-4	0-0	0-0	1	0	1	0	0	0	0	1	4	5
01	DENSON, LABREA	G	4	2-3	0-0	0-0	0	1	1	2	2	1	0	0	10	9
10	CANZOBRE, MARINA	F	0	0-1	0-0	0-0	0	1	1	0	0	0	0	0	2	1
15	GARDNER, CASSIDY	G	0	0-0	0-0	0-0	0	1	1	0	2	0	0	0	6	4
22	WALTON, RUCHAE	G	0	0-2	0-2	0-0	0	2	2	0	0	0	0	0	10	9
23	LEWIS, JADA	G	3	1-2	1-2	0-0	0	5	5	1	2	0	0	0	10	9
30	SCHULTZ, SYD	F	10	3-6	0-0	4-4	0	2	2	0	0	2	0	1	8	8
	TEAM						0	0	0	0		0				
	TOTALS		21	8-18	1-4	4-4	1	12	13	3	6	3	0	2	50	

Shooting By Period

Period	FG	FG%	3FG	3FG%	FT	FT%
Game	37-88	42.0%	13-27	48.1%	17-19	89.5%

Deadball Rebounds: 2,0

Game Notes:

Officials: Darla Foutz, Kimberly Hobbs, Charles Rydzak
 Attendance: 310

Start Time: 08:04 PM ET
 End Time: 09:34 PM ET
 Game Duration: 1:29

Score	1st	2nd	3rd	4th	TOT
MUL	12	12	12	12	48
PSU	29	26	28	21	104

Points from (This Period)	MUL	PSU
In the Paint	4	12
Off Turns	2	2
2nd Chance	4	2
Fast Break	2	2
Bench	8	17

Official Play-By-Play
Multnomah vs Portland St.
Fourth Quarter
November 05, 2019 at Viking Pavilion (Stoller Court) - Portland



Period 4

Starters:

Multnomah: 3 ALVAREZ, KAYLA; 11 PORTIS, ALAYGZA; 21 RINCAN, DALIA; 23 TAU, RACHELLE; 43 CAMPBELL, ERYKAH;

Portland St.: 11 STOTLER, JORDAN (F); 12 STREUN, TATIANA (F); 35 FRAZIER, BELLE (G); 53 HANSEN, DESIRAE (G); 3 JIMENEZ, KYLIE (G);

Time	VISITORS: Multnomah	Score	Margin	HOME: Portland St.
05:36	TURNOVER (BADPASS) by GIBSON, KALENA			
05:36				STEAL by FRAZIER, BELLE
05:36				MISSED JUMPER by FRAZIER, BELLE
05:36				REBOUND (OFF) by STREUN, TATIANA
10:00				SUB OUT: CANZOBRE, MARINA
10:00				SUB OUT: GARDNER, CASSIDY
10:00				SUB OUT: FRAZIER, BELLE
10:00				SUB IN: DENSON, LABREA
10:00				SUB IN: WALTON, RUCHAE
10:00				SUB IN: HANSEN, DESIRAE
09:52	MISSED 3PTR by TORRES, TERESA			
09:46				REBOUND (DEF) by LEWIS, JADA
09:27				MISSED JUMPER by HANSEN, DESIRAE
09:23	REBOUND (DEF) by CAMPBELL, ERYKAH			
09:10	TURNOVER (BADPASS) by TORRES, TERESA			
09:10				STEAL by HANSEN, DESIRAE
08:57				MISSED 3PTR by WALTON, RUCHAE
08:53	REBOUND (DEF) by GIBSON, KALENA			
08:46	MISSED 3PTR by WANGLER, PAYTON			
08:41				REBOUND (DEF) by LEWIS, JADA
08:22				TURNOVER (BADPASS) by DENSON, LABREA
08:22	STEAL by WENZ, KAITLIN			
07:56	MISSED JUMPER by CAMPBELL, ERYKAH			
07:52				REBOUND (DEF) by LEWIS, JADA
07:49				MISSED LAYUP by DENSON, LABREA
07:43				REBOUND (OFF) by HANSEN, DESIRAE
07:43		85-36	H 49	GOOD! LAYUP by HANSEN, DESIRAE
07:35	GOOD! JUMPER by WANGLER, PAYTON	85-38	H 47	
07:35	ASSIST by CAMPBELL, ERYKAH			
07:22				MISSED JUMPER by HANSEN, DESIRAE
07:15	REBOUND (DEF) by TORRES, TERESA			
07:12				FOUL (PERSONAL) by DENSON, LABREA
07:12				SUB OUT: SCHULTZ, SYD
07:12				SUB IN: CANZOBRE, MARINA
07:12	SUB OUT: WANGLER, PAYTON			
07:12	SUB OUT: GIBSON, KALENA			
07:12	SUB OUT: CAMPBELL, ERYKAH			
07:12	SUB IN: PORTIS, ALAYGZA			
07:12	SUB IN: CANTU, KATRINA			
07:12	SUB IN: RUIZ, ALEXIS			
07:08	MISSED JUMPER by RUIZ, ALEXIS			
07:04				REBOUND (DEF) by CANZOBRE, MARINA
06:56		87-38	H 49	GOOD! JUMPER by HANSEN, DESIRAE
06:56				ASSIST by LEWIS, JADA
06:47	MISSED 3PTR by RUIZ, ALEXIS			
06:43				REBOUND (DEF) by DENSON, LABREA
06:36		90-38	H 52	GOOD! 3PTR by LEWIS, JADA
06:36				ASSIST by DENSON, LABREA
06:20	MISSED JUMPER by RUIZ, ALEXIS			
06:18	REBOUND (OFF) by TEAM			
06:18				SUB OUT: HANSEN, DESIRAE
06:18				SUB IN: GARDNER, CASSIDY
06:16	GOOD! JUMPER by WENZ, KAITLIN	90-40	H 50	
06:16	ASSIST by RUIZ, ALEXIS			
05:56				MISSED JUMPER by CANZOBRE, MARINA
05:53	REBOUND (DEF) by WENZ, KAITLIN			
05:43	GOOD! LAYUP by PORTIS, ALAYGZA [PNT]	90-42	H 48	
05:23				MISSED 3PTR by LEWIS, JADA
05:17	REBOUND (DEF) by RUIZ, ALEXIS			
05:07	MISSED 3PTR by CANTU, KATRINA			
05:03	REBOUND (OFF) by WENZ, KAITLIN			
04:57				FOUL (PERSONAL) by LEWIS, JADA
04:57				SUB OUT: CANZOBRE, MARINA
04:57				SUB IN: SCHULTZ, SYD
04:57	SUB OUT: WENZ, KAITLIN			
04:57	SUB OUT: TORRES, TERESA			
04:57	SUB IN: WILSON, JAYLA			
04:57	SUB IN: ALVAREZ, KAYLA			
04:57	GOOD! FT by PORTIS, ALAYGZA	90-43	H 47	

Time	VISITORS: Multnomah	Score	Margin	HOME: Portland St.
04:57	GOOD! FT by PORTIS, ALAYGZA	90-44	H 46	
04:47				TURNOVER (BADPASS) by SCHULTZ, SYD
04:37	MISSED 3PTR by ALVAREZ, KAYLA			
04:34				REBOUND (DEF) by LEWIS, JADA
04:24		92-44	H 48	GOOD! LAYUP by SCHULTZ, SYD
04:24				ASSIST by GARDNER, CASSIDY
04:09	TURNOVER (LOSTBALL) by PORTIS, ALAYGZA			
03:56				MISSED JUMPER by SCHULTZ, SYD
03:52	REBOUND (DEF) by WILSON, JAYLA			
03:51	TURNOVER (LOSTBALL) by WILSON, JAYLA			
03:51				STEAL by SCHULTZ, SYD
03:41				TURNOVER (LOSTBALL) by SCHULTZ, SYD
03:41	STEAL by RUIZ, ALEXIS			
03:36	GOOD! LAYUP by CANTU, KATRINA [FB]	92-46	H 46	
03:36	ASSIST by RUIZ, ALEXIS			
03:30		94-46	H 48	GOOD! LAYUP by SCHULTZ, SYD
03:30				ASSIST by DENSON, LABREA
03:30	FOUL (PERSONAL) by PORTIS, ALAYGZA			
03:30	SUB OUT: PORTIS, ALAYGZA			
03:30	SUB OUT: CANTU, KATRINA			
03:30	SUB IN: WARREN, KAI			
03:30	SUB IN: PARKER, JESSICA			
03:30		95-46	H 49	GOOD! FT by SCHULTZ, SYD
03:24	MISSED 3PTR by WILSON, JAYLA			
03:20				REBOUND (DEF) by GARDNER, CASSIDY
03:17				MISSED 3PTR by WALTON, RUCHAE
03:13	REBOUND (DEF) by ALVAREZ, KAYLA			
03:01	MISSED JUMPER by WARREN, KAI			
02:57				REBOUND (DEF) by SCHULTZ, SYD
02:48		97-46	H 51	GOOD! LAYUP by SCHULTZ, SYD [PNT]
02:48				ASSIST by LEWIS, JADA
02:48	FOUL (PERSONAL) by WARREN, KAI			
02:48		98-46	H 52	GOOD! FT by SCHULTZ, SYD
02:40				FOUL (PERSONAL) by DENSON, LABREA
02:40	GOOD! FT by PARKER, JESSICA	98-47	H 51	
02:40	GOOD! FT by PARKER, JESSICA	98-48	H 50	
02:36	FOUL (PERSONAL) by WARREN, KAI			
02:36		99-48	H 51	GOOD! FT by SCHULTZ, SYD [FB]
02:36		100-48	H 52	GOOD! FT by SCHULTZ, SYD [FB]
02:26	MISSED 3PTR by WILSON, JAYLA			
02:21				REBOUND (DEF) by LEWIS, JADA
02:17				MISSED JUMPER by SCHULTZ, SYD
02:10	REBOUND (DEF) by PARKER, JESSICA			
02:01	TURNOVER (BADPASS) by RUIZ, ALEXIS			
01:47		102-48	H 54	GOOD! LAYUP by DENSON, LABREA [PNT]
01:47				ASSIST by GARDNER, CASSIDY
01:33	MISSED 3PTR by WILSON, JAYLA			
01:28				REBOUND (DEF) by SCHULTZ, SYD
01:23		104-48	H 56	GOOD! LAYUP by DENSON, LABREA [PNT]
01:10	MISSED 3PTR by RUIZ, ALEXIS			
01:04	REBOUND (OFF) by PARKER, JESSICA			
01:00	MISSED JUMPER by PARKER, JESSICA			
00:57				REBOUND (DEF) by WALTON, RUCHAE
00:43				MISSED JUMPER by SCHULTZ, SYD
00:39	REBOUND (DEF) by WARREN, KAI			
00:31	MISSED 3PTR by WILSON, JAYLA			
00:26				REBOUND (DEF) by WALTON, RUCHAE

Multnomah 48, Portland St. 104

Points from (This Period)	MUL	PSU
In the Paint	4	12
Off Turns	2	2
2nd Chance	4	2
Fast Break	2	2
Bench	8	17

Official Scoring/Possession Reference Chart
Multnomah vs Portland St.
Period 1
November 05, 2019 at Viking Pavilion (Stoller Court) - Portland



Period 1

Starters:

Multnomah: 3 ALVAREZ,KAYLA; 11 PORTIS,ALAYGZA; 21 RINCAN,DALIA; 23 TAU,RACHELLE; 43 CAMPBELL,ERYKAH;

Portland St.: 11 STOTLER,JORDAN (F); 12 STREUN,TATIANA (F); 35 FRAZIER,BELLE (G); 53 HANSEN,DESIRAE (G); 3 JIMENEZ,KYLIE (G);

Time	VISITORS: Multnomah	Score	Margin	HOME: Portland St.
09:01		3-0	H 3	GOOD! 3PTR by FRAZIER, BELLE [FB]
08:22		4-0	H 4	GOOD! FT by STOTLER, JORDAN [FB]
08:22		5-0	H 5	GOOD! FT by STOTLER, JORDAN [FB]
08:02		7-0	H 7	GOOD! JUMPER by HANSEN, DESIRAE
08:02		8-0	H 8	GOOD! FT by HANSEN, DESIRAE
07:36		10-0	H 10	GOOD! LAYUP by STREUN, TATIANA [PNT]
07:10	GOOD! FT by CAMPBELL, ERYKAH [FB]	10-1	H 9	
06:32	GOOD! JUMPER by CAMPBELL, ERYKAH [PNT]	10-3	H 7	
06:23		12-3	H 9	GOOD! JUMPER by FRAZIER, BELLE
06:01		14-3	H 11	GOOD! LAYUP by FRAZIER, BELLE [FB]
04:36		15-3	H 12	GOOD! FT by FRAZIER, BELLE
04:36		16-3	H 13	GOOD! FT by FRAZIER, BELLE
04:11	GOOD! JUMPER by GIBSON, KALENA [FB]	16-5	H 11	
03:38		19-5	H 14	GOOD! 3PTR by HANSEN, DESIRAE
03:23	GOOD! JUMPER by GIBSON, KALENA	19-7	H 12	
03:08		21-7	H 14	GOOD! LAYUP by STREUN, TATIANA
01:55		24-7	H 17	GOOD! 3PTR by FRAZIER, BELLE
01:39	GOOD! 3PTR by PORTIS, ALAYGZA	24-10	H 14	
01:15		26-10	H 16	GOOD! LAYUP by GARDNER, CASSIDY
01:00	GOOD! LAYUP by CANTU, KATRINA [PNT]	26-12	H 14	
00:28		27-12	H 15	GOOD! FT by CANZOBRE, MARINA
00:06		29-12	H 17	GOOD! LAYUP by JIMENEZ, KYLIE

Multnomah 12, Portland St. 29

Official Scoring/Possession Reference Chart
Multnomah vs Portland St.
Period 2
November 05, 2019 at Viking Pavilion (Stoller Court) - Portland



Period 2

Starters:

Multnomah: 3 ALVAREZ,KAYLA; 11 PORTIS,ALAYGZA; 21 RINCAN,DALIA; 23 TAU,RACHELLE; 43 CAMPBELL,ERYKAH;

Portland St.: 11 STOTLER,JORDAN (F); 12 STREUN,TATIANA (F); 35 FRAZIER,BELLE (G); 53 HANSEN,DESIRAE (G); 3 JIMENEZ,KYLIE (G);

Time	VISITORS: Multnomah	Score	Margin	HOME: Portland St.
09:50	GOOD! JUMPER by GIBSON, KALENA [PNT]	29-14	H 15	
09:19	GOOD! JUMPER by TAU, RACHELLE [PNT]	29-16	H 13	
08:41		31-16	H 15	GOOD! JUMPER by DENSON, LABREA
07:35		34-16	H 18	GOOD! 3PTR by LEWIS, JADA
07:03		36-16	H 20	GOOD! LAYUP by STREUN, TATIANA
06:37		38-16	H 22	GOOD! LAYUP by STREUN, TATIANA
06:08	GOOD! JUMPER by RINCAN, DALIA	38-18	H 20	
05:32	GOOD! LAYUP by PORTIS, ALAYGZA	38-20	H 18	
05:21		40-20	H 20	GOOD! LAYUP by STREUN, TATIANA
03:49	GOOD! JUMPER by PORTIS, ALAYGZA	40-22	H 18	
03:37		43-22	H 21	GOOD! 3PTR by JIMENEZ, KYLIE
03:04		46-22	H 24	GOOD! 3PTR by HANSEN, DESIRAE
02:23	GOOD! LAYUP by CAMPBELL, ERYKAH [FB]	46-24	H 22	
01:30		49-24	H 25	GOOD! 3PTR by JIMENEZ, KYLIE
01:12		50-24	H 26	GOOD! FT by JIMENEZ, KYLIE [FB]
01:12		51-24	H 27	GOOD! FT by JIMENEZ, KYLIE [FB]
00:50		52-24	H 28	GOOD! FT by STREUN, TATIANA [FB]
00:30		55-24	H 31	GOOD! 3PTR by HANSEN, DESIRAE

Multnomah 24, Portland St. 55

Official Scoring/Possession Reference Chart
Multnomah vs Portland St.
Period 3
November 05, 2019 at Viking Pavilion (Stoller Court) - Portland



Period 3

Starters:

Multnomah: 3 ALVAREZ,KAYLA; 11 PORTIS,ALAYGZA; 21 RINCAN,DALIA; 23 TAU,RACHELLE; 43 CAMPBELL,ERYKAH;

Portland St.: 11 STOTLER,JORDAN (F); 12 STREUN,TATIANA (F); 35 FRAZIER,BELLE (G); 53 HANSEN,DESIRAE (G); 3 JIMENEZ,KYLIE (G);

Time	VISITORS: Multnomah	Score	Margin	HOME: Portland St.
09:47	GOOD! 3PTR by ALVAREZ, KAYLA	55-27	H 28	
09:11	GOOD! FT by CAMPBELL, ERYKAH	55-28	H 27	
09:11	GOOD! FT by CAMPBELL, ERYKAH	55-29	H 26	
08:10		57-29	H 28	GOOD! LAYUP by STREUN, TATIANA
08:02	GOOD! FT by PORTIS, ALAYGZA	57-30	H 27	
07:56		59-30	H 29	GOOD! LAYUP by STOTLER, JORDAN
07:25		61-30	H 31	GOOD! LAYUP by STREUN, TATIANA [PNT]
07:02		62-30	H 32	GOOD! FT by HANSEN, DESIRAE
07:02		63-30	H 33	GOOD! FT by HANSEN, DESIRAE
06:38		65-30	H 35	GOOD! LAYUP by HANSEN, DESIRAE
06:06		67-30	H 37	GOOD! LAYUP by STREUN, TATIANA [FB]
05:35		68-30	H 38	GOOD! FT by STREUN, TATIANA [FB]
05:35		69-30	H 39	GOOD! FT by STREUN, TATIANA [FB]
04:34		72-30	H 42	GOOD! 3PTR by FRAZIER, BELLE
03:59	GOOD! JUMPER by WARREN, KAI	72-32	H 40	
02:24	GOOD! FT by CAMPBELL, ERYKAH	72-33	H 39	
02:12		75-33	H 42	GOOD! 3PTR by LEWIS, JADA
01:23	GOOD! JUMPER by CAMPBELL, ERYKAH [PNT]	75-35	H 40	
01:23	GOOD! FT by CAMPBELL, ERYKAH	75-36	H 39	
01:13		78-36	H 42	GOOD! 3PTR by LEWIS, JADA
00:38		80-36	H 44	GOOD! LAYUP by GARDNER, CASSIDY [FB]
00:04		83-36	H 47	GOOD! 3PTR by GARDNER, CASSIDY

Multnomah 36, Portland St. 83

Official Scoring/Possession Reference Chart
Multnomah vs Portland St.
Period 4
November 05, 2019 at Viking Pavilion (Stoller Court) - Portland



Period 4

Starters:

Multnomah: 3 ALVAREZ,KAYLA; 11 PORTIS,ALAYGZA; 21 RINCAN,DALIA; 23 TAU,RACHELLE; 43 CAMPBELL,ERYKAH;

Portland St.: 11 STOTLER,JORDAN (F); 12 STREUN,TATIANA (F); 35 FRAZIER,BELLE (G); 53 HANSEN,DESIRAE (G); 3 JIMENEZ,KYLIE (G);

Time	VISITORS: Multnomah	Score	Margin	HOME: Portland St.
07:43		85-36	H 49	GOOD! LAYUP by HANSEN, DESIRAE
07:35	GOOD! JUMPER by WANGLER, PAYTON	85-38	H 47	
06:56		87-38	H 49	GOOD! JUMPER by HANSEN, DESIRAE
06:36		90-38	H 52	GOOD! 3PTR by LEWIS, JADA
06:16	GOOD! JUMPER by WENZ, KAITLIN	90-40	H 50	
05:43	GOOD! LAYUP by PORTIS, ALAYGZA [PNT]	90-42	H 48	
04:57	GOOD! FT by PORTIS, ALAYGZA	90-43	H 47	
04:57	GOOD! FT by PORTIS, ALAYGZA	90-44	H 46	
04:24		92-44	H 48	GOOD! LAYUP by SCHULTZ, SYD
03:36	GOOD! LAYUP by CANTU, KATRINA [FB]	92-46	H 46	
03:30		94-46	H 48	GOOD! LAYUP by SCHULTZ, SYD
03:30		95-46	H 49	GOOD! FT by SCHULTZ, SYD
02:48		97-46	H 51	GOOD! LAYUP by SCHULTZ, SYD [PNT]
02:48		98-46	H 52	GOOD! FT by SCHULTZ, SYD
02:40	GOOD! FT by PARKER, JESSICA	98-47	H 51	
02:40	GOOD! FT by PARKER, JESSICA	98-48	H 50	
02:36		99-48	H 51	GOOD! FT by SCHULTZ, SYD [FB]
02:36		100-48	H 52	GOOD! FT by SCHULTZ, SYD [FB]
01:47		102-48	H 54	GOOD! LAYUP by DENSON, LABREA [PNT]
01:23		104-48	H 56	GOOD! LAYUP by DENSON, LABREA [PNT]

Multnomah 48, Portland St. 104

Official Substitutions Log
Multnomah vs Portland St.
Period 1
November 05, 2019 at Viking Pavilion (Stoller Court) - Portland



VISITORS: Multnomah	Time	Score	HOME: Portland St.
3 ALVAREZ,KAYLA			11 STOTLER,JORDAN
11 PORTIS,ALAYGZA			12 STREUN,TATIANA
21 RINCAN,DALIA			35 FRAZIER,BELLE
23 TAU,RACHELLE			53 HANSEN,DESIRAE
43 CAMPBELL,ERYKAH			3 JIMENEZ,KYLIE
	05:21	3-14	SUB OUT: JIMENEZ,KYLIE
	05:21		SUB IN: GARDNER,CASSIDY
SUB OUT: 21 RINCAN,DALIA	05:21		
SUB IN: 22 CANTU,KATRINA	05:21		
	04:41	3-14	SUB OUT: STOTLER,JORDAN
	04:41		SUB IN: CANZOBRE,MARINA
SUB OUT: 43 CAMPBELL,ERYKAH	04:36	3-16	
SUB IN: 20 GIBSON,KALENA	04:36		
	00:13	12-27	SUB OUT: CANZOBRE,MARINA
	00:13		SUB OUT: STREUN,TATIANA
	00:13		SUB OUT: GARDNER,CASSIDY
	00:13		SUB OUT: FRAZIER,BELLE
	00:13		SUB IN: DENSON,LABREA
	00:13		SUB IN: JIMENEZ,KYLIE
	00:13		SUB IN: STOTLER,JORDAN
	00:13		SUB IN: SCHULTZ,SYD
SUB OUT: 11 PORTIS,ALAYGZA	00:13		
SUB IN: 21 RINCAN,DALIA	00:13		

Multnomah 12, Portland St. 29

Official Substitutions Log
Multnomah vs Portland St.
Period 2
November 05, 2019 at Viking Pavilion (Stoller Court) - Portland



VISITORS: Multnomah	Time	Score	HOME: Portland St.
3 ALVAREZ,KAYLA			11 STOTLER,JORDAN
11 PORTIS,ALAYGZA			12 STREUN,TATIANA
21 RINCAN,DALIA			35 FRAZIER,BELLE
23 TAU,RACHELLE			53 HANSEN,DESIRAE
43 CAMPBELL,ERYKAH			3 JIMENEZ,KYLIE
	10:00	-	SUB OUT: HANSEN,DESIRAE
	10:00		SUB IN: LEWIS,JADA
SUB OUT: 3 ALVAREZ,KAYLA	10:00		
SUB IN: 4 TORRES,TERESA	10:00		
	08:10	16-31	SUB OUT: DENSON,LABREA
	08:10		SUB OUT: SCHULTZ,SYD
	08:10		SUB IN: STREUN,TATIANA
	08:10		SUB IN: FRAZIER,BELLE
SUB OUT: 22 CANTU,KATRINA	07:18	16-34	
SUB OUT: 23 TAU,RACHELLE	07:18		
SUB IN: 2 WANGLER,PAYTON	07:18		
SUB IN: 11 PORTIS,ALAYGZA	07:18		
	05:32	20-38	SUB OUT: STOTLER,JORDAN
	05:32		SUB OUT: LEWIS,JADA
	05:32		SUB IN: CANZOBRE,MARINA
	05:32		SUB IN: HANSEN,DESIRAE
SUB OUT: 21 RINCAN,DALIA	05:32		
SUB IN: 43 CAMPBELL,ERYKAH	05:32		
SUB OUT: 20 GIBSON,KALENA	04:46	20-40	
SUB IN: 14 PARKER,JESSICA	04:46		
	03:14	22-43	SUB OUT: CANZOBRE,MARINA
	03:14		SUB IN: SCHULTZ,SYD
	01:34	24-46	SUB OUT: FRAZIER,BELLE
	01:34		SUB IN: GARDNER,CASSIDY
	01:12	24-51	SUB OUT: JIMENEZ,KYLIE
	01:12		SUB IN: DENSON,LABREA

Multnomah 24, Portland St. 55

Official Substitutions Log
Multnomah vs Portland St.
Period 3
November 05, 2019 at Viking Pavilion (Stoller Court) - Portland



VISITORS: Multnomah	Time	Score	HOME: Portland St.
3 ALVAREZ,KAYLA			11 STOTLER,JORDAN
11 PORTIS,ALAYGZA			12 STREUN,TATIANA
21 RINCAN,DALIA			35 FRAZIER,BELLE
23 TAU,RACHELLE			53 HANSEN,DESIRAE
43 CAMPBELL,ERYKAH			3 JIMENEZ,KYLIE
	10:00	-	SUB OUT: DENSON,LABREA
	10:00		SUB OUT: GARDNER,CASSIDY
	10:00		SUB OUT: SCHULTZ,SYD
	10:00		SUB IN: JIMENEZ,KYLIE
	10:00		SUB IN: STOTLER,JORDAN
	10:00		SUB IN: FRAZIER,BELLE
SUB OUT: 2 WANGLER,PAYTON	10:00		
SUB OUT: 4 TORRES,TERESA	10:00		
SUB OUT: 14 PARKER,JESSICA	10:00		
SUB IN: 3 ALVAREZ,KAYLA	10:00		
SUB IN: 21 RINCAN,DALIA	10:00		
SUB IN: 23 TAU,RACHELLE	10:00		
	05:53	30-67	SUB OUT: JIMENEZ,KYLIE
	05:53		SUB OUT: STOTLER,JORDAN
	05:53		SUB IN: CANZOBRE,MARINA
	05:53		SUB IN: GARDNER,CASSIDY
SUB OUT: 21 RINCAN,DALIA	05:53		
SUB OUT: 23 TAU,RACHELLE	05:53		
SUB IN: 12 WARREN,KAI	05:49	30-67	
SUB IN: 20 GIBSON,KALENA	05:49		
	03:22	32-72	SUB OUT: STREUN,TATIANA
	03:22		SUB IN: SCHULTZ,SYD
SUB OUT: 3 ALVAREZ,KAYLA	03:22		
SUB OUT: 11 PORTIS,ALAYGZA	03:22		
SUB IN: 4 TORRES,TERESA	03:22		
SUB IN: 23 TAU,RACHELLE	03:22		
	02:24	32-72	SUB OUT: HANSEN,DESIRAE
	02:24		SUB IN: LEWIS,JADA
SUB OUT: 12 WARREN,KAI	01:23	35-75	
SUB IN: 2 WANGLER,PAYTON	01:23		
SUB OUT: 23 TAU,RACHELLE	00:17	36-80	
SUB IN: 0 WENZ,KAITLIN	00:17		

Multnomah 36, Portland St. 83

Official Substitutions Log
Multnomah vs Portland St.
Period 4
November 05, 2019 at Viking Pavilion (Stoller Court) - Portland



VISITORS: Multnomah	Time	Score	HOME: Portland St.
3 ALVAREZ, KAYLA			11 STOTLER, JORDAN
11 PORTIS, ALAYGZA			12 STREUN, TATIANA
21 RINCAN, DALIA			35 FRAZIER, BELLE
23 TAU, RACHELLE			53 HANSEN, DESIRAE
43 CAMPBELL, ERYKAH			3 JIMENEZ, KYLIE
	10:00	-	SUB OUT: CANZOBRE, MARINA
	10:00		SUB OUT: GARDNER, CASSIDY
	10:00		SUB OUT: FRAZIER, BELLE
	10:00		SUB IN: DENSON, LABREA
	10:00		SUB IN: WALTON, RUCHAE
	10:00		SUB IN: HANSEN, DESIRAE
	07:12	38-85	SUB OUT: SCHULTZ, SYD
	07:12		SUB IN: CANZOBRE, MARINA
SUB OUT: 2 WANGLER, PAYTON	07:12		
SUB OUT: 20 GIBSON, KALENA	07:12		
SUB OUT: 43 CAMPBELL, ERYKAH	07:12		
SUB IN: 11 PORTIS, ALAYGZA	07:12		
SUB IN: 22 CANTU, KATRINA	07:12		
SUB IN: 24 RUIZ, ALEXIS	07:12		
	06:18	38-90	SUB OUT: HANSEN, DESIRAE
	06:18		SUB IN: GARDNER, CASSIDY
	04:57	42-90	SUB OUT: CANZOBRE, MARINA
	04:57		SUB IN: SCHULTZ, SYD
SUB OUT: 0 WENZ, KAITLIN	04:57		
SUB OUT: 4 TORRES, TERESA	04:57		
SUB IN: 1 WILSON, JAYLA	04:57		
SUB IN: 3 ALVAREZ, KAYLA	04:57		
SUB OUT: 11 PORTIS, ALAYGZA	03:30	46-94	
SUB OUT: 22 CANTU, KATRINA	03:30		
SUB IN: 12 WARREN, KAI	03:30		
SUB IN: 14 PARKER, JESSICA	03:30		

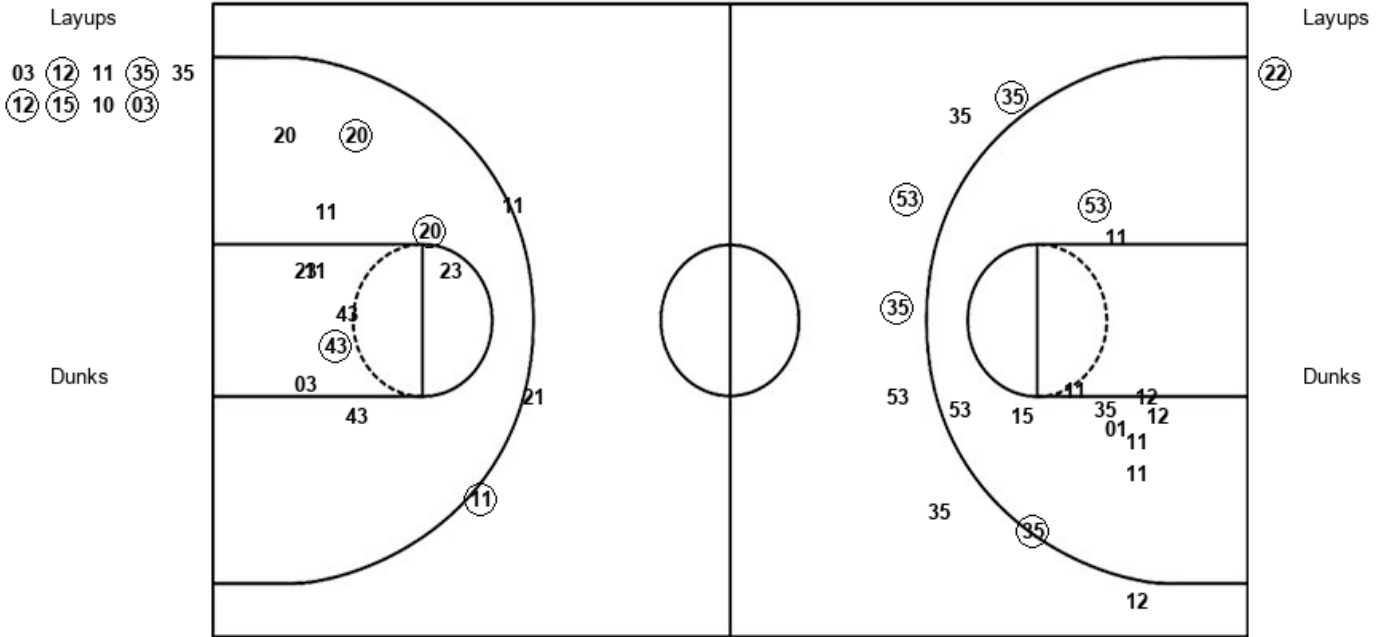
Multnomah 48, Portland St. 104

Official Shot Chart
Multnomah vs Portland St.
PERIOD 1 Shots
 November 05, 2019 at Viking Pavilion (Stoller Court) - Portland



Portland St.

Multnomah



PSU : Period 1	Made	Att	Pct
Layups	5	9	55.6
Dunks	0	0	0
2PT Field Goals	7	21	33.3
3PT Field Goals	3	7	42.9
Total Field Goals	10	28	35.7

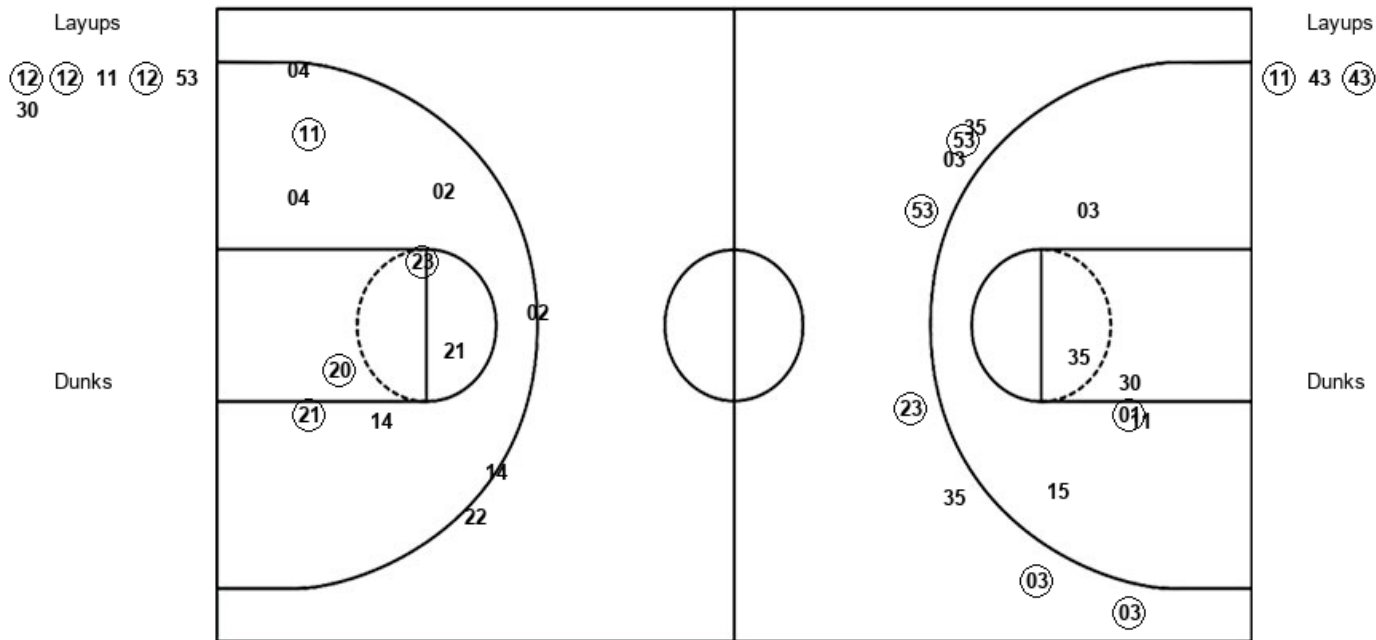
MUL : Period 1	Made	Att	Pct
Layups	1	1	100.0
Dunks	0	0	0
2PT Field Goals	4	12	33.3
3PT Field Goals	1	3	33.3
Total Field Goals	5	15	33.3

Official Shot Chart
Multnomah vs Portland St.
PERIOD 2 Shots
 November 05, 2019 at Viking Pavilion (Stoller Court) - Portland



Portland St.

Multnomah



PSU : Period 2	Made	Att	Pct
Layups	3	6	50.0
Dunks	0	0	0
2PT Field Goals	4	12	33.3
3PT Field Goals	5	8	62.5
Total Field Goals	9	20	45.0

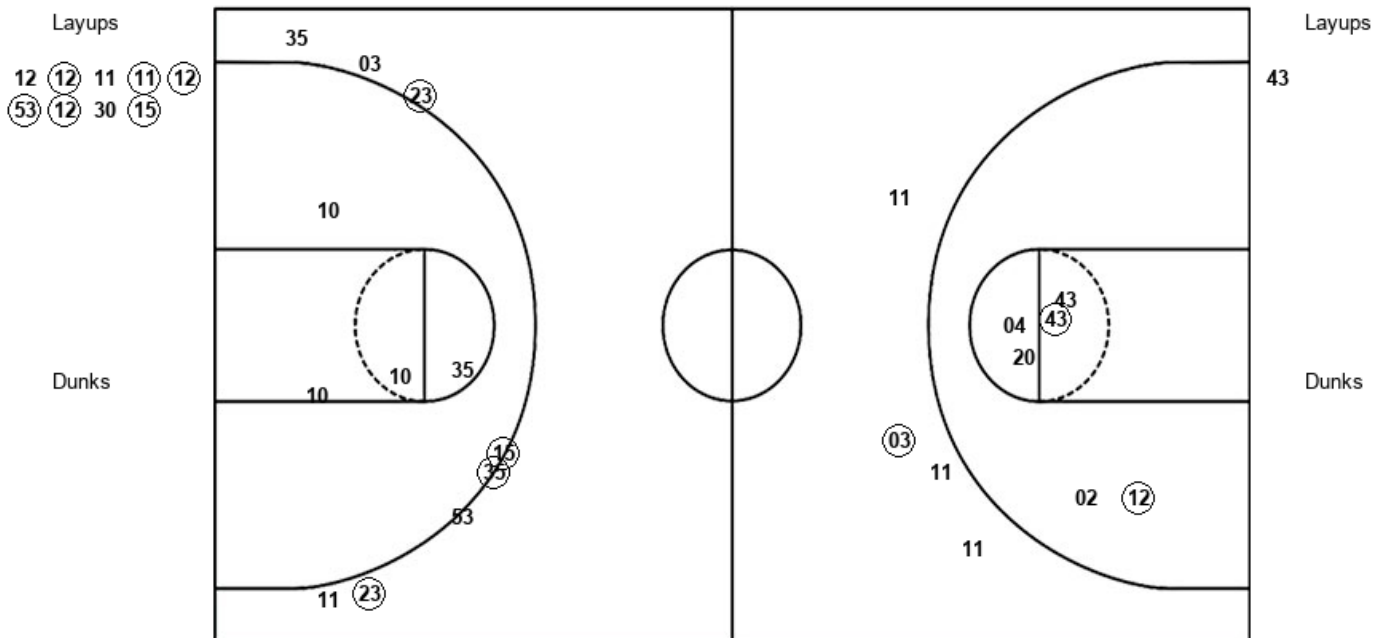
MUL : Period 2	Made	Att	Pct
Layups	2	3	66.7
Dunks	0	0	0
2PT Field Goals	6	12	50.0
3PT Field Goals	0	3	00.0
Total Field Goals	6	15	40.0

Official Shot Chart
Multnomah vs Portland St.
PERIOD 3 Shots
 November 05, 2019 at Viking Pavilion (Stoller Court) - Portland



Portland St.

Multnomah



PSU : Period 3	Made	Att	Pct
Layups	6	9	66.7
Dunks	0	0	0
2PT Field Goals	6	14	42.9
3PT Field Goals	4	8	50.0
Total Field Goals	10	22	45.5

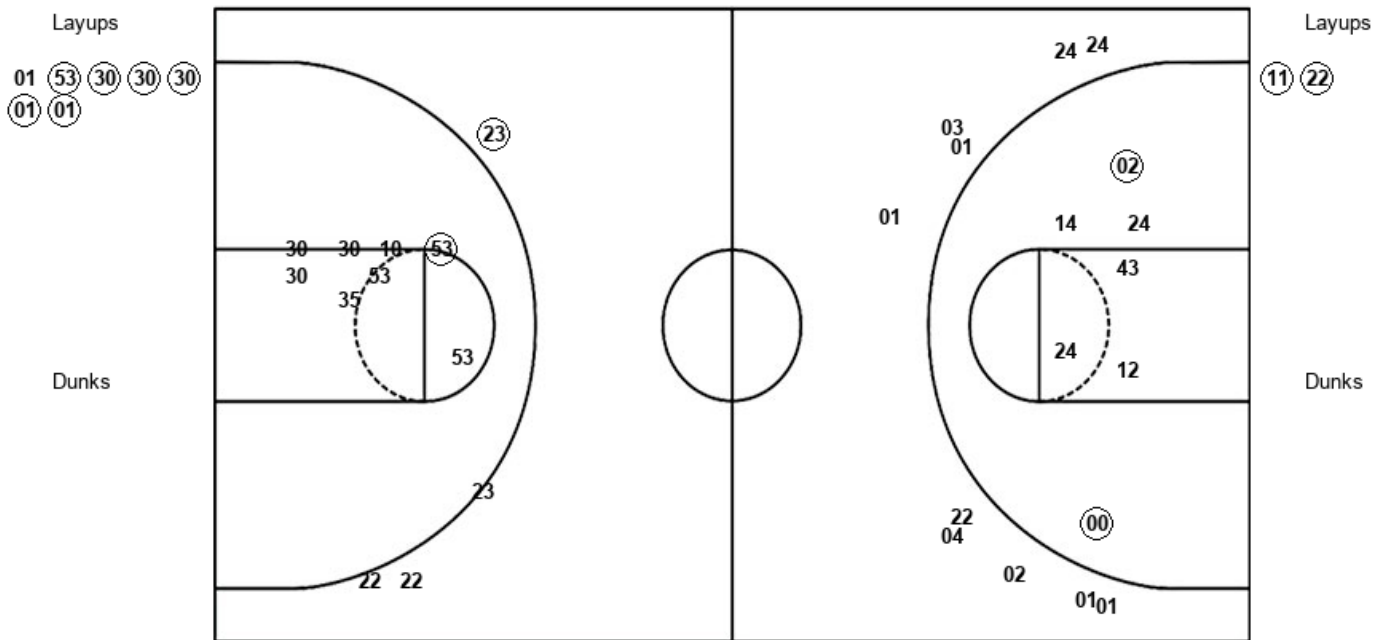
MUL : Period 3	Made	Att	Pct
Layups	0	1	00.0
Dunks	0	0	0
2PT Field Goals	2	7	28.6
3PT Field Goals	1	4	25.0
Total Field Goals	3	11	27.3

Official Shot Chart
Multnomah vs Portland St.
PERIOD 4 Shots
 November 05, 2019 at Viking Pavilion (Stoller Court) - Portland



Portland St.

Multnomah



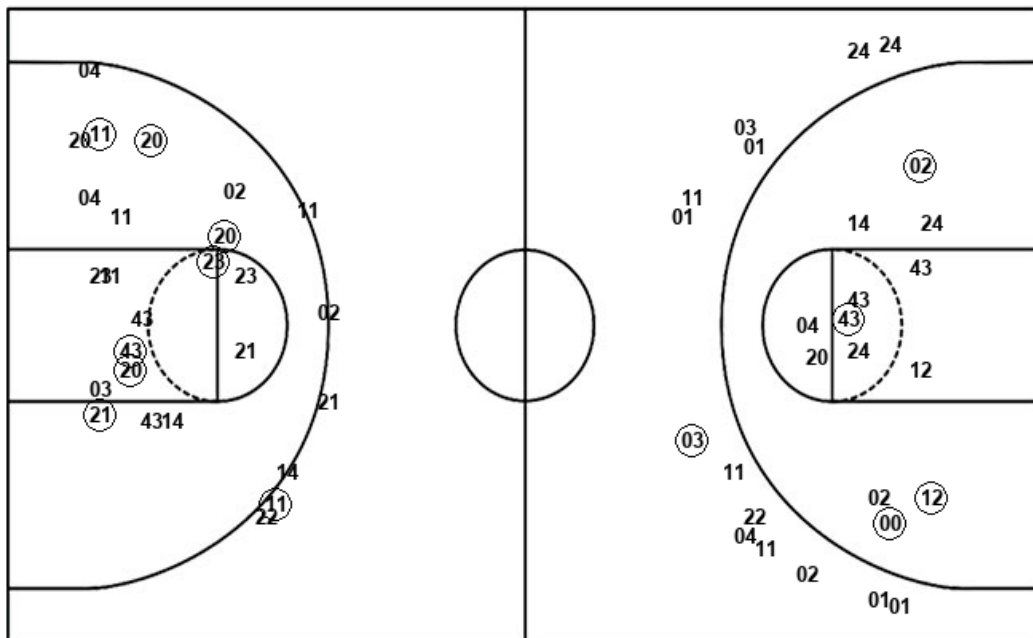
PSU : Period 4	Made	Att	Pct
Layups	6	7	85.7
Dunks	0	0	0
2PT Field Goals	7	14	50.0
3PT Field Goals	1	4	25.0
Total Field Goals	8	18	44.4

MUL : Period 4	Made	Att	Pct
Layups	2	2	100.0
Dunks	0	0	0
2PT Field Goals	4	9	44.4
3PT Field Goals	0	10	00.0
Total Field Goals	4	19	21.1

Official Shot Chart
Multnomah vs Portland St.
Multnomah Team Shots
November 05, 2019 at Viking Pavilion (Stoller Court) - Portland



Layups



Layups

Dunks

Dunks

MUL : Period 1	Made	Att	Pct
Layups	1	1	100.0
Dunks	0	0	0
2PT Field Goals	4	12	33.3
3PT Field Goals	1	3	33.3
Total Field Goals	5	15	33.3

MUL : Period 2	Made	Att	Pct
Layups	2	3	66.7
Dunks	0	0	0
2PT Field Goals	6	12	50.0
3PT Field Goals	0	3	00.0
Total Field Goals	6	15	40.0

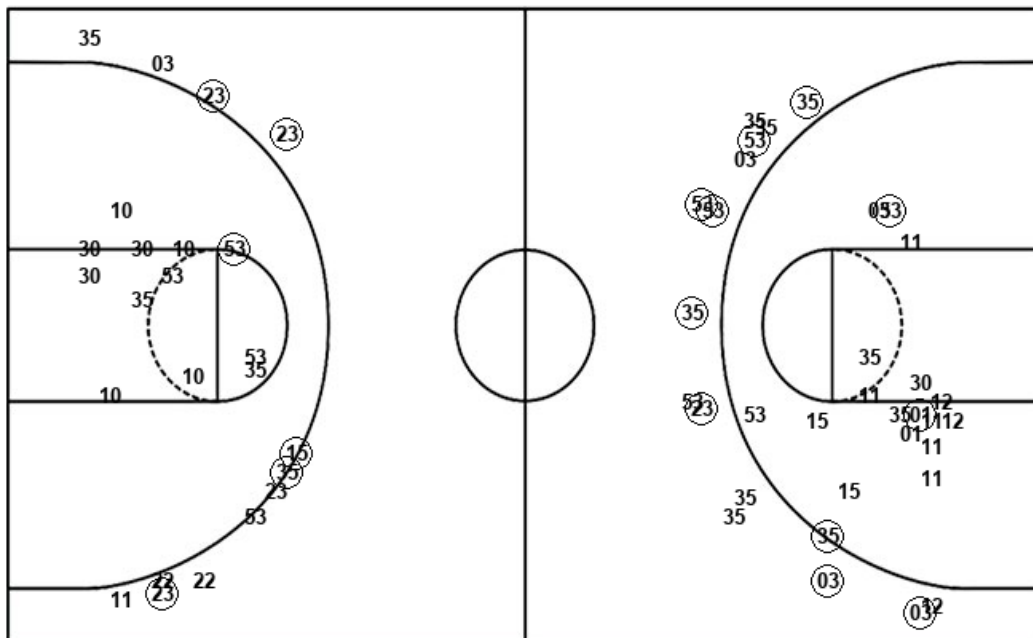
MUL : Period 3	Made	Att	Pct
Layups	0	1	00.0
Dunks	0	0	0
2PT Field Goals	2	7	28.6
3PT Field Goals	1	4	25.0
Total Field Goals	3	11	27.3

MUL : Period 4	Made	Att	Pct
Layups	2	2	100.0
Dunks	0	0	0
2PT Field Goals	4	9	44.4
3PT Field Goals	0	10	00.0
Total Field Goals	4	19	21.1

Official Shot Chart
Multnomah vs Portland St.
Portland St. Team Shots
November 05, 2019 at Viking Pavilion (Stoller Court) - Portland



Layups



Layups

- 03 12 11 35 35
- 12 15 10 03 12
- 12 11 12 53 30
- 12 12 11 11 12
- 53 12 30 15 01
- 53 30 30 30 01
- 01

Dunks

Dunks

PSU : Period 1	Made	Att	Pct
Layups	5	9	55.6
Dunks	0	0	0
2PT Field Goals	7	21	33.3
3PT Field Goals	3	7	42.9
Total Field Goals	10	28	35.7

PSU : Period 2	Made	Att	Pct
Layups	3	6	50.0
Dunks	0	0	0
2PT Field Goals	4	12	33.3
3PT Field Goals	5	8	62.5
Total Field Goals	9	20	45.0

PSU : Period 3	Made	Att	Pct
Layups	6	9	66.7
Dunks	0	0	0
2PT Field Goals	6	14	42.9
3PT Field Goals	4	8	50.0
Total Field Goals	10	22	45.5

PSU : Period 4	Made	Att	Pct
Layups	6	7	85.7
Dunks	0	0	0
2PT Field Goals	7	14	50.0
3PT Field Goals	1	4	25.0
Total Field Goals	8	18	44.4