

FINAL SCORE

Warner Pacific

51



Portland St.

79

October 30, 2019 • Viking Pavilion (Stoller Court) - Portland

FINAL STATISTICS

Official Box Score
Warner Pacific vs Portland St.
Game Totals -- Final Statistics
October 30, 2019 at Viking Pavilion (Stoller Court) - Portland



Warner Pacific 51

No.	Player	S	Pts	FG	3FG	FT	OR	DR	TR	PF	A	TO	Blk	Stl	Min	+/-
05	MORGAN, SAMANTHA	g	7	3-8	1-4	0-0	0	1	1	2	1	8	0	3	25	-31
13	WHITMORE, PAYTON	g	0	0-6	0-4	0-0	1	1	2	0	4	1	0	0	20	-16
25	KRUGER, KALI	f	4	1-3	0-0	2-2	0	8	8	2	0	1	5	0	26	-14
32	BRUNO, GABRIELLA	g	9	2-17	0-4	5-5	1	6	7	2	1	4	0	1	26	-23
34	PANTOJA, CELESTE	g	16	5-13	3-10	3-3	1	6	7	0	2	2	0	4	36	-35
01	KIRZY, MYA	g	4	2-3	0-0	0-0	3	2	5	3	2	2	1	1	18	-16
04	FARNER, ANNA	g	0	0-0	0-0	0-0	4	2	6	0	0	2	0	0	17	3
12	GARCIA, RAQUEL	g	0	0-0	0-0	0-0	1	0	1	0	1	1	0	0	7	-9
23	JACKSON, COURTNEY	G	11	4-18	2-11	1-2	1	1	2	2	3	1	0	1	26	1
TEAM							2	2	4	0		2				
TOTALS			51	17-68	6-33	11-12	14	29	43	11	14	24	6	10	200	

Shooting By Period

Period	FG	FG%	3FG	3FG%	FT	FT%
1st Qtr	4-16	25%	2-8	25%	7-7	100%
2nd Qtr	5-15	33%	4-8	50%	0-0	0%
3rd Qtr	4-16	25%	0-7	00%	1-1	100%
4th Qtr	4-21	19%	0-10	00%	3-4	75%
1st Half	9-31	29%	6-16	38%	7-7	100%
2nd Half	8-37	22%	0-17	00%	4-5	80%
Game	17-68	25.0%	6-33	18.2%	11-12	91.7%

Deadball Rebounds: 3,0
Last FG: 4th-00:30
Biggest Run: 8-0
Largest lead: By 0 at 4:00
Technical Fouls: None.

Portland St. 79

No.	Player	S	Pts	FG	3FG	FT	OR	DR	TR	PF	A	TO	Blk	Stl	Min	+/-
03	JIMENEZ, KYLIE	G	15	6-15	1-6	2-2	1	3	4	0	0	3	1	2	28	25
11	STOTLER, JORDAN	F	9	4-10	0-0	1-2	3	7	10	2	2	1	4	2	22	33
12	STREUN, TATIANA	F	20	10-14	0-0	0-2	8	8	16	4	4	1	0	3	30	42
35	FRAZIER, BELLE	G	10	3-10	2-6	2-2	3	1	4	1	5	2	0	1	30	43
53	HANSEN, DESIRAE	G	16	6-12	2-5	2-3	2	6	8	0	8	4	0	3	29	13
01	DENSON, LABREA	G	0	0-3	0-1	0-0	0	0	0	1	0	1	0	1	8	1
10	CANZOBRE, MARINA	F	5	2-6	0-0	1-2	1	2	3	0	0	0	0	1	20	-11
15	GARDNER, CASSIDY	G	4	2-7	0-5	0-0	0	1	1	2	3	0	0	2	21	2
22	WALTON, RUCHAE	G	0	0-0	0-0	0-0	0	1	1	1	0	1	0	0	3	0
30	SCHULTZ, SYD	F	0	0-2	0-0	0-0	2	1	3	3	1	2	0	0	9	-8
TEAM							1	4	5	0		1				
TOTALS			79	33-79	5-23	8-13	21	34	55	14	23	16	5	15	200	

Shooting By Period

Period	FG	FG%	3FG	3FG%	FT	FT%
1st Qtr	7-21	33%	3-10	30%	2-4	50%
2nd Qtr	9-23	39%	1-6	17%	1-2	50%
3rd Qtr	12-22	55%	1-5	20%	2-3	67%
4th Qtr	5-13	38%	0-2	00%	3-4	75%
1st Half	16-44	36%	4-16	25%	3-6	50%
2nd Half	17-35	49%	1-7	14%	5-7	71%
Game	33-79	41.8%	5-23	21.7%	8-13	61.5%

Deadball Rebounds: 1,1
Last FG: 4th-00:40
Biggest Run: 15-0
Largest lead: By 32 at -
Technical Fouls: None.

Game Notes:

Officials: , ,
Attendance: 347

Start Time: 08:04 PM ET
End Time: 09:37 PM ET
Game Duration: 1:32

Score	1st	2nd	3rd	4th	TOT
WPU	17	14	9	11	51
PSU	19	20	27	13	79

WPU led for 0:00. PSU led for 36:20.
Game was tied for 3:40.
Times tied: 69 Lead Changes: 0

Points from	WPU	PSU
In the Paint	20	52
Off Turns	21	26
2nd Chance	5	17
Fast Break	9	12
Bench	15	9

Official Box Score
Warner Pacific vs Portland St.
First Half Statistics Only
October 30, 2019 at Viking Pavilion (Stoller Court) - Portland



Warner Pacific 31

No.	Player	S	Pts	FG	3FG	FT	OR	DR	TR	PF	A	TO	Blk	Stl	Min	+/-
01	KIRZY, MYA	g	0	0-0	0-0	0-0	0	1	1	1	1	1	0	0	6	-5
04	FARNER, ANNA	g	0	0-0	0-0	0-0	1	0	1	0	0	1	0	0	6	5
05	MORGAN, SAMANTHA	g	3	1-3	1-2	0-0	0	1	1	1	0	5	0	1	12	-7
12	GARCIA, RAQUEL	g	0	0-0	0-0	0-0	1	0	1	0	1	0	0	0	4	-10
13	WHITMORE, PAYTON	g	0	0-3	0-2	0-0	0	1	1	0	3	0	0	0	12	-5
23	JACKSON, COURTNEY	G	8	3-10	2-6	0-0	0	1	1	2	2	1	0	0	14	4
25	KRUGER, KALI	f	4	1-2	0-0	2-2	0	6	6	1	0	0	4	0	18	-5
32	BRUNO, GABRIELLA	g	2	0-6	0-1	2-2	0	3	3	0	1	3	0	0	9	-3
34	PANTOJA, CELESTE	g	14	4-7	3-5	3-3	0	3	3	0	0	1	0	3	18	-14
	TEAM		0	0-0	0-0	0-0	1	1	2	0	0	0	0	0	0	
TOTALS			31	9-31	6-16	7-7	3	17	20	5	8	12	4	4	100	

Shooting By Period

Period	FG	FG%	3FG	3FG%	FT	FT%
1st Qtr	4-16	25%	2-8	25%	7-7	100%
2nd Qtr	5-15	33%	4-8	50%	0-0	0%
1st Half	9-31	29%	6-16	38%	7-7	100%
Game	17-68	25.0%	6-33	18.2%	11-12	91.7%

Deadball Rebounds: 3,0

Last FG Half: WPU 2nd-00:23

Portland St. 39

No.	Player	S	Pts	FG	3FG	FT	OR	DR	TR	PF	A	TO	Blk	Stl	Min	+/-
10	CANZOBRE, MARINA	F	0	0-0	0-0	0-0	0	1	1	0	0	0	0	0	8	-10
11	STOTLER, JORDAN	F	2	1-6	0-0	0-0	2	6	8	2	0	1	3	0	13	12
12	STREUN, TATIANA	F	8	4-8	0-0	0-2	6	4	10	1	3	1	0	3	15	16
15	GARDNER, CASSIDY	G	0	0-2	0-2	0-0	0	1	1	1	2	0	0	0	8	1
22	WALTON, RUCHAE	G	0	0-0	0-0	0-0	0	0	0	0	0	0	0	0	0	0
30	SCHULTZ, SYD	F	0	0-0	0-0	0-0	0	0	0	1	0	0	0	0	3	-2
35	FRAZIER, BELLE	G	8	3-8	2-5	0-0	2	0	2	1	2	1	0	1	15	16
53	HANSEN, DESIRAE	G	11	4-8	2-5	1-2	1	3	4	0	2	2	0	3	17	-1
01	DENSON, LABREA	G	0	0-2	0-0	0-0	0	0	0	1	0	0	0	0	2	5
03	JIMENEZ, KYLIE	G	10	4-10	0-4	2-2	1	2	3	0	0	3	1	2	18	3
	TEAM		0	0-0	0-0	0-0	1	2	3	0	0	0	0	0	0	
TOTALS			39	16-44	4-16	3-6	13	19	32	7	9	8	4	9	100	

Shooting By Period

Period	FG	FG%	3FG	3FG%	FT	FT%
1st Qtr	7-21	33%	3-10	30%	2-4	50%
2nd Qtr	9-23	39%	1-6	17%	1-2	50%
1st Half	16-44	36%	4-16	25%	3-6	50%
Game	33-79	41.8%	5-23	21.7%	8-13	61.5%

Deadball Rebounds: 1,1

Last FG Half: PSU 2nd-00:41

Game Notes:

Officials: , ,
Attendance: 347

Start Time: 08:04 PM ET
End Time: 09:37 PM ET
Game Duration: 1:32

Score	1st	2nd	3rd	4th	TOT
WPU	17	14	9	11	51
PSU	19	20	27	13	79

Points from (This Period)	WPU	PSU
In the Paint	6	22
Off Turns	14	14
2nd Chance	0	10
Fast Break	3	6
Bench	8	0

Official Box Score
Warner Pacific vs Portland St.
First Quarter Statistics Only
October 30, 2019 at Viking Pavilion (Stoller Court) - Portland



Warner Pacific 17

No.	Player	S	Pts	FG	3FG	FT	OR	DR	TR	PF	A	TO	Blk	Stl	Min	+/-
05	MORGAN, SAMANTHA	g	0	0-0	0-0	0-0	0	0	0	1	0	3	0	0	4	-5
13	WHITMORE, PAYTON	g	0	0-1	0-1	0-0	0	1	1	0	1	0	0	0	7	-4
25	KRUGER, KALI	f	4	1-2	0-0	2-2	0	3	3	0	0	0	2	0	9	-2
32	BRUNO, GABRIELLA	g	2	0-5	0-0	2-2	0	2	2	0	0	0	0	0	6	0
34	PANTOJA, CELESTE	g	8	2-4	1-3	3-3	0	2	2	0	0	0	0	3	10	-2
01	KIRZY, MYA	g	0	0-0	0-0	0-0	0	1	1	1	1	0	0	0	5	-2
04	FARNER, ANNA	g	0	0-0	0-0	0-0	0	0	0	0	0	1	0	0	3	2
12	GARCIA, RAQUEL	g	0	0-0	0-0	0-0	0	0	0	0	0	0	0	0	0	0
23	JACKSON, COURTNEY	G	3	1-4	1-4	0-0	0	0	0	1	1	0	0	0	6	3
TEAM							1	1	2	0	0	0	0	0	0	0
TOTALS			17	4-16	2-8	7-7	1	10	11	3	3	4	2	3	50	

Shooting By Period

Period	FG	FG%	3FG	3FG%	FT	FT%
1st Qtr	4-16	25%	2-8	25%	7-7	100%
2nd Qtr	5-15	33%	4-8	50%	0-0	0%
1st Half	4-16	25%	2-8	25%	7-7	100%
1st Half	9-31	29%	6-16	38%	7-7	100%
Game	17-68	25.0%	6-33	18.2%	11-12	91.7%

Deadball Rebounds: 3,0

Portland St. 19

No.	Player	S	Pts	FG	3FG	FT	OR	DR	TR	PF	A	TO	Blk	Stl	Min	+/-
03	JIMENEZ, KYLIE	G	8	3-6	0-2	2-2	0	0	0	0	0	2	0	0	10	4
11	STOTLER, JORDAN	F	0	0-3	0-0	0-0	1	3	4	1	0	0	1	0	5	2
12	STREUN, TATIANA	F	2	1-2	0-0	0-2	2	3	5	1	1	1	0	0	7	4
35	FRAZIER, BELLE	G	3	1-3	1-2	0-0	1	0	1	0	1	0	0	0	7	4
53	HANSEN, DESIRAE	G	6	2-6	2-5	0-0	1	2	3	0	2	1	0	3	10	2
01	DENSON, LABREA	G	0	0-0	0-0	0-0	0	0	0	1	0	0	0	0	0	-2
10	CANZOBRE, MARINA	F	0	0-0	0-0	0-0	0	1	1	0	0	0	0	0	5	0
15	GARDNER, CASSIDY	G	0	0-1	0-1	0-0	0	1	1	1	1	0	0	0	3	-2
22	WALTON, RUCHAE	G	0	0-0	0-0	0-0	0	0	0	0	0	0	0	0	0	0
30	SCHULTZ, SYD	F	0	0-0	0-0	0-0	0	0	0	1	0	0	0	0	3	-2
TEAM							0	1	1	0	0	0	0	0	0	
TOTALS			19	7-21	3-10	2-4	5	11	16	5	5	4	1	3	50	

Shooting By Period

Period	FG	FG%	3FG	3FG%	FT	FT%
1st Qtr	7-21	33%	3-10	30%	2-4	50%
2nd Qtr	9-23	39%	1-6	17%	1-2	50%
1st Half	7-21	33%	3-10	30%	2-4	50%
1st Half	16-44	36%	4-16	25%	3-6	50%
Game	33-79	41.8%	5-23	21.7%	8-13	61.5%

Deadball Rebounds: 1,1

Game Notes:

Officials: , ,
Attendance: 347

Start Time: 08:04 PM ET
End Time: 09:37 PM ET
Game Duration: 1:32

Score	1st	2nd	3rd	4th	TOT
WPU	17	14	9	11	51
PSU	19	20	27	13	79

Points from (This Period)	WPU	PSU
In the Paint	4	8
Off Turns	5	2
2nd Chance	0	0
Fast Break	3	4
Bench	3	0

Official Play-By-Play
Warner Pacific vs Portland St.
First Quarter
October 30, 2019 at Viking Pavilion (Stoller Court) - Portland



Period 1

Starters:

Warner Pacific: 5 MORGAN,SAMANTHA (g); 13 WHITMORE,PAYTON (g); 25 KRUGER,KALI (f); 32 BRUNO,GABRIELLA (g); 34 PANTOJA,CELESTE (g);
Portland St.: 11 STOTLER,JORDAN (F); 12 STREUN,TATIANA (F); 35 FRAZIER,BELLE (G); 53 HANSEN,DESIRAE (G); 3 JIMENEZ,KYLIE (G);

Time	VISITORS: Warner Pacific	Score	Margin	HOME: Portland St.
09:52				MISSED 3PTR by HANSEN, DESIRAE
09:47				REBOUND (OFF) by STREUN, TATIANA
09:40				TURNOVER (BADPASS) by HANSEN, DESIRAE
09:40	STEAL by PANTOJA, CELESTE			
09:33	TURNOVER (LOSTBALL) by MORGAN, SAMANTHA			
09:33				STEAL by HANSEN, DESIRAE
09:28				TURNOVER (TRAVEL) by STREUN, TATIANA
09:01	MISSED JUMPER by BRUNO, GABRIELLA			
08:57				REBOUND (DEF) by STREUN, TATIANA
08:53				MISSED LAYUP by STOTLER, JORDAN
08:48				REBOUND (OFF) by FRAZIER, BELLE
08:47				MISSED LAYUP by FRAZIER, BELLE
08:47	BLOCK by KRUGER, KALI			
08:38				REBOUND (OFF) by STREUN, TATIANA
08:36	MISSED JUMPER by BRUNO, GABRIELLA			
08:33				REBOUND (DEF) by TEAM
08:23				MISSED 3PTR by JIMENEZ, KYLIE
08:19	REBOUND (DEF) by KRUGER, KALI			
07:58	MISSED JUMPER by KRUGER, KALI			
07:58				BLOCK by STOTLER, JORDAN
07:51				REBOUND (DEF) by STOTLER, JORDAN
07:48		3-0	H 3	GOOD! 3PTR by FRAZIER, BELLE
07:19	MISSED JUMPER by BRUNO, GABRIELLA			
07:15				REBOUND (DEF) by HANSEN, DESIRAE
07:10				MISSED LAYUP by STOTLER, JORDAN
07:10	BLOCK by KRUGER, KALI			
07:10	REBOUND (DEF) by TEAM			
06:58	TURNOVER (BADPASS) by MORGAN, SAMANTHA			
06:48				MISSED JUMPER by JIMENEZ, KYLIE
06:43	REBOUND (DEF) by BRUNO, GABRIELLA			
06:32	MISSED JUMPER by BRUNO, GABRIELLA			
06:29				REBOUND (DEF) by STREUN, TATIANA
06:24		5-0	H 5	GOOD! JUMPER by STREUN, TATIANA [PNT]
06:24				ASSIST by FRAZIER, BELLE
06:10	TURNOVER (BADPASS) by MORGAN, SAMANTHA			
06:10				STEAL by HANSEN, DESIRAE
06:05	FOUL (PERSONAL) by MORGAN, SAMANTHA			
06:05	SUB OUT: MORGAN, SAMANTHA			
06:05	SUB IN: JACKSON, COURTNEY			
06:05				MISSED FT by STREUN, TATIANA
06:05				REBOUND (OFF) by TEAM
06:05				MISSED FT by STREUN, TATIANA
06:03	REBOUND (DEF) by KRUGER, KALI			
05:49	MISSED 3PTR by JACKSON, COURTNEY			
05:45				REBOUND (DEF) by STOTLER, JORDAN
05:38				MISSED 3PTR by JIMENEZ, KYLIE
05:34				REBOUND (OFF) by STOTLER, JORDAN
05:31				MISSED LAYUP by STOTLER, JORDAN
05:27	REBOUND (DEF) by BRUNO, GABRIELLA			
05:18	GOOD! 3PTR by PANTOJA, CELESTE	5-3	H 2	
05:18	ASSIST by JACKSON, COURTNEY			
05:10				MISSED 3PTR by HANSEN, DESIRAE
05:05	REBOUND (DEF) by PANTOJA, CELESTE			
05:02	MISSED LAYUP by BRUNO, GABRIELLA			
04:58				REBOUND (DEF) by STOTLER, JORDAN
04:56				TURNOVER (BADPASS) by JIMENEZ, KYLIE
04:56	STEAL by PANTOJA, CELESTE			
04:50				FOUL (PERSONAL) by STOTLER, JORDAN
04:50				SUB OUT: STOTLER, JORDAN
04:50				SUB IN: CANZOBRE, MARINA
04:50	GOOD! FT by BRUNO, GABRIELLA	5-4	H 1	
04:50	GOOD! FT by BRUNO, GABRIELLA	5-5	T	
04:50	SUB OUT: BRUNO, GABRIELLA			
04:50	SUB IN: KIRZY, MYA			
04:32		8-5	H 3	GOOD! 3PTR by HANSEN, DESIRAE
04:32				ASSIST by STREUN, TATIANA
04:14	GOOD! 3PTR by JACKSON, COURTNEY	8-8	T	
04:14	ASSIST by WHITMORE, PAYTON			
04:01				MISSED 3PTR by FRAZIER, BELLE

Time	VISITORS: Warner Pacific	Score	Margin	HOME: Portland St.
03:57				REBOUND (OFF) by HANSEN, DESIRAE
03:56				MISSED JUMPER by HANSEN, DESIRAE
03:51	REBOUND (DEF) by KRUGER, KALI			
03:45	MISSED 3PTR by WHITMORE, PAYTON			
03:41				REBOUND (DEF) by STREUN, TATIANA
03:33		10-8	H 2	GOOD! LAYUP by JIMENEZ, KYLIE
03:33				ASSIST by HANSEN, DESIRAE
03:21	MISSED 3PTR by PANTOJA, CELESTE			
03:16				REBOUND (DEF) by HANSEN, DESIRAE
03:13		12-8	H 4	GOOD! LAYUP by JIMENEZ, KYLIE [FB]
03:13				ASSIST by HANSEN, DESIRAE
02:53				FOUL (PERSONAL) by STREUN, TATIANA
02:53				SUB OUT: STREUN, TATIANA
02:53				SUB OUT: FRAZIER, BELLE
02:53				SUB IN: GARDNER, CASSIDY
02:53				SUB IN: SCHULTZ, SYD
02:53	SUB OUT: WHITMORE, PAYTON			
02:53	SUB IN: FARNER, ANNA			
02:53				FOUL (PERSONAL) by GARDNER, CASSIDY
02:53	GOOD! FT by KRUGER, KALI	12-9	H 3	
02:53	GOOD! FT by KRUGER, KALI	12-10	H 2	
02:32		15-10	H 5	GOOD! 3PTR by HANSEN, DESIRAE
02:32				ASSIST by GARDNER, CASSIDY
02:16	MISSED 3PTR by PANTOJA, CELESTE			
02:11				REBOUND (DEF) by CANZOBRE, MARINA
02:03	FOUL (PERSONAL) by KIRZY, MYA			
01:59				MISSED 3PTR by HANSEN, DESIRAE
01:55	REBOUND (DEF) by KIRZY, MYA			
01:40	GOOD! JUMPER by KRUGER, KALI [PNT]	15-12	H 3	
01:40	ASSIST by KIRZY, MYA			
01:30				TURNOVER (LOSTBALL) by JIMENEZ, KYLIE
01:30	STEAL by PANTOJA, CELESTE			
01:27	GOOD! LAYUP by PANTOJA, CELESTE [FB]	15-14	H 1	
01:27				FOUL (PERSONAL) by SCHULTZ, SYD
01:27	GOOD! FT by PANTOJA, CELESTE [FB]	15-15	T	
01:26				MISSED 3PTR by GARDNER, CASSIDY
01:21	REBOUND (DEF) by PANTOJA, CELESTE			
01:03	TURNOVER (LOSTBALL) by FARNER, ANNA			
01:03				STEAL by HANSEN, DESIRAE
00:57		17-15	H 2	GOOD! JUMPER by JIMENEZ, KYLIE [FB/PNT]
00:38	MISSED 3PTR by JACKSON, COURTNEY			
00:36	REBOUND (OFF) by TEAM			
00:36	SUB OUT: KRUGER, KALI			
00:36	SUB IN: BRUNO, GABRIELLA			
00:21	MISSED 3PTR by JACKSON, COURTNEY			
00:17				REBOUND (DEF) by GARDNER, CASSIDY
00:15	FOUL (PERSONAL) by JACKSON, COURTNEY			
00:15				SUB OUT: HANSEN, DESIRAE
00:15				SUB IN: STOTLER, JORDAN
00:15	SUB OUT: JACKSON, COURTNEY			
00:15	SUB IN: MORGAN, SAMANTHA			
00:15		18-15	H 3	GOOD! FT by JIMENEZ, KYLIE
00:15		19-15	H 4	GOOD! FT by JIMENEZ, KYLIE
00:15				SUB OUT: JIMENEZ, KYLIE
00:15				SUB IN: DENSON, LABREA
00:06				FOUL (PERSONAL) by DENSON, LABREA
00:06	GOOD! FT by PANTOJA, CELESTE	19-16	H 3	
00:06	GOOD! FT by PANTOJA, CELESTE	19-17	H 2	

Warner Pacific 17, Portland St. 19

Points from (This Period)	WPU	PSU
In the Paint	4	8
Off Turns	5	2
2nd Chance	0	0
Fast Break	3	4
Bench	3	0

Official Box Score
Warner Pacific vs Portland St.
Second Quarter Statistics Only
October 30, 2019 at Viking Pavilion (Stoller Court) - Portland



Warner Pacific 14

No.	Player	S	Pts	FG	3FG	FT	OR	DR	TR	PF	A	TO	Blk	Stl	Min	+/-
05	MORGAN, SAMANTHA	g	3	1-3	1-2	0-0	0	1	1	0	0	2	0	1	8	-2
13	WHITMORE, PAYTON	g	0	0-2	0-1	0-0	0	0	0	0	2	0	0	0	5	-1
25	KRUGER, KALI	f	0	0-0	0-0	0-0	0	3	3	1	0	0	2	0	9	-3
32	BRUNO, GABRIELLA	g	0	0-1	0-1	0-0	0	1	1	0	1	3	0	0	3	-3
34	PANTOJA, CELESTE	g	6	2-3	2-2	0-0	0	1	1	0	0	1	0	0	8	-12
01	KIRZY, MYA	g	0	0-0	0-0	0-0	0	0	0	0	0	1	0	0	1	-3
04	FARNER, ANNA	g	0	0-0	0-0	0-0	1	0	1	0	0	0	0	0	3	3
12	GARCIA, RAQUEL	g	0	0-0	0-0	0-0	1	0	1	0	1	0	0	0	4	-10
23	JACKSON, COURTNEY	G	5	2-6	1-2	0-0	0	1	1	1	1	1	0	0	8	1
TEAM							0	0	0	0	0	0	0	0	0	
TOTALS			14	5-15	4-8	0-0	2	7	9	2	5	8	2	1	50	

Shooting By Period

Period	FG	FG%	3FG	3FG%	FT	FT%
3rd Qtr	4-16	25%	0-7	00%	1-1	100%
4th Qtr	4-21	19%	0-10	00%	3-4	75%
2nd Half	5-15	33%	4-8	50%	0-0	0%
2nd Half	8-37	22%	0-17	00%	4-5	80%
Game	17-68	25.0%	6-33	18.2%	11-12	91.7%

Deadball Rebounds: 3,0

Portland St. 20

No.	Player	S	Pts	FG	3FG	FT	OR	DR	TR	PF	A	TO	Blk	Stl	Min	+/-
03	JIMENEZ, KYLIE	G	2	1-4	0-2	0-0	1	2	3	0	0	1	1	2	8	-1
11	STOTLER, JORDAN	F	2	1-3	0-0	0-0	1	3	4	1	0	1	2	0	8	10
12	STREUN, TATIANA	F	6	3-6	0-0	0-0	4	1	5	0	2	0	0	3	8	12
35	FRAZIER, BELLE	G	5	2-5	1-3	0-0	1	0	1	1	1	1	0	1	8	12
53	HANSEN, DESIRAE	G	5	2-2	0-0	1-2	0	1	1	0	0	1	0	0	7	-3
01	DENSON, LABREA	G	0	0-2	0-0	0-0	0	0	0	0	0	0	0	0	2	7
10	CANZOBRE, MARINA	F	0	0-0	0-0	0-0	0	0	0	0	0	0	0	0	3	-10
15	GARDNER, CASSIDY	G	0	0-1	0-1	0-0	0	0	0	0	1	0	0	0	5	3
22	WALTON, RUCHAE	G	0	0-0	0-0	0-0	0	0	0	0	0	0	0	0	0	0
30	SCHULTZ, SYD	F	0	0-0	0-0	0-0	0	0	0	0	0	0	0	0	0	0
TEAM							1	1	2	0	0	0	0	0	0	
TOTALS			20	9-23	1-6	1-2	8	8	16	2	4	4	3	6	50	

Shooting By Period

Period	FG	FG%	3FG	3FG%	FT	FT%
3rd Qtr	12-22	55%	1-5	20%	2-3	67%
4th Qtr	5-13	38%	0-2	00%	3-4	75%
2nd Half	9-23	39%	1-6	17%	1-2	50%
2nd Half	17-35	49%	1-7	14%	5-7	71%
Game	33-79	41.8%	5-23	21.7%	8-13	61.5%

Deadball Rebounds: 1,1

Game Notes:

Officials: , ,
 Attendance: 347

Start Time: 08:04 PM ET
 End Time: 09:37 PM ET
 Game Duration: 1:32

Score	1st	2nd	3rd	4th	TOT
WPU	17	14	9	11	51
PSU	19	20	27	13	79

Points from (This Period)	WPU	PSU
In the Paint	2	14
Off Turns	9	12
2nd Chance	0	10
Fast Break	0	2
Bench	5	0

Official Play-By-Play
Warner Pacific vs Portland St.
Second Quarter
October 30, 2019 at Viking Pavilion (Stoller Court) - Portland



Period 2

Starters:

Warner Pacific: 5 MORGAN,SAMANTHA (g); 13 WHITMORE,PAYTON (g); 25 KRUGER,KALI (f); 32 BRUNO,GABRIELLA (g); 34 PANTOJA,CELESTE (g);
Portland St.: 11 STOTLER,JORDAN (F); 12 STREUN,TATIANA (F); 35 FRAZIER,BELLE (G); 53 HANSEN,DESIRAE (G); 3 JIMENEZ,KYLIE (G);

Time	VISITORS: Warner Pacific	Score	Margin	HOME: Portland St.
08:36				MISSED LAYUP by STREUN, TATIANA
08:36	REBOUND (DEF) by WHITMORE, PAYTON			
10:00				SUB OUT: CANZOBRE, MARINA
10:00				SUB OUT: SCHULTZ, SYD
10:00				SUB IN: STREUN, TATIANA
10:00				SUB IN: FRAZIER, BELLE
09:54	TURNOVER (3SEC) by KIRZY, MYA			
09:39				MISSED JUMPER by DENSON, LABREA
09:35	REBOUND (DEF) by MORGAN, SAMANTHA			
09:28	MISSED 3PTR by BRUNO, GABRIELLA			
09:23				REBOUND (DEF) by STREUN, TATIANA
09:15		22-17	H 5	GOOD! 3PTR by FRAZIER, BELLE
09:15				ASSIST by GARDNER, CASSIDY
08:59	TURNOVER (BADPASS) by BRUNO, GABRIELLA			
08:59	SUB OUT: KIRZY, MYA			
08:59	SUB OUT: FARNER, ANNA			
08:59	SUB IN: GARCIA, RAQUEL			
08:59	SUB IN: KRUGER, KALI			
08:48		24-17	H 7	GOOD! LAYUP by STREUN, TATIANA
08:48				ASSIST by FRAZIER, BELLE
08:41	TURNOVER (LOSTBALL) by MORGAN, SAMANTHA			
08:41				STEAL by STREUN, TATIANA
08:34				MISSED LAYUP by DENSON, LABREA
08:30	REBOUND (DEF) by BRUNO, GABRIELLA			
08:29	TURNOVER (BADPASS) by BRUNO, GABRIELLA			
08:29				STEAL by FRAZIER, BELLE
08:23				MISSED JUMPER by FRAZIER, BELLE
08:17				REBOUND (OFF) by STREUN, TATIANA
08:16		26-17	H 9	GOOD! LAYUP by STREUN, TATIANA
08:16	TIMEOUT 30SEC			
08:16				SUB OUT: DENSON, LABREA
08:16				SUB IN: JIMENEZ, KYLIE
08:16	SUB OUT: BRUNO, GABRIELLA			
08:16	SUB IN: JACKSON, COURTNEY			
08:01	TURNOVER (LOSTBALL) by MORGAN, SAMANTHA			
08:01				STEAL by STREUN, TATIANA
07:56				MISSED LAYUP by JIMENEZ, KYLIE
07:51				REBOUND (OFF) by STOTLER, JORDAN
07:51		28-17	H 11	GOOD! LAYUP by STOTLER, JORDAN
07:44	MISSED JUMPER by JACKSON, COURTNEY			
07:41				REBOUND (DEF) by STOTLER, JORDAN
07:34				TURNOVER (BADPASS) by JIMENEZ, KYLIE
07:34	STEAL by MORGAN, SAMANTHA			
07:28	MISSED LAYUP by MORGAN, SAMANTHA			
07:24	REBOUND (OFF) by GARCIA, RAQUEL			
07:23	MISSED 3PTR by MORGAN, SAMANTHA			
07:18				REBOUND (DEF) by STOTLER, JORDAN
06:54				MISSED JUMPER by STOTLER, JORDAN
06:54	BLOCK by KRUGER, KALI			
06:54				REBOUND (OFF) by TEAM
06:54				SUB OUT: GARDNER, CASSIDY
06:54				SUB IN: HANSEN, DESIRAE
06:54	SUB OUT: MORGAN, SAMANTHA			
06:54	SUB IN: WHITMORE, PAYTON			
06:50		30-17	H 13	GOOD! JUMPER by HANSEN, DESIRAE
06:50				ASSIST by STREUN, TATIANA
06:33	MISSED JUMPER by PANTOJA, CELESTE			
06:30				REBOUND (DEF) by JIMENEZ, KYLIE
06:22				MISSED LAYUP by STREUN, TATIANA
06:19				REBOUND (OFF) by FRAZIER, BELLE
06:10		32-17	H 15	GOOD! LAYUP by HANSEN, DESIRAE
05:59	MISSED JUMPER by JACKSON, COURTNEY			
05:56				REBOUND (DEF) by STOTLER, JORDAN
05:47				MISSED 3PTR by FRAZIER, BELLE
05:38	REBOUND (DEF) by PANTOJA, CELESTE			
05:37	TURNOVER (BADPASS) by PANTOJA, CELESTE			
05:37				STEAL by STREUN, TATIANA
05:33		34-17	H 17	GOOD! LAYUP by JIMENEZ, KYLIE [FB]
05:33				ASSIST by STREUN, TATIANA
05:18	GOOD! JUMPER by JACKSON, COURTNEY [PNT]	34-19	H 15	

Time	VISITORS: Warner Pacific	Score	Margin	HOME: Portland St.
05:18	ASSIST by GARCIA, RAQUEL			
04:53				TURNOVER (BADPASS) by FRAZIER, BELLE
04:53				SUB OUT: STREUN, TATIANA
04:53				SUB OUT: FRAZIER, BELLE
04:53				SUB IN: CANZOBRE, MARINA
04:53				SUB IN: GARDNER, CASSIDY
04:53	SUB OUT: GARCIA, RAQUEL			
04:53	SUB OUT: PANTOJA, CELESTE			
04:53	SUB IN: FARNER, ANNA			
04:53	SUB IN: MORGAN, SAMANTHA			
04:44	GOOD! 3PTR by JACKSON, COURTNEY	34-22	H 12	
04:44	ASSIST by WHITMORE, PAYTON			
04:28				MISSED 3PTR by GARDNER, CASSIDY
04:22	REBOUND (DEF) by KRUGER, KALI			
04:15	MISSED JUMPER by WHITMORE, PAYTON			
04:15				BLOCK by STOTLER, JORDAN
04:10	REBOUND (OFF) by FARNER, ANNA			
04:08	MISSED JUMPER by JACKSON, COURTNEY			
04:08				BLOCK by STOTLER, JORDAN
04:03				REBOUND (DEF) by JIMENEZ, KYLIE
04:02	FOUL (PERSONAL) by JACKSON, COURTNEY			
03:54				MISSED 3PTR by JIMENEZ, KYLIE
03:49	REBOUND (DEF) by KRUGER, KALI			
03:38	MISSED 3PTR by WHITMORE, PAYTON			
03:38				BLOCK by JIMENEZ, KYLIE
03:33				REBOUND (DEF) by HANSEN, DESIRAE
03:33				TURNOVER (BADPASS) by HANSEN, DESIRAE
03:19	GOOD! 3PTR by MORGAN, SAMANTHA	34-25	H 9	
03:19	ASSIST by WHITMORE, PAYTON			
03:13				TIMEOUT 30SEC
03:13				SUB OUT: CANZOBRE, MARINA
03:13				SUB IN: STREUN, TATIANA
03:13	SUB OUT: FARNER, ANNA			
03:13	SUB IN: PANTOJA, CELESTE			
02:58	FOUL (PERSONAL) by KRUGER, KALI			
02:58				SUB OUT: GARDNER, CASSIDY
02:58				SUB IN: FRAZIER, BELLE
02:58		35-25	H 10	GOOD! FT by HANSEN, DESIRAE
02:58				MISSED FT by HANSEN, DESIRAE
02:57	REBOUND (DEF) by KRUGER, KALI			
02:40				FOUL (PERSONAL) by FRAZIER, BELLE
02:37	TURNOVER (BADPASS) by JACKSON, COURTNEY			
02:37				STEAL by JIMENEZ, KYLIE
02:24				MISSED JUMPER by STOTLER, JORDAN
02:24	BLOCK by KRUGER, KALI			
02:15				REBOUND (OFF) by STREUN, TATIANA
02:14		37-25	H 12	GOOD! LAYUP by STREUN, TATIANA
02:03	MISSED 3PTR by JACKSON, COURTNEY			
02:00				REBOUND (DEF) by TEAM
01:42				MISSED 3PTR by FRAZIER, BELLE
01:37				REBOUND (OFF) by JIMENEZ, KYLIE
01:31				FOUL (OFF) by STOTLER, JORDAN
01:31				TURNOVER (OFFENSIVE) by STOTLER, JORDAN
01:31	SUB OUT: WHITMORE, PAYTON			
01:31	SUB IN: BRUNO, GABRIELLA			
01:31				SUB OUT: STOTLER, JORDAN
01:31				SUB IN: CANZOBRE, MARINA
01:18	GOOD! 3PTR by PANTOJA, CELESTE	37-28	H 9	
01:18	ASSIST by JACKSON, COURTNEY			
01:00				MISSED LAYUP by STREUN, TATIANA
00:55	REBOUND (DEF) by JACKSON, COURTNEY			
00:51	TURNOVER (BADPASS) by BRUNO, GABRIELLA			
00:51				STEAL by JIMENEZ, KYLIE
00:41		39-28	H 11	GOOD! JUMPER by FRAZIER, BELLE [PNT]
00:23	GOOD! 3PTR by PANTOJA, CELESTE	39-31	H 8	
00:23	ASSIST by BRUNO, GABRIELLA			
00:02				MISSED 3PTR by JIMENEZ, KYLIE
00:00				REBOUND (OFF) by STREUN, TATIANA
00:00				MISSED LAYUP by STREUN, TATIANA
00:00				REBOUND (OFF) by STREUN, TATIANA

Warner Pacific 31, Portland St. 39

Points from (This Period)	WPU	PSU
In the Paint	2	14
Off Turns	9	12
2nd Chance	0	10
Fast Break	0	2
Bench	5	0

Official Box Score
Warner Pacific vs Portland St.
Second Half Statistics Only
October 30, 2019 at Viking Pavilion (Stoller Court) - Portland



Warner Pacific 20

No.	Player	S	Pts	FG	3FG	FT	OR	DR	TR	PF	A	TO	Blk	Stl	Min	+/-
01	KIRZY, MYA	g	4	2-3	0-0	0-0	3	1	4	2	1	1	1	1	12	-11
04	FARNER, ANNA	g	0	0-0	0-0	0-0	3	2	5	0	0	1	0	0	12	-2
05	MORGAN, SAMANTHA	g	4	2-5	0-2	0-0	0	0	0	1	1	3	0	2	12	-24
12	GARCIA, RAQUEL	g	0	0-0	0-0	0-0	0	0	0	0	0	1	0	0	3	1
13	WHITMORE, PAYTON	g	0	0-3	0-2	0-0	1	0	1	0	1	1	0	0	7	-11
23	JACKSON, COURTNEY	G	3	1-8	0-5	1-2	1	0	1	0	1	0	0	1	11	-3
25	KRUGER, KALI	f	0	0-1	0-0	0-0	0	2	2	1	0	1	1	0	8	-9
32	BRUNO, GABRIELLA	g	7	2-11	0-3	3-3	1	3	4	2	0	1	0	1	17	-20
34	PANTOJA, CELESTE	g	2	1-6	0-5	0-0	1	3	4	0	2	1	0	1	17	-21
	TEAM		0	0-0	0-0	0-0	1	1	2	0	0	2	0	0	0	0
	TOTALS		20	8-37	0-17	4-5	11	12	23	6	6	12	2	6	100	

Shooting By Period

Period	FG	FG%	3FG	3FG%	FT	FT%
3rd Qtr	4-16	25%	0-7	00%	1-1	100%
4th Qtr	4-21	19%	0-10	00%	3-4	75%
2nd Half	8-37	22%	0-17	00%	4-5	80%
Game	17-68	25.0%	6-33	18.2%	11-12	91.7%

Deadball Rebounds: 3,0
 Last FG Half: WPU 4th-00:30

Portland St. 40

No.	Player	S	Pts	FG	3FG	FT	OR	DR	TR	PF	A	TO	Blk	Stl	Min	+/-
10	CANZOBRE, MARINA	F	5	2-6	0-0	1-2	1	1	2	0	0	0	0	1	12	-1
11	STOTLER, JORDAN	F	7	3-4	0-0	1-2	1	1	2	0	2	0	1	2	8	21
12	STREUN, TATIANA	F	12	6-6	0-0	0-0	2	4	6	3	1	0	0	0	15	26
15	GARDNER, CASSIDY	G	4	2-5	0-3	0-0	0	0	0	1	1	0	0	2	13	1
22	WALTON, RUCHAE	G	0	0-0	0-0	0-0	0	1	1	1	0	1	0	0	3	0
30	SCHULTZ, SYD	F	0	0-2	0-0	0-0	2	1	3	2	1	2	0	0	5	-6
35	FRAZIER, BELLE	G	2	0-2	0-1	2-2	1	1	2	0	3	1	0	0	15	27
53	HANSEN, DESIRAE	G	5	2-4	0-0	1-1	1	3	4	0	6	2	0	0	13	14
01	DENSON, LABREA	G	0	0-1	0-1	0-0	0	0	0	0	0	1	0	1	6	-4
03	JIMENEZ, KYLIE	G	5	2-5	1-2	0-0	0	1	1	0	0	0	0	0	10	22
	TEAM		0	0-0	0-0	0-0	0	2	2	0	0	1	0	0	0	0
	TOTALS		40	17-35	1-7	5-7	8	15	23	7	14	8	1	6	100	

Shooting By Period

Period	FG	FG%	3FG	3FG%	FT	FT%
3rd Qtr	12-22	55%	1-5	20%	2-3	67%
4th Qtr	5-13	38%	0-2	00%	3-4	75%
2nd Half	17-35	49%	1-7	14%	5-7	71%
Game	33-79	41.8%	5-23	21.7%	8-13	61.5%

Deadball Rebounds: 1,1
 Last FG Half: PSU 4th-00:40

Game Notes:

Officials: , ,
 Attendance: 347

Start Time: 08:04 PM ET
 End Time: 09:37 PM ET
 Game Duration: 1:32

Score	1st	2nd	3rd	4th	TOT
WPU	17	14	9	11	51
PSU	19	20	27	13	79

Points from (This Period)	WPU	PSU
In the Paint	14	30
Off Turns	7	12
2nd Chance	5	7
Fast Break	6	6
Bench	7	9

Official Box Score
Warner Pacific vs Portland St.
Third Quarter Statistics Only
October 30, 2019 at Viking Pavilion (Stoller Court) - Portland



Warner Pacific 20

No.	Player	S	Pts	FG	3FG	FT	OR	DR	TR	PF	A	TO	Blk	Stl	Min	+/-
05	MORGAN, SAMANTHA	g	2	1-3	0-2	0-0	0	0	0	1	0	3	0	1	6	-17
13	WHITMORE, PAYTON	g	0	0-1	0-0	0-0	0	0	0	0	0	0	0	0	4	-11
25	KRUGER, KALI	f	0	0-1	0-0	0-0	0	2	2	1	0	0	1	0	5	-9
32	BRUNO, GABRIELLA	g	5	2-5	0-0	1-1	0	2	2	1	0	1	0	0	10	-18
34	PANTOJA, CELESTE	g	0	0-2	0-2	0-0	1	1	2	0	2	1	0	0	10	-18
01	KIRZY, MYA	g	0	0-0	0-0	0-0	1	0	1	1	1	0	1	0	5	-9
04	FARNER, ANNA	g	0	0-0	0-0	0-0	1	0	1	0	0	0	0	0	4	-1
12	GARCIA, RAQUEL	g	0	0-0	0-0	0-0	0	0	0	0	0	0	0	0	0	0
23	JACKSON, COURTNEY	G	2	1-4	0-3	0-0	0	0	0	0	1	0	0	0	6	-7
TEAM							1	0	1	0		2				
TOTALS			9	4-16	0-7	1-1	4	5	9	4	4	7	2	1	50	

Shooting By Period

Period	FG	FG%	3FG	3FG%	FT	FT%
2nd Half	0-0	0%	0-0	0%	0-0	0%
Game	17-68	25.0%	6-33	18.2%	11-12	91.7%

Deadball Rebounds: 3,0

Portland St. 40

No.	Player	S	Pts	FG	3FG	FT	OR	DR	TR	PF	A	TO	Blk	Stl	Min	+/-
03	JIMENEZ, KYLIE	G	3	1-4	1-2	0-0	0	0	0	0	0	0	0	0	8	18
11	STOTLER, JORDAN	F	7	3-4	0-0	1-2	1	1	2	0	2	0	1	1	6	17
12	STREUN, TATIANA	F	8	4-4	0-0	0-0	2	3	5	2	1	0	0	0	9	20
35	FRAZIER, BELLE	G	0	0-1	0-1	0-0	0	0	0	0	3	0	0	0	9	20
53	HANSEN, DESIRAE	G	5	2-2	0-0	1-1	0	2	2	0	3	1	0	0	6	12
01	DENSON, LABREA	G	0	0-1	0-1	0-0	0	0	0	0	0	0	0	0	2	0
10	CANZOBRE, MARINA	F	0	0-1	0-0	0-0	1	0	1	0	0	0	0	0	4	1
15	GARDNER, CASSIDY	G	4	2-3	0-1	0-0	0	0	0	1	0	0	0	1	5	4
22	WALTON, RUCHAE	G	0	0-0	0-0	0-0	0	0	0	0	0	0	0	0	0	0
30	SCHULTZ, SYD	F	0	0-2	0-0	0-0	2	0	2	0	1	0	0	0	1	-2
TEAM							0	0	0	0		0				
TOTALS			27	12-22	1-5	2-3	6	6	12	3	10	1	1	2	50	

Shooting By Period

Period	FG	FG%	3FG	3FG%	FT	FT%
2nd Half	0-0	0%	0-0	0%	0-0	0%
Game	33-79	41.8%	5-23	21.7%	8-13	61.5%

Deadball Rebounds: 1,1

Game Notes:
 Officials: , ,
 Attendance: 347

Start Time: 08:04 PM ET
 End Time: 09:37 PM ET
 Game Duration: 1:32

Score	1st	2nd	3rd	4th	TOT
WPU	17	14	9	11	51
PSU	19	20	27	13	79

Points from (This Period)	WPU	PSU
In the Paint	8	20
Off Turns	2	8
2nd Chance	2	5
Fast Break	2	2
Bench	2	4

Official Play-By-Play
Warner Pacific vs Portland St.
Third Quarter
October 30, 2019 at Viking Pavilion (Stoller Court) - Portland



Period 3

Starters:

Warner Pacific: 5 MORGAN,SAMANTHA (g); 13 WHITMORE,PAYTON (g); 25 KRUGER,KALI (f); 32 BRUNO,GABRIELLA (g); 34 PANTOJA,CELESTE (g);
Portland St.: 11 STOTLER,JORDAN (F); 12 STREUN,TATIANA (F); 35 FRAZIER,BELLE (G); 53 HANSEN,DESIRAE (G); 3 JIMENEZ,KYLIE (G);

Time	VISITORS: Warner Pacific	Score	Margin	HOME: Portland St.
10:00				SUB OUT: CANZOBRE, MARINA
10:00				SUB IN: STOTLER, JORDAN
10:00	SUB OUT: JACKSON, COURTNEY			
10:00	SUB IN: WHITMORE, PAYTON			
09:56		41-31	H 10	GOOD! LAYUP by STOTLER, JORDAN
09:56				ASSIST by HANSEN, DESIRAE
09:27	MISSED JUMPER by WHITMORE, PAYTON			
09:27				BLOCK by STOTLER, JORDAN
09:27	REBOUND (OFF) by TEAM			
09:23	TURNOVER (SHOTCLOCK) by TEAM			
08:57		43-31	H 12	GOOD! LAYUP by STREUN, TATIANA [PNT]
08:57				ASSIST by FRAZIER, BELLE
08:34	MISSED 3PTR by PANTOJA, CELESTE			
08:30				REBOUND (DEF) by STOTLER, JORDAN
08:22		45-31	H 14	GOOD! LAYUP by HANSEN, DESIRAE
08:04	MISSED 3PTR by MORGAN, SAMANTHA			
07:59				REBOUND (DEF) by HANSEN, DESIRAE
07:49				MISSED 3PTR by FRAZIER, BELLE
07:45	REBOUND (DEF) by KRUGER, KALI			
07:32	MISSED JUMPER by KRUGER, KALI			
07:29				REBOUND (DEF) by STREUN, TATIANA
07:18	FOUL (PERSONAL) by KRUGER, KALI			
07:18		46-31	H 15	GOOD! FT by STOTLER, JORDAN
07:17				MISSED FT by STOTLER, JORDAN
07:16	REBOUND (DEF) by KRUGER, KALI			
07:05	TURNOVER (TRAVEL) by BRUNO, GABRIELLA			
06:51		48-31	H 17	GOOD! LAYUP by STREUN, TATIANA
06:51				ASSIST by HANSEN, DESIRAE
06:46	TURNOVER (TRAVEL) by MORGAN, SAMANTHA			
06:46	SUB OUT: KRUGER, KALI			
06:46	SUB IN: KIRZY, MYA			
06:37				MISSED LAYUP by STOTLER, JORDAN
06:37	REBOUND (DEF) by BRUNO, GABRIELLA			
06:25	MISSED 3PTR by PANTOJA, CELESTE			
06:22				REBOUND (DEF) by HANSEN, DESIRAE
06:16		50-31	H 19	GOOD! JUMPER by STOTLER, JORDAN [PNT]
06:16				ASSIST by HANSEN, DESIRAE
06:04	MISSED JUMPER by BRUNO, GABRIELLA			
06:03				REBOUND (DEF) by TEAM
06:03	FOUL (PERSONAL) by KIRZY, MYA			
06:03	SUB OUT: WHITMORE, PAYTON			
06:03	SUB IN: JACKSON, COURTNEY			
05:44				MISSED 3PTR by JIMENEZ, KYLIE
05:39				REBOUND (OFF) by STOTLER, JORDAN
05:32		52-31	H 21	GOOD! JUMPER by HANSEN, DESIRAE [PNT]
05:32				ASSIST by STOTLER, JORDAN
05:32	FOUL (PERSONAL) by MORGAN, SAMANTHA			
05:32		53-31	H 22	GOOD! FT by HANSEN, DESIRAE
05:22	TURNOVER (TRAVEL) by MORGAN, SAMANTHA			
05:13				TURNOVER (BADPASS) by HANSEN, DESIRAE
05:13	STEAL by MORGAN, SAMANTHA			
05:08	MISSED 3PTR by JACKSON, COURTNEY			
05:05	REBOUND (OFF) by KIRZY, MYA			
05:05				FOUL (PERSONAL) by STREUN, TATIANA
05:05				SUB OUT: HANSEN, DESIRAE
05:05				SUB IN: GARDNER, CASSIDY
04:59	MISSED 3PTR by MORGAN, SAMANTHA			
04:52	REBOUND (OFF) by PANTOJA, CELESTE			
04:50	GOOD! JUMPER by MORGAN, SAMANTHA [PNT]	53-33	H 20	
04:50	ASSIST by PANTOJA, CELESTE			
04:25		56-33	H 23	GOOD! 3PTR by JIMENEZ, KYLIE
04:25				ASSIST by STOTLER, JORDAN
04:12	TURNOVER (BADPASS) by MORGAN, SAMANTHA			
04:12				STEAL by STOTLER, JORDAN
03:56		58-33	H 25	GOOD! LAYUP by STOTLER, JORDAN
03:56				ASSIST by FRAZIER, BELLE
03:49	TURNOVER (BADPASS) by PANTOJA, CELESTE			
03:49				STEAL by GARDNER, CASSIDY
03:44				MISSED LAYUP by JIMENEZ, KYLIE
03:41	REBOUND (DEF) by BRUNO, GABRIELLA			

Time	VISITORS: Warner Pacific	Score	Margin	HOME: Portland St.
03:41				
06:37	BLOCK by KIRZY, MYA			
03:41				SUB OUT: STOTLER, JORDAN
03:41				SUB IN: CANZOBRE, MARINA
03:41	SUB OUT: MORGAN, SAMANTHA			
03:41	SUB IN: FARNER, ANNA			
03:27	MISSED 3PTR by JACKSON, COURTNEY			
03:25	REBOUND (OFF) by TEAM			
03:25				FOUL (PERSONAL) by GARDNER, CASSIDY
03:23	MISSED JUMPER by BRUNO, GABRIELLA			
03:18				REBOUND (DEF) by STREUN, TATIANA
03:15		60-33	H 27	GOOD! LAYUP by GARDNER, CASSIDY [FB/PNT]
03:15				ASSIST by STREUN, TATIANA
02:55	GOOD! LAYUP by BRUNO, GABRIELLA [PNT]	60-35	H 25	
02:55	ASSIST by KIRZY, MYA			
02:55				FOUL (PERSONAL) by STREUN, TATIANA
02:55	GOOD! FT by BRUNO, GABRIELLA	60-36	H 24	
02:32		62-36	H 26	GOOD! LAYUP by STREUN, TATIANA [PNT]
02:32				ASSIST by FRAZIER, BELLE
02:19	MISSED JUMPER by BRUNO, GABRIELLA			
02:15	REBOUND (OFF) by FARNER, ANNA			
02:12	MISSED 3PTR by JACKSON, COURTNEY			
02:08				REBOUND (DEF) by STREUN, TATIANA
01:57				MISSED LAYUP by JIMENEZ, KYLIE
01:56				REBOUND (OFF) by STREUN, TATIANA
01:56				SUB OUT: JIMENEZ, KYLIE
01:56				SUB IN: DENSON, LABREA
01:56	SUB OUT: KIRZY, MYA			
01:56	SUB IN: KRUGER, KALI			
01:53				MISSED 3PTR by DENSON, LABREA
01:48				REBOUND (OFF) by STREUN, TATIANA
01:48		64-36	H 28	GOOD! LAYUP by STREUN, TATIANA
01:25				SUB OUT: STREUN, TATIANA
01:25				SUB IN: SCHULTZ, SYD
01:17	TURNOVER (SHOTCLOCK) by TEAM			
01:13				SUB OUT: FRAZIER, BELLE
01:13				SUB IN: HANSEN, DESIRAE
01:06		66-36	H 30	GOOD! JUMPER by GARDNER, CASSIDY
01:06				ASSIST by SCHULTZ, SYD
00:49	GOOD! JUMPER by BRUNO, GABRIELLA [PNT]	66-38	H 28	
00:49	ASSIST by JACKSON, COURTNEY			
00:26				MISSED 3PTR by GARDNER, CASSIDY
00:22				REBOUND (OFF) by CANZOBRE, MARINA
00:22				MISSED JUMPER by CANZOBRE, MARINA
00:22				REBOUND (OFF) by SCHULTZ, SYD
00:22	FOUL (PERSONAL) by BRUNO, GABRIELLA			
00:12				MISSED LAYUP by SCHULTZ, SYD
00:12	BLOCK by KRUGER, KALI			
00:04				REBOUND (OFF) by SCHULTZ, SYD
00:03				MISSED LAYUP by SCHULTZ, SYD
00:00	REBOUND (DEF) by PANTOJA, CELESTE			
00:00	GOOD! LAYUP by JACKSON, COURTNEY [FB]	66-40	H 26	
00:00	ASSIST by PANTOJA, CELESTE			

Warner Pacific 40, Portland St. 66

Points from (This Period)	WPU	PSU
In the Paint	8	20
Off Turns	2	8
2nd Chance	2	5
Fast Break	2	2
Bench	2	4

Official Box Score
Warner Pacific vs Portland St.
Fourth Quarter Statistics Only
October 30, 2019 at Viking Pavilion (Stoller Court) - Portland



Warner Pacific 11

No.	Player	S	Pts	FG	3FG	FT	OR	DR	TR	PF	A	TO	Blk	Stl	Min	+/-
05	MORGAN, SAMANTHA	g	2	1-2	0-0	0-0	0	0	0	0	1	0	0	1	6	-7
13	WHITMORE, PAYTON	g	0	0-2	0-2	0-0	1	0	1	0	1	1	0	0	3	0
25	KRUGER, KALI	f	0	0-0	0-0	0-0	0	0	0	0	0	1	0	0	3	0
32	BRUNO, GABRIELLA	g	2	0-6	0-3	2-2	1	1	2	1	0	0	0	1	7	-2
34	PANTOJA, CELESTE	g	2	1-4	0-3	0-0	0	2	2	0	0	0	0	1	7	-3
01	KIRZY, MYA	g	4	2-3	0-0	0-0	2	1	3	1	0	1	0	1	7	-2
04	FARNER, ANNA	g	0	0-0	0-0	0-0	2	2	4	0	0	1	0	0	8	-1
12	GARCIA, RAQUEL	g	0	0-0	0-0	0-0	0	0	0	0	0	1	0	0	3	1
23	JACKSON, COURTNEY	G	1	0-4	0-2	1-2	1	0	1	0	0	0	0	1	5	4
TEAM							0	1	1	0	0	0	0	0		
TOTALS			11	4-21	0-10	3-4	7	7	14	2	2	5	0	5	50	

Shooting By Period

Period	FG	FG%	3FG	3FG%	FT	FT%
Game	17-68	25.0%	6-33	18.2%	11-12	91.7%

Deadball Rebounds: 3,0

Portland St. 13

No.	Player	S	Pts	FG	3FG	FT	OR	DR	TR	PF	A	TO	Blk	Stl	Min	+/-
03	JIMENEZ, KYLIE	G	2	1-1	0-0	0-0	0	1	1	0	0	0	0	0	2	4
11	STOTLER, JORDAN	F	0	0-0	0-0	0-0	0	0	0	0	0	0	0	1	2	4
12	STREUN, TATIANA	F	4	2-2	0-0	0-0	0	1	1	1	0	0	0	0	6	6
35	FRAZIER, BELLE	G	2	0-1	0-0	2-2	1	1	2	0	0	1	0	0	6	7
53	HANSEN, DESIRAE	G	0	0-2	0-0	0-0	1	1	2	0	3	1	0	0	7	2
01	DENSON, LABREA	G	0	0-0	0-0	0-0	0	0	0	0	0	1	0	1	4	-4
10	CANZOBRE, MARINA	F	5	2-5	0-0	1-2	0	1	1	0	0	0	0	1	8	-2
15	GARDNER, CASSIDY	G	0	0-2	0-2	0-0	0	0	0	0	1	0	0	1	8	-3
22	WALTON, RUCHAE	G	0	0-0	0-0	0-0	0	1	1	1	0	1	0	0	3	0
30	SCHULTZ, SYD	F	0	0-0	0-0	0-0	0	1	1	2	0	2	0	0	4	-4
TEAM							0	2	2	0	1	0	0	0		
TOTALS			13	5-13	0-2	3-4	2	9	11	4	4	7	0	4	50	

Shooting By Period

Period	FG	FG%	3FG	3FG%	FT	FT%
Game	33-79	41.8%	5-23	21.7%	8-13	61.5%

Deadball Rebounds: 1,1

Game Notes:

Officials: , ,
 Attendance: 347

Start Time: 08:04 PM ET
 End Time: 09:37 PM ET
 Game Duration: 1:32

Score	1st	2nd	3rd	4th	TOT
WPU	17	14	9	11	51
PSU	19	20	27	13	79

Points from (This Period)	WPU	PSU
In the Paint	6	10
Off Turns	5	4
2nd Chance	3	2
Fast Break	4	4
Bench	5	5

Official Play-By-Play
Warner Pacific vs Portland St.
Fourth Quarter
October 30, 2019 at Viking Pavilion (Stoller Court) - Portland



Period 4

Starters:

Warner Pacific: 5 MORGAN,SAMANTHA (g); 13 WHITMORE,PAYTON (g); 25 KRUGER,KALI (f); 32 BRUNO,GABRIELLA (g); 34 PANTOJA,CELESTE (g);
Portland St.: 11 STOTLER,JORDAN (F); 12 STREUN,TATIANA (F); 35 FRAZIER,BELLE (G); 53 HANSEN,DESIRAE (G); 3 JIMENEZ,KYLIE (G);

Time	VISITORS: Warner Pacific	Score	Margin	HOME: Portland St.
09:44				MISSED 3PTR by GARDNER, CASSIDY
09:39				REBOUND (OFF) by HANSEN, DESIRAE
09:38				MISSED LAYUP by HANSEN, DESIRAE
09:37	REBOUND (DEF) by TEAM			
09:27				FOUL (PERSONAL) by SCHULTZ, SYD
09:27	GOOD! FT by BRUNO, GABRIELLA	66-41	H 25	
09:27	GOOD! FT by BRUNO, GABRIELLA	66-42	H 24	
09:19				TURNOVER (BADPASS) by HANSEN, DESIRAE
09:19	STEAL by PANTOJA, CELESTE			
09:15	GOOD! LAYUP by PANTOJA, CELESTE [FB]	66-44	H 22	
09:09				TURNOVER (BADPASS) by SCHULTZ, SYD
09:09	STEAL by JACKSON, COURTNEY			
09:08	TIMEOUT 30SEC			
09:08				SUB OUT: DENSON, LABREA
09:08				SUB OUT: CANZOBRE, MARINA
09:08				SUB OUT: GARDNER, CASSIDY
09:08				SUB OUT: SCHULTZ, SYD
09:08				SUB IN: JIMENEZ, KYLIE
09:08				SUB IN: STOTLER, JORDAN
09:08				SUB IN: STREUN, TATIANA
09:08				SUB IN: FRAZIER, BELLE
09:01	MISSED 3PTR by BRUNO, GABRIELLA			
08:57	REBOUND (OFF) by JACKSON, COURTNEY			
08:49				FOUL (PERSONAL) by STREUN, TATIANA
08:44	MISSED 3PTR by BRUNO, GABRIELLA			
08:40	REBOUND (OFF) by BRUNO, GABRIELLA			
08:38	MISSED 3PTR by PANTOJA, CELESTE			
08:31	REBOUND (OFF) by FARNER, ANNA			
08:21	MISSED 3PTR by JACKSON, COURTNEY			
08:17				REBOUND (DEF) by JIMENEZ, KYLIE
08:05				MISSED LAYUP by FRAZIER, BELLE
08:04				REBOUND (OFF) by FRAZIER, BELLE
08:04	FOUL (PERSONAL) by BRUNO, GABRIELLA			
08:04	SUB OUT: JACKSON, COURTNEY			
08:04	SUB IN: MORGAN, SAMANTHA			
08:04		67-44	H 23	GOOD! FT by FRAZIER, BELLE
08:04		68-44	H 24	GOOD! FT by FRAZIER, BELLE
07:51	TURNOVER (BADPASS) by KRUGER, KALI			
07:51				STEAL by STOTLER, JORDAN
07:42		70-44	H 26	GOOD! LAYUP by JIMENEZ, KYLIE
07:29	MISSED 3PTR by PANTOJA, CELESTE			
07:26				REBOUND (DEF) by TEAM
07:26				SUB OUT: JIMENEZ, KYLIE
07:26				SUB OUT: STOTLER, JORDAN
07:26				SUB IN: CANZOBRE, MARINA
07:26				SUB IN: GARDNER, CASSIDY
07:26	SUB OUT: KRUGER, KALI			
07:26	SUB IN: KIRZY, MYA			
07:08		72-44	H 28	GOOD! LAYUP by STREUN, TATIANA
07:08				ASSIST by HANSEN, DESIRAE
06:39	MISSED JUMPER by BRUNO, GABRIELLA			
06:34				REBOUND (DEF) by FRAZIER, BELLE
06:27				MISSED JUMPER by CANZOBRE, MARINA
06:23	REBOUND (DEF) by FARNER, ANNA			
05:59	MISSED JUMPER by BRUNO, GABRIELLA			
05:56				REBOUND (DEF) by STREUN, TATIANA
05:37		74-44	H 30	GOOD! JUMPER by CANZOBRE, MARINA [PNT]
05:37				ASSIST by HANSEN, DESIRAE
05:24	MISSED JUMPER by BRUNO, GABRIELLA			
05:20				REBOUND (DEF) by CANZOBRE, MARINA
05:14		76-44	H 32	GOOD! LAYUP by STREUN, TATIANA [FB/PNT]
05:14				ASSIST by HANSEN, DESIRAE
05:01	TURNOVER (BADPASS) by FARNER, ANNA			
05:01				STEAL by GARDNER, CASSIDY
04:56				MISSED LAYUP by HANSEN, DESIRAE
04:52	REBOUND (DEF) by PANTOJA, CELESTE			
04:46	GOOD! JUMPER by MORGAN, SAMANTHA	76-46	H 30	
04:20				TURNOVER (BADPASS) by FRAZIER, BELLE
04:20	STEAL by BRUNO, GABRIELLA			
04:14	GOOD! LAYUP by KIRZY, MYA [FB]	76-48	H 28	

Time	VISITORS: Warner Pacific	Score	Margin	HOME: Portland St.
04:14	ASSIST by MORGAN, SAMANTHA			
03:58				MISSED 3PTR by GARDNER, CASSIDY
03:53	REBOUND (DEF) by BRUNO, GABRIELLA			
03:41	MISSED 3PTR by BRUNO, GABRIELLA			
03:38				REBOUND (DEF) by HANSEN, DESIRAE
03:29	FOUL (PERSONAL) by KIRZY, MYA			
03:29				
03:29				SUB OUT: STREUN, TATIANA
03:29				SUB OUT: GARDNER, CASSIDY
03:29				SUB OUT: HANSEN, DESIRAE
03:29				SUB IN: DENSON, LABREA
03:29				SUB IN: WALTON, RUCHAE
03:29				SUB IN: SCHULTZ, SYD
03:29	SUB OUT: FARNER, ANNA			
03:29	SUB OUT: BRUNO, GABRIELLA			
03:29	SUB IN: WHITMORE, PAYTON			
03:29	SUB IN: JACKSON, COURTNEY			
03:29		77-48	H 29	GOOD! FT by CANZOBRE, MARINA
03:29				MISSED FT by CANZOBRE, MARINA
03:27	REBOUND (DEF) by PANTOJA, CELESTE			
03:06	MISSED 3PTR by PANTOJA, CELESTE			
03:03				REBOUND (DEF) by TEAM
03:03				SUB OUT: FRAZIER, BELLE
03:03				SUB IN: GARDNER, CASSIDY
02:53				TURNOVER (LOSTBALL) by DENSON, LABREA
02:53	STEAL by KIRZY, MYA			
02:37	TURNOVER (BADPASS) by KIRZY, MYA			
02:37	SUB OUT: PANTOJA, CELESTE			
02:37	SUB IN: GARCIA, RAQUEL			
02:27				TURNOVER (LOSTBALL) by WALTON, RUCHAE
02:27	STEAL by MORGAN, SAMANTHA			
02:22	MISSED JUMPER by MORGAN, SAMANTHA			
02:17	REBOUND (OFF) by WHITMORE, PAYTON			
02:16	MISSED 3PTR by WHITMORE, PAYTON			
02:12	REBOUND (OFF) by KIRZY, MYA			
02:02	MISSED LAYUP by JACKSON, COURTNEY			
01:59				REBOUND (DEF) by WALTON, RUCHAE
01:47				MISSED JUMPER by CANZOBRE, MARINA
01:43	REBOUND (DEF) by KIRZY, MYA			
01:43	SUB OUT: MORGAN, SAMANTHA			
01:43	SUB IN: FARNER, ANNA			
01:32	TURNOVER (BADPASS) by WHITMORE, PAYTON			
01:32				STEAL by DENSON, LABREA
01:23				MISSED JUMPER by CANZOBRE, MARINA
01:20	REBOUND (DEF) by FARNER, ANNA			
01:15	MISSED 3PTR by JACKSON, COURTNEY			
01:09	REBOUND (OFF) by KIRZY, MYA			
01:02	MISSED JUMPER by KIRZY, MYA			
01:01	REBOUND (OFF) by TEAM			
00:46	TURNOVER (BADPASS) by GARCIA, RAQUEL			
00:46				STEAL by CANZOBRE, MARINA
00:40		79-48	H 31	GOOD! LAYUP by CANZOBRE, MARINA [FB]
00:40				ASSIST by GARDNER, CASSIDY
00:33	MISSED JUMPER by JACKSON, COURTNEY			
00:32	REBOUND (OFF) by TEAM			
00:32				FOUL (PERSONAL) by SCHULTZ, SYD
00:30	GOOD! LAYUP by KIRZY, MYA [PNT]	79-50	H 29	
00:30	ASSIST by WHITMORE, PAYTON			
00:24				TURNOVER (10SEC) by TEAM
00:07	MISSED 3PTR by WHITMORE, PAYTON			
00:03	REBOUND (OFF) by FARNER, ANNA			
00:03				FOUL (PERSONAL) by WALTON, RUCHAE
00:03	GOOD! FT by JACKSON, COURTNEY	79-51	H 28	
00:03	MISSED FT by JACKSON, COURTNEY			
00:01				REBOUND (DEF) by SCHULTZ, SYD
00:00				TURNOVER (BADPASS) by SCHULTZ, SYD

Warner Pacific 51, Portland St. 79

Points from (This Period)	WPU	PSU
In the Paint	6	10
Off Turns	5	4
2nd Chance	3	2
Fast Break	4	4
Bench	5	5

Official Scoring/Possession Reference Chart
Warner Pacific vs Portland St.
Period 1
October 30, 2019 at Viking Pavilion (Stoller Court) - Portland



Period 1

Starters:

Warner Pacific: 5 MORGAN,SAMANTHA (g); 13 WHITMORE,PAYTON (g); 25 KRUGER,KALI (f); 32 BRUNO,GABRIELLA (g); 34 PANTOJA,CELESTE (g);
Portland St.: 11 STOTLER,JORDAN (F); 12 STREUN,TATIANA (F); 35 FRAZIER,BELLE (G); 53 HANSEN,DESIRAE (G); 3 JIMENEZ,KYLIE (G);

Time	VISITORS: Warner Pacific	Score	Margin	HOME: Portland St.
07:48		3-0	H 3	GOOD! 3PTR by FRAZIER, BELLE
06:24		5-0	H 5	GOOD! JUMPER by STREUN, TATIANA [PNT]
05:18	GOOD! 3PTR by PANTOJA, CELESTE	5-3	H 2	
04:50	GOOD! FT by BRUNO, GABRIELLA	5-4	H 1	
04:50	GOOD! FT by BRUNO, GABRIELLA	5-5	T	
04:32		8-5	H 3	GOOD! 3PTR by HANSEN, DESIRAE
04:14	GOOD! 3PTR by JACKSON, COURTNEY	8-8	T	
03:33		10-8	H 2	GOOD! LAYUP by JIMENEZ, KYLIE
03:13		12-8	H 4	GOOD! LAYUP by JIMENEZ, KYLIE [FB]
02:53	GOOD! FT by KRUGER, KALI	12-9	H 3	
02:53	GOOD! FT by KRUGER, KALI	12-10	H 2	
02:32		15-10	H 5	GOOD! 3PTR by HANSEN, DESIRAE
01:40	GOOD! JUMPER by KRUGER, KALI [PNT]	15-12	H 3	
01:27	GOOD! LAYUP by PANTOJA, CELESTE [FB]	15-14	H 1	
01:27	GOOD! FT by PANTOJA, CELESTE [FB]	15-15	T	
00:57		17-15	H 2	GOOD! JUMPER by JIMENEZ, KYLIE [FB/PNT]
00:15		18-15	H 3	GOOD! FT by JIMENEZ, KYLIE
00:15		19-15	H 4	GOOD! FT by JIMENEZ, KYLIE
00:06	GOOD! FT by PANTOJA, CELESTE	19-16	H 3	
00:06	GOOD! FT by PANTOJA, CELESTE	19-17	H 2	

Warner Pacific 17, Portland St. 19

Official Scoring/Possession Reference Chart
Warner Pacific vs Portland St.
Period 2
October 30, 2019 at Viking Pavilion (Stoller Court) - Portland



Period 2

Starters:

Warner Pacific: 5 MORGAN,SAMANTHA (g); 13 WHITMORE,PAYTON (g); 25 KRUGER,KALI (f); 32 BRUNO,GABRIELLA (g); 34 PANTOJA,CELESTE (g);
Portland St.: 11 STOTLER,JORDAN (F); 12 STREUN,TATIANA (F); 35 FRAZIER,BELLE (G); 53 HANSEN,DESIRAE (G); 3 JIMENEZ,KYLIE (G);

Time	VISITORS: Warner Pacific	Score	Margin	HOME: Portland St.
09:15		22-17	H 5	GOOD! 3PTR by FRAZIER, BELLE
08:48		24-17	H 7	GOOD! LAYUP by STREUN, TATIANA
08:16		26-17	H 9	GOOD! LAYUP by STREUN, TATIANA
07:51		28-17	H 11	GOOD! LAYUP by STOTLER, JORDAN
06:50		30-17	H 13	GOOD! JUMPER by HANSEN, DESIRAE
06:10		32-17	H 15	GOOD! LAYUP by HANSEN, DESIRAE
05:33		34-17	H 17	GOOD! LAYUP by JIMENEZ, KYLIE [FB]
05:18	GOOD! JUMPER by JACKSON, COURTNEY [PNT]	34-19	H 15	
04:44	GOOD! 3PTR by JACKSON, COURTNEY	34-22	H 12	
03:19	GOOD! 3PTR by MORGAN, SAMANTHA	34-25	H 9	
02:58		35-25	H 10	GOOD! FT by HANSEN, DESIRAE
02:14		37-25	H 12	GOOD! LAYUP by STREUN, TATIANA
01:18	GOOD! 3PTR by PANTOJA, CELESTE	37-28	H 9	
00:41		39-28	H 11	GOOD! JUMPER by FRAZIER, BELLE [PNT]
00:23	GOOD! 3PTR by PANTOJA, CELESTE	39-31	H 8	

Warner Pacific 31, Portland St. 39

Official Scoring/Possession Reference Chart
Warner Pacific vs Portland St.
Period 3
October 30, 2019 at Viking Pavilion (Stoller Court) - Portland



Period 3

Starters:

Warner Pacific: 5 MORGAN,SAMANTHA (g); 13 WHITMORE,PAYTON (g); 25 KRUGER,KALI (f); 32 BRUNO,GABRIELLA (g); 34 PANTOJA,CELESTE (g);
Portland St.: 11 STOTLER,JORDAN (F); 12 STREUN,TATIANA (F); 35 FRAZIER,BELLE (G); 53 HANSEN,DESIRAE (G); 3 JIMENEZ,KYLIE (G);

Time	VISITORS: Warner Pacific	Score	Margin	HOME: Portland St.
09:56		41-31	H 10	GOOD! LAYUP by STOTLER, JORDAN
08:57		43-31	H 12	GOOD! LAYUP by STREUN, TATIANA [PNT]
08:22		45-31	H 14	GOOD! LAYUP by HANSEN, DESIRAE
07:18		46-31	H 15	GOOD! FT by STOTLER, JORDAN
06:51		48-31	H 17	GOOD! LAYUP by STREUN, TATIANA
06:16		50-31	H 19	GOOD! JUMPER by STOTLER, JORDAN [PNT]
05:32		52-31	H 21	GOOD! JUMPER by HANSEN, DESIRAE [PNT]
05:32		53-31	H 22	GOOD! FT by HANSEN, DESIRAE
04:50	GOOD! JUMPER by MORGAN, SAMANTHA [PNT]	53-33	H 20	
04:25		56-33	H 23	GOOD! 3PTR by JIMENEZ, KYLIE
03:56		58-33	H 25	GOOD! LAYUP by STOTLER, JORDAN
03:15		60-33	H 27	GOOD! LAYUP by GARDNER, CASSIDY [FB/PNT]
02:55	GOOD! LAYUP by BRUNO, GABRIELLA [PNT]	60-35	H 25	
02:55	GOOD! FT by BRUNO, GABRIELLA	60-36	H 24	
02:32		62-36	H 26	GOOD! LAYUP by STREUN, TATIANA [PNT]
01:48		64-36	H 28	GOOD! LAYUP by STREUN, TATIANA
01:06		66-36	H 30	GOOD! JUMPER by GARDNER, CASSIDY
00:49	GOOD! JUMPER by BRUNO, GABRIELLA [PNT]	66-38	H 28	
00:00	GOOD! LAYUP by JACKSON, COURTNEY [FB]	66-40	H 26	

Warner Pacific 40, Portland St. 66

Official Scoring/Possession Reference Chart
Warner Pacific vs Portland St.
Period 4
October 30, 2019 at Viking Pavilion (Stoller Court) - Portland



Period 4

Starters:

Warner Pacific: 5 MORGAN,SAMANTHA (g); 13 WHITMORE,PAYTON (g); 25 KRUGER,KALI (f); 32 BRUNO,GABRIELLA (g); 34 PANTOJA,CELESTE (g);
Portland St.: 11 STOTLER,JORDAN (F); 12 STREUN,TATIANA (F); 35 FRAZIER,BELLE (G); 53 HANSEN,DESIRAE (G); 3 JIMENEZ,KYLIE (G);

Time	VISITORS: Warner Pacific	Score	Margin	HOME: Portland St.
09:27	GOOD! FT by BRUNO, GABRIELLA	66-41	H 25	
09:27	GOOD! FT by BRUNO, GABRIELLA	66-42	H 24	
09:15	GOOD! LAYUP by PANTOJA, CELESTE [FB]	66-44	H 22	
08:04		67-44	H 23	GOOD! FT by FRAZIER, BELLE
08:04		68-44	H 24	GOOD! FT by FRAZIER, BELLE
07:42		70-44	H 26	GOOD! LAYUP by JIMENEZ, KYLIE
07:08		72-44	H 28	GOOD! LAYUP by STREUN, TATIANA
05:37		74-44	H 30	GOOD! JUMPER by CANZOBRE, MARINA [PNT]
05:14		76-44	H 32	GOOD! LAYUP by STREUN, TATIANA [FB/PNT]
04:46	GOOD! JUMPER by MORGAN, SAMANTHA	76-46	H 30	
04:14	GOOD! LAYUP by KIRZY, MYA [FB]	76-48	H 28	
03:29		77-48	H 29	GOOD! FT by CANZOBRE, MARINA
00:40		79-48	H 31	GOOD! LAYUP by CANZOBRE, MARINA [FB]
00:30	GOOD! LAYUP by KIRZY, MYA [PNT]	79-50	H 29	
00:03	GOOD! FT by JACKSON, COURTNEY	79-51	H 28	

Warner Pacific 51, Portland St. 79

Official Substitutions Log
Warner Pacific vs Portland St.
Period 1
October 30, 2019 at Viking Pavilion (Stoller Court) - Portland



VISITORS: Warner Pacific	Time	Score	HOME: Portland St.
5 MORGAN, SAMANTHA			11 STOTLER, JORDAN
13 WHITMORE, PAYTON			12 STREUN, TATIANA
25 KRUGER, KALI			35 FRAZIER, BELLE
32 BRUNO, GABRIELLA			53 HANSEN, DESIRAE
34 PANTOJA, CELESTE			3 JIMENEZ, KYLIE
SUB OUT: 5 MORGAN, SAMANTHA	06:05	0-5	
SUB IN: 23 JACKSON, COURTNEY	06:05		
	04:50	3-5	SUB OUT: STOTLER, JORDAN
	04:50		SUB IN: CANZOBRE, MARINA
SUB OUT: 32 BRUNO, GABRIELLA	04:50		
SUB IN: 1 KIRZY, MYA	04:50		
	02:53	8-12	SUB OUT: STREUN, TATIANA
	02:53		SUB OUT: FRAZIER, BELLE
	02:53		SUB IN: GARDNER, CASSIDY
	02:53		SUB IN: SCHULTZ, SYD
SUB OUT: 13 WHITMORE, PAYTON	02:53		
SUB IN: 4 FARNER, ANNA	02:53		
SUB OUT: 25 KRUGER, KALI	00:36	15-17	
SUB IN: 32 BRUNO, GABRIELLA	00:36		
	00:15	15-17	SUB OUT: HANSEN, DESIRAE
	00:15		SUB IN: STOTLER, JORDAN
SUB OUT: 23 JACKSON, COURTNEY	00:15		
SUB IN: 5 MORGAN, SAMANTHA	00:15		
	00:15		SUB OUT: JIMENEZ, KYLIE
	00:15		SUB IN: DENSON, LABREA

Warner Pacific 17, Portland St. 19

Official Substitutions Log
Warner Pacific vs Portland St.
Period 2
October 30, 2019 at Viking Pavilion (Stoller Court) - Portland



VISITORS: Warner Pacific	Time	Score	HOME: Portland St.
5 MORGAN,SAMANTHA			11 STOTLER,JORDAN
13 WHITMORE,PAYTON			12 STREUN,TATIANA
25 KRUGER,KALI			35 FRAZIER,BELLE
32 BRUNO,GABRIELLA			53 HANSEN,DESIRAE
34 PANTOJA,CELESTE			3 JIMENEZ,KYLIE
	10:00	-	SUB OUT: CANZOBRE,MARINA
	10:00		SUB OUT: SCHULTZ,SYD
	10:00		SUB IN: STREUN,TATIANA
	10:00		SUB IN: FRAZIER,BELLE
SUB OUT: 1 KIRZY,MYA	08:59	17-22	
SUB OUT: 4 FARNER,ANNA	08:59		
SUB IN: 12 GARCIA,RAQUEL	08:59		
SUB IN: 25 KRUGER,KALI	08:59		
	08:16	17-26	SUB OUT: DENSON,LABREA
	08:16		SUB IN: JIMENEZ,KYLIE
SUB OUT: 32 BRUNO,GABRIELLA	08:16		
SUB IN: 23 JACKSON,COURTNEY	08:16		
	06:54	17-28	SUB OUT: GARDNER,CASSIDY
	06:54		SUB IN: HANSEN,DESIRAE
SUB OUT: 5 MORGAN,SAMANTHA	06:54		
SUB IN: 13 WHITMORE,PAYTON	06:54		
	04:53	19-34	SUB OUT: STREUN,TATIANA
	04:53		SUB OUT: FRAZIER,BELLE
	04:53		SUB IN: CANZOBRE,MARINA
	04:53		SUB IN: GARDNER,CASSIDY
SUB OUT: 12 GARCIA,RAQUEL	04:53		
SUB OUT: 34 PANTOJA,CELESTE	04:53		
SUB IN: 4 FARNER,ANNA	04:53		
SUB IN: 5 MORGAN,SAMANTHA	04:53		
	03:13	25-34	SUB OUT: CANZOBRE,MARINA
	03:13		SUB IN: STREUN,TATIANA
SUB OUT: 4 FARNER,ANNA	03:13		
SUB IN: 34 PANTOJA,CELESTE	03:13		
	02:58	25-34	SUB OUT: GARDNER,CASSIDY
	02:58		SUB IN: FRAZIER,BELLE
SUB OUT: 13 WHITMORE,PAYTON	01:31	25-37	
SUB IN: 32 BRUNO,GABRIELLA	01:31		
	01:31		SUB OUT: STOTLER,JORDAN
	01:31		SUB IN: CANZOBRE,MARINA

Warner Pacific 31, Portland St. 39

Official Substitutions Log
Warner Pacific vs Portland St.
Period 3
October 30, 2019 at Viking Pavilion (Stoller Court) - Portland



VISITORS: Warner Pacific	Time	Score	HOME: Portland St.
5 MORGAN,SAMANTHA			11 STOTLER,JORDAN
13 WHITMORE,PAYTON			12 STREUN,TATIANA
25 KRUGER,KALI			35 FRAZIER,BELLE
32 BRUNO,GABRIELLA			53 HANSEN,DESIRAE
34 PANTOJA,CELESTE			3 JIMENEZ,KYLIE
	10:00	-	SUB OUT: CANZOBRE,MARINA
	10:00		SUB IN: STOTLER,JORDAN
SUB OUT: 23 JACKSON,COURTNEY	10:00		
SUB IN: 13 WHITMORE,PAYTON	10:00		
SUB OUT: 25 KRUGER,KALI	06:46	31-48	
SUB IN: 1 KIRZY,MYA	06:46		
SUB OUT: 13 WHITMORE,PAYTON	06:03	31-50	
SUB IN: 23 JACKSON,COURTNEY	06:03		
	05:05	31-53	SUB OUT: HANSEN,DESIRAE
	05:05		SUB IN: GARDNER,CASSIDY
	03:41	33-58	SUB OUT: STOTLER,JORDAN
	03:41		SUB IN: CANZOBRE,MARINA
SUB OUT: 5 MORGAN,SAMANTHA	03:41		
SUB IN: 4 FARNER,ANNA	03:41		
	01:56	36-62	SUB OUT: JIMENEZ,KYLIE
	01:56		SUB IN: DENSON,LABREA
SUB OUT: 1 KIRZY,MYA	01:56		
SUB IN: 25 KRUGER,KALI	01:56		
	01:25	36-64	SUB OUT: STREUN,TATIANA
	01:25		SUB IN: SCHULTZ,SYD
	01:13	36-64	SUB OUT: FRAZIER,BELLE
	01:13		SUB IN: HANSEN,DESIRAE

Warner Pacific 40, Portland St. 66

Official Substitutions Log
Warner Pacific vs Portland St.
Period 4
October 30, 2019 at Viking Pavilion (Stoller Court) - Portland



VISITORS: Warner Pacific	Time	Score	HOME: Portland St.
5 MORGAN,SAMANTHA			11 STOTLER,JORDAN
13 WHITMORE,PAYTON			12 STREUN,TATIANA
25 KRUGER,KALI			35 FRAZIER,BELLE
32 BRUNO,GABRIELLA			53 HANSEN,DESIRAE
34 PANTOJA,CELESTE			3 JIMENEZ,KYLIE
	09:08	44-66	SUB OUT: DENSON,LABREA
	09:08		SUB OUT: CANZOBRE,MARINA
	09:08		SUB OUT: GARDNER,CASSIDY
	09:08		SUB OUT: SCHULTZ,SYD
	09:08		SUB IN: JIMENEZ,KYLIE
	09:08		SUB IN: STOTLER,JORDAN
	09:08		SUB IN: STREUN,TATIANA
	09:08		SUB IN: FRAZIER,BELLE
SUB OUT: 23 JACKSON,COURTNEY	08:04	44-66	
SUB IN: 5 MORGAN,SAMANTHA	08:04		
	07:26	44-70	SUB OUT: JIMENEZ,KYLIE
	07:26		SUB OUT: STOTLER,JORDAN
	07:26		SUB IN: CANZOBRE,MARINA
	07:26		SUB IN: GARDNER,CASSIDY
SUB OUT: 25 KRUGER,KALI	07:26		
SUB IN: 1 KIRZY,MYA	07:26		
	03:29	48-76	SUB OUT: STREUN,TATIANA
	03:29		SUB OUT: GARDNER,CASSIDY
	03:29		SUB OUT: HANSEN,DESIRAE
	03:29		SUB IN: DENSON,LABREA
	03:29		SUB IN: WALTON,RUCHAE
	03:29		SUB IN: SCHULTZ,SYD
SUB OUT: 4 FARNER,ANNA	03:29		
SUB OUT: 32 BRUNO,GABRIELLA	03:29		
SUB IN: 13 WHITMORE,PAYTON	03:29		
SUB IN: 23 JACKSON,COURTNEY	03:29		
	03:03	48-77	SUB OUT: FRAZIER,BELLE
	03:03		SUB IN: GARDNER,CASSIDY
SUB OUT: 34 PANTOJA,CELESTE	02:37	48-77	
SUB IN: 12 GARCIA,RAQUEL	02:37		
SUB OUT: 5 MORGAN,SAMANTHA	01:43	48-77	
SUB IN: 4 FARNER,ANNA	01:43		

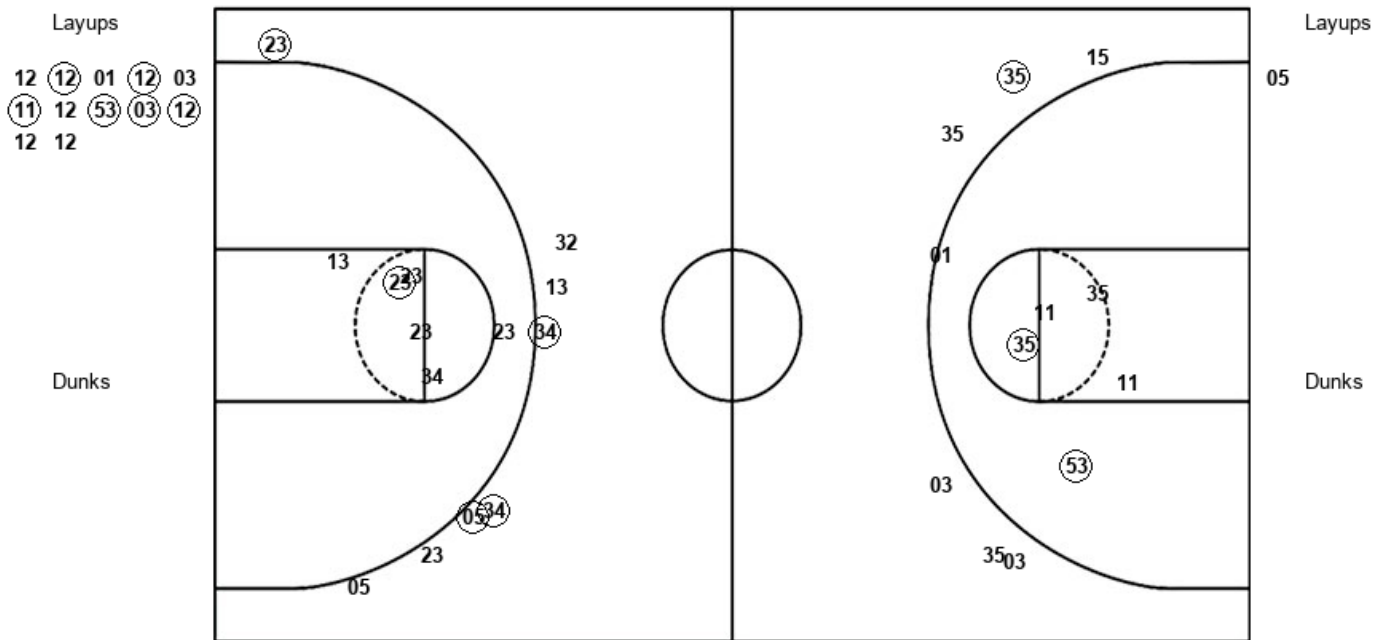
Warner Pacific 51, Portland St. 79

Official Shot Chart
Warner Pacific vs Portland St.
PERIOD 2 Shots
 October 30, 2019 at Viking Pavilion (Stoller Court) - Portland



Portland St.

Warner Pacific



PSU : Period 2	Made	Att	Pct
Layups	6	12	50.0
Dunks	0	0	0
2PT Field Goals	8	17	47.1
3PT Field Goals	1	6	16.7
Total Field Goals	9	23	39.1

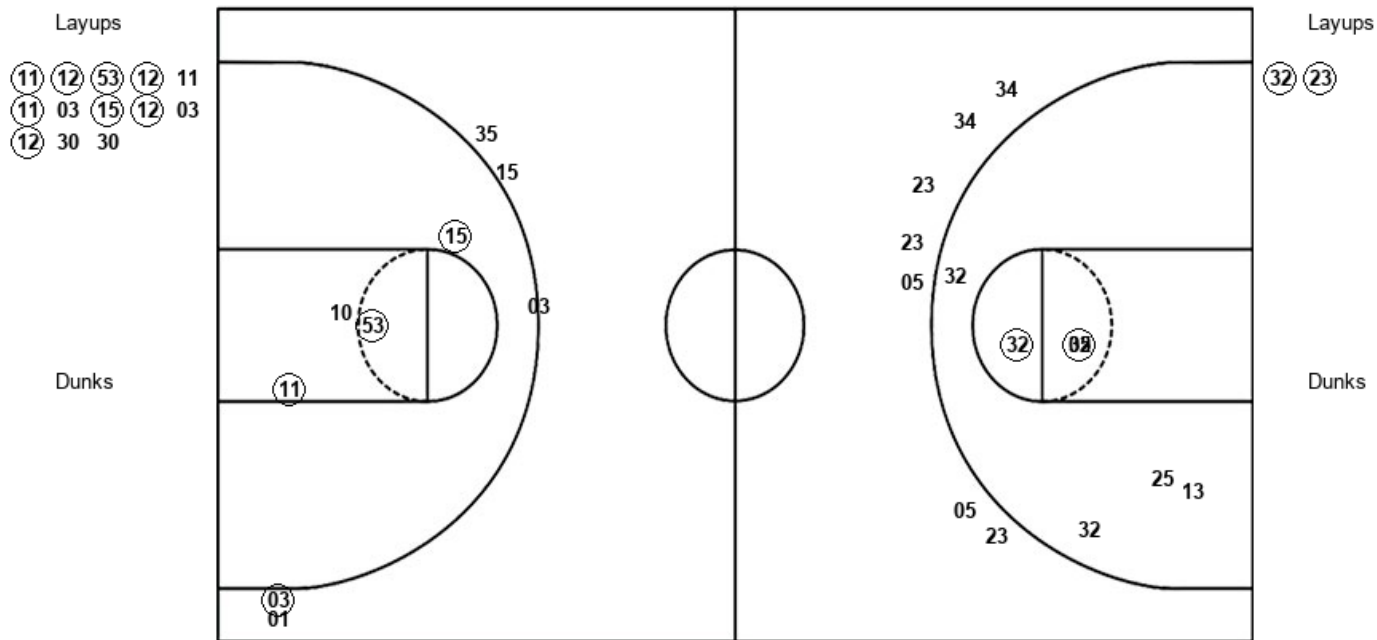
WPU : Period 2	Made	Att	Pct
Layups	0	1	00.0
Dunks	0	0	0
2PT Field Goals	1	7	14.3
3PT Field Goals	4	8	50.0
Total Field Goals	5	15	33.3

Official Shot Chart
Warner Pacific vs Portland St.
PERIOD 3 Shots
 October 30, 2019 at Viking Pavilion (Stoller Court) - Portland



Portland St.

Warner Pacific



PSU : Period 3	Made	Att	Pct
Layups	8	13	61.5
Dunks	0	0	0
2PT Field Goals	11	17	64.7
3PT Field Goals	1	5	20.0
Total Field Goals	12	22	54.5

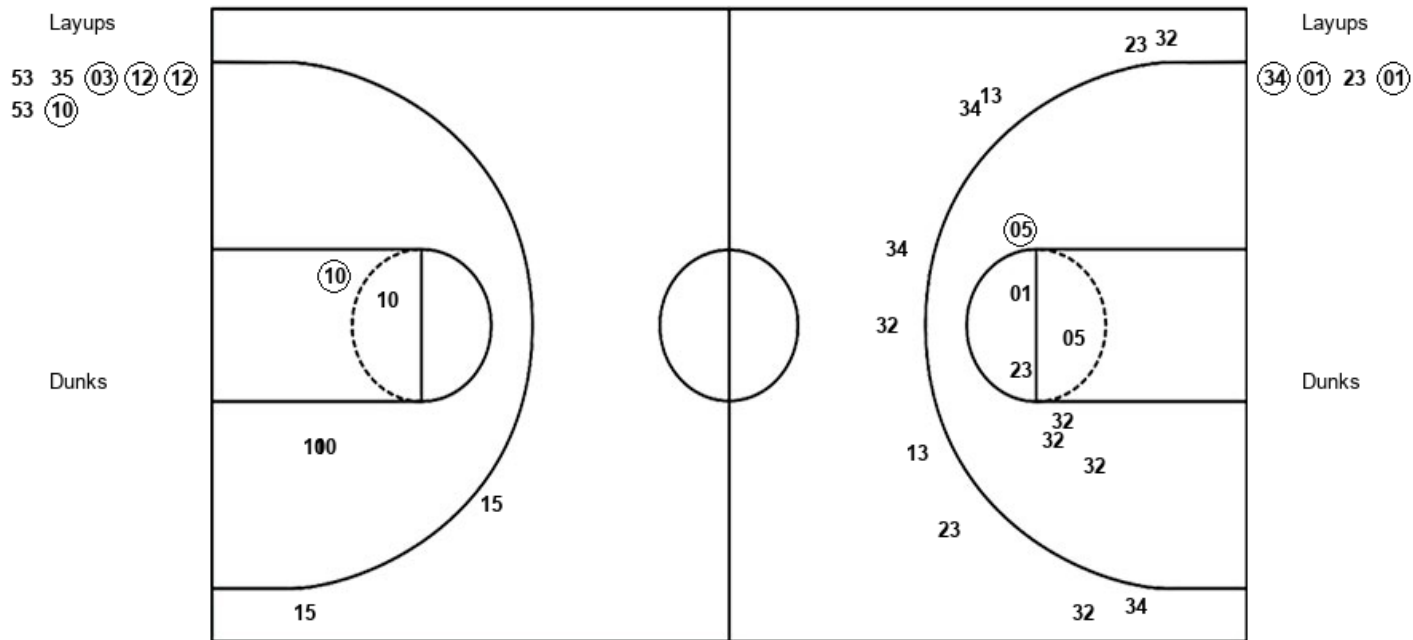
WPU : Period 3	Made	Att	Pct
Layups	2	2	100.0
Dunks	0	0	0
2PT Field Goals	4	9	44.4
3PT Field Goals	0	7	00.0
Total Field Goals	4	16	25.0

Official Shot Chart
Warner Pacific vs Portland St.
PERIOD 4 Shots
 October 30, 2019 at Viking Pavilion (Stoller Court) - Portland



Portland St.

Warner Pacific



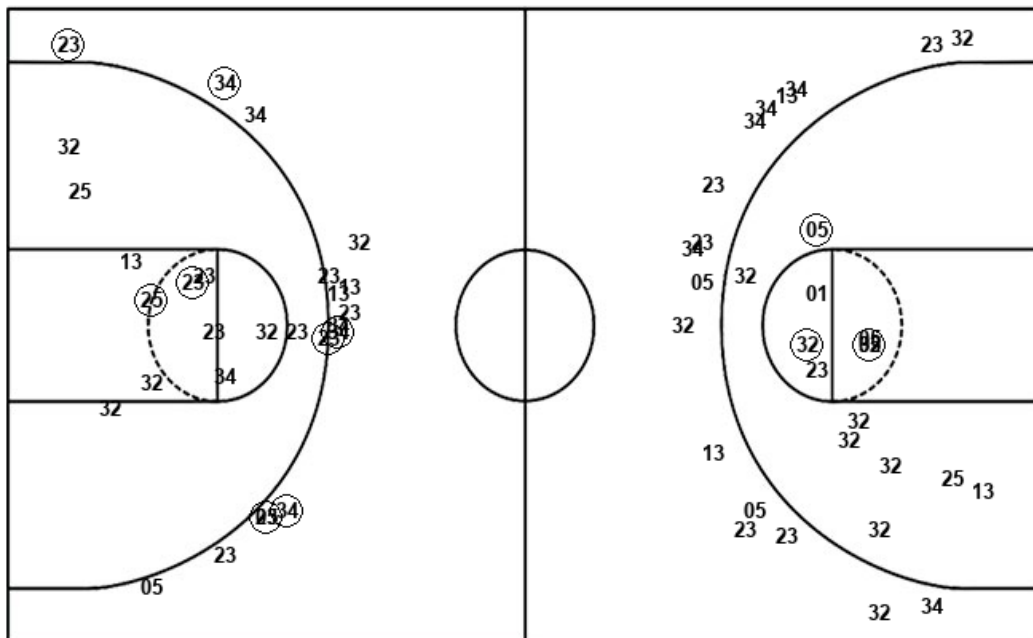
PSU : Period 4	Made	Att	Pct
Layups	4	7	57.1
Dunks	0	0	0
2PT Field Goals	5	11	45.5
3PT Field Goals	0	2	00.0
Total Field Goals	5	13	38.5

WPU : Period 4	Made	Att	Pct
Layups	3	4	75.0
Dunks	0	0	0
2PT Field Goals	4	11	36.4
3PT Field Goals	0	10	00.0
Total Field Goals	4	21	19.0

Official Shot Chart
Warner Pacific vs Portland St.
Warner Pacific Team Shots
October 30, 2019 at Viking Pavilion (Stoller Court) - Portland



Layups



Layups

32 (34) 05 (32) (23)
 (34) (01) 23 (01)

Dunks

Dunks

WPU : Period 1	Made	Att	Pct
Layups	1	2	50.0
Dunks	0	0	0
2PT Field Goals	2	8	25.0
3PT Field Goals	2	8	25.0
Total Field Goals	4	16	25.0

WPU : Period 2	Made	Att	Pct
Layups	0	1	00.0
Dunks	0	0	0
2PT Field Goals	1	7	14.3
3PT Field Goals	4	8	50.0
Total Field Goals	5	15	33.3

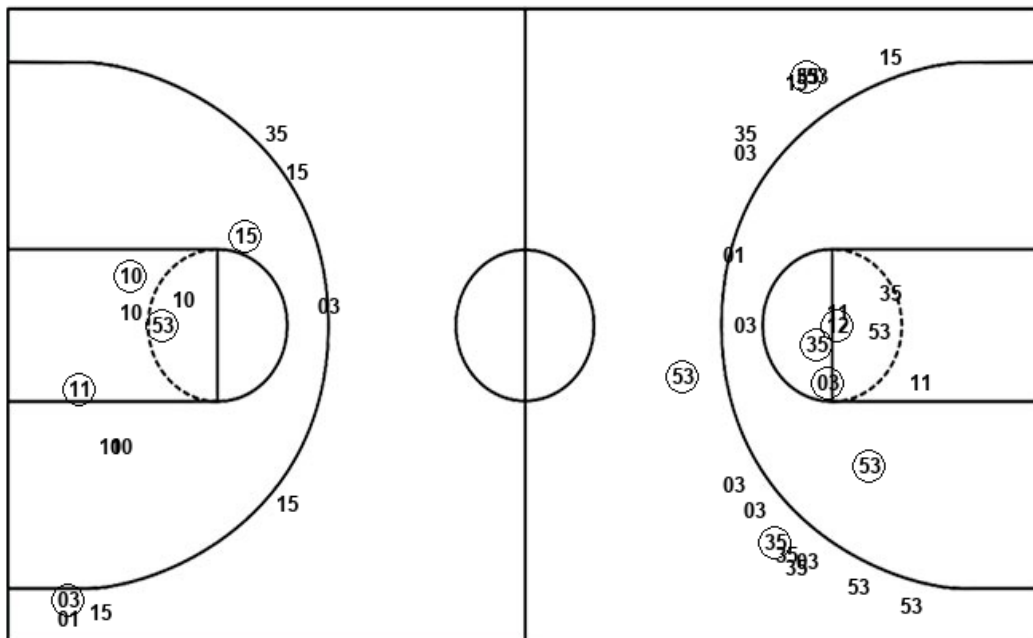
WPU : Period 3	Made	Att	Pct
Layups	2	2	100.0
Dunks	0	0	0
2PT Field Goals	4	9	44.4
3PT Field Goals	0	7	00.0
Total Field Goals	4	16	25.0

WPU : Period 4	Made	Att	Pct
Layups	3	4	75.0
Dunks	0	0	0
2PT Field Goals	4	11	36.4
3PT Field Goals	0	10	00.0
Total Field Goals	4	21	19.0

Official Shot Chart
Warner Pacific vs Portland St.
Portland St. Team Shots
October 30, 2019 at Viking Pavilion (Stoller Court) - Portland



Layups



Dunks

Layups

11	35	11	11	03
03	12	12	01	12
03	11	12	53	03
12	12	12	11	12
53	12	11	11	03
15	12	03	12	30
30	53	35	03	12
12	53	10		

Dunks

PSU : Period 1	Made	Att	Pct
Layups	2	6	33.3
Dunks	0	0	0
2PT Field Goals	4	11	36.4
3PT Field Goals	3	10	30.0
Total Field Goals	7	21	33.3

PSU : Period 2	Made	Att	Pct
Layups	6	12	50.0
Dunks	0	0	0
2PT Field Goals	8	17	47.1
3PT Field Goals	1	6	16.7
Total Field Goals	9	23	39.1

PSU : Period 3	Made	Att	Pct
Layups	8	13	61.5
Dunks	0	0	0
2PT Field Goals	11	17	64.7
3PT Field Goals	1	5	20.0
Total Field Goals	12	22	54.5

PSU : Period 4	Made	Att	Pct
Layups	4	7	57.1
Dunks	0	0	0
2PT Field Goals	5	11	45.5
3PT Field Goals	0	2	00.0
Total Field Goals	5	13	38.5