

## FINAL SCORE



**Iona**

**42**



**Penn**

**74**

November 17, 2019 • The Palestra (Macquarie) - Philadelphia

## FINAL STATISTICS

**Official Box Score**  
**Iona vs Penn**  
**Game Totals -- Final Statistics**  
**November 17, 2019 at The Palestra (Macquarie) - Philadelphia**



**Iona 42**

No.	Player	S	Pts	FG	3FG	FT	OR	DR	TR	PF	A	TO	Blk	Stl	Min	+/-
05	MWAI, SHYAN	G	12	4-12	2-9	2-3	2	1	3	0	3	6	0	1	31	-19
14	RACHU, MORGAN	G	5	2-7	1-5	0-0	2	5	7	1	2	0	0	1	36	-31
21	JOSEPH, GABRIELLE	F	0	0-1	0-0	0-0	0	0	0	3	0	1	0	0	12	-6
22	CAMILION, JUANA	G	5	2-6	1-4	0-0	0	1	1	5	2	2	0	2	22	-10
33	LESKO, TORI	F	0	0-0	0-0	0-0	0	4	4	1	3	5	0	0	27	-33
00	WILLIAMS, DE'JAH	F	11	5-7	0-1	1-2	1	1	2	1	0	1	0	1	15	-9
01	VAITEKUNAITE, AISTE	F	4	1-3	0-1	2-2	0	2	2	0	0	1	0	0	9	5
03	BAREFIELD, MONICA	G	5	2-10	0-6	1-1	0	2	2	1	1	2	0	1	27	-23
13	BECERRA PEREZ, LUCIA	G	0	0-2	0-1	0-0	2	2	4	5	0	5	0	2	14	-20
15	WORNER, NIKKI	F	0	0-1	0-1	0-0	0	0	0	0	0	0	0	0	1	-1
44	RAMIL, JODI-MARIE	F	0	0-1	0-0	0-0	0	0	0	0	0	0	0	0	5	-13
<b>TEAM</b>							1	3	4	0	1					
<b>TOTALS</b>			<b>42</b>	<b>16-50</b>	<b>4-28</b>	<b>6-8</b>	<b>8</b>	<b>21</b>	<b>29</b>	<b>17</b>	<b>11</b>	<b>24</b>	<b>0</b>	<b>8</b>	<b>198</b>	

*Shooting By Period*

Period	FG	FG%	3FG	3FG%	FT	FT%
1st Qtr	4-13	31%	1-6	17%	1-1	100%
2nd Qtr	2-9	22%	1-6	17%	0-0	0%
3rd Qtr	7-15	47%	1-7	14%	3-5	60%
4th Qtr	3-13	23%	1-9	11%	2-2	100%
1st Half	6-22	27%	2-12	17%	1-1	100%
2nd Half	10-28	36%	2-16	13%	5-7	71%
<b>Game</b>	<b>16-50</b>	<b>32.0%</b>	<b>4-28</b>	<b>14.3%</b>	<b>6-8</b>	<b>75.0%</b>

*Deadball Rebounds: 2,0*

*Last FG: 4th-02:06*

*Biggest Run: 7-0*

*Largest lead: By 3 at -*

*Technical Fouls: None.*

**Penn 74**

No.	Player	S	Pts	FG	3FG	FT	OR	DR	TR	PF	A	TO	Blk	Stl	Min	+/-
04	SUTTLE, KENNEDY	F	11	5-6	0-1	1-2	3	8	11	3	3	3	0	2	24	34
11	GRASELA, KENDALL	G	4	2-2	0-0	0-0	1	0	1	1	10	2	0	3	28	35
31	PARKER, ELEAH	C	14	6-11	0-0	2-4	4	4	8	1	0	3	0	3	21	28
33	STERBA, PHOEBE	G	17	6-13	4-8	1-1	1	0	1	1	3	3	0	2	27	40
45	PADILLA, KAYLA	G	14	6-12	1-6	1-2	1	4	5	0	5	0	0	1	30	31
02	KINUM, KATIE	G	0	0-2	0-1	0-0	0	0	0	0	0	1	0	0	4	-4
03	JONES, MICHAEL	G	0	0-1	0-0	0-0	0	0	0	1	0	1	0	0	8	-1
05	WELEDJI, SEREENA	G	0	0-1	0-0	0-0	0	1	1	1	0	0	0	1	5	-5
10	MCGURK, MANDY	G	0	0-2	0-1	0-0	0	0	0	1	0	1	0	0	6	-4
14	HAIR, MEG	G	0	0-0	0-0	0-0	0	2	2	1	0	1	0	0	4	0
21	LAKSTIGALA, MIA	G	0	0-1	0-1	0-0	1	0	1	2	1	2	0	0	8	4
24	CRAWFORD, TORI	F	7	3-6	0-1	1-1	3	0	3	0	1	0	1	1	12	-2
25	MILLIMAN, SILKE	F	0	0-2	0-1	0-0	0	1	1	0	0	1	0	0	4	-5
34	DICINDIO, CHRISSY	F	3	1-1	0-0	1-2	1	1	2	1	0	0	1	0	6	-4
40	ANDERSON, EMILY	C	4	2-7	0-0	0-0	1	1	2	2	0	0	0	0	11	12
44	CAHILL, NOELLE	C	0	0-0	0-0	0-0	1	0	1	0	0	0	0	0	1	1
<b>TEAM</b>							1	4	5	0	0					
<b>TOTALS</b>			<b>74</b>	<b>31-67</b>	<b>5-20</b>	<b>7-12</b>	<b>18</b>	<b>26</b>	<b>44</b>	<b>15</b>	<b>23</b>	<b>18</b>	<b>2</b>	<b>13</b>	<b>198</b>	

*Shooting By Period*

Period	FG	FG%	3FG	3FG%	FT	FT%
1st Qtr	7-16	44%	1-5	20%	1-3	33%
2nd Qtr	9-20	45%	2-7	29%	1-2	50%
3rd Qtr	10-16	63%	0-3	00%	3-3	100%
4th Qtr	5-15	33%	2-5	40%	2-4	50%
1st Half	16-36	44%	3-12	25%	2-5	40%
2nd Half	15-31	48%	2-8	25%	5-7	71%
<b>Game</b>	<b>31-67</b>	<b>46.3%</b>	<b>5-20</b>	<b>25.0%</b>	<b>7-12</b>	<b>58.3%</b>

*Deadball Rebounds: 2,0*

*Last FG: 4th-01:49*

*Biggest Run: 14-0*

*Largest lead: By 36 at -*

*Technical Fouls: None.*

Game Notes:

Officials: Don Cummiskey, Ryan Nunes, Kara Hunter  
 Attendance: 731

Start Time: 01:01 PM ET

End Time: 02:49 PM ET

Game Duration: 1:47

Score	1st	2nd	3rd	4th	TOT
ION	10	5	18	9	<b>42</b>
PEN	16	21	23	14	<b>74</b>

ION led for 1:40. PEN led for 37:48.

Game was tied for 0:11.

Times tied: 60      Lead Changes: 0

Points from	ION	PEN
In the Paint	14	50
Off Turns	14	22
2nd Chance	4	18
Fast Break	8	29
Bench	20	14

**Official Box Score**  
**Iona vs Penn**  
**First Half Statistics Only**  
**November 17, 2019 at The Palestra (Macquarie) - Philadelphia**



**Iona 15**

No.	Player	S	Pts	FG	3FG	FT	OR	DR	TR	PF	A	TO	Blk	Stl	Min	+/-
00	WILLIAMS, DE'JAH	F	0	0-1	0-0	0-0	0	0	0	1	0	1	0	0	4	-6
01	VAITEKUNAITE, AISTE	F	2	1-1	0-0	0-0	0	0	0	0	0	1	0	0	4	1
03	BAREFIELD, MONICA	G	5	2-5	0-1	1-1	0	1	1	0	0	0	0	0	10	-15
05	MWAI, SHYAN	G	3	1-6	1-5	0-0	1	1	2	0	0	3	0	0	15	-16
13	BECERRA PEREZ, LUCIA	G	0	0-0	0-0	0-0	1	0	1	2	0	2	0	0	6	-11
14	RACHU, MORGAN	G	0	0-4	0-4	0-0	0	3	3	0	0	0	0	0	18	-22
15	WORNER, NIKKI	F	0	0-0	0-0	0-0	0	0	0	0	0	0	0	0	0	0
21	JOSEPH, GABRIELLE	F	0	0-1	0-0	0-0	0	0	0	2	0	1	0	0	9	-8
22	CAMILION, JUANA	G	5	2-4	1-2	0-0	0	1	1	3	0	2	0	0	13	-9
33	LESKO, TORI	F	0	0-0	0-0	0-0	0	3	3	1	3	3	0	0	20	-22
44	RAMIL, JODI-MARIE	F	0	0-0	0-0	0-0	0	0	0	0	0	0	0	0	1	-2
	TEAM		0	0-0	0-0	0-0	0	3	3	0	0	0	0	0	0	0
<b>TOTALS</b>			<b>15</b>	<b>6-22</b>	<b>2-12</b>	<b>1-1</b>	<b>2</b>	<b>12</b>	<b>14</b>	<b>9</b>	<b>3</b>	<b>13</b>	<b>0</b>	<b>0</b>	<b>100</b>	

*Shooting By Period*

Period	FG	FG%	3FG	3FG%	FT	FT%
1st Qtr	4-13	31%	1-6	17%	1-1	100%
2nd Qtr	2-9	22%	1-6	17%	0-0	0%
1st Half	6-22	27%	2-12	17%	1-1	100%
Game	16-50	32.0%	4-28	14.3%	6-8	75.0%

*Deadball Rebounds: 2,0*

*Last FG Half: ION 2nd-00:10*

**Penn 37**

No.	Player	S	Pts	FG	3FG	FT	OR	DR	TR	PF	A	TO	Blk	Stl	Min	+/-
02	KINUM, KATIE	G	0	0-0	0-0	0-0	0	0	0	0	0	0	0	0	0	0
03	JONES, MICHAEL	G	0	0-1	0-0	0-0	0	0	0	1	0	0	0	0	2	2
04	SUTTLE, KENNEDY	F	9	4-5	0-1	1-2	1	6	7	1	2	1	0	0	14	18
05	WELEDJI, SEREENA	G	0	0-0	0-0	0-0	0	0	0	0	0	0	0	0	0	0
10	MCGURK, MANDY	G	0	0-0	0-0	0-0	0	0	0	0	0	0	0	0	0	0
11	GRASELA, KENDALL	G	2	1-1	0-0	0-0	1	0	1	1	5	1	0	2	18	20
14	HAIR, MEG	G	0	0-0	0-0	0-0	0	0	0	0	0	0	0	0	0	0
21	LAKSTIGALA, MIA	G	0	0-0	0-0	0-0	1	0	1	1	1	0	0	0	5	7
24	CRAWFORD, TORI	F	0	0-2	0-1	0-0	1	0	1	0	0	0	1	1	6	4
25	MILLIMAN, SILKE	F	0	0-0	0-0	0-0	0	0	0	0	0	0	0	0	0	0
31	PARKER, ELEAH	C	6	3-6	0-0	0-1	3	2	5	1	0	3	0	0	13	8
33	STERBA, PHOEBE	G	11	4-10	3-7	0-0	1	0	1	1	1	3	0	1	18	22
34	DICINDIO, CHRISSEY	F	0	0-0	0-0	0-0	0	0	0	0	0	0	0	0	0	0
40	ANDERSON, EMILY	C	2	1-5	0-0	0-0	1	1	2	1	0	0	0	0	7	14
44	CAHILL, NOELLE	C	0	0-0	0-0	0-0	0	0	0	0	0	0	0	0	0	0
45	PADILLA, KAYLA	G	7	3-6	0-3	1-2	1	3	4	0	2	0	0	1	17	15
	TEAM		0	0-0	0-0	0-0	0	2	2	0	0	0	0	0	0	0
<b>TOTALS</b>			<b>37</b>	<b>16-36</b>	<b>3-12</b>	<b>2-5</b>	<b>10</b>	<b>14</b>	<b>24</b>	<b>7</b>	<b>11</b>	<b>8</b>	<b>1</b>	<b>5</b>	<b>100</b>	

*Shooting By Period*

Period	FG	FG%	3FG	3FG%	FT	FT%
1st Qtr	7-16	44%	1-5	20%	1-3	33%
2nd Qtr	9-20	45%	2-7	29%	1-2	50%
1st Half	16-36	44%	3-12	25%	2-5	40%
Game	31-67	46.3%	5-20	25.0%	7-12	58.3%

*Deadball Rebounds: 2,0*

*Last FG Half: PEN 2nd-00:47*

*Game Notes:*

Officials: Don Cummiskey, Ryan Nunes, Kara Hunter  
 Attendance: 731

Start Time: 01:01 PM ET  
 End Time: 02:49 PM ET  
 Game Duration: 1:47

Score	1st	2nd	3rd	4th	TOT
ION	10	5	18	9	<b>42</b>
PEN	16	21	23	14	<b>74</b>

Points from (This Period)	ION	PEN
In the Paint	8	24
Off Turns	3	11
2nd Chance	0	8
Fast Break	2	11
Bench	7	2

**Official Box Score**  
**Iona vs Penn**  
**First Quarter Statistics Only**  
**November 17, 2019 at The Palestra (Macquarie) - Philadelphia**



**Iona 10**

No.	Player	S	Pts	FG	3FG	FT	OR	DR	TR	PF	A	TO	Blk	Stl	Min	+/-
05	MWAI, SHYAN	G	0	0-3	0-2	0-0	0	1	1	0	0	1	0	0	8	-6
14	RACHU, MORGAN	G	0	0-2	0-2	0-0	0	1	1	0	0	0	0	0	8	-6
21	JOSEPH, GABRIELLE	F	0	0-1	0-0	0-0	0	0	0	1	0	0	0	0	3	-1
22	CAMILION, JUANA	G	5	2-4	1-2	0-0	0	1	1	2	0	0	0	0	10	-5
33	LESKO, TORI	F	0	0-0	0-0	0-0	0	1	1	1	3	0	0	0	10	-6
00	WILLIAMS, DE'JAH	F	0	0-1	0-0	0-0	0	0	0	1	0	1	0	0	4	-6
01	VAITEKUNAITE, AISTE	F	2	1-1	0-0	0-0	0	0	0	0	0	1	0	0	4	1
03	BAREFIELD, MONICA	G	3	1-1	0-0	1-1	0	1	1	0	0	0	0	0	4	0
13	BECERRA PEREZ, LUCIA	G	0	0-0	0-0	0-0	0	0	0	0	0	0	0	0	0	-1
15	WORNER, NIKKI	F	0	0-0	0-0	0-0	0	0	0	0	0	0	0	0	0	0
44	RAMIL, JODI-MARIE	F	0	0-0	0-0	0-0	0	0	0	0	0	0	0	0	0	0
	TEAM						0	1	1	0		0				
<b>TOTALS</b>			<b>10</b>	<b>4-13</b>	<b>1-6</b>	<b>1-1</b>	<b>0</b>	<b>6</b>	<b>6</b>	<b>5</b>	<b>3</b>	<b>3</b>	<b>0</b>	<b>0</b>	<b>50</b>	

*Shooting By Period*

Period	FG	FG%	3FG	3FG%	FT	FT%
1st Qtr	4-13	31%	1-6	17%	1-1	100%
2nd Qtr	2-9	22%	1-6	17%	0-0	0%
1st Half	4-13	31%	1-6	17%	1-1	100%
1st Half	6-22	27%	2-12	17%	1-1	100%
Game	16-50	32.0%	4-28	14.3%	6-8	75.0%

*Deadball Rebounds: 2,0*

**Penn 16**

No.	Player	S	Pts	FG	3FG	FT	OR	DR	TR	PF	A	TO	Blk	Stl	Min	+/-
04	SUTTLE, KENNEDY	F	4	2-2	0-0	0-0	1	5	6	0	2	0	0	0	7	8
11	GRASELA, KENDALL	G	0	0-0	0-0	0-0	1	0	1	1	2	1	0	0	10	6
31	PARKER, ELEAH	C	4	2-4	0-0	0-1	1	2	3	1	0	2	0	0	9	5
33	STERBA, PHOEBE	G	3	1-4	1-2	0-0	1	0	1	1	1	1	0	0	8	6
45	PADILLA, KAYLA	G	5	2-4	0-2	1-2	0	1	1	0	0	0	0	1	10	6
02	KINUM, KATIE	G	0	0-0	0-0	0-0	0	0	0	0	0	0	0	0	0	0
03	JONES, MICHAEL	G	0	0-0	0-0	0-0	0	0	0	0	0	0	0	0	0	0
05	WELEDJI, SEREENA	G	0	0-0	0-0	0-0	0	0	0	0	0	0	0	0	0	0
10	MCGURK, MANDY	G	0	0-0	0-0	0-0	0	0	0	0	0	0	0	0	0	0
14	HAIR, MEG	G	0	0-0	0-0	0-0	0	0	0	0	0	0	0	0	0	0
21	LAKSTIGALA, MIA	G	0	0-0	0-0	0-0	0	0	0	1	0	0	0	0	2	0
24	CRAWFORD, TORI	F	0	0-1	0-1	0-0	0	0	0	0	0	0	0	0	3	-2
25	MILLIMAN, SILKE	F	0	0-0	0-0	0-0	0	0	0	0	0	0	0	0	0	0
34	DICINDIO, CHRISSY	F	0	0-0	0-0	0-0	0	0	0	0	0	0	0	0	0	0
40	ANDERSON, EMILY	C	0	0-1	0-0	0-0	0	0	0	0	0	0	0	0	1	1
44	CAHILL, NOELLE	C	0	0-0	0-0	0-0	0	0	0	0	0	0	0	0	0	0
	TEAM						0	1	1	0		0				
<b>TOTALS</b>			<b>16</b>	<b>7-16</b>	<b>1-5</b>	<b>1-3</b>	<b>4</b>	<b>9</b>	<b>13</b>	<b>4</b>	<b>5</b>	<b>4</b>	<b>0</b>	<b>1</b>	<b>50</b>	

*Shooting By Period*

Period	FG	FG%	3FG	3FG%	FT	FT%
1st Qtr	7-16	44%	1-5	20%	1-3	33%
2nd Qtr	9-20	45%	2-7	29%	1-2	50%
1st Half	7-16	44%	1-5	20%	1-3	33%
1st Half	16-36	44%	3-12	25%	2-5	40%
Game	31-67	46.3%	5-20	25.0%	7-12	58.3%

*Deadball Rebounds: 2,0*

Game Notes:

Officials: Don Cummiskey, Ryan Nunes, Kara Hunter  
Attendance: 731

Start Time: 01:01 PM ET  
End Time: 02:49 PM ET  
Game Duration: 1:47

Score	1st	2nd	3rd	4th	TOT
ION	10	5	18	9	<b>42</b>
PEN	16	21	23	14	<b>74</b>

Points from (This Period)	ION	PEN
In the Paint	6	12
Off Turns	3	4
2nd Chance	0	2
Fast Break	2	7
Bench	5	0

**Official Play-By-Play**  
**Iona vs Penn**  
**First Quarter**  
**November 17, 2019 at The Palestra (Macquarie) - Philadelphia**



**Period 1**

**Starters:**

**Iona:** 5 MWAI, SHYAN (G); 14 RACHU, MORGAN (G); 21 JOSEPH, GABRIELLE (F); 22 CAMILION, JUANA (G); 33 LESKO, TORI (F);  
**Penn:** 4 SUTTLE, KENNEDY (F); 11 GRASELA, KENDALL (G); 31 PARKER, ELEAH (C); 33 STERBA, PHOEBE (G); 45 PADILLA, KAYLA (G);

Time	VISITORS: Iona	Score	Margin	HOME: Penn
09:49		2-0	H 2	GOOD! JUMPER by PADILLA, KAYLA [PNT]
09:49				ASSIST by SUTTLE, KENNEDY
09:34	GOOD! 3PTR by CAMILION, JUANA	2-3	V 1	
09:34	ASSIST by LESKO, TORI			
09:11				TURNOVER (LOSTBALL) by PARKER, ELEAH
08:47	MISSED 3PTR by MWAI, SHYAN			
08:39				REBOUND (DEF) by SUTTLE, KENNEDY
08:38				MISSED 3PTR by PADILLA, KAYLA
08:34	REBOUND (DEF) by LESKO, TORI			
08:32	GOOD! LAYUP by CAMILION, JUANA [FB]	2-5	V 3	
08:32	ASSIST by LESKO, TORI			
08:20		4-5	V 1	GOOD! LAYUP by PARKER, ELEAH
08:20				ASSIST by STERBA, PHOEBE
08:20	FOUL (PERSONAL) by JOSEPH, GABRIELLE			
08:19				MISSED FT by PARKER, ELEAH
08:18	REBOUND (DEF) by RACHU, MORGAN			
08:03	MISSED LAYUP by JOSEPH, GABRIELLE			
08:00				REBOUND (DEF) by SUTTLE, KENNEDY
07:55		6-5	H 1	GOOD! LAYUP by SUTTLE, KENNEDY [FB]
07:55				ASSIST by GRASELA, KENDALL
07:23	MISSED 3PTR by MWAI, SHYAN			
07:19				REBOUND (DEF) by PARKER, ELEAH
07:19	FOUL (PERSONAL) by LESKO, TORI			
07:19	SUB OUT: JOSEPH, GABRIELLE			
07:19	SUB IN: WILLIAMS, DE'JAH			
07:11				FOUL (OFF) by GRASELA, KENDALL
07:11				TURNOVER (OFFENSIVE) by GRASELA, KENDALL
06:48	TURNOVER (TRAVEL) by WILLIAMS, DE'JAH			
06:32		8-5	H 3	GOOD! LAYUP by PARKER, ELEAH
06:32				ASSIST by SUTTLE, KENNEDY
06:03	MISSED 3PTR by RACHU, MORGAN			
05:58				REBOUND (DEF) by SUTTLE, KENNEDY
05:47				TURNOVER (LOSTBALL) by PARKER, ELEAH
05:23	MISSED 3PTR by CAMILION, JUANA			
05:19				REBOUND (DEF) by SUTTLE, KENNEDY
05:16				MISSED LAYUP by STERBA, PHOEBE
05:11				REBOUND (OFF) by STERBA, PHOEBE
05:10				MISSED LAYUP by STERBA, PHOEBE
05:07	REBOUND (DEF) by CAMILION, JUANA			
04:49	MISSED JUMPER by MWAI, SHYAN			
04:45				REBOUND (DEF) by SUTTLE, KENNEDY
04:41		11-5	H 6	GOOD! 3PTR by STERBA, PHOEBE [FB]
04:41				ASSIST by GRASELA, KENDALL
04:27	TURNOVER (TRAVEL) by MWAI, SHYAN			
04:27				
04:27				SUB OUT: SUTTLE, KENNEDY
04:27				SUB IN: CRAWFORD, TORI
04:27	SUB OUT: WILLIAMS, DE'JAH			
04:27	SUB OUT: MWAI, SHYAN			
04:27	SUB IN: VAITEKUNAITE, AISTE			
04:27	SUB IN: BAREFIELD, MONICA			
04:08				MISSED 3PTR by CRAWFORD, TORI
04:04	REBOUND (DEF) by BAREFIELD, MONICA			
03:50	TURNOVER (BADPASS) by VAITEKUNAITE, AISTE			
03:50				STEAL by PADILLA, KAYLA
03:46		13-5	H 8	GOOD! LAYUP by PADILLA, KAYLA [FB]
03:16	GOOD! JUMPER by VAITEKUNAITE, AISTE [PNT]	13-7	H 6	
03:16	ASSIST by LESKO, TORI			
02:57				MISSED 3PTR by STERBA, PHOEBE
02:53				REBOUND (OFF) by GRASELA, KENDALL
02:49	FOUL (PERSONAL) by CAMILION, JUANA			
02:44				MISSED 3PTR by PADILLA, KAYLA
02:43	REBOUND (DEF) by TEAM			
02:27	MISSED 3PTR by RACHU, MORGAN			
02:24				REBOUND (DEF) by PARKER, ELEAH
02:09				FOUL (OFF) by STERBA, PHOEBE
02:09				TURNOVER (OFFENSIVE) by STERBA, PHOEBE
02:09				SUB OUT: STERBA, PHOEBE
02:09				SUB IN: LAKSTIGALA, MIA
02:09	SUB OUT: RACHU, MORGAN			

Time	VISITORS: Iona	Score	Margin	HOME: Penn
02:09	SUB IN: MWAI, SHYAN			
01:47	GOOD! LAYUP by BAREFIELD, MONICA	13-9	H 4	
01:47				FOUL (PERSONAL) by PARKER, ELEAH
01:47				SUB OUT: CRAWFORD, TORI
01:47				SUB IN: SUTTLE, KENNEDY
01:47	GOOD! FT by BAREFIELD, MONICA	13-10	H 3	
01:38				MISSED LAYUP by PARKER, ELEAH
01:33				REBOUND (OFF) by PARKER, ELEAH
01:31				MISSED LAYUP by PARKER, ELEAH
01:27				REBOUND (OFF) by SUTTLE, KENNEDY
01:26		15-10	H 5	GOOD! LAYUP by SUTTLE, KENNEDY
00:57	MISSED JUMPER by CAMILION, JUANA			
00:57				REBOUND (DEF) by TEAM
00:57				SUB OUT: PARKER, ELEAH
00:57				SUB IN: ANDERSON, EMILY
00:57	SUB OUT: VAITEKUNAITE, AISTE			
00:57	SUB IN: WILLIAMS, DE'JAH			
00:38				MISSED JUMPER by ANDERSON, EMILY
00:33	REBOUND (DEF) by MWAI, SHYAN			
00:19	MISSED JUMPER by WILLIAMS, DE'JAH			
00:15				REBOUND (DEF) by PADILLA, KAYLA
00:14	FOUL (PERSONAL) by CAMILION, JUANA			
00:14	SUB OUT: CAMILION, JUANA			
00:14	SUB IN: BECERRA PEREZ, LUCIA			
00:06	FOUL (PERSONAL) by WILLIAMS, DE'JAH			
00:06				MISSED FT by PADILLA, KAYLA
00:06				REBOUND (OFF) by TEAM
00:06		16-10	H 6	GOOD! FT by PADILLA, KAYLA
00:06				SUB OUT: PADILLA, KAYLA
00:06				SUB IN: STERBA, PHOEBE
00:03				FOUL (PERSONAL) by LAKSTIGALA, MIA
00:03	SUB OUT: WILLIAMS, DE'JAH			
00:03	SUB IN: RACHU, MORGAN			

### Iona 10, Penn 16

Points from (This Period)	ION	PEN
In the Paint	6	12
Off Turns	3	4
2nd Chance	0	2
Fast Break	2	7
Bench	5	0

**Official Box Score**  
**Iona vs Penn**  
**Second Quarter Statistics Only**  
**November 17, 2019 at The Palestra (Macquarie) - Philadelphia**



**Iona 5**

No.	Player	S	Pts	FG	3FG	FT	OR	DR	TR	PF	A	TO	Blk	Stl	Min	+/-
05	MWAI, SHYAN	G	3	1-3	1-3	0-0	1	0	1	0	0	2	0	0	7	-10
14	RACHU, MORGAN	G	0	0-2	0-2	0-0	0	2	2	0	0	0	0	0	10	-16
21	JOSEPH, GABRIELLE	F	0	0-0	0-0	0-0	0	0	0	1	0	1	0	0	6	-7
22	CAMILION, JUANA	G	0	0-0	0-0	0-0	0	0	0	1	0	2	0	0	3	-4
33	LESKO, TORI	F	0	0-0	0-0	0-0	0	2	2	0	0	3	0	0	10	-16
00	WILLIAMS, DE'JAH	F	0	0-0	0-0	0-0	0	0	0	0	0	0	0	0	0	0
01	VAITEKUNAITE, AISTE	F	0	0-0	0-0	0-0	0	0	0	0	0	0	0	0	0	0
03	BAREFIELD, MONICA	G	2	1-4	0-1	0-0	0	0	0	0	0	0	0	0	6	-15
13	BECERRA PEREZ, LUCIA	G	0	0-0	0-0	0-0	1	0	1	2	0	2	0	0	6	-10
15	WORNER, NIKKI	F	0	0-0	0-0	0-0	0	0	0	0	0	0	0	0	0	0
44	RAMIL, JODI-MARIE	F	0	0-0	0-0	0-0	0	0	0	0	0	0	0	0	1	-2
	TEAM						0	2	2	0	0	0	0	0		
<b>TOTALS</b>			<b>5</b>	<b>2-9</b>	<b>1-6</b>	<b>0-0</b>	<b>2</b>	<b>6</b>	<b>8</b>	<b>4</b>	<b>0</b>	<b>10</b>	<b>0</b>	<b>0</b>	<b>50</b>	

*Shooting By Period*

Period	FG	FG%	3FG	3FG%	FT	FT%
3rd Qtr	7-15	47%	1-7	14%	3-5	60%
4th Qtr	3-13	23%	1-9	11%	2-2	100%
2nd Half	2-9	22%	1-6	17%	0-0	0%
2nd Half	10-28	36%	2-16	13%	5-7	71%
Game	16-50	32.0%	4-28	14.3%	6-8	75.0%

*Deadball Rebounds: 2,0*

**Penn 21**

No.	Player	S	Pts	FG	3FG	FT	OR	DR	TR	PF	A	TO	Blk	Stl	Min	+/-
04	SUTTLE, KENNEDY	F	5	2-3	0-1	1-2	0	1	1	1	0	1	0	0	7	10
11	GRASELA, KENDALL	G	2	1-1	0-0	0-0	0	0	0	0	3	0	0	2	8	14
31	PARKER, ELEAH	C	2	1-2	0-0	0-0	2	0	2	0	0	1	0	0	4	3
33	STERBA, PHOEBE	G	8	3-6	2-5	0-0	0	0	0	0	0	2	0	1	10	16
45	PADILLA, KAYLA	G	2	1-2	0-1	0-0	1	2	3	0	2	0	0	0	7	9
02	KINUM, KATIE	G	0	0-0	0-0	0-0	0	0	0	0	0	0	0	0	0	0
03	JONES, MICHAEL	G	0	0-1	0-0	0-0	0	0	0	1	0	0	0	0	2	2
05	WELEDJI, SEREENA	G	0	0-0	0-0	0-0	0	0	0	0	0	0	0	0	0	0
10	MCGURK, MANDY	G	0	0-0	0-0	0-0	0	0	0	0	0	0	0	0	0	0
14	HAIR, MEG	G	0	0-0	0-0	0-0	0	0	0	0	0	0	0	0	0	0
21	LAKSTIGALA, MIA	G	0	0-0	0-0	0-0	1	0	1	0	1	0	0	0	3	7
24	CRAWFORD, TORI	F	0	0-1	0-0	0-0	1	0	1	0	0	0	0	1	3	6
25	MILLIMAN, SILKE	F	0	0-0	0-0	0-0	0	0	0	0	0	0	0	0	0	0
34	DICINDIO, CHRISSY	F	0	0-0	0-0	0-0	0	0	0	0	0	0	0	0	0	0
40	ANDERSON, EMILY	C	2	1-4	0-0	0-0	1	1	2	1	0	0	0	0	6	13
44	CAHILL, NOELLE	C	0	0-0	0-0	0-0	0	0	0	0	0	0	0	0	0	0
	TEAM						0	1	1	0	0	0	0	0		
<b>TOTALS</b>			<b>21</b>	<b>9-20</b>	<b>2-7</b>	<b>1-2</b>	<b>6</b>	<b>5</b>	<b>11</b>	<b>3</b>	<b>6</b>	<b>4</b>	<b>1</b>	<b>4</b>	<b>50</b>	

*Shooting By Period*

Period	FG	FG%	3FG	3FG%	FT	FT%
3rd Qtr	10-16	63%	0-3	00%	3-3	100%
4th Qtr	5-15	33%	2-5	40%	2-4	50%
2nd Half	9-20	45%	2-7	29%	1-2	50%
2nd Half	15-31	48%	2-8	25%	5-7	71%
Game	31-67	46.3%	5-20	25.0%	7-12	58.3%

*Deadball Rebounds: 2,0*

Game Notes:

Officials: Don Cummiskey, Ryan Nunes, Kara Hunter  
 Attendance: 731

Start Time: 01:01 PM ET  
 End Time: 02:49 PM ET  
 Game Duration: 1:47

Score	1st	2nd	3rd	4th	TOT
ION	10	5	18	9	<b>42</b>
PEN	16	21	23	14	<b>74</b>

Points from (This Period)	ION	PEN
In the Paint	2	12
Off Turns	0	7
2nd Chance	0	6
Fast Break	0	4
Bench	2	2

**Official Play-By-Play**  
**Iona vs Penn**  
**Second Quarter**  
**November 17, 2019 at The Palestra (Macquarie) - Philadelphia**



**Period 2**

**Starters:**

**Iona:** 5 MWAI, SHYAN (G); 14 RACHU, MORGAN (G); 21 JOSEPH, GABRIELLE (F); 22 CAMILION, JUANA (G); 33 LESKO, TORI (F);  
**Penn:** 4 SUTTLE, KENNEDY (F); 11 GRASELA, KENDALL (G); 31 PARKER, ELEAH (C); 33 STERBA, PHOEBE (G); 45 PADILLA, KAYLA (G);

Time	VISITORS: Iona	Score	Margin	HOME: Penn
09:45		19-10	H 9	GOOD! 3PTR by STERBA, PHOEBE
09:45				ASSIST by GRASELA, KENDALL
09:06	MISSED 3PTR by BAREFIELD, MONICA			
09:03				REBOUND (DEF) by ANDERSON, EMILY
08:54		21-10	H 11	GOOD! LAYUP by SUTTLE, KENNEDY
08:54				ASSIST by GRASELA, KENDALL
08:54	FOUL (PERSONAL) by BECERRA PEREZ, LUCIA			
08:53				MISSED FT by SUTTLE, KENNEDY
08:52				REBOUND (OFF) by LAKSTIGALA, MIA
08:41		23-10	H 13	GOOD! JUMPER by ANDERSON, EMILY
08:41				ASSIST by LAKSTIGALA, MIA
08:10	TURNOVER (DRIBBLING) by BECERRA PEREZ, LUCIA			
08:02				MISSED LAYUP by ANDERSON, EMILY
07:59				REBOUND (OFF) by ANDERSON, EMILY
07:58				MISSED LAYUP by ANDERSON, EMILY
07:55	REBOUND (DEF) by LESKO, TORI			
07:34	MISSED LAYUP by BAREFIELD, MONICA			
07:32	REBOUND (OFF) by BECERRA PEREZ, LUCIA			
07:28	MISSED 3PTR by RACHU, MORGAN			
07:25				REBOUND (DEF) by SUTTLE, KENNEDY
07:13				MISSED 3PTR by STERBA, PHOEBE
07:10	REBOUND (DEF) by TEAM			
07:10				SUB OUT: LAKSTIGALA, MIA
07:10				SUB OUT: ANDERSON, EMILY
07:10				SUB IN: PARKER, ELEAH
07:10				SUB IN: PADILLA, KAYLA
07:10	SUB OUT: BAREFIELD, MONICA			
07:10	SUB IN: JOSEPH, GABRIELLE			
07:09	TURNOVER (BADPASS) by LESKO, TORI			
07:09				STEAL by STERBA, PHOEBE
07:03				MISSED 3PTR by PADILLA, KAYLA
07:00	REBOUND (DEF) by RACHU, MORGAN			
06:35	GOOD! 3PTR by MWAI, SHYAN	23-13	H 10	
06:21				TURNOVER (BADPASS) by STERBA, PHOEBE
06:21				TIMEOUT 30SEC
06:21				
06:14	TURNOVER (LOSTBALL) by MWAI, SHYAN			
06:14				STEAL by GRASELA, KENDALL
05:59				FOUL (OFF) by SUTTLE, KENNEDY
05:59				TURNOVER (OFFENSIVE) by SUTTLE, KENNEDY
05:59				SUB OUT: SUTTLE, KENNEDY
05:59				SUB IN: CRAWFORD, TORI
05:53	TURNOVER (LOSTBALL) by BECERRA PEREZ, LUCIA			
05:53				STEAL by GRASELA, KENDALL
05:48		25-13	H 12	GOOD! LAYUP by STERBA, PHOEBE [FB]
05:48				ASSIST by PADILLA, KAYLA
05:42	TIMEOUT 30SEC			
05:42	SUB OUT: BECERRA PEREZ, LUCIA			
05:42	SUB IN: BAREFIELD, MONICA			
05:17	MISSED 3PTR by RACHU, MORGAN			
05:14				REBOUND (DEF) by PADILLA, KAYLA
05:12		27-13	H 14	GOOD! LAYUP by GRASELA, KENDALL [FB]
05:12				ASSIST by PADILLA, KAYLA
05:03	TURNOVER (BADPASS) by LESKO, TORI			
05:03				SUB OUT: GRASELA, KENDALL
05:03				SUB IN: JONES, MICHAEL
05:03	SUB OUT: BAREFIELD, MONICA			
05:03	SUB IN: CAMILION, JUANA			
05:00				TURNOVER (BADPASS) by PARKER, ELEAH
04:53				FOUL (PERSONAL) by JONES, MICHAEL
04:44	TURNOVER (TRAVEL) by CAMILION, JUANA			
04:36				MISSED 3PTR by STERBA, PHOEBE
04:33				REBOUND (OFF) by CRAWFORD, TORI
04:26				MISSED JUMPER by JONES, MICHAEL
04:22	REBOUND (DEF) by LESKO, TORI			
04:17	TURNOVER (LOSTBALL) by JOSEPH, GABRIELLE			
03:59				MISSED LAYUP by CRAWFORD, TORI
03:55				REBOUND (OFF) by PARKER, ELEAH
03:54				MISSED LAYUP by PARKER, ELEAH
03:51				REBOUND (OFF) by PARKER, ELEAH



Time	VISITORS: Iona	Score	Margin	HOME: Penn
03:50		29-13	H 16	GOOD! LAYUP by PARKER, ELEAH
03:24	TURNOVER (LOSTBALL) by MWAI, SHYAN			
03:24				STEAL by CRAWFORD, TORI
03:18				MISSED 3PTR by STERBA, PHOEBE
03:13	REBOUND (DEF) by RACHU, MORGAN			
02:49	MISSED 3PTR by MWAI, SHYAN			
02:49				BLOCK by CRAWFORD, TORI
02:45	REBOUND (OFF) by MWAI, SHYAN			
02:45	MISSED 3PTR by MWAI, SHYAN			
02:45				REBOUND (DEF) by TEAM
02:45				SUB OUT: JONES, MICHAEL
02:45				SUB OUT: CRAWFORD, TORI
02:45				SUB OUT: PARKER, ELEAH
02:45				SUB IN: SUTTLE, KENNEDY
02:45				SUB IN: GRASELA, KENDALL
02:45				SUB IN: ANDERSON, EMILY
02:45	SUB OUT: MWAI, SHYAN			
02:45	SUB IN: BAREFIELD, MONICA			
02:33				MISSED 3PTR by SUTTLE, KENNEDY
02:27				REBOUND (OFF) by PADILLA, KAYLA
02:26		31-13	H 18	GOOD! LAYUP by PADILLA, KAYLA
02:09	FOUL (OFF) by CAMILION, JUANA			
02:09	TURNOVER (OFFENSIVE) by CAMILION, JUANA			
02:09	SUB OUT: CAMILION, JUANA			
02:09	SUB IN: BECERRA PEREZ, LUCIA			
01:58				TURNOVER (LOSTBALL) by STERBA, PHOEBE
01:42	MISSED JUMPER by BAREFIELD, MONICA			
01:38				REBOUND (DEF) by PADILLA, KAYLA
01:28		33-13	H 20	GOOD! LAYUP by SUTTLE, KENNEDY
01:28	FOUL (PERSONAL) by JOSEPH, GABRIELLE			
01:28	SUB OUT: JOSEPH, GABRIELLE			
01:28	SUB IN: RAMIL, JODI-MARIE			
01:28		34-13	H 21	GOOD! FT by SUTTLE, KENNEDY
01:08	TURNOVER (BADPASS) by LESKO, TORI			
00:55	FOUL (PERSONAL) by BECERRA PEREZ, LUCIA			
00:47		37-13	H 24	GOOD! 3PTR by STERBA, PHOEBE
00:47				ASSIST by GRASELA, KENDALL
00:10	GOOD! LAYUP by BAREFIELD, MONICA	37-15	H 22	
00:03				MISSED LAYUP by ANDERSON, EMILY
00:03	REBOUND (DEF) by TEAM			
00:03				FOUL (PERSONAL) by ANDERSON, EMILY

### Iona 15, Penn 37

Points from (This Period)	ION	PEN
In the Paint	2	12
Off Turns	0	7
2nd Chance	0	6
Fast Break	0	4
Bench	2	2

**Official Box Score**  
**Iona vs Penn**  
**Second Half Statistics Only**  
**November 17, 2019 at The Palestra (Macquarie) - Philadelphia**



**Iona 27**

No.	Player	S	Pts	FG	3FG	FT	OR	DR	TR	PF	A	TO	Blk	Stl	Min	+/-
00	WILLIAMS, DE'JAH	F	11	5-6	0-1	1-2	1	1	2	0	0	0	0	1	11	-3
01	VAITEKUNAITE, AISTE	F	2	0-2	0-1	2-2	0	2	2	0	0	0	0	0	6	4
03	BAREFIELD, MONICA	G	0	0-5	0-5	0-0	0	1	1	1	1	2	0	1	16	-8
05	MWAI, SHYAN	G	9	3-6	1-4	2-3	1	0	1	0	3	3	0	1	16	-3
13	BECERRA PEREZ, LUCIA	G	0	0-2	0-1	0-0	1	2	3	3	0	3	0	2	7	-9
14	RACHU, MORGAN	G	5	2-3	1-1	0-0	2	2	4	1	2	0	0	1	18	-9
15	WORNER, NIKKI	F	0	0-1	0-1	0-0	0	0	0	0	0	0	0	0	1	-1
21	JOSEPH, GABRIELLE	F	0	0-0	0-0	0-0	0	0	0	1	0	0	0	0	3	2
22	CAMILION, JUANA	G	0	0-2	0-2	0-0	0	0	0	2	2	0	0	2	9	-1
33	LESKO, TORI	F	0	0-0	0-0	0-0	0	1	1	0	0	2	0	0	7	-11
44	RAMIL, JODI-MARIE	F	0	0-1	0-0	0-0	0	0	0	0	0	0	0	0	3	-11
	TEAM		0	0-0	0-0	0-0	1	0	1	0	0	1	0	0	0	0
<b>TOTALS</b>			<b>27</b>	<b>10-28</b>	<b>2-16</b>	<b>5-7</b>	<b>6</b>	<b>9</b>	<b>15</b>	<b>8</b>	<b>8</b>	<b>11</b>	<b>0</b>	<b>8</b>	<b>98</b>	

*Shooting By Period*

Period	FG	FG%	3FG	3FG%	FT	FT%
3rd Qtr	7-15	47%	1-7	14%	3-5	60%
4th Qtr	3-13	23%	1-9	11%	2-2	100%
2nd Half	10-28	36%	2-16	13%	5-7	71%
Game	16-50	32.0%	4-28	14.3%	6-8	75.0%

Deadball Rebounds: 2,0  
 Last FG Half: ION 4th-02:06

**Penn 37**

No.	Player	S	Pts	FG	3FG	FT	OR	DR	TR	PF	A	TO	Blk	Stl	Min	+/-
02	KINUM, KATIE	G	0	0-2	0-1	0-0	0	0	0	0	0	1	0	0	4	-4
03	JONES, MICHAEL	G	0	0-0	0-0	0-0	0	0	0	0	0	1	0	0	5	-3
04	SUTTLE, KENNEDY	F	2	1-1	0-0	0-0	2	2	4	2	1	2	0	2	10	16
05	WELEDJI, SEREENA	G	0	0-1	0-0	0-0	0	1	1	1	0	0	0	1	5	-5
10	MCGURK, MANDY	G	0	0-2	0-1	0-0	0	0	0	1	0	1	0	0	6	-4
11	GRASELA, KENDALL	G	2	1-1	0-0	0-0	0	0	0	0	5	1	0	1	11	15
14	HAIR, MEG	G	0	0-0	0-0	0-0	0	2	2	1	0	1	0	0	3	0
21	LAKSTIGALA, MIA	G	0	0-1	0-1	0-0	0	0	0	1	0	2	0	0	3	-3
24	CRAWFORD, TORI	F	7	3-4	0-0	1-1	2	0	2	0	1	0	0	0	6	-6
25	MILLIMAN, SILKE	F	0	0-2	0-1	0-0	0	1	1	0	0	1	0	0	4	-5
31	PARKER, ELEAH	C	8	3-5	0-0	2-3	1	2	3	0	0	0	0	3	8	20
33	STERBA, PHOEBE	G	6	2-3	1-1	1-1	0	0	0	0	2	0	0	1	9	18
34	DICINDIO, CHRISSEY	F	3	1-1	0-0	1-2	1	1	2	1	0	0	1	0	6	-4
40	ANDERSON, EMILY	C	2	1-2	0-0	0-0	0	0	0	1	0	0	0	0	4	-2
44	CAHILL, NOELLE	C	0	0-0	0-0	0-0	1	0	1	0	0	0	0	0	1	1
45	PADILLA, KAYLA	G	7	3-6	1-3	0-0	0	1	1	0	3	0	0	0	13	16
	TEAM		0	0-0	0-0	0-0	1	2	3	0	0	0	0	0	0	0
<b>TOTALS</b>			<b>37</b>	<b>15-31</b>	<b>2-8</b>	<b>5-7</b>	<b>8</b>	<b>12</b>	<b>20</b>	<b>8</b>	<b>12</b>	<b>10</b>	<b>1</b>	<b>8</b>	<b>98</b>	

*Shooting By Period*

Period	FG	FG%	3FG	3FG%	FT	FT%
3rd Qtr	10-16	63%	0-3	00%	3-3	100%
4th Qtr	5-15	33%	2-5	40%	2-4	50%
2nd Half	15-31	48%	2-8	25%	5-7	71%
Game	31-67	46.3%	5-20	25.0%	7-12	58.3%

Deadball Rebounds: 2,0  
 Last FG Half: PEN 4th-01:49

*Game Notes:*

Officials: Don Cumiskey, Ryan Nunes, Kara Hunter  
 Attendance: 731

Start Time: 01:01 PM ET  
 End Time: 02:49 PM ET  
 Game Duration: 1:47

Score	1st	2nd	3rd	4th	TOT
ION	10	5	18	9	42
PEN	16	21	23	14	74

Points from (This Period)	ION	PEN
In the Paint	6	26
Off Turns	11	11
2nd Chance	4	10
Fast Break	6	18
Bench	13	12

**Official Box Score**  
**Iona vs Penn**  
**Third Quarter Statistics Only**  
**November 17, 2019 at The Palestra (Macquarie) - Philadelphia**



**Iona 27**

No.	Player	S	Pts	FG	3FG	FT	OR	DR	TR	PF	A	TO	Blk	Stl	Min	+/-
05	MWAI, SHYAN	G	5	1-3	1-3	2-3	0	0	0	0	3	0	0	1	8	4
14	RACHU, MORGAN	G	2	1-2	0-0	0-0	1	0	1	1	1	0	0	1	10	-5
21	JOSEPH, GABRIELLE	F	0	0-0	0-0	0-0	0	0	0	0	0	0	0	0	0	0
22	CAMILION, JUANA	G	0	0-2	0-2	0-0	0	0	0	1	2	0	0	2	8	4
33	LESKO, TORI	F	0	0-0	0-0	0-0	0	0	0	0	0	1	0	0	2	-9
00	WILLIAMS, DE'JAH	F	11	5-6	0-1	1-2	1	1	2	0	0	0	0	1	7	6
01	VAITEKUNAITE, AISTE	F	0	0-0	0-0	0-0	0	0	0	0	0	0	0	0	0	0
03	BAREFIELD, MONICA	G	0	0-1	0-1	0-0	0	0	0	1	0	1	0	0	8	-3
13	BECERRA PEREZ, LUCIA	G	0	0-0	0-0	0-0	0	0	0	1	0	2	0	0	4	-11
15	WORNER, NIKKI	F	0	0-0	0-0	0-0	0	0	0	0	0	0	0	0	0	0
44	RAMIL, JODI-MARIE	F	0	0-1	0-0	0-0	0	0	0	0	0	0	0	0	3	-11
	TEAM						1	0	1	0		1				
<b>TOTALS</b>			<b>18</b>	<b>7-15</b>	<b>1-7</b>	<b>3-5</b>	<b>3</b>	<b>1</b>	<b>4</b>	<b>4</b>	<b>6</b>	<b>5</b>	<b>0</b>	<b>5</b>	<b>50</b>	

*Shooting By Period*

Period	FG	FG%	3FG	3FG%	FT	FT%
2nd Half	0-0	0%	0-0	0%	0-0	0%
Game	16-50	32.0%	4-28	14.3%	6-8	75.0%

*Deadball Rebounds: 2,0*

**Penn 37**

No.	Player	S	Pts	FG	3FG	FT	OR	DR	TR	PF	A	TO	Blk	Stl	Min	+/-
04	SUTTLE, KENNEDY	F	2	1-1	0-0	0-0	1	1	2	2	1	2	0	1	6	7
11	GRASELA, KENDALL	G	2	1-1	0-0	0-0	0	0	0	0	2	1	0	0	7	6
31	PARKER, ELEAH	C	5	2-3	0-0	1-1	1	1	2	0	0	0	0	2	4	11
33	STERBA, PHOEBE	G	3	1-1	0-0	1-1	0	0	0	0	1	0	0	1	5	9
45	PADILLA, KAYLA	G	2	1-3	0-2	0-0	0	1	1	0	3	0	0	0	9	7
02	KINUM, KATIE	G	0	0-0	0-0	0-0	0	0	0	0	0	1	0	0	1	-2
03	JONES, MICHAEL	G	0	0-0	0-0	0-0	0	0	0	0	0	0	0	0	3	-1
05	WELEDJI, SEREENA	G	0	0-0	0-0	0-0	0	0	0	0	0	0	0	0	0	0
10	MCGURK, MANDY	G	0	0-0	0-0	0-0	0	0	0	0	0	0	0	0	0	0
14	HAIR, MEG	G	0	0-0	0-0	0-0	0	1	1	0	0	1	0	0	2	-1
21	LAKSTIGALA, MIA	G	0	0-1	0-1	0-0	0	0	0	1	0	2	0	0	3	-3
24	CRAWFORD, TORI	F	7	3-4	0-0	1-1	2	0	2	0	1	0	0	0	6	-6
25	MILLIMAN, SILKE	F	0	0-0	0-0	0-0	0	0	0	0	0	0	0	0	0	0
34	DICINDIO, CHRISSY	F	0	0-0	0-0	0-0	0	0	0	0	0	0	0	0	0	0
40	ANDERSON, EMILY	C	2	1-2	0-0	0-0	0	0	0	1	0	0	0	0	4	-2
44	CAHILL, NOELLE	C	0	0-0	0-0	0-0	0	0	0	0	0	0	0	0	0	0
	TEAM						1	1	2	0		0				
<b>TOTALS</b>			<b>23</b>	<b>10-16</b>	<b>0-3</b>	<b>3-3</b>	<b>5</b>	<b>5</b>	<b>10</b>	<b>4</b>	<b>8</b>	<b>7</b>	<b>0</b>	<b>4</b>	<b>50</b>	

*Shooting By Period*

Period	FG	FG%	3FG	3FG%	FT	FT%
2nd Half	0-0	0%	0-0	0%	0-0	0%
Game	31-67	46.3%	5-20	25.0%	7-12	58.3%

*Deadball Rebounds: 2,0*

*Game Notes:*

Officials: Don Cummiskey, Ryan Nunes, Kara Hunter  
 Attendance: 731

Start Time: 01:01 PM ET  
 End Time: 02:49 PM ET  
 Game Duration: 1:47

Score	1st	2nd	3rd	4th	TOT
ION	10	5	18	9	<b>42</b>
PEN	16	21	23	14	<b>74</b>

Points from (This Period)	ION	PEN
In the Paint	4	20
Off Turns	8	6
2nd Chance	4	5
Fast Break	3	13
Bench	11	9

**Official Play-By-Play**  
**Iona vs Penn**  
**Third Quarter**  
**November 17, 2019 at The Palestra (Macquarie) - Philadelphia**



**Period 3**

**Starters:**

**Iona:** 5 MWAI, SHYAN (G); 14 RACHU, MORGAN (G); 21 JOSEPH, GABRIELLE (F); 22 CAMILION, JUANA (G); 33 LESKO, TORI (F);

**Penn:** 4 SUTTLE, KENNEDY (F); 11 GRASELA, KENDALL (G); 31 PARKER, ELEAH (C); 33 STERBA, PHOEBE (G); 45 PADILLA, KAYLA (G);

Time	VISITORS: Iona	Score	Margin	HOME: Penn
10:00				SUB OUT: ANDERSON, EMILY
10:00				SUB IN: PARKER, ELEAH
09:48	TURNOVER (BADPASS) by BECERRA PEREZ, LUCIA			
09:48				STEAL by PARKER, ELEAH
09:43		39-15	H 24	GOOD! LAYUP by PADILLA, KAYLA [FB]
09:43				ASSIST by GRASELA, KENDALL
09:25	MISSED LAYUP by RACHU, MORGAN			
09:19				REBOUND (DEF) by PADILLA, KAYLA
09:18		41-15	H 26	GOOD! LAYUP by PARKER, ELEAH [FB]
09:18				ASSIST by STERBA, PHOEBE
09:18	FOUL (PERSONAL) by BECERRA PEREZ, LUCIA			
09:18		42-15	H 27	GOOD! FT by PARKER, ELEAH [FB]
09:00	TURNOVER (LOSTBALL) by LESKO, TORI			
09:00				STEAL by SUTTLE, KENNEDY
08:45		44-15	H 29	GOOD! LAYUP by SUTTLE, KENNEDY
08:26	TURNOVER (BADPASS) by BAREFIELD, MONICA			
08:26				STEAL by PARKER, ELEAH
08:21		46-15	H 31	GOOD! LAYUP by GRASELA, KENDALL [FB]
08:21				ASSIST by PADILLA, KAYLA
08:20	TIMEOUT 30SEC			
08:20				
08:20	SUB OUT: BAREFIELD, MONICA			
08:20	SUB OUT: LESKO, TORI			
08:20	SUB IN: MWAI, SHYAN			
08:20	SUB IN: CAMILION, JUANA			
08:03	MISSED 3PTR by MWAI, SHYAN			
07:59				REBOUND (DEF) by SUTTLE, KENNEDY
07:56				MISSED 3PTR by PADILLA, KAYLA
07:52				REBOUND (OFF) by SUTTLE, KENNEDY
07:39		48-15	H 33	GOOD! LAYUP by PARKER, ELEAH
07:39				ASSIST by SUTTLE, KENNEDY
07:18	MISSED JUMPER by RAMIL, JODI-MARIE			
07:13				REBOUND (DEF) by PARKER, ELEAH
06:55				FOUL (OFF) by SUTTLE, KENNEDY
06:55				TURNOVER (OFFENSIVE) by SUTTLE, KENNEDY
06:55	SUB OUT: RAMIL, JODI-MARIE			
06:55	SUB IN: WILLIAMS, DE'JAH			
06:45	TURNOVER (BADPASS) by BECERRA PEREZ, LUCIA			
06:45				STEAL by STERBA, PHOEBE
06:35				MISSED JUMPER by PARKER, ELEAH
06:32				REBOUND (OFF) by PARKER, ELEAH
06:22				TURNOVER (LOSTBALL) by SUTTLE, KENNEDY
06:22	STEAL by WILLIAMS, DE'JAH			
06:17				SUB OUT: SUTTLE, KENNEDY
06:17				SUB OUT: PARKER, ELEAH
06:17				SUB IN: CRAWFORD, TORI
06:17				SUB IN: ANDERSON, EMILY
06:17	SUB OUT: BECERRA PEREZ, LUCIA			
06:17	SUB IN: BAREFIELD, MONICA			
06:17				SUB OUT: STERBA, PHOEBE
06:17				SUB IN: LAKSTIGALA, MIA
06:04	GOOD! LAYUP by RACHU, MORGAN	48-17	H 31	
06:04	ASSIST by MWAI, SHYAN			
05:46				MISSED 3PTR by LAKSTIGALA, MIA
05:45				REBOUND (OFF) by TEAM
05:45	FOUL (PERSONAL) by RACHU, MORGAN			
05:35				MISSED LAYUP by CRAWFORD, TORI
05:33	REBOUND (DEF) by WILLIAMS, DE'JAH			
05:29				FOUL (PERSONAL) by ANDERSON, EMILY
05:29	MISSED FT by WILLIAMS, DE'JAH			
05:29	REBOUND (OFF) by TEAM			
05:29	GOOD! FT by WILLIAMS, DE'JAH [FB]	48-18	H 30	
05:21		50-18	H 32	GOOD! LAYUP by ANDERSON, EMILY [FB]
05:21				ASSIST by PADILLA, KAYLA
05:00	GOOD! LAYUP by WILLIAMS, DE'JAH	50-20	H 30	
04:50				TURNOVER (BADPASS) by LAKSTIGALA, MIA
04:50	STEAL by MWAI, SHYAN			
04:18	TURNOVER (SHOTCLOCK) by TEAM			
04:18				
04:18				SUB OUT: GRASELA, KENDALL

Time	VISITORS: Iona	Score	Margin	HOME: Penn
04:18				SUB IN: JONES, MICHAEL
04:10				FOUL (OFF) by LAKSTIGALA, MIA
04:10				TURNOVER (OFFENSIVE) by LAKSTIGALA, MIA
03:53	GOOD! JUMPER by WILLIAMS, DE'JAH	50-22	H 28	
03:53	ASSIST by RACHU, MORGAN			
03:31				MISSED LAYUP by ANDERSON, EMILY
03:29				REBOUND (OFF) by CRAWFORD, TORI
03:26				MISSED 3PTR by PADILLA, KAYLA
03:24				REBOUND (OFF) by CRAWFORD, TORI
03:24		52-22	H 30	GOOD! LAYUP by CRAWFORD, TORI
03:24	FOUL (PERSONAL) by CAMILION, JUANA			
03:24				SUB OUT: LAKSTIGALA, MIA
03:24				SUB IN: HAIR, MEG
03:24		53-22	H 31	GOOD! FT by CRAWFORD, TORI
03:08	MISSED 3PTR by WILLIAMS, DE'JAH			
03:05				REBOUND (DEF) by HAIR, MEG
03:02		55-22	H 33	GOOD! LAYUP by CRAWFORD, TORI [FB]
03:02				ASSIST by PADILLA, KAYLA
02:33	MISSED 3PTR by BAREFIELD, MONICA			
02:28	REBOUND (OFF) by WILLIAMS, DE'JAH			
02:23	GOOD! JUMPER by WILLIAMS, DE'JAH	55-24	H 31	
02:23	ASSIST by MWAI, SHYAN			
02:12				TURNOVER (BADPASS) by HAIR, MEG
02:12	STEAL by RACHU, MORGAN			
02:06	MISSED 3PTR by MWAI, SHYAN			
02:05	REBOUND (OFF) by TEAM			
02:05				SUB OUT: ANDERSON, EMILY
02:05				SUB OUT: PADILLA, KAYLA
02:05				SUB IN: KINUM, KATIE
02:05				SUB IN: SUTTLE, KENNEDY
01:53	MISSED 3PTR by CAMILION, JUANA			
01:50				REBOUND (DEF) by TEAM
01:43				TURNOVER (BADPASS) by KINUM, KATIE
01:43	STEAL by CAMILION, JUANA			
01:27	MISSED 3PTR by CAMILION, JUANA			
01:22	REBOUND (OFF) by RACHU, MORGAN			
01:16	GOOD! JUMPER by WILLIAMS, DE'JAH	55-26	H 29	
01:16	ASSIST by CAMILION, JUANA			
01:05				TIMEOUT 30SEC
01:05				SUB OUT: KINUM, KATIE
01:05				SUB OUT: JONES, MICHAEL
01:05				SUB OUT: HAIR, MEG
01:05				SUB IN: GRASELA, KENDALL
01:05				SUB IN: STERBA, PHOEBE
01:05				SUB IN: PADILLA, KAYLA
00:52		57-26	H 31	GOOD! LAYUP by STERBA, PHOEBE
00:52				ASSIST by CRAWFORD, TORI
00:52	FOUL (PERSONAL) by BAREFIELD, MONICA			
00:52		58-26	H 32	GOOD! FT by STERBA, PHOEBE
00:41	GOOD! JUMPER by WILLIAMS, DE'JAH	58-28	H 30	
00:41	ASSIST by MWAI, SHYAN			
00:32				TURNOVER (BADPASS) by GRASELA, KENDALL
00:32	STEAL by CAMILION, JUANA			
00:27				FOUL (PERSONAL) by SUTTLE, KENNEDY
00:27	GOOD! FT by MWAI, SHYAN [FB]	58-29	H 29	
00:27	MISSED FT by MWAI, SHYAN			
00:27	REBOUND (OFF) by TEAM			
00:27	GOOD! FT by MWAI, SHYAN [FB]	58-30	H 28	
00:20		60-30	H 30	GOOD! LAYUP by CRAWFORD, TORI [FB]
00:20				ASSIST by GRASELA, KENDALL
00:03	GOOD! 3PTR by MWAI, SHYAN	60-33	H 27	
00:03	ASSIST by CAMILION, JUANA			

### Iona 33, Penn 60

Points from (This Period)	ION	PEN
In the Paint	4	20
Off Turns	8	6
2nd Chance	4	5
Fast Break	3	13
Bench	11	9

**Official Box Score**  
**Iona vs Penn**  
**Fourth Quarter Statistics Only**  
**November 17, 2019 at The Palestra (Macquarie) - Philadelphia**



**Iona 9**

No.	Player	S	Pts	FG	3FG	FT	OR	DR	TR	PF	A	TO	Blk	Stl	Min	+/-
05	MWAI, SHYAN	G	4	2-3	0-1	0-0	1	0	1	0	0	3	0	0	8	-7
14	RACHU, MORGAN	G	3	1-1	1-1	0-0	1	2	3	0	1	0	0	0	8	-4
21	JOSEPH, GABRIELLE	F	0	0-0	0-0	0-0	0	0	0	1	0	0	0	0	3	2
22	CAMILION, JUANA	G	0	0-0	0-0	0-0	0	0	0	1	0	0	0	0	1	-5
33	LESKO, TORI	F	0	0-0	0-0	0-0	0	1	1	0	0	1	0	0	5	-2
00	WILLIAMS, DE'JAH	F	0	0-0	0-0	0-0	0	0	0	0	0	0	0	0	4	-9
01	VAITEKUNAITE, AISTE	F	2	0-2	0-1	2-2	0	2	2	0	0	0	0	0	6	4
03	BAREFIELD, MONICA	G	0	0-4	0-4	0-0	0	1	1	0	1	1	0	1	8	-5
13	BECERRA PEREZ, LUCIA	G	0	0-2	0-1	0-0	1	2	3	2	0	1	0	2	3	2
15	WORNER, NIKKI	F	0	0-1	0-1	0-0	0	0	0	0	0	0	0	0	1	-1
44	RAMIL, JODI-MARIE	F	0	0-0	0-0	0-0	0	0	0	0	0	0	0	0	0	0
	TEAM						0	0	0	0	0	0				
	<b>TOTALS</b>		<b>9</b>	<b>3-13</b>	<b>1-9</b>	<b>2-2</b>	<b>3</b>	<b>8</b>	<b>11</b>	<b>4</b>	<b>2</b>	<b>6</b>	<b>0</b>	<b>3</b>	<b>48</b>	

*Shooting By Period*

Period	FG	FG%	3FG	3FG%	FT	FT%
Game	16-50	32.0%	4-28	14.3%	6-8	75.0%

*Deadball Rebounds: 2,0*

**Penn 14**

No.	Player	S	Pts	FG	3FG	FT	OR	DR	TR	PF	A	TO	Blk	Stl	Min	+/-
04	SUTTLE, KENNEDY	F	0	0-0	0-0	0-0	1	1	2	0	0	0	0	1	4	9
11	GRASELA, KENDALL	G	0	0-0	0-0	0-0	0	0	0	0	3	0	0	1	4	9
31	PARKER, ELEAH	C	3	1-2	0-0	1-2	0	1	1	0	0	0	0	1	4	9
33	STERBA, PHOEBE	G	3	1-2	1-1	0-0	0	0	0	0	1	0	0	0	4	9
45	PADILLA, KAYLA	G	5	2-3	1-1	0-0	0	0	0	0	0	0	0	0	4	9
02	KINUM, KATIE	G	0	0-2	0-1	0-0	0	0	0	0	0	0	0	0	3	-2
03	JONES, MICHAEL	G	0	0-0	0-0	0-0	0	0	0	0	0	1	0	0	2	-2
05	WELEDJI, SEREENA	G	0	0-1	0-0	0-0	0	1	1	1	0	0	0	1	5	-5
10	MCGURK, MANDY	G	0	0-2	0-1	0-0	0	0	0	1	0	1	0	0	6	-4
14	HAIR, MEG	G	0	0-0	0-0	0-0	0	1	1	1	0	0	0	0	1	1
21	LAKSTIGALA, MIA	G	0	0-0	0-0	0-0	0	0	0	0	0	0	0	0	0	0
24	CRAWFORD, TORI	F	0	0-0	0-0	0-0	0	0	0	0	0	0	0	0	0	0
25	MILLIMAN, SILKE	F	0	0-2	0-1	0-0	0	1	1	0	0	1	0	0	4	-5
34	DICINDIO, CHRISSY	F	3	1-1	0-0	1-2	1	1	2	1	0	0	1	0	6	-4
40	ANDERSON, EMILY	C	0	0-0	0-0	0-0	0	0	0	0	0	0	0	0	0	0
44	CAHILL, NOELLE	C	0	0-0	0-0	0-0	1	0	1	0	0	0	0	0	1	1
	TEAM						0	1	1	0	0	0				
	<b>TOTALS</b>		<b>14</b>	<b>5-15</b>	<b>2-5</b>	<b>2-4</b>	<b>3</b>	<b>7</b>	<b>10</b>	<b>4</b>	<b>4</b>	<b>3</b>	<b>1</b>	<b>4</b>	<b>48</b>	

*Shooting By Period*

Period	FG	FG%	3FG	3FG%	FT	FT%
Game	31-67	46.3%	5-20	25.0%	7-12	58.3%

*Deadball Rebounds: 2,0*

Game Notes:

Officials: Don Cummiskey, Ryan Nunes, Kara Hunter  
 Attendance: 731

Start Time: 01:01 PM ET  
 End Time: 02:49 PM ET  
 Game Duration: 1:47

Score	1st	2nd	3rd	4th	TOT
ION	10	5	18	9	<b>42</b>
PEN	16	21	23	14	<b>74</b>

Points from (This Period)	ION	PEN
In the Paint	2	6
Off Turns	3	5
2nd Chance	0	5
Fast Break	3	5
Bench	2	3

**Official Play-By-Play**  
**Iona vs Penn**  
**Fourth Quarter**  
**November 17, 2019 at The Palestra (Macquarie) - Philadelphia**



**Period 4**

**Starters:**

**Iona:** 5 MWAI, SHYAN (G); 14 RACHU, MORGAN (G); 21 JOSEPH, GABRIELLE (F); 22 CAMILION, JUANA (G); 33 LESKO, TORI (F);  
**Penn:** 4 SUTTLE, KENNEDY (F); 11 GRASELA, KENDALL (G); 31 PARKER, ELEAH (C); 33 STERBA, PHOEBE (G); 45 PADILLA, KAYLA (G);

Time	VISITORS: Iona	Score	Margin	HOME: Penn
10:00				SUB OUT: CRAWFORD, TORI
10:00				SUB IN: PARKER, ELEAH
09:50		62-33	H 29	GOOD! LAYUP by PARKER, ELEAH
09:50				ASSIST by STERBA, PHOEBE
09:22	TURNOVER (BADPASS) by MWAI, SHYAN			
09:22				STEAL by PARKER, ELEAH
09:14		65-33	H 32	GOOD! 3PTR by PADILLA, KAYLA [FB]
09:14				ASSIST by GRASELA, KENDALL
08:41	MISSED 3PTR by BAREFIELD, MONICA			
08:37				REBOUND (DEF) by SUTTLE, KENNEDY
08:31	FOUL (PERSONAL) by CAMILION, JUANA			
08:31	SUB OUT: CAMILION, JUANA			
08:31	SUB IN: LESKO, TORI			
08:31				MISSED FT by PARKER, ELEAH
08:31				REBOUND (OFF) by TEAM
08:31		66-33	H 33	GOOD! FT by PARKER, ELEAH
08:05	GOOD! LAYUP by MWAI, SHYAN	66-35	H 31	
08:05	ASSIST by RACHU, MORGAN			
07:47				MISSED LAYUP by PADILLA, KAYLA
07:45	REBOUND (DEF) by RACHU, MORGAN			
07:30	TURNOVER (BADPASS) by BAREFIELD, MONICA			
07:30				STEAL by GRASELA, KENDALL
07:24		68-35	H 33	GOOD! LAYUP by PADILLA, KAYLA [FB]
07:24				ASSIST by GRASELA, KENDALL
06:56	TURNOVER (LOSTBALL) by LESKO, TORI			
06:56				STEAL by SUTTLE, KENNEDY
06:44				MISSED LAYUP by PARKER, ELEAH
06:41	REBOUND (DEF) by RACHU, MORGAN			
06:21	MISSED 3PTR by BAREFIELD, MONICA			
06:15				REBOUND (DEF) by PARKER, ELEAH
06:10				MISSED LAYUP by STERBA, PHOEBE
06:05				REBOUND (OFF) by SUTTLE, KENNEDY
06:03		71-35	H 36	GOOD! 3PTR by STERBA, PHOEBE
06:03				ASSIST by GRASELA, KENDALL
06:02				TIMEOUT 30SEC
06:02				
06:02				SUB OUT: SUTTLE, KENNEDY
06:02				SUB OUT: GRASELA, KENDALL
06:02				SUB OUT: PARKER, ELEAH
06:02				SUB OUT: STERBA, PHOEBE
06:02				SUB OUT: PADILLA, KAYLA
06:02				SUB IN: JONES, MICHAEL
06:02				SUB IN: WELEDJI, SEREENA
06:02				SUB IN: MCGURK, MANDY
06:02				SUB IN: MILLIMAN, SILKE
06:02				SUB IN: DICINDIO, CHRISSY
06:02	SUB OUT: WILLIAMS, DE'JAH			
06:02	SUB OUT: BAREFIELD, MONICA			
06:02	SUB IN: VAITEKUNAITE, AISTE			
06:02	SUB IN: BECERRA PEREZ, LUCIA			
05:45	TURNOVER (BADPASS) by MWAI, SHYAN			
05:40				TURNOVER (BADPASS) by JONES, MICHAEL
05:40	STEAL by BECERRA PEREZ, LUCIA			
05:34	MISSED 3PTR by MWAI, SHYAN			
05:34				REBOUND (DEF) by MILLIMAN, SILKE
05:34	FOUL (PERSONAL) by BECERRA PEREZ, LUCIA			
05:04				MISSED LAYUP by MILLIMAN, SILKE
05:00	REBOUND (DEF) by LESKO, TORI			
04:50	TURNOVER (LOSTBALL) by MWAI, SHYAN			
04:50				STEAL by WELEDJI, SEREENA
04:39				MISSED JUMPER by WELEDJI, SEREENA
04:35	REBOUND (DEF) by BECERRA PEREZ, LUCIA			
04:27				FOUL (PERSONAL) by DICINDIO, CHRISSY
04:27	SUB OUT: MWAI, SHYAN			
04:27	SUB IN: BAREFIELD, MONICA			
04:27	GOOD! FT by VAITEKUNAITE, AISTE	71-36	H 35	
04:27	GOOD! FT by VAITEKUNAITE, AISTE	71-37	H 34	
04:12				MISSED 3PTR by MILLIMAN, SILKE
04:09	REBOUND (DEF) by BECERRA PEREZ, LUCIA			
03:54	MISSED 3PTR by BECERRA PEREZ, LUCIA			

Time	VISITORS: Iona	Score	Margin	HOME: Penn
03:51	REBOUND (OFF) by BECERRA PEREZ, LUCIA			
03:41	MISSED 3PTR by BAREFIELD, MONICA			
03:39	REBOUND (OFF) by RACHU, MORGAN			
03:39				FOUL (PERSONAL) by WELEDJI, SEREENA
03:39				SUB OUT: JONES, MICHAEL
03:39				SUB IN: KINUM, KATIE
03:39	SUB OUT: LESKO, TORI			
03:39	SUB IN: JOSEPH, GABRIELLE			
03:32	MISSED 3PTR by VAITEKUNAITE, AISTE			
03:29				REBOUND (DEF) by WELEDJI, SEREENA
03:22				MISSED 3PTR by KINUM, KATIE
03:19	REBOUND (DEF) by BAREFIELD, MONICA			
03:14	MISSED JUMPER by BECERRA PEREZ, LUCIA			
03:14				BLOCK by DICINDIO, CHRISSY
03:14				REBOUND (DEF) by TEAM
03:09				TURNOVER (BADPASS) by MILLIMAN, SILKE
03:09	STEAL by BECERRA PEREZ, LUCIA			
02:56	FOUL (OFF) by BECERRA PEREZ, LUCIA			
02:56	TURNOVER (OFFENSIVE) by BECERRA PEREZ, LUCIA			
02:56	SUB OUT: BECERRA PEREZ, LUCIA			
02:56	SUB IN: MWAI, SHYAN			
02:43				MISSED LAYUP by MCGURK, MANDY
02:40	REBOUND (DEF) by VAITEKUNAITE, AISTE			
02:22	GOOD! JUMPER by MWAI, SHYAN	71-39	H 32	
02:10				TURNOVER (BADPASS) by MCGURK, MANDY
02:10	STEAL by BAREFIELD, MONICA			
02:06	GOOD! 3PTR by RACHU, MORGAN [FB]	71-42	H 29	
02:06	ASSIST by BAREFIELD, MONICA			
01:55				MISSED JUMPER by KINUM, KATIE
01:49				REBOUND (OFF) by DICINDIO, CHRISSY
01:49		73-42	H 31	GOOD! LAYUP by DICINDIO, CHRISSY
01:41	TIMEOUT 30SEC			
01:41				SUB OUT: MILLIMAN, SILKE
01:41				SUB IN: HAIR, MEG
01:41	SUB OUT: RACHU, MORGAN			
01:41	SUB IN: WORNER, NIKKI			
01:31				FOUL (PERSONAL) by HAIR, MEG
01:31				SUB OUT: WELEDJI, SEREENA
01:31				SUB IN: CAHILL, NOELLE
01:17	MISSED 3PTR by BAREFIELD, MONICA			
01:14				REBOUND (DEF) by HAIR, MEG
01:11	FOUL (PERSONAL) by JOSEPH, GABRIELLE			
01:11		74-42	H 32	GOOD! FT by DICINDIO, CHRISSY
01:11				MISSED FT by DICINDIO, CHRISSY
01:10				REBOUND (OFF) by CAHILL, NOELLE
01:07				MISSED 3PTR by MCGURK, MANDY
01:02	REBOUND (DEF) by VAITEKUNAITE, AISTE			
00:49	MISSED 3PTR by WORNER, NIKKI			
00:44	REBOUND (OFF) by MWAI, SHYAN			
00:34				FOUL (PERSONAL) by MCGURK, MANDY
00:25	MISSED LAYUP by VAITEKUNAITE, AISTE			
00:22				REBOUND (DEF) by DICINDIO, CHRISSY

### Iona 42, Penn 74

Points from (This Period)	ION	PEN
In the Paint	2	6
Off Turns	3	5
2nd Chance	0	5
Fast Break	3	5
Bench	2	3



**Official Scoring/Possession Reference Chart**  
**Iona vs Penn**  
**Period 1**  
**November 17, 2019 at The Palestra (Macquarie) - Philadelphia**



**Period 1**

**Starters:**

**Iona:** 5 MWAI, SHYAN (G); 14 RACHU, MORGAN (G); 21 JOSEPH, GABRIELLE (F); 22 CAMILION, JUANA (G); 33 LESKO, TORI (F);  
**Penn:** 4 SUTTLE, KENNEDY (F); 11 GRASELA, KENDALL (G); 31 PARKER, ELEAH (C); 33 STERBA, PHOEBE (G); 45 PADILLA, KAYLA (G);

Time	VISITORS: Iona	Score	Margin	HOME: Penn
09:49		2-0	H 2	GOOD! JUMPER by PADILLA, KAYLA [PNT]
09:34	GOOD! 3PTR by CAMILION, JUANA	2-3	V 1	
08:32	GOOD! LAYUP by CAMILION, JUANA [FB]	2-5	V 3	
08:20		4-5	V 1	GOOD! LAYUP by PARKER, ELEAH
07:55		6-5	H 1	GOOD! LAYUP by SUTTLE, KENNEDY [FB]
06:32		8-5	H 3	GOOD! LAYUP by PARKER, ELEAH
04:41		11-5	H 6	GOOD! 3PTR by STERBA, PHOEBE [FB]
03:46		13-5	H 8	GOOD! LAYUP by PADILLA, KAYLA [FB]
03:16	GOOD! JUMPER by VAITEKUNAITE, AISTE [PNT]	13-7	H 6	
01:47	GOOD! LAYUP by BAREFIELD, MONICA	13-9	H 4	
01:47	GOOD! FT by BAREFIELD, MONICA	13-10	H 3	
01:26		15-10	H 5	GOOD! LAYUP by SUTTLE, KENNEDY
00:06		16-10	H 6	GOOD! FT by PADILLA, KAYLA

**Iona 10, Penn 16**

**Official Scoring/Possession Reference Chart**  
**Iona vs Penn**  
**Period 2**  
**November 17, 2019 at The Palestra (Macquarie) - Philadelphia**



**Period 2**

**Starters:**

**Iona:** 5 MWAI, SHYAN (G); 14 RACHU, MORGAN (G); 21 JOSEPH, GABRIELLE (F); 22 CAMILION, JUANA (G); 33 LESKO, TORI (F);

**Penn:** 4 SUTTLE, KENNEDY (F); 11 GRASELA, KENDALL (G); 31 PARKER, ELEAH (C); 33 STERBA, PHOEBE (G); 45 PADILLA, KAYLA (G);

Time	VISITORS: Iona	Score	Margin	HOME: Penn
09:45		19-10	H 9	GOOD! 3PTR by STERBA, PHOEBE
08:54		21-10	H 11	GOOD! LAYUP by SUTTLE, KENNEDY
08:41		23-10	H 13	GOOD! JUMPER by ANDERSON, EMILY
06:35	GOOD! 3PTR by MWAI, SHYAN	23-13	H 10	
05:48		25-13	H 12	GOOD! LAYUP by STERBA, PHOEBE [FB]
05:12		27-13	H 14	GOOD! LAYUP by GRASELA, KENDALL [FB]
03:50		29-13	H 16	GOOD! LAYUP by PARKER, ELEAH
02:26		31-13	H 18	GOOD! LAYUP by PADILLA, KAYLA
01:28		33-13	H 20	GOOD! LAYUP by SUTTLE, KENNEDY
01:28		34-13	H 21	GOOD! FT by SUTTLE, KENNEDY
00:47		37-13	H 24	GOOD! 3PTR by STERBA, PHOEBE
00:10	GOOD! LAYUP by BAREFIELD, MONICA	37-15	H 22	

**Iona 15, Penn 37**

**Official Scoring/Possession Reference Chart**  
**Iona vs Penn**  
**Period 3**  
**November 17, 2019 at The Palestra (Macquarie) - Philadelphia**



**Period 3**

**Starters:**

**Iona:** 5 MWAI, SHYAN (G); 14 RACHU, MORGAN (G); 21 JOSEPH, GABRIELLE (F); 22 CAMILION, JUANA (G); 33 LESKO, TORI (F);

**Penn:** 4 SUTTLE, KENNEDY (F); 11 GRASELA, KENDALL (G); 31 PARKER, ELEAH (C); 33 STERBA, PHOEBE (G); 45 PADILLA, KAYLA (G);

Time	VISITORS: Iona	Score	Margin	HOME: Penn
09:43		39-15	H 24	GOOD! LAYUP by PADILLA, KAYLA [FB]
09:18		41-15	H 26	GOOD! LAYUP by PARKER, ELEAH [FB]
09:18		42-15	H 27	GOOD! FT by PARKER, ELEAH [FB]
08:45		44-15	H 29	GOOD! LAYUP by SUTTLE, KENNEDY
08:21		46-15	H 31	GOOD! LAYUP by GRASELA, KENDALL [FB]
07:39		48-15	H 33	GOOD! LAYUP by PARKER, ELEAH
06:04	GOOD! LAYUP by RACHU, MORGAN	48-17	H 31	
05:29	GOOD! FT by WILLIAMS, DE'JAH [FB]	48-18	H 30	
05:21		50-18	H 32	GOOD! LAYUP by ANDERSON, EMILY [FB]
05:00	GOOD! LAYUP by WILLIAMS, DE'JAH	50-20	H 30	
03:53	GOOD! JUMPER by WILLIAMS, DE'JAH	50-22	H 28	
03:24		52-22	H 30	GOOD! LAYUP by CRAWFORD, TORI
03:24		53-22	H 31	GOOD! FT by CRAWFORD, TORI
03:02		55-22	H 33	GOOD! LAYUP by CRAWFORD, TORI [FB]
02:23	GOOD! JUMPER by WILLIAMS, DE'JAH	55-24	H 31	
01:16	GOOD! JUMPER by WILLIAMS, DE'JAH	55-26	H 29	
00:52		57-26	H 31	GOOD! LAYUP by STERBA, PHOEBE
00:52		58-26	H 32	GOOD! FT by STERBA, PHOEBE
00:41	GOOD! JUMPER by WILLIAMS, DE'JAH	58-28	H 30	
00:27	GOOD! FT by MWAI, SHYAN [FB]	58-29	H 29	
00:27	GOOD! FT by MWAI, SHYAN [FB]	58-30	H 28	
00:20		60-30	H 30	GOOD! LAYUP by CRAWFORD, TORI [FB]
00:03	GOOD! 3PTR by MWAI, SHYAN	60-33	H 27	

**Iona 33, Penn 60**

**Official Scoring/Possession Reference Chart**  
**Iona vs Penn**  
**Period 4**  
**November 17, 2019 at The Palestra (Macquarie) - Philadelphia**



**Period 4**

**Starters:**

**Iona:** 5 MWAI, SHYAN (G); 14 RACHU, MORGAN (G); 21 JOSEPH, GABRIELLE (F); 22 CAMILION, JUANA (G); 33 LESKO, TORI (F);

**Penn:** 4 SUTTLE, KENNEDY (F); 11 GRASELA, KENDALL (G); 31 PARKER, ELEAH (C); 33 STERBA, PHOEBE (G); 45 PADILLA, KAYLA (G);

Time	VISITORS: Iona	Score	Margin	HOME: Penn
09:50		62-33	H 29	GOOD! LAYUP by PARKER, ELEAH
09:14		65-33	H 32	GOOD! 3PTR by PADILLA, KAYLA [FB]
08:31		66-33	H 33	GOOD! FT by PARKER, ELEAH
08:05	GOOD! LAYUP by MWAI, SHYAN	66-35	H 31	
07:24		68-35	H 33	GOOD! LAYUP by PADILLA, KAYLA [FB]
06:03		71-35	H 36	GOOD! 3PTR by STERBA, PHOEBE
04:27	GOOD! FT by VAITEKUNAITE, AISTE	71-36	H 35	
04:27	GOOD! FT by VAITEKUNAITE, AISTE	71-37	H 34	
02:22	GOOD! JUMPER by MWAI, SHYAN	71-39	H 32	
02:06	GOOD! 3PTR by RACHU, MORGAN [FB]	71-42	H 29	
01:49		73-42	H 31	GOOD! LAYUP by DICINDIO, CHRISSY
01:11		74-42	H 32	GOOD! FT by DICINDIO, CHRISSY

**Iona 42, Penn 74**

**Official Substitutions Log**  
**Iona vs Penn**  
**Period 1**  
**November 17, 2019 at The Palestra (Macquarie) - Philadelphia**



VISITORS: Iona	Time	Score	HOME: Penn
5 MWAI, SHYAN			4 SUTTLE, KENNEDY
14 RACHU, MORGAN			11 GRASELA, KENDALL
21 JOSEPH, GABRIELLE			31 PARKER, ELEAH
22 CAMILION, JUANA			33 STERBA, PHOEBE
33 LESKO, TORI			45 PADILLA, KAYLA
SUB OUT: 21 JOSEPH, GABRIELLE	07:19	5-6	
SUB IN: 00 WILLIAMS, DE'JAH	07:19		
	04:27	5-11	SUB OUT: SUTTLE, KENNEDY
	04:27		SUB IN: CRAWFORD, TORI
SUB OUT: 00 WILLIAMS, DE'JAH	04:27		
SUB OUT: 5 MWAI, SHYAN	04:27		
SUB IN: 1 VAITEKUNAITE, AISTE	04:27		
SUB IN: 3 BAREFIELD, MONICA	04:27		
	02:09	7-13	SUB OUT: STERBA, PHOEBE
	02:09		SUB IN: LAKSTIGALA, MIA
SUB OUT: 14 RACHU, MORGAN	02:09		
SUB IN: 5 MWAI, SHYAN	02:09		
	01:47	9-13	SUB OUT: CRAWFORD, TORI
	01:47		SUB IN: SUTTLE, KENNEDY
	00:57	10-15	SUB OUT: PARKER, ELEAH
	00:57		SUB IN: ANDERSON, EMILY
SUB OUT: 1 VAITEKUNAITE, AISTE	00:57		
SUB IN: 00 WILLIAMS, DE'JAH	00:57		
SUB OUT: 22 CAMILION, JUANA	00:14	10-15	
SUB IN: 13 BECERRA PEREZ, LUCIA	00:14		
	00:06	10-16	SUB OUT: PADILLA, KAYLA
	00:06		SUB IN: STERBA, PHOEBE
SUB OUT: 00 WILLIAMS, DE'JAH	00:03	10-16	
SUB IN: 14 RACHU, MORGAN	00:03		

**Iona 10, Penn 16**

**Official Substitutions Log**  
**Iona vs Penn**  
**Period 2**  
**November 17, 2019 at The Palestra (Macquarie) - Philadelphia**



VISITORS: Iona	Time	Score	HOME: Penn
5 MWAI, SHYAN			4 SUTTLE, KENNEDY
14 RACHU, MORGAN			11 GRASELA, KENDALL
21 JOSEPH, GABRIELLE			31 PARKER, ELEAH
22 CAMILION, JUANA			33 STERBA, PHOEBE
33 LESKO, TORI			45 PADILLA, KAYLA
	07:10	10-23	SUB OUT: LAKSTIGALA, MIA
	07:10		SUB OUT: ANDERSON, EMILY
	07:10		SUB IN: PARKER, ELEAH
	07:10		SUB IN: PADILLA, KAYLA
SUB OUT: 3 BAREFIELD, MONICA	07:10		
SUB IN: 21 JOSEPH, GABRIELLE	07:10		
	05:59	13-23	SUB OUT: SUTTLE, KENNEDY
	05:59		SUB IN: CRAWFORD, TORI
SUB OUT: 13 BECERRA PEREZ, LUCIA	05:42	13-25	
SUB IN: 3 BAREFIELD, MONICA	05:42		
	05:03	13-27	SUB OUT: GRASELA, KENDALL
	05:03		SUB IN: JONES, MICHAEL
SUB OUT: 3 BAREFIELD, MONICA	05:03		
SUB IN: 22 CAMILION, JUANA	05:03		
	02:45	13-29	SUB OUT: JONES, MICHAEL
	02:45		SUB OUT: CRAWFORD, TORI
	02:45		SUB OUT: PARKER, ELEAH
	02:45		SUB IN: SUTTLE, KENNEDY
	02:45		SUB IN: GRASELA, KENDALL
	02:45		SUB IN: ANDERSON, EMILY
SUB OUT: 5 MWAI, SHYAN	02:45		
SUB IN: 3 BAREFIELD, MONICA	02:45		
SUB OUT: 22 CAMILION, JUANA	02:09	13-31	
SUB IN: 13 BECERRA PEREZ, LUCIA	02:09		
SUB OUT: 21 JOSEPH, GABRIELLE	01:28	13-33	
SUB IN: 44 RAMIL, JODI-MARIE	01:28		

**Iona 15, Penn 37**

**Official Substitutions Log**  
**Iona vs Penn**  
**Period 3**  
**November 17, 2019 at The Palestra (Macquarie) - Philadelphia**



VISITORS: Iona	Time	Score	HOME: Penn
5 MWAI, SHYAN			4 SUTTLE, KENNEDY
14 RACHU, MORGAN			11 GRASELA, KENDALL
21 JOSEPH, GABRIELLE			31 PARKER, ELEAH
22 CAMILION, JUANA			33 STERBA, PHOEBE
33 LESKO, TORI			45 PADILLA, KAYLA
	10:00	-	SUB OUT: ANDERSON, EMILY
	10:00		SUB IN: PARKER, ELEAH
SUB OUT: 3 BAREFIELD, MONICA	08:20	15-46	
SUB OUT: 33 LESKO, TORI	08:20		
SUB IN: 5 MWAI, SHYAN	08:20		
SUB IN: 22 CAMILION, JUANA	08:20		
SUB OUT: 44 RAMIL, JODI-MARIE	06:55	15-48	
SUB IN: 00 WILLIAMS, DE'JAH	06:55		
	06:17	15-48	SUB OUT: SUTTLE, KENNEDY
	06:17		SUB OUT: PARKER, ELEAH
	06:17		SUB IN: CRAWFORD, TORI
	06:17		SUB IN: ANDERSON, EMILY
SUB OUT: 13 BECERRA PEREZ, LUCIA	06:17		
SUB IN: 3 BAREFIELD, MONICA	06:17		
	06:17		SUB OUT: STERBA, PHOEBE
	06:17		SUB IN: LAKSTIGALA, MIA
	04:18	20-50	SUB OUT: GRASELA, KENDALL
	04:18		SUB IN: JONES, MICHAEL
	03:24	22-52	SUB OUT: LAKSTIGALA, MIA
	03:24		SUB IN: HAIR, MEG
	02:05	24-55	SUB OUT: ANDERSON, EMILY
	02:05		SUB OUT: PADILLA, KAYLA
	02:05		SUB IN: KINUM, KATIE
	02:05		SUB IN: SUTTLE, KENNEDY
	01:05	26-55	SUB OUT: KINUM, KATIE
	01:05		SUB OUT: JONES, MICHAEL
	01:05		SUB OUT: HAIR, MEG
	01:05		SUB IN: GRASELA, KENDALL
	01:05		SUB IN: STERBA, PHOEBE
	01:05		SUB IN: PADILLA, KAYLA

**Iona 33, Penn 60**

**Official Substitutions Log**  
**Iona vs Penn**  
**Period 4**  
**November 17, 2019 at The Palestra (Macquarie) - Philadelphia**



VISITORS: Iona	Time	Score	HOME: Penn
5 MWAI,SHYAN			4 SUTTLE,KENNEDY
14 RACHU,MORGAN			11 GRASELA,KENDALL
21 JOSEPH,GABRIELLE			31 PARKER,ELEAH
22 CAMILION,JUANA			33 STERBA,PHOEBE
33 LESKO,TORI			45 PADILLA,KAYLA
	10:00	-	SUB OUT: CRAWFORD,TORI
	10:00		SUB IN: PARKER,ELEAH
SUB OUT: 22 CAMILION,JUANA	08:31	33-65	
SUB IN: 33 LESKO,TORI	08:31		
	06:02	35-71	SUB OUT: SUTTLE,KENNEDY
	06:02		SUB OUT: GRASELA,KENDALL
	06:02		SUB OUT: PARKER,ELEAH
	06:02		SUB OUT: STERBA,PHOEBE
	06:02		SUB OUT: PADILLA,KAYLA
	06:02		SUB IN: JONES,MICHAEL
	06:02		SUB IN: WELEDJI,SEREENA
	06:02		SUB IN: MCGURK,MANDY
	06:02		SUB IN: MILLIMAN,SILKE
	06:02		SUB IN: DICINDIO,CHRISSEY
SUB OUT: 00 WILLIAMS,DE'JAH	06:02		
SUB OUT: 3 BAREFIELD,MONICA	06:02		
SUB IN: 1 VAI TEKUNAITE,AISTE	06:02		
SUB IN: 13 BECERRA PEREZ,LUCIA	06:02		
SUB OUT: 5 MWAI,SHYAN	04:27	35-71	
SUB IN: 3 BAREFIELD,MONICA	04:27		
	03:39	37-71	SUB OUT: JONES,MICHAEL
	03:39		SUB IN: KINUM,KATIE
SUB OUT: 33 LESKO,TORI	03:39		
SUB IN: 21 JOSEPH,GABRIELLE	03:39		
SUB OUT: 13 BECERRA PEREZ,LUCIA	02:56	37-71	
SUB IN: 5 MWAI,SHYAN	02:56		
	01:41	42-73	SUB OUT: MILLIMAN,SILKE
	01:41		SUB IN: HAIR,MEG
SUB OUT: 14 RACHU,MORGAN	01:41		
SUB IN: 15 WORNOR,NIKKI	01:41		
	01:31	42-73	SUB OUT: WELEDJI,SEREENA
	01:31		SUB IN: CAHILL,NOELLE

**Iona 42, Penn 74**

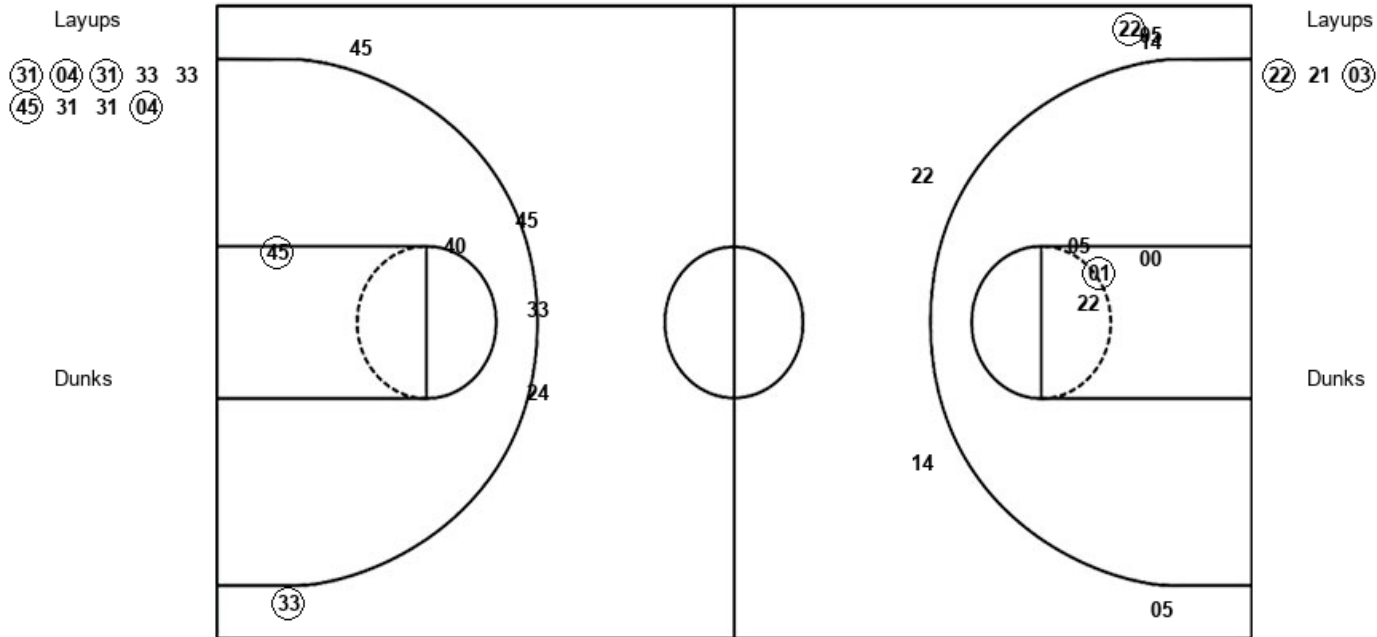


**Official Shot Chart**  
**Iona vs Penn**  
**PERIOD 1 Shots**  
**November 17, 2019 at The Palestra (Macquarie) - Philadelphia**



**Penn**

**Iona**



<b>PEN : Period 1</b>	<b>Made</b>	<b>Att</b>	<b>Pct</b>
Layups	5	9	55.6
Dunks	0	0	0
2PT Field Goals	6	11	54.5
3PT Field Goals	1	5	20.0
<b>Total Field Goals</b>	<b>7</b>	<b>16</b>	<b>43.8</b>

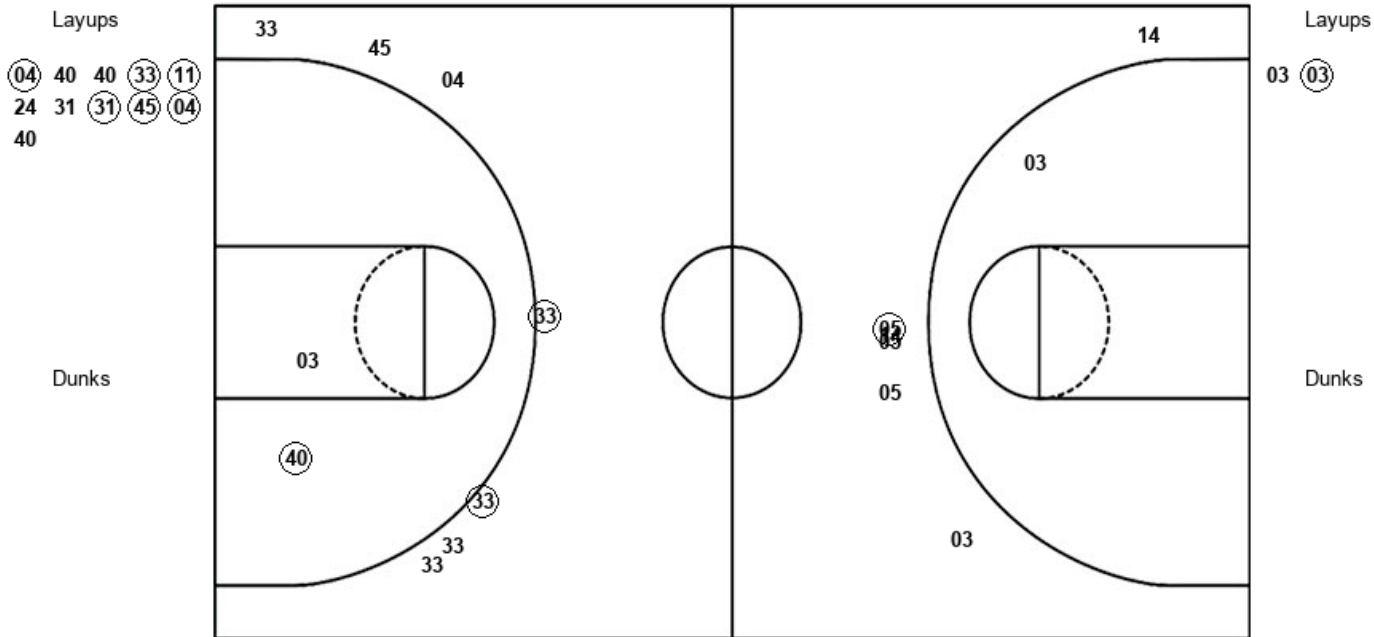
<b>ION : Period 1</b>	<b>Made</b>	<b>Att</b>	<b>Pct</b>
Layups	2	3	66.7
Dunks	0	0	0
2PT Field Goals	3	7	42.9
3PT Field Goals	1	6	16.7
<b>Total Field Goals</b>	<b>4</b>	<b>13</b>	<b>30.8</b>

**Official Shot Chart**  
**Iona vs Penn**  
**PERIOD 2 Shots**  
**November 17, 2019 at The Palestra (Macquarie) - Philadelphia**



**Penn**

**Iona**



<b>PEN : Period 2</b>	<b>Made</b>	<b>Att</b>	<b>Pct</b>
Layups	6	11	54.5
Dunks	0	0	0
2PT Field Goals	7	13	53.8
3PT Field Goals	2	7	28.6
<b>Total Field Goals</b>	<b>9</b>	<b>20</b>	<b>45.0</b>

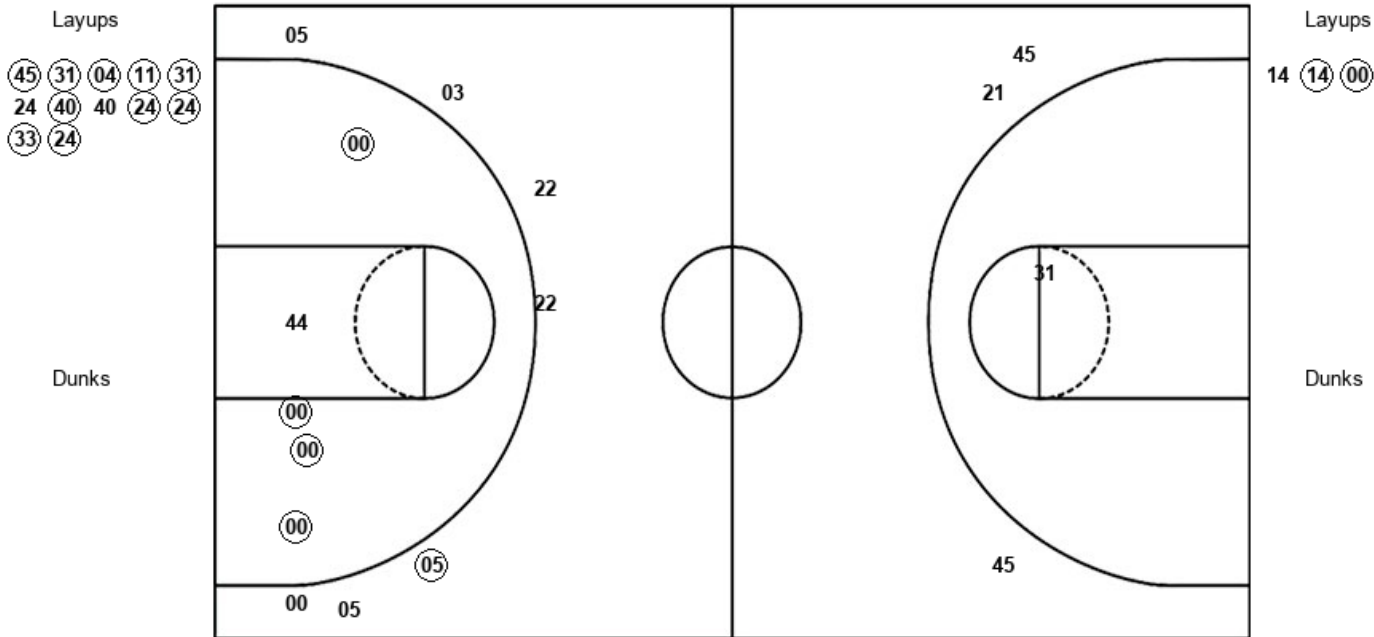
<b>ION : Period 2</b>	<b>Made</b>	<b>Att</b>	<b>Pct</b>
Layups	1	2	50.0
Dunks	0	0	0
2PT Field Goals	1	3	33.3
3PT Field Goals	1	6	16.7
<b>Total Field Goals</b>	<b>2</b>	<b>9</b>	<b>22.2</b>

**Official Shot Chart**  
**Iona vs Penn**  
**PERIOD 3 Shots**  
**November 17, 2019 at The Palestra (Macquarie) - Philadelphia**



**Penn**

**Iona**



<b>PEN : Period 3</b>	<b>Made</b>	<b>Att</b>	<b>Pct</b>
Layups	10	12	83.3
Dunks	0	0	0
2PT Field Goals	10	13	76.9
3PT Field Goals	0	3	00.0
<b>Total Field Goals</b>	<b>10</b>	<b>16</b>	<b>62.5</b>

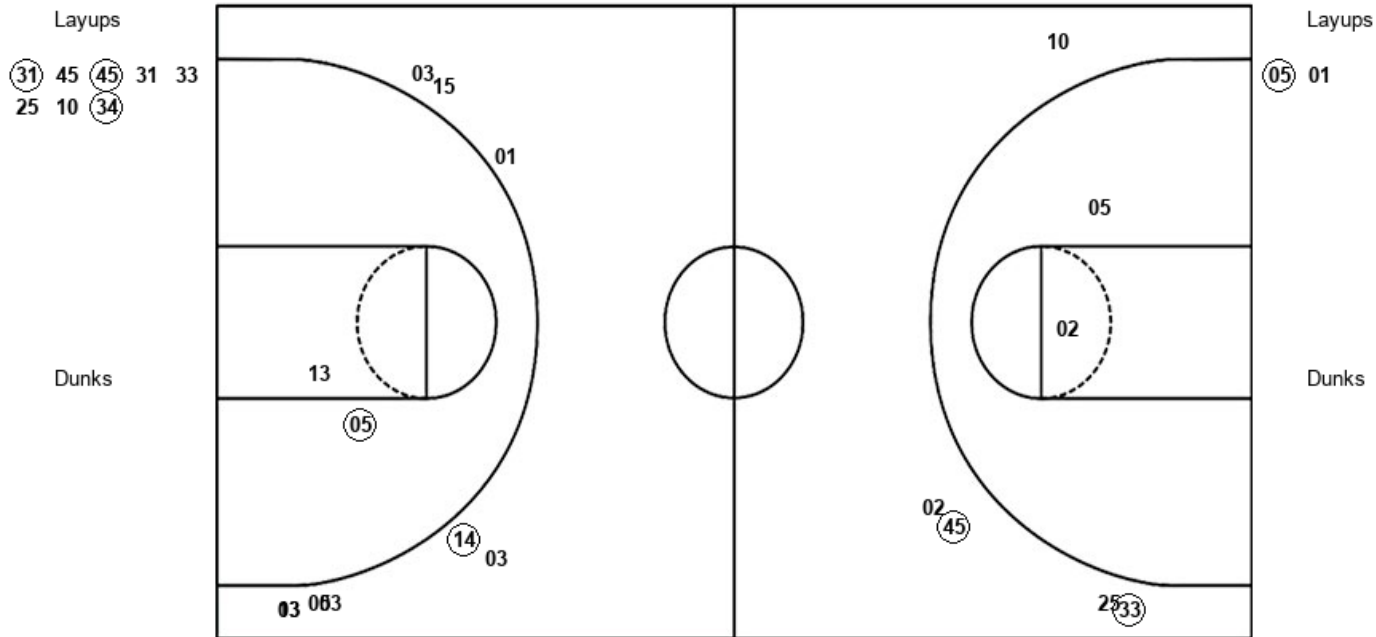
<b>ION : Period 3</b>	<b>Made</b>	<b>Att</b>	<b>Pct</b>
Layups	2	3	66.7
Dunks	0	0	0
2PT Field Goals	6	8	75.0
3PT Field Goals	1	7	14.3
<b>Total Field Goals</b>	<b>7</b>	<b>15</b>	<b>46.7</b>

**Official Shot Chart**  
**Iona vs Penn**  
**PERIOD 4 Shots**  
**November 17, 2019 at The Palestra (Macquarie) - Philadelphia**



**Penn**

**Iona**



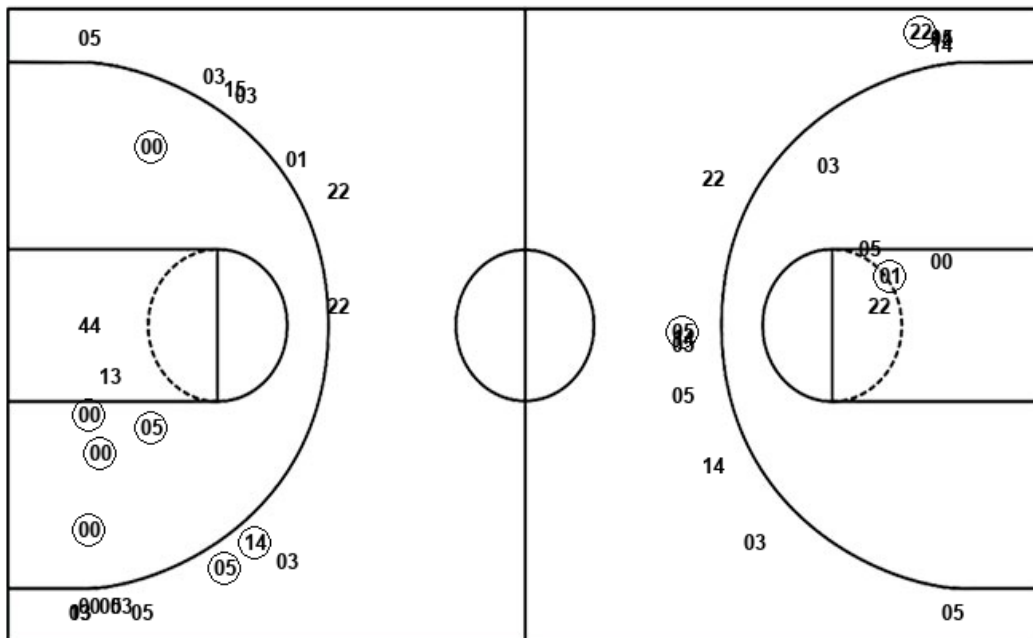
<b>PEN : Period 4</b>	<b>Made</b>	<b>Att</b>	<b>Pct</b>
Layups	3	8	37.5
Dunks	0	0	0
2PT Field Goals	3	10	30.0
3PT Field Goals	2	5	40.0
<b>Total Field Goals</b>	<b>5</b>	<b>15</b>	<b>33.3</b>

<b>ION : Period 4</b>	<b>Made</b>	<b>Att</b>	<b>Pct</b>
Layups	1	2	50.0
Dunks	0	0	0
2PT Field Goals	2	4	50.0
3PT Field Goals	1	9	11.1
<b>Total Field Goals</b>	<b>3</b>	<b>13</b>	<b>23.1</b>

**Official Shot Chart**  
**Iona vs Penn**  
**Iona Team Shots**  
**November 17, 2019 at The Palestra (Macquarie) - Philadelphia**



Layups



Layups

(22) 21 (03) 03 (03)  
 14 (14) (00) (05) 01

Dunks

Dunks

ION : Period 1	Made	Att	Pct
Layups	2	3	66.7
Dunks	0	0	0
2PT Field Goals	3	7	42.9
3PT Field Goals	1	6	16.7
<b>Total Field Goals</b>	<b>4</b>	<b>13</b>	<b>30.8</b>

ION : Period 2	Made	Att	Pct
Layups	1	2	50.0
Dunks	0	0	0
2PT Field Goals	1	3	33.3
3PT Field Goals	1	6	16.7
<b>Total Field Goals</b>	<b>2</b>	<b>9</b>	<b>22.2</b>

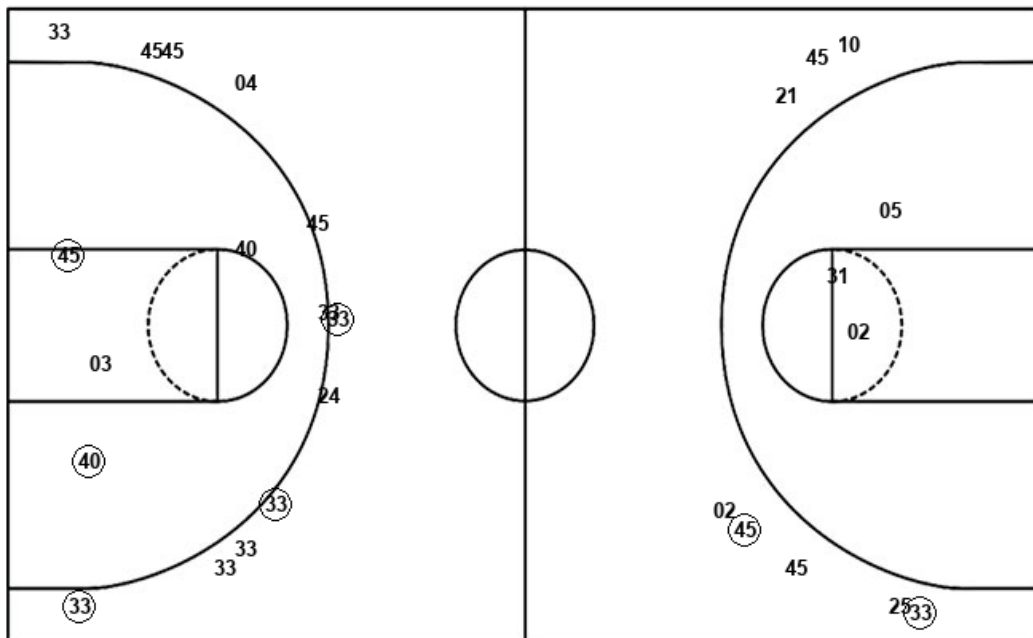
ION : Period 3	Made	Att	Pct
Layups	2	3	66.7
Dunks	0	0	0
2PT Field Goals	6	8	75.0
3PT Field Goals	1	7	14.3
<b>Total Field Goals</b>	<b>7</b>	<b>15</b>	<b>46.7</b>

ION : Period 4	Made	Att	Pct
Layups	1	2	50.0
Dunks	0	0	0
2PT Field Goals	2	4	50.0
3PT Field Goals	1	9	11.1
<b>Total Field Goals</b>	<b>3</b>	<b>13</b>	<b>23.1</b>

**Official Shot Chart**  
**Iona vs Penn**  
**Penn Team Shots**  
**November 17, 2019 at The Palestra (Macquarie) - Philadelphia**



Layups



Layups

- (31) (04) (31) 33 33
- (45) 31 31 (04) (04)
- 40 40 (33) (11) 24
- 31 (31) (45) (04) 40
- (45) (31) (04) (11) (31)
- 24 (40) 40 (24) (24)
- (33) (24) (31) 45 (45)
- 31 33 25 10 (34)

Dunks

Dunks

PEN : Period 1	Made	Att	Pct
Layups	5	9	55.6
Dunks	0	0	0
2PT Field Goals	6	11	54.5
3PT Field Goals	1	5	20.0
<b>Total Field Goals</b>	<b>7</b>	<b>16</b>	<b>43.8</b>

PEN : Period 2	Made	Att	Pct
Layups	6	11	54.5
Dunks	0	0	0
2PT Field Goals	7	13	53.8
3PT Field Goals	2	7	28.6
<b>Total Field Goals</b>	<b>9</b>	<b>20</b>	<b>45.0</b>

PEN : Period 3	Made	Att	Pct
Layups	10	12	83.3
Dunks	0	0	0
2PT Field Goals	10	13	76.9
3PT Field Goals	0	3	00.0
<b>Total Field Goals</b>	<b>10</b>	<b>16</b>	<b>62.5</b>

PEN : Period 4	Made	Att	Pct
Layups	3	8	37.5
Dunks	0	0	0
2PT Field Goals	3	10	30.0
3PT Field Goals	2	5	40.0
<b>Total Field Goals</b>	<b>5</b>	<b>15</b>	<b>33.3</b>