

FINAL SCORE

Palm Beach Atl.

89



Saint Leo

76



January 04, 2020 • Marion Bowman Center - Saint Leo, Fla.

FINAL STATISTICS

Official Box Score
Palm Beach Atl. vs Saint Leo
Game Totals -- Final Statistics
January 04, 2020 at Marion Bowman Center - Saint Leo, Fla.



Palm Beach Atl. 89

No.	Player	S	Pts	FG	3FG	FT	OR	DR	TR	PF	A	TO	Blk	Stl	Min	+/-
02	NUNN, DARHIUS	G	13	4-8	1-2	4-4	0	3	3	1	4	4	0	0	38	8
04	LARGEY, DAN	F	20	6-11	1-5	7-8	1	7	8	5	0	3	0	0	29	-3
05	JACKSON, DE'ONDRE	G	19	6-15	3-7	4-4	2	7	9	3	2	2	0	0	37	8
21	BARBER, MALEK	F	10	4-6	1-3	1-1	1	4	5	5	1	1	1	3	28	11
23	JASMIN, JULES	F	14	5-8	2-2	2-6	2	3	5	2	1	0	0	1	30	-1
00	CARPINELLO, CASEY	G	0	0-0	0-0	0-0	0	0	0	3	0	1	0	1	3	3
14	CELAYIR, KUTLUHAN	G	0	0-0	0-0	0-0	0	0	0	0	0	0	0	0	2	8
15	NICHELSON, JUSTIN	G	11	2-3	2-3	5-6	0	3	3	3	1	0	1	0	20	10
33	RAKIC, ALEKSA	C	2	0-3	0-1	2-2	1	2	3	5	2	1	0	1	13	21
	TEAM						2	0	2	0		0				
TOTALS			89	27-54	10-23	25-31	9	29	38	27	11	12	2	6	200	

Shooting By Period

Period	FG	FG%	3FG	3FG%	FT	FT%
1st Half	16-31	52%	5-11	45%	6-7	86%
2nd Half	11-23	48%	5-12	42%	19-24	79%
Game	27-54	50.0%	10-23	43.5%	25-31	80.6%

Deadball Rebounds: 2.0

Last FG: 2nd-03:57

Biggest Run: 13-0

Largest lead: By 22 at 2nd-02:54

Technical Fouls: #05 JACKSON (Contact Deadball) @ 2nd - 02:00;

Saint Leo 76

No.	Player	S	Pts	FG	3FG	FT	OR	DR	TR	PF	A	TO	Blk	Stl	Min	+/-
00	REED, YALEN	F	9	3-4	0-0	3-4	2	5	7	1	2	1	0	0	33	-13
01	HILL, ISAAH	G	14	5-15	1-7	3-8	1	4	5	2	3	1	1	1	37	-7
03	MOORER, RUSTY	G	11	4-10	3-6	0-1	0	3	3	5	1	2	0	1	25	5
13	MCCLURE, KYRAN	G	28	7-12	5-9	9-11	0	2	2	3	1	2	0	1	39	-10
25	FORMAN, TY	F	11	4-7	0-0	3-4	5	4	9	3	0	1	1	0	23	1
02	BARTASKAS, GINTARAS	G	0	0-5	0-5	0-0	1	1	2	4	0	2	0	0	11	8
04	COOMER, WADE	G	0	0-1	0-1	0-0	1	0	1	0	0	2	0	0	4	-5
12	COOMER, JARED	F	1	0-1	0-1	1-2	1	0	1	2	0	1	0	0	6	-13
20	LAHM, ERIK	C	0	0-2	0-0	0-0	1	1	2	2	0	0	0	0	7	-7
22	CARTER, TYLER	F	2	1-2	0-1	0-0	0	0	0	4	0	0	0	0	11	-15
33	FULLER, MALIK	G	0	0-0	0-0	0-0	0	0	0	0	0	1	0	0	4	-9
	TEAM						1	2	3	0		1				
TOTALS			76	24-59	9-30	19-30	13	22	35	26	7	14	2	3	200	

Shooting By Period

Period	FG	FG%	3FG	3FG%	FT	FT%
1st Half	9-26	35%	3-12	25%	3-9	33%
2nd Half	15-33	45%	6-18	33%	16-21	76%
Game	24-59	40.7%	9-30	30.0%	19-30	63.3%

Deadball Rebounds: 4.0

Last FG: 2nd-00:24

Biggest Run: 7-0

Largest lead: By 2 at 1st-16:59

Technical Fouls: None.

Game Notes:

Officials: John Atanassov, Klyde Mulla, Jordan Conley
 Attendance: 386

Start Time: 07:44 PM ET
 End Time: 09:45 PM ET
 Game Duration: 2:01
 Conference Game;

Score	1st	2nd	TOT
PBA	43	46	89
SLM	24	52	76

PBA led for 34:40. SLM led for 1:44.
 Game was tied for 3:36.
 Times tied: 4 Lead Changes: 4

Points from	PBA	SLM
In the Paint	30	28
Off Turns	19	17
2nd Chance	13	13
Fast Break	7	7
Bench	13	3

Official Box Score
Palm Beach Atl. vs Saint Leo
First Half Statistics Only
January 04, 2020 at Marion Bowman Center - Saint Leo, Fla.



Palm Beach Atl. 43

No.	Player	S	Pts	FG	3FG	FT	OR	DR	TR	PF	A	TO	Blk	Stl	Min	+/-
02	NUNN, DARHIUS	G	9	3-5	1-2	2-2	0	1	1	0	2	1	0	0	18	14
04	LARGEY, DAN	F	7	3-6	0-2	1-1	1	4	5	1	0	1	0	0	14	3
05	JACKSON, DE'ONDRE	G	10	4-8	2-3	0-0	1	3	4	0	0	0	0	0	17	14
21	BARBER, MALEK	F	3	1-2	0-1	1-1	1	2	3	2	1	1	1	1	17	14
23	JASMIN, JULES	F	6	3-5	0-0	0-1	1	1	2	1	0	0	0	1	12	7
00	CARPINELLO, CASEY	G	0	0-0	0-0	0-0	0	0	0	2	0	0	0	0	2	3
14	CELAYIR, KUTLUHAN	G	0	0-0	0-0	0-0	0	0	0	0	0	0	0	0	2	8
15	NICHELSON, JUSTIN	G	6	2-2	2-2	0-0	0	2	2	2	1	0	0	0	9	12
33	RAKIC, ALEKSA	C	2	0-3	0-1	2-2	0	1	1	2	2	1	0	1	9	20
TEAM							2	0	2	0		0				
TOTALS			43	16-31	5-11	6-7	6	14	20	10	6	4	1	3	100	

Shooting By Period

Period	FG	FG%	3FG	3FG%	FT	FT%
1st Half	16-31	52%	5-11	45%	6-7	86%
Game	27-54	50.0%	10-23	43.5%	25-31	80.6%

Deadball Rebounds: 2,0
Last FG Half: PBA 2nd-03:57

Saint Leo 24

No.	Player	S	Pts	FG	3FG	FT	OR	DR	TR	PF	A	TO	Blk	Stl	Min	+/-
00	REED, YALEN	F	5	1-1	0-0	3-4	1	4	5	0	0	1	0	0	17	-14
01	HILL, ISAAH	G	5	2-8	1-4	0-4	1	1	2	0	1	1	1	1	18	-14
03	MOORER, RUSTY	G	0	0-2	0-1	0-0	0	0	0	2	1	0	0	0	9	-2
13	MCCLURE, KYRAN	G	8	3-6	2-4	0-1	0	2	2	1	1	1	0	0	20	-18
25	FORMAN, TY	F	6	3-6	0-0	0-0	3	2	5	2	0	1	0	0	11	-3
02	BARTASKAS, GINTARAS	G	0	0-1	0-1	0-0	0	0	0	0	0	0	0	0	4	5
04	COOMER, WADE	G	0	0-1	0-1	0-0	0	0	0	0	0	2	0	0	2	-5
12	COOMER, JARED	F	0	0-1	0-1	0-0	1	0	1	0	0	1	0	0	5	-15
20	LAHM, ERIK	C	0	0-0	0-0	0-0	0	0	0	2	0	0	0	0	4	-4
22	CARTER, TYLER	F	0	0-0	0-0	0-0	0	0	0	2	0	0	0	0	7	-15
33	FULLER, MALIK	G	0	0-0	0-0	0-0	0	0	0	0	0	1	0	0	3	-10
TEAM							0	1	1	0		0				
TOTALS			24	9-26	3-12	3-9	6	10	16	9	3	8	1	1	100	

Shooting By Period

Period	FG	FG%	3FG	3FG%	FT	FT%
1st Half	9-26	35%	3-12	25%	3-9	33%
Game	24-59	40.7%	9-30	30.0%	19-30	63.3%

Deadball Rebounds: 4,0
Last FG Half: SLM 2nd-00:24

Game Notes:

Officials: John Atanassov, Klyde Mulla, Jordan Conley
 Attendance: 386

Start Time: 07:44 PM ET
 End Time: 09:45 PM ET
 Game Duration: 2:01
 Conference Game;

Score	1st	2nd	TOT
PBA	43	46	89
SLM	24	52	76

Points from (This Period)	PBA	SLM
In the Paint	18	10
Off Turns	14	4
2nd Chance	8	6
Fast Break	5	2
Bench	8	0

**Official Play-By-Play
Palm Beach Atl. vs Saint Leo
First Half**

January 04, 2020 at Marion Bowman Center - Saint Leo, Fla.



Period 1

Starters:

Palm Beach Atl.: 2 NUNN, DARHIUS (G); 4 LARGEY, DAN (F); 5 JACKSON, DE'ONDRE (G); 21 BARBER, MALEK (F); 23 JASMIN, JULES (F);

Saint Leo: 0 REED, YALEN (F); 13 MCCLURE, KYRAN (G); 25 FORMAN, TY (F); 1 HILL, ISIAIAH (G); 3 MOORER, RUSTY (G);

Time	VISITORS: Palm Beach Atl.	Score	Margin	HOME: Saint Leo
19:42				MISSED 3PTR by MOORER, RUSTY
19:40				REBOUND (OFF) by REED, YALEN
19:20				MISSED JUMPER by FORMAN, TY
19:17	REBOUND (DEF) by JACKSON, DE'ONDRE			
18:53	MISSED LAYUP by JASMIN, JULES			
18:49				REBOUND (DEF) by MCCLURE, KYRAN
18:46				MISSED 3PTR by HILL, ISIAIAH
18:42	REBOUND (DEF) by JASMIN, JULES			
18:39				FOUL (PERSONAL) by MCCLURE, KYRAN
18:28	GOOD! JUMPER by LARGEY, DAN	0-2	V 2	
17:52				MISSED JUMPER by MOORER, RUSTY
17:49				REBOUND (OFF) by FORMAN, TY
17:48		2-2	T	GOOD! LAYUP by FORMAN, TY
17:17	MISSED 3PTR by LARGEY, DAN			
17:17				REBOUND (DEF) by TEAM
16:59		4-2	H 2	GOOD! LAYUP by REED, YALEN
16:59				ASSIST by HILL, ISIAIAH
16:44	MISSED 3PTR by BARBER, MALEK			
16:41	REBOUND (OFF) by TEAM			
16:41				FOUL (PERSONAL) by MOORER, RUSTY
16:24	GOOD! 3PTR by JACKSON, DE'ONDRE	4-5	V 1	
16:24	ASSIST by NUNN, DARHIUS			
16:04				TURNOVER (LOSTBALL) by HILL, ISIAIAH
16:04	STEAL by BARBER, MALEK			
16:00	GOOD! LAYUP by NUNN, DARHIUS [FB]	4-7	V 3	
15:44		7-7	T	GOOD! 3PTR by MCCLURE, KYRAN
15:44				ASSIST by MOORER, RUSTY
15:32	GOOD! LAYUP by JASMIN, JULES	7-9	V 2	
15:24	FOUL (PERSONAL) by JASMIN, JULES			
15:24				
15:01		9-9	T	GOOD! JUMPER by MCCLURE, KYRAN
14:35	GOOD! LAYUP by JASMIN, JULES	9-11	V 2	
14:35	ASSIST by NUNN, DARHIUS			
14:12				TURNOVER (LOSTBALL) by REED, YALEN
14:12	STEAL by JASMIN, JULES			
14:06	MISSED LAYUP by NUNN, DARHIUS			
14:03				REBOUND (DEF) by FORMAN, TY
13:55		12-11	H 1	GOOD! 3PTR by MCCLURE, KYRAN
13:25	MISSED JUMPER by JACKSON, DE'ONDRE			
13:23				REBOUND (DEF) by REED, YALEN
13:18				MISSED LAYUP by FORMAN, TY
13:16	REBOUND (DEF) by JACKSON, DE'ONDRE			
13:10	MISSED LAYUP by JACKSON, DE'ONDRE			
13:08				REBOUND (DEF) by FORMAN, TY
13:02				FOUL (OFF) by FORMAN, TY
13:02				TURNOVER (OFFENSIVE) by FORMAN, TY
13:02				SUB OUT: MOORER, RUSTY
13:02				SUB OUT: FORMAN, TY
13:02				SUB IN: CARTER, TYLER
13:02				SUB IN: FULLER, MALIK
13:02	SUB OUT: NUNN, DARHIUS			
13:02	SUB OUT: LARGEY, DAN			
13:02	SUB OUT: JASMIN, JULES			
13:02	SUB IN: CELAYIR, KUTLUHAN			
13:02	SUB IN: NICHELSON, JUSTIN			
13:02	SUB IN: RAKIC, ALEKSA			
12:46	GOOD! LAYUP by BARBER, MALEK	12-13	V 1	
12:46				FOUL (PERSONAL) by CARTER, TYLER
12:46	GOOD! FT by BARBER, MALEK	12-14	V 2	
12:27	FOUL (PERSONAL) by NICHELSON, JUSTIN			
12:27		13-14	V 1	GOOD! FT by REED, YALEN
12:27		14-14	T	GOOD! FT by REED, YALEN
12:11	MISSED 3PTR by JACKSON, DE'ONDRE			
12:09				REBOUND (DEF) by REED, YALEN
12:03				MISSED 3PTR by MCCLURE, KYRAN
12:00	REBOUND (DEF) by NICHELSON, JUSTIN			
11:50	GOOD! LAYUP by JACKSON, DE'ONDRE	14-16	V 2	
11:50	ASSIST by NICHELSON, JUSTIN			
11:35				TURNOVER (BADPASS) by FULLER, MALIK
11:35	STEAL by RAKIC, ALEKSA			

Time	VISITORS: Palm Beach Atl.	Score	Margin	HOME: Saint Leo
11:20	MISSED JUMPER by JACKSON, DE'ONDRE			
11:18	REBOUND (OFF) by JACKSON, DE'ONDRE			
11:18	GOOD! LAYUP by JACKSON, DE'ONDRE	14-18	V 4	
11:18				TIMEOUT 30SEC
11:18				SUB OUT: REED, YALEN
11:18				SUB IN: LAHM, ERIK
11:18	SUB OUT: JACKSON, DE'ONDRE			
11:18	SUB OUT: CELAYIR, KUTLUHAN			
11:18	SUB OUT: BARBER, MALEK			
11:18	SUB IN: CARPINELLO, CASEY			
11:18	SUB IN: NUNN, DARHIUS			
11:18	SUB IN: JASMIN, JULES			
10:59	FOUL (PERSONAL) by CARPINELLO, CASEY			
10:59				MISSED FT by HILL, ISIAIAH
10:59				REBOUND (OFF) by TEAM
10:59				MISSED FT by HILL, ISIAIAH
10:57	REBOUND (DEF) by NUNN, DARHIUS			
10:42				SUB OUT: HILL, ISIAIAH
10:42				SUB IN: COOMER, WADE
10:28	MISSED 3PTR by RAKIC, ALEKSA			
10:26				REBOUND (DEF) by MCCLURE, KYRAN
10:24				TURNOVER (BADPASS) by MCCLURE, KYRAN
10:10	GOOD! 3PTR by NICHELSON, JUSTIN	14-21	V 7	
10:10	ASSIST by RAKIC, ALEKSA			
09:41				TURNOVER (BADPASS) by COOMER, WADE
09:41				SUB OUT: FULLER, MALIK
09:41				SUB IN: MOORER, RUSTY
09:41	SUB OUT: RAKIC, ALEKSA			
09:41	SUB IN: LARGEY, DAN			
09:27	MISSED 3PTR by LARGEY, DAN			
09:26	REBOUND (OFF) by TEAM			
09:23	FOUL (OFF) by LARGEY, DAN			
09:23	TURNOVER (OFFENSIVE) by LARGEY, DAN			
09:05				MISSED 3PTR by COOMER, WADE
09:05				REBOUND (OFF) by TEAM
09:05	FOUL (PERSONAL) by CARPINELLO, CASEY			
09:05	SUB OUT: CARPINELLO, CASEY			
09:05	SUB IN: BARBER, MALEK			
08:44				MISSED JUMPER by MCCLURE, KYRAN
08:41	REBOUND (DEF) by NICHELSON, JUSTIN			
08:32	GOOD! JUMPER by JASMIN, JULES [PNT]	14-23	V 9	
08:21				TURNOVER (TRAVEL) by COOMER, WADE
08:21				SUB OUT: COOMER, WADE
08:21				SUB OUT: MCCLURE, KYRAN
08:21				SUB OUT: CARTER, TYLER
08:21				SUB IN: REED, YALEN
08:21				SUB IN: HILL, ISIAIAH
08:21				SUB IN: BARTASKAS, GINTARAS
08:21	SUB OUT: NICHELSON, JUSTIN			
08:21	SUB IN: JACKSON, DE'ONDRE			
08:08				FOUL (PERSONAL) by LAHM, ERIK
08:06				FOUL (PERSONAL) by MOORER, RUSTY
08:06	GOOD! FT by NUNN, DARHIUS	14-24	V 10	
08:06				SUB OUT: MOORER, RUSTY
08:06				SUB IN: MCCLURE, KYRAN
08:06	GOOD! FT by NUNN, DARHIUS	14-25	V 11	
07:51				
07:37		17-25	V 8	GOOD! 3PTR by HILL, ISIAIAH
07:37				ASSIST by MCCLURE, KYRAN
07:21	MISSED LAYUP by JASMIN, JULES			
07:21				BLOCK by HILL, ISIAIAH
07:20	REBOUND (OFF) by JASMIN, JULES			
07:20				FOUL (PERSONAL) by LAHM, ERIK
07:20				SUB OUT: LAHM, ERIK
07:20				SUB IN: FORMAN, TY
07:20	MISSED FT by JASMIN, JULES			
07:19				REBOUND (DEF) by REED, YALEN
07:15	FOUL (PERSONAL) by BARBER, MALEK			
07:15	SUB OUT: JASMIN, JULES			
07:15	SUB IN: NICHELSON, JUSTIN			
07:03				MISSED 3PTR by BARTASKAS, GINTARAS
07:01	REBOUND (DEF) by LARGEY, DAN			
06:51	TURNOVER (TRAVEL) by BARBER, MALEK			
06:28				MISSED LAYUP by HILL, ISIAIAH
06:26				REBOUND (OFF) by HILL, ISIAIAH
06:25				MISSED LAYUP by HILL, ISIAIAH
06:23				REBOUND (OFF) by FORMAN, TY
06:22		19-25	V 6	GOOD! LAYUP by FORMAN, TY
06:08	GOOD! JUMPER by LARGEY, DAN	19-27	V 8	

Time	VISITORS: Palm Beach Atl.	Score	Margin	HOME: Saint Leo
05:45				MISSED 3PTR by HILL, ISAIAH
05:43				REBOUND (OFF) by FORMAN, TY
05:42		21-27	V 6	GOOD! LAYUP by FORMAN, TY
05:29	TURNOVER (BADPASS) by NUNN, DARHIUS			
05:29				STEAL by HILL, ISAIAH
05:25		23-27	V 4	GOOD! LAYUP by HILL, ISAIAH [FB]
05:22	TIMEOUT 30SEC			
05:22				SUB OUT: BARTASKAS, GINTARAS
05:22				SUB IN: COOMER, JARED
05:22	SUB OUT: LARGEY, DAN			
05:22	SUB IN: RAKIC, ALEKSA			
04:56	GOOD! 3PTR by NICHELSON, JUSTIN	23-30	V 7	
04:56	ASSIST by BARBER, MALEK			
04:25				MISSED 3PTR by MCCLURE, KYRAN
04:22	REBOUND (DEF) by JACKSON, DE'ONDRE			
04:02	GOOD! 3PTR by JACKSON, DE'ONDRE	23-33	V 10	
04:02	ASSIST by RAKIC, ALEKSA			
03:42				MISSED JUMPER by FORMAN, TY
03:39				REBOUND (OFF) by COOMER, JARED
03:33				TURNOVER (TRAVEL) by COOMER, JARED
03:33				
03:33	SUB OUT: NICHELSON, JUSTIN			
03:33	SUB IN: JASMIN, JULES			
03:17	GOOD! FT by RAKIC, ALEKSA	23-34	V 11	
03:17	GOOD! FT by RAKIC, ALEKSA	23-35	V 12	
03:17				SUB OUT: FORMAN, TY
03:17				SUB IN: CARTER, TYLER
03:17	SUB OUT: JASMIN, JULES			
03:17	SUB IN: LARGEY, DAN			
03:17				FOUL (PERSONAL) by FORMAN, TY
03:04				MISSED JUMPER by HILL, ISAIAH
03:04	BLOCK by BARBER, MALEK			
03:00	REBOUND (DEF) by LARGEY, DAN			
02:42	GOOD! JUMPER by NUNN, DARHIUS [PNT]	23-37	V 14	
02:24				MISSED 3PTR by HILL, ISAIAH
02:21	REBOUND (DEF) by BARBER, MALEK			
02:14	MISSED LAYUP by RAKIC, ALEKSA			
02:11	REBOUND (OFF) by BARBER, MALEK			
02:09	MISSED 3PTR by NUNN, DARHIUS			
02:07				REBOUND (DEF) by REED, YALEN
01:46				MISSED 3PTR by COOMER, JARED
01:43	REBOUND (DEF) by BARBER, MALEK			
01:23	MISSED LAYUP by LARGEY, DAN			
01:20	REBOUND (OFF) by LARGEY, DAN			
01:20	GOOD! LAYUP by LARGEY, DAN	23-39	V 16	
01:20				FOUL (PERSONAL) by CARTER, TYLER
01:20	GOOD! FT by LARGEY, DAN	23-40	V 17	
01:20				SUB OUT: CARTER, TYLER
01:20				SUB IN: BARTASKAS, GINTARAS
01:20	SUB OUT: LARGEY, DAN			
01:20	SUB IN: NICHELSON, JUSTIN			
01:05	FOUL (PERSONAL) by BARBER, MALEK			
01:05	SUB OUT: BARBER, MALEK			
01:05	SUB IN: JASMIN, JULES			
01:05				MISSED FT by MCCLURE, KYRAN
01:03	REBOUND (DEF) by RAKIC, ALEKSA			
00:43	MISSED LAYUP by RAKIC, ALEKSA			
00:42				REBOUND (DEF) by HILL, ISAIAH
00:42	FOUL (PERSONAL) by NICHELSON, JUSTIN			
00:42	SUB OUT: NICHELSON, JUSTIN			
00:42	SUB IN: LARGEY, DAN			
00:42				MISSED FT by HILL, ISAIAH
00:41	REBOUND (DEF) by LARGEY, DAN			
00:27	TURNOVER (TRAVEL) by RAKIC, ALEKSA			
00:04	FOUL (PERSONAL) by RAKIC, ALEKSA			
00:04				SUB OUT: BARTASKAS, GINTARAS
00:04				SUB IN: FULLER, MALIK
00:04				MISSED FT by HILL, ISAIAH
00:03	REBOUND (DEF) by LARGEY, DAN			
00:03	FOUL (PERSONAL) by RAKIC, ALEKSA			
00:03				MISSED FT by REED, YALEN
00:03				REBOUND (OFF) by TEAM
00:03		24-40	V 16	GOOD! FT by REED, YALEN
00:03	SUB OUT: RAKIC, ALEKSA			
00:03	SUB IN: CELAYIR, KUTLUHAN			
00:00	GOOD! 3PTR by NUNN, DARHIUS [FB]	24-43	V 19	

Palm Beach Atl. 43, Saint Leo 24

Points from (This Period)	PBA	SLM
In the Paint	18	10
Off Turns	14	4
2nd Chance	8	6
Fast Break	5	2
Bench	8	0

Official Box Score
Palm Beach Atl. vs Saint Leo
Second Half Statistics Only
January 04, 2020 at Marion Bowman Center - Saint Leo, Fla.



Palm Beach Atl. 46

No.	Player	S	Pts	FG	3FG	FT	OR	DR	TR	PF	A	TO	Blk	Stl	Min	+/-
02	NUNN, DARHIUS	G	4	1-3	0-0	2-2	0	2	2	1	2	3	0	0	20	-6
04	LARGEY, DAN	F	13	3-5	1-3	6-7	0	3	3	4	0	2	0	0	15	-6
05	JACKSON, DE'ONDRE	G	9	2-7	1-4	4-4	1	4	5	3	2	2	0	0	20	-6
21	BARBER, MALEK	F	7	3-4	1-2	0-0	0	2	2	3	0	0	0	2	11	-3
23	JASMIN, JULES	F	8	2-3	2-2	2-5	1	2	3	1	1	0	0	0	17	-8
00	CARPINELLO, CASEY	G	0	0-0	0-0	0-0	0	0	0	1	0	1	0	1	1	0
14	CELAYIR, KUTLUHAN	G	0	0-0	0-0	0-0	0	0	0	0	0	0	0	0	0	0
15	NICHELSON, JUSTIN	G	5	0-1	0-1	5-6	0	1	1	1	0	0	1	0	11	-2
33	RAKIC, ALEKSA	C	0	0-0	0-0	0-0	1	1	2	3	0	0	0	0	4	1
TEAM							0	0	0	0		0				
TOTALS			46	11-23	5-12	19-24	3	15	18	17	5	8	1	3	100	

Shooting By Period

Period	FG	FG%	3FG	3FG%	FT	FT%
2nd Half	11-23	48%	5-12	42%	19-24	79%
Game	27-54	50.0%	10-23	43.5%	25-31	80.6%

Deadball Rebounds: 2,0

Last FG Half: PBA -

Saint Leo 52

No.	Player	S	Pts	FG	3FG	FT	OR	DR	TR	PF	A	TO	Blk	Stl	Min	+/-
00	REED, YALEN	F	4	2-3	0-0	0-0	1	1	2	1	2	0	0	0	16	1
01	HILL, ISAIAH	G	9	3-7	0-3	3-4	0	3	3	2	2	0	0	0	19	7
03	MOORER, RUSTY	G	11	4-8	3-5	0-1	0	3	3	3	0	2	0	1	17	7
13	MCCLURE, KYRAN	G	20	4-6	3-5	9-10	0	0	0	2	0	1	0	1	19	8
25	FORMAN, TY	F	5	1-1	0-0	3-4	2	2	4	1	0	0	1	0	12	4
02	BARTASKAS, GINTARAS	G	0	0-4	0-4	0-0	1	1	2	4	0	2	0	0	6	3
04	COOMER, WADE	G	0	0-0	0-0	0-0	1	0	1	0	0	0	0	0	1	0
12	COOMER, JARED	F	1	0-0	0-0	1-2	0	0	0	2	0	0	0	0	1	2
20	LAHM, ERIK	C	0	0-2	0-0	0-0	1	1	2	0	0	0	0	0	3	-3
22	CARTER, TYLER	F	2	1-2	0-1	0-0	0	0	0	2	0	0	0	0	4	0
33	FULLER, MALIK	G	0	0-0	0-0	0-0	0	0	0	0	0	0	0	0	1	1
TEAM							1	1	2	0		1				
TOTALS			52	15-33	6-18	16-21	7	12	19	17	4	6	1	2	100	

Shooting By Period

Period	FG	FG%	3FG	3FG%	FT	FT%
2nd Half	15-33	45%	6-18	33%	16-21	76%
Game	24-59	40.7%	9-30	30.0%	19-30	63.3%

Deadball Rebounds: 4,0

Last FG Half: SLM -

Game Notes:

Officials: John Atanassov, Klyde Mulla, Jordan Conley
 Attendance: 386

Start Time: 07:44 PM ET
 End Time: 09:45 PM ET
 Game Duration: 2:01
 Conference Game;

Score	1st	2nd	TOT
PBA	43	46	89
SLM	24	52	76

Points from (This Period)	PBA	SLM
In the Paint	12	18
Off Turns	5	13
2nd Chance	5	7
Fast Break	2	5
Bench	5	3

Official Play-By-Play
Palm Beach Atl. vs Saint Leo
Second Half
January 04, 2020 at Marion Bowman Center - Saint Leo, Fla.



Period 2

Starters:

Palm Beach Atl.: 2 NUNN,DARHIUS (G); 4 LARGEY,DAN (F); 5 JACKSON,DE'ONDRE (G); 21 BARBER,MALEK (F); 23 JASMIN,JULES (F);
Saint Leo: 0 REED,YALEN (F); 13 MCCLURE,KYRAN (G); 25 FORMAN,TY (F); 1 HILL,ISAIAH (G); 3 MOORER,RUSTY (G);

Time	VISITORS: Palm Beach Atl.	Score	Margin	HOME: Saint Leo
20:00				SUB OUT: COOMER, JARED
20:00				SUB OUT: FULLER, MALIK
20:00				SUB IN: MOORER, RUSTY
20:00				SUB IN: FORMAN, TY
20:00	SUB OUT: CELAYIR, KUTLUHAN			
20:00	SUB IN: BARBER, MALEK			
19:34	FOUL (OFF) by LARGEY, DAN			
19:34	TURNOVER (OFFENSIVE) by LARGEY, DAN			
19:07				MISSED JUMPER by MOORER, RUSTY
19:04				REBOUND (OFF) by FORMAN, TY
19:03		26-43	V 17	GOOD! LAYUP by FORMAN, TY
18:42	MISSED 3PTR by JACKSON, DE'ONDRE			
18:42				REBOUND (DEF) by FORMAN, TY
18:42	FOUL (PERSONAL) by BARBER, MALEK			
18:15				MISSED 3PTR by HILL, ISAIAH
18:14	REBOUND (DEF) by LARGEY, DAN			
18:14				FOUL (PERSONAL) by FORMAN, TY
17:57	GOOD! 3PTR by BARBER, MALEK	26-46	V 20	
17:57	ASSIST by JASMIN, JULES			
17:35		29-46	V 17	GOOD! 3PTR by MOORER, RUSTY
17:35				ASSIST by HILL, ISAIAH
17:10	MISSED 3PTR by BARBER, MALEK			
17:10				REBOUND (DEF) by TEAM
17:04		32-46	V 14	GOOD! 3PTR by MCCLURE, KYRAN
17:04				ASSIST by HILL, ISAIAH
16:45	MISSED LAYUP by JACKSON, DE'ONDRE			
16:45				BLOCK by FORMAN, TY
16:43				REBOUND (DEF) by HILL, ISAIAH
16:12				TURNOVER (SHOTCLOCK) by TEAM
15:58				FOUL (PERSONAL) by HILL, ISAIAH
15:58				
15:58	MISSED FT by JASMIN, JULES			
15:58	REBOUND (OFF) by TEAM			
15:58	GOOD! FT by JASMIN, JULES	32-47	V 15	
15:44	FOUL (PERSONAL) by LARGEY, DAN			
15:44	SUB OUT: LARGEY, DAN			
15:44	SUB IN: RAKIC, ALEKSA			
15:30	FOUL (PERSONAL) by JACKSON, DE'ONDRE			
15:30		33-47	V 14	GOOD! FT by MCCLURE, KYRAN
15:30		34-47	V 13	GOOD! FT by MCCLURE, KYRAN
15:30				SUB OUT: FORMAN, TY
15:30				SUB IN: CARTER, TYLER
15:30				MISSED FT by MCCLURE, KYRAN
15:28	REBOUND (DEF) by RAKIC, ALEKSA			
15:13	GOOD! DUNK by BARBER, MALEK	34-49	V 15	
15:13	ASSIST by NUNN, DARHIUS			
14:46				MISSED 3PTR by CARTER, TYLER
14:43	REBOUND (DEF) by JACKSON, DE'ONDRE			
14:39				FOUL (PERSONAL) by MOORER, RUSTY
14:39	SUB OUT: BARBER, MALEK			
14:39	SUB IN: NICHELSON, JUSTIN			
14:34	TURNOVER (LOSTBALL) by NUNN, DARHIUS			
14:15		37-49	V 12	GOOD! 3PTR by MOORER, RUSTY
14:15				ASSIST by REED, YALEN
14:00	MISSED 3PTR by NICHELSON, JUSTIN			
13:56	REBOUND (OFF) by RAKIC, ALEKSA			
13:40	GOOD! 3PTR by JASMIN, JULES	37-52	V 15	
13:40	ASSIST by JACKSON, DE'ONDRE			
13:25				MISSED JUMPER by REED, YALEN
13:25				REBOUND (OFF) by TEAM
13:22	FOUL (PERSONAL) by RAKIC, ALEKSA			
13:22	SUB OUT: RAKIC, ALEKSA			
13:22	SUB IN: LARGEY, DAN			
13:11		39-52	V 13	GOOD! JUMPER by REED, YALEN [PNT]
12:51	MISSED 3PTR by LARGEY, DAN			
12:49				REBOUND (DEF) by MOORER, RUSTY
12:49				TURNOVER (TRAVEL) by MOORER, RUSTY
12:49				FOUL (PERSONAL) by CARTER, TYLER
12:38	MISSED JUMPER by NUNN, DARHIUS			
12:33				REBOUND (DEF) by REED, YALEN

Time	VISITORS: Palm Beach Atl.	Score	Margin	HOME: Saint Leo
12:27		41-52	V 11	GOOD! LAYUP by CARTER, TYLER
12:27				ASSIST by REED, YALEN
12:03				SUB OUT: MCCLURE, KYRAN
12:03				SUB IN: BARTASKAS, GINTARAS
11:53	MISSED LAYUP by JASMIN, JULES			
11:50				REBOUND (DEF) by MOORER, RUSTY
11:44				MISSED 3PTR by BARTASKAS, GINTARAS
11:39	REBOUND (DEF) by LARGEY, DAN			
11:23	GOOD! LAYUP by LARGEY, DAN	41-54	V 13	
11:23				FOUL (PERSONAL) by CARTER, TYLER
11:23				
11:23				SUB OUT: MOORER, RUSTY
11:23				SUB OUT: CARTER, TYLER
11:23				SUB IN: MCCLURE, KYRAN
11:23				SUB IN: LAHM, ERIK
11:23	GOOD! FT by LARGEY, DAN	41-55	V 14	
11:17				FOUL (OFF) by BARTASKAS, GINTARAS
11:17				TURNOVER (OFFENSIVE) by BARTASKAS, GINTARAS
10:50	MISSED 3PTR by JACKSON, DE'ONDRE			
10:47				REBOUND (DEF) by LAHM, ERIK
10:43		43-55	V 12	GOOD! LAYUP by HILL, ISIAIAH [FB]
10:12	GOOD! 3PTR by JASMIN, JULES	43-58	V 15	
10:12	ASSIST by NUNN, DARHIUS			
09:53				MISSED LAYUP by LAHM, ERIK
09:50	REBOUND (DEF) by JACKSON, DE'ONDRE			
09:36				FOUL (PERSONAL) by MCCLURE, KYRAN
09:36				SUB OUT: REED, YALEN
09:36				SUB OUT: HILL, ISIAIAH
09:36				SUB IN: MOORER, RUSTY
09:36				SUB IN: FORMAN, TY
09:36	SUB OUT: NICHELSON, JUSTIN			
09:36	SUB IN: BARBER, MALEK			
09:36	SUB OUT: LARGEY, DAN			
09:36	SUB IN: RAKIC, ALEKSA			
09:36	GOOD! FT by NUNN, DARHIUS	43-59	V 16	
09:36	GOOD! FT by NUNN, DARHIUS	43-60	V 17	
09:20				MISSED 3PTR by MOORER, RUSTY
09:18				REBOUND (OFF) by LAHM, ERIK
09:15				MISSED LAYUP by LAHM, ERIK
09:13	REBOUND (DEF) by JACKSON, DE'ONDRE			
09:03	MISSED LAYUP by JACKSON, DE'ONDRE			
09:01	GOOD! LAYUP by JACKSON, DE'ONDRE	43-62	V 19	
09:00	REBOUND (OFF) by JACKSON, DE'ONDRE			
08:35		46-62	V 16	GOOD! 3PTR by MOORER, RUSTY
08:35	FOUL (PERSONAL) by RAKIC, ALEKSA			
08:35				SUB OUT: LAHM, ERIK
08:35				SUB IN: REED, YALEN
08:35	SUB OUT: RAKIC, ALEKSA			
08:35	SUB IN: LARGEY, DAN			
08:35	FOUL (PERSONAL) by JASMIN, JULES			
08:35				SUB OUT: BARTASKAS, GINTARAS
08:35				SUB IN: HILL, ISIAIAH
08:35		47-62	V 15	GOOD! FT by FORMAN, TY
08:35		48-62	V 14	GOOD! FT by FORMAN, TY
08:16	TURNOVER (BADPASS) by LARGEY, DAN			
08:16				STEAL by MOORER, RUSTY
08:11		50-62	V 12	GOOD! LAYUP by MOORER, RUSTY
07:44				FOUL (PERSONAL) by HILL, ISIAIAH
07:44				
07:44	GOOD! FT by LARGEY, DAN	50-63	V 13	
07:44	GOOD! FT by LARGEY, DAN	50-64	V 14	
07:34				TURNOVER (BADPASS) by MCCLURE, KYRAN
07:34	STEAL by BARBER, MALEK			
07:21	GOOD! LAYUP by LARGEY, DAN	50-66	V 16	
07:02				MISSED JUMPER by HILL, ISIAIAH
06:59	REBOUND (DEF) by BARBER, MALEK			
06:42	MISSED 3PTR by JACKSON, DE'ONDRE			
06:40				REBOUND (DEF) by FORMAN, TY
06:35				MISSED 3PTR by MOORER, RUSTY
06:32	REBOUND (DEF) by JASMIN, JULES			
06:20	TURNOVER (LOSTBALL) by NUNN, DARHIUS			
06:20				STEAL by MCCLURE, KYRAN
06:12	FOUL (PERSONAL) by NUNN, DARHIUS			
06:12		51-66	V 15	GOOD! FT by HILL, ISIAIAH
06:12	SUB OUT: JASMIN, JULES			
06:12	SUB IN: NICHELSON, JUSTIN			
06:12		52-66	V 14	GOOD! FT by HILL, ISIAIAH
05:47	GOOD! JUMPER by NUNN, DARHIUS [PNT]	52-68	V 16	
05:30				TURNOVER (BADPASS) by MOORER, RUSTY
05:30	STEAL by BARBER, MALEK			

Time	VISITORS: Palm Beach Atl.	Score	Margin	HOME: Saint Leo
05:26	GOOD! DUNK by BARBER, MALEK [FB]	52-70	V 18	
05:26				TIMEOUT 30SEC
05:26				
05:12				MISSED JUMPER by MOORER, RUSTY
05:08	REBOUND (DEF) by BARBER, MALEK			
04:54	GOOD! 3PTR by LARGEY, DAN	52-73	V 21	
04:54	ASSIST by JACKSON, DE'ONDRE			
04:37		54-73	V 19	GOOD! LAYUP by HILL, ISIAIAH [PNT]
04:09	MISSED JUMPER by NUNN, DARHIUS			
04:07				REBOUND (DEF) by MOORER, RUSTY
04:07	FOUL (PERSONAL) by BARBER, MALEK			
04:07	SUB OUT: BARBER, MALEK			
04:07	SUB IN: JASMIN, JULES			
04:07				MISSED FT by MOORER, RUSTY
04:05	REBOUND (DEF) by NUNN, DARHIUS			
03:57	GOOD! 3PTR by JACKSON, DE'ONDRE	54-76	V 22	
03:56				TIMEOUT 30SEC
03:56				
03:56				SUB OUT: REED, YALEN
03:56				SUB IN: FULLER, MALIK
03:34				MISSED 3PTR by HILL, ISIAIAH
03:30	REBOUND (DEF) by JACKSON, DE'ONDRE			
03:17	MISSED 3PTR by LARGEY, DAN			
03:16	REBOUND (OFF) by JASMIN, JULES			
03:16				FOUL (PERSONAL) by MOORER, RUSTY
03:16				SUB OUT: FULLER, MALIK
03:16				SUB IN: BARTASKAS, GINTARAS
03:16	MISSED FT by JASMIN, JULES			
03:15				REBOUND (DEF) by BARTASKAS, GINTARAS
03:08				MISSED 3PTR by BARTASKAS, GINTARAS
03:05				REBOUND (OFF) by FORMAN, TY
03:04	FOUL (PERSONAL) by NICHELSON, JUSTIN			
03:04		55-76	V 21	GOOD! FT by FORMAN, TY
03:04				MISSED FT by FORMAN, TY
03:01	REBOUND (DEF) by LARGEY, DAN			
02:54				FOUL (PERSONAL) by BARTASKAS, GINTARAS
02:54	GOOD! FT by JASMIN, JULES	55-77	V 22	
02:54	MISSED FT by JASMIN, JULES			
02:53				REBOUND (DEF) by HILL, ISIAIAH
02:48		58-77	V 19	GOOD! 3PTR by MCCLURE, KYRAN
02:36				FOUL (PERSONAL) by BARTASKAS, GINTARAS
02:36	GOOD! FT by LARGEY, DAN	58-78	V 20	
02:36	GOOD! FT by LARGEY, DAN	58-79	V 21	
02:36	SUB OUT: JASMIN, JULES			
02:36	SUB IN: BARBER, MALEK			
02:07	TURNOVER (TRAVEL) by NUNN, DARHIUS			
02:07	SUB OUT: BARBER, MALEK			
02:07	SUB IN: JASMIN, JULES			
02:00	FOUL (PERSONAL) by LARGEY, DAN			
02:00		59-79	V 20	GOOD! FT by MCCLURE, KYRAN
02:00	SUB OUT: JASMIN, JULES			
02:00	SUB IN: BARBER, MALEK			
02:00		60-79	V 19	GOOD! FT by MCCLURE, KYRAN
02:00	FOUL (TECH) by JACKSON, DE'ONDRE			
02:00		61-79	V 18	GOOD! FT by MCCLURE, KYRAN
02:00		62-79	V 17	GOOD! FT by MCCLURE, KYRAN
02:00	TURNOVER (OFFENSIVE) by JACKSON, DE'ONDRE			
01:58	FOUL (PERSONAL) by BARBER, MALEK			
01:58				SUB OUT: FORMAN, TY
01:58				SUB IN: FULLER, MALIK
01:58	SUB OUT: BARBER, MALEK			
01:58	SUB IN: JASMIN, JULES			
01:58				SUB OUT: BARTASKAS, GINTARAS
01:58				SUB IN: COOMER, JARED
01:58		63-79	V 16	GOOD! FT by HILL, ISIAIAH
01:58				MISSED FT by HILL, ISIAIAH
01:54	REBOUND (DEF) by JASMIN, JULES			
01:47				FOUL (PERSONAL) by COOMER, JARED
01:47	GOOD! FT by LARGEY, DAN	63-80	V 17	
01:47				SUB OUT: FULLER, MALIK
01:47				SUB IN: BARTASKAS, GINTARAS
01:47	MISSED FT by LARGEY, DAN			
01:46				REBOUND (DEF) by HILL, ISIAIAH
01:40		66-80	V 14	GOOD! 3PTR by MCCLURE, KYRAN [FB]
01:36				FOUL (PERSONAL) by MOORER, RUSTY
01:36				SUB OUT: MOORER, RUSTY
01:36				SUB IN: COOMER, WADE
01:36	GOOD! FT by JACKSON, DE'ONDRE	66-81	V 15	
01:36	GOOD! FT by JACKSON, DE'ONDRE	66-82	V 16	
01:27		68-82	V 14	GOOD! LAYUP by MCCLURE, KYRAN

Time	VISITORS: Palm Beach Atl.	Score	Margin	HOME: Saint Leo
01:27	FOUL (PERSONAL) by LARGEY, DAN			
01:27				SUB OUT: BARTASKAS, GINTARAS
01:27				SUB OUT: COOMER, WADE
01:27				SUB IN: REED, YALEN
01:27				SUB IN: FULLER, MALIK
01:27	SUB OUT: LARGEY, DAN			
01:27	SUB IN: CARPINELLO, CASEY			
01:27		69-82	V 13	GOOD! FT by MCCLURE, KYRAN
01:23	TIMEOUT 30SEC			
01:23	SUB OUT: JASMIN, JULES			
01:23	SUB IN: RAKIC, ALEKSA			
01:22	TURNOVER (LOSTBALL) by JACKSON, DE'ONDRE			
01:22				SUB OUT: REED, YALEN
01:22				SUB OUT: FULLER, MALIK
01:22				SUB IN: BARTASKAS, GINTARAS
01:22				SUB IN: COOMER, WADE
01:22	SUB OUT: RAKIC, ALEKSA			
01:22	SUB IN: JASMIN, JULES			
01:22				MISSED 3PTR by MCCLURE, KYRAN
01:18	REBOUND (DEF) by NICHELSON, JUSTIN			
01:18				FOUL (PERSONAL) by BARTASKAS, GINTARAS
01:18	GOOD! FT by NICHELSON, JUSTIN	69-83	V 14	
01:18	SUB OUT: CARPINELLO, CASEY			
01:18	SUB IN: RAKIC, ALEKSA			
01:18	GOOD! FT by NICHELSON, JUSTIN	69-84	V 15	
01:13				MISSED 3PTR by BARTASKAS, GINTARAS
01:11	REBOUND (DEF) by NUNN, DARHIUS			
01:11				SUB OUT: BARTASKAS, GINTARAS
01:11				SUB OUT: COOMER, WADE
01:11				SUB IN: REED, YALEN
01:11				SUB IN: FULLER, MALIK
01:11	SUB OUT: JASMIN, JULES			
01:11	SUB IN: CARPINELLO, CASEY			
01:08				FOUL (PERSONAL) by MCCLURE, KYRAN
01:08	GOOD! FT by NICHELSON, JUSTIN	69-85	V 16	
01:08				SUB OUT: COOMER, JARED
01:08				SUB OUT: FULLER, MALIK
01:08				SUB IN: BARTASKAS, GINTARAS
01:08				SUB IN: COOMER, WADE
01:08	SUB OUT: CARPINELLO, CASEY			
01:08	SUB IN: JASMIN, JULES			
01:08	GOOD! FT by NICHELSON, JUSTIN	69-86	V 17	
01:01				MISSED 3PTR by HILL, ISAIAH
00:56				REBOUND (OFF) by COOMER, WADE
00:53				MISSED 3PTR by MCCLURE, KYRAN
00:53		71-86	V 15	GOOD! DUNK by REED, YALEN
00:53				TIMEOUT TEAM
00:53				SUB OUT: BARTASKAS, GINTARAS
00:53				SUB OUT: COOMER, WADE
00:53				SUB IN: COOMER, JARED
00:53				SUB IN: FULLER, MALIK
00:53	SUB OUT: JASMIN, JULES			
00:53	SUB IN: CARPINELLO, CASEY			
00:52				REBOUND (OFF) by REED, YALEN
00:51				FOUL (PERSONAL) by REED, YALEN
00:51	MISSED FT by NICHELSON, JUSTIN			
00:51	REBOUND (OFF) by TEAM			
00:51				SUB OUT: COOMER, JARED
00:51				SUB OUT: FULLER, MALIK
00:51				SUB IN: BARTASKAS, GINTARAS
00:51				SUB IN: COOMER, WADE
00:51	SUB OUT: CARPINELLO, CASEY			
00:51	SUB IN: JASMIN, JULES			
00:51	GOOD! FT by NICHELSON, JUSTIN	71-87	V 16	
00:46	FOUL (PERSONAL) by JACKSON, DE'ONDRE			
00:46		72-87	V 15	GOOD! FT by MCCLURE, KYRAN
00:46				SUB OUT: BARTASKAS, GINTARAS
00:46				SUB OUT: COOMER, WADE
00:46				SUB IN: COOMER, JARED
00:46				SUB IN: FULLER, MALIK
00:46		73-87	V 14	GOOD! FT by MCCLURE, KYRAN
00:46	SUB OUT: JASMIN, JULES			
00:46	SUB IN: CARPINELLO, CASEY			
00:46	FOUL (PERSONAL) by RAKIC, ALEKSA			
00:46	SUB OUT: RAKIC, ALEKSA			
00:46	SUB IN: JASMIN, JULES			
00:46				MISSED FT by COOMER, JARED
00:46				REBOUND (OFF) by TEAM
00:46		74-87	V 13	GOOD! FT by COOMER, JARED
00:45				FOUL (PERSONAL) by COOMER, JARED

Time	VISITORS: Palm Beach Atl.	Score	Margin	HOME: Saint Leo
00:45	GOOD! FT by JACKSON, DE'ONDRE	74-88	V 14	
00:45				SUB OUT: COOMER, JARED
00:45				SUB OUT: FULLER, MALIK
00:45				SUB IN: BARTASKAS, GINTARAS
00:45				SUB IN: COOMER, WADE
00:45	GOOD! FT by JACKSON, DE'ONDRE	74-89	V 15	
00:37				MISSED 3PTR by BARTASKAS, GINTARAS
00:37	BLOCK by NICHELSON, JUSTIN			
00:33				REBOUND (OFF) by BARTASKAS, GINTARAS
00:32				TURNOVER (BADPASS) by BARTASKAS, GINTARAS
00:32	STEAL by CARPINELLO, CASEY			
00:29	FOUL (OFF) by CARPINELLO, CASEY			
00:29	TURNOVER (OFFENSIVE) by CARPINELLO, CASEY			
00:24		76-89	V 13	GOOD! LAYUP by HILL, ISAIAH

Palm Beach Atl. 89, Saint Leo 76

Points from (This Period)	PBA	SLM
In the Paint	12	18
Off Turns	5	13
2nd Chance	5	7
Fast Break	2	5
Bench	5	3

Official Scoring/Possession Reference Chart
Palm Beach Atl. vs Saint Leo
Period 1
January 04, 2020 at Marion Bowman Center - Saint Leo, Fla.



Period 1

Starters:

Palm Beach Atl.: 2 NUNN, DARHIUS (G); 4 LARGEY, DAN (F); 5 JACKSON, DE'ONDRE (G); 21 BARBER, MALEK (F); 23 JASMIN, JULES (F);
Saint Leo: 0 REED, YALEN (F); 13 MCCLURE, KYRAN (G); 25 FORMAN, TY (F); 1 HILL, ISAIAH (G); 3 MOORER, RUSTY (G);

Time	VISITORS: Palm Beach Atl.	Score	Margin	HOME: Saint Leo
18:28	GOOD! JUMPER by LARGEY, DAN	0-2	V 2	
17:48		2-2	T	GOOD! LAYUP by FORMAN, TY
16:59		4-2	H 2	GOOD! LAYUP by REED, YALEN
16:24	GOOD! 3PTR by JACKSON, DE'ONDRE	4-5	V 1	
16:00	GOOD! LAYUP by NUNN, DARHIUS [FB]	4-7	V 3	
15:44		7-7	T	GOOD! 3PTR by MCCLURE, KYRAN
15:32	GOOD! LAYUP by JASMIN, JULES	7-9	V 2	
15:01		9-9	T	GOOD! JUMPER by MCCLURE, KYRAN
14:35	GOOD! LAYUP by JASMIN, JULES	9-11	V 2	
13:55		12-11	H 1	GOOD! 3PTR by MCCLURE, KYRAN
12:46	GOOD! LAYUP by BARBER, MALEK	12-13	V 1	
12:46	GOOD! FT by BARBER, MALEK	12-14	V 2	
12:27		13-14	V 1	GOOD! FT by REED, YALEN
12:27		14-14	T	GOOD! FT by REED, YALEN
11:50	GOOD! LAYUP by JACKSON, DE'ONDRE	14-16	V 2	
11:18	GOOD! LAYUP by JACKSON, DE'ONDRE	14-18	V 4	
10:10	GOOD! 3PTR by NICHELSON, JUSTIN	14-21	V 7	
08:32	GOOD! JUMPER by JASMIN, JULES [PNT]	14-23	V 9	
08:06	GOOD! FT by NUNN, DARHIUS	14-24	V 10	
08:06	GOOD! FT by NUNN, DARHIUS	14-25	V 11	
07:37		17-25	V 8	GOOD! 3PTR by HILL, ISAIAH
06:22		19-25	V 6	GOOD! LAYUP by FORMAN, TY
06:08	GOOD! JUMPER by LARGEY, DAN	19-27	V 8	
05:42		21-27	V 6	GOOD! LAYUP by FORMAN, TY
05:25		23-27	V 4	GOOD! LAYUP by HILL, ISAIAH [FB]
04:56	GOOD! 3PTR by NICHELSON, JUSTIN	23-30	V 7	
04:02	GOOD! 3PTR by JACKSON, DE'ONDRE	23-33	V 10	
03:17	GOOD! FT by RAKIC, ALEKSA	23-34	V 11	
03:17	GOOD! FT by RAKIC, ALEKSA	23-35	V 12	
02:42	GOOD! JUMPER by NUNN, DARHIUS [PNT]	23-37	V 14	
01:20	GOOD! LAYUP by LARGEY, DAN	23-39	V 16	
01:20	GOOD! FT by LARGEY, DAN	23-40	V 17	
00:03		24-40	V 16	GOOD! FT by REED, YALEN
00:00	GOOD! 3PTR by NUNN, DARHIUS [FB]	24-43	V 19	

Palm Beach Atl. 43, Saint Leo 24

Official Scoring/Possession Reference Chart
Palm Beach Atl. vs Saint Leo
Period 2
January 04, 2020 at Marion Bowman Center - Saint Leo, Fla.



Period 2

Starters:

Palm Beach Atl.: 2 NUNN, DARHIUS (G); 4 LARGEY, DAN (F); 5 JACKSON, DE'ONDRE (G); 21 BARBER, MALEK (F); 23 JASMIN, JULES (F);
Saint Leo: 0 REED, YALEN (F); 13 MCCLURE, KYRAN (G); 25 FORMAN, TY (F); 1 HILL, ISAIAH (G); 3 MOORER, RUSTY (G);

Time	VISITORS: Palm Beach Atl.	Score	Margin	HOME: Saint Leo
19:03		26-43	V 17	GOOD! LAYUP by FORMAN, TY
17:57	GOOD! 3PTR by BARBER, MALEK	26-46	V 20	
17:35		29-46	V 17	GOOD! 3PTR by MOORER, RUSTY
17:04		32-46	V 14	GOOD! 3PTR by MCCLURE, KYRAN
15:58	GOOD! FT by JASMIN, JULES	32-47	V 15	
15:30		33-47	V 14	GOOD! FT by MCCLURE, KYRAN
15:30		34-47	V 13	GOOD! FT by MCCLURE, KYRAN
15:13	GOOD! DUNK by BARBER, MALEK	34-49	V 15	
14:15		37-49	V 12	GOOD! 3PTR by MOORER, RUSTY
13:40	GOOD! 3PTR by JASMIN, JULES	37-52	V 15	
13:11		39-52	V 13	GOOD! JUMPER by REED, YALEN [PNT]
12:27		41-52	V 11	GOOD! LAYUP by CARTER, TYLER
11:23	GOOD! LAYUP by LARGEY, DAN	41-54	V 13	
11:23	GOOD! FT by LARGEY, DAN	41-55	V 14	
10:43		43-55	V 12	GOOD! LAYUP by HILL, ISAIAH [FB]
10:12	GOOD! 3PTR by JASMIN, JULES	43-58	V 15	
09:36	GOOD! FT by NUNN, DARHIUS	43-59	V 16	
09:36	GOOD! FT by NUNN, DARHIUS	43-60	V 17	
09:01	GOOD! LAYUP by JACKSON, DE'ONDRE	43-62	V 19	
08:35		46-62	V 16	GOOD! 3PTR by MOORER, RUSTY
08:35		47-62	V 15	GOOD! FT by FORMAN, TY
08:35		48-62	V 14	GOOD! FT by FORMAN, TY
08:11		50-62	V 12	GOOD! LAYUP by MOORER, RUSTY
07:44	GOOD! FT by LARGEY, DAN	50-63	V 13	
07:44	GOOD! FT by LARGEY, DAN	50-64	V 14	
07:21	GOOD! LAYUP by LARGEY, DAN	50-66	V 16	
06:12		51-66	V 15	GOOD! FT by HILL, ISAIAH
06:12		52-66	V 14	GOOD! FT by HILL, ISAIAH
05:47	GOOD! JUMPER by NUNN, DARHIUS [PNT]	52-68	V 16	
05:26	GOOD! DUNK by BARBER, MALEK [FB]	52-70	V 18	
04:54	GOOD! 3PTR by LARGEY, DAN	52-73	V 21	
04:37		54-73	V 19	GOOD! LAYUP by HILL, ISAIAH [PNT]
03:57	GOOD! 3PTR by JACKSON, DE'ONDRE	54-76	V 22	
03:04		55-76	V 21	GOOD! FT by FORMAN, TY
02:54	GOOD! FT by JASMIN, JULES	55-77	V 22	
02:48		58-77	V 19	GOOD! 3PTR by MCCLURE, KYRAN
02:36	GOOD! FT by LARGEY, DAN	58-78	V 20	
02:36	GOOD! FT by LARGEY, DAN	58-79	V 21	
02:00		59-79	V 20	GOOD! FT by MCCLURE, KYRAN
02:00		60-79	V 19	GOOD! FT by MCCLURE, KYRAN
02:00		61-79	V 18	GOOD! FT by MCCLURE, KYRAN
02:00		62-79	V 17	GOOD! FT by MCCLURE, KYRAN
01:58		63-79	V 16	GOOD! FT by HILL, ISAIAH
01:47	GOOD! FT by LARGEY, DAN	63-80	V 17	
01:40		66-80	V 14	GOOD! 3PTR by MCCLURE, KYRAN [FB]
01:36	GOOD! FT by JACKSON, DE'ONDRE	66-81	V 15	
01:36	GOOD! FT by JACKSON, DE'ONDRE	66-82	V 16	
01:27		68-82	V 14	GOOD! LAYUP by MCCLURE, KYRAN
01:27		69-82	V 13	GOOD! FT by MCCLURE, KYRAN
01:18	GOOD! FT by NICHELSON, JUSTIN	69-83	V 14	
01:18	GOOD! FT by NICHELSON, JUSTIN	69-84	V 15	
01:08	GOOD! FT by NICHELSON, JUSTIN	69-85	V 16	

Time	VISITORS: Palm Beach Atl.	Score	Margin	HOME: Saint Leo
01:08	GOOD! FT by NICHELSON, JUSTIN	69-86	V 17	
00:53		71-86	V 15	GOOD! DUNK by REED, YALEN
00:51	GOOD! FT by NICHELSON, JUSTIN	71-87	V 16	
00:46		72-87	V 15	GOOD! FT by MCCLURE, KYRAN
00:46		73-87	V 14	GOOD! FT by MCCLURE, KYRAN
00:46		74-87	V 13	GOOD! FT by COOMER, JARED
00:45	GOOD! FT by JACKSON, DE'ONDRE	74-88	V 14	
00:45	GOOD! FT by JACKSON, DE'ONDRE	74-89	V 15	
00:24		76-89	V 13	GOOD! LAYUP by HILL, ISAIAH

Palm Beach Atl. 89, Saint Leo 76

Official Substitutions Log
Palm Beach Atl. vs Saint Leo
Period 1
January 04, 2020 at Marion Bowman Center - Saint Leo, Fla.



VISITORS: Palm Beach Atl.	Time	Score	HOME: Saint Leo
2 NUNN,DARHIUS			0 REED,YALEN
4 LARGEY,DAN			13 MCCLURE,KYRAN
5 JACKSON,DE'ONDRE			25 FORMAN,TY
21 BARBER,MALEK			1 HILL,ISAIHAH
23 JASMIN,JULES			3 MOORER,RUSTY
	13:02	11-12	SUB OUT: MOORER,RUSTY
	13:02		SUB OUT: FORMAN,TY
	13:02		SUB IN: CARTER,TYLER
	13:02		SUB IN: FULLER,MALIK
SUB OUT: 2 NUNN,DARHIUS	13:02		
SUB OUT: 4 LARGEY,DAN	13:02		
SUB OUT: 23 JASMIN,JULES	13:02		
SUB IN: 14 CELAYIR,KUTLUHAN	13:02		
SUB IN: 15 NICHELSON,JUSTIN	13:02		
SUB IN: 33 RAKIC,ALEKSA	13:02		
	11:18	18-14	SUB OUT: REED,YALEN
	11:18		SUB IN: LAHM,ERIK
SUB OUT: 5 JACKSON,DE'ONDRE	11:18		
SUB OUT: 14 CELAYIR,KUTLUHAN	11:18		
SUB OUT: 21 BARBER,MALEK	11:18		
SUB IN: 0 CARPINELLO,CASEY	11:18		
SUB IN: 2 NUNN,DARHIUS	11:18		
SUB IN: 23 JASMIN,JULES	11:18		
	10:42	18-14	SUB OUT: HILL,ISAIHAH
	10:42		SUB IN: COOMER,WADE
	09:41	21-14	SUB OUT: FULLER,MALIK
	09:41		SUB IN: MOORER,RUSTY
SUB OUT: 33 RAKIC,ALEKSA	09:41		
SUB IN: 4 LARGEY,DAN	09:41		
SUB OUT: 0 CARPINELLO,CASEY	09:05	21-14	
SUB IN: 21 BARBER,MALEK	09:05		
	08:21	23-14	SUB OUT: COOMER,WADE
	08:21		SUB OUT: MCCLURE,KYRAN
	08:21		SUB OUT: CARTER,TYLER
	08:21		SUB IN: REED,YALEN
	08:21		SUB IN: HILL,ISAIHAH
	08:21		SUB IN: BARTASKAS,GINTARAS
SUB OUT: 15 NICHELSON,JUSTIN	08:21		
SUB IN: 5 JACKSON,DE'ONDRE	08:21		
	08:06	24-14	SUB OUT: MOORER,RUSTY
	08:06		SUB IN: MCCLURE,KYRAN
	07:20	25-17	SUB OUT: LAHM,ERIK
	07:20		SUB IN: FORMAN,TY
SUB OUT: 23 JASMIN,JULES	07:15	25-17	
SUB IN: 15 NICHELSON,JUSTIN	07:15		
	05:22	27-23	SUB OUT: BARTASKAS,GINTARAS
	05:22		SUB IN: COOMER,JARED
SUB OUT: 4 LARGEY,DAN	05:22		
SUB IN: 33 RAKIC,ALEKSA	05:22		
SUB OUT: 15 NICHELSON,JUSTIN	03:33	33-23	
SUB IN: 23 JASMIN,JULES	03:33		
	03:17	35-23	SUB OUT: FORMAN,TY
	03:17		SUB IN: CARTER,TYLER
SUB OUT: 23 JASMIN,JULES	03:17		
SUB IN: 4 LARGEY,DAN	03:17		
	01:20	40-23	SUB OUT: CARTER,TYLER
	01:20		SUB IN: BARTASKAS,GINTARAS
SUB OUT: 4 LARGEY,DAN	01:20		
SUB IN: 15 NICHELSON,JUSTIN	01:20		
SUB OUT: 21 BARBER,MALEK	01:05	40-23	
SUB IN: 23 JASMIN,JULES	01:05		
SUB OUT: 15 NICHELSON,JUSTIN	00:42	40-23	
SUB IN: 4 LARGEY,DAN	00:42		
	00:04	40-23	SUB OUT: BARTASKAS,GINTARAS
	00:04		SUB IN: FULLER,MALIK
SUB OUT: 33 RAKIC,ALEKSA	00:03	40-24	
SUB IN: 14 CELAYIR,KUTLUHAN	00:03		

Official Substitutions Log
Palm Beach Atl. vs Saint Leo
Period 2
January 04, 2020 at Marion Bowman Center - Saint Leo, Fla.



VISITORS: Palm Beach Atl.	Time	Score	HOME: Saint Leo
2 NUNN,DARHIUS			0 REED,YALEN
4 LARGEY,DAN			13 MCCLURE,KYRAN
5 JACKSON,DE'ONDRE			25 FORMAN,TY
21 BARBER,MALEK			1 HILL,ISAIHAH
23 JASMIN,JULES			3 MOORER,RUSTY
	20:00	-	SUB OUT: COOMER,JARED
	20:00		SUB OUT: FULLER,MALIK
	20:00		SUB IN: MOORER,RUSTY
	20:00		SUB IN: FORMAN,TY
SUB OUT: 14 CELAYIR,KUTLUHAN	20:00		
SUB IN: 21 BARBER,MALEK	20:00		
SUB OUT: 4 LARGEY,DAN	15:44	47-32	
SUB IN: 33 RAKIC,ALEKSA	15:44		
	15:30	47-34	SUB OUT: FORMAN,TY
	15:30		SUB IN: CARTER,TYLER
SUB OUT: 21 BARBER,MALEK	14:39	49-34	
SUB IN: 15 NICHELSON,JUSTIN	14:39		
SUB OUT: 33 RAKIC,ALEKSA	13:22	52-37	
SUB IN: 4 LARGEY,DAN	13:22		
	12:03	52-41	SUB OUT: MCCLURE,KYRAN
	12:03		SUB IN: BARTASKAS,GINTARAS
	11:23	54-41	SUB OUT: MOORER,RUSTY
	11:23		SUB IN: CARTER,TYLER
	11:23		SUB IN: MCCLURE,KYRAN
	11:23		SUB IN: LAHM,ERIK
	09:36	58-43	SUB OUT: REED,YALEN
	09:36		SUB OUT: HILL,ISAIHAH
	09:36		SUB IN: MOORER,RUSTY
	09:36		SUB IN: FORMAN,TY
SUB OUT: 15 NICHELSON,JUSTIN	09:36		
SUB IN: 21 BARBER,MALEK	09:36		
SUB OUT: 4 LARGEY,DAN	09:36		
SUB IN: 33 RAKIC,ALEKSA	09:36		
	08:35	62-46	SUB OUT: LAHM,ERIK
	08:35		SUB IN: REED,YALEN
SUB OUT: 33 RAKIC,ALEKSA	08:35		
SUB IN: 4 LARGEY,DAN	08:35		
	08:35		SUB OUT: BARTASKAS,GINTARAS
	08:35		SUB IN: HILL,ISAIHAH
SUB OUT: 23 JASMIN,JULES	06:12	66-51	
SUB IN: 15 NICHELSON,JUSTIN	06:12		
SUB OUT: 21 BARBER,MALEK	04:07	73-54	
SUB IN: 23 JASMIN,JULES	04:07		
	03:56	76-54	SUB OUT: REED,YALEN
	03:56		SUB IN: FULLER,MALIK
	03:16	76-54	SUB OUT: FULLER,MALIK
	03:16		SUB IN: BARTASKAS,GINTARAS
SUB OUT: 23 JASMIN,JULES	02:36	79-58	
SUB IN: 21 BARBER,MALEK	02:36		
SUB OUT: 21 BARBER,MALEK	02:07	79-58	
SUB IN: 23 JASMIN,JULES	02:07		
SUB OUT: 23 JASMIN,JULES	02:00	79-59	
SUB IN: 21 BARBER,MALEK	02:00		
	01:58	79-62	SUB OUT: FORMAN,TY
	01:58		SUB IN: FULLER,MALIK
SUB OUT: 21 BARBER,MALEK	01:58		
SUB IN: 23 JASMIN,JULES	01:58		
	01:58		SUB OUT: BARTASKAS,GINTARAS
	01:58		SUB IN: COOMER,JARED
	01:47	80-63	SUB OUT: FULLER,MALIK
	01:47		SUB IN: BARTASKAS,GINTARAS
	01:36	80-66	SUB OUT: MOORER,RUSTY
	01:36		SUB IN: COOMER,WADE
	01:27	82-68	SUB OUT: BARTASKAS,GINTARAS
	01:27		SUB OUT: COOMER,WADE
	01:27		SUB IN: REED,YALEN
	01:27		SUB IN: FULLER,MALIK
SUB OUT: 4 LARGEY,DAN	01:27		
SUB IN: 0 CARPINELLO,CASEY	01:27		
SUB OUT: 23 JASMIN,JULES	01:23	82-69	
SUB IN: 33 RAKIC,ALEKSA	01:23		
	01:22	82-69	SUB OUT: REED,YALEN
	01:22		SUB OUT: FULLER,MALIK
	01:22		SUB IN: BARTASKAS,GINTARAS
	01:22		SUB IN: COOMER,WADE

VISITORS: Palm Beach Atl.	Time	Score	HOME: Saint Leo
SUB OUT: 33 RAKIC,ALEKSA	01:22		
SUB IN: 23 JASMIN,JULES	01:22		
SUB OUT: 0 CARPINELLO,CASEY	01:18	83-69	
SUB IN: 33 RAKIC,ALEKSA	01:18		
	01:11	84-69	SUB OUT: BARTASKAS,GINTARAS
	01:11		SUB OUT: COOMER,WADE
	01:11		SUB IN: REED,YALEN
	01:11		SUB IN: FULLER,MALIK
SUB OUT: 23 JASMIN,JULES	01:11		
SUB IN: 0 CARPINELLO,CASEY	01:11		
	01:08	85-69	SUB OUT: COOMER,JARED
	01:08		SUB OUT: FULLER,MALIK
	01:08		SUB IN: BARTASKAS,GINTARAS
	01:08		SUB IN: COOMER,WADE
SUB OUT: 0 CARPINELLO,CASEY	01:08		
SUB IN: 23 JASMIN,JULES	01:08		
	00:53	86-71	SUB OUT: BARTASKAS,GINTARAS
	00:53		SUB OUT: COOMER,WADE
	00:53		SUB IN: COOMER,JARED
	00:53		SUB IN: FULLER,MALIK
SUB OUT: 23 JASMIN,JULES	00:53		
SUB IN: 0 CARPINELLO,CASEY	00:53		
	00:51	86-71	SUB OUT: COOMER,JARED
	00:51		SUB OUT: FULLER,MALIK
	00:51		SUB IN: BARTASKAS,GINTARAS
	00:51		SUB IN: COOMER,WADE
SUB OUT: 0 CARPINELLO,CASEY	00:51		
SUB IN: 23 JASMIN,JULES	00:51		
	00:46	87-72	SUB OUT: BARTASKAS,GINTARAS
	00:46		SUB OUT: COOMER,WADE
	00:46		SUB IN: COOMER,JARED
	00:46		SUB IN: FULLER,MALIK
SUB OUT: 23 JASMIN,JULES	00:46		
SUB IN: 0 CARPINELLO,CASEY	00:46		
SUB OUT: 33 RAKIC,ALEKSA	00:46		
SUB IN: 23 JASMIN,JULES	00:46		
	00:45	88-74	SUB OUT: COOMER,JARED
	00:45		SUB OUT: FULLER,MALIK
	00:45		SUB IN: BARTASKAS,GINTARAS
	00:45		SUB IN: COOMER,WADE

Palm Beach Atl. 89, Saint Leo 76

Official Shot Chart
Palm Beach Atl. vs Saint Leo
PERIOD 1 Shots
 January 04, 2020 at Marion Bowman Center - Saint Leo, Fla.



Saint Leo

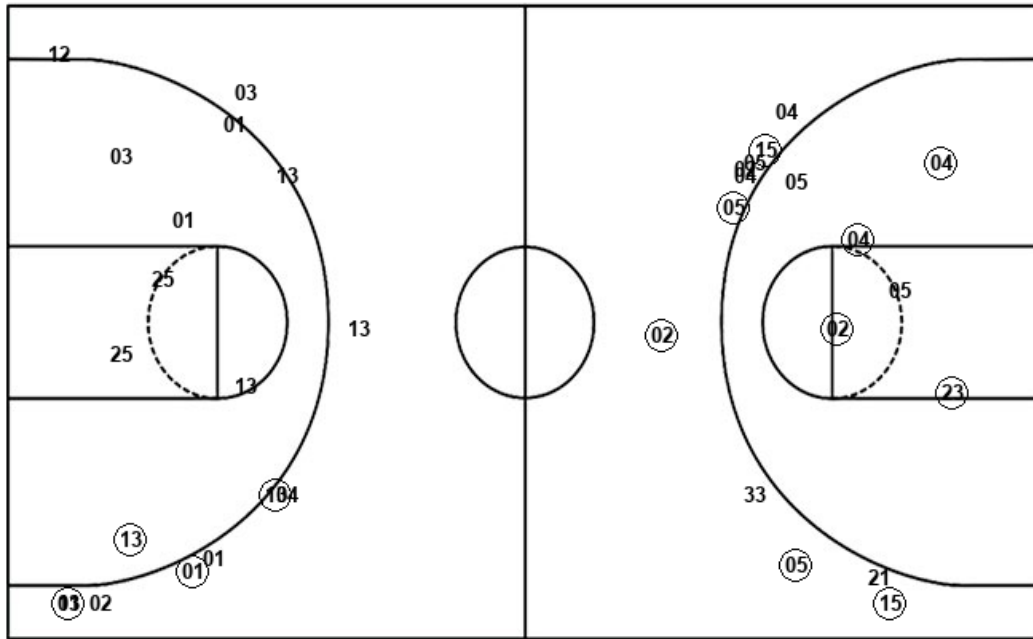
Palm Beach Atl.

Layups
 (25) (00) 25 01 01
 (25) (25) (01)

Layups
 23 (02) (23) (23) 02
 05 (21) (05) (05) 23
 33 04 (04) 33

Dunks

Dunks



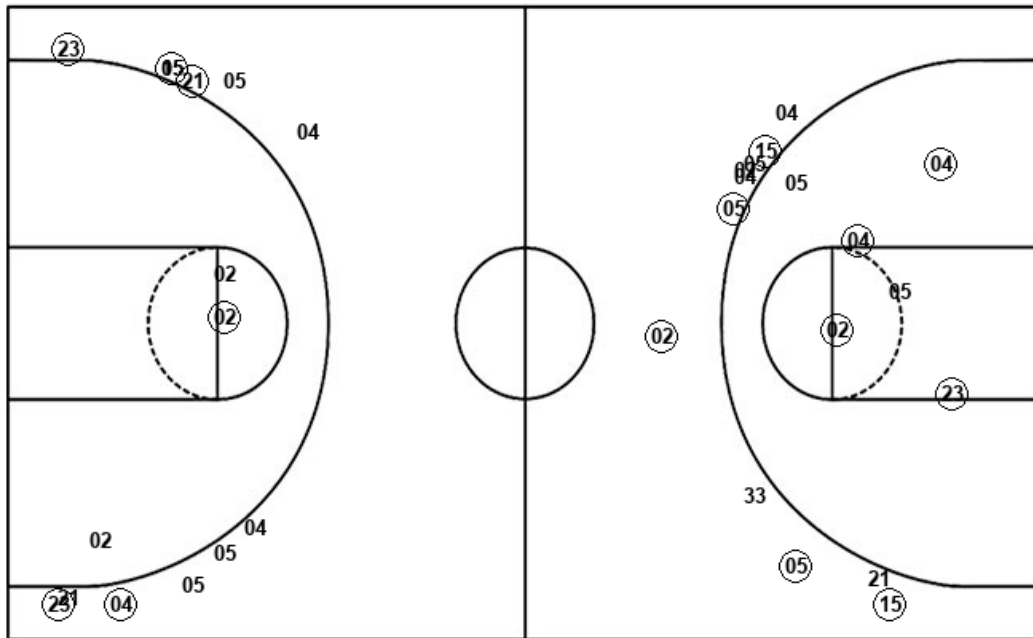
SLM : Period 1	Made	Att	Pct
Layups	5	8	62.5
Dunks	0	0	0
2PT Field Goals	6	14	42.9
3PT Field Goals	3	12	25.0
Total Field Goals	9	26	34.6

PBA : Period 1	Made	Att	Pct
Layups	7	14	50.0
Dunks	0	0	0
2PT Field Goals	11	20	55.0
3PT Field Goals	5	11	45.5
Total Field Goals	16	31	51.6

Official Shot Chart
Palm Beach Atl. vs Saint Leo
Palm Beach Atl. Team Shots
January 04, 2020 at Marion Bowman Center - Saint Leo, Fla.



Layups



Layups

23 (02) (23) (23) 02
 05 (21) (05) (05) 23
 33 04 (04) 33 05
 23 (04) 05 (05) (04)

Dunks

Dunks

(21) (21)

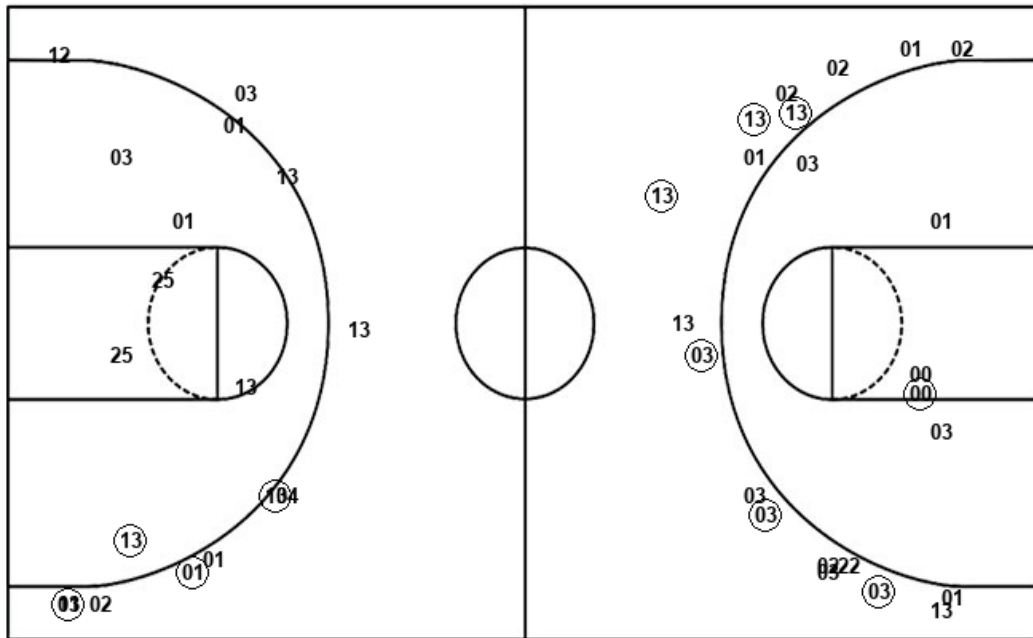
PBA : Period 1	Made	Att	Pct
Layups	7	14	50.0
Dunks	0	0	0
2PT Field Goals	11	20	55.0
3PT Field Goals	5	11	45.5
Total Field Goals	16	31	51.6

PBA : Period 2	Made	Att	Pct
Layups	3	6	50.0
Dunks	2	2	100.0
2PT Field Goals	6	11	54.5
3PT Field Goals	5	12	41.7
Total Field Goals	11	23	47.8

Official Shot Chart
Palm Beach Atl. vs Saint Leo
Saint Leo Team Shots
 January 04, 2020 at Marion Bowman Center - Saint Leo, Fla.



Layups



Layups

(25) (00) 25 01 01
 (25) (25) (01) (25) (22)
 (01) 20 20 (03) (01)
 (13) (01)

Dunks

Dunks

(00)

SLM : Period 1	Made	Att	Pct
Layups	5	8	62.5
Dunks	0	0	0
2PT Field Goals	6	14	42.9
3PT Field Goals	3	12	25.0
Total Field Goals	9	26	34.6

SLM : Period 2	Made	Att	Pct
Layups	7	9	77.8
Dunks	1	1	100.0
2PT Field Goals	9	15	60.0
3PT Field Goals	6	18	33.3
Total Field Goals	15	33	45.5