

## FINAL SCORE



**Barry**

**68**



**Saint Leo**

**77**

January 18, 2020 • Marion Bowman Center - Saint Leo, Fla.

## FINAL STATISTICS

**Official Box Score**  
**Barry vs Saint Leo**  
**Game Totals -- Final Statistics**  
**January 18, 2020 at Marion Bowman Center - Saint Leo, Fla.**



**Barry 68**

No.	Player	S	Pts	FG	3FG	FT	OR	DR	TR	PF	A	TO	Blk	Stl	Min	+/-
04	FUSARI, CHIARA	G	11	2-13	1-5	6-8	1	1	2	1	1	3	0	2	29	-6
10	PINK, ASHLEIGH	G	11	4-6	2-2	1-1	1	3	4	5	4	5	0	2	38	-6
15	SWINDELLS, HARRIET	G	10	3-8	1-4	3-4	1	2	3	1	3	1	2	0	30	-10
24	BAENA, NEREA	F	13	4-7	0-0	5-11	1	5	6	3	1	0	0	0	22	-6
32	HERGOT, EMMA	F	10	5-7	0-0	0-0	1	7	8	4	0	0	0	0	17	0
14	CROMBIE, JAIMEE	G	0	0-0	0-0	0-0	0	0	0	1	0	1	0	0	3	-1
22	KAMPP, JOHANNA	G	5	2-4	1-2	0-0	1	3	4	5	1	1	0	1	30	-4
23	FLEFIL, CAMILLA	G	0	0-0	0-0	0-0	0	0	0	0	0	0	0	0	1	-3
25	ARMSTRONG, CHARLOTTE	F	2	1-2	0-0	0-0	1	2	3	0	0	1	0	0	5	-10
31	JORDAN, MELANIE	G	0	0-1	0-1	0-0	0	0	0	0	0	0	0	0	3	-2
34	SANDERS, CARLY	F	6	3-4	0-1	0-0	0	0	0	4	1	2	0	0	17	-2
35	DACRES, RENICE	G	0	0-0	0-0	0-0	1	0	1	0	1	0	0	0	4	5
<b>TEAM</b>							2	5	7	0		0				
<b>TOTALS</b>			<b>68</b>	<b>24-52</b>	<b>5-15</b>	<b>15-24</b>	<b>10</b>	<b>28</b>	<b>38</b>	<b>24</b>	<b>12</b>	<b>14</b>	<b>2</b>	<b>5</b>	<b>200</b>	

*Shooting By Period*

Period	FG	FG%	3FG	3FG%	FT	FT%
1st Qtr	8-14	57%	1-3	33%	2-2	100%
2nd Qtr	5-15	33%	1-5	20%	3-4	75%
3rd Qtr	6-12	50%	2-3	67%	5-9	56%
4th Qtr	5-11	45%	1-4	25%	5-9	56%
1st Half	13-29	45%	2-8	25%	5-6	83%
2nd Half	11-23	48%	3-7	43%	10-18	56%
<b>Game</b>	<b>24-52</b>	<b>46.2%</b>	<b>5-15</b>	<b>33.3%</b>	<b>15-24</b>	<b>62.5%</b>

*Deadball Rebounds: 3,0*

*Last FG: 4th-01:21*

*Biggest Run: 9-0*

*Largest lead: By 0 at 1st-00:39*

*Technical Fouls: None.*

**Saint Leo 77**

No.	Player	S	Pts	FG	3FG	FT	OR	DR	TR	PF	A	TO	Blk	Stl	Min	+/-
00	ULRICH, AMANDA	G	11	4-14	2-6	1-1	0	8	8	1	4	2	0	3	34	6
10	O'SHAUGHNESSY, CASEY	G	7	2-6	0-2	3-3	0	1	1	3	3	1	0	1	34	17
22	BUTTON, ALEX	F	20	6-10	4-4	4-4	0	5	5	4	3	1	0	1	38	13
23	GALLAGHER, ALANI	F	19	6-17	0-2	7-10	2	4	6	3	3	1	2	0	36	11
33	BRIERLEY, GINA	G	4	2-7	0-3	0-0	1	3	4	4	3	3	0	0	31	-4
04	QUIGLEY, SUMMER	F	2	1-2	0-0	0-0	0	0	0	0	0	0	0	0	6	-11
12	MOON, MONTIA	G	3	1-1	1-1	0-0	1	2	3	2	1	0	0	0	11	13
15	SHASH, TAMARA	F	2	1-1	0-0	0-0	1	0	1	0	1	0	0	1	2	-1
21	ZEITSIFF, ABBY	G	9	3-4	3-3	0-0	0	0	0	0	0	0	0	0	9	1
<b>TEAM</b>							4	1	5	0		1				
<b>TOTALS</b>			<b>77</b>	<b>26-62</b>	<b>10-21</b>	<b>15-18</b>	<b>9</b>	<b>24</b>	<b>33</b>	<b>17</b>	<b>18</b>	<b>9</b>	<b>2</b>	<b>6</b>	<b>200</b>	

*Shooting By Period*

Period	FG	FG%	3FG	3FG%	FT	FT%
1st Qtr	8-15	53%	2-4	50%	3-3	100%
2nd Qtr	7-13	54%	1-4	25%	5-8	63%
3rd Qtr	6-16	38%	3-5	60%	4-4	100%
4th Qtr	5-18	28%	4-8	50%	3-3	100%
1st Half	15-28	54%	3-8	38%	8-11	73%
2nd Half	11-34	32%	7-13	54%	7-7	100%
<b>Game</b>	<b>26-62</b>	<b>41.9%</b>	<b>10-21</b>	<b>47.6%</b>	<b>15-18</b>	<b>83.3%</b>

*Deadball Rebounds: 2,0*

*Last FG: 4th-00:50*

*Biggest Run: 11-0*

*Largest lead: By 14 at 2nd-02:48*

*Technical Fouls: None.*

Game Notes:

Officials: Reatha Johnson, Kiara Negron, Sam Crawford  
 Attendance: 437

Start Time: 05:30 PM ET

End Time: 07:21 PM ET

Game Duration: 1:51

Conference Game;

Score	1st	2nd	3rd	4th	TOT
BUW	19	14	19	16	<b>68</b>
SLW	21	20	19	17	<b>77</b>

BUW led for 0:00. SLW led for 38:14.

Game was tied for 1:46.

Times tied: 2      Lead Changes: 0

Points from	BUW	SLW
In the Paint	34	26
Off Turns	9	19
2nd Chance	10	11
Fast Break	12	10
Bench	13	16

**Official Box Score**  
**Barry vs Saint Leo**  
**First Half Statistics Only**  
**January 18, 2020 at Marion Bowman Center - Saint Leo, Fla.**



### Barry 33

No.	Player	S	Pts	FG	3FG	FT	OR	DR	TR	PF	A	TO	Blk	Stl	Min	+/-
04	FUSARI, CHIARA	G	4	1-8	0-2	2-2	1	0	1	1	0	2	0	1	18	-6
10	PINK, ASHLEIGH	G	2	1-3	0-0	0-0	1	1	2	2	2	2	0	1	19	-8
14	CROMBIE, JAIMEE	G	0	0-0	0-0	0-0	0	0	0	1	0	1	0	0	3	-1
15	SWINDELLS, HARRIET	G	10	3-5	1-3	3-4	1	2	3	0	2	1	0	0	17	-7
22	KAMPP, JOHANNA	G	5	2-3	1-2	0-0	1	2	3	1	1	1	0	1	18	-3
23	FLEFIL, CAMILLA	G	0	0-0	0-0	0-0	0	0	0	0	0	0	0	0	0	0
24	BAENA, NEREA	F	0	0-1	0-0	0-0	0	0	0	2	0	0	0	0	2	-5
25	ARMSTRONG, CHARLOTTE	F	2	1-2	0-0	0-0	1	2	3	0	0	1	0	0	5	-10
31	JORDAN, MELANIE	G	0	0-1	0-1	0-0	0	0	0	0	0	0	0	0	3	-2
32	HERGOT, EMMA	F	6	3-4	0-0	0-0	1	4	5	2	0	0	0	0	9	0
34	SANDERS, CARLY	F	4	2-2	0-0	0-0	0	0	0	3	0	2	0	0	6	-1
35	DACRES, RENICE	G	0	0-0	0-0	0-0	0	0	0	0	1	0	0	0	0	3
	TEAM		0	0-0	0-0	0-0	1	0	1	0	0	0	0	0	0	0
<b>TOTALS</b>			<b>33</b>	<b>13-29</b>	<b>2-8</b>	<b>5-6</b>	<b>7</b>	<b>11</b>	<b>18</b>	<b>12</b>	<b>6</b>	<b>10</b>	<b>0</b>	<b>3</b>	<b>100</b>	

#### Shooting By Period

Period	FG	FG%	3FG	3FG%	FT	FT%
1st Qtr	8-14	57%	1-3	33%	2-2	100%
2nd Qtr	5-15	33%	1-5	20%	3-4	75%
1st Half	13-29	45%	2-8	25%	5-6	83%
Game	24-52	46.2%	5-15	33.3%	15-24	62.5%

Deadball Rebounds: 3,0  
 Last FG Half: BUW 2nd-00:01

### Saint Leo 41

No.	Player	S	Pts	FG	3FG	FT	OR	DR	TR	PF	A	TO	Blk	Stl	Min	+/-
00	ULRICH, AMANDA	G	8	3-7	1-3	1-1	0	5	5	0	2	1	0	2	20	8
10	O'SHAUGHNESSY, CASEY	G	2	0-0	0-0	2-2	0	0	0	0	2	1	0	1	14	16
12	MOON, MONTIA	G	0	0-0	0-0	0-0	1	0	1	1	1	0	0	0	3	4
15	SHASH, TAMARA	F	2	1-1	0-0	0-0	1	0	1	0	1	0	0	1	2	-1
21	ZEITSIFF, ABBY	G	0	0-0	0-0	0-0	0	0	0	0	0	0	0	0	4	0
22	BUTTON, ALEX	F	10	4-5	2-2	0-0	0	2	2	1	0	1	0	1	19	10
23	GALLAGHER, ALANI	F	13	4-8	0-1	5-8	0	2	2	1	1	0	1	0	18	9
33	BRIERLEY, GINA	G	4	2-5	0-2	0-0	0	0	0	1	2	1	0	0	16	4
04	QUIGLEY, SUMMER	F	2	1-2	0-0	0-0	0	0	0	0	0	0	0	0	4	-10
	TEAM		0	0-0	0-0	0-0	1	0	1	0	0	1	0	0	0	0
<b>TOTALS</b>			<b>41</b>	<b>15-28</b>	<b>3-8</b>	<b>8-11</b>	<b>3</b>	<b>9</b>	<b>12</b>	<b>4</b>	<b>9</b>	<b>5</b>	<b>1</b>	<b>5</b>	<b>100</b>	

#### Shooting By Period

Period	FG	FG%	3FG	3FG%	FT	FT%
1st Qtr	8-15	53%	2-4	50%	3-3	100%
2nd Qtr	7-13	54%	1-4	25%	5-8	63%
1st Half	15-28	54%	3-8	38%	8-11	73%
Game	26-62	41.9%	10-21	47.6%	15-18	83.3%

Deadball Rebounds: 2,0  
 Last FG Half: SLW 2nd-02:48

#### Game Notes:

Officials: Reatha Johnson, Kiara Negron, Sam Crawford  
 Attendance: 437

Start Time: 05:30 PM ET  
 End Time: 07:21 PM ET  
 Game Duration: 1:51  
 Conference Game;

Score	1st	2nd	3rd	4th	TOT
BUW	19	14	19	16	<b>68</b>
SLW	21	20	19	17	<b>77</b>

Points from (This Period)	BUW	SLW
In the Paint	20	18
Off Turns	5	19
2nd Chance	6	4
Fast Break	7	5
Bench	11	4

**Official Box Score**  
**Barry vs Saint Leo**  
**First Quarter Statistics Only**  
**January 18, 2020 at Marion Bowman Center - Saint Leo, Fla.**



### Barry 19

No.	Player	S	Pts	FG	3FG	FT	OR	DR	TR	PF	A	TO	Blk	Stl	Min	+/-
04	FUSARI, CHIARA	G	2	1-2	0-1	0-0	0	0	0	0	0	1	0	0	9	-2
10	PINK, ASHLEIGH	G	2	1-3	0-0	0-0	0	1	1	1	1	1	0	1	10	-2
15	SWINDELLS, HARRIET	G	4	1-2	0-1	2-2	0	1	1	0	2	0	0	0	10	-2
24	BAENA, NEREA	F	0	0-1	0-0	0-0	0	0	0	2	0	0	0	0	2	-5
32	HERGOT, EMMA	F	6	3-4	0-0	0-0	1	4	5	0	0	0	0	0	8	-2
14	CROMBIE, JAIMEE	G	0	0-0	0-0	0-0	0	0	0	0	0	0	0	0	0	0
22	KAMPP, JOHANNA	G	3	1-1	1-1	0-0	0	1	1	0	0	0	0	0	8	3
23	FLEFIL, CAMILLA	G	0	0-0	0-0	0-0	0	0	0	0	0	0	0	0	0	0
25	ARMSTRONG, CHARLOTTE	F	0	0-0	0-0	0-0	0	0	0	0	0	0	0	0	0	0
31	JORDAN, MELANIE	G	0	0-0	0-0	0-0	0	0	0	0	0	0	0	0	1	0
34	SANDERS, CARLY	F	2	1-1	0-0	0-0	0	0	0	0	0	1	0	0	2	0
35	DACRES, RENICE	G	0	0-0	0-0	0-0	0	0	0	0	0	0	0	0	0	0
TEAM							0	0	0	0	0	0				
<b>TOTALS</b>			<b>19</b>	<b>8-14</b>	<b>1-3</b>	<b>2-2</b>	<b>1</b>	<b>7</b>	<b>8</b>	<b>3</b>	<b>3</b>	<b>3</b>	<b>0</b>	<b>1</b>	<b>50</b>	

#### Shooting By Period

Period	FG	FG%	3FG	3FG%	FT	FT%
1st Qtr	8-14	57%	1-3	33%	2-2	100%
2nd Qtr	5-15	33%	1-5	20%	3-4	75%
1st Half	8-14	57%	1-3	33%	2-2	100%
1st Half	13-29	45%	2-8	25%	5-6	83%
Game	24-52	46.2%	5-15	33.3%	15-24	62.5%

Deadball Rebounds: 3,0

### Saint Leo 21

No.	Player	S	Pts	FG	3FG	FT	OR	DR	TR	PF	A	TO	Blk	Stl	Min	+/-
00	ULRICH, AMANDA	G	6	2-3	1-2	1-1	0	2	2	0	1	0	0	1	10	2
10	O'SHAUGHNESSY, CASEY	G	0	0-0	0-0	0-0	0	0	0	0	1	0	0	0	6	5
22	BUTTON, ALEX	F	7	3-4	1-1	0-0	0	1	1	0	0	0	0	0	10	2
23	GALLAGHER, ALANI	F	4	1-4	0-1	2-2	0	2	2	1	1	0	1	0	10	2
33	BRIERLEY, GINA	G	2	1-2	0-0	0-0	0	0	0	0	1	1	0	0	8	4
04	QUIGLEY, SUMMER	F	2	1-2	0-0	0-0	0	0	0	0	0	0	0	0	3	-5
12	MOON, MONTIA	G	0	0-0	0-0	0-0	0	0	0	0	0	0	0	0	0	0
15	SHASH, TAMARA	F	0	0-0	0-0	0-0	0	0	0	0	0	0	0	0	0	0
21	ZEITSIFF, ABBY	G	0	0-0	0-0	0-0	0	0	0	0	0	0	0	0	2	0
TEAM							0	0	0	0		1				
<b>TOTALS</b>			<b>21</b>	<b>8-15</b>	<b>2-4</b>	<b>3-3</b>	<b>0</b>	<b>5</b>	<b>5</b>	<b>1</b>	<b>4</b>	<b>2</b>	<b>1</b>	<b>1</b>	<b>50</b>	

#### Shooting By Period

Period	FG	FG%	3FG	3FG%	FT	FT%
1st Qtr	8-15	53%	2-4	50%	3-3	100%
2nd Qtr	7-13	54%	1-4	25%	5-8	63%
1st Half	8-15	53%	2-4	50%	3-3	100%
1st Half	15-28	54%	3-8	38%	8-11	73%
Game	26-62	41.9%	10-21	47.6%	15-18	83.3%

Deadball Rebounds: 2,0

#### Game Notes:

Officials: Reatha Johnson, Kiara Negron, Sam Crawford  
 Attendance: 437

Start Time: 05:30 PM ET  
 End Time: 07:21 PM ET  
 Game Duration: 1:51  
 Conference Game:

Score	1st	2nd	3rd	4th	TOT
BUW	19	14	19	16	<b>68</b>
SLW	21	20	19	17	<b>77</b>

Points from (This Period)	BUW	SLW
In the Paint	14	8
Off Turns	0	4
2nd Chance	2	0
Fast Break	4	3
Bench	5	2

**Official Play-By-Play**  
**Barry vs Saint Leo**  
**First Quarter**  
**January 18, 2020 at Marion Bowman Center - Saint Leo, Fla.**



**Period 1**

**Starters:**

**Barry:** 4 FUSARI, CHIARA (G); 10 PINK, ASHLEIGH (G); 15 SWINDELLS, HARRIET (G); 24 BAENA, NEREA (F); 32 HERGOT, EMMA (F);

**Saint Leo:** 0 ULRICH, AMANDA (G); 10 O'SHAUGHNESSY, CASEY (G); 22 BUTTON, ALEX (F); 23 GALLAGHER, ALANI (F); 33 BRIERLEY, GINA (G);

Time	VISITORS: Barry	Score	Margin	HOME: Saint Leo
09:49		3-0	H 3	GOOD! 3PTR by BUTTON, ALEX
09:49				ASSIST by O'SHAUGHNESSY, CASEY
09:27	MISSED JUMPER by BAENA, NEREA			
09:24				REBOUND (DEF) by BUTTON, ALEX
09:01				MISSED LAYUP by BRIERLEY, GINA
08:58	REBOUND (DEF) by HERGOT, EMMA			
08:49	GOOD! LAYUP by FUSARI, CHIARA	3-2	H 1	
08:25	FOUL (PERSONAL) by BAENA, NEREA			
08:25		4-2	H 2	GOOD! FT by GALLAGHER, ALANI
08:25		5-2	H 3	GOOD! FT by GALLAGHER, ALANI
08:12	MISSED 3PTR by FUSARI, CHIARA			
08:10				REBOUND (DEF) by GALLAGHER, ALANI
08:07		7-2	H 5	GOOD! LAYUP by ULRICH, AMANDA [FB]
08:07	FOUL (PERSONAL) by BAENA, NEREA			
08:07	SUB OUT: BAENA, NEREA			
08:07	SUB IN: KAMPP, JOHANNA			
08:07		8-2	H 6	GOOD! FT by ULRICH, AMANDA [FB]
07:49	MISSED LAYUP by PINK, ASHLEIGH			
07:49				BLOCK by GALLAGHER, ALANI
07:45				REBOUND (DEF) by GALLAGHER, ALANI
07:29				MISSED JUMPER by GALLAGHER, ALANI
07:26	REBOUND (DEF) by PINK, ASHLEIGH			
07:20	MISSED LAYUP by PINK, ASHLEIGH			
07:16	REBOUND (OFF) by HERGOT, EMMA			
07:15	GOOD! LAYUP by HERGOT, EMMA	8-4	H 4	
07:09				MISSED 3PTR by GALLAGHER, ALANI
07:06	REBOUND (DEF) by HERGOT, EMMA			
06:53	GOOD! LAYUP by HERGOT, EMMA	8-6	H 2	
06:53	ASSIST by PINK, ASHLEIGH			
06:35		10-6	H 4	GOOD! LAYUP by BUTTON, ALEX
06:11	MISSED JUMPER by HERGOT, EMMA			
06:07				REBOUND (DEF) by ULRICH, AMANDA
05:39		13-6	H 7	GOOD! 3PTR by ULRICH, AMANDA
05:39				ASSIST by BRIERLEY, GINA
05:22				SUB OUT: O'SHAUGHNESSY, CASEY
05:22				SUB IN: QUIGLEY, SUMMER
05:07	GOOD! LAYUP by SWINDELLS, HARRIET	13-8	H 5	
04:49				MISSED 3PTR by ULRICH, AMANDA
04:45	REBOUND (DEF) by KAMPP, JOHANNA			
04:38	GOOD! 3PTR by KAMPP, JOHANNA	13-11	H 2	
04:38	ASSIST by SWINDELLS, HARRIET			
04:12		15-11	H 4	GOOD! LAYUP by QUIGLEY, SUMMER
04:12				ASSIST by GALLAGHER, ALANI
03:56	FOUL (OFF) by PINK, ASHLEIGH			
03:56	TURNOVER (OFFENSIVE) by PINK, ASHLEIGH			
03:56				SUB OUT: BRIERLEY, GINA
03:56				SUB IN: O'SHAUGHNESSY, CASEY
03:31		17-11	H 6	GOOD! JUMPER by GALLAGHER, ALANI
03:31				ASSIST by ULRICH, AMANDA
03:11	GOOD! JUMPER by HERGOT, EMMA [PNT]	17-13	H 4	
02:56				MISSED JUMPER by QUIGLEY, SUMMER
02:53	REBOUND (DEF) by HERGOT, EMMA			
02:48	GOOD! LAYUP by PINK, ASHLEIGH [FB]	17-15	H 2	
02:48	ASSIST by SWINDELLS, HARRIET			
02:27				MISSED LAYUP by BUTTON, ALEX
02:24	REBOUND (DEF) by HERGOT, EMMA			
02:22				FOUL (PERSONAL) by GALLAGHER, ALANI
02:22				SUB OUT: QUIGLEY, SUMMER
02:22				SUB OUT: O'SHAUGHNESSY, CASEY
02:22				SUB IN: ZEITSIFF, ABBY
02:22				SUB IN: BRIERLEY, GINA
02:22	SUB OUT: HERGOT, EMMA			
02:22	GOOD! FT by SWINDELLS, HARRIET [FB]	17-16	H 1	
02:22	GOOD! FT by SWINDELLS, HARRIET [FB]	17-17	T	
02:22	SUB IN: SANDERS, CARLY			
01:49				TURNOVER (SHOTCLOCK) by TEAM
01:38	MISSED 3PTR by SWINDELLS, HARRIET			
01:35				REBOUND (DEF) by ULRICH, AMANDA
01:26		19-17	H 2	GOOD! JUMPER by BUTTON, ALEX

Time	VISITORS: Barry	Score	Margin	HOME: Saint Leo
01:19				TIMEOUT 30SEC
01:19	TURNOVER (LOSTBALL) by FUSARI, CHIARA			
01:19				STEAL by ULRICH, AMANDA
01:19	SUB OUT: FUSARI, CHIARA			
01:19	SUB IN: JORDAN, MELANIE			
01:05				MISSED LAYUP by GALLAGHER, ALANI
01:02	REBOUND (DEF) by SWINDELLS, HARRIET			
00:39	GOOD! LAYUP by SANDERS, CARLY	19-19	T	
00:13				TURNOVER (BADPASS) by BRIERLEY, GINA
00:13	STEAL by PINK, ASHLEIGH			
00:09	TURNOVER (TRAVEL) by SANDERS, CARLY			
00:00		21-19	H 2	GOOD! LAYUP by BRIERLEY, GINA

### Barry 19, Saint Leo 21

Points from (This Period)	BUW	SLW
In the Paint	14	8
Off Turns	0	4
2nd Chance	2	0
Fast Break	4	3
Bench	5	2

**Official Box Score**  
**Barry vs Saint Leo**  
**Second Quarter Statistics Only**  
**January 18, 2020 at Marion Bowman Center - Saint Leo, Fla.**



**Barry 14**

No.	Player	S	Pts	FG	3FG	FT	OR	DR	TR	PF	A	TO	Blk	Stl	Min	+/-
04	FUSARI, CHIARA	G	2	0-6	0-1	2-2	1	0	1	1	0	1	0	1	9	-4
10	PINK, ASHLEIGH	G	0	0-0	0-0	0-0	1	0	1	1	1	1	0	0	9	-6
15	SWINDELLS, HARRIET	G	6	2-3	1-2	1-2	1	1	2	0	0	1	0	0	7	-5
24	BAENA, NEREA	F	0	0-0	0-0	0-0	0	0	0	0	0	0	0	0	0	0
32	HERGOT, EMMA	F	0	0-0	0-0	0-0	0	0	0	2	0	0	0	0	1	2
14	CROMBIE, JAIMEE	G	0	0-0	0-0	0-0	0	0	0	1	0	1	0	0	3	-1
22	KAMPP, JOHANNA	G	2	1-2	0-1	0-0	1	1	2	1	1	1	0	1	10	-6
23	FLEFIL, CAMILLA	G	0	0-0	0-0	0-0	0	0	0	0	0	0	0	0	0	0
25	ARMSTRONG, CHARLOTTE	F	2	1-2	0-0	0-0	1	2	3	0	0	1	0	0	5	-10
31	JORDAN, MELANIE	G	0	0-1	0-1	0-0	0	0	0	0	0	0	0	0	2	-2
34	SANDERS, CARLY	F	2	1-1	0-0	0-0	0	0	0	3	0	1	0	0	4	-1
35	DACRES, RENICE	G	0	0-0	0-0	0-0	0	0	0	0	1	0	0	0	0	3
TEAM							1	0	1	0						
<b>TOTALS</b>			<b>14</b>	<b>5-15</b>	<b>1-5</b>	<b>3-4</b>	<b>6</b>	<b>4</b>	<b>10</b>	<b>9</b>	<b>3</b>	<b>7</b>	<b>0</b>	<b>2</b>	<b>50</b>	

*Shooting By Period*

Period	FG	FG%	3FG	3FG%	FT	FT%
3rd Qtr	6-12	50%	2-3	67%	5-9	56%
4th Qtr	5-11	45%	1-4	25%	5-9	56%
2nd Half	5-15	33%	1-5	20%	3-4	75%
2nd Half	11-23	48%	3-7	43%	10-18	56%
Game	24-52	46.2%	5-15	33.3%	15-24	62.5%

*Deadball Rebounds: 3,0*

**Saint Leo 20**

No.	Player	S	Pts	FG	3FG	FT	OR	DR	TR	PF	A	TO	Blk	Stl	Min	+/-
00	ULRICH, AMANDA	G	2	1-4	0-1	0-0	0	3	3	0	1	1	0	1	10	6
10	O'SHAUGHNESSY, CASEY	G	2	0-0	0-0	2-2	0	0	0	0	1	1	0	1	8	11
22	BUTTON, ALEX	F	3	1-1	1-1	0-0	0	1	1	1	0	1	0	1	9	8
23	GALLAGHER, ALANI	F	9	3-4	0-0	3-6	0	0	0	0	0	0	0	0	8	7
33	BRIERLEY, GINA	G	2	1-3	0-2	0-0	0	0	0	1	1	0	0	0	8	0
04	QUIGLEY, SUMMER	F	0	0-0	0-0	0-0	0	0	0	0	0	0	0	0	1	-5
12	MOON, MONTIA	G	0	0-0	0-0	0-0	1	0	1	1	1	0	0	0	3	4
15	SHASH, TAMARA	F	2	1-1	0-0	0-0	1	0	1	0	1	0	0	1	2	-1
21	ZEITSIFF, ABBY	G	0	0-0	0-0	0-0	0	0	0	0	0	0	0	0	2	0
TEAM							1	0	1	0						
<b>TOTALS</b>			<b>20</b>	<b>7-13</b>	<b>1-4</b>	<b>5-8</b>	<b>3</b>	<b>4</b>	<b>7</b>	<b>3</b>	<b>5</b>	<b>3</b>	<b>0</b>	<b>4</b>	<b>50</b>	

*Shooting By Period*

Period	FG	FG%	3FG	3FG%	FT	FT%
3rd Qtr	6-16	38%	3-5	60%	4-4	100%
4th Qtr	5-18	28%	4-8	50%	3-3	100%
2nd Half	7-13	54%	1-4	25%	5-8	63%
2nd Half	11-34	32%	7-13	54%	7-7	100%
Game	26-62	41.9%	10-21	47.6%	15-18	83.3%

*Deadball Rebounds: 2,0*

*Game Notes:*

Officials: Reatha Johnson, Kiara Negron, Sam Crawford  
 Attendance: 437

Start Time: 05:30 PM ET  
 End Time: 07:21 PM ET  
 Game Duration: 1:51  
 Conference Game:

Score	1st	2nd	3rd	4th	TOT
BUW	19	14	19	16	<b>68</b>
SLW	21	20	19	17	<b>77</b>

Points from (This Period)	BUW	SLW
In the Paint	6	10
Off Turns	5	15
2nd Chance	4	4
Fast Break	3	2
Bench	6	2

**Official Play-By-Play**  
**Barry vs Saint Leo**  
**Second Quarter**  
**January 18, 2020 at Marion Bowman Center - Saint Leo, Fla.**



**Period 2**

**Starters:**

**Barry:** 4 FUSARI, CHIARA (G); 10 PINK, ASHLEIGH (G); 15 SWINDELLS, HARRIET (G); 24 BAENA, NEREA (F); 32 HERGOT, EMMA (F);

**Saint Leo:** 0 ULRICH, AMANDA (G); 10 O'SHAUGHNESSY, CASEY (G); 22 BUTTON, ALEX (F); 23 GALLAGHER, ALANI (F); 33 BRIERLEY, GINA (G);

Time	VISITORS: Barry	Score	Margin	HOME: Saint Leo
10:00				SUB OUT: ZEITSIFF, ABBY
10:00				SUB OUT: GALLAGHER, ALANI
10:00				SUB IN: O'SHAUGHNESSY, CASEY
10:00				SUB IN: SHASH, TAMARA
09:52	TURNOVER (LOSTBALL) by PINK, ASHLEIGH			
09:52				STEAL by ULRICH, AMANDA
09:52	FOUL (PERSONAL) by PINK, ASHLEIGH			
09:36				MISSED 3PTR by BRIERLEY, GINA
09:33				REBOUND (OFF) by SHASH, TAMARA
09:32		23-19	H 4	GOOD! LAYUP by BRIERLEY, GINA
09:32				ASSIST by SHASH, TAMARA
09:11	MISSED 3PTR by JORDAN, MELANIE			
09:09	REBOUND (OFF) by TEAM			
09:09	SUB OUT: PINK, ASHLEIGH			
09:09	SUB IN: FUSARI, CHIARA			
09:05	TURNOVER (LOSTBALL) by SANDERS, CARLY			
09:05				STEAL by SHASH, TAMARA
08:42	FOUL (PERSONAL) by FUSARI, CHIARA			
08:39		25-19	H 6	GOOD! JUMPER by SHASH, TAMARA
08:39				ASSIST by ULRICH, AMANDA
08:17	GOOD! LAYUP by SANDERS, CARLY	25-21	H 4	
08:17	ASSIST by KAMPP, JOHANNA			
08:04				MISSED JUMPER by ULRICH, AMANDA
08:01	REBOUND (DEF) by SWINDELLS, HARRIET			
07:58	TURNOVER (BADPASS) by SWINDELLS, HARRIET			
07:58				STEAL by BUTTON, ALEX
07:52	FOUL (PERSONAL) by SANDERS, CARLY			
07:52				SUB OUT: SHASH, TAMARA
07:52				SUB IN: GALLAGHER, ALANI
07:52	SUB OUT: JORDAN, MELANIE			
07:52	SUB IN: PINK, ASHLEIGH			
07:52		26-21	H 5	GOOD! FT by O'SHAUGHNESSY, CASEY [FB]
07:52		27-21	H 6	GOOD! FT by O'SHAUGHNESSY, CASEY [FB]
07:28	MISSED 3PTR by KAMPP, JOHANNA			
07:25				REBOUND (DEF) by ULRICH, AMANDA
07:18	FOUL (PERSONAL) by SANDERS, CARLY			
07:18	SUB OUT: SWINDELLS, HARRIET			
07:18	SUB OUT: SANDERS, CARLY			
07:18	SUB IN: CROMBIE, JAIMEE			
07:18	SUB IN: HERGOT, EMMA			
07:11	FOUL (PERSONAL) by HERGOT, EMMA			
07:11				MISSED FT by GALLAGHER, ALANI
07:11				REBOUND (OFF) by TEAM
07:11				MISSED FT by GALLAGHER, ALANI
07:09	REBOUND (DEF) by KAMPP, JOHANNA			
06:59	MISSED 3PTR by FUSARI, CHIARA			
06:55	REBOUND (OFF) by KAMPP, JOHANNA			
06:54	GOOD! JUMPER by KAMPP, JOHANNA	27-23	H 4	
06:38	FOUL (PERSONAL) by HERGOT, EMMA			
06:38	SUB OUT: HERGOT, EMMA			
06:38	SUB IN: ARMSTRONG, CHARLOTTE			
06:38				MISSED FT by GALLAGHER, ALANI
06:38				REBOUND (OFF) by TEAM
06:38		28-23	H 5	GOOD! FT by GALLAGHER, ALANI
06:23				FOUL (PERSONAL) by BUTTON, ALEX
06:23	GOOD! FT by FUSARI, CHIARA	28-24	H 4	
06:23	GOOD! FT by FUSARI, CHIARA	28-25	H 3	
06:07		30-25	H 5	GOOD! LAYUP by GALLAGHER, ALANI
06:07				ASSIST by BRIERLEY, GINA
05:51	MISSED JUMPER by FUSARI, CHIARA			
05:48				REBOUND (DEF) by ULRICH, AMANDA
05:39				MISSED 3PTR by BRIERLEY, GINA
05:36	REBOUND (DEF) by ARMSTRONG, CHARLOTTE			
05:24	TURNOVER (LOSTBALL) by ARMSTRONG, CHARLOTTE			
05:24				STEAL by O'SHAUGHNESSY, CASEY
05:09		32-25	H 7	GOOD! LAYUP by ULRICH, AMANDA
04:46	FOUL (OFF) by CROMBIE, JAIMEE			
04:46	TURNOVER (OFFENSIVE) by CROMBIE, JAIMEE			
04:46				
04:46				SUB OUT: BRIERLEY, GINA



Time	VISITORS: Barry	Score	Margin	HOME: Saint Leo
04:46				SUB IN: MOON, MONTIA
04:30		34-25	H 9	GOOD! LAYUP by GALLAGHER, ALANI
04:30				ASSIST by MOON, MONTIA
04:15	TURNOVER (OTHER) by FUSARI, CHIARA			
03:56		36-25	H 11	GOOD! LAYUP by GALLAGHER, ALANI
03:48	MISSED 3PTR by SWINDELLS, HARRIET			
03:42				REBOUND (DEF) by ULRICH, AMANDA
03:27	SUB OUT: CROMBIE, JAIMEE			
03:27	SUB IN: SWINDELLS, HARRIET			
03:25				TURNOVER (LOSTBALL) by O'SHAUGHNESSY, CASEY
03:25	STEAL by FUSARI, CHIARA			
03:19	MISSED JUMPER by FUSARI, CHIARA			
03:16	REBOUND (OFF) by FUSARI, CHIARA			
03:15	MISSED JUMPER by FUSARI, CHIARA			
03:12	REBOUND (OFF) by SWINDELLS, HARRIET			
03:10	MISSED JUMPER by ARMSTRONG, CHARLOTTE			
03:07	REBOUND (OFF) by ARMSTRONG, CHARLOTTE			
03:03	FOUL (OFF) by KAMPP, JOHANNA			
03:03	TURNOVER (OFFENSIVE) by KAMPP, JOHANNA			
03:03	TIMEOUT 30SEC			
02:48		39-25	H 14	GOOD! 3PTR by BUTTON, ALEX
02:48				ASSIST by O'SHAUGHNESSY, CASEY
02:35				FOUL (PERSONAL) by MOON, MONTIA
02:35	SUB OUT: ARMSTRONG, CHARLOTTE			
02:35	SUB IN: SANDERS, CARLY			
02:35	MISSED FT by SWINDELLS, HARRIET			
02:35	REBOUND (OFF) by TEAM			
02:35	GOOD! FT by SWINDELLS, HARRIET	39-26	H 13	
02:19				TURNOVER (LOSTBALL) by BUTTON, ALEX
02:19	STEAL by KAMPP, JOHANNA			
02:19				SUB OUT: O'SHAUGHNESSY, CASEY
02:19				SUB OUT: BUTTON, ALEX
02:19				SUB IN: ZEITSIFF, ABBY
02:19				SUB IN: BRIERLEY, GINA
02:04	MISSED JUMPER by FUSARI, CHIARA			
02:01	REBOUND (OFF) by PINK, ASHLEIGH			
02:01				FOUL (PERSONAL) by BRIERLEY, GINA
01:57	GOOD! LAYUP by SWINDELLS, HARRIET	39-28	H 11	
01:57	ASSIST by PINK, ASHLEIGH			
01:37				MISSED LAYUP by ULRICH, AMANDA
01:34				REBOUND (OFF) by MOON, MONTIA
01:31				MISSED 3PTR by ULRICH, AMANDA
01:28				REBOUND (OFF) by TEAM
01:28				SUB OUT: MOON, MONTIA
01:28				SUB IN: BUTTON, ALEX
01:26	FOUL (PERSONAL) by SANDERS, CARLY			
01:26	SUB OUT: SANDERS, CARLY			
01:26	SUB IN: ARMSTRONG, CHARLOTTE			
01:26		40-28	H 12	GOOD! FT by GALLAGHER, ALANI
01:26		41-28	H 13	GOOD! FT by GALLAGHER, ALANI
01:11	MISSED LAYUP by FUSARI, CHIARA			
01:08				REBOUND (DEF) by BUTTON, ALEX
00:46				SUB OUT: ZEITSIFF, ABBY
00:46				SUB IN: QUIGLEY, SUMMER
00:43				MISSED LAYUP by GALLAGHER, ALANI
00:40	REBOUND (DEF) by ARMSTRONG, CHARLOTTE			
00:24	GOOD! LAYUP by ARMSTRONG, CHARLOTTE	41-30	H 11	
00:02				TURNOVER (LOSTBALL) by ULRICH, AMANDA
00:02				SUB OUT: GALLAGHER, ALANI
00:02				SUB IN: SHASH, TAMARA
00:02	SUB OUT: ARMSTRONG, CHARLOTTE			
00:02	SUB IN: DACRES, RENICE			
00:01	GOOD! 3PTR by SWINDELLS, HARRIET [FB]	41-33	H 8	
00:01	ASSIST by DACRES, RENICE			

### Barry 33, Saint Leo 41

Points from (This Period)	BUW	SLW
In the Paint	6	10
Off Turns	5	15
2nd Chance	4	4
Fast Break	3	2
Bench	6	2

**Official Box Score**  
**Barry vs Saint Leo**  
**Second Half Statistics Only**  
**January 18, 2020 at Marion Bowman Center - Saint Leo, Fla.**



**Barry 35**

No.	Player	S	Pts	FG	3FG	FT	OR	DR	TR	PF	A	TO	Blk	Stl	Min	+/-
04	FUSARI, CHIARA	G	7	1-5	1-3	4-6	0	1	1	0	1	1	0	1	11	0
10	PINK, ASHLEIGH	G	9	3-3	2-2	1-1	0	2	2	3	2	3	0	1	19	2
14	CROMBIE, JAIMEE	G	0	0-0	0-0	0-0	0	0	0	0	0	0	0	0	0	0
15	SWINDELLS, HARRIET	G	0	0-3	0-1	0-0	0	0	0	1	1	0	2	0	13	-3
22	KAMPP, JOHANNA	G	0	0-1	0-0	0-0	0	1	1	4	0	0	0	0	12	-1
23	FLEFIL, CAMILLA	G	0	0-0	0-0	0-0	0	0	0	0	0	0	0	0	1	-3
24	BAENA, NEREA	F	13	4-6	0-0	5-11	1	5	6	1	1	0	0	0	20	-1
25	ARMSTRONG, CHARLOTTE	F	0	0-0	0-0	0-0	0	0	0	0	0	0	0	0	0	0
31	JORDAN, MELANIE	G	0	0-0	0-0	0-0	0	0	0	0	0	0	0	0	0	0
32	HERGOT, EMMA	F	4	2-3	0-0	0-0	0	3	3	2	0	0	0	0	9	0
34	SANDERS, CARLY	F	2	1-2	0-1	0-0	0	0	0	1	1	0	0	0	11	-1
35	DACRES, RENICE	G	0	0-0	0-0	0-0	1	0	1	0	0	0	0	0	4	2
	TEAM		0	0-0	0-0	0-0	1	5	6	0	0	0	0	0	0	0
<b>TOTALS</b>			<b>35</b>	<b>11-23</b>	<b>3-7</b>	<b>10-18</b>	<b>3</b>	<b>17</b>	<b>20</b>	<b>12</b>	<b>6</b>	<b>4</b>	<b>2</b>	<b>2</b>	<b>100</b>	

*Shooting By Period*

Period	FG	FG%	3FG	3FG%	FT	FT%
3rd Qtr	6-12	50%	2-3	67%	5-9	56%
4th Qtr	5-11	45%	1-4	25%	5-9	56%
2nd Half	11-23	48%	3-7	43%	10-18	56%
Game	24-52	46.2%	5-15	33.3%	15-24	62.5%

*Deadball Rebounds: 3,0*  
*Last FG Half: BUW 4th-01:21*

**Saint Leo 36**

No.	Player	S	Pts	FG	3FG	FT	OR	DR	TR	PF	A	TO	Blk	Stl	Min	+/-
00	ULRICH, AMANDA	G	3	1-7	1-3	0-0	0	3	3	1	2	1	0	1	14	-2
10	O'SHAUGHNESSY, CASEY	G	5	2-6	0-2	1-1	0	1	1	3	1	0	0	0	20	1
12	MOON, MONTIA	G	3	1-1	1-1	0-0	0	2	2	1	0	0	0	0	7	9
15	SHASH, TAMARA	F	0	0-0	0-0	0-0	0	0	0	0	0	0	0	0	0	0
21	ZEITSIFF, ABBY	G	9	3-4	3-3	0-0	0	0	0	0	0	0	0	0	5	1
22	BUTTON, ALEX	F	10	2-5	2-2	4-4	0	3	3	3	3	0	0	0	18	3
23	GALLAGHER, ALANI	F	6	2-9	0-1	2-2	2	2	4	2	2	1	1	0	18	2
33	BRIERLEY, GINA	G	0	0-2	0-1	0-0	1	3	4	3	1	2	0	0	15	-8
04	QUIGLEY, SUMMER	F	0	0-0	0-0	0-0	0	0	0	0	0	0	0	0	2	-1
	TEAM		0	0-0	0-0	0-0	3	1	4	0	0	0	0	0	0	0
<b>TOTALS</b>			<b>36</b>	<b>11-34</b>	<b>7-13</b>	<b>7-7</b>	<b>6</b>	<b>15</b>	<b>21</b>	<b>13</b>	<b>9</b>	<b>4</b>	<b>1</b>	<b>1</b>	<b>100</b>	

*Shooting By Period*

Period	FG	FG%	3FG	3FG%	FT	FT%
3rd Qtr	6-16	38%	3-5	60%	4-4	100%
4th Qtr	5-18	28%	4-8	50%	3-3	100%
2nd Half	11-34	32%	7-13	54%	7-7	100%
Game	26-62	41.9%	10-21	47.6%	15-18	83.3%

*Deadball Rebounds: 2,0*  
*Last FG Half: SLW 4th-00:50*

Game Notes:

Officials: Reatha Johnson, Kiara Negron, Sam Crawford  
 Attendance: 437

Start Time: 05:30 PM ET  
 End Time: 07:21 PM ET  
 Game Duration: 1:51  
 Conference Game;

Score	1st	2nd	3rd	4th	TOT
BUW	19	14	19	16	<b>68</b>
SLW	21	20	19	17	<b>77</b>

Points from (This Period)	BUW	SLW
In the Paint	14	8
Off Turns	4	0
2nd Chance	4	7
Fast Break	5	5
Bench	2	12

**Official Box Score**  
**Barry vs Saint Leo**  
**Third Quarter Statistics Only**  
**January 18, 2020 at Marion Bowman Center - Saint Leo, Fla.**



**Barry 35**

No.	Player	S	Pts	FG	3FG	FT	OR	DR	TR	PF	A	TO	Blk	Stl	Min	+/-
04	FUSARI, CHIARA	G	0	0-0	0-0	0-0	0	0	0	0	0	0	0	0	1	1
10	PINK, ASHLEIGH	G	6	2-2	2-2	0-0	0	1	1	1	0	1	0	0	10	0
15	SWINDELLS, HARRIET	G	0	0-2	0-1	0-0	0	0	0	1	1	0	0	0	10	0
24	BAENA, NEREA	F	9	2-4	0-0	5-9	1	2	3	0	1	0	0	0	10	0
32	HERGOT, EMMA	F	4	2-3	0-0	0-0	0	3	3	1	0	0	0	0	7	-1
14	CROMBIE, JAIMEE	G	0	0-0	0-0	0-0	0	0	0	0	0	0	0	0	0	0
22	KAMPP, JOHANNA	G	0	0-1	0-0	0-0	0	1	1	3	0	0	0	0	9	-1
23	FLEFIL, CAMILLA	G	0	0-0	0-0	0-0	0	0	0	0	0	0	0	0	0	0
25	ARMSTRONG, CHARLOTTE	F	0	0-0	0-0	0-0	0	0	0	0	0	0	0	0	0	0
31	JORDAN, MELANIE	G	0	0-0	0-0	0-0	0	0	0	0	0	0	0	0	0	0
34	SANDERS, CARLY	F	0	0-0	0-0	0-0	0	0	0	0	0	0	0	0	3	1
35	DACRES, RENICE	G	0	0-0	0-0	0-0	0	0	0	0	0	0	0	0	0	0
TEAM							0	2	2	0	0	0	0	0	0	0
<b>TOTALS</b>			<b>19</b>	<b>6-12</b>	<b>2-3</b>	<b>5-9</b>	<b>1</b>	<b>9</b>	<b>10</b>	<b>6</b>	<b>2</b>	<b>1</b>	<b>0</b>	<b>0</b>	<b>50</b>	

*Shooting By Period*

Period	FG	FG%	3FG	3FG%	FT	FT%
2nd Half	0-0	0%	0-0	0%	0-0	0%
Game	24-52	46.2%	5-15	33.3%	15-24	62.5%

*Deadball Rebounds: 3,0*

**Saint Leo 36**

No.	Player	S	Pts	FG	3FG	FT	OR	DR	TR	PF	A	TO	Blk	Stl	Min	+/-
00	ULRICH, AMANDA	G	0	0-2	0-0	0-0	0	1	1	0	1	0	0	0	4	-3
10	O'SHAUGHNESSY, CASEY	G	4	2-5	0-2	0-0	0	0	0	1	0	0	0	0	10	0
22	BUTTON, ALEX	F	10	2-3	2-2	4-4	0	3	3	1	2	0	0	0	10	0
23	GALLAGHER, ALANI	F	2	1-4	0-0	0-0	1	0	1	2	1	0	0	0	9	1
33	BRIERLEY, GINA	G	0	0-1	0-0	0-0	0	1	1	2	1	0	0	0	10	0
04	QUIGLEY, SUMMER	F	0	0-0	0-0	0-0	0	0	0	0	0	0	0	0	1	-1
12	MOON, MONTIA	G	3	1-1	1-1	0-0	0	2	2	1	0	0	0	0	6	3
15	SHASH, TAMARA	F	0	0-0	0-0	0-0	0	0	0	0	0	0	0	0	0	0
21	ZEITSIFF, ABBY	G	0	0-0	0-0	0-0	0	0	0	0	0	0	0	0	0	0
TEAM							0	1	1	0	0	0	0	0	0	
<b>TOTALS</b>			<b>19</b>	<b>6-16</b>	<b>3-5</b>	<b>4-4</b>	<b>1</b>	<b>8</b>	<b>9</b>	<b>7</b>	<b>5</b>	<b>0</b>	<b>0</b>	<b>0</b>	<b>50</b>	

*Shooting By Period*

Period	FG	FG%	3FG	3FG%	FT	FT%
2nd Half	0-0	0%	0-0	0%	0-0	0%
Game	26-62	41.9%	10-21	47.6%	15-18	83.3%

*Deadball Rebounds: 2,0*

*Game Notes:*

Officials: **Reatha Johnson, Kiara Negron, Sam Crawford**  
 Attendance: **437**

Start Time: **05:30 PM ET**  
 End Time: **07:21 PM ET**  
 Game Duration: **1:51**  
 Conference Game;

Score	1st	2nd	3rd	4th	TOT
BUW	19	14	19	16	<b>68</b>
SLW	21	20	19	17	<b>77</b>

Points from (This Period)	BUW	SLW
In the Paint	6	6
Off Turns	0	0
2nd Chance	2	2
Fast Break	0	2
Bench	0	3

**Official Play-By-Play**  
**Barry vs Saint Leo**  
**Third Quarter**  
**January 18, 2020 at Marion Bowman Center - Saint Leo, Fla.**



**Period 3**

**Starters:**

**Barry:** 4 FUSARI, CHIARA (G); 10 PINK, ASHLEIGH (G); 15 SWINDELLS, HARRIET (G); 24 BAENA, NEREA (F); 32 HERGOT, EMMA (F);

**Saint Leo:** 0 ULRICH, AMANDA (G); 10 O'SHAUGHNESSY, CASEY (G); 22 BUTTON, ALEX (F); 23 GALLAGHER, ALANI (F); 33 BRIERLEY, GINA (G);

Time	VISITORS: Barry	Score	Margin	HOME: Saint Leo
10:00				SUB OUT: QUIGLEY, SUMMER
10:00				SUB OUT: SHASH, TAMARA
10:00				SUB IN: O'SHAUGHNESSY, CASEY
10:00				SUB IN: GALLAGHER, ALANI
10:00	SUB OUT: FUSARI, CHIARA			
10:00	SUB OUT: DACRES, RENICE			
10:00	SUB IN: BAENA, NEREA			
10:00	SUB IN: HERGOT, EMMA			
09:49	GOOD! LAYUP by HERGOT, EMMA	41-35	H 6	
09:32				MISSED LAYUP by GALLAGHER, ALANI
09:30				REBOUND (OFF) by GALLAGHER, ALANI
09:29		43-35	H 8	GOOD! LAYUP by GALLAGHER, ALANI
09:09	MISSED JUMPER by BAENA, NEREA			
09:06				REBOUND (DEF) by BUTTON, ALEX
09:01				MISSED LAYUP by BUTTON, ALEX
08:57	REBOUND (DEF) by HERGOT, EMMA			
08:51	FOUL (OFF) by PINK, ASHLEIGH			
08:51	TURNOVER (OFFENSIVE) by PINK, ASHLEIGH			
08:31				MISSED 3PTR by O'SHAUGHNESSY, CASEY
08:30	REBOUND (DEF) by TEAM			
08:14	GOOD! 3PTR by PINK, ASHLEIGH	43-38	H 5	
08:14	ASSIST by SWINDELLS, HARRIET			
07:46				MISSED LAYUP by ULRICH, AMANDA
07:43	REBOUND (DEF) by HERGOT, EMMA			
07:37	GOOD! LAYUP by BAENA, NEREA	43-40	H 3	
07:37				FOUL (PERSONAL) by O'SHAUGHNESSY, CASEY
07:37	MISSED FT by BAENA, NEREA			
07:37				REBOUND (DEF) by ULRICH, AMANDA
07:19		46-40	H 6	GOOD! 3PTR by BUTTON, ALEX
07:19				ASSIST by ULRICH, AMANDA
06:53				FOUL (PERSONAL) by GALLAGHER, ALANI
06:53	GOOD! FT by BAENA, NEREA	46-41	H 5	
06:53	MISSED FT by BAENA, NEREA			
06:52				REBOUND (DEF) by BUTTON, ALEX
06:42	FOUL (PERSONAL) by KAMPP, JOHANNA			
06:26				MISSED LAYUP by ULRICH, AMANDA
06:23	REBOUND (DEF) by PINK, ASHLEIGH			
06:22				FOUL (PERSONAL) by BRIERLEY, GINA
06:22				SUB OUT: ULRICH, AMANDA
06:22				SUB IN: MOON, MONTIA
06:14	FOUL (PERSONAL) by SWINDELLS, HARRIET			
05:48				MISSED JUMPER by BRIERLEY, GINA
05:44	REBOUND (DEF) by KAMPP, JOHANNA			
05:31	GOOD! JUMPER by HERGOT, EMMA	46-43	H 3	
05:09				MISSED JUMPER by GALLAGHER, ALANI
05:07	REBOUND (DEF) by HERGOT, EMMA			
05:07				FOUL (PERSONAL) by MOON, MONTIA
04:54	GOOD! LAYUP by BAENA, NEREA	46-45	H 1	
04:45	FOUL (PERSONAL) by KAMPP, JOHANNA			
04:45		47-45	H 2	GOOD! FT by BUTTON, ALEX
04:45		48-45	H 3	GOOD! FT by BUTTON, ALEX
04:33	MISSED JUMPER by HERGOT, EMMA			
04:32				REBOUND (DEF) by TEAM
04:32	FOUL (PERSONAL) by HERGOT, EMMA			
04:10		51-45	H 6	GOOD! 3PTR by MOON, MONTIA
04:10				ASSIST by BUTTON, ALEX
03:55	MISSED JUMPER by KAMPP, JOHANNA			
03:51				REBOUND (DEF) by MOON, MONTIA
03:41		54-45	H 9	GOOD! 3PTR by BUTTON, ALEX
03:41				ASSIST by GALLAGHER, ALANI
03:12				FOUL (PERSONAL) by BUTTON, ALEX
03:12	SUB OUT: HERGOT, EMMA			
03:12	SUB IN: SANDERS, CARLY			
03:12	MISSED FT by BAENA, NEREA			
03:12	REBOUND (OFF) by TEAM			
03:12	GOOD! FT by BAENA, NEREA	54-46	H 8	
02:50		56-46	H 10	GOOD! LAYUP by O'SHAUGHNESSY, CASEY
02:50				ASSIST by BRIERLEY, GINA
02:27	GOOD! 3PTR by PINK, ASHLEIGH	56-49	H 7	

Time	VISITORS: Barry	Score	Margin	HOME: Saint Leo
02:27	ASSIST by BAENA, NEREA			
02:05				MISSED LAYUP by GALLAGHER, ALANI
02:02	REBOUND (DEF) by BAENA, NEREA			
01:36	MISSED LAYUP by SWINDELLS, HARRIET			
01:33				REBOUND (DEF) by BRIERLEY, GINA
01:23	FOUL (PERSONAL) by KAMPP, JOHANNA			
01:23		57-49	H 8	GOOD! FT by BUTTON, ALEX
01:23		58-49	H 9	GOOD! FT by BUTTON, ALEX
01:13				FOUL (PERSONAL) by GALLAGHER, ALANI
01:13				SUB OUT: GALLAGHER, ALANI
01:13				SUB IN: QUIGLEY, SUMMER
01:13	SUB OUT: KAMPP, JOHANNA			
01:13	SUB IN: FUSARI, CHIARA			
01:13	GOOD! FT by BAENA, NEREA	58-50	H 8	
01:13	MISSED FT by BAENA, NEREA			
01:11				REBOUND (DEF) by MOON, MONTIA
01:00				MISSED 3PTR by O'SHAUGHNESSY, CASEY
00:59	REBOUND (DEF) by TEAM			
00:38	MISSED LAYUP by BAENA, NEREA			
00:36				REBOUND (DEF) by BUTTON, ALEX
00:32		60-50	H 10	GOOD! LAYUP by O'SHAUGHNESSY, CASEY [FB]
00:32				ASSIST by BUTTON, ALEX
00:19	MISSED 3PTR by SWINDELLS, HARRIET			
00:18	REBOUND (OFF) by BAENA, NEREA			
00:18				FOUL (PERSONAL) by BRIERLEY, GINA
00:18	GOOD! FT by BAENA, NEREA	60-51	H 9	
00:18	GOOD! FT by BAENA, NEREA	60-52	H 8	
00:18	SUB OUT: SWINDELLS, HARRIET			
00:18	SUB IN: CROMBIE, JAIMEE			
00:01				MISSED LAYUP by O'SHAUGHNESSY, CASEY
00:00	REBOUND (DEF) by BAENA, NEREA			

### Barry 52, Saint Leo 60

Points from (This Period)	BUW	SLW
In the Paint	6	6
Off Turns	0	0
2nd Chance	2	2
Fast Break	0	2
Bench	0	3

**Official Box Score**  
**Barry vs Saint Leo**  
**Fourth Quarter Statistics Only**  
**January 18, 2020 at Marion Bowman Center - Saint Leo, Fla.**



### Barry 16

No.	Player	S	Pts	FG	3FG	FT	OR	DR	TR	PF	A	TO	Blk	Stl	Min	+/-
04	FUSARI, CHIARA	G	7	1-5	1-3	4-6	0	1	1	0	1	1	0	1	10	-1
10	PINK, ASHLEIGH	G	3	1-1	0-0	1-1	0	1	1	2	2	2	0	1	9	2
15	SWINDELLS, HARRIET	G	0	0-1	0-0	0-0	0	0	0	0	0	0	2	0	3	-3
24	BAENA, NEREA	F	4	2-2	0-0	0-2	0	3	3	1	0	0	0	0	10	-1
32	HERGOT, EMMA	F	0	0-0	0-0	0-0	0	0	0	1	0	0	0	0	2	1
14	CROMBIE, JAIMEE	G	0	0-0	0-0	0-0	0	0	0	0	0	0	0	0	0	0
22	KAMPP, JOHANNA	G	0	0-0	0-0	0-0	0	0	0	1	0	0	0	0	3	0
23	FLEFIL, CAMILLA	G	0	0-0	0-0	0-0	0	0	0	0	0	0	0	0	1	-3
25	ARMSTRONG, CHARLOTTE	F	0	0-0	0-0	0-0	0	0	0	0	0	0	0	0	0	0
31	JORDAN, MELANIE	G	0	0-0	0-0	0-0	0	0	0	0	0	0	0	0	0	0
34	SANDERS, CARLY	F	2	1-2	0-1	0-0	0	0	0	1	1	0	0	0	8	-2
35	DACRES, RENICE	G	0	0-0	0-0	0-0	1	0	1	0	0	0	0	0	4	2
TEAM								1	3	4	0	0				
<b>TOTALS</b>			<b>16</b>	<b>5-11</b>	<b>1-4</b>	<b>5-9</b>	<b>2</b>	<b>8</b>	<b>10</b>	<b>6</b>	<b>4</b>	<b>3</b>	<b>2</b>	<b>2</b>	<b>50</b>	

*Shooting By Period*

Period	FG	FG%	3FG	3FG%	FT	FT%
Game	24-52	46.2%	5-15	33.3%	15-24	62.5%

Deadball Rebounds: 3,0

### Saint Leo 17

No.	Player	S	Pts	FG	3FG	FT	OR	DR	TR	PF	A	TO	Blk	Stl	Min	+/-
00	ULRICH, AMANDA	G	3	1-5	1-3	0-0	0	2	2	1	1	1	0	1	10	1
10	O'SHAUGHNESSY, CASEY	G	1	0-1	0-0	1-1	0	1	1	2	1	0	0	0	10	1
22	BUTTON, ALEX	F	0	0-2	0-0	0-0	0	0	0	2	1	0	0	0	8	3
23	GALLAGHER, ALANI	F	4	1-5	0-1	2-2	1	2	3	0	1	1	1	0	9	1
33	BRIERLEY, GINA	G	0	0-1	0-1	0-0	1	2	3	1	0	2	0	0	5	-8
04	QUIGLEY, SUMMER	F	0	0-0	0-0	0-0	0	0	0	0	0	0	0	0	1	0
12	MOON, MONTIA	G	0	0-0	0-0	0-0	0	0	0	0	0	0	0	0	1	6
15	SHASH, TAMARA	F	0	0-0	0-0	0-0	0	0	0	0	0	0	0	0	0	0
21	ZEITSIFF, ABBY	G	9	3-4	3-3	0-0	0	0	0	0	0	0	0	0	5	1
TEAM								3	0	3	0	0				
<b>TOTALS</b>			<b>17</b>	<b>5-18</b>	<b>4-8</b>	<b>3-3</b>	<b>5</b>	<b>7</b>	<b>12</b>	<b>6</b>	<b>4</b>	<b>4</b>	<b>1</b>	<b>1</b>	<b>50</b>	

*Shooting By Period*

Period	FG	FG%	3FG	3FG%	FT	FT%
Game	26-62	41.9%	10-21	47.6%	15-18	83.3%

Deadball Rebounds: 2,0

Game Notes:

Officials: Reatha Johnson, Kiara Negron, Sam Crawford  
 Attendance: 437

Start Time: 05:30 PM ET  
 End Time: 07:21 PM ET  
 Game Duration: 1:51  
 Conference Game;

Score	1st	2nd	3rd	4th	TOT
BUW	19	14	19	16	<b>68</b>
SLW	21	20	19	17	<b>77</b>

Points from (This Period)	BUW	SLW
In the Paint	8	2
Off Turns	4	0
2nd Chance	2	5
Fast Break	5	3
Bench	2	9

**Official Play-By-Play**  
**Barry vs Saint Leo**  
**Fourth Quarter**  
**January 18, 2020 at Marion Bowman Center - Saint Leo, Fla.**



**Period 4**

**Starters:**

**Barry:** 4 FUSARI, CHIARA (G); 10 PINK, ASHLEIGH (G); 15 SWINDELLS, HARRIET (G); 24 BAENA, NEREA (F); 32 HERGOT, EMMA (F);

**Saint Leo:** 0 ULRICH, AMANDA (G); 10 O'SHAUGHNESSY, CASEY (G); 22 BUTTON, ALEX (F); 23 GALLAGHER, ALANI (F); 33 BRIERLEY, GINA (G);

Time	VISITORS: Barry	Score	Margin	HOME: Saint Leo
10:00				SUB OUT: QUIGLEY, SUMMER
10:00				SUB OUT: MOON, MONTIA
10:00				SUB IN: ULRICH, AMANDA
10:00				SUB IN: GALLAGHER, ALANI
10:00	SUB OUT: CROMBIE, JAIMEE			
10:00	SUB OUT: SANDERS, CARLY			
10:00	SUB IN: SWINDELLS, HARRIET			
10:00	SUB IN: HERGOT, EMMA			
09:46				MISSED LAYUP by GALLAGHER, ALANI
09:42	REBOUND (DEF) by BAENA, NEREA			
09:41				FOUL (PERSONAL) by BUTTON, ALEX
09:41	GOOD! FT by FUSARI, CHIARA [FB]	60-53	H 7	
09:41	MISSED FT by FUSARI, CHIARA			
09:40				REBOUND (DEF) by BRIERLEY, GINA
09:15				MISSED LAYUP by GALLAGHER, ALANI
09:13				REBOUND (OFF) by GALLAGHER, ALANI
09:11		62-53	H 9	GOOD! LAYUP by GALLAGHER, ALANI
08:57	TURNOVER (LOSTBALL) by PINK, ASHLEIGH			
08:36	FOUL (PERSONAL) by BAENA, NEREA			
08:26				MISSED 3PTR by BRIERLEY, GINA
08:23	REBOUND (DEF) by BAENA, NEREA			
08:23				FOUL (PERSONAL) by BRIERLEY, GINA
08:23				SUB OUT: BRIERLEY, GINA
08:23				SUB IN: ZEITSIFF, ABBY
08:12				FOUL (PERSONAL) by O'SHAUGHNESSY, CASEY
08:12	GOOD! FT by FUSARI, CHIARA	62-54	H 8	
08:12	GOOD! FT by FUSARI, CHIARA	62-55	H 7	
08:07				TIMEOUT 30SEC
08:07				
07:56	FOUL (PERSONAL) by HERGOT, EMMA			
07:56	SUB OUT: HERGOT, EMMA			
07:56	SUB IN: SANDERS, CARLY			
07:48				MISSED LAYUP by BUTTON, ALEX
07:48	BLOCK by SWINDELLS, HARRIET			
07:48	REBOUND (DEF) by TEAM			
07:35	GOOD! LAYUP by BAENA, NEREA	62-57	H 5	
07:35	ASSIST by PINK, ASHLEIGH			
07:18				MISSED LAYUP by ULRICH, AMANDA
07:18	BLOCK by SWINDELLS, HARRIET			
07:18				REBOUND (OFF) by TEAM
07:17		65-57	H 8	GOOD! 3PTR by ZEITSIFF, ABBY
07:17				ASSIST by ULRICH, AMANDA
07:02	MISSED LAYUP by SWINDELLS, HARRIET			
06:59				REBOUND (DEF) by GALLAGHER, ALANI
06:55		68-57	H 11	GOOD! 3PTR by ZEITSIFF, ABBY [FB]
06:55				ASSIST by BUTTON, ALEX
06:47	SUB OUT: SWINDELLS, HARRIET			
06:47	SUB IN: KAMPP, JOHANNA			
06:20	GOOD! LAYUP by SANDERS, CARLY	68-59	H 9	
06:20	ASSIST by FUSARI, CHIARA			
05:55		71-59	H 12	GOOD! 3PTR by ZEITSIFF, ABBY
05:55				ASSIST by O'SHAUGHNESSY, CASEY
05:35	TURNOVER (LOSTBALL) by PINK, ASHLEIGH			
05:35				STEAL by ULRICH, AMANDA
05:34	FOUL (PERSONAL) by PINK, ASHLEIGH			
05:17				MISSED LAYUP by ULRICH, AMANDA
05:14	REBOUND (DEF) by TEAM			
05:00				FOUL (PERSONAL) by BUTTON, ALEX
05:00				
05:00				SUB OUT: BUTTON, ALEX
05:00				SUB IN: BRIERLEY, GINA
05:00	MISSED FT by BAENA, NEREA			
05:00	REBOUND (OFF) by TEAM			
05:00	MISSED FT by BAENA, NEREA			
04:59				REBOUND (DEF) by BRIERLEY, GINA
04:37				MISSED JUMPER by ZEITSIFF, ABBY
04:34	REBOUND (DEF) by PINK, ASHLEIGH			
04:32				FOUL (PERSONAL) by O'SHAUGHNESSY, CASEY
04:32	GOOD! FT by FUSARI, CHIARA [FB]	71-60	H 11	
04:32	MISSED FT by FUSARI, CHIARA			

Time	VISITORS: Barry	Score	Margin	HOME: Saint Leo
04:31				REBOUND (DEF) by ULRICH, AMANDA
04:13				MISSED 3PTR by ULRICH, AMANDA
04:11				REBOUND (OFF) by TEAM
04:11	FOUL (PERSONAL) by KAMPP, JOHANNA			
04:11	SUB OUT: KAMPP, JOHANNA			
04:11	SUB IN: DACRES, RENICE			
03:52				MISSED LAYUP by GALLAGHER, ALANI
03:52				REBOUND (OFF) by TEAM
03:31				MISSED 3PTR by GALLAGHER, ALANI
03:29				REBOUND (OFF) by BRIERLEY, GINA
03:28				TURNOVER (BADPASS) by BRIERLEY, GINA
03:28	STEAL by PINK, ASHLEIGH			
03:26				FOUL (PERSONAL) by ULRICH, AMANDA
03:26	GOOD! FT by PINK, ASHLEIGH [FB]	71-61	H 10	
03:26				SUB OUT: ZEITSIFF, ABBY
03:26				SUB IN: BUTTON, ALEX
03:11				MISSED 3PTR by ULRICH, AMANDA
03:11	REBOUND (DEF) by TEAM			
03:01	MISSED LAYUP by FUSARI, CHIARA			
03:01				BLOCK by GALLAGHER, ALANI
03:01	REBOUND (OFF) by TEAM			
02:51	GOOD! LAYUP by BAENA, NEREA	71-63	H 8	
02:51	ASSIST by SANDERS, CARLY			
02:23				MISSED LAYUP by O'SHAUGHNESSY, CASEY
02:21	REBOUND (DEF) by BAENA, NEREA			
02:17	GOOD! LAYUP by PINK, ASHLEIGH [FB]	71-65	H 6	
01:45				MISSED JUMPER by BUTTON, ALEX
01:42	REBOUND (DEF) by FUSARI, CHIARA			
01:42	TURNOVER (TRAVEL) by FUSARI, CHIARA			
01:42				TIMEOUT TEAM
01:40				TURNOVER (BADPASS) by BRIERLEY, GINA
01:40	STEAL by FUSARI, CHIARA			
01:21	GOOD! 3PTR by FUSARI, CHIARA	71-68	H 3	
01:21	ASSIST by PINK, ASHLEIGH			
01:19	TIMEOUT 30SEC			
01:19				SUB OUT: BRIERLEY, GINA
01:19				SUB IN: MOON, MONTIA
00:50		74-68	H 6	GOOD! 3PTR by ULRICH, AMANDA
00:50				ASSIST by GALLAGHER, ALANI
00:42	MISSED 3PTR by SANDERS, CARLY			
00:39				REBOUND (DEF) by O'SHAUGHNESSY, CASEY
00:38	FOUL (PERSONAL) by PINK, ASHLEIGH			
00:38	SUB OUT: PINK, ASHLEIGH			
00:38	SUB IN: FLEFIL, CAMILLA			
00:38		75-68	H 7	GOOD! FT by O'SHAUGHNESSY, CASEY
00:38				TURNOVER (LANEVIOLATION) by GALLAGHER, ALANI
00:38	TIMEOUT TEAM			
00:34	MISSED 3PTR by FUSARI, CHIARA			
00:34				REBOUND (DEF) by GALLAGHER, ALANI
00:34	FOUL (PERSONAL) by SANDERS, CARLY			
00:34		76-68	H 8	GOOD! FT by GALLAGHER, ALANI
00:34		77-68	H 9	GOOD! FT by GALLAGHER, ALANI
00:34				SUB OUT: GALLAGHER, ALANI
00:34				SUB IN: QUIGLEY, SUMMER
00:27	MISSED 3PTR by FUSARI, CHIARA			
00:23	REBOUND (OFF) by DACRES, RENICE			
00:16	MISSED LAYUP by FUSARI, CHIARA			
00:13				REBOUND (DEF) by ULRICH, AMANDA
00:01				TURNOVER (LOSTBALL) by ULRICH, AMANDA

Barry 68, Saint Leo 77

Points from (This Period)	BUW	SLW
In the Paint	8	2
Off Turns	4	0
2nd Chance	2	5
Fast Break	5	3
Bench	2	9



**Official Scoring/Possession Reference Chart**  
**Barry vs Saint Leo**  
**Period 1**  
**January 18, 2020 at Marion Bowman Center - Saint Leo, Fla.**



**Period 1**

**Starters:**

**Barry:** 4 FUSARI, CHIARA (G); 10 PINK, ASHLEIGH (G); 15 SWINDELLS, HARRIET (G); 24 BAENA, NEREA (F); 32 HERGOT, EMMA (F);

**Saint Leo:** 0 ULRICH, AMANDA (G); 10 O'SHAUGHNESSY, CASEY (G); 22 BUTTON, ALEX (F); 23 GALLAGHER, ALANI (F); 33 BRIERLEY, GINA (G);

Time	VISITORS: Barry	Score	Margin	HOME: Saint Leo
09:49		3-0	H 3	GOOD! 3PTR by BUTTON, ALEX
08:49	GOOD! LAYUP by FUSARI, CHIARA	3-2	H 1	
08:25		4-2	H 2	GOOD! FT by GALLAGHER, ALANI
08:25		5-2	H 3	GOOD! FT by GALLAGHER, ALANI
08:07		7-2	H 5	GOOD! LAYUP by ULRICH, AMANDA [FB]
08:07		8-2	H 6	GOOD! FT by ULRICH, AMANDA [FB]
07:15	GOOD! LAYUP by HERGOT, EMMA	8-4	H 4	
06:53	GOOD! LAYUP by HERGOT, EMMA	8-6	H 2	
06:35		10-6	H 4	GOOD! LAYUP by BUTTON, ALEX
05:39		13-6	H 7	GOOD! 3PTR by ULRICH, AMANDA
05:07	GOOD! LAYUP by SWINDELLS, HARRIET	13-8	H 5	
04:38	GOOD! 3PTR by KAMPP, JOHANNA	13-11	H 2	
04:12		15-11	H 4	GOOD! LAYUP by QUIGLEY, SUMMER
03:31		17-11	H 6	GOOD! JUMPER by GALLAGHER, ALANI
03:11	GOOD! JUMPER by HERGOT, EMMA [PNT]	17-13	H 4	
02:48	GOOD! LAYUP by PINK, ASHLEIGH [FB]	17-15	H 2	
02:22	GOOD! FT by SWINDELLS, HARRIET [FB]	17-16	H 1	
02:22	GOOD! FT by SWINDELLS, HARRIET [FB]	17-17	T	
01:26		19-17	H 2	GOOD! JUMPER by BUTTON, ALEX
00:39	GOOD! LAYUP by SANDERS, CARLY	19-19	T	
00:00		21-19	H 2	GOOD! LAYUP by BRIERLEY, GINA

**Barry 19, Saint Leo 21**

**Official Scoring/Possession Reference Chart**  
**Barry vs Saint Leo**  
**Period 2**  
**January 18, 2020 at Marion Bowman Center - Saint Leo, Fla.**



**Period 2**

**Starters:**

**Barry:** 4 FUSARI, CHIARA (G); 10 PINK, ASHLEIGH (G); 15 SWINDELLS, HARRIET (G); 24 BAENA, NEREA (F); 32 HERGOT, EMMA (F);

**Saint Leo:** 0 ULRICH, AMANDA (G); 10 O'SHAUGHNESSY, CASEY (G); 22 BUTTON, ALEX (F); 23 GALLAGHER, ALANI (F); 33 BRIERLEY, GINA (G);

Time	VISITORS: Barry	Score	Margin	HOME: Saint Leo
09:32		23-19	H 4	GOOD! LAYUP by BRIERLEY, GINA
08:39		25-19	H 6	GOOD! JUMPER by SHASH, TAMARA
08:17	GOOD! LAYUP by SANDERS, CARLY	25-21	H 4	
07:52		26-21	H 5	GOOD! FT by O'SHAUGHNESSY, CASEY [FB]
07:52		27-21	H 6	GOOD! FT by O'SHAUGHNESSY, CASEY [FB]
06:54	GOOD! JUMPER by KAMPP, JOHANNA	27-23	H 4	
06:38		28-23	H 5	GOOD! FT by GALLAGHER, ALANI
06:23	GOOD! FT by FUSARI, CHIARA	28-24	H 4	
06:23	GOOD! FT by FUSARI, CHIARA	28-25	H 3	
06:07		30-25	H 5	GOOD! LAYUP by GALLAGHER, ALANI
05:09		32-25	H 7	GOOD! LAYUP by ULRICH, AMANDA
04:30		34-25	H 9	GOOD! LAYUP by GALLAGHER, ALANI
03:56		36-25	H 11	GOOD! LAYUP by GALLAGHER, ALANI
02:48		39-25	H 14	GOOD! 3PTR by BUTTON, ALEX
02:35	GOOD! FT by SWINDELLS, HARRIET	39-26	H 13	
01:57	GOOD! LAYUP by SWINDELLS, HARRIET	39-28	H 11	
01:26		40-28	H 12	GOOD! FT by GALLAGHER, ALANI
01:26		41-28	H 13	GOOD! FT by GALLAGHER, ALANI
00:24	GOOD! LAYUP by ARMSTRONG, CHARLOTTE	41-30	H 11	
00:01	GOOD! 3PTR by SWINDELLS, HARRIET [FB]	41-33	H 8	

**Barry 33, Saint Leo 41**

**Official Scoring/Possession Reference Chart**  
**Barry vs Saint Leo**  
**Period 3**  
**January 18, 2020 at Marion Bowman Center - Saint Leo, Fla.**



**Period 3**

**Starters:**

**Barry:** 4 FUSARI, CHIARA (G); 10 PINK, ASHLEIGH (G); 15 SWINDELLS, HARRIET (G); 24 BAENA, NEREA (F); 32 HERGOT, EMMA (F);

**Saint Leo:** 0 ULRICH, AMANDA (G); 10 O'SHAUGHNESSY, CASEY (G); 22 BUTTON, ALEX (F); 23 GALLAGHER, ALANI (F); 33 BRIERLEY, GINA (G);

Time	VISITORS: Barry	Score	Margin	HOME: Saint Leo
09:49	GOOD! LAYUP by HERGOT, EMMA	41-35	H 6	
09:29		43-35	H 8	GOOD! LAYUP by GALLAGHER, ALANI
08:14	GOOD! 3PTR by PINK, ASHLEIGH	43-38	H 5	
07:37	GOOD! LAYUP by BAENA, NEREA	43-40	H 3	
07:19		46-40	H 6	GOOD! 3PTR by BUTTON, ALEX
06:53	GOOD! FT by BAENA, NEREA	46-41	H 5	
05:31	GOOD! JUMPER by HERGOT, EMMA	46-43	H 3	
04:54	GOOD! LAYUP by BAENA, NEREA	46-45	H 1	
04:45		47-45	H 2	GOOD! FT by BUTTON, ALEX
04:45		48-45	H 3	GOOD! FT by BUTTON, ALEX
04:10		51-45	H 6	GOOD! 3PTR by MOON, MONTIA
03:41		54-45	H 9	GOOD! 3PTR by BUTTON, ALEX
03:12	GOOD! FT by BAENA, NEREA	54-46	H 8	
02:50		56-46	H 10	GOOD! LAYUP by O'SHAUGHNESSY, CASEY
02:27	GOOD! 3PTR by PINK, ASHLEIGH	56-49	H 7	
01:23		57-49	H 8	GOOD! FT by BUTTON, ALEX
01:23		58-49	H 9	GOOD! FT by BUTTON, ALEX
01:13	GOOD! FT by BAENA, NEREA	58-50	H 8	
00:32		60-50	H 10	GOOD! LAYUP by O'SHAUGHNESSY, CASEY [FB]
00:18	GOOD! FT by BAENA, NEREA	60-51	H 9	
00:18	GOOD! FT by BAENA, NEREA	60-52	H 8	

**Barry 52, Saint Leo 60**

**Official Scoring/Possession Reference Chart**  
**Barry vs Saint Leo**  
**Period 4**  
**January 18, 2020 at Marion Bowman Center - Saint Leo, Fla.**



**Period 4**

**Starters:**

**Barry:** 4 FUSARI, CHIARA (G); 10 PINK, ASHLEIGH (G); 15 SWINDELLS, HARRIET (G); 24 BAENA, NEREA (F); 32 HERGOT, EMMA (F);

**Saint Leo:** 0 ULRICH, AMANDA (G); 10 O'SHAUGHNESSY, CASEY (G); 22 BUTTON, ALEX (F); 23 GALLAGHER, ALANI (F); 33 BRIERLEY, GINA (G);

Time	VISITORS: Barry	Score	Margin	HOME: Saint Leo
09:41	GOOD! FT by FUSARI, CHIARA [FB]	60-53	H 7	
09:11		62-53	H 9	GOOD! LAYUP by GALLAGHER, ALANI
08:12	GOOD! FT by FUSARI, CHIARA	62-54	H 8	
08:12	GOOD! FT by FUSARI, CHIARA	62-55	H 7	
07:35	GOOD! LAYUP by BAENA, NEREA	62-57	H 5	
07:17		65-57	H 8	GOOD! 3PTR by ZEITSIFF, ABBY
06:55		68-57	H 11	GOOD! 3PTR by ZEITSIFF, ABBY [FB]
06:20	GOOD! LAYUP by SANDERS, CARLY	68-59	H 9	
05:55		71-59	H 12	GOOD! 3PTR by ZEITSIFF, ABBY
04:32	GOOD! FT by FUSARI, CHIARA [FB]	71-60	H 11	
03:26	GOOD! FT by PINK, ASHLEIGH [FB]	71-61	H 10	
02:51	GOOD! LAYUP by BAENA, NEREA	71-63	H 8	
02:17	GOOD! LAYUP by PINK, ASHLEIGH [FB]	71-65	H 6	
01:21	GOOD! 3PTR by FUSARI, CHIARA	71-68	H 3	
00:50		74-68	H 6	GOOD! 3PTR by ULRICH, AMANDA
00:38		75-68	H 7	GOOD! FT by O'SHAUGHNESSY, CASEY
00:34		76-68	H 8	GOOD! FT by GALLAGHER, ALANI
00:34		77-68	H 9	GOOD! FT by GALLAGHER, ALANI

**Barry 68, Saint Leo 77**

**Official Substitutions Log**  
**Barry vs Saint Leo**  
**Period 1**  
**January 18, 2020 at Marion Bowman Center - Saint Leo, Fla.**



VISITORS: Barry	Time	Score	HOME: Saint Leo
4 FUSARI, CHIARA			0 ULRICH, AMANDA
10 PINK, ASHLEIGH			10 O'SHAUGHNESSY, CASEY
15 SWINDELLS, HARRIET			22 BUTTON, ALEX
24 BAENA, NEREA			23 GALLAGHER, ALANI
32 HERGOT, EMMA			33 BRIERLEY, GINA
SUB OUT: 24 BAENA, NEREA	08:07	2-7	
SUB IN: 22 KAMPP, JOHANNA	08:07		
	05:22	6-13	SUB OUT: O'SHAUGHNESSY, CASEY
	05:22		SUB IN: QUIGLEY, SUMMER
	03:56	11-15	SUB OUT: BRIERLEY, GINA
	03:56		SUB IN: O'SHAUGHNESSY, CASEY
	02:22	15-17	SUB OUT: QUIGLEY, SUMMER
	02:22		SUB OUT: O'SHAUGHNESSY, CASEY
	02:22		SUB IN: ZEITSIFF, ABBY
	02:22		SUB IN: BRIERLEY, GINA
SUB OUT: 32 HERGOT, EMMA	02:22		
SUB IN: 34 SANDERS, CARLY	02:22		
SUB OUT: 4 FUSARI, CHIARA	01:19	17-19	
SUB IN: 31 JORDAN, MELANIE	01:19		

**Barry 19, Saint Leo 21**

**Official Substitutions Log**  
**Barry vs Saint Leo**  
**Period 2**  
**January 18, 2020 at Marion Bowman Center - Saint Leo, Fla.**



VISITORS: Barry	Time	Score	HOME: Saint Leo
4 FUSARI, CHIARA			0 ULRICH, AMANDA
10 PINK, ASHLEIGH			10 O'SHAUGHNESSY, CASEY
15 SWINDELLS, HARRIET			22 BUTTON, ALEX
24 BAENA, NEREA			23 GALLAGHER, ALANI
32 HERGOT, EMMA			33 BRIERLEY, GINA
	10:00	-	SUB OUT: ZEITSIFF, ABBY
	10:00		SUB OUT: GALLAGHER, ALANI
	10:00		SUB IN: O'SHAUGHNESSY, CASEY
	10:00		SUB IN: SHASH, TAMARA
SUB OUT: 10 PINK, ASHLEIGH	09:09	19-23	
SUB IN: 4 FUSARI, CHIARA	09:09		
	07:52	21-25	SUB OUT: SHASH, TAMARA
	07:52		SUB IN: GALLAGHER, ALANI
SUB OUT: 31 JORDAN, MELANIE	07:52		
SUB IN: 10 PINK, ASHLEIGH	07:52		
SUB OUT: 15 SWINDELLS, HARRIET	07:18	21-27	
SUB OUT: 34 SANDERS, CARLY	07:18		
SUB IN: 14 CROMBIE, JAIMEE	07:18		
SUB IN: 32 HERGOT, EMMA	07:18		
SUB OUT: 32 HERGOT, EMMA	06:38	23-27	
SUB IN: 25 ARMSTRONG, CHARLOTTE	06:38		
	04:46	25-32	SUB OUT: BRIERLEY, GINA
	04:46		SUB IN: MOON, MONTIA
SUB OUT: 14 CROMBIE, JAIMEE	03:27	25-36	
SUB IN: 15 SWINDELLS, HARRIET	03:27		
SUB OUT: 25 ARMSTRONG, CHARLOTTE	02:35	25-39	
SUB IN: 34 SANDERS, CARLY	02:35		
	02:19	26-39	SUB OUT: O'SHAUGHNESSY, CASEY
	02:19		SUB OUT: BUTTON, ALEX
	02:19		SUB IN: ZEITSIFF, ABBY
	02:19		SUB IN: BRIERLEY, GINA
	01:28	28-39	SUB OUT: MOON, MONTIA
	01:28		SUB IN: BUTTON, ALEX
SUB OUT: 34 SANDERS, CARLY	01:26	28-39	
SUB IN: 25 ARMSTRONG, CHARLOTTE	01:26		
	00:46	28-41	SUB OUT: ZEITSIFF, ABBY
	00:46		SUB IN: QUIGLEY, SUMMER
	00:02	30-41	SUB OUT: GALLAGHER, ALANI
	00:02		SUB IN: SHASH, TAMARA
SUB OUT: 25 ARMSTRONG, CHARLOTTE	00:02		
SUB IN: 35 DACRES, RENICE	00:02		

**Barry 33, Saint Leo 41**

**Official Substitutions Log**  
**Barry vs Saint Leo**  
**Period 3**  
**January 18, 2020 at Marion Bowman Center - Saint Leo, Fla.**



VISITORS: Barry	Time	Score	HOME: Saint Leo
4 FUSARI, CHIARA			0 ULRICH, AMANDA
10 PINK, ASHLEIGH			10 O'SHAUGHNESSY, CASEY
15 SWINDELLS, HARRIET			22 BUTTON, ALEX
24 BAENA, NEREA			23 GALLAGHER, ALANI
32 HERGOT, EMMA			33 BRIERLEY, GINA
	10:00	-	SUB OUT: QUIGLEY, SUMMER
	10:00		SUB OUT: SHASH, TAMARA
	10:00		SUB IN: O'SHAUGHNESSY, CASEY
	10:00		SUB IN: GALLAGHER, ALANI
SUB OUT: 4 FUSARI, CHIARA	10:00		
SUB OUT: 35 DACRES, RENICE	10:00		
SUB IN: 24 BAENA, NEREA	10:00		
SUB IN: 32 HERGOT, EMMA	10:00		
	06:22	41-46	SUB OUT: ULRICH, AMANDA
	06:22		SUB IN: MOON, MONTIA
SUB OUT: 32 HERGOT, EMMA	03:12	45-54	
SUB IN: 34 SANDERS, CARLY	03:12		
	01:13	49-58	SUB OUT: GALLAGHER, ALANI
	01:13		SUB IN: QUIGLEY, SUMMER
SUB OUT: 22 KAMPP, JOHANNA	01:13		
SUB IN: 4 FUSARI, CHIARA	01:13		
SUB OUT: 15 SWINDELLS, HARRIET	00:18	52-60	
SUB IN: 14 CROMBIE, JAIMEE	00:18		

**Barry 52, Saint Leo 60**

**Official Substitutions Log**  
**Barry vs Saint Leo**  
**Period 4**  
**January 18, 2020 at Marion Bowman Center - Saint Leo, Fla.**



VISITORS: Barry	Time	Score	HOME: Saint Leo
4 FUSARI, CHIARA			0 ULRICH, AMANDA
10 PINK, ASHLEIGH			10 O'SHAUGHNESSY, CASEY
15 SWINDELLS, HARRIET			22 BUTTON, ALEX
24 BAENA, NEREA			23 GALLAGHER, ALANI
32 HERGOT, EMMA			33 BRIERLEY, GINA
	10:00	-	SUB OUT: QUIGLEY, SUMMER
	10:00		SUB OUT: MOON, MONTIA
	10:00		SUB IN: ULRICH, AMANDA
	10:00		SUB IN: GALLAGHER, ALANI
SUB OUT: 14 CROMBIE, JAIMEE	10:00		
SUB OUT: 34 SANDERS, CARLY	10:00		
SUB IN: 15 SWINDELLS, HARRIET	10:00		
SUB IN: 32 HERGOT, EMMA	10:00		
	08:23	53-62	SUB OUT: BRIERLEY, GINA
	08:23		SUB IN: ZEITSIFF, ABBY
SUB OUT: 32 HERGOT, EMMA	07:56	55-62	
SUB IN: 34 SANDERS, CARLY	07:56		
SUB OUT: 15 SWINDELLS, HARRIET	06:47	57-68	
SUB IN: 22 KAMPP, JOHANNA	06:47		
	05:00	59-71	SUB OUT: BUTTON, ALEX
	05:00		SUB IN: BRIERLEY, GINA
SUB OUT: 22 KAMPP, JOHANNA	04:11	60-71	
SUB IN: 35 DACRES, RENICE	04:11		
	03:26	61-71	SUB OUT: ZEITSIFF, ABBY
	03:26		SUB IN: BUTTON, ALEX
	01:19	68-71	SUB OUT: BRIERLEY, GINA
	01:19		SUB IN: MOON, MONTIA
SUB OUT: 10 PINK, ASHLEIGH	00:38	68-74	
SUB IN: 23 FLEFIL, CAMILLA	00:38		
	00:34	68-77	SUB OUT: GALLAGHER, ALANI
	00:34		SUB IN: QUIGLEY, SUMMER

**Barry 68, Saint Leo 77**

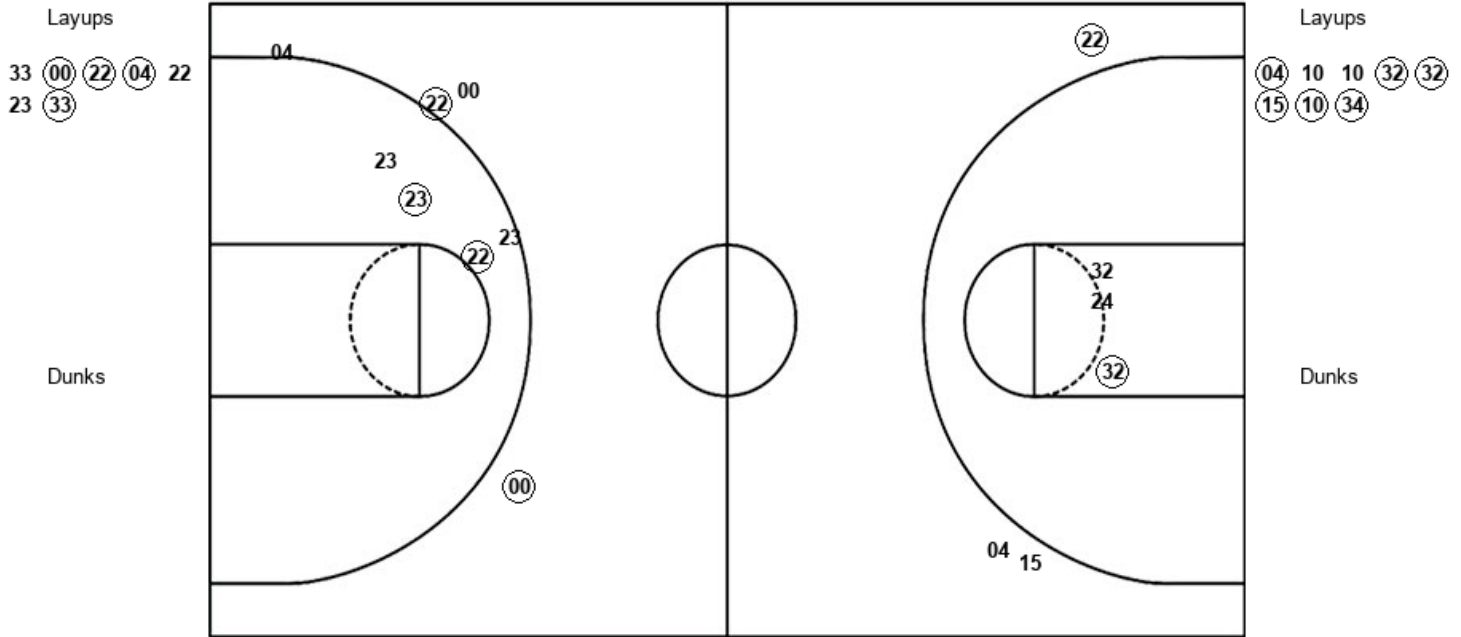


**Official Shot Chart**  
**Barry vs Saint Leo**  
**PERIOD 1 Shots**  
 January 18, 2020 at Marion Bowman Center - Saint Leo, Fla.



**Saint Leo**

**Barry**



SLW : Period 1	Made	Att	Pct
Layups	4	7	57.1
Dunks	0	0	0
2PT Field Goals	6	11	54.5
3PT Field Goals	2	4	50.0
<b>Total Field Goals</b>	<b>8</b>	<b>15</b>	<b>53.3</b>

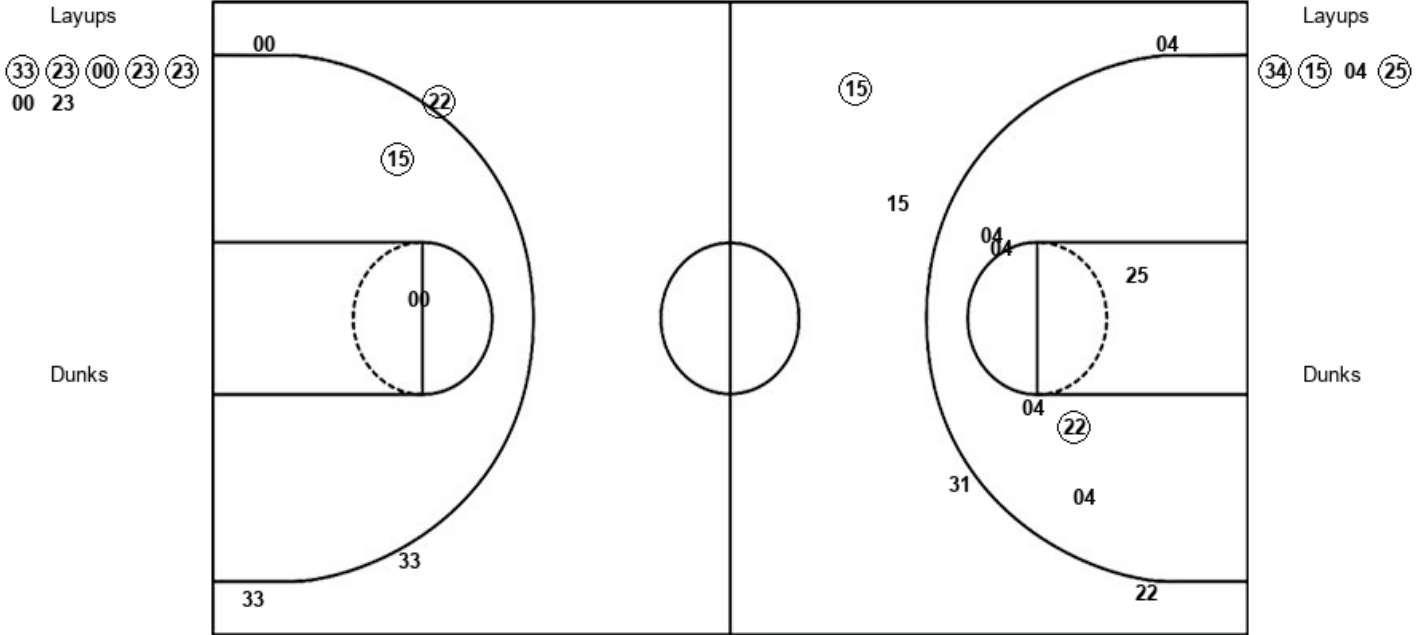
BUW : Period 1	Made	Att	Pct
Layups	6	8	75.0
Dunks	0	0	0
2PT Field Goals	7	11	63.6
3PT Field Goals	1	3	33.3
<b>Total Field Goals</b>	<b>8</b>	<b>14</b>	<b>57.1</b>

**Official Shot Chart**  
**Barry vs Saint Leo**  
**PERIOD 2 Shots**  
 January 18, 2020 at Marion Bowman Center - Saint Leo, Fla.



**Saint Leo**

**Barry**



SLW : Period 2	Made	Att	Pct
Layups	5	7	71.4
Dunks	0	0	0
2PT Field Goals	6	9	66.7
3PT Field Goals	1	4	25.0
<b>Total Field Goals</b>	<b>7</b>	<b>13</b>	<b>53.8</b>

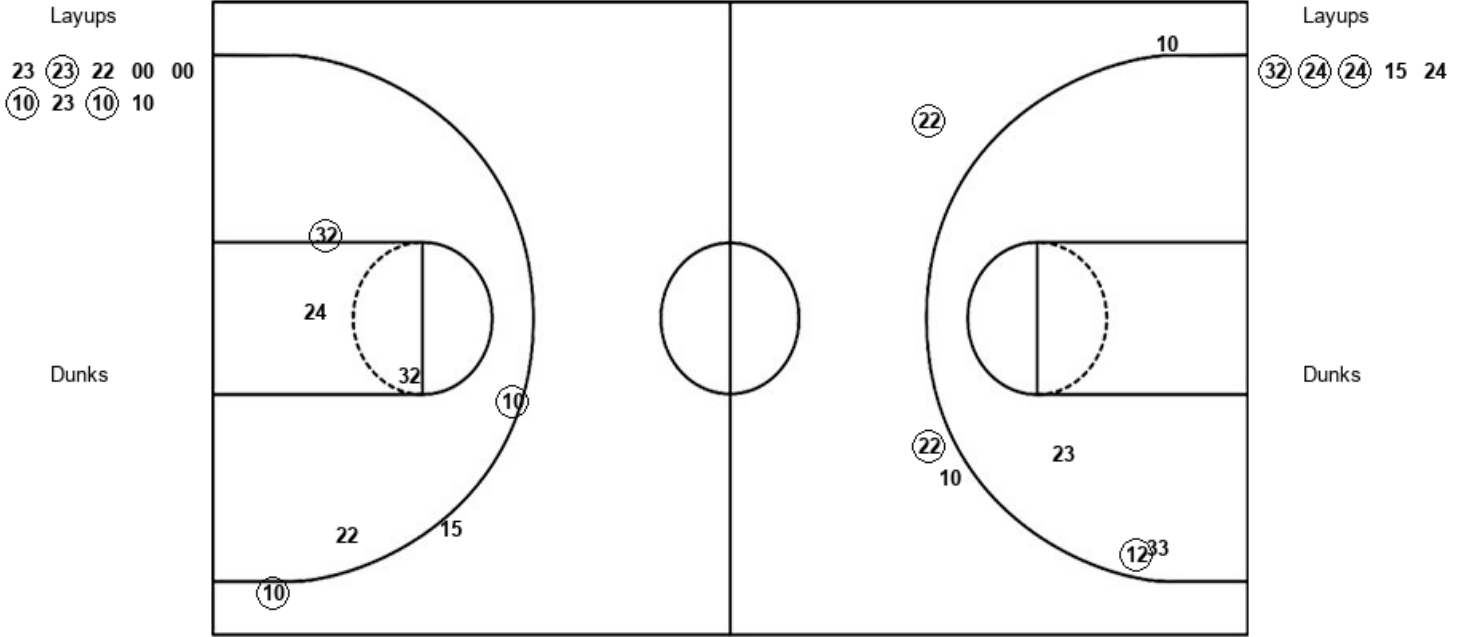
BUW : Period 2	Made	Att	Pct
Layups	3	4	75.0
Dunks	0	0	0
2PT Field Goals	4	10	40.0
3PT Field Goals	1	5	20.0
<b>Total Field Goals</b>	<b>5</b>	<b>15</b>	<b>33.3</b>

**Official Shot Chart**  
**Barry vs Saint Leo**  
**PERIOD 3 Shots**  
 January 18, 2020 at Marion Bowman Center - Saint Leo, Fla.



**Saint Leo**

**Barry**



SLW : Period 3	Made	Att	Pct
Layups	3	9	33.3
Dunks	0	0	0
2PT Field Goals	3	11	27.3
3PT Field Goals	3	5	60.0
<b>Total Field Goals</b>	<b>6</b>	<b>16</b>	<b>37.5</b>

BUW : Period 3	Made	Att	Pct
Layups	3	5	60.0
Dunks	0	0	0
2PT Field Goals	4	9	44.4
3PT Field Goals	2	3	66.7
<b>Total Field Goals</b>	<b>6</b>	<b>12</b>	<b>50.0</b>

**Official Shot Chart**  
**Barry vs Saint Leo**  
**PERIOD 4 Shots**  
 January 18, 2020 at Marion Bowman Center - Saint Leo, Fla.

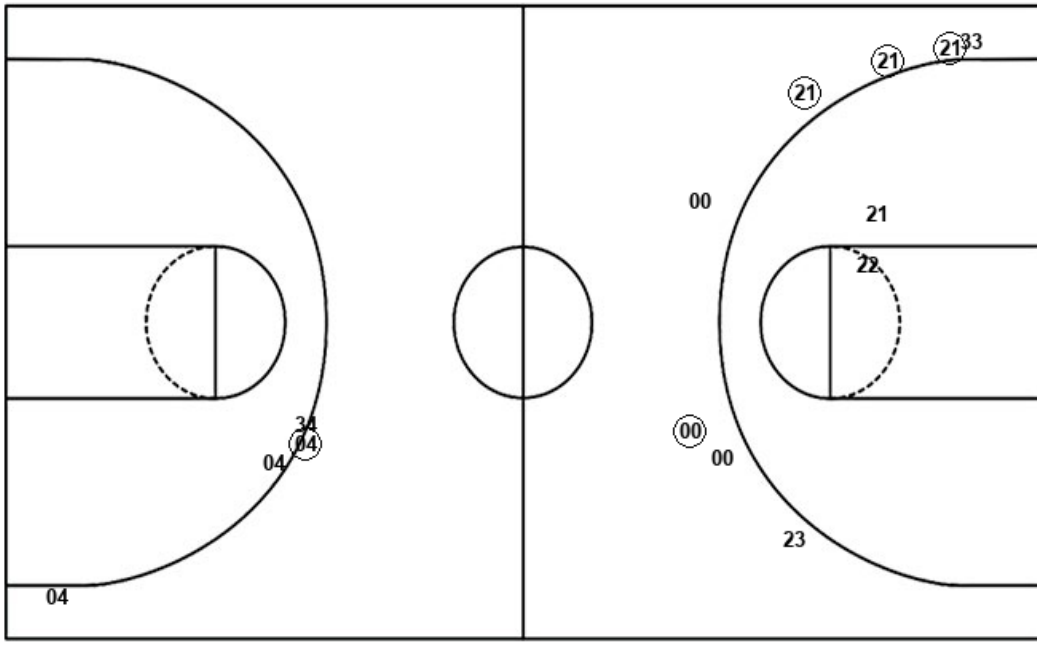


**Saint Leo**

**Barry**

Layups  
 23 23 (23) 22 00  
 00 23 10

Layups  
 (24) 15 (34) 04 (24)  
 (10) 04



Dunks

Dunks

SLW : Period 4	Made	Att	Pct
Layups	1	8	12.5
Dunks	0	0	0
2PT Field Goals	1	10	10.0
3PT Field Goals	4	8	50.0
<b>Total Field Goals</b>	<b>5</b>	<b>18</b>	<b>27.8</b>

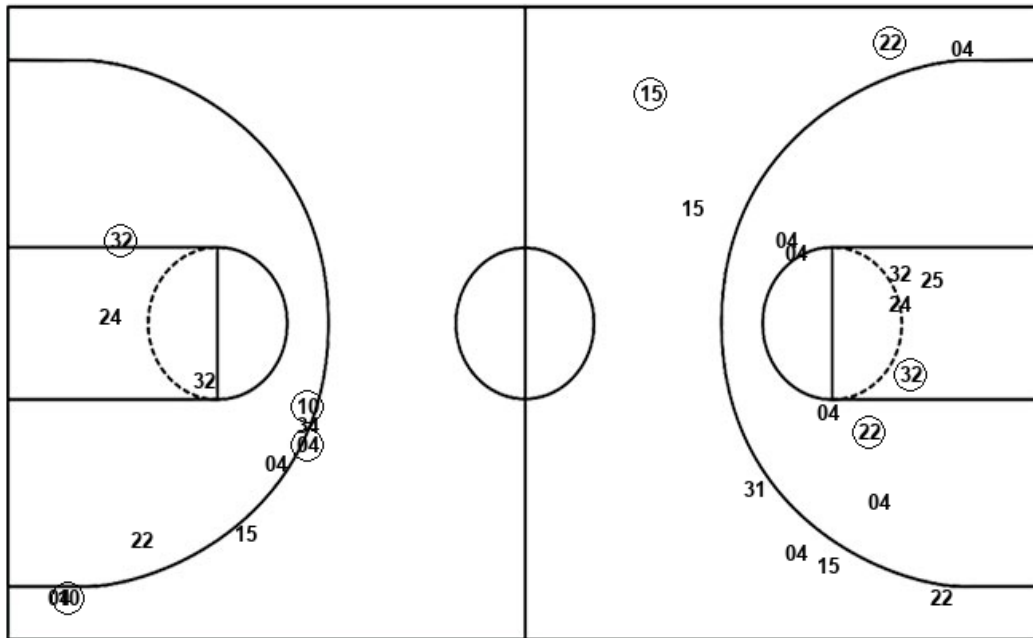
BUW : Period 4	Made	Att	Pct
Layups	4	7	57.1
Dunks	0	0	0
2PT Field Goals	4	7	57.1
3PT Field Goals	1	4	25.0
<b>Total Field Goals</b>	<b>5</b>	<b>11</b>	<b>45.5</b>

**Official Shot Chart**  
**Barry vs Saint Leo**  
**Barry Team Shots**  
 January 18, 2020 at Marion Bowman Center - Saint Leo, Fla.



Layups

Dunks



Layups

Dunks

- (04) 10 10 (32) (32)
- (15) (10) (34) (34) (15)
- 04 (25) (32) (24) (24)
- 15 24 (24) 15 (34)
- 04 (24) (10) 04

BUW : Period 1	Made	Att	Pct
Layups	6	8	75.0
Dunks	0	0	0
2PT Field Goals	7	11	63.6
3PT Field Goals	1	3	33.3
<b>Total Field Goals</b>	<b>8</b>	<b>14</b>	<b>57.1</b>

BUW : Period 3	Made	Att	Pct
Layups	3	5	60.0
Dunks	0	0	0
2PT Field Goals	4	9	44.4
3PT Field Goals	2	3	66.7
<b>Total Field Goals</b>	<b>6</b>	<b>12</b>	<b>50.0</b>

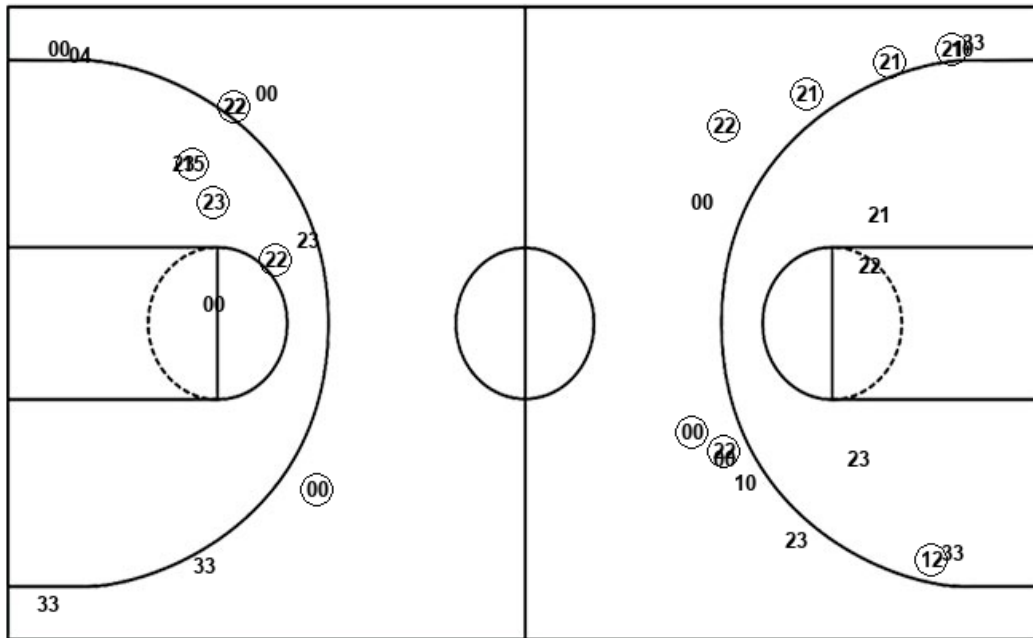
BUW : Period 2	Made	Att	Pct
Layups	3	4	75.0
Dunks	0	0	0
2PT Field Goals	4	10	40.0
3PT Field Goals	1	5	20.0
<b>Total Field Goals</b>	<b>5</b>	<b>15</b>	<b>33.3</b>

BUW : Period 4	Made	Att	Pct
Layups	4	7	57.1
Dunks	0	0	0
2PT Field Goals	4	7	57.1
3PT Field Goals	1	4	25.0
<b>Total Field Goals</b>	<b>5</b>	<b>11</b>	<b>45.5</b>

**Official Shot Chart**  
**Barry vs Saint Leo**  
**Saint Leo Team Shots**  
 January 18, 2020 at Marion Bowman Center - Saint Leo, Fla.



Layups



Layups

33 (00) (22) (04) 22  
 23 (33) (33) (23) (00)  
 (23) (23) 00 23 23  
 (23) 22 00 00 (10)  
 23 (10) 10 23 23  
 (23) 22 00 00 23  
 10

Dunks

Dunks

SLW : Period 1	Made	Att	Pct
Layups	4	7	57.1
Dunks	0	0	0
2PT Field Goals	6	11	54.5
3PT Field Goals	2	4	50.0
<b>Total Field Goals</b>	<b>8</b>	<b>15</b>	<b>53.3</b>

SLW : Period 3	Made	Att	Pct
Layups	3	9	33.3
Dunks	0	0	0
2PT Field Goals	3	11	27.3
3PT Field Goals	3	5	60.0
<b>Total Field Goals</b>	<b>6</b>	<b>16</b>	<b>37.5</b>

SLW : Period 2	Made	Att	Pct
Layups	5	7	71.4
Dunks	0	0	0
2PT Field Goals	6	9	66.7
3PT Field Goals	1	4	25.0
<b>Total Field Goals</b>	<b>7</b>	<b>13</b>	<b>53.8</b>

SLW : Period 4	Made	Att	Pct
Layups	1	8	12.5
Dunks	0	0	0
2PT Field Goals	1	10	10.0
3PT Field Goals	4	8	50.0
<b>Total Field Goals</b>	<b>5</b>	<b>18</b>	<b>27.8</b>