

## FINAL SCORE

**High Point**

**58**



**Texas**

**89**



December 31, 2019 • Frank Erwin Center

## FINAL STATISTICS

**Official Box Score**  
**High Point vs Texas**  
**Game Totals -- Final Statistics**  
**December 31, 2019 at Frank Erwin Center**



**High Point 58**

No.	Player	S	Pts	FG	3FG	FT	OR	DR	TR	PF	A	TO	Blk	Stl	Min	+/-
01	WRIGHT, JOHN-MICHAEL	G	15	4-12	1-6	6-6	1	4	5	1	2	2	1	1	33	-31
03	WRIGHT, JAMAL	G	2	1-5	0-2	0-0	0	0	0	1	0	1	0	0	14	-15
11	RANDLEMAN, BRYANT	G	6	2-6	0-0	2-3	0	2	2	1	0	1	0	1	28	-29
20	COLEMAN JR., ERIC	F	9	1-6	1-4	6-8	1	4	5	2	2	3	1	2	30	-29
35	SANCHEZ, CADEN	F	2	1-4	0-1	0-0	0	0	0	2	0	0	0	0	13	-12
02	SLAY II, DENNY	G	2	0-0	0-0	2-2	3	3	6	2	1	1	0	1	17	-5
04	QUINLAN-HUERTAS, BRENDA	G	0	0-0	0-0	0-0	0	0	0	0	0	0	0	0	1	3
10	IZUNABOR, EMMANUAL	C	0	0-5	0-0	0-0	2	2	4	1	0	2	0	0	9	-10
13	BILLUPS, CAMERON	F	1	0-0	0-0	1-2	0	0	0	0	0	0	0	0	1	2
15	THOMAS JR, CLIFF	F	15	6-10	0-0	3-5	3	1	4	0	0	2	0	0	28	-17
21	AYERS, RYAN	F	0	0-0	0-0	0-0	0	0	0	0	0	0	0	0	1	3
22	PETERSON III, ROB	G	4	1-2	0-0	2-4	0	1	1	1	1	1	0	0	22	-15
32	HUGHES, JOHN-MICHAEL	G	2	1-1	0-0	0-0	0	1	1	1	0	1	0	0	3	0
	TEAM						0	1	1	0		2				
<b>TOTALS</b>			<b>58</b>	<b>17-51</b>	<b>2-13</b>	<b>22-30</b>	<b>10</b>	<b>19</b>	<b>29</b>	<b>12</b>	<b>6</b>	<b>16</b>	<b>2</b>	<b>5</b>	<b>200</b>	

*Shooting By Period*

Period	FG	FG%	3FG	3FG%	FT	FT%
1st Half	8-25	32%	1-5	20%	12-16	75%
2nd Half	9-26	35%	1-8	13%	10-14	71%
<b>Game</b>	<b>17-51</b>	<b>33.3%</b>	<b>2-13</b>	<b>15.4%</b>	<b>22-30</b>	<b>73.3%</b>

*Last FG: 2nd-00:04*  
*Largest lead: By 0 at*  
*Technical Fouls: None.*

**Texas 89**

No.	Player	S	Pts	FG	3FG	FT	OR	DR	TR	PF	A	TO	Blk	Stl	Min	+/-
01	JONES, ANDREW	G	13	5-9	3-5	0-0	0	0	0	1	4	0	0	1	23	23
02	COLEMAN III, MATT	G	10	4-7	1-2	1-2	1	3	4	0	8	1	0	1	28	34
13	FEBRES, JASE	G	16	6-8	4-6	0-0	0	3	3	3	0	1	0	1	23	16
20	SIMS, JERICHO	F	12	5-8	0-0	2-4	5	6	11	2	1	2	1	2	23	42
33	HEPA, KAMAKA	F	7	3-8	1-5	0-0	2	3	5	4	3	2	3	0	24	12
00	LIDDELL, GERALD	F	7	3-7	0-0	1-2	0	2	2	4	0	1	2	0	19	11
03	RAMEY, COURTNEY	G	13	6-10	1-2	0-1	2	4	6	3	2	2	0	0	27	16
05	HAMM JR., ROYCE	F	2	1-1	0-0	0-0	0	1	1	2	0	1	0	0	7	-1
14	WHITESIDE, DRAYTON	G	0	0-1	0-1	0-0	0	0	0	0	0	0	0	0	2	-3
22	JONES, KAI	F	7	2-2	0-0	3-4	0	2	2	3	0	0	1	0	14	16
30	CUNNINGHAM, BROCK	F	0	0-1	0-0	0-0	1	0	1	0	0	0	0	1	4	-1
50	BAKER, WILL	C	2	1-3	0-2	0-0	0	0	0	2	0	0	0	0	6	-10
	TEAM						2	1	3	0		1				
<b>TOTALS</b>			<b>89</b>	<b>36-65</b>	<b>10-23</b>	<b>7-13</b>	<b>13</b>	<b>25</b>	<b>38</b>	<b>24</b>	<b>18</b>	<b>11</b>	<b>7</b>	<b>6</b>	<b>200</b>	

*Shooting By Period*

Period	FG	FG%	3FG	3FG%	FT	FT%
1st Half	17-32	53%	4-10	40%	3-8	38%
2nd Half	19-33	58%	6-13	46%	4-5	80%
<b>Game</b>	<b>36-65</b>	<b>55.4%</b>	<b>10-23</b>	<b>43.5%</b>	<b>7-13</b>	<b>53.8%</b>

*Last FG: 2nd-01:58*  
*Largest lead: By 35 at*  
*Technical Fouls: None.*

*Game Notes:*

Officials: Tony Padilla, Bert Smith, Marques Pettigrew  
 Attendance: 8652

Start Time: 01:00 AM

Score	1st	2nd	TOT
HPU	29	29	<b>58</b>
TEX	41	48	<b>89</b>

HPU led for 0:00. TEX led for 39:26.  
 Game was tied for 0:0.  
 Times tied: 0      Lead Changes: 0

Points from	HPU	TEX
In the Paint	28	38
Off Turns	15	25
2nd Chance	0	18
Fast Break	17	23
Bench	24	31

**Official Box Score**  
**High Point vs Texas**  
**First Half Statistics Only**  
**December 31, 2019 at Frank Erwin Center**



### High Point 29

No.	Player	S	Pts	FG	3FG	FT	OR	DR	TR	PF	A	TO	Blk	Stl	Min
01	WRIGHT, JOHN-MICHAEL	G	7	2-6	0-2	3-3	0	3	3	1	2	1	1	1	19
03	WRIGHT, JAMAL	G	0	0-3	0-2	0-0	0	0	0	1	0	1	0	0	7
11	RANDLEMAN, BRYANT	G	2	1-2	0-0	0-0	0	0	0	1	0	1	0	0	14
20	COLEMAN JR., ERIC	F	9	1-2	1-1	6-7	0	4	4	1	1	1	0	1	16
35	SANCHEZ, CADEN	F	0	0-0	0-0	0-0	0	0	0	2	0	0	0	0	2
02	SLAY II, DENNY	G	0	0-0	0-0	0-0	1	1	2	0	0	0	0	1	6
04	QUINLAN-HUERTAS, BRENDA	G	0	0-0	0-0	0-0	0	0	0	0	0	0	0	0	0
10	IZUNABOR, EMMANUAL	C	0	0-5	0-0	0-0	2	0	2	1	0	2	0	0	5
13	BILLUPS, CAMERON	F	0	0-0	0-0	0-0	0	0	0	0	0	0	0	0	0
15	THOMAS JR, CLIFF	F	9	4-6	0-0	1-2	2	1	3	0	0	1	0	0	17
21	AYERS, RYAN	F	0	0-0	0-0	0-0	0	0	0	0	0	0	0	0	0
22	PETERSON III, ROB	G	2	0-1	0-0	2-4	0	0	0	1	1	0	0	0	14
32	HUGHES, JOHN-MICHAEL	G	0	0-0	0-0	0-0	0	0	0	0	0	0	0	0	0
	TEAM			0-0			0	1	1	0		0			
<b>TOTALS</b>			<b>29</b>	<b>8-25</b>	<b>1-5</b>	<b>12-16</b>	<b>5</b>	<b>10</b>	<b>15</b>	<b>8</b>	<b>4</b>	<b>7</b>	<b>1</b>	<b>3</b>	<b>100</b>

*Shooting By Period*

Period	FG	FG%	3FG	3FG%	FT	FT%
1st Half	8-25	32%	1-5	20%	12-16	75%
Game	17-51	33.3%	2-13	15.4%	22-30	73.3%

*Last FG Half: HPU 2nd-00:04*

### Texas 41

No.	Player	S	Pts	FG	3FG	FT	OR	DR	TR	PF	A	TO	Blk	Stl	Min
01	JONES, ANDREW	G	5	2-6	1-3	0-0	0	0	0	0	2	0	0	1	14
02	COLEMAN III, MATT	G	6	2-4	1-1	1-2	0	1	1	0	3	0	0	0	16
13	FEBRES, JASE	G	5	2-3	1-2	0-0	0	2	2	2	0	1	0	0	15
20	SIMS, JERICHO	F	7	3-4	0-0	1-3	4	2	6	2	0	1	0	1	9
33	HEPA, KAMAKA	F	5	2-5	1-3	0-0	2	3	5	0	3	1	2	0	16
00	LIDDELL, GERALD	F	5	2-3	0-0	1-2	0	0	0	2	0	0	2	0	7
03	RAMEY, COURTNEY	G	4	2-4	0-0	0-1	0	2	2	1	0	1	0	0	12
05	HAMM JR., ROYCE	F	2	1-1	0-0	0-0	0	1	1	2	0	0	0	0	6
14	WHITESIDE, DRAYTON	G	0	0-0	0-0	0-0	0	0	0	0	0	0	0	0	0
22	JONES, KAI	F	2	1-1	0-0	0-0	0	1	1	2	0	0	0	0	3
30	CUNNINGHAM, BROCK	F	0	0-0	0-0	0-0	0	0	0	0	0	0	0	0	0
50	BAKER, WILL	C	0	0-1	0-1	0-0	0	0	0	2	0	0	0	0	2
	TEAM			0-0			1	0	1	0		1			
<b>TOTALS</b>			<b>41</b>	<b>17-32</b>	<b>4-10</b>	<b>3-8</b>	<b>7</b>	<b>12</b>	<b>19</b>	<b>13</b>	<b>8</b>	<b>5</b>	<b>4</b>	<b>2</b>	<b>100</b>

*Shooting By Period*

Period	FG	FG%	3FG	3FG%	FT	FT%
1st Half	17-32	53%	4-10	40%	3-8	38%
Game	36-65	55.4%	10-23	43.5%	7-13	53.8%

*Last FG Half: TEX 2nd-01:58*

Game Notes:

Officials: Tony Padilla, Bert Smith, Marques Pettigrew  
Attendance: 8652

Start Time: 01:00 AM

Score	1st	2nd	TOT
HPU	29	29	<b>58</b>
TEX	41	48	<b>89</b>

Points from (This Period)	HPU	TEX
In the Paint	14	20
Off Turns	6	9
2nd Chance	0	7
Fast Break	7	7
Bench	11	13

**Official Play-By-Play**  
**High Point vs Texas**  
**First Half**  
**December 31, 2019 at Frank Erwin Center**



**Period 1**

**Starters:**

**High Point:** 1 WRIGHT, JOHN-MICHAEL (G); 3 WRIGHT, JAMAL (G); 11 RANDLEMAN, BRYANT (G); 20 COLEMAN JR., ERIC (F); 35 SANCHEZ, CADEN (F);

**Texas:** 1 JONES, ANDREW (G); 2 COLEMAN III, MATT (G); 13 FEBRES, JASE (G); 20 SIMS, JERICHO (F); 33 HEPA, KAMAKA (F);

Time	VISITORS: High Point	Score	Margin	HOME: Texas
19:28		3-0	H 3	GOOD! 3PTR by COLEMAN III, MATT
19:18	MISSED 3PTR by WRIGHT, JAMAL			
19:15				REBOUND (DEF) by COLEMAN III, MATT
19:02	FOUL by SANCHEZ, CADEN			
19:02				MISSED FT by SIMS, JERICHO
19:02				REBOUND (DEADB) by TEAM
19:02		4-0	H 4	GOOD! FT by SIMS, JERICHO
18:31	MISSED 3PTR by WRIGHT, JAMAL			
18:27				REBOUND (DEF) by SIMS, JERICHO
18:12				MISSED 3PTR by HEPA, KAMAKA
18:09		6-0	H 6	GOOD! JUMPER by SIMS, JERICHO [PNT]
18:09	FOUL by SANCHEZ, CADEN [PNT]			
18:09	SUB OUT: SANCHEZ, CADEN			
18:09	SUB IN: THOMAS JR, CLIFF			
18:09				MISSED FT by SIMS, JERICHO
18:08				REBOUND (OFF) by SIMS, JERICHO
18:03	REBOUND (DEF) by COLEMAN JR., ERIC			
17:40	MISSED JUMPER by WRIGHT, JAMAL			
17:39				REBOUND (DEADB) by TEAM
17:26				TURNOVER by SIMS, JERICHO
17:26	STEAL by WRIGHT, JOHN-MICHAEL			
17:21	GOOD! LAYUP by WRIGHT, JOHN-MICHAEL [FB]	6-2	H 4	
17:21	ASSIST by COLEMAN JR., ERIC			
17:01				MISSED 3PTR by HEPA, KAMAKA
16:59	REBOUND (DEADB) by TEAM			
16:59				FOUL by SIMS, JERICHO
16:59	SUB OUT: WRIGHT, JAMAL			
16:59	SUB OUT: COLEMAN JR., ERIC			
16:59	SUB IN: IZUNABOR, EMMANUAL			
16:59	SUB IN: PETERSON III, ROB			
16:42	MISSED JUMPER by WRIGHT, JOHN-MICHAEL			
16:35	REBOUND (OFF) by IZUNABOR, EMMANUAL			
16:35	MISSED LAYUP by IZUNABOR, EMMANUAL			
16:35				BLOCK by HEPA, KAMAKA
16:33				REBOUND (DEF) by HEPA, KAMAKA
16:32		8-2	H 6	GOOD! LAYUP by COLEMAN III, MATT [FB]
16:17	MISSED LAYUP by RANDLEMAN, BRYANT			
16:13	REBOUND (OFF) by IZUNABOR, EMMANUAL			
16:13	MISSED LAYUP by IZUNABOR, EMMANUAL			
16:12				REBOUND (DEF) by SIMS, JERICHO
15:53		11-2	H 9	GOOD! 3PTR by HEPA, KAMAKA
15:53				ASSIST by JONES, ANDREW
15:31	TURNOVER by IZUNABOR, EMMANUAL			
15:31	TIMEOUT MEDIA			
15:31				SUB OUT: JONES, ANDREW
15:31				SUB IN: RAMEY, COURTNEY
15:31	SUB OUT: RANDLEMAN, BRYANT			
15:31	SUB IN: SLAY II, DENNY			
15:31				MISSED JUMPER by SIMS, JERICHO
15:26	REBOUND (DEF) by WRIGHT, JOHN-MICHAEL			
15:14				FOUL by SIMS, JERICHO
15:14				SUB OUT: SIMS, JERICHO
15:14				SUB IN: HAMM JR., ROYCE
14:58	MISSED JUMPER by IZUNABOR, EMMANUAL			
14:58				BLOCK by LIDDELL, GERALD
14:51				REBOUND (DEF) by HEPA, KAMAKA
14:46				SUB OUT: COLEMAN III, MATT
14:46				SUB IN: LIDDELL, GERALD
14:38		13-2	H 11	GOOD! LAYUP by LIDDELL, GERALD
14:20	MISSED JUMPER by IZUNABOR, EMMANUAL			
14:15	REBOUND (OFF) by THOMAS JR, CLIFF			
14:07	MISSED LAYUP by WRIGHT, JOHN-MICHAEL			
14:07	REBOUND (OFF) by SLAY II, DENNY			
14:07				BLOCK by HEPA, KAMAKA
13:48	MISSED 3PTR by WRIGHT, JOHN-MICHAEL			
13:41				REBOUND (DEF) by RAMEY, COURTNEY
13:29				MISSED LAYUP by LIDDELL, GERALD
13:23	REBOUND (DEF) by THOMAS JR, CLIFF			
13:20	GOOD! LAYUP by THOMAS JR, CLIFF	13-4	H 9	
13:14		15-4	H 11	GOOD! JUMPER by LIDDELL, GERALD

Time	VISITORS: High Point	Score	Margin	HOME: Texas
12:56				FOUL by LIDDELL, GERALD
12:56	GOOD! FT by PETERSON III, ROB	15-5	H 10	
12:56				SUB OUT: FEBRES, JASE
12:56				SUB OUT: HEPA, KAMAKA
12:56				SUB IN: COLEMAN III, MATT
12:56				SUB IN: JONES, KAI
12:56	SUB OUT: WRIGHT, JOHN-MICHAEL			
12:56	SUB OUT: IZUNABOR, EMMANUAL			
12:56	SUB IN: WRIGHT, JAMAL			
12:56	SUB IN: COLEMAN JR., ERIC			
12:56	GOOD! FT by PETERSON III, ROB	15-6	H 9	
12:38		17-6	H 11	GOOD! DUNK by JONES, KAI
12:38				ASSIST by COLEMAN III, MATT
12:31				FOUL by HAMM JR., ROYCE
12:30	MISSED JUMPER by PETERSON III, ROB			
12:25				REBOUND (DEF) by JONES, KAI
12:13				TURNOVER by RAMEY, COURTNEY [PNT]
12:13	STEAL by SLAY II, DENNY			
12:10	FOUL by WRIGHT, JAMAL			
12:10	TURNOVER by WRIGHT, JAMAL			
12:10	SUB OUT: WRIGHT, JAMAL			
12:10	SUB IN: WRIGHT, JOHN-MICHAEL			
11:50		19-6	H 13	GOOD! JUMPER by HAMM JR., ROYCE [PNT]
11:18				FOUL by JONES, KAI
11:18	TIMEOUT MEDIA			
11:18				SUB OUT: LIDDELL, GERALD
11:18				SUB IN: JONES, ANDREW
11:18	MISSED FT by COLEMAN JR., ERIC			
11:18	REBOUND (DEADB) by TEAM			
11:18	GOOD! FT by COLEMAN JR., ERIC	19-7	H 12	
11:18	GOOD! FT by COLEMAN JR., ERIC	19-8	H 11	
10:57				MISSED LAYUP by RAMEY, COURTNEY
10:57	BLOCK by WRIGHT, JOHN-MICHAEL			
10:49	REBOUND (DEF) by SLAY II, DENNY			
10:48	TURNOVER by WRIGHT, JOHN-MICHAEL			
10:48				STEAL by JONES, ANDREW
10:44		21-8	H 13	GOOD! LAYUP by RAMEY, COURTNEY [FB]
10:44				ASSIST by COLEMAN III, MATT
10:21	MISSED JUMPER by COLEMAN JR., ERIC			
10:17				REBOUND (DEF) by HAMM JR., ROYCE
10:13				MISSED 3PTR by JONES, ANDREW
10:13				REBOUND (OFF) by TEAM
10:13				SUB OUT: COLEMAN III, MATT
10:13				SUB OUT: JONES, KAI
10:13				SUB IN: FEBRES, JASE
10:13				SUB IN: HEPA, KAMAKA
10:10	FOUL by PETERSON III, ROB			
10:08				TURNOVER by HEPA, KAMAKA
10:08	STEAL by COLEMAN JR., ERIC			
09:49				FOUL by HAMM JR., ROYCE
09:49				SUB OUT: HAMM JR., ROYCE
09:49				SUB IN: BAKER, WILL
09:48				FOUL by RAMEY, COURTNEY [PNT]
09:48	GOOD! FT by COLEMAN JR., ERIC	21-9	H 12	
09:48	GOOD! FT by COLEMAN JR., ERIC	21-10	H 11	
09:48	SUB OUT: SLAY II, DENNY			
09:48	SUB IN: RANDLEMAN, BRYANT			
09:34				MISSED LAYUP by JONES, ANDREW
09:32	REBOUND (DEF) by WRIGHT, JOHN-MICHAEL			
09:23				FOUL by BAKER, WILL [PNT]
09:23	MISSED FT by THOMAS JR, CLIFF			
09:23	REBOUND (DEADB) by TEAM			
09:23				SUB OUT: RAMEY, COURTNEY
09:23				SUB IN: COLEMAN III, MATT
09:23	GOOD! FT by THOMAS JR, CLIFF	21-11	H 10	
08:59				MISSED 3PTR by BAKER, WILL
08:56	REBOUND (DEF) by COLEMAN JR., ERIC			
08:51	GOOD! 3PTR by COLEMAN JR., ERIC [FB]	21-14	H 7	
08:51	ASSIST by PETERSON III, ROB			
08:27		23-14	H 9	GOOD! JUMPER by JONES, ANDREW
08:27				ASSIST by HEPA, KAMAKA
08:04	GOOD! by THOMAS JR, CLIFF [PNT]	23-16	H 7	
07:49				MISSED 3PTR by FEBRES, JASE
07:45	REBOUND (DEF) by COLEMAN JR., ERIC			
07:33	GOOD! LAYUP by WRIGHT, JOHN-MICHAEL	23-18	H 5	
07:33				FOUL by BAKER, WILL
07:33	TIMEOUT MEDIA			
07:33	GOOD! FT by WRIGHT, JOHN-MICHAEL	23-19	H 4	
07:31				SUB OUT: COLEMAN III, MATT
07:31				SUB OUT: BAKER, WILL

Time	VISITORS: High Point	Score	Margin	HOME: Texas
07:31				SUB IN: LIDDELL, GERALD
07:31				SUB IN: RAMEY, COURTNEY
07:31	SUB OUT: THOMAS JR, CLIFF			
07:31	SUB OUT: PETERSON III, ROB			
07:31	SUB IN: WRIGHT, JAMAL			
07:31	SUB IN: IZUNABOR, EMMANUAL			
07:19				MISSED LAYUP by RAMEY, COURTNEY [PNT]
07:16	REBOUND (DEF) by WRIGHT, JOHN-MICHAEL			
07:10	MISSED LAYUP by IZUNABOR, EMMANUAL [PNT]			
07:10				BLOCK by LIDDELL, GERALD
07:06				REBOUND (DEF) by RAMEY, COURTNEY
07:06	FOUL by IZUNABOR, EMMANUAL			
06:45		25-19	H 6	GOOD! LAYUP by HEPA, KAMAKA
06:45				ASSIST by JONES, ANDREW
06:28	TURNOVER by IZUNABOR, EMMANUAL			
06:25	FOUL by COLEMAN JR., ERIC			
06:25				SUB OUT: JONES, ANDREW
06:25				SUB IN: COLEMAN III, MATT
06:25	SUB OUT: IZUNABOR, EMMANUAL			
06:25	SUB IN: THOMAS JR, CLIFF			
06:25		26-19	H 7	GOOD! FT by LIDDELL, GERALD [FB]
06:25				MISSED FT by LIDDELL, GERALD [FB]
06:24	REBOUND (DEF) by COLEMAN JR., ERIC			
06:01	GOOD! LAYUP by THOMAS JR, CLIFF	26-21	H 5	
06:01	ASSIST by WRIGHT, JOHN-MICHAEL			
05:56				FOUL by FEBRES, JASE
05:56				TURNOVER by FEBRES, JASE
05:43	GOOD! LAYUP by RANDLEMAN, BRYANT	26-23	H 3	
05:25		28-23	H 5	GOOD! LAYUP by RAMEY, COURTNEY
05:25				ASSIST by HEPA, KAMAKA
05:03	TURNOVER by THOMAS JR, CLIFF			
05:03				SUB OUT: HEPA, KAMAKA
05:03				SUB IN: JONES, KAI
05:03	SUB OUT: WRIGHT, JAMAL			
05:03	SUB IN: PETERSON III, ROB			
04:46		30-23	H 7	GOOD! LAYUP by FEBRES, JASE
04:30				FOUL by JONES, KAI
04:30	GOOD! FT by WRIGHT, JOHN-MICHAEL	30-24	H 6	
04:30				SUB OUT: JONES, KAI
04:30				SUB IN: HEPA, KAMAKA
04:30	GOOD! FT by WRIGHT, JOHN-MICHAEL	30-25	H 5	
04:18	FOUL by RANDLEMAN, BRYANT			
04:18				MISSED FT by RAMEY, COURTNEY
04:18	REBOUND (DEADB) by TEAM			
04:17				FOUL by LIDDELL, GERALD
04:17	GOOD! FT by COLEMAN JR., ERIC [FB]	30-26	H 4	
04:17				SUB OUT: LIDDELL, GERALD
04:17				SUB IN: JONES, ANDREW
04:17	GOOD! FT by COLEMAN JR., ERIC [FB]	30-27	H 3	
04:07	FOUL by WRIGHT, JOHN-MICHAEL			
04:07		31-27	H 4	GOOD! FT by COLEMAN III, MATT
04:07				SUB OUT: HEPA, KAMAKA
04:07				SUB IN: SIMS, JERICHO
04:07				MISSED FT by COLEMAN III, MATT
04:07	REBOUND (DEF) by TEAM			
03:40	TIMEOUT MEDIA			
03:40				SUB OUT: RAMEY, COURTNEY
03:40				SUB IN: HEPA, KAMAKA
03:35	MISSED 3PTR by WRIGHT, JOHN-MICHAEL			
03:32				REBOUND (DEF) by FEBRES, JASE
03:28		33-27	H 6	GOOD! JUMPER by SIMS, JERICHO [FB]
03:06	GOOD! JUMPER by THOMAS JR, CLIFF	33-29	H 4	
03:06	ASSIST by WRIGHT, JOHN-MICHAEL			
02:46		36-29	H 7	GOOD! 3PTR by JONES, ANDREW
02:46				ASSIST by COLEMAN III, MATT
02:18				FOUL by FEBRES, JASE [PNT]
02:18	MISSED FT by PETERSON III, ROB [FB]			
02:18	REBOUND (DEADB) by TEAM			
02:18	MISSED FT by PETERSON III, ROB [FB]			
02:18				REBOUND (DEF) by FEBRES, JASE
02:10				MISSED LAYUP by COLEMAN III, MATT
02:10				REBOUND (OFF) by HEPA, KAMAKA
02:04				MISSED LAYUP by HEPA, KAMAKA
02:04				REBOUND (OFF) by HEPA, KAMAKA
02:01		39-29	H 10	GOOD! 3PTR by FEBRES, JASE
02:01				ASSIST by HEPA, KAMAKA
02:00	TIMEOUT 30SEC			
02:00				SUB OUT: FEBRES, JASE
02:00				SUB IN: RAMEY, COURTNEY
01:42	TURNOVER by COLEMAN JR., ERIC			

Time	VISITORS: High Point	Score	Margin	HOME: Texas
01:42				STEAL by SIMS, JERICO
01:27				MISSED 3PTR by JONES, ANDREW
01:24				REBOUND (OFF) by SIMS, JERICO
01:18				MISSED JUMPER by JONES, ANDREW
01:15				REBOUND (OFF) by SIMS, JERICO
00:54				TURNOVER by TEAM
00:53				SUB OUT: SIMS, JERICO
00:53				SUB IN: HAMM JR., ROYCE
00:53	SUB OUT: PETERSON III, ROB			
00:53	SUB IN: WRIGHT, JAMAL			
00:43	TURNOVER by RANDLEMAN, BRYANT			
00:43				SUB OUT: HAMM JR., ROYCE
00:43				SUB IN: SIMS, JERICO
00:40				MISSED JUMPER by COLEMAN III, MATT [PNT]
00:34				REBOUND (OFF) by SIMS, JERICO
00:34		41-29	H 12	GOOD! DUNK by SIMS, JERICO
00:10	MISSED by THOMAS JR, CLIFF [PNT]			
00:05	REBOUND (OFF) by THOMAS JR, CLIFF			
00:03	MISSED by THOMAS JR, CLIFF			
00:00				REBOUND (DEF) by HEPA, KAMAKA

### High Point 29, Texas 41

Points from (This Period)	HPU	TEX
In the Paint	14	20
Off Turns	6	9
2nd Chance	0	7
Fast Break	7	7
Bench	11	13

**Official Box Score  
High Point vs Texas  
Second Half Statistics Only  
December 31, 2019 at Frank Erwin Center**



**High Point 29**

No.	Player	S	Pts	FG	3FG	FT	OR	DR	TR	PF	A	TO	Blk	Stl	Min
01	WRIGHT, JOHN-MICHAEL	G	8	2-6	1-4	3-3	1	1	2	0	0	1	0	0	14
03	WRIGHT, JAMAL	G	2	1-2	0-0	0-0	0	0	0	0	0	0	0	0	7
11	RANDLEMAN, BRYANT	G	4	1-4	0-0	2-3	0	2	2	0	0	0	0	1	13
20	COLEMAN JR., ERIC	F	0	0-4	0-3	0-1	1	0	1	1	1	2	1	1	14
35	SANCHEZ, CADEN	F	2	1-4	0-1	0-0	0	0	0	0	0	0	0	0	11
02	SLAY II, DENNY	G	2	0-0	0-0	2-2	2	2	4	2	1	1	0	0	11
04	QUINLAN-HUERTAS, BRENDA	G	0	0-0	0-0	0-0	0	0	0	0	0	0	0	0	1
10	IZUNABOR, EMMANUAL	C	0	0-0	0-0	0-0	0	2	2	0	0	0	0	0	4
13	BILLUPS, CAMERON	F	1	0-0	0-0	1-2	0	0	0	0	0	0	0	0	1
15	THOMAS JR, CLIFF	F	6	2-4	0-0	2-3	1	0	1	0	0	1	0	0	11
21	AYERS, RYAN	F	0	0-0	0-0	0-0	0	0	0	0	0	0	0	0	1
22	PETERSON III, ROB	G	2	1-1	0-0	0-0	0	1	1	0	0	1	0	0	9
32	HUGHES, JOHN-MICHAEL	G	2	1-1	0-0	0-0	0	1	1	1	0	1	0	0	3
	TEAM			0-0			0	0	0	0		2			
<b>TOTALS</b>			<b>29</b>	<b>9-26</b>	<b>1-8</b>	<b>10-14</b>	<b>5</b>	<b>9</b>	<b>14</b>	<b>4</b>	<b>2</b>	<b>9</b>	<b>1</b>	<b>2</b>	<b>100</b>

*Shooting By Period*

Period	FG	FG%	3FG	3FG%	FT	FT%
2nd Half	9-26	35%	1-8	13%	10-14	71%
Game	17-51	33.3%	2-13	15.4%	22-30	73.3%

*Last FG Half: HPU -*

**Texas 48**

No.	Player	S	Pts	FG	3FG	FT	OR	DR	TR	PF	A	TO	Blk	Stl	Min
01	JONES, ANDREW	G	8	3-3	2-2	0-0	0	0	0	1	2	0	0	0	10
02	COLEMAN III, MATT	G	4	2-3	0-1	0-0	1	2	3	0	5	1	0	1	12
13	FEBRES, JASE	G	11	4-5	3-4	0-0	0	1	1	1	0	0	0	1	7
20	SIMS, JERICHO	F	5	2-4	0-0	1-1	1	4	5	0	1	1	1	1	15
33	HEPA, KAMAKA	F	2	1-3	0-2	0-0	0	0	0	4	0	1	1	0	8
00	LIDDELL, GERALD	F	2	1-4	0-0	0-0	0	2	2	2	0	1	0	0	12
03	RAMEY, COURTNEY	G	9	4-6	1-2	0-0	2	2	4	2	2	1	0	0	15
05	HAMM JR., ROYCE	F	0	0-0	0-0	0-0	0	0	0	0	0	1	0	0	1
14	WHITESIDE, DRAYTON	G	0	0-1	0-1	0-0	0	0	0	0	0	0	0	0	2
22	JONES, KAI	F	5	1-1	0-0	3-4	0	1	1	1	0	0	1	0	11
30	CUNNINGHAM, BROCK	F	0	0-1	0-0	0-0	1	0	1	0	0	0	0	1	4
50	BAKER, WILL	C	2	1-2	0-1	0-0	0	0	0	0	0	0	0	0	4
	TEAM			0-0			1	1	2	0		0			
<b>TOTALS</b>			<b>48</b>	<b>19-33</b>	<b>6-13</b>	<b>4-5</b>	<b>6</b>	<b>13</b>	<b>19</b>	<b>11</b>	<b>10</b>	<b>6</b>	<b>3</b>	<b>4</b>	<b>100</b>

*Shooting By Period*

Period	FG	FG%	3FG	3FG%	FT	FT%
2nd Half	19-33	58%	6-13	46%	4-5	80%
Game	36-65	55.4%	10-23	43.5%	7-13	53.8%

*Last FG Half: TEX -*

*Game Notes:*

Officials: Tony Padilla, Bert Smith, Marques Pettigrew  
Attendance: 8652

Start Time: 01:00 AM

Score	1st	2nd	TOT
HPU	29	29	<b>58</b>
TEX	41	48	<b>89</b>

Points from (This Period)	HPU	TEX
In the Paint	14	18
Off Turns	9	16
2nd Chance	0	11
Fast Break	10	16
Bench	13	18



**Official Play-By-Play**  
**High Point vs Texas**  
**Second Half**  
**December 31, 2019 at Frank Erwin Center**



**Period 2**

**Starters:**

**High Point:** 1 WRIGHT, JOHN-MICHAEL (G); 3 WRIGHT, JAMAL (G); 11 RANDLEMAN, BRYANT (G); 20 COLEMAN JR., ERIC (F); 35 SANCHEZ, CADEN (F);

**Texas:** 1 JONES, ANDREW (G); 2 COLEMAN III, MATT (G); 13 FEBRES, JASE (G); 20 SIMS, JERICHO (F); 33 HEPA, KAMAKA (F);

Time	VISITORS: High Point	Score	Margin	HOME: Texas
20:00				SUB OUT: RAMEY, COURTNEY
20:00				SUB IN: FEBRES, JASE
20:00	SUB OUT: THOMAS JR, CLIFF			
20:00	SUB IN: SANCHEZ, CADEN			
19:36		44-29	H 15	GOOD! 3PTR by FEBRES, JASE
19:36				ASSIST by SIMS, JERICHO
19:08	MISSED JUMPER by WRIGHT, JAMAL			
19:07	REBOUND (DEADB) by TEAM			
19:07				FOUL by HEPA, KAMAKA
18:53	MISSED JUMPER by RANDLEMAN, BRYANT			
18:53				BLOCK by HEPA, KAMAKA
18:47				REBOUND (DEF) by SIMS, JERICHO
18:44		46-29	H 17	GOOD! LAYUP by HEPA, KAMAKA
18:44				ASSIST by COLEMAN III, MATT
18:13	TURNOVER by TEAM			
18:13				SUB OUT: COLEMAN III, MATT
18:13				SUB IN: RAMEY, COURTNEY
18:13	SUB OUT: WRIGHT, JAMAL			
18:13	SUB OUT: RANDLEMAN, BRYANT			
18:13	SUB IN: SLAY II, DENNY			
18:13	SUB IN: PETERSON III, ROB			
18:00				MISSED 3PTR by HEPA, KAMAKA
17:56				REBOUND (OFF) by RAMEY, COURTNEY
17:47		48-29	H 19	GOOD! DUNK by SIMS, JERICHO
17:47				ASSIST by JONES, ANDREW
17:47	FOUL by SLAY II, DENNY			
17:47		49-29	H 20	GOOD! FT by SIMS, JERICHO
17:22	GOOD! LAYUP by PETERSON III, ROB	49-31	H 18	
17:06				TURNOVER by SIMS, JERICHO
17:06	STEAL by COLEMAN JR., ERIC			
17:03				FOUL by JONES, ANDREW
17:03	GOOD! FT by SLAY II, DENNY [FB]	49-32	H 17	
17:03				SUB OUT: JONES, ANDREW
17:03				SUB IN: COLEMAN III, MATT
17:03	GOOD! FT by SLAY II, DENNY [FB]	49-33	H 16	
16:43				MISSED 3PTR by RAMEY, COURTNEY
16:40	REBOUND (DEF) by SLAY II, DENNY			
16:27	MISSED LAYUP by COLEMAN JR., ERIC [PNT]			
16:21				REBOUND (DEF) by FEBRES, JASE
16:16				MISSED 3PTR by COLEMAN III, MATT
16:10				REBOUND (OFF) by COLEMAN III, MATT
16:08				MISSED 3PTR by HEPA, KAMAKA
16:04	REBOUND (DEF) by SLAY II, DENNY			
15:58	GOOD! 3PTR by WRIGHT, JOHN-MICHAEL	49-36	H 13	
15:58	ASSIST by COLEMAN JR., ERIC			
15:58				FOUL by HEPA, KAMAKA
15:58	TIMEOUT MEDIA			
15:58				SUB OUT: FEBRES, JASE
15:58				SUB OUT: HEPA, KAMAKA
15:58				SUB IN: LIDDELL, GERALD
15:58				SUB IN: JONES, KAI
15:58	SUB OUT: SANCHEZ, CADEN			
15:58	SUB IN: THOMAS JR, CLIFF			
15:58	GOOD! FT by WRIGHT, JOHN-MICHAEL	49-37	H 12	
15:33		51-37	H 14	GOOD! JUMPER by LIDDELL, GERALD
15:14	MISSED JUMPER by WRIGHT, JOHN-MICHAEL [PNT]			
15:09				REBOUND (DEF) by JONES, KAI
15:04				TURNOVER by RAMEY, COURTNEY
14:48	TURNOVER by THOMAS JR, CLIFF			
14:48				STEAL by COLEMAN III, MATT
14:45		53-37	H 16	GOOD! LAYUP by COLEMAN III, MATT [FB]
14:12	MISSED 3PTR by COLEMAN JR., ERIC			
14:12				BLOCK by JONES, KAI
14:11	TURNOVER by TEAM			
14:10	REBOUND (OFF) by SLAY II, DENNY			
14:01		55-37	H 18	GOOD! LAYUP by COLEMAN III, MATT
13:54	TIMEOUT 30SEC			
13:54	TIMEOUT MEDIA			
13:42	TURNOVER by SLAY II, DENNY			
13:32				MISSED JUMPER by LIDDELL, GERALD

Time	VISITORS: High Point	Score	Margin	HOME: Texas
13:28	REBOUND (DEF) by WRIGHT, JOHN-MICHAEL			
13:15	MISSED 3PTR by WRIGHT, JOHN-MICHAEL			
13:12				REBOUND (DEF) by SIMS, JERICHO
12:47		57-37	H 20	GOOD! by JONES, KAI
12:40				FOUL by RAMEY, COURTNEY [PNT]
12:40	GOOD! FT by WRIGHT, JOHN-MICHAEL [FB]	57-38	H 19	
12:40				SUB OUT: RAMEY, COURTNEY
12:40				SUB IN: FEBRES, JASE
12:40	SUB OUT: SLAY II, DENNY			
12:40	SUB IN: RANDLEMAN, BRYANT			
12:40	GOOD! FT by WRIGHT, JOHN-MICHAEL [FB]	57-39	H 18	
12:29		60-39	H 21	GOOD! 3PTR by FEBRES, JASE
12:29				ASSIST by COLEMAN III, MATT
12:01	MISSED LAYUP by RANDLEMAN, BRYANT			
11:58				REBOUND (DEF) by COLEMAN III, MATT
11:53		63-39	H 24	GOOD! 3PTR by FEBRES, JASE [FB]
11:53				ASSIST by COLEMAN III, MATT
11:45	TURNOVER by PETERSON III, ROB [PNT]			
11:45				STEAL by SIMS, JERICHO
11:33				MISSED 3PTR by FEBRES, JASE
11:27				REBOUND (OFF) by SIMS, JERICHO
11:27		65-39	H 26	GOOD! LAYUP by SIMS, JERICHO
11:11	MISSED 3PTR by COLEMAN JR., ERIC			
11:07				REBOUND (DEF) by COLEMAN III, MATT
10:51				TURNOVER by COLEMAN III, MATT
10:51	STEAL by RANDLEMAN, BRYANT			
10:48	GOOD! LAYUP by RANDLEMAN, BRYANT [FB]	65-41	H 24	
10:48				FOUL by FEBRES, JASE
10:48	TIMEOUT MEDIA			
10:48				SUB OUT: COLEMAN III, MATT
10:48				SUB OUT: JONES, KAI
10:48				SUB IN: JONES, ANDREW
10:48				SUB IN: RAMEY, COURTNEY
10:48	SUB OUT: THOMAS JR, CLIFF			
10:48	SUB IN: SANCHEZ, CADEN			
10:48	GOOD! FT by RANDLEMAN, BRYANT [FB]	65-42	H 23	
10:28				MISSED JUMPER by SIMS, JERICHO [PNT]
10:24	REBOUND (DEF) by PETERSON III, ROB			
10:14	MISSED JUMPER by SANCHEZ, CADEN			
10:10				REBOUND (DEF) by SIMS, JERICHO
10:06		67-42	H 25	GOOD! LAYUP by RAMEY, COURTNEY [FB]
09:51	TURNOVER by WRIGHT, JOHN-MICHAEL			
09:51				STEAL by FEBRES, JASE
09:44		69-42	H 27	GOOD! JUMPER by FEBRES, JASE [FB]
09:21				SUB OUT: LIDDELL, GERALD
09:21				SUB OUT: FEBRES, JASE
09:21				SUB IN: COLEMAN III, MATT
09:21				SUB IN: HEPA, KAMAKA
09:21	SUB OUT: WRIGHT, JOHN-MICHAEL			
09:21	SUB OUT: PETERSON III, ROB			
09:21	SUB IN: WRIGHT, JAMAL			
09:21	SUB IN: THOMAS JR, CLIFF			
09:17	TURNOVER by COLEMAN JR., ERIC			
09:01		72-42	H 30	GOOD! 3PTR by JONES, ANDREW
09:01				ASSIST by RAMEY, COURTNEY
08:45				FOUL by RAMEY, COURTNEY
08:36	MISSED 3PTR by COLEMAN JR., ERIC			
08:35				REBOUND (DEF) by TEAM
08:34	SUB OUT: COLEMAN JR., ERIC			
08:34	SUB IN: SLAY II, DENNY			
08:19				TURNOVER by HEPA, KAMAKA
07:53	MISSED 3PTR by SANCHEZ, CADEN			
07:50				REBOUND (DEF) by RAMEY, COURTNEY
07:46		74-42	H 32	GOOD! JUMPER by RAMEY, COURTNEY [FB/PNT]
07:32	MISSED JUMPER by SANCHEZ, CADEN [PNT]			
07:32				BLOCK by SIMS, JERICHO
07:27	REBOUND (OFF) by THOMAS JR, CLIFF			
07:21	MISSED JUMPER by THOMAS JR, CLIFF			
07:17	REBOUND (OFF) by SLAY II, DENNY			
07:05	MISSED by THOMAS JR, CLIFF [PNT]			
07:01				REBOUND (DEF) by SIMS, JERICHO
06:58		77-42	H 35	GOOD! 3PTR by JONES, ANDREW [FB]
06:58				ASSIST by COLEMAN III, MATT
06:47	TIMEOUT 30SEC			
06:47	TIMEOUT MEDIA			
06:47				SUB OUT: COLEMAN III, MATT
06:47				SUB OUT: SIMS, JERICHO
06:47				SUB IN: LIDDELL, GERALD
06:47				SUB IN: HAMM JR., ROYCE
06:35	GOOD! LAYUP by WRIGHT, JAMAL	77-44	H 33	

Time	VISITORS: High Point	Score	Margin	HOME: Texas
06:15				TURNOVER by LIDDELL, GERALD
05:58				FOUL by HEPA, KAMAKA [PNT]
05:58	GOOD! FT by THOMAS JR, CLIFF	77-45	H 32	
05:58	MISSED FT by THOMAS JR, CLIFF			
05:58				REBOUND (DEF) by RAMEY, COURTNEY
05:45				TURNOVER by HAMM JR., ROYCE
05:29	GOOD! by THOMAS JR, CLIFF [PNT]	77-47	H 30	
05:29				FOUL by HEPA, KAMAKA [PNT]
05:29				SUB OUT: HAMM JR., ROYCE
05:29				SUB OUT: HEPA, KAMAKA
05:29				SUB IN: SIMS, JERICHO
05:29				SUB IN: JONES, KAI
05:29	GOOD! FT by THOMAS JR, CLIFF	77-48	H 29	
05:29				SUB OUT: LIDDELL, GERALD
05:29				SUB IN: COLEMAN III, MATT
05:09		79-48	H 31	GOOD! JUMPER by JONES, ANDREW
04:39	GOOD! LAYUP by SANCHEZ, CADEN	79-50	H 29	
04:28		81-50	H 31	GOOD! LAYUP by RAMEY, COURTNEY
04:28				ASSIST by JONES, ANDREW
04:20	GOOD! LAYUP by THOMAS JR, CLIFF [FB]	81-52	H 29	
04:20	ASSIST by SLAY II, DENNY			
04:06				MISSED LAYUP by SIMS, JERICHO
04:05				REBOUND (OFF) by TEAM
04:05	SUB OUT: WRIGHT, JAMAL			
04:05	SUB OUT: THOMAS JR, CLIFF			
04:05	SUB OUT: SANCHEZ, CADEN			
04:05	SUB IN: WRIGHT, JOHN-MICHAEL			
04:05	SUB IN: IZUNABOR, EMMANUAL			
04:05	SUB IN: COLEMAN JR., ERIC			
04:03		84-52	H 32	GOOD! 3PTR by RAMEY, COURTNEY
04:03				ASSIST by COLEMAN III, MATT
04:02				TIMEOUT 30SEC
04:02	TIMEOUT MEDIA			
04:02				SUB OUT: JONES, ANDREW
04:02				SUB OUT: COLEMAN III, MATT
04:02				SUB OUT: SIMS, JERICHO
04:02				SUB IN: LIDDELL, GERALD
04:02				SUB IN: CUNNINGHAM, BROCK
04:02				SUB IN: BAKER, WILL
03:33	GOOD! JUMPER by WRIGHT, JOHN-MICHAEL [PNT]	84-54	H 30	
03:10				MISSED JUMPER by LIDDELL, GERALD
03:07	REBOUND (DEF) by IZUNABOR, EMMANUAL			
03:01	MISSED 3PTR by WRIGHT, JOHN-MICHAEL			
02:58				REBOUND (DEF) by LIDDELL, GERALD
02:56	FOUL by SLAY II, DENNY			
02:56		85-54	H 31	GOOD! FT by JONES, KAI [FB]
02:56	SUB OUT: SLAY II, DENNY			
02:56	SUB IN: HUGHES, JOHN-MICHAEL			
02:56		86-54	H 32	GOOD! FT by JONES, KAI [FB]
02:46	MISSED LAYUP by RANDLEMAN, BRYANT [PNT]			
02:43				REBOUND (DEF) by LIDDELL, GERALD
02:37	FOUL by COLEMAN JR., ERIC			
02:29				MISSED JUMPER by RAMEY, COURTNEY [PNT]
02:25	REBOUND (DEF) by RANDLEMAN, BRYANT			
02:13	TURNOVER by HUGHES, JOHN-MICHAEL			
02:13				STEAL by CUNNINGHAM, BROCK
02:09				MISSED LAYUP by CUNNINGHAM, BROCK
02:09	BLOCK by COLEMAN JR., ERIC			
02:03				REBOUND (OFF) by RAMEY, COURTNEY
01:58		88-54	H 34	GOOD! LAYUP by BAKER, WILL
01:58				ASSIST by RAMEY, COURTNEY
01:46				SUB OUT: RAMEY, COURTNEY
01:46				SUB IN: WHITESIDE, DRAYTON
01:40				FOUL by JONES, KAI
01:40	MISSED FT by COLEMAN JR., ERIC			
01:40	REBOUND (OFF) by WRIGHT, JOHN-MICHAEL			
01:32	MISSED 3PTR by WRIGHT, JOHN-MICHAEL			
01:32	REBOUND (OFF) by COLEMAN JR., ERIC			
01:31	TURNOVER by COLEMAN JR., ERIC			
01:12				MISSED JUMPER by LIDDELL, GERALD [PNT]
01:09	REBOUND (DEF) by RANDLEMAN, BRYANT			
01:07				FOUL by LIDDELL, GERALD
01:07	MISSED FT by RANDLEMAN, BRYANT [FB]			
01:07	REBOUND (DEADB) by TEAM			
01:07	SUB OUT: WRIGHT, JOHN-MICHAEL			
01:07	SUB OUT: COLEMAN JR., ERIC			
01:07	SUB IN: QUINLAN-HUERTAS, BRENDAN			
01:07	SUB IN: AYERS, RYAN			
01:07	GOOD! FT by RANDLEMAN, BRYANT [FB]	88-55	H 33	
01:07	SUB OUT: RANDLEMAN, BRYANT			

Time	VISITORS: High Point	Score	Margin	HOME: Texas
01:07	SUB IN: BILLUPS, CAMERON			
00:54				MISSED 3PTR by WHITESIDE, DRAYTON
00:50	REBOUND (DEF) by IZUNABOR, EMMANUAL			
00:43				FOUL by LIDDELL, GERALD
00:43	MISSED FT by BILLUPS, CAMERON			
00:43	REBOUND (DEADB) by TEAM			
00:43	GOOD! FT by BILLUPS, CAMERON	88-56	H 32	
00:27				MISSED 3PTR by BAKER, WILL
00:25				REBOUND (OFF) by CUNNINGHAM, BROCK
00:25	FOUL by HUGHES, JOHN-MICHAEL [PNT]			
00:25		89-56	H 33	GOOD! FT by JONES, KAI
00:25				MISSED FT by JONES, KAI
00:24	REBOUND (DEF) by HUGHES, JOHN-MICHAEL			
00:04	GOOD! JUMPER by HUGHES, JOHN-MICHAEL	89-58	H 31	

### High Point 58, Texas 89

Points from (This Period)	HPU	TEX
In the Paint	14	18
Off Turns	9	16
2nd Chance	0	11
Fast Break	10	16
Bench	13	18

**Official Scoring/Possession Reference Chart**  
**High Point vs Texas**  
**Period 1**  
**December 31, 2019 at Frank Erwin Center**



**Period 1**

**Starters:**

**High Point:** 1 WRIGHT, JOHN-MICHAEL (G); 3 WRIGHT, JAMAL (G); 11 RANDLEMAN, BRYANT (G); 20 COLEMAN JR., ERIC (F); 35 SANCHEZ, CADEN (F);

**Texas:** 1 JONES, ANDREW (G); 2 COLEMAN III, MATT (G); 13 FEBRES, JASE (G); 20 SIMS, JERICHO (F); 33 HEPA, KAMAKA (F);

Time	VISITORS: High Point	Score	Margin	HOME: Texas
19:28		3-0	H 3	GOOD! 3PTR by COLEMAN III, MATT
19:02		4-0	H 4	GOOD! FT by SIMS, JERICHO
18:09		6-0	H 6	GOOD! JUMPER by SIMS, JERICHO [PNT]
17:21	GOOD! LAYUP by WRIGHT, JOHN-MICHAEL [FB]	6-2	H 4	
16:32		8-2	H 6	GOOD! LAYUP by COLEMAN III, MATT [FB]
15:53		11-2	H 9	GOOD! 3PTR by HEPA, KAMAKA
14:38		13-2	H 11	GOOD! LAYUP by LIDDELL, GERALD
13:20	GOOD! LAYUP by THOMAS JR, CLIFF	13-4	H 9	
13:14		15-4	H 11	GOOD! JUMPER by LIDDELL, GERALD
12:56	GOOD! FT by PETERSON III, ROB	15-5	H 10	
12:56	GOOD! FT by PETERSON III, ROB	15-6	H 9	
12:38		17-6	H 11	GOOD! DUNK by JONES, KAI
11:50		19-6	H 13	GOOD! JUMPER by HAMM JR., ROYCE [PNT]
11:18	GOOD! FT by COLEMAN JR., ERIC	19-7	H 12	
11:18	GOOD! FT by COLEMAN JR., ERIC	19-8	H 11	
10:44		21-8	H 13	GOOD! LAYUP by RAMEY, COURTNEY [FB]
09:48	GOOD! FT by COLEMAN JR., ERIC	21-9	H 12	
09:48	GOOD! FT by COLEMAN JR., ERIC	21-10	H 11	
09:23	GOOD! FT by THOMAS JR, CLIFF	21-11	H 10	
08:51	GOOD! 3PTR by COLEMAN JR., ERIC [FB]	21-14	H 7	
08:27		23-14	H 9	GOOD! JUMPER by JONES, ANDREW
08:04	GOOD! by THOMAS JR, CLIFF [PNT]	23-16	H 7	
07:33	GOOD! LAYUP by WRIGHT, JOHN-MICHAEL	23-18	H 5	
07:33	GOOD! FT by WRIGHT, JOHN-MICHAEL	23-19	H 4	
06:45		25-19	H 6	GOOD! LAYUP by HEPA, KAMAKA
06:25		26-19	H 7	GOOD! FT by LIDDELL, GERALD [FB]
06:01	GOOD! LAYUP by THOMAS JR, CLIFF	26-21	H 5	
05:43	GOOD! LAYUP by RANDLEMAN, BRYANT	26-23	H 3	
05:25		28-23	H 5	GOOD! LAYUP by RAMEY, COURTNEY
04:46		30-23	H 7	GOOD! LAYUP by FEBRES, JASE
04:30	GOOD! FT by WRIGHT, JOHN-MICHAEL	30-24	H 6	
04:30	GOOD! FT by WRIGHT, JOHN-MICHAEL	30-25	H 5	
04:17	GOOD! FT by COLEMAN JR., ERIC [FB]	30-26	H 4	
04:17	GOOD! FT by COLEMAN JR., ERIC [FB]	30-27	H 3	
04:07		31-27	H 4	GOOD! FT by COLEMAN III, MATT
03:28		33-27	H 6	GOOD! JUMPER by SIMS, JERICHO [FB]
03:06	GOOD! JUMPER by THOMAS JR, CLIFF	33-29	H 4	
02:46		36-29	H 7	GOOD! 3PTR by JONES, ANDREW
02:01		39-29	H 10	GOOD! 3PTR by FEBRES, JASE
00:34		41-29	H 12	GOOD! DUNK by SIMS, JERICHO

**High Point 29, Texas 41**

**Official Scoring/Possession Reference Chart**  
**High Point vs Texas**  
**Period 2**  
**December 31, 2019 at Frank Erwin Center**



**Period 2**

**Starters:**

**High Point:** 1 WRIGHT, JOHN-MICHAEL (G); 3 WRIGHT, JAMAL (G); 11 RANDLEMAN, BRYANT (G); 20 COLEMAN JR., ERIC (F); 35 SANCHEZ, CADEN (F);

**Texas:** 1 JONES, ANDREW (G); 2 COLEMAN III, MATT (G); 13 FEBRES, JASE (G); 20 SIMS, JERICHO (F); 33 HEPA, KAMAKA (F);

Time	VISITORS: High Point	Score	Margin	HOME: Texas
19:36		44-29	H 15	GOOD! 3PTR by FEBRES, JASE
18:44		46-29	H 17	GOOD! LAYUP by HEPA, KAMAKA
17:47		48-29	H 19	GOOD! DUNK by SIMS, JERICHO
17:47		49-29	H 20	GOOD! FT by SIMS, JERICHO
17:22	GOOD! LAYUP by PETERSON III, ROB	49-31	H 18	
17:03	GOOD! FT by SLAY II, DENNY [FB]	49-32	H 17	
17:03	GOOD! FT by SLAY II, DENNY [FB]	49-33	H 16	
15:58	GOOD! 3PTR by WRIGHT, JOHN-MICHAEL	49-36	H 13	
15:58	GOOD! FT by WRIGHT, JOHN-MICHAEL	49-37	H 12	
15:33		51-37	H 14	GOOD! JUMPER by LIDDELL, GERALD
14:45		53-37	H 16	GOOD! LAYUP by COLEMAN III, MATT [FB]
14:01		55-37	H 18	GOOD! LAYUP by COLEMAN III, MATT
12:47		57-37	H 20	GOOD! by JONES, KAI
12:40	GOOD! FT by WRIGHT, JOHN-MICHAEL [FB]	57-38	H 19	
12:40	GOOD! FT by WRIGHT, JOHN-MICHAEL [FB]	57-39	H 18	
12:29		60-39	H 21	GOOD! 3PTR by FEBRES, JASE
11:53		63-39	H 24	GOOD! 3PTR by FEBRES, JASE [FB]
11:27		65-39	H 26	GOOD! LAYUP by SIMS, JERICHO
10:48	GOOD! LAYUP by RANDLEMAN, BRYANT [FB]	65-41	H 24	
10:48	GOOD! FT by RANDLEMAN, BRYANT [FB]	65-42	H 23	
10:06		67-42	H 25	GOOD! LAYUP by RAMEY, COURTNEY [FB]
09:44		69-42	H 27	GOOD! JUMPER by FEBRES, JASE [FB]
09:01		72-42	H 30	GOOD! 3PTR by JONES, ANDREW
07:46		74-42	H 32	GOOD! JUMPER by RAMEY, COURTNEY [FB/PNT]
06:58		77-42	H 35	GOOD! 3PTR by JONES, ANDREW [FB]
06:35	GOOD! LAYUP by WRIGHT, JAMAL	77-44	H 33	
05:58	GOOD! FT by THOMAS JR, CLIFF	77-45	H 32	
05:29	GOOD! by THOMAS JR, CLIFF [PNT]	77-47	H 30	
05:29	GOOD! FT by THOMAS JR, CLIFF	77-48	H 29	
05:09		79-48	H 31	GOOD! JUMPER by JONES, ANDREW
04:39	GOOD! LAYUP by SANCHEZ, CADEN	79-50	H 29	
04:28		81-50	H 31	GOOD! LAYUP by RAMEY, COURTNEY
04:20	GOOD! LAYUP by THOMAS JR, CLIFF [FB]	81-52	H 29	
04:03		84-52	H 32	GOOD! 3PTR by RAMEY, COURTNEY
03:33	GOOD! JUMPER by WRIGHT, JOHN-MICHAEL [PNT]	84-54	H 30	
02:56		85-54	H 31	GOOD! FT by JONES, KAI [FB]
02:56		86-54	H 32	GOOD! FT by JONES, KAI [FB]
01:58		88-54	H 34	GOOD! LAYUP by BAKER, WILL
01:07	GOOD! FT by RANDLEMAN, BRYANT [FB]	88-55	H 33	
00:43	GOOD! FT by BILLUPS, CAMERON	88-56	H 32	
00:25		89-56	H 33	GOOD! FT by JONES, KAI
00:04	GOOD! JUMPER by HUGHES, JOHN-MICHAEL	89-58	H 31	

**High Point 58, Texas 89**

**Official Substitutions Log  
High Point vs Texas  
Period 1  
December 31, 2019 at Frank Erwin Center**



VISITORS: High Point	Time	Score	HOME: Texas
1 WRIGHT, JOHN-MICHAEL			1 JONES, ANDREW
3 WRIGHT, JAMAL			2 COLEMAN III, MATT
11 RANDLEMAN, BRYANT			13 FEBRES, JASE
20 COLEMAN JR., ERIC			20 SIMS, JERICHO
35 SANCHEZ, CADEN			33 HEPA, KAMAKA
SUB OUT: 35 SANCHEZ, CADEN	18:09	0-6	
SUB IN: 15 THOMAS JR, CLIFF	18:09		
SUB OUT: 3 WRIGHT, JAMAL	16:59	2-6	
SUB OUT: 20 COLEMAN JR., ERIC	16:59		
SUB IN: 10 IZUNABOR, EMMANUAL	16:59		
SUB IN: 22 PETERSON III, ROB	16:59		
	15:31	2-11	SUB OUT: JONES, ANDREW
	15:31		SUB IN: RAMEY, COURTNEY
SUB OUT: 11 RANDLEMAN, BRYANT	15:31		
SUB IN: 2 SLAY II, DENNY	15:31		
	15:14	2-11	SUB OUT: SIMS, JERICHO
	15:14		SUB IN: HAMM JR., ROYCE
	14:46	2-11	SUB OUT: COLEMAN III, MATT
	14:46		SUB IN: LIDDELL, GERALD
	12:56	5-15	SUB OUT: FEBRES, JASE
	12:56		SUB OUT: HEPA, KAMAKA
	12:56		SUB IN: COLEMAN III, MATT
	12:56		SUB IN: JONES, KAI
SUB OUT: 1 WRIGHT, JOHN-MICHAEL	12:56		
SUB OUT: 10 IZUNABOR, EMMANUAL	12:56		
SUB IN: 3 WRIGHT, JAMAL	12:56		
SUB IN: 20 COLEMAN JR., ERIC	12:56		
SUB OUT: 3 WRIGHT, JAMAL	12:10	6-17	
SUB IN: 1 WRIGHT, JOHN-MICHAEL	12:10		
	11:18	6-19	SUB OUT: LIDDELL, GERALD
	11:18		SUB IN: JONES, ANDREW
	10:13	8-21	SUB OUT: COLEMAN III, MATT
	10:13		SUB OUT: JONES, KAI
	10:13		SUB IN: FEBRES, JASE
	10:13		SUB IN: HEPA, KAMAKA
	09:49	8-21	SUB OUT: HAMM JR., ROYCE
	09:49		SUB IN: BAKER, WILL
SUB OUT: 2 SLAY II, DENNY	09:48	10-21	
SUB IN: 11 RANDLEMAN, BRYANT	09:48		
	09:23	10-21	SUB OUT: RAMEY, COURTNEY
	09:23		SUB IN: COLEMAN III, MATT
	07:31	19-23	SUB OUT: COLEMAN III, MATT
	07:31		SUB OUT: BAKER, WILL
	07:31		SUB IN: LIDDELL, GERALD
	07:31		SUB IN: RAMEY, COURTNEY
SUB OUT: 15 THOMAS JR, CLIFF	07:31		
SUB OUT: 22 PETERSON III, ROB	07:31		
SUB IN: 3 WRIGHT, JAMAL	07:31		
SUB IN: 10 IZUNABOR, EMMANUAL	07:31		
	06:25	19-25	SUB OUT: JONES, ANDREW
	06:25		SUB IN: COLEMAN III, MATT
SUB OUT: 10 IZUNABOR, EMMANUAL	06:25		
SUB IN: 15 THOMAS JR, CLIFF	06:25		
	05:03	23-28	SUB OUT: HEPA, KAMAKA
	05:03		SUB IN: JONES, KAI
SUB OUT: 3 WRIGHT, JAMAL	05:03		
SUB IN: 22 PETERSON III, ROB	05:03		
	04:30	24-30	SUB OUT: JONES, KAI
	04:30		SUB IN: HEPA, KAMAKA
	04:17	26-30	SUB OUT: LIDDELL, GERALD
	04:17		SUB IN: JONES, ANDREW
	04:07	27-31	SUB OUT: HEPA, KAMAKA
	04:07		SUB IN: SIMS, JERICHO
	03:40	27-31	SUB OUT: RAMEY, COURTNEY
	03:40		SUB IN: HEPA, KAMAKA
	02:00	29-39	SUB OUT: FEBRES, JASE
	02:00		SUB IN: RAMEY, COURTNEY
	00:53	29-39	SUB OUT: SIMS, JERICHO
	00:53		SUB IN: HAMM JR., ROYCE
SUB OUT: 22 PETERSON III, ROB	00:53		
SUB IN: 3 WRIGHT, JAMAL	00:53		
	00:43	29-39	SUB OUT: HAMM JR., ROYCE
	00:43		SUB IN: SIMS, JERICHO

**High Point 29, Texas 41**





**Official Substitutions Log  
High Point vs Texas  
Period 2  
December 31, 2019 at Frank Erwin Center**



VISITORS: High Point	Time	Score	HOME: Texas
1 WRIGHT, JOHN-MICHAEL			1 JONES, ANDREW
3 WRIGHT, JAMAL			2 COLEMAN III, MATT
11 RANDLEMAN, BRYANT			13 FEBRES, JASE
20 COLEMAN JR., ERIC			20 SIMS, JERICHO
35 SANCHEZ, CADEN			33 HEPA, KAMAKA
	20:00	-	SUB OUT: RAMEY, COURTNEY
	20:00		SUB IN: FEBRES, JASE
SUB OUT: 15 THOMAS JR, CLIFF	20:00		
SUB IN: 35 SANCHEZ, CADEN	20:00		
	18:13	29-46	SUB OUT: COLEMAN III, MATT
	18:13		SUB IN: RAMEY, COURTNEY
SUB OUT: 3 WRIGHT, JAMAL	18:13		
SUB OUT: 11 RANDLEMAN, BRYANT	18:13		
SUB IN: 2 SLAY II, DENNY	18:13		
SUB IN: 22 PETERSON III, ROB	18:13		
	17:03	32-49	SUB OUT: JONES, ANDREW
	17:03		SUB IN: COLEMAN III, MATT
	15:58	36-49	SUB OUT: FEBRES, JASE
	15:58		SUB OUT: HEPA, KAMAKA
	15:58		SUB IN: LIDDELL, GERALD
	15:58		SUB IN: JONES, KAI
SUB OUT: 35 SANCHEZ, CADEN	15:58		
SUB IN: 15 THOMAS JR, CLIFF	15:58		
	12:40	38-57	SUB OUT: RAMEY, COURTNEY
	12:40		SUB IN: FEBRES, JASE
SUB OUT: 2 SLAY II, DENNY	12:40		
SUB IN: 11 RANDLEMAN, BRYANT	12:40		
	10:48	41-65	SUB OUT: COLEMAN III, MATT
	10:48		SUB OUT: JONES, KAI
	10:48		SUB IN: JONES, ANDREW
	10:48		SUB IN: RAMEY, COURTNEY
SUB OUT: 15 THOMAS JR, CLIFF	10:48		
SUB IN: 35 SANCHEZ, CADEN	10:48		
	09:21	42-69	SUB OUT: LIDDELL, GERALD
	09:21		SUB OUT: FEBRES, JASE
	09:21		SUB IN: COLEMAN III, MATT
	09:21		SUB IN: HEPA, KAMAKA
SUB OUT: 1 WRIGHT, JOHN-MICHAEL	09:21		
SUB OUT: 22 PETERSON III, ROB	09:21		
SUB IN: 3 WRIGHT, JAMAL	09:21		
SUB IN: 15 THOMAS JR, CLIFF	09:21		
SUB OUT: 20 COLEMAN JR., ERIC	08:34	42-72	
SUB IN: 2 SLAY II, DENNY	08:34		
	06:47	42-77	SUB OUT: COLEMAN III, MATT
	06:47		SUB OUT: SIMS, JERICHO
	06:47		SUB IN: LIDDELL, GERALD
	06:47		SUB IN: HAMM JR., ROYCE
	05:29	47-77	SUB OUT: HAMM JR., ROYCE
	05:29		SUB OUT: HEPA, KAMAKA
	05:29		SUB IN: SIMS, JERICHO
	05:29		SUB IN: JONES, KAI
	05:29		SUB OUT: LIDDELL, GERALD
	05:29		SUB IN: COLEMAN III, MATT
SUB OUT: 3 WRIGHT, JAMAL	04:05	52-81	
SUB OUT: 15 THOMAS JR, CLIFF	04:05		
SUB OUT: 35 SANCHEZ, CADEN	04:05		
SUB IN: 1 WRIGHT, JOHN-MICHAEL	04:05		
SUB IN: 10 IZUNABOR, EMMANUAL	04:05		
SUB IN: 20 COLEMAN JR., ERIC	04:05		
	04:02	52-84	SUB OUT: JONES, ANDREW
	04:02		SUB OUT: COLEMAN III, MATT
	04:02		SUB OUT: SIMS, JERICHO
	04:02		SUB IN: LIDDELL, GERALD
	04:02		SUB IN: CUNNINGHAM, BROCK
	04:02		SUB IN: BAKER, WILL
SUB OUT: 2 SLAY II, DENNY	02:56	54-85	
SUB IN: 32 HUGHES, JOHN-MICHAEL	02:56		
	01:46	54-88	SUB OUT: RAMEY, COURTNEY
	01:46		SUB IN: WHITESIDE, DRAYTON
SUB OUT: 1 WRIGHT, JOHN-MICHAEL	01:07	54-88	
SUB OUT: 20 COLEMAN JR., ERIC	01:07		
SUB IN: 4 QUINLAN-HUERTAS, BRENDAN	01:07		
SUB IN: 21 AYERS, RYAN	01:07		
SUB OUT: 11 RANDLEMAN, BRYANT	01:07		
SUB IN: 13 BILLUPS, CAMERON	01:07		

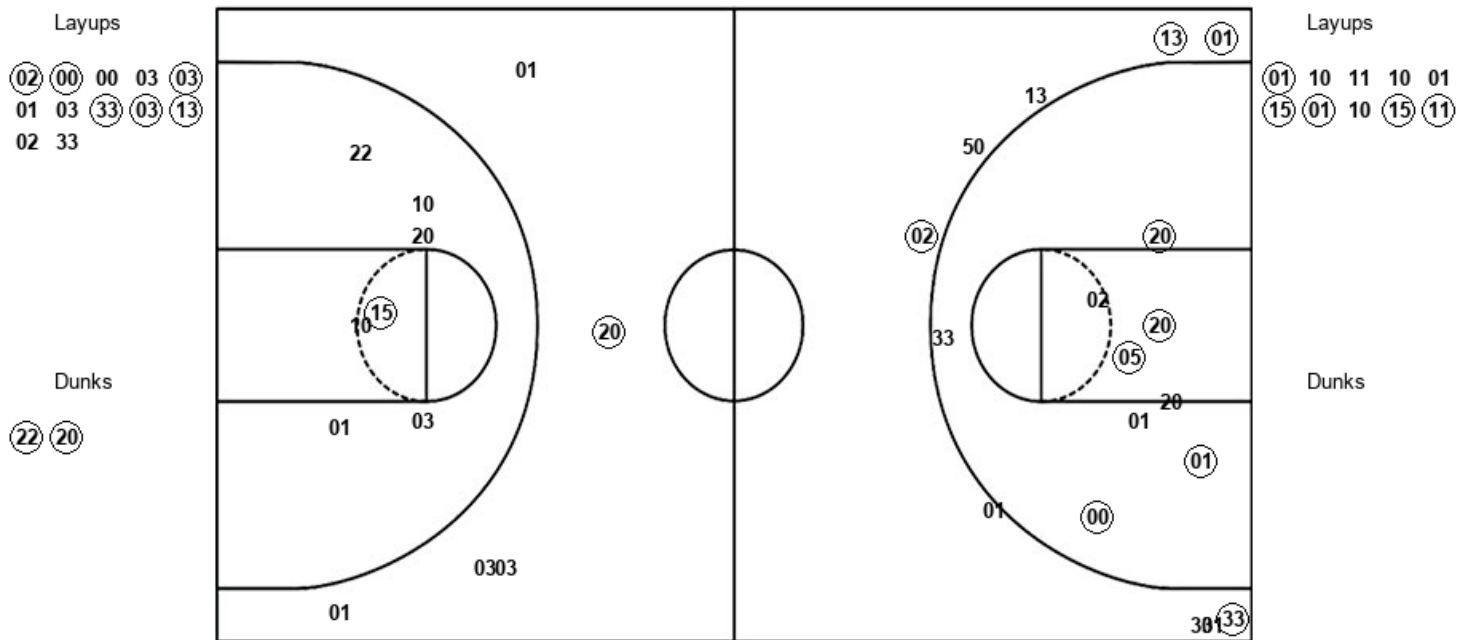


**Official Shot Chart**  
**High Point vs Texas**  
**PERIOD 1 Shots**  
 December 31, 2019 at Frank Erwin Center



**Texas**

**High Point**



TEX : Period 1	Made	Att	Pct
Layups	6	12	50.0
Dunks	2	2	100.0
2PT Field Goals	13	22	59.1
3PT Field Goals	4	10	40.0
<b>Total Field Goals</b>	<b>17</b>	<b>32</b>	<b>53.1</b>

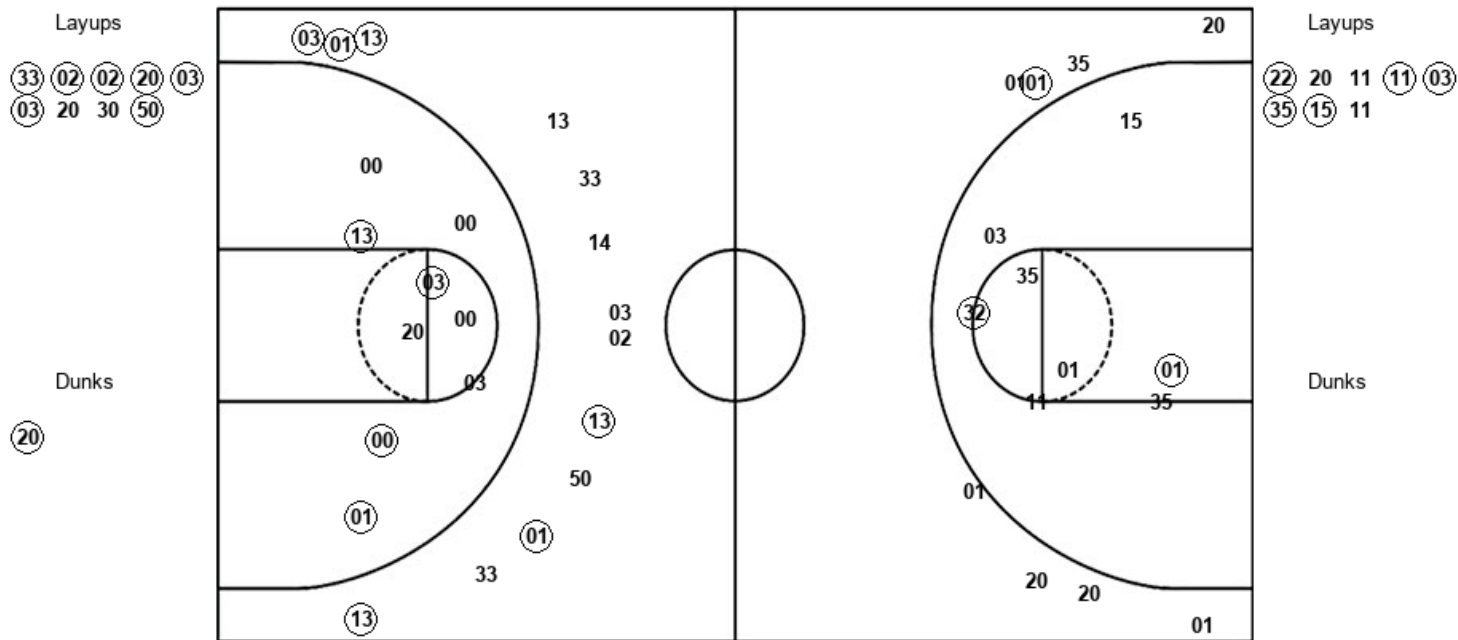
HPU : Period 1	Made	Att	Pct
Layups	5	10	50.0
Dunks	0	0	0
2PT Field Goals	7	20	35.0
3PT Field Goals	1	5	20.0
<b>Total Field Goals</b>	<b>8</b>	<b>25</b>	<b>32.0</b>

Official Shot Chart  
**High Point vs Texas**  
 PERIOD 2 Shots  
 December 31, 2019 at Frank Erwin Center



Texas

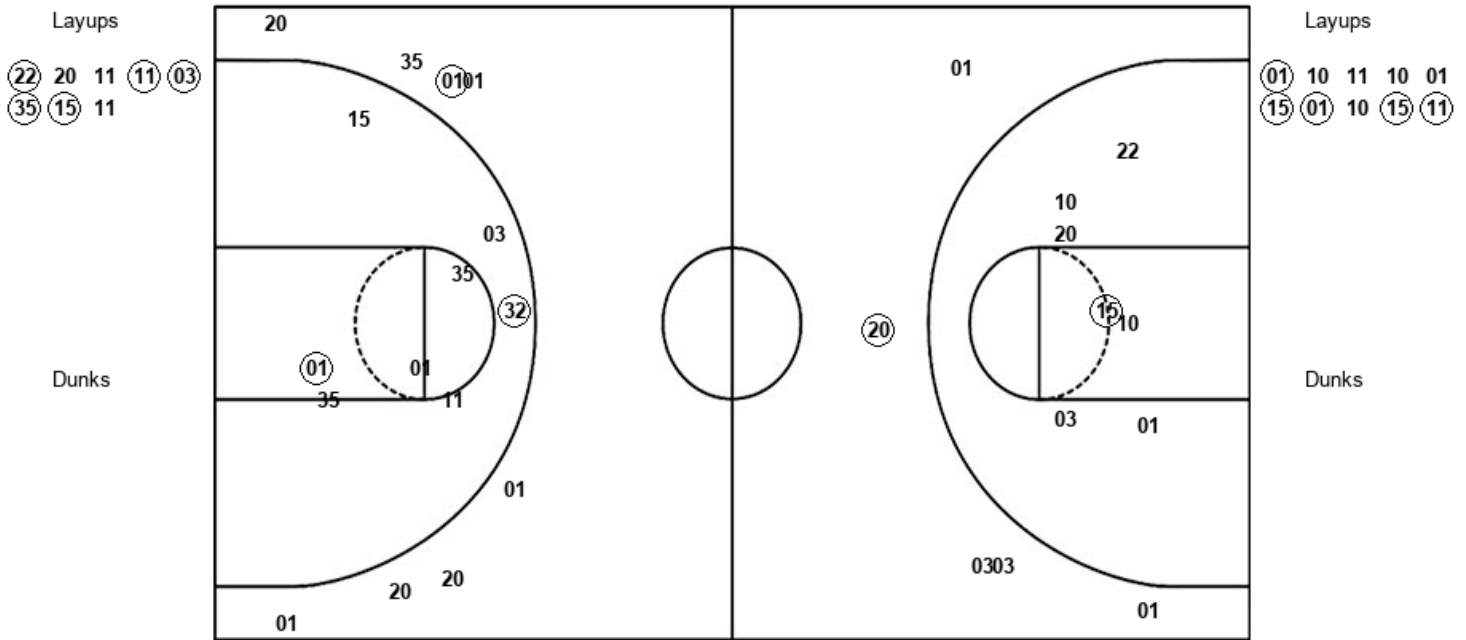
High Point



TEX : Period 2	Made	Att	Pct
Layups	7	9	77.8
Dunks	1	1	100.0
2PT Field Goals	13	20	65.0
3PT Field Goals	6	13	46.2
<b>Total Field Goals</b>	<b>19</b>	<b>33</b>	<b>57.6</b>

HPU : Period 2	Made	Att	Pct
Layups	5	8	62.5
Dunks	0	0	0
2PT Field Goals	8	18	44.4
3PT Field Goals	1	8	12.5
<b>Total Field Goals</b>	<b>9</b>	<b>26</b>	<b>34.6</b>

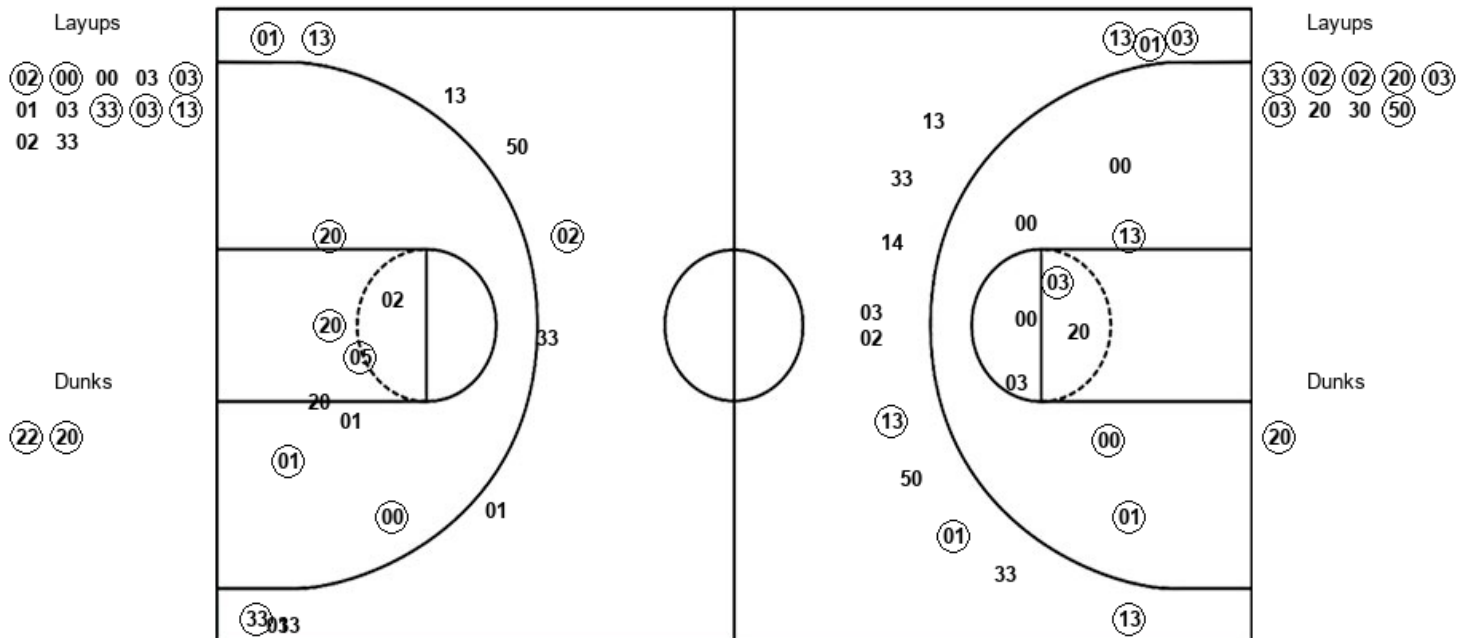
**Official Shot Chart**  
**High Point vs Texas**  
**High Point Team Shots**  
 December 31, 2019 at Frank Erwin Center



HPU : Period 1	Made	Att	Pct
Layups	5	10	50.0
Dunks	0	0	0
2PT Field Goals	7	20	35.0
3PT Field Goals	1	5	20.0
<b>Total Field Goals</b>	<b>8</b>	<b>25</b>	<b>32.0</b>

HPU : Period 2	Made	Att	Pct
Layups	5	8	62.5
Dunks	0	0	0
2PT Field Goals	8	18	44.4
3PT Field Goals	1	8	12.5
<b>Total Field Goals</b>	<b>9</b>	<b>26</b>	<b>34.6</b>

**Official Shot Chart**  
**High Point vs Texas**  
**Texas Team Shots**  
**December 31, 2019 at Frank Erwin Center**



TEX : Period 1	Made	Att	Pct
Layups	6	12	50.0
Dunks	2	2	100.0
2PT Field Goals	13	22	59.1
3PT Field Goals	4	10	40.0
<b>Total Field Goals</b>	<b>17</b>	<b>32</b>	<b>53.1</b>

TEX : Period 2	Made	Att	Pct
Layups	7	9	77.8
Dunks	1	1	100.0
2PT Field Goals	13	20	65.0
3PT Field Goals	6	13	46.2
<b>Total Field Goals</b>	<b>19</b>	<b>33</b>	<b>57.6</b>