

FINAL SCORE



Central Mich.

76



Texas

87

December 14, 2019 • Frank Erwin Center

FINAL STATISTICS

Official Box Score
Central Mich. vs Texas
Game Totals -- Final Statistics
December 14, 2019 at Frank Erwin Center



Central Mich. 76

No.	Player	S	Pts	FG	3FG	FT	OR	DR	TR	PF	A	TO	Blk	Stl	Min	+/-			
02	LANE, DEVONTAE	G	3	1-5	0-0	1-2	0	1	1	2	5	3	0	2	28	-5			
05	MONTGOMERY, ROB	F	12	4-13	2-3	2-3	1	4	5	3	1	4	0	1	31	-3			
14	DILEO, DAVID	F	15	6-14	3-10	0-0	0	4	4	3	1	3	1	2	33	-9			
20	MCKAY, KEVIN	G	21	7-7	0-0	7-9	0	6	6	4	0	5	0	1	28	-20			
23	MORGAN, DALLAS	G	14	5-12	4-9	0-1	0	2	2	2	1	2	0	1	30	0			
00	BROADWAY JR., TRAVON	G	4	2-4	0-1	0-0	2	0	2	2	0	1	0	2	20	-9			
01	REDMAN, COREY	G	0	0-0	0-0	0-0	0	0	0	0	0	0	0	0	3	3			
11	WINSTON, DESCHON	G	4	1-3	0-0	2-3	0	1	1	2	2	1	0	1	13	-6			
12	HAMLET, KEVIN	F	2	1-1	0-0	0-1	0	0	0	1	0	0	0	0	6	-1			
24	BURRELL, ROMELO	F	1	0-0	0-0	1-2	0	0	0	3	0	0	0	0	8	-5			
TEAM																			
TOTALS							76	27-59	9-23	13-21	5	21	26	22	10	19	1	10	200

Shooting By Period

Period	FG	FG%	3FG	3FG%	FT	FT%
1st Half	15-28	54%	5-10	50%	7-11	64%
2nd Half	12-31	39%	4-13	31%	6-10	60%
Game	27-59	45.8%	9-23	39.1%	13-21	61.9%

Last FG: 2nd-01:29
Largest lead: By 9 at
Technical Fouls: None.

Texas 87

No.	Player	S	Pts	FG	3FG	FT	OR	DR	TR	PF	A	TO	Blk	Stl	Min	+/-			
00	LIDDELL, GERALD	F	3	1-3	0-1	1-2	1	0	1	2	0	5	0	1	16	5			
02	COLEMAN III, MATT	G	12	5-11	2-3	0-2	0	7	7	3	6	2	0	2	38	16			
03	RAMEY, COURTNEY	G	20	7-13	3-5	3-4	0	3	3	0	6	0	0	1	31	9			
13	FEBRES, JASE	G	23	7-11	7-10	2-2	1	2	3	5	1	1	0	1	39	10			
20	SIMS, JERICHO	F	10	4-5	0-0	2-7	1	2	3	4	0	2	1	0	20	2			
01	JONES, ANDREW	G	7	1-5	1-4	4-4	0	2	2	4	3	2	0	0	18	6			
04	WILLIAMS, DONOVAN	G	0	0-1	0-1	0-0	0	0	0	0	0	1	0	0	3	-3			
05	HAMM JR., ROYCE	F	8	1-1	0-0	6-8	2	10	12	1	0	6	1	0	16	10			
22	JONES, KAI	F	3	1-2	1-1	0-0	2	4	6	3	0	2	0	0	17	-2			
33	HEPA, KAMAKA	F	0	0-0	0-0	0-0	0	0	0	0	0	0	0	0	0	0			
50	BAKER, WILL	C	1	0-1	0-0	1-2	1	0	1	0	0	0	0	0	2	-3			
TEAM																			
TOTALS							87	27-53	14-25	19-31	10	32	42	22	16	22	2	5	200

Shooting By Period

Period	FG	FG%	3FG	3FG%	FT	FT%
1st Half	12-27	44%	6-10	60%	6-10	60%
2nd Half	15-26	58%	8-15	53%	13-21	62%
Game	27-53	50.9%	14-25	56.0%	19-31	61.3%

Last FG: 2nd-00:46
Largest lead: By 13 at
Technical Fouls: None.

Game Notes:

Officials: Kelly Self, Rodrick Dixon, Tyler Kumpf
 Attendance: 8587

Start Time: 07:00 PM

Score	1st	2nd	TOT
CMU	42	34	76
TEX	36	51	87

CMU led for 27:41. TEX led for 9:39.
 Game was tied for 0:0.
 Times tied: 0 Lead Changes: 0

Points from	CMU	TEX
In the Paint	32	22
Off Turns	16	25
2nd Chance	5	9
Fast Break	20	19
Bench	11	19

Official Box Score
Central Mich. vs Texas
First Half Statistics Only
December 14, 2019 at Frank Erwin Center



Central Mich. 42

No.	Player	S	Pts	FG	3FG	FT	OR	DR	TR	PF	A	TO	Blk	Stl	Min
02	LANE, DEVONTAE	G	3	1-4	0-0	1-2	0	1	1	1	2	1	0	2	14
05	MONTGOMERY, ROB	F	11	4-7	2-2	1-1	0	1	1	1	1	2	0	1	16
14	DILEO, DAVID	F	12	5-9	2-6	0-0	0	1	1	1	1	1	1	0	17
20	MCKAY, KEVIN	G	6	2-2	0-0	2-3	0	3	3	1	0	3	0	0	15
23	MORGAN, DALLAS	G	5	2-3	1-2	0-1	0	1	1	0	1	0	0	0	12
00	BROADWAY JR., TRAVON	G	2	1-2	0-0	0-0	1	0	1	1	0	0	0	2	11
01	REDMAN, COREY	G	0	0-0	0-0	0-0	0	0	0	0	0	0	0	0	3
11	WINSTON, DESCHON	G	2	0-1	0-0	2-2	0	1	1	1	1	1	0	1	6
12	HAMLET, KEVIN	F	0	0-0	0-0	0-0	0	0	0	1	0	0	0	0	3
24	BURRELL, ROMELO	F	1	0-0	0-0	1-2	0	0	0	2	0	0	0	0	3
	TEAM			0-0			1	3	4	0		0			
TOTALS			42	15-28	5-10	7-11	2	11	13	9	6	8	1	6	100

Shooting By Period

Period	FG	FG%	3FG	3FG%	FT	FT%
1st Half	15-28	54%	5-10	50%	7-11	64%
Game	27-59	45.8%	9-23	39.1%	13-21	61.9%

Last FG Half: CMU 2nd-01:29

Texas 36

No.	Player	S	Pts	FG	3FG	FT	OR	DR	TR	PF	A	TO	Blk	Stl	Min
00	LIDDELL, GERALD	F	3	1-3	0-1	1-2	1	0	1	2	0	4	0	1	13
02	COLEMAN III, MATT	G	12	5-9	2-2	0-0	0	5	5	0	1	1	0	0	19
03	RAMEY, COURTNEY	G	2	1-4	0-0	0-0	0	0	0	0	4	0	0	0	11
13	FEBRES, JASE	G	12	4-6	4-5	0-0	0	0	0	1	0	1	0	0	20
20	SIMS, JERICHO	F	2	1-1	0-0	0-2	1	0	1	3	0	0	0	0	10
01	JONES, ANDREW	G	4	0-1	0-1	4-4	0	0	0	2	2	0	0	0	9
04	WILLIAMS, DONOVAN	G	0	0-1	0-1	0-0	0	0	0	0	0	1	0	0	3
05	HAMM JR., ROYCE	F	0	0-0	0-0	0-0	0	4	4	0	0	2	0	0	6
22	JONES, KAI	F	0	0-1	0-0	0-0	1	3	4	2	0	2	0	0	7
33	HEPA, KAMAKA	F	0	0-0	0-0	0-0	0	0	0	0	0	0	0	0	0
50	BAKER, WILL	C	1	0-1	0-0	1-2	1	0	1	0	0	0	0	0	2
	TEAM			0-0			1	1	2	0		1			
TOTALS			36	12-27	6-10	6-10	5	13	18	10	7	12	0	1	100

Shooting By Period

Period	FG	FG%	3FG	3FG%	FT	FT%
1st Half	12-27	44%	6-10	60%	6-10	60%
Game	27-53	50.9%	14-25	56.0%	19-31	61.3%

Last FG Half: TEX 2nd-00:46

Game Notes:

Officials: Kelly Self, Rodrick Dixon, Tyler Kumpf

Attendance: 8587

Start Time: 07:00 PM

Score	1st	2nd	TOT
CMU	42	34	76
TEX	36	51	87

Points from (This Period)	CMU	TEX
In the Paint	18	10
Off Turns	8	4
2nd Chance	2	2
Fast Break	11	6
Bench	5	5

Official Play-By-Play
Central Mich. vs Texas
First Half
December 14, 2019 at Frank Erwin Center



Period 1

Starters:

Central Mich.: 2 LANE,DEVONTAE (G); 5 MONTGOMERY,ROB (F); 14 DILEO,DAVID (F); 20 MCKAY,KEVIN (G); 23 MORGAN,DALLAS (G);
Texas: 0 LIDDELL,GERALD (F); 2 COLEMAN III,MATT (G); 3 RAMEY,COURTNEY (G); 13 FEBRES,JASE (G); 20 SIMS,JERICHO (F);

Time	VISITORS: Central Mich.	Score	Margin	HOME: Texas
19:44				TURNOVER by LIDDELL, GERALD
19:30	GOOD! 3PTR by MORGAN, DALLAS	0-3	V 3	
19:30	ASSIST by LANE, DEVONTAE			
19:12				TURNOVER by LIDDELL, GERALD
19:12	STEAL by LANE, DEVONTAE			
19:06	MISSED LAYUP by LANE, DEVONTAE			
19:03				REBOUND (DEF) by COLEMAN III, MATT
19:01		2-3	V 1	GOOD! LAYUP by COLEMAN III, MATT [FB]
18:47	TURNOVER by MONTGOMERY, ROB [PNT]			
18:27				MISSED 3PTR by LIDDELL, GERALD
18:21	REBOUND (DEF) by MCKAY, KEVIN			
18:11	GOOD! 3PTR by MONTGOMERY, ROB	2-6	V 4	
18:11	ASSIST by LANE, DEVONTAE			
17:49		5-6	V 1	GOOD! 3PTR by FEBRES, JASE
17:49				ASSIST by RAMEY, COURTNEY
17:34	GOOD! 3PTR by MONTGOMERY, ROB	5-9	V 4	
17:34				FOUL by SIMS, JERICHO
17:34	GOOD! FT by MONTGOMERY, ROB	5-10	V 5	
17:25		8-10	V 2	GOOD! 3PTR by FEBRES, JASE
17:25				ASSIST by RAMEY, COURTNEY
17:04	MISSED 3PTR by MORGAN, DALLAS			
16:59				REBOUND (DEF) by COLEMAN III, MATT
16:56				MISSED JUMPER by RAMEY, COURTNEY
16:51	REBOUND (DEF) by LANE, DEVONTAE			
16:46				FOUL by SIMS, JERICHO
16:46	GOOD! FT by MCKAY, KEVIN	8-11	V 3	
16:46				SUB OUT: RAMEY, COURTNEY
16:46				SUB OUT: SIMS, JERICHO
16:46				SUB IN: JONES, ANDREW
16:46				SUB IN: HAMM JR., ROYCE
16:46	SUB OUT: LANE, DEVONTAE			
16:46	SUB OUT: MONTGOMERY, ROB			
16:46	SUB OUT: MORGAN, DALLAS			
16:46	SUB IN: BROADWAY JR., TRAVON			
16:46	SUB IN: WINSTON, DESCHON			
16:46	SUB IN: BURRELL, ROMELO			
16:46	GOOD! FT by MCKAY, KEVIN	8-12	V 4	
16:31		11-12	V 1	GOOD! 3PTR by COLEMAN III, MATT
16:06				SUB OUT: LIDDELL, GERALD
16:06				SUB IN: JONES, KAI
16:05	TURNOVER by MCKAY, KEVIN			
15:58				TURNOVER by HAMM JR., ROYCE [PNT]
15:58	STEAL by WINSTON, DESCHON			
15:52	MISSED LAYUP by BROADWAY JR., TRAVON			
15:52				REBOUND (DEF) by HAMM JR., ROYCE
15:46				TURNOVER by COLEMAN III, MATT
15:46	STEAL by BROADWAY JR., TRAVON			
15:42				FOUL by JONES, ANDREW
15:42	TIMEOUT MEDIA			
15:42	SUB OUT: DILEO, DAVID			
15:42	SUB OUT: MCKAY, KEVIN			
15:42	SUB IN: MONTGOMERY, ROB			
15:42	SUB IN: MORGAN, DALLAS			
15:42	GOOD! FT by BURRELL, ROMELO [FB]	11-13	V 2	
15:42	MISSED FT by BURRELL, ROMELO [FB]			
15:40				REBOUND (DEF) by JONES, KAI
15:38				TURNOVER by JONES, KAI
15:38	STEAL by BROADWAY JR., TRAVON			
15:30	MISSED LAYUP by WINSTON, DESCHON			
15:21				REBOUND (DEF) by COLEMAN III, MATT
15:21				MISSED LAYUP by COLEMAN III, MATT
15:21	REBOUND (DEF) by WINSTON, DESCHON			
15:21	GOOD! LAYUP by MORGAN, DALLAS [FB]	11-15	V 4	
15:21				SUB OUT: HAMM JR., ROYCE
15:21				SUB IN: BAKER, WILL
14:58				MISSED JUMPER by COLEMAN III, MATT
14:52				REBOUND (OFF) by JONES, KAI
14:47				MISSED JUMPER by BAKER, WILL
14:44	REBOUND (DEF) by MORGAN, DALLAS			
14:22				FOUL by JONES, ANDREW [PNT]

Time	VISITORS: Central Mich.	Score	Margin	HOME: Texas
14:22	GOOD! FT by WINSTON, DESCHON	11-16	V 5	
14:22				SUB OUT: JONES, ANDREW
14:22				SUB OUT: COLEMAN III, MATT
14:22				SUB IN: RAMEY, COURTNEY
14:22				SUB IN: WILLIAMS, DONOVAN
14:22	GOOD! FT by WINSTON, DESCHON	11-17	V 6	
14:01				MISSED 3PTR by WILLIAMS, DONOVAN
13:58	FOUL by BURRELL, ROMELO			
13:58				MISSED FT by BAKER, WILL
13:58				REBOUND (DEADB) by TEAM
13:58	SUB OUT: WINSTON, DESCHON			
13:58	SUB OUT: BURRELL, ROMELO			
13:58	SUB IN: LANE, DEVONTAE			
13:58	SUB IN: DILEO, DAVID			
13:58		12-17	V 5	GOOD! FT by BAKER, WILL
13:57				REBOUND (OFF) by BAKER, WILL
13:49	GOOD! LAYUP by LANE, DEVONTAE	12-19	V 7	
13:36				MISSED LAYUP by RAMEY, COURTNEY [PNT]
13:34	REBOUND (DEF) by TEAM			
13:34				SUB OUT: BAKER, WILL
13:34				SUB IN: COLEMAN III, MATT
13:34	SUB OUT: BROADWAY JR., TRAVON			
13:34	SUB IN: MCKAY, KEVIN			
13:20	TURNOVER by DILEO, DAVID			
13:08				TURNOVER by FEBRES, JASE
12:57	MISSED JUMPER by LANE, DEVONTAE			
12:56	REBOUND (OFF) by TEAM			
12:56	SUB OUT: MONTGOMERY, ROB			
12:56	SUB IN: HAMLET, KEVIN			
12:54	TURNOVER by MCKAY, KEVIN [PNT]			
12:32				MISSED LAYUP by COLEMAN III, MATT
12:32	BLOCK by DILEO, DAVID			
12:32	REBOUND (DEF) by TEAM			
12:17	MISSED JUMPER by LANE, DEVONTAE [PNT]			
12:10				REBOUND (DEF) by JONES, KAI
12:09		14-19	V 5	GOOD! LAYUP by RAMEY, COURTNEY [FB]
11:58	TURNOVER by MCKAY, KEVIN			
11:58	TIMEOUT MEDIA			
11:57	SUB OUT: HAMLET, KEVIN			
11:57	SUB OUT: MORGAN, DALLAS			
11:57	SUB IN: REDMAN, COREY			
11:57	SUB IN: MONTGOMERY, ROB			
11:30				MISSED JUMPER by JONES, KAI
11:26	REBOUND (DEF) by DILEO, DAVID			
11:22	GOOD! 3PTR by DILEO, DAVID [FB]	14-22	V 8	
11:14				TURNOVER by WILLIAMS, DONOVAN
11:14	STEAL by LANE, DEVONTAE			
11:14				FOUL by JONES, KAI
11:14				SUB OUT: WILLIAMS, DONOVAN
11:14				SUB IN: LIDDELL, GERALD
11:02	MISSED 3PTR by DILEO, DAVID			
10:59				REBOUND (DEF) by JONES, KAI
10:39				FOUL by JONES, KAI
10:39				TURNOVER by JONES, KAI
10:39				SUB OUT: JONES, KAI
10:39				SUB IN: SIMS, JERICHO
10:28	MISSED LAYUP by MONTGOMERY, ROB [PNT]			
10:25				REBOUND (DEF) by COLEMAN III, MATT
10:22		16-22	V 6	GOOD! JUMPER by COLEMAN III, MATT [FB/PNT]
10:14	GOOD! LAYUP by MCKAY, KEVIN [FB/PNT]	16-24	V 8	
10:14	ASSIST by DILEO, DAVID			
09:55		18-24	V 6	GOOD! DUNK by LIDDELL, GERALD
09:55				ASSIST by RAMEY, COURTNEY
09:33	GOOD! JUMPER by DILEO, DAVID	18-26	V 8	
09:17				MISSED LAYUP by RAMEY, COURTNEY
09:13	REBOUND (DEF) by MONTGOMERY, ROB			
09:09				FOUL by FEBRES, JASE
09:09	MISSED FT by LANE, DEVONTAE [FB]			
09:09	REBOUND (DEADB) by TEAM			
09:09				SUB OUT: RAMEY, COURTNEY
09:09				SUB IN: JONES, ANDREW
09:09	SUB OUT: REDMAN, COREY			
09:09	SUB IN: BROADWAY JR., TRAVON			
09:09	GOOD! FT by LANE, DEVONTAE [FB]	18-27	V 9	
09:09	SUB OUT: LANE, DEVONTAE			
09:09	SUB IN: WINSTON, DESCHON			
08:53		20-27	V 7	GOOD! by SIMS, JERICHO
08:53				ASSIST by JONES, ANDREW
08:39	GOOD! LAYUP by DILEO, DAVID	20-29	V 9	
08:39	ASSIST by MONTGOMERY, ROB			

Time	VISITORS: Central Mich.	Score	Margin	HOME: Texas
08:22		23-29	V 6	GOOD! 3PTR by FEBRES, JASE
08:22				ASSIST by COLEMAN III, MATT
07:55	TURNOVER by WINSTON, DESCHON			
07:55	TIMEOUT MEDIA			
07:55	SUB OUT: DILEO, DAVID			
07:55	SUB OUT: MCKAY, KEVIN			
07:55	SUB IN: MORGAN, DALLAS			
07:55	SUB IN: BURRELL, ROMELO			
07:41	FOUL by WINSTON, DESCHON			
07:28	FOUL by BURRELL, ROMELO [PNT]			
07:28		24-29	V 5	GOOD! FT by JONES, ANDREW
07:28	SUB OUT: BURRELL, ROMELO			
07:28	SUB IN: DILEO, DAVID			
07:28		25-29	V 4	GOOD! FT by JONES, ANDREW
07:28				SUB OUT: JONES, ANDREW
07:28				SUB IN: RAMEY, COURTNEY
07:18	GOOD! 3PTR by DILEO, DAVID	25-32	V 7	
07:18	ASSIST by WINSTON, DESCHON			
06:45		28-32	V 4	GOOD! 3PTR by COLEMAN III, MATT
06:45				ASSIST by RAMEY, COURTNEY
06:21	GOOD! LAYUP by MONTGOMERY, ROB	28-34	V 6	
06:21	ASSIST by MORGAN, DALLAS			
06:01				FOUL by LIDDELL, GERALD
06:01				TURNOVER by LIDDELL, GERALD
06:01				SUB OUT: LIDDELL, GERALD
06:01				SUB OUT: RAMEY, COURTNEY
06:01				SUB IN: JONES, ANDREW
06:01				SUB IN: JONES, KAI
06:01	SUB OUT: MONTGOMERY, ROB			
06:01	SUB OUT: WINSTON, DESCHON			
06:01	SUB IN: LANE, DEVONTAE			
06:01	SUB IN: HAMLET, KEVIN			
05:49	GOOD! JUMPER by DILEO, DAVID [PNT]	28-36	V 8	
05:28		30-36	V 6	GOOD! LAYUP by COLEMAN III, MATT
05:19	MISSED 3PTR by DILEO, DAVID			
05:15	REBOUND (OFF) by BROADWAY JR., TRAVON			
05:13	GOOD! JUMPER by BROADWAY JR., TRAVON [PNT]	30-38	V 8	
04:56	FOUL by BROADWAY JR., TRAVON [PNT]			
04:56	SUB OUT: BROADWAY JR., TRAVON			
04:56	SUB IN: MCKAY, KEVIN			
04:38				MISSED 3PTR by FEBRES, JASE
04:37				REBOUND (OFF) by SIMS, JERICHO
04:37	FOUL by HAMLET, KEVIN			
04:30				MISSED JUMPER by FEBRES, JASE
04:27				REBOUND (OFF) by TEAM
04:17	FOUL by DILEO, DAVID			
04:17				MISSED FT by SIMS, JERICHO
04:17				REBOUND (DEADB) by TEAM
04:17				MISSED FT by SIMS, JERICHO
04:15	REBOUND (DEF) by MCKAY, KEVIN			
04:08				FOUL by SIMS, JERICHO [PNT]
04:08				SUB OUT: SIMS, JERICHO
04:08				SUB IN: HAMM JR., ROYCE
04:08				SUB OUT: JONES, KAI
04:08				SUB IN: LIDDELL, GERALD
04:08	MISSED FT by MORGAN, DALLAS			
04:07				REBOUND (DEF) by HAMM JR., ROYCE
03:53				TURNOVER by HAMM JR., ROYCE [PNT]
03:53	TIMEOUT MEDIA			
03:53	SUB OUT: LANE, DEVONTAE			
03:53	SUB OUT: HAMLET, KEVIN			
03:53	SUB OUT: MORGAN, DALLAS			
03:53	SUB IN: BROADWAY JR., TRAVON			
03:53	SUB IN: REDMAN, COREY			
03:53	SUB IN: MONTGOMERY, ROB			
03:53	SUB OUT: REDMAN, COREY			
03:53	SUB IN: LANE, DEVONTAE			
03:40	FOUL by MONTGOMERY, ROB			
03:40	TURNOVER by MONTGOMERY, ROB			
03:19	FOUL by MCKAY, KEVIN [PNT]			
03:19		31-38	V 7	GOOD! FT by JONES, ANDREW
03:19		32-38	V 6	GOOD! FT by JONES, ANDREW
02:59	MISSED JUMPER by MONTGOMERY, ROB			
02:58				REBOUND (DEF) by TEAM
02:30				TURNOVER by LIDDELL, GERALD
02:30	STEAL by MONTGOMERY, ROB			
02:25	GOOD! LAYUP by MONTGOMERY, ROB [FB]	32-40	V 8	
02:00				MISSED LAYUP by COLEMAN III, MATT [PNT]
02:00	REBOUND (DEADB) by TEAM			
01:47	MISSED 3PTR by DILEO, DAVID			

Time	VISITORS: Central Mich.	Score	Margin	HOME: Texas
01:43				REBOUND (DEF) by COLEMAN III, MATT
01:31		35-40	V 5	GOOD! 3PTR by FEBRES, JASE
01:31				ASSIST by JONES, ANDREW
01:30	TIMEOUT 30SEC			
01:18	GOOD! LAYUP by MCKAY, KEVIN	35-42	V 7	
01:18				FOUL by LIDDELL, GERALD
01:18	SUB OUT: DILEO, DAVID			
01:18	SUB IN: MORGAN, DALLAS			
01:18	MISSED FT by MCKAY, KEVIN			
01:18				REBOUND (DEF) by HAMM JR., ROYCE
01:10				MISSED 3PTR by JONES, ANDREW
01:08				REBOUND (OFF) by LIDDELL, GERALD
01:07	FOUL by LANE, DEVONTAE			
01:07		36-42	V 6	GOOD! FT by LIDDELL, GERALD
01:07				SUB OUT: JONES, ANDREW
01:07				SUB IN: RAMEY, COURTNEY
01:06				MISSED FT by LIDDELL, GERALD
01:05	REBOUND (DEF) by MCKAY, KEVIN			
00:54	TURNOVER by LANE, DEVONTAE			
00:54				STEAL by LIDDELL, GERALD
00:49				MISSED LAYUP by LIDDELL, GERALD
00:49	REBOUND (DEF) by TEAM			
00:34	MISSED JUMPER by MONTGOMERY, ROB [PNT]			
00:29				REBOUND (DEF) by HAMM JR., ROYCE
00:27				SUB OUT: RAMEY, COURTNEY
00:27				SUB IN: JONES, ANDREW
00:27	SUB OUT: LANE, DEVONTAE			
00:27	SUB IN: WINSTON, DESCHON			
00:27				TIMEOUT 30SEC
00:27				SUB OUT: LIDDELL, GERALD
00:27				SUB IN: HEPA, KAMAKA
00:01				TURNOVER by TEAM
00:01				SUB OUT: JONES, ANDREW
00:01				SUB OUT: HEPA, KAMAKA
00:01				SUB IN: LIDDELL, GERALD
00:01				SUB IN: RAMEY, COURTNEY
00:01	SUB OUT: MCKAY, KEVIN			
00:01	SUB IN: DILEO, DAVID			
00:00	MISSED 3PTR by DILEO, DAVID			
00:00				REBOUND (DEADB) by TEAM

Central Mich. 42, Texas 36

Points from (This Period)	CMU	TEX
In the Paint	18	10
Off Turns	8	4
2nd Chance	2	2
Fast Break	11	6
Bench	5	5

Official Box Score
Central Mich. vs Texas
Second Half Statistics Only
December 14, 2019 at Frank Erwin Center



Central Mich. 34

No.	Player	S	Pts	FG	3FG	FT	OR	DR	TR	PF	A	TO	Blk	Stl	Min
02	LANE, DEVONTAE	G	0	0-1	0-0	0-0	0	0	0	1	3	2	0	0	14
05	MONTGOMERY, ROB	F	1	0-6	0-1	1-2	1	3	4	2	0	2	0	0	15
14	DILEO, DAVID	F	3	1-5	1-4	0-0	0	3	3	2	0	2	0	2	17
20	MCKAY, KEVIN	G	15	5-5	0-0	5-6	0	3	3	3	0	2	0	1	13
23	MORGAN, DALLAS	G	9	3-9	3-7	0-0	0	1	1	2	0	2	0	1	18
00	BROADWAY JR., TRAVON	G	2	1-2	0-1	0-0	1	0	1	1	0	1	0	0	9
01	REDMAN, COREY	G	0	0-0	0-0	0-0	0	0	0	0	0	0	0	0	0
11	WINSTON, DESCHON	G	2	1-2	0-0	0-1	0	0	0	1	1	0	0	0	7
12	HAMLET, KEVIN	F	2	1-1	0-0	0-1	0	0	0	0	0	0	0	0	3
24	BURRELL, ROMELO	F	0	0-0	0-0	0-0	0	0	0	1	0	0	0	0	5
	TEAM			0-0			1	0	1	0		0			
TOTALS			34	12-31	4-13	6-10	3	10	13	13	4	11	0	4	100

Shooting By Period

Period	FG	FG%	3FG	3FG%	FT	FT%
2nd Half	12-31	39%	4-13	31%	6-10	60%
Game	27-59	45.8%	9-23	39.1%	13-21	61.9%

Last FG Half: CMU -

Texas 51

No.	Player	S	Pts	FG	3FG	FT	OR	DR	TR	PF	A	TO	Blk	Stl	Min
00	LIDDELL, GERALD	F	0	0-0	0-0	0-0	0	0	0	0	0	1	0	0	4
02	COLEMAN III, MATT	G	0	0-2	0-1	0-2	0	2	2	3	5	1	0	2	19
03	RAMEY, COURTNEY	G	18	6-9	3-5	3-4	0	3	3	0	2	0	0	1	20
13	FEBRES, JASE	G	11	3-5	3-5	2-2	1	2	3	4	1	0	0	1	19
20	SIMS, JERICHO	F	8	3-4	0-0	2-5	0	2	2	1	0	2	1	0	11
01	JONES, ANDREW	G	3	1-4	1-3	0-0	0	2	2	2	1	2	0	0	8
04	WILLIAMS, DONOVAN	G	0	0-0	0-0	0-0	0	0	0	0	0	0	0	0	0
05	HAMM JR., ROYCE	F	8	1-1	0-0	6-8	2	6	8	1	0	4	1	0	10
22	JONES, KAI	F	3	1-1	1-1	0-0	1	1	2	1	0	0	0	0	10
33	HEPA, KAMAKA	F	0	0-0	0-0	0-0	0	0	0	0	0	0	0	0	0
50	BAKER, WILL	C	0	0-0	0-0	0-0	0	0	0	0	0	0	0	0	0
	TEAM			0-0			1	1	2	0		0			
TOTALS			51	15-26	8-15	13-21	5	19	24	12	9	10	2	4	100

Shooting By Period

Period	FG	FG%	3FG	3FG%	FT	FT%
2nd Half	15-26	58%	8-15	53%	13-21	62%
Game	27-53	50.9%	14-25	56.0%	19-31	61.3%

Last FG Half: TEX -

Game Notes:

Officials: Kelly Self, Rodrick Dixon, Tyler Kumpf
 Attendance: 8587

Start Time: 07:00 PM

Score	1st	2nd	TOT
CMU	42	34	76
TEX	36	51	87

Points from (This Period)	CMU	TEX
In the Paint	14	12
Off Turns	8	21
2nd Chance	3	7
Fast Break	9	13
Bench	6	14

Official Play-By-Play
Central Mich. vs Texas
Second Half
December 14, 2019 at Frank Erwin Center



Period 2

Starters:

Central Mich.: 2 LANE,DEVONTAE (G); 5 MONTGOMERY,ROB (F); 14 DILEO,DAVID (F); 20 MCKAY,KEVIN (G); 23 MORGAN,DALLAS (G);
Texas: 0 LIDDELL,GERALD (F); 2 COLEMAN III,MATT (G); 3 RAMEY,COURTNEY (G); 13 FEBRES,JASE (G); 20 SIMS,JERICHO (F);

Time	VISITORS: Central Mich.	Score	Margin	HOME: Texas
20:00	SUB OUT: BROADWAY JR., TRAVON			
20:00	SUB OUT: WINSTON, DESCHON			
20:00	SUB IN: LANE, DEVONTAE			
20:00	SUB IN: MCKAY, KEVIN			
19:48	GOOD! LAYUP by MCKAY, KEVIN	36-44	V 8	
19:22				TURNOVER by HAMM JR., ROYCE [PNT]
19:22	STEAL by DILEO, DAVID			
19:16	MISSED 3PTR by MORGAN, DALLAS			
19:12	REBOUND (OFF) by MONTGOMERY, ROB			
18:59	FOUL by LANE, DEVONTAE			
18:59	TURNOVER by LANE, DEVONTAE			
18:47	FOUL by MONTGOMERY, ROB			
18:47		37-44	V 7	GOOD! FT by RAMEY, COURTNEY
18:46				MISSED FT by RAMEY, COURTNEY
18:44	REBOUND (DEF) by DILEO, DAVID			
18:33	MISSED JUMPER by MONTGOMERY, ROB			
18:29				REBOUND (DEF) by FEBRES, JASE
18:21				MISSED 3PTR by FEBRES, JASE
18:17				REBOUND (OFF) by HAMM JR., ROYCE
18:17	FOUL by MCKAY, KEVIN			
18:17				MISSED FT by HAMM JR., ROYCE
18:17				REBOUND (DEADB) by TEAM
18:17		38-44	V 6	GOOD! FT by HAMM JR., ROYCE
18:00	MISSED JUMPER by MONTGOMERY, ROB [PNT]			
17:57				REBOUND (DEF) by HAMM JR., ROYCE
17:36				TURNOVER by LIDDELL, GERALD
17:36				SUB OUT: LIDDELL, GERALD
17:36				SUB IN: JONES, ANDREW
17:25	MISSED 3PTR by DILEO, DAVID			
17:22				REBOUND (DEF) by COLEMAN III, MATT
17:10	FOUL by MONTGOMERY, ROB [PNT]			
17:10		39-44	V 5	GOOD! FT by HAMM JR., ROYCE
17:10	SUB OUT: MONTGOMERY, ROB			
17:10	SUB OUT: MORGAN, DALLAS			
17:10	SUB IN: BROADWAY JR., TRAVON			
17:10	SUB IN: BURRELL, ROMELO			
17:10				MISSED FT by HAMM JR., ROYCE
17:08	REBOUND (DEF) by DILEO, DAVID			
16:56	MISSED 3PTR by BROADWAY JR., TRAVON			
16:51				REBOUND (DEF) by FEBRES, JASE
16:48				MISSED 3PTR by JONES, ANDREW
16:44	REBOUND (DEF) by MCKAY, KEVIN			
16:41	MISSED 3PTR by DILEO, DAVID			
16:36				REBOUND (DEF) by HAMM JR., ROYCE
16:30				MISSED LAYUP by JONES, ANDREW
16:26				REBOUND (OFF) by HAMM JR., ROYCE
16:25		41-44	V 3	GOOD! LAYUP by HAMM JR., ROYCE
16:24	FOUL by MCKAY, KEVIN			
16:24	TURNOVER by MCKAY, KEVIN			
16:24	SUB OUT: LANE, DEVONTAE			
16:24	SUB OUT: BURRELL, ROMELO			
16:24	SUB IN: WINSTON, DESCHON			
16:24	SUB IN: MORGAN, DALLAS			
16:09		44-44	T	GOOD! 3PTR by RAMEY, COURTNEY
15:54	MISSED LAYUP by WINSTON, DESCHON [PNT]			
15:54				BLOCK by HAMM JR., ROYCE
15:48				REBOUND (DEF) by JONES, ANDREW
15:36	TIMEOUT MEDIA			
15:36	SUB OUT: MCKAY, KEVIN			
15:36	SUB IN: BURRELL, ROMELO			
15:30				FOUL by HAMM JR., ROYCE
15:30				TURNOVER by HAMM JR., ROYCE
15:20	TURNOVER by MORGAN, DALLAS			
15:08				FOUL by COLEMAN III, MATT
15:08				TURNOVER by COLEMAN III, MATT
14:51	MISSED LAYUP by MORGAN, DALLAS			
14:48				REBOUND (DEF) by HAMM JR., ROYCE
14:48				TURNOVER by HAMM JR., ROYCE
14:48	SUB OUT: DILEO, DAVID			
14:48	SUB IN: MONTGOMERY, ROB			

Time	VISITORS: Central Mich.	Score	Margin	HOME: Texas
14:24				FOUL by COLEMAN III, MATT
14:24	GOOD! FT by MONTGOMERY, ROB	44-45	V 1	
14:24				SUB OUT: HAMM JR., ROYCE
14:24				SUB IN: SIMS, JERICHO
14:24	MISSED FT by MONTGOMERY, ROB			
14:22				REBOUND (DEF) by RAMEY, COURTNEY
14:07				MISSED LAYUP by RAMEY, COURTNEY
14:04				REBOUND (OFF) by FEBRES, JASE
14:02		46-45	H 1	GOOD! DUNK by SIMS, JERICHO
14:02				ASSIST by FEBRES, JASE
13:44				FOUL by COLEMAN III, MATT [PNT]
13:44				SUB OUT: COLEMAN III, MATT
13:44				SUB IN: JONES, KAI
13:41	GOOD! 3PTR by MORGAN, DALLAS	46-48	V 2	
13:41	ASSIST by WINSTON, DESCHON			
13:27		49-48	H 1	GOOD! 3PTR by JONES, ANDREW
13:27				ASSIST by RAMEY, COURTNEY
13:08	TURNOVER by MONTGOMERY, ROB			
12:45				MISSED by SIMS, JERICHO [PNT]
12:41	REBOUND (DEF) by MONTGOMERY, ROB			
12:36	GOOD! 3PTR by MORGAN, DALLAS	49-51	V 2	
12:36				FOUL by JONES, ANDREW
12:36	SUB OUT: BROADWAY JR., TRAVON			
12:36	SUB OUT: WINSTON, DESCHON			
12:36	SUB OUT: BURRELL, ROMELO			
12:36	SUB IN: LANE, DEVONTAE			
12:36	SUB IN: DILEO, DAVID			
12:36	SUB IN: MCKAY, KEVIN			
12:34				FOUL by JONES, ANDREW
12:32				SUB OUT: JONES, ANDREW
12:32				SUB IN: COLEMAN III, MATT
12:16	TURNOVER by MCKAY, KEVIN			
12:11		52-51	H 1	GOOD! 3PTR by JONES, KAI [FB]
12:11				ASSIST by COLEMAN III, MATT
12:01	GOOD! 3PTR by MORGAN, DALLAS	52-54	V 2	
12:01	ASSIST by LANE, DEVONTAE			
11:48	FOUL by MCKAY, KEVIN			
11:48	TIMEOUT MEDIA			
11:48	SUB OUT: MONTGOMERY, ROB			
11:48	SUB OUT: MCKAY, KEVIN			
11:48	SUB IN: BROADWAY JR., TRAVON			
11:48	SUB IN: HAMLET, KEVIN			
11:48				MISSED FT by SIMS, JERICHO
11:48				REBOUND (DEADB) by TEAM
11:48		53-54	V 1	GOOD! FT by SIMS, JERICHO
11:30	MISSED LAYUP by MORGAN, DALLAS			
11:22	REBOUND (OFF) by BROADWAY JR., TRAVON			
11:22	GOOD! LAYUP by BROADWAY JR., TRAVON	53-56	V 3	
11:15		55-56	V 1	GOOD! by SIMS, JERICHO [FB]
11:15	FOUL by DILEO, DAVID			
11:15				MISSED FT by SIMS, JERICHO [FB]
11:15	REBOUND (DEF) by DILEO, DAVID			
11:09	MISSED 3PTR by MORGAN, DALLAS			
11:07				REBOUND (DEF) by TEAM
10:39				TURNOVER by SIMS, JERICHO [PNT]
10:39	STEAL by MORGAN, DALLAS			
10:31	GOOD! 3PTR by DILEO, DAVID [FB]	55-59	V 4	
10:31	ASSIST by LANE, DEVONTAE			
10:07		57-59	V 2	GOOD! LAYUP by SIMS, JERICHO
09:43	MISSED JUMPER by DILEO, DAVID			
09:39				REBOUND (DEF) by COLEMAN III, MATT
09:29		60-59	H 1	GOOD! 3PTR by FEBRES, JASE
09:29				ASSIST by COLEMAN III, MATT
09:15	GOOD! LAYUP by HAMLET, KEVIN	60-61	V 1	
09:15	ASSIST by LANE, DEVONTAE			
09:15				FOUL by FEBRES, JASE
09:15	SUB OUT: MORGAN, DALLAS			
09:15	SUB IN: WINSTON, DESCHON			
09:15	MISSED FT by HAMLET, KEVIN			
09:14				REBOUND (DEF) by RAMEY, COURTNEY
09:04				MISSED 3PTR by FEBRES, JASE
09:01				REBOUND (OFF) by JONES, KAI
08:51				TURNOVER by SIMS, JERICHO [PNT]
08:51	SUB OUT: HAMLET, KEVIN			
08:51	SUB IN: MONTGOMERY, ROB			
08:37	TURNOVER by LANE, DEVONTAE			
08:37				STEAL by COLEMAN III, MATT
08:28	FOUL by WINSTON, DESCHON [PNT]			
08:28				MISSED FT by SIMS, JERICHO
08:28				REBOUND (DEADB) by TEAM

Time	VISITORS: Central Mich.	Score	Margin	HOME: Texas
08:28	SUB OUT: LANE, DEVONTAE			
08:28	SUB OUT: DILEO, DAVID			
08:28	SUB IN: MCKAY, KEVIN			
08:28	SUB IN: BURRELL, ROMELO			
08:28		61-61	T	GOOD! FT by SIMS, JERICHO
08:16	TURNOVER by MONTGOMERY, ROB			
08:03		64-61	H 3	GOOD! 3PTR by FEBRES, JASE
08:03				ASSIST by RAMEY, COURTNEY
07:59	TURNOVER by BROADWAY JR., TRAVON [PNT]			
07:59				STEAL by FEBRES, JASE
07:52		67-61	H 6	GOOD! 3PTR by FEBRES, JASE
07:52				ASSIST by COLEMAN III, MATT
07:51	TIMEOUT 30SEC			
07:51	TIMEOUT MEDIA			
07:51	SUB OUT: BROADWAY JR., TRAVON			
07:51	SUB OUT: WINSTON, DESCHON			
07:51	SUB IN: LANE, DEVONTAE			
07:51	SUB IN: MORGAN, DALLAS			
07:28	MISSED JUMPER by LANE, DEVONTAE [PNT]			
07:27	FOUL by BURRELL, ROMELO			
07:27	TIMEOUT MEDIA			
07:27	SUB OUT: LANE, DEVONTAE			
07:27	SUB IN: WINSTON, DESCHON			
07:27		68-61	H 7	GOOD! FT by FEBRES, JASE [FB]
07:27		69-61	H 8	GOOD! FT by FEBRES, JASE [FB]
07:26				REBOUND (DEF) by SIMS, JERICHO
07:14	GOOD! LAYUP by MCKAY, KEVIN	69-63	H 6	
07:14				FOUL by FEBRES, JASE
07:14	SUB OUT: BURRELL, ROMELO			
07:14	SUB IN: DILEO, DAVID			
07:14	GOOD! FT by MCKAY, KEVIN	69-64	H 5	
06:54				MISSED 3PTR by COLEMAN III, MATT
06:49	REBOUND (DEF) by MONTGOMERY, ROB			
06:47	GOOD! LAYUP by WINSTON, DESCHON [FB]	69-66	H 3	
06:47				FOUL by SIMS, JERICHO
06:47				SUB OUT: SIMS, JERICHO
06:47				SUB IN: HAMM JR., ROYCE
06:47	MISSED FT by WINSTON, DESCHON [FB]			
06:45				REBOUND (DEF) by JONES, KAI
06:27		72-66	H 6	GOOD! 3PTR by RAMEY, COURTNEY
06:27				ASSIST by COLEMAN III, MATT
05:58	GOOD! JUMPER by MCKAY, KEVIN	72-68	H 4	
05:58	SUB OUT: WINSTON, DESCHON			
05:58	SUB IN: LANE, DEVONTAE			
05:35	FOUL by MORGAN, DALLAS [PNT]			
05:35		73-68	H 5	GOOD! FT by HAMM JR., ROYCE
05:35		74-68	H 6	GOOD! FT by HAMM JR., ROYCE
05:25	TURNOVER by DILEO, DAVID			
05:09		77-68	H 9	GOOD! 3PTR by RAMEY, COURTNEY
05:09				ASSIST by COLEMAN III, MATT
04:52	MISSED 3PTR by MORGAN, DALLAS			
04:50	FOUL by DILEO, DAVID			
04:50	TIMEOUT 30SEC			
04:50		78-68	H 10	GOOD! FT by HAMM JR., ROYCE [FB]
04:50		79-68	H 11	GOOD! FT by HAMM JR., ROYCE [FB]
04:49				REBOUND (DEF) by HAMM JR., ROYCE
04:37	GOOD! LAYUP by MCKAY, KEVIN	79-70	H 9	
04:20				MISSED JUMPER by COLEMAN III, MATT [PNT]
04:19				REBOUND (OFF) by TEAM
04:19				SUB OUT: JONES, KAI
04:19				SUB IN: JONES, ANDREW
04:08		81-70	H 11	GOOD! LAYUP by RAMEY, COURTNEY
03:53	MISSED JUMPER by MONTGOMERY, ROB			
03:49				REBOUND (DEF) by HAMM JR., ROYCE
03:28	FOUL by MORGAN, DALLAS			
03:28	TIMEOUT MEDIA			
03:28				SUB OUT: HAMM JR., ROYCE
03:28				SUB IN: SIMS, JERICHO
03:28		82-70	H 12	GOOD! FT by RAMEY, COURTNEY
03:28		83-70	H 13	GOOD! FT by RAMEY, COURTNEY
03:02	MISSED JUMPER by MONTGOMERY, ROB [PNT]			
03:02				BLOCK by SIMS, JERICHO
02:56				REBOUND (DEF) by JONES, ANDREW
02:39				MISSED 3PTR by JONES, ANDREW
02:36	REBOUND (DEF) by MORGAN, DALLAS			
02:29				FOUL by FEBRES, JASE
02:29	GOOD! FT by MCKAY, KEVIN	83-71	H 12	
02:29	GOOD! FT by MCKAY, KEVIN	83-72	H 11	
02:08				MISSED 3PTR by RAMEY, COURTNEY
02:04	REBOUND (DEF) by MCKAY, KEVIN			

Time	VISITORS: Central Mich.	Score	Margin	HOME: Texas
01:56	TURNOVER by MORGAN, DALLAS			
01:56				STEAL by COLEMAN III, MATT
01:52		85-72	H 13	GOOD! LAYUP by RAMEY, COURTNEY [FB]
01:52				ASSIST by JONES, ANDREW
01:40	MISSED LAYUP by MONTGOMERY, ROB			
01:36				REBOUND (DEF) by RAMEY, COURTNEY
01:31				TURNOVER by JONES, ANDREW
01:31	STEAL by MCKAY, KEVIN			
01:29	GOOD! LAYUP by MCKAY, KEVIN [FB]	85-74	H 11	
01:29				FOUL by FEBRES, JASE
01:29	GOOD! FT by MCKAY, KEVIN [FB]	85-75	H 10	
01:27				SUB OUT: FEBRES, JASE
01:27				SUB IN: JONES, KAI
01:27				SUB OUT: SIMS, JERICHO
01:27				SUB IN: HAMM JR., ROYCE
01:27	SUB OUT: MCKAY, KEVIN			
01:27	SUB IN: BROADWAY JR., TRAVON			
01:22				TURNOVER by JONES, ANDREW
01:22	STEAL by DILEO, DAVID			
01:16	MISSED 3PTR by MORGAN, DALLAS			
01:15				REBOUND (DEF) by HAMM JR., ROYCE
01:15				TURNOVER by HAMM JR., ROYCE
01:15	SUB OUT: BROADWAY JR., TRAVON			
01:15	SUB IN: MCKAY, KEVIN			
01:15	MISSED 3PTR by DILEO, DAVID			
01:15	REBOUND (OFF) by TEAM			
01:10				FOUL by JONES, KAI
01:10	MISSED FT by MCKAY, KEVIN [FB]			
01:10	REBOUND (DEADB) by TEAM			
01:10	GOOD! FT by MCKAY, KEVIN [FB]	85-76	H 9	
01:10	SUB OUT: MCKAY, KEVIN			
01:10	SUB IN: BROADWAY JR., TRAVON			
01:09				SUB OUT: JONES, ANDREW
01:09				SUB IN: LIDDELL, GERALD
00:58	FOUL by BROADWAY JR., TRAVON [PNT]			
00:58				MISSED FT by COLEMAN III, MATT
00:58				REBOUND (DEADB) by TEAM
00:58				SUB OUT: JONES, KAI
00:58				SUB IN: SIMS, JERICHO
00:58	SUB OUT: BROADWAY JR., TRAVON			
00:58	SUB IN: MCKAY, KEVIN			
00:58				MISSED FT by COLEMAN III, MATT
00:56	REBOUND (DEF) by MCKAY, KEVIN			
00:51	TURNOVER by DILEO, DAVID			
00:51				STEAL by RAMEY, COURTNEY
00:46		87-76	H 11	GOOD! LAYUP by RAMEY, COURTNEY [FB]
00:36	MISSED 3PTR by MONTGOMERY, ROB			
00:32				REBOUND (DEF) by SIMS, JERICHO
00:09				MISSED 3PTR by RAMEY, COURTNEY
00:05	REBOUND (DEF) by MONTGOMERY, ROB			

Central Mich. 76, Texas 87

Points from (This Period)	CMU	TEX
In the Paint	14	12
Off Turns	8	21
2nd Chance	3	7
Fast Break	9	13
Bench	6	14

Official Scoring/Possession Reference Chart
Central Mich. vs Texas
Period 1
December 14, 2019 at Frank Erwin Center



Period 1

Starters:

Central Mich.: 2 LANE,DEVONTAE (G); 5 MONTGOMERY,ROB (F); 14 DILEO,DAVID (F); 20 MCKAY,KEVIN (G); 23 MORGAN,DALLAS (G);
Texas: 0 LIDDELL,GERALD (F); 2 COLEMAN III,MATT (G); 3 RAMEY,COURTNEY (G); 13 FEBRES,JASE (G); 20 SIMS,JERICO (F);

Time	VISITORS: Central Mich.	Score	Margin	HOME: Texas
19:30	GOOD! 3PTR by MORGAN, DALLAS	0-3	V 3	
19:01		2-3	V 1	GOOD! LAYUP by COLEMAN III, MATT [FB]
18:11	GOOD! 3PTR by MONTGOMERY, ROB	2-6	V 4	
17:49		5-6	V 1	GOOD! 3PTR by FEBRES, JASE
17:34	GOOD! 3PTR by MONTGOMERY, ROB	5-9	V 4	
17:34	GOOD! FT by MONTGOMERY, ROB	5-10	V 5	
17:25		8-10	V 2	GOOD! 3PTR by FEBRES, JASE
16:46	GOOD! FT by MCKAY, KEVIN	8-11	V 3	
16:46	GOOD! FT by MCKAY, KEVIN	8-12	V 4	
16:31		11-12	V 1	GOOD! 3PTR by COLEMAN III, MATT
15:42	GOOD! FT by BURRELL, ROMELO [FB]	11-13	V 2	
15:21	GOOD! LAYUP by MORGAN, DALLAS [FB]	11-15	V 4	
14:22	GOOD! FT by WINSTON, DESCHON	11-16	V 5	
14:22	GOOD! FT by WINSTON, DESCHON	11-17	V 6	
13:58		12-17	V 5	GOOD! FT by BAKER, WILL
13:49	GOOD! LAYUP by LANE, DEVONTAE	12-19	V 7	
12:09		14-19	V 5	GOOD! LAYUP by RAMEY, COURTNEY [FB]
11:22	GOOD! 3PTR by DILEO, DAVID [FB]	14-22	V 8	
10:22		16-22	V 6	GOOD! JUMPER by COLEMAN III, MATT [FB/PNT]
10:14	GOOD! LAYUP by MCKAY, KEVIN [FB/PNT]	16-24	V 8	
09:55		18-24	V 6	GOOD! DUNK by LIDDELL, GERALD
09:33	GOOD! JUMPER by DILEO, DAVID	18-26	V 8	
09:09	GOOD! FT by LANE, DEVONTAE [FB]	18-27	V 9	
08:53		20-27	V 7	GOOD! by SIMS, JERICO
08:39	GOOD! LAYUP by DILEO, DAVID	20-29	V 9	
08:22		23-29	V 6	GOOD! 3PTR by FEBRES, JASE
07:28		24-29	V 5	GOOD! FT by JONES, ANDREW
07:28		25-29	V 4	GOOD! FT by JONES, ANDREW
07:18	GOOD! 3PTR by DILEO, DAVID	25-32	V 7	
06:45		28-32	V 4	GOOD! 3PTR by COLEMAN III, MATT
06:21	GOOD! LAYUP by MONTGOMERY, ROB	28-34	V 6	
05:49	GOOD! JUMPER by DILEO, DAVID [PNT]	28-36	V 8	
05:28		30-36	V 6	GOOD! LAYUP by COLEMAN III, MATT
05:13	GOOD! JUMPER by BROADWAY JR., TRAVON [PNT]	30-38	V 8	
03:19		31-38	V 7	GOOD! FT by JONES, ANDREW
03:19		32-38	V 6	GOOD! FT by JONES, ANDREW
02:25	GOOD! LAYUP by MONTGOMERY, ROB [FB]	32-40	V 8	
01:31		35-40	V 5	GOOD! 3PTR by FEBRES, JASE
01:18	GOOD! LAYUP by MCKAY, KEVIN	35-42	V 7	
01:07		36-42	V 6	GOOD! FT by LIDDELL, GERALD

Central Mich. 42, Texas 36

Official Scoring/Possession Reference Chart
Central Mich. vs Texas
Period 2
December 14, 2019 at Frank Erwin Center



Period 2

Starters:

Central Mich.: 2 LANE,DEVONTAE (G); 5 MONTGOMERY,ROB (F); 14 DILEO,DAVID (F); 20 MCKAY,KEVIN (G); 23 MORGAN,DALLAS (G);
Texas: 0 LIDDELL,GERALD (F); 2 COLEMAN III,MATT (G); 3 RAMEY,COURTNEY (G); 13 FEBRES,JASE (G); 20 SIMS,JERICHO (F);

Time	VISITORS: Central Mich.	Score	Margin	HOME: Texas
19:48	GOOD! LAYUP by MCKAY, KEVIN	36-44	V 8	
18:47		37-44	V 7	GOOD! FT by RAMEY, COURTNEY
18:17		38-44	V 6	GOOD! FT by HAMM JR., ROYCE
17:10		39-44	V 5	GOOD! FT by HAMM JR., ROYCE
16:25		41-44	V 3	GOOD! LAYUP by HAMM JR., ROYCE
16:09		44-44	T	GOOD! 3PTR by RAMEY, COURTNEY
14:24	GOOD! FT by MONTGOMERY, ROB	44-45	V 1	
14:02		46-45	H 1	GOOD! DUNK by SIMS, JERICHO
13:41	GOOD! 3PTR by MORGAN, DALLAS	46-48	V 2	
13:27		49-48	H 1	GOOD! 3PTR by JONES, ANDREW
12:36	GOOD! 3PTR by MORGAN, DALLAS	49-51	V 2	
12:11		52-51	H 1	GOOD! 3PTR by JONES, KAI [FB]
12:01	GOOD! 3PTR by MORGAN, DALLAS	52-54	V 2	
11:48		53-54	V 1	GOOD! FT by SIMS, JERICHO
11:22	GOOD! LAYUP by BROADWAY JR., TRAVON	53-56	V 3	
11:15		55-56	V 1	GOOD! by SIMS, JERICHO [FB]
10:31	GOOD! 3PTR by DILEO, DAVID [FB]	55-59	V 4	
10:07		57-59	V 2	GOOD! LAYUP by SIMS, JERICHO
09:29		60-59	H 1	GOOD! 3PTR by FEBRES, JASE
09:15	GOOD! LAYUP by HAMLET, KEVIN	60-61	V 1	
08:28		61-61	T	GOOD! FT by SIMS, JERICHO
08:03		64-61	H 3	GOOD! 3PTR by FEBRES, JASE
07:52		67-61	H 6	GOOD! 3PTR by FEBRES, JASE
07:27		68-61	H 7	GOOD! FT by FEBRES, JASE [FB]
07:27		69-61	H 8	GOOD! FT by FEBRES, JASE [FB]
07:14	GOOD! LAYUP by MCKAY, KEVIN	69-63	H 6	
07:14	GOOD! FT by MCKAY, KEVIN	69-64	H 5	
06:47	GOOD! LAYUP by WINSTON, DESCHON [FB]	69-66	H 3	
06:27		72-66	H 6	GOOD! 3PTR by RAMEY, COURTNEY
05:58	GOOD! JUMPER by MCKAY, KEVIN	72-68	H 4	
05:35		73-68	H 5	GOOD! FT by HAMM JR., ROYCE
05:35		74-68	H 6	GOOD! FT by HAMM JR., ROYCE
05:09		77-68	H 9	GOOD! 3PTR by RAMEY, COURTNEY
04:50		78-68	H 10	GOOD! FT by HAMM JR., ROYCE [FB]
04:50		79-68	H 11	GOOD! FT by HAMM JR., ROYCE [FB]
04:37	GOOD! LAYUP by MCKAY, KEVIN	79-70	H 9	
04:08		81-70	H 11	GOOD! LAYUP by RAMEY, COURTNEY
03:28		82-70	H 12	GOOD! FT by RAMEY, COURTNEY
03:28		83-70	H 13	GOOD! FT by RAMEY, COURTNEY
02:29	GOOD! FT by MCKAY, KEVIN	83-71	H 12	
02:29	GOOD! FT by MCKAY, KEVIN	83-72	H 11	
01:52		85-72	H 13	GOOD! LAYUP by RAMEY, COURTNEY [FB]
01:29	GOOD! LAYUP by MCKAY, KEVIN [FB]	85-74	H 11	
01:29	GOOD! FT by MCKAY, KEVIN [FB]	85-75	H 10	
01:10	GOOD! FT by MCKAY, KEVIN [FB]	85-76	H 9	
00:46		87-76	H 11	GOOD! LAYUP by RAMEY, COURTNEY [FB]

Central Mich. 76, Texas 87

**Official Substitutions Log
Central Mich. vs Texas
Period 1
December 14, 2019 at Frank Erwin Center**



VISITORS: Central Mich.	Time	Score	HOME: Texas
2 LANE,DEVONTAE			0 LIDDELL,GERALD
5 MONTGOMERY,ROB			2 COLEMAN III,MATT
14 DILEO,DAVID			3 RAMEY,COURTNEY
20 MCKAY,KEVIN			13 FEBRES,JASE
23 MORGAN,DALLAS			20 SIMS,JERICHO
	16:46	11-8	SUB OUT: RAMEY,COURTNEY
	16:46		SUB OUT: SIMS,JERICHO
	16:46		SUB IN: JONES,ANDREW
	16:46		SUB IN: HAMM JR.,ROYCE
SUB OUT: 2 LANE,DEVONTAE	16:46		
SUB OUT: 5 MONTGOMERY,ROB	16:46		
SUB OUT: 23 MORGAN,DALLAS	16:46		
SUB IN: 0 BROADWAY JR.,TRAVON	16:46		
SUB IN: 11 WINSTON,DESCHON	16:46		
SUB IN: 24 BURRELL,ROMELO	16:46		
	16:06	12-11	SUB OUT: LIDDELL,GERALD
	16:06		SUB IN: JONES,KAI
SUB OUT: 14 DILEO,DAVID	15:42	12-11	
SUB OUT: 20 MCKAY,KEVIN	15:42		
SUB IN: 5 MONTGOMERY,ROB	15:42		
SUB IN: 23 MORGAN,DALLAS	15:42		
	15:21	15-11	SUB OUT: HAMM JR.,ROYCE
	15:21		SUB IN: BAKER,WILL
	14:22	16-11	SUB OUT: JONES,ANDREW
	14:22		SUB OUT: COLEMAN III,MATT
	14:22		SUB IN: RAMEY,COURTNEY
	14:22		SUB IN: WILLIAMS,DONOVAN
SUB OUT: 11 WINSTON,DESCHON	13:58	17-11	
SUB OUT: 24 BURRELL,ROMELO	13:58		
SUB IN: 2 LANE,DEVONTAE	13:58		
SUB IN: 14 DILEO,DAVID	13:58		
	13:34	19-12	SUB OUT: BAKER,WILL
	13:34		SUB IN: COLEMAN III,MATT
SUB OUT: 0 BROADWAY JR.,TRAVON	13:34		
SUB IN: 20 MCKAY,KEVIN	13:34		
SUB OUT: 5 MONTGOMERY,ROB	12:56	19-12	
SUB IN: 12 HAMLET,KEVIN	12:56		
SUB OUT: 12 HAMLET,KEVIN	11:57	19-14	
SUB OUT: 23 MORGAN,DALLAS	11:57		
SUB IN: 1 REDMAN,COREY	11:57		
SUB IN: 5 MONTGOMERY,ROB	11:57		
	11:14	22-14	SUB OUT: WILLIAMS,DONOVAN
	11:14		SUB IN: LIDDELL,GERALD
	10:39	22-14	SUB OUT: JONES,KAI
	10:39		SUB IN: SIMS,JERICHO
	09:09	26-18	SUB OUT: RAMEY,COURTNEY
	09:09		SUB IN: JONES,ANDREW
SUB OUT: 1 REDMAN,COREY	09:09		
SUB IN: 0 BROADWAY JR.,TRAVON	09:09		
SUB OUT: 2 LANE,DEVONTAE	09:09		
SUB IN: 11 WINSTON,DESCHON	09:09		
SUB OUT: 14 DILEO,DAVID	07:55	29-23	
SUB OUT: 20 MCKAY,KEVIN	07:55		
SUB IN: 23 MORGAN,DALLAS	07:55		
SUB IN: 24 BURRELL,ROMELO	07:55		
SUB OUT: 24 BURRELL,ROMELO	07:28	29-24	
SUB IN: 14 DILEO,DAVID	07:28		
	07:28		SUB OUT: JONES,ANDREW
	07:28		SUB IN: RAMEY,COURTNEY
	06:01	34-28	SUB OUT: LIDDELL,GERALD
	06:01		SUB OUT: RAMEY,COURTNEY
	06:01		SUB IN: JONES,ANDREW
	06:01		SUB IN: JONES,KAI
SUB OUT: 5 MONTGOMERY,ROB	06:01		
SUB OUT: 11 WINSTON,DESCHON	06:01		
SUB IN: 2 LANE,DEVONTAE	06:01		
SUB IN: 12 HAMLET,KEVIN	06:01		
SUB OUT: 0 BROADWAY JR.,TRAVON	04:56	38-30	
SUB IN: 20 MCKAY,KEVIN	04:56		
	04:08	38-30	SUB OUT: SIMS,JERICHO
	04:08		SUB IN: HAMM JR.,ROYCE
	04:08		SUB OUT: JONES,KAI
	04:08		SUB IN: LIDDELL,GERALD
SUB OUT: 2 LANE,DEVONTAE	03:53	38-30	
SUB OUT: 12 HAMLET,KEVIN	03:53		

VISITORS: Central Mich.	Time	Score	HOME: Texas
SUB OUT: 23 MORGAN,DALLAS	03:53		
SUB IN: 0 BROADWAY JR.,TRAVON	03:53		
SUB IN: 1 REDMAN,COREY	03:53		
SUB IN: 5 MONTGOMERY,ROB	03:53		
SUB OUT: 1 REDMAN,COREY	03:53		
SUB IN: 2 LANE,DEVONTAE	03:53		
SUB OUT: 14 DILEO,DAVID	01:18	42-35	
SUB IN: 23 MORGAN,DALLAS	01:18		
	01:07	42-36	SUB OUT: JONES,ANDREW
	01:07		SUB IN: RAMEY,COURTNEY
	00:27	42-36	SUB OUT: RAMEY,COURTNEY
	00:27		SUB IN: JONES,ANDREW
SUB OUT: 2 LANE,DEVONTAE	00:27		
SUB IN: 11 WINSTON,DESCHON	00:27		
	00:27		SUB OUT: LIDDELL,GERALD
	00:27		SUB IN: HEPA,KAMAKA
	00:01	42-36	SUB OUT: JONES,ANDREW
	00:01		SUB OUT: HEPA,KAMAKA
	00:01		SUB IN: LIDDELL,GERALD
	00:01		SUB IN: RAMEY,COURTNEY
SUB OUT: 20 MCKAY,KEVIN	00:01		
SUB IN: 14 DILEO,DAVID	00:01		

Central Mich. 42, Texas 36

**Official Substitutions Log
Central Mich. vs Texas
Period 2
December 14, 2019 at Frank Erwin Center**



VISITORS: Central Mich.	Time	Score	HOME: Texas
2 LANE,DEVONTAE			0 LIDDELL,GERALD
5 MONTGOMERY,ROB			2 COLEMAN III,MATT
14 DILEO,DAVID			3 RAMEY,COURTNEY
20 MCKAY,KEVIN			13 FEBRES,JASE
23 MORGAN,DALLAS			20 SIMS,JERICHO
SUB OUT: 0 BROADWAY JR.,TRAVON	20:00	-	
SUB OUT: 11 WINSTON,DESCHON	20:00		
SUB IN: 2 LANE,DEVONTAE	20:00		
SUB IN: 20 MCKAY,KEVIN	20:00		
	17:36	44-38	SUB OUT: LIDDELL,GERALD
	17:36		SUB IN: JONES,ANDREW
SUB OUT: 5 MONTGOMERY,ROB	17:10	44-39	
SUB OUT: 23 MORGAN,DALLAS	17:10		
SUB IN: 0 BROADWAY JR.,TRAVON	17:10		
SUB IN: 24 BURRELL,ROMELO	17:10		
SUB OUT: 2 LANE,DEVONTAE	16:24	44-41	
SUB OUT: 24 BURRELL,ROMELO	16:24		
SUB IN: 11 WINSTON,DESCHON	16:24		
SUB IN: 23 MORGAN,DALLAS	16:24		
SUB OUT: 20 MCKAY,KEVIN	15:36	44-44	
SUB IN: 24 BURRELL,ROMELO	15:36		
SUB OUT: 14 DILEO,DAVID	14:48	44-44	
SUB IN: 5 MONTGOMERY,ROB	14:48		
	14:24	45-44	SUB OUT: HAMM JR.,ROYCE
	14:24		SUB IN: SIMS,JERICHO
	13:44	45-46	SUB OUT: COLEMAN III,MATT
	13:44		SUB IN: JONES,KAI
SUB OUT: 0 BROADWAY JR.,TRAVON	12:36	51-49	
SUB OUT: 11 WINSTON,DESCHON	12:36		
SUB OUT: 24 BURRELL,ROMELO	12:36		
SUB IN: 2 LANE,DEVONTAE	12:36		
SUB IN: 14 DILEO,DAVID	12:36		
SUB IN: 20 MCKAY,KEVIN	12:36		
	12:32	51-49	SUB OUT: JONES,ANDREW
	12:32		SUB IN: COLEMAN III,MATT
SUB OUT: 5 MONTGOMERY,ROB	11:48	54-52	
SUB OUT: 20 MCKAY,KEVIN	11:48		
SUB IN: 0 BROADWAY JR.,TRAVON	11:48		
SUB IN: 12 HAMLET,KEVIN	11:48		
SUB OUT: 23 MORGAN,DALLAS	09:15	61-60	
SUB IN: 11 WINSTON,DESCHON	09:15		
SUB OUT: 12 HAMLET,KEVIN	08:51	61-60	
SUB IN: 5 MONTGOMERY,ROB	08:51		
SUB OUT: 2 LANE,DEVONTAE	08:28	61-60	
SUB OUT: 14 DILEO,DAVID	08:28		
SUB IN: 20 MCKAY,KEVIN	08:28		
SUB IN: 24 BURRELL,ROMELO	08:28		
SUB OUT: 0 BROADWAY JR.,TRAVON	07:51	61-67	
SUB OUT: 11 WINSTON,DESCHON	07:51		
SUB IN: 2 LANE,DEVONTAE	07:51		
SUB IN: 23 MORGAN,DALLAS	07:51		
SUB OUT: 2 LANE,DEVONTAE	07:27	61-67	
SUB IN: 11 WINSTON,DESCHON	07:27		
SUB OUT: 24 BURRELL,ROMELO	07:14	63-69	
SUB IN: 14 DILEO,DAVID	07:14		
	06:47	66-69	SUB OUT: SIMS,JERICHO
	06:47		SUB IN: HAMM JR.,ROYCE
SUB OUT: 11 WINSTON,DESCHON	05:58	68-72	
SUB IN: 2 LANE,DEVONTAE	05:58		
	04:19	70-79	SUB OUT: JONES,KAI
	04:19		SUB IN: JONES,ANDREW
	03:28	70-81	SUB OUT: HAMM JR.,ROYCE
	03:28		SUB IN: SIMS,JERICHO
	01:27	75-85	SUB OUT: FEBRES,JASE
	01:27		SUB IN: JONES,KAI
	01:27		SUB OUT: SIMS,JERICHO
	01:27		SUB IN: HAMM JR.,ROYCE
SUB OUT: 20 MCKAY,KEVIN	01:27		
SUB IN: 0 BROADWAY JR.,TRAVON	01:27		
SUB OUT: 0 BROADWAY JR.,TRAVON	01:15	75-85	
SUB IN: 20 MCKAY,KEVIN	01:15		
SUB OUT: 20 MCKAY,KEVIN	01:10	76-85	
SUB IN: 0 BROADWAY JR.,TRAVON	01:10		
	01:09	76-85	SUB OUT: JONES,ANDREW
	01:09		SUB IN: LIDDELL,GERALD

VISITORS: Central Mich.	Time	Score	HOME: Texas
	00:58	76-85	SUB OUT: JONES,KAI
	00:58		SUB IN: SIMS,JERICO
SUB OUT: 0 BROADWAY JR.,TRAVON	00:58		
SUB IN: 20 MCKAY,KEVIN	00:58		

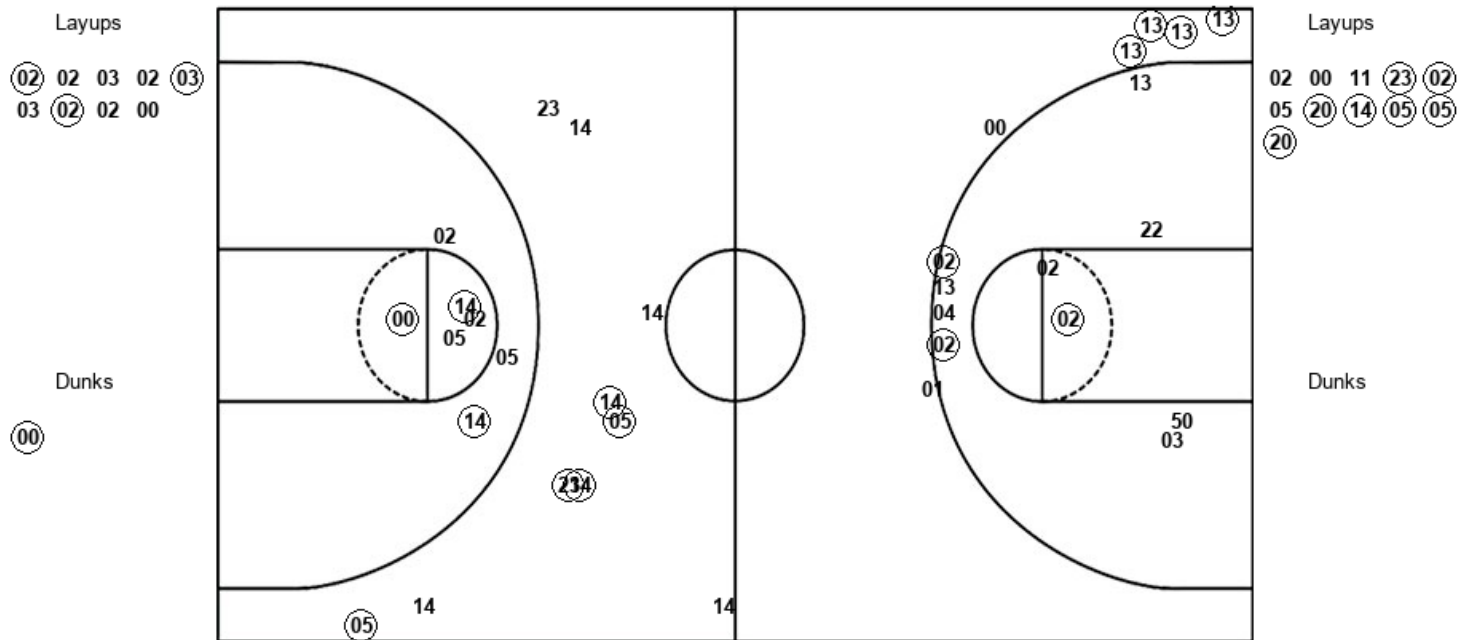
Central Mich. 76, Texas 87

Official Shot Chart
Central Mich. vs Texas
PERIOD 1 Shots
 December 14, 2019 at Frank Erwin Center



Texas

Central Mich.



TEX : Period 1	Made	Att	Pct
Layups	3	9	33.3
Dunks	1	1	100.0
2PT Field Goals	6	17	35.3
3PT Field Goals	6	10	60.0
Total Field Goals	12	27	44.4

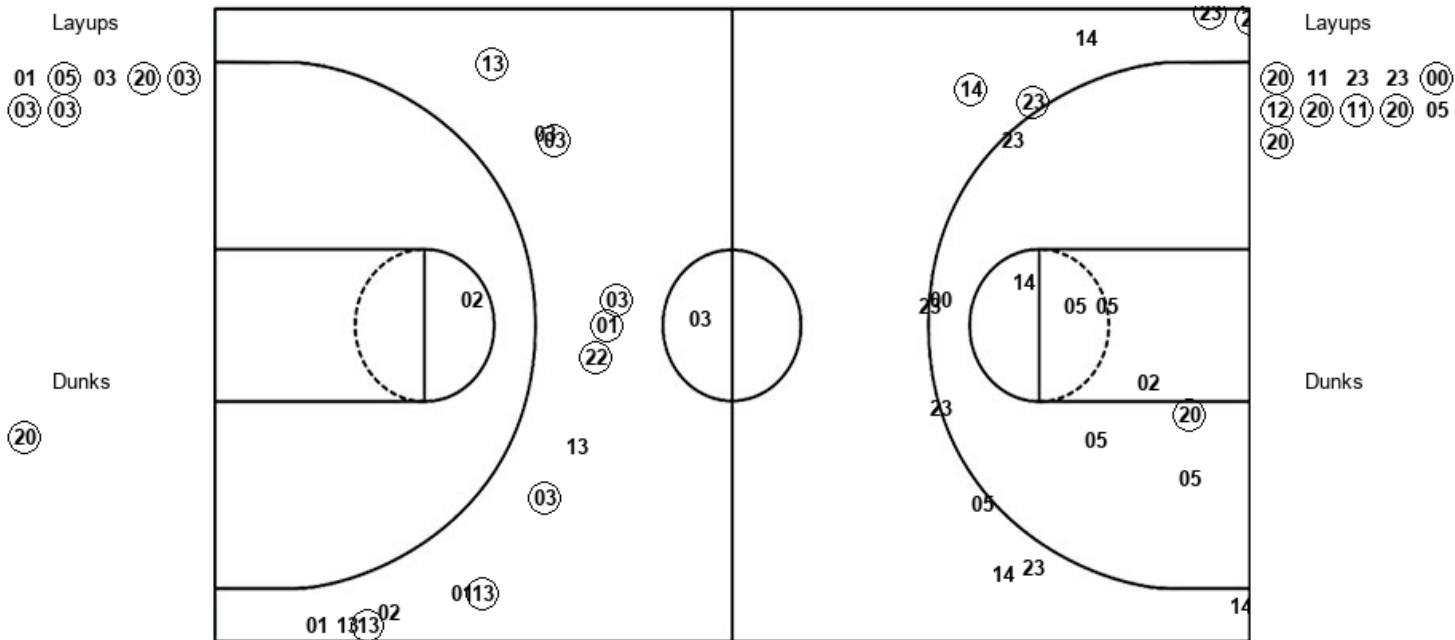
CMU : Period 1	Made	Att	Pct
Layups	7	11	63.6
Dunks	0	0	0
2PT Field Goals	10	18	55.6
3PT Field Goals	5	10	50.0
Total Field Goals	15	28	53.6

Official Shot Chart
 Central Mich. vs Texas
 PERIOD 2 Shots
 December 14, 2019 at Frank Erwin Center



Texas

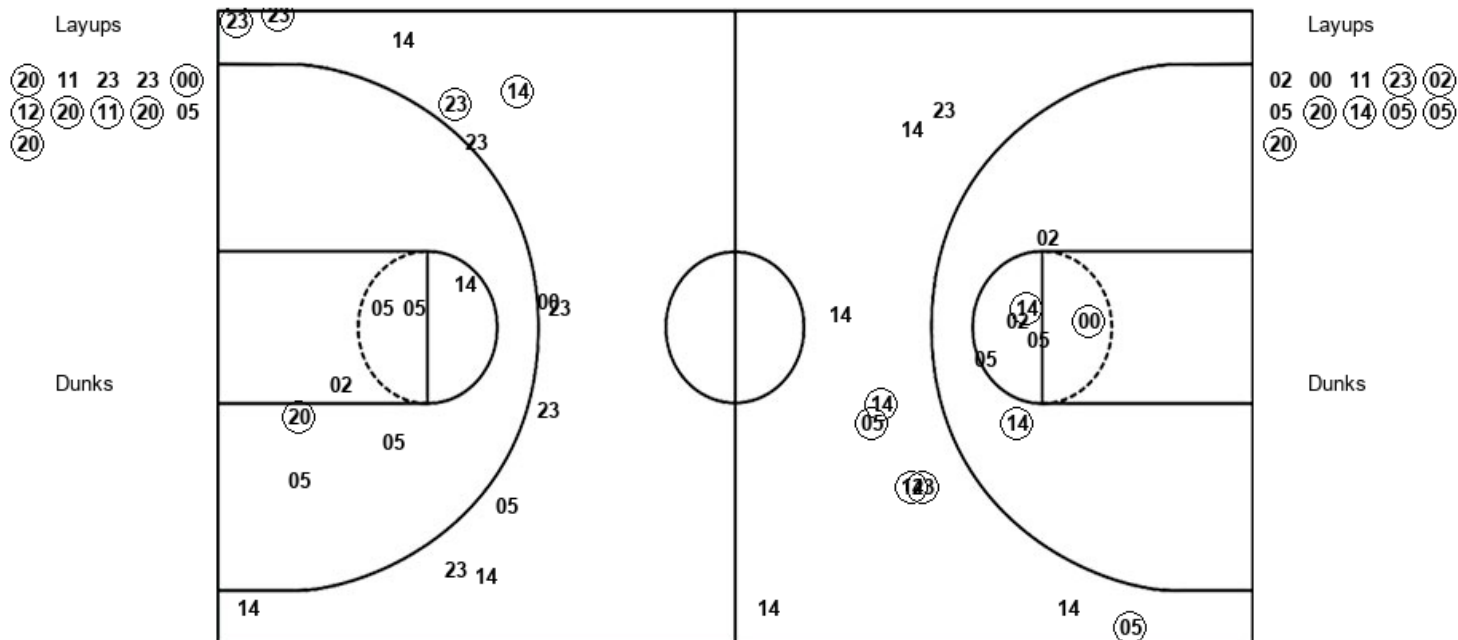
Central Mich.



TEX : Period 2	Made	Att	Pct
Layups	5	7	71.4
Dunks	1	1	100.0
2PT Field Goals	7	11	63.6
3PT Field Goals	8	15	53.3
Total Field Goals	15	26	57.7

CMU : Period 2	Made	Att	Pct
Layups	7	11	63.6
Dunks	0	0	0
2PT Field Goals	8	18	44.4
3PT Field Goals	4	13	30.8
Total Field Goals	12	31	38.7

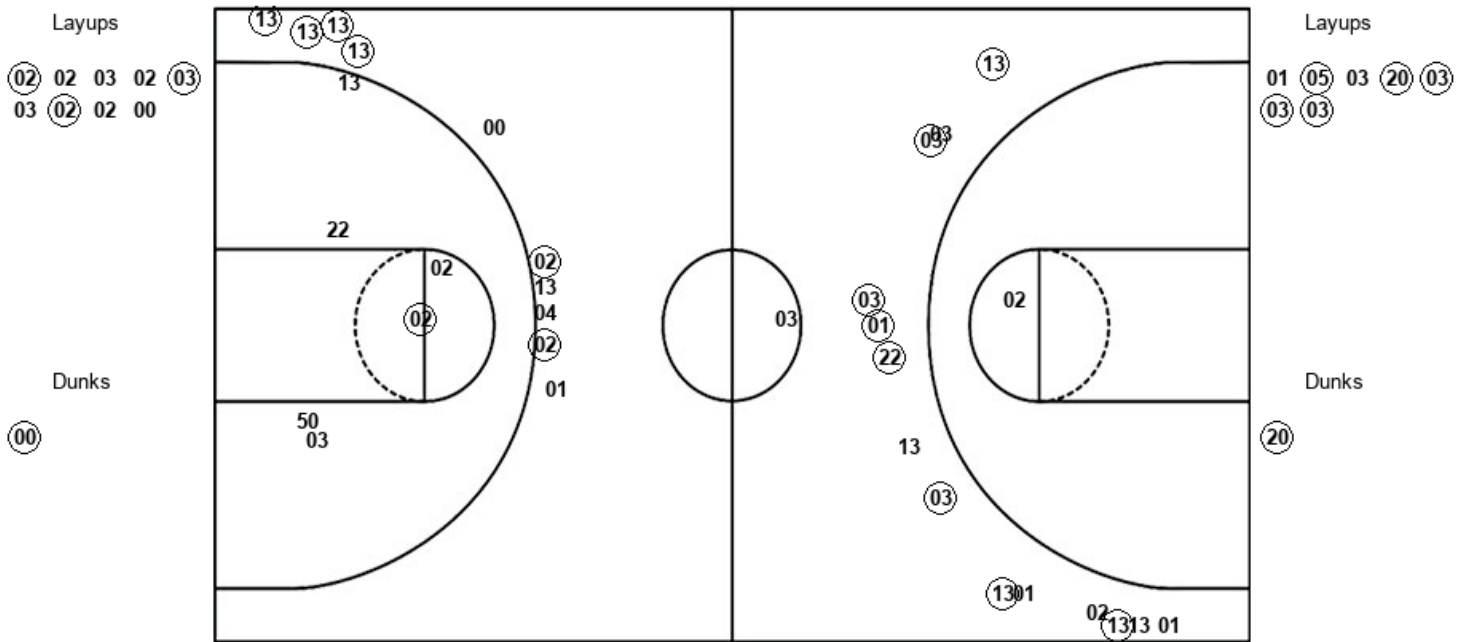
Official Shot Chart
 Central Mich. vs Texas
 Central Mich. Team Shots
 December 14, 2019 at Frank Erwin Center



CMU : Period 1	Made	Att	Pct
Layups	7	11	63.6
Dunks	0	0	0
2PT Field Goals	10	18	55.6
3PT Field Goals	5	10	50.0
Total Field Goals	15	28	53.6

CMU : Period 2	Made	Att	Pct
Layups	7	11	63.6
Dunks	0	0	0
2PT Field Goals	8	18	44.4
3PT Field Goals	4	13	30.8
Total Field Goals	12	31	38.7

Official Shot Chart
 Central Mich. vs Texas
 Texas Team Shots
 December 14, 2019 at Frank Erwin Center



TEX : Period 1	Made	Att	Pct
Layups	3	9	33.3
Dunks	1	1	100.0
2PT Field Goals	6	17	35.3
3PT Field Goals	6	10	60.0
Total Field Goals	12	27	44.4

TEX : Period 2	Made	Att	Pct
Layups	5	7	71.4
Dunks	1	1	100.0
2PT Field Goals	7	11	63.6
3PT Field Goals	8	15	53.3
Total Field Goals	15	26	57.7