

**FINAL SCORE**



**McNeese**

**71**



**Texas**

**73**

November 30, 2019 • Frank Erwin Center

**FINAL STATISTICS**

**Official Box Score**  
**McNeese vs Texas**  
**Game Totals -- Final Statistics**  
**November 30, 2019 at Frank Erwin Center**



**McNeese 71**

No.	Player	S	Pts	FG	3FG	FT	OR	DR	TR	PF	A	TO	Blk	Stl	Min	+/-	
00	KUXHAUSEN, DRU	G	12	4-8	4-6	0-0	0	2	2	4	1	4	0	1	34	3	
12	LAWSON, A.J.	G	14	4-9	1-2	5-6	0	2	2	5	1	3	0	0	19	1	
13	JOHNSON, TREY	G	2	1-4	0-1	0-0	0	2	2	1	3	1	2	2	37	0	
22	BROWN, ROYDELL	G	4	2-3	0-1	0-0	1	3	4	1	1	2	1	0	25	-8	
23	KENNEDY, SHAMARKUS	F	22	9-14	0-0	4-4	2	6	8	2	2	3	2	0	37	-1	
02	BAKER, SAM	G	0	0-0	0-0	0-0	0	1	1	1	1	1	0	0	13	-9	
03	WASHINGTON, LEONDRE	G	17	6-12	3-6	2-3	0	3	3	0	4	3	0	1	32	2	
44	MOORE, TRUMAN	F	0	0-0	0-0	0-0	1	0	1	0	0	0	0	0	3	-1	
TEAM							1	0	1	0	0						
<b>TOTALS</b>			<b>71</b>	<b>26-50</b>	<b>8-16</b>	<b>11-13</b>	<b>5</b>	<b>19</b>	<b>24</b>	<b>14</b>	<b>13</b>	<b>17</b>	<b>5</b>	<b>4</b>	<b>200</b>		

*Shooting By Period*

Period	FG	FG%	3FG	3FG%	FT	FT%
1st Half	13-26	50%	4-7	57%	4-6	67%
2nd Half	13-24	54%	4-9	44%	7-7	100%
<b>Game</b>	<b>26-50</b>	<b>52.0%</b>	<b>8-16</b>	<b>50.0%</b>	<b>11-13</b>	<b>84.6%</b>

*Last FG: 2nd-00:56*  
*Largest lead: By 4 at*  
*Technical Fouls: None.*

**Texas 73**

No.	Player	S	Pts	FG	3FG	FT	OR	DR	TR	PF	A	TO	Blk	Stl	Min	+/-	
00	LIDDELL, GERALD	F	2	1-5	0-0	0-2	3	3	6	1	0	1	0	1	18	-1	
02	COLEMAN III, MATT	G	9	4-9	1-2	0-0	1	5	6	1	10	0	0	2	38	4	
03	RAMEY, COURTNEY	G	14	4-8	2-5	4-4	1	2	3	2	2	3	0	0	21	-4	
13	FEBRES, JASE	G	9	3-14	3-12	0-0	1	1	2	0	1	0	0	1	32	1	
20	SIMS, JERICHO	F	12	6-6	0-0	0-0	6	5	11	4	0	3	2	0	30	-1	
01	JONES, ANDREW	G	14	6-14	2-8	0-0	1	1	2	1	3	3	1	0	24	6	
04	WILLIAMS, DONOVAN	G	5	2-5	1-4	0-0	1	0	1	1	0	2	0	1	16	1	
05	HAMM JR., ROYCE	F	0	0-0	0-0	0-0	0	2	2	2	0	1	0	0	9	1	
22	JONES, KAI	F	8	4-5	0-0	0-2	0	1	1	2	1	1	0	0	10	1	
50	BAKER, WILL	C	0	0-0	0-0	0-0	0	0	0	0	0	0	0	0	2	2	
TEAM							4	0	4	0	1						
<b>TOTALS</b>			<b>73</b>	<b>30-66</b>	<b>9-31</b>	<b>4-8</b>	<b>18</b>	<b>20</b>	<b>38</b>	<b>14</b>	<b>17</b>	<b>15</b>	<b>3</b>	<b>5</b>	<b>200</b>		

*Shooting By Period*

Period	FG	FG%	3FG	3FG%	FT	FT%
1st Half	16-34	47%	3-14	21%	2-4	50%
2nd Half	14-32	44%	6-17	35%	2-4	50%
<b>Game</b>	<b>30-66</b>	<b>45.5%</b>	<b>9-31</b>	<b>29.0%</b>	<b>4-8</b>	<b>50.0%</b>

*Last FG: 2nd-01:14*  
*Largest lead: By 6 at*  
*Technical Fouls: None.*

Game Notes:

Officials: Tom Eades, Rick Crawford, Rodrick Dixon  
 Attendance: 8482

Start Time: 07:00 PM

Score	1st	2nd	TOT
MSU	34	37	<b>71</b>
TEX	37	36	<b>73</b>

MSU led for 6:08. TEX led for 29:38.  
 Game was tied for 0:0.  
 Times tied: 0      Lead Changes: 0

Points from	MSU	TEX
In the Paint	34	32
Off Turns	14	8
2nd Chance	6	14
Fast Break	14	10
Bench	17	27

**Official Box Score**  
**McNeese vs Texas**  
**First Half Statistics Only**  
**November 30, 2019 at Frank Erwin Center**



**McNeese 34**

No.	Player	S	Pts	FG	3FG	FT	OR	DR	TR	PF	A	TO	Blk	Stl	Min
00	KUXHAUSEN, DRU	G	3	1-2	1-1	0-0	0	2	2	2	1	1	0	1	14
12	LAWSON, A.J.	G	10	3-6	1-1	3-4	0	2	2	3	0	2	0	0	9
13	JOHNSON, TREY	G	2	1-3	0-1	0-0	0	0	0	1	2	0	1	2	18
22	BROWN, ROYDELL	G	2	1-2	0-1	0-0	0	3	3	1	0	2	1	0	17
23	KENNEDY, SHAMARKUS	F	10	5-8	0-0	0-0	0	1	1	0	1	2	1	0	17
02	BAKER, SAM	G	0	0-0	0-0	0-0	0	1	1	0	1	1	0	0	8
03	WASHINGTON, LEONDRE	G	7	2-5	2-3	1-2	0	2	2	0	3	1	0	1	14
44	MOORE, TRUMAN	F	0	0-0	0-0	0-0	1	0	1	0	0	0	0	0	3
	TEAM			0-0			1	0	1	0		0			
<b>TOTALS</b>			<b>34</b>	<b>13-26</b>	<b>4-7</b>	<b>4-6</b>	<b>2</b>	<b>11</b>	<b>13</b>	<b>7</b>	<b>8</b>	<b>9</b>	<b>3</b>	<b>4</b>	<b>100</b>

*Shooting By Period*

Period	FG	FG%	3FG	3FG%	FT	FT%
1st Half	13-26	50%	4-7	57%	4-6	67%
Game	26-50	52.0%	8-16	50.0%	11-13	84.6%

*Last FG Half: MSU 2nd-00:56*

**Texas 37**

No.	Player	S	Pts	FG	3FG	FT	OR	DR	TR	PF	A	TO	Blk	Stl	Min
00	LIDDELL, GERALD	F	2	1-5	0-0	0-0	2	3	5	1	0	1	0	1	16
02	COLEMAN III, MATT	G	2	1-3	0-1	0-0	1	2	3	0	6	0	0	1	18
03	RAMEY, COURTNEY	G	4	1-4	0-2	2-2	0	1	1	2	2	1	0	0	12
13	FEBRES, JASE	G	6	2-5	2-5	0-0	1	0	1	0	0	0	0	0	12
20	SIMS, JERICHO	F	8	4-4	0-0	0-0	3	3	6	1	0	1	1	0	14
01	JONES, ANDREW	G	8	4-8	0-3	0-0	0	0	0	0	0	2	0	0	9
04	WILLIAMS, DONOVAN	G	3	1-3	1-3	0-0	0	0	0	0	0	1	0	1	8
05	HAMM JR., ROYCE	F	0	0-0	0-0	0-0	0	2	2	0	0	1	0	0	4
22	JONES, KAI	F	4	2-2	0-0	0-2	0	1	1	0	0	0	0	0	4
50	BAKER, WILL	C	0	0-0	0-0	0-0	0	0	0	0	0	0	0	0	2
	TEAM			0-0			1	0	1	0		1			
<b>TOTALS</b>			<b>37</b>	<b>16-34</b>	<b>3-14</b>	<b>2-4</b>	<b>8</b>	<b>12</b>	<b>20</b>	<b>4</b>	<b>8</b>	<b>8</b>	<b>1</b>	<b>3</b>	<b>100</b>

*Shooting By Period*

Period	FG	FG%	3FG	3FG%	FT	FT%
1st Half	16-34	47%	3-14	21%	2-4	50%
Game	30-66	45.5%	9-31	29.0%	4-8	50.0%

*Last FG Half: TEX 2nd-01:14*

Game Notes:

Officials: Tom Eades, Rick Crawford, Rodrick Dixon  
Attendance: 8482

Start Time: 07:00 PM

Score	1st	2nd	TOT
MSU	34	37	<b>71</b>
TEX	37	36	<b>73</b>

Points from (This Period)	MSU	TEX
In the Paint	18	20
Off Turns	6	0
2nd Chance	0	6
Fast Break	11	6
Bench	7	15

**Official By-By-Play**  
**McNeese vs Texas**  
**First Half**  
**November 30, 2019 at Frank Erwin Center**



**Period 1**

**Starters:**

**McNeese:** 0 KUXHAUSEN, DRU (G); 12 LAWSON, A.J. (G); 13 JOHNSON, TREY (G); 22 BROWN, ROYDELL (G); 23 KENNEDY, SHAMARKUS (F);  
**Texas:** 0 LIDDELL, GERALD (F); 2 COLEMAN III, MATT (G); 3 RAMEY, COURTNEY (G); 13 FEBRES, JASE (G); 20 SIMS, JERICHO (F);

Time	VISITORS: McNeese	Score	Margin	HOME: Texas
19:40				MISSED 3PTR by RAMEY, COURTNEY
19:36	REBOUND (DEF) by KENNEDY, SHAMARKUS			
19:24				FOUL by RAMEY, COURTNEY [PNT]
19:23	GOOD! FT by LAWSON, A.J.	0-1	V 1	
19:23	MISSED FT by LAWSON, A.J.			
19:22				REBOUND (DEF) by LIDDELL, GERALD
19:15		2-1	H 1	GOOD! LAYUP by RAMEY, COURTNEY [FB]
19:15				ASSIST by COLEMAN III, MATT
18:41	GOOD! JUMPER by KENNEDY, SHAMARKUS [PNT]	2-3	V 1	
18:34		5-3	H 2	GOOD! 3PTR by FEBRES, JASE
18:34				ASSIST by COLEMAN III, MATT
18:30	FOUL by LAWSON, A.J.			
18:30	TURNOVER by LAWSON, A.J.			
18:03				TURNOVER by SIMS, JERICHO
17:47	MISSED JUMPER by KUXHAUSEN, DRU			
17:44				REBOUND (DEF) by SIMS, JERICHO
17:44	FOUL by BROWN, ROYDELL			
17:27	FOUL by LAWSON, A.J.			
17:13				MISSED JUMPER by LIDDELL, GERALD
17:13	BLOCK by KENNEDY, SHAMARKUS			
17:06				REBOUND (OFF) by SIMS, JERICHO
17:04				MISSED 3PTR by RAMEY, COURTNEY
17:01	REBOUND (DEF) by BROWN, ROYDELL			
16:59	MISSED LAYUP by LAWSON, A.J.			
16:56				REBOUND (DEF) by LIDDELL, GERALD
16:54				MISSED JUMPER by RAMEY, COURTNEY [PNT]
16:54	BLOCK by JOHNSON, TREY			
16:48	REBOUND (DEF) by LAWSON, A.J.			
16:46	TURNOVER by LAWSON, A.J.			
16:46				STEAL by COLEMAN III, MATT
16:35				MISSED LAYUP by COLEMAN III, MATT
16:32				REBOUND (OFF) by SIMS, JERICHO
16:30				MISSED 3PTR by FEBRES, JASE
16:30				MISSED JUMPER by LIDDELL, GERALD
16:30				REBOUND (OFF) by FEBRES, JASE
16:27	REBOUND (DEF) by BROWN, ROYDELL			
16:26	MISSED JUMPER by KENNEDY, SHAMARKUS [PNT]			
16:23				REBOUND (DEF) by LIDDELL, GERALD
16:23	FOUL by KUXHAUSEN, DRU			
16:23		6-3	H 3	GOOD! FT by RAMEY, COURTNEY [FB]
16:23		7-3	H 4	GOOD! FT by RAMEY, COURTNEY [FB]
16:23				SUB OUT: RAMEY, COURTNEY
16:23				SUB OUT: SIMS, JERICHO
16:23				SUB IN: JONES, ANDREW
16:23				SUB IN: HAMM JR., ROYCE
16:08	MISSED 3PTR by JOHNSON, TREY			
16:05				REBOUND (DEF) by HAMM JR., ROYCE
15:57		9-3	H 6	GOOD! JUMPER by JONES, ANDREW
15:37	GOOD! JUMPER by LAWSON, A.J. [PNT]	9-5	H 4	
15:28				MISSED 3PTR by JONES, ANDREW
15:25				REBOUND (OFF) by LIDDELL, GERALD
15:23				TURNOVER by LIDDELL, GERALD
15:23	STEAL by JOHNSON, TREY			
15:13	GOOD! LAYUP by LAWSON, A.J. [FB]	9-7	H 2	
15:01		11-7	H 4	GOOD! LAYUP by JONES, ANDREW
14:38	TURNOVER by KENNEDY, SHAMARKUS [PNT]			
14:38	TIMEOUT MEDIA			
14:38				SUB OUT: LIDDELL, GERALD
14:38				SUB OUT: COLEMAN III, MATT
14:38				SUB OUT: FEBRES, JASE
14:38				SUB IN: RAMEY, COURTNEY
14:38				SUB IN: WILLIAMS, DONOVAN
14:38				SUB IN: JONES, KAI
14:21				TURNOVER by JONES, ANDREW
14:21	SUB OUT: LAWSON, A.J.			
14:21	SUB IN: WASHINGTON, LEONDRE			
14:02	MISSED JUMPER by JOHNSON, TREY			
14:00	REBOUND (OFF) by TEAM			
13:57	TURNOVER by WASHINGTON, LEONDRE			
13:57				STEAL by WILLIAMS, DONOVAN

Time	VISITORS: McNeese	Score	Margin	HOME: Texas
13:56	FOUL by JOHNSON, TREY			
13:56				MISSED FT by JONES, KAI [FB]
13:56				REBOUND (DEADB) by TEAM
13:56				MISSED FT by JONES, KAI [FB]
13:54	REBOUND (DEF) by BROWN, ROYDELL			
13:51	TURNOVER by BROWN, ROYDELL			
13:31				TURNOVER by HAMM JR., ROYCE [PNT]
13:31	SUB OUT: BROWN, ROYDELL			
13:31	SUB IN: LAWSON, A.J.			
13:22	TURNOVER by KENNEDY, SHAMARKUS			
13:08				TURNOVER by JONES, ANDREW
13:08	STEAL by KUXHAUSEN, DRU			
13:06				FOUL by RAMEY, COURTNEY
13:06	GOOD! FT by LAWSON, A.J.	11-8	H 3	
13:06	GOOD! FT by LAWSON, A.J.	11-9	H 2	
13:06				SUB OUT: JONES, ANDREW
13:06				SUB IN: COLEMAN III, MATT
13:06	SUB OUT: KUXHAUSEN, DRU			
13:06	SUB IN: BAKER, SAM			
12:49		13-9	H 4	GOOD! JUMPER by JONES, KAI
12:49				ASSIST by COLEMAN III, MATT
12:32	MISSED LAYUP by LAWSON, A.J. [PNT]			
12:29				REBOUND (DEF) by HAMM JR., ROYCE
12:28				TURNOVER by TEAM [PNT]
12:08	MISSED JUMPER by KENNEDY, SHAMARKUS [PNT]			
12:01				REBOUND (DEF) by JONES, KAI
12:01				SUB OUT: HAMM JR., ROYCE
12:01				SUB IN: SIMS, JERICHO
11:50	TIMEOUT MEDIA			
11:50				SUB OUT: WILLIAMS, DONOVAN
11:50				SUB IN: FEBRES, JASE
11:50	SUB OUT: KENNEDY, SHAMARKUS			
11:50	SUB IN: MOORE, TRUMAN			
11:47		15-9	H 6	GOOD! DUNK by JONES, KAI
11:23	GOOD! 3PTR by LAWSON, A.J.	15-12	H 3	
11:23	ASSIST by WASHINGTON, LEONDRE			
11:17				MISSED 3PTR by FEBRES, JASE
11:13	REBOUND (DEF) by LAWSON, A.J.			
11:06	MISSED LAYUP by WASHINGTON, LEONDRE			
11:04				SUB OUT: JONES, KAI
11:04				SUB IN: LIDDELL, GERALD
11:03				REBOUND (DEF) by COLEMAN III, MATT
10:34				MISSED 3PTR by COLEMAN III, MATT
10:31	REBOUND (DEF) by WASHINGTON, LEONDRE			
10:17	MISSED LAYUP by LAWSON, A.J. [PNT]			
10:13				REBOUND (DEF) by SIMS, JERICHO
10:08				MISSED 3PTR by FEBRES, JASE
10:08				REBOUND (OFF) by TEAM
10:08	FOUL by LAWSON, A.J.			
10:07				SUB OUT: RAMEY, COURTNEY
10:07				SUB IN: JONES, ANDREW
10:07	SUB OUT: BAKER, SAM			
10:07	SUB OUT: LAWSON, A.J.			
10:07	SUB OUT: MOORE, TRUMAN			
10:07	SUB IN: KUXHAUSEN, DRU			
10:07	SUB IN: BROWN, ROYDELL			
10:07	SUB IN: KENNEDY, SHAMARKUS			
09:59		17-12	H 5	GOOD! JUMPER by JONES, ANDREW
09:45	GOOD! 3PTR by KUXHAUSEN, DRU	17-15	H 2	
09:45	ASSIST by JOHNSON, TREY			
09:14				MISSED JUMPER by JONES, ANDREW
09:10				REBOUND (OFF) by LIDDELL, GERALD
09:08		19-15	H 4	GOOD! JUMPER by LIDDELL, GERALD
08:45	MISSED 3PTR by WASHINGTON, LEONDRE			
08:41				REBOUND (DEF) by COLEMAN III, MATT
08:40		21-15	H 6	GOOD! LAYUP by JONES, ANDREW [FB]
08:40				ASSIST by COLEMAN III, MATT
08:23	GOOD! DUNK by KENNEDY, SHAMARKUS	21-17	H 4	
08:23	ASSIST by WASHINGTON, LEONDRE			
08:16				MISSED 3PTR by JONES, ANDREW
08:12	REBOUND (DEF) by KUXHAUSEN, DRU			
08:09	GOOD! 3PTR by WASHINGTON, LEONDRE [FB]	21-20	H 1	
08:09	ASSIST by KUXHAUSEN, DRU			
08:07				TIMEOUT 30SEC
08:07	TIMEOUT MEDIA			
08:07				SUB OUT: FEBRES, JASE
08:07				SUB IN: WILLIAMS, DONOVAN
08:07	SUB OUT: KUXHAUSEN, DRU			
08:07	SUB IN: BAKER, SAM			
07:48				MISSED 3PTR by JONES, ANDREW

Time	VISITORS: McNeese	Score	Margin	HOME: Texas
07:45				REBOUND (OFF) by SIMS, JERICHO
07:44		23-20	H 3	GOOD! JUMPER by SIMS, JERICHO [PNT]
07:24	GOOD! DUNK by KENNEDY, SHAMARKUS	23-22	H 1	
07:24	ASSIST by BAKER, SAM			
06:55		25-22	H 3	GOOD! JUMPER by SIMS, JERICHO
06:30	MISSED LAYUP by WASHINGTON, LEONDRE			
06:26				REBOUND (DEF) by SIMS, JERICHO
06:20		28-22	H 6	GOOD! 3PTR by WILLIAMS, DONOVAN
06:20				ASSIST by COLEMAN III, MATT
05:58	TURNOVER by BROWN, ROYDELL			
05:58				STEAL by LIDDELL, GERALD
05:49				MISSED 3PTR by WILLIAMS, DONOVAN
05:45	REBOUND (DEF) by BAKER, SAM			
05:29				FOUL by SIMS, JERICHO
05:29				SUB OUT: JONES, ANDREW
05:29				SUB IN: RAMEY, COURTNEY
05:29	SUB OUT: BAKER, SAM			
05:29	SUB IN: KUXHAUSEN, DRU			
05:13	GOOD! LAYUP by KENNEDY, SHAMARKUS	28-24	H 4	
05:13	ASSIST by JOHNSON, TREY			
04:57				MISSED JUMPER by LIDDELL, GERALD
04:57	BLOCK by BROWN, ROYDELL			
04:51				REBOUND (OFF) by COLEMAN III, MATT
04:48				TURNOVER by WILLIAMS, DONOVAN
04:48	STEAL by JOHNSON, TREY			
04:38	GOOD! DUNK by JOHNSON, TREY [FB]	28-26	H 2	
04:18		30-26	H 4	GOOD! DUNK by SIMS, JERICHO
04:18				ASSIST by RAMEY, COURTNEY
03:59	GOOD! DUNK by KENNEDY, SHAMARKUS	30-28	H 2	
03:59	ASSIST by WASHINGTON, LEONDRE			
03:42		32-28	H 4	GOOD! DUNK by SIMS, JERICHO
03:42				ASSIST by RAMEY, COURTNEY
03:20	MISSED JUMPER by KENNEDY, SHAMARKUS [PNT]			
03:20				BLOCK by SIMS, JERICHO
03:14				REBOUND (DEF) by RAMEY, COURTNEY
03:13				MISSED 3PTR by WILLIAMS, DONOVAN
03:09	REBOUND (DEF) by KUXHAUSEN, DRU			
02:52	GOOD! DUNK by BROWN, ROYDELL	32-30	H 2	
02:52	ASSIST by KENNEDY, SHAMARKUS			
02:50	TIMEOUT 30SEC			
02:50	TIMEOUT MEDIA			
02:50				SUB OUT: WILLIAMS, DONOVAN
02:50				SUB OUT: SIMS, JERICHO
02:50				SUB IN: FEBRES, JASE
02:50				SUB IN: BAKER, WILL
02:50	SUB OUT: JOHNSON, TREY			
02:50	SUB OUT: KENNEDY, SHAMARKUS			
02:50	SUB IN: BAKER, SAM			
02:50	SUB IN: MOORE, TRUMAN			
02:18		34-30	H 4	GOOD! JUMPER by COLEMAN III, MATT
02:01	TURNOVER by BAKER, SAM			
01:41				TURNOVER by RAMEY, COURTNEY
01:41	STEAL by WASHINGTON, LEONDRE			
01:16	MISSED 3PTR by BROWN, ROYDELL			
01:15	REBOUND (OFF) by MOORE, TRUMAN			
01:15				SUB OUT: RAMEY, COURTNEY
01:15				SUB OUT: BAKER, WILL
01:15				SUB IN: JONES, ANDREW
01:15				SUB IN: SIMS, JERICHO
01:15	SUB OUT: MOORE, TRUMAN			
01:15	SUB IN: KENNEDY, SHAMARKUS			
01:04	FOUL by KUXHAUSEN, DRU			
01:04	TURNOVER by KUXHAUSEN, DRU			
00:42				MISSED JUMPER by LIDDELL, GERALD [PNT]
00:37	REBOUND (DEF) by WASHINGTON, LEONDRE			
00:34				FOUL by LIDDELL, GERALD [PNT]
00:34	MISSED FT by WASHINGTON, LEONDRE [FB]			
00:34	REBOUND (DEADB) by TEAM			
00:34				SUB OUT: LIDDELL, GERALD
00:34				SUB IN: WILLIAMS, DONOVAN
00:34	SUB OUT: KUXHAUSEN, DRU			
00:34	SUB IN: JOHNSON, TREY			
00:34	GOOD! FT by WASHINGTON, LEONDRE [FB]	34-31	H 3	
00:06		37-31	H 6	GOOD! 3PTR by FEBRES, JASE
00:06				ASSIST by COLEMAN III, MATT
00:00	GOOD! 3PTR by WASHINGTON, LEONDRE [FB]	37-34	H 3	

McNeese 34, Texas 37

<b>Points from (This Period)</b>	<b>MSU</b>	<b>TEX</b>
In the Paint	18	20
Off Turns	6	0
2nd Chance	0	6
Fast Break	11	6
Bench	7	15

**Official Box Score**  
**McNeese vs Texas**  
**Second Half Statistics Only**  
**November 30, 2019 at Frank Erwin Center**



**McNeese 37**

No.	Player	S	Pts	FG	3FG	FT	OR	DR	TR	PF	A	TO	Blk	Stl	Min
00	KUXHAUSEN, DRU	G	9	3-6	3-5	0-0	0	0	0	2	0	3	0	0	20
12	LAWSON, A.J.	G	4	1-3	0-1	2-2	0	0	0	2	1	1	0	0	10
13	JOHNSON, TREY	G	0	0-1	0-0	0-0	0	2	2	0	1	1	1	0	19
22	BROWN, ROYDELL	G	2	1-1	0-0	0-0	1	0	1	0	1	0	0	0	8
23	KENNEDY, SHAMARKUS	F	12	4-6	0-0	4-4	2	5	7	2	1	1	1	0	20
02	BAKER, SAM	G	0	0-0	0-0	0-0	0	0	0	1	0	0	0	0	5
03	WASHINGTON, LEONDRE	G	10	4-7	1-3	1-1	0	1	1	0	1	2	0	0	18
44	MOORE, TRUMAN	F	0	0-0	0-0	0-0	0	0	0	0	0	0	0	0	0
	TEAM			0-0			0	0	0	0		0			
<b>TOTALS</b>			<b>37</b>	<b>13-24</b>	<b>4-9</b>	<b>7-7</b>	<b>3</b>	<b>8</b>	<b>11</b>	<b>7</b>	<b>5</b>	<b>8</b>	<b>2</b>	<b>0</b>	<b>100</b>

*Shooting By Period*

Period	FG	FG%	3FG	3FG%	FT	FT%
2nd Half	13-24	54%	4-9	44%	7-7	100%
Game	26-50	52.0%	8-16	50.0%	11-13	84.6%

*Last FG Half: MSU -*

**Texas 36**

No.	Player	S	Pts	FG	3FG	FT	OR	DR	TR	PF	A	TO	Blk	Stl	Min
00	LIDDELL, GERALD	F	0	0-0	0-0	0-2	1	0	1	0	0	0	0	0	2
02	COLEMAN III, MATT	G	7	3-6	1-1	0-0	0	3	3	1	4	0	0	1	20
03	RAMEY, COURTNEY	G	10	3-4	2-3	2-2	1	1	2	0	0	2	0	0	9
13	FEBRES, JASE	G	3	1-9	1-7	0-0	0	1	1	0	1	0	0	1	20
20	SIMS, JERICHO	F	4	2-2	0-0	0-0	3	2	5	3	0	2	1	0	16
01	JONES, ANDREW	G	6	2-6	2-5	0-0	1	1	2	1	3	1	1	0	15
04	WILLIAMS, DONOVAN	G	2	1-2	0-1	0-0	1	0	1	1	0	1	0	0	8
05	HAMM JR., ROYCE	F	0	0-0	0-0	0-0	0	0	0	2	0	0	0	0	4
22	JONES, KAI	F	4	2-3	0-0	0-0	0	0	0	2	1	1	0	0	6
50	BAKER, WILL	C	0	0-0	0-0	0-0	0	0	0	0	0	0	0	0	0
	TEAM			0-0			3	0	3	0		0			
<b>TOTALS</b>			<b>36</b>	<b>14-32</b>	<b>6-17</b>	<b>2-4</b>	<b>10</b>	<b>8</b>	<b>18</b>	<b>10</b>	<b>9</b>	<b>7</b>	<b>2</b>	<b>2</b>	<b>100</b>

*Shooting By Period*

Period	FG	FG%	3FG	3FG%	FT	FT%
2nd Half	14-32	44%	6-17	35%	2-4	50%
Game	30-66	45.5%	9-31	29.0%	4-8	50.0%

*Last FG Half: TEX -*

Game Notes:

Officials: Tom Eades, Rick Crawford, Rodrick Dixon  
Attendance: 8482

Start Time: 07:00 PM

Score	1st	2nd	TOT
MSU	34	37	<b>71</b>
TEX	37	36	<b>73</b>

Points from (This Period)	MSU	TEX
In the Paint	16	12
Off Turns	8	8
2nd Chance	6	8
Fast Break	3	4
Bench	10	12



**Official Play-By-Play**  
**McNeese vs Texas**  
**Second Half**  
**November 30, 2019 at Frank Erwin Center**



**Period 2**

**Starters:**

**McNeese:** 0 KUXHAUSEN, DRU (G); 12 LAWSON, A.J. (G); 13 JOHNSON, TREY (G); 22 BROWN, ROYDELL (G); 23 KENNEDY, SHAMARKUS (F);  
**Texas:** 0 LIDDELL, GERALD (F); 2 COLEMAN III, MATT (G); 3 RAMEY, COURTNEY (G); 13 FEBRES, JASE (G); 20 SIMS, JERICHO (F);

Time	VISITORS: McNeese	Score	Margin	HOME: Texas
20:00				SUB OUT: JONES, ANDREW
20:00				SUB OUT: WILLIAMS, DONOVAN
20:00				SUB IN: LIDDELL, GERALD
20:00				SUB IN: RAMEY, COURTNEY
20:00	SUB OUT: BAKER, SAM			
20:00	SUB OUT: BROWN, ROYDELL			
20:00	SUB IN: KUXHAUSEN, DRU			
20:00	SUB IN: LAWSON, A.J.			
19:36	GOOD! DUNK by KENNEDY, SHAMARKUS	37-36	H 1	
19:36	ASSIST by LAWSON, A.J.			
19:17	FOUL by KENNEDY, SHAMARKUS			
19:08				MISSED JUMPER by COLEMAN III, MATT [PNT]
19:06				REBOUND (OFF) by TEAM
19:00				MISSED 3PTR by RAMEY, COURTNEY
18:56				REBOUND (OFF) by LIDDELL, GERALD
18:52	FOUL by KENNEDY, SHAMARKUS			
18:52				MISSED FT by LIDDELL, GERALD
18:52				REBOUND (DEADB) by TEAM
18:52				MISSED FT by LIDDELL, GERALD
18:51	REBOUND (DEF) by KENNEDY, SHAMARKUS			
18:33	GOOD! LAYUP by WASHINGTON, LEONDRE	37-38	V 1	
18:25				MISSED LAYUP by FEBRES, JASE
18:25	BLOCK by JOHNSON, TREY			
18:19				REBOUND (OFF) by RAMEY, COURTNEY
18:18				MISSED 3PTR by FEBRES, JASE
18:13	REBOUND (DEF) by KENNEDY, SHAMARKUS			
18:02	GOOD! LAYUP by LAWSON, A.J.	37-40	V 3	
18:02	ASSIST by KENNEDY, SHAMARKUS			
17:54				TIMEOUT 30SEC
17:54	TIMEOUT MEDIA			
17:54				SUB OUT: LIDDELL, GERALD
17:54				SUB IN: JONES, KAI
17:41		39-40	V 1	GOOD! JUMPER by COLEMAN III, MATT
17:22	MISSED JUMPER by KENNEDY, SHAMARKUS			
17:22				BLOCK by SIMS, JERICHO
17:17				REBOUND (DEF) by COLEMAN III, MATT
17:13				TURNOVER by RAMEY, COURTNEY [PNT]
17:13	SUB OUT: JOHNSON, TREY			
17:13	SUB IN: BROWN, ROYDELL			
17:10				FOUL by JONES, KAI
17:06	TURNOVER by LAWSON, A.J. [PNT]			
16:54				MISSED 3PTR by FEBRES, JASE
16:50				REBOUND (OFF) by TEAM
16:43				MISSED LAYUP by COLEMAN III, MATT
16:43	BLOCK by KENNEDY, SHAMARKUS			
16:43				REBOUND (OFF) by TEAM
16:39	FOUL by LAWSON, A.J.			
16:39	SUB OUT: LAWSON, A.J.			
16:39	SUB IN: JOHNSON, TREY			
16:21		42-40	H 2	GOOD! 3PTR by RAMEY, COURTNEY
16:21				ASSIST by COLEMAN III, MATT
16:04	GOOD! 3PTR by KUXHAUSEN, DRU	42-43	V 1	
16:04	ASSIST by BROWN, ROYDELL			
15:51				TURNOVER by RAMEY, COURTNEY
15:51	TIMEOUT MEDIA			
15:51				SUB OUT: RAMEY, COURTNEY
15:51				SUB IN: JONES, ANDREW
15:35				FOUL by SIMS, JERICHO
15:35	GOOD! FT by KENNEDY, SHAMARKUS	42-44	V 2	
15:35	GOOD! FT by KENNEDY, SHAMARKUS	42-45	V 3	
15:01		44-45	V 1	GOOD! DUNK by JONES, KAI
15:01				ASSIST by FEBRES, JASE
14:55	GOOD! 3PTR by KUXHAUSEN, DRU	44-48	V 4	
14:55	ASSIST by JOHNSON, TREY			
14:38				MISSED 3PTR by JONES, ANDREW
14:37	REBOUND (DEADB) by TEAM			
14:36				FOUL by SIMS, JERICHO
14:24	MISSED 3PTR by KUXHAUSEN, DRU			
14:20				REBOUND (DEF) by FEBRES, JASE
14:06				MISSED JUMPER by JONES, KAI [PNT]

Time	VISITORS: McNeese	Score	Margin	HOME: Texas
14:01				REBOUND (OFF) by SIMS, JERICHO
14:00				MISSED 3PTR by FEBRES, JASE
13:56				REBOUND (OFF) by SIMS, JERICHO
13:55		47-48	V 1	GOOD! 3PTR by JONES, ANDREW
13:55				ASSIST by JONES, KAI
13:37	MISSED LAYUP by JOHNSON, TREY			
13:34				REBOUND (DEF) by SIMS, JERICHO
13:31		49-48	H 1	GOOD! JUMPER by JONES, KAI [FB]
13:31				ASSIST by JONES, ANDREW
13:21	TIMEOUT 30SEC			
13:00	TURNOVER by WASHINGTON, LEONDRE			
13:00				STEAL by FEBRES, JASE
12:56				FOUL by JONES, KAI
12:56				TURNOVER by JONES, KAI
12:56	SUB OUT: BROWN, ROYDELL			
12:56	SUB IN: BAKER, SAM			
12:32	TURNOVER by WASHINGTON, LEONDRE			
12:32				SUB OUT: JONES, KAI
12:32				SUB IN: WILLIAMS, DONOVAN
12:15		51-48	H 3	GOOD! DUNK by SIMS, JERICHO
12:15				ASSIST by COLEMAN III, MATT
11:41	MISSED LAYUP by KENNEDY, SHAMARKUS [PNT]			
11:39	REBOUND (OFF) by KENNEDY, SHAMARKUS			
11:39	GOOD! LAYUP by KENNEDY, SHAMARKUS	51-50	H 1	
11:22				MISSED 3PTR by FEBRES, JASE
11:19	REBOUND (DEF) by KENNEDY, SHAMARKUS			
11:15	GOOD! 3PTR by KUXHAUSEN, DRU [FB]	51-53	V 2	
11:15	ASSIST by WASHINGTON, LEONDRE			
10:58		53-53	T	GOOD! JUMPER by WILLIAMS, DONOVAN
10:24	MISSED 3PTR by WASHINGTON, LEONDRE			
10:20				REBOUND (DEF) by COLEMAN III, MATT
10:17	TIMEOUT MEDIA			
10:17	SUB OUT: WASHINGTON, LEONDRE			
10:17	SUB IN: LAWSON, A.J.			
10:16	FOUL by BAKER, SAM			
10:13				TURNOVER by SIMS, JERICHO
09:50	GOOD! JUMPER by KENNEDY, SHAMARKUS [PNT]	53-55	V 2	
09:41				MISSED 3PTR by FEBRES, JASE
09:36				REBOUND (OFF) by SIMS, JERICHO
09:36		55-55	T	GOOD! DUNK by SIMS, JERICHO
09:21	TURNOVER by KUXHAUSEN, DRU			
09:06				FOUL by SIMS, JERICHO
09:06				TURNOVER by SIMS, JERICHO
09:06				SUB OUT: SIMS, JERICHO
09:06				SUB IN: HAMM JR., ROYCE
08:40	MISSED 3PTR by LAWSON, A.J.			
08:35				REBOUND (DEF) by JONES, ANDREW
08:31		58-55	H 3	GOOD! 3PTR by COLEMAN III, MATT
08:31				ASSIST by JONES, ANDREW
08:09	SUB OUT: BAKER, SAM			
08:09	SUB IN: WASHINGTON, LEONDRE			
08:02	TURNOVER by KUXHAUSEN, DRU			
08:02				STEAL by COLEMAN III, MATT
07:55				MISSED 3PTR by JONES, ANDREW
07:50	REBOUND (DEF) by KENNEDY, SHAMARKUS			
07:35	TURNOVER by KENNEDY, SHAMARKUS			
07:35	TIMEOUT MEDIA			
07:07				MISSED 3PTR by WILLIAMS, DONOVAN
07:03	REBOUND (DEF) by WASHINGTON, LEONDRE			
06:44	TURNOVER by JOHNSON, TREY [PNT]			
06:44				SUB OUT: WILLIAMS, DONOVAN
06:44				SUB IN: JONES, KAI
06:16				MISSED LAYUP by JONES, ANDREW [PNT]
06:13	REBOUND (DEF) by JOHNSON, TREY			
05:54	GOOD! FT by LAWSON, A.J.	58-56	H 2	
05:54	GOOD! FT by LAWSON, A.J.	58-57	H 1	
05:54				SUB OUT: JONES, KAI
05:54				SUB IN: WILLIAMS, DONOVAN
05:53				FOUL by HAMM JR., ROYCE
05:36		60-57	H 3	GOOD! LAYUP by COLEMAN III, MATT
05:17	MISSED LAYUP by LAWSON, A.J. [PNT]			
05:17				BLOCK by JONES, ANDREW
05:11				REBOUND (DEF) by COLEMAN III, MATT
05:07				MISSED JUMPER by FEBRES, JASE
05:05				REBOUND (OFF) by JONES, ANDREW
05:05				FOUL by JONES, ANDREW
05:05				TURNOVER by JONES, ANDREW
05:03				SUB OUT: JONES, ANDREW
05:03				SUB IN: RAMEY, COURTNEY
04:51				FOUL by HAMM JR., ROYCE [PNT]

Time	VISITORS: McNeese	Score	Margin	HOME: Texas
04:51	GOOD! FT by KENNEDY, SHAMARKUS	60-58	H 2	
04:51	GOOD! FT by KENNEDY, SHAMARKUS	60-59	H 1	
04:50				SUB OUT: HAMM JR., ROYCE
04:50				SUB IN: SIMS, JERICHO
04:22		62-59	H 3	GOOD! JUMPER by RAMEY, COURTNEY [PNT]
04:13	GOOD! LAYUP by WASHINGTON, LEONDRE	62-61	H 1	
04:11				FOUL by COLEMAN III, MATT
04:11	GOOD! FT by WASHINGTON, LEONDRE	62-62	T	
03:54	FOUL by LAWSON, A.J. [PNT]			
03:54	TIMEOUT MEDIA			
03:54	SUB OUT: LAWSON, A.J.			
03:54	SUB IN: BROWN, ROYDELL			
03:50				MISSED LAYUP by COLEMAN III, MATT [PNT]
03:48				REBOUND (OFF) by WILLIAMS, DONOVAN
03:48				FOUL by WILLIAMS, DONOVAN
03:48				TURNOVER by WILLIAMS, DONOVAN
03:48				SUB OUT: WILLIAMS, DONOVAN
03:48				SUB IN: JONES, ANDREW
03:36	GOOD! JUMPER by WASHINGTON, LEONDRE	62-64	V 2	
03:19		65-64	H 1	GOOD! 3PTR by RAMEY, COURTNEY
03:19				ASSIST by COLEMAN III, MATT
03:02	FOUL by KUXHAUSEN, DRU			
03:02	TURNOVER by KUXHAUSEN, DRU			
02:50		68-64	H 4	GOOD! 3PTR by FEBRES, JASE
02:50				ASSIST by JONES, ANDREW
02:40	TIMEOUT 30SEC			
02:21	MISSED LAYUP by WASHINGTON, LEONDRE			
02:15	REBOUND (OFF) by BROWN, ROYDELL			
02:15	GOOD! LAYUP by BROWN, ROYDELL	68-66	H 2	
01:52				MISSED 3PTR by JONES, ANDREW
01:49	REBOUND (DEF) by JOHNSON, TREY			
01:34	GOOD! 3PTR by WASHINGTON, LEONDRE	68-69	V 1	
01:14		71-69	H 2	GOOD! 3PTR by JONES, ANDREW
01:14				ASSIST by COLEMAN III, MATT
01:11				TIMEOUT TEAM
01:03	MISSED 3PTR by KUXHAUSEN, DRU			
00:58	REBOUND (OFF) by KENNEDY, SHAMARKUS			
00:56	GOOD! LAYUP by KENNEDY, SHAMARKUS	71-71	T	
00:40				MISSED 3PTR by FEBRES, JASE
00:35	REBOUND (DEF) by KENNEDY, SHAMARKUS			
00:09	MISSED JUMPER by KUXHAUSEN, DRU			
00:09				REBOUND (DEF) by RAMEY, COURTNEY
00:08	FOUL by KUXHAUSEN, DRU			
00:08	TIMEOUT TEAM			
00:08		72-71	H 1	GOOD! FT by RAMEY, COURTNEY [FB]
00:08		73-71	H 2	GOOD! FT by RAMEY, COURTNEY [FB]
00:08				TIMEOUT 30SEC
00:03	MISSED 3PTR by WASHINGTON, LEONDRE			
00:00				REBOUND (DEF) by SIMS, JERICHO

### McNeese 71, Texas 73

Points from (This Period)	MSU	TEX
In the Paint	16	12
Off Turns	8	8
2nd Chance	6	8
Fast Break	3	4
Bench	10	12

**Official Scoring/Possession Reference Chart**  
**McNeese vs Texas**  
**Period 1**  
**November 30, 2019 at Frank Erwin Center**



**Period 1**

**Starters:**

**McNeese:** 0 KUXHAUSEN, DRU (G); 12 LAWSON, A.J. (G); 13 JOHNSON, TREY (G); 22 BROWN, ROYDELL (G); 23 KENNEDY, SHAMARKUS (F);  
**Texas:** 0 LIDDELL, GERALD (F); 2 COLEMAN III, MATT (G); 3 RAMEY, COURTNEY (G); 13 FEBRES, JASE (G); 20 SIMS, JERICHO (F);

Time	VISITORS: McNeese	Score	Margin	HOME: Texas
19:23	GOOD! FT by LAWSON, A.J.	0-1	V 1	
19:15		2-1	H 1	GOOD! LAYUP by RAMEY, COURTNEY [FB]
18:41	GOOD! JUMPER by KENNEDY, SHAMARKUS [PNT]	2-3	V 1	
18:34		5-3	H 2	GOOD! 3PTR by FEBRES, JASE
16:23		6-3	H 3	GOOD! FT by RAMEY, COURTNEY [FB]
16:23		7-3	H 4	GOOD! FT by RAMEY, COURTNEY [FB]
15:57		9-3	H 6	GOOD! JUMPER by JONES, ANDREW
15:37	GOOD! JUMPER by LAWSON, A.J. [PNT]	9-5	H 4	
15:13	GOOD! LAYUP by LAWSON, A.J. [FB]	9-7	H 2	
15:01		11-7	H 4	GOOD! LAYUP by JONES, ANDREW
13:06	GOOD! FT by LAWSON, A.J.	11-8	H 3	
13:06	GOOD! FT by LAWSON, A.J.	11-9	H 2	
12:49		13-9	H 4	GOOD! JUMPER by JONES, KAI
11:47		15-9	H 6	GOOD! DUNK by JONES, KAI
11:23	GOOD! 3PTR by LAWSON, A.J.	15-12	H 3	
09:59		17-12	H 5	GOOD! JUMPER by JONES, ANDREW
09:45	GOOD! 3PTR by KUXHAUSEN, DRU	17-15	H 2	
09:08		19-15	H 4	GOOD! JUMPER by LIDDELL, GERALD
08:40		21-15	H 6	GOOD! LAYUP by JONES, ANDREW [FB]
08:23	GOOD! DUNK by KENNEDY, SHAMARKUS	21-17	H 4	
08:09	GOOD! 3PTR by WASHINGTON, LEONDRE [FB]	21-20	H 1	
07:44		23-20	H 3	GOOD! JUMPER by SIMS, JERICHO [PNT]
07:24	GOOD! DUNK by KENNEDY, SHAMARKUS	23-22	H 1	
06:55		25-22	H 3	GOOD! JUMPER by SIMS, JERICHO
06:20		28-22	H 6	GOOD! 3PTR by WILLIAMS, DONOVAN
05:13	GOOD! LAYUP by KENNEDY, SHAMARKUS	28-24	H 4	
04:38	GOOD! DUNK by JOHNSON, TREY [FB]	28-26	H 2	
04:18		30-26	H 4	GOOD! DUNK by SIMS, JERICHO
03:59	GOOD! DUNK by KENNEDY, SHAMARKUS	30-28	H 2	
03:42		32-28	H 4	GOOD! DUNK by SIMS, JERICHO
02:52	GOOD! DUNK by BROWN, ROYDELL	32-30	H 2	
02:18		34-30	H 4	GOOD! JUMPER by COLEMAN III, MATT
00:34	GOOD! FT by WASHINGTON, LEONDRE [FB]	34-31	H 3	
00:06		37-31	H 6	GOOD! 3PTR by FEBRES, JASE
00:00	GOOD! 3PTR by WASHINGTON, LEONDRE [FB]	37-34	H 3	

**McNeese 34, Texas 37**

**Official Scoring/Possession Reference Chart**  
**McNeese vs Texas**  
**Period 2**  
**November 30, 2019 at Frank Erwin Center**



**Period 2**

**Starters:**

**McNeese:** 0 KUXHAUSEN, DRU (G); 12 LAWSON, A.J. (G); 13 JOHNSON, TREY (G); 22 BROWN, ROYDELL (G); 23 KENNEDY, SHAMARKUS (F);  
**Texas:** 0 LIDDELL, GERALD (F); 2 COLEMAN III, MATT (G); 3 RAMEY, COURTNEY (G); 13 FEBRES, JASE (G); 20 SIMS, JERICHO (F);

Time	VISITORS: McNeese	Score	Margin	HOME: Texas
19:36	GOOD! DUNK by KENNEDY, SHAMARKUS	37-36	H 1	
18:33	GOOD! LAYUP by WASHINGTON, LEONDRE	37-38	V 1	
18:02	GOOD! LAYUP by LAWSON, A.J.	37-40	V 3	
17:41		39-40	V 1	GOOD! JUMPER by COLEMAN III, MATT
16:21		42-40	H 2	GOOD! 3PTR by RAMEY, COURTNEY
16:04	GOOD! 3PTR by KUXHAUSEN, DRU	42-43	V 1	
15:35	GOOD! FT by KENNEDY, SHAMARKUS	42-44	V 2	
15:35	GOOD! FT by KENNEDY, SHAMARKUS	42-45	V 3	
15:01		44-45	V 1	GOOD! DUNK by JONES, KAI
14:55	GOOD! 3PTR by KUXHAUSEN, DRU	44-48	V 4	
13:55		47-48	V 1	GOOD! 3PTR by JONES, ANDREW
13:31		49-48	H 1	GOOD! JUMPER by JONES, KAI [FB]
12:15		51-48	H 3	GOOD! DUNK by SIMS, JERICHO
11:39	GOOD! LAYUP by KENNEDY, SHAMARKUS	51-50	H 1	
11:15	GOOD! 3PTR by KUXHAUSEN, DRU [FB]	51-53	V 2	
10:58		53-53	T	GOOD! JUMPER by WILLIAMS, DONOVAN
09:50	GOOD! JUMPER by KENNEDY, SHAMARKUS [PNT]	53-55	V 2	
09:36		55-55	T	GOOD! DUNK by SIMS, JERICHO
08:31		58-55	H 3	GOOD! 3PTR by COLEMAN III, MATT
05:54	GOOD! FT by LAWSON, A.J.	58-56	H 2	
05:54	GOOD! FT by LAWSON, A.J.	58-57	H 1	
05:36		60-57	H 3	GOOD! LAYUP by COLEMAN III, MATT
04:51	GOOD! FT by KENNEDY, SHAMARKUS	60-58	H 2	
04:51	GOOD! FT by KENNEDY, SHAMARKUS	60-59	H 1	
04:22		62-59	H 3	GOOD! JUMPER by RAMEY, COURTNEY [PNT]
04:13	GOOD! LAYUP by WASHINGTON, LEONDRE	62-61	H 1	
04:11	GOOD! FT by WASHINGTON, LEONDRE	62-62	T	
03:36	GOOD! JUMPER by WASHINGTON, LEONDRE	62-64	V 2	
03:19		65-64	H 1	GOOD! 3PTR by RAMEY, COURTNEY
02:50		68-64	H 4	GOOD! 3PTR by FEBRES, JASE
02:15	GOOD! LAYUP by BROWN, ROYDELL	68-66	H 2	
01:34	GOOD! 3PTR by WASHINGTON, LEONDRE	68-69	V 1	
01:14		71-69	H 2	GOOD! 3PTR by JONES, ANDREW
00:56	GOOD! LAYUP by KENNEDY, SHAMARKUS	71-71	T	
00:08		72-71	H 1	GOOD! FT by RAMEY, COURTNEY [FB]
00:08		73-71	H 2	GOOD! FT by RAMEY, COURTNEY [FB]

**McNeese 71, Texas 73**

**Official Substitutions Log**  
**McNeese vs Texas**  
**Period 1**  
**November 30, 2019 at Frank Erwin Center**



VISITORS: McNeese	Time	Score	HOME: Texas
0 KUXHAUSEN, DRU			0 LIDDELL, GERALD
12 LAWSON, A. J.			2 COLEMAN III, MATT
13 JOHNSON, TREY			3 RAMEY, COURTNEY
22 BROWN, ROYDELL			13 FEBRES, JASE
23 KENNEDY, SHAMARKUS			20 SIMS, JERICHO
	16:23	3-7	SUB OUT: RAMEY, COURTNEY
	16:23		SUB OUT: SIMS, JERICHO
	16:23		SUB IN: JONES, ANDREW
	16:23		SUB IN: HAMM JR., ROYCE
	14:38	7-11	SUB OUT: LIDDELL, GERALD
	14:38		SUB OUT: COLEMAN III, MATT
	14:38		SUB OUT: FEBRES, JASE
	14:38		SUB IN: RAMEY, COURTNEY
	14:38		SUB IN: WILLIAMS, DONOVAN
	14:38		SUB IN: JONES, KAI
SUB OUT: 12 LAWSON, A. J.	14:21	7-11	
SUB IN: 3 WASHINGTON, LEONDRE	14:21		
SUB OUT: 22 BROWN, ROYDELL	13:31	7-11	
SUB IN: 12 LAWSON, A. J.	13:31		
	13:06	9-11	SUB OUT: JONES, ANDREW
	13:06		SUB IN: COLEMAN III, MATT
SUB OUT: 0 KUXHAUSEN, DRU	13:06		
SUB IN: 2 BAKER, SAM	13:06		
	12:01	9-13	SUB OUT: HAMM JR., ROYCE
	12:01		SUB IN: SIMS, JERICHO
	11:50	9-13	SUB OUT: WILLIAMS, DONOVAN
	11:50		SUB IN: FEBRES, JASE
SUB OUT: 23 KENNEDY, SHAMARKUS	11:50		
SUB IN: 44 MOORE, TRUMAN	11:50		
	11:04	12-15	SUB OUT: JONES, KAI
	11:04		SUB IN: LIDDELL, GERALD
	10:07	12-15	SUB OUT: RAMEY, COURTNEY
	10:07		SUB IN: JONES, ANDREW
SUB OUT: 2 BAKER, SAM	10:07		
SUB OUT: 12 LAWSON, A. J.	10:07		
SUB OUT: 44 MOORE, TRUMAN	10:07		
SUB IN: 0 KUXHAUSEN, DRU	10:07		
SUB IN: 22 BROWN, ROYDELL	10:07		
SUB IN: 23 KENNEDY, SHAMARKUS	10:07		
	08:07	20-21	SUB OUT: FEBRES, JASE
	08:07		SUB IN: WILLIAMS, DONOVAN
SUB OUT: 0 KUXHAUSEN, DRU	08:07		
SUB IN: 2 BAKER, SAM	08:07		
	05:29	22-28	SUB OUT: JONES, ANDREW
	05:29		SUB IN: RAMEY, COURTNEY
SUB OUT: 2 BAKER, SAM	05:29		
SUB IN: 0 KUXHAUSEN, DRU	05:29		
	02:50	30-32	SUB OUT: WILLIAMS, DONOVAN
	02:50		SUB OUT: SIMS, JERICHO
	02:50		SUB IN: FEBRES, JASE
	02:50		SUB IN: BAKER, WILL
SUB OUT: 13 JOHNSON, TREY	02:50		
SUB OUT: 23 KENNEDY, SHAMARKUS	02:50		
SUB IN: 2 BAKER, SAM	02:50		
SUB IN: 44 MOORE, TRUMAN	02:50		
	01:15	30-34	SUB OUT: RAMEY, COURTNEY
	01:15		SUB OUT: BAKER, WILL
	01:15		SUB IN: JONES, ANDREW
	01:15		SUB IN: SIMS, JERICHO
SUB OUT: 44 MOORE, TRUMAN	01:15		
SUB IN: 23 KENNEDY, SHAMARKUS	01:15		
	00:34	30-34	SUB OUT: LIDDELL, GERALD
	00:34		SUB IN: WILLIAMS, DONOVAN
SUB OUT: 0 KUXHAUSEN, DRU	00:34		
SUB IN: 13 JOHNSON, TREY	00:34		

**McNeese 34, Texas 37**

**Official Substitutions Log  
McNeese vs Texas  
Period 2  
November 30, 2019 at Frank Erwin Center**



VISITORS: McNeese	Time	Score	HOME: Texas
0 KUXHAUSEN, DRU			0 LIDDELL, GERALD
12 LAWSON, A. J.			2 COLEMAN III, MATT
13 JOHNSON, TREY			3 RAMEY, COURTNEY
22 BROWN, ROYDELL			13 FEBRES, JASE
23 KENNEDY, SHAMARKUS			20 SIMS, JERICO
	20:00	-	SUB OUT: JONES, ANDREW
	20:00		SUB OUT: WILLIAMS, DONOVAN
	20:00		SUB IN: LIDDELL, GERALD
	20:00		SUB IN: RAMEY, COURTNEY
SUB OUT: 2 BAKER, SAM	20:00		
SUB OUT: 22 BROWN, ROYDELL	20:00		
SUB IN: 0 KUXHAUSEN, DRU	20:00		
SUB IN: 12 LAWSON, A. J.	20:00		
	17:54	40-37	SUB OUT: LIDDELL, GERALD
	17:54		SUB IN: JONES, KAI
SUB OUT: 13 JOHNSON, TREY	17:13	40-39	
SUB IN: 22 BROWN, ROYDELL	17:13		
SUB OUT: 12 LAWSON, A. J.	16:39	40-39	
SUB IN: 13 JOHNSON, TREY	16:39		
	15:51	43-42	SUB OUT: RAMEY, COURTNEY
	15:51		SUB IN: JONES, ANDREW
SUB OUT: 22 BROWN, ROYDELL	12:56	48-49	
SUB IN: 2 BAKER, SAM	12:56		
	12:32	48-49	SUB OUT: JONES, KAI
	12:32		SUB IN: WILLIAMS, DONOVAN
SUB OUT: 3 WASHINGTON, LEONDRE	10:17	53-53	
SUB IN: 12 LAWSON, A. J.	10:17		
	09:06	55-55	SUB OUT: SIMS, JERICO
	09:06		SUB IN: HAMM JR., ROYCE
SUB OUT: 2 BAKER, SAM	08:09	55-58	
SUB IN: 3 WASHINGTON, LEONDRE	08:09		
	06:44	55-58	SUB OUT: WILLIAMS, DONOVAN
	06:44		SUB IN: JONES, KAI
	05:54	57-58	SUB OUT: JONES, KAI
	05:54		SUB IN: WILLIAMS, DONOVAN
	05:03	57-60	SUB OUT: JONES, ANDREW
	05:03		SUB IN: RAMEY, COURTNEY
	04:50	59-60	SUB OUT: HAMM JR., ROYCE
	04:50		SUB IN: SIMS, JERICO
SUB OUT: 12 LAWSON, A. J.	03:54	62-62	
SUB IN: 22 BROWN, ROYDELL	03:54		
	03:48	62-62	SUB OUT: WILLIAMS, DONOVAN
	03:48		SUB IN: JONES, ANDREW

**McNeese 71, Texas 73**

**Official Shot Chart**  
**McNeese vs Texas**  
**PERIOD 1 Shots**  
**November 30, 2019 at Frank Erwin Center**

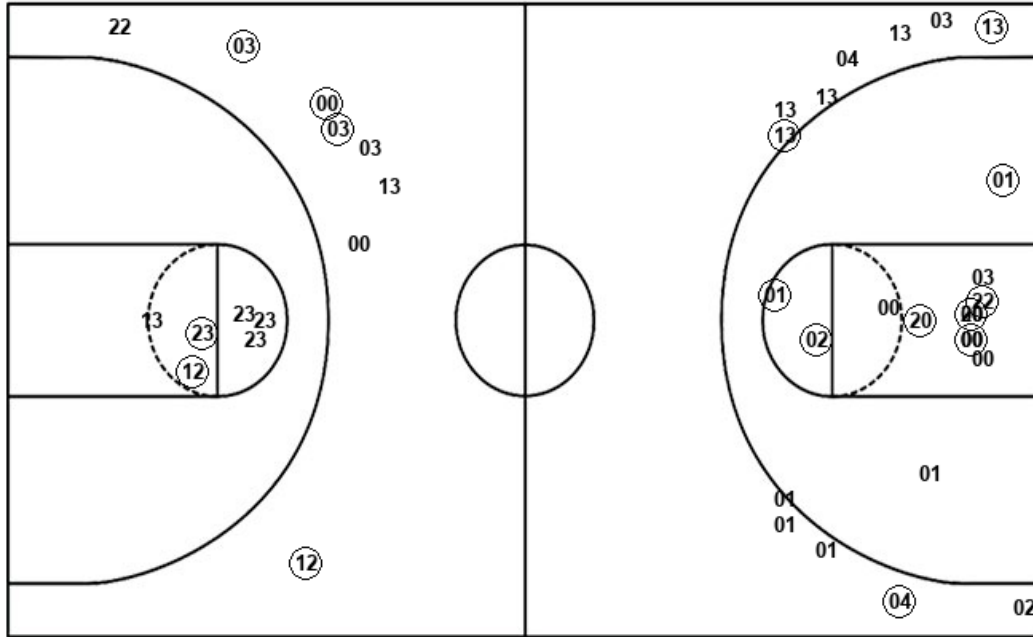


**Texas**

**McNeese**

Layups  
 03 02 01 01

Dunks  
 22 20 20



Layups  
 12 12 12 03 12  
 03 23

Dunks  
 23 23 13 23 22

TEX : Period 1	Made	Att	Pct
Layups	3	4	75.0
Dunks	3	3	100.0
2PT Field Goals	13	20	65.0
3PT Field Goals	3	14	21.4
<b>Total Field Goals</b>	<b>16</b>	<b>34</b>	<b>47.1</b>

MSU : Period 1	Made	Att	Pct
Layups	2	7	28.6
Dunks	5	5	100.0
2PT Field Goals	9	19	47.4
3PT Field Goals	4	7	57.1
<b>Total Field Goals</b>	<b>13</b>	<b>26</b>	<b>50.0</b>

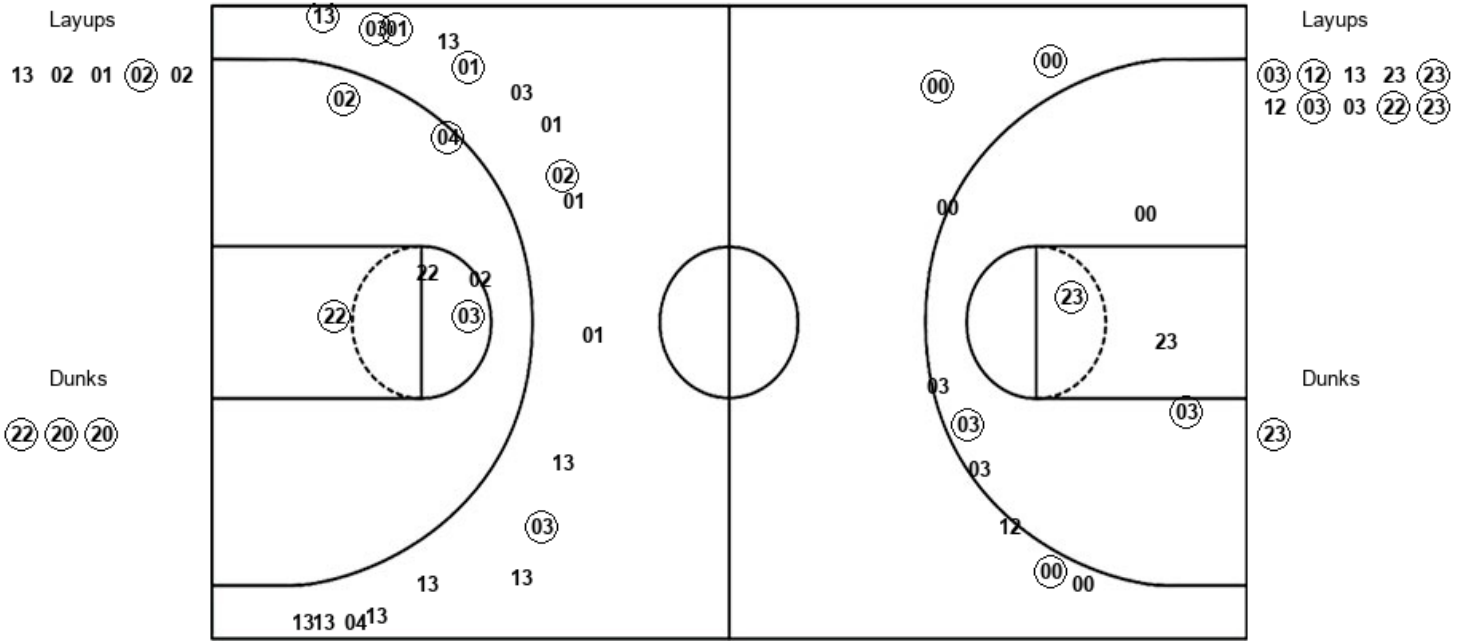


**Official Shot Chart**  
**McNeese vs Texas**  
**PERIOD 2 Shots**  
**November 30, 2019 at Frank Erwin Center**



**Texas**

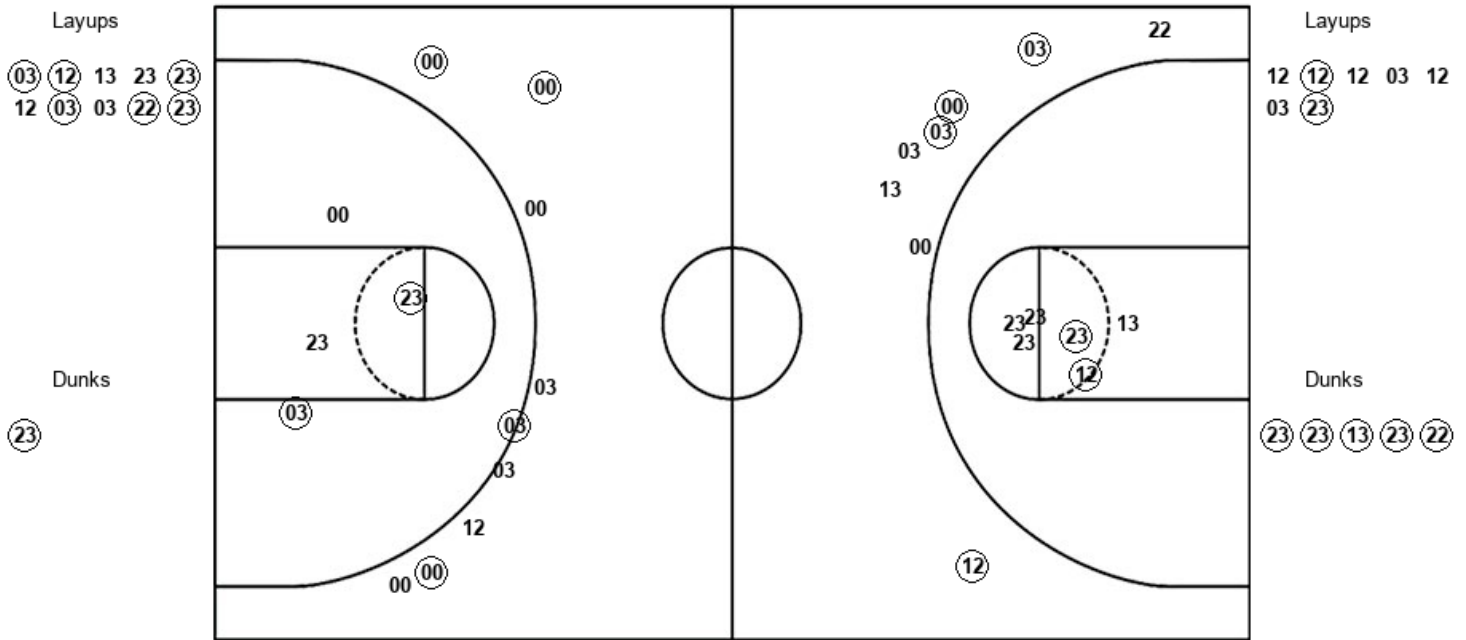
**McNeese**



<b>TEX : Period 2</b>	<b>Made</b>	<b>Att</b>	<b>Pct</b>
Layups	1	5	20.0
Dunks	3	3	100.0
2PT Field Goals	8	15	53.3
3PT Field Goals	6	17	35.3
<b>Total Field Goals</b>	<b>14</b>	<b>32</b>	<b>43.8</b>

<b>MSU : Period 2</b>	<b>Made</b>	<b>Att</b>	<b>Pct</b>
Layups	6	10	60.0
Dunks	1	1	100.0
2PT Field Goals	9	15	60.0
3PT Field Goals	4	9	44.4
<b>Total Field Goals</b>	<b>13</b>	<b>24</b>	<b>54.2</b>

**Official Shot Chart**  
**McNeese vs Texas**  
**McNeese Team Shots**  
 November 30, 2019 at Frank Erwin Center



MSU : Period 1	Made	Att	Pct
Layups	2	7	28.6
Dunks	5	5	100.0
2PT Field Goals	9	19	47.4
3PT Field Goals	4	7	57.1
<b>Total Field Goals</b>	<b>13</b>	<b>26</b>	<b>50.0</b>

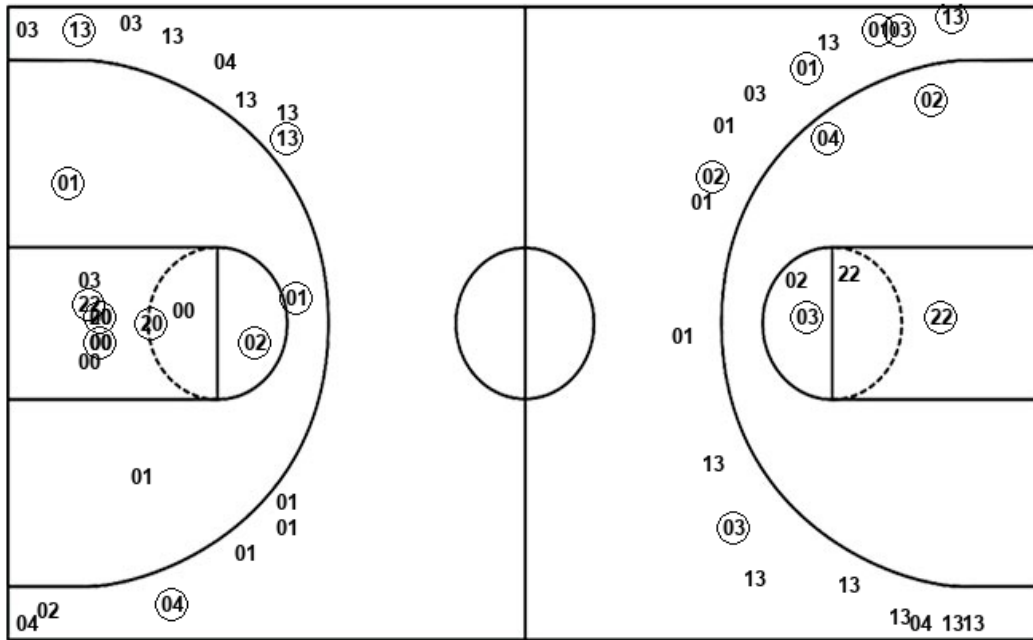
MSU : Period 2	Made	Att	Pct
Layups	6	10	60.0
Dunks	1	1	100.0
2PT Field Goals	9	15	60.0
3PT Field Goals	4	9	44.4
<b>Total Field Goals</b>	<b>13</b>	<b>24</b>	<b>54.2</b>

**Official Shot Chart**  
**McNeese vs Texas**  
**Texas Team Shots**  
**November 30, 2019 at Frank Erwin Center**



Layups  
 (03) 02 (01) (01)

Dunks  
 (22) (20) (20)



Layups  
 13 02 01 (02) 02

Dunks  
 (22) (20) (20)

TEX : Period 1	Made	Att	Pct
Layups	3	4	75.0
Dunks	3	3	100.0
2PT Field Goals	13	20	65.0
3PT Field Goals	3	14	21.4
<b>Total Field Goals</b>	<b>16</b>	<b>34</b>	<b>47.1</b>

TEX : Period 2	Made	Att	Pct
Layups	1	5	20.0
Dunks	3	3	100.0
2PT Field Goals	8	15	53.3
3PT Field Goals	6	17	35.3
<b>Total Field Goals</b>	<b>14</b>	<b>32</b>	<b>43.8</b>