

**FINAL SCORE**



**Prairie View**

**56**



**Texas**

**70**

November 16, 2019 • Frank Erwin Center

**FINAL STATISTICS**

**Official Box Score**  
**Prairie View vs Texas**  
**Game Totals -- Final Statistics**  
**November 16, 2019 at Frank Erwin Center**



**Prairie View 56**

No.	Player	S	Pts	FG	3FG	FT	OR	DR	TR	PF	A	TO	Blk	Stl	Min	+/-
00	HENRY, LENELL	F	12	4-12	0-2	4-7	1	3	4	5	1	8	0	3	36	-18
01	MADDEN, DAJAUN	G	8	4-7	0-0	0-0	2	3	5	4	1	2	1	1	22	2
03	ELLIS, CHANCELLOR	G	11	4-8	2-6	1-2	0	1	1	0	0	1	0	0	24	1
04	LISTER, ANTIONE	G	3	1-4	1-2	0-0	0	2	2	0	0	1	0	0	25	-12
15	ANDRUS, GERARD	G	9	4-4	0-0	1-2	0	2	2	4	0	2	0	2	15	-11
02	WILLIAMS, DARIUS	G	6	1-4	0-2	4-6	0	1	1	2	0	2	0	1	18	-4
05	BYNUM, TAMIR	G	4	2-4	0-1	0-1	0	1	1	0	0	1	0	2	9	-4
11	COX, DEWAYNE		0	0-0	0-0	0-0	0	0	0	1	0	0	0	0	3	-1
12	WILLIAMS, FAITE	G	1	0-2	0-0	1-2	0	1	1	1	0	0	0	1	15	-10
13	COLEMAN, CALEB	F	0	0-1	0-0	0-0	0	4	4	0	0	1	0	0	6	-3
14	SNEED, LEON	G	0	0-2	0-0	0-0	0	0	0	0	1	1	0	0	4	-5
31	JACKSON, JONATHAN	F	2	1-1	0-0	0-0	1	3	4	3	0	2	1	0	21	-4
	TEAM						3	3	6	0		0				
<b>TOTALS</b>			<b>56</b>	<b>21-49</b>	<b>3-13</b>	<b>11-20</b>	<b>7</b>	<b>24</b>	<b>31</b>	<b>20</b>	<b>3</b>	<b>21</b>	<b>2</b>	<b>10</b>	<b>198</b>	

*Shooting By Period*

Period	FG	FG%	3FG	3FG%	FT	FT%
1st Half	8-22	36%	1-7	14%	5-9	56%
2nd Half	13-27	48%	2-6	33%	6-11	55%
<b>Game</b>	<b>21-49</b>	<b>42.9%</b>	<b>3-13</b>	<b>23.1%</b>	<b>11-20</b>	<b>55.0%</b>

Last FG: 2nd-01:22  
Largest lead: By 2 at  
Technical Fouls: None.

**Texas 70**

No.	Player	S	Pts	FG	3FG	FT	OR	DR	TR	PF	A	TO	Blk	Stl	Min	+/-
00	LIDDELL, GERALD	F	5	2-3	1-2	0-1	0	1	1	2	0	2	0	2	21	8
02	COLEMAN III, MATT	G	17	5-11	1-3	6-7	0	3	3	3	4	3	0	0	38	16
03	RAMEY, COURTNEY	G	0	0-6	0-5	0-1	0	3	3	0	0	3	0	1	26	2
13	FEBRES, JASE	G	10	3-11	2-8	2-2	0	5	5	3	1	1	0	1	32	14
20	SIMS, JERICHO	F	8	2-3	0-0	4-6	5	5	10	2	2	0	2	1	29	19
01	JONES, ANDREW	G	15	6-15	3-10	0-0	0	0	0	2	2	3	0	1	26	13
04	WILLIAMS, DONOVAN	G	13	5-6	2-3	1-2	2	2	4	3	0	2	0	4	15	6
05	HAMM JR., ROYCE	F	2	1-1	0-0	0-0	0	0	0	1	1	0	0	0	8	-3
30	CUNNINGHAM, BROCK	F	0	0-0	0-0	0-0	0	0	0	2	0	1	0	1	2	-3
33	HEPA, KAMAKA	F	0	0-1	0-1	0-0	0	0	0	0	0	0	0	0	0	0
50	BAKER, WILL	C	0	0-0	0-0	0-0	0	1	1	1	0	1	1	0	3	-2
	TEAM						3	2	5	0		0				
<b>TOTALS</b>			<b>70</b>	<b>24-57</b>	<b>9-32</b>	<b>13-19</b>	<b>10</b>	<b>22</b>	<b>32</b>	<b>19</b>	<b>10</b>	<b>16</b>	<b>3</b>	<b>11</b>	<b>200</b>	

*Shooting By Period*

Period	FG	FG%	3FG	3FG%	FT	FT%
1st Half	10-29	34%	4-18	22%	2-3	67%
2nd Half	14-28	50%	5-14	36%	11-16	69%
<b>Game</b>	<b>24-57</b>	<b>42.1%</b>	<b>9-32</b>	<b>28.1%</b>	<b>13-19</b>	<b>68.4%</b>

Last FG: 2nd-01:08  
Largest lead: By 15 at  
Technical Fouls: None.

*Game Notes:*

Officials: Joe DeRosa, Larry Spaulding, Jabir Walker  
Attendance:

Start Time: 01:00 AM

Score	1st	2nd	TOT
PVAMU	22	34	56
TEX	26	44	70

PVAMU led for 0:22. TEX led for 38:33.  
Game was tied for 0:0.  
Times tied: 0      Lead Changes: 0

Points from	PVAMU	TEX
In the Paint	18	26
Off Turns	18	18
2nd Chance	7	7
Fast Break	7	14
Bench	13	30

**Official Box Score**  
**Prairie View vs Texas**  
**First Half Statistics Only**  
**November 16, 2019 at Frank Erwin Center**



**Prairie View 22**

No.	Player	S	Pts	FG	3FG	FT	OR	DR	TR	PF	A	TO	Blk	Stl	Min
00	HENRY, LENELL	F	7	3-8	0-2	1-3	0	3	3	1	0	3	0	1	19
01	MADDEN, DAJAUN	G	6	3-3	0-0	0-0	0	1	1	2	1	0	0	1	9
03	ELLIS, CHANCELLOR	G	3	1-3	1-3	0-0	0	1	1	0	0	0	0	0	13
04	LISTER, ANTIONE	G	0	0-2	0-1	0-0	0	1	1	0	0	1	0	0	15
15	ANDRUS, GERARD	G	2	1-1	0-0	0-0	0	0	0	2	0	2	0	1	4
02	WILLIAMS, DARIUS	G	3	0-0	0-0	3-4	0	0	0	1	0	2	0	0	9
05	BYNUM, TAMIR	G	0	0-2	0-1	0-0	0	1	1	0	0	1	0	1	6
11	COX, DEWAYNE		0	0-0	0-0	0-0	0	0	0	1	0	0	0	0	3
12	WILLIAMS, FAITE	G	1	0-2	0-0	1-2	0	1	1	0	0	0	0	1	8
13	COLEMAN, CALEB	F	0	0-0	0-0	0-0	0	2	2	0	0	1	0	0	2
14	SNEED, LEON	G	0	0-1	0-0	0-0	0	0	0	0	0	1	0	0	2
31	JACKSON, JONATHAN	F	0	0-0	0-0	0-0	0	2	2	0	0	0	1	0	10
	TEAM			0-0			2	1	3	0		0			
<b>TOTALS</b>			<b>22</b>	<b>8-22</b>	<b>1-7</b>	<b>5-9</b>	<b>2</b>	<b>13</b>	<b>15</b>	<b>7</b>	<b>1</b>	<b>11</b>	<b>1</b>	<b>5</b>	<b>100</b>

*Shooting By Period*

Period	FG	FG%	3FG	3FG%	FT	FT%
1st Half	8-22	36%	1-7	14%	5-9	56%
Game	21-49	42.9%	3-13	23.1%	11-20	55.0%

*Last FG Half: PVAMU 2nd-01:22*

**Texas 26**

No.	Player	S	Pts	FG	3FG	FT	OR	DR	TR	PF	A	TO	Blk	Stl	Min
00	LIDDELL, GERALD	F	3	1-2	1-2	0-0	0	0	0	2	0	1	0	0	6
02	COLEMAN III, MATT	G	5	2-6	1-3	0-0	0	1	1	0	3	1	0	0	18
03	RAMEY, COURTNEY	G	0	0-3	0-2	0-1	0	3	3	0	0	3	0	0	18
13	FEBRES, JASE	G	2	1-5	0-3	0-0	0	2	2	1	1	0	0	1	15
20	SIMS, JERICHO	F	2	0-0	0-0	2-2	2	4	6	1	1	0	0	1	14
01	JONES, ANDREW	G	10	4-9	2-6	0-0	0	0	0	0	1	1	0	1	14
04	WILLIAMS, DONOVAN	G	2	1-2	0-1	0-0	1	0	1	2	0	1	0	1	7
05	HAMM JR., ROYCE	F	2	1-1	0-0	0-0	0	0	0	1	1	0	0	0	4
30	CUNNINGHAM, BROCK	F	0	0-0	0-0	0-0	0	0	0	2	0	1	0	1	2
33	HEPA, KAMAKA	F	0	0-1	0-1	0-0	0	0	0	0	0	0	0	0	0
50	BAKER, WILL	C	0	0-0	0-0	0-0	0	1	1	1	0	1	1	0	3
	TEAM			0-0			2	1	3	0		0			
<b>TOTALS</b>			<b>26</b>	<b>10-29</b>	<b>4-18</b>	<b>2-3</b>	<b>5</b>	<b>12</b>	<b>17</b>	<b>10</b>	<b>7</b>	<b>9</b>	<b>1</b>	<b>5</b>	<b>100</b>

*Shooting By Period*

Period	FG	FG%	3FG	3FG%	FT	FT%
1st Half	10-29	34%	4-18	22%	2-3	67%
Game	24-57	42.1%	9-32	28.1%	13-19	68.4%

*Last FG Half: TEX 2nd-01:08*

*Game Notes:*

Officials: Joe DeRosa, Larry Spaulding, Jabir Walker

Attendance:

Start Time: 01:00 AM

Score	1st	2nd	TOT
PVAMU	22	34	<b>56</b>
TEX	26	44	<b>70</b>

Points from (This Period)	PVAMU	TEX
In the Paint	6	10
Off Turns	7	5
2nd Chance	2	2
Fast Break	0	5
Bench	4	14

**Official Play-By-Play**  
**Prairie View vs Texas**  
**First Half**  
**November 16, 2019 at Frank Erwin Center**



**Period 1**

**Starters:**

**Prairie View:** 00 HENRY, LENELL (F); 1 MADDEN, DAJAUN (G); 3 ELLIS, CHANCELLOR (G); 4 LISTER, ANTIONE (G); 15 ANDRUS, GERARD (G);

**Texas:** 0 LIDDELL, GERALD (F); 2 COLEMAN III, MATT (G); 3 RAMEY, COURTNEY (G); 13 FEBRES, JASE (G); 20 SIMS, JERICHO (F);

Time	VISITORS: Prairie View	Score	Margin	HOME: Texas
19:44		3-0	H 3	GOOD! 3PTR by COLEMAN III, MATT
19:44				ASSIST by SIMS, JERICHO
19:23	GOOD! JUMPER by ANDRUS, GERARD	3-2	H 1	
19:08				TURNOVER by COLEMAN III, MATT
19:08	STEAL by ANDRUS, GERARD			
18:44	GOOD! 3PTR by ELLIS, CHANCELLOR	3-5	V 2	
18:44	ASSIST by MADDEN, DAJAUN			
18:37	FOUL by ANDRUS, GERARD			
18:22	FOUL by MADDEN, DAJAUN [PNT]			
18:22		4-5	V 1	GOOD! FT by SIMS, JERICHO
18:22		5-5	T	GOOD! FT by SIMS, JERICHO
18:10	MISSED JUMPER by LISTER, ANTIONE			
18:07	REBOUND (OFF) by TEAM			
17:59	MISSED 3PTR by HENRY, LENELL			
17:55				REBOUND (DEF) by FEBRES, JASE
17:47				TURNOVER by RAMEY, COURTNEY
17:47	STEAL by HENRY, LENELL			
17:39	MISSED 3PTR by LISTER, ANTIONE			
17:37	FOUL by MADDEN, DAJAUN [PNT]			
17:37	SUB OUT: MADDEN, DAJAUN			
17:37	SUB IN: SNEED, LEON			
17:36				REBOUND (DEF) by FEBRES, JASE
17:33		8-5	H 3	GOOD! 3PTR by LIDDELL, GERALD
17:12	TURNOVER by ANDRUS, GERARD [PNT]			
17:12				STEAL by FEBRES, JASE
16:50				MISSED 3PTR by RAMEY, COURTNEY
16:47				REBOUND (OFF) by SIMS, JERICHO
16:33	FOUL by ANDRUS, GERARD			
16:33	SUB OUT: ANDRUS, GERARD			
16:33	SUB IN: WILLIAMS, FAITE			
16:24				MISSED 3PTR by LIDDELL, GERALD
16:19	REBOUND (DEF) by HENRY, LENELL			
16:06	TURNOVER by SNEED, LEON			
15:49				MISSED JUMPER by COLEMAN III, MATT
15:45	REBOUND (DEF) by ELLIS, CHANCELLOR			
15:27	MISSED JUMPER by SNEED, LEON [PNT]			
15:22				REBOUND (DEF) by RAMEY, COURTNEY
15:20				FOUL by LIDDELL, GERALD
15:20				TURNOVER by LIDDELL, GERALD
15:20	TIMEOUT MEDIA			
15:20				SUB OUT: LIDDELL, GERALD
15:20				SUB IN: JONES, ANDREW
15:20	SUB OUT: WILLIAMS, FAITE			
15:20	SUB OUT: SNEED, LEON			
15:20	SUB IN: BYNUM, TAMIR			
15:20	SUB IN: ANDRUS, GERARD			
14:54	TURNOVER by ANDRUS, GERARD [PNT]			
14:54				STEAL by SIMS, JERICHO
14:49		11-5	H 6	GOOD! 3PTR by JONES, ANDREW [FB]
14:49				ASSIST by COLEMAN III, MATT
14:38				SUB OUT: SIMS, JERICHO
14:38				SUB IN: HAMM JR., ROYCE
14:38	SUB OUT: LISTER, ANTIONE			
14:38	SUB OUT: ANDRUS, GERARD			
14:38	SUB IN: WILLIAMS, DARIUS			
14:38	SUB IN: COLEMAN, CALEB			
14:21	GOOD! LAYUP by HENRY, LENELL	11-7	H 4	
14:00		13-7	H 6	GOOD! LAYUP by HAMM JR., ROYCE
14:00				ASSIST by JONES, ANDREW
13:46	TURNOVER by HENRY, LENELL [PNT]			
13:46				SUB OUT: COLEMAN III, MATT
13:46				SUB IN: LIDDELL, GERALD
13:32				MISSED LAYUP by RAMEY, COURTNEY
13:28	REBOUND (DEF) by COLEMAN, CALEB			
13:24	MISSED 3PTR by BYNUM, TAMIR			
13:23				REBOUND (DEF) by TEAM
13:07				MISSED 3PTR by JONES, ANDREW
13:03	REBOUND (DEF) by COLEMAN, CALEB			
13:01	TURNOVER by COLEMAN, CALEB			
13:01				STEAL by JONES, ANDREW

Time	VISITORS: Prairie View	Score	Margin	HOME: Texas
12:57				TURNOVER by JONES, ANDREW [PNT]
12:57	STEAL by BYNUM, TAMIR			
12:57				SUB OUT: RAMEY, COURTNEY
12:57				SUB OUT: FEBRES, JASE
12:57				SUB IN: COLEMAN III, MATT
12:57				SUB IN: WILLIAMS, DONOVAN
12:57	SUB OUT: BYNUM, TAMIR			
12:57	SUB IN: MADDEN, DAJAUN			
12:41				FOUL by LIDDELL, GERALD
12:41	GOOD! FT by WILLIAMS, DARIUS	13-8	H 5	
12:41				SUB OUT: LIDDELL, GERALD
12:41				SUB IN: RAMEY, COURTNEY
12:41	SUB OUT: MADDEN, DAJAUN			
12:41	SUB OUT: ELLIS, CHANCELLOR			
12:41	SUB OUT: COLEMAN, CALEB			
12:41	SUB IN: COX, DEWAYNE			
12:41	SUB IN: WILLIAMS, FAITE			
12:41	SUB IN: JACKSON, JONATHAN			
12:40	GOOD! FT by WILLIAMS, DARIUS	13-9	H 4	
12:13		15-9	H 6	GOOD! JUMPER by COLEMAN III, MATT
12:13				ASSIST by HAMM JR., ROYCE
12:01	MISSED LAYUP by WILLIAMS, FAITE			
12:01	REBOUND (OFF) by TEAM			
12:00	TIMEOUT MEDIA			
12:00	SUB OUT: COX, DEWAYNE			
12:00	SUB OUT: WILLIAMS, FAITE			
12:00	SUB IN: MADDEN, DAJAUN			
12:00	SUB IN: ELLIS, CHANCELLOR			
11:47	GOOD! JUMPER by HENRY, LENELL	15-11	H 4	
11:25				FOUL by WILLIAMS, DONOVAN
11:25				TURNOVER by WILLIAMS, DONOVAN
11:07	MISSED 3PTR by ELLIS, CHANCELLOR			
11:06	REBOUND (DEADB) by TEAM			
11:06				FOUL by HAMM JR., ROYCE
11:06				SUB OUT: HAMM JR., ROYCE
11:06				SUB IN: BAKER, WILL
11:02	MISSED LAYUP by HENRY, LENELL			
11:02				BLOCK by BAKER, WILL
11:00				REBOUND (DEADB) by TEAM
11:00	FOUL by WILLIAMS, DARIUS			
11:00	SUB OUT: MADDEN, DAJAUN			
11:00	SUB OUT: ELLIS, CHANCELLOR			
11:00	SUB IN: LISTER, ANTIONE			
11:00	SUB IN: WILLIAMS, FAITE			
10:47				TURNOVER by BAKER, WILL
10:47	SUB OUT: LISTER, ANTIONE			
10:47	SUB OUT: WILLIAMS, FAITE			
10:47	SUB IN: MADDEN, DAJAUN			
10:47	SUB IN: ELLIS, CHANCELLOR			
10:25	TURNOVER by HENRY, LENELL [PNT]			
10:25				SUB OUT: JONES, ANDREW
10:25				SUB IN: FEBRES, JASE
10:25	SUB OUT: MADDEN, DAJAUN			
10:25	SUB OUT: ELLIS, CHANCELLOR			
10:25	SUB IN: LISTER, ANTIONE			
10:25	SUB IN: WILLIAMS, FAITE			
10:08				MISSED 3PTR by RAMEY, COURTNEY
10:03	REBOUND (DEF) by LISTER, ANTIONE			
09:48	TURNOVER by WILLIAMS, DARIUS			
09:48				STEAL by WILLIAMS, DONOVAN
09:42				MISSED 3PTR by FEBRES, JASE
09:34				REBOUND (OFF) by WILLIAMS, DONOVAN
09:34		17-11	H 6	GOOD! LAYUP by WILLIAMS, DONOVAN
09:29	TIMEOUT 30SEC			
09:29	SUB OUT: WILLIAMS, DARIUS			
09:29	SUB OUT: WILLIAMS, FAITE			
09:29	SUB IN: MADDEN, DAJAUN			
09:29	SUB IN: ELLIS, CHANCELLOR			
09:15	GOOD! LAYUP by MADDEN, DAJAUN	17-13	H 4	
09:00				MISSED 3PTR by COLEMAN III, MATT
08:57	REBOUND (DEF) by TEAM			
08:46	MISSED LAYUP by HENRY, LENELL [PNT]			
08:41				REBOUND (DEF) by BAKER, WILL
08:39				MISSED 3PTR by WILLIAMS, DONOVAN
08:35	REBOUND (DEF) by JACKSON, JONATHAN			
08:30	GOOD! JUMPER by MADDEN, DAJAUN [PNT]	17-15	H 2	
08:30				FOUL by BAKER, WILL [PNT]
08:30				SUB OUT: WILLIAMS, DONOVAN
08:30				SUB OUT: BAKER, WILL
08:30				SUB IN: JONES, ANDREW

Time	VISITORS: Prairie View	Score	Margin	HOME: Texas
08:30				SUB IN: SIMS, JERICHO
08:30	SUB OUT: ELLIS, CHANCELLOR			
08:30	SUB IN: WILLIAMS, FAITE			
08:30	SUB OUT: MADDEN, DAJAUN			
08:30	SUB IN: WILLIAMS, DARIUS			
08:30	SUB OUT: WILLIAMS, DARIUS			
08:30	SUB IN: COX, DEWAYNE			
08:30	MISSED FT by HENRY, LENELL			
08:30				REBOUND (DEF) by RAMEY, COURTNEY
08:18				TURNOVER by RAMEY, COURTNEY [PNT]
08:18	STEAL by WILLIAMS, FAITE			
08:18	SUB OUT: COX, DEWAYNE			
08:18	SUB IN: BYNUM, TAMIR			
08:02	TURNOVER by LISTER, ANTIONE			
07:44				MISSED 3PTR by JONES, ANDREW
07:44	REBOUND (DEADB) by TEAM			
07:44				FOUL by SIMS, JERICHO
07:44	TIMEOUT MEDIA			
07:44	SUB OUT: BYNUM, TAMIR			
07:44	SUB OUT: WILLIAMS, FAITE			
07:44	SUB IN: MADDEN, DAJAUN			
07:44	SUB IN: ELLIS, CHANCELLOR			
07:15	SUB OUT: JACKSON, JONATHAN			
07:15	SUB IN: WILLIAMS, DARIUS			
07:12	TURNOVER by WILLIAMS, DARIUS			
07:12	SUB OUT: ELLIS, CHANCELLOR			
07:12	SUB IN: WILLIAMS, FAITE			
06:51				MISSED 3PTR by FEBRES, JASE
06:48	REBOUND (DEF) by MADDEN, DAJAUN			
06:35	TURNOVER by HENRY, LENELL [PNT]			
06:35	SUB OUT: HENRY, LENELL			
06:35	SUB OUT: MADDEN, DAJAUN			
06:35	SUB IN: BYNUM, TAMIR			
06:35	SUB IN: JACKSON, JONATHAN			
06:15				MISSED 3PTR by FEBRES, JASE
06:11	REBOUND (DEF) by JACKSON, JONATHAN			
05:54				FOUL by FEBRES, JASE [PNT]
05:54	GOOD! FT by WILLIAMS, FAITE	17-16	H 1	
05:54	SUB OUT: WILLIAMS, DARIUS			
05:54	SUB IN: HENRY, LENELL			
05:54	MISSED FT by WILLIAMS, FAITE			
05:54				REBOUND (DEF) by SIMS, JERICHO
05:41				MISSED LAYUP by FEBRES, JASE [PNT]
05:41	BLOCK by JACKSON, JONATHAN			
05:35	REBOUND (DEF) by WILLIAMS, FAITE			
05:18	MISSED LAYUP by BYNUM, TAMIR [PNT]			
05:10				REBOUND (DEF) by SIMS, JERICHO
05:07		20-16	H 4	GOOD! 3PTR by JONES, ANDREW
05:07				ASSIST by FEBRES, JASE
04:42	MISSED LAYUP by WILLIAMS, FAITE			
04:38				REBOUND (DEF) by SIMS, JERICHO
04:35				MISSED 3PTR by JONES, ANDREW
04:33				REBOUND (DEADB) by TEAM
04:33	FOUL by HENRY, LENELL [PNT]			
04:33				SUB OUT: FEBRES, JASE
04:33				SUB IN: CUNNINGHAM, BROCK
04:33	SUB OUT: BYNUM, TAMIR			
04:33	SUB OUT: WILLIAMS, FAITE			
04:33	SUB OUT: JACKSON, JONATHAN			
04:33	SUB IN: MADDEN, DAJAUN			
04:33	SUB IN: ELLIS, CHANCELLOR			
04:33	SUB IN: ANDRUS, GERARD			
04:30				MISSED 3PTR by JONES, ANDREW
04:30	REBOUND (DEF) by HENRY, LENELL			
04:26				FOUL by CUNNINGHAM, BROCK
04:26	GOOD! FT by HENRY, LENELL	20-17	H 3	
04:26	MISSED FT by HENRY, LENELL			
04:25	SUB OUT: MADDEN, DAJAUN			
04:25	SUB OUT: ELLIS, CHANCELLOR			
04:25	SUB OUT: ANDRUS, GERARD			
04:25	SUB IN: BYNUM, TAMIR			
04:25	SUB IN: COX, DEWAYNE			
04:25	SUB IN: WILLIAMS, FAITE			
04:14		22-17	H 5	GOOD! LAYUP by JONES, ANDREW
03:51	TURNOVER by BYNUM, TAMIR [PNT]			
03:51				STEAL by CUNNINGHAM, BROCK
03:51				MISSED LAYUP by JONES, ANDREW [PNT]
03:51	REBOUND (DEF) by BYNUM, TAMIR			
03:51	GOOD! JUMPER by HENRY, LENELL	22-19	H 3	
03:19	TIMEOUT MEDIA			

Time	VISITORS: Prairie View	Score	Margin	HOME: Texas
03:19				SUB OUT: COLEMAN III, MATT
03:19				SUB IN: WILLIAMS, DONOVAN
03:19	SUB OUT: BYNUM, TAMIR			
03:19	SUB IN: JACKSON, JONATHAN			
03:04	FOUL by COX, DEWAYNE [PNT]			
03:04	SUB OUT: WILLIAMS, FAITE			
03:04	SUB IN: MADDEN, DAJAUN			
03:04				MISSED FT by RAMEY, COURTNEY
03:02				REBOUND (OFF) by SIMS, JERICHO
02:57				TURNOVER by RAMEY, COURTNEY
02:57	STEAL by MADDEN, DAJAUN			
02:46	SUB OUT: COX, DEWAYNE			
02:46	SUB IN: ELLIS, CHANCELLOR			
02:39	GOOD! JUMPER by MADDEN, DAJAUN	22-21	H 1	
02:19				FOUL by CUNNINGHAM, BROCK
02:19				TURNOVER by CUNNINGHAM, BROCK
02:19				SUB OUT: RAMEY, COURTNEY
02:19				SUB OUT: CUNNINGHAM, BROCK
02:19				SUB IN: COLEMAN III, MATT
02:19				SUB IN: FEBRES, JASE
02:19	SUB OUT: LISTER, ANTIONE			
02:19	SUB IN: WILLIAMS, DARIUS			
02:13	MISSED JUMPER by HENRY, LENELL [PNT]			
02:13				REBOUND (DEF) by COLEMAN III, MATT
02:13		24-21	H 3	GOOD! LAYUP by JONES, ANDREW [FB]
02:13				ASSIST by COLEMAN III, MATT
01:29	MISSED 3PTR by ELLIS, CHANCELLOR			
01:23				REBOUND (DEF) by SIMS, JERICHO
01:21				MISSED JUMPER by COLEMAN III, MATT
01:16	REBOUND (DEF) by HENRY, LENELL			
01:03				FOUL by WILLIAMS, DONOVAN
01:03	MISSED FT by WILLIAMS, DARIUS			
01:03	REBOUND (DEADB) by TEAM			
01:03	SUB OUT: MADDEN, DAJAUN			
01:03	SUB IN: LISTER, ANTIONE			
01:03	SUB OUT: ELLIS, CHANCELLOR			
01:03	SUB IN: WILLIAMS, FAITE			
01:03	GOOD! FT by WILLIAMS, DARIUS	24-22	H 2	
00:39		26-22	H 4	GOOD! LAYUP by FEBRES, JASE
00:39				ASSIST by COLEMAN III, MATT
00:38				TIMEOUT 30SEC
00:38				SUB OUT: WILLIAMS, DONOVAN
00:38				SUB IN: RAMEY, COURTNEY
00:38	SUB OUT: WILLIAMS, FAITE			
00:38	SUB OUT: JACKSON, JONATHAN			
00:38	SUB IN: MADDEN, DAJAUN			
00:38	SUB IN: ELLIS, CHANCELLOR			
00:23	MISSED 3PTR by HENRY, LENELL			
00:19				REBOUND (DEF) by RAMEY, COURTNEY
00:03				MISSED 3PTR by COLEMAN III, MATT
00:00				SUB OUT: COLEMAN III, MATT
00:00				SUB IN: HEPA, KAMAKA
00:00	SUB OUT: MADDEN, DAJAUN			
00:00	SUB OUT: WILLIAMS, DARIUS			
00:00	SUB OUT: ELLIS, CHANCELLOR			
00:00	SUB IN: COX, DEWAYNE			
00:00	SUB IN: WILLIAMS, FAITE			
00:00	SUB IN: JACKSON, JONATHAN			
00:00				MISSED 3PTR by HEPA, KAMAKA
00:00				REBOUND (OFF) by TEAM
00:00				REBOUND (OFF) by TEAM

### Prairie View 22, Texas 26

Points from (This Period)	PVAMU	TEX
In the Paint	6	10
Off Turns	7	5
2nd Chance	2	2
Fast Break	0	5
Bench	4	14

**Official Box Score**  
**Prairie View vs Texas**  
**Second Half Statistics Only**  
**November 16, 2019 at Frank Erwin Center**



**Prairie View 34**

No.	Player	S	Pts	FG	3FG	FT	OR	DR	TR	PF	A	TO	Blk	Stl	Min
00	HENRY, LENELL	F	5	1-4	0-0	3-4	1	0	1	4	1	5	0	2	16
01	MADDEN, DAJAUN	G	2	1-4	0-0	0-0	2	2	4	2	0	2	1	0	13
03	ELLIS, CHANCELLOR	G	8	3-5	1-3	1-2	0	0	0	0	0	1	0	0	12
04	LISTER, ANTIONE	G	3	1-2	1-1	0-0	0	1	1	0	0	0	0	0	10
15	ANDRUS, GERARD	G	7	3-3	0-0	1-2	0	2	2	2	0	0	0	1	10
02	WILLIAMS, DARIUS	G	3	1-4	0-2	1-2	0	1	1	1	0	0	0	1	9
05	BYNUM, TAMIR	G	4	2-2	0-0	0-1	0	0	0	0	0	0	0	1	3
11	COX, DEWAYNE		0	0-0	0-0	0-0	0	0	0	0	0	0	0	0	0
12	WILLIAMS, FAITE	G	0	0-0	0-0	0-0	0	0	0	1	0	0	0	0	7
13	COLEMAN, CALEB	F	0	0-1	0-0	0-0	0	2	2	0	0	0	0	0	5
14	SNEED, LEON	G	0	0-1	0-0	0-0	0	0	0	0	1	0	0	0	1
31	JACKSON, JONATHAN	F	2	1-1	0-0	0-0	1	1	2	3	0	2	0	0	11
	TEAM			0-0			1	2	3	0		0			
<b>TOTALS</b>			<b>34</b>	<b>13-27</b>	<b>2-6</b>	<b>6-11</b>	<b>5</b>	<b>11</b>	<b>16</b>	<b>13</b>	<b>2</b>	<b>10</b>	<b>1</b>	<b>5</b>	<b>98</b>

*Shooting By Period*

Period	FG	FG%	3FG	3FG%	FT	FT%
2nd Half	13-27	48%	2-6	33%	6-11	55%
Game	21-49	42.9%	3-13	23.1%	11-20	55.0%

*Last FG Half: PVAMU -*

**Texas 44**

No.	Player	S	Pts	FG	3FG	FT	OR	DR	TR	PF	A	TO	Blk	Stl	Min
00	LIDDELL, GERALD	F	2	1-1	0-0	0-1	0	1	1	0	0	1	0	2	15
02	COLEMAN III, MATT	G	12	3-5	0-0	6-7	0	2	2	3	1	2	0	0	20
03	RAMEY, COURTNEY	G	0	0-3	0-3	0-0	0	0	0	0	0	0	0	1	8
13	FEBRES, JASE	G	8	2-6	2-5	2-2	0	3	3	2	0	1	0	0	17
20	SIMS, JERICHO	F	6	2-3	0-0	2-4	3	1	4	1	1	0	2	0	15
01	JONES, ANDREW	G	5	2-6	1-4	0-0	0	0	0	2	1	2	0	0	12
04	WILLIAMS, DONOVAN	G	11	4-4	2-2	1-2	1	2	3	1	0	1	0	3	8
05	HAMM JR., ROYCE	F	0	0-0	0-0	0-0	0	0	0	0	0	0	0	0	5
30	CUNNINGHAM, BROCK	F	0	0-0	0-0	0-0	0	0	0	0	0	0	0	0	0
33	HEPA, KAMAKA	F	0	0-0	0-0	0-0	0	0	0	0	0	0	0	0	0
50	BAKER, WILL	C	0	0-0	0-0	0-0	0	0	0	0	0	0	0	0	0
	TEAM			0-0			1	1	2	0		0			
<b>TOTALS</b>			<b>44</b>	<b>14-28</b>	<b>5-14</b>	<b>11-16</b>	<b>5</b>	<b>10</b>	<b>15</b>	<b>9</b>	<b>3</b>	<b>7</b>	<b>2</b>	<b>6</b>	<b>100</b>

*Shooting By Period*

Period	FG	FG%	3FG	3FG%	FT	FT%
2nd Half	14-28	50%	5-14	36%	11-16	69%
Game	24-57	42.1%	9-32	28.1%	13-19	68.4%

*Last FG Half: TEX -*

*Game Notes:*

Officials: Joe DeRosa, Larry Spaulding, Jabir Walker  
 Attendance:

Start Time: 01:00 AM

Score	1st	2nd	TOT
PVAMU	22	34	<b>56</b>
TEX	26	44	<b>70</b>

Points from (This Period)	PVAMU	TEX
In the Paint	12	16
Off Turns	11	13
2nd Chance	5	5
Fast Break	7	9
Bench	9	16



**Official Play-By-Play**  
**Prairie View vs Texas**  
**Second Half**  
**November 16, 2019 at Frank Erwin Center**



**Period 2**

**Starters:**

**Prairie View:** 00 HENRY, LENELL (F); 1 MADDEN, DAJAUN (G); 3 ELLIS, CHANCELLOR (G); 4 LISTER, ANTIONE (G); 15 ANDRUS, GERARD (G);  
**Texas:** 0 LIDDELL, GERALD (F); 2 COLEMAN III, MATT (G); 3 RAMEY, COURTNEY (G); 13 FEBRES, JASE (G); 20 SIMS, JERICHO (F);

Time	VISITORS: Prairie View	Score	Margin	HOME: Texas
20:00				SUB OUT: JONES, ANDREW
20:00				SUB OUT: HEPA, KAMAKA
20:00				SUB IN: LIDDELL, GERALD
20:00				SUB IN: COLEMAN III, MATT
20:00	SUB OUT: COX, DEWAYNE			
20:00	SUB OUT: WILLIAMS, FAITE			
20:00	SUB OUT: JACKSON, JONATHAN			
20:00	SUB IN: MADDEN, DAJAUN			
20:00	SUB IN: ELLIS, CHANCELLOR			
20:00	SUB IN: ANDRUS, GERARD			
19:37	FOUL by ANDRUS, GERARD [PNT]			
19:37	SUB OUT: ANDRUS, GERARD			
19:37	SUB IN: WILLIAMS, FAITE			
19:28				FOUL by COLEMAN III, MATT
19:28				TURNOVER by COLEMAN III, MATT
18:59	MISSED LAYUP by MADDEN, DAJAUN [PNT]			
18:55	REBOUND (OFF) by HENRY, LENELL			
18:55	TURNOVER by HENRY, LENELL			
18:34				MISSED LAYUP by FEBRES, JASE [PNT]
18:34	BLOCK by MADDEN, DAJAUN			
18:34				REBOUND (OFF) by TEAM
18:28				MISSED JUMPER by COLEMAN III, MATT
18:27				REBOUND (OFF) by SIMS, JERICHO
18:27	FOUL by WILLIAMS, FAITE [PNT]			
18:27				MISSED FT by SIMS, JERICHO
18:27				REBOUND (DEADB) by TEAM
18:27	SUB OUT: WILLIAMS, FAITE			
18:27	SUB IN: COLEMAN, CALEB			
18:27		27-22	H 5	GOOD! FT by SIMS, JERICHO
18:06	GOOD! 3PTR by ELLIS, CHANCELLOR	27-25	H 2	
17:45				MISSED JUMPER by COLEMAN III, MATT
17:41				REBOUND (OFF) by SIMS, JERICHO
17:40		29-25	H 4	GOOD! DUNK by SIMS, JERICHO
17:17	GOOD! JUMPER by ELLIS, CHANCELLOR	29-27	H 2	
17:17	ASSIST by HENRY, LENELL			
16:57				MISSED 3PTR by RAMEY, COURTNEY
16:52	REBOUND (DEF) by COLEMAN, CALEB			
16:28	TURNOVER by ELLIS, CHANCELLOR			
16:28				STEAL by RAMEY, COURTNEY
16:03		32-27	H 5	GOOD! 3PTR by FEBRES, JASE
16:03				ASSIST by SIMS, JERICHO
15:46	MISSED JUMPER by HENRY, LENELL			
15:40				REBOUND (DEF) by FEBRES, JASE
15:35				MISSED 3PTR by RAMEY, COURTNEY
15:29	REBOUND (DEF) by MADDEN, DAJAUN			
15:12	MISSED 3PTR by ELLIS, CHANCELLOR			
15:10				REBOUND (DEF) by TEAM
15:10	TIMEOUT MEDIA			
15:10				SUB OUT: RAMEY, COURTNEY
15:10				SUB IN: JONES, ANDREW
15:10	SUB OUT: ELLIS, CHANCELLOR			
15:10	SUB IN: JACKSON, JONATHAN			
14:48				MISSED JUMPER by JONES, ANDREW [PNT]
14:42	REBOUND (DEF) by COLEMAN, CALEB			
14:35	MISSED JUMPER by COLEMAN, CALEB			
14:31				REBOUND (DEF) by FEBRES, JASE
14:22		35-27	H 8	GOOD! 3PTR by FEBRES, JASE
14:22				ASSIST by COLEMAN III, MATT
13:58	MISSED LAYUP by LISTER, ANTIONE [PNT]			
13:54				REBOUND (DEF) by FEBRES, JASE
13:54	SUB OUT: MADDEN, DAJAUN			
13:54	SUB OUT: COLEMAN, CALEB			
13:54	SUB IN: WILLIAMS, FAITE			
13:54	SUB IN: SNEED, LEON			
13:49		37-27	H 10	GOOD! JUMPER by COLEMAN III, MATT [PNT]
13:17	GOOD! 3PTR by LISTER, ANTIONE	37-30	H 7	
13:17	ASSIST by SNEED, LEON			
13:07		39-30	H 9	GOOD! LAYUP by JONES, ANDREW
12:45	MISSED JUMPER by SNEED, LEON [PNT]			
12:45				BLOCK by SIMS, JERICHO

Time	VISITORS: Prairie View	Score	Margin	HOME: Texas
12:39				REBOUND (DEF) by LIDDELL, GERALD
12:39	FOUL by HENRY, LENELL			
12:39		40-30	H 10	GOOD! FT by FEBRES, JASE [FB]
12:39				SUB OUT: SIMS, JERICHO
12:39				SUB IN: HAMM JR., ROYCE
12:39	SUB OUT: LISTER, ANTIONE			
12:39	SUB OUT: WILLIAMS, FAITE			
12:39	SUB OUT: SNEED, LEON			
12:39	SUB IN: ELLIS, CHANCELLOR			
12:39	SUB IN: BYNUM, TAMIR			
12:39	SUB IN: ANDRUS, GERARD			
12:39		41-30	H 11	GOOD! FT by FEBRES, JASE [FB]
12:21	GOOD! JUMPER by HENRY, LENELL	41-32	H 9	
12:03		43-32	H 11	GOOD! LAYUP by COLEMAN III, MATT
12:03	FOUL by JACKSON, JONATHAN			
12:03		44-32	H 12	GOOD! FT by COLEMAN III, MATT
11:52	TURNOVER by HENRY, LENELL			
11:52				STEAL by LIDDELL, GERALD
11:47				TURNOVER by JONES, ANDREW [PNT]
11:47	STEAL by BYNUM, TAMIR			
11:40	GOOD! LAYUP by BYNUM, TAMIR [FB]	44-34	H 10	
11:25				MISSED 3PTR by FEBRES, JASE
11:25	REBOUND (DEF) by TEAM			
11:22	TIMEOUT MEDIA			
11:22				SUB OUT: JONES, ANDREW
11:22				SUB OUT: FEBRES, JASE
11:22				SUB IN: RAMEY, COURTNEY
11:22				SUB IN: WILLIAMS, DONOVAN
11:08	TURNOVER by HENRY, LENELL			
11:08	FOUL by HENRY, LENELL			
10:43		47-34	H 13	GOOD! 3PTR by WILLIAMS, DONOVAN
10:29	TURNOVER by JACKSON, JONATHAN			
10:29				STEAL by LIDDELL, GERALD
10:22				TURNOVER by WILLIAMS, DONOVAN [PNT]
10:22	STEAL by HENRY, LENELL			
10:20	GOOD! LAYUP by BYNUM, TAMIR [FB]	47-36	H 11	
10:20				FOUL by COLEMAN III, MATT
10:20	SUB OUT: ELLIS, CHANCELLOR			
10:20	SUB OUT: ANDRUS, GERARD			
10:20	SUB IN: WILLIAMS, DARIUS			
10:20	SUB IN: WILLIAMS, FAITE			
10:20	MISSED FT by BYNUM, TAMIR [FB]			
10:17				REBOUND (DEF) by COLEMAN III, MATT
10:03				TURNOVER by COLEMAN III, MATT
10:03	STEAL by WILLIAMS, DARIUS			
10:00	MISSED LAYUP by WILLIAMS, DARIUS			
10:00	REBOUND (OFF) by TEAM			
09:58				SUB OUT: LIDDELL, GERALD
09:58				SUB IN: FEBRES, JASE
09:58	SUB OUT: WILLIAMS, FAITE			
09:58	SUB IN: MADDEN, DAJAUN			
09:51	MISSED 3PTR by ELLIS, CHANCELLOR			
09:44	REBOUND (OFF) by MADDEN, DAJAUN			
09:32	GOOD! JUMPER by MADDEN, DAJAUN	47-38	H 9	
09:25	SUB OUT: BYNUM, TAMIR			
09:25	SUB IN: ELLIS, CHANCELLOR			
09:19				MISSED 3PTR by RAMEY, COURTNEY
09:14	REBOUND (DEF) by WILLIAMS, DARIUS			
08:59	MISSED 3PTR by WILLIAMS, DARIUS			
08:54	REBOUND (OFF) by JACKSON, JONATHAN			
08:52	TURNOVER by JACKSON, JONATHAN [PNT]			
08:52				STEAL by WILLIAMS, DONOVAN
08:46				MISSED 3PTR by FEBRES, JASE
08:42	REBOUND (DEF) by MADDEN, DAJAUN			
08:32	GOOD! LAYUP by ELLIS, CHANCELLOR	47-40	H 7	
08:15		49-40	H 9	GOOD! JUMPER by WILLIAMS, DONOVAN
08:04	TIMEOUT 30SEC			
08:04	TIMEOUT MEDIA			
08:04				SUB OUT: RAMEY, COURTNEY
08:04				SUB OUT: HAMM JR., ROYCE
08:04				SUB IN: JONES, ANDREW
08:04				SUB IN: SIMS, JERICHO
08:04	SUB OUT: JACKSON, JONATHAN			
08:04	SUB IN: LISTER, ANTIONE			
07:47	MISSED DUNK by HENRY, LENELL			
07:41				REBOUND (DEF) by WILLIAMS, DONOVAN
07:41	FOUL by HENRY, LENELL			
07:41	TIMEOUT MEDIA			
07:41	SUB OUT: ELLIS, CHANCELLOR			
07:41	SUB IN: ANDRUS, GERARD			

Time	VISITORS: Prairie View	Score	Margin	HOME: Texas
07:22		51-40	H 11	GOOD! JUMPER by SIMS, JERICHO [PNT]
07:14	TURNOVER by MADDEN, DAJAUN			
07:14				STEAL by WILLIAMS, DONOVAN
07:08		53-40	H 13	GOOD! LAYUP by WILLIAMS, DONOVAN [FB]
07:08	SUB OUT: LISTER, ANTIONE			
07:08	SUB IN: ELLIS, CHANCELLOR			
07:01				FOUL by WILLIAMS, DONOVAN [PNT]
06:55				FOUL by COLEMAN III, MATT
06:55	MISSED FT by ELLIS, CHANCELLOR			
06:55	REBOUND (DEADB) by TEAM			
06:55	GOOD! FT by ELLIS, CHANCELLOR	53-41	H 12	
06:55	SUB OUT: ELLIS, CHANCELLOR			
06:55	SUB IN: WILLIAMS, FAITE			
06:27		56-41	H 15	GOOD! 3PTR by WILLIAMS, DONOVAN
06:27				ASSIST by JONES, ANDREW
06:08	MISSED LAYUP by HENRY, LENELL			
06:08	REBOUND (DEADB) by TEAM			
06:08				FOUL by FEBRES, JASE [PNT]
06:08	GOOD! FT by HENRY, LENELL	56-42	H 14	
06:08	SUB OUT: WILLIAMS, FAITE			
06:08	SUB IN: LISTER, ANTIONE			
06:08	MISSED FT by HENRY, LENELL			
06:06				REBOUND (DEF) by WILLIAMS, DONOVAN
05:57				MISSED 3PTR by JONES, ANDREW
05:53	REBOUND (DEF) by LISTER, ANTIONE			
05:52	SUB OUT: LISTER, ANTIONE			
05:52	SUB IN: ELLIS, CHANCELLOR			
05:44	TURNOVER by HENRY, LENELL			
05:44				STEAL by WILLIAMS, DONOVAN
05:41	SUB OUT: HENRY, LENELL			
05:41	SUB OUT: ELLIS, CHANCELLOR			
05:41	SUB IN: COX, DEWAYNE			
05:41	SUB IN: JACKSON, JONATHAN			
05:23				MISSED 3PTR by JONES, ANDREW
05:22				REBOUND (OFF) by SIMS, JERICHO
05:22	FOUL by JACKSON, JONATHAN [PNT]			
05:22	SUB OUT: COX, DEWAYNE			
05:22	SUB IN: ELLIS, CHANCELLOR			
05:22		57-42	H 15	GOOD! FT by SIMS, JERICHO
05:22				SUB OUT: FEBRES, JASE
05:22				SUB IN: LIDDELL, GERALD
05:22				MISSED FT by SIMS, JERICHO
05:19	REBOUND (DEF) by JACKSON, JONATHAN			
05:14	GOOD! LAYUP by WILLIAMS, DARIUS [FB]	57-44	H 13	
04:51				MISSED JUMPER by SIMS, JERICHO [PNT]
04:47	REBOUND (DEF) by TEAM			
04:47				SUB OUT: WILLIAMS, DONOVAN
04:47				SUB IN: FEBRES, JASE
04:30	MISSED 3PTR by WILLIAMS, DARIUS			
04:26				REBOUND (DEF) by COLEMAN III, MATT
04:26				FOUL by JONES, ANDREW
04:26				TURNOVER by JONES, ANDREW
04:13	GOOD! LAYUP by JACKSON, JONATHAN	57-46	H 11	
04:02				TURNOVER by FEBRES, JASE
04:02	STEAL by ANDRUS, GERARD			
03:59				FOUL by FEBRES, JASE [PNT]
03:59	TIMEOUT MEDIA			
03:59	SUB OUT: ELLIS, CHANCELLOR			
03:59	SUB IN: WILLIAMS, FAITE			
03:59	MISSED FT by ANDRUS, GERARD [FB]			
03:59	REBOUND (DEADB) by TEAM			
03:59	GOOD! FT by ANDRUS, GERARD [FB]	57-47	H 10	
03:31		60-47	H 13	GOOD! 3PTR by JONES, ANDREW
03:04	GOOD! LAYUP by ANDRUS, GERARD	60-49	H 11	
02:58		62-49	H 13	GOOD! LAYUP by LIDDELL, GERALD [FB]
02:58	FOUL by JACKSON, JONATHAN			
02:58	SUB OUT: WILLIAMS, FAITE			
02:58	SUB OUT: JACKSON, JONATHAN			
02:58	SUB IN: ELLIS, CHANCELLOR			
02:58	SUB IN: LISTER, ANTIONE			
02:58	SUB OUT: MADDEN, DAJAUN			
02:58	SUB IN: HENRY, LENELL			
02:55				MISSED FT by LIDDELL, GERALD [FB]
02:53	REBOUND (DEF) by ANDRUS, GERARD			
02:46				FOUL by JONES, ANDREW
02:46	MISSED FT by WILLIAMS, DARIUS			
02:46	REBOUND (DEADB) by TEAM			
02:46	SUB OUT: ELLIS, CHANCELLOR			
02:46	SUB IN: WILLIAMS, FAITE			
02:46	GOOD! FT by WILLIAMS, DARIUS	62-50	H 12	

Time	VISITORS: Prairie View	Score	Margin	HOME: Texas
02:34				TURNOVER by LIDDELL, GERALD [PNT]
02:34	STEAL by HENRY, LENELL			
02:25	GOOD! JUMPER by ANDRUS, GERARD	62-52	H 10	
02:24	TIMEOUT 30SEC			
02:24	SUB OUT: LISTER, ANTIONE			
02:24	SUB IN: HENRY, LENELL			
02:24	FOUL by WILLIAMS, DARIUS			
02:24	SUB OUT: WILLIAMS, FAITE			
02:24	SUB IN: ELLIS, CHANCELLOR			
02:24		63-52	H 11	GOOD! FT by COLEMAN III, MATT [FB]
02:24		64-52	H 12	GOOD! FT by COLEMAN III, MATT [FB]
02:11				FOUL by SIMS, JERICHO [PNT]
02:11	GOOD! FT by HENRY, LENELL	64-53	H 11	
02:11	SUB OUT: WILLIAMS, DARIUS			
02:11	SUB OUT: ELLIS, CHANCELLOR			
02:11	SUB IN: LISTER, ANTIONE			
02:11	SUB IN: WILLIAMS, FAITE			
02:11	GOOD! FT by HENRY, LENELL	64-54	H 10	
01:51				MISSED 3PTR by FEBRES, JASE
01:47	REBOUND (DEF) by ANDRUS, GERARD			
01:30	MISSED LAYUP by MADDEN, DAJAUN			
01:26	REBOUND (OFF) by MADDEN, DAJAUN			
01:22	GOOD! JUMPER by ANDRUS, GERARD	64-56	H 8	
01:18				SUB OUT: FEBRES, JASE
01:18				SUB IN: WILLIAMS, DONOVAN
01:08		66-56	H 10	GOOD! LAYUP by COLEMAN III, MATT [PNT]
01:08	FOUL by MADDEN, DAJAUN [PNT]			
01:08	TURNOVER by MADDEN, DAJAUN [PNT]			
01:08		67-56	H 11	GOOD! FT by COLEMAN III, MATT
01:08		68-56	H 12	GOOD! FT by COLEMAN III, MATT
01:08	SUB OUT: LISTER, ANTIONE			
01:08	SUB IN: WILLIAMS, DARIUS			
01:08	FOUL by MADDEN, DAJAUN [PNT]			
01:08				MISSED FT by COLEMAN III, MATT [FB]
01:08				REBOUND (DEADB) by TEAM
01:08	SUB OUT: WILLIAMS, FAITE			
01:08	SUB IN: ELLIS, CHANCELLOR			
01:08		69-56	H 13	GOOD! FT by COLEMAN III, MATT [FB]
00:53	FOUL by HENRY, LENELL			
00:53	TURNOVER by HENRY, LENELL			
00:53	SUB OUT: HENRY, LENELL			
00:53	SUB OUT: ELLIS, CHANCELLOR			
00:53	SUB IN: WILLIAMS, FAITE			
00:53	SUB IN: JACKSON, JONATHAN			
00:27				MISSED 3PTR by JONES, ANDREW
00:22				REBOUND (OFF) by WILLIAMS, DONOVAN
00:17	FOUL by ANDRUS, GERARD			
00:17				MISSED FT by WILLIAMS, DONOVAN
00:17				REBOUND (DEADB) by TEAM
00:17	SUB OUT: WILLIAMS, FAITE			
00:17	SUB IN: ELLIS, CHANCELLOR			
00:17		70-56	H 14	GOOD! FT by WILLIAMS, DONOVAN
00:05	MISSED LAYUP by MADDEN, DAJAUN [PNT]			
00:05				BLOCK by SIMS, JERICHO
00:00				REBOUND (DEF) by SIMS, JERICHO

### Prairie View 56, Texas 70

Points from (This Period)	PVAMU	TEX
In the Paint	12	16
Off Turns	11	13
2nd Chance	5	5
Fast Break	7	9
Bench	9	16

**Official Scoring/Possession Reference Chart  
 Prairie View vs Texas  
 Period 1  
 November 16, 2019 at Frank Erwin Center**



**Period 1**

**Starters:**

**Prairie View:** 00 HENRY, LENELL (F); 1 MADDEN, DAJAUN (G); 3 ELLIS, CHANCELLOR (G); 4 LISTER, ANTIONE (G); 15 ANDRUS, GERARD (G);  
**Texas:** 0 LIDDELL, GERALD (F); 2 COLEMAN III, MATT (G); 3 RAMEY, COURTNEY (G); 13 FEBRES, JASE (G); 20 SIMS, JERICHO (F);

Time	VISITORS: Prairie View	Score	Margin	HOME: Texas
19:44		3-0	H 3	GOOD! 3PTR by COLEMAN III, MATT
19:23	GOOD! JUMPER by ANDRUS, GERARD	3-2	H 1	
18:44	GOOD! 3PTR by ELLIS, CHANCELLOR	3-5	V 2	
18:22		4-5	V 1	GOOD! FT by SIMS, JERICHO
18:22		5-5	T	GOOD! FT by SIMS, JERICHO
17:33		8-5	H 3	GOOD! 3PTR by LIDDELL, GERALD
14:49		11-5	H 6	GOOD! 3PTR by JONES, ANDREW [FB]
14:21	GOOD! LAYUP by HENRY, LENELL	11-7	H 4	
14:00		13-7	H 6	GOOD! LAYUP by HAMM JR., ROYCE
12:41	GOOD! FT by WILLIAMS, DARIUS	13-8	H 5	
12:40	GOOD! FT by WILLIAMS, DARIUS	13-9	H 4	
12:13		15-9	H 6	GOOD! JUMPER by COLEMAN III, MATT
11:47	GOOD! JUMPER by HENRY, LENELL	15-11	H 4	
09:34		17-11	H 6	GOOD! LAYUP by WILLIAMS, DONOVAN
09:15	GOOD! LAYUP by MADDEN, DAJAUN	17-13	H 4	
08:30	GOOD! JUMPER by MADDEN, DAJAUN [PNT]	17-15	H 2	
05:54	GOOD! FT by WILLIAMS, FAITE	17-16	H 1	
05:07		20-16	H 4	GOOD! 3PTR by JONES, ANDREW
04:26	GOOD! FT by HENRY, LENELL	20-17	H 3	
04:14		22-17	H 5	GOOD! LAYUP by JONES, ANDREW
03:51	GOOD! JUMPER by HENRY, LENELL	22-19	H 3	
02:39	GOOD! JUMPER by MADDEN, DAJAUN	22-21	H 1	
02:13		24-21	H 3	GOOD! LAYUP by JONES, ANDREW [FB]
01:03	GOOD! FT by WILLIAMS, DARIUS	24-22	H 2	
00:39		26-22	H 4	GOOD! LAYUP by FEBRES, JASE

**Prairie View 22, Texas 26**

**Official Scoring/Possession Reference Chart**  
**Prairie View vs Texas**  
**Period 2**  
**November 16, 2019 at Frank Erwin Center**



**Period 2**

**Starters:**

**Prairie View:** 00 HENRY, LENELL (F); 1 MADDEN, DAJAUN (G); 3 ELLIS, CHANCELLOR (G); 4 LISTER, ANTIONE (G); 15 ANDRUS, GERARD (G);  
**Texas:** 0 LIDDELL, GERALD (F); 2 COLEMAN III, MATT (G); 3 RAMEY, COURTNEY (G); 13 FEBRES, JASE (G); 20 SIMS, JERICHO (F);

Time	VISITORS: Prairie View	Score	Margin	HOME: Texas
18:27		27-22	H 5	GOOD! FT by SIMS, JERICHO
18:06	GOOD! 3PTR by ELLIS, CHANCELLOR	27-25	H 2	
17:40		29-25	H 4	GOOD! DUNK by SIMS, JERICHO
17:17	GOOD! JUMPER by ELLIS, CHANCELLOR	29-27	H 2	
16:03		32-27	H 5	GOOD! 3PTR by FEBRES, JASE
14:22		35-27	H 8	GOOD! 3PTR by FEBRES, JASE
13:49		37-27	H 10	GOOD! JUMPER by COLEMAN III, MATT [PNT]
13:17	GOOD! 3PTR by LISTER, ANTIONE	37-30	H 7	
13:07		39-30	H 9	GOOD! LAYUP by JONES, ANDREW
12:39		40-30	H 10	GOOD! FT by FEBRES, JASE [FB]
12:39		41-30	H 11	GOOD! FT by FEBRES, JASE [FB]
12:21	GOOD! JUMPER by HENRY, LENELL	41-32	H 9	
12:03		43-32	H 11	GOOD! LAYUP by COLEMAN III, MATT
12:03		44-32	H 12	GOOD! FT by COLEMAN III, MATT
11:40	GOOD! LAYUP by BYNUM, TAMIR [FB]	44-34	H 10	
10:43		47-34	H 13	GOOD! 3PTR by WILLIAMS, DONOVAN
10:20	GOOD! LAYUP by BYNUM, TAMIR [FB]	47-36	H 11	
09:32	GOOD! JUMPER by MADDEN, DAJAUN	47-38	H 9	
08:32	GOOD! LAYUP by ELLIS, CHANCELLOR	47-40	H 7	
08:15		49-40	H 9	GOOD! JUMPER by WILLIAMS, DONOVAN
07:22		51-40	H 11	GOOD! JUMPER by SIMS, JERICHO [PNT]
07:08		53-40	H 13	GOOD! LAYUP by WILLIAMS, DONOVAN [FB]
06:55	GOOD! FT by ELLIS, CHANCELLOR	53-41	H 12	
06:27		56-41	H 15	GOOD! 3PTR by WILLIAMS, DONOVAN
06:08	GOOD! FT by HENRY, LENELL	56-42	H 14	
05:22		57-42	H 15	GOOD! FT by SIMS, JERICHO
05:14	GOOD! LAYUP by WILLIAMS, DARIUS [FB]	57-44	H 13	
04:13	GOOD! LAYUP by JACKSON, JONATHAN	57-46	H 11	
03:59	GOOD! FT by ANDRUS, GERARD [FB]	57-47	H 10	
03:31		60-47	H 13	GOOD! 3PTR by JONES, ANDREW
03:04	GOOD! LAYUP by ANDRUS, GERARD	60-49	H 11	
02:58		62-49	H 13	GOOD! LAYUP by LIDDELL, GERALD [FB]
02:46	GOOD! FT by WILLIAMS, DARIUS	62-50	H 12	
02:25	GOOD! JUMPER by ANDRUS, GERARD	62-52	H 10	
02:24		63-52	H 11	GOOD! FT by COLEMAN III, MATT [FB]
02:24		64-52	H 12	GOOD! FT by COLEMAN III, MATT [FB]
02:11	GOOD! FT by HENRY, LENELL	64-53	H 11	
02:11	GOOD! FT by HENRY, LENELL	64-54	H 10	
01:22	GOOD! JUMPER by ANDRUS, GERARD	64-56	H 8	
01:08		66-56	H 10	GOOD! LAYUP by COLEMAN III, MATT [PNT]
01:08		67-56	H 11	GOOD! FT by COLEMAN III, MATT
01:08		68-56	H 12	GOOD! FT by COLEMAN III, MATT
01:08		69-56	H 13	GOOD! FT by COLEMAN III, MATT [FB]
00:17		70-56	H 14	GOOD! FT by WILLIAMS, DONOVAN

**Prairie View 56, Texas 70**

**Official Substitutions Log  
Prairie View vs Texas  
Period 1  
November 16, 2019 at Frank Erwin Center**



VISITORS: Prairie View	Time	Score	HOME: Texas
00 HENRY, LENELL			0 LIDDELL, GERALD
1 MADDEN, DAJAUN			2 COLEMAN III, MATT
3 ELLIS, CHANCELLOR			3 RAMEY, COURTNEY
4 LISTER, ANTIONE			13 FEBRES, JASE
15 ANDRUS, GERARD			20 SIMS, JERICHO
SUB OUT: 1 MADDEN, DAJAUN	17:37	5-5	
SUB IN: 14 SNEED, LEON	17:37		
SUB OUT: 15 ANDRUS, GERARD	16:33	5-8	
SUB IN: 12 WILLIAMS, FAITE	16:33		
	15:20	5-8	SUB OUT: LIDDELL, GERALD
	15:20		SUB IN: JONES, ANDREW
SUB OUT: 12 WILLIAMS, FAITE	15:20		
SUB OUT: 14 SNEED, LEON	15:20		
SUB IN: 5 BYNUM, TAMIR	15:20		
SUB IN: 15 ANDRUS, GERARD	15:20		
	14:38	5-11	SUB OUT: SIMS, JERICHO
	14:38		SUB IN: HAMM JR., ROYCE
SUB OUT: 4 LISTER, ANTIONE	14:38		
SUB OUT: 15 ANDRUS, GERARD	14:38		
SUB IN: 2 WILLIAMS, DARIUS	14:38		
SUB IN: 13 COLEMAN, CALEB	14:38		
	13:46	7-13	SUB OUT: COLEMAN III, MATT
	13:46		SUB IN: LIDDELL, GERALD
	12:57	7-13	SUB OUT: RAMEY, COURTNEY
	12:57		SUB OUT: FEBRES, JASE
	12:57		SUB IN: COLEMAN III, MATT
	12:57		SUB IN: WILLIAMS, DONOVAN
SUB OUT: 5 BYNUM, TAMIR	12:57		
SUB IN: 1 MADDEN, DAJAUN	12:57		
	12:41	8-13	SUB OUT: LIDDELL, GERALD
	12:41		SUB IN: RAMEY, COURTNEY
SUB OUT: 1 MADDEN, DAJAUN	12:41		
SUB OUT: 3 ELLIS, CHANCELLOR	12:41		
SUB OUT: 13 COLEMAN, CALEB	12:41		
SUB IN: 11 COX, DEWAYNE	12:41		
SUB IN: 12 WILLIAMS, FAITE	12:41		
SUB IN: 31 JACKSON, JONATHAN	12:41		
SUB OUT: 11 COX, DEWAYNE	12:00	9-15	
SUB OUT: 12 WILLIAMS, FAITE	12:00		
SUB IN: 1 MADDEN, DAJAUN	12:00		
SUB IN: 3 ELLIS, CHANCELLOR	12:00		
	11:06	11-15	SUB OUT: HAMM JR., ROYCE
	11:06		SUB IN: BAKER, WILL
SUB OUT: 1 MADDEN, DAJAUN	11:00	11-15	
SUB OUT: 3 ELLIS, CHANCELLOR	11:00		
SUB IN: 4 LISTER, ANTIONE	11:00		
SUB IN: 12 WILLIAMS, FAITE	11:00		
SUB OUT: 4 LISTER, ANTIONE	10:47	11-15	
SUB OUT: 12 WILLIAMS, FAITE	10:47		
SUB IN: 1 MADDEN, DAJAUN	10:47		
SUB IN: 3 ELLIS, CHANCELLOR	10:47		
	10:25	11-15	SUB OUT: JONES, ANDREW
	10:25		SUB IN: FEBRES, JASE
SUB OUT: 1 MADDEN, DAJAUN	10:25		
SUB OUT: 3 ELLIS, CHANCELLOR	10:25		
SUB IN: 4 LISTER, ANTIONE	10:25		
SUB IN: 12 WILLIAMS, FAITE	10:25		
SUB OUT: 2 WILLIAMS, DARIUS	09:29	11-17	
SUB OUT: 12 WILLIAMS, FAITE	09:29		
SUB IN: 1 MADDEN, DAJAUN	09:29		
SUB IN: 3 ELLIS, CHANCELLOR	09:29		
	08:30	15-17	SUB OUT: WILLIAMS, DONOVAN
	08:30		SUB OUT: BAKER, WILL
	08:30		SUB IN: JONES, ANDREW
	08:30		SUB IN: SIMS, JERICHO
SUB OUT: 3 ELLIS, CHANCELLOR	08:30		
SUB IN: 12 WILLIAMS, FAITE	08:30		
SUB OUT: 1 MADDEN, DAJAUN	08:30		
SUB IN: 2 WILLIAMS, DARIUS	08:30		
SUB OUT: 2 WILLIAMS, DARIUS	08:30		
SUB IN: 11 COX, DEWAYNE	08:30		
SUB OUT: 11 COX, DEWAYNE	08:18	15-17	
SUB IN: 5 BYNUM, TAMIR	08:18		
SUB OUT: 5 BYNUM, TAMIR	07:44	15-17	
SUB OUT: 12 WILLIAMS, FAITE	07:44		

<b>VISITORS: Prairie View</b>	<b>Time</b>	<b>Score</b>	<b>HOME: Texas</b>
SUB IN: 1 MADDEN,DAJAUN	07:44		
SUB IN: 3 ELLIS,CHANCELLOR	07:44		
SUB OUT: 31 JACKSON,JONATHAN	07:15	15-17	
SUB IN: 2 WILLIAMS,DARIUS	07:15		
SUB OUT: 3 ELLIS,CHANCELLOR	07:12	15-17	
SUB IN: 12 WILLIAMS,FAITE	07:12		
SUB OUT: 00 HENRY,LENELL	06:35	15-17	
SUB OUT: 1 MADDEN,DAJAUN	06:35		
SUB IN: 5 BYNUM,TAMIR	06:35		
SUB IN: 31 JACKSON,JONATHAN	06:35		
SUB OUT: 2 WILLIAMS,DARIUS	05:54	16-17	
SUB IN: 00 HENRY,LENELL	05:54		
	04:33	16-20	SUB OUT: FEBRES,JASE
	04:33		SUB IN: CUNNINGHAM,BROCK
SUB OUT: 5 BYNUM,TAMIR	04:33		
SUB OUT: 12 WILLIAMS,FAITE	04:33		
SUB OUT: 31 JACKSON,JONATHAN	04:33		
SUB IN: 1 MADDEN,DAJAUN	04:33		
SUB IN: 3 ELLIS,CHANCELLOR	04:33		
SUB IN: 15 ANDRUS,GERARD	04:33		
SUB OUT: 1 MADDEN,DAJAUN	04:25	17-20	
SUB OUT: 3 ELLIS,CHANCELLOR	04:25		
SUB OUT: 15 ANDRUS,GERARD	04:25		
SUB IN: 5 BYNUM,TAMIR	04:25		
SUB IN: 11 COX,DEWAYNE	04:25		
SUB IN: 12 WILLIAMS,FAITE	04:25		
	03:19	19-22	SUB OUT: COLEMAN III,MATT
	03:19		SUB IN: WILLIAMS,DONOVAN
SUB OUT: 5 BYNUM,TAMIR	03:19		
SUB IN: 31 JACKSON,JONATHAN	03:19		
SUB OUT: 12 WILLIAMS,FAITE	03:04	19-22	
SUB IN: 1 MADDEN,DAJAUN	03:04		
SUB OUT: 11 COX,DEWAYNE	02:46	19-22	
SUB IN: 3 ELLIS,CHANCELLOR	02:46		
	02:19	21-22	SUB OUT: RAMEY,COURTNEY
	02:19		SUB OUT: CUNNINGHAM,BROCK
	02:19		SUB IN: COLEMAN III,MATT
	02:19		SUB IN: FEBRES,JASE
SUB OUT: 4 LISTER,ANTIONE	02:19		
SUB IN: 2 WILLIAMS,DARIUS	02:19		
SUB OUT: 1 MADDEN,DAJAUN	01:03	21-24	
SUB IN: 4 LISTER,ANTIONE	01:03		
SUB OUT: 3 ELLIS,CHANCELLOR	01:03		
SUB IN: 12 WILLIAMS,FAITE	01:03		
	00:38	22-26	SUB OUT: WILLIAMS,DONOVAN
	00:38		SUB IN: RAMEY,COURTNEY
SUB OUT: 12 WILLIAMS,FAITE	00:38		
SUB OUT: 31 JACKSON,JONATHAN	00:38		
SUB IN: 1 MADDEN,DAJAUN	00:38		
SUB IN: 3 ELLIS,CHANCELLOR	00:38		
	00:00	22-26	SUB OUT: COLEMAN III,MATT
	00:00		SUB IN: HEPA,KAMAKA
SUB OUT: 1 MADDEN,DAJAUN	00:00		
SUB OUT: 2 WILLIAMS,DARIUS	00:00		
SUB OUT: 3 ELLIS,CHANCELLOR	00:00		
SUB IN: 11 COX,DEWAYNE	00:00		
SUB IN: 12 WILLIAMS,FAITE	00:00		
SUB IN: 31 JACKSON,JONATHAN	00:00		

**Prairie View 22, Texas 26**



**Official Substitutions Log  
Prairie View vs Texas  
Period 2  
November 16, 2019 at Frank Erwin Center**



VISITORS: Prairie View	Time	Score	HOME: Texas
00 HENRY, LENELL			0 LIDDELL, GERALD
1 MADDEN, DAJAUN			2 COLEMAN III, MATT
3 ELLIS, CHANCELLOR			3 RAMEY, COURTNEY
4 LISTER, ANTIONE			13 FEBRES, JASE
15 ANDRUS, GERARD			20 SIMS, JERICO
	20:00	-	SUB OUT: JONES, ANDREW
	20:00		SUB OUT: HEPA, KAMAKA
	20:00		SUB IN: LIDDELL, GERALD
	20:00		SUB IN: COLEMAN III, MATT
SUB OUT: 11 COX, DEWAYNE	20:00		
SUB OUT: 12 WILLIAMS, FAITE	20:00		
SUB OUT: 31 JACKSON, JONATHAN	20:00		
SUB IN: 1 MADDEN, DAJAUN	20:00		
SUB IN: 3 ELLIS, CHANCELLOR	20:00		
SUB IN: 15 ANDRUS, GERARD	20:00		
SUB OUT: 15 ANDRUS, GERARD	19:37	-	
SUB IN: 12 WILLIAMS, FAITE	19:37		
SUB OUT: 12 WILLIAMS, FAITE	18:27	-	
SUB IN: 13 COLEMAN, CALEB	18:27		
	15:10	27-32	SUB OUT: RAMEY, COURTNEY
	15:10		SUB IN: JONES, ANDREW
SUB OUT: 3 ELLIS, CHANCELLOR	15:10		
SUB IN: 31 JACKSON, JONATHAN	15:10		
SUB OUT: 1 MADDEN, DAJAUN	13:54	27-35	
SUB OUT: 13 COLEMAN, CALEB	13:54		
SUB IN: 12 WILLIAMS, FAITE	13:54		
SUB IN: 14 SNEED, LEON	13:54		
	12:39	30-40	SUB OUT: SIMS, JERICO
	12:39		SUB IN: HAMM JR., ROYCE
SUB OUT: 4 LISTER, ANTIONE	12:39		
SUB OUT: 12 WILLIAMS, FAITE	12:39		
SUB OUT: 14 SNEED, LEON	12:39		
SUB IN: 3 ELLIS, CHANCELLOR	12:39		
SUB IN: 5 BYNUM, TAMIR	12:39		
SUB IN: 15 ANDRUS, GERARD	12:39		
	11:22	34-44	SUB OUT: JONES, ANDREW
	11:22		SUB OUT: FEBRES, JASE
	11:22		SUB IN: RAMEY, COURTNEY
	11:22		SUB IN: WILLIAMS, DONOVAN
SUB OUT: 3 ELLIS, CHANCELLOR	10:20	36-47	
SUB OUT: 15 ANDRUS, GERARD	10:20		
SUB IN: 2 WILLIAMS, DARIUS	10:20		
SUB IN: 12 WILLIAMS, FAITE	10:20		
	09:58	36-47	SUB OUT: LIDDELL, GERALD
	09:58		SUB IN: FEBRES, JASE
SUB OUT: 12 WILLIAMS, FAITE	09:58		
SUB IN: 1 MADDEN, DAJAUN	09:58		
SUB OUT: 5 BYNUM, TAMIR	09:25	38-47	
SUB IN: 3 ELLIS, CHANCELLOR	09:25		
	08:04	40-49	SUB OUT: RAMEY, COURTNEY
	08:04		SUB OUT: HAMM JR., ROYCE
	08:04		SUB IN: JONES, ANDREW
	08:04		SUB IN: SIMS, JERICO
SUB OUT: 31 JACKSON, JONATHAN	08:04		
SUB IN: 4 LISTER, ANTIONE	08:04		
SUB OUT: 3 ELLIS, CHANCELLOR	07:41	40-49	
SUB IN: 15 ANDRUS, GERARD	07:41		
SUB OUT: 4 LISTER, ANTIONE	07:08	40-53	
SUB IN: 3 ELLIS, CHANCELLOR	07:08		
SUB OUT: 3 ELLIS, CHANCELLOR	06:55	41-53	
SUB IN: 12 WILLIAMS, FAITE	06:55		
SUB OUT: 12 WILLIAMS, FAITE	06:08	42-56	
SUB IN: 4 LISTER, ANTIONE	06:08		
SUB OUT: 4 LISTER, ANTIONE	05:52	42-56	
SUB IN: 3 ELLIS, CHANCELLOR	05:52		
SUB OUT: 00 HENRY, LENELL	05:41	42-56	
SUB OUT: 3 ELLIS, CHANCELLOR	05:41		
SUB IN: 11 COX, DEWAYNE	05:41		
SUB IN: 31 JACKSON, JONATHAN	05:41		
SUB OUT: 11 COX, DEWAYNE	05:22	42-56	
SUB IN: 3 ELLIS, CHANCELLOR	05:22		
	05:22		SUB OUT: FEBRES, JASE
	05:22		SUB IN: LIDDELL, GERALD
	04:47	44-57	SUB OUT: WILLIAMS, DONOVAN
	04:47		SUB IN: FEBRES, JASE

<b>VISITORS: Prairie View</b>	<b>Time</b>	<b>Score</b>	<b>HOME: Texas</b>
SUB OUT: 3 ELLIS,CHANCELLOR	03:59	46-57	
SUB IN: 12 WILLIAMS,FAITE	03:59		
SUB OUT: 12 WILLIAMS,FAITE	02:58	49-62	
SUB OUT: 31 JACKSON,JONATHAN	02:58		
SUB IN: 3 ELLIS,CHANCELLOR	02:58		
SUB IN: 4 LISTER,ANTIONE	02:58		
SUB OUT: 1 MADDEN,DAJAUN	02:58		
SUB IN: 00 HENRY,LENELL	02:58		
SUB OUT: 3 ELLIS,CHANCELLOR	02:46	49-62	
SUB IN: 12 WILLIAMS,FAITE	02:46		
SUB OUT: 4 LISTER,ANTIONE	02:24	52-62	
SUB IN: 00 HENRY,LENELL	02:24		
SUB OUT: 12 WILLIAMS,FAITE	02:24		
SUB IN: 3 ELLIS,CHANCELLOR	02:24		
SUB OUT: 2 WILLIAMS,DARIUS	02:11	53-64	
SUB OUT: 3 ELLIS,CHANCELLOR	02:11		
SUB IN: 4 LISTER,ANTIONE	02:11		
SUB IN: 12 WILLIAMS,FAITE	02:11		
	01:18	56-64	SUB OUT: FEBRES,JASE
	01:18		SUB IN: WILLIAMS,DONOVAN
SUB OUT: 4 LISTER,ANTIONE	01:08	56-68	
SUB IN: 2 WILLIAMS,DARIUS	01:08		
SUB OUT: 12 WILLIAMS,FAITE	01:08		
SUB IN: 3 ELLIS,CHANCELLOR	01:08		
SUB OUT: 00 HENRY,LENELL	00:53	56-69	
SUB OUT: 3 ELLIS,CHANCELLOR	00:53		
SUB IN: 12 WILLIAMS,FAITE	00:53		
SUB IN: 31 JACKSON,JONATHAN	00:53		
SUB OUT: 12 WILLIAMS,FAITE	00:17	56-69	
SUB IN: 3 ELLIS,CHANCELLOR	00:17		

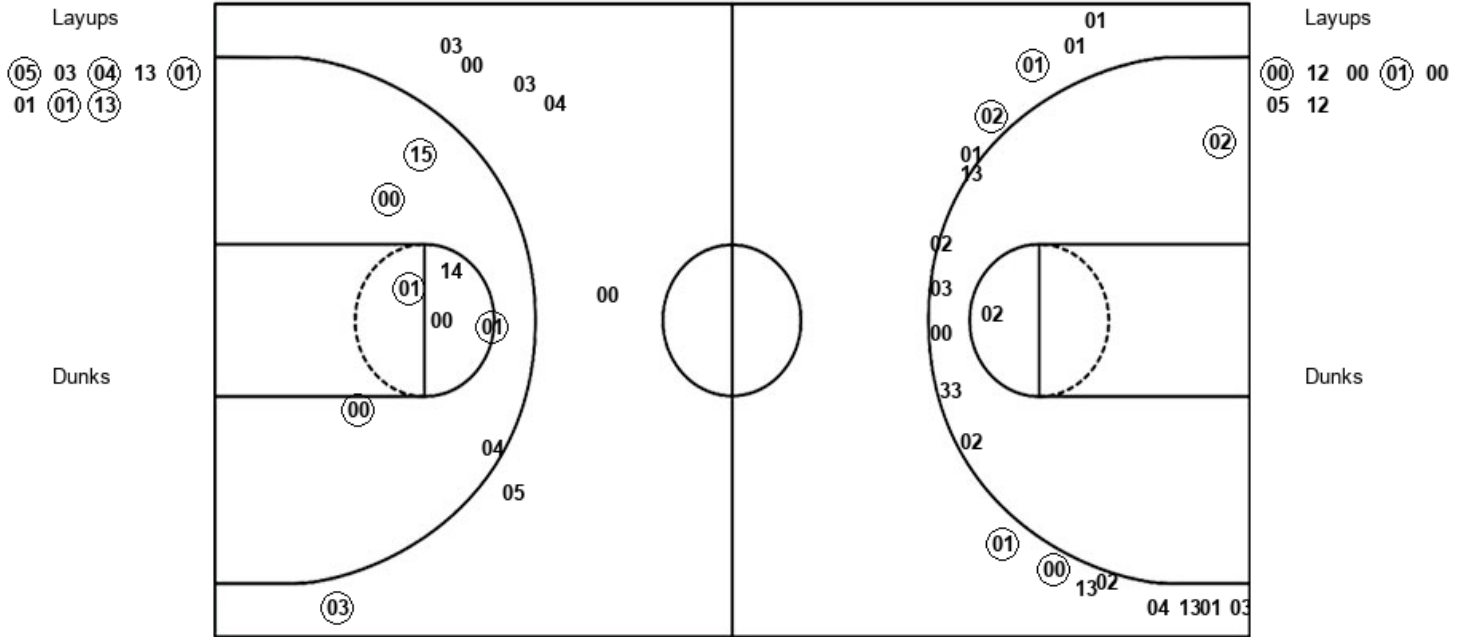
**Prairie View 56, Texas 70**

Official Shot Chart  
 Prairie View vs Texas  
 PERIOD 1 Shots  
 November 16, 2019 at Frank Erwin Center



Texas

Prairie View

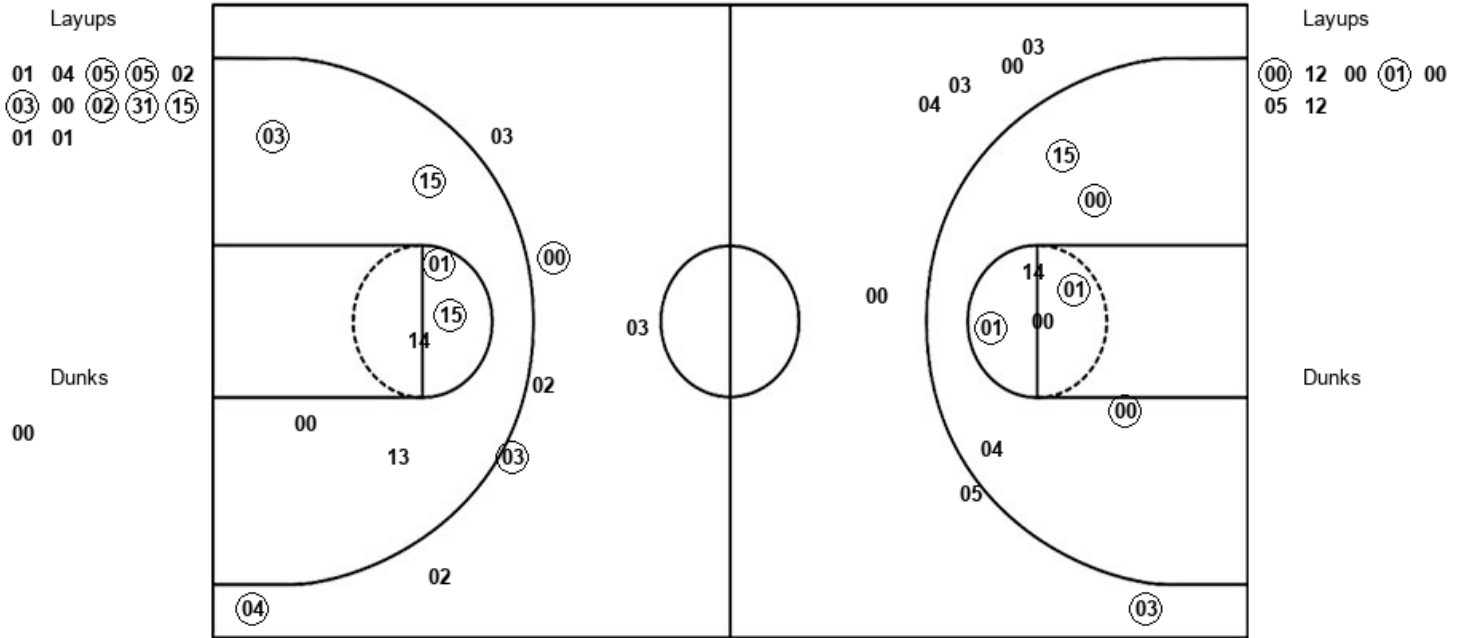


TEX : Period 1	Made	Att	Pct
Layups	5	8	62.5
Dunks	0	0	0
2PT Field Goals	6	11	54.5
3PT Field Goals	4	18	22.2
<b>Total Field Goals</b>	<b>10</b>	<b>29</b>	<b>34.5</b>

PVAMU : Period 1	Made	Att	Pct
Layups	2	7	28.6
Dunks	0	0	0
2PT Field Goals	7	15	46.7
3PT Field Goals	1	7	14.3
<b>Total Field Goals</b>	<b>8</b>	<b>22</b>	<b>36.4</b>



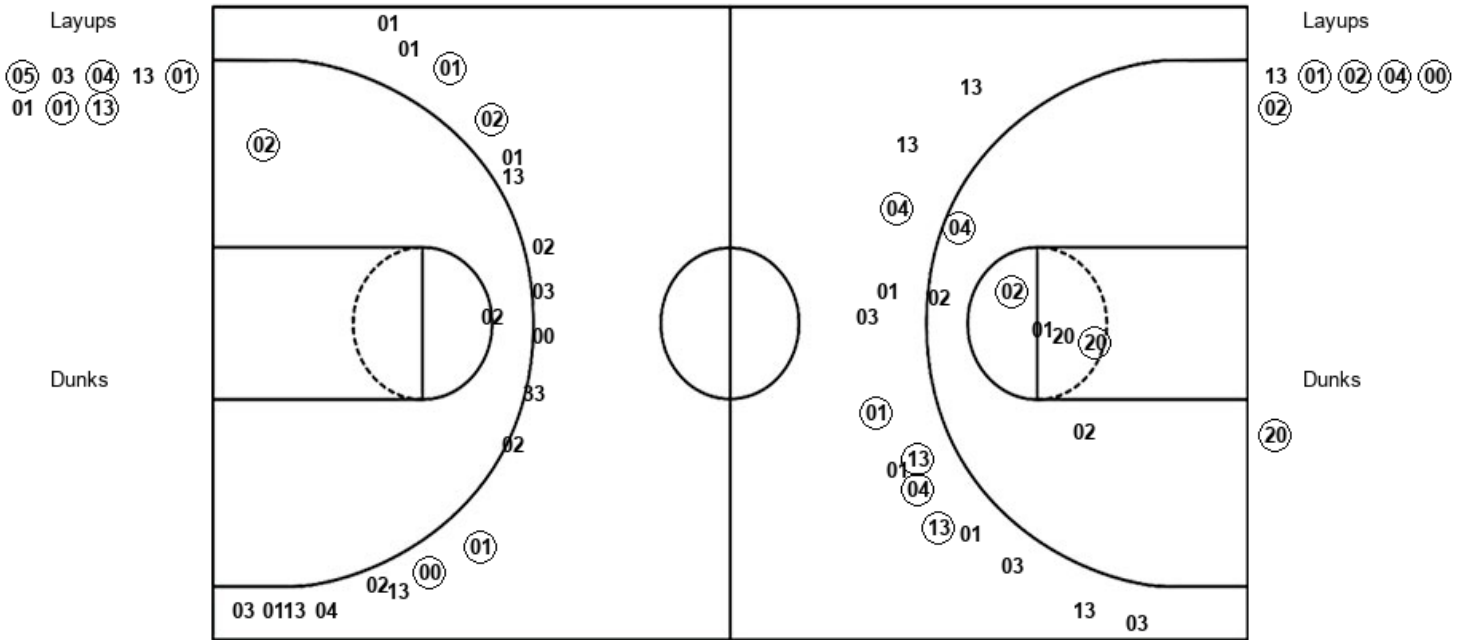
**Official Shot Chart**  
**Prairie View vs Texas**  
**Prairie View Team Shots**  
**November 16, 2019 at Frank Erwin Center**



PVAMU : Period 1	Made	Att	Pct
Layups	2	7	28.6
Dunks	0	0	0
2PT Field Goals	7	15	46.7
3PT Field Goals	1	7	14.3
<b>Total Field Goals</b>	<b>8</b>	<b>22</b>	<b>36.4</b>

PVAMU : Period 2	Made	Att	Pct
Layups	6	12	50.0
Dunks	0	1	00.0
2PT Field Goals	11	21	52.4
3PT Field Goals	2	6	33.3
<b>Total Field Goals</b>	<b>13</b>	<b>27</b>	<b>48.1</b>

**Official Shot Chart**  
**Prairie View vs Texas**  
**Texas Team Shots**  
**November 16, 2019 at Frank Erwin Center**



TEX : Period 1	Made	Att	Pct
Layups	5	8	62.5
Dunks	0	0	0
2PT Field Goals	6	11	54.5
3PT Field Goals	4	18	22.2
<b>Total Field Goals</b>	<b>10</b>	<b>29</b>	<b>34.5</b>

TEX : Period 2	Made	Att	Pct
Layups	5	6	83.3
Dunks	1	1	100.0
2PT Field Goals	9	14	64.3
3PT Field Goals	5	14	35.7
<b>Total Field Goals</b>	<b>14</b>	<b>28</b>	<b>50.0</b>