

## FINAL SCORE



**Cincinnati**

**75**



**Wichita St.**

**54**

February 29, 2020 • Charles Koch Arena (Devlin Court) - Wichita, Kan.

## FINAL STATISTICS

**Official Box Score**  
**Cincinnati vs Wichita St.**  
**Game Totals -- Final Statistics**  
**February 29, 2020 at Charles Koch Arena (Devlin Court) - Wichita, Kan.**



**Cincinnati 75**

No.	Player	S	Pts	FG	3FG	FT	OR	DR	TR	PF	A	TO	Blk	Stl	Min	+/-
04	RIZOR, ANGEL	F	14	6-10	0-0	2-2	2	3	5	0	6	1	2	2	33	24
11	RODGERS, SAM	G	3	1-5	1-3	0-0	1	8	9	3	2	2	2	1	39	19
12	MILLER, ANTOINETTE	G	15	7-16	0-3	1-2	0	5	5	2	5	4	0	1	36	19
23	THOMAS, IIMAR'I	F	29	13-18	0-0	3-5	2	3	5	1	1	1	3	0	30	21
30	SIFA, FLORENCE	G	8	3-4	0-0	2-2	0	4	4	3	2	1	0	1	25	20
02	NELSON, ALEAH	G	0	0-0	0-0	0-0	0	2	2	0	0	0	0	1	6	4
03	SCOTT, JADA	G	0	0-0	0-0	0-0	0	0	0	1	1	0	0	0	2	2
10	SCOTT, JADYN	F	2	1-2	0-0	0-0	0	0	0	1	0	1	1	0	6	-4
14	MOORE, ADDAYA	G	2	1-4	0-0	0-0	3	1	4	2	3	4	0	0	18	-2
21	TUFF, JORDAN	G	0	0-0	0-0	0-0	0	1	1	0	0	0	0	0	1	4
35	WATSON, CHELLIA	G	2	0-2	0-0	2-4	0	0	0	0	0	1	0	0	4	-3
50	KHALIFA, NESMA	C	0	0-0	0-0	0-0	0	0	0	0	0	0	0	0	2	1
<b>TEAM</b>							3	2	5	0		0				
<b>TOTALS</b>			<b>75</b>	<b>32-61</b>	<b>1-6</b>	<b>10-15</b>	<b>11</b>	<b>29</b>	<b>40</b>	<b>13</b>	<b>20</b>	<b>15</b>	<b>8</b>	<b>6</b>	<b>200</b>	

*Shooting By Period*

Period	FG	FG%	3FG	3FG%	FT	FT%
1st Qtr	6-14	43%	1-2	50%	0-0	0%
2nd Qtr	6-11	55%	0-1	00%	7-10	70%
3rd Qtr	9-19	47%	0-3	00%	0-0	0%
4th Qtr	11-17	65%	0-0	0%	3-5	60%
1st Half	12-25	48%	1-3	33%	7-10	70%
2nd Half	20-36	56%	0-3	00%	3-5	60%
<b>Game</b>	<b>32-61</b>	<b>52.5%</b>	<b>1-6</b>	<b>16.7%</b>	<b>10-15</b>	<b>66.7%</b>

*Deadball Rebounds: 3,0*

*Last FG: 4th-00:21*

*Biggest Run: 10-0*

*Largest lead: By 21 at 4th-00:21*

*Technical Fouls: None.*

**Wichita St. 54**

No.	Player	S	Pts	FG	3FG	FT	OR	DR	TR	PF	A	TO	Blk	Stl	Min	+/-
05	REID, ASHLEY	G	10	3-5	3-5	1-1	0	3	3	2	2	3	0	0	33	-20
12	BREMAUD, CARLA	G	7	2-7	1-4	2-2	0	1	1	0	1	1	0	0	25	-18
13	PRINCE, RAVEN	F	2	1-4	0-0	0-0	1	2	3	3	1	2	0	0	26	-21
21	BREWER, MAYA	G	4	2-11	0-3	0-0	1	2	3	0	0	3	0	0	19	-13
23	BASTIN, SERAPHINE	G	5	2-5	0-0	1-2	1	4	5	3	5	3	0	3	28	-22
01	MCCARTY, DJ	G	7	2-9	0-1	3-3	2	0	2	1	0	1	1	2	22	-3
02	MCCULLY, MARIAH	G	7	2-8	1-3	2-2	0	1	1	2	2	1	0	1	21	1
24	COLBERT, TRAJATA	F	8	4-5	0-0	0-0	1	2	3	2	0	0	1	0	15	4
42	HENDERSON, ASIA	F	4	2-6	0-0	0-0	1	0	1	2	0	1	0	0	11	-13
<b>TEAM</b>							5	3	8	0		3				
<b>TOTALS</b>			<b>54</b>	<b>20-60</b>	<b>5-16</b>	<b>9-10</b>	<b>12</b>	<b>18</b>	<b>30</b>	<b>15</b>	<b>11</b>	<b>18</b>	<b>2</b>	<b>6</b>	<b>200</b>	

*Shooting By Period*

Period	FG	FG%	3FG	3FG%	FT	FT%
1st Qtr	6-12	50%	1-2	50%	3-3	100%
2nd Qtr	4-15	27%	0-6	00%	1-2	50%
3rd Qtr	5-14	36%	2-4	50%	4-4	100%
4th Qtr	5-19	26%	2-4	50%	1-1	100%
1st Half	10-27	37%	1-8	13%	4-5	80%
2nd Half	10-33	30%	4-8	50%	5-5	100%
<b>Game</b>	<b>20-60</b>	<b>33.3%</b>	<b>5-16</b>	<b>31.3%</b>	<b>9-10</b>	<b>90.0%</b>

*Deadball Rebounds: 0,2*

*Last FG: 4th-00:56*

*Biggest Run: 10-0*

*Largest lead: By 5 at 2nd-09:36*

*Technical Fouls: #0 TEAM (Admin Technical) @ 4th - 00:39;*

*#0 TEAM (Admin Technical) @ 4th - 00:39;*

Game Notes:

Officials: Ed Sidlasky, Billy Smith, Geraldine Smith  
 Attendance: 2436

Start Time: 03:02 PM ET

End Time: 04:58 PM ET

Game Duration: 1:56

Conference Game;

Score	1st	2nd	3rd	4th	TOT
CIN	13	19	18	25	<b>75</b>
WSU	16	9	16	13	<b>54</b>

CIN led for 34:27. WSU led for 4:35.

Game was tied for 0:58.

Times tied: 2      Lead Changes: 2

Points from	CIN	WSU
In the Paint	58	24
Off Turns	19	13
2nd Chance	11	4
Fast Break	16	3
Bench	6	26

**Official Box Score**  
**Cincinnati vs Wichita St.**  
**First Half Statistics Only**  
**February 29, 2020 at Charles Koch Arena (Devlin Court) - Wichita, Kan.**



### Cincinnati 32

No.	Player	S	Pts	FG	3FG	FT	OR	DR	TR	PF	A	TO	Blk	Stl	Min	+/-
02	NELSON, ALEAH	G	0	0-0	0-0	0-0	0	1	1	0	0	0	0	1	3	0
04	RIZOR, ANGEL	F	6	2-5	0-0	2-2	0	1	1	0	3	1	0	1	16	7
10	SCOTT, JADYN	F	0	0-0	0-0	0-0	0	0	0	1	0	0	0	0	2	-3
11	RODGERS, SAM	G	3	1-4	1-2	0-0	1	5	6	1	1	2	2	0	20	7
12	MILLER, ANTOINETTE	G	5	2-5	0-1	1-2	0	3	3	2	4	2	0	0	19	9
14	MOORE, ADDAYA	G	0	0-1	0-0	0-0	1	1	2	1	0	1	0	0	9	-2
21	TUFF, JORDAN	G	0	0-0	0-0	0-0	0	0	0	0	0	0	0	0	0	0
23	THOMAS, IIMAR'I	F	12	5-6	0-0	2-4	0	0	0	1	0	1	0	0	12	11
30	SIFA, FLORENCE	G	6	2-3	0-0	2-2	0	2	2	2	1	0	0	1	15	10
35	WATSON, CHELLIA	G	0	0-1	0-0	0-0	0	0	0	0	0	1	0	0	3	-5
50	KHALIFA, NESMA	C	0	0-0	0-0	0-0	0	0	0	0	0	0	0	0	2	1
03	SCOTT, JADA	G	0	0-0	0-0	0-0	0	0	0	0	0	0	0	0	0	0
	TEAM		0	0-0	0-0	0-0	1	1	2	0	0	0	0	0	0	0
	<b>TOTALS</b>		<b>32</b>	<b>12-25</b>	<b>1-3</b>	<b>7-10</b>	<b>3</b>	<b>14</b>	<b>17</b>	<b>8</b>	<b>9</b>	<b>8</b>	<b>2</b>	<b>3</b>	<b>100</b>	

*Shooting By Period*

Period	FG	FG%	3FG	3FG%	FT	FT%
1st Qtr	6-14	43%	1-2	50%	0-0	0%
2nd Qtr	6-11	55%	0-1	00%	7-10	70%
1st Half	12-25	48%	1-3	33%	7-10	70%
Game	32-61	52.5%	1-6	16.7%	10-15	66.7%

Deadball Rebounds: 3,0  
 Last FG Half: CIN 2nd-01:31

### Wichita St. 25

No.	Player	S	Pts	FG	3FG	FT	OR	DR	TR	PF	A	TO	Blk	Stl	Min	+/-
01	MCCARTY, DJ	G	7	2-3	0-1	3-3	0	0	0	1	0	1	1	0	12	4
02	MCCULLY, MARIAH	G	0	0-2	0-0	0-0	0	0	0	2	2	0	0	0	6	8
05	REID, ASHLEY	G	3	1-3	1-3	0-0	0	2	2	1	0	1	0	0	18	-7
12	BREMAUD, CARLA	G	2	1-4	0-2	0-0	0	1	1	0	1	1	0	0	15	-10
13	PRINCE, RAVEN	F	0	0-2	0-0	0-0	1	1	2	1	0	1	0	0	10	-13
21	BREWER, MAYA	G	4	2-7	0-2	0-0	1	2	3	0	0	3	0	0	12	-9
23	BASTIN, SERAPHINE	G	5	2-3	0-0	1-2	0	3	3	1	0	2	0	3	17	-14
24	COLBERT, TRAJATA	F	4	2-2	0-0	0-0	0	2	2	1	0	0	1	0	5	8
42	HENDERSON, ASIA	F	0	0-1	0-0	0-0	0	0	0	1	0	0	0	0	4	-2
	TEAM		0	0-0	0-0	0-0	2	0	2	0	0	1	0	0	0	0
	<b>TOTALS</b>		<b>25</b>	<b>10-27</b>	<b>1-8</b>	<b>4-5</b>	<b>4</b>	<b>11</b>	<b>15</b>	<b>8</b>	<b>3</b>	<b>10</b>	<b>2</b>	<b>3</b>	<b>100</b>	

*Shooting By Period*

Period	FG	FG%	3FG	3FG%	FT	FT%
1st Qtr	6-12	50%	1-2	50%	3-3	100%
2nd Qtr	4-15	27%	0-6	00%	1-2	50%
1st Half	10-27	37%	1-8	13%	4-5	80%
Game	20-60	33.3%	5-16	31.3%	9-10	90.0%

Deadball Rebounds: 0,2  
 Last FG Half: WSU 2nd-00:04

**Game Notes:**

Officials: Ed Sidlasky, Billy Smith, Geraldine Smith  
 Attendance: 2436

Start Time: 03:02 PM ET  
 End Time: 04:58 PM ET  
 Game Duration: 1:56  
 Conference Game;

Score	1st	2nd	3rd	4th	TOT
CIN	13	19	18	25	<b>75</b>
WSU	16	9	16	13	<b>54</b>

Points from (This Period)	CIN	WSU
In the Paint	22	12
Off Turns	8	6
2nd Chance	2	2
Fast Break	10	1
Bench	0	11

**Official Box Score**  
**Cincinnati vs Wichita St.**  
**First Quarter Statistics Only**  
**February 29, 2020 at Charles Koch Arena (Devlin Court) - Wichita, Kan.**



### Cincinnati 13

No.	Player	S	Pts	FG	3FG	FT	OR	DR	TR	PF	A	TO	Blk	Stl	Min	+/-
04	RIZOR, ANGEL	F	2	1-3	0-0	0-0	0	0	0	0	2	0	0	1	8	-2
11	RODGERS, SAM	G	3	1-3	1-2	0-0	0	1	1	0	1	2	0	0	10	-3
12	MILLER, ANTOINETTE	G	0	0-1	0-0	0-0	0	3	3	1	3	0	0	0	10	-3
23	THOMAS, IIMAR'I	F	4	2-3	0-0	0-0	0	0	0	1	0	1	0	0	6	3
30	SIFA, FLORENCE	G	4	2-2	0-0	0-0	0	0	0	1	0	0	0	1	7	2
02	NELSON, ALEAH	G	0	0-0	0-0	0-0	0	0	0	0	0	0	0	0	0	0
03	SCOTT, JADA	G	0	0-0	0-0	0-0	0	0	0	0	0	0	0	0	0	0
10	SCOTT, JADYN	F	0	0-0	0-0	0-0	0	0	0	1	0	0	0	0	2	-3
14	MOORE, ADDAYA	G	0	0-1	0-0	0-0	1	0	1	0	0	0	0	0	5	-4
21	TUFF, JORDAN	G	0	0-0	0-0	0-0	0	0	0	0	0	0	0	0	0	0
35	WATSON, CHELLIA	G	0	0-1	0-0	0-0	0	0	0	0	0	1	0	0	3	-5
50	KHALIFA, NESMA	C	0	0-0	0-0	0-0	0	0	0	0	0	0	0	0	0	0
TEAM							0	0	0	0	0	0	0	0	0	0
<b>TOTALS</b>			<b>13</b>	<b>6-14</b>	<b>1-2</b>	<b>0-0</b>	<b>1</b>	<b>4</b>	<b>5</b>	<b>4</b>	<b>6</b>	<b>4</b>	<b>0</b>	<b>2</b>	<b>50</b>	

*Shooting By Period*

Period	FG	FG%	3FG	3FG%	FT	FT%
1st Qtr	6-14	43%	1-2	50%	0-0	0%
2nd Qtr	6-11	55%	0-1	00%	7-10	70%
1st Half	6-14	43%	1-2	50%	0-0	0%
1st Half	12-25	48%	1-3	33%	7-10	70%
Game	32-61	52.5%	1-6	16.7%	10-15	66.7%

Deadball Rebounds: 3,0

### Wichita St. 16

No.	Player	S	Pts	FG	3FG	FT	OR	DR	TR	PF	A	TO	Blk	Stl	Min	+/-
05	REID, ASHLEY	G	3	1-2	1-2	0-0	0	2	2	1	0	1	0	0	10	3
12	BREMAUD, CARLA	G	0	0-0	0-0	0-0	0	1	1	0	1	0	0	0	8	0
13	PRINCE, RAVEN	F	0	0-1	0-0	0-0	0	1	1	0	0	0	0	0	6	-5
21	BREWER, MAYA	G	4	2-4	0-0	0-0	1	1	2	0	0	2	0	0	6	-5
23	BASTIN, SERAPHINE	G	2	1-2	0-0	0-0	0	1	1	0	0	1	0	2	8	-2
01	MCCARTY, DJ	G	5	1-1	0-0	3-3	0	0	0	0	0	1	0	0	4	8
02	MCCULLY, MARIAH	G	0	0-1	0-0	0-0	0	0	0	0	1	0	0	0	4	8
24	COLBERT, TRAJATA	F	2	1-1	0-0	0-0	0	1	1	0	0	0	1	0	4	8
42	HENDERSON, ASIA	F	0	0-0	0-0	0-0	0	0	0	0	0	0	0	0	0	0
TEAM							1	0	1	0	1	0	0	0	0	
<b>TOTALS</b>			<b>16</b>	<b>6-12</b>	<b>1-2</b>	<b>3-3</b>	<b>2</b>	<b>7</b>	<b>9</b>	<b>1</b>	<b>2</b>	<b>6</b>	<b>1</b>	<b>2</b>	<b>50</b>	

*Shooting By Period*

Period	FG	FG%	3FG	3FG%	FT	FT%
1st Qtr	6-12	50%	1-2	50%	3-3	100%
2nd Qtr	4-15	27%	0-6	00%	1-2	50%
1st Half	6-12	50%	1-2	50%	3-3	100%
1st Half	10-27	37%	1-8	13%	4-5	80%
Game	20-60	33.3%	5-16	31.3%	9-10	90.0%

Deadball Rebounds: 0,2

*Game Notes:*

Officials: Ed Sidlasky, Billy Smith, Geraldine Smith  
 Attendance: 2436

Start Time: 03:02 PM ET  
 End Time: 04:58 PM ET  
 Game Duration: 1:56  
 Conference Game;

Score	1st	2nd	3rd	4th	TOT
CIN	13	19	18	25	<b>75</b>
WSU	16	9	16	13	<b>54</b>

Points from (This Period)	CIN	WSU
In the Paint	10	8
Off Turns	4	4
2nd Chance	0	2
Fast Break	6	0
Bench	0	7

**Official Play-By-Play  
Cincinnati vs Wichita St.  
First Quarter**

**February 29, 2020 at Charles Koch Arena (Devlin Court) - Wichita, Kan.**



**Period 1**

**Starters:**

**Cincinnati:** 4 RIZOR, ANGEL (F); 11 RODGERS, SAM (G); 12 MILLER, ANTOINETTE (G); 23 THOMAS, IIMAR'I (F); 30 SIFA, FLORENCE (G);  
**Wichita St.:** 5 REID, ASHLEY (G); 12 BREMAUD, CARLA (G); 13 PRINCE, RAVEN (F); 21 BREWER, MAYA (G); 23 BASTIN, SERAPHINE (G);

Time	VISITORS: Cincinnati	Score	Margin	HOME: Wichita St.
09:37	GOOD! JUMPER by THOMAS, IIMAR'I	0-2	V 2	
09:37	ASSIST by RIZOR, ANGEL			
09:07				MISSED LAYUP by BREWER, MAYA
09:02				REBOUND (OFF) by BREWER, MAYA
09:02		2-2	T	GOOD! LAYUP by BREWER, MAYA
08:53	TURNOVER (LOSTBALL) by RODGERS, SAM			
08:53				STEAL by BASTIN, SERAPHINE
08:41				TURNOVER (LOSTBALL) by BASTIN, SERAPHINE
08:41	STEAL by SIFA, FLORENCE			
08:34	GOOD! LAYUP by THOMAS, IIMAR'I [FB]	2-4	V 2	
08:34	ASSIST by RODGERS, SAM			
08:22	FOUL (PERSONAL) by SIFA, FLORENCE			
08:11				TURNOVER (TRAVEL) by BREWER, MAYA
07:51	MISSED LAYUP by THOMAS, IIMAR'I			
07:48				REBOUND (DEF) by PRINCE, RAVEN
07:29				MISSED 3PTR by REID, ASHLEY
07:26	REBOUND (DEF) by RODGERS, SAM			
07:24	FOUL (OFF) by THOMAS, IIMAR'I			
07:24	TURNOVER (OFFENSIVE) by THOMAS, IIMAR'I			
07:06		4-4	T	GOOD! LAYUP by BREWER, MAYA
06:59	GOOD! LAYUP by SIFA, FLORENCE [FB]	4-6	V 2	
06:59	ASSIST by MILLER, ANTOINETTE			
06:38				TURNOVER (BADPASS) by BREWER, MAYA
06:38	STEAL by RIZOR, ANGEL			
06:31	GOOD! LAYUP by SIFA, FLORENCE [FB]	4-8	V 4	
06:31	ASSIST by RIZOR, ANGEL			
06:09				MISSED LAYUP by BASTIN, SERAPHINE
06:09				REBOUND (OFF) by TEAM
06:09	SUB OUT: RIZOR, ANGEL			
06:09	SUB IN: MOORE, ADDAYA			
06:09				TURNOVER (5SEC) by TEAM
05:54	MISSED LAYUP by RODGERS, SAM			
05:51				REBOUND (DEF) by BREWER, MAYA
05:42				MISSED JUMPER by PRINCE, RAVEN
05:39	REBOUND (DEF) by MILLER, ANTOINETTE			
05:27	MISSED JUMPER by MILLER, ANTOINETTE			
05:20				REBOUND (DEF) by BASTIN, SERAPHINE
05:13				MISSED LAYUP by BREWER, MAYA
05:10	REBOUND (DEF) by MILLER, ANTOINETTE			
05:05	GOOD! 3PTR by RODGERS, SAM	4-11	V 7	
05:05	ASSIST by MILLER, ANTOINETTE			
04:36		6-11	V 5	GOOD! JUMPER by BASTIN, SERAPHINE
04:26	TURNOVER (BADPASS) by RODGERS, SAM			
04:26				SUB OUT: BREMAUD, CARLA
04:26				SUB OUT: PRINCE, RAVEN
04:26				SUB OUT: BREWER, MAYA
04:26				SUB IN: MCCARTY, DJ
04:26				SUB IN: MCCULLY, MARIAH
04:26				SUB IN: COLBERT, TRAJATA
04:26	SUB OUT: MOORE, ADDAYA			
04:26	SUB IN: SCOTT, JADYN			
03:58	FOUL (PERSONAL) by SCOTT, JADYN			
03:58		7-11	V 4	GOOD! FT by MCCARTY, DJ
03:58		8-11	V 3	GOOD! FT by MCCARTY, DJ
03:58	SUB OUT: THOMAS, IIMAR'I			
03:58	SUB IN: RIZOR, ANGEL			
03:40	GOOD! JUMPER by RIZOR, ANGEL [PNT]	8-13	V 5	
03:40	ASSIST by MILLER, ANTOINETTE			
03:18		10-13	V 3	GOOD! LAYUP by MCCARTY, DJ
03:18	FOUL (PERSONAL) by MILLER, ANTOINETTE			
03:18		11-13	V 2	GOOD! FT by MCCARTY, DJ
02:57	MISSED 3PTR by RODGERS, SAM			
02:54				REBOUND (DEF) by REID, ASHLEY
02:52				TURNOVER (BADPASS) by REID, ASHLEY
02:52	SUB OUT: SCOTT, JADYN			
02:52	SUB OUT: SIFA, FLORENCE			
02:52	SUB IN: MOORE, ADDAYA			
02:52	SUB IN: WATSON, CHELLIA			
02:41				FOUL (PERSONAL) by REID, ASHLEY

Time	VISITORS: Cincinnati	Score	Margin	HOME: Wichita St.
02:30	TURNOVER (LOSTBALL) by WATSON, CHELLIA			
02:30				STEAL by BASTIN, SERAPHINE
02:12				TURNOVER (TRAVEL) by MCCARTY, DJ
02:12				SUB OUT: BASTIN, SERAPHINE
02:12				SUB IN: BREMAUD, CARLA
01:58	MISSED JUMPER by MOORE, ADDAYA			
01:55	REBOUND (OFF) by MOORE, ADDAYA			
01:45	MISSED JUMPER by WATSON, CHELLIA			
01:42				REBOUND (DEF) by BREMAUD, CARLA
01:33		14-13	H 1	GOOD! 3PTR by REID, ASHLEY
01:33				ASSIST by MCCULLY, MARIAH
01:17	MISSED LAYUP by RIZOR, ANGEL			
01:17				BLOCK by COLBERT, TRAJATA
01:11				REBOUND (DEF) by COLBERT, TRAJATA
00:56		16-13	H 3	GOOD! LAYUP by COLBERT, TRAJATA
00:56				ASSIST by BREMAUD, CARLA
00:32	MISSED JUMPER by RIZOR, ANGEL			
00:29				REBOUND (DEF) by REID, ASHLEY
00:00				MISSED JUMPER by MCCULLY, MARIAH
00:00	REBOUND (DEF) by MILLER, ANTOINETTE			

**Cincinnati 13, Wichita St. 16**

Points from (This Period)	CIN	WSU
In the Paint	10	8
Off Turns	4	4
2nd Chance	0	2
Fast Break	6	0
Bench	0	7

**Official Box Score**  
**Cincinnati vs Wichita St.**  
**Second Quarter Statistics Only**  
**February 29, 2020 at Charles Koch Arena (Devlin Court) - Wichita, Kan.**



**Cincinnati 19**

No.	Player	S	Pts	FG	3FG	FT	OR	DR	TR	PF	A	TO	Blk	Stl	Min	+/-
04	RIZOR, ANGEL	F	4	1-2	0-0	2-2	0	1	1	0	1	1	0	0	8	9
11	RODGERS, SAM	G	0	0-1	0-0	0-0	1	4	5	1	0	0	2	0	10	10
12	MILLER, ANTOINETTE	G	5	2-4	0-1	1-2	0	0	0	1	1	2	0	0	9	12
23	THOMAS, IIMAR'I	F	8	3-3	0-0	2-4	0	0	0	0	0	0	0	0	6	8
30	SIFA, FLORENCE	G	2	0-1	0-0	2-2	0	2	2	1	1	0	0	0	8	8
02	NELSON, ALEAH	G	0	0-0	0-0	0-0	0	1	1	0	0	0	0	1	3	0
03	SCOTT, JADA	G	0	0-0	0-0	0-0	0	0	0	0	0	0	0	0	0	0
10	SCOTT, JADYN	F	0	0-0	0-0	0-0	0	0	0	0	0	0	0	0	0	0
14	MOORE, ADDAYA	G	0	0-0	0-0	0-0	0	1	1	1	0	1	0	0	4	2
21	TUFF, JORDAN	G	0	0-0	0-0	0-0	0	0	0	0	0	0	0	0	0	0
35	WATSON, CHELLIA	G	0	0-0	0-0	0-0	0	0	0	0	0	0	0	0	0	0
50	KHALIFA, NESMA	C	0	0-0	0-0	0-0	0	0	0	0	0	0	0	0	2	1
TEAM							1	1	2	0						
<b>TOTALS</b>			<b>19</b>	<b>6-11</b>	<b>0-1</b>	<b>7-10</b>	<b>2</b>	<b>10</b>	<b>12</b>	<b>4</b>	<b>3</b>	<b>4</b>	<b>2</b>	<b>1</b>	<b>50</b>	

*Shooting By Period*

Period	FG	FG%	3FG	3FG%	FT	FT%
3rd Qtr	9-19	47%	0-3	00%	0-0	0%
4th Qtr	11-17	65%	0-0	0%	3-5	60%
2nd Half	6-11	55%	0-1	00%	7-10	70%
2nd Half	20-36	56%	0-3	00%	3-5	60%
Game	32-61	52.5%	1-6	16.7%	10-15	66.7%

*Deadball Rebounds: 3,0*

**Wichita St. 9**

No.	Player	S	Pts	FG	3FG	FT	OR	DR	TR	PF	A	TO	Blk	Stl	Min	+/-
05	REID, ASHLEY	G	0	0-1	0-1	0-0	0	0	0	0	0	0	0	0	8	-10
12	BREMAUD, CARLA	G	2	1-4	0-2	0-0	0	0	0	0	0	1	0	0	7	-10
13	PRINCE, RAVEN	F	0	0-1	0-0	0-0	1	0	1	1	0	1	0	0	4	-8
21	BREWER, MAYA	G	0	0-3	0-2	0-0	0	1	1	0	0	1	0	0	6	-4
23	BASTIN, SERAPHINE	G	3	1-1	0-0	1-2	0	2	2	1	0	1	0	1	9	-12
01	MCCARTY, DJ	G	2	1-2	0-1	0-0	0	0	0	1	0	0	1	0	8	-4
02	MCCULLY, MARIAH	G	0	0-1	0-0	0-0	0	0	0	2	1	0	0	0	2	0
24	COLBERT, TRAJATA	F	2	1-1	0-0	0-0	0	1	1	1	0	0	0	0	1	0
42	HENDERSON, ASIA	F	0	0-1	0-0	0-0	0	0	0	1	0	0	0	0	4	-2
TEAM							1	0	1	0						
<b>TOTALS</b>			<b>9</b>	<b>4-15</b>	<b>0-6</b>	<b>1-2</b>	<b>2</b>	<b>4</b>	<b>6</b>	<b>7</b>	<b>1</b>	<b>4</b>	<b>1</b>	<b>1</b>	<b>50</b>	

*Shooting By Period*

Period	FG	FG%	3FG	3FG%	FT	FT%
3rd Qtr	5-14	36%	2-4	50%	4-4	100%
4th Qtr	5-19	26%	2-4	50%	1-1	100%
2nd Half	4-15	27%	0-6	00%	1-2	50%
2nd Half	10-33	30%	4-8	50%	5-5	100%
Game	20-60	33.3%	5-16	31.3%	9-10	90.0%

*Deadball Rebounds: 0,2*

*Game Notes:*

Officials: Ed Sidlasky, Billy Smith, Geraldine Smith  
 Attendance: 2436

Start Time: 03:02 PM ET  
 End Time: 04:58 PM ET  
 Game Duration: 1:56  
 Conference Game;

Score	1st	2nd	3rd	4th	TOT
CIN	13	19	18	25	<b>75</b>
WSU	16	9	16	13	<b>54</b>

Points from (This Period)	CIN	WSU
In the Paint	12	4
Off Turns	4	2
2nd Chance	2	0
Fast Break	4	1
Bench	0	4

**Official Play-By-Play  
Cincinnati vs Wichita St.  
Second Quarter**

**February 29, 2020 at Charles Koch Arena (Devlin Court) - Wichita, Kan.**



**Period 2**

**Starters:**

**Cincinnati:** 4 RIZOR, ANGEL (F); 11 RODGERS, SAM (G); 12 MILLER, ANTOINETTE (G); 23 THOMAS, IIMAR'I (F); 30 SIFA, FLORENCE (G);  
**Wichita St.:** 5 REID, ASHLEY (G); 12 BREMAUD, CARLA (G); 13 PRINCE, RAVEN (F); 21 BREWER, MAYA (G); 23 BASTIN, SERAPHINE (G);

Time	VISITORS: Cincinnati	Score	Margin	HOME: Wichita St.
10:00				SUB OUT: REID, ASHLEY
10:00				SUB IN: BREWER, MAYA
10:00	SUB OUT: MOORE, ADDAYA			
10:00	SUB OUT: WATSON, CHELLIA			
10:00	SUB IN: THOMAS, IIMAR'I			
10:00	SUB IN: SIFA, FLORENCE			
09:36		18-13	H 5	GOOD! LAYUP by COLBERT, TRAJATA
09:36				ASSIST by MCCULLY, MARIAH
09:20	MISSED LAYUP by RODGERS, SAM			
09:17				REBOUND (DEF) by COLBERT, TRAJATA
09:11				TURNOVER (TRAVEL) by BREMAUD, CARLA
09:11				SUB OUT: BREMAUD, CARLA
09:11				SUB IN: BASTIN, SERAPHINE
09:03	GOOD! LAYUP by MILLER, ANTOINETTE	18-15	H 3	
09:03				FOUL (PERSONAL) by MCCULLY, MARIAH
09:03	MISSED FT by MILLER, ANTOINETTE			
09:03				REBOUND (DEF) by BASTIN, SERAPHINE
08:51				MISSED JUMPER by MCCULLY, MARIAH
08:46	REBOUND (DEF) by SIFA, FLORENCE			
08:31				FOUL (PERSONAL) by COLBERT, TRAJATA
08:31				SUB OUT: COLBERT, TRAJATA
08:31				SUB IN: PRINCE, RAVEN
08:30	TURNOVER (BADPASS) by MILLER, ANTOINETTE			
08:11				MISSED JUMPER by BREWER, MAYA
08:08	REBOUND (DEF) by RODGERS, SAM			
08:04				FOUL (PERSONAL) by MCCULLY, MARIAH
08:04				SUB OUT: MCCARTY, DJ
08:04				SUB OUT: MCCULLY, MARIAH
08:04				SUB IN: REID, ASHLEY
08:04				SUB IN: BREMAUD, CARLA
08:04	GOOD! FT by RIZOR, ANGEL [FB]	18-16	H 2	
08:04	GOOD! FT by RIZOR, ANGEL [FB]	18-17	H 1	
07:57				TURNOVER (TRAVEL) by PRINCE, RAVEN
07:43				FOUL (PERSONAL) by PRINCE, RAVEN
07:43	MISSED FT by THOMAS, IIMAR'I			
07:43	REBOUND (OFF) by TEAM			
07:43	MISSED FT by THOMAS, IIMAR'I			
07:43				REBOUND (DEF) by TEAM
07:15				MISSED 3PTR by BREMAUD, CARLA
07:11				REBOUND (OFF) by PRINCE, RAVEN
07:10				MISSED LAYUP by PRINCE, RAVEN
07:10	REBOUND (DEF) by TEAM			
06:58	GOOD! JUMPER by THOMAS, IIMAR'I	18-19	V 1	
06:58	ASSIST by RIZOR, ANGEL			
06:36				MISSED 3PTR by BREWER, MAYA
06:32	REBOUND (DEF) by RIZOR, ANGEL			
06:17	MISSED 3PTR by MILLER, ANTOINETTE			
06:14				REBOUND (DEF) by BREWER, MAYA
05:59				MISSED 3PTR by REID, ASHLEY
05:56	REBOUND (DEF) by RODGERS, SAM			
05:53	GOOD! LAYUP by THOMAS, IIMAR'I [FB]	18-21	V 3	
05:53	ASSIST by SIFA, FLORENCE			
05:40				TURNOVER (BADPASS) by BASTIN, SERAPHINE
05:40				SUB OUT: BREWER, MAYA
05:40				SUB IN: MCCARTY, DJ
05:27	GOOD! LAYUP by THOMAS, IIMAR'I	18-23	V 5	
05:27	ASSIST by MILLER, ANTOINETTE			
05:05		20-23	V 3	GOOD! JUMPER by BREMAUD, CARLA
04:56				FOUL (PERSONAL) by MCCARTY, DJ
04:56	GOOD! FT by THOMAS, IIMAR'I	20-24	V 4	
04:56	GOOD! FT by THOMAS, IIMAR'I	20-25	V 5	
04:32				MISSED 3PTR by BREMAUD, CARLA
04:29	REBOUND (DEF) by RODGERS, SAM			
04:23				SUB OUT: PRINCE, RAVEN
04:23				SUB IN: HENDERSON, ASIA
04:15	GOOD! JUMPER by RIZOR, ANGEL [PNT]	20-27	V 7	
03:49		22-27	V 5	GOOD! JUMPER by MCCARTY, DJ [PNT]
03:35	SUB OUT: THOMAS, IIMAR'I			
03:35	SUB IN: MOORE, ADDAYA			



Time	VISITORS: Cincinnati	Score	Margin	HOME: Wichita St.
03:21	MISSED JUMPER by RIZOR, ANGEL			
03:19	REBOUND (OFF) by RODGERS, SAM			
03:04	MISSED JUMPER by MILLER, ANTOINETTE			
03:00				REBOUND (DEF) by BASTIN, SERAPHINE
02:52	FOUL (PERSONAL) by SIFA, FLORENCE			
02:45				MISSED JUMPER by BREMAUD, CARLA
02:41	REBOUND (DEF) by MOORE, ADDAYA			
02:33	MISSED LAYUP by SIFA, FLORENCE			
02:33				BLOCK by MCCARTY, DJ
02:33	REBOUND (OFF) by TEAM			
02:30				FOUL (PERSONAL) by BASTIN, SERAPHINE
02:30	GOOD! FT by SIFA, FLORENCE	22-28	V 6	
02:30	GOOD! FT by SIFA, FLORENCE	22-29	V 7	
02:30	SUB OUT: SIFA, FLORENCE			
02:30	SUB IN: NELSON, ALEAH			
02:27	FOUL (PERSONAL) by RODGERS, SAM			
02:27		23-29	V 6	GOOD! FT by BASTIN, SERAPHINE [FB]
02:27				MISSED FT by BASTIN, SERAPHINE
02:26	REBOUND (DEF) by RODGERS, SAM			
02:01	TURNOVER (BADPASS) by RIZOR, ANGEL			
02:01	SUB OUT: RIZOR, ANGEL			
02:01	SUB IN: KHALIFA, NESMA			
01:45				MISSED LAYUP by HENDERSON, ASIA
01:45	BLOCK by RODGERS, SAM			
01:41	REBOUND (DEF) by NELSON, ALEAH			
01:31	GOOD! LAYUP by MILLER, ANTOINETTE	23-31	V 8	
01:31				FOUL (PERSONAL) by HENDERSON, ASIA
01:31	GOOD! FT by MILLER, ANTOINETTE	23-32	V 9	
01:31				SUB OUT: BREMAUD, CARLA
01:31				SUB IN: BREWER, MAYA
01:16				MISSED 3PTR by BREWER, MAYA
01:16	BLOCK by RODGERS, SAM			
01:16				REBOUND (OFF) by TEAM
00:56				TURNOVER (BADPASS) by BREWER, MAYA
00:56	STEAL by NELSON, ALEAH			
00:47	TURNOVER (LOSTBALL) by MILLER, ANTOINETTE			
00:47				STEAL by BASTIN, SERAPHINE
00:47	FOUL (PERSONAL) by MILLER, ANTOINETTE			
00:47	SUB OUT: MILLER, ANTOINETTE			
00:47	SUB IN: SIFA, FLORENCE			
00:29				MISSED 3PTR by MCCARTY, DJ
00:25	REBOUND (DEF) by SIFA, FLORENCE			
00:15	FOUL (OFF) by MOORE, ADDAYA			
00:15	TURNOVER (OFFENSIVE) by MOORE, ADDAYA			
00:04		25-32	V 7	GOOD! JUMPER by BASTIN, SERAPHINE

### Cincinnati 32, Wichita St. 25

Points from (This Period)	CIN	WSU
In the Paint	12	4
Off Turns	4	2
2nd Chance	2	0
Fast Break	4	1
Bench	0	4

**Official Box Score**  
**Cincinnati vs Wichita St.**  
**Second Half Statistics Only**  
**February 29, 2020 at Charles Koch Arena (Devlin Court) - Wichita, Kan.**



**Cincinnati 43**

No.	Player	S	Pts	FG	3FG	FT	OR	DR	TR	PF	A	TO	Blk	Stl	Min	+/-
02	NELSON, ALEAH	G	0	0-0	0-0	0-0	0	1	1	0	0	0	0	0	3	4
04	RIZOR, ANGEL	F	8	4-5	0-0	0-0	2	2	4	0	3	0	2	1	16	17
10	SCOTT, JADYN	F	2	1-2	0-0	0-0	0	0	0	0	0	1	1	0	4	-1
11	RODGERS, SAM	G	0	0-1	0-1	0-0	0	3	3	2	1	0	0	1	19	12
12	MILLER, ANTOINETTE	G	10	5-11	0-2	0-0	0	2	2	0	1	2	0	1	17	10
14	MOORE, ADDAYA	G	2	1-3	0-0	0-0	2	0	2	1	3	3	0	0	10	0
21	TUFF, JORDAN	G	0	0-0	0-0	0-0	0	1	1	0	0	0	0	0	1	4
23	THOMAS, IIMAR'I	F	17	8-12	0-0	1-1	2	3	5	0	1	0	3	0	18	10
30	SIFA, FLORENCE	G	2	1-1	0-0	0-0	0	2	2	1	1	1	0	0	9	10
35	WATSON, CHELLIA	G	2	0-1	0-0	2-4	0	0	0	0	0	0	0	0	1	2
50	KHALIFA, NESMA	C	0	0-0	0-0	0-0	0	0	0	0	0	0	0	0	0	0
03	SCOTT, JADA	G	0	0-0	0-0	0-0	0	0	0	1	1	0	0	0	2	2
	TEAM		0	0-0	0-0	0-0	2	1	3	0	0	0	0	0	0	0
<b>TOTALS</b>			<b>43</b>	<b>20-36</b>	<b>0-3</b>	<b>3-5</b>	<b>8</b>	<b>15</b>	<b>23</b>	<b>5</b>	<b>11</b>	<b>7</b>	<b>6</b>	<b>3</b>	<b>100</b>	

*Shooting By Period*

Period	FG	FG%	3FG	3FG%	FT	FT%
3rd Qtr	9-19	47%	0-3	00%	0-0	0%
4th Qtr	11-17	65%	0-0	0%	3-5	60%
2nd Half	20-36	56%	0-3	00%	3-5	60%
Game	32-61	52.5%	1-6	16.7%	10-15	66.7%

*Deadball Rebounds: 3,0*  
*Last FG Half: CIN 4th-00:21*

**Wichita St. 29**

No.	Player	S	Pts	FG	3FG	FT	OR	DR	TR	PF	A	TO	Blk	Stl	Min	+/-
01	MCCARTY, DJ	G	0	0-6	0-0	0-0	2	0	2	0	0	0	0	2	10	-7
02	MCCULLY, MARIAH	G	7	2-6	1-3	2-2	0	1	1	0	0	1	0	1	15	-7
05	REID, ASHLEY	G	7	2-2	2-2	1-1	0	1	1	1	2	2	0	0	15	-13
12	BREMAUD, CARLA	G	5	1-3	1-2	2-2	0	0	0	0	0	0	0	0	10	-8
13	PRINCE, RAVEN	F	2	1-2	0-0	0-0	0	1	1	2	1	1	0	0	16	-8
21	BREWER, MAYA	G	0	0-4	0-1	0-0	0	0	0	0	0	0	0	0	7	-4
23	BASTIN, SERAPHINE	G	0	0-2	0-0	0-0	1	1	2	2	5	1	0	0	11	-8
24	COLBERT, TRAJATA	F	4	2-3	0-0	0-0	1	0	1	1	0	0	0	0	9	-4
42	HENDERSON, ASIA	F	4	2-5	0-0	0-0	1	0	1	1	0	1	0	0	7	-11
	TEAM		0	0-0	0-0	0-0	3	3	6	0	0	2	0	0	0	0
<b>TOTALS</b>			<b>29</b>	<b>10-33</b>	<b>4-8</b>	<b>5-5</b>	<b>8</b>	<b>7</b>	<b>15</b>	<b>7</b>	<b>8</b>	<b>8</b>	<b>0</b>	<b>3</b>	<b>100</b>	

*Shooting By Period*

Period	FG	FG%	3FG	3FG%	FT	FT%
3rd Qtr	5-14	36%	2-4	50%	4-4	100%
4th Qtr	5-19	26%	2-4	50%	1-1	100%
2nd Half	10-33	30%	4-8	50%	5-5	100%
Game	20-60	33.3%	5-16	31.3%	9-10	90.0%

*Deadball Rebounds: 0,2*  
*Last FG Half: WSU 4th-00:56*

Game Notes:

Officials: Ed Sidlasky, Billy Smith, Geraldine Smith  
 Attendance: 2436

Start Time: 03:02 PM ET  
 End Time: 04:58 PM ET  
 Game Duration: 1:56  
 Conference Game;

Score	1st	2nd	3rd	4th	TOT
CIN	13	19	18	25	<b>75</b>
WSU	16	9	16	13	<b>54</b>

Points from (This Period)	CIN	WSU
In the Paint	36	12
Off Turns	11	7
2nd Chance	9	2
Fast Break	6	2
Bench	6	15

**Official Box Score**  
**Cincinnati vs Wichita St.**  
**Third Quarter Statistics Only**  
**February 29, 2020 at Charles Koch Arena (Devlin Court) - Wichita, Kan.**



**Cincinnati 43**

No.	Player	S	Pts	FG	3FG	FT	OR	DR	TR	PF	A	TO	Blk	Stl	Min	+/-
04	RIZOR, ANGEL	F	2	1-1	0-0	0-0	1	2	3	0	1	0	2	0	8	7
11	RODGERS, SAM	G	0	0-1	0-1	0-0	0	0	0	1	1	0	0	1	10	2
12	MILLER, ANTOINETTE	G	6	3-8	0-2	0-0	0	2	2	0	1	1	0	1	8	0
23	THOMAS, IIMAR'I	F	8	4-5	0-0	0-0	0	1	1	0	0	0	1	0	10	2
30	SIFA, FLORENCE	G	0	0-0	0-0	0-0	0	0	0	0	0	0	0	0	1	0
02	NELSON, ALEAH	G	0	0-0	0-0	0-0	0	1	1	0	0	0	0	0	2	2
03	SCOTT, JADA	G	0	0-0	0-0	0-0	0	0	0	0	0	0	0	0	0	0
10	SCOTT, JADYN	F	0	0-1	0-0	0-0	0	0	0	0	0	0	0	0	2	-5
14	MOORE, ADDAYA	G	2	1-3	0-0	0-0	2	0	2	1	3	2	0	0	9	2
21	TUFF, JORDAN	G	0	0-0	0-0	0-0	0	0	0	0	0	0	0	0	0	0
35	WATSON, CHELLIA	G	0	0-0	0-0	0-0	0	0	0	0	0	0	0	0	0	0
50	KHALIFA, NESMA	C	0	0-0	0-0	0-0	0	0	0	0	0	0	0	0	0	0
TEAM							2	0	2	0						
<b>TOTALS</b>			<b>18</b>	<b>9-19</b>	<b>0-3</b>	<b>0-0</b>	<b>5</b>	<b>6</b>	<b>11</b>	<b>2</b>	<b>6</b>	<b>3</b>	<b>3</b>	<b>2</b>	<b>50</b>	

*Shooting By Period*

Period	FG	FG%	3FG	3FG%	FT	FT%
2nd Half	0-0	0%	0-0	0%	0-0	0%
Game	32-61	52.5%	1-6	16.7%	10-15	66.7%

*Deadball Rebounds: 3,0*

**Wichita St. 29**

No.	Player	S	Pts	FG	3FG	FT	OR	DR	TR	PF	A	TO	Blk	Stl	Min	+/-
05	REID, ASHLEY	G	0	0-0	0-0	0-0	0	1	1	1	2	1	0	0	6	-3
12	BREMAUD, CARLA	G	5	1-3	1-2	2-2	0	0	0	0	0	0	0	0	6	-1
13	PRINCE, RAVEN	F	2	1-2	0-0	0-0	0	1	1	0	1	1	0	0	10	-2
21	BREWER, MAYA	G	0	0-0	0-0	0-0	0	0	0	0	0	0	0	0	3	3
23	BASTIN, SERAPHINE	G	0	0-1	0-0	0-0	1	0	1	1	2	1	0	0	5	-3
01	MCCARTY, DJ	G	0	0-3	0-0	0-0	1	0	1	0	0	0	0	1	6	-1
02	MCCULLY, MARIAH	G	5	1-3	1-2	2-2	0	1	1	0	0	1	0	1	10	-2
24	COLBERT, TRAJATA	F	4	2-2	0-0	0-0	0	0	0	0	0	0	0	0	4	-1
42	HENDERSON, ASIA	F	0	0-0	0-0	0-0	0	0	0	0	0	0	0	0	0	0
TEAM							1	2	3	0						
<b>TOTALS</b>			<b>16</b>	<b>5-14</b>	<b>2-4</b>	<b>4-4</b>	<b>3</b>	<b>5</b>	<b>8</b>	<b>2</b>	<b>5</b>	<b>4</b>	<b>0</b>	<b>2</b>	<b>50</b>	

*Shooting By Period*

Period	FG	FG%	3FG	3FG%	FT	FT%
2nd Half	0-0	0%	0-0	0%	0-0	0%
Game	20-60	33.3%	5-16	31.3%	9-10	90.0%

*Deadball Rebounds: 0,2*

Game Notes:

Officials: Ed Sidlasky, Billy Smith, Geraldine Smith  
 Attendance: 2436

Start Time: 03:02 PM ET  
 End Time: 04:58 PM ET  
 Game Duration: 1:56  
 Conference Game;

Score	1st	2nd	3rd	4th	TOT
CIN	13	19	18	25	<b>75</b>
WSU	16	9	16	13	<b>54</b>

Points from (This Period)	CIN	WSU
In the Paint	16	6
Off Turns	4	5
2nd Chance	2	0
Fast Break	6	2
Bench	2	9

**Official Play-By-Play  
Cincinnati vs Wichita St.  
Third Quarter**

**February 29, 2020 at Charles Koch Arena (Devlin Court) - Wichita, Kan.**



**Period 3**

**Starters:**

**Cincinnati:** 4 RIZOR, ANGEL (F); 11 RODGERS, SAM (G); 12 MILLER, ANTOINETTE (G); 23 THOMAS, IIMAR'I (F); 30 SIFA, FLORENCE (G);

**Wichita St.:** 5 REID, ASHLEY (G); 12 BREMAUD, CARLA (G); 13 PRINCE, RAVEN (F); 21 BREWER, MAYA (G); 23 BASTIN, SERAPHINE (G);

Time	VISITORS: Cincinnati	Score	Margin	HOME: Wichita St.
10:00				SUB OUT: REID, ASHLEY
10:00				SUB OUT: BREWER, MAYA
10:00				SUB OUT: HENDERSON, ASIA
10:00				SUB IN: MCCULLY, MARIAH
10:00				SUB IN: BREMAUD, CARLA
10:00				SUB IN: PRINCE, RAVEN
10:00	SUB OUT: NELSON, ALEAH			
10:00	SUB OUT: MOORE, ADDAYA			
10:00	SUB OUT: KHALIFA, NESMA			
10:00	SUB IN: RIZOR, ANGEL			
10:00	SUB IN: MILLER, ANTOINETTE			
10:00	SUB IN: THOMAS, IIMAR'I			
09:43				MISSED JUMPER by MCCARTY, DJ
09:43	BLOCK by RIZOR, ANGEL			
09:40	REBOUND (DEF) by RIZOR, ANGEL			
09:36	MISSED JUMPER by MILLER, ANTOINETTE			
09:35	REBOUND (OFF) by TEAM			
09:32	TURNOVER (BADPASS) by MILLER, ANTOINETTE			
09:32				STEAL by MCCARTY, DJ
09:32	SUB OUT: RIZOR, ANGEL			
09:32	SUB IN: SCOTT, JADYN			
09:12				FOUL (OFF) by BASTIN, SERAPHINE
09:12				TURNOVER (OFFENSIVE) by BASTIN, SERAPHINE
09:12	SUB OUT: SIFA, FLORENCE			
09:12	SUB IN: MOORE, ADDAYA			
08:57	MISSED 3PTR by RODGERS, SAM			
08:54				REBOUND (DEF) by PRINCE, RAVEN
08:40		27-32	V 5	GOOD! LAYUP by PRINCE, RAVEN
08:40				ASSIST by BASTIN, SERAPHINE
08:28	MISSED JUMPER by SCOTT, JADYN			
08:27				REBOUND (DEF) by TEAM
08:17		30-32	V 2	GOOD! 3PTR by BREMAUD, CARLA
08:17				ASSIST by BASTIN, SERAPHINE
07:55	MISSED 3PTR by MILLER, ANTOINETTE			
07:53	REBOUND (OFF) by MOORE, ADDAYA			
07:53	MISSED LAYUP by MOORE, ADDAYA			
07:53				REBOUND (DEF) by TEAM
07:53	SUB OUT: SCOTT, JADYN			
07:53	SUB IN: RIZOR, ANGEL			
07:30				MISSED JUMPER by MCCULLY, MARIAH
07:26	REBOUND (DEF) by MILLER, ANTOINETTE			
07:18	GOOD! JUMPER by MILLER, ANTOINETTE	30-34	V 4	
07:02				MISSED 3PTR by MCCULLY, MARIAH
06:57				REBOUND (OFF) by BASTIN, SERAPHINE
06:48				MISSED LAYUP by MCCARTY, DJ
06:47				REBOUND (OFF) by MCCARTY, DJ
06:47				MISSED LAYUP by MCCARTY, DJ
06:47	BLOCK by RIZOR, ANGEL			
06:47				REBOUND (OFF) by TEAM
06:47				MISSED JUMPER by BREMAUD, CARLA
06:47	REBOUND (DEF) by THOMAS, IIMAR'I			
06:47	GOOD! JUMPER by MILLER, ANTOINETTE [FB]	30-36	V 6	
06:02				MISSED LAYUP by BASTIN, SERAPHINE
05:58	REBOUND (DEF) by RIZOR, ANGEL			
05:52	MISSED JUMPER by THOMAS, IIMAR'I			
05:48	REBOUND (OFF) by MOORE, ADDAYA			
05:47	TURNOVER (LOSTBALL) by MOORE, ADDAYA			
05:47				STEAL by MCCULLY, MARIAH
05:46	FOUL (PERSONAL) by RODGERS, SAM			
05:46				SUB OUT: BASTIN, SERAPHINE
05:46				SUB IN: REID, ASHLEY
05:46	SUB OUT: MILLER, ANTOINETTE			
05:46	SUB IN: NELSON, ALEAH			
05:46		31-36	V 5	GOOD! FT by MCCULLY, MARIAH [FB]
05:46		32-36	V 4	GOOD! FT by MCCULLY, MARIAH [FB]
05:27	GOOD! LAYUP by THOMAS, IIMAR'I	32-38	V 6	
05:27	ASSIST by MOORE, ADDAYA			
05:02	FOUL (PERSONAL) by MOORE, ADDAYA			
05:02		33-38	V 5	GOOD! FT by BREMAUD, CARLA
05:02		34-38	V 4	GOOD! FT by BREMAUD, CARLA

Time	VISITORS: Cincinnati	Score	Margin	HOME: Wichita St.
04:41	GOOD! LAYUP by THOMAS, IIMAR'I	34-40	V 6	
04:41	ASSIST by RIZOR, ANGEL			
04:19				MISSED 3PTR by BREMAUD, CARLA
04:16	REBOUND (DEF) by NELSON, ALEAH			
04:12	GOOD! LAYUP by THOMAS, IIMAR'I [FB]	34-42	V 8	
04:12	ASSIST by RODGERS, SAM			
04:11				TIMEOUT 30SEC
04:11				SUB OUT: MCCARTY, DJ
04:11				SUB OUT: BREMAUD, CARLA
04:11				SUB IN: BREWER, MAYA
04:11				SUB IN: COLBERT, TRAJATA
04:11	SUB OUT: NELSON, ALEAH			
04:11	SUB IN: MILLER, ANTOINETTE			
03:47		36-42	V 6	GOOD! JUMPER by COLBERT, TRAJATA [PNT]
03:47				ASSIST by REID, ASHLEY
03:18	MISSED JUMPER by MOORE, ADDAYA			
03:14	REBOUND (OFF) by RIZOR, ANGEL			
03:03	MISSED JUMPER by MILLER, ANTOINETTE			
03:00				REBOUND (DEF) by REID, ASHLEY
02:53				TURNOVER (BADPASS) by REID, ASHLEY
02:53	STEAL by RODGERS, SAM			
02:46	MISSED JUMPER by MILLER, ANTOINETTE			
02:43				REBOUND (DEF) by MCCULLY, MARIAH
02:39				TURNOVER (TRAVEL) by PRINCE, RAVEN
02:39				
02:20	GOOD! LAYUP by THOMAS, IIMAR'I	36-44	V 8	
02:20	ASSIST by MOORE, ADDAYA			
01:51		38-44	V 6	GOOD! JUMPER by COLBERT, TRAJATA
01:51				ASSIST by PRINCE, RAVEN
01:41				FOUL (PERSONAL) by REID, ASHLEY
01:39	GOOD! LAYUP by MOORE, ADDAYA	38-46	V 8	
01:39	ASSIST by MILLER, ANTOINETTE			
01:25				MISSED JUMPER by PRINCE, RAVEN
01:25	BLOCK by THOMAS, IIMAR'I			
01:19	REBOUND (DEF) by MILLER, ANTOINETTE			
01:16	TURNOVER (TRAVEL) by MOORE, ADDAYA			
01:01		41-46	V 5	GOOD! 3PTR by MCCULLY, MARIAH
01:01				ASSIST by REID, ASHLEY
00:52	MISSED 3PTR by MILLER, ANTOINETTE			
00:50	REBOUND (OFF) by TEAM			
00:50				SUB OUT: BREWER, MAYA
00:50				SUB IN: BASTIN, SERAPHINE
00:27	GOOD! JUMPER by RIZOR, ANGEL [PNT]	41-48	V 7	
00:27	ASSIST by MOORE, ADDAYA			
00:04				TURNOVER (BADPASS) by MCCULLY, MARIAH
00:04	STEAL by MILLER, ANTOINETTE			
00:00	GOOD! LAYUP by MILLER, ANTOINETTE [FB]	41-50	V 9	

### Cincinnati 50, Wichita St. 41

Points from (This Period)	CIN	WSU
In the Paint	16	6
Off Turns	4	5
2nd Chance	2	0
Fast Break	6	2
Bench	2	9

**Official Box Score**  
**Cincinnati vs Wichita St.**  
**Fourth Quarter Statistics Only**  
 February 29, 2020 at Charles Koch Arena (Devlin Court) - Wichita, Kan.



**Cincinnati 25**

No.	Player	S	Pts	FG	3FG	FT	OR	DR	TR	PF	A	TO	Blk	Stl	Min	+/-
04	RIZOR, ANGEL	F	6	3-4	0-0	0-0	1	0	1	0	2	0	0	1	8	10
11	RODGERS, SAM	G	0	0-0	0-0	0-0	0	3	3	1	0	0	0	0	9	10
12	MILLER, ANTOINETTE	G	4	2-3	0-0	0-0	0	0	0	0	0	1	0	0	9	10
23	THOMAS, IIMAR'I	F	9	4-7	0-0	1-1	2	2	4	0	1	0	2	0	8	8
30	SIFA, FLORENCE	G	2	1-1	0-0	0-0	0	2	2	1	1	1	0	0	8	10
02	NELSON, ALEAH	G	0	0-0	0-0	0-0	0	0	0	0	0	0	0	0	1	2
03	SCOTT, JADA	G	0	0-0	0-0	0-0	0	0	0	1	1	0	0	0	2	2
10	SCOTT, JADYN	F	2	1-1	0-0	0-0	0	0	0	0	0	1	1	0	2	4
14	MOORE, ADDAYA	G	0	0-0	0-0	0-0	0	0	0	0	0	1	0	0	1	-2
21	TUFF, JORDAN	G	0	0-0	0-0	0-0	0	1	1	0	0	0	0	0	1	4
35	WATSON, CHELLIA	G	2	0-1	0-0	2-4	0	0	0	0	0	0	0	0	1	2
50	KHALIFA, NESMA	C	0	0-0	0-0	0-0	0	0	0	0	0	0	0	0	0	0
<b>TEAM</b>							0	1	1	0						
<b>TOTALS</b>			<b>25</b>	<b>11-17</b>	<b>0-0</b>	<b>3-5</b>	<b>3</b>	<b>9</b>	<b>12</b>	<b>3</b>	<b>5</b>	<b>4</b>	<b>3</b>	<b>1</b>	<b>50</b>	

*Shooting By Period*

Period	FG	FG%	3FG	3FG%	FT	FT%	Deadball Rebounds: 3,0
Game	32-61	52.5%	1-6	16.7%	10-15	66.7%	

**Wichita St. 13**

No.	Player	S	Pts	FG	3FG	FT	OR	DR	TR	PF	A	TO	Blk	Stl	Min	+/-
05	REID, ASHLEY	G	7	2-2	2-2	1-1	0	0	0	0	0	1	0	0	9	-10
12	BREMAUD, CARLA	G	0	0-0	0-0	0-0	0	0	0	0	0	0	0	0	4	-7
13	PRINCE, RAVEN	F	0	0-0	0-0	0-0	0	0	0	2	0	0	0	0	6	-6
21	BREWER, MAYA	G	0	0-4	0-1	0-0	0	0	0	0	0	0	0	0	4	-7
23	BASTIN, SERAPHINE	G	0	0-1	0-0	0-0	0	1	1	1	3	0	0	0	6	-5
01	MCCARTY, DJ	G	0	0-3	0-0	0-0	1	0	1	0	0	0	0	1	4	-6
02	MCCULLY, MARIAH	G	2	1-3	0-1	0-0	0	0	0	0	0	0	0	0	5	-5
24	COLBERT, TRAJATA	F	0	0-1	0-0	0-0	1	0	1	1	0	0	0	0	5	-3
42	HENDERSON, ASIA	F	4	2-5	0-0	0-0	1	0	1	1	0	1	0	0	7	-11
<b>TEAM</b>							2	1	3	0						
<b>TOTALS</b>			<b>13</b>	<b>5-19</b>	<b>2-4</b>	<b>1-1</b>	<b>5</b>	<b>2</b>	<b>7</b>	<b>5</b>	<b>3</b>	<b>4</b>	<b>0</b>	<b>1</b>	<b>50</b>	

*Shooting By Period*

Period	FG	FG%	3FG	3FG%	FT	FT%	Deadball Rebounds: 0,2
Game	20-60	33.3%	5-16	31.3%	9-10	90.0%	

Game Notes:

Officials: Ed Sidlasky, Billy Smith, Geraldine Smith  
 Attendance: 2436

Start Time: 03:02 PM ET  
 End Time: 04:58 PM ET  
 Game Duration: 1:56  
 Conference Game;

Score	1st	2nd	3rd	4th	TOT
CIN	13	19	18	25	<b>75</b>
WSU	16	9	16	13	<b>54</b>

Points from (This Period)	CIN	WSU
In the Paint	20	6
Off Turns	7	2
2nd Chance	7	2
Fast Break	0	0
Bench	4	6

**Official Play-By-Play  
Cincinnati vs Wichita St.  
Fourth Quarter**

**February 29, 2020 at Charles Koch Arena (Devlin Court) - Wichita, Kan.**



**Period 4**

**Starters:**

**Cincinnati:** 4 RIZOR, ANGEL (F); 11 RODGERS, SAM (G); 12 MILLER, ANTOINETTE (G); 23 THOMAS, IIMAR'I (F); 30 SIFA, FLORENCE (G);  
**Wichita St.:** 5 REID, ASHLEY (G); 12 BREMAUD, CARLA (G); 13 PRINCE, RAVEN (F); 21 BREWER, MAYA (G); 23 BASTIN, SERAPHINE (G);

Time	VISITORS: Cincinnati	Score	Margin	HOME: Wichita St.
10:00	SUB OUT: MOORE, ADDAYA			
10:00	SUB IN: SIFA, FLORENCE			
09:47	GOOD! JUMPER by THOMAS, IIMAR'I	41-52	V 11	
09:47	ASSIST by SIFA, FLORENCE			
09:34				MISSED 3PTR by MCCULLY, MARIAH
09:30	REBOUND (DEF) by SIFA, FLORENCE			
09:21	GOOD! LAYUP by THOMAS, IIMAR'I	41-54	V 13	
09:21	ASSIST by RIZOR, ANGEL			
08:55				MISSED JUMPER by BASTIN, SERAPHINE
08:55	REBOUND (DEF) by TEAM			
08:55				FOUL (PERSONAL) by COLBERT, TRAJATA
08:35	GOOD! JUMPER by MILLER, ANTOINETTE	41-56	V 15	
08:18		44-56	V 12	GOOD! 3PTR by REID, ASHLEY
08:18				ASSIST by BASTIN, SERAPHINE
08:18	FOUL (PERSONAL) by RODGERS, SAM			
08:18	SUB OUT: SIFA, FLORENCE			
08:18	SUB IN: MOORE, ADDAYA			
08:18		45-56	V 11	GOOD! FT by REID, ASHLEY
08:07				FOUL (PERSONAL) by PRINCE, RAVEN
08:03	GOOD! JUMPER by RIZOR, ANGEL [PNT]	45-58	V 13	
07:52		48-58	V 10	GOOD! 3PTR by REID, ASHLEY
07:52				ASSIST by BASTIN, SERAPHINE
07:38	TURNOVER (BADPASS) by MOORE, ADDAYA			
07:38				SUB OUT: MCCULLY, MARIAH
07:38				SUB IN: MCCARTY, DJ
07:38	SUB OUT: MOORE, ADDAYA			
07:38	SUB IN: SIFA, FLORENCE			
06:59				MISSED JUMPER by MCCARTY, DJ
06:59	BLOCK by THOMAS, IIMAR'I			
06:55	REBOUND (DEF) by THOMAS, IIMAR'I			
06:55	TURNOVER (LOSTBALL) by MILLER, ANTOINETTE			
06:55				STEAL by MCCARTY, DJ
06:55				TURNOVER (BADPASS) by REID, ASHLEY
06:45				FOUL (PERSONAL) by BASTIN, SERAPHINE
06:45				SUB OUT: COLBERT, TRAJATA
06:45				SUB IN: HENDERSON, ASIA
06:38	GOOD! LAYUP by MILLER, ANTOINETTE	48-60	V 12	
06:14		50-60	V 10	GOOD! LAYUP by HENDERSON, ASIA
06:14				ASSIST by BASTIN, SERAPHINE
05:53	MISSED JUMPER by THOMAS, IIMAR'I			
05:49				REBOUND (DEF) by TEAM
05:35				MISSED JUMPER by HENDERSON, ASIA
05:32	REBOUND (DEF) by RODGERS, SAM			
05:07	MISSED LAYUP by MILLER, ANTOINETTE			
05:04				REBOUND (DEF) by BASTIN, SERAPHINE
05:04	FOUL (PERSONAL) by SIFA, FLORENCE			
05:04	SUB OUT: THOMAS, IIMAR'I			
05:04	SUB IN: SCOTT, JADYN			
04:52				FOUL (PERSONAL) by HENDERSON, ASIA
04:52				
04:40	GOOD! LAYUP by SIFA, FLORENCE	50-62	V 12	
04:40	ASSIST by RIZOR, ANGEL			
04:15	SUB OUT: SCOTT, JADYN			
04:15	SUB IN: THOMAS, IIMAR'I			
04:12				MISSED JUMPER by MCCARTY, DJ
04:08				REBOUND (OFF) by MCCARTY, DJ
04:08				MISSED JUMPER by MCCARTY, DJ
04:08	BLOCK by THOMAS, IIMAR'I			
04:08				REBOUND (OFF) by TEAM
04:06				TURNOVER (LOSTBALL) by HENDERSON, ASIA
04:06	STEAL by RIZOR, ANGEL			
03:54	MISSED JUMPER by THOMAS, IIMAR'I			
03:51	REBOUND (OFF) by THOMAS, IIMAR'I			
03:49	MISSED JUMPER by THOMAS, IIMAR'I			
03:49	REBOUND (OFF) by THOMAS, IIMAR'I			
03:49	GOOD! LAYUP by THOMAS, IIMAR'I	50-64	V 14	
03:49				FOUL (PERSONAL) by PRINCE, RAVEN
03:49				SUB OUT: MCCARTY, DJ
03:49				SUB OUT: BASTIN, SERAPHINE
03:49				SUB IN: BREMAUD, CARLA

Time	VISITORS: Cincinnati	Score	Margin	HOME: Wichita St.
03:49				SUB IN: BREWER, MAYA
03:49	GOOD! FT by THOMAS, IIMAR'I	50-65	V 15	
03:49				SUB OUT: PRINCE, RAVEN
03:49				SUB IN: MCCULLY, MARIAH
03:35		52-65	V 13	GOOD! LAYUP by MCCULLY, MARIAH
03:20	GOOD! LAYUP by RIZOR, ANGEL	52-67	V 15	
03:20	ASSIST by THOMAS, IIMAR'I			
02:58				MISSED JUMPER by MCCULLY, MARIAH
02:55	REBOUND (DEF) by RODGERS, SAM			
02:37	GOOD! JUMPER by THOMAS, IIMAR'I	52-69	V 17	
02:20				MISSED JUMPER by BREWER, MAYA
02:17	REBOUND (DEF) by THOMAS, IIMAR'I			
01:58	MISSED JUMPER by RIZOR, ANGEL			
01:53	REBOUND (OFF) by RIZOR, ANGEL			
01:53	GOOD! LAYUP by RIZOR, ANGEL	52-71	V 19	
01:43				MISSED 3PTR by BREWER, MAYA
01:39	REBOUND (DEF) by RODGERS, SAM			
01:37	TIMEOUT 30SEC			
01:37				SUB OUT: MCCULLY, MARIAH
01:37				SUB IN: COLBERT, TRAJATA
01:37	SUB OUT: RIZOR, ANGEL			
01:37	SUB OUT: THOMAS, IIMAR'I			
01:37	SUB IN: SCOTT, JADA			
01:37	SUB IN: SCOTT, JADYN			
01:29	TURNOVER (BADPASS) by SCOTT, JADYN			
01:29	SUB OUT: MILLER, ANTOINETTE			
01:29	SUB IN: NELSON, ALEAH			
01:17				MISSED JUMPER by BREWER, MAYA
01:16				REBOUND (OFF) by TEAM
01:16	FOUL (PERSONAL) by SCOTT, JADA			
01:16	SUB OUT: RODGERS, SAM			
01:16	SUB IN: WATSON, CHELLIA			
01:12				MISSED JUMPER by HENDERSON, ASIA
01:12	BLOCK by SCOTT, JADYN			
01:07	REBOUND (DEF) by SIFA, FLORENCE			
01:05	TURNOVER (LOSTBALL) by SIFA, FLORENCE			
00:59				MISSED JUMPER by HENDERSON, ASIA
00:56				REBOUND (OFF) by COLBERT, TRAJATA
00:56				MISSED JUMPER by COLBERT, TRAJATA
00:56				REBOUND (OFF) by HENDERSON, ASIA
00:56		54-71	V 17	GOOD! LAYUP by HENDERSON, ASIA
00:56	SUB OUT: SIFA, FLORENCE			
00:56	SUB IN: TUFF, JORDAN			
00:40	MISSED LAYUP by WATSON, CHELLIA			
00:39				REBOUND (DEF) by TEAM
00:39				FOUL (TECH) by TEAM
00:39				TURNOVER (OFFENSIVE) by TEAM
00:39	MISSED FT by WATSON, CHELLIA			
00:39	REBOUND (OFF) by TEAM			
00:39	GOOD! FT by WATSON, CHELLIA	54-72	V 18	
00:39				FOUL (TECH) by TEAM
00:39				TURNOVER (OFFENSIVE) by TEAM
00:39	GOOD! FT by WATSON, CHELLIA	54-73	V 19	
00:39	MISSED FT by WATSON, CHELLIA			
00:39	REBOUND (OFF) by TEAM			
00:39				SUB OUT: REID, ASHLEY
00:39				SUB IN: MCCARTY, DJ
00:21	GOOD! JUMPER by SCOTT, JADYN [PNT]	54-75	V 21	
00:21	ASSIST by SCOTT, JADA			
00:06				MISSED JUMPER by BREWER, MAYA
00:03	REBOUND (DEF) by TUFF, JORDAN			

### Cincinnati 75, Wichita St. 54

Points from (This Period)	CIN	WSU
In the Paint	20	6
Off Turns	7	2
2nd Chance	7	2
Fast Break	0	0
Bench	4	6



**Official Scoring/Possession Reference Chart  
Cincinnati vs Wichita St.**

**Period 1**

**February 29, 2020 at Charles Koch Arena (Devlin Court) - Wichita, Kan.**



**Period 1**

**Starters:**

**Cincinnati:** 4 RIZOR, ANGEL (F); 11 RODGERS, SAM (G); 12 MILLER, ANTOINETTE (G); 23 THOMAS, IIMAR'I (F); 30 SIFA, FLORENCE (G);  
**Wichita St.:** 5 REID, ASHLEY (G); 12 BREMAUD, CARLA (G); 13 PRINCE, RAVEN (F); 21 BREWER, MAYA (G); 23 BASTIN, SERAPHINE (G);

Time	VISITORS: Cincinnati	Score	Margin	HOME: Wichita St.
09:37	GOOD! JUMPER by THOMAS, IIMAR'I	0-2	V 2	
09:02		2-2	T	GOOD! LAYUP by BREWER, MAYA
08:34	GOOD! LAYUP by THOMAS, IIMAR'I [FB]	2-4	V 2	
07:06		4-4	T	GOOD! LAYUP by BREWER, MAYA
06:59	GOOD! LAYUP by SIFA, FLORENCE [FB]	4-6	V 2	
06:31	GOOD! LAYUP by SIFA, FLORENCE [FB]	4-8	V 4	
05:05	GOOD! 3PTR by RODGERS, SAM	4-11	V 7	
04:36		6-11	V 5	GOOD! JUMPER by BASTIN, SERAPHINE
03:58		7-11	V 4	GOOD! FT by MCCARTY, DJ
03:58		8-11	V 3	GOOD! FT by MCCARTY, DJ
03:40	GOOD! JUMPER by RIZOR, ANGEL [PNT]	8-13	V 5	
03:18		10-13	V 3	GOOD! LAYUP by MCCARTY, DJ
03:18		11-13	V 2	GOOD! FT by MCCARTY, DJ
01:33		14-13	H 1	GOOD! 3PTR by REID, ASHLEY
00:56		16-13	H 3	GOOD! LAYUP by COLBERT, TRAJATA

**Cincinnati 13, Wichita St. 16**

**Official Scoring/Possession Reference Chart  
Cincinnati vs Wichita St.**

**Period 2**

**February 29, 2020 at Charles Koch Arena (Devlin Court) - Wichita, Kan.**



**Period 2**

**Starters:**

**Cincinnati:** 4 RIZOR, ANGEL (F); 11 RODGERS, SAM (G); 12 MILLER, ANTOINETTE (G); 23 THOMAS, IIMAR'I (F); 30 SIFA, FLORENCE (G);

**Wichita St.:** 5 REID, ASHLEY (G); 12 BREMAUD, CARLA (G); 13 PRINCE, RAVEN (F); 21 BREWER, MAYA (G); 23 BASTIN, SERAPHINE (G);

Time	VISITORS: Cincinnati	Score	Margin	HOME: Wichita St.
09:36		18-13	H 5	GOOD! LAYUP by COLBERT, TRAJATA
09:03	GOOD! LAYUP by MILLER, ANTOINETTE	18-15	H 3	
08:04	GOOD! FT by RIZOR, ANGEL [FB]	18-16	H 2	
08:04	GOOD! FT by RIZOR, ANGEL [FB]	18-17	H 1	
06:58	GOOD! JUMPER by THOMAS, IIMAR'I	18-19	V 1	
05:53	GOOD! LAYUP by THOMAS, IIMAR'I [FB]	18-21	V 3	
05:27	GOOD! LAYUP by THOMAS, IIMAR'I	18-23	V 5	
05:05		20-23	V 3	GOOD! JUMPER by BREMAUD, CARLA
04:56	GOOD! FT by THOMAS, IIMAR'I	20-24	V 4	
04:56	GOOD! FT by THOMAS, IIMAR'I	20-25	V 5	
04:15	GOOD! JUMPER by RIZOR, ANGEL [PNT]	20-27	V 7	
03:49		22-27	V 5	GOOD! JUMPER by MCCARTY, DJ [PNT]
02:30	GOOD! FT by SIFA, FLORENCE	22-28	V 6	
02:30	GOOD! FT by SIFA, FLORENCE	22-29	V 7	
02:27		23-29	V 6	GOOD! FT by BASTIN, SERAPHINE [FB]
01:31	GOOD! LAYUP by MILLER, ANTOINETTE	23-31	V 8	
01:31	GOOD! FT by MILLER, ANTOINETTE	23-32	V 9	
00:04		25-32	V 7	GOOD! JUMPER by BASTIN, SERAPHINE

**Cincinnati 32, Wichita St. 25**

**Official Scoring/Possession Reference Chart  
Cincinnati vs Wichita St.**

**Period 3**

**February 29, 2020 at Charles Koch Arena (Devlin Court) - Wichita, Kan.**



**Period 3**

**Starters:**

**Cincinnati:** 4 RIZOR, ANGEL (F); 11 RODGERS, SAM (G); 12 MILLER, ANTOINETTE (G); 23 THOMAS, IIMAR'I (F); 30 SIFA, FLORENCE (G);

**Wichita St.:** 5 REID, ASHLEY (G); 12 BREMAUD, CARLA (G); 13 PRINCE, RAVEN (F); 21 BREWER, MAYA (G); 23 BASTIN, SERAPHINE (G);

Time	VISITORS: Cincinnati	Score	Margin	HOME: Wichita St.
08:40		27-32	V 5	GOOD! LAYUP by PRINCE, RAVEN
08:17		30-32	V 2	GOOD! 3PTR by BREMAUD, CARLA
07:18	GOOD! JUMPER by MILLER, ANTOINETTE	30-34	V 4	
06:47	GOOD! JUMPER by MILLER, ANTOINETTE [FB]	30-36	V 6	
05:46		31-36	V 5	GOOD! FT by MCCULLY, MARIAH [FB]
05:46		32-36	V 4	GOOD! FT by MCCULLY, MARIAH [FB]
05:27	GOOD! LAYUP by THOMAS, IIMAR'I	32-38	V 6	
05:02		33-38	V 5	GOOD! FT by BREMAUD, CARLA
05:02		34-38	V 4	GOOD! FT by BREMAUD, CARLA
04:41	GOOD! LAYUP by THOMAS, IIMAR'I	34-40	V 6	
04:12	GOOD! LAYUP by THOMAS, IIMAR'I [FB]	34-42	V 8	
03:47		36-42	V 6	GOOD! JUMPER by COLBERT, TRAJATA [PNT]
02:20	GOOD! LAYUP by THOMAS, IIMAR'I	36-44	V 8	
01:51		38-44	V 6	GOOD! JUMPER by COLBERT, TRAJATA
01:39	GOOD! LAYUP by MOORE, ADDAYA	38-46	V 8	
01:01		41-46	V 5	GOOD! 3PTR by MCCULLY, MARIAH
00:27	GOOD! JUMPER by RIZOR, ANGEL [PNT]	41-48	V 7	
00:00	GOOD! LAYUP by MILLER, ANTOINETTE [FB]	41-50	V 9	

**Cincinnati 50, Wichita St. 41**

**Official Scoring/Possession Reference Chart  
Cincinnati vs Wichita St.**

**Period 4**

**February 29, 2020 at Charles Koch Arena (Devlin Court) - Wichita, Kan.**



**Period 4**

**Starters:**

**Cincinnati:** 4 RIZOR, ANGEL (F); 11 RODGERS, SAM (G); 12 MILLER, ANTOINETTE (G); 23 THOMAS, IIMAR'I (F); 30 SIFA, FLORENCE (G);

**Wichita St.:** 5 REID, ASHLEY (G); 12 BREMAUD, CARLA (G); 13 PRINCE, RAVEN (F); 21 BREWER, MAYA (G); 23 BASTIN, SERAPHINE (G);

Time	VISITORS: Cincinnati	Score	Margin	HOME: Wichita St.
09:47	GOOD! JUMPER by THOMAS, IIMAR'I	41-52	V 11	
09:21	GOOD! LAYUP by THOMAS, IIMAR'I	41-54	V 13	
08:35	GOOD! JUMPER by MILLER, ANTOINETTE	41-56	V 15	
08:18		44-56	V 12	GOOD! 3PTR by REID, ASHLEY
08:18		45-56	V 11	GOOD! FT by REID, ASHLEY
08:03	GOOD! JUMPER by RIZOR, ANGEL [PNT]	45-58	V 13	
07:52		48-58	V 10	GOOD! 3PTR by REID, ASHLEY
06:38	GOOD! LAYUP by MILLER, ANTOINETTE	48-60	V 12	
06:14		50-60	V 10	GOOD! LAYUP by HENDERSON, ASIA
04:40	GOOD! LAYUP by SIFA, FLORENCE	50-62	V 12	
03:49	GOOD! LAYUP by THOMAS, IIMAR'I	50-64	V 14	
03:49	GOOD! FT by THOMAS, IIMAR'I	50-65	V 15	
03:35		52-65	V 13	GOOD! LAYUP by MCCULLY, MARIAH
03:20	GOOD! LAYUP by RIZOR, ANGEL	52-67	V 15	
02:37	GOOD! JUMPER by THOMAS, IIMAR'I	52-69	V 17	
01:53	GOOD! LAYUP by RIZOR, ANGEL	52-71	V 19	
00:56		54-71	V 17	GOOD! LAYUP by HENDERSON, ASIA
00:39	GOOD! FT by WATSON, CHELLIA	54-72	V 18	
00:39	GOOD! FT by WATSON, CHELLIA	54-73	V 19	
00:21	GOOD! JUMPER by SCOTT, JADYN [PNT]	54-75	V 21	

**Cincinnati 75, Wichita St. 54**

**Official Substitutions Log  
Cincinnati vs Wichita St.  
Period 1**

**February 29, 2020 at Charles Koch Arena (Devlin Court) - Wichita, Kan.**



<b>VISITORS: Cincinnati</b>	<b>Time</b>	<b>Score</b>	<b>HOME: Wichita St.</b>
4 RIZOR, ANGEL			5 REID, ASHLEY
11 RODGERS, SAM			12 BREMAUD, CARLA
12 MILLER, ANTOINETTE			13 PRINCE, RAVEN
23 THOMAS, IIMAR'I			21 BREWER, MAYA
30 SIFA, FLORENCE			23 BASTIN, SERAPHINE
SUB OUT: 4 RIZOR, ANGEL	06:09	8-4	
SUB IN: 14 MOORE, ADDAYA	06:09		
	04:26	11-6	SUB OUT: BREMAUD, CARLA
	04:26		SUB OUT: PRINCE, RAVEN
	04:26		SUB OUT: BREWER, MAYA
	04:26		SUB IN: MCCARTY, DJ
	04:26		SUB IN: MCCULLY, MARIAH
	04:26		SUB IN: COLBERT, TRAJATA
SUB OUT: 14 MOORE, ADDAYA	04:26		
SUB IN: 10 SCOTT, JADYN	04:26		
SUB OUT: 23 THOMAS, IIMAR'I	03:58	11-8	
SUB IN: 4 RIZOR, ANGEL	03:58		
SUB OUT: 10 SCOTT, JADYN	02:52	13-11	
SUB OUT: 30 SIFA, FLORENCE	02:52		
SUB IN: 14 MOORE, ADDAYA	02:52		
SUB IN: 35 WATSON, CHELLIA	02:52		
	02:12	13-11	SUB OUT: BASTIN, SERAPHINE
	02:12		SUB IN: BREMAUD, CARLA

**Cincinnati 13, Wichita St. 16**

**Official Substitutions Log  
Cincinnati vs Wichita St.  
Period 2**

**February 29, 2020 at Charles Koch Arena (Devlin Court) - Wichita, Kan.**



VISITORS: Cincinnati	Time	Score	HOME: Wichita St.
4 RIZOR, ANGEL			5 REID, ASHLEY
11 RODGERS, SAM			12 BREMAUD, CARLA
12 MILLER, ANTOINETTE			13 PRINCE, RAVEN
23 THOMAS, IIMAR'I			21 BREWER, MAYA
30 SIFA, FLORENCE			23 BASTIN, SERAPHINE
	10:00	-	SUB OUT: REID, ASHLEY
	10:00		SUB IN: BREWER, MAYA
SUB OUT: 14 MOORE, ADDAYA	10:00		
SUB OUT: 35 WATSON, CHELLIA	10:00		
SUB IN: 23 THOMAS, IIMAR'I	10:00		
SUB IN: 30 SIFA, FLORENCE	10:00		
	09:11	13-18	SUB OUT: BREMAUD, CARLA
	09:11		SUB IN: BASTIN, SERAPHINE
	08:31	15-18	SUB OUT: COLBERT, TRAJATA
	08:31		SUB IN: PRINCE, RAVEN
	08:04	15-18	SUB OUT: MCCARTY, DJ
	08:04		SUB OUT: MCCULLY, MARIAH
	08:04		SUB IN: REID, ASHLEY
	08:04		SUB IN: BREMAUD, CARLA
	05:40	21-18	SUB OUT: BREWER, MAYA
	05:40		SUB IN: MCCARTY, DJ
	04:23	25-20	SUB OUT: PRINCE, RAVEN
	04:23		SUB IN: HENDERSON, ASIA
SUB OUT: 23 THOMAS, IIMAR'I	03:35	27-22	
SUB IN: 14 MOORE, ADDAYA	03:35		
SUB OUT: 30 SIFA, FLORENCE	02:30	29-22	
SUB IN: 2 NELSON, ALEAH	02:30		
SUB OUT: 4 RIZOR, ANGEL	02:01	29-23	
SUB IN: 50 KHALIFA, NESMA	02:01		
	01:31	32-23	SUB OUT: BREMAUD, CARLA
	01:31		SUB IN: BREWER, MAYA
SUB OUT: 12 MILLER, ANTOINETTE	00:47	32-23	
SUB IN: 30 SIFA, FLORENCE	00:47		

**Cincinnati 32, Wichita St. 25**

**Official Substitutions Log  
Cincinnati vs Wichita St.  
Period 3**

**February 29, 2020 at Charles Koch Arena (Devlin Court) - Wichita, Kan.**



<b>VISITORS: Cincinnati</b>	<b>Time</b>	<b>Score</b>	<b>HOME: Wichita St.</b>
4 RIZOR, ANGEL			5 REID, ASHLEY
11 RODGERS, SAM			12 BREMAUD, CARLA
12 MILLER, ANTOINETTE			13 PRINCE, RAVEN
23 THOMAS, IIMAR'I			21 BREWER, MAYA
30 SIFA, FLORENCE			23 BASTIN, SERAPHINE
	10:00	-	SUB OUT: REID, ASHLEY
	10:00		SUB OUT: BREWER, MAYA
	10:00		SUB OUT: HENDERSON, ASIA
	10:00		SUB IN: MCCULLY, MARIAH
	10:00		SUB IN: BREMAUD, CARLA
	10:00		SUB IN: PRINCE, RAVEN
SUB OUT: 2 NELSON, ALEAH	10:00		
SUB OUT: 14 MOORE, ADDAYA	10:00		
SUB OUT: 50 KHALIFA, NESMA	10:00		
SUB IN: 4 RIZOR, ANGEL	10:00		
SUB IN: 12 MILLER, ANTOINETTE	10:00		
SUB IN: 23 THOMAS, IIMAR'I	10:00		
SUB OUT: 4 RIZOR, ANGEL	09:32	-	
SUB IN: 10 SCOTT, JADYN	09:32		
SUB OUT: 30 SIFA, FLORENCE	09:12	-	
SUB IN: 14 MOORE, ADDAYA	09:12		
SUB OUT: 10 SCOTT, JADYN	07:53	32-30	
SUB IN: 4 RIZOR, ANGEL	07:53		
	05:46	36-30	SUB OUT: BASTIN, SERAPHINE
	05:46		SUB IN: REID, ASHLEY
SUB OUT: 12 MILLER, ANTOINETTE	05:46		
SUB IN: 2 NELSON, ALEAH	05:46		
	04:11	42-34	SUB OUT: MCCARTY, DJ
	04:11		SUB OUT: BREMAUD, CARLA
	04:11		SUB IN: BREWER, MAYA
	04:11		SUB IN: COLBERT, TRAJATA
SUB OUT: 2 NELSON, ALEAH	04:11		
SUB IN: 12 MILLER, ANTOINETTE	04:11		
	00:50	46-41	SUB OUT: BREWER, MAYA
	00:50		SUB IN: BASTIN, SERAPHINE

**Cincinnati 50, Wichita St. 41**

**Official Substitutions Log  
Cincinnati vs Wichita St.  
Period 4**

**February 29, 2020 at Charles Koch Arena (Devlin Court) - Wichita, Kan.**



<b>VISITORS: Cincinnati</b>	<b>Time</b>	<b>Score</b>	<b>HOME: Wichita St.</b>
4 RIZOR, ANGEL			5 REID, ASHLEY
11 RODGERS, SAM			12 BREMAUD, CARLA
12 MILLER, ANTOINETTE			13 PRINCE, RAVEN
23 THOMAS, IIMAR'I			21 BREWER, MAYA
30 SIFA, FLORENCE			23 BASTIN, SERAPHINE
SUB OUT: 14 MOORE, ADDAYA	10:00	-	
SUB IN: 30 SIFA, FLORENCE	10:00		
SUB OUT: 30 SIFA, FLORENCE	08:18	56-44	
SUB IN: 14 MOORE, ADDAYA	08:18		
	07:38	58-48	SUB OUT: MCCULLY, MARIAH
	07:38		SUB IN: MCCARTY, DJ
SUB OUT: 14 MOORE, ADDAYA	07:38		
SUB IN: 30 SIFA, FLORENCE	07:38		
	06:45	58-48	SUB OUT: COLBERT, TRAJATA
	06:45		SUB IN: HENDERSON, ASIA
SUB OUT: 23 THOMAS, IIMAR'I	05:04	60-50	
SUB IN: 10 SCOTT, JADYN	05:04		
SUB OUT: 10 SCOTT, JADYN	04:15	62-50	
SUB IN: 23 THOMAS, IIMAR'I	04:15		
	03:49	64-50	SUB OUT: MCCARTY, DJ
	03:49		SUB OUT: BASTIN, SERAPHINE
	03:49		SUB IN: BREMAUD, CARLA
	03:49		SUB IN: BREWER, MAYA
	03:49		SUB OUT: PRINCE, RAVEN
	03:49		SUB IN: MCCULLY, MARIAH
	01:37	71-52	SUB OUT: MCCULLY, MARIAH
	01:37		SUB IN: COLBERT, TRAJATA
SUB OUT: 4 RIZOR, ANGEL	01:37		
SUB OUT: 23 THOMAS, IIMAR'I	01:37		
SUB IN: 3 SCOTT, JADA	01:37		
SUB IN: 10 SCOTT, JADYN	01:37		
SUB OUT: 12 MILLER, ANTOINETTE	01:29	71-52	
SUB IN: 2 NELSON, ALEAH	01:29		
SUB OUT: 11 RODGERS, SAM	01:16	71-52	
SUB IN: 35 WATSON, CHELLIA	01:16		
SUB OUT: 30 SIFA, FLORENCE	00:56	71-54	
SUB IN: 21 TUFF, JORDAN	00:56		
	00:39	73-54	SUB OUT: REID, ASHLEY
	00:39		SUB IN: MCCARTY, DJ

**Cincinnati 75, Wichita St. 54**



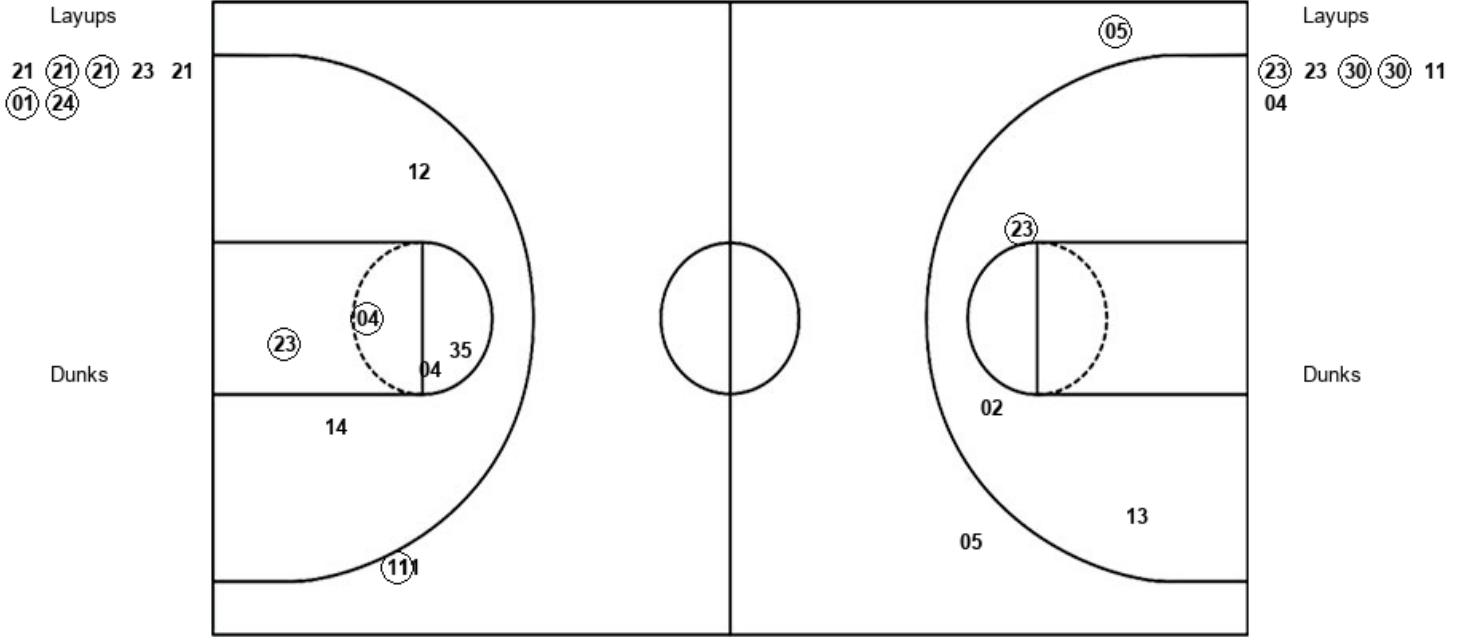
Official Shot Chart  
 Cincinnati vs Wichita St.  
 PERIOD 1 Shots

February 29, 2020 at Charles Koch Arena (Devlin Court) - Wichita, Kan.



Wichita St.

Cincinnati



WSU : Period 1	Made	Att	Pct
Layups	4	7	57.1
Dunks	0	0	0
2PT Field Goals	5	10	50.0
3PT Field Goals	1	2	50.0
<b>Total Field Goals</b>	<b>6</b>	<b>12</b>	<b>50.0</b>

CIN : Period 1	Made	Att	Pct
Layups	3	6	50.0
Dunks	0	0	0
2PT Field Goals	5	12	41.7
3PT Field Goals	1	2	50.0
<b>Total Field Goals</b>	<b>6</b>	<b>14</b>	<b>42.9</b>

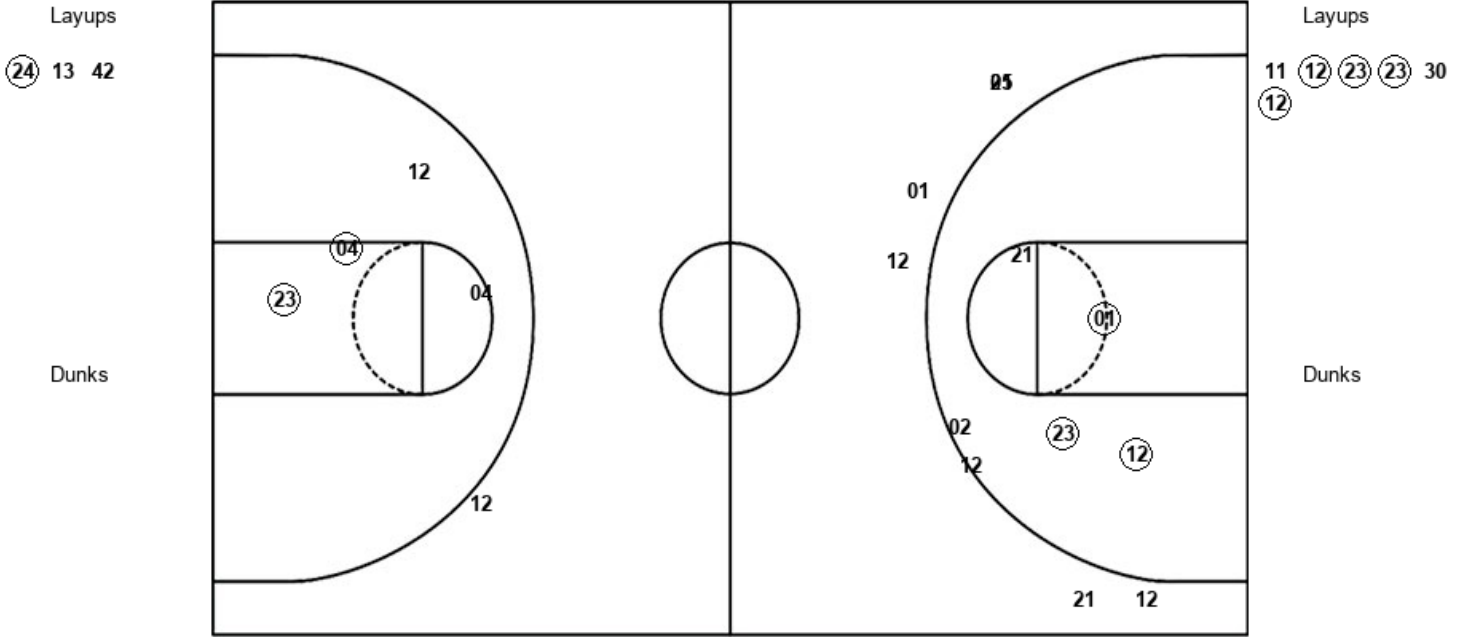
Official Shot Chart  
 Cincinnati vs Wichita St.  
 PERIOD 2 Shots

February 29, 2020 at Charles Koch Arena (Devlin Court) - Wichita, Kan.



Wichita St.

Cincinnati



WSU : Period 2	Made	Att	Pct
Layups	1	3	33.3
Dunks	0	0	0
2PT Field Goals	4	9	44.4
3PT Field Goals	0	6	00.0
<b>Total Field Goals</b>	<b>4</b>	<b>15</b>	<b>26.7</b>

CIN : Period 2	Made	Att	Pct
Layups	4	6	66.7
Dunks	0	0	0
2PT Field Goals	6	10	60.0
3PT Field Goals	0	1	00.0
<b>Total Field Goals</b>	<b>6</b>	<b>11</b>	<b>54.5</b>

Official Shot Chart  
 Cincinnati vs Wichita St.  
 PERIOD 3 Shots

February 29, 2020 at Charles Koch Arena (Devlin Court) - Wichita, Kan.



Wichita St.

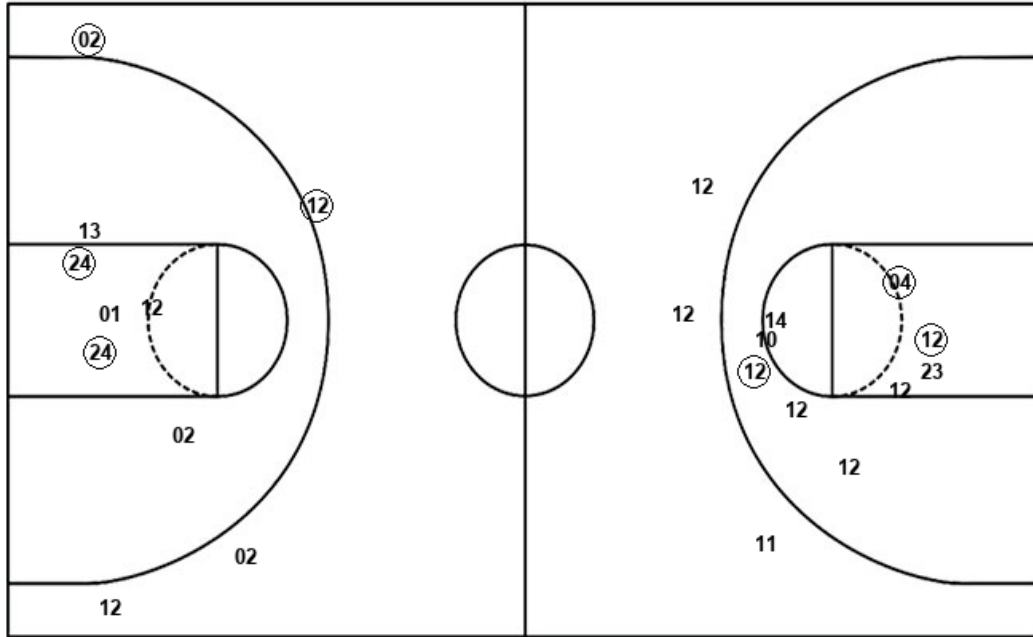
Cincinnati

Layups  
 13 01 01 23

Layups  
 14 23 23 23 23  
 14 12

Dunks

Dunks



WSU : Period 3	Made	Att	Pct
Layups	1	4	25.0
Dunks	0	0	0
2PT Field Goals	3	10	30.0
3PT Field Goals	2	4	50.0
<b>Total Field Goals</b>	<b>5</b>	<b>14</b>	<b>35.7</b>

CIN : Period 3	Made	Att	Pct
Layups	6	7	85.7
Dunks	0	0	0
2PT Field Goals	9	16	56.3
3PT Field Goals	0	3	00.0
<b>Total Field Goals</b>	<b>9</b>	<b>19</b>	<b>47.4</b>

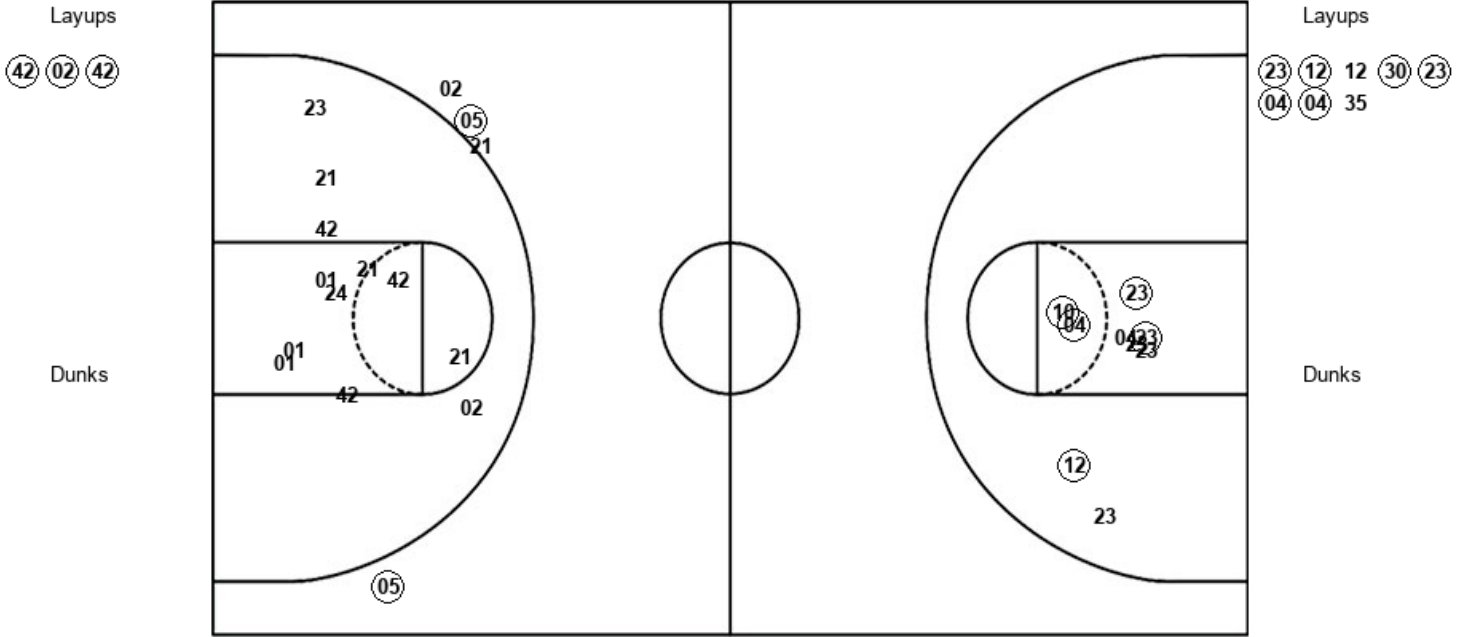
Official Shot Chart  
 Cincinnati vs Wichita St.  
 PERIOD 4 Shots

February 29, 2020 at Charles Koch Arena (Devlin Court) - Wichita, Kan.



Wichita St.

Cincinnati



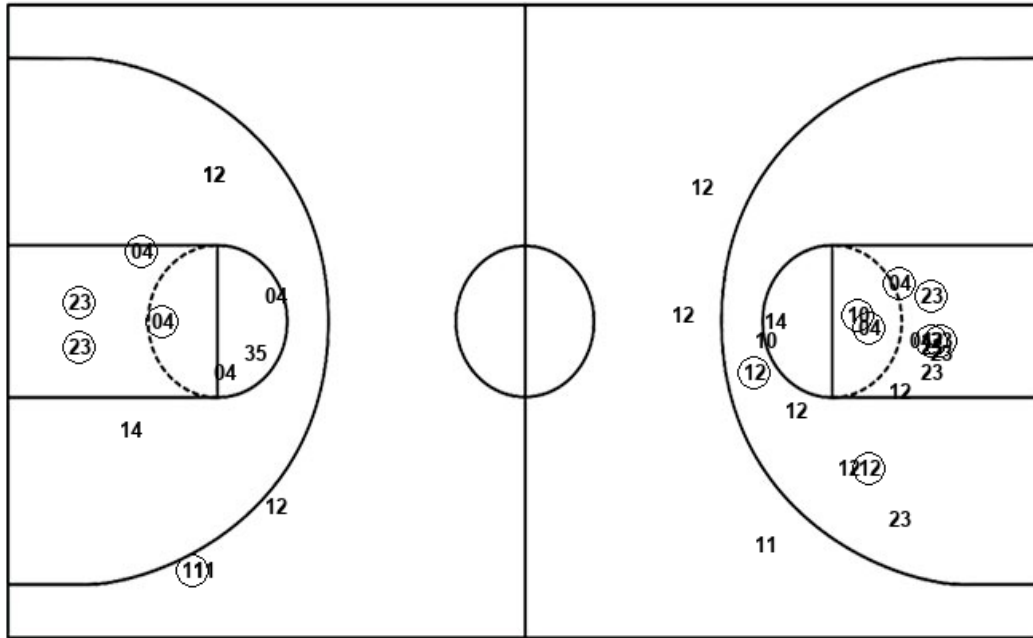
WSU : Period 4	Made	Att	Pct
Layups	3	3	100.0
Dunks	0	0	0
2PT Field Goals	3	15	20.0
3PT Field Goals	2	4	50.0
<b>Total Field Goals</b>	<b>5</b>	<b>19</b>	<b>26.3</b>

CIN : Period 4	Made	Att	Pct
Layups	6	8	75.0
Dunks	0	0	0
2PT Field Goals	11	17	64.7
3PT Field Goals	0	0	0
<b>Total Field Goals</b>	<b>11</b>	<b>17</b>	<b>64.7</b>

**Official Shot Chart**  
**Cincinnati vs Wichita St.**  
**Cincinnati Team Shots**  
 February 29, 2020 at Charles Koch Arena (Devlin Court) - Wichita, Kan.



Layups



Layups

(23) 23 (30) (30) 11  
 04 11 (12) (23) (23)  
 30 (12) 14 (23) (23)  
 (23) (23) (14) (12) (23)  
 (12) 12 (30) (23) (04)  
 (04) 35

Dunks

Dunks

CIN : Period 1	Made	Att	Pct
Layups	3	6	50.0
Dunks	0	0	0
2PT Field Goals	5	12	41.7
3PT Field Goals	1	2	50.0
<b>Total Field Goals</b>	<b>6</b>	<b>14</b>	<b>42.9</b>

CIN : Period 2	Made	Att	Pct
Layups	4	6	66.7
Dunks	0	0	0
2PT Field Goals	6	10	60.0
3PT Field Goals	0	1	00.0
<b>Total Field Goals</b>	<b>6</b>	<b>11</b>	<b>54.5</b>

CIN : Period 3	Made	Att	Pct
Layups	6	7	85.7
Dunks	0	0	0
2PT Field Goals	9	16	56.3
3PT Field Goals	0	3	00.0
<b>Total Field Goals</b>	<b>9</b>	<b>19</b>	<b>47.4</b>

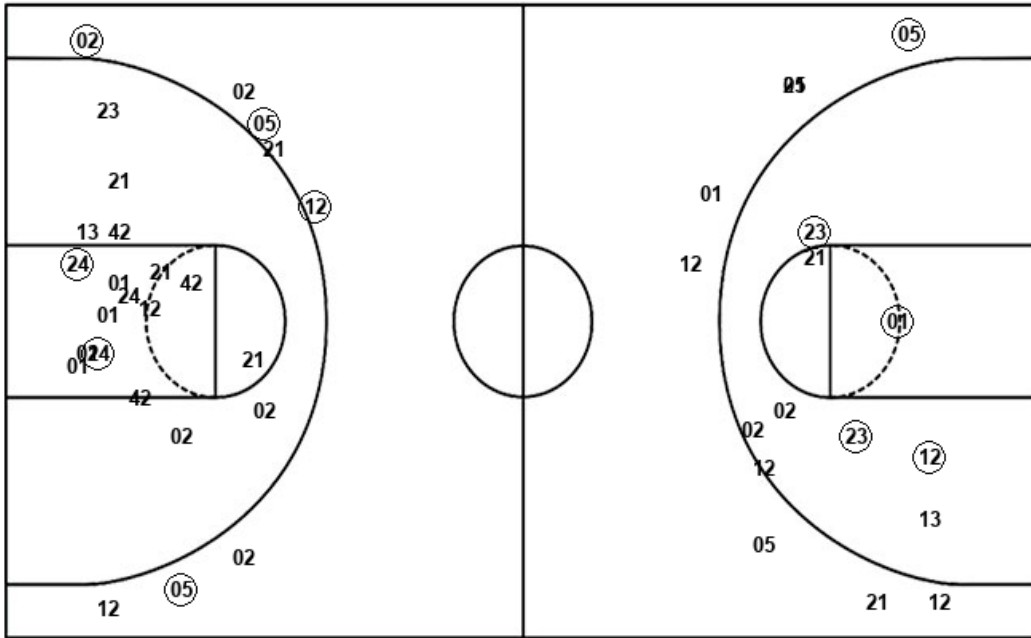
CIN : Period 4	Made	Att	Pct
Layups	6	8	75.0
Dunks	0	0	0
2PT Field Goals	11	17	64.7
3PT Field Goals	0	0	0
<b>Total Field Goals</b>	<b>11</b>	<b>17</b>	<b>64.7</b>

Official Shot Chart  
 Cincinnati vs Wichita St.  
 Wichita St. Team Shots

February 29, 2020 at Charles Koch Arena (Devlin Court) - Wichita, Kan.



Layups



Layups

21 (21) (21) 23 21  
 (01) (24) (24) 13 42  
 (13) 01 01 23 (42)  
 (02) (42)

Dunks

Dunks

WSU : Period 1	Made	Att	Pct
Layups	4	7	57.1
Dunks	0	0	0
2PT Field Goals	5	10	50.0
3PT Field Goals	1	2	50.0
<b>Total Field Goals</b>	<b>6</b>	<b>12</b>	<b>50.0</b>

WSU : Period 2	Made	Att	Pct
Layups	1	3	33.3
Dunks	0	0	0
2PT Field Goals	4	9	44.4
3PT Field Goals	0	6	00.0
<b>Total Field Goals</b>	<b>4</b>	<b>15</b>	<b>26.7</b>

WSU : Period 3	Made	Att	Pct
Layups	1	4	25.0
Dunks	0	0	0
2PT Field Goals	3	10	30.0
3PT Field Goals	2	4	50.0
<b>Total Field Goals</b>	<b>5</b>	<b>14</b>	<b>35.7</b>

WSU : Period 4	Made	Att	Pct
Layups	3	3	100.0
Dunks	0	0	0
2PT Field Goals	3	15	20.0
3PT Field Goals	2	4	50.0
<b>Total Field Goals</b>	<b>5</b>	<b>19</b>	<b>26.3</b>