

FINAL SCORE

SMU



72

Wichita St.



67

February 19, 2020 • Charles Koch Arena (Devlin Court) - Wichita, Kan.

FINAL STATISTICS

Official Box Score
SMU vs Wichita St.
Game Totals -- Final Statistics
February 19, 2020 at Charles Koch Arena (Devlin Court) - Wichita, Kan.



SMU 72

No.	Player	S	Pts	FG	3FG	FT	OR	DR	TR	PF	A	TO	Blk	Stl	Min	+/-
04	BACON, AMBER	G	17	6-12	1-1	4-4	0	5	5	3	4	5	0	2	34	14
13	BRADLEY, REAGAN	G	13	4-8	2-4	3-5	0	6	6	3	7	5	1	2	39	7
14	BAYLISS, PAIGE	C	6	3-7	0-0	0-0	3	1	4	3	0	3	0	0	19	6
32	WHITE, KAYLA	G	16	6-9	2-3	2-3	2	1	3	1	4	3	0	1	29	-4
33	CASH, JOHNASIA	F	14	7-13	0-0	0-5	2	10	12	2	0	3	1	2	33	1
01	MATHIS, DESIRAE	G	1	0-1	0-1	1-2	0	1	1	1	0	2	0	0	18	10
02	WHITFIELD, ARIANA	G	3	1-3	1-2	0-2	1	2	3	1	0	1	0	0	16	-2
22	TSHIMANGA, FLORENCE	C	2	1-1	0-0	0-0	0	1	1	4	0	2	1	0	12	-7
TEAM							0	3	3	0		0				
TOTALS			72	28-54	6-11	10-21	8	30	38	18	15	24	3	7	200	

Shooting By Period

Period	FG	FG%	3FG	3FG%	FT	FT%
1st Qtr	8-15	53%	1-4	25%	0-0	0%
2nd Qtr	9-15	60%	0-0	0%	3-5	60%
3rd Qtr	5-13	38%	2-2	100%	2-7	29%
4th Qtr	6-11	55%	3-5	60%	5-9	56%
1st Half	17-30	57%	1-4	25%	3-5	60%
2nd Half	11-24	46%	5-7	71%	7-16	44%
Game	28-54	51.9%	6-11	54.5%	10-21	47.6%

Deadball Rebounds: 6,1

Last FG: 4th-01:03

Biggest Run: 9-0

Largest lead: By 14 at 2nd-04:56

Technical Fouls: #04 BACON @ 2nd - 00:30;

Wichita St. 67

No.	Player	S	Pts	FG	3FG	FT	OR	DR	TR	PF	A	TO	Blk	Stl	Min	+/-
02	MCCULLY, MARIAH	G	19	8-17	0-3	3-3	1	1	2	2	4	4	0	1	33	-1
12	BREMAUD, CARLA	G	14	4-9	4-8	2-2	2	2	4	1	1	3	0	1	29	-1
13	PRINCE, RAVEN	F	2	1-5	0-0	0-0	1	2	3	5	0	1	0	2	22	-6
23	BASTIN, SERAPHINE	G	8	4-10	0-2	0-0	1	5	6	4	7	3	1	0	28	-6
34	SMITH, SHYIA	F	0	0-4	0-2	0-0	1	4	5	4	0	2	2	1	31	-4
01	MCCARTY, DJ	G	4	0-1	0-0	4-4	1	3	4	2	4	0	0	1	13	5
05	REID, ASHLEY	G	0	0-2	0-2	0-0	0	0	0	1	1	1	0	0	10	-1
21	BREWER, MAYA	G	0	0-4	0-3	0-0	0	0	0	1	0	1	0	0	7	-9
24	COLBERT, TRAJATA	F	13	5-8	0-0	3-5	0	3	3	1	0	1	0	0	14	3
31	DANIELSSON, VENDELA	G	2	1-2	0-1	0-0	0	0	0	1	0	1	0	0	4	0
42	HENDERSON, ASIA	F	5	2-4	0-0	1-2	1	0	1	0	0	1	0	2	10	-5
TEAM							4	1	5	0		0				
TOTALS			67	25-66	4-21	13-16	12	21	33	22	17	18	3	8	200	

Shooting By Period

Period	FG	FG%	3FG	3FG%	FT	FT%
1st Qtr	4-19	21%	0-7	00%	0-0	0%
2nd Qtr	5-13	38%	1-4	25%	12-14	86%
3rd Qtr	12-18	67%	3-5	60%	1-2	50%
4th Qtr	4-16	25%	0-5	00%	0-0	0%
1st Half	9-32	28%	1-11	09%	12-14	86%
2nd Half	16-34	47%	3-10	30%	1-2	50%
Game	25-66	37.9%	4-21	19.0%	13-16	81.3%

Deadball Rebounds: 1,2

Last FG: 4th-02:21

Biggest Run: 11-0

Largest lead: By 7 at 3rd-00:02

Technical Fouls: None.

Game Notes:

Officials: Joseph Vaszily, Maggie Tieman, John Capolino
Attendance: 1359

Start Time: 07:35 PM ET

End Time: 09:36 PM ET

Game Duration: 2:01

Conference Game;

Score	1st	2nd	3rd	4th	TOT
SMU	17	21	14	20	72
WSU	8	23	28	8	67

SMU led for 25:26. WSU led for 12:56.

Game was tied for 1:38.

Times tied: 2 Lead Changes: 4

Points from	SMU	WSU
In the Paint	26	34
Off Turns	22	17
2nd Chance	6	14
Fast Break	12	10
Bench	6	24

Official Box Score
SMU vs Wichita St.
First Half Statistics Only
February 19, 2020 at Charles Koch Arena (Devlin Court) - Wichita, Kan.



SMU 38

No.	Player	S	Pts	FG	3FG	FT	OR	DR	TR	PF	A	TO	Blk	Stl	Min	+/-
01	MATHIS, DESIRAE	G	1	0-0	0-0	1-2	0	0	0	1	0	1	0	0	8	-2
13	BRADLEY, REAGAN	G	0	0-3	0-2	0-0	0	5	5	0	3	3	0	0	19	9
14	BAYLISS, PAIGE	C	4	2-3	0-0	0-0	0	1	1	3	0	2	0	0	7	10
22	TSHIMANGA, FLORENCE	C	2	1-1	0-0	0-0	0	1	1	3	0	2	1	0	7	-1
32	WHITE, KAYLA	G	7	3-6	1-2	0-0	1	0	1	1	4	2	0	1	18	5
33	CASH, JOHNASIA	F	14	7-11	0-0	0-1	1	5	6	2	0	1	0	1	20	7
02	WHITFIELD, ARIANA	G	0	0-0	0-0	0-0	0	0	0	0	0	0	0	0	4	0
04	BACON, AMBER	G	10	4-6	0-0	2-2	0	4	4	2	3	2	0	2	17	7
	TEAM		0	0-0	0-0	0-0	0	1	1	0	0	0	0	0	0	
TOTALS			38	17-30	1-4	3-5	2	17	19	12	10	13	1	4	100	

Shooting By Period

Period	FG	FG%	3FG	3FG%	FT	FT%
1st Qtr	8-15	53%	1-4	25%	0-0	0%
2nd Qtr	9-15	60%	0-0	0%	3-5	60%
1st Half	17-30	57%	1-4	25%	3-5	60%
Game	28-54	51.9%	6-11	54.5%	10-21	47.6%

Deadball Rebounds: 6,1

Last FG Half: SMU 2nd-00:01

Wichita St. 31

No.	Player	S	Pts	FG	3FG	FT	OR	DR	TR	PF	A	TO	Blk	Stl	Min	+/-
01	MCCARTY, DJ	G	4	0-1	0-0	4-4	1	2	3	2	3	0	0	1	9	6
02	MCCULLY, MARIAH	G	6	2-5	0-1	2-2	0	1	1	1	2	3	0	1	15	-5
05	REID, ASHLEY	G	0	0-2	0-2	0-0	0	0	0	1	1	1	0	0	6	-3
12	BREMAUD, CARLA	G	5	1-2	1-2	2-2	0	1	1	0	0	0	0	1	12	-2
13	PRINCE, RAVEN	F	0	0-2	0-0	0-0	1	0	1	1	0	0	0	0	9	-11
21	BREWER, MAYA	G	0	0-3	0-2	0-0	0	0	0	1	0	1	0	0	7	-7
23	BASTIN, SERAPHINE	G	4	2-8	0-2	0-0	0	1	1	2	1	1	0	0	12	-6
24	COLBERT, TRAJATA	F	5	1-2	0-0	3-4	0	3	3	0	0	0	0	0	5	5
31	DANIELSSON, VENDELA	G	2	1-2	0-1	0-0	0	0	0	1	0	1	0	0	4	0
34	SMITH, SHYIA	F	0	0-1	0-1	0-0	0	1	1	1	0	2	0	0	13	-7
42	HENDERSON, ASIA	F	5	2-4	0-0	1-2	1	0	1	0	0	1	0	2	10	-5
	TEAM		0	0-0	0-0	0-0	4	1	5	0	0	0	0	0	0	
TOTALS			31	9-32	1-11	12-14	7	10	17	10	7	10	0	5	100	

Shooting By Period

Period	FG	FG%	3FG	3FG%	FT	FT%
1st Qtr	4-19	21%	0-7	00%	0-0	0%
2nd Qtr	5-13	38%	1-4	25%	12-14	86%
1st Half	9-32	28%	1-11	09%	12-14	86%
Game	25-66	37.9%	4-21	19.0%	13-16	81.3%

Deadball Rebounds: 1,2

Last FG Half: WSU 2nd-01:35

Game Notes:

Officials: Joseph Vaszily, Maggie Tieman, John Capolino
Attendance: 1359

Start Time: 07:35 PM ET
End Time: 09:36 PM ET
Game Duration: 2:01
Conference Game;

Score	1st	2nd	3rd	4th	TOT
SMU	17	21	14	20	72
WSU	8	23	28	8	67

Points from (This Period)	SMU	WSU
In the Paint	18	12
Off Turns	14	5
2nd Chance	4	8
Fast Break	12	4
Bench	3	16

Official Box Score
SMU vs Wichita St.
First Quarter Statistics Only
February 19, 2020 at Charles Koch Arena (Devlin Court) - Wichita, Kan.



SMU 17

No.	Player	S	Pts	FG	3FG	FT	OR	DR	TR	PF	A	TO	Blk	Stl	Min	+/-
04	BACON, AMBER	G	2	1-1	0-0	0-0	0	1	1	0	0	0	0	0	8	9
13	BRADLEY, REAGAN	G	0	0-2	0-2	0-0	0	4	4	0	2	1	0	0	10	9
14	BAYLISS, PAIGE	C	2	1-2	0-0	0-0	0	1	1	2	0	2	0	0	6	8
32	WHITE, KAYLA	G	5	2-5	1-2	0-0	1	0	1	0	3	1	0	1	10	9
33	CASH, JOHNASIA	F	6	3-4	0-0	0-0	1	3	4	0	0	1	0	1	10	9
01	MATHIS, DESIRAE	G	0	0-0	0-0	0-0	0	0	0	0	0	0	0	0	0	0
02	WHITFIELD, ARIANA	G	0	0-0	0-0	0-0	0	0	0	0	0	0	0	0	2	0
22	TSHIMANGA, FLORENCE	C	2	1-1	0-0	0-0	0	1	1	1	0	2	1	0	4	1
TEAM							0	0	0	0		0				
TOTALS			17	8-15	1-4	0-0	2	10	12	3	5	7	1	2	50	

Shooting By Period

Period	FG	FG%	3FG	3FG%	FT	FT%
1st Qtr	8-15	53%	1-4	25%	0-0	0%
2nd Qtr	9-15	60%	0-0	0%	3-5	60%
1st Half	8-15	53%	1-4	25%	0-0	0%
1st Half	17-30	57%	1-4	25%	3-5	60%
Game	28-54	51.9%	6-11	54.5%	10-21	47.6%

Deadball Rebounds: 6,1

Wichita St. 8

No.	Player	S	Pts	FG	3FG	FT	OR	DR	TR	PF	A	TO	Blk	Stl	Min	+/-
02	MCCULLY, MARIAH	G	0	0-2	0-1	0-0	0	1	1	0	0	0	0	1	5	-7
12	BREMAUD, CARLA	G	0	0-1	0-1	0-0	0	0	0	0	0	0	0	1	7	-7
13	PRINCE, RAVEN	F	0	0-2	0-0	0-0	1	0	1	1	0	0	0	0	5	-7
23	BASTIN, SERAPHINE	G	2	1-5	0-1	0-0	0	0	0	1	1	1	0	0	6	-4
34	SMITH, SHYIA	F	0	0-0	0-0	0-0	0	0	0	1	0	1	0	0	10	-9
01	MCCARTY, DJ	G	0	0-1	0-0	0-0	0	0	0	0	1	0	0	0	2	0
05	REID, ASHLEY	G	0	0-2	0-2	0-0	0	0	0	0	1	0	0	0	4	-5
21	BREWER, MAYA	G	0	0-1	0-1	0-0	0	0	0	0	0	1	0	0	3	-2
24	COLBERT, TRAJATA	F	0	0-0	0-0	0-0	0	0	0	0	0	0	0	0	0	0
31	DANIELSSON, VENDELA	G	2	1-2	0-1	0-0	0	0	0	1	0	1	0	0	3	-2
42	HENDERSON, ASIA	F	4	2-3	0-0	0-0	0	0	0	0	0	0	0	1	5	-2
TEAM							4	1	5	0		0				
TOTALS			8	4-19	0-7	0-0	5	2	7	4	3	4	0	3	50	

Shooting By Period

Period	FG	FG%	3FG	3FG%	FT	FT%
1st Qtr	4-19	21%	0-7	00%	0-0	0%
2nd Qtr	5-13	38%	1-4	25%	12-14	86%
1st Half	4-19	21%	0-7	00%	0-0	0%
1st Half	9-32	28%	1-11	09%	12-14	86%
Game	25-66	37.9%	4-21	19.0%	13-16	81.3%

Deadball Rebounds: 1,2

Game Notes:

Officials: Joseph Vaszily, Maggie Tieman, John Capolino
Attendance: 1359

Start Time: 07:35 PM ET

End Time: 09:36 PM ET

Game Duration: 2:01

Conference Game;

Score	1st	2nd	3rd	4th	TOT
SMU	17	21	14	20	72
WSU	8	23	28	8	67

Points from (This Period)	SMU	WSU
In the Paint	8	6
Off Turns	6	2
2nd Chance	4	4
Fast Break	4	2
Bench	2	6

**Official Play-By-Play
SMU vs Wichita St.
First Quarter**

February 19, 2020 at Charles Koch Arena (Devlin Court) - Wichita, Kan.



Period 1

Starters:

SMU: 13 BRADLEY, REAGAN (G); 14 BAYLISS, PAIGE (C); 32 WHITE, KAYLA (G); 33 CASH, JOHNASIA (F); 4 BACON, AMBER (G);

Wichita St.: 2 MCCULLY, MARIAH (G); 12 BREMAUD, CARLA (G); 13 PRINCE, RAVEN (F); 23 BASTIN, SERAPHINE (G); 34 SMITH, SHYIA (F);

Time	VISITORS: SMU	Score	Margin	HOME: Wichita St.
09:50	MISSED 3PTR by BRADLEY, REAGAN			
09:46	REBOUND (OFF) by WHITE, KAYLA			
09:40	GOOD! JUMPER by BACON, AMBER	0-2	V 2	
09:21				TURNOVER (TRAVEL) by SMITH, SHYIA
09:07	MISSED JUMPER by CASH, JOHNASIA			
09:04				REBOUND (DEF) by MCCULLY, MARIAH
09:00		2-2	T	GOOD! JUMPER by BASTIN, SERAPHINE [FB]
08:50	MISSED 3PTR by WHITE, KAYLA			
08:46	REBOUND (OFF) by CASH, JOHNASIA			
08:45	GOOD! LAYUP by CASH, JOHNASIA	2-4	V 2	
08:30				FOUL (OFF) by BASTIN, SERAPHINE
08:30				TURNOVER (OFFENSIVE) by BASTIN, SERAPHINE
08:07	GOOD! LAYUP by CASH, JOHNASIA	2-6	V 4	
08:07	ASSIST by BRADLEY, REAGAN			
07:47				MISSED 3PTR by BREMAUD, CARLA
07:45	REBOUND (DEF) by BRADLEY, REAGAN			
07:45				FOUL (PERSONAL) by PRINCE, RAVEN
07:37	FOUL (OFF) by BAYLISS, PAIGE			
07:37	TURNOVER (OFFENSIVE) by BAYLISS, PAIGE			
07:21				MISSED LAYUP by MCCULLY, MARIAH
07:19	REBOUND (DEF) by BAYLISS, PAIGE			
07:19	TURNOVER (LOSTBALL) by BAYLISS, PAIGE			
07:19				STEAL by MCCULLY, MARIAH
07:19	SUB OUT: BAYLISS, PAIGE			
07:19	SUB IN: TSHIMANGA, FLORENCE			
07:13				MISSED JUMPER by BASTIN, SERAPHINE
07:10	REBOUND (DEF) by CASH, JOHNASIA			
07:09	TURNOVER (BADPASS) by CASH, JOHNASIA			
07:09				STEAL by BREMAUD, CARLA
07:05				MISSED LAYUP by BASTIN, SERAPHINE
07:01	REBOUND (DEF) by BACON, AMBER			
06:42	MISSED JUMPER by WHITE, KAYLA			
06:40				REBOUND (DEF) by TEAM
06:19				MISSED LAYUP by PRINCE, RAVEN
06:19	BLOCK by TSHIMANGA, FLORENCE			
06:18	REBOUND (DEF) by TSHIMANGA, FLORENCE			
06:18	TURNOVER (OTHER) by TSHIMANGA, FLORENCE			
06:07				MISSED LAYUP by BASTIN, SERAPHINE
06:00				REBOUND (OFF) by PRINCE, RAVEN
06:00				MISSED LAYUP by PRINCE, RAVEN
06:00	REBOUND (DEF) by BRADLEY, REAGAN			
05:59				SUB OUT: BASTIN, SERAPHINE
05:59				SUB IN: REID, ASHLEY
05:49	GOOD! 3PTR by WHITE, KAYLA	2-9	V 7	
05:49	ASSIST by BRADLEY, REAGAN			
05:24				MISSED 3PTR by MCCULLY, MARIAH
05:20	REBOUND (DEF) by CASH, JOHNASIA			
05:04				SUB OUT: MCCULLY, MARIAH
05:04				SUB OUT: PRINCE, RAVEN
05:04				SUB IN: BREWER, MAYA
05:04				SUB IN: HENDERSON, ASIA
04:57	MISSED 3PTR by BRADLEY, REAGAN			
04:55	REBOUND (OFF) by TEAM			
04:55				FOUL (PERSONAL) by SMITH, SHYIA
04:55				
04:51	TURNOVER (BADPASS) by BRADLEY, REAGAN			
04:36				MISSED 3PTR by REID, ASHLEY
04:36				REBOUND (OFF) by TEAM
04:33		4-9	V 5	GOOD! JUMPER by HENDERSON, ASIA [PNT]
04:33				ASSIST by REID, ASHLEY
04:18	TURNOVER (TRAVEL) by TSHIMANGA, FLORENCE			
04:18	SUB OUT: TSHIMANGA, FLORENCE			
04:18	SUB IN: BAYLISS, PAIGE			
04:03				TURNOVER (BADPASS) by BREWER, MAYA
04:03	STEAL by WHITE, KAYLA			
03:58	GOOD! LAYUP by CASH, JOHNASIA [FB]	4-11	V 7	
03:58	ASSIST by WHITE, KAYLA			
03:28				MISSED 3PTR by REID, ASHLEY
03:25	REBOUND (DEF) by BRADLEY, REAGAN			
03:15				SUB OUT: BREMAUD, CARLA

Time	VISITORS: SMU	Score	Margin	HOME: Wichita St.
03:15				SUB IN: DANIELSSON, VENDELA
03:06				FOUL (PERSONAL) by DANIELSSON, VENDELA
02:55	MISSED JUMPER by BAYLISS, PAIGE			
02:54				REBOUND (DEF) by TEAM
02:35				TURNOVER (BADPASS) by DANIELSSON, VENDELA
02:35	STEAL by CASH, JOHNASIA			
02:30	GOOD! LAYUP by WHITE, KAYLA [FB]	4-13	V 9	
02:08				MISSED 3PTR by BREWER, MAYA
02:05	REBOUND (DEF) by CASH, JOHNASIA			
01:54	MISSED JUMPER by WHITE, KAYLA			
01:51				REBOUND (DEF) by TEAM
01:51				SUB OUT: REID, ASHLEY
01:51				SUB OUT: BREWER, MAYA
01:51				SUB IN: MCCARTY, DJ
01:51				SUB IN: BASTIN, SERAPHINE
01:51	SUB OUT: BACON, AMBER			
01:51	SUB IN: WHITFIELD, ARIANA			
01:40		6-13	V 7	GOOD! LAYUP by HENDERSON, ASIA
01:40				ASSIST by BASTIN, SERAPHINE
01:09	GOOD! JUMPER by BAYLISS, PAIGE	6-15	V 9	
01:09	ASSIST by WHITE, KAYLA			
00:54				MISSED 3PTR by DANIELSSON, VENDELA
00:53				REBOUND (OFF) by TEAM
00:53	FOUL (PERSONAL) by BAYLISS, PAIGE			
00:53	SUB OUT: BAYLISS, PAIGE			
00:53	SUB IN: TSHIMANGA, FLORENCE			
00:53		8-15	V 7	GOOD! LAYUP by DANIELSSON, VENDELA
00:53				ASSIST by MCCARTY, DJ
00:39	TURNOVER (BADPASS) by WHITE, KAYLA			
00:39				STEAL by HENDERSON, ASIA
00:25				MISSED JUMPER by HENDERSON, ASIA
00:23				REBOUND (OFF) by TEAM
00:20	FOUL (PERSONAL) by TSHIMANGA, FLORENCE			
00:15				MISSED JUMPER by MCCARTY, DJ
00:11	REBOUND (DEF) by BRADLEY, REAGAN			
00:05	GOOD! JUMPER by TSHIMANGA, FLORENCE	8-17	V 9	
00:05	ASSIST by WHITE, KAYLA			
00:00				MISSED 3PTR by BASTIN, SERAPHINE
00:00				REBOUND (OFF) by TEAM

SMU 17, Wichita St. 8

Points from (This Period)	SMU	WSU
In the Paint	8	6
Off Turns	6	2
2nd Chance	4	4
Fast Break	4	2
Bench	2	6

Official Box Score
SMU vs Wichita St.
Second Quarter Statistics Only
February 19, 2020 at Charles Koch Arena (Devlin Court) - Wichita, Kan.



SMU 21

No.	Player	S	Pts	FG	3FG	FT	OR	DR	TR	PF	A	TO	Blk	Stl	Min	+/-
04	BACON, AMBER	G	8	3-5	0-0	2-2	0	3	3	2	3	2	0	2	9	-2
13	BRADLEY, REAGAN	G	0	0-1	0-0	0-0	0	1	1	0	1	2	0	0	9	0
14	BAYLISS, PAIGE	C	2	1-1	0-0	0-0	0	0	0	1	0	0	0	0	1	2
32	WHITE, KAYLA	G	2	1-1	0-0	0-0	0	0	0	1	1	1	0	0	8	-4
33	CASH, JOHNASIA	F	8	4-7	0-0	0-1	0	2	2	2	0	0	0	0	10	-2
01	MATHIS, DESIRAE	G	1	0-0	0-0	1-2	0	0	0	1	0	1	0	0	8	-2
02	WHITFIELD, ARIANA	G	0	0-0	0-0	0-0	0	0	0	0	0	0	0	0	2	0
22	TSHIMANGA, FLORENCE	C	0	0-0	0-0	0-0	0	0	0	2	0	0	0	0	3	-2
TEAM							0	1	1	0		0				
TOTALS			21	9-15	0-0	3-5	0	7	7	9	5	6	0	2	50	

Shooting By Period

Period	FG	FG%	3FG	3FG%	FT	FT%
3rd Qtr	5-13	38%	2-2	100%	2-7	29%
4th Qtr	6-11	55%	3-5	60%	5-9	56%
2nd Half	9-15	60%	0-0	0%	3-5	60%
2nd Half	11-24	46%	5-7	71%	7-16	44%
Game	28-54	51.9%	6-11	54.5%	10-21	47.6%

Deadball Rebounds: 6,1

Wichita St. 23

No.	Player	S	Pts	FG	3FG	FT	OR	DR	TR	PF	A	TO	Blk	Stl	Min	+/-
02	MCCULLY, MARIAH	G	6	2-3	0-0	2-2	0	0	0	1	2	3	0	0	10	2
12	BREMAUD, CARLA	G	5	1-1	1-1	2-2	0	1	1	0	0	0	0	0	5	5
13	PRINCE, RAVEN	F	0	0-0	0-0	0-0	0	0	0	0	0	0	0	0	4	-4
23	BASTIN, SERAPHINE	G	2	1-3	0-1	0-0	0	1	1	1	0	0	0	0	6	-2
34	SMITH, SHYIA	F	0	0-1	0-1	0-0	0	1	1	0	0	1	0	0	3	2
01	MCCARTY, DJ	G	4	0-0	0-0	4-4	1	2	3	2	2	0	0	1	7	6
05	REID, ASHLEY	G	0	0-0	0-0	0-0	0	0	0	1	0	1	0	0	2	2
21	BREWER, MAYA	G	0	0-2	0-1	0-0	0	0	0	1	0	0	0	0	4	-5
24	COLBERT, TRAJATA	F	5	1-2	0-0	3-4	0	3	3	0	0	0	0	0	5	5
31	DANIELSSON, VENDELA	G	0	0-0	0-0	0-0	0	0	0	0	0	0	0	0	1	2
42	HENDERSON, ASIA	F	1	0-1	0-0	1-2	1	0	1	0	0	1	0	1	5	-3
TEAM							0	0	0	0		0				
TOTALS			23	5-13	1-4	12-14	2	8	10	6	4	6	0	2	50	

Shooting By Period

Period	FG	FG%	3FG	3FG%	FT	FT%
3rd Qtr	12-18	67%	3-5	60%	1-2	50%
4th Qtr	4-16	25%	0-5	00%	0-0	0%
2nd Half	5-13	38%	1-4	25%	12-14	86%
2nd Half	16-34	47%	3-10	30%	1-2	50%
Game	25-66	37.9%	4-21	19.0%	13-16	81.3%

Deadball Rebounds: 1,2

Game Notes:

Officials: Joseph Vaszily, Maggie Tieman, John Capolino
Attendance: 1359

Start Time: 07:35 PM ET

End Time: 09:36 PM ET

Game Duration: 2:01

Conference Game;

Score	1st	2nd	3rd	4th	TOT
SMU	17	21	14	20	72
WSU	8	23	28	8	67

Points from (This Period)	SMU	WSU
In the Paint	10	6
Off Turns	8	3
2nd Chance	0	4
Fast Break	8	2
Bench	1	10

**Official Play-By-Play
SMU vs Wichita St.
Second Quarter**

February 19, 2020 at Charles Koch Arena (Devlin Court) - Wichita, Kan.



Period 2

Starters:

SMU: 13 BRADLEY, REAGAN (G); 14 BAYLISS, PAIGE (C); 32 WHITE, KAYLA (G); 33 CASH, JOHNASIA (F); 4 BACON, AMBER (G);

Wichita St.: 2 MCCULLY, MARIAH (G); 12 BREMAUD, CARLA (G); 13 PRINCE, RAVEN (F); 23 BASTIN, SERAPHINE (G); 34 SMITH, SHYIA (F);

Time	VISITORS: SMU	Score	Margin	HOME: Wichita St.
10:00				SUB OUT: DANIELSSON, VENDELA
10:00				SUB IN: MCCULLY, MARIAH
09:55				MISSED JUMPER by MCCULLY, MARIAH
09:51	REBOUND (DEF) by TEAM			
09:45	TURNOVER (BADPASS) by BRADLEY, REAGAN			
09:45				STEAL by HENDERSON, ASIA
09:36				MISSED JUMPER by BASTIN, SERAPHINE
09:31	REBOUND (DEF) by CASH, JOHNASIA			
09:12	TURNOVER (BADPASS) by BRADLEY, REAGAN			
09:12	SUB OUT: BRADLEY, REAGAN			
09:12	SUB IN: BACON, AMBER			
08:59				FOUL (OFF) by MCCULLY, MARIAH
08:59				TURNOVER (OFFENSIVE) by MCCULLY, MARIAH
08:34	MISSED LAYUP by CASH, JOHNASIA			
08:31				REBOUND (DEF) by SMITH, SHYIA
08:24				MISSED 3PTR by SMITH, SHYIA
08:20				REBOUND (OFF) by MCCARTY, DJ
08:20	FOUL (PERSONAL) by TSHIMANGA, FLORENCE			
08:20	SUB OUT: WHITFIELD, ARIANA			
08:20	SUB IN: MATHIS, DESIRAE			
08:20				SUB OUT: BASTIN, SERAPHINE
08:20				SUB IN: DANIELSSON, VENDELA
08:20		9-17	V 8	GOOD! FT by MCCARTY, DJ
08:20		10-17	V 7	GOOD! FT by MCCARTY, DJ
08:09	TURNOVER (BADPASS) by WHITE, KAYLA			
08:09				STEAL by MCCARTY, DJ
08:06	FOUL (PERSONAL) by WHITE, KAYLA			
08:06	SUB OUT: WHITE, KAYLA			
08:06	SUB IN: BRADLEY, REAGAN			
08:06		11-17	V 6	GOOD! FT by MCCULLY, MARIAH [FB]
08:06		12-17	V 5	GOOD! FT by MCCULLY, MARIAH [FB]
07:57	TURNOVER (TRAVEL) by MATHIS, DESIRAE			
07:44				TURNOVER (TRAVEL) by MCCULLY, MARIAH
07:33	GOOD! LAYUP by CASH, JOHNASIA	12-19	V 7	
07:33	ASSIST by BACON, AMBER			
07:23				TURNOVER (BADPASS) by SMITH, SHYIA
07:23	STEAL by BACON, AMBER			
07:19				SUB OUT: DANIELSSON, VENDELA
07:19				SUB OUT: SMITH, SHYIA
07:19				SUB IN: PRINCE, RAVEN
07:19				SUB IN: BREWER, MAYA
07:12	MISSED JUMPER by CASH, JOHNASIA			
07:09				REBOUND (DEF) by MCCARTY, DJ
07:04				MISSED LAYUP by BREWER, MAYA
07:01				REBOUND (OFF) by HENDERSON, ASIA
07:01	SUB OUT: CASH, JOHNASIA			
07:01	SUB IN: BAYLISS, PAIGE			
07:01	FOUL (PERSONAL) by TSHIMANGA, FLORENCE			
07:01	SUB OUT: TSHIMANGA, FLORENCE			
07:01	SUB IN: CASH, JOHNASIA			
06:59		14-19	V 5	GOOD! LAYUP by MCCULLY, MARIAH
06:59				ASSIST by MCCARTY, DJ
06:46				FOUL (PERSONAL) by MCCARTY, DJ
06:35	GOOD! LAYUP by BAYLISS, PAIGE	14-21	V 7	
06:35	ASSIST by BACON, AMBER			
06:15				TURNOVER (TRAVEL) by HENDERSON, ASIA
06:15				SUB OUT: MCCARTY, DJ
06:15				SUB IN: BASTIN, SERAPHINE
06:00	GOOD! LAYUP by CASH, JOHNASIA	14-23	V 9	
06:00	ASSIST by BACON, AMBER			
05:51	FOUL (PERSONAL) by BAYLISS, PAIGE			
05:51	SUB OUT: BAYLISS, PAIGE			
05:51	SUB IN: WHITE, KAYLA			
05:51				MISSED FT by HENDERSON, ASIA
05:51				REBOUND (OFF) by TEAM
05:51		15-23	V 8	GOOD! FT by HENDERSON, ASIA
05:45	GOOD! JUMPER by WHITE, KAYLA [FB]	15-25	V 10	
05:28				MISSED LAYUP by HENDERSON, ASIA
05:25	REBOUND (DEF) by BACON, AMBER			
05:21	GOOD! JUMPER by BACON, AMBER [FB]	15-27	V 12	

Time	VISITORS: SMU	Score	Margin	HOME: Wichita St.
05:19				TIMEOUT 30SEC
05:19				SUB OUT: HENDERSON, ASIA
05:19				SUB IN: COLBERT, TRAJATA
05:05				MISSED 3PTR by BREWER, MAYA
05:03	REBOUND (DEF) by BRADLEY, REAGAN			
04:56	GOOD! JUMPER by BACON, AMBER	15-29	V 14	
04:56	ASSIST by BRADLEY, REAGAN			
04:41		17-29	V 12	GOOD! LAYUP by MCCULLY, MARIAH [PNT]
04:34				FOUL (PERSONAL) by BREWER, MAYA
04:34				SUB OUT: BREWER, MAYA
04:34				SUB IN: BREMAUD, CARLA
04:28	TURNOVER (LOSTBALL) by BACON, AMBER			
04:13	FOUL (PERSONAL) by CASH, JOHNASIA			
04:13		18-29	V 11	GOOD! FT by COLBERT, TRAJATA
04:13				MISSED FT by COLBERT, TRAJATA
04:12	REBOUND (DEF) by CASH, JOHNASIA			
03:58	MISSED JUMPER by BACON, AMBER			
03:55				REBOUND (DEF) by BASTIN, SERAPHINE
03:48				TURNOVER (BADPASS) by MCCULLY, MARIAH
03:48				SUB OUT: PRINCE, RAVEN
03:48				SUB IN: MCCARTY, DJ
03:39	GOOD! LAYUP by CASH, JOHNASIA	18-31	V 13	
03:39	ASSIST by WHITE, KAYLA			
03:24		20-31	V 11	GOOD! LAYUP by COLBERT, TRAJATA
03:24				ASSIST by MCCULLY, MARIAH
03:12	MISSED JUMPER by CASH, JOHNASIA			
03:12				REBOUND (DEF) by MCCARTY, DJ
03:12	FOUL (PERSONAL) by MATHIS, DESIRAE			
03:12		21-31	V 10	GOOD! FT by MCCARTY, DJ
03:12		22-31	V 9	GOOD! FT by MCCARTY, DJ
02:59	MISSED LAYUP by BRADLEY, REAGAN			
02:56				REBOUND (DEF) by COLBERT, TRAJATA
02:37				MISSED 3PTR by BASTIN, SERAPHINE
02:34	REBOUND (DEF) by BACON, AMBER			
02:31	MISSED LAYUP by BACON, AMBER			
02:27				REBOUND (DEF) by BREMAUD, CARLA
02:23		24-31	V 7	GOOD! JUMPER by BASTIN, SERAPHINE
02:23				ASSIST by MCCARTY, DJ
02:01	GOOD! LAYUP by CASH, JOHNASIA	24-33	V 9	
02:01				FOUL (PERSONAL) by BASTIN, SERAPHINE
02:01				SUB OUT: BASTIN, SERAPHINE
02:01				SUB IN: REID, ASHLEY
02:01	MISSED FT by CASH, JOHNASIA			
02:00				REBOUND (DEF) by COLBERT, TRAJATA
01:35		27-33	V 6	GOOD! 3PTR by BREMAUD, CARLA
01:35				ASSIST by MCCULLY, MARIAH
01:17				FOUL (PERSONAL) by MCCARTY, DJ
01:17	GOOD! FT by MATHIS, DESIRAE	27-34	V 7	
01:17	MISSED FT by MATHIS, DESIRAE			
01:16				REBOUND (DEF) by COLBERT, TRAJATA
00:57	FOUL (PERSONAL) by CASH, JOHNASIA			
00:57				SUB OUT: MCCARTY, DJ
00:57				SUB IN: BREWER, MAYA
00:57		28-34	V 6	GOOD! FT by COLBERT, TRAJATA
00:57		29-34	V 5	GOOD! FT by COLBERT, TRAJATA
00:43	FOUL (OFF) by BACON, AMBER			
00:43	TURNOVER (OFFENSIVE) by BACON, AMBER			
00:32				TURNOVER (LOSTBALL) by REID, ASHLEY
00:32	STEAL by BACON, AMBER			
00:30				FOUL (PERSONAL) by REID, ASHLEY
00:30	GOOD! FT by BACON, AMBER [FB]	29-35	V 6	
00:30	GOOD! FT by BACON, AMBER [FB]	29-36	V 7	
00:30	FOUL (TECH) by BACON, AMBER			
00:30		30-36	V 6	GOOD! FT by BREMAUD, CARLA
00:30		31-36	V 5	GOOD! FT by BREMAUD, CARLA
00:05				MISSED LAYUP by COLBERT, TRAJATA
00:02	REBOUND (DEF) by BACON, AMBER			
00:01	GOOD! JUMPER by BACON, AMBER [FB]	31-38	V 7	

SMU 38, Wichita St. 31

Points from (This Period)	SMU	WSU
In the Paint	10	6
Off Turns	8	3
2nd Chance	0	4
Fast Break	8	2
Bench	1	10

Official Box Score
SMU vs Wichita St.
Second Half Statistics Only
February 19, 2020 at Charles Koch Arena (Devlin Court) - Wichita, Kan.



SMU 34

No.	Player	S	Pts	FG	3FG	FT	OR	DR	TR	PF	A	TO	Blk	Stl	Min	+/-
01	MATHIS, DESIRAE	G	0	0-1	0-1	0-0	0	1	1	0	0	1	0	0	10	12
13	BRADLEY, REAGAN	G	13	4-5	2-2	3-5	0	1	1	3	4	2	1	2	20	-2
14	BAYLISS, PAIGE	C	2	1-4	0-0	0-0	3	0	3	0	0	1	0	0	11	-4
22	TSHIMANGA, FLORENCE	C	0	0-0	0-0	0-0	0	0	0	1	0	0	0	0	5	-6
32	WHITE, KAYLA	G	9	3-3	1-1	2-3	1	1	2	0	0	1	0	0	10	-9
33	CASH, JOHNASIA	F	0	0-2	0-0	0-4	1	5	6	0	0	2	1	1	13	-6
02	WHITFIELD, ARIANA	G	3	1-3	1-2	0-2	1	2	3	1	0	1	0	0	13	-2
04	BACON, AMBER	G	7	2-6	1-1	2-2	0	1	1	1	1	3	0	0	17	7
	TEAM		0	0-0	0-0	0-0	0	2	2	0	0	0	0	0	0	
TOTALS			34	11-24	5-7	7-16	6	13	19	6	5	11	2	3	100	

Shooting By Period

Period	FG	FG%	3FG	3FG%	FT	FT%
3rd Qtr	5-13	38%	2-2	100%	2-7	29%
4th Qtr	6-11	55%	3-5	60%	5-9	56%
2nd Half	11-24	46%	5-7	71%	7-16	44%
Game	28-54	51.9%	6-11	54.5%	10-21	47.6%

Deadball Rebounds: 6,1

Last FG Half: SMU 4th-01:03

Wichita St. 36

No.	Player	S	Pts	FG	3FG	FT	OR	DR	TR	PF	A	TO	Blk	Stl	Min	+/-
01	MCCARTY, DJ	G	0	0-0	0-0	0-0	0	1	1	0	1	0	0	0	4	-1
02	MCCULLY, MARIAH	G	13	6-12	0-2	1-1	1	0	1	1	2	1	0	0	18	4
05	REID, ASHLEY	G	0	0-0	0-0	0-0	0	0	0	0	0	0	0	0	4	2
12	BREMAUD, CARLA	G	9	3-7	3-6	0-0	2	1	3	1	1	3	0	0	17	1
13	PRINCE, RAVEN	F	2	1-3	0-0	0-0	0	2	2	4	0	1	0	2	14	5
21	BREWER, MAYA	G	0	0-1	0-1	0-0	0	0	0	0	0	0	0	0	0	-2
23	BASTIN, SERAPHINE	G	4	2-2	0-0	0-0	1	4	5	2	6	2	1	0	16	0
24	COLBERT, TRAJATA	F	8	4-6	0-0	0-1	0	0	0	1	0	1	0	0	8	-2
31	DANIELSSON, VENDELA	G	0	0-0	0-0	0-0	0	0	0	0	0	0	0	0	0	0
34	SMITH, SHYIA	F	0	0-3	0-1	0-0	1	3	4	3	0	0	2	1	18	3
42	HENDERSON, ASIA	F	0	0-0	0-0	0-0	0	0	0	0	0	0	0	0	0	0
	TEAM		0	0-0	0-0	0-0	0	0	0	0	0	0	0	0	0	
TOTALS			36	16-34	3-10	1-2	5	11	16	12	10	8	3	3	100	

Shooting By Period

Period	FG	FG%	3FG	3FG%	FT	FT%
3rd Qtr	12-18	67%	3-5	60%	1-2	50%
4th Qtr	4-16	25%	0-5	00%	0-0	0%
2nd Half	16-34	47%	3-10	30%	1-2	50%
Game	25-66	37.9%	4-21	19.0%	13-16	81.3%

Deadball Rebounds: 1,2

Last FG Half: WSU 4th-02:21

Game Notes:

Officials: Joseph Vaszily, Maggie Tieman, John Capolino
Attendance: 1359

Start Time: 07:35 PM ET

End Time: 09:36 PM ET

Game Duration: 2:01

Conference Game;

Score	1st	2nd	3rd	4th	TOT
SMU	17	21	14	20	72
WSU	8	23	28	8	67

Points from (This Period)	SMU	WSU
In the Paint	8	22
Off Turns	8	12
2nd Chance	2	6
Fast Break	0	6
Bench	3	8

Official Box Score
SMU vs Wichita St.
Third Quarter Statistics Only
February 19, 2020 at Charles Koch Arena (Devlin Court) - Wichita, Kan.



SMU 34

No.	Player	S	Pts	FG	3FG	FT	OR	DR	TR	PF	A	TO	Blk	Stl	Min	+/-
04	BACON, AMBER	G	0	0-2	0-0	0-0	0	0	0	0	0	3	0	0	7	-5
13	BRADLEY, REAGAN	G	0	0-0	0-0	0-0	0	0	0	1	3	0	0	0	10	-14
14	BAYLISS, PAIGE	C	2	1-4	0-0	0-0	3	0	3	0	0	1	0	0	8	-11
32	WHITE, KAYLA	G	9	3-3	1-1	2-3	1	0	1	0	0	1	0	0	7	-11
33	CASH, JOHNASIA	F	0	0-2	0-0	0-4	0	3	3	0	0	0	0	1	6	-11
01	MATHIS, DESIRAE	G	0	0-0	0-0	0-0	0	0	0	0	0	0	0	0	0	0
02	WHITFIELD, ARIANA	G	3	1-2	1-1	0-0	0	0	0	0	0	0	0	0	6	-12
22	TSHIMANGA, FLORENCE	C	0	0-0	0-0	0-0	0	0	0	1	0	0	0	0	5	-6
TEAM							0	1	1	0		0				
TOTALS			14	5-13	2-2	2-7	4	4	8	2	3	5	0	1	50	

Shooting By Period

Period	FG	FG%	3FG	3FG%	FT	FT%
2nd Half	0-0	0%	0-0	0%	0-0	0%
Game	28-54	51.9%	6-11	54.5%	10-21	47.6%

Deadball Rebounds: 6,1

Wichita St. 36

No.	Player	S	Pts	FG	3FG	FT	OR	DR	TR	PF	A	TO	Blk	Stl	Min	+/-
02	MCCULLY, MARIAH	G	7	3-3	0-0	1-1	1	0	1	0	1	0	0	0	10	14
12	BREMAUD, CARLA	G	9	3-5	3-4	0-0	1	0	1	0	0	1	0	0	9	13
13	PRINCE, RAVEN	F	2	1-3	0-0	0-0	0	2	2	3	0	1	0	2	8	11
23	BASTIN, SERAPHINE	G	4	2-2	0-0	0-0	0	1	1	0	6	1	1	0	9	12
34	SMITH, SHYIA	F	0	0-2	0-1	0-0	1	3	4	1	0	0	2	1	10	14
01	MCCARTY, DJ	G	0	0-0	0-0	0-0	0	0	0	0	1	0	0	0	1	1
05	REID, ASHLEY	G	0	0-0	0-0	0-0	0	0	0	0	0	0	0	0	1	2
21	BREWER, MAYA	G	0	0-0	0-0	0-0	0	0	0	0	0	0	0	0	0	0
24	COLBERT, TRAJATA	F	6	3-3	0-0	0-1	0	0	0	0	0	0	0	0	2	3
31	DANIELSSON, VENDELA	G	0	0-0	0-0	0-0	0	0	0	0	0	0	0	0	0	0
42	HENDERSON, ASIA	F	0	0-0	0-0	0-0	0	0	0	0	0	0	0	0	0	0
TEAM							0	0	0	0		0				
TOTALS			28	12-18	3-5	1-2	3	6	9	4	8	3	3	3	50	

Shooting By Period

Period	FG	FG%	3FG	3FG%	FT	FT%
2nd Half	0-0	0%	0-0	0%	0-0	0%
Game	25-66	37.9%	4-21	19.0%	13-16	81.3%

Deadball Rebounds: 1,2

Game Notes:

Officials: Joseph Vaszily, Maggie Tieman, John Capolino
Attendance: 1359

Start Time: 07:35 PM ET
End Time: 09:36 PM ET
Game Duration: 2:01
Conference Game;

Score	1st	2nd	3rd	4th	TOT
SMU	17	21	14	20	72
WSU	8	23	28	8	67

Points from (This Period)	SMU	WSU
In the Paint	4	16
Off Turns	2	8
2nd Chance	2	4
Fast Break	0	6
Bench	3	6

**Official Play-By-Play
SMU vs Wichita St.
Third Quarter**

February 19, 2020 at Charles Koch Arena (Devlin Court) - Wichita, Kan.



Period 3

Starters:

SMU: 13 BRADLEY, REAGAN (G); 14 BAYLISS, PAIGE (C); 32 WHITE, KAYLA (G); 33 CASH, JOHNASIA (F); 4 BACON, AMBER (G);

Wichita St.: 2 MCCULLY, MARIAH (G); 12 BREMAUD, CARLA (G); 13 PRINCE, RAVEN (F); 23 BASTIN, SERAPHINE (G); 34 SMITH, SHYIA (F);

Time	VISITORS: SMU	Score	Margin	HOME: Wichita St.
10:00				SUB OUT: REID, ASHLEY
10:00				SUB OUT: BREWER, MAYA
10:00				SUB OUT: COLBERT, TRAJATA
10:00				SUB IN: PRINCE, RAVEN
10:00				SUB IN: BASTIN, SERAPHINE
10:00				SUB IN: SMITH, SHYIA
10:00	SUB OUT: MATHIS, DESIRAE			
10:00	SUB IN: BAYLISS, PAIGE			
09:52				MISSED 3PTR by SMITH, SHYIA
09:51	REBOUND (DEF) by TEAM			
09:38	TURNOVER (BADPASS) by BACON, AMBER			
09:38				STEAL by PRINCE, RAVEN
09:28				TURNOVER (TRAVEL) by PRINCE, RAVEN
09:12	GOOD! LAYUP by WHITE, KAYLA	31-40	V 9	
08:50		33-40	V 7	GOOD! LAYUP by PRINCE, RAVEN
08:50				ASSIST by BASTIN, SERAPHINE
08:33				FOUL (PERSONAL) by PRINCE, RAVEN
08:33	MISSED FT by CASH, JOHNASIA			
08:33	REBOUND (OFF) by TEAM			
08:33	MISSED FT by CASH, JOHNASIA			
08:32				REBOUND (DEF) by SMITH, SHYIA
08:19				MISSED JUMPER by PRINCE, RAVEN
08:14				REBOUND (OFF) by BREMAUD, CARLA
08:13				MISSED JUMPER by BREMAUD, CARLA
08:11	REBOUND (DEF) by CASH, JOHNASIA			
08:08	GOOD! JUMPER by WHITE, KAYLA	33-42	V 9	
08:08	ASSIST by BRADLEY, REAGAN			
07:53				MISSED LAYUP by SMITH, SHYIA
07:49	REBOUND (DEF) by CASH, JOHNASIA			
07:45	MISSED LAYUP by BACON, AMBER			
07:45				BLOCK by BASTIN, SERAPHINE
07:40				REBOUND (DEF) by BASTIN, SERAPHINE
07:39		36-42	V 6	GOOD! 3PTR by BREMAUD, CARLA [FB]
07:39				ASSIST by BASTIN, SERAPHINE
07:22				FOUL (PERSONAL) by PRINCE, RAVEN
07:22	SUB OUT: BACON, AMBER			
07:22	SUB IN: WHITFIELD, ARIANA			
07:22	MISSED FT by CASH, JOHNASIA			
07:22	REBOUND (OFF) by TEAM			
07:22	MISSED FT by CASH, JOHNASIA			
07:21				REBOUND (DEF) by PRINCE, RAVEN
07:10		38-42	V 4	GOOD! LAYUP by BASTIN, SERAPHINE
06:53	MISSED JUMPER by BAYLISS, PAIGE			
06:50	REBOUND (OFF) by BAYLISS, PAIGE			
06:49	MISSED JUMPER by BAYLISS, PAIGE			
06:47				REBOUND (DEF) by SMITH, SHYIA
06:40				TURNOVER (BADPASS) by BREMAUD, CARLA
06:40	STEAL by CASH, JOHNASIA			
06:22	MISSED JUMPER by WHITFIELD, ARIANA			
06:19				REBOUND (DEF) by PRINCE, RAVEN
06:00		41-42	V 1	GOOD! 3PTR by BREMAUD, CARLA
06:00				ASSIST by BASTIN, SERAPHINE
05:29	MISSED LAYUP by CASH, JOHNASIA			
05:29				BLOCK by SMITH, SHYIA
05:25				REBOUND (DEF) by SMITH, SHYIA
05:23		43-42	H 1	GOOD! LAYUP by MCCULLY, MARIAH [FB]
05:23	FOUL (PERSONAL) by BRADLEY, REAGAN			
05:23	SUB OUT: WHITE, KAYLA			
05:23	SUB OUT: CASH, JOHNASIA			
05:23	SUB IN: BACON, AMBER			
05:23	SUB IN: TSHIMANGA, FLORENCE			
05:23		44-42	H 2	GOOD! FT by MCCULLY, MARIAH [FB]
05:03	GOOD! 3PTR by WHITFIELD, ARIANA	44-45	V 1	
05:03	ASSIST by BRADLEY, REAGAN			
04:42		47-45	H 2	GOOD! 3PTR by BREMAUD, CARLA
04:42				ASSIST by BASTIN, SERAPHINE
04:18	MISSED JUMPER by BACON, AMBER			
04:15	REBOUND (OFF) by BAYLISS, PAIGE			
04:14	MISSED JUMPER by BAYLISS, PAIGE			
04:14				BLOCK by SMITH, SHYIA

Time	VISITORS: SMU	Score	Margin	HOME: Wichita St.
04:07	REBOUND (OFF) by BAYLISS, PAIGE			
04:07	GOOD! LAYUP by BAYLISS, PAIGE	47-47	T	
04:00				TURNOVER (LOSTBALL) by BASTIN, SERAPHINE
04:00				
03:36	TURNOVER (BADPASS) by BACON, AMBER			
03:36				STEAL by SMITH, SHYIA
03:22				MISSED 3PTR by BREMAUD, CARLA
03:18				REBOUND (OFF) by SMITH, SHYIA
03:04		49-47	H 2	GOOD! JUMPER by BASTIN, SERAPHINE
03:04				ASSIST by MCCULLY, MARIAH
02:48	TURNOVER (BADPASS) by BACON, AMBER			
02:48				STEAL by PRINCE, RAVEN
02:43				MISSED LAYUP by PRINCE, RAVEN
02:39				REBOUND (OFF) by MCCULLY, MARIAH
02:39		51-47	H 4	GOOD! LAYUP by MCCULLY, MARIAH
02:39	TIMEOUT 30SEC			
02:39	SUB OUT: BACON, AMBER			
02:39	SUB IN: WHITE, KAYLA			
02:28				FOUL (PERSONAL) by PRINCE, RAVEN
02:28				SUB OUT: PRINCE, RAVEN
02:28				SUB IN: COLBERT, TRAJATA
02:28	MISSED FT by WHITE, KAYLA			
02:28	REBOUND (OFF) by TEAM			
02:28	GOOD! FT by WHITE, KAYLA	51-48	H 3	
02:28	GOOD! FT by WHITE, KAYLA	51-49	H 2	
02:16		53-49	H 4	GOOD! LAYUP by COLBERT, TRAJATA
02:16				ASSIST by BASTIN, SERAPHINE
02:05				FOUL (PERSONAL) by SMITH, SHYIA
01:47	TURNOVER (3SEC) by BAYLISS, PAIGE			
01:47	SUB OUT: BAYLISS, PAIGE			
01:47	SUB IN: CASH, JOHNASIA			
01:31		55-49	H 6	GOOD! JUMPER by MCCULLY, MARIAH [PNT]
01:10				SUB OUT: BREMAUD, CARLA
01:10				SUB IN: MCCARTY, DJ
01:10	SUB OUT: WHITFIELD, ARIANA			
01:10	SUB IN: BACON, AMBER			
01:03	GOOD! 3PTR by WHITE, KAYLA	55-52	H 3	
01:03	ASSIST by BRADLEY, REAGAN			
00:35		57-52	H 5	GOOD! JUMPER by COLBERT, TRAJATA [PNT]
00:35				ASSIST by BASTIN, SERAPHINE
00:35	FOUL (PERSONAL) by TSHIMANGA, FLORENCE			
00:35				SUB OUT: BASTIN, SERAPHINE
00:35				SUB IN: REID, ASHLEY
00:35				MISSED FT by COLBERT, TRAJATA
00:35	REBOUND (DEF) by CASH, JOHNASIA			
00:23	MISSED JUMPER by CASH, JOHNASIA			
00:21	REBOUND (OFF) by WHITE, KAYLA			
00:21	TURNOVER (BADPASS) by WHITE, KAYLA			
00:02		59-52	H 7	GOOD! LAYUP by COLBERT, TRAJATA
00:02				ASSIST by MCCARTY, DJ

SMU 52, Wichita St. 59

Points from (This Period)	SMU	WSU
In the Paint	4	16
Off Turns	2	8
2nd Chance	2	4
Fast Break	0	6
Bench	3	6

Official Box Score
SMU vs Wichita St.
Fourth Quarter Statistics Only
February 19, 2020 at Charles Koch Arena (Devlin Court) - Wichita, Kan.



SMU 20

No.	Player	S	Pts	FG	3FG	FT	OR	DR	TR	PF	A	TO	Blk	Stl	Min	+/-
04	BACON, AMBER	G	7	2-4	1-1	2-2	0	1	1	1	1	0	0	0	10	12
13	BRADLEY, REAGAN	G	13	4-5	2-2	3-5	0	1	1	2	1	2	1	2	10	12
14	BAYLISS, PAIGE	C	0	0-0	0-0	0-0	0	0	0	0	0	0	0	0	3	7
32	WHITE, KAYLA	G	0	0-0	0-0	0-0	0	1	1	0	0	0	0	0	3	2
33	CASH, JOHNASIA	F	0	0-0	0-0	0-0	1	2	3	0	0	2	1	0	7	5
01	MATHIS, DESIRAE	G	0	0-1	0-1	0-0	0	1	1	0	0	1	0	0	10	12
02	WHITFIELD, ARIANA	G	0	0-1	0-1	0-2	1	2	3	1	0	1	0	0	7	10
22	TSHIMANGA, FLORENCE	C	0	0-0	0-0	0-0	0	0	0	0	0	0	0	0	0	0
TEAM							0	1	1	0		0				
TOTALS			20	6-11	3-5	5-9	2	9	11	4	2	6	2	2	50	

Shooting By Period

Period	FG	FG%	3FG	3FG%	FT	FT%
Game	28-54	51.9%	6-11	54.5%	10-21	47.6%

Deadball Rebounds: 6,1

Wichita St. 8

No.	Player	S	Pts	FG	3FG	FT	OR	DR	TR	PF	A	TO	Blk	Stl	Min	+/-
02	MCCULLY, MARIAH	G	6	3-9	0-2	0-0	0	0	0	1	1	1	0	0	8	-10
12	BREMAUD, CARLA	G	0	0-2	0-2	0-0	1	1	2	1	1	2	0	0	8	-12
13	PRINCE, RAVEN	F	0	0-0	0-0	0-0	0	0	0	1	0	0	0	0	6	-6
23	BASTIN, SERAPHINE	G	0	0-0	0-0	0-0	1	3	4	2	0	1	0	0	7	-12
34	SMITH, SHYIA	F	0	0-1	0-0	0-0	0	0	0	2	0	0	0	0	8	-11
01	MCCARTY, DJ	G	0	0-0	0-0	0-0	0	1	1	0	0	0	0	0	3	-2
05	REID, ASHLEY	G	0	0-0	0-0	0-0	0	0	0	0	0	0	0	0	3	0
21	BREWER, MAYA	G	0	0-1	0-1	0-0	0	0	0	0	0	0	0	0	0	-2
24	COLBERT, TRAJATA	F	2	1-3	0-0	0-0	0	0	0	1	0	1	0	0	6	-5
31	DANIELSSON, VENDELA	G	0	0-0	0-0	0-0	0	0	0	0	0	0	0	0	0	0
42	HENDERSON, ASIA	F	0	0-0	0-0	0-0	0	0	0	0	0	0	0	0	0	0
TEAM							0	0	0	0		0				
TOTALS			8	4-16	0-5	0-0	2	5	7	8	2	5	0	0	50	

Shooting By Period

Period	FG	FG%	3FG	3FG%	FT	FT%
Game	25-66	37.9%	4-21	19.0%	13-16	81.3%

Deadball Rebounds: 1,2

Game Notes:

Officials: Joseph Vaszily, Maggie Tieman, John Capolino
Attendance: 1359

Start Time: 07:35 PM ET
End Time: 09:36 PM ET
Game Duration: 2:01
Conference Game;

Score	1st	2nd	3rd	4th	TOT
SMU	17	21	14	20	72
WSU	8	23	28	8	67

Points from (This Period)	SMU	WSU
In the Paint	4	6
Off Turns	6	4
2nd Chance	0	2
Fast Break	0	0
Bench	0	2

**Official Play-By-Play
SMU vs Wichita St.
Fourth Quarter**

February 19, 2020 at Charles Koch Arena (Devlin Court) - Wichita, Kan.



Period 4

Starters:

SMU: 13 BRADLEY, REAGAN (G); 14 BAYLISS, PAIGE (C); 32 WHITE, KAYLA (G); 33 CASH, JOHNASIA (F); 4 BACON, AMBER (G);

Wichita St.: 2 MCCULLY, MARIAH (G); 12 BREMAUD, CARLA (G); 13 PRINCE, RAVEN (F); 23 BASTIN, SERAPHINE (G); 34 SMITH, SHYIA (F);

Time	VISITORS: SMU	Score	Margin	HOME: Wichita St.
10:00	SUB OUT: TSHIMANGA, FLORENCE			
10:00	SUB IN: MATHIS, DESIRAE			
09:48	TURNOVER (TRAVEL) by CASH, JOHNASIA			
09:34				MISSED JUMPER by MCCULLY, MARIAH
09:34	BLOCK by CASH, JOHNASIA			
09:29	REBOUND (DEF) by WHITE, KAYLA			
09:28	TURNOVER (TRAVEL) by MATHIS, DESIRAE			
09:05				TURNOVER (TRAVEL) by COLBERT, TRAJATA
08:51	MISSED 3PTR by MATHIS, DESIRAE			
08:48				REBOUND (DEF) by MCCARTY, DJ
08:22				MISSED JUMPER by SMITH, SHYIA
08:21	REBOUND (DEF) by TEAM			
08:21				SUB OUT: MCCULLY, MARIAH
08:21				SUB IN: BREMAUD, CARLA
08:09	TURNOVER (TRAVEL) by CASH, JOHNASIA			
07:47	FOUL (PERSONAL) by BRADLEY, REAGAN			
07:47	SUB OUT: CASH, JOHNASIA			
07:47	SUB IN: BAYLISS, PAIGE			
07:31				MISSED 3PTR by BREMAUD, CARLA
07:28	REBOUND (DEF) by TEAM			
07:13				SUB OUT: REID, ASHLEY
07:13				SUB IN: BASTIN, SERAPHINE
07:10	GOOD! JUMPER by BACON, AMBER	59-54	H 5	
07:10	ASSIST by BRADLEY, REAGAN			
06:51				MISSED LAYUP by COLBERT, TRAJATA
06:47				REBOUND (OFF) by BASTIN, SERAPHINE
06:33				MISSED JUMPER by COLBERT, TRAJATA
06:31	REBOUND (DEF) by BACON, AMBER			
06:31				FOUL (PERSONAL) by SMITH, SHYIA
06:31				SUB OUT: MCCARTY, DJ
06:31				SUB OUT: SMITH, SHYIA
06:31				SUB IN: MCCULLY, MARIAH
06:31				SUB IN: PRINCE, RAVEN
06:31	SUB OUT: WHITE, KAYLA			
06:31	SUB IN: WHITFIELD, ARIANA			
06:25				FOUL (PERSONAL) by BREMAUD, CARLA
06:25	MISSED FT by BRADLEY, REAGAN			
06:25	REBOUND (OFF) by TEAM			
06:25	GOOD! FT by BRADLEY, REAGAN	59-55	H 4	
06:11				TURNOVER (LOSTBALL) by MCCULLY, MARIAH
06:11	STEAL by BRADLEY, REAGAN			
06:07	FOUL (OFF) by BRADLEY, REAGAN			
06:07	TURNOVER (OFFENSIVE) by BRADLEY, REAGAN			
05:55		61-55	H 6	GOOD! LAYUP by COLBERT, TRAJATA
05:55				ASSIST by MCCULLY, MARIAH
05:46	MISSED JUMPER by BACON, AMBER			
05:43				REBOUND (DEF) by BASTIN, SERAPHINE
05:40				TURNOVER (BADPASS) by BASTIN, SERAPHINE
05:40	SUB OUT: BAYLISS, PAIGE			
05:40	SUB IN: CASH, JOHNASIA			
05:27	GOOD! JUMPER by BRADLEY, REAGAN	61-57	H 4	
05:13	FOUL (PERSONAL) by BACON, AMBER			
05:11				MISSED JUMPER by MCCULLY, MARIAH
05:05	REBOUND (DEF) by WHITFIELD, ARIANA			
05:02	TURNOVER (TRAVEL) by BRADLEY, REAGAN			
04:51				MISSED 3PTR by MCCULLY, MARIAH
04:47	REBOUND (DEF) by CASH, JOHNASIA			
04:34				FOUL (PERSONAL) by MCCULLY, MARIAH
04:34				
04:34				SUB OUT: COLBERT, TRAJATA
04:34				SUB IN: SMITH, SHYIA
04:28	GOOD! 3PTR by BRADLEY, REAGAN	61-60	H 1	
04:28	ASSIST by BACON, AMBER			
04:10				MISSED 3PTR by MCCULLY, MARIAH
04:08				REBOUND (OFF) by BREMAUD, CARLA
03:58		63-60	H 3	GOOD! LAYUP by MCCULLY, MARIAH
03:41	MISSED 3PTR by WHITFIELD, ARIANA			
03:38	REBOUND (OFF) by CASH, JOHNASIA			
03:28				FOUL (PERSONAL) by BASTIN, SERAPHINE
03:15	MISSED JUMPER by BRADLEY, REAGAN			

Time	VISITORS: SMU	Score	Margin	HOME: Wichita St.
03:12	REBOUND (OFF) by WHITFIELD, ARIANA			
03:12	TURNOVER (TRAVEL) by WHITFIELD, ARIANA			
02:52		65-60	H 5	GOOD! JUMPER by MCCULLY, MARIAH
02:35	GOOD! 3PTR by BACON, AMBER	65-63	H 2	
02:21		67-63	H 4	GOOD! LAYUP by MCCULLY, MARIAH
02:21				ASSIST by BREMAUD, CARLA
02:04	GOOD! 3PTR by BRADLEY, REAGAN	67-66	H 1	
01:29				MISSED JUMPER by MCCULLY, MARIAH
01:26	REBOUND (DEF) by CASH, JOHNASIA			
01:21	MISSED JUMPER by BACON, AMBER			
01:20				REBOUND (DEF) by BREMAUD, CARLA
01:20	FOUL (PERSONAL) by WHITFIELD, ARIANA			
01:20				TIMEOUT TEAM
01:20	SUB OUT: CASH, JOHNASIA			
01:20	SUB IN: BAYLISS, PAIGE			
01:20				SUB OUT: PRINCE, RAVEN
01:20				SUB IN: COLBERT, TRAJATA
01:18				TURNOVER (BADPASS) by BREMAUD, CARLA
01:18	STEAL by BRADLEY, REAGAN			
01:03	GOOD! LAYUP by BRADLEY, REAGAN	67-68	V 1	
01:03				FOUL (PERSONAL) by COLBERT, TRAJATA
01:03	MISSED FT by BRADLEY, REAGAN			
01:02				REBOUND (DEF) by BASTIN, SERAPHINE
00:39	TIMEOUT 30SEC			
00:37				MISSED LAYUP by MCCULLY, MARIAH
00:35	REBOUND (DEF) by BRADLEY, REAGAN			
00:35	TIMEOUT 30SEC			
00:35				SUB OUT: COLBERT, TRAJATA
00:35				SUB IN: PRINCE, RAVEN
00:31				FOUL (PERSONAL) by BASTIN, SERAPHINE
00:31	GOOD! FT by BRADLEY, REAGAN	67-69	V 2	
00:31	GOOD! FT by BRADLEY, REAGAN	67-70	V 3	
00:21				MISSED 3PTR by BREMAUD, CARLA
00:21	BLOCK by BRADLEY, REAGAN			
00:18	REBOUND (DEF) by WHITFIELD, ARIANA			
00:18				FOUL (PERSONAL) by SMITH, SHYIA
00:18	MISSED FT by WHITFIELD, ARIANA			
00:18	REBOUND (OFF) by TEAM			
00:18	MISSED FT by WHITFIELD, ARIANA			
00:17				REBOUND (DEF) by BASTIN, SERAPHINE
00:17				TIMEOUT TEAM
00:14				TURNOVER (TRAVEL) by BREMAUD, CARLA
00:10				FOUL (PERSONAL) by PRINCE, RAVEN
00:10				SUB OUT: PRINCE, RAVEN
00:10				SUB IN: BREWER, MAYA
00:10	GOOD! FT by BACON, AMBER	67-71	V 4	
00:10	GOOD! FT by BACON, AMBER	67-72	V 5	
00:01				MISSED 3PTR by BREWER, MAYA
00:00	REBOUND (DEF) by MATHIS, DESIRAE			

SMU 72, Wichita St. 67

Points from (This Period)	SMU	WSU
In the Paint	4	6
Off Turns	6	4
2nd Chance	0	2
Fast Break	0	0
Bench	0	2

**Official Scoring/Possession Reference Chart
SMU vs Wichita St.**

Period 1

February 19, 2020 at Charles Koch Arena (Devlin Court) - Wichita, Kan.



Period 1

Starters:

SMU: 13 BRADLEY, REAGAN (G); 14 BAYLISS, PAIGE (C); 32 WHITE, KAYLA (G); 33 CASH, JOHNASIA (F); 4 BACON, AMBER (G);

Wichita St.: 2 MCCULLY, MARIAH (G); 12 BREMAUD, CARLA (G); 13 PRINCE, RAVEN (F); 23 BASTIN, SERAPHINE (G); 34 SMITH, SHYIA (F);

Time	VISITORS: SMU	Score	Margin	HOME: Wichita St.
09:40	GOOD! JUMPER by BACON, AMBER	0-2	V 2	
09:00		2-2	T	GOOD! JUMPER by BASTIN, SERAPHINE [FB]
08:45	GOOD! LAYUP by CASH, JOHNASIA	2-4	V 2	
08:07	GOOD! LAYUP by CASH, JOHNASIA	2-6	V 4	
05:49	GOOD! 3PTR by WHITE, KAYLA	2-9	V 7	
04:33		4-9	V 5	GOOD! JUMPER by HENDERSON, ASIA [PNT]
03:58	GOOD! LAYUP by CASH, JOHNASIA [FB]	4-11	V 7	
02:30	GOOD! LAYUP by WHITE, KAYLA [FB]	4-13	V 9	
01:40		6-13	V 7	GOOD! LAYUP by HENDERSON, ASIA
01:09	GOOD! JUMPER by BAYLISS, PAIGE	6-15	V 9	
00:53		8-15	V 7	GOOD! LAYUP by DANIELSSON, VENDELA
00:05	GOOD! JUMPER by TSHIMANGA, FLORENCE	8-17	V 9	

SMU 17, Wichita St. 8

Official Scoring/Possession Reference Chart
SMU vs Wichita St.

Period 2

February 19, 2020 at Charles Koch Arena (Devlin Court) - Wichita, Kan.



Period 2

Starters:

SMU: 13 BRADLEY, REAGAN (G); 14 BAYLISS, PAIGE (C); 32 WHITE, KAYLA (G); 33 CASH, JOHNASIA (F); 4 BACON, AMBER (G);

Wichita St.: 2 MCCULLY, MARIAH (G); 12 BREMAUD, CARLA (G); 13 PRINCE, RAVEN (F); 23 BASTIN, SERAPHINE (G); 34 SMITH, SHYIA (F);

Time	VISITORS: SMU	Score	Margin	HOME: Wichita St.
08:20		9-17	V 8	GOOD! FT by MCCARTY, DJ
08:20		10-17	V 7	GOOD! FT by MCCARTY, DJ
08:06		11-17	V 6	GOOD! FT by MCCULLY, MARIAH [FB]
08:06		12-17	V 5	GOOD! FT by MCCULLY, MARIAH [FB]
07:33	GOOD! LAYUP by CASH, JOHNASIA	12-19	V 7	
06:59		14-19	V 5	GOOD! LAYUP by MCCULLY, MARIAH
06:35	GOOD! LAYUP by BAYLISS, PAIGE	14-21	V 7	
06:00	GOOD! LAYUP by CASH, JOHNASIA	14-23	V 9	
05:51		15-23	V 8	GOOD! FT by HENDERSON, ASIA
05:45	GOOD! JUMPER by WHITE, KAYLA [FB]	15-25	V 10	
05:21	GOOD! JUMPER by BACON, AMBER [FB]	15-27	V 12	
04:56	GOOD! JUMPER by BACON, AMBER	15-29	V 14	
04:41		17-29	V 12	GOOD! LAYUP by MCCULLY, MARIAH [PNT]
04:13		18-29	V 11	GOOD! FT by COLBERT, TRAJATA
03:39	GOOD! LAYUP by CASH, JOHNASIA	18-31	V 13	
03:24		20-31	V 11	GOOD! LAYUP by COLBERT, TRAJATA
03:12		21-31	V 10	GOOD! FT by MCCARTY, DJ
03:12		22-31	V 9	GOOD! FT by MCCARTY, DJ
02:23		24-31	V 7	GOOD! JUMPER by BASTIN, SERAPHINE
02:01	GOOD! LAYUP by CASH, JOHNASIA	24-33	V 9	
01:35		27-33	V 6	GOOD! 3PTR by BREMAUD, CARLA
01:17	GOOD! FT by MATHIS, DESIRAE	27-34	V 7	
00:57		28-34	V 6	GOOD! FT by COLBERT, TRAJATA
00:57		29-34	V 5	GOOD! FT by COLBERT, TRAJATA
00:30	GOOD! FT by BACON, AMBER [FB]	29-35	V 6	
00:30	GOOD! FT by BACON, AMBER [FB]	29-36	V 7	
00:30		30-36	V 6	GOOD! FT by BREMAUD, CARLA
00:30		31-36	V 5	GOOD! FT by BREMAUD, CARLA
00:01	GOOD! JUMPER by BACON, AMBER [FB]	31-38	V 7	

SMU 38, Wichita St. 31

Official Scoring/Possession Reference Chart
SMU vs Wichita St.

Period 3

February 19, 2020 at Charles Koch Arena (Devlin Court) - Wichita, Kan.



Period 3

Starters:

SMU: 13 BRADLEY, REAGAN (G); 14 BAYLISS, PAIGE (C); 32 WHITE, KAYLA (G); 33 CASH, JOHNASIA (F); 4 BACON, AMBER (G);

Wichita St.: 2 MCCULLY, MARIAH (G); 12 BREMAUD, CARLA (G); 13 PRINCE, RAVEN (F); 23 BASTIN, SERAPHINE (G); 34 SMITH, SHYIA (F);

Time	VISITORS: SMU	Score	Margin	HOME: Wichita St.
09:12	GOOD! LAYUP by WHITE, KAYLA	31-40	V 9	
08:50		33-40	V 7	GOOD! LAYUP by PRINCE, RAVEN
08:08	GOOD! JUMPER by WHITE, KAYLA	33-42	V 9	
07:39		36-42	V 6	GOOD! 3PTR by BREMAUD, CARLA [FB]
07:10		38-42	V 4	GOOD! LAYUP by BASTIN, SERAPHINE
06:00		41-42	V 1	GOOD! 3PTR by BREMAUD, CARLA
05:23		43-42	H 1	GOOD! LAYUP by MCCULLY, MARIAH [FB]
05:23		44-42	H 2	GOOD! FT by MCCULLY, MARIAH [FB]
05:03	GOOD! 3PTR by WHITFIELD, ARIANA	44-45	V 1	
04:42		47-45	H 2	GOOD! 3PTR by BREMAUD, CARLA
04:07	GOOD! LAYUP by BAYLISS, PAIGE	47-47	T	
03:04		49-47	H 2	GOOD! JUMPER by BASTIN, SERAPHINE
02:39		51-47	H 4	GOOD! LAYUP by MCCULLY, MARIAH
02:28	GOOD! FT by WHITE, KAYLA	51-48	H 3	
02:28	GOOD! FT by WHITE, KAYLA	51-49	H 2	
02:16		53-49	H 4	GOOD! LAYUP by COLBERT, TRAJATA
01:31		55-49	H 6	GOOD! JUMPER by MCCULLY, MARIAH [PNT]
01:03	GOOD! 3PTR by WHITE, KAYLA	55-52	H 3	
00:35		57-52	H 5	GOOD! JUMPER by COLBERT, TRAJATA [PNT]
00:02		59-52	H 7	GOOD! LAYUP by COLBERT, TRAJATA

SMU 52, Wichita St. 59

**Official Scoring/Possession Reference Chart
SMU vs Wichita St.**

Period 4

February 19, 2020 at Charles Koch Arena (Devlin Court) - Wichita, Kan.



Period 4

Starters:

SMU: 13 BRADLEY, REAGAN (G); 14 BAYLISS, PAIGE (C); 32 WHITE, KAYLA (G); 33 CASH, JOHNASIA (F); 4 BACON, AMBER (G);

Wichita St.: 2 MCCULLY, MARIAH (G); 12 BREMAUD, CARLA (G); 13 PRINCE, RAVEN (F); 23 BASTIN, SERAPHINE (G); 34 SMITH, SHYIA (F);

Time	VISITORS: SMU	Score	Margin	HOME: Wichita St.
07:10	GOOD! JUMPER by BACON, AMBER	59-54	H 5	
06:25	GOOD! FT by BRADLEY, REAGAN	59-55	H 4	
05:55		61-55	H 6	GOOD! LAYUP by COLBERT, TRAJATA
05:27	GOOD! JUMPER by BRADLEY, REAGAN	61-57	H 4	
04:28	GOOD! 3PTR by BRADLEY, REAGAN	61-60	H 1	
03:58		63-60	H 3	GOOD! LAYUP by MCCULLY, MARIAH
02:52		65-60	H 5	GOOD! JUMPER by MCCULLY, MARIAH
02:35	GOOD! 3PTR by BACON, AMBER	65-63	H 2	
02:21		67-63	H 4	GOOD! LAYUP by MCCULLY, MARIAH
02:04	GOOD! 3PTR by BRADLEY, REAGAN	67-66	H 1	
01:03	GOOD! LAYUP by BRADLEY, REAGAN	67-68	V 1	
00:31	GOOD! FT by BRADLEY, REAGAN	67-69	V 2	
00:31	GOOD! FT by BRADLEY, REAGAN	67-70	V 3	
00:10	GOOD! FT by BACON, AMBER	67-71	V 4	
00:10	GOOD! FT by BACON, AMBER	67-72	V 5	

SMU 72, Wichita St. 67

Official Substitutions Log

SMU vs Wichita St.

Period 1

February 19, 2020 at Charles Koch Arena (Devlin Court) - Wichita, Kan.



VISITORS: SMU	Time	Score	HOME: Wichita St.
13 BRADLEY, REAGAN			2 MCCULLY, MARIAH
14 BAYLISS, PAIGE			12 BREMAUD, CARLA
32 WHITE, KAYLA			13 PRINCE, RAVEN
33 CASH, JOHNASIA			23 BASTIN, SERAPHINE
4 BACON, AMBER			34 SMITH, SHYIA
SUB OUT: 14 BAYLISS, PAIGE	07:19	6-2	
SUB IN: 22 TSHIMANGA, FLORENCE	07:19		
	05:59	6-2	SUB OUT: BASTIN, SERAPHINE
	05:59		SUB IN: REID, ASHLEY
	05:04	9-2	SUB OUT: MCCULLY, MARIAH
	05:04		SUB OUT: PRINCE, RAVEN
	05:04		SUB IN: BREWER, MAYA
	05:04		SUB IN: HENDERSON, ASIA
SUB OUT: 22 TSHIMANGA, FLORENCE	04:18	9-4	
SUB IN: 14 BAYLISS, PAIGE	04:18		
	03:15	11-4	SUB OUT: BREMAUD, CARLA
	03:15		SUB IN: DANIELSSON, VENDELA
	01:51	13-4	SUB OUT: REID, ASHLEY
	01:51		SUB OUT: BREWER, MAYA
	01:51		SUB IN: MCCARTY, DJ
	01:51		SUB IN: BASTIN, SERAPHINE
SUB OUT: 4 BACON, AMBER	01:51		
SUB IN: 2 WHITFIELD, ARIANA	01:51		
SUB OUT: 14 BAYLISS, PAIGE	00:53	15-6	
SUB IN: 22 TSHIMANGA, FLORENCE	00:53		

SMU 17, Wichita St. 8

Official Substitutions Log

SMU vs Wichita St.

Period 2

February 19, 2020 at Charles Koch Arena (Devlin Court) - Wichita, Kan.



VISITORS: SMU	Time	Score	HOME: Wichita St.
13 BRADLEY, REAGAN			2 MCCULLY, MARIAH
14 BAYLISS, PAIGE			12 BREMAUD, CARLA
32 WHITE, KAYLA			13 PRINCE, RAVEN
33 CASH, JOHNASIA			23 BASTIN, SERAPHINE
4 BACON, AMBER			34 SMITH, SHYIA
	10:00	-	SUB OUT: DANIELSSON, VENDELA
	10:00		SUB IN: MCCULLY, MARIAH
SUB OUT: 13 BRADLEY, REAGAN	09:12	-	
SUB IN: 4 BACON, AMBER	09:12		
SUB OUT: 2 WHITFIELD, ARIANA	08:20	-	
SUB IN: 1 MATHIS, DESIRAE	08:20		
	08:20		SUB OUT: BASTIN, SERAPHINE
	08:20		SUB IN: DANIELSSON, VENDELA
SUB OUT: 32 WHITE, KAYLA	08:06	17-10	
SUB IN: 13 BRADLEY, REAGAN	08:06		
	07:19	19-12	SUB OUT: DANIELSSON, VENDELA
	07:19		SUB OUT: SMITH, SHYIA
	07:19		SUB IN: PRINCE, RAVEN
	07:19		SUB IN: BREWER, MAYA
SUB OUT: 33 CASH, JOHNASIA	07:01	19-12	
SUB IN: 14 BAYLISS, PAIGE	07:01		
SUB OUT: 22 TSHIMANGA, FLORENCE	07:01		
SUB IN: 33 CASH, JOHNASIA	07:01		
	06:15	21-14	SUB OUT: MCCARTY, DJ
	06:15		SUB IN: BASTIN, SERAPHINE
SUB OUT: 14 BAYLISS, PAIGE	05:51	23-14	
SUB IN: 32 WHITE, KAYLA	05:51		
	05:19	27-15	SUB OUT: HENDERSON, ASIA
	05:19		SUB IN: COLBERT, TRAJATA
	04:34	29-17	SUB OUT: BREWER, MAYA
	04:34		SUB IN: BREMAUD, CARLA
	03:48	29-18	SUB OUT: PRINCE, RAVEN
	03:48		SUB IN: MCCARTY, DJ
	02:01	33-24	SUB OUT: BASTIN, SERAPHINE
	02:01		SUB IN: REID, ASHLEY
	00:57	34-27	SUB OUT: MCCARTY, DJ
	00:57		SUB IN: BREWER, MAYA

SMU 38, Wichita St. 31

Official Substitutions Log

SMU vs Wichita St.

Period 3

February 19, 2020 at Charles Koch Arena (Devlin Court) - Wichita, Kan.



VISITORS: SMU	Time	Score	HOME: Wichita St.
13 BRADLEY, REAGAN			2 MCCULLY, MARIAH
14 BAYLISS, PAIGE			12 BREMAUD, CARLA
32 WHITE, KAYLA			13 PRINCE, RAVEN
33 CASH, JOHNASIA			23 BASTIN, SERAPHINE
4 BACON, AMBER			34 SMITH, SHYIA
	10:00	-	SUB OUT: REID, ASHLEY
	10:00		SUB OUT: BREWER, MAYA
	10:00		SUB OUT: COLBERT, TRAJATA
	10:00		SUB IN: PRINCE, RAVEN
	10:00		SUB IN: BASTIN, SERAPHINE
	10:00		SUB IN: SMITH, SHYIA
SUB OUT: 1 MATHIS, DESIRAE	10:00		
SUB IN: 14 BAYLISS, PAIGE	10:00		
SUB OUT: 4 BACON, AMBER	07:22	42-36	
SUB IN: 2 WHITFIELD, ARIANA	07:22		
SUB OUT: 32 WHITE, KAYLA	05:23	42-43	
SUB OUT: 33 CASH, JOHNASIA	05:23		
SUB IN: 4 BACON, AMBER	05:23		
SUB IN: 22 TSHIMANGA, FLORENCE	05:23		
SUB OUT: 4 BACON, AMBER	02:39	47-51	
SUB IN: 32 WHITE, KAYLA	02:39		
	02:28	47-51	
	02:28		SUB OUT: PRINCE, RAVEN
			SUB IN: COLBERT, TRAJATA
SUB OUT: 14 BAYLISS, PAIGE	01:47	49-53	
SUB IN: 33 CASH, JOHNASIA	01:47		
	01:10	49-55	
	01:10		SUB OUT: BREMAUD, CARLA
	01:10		SUB IN: MCCARTY, DJ
SUB OUT: 2 WHITFIELD, ARIANA	01:10		
SUB IN: 4 BACON, AMBER	01:10		
	00:35	52-57	
	00:35		SUB OUT: BASTIN, SERAPHINE
			SUB IN: REID, ASHLEY

SMU 52, Wichita St. 59

Official Substitutions Log

SMU vs Wichita St.

Period 4

February 19, 2020 at Charles Koch Arena (Devlin Court) - Wichita, Kan.



VISITORS: SMU	Time	Score	HOME: Wichita St.
13 BRADLEY, REAGAN			2 MCCULLY, MARIAH
14 BAYLISS, PAIGE			12 BREMAUD, CARLA
32 WHITE, KAYLA			13 PRINCE, RAVEN
33 CASH, JOHNASIA			23 BASTIN, SERAPHINE
4 BACON, AMBER			34 SMITH, SHYIA
SUB OUT: 22 TSHIMANGA, FLORENCE	10:00	-	
SUB IN: 1 MATHIS, DESIRAE	10:00		
	08:21	-	SUB OUT: MCCULLY, MARIAH
	08:21		SUB IN: BREMAUD, CARLA
SUB OUT: 33 CASH, JOHNASIA	07:47	-	
SUB IN: 14 BAYLISS, PAIGE	07:47		
	07:13	-	SUB OUT: REID, ASHLEY
	07:13		SUB IN: BASTIN, SERAPHINE
	06:31	54-59	SUB OUT: MCCARTY, DJ
	06:31		SUB OUT: SMITH, SHYIA
	06:31		SUB IN: MCCULLY, MARIAH
	06:31		SUB IN: PRINCE, RAVEN
SUB OUT: 32 WHITE, KAYLA	06:31		
SUB IN: 2 WHITFIELD, ARIANA	06:31		
SUB OUT: 14 BAYLISS, PAIGE	05:40	55-61	
SUB IN: 33 CASH, JOHNASIA	05:40		
	04:34	57-61	SUB OUT: COLBERT, TRAJATA
	04:34		SUB IN: SMITH, SHYIA
SUB OUT: 33 CASH, JOHNASIA	01:20	66-67	
SUB IN: 14 BAYLISS, PAIGE	01:20		
	01:20		SUB OUT: PRINCE, RAVEN
	01:20		SUB IN: COLBERT, TRAJATA
	00:35	68-67	SUB OUT: COLBERT, TRAJATA
	00:35		SUB IN: PRINCE, RAVEN
	00:10	70-67	SUB OUT: PRINCE, RAVEN
	00:10		SUB IN: BREWER, MAYA

SMU 72, Wichita St. 67

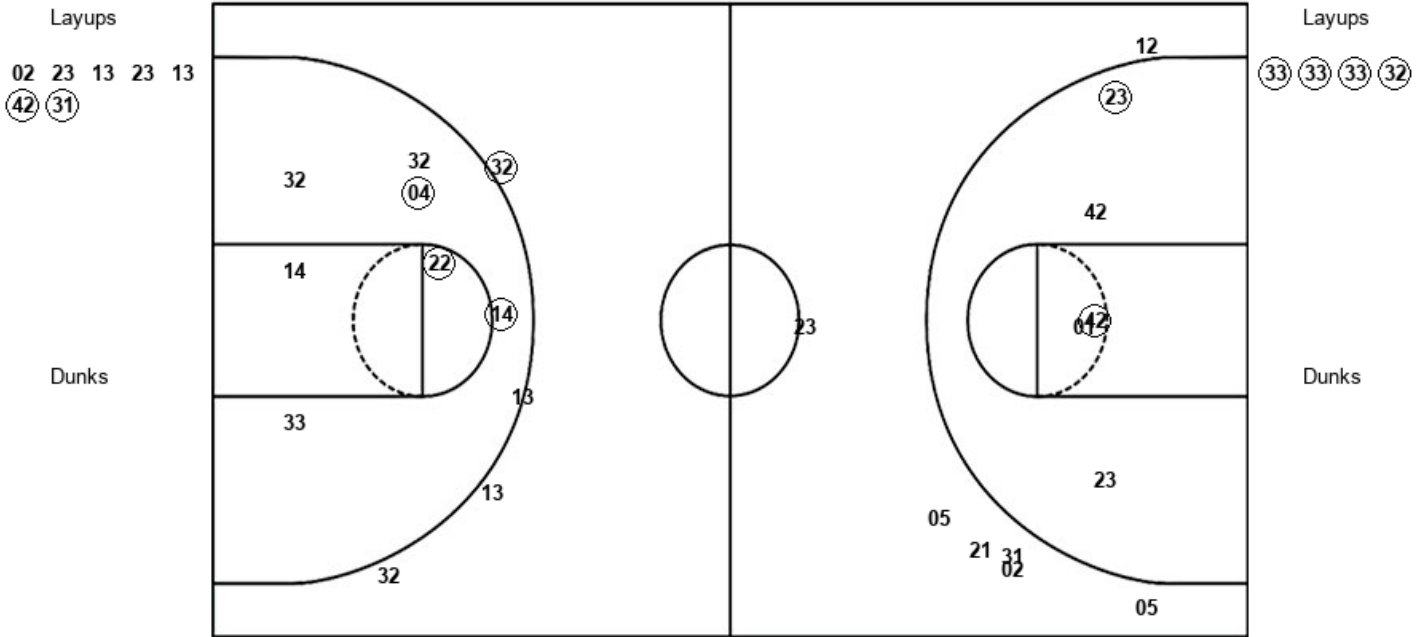
Official Shot Chart
SMU vs Wichita St.
PERIOD 1 Shots

February 19, 2020 at Charles Koch Arena (Devlin Court) - Wichita, Kan.



Wichita St.

SMU



WSU : Period 1	Made	Att	Pct
Layups	2	7	28.6
Dunks	0	0	0
2PT Field Goals	4	12	33.3
3PT Field Goals	0	7	00.0
Total Field Goals	4	19	21.1

SMU : Period 1	Made	Att	Pct
Layups	4	4	100.0
Dunks	0	0	0
2PT Field Goals	7	11	63.6
3PT Field Goals	1	4	25.0
Total Field Goals	8	15	53.3

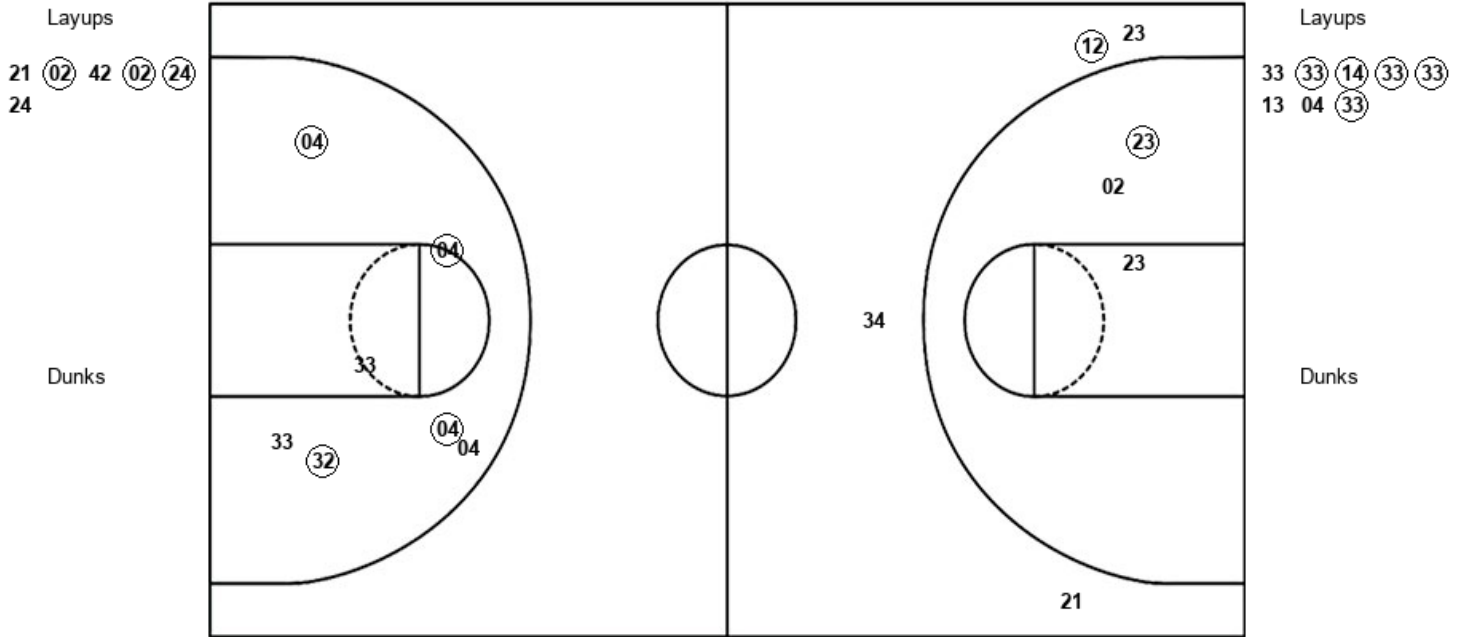
Official Shot Chart
SMU vs Wichita St.
PERIOD 2 Shots

February 19, 2020 at Charles Koch Arena (Devlin Court) - Wichita, Kan.



Wichita St.

SMU



WSU : Period 2	Made	Att	Pct
Layups	3	6	50.0
Dunks	0	0	0
2PT Field Goals	4	9	44.4
3PT Field Goals	1	4	25.0
Total Field Goals	5	13	38.5

SMU : Period 2	Made	Att	Pct
Layups	5	8	62.5
Dunks	0	0	0
2PT Field Goals	9	15	60.0
3PT Field Goals	0	0	0
Total Field Goals	9	15	60.0

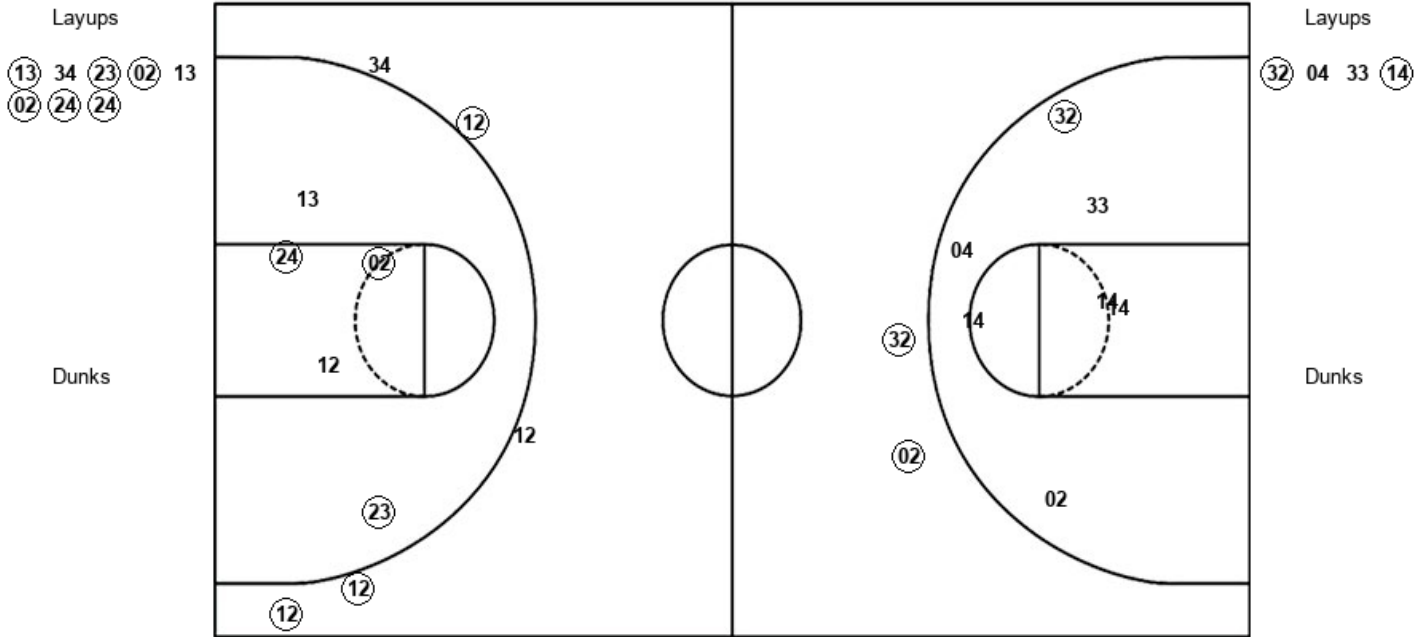
Official Shot Chart
SMU vs Wichita St.
PERIOD 3 Shots

February 19, 2020 at Charles Koch Arena (Devlin Court) - Wichita, Kan.



Wichita St.

SMU



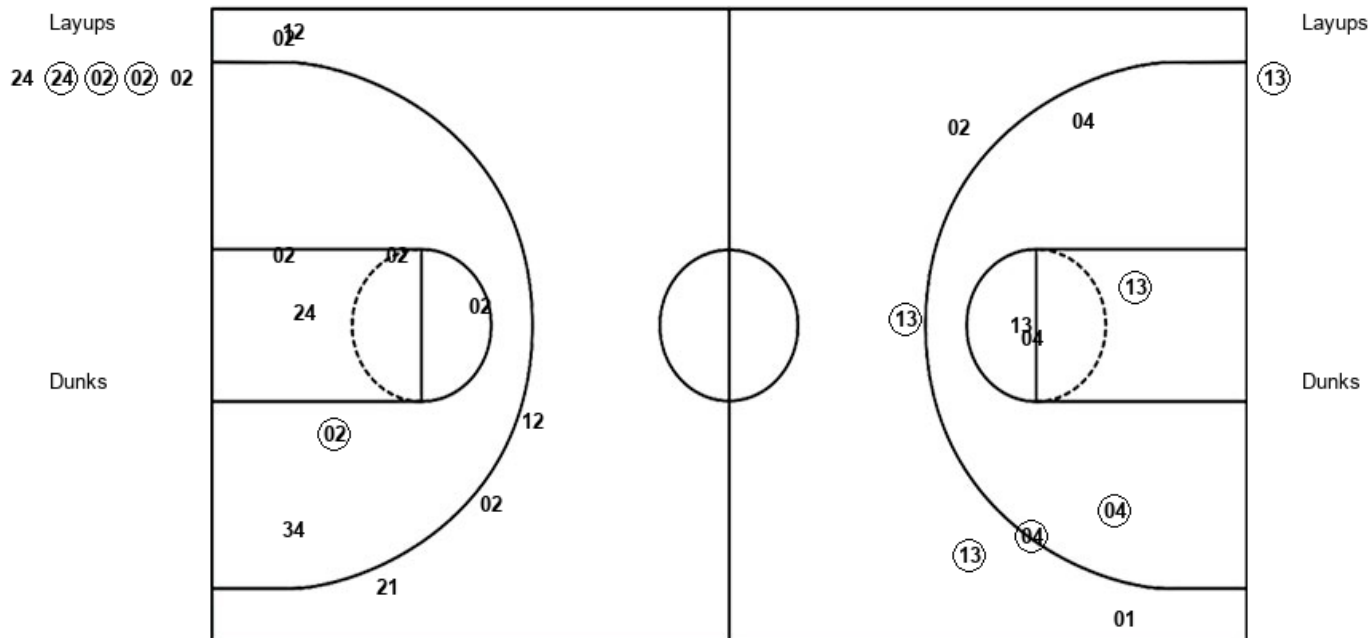
WSU : Period 3	Made	Att	Pct
Layups	6	8	75.0
Dunks	0	0	0
2PT Field Goals	9	13	69.2
3PT Field Goals	3	5	60.0
Total Field Goals	12	18	66.7

SMU : Period 3	Made	Att	Pct
Layups	2	4	50.0
Dunks	0	0	0
2PT Field Goals	3	11	27.3
3PT Field Goals	2	2	100.0
Total Field Goals	5	13	38.5

February 19, 2020 at Charles Koch Arena (Devlin Court) - Wichita, Kan.



SMU



WSU : Period 4	Made	Att	Pct
Layups	3	5	60.0
Dunks	0	0	0
2PT Field Goals	4	11	36.4
3PT Field Goals	0	5	00.0
Total Field Goals	4	16	25.0

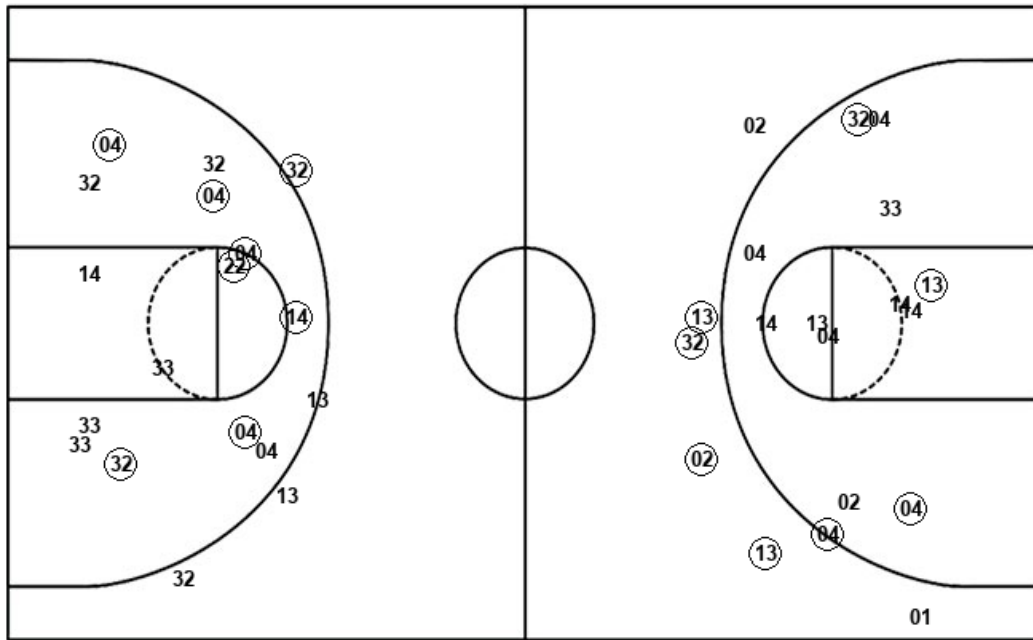
SMU : Period 4	Made	Att	Pct
Layups	1	1	100.0
Dunks	0	0	0
2PT Field Goals	3	6	50.0
3PT Field Goals	3	5	60.0
Total Field Goals	6	11	54.5

Official Shot Chart
SMU vs Wichita St.
SMU Team Shots
February 19, 2020 at Charles Koch Arena (Devlin Court) - Wichita, Kan.



Layups

Dunks



Layups

Dunks

SMU : Period 1	Made	Att	Pct
Layups	4	4	100.0
Dunks	0	0	0
2PT Field Goals	7	11	63.6
3PT Field Goals	1	4	25.0
Total Field Goals	8	15	53.3

SMU : Period 3	Made	Att	Pct
Layups	2	4	50.0
Dunks	0	0	0
2PT Field Goals	3	11	27.3
3PT Field Goals	2	2	100.0
Total Field Goals	5	13	38.5

SMU : Period 2	Made	Att	Pct
Layups	5	8	62.5
Dunks	0	0	0
2PT Field Goals	9	15	60.0
3PT Field Goals	0	0	0
Total Field Goals	9	15	60.0

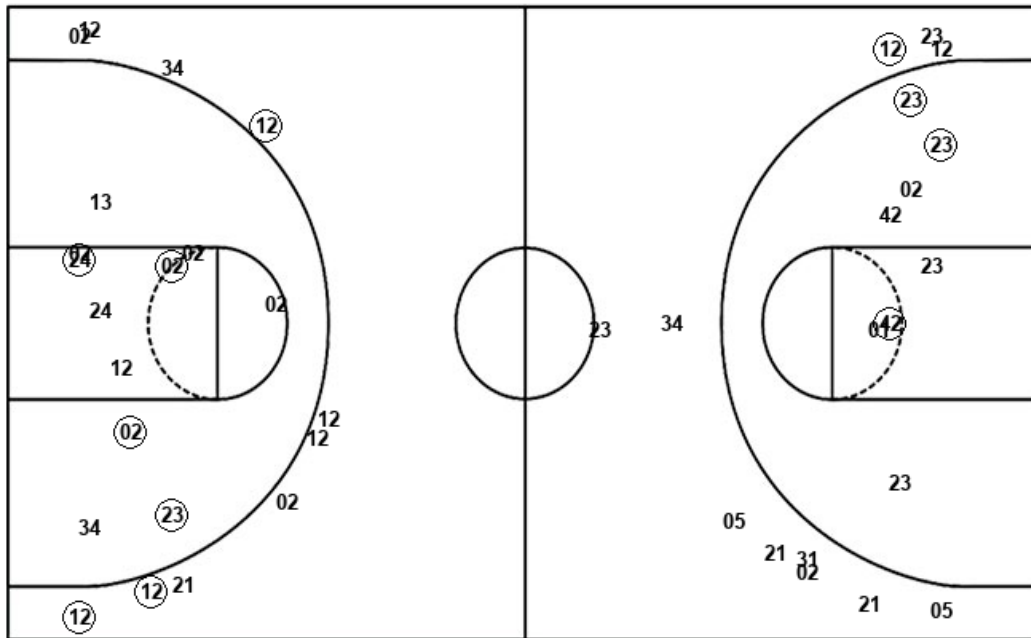
SMU : Period 4	Made	Att	Pct
Layups	1	1	100.0
Dunks	0	0	0
2PT Field Goals	3	6	50.0
3PT Field Goals	3	5	60.0
Total Field Goals	6	11	54.5

Official Shot Chart
SMU vs Wichita St.
Wichita St. Team Shots
February 19, 2020 at Charles Koch Arena (Devlin Court) - Wichita, Kan.



Layups

Dunks



Layups

Dunks

02 23 13 23 13
 42 31 21 02 42
 02 24 24 13 34
 23 02 13 02 24
 24 24 24 02 02
 02

WSU : Period 1	Made	Att	Pct
Layups	2	7	28.6
Dunks	0	0	0
2PT Field Goals	4	12	33.3
3PT Field Goals	0	7	00.0
Total Field Goals	4	19	21.1

WSU : Period 3	Made	Att	Pct
Layups	6	8	75.0
Dunks	0	0	0
2PT Field Goals	9	13	69.2
3PT Field Goals	3	5	60.0
Total Field Goals	12	18	66.7

WSU : Period 2	Made	Att	Pct
Layups	3	6	50.0
Dunks	0	0	0
2PT Field Goals	4	9	44.4
3PT Field Goals	1	4	25.0
Total Field Goals	5	13	38.5

WSU : Period 4	Made	Att	Pct
Layups	3	5	60.0
Dunks	0	0	0
2PT Field Goals	4	11	36.4
3PT Field Goals	0	5	00.0
Total Field Goals	4	16	25.0