

FINAL SCORE



East Carolina

55



Wichita St.

57

February 01, 2020 • Charles Koch Arena (Devlin Court) - Wichita, Kan.

FINAL STATISTICS

Official Box Score
East Carolina vs Wichita St.
Game Totals -- Final Statistics
February 01, 2020 at Charles Koch Arena (Devlin Court) - Wichita, Kan.



East Carolina 55

No.	Player	S	Pts	FG	3FG	FT	OR	DR	TR	PF	A	TO	Blk	Stl	Min	+/-
01	THOMPSON, TANIYAH	G	25	9-25	4-12	3-6	1	1	2	3	1	3	0	1	39	-1
02	MONK, LASHONDA	G	7	2-4	2-3	1-2	0	4	4	4	3	2	0	2	19	1
23	CLAYTOR, DOMINIQUE	G	8	4-7	0-0	0-0	1	8	9	4	0	4	0	2	20	7
25	EVANS, RYANN	G	2	1-3	0-0	0-0	1	1	2	3	3	2	0	0	37	-4
33	CHAMBERS, TIARA	F	2	1-2	0-0	0-2	0	4	4	4	0	1	1	0	18	-3
03	JOSEPHS, XIANNA	F	2	1-2	0-0	0-0	2	0	2	4	0	0	0	1	22	-2
04	HOPE, NECOLE	G	5	2-6	1-3	0-0	0	1	1	1	0	2	0	3	28	-1
05	TSINEKE, KATERINA	G	4	2-3	0-0	0-0	1	0	1	2	4	1	1	1	17	-7
TEAM							3	1	4	0		1				
TOTALS			55	22-52	7-18	4-10	9	20	29	25	11	16	2	10	200	

Shooting By Period

Period	FG	FG%	3FG	3FG%	FT	FT%
1st Qtr	5-14	36%	2-7	29%	1-2	50%
2nd Qtr	5-9	56%	0-1	00%	0-0	0%
3rd Qtr	6-13	46%	2-5	40%	2-6	33%
4th Qtr	6-16	38%	3-5	60%	1-2	50%
1st Half	10-23	43%	2-8	25%	1-2	50%
2nd Half	12-29	41%	5-10	50%	3-8	38%
Game	22-52	42.3%	7-18	38.9%	4-10	40.0%

Deadball Rebounds: 6,0
Last FG: 4th-00:22
Biggest Run: 9-0
Largest lead: By 7 at 2nd-07:30
Technical Fouls: None.

Wichita St. 57

No.	Player	S	Pts	FG	3FG	FT	OR	DR	TR	PF	A	TO	Blk	Stl	Min	+/-
05	REID, ASHLEY	G	3	1-3	1-1	0-0	0	2	2	3	0	1	0	1	19	2
12	BREMAUD, CARLA	G	7	3-10	0-4	1-1	1	2	3	4	2	5	0	2	36	0
13	PRINCE, RAVEN	F	11	2-7	0-0	7-11	1	0	1	1	0	1	0	2	20	1
23	BASTIN, SERAPHINE	G	7	2-3	1-1	2-2	2	7	9	2	4	4	0	1	32	3
30	SMITH, SHYIA	F	7	1-3	0-2	5-6	1	2	3	2	2	2	0	1	32	9
01	MCCARTY, DJ	G	8	2-5	1-4	3-6	2	2	4	4	1	2	0	1	18	-7
10	DANIELSSON, VENDELA	G	3	1-3	1-3	0-0	1	1	2	0	2	0	0	0	15	8
25	BREWER, MAYA	G	0	0-1	0-1	0-0	0	0	0	2	0	1	0	0	4	-3
42	HENDERSON, ASIA	F	11	4-9	0-0	3-4	2	2	4	0	0	0	2	0	24	-3
TEAM							2	3	5	0		1				
TOTALS			57	16-44	4-16	21-30	12	21	33	18	11	17	2	8	200	

Shooting By Period

Period	FG	FG%	3FG	3FG%	FT	FT%
1st Qtr	2-9	22%	1-3	33%	1-2	50%
2nd Qtr	3-9	33%	1-3	33%	10-14	71%
3rd Qtr	4-13	31%	0-4	00%	6-9	67%
4th Qtr	7-13	54%	2-6	33%	4-5	80%
1st Half	5-18	28%	2-6	33%	11-16	69%
2nd Half	11-26	42%	2-10	20%	10-14	71%
Game	16-44	36.4%	4-16	25.0%	21-30	70.0%

Deadball Rebounds: 5,0
Last FG: 4th-00:11
Biggest Run: 8-0
Largest lead: By 7 at 4th-03:46
Technical Fouls: None.

Game Notes:

Officials: **Mark Resch, Ron Ledington, Michelle Kramer**
 Attendance: **1953**

Start Time: **03:05 PM ET**
 End Time: **05:13 PM ET**
 Game Duration: **2:08**
 Conference Game;

Score	1st	2nd	3rd	4th	TOT
ECU	13	10	16	16	55
WSU	6	17	14	20	57

ECU led for 23:31. WSU led for 12:31.
 Game was tied for 3:58.
 Times tied: 4 Lead Changes: 8

Points from	ECU	WSU
In the Paint	16	20
Off Turns	12	13
2nd Chance	4	11
Fast Break	7	2
Bench	11	22

Official Box Score
East Carolina vs Wichita St.
First Half Statistics Only
February 01, 2020 at Charles Koch Arena (Devlin Court) - Wichita, Kan.



East Carolina 23

No.	Player	S	Pts	FG	3FG	FT	OR	DR	TR	PF	A	TO	Blk	Stl	Min	+/-
01	THOMPSON, TANIYAH	G	11	4-12	2-8	1-2	0	0	0	1	0	2	0	1	19	1
02	MONK, LASHONDA	G	0	0-0	0-0	0-0	0	2	2	2	0	2	0	0	5	-4
03	JOSEPHS, XIANNA	F	0	0-1	0-0	0-0	1	0	1	2	0	0	0	0	11	3
04	HOPE, NECOLE	G	2	1-2	0-0	0-0	0	0	0	1	0	2	0	3	14	4
05	TSINEKE, KATERINA	G	4	2-3	0-0	0-0	0	0	0	1	3	0	0	0	10	0
23	CLAYTOR, DOMINIQUE	G	4	2-3	0-0	0-0	1	5	6	3	0	4	0	2	13	5
25	EVANS, RYANN	G	0	0-0	0-0	0-0	0	0	0	1	2	1	0	0	18	-3
33	CHAMBERS, TIARA	F	2	1-2	0-0	0-0	0	3	3	2	0	1	1	0	9	-6
	TEAM		0	0-0	0-0	0-0	1	0	1	0	0	1	0	0	0	
	TOTALS		23	10-23	2-8	1-2	3	10	13	13	5	13	1	6	100	

Shooting By Period

Period	FG	FG%	3FG	3FG%	FT	FT%
1st Qtr	5-14	36%	2-7	29%	1-2	50%
2nd Qtr	5-9	56%	0-1	00%	0-0	0%
1st Half	10-23	43%	2-8	25%	1-2	50%
Game	22-52	42.3%	7-18	38.9%	4-10	40.0%

Deadball Rebounds: 6,0
 Last FG Half: ECU 2nd-01:37

Wichita St. 23

No.	Player	S	Pts	FG	3FG	FT	OR	DR	TR	PF	A	TO	Blk	Stl	Min	+/-
01	MCCARTY, DJ	G	1	0-1	0-1	1-2	0	1	1	2	0	2	0	1	7	-8
05	REID, ASHLEY	G	3	1-2	1-1	0-0	0	0	0	2	0	0	0	1	10	5
12	BREMAUD, CARLA	G	2	1-3	0-1	0-0	0	1	1	1	0	4	0	2	18	-3
13	PRINCE, RAVEN	F	5	0-4	0-0	5-8	1	0	1	1	0	1	0	1	11	8
25	BREWER, MAYA	G	0	0-1	0-1	0-0	0	0	0	2	0	1	0	0	3	-3
23	BASTIN, SERAPHINE	G	4	1-2	0-0	2-2	1	5	6	1	2	3	0	1	16	3
10	DANIELSSON, VENDELA	G	3	1-2	1-2	0-0	0	0	0	0	0	0	0	0	10	3
30	SMITH, SHYIA	F	3	0-0	0-0	3-4	1	2	3	0	1	0	0	1	16	3
42	HENDERSON, ASIA	F	2	1-3	0-0	0-0	0	0	0	0	0	0	0	0	9	-8
	TEAM		0	0-0	0-0	0-0	1	1	2	0	0	0	0	0	0	
	TOTALS		23	5-18	2-6	11-16	4	10	14	9	3	11	0	7	100	

Shooting By Period

Period	FG	FG%	3FG	3FG%	FT	FT%
1st Qtr	2-9	22%	1-3	33%	1-2	50%
2nd Qtr	3-9	33%	1-3	33%	10-14	71%
1st Half	5-18	28%	2-6	33%	11-16	69%
Game	16-44	36.4%	4-16	25.0%	21-30	70.0%

Deadball Rebounds: 5,0
 Last FG Half: WSU 2nd-05:55

Game Notes:

Officials: Mark Resch, Ron Ledington, Michelle Kramer
 Attendance: 1953

Start Time: 03:05 PM ET
 End Time: 05:13 PM ET
 Game Duration: 2:08
 Conference Game;

Score	1st	2nd	3rd	4th	TOT
ECU	13	10	16	16	55
WSU	6	17	14	20	57

Points from (This Period)	ECU	WSU
In the Paint	8	4
Off Turns	8	9
2nd Chance	0	5
Fast Break	5	2
Bench	6	6

Official Box Score
East Carolina vs Wichita St.
First Quarter Statistics Only
February 01, 2020 at Charles Koch Arena (Devlin Court) - Wichita, Kan.



East Carolina 13

No.	Player	S	Pts	FG	3FG	FT	OR	DR	TR	PF	A	TO	Blk	Stl	Min	+/-
01	THOMPSON, TANIYAH	G	11	4-10	2-7	1-2	0	0	0	0	0	0	0	1	10	7
02	MONK, LASHONDA	G	0	0-0	0-0	0-0	0	1	1	1	0	1	0	0	3	-3
23	CLAYTOR, DOMINIQUE	G	2	1-2	0-0	0-0	1	5	6	1	0	3	0	1	10	7
25	EVANS, RYANN	G	0	0-0	0-0	0-0	0	0	0	1	1	1	0	0	9	4
33	CHAMBERS, TIARA	F	0	0-1	0-0	0-0	0	1	1	0	0	0	0	0	4	-1
03	JOSEPHS, XIANNA	F	0	0-0	0-0	0-0	1	0	1	0	0	0	0	0	6	8
04	HOPE, NECOLE	G	0	0-1	0-0	0-0	0	0	0	1	0	1	0	2	6	11
05	TSINEKE, KATERINA	G	0	0-0	0-0	0-0	0	0	0	0	1	0	0	0	2	2
TEAM							1	0	1	0						
TOTALS			13	5-14	2-7	1-2	3	7	10	4	2	6	0	4	50	

Shooting By Period

Period	FG	FG%	3FG	3FG%	FT	FT%
1st Qtr	5-14	36%	2-7	29%	1-2	50%
2nd Qtr	5-9	56%	0-1	00%	0-0	0%
1st Half	5-14	36%	2-7	29%	1-2	50%
1st Half	10-23	43%	2-8	25%	1-2	50%
Game	22-52	42.3%	7-18	38.9%	4-10	40.0%

Deadball Rebounds: 6,0

Wichita St. 6

No.	Player	S	Pts	FG	3FG	FT	OR	DR	TR	PF	A	TO	Blk	Stl	Min	+/-
05	REID, ASHLEY	G	3	1-1	1-1	0-0	0	0	0	2	0	0	0	0	5	2
12	BREMAUD, CARLA	G	0	0-1	0-1	0-0	0	1	1	0	0	3	0	1	10	-7
13	PRINCE, RAVEN	F	0	0-3	0-0	0-0	0	0	0	1	0	0	0	0	4	1
23	BASTIN, SERAPHINE	G	2	1-2	0-0	0-0	0	3	3	0	1	1	0	0	9	-4
30	SMITH, SHYIA	F	0	0-0	0-0	0-0	0	1	1	0	0	0	0	1	6	-4
01	MCCARTY, DJ	G	1	0-1	0-1	1-2	0	1	1	2	0	2	0	1	7	-8
10	DANIELSSON, VENDELA	G	0	0-0	0-0	0-0	0	0	0	0	0	0	0	0	2	-2
25	BREWER, MAYA	G	0	0-0	0-0	0-0	0	0	0	0	0	1	0	0	1	-5
42	HENDERSON, ASIA	F	0	0-1	0-0	0-0	0	0	0	0	0	0	0	0	6	-8
TEAM							0	0	0	0						
TOTALS			6	2-9	1-3	1-2	0	6	6	5	1	7	0	3	50	

Shooting By Period

Period	FG	FG%	3FG	3FG%	FT	FT%
1st Qtr	2-9	22%	1-3	33%	1-2	50%
2nd Qtr	3-9	33%	1-3	33%	10-14	71%
1st Half	2-9	22%	1-3	33%	1-2	50%
1st Half	5-18	28%	2-6	33%	11-16	69%
Game	16-44	36.4%	4-16	25.0%	21-30	70.0%

Deadball Rebounds: 5,0

Game Notes:

Officials: **Mark Resch, Ron Ledington, Michelle Kramer**
 Attendance: **1953**

Start Time: **03:05 PM ET**
 End Time: **05:13 PM ET**
 Game Duration: **2:08**
 Conference Game;

Score	1st	2nd	3rd	4th	TOT
ECU	13	10	16	16	55
WSU	6	17	14	20	57

Points from (This Period)	ECU	WSU
In the Paint	2	2
Off Turns	6	4
2nd Chance	0	0
Fast Break	3	0
Bench	0	1

**Official Play-By-Play
East Carolina vs Wichita St.
First Quarter**

February 01, 2020 at Charles Koch Arena (Devlin Court) - Wichita, Kan.



Period 1

Starters:

East Carolina: 1 THOMPSON, TANIYAH (G); 2 MONK, LASHONDA (G); 23 CLAYTOR, DOMINIQUE (G); 25 EVANS, RYANN (G); 33 CHAMBERS, TIARA (F);

Wichita St.: 5 REID, ASHLEY (G); 12 BREMAUD, CARLA (G); 13 PRINCE, RAVEN (F); 23 BASTIN, SERAPHINE (G); 30 SMITH, SHYIA (F);

Time	VISITORS: East Carolina	Score	Margin	HOME: Wichita St.
09:39	TURNOVER (BADPASS) by EVANS, RYANN			
09:13		3-0	H 3	GOOD! 3PTR by REID, ASHLEY
09:13				ASSIST by BASTIN, SERAPHINE
09:02				FOUL (PERSONAL) by PRINCE, RAVEN
08:41	MISSED 3PTR by THOMPSON, TANIYAH			
08:38	REBOUND (OFF) by CLAYTOR, DOMINIQUE			
08:31				FOUL (PERSONAL) by REID, ASHLEY
08:31				FOUL (PERSONAL) by REID, ASHLEY
08:31				SUB OUT: REID, ASHLEY
08:31				SUB IN: MCCARTY, DJ
08:13	TURNOVER (BADPASS) by CLAYTOR, DOMINIQUE			
08:13				STEAL by BREMAUD, CARLA
07:58				MISSED LAYUP by PRINCE, RAVEN
07:55	REBOUND (DEF) by CHAMBERS, TIARA			
07:42	TURNOVER (LOSTBALL) by CLAYTOR, DOMINIQUE			
07:42				STEAL by SMITH, SHYIA
07:22				MISSED JUMPER by PRINCE, RAVEN
07:18	REBOUND (DEF) by CLAYTOR, DOMINIQUE			
07:08	MISSED LAYUP by CHAMBERS, TIARA			
07:08	REBOUND (OFF) by TEAM			
07:08				FOUL (PERSONAL) by MCCARTY, DJ
06:55	MISSED 3PTR by THOMPSON, TANIYAH			
06:53				REBOUND (DEF) by BASTIN, SERAPHINE
06:48				MISSED LAYUP by BASTIN, SERAPHINE
06:45	REBOUND (DEF) by MONK, LASHONDA			
06:41	FOUL (OFF) by MONK, LASHONDA			
06:41	TURNOVER (OFFENSIVE) by MONK, LASHONDA			
06:41	TIMEOUT 30SEC			
06:41	SUB OUT: MONK, LASHONDA			
06:41	SUB IN: HOPE, NECOLE			
06:34	FOUL (PERSONAL) by CLAYTOR, DOMINIQUE			
06:17				MISSED LAYUP by PRINCE, RAVEN
06:12	REBOUND (DEF) by CLAYTOR, DOMINIQUE			
06:02	GOOD! JUMPER by CLAYTOR, DOMINIQUE	3-2	H 1	
05:37				TURNOVER (BADPASS) by BREMAUD, CARLA
05:37				SUB OUT: PRINCE, RAVEN
05:37				SUB IN: HENDERSON, ASIA
05:37	SUB OUT: CHAMBERS, TIARA			
05:37	SUB IN: JOSEPHS, XIANNA			
05:12	MISSED JUMPER by CLAYTOR, DOMINIQUE			
05:07				REBOUND (DEF) by SMITH, SHYIA
05:02				MISSED LAYUP by HENDERSON, ASIA
05:00	REBOUND (DEF) by CLAYTOR, DOMINIQUE			
04:44	GOOD! JUMPER by THOMPSON, TANIYAH	3-4	V 1	
04:26				SUB OUT: SMITH, SHYIA
04:26				SUB IN: BREWER, MAYA
04:25				TURNOVER (BADPASS) by MCCARTY, DJ
04:25	STEAL by HOPE, NECOLE			
03:59	MISSED JUMPER by HOPE, NECOLE			
03:56				REBOUND (DEF) by BASTIN, SERAPHINE
03:49				MISSED 3PTR by MCCARTY, DJ
03:46	REBOUND (DEF) by CLAYTOR, DOMINIQUE			
03:44	TURNOVER (BADPASS) by CLAYTOR, DOMINIQUE			
03:31				TURNOVER (BADPASS) by BREWER, MAYA
03:31	STEAL by CLAYTOR, DOMINIQUE			
03:25	GOOD! LAYUP by THOMPSON, TANIYAH [FB]	3-6	V 3	
03:15				TURNOVER (BADPASS) by BREMAUD, CARLA
03:04	GOOD! 3PTR by THOMPSON, TANIYAH	3-9	V 6	
03:04	ASSIST by EVANS, RYANN			
03:01				TIMEOUT 30SEC
03:01				SUB OUT: BREWER, MAYA
03:01				SUB IN: REID, ASHLEY
02:46				TURNOVER (LOSTBALL) by BREMAUD, CARLA
02:46	STEAL by HOPE, NECOLE			
02:31	TURNOVER (LOSTBALL) by HOPE, NECOLE			
02:31				STEAL by MCCARTY, DJ
02:29	FOUL (PERSONAL) by HOPE, NECOLE			
02:29				MISSED FT by MCCARTY, DJ
02:29				REBOUND (OFF) by TEAM
02:29		4-9	V 5	GOOD! FT by MCCARTY, DJ

Time	VISITORS: East Carolina	Score	Margin	HOME: Wichita St.
02:15	MISSED 3PTR by THOMPSON, TANIYAH			
02:14				REBOUND (DEF) by MCCARTY, DJ
02:14				TURNOVER (TRAVEL) by MCCARTY, DJ
01:46	MISSED 3PTR by THOMPSON, TANIYAH			
01:43				REBOUND (DEF) by BASTIN, SERAPHINE
01:41				TURNOVER (LOSTBALL) by BASTIN, SERAPHINE
01:41	STEAL by THOMPSON, TANIYAH			
01:36				FOUL (PERSONAL) by MCCARTY, DJ
01:36				SUB OUT: MCCARTY, DJ
01:36				SUB IN: DANIELSSON, VENDELA
01:36	SUB OUT: HOPE, NECOLE			
01:36	SUB IN: TSINEKE, KATERINA			
01:36	MISSED FT by THOMPSON, TANIYAH			
01:36	REBOUND (OFF) by TEAM			
01:36	GOOD! FT by THOMPSON, TANIYAH [FB]	4-10	V 6	
01:30		6-10	V 4	GOOD! LAYUP by BASTIN, SERAPHINE
01:03	MISSED JUMPER by THOMPSON, TANIYAH			
00:59	REBOUND (OFF) by JOSEPHS, XIANNA			
00:46	MISSED 3PTR by THOMPSON, TANIYAH			
00:43				REBOUND (DEF) by BREMAUD, CARLA
00:34	FOUL (PERSONAL) by EVANS, RYANN			
00:34				SUB OUT: BASTIN, SERAPHINE
00:34				SUB IN: SMITH, SHYIA
00:34	SUB OUT: EVANS, RYANN			
00:34	SUB IN: HOPE, NECOLE			
00:13				MISSED 3PTR by BREMAUD, CARLA
00:13	REBOUND (DEF) by CLAYTOR, DOMINIQUE			
00:04	GOOD! 3PTR by THOMPSON, TANIYAH	6-13	V 7	
00:04	ASSIST by TSINEKE, KATERINA			

East Carolina 13, Wichita St. 6

Points from (This Period)	ECU	WSU
In the Paint	2	2
Off Turns	6	4
2nd Chance	0	0
Fast Break	3	0
Bench	0	1

Official Box Score
East Carolina vs Wichita St.
Second Quarter Statistics Only
 February 01, 2020 at Charles Koch Arena (Devlin Court) - Wichita, Kan.



East Carolina 10

No.	Player	S	Pts	FG	3FG	FT	OR	DR	TR	PF	A	TO	Blk	Stl	Min	+/-
01	THOMPSON, TANIYAH	G	0	0-2	0-1	0-0	0	0	0	1	0	2	0	0	9	-6
02	MONK, LASHONDA	G	0	0-0	0-0	0-0	0	1	1	1	0	1	0	0	2	-1
23	CLAYTOR, DOMINIQUE	G	2	1-1	0-0	0-0	0	0	0	2	0	1	0	1	3	-2
25	EVANS, RYANN	G	0	0-0	0-0	0-0	0	0	0	0	1	0	0	0	9	-7
33	CHAMBERS, TIARA	F	2	1-1	0-0	0-0	0	2	2	2	0	1	1	0	5	-5
03	JOSEPHS, XIANNA	F	0	0-1	0-0	0-0	0	0	0	2	0	0	0	0	5	-5
04	HOPE, NECOLE	G	2	1-1	0-0	0-0	0	0	0	0	0	1	0	1	8	-7
05	TSINEKE, KATERINA	G	4	2-3	0-0	0-0	0	0	0	1	2	0	0	0	8	-2
TEAM							0	0	0	0		1				
TOTALS			10	5-9	0-1	0-0	0	3	3	9	3	7	1	2	50	

Shooting By Period

Period	FG	FG%	3FG	3FG%	FT	FT%
3rd Qtr	6-13	46%	2-5	40%	2-6	33%
4th Qtr	6-16	38%	3-5	60%	1-2	50%
2nd Half	5-9	56%	0-1	00%	0-0	0%
2nd Half	12-29	41%	5-10	50%	3-8	38%
Game	22-52	42.3%	7-18	38.9%	4-10	40.0%

Deadball Rebounds: 6,0

Wichita St. 17

No.	Player	S	Pts	FG	3FG	FT	OR	DR	TR	PF	A	TO	Blk	Stl	Min	+/-
05	REID, ASHLEY	G	0	0-1	0-0	0-0	0	0	0	0	0	0	0	1	5	3
12	BREMAUD, CARLA	G	2	1-2	0-0	0-0	0	0	0	1	0	1	0	1	8	4
13	PRINCE, RAVEN	F	5	0-1	0-0	5-8	1	0	1	0	0	1	0	1	7	7
23	BASTIN, SERAPHINE	G	2	0-0	0-0	2-2	1	2	3	1	1	2	0	1	7	7
30	SMITH, SHYIA	F	3	0-0	0-0	3-4	1	1	2	0	1	0	0	0	10	7
01	MCCARTY, DJ	G	0	0-0	0-0	0-0	0	0	0	0	0	0	0	0	0	0
10	DANIELSSON, VENDELA	G	3	1-2	1-2	0-0	0	0	0	0	0	0	0	0	8	5
25	BREWER, MAYA	G	0	0-1	0-1	0-0	0	0	0	2	0	0	0	0	2	2
42	HENDERSON, ASIA	F	2	1-2	0-0	0-0	0	0	0	0	0	0	0	0	3	0
TEAM							1	1	2	0		0				
TOTALS			17	3-9	1-3	10-14	4	4	8	4	2	4	0	4	50	

Shooting By Period

Period	FG	FG%	3FG	3FG%	FT	FT%
3rd Qtr	4-13	31%	0-4	00%	6-9	67%
4th Qtr	7-13	54%	2-6	33%	4-5	80%
2nd Half	3-9	33%	1-3	33%	10-14	71%
2nd Half	11-26	42%	2-10	20%	10-14	71%
Game	16-44	36.4%	4-16	25.0%	21-30	70.0%

Deadball Rebounds: 5,0

Game Notes:

Officials: **Mark Resch, Ron Ledington, Michelle Kramer**
 Attendance: **1953**

Start Time: **03:05 PM ET**
 End Time: **05:13 PM ET**
 Game Duration: **2:08**
 Conference Game;

Score	1st	2nd	3rd	4th	TOT
ECU	13	10	16	16	55
WSU	6	17	14	20	57

Points from (This Period)	ECU	WSU
In the Paint	6	2
Off Turns	2	5
2nd Chance	0	5
Fast Break	2	2
Bench	6	5

**Official Play-By-Play
East Carolina vs Wichita St.
Second Quarter**

February 01, 2020 at Charles Koch Arena (Devlin Court) - Wichita, Kan.



Period 2

Starters:

East Carolina: 1 THOMPSON, TANIYAH (G); 2 MONK, LASHONDA (G); 23 CLAYTOR, DOMINIQUE (G); 25 EVANS, RYANN (G); 33 CHAMBERS, TIARA (F);

Wichita St.: 5 REID, ASHLEY (G); 12 BREMAUD, CARLA (G); 13 PRINCE, RAVEN (F); 23 BASTIN, SERAPHINE (G); 30 SMITH, SHYIA (F);

Time	VISITORS: East Carolina	Score	Margin	HOME: Wichita St.
09:46		8-13	V 5	GOOD! LAYUP by HENDERSON, ASIA
09:46				ASSIST by SMITH, SHYIA
09:15	GOOD! JUMPER by CLAYTOR, DOMINIQUE	8-15	V 7	
09:15	ASSIST by TSINEKE, KATERINA			
08:54				MISSED LAYUP by HENDERSON, ASIA
08:51				REBOUND (OFF) by SMITH, SHYIA
08:38	FOUL (PERSONAL) by CLAYTOR, DOMINIQUE			
08:38	SUB OUT: JOSEPHS, XIANNA			
08:38	SUB OUT: HOPE, NECOLE			
08:38	SUB OUT: CLAYTOR, DOMINIQUE			
08:38	SUB IN: MONK, LASHONDA			
08:38	SUB IN: EVANS, RYANN			
08:38	SUB IN: CHAMBERS, TIARA			
08:38		9-15	V 6	GOOD! FT by SMITH, SHYIA
08:38		10-15	V 5	GOOD! FT by SMITH, SHYIA
08:21	TURNOVER (BADPASS) by MONK, LASHONDA			
08:21				STEAL by BREMAUD, CARLA
08:15				MISSED LAYUP by BREMAUD, CARLA
08:12	REBOUND (DEF) by CHAMBERS, TIARA			
07:59	GOOD! LAYUP by TSINEKE, KATERINA	10-17	V 7	
07:38		12-17	V 5	GOOD! JUMPER by BREMAUD, CARLA
07:30	GOOD! LAYUP by TSINEKE, KATERINA [FB]	12-19	V 7	
07:30	ASSIST by EVANS, RYANN			
07:05				MISSED 3PTR by DANIELSSON, VENDELA
07:02	REBOUND (DEF) by MONK, LASHONDA			
06:55	MISSED 3PTR by THOMPSON, TANIYAH			
06:54				REBOUND (DEF) by TEAM
06:54				SUB OUT: BREMAUD, CARLA
06:54				SUB OUT: HENDERSON, ASIA
06:54				SUB IN: PRINCE, RAVEN
06:54				SUB IN: BASTIN, SERAPHINE
06:54	SUB OUT: TSINEKE, KATERINA			
06:54	SUB IN: HOPE, NECOLE			
06:54	SUB OUT: THOMPSON, TANIYAH			
06:54	SUB IN: JOSEPHS, XIANNA			
06:41	FOUL (PERSONAL) by CHAMBERS, TIARA			
06:41				MISSED FT by SMITH, SHYIA
06:41				REBOUND (OFF) by TEAM
06:41		13-19	V 6	GOOD! FT by SMITH, SHYIA
06:18	TURNOVER (BADPASS) by CHAMBERS, TIARA			
06:18				STEAL by REID, ASHLEY
06:18	FOUL (PERSONAL) by MONK, LASHONDA			
06:18	SUB OUT: MONK, LASHONDA			
06:18	SUB OUT: JOSEPHS, XIANNA			
06:18	SUB IN: THOMPSON, TANIYAH			
06:18	SUB IN: TSINEKE, KATERINA			
05:55		16-19	V 3	GOOD! 3PTR by DANIELSSON, VENDELA
05:55				ASSIST by BASTIN, SERAPHINE
05:27	GOOD! LAYUP by CHAMBERS, TIARA	16-21	V 5	
05:27	ASSIST by TSINEKE, KATERINA			
05:06				MISSED JUMPER by REID, ASHLEY
05:05				REBOUND (OFF) by PRINCE, RAVEN
05:05	FOUL (PERSONAL) by CHAMBERS, TIARA			
05:05				MISSED FT by PRINCE, RAVEN
05:05				REBOUND (OFF) by TEAM
05:05		17-21	V 4	GOOD! FT by PRINCE, RAVEN
05:05				SUB OUT: REID, ASHLEY
05:05				SUB IN: BREMAUD, CARLA
05:05	SUB OUT: CHAMBERS, TIARA			
05:05	SUB IN: JOSEPHS, XIANNA			
04:35	TURNOVER (SHOTCLOCK) by TEAM			
04:35	TIMEOUT 30SEC			
04:20				TURNOVER (LOSTBALL) by BREMAUD, CARLA
04:20	STEAL by HOPE, NECOLE			
04:10	FOUL (OFF) by THOMPSON, TANIYAH			
04:10	TURNOVER (OFFENSIVE) by THOMPSON, TANIYAH			
03:41				TURNOVER (TRAVEL) by PRINCE, RAVEN
03:18	MISSED JUMPER by TSINEKE, KATERINA			
03:15				REBOUND (DEF) by BASTIN, SERAPHINE
03:11				FOUL (OFF) by BASTIN, SERAPHINE

Time	VISITORS: East Carolina	Score	Margin	HOME: Wichita St.
03:11				TURNOVER (OFFENSIVE) by BASTIN, SERAPHINE
02:55	TURNOVER (LOSTBALL) by THOMPSON, TANIYAH			
02:55				STEAL by PRINCE, RAVEN
02:46	FOUL (PERSONAL) by JOSEPHS, XIANNA			
02:46	SUB OUT: TSINEKE, KATERINA			
02:46	SUB IN: CLAYTOR, DOMINIQUE			
02:46		18-21	V 3	GOOD! FT by PRINCE, RAVEN
02:46		19-21	V 2	GOOD! FT by PRINCE, RAVEN
02:21				SUB OUT: DANIELSSON, VENDELA
02:21				SUB IN: BREWER, MAYA
02:17	MISSED LAYUP by JOSEPHS, XIANNA			
02:14				REBOUND (DEF) by BASTIN, SERAPHINE
02:09	FOUL (PERSONAL) by JOSEPHS, XIANNA			
02:09		20-21	V 1	GOOD! FT by BASTIN, SERAPHINE [FB]
02:09		21-21	T	GOOD! FT by BASTIN, SERAPHINE [FB]
01:47	TURNOVER (LOSTBALL) by CLAYTOR, DOMINIQUE			
01:47				STEAL by BASTIN, SERAPHINE
01:47				TURNOVER (LOSTBALL) by BASTIN, SERAPHINE
01:47	STEAL by CLAYTOR, DOMINIQUE			
01:47	SUB OUT: JOSEPHS, XIANNA			
01:47	SUB IN: TSINEKE, KATERINA			
01:47				FOUL (PERSONAL) by BREMAUD, CARLA
01:37	GOOD! JUMPER by HOPE, NECOLE	21-23	V 2	
01:18	FOUL (PERSONAL) by CLAYTOR, DOMINIQUE			
01:18	SUB OUT: CLAYTOR, DOMINIQUE			
01:18	SUB IN: CHAMBERS, TIARA			
01:18				MISSED FT by PRINCE, RAVEN
01:18				REBOUND (OFF) by TEAM
01:18				MISSED FT by PRINCE, RAVEN
01:18	REBOUND (DEF) by CHAMBERS, TIARA			
00:56	MISSED JUMPER by THOMPSON, TANIYAH			
00:53				REBOUND (DEF) by SMITH, SHYIA
00:49				MISSED LAYUP by PRINCE, RAVEN
00:49	BLOCK by CHAMBERS, TIARA			
00:49				REBOUND (OFF) by TEAM
00:49	FOUL (PERSONAL) by TSINEKE, KATERINA			
00:49		22-23	V 1	GOOD! FT by PRINCE, RAVEN
00:49		23-23	T	GOOD! FT by PRINCE, RAVEN
00:44				FOUL (PERSONAL) by BREWER, MAYA
00:33				FOUL (PERSONAL) by BREWER, MAYA
00:27	TURNOVER (OTHER) by HOPE, NECOLE			
00:05				MISSED 3PTR by BREWER, MAYA
00:01				REBOUND (OFF) by BASTIN, SERAPHINE

East Carolina 23, Wichita St. 23

Points from (This Period)	ECU	WSU
In the Paint	6	2
Off Turns	2	5
2nd Chance	0	5
Fast Break	2	2
Bench	6	5

Official Box Score
East Carolina vs Wichita St.
Second Half Statistics Only
February 01, 2020 at Charles Koch Arena (Devlin Court) - Wichita, Kan.



East Carolina 32

No.	Player	S	Pts	FG	3FG	FT	OR	DR	TR	PF	A	TO	Blk	Stl	Min	+/-
01	THOMPSON, TANIYAH	G	14	5-13	2-4	2-4	1	1	2	2	1	1	0	0	20	-2
02	MONK, LASHONDA	G	7	2-4	2-3	1-2	0	2	2	2	3	0	0	2	14	5
03	JOSEPHS, XIANNA	F	2	1-1	0-0	0-0	1	0	1	2	0	0	0	1	10	-5
04	HOPE, NECOLE	G	3	1-4	1-3	0-0	0	1	1	0	0	0	0	0	14	-5
05	TSINEKE, KATERINA	G	0	0-0	0-0	0-0	1	0	1	1	1	1	1	1	6	-7
23	CLAYTOR, DOMINIQUE	G	4	2-4	0-0	0-0	0	3	3	1	0	0	0	0	8	2
25	EVANS, RYANN	G	2	1-3	0-0	0-0	1	1	2	2	1	1	0	0	19	-1
33	CHAMBERS, TIARA	F	0	0-0	0-0	0-2	0	1	1	2	0	0	0	0	10	3
	TEAM		0	0-0	0-0	0-0	2	1	3	0	0	0	0	0	0	
TOTALS			32	12-29	5-10	3-8	6	10	16	12	6	3	1	4	100	

Shooting By Period

Period	FG	FG%	3FG	3FG%	FT	FT%
3rd Qtr	6-13	46%	2-5	40%	2-6	33%
4th Qtr	6-16	38%	3-5	60%	1-2	50%
2nd Half	12-29	41%	5-10	50%	3-8	38%
Game	22-52	42.3%	7-18	38.9%	4-10	40.0%

Deadball Rebounds: 6,0

Last FG Half: ECU 4th-00:22

Wichita St. 34

No.	Player	S	Pts	FG	3FG	FT	OR	DR	TR	PF	A	TO	Blk	Stl	Min	+/-
01	MCCARTY, DJ	G	7	2-4	1-3	2-4	2	1	3	2	1	0	0	0	11	1
05	REID, ASHLEY	G	0	0-1	0-0	0-0	0	2	2	1	0	1	0	0	9	-3
12	BREMAUD, CARLA	G	5	2-7	0-3	1-1	1	1	2	3	2	1	0	0	18	3
13	PRINCE, RAVEN	F	6	2-3	0-0	2-3	0	0	0	0	0	0	0	1	9	-7
25	BREWER, MAYA	G	0	0-0	0-0	0-0	0	0	0	0	0	0	0	0	0	0
23	BASTIN, SERAPHINE	G	3	1-1	1-1	0-0	1	2	3	1	2	1	0	0	16	0
10	DANIELSSON, VENDELA	G	0	0-1	0-1	0-0	1	1	2	0	2	0	0	0	6	5
30	SMITH, SHYIA	F	4	1-3	0-2	2-2	0	0	0	2	1	2	0	0	16	6
42	HENDERSON, ASIA	F	9	3-6	0-0	3-4	2	2	4	0	0	0	2	0	15	5
	TEAM		0	0-0	0-0	0-0	1	2	3	0	0	1	0	0	0	
TOTALS			34	11-26	2-10	10-14	8	11	19	9	8	6	2	1	100	

Shooting By Period

Period	FG	FG%	3FG	3FG%	FT	FT%
3rd Qtr	4-13	31%	0-4	00%	6-9	67%
4th Qtr	7-13	54%	2-6	33%	4-5	80%
2nd Half	11-26	42%	2-10	20%	10-14	71%
Game	16-44	36.4%	4-16	25.0%	21-30	70.0%

Deadball Rebounds: 5,0

Last FG Half: WSU 4th-00:11

Game Notes:

Officials: **Mark Resch, Ron Ledington, Michelle Kramer**
 Attendance: **1953**

Start Time: **03:05 PM ET**
 End Time: **05:13 PM ET**
 Game Duration: **2:08**
 Conference Game;

Score	1st	2nd	3rd	4th	TOT
ECU	13	10	16	16	55
WSU	6	17	14	20	57

Points from (This Period)	ECU	WSU
In the Paint	8	16
Off Turns	4	4
2nd Chance	4	6
Fast Break	2	0
Bench	5	16

Official Box Score
East Carolina vs Wichita St.
Third Quarter Statistics Only
February 01, 2020 at Charles Koch Arena (Devlin Court) - Wichita, Kan.



East Carolina 32

No.	Player	S	Pts	FG	3FG	FT	OR	DR	TR	PF	A	TO	Blk	Stl	Min	+/-
01	THOMPSON, TANIYAH	G	6	2-6	1-2	1-2	0	1	1	0	0	1	0	0	10	2
02	MONK, LASHONDA	G	1	0-1	0-1	1-2	0	2	2	2	2	0	0	1	9	5
23	CLAYTOR, DOMINIQUE	G	2	1-1	0-0	0-0	0	1	1	1	0	0	0	0	3	2
25	EVANS, RYANN	G	2	1-2	0-0	0-0	0	1	1	0	1	0	0	0	9	3
33	CHAMBERS, TIARA	F	0	0-0	0-0	0-2	0	0	0	2	0	0	0	0	3	3
03	JOSEPHS, XIANNA	F	2	1-1	0-0	0-0	1	0	1	1	0	0	0	1	7	-1
04	HOPE, NECOLE	G	3	1-2	1-2	0-0	0	1	1	0	0	0	0	0	9	-1
05	TSINEKE, KATERINA	G	0	0-0	0-0	0-0	0	0	0	0	0	0	0	0	1	-3
TEAM							1	0	1	0	0					
TOTALS			16	6-13	2-5	2-6	2	6	8	6	3	1	0	2	50	

Shooting By Period

Period	FG	FG%	3FG	3FG%	FT	FT%
2nd Half	0-0	0%	0-0	0%	0-0	0%
Game	22-52	42.3%	7-18	38.9%	4-10	40.0%

Deadball Rebounds: 6,0

Wichita St. 34

No.	Player	S	Pts	FG	3FG	FT	OR	DR	TR	PF	A	TO	Blk	Stl	Min	+/-
05	REID, ASHLEY	G	0	0-1	0-0	0-0	0	2	2	1	0	1	0	0	9	-3
12	BREMAUD, CARLA	G	0	0-4	0-2	0-0	1	0	1	1	1	0	0	0	8	-1
13	PRINCE, RAVEN	F	6	2-3	0-0	2-3	0	0	0	0	0	0	0	1	9	-5
23	BASTIN, SERAPHINE	G	0	0-0	0-0	0-0	0	1	1	1	0	0	0	0	7	-2
30	SMITH, SHYIA	F	2	0-1	0-1	2-2	0	0	0	2	1	2	0	0	6	2
01	MCCARTY, DJ	G	4	1-2	0-1	2-4	2	1	3	1	0	0	0	0	5	-1
10	DANIELSSON, VENDELA	G	0	0-0	0-0	0-0	1	0	1	0	0	0	0	0	1	1
25	BREWER, MAYA	G	0	0-0	0-0	0-0	0	0	0	0	0	0	0	0	0	0
42	HENDERSON, ASIA	F	2	1-2	0-0	0-0	1	1	2	0	0	0	1	0	5	-1
TEAM							0	1	1	0	1					
TOTALS			14	4-13	0-4	6-9	5	6	11	6	2	4	1	1	50	

Shooting By Period

Period	FG	FG%	3FG	3FG%	FT	FT%
2nd Half	0-0	0%	0-0	0%	0-0	0%
Game	16-44	36.4%	4-16	25.0%	21-30	70.0%

Deadball Rebounds: 5,0

Game Notes:

Officials: **Mark Resch, Ron Ledington, Michelle Kramer**
 Attendance: 1953

Start Time: **03:05 PM ET**
 End Time: **05:13 PM ET**
 Game Duration: **2:08**
 Conference Game;

Score	1st	2nd	3rd	4th	TOT
ECU	13	10	16	16	55
WSU	6	17	14	20	57

Points from (This Period)	ECU	WSU
In the Paint	6	8
Off Turns	2	2
2nd Chance	4	6
Fast Break	2	0
Bench	5	6

**Official Play-By-Play
East Carolina vs Wichita St.
Third Quarter**

February 01, 2020 at Charles Koch Arena (Devlin Court) - Wichita, Kan.



Period 3

Starters:

East Carolina: 1 THOMPSON, TANIYAH (G); 2 MONK, LASHONDA (G); 23 CLAYTOR, DOMINIQUE (G); 25 EVANS, RYANN (G); 33 CHAMBERS, TIARA (F);

Wichita St.: 5 REID, ASHLEY (G); 12 BREMAUD, CARLA (G); 13 PRINCE, RAVEN (F); 23 BASTIN, SERAPHINE (G); 30 SMITH, SHYIA (F);

Time	VISITORS: East Carolina	Score	Margin	HOME: Wichita St.
10:00				SUB OUT: BREWER, MAYA
10:00				SUB IN: REID, ASHLEY
10:00	SUB OUT: TSINEKE, KATERINA			
10:00	SUB IN: MONK, LASHONDA			
09:53				FOUL (OFF) by SMITH, SHYIA
09:53				TURNOVER (OFFENSIVE) by SMITH, SHYIA
09:43	GOOD! JUMPER by THOMPSON, TANIYAH	23-25	V 2	
09:13	FOUL (PERSONAL) by CHAMBERS, TIARA			
09:13	SUB OUT: CHAMBERS, TIARA			
09:13	SUB IN: JOSEPHS, XIANNA			
09:12		24-25	V 1	GOOD! FT by PRINCE, RAVEN
09:12				MISSED FT by PRINCE, RAVEN
09:11	REBOUND (DEF) by EVANS, RYANN			
08:47	MISSED 3PTR by HOPE, NECOLE			
08:44	REBOUND (OFF) by TEAM			
08:40	GOOD! LAYUP by EVANS, RYANN	24-27	V 3	
08:25				TURNOVER (BADPASS) by SMITH, SHYIA
08:25	STEAL by MONK, LASHONDA			
08:18	MISSED 3PTR by MONK, LASHONDA			
08:13				REBOUND (DEF) by REID, ASHLEY
08:12				TURNOVER (BADPASS) by REID, ASHLEY
08:12	STEAL by JOSEPHS, XIANNA			
07:53	TURNOVER (BADPASS) by THOMPSON, TANIYAH			
07:53				STEAL by PRINCE, RAVEN
07:26		26-27	V 1	GOOD! LAYUP by PRINCE, RAVEN
07:26				ASSIST by SMITH, SHYIA
06:58	MISSED JUMPER by THOMPSON, TANIYAH			
06:54				REBOUND (DEF) by BASTIN, SERAPHINE
06:47				MISSED JUMPER by BREMAUD, CARLA
06:43	REBOUND (DEF) by MONK, LASHONDA			
06:22	GOOD! 3PTR by THOMPSON, TANIYAH	26-30	V 4	
06:22	ASSIST by MONK, LASHONDA			
06:00		28-30	V 2	GOOD! LAYUP by PRINCE, RAVEN
06:00	FOUL (PERSONAL) by JOSEPHS, XIANNA			
06:00		29-30	V 1	GOOD! FT by PRINCE, RAVEN
05:51	MISSED JUMPER by THOMPSON, TANIYAH			
05:47	REBOUND (OFF) by JOSEPHS, XIANNA			
05:44	GOOD! LAYUP by JOSEPHS, XIANNA	29-32	V 3	
05:44	ASSIST by MONK, LASHONDA			
05:27	FOUL (PERSONAL) by MONK, LASHONDA			
05:27		30-32	V 2	GOOD! FT by SMITH, SHYIA
05:27		31-32	V 1	GOOD! FT by SMITH, SHYIA
05:27				SUB OUT: SMITH, SHYIA
05:27				SUB IN: HENDERSON, ASIA
05:10				FOUL (PERSONAL) by BREMAUD, CARLA
04:58	MISSED JUMPER by EVANS, RYANN			
04:57				REBOUND (DEF) by TEAM
04:57				
04:57				SUB OUT: BASTIN, SERAPHINE
04:57				SUB IN: MCCARTY, DJ
04:36				MISSED 3PTR by BREMAUD, CARLA
04:32				REBOUND (OFF) by BREMAUD, CARLA
04:21		33-32	H 1	GOOD! LAYUP by HENDERSON, ASIA
04:21				ASSIST by BREMAUD, CARLA
03:49	MISSED JUMPER by THOMPSON, TANIYAH			
03:49				BLOCK by HENDERSON, ASIA
03:43				REBOUND (DEF) by REID, ASHLEY
03:42				MISSED LAYUP by REID, ASHLEY
03:39	REBOUND (DEF) by HOPE, NECOLE			
03:27	GOOD! 3PTR by HOPE, NECOLE	33-35	V 2	
03:27	ASSIST by EVANS, RYANN			
03:05				MISSED LAYUP by HENDERSON, ASIA
03:02				REBOUND (OFF) by MCCARTY, DJ
02:49				MISSED JUMPER by BREMAUD, CARLA
02:45	REBOUND (DEF) by THOMPSON, TANIYAH			
02:41				FOUL (PERSONAL) by REID, ASHLEY
02:41				SUB OUT: BREMAUD, CARLA
02:41				SUB IN: BASTIN, SERAPHINE
02:41	SUB OUT: JOSEPHS, XIANNA			
02:41	SUB OUT: HOPE, NECOLE			

Time	VISITORS: East Carolina	Score	Margin	HOME: Wichita St.
02:41	SUB IN: CLAYTOR, DOMINIQUE			
02:41	SUB IN: CHAMBERS, TIARA			
02:41	MISSED FT by MONK, LASHONDA			
02:41	REBOUND (OFF) by TEAM			
02:41	GOOD! FT by MONK, LASHONDA	33-36	V 3	
02:09				TURNOVER (SHOTCLOCK) by TEAM
02:02	MISSED 3PTR by THOMPSON, TANIYAH			
01:58				REBOUND (DEF) by HENDERSON, ASIA
01:54				MISSED 3PTR by MCCARTY, DJ
01:51	REBOUND (DEF) by MONK, LASHONDA			
01:47	GOOD! LAYUP by CLAYTOR, DOMINIQUE [FB]	33-38	V 5	
01:26				MISSED JUMPER by PRINCE, RAVEN
01:26				REBOUND (OFF) by HENDERSON, ASIA
01:26	FOUL (PERSONAL) by MONK, LASHONDA			
01:26				SUB OUT: PRINCE, RAVEN
01:26				SUB IN: SMITH, SHYIA
01:26	SUB OUT: EVANS, RYANN			
01:26	SUB IN: TSINEKE, KATERINA			
01:26	SUB OUT: MONK, LASHONDA			
01:26	SUB IN: HOPE, NECOLE			
01:26		35-38	V 3	GOOD! LAYUP by MCCARTY, DJ
01:24				FOUL (PERSONAL) by BASTIN, SERAPHINE
00:59				FOUL (PERSONAL) by SMITH, SHYIA
00:59	MISSED FT by CHAMBERS, TIARA			
00:59	REBOUND (OFF) by TEAM			
00:59	MISSED FT by CHAMBERS, TIARA			
00:57				REBOUND (DEF) by MCCARTY, DJ
00:53	FOUL (PERSONAL) by CHAMBERS, TIARA			
00:53				SUB OUT: REID, ASHLEY
00:53				SUB OUT: BASTIN, SERAPHINE
00:53				SUB IN: DANIELSSON, VENDELA
00:53				SUB IN: BREMAUD, CARLA
00:53	SUB OUT: CHAMBERS, TIARA			
00:53	SUB IN: JOSEPHS, XIANNA			
00:53				MISSED FT by MCCARTY, DJ
00:53				REBOUND (OFF) by TEAM
00:53				MISSED FT by MCCARTY, DJ
00:51	REBOUND (DEF) by CLAYTOR, DOMINIQUE			
00:40				FOUL (PERSONAL) by MCCARTY, DJ
00:40	MISSED FT by THOMPSON, TANIYAH			
00:40	REBOUND (OFF) by TEAM			
00:40	GOOD! FT by THOMPSON, TANIYAH	35-39	V 4	
00:09				MISSED 3PTR by SMITH, SHYIA
00:06				REBOUND (OFF) by DANIELSSON, VENDELA
00:03				MISSED 3PTR by BREMAUD, CARLA
00:01				REBOUND (OFF) by MCCARTY, DJ
00:01	FOUL (PERSONAL) by CLAYTOR, DOMINIQUE			
00:01	SUB OUT: CLAYTOR, DOMINIQUE			
00:01	SUB IN: EVANS, RYANN			
00:01		36-39	V 3	GOOD! FT by MCCARTY, DJ
00:01		37-39	V 2	GOOD! FT by MCCARTY, DJ

East Carolina 39, Wichita St. 37

Points from (This Period)	ECU	WSU
In the Paint	6	8
Off Turns	2	2
2nd Chance	4	6
Fast Break	2	0
Bench	5	6

Official Box Score
East Carolina vs Wichita St.
Fourth Quarter Statistics Only
 February 01, 2020 at Charles Koch Arena (Devlin Court) - Wichita, Kan.



East Carolina 16

No.	Player	S	Pts	FG	3FG	FT	OR	DR	TR	PF	A	TO	Blk	Stl	Min	+/-
01	THOMPSON, TANIYAH	G	8	3-7	1-2	1-2	1	0	1	2	1	0	0	0	10	-4
02	MONK, LASHONDA	G	6	2-3	2-2	0-0	0	0	0	0	1	0	0	1	5	0
23	CLAYTOR, DOMINIQUE	G	2	1-3	0-0	0-0	0	2	2	0	0	0	0	0	5	0
25	EVANS, RYANN	G	0	0-1	0-0	0-0	1	0	1	2	0	1	0	0	10	-4
33	CHAMBERS, TIARA	F	0	0-0	0-0	0-0	0	1	1	0	0	0	0	0	7	0
03	JOSEPHS, XIANNA	F	0	0-0	0-0	0-0	0	0	0	1	0	0	0	0	3	-4
04	HOPE, NECOLE	G	0	0-2	0-1	0-0	0	0	0	0	0	0	0	0	5	-4
05	TSINEKE, KATERINA	G	0	0-0	0-0	0-0	1	0	1	1	1	1	1	1	5	-4
TEAM							1	1	2	0						
TOTALS			16	6-16	3-5	1-2	4	4	8	6	3	2	1	2	50	

Shooting By Period

Period	FG	FG%	3FG	3FG%	FT	FT%
Game	22-52	42.3%	7-18	38.9%	4-10	40.0%

Deadball Rebounds: 6,0

Wichita St. 20

No.	Player	S	Pts	FG	3FG	FT	OR	DR	TR	PF	A	TO	Blk	Stl	Min	+/-
05	REID, ASHLEY	G	0	0-0	0-0	0-0	0	0	0	0	0	0	0	0	0	0
12	BREMAUD, CARLA	G	5	2-3	0-1	1-1	0	1	1	2	1	1	0	0	10	4
13	PRINCE, RAVEN	F	0	0-0	0-0	0-0	0	0	0	0	0	0	0	0	0	-2
23	BASTIN, SERAPHINE	G	3	1-1	1-1	0-0	1	1	2	0	2	1	0	0	9	2
30	SMITH, SHYIA	F	2	1-2	0-1	0-0	0	0	0	0	0	0	0	0	10	4
01	MCCARTY, DJ	G	3	1-2	1-2	0-0	0	0	0	1	1	0	0	0	6	2
10	DANIELSSON, VENDELA	G	0	0-1	0-1	0-0	0	1	1	0	2	0	0	0	5	4
25	BREWER, MAYA	G	0	0-0	0-0	0-0	0	0	0	0	0	0	0	0	0	0
42	HENDERSON, ASIA	F	7	2-4	0-0	3-4	1	1	2	0	0	0	1	0	10	6
TEAM							1	1	2	0						
TOTALS			20	7-13	2-6	4-5	3	5	8	3	6	2	1	0	50	

Shooting By Period

Period	FG	FG%	3FG	3FG%	FT	FT%
Game	16-44	36.4%	4-16	25.0%	21-30	70.0%

Deadball Rebounds: 5,0

Game Notes:

Officials: Mark Resch, Ron Ledington, Michelle Kramer

Attendance: 1953

Start Time: 03:05 PM ET

End Time: 05:13 PM ET

Game Duration: 2:08

Conference Game;

Score	1st	2nd	3rd	4th	TOT
ECU	13	10	16	16	55
WSU	6	17	14	20	57

Points from (This Period)	ECU	WSU
In the Paint	2	8
Off Turns	2	2
2nd Chance	0	0
Fast Break	0	0
Bench	0	10

**Official Play-By-Play
East Carolina vs Wichita St.
Fourth Quarter**

February 01, 2020 at Charles Koch Arena (Devlin Court) - Wichita, Kan.



Period 4

Starters:

East Carolina: 1 THOMPSON, TANIYAH (G); 2 MONK, LASHONDA (G); 23 CLAYTOR, DOMINIQUE (G); 25 EVANS, RYANN (G); 33 CHAMBERS, TIARA (F);

Wichita St.: 5 REID, ASHLEY (G); 12 BREMAUD, CARLA (G); 13 PRINCE, RAVEN (F); 23 BASTIN, SERAPHINE (G); 30 SMITH, SHYIA (F);

Time	VISITORS: East Carolina	Score	Margin	HOME: Wichita St.
09:41	MISSED LAYUP by EVANS, RYANN			
09:40				REBOUND (DEF) by DANIELSSON, VENDELA
09:40	FOUL (PERSONAL) by JOSEPHS, XIANNA			
09:16		39-39	T	GOOD! LAYUP by SMITH, SHYIA
09:05	MISSED LAYUP by THOMPSON, TANIYAH			
09:05				BLOCK by HENDERSON, ASIA
09:01	REBOUND (OFF) by THOMPSON, TANIYAH			
08:59	MISSED LAYUP by THOMPSON, TANIYAH			
08:58	REBOUND (OFF) by TEAM			
08:58				FOUL (PERSONAL) by MCCARTY, DJ
08:58				SUB OUT: MCCARTY, DJ
08:58				SUB IN: BASTIN, SERAPHINE
08:43	MISSED 3PTR by HOPE, NECOLE			
08:42	REBOUND (OFF) by TSINEKE, KATERINA			
08:42				FOUL (PERSONAL) by BREMAUD, CARLA
08:33	MISSED 3PTR by THOMPSON, TANIYAH			
08:30				REBOUND (DEF) by HENDERSON, ASIA
08:16	FOUL (PERSONAL) by EVANS, RYANN			
08:16		40-39	H 1	GOOD! FT by HENDERSON, ASIA
08:16		41-39	H 2	GOOD! FT by HENDERSON, ASIA
08:06	GOOD! JUMPER by THOMPSON, TANIYAH	41-41	T	
07:56	FOUL (PERSONAL) by TSINEKE, KATERINA			
07:33		43-41	H 2	GOOD! JUMPER by BREMAUD, CARLA [PNT]
07:33				ASSIST by DANIELSSON, VENDELA
07:07	MISSED JUMPER by THOMPSON, TANIYAH			
07:04				REBOUND (DEF) by BREMAUD, CARLA
06:45				MISSED 3PTR by DANIELSSON, VENDELA
06:45				REBOUND (OFF) by TEAM
06:45	BLOCK by TSINEKE, KATERINA			
06:38				MISSED 3PTR by BREMAUD, CARLA
06:35				REBOUND (OFF) by HENDERSON, ASIA
06:35				MISSED LAYUP by HENDERSON, ASIA
06:35	REBOUND (DEF) by TEAM			
06:35	SUB OUT: JOSEPHS, XIANNA			
06:35	SUB IN: CHAMBERS, TIARA			
06:26	GOOD! 3PTR by THOMPSON, TANIYAH	43-44	V 1	
06:26	ASSIST by TSINEKE, KATERINA			
06:02		45-44	H 1	GOOD! JUMPER by BREMAUD, CARLA
06:02				ASSIST by DANIELSSON, VENDELA
06:02	FOUL (PERSONAL) by THOMPSON, TANIYAH			
06:02		46-44	H 2	GOOD! FT by BREMAUD, CARLA
05:44	MISSED LAYUP by HOPE, NECOLE			
05:40	REBOUND (OFF) by EVANS, RYANN			
05:38	FOUL (OFF) by EVANS, RYANN			
05:38	TURNOVER (OFFENSIVE) by EVANS, RYANN			
05:19				MISSED 3PTR by SMITH, SHYIA
05:16				REBOUND (OFF) by BASTIN, SERAPHINE
05:10				TURNOVER (BADPASS) by BREMAUD, CARLA
05:10	STEAL by TSINEKE, KATERINA			
04:48	TURNOVER (BADPASS) by TSINEKE, KATERINA			
04:48				SUB OUT: DANIELSSON, VENDELA
04:48				SUB IN: MCCARTY, DJ
04:48	SUB OUT: HOPE, NECOLE			
04:48	SUB OUT: TSINEKE, KATERINA			
04:48	SUB IN: MONK, LASHONDA			
04:48	SUB IN: CLAYTOR, DOMINIQUE			
04:14		48-44	H 4	GOOD! LAYUP by HENDERSON, ASIA
04:14				ASSIST by MCCARTY, DJ
04:00	MISSED JUMPER by CLAYTOR, DOMINIQUE			
03:59				REBOUND (DEF) by TEAM
03:46		51-44	H 7	GOOD! 3PTR by BASTIN, SERAPHINE
03:46				ASSIST by BREMAUD, CARLA
03:37	TIMEOUT TEAM			
03:14	MISSED JUMPER by CLAYTOR, DOMINIQUE			
03:11				REBOUND (DEF) by BASTIN, SERAPHINE
03:00				MISSED LAYUP by HENDERSON, ASIA
02:56	REBOUND (DEF) by CLAYTOR, DOMINIQUE			
02:51	GOOD! 3PTR by MONK, LASHONDA	51-47	H 4	
02:18				MISSED 3PTR by MCCARTY, DJ

Time	VISITORS: East Carolina	Score	Margin	HOME: Wichita St.
02:15	REBOUND (DEF) by CLAYTOR, DOMINIQUE			
02:07	GOOD! JUMPER by THOMPSON, TANIYAH	51-49	H 2	
01:51		53-49	H 4	GOOD! LAYUP by HENDERSON, ASIA
01:51				ASSIST by BASTIN, SERAPHINE
01:44				FOUL (PERSONAL) by BREMAUD, CARLA
01:44	MISSED FT by THOMPSON, TANIYAH			
01:44	REBOUND (OFF) by TEAM			
01:44	GOOD! FT by THOMPSON, TANIYAH	53-50	H 3	
01:14	FOUL (PERSONAL) by THOMPSON, TANIYAH			
01:14		54-50	H 4	GOOD! FT by HENDERSON, ASIA
01:14				MISSED FT by HENDERSON, ASIA
01:12	REBOUND (DEF) by CHAMBERS, TIARA			
01:05	GOOD! 3PTR by MONK, LASHONDA	54-53	H 1	
01:05	ASSIST by THOMPSON, TANIYAH			
00:37				TURNOVER (LOSTBALL) by BASTIN, SERAPHINE
00:37	STEAL by MONK, LASHONDA			
00:37				SUB OUT: HENDERSON, ASIA
00:37				SUB IN: PRINCE, RAVEN
00:31	TIMEOUT TEAM			
00:22	GOOD! LAYUP by CLAYTOR, DOMINIQUE	54-55	V 1	
00:22	ASSIST by MONK, LASHONDA			
00:22				TIMEOUT TEAM
00:22				SUB OUT: PRINCE, RAVEN
00:22				SUB IN: HENDERSON, ASIA
00:11		57-55	H 2	GOOD! 3PTR by MCCARTY, DJ
00:11				ASSIST by BASTIN, SERAPHINE
00:11	TIMEOUT 30SEC			
00:11				SUB OUT: HENDERSON, ASIA
00:11				SUB IN: PRINCE, RAVEN
00:00	MISSED JUMPER by MONK, LASHONDA			
00:00	REBOUND (OFF) by TEAM			

East Carolina 55, Wichita St. 57

Points from (This Period)	ECU	WSU
In the Paint	2	8
Off Turns	2	2
2nd Chance	0	0
Fast Break	0	0
Bench	0	10

**Official Scoring/Possession Reference Chart
East Carolina vs Wichita St.**

Period 1

February 01, 2020 at Charles Koch Arena (Devlin Court) - Wichita, Kan.



Period 1

Starters:

East Carolina: 1 THOMPSON, TANIYAH (G); 2 MONK, LASHONDA (G); 23 CLAYTOR, DOMINIQUE (G); 25 EVANS, RYANN (G); 33 CHAMBERS, TIARA (F);

Wichita St.: 5 REID, ASHLEY (G); 12 BREMAUD, CARLA (G); 13 PRINCE, RAVEN (F); 23 BASTIN, SERAPHINE (G); 30 SMITH, SHYIA (F);

Time	VISITORS: East Carolina	Score	Margin	HOME: Wichita St.
09:13		3-0	H 3	GOOD! 3PTR by REID, ASHLEY
06:02	GOOD! JUMPER by CLAYTOR, DOMINIQUE	3-2	H 1	
04:44	GOOD! JUMPER by THOMPSON, TANIYAH	3-4	V 1	
03:25	GOOD! LAYUP by THOMPSON, TANIYAH [FB]	3-6	V 3	
03:04	GOOD! 3PTR by THOMPSON, TANIYAH	3-9	V 6	
02:29		4-9	V 5	GOOD! FT by MCCARTY, DJ
01:36	GOOD! FT by THOMPSON, TANIYAH [FB]	4-10	V 6	
01:30		6-10	V 4	GOOD! LAYUP by BASTIN, SERAPHINE
00:04	GOOD! 3PTR by THOMPSON, TANIYAH	6-13	V 7	

East Carolina 13, Wichita St. 6

**Official Scoring/Possession Reference Chart
East Carolina vs Wichita St.**

Period 2

February 01, 2020 at Charles Koch Arena (Devlin Court) - Wichita, Kan.



Period 2

Starters:

East Carolina: 1 THOMPSON, TANIYAH (G); 2 MONK, LASHONDA (G); 23 CLAYTOR, DOMINIQUE (G); 25 EVANS, RYANN (G); 33 CHAMBERS, TIARA (F);

Wichita St.: 5 REID, ASHLEY (G); 12 BREMAUD, CARLA (G); 13 PRINCE, RAVEN (F); 23 BASTIN, SERAPHINE (G); 30 SMITH, SHYIA (F);

Time	VISITORS: East Carolina	Score	Margin	HOME: Wichita St.
09:46		8-13	V 5	GOOD! LAYUP by HENDERSON, ASIA
09:15	GOOD! JUMPER by CLAYTOR, DOMINIQUE	8-15	V 7	
08:38		9-15	V 6	GOOD! FT by SMITH, SHYIA
08:38		10-15	V 5	GOOD! FT by SMITH, SHYIA
07:59	GOOD! LAYUP by TSINEKE, KATERINA	10-17	V 7	
07:38		12-17	V 5	GOOD! JUMPER by BREMAUD, CARLA
07:30	GOOD! LAYUP by TSINEKE, KATERINA [FB]	12-19	V 7	
06:41		13-19	V 6	GOOD! FT by SMITH, SHYIA
05:55		16-19	V 3	GOOD! 3PTR by DANIELSSON, VENDELA
05:27	GOOD! LAYUP by CHAMBERS, TIARA	16-21	V 5	
05:05		17-21	V 4	GOOD! FT by PRINCE, RAVEN
02:46		18-21	V 3	GOOD! FT by PRINCE, RAVEN
02:46		19-21	V 2	GOOD! FT by PRINCE, RAVEN
02:09		20-21	V 1	GOOD! FT by BASTIN, SERAPHINE [FB]
02:09		21-21	T	GOOD! FT by BASTIN, SERAPHINE [FB]
01:37	GOOD! JUMPER by HOPE, NECOLE	21-23	V 2	
00:49		22-23	V 1	GOOD! FT by PRINCE, RAVEN
00:49		23-23	T	GOOD! FT by PRINCE, RAVEN

East Carolina 23, Wichita St. 23

**Official Scoring/Possession Reference Chart
East Carolina vs Wichita St.**

Period 3

February 01, 2020 at Charles Koch Arena (Devlin Court) - Wichita, Kan.



Period 3

Starters:

East Carolina: 1 THOMPSON, TANIYAH (G); 2 MONK, LASHONDA (G); 23 CLAYTOR, DOMINIQUE (G); 25 EVANS, RYANN (G); 33 CHAMBERS, TIARA (F);

Wichita St.: 5 REID, ASHLEY (G); 12 BREMAUD, CARLA (G); 13 PRINCE, RAVEN (F); 23 BASTIN, SERAPHINE (G); 30 SMITH, SHYIA (F);

Time	VISITORS: East Carolina	Score	Margin	HOME: Wichita St.
09:43	GOOD! JUMPER by THOMPSON, TANIYAH	23-25	V 2	
09:12		24-25	V 1	GOOD! FT by PRINCE, RAVEN
08:40	GOOD! LAYUP by EVANS, RYANN	24-27	V 3	
07:26		26-27	V 1	GOOD! LAYUP by PRINCE, RAVEN
06:22	GOOD! 3PTR by THOMPSON, TANIYAH	26-30	V 4	
06:00		28-30	V 2	GOOD! LAYUP by PRINCE, RAVEN
06:00		29-30	V 1	GOOD! FT by PRINCE, RAVEN
05:44	GOOD! LAYUP by JOSEPHS, XIANNA	29-32	V 3	
05:27		30-32	V 2	GOOD! FT by SMITH, SHYIA
05:27		31-32	V 1	GOOD! FT by SMITH, SHYIA
04:21		33-32	H 1	GOOD! LAYUP by HENDERSON, ASIA
03:27	GOOD! 3PTR by HOPE, NECOLE	33-35	V 2	
02:41	GOOD! FT by MONK, LASHONDA	33-36	V 3	
01:47	GOOD! LAYUP by CLAYTOR, DOMINIQUE [FB]	33-38	V 5	
01:26		35-38	V 3	GOOD! LAYUP by MCCARTY, DJ
00:40	GOOD! FT by THOMPSON, TANIYAH	35-39	V 4	
00:01		36-39	V 3	GOOD! FT by MCCARTY, DJ
00:01		37-39	V 2	GOOD! FT by MCCARTY, DJ

East Carolina 39, Wichita St. 37

**Official Scoring/Possession Reference Chart
East Carolina vs Wichita St.
Period 4**



February 01, 2020 at Charles Koch Arena (Devlin Court) - Wichita, Kan.

Period 4

Starters:

East Carolina: 1 THOMPSON, TANIYAH (G); 2 MONK, LASHONDA (G); 23 CLAYTOR, DOMINIQUE (G); 25 EVANS, RYANN (G); 33 CHAMBERS, TIARA (F);

Wichita St.: 5 REID, ASHLEY (G); 12 BREMAUD, CARLA (G); 13 PRINCE, RAVEN (F); 23 BASTIN, SERAPHINE (G); 30 SMITH, SHYIA (F);

Time	VISITORS: East Carolina	Score	Margin	HOME: Wichita St.
09:16		39-39	T	GOOD! LAYUP by SMITH, SHYIA
08:16		40-39	H 1	GOOD! FT by HENDERSON, ASIA
08:16		41-39	H 2	GOOD! FT by HENDERSON, ASIA
08:06	GOOD! JUMPER by THOMPSON, TANIYAH	41-41	T	
07:33		43-41	H 2	GOOD! JUMPER by BREMAUD, CARLA [PNT]
06:26	GOOD! 3PTR by THOMPSON, TANIYAH	43-44	V 1	
06:02		45-44	H 1	GOOD! JUMPER by BREMAUD, CARLA
06:02		46-44	H 2	GOOD! FT by BREMAUD, CARLA
04:14		48-44	H 4	GOOD! LAYUP by HENDERSON, ASIA
03:46		51-44	H 7	GOOD! 3PTR by BASTIN, SERAPHINE
02:51	GOOD! 3PTR by MONK, LASHONDA	51-47	H 4	
02:07	GOOD! JUMPER by THOMPSON, TANIYAH	51-49	H 2	
01:51		53-49	H 4	GOOD! LAYUP by HENDERSON, ASIA
01:44	GOOD! FT by THOMPSON, TANIYAH	53-50	H 3	
01:14		54-50	H 4	GOOD! FT by HENDERSON, ASIA
01:05	GOOD! 3PTR by MONK, LASHONDA	54-53	H 1	
00:22	GOOD! LAYUP by CLAYTOR, DOMINIQUE	54-55	V 1	
00:11		57-55	H 2	GOOD! 3PTR by MCCARTY, DJ

East Carolina 55, Wichita St. 57

**Official Substitutions Log
East Carolina vs Wichita St.
Period 1**

February 01, 2020 at Charles Koch Arena (Devlin Court) - Wichita, Kan.



VISITORS: East Carolina	Time	Score	HOME: Wichita St.
1 THOMPSON, TANIYAH			5 REID, ASHLEY
2 MONK, LASHONDA			12 BREMAUD, CARLA
23 CLAYTOR, DOMINIQUE			13 PRINCE, RAVEN
25 EVANS, RYANN			23 BASTIN, SERAPHINE
33 CHAMBERS, TIARA			30 SMITH, SHYIA
	08:31	0-3	SUB OUT: REID, ASHLEY
	08:31		SUB IN: MCCARTY, DJ
SUB OUT: 2 MONK, LASHONDA	06:41	0-3	
SUB IN: 4 HOPE, NECOLE	06:41		
	05:37	2-3	SUB OUT: PRINCE, RAVEN
	05:37		SUB IN: HENDERSON, ASIA
SUB OUT: 33 CHAMBERS, TIARA	05:37		
SUB IN: 3 JOSEPHS, XIANNA	05:37		
	04:26	4-3	SUB OUT: SMITH, SHYIA
	04:26		SUB IN: BREWER, MAYA
	03:01	9-3	SUB OUT: BREWER, MAYA
	03:01		SUB IN: REID, ASHLEY
	01:36	9-4	SUB OUT: MCCARTY, DJ
	01:36		SUB IN: DANIELSSON, VENDELA
SUB OUT: 4 HOPE, NECOLE	01:36		
SUB IN: 5 TSINEKE, KATERINA	01:36		
	00:34	10-6	SUB OUT: BASTIN, SERAPHINE
	00:34		SUB IN: SMITH, SHYIA
SUB OUT: 25 EVANS, RYANN	00:34		
SUB IN: 4 HOPE, NECOLE	00:34		

East Carolina 13, Wichita St. 6

**Official Substitutions Log
East Carolina vs Wichita St.
Period 2**

February 01, 2020 at Charles Koch Arena (Devlin Court) - Wichita, Kan.



VISITORS: East Carolina	Time	Score	HOME: Wichita St.
1 THOMPSON, TANIYAH			5 REID, ASHLEY
2 MONK, LASHONDA			12 BREMAUD, CARLA
23 CLAYTOR, DOMINIQUE			13 PRINCE, RAVEN
25 EVANS, RYANN			23 BASTIN, SERAPHINE
33 CHAMBERS, TIARA			30 SMITH, SHYIA
SUB OUT: 3 JOSEPHS, XIANNA	08:38	15-8	
SUB OUT: 4 HOPE, NECOLE	08:38		
SUB OUT: 23 CLAYTOR, DOMINIQUE	08:38		
SUB IN: 2 MONK, LASHONDA	08:38		
SUB IN: 25 EVANS, RYANN	08:38		
SUB IN: 33 CHAMBERS, TIARA	08:38		
	06:54	19-12	SUB OUT: BREMAUD, CARLA
	06:54		SUB OUT: HENDERSON, ASIA
	06:54		SUB IN: PRINCE, RAVEN
	06:54		SUB IN: BASTIN, SERAPHINE
SUB OUT: 5 TSINEKE, KATERINA	06:54		
SUB IN: 4 HOPE, NECOLE	06:54		
SUB OUT: 1 THOMPSON, TANIYAH	06:54		
SUB IN: 3 JOSEPHS, XIANNA	06:54		
SUB OUT: 2 MONK, LASHONDA	06:18	19-13	
SUB OUT: 3 JOSEPHS, XIANNA	06:18		
SUB IN: 1 THOMPSON, TANIYAH	06:18		
SUB IN: 5 TSINEKE, KATERINA	06:18		
	05:05	21-17	SUB OUT: REID, ASHLEY
	05:05		SUB IN: BREMAUD, CARLA
SUB OUT: 33 CHAMBERS, TIARA	05:05		
SUB IN: 3 JOSEPHS, XIANNA	05:05		
SUB OUT: 5 TSINEKE, KATERINA	02:46	21-17	
SUB IN: 23 CLAYTOR, DOMINIQUE	02:46		
	02:21	21-19	SUB OUT: DANIELSSON, VENDELA
	02:21		SUB IN: BREWER, MAYA
SUB OUT: 3 JOSEPHS, XIANNA	01:47	21-21	
SUB IN: 5 TSINEKE, KATERINA	01:47		
SUB OUT: 23 CLAYTOR, DOMINIQUE	01:18	23-21	
SUB IN: 33 CHAMBERS, TIARA	01:18		

East Carolina 23, Wichita St. 23

**Official Substitutions Log
East Carolina vs Wichita St.
Period 3**

February 01, 2020 at Charles Koch Arena (Devlin Court) - Wichita, Kan.



VISITORS: East Carolina	Time	Score	HOME: Wichita St.
1 THOMPSON, TANIYAH			5 REID, ASHLEY
2 MONK, LASHONDA			12 BREMAUD, CARLA
23 CLAYTOR, DOMINIQUE			13 PRINCE, RAVEN
25 EVANS, RYANN			23 BASTIN, SERAPHINE
33 CHAMBERS, TIARA			30 SMITH, SHYIA
	10:00	-	SUB OUT: BREWER, MAYA
	10:00		SUB IN: REID, ASHLEY
SUB OUT: 5 TSINEKE, KATERINA	10:00		
SUB IN: 2 MONK, LASHONDA	10:00		
SUB OUT: 33 CHAMBERS, TIARA	09:13	25-23	
SUB IN: 3 JOSEPHS, XIANNA	09:13		
	05:27	32-31	SUB OUT: SMITH, SHYIA
	05:27		SUB IN: HENDERSON, ASIA
	04:57	32-31	SUB OUT: BASTIN, SERAPHINE
	04:57		SUB IN: MCCARTY, DJ
	02:41	35-33	SUB OUT: BREMAUD, CARLA
	02:41		SUB IN: BASTIN, SERAPHINE
SUB OUT: 3 JOSEPHS, XIANNA	02:41		
SUB OUT: 4 HOPE, NECOLE	02:41		
SUB IN: 23 CLAYTOR, DOMINIQUE	02:41		
SUB IN: 33 CHAMBERS, TIARA	02:41		
	01:26	38-33	SUB OUT: PRINCE, RAVEN
	01:26		SUB IN: SMITH, SHYIA
SUB OUT: 25 EVANS, RYANN	01:26		
SUB IN: 5 TSINEKE, KATERINA	01:26		
SUB OUT: 2 MONK, LASHONDA	01:26		
SUB IN: 4 HOPE, NECOLE	01:26		
	00:53	38-35	SUB OUT: REID, ASHLEY
	00:53		SUB OUT: BASTIN, SERAPHINE
	00:53		SUB IN: DANIELSSON, VENDELA
	00:53		SUB IN: BREMAUD, CARLA
SUB OUT: 33 CHAMBERS, TIARA	00:53		
SUB IN: 3 JOSEPHS, XIANNA	00:53		
SUB OUT: 23 CLAYTOR, DOMINIQUE	00:01	39-35	
SUB IN: 25 EVANS, RYANN	00:01		

East Carolina 39, Wichita St. 37

**Official Substitutions Log
East Carolina vs Wichita St.
Period 4**

February 01, 2020 at Charles Koch Arena (Devlin Court) - Wichita, Kan.



VISITORS: East Carolina	Time	Score	HOME: Wichita St.
1 THOMPSON, TANIYAH			5 REID, ASHLEY
2 MONK, LASHONDA			12 BREMAUD, CARLA
23 CLAYTOR, DOMINIQUE			13 PRINCE, RAVEN
25 EVANS, RYANN			23 BASTIN, SERAPHINE
33 CHAMBERS, TIARA			30 SMITH, SHYIA
	08:58	39-39	SUB OUT: MCCARTY, DJ
	08:58		SUB IN: BASTIN, SERAPHINE
SUB OUT: 3 JOSEPHS, XIANNA	06:35	41-43	
SUB IN: 33 CHAMBERS, TIARA	06:35		
	04:48	44-46	SUB OUT: DANIELSSON, VENDELA
	04:48		SUB IN: MCCARTY, DJ
SUB OUT: 4 HOPE, NECOLE	04:48		
SUB OUT: 5 TSINEKE, KATERINA	04:48		
SUB IN: 2 MONK, LASHONDA	04:48		
SUB IN: 23 CLAYTOR, DOMINIQUE	04:48		
	00:37	53-54	SUB OUT: HENDERSON, ASIA
	00:37		SUB IN: PRINCE, RAVEN
	00:22	55-54	SUB OUT: PRINCE, RAVEN
	00:22		SUB IN: HENDERSON, ASIA
	00:11	55-57	SUB OUT: HENDERSON, ASIA
	00:11		SUB IN: PRINCE, RAVEN

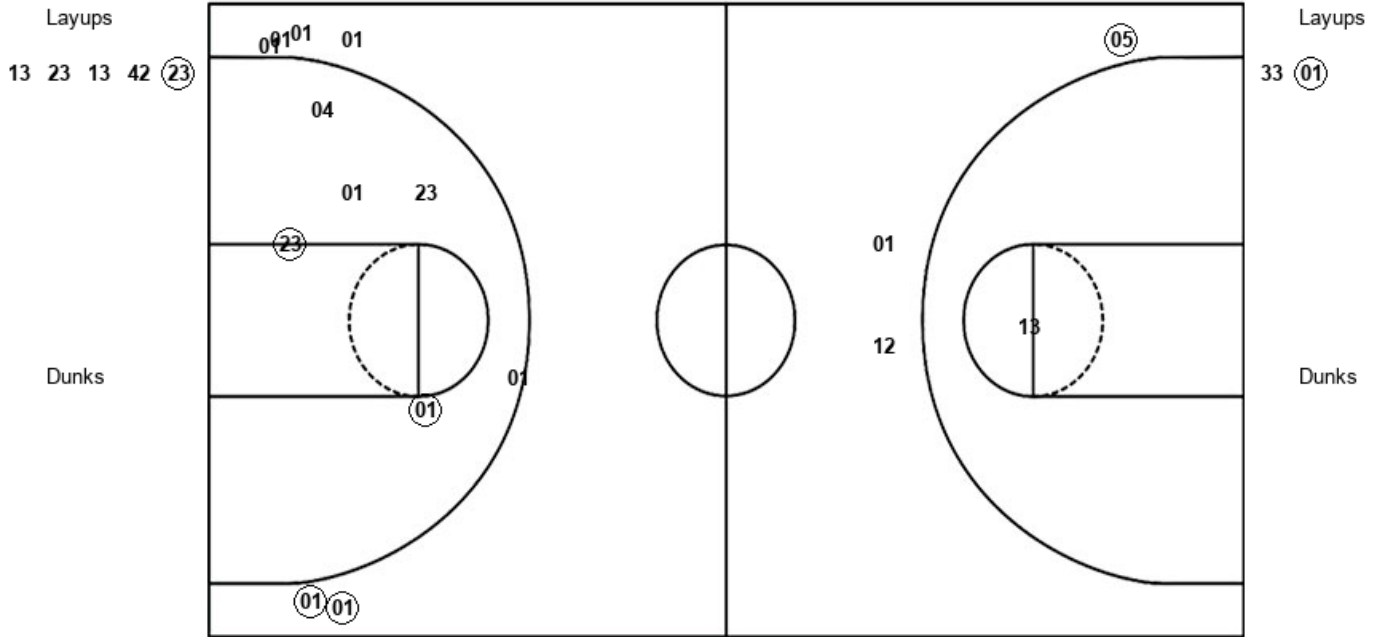
East Carolina 55, Wichita St. 57

Official Shot Chart
East Carolina vs Wichita St.
PERIOD 1 Shots
 February 01, 2020 at Charles Koch Arena (Devlin Court) - Wichita, Kan.



Wichita St.

East Carolina



WSU : Period 1	Made	Att	Pct
Layups	1	5	20.0
Dunks	0	0	0
2PT Field Goals	1	6	16.7
3PT Field Goals	1	3	33.3
Total Field Goals	2	9	22.2

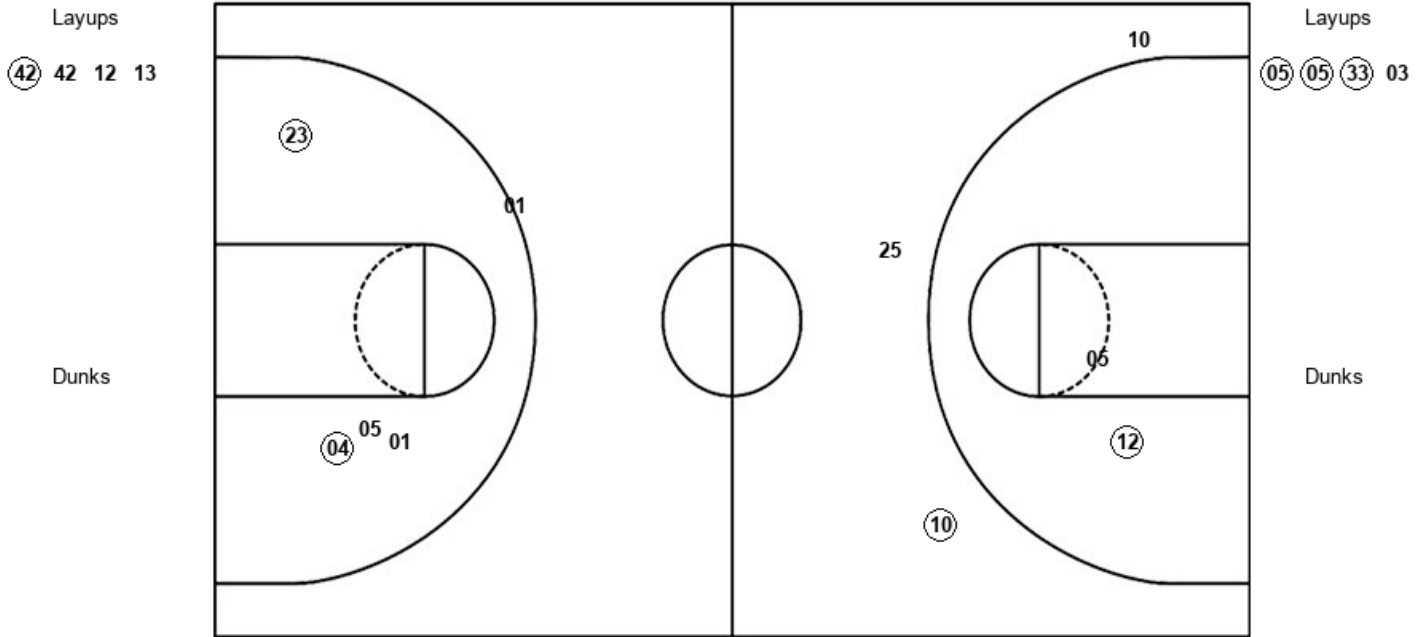
ECU : Period 1	Made	Att	Pct
Layups	1	2	50.0
Dunks	0	0	0
2PT Field Goals	3	7	42.9
3PT Field Goals	2	7	28.6
Total Field Goals	5	14	35.7

Official Shot Chart
East Carolina vs Wichita St.
PERIOD 2 Shots
 February 01, 2020 at Charles Koch Arena (Devlin Court) - Wichita, Kan.



Wichita St.

East Carolina



WSU : Period 2	Made	Att	Pct
Layups	1	4	25.0
Dunks	0	0	0
2PT Field Goals	2	6	33.3
3PT Field Goals	1	3	33.3
Total Field Goals	3	9	33.3

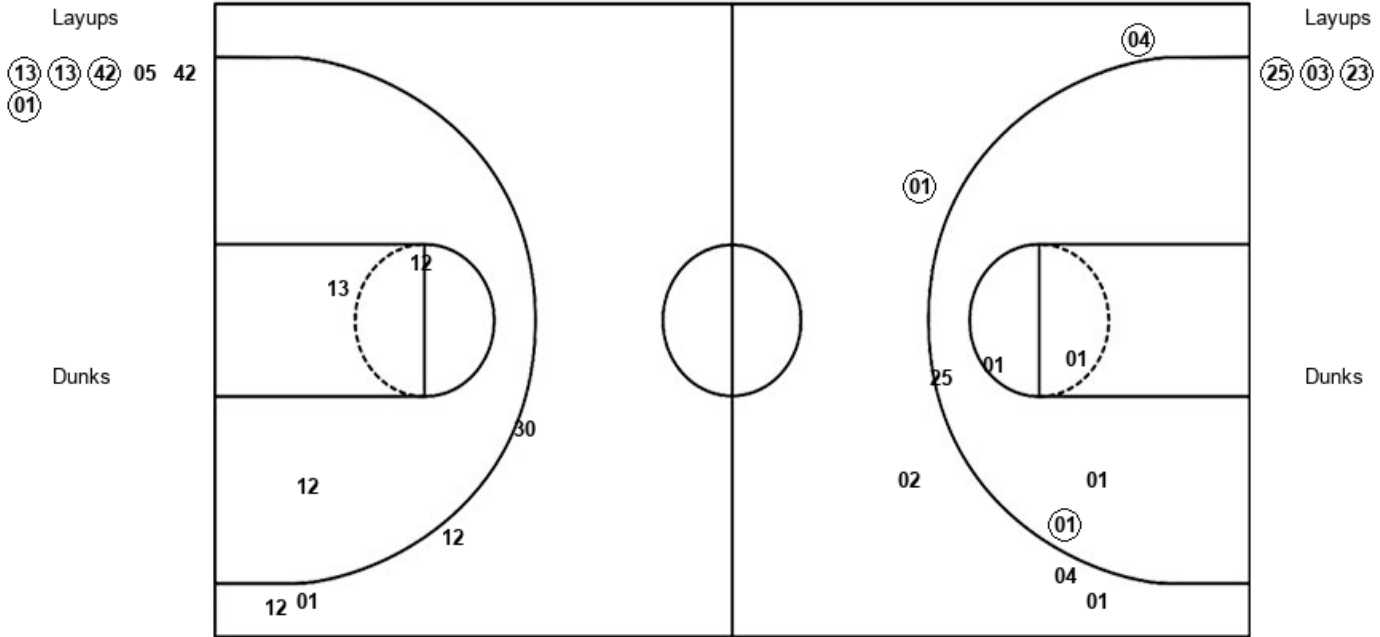
ECU : Period 2	Made	Att	Pct
Layups	3	4	75.0
Dunks	0	0	0
2PT Field Goals	5	8	62.5
3PT Field Goals	0	1	00.0
Total Field Goals	5	9	55.6

Official Shot Chart
East Carolina vs Wichita St.
 PERIOD 3 Shots
 February 01, 2020 at Charles Koch Arena (Devlin Court) - Wichita, Kan.



Wichita St.

East Carolina



WSU : Period 3	Made	Att	Pct
Layups	4	6	66.7
Dunks	0	0	0
2PT Field Goals	4	9	44.4
3PT Field Goals	0	4	00.0
Total Field Goals	4	13	30.8

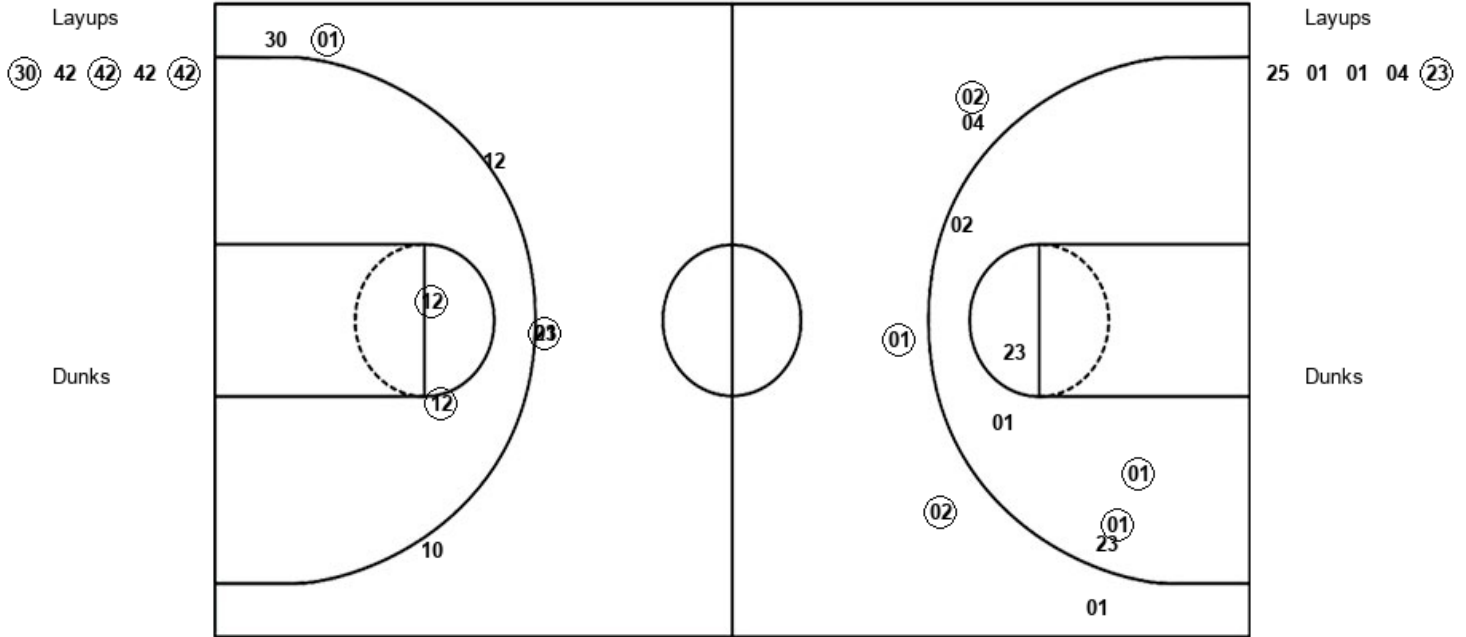
ECU : Period 3	Made	Att	Pct
Layups	3	3	100.0
Dunks	0	0	0
2PT Field Goals	4	8	50.0
3PT Field Goals	2	5	40.0
Total Field Goals	6	13	46.2

Official Shot Chart
East Carolina vs Wichita St.
PERIOD 4 Shots
 February 01, 2020 at Charles Koch Arena (Devlin Court) - Wichita, Kan.



Wichita St.

East Carolina



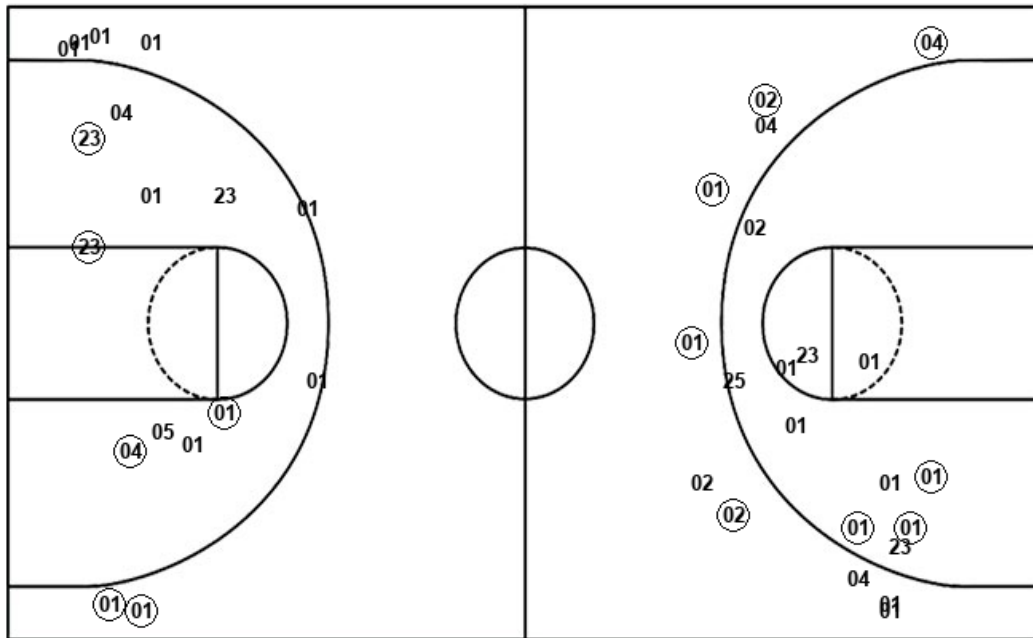
WSU : Period 4	Made	Att	Pct
Layups	3	5	60.0
Dunks	0	0	0
2PT Field Goals	5	7	71.4
3PT Field Goals	2	6	33.3
Total Field Goals	7	13	53.8

ECU : Period 4	Made	Att	Pct
Layups	1	5	20.0
Dunks	0	0	0
2PT Field Goals	3	11	27.3
3PT Field Goals	3	5	60.0
Total Field Goals	6	16	37.5

Official Shot Chart
East Carolina vs Wichita St.
East Carolina Team Shots
 February 01, 2020 at Charles Koch Arena (Devlin Court) - Wichita, Kan.



Layups



Layups

33 (01) (05) (05) (33)
 03 (25) (03) (23) 25
 01 01 04 (23)

Dunks

Dunks

ECU : Period 1	Made	Att	Pct
Layups	1	2	50.0
Dunks	0	0	0
2PT Field Goals	3	7	42.9
3PT Field Goals	2	7	28.6
Total Field Goals	5	14	35.7

ECU : Period 3	Made	Att	Pct
Layups	3	3	100.0
Dunks	0	0	0
2PT Field Goals	4	8	50.0
3PT Field Goals	2	5	40.0
Total Field Goals	6	13	46.2

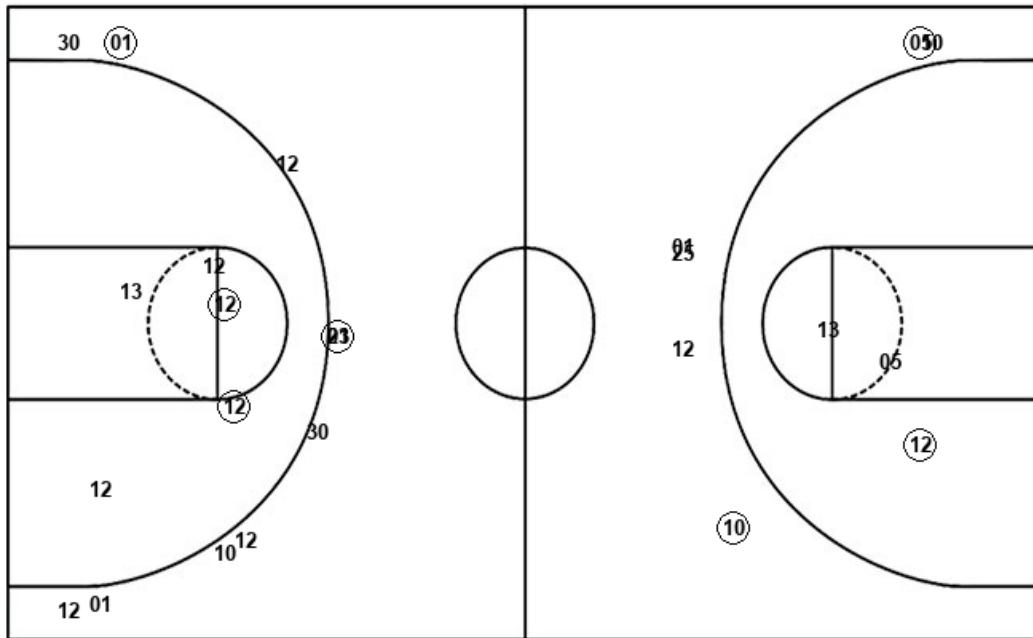
ECU : Period 2	Made	Att	Pct
Layups	3	4	75.0
Dunks	0	0	0
2PT Field Goals	5	8	62.5
3PT Field Goals	0	1	00.0
Total Field Goals	5	9	55.6

ECU : Period 4	Made	Att	Pct
Layups	1	5	20.0
Dunks	0	0	0
2PT Field Goals	3	11	27.3
3PT Field Goals	3	5	60.0
Total Field Goals	6	16	37.5

Official Shot Chart
East Carolina vs Wichita St.
Wichita St. Team Shots
 February 01, 2020 at Charles Koch Arena (Devlin Court) - Wichita, Kan.



Layups



Layups

13 23 13 42 (23)
 (42) 42 12 13 (13)
 (13) (42) 05 42 (01)
 (30) 42 (42) 42 (42)

Dunks

Dunks

WSU : Period 1	Made	Att	Pct
Layups	1	5	20.0
Dunks	0	0	0
2PT Field Goals	1	6	16.7
3PT Field Goals	1	3	33.3
Total Field Goals	2	9	22.2

WSU : Period 2	Made	Att	Pct
Layups	1	4	25.0
Dunks	0	0	0
2PT Field Goals	2	6	33.3
3PT Field Goals	1	3	33.3
Total Field Goals	3	9	33.3

WSU : Period 3	Made	Att	Pct
Layups	4	6	66.7
Dunks	0	0	0
2PT Field Goals	4	9	44.4
3PT Field Goals	0	4	00.0
Total Field Goals	4	13	30.8

WSU : Period 4	Made	Att	Pct
Layups	3	5	60.0
Dunks	0	0	0
2PT Field Goals	5	7	71.4
3PT Field Goals	2	6	33.3
Total Field Goals	7	13	53.8