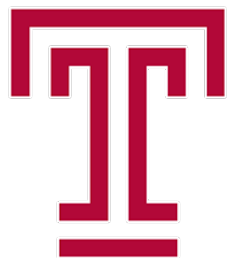


**FINAL SCORE****Temple****70****Wichita St.****72**

January 19, 2020 • Charles Koch Arena (Devlin Court) - Wichita, Kan.

**FINAL STATISTICS**

**Official Box Score**  
**Temple vs Wichita St.**  
**Game Totals -- Final Statistics**  
**January 19, 2020 at Charles Koch Arena (Devlin Court) - Wichita, Kan.**



### Temple 70

No.	Player	S	Pts	FG	3FG	FT	OR	DR	TR	PF	A	TO	Blk	Stl	Min	+/-
01	NIANG, LENA	G	2	1-6	0-3	0-0	1	2	3	3	0	0	0	2	39	-5
02	ALEXANDER, ASONAH	G	5	2-6	1-4	0-2	2	2	4	0	1	4	0	0	29	1
05	MACKINS, MARISSA	G	15	6-8	3-5	0-0	0	1	1	3	1	2	0	0	24	1
20	WILLIAMSON, ALEXA	F	6	2-6	0-0	2-4	1	1	2	4	0	1	0	0	16	2
25	DAVIS, MIA	F	23	7-15	1-2	8-9	6	9	15	4	1	4	0	0	37	-3
00	JONES, ASHLEY	G	19	4-12	1-6	10-11	0	2	2	3	7	3	2	1	31	0
11	ATKINSON, SHANNEN	C	0	0-1	0-0	0-2	0	0	0	4	0	1	1	0	20	-1
12	MAYO, EMANI	G	0	0-0	0-0	0-0	1	0	1	1	0	0	0	0	4	-5
TEAM							4	6	10	0		1				
<b>TOTALS</b>			<b>70</b>	<b>22-54</b>	<b>6-20</b>	<b>20-28</b>	<b>15</b>	<b>23</b>	<b>38</b>	<b>22</b>	<b>10</b>	<b>16</b>	<b>3</b>	<b>3</b>	<b>200</b>	

#### Shooting By Period

Period	FG	FG%	3FG	3FG%	FT	FT%
1st Qtr	6-15	40%	2-7	29%	2-2	100%
2nd Qtr	7-13	54%	3-5	60%	5-9	56%
3rd Qtr	5-13	38%	0-3	00%	9-13	69%
4th Qtr	4-13	31%	1-5	20%	4-4	100%
1st Half	13-28	46%	5-12	42%	7-11	64%
2nd Half	9-26	35%	1-8	13%	13-17	76%
<b>Game</b>	<b>22-54</b>	<b>40.7%</b>	<b>6-20</b>	<b>30.0%</b>	<b>20-28</b>	<b>71.4%</b>

Deadball Rebounds: 5,2

Last FG: 4th-00:50

Biggest Run: 5-0

Largest lead: By 12 at 2nd-03:22

Technical Fouls: None.

### Wichita St. 72

No.	Player	S	Pts	FG	3FG	FT	OR	DR	TR	PF	A	TO	Blk	Stl	Min	+/-
02	MCCULLY, MARIAH	G	15	5-19	1-6	4-6	0	3	3	4	2	1	0	1	26	10
12	BREMAUD, CARLA	G	5	2-6	1-4	0-2	0	1	1	2	2	1	0	0	35	6
13	PRINCE, RAVEN	F	0	0-3	0-0	0-0	0	2	2	2	1	0	0	0	14	-2
23	BASTIN, SERAPHINE	G	12	3-8	0-1	6-6	2	4	6	4	3	1	0	2	27	7
34	SMITH, SHYIA	F	12	4-6	0-1	4-5	1	3	4	3	1	1	0	0	32	7
01	MCCARTY, DJ	G	0	0-0	0-0	0-0	0	0	0	1	0	0	0	0	5	-9
05	REID, ASHLEY	G	8	2-4	2-4	2-2	0	1	1	2	0	0	0	0	15	-3
11	KIRVEN, ASHLEI	F	7	3-4	0-0	1-1	3	1	4	4	0	1	1	0	13	1
21	BREWER, MAYA	G	5	2-3	1-2	0-0	0	1	1	0	0	1	1	2	11	-5
24	COLBERT, TRAJATA	F	8	3-4	0-0	2-4	2	2	4	3	0	3	2	0	17	1
42	HENDERSON, ASIA	F	0	0-1	0-0	0-0	0	0	0	0	0	1	0	0	4	-3
TEAM							4	2	6	0		0				
<b>TOTALS</b>			<b>72</b>	<b>24-58</b>	<b>5-18</b>	<b>19-26</b>	<b>12</b>	<b>20</b>	<b>32</b>	<b>25</b>	<b>9</b>	<b>10</b>	<b>4</b>	<b>5</b>	<b>200</b>	

#### Shooting By Period

Period	FG	FG%	3FG	3FG%	FT	FT%
1st Qtr	6-16	38%	1-5	20%	0-2	00%
2nd Qtr	5-16	31%	2-4	50%	5-8	63%
3rd Qtr	7-11	64%	0-3	00%	11-12	92%
4th Qtr	6-15	40%	2-6	33%	3-4	75%
1st Half	11-32	34%	3-9	33%	5-10	50%
2nd Half	13-26	50%	2-9	22%	14-16	88%
<b>Game</b>	<b>24-58</b>	<b>41.4%</b>	<b>5-18</b>	<b>27.8%</b>	<b>19-26</b>	<b>73.1%</b>

Deadball Rebounds: 4,0

Last FG: 4th-00:06

Biggest Run: 7-0

Largest lead: By 3 at 4th-01:41

Technical Fouls: None.

#### Game Notes:

Officials: Chaney Muench, Blanca Burns, Isaac Johnson  
Attendance: 1582

Start Time: 03:05 PM ET

End Time: 05:15 PM ET

Game Duration: 2:10

Conference Game;

Score	1st	2nd	3rd	4th	TOT
TEM	16	22	19	13	<b>70</b>
WSU	13	17	25	17	<b>72</b>

TEM led for 25:53. WSU led for 7:14.

Game was tied for 6:53.

Times tied: 9      Lead Changes: 7

Points from	TEM	WSU
In the Paint	26	36
Off Turns	11	13
2nd Chance	12	1
Fast Break	7	11
Bench	19	28

**Official Box Score**  
**Temple vs Wichita St.**  
**First Half Statistics Only**  
**January 19, 2020 at Charles Koch Arena (Devlin Court) - Wichita, Kan.**



### Temple 38

No.	Player	S	Pts	FG	3FG	FT	OR	DR	TR	PF	A	TO	Blk	Stl	Min	+/-
00	JONES, ASHLEY	G	5	2-4	1-3	0-0	0	2	2	2	5	1	0	1	13	9
11	ATKINSON, SHANNEN	C	0	0-1	0-0	0-0	0	0	0	1	0	0	1	0	10	6
12	MAYO, EMANI	G	0	0-0	0-0	0-0	0	0	0	0	0	0	0	0	1	-1
20	WILLIAMSON, ALEXA	F	5	2-5	0-0	1-2	1	0	1	1	0	0	0	0	10	2
25	DAVIS, MIA	F	10	2-5	0-1	6-7	3	4	7	1	1	3	0	0	19	7
01	NIANG, LENA	G	2	1-4	0-1	0-0	0	2	2	1	0	0	0	2	19	5
02	ALEXANDER, ASONAH	G	3	1-3	1-3	0-2	1	1	2	0	1	3	0	0	14	6
05	MACKINS, MARISSA	G	13	5-6	3-4	0-0	0	0	0	2	1	0	0	0	14	6
	TEAM		0	0-0	0-0	0-0	1	3	4	0	0	0	0	0	0	
<b>TOTALS</b>			<b>38</b>	<b>13-28</b>	<b>5-12</b>	<b>7-11</b>	<b>6</b>	<b>12</b>	<b>18</b>	<b>8</b>	<b>8</b>	<b>7</b>	<b>1</b>	<b>3</b>	<b>100</b>	

#### Shooting By Period

Period	FG	FG%	3FG	3FG%	FT	FT%
1st Qtr	6-15	40%	2-7	29%	2-2	100%
2nd Qtr	7-13	54%	3-5	60%	5-9	56%
1st Half	13-28	46%	5-12	42%	7-11	64%
Game	22-54	40.7%	6-20	30.0%	20-28	71.4%

Deadball Rebounds: 5,2

Last FG Half: TEM 2nd-03:22

### Wichita St. 30

No.	Player	S	Pts	FG	3FG	FT	OR	DR	TR	PF	A	TO	Blk	Stl	Min	+/-
01	MCCARTY, DJ	G	0	0-0	0-0	0-0	0	0	0	1	0	0	0	0	5	-9
02	MCCULLY, MARIAH	G	3	1-7	0-2	1-2	0	1	1	0	0	1	0	0	8	1
05	REID, ASHLEY	G	5	1-2	1-2	2-2	0	1	1	1	0	0	0	0	7	-7
11	KIRVEN, ASHLEI	F	2	1-2	0-0	0-0	3	0	3	0	0	1	0	0	5	-5
12	BREMAUD, CARLA	G	3	1-3	1-2	0-2	0	1	1	1	0	0	0	0	17	-2
13	PRINCE, RAVEN	F	0	0-3	0-0	0-0	0	2	2	2	1	0	0	0	13	-2
21	BREWER, MAYA	G	5	2-3	1-2	0-0	0	0	0	0	0	1	0	2	7	-8
23	BASTIN, SERAPHINE	G	8	3-7	0-1	2-2	2	3	5	1	2	1	0	1	15	1
24	COLBERT, TRAJATA	F	0	0-1	0-0	0-2	1	0	1	2	0	1	0	0	6	-3
34	SMITH, SHYIA	F	4	2-3	0-0	0-0	1	2	3	2	0	0	0	0	12	-5
42	HENDERSON, ASIA	F	0	0-1	0-0	0-0	0	0	0	0	0	1	0	0	4	-1
	TEAM		0	0-0	0-0	0-0	2	1	3	0	0	0	0	0	0	
<b>TOTALS</b>			<b>30</b>	<b>11-32</b>	<b>3-9</b>	<b>5-10</b>	<b>9</b>	<b>11</b>	<b>20</b>	<b>10</b>	<b>3</b>	<b>6</b>	<b>0</b>	<b>3</b>	<b>100</b>	

#### Shooting By Period

Period	FG	FG%	3FG	3FG%	FT	FT%
1st Qtr	6-16	38%	1-5	20%	0-2	00%
2nd Qtr	5-16	31%	2-4	50%	5-8	63%
1st Half	11-32	34%	3-9	33%	5-10	50%
Game	24-58	41.4%	5-18	27.8%	19-26	73.1%

Deadball Rebounds: 4,0

Last FG Half: WSU 2nd-01:51

#### Game Notes:

Officials: Chaney Muench, Blanca Burns, Isaac Johnson  
Attendance: 1582

Start Time: 03:05 PM ET  
End Time: 05:15 PM ET  
Game Duration: 2:10  
Conference Game;

Score	1st	2nd	3rd	4th	TOT
TEM	16	22	19	13	<b>70</b>
WSU	13	17	25	17	<b>72</b>

Points from (This Period)	TEM	WSU
In the Paint	12	16
Off Turns	4	4
2nd Chance	4	0
Fast Break	7	7
Bench	5	12

**Official Box Score**  
**Temple vs Wichita St.**  
**First Quarter Statistics Only**  
**January 19, 2020 at Charles Koch Arena (Devlin Court) - Wichita, Kan.**



### Temple 16

No.	Player	S	Pts	FG	3FG	FT	OR	DR	TR	PF	A	TO	Blk	Stl	Min	+/-
01	NIANG, LENA	G	2	1-3	0-1	0-0	0	2	2	0	0	0	0	0	10	3
02	ALEXANDER, ASONAH	G	0	0-1	0-1	0-0	0	0	0	0	0	1	0	0	6	0
05	MACKINS, MARISSA	G	8	3-4	2-3	0-0	0	0	0	0	1	0	0	0	10	3
20	WILLIAMSON, ALEXA	F	2	1-2	0-0	0-0	1	0	1	0	0	0	0	0	6	0
25	DAVIS, MIA	F	4	1-4	0-1	2-2	2	3	5	0	1	2	0	0	10	3
00	JONES, ASHLEY	G	0	0-1	0-1	0-0	0	0	0	0	2	0	0	0	4	3
11	ATKINSON, SHANNEN	C	0	0-0	0-0	0-0	0	0	0	1	0	0	0	0	4	3
12	MAYO, EMANI	G	0	0-0	0-0	0-0	0	0	0	0	0	0	0	0	0	0
	TEAM						0	2	2	0		0				
<b>TOTALS</b>			<b>16</b>	<b>6-15</b>	<b>2-7</b>	<b>2-2</b>	<b>3</b>	<b>7</b>	<b>10</b>	<b>1</b>	<b>4</b>	<b>3</b>	<b>0</b>	<b>0</b>	<b>50</b>	

#### Shooting By Period

Period	FG	FG%	3FG	3FG%	FT	FT%
1st Qtr	6-15	40%	2-7	29%	2-2	100%
2nd Qtr	7-13	54%	3-5	60%	5-9	56%
1st Half	6-15	40%	2-7	29%	2-2	100%
1st Half	13-28	46%	5-12	42%	7-11	64%
Game	22-54	40.7%	6-20	30.0%	20-28	71.4%

Deadball Rebounds: 5,2

### Wichita St. 13

No.	Player	S	Pts	FG	3FG	FT	OR	DR	TR	PF	A	TO	Blk	Stl	Min	+/-
02	MCCULLY, MARIAH	G	2	1-3	0-1	0-0	0	1	1	0	0	1	0	0	6	0
12	BREMAUD, CARLA	G	0	0-1	0-1	0-0	0	0	0	0	0	0	0	0	8	1
13	PRINCE, RAVEN	F	0	0-2	0-0	0-0	0	1	1	0	0	0	0	0	6	0
23	BASTIN, SERAPHINE	G	4	2-4	0-1	0-0	1	2	3	1	2	0	0	1	8	1
34	SMITH, SHYIA	F	4	2-3	0-0	0-0	1	2	3	1	0	0	0	0	10	-3
01	MCCARTY, DJ	G	0	0-0	0-0	0-0	0	0	0	0	0	0	0	0	2	-4
05	REID, ASHLEY	G	0	0-0	0-0	0-0	0	0	0	0	0	0	0	0	2	-4
11	KIRVEN, ASHLEI	F	0	0-0	0-0	0-0	0	0	0	0	0	0	0	0	0	0
21	BREWER, MAYA	G	3	1-2	1-2	0-0	0	0	0	0	0	1	0	1	4	-3
24	COLBERT, TRAJATA	F	0	0-1	0-0	0-2	1	0	1	0	0	0	0	0	4	-3
42	HENDERSON, ASIA	F	0	0-0	0-0	0-0	0	0	0	0	0	0	0	0	0	0
	TEAM						0	0	0	0		0				
<b>TOTALS</b>			<b>13</b>	<b>6-16</b>	<b>1-5</b>	<b>0-2</b>	<b>3</b>	<b>6</b>	<b>9</b>	<b>2</b>	<b>2</b>	<b>2</b>	<b>0</b>	<b>2</b>	<b>50</b>	

#### Shooting By Period

Period	FG	FG%	3FG	3FG%	FT	FT%
1st Qtr	6-16	38%	1-5	20%	0-2	00%
2nd Qtr	5-16	31%	2-4	50%	5-8	63%
1st Half	6-16	38%	1-5	20%	0-2	00%
1st Half	11-32	34%	3-9	33%	5-10	50%
Game	24-58	41.4%	5-18	27.8%	19-26	73.1%

Deadball Rebounds: 4,0

#### Game Notes:

Officials: Chaney Muench, Blanca Burns, Isaac Johnson  
Attendance: 1582

Start Time: 03:05 PM ET

End Time: 05:15 PM ET

Game Duration: 2:10

Conference Game;

Score	1st	2nd	3rd	4th	TOT
TEM	16	22	19	13	<b>70</b>
WSU	13	17	25	17	<b>72</b>

Points from (This Period)	TEM	WSU
In the Paint	6	10
Off Turns	2	2
2nd Chance	2	0
Fast Break	3	4
Bench	0	3

**Official Play-By-Play  
Temple vs Wichita St.  
First Quarter**

**January 19, 2020 at Charles Koch Arena (Devlin Court) - Wichita, Kan.**



**Period 1**

**Starters:**

**Temple:** 20 WILLIAMSON,ALEXA (F); 25 DAVIS,MIA (F); 1 NIANG,LENA (G); 2 ALEXANDER,ASONAH (G); 5 MACKINS,MARISSA (G);

**Wichita St.:** 2 MCCULLY,MARIAH (G); 12 BREMAUD,CARLA (G); 13 PRINCE,RAVEN (F); 23 BASTIN,SERAPHINE (G); 34 SMITH,SHYIA (F);

Time	VISITORS: Temple	Score	Margin	HOME: Wichita St.
09:48	MISSED 3PTR by ALEXANDER, ASONAH			
09:46	REBOUND (OFF) by DAVIS, MIA			
09:46				FOUL (PERSONAL) by SMITH, SHYIA
09:46	GOOD! FT by DAVIS, MIA	0-1	V 1	
09:46	GOOD! FT by DAVIS, MIA	0-2	V 2	
09:26		2-2	T	GOOD! LAYUP by SMITH, SHYIA
09:09	MISSED JUMPER by WILLIAMSON, ALEXA			
09:05				REBOUND (DEF) by MCCULLY, MARIAH
09:03				MISSED LAYUP by MCCULLY, MARIAH
09:00				REBOUND (OFF) by BASTIN, SERAPHINE
08:50				MISSED 3PTR by BASTIN, SERAPHINE
08:46	REBOUND (DEF) by DAVIS, MIA			
08:28	MISSED JUMPER by DAVIS, MIA			
08:26	REBOUND (OFF) by WILLIAMSON, ALEXA			
08:26				FOUL (PERSONAL) by BASTIN, SERAPHINE
08:21	MISSED JUMPER by NIANG, LENA			
08:18				REBOUND (DEF) by SMITH, SHYIA
08:00				TURNOVER (TRAVEL) by MCCULLY, MARIAH
07:40	GOOD! JUMPER by MACKINS, MARISSA	2-4	V 2	
07:17		4-4	T	GOOD! LAYUP by MCCULLY, MARIAH [PNT]
07:17				ASSIST by BASTIN, SERAPHINE
07:07	TURNOVER (BADPASS) by ALEXANDER, ASONAH			
06:52				MISSED LAYUP by PRINCE, RAVEN
06:49	REBOUND (DEF) by NIANG, LENA			
06:30	GOOD! LAYUP by NIANG, LENA	4-6	V 2	
06:30	ASSIST by MACKINS, MARISSA			
06:11				MISSED 3PTR by MCCULLY, MARIAH
06:07				REBOUND (OFF) by SMITH, SHYIA
06:05				MISSED 3PTR by BREMAUD, CARLA
06:02	REBOUND (DEF) by DAVIS, MIA			
05:56	MISSED 3PTR by MACKINS, MARISSA			
05:54				REBOUND (DEF) by BASTIN, SERAPHINE
05:50		6-6	T	GOOD! LAYUP by BASTIN, SERAPHINE [FB]
05:33	MISSED 3PTR by NIANG, LENA			
05:30				REBOUND (DEF) by PRINCE, RAVEN
05:16				MISSED JUMPER by PRINCE, RAVEN
05:12	REBOUND (DEF) by DAVIS, MIA			
04:53	MISSED JUMPER by DAVIS, MIA			
04:50	REBOUND (OFF) by DAVIS, MIA			
04:48	TURNOVER (BADPASS) by DAVIS, MIA			
04:48				STEAL by BASTIN, SERAPHINE
04:44		8-6	H 2	GOOD! LAYUP by BASTIN, SERAPHINE [FB]
04:19	GOOD! LAYUP by WILLIAMSON, ALEXA	8-8	T	
04:19	ASSIST by DAVIS, MIA			
03:51				MISSED JUMPER by BASTIN, SERAPHINE
03:49	REBOUND (DEF) by TEAM			
03:49				
03:49				SUB OUT: MCCULLY, MARIAH
03:49				SUB OUT: PRINCE, RAVEN
03:49				SUB IN: BREWER, MAYA
03:49				SUB IN: COLBERT, TRAJATA
03:49	SUB OUT: ALEXANDER, ASONAH			
03:49	SUB OUT: WILLIAMSON, ALEXA			
03:49	SUB IN: JONES, ASHLEY			
03:49	SUB IN: ATKINSON, SHANNEN			
03:30	MISSED 3PTR by DAVIS, MIA			
03:26				REBOUND (DEF) by BASTIN, SERAPHINE
03:21		11-8	H 3	GOOD! 3PTR by BREWER, MAYA
03:21				ASSIST by BASTIN, SERAPHINE
02:51	GOOD! LAYUP by DAVIS, MIA [PNT]	11-10	H 1	
02:26				MISSED 3PTR by BREWER, MAYA
02:23	REBOUND (DEF) by TEAM			
02:23				SUB OUT: BASTIN, SERAPHINE
02:23				SUB IN: REID, ASHLEY
02:02	MISSED 3PTR by JONES, ASHLEY			
01:57				REBOUND (DEF) by SMITH, SHYIA
01:53	FOUL (PERSONAL) by ATKINSON, SHANNEN			
01:53				SUB OUT: BREMAUD, CARLA
01:53				SUB IN: MCCARTY, DJ
01:53				MISSED FT by COLBERT, TRAJATA

Time	VISITORS: Temple	Score	Margin	HOME: Wichita St.
01:53				REBOUND (OFF) by TEAM
01:53				MISSED FT by COLBERT, TRAJATA
01:53	REBOUND (DEF) by NIANG, LENA			
01:49	GOOD! 3PTR by MACKINS, MARISSA [FB]	11-13	V 2	
01:49	ASSIST by JONES, ASHLEY			
01:32		13-13	T	GOOD! LAYUP by SMITH, SHYIA [PNT]
01:17	GOOD! 3PTR by MACKINS, MARISSA	13-16	V 3	
01:17	ASSIST by JONES, ASHLEY			
00:42				TURNOVER (TRAVEL) by BREWER, MAYA
00:36	TURNOVER (BADPASS) by DAVIS, MIA			
00:36				STEAL by BREWER, MAYA
00:12				MISSED LAYUP by COLBERT, TRAJATA
00:11				REBOUND (OFF) by COLBERT, TRAJATA
00:11				MISSED LAYUP by SMITH, SHYIA
00:11	REBOUND (DEF) by TEAM			

Temple 16, Wichita St. 13

Points from (This Period)	TEM	WSU
In the Paint	6	10
Off Turns	2	2
2nd Chance	2	0
Fast Break	3	4
Bench	0	3

**Official Box Score**  
**Temple vs Wichita St.**  
**Second Quarter Statistics Only**  
**January 19, 2020 at Charles Koch Arena (Devlin Court) - Wichita, Kan.**



## Temple 22

No.	Player	S	Pts	FG	3FG	FT	OR	DR	TR	PF	A	TO	Blk	Stl	Min	+/-
01	NIANG, LENA	G	0	0-1	0-0	0-0	0	0	0	1	0	0	0	2	9	2
02	ALEXANDER, ASONAH	G	3	1-2	1-2	0-2	1	1	2	0	1	2	0	0	8	6
05	MACKINS, MARISSA	G	5	2-2	1-1	0-0	0	0	0	2	0	0	0	0	4	3
20	WILLIAMSON, ALEXA	F	3	1-3	0-0	1-2	0	0	0	1	0	0	0	0	4	2
25	DAVIS, MIA	F	6	1-1	0-0	4-5	1	1	2	1	0	1	0	0	9	4
00	JONES, ASHLEY	G	5	2-3	1-2	0-0	0	2	2	2	3	1	0	1	9	6
11	ATKINSON, SHANNEN	C	0	0-1	0-0	0-0	0	0	0	0	0	1	0	0	6	3
12	MAYO, EMANI	G	0	0-0	0-0	0-0	0	0	0	0	0	0	0	0	1	-1
TEAM							1	1	2	0		0				
<b>TOTALS</b>			<b>22</b>	<b>7-13</b>	<b>3-5</b>	<b>5-9</b>	<b>3</b>	<b>5</b>	<b>8</b>	<b>7</b>	<b>4</b>	<b>4</b>	<b>1</b>	<b>3</b>	<b>50</b>	

### Shooting By Period

Period	FG	FG%	3FG	3FG%	FT	FT%
3rd Qtr	5-13	38%	0-3	00%	9-13	69%
4th Qtr	4-13	31%	1-5	20%	4-4	100%
2nd Half	7-13	54%	3-5	60%	5-9	56%
2nd Half	9-26	35%	1-8	13%	13-17	76%
Game	22-54	40.7%	6-20	30.0%	20-28	71.4%

Deadball Rebounds: 5,2

## Wichita St. 17

No.	Player	S	Pts	FG	3FG	FT	OR	DR	TR	PF	A	TO	Blk	Stl	Min	+/-
02	MCCULLY, MARIAH	G	1	0-4	0-1	1-2	0	0	0	0	0	0	0	0	2	1
12	BREMAUD, CARLA	G	3	1-2	1-1	0-2	0	1	1	1	0	0	0	0	9	-3
13	PRINCE, RAVEN	F	0	0-1	0-0	0-0	0	1	1	2	1	0	0	0	7	-2
23	BASTIN, SERAPHINE	G	4	1-3	0-0	2-2	1	1	2	0	0	1	0	0	7	0
34	SMITH, SHYIA	F	0	0-0	0-0	0-0	0	0	0	1	0	0	0	0	2	-2
01	MCCARTY, DJ	G	0	0-0	0-0	0-0	0	0	0	1	0	0	0	0	3	-5
05	REID, ASHLEY	G	5	1-2	1-2	2-2	0	1	1	1	0	0	0	0	5	-3
11	KIRVEN, ASHLEI	F	2	1-2	0-0	0-0	3	0	3	0	0	1	0	0	5	-5
21	BREWER, MAYA	G	2	1-1	0-0	0-0	0	0	0	0	0	0	0	1	3	-5
24	COLBERT, TRAJATA	F	0	0-0	0-0	0-0	0	0	0	2	0	1	0	0	2	0
42	HENDERSON, ASIA	F	0	0-1	0-0	0-0	0	0	0	0	0	1	0	0	4	-1
TEAM							2	1	3	0		0				
<b>TOTALS</b>			<b>17</b>	<b>5-16</b>	<b>2-4</b>	<b>5-8</b>	<b>6</b>	<b>5</b>	<b>11</b>	<b>8</b>	<b>1</b>	<b>4</b>	<b>0</b>	<b>1</b>	<b>50</b>	

### Shooting By Period

Period	FG	FG%	3FG	3FG%	FT	FT%
3rd Qtr	7-11	64%	0-3	00%	11-12	92%
4th Qtr	6-15	40%	2-6	33%	3-4	75%
2nd Half	5-16	31%	2-4	50%	5-8	63%
2nd Half	13-26	50%	2-9	22%	14-16	88%
Game	24-58	41.4%	5-18	27.8%	19-26	73.1%

Deadball Rebounds: 4,0

### Game Notes:

Officials: Chaney Muench, Blanca Burns, Isaac Johnson  
Attendance: 1582

Start Time: 03:05 PM ET

End Time: 05:15 PM ET

Game Duration: 2:10

Conference Game;

Score	1st	2nd	3rd	4th	TOT
TEM	16	22	19	13	<b>70</b>
WSU	13	17	25	17	<b>72</b>

Points from (This Period)	TEM	WSU
In the Paint	6	6
Off Turns	2	2
2nd Chance	2	0
Fast Break	4	3
Bench	5	9

**Official Play-By-Play  
Temple vs Wichita St.  
Second Quarter**

**January 19, 2020 at Charles Koch Arena (Devlin Court) - Wichita, Kan.**



**Period 2**

**Starters:**

**Temple:** 20 WILLIAMSON,ALEXA (F); 25 DAVIS,MIA (F); 1 NIANG,LENA (G); 2 ALEXANDER,ASONAH (G); 5 MACKINS,MARISSA (G);

**Wichita St.:** 2 MCCULLY,MARIAH (G); 12 BREMAUD,CARLA (G); 13 PRINCE,RAVEN (F); 23 BASTIN,SERAPHINE (G); 34 SMITH,SHYIA (F);

Time	VISITORS: Temple	Score	Margin	HOME: Wichita St.
10:00	SUB OUT: MACKINS, MARISSA			
10:00	SUB IN: ALEXANDER, ASONAH			
09:44	GOOD! LAYUP by JONES, ASHLEY [PNT]	13-18	V 5	
09:15				TURNOVER (BADPASS) by COLBERT, TRAJATA
09:15				SUB OUT: REID, ASHLEY
09:15				SUB IN: BREMAUD, CARLA
08:55				FOUL (PERSONAL) by MCCARTY, DJ
08:50				FOUL (PERSONAL) by COLBERT, TRAJATA
08:47	TURNOVER (LOSTBALL) by ALEXANDER, ASONAH			
08:47				STEAL by BREWER, MAYA
08:42		15-18	V 3	GOOD! LAYUP by BREWER, MAYA [FB/PNT]
08:30				FOUL (PERSONAL) by COLBERT, TRAJATA
08:30				SUB OUT: COLBERT, TRAJATA
08:30				SUB IN: KIRVEN, ASHLEI
08:30	SUB OUT: NIANG, LENA			
08:30	SUB IN: MACKINS, MARISSA			
08:26	GOOD! 3PTR by MACKINS, MARISSA	15-21	V 6	
08:26	ASSIST by JONES, ASHLEY			
08:02		18-21	V 3	GOOD! 3PTR by BREMAUD, CARLA
07:44	GOOD! JUMPER by DAVIS, MIA	18-23	V 5	
07:44				FOUL (PERSONAL) by SMITH, SHYIA
07:44				SUB OUT: SMITH, SHYIA
07:44				SUB IN: PRINCE, RAVEN
07:44	SUB OUT: ATKINSON, SHANNEN			
07:44	SUB IN: WILLIAMSON, ALEXA			
07:44	GOOD! FT by DAVIS, MIA	18-24	V 6	
07:43	SUB OUT: DAVIS, MIA			
07:43	SUB IN: NIANG, LENA			
07:18				MISSED JUMPER by BREMAUD, CARLA
07:14	REBOUND (DEF) by ALEXANDER, ASONAH			
07:12	GOOD! LAYUP by MACKINS, MARISSA [FB]	18-26	V 8	
06:44	FOUL (PERSONAL) by WILLIAMSON, ALEXA			
06:44				SUB OUT: MCCARTY, DJ
06:44				SUB OUT: BREWER, MAYA
06:44				SUB IN: MCCULLY, MARIAH
06:44				SUB IN: BASTIN, SERAPHINE
06:42				TURNOVER (LOSTBALL) by KIRVEN, ASHLEI
06:42	STEAL by NIANG, LENA			
06:37	MISSED LAYUP by NIANG, LENA			
06:34				REBOUND (DEF) by PRINCE, RAVEN
06:30	FOUL (PERSONAL) by MACKINS, MARISSA			
06:30				MISSED FT by MCCULLY, MARIAH
06:30				REBOUND (OFF) by TEAM
06:30		19-26	V 7	GOOD! FT by MCCULLY, MARIAH [FB]
06:30	SUB OUT: ALEXANDER, ASONAH			
06:30	SUB IN: DAVIS, MIA			
06:19				FOUL (PERSONAL) by BREMAUD, CARLA
06:19	MISSED FT by WILLIAMSON, ALEXA			
06:19	REBOUND (OFF) by TEAM			
06:19	GOOD! FT by WILLIAMSON, ALEXA	19-27	V 8	
06:03		21-27	V 6	GOOD! LAYUP by KIRVEN, ASHLEI
05:49	GOOD! LAYUP by WILLIAMSON, ALEXA	21-29	V 8	
05:49	ASSIST by JONES, ASHLEY			
05:21				MISSED LAYUP by MCCULLY, MARIAH
05:17				REBOUND (OFF) by KIRVEN, ASHLEI
05:14				MISSED JUMPER by MCCULLY, MARIAH
05:11				REBOUND (OFF) by KIRVEN, ASHLEI
05:10				MISSED LAYUP by KIRVEN, ASHLEI
05:10				REBOUND (OFF) by KIRVEN, ASHLEI
05:06				MISSED JUMPER by MCCULLY, MARIAH
05:05				REBOUND (OFF) by TEAM
05:05				MISSED 3PTR by MCCULLY, MARIAH
05:05	REBOUND (DEF) by JONES, ASHLEY			
05:05	MISSED LAYUP by WILLIAMSON, ALEXA			
04:59				REBOUND (DEF) by BREMAUD, CARLA
04:58	FOUL (PERSONAL) by MACKINS, MARISSA			
04:58		22-29	V 7	GOOD! FT by BASTIN, SERAPHINE
04:58		23-29	V 6	GOOD! FT by BASTIN, SERAPHINE
04:50	GOOD! 3PTR by JONES, ASHLEY	23-32	V 9	
04:50	ASSIST by ALEXANDER, ASONAH			



Time	VISITORS: Temple	Score	Margin	HOME: Wichita St.
04:50	SUB OUT: MACKINS, MARISSA			
04:50	SUB IN: ALEXANDER, ASONAH			
04:49		25-32	V 7	GOOD! LAYUP by BASTIN, SERAPHINE
04:21	MISSED 3PTR by JONES, ASHLEY			
04:18	REBOUND (OFF) by DAVIS, MIA			
04:18	FOUL (OFF) by DAVIS, MIA			
04:18	TURNOVER (OFFENSIVE) by DAVIS, MIA			
04:18				SUB OUT: MCCULLY, MARIAH
04:18				SUB OUT: KIRVEN, ASHLEI
04:18				SUB IN: REID, ASHLEY
04:18				SUB IN: HENDERSON, ASIA
03:59				TURNOVER (BADPASS) by BASTIN, SERAPHINE
03:59	STEAL by NIANG, LENA			
03:54	MISSED LAYUP by WILLIAMSON, ALEXA			
03:54	SUB OUT: MACKINS, MARISSA			
03:54	SUB IN: ALEXANDER, ASONAH			
03:53	REBOUND (OFF) by ALEXANDER, ASONAH			
03:53				FOUL (PERSONAL) by REID, ASHLEY
03:53	SUB OUT: MACKINS, MARISSA			
03:53	SUB OUT: WILLIAMSON, ALEXA			
03:53	SUB IN: ALEXANDER, ASONAH			
03:53	SUB IN: ATKINSON, SHANNEN			
03:53	MISSED FT by ALEXANDER, ASONAH			
03:53	REBOUND (OFF) by TEAM			
03:53	MISSED FT by ALEXANDER, ASONAH			
03:53	REBOUND (OFF) by TEAM			
03:51				FOUL (PERSONAL) by PRINCE, RAVEN
03:49	GOOD! FT by DAVIS, MIA [FB]	25-33	V 8	
03:49	GOOD! FT by DAVIS, MIA [FB]	25-34	V 9	
03:37	FOUL (PERSONAL) by NIANG, LENA			
03:37				MISSED FT by BREMAUD, CARLA
03:37				REBOUND (OFF) by TEAM
03:37				MISSED FT by BREMAUD, CARLA
03:37	REBOUND (DEF) by JONES, ASHLEY			
03:22	GOOD! 3PTR by ALEXANDER, ASONAH	25-37	V 12	
03:22	ASSIST by JONES, ASHLEY			
02:45				TURNOVER (LOSTBALL) by HENDERSON, ASIA
02:45	STEAL by JONES, ASHLEY			
02:40	FOUL (OFF) by JONES, ASHLEY			
02:40	TURNOVER (OFFENSIVE) by JONES, ASHLEY			
02:19				MISSED LAYUP by HENDERSON, ASIA
02:16	REBOUND (DEF) by DAVIS, MIA			
02:10	MISSED JUMPER by ATKINSON, SHANNEN			
02:08				REBOUND (DEF) by TEAM
01:51		28-37	V 9	GOOD! 3PTR by REID, ASHLEY
01:51				ASSIST by PRINCE, RAVEN
01:19	MISSED 3PTR by ALEXANDER, ASONAH			
01:14				REBOUND (DEF) by REID, ASHLEY
01:08	FOUL (PERSONAL) by JONES, ASHLEY			
01:08	SUB OUT: JONES, ASHLEY			
01:08	SUB IN: MAYO, EMANI			
01:08		29-37	V 8	GOOD! FT by REID, ASHLEY
01:08		30-37	V 7	GOOD! FT by REID, ASHLEY
00:43	TURNOVER (BADPASS) by ALEXANDER, ASONAH			
00:33				MISSED LAYUP by BASTIN, SERAPHINE
00:33	BLOCK by ATKINSON, SHANNEN			
00:28				REBOUND (OFF) by BASTIN, SERAPHINE
00:25				MISSED JUMPER by PRINCE, RAVEN
00:24				REBOUND (OFF) by TEAM
00:19				MISSED JUMPER by BASTIN, SERAPHINE
00:18	REBOUND (DEF) by TEAM			
00:18				FOUL (PERSONAL) by PRINCE, RAVEN
00:18				SUB OUT: PRINCE, RAVEN
00:18				SUB IN: KIRVEN, ASHLEI
00:18	GOOD! FT by DAVIS, MIA	30-38	V 8	
00:18	MISSED FT by DAVIS, MIA			
00:17				REBOUND (DEF) by BASTIN, SERAPHINE
00:05				MISSED 3PTR by REID, ASHLEY
00:04	REBOUND (DEF) by TEAM			

### Temple 38, Wichita St. 30

Points from (This Period)	TEM	WSU
In the Paint	6	6
Off Turns	2	2
2nd Chance	2	0
Fast Break	4	3
Bench	5	9

**Official Box Score**  
**Temple vs Wichita St.**  
**Second Half Statistics Only**  
**January 19, 2020 at Charles Koch Arena (Devlin Court) - Wichita, Kan.**



### Temple 32

No.	Player	S	Pts	FG	3FG	FT	OR	DR	TR	PF	A	TO	Blk	Stl	Min	+/-
00	JONES, ASHLEY	G	14	2-8	0-3	10-11	0	0	0	1	2	2	2	0	18	-9
11	ATKINSON, SHANNEN	C	0	0-0	0-0	0-2	0	0	0	3	0	1	0	0	10	-7
12	MAYO, EMANI	G	0	0-0	0-0	0-0	1	0	1	1	0	0	0	0	3	-4
20	WILLIAMSON, ALEXA	F	1	0-1	0-0	1-2	0	1	1	3	0	1	0	0	6	0
25	DAVIS, MIA	F	13	5-10	1-1	2-2	3	5	8	3	0	1	0	0	18	-10
01	NIANG, LENA	G	0	0-2	0-2	0-0	1	0	1	2	0	0	0	0	20	-10
02	ALEXANDER, ASONAH	G	2	1-3	0-1	0-0	1	1	2	0	0	1	0	0	14	-5
05	MACKINS, MARISSA	G	2	1-2	0-1	0-0	0	1	1	1	0	2	0	0	10	-5
	TEAM		0	0-0	0-0	0-0	3	3	6	0	0	1	0	0	0	
<b>TOTALS</b>			<b>32</b>	<b>9-26</b>	<b>1-8</b>	<b>13-17</b>	<b>9</b>	<b>11</b>	<b>20</b>	<b>14</b>	<b>2</b>	<b>9</b>	<b>2</b>	<b>0</b>	<b>100</b>	

#### Shooting By Period

Period	FG	FG%	3FG	3FG%	FT	FT%
3rd Qtr	5-13	38%	0-3	00%	9-13	69%
4th Qtr	4-13	31%	1-5	20%	4-4	100%
2nd Half	9-26	35%	1-8	13%	13-17	76%
Game	22-54	40.7%	6-20	30.0%	20-28	71.4%

Deadball Rebounds: 5,2

Last FG Half: TEM 4th-00:50

### Wichita St. 42

No.	Player	S	Pts	FG	3FG	FT	OR	DR	TR	PF	A	TO	Blk	Stl	Min	+/-
01	MCCARTY, DJ	G	0	0-0	0-0	0-0	0	0	0	0	0	0	0	0	0	0
02	MCCULLY, MARIAH	G	12	4-12	1-4	3-4	0	2	2	4	2	0	0	1	18	9
05	REID, ASHLEY	G	3	1-2	1-2	0-0	0	0	0	1	0	0	0	0	8	4
11	KIRVEN, ASHLEI	F	5	2-2	0-0	1-1	0	1	1	4	0	0	1	0	8	6
12	BREMAUD, CARLA	G	2	1-3	0-2	0-0	0	0	0	1	2	1	0	0	18	8
13	PRINCE, RAVEN	F	0	0-0	0-0	0-0	0	0	0	0	0	0	0	0	0	0
21	BREWER, MAYA	G	0	0-0	0-0	0-0	0	1	1	0	0	0	1	0	4	3
23	BASTIN, SERAPHINE	G	4	0-1	0-0	4-4	0	1	1	3	1	0	0	1	12	6
24	COLBERT, TRAJATA	F	8	3-3	0-0	2-2	1	2	3	1	0	2	2	0	12	4
34	SMITH, SHYIA	F	8	2-3	0-1	4-5	0	1	1	1	1	1	0	0	20	12
42	HENDERSON, ASIA	F	0	0-0	0-0	0-0	0	0	0	0	0	0	0	0	0	-2
	TEAM		0	0-0	0-0	0-0	2	1	3	0	0	0	0	0	0	
<b>TOTALS</b>			<b>42</b>	<b>13-26</b>	<b>2-9</b>	<b>14-16</b>	<b>3</b>	<b>9</b>	<b>12</b>	<b>15</b>	<b>6</b>	<b>4</b>	<b>4</b>	<b>2</b>	<b>100</b>	

#### Shooting By Period

Period	FG	FG%	3FG	3FG%	FT	FT%
3rd Qtr	7-11	64%	0-3	00%	11-12	92%
4th Qtr	6-15	40%	2-6	33%	3-4	75%
2nd Half	13-26	50%	2-9	22%	14-16	88%
Game	24-58	41.4%	5-18	27.8%	19-26	73.1%

Deadball Rebounds: 4,0

Last FG Half: WSU 4th-00:06

#### Game Notes:

Officials: Chaney Muench, Blanca Burns, Isaac Johnson  
Attendance: 1582

Start Time: 03:05 PM ET

End Time: 05:15 PM ET

Game Duration: 2:10

Conference Game;

Score	1st	2nd	3rd	4th	TOT
TEM	16	22	19	13	<b>70</b>
WSU	13	17	25	17	<b>72</b>

Points from (This Period)	TEM	WSU
In the Paint	14	20
Off Turns	7	9
2nd Chance	8	1
Fast Break	0	4
Bench	14	16

**Official Box Score**  
**Temple vs Wichita St.**  
**Third Quarter Statistics Only**  
**January 19, 2020 at Charles Koch Arena (Devlin Court) - Wichita, Kan.**



### Temple 32

No.	Player	S	Pts	FG	3FG	FT	OR	DR	TR	PF	A	TO	Blk	Stl	Min	+/-
01	NIANG, LENA	G	0	0-0	0-0	0-0	1	0	1	1	0	0	0	0	10	-6
02	ALEXANDER, ASONAH	G	2	1-3	0-1	0-0	0	0	0	0	0	1	0	0	8	-2
05	MACKINS, MARISSA	G	2	1-2	0-1	0-0	0	0	0	1	0	0	0	0	3	-1
20	WILLIAMSON, ALEXA	F	1	0-0	0-0	1-2	0	1	1	2	0	1	0	0	3	-1
25	DAVIS, MIA	F	6	2-4	0-0	2-2	1	1	2	2	0	1	0	0	8	-6
00	JONES, ASHLEY	G	8	1-4	0-1	6-7	0	0	0	0	1	0	0	0	8	-5
11	ATKINSON, SHANNEN	C	0	0-0	0-0	0-2	0	0	0	1	0	0	0	0	7	-5
12	MAYO, EMANI	G	0	0-0	0-0	0-0	1	0	1	1	0	0	0	0	3	-4
TEAM							2	1	3	0		1				
<b>TOTALS</b>			<b>19</b>	<b>5-13</b>	<b>0-3</b>	<b>9-13</b>	<b>5</b>	<b>3</b>	<b>8</b>	<b>8</b>	<b>1</b>	<b>4</b>	<b>0</b>	<b>0</b>	<b>50</b>	

#### Shooting By Period

Period	FG	FG%	3FG	3FG%	FT	FT%
2nd Half	0-0	0%	0-0	0%	0-0	0%
Game	22-54	40.7%	6-20	30.0%	20-28	71.4%

Deadball Rebounds: 5,2

### Wichita St. 42

No.	Player	S	Pts	FG	3FG	FT	OR	DR	TR	PF	A	TO	Blk	Stl	Min	+/-
02	MCCULLY, MARIAH	G	8	3-6	0-2	2-2	0	1	1	3	1	0	0	1	8	5
12	BREMAUD, CARLA	G	2	1-2	0-1	0-0	0	0	0	0	0	1	0	0	8	4
13	PRINCE, RAVEN	F	0	0-0	0-0	0-0	0	0	0	0	0	0	0	0	0	0
23	BASTIN, SERAPHINE	G	4	0-0	0-0	4-4	0	1	1	0	1	0	0	1	8	6
34	SMITH, SHYIA	F	6	1-1	0-0	4-5	0	0	0	1	0	1	0	0	10	8
01	MCCARTY, DJ	G	0	0-0	0-0	0-0	0	0	0	0	0	0	0	0	0	0
05	REID, ASHLEY	G	0	0-0	0-0	0-0	0	0	0	1	0	0	0	0	2	0
11	KIRVEN, ASHLEI	F	5	2-2	0-0	1-1	0	1	1	4	0	0	1	0	8	6
21	BREWER, MAYA	G	0	0-0	0-0	0-0	0	1	1	0	0	0	1	0	4	3
24	COLBERT, TRAJATA	F	0	0-0	0-0	0-0	0	0	0	0	0	0	0	0	2	0
42	HENDERSON, ASIA	F	0	0-0	0-0	0-0	0	0	0	0	0	0	0	0	0	-2
TEAM							1	0	1	0		0				
<b>TOTALS</b>			<b>25</b>	<b>7-11</b>	<b>0-3</b>	<b>11-12</b>	<b>1</b>	<b>4</b>	<b>5</b>	<b>9</b>	<b>2</b>	<b>2</b>	<b>2</b>	<b>2</b>	<b>50</b>	

#### Shooting By Period

Period	FG	FG%	3FG	3FG%	FT	FT%
2nd Half	0-0	0%	0-0	0%	0-0	0%
Game	24-58	41.4%	5-18	27.8%	19-26	73.1%

Deadball Rebounds: 4,0

#### Game Notes:

Officials: Chaney Muench, Blanca Burns, Isaac Johnson  
Attendance: 1582

Start Time: 03:05 PM ET  
End Time: 05:15 PM ET  
Game Duration: 2:10  
Conference Game;

Score	1st	2nd	3rd	4th	TOT
TEM	16	22	19	13	<b>70</b>
WSU	13	17	25	17	<b>72</b>

Points from (This Period)	TEM	WSU
In the Paint	8	12
Off Turns	2	5
2nd Chance	4	1
Fast Break	0	4
Bench	8	5

**Official Play-By-Play  
Temple vs Wichita St.  
Third Quarter**

**January 19, 2020 at Charles Koch Arena (Devlin Court) - Wichita, Kan.**



**Period 3**

**Starters:**

**Temple:** 20 WILLIAMSON, ALEXA (F); 25 DAVIS, MIA (F); 1 NIANG, LENA (G); 2 ALEXANDER, ASONAH (G); 5 MACKINS, MARISSA (G);

**Wichita St.:** 2 MCCULLY, MARIAH (G); 12 BREMAUD, CARLA (G); 13 PRINCE, RAVEN (F); 23 BASTIN, SERAPHINE (G); 34 SMITH, SHYIA (F);

Time	VISITORS: Temple	Score	Margin	HOME: Wichita St.
10:00				SUB OUT: REID, ASHLEY
10:00				SUB OUT: HENDERSON, ASIA
10:00				SUB IN: MCCULLY, MARIAH
10:00				SUB IN: SMITH, SHYIA
10:00	SUB OUT: ATKINSON, SHANNEN			
10:00	SUB OUT: MAYO, EMANI			
10:00	SUB IN: MACKINS, MARISSA			
10:00	SUB IN: WILLIAMSON, ALEXA			
09:59	GOOD! LAYUP by MACKINS, MARISSA	30-40	V 10	
09:46				MISSED 3PTR by MCCULLY, MARIAH
09:42	REBOUND (DEF) by DAVIS, MIA			
09:07	MISSED JUMPER by DAVIS, MIA			
09:07				BLOCK by KIRVEN, ASHLEI
09:06	REBOUND (OFF) by TEAM			
09:04	TURNOVER (SHOTCLOCK) by TEAM			
08:42				MISSED JUMPER by MCCULLY, MARIAH
08:40	REBOUND (DEF) by WILLIAMSON, ALEXA			
08:40	TURNOVER (LOSTBALL) by WILLIAMSON, ALEXA			
08:40				STEAL by BASTIN, SERAPHINE
08:39	FOUL (PERSONAL) by DAVIS, MIA			
08:30		32-40	V 8	GOOD! LAYUP by SMITH, SHYIA
08:30	FOUL (PERSONAL) by WILLIAMSON, ALEXA			
08:30		33-40	V 7	GOOD! FT by SMITH, SHYIA
08:30	SUB OUT: WILLIAMSON, ALEXA			
08:30	SUB IN: ATKINSON, SHANNEN			
08:03	MISSED 3PTR by MACKINS, MARISSA			
07:59				REBOUND (DEF) by BASTIN, SERAPHINE
07:57	FOUL (PERSONAL) by MACKINS, MARISSA			
07:57	SUB OUT: MACKINS, MARISSA			
07:57	SUB IN: JONES, ASHLEY			
07:57		34-40	V 6	GOOD! FT by BASTIN, SERAPHINE [FB]
07:57		35-40	V 5	GOOD! FT by BASTIN, SERAPHINE [FB]
07:46				FOUL (PERSONAL) by MCCULLY, MARIAH
07:45	TURNOVER (BADPASS) by DAVIS, MIA			
07:45				STEAL by MCCULLY, MARIAH
07:41		37-40	V 3	GOOD! LAYUP by MCCULLY, MARIAH [FB]
07:25				FOUL (PERSONAL) by MCCULLY, MARIAH
07:17				FOUL (PERSONAL) by SMITH, SHYIA
07:17	GOOD! FT by JONES, ASHLEY	37-41	V 4	
07:17	GOOD! FT by JONES, ASHLEY	37-42	V 5	
07:17	GOOD! FT by JONES, ASHLEY	37-43	V 6	
07:06				MISSED 3PTR by BREMAUD, CARLA
07:03				REBOUND (OFF) by TEAM
06:54	FOUL (PERSONAL) by ATKINSON, SHANNEN			
06:54				MISSED FT by SMITH, SHYIA
06:54				REBOUND (OFF) by TEAM
06:54		38-43	V 5	GOOD! FT by SMITH, SHYIA
06:48				FOUL (PERSONAL) by KIRVEN, ASHLEI
06:40	MISSED LAYUP by DAVIS, MIA			
06:37	REBOUND (OFF) by NIANG, LENA			
06:30	TURNOVER (BADPASS) by ALEXANDER, ASONAH			
06:16				MISSED 3PTR by MCCULLY, MARIAH
06:12	REBOUND (DEF) by TEAM			
06:12				SUB OUT: BREMAUD, CARLA
06:12				SUB IN: BREWER, MAYA
06:02				FOUL (PERSONAL) by KIRVEN, ASHLEI
06:02	MISSED FT by JONES, ASHLEY			
06:02	REBOUND (OFF) by TEAM			
06:02	GOOD! FT by JONES, ASHLEY	38-44	V 6	
05:49		40-44	V 4	GOOD! LAYUP by MCCULLY, MARIAH [PNT]
05:32	MISSED 3PTR by ALEXANDER, ASONAH			
05:28	REBOUND (OFF) by DAVIS, MIA			
05:26	GOOD! JUMPER by DAVIS, MIA [PNT]	40-46	V 6	
05:05		42-46	V 4	GOOD! LAYUP by KIRVEN, ASHLEI
05:05				ASSIST by MCCULLY, MARIAH
05:05	FOUL (PERSONAL) by NIANG, LENA			
05:05				
05:05	SUB OUT: ALEXANDER, ASONAH			
05:05	SUB OUT: ATKINSON, SHANNEN			
05:05	SUB IN: MACKINS, MARISSA			

Time	VISITORS: Temple	Score	Margin	HOME: Wichita St.
05:05	SUB IN: WILLIAMSON, ALEXA			
05:05		43-46	V 3	GOOD! FT by KIRVEN, ASHLEI
04:46	GOOD! JUMPER by JONES, ASHLEY	43-48	V 5	
04:27	FOUL (PERSONAL) by WILLIAMSON, ALEXA			
04:27		44-48	V 4	GOOD! FT by MCCULLY, MARIAH
04:27		45-48	V 3	GOOD! FT by MCCULLY, MARIAH
04:15				FOUL (PERSONAL) by MCCULLY, MARIAH
04:15				SUB OUT: MCCULLY, MARIAH
04:15				SUB IN: BREMAUD, CARLA
04:15	GOOD! FT by DAVIS, MIA	45-49	V 4	
04:15	GOOD! FT by DAVIS, MIA	45-50	V 5	
04:00		47-50	V 3	GOOD! LAYUP by KIRVEN, ASHLEI
04:00				ASSIST by BASTIN, SERAPHINE
03:48				FOUL (PERSONAL) by KIRVEN, ASHLEI
03:48	MISSED FT by WILLIAMSON, ALEXA			
03:48	REBOUND (OFF) by TEAM			
03:48	GOOD! FT by WILLIAMSON, ALEXA	47-51	V 4	
03:48	SUB OUT: MACKINS, MARISSA			
03:48	SUB OUT: WILLIAMSON, ALEXA			
03:48	SUB IN: ATKINSON, SHANNEN			
03:48	SUB IN: MAYO, EMANI			
03:39	FOUL (PERSONAL) by MAYO, EMANI			
03:39		48-51	V 3	GOOD! FT by BASTIN, SERAPHINE
03:39		49-51	V 2	GOOD! FT by BASTIN, SERAPHINE
03:15	MISSED LAYUP by JONES, ASHLEY			
03:13				REBOUND (DEF) by BREWER, MAYA
03:07				TURNOVER (TRAVEL) by BREMAUD, CARLA
03:07	SUB OUT: MAYO, EMANI			
03:07	SUB IN: ALEXANDER, ASONAH			
02:44	GOOD! JUMPER by DAVIS, MIA [PNT]	49-53	V 4	
02:44	ASSIST by JONES, ASHLEY			
02:42	TIMEOUT TEAM			
02:42	SUB OUT: ALEXANDER, ASONAH			
02:42	SUB IN: MAYO, EMANI			
02:32	FOUL (PERSONAL) by DAVIS, MIA			
02:32		50-53	V 3	GOOD! FT by SMITH, SHYIA
02:32		51-53	V 2	GOOD! FT by SMITH, SHYIA
02:32	SUB OUT: MAYO, EMANI			
02:32	SUB IN: ALEXANDER, ASONAH			
02:23	MISSED 3PTR by JONES, ASHLEY			
02:16	REBOUND (OFF) by TEAM			
02:12	MISSED LAYUP by ALEXANDER, ASONAH			
02:12				BLOCK by BREWER, MAYA
02:07				REBOUND (DEF) by KIRVEN, ASHLEI
02:05				TURNOVER (TRAVEL) by SMITH, SHYIA
01:55				FOUL (PERSONAL) by KIRVEN, ASHLEI
01:55				SUB OUT: KIRVEN, ASHLEI
01:55				SUB OUT: BASTIN, SERAPHINE
01:55				SUB IN: REID, ASHLEY
01:55				SUB IN: COLBERT, TRAJATA
01:55	SUB OUT: DAVIS, MIA			
01:55	SUB IN: MAYO, EMANI			
01:55				SUB OUT: BREWER, MAYA
01:55				SUB IN: MCCULLY, MARIAH
01:55	MISSED FT by ATKINSON, SHANNEN			
01:55	REBOUND (OFF) by TEAM			
01:55	MISSED FT by ATKINSON, SHANNEN			
01:55				REBOUND (DEF) by MCCULLY, MARIAH
01:34		53-53	T	GOOD! JUMPER by BREMAUD, CARLA
01:18	MISSED LAYUP by JONES, ASHLEY			
01:14	REBOUND (OFF) by MAYO, EMANI			
00:59	GOOD! LAYUP by ALEXANDER, ASONAH [PNT]	53-55	V 2	
00:25		55-55	T	GOOD! LAYUP by MCCULLY, MARIAH
00:09				FOUL (PERSONAL) by REID, ASHLEY
00:09				SUB OUT: SMITH, SHYIA
00:09				SUB IN: HENDERSON, ASIA
00:09	GOOD! FT by JONES, ASHLEY	55-56	V 1	
00:09	GOOD! FT by JONES, ASHLEY	55-57	V 2	

### Temple 57, Wichita St. 55

Points from (This Period)	TEM	WSU
In the Paint	8	12
Off Turns	2	5
2nd Chance	4	1
Fast Break	0	4
Bench	8	5

**Official Box Score**  
**Temple vs Wichita St.**  
**Fourth Quarter Statistics Only**  
**January 19, 2020 at Charles Koch Arena (Devlin Court) - Wichita, Kan.**



### Temple 13

No.	Player	S	Pts	FG	3FG	FT	OR	DR	TR	PF	A	TO	Blk	Stl	Min	+/-
01	NIANG, LENA	G	0	0-2	0-2	0-0	0	0	0	1	0	0	0	0	10	-4
02	ALEXANDER, ASONAH	G	0	0-0	0-0	0-0	1	1	2	0	0	0	0	0	6	-3
05	MACKINS, MARISSA	G	0	0-0	0-0	0-0	0	1	1	0	0	2	0	0	7	-4
20	WILLIAMSON, ALEXA	F	0	0-1	0-0	0-0	0	0	0	1	0	0	0	0	3	1
25	DAVIS, MIA	F	7	3-6	1-1	0-0	2	4	6	1	0	0	0	0	10	-4
00	JONES, ASHLEY	G	6	1-4	0-2	4-4	0	0	0	1	1	2	2	0	10	-4
11	ATKINSON, SHANNEN	C	0	0-0	0-0	0-0	0	0	0	2	0	1	0	0	3	-2
12	MAYO, EMANI	G	0	0-0	0-0	0-0	0	0	0	0	0	0	0	0	0	0
TEAM							1	2	3	0		0				
<b>TOTALS</b>			<b>13</b>	<b>4-13</b>	<b>1-5</b>	<b>4-4</b>	<b>4</b>	<b>8</b>	<b>12</b>	<b>6</b>	<b>1</b>	<b>5</b>	<b>2</b>	<b>0</b>	<b>50</b>	

#### Shooting By Period

Period	FG	FG%	3FG	3FG%	FT	FT%
Game	22-54	40.7%	6-20	30.0%	20-28	71.4%

Deadball Rebounds: 5,2

### Wichita St. 17

No.	Player	S	Pts	FG	3FG	FT	OR	DR	TR	PF	A	TO	Blk	Stl	Min	+/-
02	MCCULLY, MARIAH	G	4	1-6	1-2	1-2	0	1	1	1	1	0	0	0	10	4
12	BREMAUD, CARLA	G	0	0-1	0-1	0-0	0	0	0	1	2	0	0	0	10	4
13	PRINCE, RAVEN	F	0	0-0	0-0	0-0	0	0	0	0	0	0	0	0	0	0
23	BASTIN, SERAPHINE	G	0	0-1	0-0	0-0	0	0	0	3	0	0	0	0	4	0
34	SMITH, SHYIA	F	2	1-2	0-1	0-0	0	1	1	0	1	0	0	0	10	4
01	MCCARTY, DJ	G	0	0-0	0-0	0-0	0	0	0	0	0	0	0	0	0	0
05	REID, ASHLEY	G	3	1-2	1-2	0-0	0	0	0	0	0	0	0	0	6	4
11	KIRVEN, ASHLEI	F	0	0-0	0-0	0-0	0	0	0	0	0	0	0	0	0	0
21	BREWER, MAYA	G	0	0-0	0-0	0-0	0	0	0	0	0	0	0	0	0	0
24	COLBERT, TRAJATA	F	8	3-3	0-0	2-2	1	2	3	1	0	2	2	0	10	4
42	HENDERSON, ASIA	F	0	0-0	0-0	0-0	0	0	0	0	0	0	0	0	0	0
TEAM							1	1	2	0		0				
<b>TOTALS</b>			<b>17</b>	<b>6-15</b>	<b>2-6</b>	<b>3-4</b>	<b>2</b>	<b>5</b>	<b>7</b>	<b>6</b>	<b>4</b>	<b>2</b>	<b>2</b>	<b>0</b>	<b>50</b>	

#### Shooting By Period

Period	FG	FG%	3FG	3FG%	FT	FT%
Game	24-58	41.4%	5-18	27.8%	19-26	73.1%

Deadball Rebounds: 4,0

#### Game Notes:

Officials: Chaney Muench, Blanca Burns, Isaac Johnson  
Attendance: 1582

Start Time: 03:05 PM ET  
End Time: 05:15 PM ET  
Game Duration: 2:10  
Conference Game;

Score	1st	2nd	3rd	4th	TOT
TEM	16	22	19	13	<b>70</b>
WSU	13	17	25	17	<b>72</b>

Points from (This Period)	TEM	WSU
In the Paint	6	8
Off Turns	5	4
2nd Chance	4	0
Fast Break	0	0
Bench	6	11

**Official Play-By-Play  
Temple vs Wichita St.  
Fourth Quarter**

**January 19, 2020 at Charles Koch Arena (Devlin Court) - Wichita, Kan.**



**Period 4**

**Starters:**

**Temple:** 20 WILLIAMSON,ALEXA (F); 25 DAVIS,MIA (F); 1 NIANG,LENA (G); 2 ALEXANDER,ASONAH (G); 5 MACKINS,MARISSA (G);

**Wichita St.:** 2 MCCULLY,MARIAH (G); 12 BREMAUD,CARLA (G); 13 PRINCE,RAVEN (F); 23 BASTIN,SERAPHINE (G); 34 SMITH,SHYIA (F);

Time	VISITORS: Temple	Score	Margin	HOME: Wichita St.
10:00				SUB OUT: HENDERSON, ASIA
10:00				SUB IN: SMITH, SHYIA
10:00	SUB OUT: ALEXANDER, ASONAH			
10:00	SUB OUT: ATKINSON, SHANNEN			
10:00	SUB OUT: MAYO, EMANI			
10:00	SUB IN: MACKINS, MARISSA			
10:00	SUB IN: WILLIAMSON, ALEXA			
10:00	SUB IN: DAVIS, MIA			
09:52		58-57	H 1	GOOD! 3PTR by REID, ASHLEY
09:52				ASSIST by SMITH, SHYIA
09:25	MISSED LAYUP by WILLIAMSON, ALEXA			
09:25				BLOCK by COLBERT, TRAJATA
09:18	REBOUND (OFF) by DAVIS, MIA			
09:17	GOOD! LAYUP by DAVIS, MIA	58-59	V 1	
09:02				TURNOVER (3SEC) by COLBERT, TRAJATA
08:44	GOOD! LAYUP by JONES, ASHLEY	58-61	V 3	
08:27				MISSED JUMPER by MCCULLY, MARIAH
08:27	BLOCK by JONES, ASHLEY			
08:26	REBOUND (DEF) by TEAM			
08:00	MISSED LAYUP by DAVIS, MIA			
07:56				REBOUND (DEF) by MCCULLY, MARIAH
07:51				MISSED 3PTR by REID, ASHLEY
07:46				REBOUND (OFF) by COLBERT, TRAJATA
07:46	FOUL (PERSONAL) by WILLIAMSON, ALEXA			
07:46	SUB OUT: WILLIAMSON, ALEXA			
07:46	SUB IN: ATKINSON, SHANNEN			
07:42				MISSED JUMPER by MCCULLY, MARIAH
07:39	REBOUND (DEF) by DAVIS, MIA			
07:36	FOUL (OFF) by ATKINSON, SHANNEN			
07:36	TURNOVER (OFFENSIVE) by ATKINSON, SHANNEN			
07:21		60-61	V 1	GOOD! LAYUP by SMITH, SHYIA [PNT]
06:58	TURNOVER (BADPASS) by JONES, ASHLEY			
06:58	SUB OUT: ATKINSON, SHANNEN			
06:58	SUB IN: ALEXANDER, ASONAH			
06:45				MISSED 3PTR by SMITH, SHYIA
06:43	REBOUND (DEF) by TEAM			
06:24	MISSED 3PTR by NIANG, LENA			
06:20				REBOUND (DEF) by TEAM
05:57		62-61	H 1	GOOD! JUMPER by COLBERT, TRAJATA [PNT]
05:57				ASSIST by BREMAUD, CARLA
05:57	FOUL (PERSONAL) by NIANG, LENA			
05:57		63-61	H 2	GOOD! FT by COLBERT, TRAJATA
05:48				
05:30	MISSED LAYUP by DAVIS, MIA			
05:30				BLOCK by COLBERT, TRAJATA
05:26				REBOUND (DEF) by COLBERT, TRAJATA
05:11				FOUL (OFF) by COLBERT, TRAJATA
05:11				TURNOVER (OFFENSIVE) by COLBERT, TRAJATA
04:57	GOOD! 3PTR by DAVIS, MIA	63-64	V 1	
04:57	ASSIST by JONES, ASHLEY			
04:39		66-64	H 2	GOOD! 3PTR by MCCULLY, MARIAH
04:39				ASSIST by BREMAUD, CARLA
04:21				FOUL (PERSONAL) by BREMAUD, CARLA
04:21				SUB OUT: REID, ASHLEY
04:21				SUB IN: BASTIN, SERAPHINE
04:17	MISSED LAYUP by JONES, ASHLEY			
04:13				REBOUND (DEF) by COLBERT, TRAJATA
04:10				MISSED LAYUP by BASTIN, SERAPHINE
04:06	REBOUND (DEF) by MACKINS, MARISSA			
04:05	TURNOVER (BADPASS) by MACKINS, MARISSA			
04:05	SUB OUT: MACKINS, MARISSA			
04:05	SUB IN: ATKINSON, SHANNEN			
03:58				MISSED 3PTR by BREMAUD, CARLA
03:55	REBOUND (DEF) by DAVIS, MIA			
03:29	MISSED LAYUP by DAVIS, MIA			
03:26	REBOUND (OFF) by ALEXANDER, ASONAH			
03:23	MISSED 3PTR by JONES, ASHLEY			
03:20	REBOUND (OFF) by DAVIS, MIA			
03:09				FOUL (PERSONAL) by BASTIN, SERAPHINE
02:56	TIMEOUT 30SEC			

Time	VISITORS: Temple	Score	Margin	HOME: Wichita St.
02:56	SUB OUT: ALEXANDER, ASONAH			
02:56	SUB IN: MACKINS, MARISSA			
02:55	TURNOVER (DRIBBLING) by MACKINS, MARISSA			
02:41				MISSED LAYUP by MCCULLY, MARIAH
02:41	BLOCK by JONES, ASHLEY			
02:41				REBOUND (OFF) by TEAM
02:41				TIMEOUT 30SEC
02:41	SUB OUT: MACKINS, MARISSA			
02:41	SUB IN: ALEXANDER, ASONAH			
02:29				MISSED 3PTR by MCCULLY, MARIAH
02:24	REBOUND (DEF) by DAVIS, MIA			
02:24	SUB OUT: ALEXANDER, ASONAH			
02:24	SUB IN: MACKINS, MARISSA			
02:08				FOUL (PERSONAL) by MCCULLY, MARIAH
02:08	SUB OUT: ATKINSON, SHANNEN			
02:08	SUB IN: ALEXANDER, ASONAH			
01:54				FOUL (PERSONAL) by BASTIN, SERAPHINE
01:54	SUB OUT: MACKINS, MARISSA			
01:54	SUB IN: ATKINSON, SHANNEN			
01:54	GOOD! FT by JONES, ASHLEY	66-65	H 1	
01:54	GOOD! FT by JONES, ASHLEY	66-66	T	
01:41		68-66	H 2	GOOD! JUMPER by COLBERT, TRAJATA [PNT]
01:41	FOUL (PERSONAL) by ATKINSON, SHANNEN			
01:41	SUB OUT: ATKINSON, SHANNEN			
01:41	SUB IN: MACKINS, MARISSA			
01:41		69-66	H 3	GOOD! FT by COLBERT, TRAJATA
01:29				FOUL (PERSONAL) by BASTIN, SERAPHINE
01:29	SUB OUT: MACKINS, MARISSA			
01:29	SUB IN: WILLIAMSON, ALEXA			
01:29	GOOD! FT by JONES, ASHLEY	69-67	H 2	
01:29	GOOD! FT by JONES, ASHLEY	69-68	H 1	
01:03	FOUL (PERSONAL) by DAVIS, MIA			
01:03	SUB OUT: WILLIAMSON, ALEXA			
01:03	SUB IN: MACKINS, MARISSA			
01:03		70-68	H 2	GOOD! FT by MCCULLY, MARIAH
01:03				MISSED FT by MCCULLY, MARIAH
01:03	REBOUND (DEF) by DAVIS, MIA			
00:57	MISSED 3PTR by NIANG, LENA			
00:54	REBOUND (OFF) by TEAM			
00:50	GOOD! LAYUP by DAVIS, MIA	70-70	T	
00:49				TIMEOUT 30SEC
00:49	SUB OUT: MACKINS, MARISSA			
00:49	SUB IN: WILLIAMSON, ALEXA			
00:20				MISSED LAYUP by MCCULLY, MARIAH
00:17	REBOUND (DEF) by ALEXANDER, ASONAH			
00:12	FOUL (OFF) by JONES, ASHLEY			
00:12	TURNOVER (OFFENSIVE) by JONES, ASHLEY			
00:12				TIMEOUT 30SEC
00:06		72-70	H 2	GOOD! LAYUP by COLBERT, TRAJATA
00:06				ASSIST by MCCULLY, MARIAH
00:03	TIMEOUT 30SEC			
00:03				SUB OUT: BASTIN, SERAPHINE
00:03				SUB OUT: COLBERT, TRAJATA
00:03				SUB IN: REID, ASHLEY
00:03				SUB IN: PRINCE, RAVEN
00:03	SUB OUT: WILLIAMSON, ALEXA			
00:03	SUB IN: MACKINS, MARISSA			
00:00	MISSED 3PTR by JONES, ASHLEY			
00:00				REBOUND (DEF) by SMITH, SHYIA

Temple 70, Wichita St. 72

Points from (This Period)	TEM	WSU
In the Paint	6	8
Off Turns	5	4
2nd Chance	4	0
Fast Break	0	0
Bench	6	11



**Official Scoring/Possession Reference Chart  
Temple vs Wichita St.**

**Period 1**

**January 19, 2020 at Charles Koch Arena (Devlin Court) - Wichita, Kan.**



**Period 1**

**Starters:**

**Temple:** 20 WILLIAMSON,ALEXA (F); 25 DAVIS,MIA (F); 1 NIANG,LENA (G); 2 ALEXANDER,ASONAH (G); 5 MACKINS,MARISSA (G);

**Wichita St.:** 2 MCCULLY,MARIAH (G); 12 BREMAUD,CARLA (G); 13 PRINCE,RAVEN (F); 23 BASTIN,SERAPHINE (G); 34 SMITH,SHYIA (F);

Time	VISITORS: Temple	Score	Margin	HOME: Wichita St.
09:46	GOOD! FT by DAVIS, MIA	0-1	V 1	
09:46	GOOD! FT by DAVIS, MIA	0-2	V 2	
09:26		2-2	T	GOOD! LAYUP by SMITH, SHYIA
07:40	GOOD! JUMPER by MACKINS, MARISSA	2-4	V 2	
07:17		4-4	T	GOOD! LAYUP by MCCULLY, MARIAH [PNT]
06:30	GOOD! LAYUP by NIANG, LENA	4-6	V 2	
05:50		6-6	T	GOOD! LAYUP by BASTIN, SERAPHINE [FB]
04:44		8-6	H 2	GOOD! LAYUP by BASTIN, SERAPHINE [FB]
04:19	GOOD! LAYUP by WILLIAMSON, ALEXA	8-8	T	
03:21		11-8	H 3	GOOD! 3PTR by BREWER, MAYA
02:51	GOOD! LAYUP by DAVIS, MIA [PNT]	11-10	H 1	
01:49	GOOD! 3PTR by MACKINS, MARISSA [FB]	11-13	V 2	
01:32		13-13	T	GOOD! LAYUP by SMITH, SHYIA [PNT]
01:17	GOOD! 3PTR by MACKINS, MARISSA	13-16	V 3	

**Temple 16, Wichita St. 13**

**Official Scoring/Possession Reference Chart  
Temple vs Wichita St.**

**Period 2**

**January 19, 2020 at Charles Koch Arena (Devlin Court) - Wichita, Kan.**



**Period 2**

**Starters:**

**Temple:** 20 WILLIAMSON,ALEXA (F); 25 DAVIS,MIA (F); 1 NIANG,LENA (G); 2 ALEXANDER,ASONAH (G); 5 MACKINS,MARISSA (G);

**Wichita St.:** 2 MCCULLY,MARIAH (G); 12 BREMAUD,CARLA (G); 13 PRINCE,RAVEN (F); 23 BASTIN,SERAPHINE (G); 34 SMITH,SHYIA (F);

Time	VISITORS: Temple	Score	Margin	HOME: Wichita St.
09:44	GOOD! LAYUP by JONES, ASHLEY [PNT]	13-18	V 5	
08:42		15-18	V 3	GOOD! LAYUP by BREWER, MAYA [FB/PNT]
08:26	GOOD! 3PTR by MACKINS, MARISSA	15-21	V 6	
08:02		18-21	V 3	GOOD! 3PTR by BREMAUD, CARLA
07:44	GOOD! JUMPER by DAVIS, MIA	18-23	V 5	
07:44	GOOD! FT by DAVIS, MIA	18-24	V 6	
07:12	GOOD! LAYUP by MACKINS, MARISSA [FB]	18-26	V 8	
06:30		19-26	V 7	GOOD! FT by MCCULLY, MARIAH [FB]
06:19	GOOD! FT by WILLIAMSON, ALEXA	19-27	V 8	
06:03		21-27	V 6	GOOD! LAYUP by KIRVEN, ASHLEI
05:49	GOOD! LAYUP by WILLIAMSON, ALEXA	21-29	V 8	
04:58		22-29	V 7	GOOD! FT by BASTIN, SERAPHINE
04:58		23-29	V 6	GOOD! FT by BASTIN, SERAPHINE
04:50	GOOD! 3PTR by JONES, ASHLEY	23-32	V 9	
04:49		25-32	V 7	GOOD! LAYUP by BASTIN, SERAPHINE
03:49	GOOD! FT by DAVIS, MIA [FB]	25-33	V 8	
03:49	GOOD! FT by DAVIS, MIA [FB]	25-34	V 9	
03:22	GOOD! 3PTR by ALEXANDER, ASONAH	25-37	V 12	
01:51		28-37	V 9	GOOD! 3PTR by REID, ASHLEY
01:08		29-37	V 8	GOOD! FT by REID, ASHLEY
01:08		30-37	V 7	GOOD! FT by REID, ASHLEY
00:18	GOOD! FT by DAVIS, MIA	30-38	V 8	

**Temple 38, Wichita St. 30**

**Official Scoring/Possession Reference Chart  
Temple vs Wichita St.**

**Period 3**

**January 19, 2020 at Charles Koch Arena (Devlin Court) - Wichita, Kan.**



**Period 3**

**Starters:**

**Temple:** 20 WILLIAMSON,ALEXA (F); 25 DAVIS,MIA (F); 1 NIANG,LENA (G); 2 ALEXANDER,ASONAH (G); 5 MACKINS,MARISSA (G);

**Wichita St.:** 2 MCCULLY,MARIAH (G); 12 BREMAUD,CARLA (G); 13 PRINCE,RAVEN (F); 23 BASTIN,SERAPHINE (G); 34 SMITH,SHYIA (F);

Time	VISITORS: Temple	Score	Margin	HOME: Wichita St.
09:59	GOOD! LAYUP by MACKINS, MARISSA	30-40	V 10	
08:30		32-40	V 8	GOOD! LAYUP by SMITH, SHYIA
08:30		33-40	V 7	GOOD! FT by SMITH, SHYIA
07:57		34-40	V 6	GOOD! FT by BASTIN, SERAPHINE [FB]
07:57		35-40	V 5	GOOD! FT by BASTIN, SERAPHINE [FB]
07:41		37-40	V 3	GOOD! LAYUP by MCCULLY, MARIAH [FB]
07:17	GOOD! FT by JONES, ASHLEY	37-41	V 4	
07:17	GOOD! FT by JONES, ASHLEY	37-42	V 5	
07:17	GOOD! FT by JONES, ASHLEY	37-43	V 6	
06:54		38-43	V 5	GOOD! FT by SMITH, SHYIA
06:02	GOOD! FT by JONES, ASHLEY	38-44	V 6	
05:49		40-44	V 4	GOOD! LAYUP by MCCULLY, MARIAH [PNT]
05:26	GOOD! JUMPER by DAVIS, MIA [PNT]	40-46	V 6	
05:05		42-46	V 4	GOOD! LAYUP by KIRVEN, ASHLEI
05:05		43-46	V 3	GOOD! FT by KIRVEN, ASHLEI
04:46	GOOD! JUMPER by JONES, ASHLEY	43-48	V 5	
04:27		44-48	V 4	GOOD! FT by MCCULLY, MARIAH
04:27		45-48	V 3	GOOD! FT by MCCULLY, MARIAH
04:15	GOOD! FT by DAVIS, MIA	45-49	V 4	
04:15	GOOD! FT by DAVIS, MIA	45-50	V 5	
04:00		47-50	V 3	GOOD! LAYUP by KIRVEN, ASHLEI
03:48	GOOD! FT by WILLIAMSON, ALEXA	47-51	V 4	
03:39		48-51	V 3	GOOD! FT by BASTIN, SERAPHINE
03:39		49-51	V 2	GOOD! FT by BASTIN, SERAPHINE
02:44	GOOD! JUMPER by DAVIS, MIA [PNT]	49-53	V 4	
02:32		50-53	V 3	GOOD! FT by SMITH, SHYIA
02:32		51-53	V 2	GOOD! FT by SMITH, SHYIA
01:34		53-53	T	GOOD! JUMPER by BREMAUD, CARLA
00:59	GOOD! LAYUP by ALEXANDER, ASONAH [PNT]	53-55	V 2	
00:25		55-55	T	GOOD! LAYUP by MCCULLY, MARIAH
00:09	GOOD! FT by JONES, ASHLEY	55-56	V 1	
00:09	GOOD! FT by JONES, ASHLEY	55-57	V 2	

**Temple 57, Wichita St. 55**

**Official Scoring/Possession Reference Chart  
Temple vs Wichita St.**

**Period 4**

**January 19, 2020 at Charles Koch Arena (Devlin Court) - Wichita, Kan.**



**Period 4**

**Starters:**

**Temple:** 20 WILLIAMSON,ALEXA (F); 25 DAVIS,MIA (F); 1 NIANG,LENA (G); 2 ALEXANDER,ASONAH (G); 5 MACKINS,MARISSA (G);

**Wichita St.:** 2 MCCULLY,MARIAH (G); 12 BREMAUD,CARLA (G); 13 PRINCE,RAVEN (F); 23 BASTIN,SERAPHINE (G); 34 SMITH,SHYIA (F);

Time	VISITORS: Temple	Score	Margin	HOME: Wichita St.
09:52		58-57	H 1	GOOD! 3PTR by REID, ASHLEY
09:17	GOOD! LAYUP by DAVIS, MIA	58-59	V 1	
08:44	GOOD! LAYUP by JONES, ASHLEY	58-61	V 3	
07:21		60-61	V 1	GOOD! LAYUP by SMITH, SHYIA [PNT]
05:57		62-61	H 1	GOOD! JUMPER by COLBERT, TRAJATA [PNT]
05:57		63-61	H 2	GOOD! FT by COLBERT, TRAJATA
04:57	GOOD! 3PTR by DAVIS, MIA	63-64	V 1	
04:39		66-64	H 2	GOOD! 3PTR by MCCULLY, MARIAH
01:54	GOOD! FT by JONES, ASHLEY	66-65	H 1	
01:54	GOOD! FT by JONES, ASHLEY	66-66	T	
01:41		68-66	H 2	GOOD! JUMPER by COLBERT, TRAJATA [PNT]
01:41		69-66	H 3	GOOD! FT by COLBERT, TRAJATA
01:29	GOOD! FT by JONES, ASHLEY	69-67	H 2	
01:29	GOOD! FT by JONES, ASHLEY	69-68	H 1	
01:03		70-68	H 2	GOOD! FT by MCCULLY, MARIAH
00:50	GOOD! LAYUP by DAVIS, MIA	70-70	T	
00:06		72-70	H 2	GOOD! LAYUP by COLBERT, TRAJATA

**Temple 70, Wichita St. 72**

Official Substitutions Log

Temple vs Wichita St.

Period 1

January 19, 2020 at Charles Koch Arena (Devlin Court) - Wichita, Kan.



VISITORS: Temple	Time	Score	HOME: Wichita St.
20 WILLIAMSON,ALEXA			2 MCCULLY,MARIAH
25 DAVIS,MIA			12 BREMAUD,CARLA
1 NIANG,LENA			13 PRINCE,RAVEN
2 ALEXANDER,ASONAH			23 BASTIN,SERAPHINE
5 MACKINS,MARISSA			34 SMITH,SHYIA
	03:49	8-8	SUB OUT: MCCULLY,MARIAH
	03:49		SUB OUT: PRINCE,RAVEN
	03:49		SUB IN: BREWER,MAYA
	03:49		SUB IN: COLBERT,TRAJATA
SUB OUT: 2 ALEXANDER,ASONAH	03:49		
SUB OUT: 20 WILLIAMSON,ALEXA	03:49		
SUB IN: 0 JONES,ASHLEY	03:49		
SUB IN: 11 ATKINSON,SHANNEN	03:49		
	02:23	10-11	SUB OUT: BASTIN,SERAPHINE
	02:23		SUB IN: REID,ASHLEY
	01:53	10-11	SUB OUT: BREMAUD,CARLA
	01:53		SUB IN: MCCARTY,DJ

Temple 16, Wichita St. 13

**Official Substitutions Log  
Temple vs Wichita St.  
Period 2**

**January 19, 2020 at Charles Koch Arena (Devlin Court) - Wichita, Kan.**



VISITORS: Temple	Time	Score	HOME: Wichita St.
20 WILLIAMSON,ALEXA			2 MCCULLY,MARIAH
25 DAVIS,MIA			12 BREMAUD,CARLA
1 NIANG,LENA			13 PRINCE,RAVEN
2 ALEXANDER,ASONAH			23 BASTIN,SERAPHINE
5 MACKINS,MARISSA			34 SMITH,SHYIA
SUB OUT: 5 MACKINS,MARISSA	10:00	-	
SUB IN: 2 ALEXANDER,ASONAH	10:00		
	09:15	18-13	SUB OUT: REID,ASHLEY
	09:15		SUB IN: BREMAUD,CARLA
	08:30	18-15	SUB OUT: COLBERT,TRAJATA
	08:30		SUB IN: KIRVEN,ASHLEI
SUB OUT: 1 NIANG,LENA	08:30		
SUB IN: 5 MACKINS,MARISSA	08:30		
	07:44	23-18	SUB OUT: SMITH,SHYIA
	07:44		SUB IN: PRINCE,RAVEN
SUB OUT: 11 ATKINSON,SHANNEN	07:44		
SUB IN: 20 WILLIAMSON,ALEXA	07:44		
SUB OUT: 25 DAVIS,MIA	07:43	24-18	
SUB IN: 1 NIANG,LENA	07:43		
	06:44	26-18	SUB OUT: MCCARTY,DJ
	06:44		SUB OUT: BREWER,MAYA
	06:44		SUB IN: MCCULLY,MARIAH
	06:44		SUB IN: BASTIN,SERAPHINE
SUB OUT: 2 ALEXANDER,ASONAH	06:30	26-19	
SUB IN: 25 DAVIS,MIA	06:30		
SUB OUT: 5 MACKINS,MARISSA	04:50	32-23	
SUB IN: 2 ALEXANDER,ASONAH	04:50		
	04:18	32-25	SUB OUT: MCCULLY,MARIAH
	04:18		SUB OUT: KIRVEN,ASHLEI
	04:18		SUB IN: REID,ASHLEY
	04:18		SUB IN: HENDERSON,ASIA
SUB OUT: 5 MACKINS,MARISSA	03:54	32-25	
SUB IN: 2 ALEXANDER,ASONAH	03:54		
SUB OUT: 5 MACKINS,MARISSA	03:53	32-25	
SUB OUT: 20 WILLIAMSON,ALEXA	03:53		
SUB IN: 2 ALEXANDER,ASONAH	03:53		
SUB IN: 11 ATKINSON,SHANNEN	03:53		
SUB OUT: 0 JONES,ASHLEY	01:08	37-28	
SUB IN: 12 MAYO,EMANI	01:08		
	00:18	37-30	SUB OUT: PRINCE,RAVEN
	00:18		SUB IN: KIRVEN,ASHLEI

**Temple 38, Wichita St. 30**

**Official Substitutions Log**  
**Temple vs Wichita St.**  
**Period 3**  
**January 19, 2020 at Charles Koch Arena (Devlin Court) - Wichita, Kan.**



VISITORS: Temple	Time	Score	HOME: Wichita St.
20 WILLIAMSON,ALEXA			2 MCCULLY,MARIAH
25 DAVIS,MIA			12 BREMAUD,CARLA
1 NIANG,LENA			13 PRINCE,RAVEN
2 ALEXANDER,ASONAH			23 BASTIN,SERAPHINE
5 MACKINS,MARISSA			34 SMITH,SHYIA
	10:00	-	SUB OUT: REID,ASHLEY
	10:00		SUB OUT: HENDERSON,ASIA
	10:00		SUB IN: MCCULLY,MARIAH
	10:00		SUB IN: SMITH,SHYIA
SUB OUT: 11 ATKINSON,SHANNEN	10:00		
SUB OUT: 12 MAYO,EMANI	10:00		
SUB IN: 5 MACKINS,MARISSA	10:00		
SUB IN: 20 WILLIAMSON,ALEXA	10:00		
SUB OUT: 20 WILLIAMSON,ALEXA	08:30	40-33	
SUB IN: 11 ATKINSON,SHANNEN	08:30		
SUB OUT: 5 MACKINS,MARISSA	07:57	40-33	
SUB IN: 0 JONES,ASHLEY	07:57		
	06:12	43-38	SUB OUT: BREMAUD,CARLA
	06:12		SUB IN: BREWER,MAYA
SUB OUT: 2 ALEXANDER,ASONAH	05:05	46-42	
SUB OUT: 11 ATKINSON,SHANNEN	05:05		
SUB IN: 5 MACKINS,MARISSA	05:05		
SUB IN: 20 WILLIAMSON,ALEXA	05:05		
	04:15	48-45	SUB OUT: MCCULLY,MARIAH
	04:15		SUB IN: BREMAUD,CARLA
SUB OUT: 5 MACKINS,MARISSA	03:48	51-47	
SUB OUT: 20 WILLIAMSON,ALEXA	03:48		
SUB IN: 11 ATKINSON,SHANNEN	03:48		
SUB IN: 12 MAYO,EMANI	03:48		
SUB OUT: 12 MAYO,EMANI	03:07	51-49	
SUB IN: 2 ALEXANDER,ASONAH	03:07		
SUB OUT: 2 ALEXANDER,ASONAH	02:42	53-49	
SUB IN: 12 MAYO,EMANI	02:42		
SUB OUT: 12 MAYO,EMANI	02:32	53-51	
SUB IN: 2 ALEXANDER,ASONAH	02:32		
	01:55	53-51	SUB OUT: KIRVEN,ASHLEI
	01:55		SUB OUT: BASTIN,SERAPHINE
	01:55		SUB IN: REID,ASHLEY
	01:55		SUB IN: COLBERT,TRAJATA
SUB OUT: 25 DAVIS,MIA	01:55		
SUB IN: 12 MAYO,EMANI	01:55		
	01:55		SUB OUT: BREWER,MAYA
	01:55		SUB IN: MCCULLY,MARIAH
	00:09	55-55	SUB OUT: SMITH,SHYIA
	00:09		SUB IN: HENDERSON,ASIA

**Temple 57, Wichita St. 55**

**Official Substitutions Log  
Temple vs Wichita St.  
Period 4**

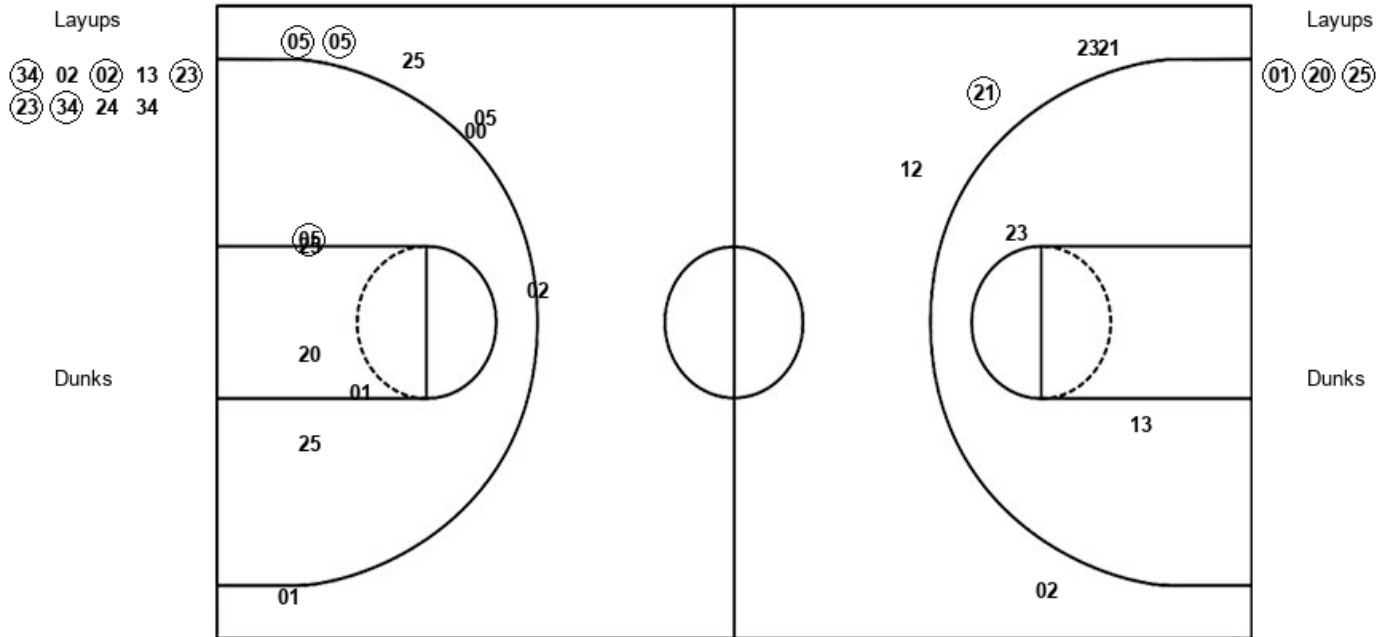
**January 19, 2020 at Charles Koch Arena (Devlin Court) - Wichita, Kan.**



VISITORS: Temple	Time	Score	HOME: Wichita St.
20 WILLIAMSON,ALEXA			2 MCCULLY,MARIAH
25 DAVIS,MIA			12 BREMAUD,CARLA
1 NIANG,LENA			13 PRINCE,RAVEN
2 ALEXANDER,ASONAH			23 BASTIN,SERAPHINE
5 MACKINS,MARISSA			34 SMITH,SHYIA
	10:00	-	SUB OUT: HENDERSON,ASIA
	10:00		SUB IN: SMITH,SHYIA
SUB OUT: 2 ALEXANDER,ASONAH	10:00		
SUB OUT: 11 ATKINSON,SHANNEN	10:00		
SUB OUT: 12 MAYO,EMANI	10:00		
SUB IN: 5 MACKINS,MARISSA	10:00		
SUB IN: 20 WILLIAMSON,ALEXA	10:00		
SUB IN: 25 DAVIS,MIA	10:00		
SUB OUT: 20 WILLIAMSON,ALEXA	07:46	61-58	
SUB IN: 11 ATKINSON,SHANNEN	07:46		
SUB OUT: 11 ATKINSON,SHANNEN	06:58	61-60	
SUB IN: 2 ALEXANDER,ASONAH	06:58		
	04:21	64-66	SUB OUT: REID,ASHLEY
	04:21		SUB IN: BASTIN,SERAPHINE
SUB OUT: 5 MACKINS,MARISSA	04:05	64-66	
SUB IN: 11 ATKINSON,SHANNEN	04:05		
SUB OUT: 2 ALEXANDER,ASONAH	02:56	64-66	
SUB IN: 5 MACKINS,MARISSA	02:56		
SUB OUT: 5 MACKINS,MARISSA	02:41	64-66	
SUB IN: 2 ALEXANDER,ASONAH	02:41		
SUB OUT: 2 ALEXANDER,ASONAH	02:24	64-66	
SUB IN: 5 MACKINS,MARISSA	02:24		
SUB OUT: 11 ATKINSON,SHANNEN	02:08	64-66	
SUB IN: 2 ALEXANDER,ASONAH	02:08		
SUB OUT: 5 MACKINS,MARISSA	01:54	64-66	
SUB IN: 11 ATKINSON,SHANNEN	01:54		
SUB OUT: 11 ATKINSON,SHANNEN	01:41	66-68	
SUB IN: 5 MACKINS,MARISSA	01:41		
SUB OUT: 5 MACKINS,MARISSA	01:29	66-69	
SUB IN: 20 WILLIAMSON,ALEXA	01:29		
SUB OUT: 20 WILLIAMSON,ALEXA	01:03	68-69	
SUB IN: 5 MACKINS,MARISSA	01:03		
SUB OUT: 5 MACKINS,MARISSA	00:49	70-70	
SUB IN: 20 WILLIAMSON,ALEXA	00:49		
	00:03	70-72	SUB OUT: BASTIN,SERAPHINE
	00:03		SUB OUT: COLBERT,TRAJATA
	00:03		SUB IN: REID,ASHLEY
	00:03		SUB IN: PRINCE,RAVEN
SUB OUT: 20 WILLIAMSON,ALEXA	00:03		
SUB IN: 5 MACKINS,MARISSA	00:03		

**Temple 70, Wichita St. 72**





TEM : Period 1	Made	Att	Pct
Layups	3	3	100.0
Dunks	0	0	0
2PT Field Goals	4	8	50.0
3PT Field Goals	2	7	28.6
<b>Total Field Goals</b>	<b>6</b>	<b>15</b>	<b>40.0</b>

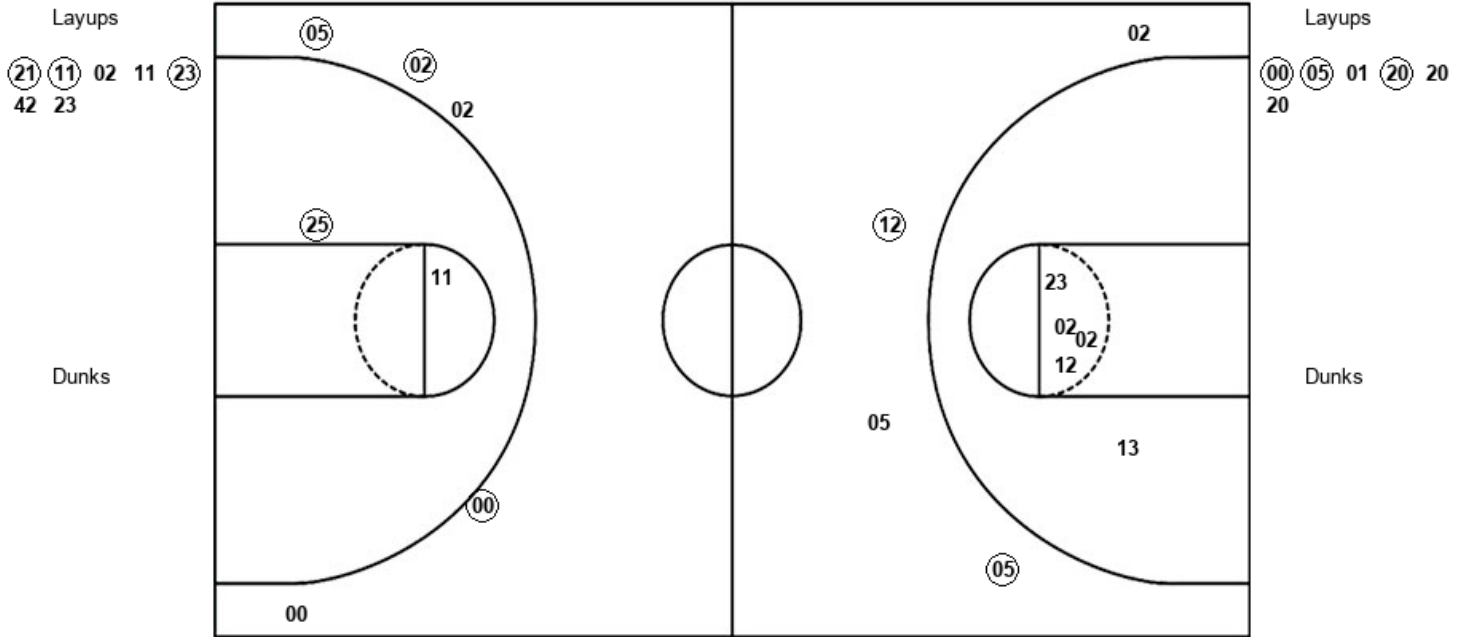
Official Shot Chart  
 Temple vs Wichita St.  
 PERIOD 2 Shots

January 19, 2020 at Charles Koch Arena (Devlin Court) - Wichita, Kan.



Wichita St.

Temple



WSU : Period 2	Made	Att	Pct
Layups	3	7	42.9
Dunks	0	0	0
2PT Field Goals	3	12	25.0
3PT Field Goals	2	4	50.0
<b>Total Field Goals</b>	<b>5</b>	<b>16</b>	<b>31.3</b>

TEM : Period 2	Made	Att	Pct
Layups	3	6	50.0
Dunks	0	0	0
2PT Field Goals	4	8	50.0
3PT Field Goals	3	5	60.0
<b>Total Field Goals</b>	<b>7</b>	<b>13</b>	<b>53.8</b>

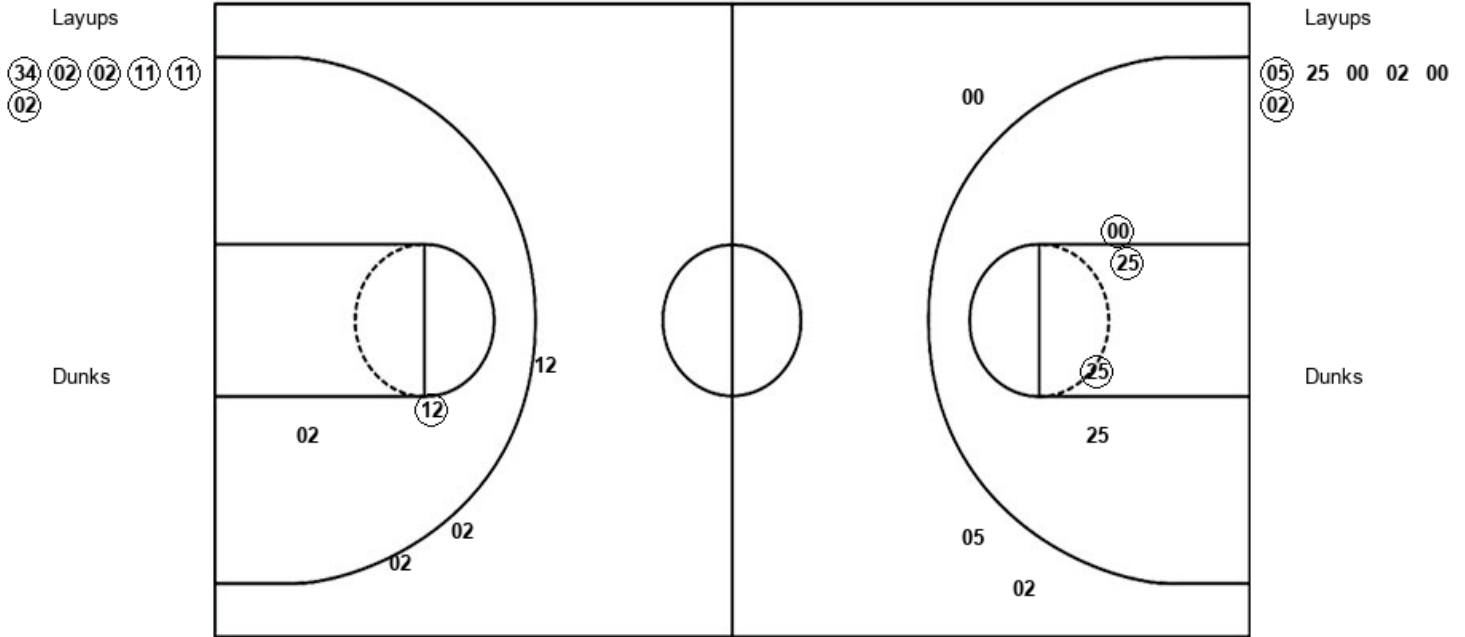
Official Shot Chart  
**Temple vs Wichita St.**  
 PERIOD 3 Shots

January 19, 2020 at Charles Koch Arena (Devlin Court) - Wichita, Kan.



**Wichita St.**

**Temple**



WSU : Period 3	Made	Att	Pct
Layups	6	6	100.0
Dunks	0	0	0
2PT Field Goals	7	8	87.5
3PT Field Goals	0	3	00.0
<b>Total Field Goals</b>	<b>7</b>	<b>11</b>	<b>63.6</b>

TEM : Period 3	Made	Att	Pct
Layups	2	6	33.3
Dunks	0	0	0
2PT Field Goals	5	10	50.0
3PT Field Goals	0	3	00.0
<b>Total Field Goals</b>	<b>5</b>	<b>13</b>	<b>38.5</b>

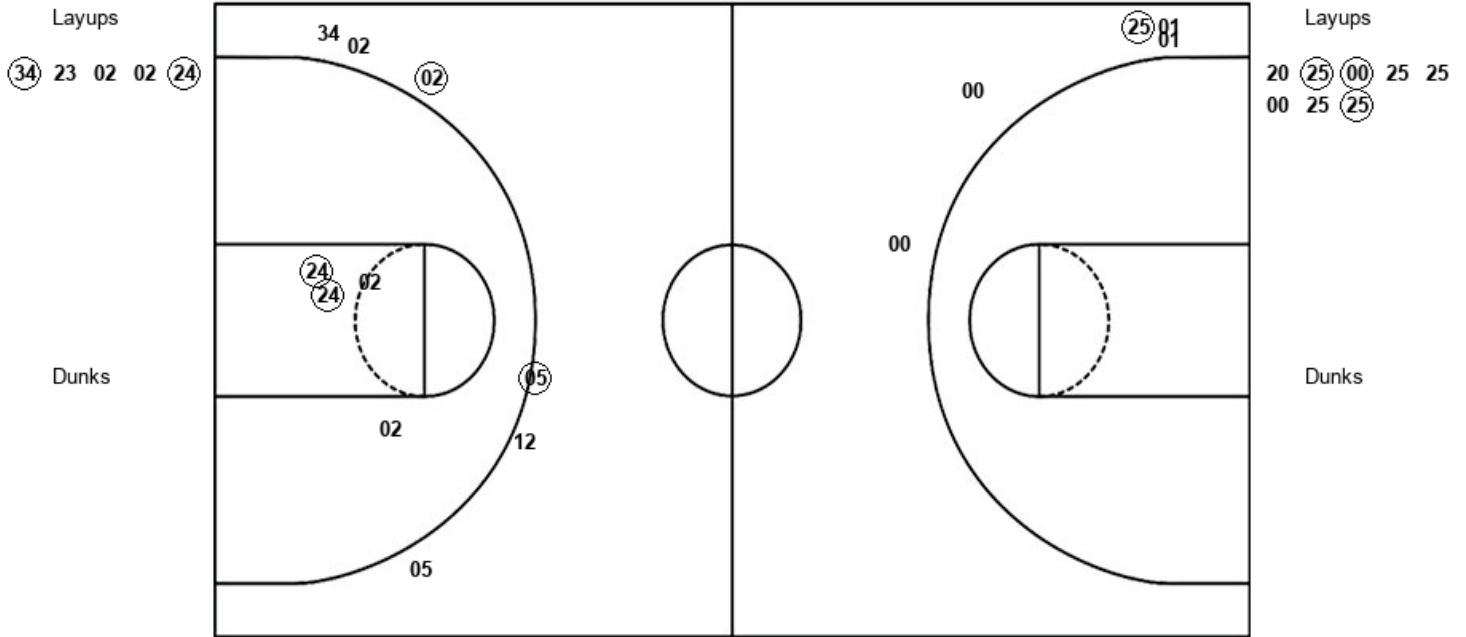
Official Shot Chart  
 Temple vs Wichita St.  
 PERIOD 4 Shots

January 19, 2020 at Charles Koch Arena (Devlin Court) - Wichita, Kan.



Wichita St.

Temple



WSU : Period 4	Made	Att	Pct
Layups	2	5	40.0
Dunks	0	0	0
2PT Field Goals	4	9	44.4
3PT Field Goals	2	6	33.3
<b>Total Field Goals</b>	<b>6</b>	<b>15</b>	<b>40.0</b>

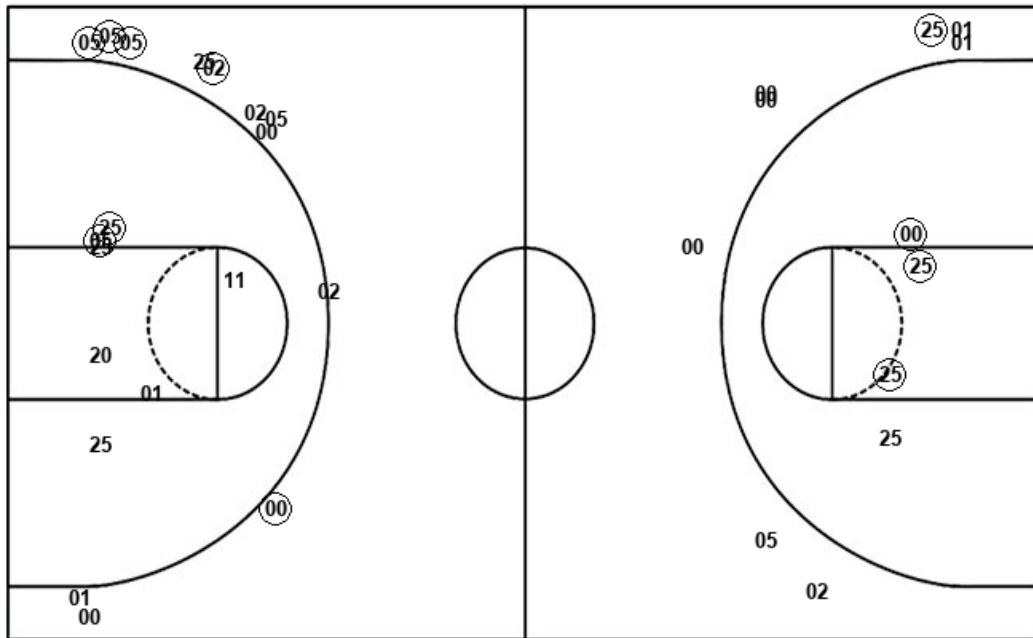
TEM : Period 4	Made	Att	Pct
Layups	3	8	37.5
Dunks	0	0	0
2PT Field Goals	3	8	37.5
3PT Field Goals	1	5	20.0
<b>Total Field Goals</b>	<b>4</b>	<b>13</b>	<b>30.8</b>

Official Shot Chart  
**Temple vs Wichita St.**  
 Temple Team Shots  
 January 19, 2020 at Charles Koch Arena (Devlin Court) - Wichita, Kan.



Layups

Dunks



Layups

Dunks

(01) (20) (25) (00) (05)  
 01 (20) 20 20 (05)  
 25 00 02 00 (02)  
 20 (25) (00) 25 25  
 00 25 (25)

TEM : Period 1	Made	Att	Pct
Layups	3	3	100.0
Dunks	0	0	0
2PT Field Goals	4	8	50.0
3PT Field Goals	2	7	28.6
<b>Total Field Goals</b>	<b>6</b>	<b>15</b>	<b>40.0</b>

TEM : Period 3	Made	Att	Pct
Layups	2	6	33.3
Dunks	0	0	0
2PT Field Goals	5	10	50.0
3PT Field Goals	0	3	00.0
<b>Total Field Goals</b>	<b>5</b>	<b>13</b>	<b>38.5</b>

TEM : Period 2	Made	Att	Pct
Layups	3	6	50.0
Dunks	0	0	0
2PT Field Goals	4	8	50.0
3PT Field Goals	3	5	60.0
<b>Total Field Goals</b>	<b>7</b>	<b>13</b>	<b>53.8</b>

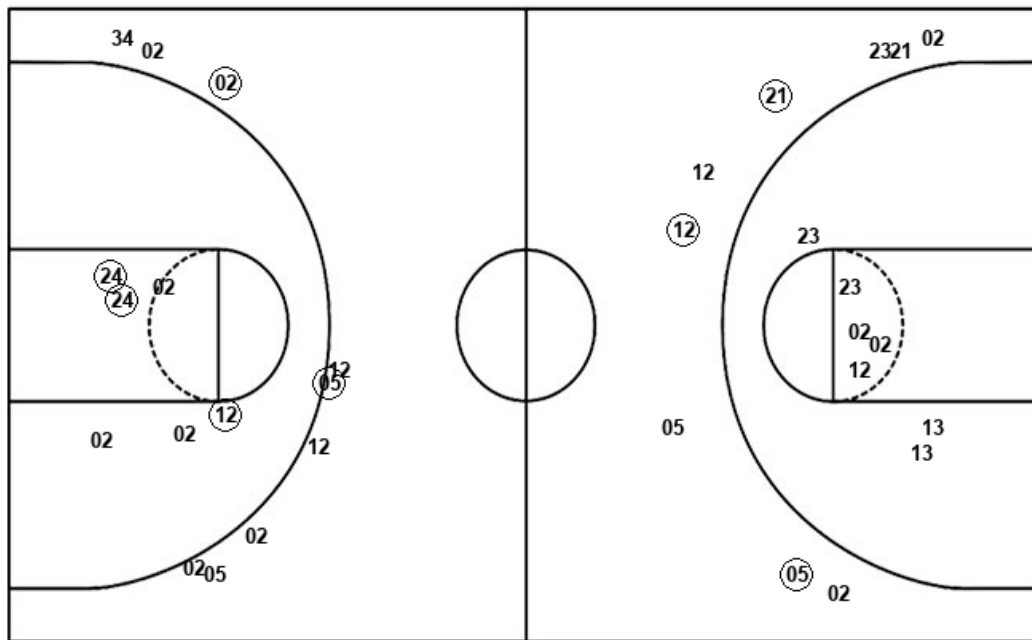
TEM : Period 4	Made	Att	Pct
Layups	3	8	37.5
Dunks	0	0	0
2PT Field Goals	3	8	37.5
3PT Field Goals	1	5	20.0
<b>Total Field Goals</b>	<b>4</b>	<b>13</b>	<b>30.8</b>

Official Shot Chart  
**Temple vs Wichita St.**  
 Wichita St. Team Shots  
 January 19, 2020 at Charles Koch Arena (Devlin Court) - Wichita, Kan.



Layups

Dunks



Layups

Dunks

34 02 02 13 23  
 23 34 24 34 21  
 11 02 11 23 42  
 23 34 02 02 11  
 11 02 34 23 02  
 02 24

WSU : Period 1	Made	Att	Pct
Layups	5	9	55.6
Dunks	0	0	0
2PT Field Goals	5	11	45.5
3PT Field Goals	1	5	20.0
<b>Total Field Goals</b>	<b>6</b>	<b>16</b>	<b>37.5</b>

WSU : Period 3	Made	Att	Pct
Layups	6	6	100.0
Dunks	0	0	0
2PT Field Goals	7	8	87.5
3PT Field Goals	0	3	00.0
<b>Total Field Goals</b>	<b>7</b>	<b>11</b>	<b>63.6</b>

WSU : Period 2	Made	Att	Pct
Layups	3	7	42.9
Dunks	0	0	0
2PT Field Goals	3	12	25.0
3PT Field Goals	2	4	50.0
<b>Total Field Goals</b>	<b>5</b>	<b>16</b>	<b>31.3</b>

WSU : Period 4	Made	Att	Pct
Layups	2	5	40.0
Dunks	0	0	0
2PT Field Goals	4	9	44.4
3PT Field Goals	2	6	33.3
<b>Total Field Goals</b>	<b>6</b>	<b>15</b>	<b>40.0</b>