

FINAL SCORE



Tulsa

46



Wichita St.

57

January 15, 2020 • Charles Koch Arena (Devlin Court) - Wichita, Kan.

FINAL STATISTICS

Official Box Score
Tulsa vs Wichita St.
Game Totals -- Final Statistics
January 15, 2020 at Charles Koch Arena (Devlin Court) - Wichita, Kan.



Tulsa 46

No.	Player	S	Pts	FG	3FG	FT	OR	DR	TR	PF	A	TO	Blk	Stl	Min	+/-
00	ELLIOTT, KENDRIAN	F	16	6-11	2-3	2-3	1	10	11	3	0	2	2	2	40	-11
04	RICHARDS, ADDISON	F	5	2-8	1-4	0-2	0	2	2	2	0	4	1	0	26	-11
10	GAULDEN, ALEXIS	G	8	2-10	1-7	3-4	0	3	3	3	5	4	0	0	33	-14
11	BITTLE, MADDIE	G	7	2-3	2-2	1-2	0	1	1	4	2	0	0	2	24	-4
21	LESCAY, REBECCA	G	2	1-11	0-0	0-0	0	3	3	1	3	3	0	3	29	-4
15	RODRIGUEZ, KK	G	0	0-3	0-2	0-0	1	2	3	1	1	0	0	2	14	-4
20	HRAFNKELSDOTTIR, ELIN	F	2	0-0	0-0	2-2	0	0	0	0	0	1	0	0	3	2
22	BRADY, MORGAN	G	2	1-6	0-2	0-0	1	1	2	1	1	0	0	0	16	0
23	MOUTRY, KAYLA	G	2	1-1	0-0	0-0	0	0	0	0	0	1	0	0	5	-7
32	LEWIS, DESIREE	F	2	1-3	0-0	0-2	2	1	3	1	0	1	0	1	11	-2
TEAM												2				
TOTALS			46	16-56	6-20	8-15	7	25	32	16	12	18	3	10	200	

Shooting By Period

Period	FG	FG%	3FG	3FG%	FT	FT%
1st Qtr	6-14	43%	3-4	75%	1-4	25%
2nd Qtr	3-13	23%	1-5	20%	5-6	83%
3rd Qtr	4-15	27%	2-5	40%	0-2	00%
4th Qtr	3-14	21%	0-6	00%	2-3	67%
1st Half	9-27	33%	4-9	44%	6-10	60%
2nd Half	7-29	24%	2-11	18%	2-5	40%
Game	16-56	28.6%	6-20	30.0%	8-15	53.3%

Deadball Rebounds: 3,0
Last FG: 4th-00:43
Biggest Run: 10-0
Largest lead: By 16 at 2nd-09:38
Technical Fouls: #21 LESCAY @ 4th - 04:11;

Wichita St. 57

No.	Player	S	Pts	FG	3FG	FT	OR	DR	TR	PF	A	TO	Blk	Stl	Min	+/-
02	MCCULLY, MARIAH	G	11	5-16	1-4	0-1	1	4	5	2	1	8	0	3	32	9
12	BREMAUD, CARLA	G	13	4-9	2-4	3-4	0	6	6	0	1	1	1	0	33	13
13	PRINCE, RAVEN	F	0	0-2	0-0	0-0	1	1	2	2	0	0	0	1	8	-3
23	BASTIN, SERAPHINE	G	13	4-13	0-2	5-5	0	4	4	0	0	3	0	1	29	8
34	SMITH, SHYIA	F	2	1-3	0-1	0-0	1	5	6	2	0	3	0	1	33	1
01	MCCARTY, DJ	G	0	0-0	0-0	0-0	0	0	0	0	0	0	0	0	4	-7
05	REID, ASHLEY	G	2	0-0	0-0	2-2	1	2	3	0	3	1	0	0	16	12
11	KIRVEN, ASHLEI	F	4	2-3	0-0	0-2	2	2	4	2	0	0	1	1	8	10
21	BREWER, MAYA	G	2	1-2	0-0	0-0	0	3	3	2	1	1	0	0	6	-2
24	COLBERT, TRAJATA	F	6	3-5	0-0	0-0	1	2	3	3	0	2	1	0	17	9
42	HENDERSON, ASIA	F	4	2-6	0-0	0-0	5	3	8	1	0	1	2	0	14	5
TEAM																
TOTALS			57	22-59	3-11	10-14	14	35	49	15	6	21	5	7	200	

Shooting By Period

Period	FG	FG%	3FG	3FG%	FT	FT%
1st Qtr	2-14	14%	0-2	00%	0-0	0%
2nd Qtr	5-15	33%	1-6	17%	0-0	0%
3rd Qtr	10-14	71%	1-2	50%	5-6	83%
4th Qtr	5-16	31%	1-1	100%	5-8	63%
1st Half	7-29	24%	1-8	13%	0-0	0%
2nd Half	15-30	50%	2-3	67%	10-14	71%
Game	22-59	37.3%	3-11	27.3%	10-14	71.4%

Deadball Rebounds: 2,1
Last FG: 4th-02:07
Biggest Run: 11-0
Largest lead: By 13 at 4th-01:01
Technical Fouls: #0 TEAM @ 1st - 09:59;

Game Notes:

Officials: Denise Brooks, Tiara Cruse, Ed Sidlasky
Attendance: 1464

Start Time: 07:33 PM ET
End Time: 09:21 PM ET
Game Duration: 1:48
Conference Game;

Score	1st	2nd	3rd	4th	TOT
TUL	16	12	10	8	46
WSU	4	11	26	16	57

TUL led for 26:05. WSU led for 11:11.
Game was tied for 2:44.
Times tied: 2 *Lead Changes: 3*

Points from	TUL	WSU
In the Paint	18	30
Off Turns	23	12
2nd Chance	2	8
Fast Break	2	12
Bench	8	18

Official Box Score
Tulsa vs Wichita St.
First Half Statistics Only
January 15, 2020 at Charles Koch Arena (Devlin Court) - Wichita, Kan.



Tulsa 28

No.	Player	S	Pts	FG	3FG	FT	OR	DR	TR	PF	A	TO	Blk	Stl	Min	+/-
00	ELLIOTT, KENDRIAN	F	13	5-7	2-2	1-2	0	7	7	1	0	1	0	2	20	13
04	RICHARDS, ADDISON	F	2	1-4	0-1	0-2	0	1	1	0	0	1	1	0	11	4
10	GAULDEN, ALEXIS	G	2	0-4	0-3	2-2	0	3	3	1	3	1	0	0	15	8
11	BITTLE, MADDIE	G	7	2-2	2-2	1-2	0	1	1	2	2	0	0	1	11	14
15	RODRIGUEZ, KK	G	0	0-1	0-0	0-0	0	0	0	0	1	0	0	0	8	-1
20	HRAFINKELSDOTTIR, ELIN	F	2	0-0	0-0	2-2	0	0	0	0	0	1	0	0	3	2
21	LESCAY, REBECCA	G	0	0-4	0-0	0-0	0	2	2	0	2	2	0	2	16	11
22	BRADY, MORGAN	G	0	0-3	0-1	0-0	0	1	1	0	0	0	0	0	11	7
23	MOUTRY, KAYLA	G	0	0-0	0-0	0-0	0	0	0	0	0	0	0	0	0	0
32	LEWIS, DESIREE	F	2	1-2	0-0	0-0	1	1	2	0	0	0	0	1	6	7
	TEAM		0	0-0	0-0	0-0	1	1	2	0	0	1	0	0	0	0
TOTALS			28	9-27	4-9	6-10	2	17	19	4	8	7	1	6	100	

Shooting By Period

Period	FG	FG%	3FG	3FG%	FT	FT%
1st Qtr	6-14	43%	3-4	75%	1-4	25%
2nd Qtr	3-13	23%	1-5	20%	5-6	83%
1st Half	9-27	33%	4-9	44%	6-10	60%
Game	16-56	28.6%	6-20	30.0%	8-15	53.3%

Deadball Rebounds: 3,0

Last FG Half: TUL 2nd-01:03

Wichita St. 15

No.	Player	S	Pts	FG	3FG	FT	OR	DR	TR	PF	A	TO	Blk	Stl	Min	+/-
01	MCCARTY, DJ	G	0	0-0	0-0	0-0	0	0	0	0	0	0	0	0	4	-7
02	MCCULLY, MARIAH	G	4	2-6	0-2	0-0	1	3	4	0	0	3	0	0	14	-11
05	REID, ASHLEY	G	0	0-0	0-0	0-0	0	1	1	0	1	1	0	0	8	1
11	KIRVEN, ASHLEI	F	2	1-1	0-0	0-0	0	1	1	2	0	0	1	0	4	3
12	BREMAUD, CARLA	G	3	1-5	1-3	0-0	0	1	1	0	0	0	0	0	16	-8
13	PRINCE, RAVEN	F	0	0-2	0-0	0-0	1	1	2	2	0	0	0	1	8	-3
21	BREWER, MAYA	G	2	1-2	0-0	0-0	0	3	3	2	1	1	0	0	6	-2
23	BASTIN, SERAPHINE	G	2	1-6	0-2	0-0	0	2	2	0	0	1	0	0	13	-12
24	COLBERT, TRAJATA	F	2	1-3	0-0	0-0	0	2	2	1	0	1	0	0	5	-5
34	SMITH, SHYIA	F	0	0-2	0-1	0-0	0	1	1	0	0	2	0	1	17	-14
42	HENDERSON, ASIA	F	0	0-2	0-0	0-0	1	2	3	0	0	1	1	0	6	-7
	TEAM		0	0-0	0-0	0-0	2	1	3	1	0	0	0	0	0	0
TOTALS			15	7-29	1-8	0-0	5	18	23	8	2	10	2	2	100	

Shooting By Period

Period	FG	FG%	3FG	3FG%	FT	FT%
1st Qtr	2-14	14%	0-2	00%	0-0	0%
2nd Qtr	5-15	33%	1-6	17%	0-0	0%
1st Half	7-29	24%	1-8	13%	0-0	0%
Game	22-59	37.3%	3-11	27.3%	10-14	71.4%

Deadball Rebounds: 2,1

Last FG Half: WSU 2nd-01:28

Game Notes:

Officials: Denise Brooks, Tiara Cruse, Ed Sidlasky
 Attendance: 1464

Start Time: 07:33 PM ET
 End Time: 09:21 PM ET
 Game Duration: 1:48
 Conference Game;

Score	1st	2nd	3rd	4th	TOT
TUL	16	12	10	8	46
WSU	4	11	26	16	57

Points from (This Period)	TUL	WSU
In the Paint	10	12
Off Turns	12	4
2nd Chance	2	0
Fast Break	0	3
Bench	4	6

Official Box Score
Tulsa vs Wichita St.
First Quarter Statistics Only
January 15, 2020 at Charles Koch Arena (Devlin Court) - Wichita, Kan.



Tulsa 16

No.	Player	S	Pts	FG	3FG	FT	OR	DR	TR	PF	A	TO	Blk	Stl	Min	+/-
00	ELLIOTT, KENDRIAN	F	7	3-3	1-1	0-0	0	3	3	1	0	1	0	1	10	12
04	RICHARDS, ADDISON	F	2	1-3	0-0	0-2	0	0	0	0	0	1	1	0	6	5
10	GAULDEN, ALEXIS	G	0	0-1	0-1	0-0	0	3	3	1	2	1	0	0	8	9
11	BITTLE, MADDIE	G	7	2-2	2-2	1-2	0	1	1	1	2	0	0	1	10	12
21	LESCAY, REBECCA	G	0	0-2	0-0	0-0	0	2	2	0	2	0	0	0	10	12
15	RODRIGUEZ, KK	G	0	0-0	0-0	0-0	0	0	0	0	0	0	0	0	0	0
20	HRAFNKELSDOTTIR, ELIN	F	0	0-0	0-0	0-0	0	0	0	0	0	0	0	0	0	0
22	BRADY, MORGAN	G	0	0-2	0-0	0-0	0	0	0	0	0	0	0	0	2	3
23	MOUTRY, KAYLA	G	0	0-0	0-0	0-0	0	0	0	0	0	0	0	0	0	0
32	LEWIS, DESIREE	F	0	0-1	0-0	0-0	0	1	1	0	0	0	0	1	4	7
TEAM							0	0	0	0						
TOTALS			16	6-14	3-4	1-4	0	10	10	3	6	3	1	3	50	

Shooting By Period

Period	FG	FG%	3FG	3FG%	FT	FT%
1st Qtr	6-14	43%	3-4	75%	1-4	25%
2nd Qtr	3-13	23%	1-5	20%	5-6	83%
1st Half	6-14	43%	3-4	75%	1-4	25%
1st Half	9-27	33%	4-9	44%	6-10	60%
Game	16-56	28.6%	6-20	30.0%	8-15	53.3%

Deadball Rebounds: 3,0

Wichita St. 4

No.	Player	S	Pts	FG	3FG	FT	OR	DR	TR	PF	A	TO	Blk	Stl	Min	+/-
02	MCCULLY, MARIAH	G	0	0-2	0-0	0-0	1	1	2	0	0	2	0	0	8	-9
12	BREMAUD, CARLA	G	0	0-3	0-1	0-0	0	1	1	0	0	0	0	0	8	-9
13	PRINCE, RAVEN	F	0	0-1	0-0	0-0	0	1	1	1	0	0	0	0	5	-4
23	BASTIN, SERAPHINE	G	2	1-4	0-1	0-0	0	1	1	0	0	0	0	0	8	-8
34	SMITH, SHYIA	F	0	0-1	0-0	0-0	0	1	1	0	0	2	0	0	10	-12
01	MCCARTY, DJ	G	0	0-0	0-0	0-0	0	0	0	0	0	0	0	0	4	-7
05	REID, ASHLEY	G	0	0-0	0-0	0-0	0	0	0	0	0	0	0	0	0	0
11	KIRVEN, ASHLEI	F	0	0-0	0-0	0-0	0	0	0	0	0	0	0	0	0	0
21	BREWER, MAYA	G	0	0-0	0-0	0-0	0	1	1	0	0	0	0	0	2	-3
24	COLBERT, TRAJATA	F	2	1-2	0-0	0-0	0	2	2	1	0	1	0	0	3	-5
42	HENDERSON, ASIA	F	0	0-1	0-0	0-0	0	0	0	0	0	0	0	0	2	-3
TEAM							1	1	2	1						
TOTALS			4	2-14	0-2	0-0	2	9	11	3	0	5	0	0	50	

Shooting By Period

Period	FG	FG%	3FG	3FG%	FT	FT%
1st Qtr	2-14	14%	0-2	00%	0-0	0%
2nd Qtr	5-15	33%	1-6	17%	0-0	0%
1st Half	2-14	14%	0-2	00%	0-0	0%
1st Half	7-29	24%	1-8	13%	0-0	0%
Game	22-59	37.3%	3-11	27.3%	10-14	71.4%

Deadball Rebounds: 2,1

Game Notes:

Officials: Denise Brooks, Tiara Cruse, Ed Sidlasky
Attendance: 1464

Start Time: 07:33 PM ET
End Time: 09:21 PM ET
Game Duration: 1:48
Conference Game;

Score	1st	2nd	3rd	4th	TOT
TUL	16	12	10	8	46
WSU	4	11	26	16	57

Points from (This Period)	TUL	WSU
In the Paint	6	4
Off Turns	9	0
2nd Chance	0	0
Fast Break	0	0
Bench	0	2

**Official By-By-Play
Tulsa vs Wichita St.
First Quarter**

January 15, 2020 at Charles Koch Arena (Devlin Court) - Wichita, Kan.



Period 1

Starters:

Tulsa: 00 ELLIOTT, KENDRIAN (F); 4 RICHARDS, ADDISON (F); 10 GAULDEN, ALEXIS (G); 11 BITTLE, MADDIE (G); 21 LESCAY, REBECCA (G);
Wichita St.: 2 MCCULLY, MARIAH (G); 12 BREMAUD, CARLA (G); 13 PRINCE, RAVEN (F); 23 BASTIN, SERAPHINE (G); 34 SMITH, SHYIA (F);

Time	VISITORS: Tulsa	Score	Margin	HOME: Wichita St.
09:59				FOUL (TECH) by TEAM
09:59	MISSED FT by RICHARDS, ADDISON			
09:59	REBOUND (OFF) by TEAM			
09:59	MISSED FT by RICHARDS, ADDISON			
09:30	MISSED JUMPER by LESCAY, REBECCA			
09:27				REBOUND (DEF) by BASTIN, SERAPHINE
09:22				MISSED 3PTR by BREMAUD, CARLA
09:19	REBOUND (DEF) by ELLIOTT, KENDRIAN			
09:09	FOUL (OFF) by ELLIOTT, KENDRIAN			
09:09	TURNOVER (OFFENSIVE) by ELLIOTT, KENDRIAN			
08:48				MISSED LAYUP by PRINCE, RAVEN
08:46				REBOUND (OFF) by MCCULLY, MARIAH
08:37				MISSED JUMPER by BREMAUD, CARLA
08:34	REBOUND (DEF) by BITTLE, MADDIE			
08:27	GOOD! LAYUP by RICHARDS, ADDISON	0-2	V 2	
08:27	ASSIST by GAULDEN, ALEXIS			
08:09	FOUL (PERSONAL) by BITTLE, MADDIE			
08:01				MISSED JUMPER by BASTIN, SERAPHINE
07:56	REBOUND (DEF) by LESCAY, REBECCA			
07:48	GOOD! LAYUP by ELLIOTT, KENDRIAN	0-4	V 4	
07:48	ASSIST by BITTLE, MADDIE			
07:29				MISSED LAYUP by SMITH, SHYIA
07:29	BLOCK by RICHARDS, ADDISON			
07:23	REBOUND (DEF) by GAULDEN, ALEXIS			
07:09	GOOD! LAYUP by ELLIOTT, KENDRIAN	0-6	V 6	
07:09	ASSIST by BITTLE, MADDIE			
06:49				TURNOVER (LOSTBALL) by MCCULLY, MARIAH
06:30	TURNOVER (TRAVEL) by GAULDEN, ALEXIS			
06:20	FOUL (PERSONAL) by GAULDEN, ALEXIS			
06:07				MISSED JUMPER by BREMAUD, CARLA
06:04	REBOUND (DEF) by GAULDEN, ALEXIS			
05:49	MISSED LAYUP by LESCAY, REBECCA			
05:46				REBOUND (DEF) by SMITH, SHYIA
05:45				TURNOVER (BADPASS) by SMITH, SHYIA
05:45	STEAL by BITTLE, MADDIE			
05:39	MISSED JUMPER by RICHARDS, ADDISON			
05:35				REBOUND (DEF) by PRINCE, RAVEN
05:31		2-6	V 4	GOOD! JUMPER by BASTIN, SERAPHINE [PNT]
05:10				FOUL (PERSONAL) by PRINCE, RAVEN
05:10				SUB OUT: PRINCE, RAVEN
05:10				SUB IN: COLBERT, TRAJATA
05:10	GOOD! FT by BITTLE, MADDIE	2-7	V 5	
05:10	MISSED FT by BITTLE, MADDIE			
05:10				REBOUND (DEF) by COLBERT, TRAJATA
04:57				MISSED LAYUP by COLBERT, TRAJATA
04:54	REBOUND (DEF) by ELLIOTT, KENDRIAN			
04:36	MISSED JUMPER by RICHARDS, ADDISON			
04:33				REBOUND (DEF) by MCCULLY, MARIAH
04:29				MISSED LAYUP by MCCULLY, MARIAH
04:25	REBOUND (DEF) by GAULDEN, ALEXIS			
04:11	TURNOVER (TRAVEL) by RICHARDS, ADDISON			
04:11				SUB OUT: BASTIN, SERAPHINE
04:11				SUB IN: MCCARTY, DJ
04:11	SUB OUT: RICHARDS, ADDISON			
04:11	SUB IN: LEWIS, DESIREE			
03:58				FOUL (OFF) by COLBERT, TRAJATA
03:58				TURNOVER (OFFENSIVE) by COLBERT, TRAJATA
03:31	GOOD! 3PTR by BITTLE, MADDIE	2-10	V 8	
03:31	ASSIST by GAULDEN, ALEXIS			
03:13		4-10	V 6	GOOD! LAYUP by COLBERT, TRAJATA
02:54	MISSED JUMPER by LEWIS, DESIREE			
02:51				REBOUND (DEF) by COLBERT, TRAJATA
02:36				MISSED LAYUP by MCCULLY, MARIAH
02:33	REBOUND (DEF) by LESCAY, REBECCA			
02:29	MISSED 3PTR by GAULDEN, ALEXIS			
02:26				REBOUND (DEF) by BREMAUD, CARLA
02:21				TURNOVER (BADPASS) by MCCULLY, MARIAH
02:21	STEAL by ELLIOTT, KENDRIAN			
02:12	GOOD! 3PTR by ELLIOTT, KENDRIAN	4-13	V 9	

Time	VISITORS: Tulsa	Score	Margin	HOME: Wichita St.
02:12	ASSIST by LESCAY, REBECCA			
02:10				TIMEOUT 30SEC
02:10				SUB OUT: MCCULLY, MARIAH
02:10				SUB OUT: BREMAUD, CARLA
02:10				SUB OUT: COLBERT, TRAJATA
02:10				SUB IN: BREWER, MAYA
02:10				SUB IN: BASTIN, SERAPHINE
02:10				SUB IN: HENDERSON, ASIA
02:10	SUB OUT: GAULDEN, ALEXIS			
02:10	SUB IN: BRADY, MORGAN			
01:50				MISSED JUMPER by HENDERSON, ASIA
01:47	REBOUND (DEF) by LEWIS, DESIREE			
01:21	MISSED JUMPER by BRADY, MORGAN			
01:18				REBOUND (DEF) by BREWER, MAYA
01:06				TURNOVER (LOSTBALL) by SMITH, SHYIA
01:06	STEAL by LEWIS, DESIREE			
00:45	GOOD! 3PTR by BITTLE, MADDIE	4-16	V 12	
00:45	ASSIST by LESCAY, REBECCA			
00:26				MISSED JUMPER by BASTIN, SERAPHINE
00:23	REBOUND (DEF) by ELLIOTT, KENDRIAN			
00:08	MISSED JUMPER by BRADY, MORGAN			
00:06				REBOUND (DEF) by TEAM
00:06				SUB OUT: MCCARTY, DJ
00:06				SUB IN: BREMAUD, CARLA
00:02				MISSED 3PTR by BASTIN, SERAPHINE
00:02				REBOUND (OFF) by TEAM

Tulsa 16, Wichita St. 4

Points from (This Period)	TUL	WSU
In the Paint	6	4
Off Turns	9	0
2nd Chance	0	0
Fast Break	0	0
Bench	0	2

Official Box Score
Tulsa vs Wichita St.
Second Quarter Statistics Only
January 15, 2020 at Charles Koch Arena (Devlin Court) - Wichita, Kan.



Tulsa 12

No.	Player	S	Pts	FG	3FG	FT	OR	DR	TR	PF	A	TO	Blk	Stl	Min	+/-
00	ELLIOTT, KENDRIAN	F	6	2-4	1-1	1-2	0	4	4	0	0	0	0	1	10	1
04	RICHARDS, ADDISON	F	0	0-1	0-1	0-0	0	1	1	0	0	0	0	0	5	-1
10	GAULDEN, ALEXIS	G	2	0-3	0-2	2-2	0	0	0	0	1	0	0	0	7	-1
11	BITTLE, MADDIE	G	0	0-0	0-0	0-0	0	0	0	1	0	0	0	0	1	2
21	LESCAY, REBECCA	G	0	0-2	0-0	0-0	0	0	0	0	0	2	0	2	6	-1
15	RODRIGUEZ, KK	G	0	0-1	0-0	0-0	0	0	0	0	1	0	0	0	8	-1
20	HRAFNEKLESDOTTIR, ELIN	F	2	0-0	0-0	2-2	0	0	0	0	0	1	0	0	3	2
22	BRADY, MORGAN	G	0	0-1	0-1	0-0	0	1	1	0	0	0	0	0	9	4
23	MOUTRY, KAYLA	G	0	0-0	0-0	0-0	0	0	0	0	0	0	0	0	0	0
32	LEWIS, DESIREE	F	2	1-1	0-0	0-0	1	0	1	0	0	0	0	0	2	0
TEAM							1	1	2	0		1				
TOTALS			12	3-13	1-5	5-6	2	7	9	1	2	4	0	3	50	

Shooting By Period

Period	FG	FG%	3FG	3FG%	FT	FT%
3rd Qtr	4-15	27%	2-5	40%	0-2	00%
4th Qtr	3-14	21%	0-6	00%	2-3	67%
2nd Half	3-13	23%	1-5	20%	5-6	83%
2nd Half	7-29	24%	2-11	18%	2-5	40%
Game	16-56	28.6%	6-20	30.0%	8-15	53.3%

Deadball Rebounds: 3,0

Wichita St. 11

No.	Player	S	Pts	FG	3FG	FT	OR	DR	TR	PF	A	TO	Blk	Stl	Min	+/-
02	MCCULLY, MARIAH	G	4	2-4	0-2	0-0	0	2	2	0	0	1	0	0	6	-2
12	BREMAUD, CARLA	G	3	1-2	1-2	0-0	0	0	0	0	0	0	0	0	8	1
13	PRINCE, RAVEN	F	0	0-1	0-0	0-0	1	0	1	1	0	0	0	1	3	1
23	BASTIN, SERAPHINE	G	0	0-2	0-1	0-0	0	1	1	0	0	1	0	0	5	-4
34	SMITH, SHYIA	F	0	0-1	0-1	0-0	0	0	0	0	0	0	0	1	7	-2
01	MCCARTY, DJ	G	0	0-0	0-0	0-0	0	0	0	0	0	0	0	0	0	0
05	REID, ASHLEY	G	0	0-0	0-0	0-0	0	1	1	0	1	1	0	0	8	1
11	KIRVEN, ASHLEI	F	2	1-1	0-0	0-0	0	1	1	2	0	0	1	0	4	3
21	BREWER, MAYA	G	2	1-2	0-0	0-0	0	2	2	2	1	1	0	0	4	1
24	COLBERT, TRAJATA	F	0	0-1	0-0	0-0	0	0	0	0	0	0	0	0	2	0
42	HENDERSON, ASIA	F	0	0-1	0-0	0-0	1	2	3	0	0	1	1	0	4	-4
TEAM							1	0	1	0		0				
TOTALS			11	5-15	1-6	0-0	3	9	12	5	2	5	2	2	50	

Shooting By Period

Period	FG	FG%	3FG	3FG%	FT	FT%
3rd Qtr	10-14	71%	1-2	50%	5-6	83%
4th Qtr	5-16	31%	1-1	100%	5-8	63%
2nd Half	5-15	33%	1-6	17%	0-0	0%
2nd Half	15-30	50%	2-3	67%	10-14	71%
Game	22-59	37.3%	3-11	27.3%	10-14	71.4%

Deadball Rebounds: 2,1

Game Notes:

Officials: Denise Brooks, Tiara Cruse, Ed Sidlasky
 Attendance: 1464

Start Time: 07:33 PM ET
 End Time: 09:21 PM ET
 Game Duration: 1:48
 Conference Game;

Score	1st	2nd	3rd	4th	TOT
TUL	16	12	10	8	46
WSU	4	11	26	16	57

Points from (This Period)	TUL	WSU
In the Paint	4	8
Off Turns	3	4
2nd Chance	2	0
Fast Break	0	3
Bench	4	4

**Official Play-By-Play
Tulsa vs Wichita St.
Second Quarter**

January 15, 2020 at Charles Koch Arena (Devlin Court) - Wichita, Kan.



Period 2

Starters:

Tulsa: 00 ELLIOTT, KENDRIAN (F); 4 RICHARDS, ADDISON (F); 10 GAULDEN, ALEXIS (G); 11 BITTLE, MADDIE (G); 21 LESCAY, REBECCA (G);

Wichita St.: 2 MCCULLY, MARIAH (G); 12 BREMAUD, CARLA (G); 13 PRINCE, RAVEN (F); 23 BASTIN, SERAPHINE (G); 34 SMITH, SHYIA (F);

Time	VISITORS: Tulsa	Score	Margin	HOME: Wichita St.
10:00	SUB OUT: LESCAY, REBECCA			
10:00	SUB OUT: LEWIS, DESIREE			
10:00	SUB IN: RICHARDS, ADDISON			
10:00	SUB IN: GAULDEN, ALEXIS			
09:52				FOUL (PERSONAL) by BREWER, MAYA
09:52	GOOD! FT by ELLIOTT, KENDRIAN	4-17	V 13	
09:52	MISSED FT by ELLIOTT, KENDRIAN			
09:52				REBOUND (DEF) by HENDERSON, ASIA
09:46				TURNOVER (LOSTBALL) by BASTIN, SERAPHINE
09:46	STEAL by ELLIOTT, KENDRIAN			
09:38	GOOD! 3PTR by ELLIOTT, KENDRIAN	4-20	V 16	
09:38	ASSIST by GAULDEN, ALEXIS			
09:18		6-20	V 14	GOOD! LAYUP by BREWER, MAYA
09:05	MISSED LAYUP by GAULDEN, ALEXIS			
09:01				REBOUND (DEF) by BASTIN, SERAPHINE
08:55	FOUL (PERSONAL) by BITTLE, MADDIE			
08:55	SUB OUT: BITTLE, MADDIE			
08:55	SUB IN: LESCAY, REBECCA			
08:49				MISSED LAYUP by BREWER, MAYA
08:45	REBOUND (DEF) by RICHARDS, ADDISON			
08:37	MISSED JUMPER by ELLIOTT, KENDRIAN			
08:37				BLOCK by HENDERSON, ASIA
08:33				REBOUND (DEF) by HENDERSON, ASIA
08:29				MISSED LAYUP by BASTIN, SERAPHINE
08:26	REBOUND (DEF) by ELLIOTT, KENDRIAN			
08:21	TURNOVER (BADPASS) by LESCAY, REBECCA			
08:21				STEAL by SMITH, SHYIA
08:13				MISSED 3PTR by BREMAUD, CARLA
08:09				REBOUND (OFF) by HENDERSON, ASIA
07:55				MISSED 3PTR by SMITH, SHYIA
07:52	REBOUND (DEF) by BRADY, MORGAN			
07:42	MISSED 3PTR by GAULDEN, ALEXIS			
07:37				REBOUND (DEF) by BREWER, MAYA
07:35				FOUL (OFF) by BREWER, MAYA
07:35				TURNOVER (OFFENSIVE) by BREWER, MAYA
07:35				SUB OUT: BASTIN, SERAPHINE
07:35				SUB OUT: SMITH, SHYIA
07:35				SUB OUT: HENDERSON, ASIA
07:35				SUB IN: REID, ASHLEY
07:35				SUB IN: KIRVEN, ASHLEI
07:35				SUB IN: PRINCE, RAVEN
07:35	SUB OUT: BRADY, MORGAN			
07:35	SUB IN: RODRIGUEZ, KK			
07:18	MISSED LAYUP by ELLIOTT, KENDRIAN			
07:18				BLOCK by KIRVEN, ASHLEI
07:18	REBOUND (OFF) by TEAM			
07:07	MISSED 3PTR by RICHARDS, ADDISON			
07:04				REBOUND (DEF) by KIRVEN, ASHLEI
06:45				TURNOVER (BADPASS) by REID, ASHLEY
06:45	STEAL by LESCAY, REBECCA			
06:41	MISSED LAYUP by LESCAY, REBECCA			
06:38				REBOUND (DEF) by BREWER, MAYA
06:35		9-20	V 11	GOOD! 3PTR by BREMAUD, CARLA [FB]
06:35				ASSIST by BREWER, MAYA
06:16	TURNOVER (LOSTBALL) by LESCAY, REBECCA			
06:16				STEAL by PRINCE, RAVEN
06:16				SUB OUT: BREWER, MAYA
06:16				SUB IN: MCCULLY, MARIAH
06:16	SUB OUT: LESCAY, REBECCA			
06:16	SUB IN: BRADY, MORGAN			
05:52		11-20	V 9	GOOD! JUMPER by MCCULLY, MARIAH [PNT]
05:17	GOOD! LAYUP by ELLIOTT, KENDRIAN	11-22	V 11	
04:59				MISSED JUMPER by PRINCE, RAVEN
04:55	REBOUND (DEF) by ELLIOTT, KENDRIAN			
04:42				FOUL (PERSONAL) by KIRVEN, ASHLEI
04:42				
04:42				SUB OUT: BREMAUD, CARLA
04:42				SUB IN: BASTIN, SERAPHINE
04:42	SUB OUT: RICHARDS, ADDISON			
04:42	SUB IN: HRAFNKELSDOTTIR, ELIN			

Time	VISITORS: Tulsa	Score	Margin	HOME: Wichita St.
04:42	GOOD! FT by GAULDEN, ALEXIS	11-23	V 12	
04:42	GOOD! FT by GAULDEN, ALEXIS	11-24	V 13	
04:18				MISSED 3PTR by MCCULLY, MARIAH
04:14				REBOUND (OFF) by PRINCE, RAVEN
04:09				MISSED 3PTR by BASTIN, SERAPHINE
04:07	REBOUND (DEF) by ELLIOTT, KENDRIAN			
04:07				FOUL (PERSONAL) by PRINCE, RAVEN
04:07				SUB OUT: PRINCE, RAVEN
04:07				SUB IN: SMITH, SHYIA
03:53	MISSED 3PTR by GAULDEN, ALEXIS			
03:51				REBOUND (DEF) by MCCULLY, MARIAH
03:43		13-24	V 11	GOOD! JUMPER by KIRVEN, ASHLEI
03:43				ASSIST by REID, ASHLEY
03:27				FOUL (PERSONAL) by KIRVEN, ASHLEI
03:27				SUB OUT: KIRVEN, ASHLEI
03:27				SUB IN: HENDERSON, ASIA
03:27	SUB OUT: GAULDEN, ALEXIS			
03:27	SUB IN: LESCAY, REBECCA			
03:27	GOOD! FT by HRAFNKELSDOTTIR, ELIN	13-25	V 12	
03:27	GOOD! FT by HRAFNKELSDOTTIR, ELIN	13-26	V 13	
03:07				MISSED LAYUP by HENDERSON, ASIA
03:06	REBOUND (DEF) by TEAM			
02:50	MISSED 3PTR by BRADY, MORGAN			
02:45				REBOUND (DEF) by REID, ASHLEY
02:34				TURNOVER (LOSTBALL) by MCCULLY, MARIAH
02:34	STEAL by LESCAY, REBECCA			
02:20	MISSED LAYUP by RODRIGUEZ, KK			
02:16				REBOUND (DEF) by MCCULLY, MARIAH
02:14				SUB OUT: BASTIN, SERAPHINE
02:14				SUB IN: BREMAUD, CARLA
02:02				TURNOVER (TRAVEL) by HENDERSON, ASIA
01:51	TURNOVER (TRAVEL) by HRAFNKELSDOTTIR, ELIN			
01:51				SUB OUT: HENDERSON, ASIA
01:51				SUB IN: COLBERT, TRAJATA
01:51	SUB OUT: HRAFNKELSDOTTIR, ELIN			
01:51	SUB IN: LEWIS, DESIREE			
01:28		15-26	V 11	GOOD! LAYUP by MCCULLY, MARIAH
01:13	MISSED JUMPER by LESCAY, REBECCA			
01:09	REBOUND (OFF) by LEWIS, DESIREE			
01:03	GOOD! LAYUP by LEWIS, DESIREE	15-28	V 13	
01:03	ASSIST by RODRIGUEZ, KK			
00:32				MISSED LAYUP by COLBERT, TRAJATA
00:27	REBOUND (DEF) by ELLIOTT, KENDRIAN			
00:00	TURNOVER (SHOTCLOCK) by TEAM			
00:00				MISSED 3PTR by MCCULLY, MARIAH
00:00				REBOUND (OFF) by TEAM

Tulsa 28, Wichita St. 15

Points from (This Period)	TUL	WSU
In the Paint	4	8
Off Turns	3	4
2nd Chance	2	0
Fast Break	0	3
Bench	4	4

Official Box Score
Tulsa vs Wichita St.
Second Half Statistics Only
January 15, 2020 at Charles Koch Arena (Devlin Court) - Wichita, Kan.



Tulsa 18

No.	Player	S	Pts	FG	3FG	FT	OR	DR	TR	PF	A	TO	Blk	Stl	Min	+/-
00	ELLIOTT, KENDRIAN	F	3	1-4	0-1	1-1	1	3	4	2	0	1	2	0	20	-24
04	RICHARDS, ADDISON	F	3	1-4	1-3	0-0	0	1	1	2	0	3	0	0	15	-15
10	GAULDEN, ALEXIS	G	6	2-6	1-4	1-2	0	0	0	2	2	3	0	0	18	-22
11	BITTLE, MADDIE	G	0	0-1	0-0	0-0	0	0	0	2	0	0	0	1	13	-18
15	RODRIGUEZ, KK	G	0	0-2	0-2	0-0	1	2	3	1	0	0	0	2	6	-3
20	HRAFNKELSDOTTIR, ELIN	F	0	0-0	0-0	0-0	0	0	0	0	0	0	0	0	0	0
21	LESCAY, REBECCA	G	2	1-7	0-0	0-0	0	1	1	1	1	1	0	1	13	-15
22	BRADY, MORGAN	G	2	1-3	0-1	0-0	1	0	1	1	1	0	0	0	5	-7
23	MOUTRY, KAYLA	G	2	1-1	0-0	0-0	0	0	0	0	0	1	0	0	5	-7
32	LEWIS, DESIREE	F	0	0-1	0-0	0-2	1	0	1	1	0	1	0	0	5	-9
	TEAM		0	0-0	0-0	0-0	1	1	2	0	0	1	0	0	0	
TOTALS			18	7-29	2-11	2-5	5	8	13	12	4	11	2	4	100	

Shooting By Period

Period	FG	FG%	3FG	3FG%	FT	FT%
3rd Qtr	4-15	27%	2-5	40%	0-2	00%
4th Qtr	3-14	21%	0-6	00%	2-3	67%
2nd Half	7-29	24%	2-11	18%	2-5	40%
Game	16-56	28.6%	6-20	30.0%	8-15	53.3%

Deadball Rebounds: 3,0
Last FG Half: TUL 4th-00:43

Wichita St. 42

No.	Player	S	Pts	FG	3FG	FT	OR	DR	TR	PF	A	TO	Blk	Stl	Min	+/-
01	MCCARTY, DJ	G	0	0-0	0-0	0-0	0	0	0	0	0	0	0	0	0	0
02	MCCULLY, MARIAH	G	7	3-10	1-2	0-1	0	1	1	2	1	5	0	3	18	20
05	REID, ASHLEY	G	2	0-0	0-0	2-2	1	1	2	0	2	0	0	0	9	11
11	KIRVEN, ASHLEI	F	2	1-2	0-0	0-2	2	1	3	0	0	0	0	1	4	7
12	BREMAUD, CARLA	G	10	3-4	1-1	3-4	0	5	5	0	1	1	1	0	18	21
13	PRINCE, RAVEN	F	0	0-0	0-0	0-0	0	0	0	0	0	0	0	0	0	0
21	BREWER, MAYA	G	0	0-0	0-0	0-0	0	0	0	0	0	0	0	0	0	0
23	BASTIN, SERAPHINE	G	11	3-7	0-0	5-5	0	2	2	0	0	2	0	1	16	20
24	COLBERT, TRAJATA	F	4	2-2	0-0	0-0	1	0	1	2	0	1	1	0	12	14
34	SMITH, SHYIA	F	2	1-1	0-0	0-0	1	4	5	2	0	1	0	0	16	15
42	HENDERSON, ASIA	F	4	2-4	0-0	0-0	4	1	5	1	0	0	1	0	8	12
	TEAM		0	0-0	0-0	0-0	0	2	2	0	0	1	0	0	0	
TOTALS			42	15-30	2-3	10-14	9	17	26	7	4	11	3	5	100	

Shooting By Period

Period	FG	FG%	3FG	3FG%	FT	FT%
3rd Qtr	10-14	71%	1-2	50%	5-6	83%
4th Qtr	5-16	31%	1-1	100%	5-8	63%
2nd Half	15-30	50%	2-3	67%	10-14	71%
Game	22-59	37.3%	3-11	27.3%	10-14	71.4%

Deadball Rebounds: 2,1
Last FG Half: WSU 4th-02:07

Game Notes:

Officials: Denise Brooks, Tiara Cruse, Ed Sidlasky
 Attendance: 1464

Start Time: 07:33 PM ET
 End Time: 09:21 PM ET
 Game Duration: 1:48
 Conference Game;

Score	1st	2nd	3rd	4th	TOT
TUL	16	12	10	8	46
WSU	4	11	26	16	57

Points from (This Period)	TUL	WSU
In the Paint	8	18
Off Turns	11	8
2nd Chance	0	8
Fast Break	2	9
Bench	4	12

Official Box Score
Tulsa vs Wichita St.
Third Quarter Statistics Only
January 15, 2020 at Charles Koch Arena (Devlin Court) - Wichita, Kan.



Tulsa 18

No.	Player	S	Pts	FG	3FG	FT	OR	DR	TR	PF	A	TO	Blk	Stl	Min	+/-
00	ELLIOTT, KENDRIAN	F	0	0-3	0-1	0-0	0	2	2	1	0	1	1	0	10	-16
04	RICHARDS, ADDISON	F	3	1-1	1-1	0-0	0	0	0	1	0	2	0	0	5	-7
10	GAULDEN, ALEXIS	G	5	2-3	1-2	0-0	0	0	0	1	2	2	0	0	8	-14
11	BITTLE, MADDIE	G	0	0-1	0-0	0-0	0	0	0	0	0	0	0	1	9	-17
21	LESCAY, REBECCA	G	2	1-4	0-0	0-0	0	0	0	0	0	1	0	1	7	-10
15	RODRIGUEZ, KK	G	0	0-0	0-0	0-0	0	0	0	1	0	0	0	1	2	-2
20	HRAFNKELSDOTTIR, ELIN	F	0	0-0	0-0	0-0	0	0	0	0	0	0	0	0	0	0
22	BRADY, MORGAN	G	0	0-2	0-1	0-0	1	0	1	1	1	0	0	0	4	-5
23	MOUTRY, KAYLA	G	0	0-0	0-0	0-0	0	0	0	0	0	0	0	0	0	0
32	LEWIS, DESIREE	F	0	0-1	0-0	0-2	1	0	1	1	0	1	0	0	5	-9
TEAM							1	1	2	0						
TOTALS			10	4-15	2-5	0-2	3	3	6	6	3	7	1	3	50	

Shooting By Period

Period	FG	FG%	3FG	3FG%	FT	FT%
2nd Half	0-0	0%	0-0	0%	0-0	0%
Game	16-56	28.6%	6-20	30.0%	8-15	53.3%

Deadball Rebounds: 3,0

Wichita St. 42

No.	Player	S	Pts	FG	3FG	FT	OR	DR	TR	PF	A	TO	Blk	Stl	Min	+/-
02	MCCULLY, MARIAH	G	4	2-5	0-1	0-1	0	0	0	1	0	3	0	2	10	16
12	BREMAUD, CARLA	G	5	2-2	1-1	0-0	0	4	4	0	1	0	1	0	10	16
13	PRINCE, RAVEN	F	0	0-0	0-0	0-0	0	0	0	0	0	0	0	0	0	0
23	BASTIN, SERAPHINE	G	9	3-4	0-0	3-3	0	2	2	0	0	1	0	0	6	12
34	SMITH, SHYIA	F	2	1-1	0-0	0-0	1	2	3	2	0	1	0	0	9	13
01	MCCARTY, DJ	G	0	0-0	0-0	0-0	0	0	0	0	0	0	0	0	0	0
05	REID, ASHLEY	G	2	0-0	0-0	2-2	1	0	1	0	1	0	0	0	4	4
11	KIRVEN, ASHLEI	F	2	1-1	0-0	0-0	0	0	0	0	0	0	0	0	2	3
21	BREWER, MAYA	G	0	0-0	0-0	0-0	0	0	0	0	0	0	0	0	0	0
24	COLBERT, TRAJATA	F	2	1-1	0-0	0-0	0	0	0	1	0	1	1	0	8	13
42	HENDERSON, ASIA	F	0	0-0	0-0	0-0	0	0	0	0	0	0	0	0	1	3
TEAM							0	1	1	0						
TOTALS			26	10-14	1-2	5-6	2	9	11	4	2	6	2	2	50	

Shooting By Period

Period	FG	FG%	3FG	3FG%	FT	FT%
2nd Half	0-0	0%	0-0	0%	0-0	0%
Game	22-59	37.3%	3-11	27.3%	10-14	71.4%

Deadball Rebounds: 2,1

Game Notes:

Officials: Denise Brooks, Tiara Cruse, Ed Sidlasky
 Attendance: 1464

Start Time: 07:33 PM ET
 End Time: 09:21 PM ET
 Game Duration: 1:48
 Conference Game;

Score	1st	2nd	3rd	4th	TOT
TUL	16	12	10	8	46
WSU	4	11	26	16	57

Points from (This Period)	TUL	WSU
In the Paint	2	12
Off Turns	8	8
2nd Chance	0	4
Fast Break	2	7
Bench	0	6

**Official By-By-Play
Tulsa vs Wichita St.
Third Quarter**

January 15, 2020 at Charles Koch Arena (Devlin Court) - Wichita, Kan.



Period 3

Starters:

Tulsa: 00 ELLIOTT, KENDRIAN (F); 4 RICHARDS, ADDISON (F); 10 GAULDEN, ALEXIS (G); 11 BITTLE, MADDIE (G); 21 LESCAY, REBECCA (G);
Wichita St.: 2 MCCULLY, MARIAH (G); 12 BREMAUD, CARLA (G); 13 PRINCE, RAVEN (F); 23 BASTIN, SERAPHINE (G); 34 SMITH, SHYIA (F);

Time	VISITORS: Tulsa	Score	Margin	HOME: Wichita St.
10:00				SUB OUT: REID, ASHLEY
10:00				SUB IN: BASTIN, SERAPHINE
10:00	SUB OUT: RODRIGUEZ, KK			
10:00	SUB OUT: BRADY, MORGAN			
10:00	SUB OUT: LEWIS, DESIREE			
10:00	SUB IN: RICHARDS, ADDISON			
10:00	SUB IN: GAULDEN, ALEXIS			
10:00	SUB IN: BITTLE, MADDIE			
09:52	TURNOVER (LOSTBALL) by GAULDEN, ALEXIS			
09:52				STEAL by MCCULLY, MARIAH
09:43				MISSED LAYUP by MCCULLY, MARIAH
09:36				REBOUND (OFF) by SMITH, SHYIA
09:36		17-28	V 11	GOOD! LAYUP by SMITH, SHYIA
09:32	GOOD! LAYUP by LESCAY, REBECCA [FB]	17-30	V 13	
09:32	ASSIST by GAULDEN, ALEXIS			
09:11		19-30	V 11	GOOD! JUMPER by BREMAUD, CARLA
08:56	TURNOVER (BADPASS) by GAULDEN, ALEXIS			
08:56				STEAL by MCCULLY, MARIAH
08:52		21-30	V 9	GOOD! LAYUP by MCCULLY, MARIAH [FB]
08:32	MISSED LAYUP by BITTLE, MADDIE			
08:28				REBOUND (DEF) by BREMAUD, CARLA
08:13		23-30	V 7	GOOD! JUMPER by BASTIN, SERAPHINE
08:07	TIMEOUT 30SEC			
08:07	SUB OUT: GAULDEN, ALEXIS			
08:07	SUB IN: BRADY, MORGAN			
07:54	MISSED JUMPER by LESCAY, REBECCA			
07:50	REBOUND (OFF) by BRADY, MORGAN			
07:44	TURNOVER (BADPASS) by ELLIOTT, KENDRIAN			
07:35				FOUL (OFF) by MCCULLY, MARIAH
07:35				TURNOVER (OFFENSIVE) by MCCULLY, MARIAH
07:25	TURNOVER (BADPASS) by RICHARDS, ADDISON			
07:17		25-30	V 5	GOOD! JUMPER by BASTIN, SERAPHINE
06:58	FOUL (OFF) by RICHARDS, ADDISON			
06:58	TURNOVER (OFFENSIVE) by RICHARDS, ADDISON			
06:39				MISSED LAYUP by MCCULLY, MARIAH
06:36	REBOUND (DEF) by ELLIOTT, KENDRIAN			
06:30	MISSED LAYUP by LESCAY, REBECCA			
06:30				BLOCK by COLBERT, TRAJATA
06:28				REBOUND (DEF) by SMITH, SHYIA
06:19				TURNOVER (BADPASS) by BASTIN, SERAPHINE
06:18	SUB OUT: BITTLE, MADDIE			
06:18	SUB OUT: BRADY, MORGAN			
06:18	SUB IN: GAULDEN, ALEXIS			
06:18	SUB IN: RODRIGUEZ, KK			
05:58	GOOD! 3PTR by RICHARDS, ADDISON	25-33	V 8	
05:58	ASSIST by GAULDEN, ALEXIS			
05:38				TURNOVER (LOSTBALL) by SMITH, SHYIA
05:38	STEAL by LESCAY, REBECCA			
05:24	TURNOVER (DRIBBLING) by LESCAY, REBECCA			
05:04				TURNOVER (BADPASS) by COLBERT, TRAJATA
05:04	STEAL by RODRIGUEZ, KK			
04:55	MISSED JUMPER by LESCAY, REBECCA			
04:52				REBOUND (DEF) by BASTIN, SERAPHINE
04:48		27-33	V 6	GOOD! LAYUP by BASTIN, SERAPHINE [FB]
04:48	FOUL (PERSONAL) by ELLIOTT, KENDRIAN			
04:48				
04:48	SUB OUT: RICHARDS, ADDISON			
04:48	SUB OUT: LESCAY, REBECCA			
04:48	SUB IN: BITTLE, MADDIE			
04:48	SUB IN: LEWIS, DESIREE			
04:48		28-33	V 5	GOOD! FT by BASTIN, SERAPHINE [FB]
04:38	TURNOVER (BADPASS) by LEWIS, DESIREE			
04:23		30-33	V 3	GOOD! JUMPER by COLBERT, TRAJATA
04:23				ASSIST by BREMAUD, CARLA
03:55	MISSED LAYUP by ELLIOTT, KENDRIAN			
03:55				BLOCK by BREMAUD, CARLA
03:51				REBOUND (DEF) by BASTIN, SERAPHINE
03:49	FOUL (PERSONAL) by RODRIGUEZ, KK			
03:49	SUB OUT: RODRIGUEZ, KK			
03:49	SUB IN: BRADY, MORGAN			

Time	VISITORS: Tulsa	Score	Margin	HOME: Wichita St.
03:49		31-33	V 2	GOOD! FT by BASTIN, SERAPHINE [FB]
03:49		32-33	V 1	GOOD! FT by BASTIN, SERAPHINE [FB]
03:42				FOUL (PERSONAL) by SMITH, SHYIA
03:40				FOUL (PERSONAL) by COLBERT, TRAJATA
03:40	MISSED FT by LEWIS, DESIREE			
03:40	REBOUND (OFF) by TEAM			
03:40	MISSED FT by LEWIS, DESIREE			
03:39				REBOUND (DEF) by SMITH, SHYIA
03:33				MISSED LAYUP by BASTIN, SERAPHINE
03:33	BLOCK by ELLIOTT, KENDRIAN			
03:31	REBOUND (DEF) by TEAM			
03:31				SUB OUT: BASTIN, SERAPHINE
03:31				SUB IN: REID, ASHLEY
03:10	MISSED JUMPER by ELLIOTT, KENDRIAN			
03:09	REBOUND (OFF) by LEWIS, DESIREE			
03:09				FOUL (PERSONAL) by SMITH, SHYIA
03:01	MISSED 3PTR by ELLIOTT, KENDRIAN			
03:00				REBOUND (DEF) by BREMAUD, CARLA
03:00	FOUL (PERSONAL) by GAULDEN, ALEXIS			
02:45		34-33	H 1	GOOD! LAYUP by MCCULLY, MARIAH
02:45	FOUL (PERSONAL) by BRADY, MORGAN			
02:45				MISSED FT by MCCULLY, MARIAH
02:45				REBOUND (OFF) by REID, ASHLEY
02:45	FOUL (PERSONAL) by LEWIS, DESIREE			
02:45		35-33	H 2	GOOD! FT by REID, ASHLEY
02:45		36-33	H 3	GOOD! FT by REID, ASHLEY
02:32	MISSED 3PTR by BRADY, MORGAN			
02:29				REBOUND (DEF) by BREMAUD, CARLA
02:21				TURNOVER (BADPASS) by MCCULLY, MARIAH
02:21	STEAL by BITTLE, MADDIE			
02:05	GOOD! 3PTR by GAULDEN, ALEXIS	36-36	T	
02:05	ASSIST by BRADY, MORGAN			
01:49				MISSED 3PTR by MCCULLY, MARIAH
01:45	REBOUND (DEF) by ELLIOTT, KENDRIAN			
01:39	MISSED JUMPER by BRADY, MORGAN			
01:35				REBOUND (DEF) by BREMAUD, CARLA
01:31				TURNOVER (BADPASS) by MCCULLY, MARIAH
01:31				SUB OUT: COLBERT, TRAJATA
01:31				SUB IN: KIRVEN, ASHLEI
01:31	SUB OUT: BRADY, MORGAN			
01:31	SUB IN: LESCAY, REBECCA			
01:20	GOOD! JUMPER by GAULDEN, ALEXIS	36-38	V 2	
00:57		38-38	T	GOOD! LAYUP by KIRVEN, ASHLEI
00:44	MISSED 3PTR by GAULDEN, ALEXIS			
00:43				REBOUND (DEF) by TEAM
00:43				SUB OUT: SMITH, SHYIA
00:43				SUB IN: HENDERSON, ASIA
00:30		41-38	H 3	GOOD! 3PTR by BREMAUD, CARLA
00:30				ASSIST by REID, ASHLEY
00:03	MISSED LAYUP by LEWIS, DESIREE			
00:03	REBOUND (OFF) by TEAM			

Tulsa 38, Wichita St. 41

Points from (This Period)	TUL	WSU
In the Paint	2	12
Off Turns	8	8
2nd Chance	0	4
Fast Break	2	7
Bench	0	6

Official Box Score
Tulsa vs Wichita St.
Fourth Quarter Statistics Only
January 15, 2020 at Charles Koch Arena (Devlin Court) - Wichita, Kan.



Tulsa 8

No.	Player	S	Pts	FG	3FG	FT	OR	DR	TR	PF	A	TO	Blk	Stl	Min	+/-
00	ELLIOTT, KENDRIAN	F	3	1-1	0-0	1-1	1	1	2	1	0	0	1	0	10	-8
04	RICHARDS, ADDISON	F	0	0-3	0-2	0-0	0	1	1	1	0	1	0	0	10	-8
10	GAULDEN, ALEXIS	G	1	0-3	0-2	1-2	0	0	0	1	0	1	0	0	10	-8
11	BITTLE, MADDIE	G	0	0-0	0-0	0-0	0	0	0	2	0	0	0	0	4	-1
21	LESCAY, REBECCA	G	0	0-3	0-0	0-0	0	1	1	1	1	0	0	0	6	-5
15	RODRIGUEZ, KK	G	0	0-2	0-2	0-0	1	2	3	0	0	0	0	1	4	-1
20	HRAFINKELSDOTTIR, ELIN	F	0	0-0	0-0	0-0	0	0	0	0	0	0	0	0	0	0
22	BRADY, MORGAN	G	2	1-1	0-0	0-0	0	0	0	0	0	0	0	0	1	-2
23	MOUTRY, KAYLA	G	2	1-1	0-0	0-0	0	0	0	0	0	1	0	0	5	-7
32	LEWIS, DESIREE	F	0	0-0	0-0	0-0	0	0	0	0	0	0	0	0	0	0
TEAM							0	0	0	0		1				
TOTALS			8	3-14	0-6	2-3	2	5	7	6	1	4	1	1	50	

Shooting By Period

Period	FG	FG%	3FG	3FG%	FT	FT%
Game	16-56	28.6%	6-20	30.0%	8-15	53.3%

Deadball Rebounds: 3,0

Wichita St. 16

No.	Player	S	Pts	FG	3FG	FT	OR	DR	TR	PF	A	TO	Blk	Stl	Min	+/-
02	MCCULLY, MARIAH	G	3	1-5	1-1	0-0	0	1	1	1	1	2	0	1	8	4
12	BREMAUD, CARLA	G	5	1-2	0-0	3-4	0	1	1	0	0	1	0	0	8	5
13	PRINCE, RAVEN	F	0	0-0	0-0	0-0	0	0	0	0	0	0	0	0	0	0
23	BASTIN, SERAPHINE	G	2	0-3	0-0	2-2	0	0	0	0	0	1	0	1	10	8
34	SMITH, SHYIA	F	0	0-0	0-0	0-0	0	2	2	0	0	0	0	0	7	2
01	MCCARTY, DJ	G	0	0-0	0-0	0-0	0	0	0	0	0	0	0	0	0	0
05	REID, ASHLEY	G	0	0-0	0-0	0-0	0	1	1	0	1	0	0	0	5	7
11	KIRVEN, ASHLEI	F	0	0-1	0-0	0-2	2	1	3	0	0	0	0	1	2	4
21	BREWER, MAYA	G	0	0-0	0-0	0-0	0	0	0	0	0	0	0	0	0	0
24	COLBERT, TRAJATA	F	2	1-1	0-0	0-0	1	0	1	1	0	0	0	0	4	1
42	HENDERSON, ASIA	F	4	2-4	0-0	0-0	4	1	5	1	0	0	1	0	7	9
TEAM							0	1	1	0		1				
TOTALS			16	5-16	1-1	5-8	7	8	15	3	2	5	1	3	50	

Shooting By Period

Period	FG	FG%	3FG	3FG%	FT	FT%
Game	22-59	37.3%	3-11	27.3%	10-14	71.4%

Deadball Rebounds: 2,1

Game Notes:

Officials: Denise Brooks, Tiara Cruse, Ed Sidlasky
 Attendance: 1464

Start Time: 07:33 PM ET
 End Time: 09:21 PM ET
 Game Duration: 1:48
 Conference Game;

Score	1st	2nd	3rd	4th	TOT
TUL	16	12	10	8	46
WSU	4	11	26	16	57

Points from (This Period)	TUL	WSU
In the Paint	6	6
Off Turns	3	0
2nd Chance	0	4
Fast Break	0	2
Bench	4	6

**Official Play-By-Play
Tulsa vs Wichita St.
Fourth Quarter**

January 15, 2020 at Charles Koch Arena (Devlin Court) - Wichita, Kan.



Period 4

Starters:

Tulsa: 00 ELLIOTT, KENDRIAN (F); 4 RICHARDS, ADDISON (F); 10 GAULDEN, ALEXIS (G); 11 BITTLE, MADDIE (G); 21 LESCAY, REBECCA (G);
Wichita St.: 2 MCCULLY, MARIAH (G); 12 BREMAUD, CARLA (G); 13 PRINCE, RAVEN (F); 23 BASTIN, SERAPHINE (G); 34 SMITH, SHYIA (F);

Time	VISITORS: Tulsa	Score	Margin	HOME: Wichita St.
10:00				SUB OUT: MCCULLY, MARIAH
10:00				SUB IN: BASTIN, SERAPHINE
10:00	SUB OUT: BITTLE, MADDIE			
10:00	SUB OUT: LEWIS, DESIREE			
10:00	SUB IN: RICHARDS, ADDISON			
10:00	SUB IN: MOUTRY, KAYLA			
09:44	MISSED JUMPER by LESCAY, REBECCA			
09:41				REBOUND (DEF) by KIRVEN, ASHLEI
09:28				MISSED LAYUP by BASTIN, SERAPHINE
09:28	BLOCK by ELLIOTT, KENDRIAN			
09:23				REBOUND (OFF) by KIRVEN, ASHLEI
09:23				MISSED JUMPER by KIRVEN, ASHLEI
09:18				REBOUND (OFF) by HENDERSON, ASIA
09:18				MISSED LAYUP by HENDERSON, ASIA
09:17				REBOUND (OFF) by KIRVEN, ASHLEI
09:17	FOUL (PERSONAL) by ELLIOTT, KENDRIAN			
09:17				MISSED FT by KIRVEN, ASHLEI
09:17				REBOUND (OFF) by TEAM
09:17				MISSED FT by KIRVEN, ASHLEI
09:15		43-38	H 5	REBOUND (OFF) by HENDERSON, ASIA
09:15				GOOD! JUMPER by HENDERSON, ASIA
08:57	MISSED JUMPER by LESCAY, REBECCA			
08:57				BLOCK by HENDERSON, ASIA
08:51				REBOUND (DEF) by BREMAUD, CARLA
08:31		45-38	H 7	GOOD! JUMPER by BREMAUD, CARLA
08:12	MISSED 3PTR by RICHARDS, ADDISON			
08:09				REBOUND (DEF) by REID, ASHLEY
07:56				MISSED JUMPER by BREMAUD, CARLA
07:54	REBOUND (DEF) by RICHARDS, ADDISON			
07:54	TURNOVER (LOSTBALL) by RICHARDS, ADDISON			
07:54				STEAL by KIRVEN, ASHLEI
07:54				SUB OUT: BREMAUD, CARLA
07:54				SUB IN: MCCULLY, MARIAH
07:54				SUB OUT: KIRVEN, ASHLEI
07:54				SUB IN: COLBERT, TRAJATA
07:50				TURNOVER (TRAVEL) by MCCULLY, MARIAH
07:32	MISSED JUMPER by RICHARDS, ADDISON			
07:28	REBOUND (OFF) by ELLIOTT, KENDRIAN			
07:22	MISSED LAYUP by GAULDEN, ALEXIS			
07:18				REBOUND (DEF) by MCCULLY, MARIAH
07:13				MISSED JUMPER by BASTIN, SERAPHINE
07:08				REBOUND (OFF) by COLBERT, TRAJATA
07:08		47-38	H 9	GOOD! LAYUP by COLBERT, TRAJATA
06:57	TIMEOUT 30SEC			
06:57				SUB OUT: HENDERSON, ASIA
06:57				SUB IN: SMITH, SHYIA
06:34	TURNOVER (SHOTCLOCK) by TEAM			
06:20				MISSED JUMPER by BASTIN, SERAPHINE
06:17	REBOUND (DEF) by LESCAY, REBECCA			
06:10	GOOD! LAYUP by MOUTRY, KAYLA	47-40	H 7	
06:10	ASSIST by LESCAY, REBECCA			
05:48		50-40	H 10	GOOD! 3PTR by MCCULLY, MARIAH
05:48				ASSIST by REID, ASHLEY
05:29	TURNOVER (BADPASS) by MOUTRY, KAYLA			
05:29				STEAL by BASTIN, SERAPHINE
05:29				SUB OUT: REID, ASHLEY
05:29				SUB IN: BREMAUD, CARLA
05:29	SUB OUT: MOUTRY, KAYLA			
05:29	SUB IN: BITTLE, MADDIE			
05:29	FOUL (PERSONAL) by GAULDEN, ALEXIS			
05:15	FOUL (PERSONAL) by RICHARDS, ADDISON			
05:11				TURNOVER (TRAVEL) by BREMAUD, CARLA
04:49	GOOD! LAYUP by ELLIOTT, KENDRIAN	50-42	H 8	
04:49				FOUL (PERSONAL) by COLBERT, TRAJATA
04:49	SUB OUT: BITTLE, MADDIE			
04:49	SUB IN: RODRIGUEZ, KK			
04:49	GOOD! FT by ELLIOTT, KENDRIAN	50-43	H 7	
04:39				TURNOVER (OTHER) by MCCULLY, MARIAH
04:18	MISSED LAYUP by LESCAY, REBECCA			
04:18				REBOUND (DEF) by TEAM

Time	VISITORS: Tulsa	Score	Margin	HOME: Wichita St.
04:11	FOUL (TECH) by LESCAY, REBECCA			
04:11				MISSED FT by BREMAUD, CARLA
04:11				REBOUND (OFF) by TEAM
04:11		51-43	H 8	GOOD! FT by BREMAUD, CARLA
04:11				SUB OUT: COLBERT, TRAJATA
04:11				SUB IN: HENDERSON, ASIA
04:11	SUB OUT: LESCAY, REBECCA			
04:11	SUB IN: BITTLE, MADDIE			
03:48				MISSED LAYUP by MCCULLY, MARIAH
03:46	REBOUND (DEF) by RODRIGUEZ, KK			
03:46				FOUL (PERSONAL) by HENDERSON, ASIA
03:29				FOUL (PERSONAL) by MCCULLY, MARIAH
03:29	MISSED FT by GAULDEN, ALEXIS			
03:29	REBOUND (OFF) by TEAM			
03:29	GOOD! FT by GAULDEN, ALEXIS	51-44	H 7	
02:51				TURNOVER (BADPASS) by BASTIN, SERAPHINE
02:51	MISSED 3PTR by RODRIGUEZ, KK			
02:51				REBOUND (DEF) by TEAM
02:51	STEAL by RODRIGUEZ, KK			
02:35				MISSED JUMPER by MCCULLY, MARIAH
02:32				REBOUND (OFF) by HENDERSON, ASIA
02:31				MISSED JUMPER by HENDERSON, ASIA
02:27	REBOUND (DEF) by ELLIOTT, KENDRIAN			
02:18	MISSED 3PTR by GAULDEN, ALEXIS			
02:15				REBOUND (DEF) by SMITH, SHYIA
02:07		53-44	H 9	GOOD! LAYUP by HENDERSON, ASIA
02:07				ASSIST by MCCULLY, MARIAH
01:50	TURNOVER (LOSTBALL) by GAULDEN, ALEXIS			
01:50				STEAL by MCCULLY, MARIAH
01:45				MISSED LAYUP by MCCULLY, MARIAH
01:41	REBOUND (DEF) by RODRIGUEZ, KK			
01:32	MISSED 3PTR by RODRIGUEZ, KK			
01:28				REBOUND (DEF) by SMITH, SHYIA
01:08	FOUL (PERSONAL) by BITTLE, MADDIE			
01:08	SUB OUT: RODRIGUEZ, KK			
01:08	SUB IN: BRADY, MORGAN			
01:08	TIMEOUT TEAM			
01:08		54-44	H 10	GOOD! FT by BREMAUD, CARLA
01:08		55-44	H 11	GOOD! FT by BREMAUD, CARLA
01:04	MISSED 3PTR by RICHARDS, ADDISON			
01:04				REBOUND (DEF) by HENDERSON, ASIA
01:01	FOUL (PERSONAL) by BITTLE, MADDIE			
01:01		56-44	H 12	GOOD! FT by BASTIN, SERAPHINE [FB]
01:01		57-44	H 13	GOOD! FT by BASTIN, SERAPHINE [FB]
00:43	GOOD! LAYUP by BRADY, MORGAN	57-46	H 11	
00:43	TIMEOUT 30SEC			
00:43				TIMEOUT 30SEC
00:43	SUB OUT: BITTLE, MADDIE			
00:43	SUB IN: RODRIGUEZ, KK			
00:12				MISSED LAYUP by MCCULLY, MARIAH
00:11				REBOUND (OFF) by HENDERSON, ASIA
00:11				TURNOVER (SHOTCLOCK) by TEAM
00:03	MISSED 3PTR by GAULDEN, ALEXIS			
00:00	REBOUND (OFF) by RODRIGUEZ, KK			

Tulsa 46, Wichita St. 57

Points from (This Period)	TUL	WSU
In the Paint	6	6
Off Turns	3	0
2nd Chance	0	4
Fast Break	0	2
Bench	4	6

**Official Scoring/Possession Reference Chart
Tulsa vs Wichita St.**

Period 1

January 15, 2020 at Charles Koch Arena (Devlin Court) - Wichita, Kan.



Period 1

Starters:

Tulsa: 00 ELLIOTT, KENDRIAN (F); 4 RICHARDS, ADDISON (F); 10 GAULDEN, ALEXIS (G); 11 BITTLE, MADDIE (G); 21 LESCAY, REBECCA (G);

Wichita St.: 2 MCCULLY, MARIAH (G); 12 BREMAUD, CARLA (G); 13 PRINCE, RAVEN (F); 23 BASTIN, SERAPHINE (G); 34 SMITH, SHYIA (F);

Time	VISITORS: Tulsa	Score	Margin	HOME: Wichita St.
08:27	GOOD! LAYUP by RICHARDS, ADDISON	0-2	V 2	
07:48	GOOD! LAYUP by ELLIOTT, KENDRIAN	0-4	V 4	
07:09	GOOD! LAYUP by ELLIOTT, KENDRIAN	0-6	V 6	
05:31		2-6	V 4	GOOD! JUMPER by BASTIN, SERAPHINE [PNT]
05:10	GOOD! FT by BITTLE, MADDIE	2-7	V 5	
03:31	GOOD! 3PTR by BITTLE, MADDIE	2-10	V 8	
03:13		4-10	V 6	GOOD! LAYUP by COLBERT, TRAJATA
02:12	GOOD! 3PTR by ELLIOTT, KENDRIAN	4-13	V 9	
00:45	GOOD! 3PTR by BITTLE, MADDIE	4-16	V 12	

Tulsa 16, Wichita St. 4

**Official Scoring/Possession Reference Chart
Tulsa vs Wichita St.**

Period 2

January 15, 2020 at Charles Koch Arena (Devlin Court) - Wichita, Kan.



Period 2

Starters:

Tulsa: 00 ELLIOTT, KENDRIAN (F); 4 RICHARDS, ADDISON (F); 10 GAULDEN, ALEXIS (G); 11 BITTLE, MADDIE (G); 21 LESCAY, REBECCA (G);

Wichita St.: 2 MCCULLY, MARIAH (G); 12 BREMAUD, CARLA (G); 13 PRINCE, RAVEN (F); 23 BASTIN, SERAPHINE (G); 34 SMITH, SHYIA (F);

Time	VISITORS: Tulsa	Score	Margin	HOME: Wichita St.
09:52	GOOD! FT by ELLIOTT, KENDRIAN	4-17	V 13	
09:38	GOOD! 3PTR by ELLIOTT, KENDRIAN	4-20	V 16	
09:18		6-20	V 14	GOOD! LAYUP by BREWER, MAYA
06:35		9-20	V 11	GOOD! 3PTR by BREMAUD, CARLA [FB]
05:52		11-20	V 9	GOOD! JUMPER by MCCULLY, MARIAH [PNT]
05:17	GOOD! LAYUP by ELLIOTT, KENDRIAN	11-22	V 11	
04:42	GOOD! FT by GAULDEN, ALEXIS	11-23	V 12	
04:42	GOOD! FT by GAULDEN, ALEXIS	11-24	V 13	
03:43		13-24	V 11	GOOD! JUMPER by KIRVEN, ASHLEI
03:27	GOOD! FT by HRAFNKELSDOTTIR, ELIN	13-25	V 12	
03:27	GOOD! FT by HRAFNKELSDOTTIR, ELIN	13-26	V 13	
01:28		15-26	V 11	GOOD! LAYUP by MCCULLY, MARIAH
01:03	GOOD! LAYUP by LEWIS, DESIREE	15-28	V 13	

Tulsa 28, Wichita St. 15

**Official Scoring/Possession Reference Chart
Tulsa vs Wichita St.**

Period 3

January 15, 2020 at Charles Koch Arena (Devlin Court) - Wichita, Kan.



Period 3

Starters:

Tulsa: 00 ELLIOTT, KENDRIAN (F); 4 RICHARDS, ADDISON (F); 10 GAULDEN, ALEXIS (G); 11 BITTLE, MADDIE (G); 21 LESCAY, REBECCA (G);

Wichita St.: 2 MCCULLY, MARIAH (G); 12 BREMAUD, CARLA (G); 13 PRINCE, RAVEN (F); 23 BASTIN, SERAPHINE (G); 34 SMITH, SHYIA (F);

Time	VISITORS: Tulsa	Score	Margin	HOME: Wichita St.
09:36		17-28	V 11	GOOD! LAYUP by SMITH, SHYIA
09:32	GOOD! LAYUP by LESCAY, REBECCA [FB]	17-30	V 13	
09:11		19-30	V 11	GOOD! JUMPER by BREMAUD, CARLA
08:52		21-30	V 9	GOOD! LAYUP by MCCULLY, MARIAH [FB]
08:13		23-30	V 7	GOOD! JUMPER by BASTIN, SERAPHINE
07:17		25-30	V 5	GOOD! JUMPER by BASTIN, SERAPHINE
05:58	GOOD! 3PTR by RICHARDS, ADDISON	25-33	V 8	
04:48		27-33	V 6	GOOD! LAYUP by BASTIN, SERAPHINE [FB]
04:48		28-33	V 5	GOOD! FT by BASTIN, SERAPHINE [FB]
04:23		30-33	V 3	GOOD! JUMPER by COLBERT, TRAJATA
03:49		31-33	V 2	GOOD! FT by BASTIN, SERAPHINE [FB]
03:49		32-33	V 1	GOOD! FT by BASTIN, SERAPHINE [FB]
02:45		34-33	H 1	GOOD! LAYUP by MCCULLY, MARIAH
02:45		35-33	H 2	GOOD! FT by REID, ASHLEY
02:45		36-33	H 3	GOOD! FT by REID, ASHLEY
02:05	GOOD! 3PTR by GAULDEN, ALEXIS	36-36	T	
01:20	GOOD! JUMPER by GAULDEN, ALEXIS	36-38	V 2	
00:57		38-38	T	GOOD! LAYUP by KIRVEN, ASHLEI
00:30		41-38	H 3	GOOD! 3PTR by BREMAUD, CARLA

Tulsa 38, Wichita St. 41

**Official Scoring/Possession Reference Chart
Tulsa vs Wichita St.**

Period 4

January 15, 2020 at Charles Koch Arena (Devlin Court) - Wichita, Kan.



Period 4

Starters:

Tulsa: 00 ELLIOTT, KENDRIAN (F); 4 RICHARDS, ADDISON (F); 10 GAULDEN, ALEXIS (G); 11 BITTLE, MADDIE (G); 21 LESCAY, REBECCA (G);

Wichita St.: 2 MCCULLY, MARIAH (G); 12 BREMAUD, CARLA (G); 13 PRINCE, RAVEN (F); 23 BASTIN, SERAPHINE (G); 34 SMITH, SHYIA (F);

Time	VISITORS: Tulsa	Score	Margin	HOME: Wichita St.
09:15		43-38	H 5	GOOD! JUMPER by HENDERSON, ASIA
08:31		45-38	H 7	GOOD! JUMPER by BREMAUD, CARLA
07:08		47-38	H 9	GOOD! LAYUP by COLBERT, TRAJATA
06:10	GOOD! LAYUP by MOUTRY, KAYLA	47-40	H 7	
05:48		50-40	H 10	GOOD! 3PTR by MCCULLY, MARIAH
04:49	GOOD! LAYUP by ELLIOTT, KENDRIAN	50-42	H 8	
04:49	GOOD! FT by ELLIOTT, KENDRIAN	50-43	H 7	
04:11		51-43	H 8	GOOD! FT by BREMAUD, CARLA
03:29	GOOD! FT by GAULDEN, ALEXIS	51-44	H 7	
02:07		53-44	H 9	GOOD! LAYUP by HENDERSON, ASIA
01:08		54-44	H 10	GOOD! FT by BREMAUD, CARLA
01:08		55-44	H 11	GOOD! FT by BREMAUD, CARLA
01:01		56-44	H 12	GOOD! FT by BASTIN, SERAPHINE [FB]
01:01		57-44	H 13	GOOD! FT by BASTIN, SERAPHINE [FB]
00:43	GOOD! LAYUP by BRADY, MORGAN	57-46	H 11	

Tulsa 46, Wichita St. 57

**Official Substitutions Log
Tulsa vs Wichita St.
Period 1**

January 15, 2020 at Charles Koch Arena (Devlin Court) - Wichita, Kan.



VISITORS: Tulsa	Time	Score	HOME: Wichita St.
00 ELLIOTT, KENDRIAN			2 MCCULLY, MARIAH
4 RICHARDS, ADDISON			12 BREMAUD, CARLA
10 GAULDEN, ALEXIS			13 PRINCE, RAVEN
11 BITTLE, MADDIE			23 BASTIN, SERAPHINE
21 LESCAY, REBECCA			34 SMITH, SHYIA
	05:10	6-2	SUB OUT: PRINCE, RAVEN
	05:10		SUB IN: COLBERT, TRAJATA
	04:11	7-2	SUB OUT: BASTIN, SERAPHINE
	04:11		SUB IN: MCCARTY, DJ
SUB OUT: 4 RICHARDS, ADDISON	04:11		
SUB IN: 32 LEWIS, DESIREE	04:11		
	02:10	13-4	SUB OUT: MCCULLY, MARIAH
	02:10		SUB OUT: BREMAUD, CARLA
	02:10		SUB OUT: COLBERT, TRAJATA
	02:10		SUB IN: BREWER, MAYA
	02:10		SUB IN: BASTIN, SERAPHINE
	02:10		SUB IN: HENDERSON, ASIA
SUB OUT: 10 GAULDEN, ALEXIS	02:10		
SUB IN: 22 BRADY, MORGAN	02:10		
	00:06	16-4	SUB OUT: MCCARTY, DJ
	00:06		SUB IN: BREMAUD, CARLA

Tulsa 16, Wichita St. 4

**Official Substitutions Log
Tulsa vs Wichita St.
Period 2**

January 15, 2020 at Charles Koch Arena (Devlin Court) - Wichita, Kan.



VISITORS: Tulsa	Time	Score	HOME: Wichita St.
00 ELLIOTT,KENDRIAN			2 MCCULLY,MARIAH
4 RICHARDS,ADDISON			12 BREMAUD,CARLA
10 GAULDEN,ALEXIS			13 PRINCE,RAVEN
11 BITTLE,MADDIE			23 BASTIN,SERAPHINE
21 LESCAY,REBECCA			34 SMITH,SHYIA
SUB OUT: 21 LESCAY,REBECCA	10:00	-	
SUB OUT: 32 LEWIS,DESIREE	10:00		
SUB IN: 4 RICHARDS,ADDISON	10:00		
SUB IN: 10 GAULDEN,ALEXIS	10:00		
SUB OUT: 11 BITTLE,MADDIE	08:55	20-6	
SUB IN: 21 LESCAY,REBECCA	08:55		
	07:35	20-6	SUB OUT: BASTIN,SERAPHINE
	07:35		SUB OUT: SMITH,SHYIA
	07:35		SUB OUT: HENDERSON,ASIA
	07:35		SUB IN: REID,ASHLEY
	07:35		SUB IN: KIRVEN,ASHLEI
	07:35		SUB IN: PRINCE,RAVEN
SUB OUT: 22 BRADY,MORGAN	07:35		
SUB IN: 15 RODRIGUEZ,KK	07:35		
	06:16	20-9	SUB OUT: BREWER,MAYA
	06:16		SUB IN: MCCULLY,MARIAH
SUB OUT: 21 LESCAY,REBECCA	06:16		
SUB IN: 22 BRADY,MORGAN	06:16		
	04:42	22-11	SUB OUT: BREMAUD,CARLA
	04:42		SUB IN: BASTIN,SERAPHINE
SUB OUT: 4 RICHARDS,ADDISON	04:42		
SUB IN: 20 HRAFNKELSDOTTIR,ELIN	04:42		
	04:07	24-11	SUB OUT: PRINCE,RAVEN
	04:07		SUB IN: SMITH,SHYIA
	03:27	24-13	SUB OUT: KIRVEN,ASHLEI
	03:27		SUB IN: HENDERSON,ASIA
SUB OUT: 10 GAULDEN,ALEXIS	03:27		
SUB IN: 21 LESCAY,REBECCA	03:27		
	02:14	26-13	SUB OUT: BASTIN,SERAPHINE
	02:14		SUB IN: BREMAUD,CARLA
	01:51	26-13	SUB OUT: HENDERSON,ASIA
	01:51		SUB IN: COLBERT,TRAJATA
SUB OUT: 20 HRAFNKELSDOTTIR,ELIN	01:51		
SUB IN: 32 LEWIS,DESIREE	01:51		

Tulsa 28, Wichita St. 15

**Official Substitutions Log
Tulsa vs Wichita St.
Period 3**

January 15, 2020 at Charles Koch Arena (Devlin Court) - Wichita, Kan.



VISITORS: Tulsa	Time	Score	HOME: Wichita St.
00 ELLIOTT,KENDRIAN			2 MCCULLY,MARIAH
4 RICHARDS,ADDISON			12 BREMAUD,CARLA
10 GAULDEN,ALEXIS			13 PRINCE,RAVEN
11 BITTLE,MADDIE			23 BASTIN,SERAPHINE
21 LESCAY,REBECCA			34 SMITH,SHYIA
	10:00	-	SUB OUT: REID,ASHLEY
	10:00		SUB IN: BASTIN,SERAPHINE
SUB OUT: 15 RODRIGUEZ, KK	10:00		
SUB OUT: 22 BRADY, MORGAN	10:00		
SUB OUT: 32 LEWIS, DESIREE	10:00		
SUB IN: 4 RICHARDS, ADDISON	10:00		
SUB IN: 10 GAULDEN, ALEXIS	10:00		
SUB IN: 11 BITTLE, MADDIE	10:00		
SUB OUT: 10 GAULDEN, ALEXIS	08:07	30-23	
SUB IN: 22 BRADY, MORGAN	08:07		
SUB OUT: 11 BITTLE, MADDIE	06:18	30-25	
SUB OUT: 22 BRADY, MORGAN	06:18		
SUB IN: 10 GAULDEN, ALEXIS	06:18		
SUB IN: 15 RODRIGUEZ, KK	06:18		
SUB OUT: 4 RICHARDS, ADDISON	04:48	33-27	
SUB OUT: 21 LESCAY, REBECCA	04:48		
SUB IN: 11 BITTLE, MADDIE	04:48		
SUB IN: 32 LEWIS, DESIREE	04:48		
SUB OUT: 15 RODRIGUEZ, KK	03:49	33-30	
SUB IN: 22 BRADY, MORGAN	03:49		
	03:31	33-32	SUB OUT: BASTIN,SERAPHINE
	03:31		SUB IN: REID,ASHLEY
	01:31	36-36	SUB OUT: COLBERT,TRAJATA
	01:31		SUB IN: KIRVEN,ASHLEI
SUB OUT: 22 BRADY, MORGAN	01:31		
SUB IN: 21 LESCAY, REBECCA	01:31		
	00:43	38-38	SUB OUT: SMITH,SHYIA
	00:43		SUB IN: HENDERSON,ASIA

Tulsa 38, Wichita St. 41

**Official Substitutions Log
Tulsa vs Wichita St.
Period 4**

January 15, 2020 at Charles Koch Arena (Devlin Court) - Wichita, Kan.



VISITORS: Tulsa	Time	Score	HOME: Wichita St.
00 ELLIOTT,KENDRIAN			2 MCCULLY,MARIAH
4 RICHARDS,ADDISON			12 BREMAUD,CARLA
10 GAULDEN,ALEXIS			13 PRINCE,RAVEN
11 BITTLE,MADDIE			23 BASTIN,SERAPHINE
21 LESCAY,REBECCA			34 SMITH,SHYIA
	10:00	-	SUB OUT: MCCULLY,MARIAH
	10:00		SUB IN: BASTIN,SERAPHINE
SUB OUT: 11 BITTLE,MADDIE	10:00		
SUB OUT: 32 LEWIS,DESIREE	10:00		
SUB IN: 4 RICHARDS,ADDISON	10:00		
SUB IN: 23 MOUTRY,KAYLA	10:00		
	07:54	38-45	SUB OUT: BREMAUD,CARLA
	07:54		SUB IN: MCCULLY,MARIAH
	07:54		SUB OUT: KIRVEN,ASHLEI
	07:54		SUB IN: COLBERT,TRAJATA
	06:57	38-47	SUB OUT: HENDERSON,ASIA
	06:57		SUB IN: SMITH,SHYIA
	05:29	40-50	SUB OUT: REID,ASHLEY
	05:29		SUB IN: BREMAUD,CARLA
SUB OUT: 23 MOUTRY,KAYLA	05:29		
SUB IN: 11 BITTLE,MADDIE	05:29		
SUB OUT: 11 BITTLE,MADDIE	04:49	42-50	
SUB IN: 15 RODRIGUEZ,KK	04:49		
	04:11	43-51	SUB OUT: COLBERT,TRAJATA
	04:11		SUB IN: HENDERSON,ASIA
SUB OUT: 21 LESCAY,REBECCA	04:11		
SUB IN: 11 BITTLE,MADDIE	04:11		
SUB OUT: 15 RODRIGUEZ,KK	01:08	44-53	
SUB IN: 22 BRADY,MORGAN	01:08		
SUB OUT: 11 BITTLE,MADDIE	00:43	46-57	
SUB IN: 15 RODRIGUEZ,KK	00:43		

Tulsa 46, Wichita St. 57

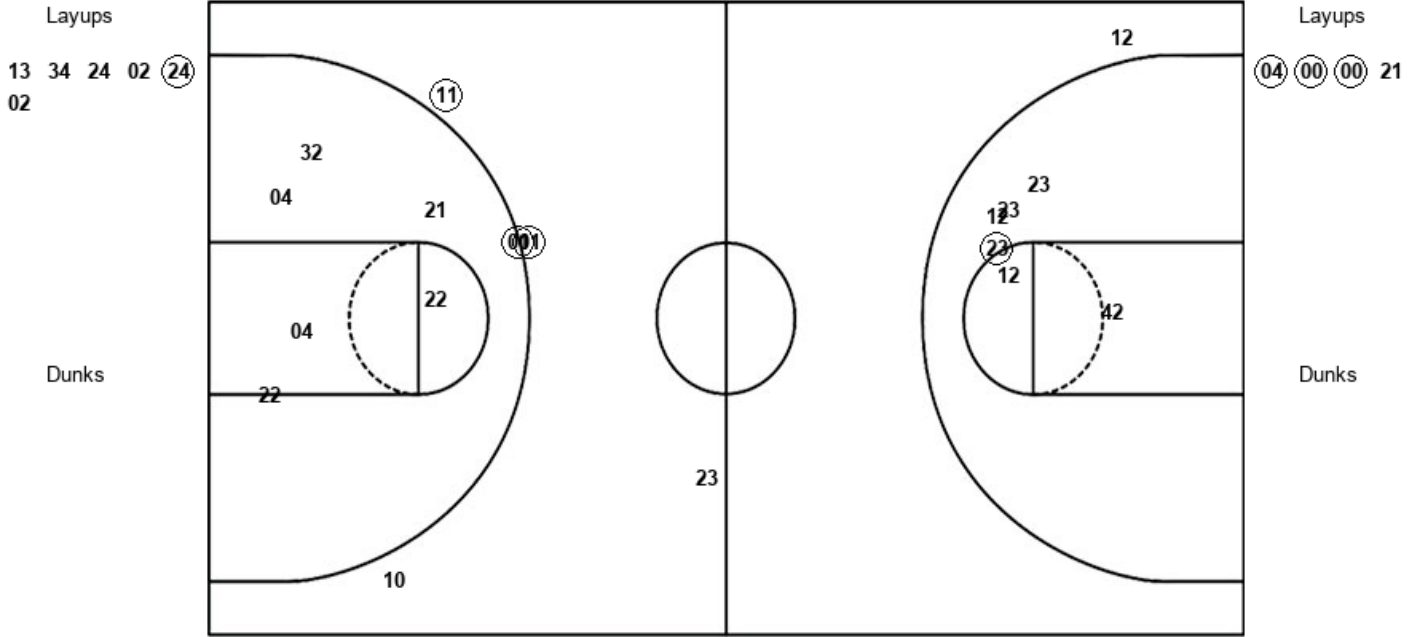
Official Shot Chart
 Tulsa vs Wichita St.
 PERIOD 1 Shots

January 15, 2020 at Charles Koch Arena (Devlin Court) - Wichita, Kan.



Wichita St.

Tulsa



WSU : Period 1	Made	Att	Pct
Layups	1	6	16.7
Dunks	0	0	0
2PT Field Goals	2	12	16.7
3PT Field Goals	0	2	00.0
Total Field Goals	2	14	14.3

TUL : Period 1	Made	Att	Pct
Layups	3	4	75.0
Dunks	0	0	0
2PT Field Goals	3	10	30.0
3PT Field Goals	3	4	75.0
Total Field Goals	6	14	42.9

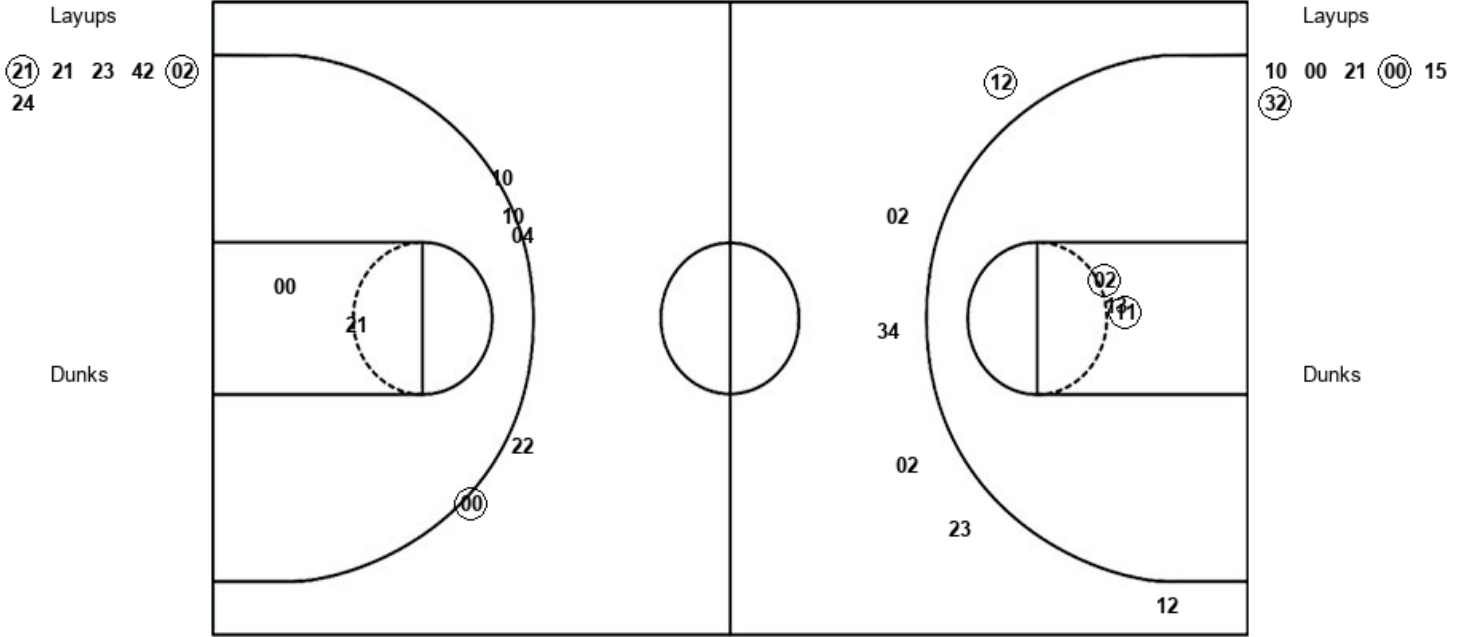
Official Shot Chart
 Tulsa vs Wichita St.
 PERIOD 2 Shots

January 15, 2020 at Charles Koch Arena (Devlin Court) - Wichita, Kan.



Wichita St.

Tulsa



WSU : Period 2	Made	Att	Pct
Layups	2	6	33.3
Dunks	0	0	0
2PT Field Goals	4	9	44.4
3PT Field Goals	1	6	16.7
Total Field Goals	5	15	33.3

TUL : Period 2	Made	Att	Pct
Layups	2	6	33.3
Dunks	0	0	0
2PT Field Goals	2	8	25.0
3PT Field Goals	1	5	20.0
Total Field Goals	3	13	23.1

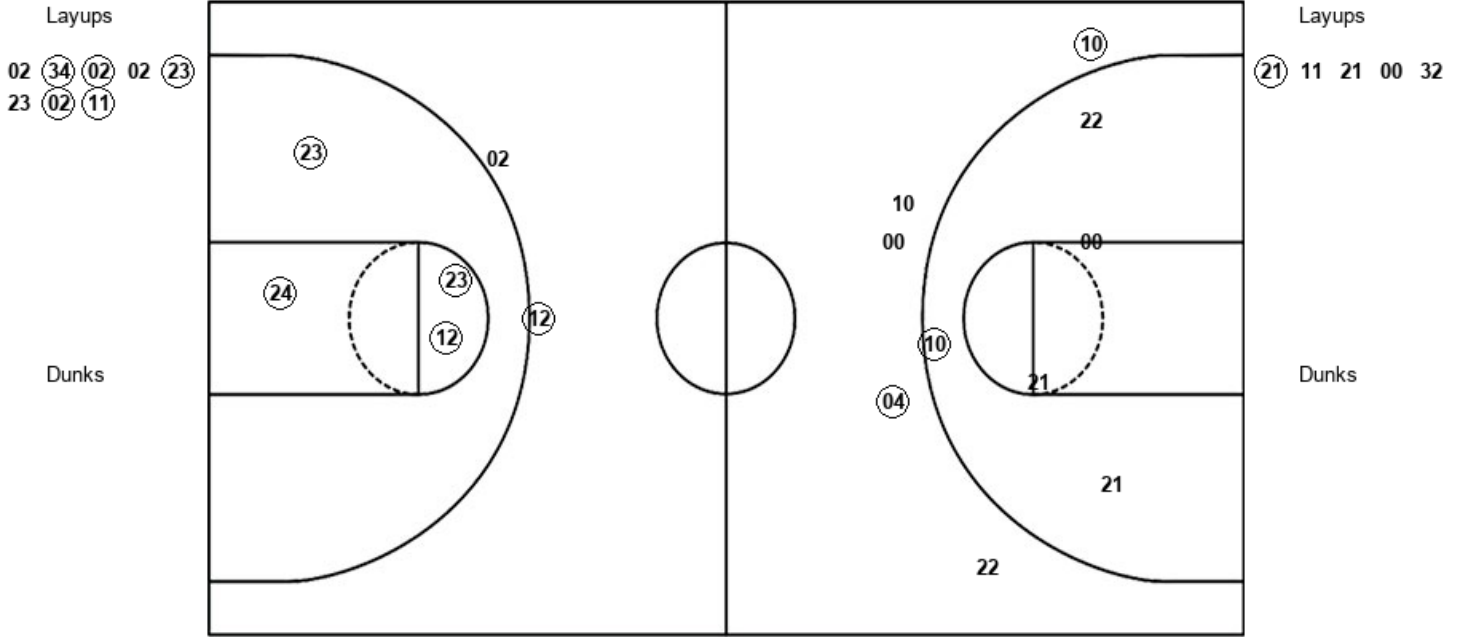
Official Shot Chart
 Tulsa vs Wichita St.
 PERIOD 3 Shots

January 15, 2020 at Charles Koch Arena (Devlin Court) - Wichita, Kan.



Wichita St.

Tulsa



WSU : Period 3	Made	Att	Pct
Layups	5	8	62.5
Dunks	0	0	0
2PT Field Goals	9	12	75.0
3PT Field Goals	1	2	50.0
Total Field Goals	10	14	71.4

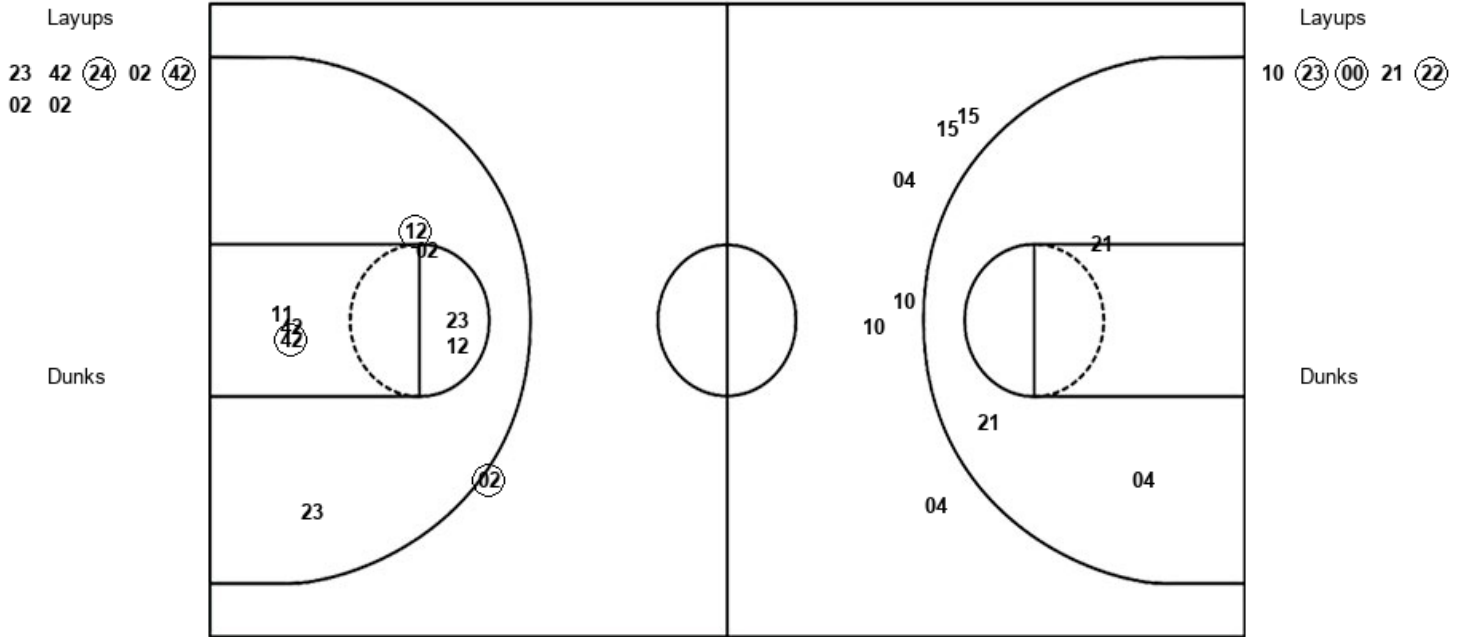
TUL : Period 3	Made	Att	Pct
Layups	1	5	20.0
Dunks	0	0	0
2PT Field Goals	2	10	20.0
3PT Field Goals	2	5	40.0
Total Field Goals	4	15	26.7

Official Shot Chart
Tulsa vs Wichita St.
PERIOD 4 Shots
 January 15, 2020 at Charles Koch Arena (Devlin Court) - Wichita, Kan.



Wichita St.

Tulsa



WSU : Period 4	Made	Att	Pct
Layups	2	7	28.6
Dunks	0	0	0
2PT Field Goals	4	15	26.7
3PT Field Goals	1	1	100.0
Total Field Goals	5	16	31.3

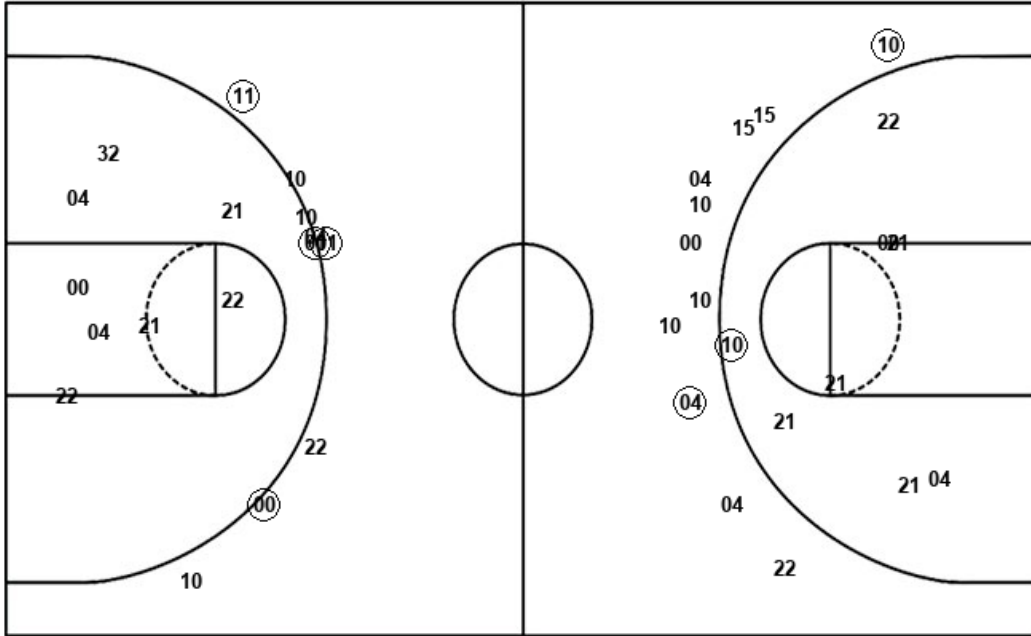
TUL : Period 4	Made	Att	Pct
Layups	3	5	60.0
Dunks	0	0	0
2PT Field Goals	3	8	37.5
3PT Field Goals	0	6	00.0
Total Field Goals	3	14	21.4

**Official Shot Chart
Tulsa vs Wichita St.
Tulsa Team Shots**

January 15, 2020 at Charles Koch Arena (Devlin Court) - Wichita, Kan.



Layups



Layups

(04)	(00)	(00)	21	10
00	21	(00)	15	(32)
(21)	11	21	00	32
10	(23)	(00)	21	(22)

Dunks

Dunks

TUL : Period 1	Made	Att	Pct
Layups	3	4	75.0
Dunks	0	0	0
2PT Field Goals	3	10	30.0
3PT Field Goals	3	4	75.0
Total Field Goals	6	14	42.9

TUL : Period 2	Made	Att	Pct
Layups	2	6	33.3
Dunks	0	0	0
2PT Field Goals	2	8	25.0
3PT Field Goals	1	5	20.0
Total Field Goals	3	13	23.1

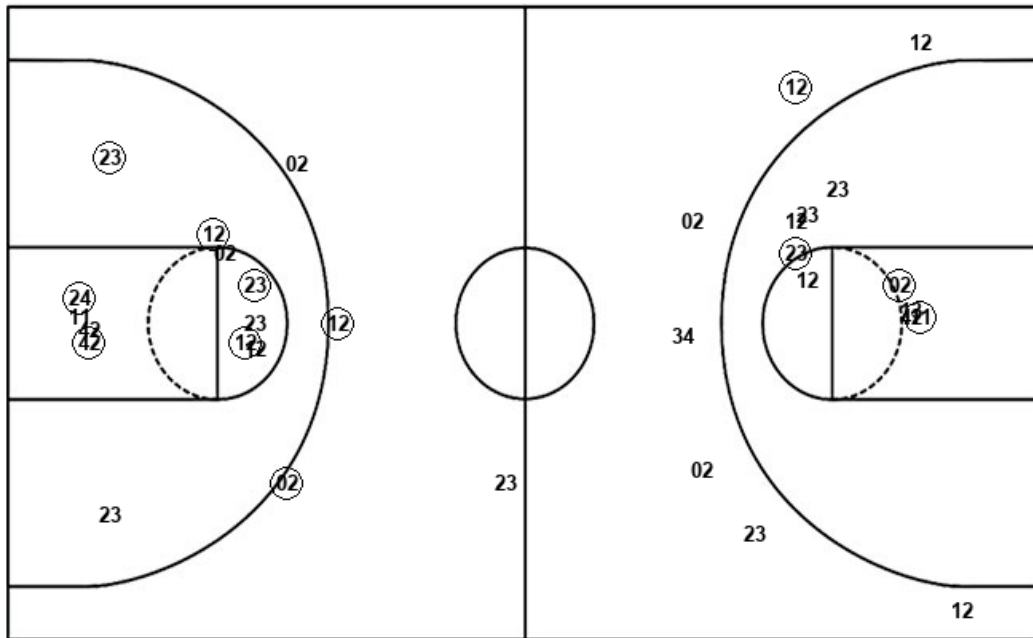
TUL : Period 3	Made	Att	Pct
Layups	1	5	20.0
Dunks	0	0	0
2PT Field Goals	2	10	20.0
3PT Field Goals	2	5	40.0
Total Field Goals	4	15	26.7

TUL : Period 4	Made	Att	Pct
Layups	3	5	60.0
Dunks	0	0	0
2PT Field Goals	3	8	37.5
3PT Field Goals	0	6	00.0
Total Field Goals	3	14	21.4

Official Shot Chart
Tulsa vs Wichita St.
Wichita St. Team Shots
 January 15, 2020 at Charles Koch Arena (Devlin Court) - Wichita, Kan.



Layups



Layups

13 34 24 02 (24)
 02 (21) 21 23 42
 (02) 24 02 (34) (02)
 02 (23) 23 (02) (11)
 23 42 (24) 02 (42)
 02 02

Dunks

Dunks

WSU : Period 1	Made	Att	Pct
Layups	1	6	16.7
Dunks	0	0	0
2PT Field Goals	2	12	16.7
3PT Field Goals	0	2	00.0
Total Field Goals	2	14	14.3

WSU : Period 3	Made	Att	Pct
Layups	5	8	62.5
Dunks	0	0	0
2PT Field Goals	9	12	75.0
3PT Field Goals	1	2	50.0
Total Field Goals	10	14	71.4

WSU : Period 2	Made	Att	Pct
Layups	2	6	33.3
Dunks	0	0	0
2PT Field Goals	4	9	44.4
3PT Field Goals	1	6	16.7
Total Field Goals	5	15	33.3

WSU : Period 4	Made	Att	Pct
Layups	2	7	28.6
Dunks	0	0	0
2PT Field Goals	4	15	26.7
3PT Field Goals	1	1	100.0
Total Field Goals	5	16	31.3