

FINAL SCORE

Tulane



61

Wichita St.



56

January 05, 2020 • Charles Koch Arena (Devlin Court) - Wichita, Kan.

FINAL STATISTICS

Official Box Score
Tulane vs Wichita St.
Game Totals -- Final Statistics
January 05, 2020 at Charles Koch Arena (Devlin Court) - Wichita, Kan.



Tulane 61

No.	Player	S	Pts	FG	3FG	FT	OR	DR	TR	PF	A	TO	Blk	Stl	Min	+/-
00	CLARK, ARSULA	G	8	4-9	0-0	0-1	1	2	3	1	2	6	0	0	35	4
01	ANDERSON, KAILA	G	0	0-0	0-0	0-0	0	0	0	0	1	0	0	0	2	-4
12	CHEATHAM, SIERRA	G	12	3-8	3-8	3-5	1	6	7	2	2	4	2	2	38	5
21	PARAU, IRINA	F	3	1-3	1-2	0-0	1	0	1	0	0	3	0	0	14	4
23	FREEMAN, KRISTAL	F	12	3-7	1-2	5-5	2	4	6	4	1	3	0	1	33	-3
05	MANUIRIRANGI, KAYLA	G	14	4-9	3-6	3-3	1	2	3	1	1	2	0	0	23	2
11	BATES, SALMA	G	0	0-2	0-2	0-0	1	2	3	2	3	1	0	0	12	-1
14	JONES, DYNAH	G	2	0-0	0-0	2-4	1	0	1	0	2	0	0	1	6	5
15	GRANT, ANIJAH	F	4	2-4	0-0	0-0	0	3	3	0	0	0	0	1	17	-2
30	MIMMS, DENE'	F	0	0-0	0-0	0-0	0	0	0	0	1	0	0	0	4	5
42	HEIDE, MIA	F	6	2-4	0-0	2-4	2	2	4	4	2	1	2	0	18	10
TEAM							3	4	7	0		5				
TOTALS			61	19-46	8-20	15-22	13	25	38	14	14	26	4	5	200	

Shooting By Period

Period	FG	FG%	3FG	3FG%	FT	FT%
1st Qtr	7-12	58%	3-4	75%	2-8	25%
2nd Qtr	5-15	33%	3-9	33%	2-2	100%
3rd Qtr	3-8	38%	0-2	00%	1-1	100%
4th Qtr	4-11	36%	2-5	40%	10-11	91%
1st Half	12-27	44%	6-13	46%	4-10	40%
2nd Half	7-19	37%	2-7	29%	11-12	92%
Game	19-46	41.3%	8-20	40.0%	15-22	68.2%

Deadball Rebounds: 3,0

Last FG: 4th-03:46

Biggest Run: 11-0

Largest lead: By 8 at 2nd-01:02

Technical Fouls: None.

Wichita St. 56

No.	Player	S	Pts	FG	3FG	FT	OR	DR	TR	PF	A	TO	Blk	Stl	Min	+/-
02	MCCULLY, MARIAH	G	13	5-17	2-6	1-2	2	3	5	2	0	5	0	4	35	-4
12	BREMAUD, CARLA	G	7	3-9	1-6	0-0	0	3	3	2	1	1	1	1	22	4
13	PRINCE, RAVEN	F	6	2-4	0-0	2-2	0	1	1	2	1	1	0	2	27	-1
23	BASTIN, SERAPHINE	G	9	3-7	0-1	3-5	3	4	7	2	3	0	0	3	35	-1
34	SMITH, SHYIA	F	8	3-4	2-2	0-0	1	1	2	5	0	3	0	0	20	6
05	REID, ASHLEY	G	3	1-2	1-1	0-0	0	0	0	1	1	1	0	0	14	-10
11	KIRVEN, ASHLEI	F	2	1-2	0-0	0-0	2	1	3	1	0	0	0	1	8	-3
21	BREWER, MAYA	G	0	0-2	0-2	0-0	1	0	1	2	1	1	0	0	7	-4
24	COLBERT, TRAJATA	F	2	1-1	0-0	0-0	0	0	0	0	0	0	0	0	6	-2
31	DANIELSSON, VENDELA	G	0	0-4	0-4	0-0	0	0	0	0	2	0	0	1	7	0
42	HENDERSON, ASIA	F	6	1-7	0-0	4-4	4	4	8	2	0	3	2	0	19	-10
TEAM							1	0	1	0		2				
TOTALS			56	20-59	6-22	10-13	14	17	31	19	9	17	3	12	200	

Shooting By Period

Period	FG	FG%	3FG	3FG%	FT	FT%
1st Qtr	6-11	55%	1-3	33%	3-5	60%
2nd Qtr	5-16	31%	1-7	14%	1-2	50%
3rd Qtr	5-16	31%	2-4	50%	2-2	100%
4th Qtr	4-16	25%	2-8	25%	4-4	100%
1st Half	11-27	41%	2-10	20%	4-7	57%
2nd Half	9-32	28%	4-12	33%	6-6	100%
Game	20-59	33.9%	6-22	27.3%	10-13	76.9%

Deadball Rebounds: 3,1

Last FG: 4th-01:55

Biggest Run: 9-0

Largest lead: By 9 at 1st-05:16

Technical Fouls: None.

Game Notes:

Officials: Fatou Cissoko-Stephens,Michelle Kramer,John

Fletcher

Attendance: 1703

Start Time: 03:05 PM ET

End Time: 05:05 PM ET

Game Duration: 2:00

Conference Game;

Score	1st	2nd	3rd	4th	TOT
TLN	19	15	7	20	61
WSU	16	12	14	14	56

TLN led for 21:34. WSU led for 16:14.

Game was tied for 2:11.

Times tied: 3 Lead Changes: 5

Points from	TLN	WSU
In the Paint	18	28
Off Turns	21	17
2nd Chance	15	11
Fast Break	5	10
Bench	26	13

Official Box Score
Tulane vs Wichita St.
First Half Statistics Only
January 05, 2020 at Charles Koch Arena (Devlin Court) - Wichita, Kan.



Tulane 34

No.	Player	S	Pts	FG	3FG	FT	OR	DR	TR	PF	A	TO	Blk	Stl	Min	+/-
00	CLARK, ARSULA	G	6	3-6	0-0	0-1	0	1	1	1	1	2	0	0	17	4
01	ANDERSON, KAILA	G	0	0-0	0-0	0-0	0	0	0	0	0	1	0	0	2	-4
05	MANUIRIRANGI, KAYLA	G	3	1-3	1-3	0-0	0	0	0	1	0	1	0	0	6	3
11	BATES, SALMA	G	0	0-1	0-1	0-0	1	1	2	0	3	0	0	0	7	2
12	CHEATHAM, SIERRA	G	11	3-6	3-6	2-3	1	2	3	1	1	1	0	1	18	6
14	JONES, DYNAH	G	2	0-0	0-0	2-4	1	0	1	0	2	0	0	1	5	5
15	GRANT, ANIJAH	F	2	1-2	0-0	0-0	0	1	1	0	0	0	0	1	6	2
21	PARAU, IRINA	F	3	1-3	1-2	0-0	1	0	1	0	0	3	0	0	13	0
23	FREEMAN, KRYSTAL	F	3	1-2	1-1	0-0	1	2	3	2	1	1	0	0	12	-2
30	MIMMS, DENE'	F	0	0-0	0-0	0-0	0	0	0	0	1	0	0	0	4	5
42	HEIDE, MIA	F	4	2-4	0-0	0-2	1	1	2	2	2	0	1	0	9	9
	TEAM		0	0-0	0-0	0-0	3	1	4	0	0	1	0	0	0	
TOTALS			34	12-27	6-13	4-10	9	9	18	7	11	10	1	3	100	

Shooting By Period

Period	FG	FG%	3FG	3FG%	FT	FT%
1st Qtr	7-12	58%	3-4	75%	2-8	25%
2nd Qtr	5-15	33%	3-9	33%	2-2	100%
1st Half	12-27	44%	6-13	46%	4-10	40%
Game	19-46	41.3%	8-20	40.0%	15-22	68.2%

Deadball Rebounds: 3,0

Last FG Half: TLN 2nd-01:02

Wichita St. 28

No.	Player	S	Pts	FG	3FG	FT	OR	DR	TR	PF	A	TO	Blk	Stl	Min	+/-
02	MCCULLY, MARIAH	G	6	2-4	1-2	1-2	1	1	2	1	0	2	0	1	16	-3
05	REID, ASHLEY	G	3	1-1	1-1	0-0	0	0	0	0	0	0	0	0	7	-9
11	KIRVEN, ASHLEI	F	0	0-0	0-0	0-0	1	1	2	0	0	0	0	1	4	-1
12	BREMAUD, CARLA	G	2	1-2	0-1	0-0	0	1	1	2	1	1	0	1	7	0
13	PRINCE, RAVEN	F	6	2-2	0-0	2-2	0	0	0	1	0	1	0	0	14	-5
21	BREWER, MAYA	G	0	0-2	0-2	0-0	1	0	1	1	1	1	0	0	4	-3
23	BASTIN, SERAPHINE	G	7	3-6	0-0	1-3	1	3	4	1	1	0	0	2	19	-3
24	COLBERT, TRAJATA	F	2	1-1	0-0	0-0	0	0	0	0	0	0	0	0	6	-2
31	DANIELSSON, VENDELA	G	0	0-4	0-4	0-0	0	0	0	0	2	0	0	1	7	0
34	SMITH, SHYIA	F	0	0-0	0-0	0-0	0	0	0	2	0	1	0	0	7	3
42	HENDERSON, ASIA	F	2	1-5	0-0	0-0	3	3	6	1	0	1	1	0	9	-7
	TEAM		0	0-0	0-0	0-0	0	0	0	0	0	1	0	0	0	
TOTALS			28	11-27	2-10	4-7	7	9	16	9	5	8	1	6	100	

Shooting By Period

Period	FG	FG%	3FG	3FG%	FT	FT%
1st Qtr	6-11	55%	1-3	33%	3-5	60%
2nd Qtr	5-16	31%	1-7	14%	1-2	50%
1st Half	11-27	41%	2-10	20%	4-7	57%
Game	20-59	33.9%	6-22	27.3%	10-13	76.9%

Deadball Rebounds: 3,1

Last FG Half: WSU 2nd-00:40

Game Notes:

Officials: Fatou Cissoko-Stephens,Michelle Kramer,John

Fletcher

Attendance: 1703

Start Time: 03:05 PM ET

End Time: 05:05 PM ET

Game Duration: 2:00

Conference Game;

Score	1st	2nd	3rd	4th	TOT
TLN	19	15	7	20	61
WSU	16	12	14	14	56

Points from (This Period)	TLN	WSU
In the Paint	8	18
Off Turns	12	9
2nd Chance	11	2
Fast Break	2	4
Bench	11	7

Official Box Score
Tulane vs Wichita St.
First Quarter Statistics Only
January 05, 2020 at Charles Koch Arena (Devlin Court) - Wichita, Kan.



Tulane 19

No.	Player	S	Pts	FG	3FG	FT	OR	DR	TR	PF	A	TO	Blk	Stl	Min	+/-
00	CLARK, ARSULA	G	4	2-4	0-0	0-1	0	0	0	1	0	1	0	0	10	3
01	ANDERSON, KAILA	G	0	0-0	0-0	0-0	0	0	0	0	0	1	0	0	2	-4
12	CHEATHAM, SIERRA	G	5	1-2	1-2	2-3	0	1	1	0	1	0	0	0	10	3
21	PARAU, IRINA	F	3	1-1	1-1	0-0	1	0	1	0	0	3	0	0	7	-2
23	FREEMAN, KRYSTAL	F	3	1-2	1-1	0-0	1	2	3	1	1	1	0	0	9	-1
05	MANUIRIRANGI, KAYLA	G	0	0-0	0-0	0-0	0	0	0	0	0	0	0	0	0	0
11	BATES, SALMA	G	0	0-0	0-0	0-0	0	0	0	0	0	0	0	0	0	0
14	JONES, DYNAH	G	0	0-0	0-0	0-2	1	0	1	0	2	0	0	1	3	5
15	GRANT, ANIJAH	F	0	0-0	0-0	0-0	0	0	0	0	0	0	0	0	0	0
30	MIMMS, DENE'	F	0	0-0	0-0	0-0	0	0	0	0	0	0	0	0	1	4
42	HEIDE, MIA	F	4	2-3	0-0	0-2	1	0	1	1	2	0	0	0	8	7
	TEAM						1	1	2	0		0				
TOTALS			19	7-12	3-4	2-8	5	4	9	3	6	6	0	1	50	

Shooting By Period

Period	FG	FG%	3FG	3FG%	FT	FT%
1st Qtr	7-12	58%	3-4	75%	2-8	25%
2nd Qtr	5-15	33%	3-9	33%	2-2	100%
1st Half	7-12	58%	3-4	75%	2-8	25%
1st Half	12-27	44%	6-13	46%	4-10	40%
Game	19-46	41.3%	8-20	40.0%	15-22	68.2%

Deadball Rebounds: 3,0

Wichita St. 16

No.	Player	S	Pts	FG	3FG	FT	OR	DR	TR	PF	A	TO	Blk	Stl	Min	+/-
02	MCCULLY, MARIAH	G	2	1-1	0-0	0-0	0	1	1	1	0	1	0	1	6	0
12	BREMAUD, CARLA	G	2	1-1	0-0	0-0	0	0	0	1	1	1	0	1	6	0
13	PRINCE, RAVEN	F	2	0-0	0-0	2-2	0	0	0	1	0	0	0	0	10	-4
23	BASTIN, SERAPHINE	G	7	3-6	0-0	1-3	0	1	1	0	0	0	0	2	9	0
34	SMITH, SHYIA	F	0	0-0	0-0	0-0	0	0	0	2	0	1	0	0	7	3
05	REID, ASHLEY	G	3	1-1	1-1	0-0	0	0	0	0	0	0	0	0	5	-6
11	KIRVEN, ASHLEI	F	0	0-0	0-0	0-0	0	0	0	0	0	0	0	0	0	0
21	BREWER, MAYA	G	0	0-2	0-2	0-0	1	0	1	1	1	1	0	0	4	-3
24	COLBERT, TRAJATA	F	0	0-0	0-0	0-0	0	0	0	0	0	0	0	0	0	0
31	DANIELSSON, VENDELA	G	0	0-0	0-0	0-0	0	0	0	0	0	0	0	0	0	0
42	HENDERSON, ASIA	F	0	0-0	0-0	0-0	0	1	1	0	0	0	0	0	3	-5
	TEAM						0	0	0	0		0				
TOTALS			16	6-11	1-3	3-5	1	3	4	6	2	4	0	4	50	

Shooting By Period

Period	FG	FG%	3FG	3FG%	FT	FT%
1st Qtr	6-11	55%	1-3	33%	3-5	60%
2nd Qtr	5-16	31%	1-7	14%	1-2	50%
1st Half	6-11	55%	1-3	33%	3-5	60%
1st Half	11-27	41%	2-10	20%	4-7	57%
Game	20-59	33.9%	6-22	27.3%	10-13	76.9%

Deadball Rebounds: 3,1

Game Notes:

Officials: **Fatou Cissoko-Stephens, Michelle Kramer, John Fletcher**

Attendance: **1703**

Start Time: **03:05 PM ET**

End Time: **05:05 PM ET**

Game Duration: **2:00**

Conference Game;

Score	1st	2nd	3rd	4th	TOT
TLN	19	15	7	20	61
WSU	16	12	14	14	56

Points from (This Period)	TLN	WSU
In the Paint	6	10
Off Turns	7	7
2nd Chance	4	0
Fast Break	2	3
Bench	4	3

**Official By-Play
Tulane vs Wichita St.
First Quarter**

January 05, 2020 at Charles Koch Arena (Devlin Court) - Wichita, Kan.



Period 1

Starters:

Tulane: 0 CLARK, ARSULA (G); 1 ANDERSON, KAILA (G); 12 CHEATHAM, SIERRA (G); 21 PARAU, IRINA (F); 23 FREEMAN, KRYSTAL (F);
Wichita St.: 2 MCCULLY, MARIAH (G); 12 BREMAUD, CARLA (G); 13 PRINCE, RAVEN (F); 23 BASTIN, SERAPHINE (G); 34 SMITH, SHYIA (F);

Time	VISITORS: Tulane	Score	Margin	HOME: Wichita St.
09:33				FOUL (PERSONAL) by MCCULLY, MARIAH
09:31	TURNOVER (LOSTBALL) by PARAU, IRINA			
09:31				STEAL by BREMAUD, CARLA
09:22				TURNOVER (BADPASS) by MCCULLY, MARIAH
08:56	MISSED LAYUP by FREEMAN, KRYSTAL			
08:53				REBOUND (DEF) by BASTIN, SERAPHINE
08:50		2-0	H 2	GOOD! LAYUP by BASTIN, SERAPHINE [FB]
08:50	FOUL (PERSONAL) by CLARK, ARSULA			
08:50				MISSED FT by BASTIN, SERAPHINE
08:47	REBOUND (DEF) by TEAM			
08:42	TURNOVER (BADPASS) by ANDERSON, KAILA			
08:42				STEAL by MCCULLY, MARIAH
08:38		4-0	H 4	GOOD! LAYUP by MCCULLY, MARIAH
08:14	MISSED JUMPER by CLARK, ARSULA			
08:08				REBOUND (DEF) by MCCULLY, MARIAH
08:01	SUB OUT: ANDERSON, KAILA			
08:01	SUB IN: HEIDE, MIA			
07:45		6-0	H 6	GOOD! LAYUP by BASTIN, SERAPHINE
07:45				ASSIST by BREMAUD, CARLA
07:26	GOOD! 3PTR by PARAU, IRINA	6-3	H 3	
07:26	ASSIST by FREEMAN, KRYSTAL			
07:07		8-3	H 5	GOOD! LAYUP by BASTIN, SERAPHINE
06:54	TURNOVER (TRAVEL) by CLARK, ARSULA			
06:48				MISSED LAYUP by BASTIN, SERAPHINE
06:44	REBOUND (DEF) by CHEATHAM, SIERRA			
06:36				FOUL (PERSONAL) by BREMAUD, CARLA
06:16	TURNOVER (BADPASS) by PARAU, IRINA			
06:16				STEAL by BASTIN, SERAPHINE
06:05		10-3	H 7	GOOD! JUMPER by BREMAUD, CARLA [PNT]
05:38	TURNOVER (OTHER) by FREEMAN, KRYSTAL			
05:38				SUB OUT: BASTIN, SERAPHINE
05:38				SUB IN: REID, ASHLEY
05:16	FOUL (PERSONAL) by FREEMAN, KRYSTAL			
05:16		11-3	H 8	GOOD! FT by PRINCE, RAVEN
05:16		12-3	H 9	GOOD! FT by PRINCE, RAVEN
05:01	GOOD! 3PTR by FREEMAN, KRYSTAL	12-6	H 6	
05:01	ASSIST by HEIDE, MIA			
04:46				TURNOVER (TRAVEL) by SMITH, SHYIA
04:46				
04:24	MISSED 3PTR by CHEATHAM, SIERRA			
04:18	REBOUND (OFF) by PARAU, IRINA			
04:14	GOOD! LAYUP by CLARK, ARSULA	12-8	H 4	
04:14	ASSIST by HEIDE, MIA			
04:14				FOUL (PERSONAL) by SMITH, SHYIA
04:14				SUB OUT: MCCULLY, MARIAH
04:14				SUB OUT: BREMAUD, CARLA
04:14				SUB IN: BREWER, MAYA
04:14				SUB IN: BASTIN, SERAPHINE
04:14	MISSED FT by CLARK, ARSULA			
04:14	REBOUND (OFF) by FREEMAN, KRYSTAL			
03:53	GOOD! LAYUP by HEIDE, MIA	12-10	H 2	
03:53	ASSIST by CHEATHAM, SIERRA			
03:30				MISSED 3PTR by BREWER, MAYA
03:27	REBOUND (DEF) by FREEMAN, KRYSTAL			
03:15	TURNOVER (LOSTBALL) by PARAU, IRINA			
03:15				STEAL by BASTIN, SERAPHINE
03:11	FOUL (PERSONAL) by HEIDE, MIA			
03:11				SUB OUT: PRINCE, RAVEN
03:11				SUB IN: HENDERSON, ASIA
03:11	SUB OUT: PARAU, IRINA			
03:11	SUB IN: JONES, DYNAH			
03:11				MISSED FT by BASTIN, SERAPHINE
03:11				REBOUND (OFF) by TEAM
03:11		13-10	H 3	GOOD! FT by BASTIN, SERAPHINE [FB]
02:56	MISSED LAYUP by HEIDE, MIA			
02:55	REBOUND (OFF) by HEIDE, MIA			
02:55				FOUL (PERSONAL) by SMITH, SHYIA
02:55				SUB OUT: SMITH, SHYIA
02:55				SUB IN: PRINCE, RAVEN
02:55	MISSED FT by HEIDE, MIA			

Time	VISITORS: Tulane	Score	Margin	HOME: Wichita St.
02:55	REBOUND (OFF) by TEAM			
02:55	MISSED FT by HEIDE, MIA			
02:55	REBOUND (OFF) by TEAM			
02:34	MISSED JUMPER by CLARK, ARSULA			
02:34	REBOUND (OFF) by JONES, DYNAH			
02:34				FOUL (PERSONAL) by PRINCE, RAVEN
02:34	MISSED FT by JONES, DYNAH			
02:34	REBOUND (OFF) by TEAM			
02:34	MISSED FT by JONES, DYNAH			
02:33				REBOUND (DEF) by HENDERSON, ASIA
02:17		16-10	H 6	GOOD! 3PTR by REID, ASHLEY
02:17				ASSIST by BREWER, MAYA
01:49	GOOD! JUMPER by CLARK, ARSULA	16-12	H 4	
01:29				MISSED 3PTR by BREWER, MAYA
01:26				REBOUND (OFF) by BREWER, MAYA
01:22				TURNOVER (BADPASS) by BREWER, MAYA
01:07	GOOD! 3PTR by CHEATHAM, SIERRA	16-15	H 1	
01:07	ASSIST by JONES, DYNAH			
00:42				MISSED LAYUP by BASTIN, SERAPHINE
00:39	REBOUND (DEF) by FREEMAN, KRYSTAL			
00:33				FOUL (PERSONAL) by BREWER, MAYA
00:33				SUB OUT: REID, ASHLEY
00:33				SUB OUT: BREWER, MAYA
00:33				SUB IN: MCCULLY, MARIAH
00:33				SUB IN: BREMAUD, CARLA
00:33	SUB OUT: FREEMAN, KRYSTAL			
00:33	SUB IN: MIMMS, DENE'			
00:33	GOOD! FT by CHEATHAM, SIERRA	16-16	T	
00:33	MISSED FT by CHEATHAM, SIERRA			
00:33	REBOUND (OFF) by TEAM			
00:33	GOOD! FT by CHEATHAM, SIERRA	16-17	V 1	
00:10				TURNOVER (BADPASS) by BREMAUD, CARLA
00:10	STEAL by JONES, DYNAH			
00:03	GOOD! LAYUP by HEIDE, MIA [FB]	16-19	V 3	
00:03	ASSIST by JONES, DYNAH			
00:00				MISSED LAYUP by BASTIN, SERAPHINE
00:00				REBOUND (OFF) by TEAM

Tulane 19, Wichita St. 16

Points from (This Period)	TLN	WSU
In the Paint	6	10
Off Turns	7	7
2nd Chance	4	0
Fast Break	2	3
Bench	4	3

Official Box Score
Tulane vs Wichita St.
Second Quarter Statistics Only
January 05, 2020 at Charles Koch Arena (Devlin Court) - Wichita, Kan.



Tulane 15

No.	Player	S	Pts	FG	3FG	FT	OR	DR	TR	PF	A	TO	Blk	Stl	Min	+/-
00	CLARK, ARSULA	G	2	1-2	0-0	0-0	0	1	1	0	1	1	0	0	7	1
01	ANDERSON, KAILA	G	0	0-0	0-0	0-0	0	0	0	0	0	0	0	0	0	0
12	CHEATHAM, SIERRA	G	6	2-4	2-4	0-0	1	1	2	1	0	1	0	1	8	3
21	PARAU, IRINA	F	0	0-2	0-1	0-0	0	0	0	0	0	0	0	0	6	2
23	FREEMAN, KRYSTAL	F	0	0-0	0-0	0-0	0	0	0	1	0	0	0	0	3	-1
05	MANUIRIRANGI, KAYLA	G	3	1-3	1-3	0-0	0	0	0	1	0	1	0	0	6	3
11	BATES, SALMA	G	0	0-1	0-1	0-0	1	1	2	0	3	0	0	0	7	2
14	JONES, DYNAH	G	2	0-0	0-0	2-2	0	0	0	0	0	0	0	0	2	0
15	GRANT, ANIJAH	F	2	1-2	0-0	0-0	0	1	1	0	0	0	0	1	6	2
30	MIMMS, DENE'	F	0	0-0	0-0	0-0	0	0	0	0	1	0	0	0	3	1
42	HEIDE, MIA	F	0	0-1	0-0	0-0	0	1	1	1	0	0	1	0	1	2
	TEAM						2	0	2	0		1				
TOTALS			15	5-15	3-9	2-2	4	5	9	4	5	4	1	2	50	

Shooting By Period

Period	FG	FG%	3FG	3FG%	FT	FT%
3rd Qtr	3-8	38%	0-2	00%	1-1	100%
4th Qtr	4-11	36%	2-5	40%	10-11	91%
2nd Half	5-15	33%	3-9	33%	2-2	100%
2nd Half	7-19	37%	2-7	29%	11-12	92%
Game	19-46	41.3%	8-20	40.0%	15-22	68.2%

Deadball Rebounds: 3,0

Wichita St. 12

No.	Player	S	Pts	FG	3FG	FT	OR	DR	TR	PF	A	TO	Blk	Stl	Min	+/-
02	MCCULLY, MARIAH	G	4	1-3	1-2	1-2	1	0	1	0	0	1	0	0	10	-3
12	BREMAUD, CARLA	G	0	0-1	0-1	0-0	0	1	1	1	0	0	0	0	1	0
13	PRINCE, RAVEN	F	4	2-2	0-0	0-0	0	0	0	0	0	1	0	0	4	-1
23	BASTIN, SERAPHINE	G	0	0-0	0-0	0-0	1	2	3	1	1	0	0	0	10	-3
34	SMITH, SHYIA	F	0	0-0	0-0	0-0	0	0	0	0	0	0	0	0	0	0
05	REID, ASHLEY	G	0	0-0	0-0	0-0	0	0	0	0	0	0	0	0	2	-3
11	KIRVEN, ASHLEI	F	0	0-0	0-0	0-0	1	1	2	0	0	0	0	1	4	-1
21	BREWER, MAYA	G	0	0-0	0-0	0-0	0	0	0	0	0	0	0	0	0	0
24	COLBERT, TRAJATA	F	2	1-1	0-0	0-0	0	0	0	0	0	0	0	0	6	-2
31	DANIELSSON, VENDELA	G	0	0-4	0-4	0-0	0	0	0	0	2	0	0	1	7	0
42	HENDERSON, ASIA	F	2	1-5	0-0	0-0	3	2	5	1	0	1	1	0	6	-2
	TEAM						0	0	0	0		1				
TOTALS			12	5-16	1-7	1-2	6	6	12	3	3	4	1	2	50	

Shooting By Period

Period	FG	FG%	3FG	3FG%	FT	FT%
3rd Qtr	5-16	31%	2-4	50%	2-2	100%
4th Qtr	4-16	25%	2-8	25%	4-4	100%
2nd Half	5-16	31%	1-7	14%	1-2	50%
2nd Half	9-32	28%	4-12	33%	6-6	100%
Game	20-59	33.9%	6-22	27.3%	10-13	76.9%

Deadball Rebounds: 3,1

Game Notes:

Officials: **Fatou Cissoko-Stephens, Michelle Kramer, John Fletcher**

Attendance: **1703**

Start Time: **03:05 PM ET**

End Time: **05:05 PM ET**

Game Duration: **2:00**

Conference Game;

Score	1st	2nd	3rd	4th	TOT
TLN	19	15	7	20	61
WSU	16	12	14	14	56

Points from (This Period)	TLN	WSU
In the Paint	2	8
Off Turns	5	2
2nd Chance	7	2
Fast Break	0	1
Bench	7	4

**Official Play-By-Play
Tulane vs Wichita St.
Second Quarter**

January 05, 2020 at Charles Koch Arena (Devlin Court) - Wichita, Kan.



Period 2

Starters:

Tulane: 0 CLARK,ARSULA (G); 1 ANDERSON,KAILA (G); 12 CHEATHAM,SIERRA (G); 21 PARAU,IRINA (F); 23 FREEMAN,KRYSTAL (F);

Wichita St.: 2 MCCULLY,MARIAH (G); 12 BREMAUD,CARLA (G); 13 PRINCE,RAVEN (F); 23 BASTIN,SERAPHINE (G); 34 SMITH,SHYIA (F);

Time	VISITORS: Tulane	Score	Margin	HOME: Wichita St.
10:00				SUB OUT: HENDERSON, ASIA
10:00				SUB IN: KIRVEN, ASHLEI
10:00	SUB OUT: CHEATHAM, SIERRA			
10:00	SUB IN: MANUIRIRANGI, KAYLA			
09:39	MISSED 3PTR by MANUIRIRANGI, KAYLA			
09:35				REBOUND (DEF) by BREMAUD, CARLA
09:29				MISSED 3PTR by BREMAUD, CARLA
09:25	REBOUND (DEF) by CLARK, ARSULA			
09:16	MISSED JUMPER by CLARK, ARSULA			
09:14	REBOUND (OFF) by TEAM			
09:14				FOUL (PERSONAL) by BREMAUD, CARLA
09:14				SUB OUT: BREMAUD, CARLA
09:14				SUB IN: DANIELSSON, VENDELA
09:08				FOUL (PERSONAL) by BASTIN, SERAPHINE
09:08	GOOD! FT by JONES, DYNAH	16-20	V 4	
09:08	GOOD! FT by JONES, DYNAH	16-21	V 5	
09:08	SUB OUT: HEIDE, MIA			
09:08	SUB IN: FREEMAN, KRYSTAL			
08:56		18-21	V 3	GOOD! LAYUP by PRINCE, RAVEN
08:56				ASSIST by DANIELSSON, VENDELA
08:39	MISSED 3PTR by MANUIRIRANGI, KAYLA			
08:36				REBOUND (DEF) by KIRVEN, ASHLEI
08:15				MISSED JUMPER by MCCULLY, MARIAH
08:12				REBOUND (OFF) by BASTIN, SERAPHINE
07:59				MISSED 3PTR by DANIELSSON, VENDELA
07:56				REBOUND (OFF) by KIRVEN, ASHLEI
07:53				TURNOVER (OTHER) by TEAM
07:53	SUB OUT: JONES, DYNAH			
07:53	SUB IN: CHEATHAM, SIERRA			
07:35	TURNOVER (BADPASS) by CLARK, ARSULA			
07:35				STEAL by KIRVEN, ASHLEI
07:23		20-21	V 1	GOOD! LAYUP by PRINCE, RAVEN
06:57	GOOD! 3PTR by MANUIRIRANGI, KAYLA	20-24	V 4	
06:57	ASSIST by MIMMS, DENE'			
06:39				MISSED 3PTR by MCCULLY, MARIAH
06:38				REBOUND (OFF) by MCCULLY, MARIAH
06:38	FOUL (PERSONAL) by MANUIRIRANGI, KAYLA			
06:38	SUB OUT: CLARK, ARSULA			
06:38	SUB OUT: MIMMS, DENE'			
06:38	SUB IN: BATES, SALMA			
06:38	SUB IN: HEIDE, MIA			
06:30				SUB OUT: PRINCE, RAVEN
06:30				SUB IN: HENDERSON, ASIA
06:28				MISSED JUMPER by HENDERSON, ASIA
06:28	BLOCK by HEIDE, MIA			
06:27	REBOUND (DEF) by HEIDE, MIA			
06:27	MISSED LAYUP by HEIDE, MIA			
06:27				REBOUND (DEF) by HENDERSON, ASIA
06:27				SUB OUT: KIRVEN, ASHLEI
06:27				SUB IN: PRINCE, RAVEN
06:27	SUB OUT: HEIDE, MIA			
06:27	SUB IN: PARAU, IRINA			
06:27	FOUL (PERSONAL) by HEIDE, MIA			
06:15				TURNOVER (TRAVEL) by PRINCE, RAVEN
05:52	MISSED JUMPER by PARAU, IRINA			
05:49				REBOUND (DEF) by BASTIN, SERAPHINE
05:42	FOUL (PERSONAL) by FREEMAN, KRYSTAL			
05:42				SUB OUT: PRINCE, RAVEN
05:42				SUB IN: COLBERT, TRAJATA
05:42	SUB OUT: FREEMAN, KRYSTAL			
05:42	SUB IN: GRANT, ANIJAH			
05:31				MISSED 3PTR by DANIELSSON, VENDELA
05:27				REBOUND (OFF) by HENDERSON, ASIA
05:25				TURNOVER (LOSTBALL) by HENDERSON, ASIA
05:25	STEAL by CHEATHAM, SIERRA			
05:15	MISSED 3PTR by CHEATHAM, SIERRA			
05:15	REBOUND (OFF) by TEAM			
05:15				FOUL (PERSONAL) by HENDERSON, ASIA
04:56	GOOD! LAYUP by GRANT, ANIJAH	20-26	V 6	
04:56	ASSIST by BATES, SALMA			

Time	VISITORS: Tulane	Score	Margin	HOME: Wichita St.
04:33				MISSED JUMPER by HENDERSON, ASIA
04:29	REBOUND (DEF) by GRANT, ANIJAH			
04:21	TURNOVER (LOSTBALL) by CHEATHAM, SIERRA			
04:21				STEAL by DANIELSSON, VENDELA
04:06				MISSED 3PTR by DANIELSSON, VENDELA
04:03	REBOUND (DEF) by CHEATHAM, SIERRA			
03:49	TURNOVER (TRAVEL) by MANUIRIRANGI, KAYLA			
03:49				
03:49	SUB OUT: MANUIRIRANGI, KAYLA			
03:49	SUB IN: CLARK, ARSULA			
03:38				MISSED 3PTR by DANIELSSON, VENDELA
03:34	REBOUND (DEF) by BATES, SALMA			
03:29	GOOD! JUMPER by CLARK, ARSULA	20-28	V 8	
03:29	ASSIST by BATES, SALMA			
03:07		23-28	V 5	GOOD! 3PTR by MCCULLY, MARIAH
03:07				ASSIST by DANIELSSON, VENDELA
02:48	MISSED 3PTR by CHEATHAM, SIERRA			
02:44				REBOUND (DEF) by BASTIN, SERAPHINE
02:23				MISSED JUMPER by HENDERSON, ASIA
02:16				REBOUND (OFF) by HENDERSON, ASIA
02:16				MISSED LAYUP by HENDERSON, ASIA
02:15				REBOUND (OFF) by HENDERSON, ASIA
02:15		25-28	V 3	GOOD! LAYUP by COLBERT, TRAJATA
01:59	MISSED 3PTR by BATES, SALMA			
01:56				REBOUND (DEF) by HENDERSON, ASIA
01:55	FOUL (PERSONAL) by CHEATHAM, SIERRA			
01:55				SUB OUT: DANIELSSON, VENDELA
01:55				SUB IN: REID, ASHLEY
01:55				MISSED FT by MCCULLY, MARIAH
01:55				REBOUND (OFF) by TEAM
01:55		26-28	V 2	GOOD! FT by MCCULLY, MARIAH [FB]
01:48	GOOD! 3PTR by CHEATHAM, SIERRA	26-31	V 5	
01:48	ASSIST by BATES, SALMA			
01:27				TURNOVER (BADPASS) by MCCULLY, MARIAH
01:27	STEAL by GRANT, ANIJAH			
01:20	MISSED 3PTR by PARAU, IRINA			
01:16	REBOUND (OFF) by BATES, SALMA			
01:02	GOOD! 3PTR by CHEATHAM, SIERRA	26-34	V 8	
01:02	ASSIST by CLARK, ARSULA			
00:40		28-34	V 6	GOOD! LAYUP by HENDERSON, ASIA
00:40				ASSIST by BASTIN, SERAPHINE
00:06	MISSED JUMPER by GRANT, ANIJAH			
00:06				BLOCK by HENDERSON, ASIA
00:06	REBOUND (OFF) by CHEATHAM, SIERRA			
00:06	TURNOVER (SHOTCLOCK) by TEAM			
00:06				SUB OUT: HENDERSON, ASIA
00:06				SUB IN: KIRVEN, ASHLEI

Tulane 34, Wichita St. 28

Points from (This Period)	TLN	WSU
In the Paint	2	8
Off Turns	5	2
2nd Chance	7	2
Fast Break	0	1
Bench	7	4

Official Box Score
Tulane vs Wichita St.
Second Half Statistics Only
January 05, 2020 at Charles Koch Arena (Devlin Court) - Wichita, Kan.



Tulane 27

No.	Player	S	Pts	FG	3FG	FT	OR	DR	TR	PF	A	TO	Blk	Stl	Min	+/-
00	CLARK, ARSULA	G	2	1-3	0-0	0-0	1	1	2	0	1	4	0	0	18	0
01	ANDERSON, KAILA	G	0	0-0	0-0	0-0	0	0	0	0	0	0	0	0	0	0
05	MANUIRIRANGI, KAYLA	G	11	3-6	2-3	3-3	1	2	3	0	1	1	0	0	17	-1
11	BATES, SALMA	G	0	0-1	0-1	0-0	0	1	1	2	0	1	0	0	5	-3
12	CHEATHAM, SIERRA	G	1	0-2	0-2	1-2	0	4	4	1	1	3	2	1	20	-1
14	JONES, DYNAH	G	0	0-0	0-0	0-0	0	0	0	0	0	0	0	0	0	0
15	GRANT, ANIJAH	F	2	1-2	0-0	0-0	0	2	2	0	0	0	0	0	11	-4
21	PARAU, IRINA	F	0	0-0	0-0	0-0	0	0	0	0	0	0	0	0	0	4
23	FREEMAN, KRISTAL	F	9	2-5	0-1	5-5	1	2	3	2	0	2	0	1	20	-1
30	MIMMS, DENE'	F	0	0-0	0-0	0-0	0	0	0	0	0	0	0	0	0	0
42	HEIDE, MIA	F	2	0-0	0-0	2-2	1	1	2	2	0	1	1	0	9	1
	TEAM		0	0-0	0-0	0-0	0	3	3	0	0	4	0	0	0	0
TOTALS			27	7-19	2-7	11-12	4	16	20	7	3	16	3	2	100	

Shooting By Period

Period	FG	FG%	3FG	3FG%	FT	FT%
3rd Qtr	3-8	38%	0-2	00%	1-1	100%
4th Qtr	4-11	36%	2-5	40%	10-11	91%
2nd Half	7-19	37%	2-7	29%	11-12	92%
Game	19-46	41.3%	8-20	40.0%	15-22	68.2%

Deadball Rebounds: 3,0
 Last FG Half: TLN 4th-03:46

Wichita St. 28

No.	Player	S	Pts	FG	3FG	FT	OR	DR	TR	PF	A	TO	Blk	Stl	Min	+/-
02	MCCULLY, MARIAH	G	7	3-13	1-4	0-0	1	2	3	1	0	3	0	3	18	-1
05	REID, ASHLEY	G	0	0-1	0-0	0-0	0	0	0	1	1	1	0	0	7	-1
11	KIRVEN, ASHLEI	F	2	1-2	0-0	0-0	1	0	1	1	0	0	0	0	4	-2
12	BREMAUD, CARLA	G	5	2-7	1-5	0-0	0	2	2	0	0	0	1	0	15	4
13	PRINCE, RAVEN	F	0	0-2	0-0	0-0	0	1	1	1	1	0	0	2	13	4
21	BREWER, MAYA	G	0	0-0	0-0	0-0	0	0	0	1	0	0	0	0	4	-1
23	BASTIN, SERAPHINE	G	2	0-1	0-1	2-2	2	1	3	1	2	0	0	1	16	2
24	COLBERT, TRAJATA	F	0	0-0	0-0	0-0	0	0	0	0	0	0	0	0	0	0
31	DANIELSSON, VENDELA	G	0	0-0	0-0	0-0	0	0	0	0	0	0	0	0	0	0
34	SMITH, SHYIA	F	8	3-4	2-2	0-0	1	1	2	3	0	2	0	0	13	3
42	HENDERSON, ASIA	F	4	0-2	0-0	4-4	1	1	2	1	0	2	1	0	9	-3
	TEAM		0	0-0	0-0	0-0	1	0	1	0	0	1	0	0	0	0
TOTALS			28	9-32	4-12	6-6	7	8	15	10	4	9	2	6	100	

Shooting By Period

Period	FG	FG%	3FG	3FG%	FT	FT%
3rd Qtr	5-16	31%	2-4	50%	2-2	100%
4th Qtr	4-16	25%	2-8	25%	4-4	100%
2nd Half	9-32	28%	4-12	33%	6-6	100%
Game	20-59	33.9%	6-22	27.3%	10-13	76.9%

Deadball Rebounds: 3,1
 Last FG Half: WSU 4th-01:55

Game Notes:

Officials: Fatou Cissoko-Stephens,Michelle Kramer,John

Fletcher

Attendance: 1703

Start Time: 03:05 PM ET

End Time: 05:05 PM ET

Game Duration: 2:00

Conference Game;

Score	1st	2nd	3rd	4th	TOT
TLN	19	15	7	20	61
WSU	16	12	14	14	56

Points from (This Period)	TLN	WSU
In the Paint	10	10
Off Turns	9	8
2nd Chance	4	9
Fast Break	3	6
Bench	15	6

Official Box Score
Tulane vs Wichita St.
Third Quarter Statistics Only
January 05, 2020 at Charles Koch Arena (Devlin Court) - Wichita, Kan.



Tulane 27

No.	Player	S	Pts	FG	3FG	FT	OR	DR	TR	PF	A	TO	Blk	Stl	Min	+/-
00	CLARK, ARSULA	G	0	0-1	0-0	0-0	0	1	1	0	1	2	0	0	10	-7
01	ANDERSON, KAILA	G	0	0-0	0-0	0-0	0	0	0	0	0	0	0	0	0	0
12	CHEATHAM, SIERRA	G	0	0-0	0-0	0-0	0	3	3	0	0	3	1	1	10	-7
21	PARAU, IRINA	F	0	0-0	0-0	0-0	0	0	0	0	0	0	0	0	0	0
23	FREEMAN, KRYSTAL	F	2	1-4	0-1	0-0	0	1	1	1	0	1	0	1	10	-7
05	MANUIRIRANGI, KAYLA	G	3	1-1	0-0	1-1	0	1	1	0	0	1	0	0	7	-5
11	BATES, SALMA	G	0	0-1	0-1	0-0	0	1	1	2	0	0	0	0	3	-2
14	JONES, DYNAH	G	0	0-0	0-0	0-0	0	0	0	0	0	0	0	0	0	0
15	GRANT, ANIJAH	F	2	1-1	0-0	0-0	0	1	1	0	0	0	0	0	7	-4
30	MIMMS, DENE'	F	0	0-0	0-0	0-0	0	0	0	0	0	0	0	0	0	0
42	HEIDE, MIA	F	0	0-0	0-0	0-0	0	0	0	2	0	1	0	0	3	-3
	TEAM						0	0	0	0		2				
TOTALS			7	3-8	0-2	1-1	0	8	8	5	1	10	1	2	50	

Shooting By Period

Period	FG	FG%	3FG	3FG%	FT	FT%
2nd Half	0-0	0%	0-0	0%	0-0	0%
Game	19-46	41.3%	8-20	40.0%	15-22	68.2%

Deadball Rebounds: 3,0

Wichita St. 28

No.	Player	S	Pts	FG	3FG	FT	OR	DR	TR	PF	A	TO	Blk	Stl	Min	+/-
02	MCCULLY, MARIAH	G	5	2-8	1-2	0-0	1	1	2	0	0	0	0	1	8	5
12	BREMAUD, CARLA	G	2	1-3	0-1	0-0	0	1	1	0	0	0	0	0	8	9
13	PRINCE, RAVEN	F	0	0-0	0-0	0-0	0	0	0	0	0	0	0	0	6	7
23	BASTIN, SERAPHINE	G	2	0-0	0-0	2-2	1	0	1	0	2	0	0	1	9	7
34	SMITH, SHYIA	F	5	2-3	1-1	0-0	1	1	2	1	0	2	0	0	10	7
05	REID, ASHLEY	G	0	0-1	0-0	0-0	0	0	0	1	0	1	0	0	4	0
11	KIRVEN, ASHLEI	F	0	0-0	0-0	0-0	0	0	0	0	0	0	0	0	0	0
21	BREWER, MAYA	G	0	0-0	0-0	0-0	0	0	0	0	0	0	0	0	1	0
24	COLBERT, TRAJATA	F	0	0-0	0-0	0-0	0	0	0	0	0	0	0	0	0	0
31	DANIELSSON, VENDELA	G	0	0-0	0-0	0-0	0	0	0	0	0	0	0	0	0	0
42	HENDERSON, ASIA	F	0	0-1	0-0	0-0	0	1	1	0	0	1	1	0	4	0
	TEAM						0	0	0	0		1				
TOTALS			14	5-16	2-4	2-2	3	4	7	2	2	5	1	2	50	

Shooting By Period

Period	FG	FG%	3FG	3FG%	FT	FT%
2nd Half	0-0	0%	0-0	0%	0-0	0%
Game	20-59	33.9%	6-22	27.3%	10-13	76.9%

Deadball Rebounds: 3,1

Game Notes:

Officials: **Fatou Cissoko-Stephens, Michelle Kramer, John Fletcher**
 Attendance: 1703

Start Time: **03:05 PM ET**
 End Time: **05:05 PM ET**
 Game Duration: **2:00**
 Conference Game;

Score	1st	2nd	3rd	4th	TOT
TLN	19	15	7	20	61
WSU	16	12	14	14	56

Points from (This Period)	TLN	WSU
In the Paint	6	6
Off Turns	2	4
2nd Chance	0	5
Fast Break	3	4
Bench	5	0

**Official By-By-Play
Tulane vs Wichita St.
Third Quarter**

January 05, 2020 at Charles Koch Arena (Devlin Court) - Wichita, Kan.



Period 3

Starters:

Tulane: 0 CLARK, ARSULA (G); 1 ANDERSON, KAILA (G); 12 CHEATHAM, SIERRA (G); 21 PARAU, IRINA (F); 23 FREEMAN, KRYSTAL (F);

Wichita St.: 2 MCCULLY, MARIAH (G); 12 BREMAUD, CARLA (G); 13 PRINCE, RAVEN (F); 23 BASTIN, SERAPHINE (G); 34 SMITH, SHYIA (F);

Time	VISITORS: Tulane	Score	Margin	HOME: Wichita St.
10:00				SUB OUT: REID, ASHLEY
10:00				SUB OUT: KIRVEN, ASHLEI
10:00				SUB OUT: COLBERT, TRAJATA
10:00				SUB IN: BREMAUD, CARLA
10:00				SUB IN: PRINCE, RAVEN
10:00				SUB IN: SMITH, SHYIA
10:00	SUB OUT: BATES, SALMA			
10:00	SUB OUT: GRANT, ANIJAH			
10:00	SUB OUT: PARAU, IRINA			
10:00	SUB IN: MANUIRIRANGI, KAYLA			
10:00	SUB IN: FREEMAN, KRYSTAL			
10:00	SUB IN: HEIDE, MIA			
09:35				TURNOVER (TRAVEL) by SMITH, SHYIA
09:18	TURNOVER (BADPASS) by MANUIRIRANGI, KAYLA			
09:18				STEAL by MCCULLY, MARIAH
09:12				MISSED JUMPER by MCCULLY, MARIAH
09:09	REBOUND (DEF) by CLARK, ARSULA			
09:01	MISSED 3PTR by FREEMAN, KRYSTAL			
08:57				REBOUND (DEF) by MCCULLY, MARIAH
08:53		30-34	V 4	GOOD! LAYUP by SMITH, SHYIA
08:33	TURNOVER (BADPASS) by CHEATHAM, SIERRA			
08:24				MISSED JUMPER by MCCULLY, MARIAH
08:20	REBOUND (DEF) by CHEATHAM, SIERRA			
08:13	GOOD! JUMPER by FREEMAN, KRYSTAL [PNT]	30-36	V 6	
07:51				MISSED 3PTR by BREMAUD, CARLA
07:48				REBOUND (OFF) by BASTIN, SERAPHINE
07:40		33-36	V 3	GOOD! 3PTR by MCCULLY, MARIAH
07:40				ASSIST by BASTIN, SERAPHINE
07:14	FOUL (OFF) by HEIDE, MIA			
07:14	TURNOVER (OFFENSIVE) by HEIDE, MIA			
07:14	SUB OUT: HEIDE, MIA			
07:14	SUB IN: GRANT, ANIJAH			
07:03				MISSED LAYUP by SMITH, SHYIA
07:00	REBOUND (DEF) by CHEATHAM, SIERRA			
06:56				FOUL (PERSONAL) by SMITH, SHYIA
06:54	TURNOVER (BADPASS) by CHEATHAM, SIERRA			
06:42				MISSED JUMPER by MCCULLY, MARIAH
06:39				REBOUND (OFF) by MCCULLY, MARIAH
06:37		35-36	V 1	GOOD! JUMPER by MCCULLY, MARIAH [PNT]
06:25	MISSED JUMPER by CLARK, ARSULA			
06:22				REBOUND (DEF) by BREMAUD, CARLA
06:17				MISSED 3PTR by MCCULLY, MARIAH
06:17	BLOCK by CHEATHAM, SIERRA			
06:12	REBOUND (DEF) by CHEATHAM, SIERRA			
05:48	TURNOVER (BADPASS) by CHEATHAM, SIERRA			
05:48				STEAL by BASTIN, SERAPHINE
05:43		37-36	H 1	GOOD! LAYUP by BREMAUD, CARLA [FB]
05:43				ASSIST by BASTIN, SERAPHINE
05:32	SUB OUT: MANUIRIRANGI, KAYLA			
05:32	SUB IN: BATES, SALMA			
05:08	TURNOVER (SHOTCLOCK) by TEAM			
04:47				MISSED LAYUP by MCCULLY, MARIAH
04:45				REBOUND (OFF) by SMITH, SHYIA
04:45				TURNOVER (5SEC) by TEAM
04:37	TURNOVER (BADPASS) by CLARK, ARSULA			
04:27				MISSED JUMPER by BREMAUD, CARLA
04:24	REBOUND (DEF) by BATES, SALMA			
04:11	MISSED JUMPER by FREEMAN, KRYSTAL			
04:08				REBOUND (DEF) by SMITH, SHYIA
04:04	FOUL (PERSONAL) by BATES, SALMA			
04:04				SUB OUT: MCCULLY, MARIAH
04:04				SUB OUT: PRINCE, RAVEN
04:04				SUB IN: REID, ASHLEY
04:04				SUB IN: HENDERSON, ASIA
04:04		38-36	H 2	GOOD! FT by BASTIN, SERAPHINE [FB]
04:04		39-36	H 3	GOOD! FT by BASTIN, SERAPHINE [FB]
03:37	MISSED 3PTR by BATES, SALMA			
03:34				REBOUND (DEF) by TEAM
03:22	FOUL (PERSONAL) by BATES, SALMA			

Time	VISITORS: Tulane	Score	Margin	HOME: Wichita St.
03:19				TURNOVER (TRAVEL) by HENDERSON, ASIA
03:03	TIMEOUT 30SEC			
03:03	SUB OUT: GRANT, ANIJAH			
03:03	SUB IN: HEIDE, MIA			
03:03	TURNOVER (5SEC) by TEAM			
02:55	FOUL (PERSONAL) by HEIDE, MIA			
02:55	SUB OUT: HEIDE, MIA			
02:55	SUB IN: GRANT, ANIJAH			
02:51				TURNOVER (LOSTBALL) by SMITH, SHYIA
02:51	STEAL by CHEATHAM, SIERRA			
02:33	MISSED LAYUP by FREEMAN, KRYSTAL			
02:33				BLOCK by HENDERSON, ASIA
02:29				REBOUND (DEF) by HENDERSON, ASIA
02:29	SUB OUT: BATES, SALMA			
02:29	SUB IN: MANUIRIRANGI, KAYLA			
02:29				SUB OUT: BREMAUD, CARLA
02:29				SUB IN: MCCULLY, MARIAH
02:20				TURNOVER (BADPASS) by REID, ASHLEY
02:20	STEAL by FREEMAN, KRYSTAL			
02:06	GOOD! LAYUP by GRANT, ANIJAH	39-38	H 1	
02:06	ASSIST by CLARK, ARSULA			
01:42		42-38	H 4	GOOD! 3PTR by SMITH, SHYIA
01:17	FOUL (OFF) by FREEMAN, KRYSTAL			
01:17	TURNOVER (OFFENSIVE) by FREEMAN, KRYSTAL			
01:00				MISSED JUMPER by MCCULLY, MARIAH
00:55	REBOUND (DEF) by MANUIRIRANGI, KAYLA			
00:53	GOOD! LAYUP by MANUIRIRANGI, KAYLA [FB]	42-40	H 2	
00:53				FOUL (PERSONAL) by REID, ASHLEY
00:53	GOOD! FT by MANUIRIRANGI, KAYLA [FB]	42-41	H 1	
00:53				SUB OUT: BASTIN, SERAPHINE
00:53				SUB IN: BREWER, MAYA
00:26				MISSED JUMPER by HENDERSON, ASIA
00:22	REBOUND (DEF) by GRANT, ANIJAH			
00:22	TURNOVER (LOSTBALL) by CLARK, ARSULA			
00:03				MISSED JUMPER by REID, ASHLEY
00:00	REBOUND (DEF) by FREEMAN, KRYSTAL			

Tulane 41, Wichita St. 42

Points from (This Period)	TLN	WSU
In the Paint	6	6
Off Turns	2	4
2nd Chance	0	5
Fast Break	3	4
Bench	5	0

Official Box Score
Tulane vs Wichita St.
Fourth Quarter Statistics Only
January 05, 2020 at Charles Koch Arena (Devlin Court) - Wichita, Kan.



Tulane 20

No.	Player	S	Pts	FG	3FG	FT	OR	DR	TR	PF	A	TO	Blk	Stl	Min	+/-
00	CLARK, ARSULA	G	2	1-2	0-0	0-0	1	0	1	0	0	2	0	0	8	7
01	ANDERSON, KAILA	G	0	0-0	0-0	0-0	0	0	0	0	0	0	0	0	0	0
12	CHEATHAM, SIERRA	G	1	0-2	0-2	1-2	0	1	1	1	1	0	1	0	10	6
21	PARAU, IRINA	F	0	0-0	0-0	0-0	0	0	0	0	0	0	0	0	0	4
23	FREEMAN, KRYSTAL	F	7	1-1	0-0	5-5	1	1	2	1	0	1	0	0	10	6
05	MANUIRIRANGI, KAYLA	G	8	2-5	2-3	2-2	1	1	2	0	1	0	0	0	10	4
11	BATES, SALMA	G	0	0-0	0-0	0-0	0	0	0	0	0	1	0	0	2	-1
14	JONES, DYNAH	G	0	0-0	0-0	0-0	0	0	0	0	0	0	0	0	0	0
15	GRANT, ANIJAH	F	0	0-1	0-0	0-0	0	1	1	0	0	0	0	0	4	0
30	MIMMS, DENE'	F	0	0-0	0-0	0-0	0	0	0	0	0	0	0	0	0	0
42	HEIDE, MIA	F	2	0-0	0-0	2-2	1	1	2	0	0	0	1	0	6	4
	TEAM						0	3	3	0		2				
TOTALS			20	4-11	2-5	10-11	4	8	12	2	2	6	2	0	50	

Shooting By Period

Period	FG	FG%	3FG	3FG%	FT	FT%
Game	19-46	41.3%	8-20	40.0%	15-22	68.2%

Deadball Rebounds: 3,0

Wichita St. 14

No.	Player	S	Pts	FG	3FG	FT	OR	DR	TR	PF	A	TO	Blk	Stl	Min	+/-
02	MCCULLY, MARIAH	G	2	1-5	0-2	0-0	0	1	1	1	0	3	0	2	10	-6
12	BREMAUD, CARLA	G	3	1-4	1-4	0-0	0	1	1	0	0	0	1	0	7	-5
13	PRINCE, RAVEN	F	0	0-2	0-0	0-0	0	1	1	1	1	0	0	2	7	-3
23	BASTIN, SERAPHINE	G	0	0-1	0-1	0-0	1	1	2	1	0	0	0	0	7	-5
34	SMITH, SHYIA	F	3	1-1	1-1	0-0	0	0	0	2	0	0	0	0	3	-4
05	REID, ASHLEY	G	0	0-0	0-0	0-0	0	0	0	0	1	0	0	0	3	-1
11	KIRVEN, ASHLEI	F	2	1-2	0-0	0-0	1	0	1	1	0	0	0	0	4	-2
21	BREWER, MAYA	G	0	0-0	0-0	0-0	0	0	0	1	0	0	0	0	3	-1
24	COLBERT, TRAJATA	F	0	0-0	0-0	0-0	0	0	0	0	0	0	0	0	0	0
31	DANIELSSON, VENDELA	G	0	0-0	0-0	0-0	0	0	0	0	0	0	0	0	0	0
42	HENDERSON, ASIA	F	4	0-1	0-0	4-4	1	0	1	1	0	1	0	0	5	-3
	TEAM						1	0	1	0		0				
TOTALS			14	4-16	2-8	4-4	4	4	8	8	2	4	1	4	50	

Shooting By Period

Period	FG	FG%	3FG	3FG%	FT	FT%
Game	20-59	33.9%	6-22	27.3%	10-13	76.9%

Deadball Rebounds: 3,1

Game Notes:

Officials: Fatou Cissoko-Stephens, Michelle Kramer, John

Fletcher

Attendance: 1703

Start Time: 03:05 PM ET

End Time: 05:05 PM ET

Game Duration: 2:00

Conference Game:

Score	1st	2nd	3rd	4th	TOT
TLN	19	15	7	20	61
WSU	16	12	14	14	56

Points from (This Period)	TLN	WSU
In the Paint	4	4
Off Turns	7	4
2nd Chance	4	4
Fast Break	0	2
Bench	10	6

**Official Play-By-Play
Tulane vs Wichita St.
Fourth Quarter**

January 05, 2020 at Charles Koch Arena (Devlin Court) - Wichita, Kan.



Period 4

Starters:

Tulane: 0 CLARK,ARSULA (G); 1 ANDERSON,KAILA (G); 12 CHEATHAM,SIERRA (G); 21 PARAU,IRINA (F); 23 FREEMAN,KRYSTAL (F);

Wichita St.: 2 MCCULLY,MARIAH (G); 12 BREMAUD,CARLA (G); 13 PRINCE,RAVEN (F); 23 BASTIN,SERAPHINE (G); 34 SMITH,SHYIA (F);

Time	VISITORS: Tulane	Score	Margin	HOME: Wichita St.
10:00				SUB OUT: HENDERSON, ASIA
10:00				SUB IN: KIRVEN, ASHLEI
09:48				FOUL (PERSONAL) by BREWER, MAYA
09:41	TURNOVER (LOSTBALL) by CLARK, ARSULA			
09:41				STEAL by MCCULLY, MARIAH
09:19				MISSED 3PTR by MCCULLY, MARIAH
09:13	REBOUND (DEF) by GRANT, ANIJAH			
09:04	GOOD! 3PTR by MANUIRIRANGI, KAYLA	42-44	V 2	
09:04	ASSIST by CHEATHAM, SIERRA			
08:43				MISSED LAYUP by KIRVEN, ASHLEI
08:38		44-44	T	REBOUND (OFF) by KIRVEN, ASHLEI
08:38				GOOD! LAYUP by KIRVEN, ASHLEI
08:21	MISSED JUMPER by MANUIRIRANGI, KAYLA			
08:18	REBOUND (OFF) by MANUIRIRANGI, KAYLA			
08:15	GOOD! 3PTR by MANUIRIRANGI, KAYLA	44-47	V 3	
08:03		47-47	T	GOOD! 3PTR by SMITH, SHYIA
08:03				ASSIST by REID, ASHLEY
07:49	TURNOVER (BADPASS) by CLARK, ARSULA			
07:49				STEAL by MCCULLY, MARIAH
07:45				TURNOVER (BADPASS) by MCCULLY, MARIAH
07:45	SUB OUT: CLARK, ARSULA			
07:45	SUB IN: BATES, SALMA			
07:25				FOUL (PERSONAL) by SMITH, SHYIA
07:25				SUB OUT: REID, ASHLEY
07:25				SUB OUT: BREWER, MAYA
07:25				SUB IN: BREMAUD, CARLA
07:25				SUB IN: BASTIN, SERAPHINE
07:25	GOOD! FT by FREEMAN, KRYSTAL	47-48	V 1	
07:25	GOOD! FT by FREEMAN, KRYSTAL	47-49	V 2	
07:25				SUB OUT: SMITH, SHYIA
07:25				SUB IN: PRINCE, RAVEN
07:03		50-49	H 1	GOOD! 3PTR by BREMAUD, CARLA
07:03				ASSIST by PRINCE, RAVEN
06:48	TIMEOUT 30SEC			
06:35				FOUL (PERSONAL) by MCCULLY, MARIAH
06:21	MISSED LAYUP by GRANT, ANIJAH			
06:18				REBOUND (DEF) by PRINCE, RAVEN
06:08				TURNOVER (BADPASS) by MCCULLY, MARIAH
06:08	SUB OUT: GRANT, ANIJAH			
06:08	SUB IN: HEIDE, MIA			
05:58	TURNOVER (BADPASS) by BATES, SALMA			
05:58				STEAL by PRINCE, RAVEN
05:53				TURNOVER (BADPASS) by MCCULLY, MARIAH
05:53	SUB OUT: BATES, SALMA			
05:53	SUB IN: CLARK, ARSULA			
05:45	GOOD! LAYUP by FREEMAN, KRYSTAL	50-51	V 1	
05:45	ASSIST by MANUIRIRANGI, KAYLA			
05:45				FOUL (PERSONAL) by KIRVEN, ASHLEI
05:45				SUB OUT: KIRVEN, ASHLEI
05:45				SUB IN: SMITH, SHYIA
05:45	GOOD! FT by FREEMAN, KRYSTAL	50-52	V 2	
05:32				MISSED LAYUP by PRINCE, RAVEN
05:29	REBOUND (DEF) by FREEMAN, KRYSTAL			
05:07	MISSED 3PTR by CHEATHAM, SIERRA			
05:06	REBOUND (OFF) by CLARK, ARSULA			
05:05				FOUL (PERSONAL) by SMITH, SHYIA
05:05				SUB OUT: SMITH, SHYIA
05:05				SUB IN: HENDERSON, ASIA
05:05	GOOD! FT by CHEATHAM, SIERRA	50-53	V 3	
05:05	MISSED FT by CHEATHAM, SIERRA			
05:05				REBOUND (DEF) by BASTIN, SERAPHINE
04:59				MISSED LAYUP by MCCULLY, MARIAH
04:59	BLOCK by HEIDE, MIA			
04:59	REBOUND (DEF) by TEAM			
04:27	TURNOVER (SHOTCLOCK) by TEAM			
04:08	FOUL (PERSONAL) by FREEMAN, KRYSTAL			
04:08		51-53	V 2	
04:08		52-53	V 1	GOOD! FT by HENDERSON, ASIA
04:08		52-55	V 3	GOOD! FT by HENDERSON, ASIA
03:46	GOOD! JUMPER by CLARK, ARSULA [PNT]			
03:23				MISSED JUMPER by HENDERSON, ASIA

Time	VISITORS: Tulane	Score	Margin	HOME: Wichita St.
03:21	REBOUND (DEF) by TEAM			
03:21				FOUL (PERSONAL) by HENDERSON, ASIA
03:21	GOOD! FT by HEIDE, MIA	52-56	V 4	
03:21	GOOD! FT by HEIDE, MIA	52-57	V 5	
03:11				MISSED 3PTR by BREMAUD, CARLA
03:04	REBOUND (DEF) by HEIDE, MIA			
02:47	MISSED 3PTR by CHEATHAM, SIERRA			
02:44				REBOUND (DEF) by BREMAUD, CARLA
02:37				MISSED JUMPER by PRINCE, RAVEN
02:34	REBOUND (DEF) by CHEATHAM, SIERRA			
02:25	MISSED 3PTR by MANUIRIRANGI, KAYLA			
02:22	REBOUND (OFF) by FREEMAN, KRYSTAL			
02:17	MISSED JUMPER by CLARK, ARSULA			
02:17				BLOCK by BREMAUD, CARLA
02:12	REBOUND (OFF) by HEIDE, MIA			
02:03	MISSED LAYUP by MANUIRIRANGI, KAYLA			
02:00				REBOUND (DEF) by MCCULLY, MARIAH
01:55		54-57	V 3	GOOD! LAYUP by MCCULLY, MARIAH [FB]
01:55				TIMEOUT TEAM
01:30	TURNOVER (LOSTBALL) by FREEMAN, KRYSTAL			
01:30				STEAL by PRINCE, RAVEN
01:20				MISSED JUMPER by MCCULLY, MARIAH
01:16	REBOUND (DEF) by MANUIRIRANGI, KAYLA			
00:52	TURNOVER (5SEC) by TEAM			
00:43				MISSED 3PTR by MCCULLY, MARIAH
00:40				REBOUND (OFF) by BASTIN, SERAPHINE
00:32				MISSED 3PTR by BREMAUD, CARLA
00:32	BLOCK by CHEATHAM, SIERRA			
00:32				REBOUND (OFF) by TEAM
00:32				TIMEOUT 30SEC
00:27	FOUL (PERSONAL) by CHEATHAM, SIERRA			
00:27		55-57	V 2	GOOD! FT by HENDERSON, ASIA
00:27		56-57	V 1	GOOD! FT by HENDERSON, ASIA
00:27	TIMEOUT 30SEC			
00:27	SUB OUT: HEIDE, MIA			
00:27	SUB IN: PARAU, IRINA			
00:25				FOUL (PERSONAL) by BASTIN, SERAPHINE
00:25	GOOD! FT by MANUIRIRANGI, KAYLA	56-58	V 2	
00:25	GOOD! FT by MANUIRIRANGI, KAYLA	56-59	V 3	
00:25				TIMEOUT TEAM
00:25	SUB OUT: MANUIRIRANGI, KAYLA			
00:25	SUB IN: HEIDE, MIA			
00:25				TIMEOUT 30SEC
00:25	SUB OUT: FREEMAN, KRYSTAL			
00:25	SUB IN: JONES, DYNAH			
00:14				MISSED 3PTR by BREMAUD, CARLA
00:11				REBOUND (OFF) by HENDERSON, ASIA
00:11				TURNOVER (TRAVEL) by HENDERSON, ASIA
00:11	SUB OUT: JONES, DYNAH			
00:11	SUB OUT: HEIDE, MIA			
00:11	SUB IN: MANUIRIRANGI, KAYLA			
00:11	SUB IN: FREEMAN, KRYSTAL			
00:11	TIMEOUT TEAM			
00:07				FOUL (PERSONAL) by PRINCE, RAVEN
00:07	SUB OUT: MANUIRIRANGI, KAYLA			
00:07	SUB IN: HEIDE, MIA			
00:07	GOOD! FT by FREEMAN, KRYSTAL	56-60	V 4	
00:07	GOOD! FT by FREEMAN, KRYSTAL	56-61	V 5	
00:07	SUB OUT: FREEMAN, KRYSTAL			
00:07	SUB IN: JONES, DYNAH			
00:01				MISSED 3PTR by BASTIN, SERAPHINE
00:01	REBOUND (DEF) by TEAM			

Tulane 61, Wichita St. 56

Points from (This Period)	TLN	WSU
In the Paint	4	4
Off Turns	7	4
2nd Chance	4	4
Fast Break	0	2
Bench	10	6

**Official Scoring/Possession Reference Chart
Tulane vs Wichita St.**

Period 1

January 05, 2020 at Charles Koch Arena (Devlin Court) - Wichita, Kan.



Period 1

Starters:

Tulane: 0 CLARK,ARSULA (G); 1 ANDERSON,KAILA (G); 12 CHEATHAM,SIERRA (G); 21 PARAU,IRINA (F); 23 FREEMAN,KRYSTAL (F);

Wichita St.: 2 MCCULLY,MARIAH (G); 12 BREMAUD,CARLA (G); 13 PRINCE,RAVEN (F); 23 BASTIN,SERAPHINE (G); 34 SMITH,SHYIA (F);

Time	VISITORS: Tulane	Score	Margin	HOME: Wichita St.
08:50		2-0	H 2	GOOD! LAYUP by BASTIN, SERAPHINE [FB]
08:38		4-0	H 4	GOOD! LAYUP by MCCULLY, MARIAH
07:45		6-0	H 6	GOOD! LAYUP by BASTIN, SERAPHINE
07:26	GOOD! 3PTR by PARAU, IRINA	6-3	H 3	
07:07		8-3	H 5	GOOD! LAYUP by BASTIN, SERAPHINE
06:05		10-3	H 7	GOOD! JUMPER by BREMAUD, CARLA [PNT]
05:16		11-3	H 8	GOOD! FT by PRINCE, RAVEN
05:16		12-3	H 9	GOOD! FT by PRINCE, RAVEN
05:01	GOOD! 3PTR by FREEMAN, KRYSTAL	12-6	H 6	
04:14	GOOD! LAYUP by CLARK, ARSULA	12-8	H 4	
03:53	GOOD! LAYUP by HEIDE, MIA	12-10	H 2	
03:11		13-10	H 3	GOOD! FT by BASTIN, SERAPHINE [FB]
02:17		16-10	H 6	GOOD! 3PTR by REID, ASHLEY
01:49	GOOD! JUMPER by CLARK, ARSULA	16-12	H 4	
01:07	GOOD! 3PTR by CHEATHAM, SIERRA	16-15	H 1	
00:33	GOOD! FT by CHEATHAM, SIERRA	16-16	T	
00:33	GOOD! FT by CHEATHAM, SIERRA	16-17	V 1	
00:03	GOOD! LAYUP by HEIDE, MIA [FB]	16-19	V 3	

Tulane 19, Wichita St. 16

**Official Scoring/Possession Reference Chart
Tulane vs Wichita St.
Period 2**

January 05, 2020 at Charles Koch Arena (Devlin Court) - Wichita, Kan.



Period 2

Starters:

Tulane: 0 CLARK,ARSULA (G); 1 ANDERSON,KAILA (G); 12 CHEATHAM,SIERRA (G); 21 PARAU,IRINA (F); 23 FREEMAN,KRYSTAL (F);

Wichita St.: 2 MCCULLY,MARIAH (G); 12 BREMAUD,CARLA (G); 13 PRINCE,RAVEN (F); 23 BASTIN,SERAPHINE (G); 34 SMITH,SHYIA (F);

Time	VISITORS: Tulane	Score	Margin	HOME: Wichita St.
09:08	GOOD! FT by JONES, DYNAH	16-20	V 4	
09:08	GOOD! FT by JONES, DYNAH	16-21	V 5	
08:56		18-21	V 3	GOOD! LAYUP by PRINCE, RAVEN
07:23		20-21	V 1	GOOD! LAYUP by PRINCE, RAVEN
06:57	GOOD! 3PTR by MANUIRIRANGI, KAYLA	20-24	V 4	
04:56	GOOD! LAYUP by GRANT, ANIJAH	20-26	V 6	
03:29	GOOD! JUMPER by CLARK, ARSULA	20-28	V 8	
03:07		23-28	V 5	GOOD! 3PTR by MCCULLY, MARIAH
02:15		25-28	V 3	GOOD! LAYUP by COLBERT, TRAJATA
01:55		26-28	V 2	GOOD! FT by MCCULLY, MARIAH [FB]
01:48	GOOD! 3PTR by CHEATHAM, SIERRA	26-31	V 5	
01:02	GOOD! 3PTR by CHEATHAM, SIERRA	26-34	V 8	
00:40		28-34	V 6	GOOD! LAYUP by HENDERSON, ASIA

Tulane 34, Wichita St. 28

**Official Scoring/Possession Reference Chart
Tulane vs Wichita St.
Period 3**

January 05, 2020 at Charles Koch Arena (Devlin Court) - Wichita, Kan.



Period 3

Starters:

Tulane: 0 CLARK,ARSULA (G); 1 ANDERSON,KAILA (G); 12 CHEATHAM,SIERRA (G); 21 PARAU,IRINA (F); 23 FREEMAN,KRYSTAL (F);

Wichita St.: 2 MCCULLY,MARIAH (G); 12 BREMAUD,CARLA (G); 13 PRINCE,RAVEN (F); 23 BASTIN,SERAPHINE (G); 34 SMITH,SHYIA (F);

Time	VISITORS: Tulane	Score	Margin	HOME: Wichita St.
08:53		30-34	V 4	GOOD! LAYUP by SMITH, SHYIA
08:13	GOOD! JUMPER by FREEMAN, KRYSTAL [PNT]	30-36	V 6	
07:40		33-36	V 3	GOOD! 3PTR by MCCULLY, MARIAH
06:37		35-36	V 1	GOOD! JUMPER by MCCULLY, MARIAH [PNT]
05:43		37-36	H 1	GOOD! LAYUP by BREMAUD, CARLA [FB]
04:04		38-36	H 2	GOOD! FT by BASTIN, SERAPHINE [FB]
04:04		39-36	H 3	GOOD! FT by BASTIN, SERAPHINE [FB]
02:06	GOOD! LAYUP by GRANT, ANIJAH	39-38	H 1	
01:42		42-38	H 4	GOOD! 3PTR by SMITH, SHYIA
00:53	GOOD! LAYUP by MANUIRIRANGI, KAYLA [FB]	42-40	H 2	
00:53	GOOD! FT by MANUIRIRANGI, KAYLA [FB]	42-41	H 1	

Tulane 41, Wichita St. 42

**Official Scoring/Possession Reference Chart
Tulane vs Wichita St.
Period 4**

January 05, 2020 at Charles Koch Arena (Devlin Court) - Wichita, Kan.



Period 4

Starters:

Tulane: 0 CLARK,ARSULA (G); 1 ANDERSON,KAILA (G); 12 CHEATHAM,SIERRA (G); 21 PARAU,IRINA (F); 23 FREEMAN,KRYSTAL (F);

Wichita St.: 2 MCCULLY,MARIAH (G); 12 BREMAUD,CARLA (G); 13 PRINCE,RAVEN (F); 23 BASTIN,SERAPHINE (G); 34 SMITH,SHYIA (F);

Time	VISITORS: Tulane	Score	Margin	HOME: Wichita St.
09:04	GOOD! 3PTR by MANUIRIRANGI, KAYLA	42-44	V 2	
08:38		44-44	T	GOOD! LAYUP by KIRVEN, ASHLEI
08:15	GOOD! 3PTR by MANUIRIRANGI, KAYLA	44-47	V 3	
08:03		47-47	T	GOOD! 3PTR by SMITH, SHYIA
07:25	GOOD! FT by FREEMAN, KRYSTAL	47-48	V 1	
07:25	GOOD! FT by FREEMAN, KRYSTAL	47-49	V 2	
07:03		50-49	H 1	GOOD! 3PTR by BREMAUD, CARLA
05:45	GOOD! LAYUP by FREEMAN, KRYSTAL	50-51	V 1	
05:45	GOOD! FT by FREEMAN, KRYSTAL	50-52	V 2	
05:05	GOOD! FT by CHEATHAM, SIERRA	50-53	V 3	
04:08		51-53	V 2	GOOD! FT by HENDERSON, ASIA
04:08		52-53	V 1	GOOD! FT by HENDERSON, ASIA
03:46	GOOD! JUMPER by CLARK, ARSULA [PNT]	52-55	V 3	
03:21	GOOD! FT by HEIDE, MIA	52-56	V 4	
03:21	GOOD! FT by HEIDE, MIA	52-57	V 5	
01:55		54-57	V 3	GOOD! LAYUP by MCCULLY, MARIAH [FB]
00:27		55-57	V 2	GOOD! FT by HENDERSON, ASIA
00:27		56-57	V 1	GOOD! FT by HENDERSON, ASIA
00:25	GOOD! FT by MANUIRIRANGI, KAYLA	56-58	V 2	
00:25	GOOD! FT by MANUIRIRANGI, KAYLA	56-59	V 3	
00:07	GOOD! FT by FREEMAN, KRYSTAL	56-60	V 4	
00:07	GOOD! FT by FREEMAN, KRYSTAL	56-61	V 5	

Tulane 61, Wichita St. 56

**Official Substitutions Log
Tulane vs Wichita St.
Period 1**

January 05, 2020 at Charles Koch Arena (Devlin Court) - Wichita, Kan.



VISITORS: Tulane	Time	Score	HOME: Wichita St.
0 CLARK, ARSULA			2 MCCULLY, MARIAH
1 ANDERSON, KAILA			12 BREMAUD, CARLA
12 CHEATHAM, SIERRA			13 PRINCE, RAVEN
21 PARAU, IRINA			23 BASTIN, SERAPHINE
23 FREEMAN, KRYSTAL			34 SMITH, SHYIA
SUB OUT: 1 ANDERSON, KAILA	08:01	0-4	
SUB IN: 42 HEIDE, MIA	08:01		
	05:38	3-10	SUB OUT: BASTIN, SERAPHINE
	05:38		SUB IN: REID, ASHLEY
	04:14	8-12	SUB OUT: MCCULLY, MARIAH
	04:14		SUB OUT: BREMAUD, CARLA
	04:14		SUB IN: BREWER, MAYA
	04:14		SUB IN: BASTIN, SERAPHINE
	03:11	10-12	SUB OUT: PRINCE, RAVEN
	03:11		SUB IN: HENDERSON, ASIA
SUB OUT: 21 PARAU, IRINA	03:11		
SUB IN: 14 JONES, DYNAH	03:11		
	02:55	10-13	SUB OUT: SMITH, SHYIA
	02:55		SUB IN: PRINCE, RAVEN
	00:33	15-16	SUB OUT: REID, ASHLEY
	00:33		SUB OUT: BREWER, MAYA
	00:33		SUB IN: MCCULLY, MARIAH
	00:33		SUB IN: BREMAUD, CARLA
SUB OUT: 23 FREEMAN, KRYSTAL	00:33		
SUB IN: 30 MIMMS, DENE'	00:33		

Tulane 19, Wichita St. 16

Official Substitutions Log
Tulane vs Wichita St.
Period 2
January 05, 2020 at Charles Koch Arena (Devlin Court) - Wichita, Kan.



VISITORS: Tulane	Time	Score	HOME: Wichita St.
0 CLARK,ARSULA			2 MCCULLY,MARIAH
1 ANDERSON,KAILA			12 BREMAUD,CARLA
12 CHEATHAM,SIERRA			13 PRINCE,RAVEN
21 PARAU,IRINA			23 BASTIN,SERAPHINE
23 FREEMAN,KRYSTAL			34 SMITH,SHYIA
	10:00	-	SUB OUT: HENDERSON,ASIA
	10:00		SUB IN: KIRVEN,ASHLEI
SUB OUT: 12 CHEATHAM,SIERRA	10:00		
SUB IN: 5 MANUIRIRANGI,KAYLA	10:00		
	09:14	-	SUB OUT: BREMAUD,CARLA
	09:14		SUB IN: DANIELSSON,VENDELA
SUB OUT: 42 HEIDE,MIA	09:08	21-16	
SUB IN: 23 FREEMAN,KRYSTAL	09:08		
SUB OUT: 14 JONES,DYNAH	07:53	21-18	
SUB IN: 12 CHEATHAM,SIERRA	07:53		
SUB OUT: 0 CLARK,ARSULA	06:38	24-20	
SUB OUT: 30 MIMMS,DENE'	06:38		
SUB IN: 11 BATES,SALMA	06:38		
SUB IN: 42 HEIDE,MIA	06:38		
	06:30	24-20	SUB OUT: PRINCE,RAVEN
	06:30		SUB IN: HENDERSON,ASIA
	06:27	24-20	SUB OUT: KIRVEN,ASHLEI
	06:27		SUB IN: PRINCE,RAVEN
SUB OUT: 42 HEIDE,MIA	06:27		
SUB IN: 21 PARAU,IRINA	06:27		
	05:42	24-20	SUB OUT: PRINCE,RAVEN
	05:42		SUB IN: COLBERT,TRAJATA
SUB OUT: 23 FREEMAN,KRYSTAL	05:42		
SUB IN: 15 GRANT,ANIJAH	05:42		
SUB OUT: 5 MANUIRIRANGI,KAYLA	03:49	26-20	
SUB IN: 0 CLARK,ARSULA	03:49		
	01:55	28-25	SUB OUT: DANIELSSON,VENDELA
	01:55		SUB IN: REID,ASHLEY
	00:06	34-28	SUB OUT: HENDERSON,ASIA
	00:06		SUB IN: KIRVEN,ASHLEI

Tulane 34, Wichita St. 28

Official Substitutions Log
Tulane vs Wichita St.
Period 3
January 05, 2020 at Charles Koch Arena (Devlin Court) - Wichita, Kan.



VISITORS: Tulane	Time	Score	HOME: Wichita St.
0 CLARK,ARSULA			2 MCCULLY,MARIAH
1 ANDERSON,KAILA			12 BREMAUD,CARLA
12 CHEATHAM,SIERRA			13 PRINCE,RAVEN
21 PARAU,IRINA			23 BASTIN,SERAPHINE
23 FREEMAN,KRYSTAL			34 SMITH,SHYIA
	10:00	-	SUB OUT: REID,ASHLEY
	10:00		SUB OUT: KIRVEN,ASHLEI
	10:00		SUB OUT: COLBERT,TRAJATA
	10:00		SUB IN: BREMAUD,CARLA
	10:00		SUB IN: PRINCE,RAVEN
	10:00		SUB IN: SMITH,SHYIA
SUB OUT: 11 BATES,SALMA	10:00		
SUB OUT: 15 GRANT,ANIJAH	10:00		
SUB OUT: 21 PARAU,IRINA	10:00		
SUB IN: 5 MANUIRIRANGI,KAYLA	10:00		
SUB IN: 23 FREEMAN,KRYSTAL	10:00		
SUB IN: 42 HEIDE,MIA	10:00		
SUB OUT: 42 HEIDE,MIA	07:14	36-33	
SUB IN: 15 GRANT,ANIJAH	07:14		
SUB OUT: 5 MANUIRIRANGI,KAYLA	05:32	36-37	
SUB IN: 11 BATES,SALMA	05:32		
	04:04	36-37	
	04:04		SUB OUT: MCCULLY,MARIAH
	04:04		SUB OUT: PRINCE,RAVEN
	04:04		SUB IN: REID,ASHLEY
	04:04		SUB IN: HENDERSON,ASIA
SUB OUT: 15 GRANT,ANIJAH	03:03	36-39	
SUB IN: 42 HEIDE,MIA	03:03		
SUB OUT: 42 HEIDE,MIA	02:55	36-39	
SUB IN: 15 GRANT,ANIJAH	02:55		
SUB OUT: 11 BATES,SALMA	02:29	36-39	
SUB IN: 5 MANUIRIRANGI,KAYLA	02:29		
	02:29		SUB OUT: BREMAUD,CARLA
	02:29		SUB IN: MCCULLY,MARIAH
	00:53	41-42	SUB OUT: BASTIN,SERAPHINE
	00:53		SUB IN: BREWER,MAYA

Tulane 41, Wichita St. 42

**Official Substitutions Log
Tulane vs Wichita St.
Period 4**

January 05, 2020 at Charles Koch Arena (Devlin Court) - Wichita, Kan.



VISITORS: Tulane	Time	Score	HOME: Wichita St.
0 CLARK,ARSULA			2 MCCULLY,MARIAH
1 ANDERSON,KAILA			12 BREMAUD,CARLA
12 CHEATHAM,SIERRA			13 PRINCE,RAVEN
21 PARAU,IRINA			23 BASTIN,SERAPHINE
23 FREEMAN,KRYSTAL			34 SMITH,SHYIA
	10:00	-	SUB OUT: HENDERSON,ASIA
	10:00		SUB IN: KIRVEN,ASHLEI
SUB OUT: 0 CLARK,ARSULA	07:45	47-47	
SUB IN: 11 BATES,SALMA	07:45		
	07:25	47-47	SUB OUT: REID,ASHLEY
	07:25		SUB OUT: BREWER,MAYA
	07:25		SUB IN: BREMAUD,CARLA
	07:25		SUB IN: BASTIN,SERAPHINE
	07:25		SUB OUT: SMITH,SHYIA
	07:25		SUB IN: PRINCE,RAVEN
SUB OUT: 15 GRANT,ANIJAH	06:08	49-50	
SUB IN: 42 HEIDE,MIA	06:08		
SUB OUT: 11 BATES,SALMA	05:53	49-50	
SUB IN: 0 CLARK,ARSULA	05:53		
	05:45	51-50	SUB OUT: KIRVEN,ASHLEI
	05:45		SUB IN: SMITH,SHYIA
	05:05	52-50	SUB OUT: SMITH,SHYIA
	05:05		SUB IN: HENDERSON,ASIA
SUB OUT: 42 HEIDE,MIA	00:27	57-56	
SUB IN: 21 PARAU,IRINA	00:27		
SUB OUT: 5 MANUIRIRANGI,KAYLA	00:25	59-56	
SUB IN: 42 HEIDE,MIA	00:25		
SUB OUT: 23 FREEMAN,KRYSTAL	00:25		
SUB IN: 14 JONES,DYNAH	00:25		
SUB OUT: 14 JONES,DYNAH	00:11	59-56	
SUB OUT: 42 HEIDE,MIA	00:11		
SUB IN: 5 MANUIRIRANGI,KAYLA	00:11		
SUB IN: 23 FREEMAN,KRYSTAL	00:11		
SUB OUT: 5 MANUIRIRANGI,KAYLA	00:07	59-56	
SUB IN: 42 HEIDE,MIA	00:07		
SUB OUT: 23 FREEMAN,KRYSTAL	00:07		
SUB IN: 14 JONES,DYNAH	00:07		

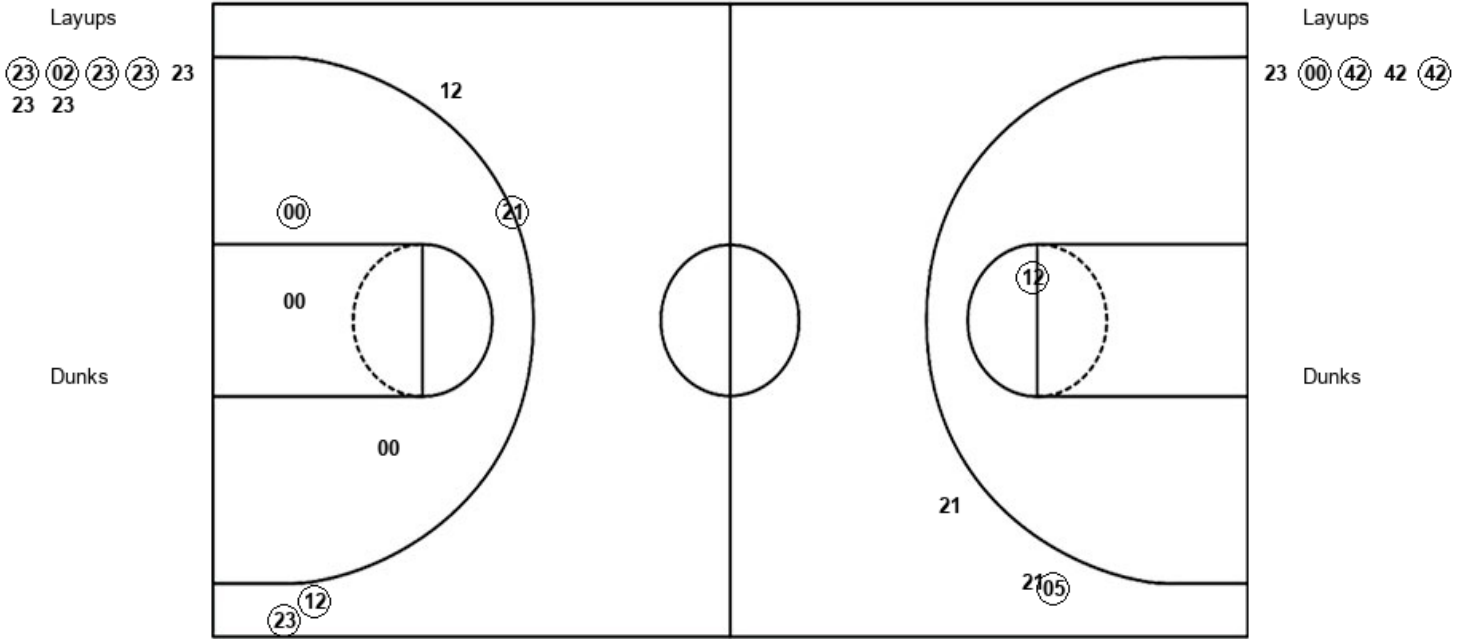
Tulane 61, Wichita St. 56

Official Shot Chart
Tulane vs Wichita St.
PERIOD 1 Shots
 January 05, 2020 at Charles Koch Arena (Devlin Court) - Wichita, Kan.



Wichita St.

Tulane



WSU : Period 1	Made	Att	Pct
Layups	4	7	57.1
Dunks	0	0	0
2PT Field Goals	5	8	62.5
3PT Field Goals	1	3	33.3
Total Field Goals	6	11	54.5

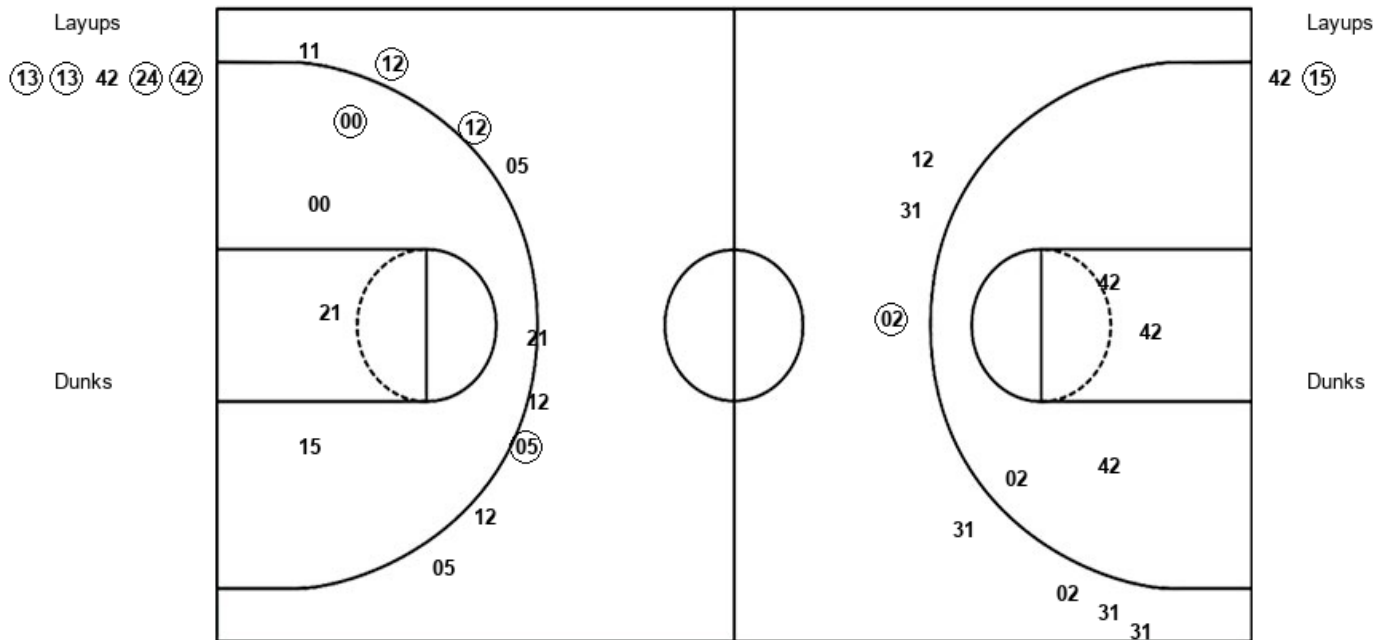
TLN : Period 1	Made	Att	Pct
Layups	3	5	60.0
Dunks	0	0	0
2PT Field Goals	4	8	50.0
3PT Field Goals	3	4	75.0
Total Field Goals	7	12	58.3

Official Shot Chart
Tulane vs Wichita St.
PERIOD 2 Shots
 January 05, 2020 at Charles Koch Arena (Devlin Court) - Wichita, Kan.



Wichita St.

Tulane



WSU : Period 2	Made	Att	Pct
Layups	4	5	80.0
Dunks	0	0	0
2PT Field Goals	4	9	44.4
3PT Field Goals	1	7	14.3
Total Field Goals	5	16	31.3

TLN : Period 2	Made	Att	Pct
Layups	1	2	50.0
Dunks	0	0	0
2PT Field Goals	2	6	33.3
3PT Field Goals	3	9	33.3
Total Field Goals	5	15	33.3

Official Shot Chart
 Tulane vs Wichita St.
 PERIOD 3 Shots

January 05, 2020 at Charles Koch Arena (Devlin Court) - Wichita, Kan.



Wichita St.

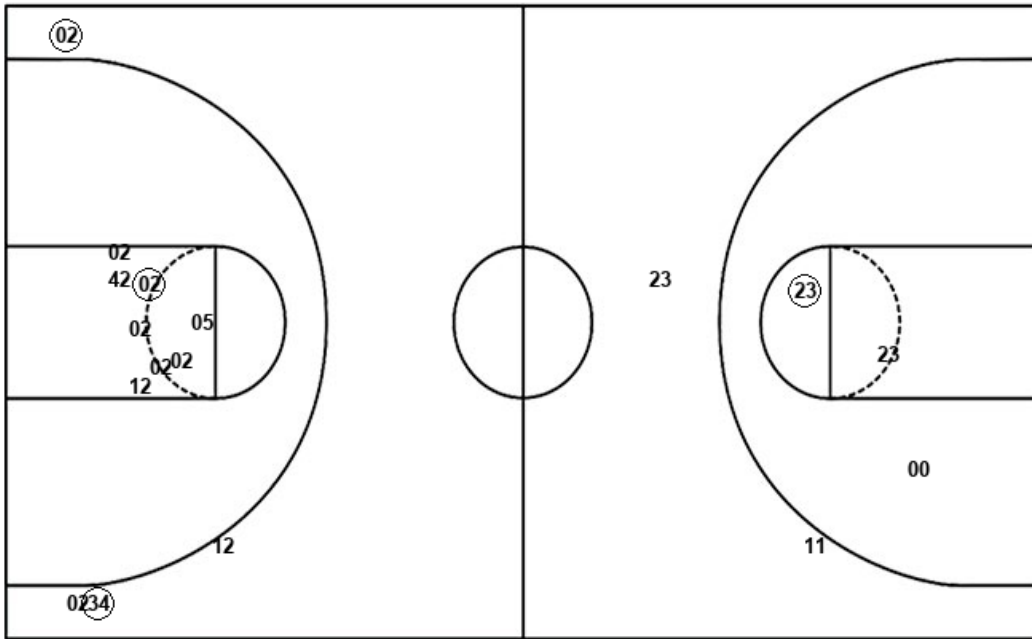
Tulane

Layups
 34 34 12 02

Layups
 23 15 05

Dunks

Dunks



WSU : Period 3	Made	Att	Pct
Layups	2	4	50.0
Dunks	0	0	0
2PT Field Goals	3	12	25.0
3PT Field Goals	2	4	50.0
Total Field Goals	5	16	31.3

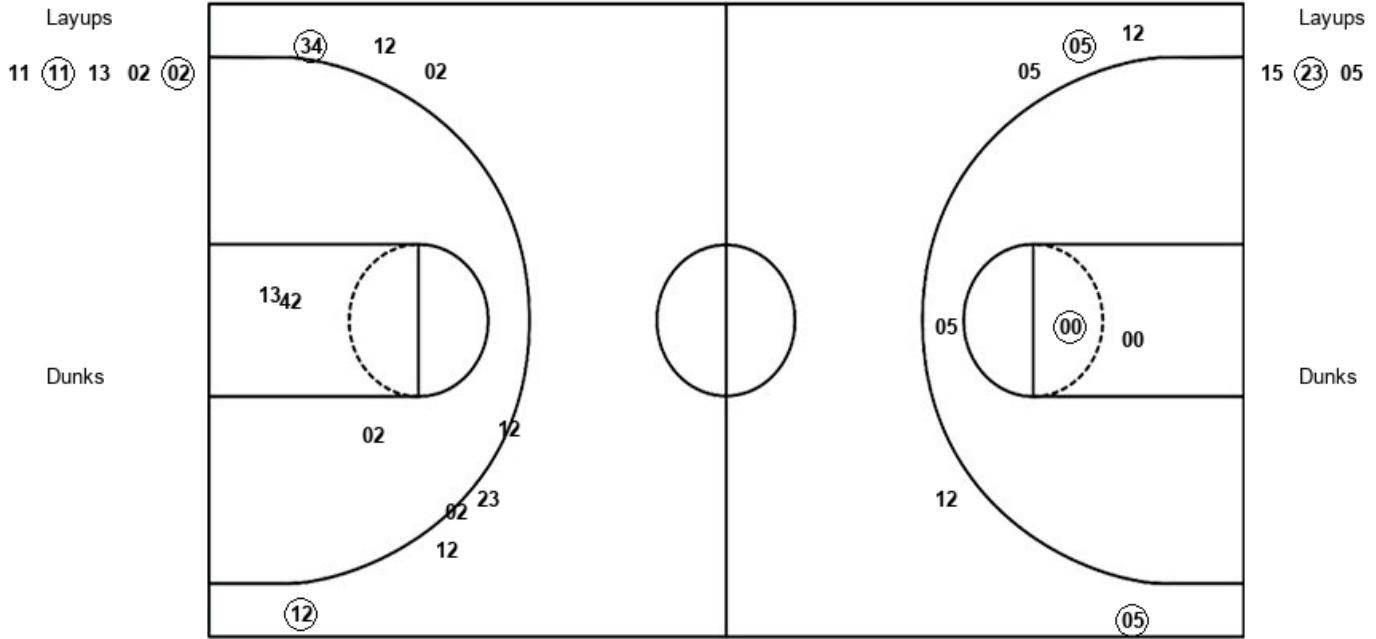
TLN : Period 3	Made	Att	Pct
Layups	2	3	66.7
Dunks	0	0	0
2PT Field Goals	3	6	50.0
3PT Field Goals	0	2	00.0
Total Field Goals	3	8	37.5

Official Shot Chart
Tulane vs Wichita St.
PERIOD 4 Shots
 January 05, 2020 at Charles Koch Arena (Devlin Court) - Wichita, Kan.



Wichita St.

Tulane



WSU : Period 4	Made	Att	Pct
Layups	2	5	40.0
Dunks	0	0	0
2PT Field Goals	2	8	25.0
3PT Field Goals	2	8	25.0
Total Field Goals	4	16	25.0

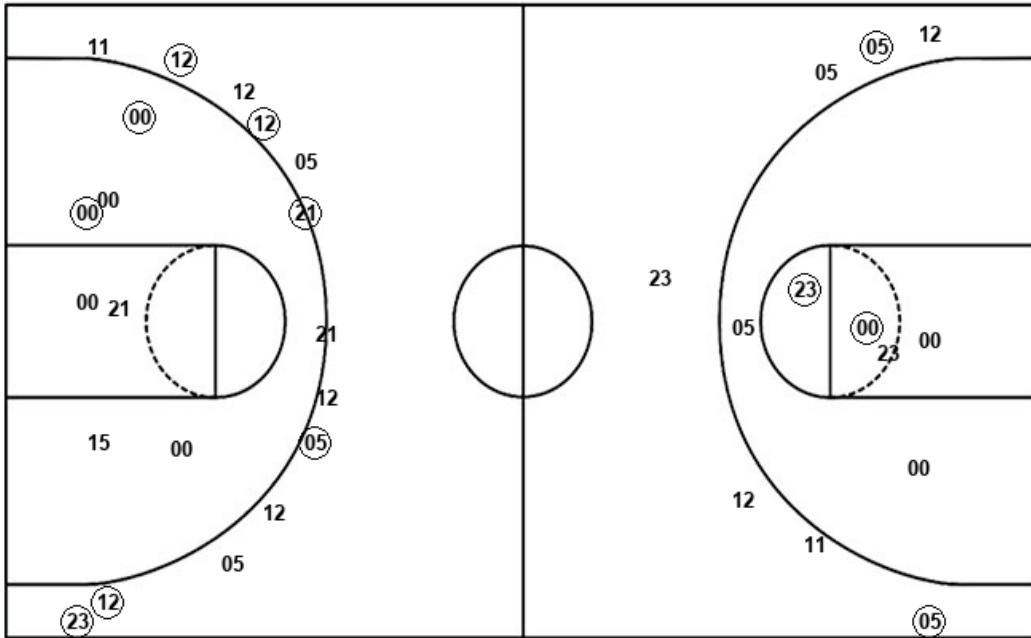
TLN : Period 4	Made	Att	Pct
Layups	1	3	33.3
Dunks	0	0	0
2PT Field Goals	2	6	33.3
3PT Field Goals	2	5	40.0
Total Field Goals	4	11	36.4

Official Shot Chart
 Tulane vs Wichita St.
 Tulane Team Shots

January 05, 2020 at Charles Koch Arena (Devlin Court) - Wichita, Kan.



Layups



Layups

23 (00) (42) (42) (42)
 42 (15) 23 (15) (05)
 15 (23) 05

Dunks

Dunks

TLN : Period 1	Made	Att	Pct
Layups	3	5	60.0
Dunks	0	0	0
2PT Field Goals	4	8	50.0
3PT Field Goals	3	4	75.0
Total Field Goals	7	12	58.3

TLN : Period 2	Made	Att	Pct
Layups	1	2	50.0
Dunks	0	0	0
2PT Field Goals	2	6	33.3
3PT Field Goals	3	9	33.3
Total Field Goals	5	15	33.3

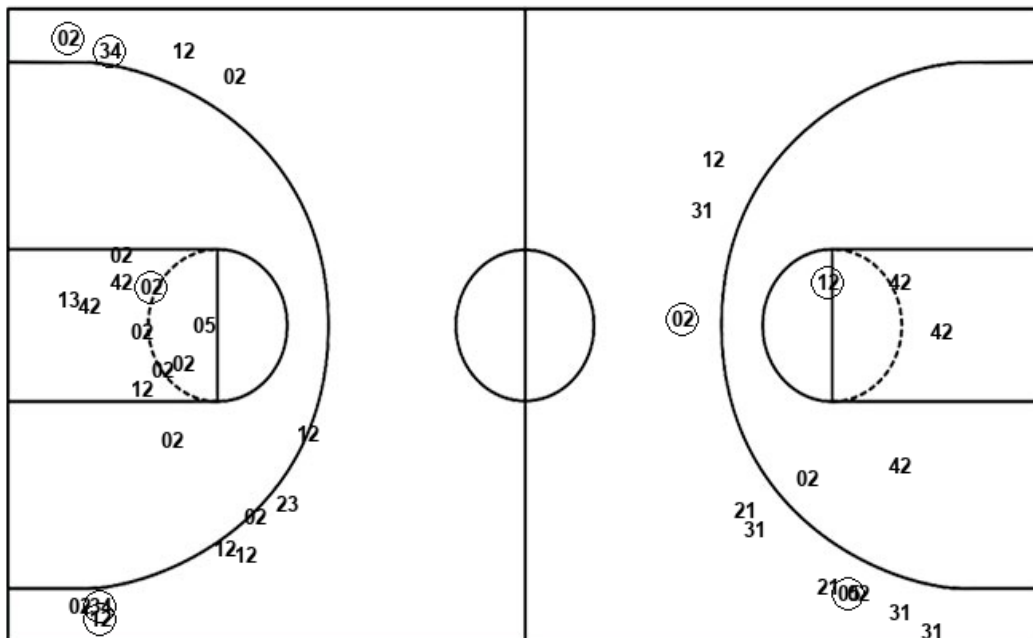
TLN : Period 3	Made	Att	Pct
Layups	2	3	66.7
Dunks	0	0	0
2PT Field Goals	3	6	50.0
3PT Field Goals	0	2	00.0
Total Field Goals	3	8	37.5

TLN : Period 4	Made	Att	Pct
Layups	1	3	33.3
Dunks	0	0	0
2PT Field Goals	2	6	33.3
3PT Field Goals	2	5	40.0
Total Field Goals	4	11	36.4

Official Shot Chart
Tulane vs Wichita St.
Wichita St. Team Shots
 January 05, 2020 at Charles Koch Arena (Devlin Court) - Wichita, Kan.



Layups



Layups

(23) (02) (23) (23) 23
 23 23 (13) (13) 42
 (24) (42) (34) 34 (12)
 02 11 (11) 13 02
 (02)

Dunks

Dunks

WSU : Period 1	Made	Att	Pct
Layups	4	7	57.1
Dunks	0	0	0
2PT Field Goals	5	8	62.5
3PT Field Goals	1	3	33.3
Total Field Goals	6	11	54.5

WSU : Period 2	Made	Att	Pct
Layups	4	5	80.0
Dunks	0	0	0
2PT Field Goals	4	9	44.4
3PT Field Goals	1	7	14.3
Total Field Goals	5	16	31.3

WSU : Period 3	Made	Att	Pct
Layups	2	4	50.0
Dunks	0	0	0
2PT Field Goals	3	12	25.0
3PT Field Goals	2	4	50.0
Total Field Goals	5	16	31.3

WSU : Period 4	Made	Att	Pct
Layups	2	5	40.0
Dunks	0	0	0
2PT Field Goals	2	8	25.0
3PT Field Goals	2	8	25.0
Total Field Goals	4	16	25.0