

FINAL SCORE



Grambling

65



Wichita St.

77

December 30, 2019 • Charles Koch Arena (Devlin Court) - Wichita, Kan.

FINAL STATISTICS

Official Box Score
Grambling vs Wichita St.
Game Totals -- Final Statistics
December 30, 2019 at Charles Koch Arena (Devlin Court) - Wichita, Kan.



Grambling 65

No.	Player	S	Pts	FG	3FG	FT	OR	DR	TR	PF	A	TO	Blk	Stl	Min	+/-
00	HOLT, ALEXUS	G	23	9-14	2-4	3-4	1	2	3	2	0	3	0	1	32	2
01	FORTE, JASMINE	C	4	2-6	0-0	0-2	4	2	6	5	0	2	0	1	21	-10
11	WILLIAMS, ARIEL	G	12	5-11	0-1	2-4	3	3	6	2	5	5	2	2	35	-11
12	COLEMAN, JUSTICE	G	19	5-13	0-3	9-10	1	3	4	3	2	6	0	0	36	-21
15	PARRAMORE, CANDICE	G	0	0-5	0-2	0-0	0	0	0	0	1	5	0	1	24	-28
03	WASHINGTON, BRANDI	G	0	0-3	0-3	0-0	0	3	3	2	0	1	0	1	21	-7
05	BODY, MARKISHA	G	0	0-1	0-1	0-0	0	0	0	0	0	0	0	0	5	6
24	VAUGHN, ALEXIS	G	3	1-1	1-1	0-0	0	0	0	0	0	0	0	0	7	8
25	CONNALLY-BANKS, MADISON	F	0	0-0	0-0	0-0	0	0	0	1	0	0	0	0	2	0
30	HARRISON, JEMIAH	C	4	2-4	0-0	0-0	1	5	6	2	2	1	3	0	14	5
33	GIDEON, KAILYN	C	0	0-0	0-0	0-0	0	0	0	0	0	0	0	0	2	-4
TEAM							1	1	2	0		0				
TOTALS			65	24-58	3-15	14-20	11	19	30	17	10	23	5	6	198	

Shooting By Period

Period	FG	FG%	3FG	3FG%	FT	FT%
1st Qtr	2-15	13%	0-2	00%	1-2	50%
2nd Qtr	5-13	38%	0-5	00%	4-4	100%
3rd Qtr	6-14	43%	1-4	25%	3-5	60%
4th Qtr	11-16	69%	2-4	50%	6-9	67%
1st Half	7-28	25%	0-7	00%	5-6	83%
2nd Half	17-30	57%	3-8	38%	9-14	64%
Game	24-58	41.4%	3-15	20.0%	14-20	70.0%

Deadball Rebounds: 5,5

Last FG: 4th-00:50

Biggest Run: 18-0

Largest lead: By 0 at -

Technical Fouls: None.

Wichita St. 77

No.	Player	S	Pts	FG	3FG	FT	OR	DR	TR	PF	A	TO	Blk	Stl	Min	+/-
02	MCCULLY, MARIAH	G	18	8-13	1-5	1-2	0	1	1	2	0	4	0	5	30	23
12	BREMAUD, CARLA	G	13	5-10	3-5	0-0	0	5	5	1	2	1	0	2	29	16
13	PRINCE, RAVEN	F	7	2-4	0-0	3-4	2	2	4	1	1	2	1	0	23	18
23	BASTIN, SERAPHINE	G	6	1-2	0-0	4-4	2	3	5	2	2	3	0	1	25	14
34	SMITH, SHYIA	F	9	3-4	0-0	3-4	2	5	7	2	2	0	1	1	22	28
00	FORREST, DIAMOND	C	0	0-0	0-0	0-2	0	1	1	0	0	0	0	0	6	-15
03	RYNG, NATALIA	F	0	0-1	0-1	0-0	0	0	0	1	1	0	0	0	7	-13
05	REID, ASHLEY	G	3	1-5	1-1	0-0	0	0	0	2	2	2	0	1	22	-4
11	KIRVEN, ASHLEI	F	5	1-5	0-0	3-4	2	3	5	0	0	0	1	0	7	-2
21	BREWER, MAYA	G	11	5-13	1-4	0-0	3	2	5	2	1	1	0	3	17	3
31	DANIELSSON, VENDELA	G	0	0-1	0-1	0-0	0	1	1	1	0	0	0	0	7	-19
42	HENDERSON, ASIA	F	5	2-3	0-1	1-2	0	1	1	0	0	1	0	1	4	11
TEAM							1	0	1	0		3				
TOTALS			77	28-61	6-18	15-22	12	24	36	14	11	17	3	14	198	

Shooting By Period

Period	FG	FG%	3FG	3FG%	FT	FT%
1st Qtr	10-18	56%	2-7	29%	3-4	75%
2nd Qtr	7-13	54%	2-5	40%	6-8	75%
3rd Qtr	6-15	40%	1-2	50%	6-8	75%
4th Qtr	5-15	33%	1-4	25%	0-2	00%
1st Half	17-31	55%	4-12	33%	9-12	75%
2nd Half	11-30	37%	2-6	33%	6-10	60%
Game	28-61	45.9%	6-18	33.3%	15-22	68.2%

Deadball Rebounds: 4,0

Last FG: 4th-04:20

Biggest Run: 11-0

Largest lead: By 36 at 3rd-04:09

Technical Fouls: None.

Game Notes:

Officials: Mark Resch, Nykesha Thompson, Billy Smith
 Attendance: 1797

Start Time: 07:35 PM ET
 End Time: 09:26 PM ET
 Game Duration: 1:51

Score	1st	2nd	3rd	4th	TOT
GSU	5	14	16	30	65
WSU	25	22	19	11	77

GSU led for 0:00. WSU led for 38:10.
 Game was tied for 1:26.
 Times tied: 0 Lead Changes: 0

Points from	GSU	WSU
In the Paint	34	42
Off Turns	27	30
2nd Chance	14	14
Fast Break	17	21
Bench	7	24

Official Box Score
Grambling vs Wichita St.
First Half Statistics Only
December 30, 2019 at Charles Koch Arena (Devlin Court) - Wichita, Kan.



Grambling 19

No.	Player	S	Pts	FG	3FG	FT	OR	DR	TR	PF	A	TO	Blk	Stl	Min	+/-
00	HOLT, ALEXUS	G	9	4-7	0-1	1-2	1	1	2	0	0	2	0	1	15	-17
01	FORTE, JASMINE	C	0	0-4	0-0	0-0	1	1	2	2	0	1	0	0	13	-14
03	WASHINGTON, BRANDI	G	0	0-0	0-0	0-0	0	2	2	0	0	0	0	0	8	-15
05	BODY, MARKISHA	G	0	0-1	0-1	0-0	0	0	0	0	0	0	0	0	2	-3
11	WILLIAMS, ARIEL	G	6	2-5	0-1	2-2	2	0	2	1	1	4	1	1	18	-24
12	COLEMAN, JUSTICE	G	4	1-7	0-3	2-2	1	2	3	1	1	4	0	0	18	-28
15	PARRAMORE, CANDICE	G	0	0-4	0-1	0-0	0	0	0	0	0	4	0	1	18	-24
24	VAUGHN, ALEXIS	G	0	0-0	0-0	0-0	0	0	0	0	0	0	0	0	2	-4
25	CONNALLY-BANKS, MADISON	F	0	0-0	0-0	0-0	0	0	0	1	0	0	0	0	2	0
30	HARRISON, JEMIAH	C	0	0-0	0-0	0-0	0	1	1	1	0	0	0	0	2	-7
33	GIDEON, KAILYN	C	0	0-0	0-0	0-0	0	0	0	0	0	0	0	0	2	-4
	TEAM		0	0-0	0-0	0-0	1	0	1	0	0	0	0	0	0	0
TOTALS			19	7-28	0-7	5-6	6	7	13	6	2	15	1	3	100	

Shooting By Period

Period	FG	FG%	3FG	3FG%	FT	FT%
1st Qtr	2-15	13%	0-2	00%	1-2	50%
2nd Qtr	5-13	38%	0-5	00%	4-4	100%
1st Half	7-28	25%	0-7	00%	5-6	83%
Game	24-58	41.4%	3-15	20.0%	14-20	70.0%

Deadball Rebounds: 5,5
 Last FG Half: GSU 2nd-01:58

Wichita St. 47

No.	Player	S	Pts	FG	3FG	FT	OR	DR	TR	PF	A	TO	Blk	Stl	Min	+/-
00	FORREST, DIAMOND	C	0	0-0	0-0	0-0	0	0	0	0	0	0	0	0	0	0
02	MCCULLY, MARIAH	G	8	3-5	1-3	1-2	0	0	0	1	0	2	0	2	16	20
03	RYNG, NATALIA	F	0	0-1	0-1	0-0	0	0	0	0	1	0	0	0	4	1
05	REID, ASHLEY	G	0	0-2	0-0	0-0	0	0	0	1	2	0	0	1	6	15
11	KIRVEN, ASHLEI	F	5	1-2	0-0	3-4	1	0	1	0	0	0	1	0	3	3
12	BREMAUD, CARLA	G	8	3-6	2-4	0-0	0	3	3	1	0	1	0	0	14	14
13	PRINCE, RAVEN	F	0	0-1	0-0	0-0	2	1	3	0	1	2	0	0	13	14
21	BREWER, MAYA	G	11	5-8	1-3	0-0	1	0	1	0	1	0	0	3	10	22
23	BASTIN, SERAPHINE	G	4	0-0	0-0	4-4	1	2	3	0	2	1	0	0	14	13
31	DANIELSSON, VENDELA	G	0	0-0	0-0	0-0	0	1	1	0	0	0	0	0	1	3
34	SMITH, SHYIA	F	6	3-3	0-0	0-0	1	5	6	1	1	0	0	1	13	24
42	HENDERSON, ASIA	F	5	2-3	0-1	1-2	0	1	1	0	0	1	0	1	4	11
	TEAM		0	0-0	0-0	0-0	0	0	0	0	0	0	0	0	0	0
TOTALS			47	17-31	4-12	9-12	6	13	19	4	8	7	1	8	100	

Shooting By Period

Period	FG	FG%	3FG	3FG%	FT	FT%
1st Qtr	10-18	56%	2-7	29%	3-4	75%
2nd Qtr	7-13	54%	2-5	40%	6-8	75%
1st Half	17-31	55%	4-12	33%	9-12	75%
Game	28-61	45.9%	6-18	33.3%	15-22	68.2%

Deadball Rebounds: 4,0
 Last FG Half: WSU 2nd-01:04

Game Notes:

Officials: Mark Resch, Nykesha Thompson, Billy Smith
 Attendance: 1797

Start Time: 07:35 PM ET
 End Time: 09:26 PM ET
 Game Duration: 1:51

Score	1st	2nd	3rd	4th	TOT
GSU	5	14	16	30	65
WSU	25	22	19	11	77

Points from (This Period)	GSU	WSU
In the Paint	12	24
Off Turns	7	15
2nd Chance	6	10
Fast Break	3	13
Bench	0	21

Official Box Score
Grambling vs Wichita St.
First Quarter Statistics Only
December 30, 2019 at Charles Koch Arena (Devlin Court) - Wichita, Kan.



Grambling 5

No.	Player	S	Pts	FG	3FG	FT	OR	DR	TR	PF	A	TO	Blk	Stl	Min	+/-
00	HOLT, ALEXUS	G	1	0-1	0-0	1-2	0	0	0	0	0	2	0	1	8	-13
01	FORTE, JASMINE	C	0	0-4	0-0	0-0	1	1	2	1	0	0	0	0	6	-9
11	WILLIAMS, ARIEL	G	4	2-5	0-1	0-0	0	0	0	0	0	3	1	1	10	-20
12	COLEMAN, JUSTICE	G	0	0-3	0-1	0-0	0	0	0	0	1	1	0	0	10	-20
15	PARRAMORE, CANDICE	G	0	0-2	0-0	0-0	0	0	0	0	0	2	0	0	8	-16
03	WASHINGTON, BRANDI	G	0	0-0	0-0	0-0	0	1	1	0	0	0	0	0	4	-11
05	BODY, MARKISHA	G	0	0-0	0-0	0-0	0	0	0	0	0	0	0	0	0	0
24	VAUGHN, ALEXIS	G	0	0-0	0-0	0-0	0	0	0	0	0	0	0	0	0	0
25	CONNALLY-BANKS, MADISON	F	0	0-0	0-0	0-0	0	0	0	0	0	0	0	0	0	0
30	HARRISON, JEMIAH	C	0	0-0	0-0	0-0	0	1	1	1	0	0	0	0	2	-7
33	GIDEON, KAILYN	C	0	0-0	0-0	0-0	0	0	0	0	0	0	0	0	2	-4
	TEAM						1	0	1	0		0				
TOTALS			5	2-15	0-2	1-2	2	3	5	2	1	8	1	2	50	

Shooting By Period

Period	FG	FG%	3FG	3FG%	FT	FT%
1st Qtr	2-15	13%	0-2	00%	1-2	50%
2nd Qtr	5-13	38%	0-5	00%	4-4	100%
1st Half	2-15	13%	0-2	00%	1-2	50%
1st Half	7-28	25%	0-7	00%	5-6	83%
Game	24-58	41.4%	3-15	20.0%	14-20	70.0%

Deadball Rebounds: 5,5

Wichita St. 25

No.	Player	S	Pts	FG	3FG	FT	OR	DR	TR	PF	A	TO	Blk	Stl	Min	+/-
02	MCCULLY, MARIAH	G	0	0-2	0-2	0-0	0	0	0	0	0	1	0	0	6	12
12	BREMAUD, CARLA	G	5	2-3	1-2	0-0	0	3	3	0	0	0	0	0	8	13
13	PRINCE, RAVEN	F	0	0-1	0-0	0-0	1	1	2	0	1	2	0	0	8	13
23	BASTIN, SERAPHINE	G	2	0-0	0-0	2-2	1	1	2	0	1	1	0	0	6	9
34	SMITH, SHYIA	F	4	2-2	0-0	0-0	1	5	6	1	1	0	0	1	10	20
00	FORREST, DIAMOND	C	0	0-0	0-0	0-0	0	0	0	0	0	0	0	0	0	0
03	RYNG, NATALIA	F	0	0-0	0-0	0-0	0	0	0	0	0	0	0	0	0	0
05	REID, ASHLEY	G	0	0-2	0-0	0-0	0	0	0	1	1	0	0	1	4	11
11	KIRVEN, ASHLEI	F	0	0-0	0-0	0-0	0	0	0	0	0	0	0	0	0	0
21	BREWER, MAYA	G	11	5-6	1-2	0-0	1	0	1	0	0	0	0	2	5	15
31	DANIELSSON, VENDELA	G	0	0-0	0-0	0-0	0	0	0	0	0	0	0	0	0	0
42	HENDERSON, ASIA	F	3	1-2	0-1	1-2	0	0	0	0	0	0	0	0	2	7
	TEAM						0	0	0	0		0				
TOTALS			25	10-18	2-7	3-4	4	10	14	2	4	4	0	4	50	

Shooting By Period

Period	FG	FG%	3FG	3FG%	FT	FT%
1st Qtr	10-18	56%	2-7	29%	3-4	75%
2nd Qtr	7-13	54%	2-5	40%	6-8	75%
1st Half	10-18	56%	2-7	29%	3-4	75%
1st Half	17-31	55%	4-12	33%	9-12	75%
Game	28-61	45.9%	6-18	33.3%	15-22	68.2%

Deadball Rebounds: 4,0

Game Notes:

Officials: Mark Resch, Nykesha Thompson, Billy Smith
 Attendance: 1797

Start Time: 07:35 PM ET
 End Time: 09:26 PM ET
 Game Duration: 1:51

Score	1st	2nd	3rd	4th	TOT
GSU	5	14	16	30	65
WSU	25	22	19	11	77

Points from (This Period)	GSU	WSU
In the Paint	4	14
Off Turns	3	10
2nd Chance	2	6
Fast Break	3	6
Bench	0	14

**Official Play-By-Play
Grambling vs Wichita St.
First Quarter**

December 30, 2019 at Charles Koch Arena (Devlin Court) - Wichita, Kan.



Period 1

Starters:

Grambling: 0 HOLT, ALEXUS (G); 1 FORTE, JASMINE (C); 11 WILLIAMS, ARIEL (G); 12 COLEMAN, JUSTICE (G); 15 PARRAMORE, CANDICE (G);
Wichita St.: 2 MCCULLY, MARIAH (G); 12 BREMAUD, CARLA (G); 13 PRINCE, RAVEN (F); 23 BASTIN, SERAPHINE (G); 34 SMITH, SHYIA (F);

Time	VISITORS: Grambling	Score	Margin	HOME: Wichita St.
09:38	MISSED JUMPER by WILLIAMS, ARIEL			
09:35				REBOUND (DEF) by BREMAUD, CARLA
09:14				TURNOVER (LOSTBALL) by BASTIN, SERAPHINE
09:04	MISSED JUMPER by PARRAMORE, CANDICE			
09:01				REBOUND (DEF) by SMITH, SHYIA
08:54				MISSED 3PTR by MCCULLY, MARIAH
08:51	REBOUND (DEF) by FORTE, JASMINE			
08:46	MISSED 3PTR by COLEMAN, JUSTICE			
08:42				REBOUND (DEF) by BASTIN, SERAPHINE
08:34		3-0	H 3	GOOD! 3PTR by BREMAUD, CARLA
08:34				ASSIST by BASTIN, SERAPHINE
08:14	MISSED JUMPER by PARRAMORE, CANDICE			
08:11				REBOUND (DEF) by BREMAUD, CARLA
08:10	FOUL (PERSONAL) by FORTE, JASMINE			
08:10		4-0	H 4	GOOD! FT by BASTIN, SERAPHINE [FB]
08:10		5-0	H 5	GOOD! FT by BASTIN, SERAPHINE [FB]
07:56	MISSED LAYUP by FORTE, JASMINE			
07:55	REBOUND (OFF) by TEAM			
07:51	GOOD! LAYUP by WILLIAMS, ARIEL	5-2	H 3	
07:51	ASSIST by COLEMAN, JUSTICE			
07:35		7-2	H 5	GOOD! LAYUP by SMITH, SHYIA
07:35				ASSIST by PRINCE, RAVEN
07:18	MISSED LAYUP by FORTE, JASMINE			
07:18	REBOUND (OFF) by TEAM			
07:12	MISSED LAYUP by FORTE, JASMINE			
07:11	REBOUND (OFF) by TEAM			
07:06	MISSED JUMPER by FORTE, JASMINE			
07:03				REBOUND (DEF) by SMITH, SHYIA
06:52				TURNOVER (BADPASS) by MCCULLY, MARIAH
06:52	STEAL by WILLIAMS, ARIEL			
06:47	GOOD! LAYUP by WILLIAMS, ARIEL [FB]	7-4	H 3	
06:22				MISSED 3PTR by MCCULLY, MARIAH
06:19				REBOUND (OFF) by BASTIN, SERAPHINE
06:10		9-4	H 5	GOOD! JUMPER by BREMAUD, CARLA
05:46	TURNOVER (BADPASS) by PARRAMORE, CANDICE			
05:28				MISSED LAYUP by PRINCE, RAVEN
05:28	REBOUND (DEF) by TEAM			
05:28				FOUL (PERSONAL) by SMITH, SHYIA
05:28				SUB OUT: MCCULLY, MARIAH
05:28				SUB IN: BREWER, MAYA
05:17	TURNOVER (BADPASS) by HOLT, ALEXUS			
05:17				STEAL by BREWER, MAYA
05:13		11-4	H 7	GOOD! LAYUP by BREWER, MAYA [FB]
04:54	MISSED JUMPER by WILLIAMS, ARIEL			
04:51	REBOUND (OFF) by FORTE, JASMINE			
04:50	TURNOVER (BADPASS) by HOLT, ALEXUS			
04:50				STEAL by SMITH, SHYIA
04:27		13-4	H 9	GOOD! LAYUP by BREWER, MAYA
04:05	MISSED LAYUP by HOLT, ALEXUS			
04:01				REBOUND (DEF) by SMITH, SHYIA
03:53				TURNOVER (TRAVEL) by PRINCE, RAVEN
03:53				
03:53				SUB OUT: BASTIN, SERAPHINE
03:53				SUB IN: REID, ASHLEY
03:53	SUB OUT: FORTE, JASMINE			
03:53	SUB OUT: PARRAMORE, CANDICE			
03:53	SUB IN: WASHINGTON, BRANDI			
03:53	SUB IN: GIDEON, KAILYN			
03:41	MISSED LAYUP by COLEMAN, JUSTICE			
03:38				REBOUND (DEF) by PRINCE, RAVEN
03:31		16-4	H 12	GOOD! 3PTR by BREWER, MAYA
03:31				ASSIST by REID, ASHLEY
03:15	TURNOVER (TRAVEL) by WILLIAMS, ARIEL			
02:58				MISSED 3PTR by BREMAUD, CARLA
02:55				REBOUND (OFF) by PRINCE, RAVEN
02:52				TURNOVER (BADPASS) by PRINCE, RAVEN
02:52	STEAL by HOLT, ALEXUS			
02:47				FOUL (PERSONAL) by REID, ASHLEY
02:47	GOOD! FT by HOLT, ALEXUS [FB]	16-5	H 11	
02:47	MISSED FT by HOLT, ALEXUS			

Time	VISITORS: Grambling	Score	Margin	HOME: Wichita St.
02:47				REBOUND (DEF) by BREMAUD, CARLA
02:26				MISSED JUMPER by REID, ASHLEY
02:20				REBOUND (OFF) by BREWER, MAYA
02:20		18-5	H 13	GOOD! LAYUP by BREWER, MAYA
02:06	MISSED LAYUP by COLEMAN, JUSTICE			
02:02				REBOUND (DEF) by SMITH, SHYIA
01:54				MISSED 3PTR by BREWER, MAYA
01:53	REBOUND (DEF) by WASHINGTON, BRANDI			
01:53				SUB OUT: BREMAUD, CARLA
01:53				SUB OUT: PRINCE, RAVEN
01:53				SUB IN: MCCULLY, MARIAH
01:53				SUB IN: HENDERSON, ASIA
01:53	SUB OUT: HOLT, ALEXUS			
01:53	SUB IN: PARRAMORE, CANDICE			
01:35	TURNOVER (BADPASS) by PARRAMORE, CANDICE			
01:35	SUB OUT: GIDEON, KAILYN			
01:35	SUB IN: HARRISON, JEMIAH			
01:22		20-5	H 15	GOOD! LAYUP by HENDERSON, ASIA
01:22				ASSIST by SMITH, SHYIA
01:04	MISSED 3PTR by WILLIAMS, ARIEL			
01:01				REBOUND (DEF) by SMITH, SHYIA
00:53	FOUL (PERSONAL) by HARRISON, JEMIAH			
00:53		21-5	H 16	GOOD! FT by HENDERSON, ASIA
00:53				MISSED FT by HENDERSON, ASIA
00:53	REBOUND (DEF) by HARRISON, JEMIAH			
00:41	TURNOVER (BADPASS) by WILLIAMS, ARIEL			
00:41				STEAL by REID, ASHLEY
00:35				MISSED LAYUP by REID, ASHLEY
00:35	BLOCK by WILLIAMS, ARIEL			
00:33				REBOUND (OFF) by SMITH, SHYIA
00:33		23-5	H 18	GOOD! LAYUP by SMITH, SHYIA
00:33	TIMEOUT 30SEC			
00:27	TURNOVER (BADPASS) by WILLIAMS, ARIEL			
00:27				STEAL by BREWER, MAYA
00:22		25-5	H 20	GOOD! LAYUP by BREWER, MAYA [FB]
00:17	TURNOVER (TRAVEL) by COLEMAN, JUSTICE			
00:17	SUB OUT: WILLIAMS, ARIEL			
00:17	SUB IN: VAUGHN, ALEXIS			
00:01				MISSED 3PTR by HENDERSON, ASIA
00:01	REBOUND (DEF) by TEAM			

Grambling 5, Wichita St. 25

Points from (This Period)	GSU	WSU
In the Paint	4	14
Off Turns	3	10
2nd Chance	2	6
Fast Break	3	6
Bench	0	14

Official Box Score
Grambling vs Wichita St.
Second Quarter Statistics Only
December 30, 2019 at Charles Koch Arena (Devlin Court) - Wichita, Kan.



Grambling 14

No.	Player	S	Pts	FG	3FG	FT	OR	DR	TR	PF	A	TO	Blk	Stl	Min	+/-
00	HOLT, ALEXUS	G	8	4-6	0-1	0-0	1	1	2	0	0	0	0	0	7	-4
01	FORTE, JASMINE	C	0	0-0	0-0	0-0	0	0	0	1	0	1	0	0	7	-5
11	WILLIAMS, ARIEL	G	2	0-0	0-0	2-2	2	0	2	1	1	1	0	0	8	-4
12	COLEMAN, JUSTICE	G	4	1-4	0-2	2-2	1	2	3	1	0	3	0	0	8	-8
15	PARRAMORE, CANDICE	G	0	0-2	0-1	0-0	0	0	0	0	0	2	0	1	10	-8
03	WASHINGTON, BRANDI	G	0	0-0	0-0	0-0	0	1	1	0	0	0	0	0	4	-4
05	BODY, MARKISHA	G	0	0-1	0-1	0-0	0	0	0	0	0	0	0	0	2	-3
24	VAUGHN, ALEXIS	G	0	0-0	0-0	0-0	0	0	0	0	0	0	0	0	2	-4
25	CONNALLY-BANKS, MADISON	F	0	0-0	0-0	0-0	0	0	0	1	0	0	0	0	2	0
30	HARRISON, JEMIAH	C	0	0-0	0-0	0-0	0	0	0	0	0	0	0	0	0	0
33	GIDEON, KAILYN	C	0	0-0	0-0	0-0	0	0	0	0	0	0	0	0	0	0
	TEAM						0	0	0	0		0				
TOTALS			14	5-13	0-5	4-4	4	4	8	4	1	7	0	1	50	

Shooting By Period

Period	FG	FG%	3FG	3FG%	FT	FT%
3rd Qtr	6-14	43%	1-4	25%	3-5	60%
4th Qtr	11-16	69%	2-4	50%	6-9	67%
2nd Half	5-13	38%	0-5	00%	4-4	100%
2nd Half	17-30	57%	3-8	38%	9-14	64%
Game	24-58	41.4%	3-15	20.0%	14-20	70.0%

Deadball Rebounds: 5,5

Wichita St. 22

No.	Player	S	Pts	FG	3FG	FT	OR	DR	TR	PF	A	TO	Blk	Stl	Min	+/-
02	MCCULLY, MARIAH	G	8	3-3	1-1	1-2	0	0	0	1	0	1	0	2	10	8
12	BREMAUD, CARLA	G	3	1-3	1-2	0-0	0	0	0	1	0	1	0	0	6	1
13	PRINCE, RAVEN	F	0	0-0	0-0	0-0	1	0	1	0	0	0	0	0	5	1
23	BASTIN, SERAPHINE	G	2	0-0	0-0	2-2	0	1	1	0	1	0	0	0	8	4
34	SMITH, SHYIA	F	2	1-1	0-0	0-0	0	0	0	0	0	0	0	0	3	4
00	FORREST, DIAMOND	C	0	0-0	0-0	0-0	0	0	0	0	0	0	0	0	0	0
03	RYNG, NATALIA	F	0	0-1	0-1	0-0	0	0	0	0	1	0	0	0	4	1
05	REID, ASHLEY	G	0	0-0	0-0	0-0	0	0	0	0	1	0	0	0	2	4
11	KIRVEN, ASHLEI	F	5	1-2	0-0	3-4	1	0	1	0	0	0	1	0	3	3
21	BREWER, MAYA	G	0	0-2	0-1	0-0	0	0	0	0	1	0	0	1	5	7
31	DANIELSSON, VENDELA	G	0	0-0	0-0	0-0	0	1	1	0	0	0	0	0	1	3
42	HENDERSON, ASIA	F	2	1-1	0-0	0-0	0	1	1	0	0	1	0	1	2	4
	TEAM						0	0	0	0		0				
TOTALS			22	7-13	2-5	6-8	2	3	5	2	4	3	1	4	50	

Shooting By Period

Period	FG	FG%	3FG	3FG%	FT	FT%
3rd Qtr	6-15	40%	1-2	50%	6-8	75%
4th Qtr	5-15	33%	1-4	25%	0-2	00%
2nd Half	7-13	54%	2-5	40%	6-8	75%
2nd Half	11-30	37%	2-6	33%	6-10	60%
Game	28-61	45.9%	6-18	33.3%	15-22	68.2%

Deadball Rebounds: 4,0

Game Notes:

Officials: Mark Resch, Nykesha Thompson, Billy Smith
 Attendance: 1797

Start Time: 07:35 PM ET
 End Time: 09:26 PM ET
 Game Duration: 1:51

Score	1st	2nd	3rd	4th	TOT
GSU	5	14	16	30	65
WSU	25	22	19	11	77

Points from (This Period)	GSU	WSU
In the Paint	8	10
Off Turns	4	5
2nd Chance	4	4
Fast Break	0	7
Bench	0	7

**Official Play-By-Play
Grambling vs Wichita St.
Second Quarter**

December 30, 2019 at Charles Koch Arena (Devlin Court) - Wichita, Kan.



Period 2

Starters:

Grambling: 0 HOLT,ALEXUS (G); 1 FORTE,JASMINE (C); 11 WILLIAMS,ARIEL (G); 12 COLEMAN,JUSTICE (G); 15 PARRAMORE,CANDICE (G);
Wichita St.: 2 MCCULLY,MARIAH (G); 12 BREMAUD,CARLA (G); 13 PRINCE,RAVEN (F); 23 BASTIN,SERAPHINE (G); 34 SMITH,SHYIA (F);

Time	VISITORS: Grambling	Score	Margin	HOME: Wichita St.
10:00	SUB OUT: HARRISON, JEMIAH			
10:00	SUB IN: FORTE, JASMINE			
09:59		27-5	H 22	GOOD! LAYUP by HENDERSON, ASIA
09:59				ASSIST by REID, ASHLEY
09:32				FOUL (PERSONAL) by MCCULLY, MARIAH
09:32	GOOD! FT by COLEMAN, JUSTICE	27-6	H 21	
09:32	GOOD! FT by COLEMAN, JUSTICE	27-7	H 20	
09:10				TURNOVER (TRAVEL) by HENDERSON, ASIA
08:53	MISSED 3PTR by COLEMAN, JUSTICE			
08:48				REBOUND (DEF) by HENDERSON, ASIA
08:36		29-7	H 22	GOOD! LAYUP by SMITH, SHYIA
08:11	TURNOVER (BADPASS) by FORTE, JASMINE			
08:11				STEAL by BREWER, MAYA
08:05		31-7	H 24	GOOD! LAYUP by MCCULLY, MARIAH [FB]
08:05				ASSIST by BREWER, MAYA
07:49	TURNOVER (LOSTBALL) by PARRAMORE, CANDICE			
07:49				STEAL by HENDERSON, ASIA
07:33				MISSED 3PTR by BREWER, MAYA
07:31	REBOUND (DEF) by WASHINGTON, BRANDI			
07:31	TIMEOUT 30SEC			
07:31				SUB OUT: REID, ASHLEY
07:31				SUB OUT: BREWER, MAYA
07:31				SUB OUT: HENDERSON, ASIA
07:31				SUB IN: BREMAUD, CARLA
07:31				SUB IN: PRINCE, RAVEN
07:31				SUB IN: BASTIN, SERAPHINE
07:31	SUB OUT: VAUGHN, ALEXIS			
07:31	SUB IN: WILLIAMS, ARIEL			
07:21	TURNOVER (BADPASS) by COLEMAN, JUSTICE			
06:59				MISSED 3PTR by BREMAUD, CARLA
06:55	REBOUND (DEF) by COLEMAN, JUSTICE			
06:34				FOUL (PERSONAL) by BREMAUD, CARLA
06:34				SUB OUT: SMITH, SHYIA
06:34				SUB IN: RYNG, NATALIA
06:34	SUB OUT: WASHINGTON, BRANDI			
06:34	SUB IN: HOLT, ALEXUS			
06:34	GOOD! FT by WILLIAMS, ARIEL	31-8	H 23	
06:34	GOOD! FT by WILLIAMS, ARIEL	31-9	H 22	
06:24				TURNOVER (BADPASS) by BREMAUD, CARLA
06:24	STEAL by PARRAMORE, CANDICE			
06:01	GOOD! JUMPER by COLEMAN, JUSTICE	31-11	H 20	
06:01	ASSIST by WILLIAMS, ARIEL			
05:37	FOUL (PERSONAL) by COLEMAN, JUSTICE			
05:37				MISSED FT by MCCULLY, MARIAH
05:37				REBOUND (OFF) by TEAM
05:37		32-11	H 21	GOOD! FT by MCCULLY, MARIAH
05:23	MISSED JUMPER by PARRAMORE, CANDICE			
05:20	REBOUND (OFF) by WILLIAMS, ARIEL			
05:04	GOOD! LAYUP by HOLT, ALEXUS	32-13	H 19	
04:52		35-13	H 22	GOOD! 3PTR by BREMAUD, CARLA
04:52				ASSIST by BASTIN, SERAPHINE
04:30	MISSED 3PTR by HOLT, ALEXUS			
04:28	REBOUND (OFF) by WILLIAMS, ARIEL			
04:27	TURNOVER (TRAVEL) by PARRAMORE, CANDICE			
04:15				MISSED JUMPER by BREMAUD, CARLA
04:12	REBOUND (DEF) by HOLT, ALEXUS			
04:07	MISSED JUMPER by COLEMAN, JUSTICE			
04:04				REBOUND (DEF) by BASTIN, SERAPHINE
03:53				MISSED 3PTR by RYNG, NATALIA
03:50				REBOUND (OFF) by PRINCE, RAVEN
03:47		38-13	H 25	GOOD! 3PTR by MCCULLY, MARIAH
03:47				ASSIST by RYNG, NATALIA
03:31	TURNOVER (LOSTBALL) by COLEMAN, JUSTICE			
03:31				STEAL by MCCULLY, MARIAH
03:26		40-13	H 27	GOOD! LAYUP by MCCULLY, MARIAH [FB]
03:07	GOOD! LAYUP by HOLT, ALEXUS	40-15	H 25	
02:49	FOUL (PERSONAL) by FORTE, JASMINE			
02:49				SUB OUT: PRINCE, RAVEN
02:49				SUB IN: KIRVEN, ASHLEY
02:49	SUB OUT: FORTE, JASMINE			

Time	VISITORS: Grambling	Score	Margin	HOME: Wichita St.
02:49	SUB OUT: COLEMAN, JUSTICE			
02:49	SUB IN: BODY, MARKISHA			
02:49	SUB IN: CONNALLY-BANKS, MADISON			
02:49		41-15	H 26	GOOD! FT by BASTIN, SERAPHINE
02:49		42-15	H 27	GOOD! FT by BASTIN, SERAPHINE
02:31	GOOD! LAYUP by HOLT, ALEXUS	42-17	H 25	
02:12				TURNOVER (LOSTBALL) by MCCULLY, MARIAH
02:12				SUB OUT: RYNG, NATALIA
02:12				SUB IN: BREWER, MAYA
02:00	MISSED 3PTR by BODY, MARKISHA			
01:58	REBOUND (OFF) by HOLT, ALEXUS			
01:58	GOOD! LAYUP by HOLT, ALEXUS	42-19	H 23	
01:58				TIMEOUT 30SEC
01:45	FOUL (PERSONAL) by CONNALLY-BANKS, MADISON			
01:45		43-19	H 24	GOOD! FT by KIRVEN, ASHLEI
01:45		44-19	H 25	GOOD! FT by KIRVEN, ASHLEI
01:18	MISSED JUMPER by HOLT, ALEXUS			
01:17	REBOUND (OFF) by TEAM			
01:17				SUB OUT: BREMAUD, CARLA
01:17				SUB IN: DANIELSSON, VENDELA
01:17	SUB OUT: CONNALLY-BANKS, MADISON			
01:17	SUB IN: COLEMAN, JUSTICE			
01:11	MISSED 3PTR by COLEMAN, JUSTICE			
01:11				BLOCK by KIRVEN, ASHLEI
01:06				REBOUND (DEF) by DANIELSSON, VENDELA
01:04		46-19	H 27	GOOD! LAYUP by KIRVEN, ASHLEI [FB]
00:55	MISSED 3PTR by PARRAMORE, CANDICE			
00:52	REBOUND (OFF) by COLEMAN, JUSTICE			
00:52	TURNOVER (LOSTBALL) by COLEMAN, JUSTICE			
00:52				STEAL by MCCULLY, MARIAH
00:47				MISSED LAYUP by BREWER, MAYA
00:47				REBOUND (OFF) by KIRVEN, ASHLEI
00:47	FOUL (PERSONAL) by WILLIAMS, ARIEL			
00:47				MISSED FT by KIRVEN, ASHLEI
00:47				REBOUND (OFF) by TEAM
00:47		47-19	H 28	GOOD! FT by KIRVEN, ASHLEI [FB]
00:28	TURNOVER (TRAVEL) by WILLIAMS, ARIEL			
00:28	SUB OUT: BODY, MARKISHA			
00:28	SUB IN: WASHINGTON, BRANDI			
00:00				MISSED LAYUP by KIRVEN, ASHLEI
00:00	REBOUND (DEF) by COLEMAN, JUSTICE			

Grambling 19, Wichita St. 47

Points from (This Period)	GSU	WSU
In the Paint	8	10
Off Turns	4	5
2nd Chance	4	4
Fast Break	0	7
Bench	0	7

Official Box Score
Grambling vs Wichita St.
Second Half Statistics Only
December 30, 2019 at Charles Koch Arena (Devlin Court) - Wichita, Kan.



Grambling 46

No.	Player	S	Pts	FG	3FG	FT	OR	DR	TR	PF	A	TO	Blk	Stl	Min	+/-
00	HOLT, ALEXUS	G	14	5-7	2-3	2-2	0	1	1	2	0	1	0	0	17	19
01	FORTE, JASMINE	C	4	2-2	0-0	0-2	3	1	4	3	0	1	0	1	8	4
03	WASHINGTON, BRANDI	G	0	0-3	0-3	0-0	0	1	1	2	0	1	0	1	13	8
05	BODY, MARKISHA	G	0	0-0	0-0	0-0	0	0	0	0	0	0	0	0	2	9
11	WILLIAMS, ARIEL	G	6	3-6	0-0	0-2	1	3	4	1	4	1	1	1	17	13
12	COLEMAN, JUSTICE	G	15	4-6	0-0	7-8	0	1	1	2	1	2	0	0	17	7
15	PARRAMORE, CANDICE	G	0	0-1	0-1	0-0	0	0	0	0	1	1	0	0	6	-4
24	VAUGHN, ALEXIS	G	3	1-1	1-1	0-0	0	0	0	0	0	0	0	0	5	12
25	CONNALLY-BANKS, MADISON	F	0	0-0	0-0	0-0	0	0	0	0	0	0	0	0	0	0
30	HARRISON, JEMIAH	C	4	2-4	0-0	0-0	1	4	5	1	2	1	3	0	13	12
33	GIDEON, KAILYN	C	0	0-0	0-0	0-0	0	0	0	0	0	0	0	0	0	0
	TEAM		0	0-0	0-0	0-0	0	1	1	0	0	0	0	0	0	0
TOTALS			46	17-30	3-8	9-14	5	12	17	11	8	8	4	3	98	

Shooting By Period

Period	FG	FG%	3FG	3FG%	FT	FT%
3rd Qtr	6-14	43%	1-4	25%	3-5	60%
4th Qtr	11-16	69%	2-4	50%	6-9	67%
2nd Half	17-30	57%	3-8	38%	9-14	64%
Game	24-58	41.4%	3-15	20.0%	14-20	70.0%

Deadball Rebounds: 5,5
 Last FG Half: GSU 4th-00:50

Wichita St. 30

No.	Player	S	Pts	FG	3FG	FT	OR	DR	TR	PF	A	TO	Blk	Stl	Min	+/-
00	FORREST, DIAMOND	C	0	0-0	0-0	0-2	0	1	1	0	0	0	0	0	6	-15
02	MCCULLY, MARIAH	G	10	5-8	0-2	0-0	0	1	1	1	0	2	0	3	13	3
03	RYNG, NATALIA	F	0	0-0	0-0	0-0	0	0	0	1	0	0	0	0	2	-14
05	REID, ASHLEY	G	3	1-3	1-1	0-0	0	0	0	1	0	2	0	0	16	-19
11	KIRVEN, ASHLEI	F	0	0-3	0-0	0-0	1	3	4	0	0	0	0	0	4	-5
12	BREMAUD, CARLA	G	5	2-4	1-1	0-0	0	2	2	0	2	0	0	2	14	2
13	PRINCE, RAVEN	F	7	2-3	0-0	3-4	0	1	1	1	0	0	1	0	10	4
21	BREWER, MAYA	G	0	0-5	0-1	0-0	2	2	4	2	0	1	0	0	6	-19
23	BASTIN, SERAPHINE	G	2	1-2	0-0	0-0	1	1	2	2	0	2	0	1	11	1
31	DANIELSSON, VENDELA	G	0	0-1	0-1	0-0	0	0	0	1	0	0	0	0	6	-22
34	SMITH, SHYIA	F	3	0-1	0-0	3-4	1	0	1	1	1	0	1	0	9	4
42	HENDERSON, ASIA	F	0	0-0	0-0	0-0	0	0	0	0	0	0	0	0	0	0
	TEAM		0	0-0	0-0	0-0	1	0	1	0	0	3	0	0	0	0
TOTALS			30	11-30	2-6	6-10	6	11	17	10	3	10	2	6	98	

Shooting By Period

Period	FG	FG%	3FG	3FG%	FT	FT%
3rd Qtr	6-15	40%	1-2	50%	6-8	75%
4th Qtr	5-15	33%	1-4	25%	0-2	00%
2nd Half	11-30	37%	2-6	33%	6-10	60%
Game	28-61	45.9%	6-18	33.3%	15-22	68.2%

Deadball Rebounds: 4,0
 Last FG Half: WSU 4th-04:20

Game Notes:

Officials: Mark Resch, Nykesha Thompson, Billy Smith
 Attendance: 1797

Start Time: 07:35 PM ET
 End Time: 09:26 PM ET
 Game Duration: 1:51

Score	1st	2nd	3rd	4th	TOT
GSU	5	14	16	30	65
WSU	25	22	19	11	77

Points from (This Period)	GSU	WSU
In the Paint	22	18
Off Turns	20	15
2nd Chance	8	4
Fast Break	14	8
Bench	7	3

Official Box Score
Grambling vs Wichita St.
Third Quarter Statistics Only
December 30, 2019 at Charles Koch Arena (Devlin Court) - Wichita, Kan.



Grambling 46

No.	Player	S	Pts	FG	3FG	FT	OR	DR	TR	PF	A	TO	Blk	Stl	Min	+/-
00	HOLT, ALEXUS	G	6	2-4	1-2	1-1	0	0	0	1	0	1	0	0	10	-3
01	FORTE, JASMINE	C	2	1-1	0-0	0-0	2	1	3	2	0	1	0	0	3	1
11	WILLIAMS, ARIEL	G	2	1-2	0-0	0-2	0	1	1	0	0	0	0	0	8	-6
12	COLEMAN, JUSTICE	G	6	2-4	0-0	2-2	0	1	1	1	0	1	0	0	10	-3
15	PARRAMORE, CANDICE	G	0	0-0	0-0	0-0	0	0	0	0	1	1	0	0	4	-1
03	WASHINGTON, BRANDI	G	0	0-2	0-2	0-0	0	0	0	0	0	0	0	0	6	-2
05	BODY, MARKISHA	G	0	0-0	0-0	0-0	0	0	0	0	0	0	0	0	0	0
24	VAUGHN, ALEXIS	G	0	0-0	0-0	0-0	0	0	0	0	0	0	0	0	2	3
25	CONNALLY-BANKS, MADISON	F	0	0-0	0-0	0-0	0	0	0	0	0	0	0	0	0	0
30	HARRISON, JEMIAH	C	0	0-1	0-0	0-0	0	2	2	1	1	1	1	0	8	-4
33	GIDEON, KAILYN	C	0	0-0	0-0	0-0	0	0	0	0	0	0	0	0	0	0
	TEAM						0	0	0	0		0				
TOTALS			16	6-14	1-4	3-5	2	5	7	5	2	5	1	0	50	

Shooting By Period

Period	FG	FG%	3FG	3FG%	FT	FT%
2nd Half	0-0	0%	0-0	0%	0-0	0%
Game	24-58	41.4%	3-15	20.0%	14-20	70.0%

Deadball Rebounds: 5,5

Wichita St. 30

No.	Player	S	Pts	FG	3FG	FT	OR	DR	TR	PF	A	TO	Blk	Stl	Min	+/-
02	MCCULLY, MARIAH	G	4	2-4	0-1	0-0	0	1	1	0	0	1	0	2	6	8
12	BREMAUD, CARLA	G	5	2-4	1-1	0-0	0	2	2	0	1	0	0	2	7	7
13	PRINCE, RAVEN	F	7	2-2	0-0	3-4	0	0	0	0	0	0	1	0	6	8
23	BASTIN, SERAPHINE	G	0	0-0	0-0	0-0	1	0	1	1	0	0	0	1	5	2
34	SMITH, SHYIA	F	3	0-1	0-0	3-4	1	0	1	1	1	0	1	0	9	4
00	FORREST, DIAMOND	C	0	0-0	0-0	0-0	0	0	0	0	0	0	0	0	0	0
03	RYNG, NATALIA	F	0	0-0	0-0	0-0	0	0	0	0	0	0	0	0	0	0
05	REID, ASHLEY	G	0	0-0	0-0	0-0	0	0	0	0	0	0	0	0	6	0
11	KIRVEN, ASHLEI	F	0	0-3	0-0	0-0	1	3	4	0	0	0	0	0	4	-5
21	BREWER, MAYA	G	0	0-1	0-0	0-0	0	1	1	2	0	1	0	0	4	-5
31	DANIELSSON, VENDELA	G	0	0-0	0-0	0-0	0	0	0	1	0	0	0	0	3	-4
42	HENDERSON, ASIA	F	0	0-0	0-0	0-0	0	0	0	0	0	0	0	0	0	0
	TEAM						0	0	0	0		1				
TOTALS			19	6-15	1-2	6-8	3	7	10	5	2	3	2	5	50	

Shooting By Period

Period	FG	FG%	3FG	3FG%	FT	FT%
2nd Half	0-0	0%	0-0	0%	0-0	0%
Game	28-61	45.9%	6-18	33.3%	15-22	68.2%

Deadball Rebounds: 4,0

Game Notes:

Officials: **Mark Resch, Nykesha Thompson, Billy Smith**
 Attendance: 1797

Start Time: 07:35 PM ET
 End Time: 09:26 PM ET
 Game Duration: 1:51

Score	1st	2nd	3rd	4th	TOT
GSU	5	14	16	30	65
WSU	25	22	19	11	77

Points from (This Period)	GSU	WSU
In the Paint	6	10
Off Turns	5	10
2nd Chance	2	4
Fast Break	0	8
Bench	0	0

**Official Play-By-Play
Grambling vs Wichita St.
Third Quarter**

December 30, 2019 at Charles Koch Arena (Devlin Court) - Wichita, Kan.



Period 3

Starters:

Grambling: 0 HOLT,ALEXUS (G); 1 FORTE,JASMINE (C); 11 WILLIAMS,ARIEL (G); 12 COLEMAN,JUSTICE (G); 15 PARRAMORE,CANDICE (G);
Wichita St.: 2 MCCULLY,MARIAH (G); 12 BREMAUD,CARLA (G); 13 PRINCE,RAVEN (F); 23 BASTIN,SERAPHINE (G); 34 SMITH,SHYIA (F);

Time	VISITORS: Grambling	Score	Margin	HOME: Wichita St.
10:00				SUB OUT: KIRVEN, ASHLEI
10:00				SUB OUT: BREWER, MAYA
10:00				SUB OUT: DANIELSSON, VENDELA
10:00				SUB IN: BREMAUD, CARLA
10:00				SUB IN: PRINCE, RAVEN
10:00				SUB IN: SMITH, SHYIA
10:00	SUB OUT: WASHINGTON, BRANDI			
10:00	SUB IN: FORTE, JASMINE			
09:42				MISSED 3PTR by MCCULLY, MARIAH
09:39	REBOUND (DEF) by FORTE, JASMINE			
09:29				FOUL (PERSONAL) by BASTIN, SERAPHINE
09:29	GOOD! FT by COLEMAN, JUSTICE	47-20	H 27	
09:29	GOOD! FT by COLEMAN, JUSTICE	47-21	H 26	
09:13	FOUL (PERSONAL) by FORTE, JASMINE			
09:13		48-21	H 27	GOOD! FT by PRINCE, RAVEN
09:13				MISSED FT by PRINCE, RAVEN
09:12	REBOUND (DEF) by COLEMAN, JUSTICE			
08:52	MISSED JUMPER by COLEMAN, JUSTICE			
08:52				BLOCK by PRINCE, RAVEN
08:51	REBOUND (OFF) by FORTE, JASMINE			
08:47	MISSED JUMPER by WILLIAMS, ARIEL			
08:47				BLOCK by SMITH, SHYIA
08:42				REBOUND (DEF) by BREMAUD, CARLA
08:35				MISSED JUMPER by BREMAUD, CARLA
08:33	REBOUND (DEF) by TEAM			
08:21	TURNOVER (BADPASS) by FORTE, JASMINE			
08:21				STEAL by MCCULLY, MARIAH
08:21	FOUL (PERSONAL) by COLEMAN, JUSTICE			
08:13		50-21	H 29	GOOD! LAYUP by MCCULLY, MARIAH
07:57	MISSED JUMPER by COLEMAN, JUSTICE			
07:53	REBOUND (OFF) by FORTE, JASMINE			
07:53	GOOD! LAYUP by FORTE, JASMINE	50-23	H 27	
07:30	FOUL (PERSONAL) by FORTE, JASMINE			
07:30	SUB OUT: FORTE, JASMINE			
07:30	SUB IN: HARRISON, JEMIAH			
07:30				MISSED FT by SMITH, SHYIA
07:30				REBOUND (OFF) by TEAM
07:30		51-23	H 28	GOOD! FT by SMITH, SHYIA
07:20	GOOD! 3PTR by HOLT, ALEXUS	51-26	H 25	
07:20	ASSIST by PARRAMORE, CANDICE			
07:03		53-26	H 27	GOOD! LAYUP by MCCULLY, MARIAH
06:46	TURNOVER (LOSTBALL) by PARRAMORE, CANDICE			
06:46				STEAL by BASTIN, SERAPHINE
06:39				MISSED LAYUP by MCCULLY, MARIAH
06:38				REBOUND (OFF) by SMITH, SHYIA
06:38	FOUL (PERSONAL) by HARRISON, JEMIAH			
06:38		54-26	H 28	GOOD! FT by SMITH, SHYIA [FB]
06:38		55-26	H 29	GOOD! FT by SMITH, SHYIA [FB]
06:27	TURNOVER (BADPASS) by HARRISON, JEMIAH			
06:27				STEAL by MCCULLY, MARIAH
06:21				MISSED LAYUP by BREMAUD, CARLA
06:17				REBOUND (OFF) by BASTIN, SERAPHINE
06:10	FOUL (PERSONAL) by HOLT, ALEXUS			
06:10	SUB OUT: PARRAMORE, CANDICE			
06:10	SUB IN: WASHINGTON, BRANDI			
06:10		56-26	H 30	GOOD! FT by PRINCE, RAVEN
06:10		57-26	H 31	GOOD! FT by PRINCE, RAVEN
06:10				SUB OUT: BASTIN, SERAPHINE
06:10				SUB IN: REID, ASHLEY
05:56	MISSED 3PTR by WASHINGTON, BRANDI			
05:52				REBOUND (DEF) by MCCULLY, MARIAH
05:45				TURNOVER (BADPASS) by MCCULLY, MARIAH
05:30	GOOD! JUMPER by COLEMAN, JUSTICE	57-28	H 29	
05:09		60-28	H 32	GOOD! 3PTR by BREMAUD, CARLA
04:42	TURNOVER (BADPASS) by HOLT, ALEXUS			
04:42				STEAL by BREMAUD, CARLA
04:36		62-28	H 34	GOOD! LAYUP by PRINCE, RAVEN [FB]
04:36				ASSIST by SMITH, SHYIA
04:15	TURNOVER (BADPASS) by COLEMAN, JUSTICE			
04:15				STEAL by BREMAUD, CARLA

Time	VISITORS: Grambling	Score	Margin	HOME: Wichita St.
04:09		64-28	H 36	GOOD! LAYUP by PRINCE, RAVEN [FB]
04:09				ASSIST by BREMAUD, CARLA
04:05	TIMEOUT 30SEC			
04:05				SUB OUT: MCCULLY, MARIAH
04:05				SUB OUT: BREMAUD, CARLA
04:05				SUB OUT: PRINCE, RAVEN
04:05				SUB IN: KIRVEN, ASHLEI
04:05				SUB IN: BREWER, MAYA
04:05				SUB IN: DANIELSSON, VENDELA
03:55	MISSED JUMPER by HOLT, ALEXUS			
03:50				REBOUND (DEF) by KIRVEN, ASHLEI
03:41				MISSED JUMPER by KIRVEN, ASHLEI
03:38	REBOUND (DEF) by HARRISON, JEMIAH			
03:32				FOUL (PERSONAL) by SMITH, SHYIA
03:32				
03:32	MISSED FT by WILLIAMS, ARIEL			
03:32	REBOUND (OFF) by TEAM			
03:32	MISSED FT by WILLIAMS, ARIEL			
03:32				REBOUND (DEF) by KIRVEN, ASHLEI
03:22				TURNOVER (10SEC) by TEAM
03:11	MISSED 3PTR by HOLT, ALEXUS			
03:08				REBOUND (DEF) by KIRVEN, ASHLEI
03:04				MISSED LAYUP by BREWER, MAYA
03:04	BLOCK by HARRISON, JEMIAH			
03:00	REBOUND (DEF) by WILLIAMS, ARIEL			
02:45	GOOD! JUMPER by WILLIAMS, ARIEL [PNT]	64-30	H 34	
02:32				TIMEOUT 30SEC
02:14				MISSED LAYUP by SMITH, SHYIA
02:11	REBOUND (DEF) by TEAM			
02:11				FOUL (PERSONAL) by BREWER, MAYA
01:52	MISSED JUMPER by HARRISON, JEMIAH			
01:48				REBOUND (DEF) by BREWER, MAYA
01:34				FOUL (OFF) by BREWER, MAYA
01:34				TURNOVER (OFFENSIVE) by BREWER, MAYA
01:34	SUB OUT: WILLIAMS, ARIEL			
01:34	SUB IN: VAUGHN, ALEXIS			
01:21	GOOD! LAYUP by HOLT, ALEXUS	64-32	H 32	
01:21	ASSIST by HARRISON, JEMIAH			
01:21				FOUL (PERSONAL) by DANIELSSON, VENDELA
01:21				SUB OUT: DANIELSSON, VENDELA
01:21				SUB OUT: SMITH, SHYIA
01:21				SUB IN: BREMAUD, CARLA
01:21				SUB IN: BASTIN, SERAPHINE
01:21	GOOD! FT by HOLT, ALEXUS	64-33	H 31	
00:54				MISSED LAYUP by KIRVEN, ASHLEI
00:47				REBOUND (OFF) by KIRVEN, ASHLEI
00:47				MISSED LAYUP by KIRVEN, ASHLEI
00:47	REBOUND (DEF) by HARRISON, JEMIAH			
00:38	MISSED 3PTR by WASHINGTON, BRANDI			
00:35				REBOUND (DEF) by BREMAUD, CARLA
00:31		66-33	H 33	GOOD! JUMPER by BREMAUD, CARLA [FB/PNT]
00:00	GOOD! JUMPER by COLEMAN, JUSTICE	66-35	H 31	

Grambling 35, Wichita St. 66

Points from (This Period)	GSU	WSU
In the Paint	6	10
Off Turns	5	10
2nd Chance	2	4
Fast Break	0	8
Bench	0	0

Official Box Score
Grambling vs Wichita St.
Fourth Quarter Statistics Only
December 30, 2019 at Charles Koch Arena (Devlin Court) - Wichita, Kan.



Grambling 30

No.	Player	S	Pts	FG	3FG	FT	OR	DR	TR	PF	A	TO	Blk	Stl	Min	+/-
00	HOLT, ALEXUS	G	8	3-3	1-1	1-1	0	1	1	1	0	0	0	0	7	22
01	FORTE, JASMINE	C	2	1-1	0-0	0-2	1	0	1	1	0	0	0	1	5	-3
11	WILLIAMS, ARIEL	G	4	2-4	0-0	0-0	1	2	3	1	4	1	1	1	9	19
12	COLEMAN, JUSTICE	G	9	2-2	0-0	5-6	0	0	0	1	1	1	0	0	7	10
15	PARRAMORE, CANDICE	G	0	0-1	0-1	0-0	0	0	0	0	0	0	0	0	2	-3
03	WASHINGTON, BRANDI	G	0	0-1	0-1	0-0	0	1	1	2	0	1	0	1	7	10
05	BODY, MARKISHA	G	0	0-0	0-0	0-0	0	0	0	0	0	0	0	0	2	9
24	VAUGHN, ALEXIS	G	3	1-1	1-1	0-0	0	0	0	0	0	0	0	0	3	9
25	CONNALLY-BANKS, MADISON	F	0	0-0	0-0	0-0	0	0	0	0	0	0	0	0	0	0
30	HARRISON, JEMIAH	C	4	2-3	0-0	0-0	1	2	3	0	1	0	2	0	5	16
33	GIDEON, KAILYN	C	0	0-0	0-0	0-0	0	0	0	0	0	0	0	0	0	0
	TEAM						0	1	1	0		0				
TOTALS			30	11-16	2-4	6-9	3	7	10	6	6	3	3	3	48	

Shooting By Period

Period	FG	FG%	3FG	3FG%	FT	FT%
Game	24-58	41.4%	3-15	20.0%	14-20	70.0%

Deadball Rebounds: 5,5

Wichita St. 11

No.	Player	S	Pts	FG	3FG	FT	OR	DR	TR	PF	A	TO	Blk	Stl	Min	+/-
02	MCCULLY, MARIAH	G	6	3-4	0-1	0-0	0	0	0	1	0	1	0	1	7	-5
12	BREMAUD, CARLA	G	0	0-0	0-0	0-0	0	0	0	0	1	0	0	0	7	-5
13	PRINCE, RAVEN	F	0	0-1	0-0	0-0	0	1	1	1	0	0	0	0	4	-4
23	BASTIN, SERAPHINE	G	2	1-2	0-0	0-0	0	1	1	1	0	2	0	0	6	-1
34	SMITH, SHYIA	F	0	0-0	0-0	0-0	0	0	0	0	0	0	0	0	0	0
00	FORREST, DIAMOND	C	0	0-0	0-0	0-2	0	1	1	0	0	0	0	0	6	-15
03	RYNG, NATALIA	F	0	0-0	0-0	0-0	0	0	0	1	0	0	0	0	2	-14
05	REID, ASHLEY	G	3	1-3	1-1	0-0	0	0	0	1	0	2	0	0	10	-19
11	KIRVEN, ASHLEI	F	0	0-0	0-0	0-0	0	0	0	0	0	0	0	0	0	0
21	BREWER, MAYA	G	0	0-4	0-1	0-0	2	1	3	0	0	0	0	0	2	-14
31	DANIELSSON, VENDELA	G	0	0-1	0-1	0-0	0	0	0	0	0	0	0	0	3	-18
42	HENDERSON, ASIA	F	0	0-0	0-0	0-0	0	0	0	0	0	0	0	0	0	0
	TEAM						1	0	1	0		2				
TOTALS			11	5-15	1-4	0-2	3	4	7	5	1	7	0	1	48	

Shooting By Period

Period	FG	FG%	3FG	3FG%	FT	FT%
Game	28-61	45.9%	6-18	33.3%	15-22	68.2%

Deadball Rebounds: 4,0

Game Notes:

Officials: Mark Resch, Nykesha Thompson, Billy Smith
 Attendance: 1797

Start Time: 07:35 PM ET
 End Time: 09:26 PM ET
 Game Duration: 1:51

Score	1st	2nd	3rd	4th	TOT
GSU	5	14	16	30	65
WSU	25	22	19	11	77

Points from (This Period)	GSU	WSU
In the Paint	16	8
Off Turns	15	5
2nd Chance	6	0
Fast Break	14	0
Bench	7	3

**Official Play-By-Play
Grambling vs Wichita St.
Fourth Quarter**

December 30, 2019 at Charles Koch Arena (Devlin Court) - Wichita, Kan.



Period 4

Starters:

Grambling: 0 HOLT,ALEXUS (G); 1 FORTE,JASMINE (C); 11 WILLIAMS,ARIEL (G); 12 COLEMAN,JUSTICE (G); 15 PARRAMORE,CANDICE (G);

Wichita St.: 2 MCCULLY,MARIAH (G); 12 BREMAUD,CARLA (G); 13 PRINCE,RAVEN (F); 23 BASTIN,SERAPHINE (G); 34 SMITH,SHYIA (F);

Time	VISITORS: Grambling	Score	Margin	HOME: Wichita St.
10:00				SUB OUT: KIRVEN, ASHLEI
10:00				SUB OUT: BREWER, MAYA
10:00				SUB IN: MCCULLY, MARIAH
10:00				SUB IN: PRINCE, RAVEN
09:31				MISSED LAYUP by BASTIN, SERAPHINE
09:31	BLOCK by HARRISON, JEMIAH			
09:31				REBOUND (OFF) by TEAM
09:31	SUB OUT: VAUGHN, ALEXIS			
09:31	SUB IN: WILLIAMS, ARIEL			
09:30				TURNOVER (SHOTCLOCK) by TEAM
09:13	GOOD! JUMPER by COLEMAN, JUSTICE	66-37	H 29	
09:13	ASSIST by WILLIAMS, ARIEL			
08:57				MISSED JUMPER by REID, ASHLEY
08:54	REBOUND (DEF) by TEAM			
08:44	MISSED LAYUP by HARRISON, JEMIAH			
08:38	REBOUND (OFF) by HARRISON, JEMIAH			
08:38	GOOD! LAYUP by HARRISON, JEMIAH	66-39	H 27	
08:15				MISSED LAYUP by PRINCE, RAVEN
08:11	REBOUND (DEF) by WILLIAMS, ARIEL			
08:09	FOUL (OFF) by WILLIAMS, ARIEL			
08:09	TURNOVER (OFFENSIVE) by WILLIAMS, ARIEL			
07:57	FOUL (PERSONAL) by HOLT, ALEXUS			
07:57	SUB OUT: HOLT, ALEXUS			
07:57	SUB IN: PARRAMORE, CANDICE			
07:52		68-39	H 29	GOOD! LAYUP by MCCULLY, MARIAH
07:36				FOUL (PERSONAL) by MCCULLY, MARIAH
07:36	SUB OUT: HARRISON, JEMIAH			
07:36	SUB IN: FORTE, JASMINE			
07:36	GOOD! FT by COLEMAN, JUSTICE	68-40	H 28	
07:36	GOOD! FT by COLEMAN, JUSTICE	68-41	H 27	
07:15				MISSED 3PTR by MCCULLY, MARIAH
07:14	REBOUND (DEF) by TEAM			
07:03				FOUL (PERSONAL) by BASTIN, SERAPHINE
07:03	MISSED FT by FORTE, JASMINE			
07:03	REBOUND (OFF) by TEAM			
07:03	MISSED FT by FORTE, JASMINE			
07:03				REBOUND (DEF) by PRINCE, RAVEN
06:47		70-41	H 29	GOOD! LAYUP by MCCULLY, MARIAH
06:36	TURNOVER (LOSTBALL) by COLEMAN, JUSTICE			
06:36				STEAL by MCCULLY, MARIAH
06:36	FOUL (PERSONAL) by COLEMAN, JUSTICE			
06:36				SUB OUT: PRINCE, RAVEN
06:36				SUB IN: FORREST, DIAMOND
06:19		73-41	H 32	GOOD! 3PTR by REID, ASHLEY
06:19				ASSIST by BREMAUD, CARLA
06:03	MISSED 3PTR by PARRAMORE, CANDICE			
05:57	REBOUND (OFF) by WILLIAMS, ARIEL			
05:57	GOOD! LAYUP by WILLIAMS, ARIEL	73-43	H 30	
05:38	SUB OUT: PARRAMORE, CANDICE			
05:38	SUB IN: HOLT, ALEXUS			
05:36	FOUL (PERSONAL) by WASHINGTON, BRANDI			
05:25				TURNOVER (BADPASS) by BASTIN, SERAPHINE
05:25	STEAL by WASHINGTON, BRANDI			
05:20	GOOD! LAYUP by HOLT, ALEXUS [FB]	73-45	H 28	
05:20	ASSIST by COLEMAN, JUSTICE			
04:55		75-45	H 30	GOOD! LAYUP by BASTIN, SERAPHINE
04:34	GOOD! LAYUP by COLEMAN, JUSTICE	75-47	H 28	
04:20		77-47	H 30	GOOD! LAYUP by MCCULLY, MARIAH
04:01	MISSED 3PTR by WASHINGTON, BRANDI			
03:57				REBOUND (DEF) by BASTIN, SERAPHINE
03:52				TURNOVER (BADPASS) by BASTIN, SERAPHINE
03:52				
03:52				SUB OUT: BASTIN, SERAPHINE
03:52				SUB IN: DANIELSSON, VENDELA
03:52	SUB OUT: WASHINGTON, BRANDI			
03:52	SUB OUT: COLEMAN, JUSTICE			
03:52	SUB IN: BODY, MARKISHA			
03:52	SUB IN: VAUGHN, ALEXIS			
03:37	MISSED JUMPER by WILLIAMS, ARIEL			
03:33	REBOUND (OFF) by FORTE, JASMINE			

Time	VISITORS: Grambling	Score	Margin	HOME: Wichita St.
03:33	GOOD! LAYUP by FORTE, JASMINE	77-49	H 28	
03:20				TURNOVER (LOSTBALL) by MCCULLY, MARIAH
03:20	STEAL by FORTE, JASMINE			
03:12	GOOD! LAYUP by WILLIAMS, ARIEL [FB]	77-51	H 26	
02:50	FOUL (PERSONAL) by FORTE, JASMINE			
02:50				SUB OUT: MCCULLY, MARIAH
02:50				SUB OUT: BREMAUD, CARLA
02:50				SUB IN: RYNG, NATALIA
02:50				SUB IN: BREWER, MAYA
02:50	SUB OUT: FORTE, JASMINE			
02:50	SUB IN: HARRISON, JEMIAH			
02:50				MISSED FT by FORREST, DIAMOND
02:50				REBOUND (OFF) by TEAM
02:50				MISSED FT by FORREST, DIAMOND
02:50				REBOUND (OFF) by BREWER, MAYA
02:46				MISSED 3PTR by BREWER, MAYA
02:43	REBOUND (DEF) by HOLT, ALEXUS			
02:40	GOOD! LAYUP by HARRISON, JEMIAH [FB]	77-53	H 24	
02:40	ASSIST by WILLIAMS, ARIEL			
02:18				MISSED JUMPER by REID, ASHLEY
02:15	REBOUND (DEF) by HARRISON, JEMIAH			
02:09	MISSED JUMPER by WILLIAMS, ARIEL			
02:05				REBOUND (DEF) by BREWER, MAYA
01:56				TURNOVER (TRAVEL) by REID, ASHLEY
01:47	GOOD! 3PTR by VAUGHN, ALEXIS	77-56	H 21	
01:47	ASSIST by HARRISON, JEMIAH			
01:47	TIMEOUT 30SEC			
01:36				TURNOVER (10SEC) by TEAM
01:36	SUB OUT: BODY, MARKISHA			
01:36	SUB OUT: VAUGHN, ALEXIS			
01:36	SUB IN: WASHINGTON, BRANDI			
01:36	SUB IN: COLEMAN, JUSTICE			
01:21				FOUL (PERSONAL) by RYNG, NATALIA
01:21	GOOD! FT by COLEMAN, JUSTICE	77-57	H 20	
01:21	MISSED FT by COLEMAN, JUSTICE			
01:21				REBOUND (DEF) by FORREST, DIAMOND
01:09				MISSED JUMPER by BREWER, MAYA
01:06	REBOUND (DEF) by WILLIAMS, ARIEL			
01:02	GOOD! 3PTR by HOLT, ALEXUS [FB]	77-60	H 17	
01:02	ASSIST by WILLIAMS, ARIEL			
00:53				TURNOVER (BADPASS) by REID, ASHLEY
00:53	STEAL by WILLIAMS, ARIEL			
00:50	GOOD! LAYUP by HOLT, ALEXUS [FB]	77-62	H 15	
00:50	ASSIST by WILLIAMS, ARIEL			
00:50				FOUL (PERSONAL) by REID, ASHLEY
00:50	GOOD! FT by HOLT, ALEXUS [FB]	77-63	H 14	
00:50				SUB OUT: FORREST, DIAMOND
00:50				SUB IN: PRINCE, RAVEN
00:33				MISSED 3PTR by DANIELSSON, VENDELA
00:24				REBOUND (OFF) by BREWER, MAYA
00:24				MISSED LAYUP by BREWER, MAYA
00:24	BLOCK by WILLIAMS, ARIEL			
00:24	REBOUND (DEF) by WASHINGTON, BRANDI			
00:24	FOUL (OFF) by WASHINGTON, BRANDI			
00:24	TURNOVER (OFFENSIVE) by WASHINGTON, BRANDI			
00:24				MISSED LAYUP by BREWER, MAYA
00:24	BLOCK by HARRISON, JEMIAH			
00:24	REBOUND (DEF) by HARRISON, JEMIAH			
00:24				FOUL (PERSONAL) by PRINCE, RAVEN
00:24	GOOD! FT by COLEMAN, JUSTICE [FB]	77-64	H 13	
00:24	GOOD! FT by COLEMAN, JUSTICE [FB]	77-65	H 12	

Grambling 65, Wichita St. 77

Points from (This Period)	GSU	WSU
In the Paint	16	8
Off Turns	15	5
2nd Chance	6	0
Fast Break	14	0
Bench	7	3

**Official Scoring/Possession Reference Chart
Grambling vs Wichita St.
Period 1**

December 30, 2019 at Charles Koch Arena (Devlin Court) - Wichita, Kan.



Period 1

Starters:

Grambling: 0 HOLT,ALEXUS (G); 1 FORTE,JASMINE (C); 11 WILLIAMS,ARIEL (G); 12 COLEMAN,JUSTICE (G); 15 PARRAMORE,CANDICE (G);

Wichita St.: 2 MCCULLY,MARIAH (G); 12 BREMAUD,CARLA (G); 13 PRINCE,RAVEN (F); 23 BASTIN,SERAPHINE (G); 34 SMITH,SHYIA (F);

Time	VISITORS: Grambling	Score	Margin	HOME: Wichita St.
08:34		3-0	H 3	GOOD! 3PTR by BREMAUD, CARLA
08:10		4-0	H 4	GOOD! FT by BASTIN, SERAPHINE [FB]
08:10		5-0	H 5	GOOD! FT by BASTIN, SERAPHINE [FB]
07:51	GOOD! LAYUP by WILLIAMS, ARIEL	5-2	H 3	
07:35		7-2	H 5	GOOD! LAYUP by SMITH, SHYIA
06:47	GOOD! LAYUP by WILLIAMS, ARIEL [FB]	7-4	H 3	
06:10		9-4	H 5	GOOD! JUMPER by BREMAUD, CARLA
05:13		11-4	H 7	GOOD! LAYUP by BREWER, MAYA [FB]
04:27		13-4	H 9	GOOD! LAYUP by BREWER, MAYA
03:31		16-4	H 12	GOOD! 3PTR by BREWER, MAYA
02:47	GOOD! FT by HOLT, ALEXUS [FB]	16-5	H 11	
02:20		18-5	H 13	GOOD! LAYUP by BREWER, MAYA
01:22		20-5	H 15	GOOD! LAYUP by HENDERSON, ASIA
00:53		21-5	H 16	GOOD! FT by HENDERSON, ASIA
00:33		23-5	H 18	GOOD! LAYUP by SMITH, SHYIA
00:22		25-5	H 20	GOOD! LAYUP by BREWER, MAYA [FB]

Grambling 5, Wichita St. 25

**Official Scoring/Possession Reference Chart
Grambling vs Wichita St.
Period 2**

December 30, 2019 at Charles Koch Arena (Devlin Court) - Wichita, Kan.



Period 2

Starters:

Grambling: 0 HOLT,ALEXUS (G); 1 FORTE,JASMINE (C); 11 WILLIAMS,ARIEL (G); 12 COLEMAN,JUSTICE (G); 15 PARRAMORE,CANDICE (G);

Wichita St.: 2 MCCULLY,MARIAH (G); 12 BREMAUD,CARLA (G); 13 PRINCE,RAVEN (F); 23 BASTIN,SERAPHINE (G); 34 SMITH,SHYIA (F);

Time	VISITORS: Grambling	Score	Margin	HOME: Wichita St.
09:59		27-5	H 22	GOOD! LAYUP by HENDERSON, ASIA
09:32	GOOD! FT by COLEMAN, JUSTICE	27-6	H 21	
09:32	GOOD! FT by COLEMAN, JUSTICE	27-7	H 20	
08:36		29-7	H 22	GOOD! LAYUP by SMITH, SHYIA
08:05		31-7	H 24	GOOD! LAYUP by MCCULLY, MARIAH [FB]
06:34	GOOD! FT by WILLIAMS, ARIEL	31-8	H 23	
06:34	GOOD! FT by WILLIAMS, ARIEL	31-9	H 22	
06:01	GOOD! JUMPER by COLEMAN, JUSTICE	31-11	H 20	
05:37		32-11	H 21	GOOD! FT by MCCULLY, MARIAH
05:04	GOOD! LAYUP by HOLT, ALEXUS	32-13	H 19	
04:52		35-13	H 22	GOOD! 3PTR by BREMAUD, CARLA
03:47		38-13	H 25	GOOD! 3PTR by MCCULLY, MARIAH
03:26		40-13	H 27	GOOD! LAYUP by MCCULLY, MARIAH [FB]
03:07	GOOD! LAYUP by HOLT, ALEXUS	40-15	H 25	
02:49		41-15	H 26	GOOD! FT by BASTIN, SERAPHINE
02:49		42-15	H 27	GOOD! FT by BASTIN, SERAPHINE
02:31	GOOD! LAYUP by HOLT, ALEXUS	42-17	H 25	
01:58	GOOD! LAYUP by HOLT, ALEXUS	42-19	H 23	
01:45		43-19	H 24	GOOD! FT by KIRVEN, ASHLEI
01:45		44-19	H 25	GOOD! FT by KIRVEN, ASHLEI
01:04		46-19	H 27	GOOD! LAYUP by KIRVEN, ASHLEI [FB]
00:47		47-19	H 28	GOOD! FT by KIRVEN, ASHLEI [FB]

Grambling 19, Wichita St. 47

**Official Scoring/Possession Reference Chart
Grambling vs Wichita St.
Period 3**

December 30, 2019 at Charles Koch Arena (Devlin Court) - Wichita, Kan.



Period 3

Starters:

Grambling: 0 HOLT,ALEXUS (G); 1 FORTE,JASMINE (C); 11 WILLIAMS,ARIEL (G); 12 COLEMAN,JUSTICE (G); 15 PARRAMORE,CANDICE (G);

Wichita St.: 2 MCCULLY,MARIAH (G); 12 BREMAUD,CARLA (G); 13 PRINCE,RAVEN (F); 23 BASTIN,SERAPHINE (G); 34 SMITH,SHYIA (F);

Time	VISITORS: Grambling	Score	Margin	HOME: Wichita St.
09:29	GOOD! FT by COLEMAN, JUSTICE	47-20	H 27	
09:29	GOOD! FT by COLEMAN, JUSTICE	47-21	H 26	
09:13		48-21	H 27	GOOD! FT by PRINCE, RAVEN
08:13		50-21	H 29	GOOD! LAYUP by MCCULLY, MARIAH
07:53	GOOD! LAYUP by FORTE, JASMINE	50-23	H 27	
07:30		51-23	H 28	GOOD! FT by SMITH, SHYIA
07:20	GOOD! 3PTR by HOLT, ALEXUS	51-26	H 25	
07:03		53-26	H 27	GOOD! LAYUP by MCCULLY, MARIAH
06:38		54-26	H 28	GOOD! FT by SMITH, SHYIA [FB]
06:38		55-26	H 29	GOOD! FT by SMITH, SHYIA [FB]
06:10		56-26	H 30	GOOD! FT by PRINCE, RAVEN
06:10		57-26	H 31	GOOD! FT by PRINCE, RAVEN
05:30	GOOD! JUMPER by COLEMAN, JUSTICE	57-28	H 29	
05:09		60-28	H 32	GOOD! 3PTR by BREMAUD, CARLA
04:36		62-28	H 34	GOOD! LAYUP by PRINCE, RAVEN [FB]
04:09		64-28	H 36	GOOD! LAYUP by PRINCE, RAVEN [FB]
02:45	GOOD! JUMPER by WILLIAMS, ARIEL [PNT]	64-30	H 34	
01:21	GOOD! LAYUP by HOLT, ALEXUS	64-32	H 32	
01:21	GOOD! FT by HOLT, ALEXUS	64-33	H 31	
00:31		66-33	H 33	GOOD! JUMPER by BREMAUD, CARLA [FB/PNT]
00:00	GOOD! JUMPER by COLEMAN, JUSTICE	66-35	H 31	

Grambling 35, Wichita St. 66

**Official Scoring/Possession Reference Chart
Grambling vs Wichita St.
Period 4**

December 30, 2019 at Charles Koch Arena (Devlin Court) - Wichita, Kan.



Period 4

Starters:

Grambling: 0 HOLT,ALEXUS (G); 1 FORTE,JASMINE (C); 11 WILLIAMS,ARIEL (G); 12 COLEMAN,JUSTICE (G); 15 PARRAMORE,CANDICE (G);

Wichita St.: 2 MCCULLY,MARIAH (G); 12 BREMAUD,CARLA (G); 13 PRINCE,RAVEN (F); 23 BASTIN,SERAPHINE (G); 34 SMITH,SHYIA (F);

Time	VISITORS: Grambling	Score	Margin	HOME: Wichita St.
09:13	GOOD! JUMPER by COLEMAN, JUSTICE	66-37	H 29	
08:38	GOOD! LAYUP by HARRISON, JEMIAH	66-39	H 27	
07:52		68-39	H 29	GOOD! LAYUP by MCCULLY, MARIAH
07:36	GOOD! FT by COLEMAN, JUSTICE	68-40	H 28	
07:36	GOOD! FT by COLEMAN, JUSTICE	68-41	H 27	
06:47		70-41	H 29	GOOD! LAYUP by MCCULLY, MARIAH
06:19		73-41	H 32	GOOD! 3PTR by REID, ASHLEY
05:57	GOOD! LAYUP by WILLIAMS, ARIEL	73-43	H 30	
05:20	GOOD! LAYUP by HOLT, ALEXUS [FB]	73-45	H 28	
04:55		75-45	H 30	GOOD! LAYUP by BASTIN, SERAPHINE
04:34	GOOD! LAYUP by COLEMAN, JUSTICE	75-47	H 28	
04:20		77-47	H 30	GOOD! LAYUP by MCCULLY, MARIAH
03:33	GOOD! LAYUP by FORTE, JASMINE	77-49	H 28	
03:12	GOOD! LAYUP by WILLIAMS, ARIEL [FB]	77-51	H 26	
02:40	GOOD! LAYUP by HARRISON, JEMIAH [FB]	77-53	H 24	
01:47	GOOD! 3PTR by VAUGHN, ALEXIS	77-56	H 21	
01:21	GOOD! FT by COLEMAN, JUSTICE	77-57	H 20	
01:02	GOOD! 3PTR by HOLT, ALEXUS [FB]	77-60	H 17	
00:50	GOOD! LAYUP by HOLT, ALEXUS [FB]	77-62	H 15	
00:50	GOOD! FT by HOLT, ALEXUS [FB]	77-63	H 14	
00:24	GOOD! FT by COLEMAN, JUSTICE [FB]	77-64	H 13	
00:24	GOOD! FT by COLEMAN, JUSTICE [FB]	77-65	H 12	

Grambling 65, Wichita St. 77

**Official Substitutions Log
Grambling vs Wichita St.
Period 1**

December 30, 2019 at Charles Koch Arena (Devlin Court) - Wichita, Kan.



VISITORS: Grambling	Time	Score	HOME: Wichita St.
0 HOLT,ALEXUS			2 MCCULLY,MARIAH
1 FORTE,JASMINE			12 BREMAUD,CARLA
11 WILLIAMS,ARIEL			13 PRINCE,RAVEN
12 COLEMAN,JUSTICE			23 BASTIN,SERAPHINE
15 PARRAMORE,CANDICE			34 SMITH,SHYIA
	05:28	4-9	SUB OUT: MCCULLY,MARIAH
	05:28		SUB IN: BREWER,MAYA
	03:53	4-13	SUB OUT: BASTIN,SERAPHINE
	03:53		SUB IN: REID,ASHLEY
SUB OUT: 1 FORTE,JASMINE	03:53		
SUB OUT: 15 PARRAMORE,CANDICE	03:53		
SUB IN: 3 WASHINGTON,BRANDI	03:53		
SUB IN: 33 GIDEON,KAILYN	03:53		
	01:53	5-18	SUB OUT: BREMAUD,CARLA
	01:53		SUB OUT: PRINCE,RAVEN
	01:53		SUB IN: MCCULLY,MARIAH
	01:53		SUB IN: HENDERSON,ASIA
SUB OUT: 0 HOLT,ALEXUS	01:53		
SUB IN: 15 PARRAMORE,CANDICE	01:53		
SUB OUT: 33 GIDEON,KAILYN	01:35	5-18	
SUB IN: 30 HARRISON,JEMIAH	01:35		
SUB OUT: 11 WILLIAMS,ARIEL	00:17	5-25	
SUB IN: 24 VAUGHN,ALEXIS	00:17		

Grambling 5, Wichita St. 25

**Official Substitutions Log
Grambling vs Wichita St.
Period 2**

December 30, 2019 at Charles Koch Arena (Devlin Court) - Wichita, Kan.



VISITORS: Grambling	Time	Score	HOME: Wichita St.
0 HOLT,ALEXUS			2 MCCULLY,MARIAH
1 FORTE,JASMINE			12 BREMAUD,CARLA
11 WILLIAMS,ARIEL			13 PRINCE,RAVEN
12 COLEMAN,JUSTICE			23 BASTIN,SERAPHINE
15 PARRAMORE,CANDICE			34 SMITH,SHYIA
SUB OUT: 30 HARRISON,JEMIAH	10:00	-	
SUB IN: 1 FORTE,JASMINE	10:00		
	07:31	7-31	SUB OUT: REID,ASHLEY
	07:31		SUB OUT: BREWER,MAYA
	07:31		SUB OUT: HENDERSON,ASIA
	07:31		SUB IN: BREMAUD,CARLA
	07:31		SUB IN: PRINCE,RAVEN
	07:31		SUB IN: BASTIN,SERAPHINE
SUB OUT: 24 VAUGHN,ALEXIS	07:31		
SUB IN: 11 WILLIAMS,ARIEL	07:31		
	06:34	7-31	SUB OUT: SMITH,SHYIA
	06:34		SUB IN: RYNG,NATALIA
SUB OUT: 3 WASHINGTON,BRANDI	06:34		
SUB IN: 0 HOLT,ALEXUS	06:34		
	02:49	15-40	SUB OUT: PRINCE,RAVEN
	02:49		SUB IN: KIRVEN,ASHLEI
SUB OUT: 1 FORTE,JASMINE	02:49		
SUB OUT: 12 COLEMAN,JUSTICE	02:49		
SUB IN: 5 BODY,MARKISHA	02:49		
SUB IN: 25 CONNALLY-BANKS,MADISON	02:49		
	02:12	17-42	SUB OUT: RYNG,NATALIA
	02:12		SUB IN: BREWER,MAYA
	01:17	19-44	SUB OUT: BREMAUD,CARLA
	01:17		SUB IN: DANIELSSON,VENDELA
SUB OUT: 25 CONNALLY-BANKS,MADISON	01:17		
SUB IN: 12 COLEMAN,JUSTICE	01:17		
SUB OUT: 5 BODY,MARKISHA	00:28	19-47	
SUB IN: 3 WASHINGTON,BRANDI	00:28		

Grambling 19, Wichita St. 47

**Official Substitutions Log
Grambling vs Wichita St.
Period 3**

December 30, 2019 at Charles Koch Arena (Devlin Court) - Wichita, Kan.



VISITORS: Grambling	Time	Score	HOME: Wichita St.
0 HOLT,ALEXUS			2 MCCULLY,MARIAH
1 FORTE,JASMINE			12 BREMAUD,CARLA
11 WILLIAMS,ARIEL			13 PRINCE,RAVEN
12 COLEMAN,JUSTICE			23 BASTIN,SERAPHINE
15 PARRAMORE,CANDICE			34 SMITH,SHYIA
	10:00	-	SUB OUT: KIRVEN,ASHLEI
	10:00		SUB OUT: BREWER,MAYA
	10:00		SUB OUT: DANIELSSON,VENDELA
	10:00		SUB IN: BREMAUD,CARLA
	10:00		SUB IN: PRINCE,RAVEN
	10:00		SUB IN: SMITH,SHYIA
SUB OUT: 3 WASHINGTON,BRANDI	10:00		
SUB IN: 1 FORTE,JASMINE	10:00		
SUB OUT: 1 FORTE,JASMINE	07:30	23-50	
SUB IN: 30 HARRISON,JEMIAH	07:30		
SUB OUT: 15 PARRAMORE,CANDICE	06:10	26-55	
SUB IN: 3 WASHINGTON,BRANDI	06:10		
	06:10		SUB OUT: BASTIN,SERAPHINE
	06:10		SUB IN: REID,ASHLEY
	04:05	28-64	SUB OUT: MCCULLY,MARIAH
	04:05		SUB OUT: BREMAUD,CARLA
	04:05		SUB OUT: PRINCE,RAVEN
	04:05		SUB IN: KIRVEN,ASHLEI
	04:05		SUB IN: BREWER,MAYA
	04:05		SUB IN: DANIELSSON,VENDELA
SUB OUT: 11 WILLIAMS,ARIEL	01:34	30-64	
SUB IN: 24 VAUGHN,ALEXIS	01:34		
	01:21	32-64	SUB OUT: DANIELSSON,VENDELA
	01:21		SUB OUT: SMITH,SHYIA
	01:21		SUB IN: BREMAUD,CARLA
	01:21		SUB IN: BASTIN,SERAPHINE

Grambling 35, Wichita St. 66

**Official Substitutions Log
Grambling vs Wichita St.
Period 4**

December 30, 2019 at Charles Koch Arena (Devlin Court) - Wichita, Kan.



VISITORS: Grambling	Time	Score	HOME: Wichita St.
0 HOLT,ALEXUS			2 MCCULLY,MARIAH
1 FORTE,JASMINE			12 BREMAUD,CARLA
11 WILLIAMS,ARIEL			13 PRINCE,RAVEN
12 COLEMAN,JUSTICE			23 BASTIN,SERAPHINE
15 PARRAMORE,CANDICE			34 SMITH,SHYIA
	10:00	-	SUB OUT: KIRVEN,ASHLEI
	10:00		SUB OUT: BREWER,MAYA
	10:00		SUB IN: MCCULLY,MARIAH
	10:00		SUB IN: PRINCE,RAVEN
SUB OUT: 24 VAUGHN,ALEXIS	09:31	-	
SUB IN: 11 WILLIAMS,ARIEL	09:31		
SUB OUT: 0 HOLT,ALEXUS	07:57	39-66	
SUB IN: 15 PARRAMORE,CANDICE	07:57		
SUB OUT: 30 HARRISON,JEMIAH	07:36	39-68	
SUB IN: 1 FORTE,JASMINE	07:36		
	06:36	41-70	SUB OUT: PRINCE,RAVEN
	06:36		SUB IN: FORREST,DIAMOND
SUB OUT: 15 PARRAMORE,CANDICE	05:38	43-73	
SUB IN: 0 HOLT,ALEXUS	05:38		
	03:52	47-77	SUB OUT: BASTIN,SERAPHINE
	03:52		SUB IN: DANIELSSON,VENDELA
SUB OUT: 3 WASHINGTON,BRANDI	03:52		
SUB OUT: 12 COLEMAN,JUSTICE	03:52		
SUB IN: 5 BODY,MARKISHA	03:52		
SUB IN: 24 VAUGHN,ALEXIS	03:52		
	02:50	51-77	SUB OUT: MCCULLY,MARIAH
	02:50		SUB OUT: BREMAUD,CARLA
	02:50		SUB IN: RYNG,NATALIA
	02:50		SUB IN: BREWER,MAYA
SUB OUT: 1 FORTE,JASMINE	02:50		
SUB IN: 30 HARRISON,JEMIAH	02:50		
SUB OUT: 5 BODY,MARKISHA	01:36	56-77	
SUB OUT: 24 VAUGHN,ALEXIS	01:36		
SUB IN: 3 WASHINGTON,BRANDI	01:36		
SUB IN: 12 COLEMAN,JUSTICE	01:36		
	00:50	63-77	SUB OUT: FORREST,DIAMOND
	00:50		SUB IN: PRINCE,RAVEN

Grambling 65, Wichita St. 77

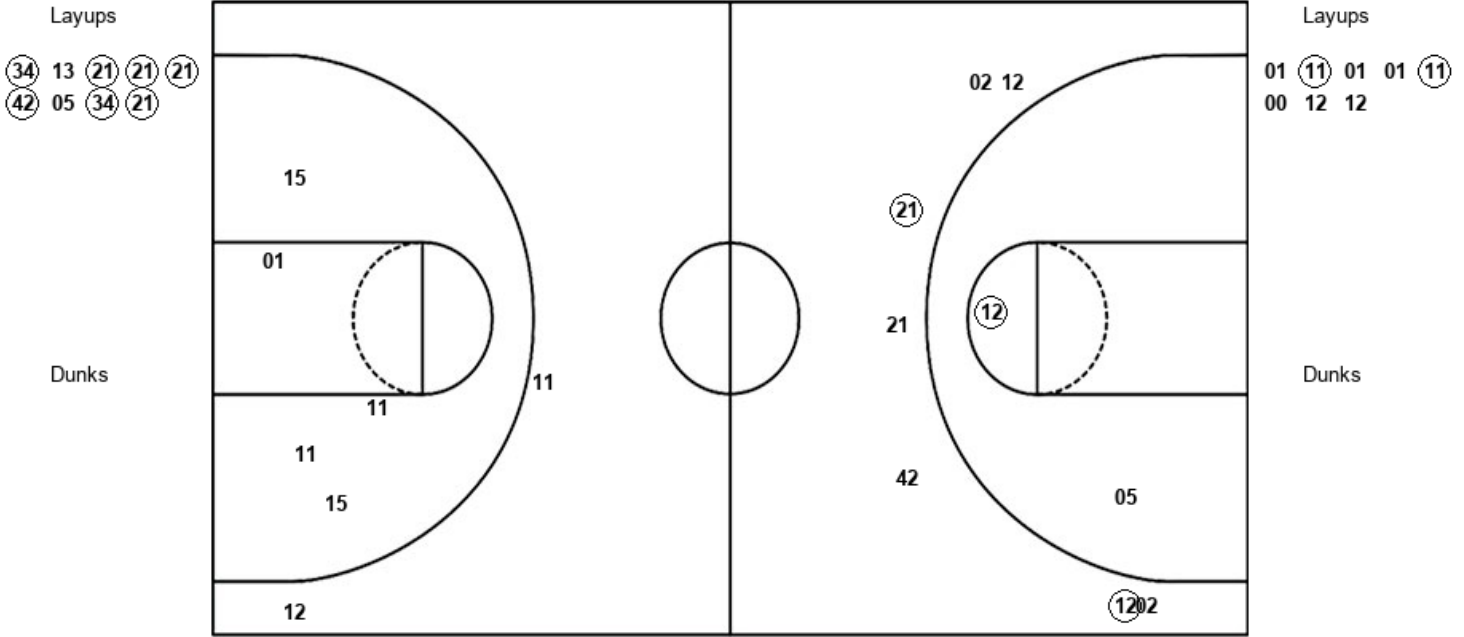
Official Shot Chart
 Grambling vs Wichita St.
 PERIOD 1 Shots

December 30, 2019 at Charles Koch Arena (Devlin Court) - Wichita, Kan.



Wichita St.

Grambling



WSU : Period 1	Made	Att	Pct
Layups	7	9	77.8
Dunks	0	0	0
2PT Field Goals	8	11	72.7
3PT Field Goals	2	7	28.6
Total Field Goals	10	18	55.6

GSU : Period 1	Made	Att	Pct
Layups	2	8	25.0
Dunks	0	0	0
2PT Field Goals	2	13	15.4
3PT Field Goals	0	2	00.0
Total Field Goals	2	15	13.3

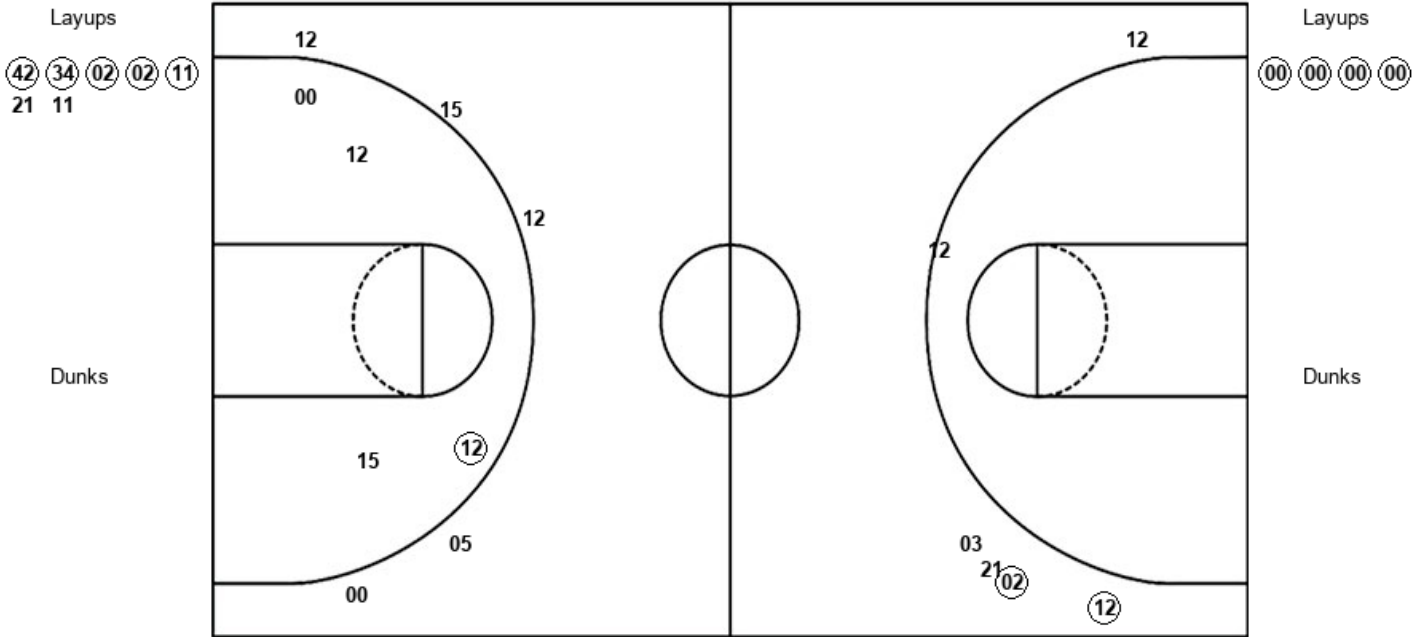
Official Shot Chart
 Grambling vs Wichita St.
 PERIOD 2 Shots

December 30, 2019 at Charles Koch Arena (Devlin Court) - Wichita, Kan.



Wichita St.

Grambling



WSU : Period 2	Made	Att	Pct
Layups	5	7	71.4
Dunks	0	0	0
2PT Field Goals	5	8	62.5
3PT Field Goals	2	5	40.0
Total Field Goals	7	13	53.8

GSU : Period 2	Made	Att	Pct
Layups	4	4	100.0
Dunks	0	0	0
2PT Field Goals	5	8	62.5
3PT Field Goals	0	5	00.0
Total Field Goals	5	13	38.5

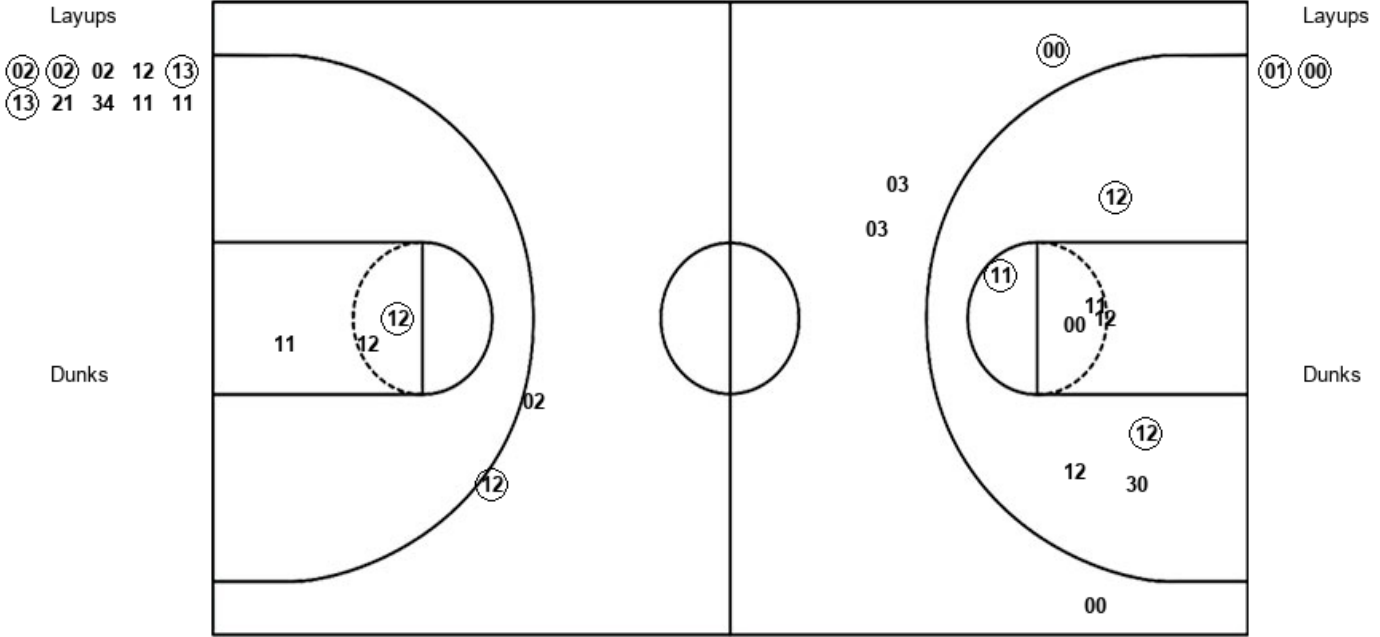
Official Shot Chart
 Grambling vs Wichita St.
 PERIOD 3 Shots

December 30, 2019 at Charles Koch Arena (Devlin Court) - Wichita, Kan.



Wichita St.

Grambling



WSU : Period 3	Made	Att	Pct
Layups	4	10	40.0
Dunks	0	0	0
2PT Field Goals	5	13	38.5
3PT Field Goals	1	2	50.0
Total Field Goals	6	15	40.0

GSU : Period 3	Made	Att	Pct
Layups	2	2	100.0
Dunks	0	0	0
2PT Field Goals	5	10	50.0
3PT Field Goals	1	4	25.0
Total Field Goals	6	14	42.9

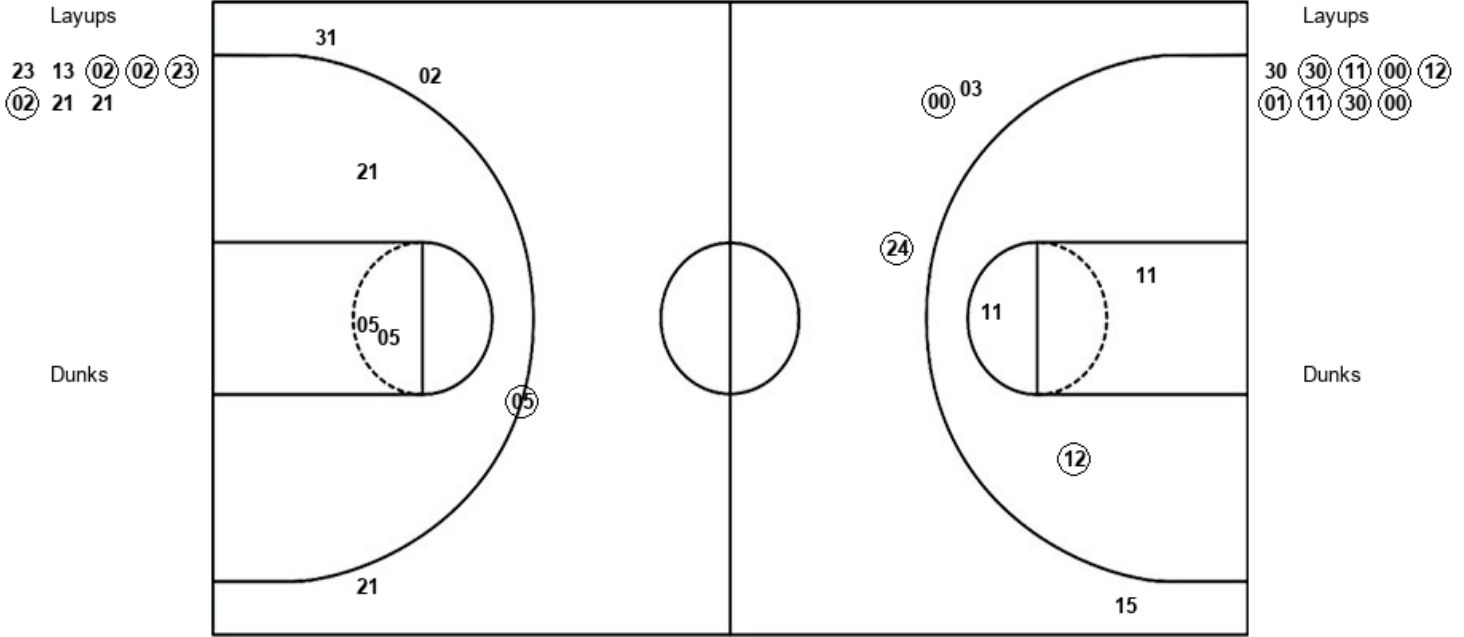
Official Shot Chart
 Grambling vs Wichita St.
 PERIOD 4 Shots

December 30, 2019 at Charles Koch Arena (Devlin Court) - Wichita, Kan.



Wichita St.

Grambling



WSU : Period 4	Made	Att	Pct
Layups	4	8	50.0
Dunks	0	0	0
2PT Field Goals	4	11	36.4
3PT Field Goals	1	4	25.0
Total Field Goals	5	15	33.3

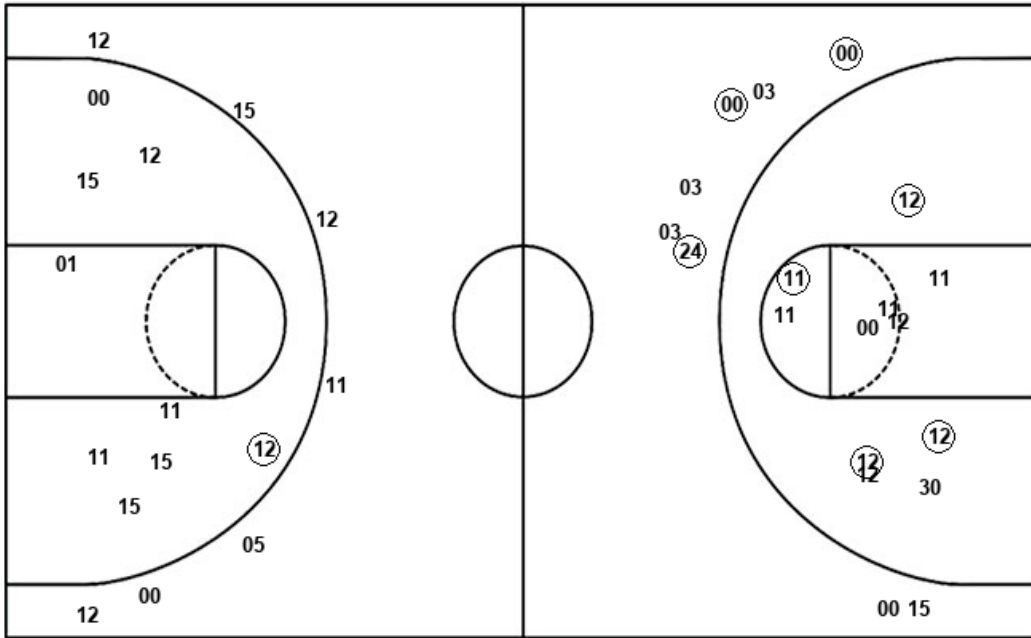
GSU : Period 4	Made	Att	Pct
Layups	8	9	88.9
Dunks	0	0	0
2PT Field Goals	9	12	75.0
3PT Field Goals	2	4	50.0
Total Field Goals	11	16	68.8

Official Shot Chart
 Grambling vs Wichita St.
 Grambling Team Shots

December 30, 2019 at Charles Koch Arena (Devlin Court) - Wichita, Kan.



Layups



Layups



Dunks

Dunks

GSU : Period 1	Made	Att	Pct
Layups	2	8	25.0
Dunks	0	0	0
2PT Field Goals	2	13	15.4
3PT Field Goals	0	2	00.0
Total Field Goals	2	15	13.3

GSU : Period 2	Made	Att	Pct
Layups	4	4	100.0
Dunks	0	0	0
2PT Field Goals	5	8	62.5
3PT Field Goals	0	5	00.0
Total Field Goals	5	13	38.5

GSU : Period 3	Made	Att	Pct
Layups	2	2	100.0
Dunks	0	0	0
2PT Field Goals	5	10	50.0
3PT Field Goals	1	4	25.0
Total Field Goals	6	14	42.9

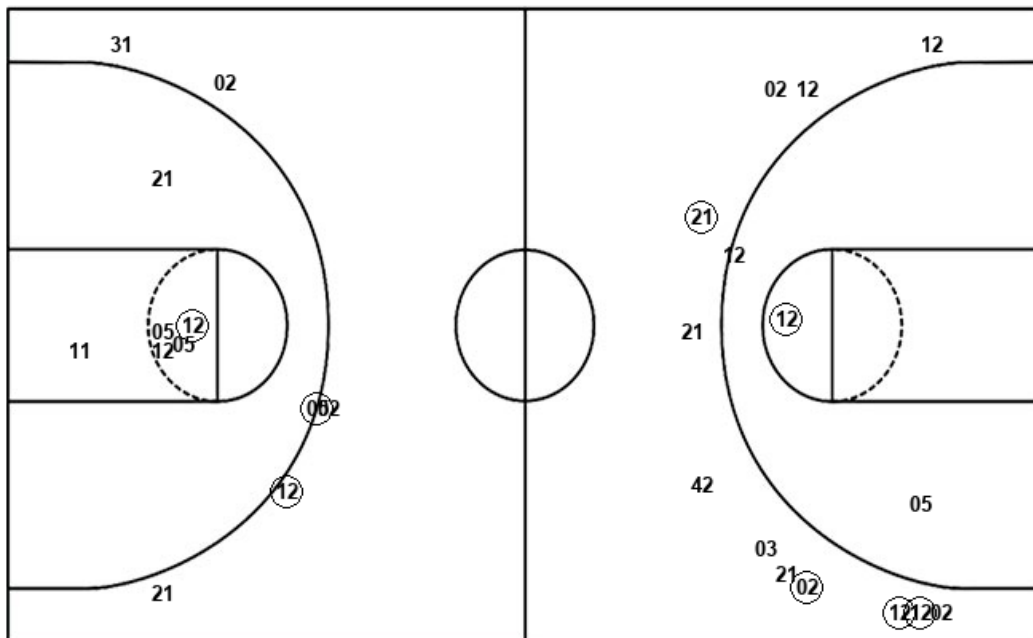
GSU : Period 4	Made	Att	Pct
Layups	8	9	88.9
Dunks	0	0	0
2PT Field Goals	9	12	75.0
3PT Field Goals	2	4	50.0
Total Field Goals	11	16	68.8

Official Shot Chart
 Grambling vs Wichita St.
 Wichita St. Team Shots

December 30, 2019 at Charles Koch Arena (Devlin Court) - Wichita, Kan.



Layups



Layups

- (34) 13 (21) (21) (21)
- (42) 05 (34) (21) (42)
- (34) (02) (02) (11) 21
- 11 (02) (02) 02 12
- (13) (13) 21 34 11
- 11 23 13 (02) (02)
- (23) (02) 21 21

Dunks

Dunks

WSU : Period 1	Made	Att	Pct
Layups	7	9	77.8
Dunks	0	0	0
2PT Field Goals	8	11	72.7
3PT Field Goals	2	7	28.6
Total Field Goals	10	18	55.6

WSU : Period 2	Made	Att	Pct
Layups	5	7	71.4
Dunks	0	0	0
2PT Field Goals	5	8	62.5
3PT Field Goals	2	5	40.0
Total Field Goals	7	13	53.8

WSU : Period 3	Made	Att	Pct
Layups	4	10	40.0
Dunks	0	0	0
2PT Field Goals	5	13	38.5
3PT Field Goals	1	2	50.0
Total Field Goals	6	15	40.0

WSU : Period 4	Made	Att	Pct
Layups	4	8	50.0
Dunks	0	0	0
2PT Field Goals	4	11	36.4
3PT Field Goals	1	4	25.0
Total Field Goals	5	15	33.3