

## FINAL SCORE



**Ark.-Pine Bluff**

**50**



**Wichita St.**

**100**

December 16, 2019 • Charles Koch Arena (Devlin Court) - Wichita, Kan.

## FINAL STATISTICS

**Official Box Score**  
**Ark.-Pine Bluff vs Wichita St.**  
**Game Totals -- Final Statistics**  
**December 16, 2019 at Charles Koch Arena (Devlin Court) - Wichita, Kan.**



**Ark.-Pine Bluff 50**

No.	Player	S	Pts	FG	3FG	FT	OR	DR	TR	PF	A	TO	Blk	Stl	Min	+/-
01	HARRIS, KYEONIA	G	9	3-14	0-6	3-3	0	1	1	3	4	9	0	2	40	-50
04	ATMORE, JAYLA	G	13	4-15	0-3	5-6	3	2	5	5	0	3	0	1	24	-27
21	EL HASSAN, AIYA	F	4	2-4	0-1	0-3	1	0	1	4	0	4	0	0	10	-12
24	TAYLOR, NOE™LL	G	8	3-6	0-0	2-3	0	2	2	3	1	2	0	1	26	-31
33	SAM-GRANT, NISSA	C	0	0-2	0-1	0-0	2	9	11	5	0	1	5	1	24	-22
05	TOTTEN, TRASITY	G	3	1-4	1-2	0-0	0	3	3	3	0	0	0	0	12	-15
10	JOPLIN, ELISE	F	6	2-5	0-0	2-2	2	1	3	1	0	1	0	0	14	-12
11	AMUSA, OLUWATUNMISE	F	0	0-2	0-0	0-0	0	0	0	0	0	0	0	0	4	-14
12	TERRY, BRIT™NEE	G	0	0-1	0-0	0-0	0	0	0	2	0	1	0	0	2	-2
30	PYBURN, TYLER	G	4	1-2	0-0	2-2	1	0	1	2	0	1	0	1	12	-19
32	TILLRY, SHA'KENDRA	F	3	1-8	0-0	1-4	2	0	2	2	0	4	0	1	25	-36
41	CHRISTIAN, MORGAN	F	0	0-1	0-0	0-4	0	0	0	2	0	0	0	0	5	-10
	TEAM						2	0	2	0		1				
	<b>TOTALS</b>		<b>50</b>	<b>17-64</b>	<b>1-13</b>	<b>15-27</b>	<b>13</b>	<b>18</b>	<b>31</b>	<b>32</b>	<b>5</b>	<b>27</b>	<b>5</b>	<b>7</b>	<b>198</b>	

*Shooting By Period*

Period	FG	FG%	3FG	3FG%	FT	FT%
1st Qtr	3-9	33%	0-2	00%	0-2	00%
2nd Qtr	4-19	21%	1-4	25%	8-13	62%
3rd Qtr	5-17	29%	0-4	00%	3-5	60%
4th Qtr	5-19	26%	0-3	00%	4-7	57%
1st Half	7-28	25%	1-6	17%	8-15	53%
2nd Half	10-36	28%	0-7	00%	7-12	58%
<b>Game</b>	<b>17-64</b>	<b>26.6%</b>	<b>1-13</b>	<b>07.7%</b>	<b>15-27</b>	<b>55.6%</b>

*Deadball Rebounds: 6,2*  
*Last FG: 4th-02:19*  
*Biggest Run: 5-0*  
*Largest lead: By 0 at -*  
*Technical Fouls: None.*

**Wichita St. 100**

No.	Player	S	Pts	FG	3FG	FT	OR	DR	TR	PF	A	TO	Blk	Stl	Min	+/-
02	MCCULLY, MARIAH	G	17	4-10	1-3	8-8	0	6	6	0	2	3	0	2	23	31
12	BREMAUD, CARLA	G	5	2-5	1-3	0-0	0	1	1	1	1	3	0	1	18	26
13	PRINCE, RAVEN	F	0	0-3	0-0	0-2	2	0	2	2	1	0	0	1	9	10
23	BASTIN, SERAPHINE	G	7	2-3	0-1	3-3	0	0	0	3	3	3	0	1	13	23
34	SMITH, SHYIA	F	10	3-4	1-1	3-3	0	5	5	2	2	0	1	1	22	41
00	FORREST, DIAMOND	C	2	1-1	0-0	0-0	0	1	1	0	0	0	0	0	5	7
03	RYNG, NATALIA	F	2	1-2	0-1	0-0	0	0	0	3	0	0	0	0	10	1
05	REID, ASHLEY	G	17	4-6	1-1	8-9	0	4	4	1	7	4	0	3	28	33
11	KIRVEN, ASHLEI	F	6	2-4	0-0	2-3	0	6	6	2	0	4	0	1	13	7
21	BREWER, MAYA	G	16	4-6	1-1	7-9	2	1	3	3	1	2	1	1	17	19
31	DANIELSSON, VENDELA	G	10	3-8	3-7	1-2	0	1	1	1	0	1	0	0	19	18
42	HENDERSON, ASIA	F	8	2-4	0-0	4-6	4	8	12	3	0	2	5	0	20	34
	TEAM						2	1	3	0		0				
	<b>TOTALS</b>		<b>100</b>	<b>28-56</b>	<b>8-18</b>	<b>36-45</b>	<b>10</b>	<b>34</b>	<b>44</b>	<b>21</b>	<b>17</b>	<b>22</b>	<b>7</b>	<b>11</b>	<b>198</b>	

*Shooting By Period*

Period	FG	FG%	3FG	3FG%	FT	FT%
1st Qtr	8-15	53%	4-7	57%	9-12	75%
2nd Qtr	8-14	57%	1-4	25%	11-13	85%
3rd Qtr	5-14	36%	1-2	50%	10-12	83%
4th Qtr	7-13	54%	2-5	40%	6-8	75%
1st Half	16-29	55%	5-11	45%	20-25	80%
2nd Half	12-27	44%	3-7	43%	16-20	80%
<b>Game</b>	<b>28-56</b>	<b>50.0%</b>	<b>8-18</b>	<b>44.4%</b>	<b>36-45</b>	<b>80.0%</b>

*Deadball Rebounds: 7,6*  
*Last FG: 4th-00:56*  
*Biggest Run: 13-0*  
*Largest lead: By 50 at 4-00*  
*Technical Fouls: None.*

*Game Notes:*

*Officials: Kathleen Lynch, Kevin Pethtel, Nicole Brannon*  
*Attendance: 1173*

*Start Time: 12:35 PM ET*  
*End Time: 02:48 PM ET*  
*Game Duration: 2:13*

Score	1st	2nd	3rd	4th	TOT
APB	6	17	13	14	<b>50</b>
WSU	29	28	21	22	<b>100</b>

*APB led for 0:00. WSU led for 38:53.*  
*Game was tied for 0:42.*  
*Times tied: 0*      *Lead Changes: 0*

Points from	APB	WSU
In the Paint	14	38
Off Turns	9	33
2nd Chance	11	11
Fast Break	15	35
Bench	16	61

**Official Box Score**  
**Ark.-Pine Bluff vs Wichita St.**  
**First Half Statistics Only**

December 16, 2019 at Charles Koch Arena (Devlin Court) - Wichita, Kan.



**Ark.-Pine Bluff 23**

No.	Player	S	Pts	FG	3FG	FT	OR	DR	TR	PF	A	TO	Blk	Stl	Min	+/-
01	HARRIS, KYEONIA	G	5	2-6	0-2	1-1	0	1	1	3	3	5	0	1	20	-34
04	ATMORE, JAYLA	G	10	3-8	0-2	4-4	2	1	3	3	0	3	0	1	12	-23
05	TOTTEN, TRASITY	G	3	1-3	1-1	0-0	0	3	3	1	0	0	0	0	9	-12
10	JOPLIN, ELISE	F	0	0-0	0-0	0-0	0	0	0	0	0	0	0	0	2	0
11	AMUSA, OLUWATUNMISE	F	0	0-2	0-0	0-0	0	0	0	0	0	0	0	0	4	-14
12	TERRY, BRITAE™NEE	G	0	0-1	0-0	0-0	0	0	0	2	0	1	0	0	2	-2
21	EL HASSAN, AIYA	F	0	0-1	0-1	0-2	0	0	0	3	0	4	0	0	6	-14
24	TAYLOR, NOEAE™LL	G	0	0-2	0-0	0-0	0	1	1	0	0	1	0	0	11	-13
30	PYBURN, TYLER	G	2	0-1	0-0	2-2	1	0	1	2	0	1	0	0	7	-19
32	TILLRY, SHA'KENDRA	F	3	1-2	0-0	1-2	0	0	0	1	0	2	0	1	10	-17
33	SAM-GRANT, NISSA	C	0	0-1	0-0	0-0	2	6	8	2	0	0	2	0	16	-22
41	CHRISTIAN, MORGAN	F	0	0-1	0-0	0-4	0	0	0	1	0	0	0	0	2	0
	TEAM		0	0-0	0-0	0-0	0	0	0	0	0	1	0	0	0	0
<b>TOTALS</b>			<b>23</b>	<b>7-28</b>	<b>1-6</b>	<b>8-15</b>	<b>5</b>	<b>12</b>	<b>17</b>	<b>18</b>	<b>3</b>	<b>18</b>	<b>2</b>	<b>3</b>	<b>100</b>	

*Shooting By Period*

Period	FG	FG%	3FG	3FG%	FT	FT%
1st Qtr	3-9	33%	0-2	00%	0-2	00%
2nd Qtr	4-19	21%	1-4	25%	8-13	62%
1st Half	7-28	25%	1-6	17%	8-15	53%
Game	17-64	26.6%	1-13	07.7%	15-27	55.6%

*Deadball Rebounds: 6,2*

*Last FG Half: APB 2nd-00:24*

**Wichita St. 57**

No.	Player	S	Pts	FG	3FG	FT	OR	DR	TR	PF	A	TO	Blk	Stl	Min	+/-
00	FORREST, DIAMOND	C	2	1-1	0-0	0-0	0	1	1	0	0	0	0	0	2	7
02	MCCULLY, MARIAH	G	11	2-5	1-2	6-6	0	3	3	0	2	1	0	2	15	30
03	RYNG, NATALIA	F	2	1-1	0-0	0-0	0	0	0	2	0	0	0	0	3	1
05	REID, ASHLEY	G	11	3-4	1-1	4-5	0	2	2	0	1	2	0	1	13	18
11	KIRVEN, ASHLEI	F	4	2-2	0-0	0-1	0	2	2	1	0	2	0	0	9	9
12	BREMAUD, CARLA	G	5	2-5	1-3	0-0	0	0	0	1	1	3	0	1	13	23
13	PRINCE, RAVEN	F	0	0-0	0-0	0-0	0	0	0	2	1	0	0	0	6	9
21	BREWER, MAYA	G	8	1-2	1-1	5-7	0	0	0	2	1	0	1	1	6	4
23	BASTIN, SERAPHINE	G	7	2-3	0-1	3-3	0	0	0	2	2	1	0	1	9	22
31	DANIELSSON, VENDELA	G	0	0-2	0-2	0-0	0	0	0	0	0	0	0	0	4	5
34	SMITH, SHYIA	F	6	2-3	1-1	1-1	0	4	4	0	1	0	1	1	11	25
42	HENDERSON, ASIA	F	1	0-1	0-0	1-2	1	4	5	1	0	0	3	0	10	17
	TEAM		0	0-0	0-0	0-0	0	0	0	0	0	0	0	0	0	0
<b>TOTALS</b>			<b>57</b>	<b>16-29</b>	<b>5-11</b>	<b>20-25</b>	<b>1</b>	<b>16</b>	<b>17</b>	<b>11</b>	<b>9</b>	<b>9</b>	<b>5</b>	<b>7</b>	<b>100</b>	

*Shooting By Period*

Period	FG	FG%	3FG	3FG%	FT	FT%
1st Qtr	8-15	53%	4-7	57%	9-12	75%
2nd Qtr	8-14	57%	1-4	25%	11-13	85%
1st Half	16-29	55%	5-11	45%	20-25	80%
Game	28-56	50.0%	8-18	44.4%	36-45	80.0%

*Deadball Rebounds: 7,6*

*Last FG Half: WSU 2nd-00:34*

Game Notes:

Officials: Kathleen Lynch, Kevin Pethtel, Nicole Brannon  
 Attendance: 1173

Start Time: 12:35 PM ET  
 End Time: 02:48 PM ET  
 Game Duration: 2:13

Score	1st	2nd	3rd	4th	TOT
APB	6	17	13	14	<b>50</b>
WSU	29	28	21	22	<b>100</b>

Points from (This Period)	APB	WSU
In the Paint	4	20
Off Turns	4	22
2nd Chance	2	1
Fast Break	10	20
Bench	8	28

**Official Box Score**  
**Ark.-Pine Bluff vs Wichita St.**  
**First Quarter Statistics Only**  
**December 16, 2019 at Charles Koch Arena (Devlin Court) - Wichita, Kan.**



### Ark.-Pine Bluff 6

No.	Player	S	Pts	FG	3FG	FT	OR	DR	TR	PF	A	TO	Blk	Stl	Min	+/-
01	HARRIS, KYEONIA	G	0	0-1	0-1	0-0	0	0	0	1	1	3	0	0	10	-23
04	ATMORE, JAYLA	G	6	3-6	0-1	0-0	2	1	3	2	0	3	0	1	10	-23
21	EL HASSAN, AIYA	F	0	0-0	0-0	0-2	0	0	0	2	0	4	0	0	3	-9
24	TAYLOR, NOE™LL	G	0	0-1	0-0	0-0	0	1	1	0	0	0	0	0	5	-9
33	SAM-GRANT, NISSA	C	0	0-0	0-0	0-0	0	2	2	1	0	0	0	0	9	-18
05	TOTTEN, TRASITY	G	0	0-0	0-0	0-0	0	1	1	0	0	0	0	0	6	-10
10	JOPLIN, ELISE	F	0	0-0	0-0	0-0	0	0	0	0	0	0	0	0	0	0
11	AMUSA, OLUWATUNMISE	F	0	0-1	0-0	0-0	0	0	0	0	0	0	0	0	1	-5
12	TERRY, BRIT™NEE	G	0	0-0	0-0	0-0	0	0	0	0	0	0	0	0	0	0
30	PYBURN, TYLER	G	0	0-0	0-0	0-0	0	0	0	0	0	0	0	0	5	-12
32	TILLRY, SHA'KENDRA	F	0	0-0	0-0	0-0	0	0	0	1	0	1	0	0	2	-6
41	CHRISTIAN, MORGAN	F	0	0-0	0-0	0-0	0	0	0	0	0	0	0	0	0	0
	TEAM						0	0	0	0		1				
	<b>TOTALS</b>		<b>6</b>	<b>3-9</b>	<b>0-2</b>	<b>0-2</b>	<b>2</b>	<b>5</b>	<b>7</b>	<b>7</b>	<b>1</b>	<b>12</b>	<b>0</b>	<b>1</b>	<b>50</b>	

*Shooting By Period*

Period	FG	FG%	3FG	3FG%	FT	FT%
1st Qtr	3-9	33%	0-2	00%	0-2	00%
2nd Qtr	4-19	21%	1-4	25%	8-13	62%
1st Half	3-9	33%	0-2	00%	0-2	00%
1st Half	7-28	25%	1-6	17%	8-15	53%
Game	17-64	26.6%	1-13	07.7%	15-27	55.6%

Deadball Rebounds: 6,2

### Wichita St. 29

No.	Player	S	Pts	FG	3FG	FT	OR	DR	TR	PF	A	TO	Blk	Stl	Min	+/-
02	MCCULLY, MARIAH	G	5	1-3	1-2	2-2	0	0	0	0	1	0	0	1	7	14
12	BREMAUD, CARLA	G	5	2-4	1-2	0-0	0	0	0	1	1	1	0	1	8	17
13	PRINCE, RAVEN	F	0	0-0	0-0	0-0	0	0	0	1	1	0	0	0	5	9
23	BASTIN, SERAPHINE	G	0	0-1	0-1	0-0	0	0	0	0	2	0	0	0	6	15
34	SMITH, SHYIA	F	6	2-3	1-1	1-1	0	3	3	0	0	0	1	1	9	18
00	FORREST, DIAMOND	C	0	0-0	0-0	0-0	0	0	0	0	0	0	0	0	0	0
03	RYNG, NATALIA	F	0	0-0	0-0	0-0	0	0	0	0	0	0	0	0	0	0
05	REID, ASHLEY	G	2	1-2	0-0	0-0	0	0	0	0	1	0	0	1	6	14
11	KIRVEN, ASHLEI	F	2	1-1	0-0	0-0	0	0	0	0	0	0	0	0	1	5
21	BREWER, MAYA	G	8	1-1	1-1	5-7	0	0	0	0	0	0	1	0	3	9
31	DANIELSSON, VENDELA	G	0	0-0	0-0	0-0	0	0	0	0	0	0	0	0	0	0
42	HENDERSON, ASIA	F	1	0-0	0-0	1-2	1	1	2	0	0	0	0	0	5	14
	TEAM						0	0	0	0		0				
	<b>TOTALS</b>		<b>29</b>	<b>8-15</b>	<b>4-7</b>	<b>9-12</b>	<b>1</b>	<b>4</b>	<b>5</b>	<b>2</b>	<b>6</b>	<b>1</b>	<b>2</b>	<b>4</b>	<b>50</b>	

*Shooting By Period*

Period	FG	FG%	3FG	3FG%	FT	FT%
1st Qtr	8-15	53%	4-7	57%	9-12	75%
2nd Qtr	8-14	57%	1-4	25%	11-13	85%
1st Half	8-15	53%	4-7	57%	9-12	75%
1st Half	16-29	55%	5-11	45%	20-25	80%
Game	28-56	50.0%	8-18	44.4%	36-45	80.0%

Deadball Rebounds: 7,6

*Game Notes:*

Officials: Kathleen Lynch, Kevin Pethtel, Nicole Brannon  
Attendance: 1173

Start Time: 12:35 PM ET  
End Time: 02:48 PM ET  
Game Duration: 2:13

Score	1st	2nd	3rd	4th	TOT
APB	6	17	13	14	50
WSU	29	28	21	22	100

Points from (This Period)	APB	WSU
In the Paint	0	8
Off Turns	0	14
2nd Chance	0	1
Fast Break	2	7
Bench	0	13

**Official Play-By-Play**  
**Ark.-Pine Bluff vs Wichita St.**  
**First Quarter**

**December 16, 2019 at Charles Koch Arena (Devlin Court) - Wichita, Kan.**



**Period 1**

**Starters:**

**Ark.-Pine Bluff:** 1 HARRIS, KYEONIA (G); 4 ATMORE, JAYLA (G); 21 EL HASSAN, AIYA (F); 24 TAYLOR, NOE™LL (G); 33 SAM-GRANT, NISSA (C);

**Wichita St.:** 2 MCCULLY, MARIAH (G); 12 BREMAUD, CARLA (G); 13 PRINCE, RAVEN (F); 23 BASTIN, SERAPHINE (G); 34 SMITH, SHYIA (F);

Time	VISITORS: Ark.-Pine Bluff	Score	Margin	HOME: Wichita St.
09:43	TURNOVER (TRAVEL) by EL HASSAN, AIYA			
09:18		3-0	H 3	GOOD! 3PTR by BREMAUD, CARLA ASSIST by MCCULLY, MARIAH
09:04	TURNOVER (TRAVEL) by EL HASSAN, AIYA			
08:50		5-0	H 5	GOOD! JUMPER by SMITH, SHYIA ASSIST by PRINCE, RAVEN
08:50	FOUL (PERSONAL) by SAM-GRANT, NISSA			
08:50		6-0	H 6	GOOD! FT by SMITH, SHYIA
08:37	TURNOVER (LOSTBALL) by EL HASSAN, AIYA			
08:37				STEAL by BREMAUD, CARLA
08:32	FOUL (PERSONAL) by EL HASSAN, AIYA			
08:32	SUB OUT: EL HASSAN, AIYA			
08:32	SUB IN: TOTTEN, TRASITY			
08:32		7-0	H 7	GOOD! FT by MCCULLY, MARIAH [FB]
08:32		8-0	H 8	GOOD! FT by MCCULLY, MARIAH [FB]
08:20	TURNOVER (BADPASS) by HARRIS, KYEONIA			
07:55				MISSED LAYUP by SMITH, SHYIA
07:52	REBOUND (DEF) by SAM-GRANT, NISSA			
07:49	MISSED LAYUP by TAYLOR, NOE™LL			
07:46				REBOUND (DEF) by SMITH, SHYIA
07:39				MISSED JUMPER by MCCULLY, MARIAH
07:38	REBOUND (DEF) by SAM-GRANT, NISSA			
07:38				FOUL (PERSONAL) by PRINCE, RAVEN
07:18	TURNOVER (LOSTBALL) by ATMORE, JAYLA			
07:18				STEAL by MCCULLY, MARIAH
07:10				MISSED 3PTR by BREMAUD, CARLA
07:07	REBOUND (DEF) by ATMORE, JAYLA			
07:04	GOOD! JUMPER by ATMORE, JAYLA [FB]	8-2	H 6	
06:54		11-2	H 9	GOOD! 3PTR by MCCULLY, MARIAH ASSIST by BASTIN, SERAPHINE
06:54	TIMEOUT 30SEC			
06:42	MISSED 3PTR by HARRIS, KYEONIA			
06:39	REBOUND (OFF) by ATMORE, JAYLA			
06:38	MISSED JUMPER by ATMORE, JAYLA			
06:38				BLOCK by SMITH, SHYIA
06:38				REBOUND (DEF) by SMITH, SHYIA
06:21				MISSED JUMPER by BREMAUD, CARLA
06:17	REBOUND (DEF) by TAYLOR, NOE™LL			
05:57				SUB OUT: BASTIN, SERAPHINE
05:57				SUB IN: REID, ASHLEY
05:48	TURNOVER (SHOTCLOCK) by TEAM			
05:31				MISSED 3PTR by MCCULLY, MARIAH
05:27	REBOUND (DEF) by TOTTEN, TRASITY			
05:21	TURNOVER (BADPASS) by ATMORE, JAYLA			
05:21				SUB OUT: PRINCE, RAVEN
05:21				SUB IN: HENDERSON, ASIA
05:21	SUB OUT: TAYLOR, NOE™LL			
05:21	SUB IN: PYBURN, TYLER			
05:01				TURNOVER (BADPASS) by BREMAUD, CARLA
05:01	STEAL by ATMORE, JAYLA			
04:55	MISSED LAYUP by ATMORE, JAYLA			
04:52				REBOUND (DEF) by SMITH, SHYIA
04:41		13-2	H 11	GOOD! LAYUP by REID, ASHLEY [PNT]
04:25	GOOD! JUMPER by ATMORE, JAYLA	13-4	H 9	
04:25	ASSIST by HARRIS, KYEONIA			
04:02		16-4	H 12	GOOD! 3PTR by SMITH, SHYIA ASSIST by BREMAUD, CARLA
04:02				
03:44	TURNOVER (BADPASS) by HARRIS, KYEONIA			
03:44				STEAL by REID, ASHLEY
03:39		18-4	H 14	GOOD! LAYUP by BREMAUD, CARLA [FB] ASSIST by REID, ASHLEY
03:39				
03:25	TURNOVER (LOSTBALL) by ATMORE, JAYLA			
03:25				STEAL by SMITH, SHYIA
03:09				MISSED JUMPER by REID, ASHLEY
03:08	REBOUND (DEF) by TEAM			
03:08				SUB OUT: MCCULLY, MARIAH
03:08				SUB IN: BREWER, MAYA
03:08	SUB OUT: TOTTEN, TRASITY			
03:08	SUB IN: EL HASSAN, AIYA			
02:51				FOUL (PERSONAL) by BREMAUD, CARLA

Time	VISITORS: Ark.-Pine Bluff	Score	Margin	HOME: Wichita St.
02:51	MISSED FT by EL HASSAN, AIYA			
02:51	REBOUND (OFF) by TEAM			
02:51	MISSED FT by EL HASSAN, AIYA			
02:50				REBOUND (DEF) by HENDERSON, ASIA
02:26		21-4	H 17	GOOD! 3PTR by BREWER, MAYA
02:17	FOUL (OFF) by EL HASSAN, AIYA			
02:17	TURNOVER (OFFENSIVE) by EL HASSAN, AIYA			
02:17				SUB OUT: BREMAUD, CARLA
02:17				SUB IN: BASTIN, SERAPHINE
02:02				MISSED 3PTR by BASTIN, SERAPHINE
02:00				REBOUND (OFF) by HENDERSON, ASIA
02:00	FOUL (PERSONAL) by HARRIS, KYEONIA			
02:00	SUB OUT: EL HASSAN, AIYA			
02:00	SUB IN: TILLRY, SHA'KENDRA			
02:00				MISSED FT by HENDERSON, ASIA
02:00				REBOUND (OFF) by TEAM
02:00		22-4	H 18	GOOD! FT by HENDERSON, ASIA
01:46	MISSED 3PTR by ATMORE, JAYLA			
01:45				REBOUND (DEF) by TEAM
01:23	FOUL (PERSONAL) by ATMORE, JAYLA			
01:23				SUB OUT: SMITH, SHYIA
01:23				SUB IN: KIRVEN, ASHLEI
01:23	SUB OUT: SAM-GRANT, NISSA			
01:23	SUB IN: AMUSA, OLUWATUNMISE			
01:23				MISSED FT by BREWER, MAYA
01:23				REBOUND (OFF) by TEAM
01:23		23-4	H 19	GOOD! FT by BREWER, MAYA
01:15	TURNOVER (TRAVEL) by HARRIS, KYEONIA			
00:53		25-4	H 21	GOOD! JUMPER by KIRVEN, ASHLEI
00:53				ASSIST by BASTIN, SERAPHINE
00:38	MISSED JUMPER by AMUSA, OLUWATUNMISE			
00:38				BLOCK by BREWER, MAYA
00:33	REBOUND (OFF) by ATMORE, JAYLA			
00:33	SUB OUT: AMUSA, OLUWATUNMISE			
00:33	SUB IN: TOTTEN, TRASITY			
00:32	TURNOVER (TRAVEL) by TILLRY, SHA'KENDRA			
00:32	SUB OUT: PYBURN, TYLER			
00:32	SUB IN: AMUSA, OLUWATUNMISE			
00:22	FOUL (PERSONAL) by ATMORE, JAYLA			
00:22				MISSED FT by BREWER, MAYA
00:22				REBOUND (OFF) by TEAM
00:22		26-4	H 22	GOOD! FT by BREWER, MAYA
00:06	GOOD! JUMPER by ATMORE, JAYLA	26-6	H 20	
00:00	FOUL (PERSONAL) by TILLRY, SHA'KENDRA			
00:00		27-6	H 21	GOOD! FT by BREWER, MAYA [FB]
00:00		28-6	H 22	GOOD! FT by BREWER, MAYA [FB]
00:00		29-6	H 23	GOOD! FT by BREWER, MAYA [FB]

### Ark.-Pine Bluff 6, Wichita St. 29

Points from (This Period)	APB	WSU
In the Paint	0	8
Off Turns	0	14
2nd Chance	0	1
Fast Break	2	7
Bench	0	13

**Official Box Score**  
**Ark.-Pine Bluff vs Wichita St.**  
**Second Quarter Statistics Only**  
**December 16, 2019 at Charles Koch Arena (Devlin Court) - Wichita, Kan.**



**Ark.-Pine Bluff 17**

No.	Player	S	Pts	FG	3FG	FT	OR	DR	TR	PF	A	TO	Blk	Stl	Min	+/-
01	HARRIS, KYEONIA	G	5	2-5	0-1	1-1	0	1	1	2	2	2	0	1	10	-11
04	ATMORE, JAYLA	G	4	0-2	0-1	4-4	0	0	0	1	0	0	0	0	2	0
21	EL HASSAN, AIYA	F	0	0-1	0-1	0-0	0	0	0	1	0	0	0	0	3	-5
24	TAYLOR, NOE	G	0	0-1	0-0	0-0	0	0	0	0	0	1	0	0	6	-4
33	SAM-GRANT, NISSA	C	0	0-1	0-0	0-0	2	4	6	1	0	0	2	0	7	-4
05	TOTTEN, TRASITY	G	3	1-3	1-1	0-0	0	2	2	1	0	0	0	0	3	-2
10	JOPLIN, ELISE	F	0	0-0	0-0	0-0	0	0	0	0	0	0	0	0	2	0
11	AMUSA, OLUWATUNMISE	F	0	0-1	0-0	0-0	0	0	0	0	0	0	0	0	3	-9
12	TERRY, BRIT	G	0	0-1	0-0	0-0	0	0	0	2	0	1	0	0	2	-2
30	PYBURN, TYLER	G	2	0-1	0-0	2-2	1	0	1	2	0	1	0	0	2	-7
32	TILLRY, SHA'KENDRA	F	3	1-2	0-0	1-2	0	0	0	0	0	1	0	1	8	-11
41	CHRISTIAN, MORGAN	F	0	0-1	0-0	0-4	0	0	0	1	0	0	0	0	2	0
	TEAM						0	0	0	0		0				
<b>TOTALS</b>			<b>17</b>	<b>4-19</b>	<b>1-4</b>	<b>8-13</b>	<b>3</b>	<b>7</b>	<b>10</b>	<b>11</b>	<b>2</b>	<b>6</b>	<b>2</b>	<b>2</b>	<b>50</b>	

*Shooting By Period*

Period	FG	FG%	3FG	3FG%	FT	FT%
3rd Qtr	5-17	29%	0-4	00%	3-5	60%
4th Qtr	5-19	26%	0-3	00%	4-7	57%
2nd Half	4-19	21%	1-4	25%	8-13	62%
2nd Half	10-36	28%	0-7	00%	7-12	58%
Game	17-64	26.6%	1-13	07.7%	15-27	55.6%

*Deadball Rebounds: 6.2*

**Wichita St. 28**

No.	Player	S	Pts	FG	3FG	FT	OR	DR	TR	PF	A	TO	Blk	Stl	Min	+/-
02	MCCULLY, MARIAH	G	6	1-2	0-0	4-4	0	3	3	0	1	1	0	1	8	16
12	BREMAUD, CARLA	G	0	0-1	0-1	0-0	0	0	0	0	0	2	0	0	5	6
13	PRINCE, RAVEN	F	0	0-0	0-0	0-0	0	0	0	1	0	0	0	0	1	0
23	BASTIN, SERAPHINE	G	7	2-2	0-0	3-3	0	0	0	2	0	1	0	1	3	7
34	SMITH, SHYIA	F	0	0-0	0-0	0-0	0	1	1	0	1	0	0	0	2	7
00	FORREST, DIAMOND	C	2	1-1	0-0	0-0	0	1	1	0	0	0	0	0	2	7
03	RYNG, NATALIA	F	2	1-1	0-0	0-0	0	0	0	2	0	0	0	0	3	1
05	REID, ASHLEY	G	9	2-2	1-1	4-5	0	2	2	0	0	2	0	0	7	4
11	KIRVEN, ASHLEI	F	2	1-1	0-0	0-1	0	2	2	1	0	2	0	0	8	4
21	BREWER, MAYA	G	0	0-1	0-0	0-0	0	0	0	2	1	0	0	1	3	-5
31	DANIELSSON, VENDELA	G	0	0-2	0-2	0-0	0	0	0	0	0	0	0	0	4	5
42	HENDERSON, ASIA	F	0	0-1	0-0	0-0	0	3	3	1	0	0	3	0	5	3
	TEAM						0	0	0	0		0				
<b>TOTALS</b>			<b>28</b>	<b>8-14</b>	<b>1-4</b>	<b>11-13</b>	<b>0</b>	<b>12</b>	<b>12</b>	<b>9</b>	<b>3</b>	<b>8</b>	<b>3</b>	<b>3</b>	<b>50</b>	

*Shooting By Period*

Period	FG	FG%	3FG	3FG%	FT	FT%
3rd Qtr	5-14	36%	1-2	50%	10-12	83%
4th Qtr	7-13	54%	2-5	40%	6-8	75%
2nd Half	8-14	57%	1-4	25%	11-13	85%
2nd Half	12-27	44%	3-7	43%	16-20	80%
Game	28-56	50.0%	8-18	44.4%	36-45	80.0%

*Deadball Rebounds: 7.6*

*Game Notes:*

Officials: Kathleen Lynch, Kevin Pethtel, Nicole Brannon  
 Attendance: 1173

Start Time: 12:35 PM ET  
 End Time: 02:48 PM ET  
 Game Duration: 2:13

Score	1st	2nd	3rd	4th	TOT
APB	6	17	13	14	50
WSU	29	28	21	22	100

Points from (This Period)	APB	WSU
In the Paint	4	12
Off Turns	4	8
2nd Chance	2	0
Fast Break	8	13
Bench	8	15

**Official Play-By-Play**  
**Ark.-Pine Bluff vs Wichita St.**  
**Second Quarter**

**December 16, 2019 at Charles Koch Arena (Devlin Court) - Wichita, Kan.**



**Period 2**

**Starters:**

**Ark.-Pine Bluff:** 1 HARRIS, KYEONIA (G); 4 ATMORE, JAYLA (G); 21 EL HASSAN, AIYA (F); 24 TAYLOR, NOE™LL (G); 33 SAM-GRANT, NISSA (C);

**Wichita St.:** 2 MCCULLY, MARIAH (G); 12 BREMAUD, CARLA (G); 13 PRINCE, RAVEN (F); 23 BASTIN, SERAPHINE (G); 34 SMITH, SHYIA (F);

Time	VISITORS: Ark.-Pine Bluff	Score	Margin	HOME: Wichita St.
10:00				SUB OUT: REID, ASHLEY
10:00				SUB OUT: HENDERSON, ASIA
10:00				SUB IN: BREMAUD, CARLA
10:00				SUB IN: PRINCE, RAVEN
10:00	SUB OUT: TOTTEN, TRASITY			
10:00	SUB OUT: AMUSA, OLUWATUNMISE			
10:00	SUB OUT: TILLRY, SHA'KENDRA			
10:00	SUB IN: EL HASSAN, AIYA			
10:00	SUB IN: TAYLOR, NOE™LL			
10:00	SUB IN: SAM-GRANT, NISSA			
09:45				MISSED 3PTR by BREMAUD, CARLA
09:42	REBOUND (DEF) by SAM-GRANT, NISSA			
09:34				SUB OUT: KIRVEN, ASHLEI
09:34				SUB IN: FORREST, DIAMOND
09:24				FOUL (PERSONAL) by PRINCE, RAVEN
09:24				SUB OUT: PRINCE, RAVEN
09:24				SUB IN: SMITH, SHYIA
09:24	SUB OUT: SAM-GRANT, NISSA			
09:24	SUB IN: AMUSA, OLUWATUNMISE			
09:24	GOOD! FT by ATMORE, JAYLA	29-7	H 22	
09:24	GOOD! FT by ATMORE, JAYLA	29-8	H 21	
09:14		31-8	H 23	GOOD! LAYUP by FORREST, DIAMOND
09:14				ASSIST by SMITH, SHYIA
09:06				FOUL (PERSONAL) by BREWER, MAYA
09:06	GOOD! FT by ATMORE, JAYLA [FB]	31-9	H 22	
09:06	GOOD! FT by ATMORE, JAYLA [FB]	31-10	H 21	
09:01				TIMEOUT 30SEC
09:01				SUB OUT: BREWER, MAYA
09:01				SUB IN: MCCULLY, MARIAH
08:51		33-10	H 23	GOOD! LAYUP by BASTIN, SERAPHINE
08:36	MISSED LAYUP by ATMORE, JAYLA			
08:32				REBOUND (DEF) by FORREST, DIAMOND
08:22				FOUL (OFF) by BASTIN, SERAPHINE
08:22				TURNOVER (OFFENSIVE) by BASTIN, SERAPHINE
08:08	MISSED 3PTR by EL HASSAN, AIYA			
08:08				REBOUND (DEF) by TEAM
08:08	SUB OUT: EL HASSAN, AIYA			
08:08	SUB IN: TILLRY, SHA'KENDRA			
08:07	FOUL (PERSONAL) by ATMORE, JAYLA			
08:07	SUB OUT: ATMORE, JAYLA			
08:07	SUB OUT: TAYLOR, NOE™LL			
08:07	SUB IN: EL HASSAN, AIYA			
08:07	SUB IN: PYBURN, TYLER			
08:07		34-10	H 24	GOOD! FT by BASTIN, SERAPHINE [FB]
08:07		35-10	H 25	GOOD! FT by BASTIN, SERAPHINE [FB]
08:03	MISSED LAYUP by PYBURN, TYLER			
07:58				REBOUND (DEF) by SMITH, SHYIA
07:53		37-10	H 27	GOOD! JUMPER by MCCULLY, MARIAH
07:37	TURNOVER (BADPASS) by PYBURN, TYLER			
07:37				STEAL by BASTIN, SERAPHINE
07:32		39-10	H 29	GOOD! LAYUP by BASTIN, SERAPHINE [FB]
07:32	FOUL (PERSONAL) by HARRIS, KYEONIA			
07:32	SUB OUT: AMUSA, OLUWATUNMISE			
07:32	SUB IN: TERRY, BRIT™NEE			
07:32		40-10	H 30	GOOD! FT by BASTIN, SERAPHINE [FB]
07:20	MISSED LAYUP by TILLRY, SHA'KENDRA			
07:17	REBOUND (OFF) by PYBURN, TYLER			
07:17				FOUL (PERSONAL) by BASTIN, SERAPHINE
07:17				SUB OUT: FORREST, DIAMOND
07:17				SUB OUT: BASTIN, SERAPHINE
07:17				SUB OUT: SMITH, SHYIA
07:17				SUB IN: RYNG, NATALIA
07:17				SUB IN: REID, ASHLEY
07:17				SUB IN: KIRVEN, ASHLEI
07:17	GOOD! FT by PYBURN, TYLER	40-11	H 29	
07:17	GOOD! FT by PYBURN, TYLER	40-12	H 28	
07:12	FOUL (PERSONAL) by EL HASSAN, AIYA			
07:12	SUB OUT: EL HASSAN, AIYA			
07:12	SUB IN: TAYLOR, NOE™LL			
06:58				FOUL (OFF) by KIRVEN, ASHLEI



Time	VISITORS: Ark.-Pine Bluff	Score	Margin	HOME: Wichita St.
06:58				TURNOVER (OFFENSIVE) by KIRVEN, ASHLEI
06:42	MISSED JUMPER by TERRY, BRITAE™NEE			
06:42				REBOUND (DEF) by MCCULLY, MARIAH
06:42	FOUL (PERSONAL) by TERRY, BRITAE™NEE			
06:40	FOUL (PERSONAL) by PYBURN, TYLER			
06:40		41-12	H 29	GOOD! FT by MCCULLY, MARIAH [FB]
06:40		42-12	H 30	GOOD! FT by MCCULLY, MARIAH [FB]
06:28	FOUL (OFF) by TERRY, BRITAE™NEE			
06:28	TURNOVER (OFFENSIVE) by TERRY, BRITAE™NEE			
06:17	FOUL (PERSONAL) by PYBURN, TYLER			
06:17	SUB OUT: PYBURN, TYLER			
06:17	SUB IN: SAM-GRANT, NISSA			
06:17		43-12	H 31	GOOD! FT by MCCULLY, MARIAH
06:17		44-12	H 32	GOOD! FT by MCCULLY, MARIAH
06:13				FOUL (PERSONAL) by RYNG, NATALIA
06:13				SUB OUT: MCCULLY, MARIAH
06:13				SUB IN: BREWER, MAYA
06:13	GOOD! FT by TILLRY, SHA'KENDRA [FB]	44-13	H 31	
06:13	MISSED FT by TILLRY, SHA'KENDRA			
06:13				REBOUND (DEF) by KIRVEN, ASHLEI
06:07				TURNOVER (TRAVEL) by BREMAUD, CARLA
05:57	TURNOVER (TRAVEL) by TILLRY, SHA'KENDRA			
05:38				TURNOVER (3SEC) by KIRVEN, ASHLEI
05:38	SUB OUT: TERRY, BRITAE™NEE			
05:38	SUB IN: CHRISTIAN, MORGAN			
05:23	GOOD! LAYUP by HARRIS, KYEONIA	44-15	H 29	
05:11				TURNOVER (LOSTBALL) by BREMAUD, CARLA
05:11	STEAL by TILLRY, SHA'KENDRA			
05:07				SUB OUT: BREMAUD, CARLA
05:07				SUB IN: MCCULLY, MARIAH
05:06	TURNOVER (BADPASS) by HARRIS, KYEONIA			
05:06				STEAL by BREWER, MAYA
05:01		46-15	H 31	GOOD! LAYUP by RYNG, NATALIA [FB]
05:01				ASSIST by BREWER, MAYA
04:42				FOUL (PERSONAL) by RYNG, NATALIA
04:42				SUB OUT: RYNG, NATALIA
04:42				SUB IN: HENDERSON, ASIA
04:42	MISSED FT by CHRISTIAN, MORGAN			
04:42	REBOUND (OFF) by TEAM			
04:42	MISSED FT by CHRISTIAN, MORGAN			
04:41				REBOUND (DEF) by HENDERSON, ASIA
04:28				MISSED LAYUP by BREWER, MAYA
04:28	BLOCK by SAM-GRANT, NISSA			
04:24	REBOUND (DEF) by SAM-GRANT, NISSA			
04:23	GOOD! JUMPER by HARRIS, KYEONIA [FB]	46-17	H 29	
04:23				FOUL (PERSONAL) by BREWER, MAYA
04:23				SUB OUT: BREWER, MAYA
04:23				SUB IN: DANIELSSON, VENDELA
04:23	GOOD! FT by HARRIS, KYEONIA [FB]	46-18	H 28	
04:11		49-18	H 31	GOOD! 3PTR by REID, ASHLEY
04:11				ASSIST by MCCULLY, MARIAH
03:53	MISSED LAYUP by CHRISTIAN, MORGAN			
03:49	REBOUND (OFF) by SAM-GRANT, NISSA			
03:48				FOUL (PERSONAL) by HENDERSON, ASIA
03:48	MISSED FT by CHRISTIAN, MORGAN			
03:48	REBOUND (OFF) by TEAM			
03:48	MISSED FT by CHRISTIAN, MORGAN			
03:47				REBOUND (DEF) by KIRVEN, ASHLEI
03:38				MISSED 3PTR by DANIELSSON, VENDELA
03:36	REBOUND (DEF) by HARRIS, KYEONIA			
03:30	TURNOVER (BADPASS) by TAYLOR, NOEAE™LL			
03:30				STEAL by MCCULLY, MARIAH
03:23	FOUL (PERSONAL) by CHRISTIAN, MORGAN			
03:23	SUB OUT: CHRISTIAN, MORGAN			
03:23	SUB IN: AMUSA, OLUWATUNMISE			
03:23		50-18	H 32	GOOD! FT by REID, ASHLEY [FB]
03:23				MISSED FT by REID, ASHLEY
03:22	REBOUND (DEF) by SAM-GRANT, NISSA			
03:14	MISSED LAYUP by TAYLOR, NOEAE™LL			
03:14				BLOCK by HENDERSON, ASIA
03:09				REBOUND (DEF) by REID, ASHLEY
03:09				TURNOVER (TRAVEL) by REID, ASHLEY
03:09	SUB OUT: TAYLOR, NOEAE™LL			
03:09	SUB IN: TOTTEN, TRASITY			
02:44	MISSED LAYUP by AMUSA, OLUWATUNMISE			
02:44				BLOCK by HENDERSON, ASIA
02:40				REBOUND (DEF) by HENDERSON, ASIA
02:34				MISSED JUMPER by MCCULLY, MARIAH
02:31	REBOUND (DEF) by SAM-GRANT, NISSA			
02:25	MISSED JUMPER by SAM-GRANT, NISSA			

Time	VISITORS: Ark.-Pine Bluff	Score	Margin	HOME: Wichita St.
02:19				REBOUND (DEF) by REID, ASHLEY
02:19		52-18	H 34	GOOD! LAYUP by REID, ASHLEY [FB/PNT]
02:19	FOUL (PERSONAL) by SAM-GRANT, NISSA			
02:19	SUB OUT: AMUSA, OLUWATUNMISE			
02:19	SUB IN: JOPLIN, ELISE			
02:19		53-18	H 35	GOOD! FT by REID, ASHLEY [FB]
02:12	MISSED JUMPER by TOTTEN, TRASITY			
02:09	REBOUND (OFF) by SAM-GRANT, NISSA			
02:06	MISSED 3PTR by HARRIS, KYEONIA			
02:03				REBOUND (DEF) by MCCULLY, MARIAH
02:01				TURNOVER (BADPASS) by MCCULLY, MARIAH
02:01	STEAL by HARRIS, KYEONIA			
01:54	GOOD! LAYUP by TILLRY, SHA'KENDRA [FB]	53-20	H 33	
01:54	ASSIST by HARRIS, KYEONIA			
01:38	FOUL (PERSONAL) by HARRIS, KYEONIA			
01:38		54-20	H 34	GOOD! FT by REID, ASHLEY
01:38		55-20	H 35	GOOD! FT by REID, ASHLEY
01:33	MISSED LAYUP by TOTTEN, TRASITY			
01:30				REBOUND (DEF) by MCCULLY, MARIAH
01:20				MISSED 3PTR by DANIELSSON, VENDELA
01:18	REBOUND (DEF) by TEAM			
01:10	MISSED LAYUP by HARRIS, KYEONIA			
01:10				BLOCK by HENDERSON, ASIA
01:10	REBOUND (OFF) by TEAM			
01:07	TURNOVER (BADPASS) by HARRIS, KYEONIA			
00:56				TURNOVER (TRAVEL) by REID, ASHLEY
00:42	MISSED JUMPER by HARRIS, KYEONIA			
00:39				REBOUND (DEF) by HENDERSON, ASIA
00:34		57-20	H 37	GOOD! JUMPER by KIRVEN, ASHLEI
00:34	FOUL (PERSONAL) by TOTTEN, TRASITY			
00:34				MISSED FT by KIRVEN, ASHLEI
00:33	REBOUND (DEF) by TOTTEN, TRASITY			
00:24	GOOD! 3PTR by TOTTEN, TRASITY	57-23	H 34	
00:24	ASSIST by HARRIS, KYEONIA			
00:05				MISSED LAYUP by HENDERSON, ASIA
00:05	BLOCK by SAM-GRANT, NISSA			
00:03	REBOUND (DEF) by TOTTEN, TRASITY			
00:03	SUB OUT: SAM-GRANT, NISSA			
00:03	SUB IN: ATMORE, JAYLA			
00:01	MISSED 3PTR by ATMORE, JAYLA			
00:01				REBOUND (DEF) by TEAM

### Ark.-Pine Bluff 23, Wichita St. 57

Points from (This Period)	APB	WSU
In the Paint	4	12
Off Turns	4	8
2nd Chance	2	0
Fast Break	8	13
Bench	8	15

**Official Box Score**  
**Ark.-Pine Bluff vs Wichita St.**  
**Second Half Statistics Only**  
**December 16, 2019 at Charles Koch Arena (Devlin Court) - Wichita, Kan.**



**Ark.-Pine Bluff 27**

No.	Player	S	Pts	FG	3FG	FT	OR	DR	TR	PF	A	TO	Blk	Stl	Min	+/-
01	HARRIS, KYEONIA	G	4	1-8	0-4	2-2	0	0	0	0	1	4	0	1	20	-16
04	ATMORE, JAYLA	G	3	1-7	0-1	1-2	1	1	2	2	0	0	0	0	12	-4
05	TOTTEN, TRASITY	G	0	0-1	0-1	0-0	0	0	0	2	0	0	0	0	3	-3
10	JOPLIN, ELISE	F	6	2-5	0-0	2-2	2	1	3	1	0	1	0	0	12	-12
11	AMUSA, OLUWATUNMISE	F	0	0-0	0-0	0-0	0	0	0	0	0	0	0	0	0	0
12	TERRY, BRITANNE	G	0	0-0	0-0	0-0	0	0	0	0	0	0	0	0	0	0
21	EL HASSAN, AIYA	F	4	2-3	0-0	0-1	1	0	1	1	0	0	0	0	4	2
24	TAYLOR, NOELLE	G	8	3-4	0-0	2-3	0	1	1	3	1	1	0	1	16	-18
30	PYBURN, TYLER	G	2	1-1	0-0	0-0	0	0	0	0	0	0	0	1	5	0
32	TILLRY, SHAKENDRA	F	0	0-6	0-0	0-2	2	0	2	1	0	2	0	0	15	-19
33	SAM-GRANT, NISSA	C	0	0-1	0-1	0-0	0	3	3	3	0	1	3	1	9	0
41	CHRISTIAN, MORGAN	F	0	0-0	0-0	0-0	0	0	0	1	0	0	0	0	2	-10
	TEAM		0	0-0	0-0	0-0	2	0	2	0	0	0	0	0	0	0
<b>TOTALS</b>			<b>27</b>	<b>10-36</b>	<b>0-7</b>	<b>7-12</b>	<b>8</b>	<b>6</b>	<b>14</b>	<b>14</b>	<b>2</b>	<b>9</b>	<b>3</b>	<b>4</b>	<b>98</b>	

*Shooting By Period*

Period	FG	FG%	3FG	3FG%	FT	FT%
3rd Qtr	5-17	29%	0-4	00%	3-5	60%
4th Qtr	5-19	26%	0-3	00%	4-7	57%
2nd Half	10-36	28%	0-7	00%	7-12	58%
Game	17-64	26.6%	1-13	07.7%	15-27	55.6%

*Deadball Rebounds: 6,2*  
*Last FG Half: APB 4th-02:19*

**Wichita St. 43**

No.	Player	S	Pts	FG	3FG	FT	OR	DR	TR	PF	A	TO	Blk	Stl	Min	+/-
00	FORREST, DIAMOND	C	0	0-0	0-0	0-0	0	0	0	0	0	0	0	0	3	0
02	MCCULLY, MARIAH	G	6	2-5	0-1	2-2	0	3	3	0	0	2	0	0	8	1
03	RYNG, NATALIA	F	0	0-1	0-1	0-0	0	0	0	1	0	0	0	0	7	0
05	REID, ASHLEY	G	6	1-2	0-0	4-4	0	2	2	1	6	2	0	2	16	15
11	KIRVEN, ASHLEI	F	2	0-2	0-0	2-2	0	4	4	1	0	2	0	1	4	-2
12	BREMAUD, CARLA	G	0	0-0	0-0	0-0	0	1	1	0	0	0	0	0	5	3
13	PRINCE, RAVEN	F	0	0-3	0-0	0-2	2	0	2	0	0	0	0	1	4	1
21	BREWER, MAYA	G	8	3-4	0-0	2-2	2	1	3	1	0	2	0	0	12	15
23	BASTIN, SERAPHINE	G	0	0-0	0-0	0-0	0	0	0	1	1	2	0	0	4	1
31	DANIELSSON, VENDELA	G	10	3-6	3-5	1-2	0	1	1	1	0	1	0	0	15	13
34	SMITH, SHYIA	F	4	1-1	0-0	2-2	0	1	1	2	1	0	0	0	11	16
42	HENDERSON, ASIA	F	7	2-3	0-0	3-4	3	4	7	2	0	2	2	0	10	17
	TEAM		0	0-0	0-0	0-0	2	1	3	0	0	0	0	0	0	0
<b>TOTALS</b>			<b>43</b>	<b>12-27</b>	<b>3-7</b>	<b>16-20</b>	<b>9</b>	<b>18</b>	<b>27</b>	<b>10</b>	<b>8</b>	<b>13</b>	<b>2</b>	<b>4</b>	<b>98</b>	

*Shooting By Period*

Period	FG	FG%	3FG	3FG%	FT	FT%
3rd Qtr	5-14	36%	1-2	50%	10-12	83%
4th Qtr	7-13	54%	2-5	40%	6-8	75%
2nd Half	12-27	44%	3-7	43%	16-20	80%
Game	28-56	50.0%	8-18	44.4%	36-45	80.0%

*Deadball Rebounds: 7,6*  
*Last FG Half: WSU 4th-00:56*

*Game Notes:*

Officials: Kathleen Lynch, Kevin Pethtel, Nicole Brannon  
 Attendance: 1173

Start Time: 12:35 PM ET  
 End Time: 02:48 PM ET  
 Game Duration: 2:13

Score	1st	2nd	3rd	4th	TOT
APB	6	17	13	14	50
WSU	29	28	21	22	100

Points from (This Period)	APB	WSU
In the Paint	10	18
Off Turns	5	11
2nd Chance	9	10
Fast Break	5	15
Bench	8	33

**Official Box Score**  
**Ark.-Pine Bluff vs Wichita St.**  
**Third Quarter Statistics Only**  
**December 16, 2019 at Charles Koch Arena (Devlin Court) - Wichita, Kan.**



**Ark.-Pine Bluff 27**

No.	Player	S	Pts	FG	3FG	FT	OR	DR	TR	PF	A	TO	Blk	Stl	Min	+/-
01	HARRIS, KYEONIA	G	4	1-4	0-2	2-2	0	0	0	0	1	3	0	0	10	-8
04	ATMORE, JAYLA	G	0	0-2	0-0	0-0	0	0	0	1	0	0	0	0	3	-1
21	EL HASSAN, AIYA	F	2	1-1	0-0	0-1	1	0	1	1	0	0	0	0	1	2
24	TAYLOR, NOE	G	3	1-1	0-0	1-2	0	1	1	1	0	1	0	0	6	-10
33	SAM-GRANT, NISSA	C	0	0-1	0-1	0-0	0	3	3	2	0	1	3	1	8	-3
05	TOTTEN, TRASITY	G	0	0-1	0-1	0-0	0	0	0	2	0	0	0	0	3	-3
10	JOPLIN, ELISE	F	2	1-2	0-0	0-0	0	1	1	1	0	0	0	0	5	-5
11	AMUSA, OLUWATUNMISE	F	0	0-0	0-0	0-0	0	0	0	0	0	0	0	0	0	0
12	TERRY, BRITNEY	G	0	0-0	0-0	0-0	0	0	0	0	0	0	0	0	0	0
30	PYBURN, TYLER	G	2	1-1	0-0	0-0	0	0	0	0	0	0	0	1	5	0
32	TILLRY, SHA'KENDRA	F	0	0-4	0-0	0-0	1	0	1	0	0	0	0	0	9	-10
41	CHRISTIAN, MORGAN	F	0	0-0	0-0	0-0	0	0	0	0	0	0	0	0	0	-2
	TEAM						0	0	0	0		0				
	<b>TOTALS</b>		<b>13</b>	<b>5-17</b>	<b>0-4</b>	<b>3-5</b>	<b>2</b>	<b>5</b>	<b>7</b>	<b>8</b>	<b>1</b>	<b>5</b>	<b>3</b>	<b>2</b>	<b>50</b>	

*Shooting By Period*

Period	FG	FG%	3FG	3FG%	FT	FT%
2nd Half	0-0	0%	0-0	0%	0-0	0%
Game	17-64	26.6%	1-13	07.7%	15-27	55.6%

*Deadball Rebounds: 6,2*

**Wichita St. 43**

No.	Player	S	Pts	FG	3FG	FT	OR	DR	TR	PF	A	TO	Blk	Stl	Min	+/-	
02	MCCULLY, MARIAH	G	6	2-5	0-1	2-2	0	3	3	0	0	2	0	0	8	1	
12	BREMAUD, CARLA	G	0	0-0	0-0	0-0	0	1	1	0	0	0	0	0	5	3	
13	PRINCE, RAVEN	F	0	0-3	0-0	0-2	2	0	2	0	0	0	0	1	4	1	
23	BASTIN, SERAPHINE	G	0	0-0	0-0	0-0	0	0	0	1	1	2	0	0	4	1	
34	SMITH, SHYIA	F	4	1-1	0-0	2-2	0	1	1	2	0	0	0	0	9	8	
00	FORREST, DIAMOND	C	0	0-0	0-0	0-0	0	0	0	0	0	0	0	0	0	0	
03	RYNG, NATALIA	F	0	0-0	0-0	0-0	0	0	0	0	0	0	0	0	0	0	
05	REID, ASHLEY	G	2	0-0	0-0	2-2	0	0	0	0	0	2	1	0	1	6	7
11	KIRVEN, ASHLEI	F	2	0-2	0-0	2-2	0	4	4	1	0	2	0	1	4	-2	
21	BREWER, MAYA	G	2	1-1	0-0	0-0	0	0	0	0	0	0	0	0	2	7	
31	DANIELSSON, VENDELA	G	3	1-2	1-1	0-0	0	0	0	0	0	0	0	0	5	5	
42	HENDERSON, ASIA	F	2	0-0	0-0	2-2	0	1	1	0	0	0	0	0	3	9	
	TEAM						2	0	2	0		0					
	<b>TOTALS</b>		<b>21</b>	<b>5-14</b>	<b>1-2</b>	<b>10-12</b>	<b>4</b>	<b>10</b>	<b>14</b>	<b>4</b>	<b>3</b>	<b>7</b>	<b>0</b>	<b>3</b>	<b>50</b>		

*Shooting By Period*

Period	FG	FG%	3FG	3FG%	FT	FT%
2nd Half	0-0	0%	0-0	0%	0-0	0%
Game	28-56	50.0%	8-18	44.4%	36-45	80.0%

*Deadball Rebounds: 7,6*

Game Notes:

Officials: Kathleen Lynch, Kevin Pethtel, Nicole Brannon  
 Attendance: 1173

Start Time: 12:35 PM ET  
 End Time: 02:48 PM ET  
 Game Duration: 2:13

Score	1st	2nd	3rd	4th	TOT
APB	6	17	13	14	50
WSU	29	28	21	22	100

Points from (This Period)	APB	WSU
In the Paint	8	8
Off Turns	4	4
2nd Chance	2	2
Fast Break	3	6
Bench	4	11

**Official Play-By-Play  
Ark.-Pine Bluff vs Wichita St.  
Third Quarter**

**December 16, 2019 at Charles Koch Arena (Devlin Court) - Wichita, Kan.**



**Period 3**

**Starters:**

**Ark.-Pine Bluff:** 1 HARRIS, KYEONIA (G); 4 ATMORE, JAYLA (G); 21 EL HASSAN, AIYA (F); 24 TAYLOR, NOEâ€™LL (G); 33 SAM-GRANT, NISSA (C);

**Wichita St.:** 2 MCCULLY, MARIAH (G); 12 BREMAUD, CARLA (G); 13 PRINCE, RAVEN (F); 23 BASTIN, SERAPHINE (G); 34 SMITH, SHYIA (F);

Time	VISITORS: Ark.-Pine Bluff	Score	Margin	HOME: Wichita St.
10:00				SUB OUT: REID, ASHLEY
10:00				SUB OUT: KIRVEN, ASHLEI
10:00				SUB OUT: DANIELSSON, VENDELA
10:00				SUB OUT: HENDERSON, ASIA
10:00				SUB IN: BREMAUD, CARLA
10:00				SUB IN: PRINCE, RAVEN
10:00				SUB IN: BASTIN, SERAPHINE
10:00				SUB IN: SMITH, SHYIA
10:00	SUB OUT: TOTTEN, TRASITY			
10:00	SUB OUT: JOPLIN, ELISE			
10:00	SUB OUT: TILLRY, SHA'KENDRA			
10:00	SUB IN: EL HASSAN, AIYA			
10:00	SUB IN: TAYLOR, NOEâ€™LL			
10:00	SUB IN: SAM-GRANT, NISSA			
09:52	MISSED 3PTR by SAM-GRANT, NISSA			
09:49				REBOUND (DEF) by MCCULLY, MARIAH
09:40	MISSED JUMPER by ATMORE, JAYLA			
09:40	REBOUND (OFF) by EL HASSAN, AIYA			
09:40	GOOD! JUMPER by EL HASSAN, AIYA [PNT]	57-25	H 32	
09:40				FOUL (PERSONAL) by SMITH, SHYIA
09:40	MISSED FT by EL HASSAN, AIYA			
09:40				REBOUND (DEF) by SMITH, SHYIA
09:26				MISSED JUMPER by MCCULLY, MARIAH
09:24				REBOUND (OFF) by PRINCE, RAVEN
09:24	FOUL (PERSONAL) by SAM-GRANT, NISSA			
09:24				MISSED FT by PRINCE, RAVEN
09:24				REBOUND (OFF) by TEAM
09:24				MISSED FT by PRINCE, RAVEN
09:24	REBOUND (DEF) by SAM-GRANT, NISSA			
09:17	TURNOVER (OTHER) by HARRIS, KYEONIA			
09:05				FOUL (OFF) by BASTIN, SERAPHINE
09:05				TURNOVER (OFFENSIVE) by BASTIN, SERAPHINE
08:54	TURNOVER (TRAVEL) by TAYLOR, NOEâ€™LL			
08:36	FOUL (PERSONAL) by EL HASSAN, AIYA			
08:36	SUB OUT: EL HASSAN, AIYA			
08:36	SUB IN: TILLRY, SHA'KENDRA			
08:36		58-25	H 33	GOOD! FT by SMITH, SHYIA
08:36		59-25	H 34	GOOD! FT by SMITH, SHYIA
08:26	TURNOVER (BADPASS) by HARRIS, KYEONIA			
08:26				STEAL by PRINCE, RAVEN
08:04				MISSED LAYUP by PRINCE, RAVEN
08:04	REBOUND (DEF) by TAYLOR, NOEâ€™LL			
07:56				FOUL (PERSONAL) by SMITH, SHYIA
07:56	GOOD! FT by TAYLOR, NOEâ€™LL [FB]	59-26	H 33	
07:56	MISSED FT by TAYLOR, NOEâ€™LL			
07:54				REBOUND (DEF) by MCCULLY, MARIAH
07:50				MISSED JUMPER by MCCULLY, MARIAH
07:48				REBOUND (OFF) by PRINCE, RAVEN
07:48				MISSED LAYUP by PRINCE, RAVEN
07:48	BLOCK by SAM-GRANT, NISSA			
07:48				REBOUND (OFF) by TEAM
07:45		61-26	H 35	GOOD! LAYUP by MCCULLY, MARIAH
07:45				ASSIST by BASTIN, SERAPHINE
07:37	MISSED LAYUP by ATMORE, JAYLA			
07:33				REBOUND (DEF) by BREMAUD, CARLA
07:11	FOUL (PERSONAL) by ATMORE, JAYLA			
07:11	SUB OUT: ATMORE, JAYLA			
07:11	SUB IN: PYBURN, TYLER			
07:08				MISSED JUMPER by PRINCE, RAVEN
07:08	BLOCK by SAM-GRANT, NISSA			
07:07				REBOUND (OFF) by TEAM
07:01				MISSED 3PTR by MCCULLY, MARIAH
06:58				REBOUND (OFF) by TEAM
06:52				TURNOVER (OTHER) by BASTIN, SERAPHINE
06:52				SUB OUT: SMITH, SHYIA
06:52				SUB IN: KIRVEN, ASHLEI
06:52	SUB OUT: TAYLOR, NOEâ€™LL			
06:52	SUB IN: TOTTEN, TRASITY			
06:34	MISSED JUMPER by HARRIS, KYEONIA			
06:30				REBOUND (DEF) by KIRVEN, ASHLEI

Time	VISITORS: Ark.-Pine Bluff	Score	Margin	HOME: Wichita St.
06:11				TURNOVER (3SEC) by KIRVEN, ASHLEI
06:11				SUB OUT: PRINCE, RAVEN
06:11				SUB IN: SMITH, SHYIA
05:51	MISSED JUMPER by TILLRY, SHA'KENDRA			
05:47				REBOUND (DEF) by KIRVEN, ASHLEI
05:37	FOUL (PERSONAL) by TOTTEN, TRASITY			
05:37				SUB OUT: BASTIN, SERAPHINE
05:37				SUB IN: REID, ASHLEY
05:37	SUB OUT: TOTTEN, TRASITY			
05:37	SUB IN: TAYLOR, NOE'LL			
05:37	FOUL (PERSONAL) by TAYLOR, NOE'LL			
05:37		62-26	H 36	GOOD! FT by MCCULLY, MARIAH
05:37		63-26	H 37	GOOD! FT by MCCULLY, MARIAH
05:28	TURNOVER (LOSTBALL) by SAM-GRANT, NISSA			
05:28				STEAL by KIRVEN, ASHLEI
05:24				TURNOVER (BADPASS) by KIRVEN, ASHLEI
05:24	STEAL by PYBURN, TYLER			
05:05	GOOD! JUMPER by PYBURN, TYLER	63-28	H 35	
04:58		65-28	H 37	GOOD! LAYUP by SMITH, SHYIA [FB]
04:52	MISSED 3PTR by HARRIS, KYEONIA			
04:48				REBOUND (DEF) by KIRVEN, ASHLEI
04:36				
08:04	BLOCK by SAM-GRANT, NISSA			
09:40				TURNOVER (LOSTBALL) by MCCULLY, MARIAH
04:36				SUB OUT: BREMAUD, CARLA
04:36				SUB IN: DANIELSSON, VENDELA
04:36	SUB OUT: TAYLOR, NOE'LL			
04:36	SUB IN: JOPLIN, ELISE			
04:33				TURNOVER (BADPASS) by MCCULLY, MARIAH
04:33	STEAL by SAM-GRANT, NISSA			
04:27	GOOD! LAYUP by JOPLIN, ELISE [FB]	65-30	H 35	
04:27	ASSIST by HARRIS, KYEONIA			
04:12				MISSED JUMPER by KIRVEN, ASHLEI
04:09	REBOUND (DEF) by SAM-GRANT, NISSA			
04:00	GOOD! LAYUP by HARRIS, KYEONIA	65-32	H 33	
03:39				MISSED JUMPER by DANIELSSON, VENDELA
03:35	REBOUND (DEF) by SAM-GRANT, NISSA			
03:28	MISSED JUMPER by TILLRY, SHA'KENDRA			
03:28				REBOUND (DEF) by KIRVEN, ASHLEI
03:28	FOUL (PERSONAL) by JOPLIN, ELISE			
03:28		66-32	H 34	GOOD! FT by KIRVEN, ASHLEI
03:28		67-32	H 35	GOOD! FT by KIRVEN, ASHLEI
03:19				FOUL (PERSONAL) by KIRVEN, ASHLEI
03:19	GOOD! FT by HARRIS, KYEONIA	67-33	H 34	
03:19	GOOD! FT by HARRIS, KYEONIA	67-34	H 33	
02:52				MISSED JUMPER by KIRVEN, ASHLEI
02:49	REBOUND (DEF) by JOPLIN, ELISE			
02:39	MISSED 3PTR by HARRIS, KYEONIA			
02:36	REBOUND (OFF) by TILLRY, SHA'KENDRA			
02:32	MISSED JUMPER by JOPLIN, ELISE			
02:30				REBOUND (DEF) by TEAM
02:30				SUB OUT: KIRVEN, ASHLEI
02:30				SUB IN: HENDERSON, ASIA
02:15		69-34	H 35	GOOD! JUMPER by MCCULLY, MARIAH [PNT]
01:59	MISSED JUMPER by TILLRY, SHA'KENDRA			
01:56				REBOUND (DEF) by MCCULLY, MARIAH
01:52	FOUL (PERSONAL) by SAM-GRANT, NISSA			
01:52				SUB OUT: MCCULLY, MARIAH
01:52				SUB IN: BREWER, MAYA
01:52	SUB OUT: PYBURN, TYLER			
01:52	SUB IN: TAYLOR, NOE'LL			
01:52		70-34	H 36	GOOD! FT by HENDERSON, ASIA [FB]
01:52		71-34	H 37	GOOD! FT by HENDERSON, ASIA [FB]
01:52	SUB OUT: SAM-GRANT, NISSA			
01:52	SUB IN: TOTTEN, TRASITY			
01:38	MISSED JUMPER by TILLRY, SHA'KENDRA			
01:35				REBOUND (DEF) by TEAM
01:34				TURNOVER (TRAVEL) by REID, ASHLEY
01:12	TURNOVER (LOSTBALL) by HARRIS, KYEONIA			
01:12				STEAL by REID, ASHLEY
01:07		73-34	H 39	GOOD! LAYUP by BREWER, MAYA [FB]
01:07				ASSIST by REID, ASHLEY
00:50	GOOD! LAYUP by TAYLOR, NOE'LL	73-36	H 37	
00:33		76-36	H 40	GOOD! 3PTR by DANIELSSON, VENDELA
00:33				ASSIST by REID, ASHLEY
00:11	MISSED 3PTR by TOTTEN, TRASITY			
00:08				REBOUND (DEF) by HENDERSON, ASIA
00:01	FOUL (PERSONAL) by TOTTEN, TRASITY			
00:01	SUB OUT: TOTTEN, TRASITY			
00:01	SUB IN: CHRISTIAN, MORGAN			

Time	VISITORS: Ark.-Pine Bluff	Score	Margin	HOME: Wichita St.
00:01		77-36	H 41	GOOD! FT by REID, ASHLEY
00:01		78-36	H 42	GOOD! FT by REID, ASHLEY

**Ark.-Pine Bluff 36, Wichita St. 78**

Points from (This Period)	APB	WSU
In the Paint	8	8
Off Turns	4	4
2nd Chance	2	2
Fast Break	3	6
Bench	4	11

**Official Box Score**  
**Ark.-Pine Bluff vs Wichita St.**  
**Fourth Quarter Statistics Only**  
**December 16, 2019 at Charles Koch Arena (Devlin Court) - Wichita, Kan.**



**Ark.-Pine Bluff 14**

No.	Player	S	Pts	FG	3FG	FT	OR	DR	TR	PF	A	TO	Blk	Stl	Min	+/-
01	HARRIS, KYEONIA	G	0	0-4	0-2	0-0	0	0	0	0	0	1	0	1	10	-8
04	ATMORE, JAYLA	G	3	1-5	0-1	1-2	1	1	2	1	0	0	0	0	9	-3
21	EL HASSAN, AIYA	F	2	1-2	0-0	0-0	0	0	0	0	0	0	0	0	3	0
24	TAYLOR, NOE™LL	G	5	2-3	0-0	1-1	0	0	0	2	1	0	0	1	10	-8
33	SAM-GRANT, NISSA	C	0	0-0	0-0	0-0	0	0	0	1	0	0	0	0	1	3
05	TOTTEN, TRASITY	G	0	0-0	0-0	0-0	0	0	0	0	0	0	0	0	0	0
10	JOPLIN, ELISE	F	4	1-3	0-0	2-2	2	0	2	0	0	1	0	0	7	-7
11	AMUSA, OLUWATUNMISE	F	0	0-0	0-0	0-0	0	0	0	0	0	0	0	0	0	0
12	TERRY, BRIT™NEE	G	0	0-0	0-0	0-0	0	0	0	0	0	0	0	0	0	0
30	PYBURN, TYLER	G	0	0-0	0-0	0-0	0	0	0	0	0	0	0	0	0	0
32	TILLRY, SHA'KENDRA	F	0	0-2	0-0	0-2	1	0	1	1	0	2	0	0	6	-9
41	CHRISTIAN, MORGAN	F	0	0-0	0-0	0-0	0	0	0	1	0	0	0	0	2	-8
	TEAM						2	0	2	0		0				
	<b>TOTALS</b>		<b>14</b>	<b>5-19</b>	<b>0-3</b>	<b>4-7</b>	<b>6</b>	<b>1</b>	<b>7</b>	<b>6</b>	<b>1</b>	<b>4</b>	<b>0</b>	<b>2</b>	<b>48</b>	

*Shooting By Period*

Period	FG	FG%	3FG	3FG%	FT	FT%
Game	17-64	26.6%	1-13	07.7%	15-27	55.6%

Deadball Rebounds: 6,2

**Wichita St. 22**

No.	Player	S	Pts	FG	3FG	FT	OR	DR	TR	PF	A	TO	Blk	Stl	Min	+/-
02	MCCULLY, MARIAH	G	0	0-0	0-0	0-0	0	0	0	0	0	0	0	0	0	0
12	BREMAUD, CARLA	G	0	0-0	0-0	0-0	0	0	0	0	0	0	0	0	0	0
13	PRINCE, RAVEN	F	0	0-0	0-0	0-0	0	0	0	0	0	0	0	0	0	0
23	BASTIN, SERAPHINE	G	0	0-0	0-0	0-0	0	0	0	0	0	0	0	0	0	0
34	SMITH, SHYIA	F	0	0-0	0-0	0-0	0	0	0	0	1	0	0	0	2	8
00	FORREST, DIAMOND	C	0	0-0	0-0	0-0	0	0	0	0	0	0	0	0	3	0
03	RYNG, NATALIA	F	0	0-1	0-1	0-0	0	0	0	1	0	0	0	0	7	0
05	REID, ASHLEY	G	4	1-2	0-0	2-2	0	2	2	1	4	1	0	1	10	8
11	KIRVEN, ASHLEI	F	0	0-0	0-0	0-0	0	0	0	0	0	0	0	0	0	0
21	BREWER, MAYA	G	6	2-3	0-0	2-2	2	1	3	1	0	2	0	0	10	8
31	DANIELSSON, VENDELA	G	7	2-4	2-4	1-2	0	1	1	1	0	1	0	0	10	8
42	HENDERSON, ASIA	F	5	2-3	0-0	1-2	3	3	6	2	0	2	2	0	7	8
	TEAM						0	1	1	0		0				
	<b>TOTALS</b>		<b>22</b>	<b>7-13</b>	<b>2-5</b>	<b>6-8</b>	<b>5</b>	<b>8</b>	<b>13</b>	<b>6</b>	<b>5</b>	<b>6</b>	<b>2</b>	<b>1</b>	<b>48</b>	

*Shooting By Period*

Period	FG	FG%	3FG	3FG%	FT	FT%
Game	28-56	50.0%	8-18	44.4%	36-45	80.0%

Deadball Rebounds: 7,6

Game Notes:

Officials: Kathleen Lynch, Kevin Pethtel, Nicole Brannon  
Attendance: 1173

Start Time: 12:35 PM ET  
End Time: 02:48 PM ET  
Game Duration: 2:13

Score	1st	2nd	3rd	4th	TOT
APB	6	17	13	14	<b>50</b>
WSU	29	28	21	22	<b>100</b>

Points from (This Period)	APB	WSU
In the Paint	2	10
Off Turns	1	7
2nd Chance	7	8
Fast Break	2	9
Bench	4	22



**Official Play-By-Play  
Ark.-Pine Bluff vs Wichita St.  
Fourth Quarter**

**December 16, 2019 at Charles Koch Arena (Devlin Court) - Wichita, Kan.**



**Period 4**

**Starters:**

**Ark.-Pine Bluff:** 1 HARRIS, KYEONIA (G); 4 ATMORE, JAYLA (G); 21 EL HASSAN, AIYA (F); 24 TAYLOR, NOE™LL (G); 33 SAM-GRANT, NISSA (C);

**Wichita St.:** 2 MCCULLY, MARIAH (G); 12 BREMAUD, CARLA (G); 13 PRINCE, RAVEN (F); 23 BASTIN, SERAPHINE (G); 34 SMITH, SHYIA (F);

Time	VISITORS: Ark.-Pine Bluff	Score	Margin	HOME: Wichita St.
09:53	FOUL (OFF) by TILLRY, SHA'KENDRA			
09:53	TURNOVER (OFFENSIVE) by TILLRY, SHA'KENDRA			
09:36				MISSED JUMPER by BREWER, MAYA
09:31				REBOUND (OFF) by HENDERSON, ASIA
09:31		80-36	H 44	GOOD! LAYUP by HENDERSON, ASIA
09:22	MISSED JUMPER by HARRIS, KYEONIA			
09:15	REBOUND (OFF) by JOPLIN, ELISE			
09:15	MISSED LAYUP by JOPLIN, ELISE			
09:14				REBOUND (DEF) by HENDERSON, ASIA
09:11	FOUL (PERSONAL) by CHRISTIAN, MORGAN			
09:11		81-36	H 45	GOOD! FT by BREWER, MAYA [FB]
09:11		82-36	H 46	GOOD! FT by BREWER, MAYA [FB]
09:11	SUB OUT: JOPLIN, ELISE			
09:11	SUB OUT: TILLRY, SHA'KENDRA			
09:11	SUB IN: ATMORE, JAYLA			
09:11	SUB IN: EL HASSAN, AIYA			
08:55	MISSED 3PTR by HARRIS, KYEONIA			
08:52				REBOUND (DEF) by BREWER, MAYA
08:31		84-36	H 48	GOOD! LAYUP by HENDERSON, ASIA
08:31				ASSIST by SMITH, SHYIA
08:05	MISSED JUMPER by ATMORE, JAYLA			
08:02				REBOUND (DEF) by REID, ASHLEY
07:59		86-36	H 50	GOOD! LAYUP by BREWER, MAYA [FB]
07:59				ASSIST by REID, ASHLEY
07:41	MISSED LAYUP by EL HASSAN, AIYA			
07:40	REBOUND (OFF) by TEAM			
07:40				SUB OUT: SMITH, SHYIA
07:40				SUB IN: RYNG, NATALIA
07:40	SUB OUT: CHRISTIAN, MORGAN			
07:40	SUB IN: SAM-GRANT, NISSA			
07:32				FOUL (PERSONAL) by RYNG, NATALIA
07:25	GOOD! JUMPER by TAYLOR, NOE™LL [PNT]	86-38	H 48	
07:25				FOUL (PERSONAL) by REID, ASHLEY
07:25	GOOD! FT by TAYLOR, NOE™LL	86-39	H 47	
07:14				MISSED LAYUP by HENDERSON, ASIA
07:10				REBOUND (OFF) by HENDERSON, ASIA
07:03	FOUL (PERSONAL) by SAM-GRANT, NISSA			
07:03	SUB OUT: SAM-GRANT, NISSA			
07:03	SUB IN: JOPLIN, ELISE			
07:03				MISSED FT by HENDERSON, ASIA
07:03				REBOUND (OFF) by TEAM
07:03		87-39	H 48	GOOD! FT by HENDERSON, ASIA
06:54	GOOD! JUMPER by EL HASSAN, AIYA	87-41	H 46	
06:54	ASSIST by TAYLOR, NOE™LL			
06:40		90-41	H 49	GOOD! 3PTR by DANIELSSON, VENDELA
06:40				ASSIST by REID, ASHLEY
06:30	GOOD! JUMPER by TAYLOR, NOE™LL	90-43	H 47	
06:16				MISSED 3PTR by DANIELSSON, VENDELA
06:13	REBOUND (DEF) by ATMORE, JAYLA			
06:10	GOOD! JUMPER by ATMORE, JAYLA [FB]	90-45	H 45	
05:48	SUB OUT: EL HASSAN, AIYA			
05:48	SUB IN: TILLRY, SHA'KENDRA			
05:48				FOUL (OFF) by HENDERSON, ASIA
05:48				TURNOVER (OFFENSIVE) by HENDERSON, ASIA
05:25	MISSED LAYUP by TILLRY, SHA'KENDRA			
05:25				BLOCK by HENDERSON, ASIA
05:21				REBOUND (DEF) by HENDERSON, ASIA
05:17				MISSED LAYUP by REID, ASHLEY
05:17				REBOUND (OFF) by HENDERSON, ASIA
05:14				TURNOVER (TRAVEL) by HENDERSON, ASIA
05:05	MISSED LAYUP by TAYLOR, NOE™LL			
05:05				BLOCK by HENDERSON, ASIA
05:01				REBOUND (DEF) by HENDERSON, ASIA
05:00				TURNOVER (LOSTBALL) by BREWER, MAYA
05:00	STEAL by TAYLOR, NOE™LL			
04:53	MISSED JUMPER by JOPLIN, ELISE			
04:53				REBOUND (DEF) by TEAM
04:53				
04:38				MISSED 3PTR by RYNG, NATALIA
04:34				REBOUND (OFF) by BREWER, MAYA

Time	VISITORS: Ark.-Pine Bluff	Score	Margin	HOME: Wichita St.
04:23		92-45	H 47	GOOD! LAYUP by REID, ASHLEY
04:15	MISSED JUMPER by ATMORE, JAYLA			
04:12	REBOUND (OFF) by TILLRY, SHA'KENDRA			
04:12	TIMEOUT 30SEC			
04:03	TURNOVER (TRAVEL) by HARRIS, KYEONIA			
03:51				MISSED 3PTR by DANIELSSON, VENDELA
03:48				REBOUND (OFF) by BREWER, MAYA
03:35		95-45	H 50	GOOD! 3PTR by DANIELSSON, VENDELA
03:35				ASSIST by REID, ASHLEY
03:02	MISSED JUMPER by HARRIS, KYEONIA			
03:00	REBOUND (OFF) by JOPLIN, ELISE			
03:00				FOUL (PERSONAL) by HENDERSON, ASIA
03:00				SUB OUT: HENDERSON, ASIA
03:00				SUB IN: FORREST, DIAMOND
03:00	GOOD! FT by JOPLIN, ELISE	95-46	H 49	
03:00	GOOD! FT by JOPLIN, ELISE	95-47	H 48	
02:51				TURNOVER (LOSTBALL) by REID, ASHLEY
02:51	STEAL by HARRIS, KYEONIA			
02:45	MISSED LAYUP by ATMORE, JAYLA			
02:44	REBOUND (OFF) by ATMORE, JAYLA			
02:35	MISSED 3PTR by HARRIS, KYEONIA			
02:32	REBOUND (OFF) by TEAM			
02:26	MISSED LAYUP by TILLRY, SHA'KENDRA			
02:24	REBOUND (OFF) by TEAM			
02:19	GOOD! JUMPER by JOPLIN, ELISE	95-49	H 46	
02:09	FOUL (PERSONAL) by TAYLOR, NOE			
02:00				TURNOVER (DRIBBLING) by BREWER, MAYA
01:31				FOUL (PERSONAL) by BREWER, MAYA
01:31	GOOD! FT by ATMORE, JAYLA	95-50	H 45	
01:30	MISSED FT by ATMORE, JAYLA			
01:28				REBOUND (DEF) by DANIELSSON, VENDELA
01:28				TURNOVER (LOSTBALL) by DANIELSSON, VENDELA
01:28				FOUL (PERSONAL) by DANIELSSON, VENDELA
01:28	MISSED FT by TILLRY, SHA'KENDRA			
01:28	REBOUND (OFF) by TEAM			
01:28	MISSED FT by TILLRY, SHA'KENDRA			
01:28				REBOUND (DEF) by TEAM
01:24	FOUL (PERSONAL) by TAYLOR, NOE			
01:24		96-50	H 46	GOOD! FT by REID, ASHLEY [FB]
01:24		97-50	H 47	GOOD! FT by REID, ASHLEY [FB]
01:02	TURNOVER (LOSTBALL) by JOPLIN, ELISE			
01:02				STEAL by REID, ASHLEY
00:56		99-50	H 49	GOOD! LAYUP by BREWER, MAYA [FB]
00:56				ASSIST by REID, ASHLEY
00:32	MISSED 3PTR by ATMORE, JAYLA			
00:28				REBOUND (DEF) by REID, ASHLEY
00:26	FOUL (PERSONAL) by ATMORE, JAYLA			
00:26	SUB OUT: ATMORE, JAYLA			
00:26	SUB IN: EL HASSAN, AIYA			
00:26				MISSED FT by DANIELSSON, VENDELA
00:26				REBOUND (OFF) by TEAM
00:26		100-50	H 50	GOOD! FT by DANIELSSON, VENDELA [FB]
00:25	TURNOVER (BADPASS) by TILLRY, SHA'KENDRA			

### Ark.-Pine Bluff 50, Wichita St. 100

Points from (This Period)	APB	WSU
In the Paint	2	10
Off Turns	1	7
2nd Chance	7	8
Fast Break	2	9
Bench	4	22

**Official Scoring/Possession Reference Chart  
Ark.-Pine Bluff vs Wichita St.**

**Period 1**

**December 16, 2019 at Charles Koch Arena (Devlin Court) - Wichita, Kan.**



**Period 1**

**Starters:**

**Ark.-Pine Bluff:** 1 HARRIS, KYEONIA (G); 4 ATMORE, JAYLA (G); 21 EL HASSAN, AIYA (F); 24 TAYLOR, NOE™LL (G); 33 SAM-GRANT, NISSA (C);  
**Wichita St.:** 2 MCCULLY, MARIAH (G); 12 BREMAUD, CARLA (G); 13 PRINCE, RAVEN (F); 23 BASTIN, SERAPHINE (G); 34 SMITH, SHYIA (F);

Time	VISITORS: Ark.-Pine Bluff	Score	Margin	HOME: Wichita St.
09:18		3-0	H 3	GOOD! 3PTR by BREMAUD, CARLA
08:50		5-0	H 5	GOOD! JUMPER by SMITH, SHYIA
08:50		6-0	H 6	GOOD! FT by SMITH, SHYIA
08:32		7-0	H 7	GOOD! FT by MCCULLY, MARIAH [FB]
08:32		8-0	H 8	GOOD! FT by MCCULLY, MARIAH [FB]
07:04	GOOD! JUMPER by ATMORE, JAYLA [FB]	8-2	H 6	
06:54		11-2	H 9	GOOD! 3PTR by MCCULLY, MARIAH
04:41		13-2	H 11	GOOD! LAYUP by REID, ASHLEY [PNT]
04:25	GOOD! JUMPER by ATMORE, JAYLA	13-4	H 9	
04:02		16-4	H 12	GOOD! 3PTR by SMITH, SHYIA
03:39		18-4	H 14	GOOD! LAYUP by BREMAUD, CARLA [FB]
02:26		21-4	H 17	GOOD! 3PTR by BREWER, MAYA
02:00		22-4	H 18	GOOD! FT by HENDERSON, ASIA
01:23		23-4	H 19	GOOD! FT by BREWER, MAYA
00:53		25-4	H 21	GOOD! JUMPER by KIRVEN, ASHLEI
00:22		26-4	H 22	GOOD! FT by BREWER, MAYA
00:06	GOOD! JUMPER by ATMORE, JAYLA	26-6	H 20	
00:00		27-6	H 21	GOOD! FT by BREWER, MAYA [FB]
00:00		28-6	H 22	GOOD! FT by BREWER, MAYA [FB]
00:00		29-6	H 23	GOOD! FT by BREWER, MAYA [FB]

**Ark.-Pine Bluff 6, Wichita St. 29**

**Official Scoring/Possession Reference Chart  
Ark.-Pine Bluff vs Wichita St.**

**Period 2**

**December 16, 2019 at Charles Koch Arena (Devlin Court) - Wichita, Kan.**



**Period 2**

**Starters:**

**Ark.-Pine Bluff:** 1 HARRIS, KYEONIA (G); 4 ATMORE, JAYLA (G); 21 EL HASSAN, AIYA (F); 24 TAYLOR, NOE™LL (G); 33 SAM-GRANT, NISSA (C);

**Wichita St.:** 2 MCCULLY, MARIAH (G); 12 BREMAUD, CARLA (G); 13 PRINCE, RAVEN (F); 23 BASTIN, SERAPHINE (G); 34 SMITH, SHYIA (F);

Time	VISITORS: Ark.-Pine Bluff	Score	Margin	HOME: Wichita St.
09:24	GOOD! FT by ATMORE, JAYLA	29-7	H 22	
09:24	GOOD! FT by ATMORE, JAYLA	29-8	H 21	
09:14		31-8	H 23	GOOD! LAYUP by FORREST, DIAMOND
09:06	GOOD! FT by ATMORE, JAYLA [FB]	31-9	H 22	
09:06	GOOD! FT by ATMORE, JAYLA [FB]	31-10	H 21	
08:51		33-10	H 23	GOOD! LAYUP by BASTIN, SERAPHINE
08:07		34-10	H 24	GOOD! FT by BASTIN, SERAPHINE [FB]
08:07		35-10	H 25	GOOD! FT by BASTIN, SERAPHINE [FB]
07:53		37-10	H 27	GOOD! JUMPER by MCCULLY, MARIAH
07:32		39-10	H 29	GOOD! LAYUP by BASTIN, SERAPHINE [FB]
07:32		40-10	H 30	GOOD! FT by BASTIN, SERAPHINE [FB]
07:17	GOOD! FT by PYBURN, TYLER	40-11	H 29	
07:17	GOOD! FT by PYBURN, TYLER	40-12	H 28	
06:40		41-12	H 29	GOOD! FT by MCCULLY, MARIAH [FB]
06:40		42-12	H 30	GOOD! FT by MCCULLY, MARIAH [FB]
06:17		43-12	H 31	GOOD! FT by MCCULLY, MARIAH
06:17		44-12	H 32	GOOD! FT by MCCULLY, MARIAH
06:13	GOOD! FT by TILLRY, SHA'KENDRA [FB]	44-13	H 31	
05:23	GOOD! LAYUP by HARRIS, KYEONIA	44-15	H 29	
05:01		46-15	H 31	GOOD! LAYUP by RYNG, NATALIA [FB]
04:23	GOOD! JUMPER by HARRIS, KYEONIA [FB]	46-17	H 29	
04:23	GOOD! FT by HARRIS, KYEONIA [FB]	46-18	H 28	
04:11		49-18	H 31	GOOD! 3PTR by REID, ASHLEY
03:23		50-18	H 32	GOOD! FT by REID, ASHLEY [FB]
02:19		52-18	H 34	GOOD! LAYUP by REID, ASHLEY [FB/PNT]
02:19		53-18	H 35	GOOD! FT by REID, ASHLEY [FB]
01:54	GOOD! LAYUP by TILLRY, SHA'KENDRA [FB]	53-20	H 33	
01:38		54-20	H 34	GOOD! FT by REID, ASHLEY
01:38		55-20	H 35	GOOD! FT by REID, ASHLEY
00:34		57-20	H 37	GOOD! JUMPER by KIRVEN, ASHLEI
00:24	GOOD! 3PTR by TOTTEN, TRASITY	57-23	H 34	

**Ark.-Pine Bluff 23, Wichita St. 57**

**Official Scoring/Possession Reference Chart  
Ark.-Pine Bluff vs Wichita St.**

**Period 3**

**December 16, 2019 at Charles Koch Arena (Devlin Court) - Wichita, Kan.**



**Period 3**

**Starters:**

**Ark.-Pine Bluff:** 1 HARRIS, KYEONIA (G); 4 ATMORE, JAYLA (G); 21 EL HASSAN, AIYA (F); 24 TAYLOR, NOEâ€™LL (G); 33 SAM-GRANT, NISSA (C);

**Wichita St.:** 2 MCCULLY, MARIAH (G); 12 BREMAUD, CARLA (G); 13 PRINCE, RAVEN (F); 23 BASTIN, SERAPHINE (G); 34 SMITH, SHYIA (F);

Time	VISITORS: Ark.-Pine Bluff	Score	Margin	HOME: Wichita St.
09:40	GOOD! JUMPER by EL HASSAN, AIYA [PNT]	57-25	H 32	
08:36		58-25	H 33	GOOD! FT by SMITH, SHYIA
08:36		59-25	H 34	GOOD! FT by SMITH, SHYIA
07:56	GOOD! FT by TAYLOR, NOEâ€™LL [FB]	59-26	H 33	
07:45		61-26	H 35	GOOD! LAYUP by MCCULLY, MARIAH
05:37		62-26	H 36	GOOD! FT by MCCULLY, MARIAH
05:37		63-26	H 37	GOOD! FT by MCCULLY, MARIAH
05:05	GOOD! JUMPER by PYBURN, TYLER	63-28	H 35	
04:58		65-28	H 37	GOOD! LAYUP by SMITH, SHYIA [FB]
04:27	GOOD! LAYUP by JOPLIN, ELISE [FB]	65-30	H 35	
04:00	GOOD! LAYUP by HARRIS, KYEONIA	65-32	H 33	
03:28		66-32	H 34	GOOD! FT by KIRVEN, ASHLEI
03:28		67-32	H 35	GOOD! FT by KIRVEN, ASHLEI
03:19	GOOD! FT by HARRIS, KYEONIA	67-33	H 34	
03:19	GOOD! FT by HARRIS, KYEONIA	67-34	H 33	
02:15		69-34	H 35	GOOD! JUMPER by MCCULLY, MARIAH [PNT]
01:52		70-34	H 36	GOOD! FT by HENDERSON, ASIA [FB]
01:52		71-34	H 37	GOOD! FT by HENDERSON, ASIA [FB]
01:07		73-34	H 39	GOOD! LAYUP by BREWER, MAYA [FB]
00:50	GOOD! LAYUP by TAYLOR, NOEâ€™LL	73-36	H 37	
00:33		76-36	H 40	GOOD! 3PTR by DANIELSSON, VENDELA
00:01		77-36	H 41	GOOD! FT by REID, ASHLEY
00:01		78-36	H 42	GOOD! FT by REID, ASHLEY

**Ark.-Pine Bluff 36, Wichita St. 78**

**Official Scoring/Possession Reference Chart  
Ark.-Pine Bluff vs Wichita St.  
Period 4**



**December 16, 2019 at Charles Koch Arena (Devlin Court) - Wichita, Kan.**

**Period 4**

**Starters:**

**Ark.-Pine Bluff:** 1 HARRIS, KYEONIA (G); 4 ATMORE, JAYLA (G); 21 EL HASSAN, AIYA (F); 24 TAYLOR, NOEâ€™LL (G); 33 SAM-GRANT, NISSA (C);

**Wichita St.:** 2 MCCULLY, MARIAH (G); 12 BREMAUD, CARLA (G); 13 PRINCE, RAVEN (F); 23 BASTIN, SERAPHINE (G); 34 SMITH, SHYIA (F);

Time	VISITORS: Ark.-Pine Bluff	Score	Margin	HOME: Wichita St.
09:31		80-36	H 44	GOOD! LAYUP by HENDERSON, ASIA
09:11		81-36	H 45	GOOD! FT by BREWER, MAYA [FB]
09:11		82-36	H 46	GOOD! FT by BREWER, MAYA [FB]
08:31		84-36	H 48	GOOD! LAYUP by HENDERSON, ASIA
07:59		86-36	H 50	GOOD! LAYUP by BREWER, MAYA [FB]
07:25	GOOD! JUMPER by TAYLOR, NOEâ€™LL [PNT]	86-38	H 48	
07:25	GOOD! FT by TAYLOR, NOEâ€™LL	86-39	H 47	
07:03		87-39	H 48	GOOD! FT by HENDERSON, ASIA
06:54	GOOD! JUMPER by EL HASSAN, AIYA	87-41	H 46	
06:40		90-41	H 49	GOOD! 3PTR by DANIELSSON, VENDELA
06:30	GOOD! JUMPER by TAYLOR, NOEâ€™LL	90-43	H 47	
06:10	GOOD! JUMPER by ATMORE, JAYLA [FB]	90-45	H 45	
04:23		92-45	H 47	GOOD! LAYUP by REID, ASHLEY
03:35		95-45	H 50	GOOD! 3PTR by DANIELSSON, VENDELA
03:00	GOOD! FT by JOPLIN, ELISE	95-46	H 49	
03:00	GOOD! FT by JOPLIN, ELISE	95-47	H 48	
02:19	GOOD! JUMPER by JOPLIN, ELISE	95-49	H 46	
01:31	GOOD! FT by ATMORE, JAYLA	95-50	H 45	
01:24		96-50	H 46	GOOD! FT by REID, ASHLEY [FB]
01:24		97-50	H 47	GOOD! FT by REID, ASHLEY [FB]
00:56		99-50	H 49	GOOD! LAYUP by BREWER, MAYA [FB]
00:26		100-50	H 50	GOOD! FT by DANIELSSON, VENDELA [FB]

**Ark.-Pine Bluff 50, Wichita St. 100**

**Official Substitutions Log  
Ark.-Pine Bluff vs Wichita St.  
Period 1**

**December 16, 2019 at Charles Koch Arena (Devlin Court) - Wichita, Kan.**



VISITORS: Ark.-Pine Bluff	Time	Score	HOME: Wichita St.
1 HARRIS,KYEONIA			2 MCCULLY,MARIAH
4 ATMORE,JAYLA			12 BREMAUD,CARLA
21 EL HASSAN,AIYA			13 PRINCE,RAVEN
24 TAYLOR,NOE&#x2122;LL			23 BASTIN,SERAPHINE
33 SAM-GRANT,NISSA			34 SMITH,SHYIA
SUB OUT: 21 EL HASSAN,AIYA	08:32	0-6	
SUB IN: 5 TOTTEN,TRASITY	08:32		
	05:57	2-11	SUB OUT: BASTIN,SERAPHINE
	05:57		SUB IN: REID,ASHLEY
	05:21	2-11	SUB OUT: PRINCE,RAVEN
	05:21		SUB IN: HENDERSON,ASIA
SUB OUT: 24 TAYLOR,NOE&#x2122;LL	05:21		
SUB IN: 30 PYBURN,TYLER	05:21		
	03:08	4-18	SUB OUT: MCCULLY,MARIAH
	03:08		SUB IN: BREWER,MAYA
SUB OUT: 5 TOTTEN,TRASITY	03:08		
SUB IN: 21 EL HASSAN,AIYA	03:08		
	02:17	4-21	SUB OUT: BREMAUD,CARLA
	02:17		SUB IN: BASTIN,SERAPHINE
SUB OUT: 21 EL HASSAN,AIYA	02:00	4-21	
SUB IN: 32 TILLRY,SHA'KENDRA	02:00		
	01:23	4-22	SUB OUT: SMITH,SHYIA
	01:23		SUB IN: KIRVEN,ASHLEI
SUB OUT: 33 SAM-GRANT,NISSA	01:23		
SUB IN: 11 AMUSA,OLUWATUNMISE	01:23		
SUB OUT: 11 AMUSA,OLUWATUNMISE	00:33	4-25	
SUB IN: 5 TOTTEN,TRASITY	00:33		
SUB OUT: 30 PYBURN,TYLER	00:32	4-25	
SUB IN: 11 AMUSA,OLUWATUNMISE	00:32		

**Ark.-Pine Bluff 6, Wichita St. 29**

**Official Substitutions Log  
Ark.-Pine Bluff vs Wichita St.  
Period 2**

**December 16, 2019 at Charles Koch Arena (Devlin Court) - Wichita, Kan.**



<b>VISITORS: Ark.-Pine Bluff</b>	<b>Time</b>	<b>Score</b>	<b>HOME: Wichita St.</b>
1 HARRIS,KYEONIA			2 MCCULLY,MARIAH
4 ATMORE,JAYLA			12 BREMAUD,CARLA
21 EL HASSAN,AIYA			13 PRINCE,RAVEN
24 TAYLOR,NOE&#x2122;LL			23 BASTIN,SERAPHINE
33 SAM-GRANT,NISSA			34 SMITH,SHYIA
	10:00	-	SUB OUT: REID,ASHLEY
	10:00		SUB OUT: HENDERSON,ASIA
	10:00		SUB IN: BREMAUD,CARLA
	10:00		SUB IN: PRINCE,RAVEN
SUB OUT: 5 TOTTEN,TRASITY	10:00		
SUB OUT: 11 AMUSA,OLUWATUNMISE	10:00		
SUB OUT: 32 TILLRY,SHA'KENDRA	10:00		
SUB IN: 21 EL HASSAN,AIYA	10:00		
SUB IN: 24 TAYLOR,NOE&#x2122;LL	10:00		
SUB IN: 33 SAM-GRANT,NISSA	10:00		
	09:34	-	SUB OUT: KIRVEN,ASHLEI
	09:34		SUB IN: FORREST,DIAMOND
	09:24	-	SUB OUT: PRINCE,RAVEN
	09:24		SUB IN: SMITH,SHYIA
SUB OUT: 33 SAM-GRANT,NISSA	09:24		
SUB IN: 11 AMUSA,OLUWATUNMISE	09:24		
	09:01	10-31	SUB OUT: BREWER,MAYA
	09:01		SUB IN: MCCULLY,MARIAH
SUB OUT: 21 EL HASSAN,AIYA	08:08	10-33	
SUB IN: 32 TILLRY,SHA'KENDRA	08:08		
SUB OUT: 4 ATMORE,JAYLA	08:07	10-33	
SUB OUT: 24 TAYLOR,NOE&#x2122;LL	08:07		
SUB IN: 21 EL HASSAN,AIYA	08:07		
SUB IN: 30 PYBURN,TYLER	08:07		
SUB OUT: 11 AMUSA,OLUWATUNMISE	07:32	10-39	
SUB IN: 12 TERRY,BRIT&#x2122;NEE	07:32		
	07:17	10-40	SUB OUT: FORREST,DIAMOND
	07:17		SUB OUT: BASTIN,SERAPHINE
	07:17		SUB OUT: SMITH,SHYIA
	07:17		SUB IN: RYNG,NATALIA
	07:17		SUB IN: REID,ASHLEY
	07:17		SUB IN: KIRVEN,ASHLEI
SUB OUT: 21 EL HASSAN,AIYA	07:12	12-40	
SUB IN: 24 TAYLOR,NOE&#x2122;LL	07:12		
SUB OUT: 30 PYBURN,TYLER	06:17	12-42	
SUB IN: 33 SAM-GRANT,NISSA	06:17		
	06:13	12-44	SUB OUT: MCCULLY,MARIAH
	06:13		SUB IN: BREWER,MAYA
SUB OUT: 12 TERRY,BRIT&#x2122;NEE	05:38	13-44	
SUB IN: 41 CHRISTIAN,MORGAN	05:38		
	05:07	15-44	SUB OUT: BREMAUD,CARLA
	05:07		SUB IN: MCCULLY,MARIAH
	04:42	15-46	SUB OUT: RYNG,NATALIA
	04:42		SUB IN: HENDERSON,ASIA
	04:23	17-46	SUB OUT: BREWER,MAYA
	04:23		SUB IN: DANIELSSON,VENDELA
SUB OUT: 41 CHRISTIAN,MORGAN	03:23	18-49	
SUB IN: 11 AMUSA,OLUWATUNMISE	03:23		
SUB OUT: 24 TAYLOR,NOE&#x2122;LL	03:09	18-50	
SUB IN: 5 TOTTEN,TRASITY	03:09		
SUB OUT: 11 AMUSA,OLUWATUNMISE	02:19	18-52	
SUB IN: 10 JOPLIN,ELISE	02:19		
SUB OUT: 33 SAM-GRANT,NISSA	00:03	23-57	
SUB IN: 4 ATMORE,JAYLA	00:03		

**Ark.-Pine Bluff 23, Wichita St. 57**



**Official Substitutions Log  
Ark.-Pine Bluff vs Wichita St.  
Period 3**

**December 16, 2019 at Charles Koch Arena (Devlin Court) - Wichita, Kan.**



VISITORS: Ark.-Pine Bluff	Time	Score	HOME: Wichita St.
1 HARRIS,KYEONIA			2 MCCULLY,MARIAH
4 ATMORE,JAYLA			12 BREMAUD,CARLA
21 EL HASSAN,AIYA			13 PRINCE,RAVEN
24 TAYLOR,NOE&#x2122;LL			23 BASTIN,SERAPHINE
33 SAM-GRANT,NISSA			34 SMITH,SHYIA
	10:00	-	SUB OUT: REID,ASHLEY
	10:00		SUB OUT: KIRVEN,ASHLEI
	10:00		SUB OUT: DANIELSSON,VENDELA
	10:00		SUB OUT: HENDERSON,ASIA
	10:00		SUB IN: BREMAUD,CARLA
	10:00		SUB IN: PRINCE,RAVEN
	10:00		SUB IN: BASTIN,SERAPHINE
	10:00		SUB IN: SMITH,SHYIA
SUB OUT: 5 TOTTEN,TRASITY	10:00		
SUB OUT: 10 JOPLIN,ELISE	10:00		
SUB OUT: 32 TILLRY,SHA'KENDRA	10:00		
SUB IN: 21 EL HASSAN,AIYA	10:00		
SUB IN: 24 TAYLOR,NOE&#x2122;LL	10:00		
SUB IN: 33 SAM-GRANT,NISSA	10:00		
SUB OUT: 21 EL HASSAN,AIYA	08:36	25-57	
SUB IN: 32 TILLRY,SHA'KENDRA	08:36		
SUB OUT: 4 ATMORE,JAYLA	07:11	26-61	
SUB IN: 30 PYBURN,TYLER	07:11		
	06:52	26-61	SUB OUT: SMITH,SHYIA
	06:52		SUB IN: KIRVEN,ASHLEI
SUB OUT: 24 TAYLOR,NOE&#x2122;LL	06:52		
SUB IN: 5 TOTTEN,TRASITY	06:52		
	06:11	26-61	SUB OUT: PRINCE,RAVEN
	06:11		SUB IN: SMITH,SHYIA
	05:37	26-61	SUB OUT: BASTIN,SERAPHINE
	05:37		SUB IN: REID,ASHLEY
SUB OUT: 5 TOTTEN,TRASITY	05:37		
SUB IN: 24 TAYLOR,NOE&#x2122;LL	05:37		
	04:36	28-65	SUB OUT: BREMAUD,CARLA
	04:36		SUB IN: DANIELSSON,VENDELA
SUB OUT: 24 TAYLOR,NOE&#x2122;LL	04:36		
SUB IN: 10 JOPLIN,ELISE	04:36		
	02:30	34-67	SUB OUT: KIRVEN,ASHLEI
	02:30		SUB IN: HENDERSON,ASIA
	01:52	34-69	SUB OUT: MCCULLY,MARIAH
	01:52		SUB IN: BREWER,MAYA
SUB OUT: 30 PYBURN,TYLER	01:52		
SUB IN: 24 TAYLOR,NOE&#x2122;LL	01:52		
SUB OUT: 33 SAM-GRANT,NISSA	01:52		
SUB IN: 5 TOTTEN,TRASITY	01:52		
SUB OUT: 5 TOTTEN,TRASITY	00:01	36-76	
SUB IN: 41 CHRISTIAN,MORGAN	00:01		

**Ark.-Pine Bluff 36, Wichita St. 78**

**Official Substitutions Log  
Ark.-Pine Bluff vs Wichita St.  
Period 4**

**December 16, 2019 at Charles Koch Arena (Devlin Court) - Wichita, Kan.**



<b>VISITORS: Ark.-Pine Bluff</b>	<b>Time</b>	<b>Score</b>	<b>HOME: Wichita St.</b>
1 HARRIS,KYEONIA			2 MCCULLY,MARIAH
4 ATMORE,JAYLA			12 BREMAUD,CARLA
21 EL HASSAN,AIYA			13 PRINCE,RAVEN
24 TAYLOR,NOE			23 BASTIN,SERAPHINE
33 SAM-GRANT,NISSA			34 SMITH,SHYIA
SUB OUT: 10 JOPLIN,ELISE	09:11	36-82	
SUB OUT: 32 TILLRY,SHA'KENDRA	09:11		
SUB IN: 4 ATMORE,JAYLA	09:11		
SUB IN: 21 EL HASSAN,AIYA	09:11		
	07:40	36-86	SUB OUT: SMITH,SHYIA
	07:40		SUB IN: RYNG,NATALIA
SUB OUT: 41 CHRISTIAN,MORGAN	07:40		
SUB IN: 33 SAM-GRANT,NISSA	07:40		
SUB OUT: 33 SAM-GRANT,NISSA	07:03	39-86	
SUB IN: 10 JOPLIN,ELISE	07:03		
SUB OUT: 21 EL HASSAN,AIYA	05:48	45-90	
SUB IN: 32 TILLRY,SHA'KENDRA	05:48		
	03:00	45-95	SUB OUT: HENDERSON,ASIA
	03:00		SUB IN: FORREST,DIAMOND
SUB OUT: 4 ATMORE,JAYLA	00:26	50-99	
SUB IN: 21 EL HASSAN,AIYA	00:26		

**Ark.-Pine Bluff 50, Wichita St. 100**

**Official Shot Chart**  
**Ark.-Pine Bluff vs Wichita St.**  
**PERIOD 1 Shots**  
 December 16, 2019 at Charles Koch Arena (Devlin Court) - Wichita, Kan.



**Wichita St.**

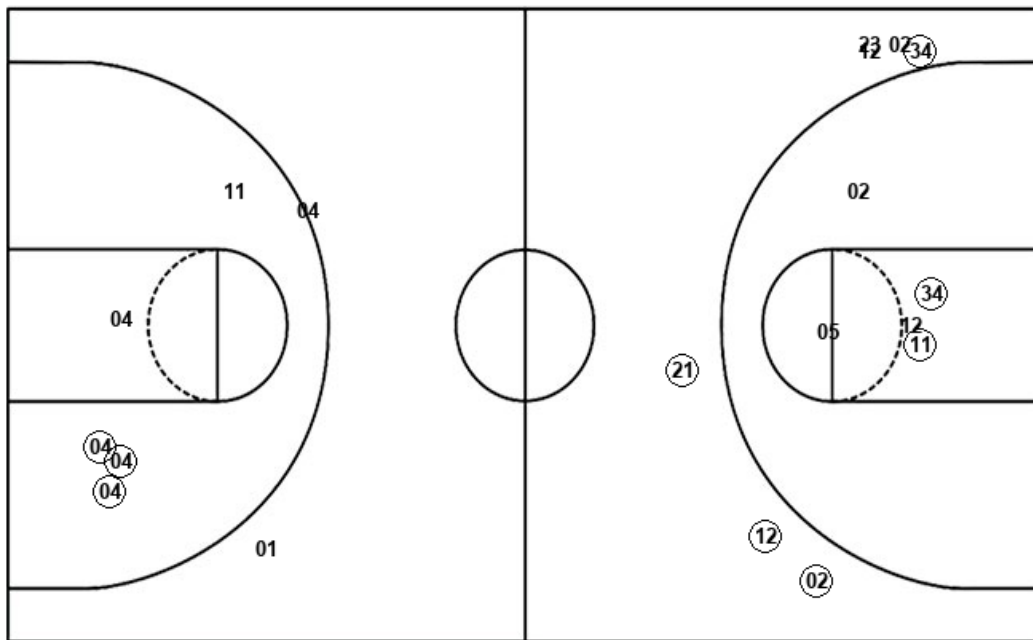
**Ark.-Pine Bluff**

Layups  
34 (05) (12)

Layups  
24 04

Dunks

Dunks



WSU : Period 1	Made	Att	Pct
Layups	2	3	66.7
Dunks	0	0	0
2PT Field Goals	4	8	50.0
3PT Field Goals	4	7	57.1
<b>Total Field Goals</b>	<b>8</b>	<b>15</b>	<b>53.3</b>

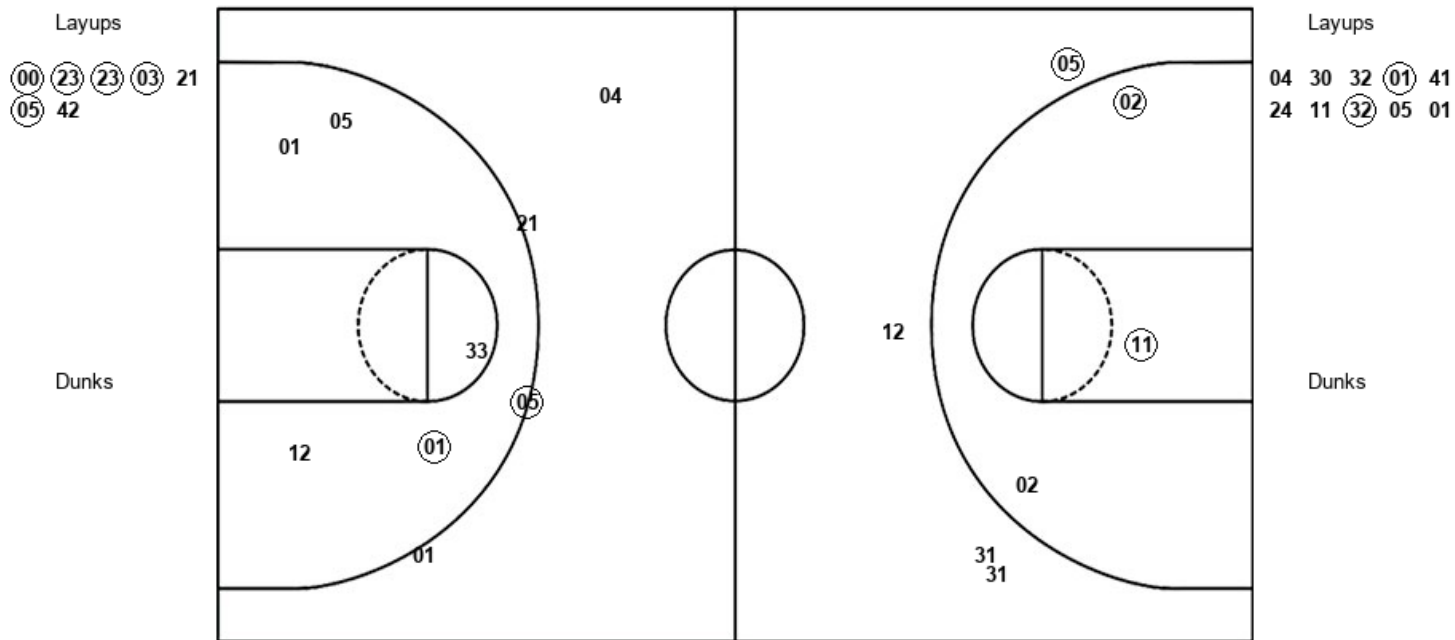
APB : Period 1	Made	Att	Pct
Layups	0	2	00.0
Dunks	0	0	0
2PT Field Goals	3	7	42.9
3PT Field Goals	0	2	00.0
<b>Total Field Goals</b>	<b>3</b>	<b>9</b>	<b>33.3</b>

**Official Shot Chart**  
**Ark.-Pine Bluff vs Wichita St.**  
**PERIOD 2 Shots**  
 December 16, 2019 at Charles Koch Arena (Devlin Court) - Wichita, Kan.



**Wichita St.**

**Ark.-Pine Bluff**



<b>WSU : Period 2</b>	<b>Made</b>	<b>Att</b>	<b>Pct</b>
Layups	5	7	71.4
Dunks	0	0	0
2PT Field Goals	7	10	70.0
3PT Field Goals	1	4	25.0
<b>Total Field Goals</b>	<b>8</b>	<b>14</b>	<b>57.1</b>

<b>APB : Period 2</b>	<b>Made</b>	<b>Att</b>	<b>Pct</b>
Layups	2	10	20.0
Dunks	0	0	0
2PT Field Goals	3	15	20.0
3PT Field Goals	1	4	25.0
<b>Total Field Goals</b>	<b>4</b>	<b>19</b>	<b>21.1</b>

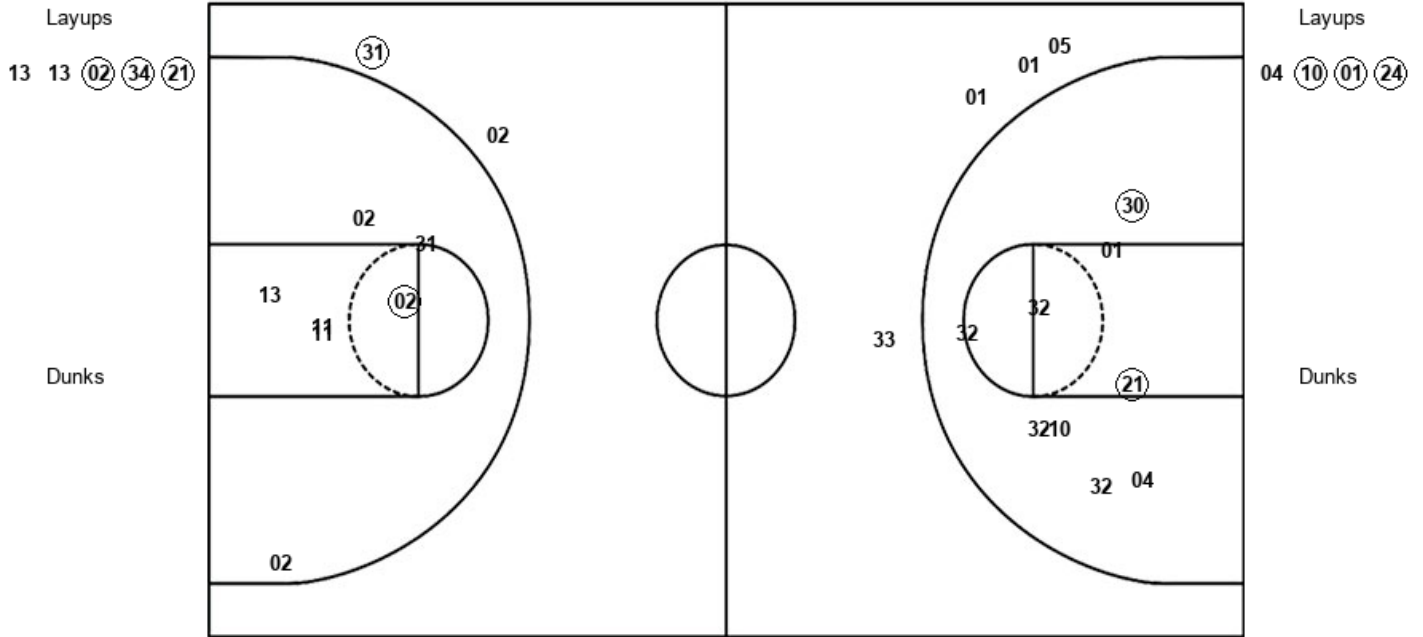
Official Shot Chart  
 Ark.-Pine Bluff vs Wichita St.  
 PERIOD 3 Shots

December 16, 2019 at Charles Koch Arena (Devlin Court) - Wichita, Kan.



Wichita St.

Ark.-Pine Bluff



WSU : Period 3	Made	Att	Pct
Layups	3	5	60.0
Dunks	0	0	0
2PT Field Goals	4	12	33.3
3PT Field Goals	1	2	50.0
<b>Total Field Goals</b>	<b>5</b>	<b>14</b>	<b>35.7</b>

APB : Period 3	Made	Att	Pct
Layups	3	4	75.0
Dunks	0	0	0
2PT Field Goals	5	13	38.5
3PT Field Goals	0	4	00.0
<b>Total Field Goals</b>	<b>5</b>	<b>17</b>	<b>29.4</b>

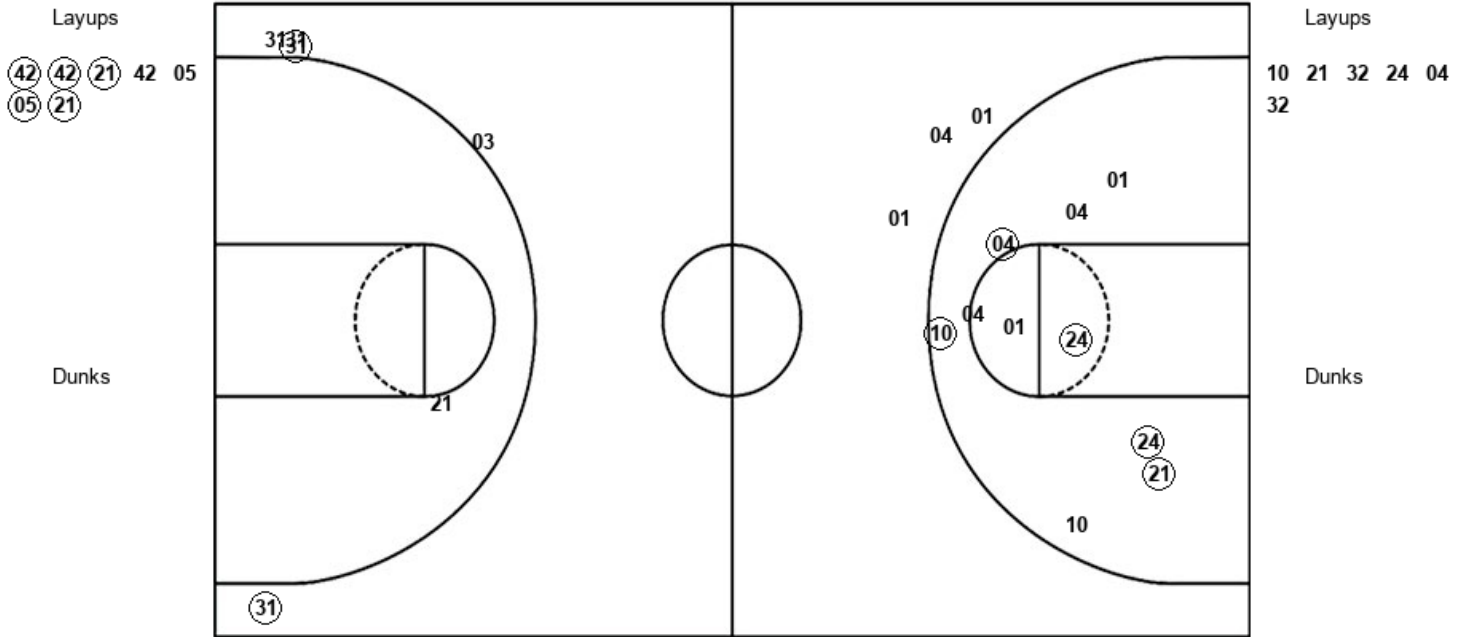
Official Shot Chart  
 Ark.-Pine Bluff vs Wichita St.  
 PERIOD 4 Shots

December 16, 2019 at Charles Koch Arena (Devlin Court) - Wichita, Kan.



Wichita St.

Ark.-Pine Bluff



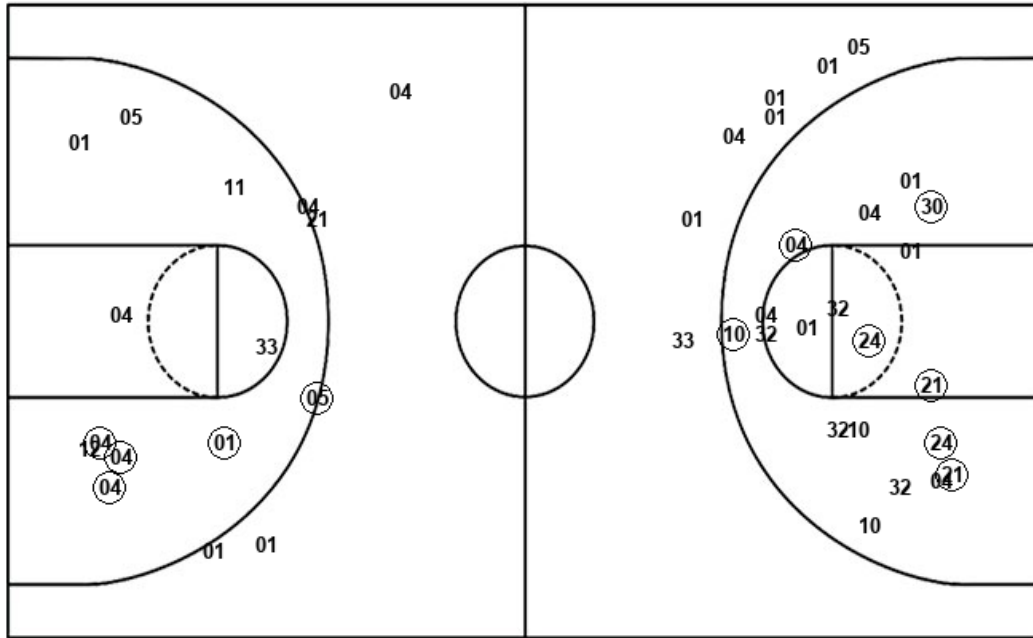
WSU : Period 4	Made	Att	Pct
Layups	5	7	71.4
Dunks	0	0	0
2PT Field Goals	5	8	62.5
3PT Field Goals	2	5	40.0
<b>Total Field Goals</b>	<b>7</b>	<b>13</b>	<b>53.8</b>

APB : Period 4	Made	Att	Pct
Layups	0	6	00.0
Dunks	0	0	0
2PT Field Goals	5	16	31.3
3PT Field Goals	0	3	00.0
<b>Total Field Goals</b>	<b>5</b>	<b>19</b>	<b>26.3</b>

**Official Shot Chart**  
**Ark.-Pine Bluff vs Wichita St.**  
**Ark.-Pine Bluff Team Shots**  
 December 16, 2019 at Charles Koch Arena (Devlin Court) - Wichita, Kan.



Layups



Layups

24	04	04	30	32
(01)	41	24	11	(32)
05	01	04	(10)	(01)
(24)	10	21	32	24
04	32			

Dunks

Dunks

APB : Period 1	Made	Att	Pct
Layups	0	2	00.0
Dunks	0	0	0
2PT Field Goals	3	7	42.9
3PT Field Goals	0	2	00.0
<b>Total Field Goals</b>	<b>3</b>	<b>9</b>	<b>33.3</b>

APB : Period 3	Made	Att	Pct
Layups	3	4	75.0
Dunks	0	0	0
2PT Field Goals	5	13	38.5
3PT Field Goals	0	4	00.0
<b>Total Field Goals</b>	<b>5</b>	<b>17</b>	<b>29.4</b>

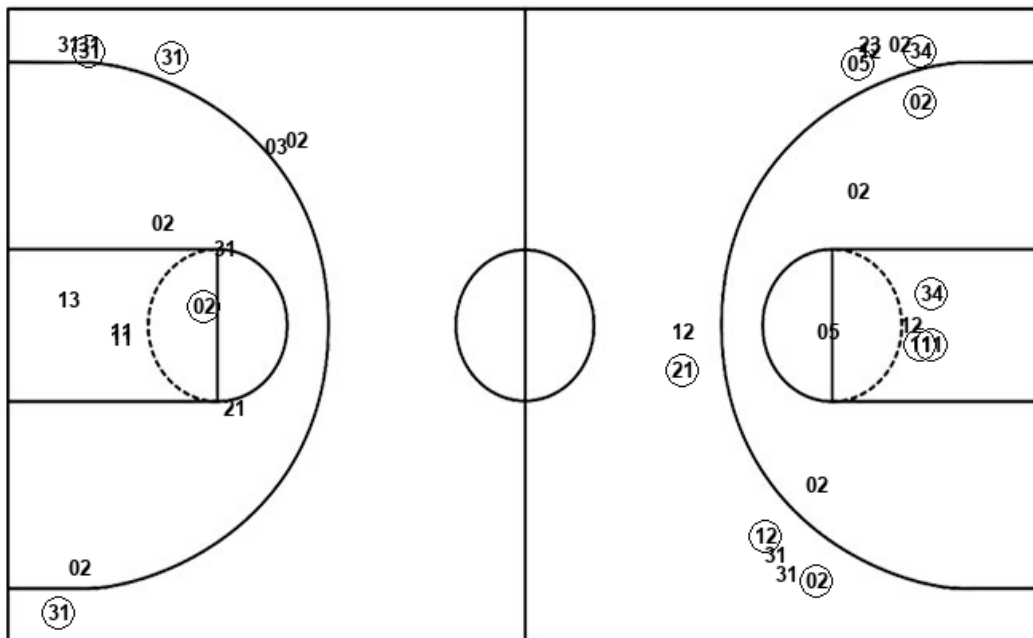
APB : Period 2	Made	Att	Pct
Layups	2	10	20.0
Dunks	0	0	0
2PT Field Goals	3	15	20.0
3PT Field Goals	1	4	25.0
<b>Total Field Goals</b>	<b>4</b>	<b>19</b>	<b>21.1</b>

APB : Period 4	Made	Att	Pct
Layups	0	6	00.0
Dunks	0	0	0
2PT Field Goals	5	16	31.3
3PT Field Goals	0	3	00.0
<b>Total Field Goals</b>	<b>5</b>	<b>19</b>	<b>26.3</b>

**Official Shot Chart**  
**Ark.-Pine Bluff vs Wichita St.**  
**Wichita St. Team Shots**  
 December 16, 2019 at Charles Koch Arena (Devlin Court) - Wichita, Kan.



Layups



Layups

- 34 05 12 00 23
- 23 03 21 05 42
- 13 13 02 34 21
- 42 42 21 42 05
- 05 21

Dunks

Dunks

WSU : Period 1	Made	Att	Pct
Layups	2	3	66.7
Dunks	0	0	0
2PT Field Goals	4	8	50.0
3PT Field Goals	4	7	57.1
<b>Total Field Goals</b>	<b>8</b>	<b>15</b>	<b>53.3</b>

WSU : Period 2	Made	Att	Pct
Layups	5	7	71.4
Dunks	0	0	0
2PT Field Goals	7	10	70.0
3PT Field Goals	1	4	25.0
<b>Total Field Goals</b>	<b>8</b>	<b>14</b>	<b>57.1</b>

WSU : Period 3	Made	Att	Pct
Layups	3	5	60.0
Dunks	0	0	0
2PT Field Goals	4	12	33.3
3PT Field Goals	1	2	50.0
<b>Total Field Goals</b>	<b>5</b>	<b>14</b>	<b>35.7</b>

WSU : Period 4	Made	Att	Pct
Layups	5	7	71.4
Dunks	0	0	0
2PT Field Goals	5	8	62.5
3PT Field Goals	2	5	40.0
<b>Total Field Goals</b>	<b>7</b>	<b>13</b>	<b>53.8</b>