

## FINAL SCORE



**Eastern Mich.**

**52**



**Wichita St.**

**63**

December 07, 2019 • Charles Koch Arena (Devlin Court) - Wichita, Kan.

## FINAL STATISTICS

**Official Box Score**  
**Eastern Mich. vs Wichita St.**  
**Game Totals -- Final Statistics**  
**December 07, 2019 at Charles Koch Arena (Devlin Court) - Wichita, Kan.**



**Eastern Mich. 52**

No.	Player	S	Pts	FG	3FG	FT	OR	DR	TR	PF	A	TO	Blk	Stl	Min	+/-
00	STANLEY, AALIYAH	G	20	7-15	6-9	0-0	1	3	4	2	0	2	0	0	25	4
10	COMBS, AREANNA	G	11	5-12	0-2	1-7	1	2	3	5	1	3	0	3	27	-6
13	ANNECCHIARICO, JENNA	G	1	0-6	0-4	1-2	1	3	4	3	6	5	0	1	33	-8
14	PINEDA, NATALIA	G	3	1-3	0-2	1-1	1	5	6	3	0	0	0	0	21	-6
22	HUDSON, AUTUMN	F	4	2-4	0-0	0-0	1	2	3	2	0	3	1	2	14	8
02	AGOSTO, JUANITA	G	2	0-1	0-1	2-4	1	2	3	2	1	2	0	0	19	-13
04	LEWIS, COURTNIIE	G	6	2-7	2-3	0-0	0	3	3	0	0	0	0	0	25	-5
12	KNIGHT, JABRIA	F	0	0-1	0-0	0-0	0	0	0	0	0	0	0	0	5	-4
20	CARDWELL, CORRIONE	G	2	1-3	0-1	0-2	1	0	1	2	0	2	0	1	15	-11
21	JOHNSON, KIARA	F	1	0-1	0-0	1-2	0	5	5	3	0	0	0	0	9	-10
32	HARRIS, RAYJON	F	2	1-3	0-0	0-0	0	0	0	0	0	1	1	0	7	-4
	TEAM						0	0	0	0	0	0	0	0		
<b>TOTALS</b>			<b>52</b>	<b>19-56</b>	<b>8-22</b>	<b>6-18</b>	<b>7</b>	<b>25</b>	<b>32</b>	<b>22</b>	<b>8</b>	<b>18</b>	<b>2</b>	<b>7</b>	<b>198</b>	

*Shooting By Period*

Period	FG	FG%	3FG	3FG%	FT	FT%
1st Qtr	5-16	31%	2-5	40%	0-2	00%
2nd Qtr	5-13	38%	0-3	00%	2-4	50%
3rd Qtr	4-11	36%	3-6	50%	1-4	25%
4th Qtr	5-16	31%	3-8	38%	3-8	38%
1st Half	10-29	34%	2-8	25%	2-6	33%
2nd Half	9-27	33%	6-14	43%	4-12	33%
<b>Game</b>	<b>19-56</b>	<b>33.9%</b>	<b>8-22</b>	<b>36.4%</b>	<b>6-18</b>	<b>33.3%</b>

*Deadball Rebounds: 10,4*  
*Last FG: 4th-00:51*  
*Biggest Run: 9-0*  
*Largest lead: By 4 at 2-08*  
*Technical Fouls: None.*

**Wichita St. 63**

No.	Player	S	Pts	FG	3FG	FT	OR	DR	TR	PF	A	TO	Blk	Stl	Min	+/-
01	MCCARTY, DJ	G	5	2-7	1-4	0-4	0	4	4	2	2	3	0	3	27	11
05	REID, ASHLEY	G	3	1-1	1-1	0-0	0	3	3	4	2	1	0	0	22	1
13	PRINCE, RAVEN	F	2	1-4	0-0	0-2	1	3	4	1	0	1	0	0	28	4
23	BASTIN, SERAPHINE	G	12	5-11	1-3	1-1	3	5	8	2	2	3	0	2	30	10
34	SMITH, SHYIA	F	8	1-4	0-2	6-6	0	5	5	1	0	3	3	2	31	17
02	MCCULLY, MARIAH	G	25	8-18	3-7	6-10	0	1	1	2	3	4	1	3	31	11
11	KIRVEN, ASHLEI	F	0	0-0	0-0	0-0	1	2	3	0	0	1	0	0	3	-3
21	BREWER, MAYA	G	0	0-0	0-0	0-0	0	0	0	1	0	0	0	0	3	3
31	DANIELSSON, VENDELA	G	0	0-1	0-1	0-0	0	0	0	0	1	1	0	0	5	-3
42	HENDERSON, ASIA	F	8	4-5	0-0	0-1	1	5	6	2	0	0	0	0	17	4
	TEAM						1	0	1	0	0	1	0	0		
<b>TOTALS</b>			<b>63</b>	<b>22-51</b>	<b>6-18</b>	<b>13-24</b>	<b>7</b>	<b>28</b>	<b>35</b>	<b>15</b>	<b>10</b>	<b>18</b>	<b>4</b>	<b>10</b>	<b>198</b>	

*Shooting By Period*

Period	FG	FG%	3FG	3FG%	FT	FT%
1st Qtr	4-10	40%	2-4	50%	2-6	33%
2nd Qtr	4-14	29%	3-6	50%	0-2	00%
3rd Qtr	7-14	50%	1-6	17%	6-8	75%
4th Qtr	7-13	54%	0-2	00%	5-8	63%
1st Half	8-24	33%	5-10	50%	2-8	25%
2nd Half	14-27	52%	1-8	13%	11-16	69%
<b>Game</b>	<b>22-51</b>	<b>43.1%</b>	<b>6-18</b>	<b>33.3%</b>	<b>13-24</b>	<b>54.2%</b>

*Deadball Rebounds: 4,4*  
*Last FG: 4th-00:35*  
*Biggest Run: 7-0*  
*Largest lead: By 15 at 4-04*  
*Technical Fouls: None.*

*Game Notes:*

*Officials: Jeffrey Smith, Bryan Enterline, Chaney Muench*  
*Attendance: 1738*

*Start Time: 03:05 PM ET*  
*End Time: 05:00 PM ET*  
*Game Duration: 1:55*

Score	1st	2nd	3rd	4th	TOT
EMU	12	12	12	16	<b>52</b>
WSU	12	11	21	19	<b>63</b>

*EMU led for 9:40. WSU led for 24:22.*  
*Game was tied for 5:36.*  
*Times tied: 4*      *Lead Changes: 6*

Points from	EMU	WSU
In the Paint	18	30
Off Turns	12	14
2nd Chance	9	6
Fast Break	7	8
Bench	13	33

**Official Box Score**  
**Eastern Mich. vs Wichita St.**  
**First Half Statistics Only**  
**December 07, 2019 at Charles Koch Arena (Devlin Court) - Wichita, Kan.**



**Eastern Mich. 24**

No.	Player	S	Pts	FG	3FG	FT	OR	DR	TR	PF	A	TO	Blk	Stl	Min	+/-
00	STANLEY, AALIYAH	G	5	2-5	1-2	0-0	0	1	1	0	0	2	0	0	12	7
02	AGOSTO, JUANITA	G	0	0-0	0-0	0-0	1	1	2	1	0	1	0	0	8	-4
04	LEWIS, COURTNIÉ	G	3	1-4	1-2	0-0	0	1	1	0	0	0	0	0	11	1
10	COMBS, AREANNA	G	7	3-8	0-1	1-4	1	2	3	2	1	2	0	1	17	3
12	KNIGHT, JABRIA	F	0	0-1	0-0	0-0	0	0	0	0	0	0	0	0	5	-4
13	ANNECCHIARICO, JENNA	G	1	0-3	0-2	1-2	1	2	3	2	4	0	0	0	15	5
14	PINEDA, NATALIA	G	0	0-1	0-1	0-0	0	3	3	0	0	0	0	0	12	-1
20	CARDWELL, CORRIONE	G	2	1-1	0-0	0-0	0	0	0	0	0	1	0	0	7	-7
21	JOHNSON, KIARA	F	0	0-0	0-0	0-0	0	1	1	0	0	0	0	0	2	4
22	HUDSON, AUTUMN	F	4	2-3	0-0	0-0	1	2	3	2	0	2	1	2	9	6
32	HARRIS, RAYJON	F	2	1-3	0-0	0-0	0	0	0	0	0	1	1	0	5	-5
	TEAM		0	0-0	0-0	0-0	0	0	0	0	0	0	0	0	0	0
<b>TOTALS</b>			<b>24</b>	<b>10-29</b>	<b>2-8</b>	<b>2-6</b>	<b>4</b>	<b>13</b>	<b>17</b>	<b>7</b>	<b>5</b>	<b>9</b>	<b>2</b>	<b>3</b>	<b>100</b>	

*Shooting By Period*

Period	FG	FG%	3FG	3FG%	FT	FT%
1st Qtr	5-16	31%	2-5	40%	0-2	00%
2nd Qtr	5-13	38%	0-3	00%	2-4	50%
1st Half	10-29	34%	2-8	25%	2-6	33%
Game	19-56	33.9%	8-22	36.4%	6-18	33.3%

*Deadball Rebounds: 10,4*  
*Last FG Half: EMU 2nd-02:12*

**Wichita St. 23**

No.	Player	S	Pts	FG	3FG	FT	OR	DR	TR	PF	A	TO	Blk	Stl	Min	+/-
01	MCCARTY, DJ	G	5	2-5	1-2	0-2	0	2	2	0	1	1	0	1	12	3
02	MCCULLY, MARIAH	G	8	2-7	2-4	2-4	0	0	0	0	0	1	0	2	12	-1
05	REID, ASHLEY	G	3	1-1	1-1	0-0	0	3	3	1	1	1	0	0	17	0
11	KIRVEN, ASHLEI	F	0	0-0	0-0	0-0	1	2	3	0	0	1	0	0	3	-3
13	PRINCE, RAVEN	F	0	0-2	0-0	0-2	1	2	3	1	0	1	0	0	16	-7
21	BREWER, MAYA	G	0	0-0	0-0	0-0	0	0	0	1	0	0	0	0	3	3
23	BASTIN, SERAPHINE	G	5	2-5	1-1	0-0	1	1	2	1	1	2	0	1	11	-5
31	DANIELSSON, VENDELA	G	0	0-1	0-1	0-0	0	0	0	0	1	1	0	0	5	-3
34	SMITH, SHYIA	F	2	1-2	0-1	0-0	0	2	2	0	0	2	3	1	16	4
42	HENDERSON, ASIA	F	0	0-1	0-0	0-0	0	1	1	2	0	0	0	0	5	4
	TEAM		0	0-0	0-0	0-0	1	0	1	0	0	1	0	0	0	0
<b>TOTALS</b>			<b>23</b>	<b>8-24</b>	<b>5-10</b>	<b>2-8</b>	<b>4</b>	<b>13</b>	<b>17</b>	<b>6</b>	<b>4</b>	<b>11</b>	<b>3</b>	<b>5</b>	<b>100</b>	

*Shooting By Period*

Period	FG	FG%	3FG	3FG%	FT	FT%
1st Qtr	4-10	40%	2-4	50%	2-6	33%
2nd Qtr	4-14	29%	3-6	50%	0-2	00%
1st Half	8-24	33%	5-10	50%	2-8	25%
Game	22-51	43.1%	6-18	33.3%	13-24	54.2%

*Deadball Rebounds: 4,4*  
*Last FG Half: WSU 2nd-04:07*

Game Notes:

Officials: Jeffrey Smith, Bryan Enterline, Chaney Muench  
 Attendance: 1738

Start Time: 03:05 PM ET  
 End Time: 05:00 PM ET  
 Game Duration: 1:55

Score	1st	2nd	3rd	4th	TOT
EMU	12	12	12	16	<b>52</b>
WSU	12	11	21	19	<b>63</b>

Points from (This Period)	EMU	WSU
In the Paint	12	4
Off Turns	6	9
2nd Chance	6	0
Fast Break	1	3
Bench	7	8

**Official Box Score**  
**Eastern Mich. vs Wichita St.**  
**First Quarter Statistics Only**  
**December 07, 2019 at Charles Koch Arena (Devlin Court) - Wichita, Kan.**



**Eastern Mich. 12**

No.	Player	S	Pts	FG	3FG	FT	OR	DR	TR	PF	A	TO	Blk	Stl	Min	+/-
00	STANLEY, AALIYAH	G	3	1-3	1-1	0-0	0	1	1	0	0	1	0	0	7	5
10	COMBS, AREANNA	G	4	2-5	0-1	0-2	1	0	1	1	1	2	0	1	9	1
13	ANNECCHIARICO, JENNA	G	0	0-2	0-2	0-0	1	2	3	2	2	0	0	0	8	2
14	PINEDA, NATALIA	G	0	0-0	0-0	0-0	0	1	1	0	0	0	0	0	6	0
22	HUDSON, AUTUMN	F	2	1-2	0-0	0-0	1	0	1	0	0	1	1	1	4	2
02	AGOSTO, JUANITA	G	0	0-0	0-0	0-0	0	0	0	0	0	0	0	0	4	-6
04	LEWIS, COURTNIÉ	G	3	1-2	1-1	0-0	0	0	0	0	0	0	0	0	3	3
12	KNIGHT, JABRIA	F	0	0-0	0-0	0-0	0	0	0	0	0	0	0	0	1	-2
20	CARDWELL, CORRIONE	G	0	0-0	0-0	0-0	0	0	0	0	0	1	0	0	3	-5
21	JOHNSON, KIARA	F	0	0-0	0-0	0-0	0	1	1	0	0	0	0	0	2	4
32	HARRIS, RAYJON	F	0	0-2	0-0	0-0	0	0	0	0	0	1	0	0	3	-4
	TEAM						0	0	0	0		0				
<b>TOTALS</b>			<b>12</b>	<b>5-16</b>	<b>2-5</b>	<b>0-2</b>	<b>3</b>	<b>5</b>	<b>8</b>	<b>3</b>	<b>3</b>	<b>6</b>	<b>1</b>	<b>2</b>	<b>50</b>	

*Shooting By Period*

Period	FG	FG%	3FG	3FG%	FT	FT%
1st Qtr	5-16	31%	2-5	40%	0-2	00%
2nd Qtr	5-13	38%	0-3	00%	2-4	50%
1st Half	5-16	31%	2-5	40%	0-2	00%
1st Half	10-29	34%	2-8	25%	2-6	33%
Game	19-56	33.9%	8-22	36.4%	6-18	33.3%

*Deadball Rebounds: 10,4*

**Wichita St. 12**

No.	Player	S	Pts	FG	3FG	FT	OR	DR	TR	PF	A	TO	Blk	Stl	Min	+/-
01	MCCARTY, DJ	G	2	1-2	0-1	0-2	0	1	1	0	1	0	0	0	7	3
05	REID, ASHLEY	G	3	1-1	1-1	0-0	0	1	1	0	0	1	0	0	8	4
13	PRINCE, RAVEN	F	0	0-1	0-0	0-0	0	1	1	0	0	1	0	0	6	-6
23	BASTIN, SERAPHINE	G	0	0-2	0-0	0-0	1	1	2	0	1	2	0	1	6	-6
34	SMITH, SHYIA	F	2	1-1	0-0	0-0	0	1	1	0	0	1	2	1	8	4
02	MCCULLY, MARIAH	G	5	1-1	1-1	2-4	0	0	0	0	0	1	0	2	6	2
11	KIRVEN, ASHLEI	F	0	0-0	0-0	0-0	0	1	1	0	0	0	0	0	1	-2
21	BREWER, MAYA	G	0	0-0	0-0	0-0	0	0	0	0	0	0	0	0	0	0
31	DANIELSSON, VENDELA	G	0	0-1	0-1	0-0	0	0	0	0	0	1	0	0	3	-3
42	HENDERSON, ASIA	F	0	0-1	0-0	0-0	0	1	1	2	0	0	0	0	5	4
	TEAM						0	0	0	0		0				
<b>TOTALS</b>			<b>12</b>	<b>4-10</b>	<b>2-4</b>	<b>2-6</b>	<b>1</b>	<b>7</b>	<b>8</b>	<b>2</b>	<b>2</b>	<b>7</b>	<b>2</b>	<b>4</b>	<b>50</b>	

*Shooting By Period*

Period	FG	FG%	3FG	3FG%	FT	FT%
1st Qtr	4-10	40%	2-4	50%	2-6	33%
2nd Qtr	4-14	29%	3-6	50%	0-2	00%
1st Half	4-10	40%	2-4	50%	2-6	33%
1st Half	8-24	33%	5-10	50%	2-8	25%
Game	22-51	43.1%	6-18	33.3%	13-24	54.2%

*Deadball Rebounds: 4,4*

*Game Notes:*

Officials: Jeffrey Smith, Bryan Enterline, Chaney Muench  
 Attendance: 1738

Start Time: 03:05 PM ET  
 End Time: 05:00 PM ET  
 Game Duration: 1:55

Score	1st	2nd	3rd	4th	TOT
EMU	12	12	12	16	<b>52</b>
WSU	12	11	21	19	<b>63</b>

Points from (This Period)	EMU	WSU
In the Paint	4	4
Off Turns	2	6
2nd Chance	2	0
Fast Break	0	3
Bench	3	5

**Official Play-By-Play  
Eastern Mich. vs Wichita St.  
First Quarter**

**December 07, 2019 at Charles Koch Arena (Devlin Court) - Wichita, Kan.**



**Period 1**

**Starters:**

**Eastern Mich.:** 0 STANLEY,AALIYAH (G); 10 COMBS,AREANNA (G); 13 ANNECCHIARICO,JENNA (G); 14 PINEDA,NATALIA (G); 22 HUDSON,AUTUMN (F);

**Wichita St.:** 1 MCCARTY,DJ (G); 5 REID,ASHLEY (G); 13 PRINCE,RAVEN (F); 23 BASTIN,SERAPHINE (G); 34 SMITH,SHYIA (F);

Time	VISITORS: Eastern Mich.	Score	Margin	HOME: Wichita St.
09:37				MISSED JUMPER by PRINCE, RAVEN
09:34				REBOUND (OFF) by BASTIN, SERAPHINE
09:32				MISSED JUMPER by BASTIN, SERAPHINE
09:28	REBOUND (DEF) by STANLEY, AALIYAH			
09:18	TURNOVER (LOSTBALL) by HUDSON, AUTUMN			
09:18				STEAL by SMITH, SHYIA
09:13		2-0	H 2	GOOD! LAYUP by SMITH, SHYIA [FB]
08:56	TURNOVER (LOSTBALL) by COMBS, AREANNA			
08:48				TURNOVER (BADPASS) by REID, ASHLEY
08:48	STEAL by COMBS, AREANNA			
08:42	MISSED LAYUP by STANLEY, AALIYAH			
08:38				REBOUND (DEF) by BASTIN, SERAPHINE
08:34				MISSED JUMPER by BASTIN, SERAPHINE
08:34	BLOCK by HUDSON, AUTUMN			
08:26	REBOUND (DEF) by ANNECCHIARICO, JENNA			
08:16	GOOD! 3PTR by STANLEY, AALIYAH	2-3	V 1	
07:46				TURNOVER (TRAVEL) by PRINCE, RAVEN
07:32	GOOD! JUMPER by COMBS, AREANNA	2-5	V 3	
07:12		5-5	T	GOOD! 3PTR by REID, ASHLEY
07:12				ASSIST by BASTIN, SERAPHINE
06:50	TURNOVER (LOSTBALL) by STANLEY, AALIYAH			
06:50				STEAL by BASTIN, SERAPHINE
06:48				TURNOVER (DRIBBLING) by BASTIN, SERAPHINE
06:33	MISSED LAYUP by COMBS, AREANNA			
06:33				BLOCK by SMITH, SHYIA
06:31	REBOUND (OFF) by HUDSON, AUTUMN			
06:27	MISSED LAYUP by HUDSON, AUTUMN			
06:24	REBOUND (OFF) by ANNECCHIARICO, JENNA			
06:23	GOOD! LAYUP by HUDSON, AUTUMN	5-7	V 2	
06:23	ASSIST by ANNECCHIARICO, JENNA			
06:07				TURNOVER (BADPASS) by BASTIN, SERAPHINE
06:07	STEAL by HUDSON, AUTUMN			
06:01	MISSED JUMPER by STANLEY, AALIYAH			
05:59				REBOUND (DEF) by PRINCE, RAVEN
05:50				SUB OUT: PRINCE, RAVEN
05:50				SUB OUT: BASTIN, SERAPHINE
05:50				SUB IN: MCCULLY, MARIAH
05:50				SUB IN: HENDERSON, ASIA
05:50	SUB OUT: STANLEY, AALIYAH			
05:50	SUB OUT: ANNECCHIARICO, JENNA			
05:50	SUB OUT: HUDSON, AUTUMN			
05:50	SUB IN: AGOSTO, JUANITA			
05:50	SUB IN: KNIGHT, JABRIA			
05:50	SUB IN: CARDWELL, CORRIONE			
05:43	FOUL (PERSONAL) by COMBS, AREANNA			
05:43				MISSED FT by MCCARTY, DJ
05:43				REBOUND (OFF) by TEAM
05:43				MISSED FT by MCCARTY, DJ
05:41	REBOUND (DEF) by PINEDA, NATALIA			
05:30	TURNOVER (BADPASS) by COMBS, AREANNA			
05:30				STEAL by MCCULLY, MARIAH
05:27				TURNOVER (DRIBBLING) by MCCULLY, MARIAH
05:16	MISSED 3PTR by COMBS, AREANNA			
05:12				REBOUND (DEF) by REID, ASHLEY
04:56		7-7	T	GOOD! LAYUP by MCCARTY, DJ
04:39				FOUL (PERSONAL) by HENDERSON, ASIA
04:39				
04:39	SUB OUT: KNIGHT, JABRIA			
04:39	SUB IN: HARRIS, RAYJON			
04:39	MISSED FT by COMBS, AREANNA			
04:39	REBOUND (OFF) by TEAM			
04:39	MISSED FT by COMBS, AREANNA			
04:39				REBOUND (DEF) by MCCARTY, DJ
04:11				MISSED 3PTR by MCCARTY, DJ
04:11	REBOUND (DEF) by TEAM			
04:11	SUB OUT: PINEDA, NATALIA			
04:11	SUB IN: ANNECCHIARICO, JENNA			
04:00	TURNOVER (DRIBBLING) by HARRIS, RAYJON			
03:41		10-7	H 3	GOOD! 3PTR by MCCULLY, MARIAH
03:41				ASSIST by MCCARTY, DJ

Time	VISITORS: Eastern Mich.	Score	Margin	HOME: Wichita St.
03:20	MISSED LAYUP by HARRIS, RAYJON			
03:14	REBOUND (OFF) by COMBS, AREANNA			
03:14	MISSED LAYUP by COMBS, AREANNA			
03:14				BLOCK by SMITH, SHYIA
03:12				REBOUND (DEF) by HENDERSON, ASIA
03:03				TURNOVER (BADPASS) by SMITH, SHYIA
03:03				SUB OUT: MCCARTY, DJ
03:03				SUB IN: DANIELSSON, VENDELA
03:03	SUB OUT: COMBS, AREANNA			
03:03	SUB IN: LEWIS, COURTNIIE			
02:53	MISSED 3PTR by ANNECCHIARICO, JENNA			
02:51	REBOUND (OFF) by TEAM			
02:44	TURNOVER (BADPASS) by CARDWELL, CORRIONE			
02:44				STEAL by MCCULLY, MARIAH
02:39	FOUL (PERSONAL) by ANNECCHIARICO, JENNA			
02:39	SUB OUT: CARDWELL, CORRIONE			
02:39	SUB IN: STANLEY, AALIYAH			
02:39				MISSED FT by MCCULLY, MARIAH
02:39				REBOUND (OFF) by TEAM
02:39		11-7	H 4	GOOD! FT by MCCULLY, MARIAH [FB]
02:22	MISSED JUMPER by HARRIS, RAYJON			
02:16				REBOUND (DEF) by SMITH, SHYIA
02:03	FOUL (PERSONAL) by ANNECCHIARICO, JENNA			
02:03				SUB OUT: REID, ASHLEY
02:03				SUB IN: BASTIN, SERAPHINE
02:03	SUB OUT: HARRIS, RAYJON			
02:03	SUB IN: JOHNSON, KIARA			
02:03	SUB OUT: AGOSTO, JUANITA			
02:03	SUB IN: COMBS, AREANNA			
02:03				SUB OUT: SMITH, SHYIA
02:03				SUB IN: PRINCE, RAVEN
02:03		12-7	H 5	GOOD! FT by MCCULLY, MARIAH
02:03				MISSED FT by MCCULLY, MARIAH
02:00	REBOUND (DEF) by ANNECCHIARICO, JENNA			
01:42	GOOD! 3PTR by LEWIS, COURTNIIE	12-10	H 2	
01:42	ASSIST by COMBS, AREANNA			
01:20				MISSED LAYUP by HENDERSON, ASIA
01:19	REBOUND (DEF) by JOHNSON, KIARA			
01:19				FOUL (PERSONAL) by HENDERSON, ASIA
01:19				SUB OUT: HENDERSON, ASIA
01:19				SUB IN: KIRVEN, ASHLEI
01:19	GOOD! LAYUP by COMBS, AREANNA	12-12	T	
01:19	ASSIST by ANNECCHIARICO, JENNA			
01:07				MISSED 3PTR by DANIELSSON, VENDELA
00:59	REBOUND (DEF) by TEAM			
00:48	MISSED JUMPER by LEWIS, COURTNIIE			
00:46				REBOUND (DEF) by KIRVEN, ASHLEI
00:18				TURNOVER (BADPASS) by DANIELSSON, VENDELA
00:01	MISSED 3PTR by ANNECCHIARICO, JENNA			
00:01				REBOUND (DEF) by TEAM

### Eastern Mich. 12, Wichita St. 12

Points from (This Period)	EMU	WSU
In the Paint	4	4
Off Turns	2	6
2nd Chance	2	0
Fast Break	0	3
Bench	3	5

**Official Box Score**  
**Eastern Mich. vs Wichita St.**  
**Second Quarter Statistics Only**  
**December 07, 2019 at Charles Koch Arena (Devlin Court) - Wichita, Kan.**



**Eastern Mich. 12**

No.	Player	S	Pts	FG	3FG	FT	OR	DR	TR	PF	A	TO	Blk	Stl	Min	+/-
00	STANLEY, AALIYAH	G	2	1-2	0-1	0-0	0	0	0	0	0	1	0	0	5	2
10	COMBS, AREANNA	G	3	1-3	0-0	1-2	0	2	2	1	0	0	0	0	8	2
13	ANNECCHIARICO, JENNA	G	1	0-1	0-0	1-2	0	0	0	0	2	0	0	0	7	3
14	PINEDA, NATALIA	G	0	0-1	0-1	0-0	0	2	2	0	0	0	0	0	6	-1
22	HUDSON, AUTUMN	F	2	1-1	0-0	0-0	0	2	2	2	0	1	0	1	5	4
02	AGOSTO, JUANITA	G	0	0-0	0-0	0-0	1	1	2	1	0	1	0	0	4	2
04	LEWIS, COURTNIÉ	G	0	0-2	0-1	0-0	0	1	1	0	0	0	0	0	8	-2
12	KNIGHT, JABRIA	F	0	0-1	0-0	0-0	0	0	0	0	0	0	0	0	4	-2
20	CARDWELL, CORRIONE	G	2	1-1	0-0	0-0	0	0	0	0	0	0	0	0	4	-2
21	JOHNSON, KIARA	F	0	0-0	0-0	0-0	0	0	0	0	0	0	0	0	0	0
32	HARRIS, RAYJON	F	2	1-1	0-0	0-0	0	0	0	0	0	0	1	0	2	-1
	TEAM						0	0	0	0	0	0				
	<b>TOTALS</b>		<b>12</b>	<b>5-13</b>	<b>0-3</b>	<b>2-4</b>	<b>1</b>	<b>8</b>	<b>9</b>	<b>4</b>	<b>2</b>	<b>3</b>	<b>1</b>	<b>1</b>	<b>50</b>	

*Shooting By Period*

Period	FG	FG%	3FG	3FG%	FT	FT%
3rd Qtr	4-11	36%	3-6	50%	1-4	25%
4th Qtr	5-16	31%	3-8	38%	3-8	38%
2nd Half	5-13	38%	0-3	00%	2-4	50%
2nd Half	9-27	33%	6-14	43%	4-12	33%
Game	19-56	33.9%	8-22	36.4%	6-18	33.3%

*Deadball Rebounds: 10,4*

**Wichita St. 11**

No.	Player	S	Pts	FG	3FG	FT	OR	DR	TR	PF	A	TO	Blk	Stl	Min	+/-
01	MCCARTY, DJ	G	3	1-3	1-1	0-0	0	1	1	0	0	1	0	1	5	0
05	REID, ASHLEY	G	0	0-0	0-0	0-0	0	2	2	1	1	0	0	0	9	-4
13	PRINCE, RAVEN	F	0	0-1	0-0	0-2	1	1	2	1	0	0	0	0	10	-1
23	BASTIN, SERAPHINE	G	5	2-3	1-1	0-0	0	0	0	1	0	0	0	0	5	1
34	SMITH, SHYIA	F	0	0-1	0-1	0-0	0	1	1	0	0	1	1	0	8	0
02	MCCULLY, MARIAH	G	3	1-6	1-3	0-0	0	0	0	0	0	0	0	0	6	-3
11	KIRVEN, ASHLEI	F	0	0-0	0-0	0-0	1	1	2	0	0	1	0	0	2	-1
21	BREWER, MAYA	G	0	0-0	0-0	0-0	0	0	0	1	0	0	0	0	3	3
31	DANIELSSON, VENDELA	G	0	0-0	0-0	0-0	0	0	0	0	1	0	0	0	2	0
42	HENDERSON, ASIA	F	0	0-0	0-0	0-0	0	0	0	0	0	0	0	0	0	0
	TEAM						1	0	1	0		1				
	<b>TOTALS</b>		<b>11</b>	<b>4-14</b>	<b>3-6</b>	<b>0-2</b>	<b>3</b>	<b>6</b>	<b>9</b>	<b>4</b>	<b>2</b>	<b>4</b>	<b>1</b>	<b>1</b>	<b>50</b>	

*Shooting By Period*

Period	FG	FG%	3FG	3FG%	FT	FT%
3rd Qtr	7-14	50%	1-6	17%	6-8	75%
4th Qtr	7-13	54%	0-2	00%	5-8	63%
2nd Half	4-14	29%	3-6	50%	0-2	00%
2nd Half	14-27	52%	1-8	13%	11-16	69%
Game	22-51	43.1%	6-18	33.3%	13-24	54.2%

*Deadball Rebounds: 4,4*

*Game Notes:*

Officials: Jeffrey Smith, Bryan Enterline, Chaney Muench  
 Attendance: 1738

Start Time: 03:05 PM ET  
 End Time: 05:00 PM ET  
 Game Duration: 1:55

Score	1st	2nd	3rd	4th	TOT
EMU	12	12	12	16	<b>52</b>
WSU	12	11	21	19	<b>63</b>

Points from (This Period)	EMU	WSU
In the Paint	8	0
Off Turns	4	3
2nd Chance	4	0
Fast Break	1	0
Bench	4	3

**Official Play-By-Play  
Eastern Mich. vs Wichita St.  
Second Quarter**

**December 07, 2019 at Charles Koch Arena (Devlin Court) - Wichita, Kan.**



**Period 2**

**Starters:**

**Eastern Mich.:** 0 STANLEY,AALIYAH (G); 10 COMBS,AREANNA (G); 13 ANNECCHIARICO,JENNA (G); 14 PINEDA,NATALIA (G); 22 HUDSON,AUTUMN (F);  
**Wichita St.:** 1 MCCARTY,DJ (G); 5 REID,ASHLEY (G); 13 PRINCE,RAVEN (F); 23 BASTIN,SERAPHINE (G); 34 SMITH,SHYIA (F);

Time	VISITORS: Eastern Mich.	Score	Margin	HOME: Wichita St.
09:59				SUB OUT: DANIELSSON, VENDELA
09:59				SUB IN: REID, ASHLEY
09:59	SUB OUT: JOHNSON, KIARA			
09:59	SUB IN: HUDSON, AUTUMN			
09:53				MISSED 3PTR by MCCULLY, MARIAH
09:50	REBOUND (DEF) by HUDSON, AUTUMN			
09:32				FOUL (PERSONAL) by BASTIN, SERAPHINE
09:27	GOOD! JUMPER by STANLEY, AALIYAH	12-14	V 2	
09:27	ASSIST by ANNECCHIARICO, JENNA			
09:09				MISSED JUMPER by BASTIN, SERAPHINE
09:06				REBOUND (OFF) by PRINCE, RAVEN
09:04				MISSED LAYUP by PRINCE, RAVEN
09:02				REBOUND (OFF) by KIRVEN, ASHLEI
09:02				TURNOVER (LOSTBALL) by KIRVEN, ASHLEI
09:02	STEAL by HUDSON, AUTUMN			
08:59	MISSED LAYUP by LEWIS, COURTNIE			
08:57	REBOUND (OFF) by TEAM			
08:52	GOOD! LAYUP by COMBS, AREANNA	12-16	V 4	
08:31		15-16	V 1	GOOD! 3PTR by BASTIN, SERAPHINE
08:31				ASSIST by REID, ASHLEY
08:13	MISSED 3PTR by STANLEY, AALIYAH			
08:10				REBOUND (DEF) by KIRVEN, ASHLEI
08:10	FOUL (PERSONAL) by HUDSON, AUTUMN			
08:10				SUB OUT: KIRVEN, ASHLEI
08:10				SUB IN: SMITH, SHYIA
08:10	SUB OUT: HUDSON, AUTUMN			
08:10	SUB IN: KNIGHT, JABRIA			
08:10	SUB OUT: ANNECCHIARICO, JENNA			
08:10	SUB IN: CARDWELL, CORRIONE			
07:40				MISSED JUMPER by MCCULLY, MARIAH
07:37	REBOUND (DEF) by COMBS, AREANNA			
07:28	GOOD! JUMPER by CARDWELL, CORRIONE	15-18	V 3	
07:04		17-18	V 1	GOOD! JUMPER by BASTIN, SERAPHINE
06:47				FOUL (PERSONAL) by PRINCE, RAVEN
06:47				SUB OUT: MCCULLY, MARIAH
06:47				SUB IN: MCCARTY, DJ
06:47	MISSED FT by COMBS, AREANNA			
06:47	REBOUND (OFF) by TEAM			
06:47	GOOD! FT by COMBS, AREANNA	17-19	V 2	
06:16				TURNOVER (SHOTCLOCK) by TEAM
05:55	TURNOVER (BADPASS) by STANLEY, AALIYAH			
05:55				STEAL by MCCARTY, DJ
05:55	FOUL (PERSONAL) by COMBS, AREANNA			
05:55				SUB OUT: REID, ASHLEY
05:55				SUB IN: BREWER, MAYA
05:55	SUB OUT: STANLEY, AALIYAH			
05:55	SUB IN: ANNECCHIARICO, JENNA			
05:54				TURNOVER (TRAVEL) by MCCARTY, DJ
05:37	SUB OUT: ANNECCHIARICO, JENNA			
05:37	SUB IN: PINEDA, NATALIA			
05:29	MISSED LAYUP by KNIGHT, JABRIA			
05:25				REBOUND (DEF) by PRINCE, RAVEN
05:21				MISSED JUMPER by MCCARTY, DJ
05:17	REBOUND (DEF) by COMBS, AREANNA			
05:11	MISSED 3PTR by PINEDA, NATALIA			
05:08				REBOUND (DEF) by SMITH, SHYIA
04:41		20-19	H 1	GOOD! 3PTR by MCCARTY, DJ
04:32	TIMEOUT 30SEC			
04:32				SUB OUT: MCCARTY, DJ
04:32				SUB OUT: BREWER, MAYA
04:32				SUB OUT: BASTIN, SERAPHINE
04:32				SUB IN: MCCULLY, MARIAH
04:32				SUB IN: REID, ASHLEY
04:32				SUB IN: DANIELSSON, VENDELA
04:32	SUB OUT: COMBS, AREANNA			
04:32	SUB OUT: KNIGHT, JABRIA			
04:32	SUB OUT: CARDWELL, CORRIONE			
04:32	SUB IN: AGOSTO, JUANITA			
04:32	SUB IN: ANNECCHIARICO, JENNA			
04:32	SUB IN: HARRIS, RAYJON			



Time	VISITORS: Eastern Mich.	Score	Margin	HOME: Wichita St.
04:21	FOUL (OFF) by AGOSTO, JUANITA			
04:21	TURNOVER (OFFENSIVE) by AGOSTO, JUANITA			
04:07		23-19	H 4	GOOD! 3PTR by MCCULLY, MARIAH
04:07				ASSIST by DANIELSSON, VENDELA
03:49	GOOD! LAYUP by HARRIS, RAYJON	23-21	H 2	
03:49	ASSIST by ANNECCHIARICO, JENNA			
03:35				MISSED 3PTR by MCCULLY, MARIAH
03:32	REBOUND (DEF) by AGOSTO, JUANITA			
03:25	MISSED 3PTR by LEWIS, COURTNIÉ			
03:21				REBOUND (DEF) by REID, ASHLEY
02:59				MISSED JUMPER by MCCULLY, MARIAH
02:59	BLOCK by HARRIS, RAYJON			
02:58				REBOUND (OFF) by TEAM
02:58	SUB OUT: LEWIS, COURTNIÉ			
02:58	SUB IN: COMBS, AREANNA			
02:56				MISSED LAYUP by MCCULLY, MARIAH
02:53	REBOUND (DEF) by PINEDA, NATALIA			
02:48				FOUL (PERSONAL) by REID, ASHLEY
02:48	SUB OUT: HARRIS, RAYJON			
02:48	SUB IN: HUDSON, AUTUMN			
02:48	MISSED FT by ANNECCHIARICO, JENNA			
02:48	REBOUND (OFF) by TEAM			
02:48	GOOD! FT by ANNECCHIARICO, JENNA [FB]	23-22	H 1	
02:35				TURNOVER (BADPASS) by SMITH, SHYIA
02:35				SUB OUT: DANIELSSON, VENDELA
02:35				SUB IN: MCCARTY, DJ
02:24	MISSED LAYUP by COMBS, AREANNA			
02:18	REBOUND (OFF) by AGOSTO, JUANITA			
02:12	GOOD! LAYUP by HUDSON, AUTUMN	23-24	V 1	
01:43	FOUL (PERSONAL) by HUDSON, AUTUMN			
01:43				SUB OUT: MCCULLY, MARIAH
01:43				SUB IN: BREWER, MAYA
01:43				MISSED FT by PRINCE, RAVEN
01:43				REBOUND (OFF) by TEAM
01:43				MISSED FT by PRINCE, RAVEN
01:42	REBOUND (DEF) by HUDSON, AUTUMN			
01:28	MISSED JUMPER by COMBS, AREANNA			
01:28				BLOCK by SMITH, SHYIA
01:24				REBOUND (DEF) by MCCARTY, DJ
01:15				MISSED 3PTR by SMITH, SHYIA
01:13	REBOUND (DEF) by PINEDA, NATALIA			
01:13				FOUL (PERSONAL) by BREWER, MAYA
00:51	TURNOVER (LOSTBALL) by HUDSON, AUTUMN			
00:51	SUB OUT: AGOSTO, JUANITA			
00:51	SUB OUT: COMBS, AREANNA			
00:51	SUB IN: STANLEY, AALIYAH			
00:51	SUB IN: LEWIS, COURTNIÉ			
00:18				MISSED JUMPER by MCCARTY, DJ
00:15	REBOUND (DEF) by LEWIS, COURTNIÉ			
00:02	MISSED LAYUP by ANNECCHIARICO, JENNA			
00:00				REBOUND (DEF) by REID, ASHLEY

### Eastern Mich. 24, Wichita St. 23

Points from (This Period)	EMU	WSU
In the Paint	8	0
Off Turns	4	3
2nd Chance	4	0
Fast Break	1	0
Bench	4	3

**Official Box Score**  
**Eastern Mich. vs Wichita St.**  
**Second Half Statistics Only**  
**December 07, 2019 at Charles Koch Arena (Devlin Court) - Wichita, Kan.**



**Eastern Mich. 28**

No.	Player	S	Pts	FG	3FG	FT	OR	DR	TR	PF	A	TO	Blk	Stl	Min	+/-
00	STANLEY, AALIYAH	G	15	5-10	5-7	0-0	1	2	3	2	0	0	0	0	14	-3
02	AGOSTO, JUANITA	G	2	0-1	0-1	2-4	0	1	1	1	1	1	0	0	11	-9
04	LEWIS, COURTNIÉ	G	3	1-3	1-1	0-0	0	2	2	0	0	0	0	0	14	-6
10	COMBS, AREANNA	G	4	2-4	0-1	0-3	0	0	0	3	0	1	0	2	10	-9
12	KNIGHT, JABRIA	F	0	0-0	0-0	0-0	0	0	0	0	0	0	0	0	0	0
13	ANNECCHIARICO, JENNA	G	0	0-3	0-2	0-0	0	1	1	1	2	5	0	1	18	-13
14	PINEDA, NATALIA	G	3	1-2	0-1	1-1	1	2	3	3	0	0	0	0	10	-5
20	CARDWELL, CORRIONE	G	0	0-2	0-1	0-2	1	0	1	2	0	1	0	1	8	-4
21	JOHNSON, KIARA	F	1	0-1	0-0	1-2	0	4	4	3	0	0	0	0	6	-14
22	HUDSON, AUTUMN	F	0	0-1	0-0	0-0	0	0	0	0	0	1	0	0	5	2
32	HARRIS, RAYJON	F	0	0-0	0-0	0-0	0	0	0	0	0	0	0	0	2	1
	TEAM		0	0-0	0-0	0-0	0	0	0	0	0	0	0	0	0	0
<b>TOTALS</b>			<b>28</b>	<b>9-27</b>	<b>6-14</b>	<b>4-12</b>	<b>3</b>	<b>12</b>	<b>15</b>	<b>15</b>	<b>3</b>	<b>9</b>	<b>0</b>	<b>4</b>	<b>98</b>	

*Shooting By Period*

Period	FG	FG%	3FG	3FG%	FT	FT%
3rd Qtr	4-11	36%	3-6	50%	1-4	25%
4th Qtr	5-16	31%	3-8	38%	3-8	38%
2nd Half	9-27	33%	6-14	43%	4-12	33%
Game	19-56	33.9%	8-22	36.4%	6-18	33.3%

*Deadball Rebounds: 10,4*  
*Last FG Half: EMU 4th-00:51*

**Wichita St. 40**

No.	Player	S	Pts	FG	3FG	FT	OR	DR	TR	PF	A	TO	Blk	Stl	Min	+/-
01	MCCARTY, DJ	G	0	0-2	0-2	0-2	0	2	2	2	1	2	0	2	15	8
02	MCCULLY, MARIAH	G	17	6-11	1-3	4-6	0	1	1	2	3	3	1	1	20	12
05	REID, ASHLEY	G	0	0-0	0-0	0-0	0	0	0	3	1	0	0	0	5	1
11	KIRVEN, ASHLEY	F	0	0-0	0-0	0-0	0	0	0	0	0	0	0	0	0	0
13	PRINCE, RAVEN	F	2	1-2	0-0	0-0	0	1	1	0	0	0	0	0	11	11
21	BREWER, MAYA	G	0	0-0	0-0	0-0	0	0	0	0	0	0	0	0	0	0
23	BASTIN, SERAPHINE	G	7	3-6	0-2	1-1	2	4	6	1	1	1	0	1	19	15
31	DANIELSSON, VENDELA	G	0	0-0	0-0	0-0	0	0	0	0	0	0	0	0	0	0
34	SMITH, SHYIA	F	6	0-2	0-1	6-6	0	3	3	1	0	1	0	1	14	13
42	HENDERSON, ASIA	F	8	4-4	0-0	0-1	1	4	5	0	0	0	0	0	13	0
	TEAM		0	0-0	0-0	0-0	0	0	0	0	0	0	0	0	0	0
<b>TOTALS</b>			<b>40</b>	<b>14-27</b>	<b>1-8</b>	<b>11-16</b>	<b>3</b>	<b>15</b>	<b>18</b>	<b>9</b>	<b>6</b>	<b>7</b>	<b>1</b>	<b>5</b>	<b>98</b>	

*Shooting By Period*

Period	FG	FG%	3FG	3FG%	FT	FT%
3rd Qtr	7-14	50%	1-6	17%	6-8	75%
4th Qtr	7-13	54%	0-2	00%	5-8	63%
2nd Half	14-27	52%	1-8	13%	11-16	69%
Game	22-51	43.1%	6-18	33.3%	13-24	54.2%

*Deadball Rebounds: 4,4*  
*Last FG Half: WSU 4th-00:35*

*Game Notes:*

Officials: **Jeffrey Smith, Bryan Enterline, Chaney Muench**  
 Attendance: 1738

Start Time: **03:05 PM ET**  
 End Time: **05:00 PM ET**  
 Game Duration: 1:55

Score	1st	2nd	3rd	4th	TOT
EMU	12	12	12	16	<b>52</b>
WSU	12	11	21	19	<b>63</b>

Points from (This Period)	EMU	WSU
In the Paint	6	26
Off Turns	6	5
2nd Chance	3	6
Fast Break	6	5
Bench	6	25

**Official Box Score**  
**Eastern Mich. vs Wichita St.**  
**Third Quarter Statistics Only**  
**December 07, 2019 at Charles Koch Arena (Devlin Court) - Wichita, Kan.**



**Eastern Mich. 28**

No.	Player	S	Pts	FG	3FG	FT	OR	DR	TR	PF	A	TO	Blk	Stl	Min	+/-
00	STANLEY, AALIYAH	G	9	3-4	3-3	0-0	0	1	1	1	0	0	0	0	4	0
10	COMBS, AREANNA	G	2	1-3	0-1	0-2	0	0	0	2	0	1	0	1	8	-10
13	ANNECCHIARICO, JENNA	G	0	0-1	0-1	0-0	0	1	1	0	0	2	0	0	10	-9
14	PINEDA, NATALIA	G	0	0-0	0-0	0-0	0	0	0	0	0	0	0	0	4	-4
22	HUDSON, AUTUMN	F	0	0-1	0-0	0-0	0	0	0	0	0	1	0	0	4	-1
02	AGOSTO, JUANITA	G	0	0-1	0-1	0-0	0	0	0	1	0	0	0	0	6	-9
04	LEWIS, COURTNE	G	0	0-1	0-0	0-0	0	1	1	0	0	0	0	0	8	-4
12	KNIGHT, JABRIA	F	0	0-0	0-0	0-0	0	0	0	0	0	0	0	0	0	0
20	CARDWELL, CORRIONE	G	0	0-0	0-0	0-0	0	0	0	0	0	0	0	0	0	0
21	JOHNSON, KIARA	F	1	0-0	0-0	1-2	0	3	3	2	0	0	0	0	4	-9
32	HARRIS, RAYJON	F	0	0-0	0-0	0-0	0	0	0	0	0	0	0	0	2	1
	TEAM						0	0	0	0	0	0	0	0		
<b>TOTALS</b>			<b>12</b>	<b>4-11</b>	<b>3-6</b>	<b>1-4</b>	<b>0</b>	<b>6</b>	<b>6</b>	<b>6</b>	<b>0</b>	<b>4</b>	<b>0</b>	<b>1</b>	<b>50</b>	

*Shooting By Period*

Period	FG	FG%	3FG	3FG%	FT	FT%
2nd Half	0-0	0%	0-0	0%	0-0	0%
Game	19-56	33.9%	8-22	36.4%	6-18	33.3%

*Deadball Rebounds: 10,4*

**Wichita St. 40**

No.	Player	S	Pts	FG	3FG	FT	OR	DR	TR	PF	A	TO	Blk	Stl	Min	+/-
01	MCCARTY, DJ	G	0	0-2	0-2	0-2	0	2	2	1	1	0	0	2	8	10
05	REID, ASHLEY	G	0	0-0	0-0	0-0	0	0	0	1	1	0	0	0	2	-1
13	PRINCE, RAVEN	F	2	1-1	0-0	0-0	0	0	0	0	0	0	0	0	6	4
23	BASTIN, SERAPHINE	G	4	2-3	0-1	0-0	1	2	3	1	0	0	0	0	10	9
34	SMITH, SHYIA	F	6	0-2	0-1	6-6	0	1	1	1	0	0	0	1	8	12
02	MCCULLY, MARIAH	G	7	3-5	1-2	0-0	0	0	0	0	2	1	1	0	10	9
11	KIRVEN, ASHLEI	F	0	0-0	0-0	0-0	0	0	0	0	0	0	0	0	0	0
21	BREWER, MAYA	G	0	0-0	0-0	0-0	0	0	0	0	0	0	0	0	0	0
31	DANIELSSON, VENDELA	G	0	0-0	0-0	0-0	0	0	0	0	0	0	0	0	0	0
42	HENDERSON, ASIA	F	2	1-1	0-0	0-0	1	2	3	0	0	0	0	0	5	2
	TEAM						0	0	0	0	0	0	0	0		
<b>TOTALS</b>			<b>21</b>	<b>7-14</b>	<b>1-6</b>	<b>6-8</b>	<b>2</b>	<b>7</b>	<b>9</b>	<b>4</b>	<b>4</b>	<b>1</b>	<b>1</b>	<b>3</b>	<b>50</b>	

*Shooting By Period*

Period	FG	FG%	3FG	3FG%	FT	FT%
2nd Half	0-0	0%	0-0	0%	0-0	0%
Game	22-51	43.1%	6-18	33.3%	13-24	54.2%

*Deadball Rebounds: 4,4*

Game Notes:

Officials: Jeffrey Smith, Bryan Enterline, Chaney Muench  
 Attendance: 1738

Start Time: 03:05 PM ET  
 End Time: 05:00 PM ET  
 Game Duration: 1:55

Score	1st	2nd	3rd	4th	TOT
EMU	12	12	12	16	<b>52</b>
WSU	12	11	21	19	<b>63</b>

Points from (This Period)	EMU	WSU
In the Paint	2	12
Off Turns	0	4
2nd Chance	0	4
Fast Break	1	4
Bench	1	9

**Official Play-By-Play  
Eastern Mich. vs Wichita St.  
Third Quarter**

**December 07, 2019 at Charles Koch Arena (Devlin Court) - Wichita, Kan.**



**Period 3**

**Starters:**

**Eastern Mich.:** 0 STANLEY,AALIYAH (G); 10 COMBS,AREANNA (G); 13 ANNECCHIARICO,JENNA (G); 14 PINEDA,NATALIA (G); 22 HUDSON,AUTUMN (F);

**Wichita St.:** 1 MCCARTY,DJ (G); 5 REID,ASHLEY (G); 13 PRINCE,RAVEN (F); 23 BASTIN,SERAPHINE (G); 34 SMITH,SHYIA (F);

Time	VISITORS: Eastern Mich.	Score	Margin	HOME: Wichita St.
10:00				SUB OUT: REID, ASHLEY
10:00				SUB OUT: BREWER, MAYA
10:00				SUB IN: MCCULLY, MARIAH
10:00				SUB IN: BASTIN, SERAPHINE
10:00	SUB OUT: LEWIS, COURTNIE			
10:00	SUB IN: COMBS, AREANNA			
09:49		25-24	H 1	GOOD! LAYUP by PRINCE, RAVEN
09:49				ASSIST by MCCULLY, MARIAH
09:28	MISSED LAYUP by HUDSON, AUTUMN			
09:24				REBOUND (DEF) by MCCARTY, DJ
09:23		27-24	H 3	GOOD! LAYUP by MCCULLY, MARIAH [FB]
09:23				ASSIST by MCCARTY, DJ
09:04	GOOD! 3PTR by STANLEY, AALIYAH	27-27	T	
08:47				MISSED LAYUP by MCCULLY, MARIAH
08:42	REBOUND (DEF) by STANLEY, AALIYAH			
08:39				FOUL (PERSONAL) by MCCARTY, DJ
08:36	TURNOVER (BADPASS) by HUDSON, AUTUMN			
08:36				STEAL by SMITH, SHYIA
08:14	FOUL (PERSONAL) by STANLEY, AALIYAH			
08:14	SUB OUT: STANLEY, AALIYAH			
08:14	SUB OUT: HUDSON, AUTUMN			
08:14	SUB IN: AGOSTO, JUANITA			
08:14	SUB IN: JOHNSON, KIARA			
08:11	FOUL (PERSONAL) by COMBS, AREANNA			
08:11		28-27	H 1	GOOD! FT by SMITH, SHYIA
08:11		29-27	H 2	GOOD! FT by SMITH, SHYIA
07:56	TURNOVER (LOSTBALL) by COMBS, AREANNA			
07:56				STEAL by MCCARTY, DJ
07:37		31-27	H 4	GOOD! JUMPER by MCCULLY, MARIAH [PNT]
07:35	TIMEOUT 30SEC			
07:35	SUB OUT: PINEDA, NATALIA			
07:35	SUB IN: LEWIS, COURTNIE			
07:28	TURNOVER (BADPASS) by ANNECCHIARICO, JENNA			
07:28				STEAL by MCCARTY, DJ
07:04				MISSED JUMPER by SMITH, SHYIA
07:01	REBOUND (DEF) by JOHNSON, KIARA			
06:48	TURNOVER (BADPASS) by ANNECCHIARICO, JENNA			
06:18				MISSED 3PTR by MCCULLY, MARIAH
06:15	REBOUND (DEF) by JOHNSON, KIARA			
05:57	MISSED JUMPER by LEWIS, COURTNIE			
05:57				REBOUND (DEF) by TEAM
05:31				MISSED 3PTR by MCCARTY, DJ
05:25				REBOUND (OFF) by BASTIN, SERAPHINE
05:25		33-27	H 6	GOOD! LAYUP by BASTIN, SERAPHINE
05:14	MISSED 3PTR by COMBS, AREANNA			
05:11				REBOUND (DEF) by MCCARTY, DJ
05:08	FOUL (PERSONAL) by AGOSTO, JUANITA			
05:08				MISSED FT by MCCARTY, DJ
05:08				REBOUND (OFF) by TEAM
05:08				MISSED FT by MCCARTY, DJ
05:08	REBOUND (DEF) by JOHNSON, KIARA			
05:08				FOUL (PERSONAL) by BASTIN, SERAPHINE
05:08				
05:08				SUB OUT: PRINCE, RAVEN
05:08				SUB IN: HENDERSON, ASIA
05:08	MISSED FT by JOHNSON, KIARA			
05:08	REBOUND (OFF) by TEAM			
05:08	GOOD! FT by JOHNSON, KIARA [FB]	33-28	H 5	
04:43	FOUL (PERSONAL) by JOHNSON, KIARA			
04:21				MISSED 3PTR by SMITH, SHYIA
04:11				REBOUND (OFF) by HENDERSON, ASIA
04:11		35-28	H 7	GOOD! LAYUP by HENDERSON, ASIA
04:05	MISSED 3PTR by AGOSTO, JUANITA			
04:02				REBOUND (DEF) by BASTIN, SERAPHINE
03:52	FOUL (PERSONAL) by JOHNSON, KIARA			
03:52		36-28	H 8	GOOD! FT by SMITH, SHYIA
03:52		37-28	H 9	GOOD! FT by SMITH, SHYIA
03:52	SUB OUT: JOHNSON, KIARA			
03:52	SUB IN: HUDSON, AUTUMN			
03:34	MISSED 3PTR by ANNECCHIARICO, JENNA			

Time	VISITORS: Eastern Mich.	Score	Margin	HOME: Wichita St.
03:31				REBOUND (DEF) by HENDERSON, ASIA
03:27		39-28	H 11	GOOD! LAYUP by BASTIN, SERAPHINE [FB]
03:27				ASSIST by MCCULLY, MARIAH
03:17	MISSED JUMPER by COMBS, AREANNA			
03:14				REBOUND (DEF) by BASTIN, SERAPHINE
02:49				MISSED 3PTR by MCCARTY, DJ
02:45	REBOUND (DEF) by LEWIS, COURTNIE			
02:29	GOOD! JUMPER by COMBS, AREANNA [PNT]	39-30	H 9	
02:10				TURNOVER (BADPASS) by MCCULLY, MARIAH
02:10	STEAL by COMBS, AREANNA			
02:00				FOUL (PERSONAL) by SMITH, SHYIA
02:00				SUB OUT: MCCARTY, DJ
02:00				SUB IN: REID, ASHLEY
02:00	SUB OUT: AGOSTO, JUANITA			
02:00	SUB OUT: HUDSON, AUTUMN			
02:00	SUB IN: STANLEY, AALIYAH			
02:00	SUB IN: HARRIS, RAYJON			
01:57				FOUL (PERSONAL) by REID, ASHLEY
01:57	MISSED FT by COMBS, AREANNA			
01:57	REBOUND (OFF) by TEAM			
01:57	MISSED FT by COMBS, AREANNA			
01:56				REBOUND (DEF) by SMITH, SHYIA
01:33	FOUL (PERSONAL) by COMBS, AREANNA			
01:33	SUB OUT: COMBS, AREANNA			
01:33	SUB IN: PINEDA, NATALIA			
01:33		40-30	H 10	GOOD! FT by SMITH, SHYIA
01:33		41-30	H 11	GOOD! FT by SMITH, SHYIA
01:33				SUB OUT: SMITH, SHYIA
01:33				SUB IN: PRINCE, RAVEN
01:23	GOOD! 3PTR by STANLEY, AALIYAH	41-33	H 8	
01:01		44-33	H 11	GOOD! 3PTR by MCCULLY, MARIAH
01:01				ASSIST by REID, ASHLEY
00:48	GOOD! 3PTR by STANLEY, AALIYAH	44-36	H 8	
00:17				MISSED 3PTR by BASTIN, SERAPHINE
00:14	REBOUND (DEF) by ANNECCHIARICO, JENNA			
00:03	MISSED JUMPER by STANLEY, AALIYAH			
00:03				BLOCK by MCCULLY, MARIAH
00:00				REBOUND (DEF) by HENDERSON, ASIA

### Eastern Mich. 36, Wichita St. 44

Points from (This Period)	EMU	WSU
In the Paint	2	12
Off Turns	0	4
2nd Chance	0	4
Fast Break	1	4
Bench	1	9

**Official Box Score**  
**Eastern Mich. vs Wichita St.**  
**Fourth Quarter Statistics Only**  
**December 07, 2019 at Charles Koch Arena (Devlin Court) - Wichita, Kan.**



**Eastern Mich. 16**

No.	Player	S	Pts	FG	3FG	FT	OR	DR	TR	PF	A	TO	Blk	Stl	Min	+/-
00	STANLEY, AALIYAH	G	6	2-6	2-4	0-0	1	1	2	1	0	0	0	0	10	-3
10	COMBS, AREANNA	G	2	1-1	0-0	0-1	0	0	0	1	0	0	0	1	2	1
13	ANNECCHIARICO, JENNA	G	0	0-2	0-1	0-0	0	0	0	1	2	3	0	1	8	-4
14	PINEDA, NATALIA	G	3	1-2	0-1	1-1	1	2	3	3	0	0	0	0	6	-1
22	HUDSON, AUTUMN	F	0	0-0	0-0	0-0	0	0	0	0	0	0	0	0	1	3
02	AGOSTO, JUANITA	G	2	0-0	0-0	2-4	0	1	1	0	1	1	0	0	5	0
04	LEWIS, COURTNIÉ	G	3	1-2	1-1	0-0	0	1	1	0	0	0	0	0	6	-2
12	KNIGHT, JABRIA	F	0	0-0	0-0	0-0	0	0	0	0	0	0	0	0	0	0
20	CARDWELL, CORRIONE	G	0	0-2	0-1	0-2	1	0	1	2	0	1	0	1	8	-4
21	JOHNSON, KIARA	F	0	0-1	0-0	0-0	0	1	1	1	0	0	0	0	2	-5
32	HARRIS, RAYJON	F	0	0-0	0-0	0-0	0	0	0	0	0	0	0	0	0	0
	TEAM						0	0	0	0	0	0	0	0	0	0
<b>TOTALS</b>			<b>16</b>	<b>5-16</b>	<b>3-8</b>	<b>3-8</b>	<b>3</b>	<b>6</b>	<b>9</b>	<b>9</b>	<b>3</b>	<b>5</b>	<b>0</b>	<b>3</b>	<b>48</b>	

*Shooting By Period*

Period	FG	FG%	3FG	3FG%	FT	FT%
Game	19-56	33.9%	8-22	36.4%	6-18	33.3%

Deadball Rebounds: 10,4

**Wichita St. 19**

No.	Player	S	Pts	FG	3FG	FT	OR	DR	TR	PF	A	TO	Blk	Stl	Min	+/-
01	MCCARTY, DJ	G	0	0-0	0-0	0-0	0	0	0	1	0	2	0	0	7	-2
05	REID, ASHLEY	G	0	0-0	0-0	0-0	0	0	0	2	0	0	0	0	3	2
13	PRINCE, RAVEN	F	0	0-1	0-0	0-0	0	1	1	0	0	0	0	0	5	7
23	BASTIN, SERAPHINE	G	3	1-3	0-1	1-1	1	2	3	0	1	1	0	1	9	6
34	SMITH, SHYIA	F	0	0-0	0-0	0-0	0	2	2	0	0	1	0	0	6	1
02	MCCULLY, MARIAH	G	10	3-6	0-1	4-6	0	1	1	2	1	2	0	1	10	3
11	KIRVEN, ASHLEI	F	0	0-0	0-0	0-0	0	0	0	0	0	0	0	0	0	0
21	BREWER, MAYA	G	0	0-0	0-0	0-0	0	0	0	0	0	0	0	0	0	0
31	DANIELSSON, VENDELA	G	0	0-0	0-0	0-0	0	0	0	0	0	0	0	0	0	0
42	HENDERSON, ASIA	F	6	3-3	0-0	0-1	0	2	2	0	0	0	0	0	8	-2
	TEAM						0	0	0	0	0	0	0	0	0	0
<b>TOTALS</b>			<b>19</b>	<b>7-13</b>	<b>0-2</b>	<b>5-8</b>	<b>1</b>	<b>8</b>	<b>9</b>	<b>5</b>	<b>2</b>	<b>6</b>	<b>0</b>	<b>2</b>	<b>48</b>	

*Shooting By Period*

Period	FG	FG%	3FG	3FG%	FT	FT%
Game	22-51	43.1%	6-18	33.3%	13-24	54.2%

Deadball Rebounds: 4,4

Game Notes:

Officials: Jeffrey Smith, Bryan Enterline, Chaney Muench  
 Attendance: 1738

Start Time: 03:05 PM ET  
 End Time: 05:00 PM ET  
 Game Duration: 1:55

Score	1st	2nd	3rd	4th	TOT
EMU	12	12	12	16	<b>52</b>
WSU	12	11	21	19	<b>63</b>

Points from (This Period)	EMU	WSU
In the Paint	4	14
Off Turns	6	1
2nd Chance	3	2
Fast Break	5	1
Bench	5	16

**Official Play-By-Play  
Eastern Mich. vs Wichita St.  
Fourth Quarter**

**December 07, 2019 at Charles Koch Arena (Devlin Court) - Wichita, Kan.**



**Period 4**

**Starters:**

**Eastern Mich.:** 0 STANLEY,AALIYAH (G); 10 COMBS,AREANNA (G); 13 ANNECCHIARICO,JENNA (G); 14 PINEDA,NATALIA (G); 22 HUDSON,AUTUMN (F);

**Wichita St.:** 1 MCCARTY,DJ (G); 5 REID,ASHLEY (G); 13 PRINCE,RAVEN (F); 23 BASTIN,SERAPHINE (G); 34 SMITH,SHYIA (F);

Time	VISITORS: Eastern Mich.	Score	Margin	HOME: Wichita St.
10:00	SUB OUT: PINEDA, NATALIA			
10:00	SUB IN: CARDWELL, CORRIONE			
09:45	MISSED JUMPER by LEWIS, COURTNIE			
09:39	REBOUND (OFF) by STANLEY, AALIYAH			
09:37	MISSED JUMPER by STANLEY, AALIYAH			
09:34				REBOUND (DEF) by BASTIN, SERAPHINE
09:34				TURNOVER (TRAVEL) by BASTIN, SERAPHINE
09:34	SUB OUT: HARRIS, RAYJON			
09:34	SUB IN: JOHNSON, KIARA			
09:21	TIMEOUT 30SEC			
09:12	MISSED LAYUP by JOHNSON, KIARA			
09:09				REBOUND (DEF) by HENDERSON, ASIA
08:56	FOUL (PERSONAL) by JOHNSON, KIARA			
08:53		46-36	H 10	GOOD! LAYUP by MCCULLY, MARIAH
08:53	FOUL (PERSONAL) by CARDWELL, CORRIONE			
08:53		47-36	H 11	GOOD! FT by MCCULLY, MARIAH
08:43	TURNOVER (BADPASS) by ANNECCHIARICO, JENNA			
08:43				STEAL by BASTIN, SERAPHINE
08:18				MISSED 3PTR by MCCULLY, MARIAH
08:15	REBOUND (DEF) by JOHNSON, KIARA			
08:05	MISSED 3PTR by CARDWELL, CORRIONE			
08:02				REBOUND (DEF) by HENDERSON, ASIA
07:46		49-36	H 13	GOOD! JUMPER by HENDERSON, ASIA [PNT]
07:46				ASSIST by BASTIN, SERAPHINE
07:37	FOUL (OFF) by ANNECCHIARICO, JENNA			
07:37	TURNOVER (OFFENSIVE) by ANNECCHIARICO, JENNA			
07:37				SUB OUT: BASTIN, SERAPHINE
07:37				SUB IN: MCCARTY, DJ
07:37	SUB OUT: ANNECCHIARICO, JENNA			
07:37	SUB IN: COMBS, AREANNA			
07:34				TURNOVER (BADPASS) by MCCARTY, DJ
07:34	STEAL by CARDWELL, CORRIONE			
07:30				FOUL (PERSONAL) by REID, ASHLEY
07:30	MISSED FT by CARDWELL, CORRIONE			
07:30	REBOUND (OFF) by TEAM			
07:30	SUB OUT: JOHNSON, KIARA			
07:30	SUB IN: HUDSON, AUTUMN			
07:30	MISSED FT by CARDWELL, CORRIONE			
07:30				REBOUND (DEF) by MCCULLY, MARIAH
07:10				TURNOVER (OTHER) by MCCULLY, MARIAH
07:10	SUB OUT: CARDWELL, CORRIONE			
07:10	SUB IN: AGOSTO, JUANITA			
06:54				FOUL (PERSONAL) by MCCARTY, DJ
06:54	MISSED FT by AGOSTO, JUANITA			
06:54	REBOUND (OFF) by TEAM			
06:54	GOOD! FT by AGOSTO, JUANITA	49-37	H 12	
06:39				TURNOVER (BADPASS) by MCCULLY, MARIAH
06:39	STEAL by COMBS, AREANNA			
06:33	GOOD! LAYUP by COMBS, AREANNA [FB]	49-39	H 10	
06:33				FOUL (PERSONAL) by REID, ASHLEY
06:33				SUB OUT: REID, ASHLEY
06:33				SUB OUT: HENDERSON, ASIA
06:33				SUB IN: BASTIN, SERAPHINE
06:33				SUB IN: SMITH, SHYIA
06:33	MISSED FT by COMBS, AREANNA			
06:32				REBOUND (DEF) by PRINCE, RAVEN
06:06				MISSED LAYUP by PRINCE, RAVEN
06:05				REBOUND (OFF) by BASTIN, SERAPHINE
06:05	SUB OUT: HUDSON, AUTUMN			
06:05	SUB IN: PINEDA, NATALIA			
06:05	FOUL (PERSONAL) by STANLEY, AALIYAH			
06:00		51-39	H 12	GOOD! LAYUP by MCCULLY, MARIAH [PNT]
06:00	FOUL (PERSONAL) by PINEDA, NATALIA			
06:00				MISSED FT by MCCULLY, MARIAH
06:00	REBOUND (DEF) by TEAM			
05:49	TURNOVER (LOSTBALL) by AGOSTO, JUANITA			
05:49				STEAL by MCCULLY, MARIAH
05:45	FOUL (PERSONAL) by COMBS, AREANNA			
05:45	SUB OUT: COMBS, AREANNA			
05:45	SUB IN: ANNECCHIARICO, JENNA			

Time	VISITORS: Eastern Mich.	Score	Margin	HOME: Wichita St.
05:45		52-39	H 13	GOOD! FT by MCCULLY, MARIAH [FB]
05:45				MISSED FT by MCCULLY, MARIAH
05:44	REBOUND (DEF) by LEWIS, COURTNIÉ			
05:24				FOUL (PERSONAL) by MCCULLY, MARIAH
05:24	MISSED FT by AGOSTO, JUANITA			
05:24	REBOUND (OFF) by TEAM			
05:24	GOOD! FT by AGOSTO, JUANITA	52-40	H 12	
05:24	SUB OUT: LEWIS, COURTNIÉ			
05:24	SUB IN: CARDWELL, CORRIONE			
05:02				MISSED LAYUP by MCCULLY, MARIAH
04:59	REBOUND (DEF) by PINEDA, NATALIA			
04:54	MISSED 3PTR by STANLEY, AALIYAH			
04:50				REBOUND (DEF) by SMITH, SHYIA
04:36		54-40	H 14	GOOD! LAYUP by BASTIN, SERAPHINE
04:32	FOUL (PERSONAL) by CARDWELL, CORRIONE			
04:32		55-40	H 15	GOOD! FT by BASTIN, SERAPHINE
04:32				SUB OUT: PRINCE, RAVEN
04:32				SUB IN: HENDERSON, ASIA
04:21	TURNOVER (BADPASS) by ANNECCHIARICO, JENNA			
04:09				MISSED LAYUP by MCCULLY, MARIAH
04:05	REBOUND (DEF) by PINEDA, NATALIA			
04:02	TURNOVER (LOSTBALL) by CARDWELL, CORRIONE			
03:40				MISSED 3PTR by BASTIN, SERAPHINE
03:37	REBOUND (DEF) by AGOSTO, JUANITA			
03:32	GOOD! 3PTR by STANLEY, AALIYAH [FB]	55-43	H 12	
03:32	ASSIST by AGOSTO, JUANITA			
03:15				TURNOVER (TRAVEL) by SMITH, SHYIA
03:10	MISSED LAYUP by ANNECCHIARICO, JENNA			
03:04	REBOUND (OFF) by CARDWELL, CORRIONE			
03:04	MISSED LAYUP by CARDWELL, CORRIONE			
03:04	REBOUND (OFF) by PINEDA, NATALIA			
03:04	GOOD! LAYUP by PINEDA, NATALIA	55-45	H 10	
03:04				FOUL (PERSONAL) by MCCULLY, MARIAH
03:04	GOOD! FT by PINEDA, NATALIA	55-46	H 9	
02:49		57-46	H 11	GOOD! LAYUP by HENDERSON, ASIA
02:49				ASSIST by MCCULLY, MARIAH
02:49	FOUL (PERSONAL) by PINEDA, NATALIA			
02:49				MISSED FT by HENDERSON, ASIA
02:49	REBOUND (DEF) by STANLEY, AALIYAH			
02:38	MISSED JUMPER by STANLEY, AALIYAH			
02:34				REBOUND (DEF) by SMITH, SHYIA
02:26	FOUL (PERSONAL) by PINEDA, NATALIA			
02:26		58-46	H 12	GOOD! FT by MCCULLY, MARIAH
02:26		59-46	H 13	GOOD! FT by MCCULLY, MARIAH
02:02	MISSED 3PTR by ANNECCHIARICO, JENNA			
01:58				REBOUND (DEF) by TEAM
01:58	SUB OUT: AGOSTO, JUANITA			
01:58	SUB IN: LEWIS, COURTNIÉ			
01:51				MISSED JUMPER by BASTIN, SERAPHINE
01:49	REBOUND (DEF) by TEAM			
01:37	GOOD! 3PTR by STANLEY, AALIYAH	59-49	H 10	
01:37	ASSIST by ANNECCHIARICO, JENNA			
01:37	TIMEOUT TEAM			
01:30				TURNOVER (BADPASS) by MCCARTY, DJ
01:30	STEAL by ANNECCHIARICO, JENNA			
01:15	MISSED 3PTR by STANLEY, AALIYAH			
01:14				REBOUND (DEF) by BASTIN, SERAPHINE
00:57		61-49	H 12	GOOD! LAYUP by MCCULLY, MARIAH
00:51	GOOD! 3PTR by LEWIS, COURTNIÉ	61-52	H 9	
00:51	ASSIST by ANNECCHIARICO, JENNA			
00:35		63-52	H 11	GOOD! LAYUP by HENDERSON, ASIA
00:24	MISSED 3PTR by PINEDA, NATALIA			
00:22				REBOUND (DEF) by TEAM

Eastern Mich. 52, Wichita St. 63

Points from (This Period)	EMU	WSU
In the Paint	4	14
Off Turns	6	1
2nd Chance	3	2
Fast Break	5	1
Bench	5	16



**Official Scoring/Possession Reference Chart  
Eastern Mich. vs Wichita St.  
Period 1**

**December 07, 2019 at Charles Koch Arena (Devlin Court) - Wichita, Kan.**



**Period 1**

**Starters:**

**Eastern Mich.:** 0 STANLEY,AALIYAH (G); 10 COMBS,AREANNA (G); 13 ANNECCHIARICO,JENNA (G); 14 PINEDA,NATALIA (G); 22 HUDSON,AUTUMN (F);  
**Wichita St.:** 1 MCCARTY,DJ (G); 5 REID,ASHLEY (G); 13 PRINCE,RAVEN (F); 23 BASTIN,SERAPHINE (G); 34 SMITH,SHYIA (F);

Time	VISITORS: Eastern Mich.	Score	Margin	HOME: Wichita St.
09:13		2-0	H 2	GOOD! LAYUP by SMITH, SHYIA [FB]
08:16	GOOD! 3PTR by STANLEY, AALIYAH	2-3	V 1	
07:32	GOOD! JUMPER by COMBS, AREANNA	2-5	V 3	
07:12		5-5	T	GOOD! 3PTR by REID, ASHLEY
06:23	GOOD! LAYUP by HUDSON, AUTUMN	5-7	V 2	
04:56		7-7	T	GOOD! LAYUP by MCCARTY, DJ
03:41		10-7	H 3	GOOD! 3PTR by MCCULLY, MARIAH
02:39		11-7	H 4	GOOD! FT by MCCULLY, MARIAH [FB]
02:03		12-7	H 5	GOOD! FT by MCCULLY, MARIAH
01:42	GOOD! 3PTR by LEWIS, COURTNIE	12-10	H 2	
01:19	GOOD! LAYUP by COMBS, AREANNA	12-12	T	

**Eastern Mich. 12, Wichita St. 12**

**Official Scoring/Possession Reference Chart  
Eastern Mich. vs Wichita St.  
Period 2**

**December 07, 2019 at Charles Koch Arena (Devlin Court) - Wichita, Kan.**



**Period 2**

**Starters:**

**Eastern Mich.:** 0 STANLEY,AALIYAH (G); 10 COMBS,AREANNA (G); 13 ANNECCHIARICO,JENNA (G); 14 PINEDA,NATALIA (G); 22 HUDSON,AUTUMN (F);

**Wichita St.:** 1 MCCARTY,DJ (G); 5 REID,ASHLEY (G); 13 PRINCE,RAVEN (F); 23 BASTIN,SERAPHINE (G); 34 SMITH,SHYIA (F);

Time	VISITORS: Eastern Mich.	Score	Margin	HOME: Wichita St.
09:27	GOOD! JUMPER by STANLEY, AALIYAH	12-14	V 2	
08:52	GOOD! LAYUP by COMBS, AREANNA	12-16	V 4	
08:31		15-16	V 1	GOOD! 3PTR by BASTIN, SERAPHINE
07:28	GOOD! JUMPER by CARDWELL, CORRIONE	15-18	V 3	
07:04		17-18	V 1	GOOD! JUMPER by BASTIN, SERAPHINE
06:47	GOOD! FT by COMBS, AREANNA	17-19	V 2	
04:41		20-19	H 1	GOOD! 3PTR by MCCARTY, DJ
04:07		23-19	H 4	GOOD! 3PTR by MCCULLY, MARIAH
03:49	GOOD! LAYUP by HARRIS, RAYJON	23-21	H 2	
02:48	GOOD! FT by ANNECCHIARICO, JENNA [FB]	23-22	H 1	
02:12	GOOD! LAYUP by HUDSON, AUTUMN	23-24	V 1	

**Eastern Mich. 24, Wichita St. 23**

**Official Scoring/Possession Reference Chart  
Eastern Mich. vs Wichita St.  
Period 3**

**December 07, 2019 at Charles Koch Arena (Devlin Court) - Wichita, Kan.**



**Period 3**

**Starters:**

**Eastern Mich.:** 0 STANLEY,AALIYAH (G); 10 COMBS,AREANNA (G); 13 ANNECCHIARICO,JENNA (G); 14 PINEDA,NATALIA (G); 22 HUDSON,AUTUMN (F);

**Wichita St.:** 1 MCCARTY,DJ (G); 5 REID,ASHLEY (G); 13 PRINCE,RAVEN (F); 23 BASTIN,SERAPHINE (G); 34 SMITH,SHYIA (F);

Time	VISITORS: Eastern Mich.	Score	Margin	HOME: Wichita St.
09:49		25-24	H 1	GOOD! LAYUP by PRINCE, RAVEN
09:23		27-24	H 3	GOOD! LAYUP by MCCULLY, MARIAH [FB]
09:04	GOOD! 3PTR by STANLEY, AALIYAH	27-27	T	
08:11		28-27	H 1	GOOD! FT by SMITH, SHYIA
08:11		29-27	H 2	GOOD! FT by SMITH, SHYIA
07:37		31-27	H 4	GOOD! JUMPER by MCCULLY, MARIAH [PNT]
05:25		33-27	H 6	GOOD! LAYUP by BASTIN, SERAPHINE
05:08	GOOD! FT by JOHNSON, KIARA [FB]	33-28	H 5	
04:11		35-28	H 7	GOOD! LAYUP by HENDERSON, ASIA
03:52		36-28	H 8	GOOD! FT by SMITH, SHYIA
03:52		37-28	H 9	GOOD! FT by SMITH, SHYIA
03:27		39-28	H 11	GOOD! LAYUP by BASTIN, SERAPHINE [FB]
02:29	GOOD! JUMPER by COMBS, AREANNA [PNT]	39-30	H 9	
01:33		40-30	H 10	GOOD! FT by SMITH, SHYIA
01:33		41-30	H 11	GOOD! FT by SMITH, SHYIA
01:23	GOOD! 3PTR by STANLEY, AALIYAH	41-33	H 8	
01:01		44-33	H 11	GOOD! 3PTR by MCCULLY, MARIAH
00:48	GOOD! 3PTR by STANLEY, AALIYAH	44-36	H 8	

**Eastern Mich. 36, Wichita St. 44**

**Official Scoring/Possession Reference Chart  
Eastern Mich. vs Wichita St.  
Period 4**

**December 07, 2019 at Charles Koch Arena (Devlin Court) - Wichita, Kan.**



**Period 4**

**Starters:**

**Eastern Mich.:** 0 STANLEY,AALIYAH (G); 10 COMBS,AREANNA (G); 13 ANNECCHIARICO,JENNA (G); 14 PINEDA,NATALIA (G); 22 HUDSON,AUTUMN (F);

**Wichita St.:** 1 MCCARTY,DJ (G); 5 REID,ASHLEY (G); 13 PRINCE,RAVEN (F); 23 BASTIN,SERAPHINE (G); 34 SMITH,SHYIA (F);

Time	VISITORS: Eastern Mich.	Score	Margin	HOME: Wichita St.
08:53		46-36	H 10	GOOD! LAYUP by MCCULLY, MARIAH
08:53		47-36	H 11	GOOD! FT by MCCULLY, MARIAH
07:46		49-36	H 13	GOOD! JUMPER by HENDERSON, ASIA [PNT]
06:54	GOOD! FT by AGOSTO, JUANITA	49-37	H 12	
06:33	GOOD! LAYUP by COMBS, AREANNA [FB]	49-39	H 10	
06:00		51-39	H 12	GOOD! LAYUP by MCCULLY, MARIAH [PNT]
05:45		52-39	H 13	GOOD! FT by MCCULLY, MARIAH [FB]
05:24	GOOD! FT by AGOSTO, JUANITA	52-40	H 12	
04:36		54-40	H 14	GOOD! LAYUP by BASTIN, SERAPHINE
04:32		55-40	H 15	GOOD! FT by BASTIN, SERAPHINE
03:32	GOOD! 3PTR by STANLEY, AALIYAH [FB]	55-43	H 12	
03:04	GOOD! LAYUP by PINEDA, NATALIA	55-45	H 10	
03:04	GOOD! FT by PINEDA, NATALIA	55-46	H 9	
02:49		57-46	H 11	GOOD! LAYUP by HENDERSON, ASIA
02:26		58-46	H 12	GOOD! FT by MCCULLY, MARIAH
02:26		59-46	H 13	GOOD! FT by MCCULLY, MARIAH
01:37	GOOD! 3PTR by STANLEY, AALIYAH	59-49	H 10	
00:57		61-49	H 12	GOOD! LAYUP by MCCULLY, MARIAH
00:51	GOOD! 3PTR by LEWIS, COURTNIE	61-52	H 9	
00:35		63-52	H 11	GOOD! LAYUP by HENDERSON, ASIA

**Eastern Mich. 52, Wichita St. 63**

**Official Substitutions Log  
Eastern Mich. vs Wichita St.  
Period 1**

**December 07, 2019 at Charles Koch Arena (Devlin Court) - Wichita, Kan.**



VISITORS: Eastern Mich.	Time	Score	HOME: Wichita St.
0 STANLEY,AALIYAH			1 MCCARTY,DJ
10 COMBS,AREANNA			5 REID,ASHLEY
13 ANNECCHIARICO,JENNA			13 PRINCE,RAVEN
14 PINEDA,NATALIA			23 BASTIN,SERAPHINE
22 HUDSON,AUTUMN			34 SMITH,SHYIA
	05:50	7-5	SUB OUT: PRINCE,RAVEN
	05:50		SUB OUT: BASTIN,SERAPHINE
	05:50		SUB IN: MCCULLY,MARIAH
	05:50		SUB IN: HENDERSON,ASIA
SUB OUT: 0 STANLEY,AALIYAH	05:50		
SUB OUT: 13 ANNECCHIARICO,JENNA	05:50		
SUB OUT: 22 HUDSON,AUTUMN	05:50		
SUB IN: 2 AGOSTO,JUANITA	05:50		
SUB IN: 12 KNIGHT,JABRIA	05:50		
SUB IN: 20 CARDWELL,CORRIONE	05:50		
SUB OUT: 12 KNIGHT,JABRIA	04:39	7-7	
SUB IN: 32 HARRIS,RAYJON	04:39		
SUB OUT: 14 PINEDA,NATALIA	04:11	7-7	
SUB IN: 13 ANNECCHIARICO,JENNA	04:11		
	03:03	7-10	SUB OUT: MCCARTY,DJ
	03:03		SUB IN: DANIELSSON,VENDELA
SUB OUT: 10 COMBS,AREANNA	03:03		
SUB IN: 4 LEWIS,COURTNE	03:03		
SUB OUT: 20 CARDWELL,CORRIONE	02:39	7-10	
SUB IN: 0 STANLEY,AALIYAH	02:39		
	02:03	7-11	SUB OUT: REID,ASHLEY
	02:03		SUB IN: BASTIN,SERAPHINE
SUB OUT: 32 HARRIS,RAYJON	02:03		
SUB IN: 21 JOHNSON,KIARA	02:03		
SUB OUT: 2 AGOSTO,JUANITA	02:03		
SUB IN: 10 COMBS,AREANNA	02:03		
	02:03		SUB OUT: SMITH,SHYIA
	02:03		SUB IN: PRINCE,RAVEN
	01:19	10-12	SUB OUT: HENDERSON,ASIA
	01:19		SUB IN: KIRVEN,ASHLEI

**Eastern Mich. 12, Wichita St. 12**

**Official Substitutions Log  
Eastern Mich. vs Wichita St.  
Period 2**

**December 07, 2019 at Charles Koch Arena (Devlin Court) - Wichita, Kan.**



VISITORS: Eastern Mich.	Time	Score	HOME: Wichita St.
0 STANLEY,AALIYAH			1 MCCARTY,DJ
10 COMBS,AREANNA			5 REID,ASHLEY
13 ANNECCHIARICO,JENNA			13 PRINCE,RAVEN
14 PINEDA,NATALIA			23 BASTIN,SERAPHINE
22 HUDSON,AUTUMN			34 SMITH,SHYIA
	09:59	-	SUB OUT: DANIELSSON,VENDELA
	09:59		SUB IN: REID,ASHLEY
SUB OUT: 21 JOHNSON,KIARA	09:59		
SUB IN: 22 HUDSON,AUTUMN	09:59		
	08:10	16-15	SUB OUT: KIRVEN,ASHLEI
	08:10		SUB IN: SMITH,SHYIA
SUB OUT: 22 HUDSON,AUTUMN	08:10		
SUB IN: 12 KNIGHT,JABRIA	08:10		
SUB OUT: 13 ANNECCHIARICO,JENNA	08:10		
SUB IN: 20 CARDWELL,CORRIONE	08:10		
	06:47	18-17	SUB OUT: MCCULLY,MARIAH
	06:47		SUB IN: MCCARTY,DJ
	05:55	19-17	SUB OUT: REID,ASHLEY
	05:55		SUB IN: BREWER,MAYA
SUB OUT: 0 STANLEY,AALIYAH	05:55		
SUB IN: 13 ANNECCHIARICO,JENNA	05:55		
SUB OUT: 13 ANNECCHIARICO,JENNA	05:37	19-17	
SUB IN: 14 PINEDA,NATALIA	05:37		
	04:32	19-20	SUB OUT: MCCARTY,DJ
	04:32		SUB OUT: BREWER,MAYA
	04:32		SUB OUT: BASTIN,SERAPHINE
	04:32		SUB IN: MCCULLY,MARIAH
	04:32		SUB IN: REID,ASHLEY
	04:32		SUB IN: DANIELSSON,VENDELA
SUB OUT: 10 COMBS,AREANNA	04:32		
SUB OUT: 12 KNIGHT,JABRIA	04:32		
SUB OUT: 20 CARDWELL,CORRIONE	04:32		
SUB IN: 2 AGOSTO,JUANITA	04:32		
SUB IN: 13 ANNECCHIARICO,JENNA	04:32		
SUB IN: 32 HARRIS,RAYJON	04:32		
SUB OUT: 4 LEWIS,COURTNEE	02:58	21-23	
SUB IN: 10 COMBS,AREANNA	02:58		
SUB OUT: 32 HARRIS,RAYJON	02:48	21-23	
SUB IN: 22 HUDSON,AUTUMN	02:48		
	02:35	22-23	SUB OUT: DANIELSSON,VENDELA
	02:35		SUB IN: MCCARTY,DJ
	01:43	24-23	SUB OUT: MCCULLY,MARIAH
	01:43		SUB IN: BREWER,MAYA
SUB OUT: 2 AGOSTO,JUANITA	00:51	24-23	
SUB OUT: 10 COMBS,AREANNA	00:51		
SUB IN: 0 STANLEY,AALIYAH	00:51		
SUB IN: 4 LEWIS,COURTNEE	00:51		

**Eastern Mich. 24, Wichita St. 23**

**Official Substitutions Log  
Eastern Mich. vs Wichita St.  
Period 3**

**December 07, 2019 at Charles Koch Arena (Devlin Court) - Wichita, Kan.**



<b>VISITORS: Eastern Mich.</b>	<b>Time</b>	<b>Score</b>	<b>HOME: Wichita St.</b>
0 STANLEY,AALIYAH			1 MCCARTY,DJ
10 COMBS,AREANNA			5 REID,ASHLEY
13 ANNECCHIARICO,JENNA			13 PRINCE,RAVEN
14 PINEDA,NATALIA			23 BASTIN,SERAPHINE
22 HUDSON,AUTUMN			34 SMITH,SHYIA
	10:00	-	SUB OUT: REID,ASHLEY
	10:00		SUB OUT: BREWER,MAYA
	10:00		SUB IN: MCCULLY,MARIAH
	10:00		SUB IN: BASTIN,SERAPHINE
SUB OUT: 4 LEWIS,COURTNIE	10:00		
SUB IN: 10 COMBS,AREANNA	10:00		
SUB OUT: 0 STANLEY,AALIYAH	08:14	27-27	
SUB OUT: 22 HUDSON,AUTUMN	08:14		
SUB IN: 2 AGOSTO,JUANITA	08:14		
SUB IN: 21 JOHNSON,KIARA	08:14		
SUB OUT: 14 PINEDA,NATALIA	07:35	27-31	
SUB IN: 4 LEWIS,COURTNIE	07:35		
	05:08	27-33	SUB OUT: PRINCE,RAVEN
	05:08		SUB IN: HENDERSON,ASIA
SUB OUT: 21 JOHNSON,KIARA	03:52	28-37	
SUB IN: 22 HUDSON,AUTUMN	03:52		
	02:00	30-39	SUB OUT: MCCARTY,DJ
	02:00		SUB IN: REID,ASHLEY
SUB OUT: 2 AGOSTO,JUANITA	02:00		
SUB OUT: 22 HUDSON,AUTUMN	02:00		
SUB IN: 0 STANLEY,AALIYAH	02:00		
SUB IN: 32 HARRIS,RAYJON	02:00		
SUB OUT: 10 COMBS,AREANNA	01:33	30-39	
SUB IN: 14 PINEDA,NATALIA	01:33		
	01:33		SUB OUT: SMITH,SHYIA
	01:33		SUB IN: PRINCE,RAVEN

**Eastern Mich. 36, Wichita St. 44**

**Official Substitutions Log  
Eastern Mich. vs Wichita St.  
Period 4**

**December 07, 2019 at Charles Koch Arena (Devlin Court) - Wichita, Kan.**



VISITORS: Eastern Mich.	Time	Score	HOME: Wichita St.
0 STANLEY,AALIYAH			1 MCCARTY,DJ
10 COMBS,AREANNA			5 REID,ASHLEY
13 ANNECCHIARICO,JENNA			13 PRINCE,RAVEN
14 PINEDA,NATALIA			23 BASTIN,SERAPHINE
22 HUDSON,AUTUMN			34 SMITH,SHYIA
SUB OUT: 14 PINEDA,NATALIA	10:00	-	
SUB IN: 20 CARDWELL,CORRIONE	10:00		
SUB OUT: 32 HARRIS,RAYJON	09:34	-	
SUB IN: 21 JOHNSON,KIARA	09:34		
	07:37	36-49	SUB OUT: BASTIN,SERAPHINE
	07:37		SUB IN: MCCARTY,DJ
SUB OUT: 13 ANNECCHIARICO,JENNA	07:37		
SUB IN: 10 COMBS,AREANNA	07:37		
SUB OUT: 21 JOHNSON,KIARA	07:30	36-49	
SUB IN: 22 HUDSON,AUTUMN	07:30		
SUB OUT: 20 CARDWELL,CORRIONE	07:10	36-49	
SUB IN: 2 AGOSTO,JUANITA	07:10		
	06:33	39-49	SUB OUT: REID,ASHLEY
	06:33		SUB OUT: HENDERSON,ASIA
	06:33		SUB IN: BASTIN,SERAPHINE
	06:33		SUB IN: SMITH,SHYIA
SUB OUT: 22 HUDSON,AUTUMN	06:05	39-49	
SUB IN: 14 PINEDA,NATALIA	06:05		
SUB OUT: 10 COMBS,AREANNA	05:45	39-51	
SUB IN: 13 ANNECCHIARICO,JENNA	05:45		
SUB OUT: 4 LEWIS,COURTNIE	05:24	40-52	
SUB IN: 20 CARDWELL,CORRIONE	05:24		
	04:32	40-55	SUB OUT: PRINCE,RAVEN
	04:32		SUB IN: HENDERSON,ASIA
SUB OUT: 2 AGOSTO,JUANITA	01:58	46-59	
SUB IN: 4 LEWIS,COURTNIE	01:58		

**Eastern Mich. 52, Wichita St. 63**

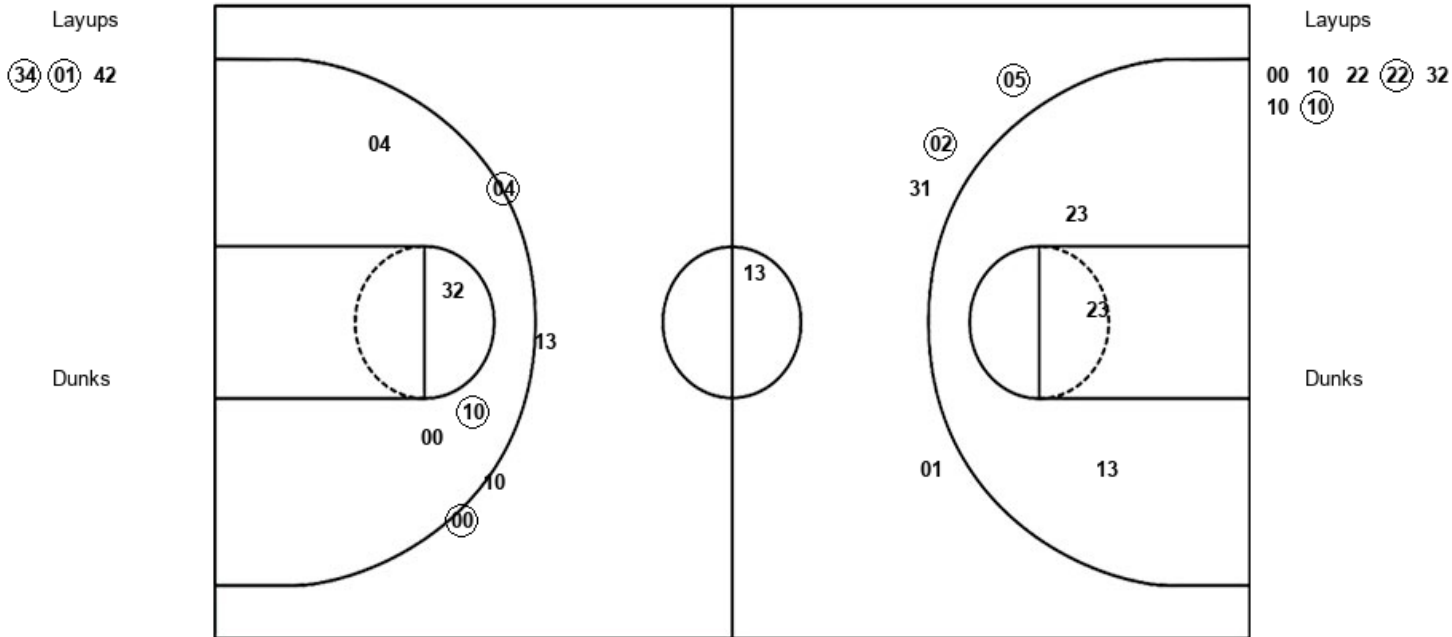


**Official Shot Chart**  
**Eastern Mich. vs Wichita St.**  
**PERIOD 1 Shots**  
 December 07, 2019 at Charles Koch Arena (Devlin Court) - Wichita, Kan.



**Wichita St.**

**Eastern Mich.**



WSU : Period 1	Made	Att	Pct
Layups	2	3	66.7
Dunks	0	0	0
2PT Field Goals	2	6	33.3
3PT Field Goals	2	4	50.0
<b>Total Field Goals</b>	<b>4</b>	<b>10</b>	<b>40.0</b>

EMU : Period 1	Made	Att	Pct
Layups	2	7	28.6
Dunks	0	0	0
2PT Field Goals	3	11	27.3
3PT Field Goals	2	5	40.0
<b>Total Field Goals</b>	<b>5</b>	<b>16</b>	<b>31.3</b>

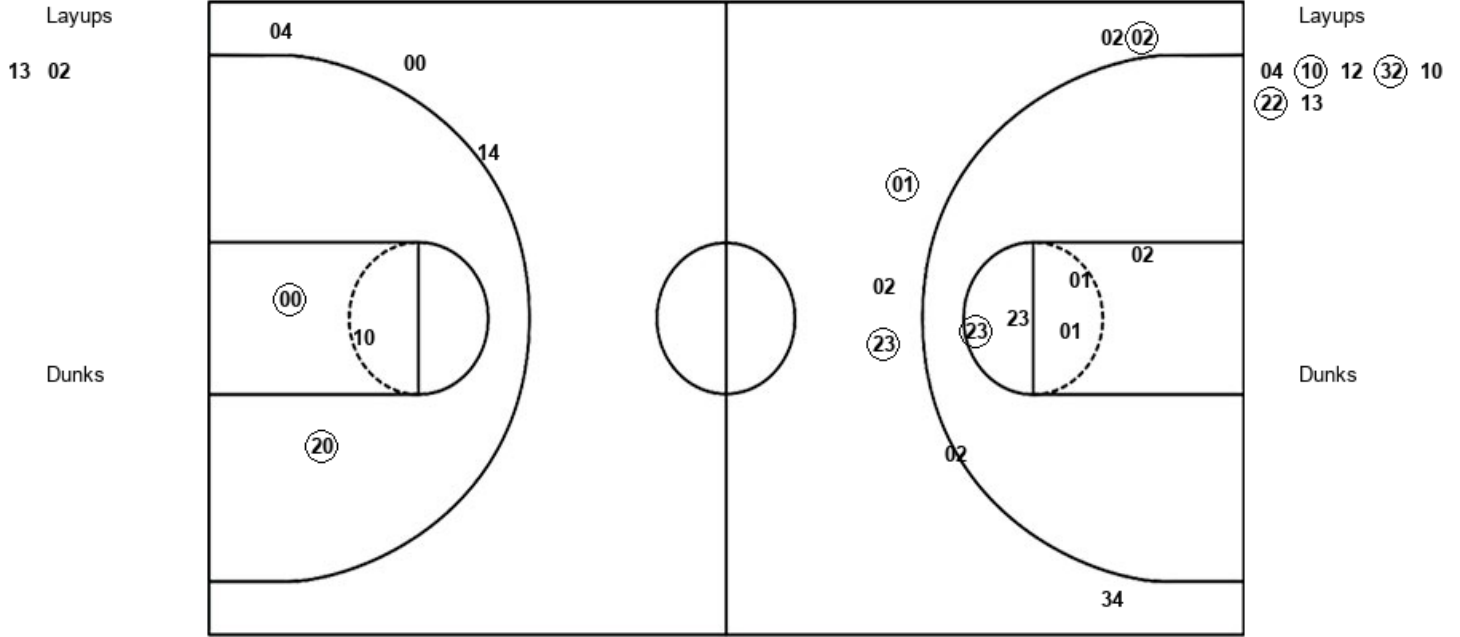
**Official Shot Chart**  
**Eastern Mich. vs Wichita St.**  
**PERIOD 2 Shots**

December 07, 2019 at Charles Koch Arena (Devlin Court) - Wichita, Kan.



**Wichita St.**

**Eastern Mich.**



WSU : Period 2	Made	Att	Pct
Layups	0	2	00.0
Dunks	0	0	0
2PT Field Goals	1	8	12.5
3PT Field Goals	3	6	50.0
<b>Total Field Goals</b>	<b>4</b>	<b>14</b>	<b>28.6</b>

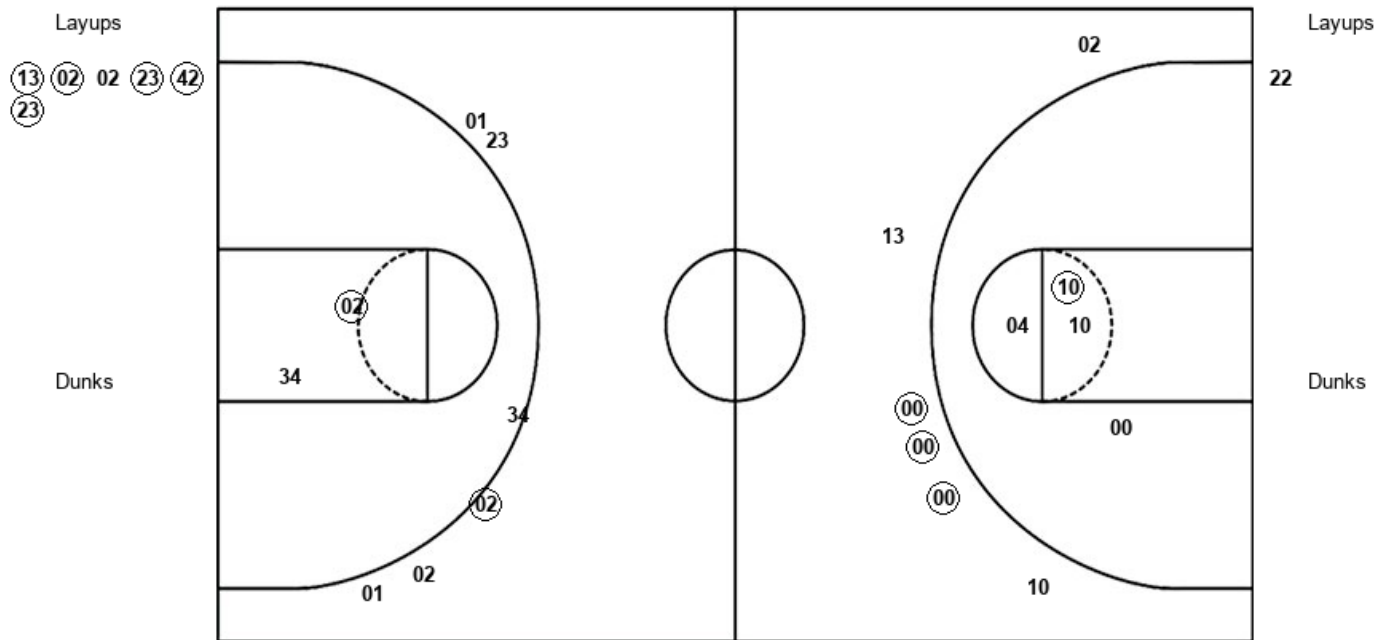
EMU : Period 2	Made	Att	Pct
Layups	3	7	42.9
Dunks	0	0	0
2PT Field Goals	5	10	50.0
3PT Field Goals	0	3	00.0
<b>Total Field Goals</b>	<b>5</b>	<b>13</b>	<b>38.5</b>

**Official Shot Chart**  
**Eastern Mich. vs Wichita St.**  
**PERIOD 3 Shots**  
 December 07, 2019 at Charles Koch Arena (Devlin Court) - Wichita, Kan.



**Wichita St.**

**Eastern Mich.**



<b>WSU : Period 3</b>	<b>Made</b>	<b>Att</b>	<b>Pct</b>
Layups	5	6	83.3
Dunks	0	0	0
2PT Field Goals	6	8	75.0
3PT Field Goals	1	6	16.7
<b>Total Field Goals</b>	<b>7</b>	<b>14</b>	<b>50.0</b>

<b>EMU : Period 3</b>	<b>Made</b>	<b>Att</b>	<b>Pct</b>
Layups	0	1	00.0
Dunks	0	0	0
2PT Field Goals	1	5	20.0
3PT Field Goals	3	6	50.0
<b>Total Field Goals</b>	<b>4</b>	<b>11</b>	<b>36.4</b>

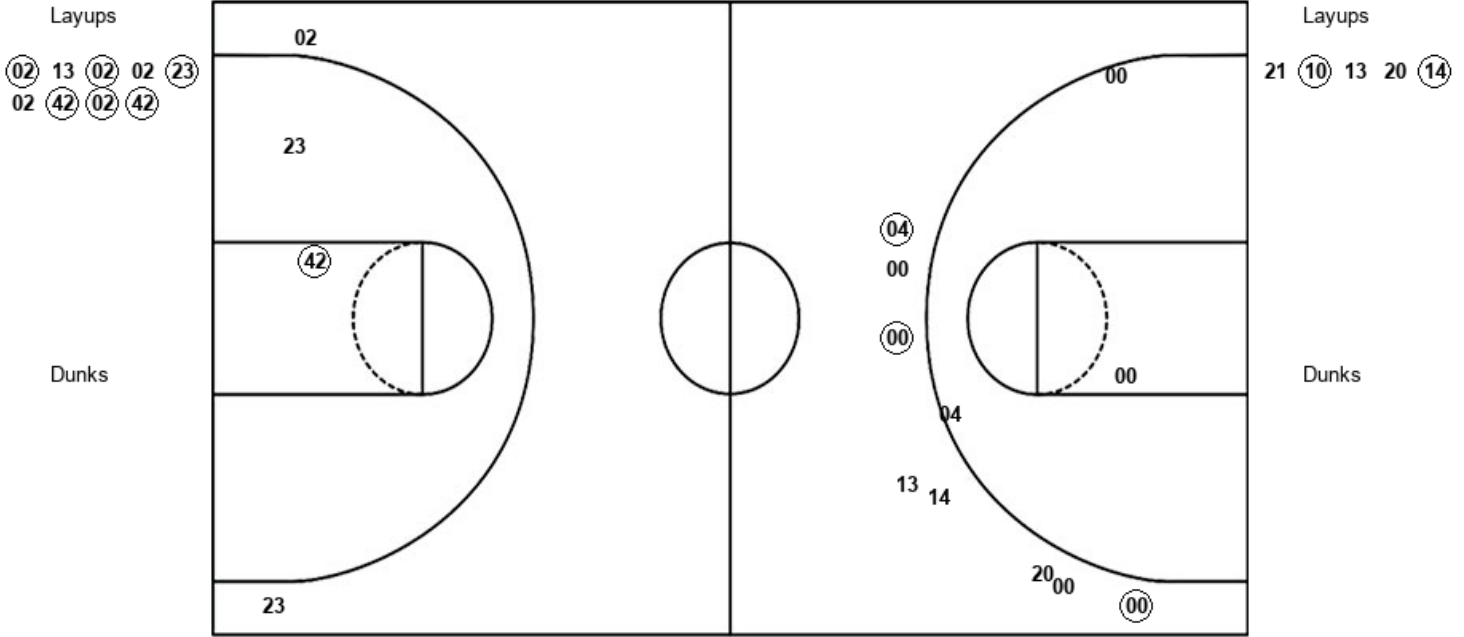
Official Shot Chart  
 Eastern Mich. vs Wichita St.  
 PERIOD 4 Shots

December 07, 2019 at Charles Koch Arena (Devlin Court) - Wichita, Kan.



Wichita St.

Eastern Mich.



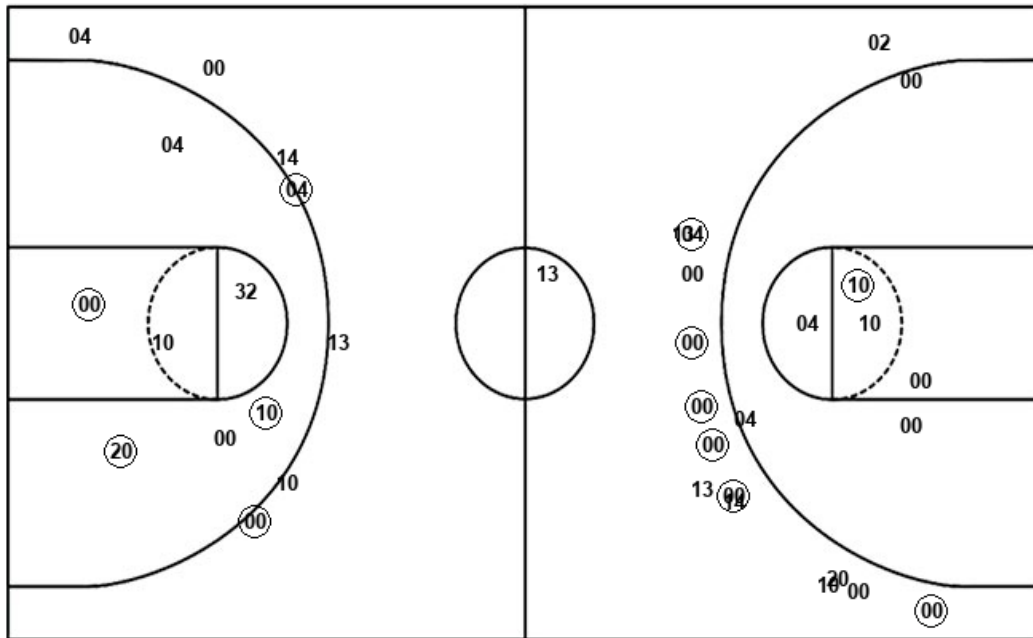
WSU : Period 4	Made	Att	Pct
Layups	6	9	66.7
Dunks	0	0	0
2PT Field Goals	7	11	63.6
3PT Field Goals	0	2	00.0
<b>Total Field Goals</b>	<b>7</b>	<b>13</b>	<b>53.8</b>

EMU : Period 4	Made	Att	Pct
Layups	2	5	40.0
Dunks	0	0	0
2PT Field Goals	2	8	25.0
3PT Field Goals	3	8	37.5
<b>Total Field Goals</b>	<b>5</b>	<b>16</b>	<b>31.3</b>

**Official Shot Chart**  
**Eastern Mich. vs Wichita St.**  
 Eastern Mich. Team Shots  
 December 07, 2019 at Charles Koch Arena (Devlin Court) - Wichita, Kan.



Layups



Layups

00	10	22	22	32
10	10	04	10	12
32	10	22	13	22
21	10	13	20	14

Dunks

Dunks

EMU : Period 1	Made	Att	Pct
Layups	2	7	28.6
Dunks	0	0	0
2PT Field Goals	3	11	27.3
3PT Field Goals	2	5	40.0
<b>Total Field Goals</b>	<b>5</b>	<b>16</b>	<b>31.3</b>

EMU : Period 3	Made	Att	Pct
Layups	0	1	00.0
Dunks	0	0	0
2PT Field Goals	1	5	20.0
3PT Field Goals	3	6	50.0
<b>Total Field Goals</b>	<b>4</b>	<b>11</b>	<b>36.4</b>

EMU : Period 2	Made	Att	Pct
Layups	3	7	42.9
Dunks	0	0	0
2PT Field Goals	5	10	50.0
3PT Field Goals	0	3	00.0
<b>Total Field Goals</b>	<b>5</b>	<b>13</b>	<b>38.5</b>

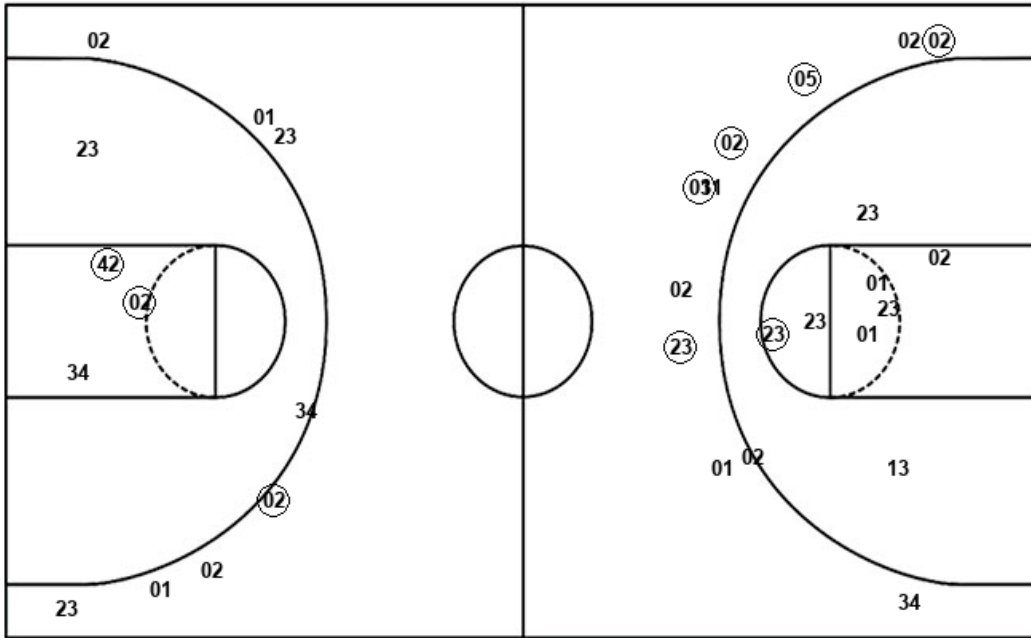
EMU : Period 4	Made	Att	Pct
Layups	2	5	40.0
Dunks	0	0	0
2PT Field Goals	2	8	25.0
3PT Field Goals	3	8	37.5
<b>Total Field Goals</b>	<b>5</b>	<b>16</b>	<b>31.3</b>

**Official Shot Chart**  
**Eastern Mich. vs Wichita St.**  
**Wichita St. Team Shots**

December 07, 2019 at Charles Koch Arena (Devlin Court) - Wichita, Kan.



Layups



Layups

34	01	42	13	02
13	02	02	23	42
23	02	13	02	02
23	02	42	02	42

Dunks

Dunks

WSU : Period 1	Made	Att	Pct
Layups	2	3	66.7
Dunks	0	0	0
2PT Field Goals	2	6	33.3
3PT Field Goals	2	4	50.0
<b>Total Field Goals</b>	<b>4</b>	<b>10</b>	<b>40.0</b>

WSU : Period 2	Made	Att	Pct
Layups	0	2	00.0
Dunks	0	0	0
2PT Field Goals	1	8	12.5
3PT Field Goals	3	6	50.0
<b>Total Field Goals</b>	<b>4</b>	<b>14</b>	<b>28.6</b>

WSU : Period 3	Made	Att	Pct
Layups	5	6	83.3
Dunks	0	0	0
2PT Field Goals	6	8	75.0
3PT Field Goals	1	6	16.7
<b>Total Field Goals</b>	<b>7</b>	<b>14</b>	<b>50.0</b>

WSU : Period 4	Made	Att	Pct
Layups	6	9	66.7
Dunks	0	0	0
2PT Field Goals	7	11	63.6
3PT Field Goals	0	2	00.0
<b>Total Field Goals</b>	<b>7</b>	<b>13</b>	<b>53.8</b>