

FINAL SCORE**Oklahoma****83****Wichita St.****88**

November 30, 2019 • Charles Koch Arena (Devlin Court) - Wichita, Kan.

FINAL STATISTICS

Official Box Score
Oklahoma vs Wichita St.
Game Totals -- Final Statistics
November 30, 2019 at Charles Koch Arena (Devlin Court) - Wichita, Kan.



Oklahoma 83

No.	Player	S	Pts	FG	3FG	FT	OR	DR	TR	PF	A	TO	Blk	Stl	Min	+/-
03	SIMPSON, MANDY	F	2	1-1	0-0	0-2	0	5	5	5	3	2	0	0	34	1
22	LLANUSA, ANA	G	19	7-12	1-4	4-4	2	2	4	2	1	4	0	0	30	5
25	WILLIAMS, MADI	G	13	3-8	0-0	7-8	2	6	8	3	2	5	0	2	31	-1
30	ROBERTSON, TAYLOR	G	30	10-17	9-16	1-1	0	1	1	3	1	1	1	1	38	-5
32	VEITENHEIMER, TATUM	G	1	0-1	0-0	1-2	0	2	2	1	8	2	0	0	15	-1
00	MURCER, JESSI	G	0	0-0	0-0	0-0	0	0	0	0	0	1	0	0	2	-6
04	LEMON, KAMRYN	G	3	0-7	0-5	3-6	2	1	3	1	5	1	0	0	22	-7
12	GREGORY, GABBY	G	13	5-7	2-3	1-2	1	2	3	4	0	0	1	1	23	-2
21	LAMPKIN, NYDIA	F	2	1-2	0-0	0-0	0	0	0	0	0	0	0	0	4	-4
31	WILLISTON, ASPEN	C	0	0-0	0-0	0-0	0	0	0	1	0	0	0	0	1	-5
TEAM							2	0	2	0		2				
TOTALS			83	27-55	12-28	17-25	9	19	28	20	20	18	2	4	200	

Shooting By Period

Period	FG	FG%	3FG	3FG%	FT	FT%
1st Qtr	7-13	54%	2-5	40%	2-4	50%
2nd Qtr	5-12	42%	1-5	20%	8-9	89%
3rd Qtr	7-12	58%	3-6	50%	6-10	60%
4th Qtr	8-18	44%	6-12	50%	1-2	50%
1st Half	12-25	48%	3-10	30%	10-13	77%
2nd Half	15-30	50%	9-18	50%	7-12	58%
Game	27-55	49.1%	12-28	42.9%	17-25	68.0%

Deadball Rebounds: 6,2
 Last FG: 4th-00:09
 Biggest Run: 6-0
 Largest lead: By 2 at 1-05
 Technical Fouls: None.

Wichita St. 88

No.	Player	S	Pts	FG	3FG	FT	OR	DR	TR	PF	A	TO	Blk	Stl	Min	+/-
01	MCCARTY, DJ	G	13	5-7	2-2	1-2	0	1	1	3	3	2	0	1	26	-2
12	BREMAUD, CARLA	G	15	5-9	4-6	1-2	0	1	1	4	0	3	0	0	20	7
13	PRINCE, RAVEN	F	16	5-8	0-0	6-10	6	2	8	4	0	1	1	0	32	-6
23	BASTIN, SERAPHINE	G	16	4-8	3-4	5-6	1	5	6	3	7	0	0	1	37	9
34	SMITH, SHYIA	F	2	0-1	0-0	2-2	1	5	6	2	1	0	1	1	33	7
02	MCCULLY, MARIAH	G	9	4-11	1-4	0-0	1	0	1	2	2	6	0	0	20	1
05	REID, ASHLEY	G	0	0-0	0-0	0-0	0	0	0	0	0	0	0	0	0	-1
11	KIRVEN, ASHLEI	F	3	1-2	0-0	1-2	1	3	4	0	0	0	0	0	7	10
15	HAMPTON, JAIDA	G	2	1-5	0-3	0-0	0	0	0	0	1	1	0	1	8	-9
21	BREWER, MAYA	G	8	3-4	2-3	0-0	1	1	2	4	0	0	0	1	9	10
42	HENDERSON, ASIA	F	4	2-3	0-0	0-0	0	1	1	1	0	1	0	0	7	-1
TEAM							0	0	0	0		0				
TOTALS			88	30-58	12-22	16-24	11	19	30	23	14	14	2	5	200	

Shooting By Period

Period	FG	FG%	3FG	3FG%	FT	FT%
1st Qtr	8-14	57%	3-4	75%	1-2	50%
2nd Qtr	11-15	73%	4-5	80%	4-7	57%
3rd Qtr	6-16	38%	5-10	50%	0-0	0%
4th Qtr	5-13	38%	0-3	00%	11-15	73%
1st Half	19-29	66%	7-9	78%	5-9	56%
2nd Half	11-29	38%	5-13	38%	11-15	73%
Game	30-58	51.7%	12-22	54.5%	16-24	66.7%

Deadball Rebounds: 4,2
 Last FG: 4th-00:22
 Biggest Run: 8-0
 Largest lead: By 16 at 2-02
 Technical Fouls: None.

Game Notes:

Officials: Bryan Brunette, John Capolino, Geraldine Smith
 Attendance: 2336

Start Time: 03:05 PM ET
 End Time: 05:11 PM ET
 Game Duration: 2:05

Score	1st	2nd	3rd	4th	TOT
OKL	18	19	23	23	83
WSU	20	30	17	21	88

OKL led for 1:42. WSU led for 34:24.
 Game was tied for 3:54.
 Times tied: 4 Lead Changes: 4

Points from	OKL	WSU
In the Paint	28	26
Off Turns	9	19
2nd Chance	11	17
Fast Break	22	9
Bench	18	26

Official Box Score
Oklahoma vs Wichita St.
First Half Statistics Only
November 30, 2019 at Charles Koch Arena (Devlin Court) - Wichita, Kan.



Oklahoma 37

No.	Player	S	Pts	FG	3FG	FT	OR	DR	TR	PF	A	TO	Blk	Stl	Min	+/-
00	MURCER, JESSI	G	0	0-0	0-0	0-0	0	0	0	0	0	1	0	0	2	-6
12	GREGORY, GABBY	G	4	2-2	0-0	0-0	0	0	0	1	0	0	0	0	8	-10
21	LAMPKIN, NYDIA	F	2	1-2	0-0	0-0	0	0	0	0	0	0	0	0	4	-4
22	LLANUSA, ANA	G	6	2-5	0-2	2-2	0	1	1	1	0	1	0	0	14	-5
25	WILLIAMS, MADI	G	11	2-4	0-0	7-7	0	5	5	2	1	4	0	1	17	-3
30	ROBERTSON, TAYLOR	G	11	4-7	3-6	0-0	0	0	0	1	1	1	1	1	18	-13
31	WILLISTON, ASPEN	C	0	0-0	0-0	0-0	0	0	0	1	0	0	0	0	1	-5
32	VEITENHEIMER, TATUM	G	1	0-1	0-0	1-2	0	2	2	1	5	1	0	0	11	-1
03	SIMPSON, MANDY	F	2	1-1	0-0	0-2	0	2	2	2	1	2	0	0	15	-6
04	LEMON, KAMRYN	G	0	0-3	0-2	0-0	1	0	1	1	2	0	0	0	9	-12
	TEAM		0	0-0	0-0	0-0	2	0	2	0	0	1	0	0	0	
TOTALS			37	12-25	3-10	10-13	3	10	13	10	10	11	1	2	100	

Shooting By Period

Period	FG	FG%	3FG	3FG%	FT	FT%
1st Qtr	7-13	54%	2-5	40%	2-4	50%
2nd Qtr	5-12	42%	1-5	20%	8-9	89%
1st Half	12-25	48%	3-10	30%	10-13	77%
Game	27-55	49.1%	12-28	42.9%	17-25	68.0%

Deadball Rebounds: 6,2

Last FG Half: OKL 2nd-00:41

Wichita St. 50

No.	Player	S	Pts	FG	3FG	FT	OR	DR	TR	PF	A	TO	Blk	Stl	Min	+/-
01	MCCARTY, DJ	G	5	2-2	1-1	0-0	0	1	1	2	2	2	0	0	7	3
02	MCCULLY, MARIAH	G	5	2-3	1-1	0-0	0	0	0	2	2	4	0	0	12	2
05	REID, ASHLEY	G	0	0-0	0-0	0-0	0	0	0	0	0	0	0	0	0	0
11	KIRVEN, ASHLEI	F	3	1-1	0-0	1-2	1	3	4	0	0	0	0	0	5	14
12	BREMAUD, CARLA	G	9	3-6	2-3	1-2	0	1	1	2	0	2	0	0	13	8
13	PRINCE, RAVEN	F	7	3-4	0-0	1-3	1	1	2	2	0	0	0	0	15	-1
15	HAMPTON, JAIDA	G	2	1-3	0-1	0-0	0	0	0	0	1	0	0	1	4	-3
21	BREWER, MAYA	G	5	2-2	1-1	0-0	0	1	1	2	0	0	0	1	6	14
23	BASTIN, SERAPHINE	G	8	3-5	2-2	0-0	1	3	4	1	5	0	0	0	19	15
34	SMITH, SHYIA	F	2	0-0	0-0	2-2	0	1	1	0	0	0	1	1	15	11
42	HENDERSON, ASIA	F	4	2-3	0-0	0-0	0	1	1	1	0	0	0	0	6	2
	TEAM		0	0-0	0-0	0-0	0	0	0	0	0	0	0	0	0	
TOTALS			50	19-29	7-9	5-9	3	12	15	12	10	8	1	3	100	

Shooting By Period

Period	FG	FG%	3FG	3FG%	FT	FT%
1st Qtr	8-14	57%	3-4	75%	1-2	50%
2nd Qtr	11-15	73%	4-5	80%	4-7	57%
1st Half	19-29	66%	7-9	78%	5-9	56%
Game	30-58	51.7%	12-22	54.5%	16-24	66.7%

Deadball Rebounds: 4,2

Last FG Half: WSU 2nd-00:00

Game Notes:

Officials: Bryan Brunette, John Capolino, Geraldine Smith

Attendance: 2336

Start Time: 03:05 PM ET

End Time: 05:11 PM ET

Game Duration: 2:05

Score	1st	2nd	3rd	4th	TOT
OKL	18	19	23	23	83
WSU	20	30	17	21	88

Points from (This Period)	OKL	WSU
In the Paint	16	16
Off Turns	5	14
2nd Chance	4	7
Fast Break	10	4
Bench	6	19

Official Box Score
Oklahoma vs Wichita St.
First Quarter Statistics Only
November 30, 2019 at Charles Koch Arena (Devlin Court) - Wichita, Kan.



Oklahoma 18

No.	Player	S	Pts	FG	3FG	FT	OR	DR	TR	PF	A	TO	Blk	Stl	Min	+/-
03	SIMPSON, MANDY	F	2	1-1	0-0	0-2	0	0	0	0	0	0	0	0	8	0
22	LLANUSA, ANA	G	2	1-2	0-1	0-0	0	1	1	0	0	1	0	0	6	0
25	WILLIAMS, MADI	G	2	0-2	0-0	2-2	0	2	2	1	1	2	0	0	10	-2
30	ROBERTSON, TAYLOR	G	8	3-5	2-4	0-0	0	0	0	1	1	0	1	0	10	-2
32	VEITENHEIMER, TATUM	G	0	0-1	0-0	0-0	0	2	2	0	3	1	0	0	5	2
00	MURCER, JESSI	G	0	0-0	0-0	0-0	0	0	0	0	0	0	0	0	0	0
04	LEMON, KAMRYN	G	0	0-0	0-0	0-0	0	0	0	1	1	0	0	0	5	-4
12	GREGORY, GABBY	G	2	1-1	0-0	0-0	0	0	0	1	0	0	0	0	4	-2
21	LAMPKIN, NYDIA	F	2	1-1	0-0	0-0	0	0	0	0	0	0	0	0	2	-2
31	WILLISTON, ASPEN	C	0	0-0	0-0	0-0	0	0	0	0	0	0	0	0	0	0
TEAM							1	0	1	0		0				
TOTALS			18	7-13	2-5	2-4	1	5	6	4	6	4	1	0	50	

Shooting By Period

Period	FG	FG%	3FG	3FG%	FT	FT%
1st Qtr	7-13	54%	2-5	40%	2-4	50%
2nd Qtr	5-12	42%	1-5	20%	8-9	89%
1st Half	7-13	54%	2-5	40%	2-4	50%
1st Half	12-25	48%	3-10	30%	10-13	77%
Game	27-55	49.1%	12-28	42.9%	17-25	68.0%

Deadball Rebounds: 6,2

Wichita St. 20

No.	Player	S	Pts	FG	3FG	FT	OR	DR	TR	PF	A	TO	Blk	Stl	Min	+/-
01	MCCARTY, DJ	G	5	2-2	1-1	0-0	0	1	1	1	1	2	0	0	7	0
12	BREMAUD, CARLA	G	6	2-5	1-2	1-2	0	1	1	1	0	1	0	0	10	2
13	PRINCE, RAVEN	F	4	2-3	0-0	0-0	1	1	2	0	0	0	0	0	10	2
23	BASTIN, SERAPHINE	G	3	1-2	1-1	0-0	1	1	2	0	2	0	0	0	9	4
34	SMITH, SHYIA	F	0	0-0	0-0	0-0	0	1	1	0	0	0	1	1	6	0
02	MCCULLY, MARIAH	G	0	0-0	0-0	0-0	0	0	0	1	1	1	0	0	5	0
05	REID, ASHLEY	G	0	0-0	0-0	0-0	0	0	0	0	0	0	0	0	0	0
11	KIRVEN, ASHLEI	F	0	0-0	0-0	0-0	0	0	0	0	0	0	0	0	0	0
15	HAMPTON, JAIDA	G	0	0-0	0-0	0-0	0	0	0	0	0	0	0	0	0	0
21	BREWER, MAYA	G	0	0-0	0-0	0-0	0	0	0	0	0	0	0	0	0	0
42	HENDERSON, ASIA	F	2	1-2	0-0	0-0	0	1	1	1	0	0	0	0	4	2
TEAM							0	0	0	0		0				
TOTALS			20	8-14	3-4	1-2	2	6	8	4	4	4	1	1	50	

Shooting By Period

Period	FG	FG%	3FG	3FG%	FT	FT%
1st Qtr	8-14	57%	3-4	75%	1-2	50%
2nd Qtr	11-15	73%	4-5	80%	4-7	57%
1st Half	8-14	57%	3-4	75%	1-2	50%
1st Half	19-29	66%	7-9	78%	5-9	56%
Game	30-58	51.7%	12-22	54.5%	16-24	66.7%

Deadball Rebounds: 4,2

Game Notes:

Officials: Bryan Brunette, John Capolino, Geraldine Smith
Attendance: 2336

Start Time: 03:05 PM ET
End Time: 05:11 PM ET
Game Duration: 2:05

Score	1st	2nd	3rd	4th	TOT
OKL	18	19	23	23	83
WSU	20	30	17	21	88

Points from (This Period)	OKL	WSU
In the Paint	10	6
Off Turns	4	2
2nd Chance	0	5
Fast Break	2	0
Bench	4	2

**Official Play-By-Play
Oklahoma vs Wichita St.
First Quarter**

November 30, 2019 at Charles Koch Arena (Devlin Court) - Wichita, Kan.



Period 1

Starters:

Oklahoma: 22 LLANUSA, ANA (G); 25 WILLIAMS, MADI (G); 30 ROBERTSON, TAYLOR (G); 32 VEITENHEIMER, TATUM (G); 3 SIMPSON, MANDY (F);
Wichita St.: 1 MCCARTY, DJ (G); 12 BREMAUD, CARLA (G); 13 PRINCE, RAVEN (F); 23 BASTIN, SERAPHINE (G); 34 SMITH, SHYIA (F);

Time	VISITORS: Oklahoma	Score	Margin	HOME: Wichita St.
09:40	MISSED LAYUP by VEITENHEIMER, TATUM			
09:37				REBOUND (DEF) by PRINCE, RAVEN
09:21				MISSED JUMPER by BREMAUD, CARLA
09:21	BLOCK by ROBERTSON, TAYLOR			
09:17	REBOUND (DEF) by VEITENHEIMER, TATUM			
09:14	TURNOVER (LOSTBALL) by WILLIAMS, MADI			
09:02		2-0	H 2	GOOD! JUMPER by MCCARTY, DJ
08:36	TURNOVER (BADPASS) by VEITENHEIMER, TATUM			
08:36				STEAL by SMITH, SHYIA
08:20				MISSED JUMPER by PRINCE, RAVEN
08:17	REBOUND (DEF) by VEITENHEIMER, TATUM			
08:12	GOOD! LAYUP by SIMPSON, MANDY	2-2	T	
08:12	ASSIST by VEITENHEIMER, TATUM			
07:37				MISSED 3PTR by BREMAUD, CARLA
07:35				REBOUND (OFF) by PRINCE, RAVEN
07:32		4-2	H 2	GOOD! LAYUP by PRINCE, RAVEN
07:24	GOOD! LAYUP by LLANUSA, ANA	4-4	T	
07:24	ASSIST by VEITENHEIMER, TATUM			
07:01				FOUL (OFF) by BREMAUD, CARLA
07:01				TURNOVER (OFFENSIVE) by BREMAUD, CARLA
06:55	GOOD! LAYUP by ROBERTSON, TAYLOR	4-6	V 2	
06:55	ASSIST by VEITENHEIMER, TATUM			
06:41				MISSED LAYUP by BASTIN, SERAPHINE
06:38	REBOUND (DEF) by WILLIAMS, MADI			
06:36	MISSED 3PTR by ROBERTSON, TAYLOR			
06:31				REBOUND (DEF) by SMITH, SHYIA
06:15				MISSED JUMPER by BREMAUD, CARLA
06:11				REBOUND (OFF) by BASTIN, SERAPHINE
05:56		7-6	H 1	GOOD! 3PTR by MCCARTY, DJ
05:56				ASSIST by BASTIN, SERAPHINE
05:28	GOOD! 3PTR by ROBERTSON, TAYLOR	7-9	V 2	
05:06	FOUL (PERSONAL) by ROBERTSON, TAYLOR			
05:06	SUB OUT: VEITENHEIMER, TATUM			
05:06	SUB IN: LEMON, KAMRYN			
05:06		8-9	V 1	GOOD! FT by BREMAUD, CARLA
05:06				MISSED FT by BREMAUD, CARLA
05:04	REBOUND (DEF) by LLANUSA, ANA			
04:58	MISSED 3PTR by LLANUSA, ANA			
04:54				REBOUND (DEF) by MCCARTY, DJ
04:45		11-9	H 2	GOOD! 3PTR by BREMAUD, CARLA
04:45				ASSIST by MCCARTY, DJ
04:30	MISSED LAYUP by WILLIAMS, MADI			
04:30				BLOCK by SMITH, SHYIA
04:30	REBOUND (OFF) by TEAM			
04:30				
04:30				SUB OUT: BASTIN, SERAPHINE
04:30				SUB IN: MCCULLY, MARIAH
04:26				FOUL (PERSONAL) by MCCULLY, MARIAH
04:25	FOUL (OFF) by WILLIAMS, MADI			
04:25	TURNOVER (OFFENSIVE) by WILLIAMS, MADI			
04:17	FOUL (PERSONAL) by LEMON, KAMRYN			
04:09				TURNOVER (TRAVEL) by MCCARTY, DJ
03:59	TURNOVER (TRAVEL) by LLANUSA, ANA			
03:45				TURNOVER (TRAVEL) by MCCULLY, MARIAH
03:34				FOUL (PERSONAL) by MCCARTY, DJ
03:34	GOOD! FT by WILLIAMS, MADI	11-10	H 1	
03:34	GOOD! FT by WILLIAMS, MADI	11-11	T	
03:34				SUB OUT: SMITH, SHYIA
03:34				SUB IN: HENDERSON, ASIA
03:34	SUB OUT: LLANUSA, ANA			
03:34	SUB IN: GREGORY, GABBY			
03:07				TURNOVER (BADPASS) by MCCARTY, DJ
03:07				SUB OUT: MCCARTY, DJ
03:07				SUB IN: BASTIN, SERAPHINE
02:56	MISSED 3PTR by ROBERTSON, TAYLOR			
02:51				REBOUND (DEF) by BREMAUD, CARLA
02:41				MISSED LAYUP by HENDERSON, ASIA
02:38	REBOUND (DEF) by WILLIAMS, MADI			
02:24				FOUL (PERSONAL) by HENDERSON, ASIA
02:24	MISSED FT by SIMPSON, MANDY			

Time	VISITORS: Oklahoma	Score	Margin	HOME: Wichita St.
02:24	REBOUND (OFF) by TEAM			
02:22	MISSED FT by SIMPSON, MANDY			
02:20				REBOUND (DEF) by HENDERSON, ASIA
02:20	FOUL (PERSONAL) by GREGORY, GABBY			
02:20	SUB OUT: SIMPSON, MANDY			
02:20	SUB IN: LAMPKIN, NYDIA			
02:10		14-11	H 3	GOOD! 3PTR by BASTIN, SERAPHINE
02:10				ASSIST by MCCULLY, MARIAH
01:59	GOOD! 3PTR by ROBERTSON, TAYLOR	14-14	T	
01:59	ASSIST by LEMON, KAMRYN			
01:36		16-14	H 2	GOOD! LAYUP by HENDERSON, ASIA
01:36				ASSIST by BASTIN, SERAPHINE
01:09	MISSED JUMPER by WILLIAMS, MADI			
01:06				REBOUND (DEF) by BASTIN, SERAPHINE
00:57		18-14	H 4	GOOD! LAYUP by PRINCE, RAVEN
00:39	GOOD! LAYUP by GREGORY, GABBY [PNT]	18-16	H 2	
00:39	ASSIST by ROBERTSON, TAYLOR			
00:09		20-16	H 4	GOOD! JUMPER by BREMAUD, CARLA
00:02	GOOD! LAYUP by LAMPKIN, NYDIA [FB]	20-18	H 2	
00:02	ASSIST by WILLIAMS, MADI			

Oklahoma 18, Wichita St. 20

Points from (This Period)	OKL	WSU
In the Paint	10	6
Off Turns	4	2
2nd Chance	0	5
Fast Break	2	0
Bench	4	2

Official Box Score
Oklahoma vs Wichita St.
Second Quarter Statistics Only
November 30, 2019 at Charles Koch Arena (Devlin Court) - Wichita, Kan.



Oklahoma 19

No.	Player	S	Pts	FG	3FG	FT	OR	DR	TR	PF	A	TO	Blk	Stl	Min	+/-
03	SIMPSON, MANDY	F	0	0-0	0-0	0-0	0	2	2	2	1	2	0	0	7	-6
22	LLANUSA, ANA	G	4	1-3	0-1	2-2	0	0	0	1	0	0	0	0	8	-5
25	WILLIAMS, MADI	G	9	2-2	0-0	5-5	0	3	3	1	0	2	0	1	7	-1
30	ROBERTSON, TAYLOR	G	3	1-2	1-2	0-0	0	0	0	0	0	1	0	1	8	-11
32	VEITENHEIMER, TATUM	G	1	0-0	0-0	1-2	0	0	0	1	2	0	0	0	6	-3
00	MURCER, JESSI	G	0	0-0	0-0	0-0	0	0	0	0	0	1	0	0	2	-6
04	LEMON, KAMRYN	G	0	0-3	0-2	0-0	1	0	1	0	1	0	0	0	4	-8
12	GREGORY, GABBY	G	2	1-1	0-0	0-0	0	0	0	0	0	0	0	0	4	-8
21	LAMPKIN, NYDIA	F	0	0-1	0-0	0-0	0	0	0	0	0	0	0	0	2	-2
31	WILLISTON, ASPEN	C	0	0-0	0-0	0-0	0	0	0	1	0	0	0	0	1	-5
TEAM							1	0	1	0		1				
TOTALS			19	5-12	1-5	8-9	2	5	7	6	4	7	0	2	50	

Shooting By Period

Period	FG	FG%	3FG	3FG%	FT	FT%
3rd Qtr	7-12	58%	3-6	50%	6-10	60%
4th Qtr	8-18	44%	6-12	50%	1-2	50%
2nd Half	5-12	42%	1-5	20%	8-9	89%
2nd Half	15-30	50%	9-18	50%	7-12	58%
Game	27-55	49.1%	12-28	42.9%	17-25	68.0%

Deadball Rebounds: 6,2

Wichita St. 30

No.	Player	S	Pts	FG	3FG	FT	OR	DR	TR	PF	A	TO	Blk	Stl	Min	+/-
01	MCCARTY, DJ	G	0	0-0	0-0	0-0	0	0	0	1	1	0	0	0	0	3
12	BREMAUD, CARLA	G	3	1-1	1-1	0-0	0	0	0	1	0	1	0	0	3	6
13	PRINCE, RAVEN	F	3	1-1	0-0	1-3	0	0	0	2	0	0	0	0	5	-3
23	BASTIN, SERAPHINE	G	5	2-3	1-1	0-0	0	2	2	1	3	0	0	0	10	11
34	SMITH, SHYIA	F	2	0-0	0-0	2-2	0	0	0	0	0	0	0	0	9	11
02	MCCULLY, MARIAH	G	5	2-3	1-1	0-0	0	0	0	1	1	3	0	0	7	2
05	REID, ASHLEY	G	0	0-0	0-0	0-0	0	0	0	0	0	0	0	0	0	0
11	KIRVEN, ASHLEI	F	3	1-1	0-0	1-2	1	3	4	0	0	0	0	0	5	14
15	HAMPTON, JAIDA	G	2	1-3	0-1	0-0	0	0	0	0	1	0	0	1	4	-3
21	BREWER, MAYA	G	5	2-2	1-1	0-0	0	1	1	2	0	0	0	1	6	14
42	HENDERSON, ASIA	F	2	1-1	0-0	0-0	0	0	0	0	0	0	0	0	2	0
TEAM							0	0	0	0		0				
TOTALS			30	11-15	4-5	4-7	1	6	7	8	6	4	0	2	50	

Shooting By Period

Period	FG	FG%	3FG	3FG%	FT	FT%
3rd Qtr	6-16	38%	5-10	50%	0-0	0%
4th Qtr	5-13	38%	0-3	00%	11-15	73%
2nd Half	11-15	73%	4-5	80%	4-7	57%
2nd Half	11-29	38%	5-13	38%	11-15	73%
Game	30-58	51.7%	12-22	54.5%	16-24	66.7%

Deadball Rebounds: 4,2

Game Notes:

Officials: Bryan Brunette, John Capolino, Geraldine Smith
Attendance: 2336

Start Time: 03:05 PM ET
End Time: 05:11 PM ET
Game Duration: 2:05

Score	1st	2nd	3rd	4th	TOT
OKL	18	19	23	23	83
WSU	20	30	17	21	88

Points from (This Period)	OKL	WSU
In the Paint	6	10
Off Turns	1	12
2nd Chance	4	2
Fast Break	8	4
Bench	2	17

**Official Play-By-Play
Oklahoma vs Wichita St.
Second Quarter**

November 30, 2019 at Charles Koch Arena (Devlin Court) - Wichita, Kan.



Period 2

Starters:

Oklahoma: 22 LLANUSA, ANA (G); 25 WILLIAMS, MADI (G); 30 ROBERTSON, TAYLOR (G); 32 VEITENHEIMER, TATUM (G); 3 SIMPSON, MANDY (F);

Wichita St.: 1 MCCARTY, DJ (G); 12 BREMAUD, CARLA (G); 13 PRINCE, RAVEN (F); 23 BASTIN, SERAPHINE (G); 34 SMITH, SHYIA (F);

Time	VISITORS: Oklahoma	Score	Margin	HOME: Wichita St.
10:00				SUB OUT: BREMAUD, CARLA
10:00				SUB IN: BREWER, MAYA
10:00	SUB OUT: ROBERTSON, TAYLOR			
10:00	SUB IN: LLANUSA, ANA			
09:52	TURNOVER (BADPASS) by WILLIAMS, MADI			
09:41		22-18	H 4	GOOD! LAYUP by HENDERSON, ASIA
09:41				ASSIST by BASTIN, SERAPHINE
09:18	MISSED 3PTR by LEMON, KAMRYN			
09:15	REBOUND (OFF) by LEMON, KAMRYN			
09:14	GOOD! LAYUP by GREGORY, GABBY	22-20	H 2	
09:14	ASSIST by LEMON, KAMRYN			
08:49				MISSED LAYUP by MCCULLY, MARIAH
08:45	REBOUND (DEF) by WILLIAMS, MADI			
08:36	MISSED LAYUP by LAMPKIN, NYDIA			
08:33				REBOUND (DEF) by BASTIN, SERAPHINE
08:30				TURNOVER (TRAVEL) by MCCULLY, MARIAH
08:30				SUB OUT: PRINCE, RAVEN
08:30				SUB OUT: HENDERSON, ASIA
08:30				SUB IN: KIRVEN, ASHLEI
08:30				SUB IN: SMITH, SHYIA
08:19	MISSED 3PTR by LLANUSA, ANA			
08:16				REBOUND (DEF) by BASTIN, SERAPHINE
08:14	SUB OUT: WILLIAMS, MADI			
08:14	SUB IN: ROBERTSON, TAYLOR			
08:13	FOUL (PERSONAL) by LLANUSA, ANA			
08:13	SUB OUT: LAMPKIN, NYDIA			
08:13	SUB IN: SIMPSON, MANDY			
08:13		23-20	H 3	GOOD! FT by SMITH, SHYIA [FB]
08:13		24-20	H 4	GOOD! FT by SMITH, SHYIA [FB]
08:01	TURNOVER (OTHER) by TEAM			
07:52				TURNOVER (BADPASS) by MCCULLY, MARIAH
07:52	STEAL by ROBERTSON, TAYLOR			
07:39	MISSED 3PTR by LEMON, KAMRYN			
07:38				REBOUND (DEF) by KIRVEN, ASHLEI
07:38	FOUL (PERSONAL) by SIMPSON, MANDY			
07:38				SUB OUT: MCCULLY, MARIAH
07:38				SUB IN: MCCARTY, DJ
07:38	SUB OUT: SIMPSON, MANDY			
07:38	SUB IN: WILLISTON, ASPEN			
07:23		27-20	H 7	GOOD! 3PTR by BREWER, MAYA
07:23				ASSIST by MCCARTY, DJ
07:13				FOUL (PERSONAL) by MCCARTY, DJ
07:13				SUB OUT: MCCARTY, DJ
07:13				SUB IN: BREMAUD, CARLA
07:11	MISSED JUMPER by LLANUSA, ANA			
07:08				REBOUND (DEF) by BREWER, MAYA
06:55	FOUL (PERSONAL) by WILLISTON, ASPEN			
06:55	SUB OUT: LLANUSA, ANA			
06:55	SUB OUT: WILLISTON, ASPEN			
06:55	SUB IN: MURCER, JESSI			
06:55	SUB IN: SIMPSON, MANDY			
06:55				MISSED FT by KIRVEN, ASHLEI
06:55				REBOUND (OFF) by TEAM
06:55		28-20	H 8	GOOD! FT by KIRVEN, ASHLEI
06:31	MISSED LAYUP by LEMON, KAMRYN			
06:28				REBOUND (DEF) by KIRVEN, ASHLEI
06:18				TURNOVER (3SEC) by BREMAUD, CARLA
06:08	TURNOVER (BADPASS) by ROBERTSON, TAYLOR			
06:08				STEAL by BREWER, MAYA
06:03		30-20	H 10	GOOD! LAYUP by BREWER, MAYA [FB]
06:00	TIMEOUT 30SEC			
05:44	MISSED 3PTR by ROBERTSON, TAYLOR			
05:42	REBOUND (OFF) by TEAM			
05:42	SUB OUT: LEMON, KAMRYN			
05:42	SUB OUT: GREGORY, GABBY			
05:42	SUB IN: WILLIAMS, MADI			
05:42	SUB IN: VEITENHEIMER, TATUM			
05:32	GOOD! LAYUP by WILLIAMS, MADI	30-22	H 8	
05:32	ASSIST by VEITENHEIMER, TATUM			
05:11		32-22	H 10	GOOD! JUMPER by BASTIN, SERAPHINE [PNT]

Time	VISITORS: Oklahoma	Score	Margin	HOME: Wichita St.
05:02	FOUL (OFF) by SIMPSON, MANDY			
05:02	TURNOVER (OFFENSIVE) by SIMPSON, MANDY			
04:43		35-22	H 13	GOOD! 3PTR by BREMAUD, CARLA
04:43				ASSIST by BASTIN, SERAPHINE
04:42				SUB OUT: KIRVEN, ASHLEI
04:42				SUB IN: PRINCE, RAVEN
04:32				FOUL (PERSONAL) by BREMAUD, CARLA
04:32				SUB OUT: BREMAUD, CARLA
04:32				SUB IN: MCCULLY, MARIAH
04:32	TURNOVER (BADPASS) by MURCER, JESSI			
04:32	SUB OUT: MURCER, JESSI			
04:32	SUB IN: LLANUSA, ANA			
04:18		38-22	H 16	GOOD! 3PTR by MCCULLY, MARIAH
04:18				ASSIST by BASTIN, SERAPHINE
04:01				FOUL (PERSONAL) by BREWER, MAYA
04:00				FOUL (PERSONAL) by BREWER, MAYA
04:00				SUB OUT: BREWER, MAYA
04:00				SUB IN: HAMPTON, JAIDA
04:00	GOOD! FT by LLANUSA, ANA	38-23	H 15	
04:00	GOOD! FT by LLANUSA, ANA	38-24	H 14	
03:43		40-24	H 16	GOOD! LAYUP by PRINCE, RAVEN
03:43				ASSIST by MCCULLY, MARIAH
03:43	FOUL (PERSONAL) by WILLIAMS, MADI			
03:43				MISSED FT by PRINCE, RAVEN
03:41	REBOUND (DEF) by SIMPSON, MANDY			
03:24				FOUL (PERSONAL) by PRINCE, RAVEN
03:24	GOOD! FT by WILLIAMS, MADI	40-25	H 15	
03:24	GOOD! FT by WILLIAMS, MADI	40-26	H 14	
02:59		42-26	H 16	GOOD! JUMPER by MCCULLY, MARIAH
02:59				ASSIST by HAMPTON, JAIDA
02:48	TURNOVER (BADPASS) by WILLIAMS, MADI			
02:48				STEAL by HAMPTON, JAIDA
02:42				MISSED JUMPER by HAMPTON, JAIDA
02:41	REBOUND (DEF) by WILLIAMS, MADI			
02:41				FOUL (PERSONAL) by BASTIN, SERAPHINE
02:41	GOOD! FT by WILLIAMS, MADI [FB]	42-27	H 15	
02:41	GOOD! FT by WILLIAMS, MADI [FB]	42-28	H 14	
02:26				MISSED JUMPER by BASTIN, SERAPHINE
02:22	REBOUND (DEF) by WILLIAMS, MADI			
02:19	GOOD! 3PTR by ROBERTSON, TAYLOR [FB]	42-31	H 11	
02:19	ASSIST by VEITENHEIMER, TATUM			
01:55	FOUL (PERSONAL) by VEITENHEIMER, TATUM			
01:55		43-31	H 12	GOOD! FT by PRINCE, RAVEN
01:55				MISSED FT by PRINCE, RAVEN
01:54	REBOUND (DEF) by SIMPSON, MANDY			
01:40	GOOD! JUMPER by WILLIAMS, MADI	43-33	H 10	
01:40	ASSIST by SIMPSON, MANDY			
01:40				FOUL (PERSONAL) by PRINCE, RAVEN
01:40				SUB OUT: PRINCE, RAVEN
01:40				SUB IN: KIRVEN, ASHLEI
01:40	GOOD! FT by WILLIAMS, MADI	43-34	H 9	
01:25				MISSED 3PTR by HAMPTON, JAIDA
01:20				REBOUND (OFF) by KIRVEN, ASHLEI
01:20		45-34	H 11	GOOD! LAYUP by KIRVEN, ASHLEI
01:08	TURNOVER (BADPASS) by SIMPSON, MANDY			
00:49		47-34	H 13	GOOD! JUMPER by HAMPTON, JAIDA
00:41	GOOD! JUMPER by LLANUSA, ANA [FB]	47-36	H 11	
00:05				TURNOVER (BADPASS) by MCCULLY, MARIAH
00:05	STEAL by WILLIAMS, MADI			
00:03				FOUL (PERSONAL) by MCCULLY, MARIAH
00:03	SUB OUT: SIMPSON, MANDY			
00:03	SUB OUT: WILLIAMS, MADI			
00:03	SUB IN: LAMPKIN, NYDIA			
00:03	SUB IN: WILLISTON, ASPEN			
00:03	GOOD! FT by VEITENHEIMER, TATUM [FB]	47-37	H 10	
00:03	MISSED FT by VEITENHEIMER, TATUM			
00:02				REBOUND (DEF) by KIRVEN, ASHLEI
00:00		50-37	H 13	GOOD! 3PTR by BASTIN, SERAPHINE

Oklahoma 37, Wichita St. 50

Points from (This Period)	OKL	WSU
In the Paint	6	10
Off Turns	1	12
2nd Chance	4	2
Fast Break	8	4
Bench	2	17

Official Box Score
Oklahoma vs Wichita St.
Second Half Statistics Only
November 30, 2019 at Charles Koch Arena (Devlin Court) - Wichita, Kan.



Oklahoma 46

No.	Player	S	Pts	FG	3FG	FT	OR	DR	TR	PF	A	TO	Blk	Stl	Min	+/-
00	MURCER, JESSI	G	0	0-0	0-0	0-0	0	0	0	0	0	0	0	0	0	0
12	GREGORY, GABBY	G	9	3-5	2-3	1-2	1	2	3	3	0	0	1	1	15	8
21	LAMPKIN, NYDIA	F	0	0-0	0-0	0-0	0	0	0	0	0	0	0	0	0	0
22	LLANUSA, ANA	G	13	5-7	1-2	2-2	2	1	3	1	1	3	0	0	16	10
25	WILLIAMS, MADI	G	2	1-4	0-0	0-1	2	1	3	1	1	1	0	1	14	2
30	ROBERTSON, TAYLOR	G	19	6-10	6-10	1-1	0	1	1	2	0	0	0	0	20	8
31	WILLISTON, ASPEN	C	0	0-0	0-0	0-0	0	0	0	0	0	0	0	0	0	0
32	VEITENHEIMER, TATUM	G	0	0-0	0-0	0-0	0	0	0	0	3	1	0	0	4	0
03	SIMPSON, MANDY	F	0	0-0	0-0	0-0	0	3	3	3	2	0	0	0	19	7
04	LEMON, KAMRYN	G	3	0-4	0-3	3-6	1	1	2	0	3	1	0	0	12	5
	TEAM		0	0-0	0-0	0-0	0	0	0	0	0	1	0	0	0	
TOTALS			46	15-30	9-18	7-12	6	9	15	10	10	7	1	2	100	

Shooting By Period

Period	FG	FG%	3FG	3FG%	FT	FT%
3rd Qtr	7-12	58%	3-6	50%	6-10	60%
4th Qtr	8-18	44%	6-12	50%	1-2	50%
2nd Half	15-30	50%	9-18	50%	7-12	58%
Game	27-55	49.1%	12-28	42.9%	17-25	68.0%

Deadball Rebounds: 6,2

Last FG Half: OKL 4th-00:09

Wichita St. 38

No.	Player	S	Pts	FG	3FG	FT	OR	DR	TR	PF	A	TO	Blk	Stl	Min	+/-
01	MCCARTY, DJ	G	8	3-5	1-1	1-2	0	0	0	1	1	0	0	1	19	-5
02	MCCULLY, MARIAH	G	4	2-8	0-3	0-0	1	0	1	0	0	2	0	0	8	-1
05	REID, ASHLEY	G	0	0-0	0-0	0-0	0	0	0	0	0	0	0	0	0	-1
11	KIRVEN, ASHLEI	F	0	0-1	0-0	0-0	0	0	0	0	0	0	0	0	2	-4
12	BREMAUD, CARLA	G	6	2-3	2-3	0-0	0	0	0	2	0	1	0	0	8	-1
13	PRINCE, RAVEN	F	9	2-4	0-0	5-7	5	1	6	2	0	1	1	0	18	-5
15	HAMPTON, JAIDA	G	0	0-2	0-2	0-0	0	0	0	0	0	1	0	0	5	-6
21	BREWER, MAYA	G	3	1-2	1-2	0-0	1	0	1	2	0	0	0	0	3	-4
23	BASTIN, SERAPHINE	G	8	1-3	1-2	5-6	0	2	2	2	2	0	0	1	18	-6
34	SMITH, SHYIA	F	0	0-1	0-0	0-0	1	4	5	2	1	0	0	0	18	-4
42	HENDERSON, ASIA	F	0	0-0	0-0	0-0	0	0	0	0	0	1	0	0	2	-3
	TEAM		0	0-0	0-0	0-0	0	0	0	0	0	0	0	0	0	
TOTALS			38	11-29	5-13	11-15	8	7	15	11	4	6	1	2	100	

Shooting By Period

Period	FG	FG%	3FG	3FG%	FT	FT%
3rd Qtr	6-16	38%	5-10	50%	0-0	0%
4th Qtr	5-13	38%	0-3	00%	11-15	73%
2nd Half	11-29	38%	5-13	38%	11-15	73%
Game	30-58	51.7%	12-22	54.5%	16-24	66.7%

Deadball Rebounds: 4,2

Last FG Half: WSU 4th-00:22

Game Notes:

Officials: Bryan Brunette, John Capolino, Geraldine Smith
Attendance: 2336

Start Time: 03:05 PM ET

End Time: 05:11 PM ET

Game Duration: 2:05

Score	1st	2nd	3rd	4th	TOT
OKL	18	19	23	23	83
WSU	20	30	17	21	88

Points from (This Period)	OKL	WSU
In the Paint	12	10
Off Turns	4	5
2nd Chance	7	10
Fast Break	12	5
Bench	12	7

Official Box Score
Oklahoma vs Wichita St.
Third Quarter Statistics Only
November 30, 2019 at Charles Koch Arena (Devlin Court) - Wichita, Kan.



Oklahoma 46

No.	Player	S	Pts	FG	3FG	FT	OR	DR	TR	PF	A	TO	Blk	Stl	Min	+/-
03	SIMPSON, MANDY	F	0	0-0	0-0	0-0	0	2	2	0	1	0	0	0	10	6
22	LLANUSA, ANA	G	8	3-4	0-1	2-2	1	1	2	0	0	1	0	0	10	6
25	WILLIAMS, MADI	G	2	1-2	0-0	0-1	0	0	0	1	1	1	0	1	5	0
30	ROBERTSON, TAYLOR	G	10	3-4	3-4	1-1	0	0	0	0	0	0	0	0	10	6
32	VEITENHEIMER, TATUM	G	0	0-0	0-0	0-0	0	0	0	0	1	0	0	0	3	-1
00	MURCER, JESSI	G	0	0-0	0-0	0-0	0	0	0	0	0	0	0	0	0	0
04	LEMON, KAMRYN	G	3	0-2	0-1	3-6	1	1	2	0	2	0	0	0	7	7
12	GREGORY, GABBY	G	0	0-0	0-0	0-0	0	1	1	0	0	0	0	0	5	6
21	LAMPKIN, NYDIA	F	0	0-0	0-0	0-0	0	0	0	0	0	0	0	0	0	0
31	WILLISTON, ASPEN	C	0	0-0	0-0	0-0	0	0	0	0	0	0	0	0	0	0
TEAM							0	0	0	0		1				
TOTALS			23	7-12	3-6	6-10	2	5	7	1	5	3	0	1	50	

Shooting By Period

Period	FG	FG%	3FG	3FG%	FT	FT%
2nd Half	0-0	0%	0-0	0%	0-0	0%
Game	27-55	49.1%	12-28	42.9%	17-25	68.0%

Deadball Rebounds: 6,2

Wichita St. 38

No.	Player	S	Pts	FG	3FG	FT	OR	DR	TR	PF	A	TO	Blk	Stl	Min	+/-
01	MCCARTY, DJ	G	3	1-2	1-1	0-0	0	0	0	0	1	0	0	0	9	-3
12	BREMAUD, CARLA	G	6	2-2	2-2	0-0	0	0	0	2	0	1	0	0	5	0
13	PRINCE, RAVEN	F	2	1-3	0-0	0-0	2	1	3	0	0	1	0	0	8	-3
23	BASTIN, SERAPHINE	G	3	1-3	1-2	0-0	0	1	1	2	1	0	0	0	8	-4
34	SMITH, SHYIA	F	0	0-0	0-0	0-0	1	2	3	1	1	0	0	0	10	-5
02	MCCULLY, MARIAH	G	0	0-3	0-2	0-0	0	0	0	0	0	2	0	0	3	-3
05	REID, ASHLEY	G	0	0-0	0-0	0-0	0	0	0	0	0	0	0	0	0	-1
11	KIRVEN, ASHLEI	F	0	0-0	0-0	0-0	0	0	0	0	0	0	0	0	0	-1
15	HAMPTON, JAIDA	G	0	0-1	0-1	0-0	0	0	0	0	0	0	0	0	3	-3
21	BREWER, MAYA	G	3	1-2	1-2	0-0	1	0	1	2	0	0	0	0	3	-4
42	HENDERSON, ASIA	F	0	0-0	0-0	0-0	0	0	0	0	0	1	0	0	2	-3
TEAM							0	0	0	0		0				
TOTALS			17	6-16	5-10	0-0	4	4	8	7	3	5	0	0	50	

Shooting By Period

Period	FG	FG%	3FG	3FG%	FT	FT%
2nd Half	0-0	0%	0-0	0%	0-0	0%
Game	30-58	51.7%	12-22	54.5%	16-24	66.7%

Deadball Rebounds: 4,2

Game Notes:

Officials: Bryan Brunette, John Capolino, Geraldine Smith
Attendance: 2336

Start Time: 03:05 PM ET
End Time: 05:11 PM ET
Game Duration: 2:05

Score	1st	2nd	3rd	4th	TOT
OKL	18	19	23	23	83
WSU	20	30	17	21	88

Points from (This Period)	OKL	WSU
In the Paint	8	2
Off Turns	4	2
2nd Chance	2	5
Fast Break	8	0
Bench	3	3

**Official Play-By-Play
Oklahoma vs Wichita St.
Third Quarter**

November 30, 2019 at Charles Koch Arena (Devlin Court) - Wichita, Kan.



Period 3

Starters:

Oklahoma: 22 LLANUSA, ANA (G); 25 WILLIAMS, MADI (G); 30 ROBERTSON, TAYLOR (G); 32 VEITENHEIMER, TATUM (G); 3 SIMPSON, MANDY (F);

Wichita St.: 1 MCCARTY, DJ (G); 12 BREMAUD, CARLA (G); 13 PRINCE, RAVEN (F); 23 BASTIN, SERAPHINE (G); 34 SMITH, SHYIA (F);

Time	VISITORS: Oklahoma	Score	Margin	HOME: Wichita St.
10:00				SUB OUT: MCCULLY, MARIAH
10:00				SUB OUT: KIRVEN, ASHLEI
10:00				SUB OUT: HAMPTON, JAIDA
10:00				SUB IN: MCCARTY, DJ
10:00				SUB IN: BREMAUD, CARLA
10:00				SUB IN: PRINCE, RAVEN
10:00	SUB OUT: LAMPKIN, NYDIA			
10:00	SUB OUT: WILLISTON, ASPEN			
10:00	SUB IN: SIMPSON, MANDY			
10:00	SUB IN: WILLIAMS, MADI			
09:38				FOUL (OFF) by BREMAUD, CARLA
09:38				TURNOVER (OFFENSIVE) by BREMAUD, CARLA
09:26	GOOD! 3PTR by ROBERTSON, TAYLOR	50-40	H 10	
09:26	ASSIST by WILLIAMS, MADI			
09:00		53-40	H 13	GOOD! 3PTR by MCCARTY, DJ
08:45	MISSED JUMPER by WILLIAMS, MADI			
08:42				REBOUND (DEF) by SMITH, SHYIA
08:23				MISSED LAYUP by PRINCE, RAVEN
08:19				REBOUND (OFF) by PRINCE, RAVEN
08:19				TURNOVER (3SEC) by PRINCE, RAVEN
07:49	TURNOVER (SHOTCLOCK) by TEAM			
07:29				MISSED LAYUP by BASTIN, SERAPHINE
07:26	REBOUND (DEF) by SIMPSON, MANDY			
07:22	GOOD! LAYUP by LLANUSA, ANA [FB]	53-42	H 11	
07:22	ASSIST by VEITENHEIMER, TATUM			
06:59		56-42	H 14	GOOD! 3PTR by BREMAUD, CARLA
06:59				ASSIST by SMITH, SHYIA
06:52	SUB OUT: VEITENHEIMER, TATUM			
06:52	SUB IN: LEMON, KAMRYN			
06:48	GOOD! LAYUP by WILLIAMS, MADI	56-44	H 12	
06:48	ASSIST by SIMPSON, MANDY			
06:48				FOUL (PERSONAL) by SMITH, SHYIA
06:48	MISSED FT by WILLIAMS, MADI			
06:47				REBOUND (DEF) by PRINCE, RAVEN
06:29		59-44	H 15	GOOD! 3PTR by BREMAUD, CARLA
06:29				ASSIST by BASTIN, SERAPHINE
06:12	GOOD! 3PTR by ROBERTSON, TAYLOR	59-47	H 12	
06:12	ASSIST by LEMON, KAMRYN			
05:50		62-47	H 15	GOOD! 3PTR by BASTIN, SERAPHINE
05:50				ASSIST by MCCARTY, DJ
05:47	MISSED 3PTR by ROBERTSON, TAYLOR			
05:46	REBOUND (OFF) by LLANUSA, ANA			
05:43				FOUL (PERSONAL) by BREMAUD, CARLA
05:30	GOOD! FT by LLANUSA, ANA [FB]	62-48	H 14	
05:30	GOOD! FT by LLANUSA, ANA [FB]	62-49	H 13	
05:30				SUB OUT: BREMAUD, CARLA
05:30				SUB IN: MCCULLY, MARIAH
05:23				TURNOVER (LOSTBALL) by MCCULLY, MARIAH
05:23	STEAL by WILLIAMS, MADI			
05:15	FOUL (OFF) by WILLIAMS, MADI			
05:15	TURNOVER (OFFENSIVE) by WILLIAMS, MADI			
05:05				SUB OUT: BASTIN, SERAPHINE
05:05				SUB IN: BREWER, MAYA
05:05	SUB OUT: WILLIAMS, MADI			
05:05	SUB IN: GREGORY, GABBY			
04:56				MISSED JUMPER by MCCULLY, MARIAH
04:50				REBOUND (OFF) by PRINCE, RAVEN
04:50		64-49	H 15	GOOD! LAYUP by PRINCE, RAVEN
04:44	GOOD! LAYUP by LLANUSA, ANA [FB]	64-51	H 13	
04:44	ASSIST by LEMON, KAMRYN			
04:19				MISSED 3PTR by BREWER, MAYA
04:16	REBOUND (DEF) by LEMON, KAMRYN			
04:11	GOOD! 3PTR by ROBERTSON, TAYLOR	64-54	H 10	
04:11				FOUL (PERSONAL) by BREWER, MAYA
04:11				
04:11	GOOD! FT by ROBERTSON, TAYLOR	64-55	H 9	
03:46				MISSED JUMPER by PRINCE, RAVEN
03:43				REBOUND (OFF) by SMITH, SHYIA
03:40				MISSED 3PTR by MCCULLY, MARIAH
03:37				REBOUND (OFF) by BREWER, MAYA

Time	VISITORS: Oklahoma	Score	Margin	HOME: Wichita St.
03:35		67-55	H 12	GOOD! 3PTR by BREWER, MAYA
03:23	TURNOVER (BADPASS) by LLANUSA, ANA			
03:23				SUB OUT: MCCARTY, DJ
03:23				SUB IN: BASTIN, SERAPHINE
03:06				MISSED 3PTR by MCCULLY, MARIAH
03:04	REBOUND (DEF) by TEAM			
02:51	GOOD! LAYUP by LLANUSA, ANA	67-57	H 10	
02:33				TURNOVER (TRAVEL) by MCCULLY, MARIAH
02:33				SUB OUT: MCCULLY, MARIAH
02:33				SUB IN: HAMPTON, JAIDA
02:19				FOUL (PERSONAL) by BREWER, MAYA
02:19				SUB OUT: PRINCE, RAVEN
02:19				SUB IN: HENDERSON, ASIA
02:19	MISSED FT by LEMON, KAMRYN			
02:19	REBOUND (OFF) by TEAM			
02:19	GOOD! FT by LEMON, KAMRYN	67-58	H 9	
02:19				SUB OUT: BREWER, MAYA
02:19				SUB IN: MCCARTY, DJ
01:55				MISSED JUMPER by MCCARTY, DJ
01:52	REBOUND (DEF) by SIMPSON, MANDY			
01:47	MISSED LAYUP by LEMON, KAMRYN			
01:44	REBOUND (OFF) by LEMON, KAMRYN			
01:36	MISSED 3PTR by LEMON, KAMRYN			
01:33				REBOUND (DEF) by BASTIN, SERAPHINE
01:03				MISSED 3PTR by BASTIN, SERAPHINE
01:00	REBOUND (DEF) by GREGORY, GABBY			
00:57				FOUL (PERSONAL) by BASTIN, SERAPHINE
00:57	GOOD! FT by LEMON, KAMRYN [FB]	67-59	H 8	
00:57	MISSED FT by LEMON, KAMRYN			
00:56				REBOUND (DEF) by SMITH, SHYIA
00:29				MISSED 3PTR by HAMPTON, JAIDA
00:26	REBOUND (DEF) by LLANUSA, ANA			
00:25				FOUL (PERSONAL) by BASTIN, SERAPHINE
00:25				SUB OUT: BASTIN, SERAPHINE
00:25				SUB OUT: SMITH, SHYIA
00:25				SUB IN: REID, ASHLEY
00:25				SUB IN: KIRVEN, ASHLEI
00:25	MISSED FT by LEMON, KAMRYN			
00:25	REBOUND (OFF) by TEAM			
00:25	GOOD! FT by LEMON, KAMRYN [FB]	67-60	H 7	
00:07				TURNOVER (TRAVEL) by HENDERSON, ASIA
00:00	MISSED 3PTR by LLANUSA, ANA			
00:00				REBOUND (DEF) by TEAM

Oklahoma 60, Wichita St. 67

Points from (This Period)	OKL	WSU
In the Paint	8	2
Off Turns	4	2
2nd Chance	2	5
Fast Break	8	0
Bench	3	3

Official Box Score
Oklahoma vs Wichita St.
Fourth Quarter Statistics Only
November 30, 2019 at Charles Koch Arena (Devlin Court) - Wichita, Kan.



Oklahoma 23

No.	Player	S	Pts	FG	3FG	FT	OR	DR	TR	PF	A	TO	Blk	Stl	Min	+/-
03	SIMPSON, MANDY	F	0	0-0	0-0	0-0	0	1	1	3	1	0	0	0	9	1
22	LLANUSA, ANA	G	5	2-3	1-1	0-0	1	0	1	1	1	2	0	0	6	4
25	WILLIAMS, MADI	G	0	0-2	0-0	0-0	2	1	3	0	0	0	0	0	9	2
30	ROBERTSON, TAYLOR	G	9	3-6	3-6	0-0	0	1	1	2	0	0	0	0	10	2
32	VEITENHEIMER, TATUM	G	0	0-0	0-0	0-0	0	0	0	0	2	1	0	0	1	1
00	MURCER, JESSI	G	0	0-0	0-0	0-0	0	0	0	0	0	0	0	0	0	0
04	LEMON, KAMRYN	G	0	0-2	0-2	0-0	0	0	0	0	1	1	0	0	5	-2
12	GREGORY, GABBY	G	9	3-5	2-3	1-2	1	1	2	3	0	0	1	1	10	2
21	LAMPKIN, NYDIA	F	0	0-0	0-0	0-0	0	0	0	0	0	0	0	0	0	0
31	WILLISTON, ASPEN	C	0	0-0	0-0	0-0	0	0	0	0	0	0	0	0	0	0
TEAM							0	0	0	0		0				
TOTALS			23	8-18	6-12	1-2	4	4	8	9	5	4	1	1	50	

Shooting By Period

Period	FG	FG%	3FG	3FG%	FT	FT%
Game	27-55	49.1%	12-28	42.9%	17-25	68.0%

Deadball Rebounds: 6,2

Wichita St. 21

No.	Player	S	Pts	FG	3FG	FT	OR	DR	TR	PF	A	TO	Blk	Stl	Min	+/-
01	MCCARTY, DJ	G	5	2-3	0-0	1-2	0	0	0	1	0	0	0	1	10	-2
12	BREMAUD, CARLA	G	0	0-1	0-1	0-0	0	0	0	0	0	0	0	0	3	-1
13	PRINCE, RAVEN	F	7	1-1	0-0	5-7	3	0	3	2	0	0	1	0	10	-2
23	BASTIN, SERAPHINE	G	5	0-0	0-0	5-6	0	1	1	0	1	0	0	1	10	-2
34	SMITH, SHYIA	F	0	0-1	0-0	0-0	0	2	2	1	0	0	0	0	8	1
02	MCCULLY, MARIAH	G	4	2-5	0-1	0-0	1	0	1	0	0	0	0	0	5	2
05	REID, ASHLEY	G	0	0-0	0-0	0-0	0	0	0	0	0	0	0	0	0	0
11	KIRVEN, ASHLEI	F	0	0-1	0-0	0-0	0	0	0	0	0	0	0	0	2	-3
15	HAMPTON, JAIDA	G	0	0-1	0-1	0-0	0	0	0	0	0	1	0	0	2	-3
21	BREWER, MAYA	G	0	0-0	0-0	0-0	0	0	0	0	0	0	0	0	0	0
42	HENDERSON, ASIA	F	0	0-0	0-0	0-0	0	0	0	0	0	0	0	0	0	0
TEAM							0	0	0	0		0				
TOTALS			21	5-13	0-3	11-15	4	3	7	4	1	1	1	2	50	

Shooting By Period

Period	FG	FG%	3FG	3FG%	FT	FT%
Game	30-58	51.7%	12-22	54.5%	16-24	66.7%

Deadball Rebounds: 4,2

Game Notes:

Officials: Bryan Brunette, John Capolino, Geraldine Smith
Attendance: 2336

Start Time: 03:05 PM ET
End Time: 05:11 PM ET
Game Duration: 2:05

Score	1st	2nd	3rd	4th	TOT
OKL	18	19	23	23	83
WSU	20	30	17	21	88

Points from (This Period)	OKL	WSU
In the Paint	4	8
Off Turns	0	3
2nd Chance	5	5
Fast Break	4	5
Bench	9	4

**Official Play-By-Play
Oklahoma vs Wichita St.
Fourth Quarter**

November 30, 2019 at Charles Koch Arena (Devlin Court) - Wichita, Kan.



Period 4

Starters:

Oklahoma: 22 LLANUSA, ANA (G); 25 WILLIAMS, MADI (G); 30 ROBERTSON, TAYLOR (G); 32 VEITENHEIMER, TATUM (G); 3 SIMPSON, MANDY (F);

Wichita St.: 1 MCCARTY, DJ (G); 12 BREMAUD, CARLA (G); 13 PRINCE, RAVEN (F); 23 BASTIN, SERAPHINE (G); 34 SMITH, SHYIA (F);

Time	VISITORS: Oklahoma	Score	Margin	HOME: Wichita St.
10:00				SUB OUT: REID, ASHLEY
10:00				SUB OUT: HENDERSON, ASIA
10:00				SUB IN: PRINCE, RAVEN
10:00				SUB IN: BASTIN, SERAPHINE
09:45				TURNOVER (LOSTBALL) by HAMPTON, JAIDA
09:45	STEAL by GREGORY, GABBY			
09:33	MISSED 3PTR by ROBERTSON, TAYLOR			
09:29	REBOUND (OFF) by LLANUSA, ANA			
09:29	TURNOVER (TRAVEL) by LLANUSA, ANA			
09:07				MISSED 3PTR by HAMPTON, JAIDA
09:06				REBOUND (OFF) by PRINCE, RAVEN
09:06	FOUL (PERSONAL) by GREGORY, GABBY			
09:06				MISSED FT by PRINCE, RAVEN
09:06				REBOUND (OFF) by TEAM
09:06		68-60	H 8	GOOD! FT by PRINCE, RAVEN
08:58				FOUL (PERSONAL) by PRINCE, RAVEN
08:58	MISSED FT by GREGORY, GABBY			
08:58	REBOUND (OFF) by TEAM			
08:58	GOOD! FT by GREGORY, GABBY [FB]	68-61	H 7	
08:58	SUB OUT: LLANUSA, ANA			
08:58	SUB IN: WILLIAMS, MADI			
08:39				MISSED JUMPER by KIRVEN, ASHLEI
08:36	REBOUND (DEF) by WILLIAMS, MADI			
08:30	GOOD! 3PTR by GREGORY, GABBY	68-64	H 4	
08:30	ASSIST by LEMON, KAMRYN			
08:26				TIMEOUT 30SEC
08:26				SUB OUT: KIRVEN, ASHLEI
08:26				SUB OUT: HAMPTON, JAIDA
08:26				SUB IN: MCCULLY, MARIAH
08:26				SUB IN: SMITH, SHYIA
08:05		70-64	H 6	GOOD! JUMPER by MCCULLY, MARIAH
07:48				FOUL (PERSONAL) by MCCARTY, DJ
07:42	MISSED 3PTR by LEMON, KAMRYN			
07:39				REBOUND (DEF) by SMITH, SHYIA
07:11				MISSED JUMPER by MCCULLY, MARIAH
07:07	REBOUND (DEF) by GREGORY, GABBY			
07:02	MISSED JUMPER by GREGORY, GABBY			
06:58	REBOUND (OFF) by GREGORY, GABBY			
06:58	GOOD! LAYUP by GREGORY, GABBY	70-66	H 4	
06:37				MISSED LAYUP by SMITH, SHYIA
06:37	BLOCK by GREGORY, GABBY			
06:37				REBOUND (OFF) by PRINCE, RAVEN
06:37	FOUL (PERSONAL) by GREGORY, GABBY			
06:37		71-66	H 5	GOOD! FT by PRINCE, RAVEN
06:37		72-66	H 6	GOOD! FT by PRINCE, RAVEN
06:13	MISSED 3PTR by ROBERTSON, TAYLOR			
06:10	REBOUND (OFF) by WILLIAMS, MADI			
06:08	MISSED 3PTR by LEMON, KAMRYN			
06:07				REBOUND (DEF) by TEAM
05:53	FOUL (PERSONAL) by SIMPSON, MANDY			
05:53		73-66	H 7	GOOD! FT by PRINCE, RAVEN
05:53				MISSED FT by PRINCE, RAVEN
05:52				REBOUND (OFF) by MCCULLY, MARIAH
05:34		75-66	H 9	GOOD! JUMPER by MCCARTY, DJ [PNT]
05:22	TIMEOUT 30SEC			
05:09	MISSED 3PTR by ROBERTSON, TAYLOR			
05:06	REBOUND (OFF) by TEAM			
05:05	TURNOVER (BADPASS) by LEMON, KAMRYN			
05:05				STEAL by MCCARTY, DJ
05:01				MISSED LAYUP by MCCARTY, DJ
04:55	REBOUND (DEF) by SIMPSON, MANDY			
04:42				FOUL (PERSONAL) by SMITH, SHYIA
04:42	SUB OUT: LEMON, KAMRYN			
04:42	SUB IN: LLANUSA, ANA			
04:36	GOOD! LAYUP by LLANUSA, ANA	75-68	H 7	
04:36	ASSIST by SIMPSON, MANDY			
04:02		77-68	H 9	GOOD! JUMPER by MCCULLY, MARIAH [PNT]
03:54	TURNOVER (LOSTBALL) by LLANUSA, ANA			
03:39				MISSED JUMPER by MCCULLY, MARIAH
03:36	REBOUND (DEF) by ROBERTSON, TAYLOR			

Time	VISITORS: Oklahoma	Score	Margin	HOME: Wichita St.
03:32	GOOD! 3PTR by ROBERTSON, TAYLOR [FB]	77-71	H 6	
03:04				MISSED 3PTR by MCCULLY, MARIAH
03:01				REBOUND (OFF) by PRINCE, RAVEN
03:01	FOUL (PERSONAL) by ROBERTSON, TAYLOR			
03:01				SUB OUT: MCCULLY, MARIAH
03:01				SUB IN: BREMAUD, CARLA
02:44				MISSED 3PTR by BREMAUD, CARLA
02:42	REBOUND (DEF) by TEAM			
02:21	MISSED LAYUP by WILLIAMS, MADI			
02:20	REBOUND (OFF) by TEAM			
02:14	GOOD! 3PTR by GREGORY, GABBY	77-74	H 3	
02:14	ASSIST by LLANUSA, ANA			
01:42	FOUL (PERSONAL) by SIMPSON, MANDY			
01:42				MISSED FT by MCCARTY, DJ
01:42				REBOUND (OFF) by TEAM
01:42		78-74	H 4	GOOD! FT by MCCARTY, DJ
01:24	MISSED JUMPER by LLANUSA, ANA			
01:18	REBOUND (OFF) by WILLIAMS, MADI			
01:17	MISSED LAYUP by WILLIAMS, MADI			
01:17				REBOUND (DEF) by SMITH, SHYIA
00:52		80-74	H 6	GOOD! LAYUP by PRINCE, RAVEN
00:52				ASSIST by BASTIN, SERAPHINE
00:52	FOUL (PERSONAL) by SIMPSON, MANDY			
00:52	SUB OUT: SIMPSON, MANDY			
00:52	SUB IN: VEITENHEIMER, TATUM			
00:52		81-74	H 7	GOOD! FT by PRINCE, RAVEN
00:46	GOOD! 3PTR by ROBERTSON, TAYLOR	81-77	H 4	
00:46	ASSIST by VEITENHEIMER, TATUM			
00:46	TIMEOUT TEAM			
01:17				BLOCK by PRINCE, RAVEN
00:46				TIMEOUT 30SEC
00:22		83-77	H 6	GOOD! LAYUP by MCCARTY, DJ
00:17	MISSED 3PTR by GREGORY, GABBY			
00:15				REBOUND (DEF) by BASTIN, SERAPHINE
00:15	FOUL (PERSONAL) by LLANUSA, ANA			
00:15				MISSED FT by BASTIN, SERAPHINE
00:15				REBOUND (OFF) by TEAM
00:15		84-77	H 7	GOOD! FT by BASTIN, SERAPHINE [FB]
00:15	TIMEOUT 30SEC			
00:12	GOOD! 3PTR by ROBERTSON, TAYLOR	84-80	H 4	
00:12				FOUL (PERSONAL) by PRINCE, RAVEN
00:09	GOOD! 3PTR by LLANUSA, ANA	84-83	H 1	
00:09	ASSIST by VEITENHEIMER, TATUM			
00:09				TIMEOUT TEAM
00:08	FOUL (PERSONAL) by GREGORY, GABBY			
00:08		85-83	H 2	GOOD! FT by BASTIN, SERAPHINE [FB]
00:08		86-83	H 3	GOOD! FT by BASTIN, SERAPHINE [FB]
00:04	TURNOVER (LOSTBALL) by VEITENHEIMER, TATUM			
00:04				STEAL by BASTIN, SERAPHINE
00:00	FOUL (PERSONAL) by ROBERTSON, TAYLOR			
00:00		87-83	H 4	GOOD! FT by BASTIN, SERAPHINE [FB]
00:00		88-83	H 5	GOOD! FT by BASTIN, SERAPHINE [FB]

Oklahoma 83, Wichita St. 88

Points from (This Period)	OKL	WSU
In the Paint	4	8
Off Turns	0	3
2nd Chance	5	5
Fast Break	4	5
Bench	9	4

**Official Scoring/Possession Reference Chart
Oklahoma vs Wichita St.**

Period 1

November 30, 2019 at Charles Koch Arena (Devlin Court) - Wichita, Kan.



Period 1

Starters:

Oklahoma: 22 LLANUSA, ANA (G); 25 WILLIAMS, MADI (G); 30 ROBERTSON, TAYLOR (G); 32 VEITENHEIMER, TATUM (G); 3 SIMPSON, MANDY (F);

Wichita St.: 1 MCCARTY, DJ (G); 12 BREMAUD, CARLA (G); 13 PRINCE, RAVEN (F); 23 BASTIN, SERAPHINE (G); 34 SMITH, SHYIA (F);

Time	VISITORS: Oklahoma	Score	Margin	HOME: Wichita St.
09:02		2-0	H 2	GOOD! JUMPER by MCCARTY, DJ
08:12	GOOD! LAYUP by SIMPSON, MANDY	2-2	T	
07:32		4-2	H 2	GOOD! LAYUP by PRINCE, RAVEN
07:24	GOOD! LAYUP by LLANUSA, ANA	4-4	T	
06:55	GOOD! LAYUP by ROBERTSON, TAYLOR	4-6	V 2	
05:56		7-6	H 1	GOOD! 3PTR by MCCARTY, DJ
05:28	GOOD! 3PTR by ROBERTSON, TAYLOR	7-9	V 2	
05:06		8-9	V 1	GOOD! FT by BREMAUD, CARLA
04:45		11-9	H 2	GOOD! 3PTR by BREMAUD, CARLA
03:34	GOOD! FT by WILLIAMS, MADI	11-10	H 1	
03:34	GOOD! FT by WILLIAMS, MADI	11-11	T	
02:10		14-11	H 3	GOOD! 3PTR by BASTIN, SERAPHINE
01:59	GOOD! 3PTR by ROBERTSON, TAYLOR	14-14	T	
01:36		16-14	H 2	GOOD! LAYUP by HENDERSON, ASIA
00:57		18-14	H 4	GOOD! LAYUP by PRINCE, RAVEN
00:39	GOOD! LAYUP by GREGORY, GABBY [PNT]	18-16	H 2	
00:09		20-16	H 4	GOOD! JUMPER by BREMAUD, CARLA
00:02	GOOD! LAYUP by LAMPKIN, NYDIA [FB]	20-18	H 2	

Oklahoma 18, Wichita St. 20

**Official Scoring/Possession Reference Chart
Oklahoma vs Wichita St.
Period 2**

November 30, 2019 at Charles Koch Arena (Devlin Court) - Wichita, Kan.



Period 2

Starters:

Oklahoma: 22 LLANUSA, ANA (G); 25 WILLIAMS, MADI (G); 30 ROBERTSON, TAYLOR (G); 32 VEITENHEIMER, TATUM (G); 3 SIMPSON, MANDY (F);
Wichita St.: 1 MCCARTY, DJ (G); 12 BREMAUD, CARLA (G); 13 PRINCE, RAVEN (F); 23 BASTIN, SERAPHINE (G); 34 SMITH, SHYIA (F);

Time	VISITORS: Oklahoma	Score	Margin	HOME: Wichita St.
09:41		22-18	H 4	GOOD! LAYUP by HENDERSON, ASIA
09:14	GOOD! LAYUP by GREGORY, GABBY	22-20	H 2	
08:13		23-20	H 3	GOOD! FT by SMITH, SHYIA [FB]
08:13		24-20	H 4	GOOD! FT by SMITH, SHYIA [FB]
07:23		27-20	H 7	GOOD! 3PTR by BREWER, MAYA
06:55		28-20	H 8	GOOD! FT by KIRVEN, ASHLEI
06:03		30-20	H 10	GOOD! LAYUP by BREWER, MAYA [FB]
05:32	GOOD! LAYUP by WILLIAMS, MADI	30-22	H 8	
05:11		32-22	H 10	GOOD! JUMPER by BASTIN, SERAPHINE [PNT]
04:43		35-22	H 13	GOOD! 3PTR by BREMAUD, CARLA
04:18		38-22	H 16	GOOD! 3PTR by MCCULLY, MARIAH
04:00	GOOD! FT by LLANUSA, ANA	38-23	H 15	
04:00	GOOD! FT by LLANUSA, ANA	38-24	H 14	
03:43		40-24	H 16	GOOD! LAYUP by PRINCE, RAVEN
03:24	GOOD! FT by WILLIAMS, MADI	40-25	H 15	
03:24	GOOD! FT by WILLIAMS, MADI	40-26	H 14	
02:59		42-26	H 16	GOOD! JUMPER by MCCULLY, MARIAH
02:41	GOOD! FT by WILLIAMS, MADI [FB]	42-27	H 15	
02:41	GOOD! FT by WILLIAMS, MADI [FB]	42-28	H 14	
02:19	GOOD! 3PTR by ROBERTSON, TAYLOR [FB]	42-31	H 11	
01:55		43-31	H 12	GOOD! FT by PRINCE, RAVEN
01:40	GOOD! JUMPER by WILLIAMS, MADI	43-33	H 10	
01:40	GOOD! FT by WILLIAMS, MADI	43-34	H 9	
01:20		45-34	H 11	GOOD! LAYUP by KIRVEN, ASHLEI
00:49		47-34	H 13	GOOD! JUMPER by HAMPTON, JAIDA
00:41	GOOD! JUMPER by LLANUSA, ANA [FB]	47-36	H 11	
00:03	GOOD! FT by VEITENHEIMER, TATUM [FB]	47-37	H 10	
00:00		50-37	H 13	GOOD! 3PTR by BASTIN, SERAPHINE

Oklahoma 37, Wichita St. 50

**Official Scoring/Possession Reference Chart
Oklahoma vs Wichita St.**

Period 3

November 30, 2019 at Charles Koch Arena (Devlin Court) - Wichita, Kan.



Period 3

Starters:

Oklahoma: 22 LLANUSA, ANA (G); 25 WILLIAMS, MADI (G); 30 ROBERTSON, TAYLOR (G); 32 VEITENHEIMER, TATUM (G); 3 SIMPSON, MANDY (F);

Wichita St.: 1 MCCARTY, DJ (G); 12 BREMAUD, CARLA (G); 13 PRINCE, RAVEN (F); 23 BASTIN, SERAPHINE (G); 34 SMITH, SHYIA (F);

Time	VISITORS: Oklahoma	Score	Margin	HOME: Wichita St.
09:26	GOOD! 3PTR by ROBERTSON, TAYLOR	50-40	H 10	
09:00		53-40	H 13	GOOD! 3PTR by MCCARTY, DJ
07:22	GOOD! LAYUP by LLANUSA, ANA [FB]	53-42	H 11	
06:59		56-42	H 14	GOOD! 3PTR by BREMAUD, CARLA
06:48	GOOD! LAYUP by WILLIAMS, MADI	56-44	H 12	
06:29		59-44	H 15	GOOD! 3PTR by BREMAUD, CARLA
06:12	GOOD! 3PTR by ROBERTSON, TAYLOR	59-47	H 12	
05:50		62-47	H 15	GOOD! 3PTR by BASTIN, SERAPHINE
05:30	GOOD! FT by LLANUSA, ANA [FB]	62-48	H 14	
05:30	GOOD! FT by LLANUSA, ANA [FB]	62-49	H 13	
04:50		64-49	H 15	GOOD! LAYUP by PRINCE, RAVEN
04:44	GOOD! LAYUP by LLANUSA, ANA [FB]	64-51	H 13	
04:11	GOOD! 3PTR by ROBERTSON, TAYLOR	64-54	H 10	
04:11	GOOD! FT by ROBERTSON, TAYLOR	64-55	H 9	
03:35		67-55	H 12	GOOD! 3PTR by BREWER, MAYA
02:51	GOOD! LAYUP by LLANUSA, ANA	67-57	H 10	
02:19	GOOD! FT by LEMON, KAMRYN	67-58	H 9	
00:57	GOOD! FT by LEMON, KAMRYN [FB]	67-59	H 8	
00:25	GOOD! FT by LEMON, KAMRYN [FB]	67-60	H 7	

Oklahoma 60, Wichita St. 67

**Official Scoring/Possession Reference Chart
Oklahoma vs Wichita St.**

Period 4

November 30, 2019 at Charles Koch Arena (Devlin Court) - Wichita, Kan.



Period 4

Starters:

Oklahoma: 22 LLANUSA, ANA (G); 25 WILLIAMS, MADI (G); 30 ROBERTSON, TAYLOR (G); 32 VEITENHEIMER, TATUM (G); 3 SIMPSON, MANDY (F);

Wichita St.: 1 MCCARTY, DJ (G); 12 BREMAUD, CARLA (G); 13 PRINCE, RAVEN (F); 23 BASTIN, SERAPHINE (G); 34 SMITH, SHYIA (F);

Time	VISITORS: Oklahoma	Score	Margin	HOME: Wichita St.
09:06		68-60	H 8	GOOD! FT by PRINCE, RAVEN
08:58	GOOD! FT by GREGORY, GABBY [FB]	68-61	H 7	
08:30	GOOD! 3PTR by GREGORY, GABBY	68-64	H 4	
08:05		70-64	H 6	GOOD! JUMPER by MCCULLY, MARIAH
06:58	GOOD! LAYUP by GREGORY, GABBY	70-66	H 4	
06:37		71-66	H 5	GOOD! FT by PRINCE, RAVEN
06:37		72-66	H 6	GOOD! FT by PRINCE, RAVEN
05:53		73-66	H 7	GOOD! FT by PRINCE, RAVEN
05:34		75-66	H 9	GOOD! JUMPER by MCCARTY, DJ [PNT]
04:36	GOOD! LAYUP by LLANUSA, ANA	75-68	H 7	
04:02		77-68	H 9	GOOD! JUMPER by MCCULLY, MARIAH [PNT]
03:32	GOOD! 3PTR by ROBERTSON, TAYLOR [FB]	77-71	H 6	
02:14	GOOD! 3PTR by GREGORY, GABBY	77-74	H 3	
01:42		78-74	H 4	GOOD! FT by MCCARTY, DJ
00:52		80-74	H 6	GOOD! LAYUP by PRINCE, RAVEN
00:52		81-74	H 7	GOOD! FT by PRINCE, RAVEN
00:46	GOOD! 3PTR by ROBERTSON, TAYLOR	81-77	H 4	
00:22		83-77	H 6	GOOD! LAYUP by MCCARTY, DJ
00:15		84-77	H 7	GOOD! FT by BASTIN, SERAPHINE [FB]
00:12	GOOD! 3PTR by ROBERTSON, TAYLOR	84-80	H 4	
00:09	GOOD! 3PTR by LLANUSA, ANA	84-83	H 1	
00:08		85-83	H 2	GOOD! FT by BASTIN, SERAPHINE [FB]
00:08		86-83	H 3	GOOD! FT by BASTIN, SERAPHINE [FB]
00:00		87-83	H 4	GOOD! FT by BASTIN, SERAPHINE [FB]
00:00		88-83	H 5	GOOD! FT by BASTIN, SERAPHINE [FB]

Oklahoma 83, Wichita St. 88

**Official Substitutions Log
Oklahoma vs Wichita St.
Period 1**

November 30, 2019 at Charles Koch Arena (Devlin Court) - Wichita, Kan.



VISITORS: Oklahoma	Time	Score	HOME: Wichita St.
22 LLANUSA, ANA			1 MCCARTY, DJ
25 WILLIAMS, MADI			12 BREMAUD, CARLA
30 ROBERTSON, TAYLOR			13 PRINCE, RAVEN
32 VEITENHEIMER, TATUM			23 BASTIN, SERAPHINE
3 SIMPSON, MANDY			34 SMITH, SHYIA
SUB OUT: 32 VEITENHEIMER, TATUM	05:06	9-7	
SUB IN: 4 LEMON, KAMRYN	05:06		
	04:30	9-11	SUB OUT: BASTIN, SERAPHINE
	04:30		SUB IN: MCCULLY, MARIAH
	03:34	11-11	SUB OUT: SMITH, SHYIA
	03:34		SUB IN: HENDERSON, ASIA
SUB OUT: 22 LLANUSA, ANA	03:34		
SUB IN: 12 GREGORY, GABBY	03:34		
	03:07	11-11	SUB OUT: MCCARTY, DJ
	03:07		SUB IN: BASTIN, SERAPHINE
SUB OUT: 3 SIMPSON, MANDY	02:20	11-11	
SUB IN: 21 LAMPKIN, NYDIA	02:20		

Oklahoma 18, Wichita St. 20

**Official Substitutions Log
Oklahoma vs Wichita St.
Period 2**

November 30, 2019 at Charles Koch Arena (Devlin Court) - Wichita, Kan.



VISITORS: Oklahoma	Time	Score	HOME: Wichita St.
22 LLANUSA, ANA			1 MCCARTY, DJ
25 WILLIAMS, MADI			12 BREMAUD, CARLA
30 ROBERTSON, TAYLOR			13 PRINCE, RAVEN
32 VEITENHEIMER, TATUM			23 BASTIN, SERAPHINE
3 SIMPSON, MANDY			34 SMITH, SHYIA
	10:00	-	SUB OUT: BREMAUD, CARLA
	10:00		SUB IN: BREWER, MAYA
SUB OUT: 30 ROBERTSON, TAYLOR	10:00		
SUB IN: 22 LLANUSA, ANA	10:00		
	08:30	20-22	SUB OUT: PRINCE, RAVEN
	08:30		SUB OUT: HENDERSON, ASIA
	08:30		SUB IN: KIRVEN, ASHLEI
	08:30		SUB IN: SMITH, SHYIA
SUB OUT: 25 WILLIAMS, MADI	08:14	20-22	
SUB IN: 30 ROBERTSON, TAYLOR	08:14		
SUB OUT: 21 LAMPKIN, NYDIA	08:13	20-22	
SUB IN: 3 SIMPSON, MANDY	08:13		
	07:38	20-24	SUB OUT: MCCULLY, MARIAH
	07:38		SUB IN: MCCARTY, DJ
SUB OUT: 3 SIMPSON, MANDY	07:38		
SUB IN: 31 WILLISTON, ASPEN	07:38		
	07:13	20-27	SUB OUT: MCCARTY, DJ
	07:13		SUB IN: BREMAUD, CARLA
SUB OUT: 22 LLANUSA, ANA	06:55	20-27	
SUB OUT: 31 WILLISTON, ASPEN	06:55		
SUB IN: 0 MURCER, JESSI	06:55		
SUB IN: 3 SIMPSON, MANDY	06:55		
SUB OUT: 4 LEMON, KAMRYN	05:42	20-30	
SUB OUT: 12 GREGORY, GABBY	05:42		
SUB IN: 25 WILLIAMS, MADI	05:42		
SUB IN: 32 VEITENHEIMER, TATUM	05:42		
	04:42	22-35	SUB OUT: KIRVEN, ASHLEI
	04:42		SUB IN: PRINCE, RAVEN
	04:32	22-35	SUB OUT: BREMAUD, CARLA
	04:32		SUB IN: MCCULLY, MARIAH
SUB OUT: 0 MURCER, JESSI	04:32		
SUB IN: 22 LLANUSA, ANA	04:32		
	04:00	22-38	SUB OUT: BREWER, MAYA
	04:00		SUB IN: HAMPTON, JAIDA
	01:40	33-43	SUB OUT: PRINCE, RAVEN
	01:40		SUB IN: KIRVEN, ASHLEI
SUB OUT: 3 SIMPSON, MANDY	00:03	36-47	
SUB OUT: 25 WILLIAMS, MADI	00:03		
SUB IN: 21 LAMPKIN, NYDIA	00:03		
SUB IN: 31 WILLISTON, ASPEN	00:03		

Oklahoma 37, Wichita St. 50

**Official Substitutions Log
Oklahoma vs Wichita St.
Period 3**

November 30, 2019 at Charles Koch Arena (Devlin Court) - Wichita, Kan.



VISITORS: Oklahoma	Time	Score	HOME: Wichita St.
22 LLANUSA, ANA			1 MCCARTY, DJ
25 WILLIAMS, MADI			12 BREMAUD, CARLA
30 ROBERTSON, TAYLOR			13 PRINCE, RAVEN
32 VEITENHEIMER, TATUM			23 BASTIN, SERAPHINE
3 SIMPSON, MANDY			34 SMITH, SHYIA
	10:00	-	SUB OUT: MCCULLY, MARIAH
	10:00		SUB OUT: KIRVEN, ASHLEI
	10:00		SUB OUT: HAMPTON, JAIDA
	10:00		SUB IN: MCCARTY, DJ
	10:00		SUB IN: BREMAUD, CARLA
	10:00		SUB IN: PRINCE, RAVEN
SUB OUT: 21 LAMPKIN, NYDIA	10:00		
SUB OUT: 31 WILLISTON, ASPEN	10:00		
SUB IN: 3 SIMPSON, MANDY	10:00		
SUB IN: 25 WILLIAMS, MADI	10:00		
SUB OUT: 32 VEITENHEIMER, TATUM	06:52	42-56	
SUB IN: 4 LEMON, KAMRYN	06:52		
	05:30	49-62	SUB OUT: BREMAUD, CARLA
	05:30		SUB IN: MCCULLY, MARIAH
	05:05	49-62	SUB OUT: BASTIN, SERAPHINE
	05:05		SUB IN: BREWER, MAYA
SUB OUT: 25 WILLIAMS, MADI	05:05		
SUB IN: 12 GREGORY, GABBY	05:05		
	03:23	55-67	SUB OUT: MCCARTY, DJ
	03:23		SUB IN: BASTIN, SERAPHINE
	02:33	57-67	SUB OUT: MCCULLY, MARIAH
	02:33		SUB IN: HAMPTON, JAIDA
	02:19	57-67	SUB OUT: PRINCE, RAVEN
	02:19		SUB IN: HENDERSON, ASIA
	02:19		SUB OUT: BREWER, MAYA
	02:19		SUB IN: MCCARTY, DJ
	00:25	59-67	SUB OUT: BASTIN, SERAPHINE
	00:25		SUB OUT: SMITH, SHYIA
	00:25		SUB IN: REID, ASHLEY
	00:25		SUB IN: KIRVEN, ASHLEI

Oklahoma 60, Wichita St. 67

**Official Substitutions Log
Oklahoma vs Wichita St.
Period 4**

November 30, 2019 at Charles Koch Arena (Devlin Court) - Wichita, Kan.



VISITORS: Oklahoma	Time	Score	HOME: Wichita St.
22 LLANUSA, ANA			1 MCCARTY, DJ
25 WILLIAMS, MADI			12 BREMAUD, CARLA
30 ROBERTSON, TAYLOR			13 PRINCE, RAVEN
32 VEITENHEIMER, TATUM			23 BASTIN, SERAPHINE
3 SIMPSON, MANDY			34 SMITH, SHYIA
	10:00	-	SUB OUT: REID, ASHLEY
	10:00		SUB OUT: HENDERSON, ASIA
	10:00		SUB IN: PRINCE, RAVEN
	10:00		SUB IN: BASTIN, SERAPHINE
SUB OUT: 22 LLANUSA, ANA	08:58	61-68	
SUB IN: 25 WILLIAMS, MADI	08:58		
	08:26	64-68	SUB OUT: KIRVEN, ASHLEI
	08:26		SUB OUT: HAMPTON, JAIDA
	08:26		SUB IN: MCCULLY, MARIAH
	08:26		SUB IN: SMITH, SHYIA
SUB OUT: 4 LEMON, KAMRYN	04:42	66-75	
SUB IN: 22 LLANUSA, ANA	04:42		
	03:01	71-77	SUB OUT: MCCULLY, MARIAH
	03:01		SUB IN: BREMAUD, CARLA
SUB OUT: 3 SIMPSON, MANDY	00:52	74-80	
SUB IN: 32 VEITENHEIMER, TATUM	00:52		

Oklahoma 83, Wichita St. 88

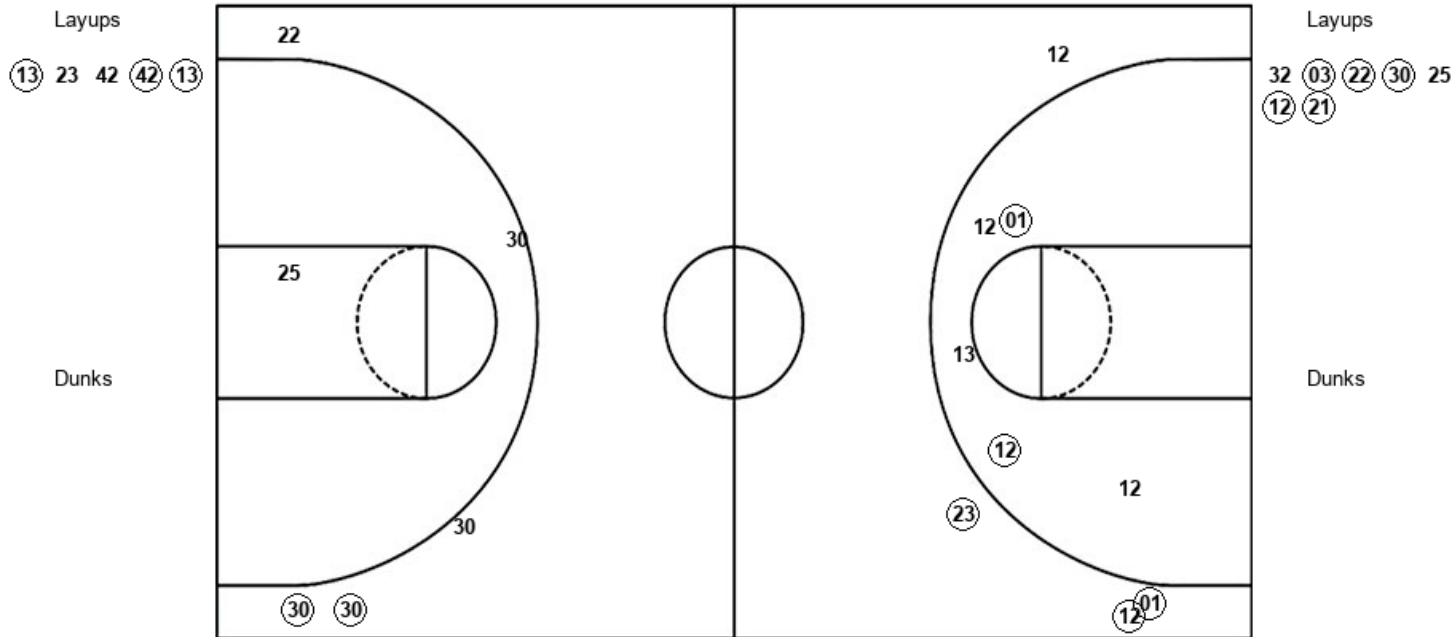
Official Shot Chart
Oklahoma vs Wichita St.
PERIOD 1 Shots

November 30, 2019 at Charles Koch Arena (Devlin Court) - Wichita, Kan.



Wichita St.

Oklahoma



WSU : Period 1	Made	Att	Pct
Layups	3	5	60.0
Dunks	0	0	0
2PT Field Goals	5	10	50.0
3PT Field Goals	3	4	75.0
Total Field Goals	8	14	57.1

OKL : Period 1	Made	Att	Pct
Layups	5	7	71.4
Dunks	0	0	0
2PT Field Goals	5	8	62.5
3PT Field Goals	2	5	40.0
Total Field Goals	7	13	53.8

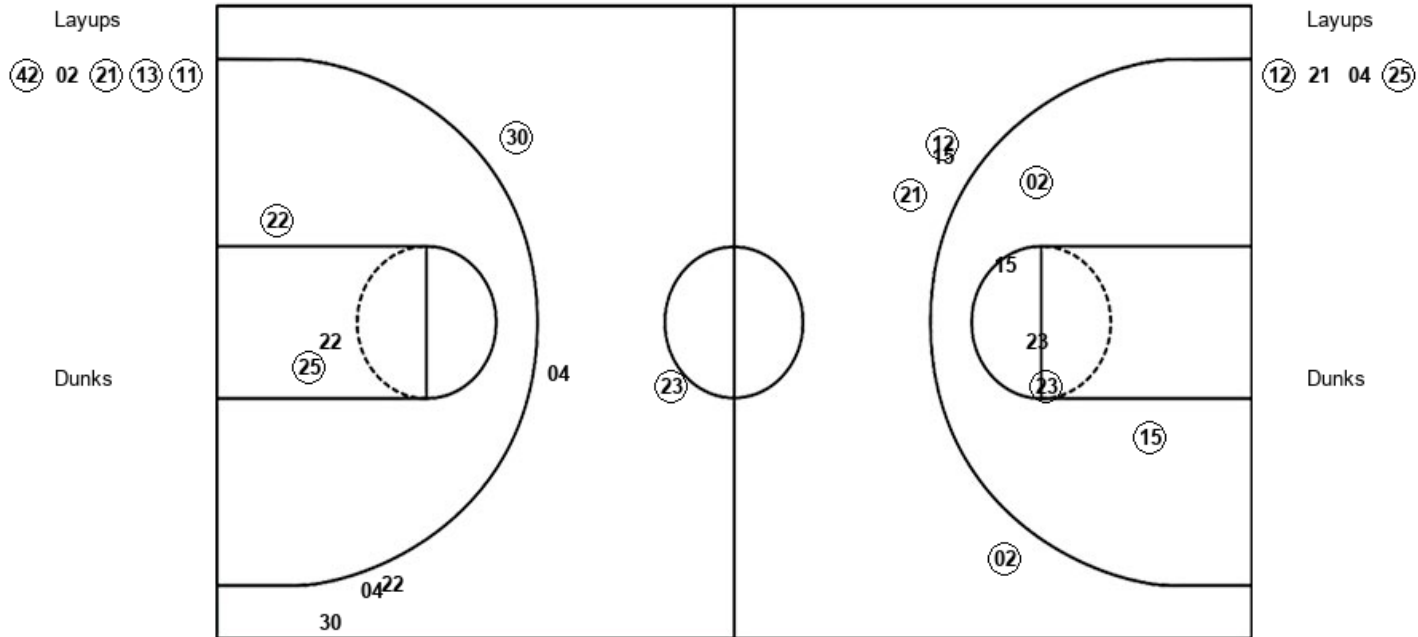
Official Shot Chart
Oklahoma vs Wichita St.
PERIOD 2 Shots

November 30, 2019 at Charles Koch Arena (Devlin Court) - Wichita, Kan.



Wichita St.

Oklahoma



WSU : Period 2	Made	Att	Pct
Layups	4	5	80.0
Dunks	0	0	0
2PT Field Goals	7	10	70.0
3PT Field Goals	4	5	80.0
Total Field Goals	11	15	73.3

OKL : Period 2	Made	Att	Pct
Layups	2	4	50.0
Dunks	0	0	0
2PT Field Goals	4	7	57.1
3PT Field Goals	1	5	20.0
Total Field Goals	5	12	41.7

Official Shot Chart
Oklahoma vs Wichita St.
PERIOD 3 Shots

November 30, 2019 at Charles Koch Arena (Devlin Court) - Wichita, Kan.



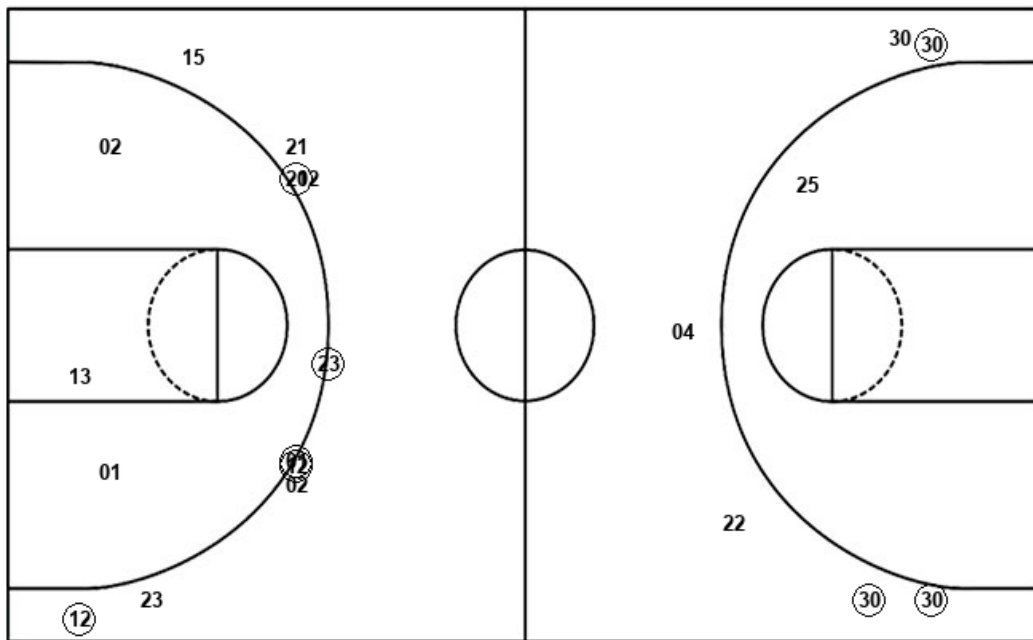
Wichita St.

Oklahoma

Layups

13 23 (13)

Dunks



Layups

(22) (25) (22) (22) 04

Dunks

WSU : Period 3	Made	Att	Pct
Layups	1	3	33.3
Dunks	0	0	0
2PT Field Goals	1	6	16.7
3PT Field Goals	5	10	50.0
Total Field Goals	6	16	37.5

OKL : Period 3	Made	Att	Pct
Layups	4	5	80.0
Dunks	0	0	0
2PT Field Goals	4	6	66.7
3PT Field Goals	3	6	50.0
Total Field Goals	7	12	58.3

Official Shot Chart
Oklahoma vs Wichita St.
PERIOD 4 Shots

November 30, 2019 at Charles Koch Arena (Devlin Court) - Wichita, Kan.

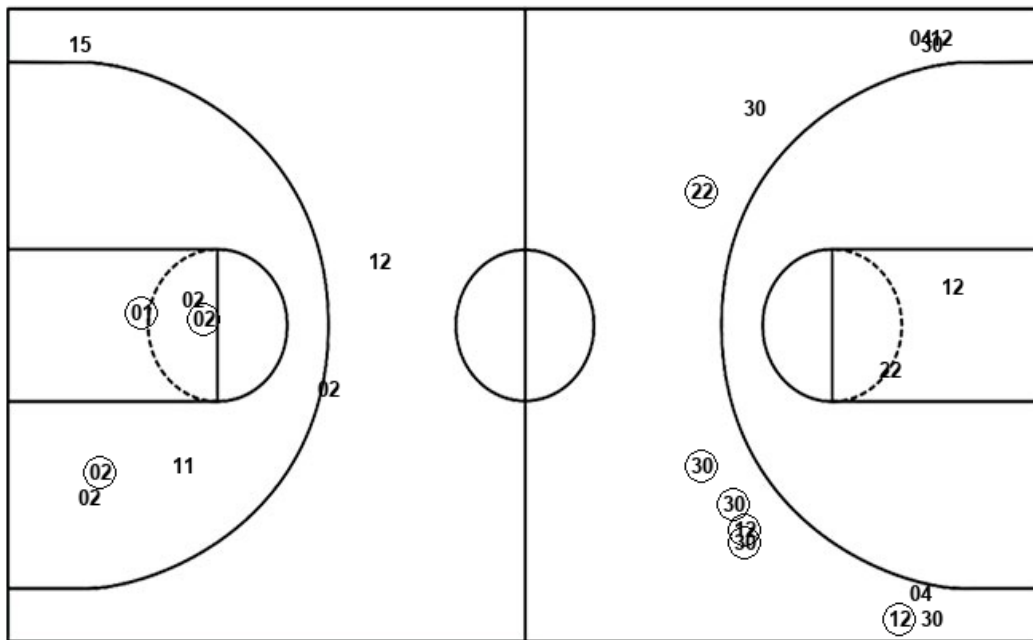


Wichita St.

Oklahoma

Layups
34 01 (13) (01)

Dunks



Layups
(12) (22) 25 25

Dunks

WSU : Period 4	Made	Att	Pct
Layups	2	4	50.0
Dunks	0	0	0
2PT Field Goals	5	10	50.0
3PT Field Goals	0	3	00.0
Total Field Goals	5	13	38.5

OKL : Period 4	Made	Att	Pct
Layups	2	4	50.0
Dunks	0	0	0
2PT Field Goals	2	6	33.3
3PT Field Goals	6	12	50.0
Total Field Goals	8	18	44.4

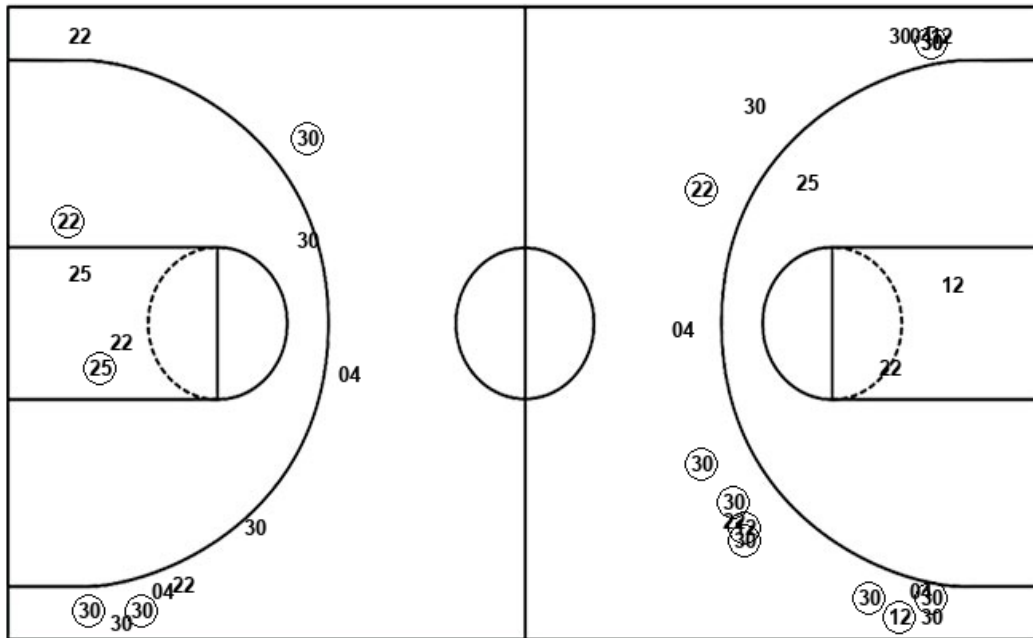
Official Shot Chart
Oklahoma vs Wichita St.
Oklahoma Team Shots

November 30, 2019 at Charles Koch Arena (Devlin Court) - Wichita, Kan.



Layups

Dunks



Layups

Dunks

32 03 22 30 25
12 21 12 21 04
25 22 25 22 22
04 12 22 25 25

OKL : Period 1	Made	Att	Pct
Layups	5	7	71.4
Dunks	0	0	0
2PT Field Goals	5	8	62.5
3PT Field Goals	2	5	40.0
Total Field Goals	7	13	53.8

OKL : Period 3	Made	Att	Pct
Layups	4	5	80.0
Dunks	0	0	0
2PT Field Goals	4	6	66.7
3PT Field Goals	3	6	50.0
Total Field Goals	7	12	58.3

OKL : Period 2	Made	Att	Pct
Layups	2	4	50.0
Dunks	0	0	0
2PT Field Goals	4	7	57.1
3PT Field Goals	1	5	20.0
Total Field Goals	5	12	41.7

OKL : Period 4	Made	Att	Pct
Layups	2	4	50.0
Dunks	0	0	0
2PT Field Goals	2	6	33.3
3PT Field Goals	6	12	50.0
Total Field Goals	8	18	44.4

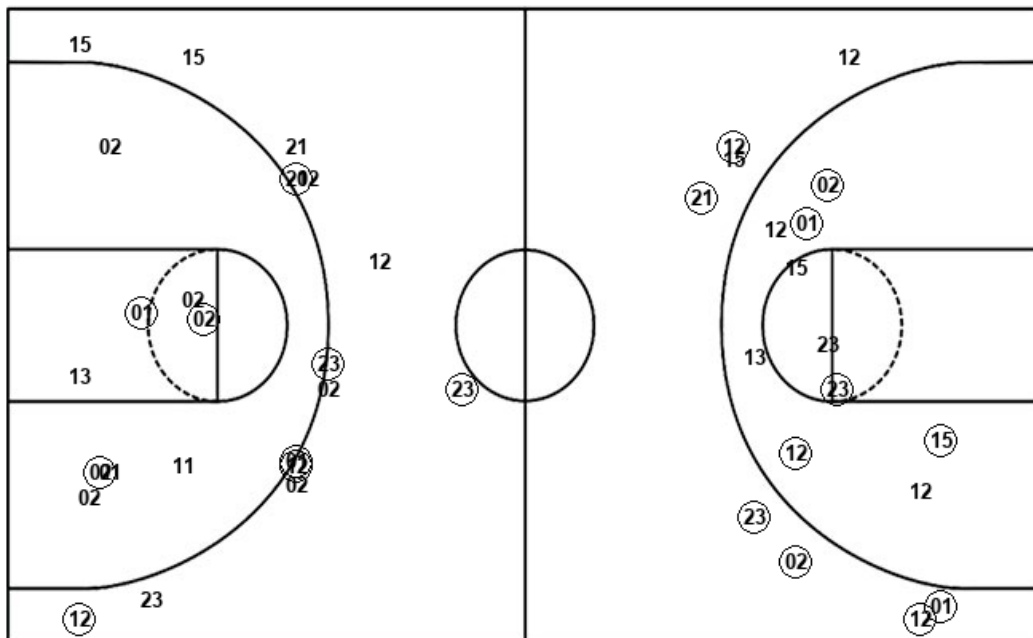
Official Shot Chart
Oklahoma vs Wichita St.
Wichita St. Team Shots

November 30, 2019 at Charles Koch Arena (Devlin Court) - Wichita, Kan.



Layups

Dunks



Layups

Dunks

13 23 42 42 13
42 02 21 13 11
13 23 13 34 01
13 01

WSU : Period 1	Made	Att	Pct
Layups	3	5	60.0
Dunks	0	0	0
2PT Field Goals	5	10	50.0
3PT Field Goals	3	4	75.0
Total Field Goals	8	14	57.1

WSU : Period 3	Made	Att	Pct
Layups	1	3	33.3
Dunks	0	0	0
2PT Field Goals	1	6	16.7
3PT Field Goals	5	10	50.0
Total Field Goals	6	16	37.5

WSU : Period 2	Made	Att	Pct
Layups	4	5	80.0
Dunks	0	0	0
2PT Field Goals	7	10	70.0
3PT Field Goals	4	5	80.0
Total Field Goals	11	15	73.3

WSU : Period 4	Made	Att	Pct
Layups	2	4	50.0
Dunks	0	0	0
2PT Field Goals	5	10	50.0
3PT Field Goals	0	3	00.0
Total Field Goals	5	13	38.5