

## FINAL SCORE



**UNI**

**61**



**Wichita St.**

**50**

November 09, 2019 • Charles Koch Arena (Devlin Court) - Wichita, Kan.

## FINAL STATISTICS

**Official Box Score**  
**UNI vs Wichita St.**  
**Game Totals -- Final Statistics**  
**November 09, 2019 at Charles Koch Arena (Devlin Court) - Wichita, Kan.**



**UNI 61**

No.	Player	S	Pts	FG	3FG	FT	OR	DR	TR	PF	A	TO	Blk	Stl	Min	+/-
03	RUCKER, KARLI	G	18	5-12	1-5	7-8	0	3	3	0	2	6	0	0	30	7
05	KROEGER, NICOLE	G	2	1-4	0-3	0-0	0	0	0	3	0	1	0	1	28	0
11	GUNNELS, BRE	F	4	1-3	0-2	2-2	0	8	8	4	1	5	1	2	26	11
22	SIMON-RESSLER, ROSE	G	0	0-2	0-1	0-0	0	0	0	0	0	0	0	0	9	-8
50	MAAHS, MEGAN	F	11	3-5	1-1	4-4	1	6	7	4	1	2	2	1	24	10
02	MORGAN, CAILYN	G	2	1-1	0-0	0-0	1	1	2	1	0	4	0	0	7	4
12	FINLEY, KAM	G	11	4-11	1-5	2-2	1	4	5	2	2	2	0	0	18	12
30	WOLF, CYNTHIA	C	4	1-1	0-0	2-2	0	4	4	3	1	0	1	0	16	1
31	CAVEY, KRISTINA	G	3	1-3	0-1	1-2	3	1	4	2	1	2	0	0	21	11
32	HILLYARD, HEIDI	F	0	0-3	0-2	0-0	1	2	3	2	1	1	0	1	14	0
41	GERRITS, ABBY	G	6	2-3	2-2	0-0	1	1	2	1	0	1	0	1	7	7
<b>TEAM</b>							4	2	6	0		3				
<b>TOTALS</b>			<b>61</b>	<b>19-48</b>	<b>5-22</b>	<b>18-20</b>	<b>12</b>	<b>32</b>	<b>44</b>	<b>22</b>	<b>9</b>	<b>27</b>	<b>4</b>	<b>6</b>	<b>200</b>	

*Shooting By Period*

Period	FG	FG%	3FG	3FG%	FT	FT%
1st Qtr	5-12	42%	3-7	43%	2-2	100%
2nd Qtr	2-12	17%	0-5	00%	5-6	83%
3rd Qtr	6-14	43%	1-6	17%	5-6	83%
4th Qtr	6-10	60%	1-4	25%	6-6	100%
1st Half	7-24	29%	3-12	25%	7-8	88%
2nd Half	12-24	50%	2-10	20%	11-12	92%
<b>Game</b>	<b>19-48</b>	<b>39.6%</b>	<b>5-22</b>	<b>22.7%</b>	<b>18-20</b>	<b>90.0%</b>

*Deadball Rebounds: 0,1*  
*Last FG: 4th-02:13*  
*Biggest Run: 7-0*  
*Largest lead: By 13 at -*  
*Technical Fouls: None.*

**Wichita St. 50**

No.	Player	S	Pts	FG	3FG	FT	OR	DR	TR	PF	A	TO	Blk	Stl	Min	+/-
12	BREMAUD, CARLA	G	6	0-4	0-2	6-6	0	1	1	4	2	2	1	2	35	-12
13	PRINCE, RAVEN	F	4	1-2	0-0	2-4	1	5	6	3	0	3	0	0	23	-4
21	BREWER, MAYA	G	11	4-13	0-4	3-7	1	1	2	1	0	3	2	3	32	-10
23	BASTIN, SERAPHINE	G	9	4-13	1-3	0-0	0	3	3	5	1	2	0	2	21	-2
24	COLBERT, TRAJATA	F	12	6-11	0-0	0-3	4	1	5	4	0	2	0	1	26	-4
01	MCCARTY, DJ	G	2	0-4	0-1	2-2	0	0	0	1	0	1	0	1	8	1
05	REID, ASHLEY	G	2	1-5	0-0	0-0	0	0	0	2	2	2	0	3	21	-12
15	HAMPTON, JAIDA	G	0	0-0	0-0	0-0	0	0	0	0	1	0	0	0	2	2
34	SMITH, SHYIA	F	2	1-6	0-2	0-2	2	3	5	1	0	1	0	1	25	-15
42	HENDERSON, ASIA	F	2	1-2	0-0	0-0	1	2	3	0	0	1	1	1	6	1
<b>TEAM</b>							4	2	6	0		0				
<b>TOTALS</b>			<b>50</b>	<b>18-60</b>	<b>1-12</b>	<b>13-24</b>	<b>13</b>	<b>18</b>	<b>31</b>	<b>21</b>	<b>6</b>	<b>17</b>	<b>4</b>	<b>14</b>	<b>200</b>	

*Shooting By Period*

Period	FG	FG%	3FG	3FG%	FT	FT%
1st Qtr	7-18	39%	1-3	33%	0-0	0%
2nd Qtr	4-13	31%	0-2	00%	5-6	83%
3rd Qtr	4-12	33%	0-3	00%	3-7	43%
4th Qtr	3-17	18%	0-4	00%	5-11	45%
1st Half	11-31	35%	1-5	20%	5-6	83%
2nd Half	7-29	24%	0-7	00%	8-18	44%
<b>Game</b>	<b>18-60</b>	<b>30.0%</b>	<b>1-12</b>	<b>08.3%</b>	<b>13-24</b>	<b>54.2%</b>

*Deadball Rebounds: 7,1*  
*Last FG: 4th-00:06*  
*Biggest Run: 6-0*  
*Largest lead: By 7 at -*  
*Technical Fouls: None.*

*Game Notes:*

*Officials: John Capolino, Kristi Mosley, Saif Esho*  
*Attendance: 1829*

*Start Time: 06:05 PM ET*  
*End Time: 08:09 PM ET*  
*Game Duration: 2:03*

Score	1st	2nd	3rd	4th	TOT
UNI	15	9	18	19	<b>61</b>
WSU	15	13	11	11	<b>50</b>

*UNI led for 11:31. WSU led for 23:32.*  
*Game was tied for 4:53.*  
*Times tied: 68*      *Lead Changes: 0*

Points from	UNI	WSU
In the Paint	26	30
Off Turns	4	15
2nd Chance	7	9
Fast Break	9	8
Bench	26	8

**Official Box Score**  
**UNI vs Wichita St.**  
**First Half Statistics Only**  
**November 09, 2019 at Charles Koch Arena (Devlin Court) - Wichita, Kan.**



**UNI 24**

No.	Player	S	Pts	FG	3FG	FT	OR	DR	TR	PF	A	TO	Blk	Stl	Min	+/-
02	MORGAN, CAILYN	G	2	1-1	0-0	0-0	1	0	1	1	0	1	0	0	4	-2
03	RUCKER, KARLI	G	1	0-4	0-2	1-2	0	1	1	0	1	2	0	0	15	-7
05	KROEGER, NICOLE	G	0	0-1	0-1	0-0	0	0	0	1	0	0	0	1	17	-3
11	GUNNELS, BRE	F	0	0-2	0-2	0-0	0	4	4	1	1	3	0	1	11	-6
12	FINLEY, KAM	G	7	2-6	1-3	2-2	0	2	2	2	1	1	0	0	5	3
22	SIMON-RESSLER, ROSE	G	0	0-2	0-1	0-0	0	0	0	0	0	0	0	0	7	-7
30	WOLF, CYNTHIA	C	2	0-0	0-0	2-2	0	1	1	1	1	0	1	0	5	-5
31	CAVEY, KRISTINA	G	0	0-0	0-0	0-0	1	0	1	1	0	2	0	0	7	0
32	HILLYARD, HEIDI	F	0	0-1	0-1	0-0	1	1	2	0	0	0	0	1	9	2
41	GERRITS, ABBY	G	3	1-2	1-1	0-0	0	1	1	1	0	0	0	0	5	4
50	MAAHS, MEGAN	F	9	3-5	1-1	2-2	1	3	4	1	0	1	1	0	15	1
	TEAM		0	0-0	0-0	0-0	1	1	2	0	0	3	0	0	0	0
<b>TOTALS</b>			<b>24</b>	<b>7-24</b>	<b>3-12</b>	<b>7-8</b>	<b>5</b>	<b>14</b>	<b>19</b>	<b>9</b>	<b>4</b>	<b>13</b>	<b>2</b>	<b>3</b>	<b>100</b>	

*Shooting By Period*

Period	FG	FG%	3FG	3FG%	FT	FT%
1st Qtr	5-12	42%	3-7	43%	2-2	100%
2nd Qtr	2-12	17%	0-5	00%	5-6	83%
1st Half	7-24	29%	3-12	25%	7-8	88%
Game	19-48	39.6%	5-22	22.7%	18-20	90.0%

*Deadball Rebounds: 0,1*  
*Last FG Half: UNI 2nd-00:21*

**Wichita St. 28**

No.	Player	S	Pts	FG	3FG	FT	OR	DR	TR	PF	A	TO	Blk	Stl	Min	+/-
01	MCCARTY, DJ	G	2	0-1	0-1	2-2	0	0	0	1	0	1	0	1	7	1
05	REID, ASHLEY	G	2	1-3	0-0	0-0	0	0	0	1	1	1	0	0	10	-1
12	BREMAUD, CARLA	G	2	0-2	0-0	2-2	0	1	1	0	1	1	0	1	15	3
13	PRINCE, RAVEN	F	0	0-1	0-0	0-0	0	3	3	2	0	0	0	0	9	6
15	HAMPTON, JAIDA	G	0	0-0	0-0	0-0	0	0	0	0	1	0	0	0	2	2
21	BREWER, MAYA	G	7	3-7	0-2	1-2	1	1	2	0	0	3	2	1	16	2
23	BASTIN, SERAPHINE	G	5	2-7	1-2	0-0	0	3	3	2	1	1	0	1	10	5
24	COLBERT, TRAJATA	F	6	3-6	0-0	0-0	0	0	0	2	0	0	0	1	11	2
34	SMITH, SHYIA	F	2	1-2	0-0	0-0	1	2	3	0	0	1	0	0	14	-1
42	HENDERSON, ASIA	F	2	1-2	0-0	0-0	1	2	3	0	0	1	1	1	6	1
	TEAM		0	0-0	0-0	0-0	3	0	3	0	0	0	0	0	0	0
<b>TOTALS</b>			<b>28</b>	<b>11-31</b>	<b>1-5</b>	<b>5-6</b>	<b>6</b>	<b>12</b>	<b>18</b>	<b>8</b>	<b>4</b>	<b>9</b>	<b>3</b>	<b>6</b>	<b>100</b>	

*Shooting By Period*

Period	FG	FG%	3FG	3FG%	FT	FT%
1st Qtr	7-18	39%	1-3	33%	0-0	0%
2nd Qtr	4-13	31%	0-2	00%	5-6	83%
1st Half	11-31	35%	1-5	20%	5-6	83%
Game	18-60	30.0%	1-12	08.3%	13-24	54.2%

*Deadball Rebounds: 7,1*  
*Last FG Half: WSU 2nd-00:35*

Game Notes:

Officials: John Capolino, Kristi Mosley, Saif Esho  
 Attendance: 1829

Start Time: 06:05 PM ET  
 End Time: 08:09 PM ET  
 Game Duration: 2:03

Score	1st	2nd	3rd	4th	TOT
UNI	15	9	18	19	<b>61</b>
WSU	15	13	11	11	<b>50</b>

Points from (This Period)	UNI	WSU
In the Paint	8	16
Off Turns	2	7
2nd Chance	2	4
Fast Break	2	3
Bench	14	8

**Official Box Score**  
**UNI vs Wichita St.**  
**First Quarter Statistics Only**  
**November 09, 2019 at Charles Koch Arena (Devlin Court) - Wichita, Kan.**



**UNI 15**

No.	Player	S	Pts	FG	3FG	FT	OR	DR	TR	PF	A	TO	Blk	Stl	Min	+/-
03	RUCKER, KARLI	G	0	0-2	0-1	0-0	0	1	1	0	1	1	0	0	6	-3
05	KROEGER, NICOLE	G	0	0-0	0-0	0-0	0	0	0	0	0	0	0	0	9	2
11	GUNNELS, BRE	F	0	0-1	0-1	0-0	0	2	2	0	1	0	0	0	7	-3
22	SIMON-RESSLER, ROSE	G	0	0-1	0-1	0-0	0	0	0	0	0	0	0	0	4	-3
50	MAAHS, MEGAN	F	5	2-2	1-1	0-0	0	2	2	1	0	1	0	0	8	2
02	MORGAN, CAILYN	G	0	0-0	0-0	0-0	0	0	0	1	0	1	0	0	1	-2
12	FINLEY, KAM	G	7	2-5	1-2	2-2	0	2	2	0	1	0	0	0	4	3
30	WOLF, CYNTHIA	C	0	0-0	0-0	0-0	0	0	0	0	1	0	1	0	2	-2
31	CAVEY, KRISTINA	G	0	0-0	0-0	0-0	0	0	0	0	0	0	0	0	3	0
32	HILLYARD, HEIDI	F	0	0-0	0-0	0-0	0	0	0	0	0	0	0	0	3	3
41	GERRITS, ABBY	G	3	1-1	1-1	0-0	0	1	1	0	0	0	0	0	3	3
TEAM							0	0	0	0		1				
<b>TOTALS</b>			<b>15</b>	<b>5-12</b>	<b>3-7</b>	<b>2-2</b>	<b>0</b>	<b>8</b>	<b>8</b>	<b>2</b>	<b>4</b>	<b>4</b>	<b>1</b>	<b>0</b>	<b>50</b>	

*Shooting By Period*

Period	FG	FG%	3FG	3FG%	FT	FT%
1st Qtr	5-12	42%	3-7	43%	2-2	100%
2nd Qtr	2-12	17%	0-5	00%	5-6	83%
1st Half	5-12	42%	3-7	43%	2-2	100%
1st Half	7-24	29%	3-12	25%	7-8	88%
Game	19-48	39.6%	5-22	22.7%	18-20	90.0%

*Deadball Rebounds: 0,1*

**Wichita St. 15**

No.	Player	S	Pts	FG	3FG	FT	OR	DR	TR	PF	A	TO	Blk	Stl	Min	+/-
12	BREMAUD, CARLA	G	0	0-2	0-0	0-0	0	1	1	0	1	0	0	1	10	0
13	PRINCE, RAVEN	F	0	0-1	0-0	0-0	0	2	2	1	0	0	0	0	6	5
21	BREWER, MAYA	G	6	3-6	0-2	0-0	0	1	1	0	0	1	1	0	8	0
23	BASTIN, SERAPHINE	G	5	2-5	1-1	0-0	0	1	1	0	1	0	0	0	7	3
24	COLBERT, TRAJATA	F	4	2-4	0-0	0-0	0	0	0	0	0	0	0	1	10	0
01	MCCARTY, DJ	G	0	0-0	0-0	0-0	0	0	0	0	0	0	0	0	2	0
05	REID, ASHLEY	G	0	0-0	0-0	0-0	0	0	0	0	0	1	0	0	3	-3
15	HAMPTON, JAIDA	G	0	0-0	0-0	0-0	0	0	0	0	0	0	0	0	0	0
34	SMITH, SHYIA	F	0	0-0	0-0	0-0	0	1	1	0	0	0	0	0	4	-5
42	HENDERSON, ASIA	F	0	0-0	0-0	0-0	0	0	0	0	0	0	0	0	0	0
TEAM							3	0	3	0		0				
<b>TOTALS</b>			<b>15</b>	<b>7-18</b>	<b>1-3</b>	<b>0-0</b>	<b>3</b>	<b>6</b>	<b>9</b>	<b>1</b>	<b>2</b>	<b>2</b>	<b>1</b>	<b>2</b>	<b>50</b>	

*Shooting By Period*

Period	FG	FG%	3FG	3FG%	FT	FT%
1st Qtr	7-18	39%	1-3	33%	0-0	0%
2nd Qtr	4-13	31%	0-2	00%	5-6	83%
1st Half	7-18	39%	1-3	33%	0-0	0%
1st Half	11-31	35%	1-5	20%	5-6	83%
Game	18-60	30.0%	1-12	08.3%	13-24	54.2%

*Deadball Rebounds: 7,1*

*Game Notes:*

Officials: John Capolino, Kristi Mosley, Saif Esho  
 Attendance: 1829

Start Time: 06:05 PM ET  
 End Time: 08:09 PM ET  
 Game Duration: 2:03

Score	1st	2nd	3rd	4th	TOT
UNI	15	9	18	19	<b>61</b>
WSU	15	13	11	11	<b>50</b>

Points from (This Period)	UNI	WSU
In the Paint	4	8
Off Turns	0	0
2nd Chance	0	2
Fast Break	0	2
Bench	10	0

**Official Play-By-Play  
UNI vs Wichita St.  
First Quarter**

**November 09, 2019 at Charles Koch Arena (Devlin Court) - Wichita, Kan.**



**Period 1**

**Starters:**

**UNI:** 3 RUCKER, KARLI (G); 5 KROEGER, NICOLE (G); 11 GUNNELS, BRE (F); 22 SIMON-RESSLER, ROSE (G); 50 MAAHS, MEGAN (F);

**Wichita St.:** 12 BREMAUD, CARLA (G); 13 PRINCE, RAVEN (F); 21 BREWER, MAYA (G); 23 BASTIN, SERAPHINE (G); 24 COLBERT, TRAJATA (F);

Time	VISITORS: UNI	Score	Margin	HOME: Wichita St.
09:43		2-0	H 2	GOOD! JUMPER by BASTIN, SERAPHINE [PNT]
09:16	GOOD! LAYUP by MAAHS, MEGAN	2-2	T	
09:16	ASSIST by GUNNELS, BRE			
09:02				MISSED LAYUP by BASTIN, SERAPHINE
09:02				REBOUND (OFF) by TEAM
08:56				MISSED JUMPER by BREWER, MAYA
08:54				REBOUND (OFF) by TEAM
08:42				TURNOVER (TRAVEL) by BREWER, MAYA
08:26	MISSED LAYUP by RUCKER, KARLI			
08:26				BLOCK by BREWER, MAYA
08:22				REBOUND (DEF) by BREWER, MAYA
08:20		4-2	H 2	GOOD! LAYUP by BREWER, MAYA [FB]
08:03	MISSED 3PTR by SIMON-RESSLER, ROSE			
07:58				REBOUND (DEF) by PRINCE, RAVEN
07:55				MISSED LAYUP by BASTIN, SERAPHINE
07:55				REBOUND (OFF) by TEAM
07:52		6-2	H 4	GOOD! JUMPER by COLBERT, TRAJATA [PNT]
07:52				ASSIST by BASTIN, SERAPHINE
07:29	MISSED 3PTR by GUNNELS, BRE			
07:25				REBOUND (DEF) by TEAM
07:12				MISSED 3PTR by BREWER, MAYA
07:05	REBOUND (DEF) by GUNNELS, BRE			
06:53	GOOD! 3PTR by MAAHS, MEGAN	6-5	H 1	
06:53	ASSIST by RUCKER, KARLI			
06:34		8-5	H 3	GOOD! JUMPER by BREWER, MAYA
06:14	SUB OUT: RUCKER, KARLI			
06:14	SUB OUT: SIMON-RESSLER, ROSE			
06:14	SUB OUT: MAAHS, MEGAN			
06:14	SUB IN: FINLEY, KAM			
06:14	SUB IN: WOLF, CYNTHIA			
06:14	SUB IN: CAVEY, KRISTINA			
06:09	MISSED JUMPER by FINLEY, KAM			
06:04				REBOUND (DEF) by PRINCE, RAVEN
05:54				MISSED JUMPER by COLBERT, TRAJATA
05:54	BLOCK by WOLF, CYNTHIA			
05:49	REBOUND (DEF) by FINLEY, KAM			
05:40	GOOD! 3PTR by FINLEY, KAM	8-8	T	
05:40	ASSIST by WOLF, CYNTHIA			
05:20		11-8	H 3	GOOD! 3PTR by BASTIN, SERAPHINE
04:56				FOUL (PERSONAL) by PRINCE, RAVEN
04:56				
04:56				SUB OUT: BASTIN, SERAPHINE
04:56				SUB IN: REID, ASHLEY
04:56	SUB OUT: KROEGER, NICOLE			
04:56	SUB OUT: GUNNELS, BRE			
04:56	SUB IN: MORGAN, CAILYN			
04:56	SUB IN: HILLYARD, HEIDI			
04:56	GOOD! FT by FINLEY, KAM	11-9	H 2	
04:56	GOOD! FT by FINLEY, KAM	11-10	H 1	
04:41		13-10	H 3	GOOD! JUMPER by COLBERT, TRAJATA
04:27	TURNOVER (LOSTBALL) by MORGAN, CAILYN			
04:27				STEAL by BREMAUD, CARLA
04:27	FOUL (PERSONAL) by MORGAN, CAILYN			
04:15				MISSED LAYUP by PRINCE, RAVEN
04:15	REBOUND (DEF) by FINLEY, KAM			
03:56	MISSED 3PTR by FINLEY, KAM			
03:50				REBOUND (DEF) by BREMAUD, CARLA
03:47		15-10	H 5	GOOD! LAYUP by BREWER, MAYA
03:47				ASSIST by BREMAUD, CARLA
03:47	TIMEOUT 30SEC			
03:47				SUB OUT: PRINCE, RAVEN
03:47				SUB IN: SMITH, SHYIA
03:47	SUB OUT: MORGAN, CAILYN			
03:47	SUB OUT: WOLF, CYNTHIA			
03:47	SUB IN: KROEGER, NICOLE			
03:47	SUB IN: MAAHS, MEGAN			
03:47	GOOD! LAYUP by FINLEY, KAM	15-12	H 3	
03:21				TURNOVER (OTHER) by REID, ASHLEY
03:21	SUB OUT: CAVEY, KRISTINA			
03:21	SUB IN: GERRITS, ABBY			

Time	VISITORS: UNI	Score	Margin	HOME: Wichita St.
03:05	MISSED LAYUP by FINLEY, KAM			
03:02				REBOUND (DEF) by SMITH, SHYIA
02:52				MISSED 3PTR by BREWER, MAYA
02:48	REBOUND (DEF) by MAAHS, MEGAN			
02:34	GOOD! 3PTR by GERRITS, ABBY	15-15	T	
02:34	ASSIST by FINLEY, KAM			
02:08				MISSED JUMPER by BREMAUD, CARLA
02:05	REBOUND (DEF) by MAAHS, MEGAN			
01:56	FOUL (OFF) by MAAHS, MEGAN			
01:56	TURNOVER (OFFENSIVE) by MAAHS, MEGAN			
01:56				SUB OUT: REID, ASHLEY
01:56				SUB OUT: BREWER, MAYA
01:56				SUB IN: MCCARTY, DJ
01:56				SUB IN: BASTIN, SERAPHINE
01:56	SUB OUT: FINLEY, KAM			
01:56	SUB OUT: HILLYARD, HEIDI			
01:56	SUB IN: RUCKER, KARLI			
01:56	SUB IN: GUNNELS, BRE			
01:42				MISSED JUMPER by COLBERT, TRAJATA
01:38	REBOUND (DEF) by GUNNELS, BRE			
01:12	TURNOVER (BADPASS) by RUCKER, KARLI			
01:12				STEAL by COLBERT, TRAJATA
00:54				MISSED LAYUP by BASTIN, SERAPHINE
00:50	REBOUND (DEF) by RUCKER, KARLI			
00:46	MISSED 3PTR by RUCKER, KARLI			
00:42				REBOUND (DEF) by BASTIN, SERAPHINE
00:33				MISSED JUMPER by BREMAUD, CARLA
00:29	REBOUND (DEF) by GERRITS, ABBY			
00:02	TURNOVER (SHOTCLOCK) by TEAM			
00:01				SUB OUT: BREMAUD, CARLA
00:01				SUB IN: HAMPTON, JAIDA

### UNI 15, Wichita St. 15

Points from (This Period)	UNI	WSU
In the Paint	4	8
Off Turns	0	0
2nd Chance	0	2
Fast Break	0	2
Bench	10	0

**Official Box Score**  
**UNI vs Wichita St.**  
**Second Quarter Statistics Only**  
**November 09, 2019 at Charles Koch Arena (Devlin Court) - Wichita, Kan.**



**UNI 9**

No.	Player	S	Pts	FG	3FG	FT	OR	DR	TR	PF	A	TO	Blk	Stl	Min	+/-
03	RUCKER, KARLI	G	1	0-2	0-1	1-2	0	0	0	0	0	1	0	0	9	-4
05	KROEGER, NICOLE	G	0	0-1	0-1	0-0	0	0	0	1	0	0	0	1	8	-5
11	GUNNELS, BRE	F	0	0-1	0-1	0-0	0	2	2	1	0	3	0	1	4	-3
22	SIMON-RESSLER, ROSE	G	0	0-1	0-0	0-0	0	0	0	0	0	0	0	0	3	-4
50	MAAHS, MEGAN	F	4	1-3	0-0	2-2	1	1	2	0	0	0	1	0	7	-1
02	MORGAN, CAILYN	G	2	1-1	0-0	0-0	1	0	1	0	0	0	0	0	3	0
12	FINLEY, KAM	G	0	0-1	0-1	0-0	0	0	0	2	0	1	0	0	1	0
30	WOLF, CYNTHIA	C	2	0-0	0-0	2-2	0	1	1	1	0	0	0	0	3	-3
31	CAVEY, KRISTINA	G	0	0-0	0-0	0-0	1	0	1	1	0	2	0	0	4	0
32	HILLYARD, HEIDI	F	0	0-1	0-1	0-0	1	1	2	0	0	0	0	1	6	-1
41	GERRITS, ABBY	G	0	0-1	0-0	0-0	0	0	0	1	0	0	0	0	2	1
	TEAM						1	1	2	0		2				
<b>TOTALS</b>			<b>9</b>	<b>2-12</b>	<b>0-5</b>	<b>5-6</b>	<b>5</b>	<b>6</b>	<b>11</b>	<b>7</b>	<b>0</b>	<b>9</b>	<b>1</b>	<b>3</b>	<b>50</b>	

*Shooting By Period*

Period	FG	FG%	3FG	3FG%	FT	FT%
3rd Qtr	6-14	43%	1-6	17%	5-6	83%
4th Qtr	6-10	60%	1-4	25%	6-6	100%
2nd Half	2-12	17%	0-5	00%	5-6	83%
2nd Half	12-24	50%	2-10	20%	11-12	92%
Game	19-48	39.6%	5-22	22.7%	18-20	90.0%

*Deadball Rebounds: 0,1*

**Wichita St. 13**

No.	Player	S	Pts	FG	3FG	FT	OR	DR	TR	PF	A	TO	Blk	Stl	Min	+/-
12	BREMAUD, CARLA	G	2	0-0	0-0	2-2	0	0	0	0	0	1	0	0	5	3
13	PRINCE, RAVEN	F	0	0-0	0-0	0-0	0	1	1	1	0	0	0	0	3	1
21	BREWER, MAYA	G	1	0-1	0-0	1-2	1	0	1	0	0	2	1	1	8	2
23	BASTIN, SERAPHINE	G	0	0-2	0-1	0-0	0	2	2	2	0	1	0	1	3	2
24	COLBERT, TRAJATA	F	2	1-2	0-0	0-0	0	0	0	2	0	0	0	0	1	2
01	MCCARTY, DJ	G	2	0-1	0-1	2-2	0	0	0	1	0	1	0	1	5	1
05	REID, ASHLEY	G	2	1-3	0-0	0-0	0	0	0	1	1	0	0	0	7	2
15	HAMPTON, JAIDA	G	0	0-0	0-0	0-0	0	0	0	0	1	0	0	0	2	2
34	SMITH, SHYIA	F	2	1-2	0-0	0-0	1	1	2	0	0	1	0	0	10	4
42	HENDERSON, ASIA	F	2	1-2	0-0	0-0	1	2	3	0	0	1	1	1	6	1
	TEAM						0	0	0	0		0				
<b>TOTALS</b>			<b>13</b>	<b>4-13</b>	<b>0-2</b>	<b>5-6</b>	<b>3</b>	<b>6</b>	<b>9</b>	<b>7</b>	<b>2</b>	<b>7</b>	<b>2</b>	<b>4</b>	<b>50</b>	

*Shooting By Period*

Period	FG	FG%	3FG	3FG%	FT	FT%
3rd Qtr	4-12	33%	0-3	00%	3-7	43%
4th Qtr	3-17	18%	0-4	00%	5-11	45%
2nd Half	4-13	31%	0-2	00%	5-6	83%
2nd Half	7-29	24%	0-7	00%	8-18	44%
Game	18-60	30.0%	1-12	08.3%	13-24	54.2%

*Deadball Rebounds: 7,1*

*Game Notes:*

Officials: John Capolino, Kristi Mosley, Saif Esho  
 Attendance: 1829

Start Time: 06:05 PM ET  
 End Time: 08:09 PM ET  
 Game Duration: 2:03

Score	1st	2nd	3rd	4th	TOT
UNI	15	9	18	19	<b>61</b>
WSU	15	13	11	11	<b>50</b>

Points from (This Period)	UNI	WSU
In the Paint	4	8
Off Turns	2	7
2nd Chance	2	2
Fast Break	2	1
Bench	4	8

**Official Play-By-Play  
UNI vs Wichita St.**

**Second Quarter  
November 09, 2019 at Charles Koch Arena (Devlin Court) - Wichita, Kan.**



**Period 2**

**Starters:**

**UNI:** 3 RUCKER, KARLI (G); 5 KROEGER, NICOLE (G); 11 GUNNELS, BRE (F); 22 SIMON-RESSLER, ROSE (G); 50 MAAHS, MEGAN (F);

**Wichita St.:** 12 BREMAUD, CARLA (G); 13 PRINCE, RAVEN (F); 21 BREWER, MAYA (G); 23 BASTIN, SERAPHINE (G); 24 COLBERT, TRAJATA (F);

Time	VISITORS: UNI	Score	Margin	HOME: Wichita St.
10:00				SUB OUT: SMITH, SHYIA
10:00				SUB IN: BREWER, MAYA
10:00	SUB OUT: GERRITS, ABBY			
10:00	SUB IN: SIMON-RESSLER, ROSE			
09:48				SUB OUT: BREWER, MAYA
09:48				SUB IN: SMITH, SHYIA
09:45				MISSED LAYUP by COLBERT, TRAJATA
09:44	REBOUND (DEF) by MAAHS, MEGAN			
09:44				FOUL (PERSONAL) by COLBERT, TRAJATA
09:28	FOUL (OFF) by GUNNELS, BRE			
09:28	TURNOVER (OFFENSIVE) by GUNNELS, BRE			
09:14		17-15	H 2	GOOD! JUMPER by COLBERT, TRAJATA [PNT]
09:14				ASSIST by HAMPTON, JAIDA
09:09				FOUL (PERSONAL) by MCCARTY, DJ
09:09				SUB OUT: COLBERT, TRAJATA
09:09				SUB IN: PRINCE, RAVEN
09:09	SUB OUT: GUNNELS, BRE			
09:09	SUB IN: MORGAN, CAILYN			
09:04	TURNOVER (LOSTBALL) by RUCKER, KARLI			
09:04				STEAL by BASTIN, SERAPHINE
09:00				FOUL (OFF) by BASTIN, SERAPHINE
09:00				TURNOVER (OFFENSIVE) by BASTIN, SERAPHINE
08:53	MISSED JUMPER by SIMON-RESSLER, ROSE			
08:48				REBOUND (DEF) by BASTIN, SERAPHINE
08:44				TURNOVER (TRAVEL) by SMITH, SHYIA
08:42	SUB OUT: MORGAN, CAILYN			
08:42	SUB OUT: RUCKER, KARLI			
08:42	SUB IN: FINLEY, KAM			
08:42	SUB IN: HILLYARD, HEIDI			
08:33	MISSED 3PTR by KROEGER, NICOLE			
08:30				REBOUND (DEF) by BASTIN, SERAPHINE
08:24	FOUL (PERSONAL) by FINLEY, KAM			
08:16				MISSED 3PTR by BASTIN, SERAPHINE
08:12	REBOUND (DEF) by HILLYARD, HEIDI			
08:02	MISSED 3PTR by FINLEY, KAM			
07:56				REBOUND (DEF) by PRINCE, RAVEN
07:54				TURNOVER (BADPASS) by MCCARTY, DJ
07:54	STEAL by KROEGER, NICOLE			
07:41	SUB OUT: HILLYARD, HEIDI			
07:41	SUB IN: WOLF, CYNTHIA			
07:41	FOUL (OFF) by FINLEY, KAM			
07:41	TURNOVER (OFFENSIVE) by FINLEY, KAM			
07:41				SUB OUT: HAMPTON, JAIDA
07:41				SUB IN: BREWER, MAYA
07:41	SUB OUT: KROEGER, NICOLE			
07:41	SUB OUT: FINLEY, KAM			
07:41	SUB OUT: SIMON-RESSLER, ROSE			
07:41	SUB OUT: MAAHS, MEGAN			
07:41	SUB IN: RUCKER, KARLI			
07:41	SUB IN: CAVEY, KRISTINA			
07:41	SUB IN: HILLYARD, HEIDI			
07:41	SUB IN: GERRITS, ABBY			
07:27				MISSED JUMPER by BASTIN, SERAPHINE
07:23	REBOUND (DEF) by WOLF, CYNTHIA			
07:16				FOUL (PERSONAL) by BASTIN, SERAPHINE
07:16				SUB OUT: BASTIN, SERAPHINE
07:16				SUB IN: REID, ASHLEY
06:56	TURNOVER (LOSTBALL) by CAVEY, KRISTINA			
06:56				STEAL by MCCARTY, DJ
06:51	FOUL (PERSONAL) by WOLF, CYNTHIA			
06:51				MISSED FT by BREWER, MAYA
06:51				REBOUND (OFF) by TEAM
06:51		18-15	H 3	GOOD! FT by BREWER, MAYA [FB]
06:22	MISSED JUMPER by GERRITS, ABBY			
06:22				BLOCK by BREWER, MAYA
06:21	REBOUND (OFF) by CAVEY, KRISTINA			
06:21	TURNOVER (SHOTCLOCK) by TEAM			
06:05				MISSED JUMPER by SMITH, SHYIA
06:05	REBOUND (DEF) by TEAM			
06:05				FOUL (PERSONAL) by PRINCE, RAVEN



Time	VISITORS: UNI	Score	Margin	HOME: Wichita St.
06:05				SUB OUT: PRINCE, RAVEN
06:05				SUB IN: COLBERT, TRAJATA
06:05	GOOD! FT by WOLF, CYNTHIA [FB]	18-16	H 2	
06:05	GOOD! FT by WOLF, CYNTHIA [FB]	18-17	H 1	
06:05	SUB OUT: WOLF, CYNTHIA			
06:05	SUB IN: MAAHS, MEGAN			
05:54	FOUL (PERSONAL) by GERRITS, ABBY			
05:54	SUB OUT: CAVEY, KRISTINA			
05:54	SUB OUT: GERRITS, ABBY			
05:54	SUB IN: MORGAN, CAILYN			
05:54	SUB IN: KROEGER, NICOLE			
05:54		19-17	H 2	GOOD! FT by MCCARTY, DJ
05:54		20-17	H 3	GOOD! FT by MCCARTY, DJ
05:41				FOUL (PERSONAL) by COLBERT, TRAJATA
05:41				SUB OUT: COLBERT, TRAJATA
05:41				SUB IN: HENDERSON, ASIA
05:41	GOOD! FT by MAAHS, MEGAN	20-18	H 2	
05:41	GOOD! FT by MAAHS, MEGAN	20-19	H 1	
05:23				MISSED 3PTR by MCCARTY, DJ
05:19				REBOUND (OFF) by BREWER, MAYA
05:10				MISSED JUMPER by HENDERSON, ASIA
05:10				REBOUND (OFF) by HENDERSON, ASIA
05:04				TURNOVER (3SEC) by HENDERSON, ASIA
05:04				SUB OUT: MCCARTY, DJ
05:04				SUB IN: BREMAUD, CARLA
05:10	BLOCK by MAAHS, MEGAN			
04:46	MISSED JUMPER by MAAHS, MEGAN			
04:39	REBOUND (OFF) by MORGAN, CAILYN			
04:39	GOOD! LAYUP by MORGAN, CAILYN	20-21	V 1	
04:26				TURNOVER (LOSTBALL) by BREWER, MAYA
04:26	STEAL by HILLYARD, HEIDI			
04:20	MISSED JUMPER by RUCKER, KARLI			
04:15				REBOUND (DEF) by HENDERSON, ASIA
04:01		22-21	H 1	GOOD! LAYUP by REID, ASHLEY
03:31	MISSED 3PTR by RUCKER, KARLI			
03:28	REBOUND (OFF) by HILLYARD, HEIDI			
03:28	TURNOVER (SHOTCLOCK) by TEAM			
03:28				
03:28	SUB OUT: MORGAN, CAILYN			
03:28	SUB OUT: HILLYARD, HEIDI			
03:28	SUB OUT: MAAHS, MEGAN			
03:28	SUB IN: GUNNELS, BRE			
03:28	SUB IN: SIMON-RESSLER, ROSE			
03:28	SUB IN: WOLF, CYNTHIA			
03:10				MISSED JUMPER by BREWER, MAYA
03:06	REBOUND (DEF) by GUNNELS, BRE			
02:59	TURNOVER (BADPASS) by GUNNELS, BRE			
02:59				STEAL by HENDERSON, ASIA
02:40	FOUL (PERSONAL) by KROEGER, NICOLE			
02:40		23-21	H 2	GOOD! FT by BREMAUD, CARLA
02:40		24-21	H 3	GOOD! FT by BREMAUD, CARLA
02:28	TURNOVER (BADPASS) by GUNNELS, BRE			
02:28				STEAL by BREWER, MAYA
02:22				TURNOVER (LOSTBALL) by BREWER, MAYA
02:22	STEAL by GUNNELS, BRE			
02:22	SUB OUT: GUNNELS, BRE			
02:22	SUB OUT: SIMON-RESSLER, ROSE			
02:22	SUB IN: CAVEY, KRISTINA			
02:22	SUB IN: HILLYARD, HEIDI			
02:02	MISSED 3PTR by HILLYARD, HEIDI			
01:58				REBOUND (DEF) by SMITH, SHYIA
01:51		26-21	H 5	GOOD! LAYUP by HENDERSON, ASIA
01:51				ASSIST by REID, ASHLEY
01:41				FOUL (PERSONAL) by REID, ASHLEY
01:41	SUB OUT: WOLF, CYNTHIA			
01:41	SUB OUT: HILLYARD, HEIDI			
01:41	SUB IN: GUNNELS, BRE			
01:41	SUB IN: MAAHS, MEGAN			
01:41	GOOD! FT by RUCKER, KARLI	26-22	H 4	
01:41	MISSED FT by RUCKER, KARLI			
01:40				REBOUND (DEF) by HENDERSON, ASIA
01:21				TURNOVER (TRAVEL) by BREMAUD, CARLA
01:06	MISSED 3PTR by GUNNELS, BRE			
01:02	REBOUND (OFF) by MAAHS, MEGAN			
01:01	MISSED LAYUP by MAAHS, MEGAN			
01:01				BLOCK by HENDERSON, ASIA
00:59	REBOUND (OFF) by TEAM			
00:55	FOUL (OFF) by CAVEY, KRISTINA			
00:55	TURNOVER (OFFENSIVE) by CAVEY, KRISTINA			
00:40				MISSED JUMPER by REID, ASHLEY

Time	VISITORS: UNI	Score	Margin	HOME: Wichita St.
00:35				REBOUND (OFF) by SMITH, SHYIA
00:35		28-22	H 6	GOOD! LAYUP by SMITH, SHYIA
00:21	GOOD! LAYUP by MAAHS, MEGAN	28-24	H 4	
00:00				MISSED JUMPER by REID, ASHLEY
00:00	REBOUND (DEF) by GUNNELS, BRE			

**UNI 24, Wichita St. 28**

Points from (This Period)	UNI	WSU
In the Paint	4	8
Off Turns	2	7
2nd Chance	2	2
Fast Break	2	1
Bench	4	8

**Official Box Score**  
**UNI vs Wichita St.**  
**Second Half Statistics Only**  
**November 09, 2019 at Charles Koch Arena (Devlin Court) - Wichita, Kan.**



**UNI 37**

No.	Player	S	Pts	FG	3FG	FT	OR	DR	TR	PF	A	TO	Blk	Stl	Min	+/-
02	MORGAN, CAILYN	G	0	0-0	0-0	0-0	0	1	1	0	0	3	0	0	4	6
03	RUCKER, KARLI	G	17	5-8	1-3	6-6	0	2	2	0	1	4	0	0	15	14
05	KROEGER, NICOLE	G	2	1-3	0-2	0-0	0	0	0	2	0	1	0	0	11	3
11	GUNNELS, BRE	F	4	1-1	0-0	2-2	0	4	4	3	0	2	1	1	15	17
12	FINLEY, KAM	G	4	2-5	0-2	0-0	1	2	3	0	1	1	0	0	13	9
22	SIMON-RESSLER, ROSE	G	0	0-0	0-0	0-0	0	0	0	0	0	0	0	0	2	-1
30	WOLF, CYNTHIA	C	2	1-1	0-0	0-0	0	3	3	2	0	0	0	0	10	6
31	CAVEY, KRISTINA	G	3	1-3	0-1	1-2	2	1	3	1	1	0	0	0	13	11
32	HILLYARD, HEIDI	F	0	0-2	0-1	0-0	0	1	1	2	1	1	0	0	5	-2
41	GERRITS, ABBY	G	3	1-1	1-1	0-0	1	0	1	0	0	1	0	1	2	3
50	MAAHS, MEGAN	F	2	0-0	0-0	2-2	0	3	3	3	1	1	1	1	10	9
	TEAM		0	0-0	0-0	0-0	3	1	4	0	0	0	0	0	0	0
<b>TOTALS</b>			<b>37</b>	<b>12-24</b>	<b>2-10</b>	<b>11-12</b>	<b>7</b>	<b>18</b>	<b>25</b>	<b>13</b>	<b>5</b>	<b>14</b>	<b>2</b>	<b>3</b>	<b>100</b>	

*Shooting By Period*

Period	FG	FG%	3FG	3FG%	FT	FT%
3rd Qtr	6-14	43%	1-6	17%	5-6	83%
4th Qtr	6-10	60%	1-4	25%	6-6	100%
2nd Half	12-24	50%	2-10	20%	11-12	92%
Game	19-48	39.6%	5-22	22.7%	18-20	90.0%

*Deadball Rebounds: 0,1*  
*Last FG Half: UNI 4th-02:13*

**Wichita St. 22**

No.	Player	S	Pts	FG	3FG	FT	OR	DR	TR	PF	A	TO	Blk	Stl	Min	+/-
01	MCCARTY, DJ	G	0	0-3	0-0	0-0	0	0	0	0	0	0	0	0	2	0
05	REID, ASHLEY	G	0	0-2	0-0	0-0	0	0	0	1	1	1	0	3	11	-11
12	BREMAUD, CARLA	G	4	0-2	0-2	4-4	0	0	0	4	1	1	1	1	20	-15
13	PRINCE, RAVEN	F	4	1-1	0-0	2-4	1	2	3	1	0	3	0	0	14	-10
15	HAMPTON, JAIDA	G	0	0-0	0-0	0-0	0	0	0	0	0	0	0	0	0	0
21	BREWER, MAYA	G	4	1-6	0-2	2-5	0	0	0	1	0	0	0	2	16	-12
23	BASTIN, SERAPHINE	G	4	2-6	0-1	0-0	0	0	0	3	0	1	0	1	11	-7
24	COLBERT, TRAJATA	F	6	3-5	0-0	0-3	4	1	5	2	0	2	0	0	14	-6
34	SMITH, SHYIA	F	0	0-4	0-2	0-2	1	1	2	1	0	0	0	1	12	-14
42	HENDERSON, ASIA	F	0	0-0	0-0	0-0	0	0	0	0	0	0	0	0	0	0
	TEAM		0	0-0	0-0	0-0	1	2	3	0	0	0	0	0	0	0
<b>TOTALS</b>			<b>22</b>	<b>7-29</b>	<b>0-7</b>	<b>8-18</b>	<b>7</b>	<b>6</b>	<b>13</b>	<b>13</b>	<b>2</b>	<b>8</b>	<b>1</b>	<b>8</b>	<b>100</b>	

*Shooting By Period*

Period	FG	FG%	3FG	3FG%	FT	FT%
3rd Qtr	4-12	33%	0-3	00%	3-7	43%
4th Qtr	3-17	18%	0-4	00%	5-11	45%
2nd Half	7-29	24%	0-7	00%	8-18	44%
Game	18-60	30.0%	1-12	08.3%	13-24	54.2%

*Deadball Rebounds: 7,1*  
*Last FG Half: WSU 4th-00:06*

*Game Notes:*

Officials: John Capolino, Kristi Mosley, Saif Esho  
 Attendance: 1829

Start Time: 06:05 PM ET  
 End Time: 08:09 PM ET  
 Game Duration: 2:03

Score	1st	2nd	3rd	4th	TOT
UNI	15	9	18	19	61
WSU	15	13	11	11	50

Points from (This Period)	UNI	WSU
In the Paint	18	14
Off Turns	2	8
2nd Chance	5	5
Fast Break	7	5
Bench	12	0

**Official Box Score**  
**UNI vs Wichita St.**  
**Third Quarter Statistics Only**  
**November 09, 2019 at Charles Koch Arena (Devlin Court) - Wichita, Kan.**



**UNI 37**

No.	Player	S	Pts	FG	3FG	FT	OR	DR	TR	PF	A	TO	Blk	Stl	Min	+/-
03	RUCKER, KARLI	G	4	2-4	0-1	0-0	0	0	0	0	0	2	0	0	7	6
05	KROEGER, NICOLE	G	0	0-1	0-1	0-0	0	0	0	1	0	0	0	0	6	2
11	GUNNELS, BRE	F	4	1-1	0-0	2-2	0	0	0	1	0	1	0	1	6	7
22	SIMON-RESSLER, ROSE	G	0	0-0	0-0	0-0	0	0	0	0	0	0	0	0	2	-1
50	MAAHS, MEGAN	F	2	0-0	0-0	2-2	0	1	1	2	0	1	1	0	4	2
02	MORGAN, CAILYN	G	0	0-0	0-0	0-0	0	1	1	0	0	0	0	0	2	6
12	FINLEY, KAM	G	2	1-3	0-1	0-0	1	1	2	0	1	1	0	0	6	2
30	WOLF, CYNTHIA	C	2	1-1	0-0	0-0	0	2	2	1	0	0	0	0	6	5
31	CAVEY, KRISTINA	G	1	0-1	0-1	1-2	2	0	2	0	0	0	0	0	5	3
32	HILLYARD, HEIDI	F	0	0-2	0-1	0-0	0	1	1	1	1	0	0	0	4	0
41	GERRITS, ABBY	G	3	1-1	1-1	0-0	1	0	1	0	0	1	0	1	2	3
	TEAM						1	1	2	0		0				
<b>TOTALS</b>			<b>18</b>	<b>6-14</b>	<b>1-6</b>	<b>5-6</b>	<b>5</b>	<b>7</b>	<b>12</b>	<b>6</b>	<b>2</b>	<b>6</b>	<b>1</b>	<b>2</b>	<b>50</b>	

*Shooting By Period*

Period	FG	FG%	3FG	3FG%	FT	FT%
2nd Half	0-0	0%	0-0	0%	0-0	0%
Game	19-48	39.6%	5-22	22.7%	18-20	90.0%

*Deadball Rebounds: 0,1*

**Wichita St. 22**

No.	Player	S	Pts	FG	3FG	FT	OR	DR	TR	PF	A	TO	Blk	Stl	Min	+/-
12	BREMAUD, CARLA	G	0	0-0	0-0	0-0	0	0	0	2	1	1	0	1	10	-7
13	PRINCE, RAVEN	F	4	1-1	0-0	2-4	1	2	3	0	0	2	0	0	9	-5
21	BREWER, MAYA	G	3	1-2	0-1	1-1	0	0	0	0	0	0	0	1	6	-4
23	BASTIN, SERAPHINE	G	2	1-3	0-1	0-0	0	0	0	2	0	1	0	0	7	-4
24	COLBERT, TRAJATA	F	2	1-1	0-0	0-2	1	1	2	2	0	1	0	0	9	-3
01	MCCARTY, DJ	G	0	0-3	0-0	0-0	0	0	0	0	0	0	0	0	2	0
05	REID, ASHLEY	G	0	0-0	0-0	0-0	0	0	0	0	1	0	0	1	5	-6
15	HAMPTON, JAIDA	G	0	0-0	0-0	0-0	0	0	0	0	0	0	0	0	0	0
34	SMITH, SHYIA	F	0	0-2	0-1	0-0	0	0	0	0	0	0	0	0	2	-6
42	HENDERSON, ASIA	F	0	0-0	0-0	0-0	0	0	0	0	0	0	0	0	0	0
	TEAM						0	1	1	0		0				
<b>TOTALS</b>			<b>11</b>	<b>4-12</b>	<b>0-3</b>	<b>3-7</b>	<b>2</b>	<b>4</b>	<b>6</b>	<b>6</b>	<b>2</b>	<b>5</b>	<b>0</b>	<b>3</b>	<b>50</b>	

*Shooting By Period*

Period	FG	FG%	3FG	3FG%	FT	FT%
2nd Half	0-0	0%	0-0	0%	0-0	0%
Game	18-60	30.0%	1-12	08.3%	13-24	54.2%

*Deadball Rebounds: 7,1*

Game Notes:

Officials: John Capolino, Kristi Mosley, Saif Esho  
 Attendance: 1829

Start Time: 06:05 PM ET  
 End Time: 08:09 PM ET  
 Game Duration: 2:03

Score	1st	2nd	3rd	4th	TOT
UNI	15	9	18	19	<b>61</b>
WSU	15	13	11	11	<b>50</b>

Points from (This Period)	UNI	WSU
In the Paint	10	8
Off Turns	2	4
2nd Chance	5	1
Fast Break	3	3
Bench	8	0

**Official Play-By-Play  
UNI vs Wichita St.  
Third Quarter**

**November 09, 2019 at Charles Koch Arena (Devlin Court) - Wichita, Kan.**



**Period 3**

**Starters:**

**UNI:** 3 RUCKER, KARLI (G); 5 KROEGER, NICOLE (G); 11 GUNNELS, BRE (F); 22 SIMON-RESSLER, ROSE (G); 50 MAAHS, MEGAN (F);

**Wichita St.:** 12 BREMAUD, CARLA (G); 13 PRINCE, RAVEN (F); 21 BREWER, MAYA (G); 23 BASTIN, SERAPHINE (G); 24 COLBERT, TRAJATA (F);

Time	VISITORS: UNI	Score	Margin	HOME: Wichita St.
10:00				SUB OUT: REID, ASHLEY
10:00				SUB OUT: SMITH, SHYIA
10:00				SUB OUT: HENDERSON, ASIA
10:00				SUB IN: PRINCE, RAVEN
10:00				SUB IN: BASTIN, SERAPHINE
10:00				SUB IN: COLBERT, TRAJATA
10:00	SUB OUT: CAVEY, KRISTINA			
10:00	SUB IN: SIMON-RESSLER, ROSE			
09:46				TURNOVER (TRAVEL) by PRINCE, RAVEN
09:42	FOUL (OFF) by MAAHS, MEGAN			
09:42	TURNOVER (OFFENSIVE) by MAAHS, MEGAN			
09:29				MISSED 3PTR by BASTIN, SERAPHINE
09:28	REBOUND (DEF) by TEAM			
08:46	GOOD! JUMPER by RUCKER, KARLI [PNT]	28-26	H 2	
08:23				TURNOVER (LOSTBALL) by PRINCE, RAVEN
08:23	STEAL by GUNNELS, BRE			
08:14	TURNOVER (BADPASS) by RUCKER, KARLI			
08:14				STEAL by BREMAUD, CARLA
08:08		30-26	H 4	GOOD! LAYUP by BREWER, MAYA [FB]
08:08				ASSIST by BREMAUD, CARLA
08:08	FOUL (PERSONAL) by GUNNELS, BRE			
08:08		31-26	H 5	GOOD! FT by BREWER, MAYA
07:51				FOUL (PERSONAL) by BASTIN, SERAPHINE
07:49	TURNOVER (TRAVEL) by GUNNELS, BRE			
07:49	SUB OUT: GUNNELS, BRE			
07:49	SUB OUT: SIMON-RESSLER, ROSE			
07:49	SUB IN: CAVEY, KRISTINA			
07:49	SUB IN: HILLYARD, HEIDI			
07:37				MISSED 3PTR by BREWER, MAYA
07:30	REBOUND (DEF) by HILLYARD, HEIDI			
07:27	MISSED JUMPER by RUCKER, KARLI			
07:25				REBOUND (DEF) by PRINCE, RAVEN
07:25	FOUL (PERSONAL) by KROEGER, NICOLE			
07:25	SUB OUT: RUCKER, KARLI			
07:25	SUB OUT: MAAHS, MEGAN			
07:25	SUB IN: FINLEY, KAM			
07:25	SUB IN: WOLF, CYNTHIA			
07:04		33-26	H 7	GOOD! JUMPER by BASTIN, SERAPHINE [PNT]
06:45	GOOD! LAYUP by WOLF, CYNTHIA	33-28	H 5	
06:45	ASSIST by HILLYARD, HEIDI			
06:21		35-28	H 7	GOOD! LAYUP by PRINCE, RAVEN
06:06	MISSED 3PTR by KROEGER, NICOLE			
06:04	REBOUND (OFF) by TEAM			
06:04				SUB OUT: BASTIN, SERAPHINE
06:04				SUB IN: REID, ASHLEY
06:04	SUB OUT: KROEGER, NICOLE			
06:04	SUB IN: GERRITS, ABBY			
05:54	MISSED JUMPER by HILLYARD, HEIDI			
05:49	REBOUND (OFF) by GERRITS, ABBY			
05:41	MISSED 3PTR by HILLYARD, HEIDI			
05:37	REBOUND (OFF) by FINLEY, KAM			
05:35	GOOD! LAYUP by FINLEY, KAM	35-30	H 5	
05:22		37-30	H 7	GOOD! LAYUP by COLBERT, TRAJATA
05:22				ASSIST by REID, ASHLEY
05:01	MISSED 3PTR by FINLEY, KAM			
04:57	REBOUND (OFF) by CAVEY, KRISTINA			
04:52	GOOD! 3PTR by GERRITS, ABBY	37-33	H 4	
04:52	ASSIST by FINLEY, KAM			
04:51	TIMEOUT 30SEC			
04:51				SUB OUT: BREWER, MAYA
04:51				SUB IN: MCCARTY, DJ
04:38				TURNOVER (LOSTBALL) by BREMAUD, CARLA
04:38	STEAL by GERRITS, ABBY			
04:31	TURNOVER (BADPASS) by GERRITS, ABBY			
04:31				STEAL by REID, ASHLEY
04:25				MISSED JUMPER by MCCARTY, DJ
04:24				REBOUND (OFF) by COLBERT, TRAJATA
04:24	FOUL (PERSONAL) by HILLYARD, HEIDI			
04:24				
04:24				MISSED FT by COLBERT, TRAJATA

Time	VISITORS: UNI	Score	Margin	HOME: Wichita St.
04:24				REBOUND (OFF) by TEAM
04:24				MISSED FT by COLBERT, TRAJATA
04:24				REBOUND (OFF) by PRINCE, RAVEN
04:22	FOUL (PERSONAL) by WOLF, CYNTHIA			
04:22	SUB OUT: GERRITS, ABBY			
04:22	SUB IN: RUCKER, KARLI			
04:22				MISSED FT by PRINCE, RAVEN
04:22				REBOUND (OFF) by TEAM
04:22		38-33	H 5	GOOD! FT by PRINCE, RAVEN
04:03	MISSED LAYUP by FINLEY, KAM			
03:59				REBOUND (DEF) by PRINCE, RAVEN
03:54				MISSED LAYUP by MCCARTY, DJ
03:50	REBOUND (DEF) by WOLF, CYNTHIA			
03:46				FOUL (PERSONAL) by BREMAUD, CARLA
03:46	SUB OUT: WOLF, CYNTHIA			
03:46	SUB OUT: HILLYARD, HEIDI			
03:46	SUB IN: GUNNELS, BRE			
03:46	SUB IN: MAAHS, MEGAN			
03:46	GOOD! FT by CAVEY, KRISTINA [FB]	38-34	H 4	
03:46	MISSED FT by CAVEY, KRISTINA			
03:45				REBOUND (DEF) by COLBERT, TRAJATA
03:22				MISSED JUMPER by MCCARTY, DJ
03:18	REBOUND (DEF) by FINLEY, KAM			
03:15				FOUL (PERSONAL) by BREMAUD, CARLA
03:15				SUB OUT: MCCARTY, DJ
03:15				SUB IN: BASTIN, SERAPHINE
03:15	GOOD! FT by MAAHS, MEGAN [FB]	38-35	H 3	
03:15	GOOD! FT by MAAHS, MEGAN [FB]	38-36	H 2	
02:51				MISSED LAYUP by BASTIN, SERAPHINE
02:51	BLOCK by MAAHS, MEGAN			
02:45	REBOUND (DEF) by MAAHS, MEGAN			
02:43	MISSED 3PTR by RUCKER, KARLI			
02:40	REBOUND (OFF) by CAVEY, KRISTINA			
02:29	MISSED 3PTR by CAVEY, KRISTINA			
02:28				REBOUND (DEF) by TEAM
02:28	FOUL (PERSONAL) by MAAHS, MEGAN			
02:28	SUB OUT: CAVEY, KRISTINA			
02:28	SUB OUT: MAAHS, MEGAN			
02:28	SUB IN: KROEGER, NICOLE			
02:28	SUB IN: WOLF, CYNTHIA			
02:28		39-36	H 3	GOOD! FT by PRINCE, RAVEN [FB]
02:28				MISSED FT by PRINCE, RAVEN
02:28	REBOUND (DEF) by TEAM			
02:13	TURNOVER (TRAVEL) by FINLEY, KAM			
01:57				TURNOVER (TRAVEL) by COLBERT, TRAJATA
01:41				SUB OUT: PRINCE, RAVEN
01:41				SUB IN: SMITH, SHYIA
01:41	SUB OUT: FINLEY, KAM			
01:41	SUB IN: MORGAN, CAILYN			
01:29	GOOD! LAYUP by RUCKER, KARLI	39-38	H 1	
01:07				MISSED 3PTR by SMITH, SHYIA
01:07	REBOUND (DEF) by MORGAN, CAILYN			
01:07				FOUL (PERSONAL) by COLBERT, TRAJATA
00:57				FOUL (PERSONAL) by COLBERT, TRAJATA
00:57				SUB OUT: REID, ASHLEY
00:57				SUB OUT: COLBERT, TRAJATA
00:57				SUB IN: PRINCE, RAVEN
00:57				SUB IN: BREWER, MAYA
00:57	GOOD! FT by GUNNELS, BRE	39-39	T	
00:57	GOOD! FT by GUNNELS, BRE	39-40	V 1	
00:41				MISSED LAYUP by SMITH, SHYIA
00:41	REBOUND (DEF) by WOLF, CYNTHIA			
00:25	GOOD! LAYUP by GUNNELS, BRE	39-42	V 3	
00:10				FOUL (OFF) by BASTIN, SERAPHINE
00:10				TURNOVER (OFFENSIVE) by BASTIN, SERAPHINE
00:10				SUB OUT: BASTIN, SERAPHINE
00:10				SUB IN: REID, ASHLEY
00:03	TURNOVER (BADPASS) by RUCKER, KARLI			
00:03				STEAL by BREWER, MAYA

### UNI 42, Wichita St. 39

Points from (This Period)	UNI	WSU
In the Paint	10	8
Off Turns	2	4
2nd Chance	5	1
Fast Break	3	3
Bench	8	0

**Official Box Score**  
**UNI vs Wichita St.**  
**Fourth Quarter Statistics Only**  
**November 09, 2019 at Charles Koch Arena (Devlin Court) - Wichita, Kan.**



**UNI 19**

No.	Player	S	Pts	FG	3FG	FT	OR	DR	TR	PF	A	TO	Blk	Stl	Min	+/-
03	RUCKER, KARLI	G	13	3-4	1-2	6-6	0	2	2	0	1	2	0	0	8	8
05	KROEGER, NICOLE	G	2	1-2	0-1	0-0	0	0	0	1	0	1	0	0	5	1
11	GUNNELS, BRE	F	0	0-0	0-0	0-0	0	4	4	2	0	1	1	0	9	10
22	SIMON-RESSLER, ROSE	G	0	0-0	0-0	0-0	0	0	0	0	0	0	0	0	0	0
50	MAAHS, MEGAN	F	0	0-0	0-0	0-0	0	2	2	1	1	0	0	1	6	7
02	MORGAN, CAILYN	G	0	0-0	0-0	0-0	0	0	0	0	0	3	0	0	2	0
12	FINLEY, KAM	G	2	1-2	0-1	0-0	0	1	1	0	0	0	0	0	7	7
30	WOLF, CYNTHIA	C	0	0-0	0-0	0-0	0	1	1	1	0	0	0	0	4	1
31	CAVEY, KRISTINA	G	2	1-2	0-0	0-0	0	1	1	1	1	0	0	0	8	8
32	HILLYARD, HEIDI	F	0	0-0	0-0	0-0	0	0	0	1	0	1	0	0	1	-2
41	GERRITS, ABBY	G	0	0-0	0-0	0-0	0	0	0	0	0	0	0	0	0	0
	TEAM						2	0	2	0		0				
<b>TOTALS</b>			<b>19</b>	<b>6-10</b>	<b>1-4</b>	<b>6-6</b>	<b>2</b>	<b>11</b>	<b>13</b>	<b>7</b>	<b>3</b>	<b>8</b>	<b>1</b>	<b>1</b>	<b>50</b>	

*Shooting By Period*

Period	FG	FG%	3FG	3FG%	FT	FT%
Game	19-48	39.6%	5-22	22.7%	18-20	90.0%

*Deadball Rebounds: 0,1*

**Wichita St. 11**

No.	Player	S	Pts	FG	3FG	FT	OR	DR	TR	PF	A	TO	Blk	Stl	Min	+/-
12	BREMAUD, CARLA	G	4	0-2	0-2	4-4	0	0	0	2	0	0	1	0	10	-8
13	PRINCE, RAVEN	F	0	0-0	0-0	0-0	0	0	0	1	0	1	0	0	5	-5
21	BREWER, MAYA	G	1	0-4	0-1	1-4	0	0	0	1	0	0	0	1	10	-8
23	BASTIN, SERAPHINE	G	2	1-3	0-0	0-0	0	0	0	1	0	0	0	1	4	-3
24	COLBERT, TRAJATA	F	4	2-4	0-0	0-1	3	0	3	0	0	1	0	0	5	-3
01	MCCARTY, DJ	G	0	0-0	0-0	0-0	0	0	0	0	0	0	0	0	0	0
05	REID, ASHLEY	G	0	0-2	0-0	0-0	0	0	0	1	0	1	0	2	6	-5
15	HAMPTON, JAIDA	G	0	0-0	0-0	0-0	0	0	0	0	0	0	0	0	0	0
34	SMITH, SHYIA	F	0	0-2	0-1	0-2	1	1	2	1	0	0	0	1	10	-8
42	HENDERSON, ASIA	F	0	0-0	0-0	0-0	0	0	0	0	0	0	0	0	0	0
	TEAM						1	1	2	0		0				
<b>TOTALS</b>			<b>11</b>	<b>3-17</b>	<b>0-4</b>	<b>5-11</b>	<b>5</b>	<b>2</b>	<b>7</b>	<b>7</b>	<b>0</b>	<b>3</b>	<b>1</b>	<b>5</b>	<b>50</b>	

*Shooting By Period*

Period	FG	FG%	3FG	3FG%	FT	FT%
Game	18-60	30.0%	1-12	08.3%	13-24	54.2%

*Deadball Rebounds: 7,1*

Game Notes:

Officials: John Capolino, Kristi Mosley, Saif Esho  
 Attendance: 1829

Start Time: 06:05 PM ET  
 End Time: 08:09 PM ET  
 Game Duration: 2:03

Score	1st	2nd	3rd	4th	TOT
UNI	15	9	18	19	<b>61</b>
WSU	15	13	11	11	<b>50</b>

Points from (This Period)	UNI	WSU
In the Paint	8	6
Off Turns	0	4
2nd Chance	0	4
Fast Break	4	2
Bench	4	0

**Official Play-By-Play  
UNI vs Wichita St.**

**Fourth Quarter**

**November 09, 2019 at Charles Koch Arena (Devlin Court) - Wichita, Kan.**



**Period 4**

**Starters:**

**UNI:** 3 RUCKER, KARLI (G); 5 KROEGER, NICOLE (G); 11 GUNNELS, BRE (F); 22 SIMON-RESSLER, ROSE (G); 50 MAAHS, MEGAN (F);

**Wichita St.:** 12 BREMAUD, CARLA (G); 13 PRINCE, RAVEN (F); 21 BREWER, MAYA (G); 23 BASTIN, SERAPHINE (G); 24 COLBERT, TRAJATA (F);

Time	VISITORS: UNI	Score	Margin	HOME: Wichita St.
10:00	SUB OUT: RUCKER, KARLI			
10:00	SUB OUT: WOLF, CYNTHIA			
10:00	SUB IN: FINLEY, KAM			
10:00	SUB IN: MAAHS, MEGAN			
09:54	TURNOVER (BADPASS) by KROEGER, NICOLE			
09:54				STEAL by BREWER, MAYA
09:48				MISSED LAYUP by BREWER, MAYA
09:47				REBOUND (OFF) by TEAM
09:44				MISSED JUMPER by BREWER, MAYA
09:40	REBOUND (DEF) by MAAHS, MEGAN			
09:24	TURNOVER (BADPASS) by MORGAN, CAILYN			
09:24				STEAL by REID, ASHLEY
09:20				TURNOVER (TRAVEL) by REID, ASHLEY
08:49	TURNOVER (BADPASS) by MORGAN, CAILYN			
08:49				STEAL by SMITH, SHYIA
08:36				TURNOVER (LOSTBALL) by PRINCE, RAVEN
08:36	STEAL by MAAHS, MEGAN			
08:18	TURNOVER (BADPASS) by MORGAN, CAILYN			
08:18	SUB OUT: MORGAN, CAILYN			
08:18	SUB OUT: KROEGER, NICOLE			
08:18	SUB IN: RUCKER, KARLI			
08:18	SUB IN: CAVEY, KRISTINA			
07:59	FOUL (PERSONAL) by MAAHS, MEGAN			
07:59	SUB OUT: MAAHS, MEGAN			
07:59	SUB IN: WOLF, CYNTHIA			
07:59		40-42	V 2	GOOD! FT by BREMAUD, CARLA
07:59		41-42	V 1	GOOD! FT by BREMAUD, CARLA
07:46	GOOD! 3PTR by RUCKER, KARLI	41-45	V 4	
07:46	ASSIST by CAVEY, KRISTINA			
07:28				MISSED JUMPER by REID, ASHLEY
07:24	REBOUND (DEF) by WOLF, CYNTHIA			
07:13	MISSED 3PTR by RUCKER, KARLI			
07:10	REBOUND (OFF) by TEAM			
07:04	TIMEOUT 30SEC			
06:54	TURNOVER (TRAVEL) by GUNNELS, BRE			
06:40				MISSED LAYUP by SMITH, SHYIA
06:40	BLOCK by GUNNELS, BRE			
06:37				REBOUND (OFF) by SMITH, SHYIA
06:33				MISSED 3PTR by BREMAUD, CARLA
06:30	REBOUND (DEF) by RUCKER, KARLI			
06:22				FOUL (PERSONAL) by PRINCE, RAVEN
06:14	GOOD! LAYUP by RUCKER, KARLI	41-47	V 6	
05:53				MISSED 3PTR by BREWER, MAYA
05:52	REBOUND (DEF) by GUNNELS, BRE			
05:52				FOUL (PERSONAL) by SMITH, SHYIA
05:52				SUB OUT: REID, ASHLEY
05:52				SUB IN: BASTIN, SERAPHINE
05:41	GOOD! LAYUP by FINLEY, KAM [PNT]	41-49	V 8	
05:22	FOUL (PERSONAL) by GUNNELS, BRE			
05:22				SUB OUT: PRINCE, RAVEN
05:22				SUB IN: COLBERT, TRAJATA
05:22	SUB OUT: GUNNELS, BRE			
05:22	SUB IN: HILLYARD, HEIDI			
05:22				MISSED FT by BREWER, MAYA
05:22				REBOUND (OFF) by TEAM
05:22				MISSED FT by BREWER, MAYA
05:21	REBOUND (DEF) by CAVEY, KRISTINA			
05:07	MISSED 3PTR by FINLEY, KAM			
05:03				REBOUND (DEF) by SMITH, SHYIA
04:55				MISSED 3PTR by SMITH, SHYIA
04:54				REBOUND (OFF) by TEAM
04:53				TURNOVER (TRAVEL) by COLBERT, TRAJATA
04:53				TIMEOUT 30SEC
04:53	SUB OUT: FINLEY, KAM			
04:53	SUB IN: KROEGER, NICOLE			
04:40	MISSED LAYUP by CAVEY, KRISTINA			
04:40				BLOCK by BREMAUD, CARLA
04:40	REBOUND (OFF) by TEAM			
04:38	TURNOVER (BADPASS) by RUCKER, KARLI			
04:38				STEAL by BASTIN, SERAPHINE



Time	VISITORS: UNI	Score	Margin	HOME: Wichita St.
04:35		43-49	V 6	GOOD! LAYUP by BASTIN, SERAPHINE [FB]
04:23	FOUL (OFF) by HILLYARD, HEIDI			
04:23	TURNOVER (OFFENSIVE) by HILLYARD, HEIDI			
04:23	SUB OUT: WOLF, CYNTHIA			
04:23	SUB OUT: HILLYARD, HEIDI			
04:23	SUB IN: GUNNELS, BRE			
04:23	SUB IN: MAAHS, MEGAN			
04:08				MISSED JUMPER by BREWER, MAYA
04:05	REBOUND (DEF) by GUNNELS, BRE			
04:01	GOOD! JUMPER by RUCKER, KARLI [FB/PNT]	43-51	V 8	
03:46				MISSED JUMPER by BASTIN, SERAPHINE
03:43	REBOUND (DEF) by RUCKER, KARLI			
03:40	GOOD! LAYUP by KROEGER, NICOLE [FB]	43-53	V 10	
03:40	ASSIST by RUCKER, KARLI			
03:15	FOUL (PERSONAL) by GUNNELS, BRE			
03:15				MISSED FT by SMITH, SHYIA
03:15				REBOUND (OFF) by TEAM
03:15				MISSED FT by SMITH, SHYIA
03:14				REBOUND (OFF) by COLBERT, TRAJATA
03:13				MISSED LAYUP by COLBERT, TRAJATA
03:11				REBOUND (OFF) by COLBERT, TRAJATA
03:11		45-53	V 8	GOOD! LAYUP by COLBERT, TRAJATA
03:11				TIMEOUT 30SEC
02:43	MISSED 3PTR by KROEGER, NICOLE			
02:41				REBOUND (DEF) by TEAM
02:33				MISSED LAYUP by BASTIN, SERAPHINE
02:30	REBOUND (DEF) by MAAHS, MEGAN			
02:13	GOOD! JUMPER by CAVEY, KRISTINA	45-55	V 10	
02:13	ASSIST by MAAHS, MEGAN			
01:51	FOUL (PERSONAL) by KROEGER, NICOLE			
01:51				MISSED FT by BREWER, MAYA
01:51				REBOUND (OFF) by TEAM
01:51		46-55	V 9	GOOD! FT by BREWER, MAYA
01:46				FOUL (PERSONAL) by BREMAUD, CARLA
01:46	SUB OUT: KROEGER, NICOLE			
01:46	SUB IN: FINLEY, KAM			
01:45				FOUL (PERSONAL) by BASTIN, SERAPHINE
01:45				SUB OUT: BASTIN, SERAPHINE
01:45				SUB IN: REID, ASHLEY
01:44	TURNOVER (BADPASS) by RUCKER, KARLI			
01:44				STEAL by REID, ASHLEY
01:40				MISSED 3PTR by BREMAUD, CARLA
01:36	REBOUND (DEF) by GUNNELS, BRE			
01:13				FOUL (PERSONAL) by REID, ASHLEY
01:13	GOOD! FT by RUCKER, KARLI	46-56	V 10	
01:13	GOOD! FT by RUCKER, KARLI	46-57	V 11	
01:03	FOUL (PERSONAL) by CAVEY, KRISTINA			
01:03		47-57	V 10	GOOD! FT by BREMAUD, CARLA
01:03		48-57	V 9	GOOD! FT by BREMAUD, CARLA
00:41				FOUL (PERSONAL) by BREWER, MAYA
00:41	GOOD! FT by RUCKER, KARLI	48-58	V 10	
00:41	GOOD! FT by RUCKER, KARLI	48-59	V 11	
00:34				MISSED LAYUP by REID, ASHLEY
00:30	REBOUND (DEF) by GUNNELS, BRE			
00:18				FOUL (PERSONAL) by BREMAUD, CARLA
00:18	GOOD! FT by RUCKER, KARLI	48-60	V 12	
00:18	GOOD! FT by RUCKER, KARLI	48-61	V 13	
00:18	SUB OUT: MAAHS, MEGAN			
00:18	SUB IN: WOLF, CYNTHIA			
00:07				MISSED LAYUP by COLBERT, TRAJATA
00:06				REBOUND (OFF) by COLBERT, TRAJATA
00:06		50-61	V 11	GOOD! LAYUP by COLBERT, TRAJATA
00:06	FOUL (PERSONAL) by WOLF, CYNTHIA			
00:06				MISSED FT by COLBERT, TRAJATA
00:05	REBOUND (DEF) by FINLEY, KAM			

### UNI 61, Wichita St. 50

Points from (This Period)	UNI	WSU
In the Paint	8	6
Off Turns	0	4
2nd Chance	0	4
Fast Break	4	2
Bench	4	0

**Official Scoring/Possession Reference Chart  
UNI vs Wichita St.**

**Period 1**

**November 09, 2019 at Charles Koch Arena (Devlin Court) - Wichita, Kan.**



**Period 1**

**Starters:**

**UNI:** 3 RUCKER, KARLI (G); 5 KROEGER, NICOLE (G); 11 GUNNELS, BRE (F); 22 SIMON-RESSLER, ROSE (G); 50 MAAHS, MEGAN (F);

**Wichita St.:** 12 BREMAUD, CARLA (G); 13 PRINCE, RAVEN (F); 21 BREWER, MAYA (G); 23 BASTIN, SERAPHINE (G); 24 COLBERT, TRAJATA (F);

Time	VISITORS: UNI	Score	Margin	HOME: Wichita St.
09:43		2-0	H 2	GOOD! JUMPER by BASTIN, SERAPHINE [PNT]
09:16	GOOD! LAYUP by MAAHS, MEGAN	2-2	T	
08:20		4-2	H 2	GOOD! LAYUP by BREWER, MAYA [FB]
07:52		6-2	H 4	GOOD! JUMPER by COLBERT, TRAJATA [PNT]
06:53	GOOD! 3PTR by MAAHS, MEGAN	6-5	H 1	
06:34		8-5	H 3	GOOD! JUMPER by BREWER, MAYA
05:40	GOOD! 3PTR by FINLEY, KAM	8-8	T	
05:20		11-8	H 3	GOOD! 3PTR by BASTIN, SERAPHINE
04:56	GOOD! FT by FINLEY, KAM	11-9	H 2	
04:56	GOOD! FT by FINLEY, KAM	11-10	H 1	
04:41		13-10	H 3	GOOD! JUMPER by COLBERT, TRAJATA
03:47		15-10	H 5	GOOD! LAYUP by BREWER, MAYA
03:47	GOOD! LAYUP by FINLEY, KAM	15-12	H 3	
02:34	GOOD! 3PTR by GERRITS, ABBY	15-15	T	

**UNI 15, Wichita St. 15**

**Official Scoring/Possession Reference Chart  
UNI vs Wichita St.**

**Period 2**

**November 09, 2019 at Charles Koch Arena (Devlin Court) - Wichita, Kan.**



**Period 2**

**Starters:**

**UNI:** 3 RUCKER, KARLI (G); 5 KROEGER, NICOLE (G); 11 GUNNELS, BRE (F); 22 SIMON-RESSLER, ROSE (G); 50 MAAHS, MEGAN (F);

**Wichita St.:** 12 BREMAUD, CARLA (G); 13 PRINCE, RAVEN (F); 21 BREWER, MAYA (G); 23 BASTIN, SERAPHINE (G); 24 COLBERT, TRAJATA (F);

Time	VISITORS: UNI	Score	Margin	HOME: Wichita St.
09:14		17-15	H 2	GOOD! JUMPER by COLBERT, TRAJATA [PNT]
06:51		18-15	H 3	GOOD! FT by BREWER, MAYA [FB]
06:05	GOOD! FT by WOLF, CYNTHIA [FB]	18-16	H 2	
06:05	GOOD! FT by WOLF, CYNTHIA [FB]	18-17	H 1	
05:54		19-17	H 2	GOOD! FT by MCCARTY, DJ
05:54		20-17	H 3	GOOD! FT by MCCARTY, DJ
05:41	GOOD! FT by MAAHS, MEGAN	20-18	H 2	
05:41	GOOD! FT by MAAHS, MEGAN	20-19	H 1	
04:39	GOOD! LAYUP by MORGAN, CAILYN	20-21	V 1	
04:01		22-21	H 1	GOOD! LAYUP by REID, ASHLEY
02:40		23-21	H 2	GOOD! FT by BREMAUD, CARLA
02:40		24-21	H 3	GOOD! FT by BREMAUD, CARLA
01:51		26-21	H 5	GOOD! LAYUP by HENDERSON, ASIA
01:41	GOOD! FT by RUCKER, KARLI	26-22	H 4	
00:35		28-22	H 6	GOOD! LAYUP by SMITH, SHYIA
00:21	GOOD! LAYUP by MAAHS, MEGAN	28-24	H 4	

**UNI 24, Wichita St. 28**

**Official Scoring/Possession Reference Chart  
UNI vs Wichita St.**

**Period 3**

**November 09, 2019 at Charles Koch Arena (Devlin Court) - Wichita, Kan.**



**Period 3**

**Starters:**

**UNI:** 3 RUCKER, KARLI (G); 5 KROEGER, NICOLE (G); 11 GUNNELS, BRE (F); 22 SIMON-RESSLER, ROSE (G); 50 MAAHS, MEGAN (F);

**Wichita St.:** 12 BREMAUD, CARLA (G); 13 PRINCE, RAVEN (F); 21 BREWER, MAYA (G); 23 BASTIN, SERAPHINE (G); 24 COLBERT, TRAJATA (F);

Time	VISITORS: UNI	Score	Margin	HOME: Wichita St.
08:46	GOOD! JUMPER by RUCKER, KARLI [PNT]	28-26	H 2	
08:08		30-26	H 4	GOOD! LAYUP by BREWER, MAYA [FB]
08:08		31-26	H 5	GOOD! FT by BREWER, MAYA
07:04		33-26	H 7	GOOD! JUMPER by BASTIN, SERAPHINE [PNT]
06:45	GOOD! LAYUP by WOLF, CYNTHIA	33-28	H 5	
06:21		35-28	H 7	GOOD! LAYUP by PRINCE, RAVEN
05:35	GOOD! LAYUP by FINLEY, KAM	35-30	H 5	
05:22		37-30	H 7	GOOD! LAYUP by COLBERT, TRAJATA
04:52	GOOD! 3PTR by GERRITS, ABBY	37-33	H 4	
04:22		38-33	H 5	GOOD! FT by PRINCE, RAVEN
03:46	GOOD! FT by CAVEY, KRISTINA [FB]	38-34	H 4	
03:15	GOOD! FT by MAAHS, MEGAN [FB]	38-35	H 3	
03:15	GOOD! FT by MAAHS, MEGAN [FB]	38-36	H 2	
02:28		39-36	H 3	GOOD! FT by PRINCE, RAVEN [FB]
01:29	GOOD! LAYUP by RUCKER, KARLI	39-38	H 1	
00:57	GOOD! FT by GUNNELS, BRE	39-39	T	
00:57	GOOD! FT by GUNNELS, BRE	39-40	V 1	
00:25	GOOD! LAYUP by GUNNELS, BRE	39-42	V 3	

**UNI 42, Wichita St. 39**

**Official Scoring/Possession Reference Chart  
UNI vs Wichita St.**

**Period 4**

**November 09, 2019 at Charles Koch Arena (Devlin Court) - Wichita, Kan.**



**Period 4**

**Starters:**

**UNI:** 3 RUCKER, KARLI (G); 5 KROEGER, NICOLE (G); 11 GUNNELS, BRE (F); 22 SIMON-RESSLER, ROSE (G); 50 MAAHS, MEGAN (F);

**Wichita St.:** 12 BREMAUD, CARLA (G); 13 PRINCE, RAVEN (F); 21 BREWER, MAYA (G); 23 BASTIN, SERAPHINE (G); 24 COLBERT, TRAJATA (F);

Time	VISITORS: UNI	Score	Margin	HOME: Wichita St.
07:59		40-42	V 2	GOOD! FT by BREMAUD, CARLA
07:59		41-42	V 1	GOOD! FT by BREMAUD, CARLA
07:46	GOOD! 3PTR by RUCKER, KARLI	41-45	V 4	
06:14	GOOD! LAYUP by RUCKER, KARLI	41-47	V 6	
05:41	GOOD! LAYUP by FINLEY, KAM [PNT]	41-49	V 8	
04:35		43-49	V 6	GOOD! LAYUP by BASTIN, SERAPHINE [FB]
04:01	GOOD! JUMPER by RUCKER, KARLI [FB/PNT]	43-51	V 8	
03:40	GOOD! LAYUP by KROEGER, NICOLE [FB]	43-53	V 10	
03:11		45-53	V 8	GOOD! LAYUP by COLBERT, TRAJATA
02:13	GOOD! JUMPER by CAVEY, KRISTINA	45-55	V 10	
01:51		46-55	V 9	GOOD! FT by BREWER, MAYA
01:13	GOOD! FT by RUCKER, KARLI	46-56	V 10	
01:13	GOOD! FT by RUCKER, KARLI	46-57	V 11	
01:03		47-57	V 10	GOOD! FT by BREMAUD, CARLA
01:03		48-57	V 9	GOOD! FT by BREMAUD, CARLA
00:41	GOOD! FT by RUCKER, KARLI	48-58	V 10	
00:41	GOOD! FT by RUCKER, KARLI	48-59	V 11	
00:18	GOOD! FT by RUCKER, KARLI	48-60	V 12	
00:18	GOOD! FT by RUCKER, KARLI	48-61	V 13	
00:06		50-61	V 11	GOOD! LAYUP by COLBERT, TRAJATA

**UNI 61, Wichita St. 50**

Official Substitutions Log

UNI vs Wichita St.

Period 1

November 09, 2019 at Charles Koch Arena (Devlin Court) - Wichita, Kan.



VISITORS: UNI	Time	Score	HOME: Wichita St.
3 RUCKER, KARLI			12 BREMAUD, CARLA
5 KROEGER, NICOLE			13 PRINCE, RAVEN
11 GUNNELS, BRE			21 BREWER, MAYA
22 SIMON-RESSLER, ROSE			23 BASTIN, SERAPHINE
50 MAAHS, MEGAN			24 COLBERT, TRAJATA
SUB OUT: 3 RUCKER, KARLI	06:14	5-8	
SUB OUT: 22 SIMON-RESSLER, ROSE	06:14		
SUB OUT: 50 MAAHS, MEGAN	06:14		
SUB IN: 12 FINLEY, KAM	06:14		
SUB IN: 30 WOLF, CYNTHIA	06:14		
SUB IN: 31 CAVEY, KRISTINA	06:14		
	04:56	8-11	SUB OUT: BASTIN, SERAPHINE
	04:56		SUB IN: REID, ASHLEY
SUB OUT: 5 KROEGER, NICOLE	04:56		
SUB OUT: 11 GUNNELS, BRE	04:56		
SUB IN: 2 MORGAN, CAILYN	04:56		
SUB IN: 32 HILLYARD, HEIDI	04:56		
	03:47	10-15	SUB OUT: PRINCE, RAVEN
	03:47		SUB IN: SMITH, SHYIA
SUB OUT: 2 MORGAN, CAILYN	03:47		
SUB OUT: 30 WOLF, CYNTHIA	03:47		
SUB IN: 5 KROEGER, NICOLE	03:47		
SUB IN: 50 MAAHS, MEGAN	03:47		
SUB OUT: 31 CAVEY, KRISTINA	03:21	12-15	
SUB IN: 41 GERRITS, ABBY	03:21		
	01:56	15-15	SUB OUT: REID, ASHLEY
	01:56		SUB OUT: BREWER, MAYA
	01:56		SUB IN: MCCARTY, DJ
	01:56		SUB IN: BASTIN, SERAPHINE
SUB OUT: 12 FINLEY, KAM	01:56		
SUB OUT: 32 HILLYARD, HEIDI	01:56		
SUB IN: 3 RUCKER, KARLI	01:56		
SUB IN: 11 GUNNELS, BRE	01:56		
	00:01	15-15	SUB OUT: BREMAUD, CARLA
	00:01		SUB IN: HAMPTON, JAIDA

UNI 15, Wichita St. 15

Official Substitutions Log

UNI vs Wichita St.

Period 2

November 09, 2019 at Charles Koch Arena (Devlin Court) - Wichita, Kan.



VISITORS: UNI	Time	Score	HOME: Wichita St.
3 RUCKER, KARLI			12 BREMAUD, CARLA
5 KROEGER, NICOLE			13 PRINCE, RAVEN
11 GUNNELS, BRE			21 BREWER, MAYA
22 SIMON-RESSLER, ROSE			23 BASTIN, SERAPHINE
50 MAAHS, MEGAN			24 COLBERT, TRAJATA
	10:00	-	SUB OUT: SMITH, SHYIA
	10:00		SUB IN: BREWER, MAYA
SUB OUT: 41 GERRITS, ABBY	10:00		
SUB IN: 22 SIMON-RESSLER, ROSE	10:00		
	09:48	-	SUB OUT: BREWER, MAYA
	09:48		SUB IN: SMITH, SHYIA
	09:09	15-17	SUB OUT: COLBERT, TRAJATA
	09:09		SUB IN: PRINCE, RAVEN
SUB OUT: 11 GUNNELS, BRE	09:09		
SUB IN: 2 MORGAN, CAILYN	09:09		
SUB OUT: 2 MORGAN, CAILYN	08:42	15-17	
SUB OUT: 3 RUCKER, KARLI	08:42		
SUB IN: 12 FINLEY, KAM	08:42		
SUB IN: 32 HILLYARD, HEIDI	08:42		
SUB OUT: 32 HILLYARD, HEIDI	07:41	15-17	
SUB IN: 30 WOLF, CYNTHIA	07:41		
	07:41		SUB OUT: HAMPTON, JAIDA
	07:41		SUB IN: BREWER, MAYA
SUB OUT: 5 KROEGER, NICOLE	07:41		
SUB OUT: 12 FINLEY, KAM	07:41		
SUB OUT: 22 SIMON-RESSLER, ROSE	07:41		
SUB OUT: 50 MAAHS, MEGAN	07:41		
SUB IN: 3 RUCKER, KARLI	07:41		
SUB IN: 31 CAVEY, KRISTINA	07:41		
SUB IN: 32 HILLYARD, HEIDI	07:41		
SUB IN: 41 GERRITS, ABBY	07:41		
	07:16	15-17	SUB OUT: BASTIN, SERAPHINE
	07:16		SUB IN: REID, ASHLEY
	06:05	15-18	SUB OUT: PRINCE, RAVEN
	06:05		SUB IN: COLBERT, TRAJATA
SUB OUT: 30 WOLF, CYNTHIA	06:05		
SUB IN: 50 MAAHS, MEGAN	06:05		
SUB OUT: 31 CAVEY, KRISTINA	05:54	17-18	
SUB OUT: 41 GERRITS, ABBY	05:54		
SUB IN: 2 MORGAN, CAILYN	05:54		
SUB IN: 5 KROEGER, NICOLE	05:54		
	05:41	17-20	SUB OUT: COLBERT, TRAJATA
	05:41		SUB IN: HENDERSON, ASIA
	05:04	19-20	SUB OUT: MCCARTY, DJ
	05:04		SUB IN: BREMAUD, CARLA
SUB OUT: 2 MORGAN, CAILYN	03:28	21-22	
SUB OUT: 32 HILLYARD, HEIDI	03:28		
SUB OUT: 50 MAAHS, MEGAN	03:28		
SUB IN: 11 GUNNELS, BRE	03:28		
SUB IN: 22 SIMON-RESSLER, ROSE	03:28		
SUB IN: 30 WOLF, CYNTHIA	03:28		
SUB OUT: 11 GUNNELS, BRE	02:22	21-24	
SUB OUT: 22 SIMON-RESSLER, ROSE	02:22		
SUB IN: 31 CAVEY, KRISTINA	02:22		
SUB IN: 32 HILLYARD, HEIDI	02:22		
SUB OUT: 30 WOLF, CYNTHIA	01:41	21-26	
SUB OUT: 32 HILLYARD, HEIDI	01:41		
SUB IN: 11 GUNNELS, BRE	01:41		
SUB IN: 50 MAAHS, MEGAN	01:41		

UNI 24, Wichita St. 28

Official Substitutions Log

UNI vs Wichita St.

Period 3

November 09, 2019 at Charles Koch Arena (Devlin Court) - Wichita, Kan.



VISITORS: UNI	Time	Score	HOME: Wichita St.
3 RUCKER, KARLI			12 BREMAUD, CARLA
5 KROEGER, NICOLE			13 PRINCE, RAVEN
11 GUNNELS, BRE			21 BREWER, MAYA
22 SIMON-RESSLER, ROSE			23 BASTIN, SERAPHINE
50 MAAHS, MEGAN			24 COLBERT, TRAJATA
	10:00	-	SUB OUT: REID, ASHLEY
	10:00		SUB OUT: SMITH, SHYIA
	10:00		SUB OUT: HENDERSON, ASIA
	10:00		SUB IN: PRINCE, RAVEN
	10:00		SUB IN: BASTIN, SERAPHINE
	10:00		SUB IN: COLBERT, TRAJATA
SUB OUT: 31 CAVEY, KRISTINA	10:00		
SUB IN: 22 SIMON-RESSLER, ROSE	10:00		
SUB OUT: 11 GUNNELS, BRE	07:49	26-31	
SUB OUT: 22 SIMON-RESSLER, ROSE	07:49		
SUB IN: 31 CAVEY, KRISTINA	07:49		
SUB IN: 32 HILLYARD, HEIDI	07:49		
SUB OUT: 3 RUCKER, KARLI	07:25	26-31	
SUB OUT: 50 MAAHS, MEGAN	07:25		
SUB IN: 12 FINLEY, KAM	07:25		
SUB IN: 30 WOLF, CYNTHIA	07:25		
	06:04	28-35	SUB OUT: BASTIN, SERAPHINE
	06:04		SUB IN: REID, ASHLEY
SUB OUT: 5 KROEGER, NICOLE	06:04		
SUB IN: 41 GERRITS, ABBY	06:04		
	04:51	33-37	SUB OUT: BREWER, MAYA
	04:51		SUB IN: MCCARTY, DJ
SUB OUT: 41 GERRITS, ABBY	04:22	33-37	
SUB IN: 3 RUCKER, KARLI	04:22		
SUB OUT: 30 WOLF, CYNTHIA	03:46	33-38	
SUB OUT: 32 HILLYARD, HEIDI	03:46		
SUB IN: 11 GUNNELS, BRE	03:46		
SUB IN: 50 MAAHS, MEGAN	03:46		
	03:15	34-38	SUB OUT: MCCARTY, DJ
	03:15		SUB IN: BASTIN, SERAPHINE
SUB OUT: 31 CAVEY, KRISTINA	02:28	36-38	
SUB OUT: 50 MAAHS, MEGAN	02:28		
SUB IN: 5 KROEGER, NICOLE	02:28		
SUB IN: 30 WOLF, CYNTHIA	02:28		
	01:41	36-39	SUB OUT: PRINCE, RAVEN
	01:41		SUB IN: SMITH, SHYIA
SUB OUT: 12 FINLEY, KAM	01:41		
SUB IN: 2 MORGAN, CAILYN	01:41		
	00:57	38-39	SUB OUT: REID, ASHLEY
	00:57		SUB OUT: COLBERT, TRAJATA
	00:57		SUB IN: PRINCE, RAVEN
	00:57		SUB IN: BREWER, MAYA
	00:10	42-39	SUB OUT: BASTIN, SERAPHINE
	00:10		SUB IN: REID, ASHLEY

UNI 42, Wichita St. 39



Official Substitutions Log

UNI vs Wichita St.

Period 4

November 09, 2019 at Charles Koch Arena (Devlin Court) - Wichita, Kan.



VISITORS: UNI	Time	Score	HOME: Wichita St.
3 RUCKER, KARLI			12 BREMAUD, CARLA
5 KROEGER, NICOLE			13 PRINCE, RAVEN
11 GUNNELS, BRE			21 BREWER, MAYA
22 SIMON-RESSLER, ROSE			23 BASTIN, SERAPHINE
50 MAAHS, MEGAN			24 COLBERT, TRAJATA
SUB OUT: 3 RUCKER, KARLI	10:00	-	
SUB OUT: 30 WOLF, CYNTHIA	10:00		
SUB IN: 12 FINLEY, KAM	10:00		
SUB IN: 50 MAAHS, MEGAN	10:00		
SUB OUT: 2 MORGAN, CAILYN	08:18	-	
SUB OUT: 5 KROEGER, NICOLE	08:18		
SUB IN: 3 RUCKER, KARLI	08:18		
SUB IN: 31 CAVEY, KRISTINA	08:18		
SUB OUT: 50 MAAHS, MEGAN	07:59	-	
SUB IN: 30 WOLF, CYNTHIA	07:59		
	05:52	47-41	SUB OUT: REID, ASHLEY
	05:52		SUB IN: BASTIN, SERAPHINE
	05:22	49-41	SUB OUT: PRINCE, RAVEN
	05:22		SUB IN: COLBERT, TRAJATA
SUB OUT: 11 GUNNELS, BRE	05:22		
SUB IN: 32 HILLYARD, HEIDI	05:22		
SUB OUT: 12 FINLEY, KAM	04:53	49-41	
SUB IN: 5 KROEGER, NICOLE	04:53		
SUB OUT: 30 WOLF, CYNTHIA	04:23	49-43	
SUB OUT: 32 HILLYARD, HEIDI	04:23		
SUB IN: 11 GUNNELS, BRE	04:23		
SUB IN: 50 MAAHS, MEGAN	04:23		
SUB OUT: 5 KROEGER, NICOLE	01:46	55-46	
SUB IN: 12 FINLEY, KAM	01:46		
	01:45	55-46	SUB OUT: BASTIN, SERAPHINE
	01:45		SUB IN: REID, ASHLEY
SUB OUT: 50 MAAHS, MEGAN	00:18	61-48	
SUB IN: 30 WOLF, CYNTHIA	00:18		

UNI 61, Wichita St. 50

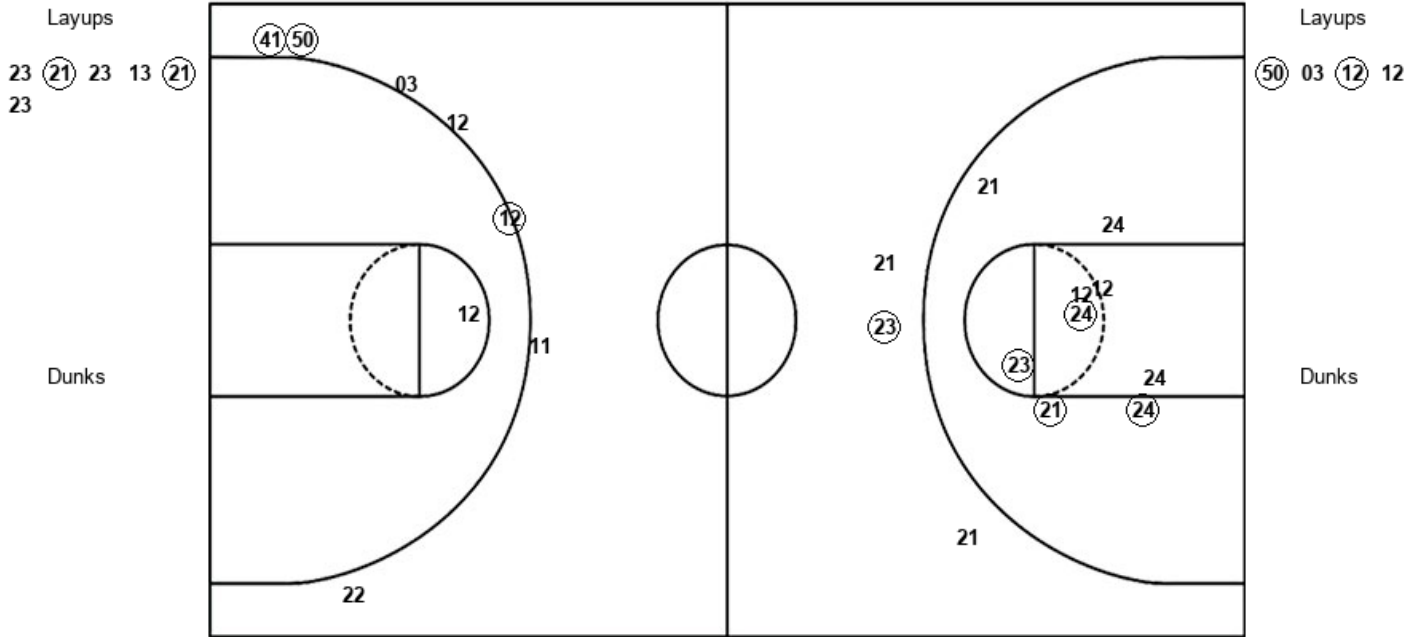
Official Shot Chart  
**UNI vs Wichita St.**  
 PERIOD 1 Shots

November 09, 2019 at Charles Koch Arena (Devlin Court) - Wichita, Kan.



Wichita St.

UNI



WSU : Period 1	Made	Att	Pct
Layups	2	6	33.3
Dunks	0	0	0
2PT Field Goals	6	15	40.0
3PT Field Goals	1	3	33.3
<b>Total Field Goals</b>	<b>7</b>	<b>18</b>	<b>38.9</b>

UNI : Period 1	Made	Att	Pct
Layups	2	4	50.0
Dunks	0	0	0
2PT Field Goals	2	5	40.0
3PT Field Goals	3	7	42.9
<b>Total Field Goals</b>	<b>5</b>	<b>12</b>	<b>41.7</b>

Official Shot Chart  
 UNI vs Wichita St.  
 PERIOD 2 Shots

November 09, 2019 at Charles Koch Arena (Devlin Court) - Wichita, Kan.



Wichita St.

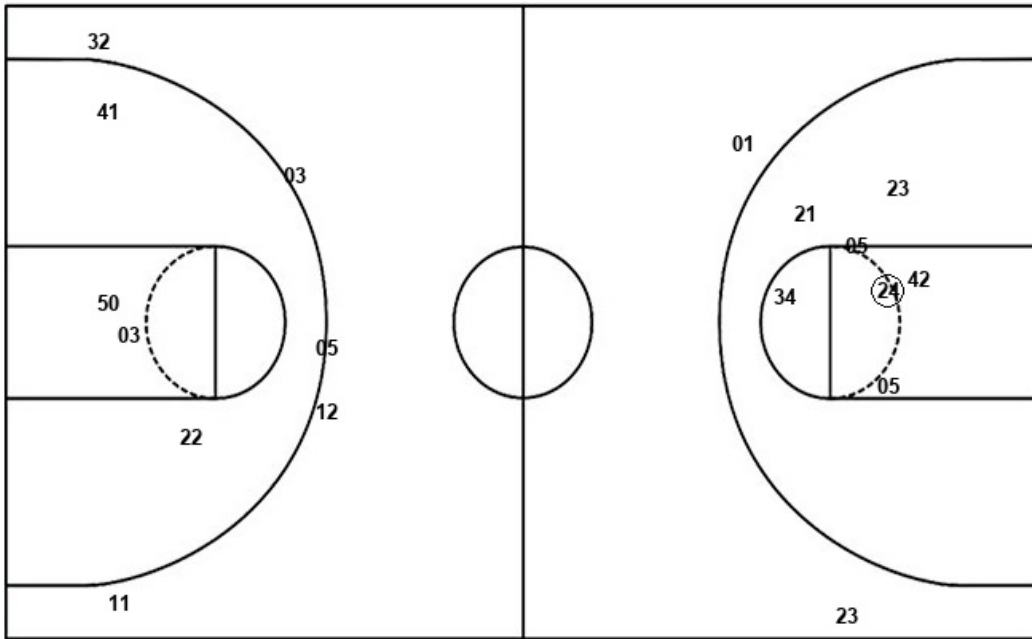
UNI

Layups  
 24 (05) (42) (34)

Layups  
 (02) 50 (50)

Dunks

Dunks



WSU : Period 2	Made	Att	Pct
Layups	3	4	75.0
Dunks	0	0	0
2PT Field Goals	4	11	36.4
3PT Field Goals	0	2	00.0
<b>Total Field Goals</b>	<b>4</b>	<b>13</b>	<b>30.8</b>

UNI : Period 2	Made	Att	Pct
Layups	2	3	66.7
Dunks	0	0	0
2PT Field Goals	2	7	28.6
3PT Field Goals	0	5	00.0
<b>Total Field Goals</b>	<b>2</b>	<b>12</b>	<b>16.7</b>

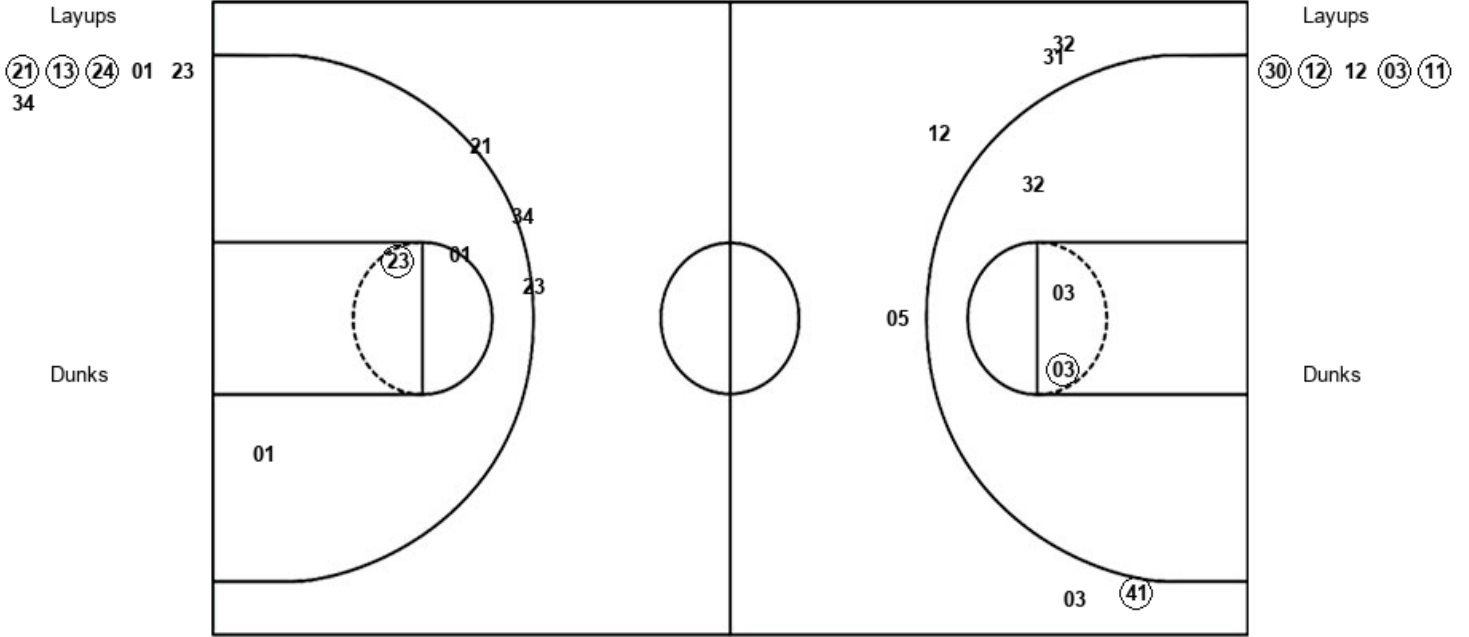
Official Shot Chart  
**UNI vs Wichita St.**  
 PERIOD 3 Shots

November 09, 2019 at Charles Koch Arena (Devlin Court) - Wichita, Kan.



Wichita St.

UNI



WSU : Period 3	Made	Att	Pct
Layups	3	6	50.0
Dunks	0	0	0
2PT Field Goals	4	9	44.4
3PT Field Goals	0	3	00.0
<b>Total Field Goals</b>	<b>4</b>	<b>12</b>	<b>33.3</b>

UNI : Period 3	Made	Att	Pct
Layups	4	5	80.0
Dunks	0	0	0
2PT Field Goals	5	8	62.5
3PT Field Goals	1	6	16.7
<b>Total Field Goals</b>	<b>6</b>	<b>14</b>	<b>42.9</b>

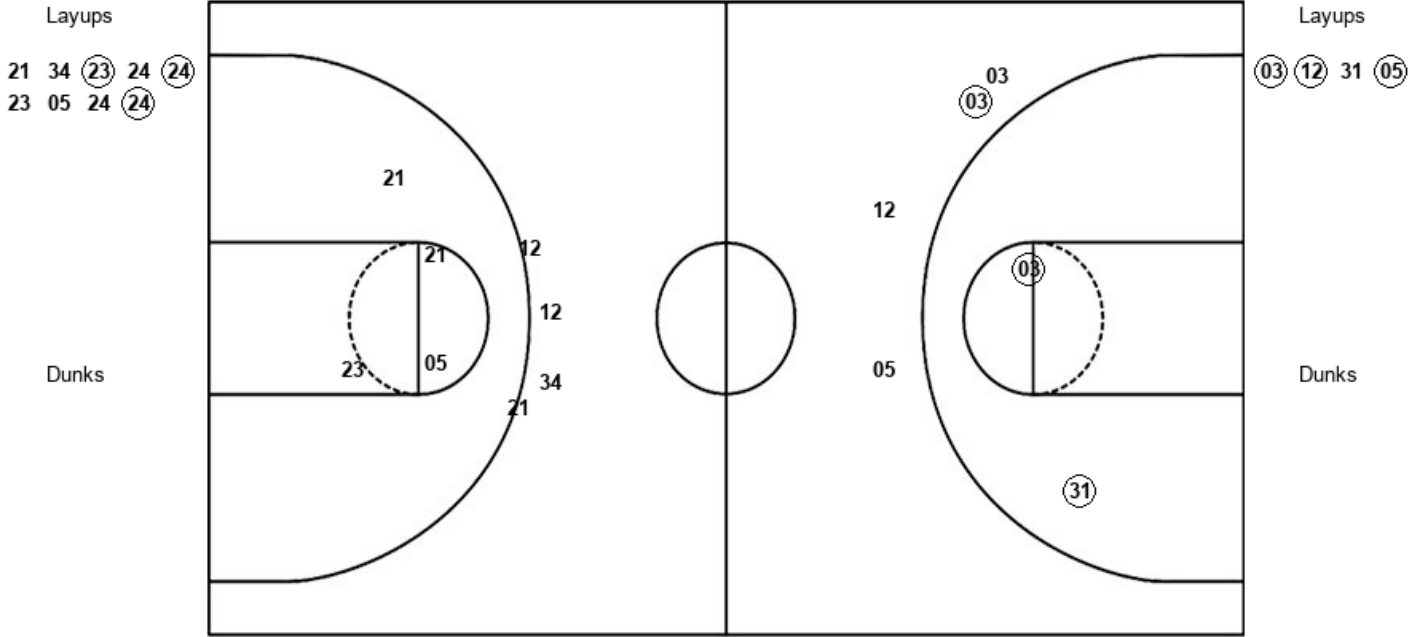
Official Shot Chart  
**UNI vs Wichita St.**  
 PERIOD 4 Shots

November 09, 2019 at Charles Koch Arena (Devlin Court) - Wichita, Kan.



**Wichita St.**

**UNI**



WSU : Period 4	Made	Att	Pct
Layups	3	9	33.3
Dunks	0	0	0
2PT Field Goals	3	13	23.1
3PT Field Goals	0	4	00.0
<b>Total Field Goals</b>	<b>3</b>	<b>17</b>	<b>17.6</b>

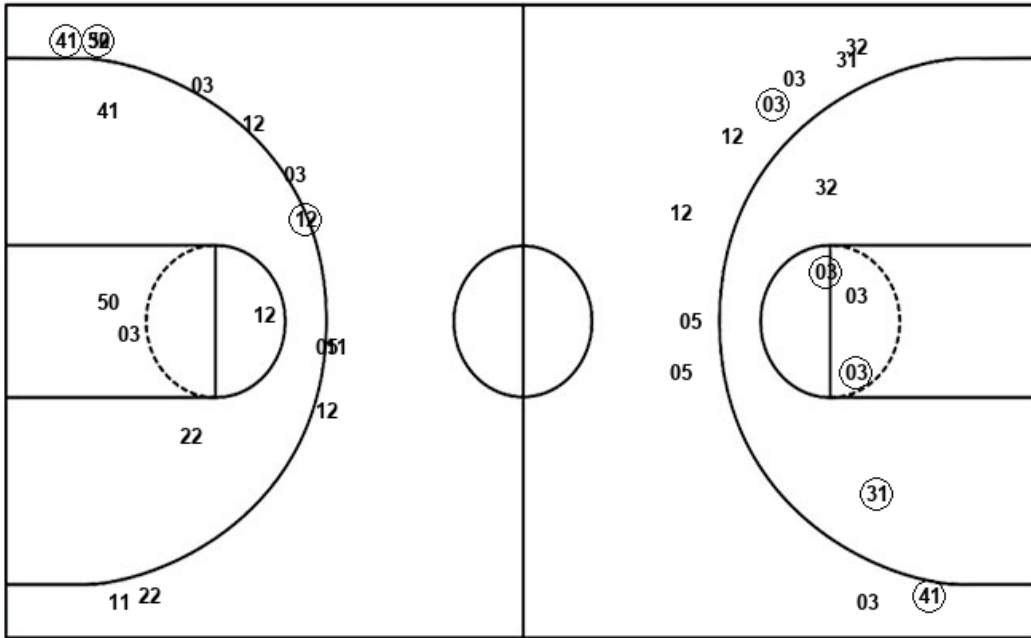
UNI : Period 4	Made	Att	Pct
Layups	3	4	75.0
Dunks	0	0	0
2PT Field Goals	5	6	83.3
3PT Field Goals	1	4	25.0
<b>Total Field Goals</b>	<b>6</b>	<b>10</b>	<b>60.0</b>

Official Shot Chart  
 UNI vs Wichita St.  
 UNI Team Shots

November 09, 2019 at Charles Koch Arena (Devlin Court) - Wichita, Kan.



Layups



Layups

(50) 03 (12) 12 (02)  
 50 (50) (30) (12) 12  
 (03) (11) (03) (12) 31  
 (05)

Dunks

Dunks

UNI : Period 1	Made	Att	Pct
Layups	2	4	50.0
Dunks	0	0	0
2PT Field Goals	2	5	40.0
3PT Field Goals	3	7	42.9
<b>Total Field Goals</b>	<b>5</b>	<b>12</b>	<b>41.7</b>

UNI : Period 2	Made	Att	Pct
Layups	2	3	66.7
Dunks	0	0	0
2PT Field Goals	2	7	28.6
3PT Field Goals	0	5	00.0
<b>Total Field Goals</b>	<b>2</b>	<b>12</b>	<b>16.7</b>

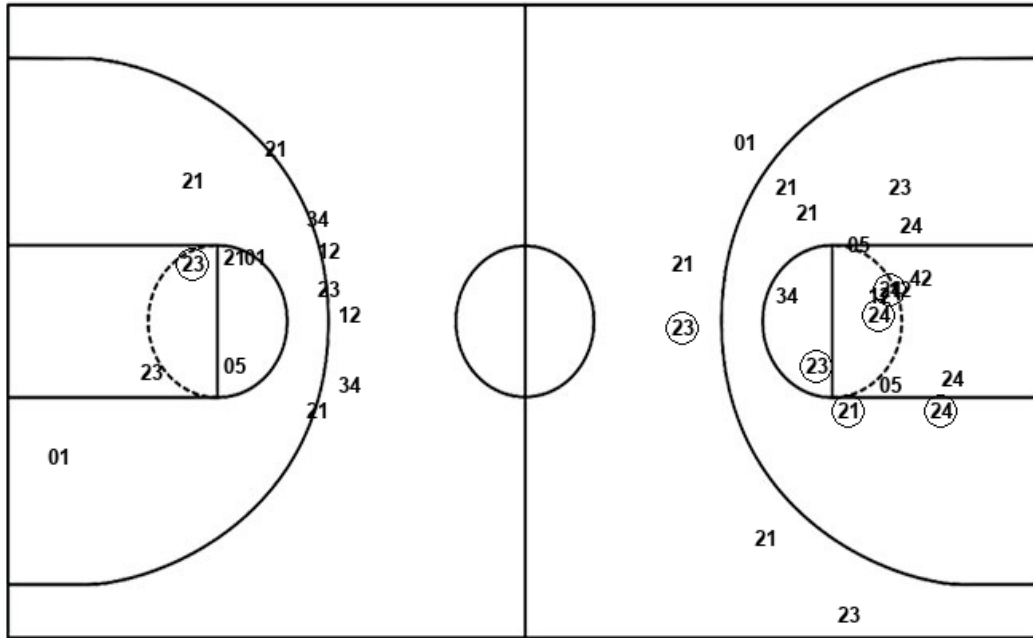
UNI : Period 3	Made	Att	Pct
Layups	4	5	80.0
Dunks	0	0	0
2PT Field Goals	5	8	62.5
3PT Field Goals	1	6	16.7
<b>Total Field Goals</b>	<b>6</b>	<b>14</b>	<b>42.9</b>

UNI : Period 4	Made	Att	Pct
Layups	3	4	75.0
Dunks	0	0	0
2PT Field Goals	5	6	83.3
3PT Field Goals	1	4	25.0
<b>Total Field Goals</b>	<b>6</b>	<b>10</b>	<b>60.0</b>

**Official Shot Chart**  
**UNI vs Wichita St.**  
**Wichita St. Team Shots**  
 November 09, 2019 at Charles Koch Arena (Devlin Court) - Wichita, Kan.



Layups



Layups

23 (21) 23 13 (21)  
 23 24 (05) (42) (34)  
 (21) (13) (24) 01 23  
 34 21 34 (23) 24  
 (24) 23 05 24 (24)

Dunks

Dunks

WSU : Period 1	Made	Att	Pct
Layups	2	6	33.3
Dunks	0	0	0
2PT Field Goals	6	15	40.0
3PT Field Goals	1	3	33.3
<b>Total Field Goals</b>	<b>7</b>	<b>18</b>	<b>38.9</b>

WSU : Period 3	Made	Att	Pct
Layups	3	6	50.0
Dunks	0	0	0
2PT Field Goals	4	9	44.4
3PT Field Goals	0	3	00.0
<b>Total Field Goals</b>	<b>4</b>	<b>12</b>	<b>33.3</b>

WSU : Period 2	Made	Att	Pct
Layups	3	4	75.0
Dunks	0	0	0
2PT Field Goals	4	11	36.4
3PT Field Goals	0	2	00.0
<b>Total Field Goals</b>	<b>4</b>	<b>13</b>	<b>30.8</b>

WSU : Period 4	Made	Att	Pct
Layups	3	9	33.3
Dunks	0	0	0
2PT Field Goals	3	13	23.1
3PT Field Goals	0	4	00.0
<b>Total Field Goals</b>	<b>3</b>	<b>17</b>	<b>17.6</b>