

**FINAL SCORE**

**Puget Sound**

**69**



**Portland St.**

**94**

**November 05, 2019 • Viking Pavilion (Viking Pavilion) - Portland**

**FINAL STATISTICS**

**Official Box Score**  
**Puget Sound vs Portland St.**  
**Game Totals -- Final Statistics**  
**November 05, 2019 at Viking Pavilion (Viking Pavilion) - Portland**



**Puget Sound 69**

No.	Player	S	Pts	FG	3FG	FT	OR	DR	TR	PF	A	TO	Blk	Stl	Min	+/-
00	ERICKSON, GRANT	F	3	1-3	0-1	1-2	0	5	5	1	2	4	0	0	23	-29
01	HANSEN, CAL	G	21	10-12	0-0	1-2	2	3	5	3	0	4	0	0	27	-20
14	ELSNER, KOBE	G	0	0-2	0-0	0-0	0	0	0	5	2	5	0	1	23	-7
25	BASILE, MAX	G	5	2-7	1-3	0-0	0	4	4	1	7	2	0	1	23	0
31	SHIBLEY-STYER, WALKER	G	12	4-7	4-6	0-0	0	1	1	3	0	1	0	1	18	-18
02	WILSON, DONOVAN	G	0	0-2	0-0	0-0	0	1	1	0	1	1	0	0	8	-9
03	GEATHERS, C.J.	G	8	3-8	2-5	0-0	2	0	2	1	4	4	0	1	15	-9
05	MISEL, JOHN	F	5	2-10	1-4	0-0	3	2	5	2	1	2	0	0	21	-6
15	JOSEPH, JOURDAN	G	11	2-11	0-5	7-7	0	4	4	3	3	4	0	3	24	-11
24	MCCANN, PAUL	F	0	0-0	0-0	0-0	0	0	0	0	0	0	0	0	1	-3
32	WEBB, GRIFFIN	G	2	1-2	0-1	0-0	0	0	0	1	0	1	0	0	5	-6
33	CAREY, CARSON	G	0	0-0	0-0	0-0	0	0	0	0	0	0	0	0	1	-3
35	NICHOL, RILEY	F	2	1-1	0-0	0-0	1	2	3	2	0	2	1	0	12	-4
	TEAM						5	4	9	0		1				
<b>TOTALS</b>			<b>69</b>	<b>26-65</b>	<b>8-25</b>	<b>9-11</b>	<b>13</b>	<b>26</b>	<b>39</b>	<b>22</b>	<b>20</b>	<b>31</b>	<b>1</b>	<b>7</b>	<b>200</b>	

*Shooting By Period*

Period	FG	FG%	3FG	3FG%	FT	FT%
1st Half	10-32	31%	2-11	18%	6-8	75%
2nd Half	16-33	48%	6-14	43%	3-3	100%
<b>Game</b>	<b>26-65</b>	<b>40.0%</b>	<b>8-25</b>	<b>32.0%</b>	<b>9-11</b>	<b>81.8%</b>

*Deadball Rebounds: 2,1*  
*Last FG: 2nd-01:28*  
*Biggest Run: 8-0*  
*Largest lead: By 0 at 2-00*  
*Technical Fouls: None.*

**Portland St. 94**

No.	Player	S	Pts	FG	3FG	FT	OR	DR	TR	PF	A	TO	Blk	Stl	Min	+/-
00	NUHU, SAL	F	12	5-8	0-0	2-6	2	5	7	2	0	0	6	0	28	17
10	HAUSER, MATT	G	13	6-16	0-5	1-2	1	2	3	2	0	1	0	2	28	11
11	WOODS, HOLLAND	G	12	4-13	0-2	4-4	0	0	0	4	5	5	0	5	28	20
22	WALKER, ALONZO	F	12	5-9	0-0	2-2	3	2	5	3	1	0	0	4	18	13
30	WHITAKER, CHRIS	G	9	4-10	0-0	1-2	3	4	7	1	1	4	0	0	20	28
02	GOLDER, MARKUS	F	5	2-4	0-1	1-2	0	0	0	1	0	1	1	1	15	-4
03	GOOLSBY, RASHAAD	F	6	2-4	0-0	2-3	6	4	10	1	2	3	0	2	16	-1
05	GREELEY, KYLE	G	12	4-6	0-1	4-4	1	2	3	0	1	1	0	0	12	19
12	WOOD, TREY	F	7	2-4	0-1	3-6	1	2	3	1	0	0	2	0	15	11
15	BURKE, IAN	G	6	2-6	2-5	0-0	1	1	2	2	0	0	0	4	21	11
	TEAM						2	4	6	0		0				
<b>TOTALS</b>			<b>94</b>	<b>36-80</b>	<b>2-15</b>	<b>20-31</b>	<b>20</b>	<b>26</b>	<b>46</b>	<b>17</b>	<b>10</b>	<b>15</b>	<b>9</b>	<b>18</b>	<b>200</b>	

*Shooting By Period*

Period	FG	FG%	3FG	3FG%	FT	FT%
1st Half	20-38	53%	1-5	20%	13-21	62%
2nd Half	16-42	38%	1-10	10%	7-10	70%
<b>Game</b>	<b>36-80</b>	<b>45.0%</b>	<b>2-15</b>	<b>13.3%</b>	<b>20-31</b>	<b>64.5%</b>

*Deadball Rebounds: 8,0*  
*Last FG: 2nd-01:56*  
*Biggest Run: 10-0*  
*Largest lead: By 31 at -*  
*Technical Fouls: None.*

Game Notes:

Officials: **Doug Sturdivan, Michael Cheatham, Dan Church**  
 Attendance: 856

Start Time: 10:33 PM ET  
 End Time: 12:25 AM ET  
 Game Duration: 1:52

Score	1st	2nd	TOT
UPS	28	41	<b>69</b>
PSU	54	40	<b>94</b>

UPS led for 0:00. PSU led for 38:29.  
 Game was tied for 1:28.  
 Times tied: 91      Lead Changes: 0

Points from	UPS	PSU
In the Paint	26	60
Off Turns	8	32
2nd Chance	10	20
Fast Break	9	18
Bench	28	36

**Official Box Score**  
**Puget Sound vs Portland St.**  
**First Half Statistics Only**  
**November 05, 2019 at Viking Pavilion (Viking Pavilion) - Portland**



**Puget Sound 28**

No.	Player	S	Pts	FG	3FG	FT	OR	DR	TR	PF	A	TO	Blk	Stl	Min	+/-
00	ERICKSON, GRANT	F	1	0-1	0-0	1-2	0	2	2	1	1	2	0	0	14	-24
01	HANSEN, CAL	G	9	4-6	0-0	1-2	2	1	3	3	0	3	0	0	13	-22
14	ELSNER, KOBE	G	0	0-0	0-0	0-0	0	0	0	2	1	3	0	1	11	-10
25	BASILE, MAX	G	2	1-3	0-0	0-0	0	3	3	1	2	1	0	0	12	-8
31	SHIBLEY-STYER, WALKER	G	3	1-4	1-3	0-0	0	0	0	3	0	1	0	1	9	-17
02	WILSON, DONOVAN	G	0	0-0	0-0	0-0	0	0	0	0	0	1	0	0	3	-11
03	GEATHERS, C.J.	G	5	2-6	1-3	0-0	2	0	2	0	1	2	0	1	9	-11
05	MISEL, JOHN	F	0	0-4	0-2	0-0	1	0	1	2	0	2	0	0	9	-12
15	JOSEPH, JOURDAN	G	6	1-7	0-3	4-4	0	2	2	2	2	3	0	2	12	-8
24	MCCANN, PAUL	F	0	0-0	0-0	0-0	0	0	0	0	0	0	0	0	0	0
32	WEBB, GRIFFIN	G	2	1-1	0-0	0-0	0	0	0	0	0	1	0	0	2	-1
33	CAREY, CARSON	G	0	0-0	0-0	0-0	0	0	0	0	0	0	0	0	0	0
35	NICHOL, RILEY	F	0	0-0	0-0	0-0	0	1	1	0	0	2	1	0	6	-6
	TEAM						4	1	5	0		0				
<b>TOTALS</b>			<b>28</b>	<b>10-32</b>	<b>2-11</b>	<b>6-8</b>	<b>9</b>	<b>10</b>	<b>19</b>	<b>14</b>	<b>7</b>	<b>21</b>	<b>1</b>	<b>5</b>	<b>100</b>	

*Shooting By Period*

Period	FG	FG%	3FG	3FG%	FT	FT%
1st Half	10-32	31%	2-11	18%	6-8	75%
Game	26-65	40.0%	8-25	32.0%	9-11	81.8%

Deadball Rebounds: 2,1  
 Last FG Half: UPS 2nd-01:28

**Portland St. 54**

No.	Player	S	Pts	FG	3FG	FT	OR	DR	TR	PF	A	TO	Blk	Stl	Min	+/-
00	NUHU, SAL	F	8	4-6	0-0	0-2	1	3	4	0	0	0	4	0	15	13
10	HAUSER, MATT	G	7	3-6	0-2	1-2	0	1	1	2	0	1	0	1	12	17
11	WOODS, HOLLAND	G	10	3-6	0-1	4-4	0	0	0	2	4	3	0	3	18	19
22	WALKER, ALONZO	F	2	1-3	0-0	0-0	0	0	0	2	0	0	0	2	5	14
30	WHITAKER, CHRIS	G	5	2-5	0-0	1-2	2	4	6	0	1	2	0	0	12	21
02	GOLDER, MARKUS	F	5	2-2	0-0	1-2	0	0	0	1	0	0	1	1	7	2
03	GOOLSBY, RASHAAD	F	6	2-4	0-0	2-3	4	0	4	1	1	3	0	2	7	1
05	GREELEY, KYLE	G	4	1-1	0-0	2-2	0	1	1	0	1	1	0	0	6	12
12	WOOD, TREY	F	4	1-2	0-0	2-4	1	2	3	1	0	0	2	0	8	16
15	BURKE, IAN	G	3	1-3	1-2	0-0	0	0	0	0	0	0	0	3	10	15
	TEAM						1	2	3	0		0				
<b>TOTALS</b>			<b>54</b>	<b>20-38</b>	<b>1-5</b>	<b>13-21</b>	<b>9</b>	<b>13</b>	<b>22</b>	<b>9</b>	<b>7</b>	<b>10</b>	<b>7</b>	<b>12</b>	<b>100</b>	

*Shooting By Period*

Period	FG	FG%	3FG	3FG%	FT	FT%
1st Half	20-38	53%	1-5	20%	13-21	62%
Game	36-80	45.0%	2-15	13.3%	20-31	64.5%

Deadball Rebounds: 8,0  
 Last FG Half: PSU 2nd-01:56

Game Notes:

Officials: Doug Sturdivan, Michael Cheatham, Dan Church  
 Attendance: 856

Start Time: 10:33 PM ET  
 End Time: 12:25 AM ET  
 Game Duration: 1:52

Score	1st	2nd	TOT
UPS	28	41	69
PSU	54	40	94

Points from (This Period)	UPS	PSU
In the Paint	12	34
Off Turns	6	25
2nd Chance	6	5
Fast Break	7	14
Bench	13	22

**Official Play-By-Play  
Puget Sound vs Portland St.  
First Half**

**November 05, 2019 at Viking Pavilion (Viking Pavilion) - Portland**



**Period 1**

**Starters:**

**Puget Sound:** 0 ERICKSON, GRANT (F); 14 ELSNER, KOBE (G); 25 BASILE, MAX (G); 31 SHIBLEY-STYER, WALKER (G); 1 HANSEN, CAL (G);

**Portland St.:** 0 NUHU, SAL (F); 10 HAUSER, MATT (G); 11 WOODS, HOLLAND (G); 22 WALKER, ALONZO (F); 30 WHITAKER, CHRIS (G);

Time	VISITORS: Puget Sound	Score	Margin	HOME: Portland St.
19:52				TURNOVER (BADPASS) by WOODS, HOLLAND
19:52	STEAL by SHIBLEY-STYER, WALKER			
19:39	MISSED JUMPER by BASILE, MAX			
19:36				REBOUND (DEF) by NUHU, SAL
19:30				MISSED JUMPER by WALKER, ALONZO
19:25	REBOUND (DEF) by BASILE, MAX			
19:13	MISSED 3PTR by SHIBLEY-STYER, WALKER			
19:08				REBOUND (DEF) by NUHU, SAL
19:08				FOUL (OFF) by WOODS, HOLLAND
19:08				TURNOVER (OFFENSIVE) by WOODS, HOLLAND
18:40	MISSED JUMPER by SHIBLEY-STYER, WALKER			
18:36				REBOUND (DEF) by WHITAKER, CHRIS
18:32		2-0	H 2	GOOD! LAYUP by WHITAKER, CHRIS [FB]
18:24	TURNOVER (BADPASS) by HANSEN, CAL			
18:15	FOUL (PERSONAL) by SHIBLEY-STYER, WALKER			
18:15	SUB OUT: SHIBLEY-STYER, WALKER			
18:15	SUB IN: MISEL, JOHN			
18:13	FOUL (PERSONAL) by ELSNER, KOBE			
18:04		4-0	H 4	GOOD! JUMPER by HAUSER, MATT [PNT]
17:47	TURNOVER (LOSTBALL) by ELSNER, KOBE			
17:47				STEAL by WALKER, ALONZO
17:40	FOUL (PERSONAL) by ELSNER, KOBE			
17:40		5-0	H 5	GOOD! FT by WOODS, HOLLAND [FB]
17:40	SUB OUT: ELSNER, KOBE			
17:40	SUB OUT: BASILE, MAX			
17:40	SUB IN: GEATHERS, C.J.			
17:40	SUB IN: JOSEPH, JOURDAN			
17:40		6-0	H 6	GOOD! FT by WOODS, HOLLAND [FB]
17:26	MISSED 3PTR by JOSEPH, JOURDAN			
17:22	REBOUND (OFF) by MISEL, JOHN			
17:11	GOOD! JUMPER by HANSEN, CAL	6-2	H 4	
17:11	ASSIST by JOSEPH, JOURDAN			
16:58		8-2	H 6	GOOD! LAYUP by NUHU, SAL
16:58				ASSIST by WHITAKER, CHRIS
16:45	TURNOVER (LOSTBALL) by MISEL, JOHN			
16:44				SUB OUT: WALKER, ALONZO
16:44				SUB IN: GOOLSBY, RASHAAD
16:44	SUB OUT: ERICKSON, GRANT			
16:44	SUB IN: NICHOL, RILEY			
16:34	FOUL (PERSONAL) by JOSEPH, JOURDAN			
16:34				MISSED FT by HAUSER, MATT
16:34				REBOUND (OFF) by TEAM
16:34	SUB OUT: HANSEN, CAL			
16:34	SUB IN: BASILE, MAX			
16:34		9-2	H 7	GOOD! FT by HAUSER, MATT
16:34				SUB OUT: HAUSER, MATT
16:34				SUB IN: BURKE, IAN
16:11	MISSED 3PTR by GEATHERS, C.J.			
16:07				REBOUND (DEF) by NUHU, SAL
16:02				MISSED JUMPER by WHITAKER, CHRIS
15:58				REBOUND (OFF) by TEAM
15:58				
15:58	FOUL (PERSONAL) by MISEL, JOHN			
15:57				TURNOVER (LOSTBALL) by WHITAKER, CHRIS
15:57	STEAL by GEATHERS, C.J.			
15:52	GOOD! LAYUP by JOSEPH, JOURDAN [FB]	9-4	H 5	
15:52	ASSIST by GEATHERS, C.J.			
15:43				TURNOVER (BADPASS) by GOOLSBY, RASHAAD
15:31	MISSED LAYUP by JOSEPH, JOURDAN			
15:31				BLOCK by NUHU, SAL
15:31	REBOUND (OFF) by TEAM			
15:31				SUB OUT: WHITAKER, CHRIS
15:31				SUB IN: GREELEY, KYLE
15:29	MISSED 3PTR by MISEL, JOHN			
15:25				REBOUND (DEF) by GREELEY, KYLE
15:17				TURNOVER (BADPASS) by GREELEY, KYLE
15:17	STEAL by JOSEPH, JOURDAN			
15:14	FOUL (PERSONAL) by JOSEPH, JOURDAN			
15:14		10-4	H 6	GOOD! FT by WOODS, HOLLAND
15:14				SUB OUT: NUHU, SAL

Time	VISITORS: Puget Sound	Score	Margin	HOME: Portland St.
15:14				SUB OUT: GOOLSBY, RASHAAD
15:14				SUB IN: WOOD, TREY
15:14				SUB IN: WALKER, ALONZO
15:14	SUB OUT: MISEL, JOHN			
15:14	SUB OUT: JOSEPH, JOURDAN			
15:14	SUB OUT: NICHOL, RILEY			
15:14	SUB IN: ERICKSON, GRANT			
15:14	SUB IN: HANSEN, CAL			
15:14	SUB IN: SHIBLEY-STYER, WALKER			
15:14		11-4	H 7	GOOD! FT by WOODS, HOLLAND
15:14				SUB OUT: WOODS, HOLLAND
15:14				SUB IN: HAUSER, MATT
15:01				FOUL (PERSONAL) by WOOD, TREY
15:01	MISSED FT by ERICKSON, GRANT			
15:01	REBOUND (OFF) by TEAM			
15:01	GOOD! FT by ERICKSON, GRANT	11-5	H 6	
14:48		13-5	H 8	GOOD! LAYUP by HAUSER, MATT
14:35	TURNOVER (TRAVEL) by ERICKSON, GRANT			
14:35	SUB OUT: GEATHERS, C.J.			
14:35	SUB OUT: BASILE, MAX			
14:35	SUB IN: WILSON, DONOVAN			
14:35	SUB IN: MISEL, JOHN			
14:23	FOUL (PERSONAL) by MISEL, JOHN			
14:23				MISSED FT by WOOD, TREY
14:23				REBOUND (OFF) by TEAM
14:23		14-5	H 9	GOOD! FT by WOOD, TREY
14:23				SUB OUT: GREELEY, KYLE
14:23				SUB IN: GOLDER, MARKUS
14:12	MISSED 3PTR by MISEL, JOHN			
14:07	REBOUND (OFF) by HANSEN, CAL			
14:07	MISSED LAYUP by HANSEN, CAL			
14:07	REBOUND (OFF) by TEAM			
14:05	TURNOVER (BADPASS) by WILSON, DONOVAN			
14:05				STEAL by BURKE, IAN
13:59		17-5	H 12	GOOD! 3PTR by BURKE, IAN [FB]
13:58	TIMEOUT 30SEC			
13:55	TURNOVER (BADPASS) by MISEL, JOHN			
13:55				STEAL by WALKER, ALONZO
13:50		19-5	H 14	GOOD! JUMPER by WALKER, ALONZO [FB/PNT]
13:47				FOUL (PERSONAL) by WALKER, ALONZO
13:47	SUB OUT: MISEL, JOHN			
13:47	SUB OUT: SHIBLEY-STYER, WALKER			
13:47	SUB IN: ELSNER, KOBE			
13:47	SUB IN: JOSEPH, JOURDAN			
13:26	MISSED JUMPER by JOSEPH, JOURDAN			
13:23				REBOUND (DEF) by TEAM
13:23				SUB OUT: WOOD, TREY
13:23				SUB OUT: BURKE, IAN
13:23				SUB IN: NUHU, SAL
13:23				SUB IN: WOODS, HOLLAND
13:23	SUB OUT: WILSON, DONOVAN			
13:23	SUB IN: WEBB, GRIFFIN			
13:15				MISSED JUMPER by WALKER, ALONZO
13:14	REBOUND (DEF) by TEAM			
13:14				FOUL (PERSONAL) by WALKER, ALONZO
13:14				SUB OUT: WALKER, ALONZO
13:14				SUB IN: GOOLSBY, RASHAAD
13:06	TURNOVER (BADPASS) by ELSNER, KOBE			
13:06				STEAL by HAUSER, MATT
13:01				MISSED LAYUP by HAUSER, MATT
12:59				REBOUND (OFF) by GOOLSBY, RASHAAD
12:56				TURNOVER (LOSTBALL) by GOOLSBY, RASHAAD
12:56	STEAL by ELSNER, KOBE			
12:48	GOOD! JUMPER by HANSEN, CAL [PNT]	19-7	H 12	
12:48	ASSIST by ELSNER, KOBE			
12:39				MISSED JUMPER by NUHU, SAL
12:35	REBOUND (DEF) by HANSEN, CAL			
12:28	SUB OUT: ERICKSON, GRANT			
12:28	SUB IN: NICHOL, RILEY			
12:20	TURNOVER (BADPASS) by HANSEN, CAL			
12:20				STEAL by GOLDER, MARKUS
12:15				MISSED 3PTR by WOODS, HOLLAND
12:11	REBOUND (DEF) by NICHOL, RILEY			
12:01	GOOD! JUMPER by WEBB, GRIFFIN	19-9	H 10	
12:01	ASSIST by JOSEPH, JOURDAN			
11:49				MISSED 3PTR by HAUSER, MATT
11:46				REBOUND (OFF) by GOOLSBY, RASHAAD
11:44				MISSED JUMPER by GOOLSBY, RASHAAD
11:44				REBOUND (OFF) by GOOLSBY, RASHAAD
11:44	FOUL (PERSONAL) by HANSEN, CAL			

Time	VISITORS: Puget Sound	Score	Margin	HOME: Portland St.
11:44				
11:44				SUB OUT: GOLDER, MARKUS
11:44				SUB IN: WHITAKER, CHRIS
11:44	SUB OUT: JOSEPH, JOURDAN			
11:44	SUB IN: GEATHERS, C.J.			
11:44				MISSED FT by GOOLSBY, RASHAAD
11:44				REBOUND (OFF) by TEAM
11:44		20-9	H 11	GOOD! FT by GOOLSBY, RASHAAD
11:36	TURNOVER (LOSTBALL) by WEBB, GRIFFIN			
11:36				STEAL by GOOLSBY, RASHAAD
11:29		22-9	H 13	GOOD! DUNK by GOOLSBY, RASHAAD
11:19	TURNOVER (LOSTBALL) by NICHOL, RILEY			
11:19	SUB OUT: WEBB, GRIFFIN			
11:19	SUB IN: BASILE, MAX			
11:07				MISSED JUMPER by NUHU, SAL
11:05	REBOUND (DEF) by TEAM			
11:05				FOUL (PERSONAL) by GOOLSBY, RASHAAD
11:05				SUB OUT: HAUSER, MATT
11:05				SUB IN: BURKE, IAN
10:58	TURNOVER (LOSTBALL) by GEATHERS, C.J.			
10:58				STEAL by WOODS, HOLLAND
10:58	SUB OUT: GEATHERS, C.J.			
10:58	SUB OUT: ELSNER, KOBE			
10:58	SUB IN: JOSEPH, JOURDAN			
10:58	SUB IN: SHIBLEY-STYER, WALKER			
10:50		24-9	H 15	GOOD! JUMPER by GOOLSBY, RASHAAD [PNT]
10:50				ASSIST by WOODS, HOLLAND
10:50	FOUL (PERSONAL) by HANSEN, CAL			
10:50		25-9	H 16	GOOD! FT by GOOLSBY, RASHAAD
10:41	GOOD! 3PTR by SHIBLEY-STYER, WALKER	25-12	H 13	
10:41	ASSIST by BASILE, MAX			
10:34		27-12	H 15	GOOD! LAYUP by NUHU, SAL
10:34				ASSIST by WOODS, HOLLAND
10:23	TURNOVER (BADPASS) by JOSEPH, JOURDAN			
10:23				STEAL by BURKE, IAN
10:18				MISSED LAYUP by WHITAKER, CHRIS
10:14				REBOUND (OFF) by WHITAKER, CHRIS
10:13				MISSED JUMPER by WHITAKER, CHRIS
10:13	BLOCK by NICHOL, RILEY			
10:08	REBOUND (DEF) by JOSEPH, JOURDAN			
10:05	GOOD! JUMPER by HANSEN, CAL [FB/PNT]	27-14	H 13	
10:05	ASSIST by BASILE, MAX			
09:51				MISSED JUMPER by WOODS, HOLLAND
09:47	REBOUND (DEF) by BASILE, MAX			
09:47				SUB OUT: GOOLSBY, RASHAAD
09:47				SUB OUT: WHITAKER, CHRIS
09:47				SUB IN: HAUSER, MATT
09:47				SUB IN: WOOD, TREY
09:47	SUB OUT: HANSEN, CAL			
09:47	SUB OUT: NICHOL, RILEY			
09:47	SUB IN: ERICKSON, GRANT			
09:47	SUB IN: MISEL, JOHN			
09:38	TURNOVER (OTHER) by SHIBLEY-STYER, WALKER			
09:32				FOUL (OFF) by HAUSER, MATT
09:32				TURNOVER (OFFENSIVE) by HAUSER, MATT
09:28	TURNOVER (BADPASS) by BASILE, MAX			
09:28				STEAL by BURKE, IAN
09:23				MISSED JUMPER by BURKE, IAN
09:18				REBOUND (OFF) by WOOD, TREY
09:18				MISSED LAYUP by WOOD, TREY
09:16	REBOUND (DEF) by ERICKSON, GRANT			
09:13	GOOD! LAYUP by BASILE, MAX [FB]	27-16	H 11	
09:06		29-16	H 13	GOOD! JUMPER by WOODS, HOLLAND
08:45	MISSED JUMPER by JOSEPH, JOURDAN			
08:45				BLOCK by NUHU, SAL
08:40				REBOUND (DEF) by HAUSER, MATT
08:37				MISSED 3PTR by BURKE, IAN
08:35				REBOUND (OFF) by NUHU, SAL
08:35	FOUL (PERSONAL) by SHIBLEY-STYER, WALKER			
08:35				MISSED FT by NUHU, SAL
08:35				REBOUND (OFF) by TEAM
08:35				SUB OUT: BURKE, IAN
08:35				SUB IN: GOLDER, MARKUS
08:35	SUB OUT: JOSEPH, JOURDAN			
08:35	SUB OUT: SHIBLEY-STYER, WALKER			
08:35	SUB IN: GEATHERS, C.J.			
08:35	SUB IN: ELSNER, KOBE			
08:35				MISSED FT by NUHU, SAL
08:34	REBOUND (DEF) by ERICKSON, GRANT			
08:16	MISSED JUMPER by GEATHERS, C.J.			

Time	VISITORS: Puget Sound	Score	Margin	HOME: Portland St.
08:16				BLOCK by NUHU, SAL
08:11				REBOUND (DEF) by WOOD, TREY
08:09		31-16	H 15	GOOD! LAYUP by GOLDER, MARKUS [FB]
08:09	TIMEOUT 30SEC			
08:09				
08:09				SUB OUT: NUHU, SAL
08:09				SUB IN: GOOLSBY, RASHAAD
07:45	GOOD! 3PTR by GEATHERS, C.J.	31-19	H 12	
07:45	ASSIST by ERICKSON, GRANT			
07:16				TURNOVER (OTHER) by GOOLSBY, RASHAAD
07:16	SUB OUT: BASILE, MAX			
07:16	SUB IN: HANSEN, CAL			
07:03	TURNOVER (TRAVEL) by ERICKSON, GRANT			
06:52	FOUL (PERSONAL) by ERICKSON, GRANT			
06:52				MISSED FT by WOOD, TREY
06:52				REBOUND (OFF) by TEAM
06:52	SUB OUT: MISEL, JOHN			
06:52	SUB IN: JOSEPH, JOURDAN			
06:52		32-19	H 13	GOOD! FT by WOOD, TREY
06:52				SUB OUT: GOLDER, MARKUS
06:52				SUB IN: WHITAKER, CHRIS
06:44	TURNOVER (TRAVEL) by ELSNER, KOBE			
06:31				MISSED 3PTR by HAUSER, MATT
06:27				REBOUND (OFF) by GOOLSBY, RASHAAD
06:25		34-19	H 15	GOOD! JUMPER by HAUSER, MATT
06:25				ASSIST by GOOLSBY, RASHAAD
06:12	TURNOVER (LOSTBALL) by GEATHERS, C.J.			
06:12				STEAL by GOOLSBY, RASHAAD
06:07				MISSED JUMPER by GOOLSBY, RASHAAD
06:03				REBOUND (OFF) by WHITAKER, CHRIS
06:01		36-19	H 17	GOOD! JUMPER by WOOD, TREY [PNT]
06:01				ASSIST by WOODS, HOLLAND
05:56				SUB OUT: GOOLSBY, RASHAAD
05:56				SUB IN: GREELEY, KYLE
05:56	SUB OUT: GEATHERS, C.J.			
05:56	SUB IN: SHIBLEY-STYER, WALKER			
05:46	MISSED JUMPER by HANSEN, CAL			
05:46				BLOCK by WOOD, TREY
05:40				REBOUND (DEF) by WOOD, TREY
05:34				MISSED JUMPER by WOODS, HOLLAND
05:31	REBOUND (DEF) by JOSEPH, JOURDAN			
05:27				FOUL (PERSONAL) by HAUSER, MATT
05:27	MISSED FT by HANSEN, CAL			
05:27	REBOUND (OFF) by TEAM			
05:27				SUB OUT: HAUSER, MATT
05:27				SUB IN: BURKE, IAN
05:27	SUB OUT: ELSNER, KOBE			
05:27	SUB IN: WILSON, DONOVAN			
05:27	GOOD! FT by HANSEN, CAL [FB]	36-20	H 16	
05:20		38-20	H 18	GOOD! LAYUP by GREELEY, KYLE
05:10	TURNOVER (BADPASS) by HANSEN, CAL			
05:10				STEAL by WOODS, HOLLAND
05:07		40-20	H 20	GOOD! LAYUP by WOODS, HOLLAND [FB]
05:07	TIMEOUT 30SEC			
04:52	MISSED JUMPER by ERICKSON, GRANT			
04:52				BLOCK by WOOD, TREY
04:49				REBOUND (DEF) by WHITAKER, CHRIS
04:49				TURNOVER (OTHER) by WHITAKER, CHRIS
04:49				SUB OUT: WOOD, TREY
04:49				SUB IN: NUHU, SAL
04:29	SUB OUT: HANSEN, CAL			
04:29	SUB IN: NICHOL, RILEY			
04:23	MISSED 3PTR by JOSEPH, JOURDAN			
04:19				REBOUND (DEF) by WHITAKER, CHRIS
04:08		42-20	H 22	GOOD! LAYUP by WHITAKER, CHRIS
03:48	MISSED 3PTR by SHIBLEY-STYER, WALKER			
03:46				REBOUND (DEF) by TEAM
03:46				
15:14	TURNOVER (OTHER) by JOSEPH, JOURDAN			
03:39	SUB OUT: WILSON, DONOVAN			
03:39	SUB IN: MISEL, JOHN			
03:33		44-20	H 24	GOOD! DUNK by NUHU, SAL
03:33				ASSIST by GREELEY, KYLE
03:17	MISSED JUMPER by MISEL, JOHN			
03:17				BLOCK by NUHU, SAL
03:17	REBOUND (OFF) by TEAM			
03:16	TURNOVER (BADPASS) by NICHOL, RILEY			
03:15	SUB OUT: ERICKSON, GRANT			
03:15	SUB OUT: SHIBLEY-STYER, WALKER			
03:15	SUB IN: HANSEN, CAL			

Time	VISITORS: Puget Sound	Score	Margin	HOME: Portland St.
03:15	SUB IN: BASILE, MAX			
03:09		46-20	H 26	GOOD! DUNK by NUHU, SAL
03:09				ASSIST by WOODS, HOLLAND
02:51	TURNOVER (BADPASS) by JOSEPH, JOURDAN			
02:51				STEAL by WOODS, HOLLAND
02:43				TURNOVER (LOSTBALL) by WOODS, HOLLAND
02:43	STEAL by JOSEPH, JOURDAN			
02:41				FOUL (PERSONAL) by WOODS, HOLLAND
02:41	GOOD! FT by JOSEPH, JOURDAN	46-21	H 25	
02:41				SUB OUT: BURKE, IAN
02:41				SUB IN: GOLDER, MARKUS
02:41	SUB OUT: NICHOL, RILEY			
02:41	SUB IN: GEATHERS, C.J.			
02:41	GOOD! FT by JOSEPH, JOURDAN	46-22	H 24	
02:41	SUB OUT: JOSEPH, JOURDAN			
02:41	SUB IN: ELSNER, KOBE			
02:18	FOUL (PERSONAL) by BASILE, MAX			
02:18		47-22	H 25	GOOD! FT by GREELEY, KYLE
02:18		48-22	H 26	GOOD! FT by GREELEY, KYLE
02:03	MISSED JUMPER by MISEL, JOHN			
02:03				BLOCK by GOLDER, MARKUS
01:59	REBOUND (OFF) by TEAM			
01:48	MISSED 3PTR by GEATHERS, C.J.			
01:44	REBOUND (OFF) by HANSEN, CAL			
01:41	GOOD! JUMPER by HANSEN, CAL [PNT]	48-24	H 24	
01:28	FOUL (PERSONAL) by HANSEN, CAL			
01:28		49-24	H 25	GOOD! FT by GOLDER, MARKUS
01:28	SUB OUT: HANSEN, CAL			
01:28	SUB OUT: MISEL, JOHN			
01:28	SUB IN: ERICKSON, GRANT			
01:28	SUB IN: SHIBLEY-STYER, WALKER			
01:28				MISSED FT by GOLDER, MARKUS
01:25	REBOUND (DEF) by BASILE, MAX			
01:18	MISSED JUMPER by BASILE, MAX			
01:15				REBOUND (DEF) by WHITAKER, CHRIS
01:14	FOUL (PERSONAL) by SHIBLEY-STYER, WALKER			
01:14				MISSED FT by WHITAKER, CHRIS
01:14				REBOUND (OFF) by TEAM
01:14				SUB OUT: GREELEY, KYLE
01:14				SUB IN: WOOD, TREY
01:14	SUB OUT: SHIBLEY-STYER, WALKER			
01:14	SUB IN: JOSEPH, JOURDAN			
01:14		50-24	H 26	GOOD! FT by WHITAKER, CHRIS [FB]
01:14				SUB OUT: WHITAKER, CHRIS
01:14				SUB IN: BURKE, IAN
00:59	MISSED 3PTR by JOSEPH, JOURDAN			
00:55	REBOUND (OFF) by GEATHERS, C.J.			
00:43	MISSED JUMPER by GEATHERS, C.J.			
00:33	REBOUND (OFF) by GEATHERS, C.J.			
00:33	GOOD! LAYUP by GEATHERS, C.J.	50-26	H 24	
00:23		52-26	H 26	GOOD! JUMPER by GOLDER, MARKUS
00:07				FOUL (PERSONAL) by GOLDER, MARKUS
00:07				TIMEOUT 30SEC
00:07	SUB OUT: ELSNER, KOBE			
00:07	SUB IN: WILSON, DONOVAN			
00:07	GOOD! FT by JOSEPH, JOURDAN	52-27	H 25	
00:07	GOOD! FT by JOSEPH, JOURDAN	52-28	H 24	
00:07	SUB OUT: JOSEPH, JOURDAN			
00:07	SUB IN: WEBB, GRIFFIN			
00:00		54-28	H 26	GOOD! JUMPER by WOODS, HOLLAND [PNT]

### Puget Sound 28, Portland St. 54

Points from (This Period)	UPS	PSU
In the Paint	12	34
Off Turns	6	25
2nd Chance	6	5
Fast Break	7	14
Bench	13	22



**Official Box Score**  
**Puget Sound vs Portland St.**  
**Second Half Statistics Only**  
**November 05, 2019 at Viking Pavilion (Viking Pavilion) - Portland**



**Puget Sound 41**

No.	Player	S	Pts	FG	3FG	FT	OR	DR	TR	PF	A	TO	Blk	Stl	Min	+/-
00	ERICKSON, GRANT	F	2	1-2	0-1	0-0	0	3	3	0	1	2	0	0	9	-5
01	HANSEN, CAL	G	12	6-6	0-0	0-0	0	2	2	0	0	1	0	0	14	2
14	ELSNER, KOBE	G	0	0-2	0-0	0-0	0	0	0	3	1	2	0	0	12	3
25	BASILE, MAX	G	3	1-4	1-3	0-0	0	1	1	0	5	1	0	1	12	8
31	SHIBLEY-STYER, WALKER	G	9	3-3	3-3	0-0	0	1	1	0	0	0	0	0	10	-1
02	WILSON, DONOVAN	G	0	0-2	0-0	0-0	0	1	1	0	1	0	0	0	4	2
03	GEATHERS, C.J.	G	3	1-2	1-2	0-0	0	0	0	1	3	2	0	0	5	2
05	MISEL, JOHN	F	5	2-6	1-2	0-0	2	2	4	0	1	0	0	0	12	6
15	JOSEPH, JOURDAN	G	5	1-4	0-2	3-3	0	2	2	1	1	1	0	1	12	-3
24	MCCANN, PAUL	F	0	0-0	0-0	0-0	0	0	0	0	0	0	0	0	1	-3
32	WEBB, GRIFFIN	G	0	0-1	0-1	0-0	0	0	0	1	0	0	0	0	3	-5
33	CAREY, CARSON	G	0	0-0	0-0	0-0	0	0	0	0	0	0	0	0	1	-3
35	NICHOL, RILEY	F	2	1-1	0-0	0-0	1	1	2	2	0	0	0	0	6	2
	TEAM						1	3	4	0		1				
<b>TOTALS</b>			<b>41</b>	<b>16-33</b>	<b>6-14</b>	<b>3-3</b>	<b>4</b>	<b>16</b>	<b>20</b>	<b>8</b>	<b>13</b>	<b>10</b>	<b>0</b>	<b>2</b>	<b>100</b>	

*Shooting By Period*

Period	FG	FG%	3FG	3FG%	FT	FT%
2nd Half	16-33	48%	6-14	43%	3-3	100%
Game	26-65	40.0%	8-25	32.0%	9-11	81.8%

Deadball Rebounds: 2,1

Last FG Half: UPS -

**Portland St. 40**

No.	Player	S	Pts	FG	3FG	FT	OR	DR	TR	PF	A	TO	Blk	Stl	Min	+/-
00	NUHU, SAL	F	4	1-2	0-0	2-4	1	2	3	2	0	0	2	0	13	4
10	HAUSER, MATT	G	6	3-10	0-3	0-0	1	1	2	0	0	0	0	1	16	-6
11	WOODS, HOLLAND	G	2	1-7	0-1	0-0	0	0	0	2	1	2	0	2	10	1
22	WALKER, ALONZO	F	10	4-6	0-0	2-2	3	2	5	1	1	0	0	2	13	-1
30	WHITAKER, CHRIS	G	4	2-5	0-0	0-0	1	0	1	1	0	2	0	0	8	7
02	GOLDER, MARKUS	F	0	0-2	0-1	0-0	0	0	0	0	0	1	0	0	8	-6
03	GOOLSBY, RASHAAD	F	0	0-0	0-0	0-0	2	4	6	0	1	0	0	0	9	-2
05	GREELEY, KYLE	G	8	3-5	0-1	2-2	1	1	2	0	0	0	0	0	6	7
12	WOOD, TREY	F	3	1-2	0-1	1-2	0	0	0	0	0	0	0	0	7	-5
15	BURKE, IAN	G	3	1-3	1-3	0-0	1	1	2	2	0	0	0	1	11	-4
	TEAM						1	2	3	0		0				
<b>TOTALS</b>			<b>40</b>	<b>16-42</b>	<b>1-10</b>	<b>7-10</b>	<b>11</b>	<b>13</b>	<b>24</b>	<b>8</b>	<b>3</b>	<b>5</b>	<b>2</b>	<b>6</b>	<b>100</b>	

*Shooting By Period*

Period	FG	FG%	3FG	3FG%	FT	FT%
2nd Half	16-42	38%	1-10	10%	7-10	70%
Game	36-80	45.0%	2-15	13.3%	20-31	64.5%

Deadball Rebounds: 8,0

Last FG Half: PSU -

Game Notes:

Officials: **Doug Sturdivan, Michael Cheatham, Dan Church**  
 Attendance: 856

Start Time: 10:33 PM ET  
 End Time: 12:25 AM ET  
 Game Duration: 1:52

Score	1st	2nd	TOT
UPS	28	41	<b>69</b>
PSU	54	40	<b>94</b>

Points from (This Period)	UPS	PSU
In the Paint	14	26
Off Turns	2	7
2nd Chance	4	15
Fast Break	2	4
Bench	15	14

**Official Play-By-Play  
Puget Sound vs Portland St.  
Second Half**

**November 05, 2019 at Viking Pavilion (Viking Pavilion) - Portland**



**Period 2**

**Starters:**

**Puget Sound:** 0 ERICKSON, GRANT (F); 14 ELSNER, KOBE (G); 25 BASILE, MAX (G); 31 SHIBLEY-STYER, WALKER (G); 1 HANSEN, CAL (G);

**Portland St.:** 0 NUHU, SAL (F); 10 HAUSER, MATT (G); 11 WOODS, HOLLAND (G); 22 WALKER, ALONZO (F); 30 WHITAKER, CHRIS (G);

Time	VISITORS: Puget Sound	Score	Margin	HOME: Portland St.
20:00				SUB OUT: GOLDER, MARKUS
20:00				SUB OUT: WOOD, TREY
20:00				SUB OUT: BURKE, IAN
20:00				SUB IN: HAUSER, MATT
20:00				SUB IN: WALKER, ALONZO
20:00				SUB IN: WHITAKER, CHRIS
20:00	SUB OUT: WILSON, DONOVAN			
20:00	SUB OUT: GEATHERS, C.J.			
20:00	SUB OUT: WEBB, GRIFFIN			
20:00	SUB IN: HANSEN, CAL			
20:00	SUB IN: ELSNER, KOBE			
20:00	SUB IN: SHIBLEY-STYER, WALKER			
19:49				MISSED 3PTR by WOODS, HOLLAND
19:45				REBOUND (OFF) by WHITAKER, CHRIS
19:42				TURNOVER (LOSTBALL) by WHITAKER, CHRIS
19:42	STEAL by BASILE, MAX			
19:36	TURNOVER (BADPASS) by ELSNER, KOBE			
19:36				STEAL by WOODS, HOLLAND
19:31		56-28	H 28	GOOD! LAYUP by WHITAKER, CHRIS [FB]
19:31				ASSIST by WOODS, HOLLAND
19:22	MISSED 3PTR by BASILE, MAX			
19:18				REBOUND (DEF) by TEAM
18:49				MISSED 3PTR by HAUSER, MATT
18:45				REBOUND (OFF) by HAUSER, MATT
18:43		58-28	H 30	GOOD! JUMPER by HAUSER, MATT [PNT]
18:32	TURNOVER (LOSTBALL) by ERICKSON, GRANT			
18:09				MISSED JUMPER by WHITAKER, CHRIS
18:07				REBOUND (OFF) by TEAM
18:02				MISSED JUMPER by WOODS, HOLLAND
17:58	REBOUND (DEF) by ERICKSON, GRANT			
17:50	GOOD! 3PTR by SHIBLEY-STYER, WALKER	58-31	H 27	
17:50	ASSIST by ERICKSON, GRANT			
17:38		60-31	H 29	GOOD! LAYUP by WHITAKER, CHRIS [PNT]
17:28	TURNOVER (BADPASS) by BASILE, MAX			
17:28				STEAL by HAUSER, MATT
17:19		62-31	H 31	GOOD! LAYUP by HAUSER, MATT
17:07	GOOD! JUMPER by HANSEN, CAL	62-33	H 29	
17:07	ASSIST by BASILE, MAX			
16:52				FOUL (OFF) by WHITAKER, CHRIS
16:52				TURNOVER (OFFENSIVE) by WHITAKER, CHRIS
16:52				SUB OUT: WALKER, ALONZO
16:52				SUB OUT: WHITAKER, CHRIS
16:52				SUB IN: GOOLSBY, RASHAAD
16:52				SUB IN: BURKE, IAN
16:52	SUB OUT: HANSEN, CAL			
16:52	SUB OUT: ELSNER, KOBE			
16:52	SUB OUT: BASILE, MAX			
16:52	SUB IN: MISEL, JOHN			
16:52	SUB IN: JOSEPH, JOURDAN			
16:52	SUB IN: NICHOL, RILEY			
16:25	MISSED 3PTR by ERICKSON, GRANT			
16:21				REBOUND (DEF) by GOOLSBY, RASHAAD
16:19		64-33	H 31	GOOD! JUMPER by WOODS, HOLLAND [FB]
15:53	MISSED 3PTR by MISEL, JOHN			
15:48				REBOUND (DEF) by GOOLSBY, RASHAAD
15:45				MISSED LAYUP by HAUSER, MATT
15:44	REBOUND (DEF) by TEAM			
15:44				
15:44	SUB OUT: ERICKSON, GRANT			
15:44	SUB OUT: SHIBLEY-STYER, WALKER			
15:44	SUB IN: HANSEN, CAL			
15:44	SUB IN: GEATHERS, C.J.			
15:32	GOOD! 3PTR by GEATHERS, C.J.	64-36	H 28	
15:32	ASSIST by JOSEPH, JOURDAN			
15:22				MISSED JUMPER by HAUSER, MATT
15:21				REBOUND (OFF) by NUHU, SAL
15:21	FOUL (PERSONAL) by NICHOL, RILEY			
15:21				MISSED FT by NUHU, SAL
15:21				REBOUND (OFF) by TEAM
15:21		65-36	H 29	GOOD! FT by NUHU, SAL

Time	VISITORS: Puget Sound	Score	Margin	HOME: Portland St.
15:21				SUB OUT: NUHU, SAL
15:21				SUB IN: WOOD, TREY
15:15				FOUL (PERSONAL) by BURKE, IAN
15:11	MISSED 3PTR by JOSEPH, JOURDAN			
15:07	REBOUND (OFF) by MISEL, JOHN			
15:06	MISSED JUMPER by MISEL, JOHN			
14:59	REBOUND (OFF) by NICHOL, RILEY			
14:59	GOOD! LAYUP by NICHOL, RILEY	65-38	H 27	
14:51				MISSED LAYUP by WOODS, HOLLAND
14:47	REBOUND (DEF) by HANSEN, CAL			
14:42	MISSED 3PTR by GEATHERS, C.J.			
14:38				REBOUND (DEF) by GOOLSBY, RASHAAD
14:34				MISSED LAYUP by WOODS, HOLLAND
14:33				REBOUND (OFF) by GOOLSBY, RASHAAD
14:33		67-38	H 29	GOOD! DUNK by WOOD, TREY
14:33				TIMEOUT 30SEC
14:33				SUB OUT: BURKE, IAN
14:33				SUB IN: WALKER, ALONZO
14:14	GOOD! JUMPER by HANSEN, CAL	67-40	H 27	
14:14	ASSIST by GEATHERS, C.J.			
13:58				MISSED JUMPER by WALKER, ALONZO
13:51		69-40	H 29	REBOUND (OFF) by WALKER, ALONZO
13:51				GOOD! LAYUP by WALKER, ALONZO
13:46	TURNOVER (LOSTBALL) by JOSEPH, JOURDAN			
13:46				STEAL by WALKER, ALONZO
13:45				TURNOVER (LOSTBALL) by WOODS, HOLLAND
13:45	STEAL by JOSEPH, JOURDAN			
13:45				FOUL (PERSONAL) by WOODS, HOLLAND
13:45	SUB OUT: JOSEPH, JOURDAN			
13:45	SUB OUT: NICHOL, RILEY			
13:45	SUB IN: ELSNER, KOBE			
13:45	SUB IN: BASILE, MAX			
13:41	GOOD! LAYUP by HANSEN, CAL [PNT]	69-42	H 27	
13:41	ASSIST by GEATHERS, C.J.			
13:15				MISSED JUMPER by WOODS, HOLLAND
13:11	REBOUND (DEF) by BASILE, MAX			
13:11				SUB OUT: GOOLSBY, RASHAAD
13:11				SUB IN: GOLDER, MARKUS
13:11	SUB OUT: HANSEN, CAL			
13:11	SUB OUT: GEATHERS, C.J.			
13:11	SUB IN: ERICKSON, GRANT			
13:11	SUB IN: WILSON, DONOVAN			
12:57	GOOD! LAYUP by ERICKSON, GRANT	69-44	H 25	
12:57	ASSIST by MISEL, JOHN			
12:55				SUB OUT: WOODS, HOLLAND
12:55				SUB OUT: WOOD, TREY
12:55				SUB OUT: WALKER, ALONZO
12:55				SUB IN: NUHU, SAL
12:55				SUB IN: GOOLSBY, RASHAAD
12:55				SUB IN: BURKE, IAN
12:39		71-44	H 27	GOOD! JUMPER by NUHU, SAL
12:22	MISSED JUMPER by BASILE, MAX			
12:19	REBOUND (OFF) by MISEL, JOHN			
12:17	GOOD! JUMPER by MISEL, JOHN	71-46	H 25	
12:07				MISSED JUMPER by NUHU, SAL
12:03	REBOUND (DEF) by ERICKSON, GRANT			
11:53	GOOD! 3PTR by BASILE, MAX	71-49	H 22	
11:53	ASSIST by ELSNER, KOBE			
11:34				MISSED JUMPER by HAUSER, MATT
11:33	REBOUND (DEF) by TEAM			
11:33				FOUL (PERSONAL) by NUHU, SAL
11:33				
11:33	SUB OUT: ERICKSON, GRANT			
11:33	SUB IN: HANSEN, CAL			
11:33	SUB OUT: MISEL, JOHN			
11:33	SUB IN: SHIBLEY-STYER, WALKER			
11:22	MISSED JUMPER by ELSNER, KOBE			
11:22				BLOCK by NUHU, SAL
11:21	REBOUND (OFF) by TEAM			
11:12	MISSED JUMPER by WILSON, DONOVAN			
11:12				BLOCK by NUHU, SAL
11:08				REBOUND (DEF) by BURKE, IAN
11:08				TURNOVER (TRAVEL) by GOLDER, MARKUS
11:08	SUB OUT: WILSON, DONOVAN			
11:08	SUB IN: JOSEPH, JOURDAN			
10:46	MISSED JUMPER by ELSNER, KOBE			
10:42				REBOUND (DEF) by HAUSER, MATT
10:39				MISSED 3PTR by GOLDER, MARKUS
10:38	REBOUND (DEF) by TEAM			
10:31	GOOD! 3PTR by SHIBLEY-STYER, WALKER	71-52	H 19	

Time	VISITORS: Puget Sound	Score	Margin	HOME: Portland St.
10:31	ASSIST by BASILE, MAX			
10:12				MISSED JUMPER by HAUSER, MATT
10:07	REBOUND (DEF) by JOSEPH, JOURDAN			
09:49	MISSED 3PTR by JOSEPH, JOURDAN			
09:44				REBOUND (DEF) by GOOLSBY, RASHAAD
09:39		74-52	H 22	GOOD! 3PTR by BURKE, IAN
09:39				ASSIST by GOOLSBY, RASHAAD
09:22	GOOD! LAYUP by HANSEN, CAL	74-54	H 20	
09:22	ASSIST by BASILE, MAX			
09:08		76-54	H 22	GOOD! LAYUP by HAUSER, MATT [PNT]
08:52	MISSED 3PTR by BASILE, MAX			
08:49				REBOUND (DEF) by TEAM
08:47				SUB OUT: GOLDER, MARKUS
08:47				SUB OUT: GOOLSBY, RASHAAD
08:47				SUB OUT: HAUSER, MATT
08:47				SUB OUT: BURKE, IAN
08:47				SUB IN: GREELEY, KYLE
08:47				SUB IN: WOODS, HOLLAND
08:47				SUB IN: WALKER, ALONZO
08:47				SUB IN: WHITAKER, CHRIS
08:47	SUB OUT: ELSNER, KOBE			
08:47	SUB OUT: BASILE, MAX			
08:47	SUB OUT: SHIBLEY-STYER, WALKER			
08:47	SUB IN: GEATHERS, C.J.			
08:47	SUB IN: MISEL, JOHN			
08:47	SUB IN: NICHOL, RILEY			
08:29				MISSED LAYUP by WOODS, HOLLAND
08:24				REBOUND (OFF) by WALKER, ALONZO
08:24		78-54	H 24	GOOD! DUNK by WALKER, ALONZO
08:22	TURNOVER (LOSTBALL) by GEATHERS, C.J.			
08:22				STEAL by WALKER, ALONZO
08:14				MISSED LAYUP by WALKER, ALONZO
08:10	REBOUND (DEF) by MISEL, JOHN			
08:07	TURNOVER (10SEC) by TEAM			
08:07	SUB OUT: JOSEPH, JOURDAN			
08:07	SUB IN: WILSON, DONOVAN			
08:04				MISSED JUMPER by WHITAKER, CHRIS
08:01	REBOUND (DEF) by NICHOL, RILEY			
07:56	GOOD! LAYUP by HANSEN, CAL [FB]	78-56	H 22	
07:56	ASSIST by WILSON, DONOVAN			
07:43		80-56	H 24	GOOD! JUMPER by GREELEY, KYLE [PNT]
07:30	GOOD! 3PTR by MISEL, JOHN	80-59	H 21	
07:30	ASSIST by GEATHERS, C.J.			
07:09	FOUL (PERSONAL) by NICHOL, RILEY			
07:09				
07:09	SUB OUT: NICHOL, RILEY			
07:09	SUB IN: ERICKSON, GRANT			
07:09		81-59	H 22	GOOD! FT by NUHU, SAL
07:09				MISSED FT by NUHU, SAL
07:07	REBOUND (DEF) by WILSON, DONOVAN			
07:04	MISSED LAYUP by WILSON, DONOVAN			
06:59				REBOUND (DEF) by WALKER, ALONZO
06:49		83-59	H 24	GOOD! JUMPER by WALKER, ALONZO [PNT]
06:45	FOUL (OFF) by GEATHERS, C.J.			
06:45	TURNOVER (OFFENSIVE) by GEATHERS, C.J.			
06:45	SUB OUT: GEATHERS, C.J.			
06:45	SUB IN: ELSNER, KOBE			
06:40	SUB OUT: WILSON, DONOVAN			
06:40	SUB IN: GEATHERS, C.J.			
06:36				MISSED JUMPER by GREELEY, KYLE
06:32	REBOUND (DEF) by MISEL, JOHN			
06:04	TURNOVER (LOSTBALL) by ERICKSON, GRANT			
06:04				STEAL by WOODS, HOLLAND
05:58				FOUL (OFF) by WOODS, HOLLAND
05:58				TURNOVER (OFFENSIVE) by WOODS, HOLLAND
05:54				SUB OUT: WOODS, HOLLAND
05:54				SUB IN: HAUSER, MATT
05:54	SUB OUT: HANSEN, CAL			
05:54	SUB OUT: GEATHERS, C.J.			
05:54	SUB IN: JOSEPH, JOURDAN			
05:54	SUB IN: WEBB, GRIFFIN			
05:39	MISSED JUMPER by MISEL, JOHN			
05:36				REBOUND (DEF) by NUHU, SAL
05:32				MISSED JUMPER by WHITAKER, CHRIS
05:28	REBOUND (DEF) by ERICKSON, GRANT			
05:25	MISSED DUNK by MISEL, JOHN			
05:20				REBOUND (DEF) by WALKER, ALONZO
05:13		85-59	H 26	GOOD! LAYUP by GREELEY, KYLE
05:13				ASSIST by WALKER, ALONZO
05:06	MISSED JUMPER by JOSEPH, JOURDAN			

Time	VISITORS: Puget Sound	Score	Margin	HOME: Portland St.
05:03				REBOUND (DEF) by NUHU, SAL
04:58				MISSED 3PTR by GREELEY, KYLE
04:50	REBOUND (DEF) by JOSEPH, JOURDAN			
04:34				FOUL (PERSONAL) by NUHU, SAL
04:31				SUB OUT: NUHU, SAL
04:31				SUB OUT: WHITAKER, CHRIS
04:31				SUB IN: WOOD, TREY
04:31				SUB IN: BURKE, IAN
04:31	SUB OUT: ERICKSON, GRANT			
04:31	SUB OUT: MISEL, JOHN			
04:31	SUB IN: BASILE, MAX			
04:31	SUB IN: NICHOL, RILEY			
04:16	TURNOVER (BADPASS) by ELSNER, KOBE			
04:16				STEAL by BURKE, IAN
04:10				MISSED 3PTR by BURKE, IAN
04:06				REBOUND (OFF) by GREELEY, KYLE
04:04		87-59	H 28	GOOD! JUMPER by GREELEY, KYLE
03:49	GOOD! JUMPER by JOSEPH, JOURDAN	87-61	H 26	
03:49				FOUL (PERSONAL) by BURKE, IAN
03:49	SUB OUT: WEBB, GRIFFIN			
03:49	SUB IN: SHIBLEY-STYER, WALKER			
03:49	GOOD! FT by JOSEPH, JOURDAN	87-62	H 25	
03:32				MISSED 3PTR by BURKE, IAN
03:32				REBOUND (OFF) by TEAM
03:32	FOUL (PERSONAL) by ELSNER, KOBE			
03:32	SUB OUT: NICHOL, RILEY			
03:32	SUB IN: HANSEN, CAL			
03:31	FOUL (PERSONAL) by ELSNER, KOBE			
03:31		88-62	H 26	GOOD! FT by WALKER, ALONZO
03:31				SUB OUT: GREELEY, KYLE
03:31				SUB IN: GOLDER, MARKUS
03:31		89-62	H 27	GOOD! FT by WALKER, ALONZO
03:14				FOUL (PERSONAL) by WALKER, ALONZO
03:14	GOOD! FT by JOSEPH, JOURDAN	89-63	H 26	
03:14	GOOD! FT by JOSEPH, JOURDAN	89-64	H 25	
03:04	FOUL (PERSONAL) by ELSNER, KOBE			
03:04	SUB OUT: ELSNER, KOBE			
03:04	SUB IN: MISEL, JOHN			
02:59				MISSED 3PTR by WOOD, TREY
02:55				REBOUND (OFF) by BURKE, IAN
02:53				MISSED 3PTR by HAUSER, MATT
02:48				REBOUND (OFF) by WALKER, ALONZO
02:34				MISSED JUMPER by GOLDER, MARKUS
02:30	REBOUND (DEF) by HANSEN, CAL			
02:17	GOOD! 3PTR by SHIBLEY-STYER, WALKER	89-67	H 22	
02:17	ASSIST by BASILE, MAX			
01:56		91-67	H 24	GOOD! JUMPER by WALKER, ALONZO [PNT]
01:28	GOOD! JUMPER by HANSEN, CAL [PNT]	91-69	H 22	
01:28	ASSIST by BASILE, MAX			
01:16				MISSED 3PTR by HAUSER, MATT
01:11	REBOUND (DEF) by SHIBLEY-STYER, WALKER			
01:01	TURNOVER (BADPASS) by HANSEN, CAL			
01:01				SUB OUT: HAUSER, MATT
01:01				SUB IN: GREELEY, KYLE
01:01	TIMEOUT 30SEC			
01:01				SUB OUT: WALKER, ALONZO
01:01				SUB IN: GOOLSBY, RASHAAD
01:01	SUB OUT: HANSEN, CAL			
01:01	SUB OUT: MISEL, JOHN			
01:01	SUB OUT: BASILE, MAX			
01:01	SUB OUT: SHIBLEY-STYER, WALKER			
01:01	SUB IN: WILSON, DONOVAN			
01:01	SUB IN: MCCANN, PAUL			
01:01	SUB IN: WEBB, GRIFFIN			
01:01	SUB IN: CAREY, CARSON			
00:42	FOUL (PERSONAL) by JOSEPH, JOURDAN			
00:42		92-69	H 23	GOOD! FT by WOOD, TREY
00:42				MISSED FT by WOOD, TREY
00:41				REBOUND (OFF) by GOOLSBY, RASHAAD
00:39	FOUL (PERSONAL) by WEBB, GRIFFIN			
00:39		93-69	H 24	GOOD! FT by GREELEY, KYLE
00:39		94-69	H 25	GOOD! FT by GREELEY, KYLE
00:30	MISSED 3PTR by WEBB, GRIFFIN			
00:25				REBOUND (DEF) by GREELEY, KYLE
00:25				SUB OUT: WOOD, TREY
00:25				SUB IN: WHITAKER, CHRIS

<b>Points from (This Period)</b>	<b>UPS</b>	<b>PSU</b>
In the Paint	14	26
Off Turns	2	7
2nd Chance	4	15
Fast Break	2	4
Bench	15	14

**Official Scoring/Possession Reference Chart  
Puget Sound vs Portland St.**

**Period 1**

**November 05, 2019 at Viking Pavilion (Viking Pavilion) - Portland**



**Period 1**

**Starters:**

**Puget Sound:** 0 ERICKSON, GRANT (F); 14 ELSNER, KOBE (G); 25 BASILE, MAX (G); 31 SHIBLEY-STYER, WALKER (G); 1 HANSEN, CAL (G);

**Portland St.:** 0 NUHU, SAL (F); 10 HAUSER, MATT (G); 11 WOODS, HOLLAND (G); 22 WALKER, ALONZO (F); 30 WHITAKER, CHRIS (G);

Time	VISITORS: Puget Sound	Score	Margin	HOME: Portland St.
18:32		2-0	H 2	GOOD! LAYUP by WHITAKER, CHRIS [FB]
18:04		4-0	H 4	GOOD! JUMPER by HAUSER, MATT [PNT]
17:40		5-0	H 5	GOOD! FT by WOODS, HOLLAND [FB]
17:40		6-0	H 6	GOOD! FT by WOODS, HOLLAND [FB]
17:11	GOOD! JUMPER by HANSEN, CAL	6-2	H 4	
16:58		8-2	H 6	GOOD! LAYUP by NUHU, SAL
16:34		9-2	H 7	GOOD! FT by HAUSER, MATT
15:52	GOOD! LAYUP by JOSEPH, JOURDAN [FB]	9-4	H 5	
15:14		10-4	H 6	GOOD! FT by WOODS, HOLLAND
15:14		11-4	H 7	GOOD! FT by WOODS, HOLLAND
15:01	GOOD! FT by ERICKSON, GRANT	11-5	H 6	
14:48		13-5	H 8	GOOD! LAYUP by HAUSER, MATT
14:23		14-5	H 9	GOOD! FT by WOOD, TREY
13:59		17-5	H 12	GOOD! 3PTR by BURKE, IAN [FB]
13:50		19-5	H 14	GOOD! JUMPER by WALKER, ALONZO [FB/PNT]
12:48	GOOD! JUMPER by HANSEN, CAL [PNT]	19-7	H 12	
12:01	GOOD! JUMPER by WEBB, GRIFFIN	19-9	H 10	
11:44		20-9	H 11	GOOD! FT by GOOLSBY, RASHAAD
11:29		22-9	H 13	GOOD! DUNK by GOOLSBY, RASHAAD
10:50		24-9	H 15	GOOD! JUMPER by GOOLSBY, RASHAAD [PNT]
10:50		25-9	H 16	GOOD! FT by GOOLSBY, RASHAAD
10:41	GOOD! 3PTR by SHIBLEY-STYER, WALKER	25-12	H 13	
10:34		27-12	H 15	GOOD! LAYUP by NUHU, SAL
10:05	GOOD! JUMPER by HANSEN, CAL [FB/PNT]	27-14	H 13	
09:13	GOOD! LAYUP by BASILE, MAX [FB]	27-16	H 11	
09:06		29-16	H 13	GOOD! JUMPER by WOODS, HOLLAND
08:09		31-16	H 15	GOOD! LAYUP by GOLDER, MARKUS [FB]
07:45	GOOD! 3PTR by GEATHERS, C.J.	31-19	H 12	
06:52		32-19	H 13	GOOD! FT by WOOD, TREY
06:25		34-19	H 15	GOOD! JUMPER by HAUSER, MATT
06:01		36-19	H 17	GOOD! JUMPER by WOOD, TREY [PNT]
05:27	GOOD! FT by HANSEN, CAL [FB]	36-20	H 16	
05:20		38-20	H 18	GOOD! LAYUP by GREELEY, KYLE
05:07		40-20	H 20	GOOD! LAYUP by WOODS, HOLLAND [FB]
04:08		42-20	H 22	GOOD! LAYUP by WHITAKER, CHRIS
03:33		44-20	H 24	GOOD! DUNK by NUHU, SAL
03:09		46-20	H 26	GOOD! DUNK by NUHU, SAL
02:41	GOOD! FT by JOSEPH, JOURDAN	46-21	H 25	
02:41	GOOD! FT by JOSEPH, JOURDAN	46-22	H 24	
02:18		47-22	H 25	GOOD! FT by GREELEY, KYLE
02:18		48-22	H 26	GOOD! FT by GREELEY, KYLE
01:41	GOOD! JUMPER by HANSEN, CAL [PNT]	48-24	H 24	
01:28		49-24	H 25	GOOD! FT by GOLDER, MARKUS
01:14		50-24	H 26	GOOD! FT by WHITAKER, CHRIS [FB]
00:33	GOOD! LAYUP by GEATHERS, C.J.	50-26	H 24	
00:23		52-26	H 26	GOOD! JUMPER by GOLDER, MARKUS
00:07	GOOD! FT by JOSEPH, JOURDAN	52-27	H 25	
00:07	GOOD! FT by JOSEPH, JOURDAN	52-28	H 24	
00:00		54-28	H 26	GOOD! JUMPER by WOODS, HOLLAND [PNT]





**Official Scoring/Possession Reference Chart**  
**Puget Sound vs Portland St.**  
**Period 2**  
**November 05, 2019 at Viking Pavilion (Viking Pavilion) - Portland**



**Period 2**

**Starters:**

**Puget Sound:** 0 ERICKSON, GRANT (F); 14 ELSNER, KOBE (G); 25 BASILE, MAX (G); 31 SHIBLEY-STYER, WALKER (G); 1 HANSEN, CAL (G);  
**Portland St.:** 0 NUHU, SAL (F); 10 HAUSER, MATT (G); 11 WOODS, HOLLAND (G); 22 WALKER, ALONZO (F); 30 WHITAKER, CHRIS (G);

Time	VISITORS: Puget Sound	Score	Margin	HOME: Portland St.
19:31		56-28	H 28	GOOD! LAYUP by WHITAKER, CHRIS [FB]
18:43		58-28	H 30	GOOD! JUMPER by HAUSER, MATT [PNT]
17:50	GOOD! 3PTR by SHIBLEY-STYER, WALKER	58-31	H 27	
17:38		60-31	H 29	GOOD! LAYUP by WHITAKER, CHRIS [PNT]
17:19		62-31	H 31	GOOD! LAYUP by HAUSER, MATT
17:07	GOOD! JUMPER by HANSEN, CAL	62-33	H 29	
16:19		64-33	H 31	GOOD! JUMPER by WOODS, HOLLAND [FB]
15:32	GOOD! 3PTR by GEATHERS, C.J.	64-36	H 28	
15:21		65-36	H 29	GOOD! FT by NUHU, SAL
14:59	GOOD! LAYUP by NICHOL, RILEY	65-38	H 27	
14:33		67-38	H 29	GOOD! DUNK by WOOD, TREY
14:14	GOOD! JUMPER by HANSEN, CAL	67-40	H 27	
13:51		69-40	H 29	GOOD! LAYUP by WALKER, ALONZO
13:41	GOOD! LAYUP by HANSEN, CAL [PNT]	69-42	H 27	
12:57	GOOD! LAYUP by ERICKSON, GRANT	69-44	H 25	
12:39		71-44	H 27	GOOD! JUMPER by NUHU, SAL
12:17	GOOD! JUMPER by MISEL, JOHN	71-46	H 25	
11:53	GOOD! 3PTR by BASILE, MAX	71-49	H 22	
10:31	GOOD! 3PTR by SHIBLEY-STYER, WALKER	71-52	H 19	
09:39		74-52	H 22	GOOD! 3PTR by BURKE, IAN
09:22	GOOD! LAYUP by HANSEN, CAL	74-54	H 20	
09:08		76-54	H 22	GOOD! LAYUP by HAUSER, MATT [PNT]
08:24		78-54	H 24	GOOD! DUNK by WALKER, ALONZO
07:56	GOOD! LAYUP by HANSEN, CAL [FB]	78-56	H 22	
07:43		80-56	H 24	GOOD! JUMPER by GREELEY, KYLE [PNT]
07:30	GOOD! 3PTR by MISEL, JOHN	80-59	H 21	
07:09		81-59	H 22	GOOD! FT by NUHU, SAL
06:49		83-59	H 24	GOOD! JUMPER by WALKER, ALONZO [PNT]
05:13		85-59	H 26	GOOD! LAYUP by GREELEY, KYLE
04:04		87-59	H 28	GOOD! JUMPER by GREELEY, KYLE
03:49	GOOD! JUMPER by JOSEPH, JOURDAN	87-61	H 26	
03:49	GOOD! FT by JOSEPH, JOURDAN	87-62	H 25	
03:31		88-62	H 26	GOOD! FT by WALKER, ALONZO
03:31		89-62	H 27	GOOD! FT by WALKER, ALONZO
03:14	GOOD! FT by JOSEPH, JOURDAN	89-63	H 26	
03:14	GOOD! FT by JOSEPH, JOURDAN	89-64	H 25	
02:17	GOOD! 3PTR by SHIBLEY-STYER, WALKER	89-67	H 22	
01:56		91-67	H 24	GOOD! JUMPER by WALKER, ALONZO [PNT]
01:28	GOOD! JUMPER by HANSEN, CAL [PNT]	91-69	H 22	
00:42		92-69	H 23	GOOD! FT by WOOD, TREY
00:39		93-69	H 24	GOOD! FT by GREELEY, KYLE
00:39		94-69	H 25	GOOD! FT by GREELEY, KYLE

**Puget Sound 69, Portland St. 94**

**Official Substitutions Log**  
**Puget Sound vs Portland St.**  
**Period 1**  
**November 05, 2019 at Viking Pavilion (Viking Pavilion) - Portland**



VISITORS: Puget Sound	Time	Score	HOME: Portland St.
0 ERICKSON, GRANT			0 NUHU, SAL
14 ELSNER, KOBE			10 HAUSER, MATT
25 BASILE, MAX			11 WOODS, HOLLAND
31 SHIBLEY-STYER, WALKER			22 WALKER, ALONZO
1 HANSEN, CAL			30 WHITAKER, CHRIS
SUB OUT: 31 SHIBLEY-STYER, WALKER	18:15	0-2	
SUB IN: 5 MISEL, JOHN	18:15		
SUB OUT: 14 ELSNER, KOBE	17:40	0-5	
SUB OUT: 25 BASILE, MAX	17:40		
SUB IN: 3 GEATHERS, C.J.	17:40		
SUB IN: 15 JOSEPH, JOURDAN	17:40		
	16:44	2-8	SUB OUT: WALKER, ALONZO
	16:44		SUB IN: GOOLSBY, RASHAAD
SUB OUT: 0 ERICKSON, GRANT	16:44		
SUB IN: 35 NICHOL, RILEY	16:44		
SUB OUT: 1 HANSEN, CAL	16:34	2-8	
SUB IN: 25 BASILE, MAX	16:34		
	16:34		SUB OUT: HAUSER, MATT
	16:34		SUB IN: BURKE, IAN
	15:31	4-9	SUB OUT: WHITAKER, CHRIS
	15:31		SUB IN: GREELEY, KYLE
	15:14	4-10	SUB OUT: NUHU, SAL
	15:14		SUB OUT: GOOLSBY, RASHAAD
	15:14		SUB IN: WOOD, TREY
	15:14		SUB IN: WALKER, ALONZO
SUB OUT: 5 MISEL, JOHN	15:14		
SUB OUT: 15 JOSEPH, JOURDAN	15:14		
SUB OUT: 35 NICHOL, RILEY	15:14		
SUB IN: 0 ERICKSON, GRANT	15:14		
SUB IN: 1 HANSEN, CAL	15:14		
SUB IN: 31 SHIBLEY-STYER, WALKER	15:14		
	15:14		SUB OUT: WOODS, HOLLAND
	15:14		SUB IN: HAUSER, MATT
SUB OUT: 3 GEATHERS, C.J.	14:35	5-13	
SUB OUT: 25 BASILE, MAX	14:35		
SUB IN: 2 WILSON, DONOVAN	14:35		
SUB IN: 5 MISEL, JOHN	14:35		
	14:23	5-14	SUB OUT: GREELEY, KYLE
	14:23		SUB IN: GOLDER, MARKUS
SUB OUT: 5 MISEL, JOHN	13:47	5-19	
SUB OUT: 31 SHIBLEY-STYER, WALKER	13:47		
SUB IN: 14 ELSNER, KOBE	13:47		
SUB IN: 15 JOSEPH, JOURDAN	13:47		
	13:23	5-19	SUB OUT: WOOD, TREY
	13:23		SUB OUT: BURKE, IAN
	13:23		SUB IN: NUHU, SAL
	13:23		SUB IN: WOODS, HOLLAND
SUB OUT: 2 WILSON, DONOVAN	13:23		
SUB IN: 32 WEBB, GRIFFIN	13:23		
	13:14	5-19	SUB OUT: WALKER, ALONZO
	13:14		SUB IN: GOOLSBY, RASHAAD
SUB OUT: 0 ERICKSON, GRANT	12:28	7-19	
SUB IN: 35 NICHOL, RILEY	12:28		
	11:44	9-19	SUB OUT: GOLDER, MARKUS
	11:44		SUB IN: WHITAKER, CHRIS
SUB OUT: 15 JOSEPH, JOURDAN	11:44		
SUB IN: 3 GEATHERS, C.J.	11:44		
SUB OUT: 32 WEBB, GRIFFIN	11:19	9-22	
SUB IN: 25 BASILE, MAX	11:19		
	11:05	9-22	SUB OUT: HAUSER, MATT
	11:05		SUB IN: BURKE, IAN
SUB OUT: 3 GEATHERS, C.J.	10:58	9-22	
SUB OUT: 14 ELSNER, KOBE	10:58		
SUB IN: 15 JOSEPH, JOURDAN	10:58		
SUB IN: 31 SHIBLEY-STYER, WALKER	10:58		
	09:47	14-27	SUB OUT: GOOLSBY, RASHAAD
	09:47		SUB OUT: WHITAKER, CHRIS
	09:47		SUB IN: HAUSER, MATT
	09:47		SUB IN: WOOD, TREY
SUB OUT: 1 HANSEN, CAL	09:47		
SUB OUT: 35 NICHOL, RILEY	09:47		
SUB IN: 0 ERICKSON, GRANT	09:47		
SUB IN: 5 MISEL, JOHN	09:47		
	08:35	16-29	SUB OUT: BURKE, IAN
	08:35		SUB IN: GOLDER, MARKUS

<b>VISITORS: Puget Sound</b>	<b>Time</b>	<b>Score</b>	<b>HOME: Portland St.</b>
SUB OUT: 15 JOSEPH,JOURDAN	08:35		
SUB OUT: 31 SHIBLEY-STYER,WALKER	08:35		
SUB IN: 3 GEATHERS,C.J.	08:35		
SUB IN: 14 ELSNER,KOBE	08:35		
	08:09	16-31	SUB OUT: NUHU,SAL
	08:09		SUB IN: GOOLSBY,RASHAAD
SUB OUT: 25 BASILE,MAX	07:16	19-31	
SUB IN: 1 HANSEN,CAL	07:16		
SUB OUT: 5 MISEL,JOHN	06:52	19-31	
SUB IN: 15 JOSEPH,JOURDAN	06:52		
	06:52		SUB OUT: GOLDER,MARKUS
	06:52		SUB IN: WHITAKER,CHRIS
	05:56	19-36	SUB OUT: GOOLSBY,RASHAAD
	05:56		SUB IN: GREELEY,KYLE
SUB OUT: 3 GEATHERS,C.J.	05:56		
SUB IN: 31 SHIBLEY-STYER,WALKER	05:56		
	05:27	19-36	SUB OUT: HAUSER,MATT
	05:27		SUB IN: BURKE,IAN
SUB OUT: 14 ELSNER,KOBE	05:27		
SUB IN: 2 WILSON,DONOVAN	05:27		
	04:49	20-40	SUB OUT: WOOD,TREY
	04:49		SUB IN: NUHU,SAL
SUB OUT: 1 HANSEN,CAL	04:29	20-40	
SUB IN: 35 NICHOL,RILEY	04:29		
SUB OUT: 2 WILSON,DONOVAN	03:39	20-42	
SUB IN: 5 MISEL,JOHN	03:39		
SUB OUT: 0 ERICKSON,GRANT	03:15	20-44	
SUB OUT: 31 SHIBLEY-STYER,WALKER	03:15		
SUB IN: 1 HANSEN,CAL	03:15		
SUB IN: 25 BASILE,MAX	03:15		
	02:41	21-46	SUB OUT: BURKE,IAN
	02:41		SUB IN: GOLDER,MARKUS
SUB OUT: 35 NICHOL,RILEY	02:41		
SUB IN: 3 GEATHERS,C.J.	02:41		
SUB OUT: 15 JOSEPH,JOURDAN	02:41		
SUB IN: 14 ELSNER,KOBE	02:41		
SUB OUT: 1 HANSEN,CAL	01:28	24-49	
SUB OUT: 5 MISEL,JOHN	01:28		
SUB IN: 0 ERICKSON,GRANT	01:28		
SUB IN: 31 SHIBLEY-STYER,WALKER	01:28		
	01:14	24-49	SUB OUT: GREELEY,KYLE
	01:14		SUB IN: WOOD,TREY
SUB OUT: 31 SHIBLEY-STYER,WALKER	01:14		
SUB IN: 15 JOSEPH,JOURDAN	01:14		
	01:14		SUB OUT: WHITAKER,CHRIS
	01:14		SUB IN: BURKE,IAN
SUB OUT: 14 ELSNER,KOBE	00:07	26-52	
SUB IN: 2 WILSON,DONOVAN	00:07		
SUB OUT: 15 JOSEPH,JOURDAN	00:07		
SUB IN: 32 WEBB,GRIFFIN	00:07		

**Puget Sound 28, Portland St. 54**

**Official Substitutions Log**  
**Puget Sound vs Portland St.**  
**Period 2**  
**November 05, 2019 at Viking Pavilion (Viking Pavilion) - Portland**



VISITORS: Puget Sound	Time	Score	HOME: Portland St.
0 ERICKSON, GRANT			0 NUHU, SAL
14 ELSNER, KOBE			10 HAUSER, MATT
25 BASILE, MAX			11 WOODS, HOLLAND
31 SHIBLEY-STYER, WALKER			22 WALKER, ALONZO
1 HANSEN, CAL			30 WHITAKER, CHRIS
	20:00	-	SUB OUT: GOLDER, MARKUS
	20:00		SUB OUT: WOOD, TREY
	20:00		SUB OUT: BURKE, IAN
	20:00		SUB IN: HAUSER, MATT
	20:00		SUB IN: WALKER, ALONZO
	20:00		SUB IN: WHITAKER, CHRIS
SUB OUT: 2 WILSON, DONOVAN	20:00		
SUB OUT: 3 GEATHERS, C.J.	20:00		
SUB OUT: 32 WEBB, GRIFFIN	20:00		
SUB IN: 1 HANSEN, CAL	20:00		
SUB IN: 14 ELSNER, KOBE	20:00		
SUB IN: 31 SHIBLEY-STYER, WALKER	20:00		
	16:52	33-62	SUB OUT: WALKER, ALONZO
	16:52		SUB OUT: WHITAKER, CHRIS
	16:52		SUB IN: GOOLSBY, RASHAAD
	16:52		SUB IN: BURKE, IAN
SUB OUT: 1 HANSEN, CAL	16:52		
SUB OUT: 14 ELSNER, KOBE	16:52		
SUB OUT: 25 BASILE, MAX	16:52		
SUB IN: 5 MISEL, JOHN	16:52		
SUB IN: 15 JOSEPH, JOURDAN	16:52		
SUB IN: 35 NICHOL, RILEY	16:52		
SUB OUT: 0 ERICKSON, GRANT	15:44	33-64	
SUB OUT: 31 SHIBLEY-STYER, WALKER	15:44		
SUB IN: 1 HANSEN, CAL	15:44		
SUB IN: 3 GEATHERS, C.J.	15:44		
	15:21	36-65	SUB OUT: NUHU, SAL
	15:21		SUB IN: WOOD, TREY
	14:33	38-67	SUB OUT: BURKE, IAN
	14:33		SUB IN: WALKER, ALONZO
SUB OUT: 15 JOSEPH, JOURDAN	13:45	40-69	
SUB OUT: 35 NICHOL, RILEY	13:45		
SUB IN: 14 ELSNER, KOBE	13:45		
SUB IN: 25 BASILE, MAX	13:45		
	13:11	42-69	SUB OUT: GOOLSBY, RASHAAD
	13:11		SUB IN: GOLDER, MARKUS
SUB OUT: 1 HANSEN, CAL	13:11		
SUB OUT: 3 GEATHERS, C.J.	13:11		
SUB IN: 0 ERICKSON, GRANT	13:11		
SUB IN: 2 WILSON, DONOVAN	13:11		
	12:55	44-69	SUB OUT: WOODS, HOLLAND
	12:55		SUB OUT: WOOD, TREY
	12:55		SUB OUT: WALKER, ALONZO
	12:55		SUB IN: NUHU, SAL
	12:55		SUB IN: GOOLSBY, RASHAAD
	12:55		SUB IN: BURKE, IAN
SUB OUT: 0 ERICKSON, GRANT	11:33	49-71	
SUB IN: 1 HANSEN, CAL	11:33		
SUB OUT: 5 MISEL, JOHN	11:33		
SUB IN: 31 SHIBLEY-STYER, WALKER	11:33		
SUB OUT: 2 WILSON, DONOVAN	11:08	49-71	
SUB IN: 15 JOSEPH, JOURDAN	11:08		
	08:47	54-76	SUB OUT: GOLDER, MARKUS
	08:47		SUB OUT: GOOLSBY, RASHAAD
	08:47		SUB OUT: HAUSER, MATT
	08:47		SUB OUT: BURKE, IAN
	08:47		SUB IN: GREELEY, KYLE
	08:47		SUB IN: WOODS, HOLLAND
	08:47		SUB IN: WALKER, ALONZO
	08:47		SUB IN: WHITAKER, CHRIS
SUB OUT: 14 ELSNER, KOBE	08:47		
SUB OUT: 25 BASILE, MAX	08:47		
SUB OUT: 31 SHIBLEY-STYER, WALKER	08:47		
SUB IN: 3 GEATHERS, C.J.	08:47		
SUB IN: 5 MISEL, JOHN	08:47		
SUB IN: 35 NICHOL, RILEY	08:47		
SUB OUT: 15 JOSEPH, JOURDAN	08:07	54-78	
SUB IN: 2 WILSON, DONOVAN	08:07		
SUB OUT: 35 NICHOL, RILEY	07:09	59-80	
SUB IN: 0 ERICKSON, GRANT	07:09		

<b>VISITORS: Puget Sound</b>	<b>Time</b>	<b>Score</b>	<b>HOME: Portland St.</b>
SUB OUT: 3 GEATHERS,C.J.	06:45	59-83	
SUB IN: 14 ELSNER,KOBE	06:45		
SUB OUT: 2 WILSON,DONOVAN	06:40	59-83	
SUB IN: 3 GEATHERS,C.J.	06:40		
	05:54	59-83	SUB OUT: WOODS,HOLLAND
	05:54		SUB IN: HAUSER,MATT
SUB OUT: 1 HANSEN,CAL	05:54		
SUB OUT: 3 GEATHERS,C.J.	05:54		
SUB IN: 15 JOSEPH,JOURDAN	05:54		
SUB IN: 32 WEBB,GRIFFIN	05:54		
	04:31	59-85	SUB OUT: NUHU,SAL
	04:31		SUB OUT: WHITAKER,CHRIS
	04:31		SUB IN: WOOD,TREY
	04:31		SUB IN: BURKE,IAN
SUB OUT: 0 ERICKSON,GRANT	04:31		
SUB OUT: 5 MISEL,JOHN	04:31		
SUB IN: 25 BASILE,MAX	04:31		
SUB IN: 35 NICHOL,RILEY	04:31		
SUB OUT: 32 WEBB,GRIFFIN	03:49	61-87	
SUB IN: 31 SHIBLEY-STYER,WALKER	03:49		
SUB OUT: 35 NICHOL,RILEY	03:32	62-87	
SUB IN: 1 HANSEN,CAL	03:32		
	03:31	62-88	SUB OUT: GREELEY,KYLE
	03:31		SUB IN: GOLDER,MARKUS
SUB OUT: 14 ELSNER,KOBE	03:04	64-89	
SUB IN: 5 MISEL,JOHN	03:04		
	01:01	69-91	SUB OUT: HAUSER,MATT
	01:01		SUB IN: GREELEY,KYLE
	01:01		SUB OUT: WALKER,ALONZO
	01:01		SUB IN: GOOLSBY,RASHAAD
SUB OUT: 1 HANSEN,CAL	01:01		
SUB OUT: 5 MISEL,JOHN	01:01		
SUB OUT: 25 BASILE,MAX	01:01		
SUB OUT: 31 SHIBLEY-STYER,WALKER	01:01		
SUB IN: 2 WILSON,DONOVAN	01:01		
SUB IN: 24 MCCANN,PAUL	01:01		
SUB IN: 32 WEBB,GRIFFIN	01:01		
SUB IN: 33 CAREY,CARSON	01:01		
	00:25	69-94	SUB OUT: WOOD,TREY
	00:25		SUB IN: WHITAKER,CHRIS

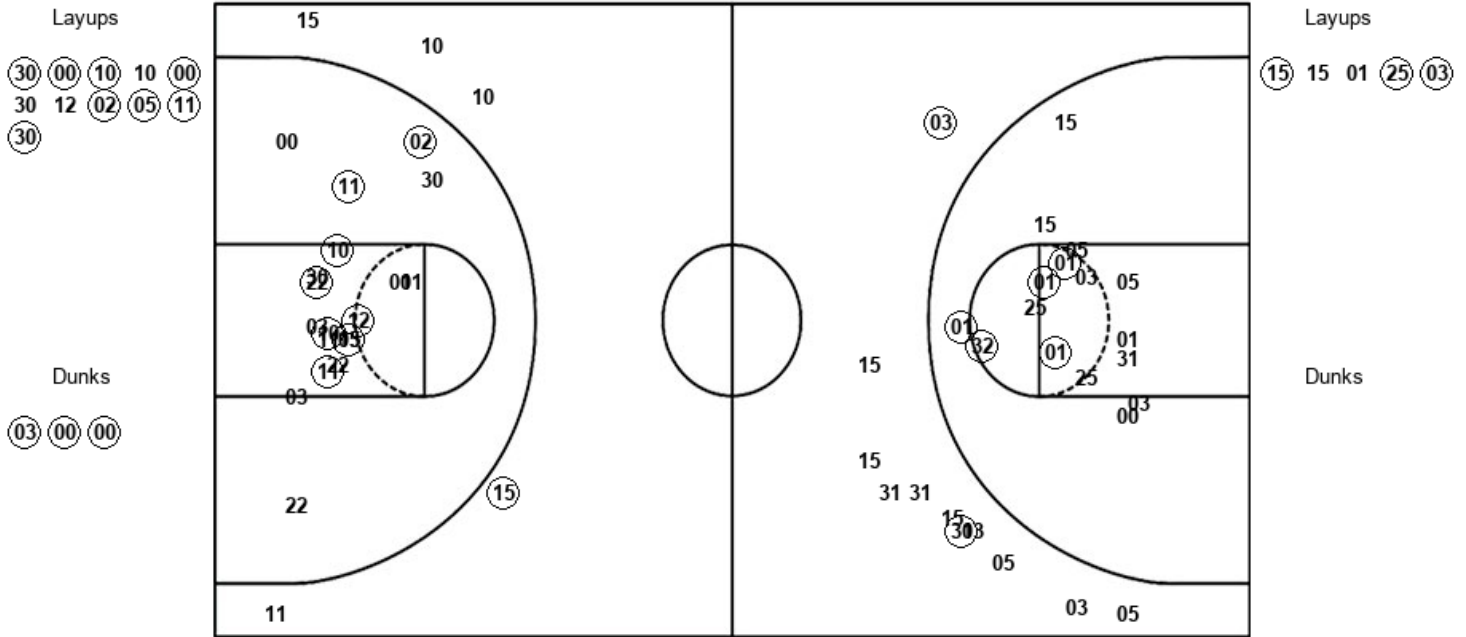
**Puget Sound 69, Portland St. 94**

**Official Shot Chart**  
**Puget Sound vs Portland St.**  
**PERIOD 1 Shots**  
**November 05, 2019 at Viking Pavilion (Viking Pavilion) - Portland**



**Portland St.**

**Puget Sound**



PSU : Period 1	Made	Att	Pct
Layups	8	11	72.7
Dunks	3	3	100.0
2PT Field Goals	19	33	57.6
3PT Field Goals	1	5	20.0
<b>Total Field Goals</b>	<b>20</b>	<b>38</b>	<b>52.6</b>

UPS : Period 1	Made	Att	Pct
Layups	3	5	60.0
Dunks	0	0	0
2PT Field Goals	8	21	38.1
3PT Field Goals	2	11	18.2
<b>Total Field Goals</b>	<b>10</b>	<b>32</b>	<b>31.3</b>

**Official Shot Chart**  
**Puget Sound vs Portland St.**  
**PERIOD 2 Shots**  
**November 05, 2019 at Viking Pavilion (Viking Pavilion) - Portland**

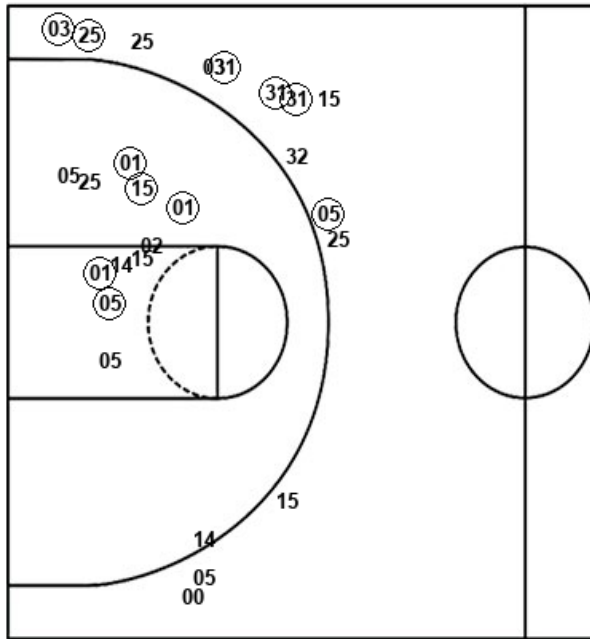


**Portland St.**

**Puget Sound**

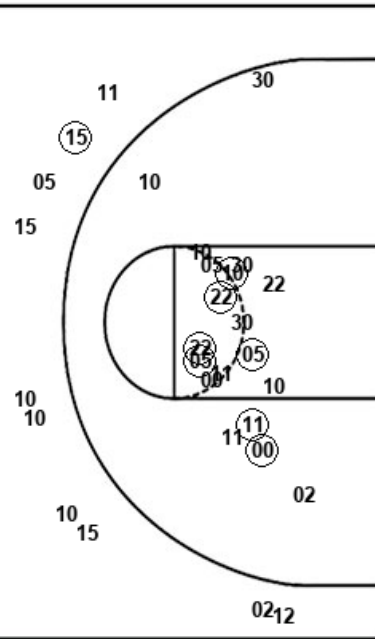
Layups  
 30 30 10 10 11  
 11 22 10 11 22  
 05

Dunks  
 12 22



Layups  
 35 01 00 01 01  
 02

Dunks  
 05



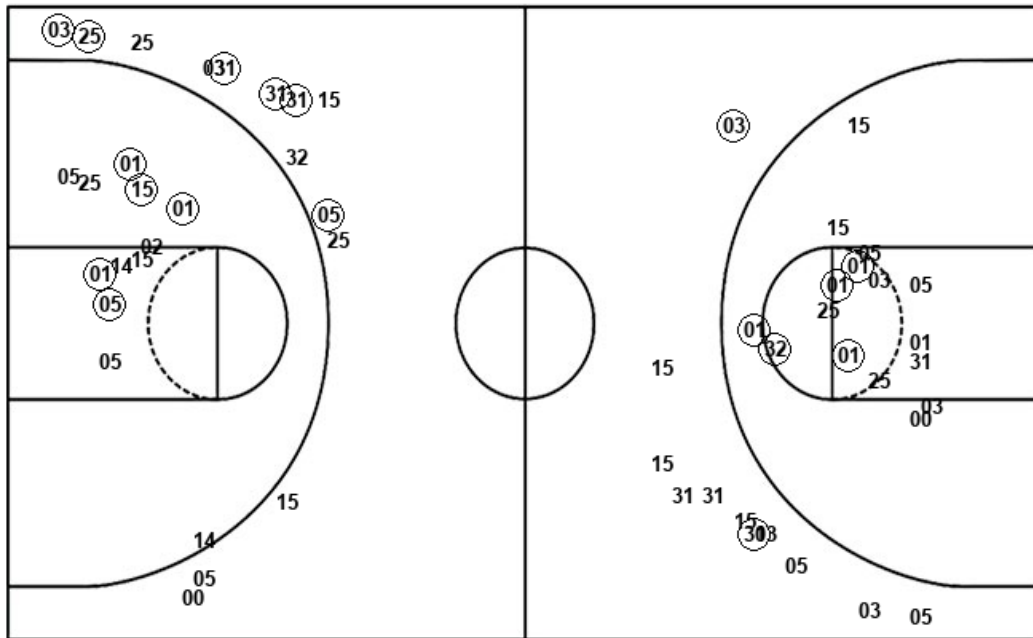
PSU : Period 2	Made	Att	Pct
Layups	6	11	54.5
Dunks	2	2	100.0
2PT Field Goals	15	32	46.9
3PT Field Goals	1	10	10.0
<b>Total Field Goals</b>	<b>16</b>	<b>42</b>	<b>38.1</b>

UPS : Period 2	Made	Att	Pct
Layups	5	6	83.3
Dunks	0	1	00.0
2PT Field Goals	10	19	52.6
3PT Field Goals	6	14	42.9
<b>Total Field Goals</b>	<b>16</b>	<b>33</b>	<b>48.5</b>

**Official Shot Chart**  
**Puget Sound vs Portland St.**  
 Puget Sound Team Shots  
 November 05, 2019 at Viking Pavilion (Viking Pavilion) - Portland



Layups



Layups

Dunks

Dunks

UPS : Period 1	Made	Att	Pct
Layups	3	5	60.0
Dunks	0	0	0
2PT Field Goals	8	21	38.1
3PT Field Goals	2	11	18.2
<b>Total Field Goals</b>	<b>10</b>	<b>32</b>	<b>31.3</b>

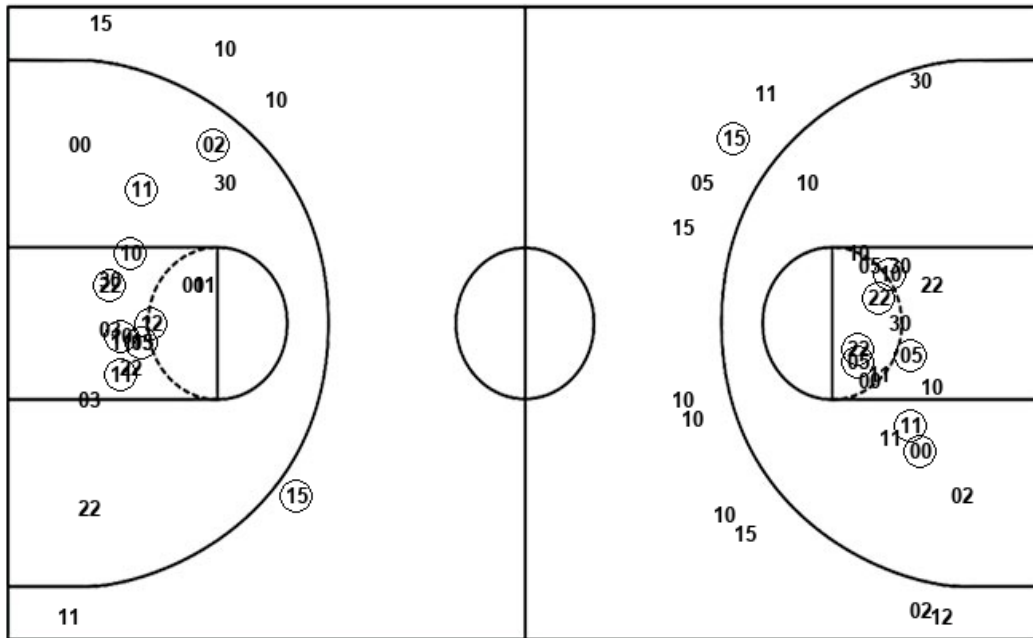
UPS : Period 2	Made	Att	Pct
Layups	5	6	83.3
Dunks	0	1	00.0
2PT Field Goals	10	19	52.6
3PT Field Goals	6	14	42.9
<b>Total Field Goals</b>	<b>16</b>	<b>33</b>	<b>48.5</b>



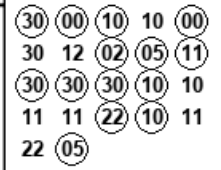
**Official Shot Chart**  
**Puget Sound vs Portland St.**  
**Portland St. Team Shots**  
**November 05, 2019 at Viking Pavilion (Viking Pavilion) - Portland**



Layups



Layups



Dunks

Dunks



PSU : Period 1	Made	Att	Pct
Layups	8	11	72.7
Dunks	3	3	100.0
2PT Field Goals	19	33	57.6
3PT Field Goals	1	5	20.0
<b>Total Field Goals</b>	<b>20</b>	<b>38</b>	<b>52.6</b>

PSU : Period 2	Made	Att	Pct
Layups	6	11	54.5
Dunks	2	2	100.0
2PT Field Goals	15	32	46.9
3PT Field Goals	1	10	10.0
<b>Total Field Goals</b>	<b>16</b>	<b>42</b>	<b>38.1</b>