

FINAL SCORE

Evergreen State

46



Portland State

103

October 30, 2019 • Viking Pavilion (Stoller) - Portland

FINAL STATISTICS

Official Box Score
Evergreen State vs Portland State
Game Totals -- Final Statistics
October 30, 2019 at Viking Pavilion (Stoller) - Portland



Evergreen State 46

No.	Player	S	Pts	FG	3FG	FT	OR	DR	TR	PF	A	TO	Blk	Stl	Min	+/-
00	HUDSON, DESMOND	*	6	3-9	0-0	0-0	2	5	7	1	0	2	5	1	29	-39
04	FRAZIER, RAVEN	*	11	5-9	1-3	0-0	0	3	3	3	4	5	0	2	26	-32
11	PRICE, LABRANDON	*	5	2-6	1-4	0-0	0	3	3	2	3	6	0	0	25	-26
20	FULLER, ELIJAH	*	5	2-9	1-4	0-0	3	2	5	2	2	2	0	0	18	-17
24	KELLY, LUKAS	*	4	2-2	0-0	0-0	0	1	1	5	0	2	0	0	17	-23
01	WETMORE, MICHAEL		1	0-7	0-2	1-3	0	2	2	0	1	5	0	0	15	-31
02	BIONGO, GLOIRE		12	4-10	2-2	2-2	1	3	4	3	0	5	0	0	22	-38
03	NELSON, DANNY		2	1-4	0-2	0-1	0	4	4	2	0	1	0	0	17	-28
23	KENNEDY, LANE		0	0-0	0-0	0-0	1	3	4	1	1	2	0	0	20	-36
34	GRANDBERRY, ANTHONY		0	0-4	0-3	0-0	0	0	0	0	0	1	0	0	11	-15
TEAM								2	3	5	0	0				
TOTALS			46	19-60	5-20	3-6	9	29	38	19	11	31	5	3	200	

Shooting By Period

Period	FG	FG%	3FG	3FG%	FT	FT%
1st Half	9-39	23%	3-13	23%	0-0	0%
2nd Half	10-21	48%	2-7	29%	3-6	50%
Game	19-60	31.7%	5-20	25.0%	3-6	50.0%

Deadball Rebounds: 1,0
Last FG: 2nd-00:10
Biggest Run: 4-0
Largest lead: By 1 at -
Technical Fouls: None.

Portland State 103

No.	Player	S	Pts	FG	3FG	FT	OR	DR	TR	PF	A	TO	Blk	Stl	Min	+/-
00	NUHU, SAL	F	0	0-4	0-0	0-0	3	3	6	0	0	1	2	0	7	10
10	HAUSER, MATT	G	23	9-12	5-7	0-0	1	4	5	0	5	1	0	1	22	25
11	WOODS, HOLLAND	G	15	4-15	1-7	6-6	0	3	3	2	6	1	0	1	27	34
15	BURKE, IAN	G	5	2-7	0-5	1-2	4	1	5	3	3	0	0	2	24	37
22	WALKER, ALONZO	F	8	4-15	0-2	0-0	9	4	13	3	0	3	1	3	21	19
03	GOOLSBY, RASHAAD	F	8	4-8	0-1	0-2	4	8	12	0	3	0	0	3	25	46
05	GREELEY, KYLE	G	9	3-9	0-3	3-4	2	1	3	2	1	1	0	2	17	24
12	WOOD, TREY	F	16	7-9	2-3	0-0	0	2	2	1	0	1	1	2	23	38
13	NIELSEN-SKINNER, JADEN	G	6	2-5	2-4	0-0	0	0	0	2	2	2	0	1	15	25
14	HAMRICK, LAMAR	G	13	5-10	2-6	1-2	1	6	7	2	2	0	0	2	18	27
TEAM							1	2	3	0	1					
TOTALS			103	40-94	12-38	11-16	25	34	59	15	22	11	4	17	200	

Shooting By Period

Period	FG	FG%	3FG	3FG%	FT	FT%
1st Half	19-45	42%	9-21	43%	3-4	75%
2nd Half	21-49	43%	3-17	18%	8-12	67%
Game	40-94	42.6%	12-38	31.6%	11-16	68.8%

Deadball Rebounds: 5,0
Last FG: 2nd-00:48
Biggest Run: 16-0
Largest lead: By 60 at -
Technical Fouls: None.

Game Notes:

Officials: Kevin Brill, Jeff Flowers, Rick Batsell
Attendance: 501

Start Time: 10:34 PM ET
End Time: 12:20 AM ET
Game Duration: 1:45

Score	1st	2nd	TOT
ESC	21	25	46
PSU	50	53	103

ESC led for 1:18. PSU led for 37:35.
Game was tied for 1:07.
Times tied: 73 Lead Changes: 0

Points from	ESC	PSU
In the Paint	16	50
Off Turns	7	39
2nd Chance	8	25
Fast Break	7	27
Bench	15	52

Official Box Score
Evergreen State vs Portland State
First Half Statistics Only
October 30, 2019 at Viking Pavilion (Stoller) - Portland



Evergreen State 21

No.	Player	S	Pts	FG	3FG	FT	OR	DR	TR	PF	A	TO	Blk	Stl	Min	+/-
00	HUDSON, DESMOND	*	2	1-5	0-0	0-0	1	4	5	0	0	1	3	0	15	-23
04	FRAZIER, RAVEN	*	7	3-7	1-3	0-0	0	2	2	2	2	1	0	1	15	-21
11	PRICE, LABRANDON	*	3	1-4	1-3	0-0	0	2	2	0	0	3	0	0	17	-18
20	FULLER, ELIJAH	*	5	2-7	1-3	0-0	3	2	5	1	1	1	0	0	11	-11
24	KELLY, LUKAS	*	2	1-1	0-0	0-0	0	0	0	2	0	0	0	0	7	-9
01	WETMORE, MICHAEL		0	0-5	0-2	0-0	0	0	0	0	1	0	0	0	6	-14
02	BIONGO, GLOIRE		2	1-7	0-0	0-0	0	2	2	1	0	1	0	0	10	-20
03	NELSON, DANNY		0	0-2	0-2	0-0	0	1	1	1	0	0	0	0	6	-7
23	KENNEDY, LANE		0	0-0	0-0	0-0	1	2	3	1	1	1	0	0	9	-18
34	GRANDBERRY, ANTHONY		0	0-1	0-0	0-0	0	0	0	0	0	0	0	0	4	-4
TEAM							2	1	3	0		0				
TOTALS			21	9-39	3-13	0-0	7	16	23	8	5	8	3	1	100	

Shooting By Period

Period	FG	FG%	3FG	3FG%	FT	FT%
1st Half	9-39	23%	3-13	23%	0-0	0%
Game	19-60	31.7%	5-20	25.0%	3-6	50.0%

Deadball Rebounds: 1,0
 Last FG Half: ESC 2nd-00:10

Portland State 50

No.	Player	S	Pts	FG	3FG	FT	OR	DR	TR	PF	A	TO	Blk	Stl	Min	+/-
00	NUHU, SAL	F	0	0-4	0-0	0-0	3	3	6	0	0	1	2	0	7	10
10	HAUSER, MATT	G	16	6-8	4-5	0-0	0	4	4	0	4	1	0	1	14	19
11	WOODS, HOLLAND	G	11	4-11	1-4	2-2	0	2	2	1	2	0	0	0	16	17
15	BURKE, IAN	G	1	0-2	0-2	1-2	1	0	1	0	2	0	0	1	11	15
22	WALKER, ALONZO	F	2	1-5	0-1	0-0	3	4	7	1	0	2	1	1	10	9
03	GOOLSBY, RASHAAD	F	2	1-2	0-0	0-0	1	7	8	0	1	0	0	1	13	27
05	GREELEY, KYLE	G	0	0-2	0-1	0-0	1	0	1	1	0	0	0	0	5	8
12	WOOD, TREY	F	12	5-6	2-3	0-0	0	1	1	1	0	0	1	0	12	19
13	NIELSEN-SKINNER, JADEN	G	3	1-1	1-1	0-0	0	0	0	0	2	0	0	0	4	8
14	HAMRICK, LAMAR	G	3	1-4	1-4	0-0	1	1	2	1	1	0	0	0	7	13
TEAM							0	1	1	0		0				
TOTALS			50	19-45	9-21	3-4	10	23	33	5	12	4	4	4	100	

Shooting By Period

Period	FG	FG%	3FG	3FG%	FT	FT%
1st Half	19-45	42%	9-21	43%	3-4	75%
Game	40-94	42.6%	12-38	31.6%	11-16	68.8%

Deadball Rebounds: 5,0
 Last FG Half: PSU 2nd-00:48

Game Notes:

Officials: Kevin Brill, Jeff Flowers, Rick Batsell
 Attendance: 501

Start Time: 10:34 PM ET
 End Time: 12:20 AM ET
 Game Duration: 1:45

Score	1st	2nd	TOT
ESC	21	25	46
PSU	50	53	103

Points from (This Period)	ESC	PSU
In the Paint	6	16
Off Turns	0	9
2nd Chance	5	8
Fast Break	2	14
Bench	2	20

Official Play-By-Play
Evergreen State vs Portland State
First Half
October 30, 2019 at Viking Pavilion (Stoller) - Portland



Period 1

Starters:

Evergreen State: 0 HUDSON, DESMOND; 4 FRAZIER, RAVEN; 11 PRICE, LABRANDON; 20 FULLER, ELIJAH; 24 KELLY, LUKAS;

Portland State: 0 NUHU, SAL (F); 10 HAUSER, MATT (G); 11 WOODS, HOLLAND (G); 15 BURKE, IAN (G); 22 WALKER, ALONZO (F);

Time	VISITORS: Evergreen State	Score	Margin	HOME: Portland State
19:41				TURNOVER (TRAVEL) by WALKER, ALONZO
19:23	MISSED 3PTR by FULLER, ELIJAH			
19:22	REBOUND (OFF) by TEAM			
19:22				FOUL (PERSONAL) by WALKER, ALONZO
19:18	MISSED JUMPER by FRAZIER, RAVEN			
19:13				REBOUND (DEF) by NUHU, SAL
19:11				MISSED 3PTR by WOODS, HOLLAND
19:04				REBOUND (OFF) by NUHU, SAL
19:03				MISSED JUMPER by NUHU, SAL
19:03	BLOCK by HUDSON, DESMOND			
18:56				REBOUND (OFF) by NUHU, SAL
18:53	FOUL (PERSONAL) by FRAZIER, RAVEN			
18:53		1-0	H 1	GOOD! FT by BURKE, IAN
18:53				MISSED FT by BURKE, IAN
18:51	REBOUND (DEF) by HUDSON, DESMOND			
18:44	MISSED LAYUP by FRAZIER, RAVEN			
18:44				REBOUND (DEF) by TEAM
18:25				MISSED 3PTR by WOODS, HOLLAND
18:20	REBOUND (DEF) by FULLER, ELIJAH			
18:09	GOOD! JUMPER by FRAZIER, RAVEN	1-2	V 1	
17:59	FOUL (PERSONAL) by KELLY, LUKAS			
17:46				MISSED JUMPER by NUHU, SAL
17:46	BLOCK by HUDSON, DESMOND			
17:38	REBOUND (DEF) by FRAZIER, RAVEN			
17:36	TURNOVER (BADPASS) by PRICE, LABRANDON			
17:36				STEAL by HAUSER, MATT
17:36				MISSED JUMPER by HAUSER, MATT
17:36				REBOUND (OFF) by NUHU, SAL
17:36				MISSED JUMPER by NUHU, SAL
17:36	REBOUND (DEF) by FULLER, ELIJAH			
17:36	MISSED JUMPER by HUDSON, DESMOND			
17:31				REBOUND (DEF) by WALKER, ALONZO
17:20				SUB OUT: NUHU, SAL
17:20				SUB IN: WOOD, TREY
16:51		4-2	H 2	GOOD! 3PTR by HAUSER, MATT
16:51				ASSIST by BURKE, IAN
16:41	FOUL (OFF) by FULLER, ELIJAH			
16:41	TURNOVER (OFFENSIVE) by FULLER, ELIJAH			
16:28				MISSED 3PTR by BURKE, IAN
16:25	REBOUND (DEF) by HUDSON, DESMOND			
16:24				SUB OUT: BURKE, IAN
16:24				SUB IN: GOOLSBY, RASHAAD
16:24	SUB OUT: HUDSON, DESMOND			
16:24	SUB IN: BIONGO, GLOIRE			
16:11	MISSED JUMPER by BIONGO, GLOIRE			
16:07				REBOUND (DEF) by WALKER, ALONZO
16:01				MISSED LAYUP by WOODS, HOLLAND
15:57	REBOUND (DEF) by BIONGO, GLOIRE			
15:35	MISSED JUMPER by FULLER, ELIJAH			
15:31				REBOUND (DEF) by WALKER, ALONZO
15:25		6-2	H 4	GOOD! LAYUP by HAUSER, MATT [FB]
15:11	MISSED 3PTR by FRAZIER, RAVEN			
15:07				REBOUND (DEF) by GOOLSBY, RASHAAD
15:03				TURNOVER (TRAVEL) by WALKER, ALONZO
15:03				SUB OUT: WALKER, ALONZO
15:03				SUB IN: GREELEY, KYLE
15:03	SUB OUT: FRAZIER, RAVEN			
15:03	SUB IN: KENNEDY, LANE			
14:48	MISSED JUMPER by BIONGO, GLOIRE			
14:44				REBOUND (DEF) by HAUSER, MATT
14:40		8-2	H 6	GOOD! LAYUP by WOODS, HOLLAND [FB]
14:14	GOOD! JUMPER by KELLY, LUKAS [PNT]	8-4	H 4	
14:14	ASSIST by KENNEDY, LANE			
14:03		11-4	H 7	GOOD! 3PTR by WOOD, TREY
14:03				ASSIST by HAUSER, MATT
13:49	TURNOVER (LOSTBALL) by KENNEDY, LANE			
13:49				STEAL by GOOLSBY, RASHAAD
13:46				TURNOVER (BADPASS) by HAUSER, MATT
13:42				SUB OUT: HAUSER, MATT
13:42				SUB IN: HAMRICK, LAMAR

Time	VISITORS: Evergreen State	Score	Margin	HOME: Portland State
13:42	SUB OUT: FULLER, ELIJAH			
13:42	SUB OUT: KELLY, LUKAS			
13:42	SUB IN: HUDSON, DESMOND			
13:42	SUB IN: WETMORE, MICHAEL			
13:33	MISSED JUMPER by WETMORE, MICHAEL			
13:29				REBOUND (DEF) by GOOLSBY, RASHAAD
13:24				MISSED 3PTR by HAMRICK, LAMAR
13:20				REBOUND (OFF) by GOOLSBY, RASHAAD
13:19		13-4	H 9	GOOD! JUMPER by GOOLSBY, RASHAAD [PNT]
13:10	MISSED JUMPER by BIONGO, GLOIRE			
13:05				REBOUND (DEF) by GOOLSBY, RASHAAD
13:02				MISSED JUMPER by WOODS, HOLLAND
13:02	BLOCK by HUDSON, DESMOND			
12:55				REBOUND (OFF) by HAMRICK, LAMAR
12:45				MISSED LAYUP by WOODS, HOLLAND
12:42	REBOUND (DEF) by BIONGO, GLOIRE			
12:38	MISSED 3PTR by WETMORE, MICHAEL			
12:34				REBOUND (DEF) by GOOLSBY, RASHAAD
12:31				MISSED JUMPER by GOOLSBY, RASHAAD
12:30	REBOUND (DEF) by KENNEDY, LANE			
12:30				FOUL (PERSONAL) by GREELEY, KYLE
12:23				SUB OUT: GREELEY, KYLE
12:23				SUB OUT: WOODS, HOLLAND
12:23				SUB OUT: WOOD, TREY
12:23				SUB IN: NUHU, SAL
12:23				SUB IN: HAUSER, MATT
12:23				SUB IN: BURKE, IAN
12:21	MISSED JUMPER by BIONGO, GLOIRE			
12:21				BLOCK by NUHU, SAL
12:18	REBOUND (OFF) by TEAM			
12:17	SUB OUT: PRICE, LABRANDON			
12:17	SUB IN: FRAZIER, RAVEN			
12:06	TURNOVER (LOSTBALL) by HUDSON, DESMOND			
12:06				STEAL by BURKE, IAN
11:56		16-4	H 12	GOOD! 3PTR by HAUSER, MATT
11:56				ASSIST by HAMRICK, LAMAR
11:49				
11:33	MISSED JUMPER by WETMORE, MICHAEL			
11:25	REBOUND (OFF) by HUDSON, DESMOND			
11:25	MISSED DUNK by HUDSON, DESMOND			
11:22				REBOUND (DEF) by NUHU, SAL
11:20		19-4	H 15	GOOD! 3PTR by HAMRICK, LAMAR [FB]
11:20				ASSIST by HAUSER, MATT
11:10	MISSED JUMPER by WETMORE, MICHAEL			
11:05				REBOUND (DEF) by HAUSER, MATT
10:51		22-4	H 18	GOOD! 3PTR by HAUSER, MATT
10:51				ASSIST by BURKE, IAN
10:39	MISSED LAYUP by BIONGO, GLOIRE			
10:35				REBOUND (DEF) by NUHU, SAL
10:28				MISSED LAYUP by NUHU, SAL
10:25	REBOUND (DEF) by HUDSON, DESMOND			
10:19	MISSED 3PTR by WETMORE, MICHAEL			
10:14	REBOUND (OFF) by KENNEDY, LANE			
10:02	MISSED 3PTR by FRAZIER, RAVEN			
09:57				REBOUND (DEF) by HAMRICK, LAMAR
09:48				MISSED 3PTR by HAMRICK, LAMAR
09:43	REBOUND (DEF) by KENNEDY, LANE			
09:41	FOUL (OFF) by BIONGO, GLOIRE			
09:41	TURNOVER (OFFENSIVE) by BIONGO, GLOIRE			
09:41				SUB OUT: NUHU, SAL
09:41				SUB OUT: GOOLSBY, RASHAAD
09:41				SUB OUT: HAUSER, MATT
09:41				SUB OUT: HAMRICK, LAMAR
09:41				SUB OUT: BURKE, IAN
09:41				SUB IN: GREELEY, KYLE
09:41				SUB IN: WOODS, HOLLAND
09:41				SUB IN: WOOD, TREY
09:41				SUB IN: NIELSEN-SKINNER, JADEN
09:41				SUB IN: WALKER, ALONZO
09:41	SUB OUT: WETMORE, MICHAEL			
09:41	SUB OUT: BIONGO, GLOIRE			
09:41	SUB OUT: KENNEDY, LANE			
09:41	SUB IN: NELSON, DANNY			
09:41	SUB IN: FULLER, ELIJAH			
09:41	SUB IN: KELLY, LUKAS			
09:26	FOUL (PERSONAL) by KELLY, LUKAS			
09:19		24-4	H 20	GOOD! JUMPER by WOODS, HOLLAND
09:12	SUB OUT: KELLY, LUKAS			
09:12	SUB IN: PRICE, LABRANDON			
08:55	GOOD! LAYUP by HUDSON, DESMOND	24-6	H 18	

Time	VISITORS: Evergreen State	Score	Margin	HOME: Portland State
08:46				MISSED 3PTR by WALKER, ALONZO
08:40				REBOUND (OFF) by GREELEY, KYLE
08:39				MISSED JUMPER by GREELEY, KYLE
08:30				REBOUND (OFF) by WALKER, ALONZO
08:30		26-6	H 20	GOOD! LAYUP by WALKER, ALONZO
08:27	TURNOVER (BADPASS) by PRICE, LABRANDON			
08:27				STEAL by WALKER, ALONZO
08:21				MISSED LAYUP by WALKER, ALONZO
08:13				REBOUND (OFF) by WALKER, ALONZO
08:13				MISSED LAYUP by WALKER, ALONZO
08:09	REBOUND (DEF) by FRAZIER, RAVEN			
08:07	MISSED 3PTR by NELSON, DANNY			
08:03				REBOUND (DEF) by WALKER, ALONZO
08:01		29-6	H 23	GOOD! 3PTR by NIELSEN-SKINNER, JADEN [FB]
08:01				ASSIST by WOODS, HOLLAND
07:42	MISSED 3PTR by PRICE, LABRANDON			
07:38	REBOUND (OFF) by FULLER, ELIJAH			
07:37	GOOD! JUMPER by FULLER, ELIJAH [PNT]	29-8	H 21	
07:23				MISSED 3PTR by GREELEY, KYLE
07:21	REBOUND (DEF) by HUDSON, DESMOND			
07:21				FOUL (PERSONAL) by WOOD, TREY
07:18				SUB OUT: GREELEY, KYLE
07:18				SUB IN: BURKE, IAN
07:18	SUB OUT: HUDSON, DESMOND			
07:18	SUB IN: GRANDBERRY, ANTHONY			
07:14	MISSED 3PTR by FULLER, ELIJAH			
07:09				REBOUND (DEF) by WOOD, TREY
07:04		31-8	H 23	GOOD! JUMPER by WOODS, HOLLAND
07:04				ASSIST by NIELSEN-SKINNER, JADEN
07:00				SUB OUT: NIELSEN-SKINNER, JADEN
07:00				SUB IN: HAUSER, MATT
06:44	GOOD! 3PTR by FULLER, ELIJAH	31-11	H 20	
06:44	ASSIST by FRAZIER, RAVEN			
06:34				MISSED 3PTR by BURKE, IAN
06:31	REBOUND (DEF) by NELSON, DANNY			
06:31				SUB OUT: WALKER, ALONZO
06:31				SUB IN: GOOLSBY, RASHAAD
06:31				FOUL (PERSONAL) by WOODS, HOLLAND
06:26	TURNOVER (LOSTBALL) by PRICE, LABRANDON			
06:22				SUB OUT: WOOD, TREY
06:22				SUB IN: NUHU, SAL
06:07		33-11	H 22	GOOD! LAYUP by HAUSER, MATT [PNT]
05:55	MISSED JUMPER by FULLER, ELIJAH			
05:55				BLOCK by NUHU, SAL
05:48	REBOUND (OFF) by FULLER, ELIJAH			
05:46	GOOD! 3PTR by FRAZIER, RAVEN	33-14	H 19	
05:46	ASSIST by FULLER, ELIJAH			
05:40				MISSED 3PTR by HAUSER, MATT
05:36				REBOUND (OFF) by BURKE, IAN
05:31		36-14	H 22	GOOD! 3PTR by HAUSER, MATT
05:31				ASSIST by WOODS, HOLLAND
05:08	MISSED JUMPER by FULLER, ELIJAH			
05:04				REBOUND (DEF) by GOOLSBY, RASHAAD
04:58				TURNOVER (LOSTBALL) by NUHU, SAL
04:58	STEAL by FRAZIER, RAVEN			
04:49	MISSED 3PTR by NELSON, DANNY			
04:45	REBOUND (OFF) by FULLER, ELIJAH			
04:39	MISSED JUMPER by GRANDBERRY, ANTHONY			
04:35				REBOUND (DEF) by HAUSER, MATT
04:32	FOUL (PERSONAL) by NELSON, DANNY			
04:32				SUB OUT: NUHU, SAL
04:32				SUB OUT: WOODS, HOLLAND
04:32				SUB OUT: BURKE, IAN
04:32				SUB IN: WOOD, TREY
04:32				SUB IN: NIELSEN-SKINNER, JADEN
04:32				SUB IN: HAMRICK, LAMAR
04:32	SUB OUT: FULLER, ELIJAH			
04:32	SUB IN: HUDSON, DESMOND			
04:20		38-14	H 24	GOOD! LAYUP by WOOD, TREY
04:20				ASSIST by NIELSEN-SKINNER, JADEN
04:07	FOUL (OFF) by FRAZIER, RAVEN			
04:07	TURNOVER (OFFENSIVE) by FRAZIER, RAVEN			
03:55		40-14	H 26	GOOD! LAYUP by WOOD, TREY [PNT]
03:55				ASSIST by HAUSER, MATT
03:46	GOOD! 3PTR by PRICE, LABRANDON	40-17	H 23	
03:46	ASSIST by FRAZIER, RAVEN			
03:39		42-17	H 25	GOOD! LAYUP by WOOD, TREY [FB]
03:39				ASSIST by HAUSER, MATT
03:39				

Time	VISITORS: Evergreen State	Score	Margin	HOME: Portland State
03:31				SUB OUT: NIELSEN-SKINNER, JADEN
03:31				SUB IN: WOODS, HOLLAND
03:31	SUB OUT: NELSON, DANNY			
03:31	SUB OUT: GRANDBERRY, ANTHONY			
03:31	SUB IN: BIONGO, GLOIRE			
03:31	SUB IN: KENNEDY, LANE			
03:13	MISSED LAYUP by HUDSON, DESMOND			
03:09				REBOUND (DEF) by GOOLSBY, RASHAAD
02:53				MISSED 3PTR by HAMRICK, LAMAR
02:49	REBOUND (DEF) by PRICE, LABRANDON			
02:46	GOOD! JUMPER by FRAZIER, RAVEN [FB]	42-19	H 23	
02:26		45-19	H 26	GOOD! 3PTR by WOOD, TREY
02:26				ASSIST by GOOLSBY, RASHAAD
02:15	MISSED 3PTR by PRICE, LABRANDON			
02:11				REBOUND (DEF) by HAUSER, MATT
02:07				MISSED JUMPER by WOODS, HOLLAND
02:06	REBOUND (DEF) by TEAM			
02:06				SUB OUT: GOOLSBY, RASHAAD
02:06				SUB OUT: HAUSER, MATT
02:06				SUB IN: BURKE, IAN
02:06				SUB IN: WALKER, ALONZO
02:06	SUB OUT: FRAZIER, RAVEN			
02:06	SUB IN: WETMORE, MICHAEL			
01:52	GOOD! LAYUP by BIONGO, GLOIRE	45-21	H 24	
01:52	ASSIST by WETMORE, MICHAEL			
01:34				MISSED 3PTR by WOOD, TREY
01:29				REBOUND (OFF) by WALKER, ALONZO
01:28				MISSED JUMPER by WALKER, ALONZO
01:27	REBOUND (DEF) by PRICE, LABRANDON			
01:27				FOUL (PERSONAL) by HAMRICK, LAMAR
01:27				SUB OUT: HAMRICK, LAMAR
01:27				SUB IN: GOOLSBY, RASHAAD
01:04	MISSED JUMPER by PRICE, LABRANDON			
01:00				REBOUND (DEF) by GOOLSBY, RASHAAD
00:47		48-21	H 27	GOOD! 3PTR by WOODS, HOLLAND
00:38	MISSED JUMPER by HUDSON, DESMOND			
00:38				BLOCK by WOOD, TREY
00:33				REBOUND (DEF) by WOODS, HOLLAND
00:33	FOUL (PERSONAL) by KENNEDY, LANE			
00:33		49-21	H 28	GOOD! FT by WOODS, HOLLAND [FB]
00:33	TIMEOUT 30SEC			
00:33		50-21	H 29	GOOD! FT by WOODS, HOLLAND [FB]
00:33				SUB OUT: WOOD, TREY
00:33				SUB IN: HAUSER, MATT
00:17	MISSED JUMPER by BIONGO, GLOIRE			
00:17				BLOCK by WALKER, ALONZO
00:11				REBOUND (DEF) by WOODS, HOLLAND
00:06				MISSED 3PTR by WOODS, HOLLAND
00:00				REBOUND (OFF) by TEAM

Evergreen State 21, Portland State 50

Points from (This Period)	ESC	PSU
In the Paint	6	16
Off Turns	0	9
2nd Chance	5	8
Fast Break	2	14
Bench	2	20

Official Box Score
Evergreen State vs Portland State
Second Half Statistics Only
October 30, 2019 at Viking Pavilion (Stoller) - Portland



Evergreen State 25

No.	Player	S	Pts	FG	3FG	FT	OR	DR	TR	PF	A	TO	Blk	Stl	Min	+/-
00	HUDSON, DESMOND	*	4	2-4	0-0	0-0	1	1	2	1	0	1	2	1	14	-16
04	FRAZIER, RAVEN	*	4	2-2	0-0	0-0	0	1	1	1	2	4	0	1	11	-11
11	PRICE, LABRANDON	*	2	1-2	0-1	0-0	0	1	1	2	3	3	0	0	8	-8
20	FULLER, ELIJAH	*	0	0-2	0-1	0-0	0	0	0	1	1	1	0	0	7	-6
24	KELLY, LUKAS	*	2	1-1	0-0	0-0	0	1	1	3	0	2	0	0	10	-14
01	WETMORE, MICHAEL		1	0-2	0-0	1-3	0	2	2	0	0	5	0	0	9	-17
02	BIONGO, GLOIRE		10	3-3	2-2	2-2	1	1	2	2	0	4	0	0	12	-18
03	NELSON, DANNY		2	1-2	0-0	0-1	0	3	3	1	0	1	0	0	11	-21
23	KENNEDY, LANE		0	0-0	0-0	0-0	0	1	1	0	0	1	0	0	11	-18
34	GRANDBERRY, ANTHONY		0	0-3	0-3	0-0	0	0	0	0	0	1	0	0	7	-11
	TEAM						0	2	2	0		0				
TOTALS			25	10-21	2-7	3-6	2	13	15	11	6	23	2	2	100	

Shooting By Period

Period	FG	FG%	3FG	3FG%	FT	FT%
2nd Half	10-21	48%	2-7	29%	3-6	50%
Game	19-60	31.7%	5-20	25.0%	3-6	50.0%

Deadball Rebounds: 1,0

Last FG Half: ESC -

Portland State 53

No.	Player	S	Pts	FG	3FG	FT	OR	DR	TR	PF	A	TO	Blk	Stl	Min	+/-
00	NUHU, SAL	F	0	0-0	0-0	0-0	0	0	0	0	0	0	0	0	0	0
10	HAUSER, MATT	G	7	3-4	1-2	0-0	1	0	1	0	1	0	0	0	8	6
11	WOODS, HOLLAND	G	4	0-4	0-3	4-4	0	1	1	1	4	1	0	1	11	17
15	BURKE, IAN	G	4	2-5	0-3	0-0	3	1	4	3	1	0	0	1	13	22
22	WALKER, ALONZO	F	6	3-10	0-1	0-0	6	0	6	2	0	1	0	2	11	10
03	GOOLSBY, RASHAAD	F	6	3-6	0-1	0-2	3	1	4	0	2	0	0	2	12	19
05	GREELEY, KYLE	G	9	3-7	0-2	3-4	1	1	2	1	1	1	0	2	12	16
12	WOOD, TREY	F	4	2-3	0-0	0-0	0	1	1	0	0	1	0	2	11	19
13	NIELSEN-SKINNER, JADEN	G	3	1-4	1-3	0-0	0	0	0	2	0	2	0	1	11	17
14	HAMRICK, LAMAR	G	10	4-6	1-2	1-2	0	5	5	1	1	0	0	2	11	14
	TEAM						1	1	2	0		1				
TOTALS			53	21-49	3-17	8-12	15	11	26	10	10	7	0	13	100	

Shooting By Period

Period	FG	FG%	3FG	3FG%	FT	FT%
2nd Half	21-49	43%	3-17	18%	8-12	67%
Game	40-94	42.6%	12-38	31.6%	11-16	68.8%

Deadball Rebounds: 5,0

Last FG Half: PSU -

Game Notes:

Officials: Kevin Brill, Jeff Flowers, Rick Batsell
 Attendance: 501

Start Time: 10:34 PM ET
 End Time: 12:20 AM ET
 Game Duration: 1:45

Score	1st	2nd	TOT
ESC	21	25	46
PSU	50	53	103

Points from (This Period)	ESC	PSU
In the Paint	10	34
Off Turns	7	30
2nd Chance	3	17
Fast Break	5	13
Bench	13	32

Official Play-By-Play
Evergreen State vs Portland State
Second Half
October 30, 2019 at Viking Pavilion (Stoller) - Portland



Period 2

Starters:

Evergreen State: 0 HUDSON, DESMOND; 4 FRAZIER, RAVEN; 11 PRICE, LABRANDON; 20 FULLER, ELIJAH; 24 KELLY, LUKAS;

Portland State: 0 NUHU, SAL (F); 10 HAUSER, MATT (G); 11 WOODS, HOLLAND (G); 15 BURKE, IAN (G); 22 WALKER, ALONZO (F);

Time	VISITORS: Evergreen State	Score	Margin	HOME: Portland State
20:00				SUB OUT: GOOLSBY, RASHAAD
20:00				SUB IN: NUHU, SAL
20:00	SUB OUT: WETMORE, MICHAEL			
20:00	SUB OUT: BIONGO, GLOIRE			
20:00	SUB OUT: KENNEDY, LANE			
20:00	SUB IN: FRAZIER, RAVEN			
20:00	SUB IN: FULLER, ELIJAH			
20:00	SUB IN: KELLY, LUKAS			
20:00				SUB OUT: NUHU, SAL
20:00				SUB IN: WOOD, TREY
19:51				MISSED JUMPER by WALKER, ALONZO
19:47	REBOUND (DEF) by KELLY, LUKAS			
19:43	FOUL (OFF) by PRICE, LABRANDON			
19:43	TURNOVER (OFFENSIVE) by PRICE, LABRANDON			
19:30				MISSED JUMPER by WALKER, ALONZO
19:30	BLOCK by HUDSON, DESMOND			
19:24				REBOUND (OFF) by WALKER, ALONZO
19:21				MISSED JUMPER by WALKER, ALONZO
19:13				REBOUND (OFF) by WALKER, ALONZO
19:13				MISSED LAYUP by WALKER, ALONZO
19:11				REBOUND (OFF) by WALKER, ALONZO
19:11				MISSED LAYUP by WALKER, ALONZO
19:09				REBOUND (OFF) by WALKER, ALONZO
19:00		52-21	H 31	GOOD! LAYUP by WALKER, ALONZO
18:53	GOOD! JUMPER by KELLY, LUKAS [PNT]	52-23	H 29	
18:47		54-23	H 31	GOOD! JUMPER by HAUSER, MATT [PNT]
18:47	GOOD! JUMPER by PRICE, LABRANDON	54-25	H 29	
18:47		56-25	H 31	GOOD! LAYUP by WOOD, TREY
18:17	TURNOVER (BADPASS) by FRAZIER, RAVEN			
18:17				STEAL by WOOD, TREY
18:08	FOUL (PERSONAL) by HUDSON, DESMOND			
18:08		57-25	H 32	GOOD! FT by WOODS, HOLLAND
18:08		58-25	H 33	GOOD! FT by WOODS, HOLLAND
18:08				SUB OUT: BURKE, IAN
18:08				SUB IN: GREELEY, KYLE
17:55	MISSED 3PTR by PRICE, LABRANDON			
17:52				REBOUND (DEF) by TEAM
17:52				TIMEOUT 30SEC
17:34				TURNOVER (BADPASS) by WALKER, ALONZO
17:34	STEAL by HUDSON, DESMOND			
17:27	GOOD! LAYUP by FRAZIER, RAVEN [FB/PNT]	58-27	H 31	
17:27	ASSIST by FULLER, ELIJAH			
17:08				MISSED 3PTR by WOODS, HOLLAND
17:04	REBOUND (DEF) by PRICE, LABRANDON			
17:02	GOOD! LAYUP by FRAZIER, RAVEN [FB]	58-29	H 29	
17:02	ASSIST by PRICE, LABRANDON			
16:53				MISSED 3PTR by HAUSER, MATT
16:49				REBOUND (OFF) by HAUSER, MATT
16:46		60-29	H 31	GOOD! LAYUP by GREELEY, KYLE [PNT]
16:46				ASSIST by HAUSER, MATT
16:34	TURNOVER (TRAVEL) by KELLY, LUKAS			
16:34				SUB OUT: WALKER, ALONZO
16:34				SUB IN: GOOLSBY, RASHAAD
16:11				TURNOVER (LOSTBALL) by WOOD, TREY
16:05	TURNOVER (BADPASS) by PRICE, LABRANDON			
15:55		62-29	H 33	GOOD! LAYUP by HAUSER, MATT [PNT]
15:43	GOOD! DUNK by HUDSON, DESMOND [PNT]	62-31	H 31	
15:43	ASSIST by FRAZIER, RAVEN			
15:19	FOUL (PERSONAL) by FRAZIER, RAVEN			
15:19				
15:19				SUB OUT: HAUSER, MATT
15:19				SUB IN: BURKE, IAN
15:19	SUB OUT: HUDSON, DESMOND			
15:19	SUB OUT: FRAZIER, RAVEN			
15:19	SUB OUT: PRICE, LABRANDON			
15:19	SUB OUT: FULLER, ELIJAH			
15:19	SUB IN: WETMORE, MICHAEL			
15:19	SUB IN: BIONGO, GLOIRE			
15:19	SUB IN: NELSON, DANNY			
15:19	SUB IN: KENNEDY, LANE			

Time	VISITORS: Evergreen State	Score	Margin	HOME: Portland State
15:19		63-31	H 32	GOOD! FT by WOODS, HOLLAND
15:19		64-31	H 33	GOOD! FT by WOODS, HOLLAND
15:03	TURNOVER (BADPASS) by BIONGO, GLOIRE			
15:03				STEAL by WOODS, HOLLAND
14:57		66-31	H 35	GOOD! DUNK by GOOLSBY, RASHAAD [FB]
14:57				ASSIST by WOODS, HOLLAND
14:48	TURNOVER (LOSTBALL) by WETMORE, MICHAEL			
14:48				STEAL by GOOLSBY, RASHAAD
14:41				MISSED LAYUP by WOODS, HOLLAND
14:38				REBOUND (OFF) by GOOLSBY, RASHAAD
14:38				MISSED LAYUP by GOOLSBY, RASHAAD
14:38				REBOUND (OFF) by GOOLSBY, RASHAAD
14:38	FOUL (PERSONAL) by KELLY, LUKAS			
14:38		67-31	H 36	GOOD! FT by GREELEY, KYLE
14:38		68-31	H 37	GOOD! FT by GREELEY, KYLE
14:38				SUB OUT: WOOD, TREY
14:38				SUB IN: WALKER, ALONZO
14:14				FOUL (PERSONAL) by WALKER, ALONZO
14:14	GOOD! FT by BIONGO, GLOIRE	68-32	H 36	
14:14	GOOD! FT by BIONGO, GLOIRE	68-33	H 35	
13:43				MISSED 3PTR by GOOLSBY, RASHAAD
13:42				REBOUND (OFF) by TEAM
13:42				TURNOVER (SHOTCLOCK) by TEAM
13:42				SUB OUT: GREELEY, KYLE
13:42				SUB IN: HAMRICK, LAMAR
13:31				FOUL (PERSONAL) by BURKE, IAN
13:31	SUB OUT: KELLY, LUKAS			
13:31	SUB IN: HUDSON, DESMOND			
13:13	GOOD! JUMPER by NELSON, DANNY	68-35	H 33	
12:56				MISSED 3PTR by BURKE, IAN
12:54	REBOUND (DEF) by NELSON, DANNY			
12:54				FOUL (PERSONAL) by BURKE, IAN
12:54				SUB OUT: BURKE, IAN
12:54				SUB IN: HAUSER, MATT
12:48	MISSED JUMPER by WETMORE, MICHAEL			
12:44				REBOUND (DEF) by HAMRICK, LAMAR
12:41				MISSED 3PTR by WOODS, HOLLAND
12:36	REBOUND (DEF) by HUDSON, DESMOND			
12:33	TURNOVER (TRAVEL) by HUDSON, DESMOND			
12:12		70-35	H 35	GOOD! LAYUP by HAMRICK, LAMAR
12:03	TURNOVER (BADPASS) by WETMORE, MICHAEL			
12:03				STEAL by HAMRICK, LAMAR
11:57		72-35	H 37	GOOD! LAYUP by HAMRICK, LAMAR [FB]
11:45	TURNOVER (BADPASS) by BIONGO, GLOIRE			
11:45				STEAL by WALKER, ALONZO
11:37		75-35	H 40	GOOD! 3PTR by HAUSER, MATT [FB]
11:37				ASSIST by WOODS, HOLLAND
11:31				FOUL (PERSONAL) by WOODS, HOLLAND
11:31				
11:25				SUB OUT: WOODS, HOLLAND
11:25				SUB IN: NIELSEN-SKINNER, JADEN
11:25	SUB OUT: WETMORE, MICHAEL			
11:25	SUB OUT: NELSON, DANNY			
11:25	SUB IN: FRAZIER, RAVEN			
11:25	SUB IN: GRANDBERRY, ANTHONY			
11:10	FOUL (OFF) by BIONGO, GLOIRE			
11:10	TURNOVER (OFFENSIVE) by BIONGO, GLOIRE			
10:58				MISSED JUMPER by WALKER, ALONZO
10:58	BLOCK by HUDSON, DESMOND			
10:57	REBOUND (DEF) by TEAM			
10:47	MISSED 3PTR by GRANDBERRY, ANTHONY			
10:43				REBOUND (DEF) by HAMRICK, LAMAR
10:39				TURNOVER (OTHER) by NIELSEN-SKINNER, JADEN
10:24	MISSED 3PTR by GRANDBERRY, ANTHONY			
10:19	REBOUND (OFF) by BIONGO, GLOIRE			
10:16	GOOD! 3PTR by BIONGO, GLOIRE	75-38	H 37	
10:16	ASSIST by FRAZIER, RAVEN			
10:03				MISSED 3PTR by NIELSEN-SKINNER, JADEN
10:00	REBOUND (DEF) by TEAM			
10:00				SUB OUT: GOOLSBY, RASHAAD
10:00				SUB OUT: HAUSER, MATT
10:00				SUB IN: WOODS, HOLLAND
10:00				SUB IN: WOOD, TREY
09:46	TURNOVER (LOSTBALL) by BIONGO, GLOIRE			
09:46				STEAL by WALKER, ALONZO
09:39				MISSED 3PTR by WALKER, ALONZO
09:33	REBOUND (DEF) by BIONGO, GLOIRE			
09:19	MISSED LAYUP by HUDSON, DESMOND			
09:12	REBOUND (OFF) by HUDSON, DESMOND			
09:12	MISSED LAYUP by HUDSON, DESMOND			

Time	VISITORS: Evergreen State	Score	Margin	HOME: Portland State
09:11				REBOUND (DEF) by WOODS, HOLLAND
09:11		77-38	H 39	GOOD! DUNK by HAMRICK, LAMAR [FB/PNT]
09:11				ASSIST by WOODS, HOLLAND
09:11				TIMEOUT 30SEC
09:10	TURNOVER (BADPASS) by KENNEDY, LANE			
09:03				TURNOVER (BADPASS) by WOODS, HOLLAND
09:03	STEAL by FRAZIER, RAVEN			
08:57	TURNOVER (BADPASS) by FRAZIER, RAVEN			
08:57				STEAL by WOOD, TREY
08:51				MISSED 3PTR by WOODS, HOLLAND
08:43				REBOUND (OFF) by WALKER, ALONZO
08:43		79-38	H 41	GOOD! DUNK by WALKER, ALONZO
08:43				FOUL (PERSONAL) by WALKER, ALONZO
08:40	MISSED 3PTR by FULLER, ELIJAH			
08:34				REBOUND (DEF) by WOOD, TREY
08:27				MISSED JUMPER by WOOD, TREY
08:23	REBOUND (DEF) by FRAZIER, RAVEN			
08:20	TURNOVER (TRAVEL) by FRAZIER, RAVEN			
08:20				SUB OUT: HAMRICK, LAMAR
08:20				SUB IN: BURKE, IAN
08:20	SUB OUT: HUDSON, DESMOND			
08:20	SUB OUT: BIONGO, GLOIRE			
08:20	SUB IN: FULLER, ELIJAH			
08:20	SUB IN: KELLY, LUKAS			
08:05				MISSED 3PTR by NIELSEN-SKINNER, JADEN
08:00				REBOUND (OFF) by BURKE, IAN
07:49		81-38	H 43	GOOD! DUNK by WOOD, TREY [PNT]
07:49				ASSIST by WOODS, HOLLAND
07:46				FOUL (PERSONAL) by NIELSEN-SKINNER, JADEN
07:46	SUB OUT: GRANDBERRY, ANTHONY			
07:46	SUB IN: PRICE, LABRANDON			
07:46				
07:46				SUB OUT: WOODS, HOLLAND
07:46				SUB IN: GREELEY, KYLE
07:20	MISSED JUMPER by FULLER, ELIJAH			
07:16				REBOUND (DEF) by GREELEY, KYLE
07:11				MISSED 3PTR by GREELEY, KYLE
07:05				REBOUND (OFF) by WALKER, ALONZO
07:05		83-38	H 45	GOOD! DUNK by WALKER, ALONZO
06:58				SUB OUT: WALKER, ALONZO
06:58				SUB IN: GOOLSBY, RASHAAD
06:45	TURNOVER (BADPASS) by FULLER, ELIJAH			
06:45				STEAL by GREELEY, KYLE
06:36	FOUL (PERSONAL) by FULLER, ELIJAH			
06:36	SUB OUT: FULLER, ELIJAH			
06:36	SUB IN: NELSON, DANNY			
06:23		85-38	H 47	GOOD! JUMPER by GREELEY, KYLE
06:23				ASSIST by BURKE, IAN
06:14	TURNOVER (LOSTBALL) by PRICE, LABRANDON			
06:14				STEAL by GREELEY, KYLE
06:11		87-38	H 49	GOOD! JUMPER by GOOLSBY, RASHAAD [FB]
06:11	SUB OUT: PRICE, LABRANDON			
06:11	SUB IN: HUDSON, DESMOND			
05:49	TURNOVER (BADPASS) by FRAZIER, RAVEN			
05:49				STEAL by GOOLSBY, RASHAAD
05:46	FOUL (PERSONAL) by KELLY, LUKAS			
05:46				MISSED FT by GOOLSBY, RASHAAD
05:46				REBOUND (OFF) by TEAM
05:46	SUB OUT: KENNEDY, LANE			
05:46	SUB IN: PRICE, LABRANDON			
05:46				MISSED FT by GOOLSBY, RASHAAD
05:43				REBOUND (OFF) by TEAM
05:36				SUB OUT: GOOLSBY, RASHAAD
05:36				SUB IN: HAMRICK, LAMAR
05:35				MISSED JUMPER by GREELEY, KYLE
05:31	REBOUND (DEF) by NELSON, DANNY			
05:17	FOUL (OFF) by KELLY, LUKAS			
05:17	TURNOVER (OFFENSIVE) by KELLY, LUKAS			
05:17	SUB OUT: KELLY, LUKAS			
05:17	SUB IN: WETMORE, MICHAEL			
05:10				MISSED JUMPER by NIELSEN-SKINNER, JADEN
05:07	REBOUND (DEF) by NELSON, DANNY			
05:07	SUB OUT: FRAZIER, RAVEN			
05:07	SUB IN: BIONGO, GLOIRE			
05:00	GOOD! LAYUP by BIONGO, GLOIRE	87-40	H 47	
05:00	ASSIST by PRICE, LABRANDON			
04:28				MISSED 3PTR by BURKE, IAN
04:24				REBOUND (OFF) by GREELEY, KYLE
04:24	FOUL (PERSONAL) by PRICE, LABRANDON			
04:24				MISSED FT by GREELEY, KYLE

Time	VISITORS: Evergreen State	Score	Margin	HOME: Portland State
04:24				REBOUND (OFF) by TEAM
04:24		88-40	H 48	GOOD! FT by GREELEY, KYLE
04:24				SUB OUT: WOOD, TREY
04:24				SUB IN: GOOLSBY, RASHAAD
04:16	GOOD! JUMPER by HUDSON, DESMOND	88-42	H 46	
04:16	ASSIST by PRICE, LABRANDON			
04:07				MISSED 3PTR by BURKE, IAN
04:04	REBOUND (DEF) by WETMORE, MICHAEL			
04:04				FOUL (PERSONAL) by BURKE, IAN
04:04	MISSED FT by WETMORE, MICHAEL			
04:04				REBOUND (DEF) by BURKE, IAN
03:57		91-42	H 49	GOOD! 3PTR by HAMRICK, LAMAR
03:57				ASSIST by GREELEY, KYLE
03:46	SUB OUT: PRICE, LABRANDON			
03:46	SUB IN: GRANDBERRY, ANTHONY			
03:41				
03:28	TURNOVER (LOSTBALL) by WETMORE, MICHAEL			
03:23				MISSED 3PTR by HAMRICK, LAMAR
03:20				REBOUND (OFF) by BURKE, IAN
03:18		93-42	H 51	GOOD! JUMPER by BURKE, IAN [PNT]
03:12	TURNOVER (BADPASS) by GRANDBERRY, ANTHONY			
03:12				STEAL by NIELSEN-SKINNER, JADEN
03:06				MISSED DUNK by GOOLSBY, RASHAAD
03:04				REBOUND (OFF) by BURKE, IAN
03:00				TURNOVER (BADPASS) by NIELSEN-SKINNER, JADEN
03:00				FOUL (PERSONAL) by HAMRICK, LAMAR
03:00	MISSED FT by NELSON, DANNY			
02:59				REBOUND (DEF) by HAMRICK, LAMAR
02:45		96-42	H 54	GOOD! 3PTR by NIELSEN-SKINNER, JADEN
02:45				ASSIST by GOOLSBY, RASHAAD
02:35	TIMEOUT 30SEC			
02:30	TURNOVER (LOSTBALL) by WETMORE, MICHAEL			
02:30				STEAL by HAMRICK, LAMAR
02:23		98-42	H 56	GOOD! LAYUP by BURKE, IAN [FB]
02:23				ASSIST by HAMRICK, LAMAR
02:20	TURNOVER (BADPASS) by WETMORE, MICHAEL			
02:20				STEAL by BURKE, IAN
02:20				FOUL (OFF) by GREELEY, KYLE
02:20				TURNOVER (OFFENSIVE) by GREELEY, KYLE
02:14	FOUL (OFF) by NELSON, DANNY			
02:14	TURNOVER (OFFENSIVE) by NELSON, DANNY			
01:47	FOUL (PERSONAL) by BIONGO, GLOIRE			
01:47				MISSED FT by HAMRICK, LAMAR
01:47				REBOUND (OFF) by TEAM
01:47		99-42	H 57	GOOD! FT by HAMRICK, LAMAR
01:40				FOUL (PERSONAL) by NIELSEN-SKINNER, JADEN
01:40	MISSED FT by WETMORE, MICHAEL			
01:40	REBOUND (OFF) by TEAM			
01:40	SUB OUT: HUDSON, DESMOND			
01:40	SUB IN: KENNEDY, LANE			
01:40	GOOD! FT by WETMORE, MICHAEL [FB]	99-43	H 56	
01:26		101-43	H 58	GOOD! JUMPER by GREELEY, KYLE [PNT]
01:26				ASSIST by GOOLSBY, RASHAAD
01:18	MISSED LAYUP by WETMORE, MICHAEL			
01:14				REBOUND (DEF) by HAMRICK, LAMAR
01:12				MISSED 3PTR by GREELEY, KYLE
01:06	REBOUND (DEF) by KENNEDY, LANE			
01:03	MISSED JUMPER by NELSON, DANNY			
00:59				REBOUND (DEF) by GOOLSBY, RASHAAD
00:56				MISSED JUMPER by HAMRICK, LAMAR
00:48				REBOUND (OFF) by GOOLSBY, RASHAAD
00:48		103-43	H 60	GOOD! LAYUP by GOOLSBY, RASHAAD
00:42	MISSED 3PTR by GRANDBERRY, ANTHONY			
00:35				REBOUND (DEF) by HAMRICK, LAMAR
00:23				MISSED JUMPER by GREELEY, KYLE
00:14	REBOUND (DEF) by WETMORE, MICHAEL			
00:10	GOOD! 3PTR by BIONGO, GLOIRE	103-46	H 57	

Evergreen State 46, Portland State 103

Points from (This Period)	ESC	PSU
In the Paint	10	34
Off Turns	7	30
2nd Chance	3	17
Fast Break	5	13
Bench	13	32

**Official Scoring/Possession Reference Chart
Evergreen State vs Portland State
Period 1
October 30, 2019 at Viking Pavilion (Stoller) - Portland**



Period 1

Starters:

Evergreen State: 0 HUDSON, DESMOND; 4 FRAZIER, RAVEN; 11 PRICE, LABRANDON; 20 FULLER, ELIJAH; 24 KELLY, LUKAS;
Portland State: 0 NUHU, SAL (F); 10 HAUSER, MATT (G); 11 WOODS, HOLLAND (G); 15 BURKE, IAN (G); 22 WALKER, ALONZO (F);

Time	VISITORS: Evergreen State	Score	Margin	HOME: Portland State
18:53		1-0	H 1	GOOD! FT by BURKE, IAN
18:09	GOOD! JUMPER by FRAZIER, RAVEN	1-2	V 1	
16:51		4-2	H 2	GOOD! 3PTR by HAUSER, MATT
15:25		6-2	H 4	GOOD! LAYUP by HAUSER, MATT [FB]
14:40		8-2	H 6	GOOD! LAYUP by WOODS, HOLLAND [FB]
14:14	GOOD! JUMPER by KELLY, LUKAS [PNT]	8-4	H 4	
14:03		11-4	H 7	GOOD! 3PTR by WOOD, TREY
13:19		13-4	H 9	GOOD! JUMPER by GOOLSBY, RASHAAD [PNT]
11:56		16-4	H 12	GOOD! 3PTR by HAUSER, MATT
11:20		19-4	H 15	GOOD! 3PTR by HAMRICK, LAMAR [FB]
10:51		22-4	H 18	GOOD! 3PTR by HAUSER, MATT
09:19		24-4	H 20	GOOD! JUMPER by WOODS, HOLLAND
08:55	GOOD! LAYUP by HUDSON, DESMOND	24-6	H 18	
08:30		26-6	H 20	GOOD! LAYUP by WALKER, ALONZO
08:01		29-6	H 23	GOOD! 3PTR by NIELSEN-SKINNER, JADEN [FB]
07:37	GOOD! JUMPER by FULLER, ELIJAH [PNT]	29-8	H 21	
07:04		31-8	H 23	GOOD! JUMPER by WOODS, HOLLAND
06:44	GOOD! 3PTR by FULLER, ELIJAH	31-11	H 20	
06:07		33-11	H 22	GOOD! LAYUP by HAUSER, MATT [PNT]
05:46	GOOD! 3PTR by FRAZIER, RAVEN	33-14	H 19	
05:31		36-14	H 22	GOOD! 3PTR by HAUSER, MATT
04:20		38-14	H 24	GOOD! LAYUP by WOOD, TREY
03:55		40-14	H 26	GOOD! LAYUP by WOOD, TREY [PNT]
03:46	GOOD! 3PTR by PRICE, LABRANDON	40-17	H 23	
03:39		42-17	H 25	GOOD! LAYUP by WOOD, TREY [FB]
02:46	GOOD! JUMPER by FRAZIER, RAVEN [FB]	42-19	H 23	
02:26		45-19	H 26	GOOD! 3PTR by WOOD, TREY
01:52	GOOD! LAYUP by BIONGO, GLOIRE	45-21	H 24	
00:47		48-21	H 27	GOOD! 3PTR by WOODS, HOLLAND
00:33		49-21	H 28	GOOD! FT by WOODS, HOLLAND [FB]
00:33		50-21	H 29	GOOD! FT by WOODS, HOLLAND [FB]

Evergreen State 21, Portland State 50

Official Scoring/Possession Reference Chart
Evergreen State vs Portland State
Period 2
October 30, 2019 at Viking Pavilion (Stoller) - Portland



Period 2

Starters:

Evergreen State: 0 HUDSON, DESMOND; 4 FRAZIER, RAVEN; 11 PRICE, LABRANDON; 20 FULLER, ELIJAH; 24 KELLY, LUKAS;
Portland State: 0 NUHU, SAL (F); 10 HAUSER, MATT (G); 11 WOODS, HOLLAND (G); 15 BURKE, IAN (G); 22 WALKER, ALONZO (F);

Time	VISITORS: Evergreen State	Score	Margin	HOME: Portland State
19:00		52-21	H 31	GOOD! LAYUP by WALKER, ALONZO
18:53	GOOD! JUMPER by KELLY, LUKAS [PNT]	52-23	H 29	
18:47		54-23	H 31	GOOD! JUMPER by HAUSER, MATT [PNT]
18:47	GOOD! JUMPER by PRICE, LABRANDON	54-25	H 29	
18:47		56-25	H 31	GOOD! LAYUP by WOOD, TREY
18:08		57-25	H 32	GOOD! FT by WOODS, HOLLAND
18:08		58-25	H 33	GOOD! FT by WOODS, HOLLAND
17:27	GOOD! LAYUP by FRAZIER, RAVEN [FB/PNT]	58-27	H 31	
17:02	GOOD! LAYUP by FRAZIER, RAVEN [FB]	58-29	H 29	
16:46		60-29	H 31	GOOD! LAYUP by GREELEY, KYLE [PNT]
15:55		62-29	H 33	GOOD! LAYUP by HAUSER, MATT [PNT]
15:43	GOOD! DUNK by HUDSON, DESMOND [PNT]	62-31	H 31	
15:19		63-31	H 32	GOOD! FT by WOODS, HOLLAND
15:19		64-31	H 33	GOOD! FT by WOODS, HOLLAND
14:57		66-31	H 35	GOOD! DUNK by GOOLSBY, RASHAAD [FB]
14:38		67-31	H 36	GOOD! FT by GREELEY, KYLE
14:38		68-31	H 37	GOOD! FT by GREELEY, KYLE
14:14	GOOD! FT by BIONGO, GLOIRE	68-32	H 36	
14:14	GOOD! FT by BIONGO, GLOIRE	68-33	H 35	
13:13	GOOD! JUMPER by NELSON, DANNY	68-35	H 33	
12:12		70-35	H 35	GOOD! LAYUP by HAMRICK, LAMAR
11:57		72-35	H 37	GOOD! LAYUP by HAMRICK, LAMAR [FB]
11:37		75-35	H 40	GOOD! 3PTR by HAUSER, MATT [FB]
10:16	GOOD! 3PTR by BIONGO, GLOIRE	75-38	H 37	
09:11		77-38	H 39	GOOD! DUNK by HAMRICK, LAMAR [FB/PNT]
08:43		79-38	H 41	GOOD! DUNK by WALKER, ALONZO
07:49		81-38	H 43	GOOD! DUNK by WOOD, TREY [PNT]
07:05		83-38	H 45	GOOD! DUNK by WALKER, ALONZO
06:23		85-38	H 47	GOOD! JUMPER by GREELEY, KYLE
06:11		87-38	H 49	GOOD! JUMPER by GOOLSBY, RASHAAD [FB]
05:00	GOOD! LAYUP by BIONGO, GLOIRE	87-40	H 47	
04:24		88-40	H 48	GOOD! FT by GREELEY, KYLE
04:16	GOOD! JUMPER by HUDSON, DESMOND	88-42	H 46	
03:57		91-42	H 49	GOOD! 3PTR by HAMRICK, LAMAR
03:18		93-42	H 51	GOOD! JUMPER by BURKE, IAN [PNT]
02:45		96-42	H 54	GOOD! 3PTR by NIELSEN-SKINNER, JADEN
02:23		98-42	H 56	GOOD! LAYUP by BURKE, IAN [FB]
01:47		99-42	H 57	GOOD! FT by HAMRICK, LAMAR
01:40	GOOD! FT by WETMORE, MICHAEL [FB]	99-43	H 56	
01:26		101-43	H 58	GOOD! JUMPER by GREELEY, KYLE [PNT]
00:48		103-43	H 60	GOOD! LAYUP by GOOLSBY, RASHAAD
00:10	GOOD! 3PTR by BIONGO, GLOIRE	103-46	H 57	

Evergreen State 46, Portland State 103

Official Substitutions Log
Evergreen State vs Portland State
Period 1
October 30, 2019 at Viking Pavilion (Stoller) - Portland



VISITORS: Evergreen State	Time	Score	HOME: Portland State
0 HUDSON, DESMOND			0 NUHU, SAL
4 FRAZIER, RAVEN			10 HAUSER, MATT
11 PRICE, LABRANDON			11 WOODS, HOLLAND
20 FULLER, ELIJAH			15 BURKE, IAN
24 KELLY, LUKAS			22 WALKER, ALONZO
	17:20	2-1	SUB OUT: NUHU, SAL
	17:20		SUB IN: WOOD, TREY
	16:24	2-4	SUB OUT: BURKE, IAN
	16:24		SUB IN: GOOLSBY, RASHAAD
SUB OUT: 0 HUDSON, DESMOND	16:24		
SUB IN: 2 BIONGO, GLOIRE	16:24		
	15:03	2-6	SUB OUT: WALKER, ALONZO
	15:03		SUB IN: GREELEY, KYLE
SUB OUT: 4 FRAZIER, RAVEN	15:03		
SUB IN: 23 KENNEDY, LANE	15:03		
	13:42	4-11	SUB OUT: HAUSER, MATT
	13:42		SUB IN: HAMRICK, LAMAR
SUB OUT: 20 FULLER, ELIJAH	13:42		
SUB OUT: 24 KELLY, LUKAS	13:42		
SUB IN: 0 HUDSON, DESMOND	13:42		
SUB IN: 1 WETMORE, MICHAEL	13:42		
	12:23	4-13	SUB OUT: GREELEY, KYLE
	12:23		SUB OUT: WOODS, HOLLAND
	12:23		SUB OUT: WOOD, TREY
	12:23		SUB IN: NUHU, SAL
	12:23		SUB IN: HAUSER, MATT
	12:23		SUB IN: BURKE, IAN
SUB OUT: 11 PRICE, LABRANDON	12:17	4-13	
SUB IN: 4 FRAZIER, RAVEN	12:17		
	09:41	4-22	SUB OUT: NUHU, SAL
	09:41		SUB OUT: GOOLSBY, RASHAAD
	09:41		SUB OUT: HAUSER, MATT
	09:41		SUB OUT: HAMRICK, LAMAR
	09:41		SUB OUT: BURKE, IAN
	09:41		SUB IN: GREELEY, KYLE
	09:41		SUB IN: WOODS, HOLLAND
	09:41		SUB IN: WOOD, TREY
	09:41		SUB IN: NIELSEN-SKINNER, JADEN
	09:41		SUB IN: WALKER, ALONZO
SUB OUT: 1 WETMORE, MICHAEL	09:41		
SUB OUT: 2 BIONGO, GLOIRE	09:41		
SUB OUT: 23 KENNEDY, LANE	09:41		
SUB IN: 3 NELSON, DANNY	09:41		
SUB IN: 20 FULLER, ELIJAH	09:41		
SUB IN: 24 KELLY, LUKAS	09:41		
SUB OUT: 24 KELLY, LUKAS	09:12	4-24	
SUB IN: 11 PRICE, LABRANDON	09:12		
	07:18	8-29	SUB OUT: GREELEY, KYLE
	07:18		SUB IN: BURKE, IAN
SUB OUT: 0 HUDSON, DESMOND	07:18		
SUB IN: 34 GRANDBERRY, ANTHONY	07:18		
	07:00	8-31	SUB OUT: NIELSEN-SKINNER, JADEN
	07:00		SUB IN: HAUSER, MATT
	06:31	11-31	SUB OUT: WALKER, ALONZO
	06:31		SUB IN: GOOLSBY, RASHAAD
	06:22	11-31	SUB OUT: WOOD, TREY
	06:22		SUB IN: NUHU, SAL
	04:32	14-36	SUB OUT: NUHU, SAL
	04:32		SUB OUT: WOODS, HOLLAND
	04:32		SUB OUT: BURKE, IAN
	04:32		SUB IN: WOOD, TREY
	04:32		SUB IN: NIELSEN-SKINNER, JADEN
	04:32		SUB IN: HAMRICK, LAMAR
SUB OUT: 20 FULLER, ELIJAH	04:32		
SUB IN: 0 HUDSON, DESMOND	04:32		
	03:31	17-42	SUB OUT: NIELSEN-SKINNER, JADEN
	03:31		SUB IN: WOODS, HOLLAND
SUB OUT: 3 NELSON, DANNY	03:31		
SUB OUT: 34 GRANDBERRY, ANTHONY	03:31		
SUB IN: 2 BIONGO, GLOIRE	03:31		
SUB IN: 23 KENNEDY, LANE	03:31		
	02:06	19-45	SUB OUT: GOOLSBY, RASHAAD
	02:06		SUB OUT: HAUSER, MATT
	02:06		SUB IN: BURKE, IAN
	02:06		SUB IN: WALKER, ALONZO

VISITORS: Evergreen State	Time	Score	HOME: Portland State
SUB OUT: 4 FRAZIER,RAVEN	02:06		
SUB IN: 1 WETMORE,MICHAEL	02:06		
	01:27	21-45	SUB OUT: HAMRICK,LAMAR
	01:27		SUB IN: GOOLSBY,RASHAAD
	00:33	21-50	SUB OUT: WOOD,TREY
	00:33		SUB IN: HAUSER,MATT

Evergreen State 21, Portland State 50

Official Substitutions Log
Evergreen State vs Portland State
Period 2
October 30, 2019 at Viking Pavilion (Stoller) - Portland



VISITORS: Evergreen State	Time	Score	HOME: Portland State
0 HUDSON, DESMOND			0 NUHU, SAL
4 FRAZIER, RAVEN			10 HAUSER, MATT
11 PRICE, LABRANDON			11 WOODS, HOLLAND
20 FULLER, ELIJAH			15 BURKE, IAN
24 KELLY, LUKAS			22 WALKER, ALONZO
	20:00	-	SUB OUT: GOOLSBY, RASHAAD
	20:00		SUB IN: NUHU, SAL
SUB OUT: 1 WETMORE, MICHAEL	20:00		
SUB OUT: 2 BIONGO, GLOIRE	20:00		
SUB OUT: 23 KENNEDY, LANE	20:00		
SUB IN: 4 FRAZIER, RAVEN	20:00		
SUB IN: 20 FULLER, ELIJAH	20:00		
SUB IN: 24 KELLY, LUKAS	20:00		
	20:00		SUB OUT: NUHU, SAL
	20:00		SUB IN: WOOD, TREY
	18:08	25-58	SUB OUT: BURKE, IAN
	18:08		SUB IN: GREELEY, KYLE
	16:34	29-60	SUB OUT: WALKER, ALONZO
	16:34		SUB IN: GOOLSBY, RASHAAD
	15:19	31-62	SUB OUT: HAUSER, MATT
	15:19		SUB IN: BURKE, IAN
SUB OUT: 0 HUDSON, DESMOND	15:19		
SUB OUT: 4 FRAZIER, RAVEN	15:19		
SUB OUT: 11 PRICE, LABRANDON	15:19		
SUB OUT: 20 FULLER, ELIJAH	15:19		
SUB IN: 1 WETMORE, MICHAEL	15:19		
SUB IN: 2 BIONGO, GLOIRE	15:19		
SUB IN: 3 NELSON, DANNY	15:19		
SUB IN: 23 KENNEDY, LANE	15:19		
	14:38	31-68	SUB OUT: WOOD, TREY
	14:38		SUB IN: WALKER, ALONZO
	13:42	33-68	SUB OUT: GREELEY, KYLE
	13:42		SUB IN: HAMRICK, LAMAR
SUB OUT: 24 KELLY, LUKAS	13:31	33-68	
SUB IN: 0 HUDSON, DESMOND	13:31		
	12:54	35-68	SUB OUT: BURKE, IAN
	12:54		SUB IN: HAUSER, MATT
	11:25	35-75	SUB OUT: WOODS, HOLLAND
	11:25		SUB IN: NIELSEN-SKINNER, JADEN
SUB OUT: 1 WETMORE, MICHAEL	11:25		
SUB OUT: 3 NELSON, DANNY	11:25		
SUB IN: 4 FRAZIER, RAVEN	11:25		
SUB IN: 34 GRANDBERRY, ANTHONY	11:25		
	10:00	38-75	SUB OUT: GOOLSBY, RASHAAD
	10:00		SUB OUT: HAUSER, MATT
	10:00		SUB IN: WOODS, HOLLAND
	10:00		SUB IN: WOOD, TREY
	08:20	38-79	SUB OUT: HAMRICK, LAMAR
	08:20		SUB IN: BURKE, IAN
SUB OUT: 0 HUDSON, DESMOND	08:20		
SUB OUT: 2 BIONGO, GLOIRE	08:20		
SUB IN: 20 FULLER, ELIJAH	08:20		
SUB IN: 24 KELLY, LUKAS	08:20		
SUB OUT: 34 GRANDBERRY, ANTHONY	07:46	38-81	
SUB IN: 11 PRICE, LABRANDON	07:46		
	07:46		SUB OUT: WOODS, HOLLAND
	07:46		SUB IN: GREELEY, KYLE
	06:58	38-83	SUB OUT: WALKER, ALONZO
	06:58		SUB IN: GOOLSBY, RASHAAD
SUB OUT: 20 FULLER, ELIJAH	06:36	38-83	
SUB IN: 3 NELSON, DANNY	06:36		
SUB OUT: 11 PRICE, LABRANDON	06:11	38-87	
SUB IN: 0 HUDSON, DESMOND	06:11		
SUB OUT: 23 KENNEDY, LANE	05:46	38-87	
SUB IN: 11 PRICE, LABRANDON	05:46		
	05:36	38-87	SUB OUT: GOOLSBY, RASHAAD
	05:36		SUB IN: HAMRICK, LAMAR
SUB OUT: 24 KELLY, LUKAS	05:17	38-87	
SUB IN: 1 WETMORE, MICHAEL	05:17		
SUB OUT: 4 FRAZIER, RAVEN	05:07	38-87	
SUB IN: 2 BIONGO, GLOIRE	05:07		
	04:24	40-88	SUB OUT: WOOD, TREY
	04:24		SUB IN: GOOLSBY, RASHAAD
SUB OUT: 11 PRICE, LABRANDON	03:46	42-91	
SUB IN: 34 GRANDBERRY, ANTHONY	03:46		

VISITORS: Evergreen State	Time	Score	HOME: Portland State
SUB OUT: 0 HUDSON, DESMOND	01:40	42-99	
SUB IN: 23 KENNEDY, LANE	01:40		

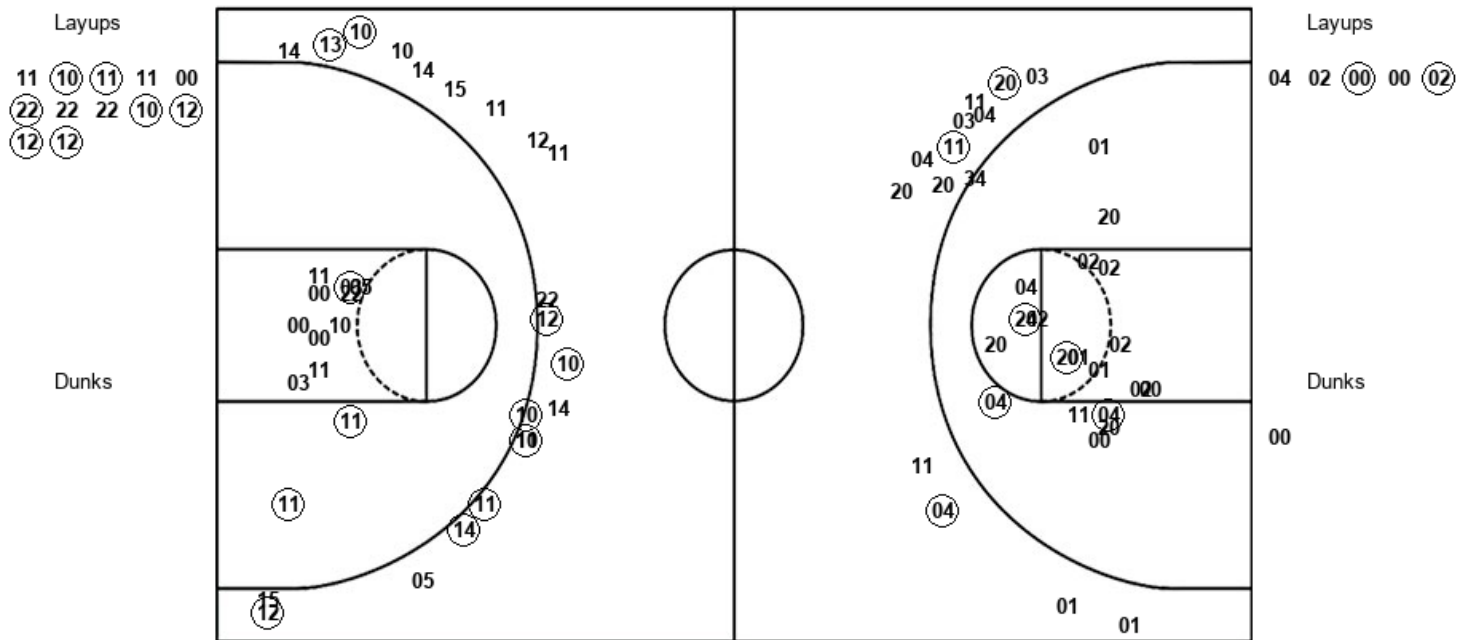
Evergreen State 46, Portland State 103

Official Shot Chart
Evergreen State vs Portland State
PERIOD 1 Shots
October 30, 2019 at Viking Pavilion (Stoller) - Portland



Portland State

Evergreen State



PSU : Period 1	Made	Att	Pct
Layups	7	12	58.3
Dunks	0	0	0
2PT Field Goals	10	24	41.7
3PT Field Goals	9	21	42.9
Total Field Goals	19	45	42.2

ESC : Period 1	Made	Att	Pct
Layups	2	5	40.0
Dunks	0	1	00.0
2PT Field Goals	6	26	23.1
3PT Field Goals	3	13	23.1
Total Field Goals	9	39	23.1

Official Shot Chart
 Evergreen State vs Portland State
 PERIOD 2 Shots
 October 30, 2019 at Viking Pavilion (Stoller) - Portland

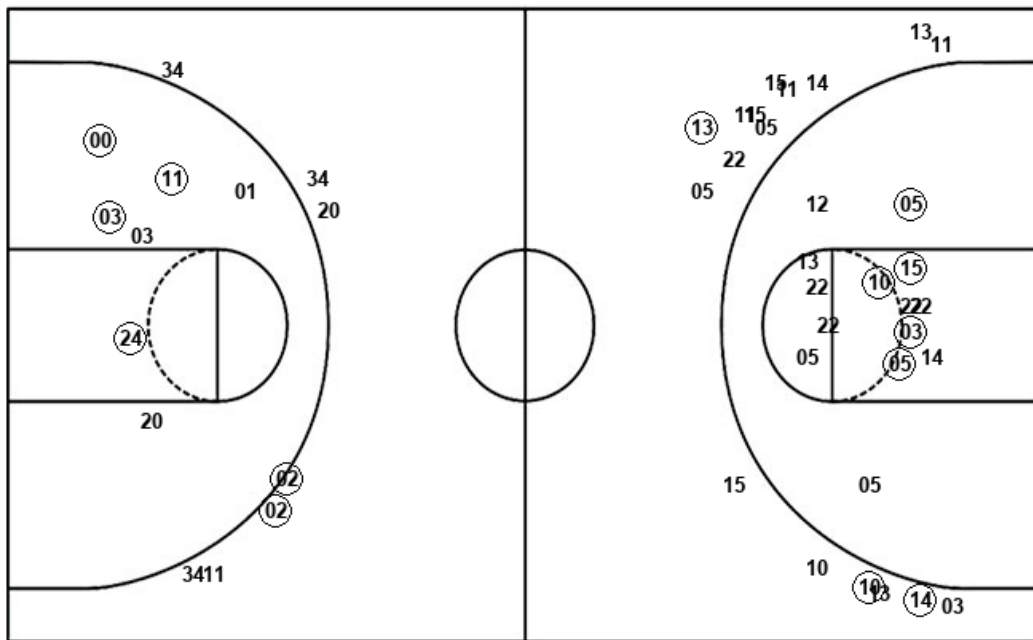


Portland State

Evergreen State

Layups
 22 22 (22) (12) (05)
 (10) 11 03 (14) (14)
 (15) (03)

Dunks
 (03) (14) (22) (12) (22)
 03



Layups
 (04) (04) 00 00 (02)
 01

Dunks
 (00)

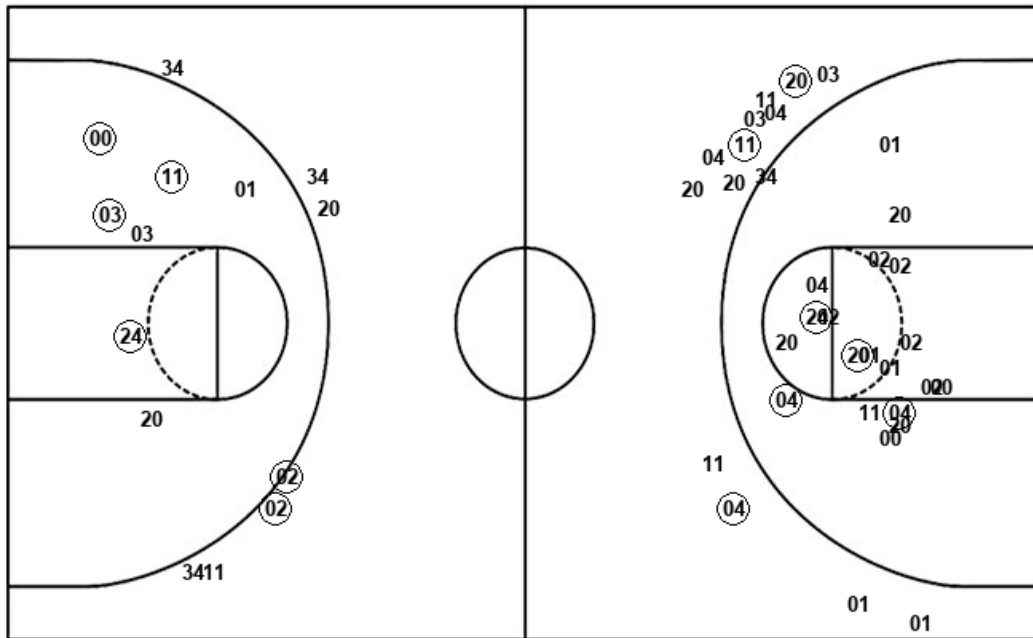
PSU : Period 2	Made	Att	Pct
Layups	8	12	66.7
Dunks	5	6	83.3
2PT Field Goals	18	32	56.3
3PT Field Goals	3	17	17.6
Total Field Goals	21	49	42.9

ESC : Period 2	Made	Att	Pct
Layups	3	6	50.0
Dunks	1	1	100.0
2PT Field Goals	8	14	57.1
3PT Field Goals	2	7	28.6
Total Field Goals	10	21	47.6

Official Shot Chart
Evergreen State vs Portland State
Evergreen State Team Shots
October 30, 2019 at Viking Pavilion (Stoller) - Portland



Layups



Layups

Dunks

04 02 (00) 00 (02)
 (04) (04) 00 00 (02)
 01

Dunks

00 (00)

ESC : Period 1	Made	Att	Pct
Layups	2	5	40.0
Dunks	0	1	00.0
2PT Field Goals	6	26	23.1
3PT Field Goals	3	13	23.1
Total Field Goals	9	39	23.1

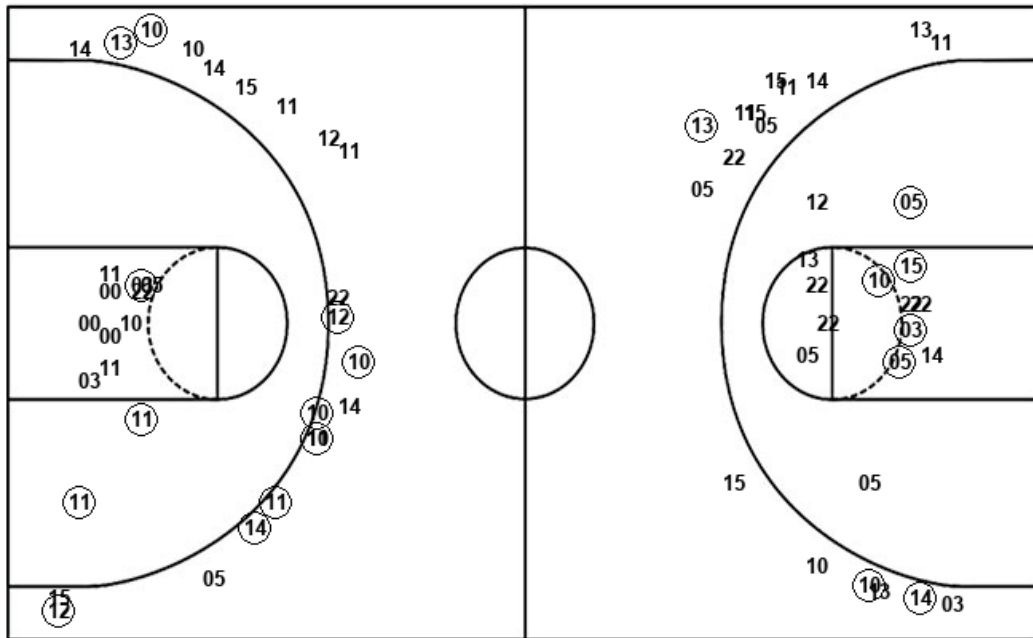
ESC : Period 2	Made	Att	Pct
Layups	3	6	50.0
Dunks	1	1	100.0
2PT Field Goals	8	14	57.1
3PT Field Goals	2	7	28.6
Total Field Goals	10	21	47.6

Official Shot Chart
Evergreen State vs Portland State
Portland State Team Shots
October 30, 2019 at Viking Pavilion (Stoller) - Portland



Layups

Dunks



PSU : Period 1	Made	Att	Pct
Layups	7	12	58.3
Dunks	0	0	0
2PT Field Goals	10	24	41.7
3PT Field Goals	9	21	42.9
Total Field Goals	19	45	42.2

PSU : Period 2	Made	Att	Pct
Layups	8	12	66.7
Dunks	5	6	83.3
2PT Field Goals	18	32	56.3
3PT Field Goals	3	17	17.6
Total Field Goals	21	49	42.9