

## FINAL SCORE



**Tulsa**

**57**



**Wichita St.**

**79**

March 08, 2020 • Charles Koch Arena - Wichita, Kan.

## FINAL STATISTICS

**Official Box Score**  
**Tulsa vs Wichita St.**  
**Game Totals -- Final Statistics**  
**March 08, 2020 at Charles Koch Arena - Wichita, Kan.**



**Tulsa 57**

No.	Player	S	Pts	FG	3FG	FT	OR	DR	TR	PF	A	TO	Blk	Stl	Min	+/-
00	RACHAL, BRANDON	G	4	1-7	1-2	1-2	0	5	5	3	0	4	0	2	26	-18
03	JOINER, ELIJAH	G	3	0-8	0-2	3-4	0	5	5	4	2	3	0	1	24	-12
05	KORITA, LAWSON	G	5	2-6	0-2	1-1	0	0	0	1	0	0	0	1	26	-23
15	EARLEY, JOSH	F	0	0-0	0-0	0-0	0	1	1	0	0	0	0	0	6	-13
41	HORNE, JERIAH	F	15	5-9	3-5	2-2	0	2	2	0	0	2	0	1	33	-17
01	IGBANU, MARTINS	F	20	7-10	2-3	4-8	0	3	3	1	1	3	0	1	30	-6
04	HILL, ISAIAH	G	5	0-5	0-0	5-6	0	1	1	3	4	1	1	2	22	-14
11	JACKSON, DARIEN	G	5	2-4	1-2	0-0	2	5	7	0	3	1	0	0	28	-1
22	JONES, REGGIE	G	0	0-1	0-1	0-0	0	0	0	1	0	1	0	0	4	-6
	TEAM						2	2	4	0		0				
<b>TOTALS</b>			<b>57</b>	<b>17-50</b>	<b>7-17</b>	<b>16-23</b>	<b>4</b>	<b>24</b>	<b>28</b>	<b>13</b>	<b>10</b>	<b>15</b>	<b>1</b>	<b>8</b>	<b>198</b>	

*Shooting By Period*

Period	FG	FG%	3FG	3FG%	FT	FT%
1st Half	8-25	32%	3-10	30%	7-10	70%
2nd Half	9-25	36%	4-7	57%	9-13	69%
<b>Game</b>	<b>17-50</b>	<b>34.0%</b>	<b>7-17</b>	<b>41.2%</b>	<b>16-23</b>	<b>69.6%</b>

*Deadball Rebounds: 3,1*

*Last FG: 2nd-00:44*

*Biggest Run: 12-0*

*Largest lead: By 0 at -*

*Technical Fouls: #22 JONES (Class A) @ 2nd - 00:20; #04 HILL (Double) @ 2nd - 00:20;*

**Wichita St. 79**

No.	Player	S	Pts	FG	3FG	FT	OR	DR	TR	PF	A	TO	Blk	Stl	Min	+/-
00	DENNIS, DEXTER	G	6	2-6	2-5	0-0	1	4	5	2	0	1	0	0	20	8
01	ETIENNE, TYSON	G	8	2-9	2-7	2-2	0	4	4	3	3	0	0	1	28	15
02	BURTON, JAMARIUS	G	14	5-8	3-3	1-1	0	2	2	3	5	3	0	1	28	20
05	WADE, TREY	F	8	3-7	1-3	1-2	2	3	5	2	0	0	0	0	31	26
21	ECHENIQUE, JAIME	C	13	5-8	0-0	3-3	2	5	7	4	0	4	2	4	25	17
03	GORDON, DEANTONI	F	0	0-0	0-0	0-0	0	0	0	0	0	0	0	0	3	-1
10	STEVENSON, ERIK	G	18	5-11	1-6	7-7	0	9	9	4	2	4	0	2	29	17
24	UDEZE, MORRIS	C	4	2-2	0-0	0-0	0	0	0	2	0	0	0	0	6	-3
33	MIDTGAARD, ASBJORN	C	0	0-0	0-0	0-0	0	3	3	0	0	0	1	0	8	8
44	POOR BEAR-CHANDLER, ISA	C	0	0-0	0-0	0-0	0	0	0	0	0	0	0	0	0	2
52	SHERFIELD, GRANT	G	8	3-6	2-4	0-0	0	1	1	2	2	3	0	0	20	1
	TEAM						0	0	0	0		0				
<b>TOTALS</b>			<b>79</b>	<b>27-57</b>	<b>11-28</b>	<b>14-15</b>	<b>5</b>	<b>31</b>	<b>36</b>	<b>22</b>	<b>12</b>	<b>15</b>	<b>3</b>	<b>8</b>	<b>198</b>	

*Shooting By Period*

Period	FG	FG%	3FG	3FG%	FT	FT%
1st Half	11-29	38%	5-13	38%	7-8	88%
2nd Half	16-28	57%	6-15	40%	7-7	100%
<b>Game</b>	<b>27-57</b>	<b>47.4%</b>	<b>11-28</b>	<b>39.3%</b>	<b>14-15</b>	<b>93.3%</b>

*Deadball Rebounds: 1,2*

*Last FG: 2nd-02:10*

*Biggest Run: 11-0*

*Largest lead: By 23 at 2nd-02:10*

*Technical Fouls: #10 STEVENSON (Double) @ 2nd - 00:20;*

Game Notes:

Officials: Don Daily, Patrick Evans, Jeb Hartness  
Attendance: 10506

Start Time: 04:07 PM ET  
End Time: 06:11 PM ET  
Game Duration: 2:04  
Conference Game;

Score	1st	2nd	TOT
TLS	26	31	57
WSU	34	45	79

TLS led for 0:00. WSU led for 38:47.  
Game was tied for 0:53.  
Times tied: 0      Lead Changes: 0

Points from	TLS	WSU
In the Paint	18	28
Off Turns	22	17
2nd Chance	2	4
Fast Break	7	15
Bench	30	30

**Official Box Score**  
**Tulsa vs Wichita St.**  
**First Half Statistics Only**  
**March 08, 2020 at Charles Koch Arena - Wichita, Kan.**



### Tulsa 26

No.	Player	S	Pts	FG	3FG	FT	OR	DR	TR	PF	A	TO	Blk	Stl	Min	+/-
00	RACHAL, BRANDON	G	4	1-4	1-2	1-2	0	4	4	3	0	2	0	1	11	-11
03	JOINER, ELIJAH	G	3	0-4	0-1	3-4	0	3	3	2	0	3	0	1	10	-9
05	KORITA, LAWSON	G	2	1-4	0-2	0-0	0	0	0	0	0	0	0	0	14	-5
15	EARLEY, JOSH	F	0	0-0	0-0	0-0	0	1	1	0	0	0	0	0	3	-8
41	HORNE, JERIAH	F	2	1-2	0-1	0-0	0	1	1	0	0	1	0	0	16	-6
01	IGBANU, MARTINS	F	11	4-5	2-2	1-2	0	2	2	0	1	2	0	1	15	3
04	HILL, ISAIAH	G	2	0-3	0-0	2-2	0	1	1	2	3	0	1	1	11	2
11	JACKSON, DARIEN	G	2	1-2	0-1	0-0	1	1	2	0	0	1	0	0	16	-2
22	JONES, REGGIE	G	0	0-1	0-1	0-0	0	0	0	0	0	0	0	0	4	-4
	TEAM						0	2	2	0		0				
<b>TOTALS</b>			<b>26</b>	<b>8-25</b>	<b>3-10</b>	<b>7-10</b>	<b>1</b>	<b>15</b>	<b>16</b>	<b>7</b>	<b>4</b>	<b>9</b>	<b>1</b>	<b>4</b>	<b>100</b>	

#### Shooting By Period

Period	FG	FG%	3FG	3FG%	FT	FT%
1st Half	8-25	32%	3-10	30%	7-10	70%
Game	17-50	34.0%	7-17	41.2%	16-23	69.6%

Deadball Rebounds: 3,1

Last FG Half: TLS 2nd-00:44

### Wichita St. 34

No.	Player	S	Pts	FG	3FG	FT	OR	DR	TR	PF	A	TO	Blk	Stl	Min	+/-
00	DENNIS, DEXTER	G	6	2-4	2-3	0-0	1	2	3	2	0	1	0	0	7	7
01	ETIENNE, TYSON	G	5	1-6	1-4	2-2	0	2	2	1	1	0	0	1	13	7
02	BURTON, JAMARIUS	G	5	2-4	1-1	0-0	0	1	1	2	3	0	0	1	17	6
05	WADE, TREY	F	5	2-5	0-1	1-2	0	1	1	0	0	0	0	0	16	10
21	ECHENIQUE, JAIME	C	7	2-5	0-0	3-3	1	4	5	2	0	3	2	2	15	9
03	GORDON, DEANTONI	F	0	0-0	0-0	0-0	0	0	0	0	0	0	0	0	2	-3
10	STEVENSON, ERIK	G	3	1-3	0-2	1-1	0	4	4	1	1	1	0	1	14	1
24	UDEZE, MORRIS	C	0	0-0	0-0	0-0	0	0	0	0	0	0	0	0	2	1
33	MIDTGAARD, ASBJORN	C	0	0-0	0-0	0-0	0	1	1	0	0	0	0	0	3	-2
44	POOR BEAR-CHANDLER, ISA	C	0	0-0	0-0	0-0	0	0	0	0	0	0	0	0	0	0
52	SHERFIELD, GRANT	G	3	1-2	1-2	0-0	0	0	0	2	2	3	0	0	10	4
	TEAM						0	0	0	0		0				
<b>TOTALS</b>			<b>34</b>	<b>11-29</b>	<b>5-13</b>	<b>7-8</b>	<b>2</b>	<b>15</b>	<b>17</b>	<b>10</b>	<b>7</b>	<b>8</b>	<b>2</b>	<b>5</b>	<b>100</b>	

#### Shooting By Period

Period	FG	FG%	3FG	3FG%	FT	FT%
1st Half	11-29	38%	5-13	38%	7-8	88%
Game	27-57	47.4%	11-28	39.3%	14-15	93.3%

Deadball Rebounds: 1,2

Last FG Half: WSU 2nd-02:10

#### Game Notes:

Officials: Don Daily, Patrick Evans, Jeb Hartness  
Attendance: 10506

Start Time: 04:07 PM ET

End Time: 06:11 PM ET

Game Duration: 2:04

Conference Game;

Score	1st	2nd	TOT
TLS	26	31	57
WSU	34	45	79

Points from (This Period)	TLS	WSU
In the Paint	8	8
Off Turns	10	7
2nd Chance	2	0
Fast Break	3	5
Bench	15	6

**Official Play-By-Play  
Tulsa vs Wichita St.  
First Half**

**March 08, 2020 at Charles Koch Arena - Wichita, Kan.**



**Period 1**

**Starters:**

**Tulsa:** 0 RACHAL, BRANDON (G); 3 JOINER, ELIJAH (G); 5 KORITA, LAWSON (G); 15 EARLEY, JOSH (F); 41 HORNE, JERIAH (F);

**Wichita St.:** 0 DENNIS, DEXTER (G); 1 ETIENNE, TYSON (G); 2 BURTON, JAMARIUS (G); 5 WADE, TREY (F); 21 ECHENIQUE, JAIME (C);

Time	VISITORS: Tulsa	Score	Margin	HOME: Wichita St.
19:41				MISSED JUMPER by ECHENIQUE, JAIME
19:38	REBOUND (DEF) by EARLEY, JOSH			
19:18	MISSED JUMPER by JOINER, ELIJAH			
19:18				BLOCK by ECHENIQUE, JAIME
19:13				REBOUND (DEF) by DENNIS, DEXTER
19:07		3-0	H 3	GOOD! 3PTR by BURTON, JAMARIUS
18:46	TURNOVER (LOSTBALL) by RACHAL, BRANDON			
18:31		6-0	H 6	GOOD! 3PTR by DENNIS, DEXTER
18:31				ASSIST by ETIENNE, TYSON
18:11	TURNOVER (BADPASS) by HORNE, JERIAH			
18:11				STEAL by ECHENIQUE, JAIME
17:56				MISSED JUMPER by WADE, TREY
17:54	REBOUND (DEF) by TEAM			
17:54	SUB OUT: EARLEY, JOSH			
17:54	SUB IN: IGBANU, MARTINS			
17:35	MISSED 3PTR by JOINER, ELIJAH			
17:32				REBOUND (DEF) by ECHENIQUE, JAIME
17:16		9-0	H 9	GOOD! 3PTR by DENNIS, DEXTER
17:16				ASSIST by BURTON, JAMARIUS
16:58	TURNOVER (BADPASS) by JOINER, ELIJAH			
16:58				STEAL by ECHENIQUE, JAIME
16:47				MISSED 3PTR by ETIENNE, TYSON
16:44				REBOUND (OFF) by DENNIS, DEXTER
16:37				MISSED 3PTR by ETIENNE, TYSON
16:34	REBOUND (DEF) by JOINER, ELIJAH			
16:29	MISSED LAYUP by RACHAL, BRANDON			
16:29				BLOCK by ECHENIQUE, JAIME
16:24				REBOUND (DEF) by ECHENIQUE, JAIME
16:24				TURNOVER (BADPASS) by ECHENIQUE, JAIME
16:24	STEAL by IGBANU, MARTINS			
16:19	MISSED LAYUP by IGBANU, MARTINS			
16:17				REBOUND (DEF) by ECHENIQUE, JAIME
16:14				MISSED 3PTR by DENNIS, DEXTER
16:12	REBOUND (DEF) by RACHAL, BRANDON			
16:00	GOOD! 3PTR by RACHAL, BRANDON	9-3	H 6	
16:00	ASSIST by IGBANU, MARTINS			
15:40				MISSED 3PTR by WADE, TREY
15:40				REBOUND (OFF) by ECHENIQUE, JAIME
15:40	FOUL (PERSONAL) by RACHAL, BRANDON			
15:40				
15:40				SUB OUT: ETIENNE, TYSON
15:40				SUB OUT: BURTON, JAMARIUS
15:40				SUB OUT: ECHENIQUE, JAIME
15:40				SUB IN: STEVENSON, ERIK
15:40				SUB IN: MIDTGAARD, ASBJORN
15:40				SUB IN: SHERFIELD, GRANT
15:40	SUB OUT: JOINER, ELIJAH			
15:40	SUB OUT: KORITA, LAWSON			
15:40	SUB IN: HILL, ISAIAH			
15:40	SUB IN: JACKSON, DARIEN			
15:16				MISSED 3PTR by STEVENSON, ERIK
15:13	REBOUND (DEF) by RACHAL, BRANDON			
15:07	MISSED 3PTR by RACHAL, BRANDON			
15:05				REBOUND (DEF) by MIDTGAARD, ASBJORN
15:00				TURNOVER (BADPASS) by SHERFIELD, GRANT
14:47	MISSED LAYUP by RACHAL, BRANDON			
14:44				REBOUND (DEF) by STEVENSON, ERIK
14:42	FOUL (PERSONAL) by HILL, ISAIAH			
14:42	SUB OUT: RACHAL, BRANDON			
14:42	SUB OUT: HORNE, JERIAH			
14:42	SUB IN: JOINER, ELIJAH			
14:42	SUB IN: JONES, REGGIE			
14:30				MISSED JUMPER by WADE, TREY
14:27	REBOUND (DEF) by JOINER, ELIJAH			
14:22				FOUL (PERSONAL) by STEVENSON, ERIK
14:22				SUB OUT: WADE, TREY
14:22				SUB IN: BURTON, JAMARIUS
14:22	SUB OUT: JOINER, ELIJAH			
14:22	SUB IN: RACHAL, BRANDON			
14:13	TURNOVER (LOSTBALL) by JACKSON, DARIEN			

Time	VISITORS: Tulsa	Score	Margin	HOME: Wichita St.
14:13				STEAL by BURTON, JAMARIUS
14:08				MISSED LAYUP by DENNIS, DEXTER
14:08	BLOCK by HILL, ISAIAH			
14:08	REBOUND (DEF) by TEAM			
13:50	MISSED 3PTR by JACKSON, DARIEN			
13:46				REBOUND (DEF) by STEVENSON, ERIK
13:41				TURNOVER (BADPASS) by DENNIS, DEXTER
13:41	STEAL by RACHAL, BRANDON			
13:37				FOUL (PERSONAL) by DENNIS, DEXTER
13:37	GOOD! FT by RACHAL, BRANDON [FB]	9-4	H 5	
13:37				SUB OUT: MIDTGAARD, ASBJORN
13:37				SUB IN: ECHENIQUE, JAIME
13:37	MISSED FT by RACHAL, BRANDON			
13:37				REBOUND (DEF) by STEVENSON, ERIK
13:14		11-4	H 7	GOOD! JUMPER by BURTON, JAMARIUS
12:51	MISSED LAYUP by HILL, ISAIAH			
12:47				REBOUND (DEF) by DENNIS, DEXTER
12:36				MISSED JUMPER by BURTON, JAMARIUS
12:35	REBOUND (DEF) by HILL, ISAIAH			
12:35				FOUL (PERSONAL) by DENNIS, DEXTER
12:35				SUB OUT: DENNIS, DEXTER
12:35				SUB IN: WADE, TREY
12:35	SUB OUT: JACKSON, DARIEN			
12:35	SUB IN: HORNE, JERIAH			
12:35	SUB OUT: IGBANU, MARTINS			
12:35	SUB IN: JACKSON, DARIEN			
12:30	GOOD! JUMPER by HORNE, JERIAH	11-6	H 5	
12:23		14-6	H 8	GOOD! 3PTR by SHERFIELD, GRANT [FB]
12:23				ASSIST by BURTON, JAMARIUS
11:55	MISSED 3PTR by JONES, REGGIE			
11:52				REBOUND (DEF) by BURTON, JAMARIUS
11:48		16-6	H 10	GOOD! LAYUP by WADE, TREY [FB]
11:48				ASSIST by BURTON, JAMARIUS
11:29	MISSED JUMPER by HILL, ISAIAH			
11:25				REBOUND (DEF) by STEVENSON, ERIK
11:19				MISSED LAYUP by ECHENIQUE, JAIME
11:15	REBOUND (DEF) by RACHAL, BRANDON			
11:00	MISSED 3PTR by HORNE, JERIAH			
10:58				REBOUND (DEF) by TEAM
10:58				
10:54				SUB OUT: STEVENSON, ERIK
10:54				SUB IN: ETIENNE, TYSON
10:54	SUB OUT: HILL, ISAIAH			
10:54	SUB OUT: JONES, REGGIE			
10:54	SUB OUT: HORNE, JERIAH			
10:54	SUB IN: IGBANU, MARTINS			
10:54	SUB IN: JOINER, ELIJAH			
10:54	SUB IN: KORITA, LAWSON			
10:27				MISSED 3PTR by SHERFIELD, GRANT
10:24	REBOUND (DEF) by JOINER, ELIJAH			
10:10	TURNOVER (TRAVEL) by RACHAL, BRANDON			
09:54		18-6	H 12	GOOD! DUNK by WADE, TREY
09:54				ASSIST by SHERFIELD, GRANT
09:34				FOUL (PERSONAL) by ECHENIQUE, JAIME
09:34	SUB OUT: KORITA, LAWSON			
09:34	SUB IN: HILL, ISAIAH			
09:33				FOUL (PERSONAL) by SHERFIELD, GRANT
09:33	MISSED FT by JOINER, ELIJAH			
09:33	REBOUND (OFF) by TEAM			
09:33	GOOD! FT by JOINER, ELIJAH	18-7	H 11	
09:16				MISSED JUMPER by BURTON, JAMARIUS
09:13	REBOUND (DEF) by RACHAL, BRANDON			
09:03	MISSED JUMPER by JOINER, ELIJAH			
08:59				REBOUND (DEF) by WADE, TREY
08:49	FOUL (PERSONAL) by RACHAL, BRANDON			
08:49				SUB OUT: SHERFIELD, GRANT
08:49				SUB IN: STEVENSON, ERIK
08:49	SUB OUT: JOINER, ELIJAH			
08:49	SUB OUT: JACKSON, DARIEN			
08:49	SUB IN: KORITA, LAWSON			
08:49	SUB IN: HORNE, JERIAH			
08:48	FOUL (PERSONAL) by RACHAL, BRANDON			
08:48				MISSED FT by WADE, TREY
08:48				REBOUND (OFF) by TEAM
08:48	SUB OUT: RACHAL, BRANDON			
08:48	SUB IN: JACKSON, DARIEN			
08:48		19-7	H 12	GOOD! FT by WADE, TREY
08:48	MISSED 3PTR by KORITA, LAWSON			
08:48				REBOUND (DEF) by ECHENIQUE, JAIME
08:48				MISSED JUMPER by ETIENNE, TYSON

Time	VISITORS: Tulsa	Score	Margin	HOME: Wichita St.
08:48	REBOUND (DEF) by IGBANU, MARTINS			
08:48	GOOD! LAYUP by IGBANU, MARTINS	19-9	H 10	
07:45	FOUL (PERSONAL) by HILL, ISAIAH			
07:45				
07:45		20-9	H 11	GOOD! FT by ECHENIQUE, JAIME
07:45		21-9	H 12	GOOD! FT by ECHENIQUE, JAIME
07:45		22-9	H 13	GOOD! FT by ECHENIQUE, JAIME
07:29	GOOD! 3PTR by IGBANU, MARTINS	22-12	H 10	
07:29	ASSIST by HILL, ISAIAH			
06:56				TURNOVER (OTHER) by STEVENSON, ERIK
06:56				SUB OUT: ETIENNE, TYSON
06:56				SUB IN: SHERFIELD, GRANT
06:46	GOOD! 3PTR by IGBANU, MARTINS	22-15	H 7	
06:46	ASSIST by HILL, ISAIAH			
06:24		24-15	H 9	GOOD! DUNK by ECHENIQUE, JAIME
06:24				ASSIST by SHERFIELD, GRANT
06:04	TURNOVER (LOSTBALL) by IGBANU, MARTINS			
06:04				SUB OUT: WADE, TREY
06:04				SUB IN: GORDON, DEANTONI
05:39				TURNOVER (LOSTBALL) by ECHENIQUE, JAIME
05:39	STEAL by HILL, ISAIAH			
05:31	GOOD! LAYUP by KORITA, LAWSON [FB]	24-17	H 7	
05:31	ASSIST by HILL, ISAIAH			
05:12				MISSED JUMPER by ECHENIQUE, JAIME
05:08	REBOUND (DEF) by IGBANU, MARTINS			
05:00				FOUL (PERSONAL) by SHERFIELD, GRANT
05:00				SUB OUT: ECHENIQUE, JAIME
05:00				SUB IN: MIDTGAARD, ASBJORN
05:00				SUB OUT: SHERFIELD, GRANT
05:00				SUB IN: ETIENNE, TYSON
04:54				FOUL (PERSONAL) by ETIENNE, TYSON
04:54	GOOD! FT by HILL, ISAIAH	24-18	H 6	
04:54	GOOD! FT by HILL, ISAIAH	24-19	H 5	
04:26		27-19	H 8	GOOD! 3PTR by ETIENNE, TYSON
04:10	GOOD! LAYUP by IGBANU, MARTINS	27-21	H 6	
03:48				MISSED 3PTR by ETIENNE, TYSON
03:45	REBOUND (DEF) by JACKSON, DARIEN			
03:45	TIMEOUT 30SEC			
03:45				SUB OUT: GORDON, DEANTONI
03:45				SUB OUT: MIDTGAARD, ASBJORN
03:45				SUB IN: WADE, TREY
03:45				SUB IN: ECHENIQUE, JAIME
03:24	MISSED JUMPER by HILL, ISAIAH			
03:21				REBOUND (DEF) by ETIENNE, TYSON
03:14				MISSED 3PTR by STEVENSON, ERIK
03:11	REBOUND (DEF) by HORNE, JERIAH			
03:01				FOUL (PERSONAL) by BURTON, JAMARIUS
03:01	MISSED FT by IGBANU, MARTINS			
03:01	REBOUND (OFF) by TEAM			
03:01	SUB OUT: HILL, ISAIAH			
03:01	SUB IN: JOINER, ELIJAH			
03:01	GOOD! FT by IGBANU, MARTINS	27-22	H 5	
03:01	SUB OUT: IGBANU, MARTINS			
03:01	SUB IN: EARLEY, JOSH			
02:37		29-22	H 7	GOOD! LAYUP by ECHENIQUE, JAIME
02:37				ASSIST by STEVENSON, ERIK
02:25	MISSED 3PTR by KORITA, LAWSON			
02:21				REBOUND (DEF) by ETIENNE, TYSON
02:15				MISSED LAYUP by ETIENNE, TYSON
02:15	REBOUND (DEF) by TEAM			
02:15	SUB OUT: EARLEY, JOSH			
02:15	SUB IN: IGBANU, MARTINS			
01:57	TURNOVER (BADPASS) by IGBANU, MARTINS			
01:45				FOUL (OFF) by ECHENIQUE, JAIME
01:45				TURNOVER (OFFENSIVE) by ECHENIQUE, JAIME
01:45				SUB OUT: ECHENIQUE, JAIME
01:45				SUB IN: UDEZE, MORRIS
01:35				FOUL (PERSONAL) by BURTON, JAMARIUS
01:35	GOOD! FT by JOINER, ELIJAH	29-23	H 6	
01:35				SUB OUT: BURTON, JAMARIUS
01:35				SUB IN: SHERFIELD, GRANT
01:35	GOOD! FT by JOINER, ELIJAH	29-24	H 5	
01:28				TURNOVER (BADPASS) by SHERFIELD, GRANT
01:28	STEAL by JOINER, ELIJAH			
01:23	MISSED LAYUP by KORITA, LAWSON			
01:18	REBOUND (OFF) by JACKSON, DARIEN			
01:18	GOOD! LAYUP by JACKSON, DARIEN	29-26	H 3	
00:56		31-26	H 5	GOOD! JUMPER by STEVENSON, ERIK
00:56	FOUL (PERSONAL) by JOINER, ELIJAH			
00:56		32-26	H 6	GOOD! FT by STEVENSON, ERIK

Time	VISITORS: Tulsa	Score	Margin	HOME: Wichita St.
00:37	TURNOVER (BADPASS) by JOINER, ELIJAH			
00:37				STEAL by STEVENSON, ERIK
00:37	FOUL (PERSONAL) by JOINER, ELIJAH			
00:37		33-26	H 7	GOOD! FT by ETIENNE, TYSON
00:37		34-26	H 8	GOOD! FT by ETIENNE, TYSON
00:25	TURNOVER (BADPASS) by JOINER, ELIJAH			
00:25				STEAL by ETIENNE, TYSON
00:04				TURNOVER (DRIBBLING) by SHERFIELD, GRANT
00:04				SUB OUT: SHERFIELD, GRANT
00:04				SUB IN: GORDON, DEANTONI
00:00	MISSED LAYUP by JOINER, ELIJAH			
00:00				REBOUND (DEF) by TEAM

Tulsa 26, Wichita St. 34

Points from (This Period)	TLS	WSU
In the Paint	8	8
Off Turns	10	7
2nd Chance	2	0
Fast Break	3	5
Bench	15	6

**Official Box Score**  
**Tulsa vs Wichita St.**  
**Second Half Statistics Only**  
**March 08, 2020 at Charles Koch Arena - Wichita, Kan.**



### Tulsa 31

No.	Player	S	Pts	FG	3FG	FT	OR	DR	TR	PF	A	TO	Blk	Stl	Min	+/-
00	RACHAL, BRANDON	G	0	0-3	0-0	0-0	0	1	1	0	0	2	0	1	15	-7
03	JOINER, ELIJAH	G	0	0-4	0-1	0-0	0	2	2	2	2	0	0	0	15	-3
05	KORITA, LAWSON	G	3	1-2	0-0	1-1	0	0	0	1	0	0	0	1	11	-18
15	EARLEY, JOSH	F	0	0-0	0-0	0-0	0	0	0	0	0	0	0	0	3	-5
41	HORNE, JERIAH	F	13	4-7	3-4	2-2	0	1	1	0	0	1	0	1	17	-11
01	IGBANU, MARTINS	F	9	3-5	0-1	3-6	0	1	1	1	0	1	0	0	14	-9
04	HILL, ISAAH	G	3	0-2	0-0	3-4	0	0	0	1	1	1	0	1	11	-16
11	JACKSON, DARIEN	G	3	1-2	1-1	0-0	1	4	5	0	3	0	0	0	13	1
22	JONES, REGGIE	G	0	0-0	0-0	0-0	0	0	0	1	0	1	0	0	0	-2
	TEAM						2	0	2	0		0				
<b>TOTALS</b>			<b>31</b>	<b>9-25</b>	<b>4-7</b>	<b>9-13</b>	<b>3</b>	<b>9</b>	<b>12</b>	<b>6</b>	<b>6</b>	<b>6</b>	<b>0</b>	<b>4</b>	<b>98</b>	

#### Shooting By Period

Period	FG	FG%	3FG	3FG%	FT	FT%
2nd Half	9-25	36%	4-7	57%	9-13	69%
Game	17-50	34.0%	7-17	41.2%	16-23	69.6%

Deadball Rebounds: 3,1

Last FG Half: TLS -

### Wichita St. 45

No.	Player	S	Pts	FG	3FG	FT	OR	DR	TR	PF	A	TO	Blk	Stl	Min	+/-
00	DENNIS, DEXTER	G	0	0-2	0-2	0-0	0	2	2	0	0	0	0	0	13	1
01	ETIENNE, TYSON	G	3	1-3	1-3	0-0	0	2	2	2	2	0	0	0	14	8
02	BURTON, JAMARIUS	G	9	3-4	2-2	1-1	0	1	1	1	2	3	0	0	11	14
05	WADE, TREY	F	3	1-2	1-2	0-0	2	2	4	2	0	0	0	0	15	16
21	ECHENIQUE, JAIME	C	6	3-3	0-0	0-0	1	1	2	2	0	1	0	2	10	8
03	GORDON, DEANTONI	F	0	0-0	0-0	0-0	0	0	0	0	0	0	0	0	0	2
10	STEVENSON, ERIK	G	15	4-8	1-4	6-6	0	5	5	3	1	3	0	1	15	16
24	UDEZE, MORRIS	C	4	2-2	0-0	0-0	0	0	0	2	0	0	0	0	5	-4
33	MIDTGAARD, ASBJORN	C	0	0-0	0-0	0-0	0	2	2	0	0	0	1	0	5	10
44	POOR BEAR-CHANDLER, ISA	C	0	0-0	0-0	0-0	0	0	0	0	0	0	0	0	0	2
52	SHERFIELD, GRANT	G	5	2-4	1-2	0-0	0	1	1	0	0	0	0	0	9	-3
	TEAM						0	0	0	0		0				
<b>TOTALS</b>			<b>45</b>	<b>16-28</b>	<b>6-15</b>	<b>7-7</b>	<b>3</b>	<b>16</b>	<b>19</b>	<b>12</b>	<b>5</b>	<b>7</b>	<b>1</b>	<b>3</b>	<b>98</b>	

#### Shooting By Period

Period	FG	FG%	3FG	3FG%	FT	FT%
2nd Half	16-28	57%	6-15	40%	7-7	100%
Game	27-57	47.4%	11-28	39.3%	14-15	93.3%

Deadball Rebounds: 1,2

Last FG Half: WSU -

#### Game Notes:

Officials: Don Daily, Patrick Evans, Jeb Hartness  
Attendance: 10506

Start Time: 04:07 PM ET  
End Time: 06:11 PM ET  
Game Duration: 2:04  
Conference Game;

Score	1st	2nd	TOT
TLS	26	31	57
WSU	34	45	79

Points from (This Period)	TLS	WSU
In the Paint	10	20
Off Turns	12	10
2nd Chance	0	4
Fast Break	4	10
Bench	15	24



**Official Play-By-Play  
Tulsa vs Wichita St.  
Second Half**

**March 08, 2020 at Charles Koch Arena - Wichita, Kan.**



**Period 2**

**Starters:**

**Tulsa:** 0 RACHAL, BRANDON (G); 3 JOINER, ELIJAH (G); 5 KORITA, LAWSON (G); 15 EARLEY, JOSH (F); 41 HORNE, JERIAH (F);

**Wichita St.:** 0 DENNIS, DEXTER (G); 1 ETIENNE, TYSON (G); 2 BURTON, JAMARIUS (G); 5 WADE, TREY (F); 21 ECHENIQUE, JAIME (C);

Time	VISITORS: Tulsa	Score	Margin	HOME: Wichita St.
20:00				SUB OUT: GORDON, DEANTONI
20:00				SUB OUT: UDEZE, MORRIS
20:00				SUB IN: BURTON, JAMARIUS
20:00				SUB IN: MIDTGAARD, ASBJORN
20:00	SUB OUT: JACKSON, DARIEN			
20:00	SUB IN: RACHAL, BRANDON			
19:46	MISSED JUMPER by JOINER, ELIJAH			
19:43				REBOUND (DEF) by STEVENSON, ERIK
19:36		37-26	H 11	GOOD! 3PTR by BURTON, JAMARIUS
19:19	MISSED LAYUP by KORITA, LAWSON			
19:19				BLOCK by MIDTGAARD, ASBJORN
19:19				REBOUND (DEF) by STEVENSON, ERIK
18:57				TURNOVER (BADPASS) by BURTON, JAMARIUS
18:57	STEAL by KORITA, LAWSON			
18:55	GOOD! LAYUP by KORITA, LAWSON [FB]	37-28	H 9	
18:55				FOUL (PERSONAL) by STEVENSON, ERIK
18:55	GOOD! FT by KORITA, LAWSON [FB]	37-29	H 8	
18:55				SUB OUT: MIDTGAARD, ASBJORN
18:55				SUB IN: ECHENIQUE, JAIME
18:37				MISSED JUMPER by BURTON, JAMARIUS
18:34	REBOUND (DEF) by HORNE, JERIAH			
18:14	MISSED JUMPER by JOINER, ELIJAH			
18:11				REBOUND (DEF) by STEVENSON, ERIK
18:10		39-29	H 10	GOOD! LAYUP by STEVENSON, ERIK [FB]
18:10	FOUL (PERSONAL) by JOINER, ELIJAH			
18:10	SUB OUT: JOINER, ELIJAH			
18:10	SUB IN: HILL, ISAIAH			
18:10		40-29	H 11	GOOD! FT by STEVENSON, ERIK [FB]
17:45	TURNOVER (LOSTBALL) by RACHAL, BRANDON			
17:45				STEAL by ECHENIQUE, JAIME
17:42		42-29	H 13	GOOD! LAYUP by STEVENSON, ERIK
17:42				ASSIST by ETIENNE, TYSON
17:42	FOUL (PERSONAL) by KORITA, LAWSON			
17:42	TIMEOUT 30SEC			
17:42				SUB OUT: ECHENIQUE, JAIME
17:42				SUB IN: MIDTGAARD, ASBJORN
17:42		43-29	H 14	GOOD! FT by STEVENSON, ERIK
17:28	TURNOVER (TRAVEL) by RACHAL, BRANDON			
17:04		46-29	H 17	GOOD! 3PTR by STEVENSON, ERIK
17:04				ASSIST by BURTON, JAMARIUS
16:50				FOUL (PERSONAL) by ETIENNE, TYSON
16:50	SUB OUT: RACHAL, BRANDON			
16:50	SUB OUT: KORITA, LAWSON			
16:50	SUB IN: JOINER, ELIJAH			
16:50	SUB IN: JACKSON, DARIEN			
16:42				FOUL (PERSONAL) by WADE, TREY
16:42	GOOD! FT by IGBANU, MARTINS	46-30	H 16	
16:42				SUB OUT: MIDTGAARD, ASBJORN
16:42				SUB IN: ECHENIQUE, JAIME
16:42	MISSED FT by IGBANU, MARTINS			
16:42	REBOUND (OFF) by TEAM			
16:36	MISSED LAYUP by IGBANU, MARTINS			
16:33				REBOUND (DEF) by ETIENNE, TYSON
16:26				MISSED 3PTR by STEVENSON, ERIK
16:22				REBOUND (OFF) by ECHENIQUE, JAIME
16:22		48-30	H 18	GOOD! LAYUP by ECHENIQUE, JAIME
15:59	MISSED JUMPER by HILL, ISAIAH			
15:57				REBOUND (DEF) by ETIENNE, TYSON
15:44		50-30	H 20	GOOD! JUMPER by STEVENSON, ERIK [PNT]
15:17	MISSED LAYUP by HORNE, JERIAH			
15:13				REBOUND (DEF) by STEVENSON, ERIK
15:11				MISSED 3PTR by STEVENSON, ERIK
15:08	REBOUND (DEF) by JOINER, ELIJAH			
14:52	TURNOVER (LOSTBALL) by HORNE, JERIAH			
14:52				STEAL by ECHENIQUE, JAIME
14:46				MISSED 3PTR by ETIENNE, TYSON
14:42	REBOUND (DEF) by IGBANU, MARTINS			
14:25	GOOD! 3PTR by HORNE, JERIAH	50-33	H 17	
14:25	ASSIST by JACKSON, DARIEN			
14:00				MISSED JUMPER by STEVENSON, ERIK

Time	VISITORS: Tulsa	Score	Margin	HOME: Wichita St.
13:56				REBOUND (OFF) by WADE, TREY
13:56		52-33	H 19	GOOD! LAYUP by ECHENIQUE, JAIME
13:42				FOUL (PERSONAL) by ECHENIQUE, JAIME
13:42				
13:42				SUB OUT: BURTON, JAMARIUS
13:42				SUB OUT: STEVENSON, ERIK
13:42				SUB OUT: ECHENIQUE, JAIME
13:42				SUB IN: DENNIS, DEXTER
13:42				SUB IN: UDEZE, MORRIS
13:42				SUB IN: SHERFIELD, GRANT
13:42	SUB OUT: JACKSON, DARIEN			
13:42	SUB OUT: HORNE, JERIAH			
13:42	SUB IN: RACHAL, BRANDON			
13:42	SUB IN: KORITA, LAWSON			
13:42	GOOD! FT by IGBANU, MARTINS	52-34	H 18	
13:42	GOOD! FT by IGBANU, MARTINS	52-35	H 17	
13:42	SUB OUT: IGBANU, MARTINS			
13:42	SUB IN: EARLEY, JOSH			
13:14				MISSED 3PTR by WADE, TREY
13:11	REBOUND (DEF) by JOINER, ELIJAH			
12:50				FOUL (PERSONAL) by UDEZE, MORRIS
12:50				SUB OUT: WADE, TREY
12:50				SUB IN: BURTON, JAMARIUS
12:39				FOUL (PERSONAL) by BURTON, JAMARIUS
12:39	GOOD! FT by HILL, ISAIAH	52-36	H 16	
12:39				SUB OUT: BURTON, JAMARIUS
12:39				SUB IN: STEVENSON, ERIK
12:39	GOOD! FT by HILL, ISAIAH	52-37	H 15	
12:20		55-37	H 18	GOOD! 3PTR by ETIENNE, TYSON
11:51	MISSED JUMPER by HILL, ISAIAH			
11:49				REBOUND (DEF) by SHERFIELD, GRANT
11:43		57-37	H 20	GOOD! LAYUP by UDEZE, MORRIS [FB]
11:43				ASSIST by ETIENNE, TYSON
11:19	MISSED JUMPER by RACHAL, BRANDON			
11:16				REBOUND (DEF) by DENNIS, DEXTER
11:04		59-37	H 22	GOOD! JUMPER by UDEZE, MORRIS
10:56	TIMEOUT 30SEC			
10:56	SUB OUT: HILL, ISAIAH			
10:56	SUB OUT: KORITA, LAWSON			
10:56	SUB OUT: EARLEY, JOSH			
10:56	SUB IN: IGBANU, MARTINS			
10:56	SUB IN: JACKSON, DARIEN			
10:56	SUB IN: HORNE, JERIAH			
10:38	GOOD! LAYUP by IGBANU, MARTINS	59-39	H 20	
10:38	ASSIST by JACKSON, DARIEN			
10:38				FOUL (PERSONAL) by UDEZE, MORRIS
10:38	MISSED FT by IGBANU, MARTINS			
10:37				REBOUND (DEF) by STEVENSON, ERIK
10:23				TURNOVER (OTHER) by STEVENSON, ERIK
10:10	GOOD! DUNK by IGBANU, MARTINS	59-41	H 18	
10:10	ASSIST by JACKSON, DARIEN			
09:46				MISSED JUMPER by SHERFIELD, GRANT
09:43	REBOUND (DEF) by JACKSON, DARIEN			
09:36	GOOD! 3PTR by HORNE, JERIAH	59-44	H 15	
09:36	ASSIST by JOINER, ELIJAH			
09:12				MISSED 3PTR by STEVENSON, ERIK
09:09	REBOUND (DEF) by JACKSON, DARIEN			
08:58				SUB OUT: UDEZE, MORRIS
08:58				SUB IN: ECHENIQUE, JAIME
08:58				SUB OUT: STEVENSON, ERIK
08:58				SUB IN: BURTON, JAMARIUS
08:48	GOOD! JUMPER by IGBANU, MARTINS	59-46	H 13	
08:20				TURNOVER (LOSTBALL) by BURTON, JAMARIUS
08:20	STEAL by RACHAL, BRANDON			
08:20				SUB OUT: SHERFIELD, GRANT
08:20				SUB IN: WADE, TREY
08:04	GOOD! 3PTR by HORNE, JERIAH	59-49	H 10	
08:04	ASSIST by JOINER, ELIJAH			
07:57				TIMEOUT TEAM
07:43				MISSED 3PTR by ETIENNE, TYSON
07:41				REBOUND (OFF) by WADE, TREY
07:25				MISSED 3PTR by DENNIS, DEXTER
07:22	REBOUND (DEF) by JACKSON, DARIEN			
07:13	MISSED JUMPER by RACHAL, BRANDON			
07:10				REBOUND (DEF) by WADE, TREY
07:07		61-49	H 12	GOOD! JUMPER by BURTON, JAMARIUS [FB/PNT]
07:07	FOUL (PERSONAL) by JOINER, ELIJAH			
07:07		62-49	H 13	GOOD! FT by BURTON, JAMARIUS [FB]
06:43	TURNOVER (TRAVEL) by IGBANU, MARTINS			
06:24				MISSED 3PTR by DENNIS, DEXTER

Time	VISITORS: Tulsa	Score	Margin	HOME: Wichita St.
06:22	REBOUND (DEF) by RACHAL, BRANDON			
06:13	MISSED JUMPER by RACHAL, BRANDON			
06:07	REBOUND (OFF) by JACKSON, DARIEN			
06:07	MISSED LAYUP by JACKSON, DARIEN			
06:07				REBOUND (DEF) by ECHENIQUE, JAIME
05:58		65-49	H 16	GOOD! 3PTR by BURTON, JAMARIUS
05:40				FOUL (PERSONAL) by ETIENNE, TYSON
05:40				SUB OUT: ETIENNE, TYSON
05:40				SUB IN: STEVENSON, ERIK
05:40	SUB OUT: RACHAL, BRANDON			
05:40	SUB OUT: JOINER, ELIJAH			
05:40	SUB IN: HILL, ISIAIAH			
05:40	SUB IN: KORITA, LAWSON			
05:40	MISSED FT by IGBANU, MARTINS			
05:39				REBOUND (DEF) by DENNIS, DEXTER
05:20	FOUL (PERSONAL) by IGBANU, MARTINS			
05:20		66-49	H 17	GOOD! FT by STEVENSON, ERIK
05:20				SUB OUT: ECHENIQUE, JAIME
05:20				SUB IN: MIDTGAARD, ASBJORN
05:20		67-49	H 18	GOOD! FT by STEVENSON, ERIK
05:06	MISSED 3PTR by IGBANU, MARTINS			
05:03				REBOUND (DEF) by BURTON, JAMARIUS
04:46		70-49	H 21	GOOD! 3PTR by WADE, TREY
04:46				ASSIST by BURTON, JAMARIUS
04:25	GOOD! LAYUP by HORNE, JERIAH	70-51	H 19	
04:15				TURNOVER (BADPASS) by BURTON, JAMARIUS
04:15	STEAL by HILL, ISIAIAH			
04:11				FOUL (PERSONAL) by STEVENSON, ERIK
04:11	MISSED FT by HILL, ISIAIAH			
04:11	REBOUND (OFF) by TEAM			
04:11				SUB OUT: BURTON, JAMARIUS
04:11				SUB OUT: MIDTGAARD, ASBJORN
04:11				SUB IN: ECHENIQUE, JAIME
04:11				SUB IN: SHERFIELD, GRANT
04:11	SUB OUT: IGBANU, MARTINS			
04:11	SUB IN: RACHAL, BRANDON			
04:11	GOOD! FT by HILL, ISIAIAH [FB]	70-52	H 18	
03:59				
03:46		72-52	H 20	GOOD! LAYUP by SHERFIELD, GRANT
03:39	TURNOVER (LOSTBALL) by HILL, ISIAIAH			
03:39				STEAL by STEVENSON, ERIK
03:24		74-52	H 22	GOOD! JUMPER by ECHENIQUE, JAIME [PNT]
03:24				ASSIST by STEVENSON, ERIK
03:09				FOUL (PERSONAL) by WADE, TREY
03:09	GOOD! FT by HORNE, JERIAH	74-53	H 21	
03:09	SUB OUT: HILL, ISIAIAH			
03:09	SUB IN: JOINER, ELIJAH			
03:09	GOOD! FT by HORNE, JERIAH	74-54	H 20	
02:56				FOUL (OFF) by ECHENIQUE, JAIME
02:56				TURNOVER (OFFENSIVE) by ECHENIQUE, JAIME
02:41	MISSED JUMPER by HORNE, JERIAH			
02:40	REBOUND (OFF) by TEAM			
02:40				SUB OUT: ECHENIQUE, JAIME
02:40				SUB IN: MIDTGAARD, ASBJORN
02:40	SUB OUT: JACKSON, DARIEN			
02:40	SUB IN: IGBANU, MARTINS			
02:36	MISSED LAYUP by JOINER, ELIJAH			
02:32				REBOUND (DEF) by MIDTGAARD, ASBJORN
02:10		77-54	H 23	GOOD! 3PTR by SHERFIELD, GRANT
01:59	MISSED 3PTR by JOINER, ELIJAH			
01:56				REBOUND (DEF) by WADE, TREY
01:36				TURNOVER (BADPASS) by STEVENSON, ERIK
01:36	SUB OUT: JOINER, ELIJAH			
01:36	SUB IN: HILL, ISIAIAH			
01:36	SUB OUT: IGBANU, MARTINS			
01:36	SUB IN: JACKSON, DARIEN			
01:27	MISSED 3PTR by HORNE, JERIAH			
01:25				REBOUND (DEF) by MIDTGAARD, ASBJORN
01:02				TIMEOUT 30SEC
01:02				SUB OUT: MIDTGAARD, ASBJORN
01:02				SUB IN: ECHENIQUE, JAIME
00:58				TURNOVER (BADPASS) by STEVENSON, ERIK
00:58	STEAL by HORNE, JERIAH			
00:44	GOOD! 3PTR by JACKSON, DARIEN	77-57	H 20	
00:44	ASSIST by HILL, ISIAIAH			
00:39				TIMEOUT 30SEC
00:39				SUB OUT: ECHENIQUE, JAIME
00:39				SUB IN: MIDTGAARD, ASBJORN
00:39	SUB OUT: RACHAL, BRANDON			
00:39	SUB IN: JONES, REGGIE			

Time	VISITORS: Tulsa	Score	Margin	HOME: Wichita St.
00:39				SUB OUT: DENNIS, DEXTER
00:39				SUB OUT: WADE, TREY
00:39				SUB IN: GORDON, DEANTONI
00:39				SUB IN: POOR BEAR-CHANDLER, ISAIAH
00:24				MISSED 3PTR by SHERFIELD, GRANT
00:20	REBOUND (DEF) by JACKSON, DARIEN			
00:20	FOUL (TECH) by JONES, REGGIE			
00:20	TURNOVER (OFFENSIVE) by JONES, REGGIE			
00:20		78-57	H 21	GOOD! FT by STEVENSON, ERIK [FB]
00:20		79-57	H 22	GOOD! FT by STEVENSON, ERIK [FB]
00:20	FOUL (TECH) by HILL, ISAIAH			
00:20				FOUL (TECH) by STEVENSON, ERIK
00:20				SUB OUT: STEVENSON, ERIK
00:20				SUB OUT: MIDTGAARD, ASBJORN
00:20				SUB OUT: SHERFIELD, GRANT
00:20				SUB IN: HERRS, JACOB
00:20				SUB IN: BUSH, BRYCEN
00:20				SUB IN: BUSSE, TATE

Tulsa 57, Wichita St. 79

Points from (This Period)	TLS	WSU
In the Paint	10	20
Off Turns	12	10
2nd Chance	0	4
Fast Break	4	10
Bench	15	24

**Official Scoring/Possession Reference Chart**  
**Tulsa vs Wichita St.**  
**Period 1**  
**March 08, 2020 at Charles Koch Arena - Wichita, Kan.**



**Period 1**

**Starters:**

**Tulsa:** 0 RACHAL, BRANDON (G); 3 JOINER, ELIJAH (G); 5 KORITA, LAWSON (G); 15 EARLEY, JOSH (F); 41 HORNE, JERIAH (F);  
**Wichita St.:** 0 DENNIS, DEXTER (G); 1 ETIENNE, TYSON (G); 2 BURTON, JAMARIUS (G); 5 WADE, TREY (F); 21 ECHENIQUE, JAIME (C);

Time	VISITORS: Tulsa	Score	Margin	HOME: Wichita St.
19:07		3-0	H 3	GOOD! 3PTR by BURTON, JAMARIUS
18:31		6-0	H 6	GOOD! 3PTR by DENNIS, DEXTER
17:16		9-0	H 9	GOOD! 3PTR by DENNIS, DEXTER
16:00	GOOD! 3PTR by RACHAL, BRANDON	9-3	H 6	
13:37	GOOD! FT by RACHAL, BRANDON [FB]	9-4	H 5	
13:14		11-4	H 7	GOOD! JUMPER by BURTON, JAMARIUS
12:30	GOOD! JUMPER by HORNE, JERIAH	11-6	H 5	
12:23		14-6	H 8	GOOD! 3PTR by SHERFIELD, GRANT [FB]
11:48		16-6	H 10	GOOD! LAYUP by WADE, TREY [FB]
09:54		18-6	H 12	GOOD! DUNK by WADE, TREY
09:33	GOOD! FT by JOINER, ELIJAH	18-7	H 11	
08:48		19-7	H 12	GOOD! FT by WADE, TREY
08:48	GOOD! LAYUP by IGBANU, MARTINS	19-9	H 10	
07:45		20-9	H 11	GOOD! FT by ECHENIQUE, JAIME
07:45		21-9	H 12	GOOD! FT by ECHENIQUE, JAIME
07:45		22-9	H 13	GOOD! FT by ECHENIQUE, JAIME
07:29	GOOD! 3PTR by IGBANU, MARTINS	22-12	H 10	
06:46	GOOD! 3PTR by IGBANU, MARTINS	22-15	H 7	
06:24		24-15	H 9	GOOD! DUNK by ECHENIQUE, JAIME
05:31	GOOD! LAYUP by KORITA, LAWSON [FB]	24-17	H 7	
04:54	GOOD! FT by HILL, ISAIAH	24-18	H 6	
04:54	GOOD! FT by HILL, ISAIAH	24-19	H 5	
04:26		27-19	H 8	GOOD! 3PTR by ETIENNE, TYSON
04:10	GOOD! LAYUP by IGBANU, MARTINS	27-21	H 6	
03:01	GOOD! FT by IGBANU, MARTINS	27-22	H 5	
02:37		29-22	H 7	GOOD! LAYUP by ECHENIQUE, JAIME
01:35	GOOD! FT by JOINER, ELIJAH	29-23	H 6	
01:35	GOOD! FT by JOINER, ELIJAH	29-24	H 5	
01:18	GOOD! LAYUP by JACKSON, DARIEN	29-26	H 3	
00:56		31-26	H 5	GOOD! JUMPER by STEVENSON, ERIK
00:56		32-26	H 6	GOOD! FT by STEVENSON, ERIK
00:37		33-26	H 7	GOOD! FT by ETIENNE, TYSON
00:37		34-26	H 8	GOOD! FT by ETIENNE, TYSON

**Tulsa 26, Wichita St. 34**

**Official Scoring/Possession Reference Chart**  
**Tulsa vs Wichita St.**  
**Period 2**  
**March 08, 2020 at Charles Koch Arena - Wichita, Kan.**



**Period 2**

**Starters:**

**Tulsa:** 0 RACHAL, BRANDON (G); 3 JOINER, ELIJAH (G); 5 KORITA, LAWSON (G); 15 EARLEY, JOSH (F); 41 HORNE, JERIAH (F);  
**Wichita St.:** 0 DENNIS, DEXTER (G); 1 ETIENNE, TYSON (G); 2 BURTON, JAMARIUS (G); 5 WADE, TREY (F); 21 ECHENIQUE, JAIME (C);

Time	VISITORS: Tulsa	Score	Margin	HOME: Wichita St.
19:36		37-26	H 11	GOOD! 3PTR by BURTON, JAMARIUS
18:55	GOOD! LAYUP by KORITA, LAWSON [FB]	37-28	H 9	
18:55	GOOD! FT by KORITA, LAWSON [FB]	37-29	H 8	
18:10		39-29	H 10	GOOD! LAYUP by STEVENSON, ERIK [FB]
18:10		40-29	H 11	GOOD! FT by STEVENSON, ERIK [FB]
17:42		42-29	H 13	GOOD! LAYUP by STEVENSON, ERIK
17:42		43-29	H 14	GOOD! FT by STEVENSON, ERIK
17:04		46-29	H 17	GOOD! 3PTR by STEVENSON, ERIK
16:42	GOOD! FT by IGBANU, MARTINS	46-30	H 16	
16:22		48-30	H 18	GOOD! LAYUP by ECHENIQUE, JAIME
15:44		50-30	H 20	GOOD! JUMPER by STEVENSON, ERIK [PNT]
14:25	GOOD! 3PTR by HORNE, JERIAH	50-33	H 17	
13:56		52-33	H 19	GOOD! LAYUP by ECHENIQUE, JAIME
13:42	GOOD! FT by IGBANU, MARTINS	52-34	H 18	
13:42	GOOD! FT by IGBANU, MARTINS	52-35	H 17	
12:39	GOOD! FT by HILL, ISIAAH	52-36	H 16	
12:39	GOOD! FT by HILL, ISIAAH	52-37	H 15	
12:20		55-37	H 18	GOOD! 3PTR by ETIENNE, TYSON
11:43		57-37	H 20	GOOD! LAYUP by UDEZE, MORRIS [FB]
11:04		59-37	H 22	GOOD! JUMPER by UDEZE, MORRIS
10:38	GOOD! LAYUP by IGBANU, MARTINS	59-39	H 20	
10:10	GOOD! DUNK by IGBANU, MARTINS	59-41	H 18	
09:36	GOOD! 3PTR by HORNE, JERIAH	59-44	H 15	
08:48	GOOD! JUMPER by IGBANU, MARTINS	59-46	H 13	
08:04	GOOD! 3PTR by HORNE, JERIAH	59-49	H 10	
07:07		61-49	H 12	GOOD! JUMPER by BURTON, JAMARIUS [FB/PNT]
07:07		62-49	H 13	GOOD! FT by BURTON, JAMARIUS [FB]
05:58		65-49	H 16	GOOD! 3PTR by BURTON, JAMARIUS
05:20		66-49	H 17	GOOD! FT by STEVENSON, ERIK
05:20		67-49	H 18	GOOD! FT by STEVENSON, ERIK
04:46		70-49	H 21	GOOD! 3PTR by WADE, TREY
04:25	GOOD! LAYUP by HORNE, JERIAH	70-51	H 19	
04:11	GOOD! FT by HILL, ISIAAH [FB]	70-52	H 18	
03:46		72-52	H 20	GOOD! LAYUP by SHERFIELD, GRANT
03:24		74-52	H 22	GOOD! JUMPER by ECHENIQUE, JAIME [PNT]
03:09	GOOD! FT by HORNE, JERIAH	74-53	H 21	
03:09	GOOD! FT by HORNE, JERIAH	74-54	H 20	
02:10		77-54	H 23	GOOD! 3PTR by SHERFIELD, GRANT
00:44	GOOD! 3PTR by JACKSON, DARIEN	77-57	H 20	
00:20		78-57	H 21	GOOD! FT by STEVENSON, ERIK [FB]
00:20		79-57	H 22	GOOD! FT by STEVENSON, ERIK [FB]

**Tulsa 57, Wichita St. 79**

# Official Substitutions Log

## Tulsa vs Wichita St.

Period 1

March 08, 2020 at Charles Koch Arena - Wichita, Kan.



VISITORS: Tulsa	Time	Score	HOME: Wichita St.
0 RACHAL, BRANDON			0 DENNIS, DEXTER
3 JOINER, ELIJAH			1 ETIENNE, TYSON
5 KORITA, LAWSON			2 BURTON, JAMARIUS
15 EARLEY, JOSH			5 WADE, TREY
41 HORNE, JERIAH			21 ECHENIQUE, JAIME
SUB OUT: 15 EARLEY, JOSH	17:54	0-6	
SUB IN: 1 IGBANU, MARTINS	17:54		
	15:40	3-9	SUB OUT: ETIENNE, TYSON
	15:40		SUB OUT: BURTON, JAMARIUS
	15:40		SUB OUT: ECHENIQUE, JAIME
	15:40		SUB IN: STEVENSON, ERIK
	15:40		SUB IN: MIDTGAARD, ASBJORN
	15:40		SUB IN: SHERFIELD, GRANT
SUB OUT: 3 JOINER, ELIJAH	15:40		
SUB OUT: 5 KORITA, LAWSON	15:40		
SUB IN: 4 HILL, ISAIAH	15:40		
SUB IN: 11 JACKSON, DARIEN	15:40		
SUB OUT: 0 RACHAL, BRANDON	14:42	3-9	
SUB OUT: 41 HORNE, JERIAH	14:42		
SUB IN: 3 JOINER, ELIJAH	14:42		
SUB IN: 22 JONES, REGGIE	14:42		
	14:22	3-9	SUB OUT: WADE, TREY
	14:22		SUB IN: BURTON, JAMARIUS
SUB OUT: 3 JOINER, ELIJAH	14:22		
SUB IN: 0 RACHAL, BRANDON	14:22		
	13:37	4-9	SUB OUT: MIDTGAARD, ASBJORN
	13:37		SUB IN: ECHENIQUE, JAIME
	12:35	4-11	SUB OUT: DENNIS, DEXTER
	12:35		SUB IN: WADE, TREY
SUB OUT: 11 JACKSON, DARIEN	12:35		
SUB IN: 41 HORNE, JERIAH	12:35		
SUB OUT: 1 IGBANU, MARTINS	12:35		
SUB IN: 11 JACKSON, DARIEN	12:35		
	10:54	6-16	SUB OUT: STEVENSON, ERIK
	10:54		SUB IN: ETIENNE, TYSON
SUB OUT: 4 HILL, ISAIAH	10:54		
SUB OUT: 22 JONES, REGGIE	10:54		
SUB OUT: 41 HORNE, JERIAH	10:54		
SUB IN: 1 IGBANU, MARTINS	10:54		
SUB IN: 3 JOINER, ELIJAH	10:54		
SUB IN: 5 KORITA, LAWSON	10:54		
SUB OUT: 5 KORITA, LAWSON	09:34	6-18	
SUB IN: 4 HILL, ISAIAH	09:34		
	08:49	7-18	SUB OUT: SHERFIELD, GRANT
	08:49		SUB IN: STEVENSON, ERIK
SUB OUT: 3 JOINER, ELIJAH	08:49		
SUB OUT: 11 JACKSON, DARIEN	08:49		
SUB IN: 5 KORITA, LAWSON	08:49		
SUB IN: 41 HORNE, JERIAH	08:49		
SUB OUT: 0 RACHAL, BRANDON	08:48	7-18	
SUB IN: 11 JACKSON, DARIEN	08:48		
	06:56	12-22	SUB OUT: ETIENNE, TYSON
	06:56		SUB IN: SHERFIELD, GRANT
	06:04	15-24	SUB OUT: WADE, TREY
	06:04		SUB IN: GORDON, DEANTONI
	05:00	17-24	SUB OUT: ECHENIQUE, JAIME
	05:00		SUB IN: MIDTGAARD, ASBJORN
	05:00		SUB OUT: SHERFIELD, GRANT
	05:00		SUB IN: ETIENNE, TYSON
	03:45	21-27	SUB OUT: GORDON, DEANTONI
	03:45		SUB OUT: MIDTGAARD, ASBJORN
	03:45		SUB IN: WADE, TREY
	03:45		SUB IN: ECHENIQUE, JAIME
SUB OUT: 4 HILL, ISAIAH	03:01	21-27	
SUB IN: 3 JOINER, ELIJAH	03:01		
SUB OUT: 1 IGBANU, MARTINS	03:01		
SUB IN: 15 EARLEY, JOSH	03:01		
SUB OUT: 15 EARLEY, JOSH	02:15	22-29	
SUB IN: 1 IGBANU, MARTINS	02:15		
	01:45	22-29	SUB OUT: ECHENIQUE, JAIME
	01:45		SUB IN: UDEZE, MORRIS
	01:35	23-29	SUB OUT: BURTON, JAMARIUS
	01:35		SUB IN: SHERFIELD, GRANT
	00:04	26-34	SUB OUT: SHERFIELD, GRANT
	00:04		SUB IN: GORDON, DEANTONI





**Official Substitutions Log**  
**Tulsa vs Wichita St.**  
**Period 2**  
**March 08, 2020 at Charles Koch Arena - Wichita, Kan.**



VISITORS: Tulsa	Time	Score	HOME: Wichita St.
0 RACHAL, BRANDON			0 DENNIS, DEXTER
3 JOINER, ELIJAH			1 ETIENNE, TYSON
5 KORITA, LAWSON			2 BURTON, JAMARIUS
15 EARLEY, JOSH			5 WADE, TREY
41 HORNE, JERIAH			21 ECHENIQUE, JAIME
	20:00	-	SUB OUT: GORDON, DEANTONI
	20:00		SUB OUT: UDEZE, MORRIS
	20:00		SUB IN: BURTON, JAMARIUS
	20:00		SUB IN: MIDTGAARD, ASBJORN
SUB OUT: 11 JACKSON, DARIEN	20:00		
SUB IN: 0 RACHAL, BRANDON	20:00		
	18:55	29-37	SUB OUT: MIDTGAARD, ASBJORN
	18:55		SUB IN: ECHENIQUE, JAIME
SUB OUT: 3 JOINER, ELIJAH	18:10	29-39	
SUB IN: 4 HILL, ISAIAH	18:10		
	17:42	29-42	SUB OUT: ECHENIQUE, JAIME
	17:42		SUB IN: MIDTGAARD, ASBJORN
SUB OUT: 0 RACHAL, BRANDON	16:50	29-46	
SUB OUT: 5 KORITA, LAWSON	16:50		
SUB IN: 3 JOINER, ELIJAH	16:50		
SUB IN: 11 JACKSON, DARIEN	16:50		
	16:42	30-46	SUB OUT: MIDTGAARD, ASBJORN
	16:42		SUB IN: ECHENIQUE, JAIME
	13:42	33-52	SUB OUT: BURTON, JAMARIUS
	13:42		SUB OUT: STEVENSON, ERIK
	13:42		SUB OUT: ECHENIQUE, JAIME
	13:42		SUB IN: DENNIS, DEXTER
	13:42		SUB IN: UDEZE, MORRIS
	13:42		SUB IN: SHERFIELD, GRANT
SUB OUT: 11 JACKSON, DARIEN	13:42		
SUB OUT: 41 HORNE, JERIAH	13:42		
SUB IN: 0 RACHAL, BRANDON	13:42		
SUB IN: 5 KORITA, LAWSON	13:42		
SUB OUT: 1 IGBANU, MARTINS	13:42		
SUB IN: 15 EARLEY, JOSH	13:42		
	12:50	35-52	SUB OUT: WADE, TREY
	12:50		SUB IN: BURTON, JAMARIUS
	12:39	36-52	SUB OUT: BURTON, JAMARIUS
	12:39		SUB IN: STEVENSON, ERIK
SUB OUT: 4 HILL, ISAIAH	10:56	37-59	
SUB OUT: 5 KORITA, LAWSON	10:56		
SUB OUT: 15 EARLEY, JOSH	10:56		
SUB IN: 1 IGBANU, MARTINS	10:56		
SUB IN: 11 JACKSON, DARIEN	10:56		
SUB IN: 41 HORNE, JERIAH	10:56		
	08:58	44-59	SUB OUT: UDEZE, MORRIS
	08:58		SUB IN: ECHENIQUE, JAIME
	08:58		SUB OUT: STEVENSON, ERIK
	08:58		SUB IN: BURTON, JAMARIUS
	08:20	46-59	SUB OUT: SHERFIELD, GRANT
	08:20		SUB IN: WADE, TREY
	05:40	49-65	SUB OUT: ETIENNE, TYSON
	05:40		SUB IN: STEVENSON, ERIK
SUB OUT: 0 RACHAL, BRANDON	05:40		
SUB OUT: 3 JOINER, ELIJAH	05:40		
SUB IN: 4 HILL, ISAIAH	05:40		
SUB IN: 5 KORITA, LAWSON	05:40		
	05:20	49-66	SUB OUT: ECHENIQUE, JAIME
	05:20		SUB IN: MIDTGAARD, ASBJORN
	04:11	51-70	SUB OUT: BURTON, JAMARIUS
	04:11		SUB OUT: MIDTGAARD, ASBJORN
	04:11		SUB IN: ECHENIQUE, JAIME
	04:11		SUB IN: SHERFIELD, GRANT
SUB OUT: 1 IGBANU, MARTINS	04:11		
SUB IN: 0 RACHAL, BRANDON	04:11		
SUB OUT: 4 HILL, ISAIAH	03:09	53-74	
SUB IN: 3 JOINER, ELIJAH	03:09		
	02:40	54-74	SUB OUT: ECHENIQUE, JAIME
	02:40		SUB IN: MIDTGAARD, ASBJORN
SUB OUT: 11 JACKSON, DARIEN	02:40		
SUB IN: 1 IGBANU, MARTINS	02:40		
SUB OUT: 3 JOINER, ELIJAH	01:36	54-77	
SUB IN: 4 HILL, ISAIAH	01:36		
SUB OUT: 1 IGBANU, MARTINS	01:36		
SUB IN: 11 JACKSON, DARIEN	01:36		

VISITORS: Tulsa		Time	Score	HOME: Wichita St.
		01:02	54-77	SUB OUT: MIDTGAARD,ASBJORN
		01:02		SUB IN: ECHENIQUE,JAIME
		00:39	57-77	SUB OUT: ECHENIQUE,JAIME
		00:39		SUB IN: MIDTGAARD,ASBJORN
SUB OUT: 0 RACHAL,BRANDON		00:39		
SUB IN: 22 JONES,REGGIE		00:39		
		00:39		SUB OUT: DENNIS,DEXTER
		00:39		SUB OUT: WADE,TREY
		00:39		SUB IN: GORDON,DEANTONI
		00:39		SUB IN: POOR BEAR-CHANDLER,ISAIAH
		00:20	57-79	SUB OUT: STEVENSON,ERIK
		00:20		SUB OUT: MIDTGAARD,ASBJORN
		00:20		SUB OUT: SHERFIELD,GRANT
		00:20		SUB IN: HERRS,JACOB
		00:20		SUB IN: BUSH,BRYCEN
		00:20		SUB IN: BUSSE,TATE

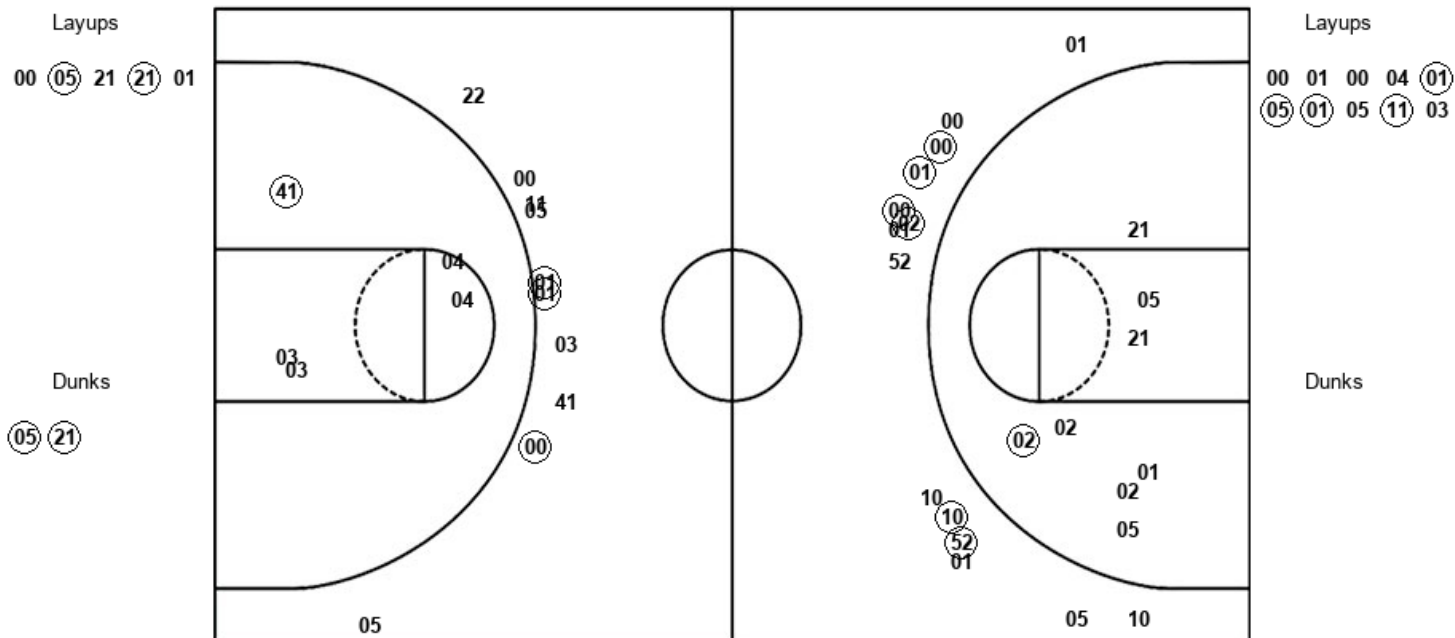
Tulsa 57, Wichita St. 79

Official Shot Chart  
**Tulsa vs Wichita St.**  
 PERIOD 1 Shots  
 March 08, 2020 at Charles Koch Arena - Wichita, Kan.



**Wichita St.**

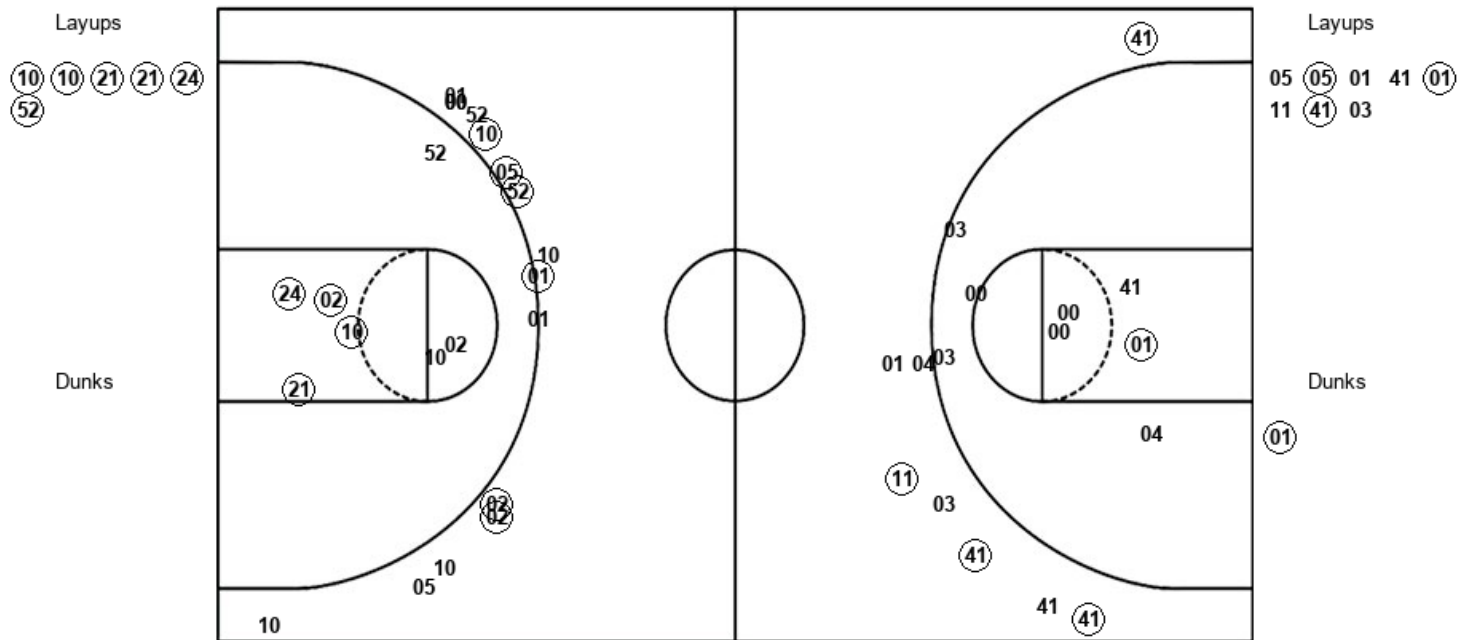
**Tulsa**



WSU : Period 1	Made	Att	Pct
Layups	2	5	40.0
Dunks	2	2	100.0
2PT Field Goals	6	16	37.5
3PT Field Goals	5	13	38.5
<b>Total Field Goals</b>	<b>11</b>	<b>29</b>	<b>37.9</b>

TLS : Period 1	Made	Att	Pct
Layups	4	10	40.0
Dunks	0	0	0
2PT Field Goals	5	15	33.3
3PT Field Goals	3	10	30.0
<b>Total Field Goals</b>	<b>8</b>	<b>25</b>	<b>32.0</b>

## Tulsa



WSU : Period 2	Made	Att	Pct
Layups	6	6	100.0
Dunks	0	0	0
2PT Field Goals	10	13	76.9
3PT Field Goals	6	15	40.0
<b>Total Field Goals</b>	<b>16</b>	<b>28</b>	<b>57.1</b>

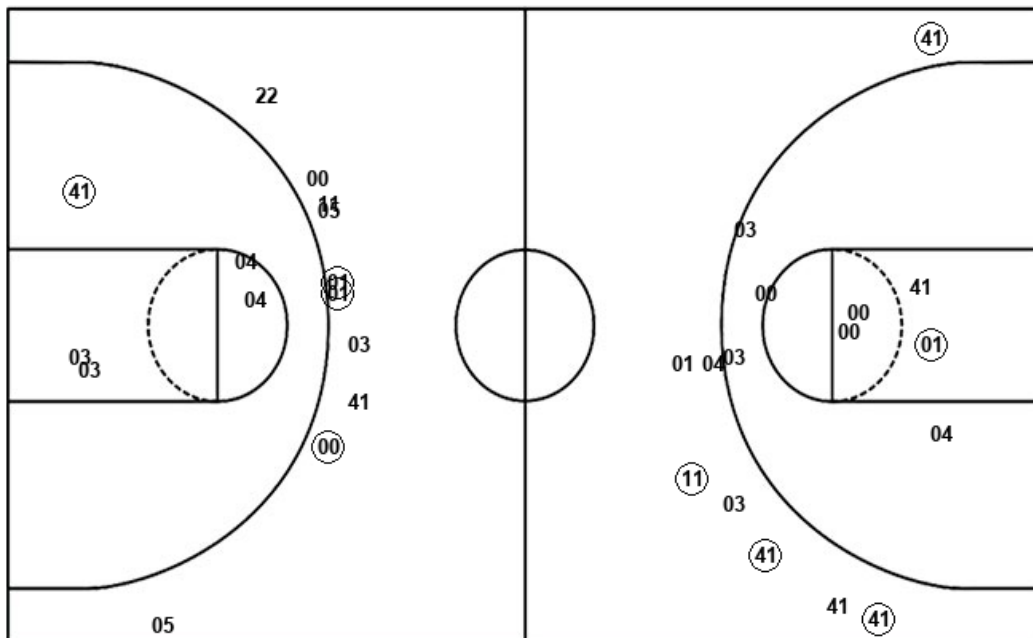
<b>TLS : Period 2</b>	<b>Made</b>	<b>Att</b>	<b>Pct</b>
Layups	3	8	37.5
Dunks	1	1	100.0
2PT Field Goals	5	18	27.8
3PT Field Goals	4	7	57.1
<b>Total Field Goals</b>	<b>9</b>	<b>25</b>	<b>36.0</b>

**Official Shot Chart**  
**Tulsa vs Wichita St.**  
**Tulsa Team Shots**  
**March 08, 2020 at Charles Koch Arena - Wichita, Kan.**



Layups

Dunks



Layups

Dunks

00 01 00 04 (01)  
 (05) (01) 05 (11) 03  
 05 (05) 01 41 (01)  
 11 (41) 03

(01)

TLS : Period 1	Made	Att	Pct
Layups	4	10	40.0
Dunks	0	0	0
2PT Field Goals	5	15	33.3
3PT Field Goals	3	10	30.0
<b>Total Field Goals</b>	<b>8</b>	<b>25</b>	<b>32.0</b>

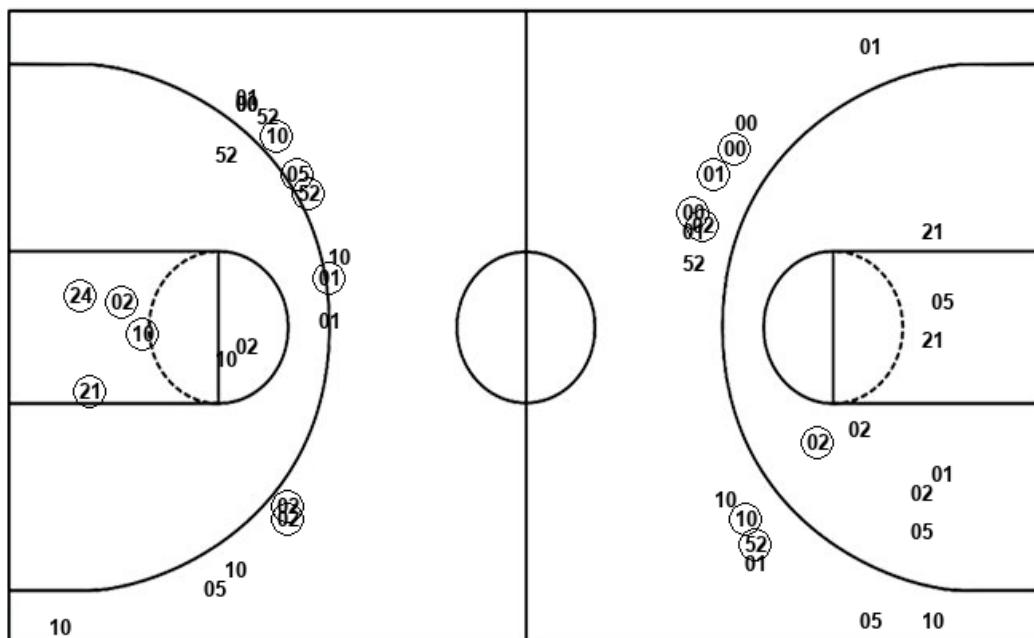
TLS : Period 2	Made	Att	Pct
Layups	3	8	37.5
Dunks	1	1	100.0
2PT Field Goals	5	18	27.8
3PT Field Goals	4	7	57.1
<b>Total Field Goals</b>	<b>9</b>	<b>25</b>	<b>36.0</b>

Official Shot Chart  
**Tulsa vs Wichita St.**  
Wichita St. Team Shots  
March 08, 2020 at Charles Koch Arena - Wichita, Kan.



Layups

Dunks



Layups

Dunks

WSU : Period 1	Made	Att	Pct
Layups	2	5	40.0
Dunks	2	2	100.0
2PT Field Goals	6	16	37.5
3PT Field Goals	5	13	38.5
<b>Total Field Goals</b>	<b>11</b>	<b>29</b>	<b>37.9</b>

WSU : Period 2	Made	Att	Pct
Layups	6	6	100.0
Dunks	0	0	0
2PT Field Goals	10	13	76.9
3PT Field Goals	6	15	40.0
<b>Total Field Goals</b>	<b>16</b>	<b>28</b>	<b>57.1</b>