

FINAL SCORE

Tulane



57

Wichita St.



82

February 16, 2020 • Charles Koch Arena - Wichita, Kan.

FINAL STATISTICS

Official Box Score
Tulane vs Wichita St.
Game Totals -- Final Statistics
February 16, 2020 at Charles Koch Arena - Wichita, Kan.



Tulane 57

No.	Player	S	Pts	FG	3FG	FT	OR	DR	TR	PF	A	TO	Blk	Stl	Min	+/-
01	LAWSON, K.J.	F	2	1-4	0-0	0-0	0	1	1	2	1	2	1	1	27	-28
05	HIGHTOWER, TESHAWN	G	10	3-14	0-4	4-6	2	2	4	2	4	1	0	3	35	-19
12	ZHANG, KEVIN	F	7	2-7	1-4	2-2	1	4	5	2	0	1	1	1	25	-9
23	MCGEE, R.J.	G	3	1-3	1-2	0-0	0	2	2	2	2	1	0	0	17	-10
25	THOMPSON, CHRISTION	G	16	5-12	0-1	6-11	1	6	7	3	1	1	0	1	29	-35
00	RUSSELL JR., CHARLIE	G	0	0-1	0-1	0-0	0	1	1	0	0	0	0	0	6	-1
02	WALKER, JORDAN	G	14	6-10	0-3	2-2	0	4	4	3	0	0	0	2	27	-5
04	DAYS, NOBAL	F	2	1-2	0-1	0-0	0	0	0	2	0	0	0	1	13	-19
13	KOKA, BUAY	C	3	1-2	0-0	1-2	0	2	2	3	0	1	1	0	9	7
14	THOMAS, NIC	G	0	0-3	0-2	0-0	0	2	2	1	0	1	0	0	11	-7
34	ZACCARDO, ALEC	G	0	0-0	0-0	0-0	0	0	0	0	0	0	0	0	0	1
TEAM							2	1	3	0		0				
TOTALS			57	20-58	2-18	15-23	6	25	31	20	8	8	3	9	200	

Shooting By Period

Period	FG	FG%	3FG	3FG%	FT	FT%
1st Half	7-30	23%	1-9	11%	5-8	63%
2nd Half	13-28	46%	1-9	11%	10-15	67%
Game	20-58	34.5%	2-18	11.1%	15-23	65.2%

Deadball Rebounds: 4,0
Last FG: 2nd-00:37
Biggest Run: 10-0
Largest lead: By 1 at 1st-18:26
Technical Fouls: None.

Wichita St. 82

No.	Player	S	Pts	FG	3FG	FT	OR	DR	TR	PF	A	TO	Blk	Stl	Min	+/-
00	DENNIS, DEXTER	G	21	8-9	4-5	1-1	4	5	9	2	3	2	1	0	30	31
02	BURTON, JAMARIUS	G	9	4-7	1-2	0-0	0	2	2	3	7	1	0	1	24	27
11	FERNANDES, NOAH	G	0	0-2	0-0	0-0	0	0	0	3	3	1	0	1	18	13
21	ECHENIQUE, JAIME	C	10	4-9	0-0	2-3	2	3	5	2	0	1	1	0	16	7
52	SHERFIELD, GRANT	G	6	2-7	1-4	1-2	0	3	3	1	4	2	0	1	22	10
01	ETIENNE, TYSON	G	20	7-9	6-8	0-0	0	4	4	3	2	1	0	1	23	20
03	GORDON, DEANTONI	F	0	0-1	0-0	0-0	1	0	1	1	0	0	0	0	6	-1
05	WADE, TREY	F	3	1-2	1-2	0-0	0	2	2	1	0	1	0	0	12	0
10	STEVENSON, ERIK	G	7	1-8	0-3	5-5	0	7	7	2	3	5	0	1	16	6
14	HERRS, JACOB	G	0	0-0	0-0	0-0	0	0	0	1	0	0	0	0	2	-4
15	BUSH, BRYCEN	G	0	0-0	0-0	0-0	0	0	0	0	0	0	0	0	2	-3
24	UDEZE, MORRIS	C	2	1-1	0-0	0-4	1	3	4	1	0	0	0	0	9	-2
32	BUSSE, TATE	G	1	0-2	0-0	1-2	1	0	1	0	0	1	0	0	2	-3
33	MIDTGAARD, ASBJORN	C	1	0-1	0-0	1-3	1	1	2	1	0	0	2	0	7	14
44	POOR BEAR-CHANDLER, ISA	C	2	1-2	0-0	0-0	0	4	4	1	0	0	0	0	12	10
TEAM							3	1	4	0		1				
TOTALS			82	29-60	13-24	11-20	13	35	48	22	22	16	4	5	200	

Shooting By Period

Period	FG	FG%	3FG	3FG%	FT	FT%
1st Half	17-29	59%	8-15	53%	8-11	73%
2nd Half	12-31	39%	5-9	56%	3-9	33%
Game	29-60	48.3%	13-24	54.2%	11-20	55.0%

Deadball Rebounds: 2,1
Last FG: 2nd-03:46
Biggest Run: 10-0
Largest lead: By 32 at 2nd-03:46
Technical Fouls: None.

Game Notes:

Officials: Anthony Jordan, Owen Shortt, Gerald Williams
Attendance: 10506

Start Time: 02:10 PM ET
End Time: 04:07 PM ET
Game Duration: 1:57
Conference Game;

Score	1st	2nd	TOT
TLN	20	37	57
WSU	50	32	82

TLN led for 0:08. WSU led for 38:34.
Game was tied for 1:13.
Times tied: 0 Lead Changes: 2

Points from	TLN	WSU
In the Paint	24	22
Off Turns	16	11
2nd Chance	8	13
Fast Break	5	12
Bench	19	36

Official Box Score
Tulane vs Wichita St.
First Half Statistics Only
February 16, 2020 at Charles Koch Arena - Wichita, Kan.



Tulane 20

No.	Player	S	Pts	FG	3FG	FT	OR	DR	TR	PF	A	TO	Blk	Stl	Min	+/-
01	LAWSON, K.J.	F	2	1-3	0-0	0-0	0	1	1	1	0	2	0	1	18	-29
05	HIGHTOWER, TESHAUN	G	3	1-6	0-1	1-2	0	0	0	1	2	1	0	2	18	-28
12	ZHANG, KEVIN	F	7	2-5	1-2	2-2	1	2	3	2	0	1	0	1	13	-17
23	MCGEE, R.J.	G	0	0-1	0-1	0-0	0	1	1	2	2	1	0	0	10	-8
25	THOMPSON, CHRISTION	G	4	1-7	0-1	2-4	0	3	3	2	1	1	0	0	16	-29
00	RUSSELL JR., CHARLIE	G	0	0-0	0-0	0-0	0	0	0	0	0	0	0	0	0	0
02	WALKER, JORDAN	G	2	1-3	0-1	0-0	0	2	2	0	0	0	0	0	7	-10
04	DAYS, NOBAL	F	2	1-2	0-1	0-0	0	0	0	0	0	0	0	1	9	-14
13	KOKA, BUAY	C	0	0-0	0-0	0-0	0	0	0	0	0	0	0	0	0	0
14	THOMAS, NIC	G	0	0-3	0-2	0-0	0	1	1	1	0	1	0	0	9	-15
34	ZACCARDO, ALEC	G	0	0-0	0-0	0-0	0	0	0	0	0	0	0	0	0	0
	TEAM						0	1	1	0		0				
TOTALS			20	7-30	1-9	5-8	1	11	12	9	5	7	0	5	100	

Shooting By Period

Period	FG	FG%	3FG	3FG%	FT	FT%
1st Half	7-30	23%	1-9	11%	5-8	63%
Game	20-58	34.5%	2-18	11.1%	15-23	65.2%

Deadball Rebounds: 4,0
 Last FG Half: TLN 2nd-00:37

Wichita St. 50

No.	Player	S	Pts	FG	3FG	FT	OR	DR	TR	PF	A	TO	Blk	Stl	Min	+/-
00	DENNIS, DEXTER	G	16	6-7	3-4	1-1	1	3	4	0	2	2	0	0	14	24
02	BURTON, JAMARIUS	G	2	1-2	0-0	0-0	0	2	2	1	4	0	0	1	13	22
11	FERNANDES, NOAH	G	0	0-0	0-0	0-0	0	0	0	2	3	1	0	1	11	20
21	ECHENIQUE, JAIME	C	5	2-5	0-0	1-1	0	2	2	1	0	1	1	0	9	12
52	SHERFIELD, GRANT	G	6	2-3	1-2	1-2	0	2	2	0	2	1	0	1	13	20
01	ETIENNE, TYSON	G	9	3-5	3-5	0-0	0	2	2	1	0	0	0	0	12	15
03	GORDON, DEANTONI	F	0	0-0	0-0	0-0	0	0	0	1	0	0	0	0	2	2
05	WADE, TREY	F	3	1-1	1-1	0-0	0	2	2	1	0	1	0	0	4	4
10	STEVENSON, ERIK	G	7	1-5	0-3	5-5	0	7	7	1	3	4	0	1	11	13
14	HERRS, JACOB	G	0	0-0	0-0	0-0	0	0	0	0	0	0	0	0	0	0
15	BUSH, BRYCEN	G	0	0-0	0-0	0-0	0	0	0	0	0	0	0	0	0	0
24	UDEZE, MORRIS	C	2	1-1	0-0	0-2	1	1	2	0	0	0	0	0	5	2
32	BUSSE, TATE	G	0	0-0	0-0	0-0	0	0	0	0	0	0	0	0	0	0
33	MIDTGAARD, ASBJORN	C	0	0-0	0-0	0-0	0	0	0	0	0	0	2	0	3	9
44	POOR BEAR-CHANDLER, ISA	C	0	0-0	0-0	0-0	0	1	1	1	0	0	0	0	3	7
	TEAM						1	0	1	0		0				
TOTALS			50	17-29	8-15	8-11	3	22	25	9	14	10	3	4	100	

Shooting By Period

Period	FG	FG%	3FG	3FG%	FT	FT%
1st Half	17-29	59%	8-15	53%	8-11	73%
Game	29-60	48.3%	13-24	54.2%	11-20	55.0%

Deadball Rebounds: 2,1
 Last FG Half: WSU 2nd-03:46

Game Notes:

Officials: Anthony Jordan, Owen Shortt, Gerald Williams
 Attendance: 10506

Start Time: 02:10 PM ET
 End Time: 04:07 PM ET
 Game Duration: 1:57
 Conference Game;

Score	1st	2nd	TOT
TLN	20	37	57
WSU	50	32	82

Points from (This Period)	TLN	WSU
In the Paint	4	16
Off Turns	5	11
2nd Chance	0	5
Fast Break	0	12
Bench	4	21

**Official By-By-Play
Tulane vs Wichita St.
First Half
February 16, 2020 at Charles Koch Arena - Wichita, Kan.**



Period 1

Starters:

Tulane: 1 LAWSON, K.J. (F); 5 HIGHTOWER, TSHAUN (G); 12 ZHANG, KEVIN (F); 23 MCGEE, R.J. (G); 25 THOMPSON, CHRISTION (G);

Wichita St.: 0 DENNIS, DEXTER (G); 2 BURTON, JAMARIUS (G); 11 FERNANDES, NOAH (G); 21 ECHENIQUE, JAIME (C); 52 SHERFIELD, GRANT (G);

Time	VISITORS: Tulane	Score	Margin	HOME: Wichita St.
19:36	MISSED 3PTR by HIGHTOWER, TSHAUN			
19:36				REBOUND (DEF) by TEAM
19:16				TURNOVER (LOSTBALL) by DENNIS, DEXTER
18:57	MISSED JUMPER by THOMPSON, CHRISTION			
18:54				REBOUND (DEF) by ECHENIQUE, JAIME
18:47		2-0	H 2	GOOD! LAYUP by ECHENIQUE, JAIME
18:47				ASSIST by FERNANDES, NOAH
18:26	GOOD! 3PTR by ZHANG, KEVIN	2-3	V 1	
18:26	ASSIST by HIGHTOWER, TSHAUN			
18:18		5-3	H 2	GOOD! 3PTR by DENNIS, DEXTER
18:18				ASSIST by FERNANDES, NOAH
18:06	FOUL (OFF) by MCGEE, R.J.			
18:06	TURNOVER (OFFENSIVE) by MCGEE, R.J.			
17:43		8-3	H 5	GOOD! 3PTR by DENNIS, DEXTER
17:43				ASSIST by FERNANDES, NOAH
17:28	MISSED JUMPER by HIGHTOWER, TSHAUN			
17:25				REBOUND (DEF) by BURTON, JAMARIUS
17:17				MISSED JUMPER by ECHENIQUE, JAIME
17:14	REBOUND (DEF) by THOMPSON, CHRISTION			
17:07	GOOD! LAYUP by HIGHTOWER, TSHAUN	8-5	H 3	
17:07	ASSIST by THOMPSON, CHRISTION			
16:42				TURNOVER (LOSTBALL) by ECHENIQUE, JAIME
16:42	STEAL by HIGHTOWER, TSHAUN			
16:30	MISSED LAYUP by HIGHTOWER, TSHAUN			
16:27				REBOUND (DEF) by ECHENIQUE, JAIME
16:24		10-5	H 5	GOOD! JUMPER by BURTON, JAMARIUS [FB]
16:08	MISSED LAYUP by THOMPSON, CHRISTION			
16:04				REBOUND (DEF) by BURTON, JAMARIUS
16:01				SUB OUT: BURTON, JAMARIUS
16:01				SUB OUT: ECHENIQUE, JAIME
16:01				SUB IN: STEVENSON, ERIK
16:01				SUB IN: UDEZE, MORRIS
16:01	SUB OUT: MCGEE, R.J.			
16:01	SUB IN: THOMAS, NIC			
15:48				TURNOVER (LOSTBALL) by DENNIS, DEXTER
15:48	STEAL by LAWSON, K.J.			
15:29				FOUL (PERSONAL) by FERNANDES, NOAH
15:29				
15:29				SUB OUT: FERNANDES, NOAH
15:29				SUB IN: ETIENNE, TYSON
15:29	GOOD! FT by ZHANG, KEVIN	10-6	H 4	
15:29	GOOD! FT by ZHANG, KEVIN	10-7	H 3	
15:01				MISSED 3PTR by STEVENSON, ERIK
14:59	REBOUND (DEF) by LAWSON, K.J.			
14:59	TURNOVER (TRAVEL) by LAWSON, K.J.			
14:43		13-7	H 6	GOOD! 3PTR by DENNIS, DEXTER
14:17	MISSED LAYUP by THOMPSON, CHRISTION			
14:13				REBOUND (DEF) by UDEZE, MORRIS
14:08		15-7	H 8	GOOD! LAYUP by UDEZE, MORRIS
14:08				ASSIST by STEVENSON, ERIK
13:53	TURNOVER (LOSTBALL) by LAWSON, K.J.			
13:53				STEAL by STEVENSON, ERIK
13:48				TURNOVER (LOSTBALL) by STEVENSON, ERIK
13:48	STEAL by HIGHTOWER, TSHAUN			
13:43	MISSED 3PTR by THOMAS, NIC			
13:40				REBOUND (DEF) by STEVENSON, ERIK
13:35	FOUL (PERSONAL) by ZHANG, KEVIN			
13:35				MISSED FT by UDEZE, MORRIS
13:35				REBOUND (OFF) by TEAM
13:35				SUB OUT: DENNIS, DEXTER
13:35				SUB IN: WADE, TREY
13:35	SUB OUT: LAWSON, K.J.			
13:35	SUB OUT: THOMPSON, CHRISTION			
13:35	SUB IN: WALKER, JORDAN			
13:35	SUB IN: DAYS, NOBAL			
13:35				MISSED FT by UDEZE, MORRIS
13:35				REBOUND (OFF) by UDEZE, MORRIS
13:25				MISSED 3PTR by STEVENSON, ERIK
13:22	REBOUND (DEF) by WALKER, JORDAN			
13:12	MISSED JUMPER by THOMAS, NIC			

Time	VISITORS: Tulane	Score	Margin	HOME: Wichita St.
13:08				REBOUND (DEF) by WADE, TREY
13:06				TURNOVER (OTHER) by STEVENSON, ERIK
13:06				SUB OUT: UDEZE, MORRIS
13:06				SUB OUT: SHERFIELD, GRANT
13:06				SUB IN: BURTON, JAMARIUS
13:06				SUB IN: ECHENIQUE, JAIME
13:06	SUB OUT: THOMAS, NIC			
13:06	SUB IN: MCGEE, R.J.			
12:49	GOOD! JUMPER by ZHANG, KEVIN	15-9	H 6	
12:32		18-9	H 9	GOOD! 3PTR by ETIENNE, TYSON
12:32				ASSIST by BURTON, JAMARIUS
12:17	MISSED JUMPER by WALKER, JORDAN			
12:14				REBOUND (DEF) by ETIENNE, TYSON
12:04				MISSED 3PTR by STEVENSON, ERIK
12:02				REBOUND (OFF) by TEAM
12:02				
12:02	SUB OUT: ZHANG, KEVIN			
12:02	SUB IN: LAWSON, K.J.			
12:02	SUB OUT: MCGEE, R.J.			
12:02	SUB IN: THOMPSON, CHRISTION			
11:53		21-9	H 12	GOOD! 3PTR by WADE, TREY
11:53				ASSIST by BURTON, JAMARIUS
11:30				FOUL (PERSONAL) by WADE, TREY
11:30	MISSED FT by HIGHTOWER, TESHAUN			
11:30	REBOUND (OFF) by TEAM			
11:30	SUB OUT: WALKER, JORDAN			
11:30	SUB IN: THOMAS, NIC			
11:30	GOOD! FT by HIGHTOWER, TESHAUN	21-10	H 11	
11:30	SUB OUT: HIGHTOWER, TESHAUN			
11:30	SUB IN: MCGEE, R.J.			
11:13				MISSED JUMPER by ECHENIQUE, JAIME
11:10	REBOUND (DEF) by THOMPSON, CHRISTION			
11:01	MISSED JUMPER by LAWSON, K.J.			
10:57				REBOUND (DEF) by WADE, TREY
10:50				MISSED JUMPER by BURTON, JAMARIUS
10:47	REBOUND (DEF) by MCGEE, R.J.			
10:38	MISSED 3PTR by DAYS, NOBAL			
10:34				REBOUND (DEF) by STEVENSON, ERIK
10:31		24-10	H 14	GOOD! 3PTR by ETIENNE, TYSON [FB]
10:31				ASSIST by STEVENSON, ERIK
10:07	GOOD! JUMPER by LAWSON, K.J.	24-12	H 12	
10:07	ASSIST by MCGEE, R.J.			
09:50				TURNOVER (TRAVEL) by WADE, TREY
09:50				SUB OUT: WADE, TREY
09:50				SUB OUT: STEVENSON, ERIK
09:50				SUB IN: DENNIS, DEXTER
09:50				SUB IN: FERNANDES, NOAH
09:50	SUB OUT: DAYS, NOBAL			
09:50	SUB OUT: THOMAS, NIC			
09:50	SUB IN: RUSSELL JR., CHARLIE			
09:50	SUB IN: ZHANG, KEVIN			
09:32	SUB OUT: RUSSELL JR., CHARLIE			
09:32	SUB IN: THOMAS, NIC			
09:32				FOUL (PERSONAL) by BURTON, JAMARIUS
09:32	SUB OUT: MCGEE, R.J.			
09:32	SUB IN: HIGHTOWER, TESHAUN			
09:14	MISSED LAYUP by HIGHTOWER, TESHAUN			
09:14				BLOCK by ECHENIQUE, JAIME
09:09				REBOUND (DEF) by ETIENNE, TYSON
09:09	FOUL (PERSONAL) by THOMAS, NIC			
08:58		26-12	H 14	GOOD! DUNK by ECHENIQUE, JAIME
08:58				ASSIST by DENNIS, DEXTER
08:58	FOUL (PERSONAL) by ZHANG, KEVIN			
08:58	SUB OUT: ZHANG, KEVIN			
08:58	SUB IN: DAYS, NOBAL			
08:58		27-12	H 15	GOOD! FT by ECHENIQUE, JAIME
08:40	TURNOVER (LOSTBALL) by THOMPSON, CHRISTION			
08:40				STEAL by BURTON, JAMARIUS
08:40	FOUL (PERSONAL) by LAWSON, K.J.			
08:40				SUB OUT: ETIENNE, TYSON
08:40				SUB IN: SHERFIELD, GRANT
08:28				MISSED JUMPER by ECHENIQUE, JAIME
08:25	REBOUND (DEF) by THOMPSON, CHRISTION			
08:25				FOUL (PERSONAL) by ECHENIQUE, JAIME
08:25				SUB OUT: ECHENIQUE, JAIME
08:25				SUB IN: MIDTGAARD, ASBJORN
08:12	MISSED LAYUP by THOMPSON, CHRISTION			
08:12				BLOCK by MIDTGAARD, ASBJORN
08:08				REBOUND (DEF) by SHERFIELD, GRANT
08:06		29-12	H 17	GOOD! DUNK by DENNIS, DEXTER [FB]

Time	VISITORS: Tulane	Score	Margin	HOME: Wichita St.
08:06				ASSIST by SHERFIELD, GRANT
08:03	TIMEOUT TEAM			
07:51	MISSED 3PTR by THOMAS, NIC			
07:47				REBOUND (DEF) by DENNIS, DEXTER
07:30				MISSED 3PTR by DENNIS, DEXTER
07:27	REBOUND (DEF) by THOMAS, NIC			
07:08	TURNOVER (LOSTBALL) by THOMAS, NIC			
07:08				STEAL by FERNANDES, NOAH
07:02		31-12	H 19	GOOD! LAYUP by DENNIS, DEXTER [FB]
07:02				ASSIST by BURTON, JAMARIUS
06:38	GOOD! JUMPER by THOMPSON, CHRISTION [PNT]	31-14	H 17	
06:22		34-14	H 20	GOOD! 3PTR by SHERFIELD, GRANT
06:22				ASSIST by BURTON, JAMARIUS
05:53	MISSED JUMPER by HIGHTOWER, TSHAUN			
05:53				REBOUND (DEF) by SHERFIELD, GRANT
05:53				BLOCK by MIDTGAARD, ASBJORN
05:45		36-14	H 22	GOOD! LAYUP by SHERFIELD, GRANT
05:19	TURNOVER (LOSTBALL) by HIGHTOWER, TSHAUN			
05:19				STEAL by SHERFIELD, GRANT
05:14		38-14	H 24	GOOD! LAYUP by DENNIS, DEXTER [FB]
05:14				ASSIST by SHERFIELD, GRANT
05:14	FOUL (PERSONAL) by THOMPSON, CHRISTION			
05:14				SUB OUT: FERNANDES, NOAH
05:14				SUB OUT: MIDTGAARD, ASBJORN
05:14				SUB IN: STEVENSON, ERIK
05:14				SUB IN: POOR BEAR-CHANDLER, ISAIAH
05:14	SUB OUT: DAYS, NOBAL			
05:14	SUB OUT: HIGHTOWER, TSHAUN			
05:14	SUB OUT: THOMAS, NIC			
05:14	SUB IN: WALKER, JORDAN			
05:14	SUB IN: ZHANG, KEVIN			
05:14	SUB IN: MCGEE, R.J.			
05:14		39-14	H 25	GOOD! FT by DENNIS, DEXTER [FB]
05:14				SUB OUT: DENNIS, DEXTER
05:14				SUB IN: GORDON, DEANTONI
05:03	MISSED 3PTR by MCGEE, R.J.			
04:56				REBOUND (DEF) by STEVENSON, ERIK
04:52				TURNOVER (TRAVEL) by SHERFIELD, GRANT
04:52				SUB OUT: BURTON, JAMARIUS
04:52				SUB IN: ETIENNE, TYSON
04:46	MISSED 3PTR by WALKER, JORDAN			
04:44				REBOUND (DEF) by STEVENSON, ERIK
04:44	FOUL (PERSONAL) by MCGEE, R.J.			
04:44	SUB OUT: MCGEE, R.J.			
04:44	SUB IN: HIGHTOWER, TSHAUN			
04:44		40-14	H 26	GOOD! FT by STEVENSON, ERIK
04:44		41-14	H 27	GOOD! FT by STEVENSON, ERIK
04:34	GOOD! JUMPER by WALKER, JORDAN	41-16	H 25	
04:34	ASSIST by HIGHTOWER, TSHAUN			
04:28	FOUL (PERSONAL) by HIGHTOWER, TSHAUN			
04:28		42-16	H 26	GOOD! FT by SHERFIELD, GRANT
04:28				MISSED FT by SHERFIELD, GRANT
04:26	REBOUND (DEF) by ZHANG, KEVIN			
04:14	MISSED JUMPER by ZHANG, KEVIN			
04:11				REBOUND (DEF) by STEVENSON, ERIK
04:07				TURNOVER (BADPASS) by STEVENSON, ERIK
04:07	STEAL by ZHANG, KEVIN			
04:07				FOUL (PERSONAL) by GORDON, DEANTONI
03:52				FOUL (PERSONAL) by POOR BEAR-CHANDLER, ISAIAH
03:52				
03:51				FOUL (PERSONAL) by ETIENNE, TYSON
03:51	GOOD! FT by THOMPSON, CHRISTION	42-17	H 25	
03:51	MISSED FT by THOMPSON, CHRISTION			
03:51				REBOUND (DEF) by STEVENSON, ERIK
03:25				MISSED 3PTR by SHERFIELD, GRANT
03:22	REBOUND (DEF) by WALKER, JORDAN			
03:18	MISSED 3PTR by THOMPSON, CHRISTION			
03:09	REBOUND (OFF) by ZHANG, KEVIN			
03:09	MISSED LAYUP by ZHANG, KEVIN			
03:07				REBOUND (DEF) by POOR BEAR-CHANDLER, ISAIAH
02:59	FOUL (PERSONAL) by THOMPSON, CHRISTION			
02:59		43-17	H 26	GOOD! FT by STEVENSON, ERIK
02:59		44-17	H 27	GOOD! FT by STEVENSON, ERIK
02:59				SUB OUT: GORDON, DEANTONI
02:59				SUB OUT: SHERFIELD, GRANT
02:59				SUB IN: DENNIS, DEXTER
02:59				SUB IN: FERNANDES, NOAH
02:59		45-17	H 28	GOOD! FT by STEVENSON, ERIK
02:39	MISSED JUMPER by THOMPSON, CHRISTION			
02:34				REBOUND (DEF) by DENNIS, DEXTER

Time	VISITORS: Tulane	Score	Margin	HOME: Wichita St.
02:23		48-17	H 31	GOOD! 3PTR by ETIENNE, TYSON
02:23				ASSIST by STEVENSON, ERIK
02:00				FOUL (PERSONAL) by STEVENSON, ERIK
02:00	MISSED FT by THOMPSON, CHRISTION			
02:00	REBOUND (OFF) by TEAM			
02:00				SUB OUT: POOR BEAR-CHANDLER, ISAIAH
02:00				SUB IN: UDEZE, MORRIS
02:00	GOOD! FT by THOMPSON, CHRISTION	48-18	H 30	
02:00	SUB OUT: THOMPSON, CHRISTION			
02:00	SUB IN: MCGEE, R.J.			
01:45				FOUL (OFF) by FERNANDES, NOAH
01:45				TURNOVER (OFFENSIVE) by FERNANDES, NOAH
01:42	MISSED 3PTR by ZHANG, KEVIN			
01:40				REBOUND (DEF) by STEVENSON, ERIK
01:37				MISSED LAYUP by STEVENSON, ERIK
01:34	REBOUND (DEF) by ZHANG, KEVIN			
01:14	TURNOVER (TRAVEL) by ZHANG, KEVIN			
01:14				SUB OUT: FERNANDES, NOAH
01:14				SUB IN: BURTON, JAMARIUS
01:14	SUB OUT: ZHANG, KEVIN			
01:14	SUB IN: DAYS, NOBAL			
01:04				TURNOVER (BADPASS) by STEVENSON, ERIK
01:04	STEAL by DAYS, NOBAL			
00:51	MISSED JUMPER by LAWSON, K.J.			
00:48				REBOUND (DEF) by DENNIS, DEXTER
00:42				MISSED 3PTR by ETIENNE, TYSON
00:39				REBOUND (OFF) by DENNIS, DEXTER
00:38		50-18	H 32	GOOD! LAYUP by STEVENSON, ERIK
00:38				ASSIST by DENNIS, DEXTER
00:16	GOOD! JUMPER by DAYS, NOBAL	50-20	H 30	
00:16	ASSIST by MCGEE, R.J.			
00:01				MISSED 3PTR by ETIENNE, TYSON
00:01	REBOUND (DEF) by TEAM			

Tulane 20, Wichita St. 50

Points from (This Period)	TLN	WSU
In the Paint	4	16
Off Turns	5	11
2nd Chance	0	5
Fast Break	0	12
Bench	4	21

Official Box Score
Tulane vs Wichita St.
Second Half Statistics Only
February 16, 2020 at Charles Koch Arena - Wichita, Kan.



Tulane 37

No.	Player	S	Pts	FG	3FG	FT	OR	DR	TR	PF	A	TO	Blk	Stl	Min	+/-
01	LAWSON, K.J.	F	0	0-1	0-0	0-0	0	0	0	1	1	0	1	0	8	1
05	HIGHTOWER, TESHAWN	G	7	2-8	0-3	3-4	2	2	4	1	2	0	0	1	18	9
12	ZHANG, KEVIN	F	0	0-2	0-2	0-0	0	2	2	0	0	0	1	0	13	8
23	MCGEE, R.J.	G	3	1-2	1-1	0-0	0	1	1	0	0	0	0	0	8	-2
25	THOMPSON, CHRISTION	G	12	4-5	0-0	4-7	1	3	4	1	0	0	0	1	12	-6
00	RUSSELL JR., CHARLIE	G	0	0-1	0-1	0-0	0	1	1	0	0	0	0	0	6	-1
02	WALKER, JORDAN	G	12	5-7	0-2	2-2	0	2	2	3	0	0	0	2	20	5
04	DAYS, NOBAL	F	0	0-0	0-0	0-0	0	0	0	2	0	0	0	0	4	-5
13	KOKA, BUAY	C	3	1-2	0-0	1-2	0	2	2	3	0	1	1	0	9	7
14	THOMAS, NIC	G	0	0-0	0-0	0-0	0	1	1	0	0	0	0	0	2	8
34	ZACCARDO, ALEC	G	0	0-0	0-0	0-0	0	0	0	0	0	0	0	0	0	1
TEAM							2	0	2	0		0				
TOTALS			37	13-28	1-9	10-15	5	14	19	11	3	1	3	4	100	

Shooting By Period

Period	FG	FG%	3FG	3FG%	FT	FT%
2nd Half	13-28	46%	1-9	11%	10-15	67%
Game	20-58	34.5%	2-18	11.1%	15-23	65.2%

Deadball Rebounds: 4,0
Last FG Half: TLN -

Wichita St. 32

No.	Player	S	Pts	FG	3FG	FT	OR	DR	TR	PF	A	TO	Blk	Stl	Min	+/-
00	DENNIS, DEXTER	G	5	2-2	1-1	0-0	3	2	5	2	1	0	1	0	16	7
02	BURTON, JAMARIUS	G	7	3-5	1-2	0-0	0	0	0	2	3	1	0	0	10	5
11	FERNANDES, NOAH	G	0	0-2	0-0	0-0	0	0	0	1	0	0	0	0	7	-7
21	ECHENIQUE, JAIME	C	5	2-4	0-0	1-2	2	1	3	1	0	0	0	0	7	-5
52	SHERFIELD, GRANT	G	0	0-4	0-2	0-0	0	1	1	1	2	1	0	0	10	-10
01	ETIENNE, TYSON	G	11	4-4	3-3	0-0	0	2	2	2	2	1	0	1	11	5
03	GORDON, DEANTONI	F	0	0-1	0-0	0-0	1	0	1	0	0	0	0	0	4	-3
05	WADE, TREY	F	0	0-1	0-1	0-0	0	0	0	0	0	0	0	0	8	-4
10	STEVENSON, ERIK	G	0	0-3	0-0	0-0	0	0	0	1	0	1	0	0	5	-7
14	HERRS, JACOB	G	0	0-0	0-0	0-0	0	0	0	1	0	0	0	0	2	-4
15	BUSH, BRYCEN	G	0	0-0	0-0	0-0	0	0	0	0	0	0	0	0	2	-3
24	UDEZE, MORRIS	C	0	0-0	0-0	0-2	0	2	2	1	0	0	0	0	4	-4
32	BUSSE, TATE	G	1	0-2	0-0	1-2	1	0	1	0	0	1	0	0	2	-3
33	MIDTGAARD, ASBJORN	C	1	0-1	0-0	1-3	1	1	2	1	0	0	0	0	4	5
44	POOR BEAR-CHANDLER, ISA	C	2	1-2	0-0	0-0	0	3	3	0	0	0	0	0	9	3
TEAM							2	1	3	0		1				
TOTALS			32	12-31	5-9	3-9	10	13	23	13	8	6	1	1	100	

Shooting By Period

Period	FG	FG%	3FG	3FG%	FT	FT%
2nd Half	12-31	39%	5-9	56%	3-9	33%
Game	29-60	48.3%	13-24	54.2%	11-20	55.0%

Deadball Rebounds: 2,1
Last FG Half: WSU -

Game Notes:

Officials: Anthony Jordan, Owen Shortt, Gerald Williams
 Attendance: 10506

Start Time: 02:10 PM ET
 End Time: 04:07 PM ET
 Game Duration: 1:57
 Conference Game;

Score	1st	2nd	TOT
TLN	20	37	57
WSU	50	32	82

Points from (This Period)	TLN	WSU
In the Paint	20	6
Off Turns	11	0
2nd Chance	8	8
Fast Break	5	0
Bench	15	15

Official Play-By-Play
Tulane vs Wichita St.
Second Half
February 16, 2020 at Charles Koch Arena - Wichita, Kan.



Period 2

Starters:

Tulane: 1 LAWSON, K.J. (F); 5 HIGHTOWER, TESHAUN (G); 12 ZHANG, KEVIN (F); 23 MCGEE, R.J. (G); 25 THOMPSON, CHRISTION (G);

Wichita St.: 0 DENNIS, DEXTER (G); 2 BURTON, JAMARIUS (G); 11 FERNANDES, NOAH (G); 21 ECHENIQUE, JAIME (C); 52 SHERFIELD, GRANT (G);

Time	VISITORS: Tulane	Score	Margin	HOME: Wichita St.
20:00				SUB OUT: ETIENNE, TYSON
20:00				SUB OUT: STEVENSON, ERIK
20:00				SUB OUT: UDEZE, MORRIS
20:00				SUB IN: FERNANDES, NOAH
20:00				SUB IN: ECHENIQUE, JAIME
20:00				SUB IN: SHERFIELD, GRANT
20:00	SUB OUT: DAYS, NOBAL			
20:00	SUB OUT: MCGEE, R.J.			
20:00	SUB IN: ZHANG, KEVIN			
20:00	SUB IN: THOMPSON, CHRISTION			
19:43				MISSED JUMPER by SHERFIELD, GRANT
19:43				REBOUND (OFF) by DENNIS, DEXTER
19:43	FOUL (PERSONAL) by WALKER, JORDAN			
19:26	FOUL (PERSONAL) by THOMPSON, CHRISTION			
19:24				TURNOVER (BADPASS) by SHERFIELD, GRANT
19:24	STEAL by WALKER, JORDAN			
19:20	GOOD! LAYUP by WALKER, JORDAN [FB]	50-22	H 28	
18:59				MISSED JUMPER by FERNANDES, NOAH
18:55				REBOUND (OFF) by ECHENIQUE, JAIME
18:55				MISSED LAYUP by ECHENIQUE, JAIME
18:54	REBOUND (DEF) by WALKER, JORDAN			
18:38				FOUL (PERSONAL) by BURTON, JAMARIUS
18:34				FOUL (PERSONAL) by ECHENIQUE, JAIME
18:34				SUB OUT: ECHENIQUE, JAIME
18:34				SUB IN: POOR BEAR-CHANDLER, ISAIAH
18:29	GOOD! LAYUP by THOMPSON, CHRISTION	50-24	H 26	
18:19				SUB OUT: BURTON, JAMARIUS
18:19				SUB IN: STEVENSON, ERIK
17:57				MISSED LAYUP by STEVENSON, ERIK
17:57	BLOCK by LAWSON, K.J.			
17:57				REBOUND (OFF) by TEAM
17:54				MISSED JUMPER by STEVENSON, ERIK
17:51				REBOUND (OFF) by DENNIS, DEXTER
17:42		52-24	H 28	GOOD! DUNK by POOR BEAR-CHANDLER, ISAIAH
17:42				ASSIST by SHERFIELD, GRANT
17:21				FOUL (PERSONAL) by FERNANDES, NOAH
17:21				SUB OUT: FERNANDES, NOAH
17:21				SUB IN: ETIENNE, TYSON
17:17	MISSED 3PTR by HIGHTOWER, TESHAUN			
17:13				REBOUND (DEF) by DENNIS, DEXTER
17:00		55-24	H 31	GOOD! 3PTR by DENNIS, DEXTER
17:00				ASSIST by ETIENNE, TYSON
16:45	GOOD! LAYUP by WALKER, JORDAN	55-26	H 29	
16:36	FOUL (PERSONAL) by WALKER, JORDAN			
16:25				MISSED 3PTR by SHERFIELD, GRANT
16:22	REBOUND (DEF) by WALKER, JORDAN			
16:16	MISSED LAYUP by HIGHTOWER, TESHAUN			
16:15	REBOUND (OFF) by TEAM			
16:12	GOOD! LAYUP by THOMPSON, CHRISTION	55-28	H 27	
16:04	FOUL (PERSONAL) by LAWSON, K.J.			
15:53				TURNOVER (BADPASS) by STEVENSON, ERIK
15:53	STEAL by HIGHTOWER, TESHAUN			
15:32	MISSED JUMPER by THOMPSON, CHRISTION			
15:32	REBOUND (OFF) by TEAM			
15:32				FOUL (PERSONAL) by SHERFIELD, GRANT
15:32				SUB OUT: STEVENSON, ERIK
15:32				SUB IN: WADE, TREY
15:18	GOOD! LAYUP by HIGHTOWER, TESHAUN	55-30	H 25	
15:18	ASSIST by LAWSON, K.J.			
14:49				FOUL (OFF) by ETIENNE, TYSON
14:49				TURNOVER (OFFENSIVE) by ETIENNE, TYSON
14:49				SUB OUT: SHERFIELD, GRANT
14:49				SUB IN: BURTON, JAMARIUS
14:34	MISSED JUMPER by LAWSON, K.J.			
14:33	REBOUND (OFF) by THOMPSON, CHRISTION			
14:33				FOUL (PERSONAL) by DENNIS, DEXTER
14:33	GOOD! FT by THOMPSON, CHRISTION	55-31	H 24	
14:33	GOOD! FT by THOMPSON, CHRISTION	55-32	H 23	
14:17		58-32	H 26	GOOD! 3PTR by BURTON, JAMARIUS

Time	VISITORS: Tulane	Score	Margin	HOME: Wichita St.
14:17				ASSIST by ETIENNE, TYSON
14:03				FOUL (PERSONAL) by DENNIS, DEXTER
14:03	GOOD! FT by THOMPSON, CHRISTION	58-33	H 25	
14:03	MISSED FT by THOMPSON, CHRISTION			
14:02				REBOUND (DEF) by POOR BEAR-CHANDLER, ISAIAH
13:36		60-33	H 27	GOOD! JUMPER by DENNIS, DEXTER
13:22				FOUL (PERSONAL) by ETIENNE, TYSON
13:22	MISSED FT by HIGHTOWER, TSHAUN			
13:22	REBOUND (OFF) by TEAM			
13:22				SUB OUT: POOR BEAR-CHANDLER, ISAIAH
13:22				SUB IN: ECHENIQUE, JAIME
13:22	SUB OUT: ZHANG, KEVIN			
13:22	SUB OUT: THOMPSON, CHRISTION			
13:22	SUB IN: DAYS, NOBAL			
13:22	SUB IN: MCGEE, R.J.			
13:22	GOOD! FT by HIGHTOWER, TSHAUN	60-34	H 26	
13:00		62-34	H 28	GOOD! JUMPER by BURTON, JAMARIUS
12:40	GOOD! JUMPER by WALKER, JORDAN	62-36	H 26	
12:15		65-36	H 29	GOOD! 3PTR by ETIENNE, TYSON
12:15				ASSIST by BURTON, JAMARIUS
12:01	MISSED 3PTR by HIGHTOWER, TSHAUN			
11:56	REBOUND (OFF) by HIGHTOWER, TSHAUN			
11:54	MISSED LAYUP by HIGHTOWER, TSHAUN			
11:54				BLOCK by DENNIS, DEXTER
11:52				REBOUND (DEF) by ETIENNE, TYSON
11:52	FOUL (PERSONAL) by WALKER, JORDAN			
11:52				
11:52				SUB OUT: ETIENNE, TYSON
11:52				SUB OUT: BURTON, JAMARIUS
11:52				SUB IN: FERNANDES, NOAH
11:52				SUB IN: SHERFIELD, GRANT
11:52	SUB OUT: LAWSON, K.J.			
11:52	SUB OUT: HIGHTOWER, TSHAUN			
11:52	SUB IN: ZHANG, KEVIN			
11:52	SUB IN: THOMPSON, CHRISTION			
11:27				MISSED JUMPER by SHERFIELD, GRANT
11:23	REBOUND (DEF) by THOMPSON, CHRISTION			
11:11	GOOD! LAYUP by THOMPSON, CHRISTION	65-38	H 27	
10:55		67-38	H 29	GOOD! LAYUP by ECHENIQUE, JAIME
10:55				ASSIST by DENNIS, DEXTER
10:55	FOUL (PERSONAL) by DAYS, NOBAL			
10:55		68-38	H 30	GOOD! FT by ECHENIQUE, JAIME
10:38	SUB OUT: THOMPSON, CHRISTION			
10:38	SUB IN: HIGHTOWER, TSHAUN			
10:27	MISSED 3PTR by WALKER, JORDAN			
10:24				REBOUND (DEF) by ECHENIQUE, JAIME
09:59				MISSED JUMPER by ECHENIQUE, JAIME
09:59	BLOCK by ZHANG, KEVIN			
09:54				REBOUND (OFF) by ECHENIQUE, JAIME
09:50				MISSED JUMPER by FERNANDES, NOAH
09:46	REBOUND (DEF) by ZHANG, KEVIN			
09:42	MISSED JUMPER by MCGEE, R.J.			
09:39				REBOUND (DEF) by SHERFIELD, GRANT
09:23		70-38	H 32	GOOD! LAYUP by ECHENIQUE, JAIME
09:23				ASSIST by SHERFIELD, GRANT
09:23	FOUL (PERSONAL) by DAYS, NOBAL			
09:23				SUB OUT: DENNIS, DEXTER
09:23				SUB IN: STEVENSON, ERIK
09:23	SUB OUT: DAYS, NOBAL			
09:23	SUB OUT: MCGEE, R.J.			
09:23	SUB IN: KOKA, BUAY			
09:23	SUB IN: THOMAS, NIC			
09:23				MISSED FT by ECHENIQUE, JAIME
09:22	REBOUND (DEF) by KOKA, BUAY			
09:12				FOUL (PERSONAL) by STEVENSON, ERIK
09:12	GOOD! FT by HIGHTOWER, TSHAUN	70-39	H 31	
09:12	GOOD! FT by HIGHTOWER, TSHAUN	70-40	H 30	
09:00				MISSED JUMPER by STEVENSON, ERIK
08:57	REBOUND (DEF) by HIGHTOWER, TSHAUN			
08:38	GOOD! DUNK by KOKA, BUAY	70-42	H 28	
08:38	ASSIST by HIGHTOWER, TSHAUN			
08:16				MISSED 3PTR by SHERFIELD, GRANT
08:12	REBOUND (DEF) by THOMAS, NIC			
08:04	GOOD! JUMPER by WALKER, JORDAN	70-44	H 26	
07:52				MISSED 3PTR by WADE, TREY
07:49	REBOUND (DEF) by ZHANG, KEVIN			
07:43	MISSED LAYUP by HIGHTOWER, TSHAUN			
07:39	REBOUND (OFF) by HIGHTOWER, TSHAUN			
07:39	GOOD! LAYUP by HIGHTOWER, TSHAUN	70-46	H 24	
07:32				TIMEOUT TEAM

Time	VISITORS: Tulane	Score	Margin	HOME: Wichita St.
07:32				SUB OUT: WADE, TREY
07:32				SUB OUT: STEVENSON, ERIK
07:32				SUB OUT: FERNANDES, NOAH
07:32				SUB OUT: ECHENIQUE, JAIME
07:32				SUB OUT: SHERFIELD, GRANT
07:32				SUB IN: DENNIS, DEXTER
07:32				SUB IN: ETIENNE, TYSON
07:32				SUB IN: BURTON, JAMARIUS
07:32				SUB IN: MIDTGAARD, ASBJORN
07:32				SUB IN: POOR BEAR-CHANDLER, ISAIAH
07:32	SUB OUT: THOMAS, NIC			
07:32	SUB IN: THOMPSON, CHRISTION			
07:10				MISSED JUMPER by POOR BEAR-CHANDLER, ISAIAH
07:07	REBOUND (DEF) by THOMPSON, CHRISTION			
07:01	GOOD! LAYUP by THOMPSON, CHRISTION [PNT]	70-48	H 22	
07:01				FOUL (PERSONAL) by MIDTGAARD, ASBJORN
07:01				
07:01	MISSED FT by THOMPSON, CHRISTION			
06:59				REBOUND (DEF) by MIDTGAARD, ASBJORN
06:41		72-48	H 24	GOOD! JUMPER by BURTON, JAMARIUS
06:20	MISSED 3PTR by ZHANG, KEVIN			
06:20				REBOUND (DEF) by DENNIS, DEXTER
06:20				MISSED 3PTR by BURTON, JAMARIUS
06:17				REBOUND (OFF) by MIDTGAARD, ASBJORN
06:17	FOUL (PERSONAL) by KOKA, BUAY			
06:17				MISSED FT by MIDTGAARD, ASBJORN
06:16	REBOUND (DEF) by THOMPSON, CHRISTION			
06:08	MISSED 3PTR by ZHANG, KEVIN			
06:05				REBOUND (DEF) by ETIENNE, TYSON
05:52				TURNOVER (LOSTBALL) by BURTON, JAMARIUS
05:52	STEAL by THOMPSON, CHRISTION			
05:52				FOUL (PERSONAL) by BURTON, JAMARIUS
05:52	MISSED FT by THOMPSON, CHRISTION			
05:52	REBOUND (OFF) by TEAM			
05:52	SUB OUT: ZHANG, KEVIN			
05:52	SUB IN: RUSSELL JR., CHARLIE			
05:52	GOOD! FT by THOMPSON, CHRISTION [FB]	72-49	H 23	
05:07		74-49	H 25	GOOD! JUMPER by ETIENNE, TYSON
04:52	MISSED 3PTR by WALKER, JORDAN			
04:50				REBOUND (DEF) by POOR BEAR-CHANDLER, ISAIAH
04:44				MISSED JUMPER by MIDTGAARD, ASBJORN
04:43				REBOUND (OFF) by DENNIS, DEXTER
04:36		77-49	H 28	GOOD! 3PTR by ETIENNE, TYSON
04:36				ASSIST by BURTON, JAMARIUS
04:19	MISSED 3PTR by HIGHTOWER, TESHAUN			
04:16				REBOUND (DEF) by POOR BEAR-CHANDLER, ISAIAH
04:05	FOUL (PERSONAL) by KOKA, BUAY			
04:05				SUB OUT: POOR BEAR-CHANDLER, ISAIAH
04:05				SUB IN: GORDON, DEANTONI
04:05	SUB OUT: HIGHTOWER, TESHAUN			
04:05	SUB IN: MCGEE, R.J.			
04:05		78-49	H 29	GOOD! FT by MIDTGAARD, ASBJORN
04:05				MISSED FT by MIDTGAARD, ASBJORN
04:02				REBOUND (OFF) by TEAM
03:56				SUB OUT: MIDTGAARD, ASBJORN
03:56				SUB IN: UDEZE, MORRIS
03:46		81-49	H 32	GOOD! 3PTR by ETIENNE, TYSON
03:46				ASSIST by BURTON, JAMARIUS
03:16	MISSED 3PTR by RUSSELL JR., CHARLIE			
03:16				REBOUND (DEF) by TEAM
03:16	FOUL (PERSONAL) by KOKA, BUAY			
03:16				
03:16	SUB OUT: THOMPSON, CHRISTION			
03:16	SUB IN: HIGHTOWER, TESHAUN			
03:16				MISSED FT by UDEZE, MORRIS
03:16				REBOUND (OFF) by TEAM
03:16				MISSED FT by UDEZE, MORRIS
03:14	REBOUND (DEF) by HIGHTOWER, TESHAUN			
02:55	TURNOVER (LOSTBALL) by KOKA, BUAY			
02:55				STEAL by ETIENNE, TYSON
02:48				MISSED JUMPER by BURTON, JAMARIUS
02:48	BLOCK by KOKA, BUAY			
02:42	REBOUND (DEF) by RUSSELL JR., CHARLIE			
02:38	GOOD! 3PTR by MCGEE, R.J.	81-52	H 29	
02:38	ASSIST by HIGHTOWER, TESHAUN			
02:02				TURNOVER (SHOTCLOCK) by TEAM
02:02				SUB OUT: DENNIS, DEXTER
02:02				SUB OUT: BURTON, JAMARIUS
02:02				SUB IN: WADE, TREY
02:02				SUB IN: HERRS, JACOB

Time	VISITORS: Tulane	Score	Margin	HOME: Wichita St.
01:43				FOUL (PERSONAL) by HERRS, JACOB
01:43	GOOD! FT by WALKER, JORDAN	81-53	H 28	
01:43				SUB OUT: ETIENNE, TYSON
01:43				SUB OUT: WADE, TREY
01:43				SUB IN: BUSH, BRYCEN
01:43				SUB IN: BUSSE, TATE
01:43	GOOD! FT by WALKER, JORDAN	81-54	H 27	
01:23				MISSED JUMPER by BUSSE, TATE
01:20				REBOUND (OFF) by BUSSE, TATE
01:07				MISSED JUMPER by BUSSE, TATE
00:58				REBOUND (OFF) by GORDON, DEANTONI
00:58				MISSED DUNK by GORDON, DEANTONI
00:57	REBOUND (DEF) by MCGEE, R.J.			
00:49	MISSED LAYUP by KOKA, BUAY			
00:43				REBOUND (DEF) by UDEZE, MORRIS
00:40				TURNOVER (LOSTBALL) by BUSSE, TATE
00:40	STEAL by WALKER, JORDAN			
00:37	GOOD! LAYUP by WALKER, JORDAN [FB]	81-56	H 25	
00:21	FOUL (PERSONAL) by HIGHTOWER, TSHAUN			
00:21		82-56	H 26	GOOD! FT by BUSSE, TATE
00:21	SUB OUT: HIGHTOWER, TSHAUN			
00:21	SUB IN: ZACCARDO, ALEC			
00:21				MISSED FT by BUSSE, TATE
00:20	REBOUND (DEF) by KOKA, BUAY			
00:07				FOUL (PERSONAL) by UDEZE, MORRIS
00:07	GOOD! FT by KOKA, BUAY	82-57	H 25	
00:07	MISSED FT by KOKA, BUAY			
00:06				REBOUND (DEF) by UDEZE, MORRIS

Tulane 57, Wichita St. 82

Points from (This Period)	TLN	WSU
In the Paint	20	6
Off Turns	11	0
2nd Chance	8	8
Fast Break	5	0
Bench	15	15

Official Scoring/Possession Reference Chart
Tulane vs Wichita St.
Period 1
February 16, 2020 at Charles Koch Arena - Wichita, Kan.



Period 1

Starters:

Tulane: 1 LAWSON, K.J. (F); 5 HIGHTOWER, TSHAUN (G); 12 ZHANG, KEVIN (F); 23 MCGEE, R.J. (G); 25 THOMPSON, CHRISTION (G);

Wichita St.: 0 DENNIS, DEXTER (G); 2 BURTON, JAMARIUS (G); 11 FERNANDES, NOAH (G); 21 ECHENIQUE, JAIME (C); 52 SHERFIELD, GRANT (G);

Time	VISITORS: Tulane	Score	Margin	HOME: Wichita St.
18:47		2-0	H 2	GOOD! LAYUP by ECHENIQUE, JAIME
18:26	GOOD! 3PTR by ZHANG, KEVIN	2-3	V 1	
18:18		5-3	H 2	GOOD! 3PTR by DENNIS, DEXTER
17:43		8-3	H 5	GOOD! 3PTR by DENNIS, DEXTER
17:07	GOOD! LAYUP by HIGHTOWER, TSHAUN	8-5	H 3	
16:24		10-5	H 5	GOOD! JUMPER by BURTON, JAMARIUS [FB]
15:29	GOOD! FT by ZHANG, KEVIN	10-6	H 4	
15:29	GOOD! FT by ZHANG, KEVIN	10-7	H 3	
14:43		13-7	H 6	GOOD! 3PTR by DENNIS, DEXTER
14:08		15-7	H 8	GOOD! LAYUP by UDEZE, MORRIS
12:49	GOOD! JUMPER by ZHANG, KEVIN	15-9	H 6	
12:32		18-9	H 9	GOOD! 3PTR by ETIENNE, TYSON
11:53		21-9	H 12	GOOD! 3PTR by WADE, TREY
11:30	GOOD! FT by HIGHTOWER, TSHAUN	21-10	H 11	
10:31		24-10	H 14	GOOD! 3PTR by ETIENNE, TYSON [FB]
10:07	GOOD! JUMPER by LAWSON, K.J.	24-12	H 12	
08:58		26-12	H 14	GOOD! DUNK by ECHENIQUE, JAIME
08:58		27-12	H 15	GOOD! FT by ECHENIQUE, JAIME
08:06		29-12	H 17	GOOD! DUNK by DENNIS, DEXTER [FB]
07:02		31-12	H 19	GOOD! LAYUP by DENNIS, DEXTER [FB]
06:38	GOOD! JUMPER by THOMPSON, CHRISTION [PNT]	31-14	H 17	
06:22		34-14	H 20	GOOD! 3PTR by SHERFIELD, GRANT
05:45		36-14	H 22	GOOD! LAYUP by SHERFIELD, GRANT
05:14		38-14	H 24	GOOD! LAYUP by DENNIS, DEXTER [FB]
05:14		39-14	H 25	GOOD! FT by DENNIS, DEXTER [FB]
04:44		40-14	H 26	GOOD! FT by STEVENSON, ERIK
04:44		41-14	H 27	GOOD! FT by STEVENSON, ERIK
04:34	GOOD! JUMPER by WALKER, JORDAN	41-16	H 25	
04:28		42-16	H 26	GOOD! FT by SHERFIELD, GRANT
03:51	GOOD! FT by THOMPSON, CHRISTION	42-17	H 25	
02:59		43-17	H 26	GOOD! FT by STEVENSON, ERIK
02:59		44-17	H 27	GOOD! FT by STEVENSON, ERIK
02:59		45-17	H 28	GOOD! FT by STEVENSON, ERIK
02:23		48-17	H 31	GOOD! 3PTR by ETIENNE, TYSON
02:00	GOOD! FT by THOMPSON, CHRISTION	48-18	H 30	
00:38		50-18	H 32	GOOD! LAYUP by STEVENSON, ERIK
00:16	GOOD! JUMPER by DAYS, NOBAL	50-20	H 30	

Tulane 20, Wichita St. 50

Official Scoring/Possession Reference Chart
Tulane vs Wichita St.
Period 2
February 16, 2020 at Charles Koch Arena - Wichita, Kan.



Period 2

Starters:

Tulane: 1 LAWSON, K.J. (F); 5 HIGHTOWER, TESHAUN (G); 12 ZHANG, KEVIN (F); 23 MCGEE, R.J. (G); 25 THOMPSON, CHRISTION (G);

Wichita St.: 0 DENNIS, DEXTER (G); 2 BURTON, JAMARIUS (G); 11 FERNANDES, NOAH (G); 21 ECHENIQUE, JAIME (C); 52 SHERFIELD, GRANT (G);

Time	VISITORS: Tulane	Score	Margin	HOME: Wichita St.
19:20	GOOD! LAYUP by WALKER, JORDAN [FB]	50-22	H 28	
18:29	GOOD! LAYUP by THOMPSON, CHRISTION	50-24	H 26	
17:42		52-24	H 28	GOOD! DUNK by POOR BEAR-CHANDLER, ISAIAH
17:00		55-24	H 31	GOOD! 3PTR by DENNIS, DEXTER
16:45	GOOD! LAYUP by WALKER, JORDAN	55-26	H 29	
16:12	GOOD! LAYUP by THOMPSON, CHRISTION	55-28	H 27	
15:18	GOOD! LAYUP by HIGHTOWER, TESHAUN	55-30	H 25	
14:33	GOOD! FT by THOMPSON, CHRISTION	55-31	H 24	
14:33	GOOD! FT by THOMPSON, CHRISTION	55-32	H 23	
14:17		58-32	H 26	GOOD! 3PTR by BURTON, JAMARIUS
14:03	GOOD! FT by THOMPSON, CHRISTION	58-33	H 25	
13:36		60-33	H 27	GOOD! JUMPER by DENNIS, DEXTER
13:22	GOOD! FT by HIGHTOWER, TESHAUN	60-34	H 26	
13:00		62-34	H 28	GOOD! JUMPER by BURTON, JAMARIUS
12:40	GOOD! JUMPER by WALKER, JORDAN	62-36	H 26	
12:15		65-36	H 29	GOOD! 3PTR by ETIENNE, TYSON
11:11	GOOD! LAYUP by THOMPSON, CHRISTION	65-38	H 27	
10:55		67-38	H 29	GOOD! LAYUP by ECHENIQUE, JAIME
10:55		68-38	H 30	GOOD! FT by ECHENIQUE, JAIME
09:23		70-38	H 32	GOOD! LAYUP by ECHENIQUE, JAIME
09:12	GOOD! FT by HIGHTOWER, TESHAUN	70-39	H 31	
09:12	GOOD! FT by HIGHTOWER, TESHAUN	70-40	H 30	
08:38	GOOD! DUNK by KOKA, BUAY	70-42	H 28	
08:04	GOOD! JUMPER by WALKER, JORDAN	70-44	H 26	
07:39	GOOD! LAYUP by HIGHTOWER, TESHAUN	70-46	H 24	
07:01	GOOD! LAYUP by THOMPSON, CHRISTION [PNT]	70-48	H 22	
06:41		72-48	H 24	GOOD! JUMPER by BURTON, JAMARIUS
05:52	GOOD! FT by THOMPSON, CHRISTION [FB]	72-49	H 23	
05:07		74-49	H 25	GOOD! JUMPER by ETIENNE, TYSON
04:36		77-49	H 28	GOOD! 3PTR by ETIENNE, TYSON
04:05		78-49	H 29	GOOD! FT by MIDTGAARD, ASBJORN
03:46		81-49	H 32	GOOD! 3PTR by ETIENNE, TYSON
02:38	GOOD! 3PTR by MCGEE, R.J.	81-52	H 29	
01:43	GOOD! FT by WALKER, JORDAN	81-53	H 28	
01:43	GOOD! FT by WALKER, JORDAN	81-54	H 27	
00:37	GOOD! LAYUP by WALKER, JORDAN [FB]	81-56	H 25	
00:21		82-56	H 26	GOOD! FT by BUSSE, TATE
00:07	GOOD! FT by KOKA, BUAY	82-57	H 25	

Tulane 57, Wichita St. 82

Official Substitutions Log
Tulane vs Wichita St.
Period 1
February 16, 2020 at Charles Koch Arena - Wichita, Kan.



VISITORS: Tulane	Time	Score	HOME: Wichita St.
1 LAWSON,K.J.			0 DENNIS,DEXTER
5 HIGHTOWER, TESHAUN			2 BURTON,JAMARIUS
12 ZHANG,KEVIN			11 FERNANDES,NOAH
23 MCGEE,R.J.			21 ECHENIQUE,JAIME
25 THOMPSON,CHRISTION			52 SHERFIELD,GRANT
	16:01	5-10	SUB OUT: BURTON,JAMARIUS
	16:01		SUB OUT: ECHENIQUE,JAIME
	16:01		SUB IN: STEVENSON,ERIK
	16:01		SUB IN: UDEZE,MORRIS
SUB OUT: 23 MCGEE,R.J.	16:01		
SUB IN: 14 THOMAS,NIC	16:01		
	15:29	5-10	SUB OUT: FERNANDES,NOAH
	15:29		SUB IN: ETIENNE,TYSON
	13:35	7-15	SUB OUT: DENNIS,DEXTER
	13:35		SUB IN: WADE,TREY
SUB OUT: 1 LAWSON,K.J.	13:35		
SUB OUT: 25 THOMPSON,CHRISTION	13:35		
SUB IN: 2 WALKER,JORDAN	13:35		
SUB IN: 4 DAYS,NOBAL	13:35		
	13:06	7-15	SUB OUT: UDEZE,MORRIS
	13:06		SUB OUT: SHERFIELD,GRANT
	13:06		SUB IN: BURTON,JAMARIUS
	13:06		SUB IN: ECHENIQUE,JAIME
SUB OUT: 14 THOMAS,NIC	13:06		
SUB IN: 23 MCGEE,R.J.	13:06		
SUB OUT: 12 ZHANG,KEVIN	12:02	9-18	
SUB IN: 1 LAWSON,K.J.	12:02		
SUB OUT: 23 MCGEE,R.J.	12:02		
SUB IN: 25 THOMPSON,CHRISTION	12:02		
SUB OUT: 2 WALKER,JORDAN	11:30	9-21	
SUB IN: 14 THOMAS,NIC	11:30		
SUB OUT: 5 HIGHTOWER, TESHAUN	11:30		
SUB IN: 23 MCGEE,R.J.	11:30		
	09:50	12-24	SUB OUT: WADE,TREY
	09:50		SUB OUT: STEVENSON,ERIK
	09:50		SUB IN: DENNIS,DEXTER
	09:50		SUB IN: FERNANDES,NOAH
SUB OUT: 4 DAYS,NOBAL	09:50		
SUB OUT: 14 THOMAS,NIC	09:50		
SUB IN: 0 RUSSELL JR.,CHARLIE	09:50		
SUB IN: 12 ZHANG,KEVIN	09:50		
SUB OUT: 0 RUSSELL JR.,CHARLIE	09:32	12-24	
SUB IN: 14 THOMAS,NIC	09:32		
SUB OUT: 23 MCGEE,R.J.	09:32		
SUB IN: 5 HIGHTOWER, TESHAUN	09:32		
SUB OUT: 12 ZHANG,KEVIN	08:58	12-26	
SUB IN: 4 DAYS,NOBAL	08:58		
	08:40	12-27	SUB OUT: ETIENNE,TYSON
	08:40		SUB IN: SHERFIELD,GRANT
	08:25	12-27	SUB OUT: ECHENIQUE,JAIME
	08:25		SUB IN: MIDTGAARD,ASBJORN
	05:14	14-38	SUB OUT: FERNANDES,NOAH
	05:14		SUB OUT: MIDTGAARD,ASBJORN
	05:14		SUB IN: STEVENSON,ERIK
	05:14		SUB IN: POOR BEAR-CHANDLER,ISAIAH
SUB OUT: 4 DAYS,NOBAL	05:14		
SUB OUT: 5 HIGHTOWER, TESHAUN	05:14		
SUB OUT: 14 THOMAS,NIC	05:14		
SUB IN: 2 WALKER,JORDAN	05:14		
SUB IN: 12 ZHANG,KEVIN	05:14		
SUB IN: 23 MCGEE,R.J.	05:14		
	05:14		SUB OUT: DENNIS,DEXTER
	05:14		SUB IN: GORDON,DEANTONI
	04:52	14-39	SUB OUT: BURTON,JAMARIUS
	04:52		SUB IN: ETIENNE,TYSON
SUB OUT: 23 MCGEE,R.J.	04:44	14-39	
SUB IN: 5 HIGHTOWER, TESHAUN	04:44		
	02:59	17-44	SUB OUT: GORDON,DEANTONI
	02:59		SUB OUT: SHERFIELD,GRANT
	02:59		SUB IN: DENNIS,DEXTER
	02:59		SUB IN: FERNANDES,NOAH
	02:00	17-48	SUB OUT: POOR BEAR-CHANDLER,ISAIAH
	02:00		SUB IN: UDEZE,MORRIS
SUB OUT: 25 THOMPSON,CHRISTION	02:00		
SUB IN: 23 MCGEE,R.J.	02:00		

VISITORS: Tulane	Time	Score	HOME: Wichita St.
	01:14	18-48	SUB OUT: FERNANDES, NOAH
	01:14		SUB IN: BURTON, JAMARIUS
SUB OUT: 12 ZHANG, KEVIN	01:14		
SUB IN: 4 DAYS, NOBAL	01:14		

Tulane 20, Wichita St. 50

Official Substitutions Log
Tulane vs Wichita St.
Period 2
February 16, 2020 at Charles Koch Arena - Wichita, Kan.



VISITORS: Tulane	Time	Score	HOME: Wichita St.
1 LAWSON,K.J.			0 DENNIS,DEXTER
5 HIGHTOWER, TESHAUN			2 BURTON,JAMARIUS
12 ZHANG,KEVIN			11 FERNANDES,NOAH
23 MCGEE,R.J.			21 ECHENIQUE,JAIME
25 THOMPSON,CHRISTION			52 SHERFIELD,GRANT
	20:00	-	SUB OUT: ETIENNE,TYSON
	20:00		SUB OUT: STEVENSON,ERIK
	20:00		SUB OUT: UDEZE,MORRIS
	20:00		SUB IN: FERNANDES,NOAH
	20:00		SUB IN: ECHENIQUE,JAIME
	20:00		SUB IN: SHERFIELD,GRANT
SUB OUT: 4 DAYS,NOBAL	20:00		
SUB OUT: 23 MCGEE,R.J.	20:00		
SUB IN: 12 ZHANG,KEVIN	20:00		
SUB IN: 25 THOMPSON,CHRISTION	20:00		
	18:34	22-50	SUB OUT: ECHENIQUE,JAIME
	18:34		SUB IN: POOR BEAR-CHANDLER,ISAIAH
	18:19	24-50	SUB OUT: BURTON,JAMARIUS
	18:19		SUB IN: STEVENSON,ERIK
	17:21	24-52	SUB OUT: FERNANDES,NOAH
	17:21		SUB IN: ETIENNE,TYSON
	15:32	28-55	SUB OUT: STEVENSON,ERIK
	15:32		SUB IN: WADE,TREY
	14:49	30-55	SUB OUT: SHERFIELD,GRANT
	14:49		SUB IN: BURTON,JAMARIUS
	13:22	33-60	SUB OUT: POOR BEAR-CHANDLER,ISAIAH
	13:22		SUB IN: ECHENIQUE,JAIME
SUB OUT: 12 ZHANG,KEVIN	13:22		
SUB OUT: 25 THOMPSON,CHRISTION	13:22		
SUB IN: 4 DAYS,NOBAL	13:22		
SUB IN: 23 MCGEE,R.J.	13:22		
	11:52	36-65	SUB OUT: ETIENNE,TYSON
	11:52		SUB OUT: BURTON,JAMARIUS
	11:52		SUB IN: FERNANDES,NOAH
	11:52		SUB IN: SHERFIELD,GRANT
SUB OUT: 1 LAWSON,K.J.	11:52		
SUB OUT: 5 HIGHTOWER, TESHAUN	11:52		
SUB IN: 12 ZHANG,KEVIN	11:52		
SUB IN: 25 THOMPSON,CHRISTION	11:52		
SUB OUT: 25 THOMPSON,CHRISTION	10:38	38-68	
SUB IN: 5 HIGHTOWER, TESHAUN	10:38		
	09:23	38-70	SUB OUT: DENNIS,DEXTER
	09:23		SUB IN: STEVENSON,ERIK
SUB OUT: 4 DAYS,NOBAL	09:23		
SUB OUT: 23 MCGEE,R.J.	09:23		
SUB IN: 13 KOKA,BUAY	09:23		
SUB IN: 14 THOMAS,NIC	09:23		
	07:32	46-70	SUB OUT: WADE,TREY
	07:32		SUB OUT: STEVENSON,ERIK
	07:32		SUB OUT: FERNANDES,NOAH
	07:32		SUB OUT: ECHENIQUE,JAIME
	07:32		SUB OUT: SHERFIELD,GRANT
	07:32		SUB IN: DENNIS,DEXTER
	07:32		SUB IN: ETIENNE,TYSON
	07:32		SUB IN: BURTON,JAMARIUS
	07:32		SUB IN: MIDTGAARD,ASBJORN
	07:32		SUB IN: POOR BEAR-CHANDLER,ISAIAH
SUB OUT: 14 THOMAS,NIC	07:32		
SUB IN: 25 THOMPSON,CHRISTION	07:32		
SUB OUT: 12 ZHANG,KEVIN	05:52	48-72	
SUB IN: 0 RUSSELL JR.,CHARLIE	05:52		
	04:05	49-77	SUB OUT: POOR BEAR-CHANDLER,ISAIAH
	04:05		SUB IN: GORDON,DEANTONI
SUB OUT: 5 HIGHTOWER, TESHAUN	04:05		
SUB IN: 23 MCGEE,R.J.	04:05		
	03:56	49-78	SUB OUT: MIDTGAARD,ASBJORN
	03:56		SUB IN: UDEZE,MORRIS
SUB OUT: 25 THOMPSON,CHRISTION	03:16	49-81	
SUB IN: 5 HIGHTOWER, TESHAUN	03:16		
	02:02	52-81	SUB OUT: DENNIS,DEXTER
	02:02		SUB OUT: BURTON,JAMARIUS
	02:02		SUB IN: WADE,TREY
	02:02		SUB IN: HERRS,JACOB
	01:43	53-81	SUB OUT: ETIENNE,TYSON
	01:43		SUB OUT: WADE,TREY

VISITORS: Tulane	Time	Score	HOME: Wichita St.
	01:43		SUB IN: BUSH,BRYCEN
	01:43		SUB IN: BUSSE,TATE
SUB OUT: 5 HIGHTOWER, TESHAUN	00:21	56-82	
SUB IN: 34 ZACCARDO,ALEC	00:21		

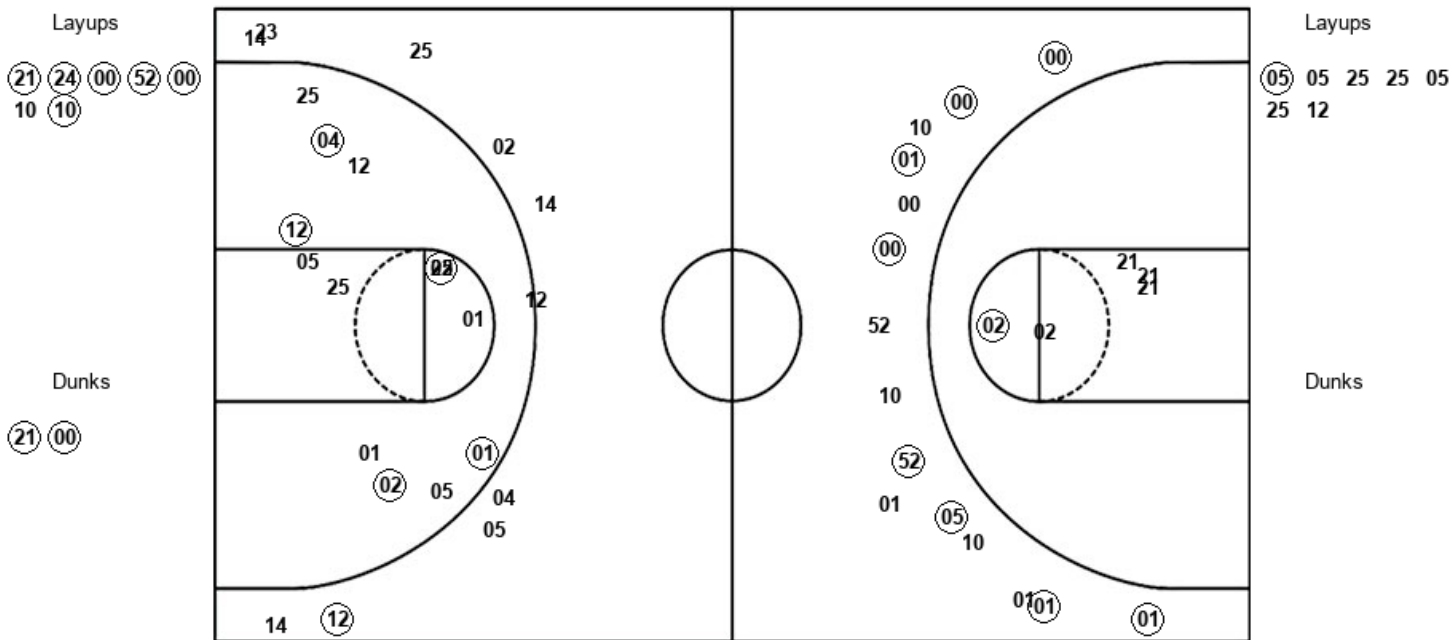
Tulane 57, Wichita St. 82

Official Shot Chart
Tulane vs Wichita St.
PERIOD 1 Shots
 February 16, 2020 at Charles Koch Arena - Wichita, Kan.



Wichita St.

Tulane



WSU : Period 1	Made	Att	Pct
Layups	6	7	85.7
Dunks	2	2	100.0
2PT Field Goals	9	14	64.3
3PT Field Goals	8	15	53.3
Total Field Goals	17	29	58.6

TLN : Period 1	Made	Att	Pct
Layups	1	7	14.3
Dunks	0	0	0
2PT Field Goals	6	21	28.6
3PT Field Goals	1	9	11.1
Total Field Goals	7	30	23.3

Official Shot Chart
Tulane vs Wichita St.
PERIOD 2 Shots
 February 16, 2020 at Charles Koch Arena - Wichita, Kan.

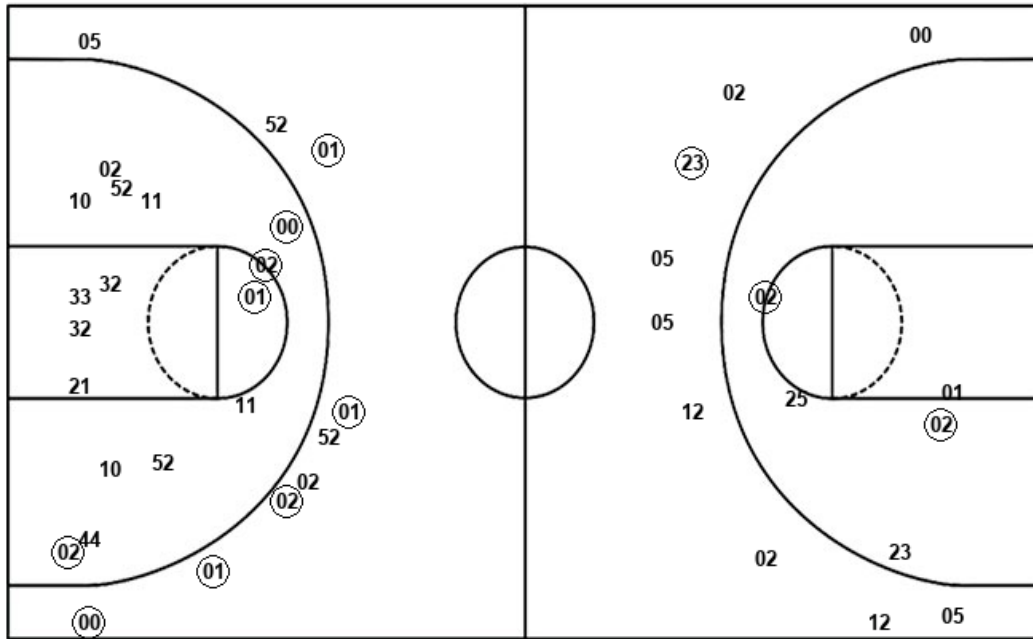


Wichita St.

Tulane

Layups
 21 10 (21) (21)

Dunks
 (44) 03



Layups
 (02) (25) (02) 05 (25)
 (05) 05 (25) 05 (05)
 (25) 13 (02)

Dunks
 (13)

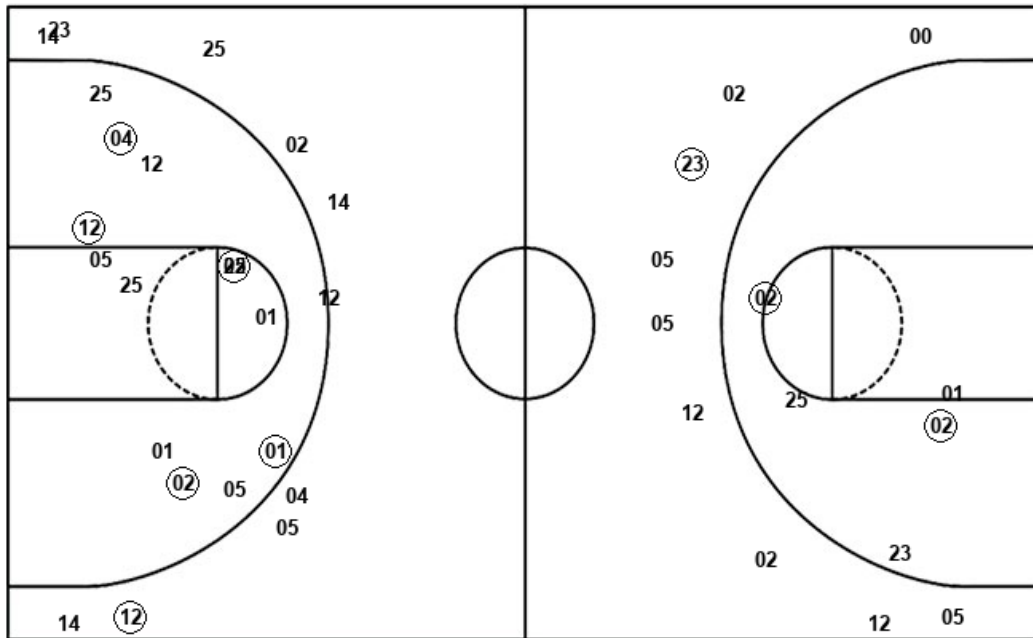
WSU : Period 2	Made	Att	Pct
Layups	2	4	50.0
Dunks	1	2	50.0
2PT Field Goals	7	22	31.8
3PT Field Goals	5	9	55.6
Total Field Goals	12	31	38.7

TLN : Period 2	Made	Att	Pct
Layups	9	13	69.2
Dunks	1	1	100.0
2PT Field Goals	12	19	63.2
3PT Field Goals	1	9	11.1
Total Field Goals	13	28	46.4

Official Shot Chart
Tulane vs Wichita St.
 Tulane Team Shots
 February 16, 2020 at Charles Koch Arena - Wichita, Kan.



Layups



Layups

(05) 05 25 25 05
 25 12 (02) (25) (02)
 05 (25) (05) 05 (25)
 05 (05) (25) 13 (02)

Dunks

Dunks

(13)

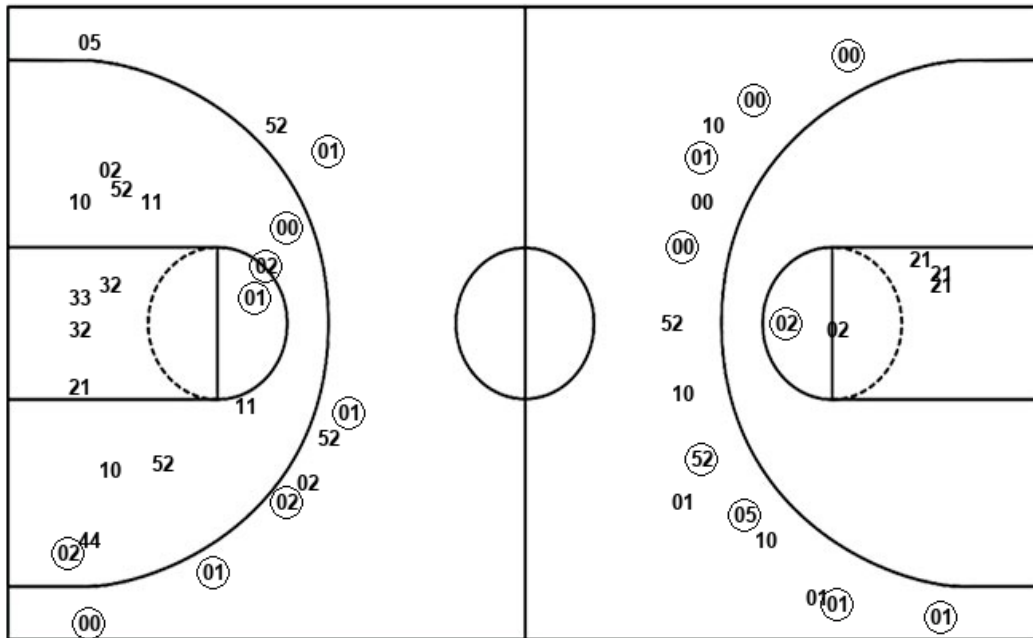
TLN : Period 1	Made	Att	Pct
Layups	1	7	14.3
Dunks	0	0	0
2PT Field Goals	6	21	28.6
3PT Field Goals	1	9	11.1
Total Field Goals	7	30	23.3

TLN : Period 2	Made	Att	Pct
Layups	9	13	69.2
Dunks	1	1	100.0
2PT Field Goals	12	19	63.2
3PT Field Goals	1	9	11.1
Total Field Goals	13	28	46.4

Official Shot Chart
Tulane vs Wichita St.
Wichita St. Team Shots
 February 16, 2020 at Charles Koch Arena - Wichita, Kan.



Layups



Layups

(21) (24) (00) (52) (00)
 10 (10) 21 10 (21)
 (21)

Dunks

Dunks

(21) (00) (44) 03

WSU : Period 1	Made	Att	Pct
Layups	6	7	85.7
Dunks	2	2	100.0
2PT Field Goals	9	14	64.3
3PT Field Goals	8	15	53.3
Total Field Goals	17	29	58.6

WSU : Period 2	Made	Att	Pct
Layups	2	4	50.0
Dunks	1	2	50.0
2PT Field Goals	7	22	31.8
3PT Field Goals	5	9	55.6
Total Field Goals	12	31	38.7