

FINAL SCORE



Memphis

67



Wichita St.

76

January 09, 2020 • Charles Koch Arena - Wichita, Kan.

FINAL STATISTICS

Official Box Score
Memphis vs Wichita St.
Game Totals -- Final Statistics
January 09, 2020 at Charles Koch Arena - Wichita, Kan.



Memphis 67

No.	Player	S	Pts	FG	3FG	FT	OR	DR	TR	PF	A	TO	Blk	Stl	Min	+/-
00	JEFFRIES, D.J.	F	3	1-2	1-2	0-0	0	4	4	4	0	2	1	0	28	-7
05	ELLIS, BOOGIE	G	2	0-5	0-2	2-2	1	2	3	4	0	0	0	0	14	-8
10	BAUGH, DAMION	G	0	0-0	0-0	0-0	0	2	2	1	1	1	0	0	13	-11
14	MAURICE, ISAIAH	F	4	2-8	0-3	0-0	0	0	0	1	0	0	0	0	8	-17
55	ACHIUWA, PRECIOUS	F	22	8-11	0-1	6-10	4	8	12	2	0	3	4	1	29	-9
01	HARRIS, TYLER	G	17	5-14	3-9	4-4	1	2	3	3	3	2	0	1	25	4
02	LOMAX, ALEX	G	6	1-6	0-0	4-6	3	6	9	5	4	6	1	1	26	-2
11	QUINONES, LESTER	G	7	0-3	0-2	7-11	3	1	4	3	2	2	0	0	28	9
15	THOMAS, LANCE	F	0	0-1	0-1	0-0	0	0	0	1	0	1	0	0	5	-7
23	DANDRIDGE, MALCOLM	C	6	3-4	0-0	0-0	2	2	4	1	0	0	3	0	15	-1
25	HARDAWAY, JAYDEN	G	0	0-2	0-1	0-0	0	1	1	1	0	0	0	0	7	4
TEAM							1	5	6	0	1					
TOTALS			67	20-56	4-21	23-33	15	33	48	26	10	18	9	3	199	

Shooting By Period

Period	FG	FG%	3FG	3FG%	FT	FT%
1st Half	9-30	30%	1-13	08%	12-15	80%
2nd Half	11-26	42%	3-8	38%	11-18	61%
Game	20-56	35.7%	4-21	19.0%	23-33	69.7%

Deadball Rebounds: 4,0
Last FG: 2nd-00:22
Biggest Run: 6-0
Largest lead: By 0 at -
Technical Fouls: None.

Wichita St. 76

No.	Player	S	Pts	FG	3FG	FT	OR	DR	TR	PF	A	TO	Blk	Stl	Min	+/-
01	ETIENNE, TYSON	G	11	2-8	2-5	5-7	1	3	4	1	1	0	0	4	24	10
02	BURTON, JAMARIUS	G	16	6-11	0-2	4-6	0	3	3	3	3	4	0	2	30	16
05	WADE, TREY	F	6	2-5	1-2	1-2	3	2	5	3	1	2	1	0	20	8
10	STEVENSON, ERIK	G	12	4-10	3-7	1-2	1	3	4	3	1	3	1	0	28	5
21	ECHENIQUE, JAIME	C	8	2-7	0-0	4-4	0	3	3	4	0	1	0	0	17	22
00	DENNIS, DEXTER	G	8	2-11	1-4	3-4	4	4	8	3	2	0	0	0	26	-3
24	UDEZE, MORRIS	C	6	2-4	0-0	2-6	3	4	7	4	0	0	1	1	15	-5
33	MIDTGAARD, ASBJORN	C	0	0-1	0-0	0-0	1	0	1	1	0	0	0	0	4	-5
44	POOR BEAR-CHANDLER, ISAI	C	0	0-0	0-0	0-0	1	0	1	1	0	0	0	0	3	-3
52	SHERFIELD, GRANT	G	9	2-10	1-2	4-4	1	3	4	1	2	0	0	0	31	0
TEAM							3	1	4	0	0					
TOTALS			76	22-67	8-22	24-35	18	26	44	24	10	10	3	7	199	

Shooting By Period

Period	FG	FG%	3FG	3FG%	FT	FT%
1st Half	13-34	38%	6-14	43%	5-6	83%
2nd Half	9-33	27%	2-8	25%	19-29	66%
Game	22-67	32.8%	8-22	36.4%	24-35	68.6%

Deadball Rebounds: 5,1
Last FG: 2nd-02:17
Biggest Run: 9-0
Largest lead: By 19 at 2nd-12:01
Technical Fouls: #05 WADE (Class A) @ 1st - 05:04;

Game Notes:

Officials: Michael Stephens, Jamie Luckie, Steven Anderson
 Attendance: 10506

Start Time: 07:01 PM ET
 End Time: 09:23 PM ET
 Game Duration: 2:22
 Conference Game;

Score	1st	2nd	TOT
MEM	31	36	67
WSU	37	39	76

MEM led for 0:00. WSU led for 39:38.
 Game was tied for 0:15.
 Times tied: 0 Lead Changes: 0

Points from	MEM	WSU
In the Paint	30	22
Off Turns	10	15
2nd Chance	20	15
Fast Break	6	10
Bench	36	23

Official Box Score
Memphis vs Wichita St.
First Half Statistics Only
January 09, 2020 at Charles Koch Arena - Wichita, Kan.



Memphis 31

No.	Player	S	Pts	FG	3FG	FT	OR	DR	TR	PF	A	TO	Blk	Stl	Min	+/-
00	JEFFRIES, D.J.	F	0	0-1	0-1	0-0	0	2	2	1	0	0	1	0	14	-3
05	ELLIS, BOOGIE	G	0	0-5	0-2	0-0	0	1	1	1	0	0	0	0	9	-6
10	BAUGH, DAMION	G	0	0-0	0-0	0-0	0	1	1	1	0	1	0	0	7	-5
14	MAURICE, ISAIAH	F	2	1-5	0-2	0-0	0	0	0	1	0	0	0	0	6	-12
55	ACHIUWA, PRECIOUS	F	9	2-4	0-1	5-7	2	2	4	0	0	0	2	0	12	-5
01	HARRIS, TYLER	G	9	2-5	1-4	4-4	0	2	2	2	0	1	0	1	13	-1
02	LOMAX, ALEX	G	5	1-3	0-0	3-4	3	3	6	1	3	2	0	0	12	0
11	QUINONES, LESTER	G	0	0-2	0-2	0-0	0	0	0	1	0	1	0	0	14	0
15	THOMAS, LANCE	F	0	0-1	0-1	0-0	0	0	0	1	0	1	0	0	3	0
23	DANDRIDGE, MALCOLM	C	6	3-4	0-0	0-0	2	1	3	0	0	0	1	0	7	1
25	HARDAWAY, JAYDEN	G	0	0-0	0-0	0-0	0	0	0	0	0	0	0	0	3	1
	TEAM						1	1	2	0		1				
TOTALS			31	9-30	1-13	12-15	8	13	21	9	3	7	4	1	100	

Shooting By Period

Period	FG	FG%	3FG	3FG%	FT	FT%
1st Half	9-30	30%	1-13	08%	12-15	80%
Game	20-56	35.7%	4-21	19.0%	23-33	69.7%

Deadball Rebounds: 4,0
 Last FG Half: MEM 2nd-00:22

Wichita St. 37

No.	Player	S	Pts	FG	3FG	FT	OR	DR	TR	PF	A	TO	Blk	Stl	Min	+/-
01	ETIENNE, TYSON	G	8	2-5	2-4	2-2	0	3	3	0	0	0	0	2	15	4
02	BURTON, JAMARIUS	G	4	2-3	0-1	0-0	0	3	3	1	3	4	0	0	12	10
05	WADE, TREY	F	6	2-4	1-2	1-2	1	2	3	2	1	2	0	0	13	10
10	STEVENSON, ERIK	G	5	2-4	1-3	0-0	1	2	3	2	0	1	0	0	14	4
21	ECHENIQUE, JAIME	C	2	1-4	0-0	0-0	0	1	1	2	0	0	0	0	9	11
00	DENNIS, DEXTER	G	3	1-5	1-2	0-0	1	1	2	1	0	0	0	0	10	-2
24	UDEZE, MORRIS	C	2	1-1	0-0	0-0	1	0	1	2	0	0	0	0	4	0
33	MIDTGAARD, ASBJORN	C	0	0-1	0-0	0-0	1	0	1	1	0	0	0	0	4	-5
44	POOR BEAR-CHANDLER, ISAI	C	0	0-0	0-0	0-0	1	0	1	1	0	0	0	0	3	-3
52	SHERFIELD, GRANT	G	7	2-7	1-2	2-2	1	1	2	0	2	0	0	0	15	1
	TEAM						1	1	2	0		0				
TOTALS			37	13-34	6-14	5-6	8	14	22	12	6	7	0	2	100	

Shooting By Period

Period	FG	FG%	3FG	3FG%	FT	FT%
1st Half	13-34	38%	6-14	43%	5-6	83%
Game	22-67	32.8%	8-22	36.4%	24-35	68.6%

Deadball Rebounds: 5,1
 Last FG Half: WSU 2nd-02:17

Game Notes:

Officials: Michael Stephens, Jamie Luckie, Steven Anderson
 Attendance: 10506

Start Time: 07:01 PM ET
 End Time: 09:23 PM ET
 Game Duration: 2:22
 Conference Game;

Score	1st	2nd	TOT
MEM	31	36	67
WSU	37	39	76

Points from (This Period)	MEM	WSU
In the Paint	16	10
Off Turns	9	5
2nd Chance	12	3
Fast Break	4	5
Bench	20	12

Official Play-By-Play
Memphis vs Wichita St.
First Half
January 09, 2020 at Charles Koch Arena - Wichita, Kan.



Period 1

Starters:

Memphis: 00 JEFFRIES, D.J. (F); 5 ELLIS, BOOGIE (G); 10 BAUGH, DAMION (G); 14 MAURICE, ISAIAH (F); 55 ACHIUWA, PRECIOUS (F);
Wichita St.: 1 ETIENNE, TYSON (G); 2 BURTON, JAMARIUS (G); 5 WADE, TREY (F); 10 STEVENSON, ERIK (G); 21 ECHENIQUE, JAIME (C);

Time	VISITORS: Memphis	Score	Margin	HOME: Wichita St.
19:45		3-0	H 3	GOOD! 3PTR by ETIENNE, TYSON
19:45				ASSIST by BURTON, JAMARIUS
19:28				FOUL (PERSONAL) by STEVENSON, ERIK
19:21	MISSED JUMPER by ELLIS, BOOGIE			
19:14	REBOUND (OFF) by ACHIUWA, PRECIOUS			
19:14	GOOD! LAYUP by ACHIUWA, PRECIOUS	3-2	H 1	
18:57		5-2	H 3	GOOD! JUMPER by STEVENSON, ERIK
18:57				ASSIST by BURTON, JAMARIUS
18:46	FOUL (OFF) by BAUGH, DAMION			
18:46	TURNOVER (OFFENSIVE) by BAUGH, DAMION			
18:35				MISSED 3PTR by BURTON, JAMARIUS
18:32	REBOUND (DEF) by JEFFRIES, D.J.			
18:28	MISSED JUMPER by MAURICE, ISAIAH			
18:25				REBOUND (DEF) by TEAM
18:03				MISSED 3PTR by STEVENSON, ERIK
18:00				REBOUND (OFF) by STEVENSON, ERIK
17:43		7-2	H 5	GOOD! JUMPER by BURTON, JAMARIUS [PNT]
17:30	MISSED 3PTR by ACHIUWA, PRECIOUS			
17:27				REBOUND (DEF) by WADE, TREY
17:24		9-2	H 7	GOOD! DUNK by WADE, TREY [FB]
17:23	TIMEOUT 30SEC			
17:23	SUB OUT: ELLIS, BOOGIE			
17:23	SUB OUT: BAUGH, DAMION			
17:23	SUB IN: HARRIS, TYLER			
17:23	SUB IN: LOMAX, ALEX			
17:09	MISSED JUMPER by MAURICE, ISAIAH			
17:05				REBOUND (DEF) by ECHENIQUE, JAIME
17:01		12-2	H 10	GOOD! 3PTR by ETIENNE, TYSON [FB]
17:01				ASSIST by BURTON, JAMARIUS
16:44	SUB OUT: MAURICE, ISAIAH			
16:44	SUB IN: THOMAS, LANCE			
16:42	MISSED 3PTR by HARRIS, TYLER			
16:38				REBOUND (DEF) by BURTON, JAMARIUS
16:29				TURNOVER (TRAVEL) by BURTON, JAMARIUS
16:29				SUB OUT: STEVENSON, ERIK
16:29				SUB IN: SHERFIELD, GRANT
16:17	TURNOVER (TRAVEL) by THOMAS, LANCE			
16:03				MISSED JUMPER by ECHENIQUE, JAIME
15:59				REBOUND (OFF) by SHERFIELD, GRANT
15:55				MISSED 3PTR by SHERFIELD, GRANT
15:52	REBOUND (DEF) by HARRIS, TYLER			
15:47	MISSED 3PTR by JEFFRIES, D.J.			
15:44				REBOUND (DEF) by SHERFIELD, GRANT
15:27				TURNOVER (LOSTBALL) by BURTON, JAMARIUS
15:27	STEAL by HARRIS, TYLER			
15:27				SUB OUT: BURTON, JAMARIUS
15:27				SUB OUT: ECHENIQUE, JAIME
15:27				SUB IN: DENNIS, DEXTER
15:27				SUB IN: UDEZE, MORRIS
15:27	SUB OUT: JEFFRIES, D.J.			
15:27	SUB IN: QUINONES, LESTER			
15:07				FOUL (PERSONAL) by UDEZE, MORRIS
15:07	GOOD! FT by LOMAX, ALEX	12-3	H 9	
15:07	SUB OUT: ACHIUWA, PRECIOUS			
15:07	SUB IN: DANDRIDGE, MALCOLM			
15:07	GOOD! FT by LOMAX, ALEX	12-4	H 8	
14:52		15-4	H 11	GOOD! 3PTR by WADE, TREY
14:52				ASSIST by SHERFIELD, GRANT
14:38	TURNOVER (LOSTBALL) by QUINONES, LESTER			
14:17		17-4	H 13	GOOD! LAYUP by UDEZE, MORRIS
14:17				ASSIST by WADE, TREY
14:02	MISSED 3PTR by THOMAS, LANCE			
13:58	REBOUND (OFF) by LOMAX, ALEX			
13:56	GOOD! 3PTR by HARRIS, TYLER	17-7	H 10	
13:56	ASSIST by LOMAX, ALEX			
13:23				MISSED 3PTR by ETIENNE, TYSON
13:22				REBOUND (OFF) by UDEZE, MORRIS
13:22	FOUL (PERSONAL) by THOMAS, LANCE			
13:22				SUB OUT: ETIENNE, TYSON

Time	VISITORS: Memphis	Score	Margin	HOME: Wichita St.
13:22				SUB OUT: WADE, TREY
13:22				SUB IN: STEVENSON, ERIK
13:22				SUB IN: ECHENIQUE, JAIME
13:22	SUB OUT: THOMAS, LANCE			
13:22	SUB IN: MAURICE, ISAIAH			
13:06				MISSED JUMPER by ECHENIQUE, JAIME
13:06				REBOUND (OFF) by TEAM
13:02				MISSED JUMPER by ECHENIQUE, JAIME
12:59	REBOUND (DEF) by LOMAX, ALEX			
12:55				FOUL (PERSONAL) by ECHENIQUE, JAIME
12:55				SUB OUT: ECHENIQUE, JAIME
12:55				SUB IN: WADE, TREY
12:51	GOOD! JUMPER by MAURICE, ISAIAH [PNT]	17-9	H 8	
12:51	ASSIST by LOMAX, ALEX			
12:18		20-9	H 11	GOOD! 3PTR by STEVENSON, ERIK
12:18				ASSIST by SHERFIELD, GRANT
11:54	MISSED LAYUP by DANDRIDGE, MALCOLM			
11:49	REBOUND (OFF) by DANDRIDGE, MALCOLM			
11:49	GOOD! LAYUP by DANDRIDGE, MALCOLM	20-11	H 9	
11:36				MISSED 3PTR by STEVENSON, ERIK
11:32				REBOUND (OFF) by DENNIS, DEXTER
11:31				MISSED JUMPER by DENNIS, DEXTER
11:30				REBOUND (OFF) by WADE, TREY
11:30	FOUL (PERSONAL) by QUINONES, LESTER			
11:30				
11:30				SUB OUT: DENNIS, DEXTER
11:30				SUB IN: BURTON, JAMARIUS
11:30	SUB OUT: LOMAX, ALEX			
11:30	SUB IN: JEFFRIES, D.J.			
11:30				MISSED FT by WADE, TREY
11:30				REBOUND (OFF) by TEAM
11:30		21-11	H 10	GOOD! FT by WADE, TREY
11:16	MISSED 3PTR by MAURICE, ISAIAH			
11:16				REBOUND (DEF) by BURTON, JAMARIUS
11:16	FOUL (PERSONAL) by JEFFRIES, D.J.			
11:16	SUB OUT: HARRIS, TYLER			
11:16	SUB OUT: DANDRIDGE, MALCOLM			
11:16	SUB IN: ELLIS, BOOGIE			
11:16	SUB IN: ACHIUWA, PRECIOUS			
11:16	SUB OUT: MAURICE, ISAIAH			
11:16	SUB IN: HARRIS, TYLER			
11:06				MISSED JUMPER by SHERFIELD, GRANT
11:03	REBOUND (DEF) by ELLIS, BOOGIE			
11:00				FOUL (PERSONAL) by UDEZE, MORRIS
11:00				SUB OUT: UDEZE, MORRIS
11:00				SUB IN: ECHENIQUE, JAIME
10:38	MISSED 3PTR by QUINONES, LESTER			
10:35				REBOUND (DEF) by STEVENSON, ERIK
10:17				MISSED 3PTR by WADE, TREY
10:14	REBOUND (DEF) by ACHIUWA, PRECIOUS			
10:08	MISSED JUMPER by ACHIUWA, PRECIOUS			
10:04				REBOUND (DEF) by TEAM
10:04	SUB OUT: HARRIS, TYLER			
10:04	SUB IN: BAUGH, DAMION			
09:48				MISSED LAYUP by SHERFIELD, GRANT
09:48	BLOCK by ACHIUWA, PRECIOUS			
09:41	REBOUND (DEF) by JEFFRIES, D.J.			
09:37	MISSED 3PTR by ELLIS, BOOGIE			
09:35				REBOUND (DEF) by WADE, TREY
09:27		23-11	H 12	GOOD! JUMPER by BURTON, JAMARIUS
08:50	TURNOVER (SHOTCLOCK) by TEAM			
08:50	SUB OUT: QUINONES, LESTER			
08:50	SUB IN: LOMAX, ALEX			
08:38				FOUL (OFF) by WADE, TREY
08:38				TURNOVER (OFFENSIVE) by WADE, TREY
08:38				SUB OUT: WADE, TREY
08:38				SUB OUT: SHERFIELD, GRANT
08:38				SUB IN: ETIENNE, TYSON
08:38				SUB IN: POOR BEAR-CHANDLER, ISAIAH
08:26	MISSED 3PTR by ELLIS, BOOGIE			
08:23	REBOUND (OFF) by ACHIUWA, PRECIOUS			
08:23	GOOD! JUMPER by ACHIUWA, PRECIOUS [PNT]	23-13	H 10	
08:23				FOUL (PERSONAL) by POOR BEAR-CHANDLER, ISAIAH
08:23				SUB OUT: POOR BEAR-CHANDLER, ISAIAH
08:23				SUB IN: MIDTGAARD, ASBJORN
08:23	SUB OUT: ELLIS, BOOGIE			
08:23	SUB IN: HARDAWAY, JAYDEN			
08:23	GOOD! FT by ACHIUWA, PRECIOUS	23-14	H 9	
08:10				TURNOVER (BADPASS) by BURTON, JAMARIUS
08:10				SUB OUT: ECHENIQUE, JAIME

Time	VISITORS: Memphis	Score	Margin	HOME: Wichita St.
08:10				SUB OUT: MIDTGAARD, ASBJORN
08:10				SUB IN: DENNIS, DEXTER
08:10				SUB IN: POOR BEAR-CHANDLER, ISAIAH
08:01	MISSED LAYUP by LOMAX, ALEX			
07:57				REBOUND (DEF) by BURTON, JAMARIUS
07:46				TURNOVER (LOSTBALL) by BURTON, JAMARIUS
07:46				
07:41	TURNOVER (LOSTBALL) by LOMAX, ALEX			
07:41				STEAL by ETIENNE, TYSON
07:25				MISSED LAYUP by ETIENNE, TYSON
07:22	REBOUND (DEF) by BAUGH, DAMION			
07:21				FOUL (PERSONAL) by BURTON, JAMARIUS
07:21	GOOD! FT by ACHIUWA, PRECIOUS [FB]	23-15	H 8	
07:21	SUB OUT: JEFFRIES, D.J.			
07:21	SUB IN: QUINONES, LESTER			
07:21	MISSED FT by ACHIUWA, PRECIOUS			
07:20				REBOUND (DEF) by ETIENNE, TYSON
06:54				MISSED JUMPER by DENNIS, DEXTER
06:54	BLOCK by ACHIUWA, PRECIOUS			
06:49	REBOUND (DEF) by ACHIUWA, PRECIOUS			
06:49				FOUL (PERSONAL) by DENNIS, DEXTER
06:49	GOOD! FT by ACHIUWA, PRECIOUS [FB]	23-16	H 7	
06:49				SUB OUT: DENNIS, DEXTER
06:49				SUB OUT: BURTON, JAMARIUS
06:49				SUB OUT: POOR BEAR-CHANDLER, ISAIAH
06:49				SUB IN: WADE, TREY
06:49				SUB IN: ECHENIQUE, JAIME
06:49				SUB IN: SHERFIELD, GRANT
06:49	SUB OUT: LOMAX, ALEX			
06:49	SUB OUT: BAUGH, DAMION			
06:49	SUB IN: HARRIS, TYLER			
06:49	SUB IN: ELLIS, BOOGIE			
06:49	MISSED FT by ACHIUWA, PRECIOUS			
06:49				REBOUND (DEF) by STEVENSON, ERIK
06:28	FOUL (PERSONAL) by ELLIS, BOOGIE			
06:28	SUB OUT: ACHIUWA, PRECIOUS			
06:28	SUB IN: MAURICE, ISAIAH			
06:21		25-16	H 9	GOOD! LAYUP by ECHENIQUE, JAIME
06:05	MISSED 3PTR by MAURICE, ISAIAH			
06:01				REBOUND (DEF) by ETIENNE, TYSON
05:56	FOUL (PERSONAL) by MAURICE, ISAIAH			
05:56	SUB OUT: MAURICE, ISAIAH			
05:56	SUB IN: DANDRIDGE, MALCOLM			
05:31				MISSED JUMPER by WADE, TREY
05:30	REBOUND (DEF) by TEAM			
05:30				FOUL (PERSONAL) by ECHENIQUE, JAIME
05:30				SUB OUT: ECHENIQUE, JAIME
05:30				SUB IN: MIDTGAARD, ASBJORN
05:30	SUB OUT: HARDAWAY, JAYDEN			
05:30	SUB IN: JEFFRIES, D.J.			
05:30	GOOD! FT by HARRIS, TYLER	25-17	H 8	
05:30	GOOD! FT by HARRIS, TYLER	25-18	H 7	
05:04				FOUL (TECH) by WADE, TREY
05:04				TURNOVER (OFFENSIVE) by WADE, TREY
05:04	GOOD! FT by HARRIS, TYLER	25-19	H 6	
05:04	GOOD! FT by HARRIS, TYLER	25-20	H 5	
05:04				SUB OUT: WADE, TREY
05:04				SUB IN: DENNIS, DEXTER
05:04	SUB OUT: HARRIS, TYLER			
05:04	SUB OUT: ELLIS, BOOGIE			
05:04	SUB IN: LOMAX, ALEX			
05:04	SUB IN: BAUGH, DAMION			
05:00				MISSED JUMPER by DENNIS, DEXTER
05:00	BLOCK by DANDRIDGE, MALCOLM			
04:55	REBOUND (DEF) by LOMAX, ALEX			
04:48	GOOD! LAYUP by DANDRIDGE, MALCOLM	25-22	H 3	
04:48	ASSIST by LOMAX, ALEX			
04:35		28-22	H 6	GOOD! 3PTR by SHERFIELD, GRANT
04:24	GOOD! LAYUP by LOMAX, ALEX	28-24	H 4	
04:13		30-24	H 6	GOOD! JUMPER by SHERFIELD, GRANT [PNT]
03:59				FOUL (PERSONAL) by MIDTGAARD, ASBJORN
03:59				
03:59	SUB OUT: BAUGH, DAMION			
03:59	SUB IN: HARRIS, TYLER			
03:59	MISSED FT by LOMAX, ALEX			
03:59	REBOUND (OFF) by TEAM			
03:59	GOOD! FT by LOMAX, ALEX	30-25	H 5	
03:48	FOUL (PERSONAL) by LOMAX, ALEX			
03:48		31-25	H 6	GOOD! FT by ETIENNE, TYSON
03:48	SUB OUT: DANDRIDGE, MALCOLM			

Time	VISITORS: Memphis	Score	Margin	HOME: Wichita St.
03:48	SUB IN: ACHIUWA, PRECIOUS			
03:48		32-25	H 7	GOOD! FT by ETIENNE, TYSON
03:37	TURNOVER (LOSTBALL) by LOMAX, ALEX			
03:37				STEAL by ETIENNE, TYSON
03:33				TURNOVER (OTHER) by STEVENSON, ERIK
03:22	GOOD! LAYUP by HARRIS, TYLER	32-27	H 5	
02:56				MISSED LAYUP by SHERFIELD, GRANT
02:51				REBOUND (OFF) by MIDTGAARD, ASBJORN
02:51				MISSED LAYUP by MIDTGAARD, ASBJORN
02:51	BLOCK by JEFFRIES, D.J.			
02:49	REBOUND (DEF) by LOMAX, ALEX			
02:48				FOUL (PERSONAL) by STEVENSON, ERIK
02:48	GOOD! FT by ACHIUWA, PRECIOUS [FB]	32-28	H 4	
02:48				SUB OUT: STEVENSON, ERIK
02:48				SUB OUT: MIDTGAARD, ASBJORN
02:48				SUB IN: BURTON, JAMARIUS
02:48				SUB IN: POOR BEAR-CHANDLER, ISAIAH
02:48	GOOD! FT by ACHIUWA, PRECIOUS [FB]	32-29	H 3	
02:37	FOUL (PERSONAL) by HARRIS, TYLER			
02:37		33-29	H 4	GOOD! FT by SHERFIELD, GRANT
02:37		34-29	H 5	GOOD! FT by SHERFIELD, GRANT
02:24	MISSED 3PTR by HARRIS, TYLER			
02:20				REBOUND (DEF) by ETIENNE, TYSON
02:10				MISSED 3PTR by DENNIS, DEXTER
02:06	REBOUND (DEF) by HARRIS, TYLER			
01:57	MISSED JUMPER by LOMAX, ALEX			
01:54	REBOUND (OFF) by LOMAX, ALEX			
01:53	SUB OUT: LOMAX, ALEX			
01:53	SUB OUT: ACHIUWA, PRECIOUS			
01:53	SUB IN: ELLIS, BOOGIE			
01:53	SUB IN: DANDRIDGE, MALCOLM			
01:53				SUB OUT: POOR BEAR-CHANDLER, ISAIAH
01:53				SUB IN: MIDTGAARD, ASBJORN
01:42	MISSED LAYUP by ELLIS, BOOGIE			
01:37	REBOUND (OFF) by DANDRIDGE, MALCOLM			
01:37	GOOD! LAYUP by DANDRIDGE, MALCOLM	34-31	H 3	
01:22				MISSED 3PTR by ETIENNE, TYSON
01:19	REBOUND (DEF) by DANDRIDGE, MALCOLM			
01:17	FOUL (OFF) by HARRIS, TYLER			
01:17	TURNOVER (OFFENSIVE) by HARRIS, TYLER			
01:17	SUB OUT: JEFFRIES, D.J.			
01:17	SUB IN: LOMAX, ALEX			
00:53		37-31	H 6	GOOD! 3PTR by DENNIS, DEXTER
00:36	MISSED LAYUP by ELLIS, BOOGIE			
00:35	REBOUND (OFF) by TEAM			
00:35	SUB OUT: ELLIS, BOOGIE			
00:35	SUB IN: JEFFRIES, D.J.			
00:35				SUB OUT: MIDTGAARD, ASBJORN
00:35				SUB IN: POOR BEAR-CHANDLER, ISAIAH
00:35	SUB OUT: DANDRIDGE, MALCOLM			
00:35	SUB IN: ACHIUWA, PRECIOUS			
00:34	MISSED 3PTR by HARRIS, TYLER			
00:32	REBOUND (OFF) by LOMAX, ALEX			
00:28	MISSED 3PTR by QUINONES, LESTER			
00:25				REBOUND (DEF) by DENNIS, DEXTER
00:00				MISSED LAYUP by SHERFIELD, GRANT
00:00				REBOUND (OFF) by POOR BEAR-CHANDLER, ISAIAH

Memphis 31, Wichita St. 37

Points from (This Period)	MEM	WSU
In the Paint	16	10
Off Turns	9	5
2nd Chance	12	3
Fast Break	4	5
Bench	20	12

Official Box Score
Memphis vs Wichita St.
Second Half Statistics Only
January 09, 2020 at Charles Koch Arena - Wichita, Kan.



Memphis 36

No.	Player	S	Pts	FG	3FG	FT	OR	DR	TR	PF	A	TO	Blk	Stl	Min	+/-
00	JEFFRIES, D.J.	F	3	1-1	1-1	0-0	0	2	2	3	0	2	0	0	15	-4
05	ELLIS, BOOGIE	G	2	0-0	0-0	2-2	1	1	2	3	0	0	0	0	5	-2
10	BAUGH, DAMION	G	0	0-0	0-0	0-0	0	1	1	0	1	0	0	0	6	-6
14	MAURICE, ISAIAH	F	2	1-3	0-1	0-0	0	0	0	0	0	0	0	0	2	-5
55	ACHIUWA, PRECIOUS	F	13	6-7	0-0	1-3	2	6	8	2	0	3	2	1	16	-4
01	HARRIS, TYLER	G	8	3-9	2-5	0-0	1	0	1	1	3	1	0	0	12	5
02	LOMAX, ALEX	G	1	0-3	0-0	1-2	0	3	3	4	1	4	1	1	14	-2
11	QUINONES, LESTER	G	7	0-1	0-0	7-11	3	1	4	2	2	1	0	0	15	9
15	THOMAS, LANCE	F	0	0-0	0-0	0-0	0	0	0	0	0	0	0	0	2	-7
23	DANDRIDGE, MALCOLM	C	0	0-0	0-0	0-0	0	1	1	1	0	0	2	0	7	-2
25	HARDAWAY, JAYDEN	G	0	0-2	0-1	0-0	0	1	1	1	0	0	0	0	4	3
	TEAM						0	4	4	0		0				
	TOTALS		36	11-26	3-8	11-18	7	20	27	17	7	11	5	2	99	

Shooting By Period

Period	FG	FG%	3FG	3FG%	FT	FT%
2nd Half	11-26	42%	3-8	38%	11-18	61%
Game	20-56	35.7%	4-21	19.0%	23-33	69.7%

Deadball Rebounds: 4,0
Last FG Half: MEM -

Wichita St. 39

No.	Player	S	Pts	FG	3FG	FT	OR	DR	TR	PF	A	TO	Blk	Stl	Min	+/-
01	ETIENNE, TYSON	G	3	0-3	0-1	3-5	1	0	1	1	1	0	0	2	9	6
02	BURTON, JAMARIUS	G	12	4-8	0-1	4-6	0	0	0	2	0	0	0	2	18	6
05	WADE, TREY	F	0	0-1	0-0	0-0	2	0	2	1	0	0	1	0	7	-2
10	STEVENSON, ERIK	G	7	2-6	2-4	1-2	0	1	1	1	1	2	1	0	14	1
21	ECHENIQUE, JAIME	C	6	1-3	0-0	4-4	0	2	2	2	0	1	0	0	8	11
00	DENNIS, DEXTER	G	5	1-6	0-2	3-4	3	3	6	2	2	0	0	0	16	-1
24	UDEZE, MORRIS	C	4	1-3	0-0	2-6	2	4	6	2	0	0	1	1	11	-5
33	MIDTGAARD, ASBJORN	C	0	0-0	0-0	0-0	0	0	0	0	0	0	0	0	0	0
44	POOR BEAR-CHANDLER, ISAI	C	0	0-0	0-0	0-0	0	0	0	0	0	0	0	0	0	0
52	SHERFIELD, GRANT	G	2	0-3	0-0	2-2	0	2	2	1	0	0	0	0	17	-1
	TEAM						2	0	2	0		0				
	TOTALS		39	9-33	2-8	19-29	10	12	22	12	4	3	3	5	99	

Shooting By Period

Period	FG	FG%	3FG	3FG%	FT	FT%
2nd Half	9-33	27%	2-8	25%	19-29	66%
Game	22-67	32.8%	8-22	36.4%	24-35	68.6%

Deadball Rebounds: 5,1
Last FG Half: WSU -

Game Notes:

Officials: Michael Stephens, Jamie Luckie, Steven Anderson
Attendance: 10506

Start Time: 07:01 PM ET
End Time: 09:23 PM ET
Game Duration: 2:22
Conference Game;

Score	1st	2nd	TOT
MEM	31	36	67
WSU	37	39	76

Points from (This Period)	MEM	WSU
In the Paint	14	12
Off Turns	1	10
2nd Chance	8	12
Fast Break	2	5
Bench	16	11

Official By-By-Play
Memphis vs Wichita St.
Second Half
January 09, 2020 at Charles Koch Arena - Wichita, Kan.



Period 2

Starters:

Memphis: 00 JEFFRIES, D.J. (F); 5 ELLIS, BOOGIE (G); 10 BAUGH, DAMION (G); 14 MAURICE, ISAAH (F); 55 ACHIUWA, PRECIOUS (F);
Wichita St.: 1 ETIENNE, TYSON (G); 2 BURTON, JAMARIUS (G); 5 WADE, TREY (F); 10 STEVENSON, ERIK (G); 21 ECHENIQUE, JAIME (C);

Time	VISITORS: Memphis	Score	Margin	HOME: Wichita St.
20:00				SUB OUT: POOR BEAR-CHANDLER, ISAAH
20:00				SUB IN: UDEZE, MORRIS
20:00	SUB OUT: HARRIS, TYLER			
20:00	SUB OUT: LOMAX, ALEX			
20:00	SUB OUT: QUINONES, LESTER			
20:00	SUB IN: ELLIS, BOOGIE			
20:00	SUB IN: BAUGH, DAMION			
20:00	SUB IN: MAURICE, ISAAH			
19:33		39-31	H 8	GOOD! LAYUP by BURTON, JAMARIUS
19:33	FOUL (PERSONAL) by ELLIS, BOOGIE			
19:33		40-31	H 9	GOOD! FT by BURTON, JAMARIUS
19:18	MISSED 3PTR by MAURICE, ISAAH			
19:15				REBOUND (DEF) by UDEZE, MORRIS
19:00		42-31	H 11	GOOD! JUMPER by UDEZE, MORRIS [PNT]
18:46	GOOD! LAYUP by MAURICE, ISAAH	42-33	H 9	
18:46	ASSIST by BAUGH, DAMION			
18:26		44-33	H 11	GOOD! JUMPER by DENNIS, DEXTER
18:04	MISSED JUMPER by MAURICE, ISAAH			
18:00				REBOUND (DEF) by SHERFIELD, GRANT
17:45				MISSED JUMPER by DENNIS, DEXTER
17:42	REBOUND (DEF) by BAUGH, DAMION			
17:34				FOUL (PERSONAL) by DENNIS, DEXTER
17:34	SUB OUT: MAURICE, ISAAH			
17:34	SUB IN: QUINONES, LESTER			
17:22	TURNOVER (LOSTBALL) by ACHIUWA, PRECIOUS			
17:22				STEAL by UDEZE, MORRIS
17:17				MISSED DUNK by DENNIS, DEXTER
17:13	REBOUND (DEF) by ELLIS, BOOGIE			
17:11	TURNOVER (LOSTBALL) by QUINONES, LESTER			
17:11	SUB OUT: ELLIS, BOOGIE			
17:11	SUB IN: LOMAX, ALEX			
17:03				MISSED 3PTR by DENNIS, DEXTER
17:00	REBOUND (DEF) by ACHIUWA, PRECIOUS			
16:56	TURNOVER (TRAVEL) by JEFFRIES, D.J.			
16:44				MISSED LAYUP by UDEZE, MORRIS
16:44	BLOCK by ACHIUWA, PRECIOUS			
16:39	REBOUND (DEF) by LOMAX, ALEX			
16:38				FOUL (PERSONAL) by SHERFIELD, GRANT
16:38	GOOD! FT by QUINONES, LESTER [FB]	44-34	H 10	
16:38				SUB OUT: DENNIS, DEXTER
16:38				SUB OUT: ETIENNE, TYSON
16:38				SUB OUT: UDEZE, MORRIS
16:38				SUB IN: WADE, TREY
16:38				SUB IN: STEVENSON, ERIK
16:38				SUB IN: ECHENIQUE, JAIME
16:38	SUB OUT: BAUGH, DAMION			
16:38	SUB IN: HARRIS, TYLER			
16:38	MISSED FT by QUINONES, LESTER			
16:37				REBOUND (DEF) by ECHENIQUE, JAIME
16:20				MISSED JUMPER by BURTON, JAMARIUS
16:17				REBOUND (OFF) by WADE, TREY
16:13	FOUL (PERSONAL) by QUINONES, LESTER			
16:13	SUB OUT: JEFFRIES, D.J.			
16:13	SUB IN: DANDRIDGE, MALCOLM			
16:06	FOUL (PERSONAL) by HARRIS, TYLER			
16:06		45-34	H 11	GOOD! FT by BURTON, JAMARIUS
16:06	SUB OUT: HARRIS, TYLER			
16:06	SUB IN: HARDAWAY, JAYDEN			
16:06		46-34	H 12	GOOD! FT by BURTON, JAMARIUS
15:46	MISSED JUMPER by HARDAWAY, JAYDEN			
15:42				REBOUND (DEF) by SHERFIELD, GRANT
15:33				MISSED JUMPER by WADE, TREY
15:29	REBOUND (DEF) by LOMAX, ALEX			
15:21	MISSED JUMPER by LOMAX, ALEX			
15:16				REBOUND (DEF) by ECHENIQUE, JAIME
15:13				MISSED LAYUP by SHERFIELD, GRANT
15:13	BLOCK by ACHIUWA, PRECIOUS			
15:13	REBOUND (DEF) by ACHIUWA, PRECIOUS			
15:13				FOUL (PERSONAL) by WADE, TREY
15:13				

Time	VISITORS: Memphis	Score	Margin	HOME: Wichita St.
15:13				SUB OUT: WADE, TREY
15:13				SUB OUT: SHERFIELD, GRANT
15:13				SUB IN: DENNIS, DEXTER
15:13				SUB IN: ETIENNE, TYSON
15:02	MISSED 3PTR by HARDAWAY, JAYDEN			
14:58				REBOUND (DEF) by DENNIS, DEXTER
14:43				MISSED JUMPER by ECHENIQUE, JAIME
14:43	BLOCK by DANDRIDGE, MALCOLM			
14:43				REBOUND (OFF) by TEAM
14:43	SUB OUT: QUINONES, LESTER			
14:43	SUB IN: JEFFRIES, D.J.			
14:37	FOUL (PERSONAL) by DANDRIDGE, MALCOLM			
14:37				MISSED FT by ETIENNE, TYSON
14:37				REBOUND (OFF) by TEAM
14:37		47-34	H 13	GOOD! FT by ETIENNE, TYSON
14:37		48-34	H 14	GOOD! FT by ETIENNE, TYSON
14:29	GOOD! LAYUP by ACHIUWA, PRECIOUS	48-36	H 12	
14:05				MISSED DUNK by ECHENIQUE, JAIME
14:02	REBOUND (DEF) by HARDAWAY, JAYDEN			
13:59	TURNOVER (LOSTBALL) by JEFFRIES, D.J.			
13:59				STEAL by BURTON, JAMARIUS
13:50				TURNOVER (BADPASS) by STEVENSON, ERIK
13:50	STEAL by LOMAX, ALEX			
13:48				FOUL (PERSONAL) by BURTON, JAMARIUS
13:48	MISSED FT by LOMAX, ALEX			
13:48	REBOUND (OFF) by TEAM			
13:48	SUB OUT: HARDAWAY, JAYDEN			
13:48	SUB OUT: ACHIUWA, PRECIOUS			
13:48	SUB IN: BAUGH, DAMION			
13:48	SUB IN: THOMAS, LANCE			
13:48	GOOD! FT by LOMAX, ALEX [FB]	48-37	H 11	
13:33		51-37	H 14	GOOD! 3PTR by STEVENSON, ERIK
13:33				ASSIST by DENNIS, DEXTER
13:18	MISSED LAYUP by LOMAX, ALEX			
13:15				REBOUND (DEF) by DENNIS, DEXTER
13:15				TIMEOUT 30SEC
12:50				MISSED 3PTR by ETIENNE, TYSON
12:46	REBOUND (DEF) by DANDRIDGE, MALCOLM			
12:39	TURNOVER (BADPASS) by LOMAX, ALEX			
12:39				STEAL by ETIENNE, TYSON
12:21				TURNOVER (TRAVEL) by ECHENIQUE, JAIME
12:21	SUB OUT: BAUGH, DAMION			
12:21	SUB OUT: DANDRIDGE, MALCOLM			
12:21	SUB IN: HARRIS, TYLER			
12:21	SUB IN: ACHIUWA, PRECIOUS			
12:08	TURNOVER (LOSTBALL) by HARRIS, TYLER			
12:08				STEAL by ETIENNE, TYSON
12:03		53-37	H 16	GOOD! LAYUP by BURTON, JAMARIUS [FB]
12:03				ASSIST by ETIENNE, TYSON
12:03	FOUL (PERSONAL) by JEFFRIES, D.J.			
12:03				SUB OUT: ETIENNE, TYSON
12:03				SUB IN: SHERFIELD, GRANT
12:03				MISSED FT by BURTON, JAMARIUS
12:03				REBOUND (OFF) by DENNIS, DEXTER
12:01		56-37	H 19	GOOD! 3PTR by STEVENSON, ERIK
12:01				ASSIST by DENNIS, DEXTER
11:48	TIMEOUT TEAM			
11:48	SUB OUT: THOMAS, LANCE			
11:48	SUB IN: QUINONES, LESTER			
11:35	TURNOVER (BADPASS) by LOMAX, ALEX			
11:32				MISSED LAYUP by SHERFIELD, GRANT
11:29	REBOUND (DEF) by ACHIUWA, PRECIOUS			
11:24	GOOD! 3PTR by HARRIS, TYLER	56-40	H 16	
10:56	FOUL (PERSONAL) by LOMAX, ALEX			
10:56		57-40	H 17	GOOD! FT by ECHENIQUE, JAIME
10:56	SUB OUT: JEFFRIES, D.J.			
10:56	SUB IN: ELLIS, BOOGIE			
10:56		58-40	H 18	GOOD! FT by ECHENIQUE, JAIME
10:45				FOUL (PERSONAL) by STEVENSON, ERIK
10:45	GOOD! FT by QUINONES, LESTER	58-41	H 17	
10:45				SUB OUT: STEVENSON, ERIK
10:45				SUB IN: ETIENNE, TYSON
10:45	MISSED FT by QUINONES, LESTER			
10:45	REBOUND (OFF) by QUINONES, LESTER			
10:44				FOUL (PERSONAL) by ECHENIQUE, JAIME
10:44	GOOD! FT by QUINONES, LESTER	58-42	H 16	
10:44				SUB OUT: ECHENIQUE, JAIME
10:44				SUB IN: UDEZE, MORRIS
10:44	GOOD! FT by QUINONES, LESTER	58-43	H 15	
10:17				MISSED JUMPER by BURTON, JAMARIUS

Time	VISITORS: Memphis	Score	Margin	HOME: Wichita St.
10:15	REBOUND (DEF) by TEAM			
10:04	GOOD! JUMPER by HARRIS, TYLER	58-45	H 13	
09:31	FOUL (PERSONAL) by ELLIS, BOOGIE			
09:31		59-45	H 14	GOOD! FT by ETIENNE, TYSON
09:31				MISSED FT by ETIENNE, TYSON
09:31				REBOUND (OFF) by UDEZE, MORRIS
09:30				MISSED LAYUP by UDEZE, MORRIS
09:26				REBOUND (OFF) by ETIENNE, TYSON
09:24				MISSED JUMPER by ETIENNE, TYSON
09:24				REBOUND (OFF) by DENNIS, DEXTER
09:24	FOUL (PERSONAL) by LOMAX, ALEX			
09:24		60-45	H 15	GOOD! FT by DENNIS, DEXTER
09:24				MISSED FT by DENNIS, DEXTER
09:22	REBOUND (DEF) by TEAM			
09:10	MISSED JUMPER by HARRIS, TYLER			
09:06	REBOUND (OFF) by HARRIS, TYLER			
08:56	TURNOVER (LOSTBALL) by ACHIUWA, PRECIOUS			
08:56				STEAL by BURTON, JAMARIUS
08:48				MISSED 3PTR by DENNIS, DEXTER
08:47				REBOUND (OFF) by UDEZE, MORRIS
08:47	FOUL (PERSONAL) by ELLIS, BOOGIE			
08:47	SUB OUT: ELLIS, BOOGIE			
08:47	SUB OUT: ACHIUWA, PRECIOUS			
08:47	SUB IN: JEFFRIES, D.J.			
08:47	SUB IN: DANDRIDGE, MALCOLM			
08:47		61-45	H 16	GOOD! FT by UDEZE, MORRIS
08:47		62-45	H 17	GOOD! FT by UDEZE, MORRIS
08:33				FOUL (PERSONAL) by UDEZE, MORRIS
08:33	GOOD! FT by QUINONES, LESTER	62-46	H 16	
08:33	GOOD! FT by QUINONES, LESTER	62-47	H 15	
08:19				MISSED JUMPER by ETIENNE, TYSON
08:19	BLOCK by DANDRIDGE, MALCOLM			
08:19				REBOUND (OFF) by TEAM
08:19	FOUL (PERSONAL) by LOMAX, ALEX			
08:19				MISSED FT by UDEZE, MORRIS
08:19				REBOUND (OFF) by TEAM
08:19	SUB OUT: LOMAX, ALEX			
08:19	SUB IN: HARDAWAY, JAYDEN			
08:19				SUB OUT: ETIENNE, TYSON
08:19				SUB IN: STEVENSON, ERIK
08:19				SUB OUT: BURTON, JAMARIUS
08:19				SUB IN: WADE, TREY
08:19				MISSED FT by UDEZE, MORRIS
08:18	REBOUND (DEF) by JEFFRIES, D.J.			
08:05	MISSED 3PTR by HARRIS, TYLER			
08:05				BLOCK by STEVENSON, ERIK
07:59	REBOUND (OFF) by QUINONES, LESTER			
07:59	MISSED JUMPER by QUINONES, LESTER			
07:59				BLOCK by WADE, TREY
07:59	REBOUND (OFF) by QUINONES, LESTER			
07:59				
07:47	GOOD! 3PTR by JEFFRIES, D.J.	62-50	H 12	
07:47	ASSIST by HARRIS, TYLER			
07:24				MISSED 3PTR by STEVENSON, ERIK
07:20	REBOUND (DEF) by QUINONES, LESTER			
07:12	MISSED JUMPER by HARRIS, TYLER			
07:12				BLOCK by UDEZE, MORRIS
07:07				REBOUND (DEF) by DENNIS, DEXTER
06:50				MISSED JUMPER by DENNIS, DEXTER
06:47				REBOUND (OFF) by DENNIS, DEXTER
06:47				SUB OUT: DENNIS, DEXTER
06:47				SUB IN: BURTON, JAMARIUS
06:47	SUB OUT: DANDRIDGE, MALCOLM			
06:47	SUB IN: ACHIUWA, PRECIOUS			
06:47				MISSED JUMPER by STEVENSON, ERIK
06:42	REBOUND (DEF) by ACHIUWA, PRECIOUS			
06:38				FOUL (PERSONAL) by BURTON, JAMARIUS
06:38	SUB OUT: HARRIS, TYLER			
06:38	SUB OUT: HARDAWAY, JAYDEN			
06:38	SUB IN: BAUGH, DAMION			
06:38	SUB IN: DANDRIDGE, MALCOLM			
06:38	MISSED FT by QUINONES, LESTER			
06:38				REBOUND (DEF) by UDEZE, MORRIS
06:25				TURNOVER (BADPASS) by STEVENSON, ERIK
06:25	STEAL by ACHIUWA, PRECIOUS			
06:17	FOUL (OFF) by ACHIUWA, PRECIOUS			
06:17	TURNOVER (OFFENSIVE) by ACHIUWA, PRECIOUS			
06:17				SUB OUT: UDEZE, MORRIS
06:17				SUB IN: ECHENIQUE, JAIME
06:17	SUB OUT: DANDRIDGE, MALCOLM			

Time	VISITORS: Memphis	Score	Margin	HOME: Wichita St.
06:17	SUB IN: HARRIS, TYLER			
06:11		64-50	H 14	GOOD! LAYUP by BURTON, JAMARIUS [FB]
05:58	GOOD! LAYUP by ACHIUWA, PRECIOUS	64-52	H 12	
05:58	ASSIST by QUINONES, LESTER			
05:58				FOUL (PERSONAL) by ECHENIQUE, JAIME
05:58				SUB OUT: ECHENIQUE, JAIME
05:58				SUB IN: UDEZE, MORRIS
05:58	MISSED FT by ACHIUWA, PRECIOUS			
05:57				REBOUND (DEF) by UDEZE, MORRIS
05:56	FOUL (PERSONAL) by QUINONES, LESTER			
05:56				MISSED FT by UDEZE, MORRIS
05:56				REBOUND (OFF) by TEAM
05:56				SUB OUT: WADE, TREY
05:56				SUB IN: DENNIS, DEXTER
05:56	SUB OUT: BAUGH, DAMION			
05:56	SUB IN: LOMAX, ALEX			
05:56				MISSED FT by UDEZE, MORRIS
05:55	REBOUND (DEF) by JEFFRIES, D.J.			
05:41	GOOD! DUNK by ACHIUWA, PRECIOUS	64-54	H 10	
05:41	ASSIST by QUINONES, LESTER			
05:18				MISSED JUMPER by STEVENSON, ERIK
05:15	REBOUND (DEF) by LOMAX, ALEX			
05:10	MISSED LAYUP by LOMAX, ALEX			
05:07				REBOUND (DEF) by UDEZE, MORRIS
05:01		66-54	H 12	GOOD! LAYUP by BURTON, JAMARIUS
04:31	GOOD! 3PTR by HARRIS, TYLER	66-57	H 9	
04:31	ASSIST by LOMAX, ALEX			
04:01				MISSED 3PTR by BURTON, JAMARIUS
03:58	REBOUND (DEF) by ACHIUWA, PRECIOUS			
03:49	GOOD! LAYUP by ACHIUWA, PRECIOUS	66-59	H 7	
03:17				MISSED JUMPER by BURTON, JAMARIUS
03:17	BLOCK by LOMAX, ALEX			
03:17	REBOUND (DEF) by TEAM			
03:17				FOUL (PERSONAL) by UDEZE, MORRIS
03:17				
03:17				SUB OUT: UDEZE, MORRIS
03:17				SUB IN: WADE, TREY
03:17	SUB OUT: JEFFRIES, D.J.			
03:17	SUB IN: DANDRIDGE, MALCOLM			
03:17	MISSED FT by QUINONES, LESTER			
03:17	REBOUND (OFF) by TEAM			
03:17				SUB OUT: DENNIS, DEXTER
03:17				SUB IN: ECHENIQUE, JAIME
03:17	GOOD! FT by QUINONES, LESTER	66-60	H 6	
02:52				MISSED JUMPER by SHERFIELD, GRANT
02:50	REBOUND (DEF) by TEAM			
02:35	TURNOVER (BADPASS) by LOMAX, ALEX			
02:17		68-60	H 8	GOOD! DUNK by ECHENIQUE, JAIME
02:17				ASSIST by STEVENSON, ERIK
02:04	TURNOVER (TRAVEL) by LOMAX, ALEX			
02:04	SUB OUT: DANDRIDGE, MALCOLM			
02:04	SUB IN: JEFFRIES, D.J.			
01:34				MISSED 3PTR by STEVENSON, ERIK
01:32				REBOUND (OFF) by WADE, TREY
01:19	FOUL (PERSONAL) by JEFFRIES, D.J.			
01:19		69-60	H 9	GOOD! FT by SHERFIELD, GRANT
01:19				SUB OUT: ECHENIQUE, JAIME
01:19				SUB IN: DENNIS, DEXTER
01:19		70-60	H 10	GOOD! FT by SHERFIELD, GRANT
00:56	MISSED LAYUP by HARRIS, TYLER			
00:53				REBOUND (DEF) by STEVENSON, ERIK
00:52	FOUL (PERSONAL) by LOMAX, ALEX			
00:52	SUB OUT: LOMAX, ALEX			
00:52	SUB IN: BAUGH, DAMION			
00:52				MISSED FT by STEVENSON, ERIK
00:52				REBOUND (OFF) by TEAM
00:52		71-60	H 11	GOOD! FT by STEVENSON, ERIK
00:42	MISSED 3PTR by HARRIS, TYLER			
00:38	REBOUND (OFF) by ACHIUWA, PRECIOUS			
00:38	MISSED LAYUP by ACHIUWA, PRECIOUS			
00:38	REBOUND (OFF) by ACHIUWA, PRECIOUS			
00:38				FOUL (PERSONAL) by DENNIS, DEXTER
00:38	MISSED FT by ACHIUWA, PRECIOUS			
00:38	REBOUND (OFF) by TEAM			
00:38	GOOD! FT by ACHIUWA, PRECIOUS	71-61	H 10	
00:38	SUB OUT: HARRIS, TYLER			
00:38	SUB IN: ELLIS, BOOGIE			
00:35	FOUL (PERSONAL) by JEFFRIES, D.J.			
00:35		72-61	H 11	GOOD! FT by BURTON, JAMARIUS [FB]
00:35	SUB OUT: JEFFRIES, D.J.			

Time	VISITORS: Memphis	Score	Margin	HOME: Wichita St.
00:35	SUB IN: HARRIS, TYLER			
00:35				MISSED FT by BURTON, JAMARIUS
00:35	REBOUND (DEF) by ACHIUWA, PRECIOUS			
00:30	GOOD! DUNK by ACHIUWA, PRECIOUS	72-63	H 9	
00:30	ASSIST by HARRIS, TYLER			
00:30	TIMEOUT 30SEC			
00:30				SUB OUT: WADE, TREY
00:30				SUB IN: ECHENIQUE, JAIME
00:29	FOUL (PERSONAL) by ACHIUWA, PRECIOUS			
00:29		73-63	H 10	GOOD! FT by ECHENIQUE, JAIME
00:29	SUB OUT: BAUGH, DAMION			
00:29	SUB IN: HARDAWAY, JAYDEN			
00:29		74-63	H 11	GOOD! FT by ECHENIQUE, JAIME
00:29				SUB OUT: ECHENIQUE, JAIME
00:29				SUB IN: WADE, TREY
00:22	GOOD! DUNK by ACHIUWA, PRECIOUS	74-65	H 9	
00:22	ASSIST by HARRIS, TYLER			
00:22	TIMEOUT TEAM			
00:22				SUB OUT: WADE, TREY
00:22				SUB IN: ECHENIQUE, JAIME
00:22				SUB OUT: BURTON, JAMARIUS
00:22				SUB IN: ETIENNE, TYSON
00:19	FOUL (PERSONAL) by HARDAWAY, JAYDEN			
00:19		75-65	H 10	GOOD! FT by DENNIS, DEXTER
00:19				SUB OUT: ECHENIQUE, JAIME
00:19				SUB IN: WADE, TREY
00:19		76-65	H 11	GOOD! FT by DENNIS, DEXTER
00:10	MISSED 3PTR by HARRIS, TYLER			
00:07	REBOUND (OFF) by ELLIS, BOOGIE			
00:07				FOUL (PERSONAL) by ETIENNE, TYSON
00:07	GOOD! FT by ELLIS, BOOGIE	76-66	H 10	
00:07	GOOD! FT by ELLIS, BOOGIE	76-67	H 9	

Memphis 67, Wichita St. 76

Points from (This Period)	MEM	WSU
In the Paint	14	12
Off Turns	1	10
2nd Chance	8	12
Fast Break	2	5
Bench	16	11

**Official Scoring/Possession Reference Chart
Memphis vs Wichita St.**

Period 1

January 09, 2020 at Charles Koch Arena - Wichita, Kan.



Period 1

Starters:

Memphis: 00 JEFFRIES,D.J. (F); 5 ELLIS,BOOGIE (G); 10 BAUGH,DAMION (G); 14 MAURICE,ISIAH (F); 55 ACHIUWA,PRECIOUS (F);

Wichita St.: 1 ETIENNE,TYSON (G); 2 BURTON,JAMARIUS (G); 5 WADE,TREY (F); 10 STEVENSON,ERIK (G); 21 ECHENIQUE,JAIME (C);

Time	VISITORS: Memphis	Score	Margin	HOME: Wichita St.
19:45		3-0	H 3	GOOD! 3PTR by ETIENNE, TYSON
19:14	GOOD! LAYUP by ACHIUWA, PRECIOUS	3-2	H 1	
18:57		5-2	H 3	GOOD! JUMPER by STEVENSON, ERIK
17:43		7-2	H 5	GOOD! JUMPER by BURTON, JAMARIUS [PNT]
17:24		9-2	H 7	GOOD! DUNK by WADE, TREY [FB]
17:01		12-2	H 10	GOOD! 3PTR by ETIENNE, TYSON [FB]
15:07	GOOD! FT by LOMAX, ALEX	12-3	H 9	
15:07	GOOD! FT by LOMAX, ALEX	12-4	H 8	
14:52		15-4	H 11	GOOD! 3PTR by WADE, TREY
14:17		17-4	H 13	GOOD! LAYUP by UDEZE, MORRIS
13:56	GOOD! 3PTR by HARRIS, TYLER	17-7	H 10	
12:51	GOOD! JUMPER by MAURICE, ISIAH [PNT]	17-9	H 8	
12:18		20-9	H 11	GOOD! 3PTR by STEVENSON, ERIK
11:49	GOOD! LAYUP by DANDRIDGE, MALCOLM	20-11	H 9	
11:30		21-11	H 10	GOOD! FT by WADE, TREY
09:27		23-11	H 12	GOOD! JUMPER by BURTON, JAMARIUS
08:23	GOOD! JUMPER by ACHIUWA, PRECIOUS [PNT]	23-13	H 10	
08:23	GOOD! FT by ACHIUWA, PRECIOUS	23-14	H 9	
07:21	GOOD! FT by ACHIUWA, PRECIOUS [FB]	23-15	H 8	
06:49	GOOD! FT by ACHIUWA, PRECIOUS [FB]	23-16	H 7	
06:21		25-16	H 9	GOOD! LAYUP by ECHENIQUE, JAIME
05:30	GOOD! FT by HARRIS, TYLER	25-17	H 8	
05:30	GOOD! FT by HARRIS, TYLER	25-18	H 7	
05:04	GOOD! FT by HARRIS, TYLER	25-19	H 6	
05:04	GOOD! FT by HARRIS, TYLER	25-20	H 5	
04:48	GOOD! LAYUP by DANDRIDGE, MALCOLM	25-22	H 3	
04:35		28-22	H 6	GOOD! 3PTR by SHERFIELD, GRANT
04:24	GOOD! LAYUP by LOMAX, ALEX	28-24	H 4	
04:13		30-24	H 6	GOOD! JUMPER by SHERFIELD, GRANT [PNT]
03:59	GOOD! FT by LOMAX, ALEX	30-25	H 5	
03:48		31-25	H 6	GOOD! FT by ETIENNE, TYSON
03:48		32-25	H 7	GOOD! FT by ETIENNE, TYSON
03:22	GOOD! LAYUP by HARRIS, TYLER	32-27	H 5	
02:48	GOOD! FT by ACHIUWA, PRECIOUS [FB]	32-28	H 4	
02:48	GOOD! FT by ACHIUWA, PRECIOUS [FB]	32-29	H 3	
02:37		33-29	H 4	GOOD! FT by SHERFIELD, GRANT
02:37		34-29	H 5	GOOD! FT by SHERFIELD, GRANT
01:37	GOOD! LAYUP by DANDRIDGE, MALCOLM	34-31	H 3	
00:53		37-31	H 6	GOOD! 3PTR by DENNIS, DEXTER

Memphis 31, Wichita St. 37

**Official Scoring/Possession Reference Chart
Memphis vs Wichita St.**

Period 2

January 09, 2020 at Charles Koch Arena - Wichita, Kan.



Period 2

Starters:

Memphis: 00 JEFFRIES, D.J. (F); 5 ELLIS, BOOGIE (G); 10 BAUGH, DAMION (G); 14 MAURICE, ISAAH (F); 55 ACHIUWA, PRECIOUS (F);
Wichita St.: 1 ETIENNE, TYSON (G); 2 BURTON, JAMARIUS (G); 5 WADE, TREY (F); 10 STEVENSON, ERIK (G); 21 ECHENIQUE, JAIME (C);

Time	VISITORS: Memphis	Score	Margin	HOME: Wichita St.
19:33		39-31	H 8	GOOD! LAYUP by BURTON, JAMARIUS
19:33		40-31	H 9	GOOD! FT by BURTON, JAMARIUS
19:00		42-31	H 11	GOOD! JUMPER by UDEZE, MORRIS [PNT]
18:46	GOOD! LAYUP by MAURICE, ISAAH	42-33	H 9	
18:26		44-33	H 11	GOOD! JUMPER by DENNIS, DEXTER
16:38	GOOD! FT by QUINONES, LESTER [FB]	44-34	H 10	
16:06		45-34	H 11	GOOD! FT by BURTON, JAMARIUS
16:06		46-34	H 12	GOOD! FT by BURTON, JAMARIUS
14:37		47-34	H 13	GOOD! FT by ETIENNE, TYSON
14:37		48-34	H 14	GOOD! FT by ETIENNE, TYSON
14:29	GOOD! LAYUP by ACHIUWA, PRECIOUS	48-36	H 12	
13:48	GOOD! FT by LOMAX, ALEX [FB]	48-37	H 11	
13:33		51-37	H 14	GOOD! 3PTR by STEVENSON, ERIK
12:03		53-37	H 16	GOOD! LAYUP by BURTON, JAMARIUS [FB]
12:01		56-37	H 19	GOOD! 3PTR by STEVENSON, ERIK
11:24	GOOD! 3PTR by HARRIS, TYLER	56-40	H 16	
10:56		57-40	H 17	GOOD! FT by ECHENIQUE, JAIME
10:56		58-40	H 18	GOOD! FT by ECHENIQUE, JAIME
10:45	GOOD! FT by QUINONES, LESTER	58-41	H 17	
10:44	GOOD! FT by QUINONES, LESTER	58-42	H 16	
10:44	GOOD! FT by QUINONES, LESTER	58-43	H 15	
10:04	GOOD! JUMPER by HARRIS, TYLER	58-45	H 13	
09:31		59-45	H 14	GOOD! FT by ETIENNE, TYSON
09:24		60-45	H 15	GOOD! FT by DENNIS, DEXTER
08:47		61-45	H 16	GOOD! FT by UDEZE, MORRIS
08:47		62-45	H 17	GOOD! FT by UDEZE, MORRIS
08:33	GOOD! FT by QUINONES, LESTER	62-46	H 16	
08:33	GOOD! FT by QUINONES, LESTER	62-47	H 15	
07:47	GOOD! 3PTR by JEFFRIES, D.J.	62-50	H 12	
06:11		64-50	H 14	GOOD! LAYUP by BURTON, JAMARIUS [FB]
05:58	GOOD! LAYUP by ACHIUWA, PRECIOUS	64-52	H 12	
05:41	GOOD! DUNK by ACHIUWA, PRECIOUS	64-54	H 10	
05:01		66-54	H 12	GOOD! LAYUP by BURTON, JAMARIUS
04:31	GOOD! 3PTR by HARRIS, TYLER	66-57	H 9	
03:49	GOOD! LAYUP by ACHIUWA, PRECIOUS	66-59	H 7	
03:17	GOOD! FT by QUINONES, LESTER	66-60	H 6	
02:17		68-60	H 8	GOOD! DUNK by ECHENIQUE, JAIME
01:19		69-60	H 9	GOOD! FT by SHERFIELD, GRANT
01:19		70-60	H 10	GOOD! FT by SHERFIELD, GRANT
00:52		71-60	H 11	GOOD! FT by STEVENSON, ERIK
00:38	GOOD! FT by ACHIUWA, PRECIOUS	71-61	H 10	
00:35		72-61	H 11	GOOD! FT by BURTON, JAMARIUS [FB]
00:30	GOOD! DUNK by ACHIUWA, PRECIOUS	72-63	H 9	
00:29		73-63	H 10	GOOD! FT by ECHENIQUE, JAIME
00:29		74-63	H 11	GOOD! FT by ECHENIQUE, JAIME
00:22	GOOD! DUNK by ACHIUWA, PRECIOUS	74-65	H 9	
00:19		75-65	H 10	GOOD! FT by DENNIS, DEXTER
00:19		76-65	H 11	GOOD! FT by DENNIS, DEXTER
00:07	GOOD! FT by ELLIS, BOOGIE	76-66	H 10	
00:07	GOOD! FT by ELLIS, BOOGIE	76-67	H 9	

Memphis 67, Wichita St. 76

**Official Substitutions Log
Memphis vs Wichita St.**

Period 1

January 09, 2020 at Charles Koch Arena - Wichita, Kan.



VISITORS: Memphis	Time	Score	HOME: Wichita St.
00 JEFFRIES,D.J.			1 ETIENNE,TYSON
5 ELLIS,BOOGIE			2 BURTON,JAMARIUS
10 BAUGH,DAMION			5 WADE,TREY
14 MAURICE,ISIAIAH			10 STEVENSON,ERIK
55 ACHIUWA,PRECIOUS			21 ECHENIQUE,JAIME
SUB OUT: 5 ELLIS,BOOGIE	17:23	2-9	
SUB OUT: 10 BAUGH,DAMION	17:23		
SUB IN: 1 HARRIS,TYLER	17:23		
SUB IN: 2 LOMAX,ALEX	17:23		
SUB OUT: 14 MAURICE,ISIAIAH	16:44	2-12	
SUB IN: 15 THOMAS,LANCE	16:44		
	16:29	2-12	SUB OUT: STEVENSON,ERIK
	16:29		SUB IN: SHERFIELD,GRANT
	15:27	2-12	SUB OUT: BURTON,JAMARIUS
	15:27		SUB OUT: ECHENIQUE,JAIME
	15:27		SUB IN: DENNIS,DEXTER
	15:27		SUB IN: UDEZE,MORRIS
SUB OUT: 00 JEFFRIES,D.J.	15:27		
SUB IN: 11 QUINONES,LESTER	15:27		
SUB OUT: 55 ACHIUWA,PRECIOUS	15:07	3-12	
SUB IN: 23 DANDRIDGE,MALCOLM	15:07		
	13:22	7-17	SUB OUT: ETIENNE,TYSON
	13:22		SUB OUT: WADE,TREY
	13:22		SUB IN: STEVENSON,ERIK
	13:22		SUB IN: ECHENIQUE,JAIME
SUB OUT: 15 THOMAS,LANCE	13:22		
SUB IN: 14 MAURICE,ISIAIAH	13:22		
	12:55	7-17	SUB OUT: ECHENIQUE,JAIME
	12:55		SUB IN: WADE,TREY
	11:30	11-20	SUB OUT: DENNIS,DEXTER
	11:30		SUB IN: BURTON,JAMARIUS
SUB OUT: 2 LOMAX,ALEX	11:30		
SUB IN: 00 JEFFRIES,D.J.	11:30		
SUB OUT: 1 HARRIS,TYLER	11:16	11-21	
SUB OUT: 23 DANDRIDGE,MALCOLM	11:16		
SUB IN: 5 ELLIS,BOOGIE	11:16		
SUB IN: 55 ACHIUWA,PRECIOUS	11:16		
SUB OUT: 14 MAURICE,ISIAIAH	11:16		
SUB IN: 1 HARRIS,TYLER	11:16		
	11:00	11-21	SUB OUT: UDEZE,MORRIS
	11:00		SUB IN: ECHENIQUE,JAIME
SUB OUT: 1 HARRIS,TYLER	10:04	11-21	
SUB IN: 10 BAUGH,DAMION	10:04		
SUB OUT: 11 QUINONES,LESTER	08:50	11-23	
SUB IN: 2 LOMAX,ALEX	08:50		
	08:38	11-23	SUB OUT: WADE,TREY
	08:38		SUB OUT: SHERFIELD,GRANT
	08:38		SUB IN: ETIENNE,TYSON
	08:38		SUB IN: POOR BEAR-CHANDLER,ISIAIAH
	08:23	13-23	SUB OUT: POOR BEAR-CHANDLER,ISIAIAH
	08:23		SUB IN: MIDTGAARD,ASBJORN
SUB OUT: 5 ELLIS,BOOGIE	08:23		
SUB IN: 25 HARDAWAY,JAYDEN	08:23		
	08:10	14-23	SUB OUT: ECHENIQUE,JAIME
	08:10		SUB OUT: MIDTGAARD,ASBJORN
	08:10		SUB IN: DENNIS,DEXTER
	08:10		SUB IN: POOR BEAR-CHANDLER,ISIAIAH
SUB OUT: 00 JEFFRIES,D.J.	07:21	15-23	
SUB IN: 11 QUINONES,LESTER	07:21		
	06:49	16-23	SUB OUT: DENNIS,DEXTER
	06:49		SUB OUT: BURTON,JAMARIUS
	06:49		SUB OUT: POOR BEAR-CHANDLER,ISIAIAH
	06:49		SUB IN: WADE,TREY
	06:49		SUB IN: ECHENIQUE,JAIME
	06:49		SUB IN: SHERFIELD,GRANT
SUB OUT: 2 LOMAX,ALEX	06:49		
SUB OUT: 10 BAUGH,DAMION	06:49		
SUB IN: 1 HARRIS,TYLER	06:49		
SUB IN: 5 ELLIS,BOOGIE	06:49		
SUB OUT: 55 ACHIUWA,PRECIOUS	06:28	16-23	
SUB IN: 14 MAURICE,ISIAIAH	06:28		
SUB OUT: 14 MAURICE,ISIAIAH	05:56	16-25	
SUB IN: 23 DANDRIDGE,MALCOLM	05:56		
	05:30	16-25	SUB OUT: ECHENIQUE,JAIME
	05:30		SUB IN: MIDTGAARD,ASBJORN

VISITORS: Memphis	Time	Score	HOME: Wichita St.
SUB OUT: 25 HARDAWAY, JAYDEN	05:30		
SUB IN: 00 JEFFRIES, D.J.	05:30		
	05:04	20-25	
	05:04		SUB OUT: WADE, TREY
	05:04		SUB IN: DENNIS, DEXTER
SUB OUT: 1 HARRIS, TYLER	05:04		
SUB OUT: 5 ELLIS, BOOGIE	05:04		
SUB IN: 2 LOMAX, ALEX	05:04		
SUB IN: 10 BAUGH, DAMION	05:04		
SUB OUT: 10 BAUGH, DAMION	03:59	24-30	
SUB IN: 1 HARRIS, TYLER	03:59		
SUB OUT: 23 DANDRIDGE, MALCOLM	03:48	25-31	
SUB IN: 55 ACHIUWA, PRECIOUS	03:48		
	02:48	28-32	
	02:48		SUB OUT: STEVENSON, ERIK
	02:48		SUB OUT: MIDTGAARD, ASBJORN
	02:48		SUB IN: BURTON, JAMARIUS
	02:48		SUB IN: POOR BEAR-CHANDLER, ISAIAH
SUB OUT: 2 LOMAX, ALEX	01:53	29-34	
SUB OUT: 55 ACHIUWA, PRECIOUS	01:53		
SUB IN: 5 ELLIS, BOOGIE	01:53		
SUB IN: 23 DANDRIDGE, MALCOLM	01:53		
	01:53		SUB OUT: POOR BEAR-CHANDLER, ISAIAH
	01:53		SUB IN: MIDTGAARD, ASBJORN
SUB OUT: 00 JEFFRIES, D.J.	01:17	31-34	
SUB IN: 2 LOMAX, ALEX	01:17		
SUB OUT: 5 ELLIS, BOOGIE	00:35	31-37	
SUB IN: 00 JEFFRIES, D.J.	00:35		
	00:35		SUB OUT: MIDTGAARD, ASBJORN
	00:35		SUB IN: POOR BEAR-CHANDLER, ISAIAH
SUB OUT: 23 DANDRIDGE, MALCOLM	00:35		
SUB IN: 55 ACHIUWA, PRECIOUS	00:35		

Memphis 31, Wichita St. 37

Official Substitutions Log
Memphis vs Wichita St.
Period 2
January 09, 2020 at Charles Koch Arena - Wichita, Kan.



VISITORS: Memphis	Time	Score	HOME: Wichita St.
00 JEFFRIES, D.J.			1 ETIENNE, TYSON
5 ELLIS, BOOGIE			2 BURTON, JAMARIUS
10 BAUGH, DAMION			5 WADE, TREY
14 MAURICE, ISIAIAH			10 STEVENSON, ERIK
55 ACHIUWA, PRECIOUS			21 ECHENIQUE, JAIME
	20:00	-	SUB OUT: POOR BEAR-CHANDLER, ISIAIAH
	20:00		SUB IN: UDEZE, MORRIS
SUB OUT: 1 HARRIS, TYLER	20:00		
SUB OUT: 2 LOMAX, ALEX	20:00		
SUB OUT: 11 QUINONES, LESTER	20:00		
SUB IN: 5 ELLIS, BOOGIE	20:00		
SUB IN: 10 BAUGH, DAMION	20:00		
SUB IN: 14 MAURICE, ISIAIAH	20:00		
SUB OUT: 14 MAURICE, ISIAIAH	17:34	33-44	
SUB IN: 11 QUINONES, LESTER	17:34		
SUB OUT: 5 ELLIS, BOOGIE	17:11	33-44	
SUB IN: 2 LOMAX, ALEX	17:11		
	16:38	34-44	SUB OUT: DENNIS, DEXTER
	16:38		SUB OUT: ETIENNE, TYSON
	16:38		SUB OUT: UDEZE, MORRIS
	16:38		SUB IN: WADE, TREY
	16:38		SUB IN: STEVENSON, ERIK
	16:38		SUB IN: ECHENIQUE, JAIME
SUB OUT: 10 BAUGH, DAMION	16:38		
SUB IN: 1 HARRIS, TYLER	16:38		
SUB OUT: 00 JEFFRIES, D.J.	16:13	34-44	
SUB IN: 23 DANDRIDGE, MALCOLM	16:13		
SUB OUT: 1 HARRIS, TYLER	16:06	34-45	
SUB IN: 25 HARDAWAY, JAYDEN	16:06		
	15:13	34-46	SUB OUT: WADE, TREY
	15:13		SUB OUT: SHERFIELD, GRANT
	15:13		SUB IN: DENNIS, DEXTER
	15:13		SUB IN: ETIENNE, TYSON
SUB OUT: 11 QUINONES, LESTER	14:43	34-46	
SUB IN: 00 JEFFRIES, D.J.	14:43		
SUB OUT: 25 HARDAWAY, JAYDEN	13:48	36-48	
SUB OUT: 55 ACHIUWA, PRECIOUS	13:48		
SUB IN: 10 BAUGH, DAMION	13:48		
SUB IN: 15 THOMAS, LANCE	13:48		
SUB OUT: 10 BAUGH, DAMION	12:21	37-51	
SUB OUT: 23 DANDRIDGE, MALCOLM	12:21		
SUB IN: 1 HARRIS, TYLER	12:21		
SUB IN: 55 ACHIUWA, PRECIOUS	12:21		
	12:03	37-53	SUB OUT: ETIENNE, TYSON
	12:03		SUB IN: SHERFIELD, GRANT
SUB OUT: 15 THOMAS, LANCE	11:48	37-56	
SUB IN: 11 QUINONES, LESTER	11:48		
SUB OUT: 00 JEFFRIES, D.J.	10:56	40-57	
SUB IN: 5 ELLIS, BOOGIE	10:56		
	10:45	41-58	SUB OUT: STEVENSON, ERIK
	10:45		SUB IN: ETIENNE, TYSON
	10:44	42-58	SUB OUT: ECHENIQUE, JAIME
	10:44		SUB IN: UDEZE, MORRIS
SUB OUT: 5 ELLIS, BOOGIE	08:47	45-60	
SUB OUT: 55 ACHIUWA, PRECIOUS	08:47		
SUB IN: 00 JEFFRIES, D.J.	08:47		
SUB IN: 23 DANDRIDGE, MALCOLM	08:47		
SUB OUT: 2 LOMAX, ALEX	08:19	47-62	
SUB IN: 25 HARDAWAY, JAYDEN	08:19		
	08:19		SUB OUT: ETIENNE, TYSON
	08:19		SUB IN: STEVENSON, ERIK
	08:19		SUB OUT: BURTON, JAMARIUS
	08:19		SUB IN: WADE, TREY
	06:47	50-62	SUB OUT: DENNIS, DEXTER
	06:47		SUB IN: BURTON, JAMARIUS
SUB OUT: 23 DANDRIDGE, MALCOLM	06:47		
SUB IN: 55 ACHIUWA, PRECIOUS	06:47		
SUB OUT: 1 HARRIS, TYLER	06:38	50-62	
SUB OUT: 25 HARDAWAY, JAYDEN	06:38		
SUB IN: 10 BAUGH, DAMION	06:38		
SUB IN: 23 DANDRIDGE, MALCOLM	06:38		
	06:17	50-62	SUB OUT: UDEZE, MORRIS
	06:17		SUB IN: ECHENIQUE, JAIME
SUB OUT: 23 DANDRIDGE, MALCOLM	06:17		
SUB IN: 1 HARRIS, TYLER	06:17		

VISITORS: Memphis	Time	Score	HOME: Wichita St.
	05:58	52-64	SUB OUT: ECHENIQUE,JAIME
	05:58		SUB IN: UDEZE,MORRIS
	05:56	52-64	SUB OUT: WADE,TREY
	05:56		SUB IN: DENNIS,DEXTER
SUB OUT: 10 BAUGH,DAMION	05:56		
SUB IN: 2 LOMAX,ALEX	05:56		
	03:17	59-66	SUB OUT: UDEZE,MORRIS
	03:17		SUB IN: WADE,TREY
SUB OUT: 00 JEFFRIES,D.J.	03:17		
SUB IN: 23 DANDRIDGE,MALCOLM	03:17		
	03:17		SUB OUT: DENNIS,DEXTER
	03:17		SUB IN: ECHENIQUE,JAIME
SUB OUT: 23 DANDRIDGE,MALCOLM	02:04	60-68	
SUB IN: 00 JEFFRIES,D.J.	02:04		
	01:19	60-69	SUB OUT: ECHENIQUE,JAIME
	01:19		SUB IN: DENNIS,DEXTER
SUB OUT: 2 LOMAX,ALEX	00:52	60-70	
SUB IN: 10 BAUGH,DAMION	00:52		
SUB OUT: 1 HARRIS,TYLER	00:38	61-71	
SUB IN: 5 ELLIS,BOOGIE	00:38		
SUB OUT: 00 JEFFRIES,D.J.	00:35	61-72	
SUB IN: 1 HARRIS,TYLER	00:35		
	00:30	63-72	SUB OUT: WADE,TREY
	00:30		SUB IN: ECHENIQUE,JAIME
SUB OUT: 10 BAUGH,DAMION	00:29	63-73	
SUB IN: 25 HARDAWAY,JAYDEN	00:29		
	00:29		SUB OUT: ECHENIQUE,JAIME
	00:29		SUB IN: WADE,TREY
	00:22	65-74	SUB OUT: WADE,TREY
	00:22		SUB IN: ECHENIQUE,JAIME
	00:22		SUB OUT: BURTON,JAMARIUS
	00:22		SUB IN: ETIENNE,TYSON
	00:19	65-75	SUB OUT: ECHENIQUE,JAIME
	00:19		SUB IN: WADE,TREY

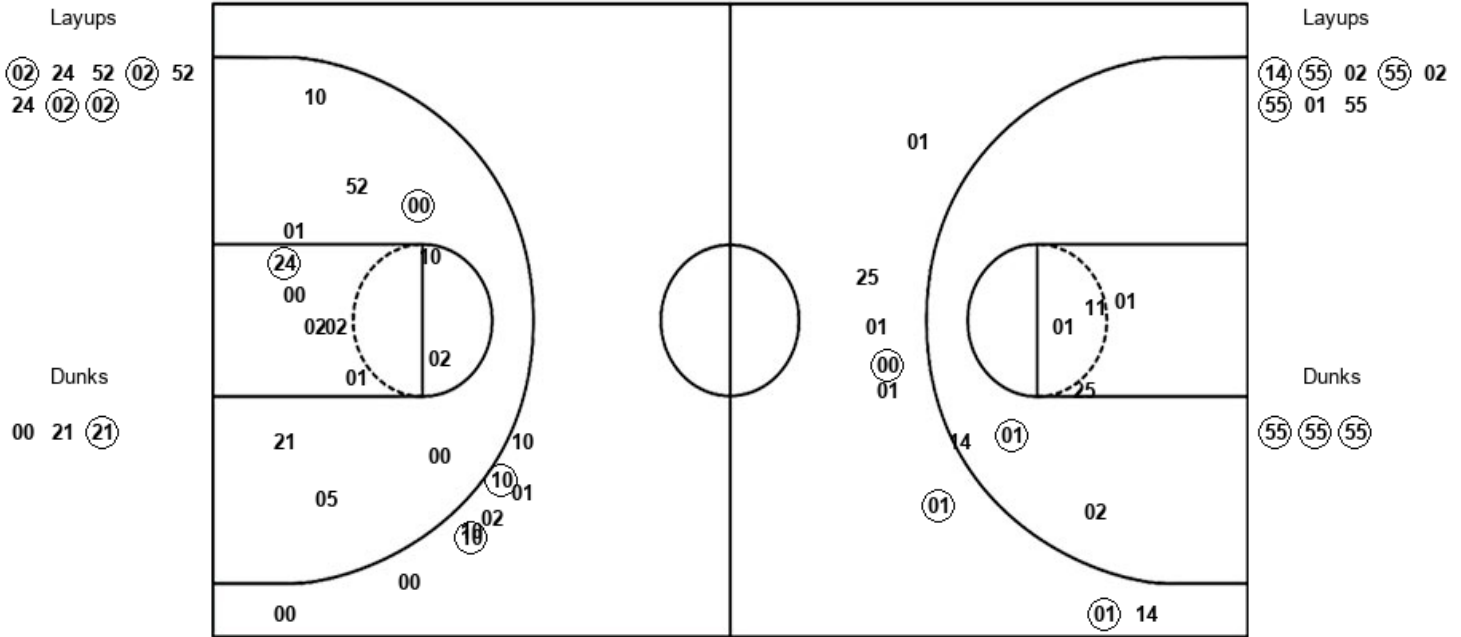
Memphis 67, Wichita St. 76

Official Shot Chart
Memphis vs Wichita St.
PERIOD 2 Shots
 January 09, 2020 at Charles Koch Arena - Wichita, Kan.



Wichita St.

Memphis



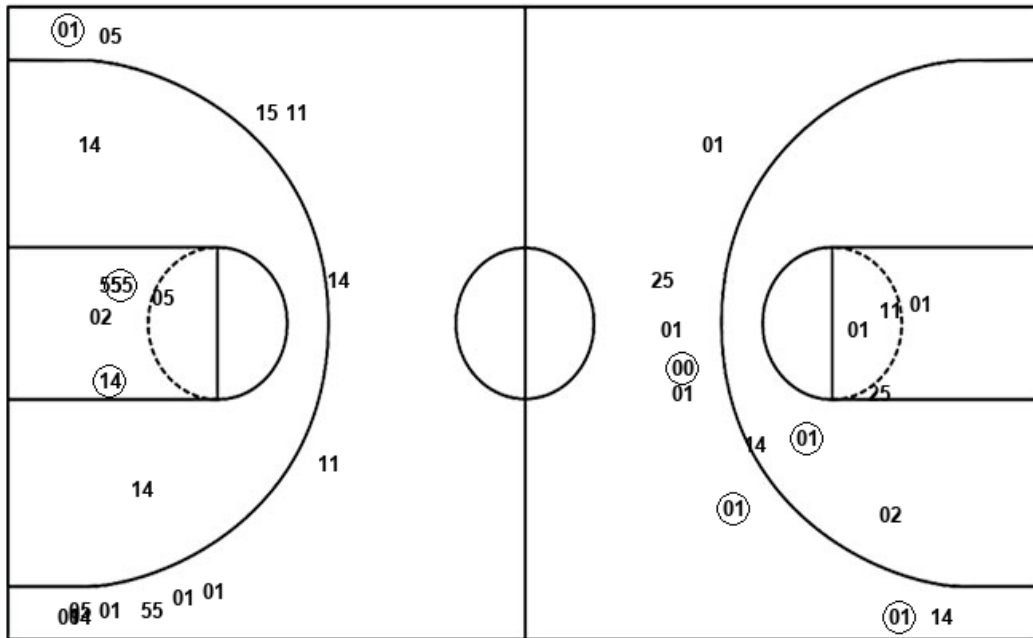
WSU : Period 2	Made	Att	Pct
Layups	4	8	50.0
Dunks	1	3	33.3
2PT Field Goals	7	25	28.0
3PT Field Goals	2	8	25.0
Total Field Goals	9	33	27.3

MEM : Period 2	Made	Att	Pct
Layups	4	8	50.0
Dunks	3	3	100.0
2PT Field Goals	8	18	44.4
3PT Field Goals	3	8	37.5
Total Field Goals	11	26	42.3

Official Shot Chart
Memphis vs Wichita St.
Memphis Team Shots
 January 09, 2020 at Charles Koch Arena - Wichita, Kan.



Layups



Layups

(55) 23 (23) 02 (23)
 (02) (01) 05 (23) 05
 (14) (55) 02 (55) 02
 (55) 01 55

Dunks

Dunks

(55) (55) (55)

MEM : Period 1	Made	Att	Pct
Layups	6	10	60.0
Dunks	0	0	0
2PT Field Goals	8	17	47.1
3PT Field Goals	1	13	07.7
Total Field Goals	9	30	30.0

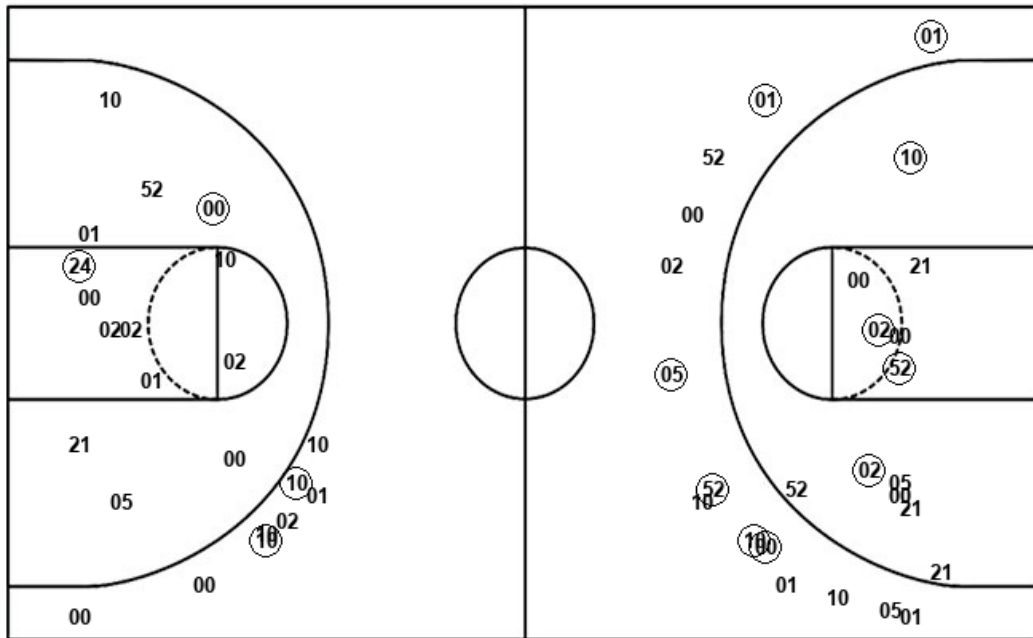
MEM : Period 2	Made	Att	Pct
Layups	4	8	50.0
Dunks	3	3	100.0
2PT Field Goals	8	18	44.4
3PT Field Goals	3	8	37.5
Total Field Goals	11	26	42.3

Official Shot Chart
Memphis vs Wichita St.
Wichita St. Team Shots
 January 09, 2020 at Charles Koch Arena - Wichita, Kan.



Layups

Dunks



Layups

Dunks

(24) 52 01 (21) 52
 33 52 (02) 24 52
 (02) 52 24 (02) (02)

(05) 00 21 (21)

WSU : Period 1	Made	Att	Pct
Layups	2	7	28.6
Dunks	1	1	100.0
2PT Field Goals	7	20	35.0
3PT Field Goals	6	14	42.9
Total Field Goals	13	34	38.2

WSU : Period 2	Made	Att	Pct
Layups	4	8	50.0
Dunks	1	3	33.3
2PT Field Goals	7	25	28.0
3PT Field Goals	2	8	25.0
Total Field Goals	9	33	27.3