

FINAL SCORE



Ole Miss

54



Wichita St.

74

January 04, 2020 • Charles Koch Arena - Wichita, Kan.

FINAL STATISTICS

Official Box Score
Ole Miss vs Wichita St.
Game Totals -- Final Statistics
January 04, 2020 at Charles Koch Arena - Wichita, Kan.



Ole Miss 54

No.	Player	S	Pts	FG	3FG	FT	OR	DR	TR	PF	A	TO	Blk	Stl	Min	+/-
00	HINSON, BLAKE	G	7	2-5	0-2	3-3	1	3	4	4	0	4	0	0	20	-15
02	SHULER, DEVONTAE	G	12	4-12	2-5	2-3	3	2	5	2	2	4	0	2	39	-24
03	SY, KHADIM	F	12	4-8	0-1	4-5	2	3	5	2	0	2	3	0	23	-13
04	TYREE, BREEIN	G	9	2-9	1-2	4-4	0	3	3	3	2	2	0	0	32	-17
05	BUFFEN, KJ	F	4	1-5	0-1	2-2	1	0	1	5	0	2	1	1	20	-7
01	CROWLEY, AUSTIN	G	2	1-2	0-1	0-0	0	1	1	0	0	0	0	0	7	-3
10	CURRY, CARLOS	F	0	0-0	0-0	0-0	0	0	0	0	0	0	0	0	2	-1
11	MILLER, FRANCO	G	2	1-2	0-1	0-0	0	2	2	2	1	0	0	0	16	-9
14	COLLUM, ANTAVION	F	4	1-4	1-4	1-2	0	3	3	0	0	0	0	1	25	-6
23	HUNTER, SAMMY	F	2	0-5	0-1	2-4	0	1	1	2	0	0	0	0	15	-5
TEAM							2	3	5	1		1				
TOTALS			54	16-52	4-18	18-23	9	21	30	21	5	15	4	4	200	

Shooting By Period

Period	FG	FG%	3FG	3FG%	FT	FT%
1st Half	7-25	28%	2-7	29%	8-10	80%
2nd Half	9-27	33%	2-11	18%	10-13	77%
Game	16-52	30.8%	4-18	22.2%	18-23	78.3%

Deadball Rebounds: 4,0

Last FG: 2nd-00:40

Biggest Run: 5-0

Largest lead: By 1 at 1st-19:22

Technical Fouls: #0 TEAM (Coach Technical) @ 2nd - 17:36;

Wichita St. 74

No.	Player	S	Pts	FG	3FG	FT	OR	DR	TR	PF	A	TO	Blk	Stl	Min	+/-
01	ETIENNE, TYSON	G	2	0-2	0-2	2-2	0	0	0	4	1	0	1	1	12	8
02	BURTON, JAMARIUS	G	16	6-8	1-1	3-3	3	2	5	2	4	4	0	2	36	18
05	WADE, TREY	F	7	3-5	0-1	1-3	1	5	6	0	1	1	1	1	32	20
10	STEVENSON, ERIK	G	29	9-15	5-11	6-7	0	6	6	2	0	3	0	3	34	18
21	ECHENIQUE, JAIME	C	7	2-5	0-2	3-3	1	5	6	2	1	1	0	0	26	19
00	DENNIS, DEXTER	G	0	0-2	0-1	0-0	0	1	1	4	0	0	0	0	10	4
03	GORDON, DEANTONI	F	0	0-0	0-0	0-0	0	0	0	0	0	0	0	0	0	0
11	FERNANDES, NOAH	G	0	0-1	0-1	0-0	0	0	0	1	0	0	0	0	2	1
24	UDEZE, MORRIS	C	3	0-1	0-0	3-7	1	5	6	3	1	0	0	1	14	1
33	MIDTGAARD, ASBJORN	C	0	0-0	0-0	0-0	0	0	0	0	0	0	0	0	0	0
52	SHERFIELD, GRANT	G	10	3-9	0-2	4-8	2	3	5	1	1	1	0	0	33	11
TEAM							2	1	3	0		2				
TOTALS			74	23-48	6-21	22-33	10	28	38	19	9	12	2	8	200	

Shooting By Period

Period	FG	FG%	3FG	3FG%	FT	FT%
1st Half	12-26	46%	5-16	31%	10-13	77%
2nd Half	11-22	50%	1-5	20%	12-20	60%
Game	23-48	47.9%	6-21	28.6%	22-33	66.7%

Deadball Rebounds: 5,0

Last FG: 2nd-00:48

Biggest Run: 10-0

Largest lead: By 23 at 2nd-00:48

Technical Fouls: None.

Game Notes:

Officials: **Doug Shows, Tony Greene, Robert Felder**
Attendance: **10506**

Start Time: **04:05 PM ET**
End Time: **06:13 PM ET**
Game Duration: **2:07**

Score	1st	2nd	TOT
MIS	24	30	54
WSU	39	35	74

MIS led for 0:18. WSU led for 39:27.

Game was tied for 0:15.

Times tied: **0** Lead Changes: **2**

Points from	MIS	WSU
In the Paint	16	24
Off Turns	1	20
2nd Chance	13	13
Fast Break	4	9
Bench	10	13

Official Box Score
Ole Miss vs Wichita St.
First Half Statistics Only
January 04, 2020 at Charles Koch Arena - Wichita, Kan.



Ole Miss 24

No.	Player	S	Pts	FG	3FG	FT	OR	DR	TR	PF	A	TO	Blk	Stl	Min	+/-
00	HINSON, BLAKE	G	0	0-1	0-1	0-0	0	1	1	2	0	3	0	0	10	-9
02	SHULER, DEVONTAE	G	4	2-6	0-1	0-0	3	2	5	1	0	3	0	1	20	-15
03	SY, KHADIM	F	4	1-3	0-0	2-2	0	0	0	0	0	1	0	0	10	-12
04	TYREE, BREEIN	G	9	2-6	1-1	4-4	0	1	1	2	1	1	0	0	15	-14
05	BUFFEN, KJ	F	0	0-0	0-0	0-0	0	0	0	3	0	1	0	0	5	-6
01	CROWLEY, AUSTIN	G	0	0-0	0-0	0-0	0	0	0	0	0	0	0	0	1	-4
10	CURRY, CARLOS	F	0	0-0	0-0	0-0	0	0	0	0	0	0	0	0	0	0
11	MILLER, FRANCO	G	2	1-2	0-1	0-0	0	2	2	1	1	0	0	0	15	-5
14	COLLUM, ANTAVION	F	4	1-3	1-3	1-2	0	2	2	0	0	0	0	1	14	-8
23	HUNTER, SAMMY	F	1	0-4	0-0	1-2	0	1	1	2	0	0	0	0	11	-2
TEAM							2	2	4	0		0				
TOTALS			24	7-25	2-7	8-10	5	11	16	11	2	9	0	2	100	

Shooting By Period

Period	FG	FG%	3FG	3FG%	FT	FT%
1st Half	7-25	28%	2-7	29%	8-10	80%
Game	16-52	30.8%	4-18	22.2%	18-23	78.3%

Deadball Rebounds: 4,0

Last FG Half: MIS 2nd-00:40

Wichita St. 39

No.	Player	S	Pts	FG	3FG	FT	OR	DR	TR	PF	A	TO	Blk	Stl	Min	+/-
01	ETIENNE, TYSON	G	2	0-2	0-2	2-2	0	0	0	2	1	0	1	1	8	8
02	BURTON, JAMARIUS	G	8	2-3	1-1	3-3	2	2	4	1	3	2	0	2	19	11
05	WADE, TREY	F	2	1-2	0-1	0-0	1	2	3	0	0	0	1	1	17	15
10	STEVENSON, ERIK	G	19	6-9	4-7	3-4	0	1	1	0	0	2	0	0	15	15
21	ECHENIQUE, JAIME	C	5	2-4	0-2	1-1	0	3	3	0	1	1	0	0	16	13
00	DENNIS, DEXTER	G	0	0-1	0-1	0-0	0	1	1	2	0	0	0	0	5	4
03	GORDON, DEANTONI	F	0	0-0	0-0	0-0	0	0	0	0	0	0	0	0	0	0
11	FERNANDES, NOAH	G	0	0-1	0-1	0-0	0	0	0	1	0	0	0	0	2	1
24	UDEZE, MORRIS	C	0	0-0	0-0	0-1	0	1	1	2	0	0	0	0	4	2
33	MIDTGAARD, ASBJORN	C	0	0-0	0-0	0-0	0	0	0	0	0	0	0	0	0	0
52	SHERFIELD, GRANT	G	3	1-4	0-1	1-2	1	1	2	0	1	0	0	0	15	6
TEAM							1	1	2	0		0				
TOTALS			39	12-26	5-16	10-13	5	12	17	8	6	5	2	4	100	

Shooting By Period

Period	FG	FG%	3FG	3FG%	FT	FT%
1st Half	12-26	46%	5-16	31%	10-13	77%
Game	23-48	47.9%	6-21	28.6%	22-33	66.7%

Deadball Rebounds: 5,0

Last FG Half: WSU 2nd-00:48

Game Notes:

Officials: **Doug Shows, Tony Greene, Robert Felder**

Attendance: **10506**

Start Time: **04:05 PM ET**

End Time: **06:13 PM ET**

Game Duration: **2:07**

Score	1st	2nd	TOT
MIS	24	30	54
WSU	39	35	74

Points from (This Period)	MIS	WSU
In the Paint	2	10
Off Turns	1	15
2nd Chance	4	7
Fast Break	0	4
Bench	7	3

**Official Play-By-Play
Ole Miss vs Wichita St.
First Half**

January 04, 2020 at Charles Koch Arena - Wichita, Kan.



Period 1

Starters:

Ole Miss: 0 HINSON, BLAKE (G); 3 SY, KHADIM (F); 5 BUFFEN, KJ (F); 2 SHULER, DEVONTAE (G); 4 TYREE, BREEIN (G);

Wichita St.: 1 ETIENNE, TYSON (G); 2 BURTON, JAMARIUS (G); 5 WADE, TREY (F); 10 STEVENSON, ERIK (G); 21 ECHENIQUE, JAIME (C);

Time	VISITORS: Ole Miss	Score	Margin	HOME: Wichita St.
19:49	TURNOVER (LOSTBALL) by BUFFEN, KJ			
19:49				STEAL by BURTON, JAMARIUS
19:45	FOUL (PERSONAL) by BUFFEN, KJ			
19:45				MISSED FT by STEVENSON, ERIK
19:45				REBOUND (OFF) by TEAM
19:45		1-0	H 1	GOOD! FT by STEVENSON, ERIK [FB]
19:22	GOOD! JUMPER by SY, KHADIM	1-2	V 1	
19:22	ASSIST by TYREE, BREEIN			
19:04		4-2	H 2	GOOD! 3PTR by STEVENSON, ERIK
19:04				ASSIST by BURTON, JAMARIUS
18:51	MISSED 3PTR by HINSON, BLAKE			
18:47				REBOUND (DEF) by WADE, TREY
18:30	FOUL (PERSONAL) by BUFFEN, KJ			
18:30		5-2	H 3	GOOD! FT by BURTON, JAMARIUS
18:30	SUB OUT: BUFFEN, KJ			
18:30	SUB IN: COLLUM, ANTAVION			
18:30		6-2	H 4	GOOD! FT by BURTON, JAMARIUS
18:19	TURNOVER (BADPASS) by HINSON, BLAKE			
18:06				MISSED 3PTR by STEVENSON, ERIK
18:01	REBOUND (DEF) by TEAM			
17:56	MISSED JUMPER by SY, KHADIM			
17:54	REBOUND (OFF) by TEAM			
17:43	GOOD! JUMPER by SHULER, DEVONTAE	6-4	H 2	
17:18				TURNOVER (TRAVEL) by STEVENSON, ERIK
17:08	MISSED LAYUP by SHULER, DEVONTAE			
17:08				BLOCK by ETIENNE, TYSON
17:08	REBOUND (OFF) by TEAM			
16:54	FOUL (OFF) by TYREE, BREEIN			
16:54	TURNOVER (OFFENSIVE) by TYREE, BREEIN			
16:40		9-4	H 5	GOOD! 3PTR by STEVENSON, ERIK
16:40				ASSIST by ETIENNE, TYSON
16:37	TIMEOUT 30SEC			
16:37				SUB OUT: ETIENNE, TYSON
16:37				SUB IN: SHERFIELD, GRANT
16:37	SUB OUT: HINSON, BLAKE			
16:37	SUB IN: MILLER, FRANCO			
16:16	MISSED 3PTR by COLLUM, ANTAVION			
16:12	REBOUND (OFF) by SHULER, DEVONTAE			
16:11	GOOD! LAYUP by SHULER, DEVONTAE	9-6	H 3	
15:58		11-6	H 5	GOOD! JUMPER by ECHENIQUE, JAIME
15:32	GOOD! 3PTR by TYREE, BREEIN	11-9	H 2	
15:18				MISSED 3PTR by ECHENIQUE, JAIME
15:13	REBOUND (DEF) by SHULER, DEVONTAE			
15:12	TURNOVER (LOSTBALL) by SHULER, DEVONTAE			
15:12				STEAL by BURTON, JAMARIUS
15:12				TURNOVER (BADPASS) by BURTON, JAMARIUS
15:12				
15:12				SUB OUT: ECHENIQUE, JAIME
15:12				SUB IN: UDEZE, MORRIS
15:12	SUB OUT: SY, KHADIM			
15:12	SUB IN: HUNTER, SAMMY			
14:53	MISSED JUMPER by TYREE, BREEIN			
14:49				REBOUND (DEF) by WADE, TREY
14:38				MISSED JUMPER by SHERFIELD, GRANT
14:35	REBOUND (DEF) by COLLUM, ANTAVION			
14:25	MISSED JUMPER by HUNTER, SAMMY			
14:22				REBOUND (DEF) by UDEZE, MORRIS
13:54				MISSED 3PTR by STEVENSON, ERIK
13:51	REBOUND (DEF) by TYREE, BREEIN			
13:41	TURNOVER (TRAVEL) by SHULER, DEVONTAE			
13:41				SUB OUT: WADE, TREY
13:41				SUB IN: DENNIS, DEXTER
13:28				TURNOVER (BADPASS) by STEVENSON, ERIK
13:28				SUB OUT: STEVENSON, ERIK
13:28				SUB IN: ETIENNE, TYSON
13:16				FOUL (PERSONAL) by DENNIS, DEXTER
13:16	MISSED FT by COLLUM, ANTAVION			
13:16	REBOUND (OFF) by TEAM			
13:16	GOOD! FT by COLLUM, ANTAVION	11-10	H 1	
12:49		13-10	H 3	GOOD! JUMPER by BURTON, JAMARIUS [PNT]

Time	VISITORS: Ole Miss	Score	Margin	HOME: Wichita St.
12:49	FOUL (PERSONAL) by TYREE, BREEIN			
12:49	SUB OUT: TYREE, BREEIN			
12:49	SUB IN: HINSON, BLAKE			
12:49		14-10	H 4	GOOD! FT by BURTON, JAMARIUS
12:31	GOOD! JUMPER by MILLER , FRANCO	14-12	H 2	
12:14				MISSED 3PTR by ETIENNE, TYSON
12:14	REBOUND (DEF) by TEAM			
12:14				FOUL (PERSONAL) by UDEZE, MORRIS
12:14				SUB OUT: UDEZE, MORRIS
12:14				SUB IN: ECHENIQUE, JAIME
11:58	MISSED LAYUP by HUNTER, SAMMY			
11:55				REBOUND (DEF) by DENNIS, DEXTER
11:45				MISSED 3PTR by SHERFIELD, GRANT
11:42				REBOUND (OFF) by BURTON, JAMARIUS
11:38				MISSED LAYUP by BURTON, JAMARIUS
11:35	REBOUND (DEF) by COLLUM, ANTAVION			
11:15	MISSED JUMPER by SHULER, DEVONTAE			
11:11				REBOUND (DEF) by ECHENIQUE, JAIME
11:04				MISSED 3PTR by ECHENIQUE, JAIME
11:01	REBOUND (DEF) by MILLER , FRANCO			
10:43				FOUL (PERSONAL) by ETIENNE, TYSON
10:43				
10:43				SUB OUT: DENNIS, DEXTER
10:43				SUB IN: WADE, TREY
10:43	SUB OUT: COLLUM, ANTAVION			
10:43	SUB IN: SY, KHADIM			
10:43	GOOD! FT by HUNTER, SAMMY	14-13	H 1	
10:43	MISSED FT by HUNTER, SAMMY			
10:43				REBOUND (DEF) by ECHENIQUE, JAIME
10:31	SUB OUT: SY, KHADIM			
10:31	SUB IN: CROWLEY, AUSTIN			
10:31	FOUL (PERSONAL) by HUNTER, SAMMY			
10:31	SUB OUT: HUNTER, SAMMY			
10:31	SUB IN: SY, KHADIM			
10:30	FOUL (PERSONAL) by MILLER , FRANCO			
10:30				SUB OUT: BURTON, JAMARIUS
10:30				SUB IN: STEVENSON, ERIK
10:30		15-13	H 2	GOOD! FT by ETIENNE, TYSON
10:30		16-13	H 3	GOOD! FT by ETIENNE, TYSON
10:13	TURNOVER (BADPASS) by SY, KHADIM			
10:13				STEAL by ETIENNE, TYSON
09:48				MISSED 3PTR by ETIENNE, TYSON
09:45				REBOUND (OFF) by SHERFIELD, GRANT
09:44				MISSED JUMPER by SHERFIELD, GRANT
09:41				REBOUND (OFF) by WADE, TREY
09:37		19-13	H 6	GOOD! 3PTR by STEVENSON, ERIK
09:17				FOUL (PERSONAL) by ETIENNE, TYSON
09:17	GOOD! FT by SY, KHADIM	19-14	H 5	
09:17				SUB OUT: ETIENNE, TYSON
09:17				SUB IN: BURTON, JAMARIUS
09:17	SUB OUT: CROWLEY, AUSTIN			
09:17	SUB IN: BUFFEN, KJ			
09:17	GOOD! FT by SY, KHADIM	19-15	H 4	
09:00				MISSED 3PTR by STEVENSON, ERIK
08:56	REBOUND (DEF) by HINSON, BLAKE			
08:38	MISSED JUMPER by SY, KHADIM			
08:34				REBOUND (DEF) by BURTON, JAMARIUS
08:34	SUB OUT: SY, KHADIM			
08:34	SUB IN: HUNTER, SAMMY			
08:15				TURNOVER (LOSTBALL) by ECHENIQUE, JAIME
08:15	STEAL by SHULER, DEVONTAE			
08:09	MISSED 3PTR by MILLER , FRANCO			
08:07	REBOUND (OFF) by TEAM			
08:07				SUB OUT: ECHENIQUE, JAIME
08:07				SUB IN: UDEZE, MORRIS
08:05	TURNOVER (OTHER) by HINSON, BLAKE			
07:46	FOUL (PERSONAL) by HINSON, BLAKE			
07:46				
07:46				SUB OUT: SHERFIELD, GRANT
07:46				SUB IN: DENNIS, DEXTER
07:46	SUB OUT: HINSON, BLAKE			
07:46	SUB IN: TYREE, BREEIN	20-15	H 5	GOOD! FT by STEVENSON, ERIK
07:46		21-15	H 6	GOOD! FT by STEVENSON, ERIK
07:26	MISSED JUMPER by HUNTER, SAMMY			
07:23				REBOUND (DEF) by BURTON, JAMARIUS
07:14	FOUL (PERSONAL) by HUNTER, SAMMY			
07:14				MISSED FT by UDEZE, MORRIS
07:14	REBOUND (DEF) by SHULER, DEVONTAE			
07:02				FOUL (PERSONAL) by UDEZE, MORRIS

Time	VISITORS: Ole Miss	Score	Margin	HOME: Wichita St.
07:02				SUB OUT: UDEZE, MORRIS
07:02				SUB IN: ECHENIQUE, JAIME
07:02	SUB OUT: HUNTER, SAMMY			
07:02	SUB IN: SY, KHADIM			
06:56	MISSED JUMPER by TYREE, BREEIN			
06:55	REBOUND (OFF) by TEAM			
06:49	MISSED JUMPER by SHULER, DEVONTAE			
06:49				BLOCK by WADE, TREY
06:43	REBOUND (OFF) by SHULER, DEVONTAE			
06:40	MISSED JUMPER by TYREE, BREEIN			
06:36				REBOUND (DEF) by ECHENIQUE, JAIME
06:33				MISSED 3PTR by DENNIS, DEXTER
06:33				REBOUND (OFF) by TEAM
06:33	SUB OUT: BUFFEN, KJ			
06:33	SUB IN: COLLUM, ANTAVION			
06:29		23-15	H 8	GOOD! JUMPER by STEVENSON, ERIK
06:29				ASSIST by BURTON, JAMARIUS
06:07	MISSED 3PTR by COLLUM, ANTAVION			
06:03				REBOUND (DEF) by STEVENSON, ERIK
05:54				TURNOVER (LOSTBALL) by BURTON, JAMARIUS
05:54	STEAL by COLLUM, ANTAVION			
05:44				FOUL (PERSONAL) by DENNIS, DEXTER
05:44				SUB OUT: DENNIS, DEXTER
05:44				SUB IN: SHERFIELD, GRANT
05:44	SUB OUT: COLLUM, ANTAVION			
05:44	SUB IN: HINSON, BLAKE			
05:44	FOUL (OFF) by HINSON, BLAKE			
05:44	TURNOVER (OFFENSIVE) by HINSON, BLAKE			
05:44	SUB OUT: HINSON, BLAKE			
05:44	SUB IN: COLLUM, ANTAVION			
05:14		26-15	H 11	GOOD! 3PTR by BURTON, JAMARIUS
05:14				ASSIST by SHERFIELD, GRANT
05:11	TIMEOUT 30SEC			
04:52	TURNOVER (BADPASS) by SHULER, DEVONTAE			
04:52				STEAL by WADE, TREY
04:46		29-15	H 14	GOOD! 3PTR by STEVENSON, ERIK [FB]
04:28	SUB OUT: SY, KHADIM			
04:28	SUB IN: HUNTER, SAMMY			
04:28				SUB OUT: STEVENSON, ERIK
04:28				SUB IN: FERNANDES, NOAH
04:02	GOOD! JUMPER by TYREE, BREEIN	29-17	H 12	
03:38				MISSED 3PTR by FERNANDES, NOAH
03:35	REBOUND (DEF) by MILLER , FRANCO			
03:13	MISSED JUMPER by TYREE, BREEIN			
03:13				REBOUND (DEF) by TEAM
03:13				
03:13	SUB OUT: MILLER , FRANCO			
03:13	SUB IN: BUFFEN, KJ			
02:51		31-17	H 14	GOOD! LAYUP by ECHENIQUE, JAIME
02:51	FOUL (PERSONAL) by BUFFEN, KJ			
02:51	SUB OUT: BUFFEN, KJ			
02:51	SUB IN: HINSON, BLAKE			
02:51		32-17	H 15	GOOD! FT by ECHENIQUE, JAIME
02:35				FOUL (PERSONAL) by FERNANDES, NOAH
02:35				SUB OUT: FERNANDES, NOAH
02:35				SUB IN: STEVENSON, ERIK
02:35	GOOD! FT by TYREE, BREEIN	32-18	H 14	
02:35	GOOD! FT by TYREE, BREEIN	32-19	H 13	
02:21		34-19	H 15	GOOD! JUMPER by STEVENSON, ERIK
01:55	MISSED JUMPER by HUNTER, SAMMY			
01:52				REBOUND (DEF) by SHERFIELD, GRANT
01:39		36-19	H 17	GOOD! DUNK by WADE, TREY
01:39				ASSIST by ECHENIQUE, JAIME
01:37	TIMEOUT 30SEC			
01:25				FOUL (PERSONAL) by BURTON, JAMARIUS
01:25	SUB OUT: HINSON, BLAKE			
01:25	SUB IN: MILLER , FRANCO			
01:25	GOOD! FT by TYREE, BREEIN	36-20	H 16	
01:25	GOOD! FT by TYREE, BREEIN	36-21	H 15	
01:11				MISSED 3PTR by WADE, TREY
01:10				REBOUND (OFF) by BURTON, JAMARIUS
01:04		38-21	H 17	GOOD! LAYUP by SHERFIELD, GRANT
01:04				ASSIST by BURTON, JAMARIUS
00:40	GOOD! 3PTR by COLLUM, ANTAVION	38-24	H 14	
00:40	ASSIST by MILLER , FRANCO			
00:06	FOUL (PERSONAL) by SHULER, DEVONTAE			
00:06		39-24	H 15	GOOD! FT by SHERFIELD, GRANT
00:06				SUB OUT: BURTON, JAMARIUS
00:06				SUB OUT: ECHENIQUE, JAIME
00:06				SUB IN: GORDON, DEANTONI

Time	VISITORS: Ole Miss	Score	Margin	HOME: Wichita St.
00:06				SUB IN: MIDTGAARD, ASBJORN
00:06				MISSED FT by SHERFIELD, GRANT
00:05	REBOUND (DEF) by HUNTER, SAMMY			
00:00	MISSED 3PTR by SHULER, DEVONTAE			
00:00	REBOUND (OFF) by SHULER, DEVONTAE			

Ole Miss 24, Wichita St. 39

Points from (This Period)	MIS	WSU
In the Paint	2	10
Off Turns	1	15
2nd Chance	4	7
Fast Break	0	4
Bench	7	3

Official Box Score
Ole Miss vs Wichita St.
Second Half Statistics Only
January 04, 2020 at Charles Koch Arena - Wichita, Kan.



Ole Miss 30

No.	Player	S	Pts	FG	3FG	FT	OR	DR	TR	PF	A	TO	Blk	Stl	Min	+/-
00	HINSON, BLAKE	G	7	2-4	0-1	3-3	1	2	3	2	0	1	0	0	11	-6
02	SHULER, DEVONTAE	G	8	2-6	2-4	2-3	0	0	0	1	2	1	0	1	19	-9
03	SY, KHADIM	F	8	3-5	0-1	2-3	2	3	5	2	0	1	3	0	14	-1
04	TYREE, BREEIN	G	0	0-3	0-1	0-0	0	2	2	1	1	1	0	0	17	-3
05	BUFFEN, KJ	F	4	1-5	0-1	2-2	1	0	1	2	0	1	1	1	15	-1
01	CROWLEY, AUSTIN	G	2	1-2	0-1	0-0	0	1	1	0	0	0	0	0	6	1
10	CURRY, CARLOS	F	0	0-0	0-0	0-0	0	0	0	0	0	0	0	0	2	-1
11	MILLER, FRANCO	G	0	0-0	0-0	0-0	0	0	0	1	0	0	0	0	1	-4
14	COLLUM, ANTAVION	F	0	0-1	0-1	0-0	0	1	1	0	0	0	0	0	11	2
23	HUNTER, SAMMY	F	1	0-1	0-1	1-2	0	0	0	0	0	0	0	0	4	-3
	TEAM						0	1	1	1		1				
TOTALS			30	9-27	2-11	10-13	4	10	14	10	3	6	4	2	100	

Shooting By Period

Period	FG	FG%	3FG	3FG%	FT	FT%
2nd Half	9-27	33%	2-11	18%	10-13	77%
Game	16-52	30.8%	4-18	22.2%	18-23	78.3%

Deadball Rebounds: 4,0

Last FG Half: MIS -

Wichita St. 35

No.	Player	S	Pts	FG	3FG	FT	OR	DR	TR	PF	A	TO	Blk	Stl	Min	+/-
01	ETIENNE, TYSON	G	0	0-0	0-0	0-0	0	0	0	2	0	0	0	0	5	0
02	BURTON, JAMARIUS	G	8	4-5	0-0	0-0	1	0	1	1	1	2	0	0	17	7
05	WADE, TREY	F	5	2-3	0-0	1-3	0	3	3	0	1	1	0	0	15	5
10	STEVENSON, ERIK	G	10	3-6	1-4	3-3	0	5	5	2	0	1	0	3	19	3
21	ECHENIQUE, JAIME	C	2	0-1	0-0	2-2	1	2	3	2	0	0	0	0	10	6
00	DENNIS, DEXTER	G	0	0-1	0-0	0-0	0	0	0	2	0	0	0	0	5	0
03	GORDON, DEANTONI	F	0	0-0	0-0	0-0	0	0	0	0	0	0	0	0	0	0
11	FERNANDES, NOAH	G	0	0-0	0-0	0-0	0	0	0	0	0	0	0	0	0	0
24	UDEZE, MORRIS	C	3	0-1	0-0	3-6	1	4	5	1	1	0	0	1	10	-1
33	MIDTGAARD, ASBJORN	C	0	0-0	0-0	0-0	0	0	0	0	0	0	0	0	0	0
52	SHERFIELD, GRANT	G	7	2-5	0-1	3-6	1	2	3	1	0	1	0	0	19	5
	TEAM						1	0	1	0		2				
TOTALS			35	11-22	1-5	12-20	5	16	21	11	3	7	0	4	100	

Shooting By Period

Period	FG	FG%	3FG	3FG%	FT	FT%
2nd Half	11-22	50%	1-5	20%	12-20	60%
Game	23-48	47.9%	6-21	28.6%	22-33	66.7%

Deadball Rebounds: 5,0

Last FG Half: WSU -

Game Notes:

Officials: **Doug Shows, Tony Greene, Robert Felder**

Attendance: **10506**

Start Time: **04:05 PM ET**

End Time: **06:13 PM ET**

Game Duration: **2:07**

Score	1st	2nd	TOT
MIS	24	30	54
WSU	39	35	74

Points from (This Period)	MIS	WSU
In the Paint	14	14
Off Turns	0	5
2nd Chance	9	6
Fast Break	4	5
Bench	3	10

**Official Play-By-Play
Ole Miss vs Wichita St.
Second Half**

January 04, 2020 at Charles Koch Arena - Wichita, Kan.



Period 2

Starters:

Ole Miss: 0 HINSON, BLAKE (G); 3 SY, KHADIM (F); 5 BUFFEN, KJ (F); 2 SHULER, DEVONTAE (G); 4 TYREE, BREEIN (G);

Wichita St.: 1 ETIENNE, TYSON (G); 2 BURTON, JAMARIUS (G); 5 WADE, TREY (F); 10 STEVENSON, ERIK (G); 21 ECHENIQUE, JAIME (C);

Time	VISITORS: Ole Miss	Score	Margin	HOME: Wichita St.
20:00				SUB OUT: GORDON, DEANTONI
20:00				SUB OUT: MIDTGAARD, ASBJORN
20:00				SUB IN: BURTON, JAMARIUS
20:00				SUB IN: ECHENIQUE, JAIME
20:00	SUB OUT: MILLER, FRANCO			
20:00	SUB OUT: COLLUM, ANTAVION			
20:00	SUB OUT: HUNTER, SAMMY			
20:00	SUB IN: HINSON, BLAKE			
20:00	SUB IN: SY, KHADIM			
20:00	SUB IN: BUFFEN, KJ			
19:50				FOUL (PERSONAL) by STEVENSON, ERIK
19:46				FOUL (PERSONAL) by STEVENSON, ERIK
19:46	GOOD! FT by HINSON, BLAKE	39-25	H 14	
19:46	GOOD! FT by HINSON, BLAKE	39-26	H 13	
19:38	MISSED JUMPER by BUFFEN, KJ			
19:34				REBOUND (DEF) by WADE, TREY
19:17				TURNOVER (TRAVEL) by WADE, TREY
19:04	MISSED JUMPER by SHULER, DEVONTAE			
19:00				REBOUND (DEF) by STEVENSON, ERIK
18:54		41-26	H 15	GOOD! DUNK by WADE, TREY
18:54				ASSIST by BURTON, JAMARIUS
18:21	GOOD! LAYUP by SY, KHADIM	41-28	H 13	
18:21	ASSIST by SHULER, DEVONTAE			
18:13				TURNOVER (LOSTBALL) by BURTON, JAMARIUS
18:13	SUB OUT: HINSON, BLAKE			
18:13	SUB IN: MILLER, FRANCO			
17:57	TURNOVER (LOSTBALL) by BUFFEN, KJ			
17:57				STEAL by STEVENSON, ERIK
17:49		43-28	H 15	GOOD! JUMPER by STEVENSON, ERIK [FB]
17:36	FOUL (TECH) by TEAM			
17:36	TURNOVER (OFFENSIVE) by TEAM			
17:36				MISSED FT by SHERFIELD, GRANT
17:36				REBOUND (OFF) by TEAM
17:36		44-28	H 16	GOOD! FT by SHERFIELD, GRANT [FB]
17:27	MISSED JUMPER by SY, KHADIM			
17:23				REBOUND (DEF) by WADE, TREY
17:16	FOUL (PERSONAL) by MILLER, FRANCO			
17:16		45-28	H 17	GOOD! FT by STEVENSON, ERIK
17:16		46-28	H 18	GOOD! FT by STEVENSON, ERIK
17:16		47-28	H 19	GOOD! FT by STEVENSON, ERIK
17:08	GOOD! 3PTR by SHULER, DEVONTAE	47-31	H 16	
16:51	FOUL (PERSONAL) by SY, KHADIM			
16:51		48-31	H 17	GOOD! FT by ECHENIQUE, JAIME
16:51	SUB OUT: MILLER, FRANCO			
16:51	SUB IN: HINSON, BLAKE			
16:51		49-31	H 18	GOOD! FT by ECHENIQUE, JAIME
16:38				FOUL (PERSONAL) by SHERFIELD, GRANT
16:38	GOOD! FT by SHULER, DEVONTAE	49-32	H 17	
16:38	GOOD! FT by SHULER, DEVONTAE	49-33	H 16	
16:23	FOUL (PERSONAL) by TYREE, BREEIN			
16:21		51-33	H 18	GOOD! JUMPER by BURTON, JAMARIUS
16:03	MISSED 3PTR by SY, KHADIM			
15:59				REBOUND (DEF) by STEVENSON, ERIK
15:51		54-33	H 21	GOOD! 3PTR by STEVENSON, ERIK
15:51				ASSIST by WADE, TREY
15:32	MISSED LAYUP by BUFFEN, KJ			
15:29				REBOUND (DEF) by ECHENIQUE, JAIME
15:21				MISSED LAYUP by WADE, TREY
15:21	BLOCK by SY, KHADIM			
15:17	REBOUND (DEF) by SY, KHADIM			
15:06				FOUL (PERSONAL) by ECHENIQUE, JAIME
15:06				
15:06				SUB OUT: ECHENIQUE, JAIME
15:06				SUB IN: UDEZE, MORRIS
15:06	GOOD! FT by SY, KHADIM	54-34	H 20	
15:06	GOOD! FT by SY, KHADIM	54-35	H 19	
15:06	SUB OUT: SY, KHADIM			
15:06	SUB IN: HUNTER, SAMMY			
14:51				MISSED 3PTR by STEVENSON, ERIK
14:48	REBOUND (DEF) by TYREE, BREEIN			

Time	VISITORS: Ole Miss	Score	Margin	HOME: Wichita St.
14:44	GOOD! DUNK by HINSON, BLAKE [FB]	54-37	H 17	
14:44	ASSIST by TYREE, BREEIN			
14:27	FOUL (PERSONAL) by SHULER, DEVONTAE			
14:27		55-37	H 18	GOOD! FT by UDEZE, MORRIS
14:27				SUB OUT: WADE, TREY
14:27				SUB IN: DENNIS, DEXTER
14:27				MISSED FT by UDEZE, MORRIS
14:26	REBOUND (DEF) by HINSON, BLAKE			
14:12	MISSED 3PTR by HUNTER, SAMMY			
14:09				REBOUND (DEF) by UDEZE, MORRIS
13:49		57-37	H 20	GOOD! JUMPER by BURTON, JAMARIUS
13:27	MISSED 3PTR by TYREE, BREEIN			
13:24				REBOUND (DEF) by STEVENSON, ERIK
13:16	FOUL (PERSONAL) by HINSON, BLAKE			
13:16				MISSED FT by UDEZE, MORRIS
13:16				REBOUND (OFF) by TEAM
13:16				SUB OUT: SHERFIELD, GRANT
13:16				SUB IN: ETIENNE, TYSON
13:16	SUB OUT: HINSON, BLAKE			
13:16	SUB OUT: TYREE, BREEIN			
13:16	SUB OUT: HUNTER, SAMMY			
13:16	SUB IN: CROWLEY, AUSTIN			
13:16	SUB IN: SY, KHADIM			
13:16	SUB IN: COLLUM, ANTAVION			
13:16				MISSED FT by UDEZE, MORRIS
13:16	REBOUND (DEF) by SY, KHADIM			
13:03	MISSED LAYUP by SHULER, DEVONTAE			
13:01	REBOUND (OFF) by SY, KHADIM			
12:56	GOOD! LAYUP by CROWLEY, AUSTIN	57-39	H 18	
12:56	ASSIST by SHULER, DEVONTAE			
12:24		59-39	H 20	GOOD! JUMPER by BURTON, JAMARIUS [PNT]
12:09				FOUL (PERSONAL) by ETIENNE, TYSON
12:09				SUB OUT: BURTON, JAMARIUS
12:09				SUB IN: SHERFIELD, GRANT
12:03	TURNOVER (BADPASS) by SHULER, DEVONTAE			
12:03				STEAL by STEVENSON, ERIK
11:59		61-39	H 22	GOOD! LAYUP by STEVENSON, ERIK [FB]
11:59				
11:59	SUB OUT: SHULER, DEVONTAE			
11:59	SUB IN: TYREE, BREEIN			
11:48	MISSED LAYUP by TYREE, BREEIN			
11:42	REBOUND (OFF) by BUFFEN, KJ			
11:42	GOOD! LAYUP by BUFFEN, KJ	61-41	H 20	
11:33				MISSED JUMPER by DENNIS, DEXTER
11:33	REBOUND (DEF) by CROWLEY, AUSTIN			
11:33	BLOCK by SY, KHADIM			
11:14	GOOD! LAYUP by SY, KHADIM	61-43	H 18	
11:14				FOUL (PERSONAL) by DENNIS, DEXTER
11:14	SUB OUT: TYREE, BREEIN			
11:14	SUB IN: SHULER, DEVONTAE			
11:14	MISSED FT by SY, KHADIM			
11:13				REBOUND (DEF) by UDEZE, MORRIS
11:02				TURNOVER (LOSTBALL) by SHERFIELD, GRANT
11:02	STEAL by SHULER, DEVONTAE			
10:39	TURNOVER (TRAVEL) by SY, KHADIM			
10:39	SUB OUT: BUFFEN, KJ			
10:39	SUB IN: HUNTER, SAMMY			
10:39	SUB OUT: SY, KHADIM			
10:39	SUB IN: BUFFEN, KJ			
10:09				TURNOVER (LOSTBALL) by STEVENSON, ERIK
10:09	STEAL by BUFFEN, KJ			
10:01	MISSED 3PTR by CROWLEY, AUSTIN			
09:56				REBOUND (DEF) by STEVENSON, ERIK
09:48				MISSED LAYUP by SHERFIELD, GRANT
09:44	REBOUND (DEF) by COLLUM, ANTAVION			
09:36				FOUL (PERSONAL) by DENNIS, DEXTER
09:36	MISSED FT by HUNTER, SAMMY			
09:36	REBOUND (OFF) by TEAM			
09:36				SUB OUT: DENNIS, DEXTER
09:36				SUB OUT: STEVENSON, ERIK
09:36				SUB OUT: UDEZE, MORRIS
09:36				SUB IN: BURTON, JAMARIUS
09:36				SUB IN: WADE, TREY
09:36				SUB IN: ECHENIQUE, JAIME
09:36	GOOD! FT by HUNTER, SAMMY	61-44	H 17	
09:16	FOUL (PERSONAL) by BUFFEN, KJ			
09:16		62-44	H 18	GOOD! FT by WADE, TREY
09:16				MISSED FT by WADE, TREY
09:16				REBOUND (OFF) by TEAM
09:16	SUB OUT: CROWLEY, AUSTIN			

Time	VISITORS: Ole Miss	Score	Margin	HOME: Wichita St.
09:16	SUB OUT: BUFFEN, KJ			
09:16	SUB IN: HINSON, BLAKE			
09:16	SUB IN: TYREE, BREEIN			
09:16				MISSED FT by WADE, TREY
09:16				REBOUND (OFF) by ECHENIQUE, JAIME
09:05		64-44	H 20	GOOD! LAYUP by SHERFIELD, GRANT
08:47				FOUL (PERSONAL) by ETIENNE, TYSON
08:46				SUB OUT: ETIENNE, TYSON
08:46				SUB IN: STEVENSON, ERIK
08:46	SUB OUT: HINSON, BLAKE			
08:46	SUB OUT: HUNTER, SAMMY			
08:46	SUB IN: SY, KHADIM			
08:46	SUB IN: BUFFEN, KJ			
08:46	MISSED FT by SHULER, DEVONTAE			
08:46	REBOUND (OFF) by SY, KHADIM			
08:11	GOOD! LAYUP by SY, KHADIM	64-46	H 18	
08:11				MISSED 3PTR by STEVENSON, ERIK
08:11	REBOUND (DEF) by TEAM			
08:11				FOUL (PERSONAL) by ECHENIQUE, JAIME
08:11	GOOD! FT by BUFFEN, KJ [FB]	64-47	H 17	
08:11	GOOD! FT by BUFFEN, KJ [FB]	64-48	H 16	
07:41				MISSED JUMPER by ECHENIQUE, JAIME
07:41	BLOCK by BUFFEN, KJ			
07:41				REBOUND (OFF) by TEAM
07:38				TURNOVER (SHOTCLOCK) by TEAM
07:22	MISSED JUMPER by BUFFEN, KJ			
07:19				REBOUND (DEF) by WADE, TREY
07:13				MISSED 3PTR by SHERFIELD, GRANT
07:10	REBOUND (DEF) by SY, KHADIM			
07:04	TURNOVER (LOSTBALL) by TYREE, BREEIN			
07:04				STEAL by STEVENSON, ERIK
06:36				TURNOVER (SHOTCLOCK) by TEAM
06:36	SUB OUT: COLLUM, ANTAVION			
06:36	SUB IN: HINSON, BLAKE			
06:22	MISSED 3PTR by BUFFEN, KJ			
06:19				REBOUND (DEF) by SHERFIELD, GRANT
05:50		66-48	H 18	GOOD! JUMPER by BURTON, JAMARIUS
05:17	MISSED 3PTR by SHULER, DEVONTAE			
05:14				REBOUND (DEF) by SHERFIELD, GRANT
04:46				MISSED JUMPER by BURTON, JAMARIUS
04:42	REBOUND (DEF) by TYREE, BREEIN			
04:34	MISSED 3PTR by HINSON, BLAKE			
04:31				REBOUND (DEF) by ECHENIQUE, JAIME
04:08	FOUL (PERSONAL) by BUFFEN, KJ			
04:08				SUB OUT: ECHENIQUE, JAIME
04:08				SUB IN: UDEZE, MORRIS
04:08	SUB OUT: SY, KHADIM			
04:08	SUB OUT: BUFFEN, KJ			
04:08	SUB IN: COLLUM, ANTAVION			
04:08	SUB IN: HUNTER, SAMMY			
04:08		67-48	H 19	GOOD! FT by SHERFIELD, GRANT
04:08		68-48	H 20	GOOD! FT by SHERFIELD, GRANT
03:46	MISSED 3PTR by SHULER, DEVONTAE			
03:46	REBOUND (OFF) by HINSON, BLAKE			
03:46	GOOD! LAYUP by HINSON, BLAKE	68-50	H 18	
03:46				FOUL (PERSONAL) by UDEZE, MORRIS
03:46				
03:46	GOOD! FT by HINSON, BLAKE	68-51	H 17	
03:24				MISSED JUMPER by UDEZE, MORRIS
03:23				REBOUND (OFF) by UDEZE, MORRIS
03:23	FOUL (PERSONAL) by HINSON, BLAKE			
03:23		69-51	H 18	GOOD! FT by UDEZE, MORRIS
03:23	SUB OUT: HUNTER, SAMMY			
03:23	SUB IN: SY, KHADIM			
03:23		70-51	H 19	GOOD! FT by UDEZE, MORRIS
03:08	MISSED 3PTR by COLLUM, ANTAVION			
03:05				REBOUND (DEF) by UDEZE, MORRIS
02:41				FOUL (OFF) by BURTON, JAMARIUS
02:41				TURNOVER (OFFENSIVE) by BURTON, JAMARIUS
02:23	TURNOVER (BADPASS) by HINSON, BLAKE			
02:23				STEAL by UDEZE, MORRIS
02:10				MISSED LAYUP by SHERFIELD, GRANT
02:10	BLOCK by SY, KHADIM			
02:05	REBOUND (DEF) by HINSON, BLAKE			
02:03	MISSED LAYUP by HINSON, BLAKE			
02:00				REBOUND (DEF) by STEVENSON, ERIK
01:53	FOUL (PERSONAL) by SY, KHADIM			
01:53				MISSED FT by SHERFIELD, GRANT
01:53				REBOUND (OFF) by TEAM

Time	VISITORS: Ole Miss	Score	Margin	HOME: Wichita St.
01:53	SUB OUT: HINSON, BLAKE			
01:53	SUB OUT: SY, KHADIM			
01:53	SUB IN: CROWLEY, AUSTIN			
01:53	SUB IN: CURRY, CARLOS			
01:53				MISSED FT by SHERFIELD, GRANT
01:52				REBOUND (OFF) by SHERFIELD, GRANT
01:41		72-51	H 21	GOOD! LAYUP by SHERFIELD, GRANT
01:20	MISSED JUMPER by TYREE, BREEIN			
01:17				REBOUND (DEF) by UDEZE, MORRIS
00:48		74-51	H 23	GOOD! DUNK by WADE, TREY
00:48				ASSIST by UDEZE, MORRIS
00:40	GOOD! 3PTR by SHULER, DEVONTAE	74-54	H 20	
00:14				MISSED 3PTR by STEVENSON, ERIK
00:10				REBOUND (OFF) by BURTON, JAMARIUS

Ole Miss 54, Wichita St. 74

Points from (This Period)	MIS	WSU
In the Paint	14	14
Off Turns	0	5
2nd Chance	9	6
Fast Break	4	5
Bench	3	10

**Official Scoring/Possession Reference Chart
Ole Miss vs Wichita St.**

Period 1

January 04, 2020 at Charles Koch Arena - Wichita, Kan.



Period 1

Starters:

Ole Miss: 0 HINSON, BLAKE (G); 3 SY, KHADIM (F); 5 BUFFEN, KJ (F); 2 SHULER, DEVONTAE (G); 4 TYREE, BREEIN (G);

Wichita St.: 1 ETIENNE, TYSON (G); 2 BURTON, JAMARIUS (G); 5 WADE, TREY (F); 10 STEVENSON, ERIK (G); 21 ECHENIQUE, JAIME (C);

Time	VISITORS: Ole Miss	Score	Margin	HOME: Wichita St.
19:45		1-0	H 1	GOOD! FT by STEVENSON, ERIK [FB]
19:22	GOOD! JUMPER by SY, KHADIM	1-2	V 1	
19:04		4-2	H 2	GOOD! 3PTR by STEVENSON, ERIK
18:30		5-2	H 3	GOOD! FT by BURTON, JAMARIUS
18:30		6-2	H 4	GOOD! FT by BURTON, JAMARIUS
17:43	GOOD! JUMPER by SHULER, DEVONTAE	6-4	H 2	
16:40		9-4	H 5	GOOD! 3PTR by STEVENSON, ERIK
16:11	GOOD! LAYUP by SHULER, DEVONTAE	9-6	H 3	
15:58		11-6	H 5	GOOD! JUMPER by ECHENIQUE, JAIME
15:32	GOOD! 3PTR by TYREE, BREEIN	11-9	H 2	
13:16	GOOD! FT by COLLUM, ANTAVION	11-10	H 1	
12:49		13-10	H 3	GOOD! JUMPER by BURTON, JAMARIUS [PNT]
12:49		14-10	H 4	GOOD! FT by BURTON, JAMARIUS
12:31	GOOD! JUMPER by MILLER, FRANCO	14-12	H 2	
10:43	GOOD! FT by HUNTER, SAMMY	14-13	H 1	
10:30		15-13	H 2	GOOD! FT by ETIENNE, TYSON
10:30		16-13	H 3	GOOD! FT by ETIENNE, TYSON
09:37		19-13	H 6	GOOD! 3PTR by STEVENSON, ERIK
09:17	GOOD! FT by SY, KHADIM	19-14	H 5	
09:17	GOOD! FT by SY, KHADIM	19-15	H 4	
07:46		20-15	H 5	GOOD! FT by STEVENSON, ERIK
07:46		21-15	H 6	GOOD! FT by STEVENSON, ERIK
06:29		23-15	H 8	GOOD! JUMPER by STEVENSON, ERIK
05:14		26-15	H 11	GOOD! 3PTR by BURTON, JAMARIUS
04:46		29-15	H 14	GOOD! 3PTR by STEVENSON, ERIK [FB]
04:02	GOOD! JUMPER by TYREE, BREEIN	29-17	H 12	
02:51		31-17	H 14	GOOD! LAYUP by ECHENIQUE, JAIME
02:51		32-17	H 15	GOOD! FT by ECHENIQUE, JAIME
02:35	GOOD! FT by TYREE, BREEIN	32-18	H 14	
02:35	GOOD! FT by TYREE, BREEIN	32-19	H 13	
02:21		34-19	H 15	GOOD! JUMPER by STEVENSON, ERIK
01:39		36-19	H 17	GOOD! DUNK by WADE, TREY
01:25	GOOD! FT by TYREE, BREEIN	36-20	H 16	
01:25	GOOD! FT by TYREE, BREEIN	36-21	H 15	
01:04		38-21	H 17	GOOD! LAYUP by SHERFIELD, GRANT
00:40	GOOD! 3PTR by COLLUM, ANTAVION	38-24	H 14	
00:06		39-24	H 15	GOOD! FT by SHERFIELD, GRANT

Ole Miss 24, Wichita St. 39

Official Scoring/Possession Reference Chart
Ole Miss vs Wichita St.
Period 2
January 04, 2020 at Charles Koch Arena - Wichita, Kan.



Period 2

Starters:

Ole Miss: 0 HINSON, BLAKE (G); 3 SY, KHADIM (F); 5 BUFFEN, KJ (F); 2 SHULER, DEVONTAE (G); 4 TYREE, BREEIN (G);

Wichita St.: 1 ETIENNE, TYSON (G); 2 BURTON, JAMARIUS (G); 5 WADE, TREY (F); 10 STEVENSON, ERIK (G); 21 ECHENIQUE, JAIME (C);

Time	VISITORS: Ole Miss	Score	Margin	HOME: Wichita St.
19:46	GOOD! FT by HINSON, BLAKE	39-25	H 14	
19:46	GOOD! FT by HINSON, BLAKE	39-26	H 13	
18:54		41-26	H 15	GOOD! DUNK by WADE, TREY
18:21	GOOD! LAYUP by SY, KHADIM	41-28	H 13	
17:49		43-28	H 15	GOOD! JUMPER by STEVENSON, ERIK [FB]
17:36		44-28	H 16	GOOD! FT by SHERFIELD, GRANT [FB]
17:16		45-28	H 17	GOOD! FT by STEVENSON, ERIK
17:16		46-28	H 18	GOOD! FT by STEVENSON, ERIK
17:16		47-28	H 19	GOOD! FT by STEVENSON, ERIK
17:08	GOOD! 3PTR by SHULER, DEVONTAE	47-31	H 16	
16:51		48-31	H 17	GOOD! FT by ECHENIQUE, JAIME
16:51		49-31	H 18	GOOD! FT by ECHENIQUE, JAIME
16:38	GOOD! FT by SHULER, DEVONTAE	49-32	H 17	
16:38	GOOD! FT by SHULER, DEVONTAE	49-33	H 16	
16:21		51-33	H 18	GOOD! JUMPER by BURTON, JAMARIUS
15:51		54-33	H 21	GOOD! 3PTR by STEVENSON, ERIK
15:06	GOOD! FT by SY, KHADIM	54-34	H 20	
15:06	GOOD! FT by SY, KHADIM	54-35	H 19	
14:44	GOOD! DUNK by HINSON, BLAKE [FB]	54-37	H 17	
14:27		55-37	H 18	GOOD! FT by UDEZE, MORRIS
13:49		57-37	H 20	GOOD! JUMPER by BURTON, JAMARIUS
12:56	GOOD! LAYUP by CROWLEY, AUSTIN	57-39	H 18	
12:24		59-39	H 20	GOOD! JUMPER by BURTON, JAMARIUS [PNT]
11:59		61-39	H 22	GOOD! LAYUP by STEVENSON, ERIK [FB]
11:42	GOOD! LAYUP by BUFFEN, KJ	61-41	H 20	
11:14	GOOD! LAYUP by SY, KHADIM	61-43	H 18	
09:36	GOOD! FT by HUNTER, SAMMY	61-44	H 17	
09:16		62-44	H 18	GOOD! FT by WADE, TREY
09:05		64-44	H 20	GOOD! LAYUP by SHERFIELD, GRANT
08:11	GOOD! LAYUP by SY, KHADIM	64-46	H 18	
08:11	GOOD! FT by BUFFEN, KJ [FB]	64-47	H 17	
08:11	GOOD! FT by BUFFEN, KJ [FB]	64-48	H 16	
05:50		66-48	H 18	GOOD! JUMPER by BURTON, JAMARIUS
04:08		67-48	H 19	GOOD! FT by SHERFIELD, GRANT
04:08		68-48	H 20	GOOD! FT by SHERFIELD, GRANT
03:46	GOOD! LAYUP by HINSON, BLAKE	68-50	H 18	
03:46	GOOD! FT by HINSON, BLAKE	68-51	H 17	
03:23		69-51	H 18	GOOD! FT by UDEZE, MORRIS
03:23		70-51	H 19	GOOD! FT by UDEZE, MORRIS
01:41		72-51	H 21	GOOD! LAYUP by SHERFIELD, GRANT
00:48		74-51	H 23	GOOD! DUNK by WADE, TREY
00:40	GOOD! 3PTR by SHULER, DEVONTAE	74-54	H 20	

Ole Miss 54, Wichita St. 74

Official Substitutions Log
Ole Miss vs Wichita St.
Period 1
January 04, 2020 at Charles Koch Arena - Wichita, Kan.



VISITORS: Ole Miss	Time	Score	HOME: Wichita St.
0 HINSON, BLAKE			1 ETIENNE, TYSON
3 SY, KHADIM			2 BURTON, JAMARIUS
5 BUFFEN, KJ			5 WADE, TREY
2 SHULER, DEVONTAE			10 STEVENSON, ERIK
4 TYREE, BREEIN			21 ECHENIQUE, JAIME
SUB OUT: 5 BUFFEN, KJ	18:30	2-5	
SUB IN: 14 COLLUM, ANTAVION	18:30		
	16:37	4-9	SUB OUT: ETIENNE, TYSON
	16:37		SUB IN: SHERFIELD, GRANT
SUB OUT: 0 HINSON, BLAKE	16:37		
SUB IN: 11 MILLER, FRANCO	16:37		
	15:12	9-11	SUB OUT: ECHENIQUE, JAIME
	15:12		SUB IN: UDEZE, MORRIS
SUB OUT: 3 SY, KHADIM	15:12		
SUB IN: 23 HUNTER, SAMMY	15:12		
	13:41	9-11	SUB OUT: WADE, TREY
	13:41		SUB IN: DENNIS, DEXTER
	13:28	9-11	SUB OUT: STEVENSON, ERIK
	13:28		SUB IN: ETIENNE, TYSON
SUB OUT: 4 TYREE, BREEIN	12:49	10-13	
SUB IN: 0 HINSON, BLAKE	12:49		
	12:14	12-14	SUB OUT: UDEZE, MORRIS
	12:14		SUB IN: ECHENIQUE, JAIME
	10:43	12-14	SUB OUT: DENNIS, DEXTER
	10:43		SUB IN: WADE, TREY
SUB OUT: 14 COLLUM, ANTAVION	10:43		
SUB IN: 3 SY, KHADIM	10:43		
SUB OUT: 3 SY, KHADIM	10:31	13-14	
SUB IN: 1 CROWLEY, AUSTIN	10:31		
SUB OUT: 23 HUNTER, SAMMY	10:31		
SUB IN: 3 SY, KHADIM	10:31		
	10:30	13-14	SUB OUT: BURTON, JAMARIUS
	10:30		SUB IN: STEVENSON, ERIK
	09:17	14-19	SUB OUT: ETIENNE, TYSON
	09:17		SUB IN: BURTON, JAMARIUS
SUB OUT: 1 CROWLEY, AUSTIN	09:17		
SUB IN: 5 BUFFEN, KJ	09:17		
SUB OUT: 3 SY, KHADIM	08:34	15-19	
SUB IN: 23 HUNTER, SAMMY	08:34		
	08:07	15-19	SUB OUT: ECHENIQUE, JAIME
	08:07		SUB IN: UDEZE, MORRIS
	07:46	15-19	SUB OUT: SHERFIELD, GRANT
	07:46		SUB IN: DENNIS, DEXTER
SUB OUT: 0 HINSON, BLAKE	07:46		
SUB IN: 4 TYREE, BREEIN	07:46		
	07:02	15-21	SUB OUT: UDEZE, MORRIS
	07:02		SUB IN: ECHENIQUE, JAIME
SUB OUT: 23 HUNTER, SAMMY	07:02		
SUB IN: 3 SY, KHADIM	07:02		
SUB OUT: 5 BUFFEN, KJ	06:33	15-21	
SUB IN: 14 COLLUM, ANTAVION	06:33		
	05:44	15-23	SUB OUT: DENNIS, DEXTER
	05:44		SUB IN: SHERFIELD, GRANT
SUB OUT: 14 COLLUM, ANTAVION	05:44		
SUB IN: 0 HINSON, BLAKE	05:44		
SUB OUT: 0 HINSON, BLAKE	05:44		
SUB IN: 14 COLLUM, ANTAVION	05:44		
SUB OUT: 3 SY, KHADIM	04:28	15-29	
SUB IN: 23 HUNTER, SAMMY	04:28		
	04:28		SUB OUT: STEVENSON, ERIK
	04:28		SUB IN: FERNANDES, NOAH
SUB OUT: 11 MILLER, FRANCO	03:13	17-29	
SUB IN: 5 BUFFEN, KJ	03:13		
SUB OUT: 5 BUFFEN, KJ	02:51	17-31	
SUB IN: 0 HINSON, BLAKE	02:51		
	02:35	17-32	SUB OUT: FERNANDES, NOAH
	02:35		SUB IN: STEVENSON, ERIK
SUB OUT: 0 HINSON, BLAKE	01:25	19-36	
SUB IN: 11 MILLER, FRANCO	01:25		
	00:06	24-39	SUB OUT: BURTON, JAMARIUS
	00:06		SUB OUT: ECHENIQUE, JAIME
	00:06		SUB IN: GORDON, DEANTONI
	00:06		SUB IN: MIDTGAARD, ASBJORN

Ole Miss 24, Wichita St. 39

Official Substitutions Log
Ole Miss vs Wichita St.
Period 2
January 04, 2020 at Charles Koch Arena - Wichita, Kan.



VISITORS: Ole Miss	Time	Score	HOME: Wichita St.
0 HINSON, BLAKE			1 ETIENNE, TYSON
3 SY, KHADIM			2 BURTON, JAMARIUS
5 BUFFEN, KJ			5 WADE, TREY
2 SHULER, DEVONTAE			10 STEVENSON, ERIK
4 TYREE, BREEIN			21 ECHENIQUE, JAIME
	20:00	-	SUB OUT: GORDON, DEANTONI
	20:00		SUB OUT: MIDTGAARD, ASBJORN
	20:00		SUB IN: BURTON, JAMARIUS
	20:00		SUB IN: ECHENIQUE, JAIME
SUB OUT: 11 MILLER, FRANCO	20:00		
SUB OUT: 14 COLLUM, ANTAVION	20:00		
SUB OUT: 23 HUNTER, SAMMY	20:00		
SUB IN: 0 HINSON, BLAKE	20:00		
SUB IN: 3 SY, KHADIM	20:00		
SUB IN: 5 BUFFEN, KJ	20:00		
SUB OUT: 0 HINSON, BLAKE	18:13	28-41	
SUB IN: 11 MILLER, FRANCO	18:13		
SUB OUT: 11 MILLER, FRANCO	16:51	31-48	
SUB IN: 0 HINSON, BLAKE	16:51		
	15:06	33-54	SUB OUT: ECHENIQUE, JAIME
	15:06		SUB IN: UDEZE, MORRIS
SUB OUT: 3 SY, KHADIM	15:06		
SUB IN: 23 HUNTER, SAMMY	15:06		
	14:27	37-55	SUB OUT: WADE, TREY
	14:27		SUB IN: DENNIS, DEXTER
	13:16	37-57	SUB OUT: SHERFIELD, GRANT
	13:16		SUB IN: ETIENNE, TYSON
SUB OUT: 0 HINSON, BLAKE	13:16		
SUB OUT: 4 TYREE, BREEIN	13:16		
SUB OUT: 23 HUNTER, SAMMY	13:16		
SUB IN: 1 CROWLEY, AUSTIN	13:16		
SUB IN: 3 SY, KHADIM	13:16		
SUB IN: 14 COLLUM, ANTAVION	13:16		
	12:09	39-59	SUB OUT: BURTON, JAMARIUS
	12:09		SUB IN: SHERFIELD, GRANT
SUB OUT: 2 SHULER, DEVONTAE	11:59	39-61	
SUB IN: 4 TYREE, BREEIN	11:59		
SUB OUT: 4 TYREE, BREEIN	11:14	43-61	
SUB IN: 2 SHULER, DEVONTAE	11:14		
SUB OUT: 5 BUFFEN, KJ	10:39	43-61	
SUB IN: 23 HUNTER, SAMMY	10:39		
SUB OUT: 3 SY, KHADIM	10:39		
SUB IN: 5 BUFFEN, KJ	10:39		
	09:36	43-61	SUB OUT: DENNIS, DEXTER
	09:36		SUB OUT: STEVENSON, ERIK
	09:36		SUB OUT: UDEZE, MORRIS
	09:36		SUB IN: BURTON, JAMARIUS
	09:36		SUB IN: WADE, TREY
	09:36		SUB IN: ECHENIQUE, JAIME
SUB OUT: 1 CROWLEY, AUSTIN	09:16	44-62	
SUB OUT: 5 BUFFEN, KJ	09:16		
SUB IN: 0 HINSON, BLAKE	09:16		
SUB IN: 4 TYREE, BREEIN	09:16		
	08:46	44-64	SUB OUT: ETIENNE, TYSON
	08:46		SUB IN: STEVENSON, ERIK
SUB OUT: 0 HINSON, BLAKE	08:46		
SUB OUT: 23 HUNTER, SAMMY	08:46		
SUB IN: 3 SY, KHADIM	08:46		
SUB IN: 5 BUFFEN, KJ	08:46		
SUB OUT: 14 COLLUM, ANTAVION	06:36	48-64	
SUB IN: 0 HINSON, BLAKE	06:36		
	04:08	48-66	SUB OUT: ECHENIQUE, JAIME
	04:08		SUB IN: UDEZE, MORRIS
SUB OUT: 3 SY, KHADIM	04:08		
SUB OUT: 5 BUFFEN, KJ	04:08		
SUB IN: 14 COLLUM, ANTAVION	04:08		
SUB IN: 23 HUNTER, SAMMY	04:08		
SUB OUT: 23 HUNTER, SAMMY	03:23	51-69	
SUB IN: 3 SY, KHADIM	03:23		
SUB OUT: 0 HINSON, BLAKE	01:53	51-70	
SUB OUT: 3 SY, KHADIM	01:53		
SUB IN: 1 CROWLEY, AUSTIN	01:53		
SUB IN: 10 CURRY, CARLOS	01:53		

Ole Miss 54, Wichita St. 74

Official Shot Chart
Ole Miss vs Wichita St.
 PERIOD 1 Shots
 January 04, 2020 at Charles Koch Arena - Wichita, Kan.

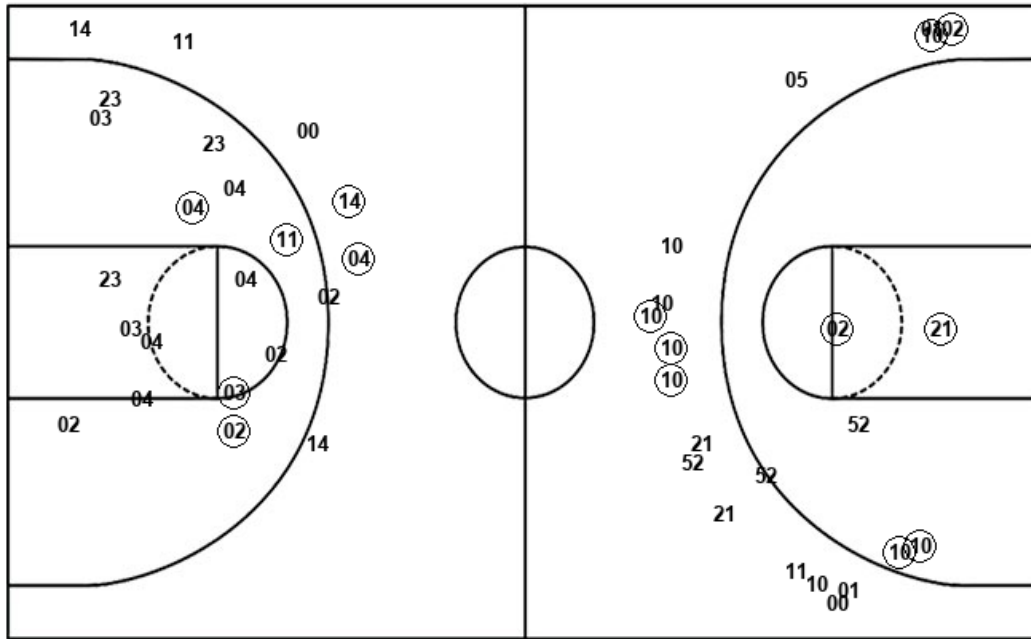


Wichita St.

Ole Miss

Layups
 02 (21) (52)

Dunks
 (05)



Layups
 02 (02) 23

Dunks

WSU : Period 1	Made	Att	Pct
Layups	2	3	66.7
Dunks	1	1	100.0
2PT Field Goals	7	10	70.0
3PT Field Goals	5	16	31.3
Total Field Goals	12	26	46.2

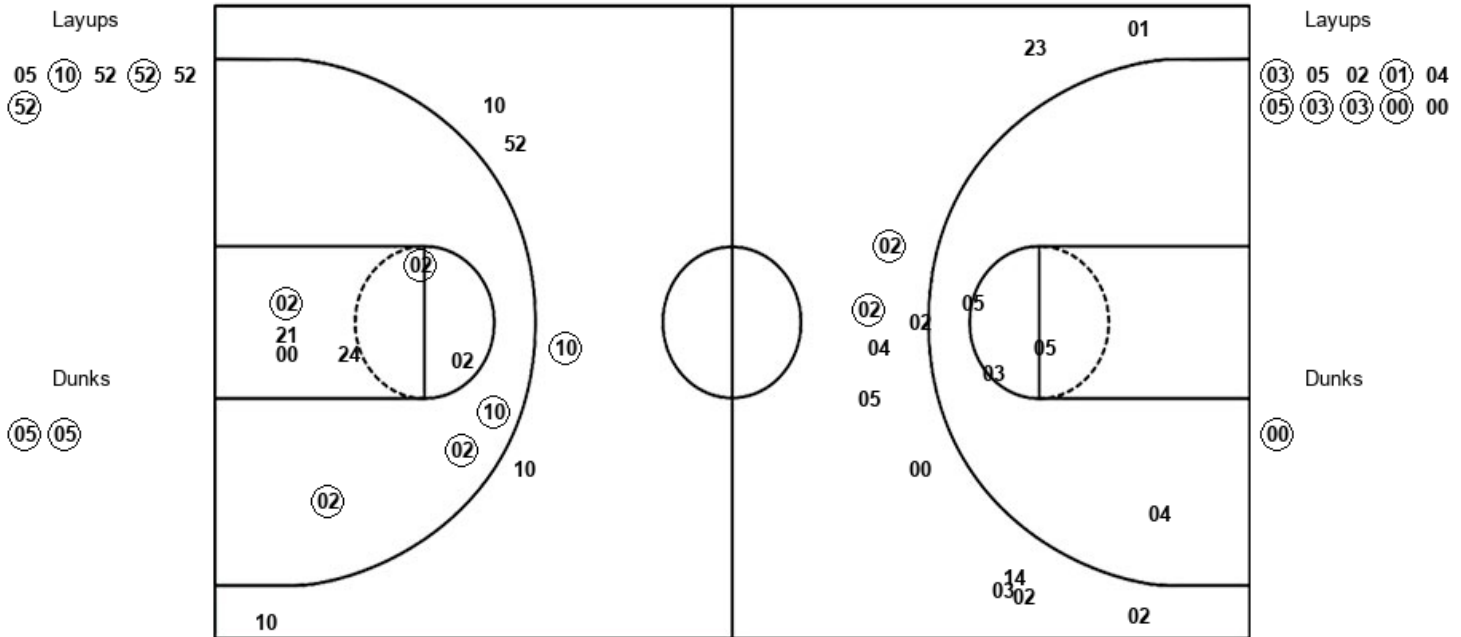
MIS : Period 1	Made	Att	Pct
Layups	1	3	33.3
Dunks	0	0	0
2PT Field Goals	5	18	27.8
3PT Field Goals	2	7	28.6
Total Field Goals	7	25	28.0

Official Shot Chart
Ole Miss vs Wichita St.
 PERIOD 2 Shots
 January 04, 2020 at Charles Koch Arena - Wichita, Kan.



Wichita St.

Ole Miss



WSU : Period 2	Made	Att	Pct
Layups	3	6	50.0
Dunks	2	2	100.0
2PT Field Goals	10	17	58.8
3PT Field Goals	1	5	20.0
Total Field Goals	11	22	50.0

MIS : Period 2	Made	Att	Pct
Layups	6	10	60.0
Dunks	1	1	100.0
2PT Field Goals	7	16	43.8
3PT Field Goals	2	11	18.2
Total Field Goals	9	27	33.3

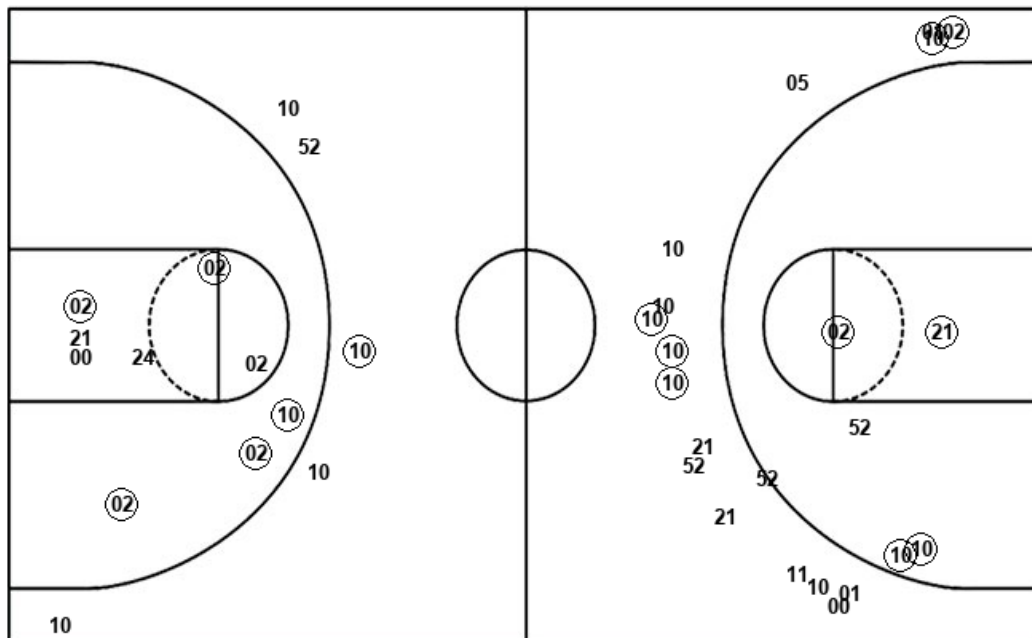
MIS : Period 2	Made	Att	Pct
Layups	6	10	60.0
Dunks	1	1	100.0
2PT Field Goals	7	16	43.8
3PT Field Goals	2	11	18.2
Total Field Goals	9	27	33.3

Official Shot Chart
Ole Miss vs Wichita St.
Wichita St. Team Shots
January 04, 2020 at Charles Koch Arena - Wichita, Kan.



Layups

Dunks



Layups

Dunks

WSU : Period 1	Made	Att	Pct
Layups	2	3	66.7
Dunks	1	1	100.0
2PT Field Goals	7	10	70.0
3PT Field Goals	5	16	31.3
Total Field Goals	12	26	46.2

WSU : Period 2	Made	Att	Pct
Layups	3	6	50.0
Dunks	2	2	100.0
2PT Field Goals	10	17	58.8
3PT Field Goals	1	5	20.0
Total Field Goals	11	22	50.0