

FINAL SCORE



East Carolina

69



Wichita St.

75

January 01, 2020 • Charles Koch Arena - Wichita, Kan.

FINAL STATISTICS

Official Box Score
East Carolina vs Wichita St.
Game Totals -- Final Statistics
January 01, 2020 at Charles Koch Arena - Wichita, Kan.



East Carolina 69

No.	Player	S	Pts	FG	3FG	FT	OR	DR	TR	PF	A	TO	Blk	Stl	Min	+/-
01	GARDNER, JAYDEN	F	29	12-20	1-2	4-5	4	6	10	4	0	2	1	2	34	-4
04	SUGGS, BRANDON	G	9	4-8	1-4	0-0	0	1	1	1	2	2	2	0	30	-10
10	JACKSON, TYRIE	G	0	0-2	0-2	0-0	0	3	3	4	0	2	0	0	12	-14
12	ROBINSON-WHITE, TREMONT	G	11	4-8	0-0	3-4	1	2	3	3	3	7	0	0	24	-7
32	COLEMAN, CHARLES	C	4	2-4	0-0	0-0	1	0	1	4	1	0	1	0	24	-7
02	NEWTON, TRISTEN	G	2	1-2	0-0	0-0	0	3	3	0	5	3	0	0	22	10
11	MILES, JJ	G	12	5-13	2-7	0-0	1	4	5	3	2	0	0	0	32	3
20	BARUTI, BITUMBA	G	2	1-2	0-1	0-0	0	4	4	4	0	1	0	0	15	2
25	STRICKLAND, SAMSON	F	0	0-0	0-0	0-0	0	0	0	0	0	0	0	1	2	-1
44	LUSTER, EDRA	C	0	0-0	0-0	0-0	0	1	1	0	1	0	0	0	4	-2
TEAM							2	3	5	0		0				
TOTALS			69	29-59	4-16	7-9	9	27	36	23	14	17	4	3	200	

Shooting By Period

Period	FG	FG%	3FG	3FG%	FT	FT%
1st Half	13-27	48%	3-7	43%	1-1	100%
2nd Half	16-32	50%	1-9	11%	6-8	75%
Game	29-59	49.2%	4-16	25.0%	7-9	77.8%

Deadball Rebounds: 1,1

Last FG: 2nd-00:12

Biggest Run: 9-0

Largest lead: By 1 at 2nd-12:46

Technical Fouls: None.

Wichita St. 75

No.	Player	S	Pts	FG	3FG	FT	OR	DR	TR	PF	A	TO	Blk	Stl	Min	+/-
01	ETIENNE, TYSON	G	11	4-12	3-10	0-0	2	4	6	1	1	1	0	1	34	6
02	BURTON, JAMARIUS	G	15	4-6	2-3	5-10	0	3	3	1	3	4	1	1	30	-2
05	WADE, TREY	F	11	4-11	1-4	2-6	3	3	6	0	2	1	0	0	34	6
10	STEVENSON, ERIK	G	17	4-12	3-8	6-8	1	8	9	3	5	1	1	5	36	5
21	ECHENIQUE, JAIME	C	7	3-5	0-0	1-2	2	0	2	4	0	0	0	1	16	11
03	GORDON, DEANTONI	F	0	0-0	0-0	0-0	0	0	0	0	0	0	0	0	2	1
24	UDEZE, MORRIS	C	9	4-5	0-0	1-1	2	2	4	2	1	1	1	1	20	-3
33	MIDTGAARD, ASBJORN	C	0	0-0	0-0	0-0	0	0	0	0	1	1	0	1	4	-2
52	SHERFIELD, GRANT	G	5	2-6	0-2	1-2	1	2	3	0	2	2	0	2	25	8
TEAM							0	0	0	0		0				
TOTALS			75	25-57	9-27	16-29	11	22	33	11	15	11	3	12	200	

Shooting By Period

Period	FG	FG%	3FG	3FG%	FT	FT%
1st Half	13-27	48%	4-13	31%	7-13	54%
2nd Half	12-30	40%	5-14	36%	9-16	56%
Game	25-57	43.9%	9-27	33.3%	16-29	55.2%

Deadball Rebounds: 6,0

Last FG: 2nd-03:14

Biggest Run: 9-0

Largest lead: By 11 at 2nd-06:38

Technical Fouls: None.

Game Notes:

Officials: Terry Oglesby, Michael Roberts, Owen Shortt
Attendance: 10506

Start Time: 03:01 PM ET

End Time: 05:05 PM ET

Game Duration: 2:03

Conference Game;

Score	1st	2nd	TOT
ECU	30	39	69
WSU	37	38	75

ECU led for 0:24. WSU led for 39:07.

Game was tied for 0:29.

Times tied: 0 Lead Changes: 2

Points from	ECU	WSU
In the Paint	30	28
Off Turns	6	13
2nd Chance	13	11
Fast Break	6	11
Bench	16	14

Official Box Score
East Carolina vs Wichita St.
First Half Statistics Only
January 01, 2020 at Charles Koch Arena - Wichita, Kan.



East Carolina 30

No.	Player	S	Pts	FG	3FG	FT	OR	DR	TR	PF	A	TO	Blk	Stl	Min	+/-
01	GARDNER, JAYDEN	F	9	4-7	0-0	1-1	0	2	2	1	0	1	0	2	16	-5
04	SUGGS, BRANDON	G	9	4-7	1-3	0-0	0	1	1	1	1	2	1	0	19	-9
10	JACKSON, TYRIE	G	0	0-0	0-0	0-0	0	0	0	2	0	2	0	0	2	-9
12	ROBINSON-WHITE, TREMONT	G	2	1-2	0-0	0-0	0	1	1	2	1	3	0	0	8	-6
32	COLEMAN, CHARLES	C	0	0-2	0-0	0-0	0	0	0	2	1	0	0	0	14	-9
02	NEWTON, TRISTEN	G	0	0-1	0-0	0-0	0	1	1	0	2	3	0	0	15	1
11	MILES, JJ	G	10	4-8	2-4	0-0	0	3	3	1	1	0	0	0	16	2
20	BARUTI, BITUMBA	G	0	0-0	0-0	0-0	0	2	2	2	0	1	0	0	4	3
25	STRICKLAND, SAMSON	F	0	0-0	0-0	0-0	0	0	0	0	0	0	0	1	2	-1
44	LUSTER, EDRA	C	0	0-0	0-0	0-0	0	1	1	0	1	0	0	0	4	-2
TEAM							2	2	4	0		0				
TOTALS			30	13-27	3-7	1-1	2	13	15	11	7	12	1	3	100	

Shooting By Period

Period	FG	FG%	3FG	3FG%	FT	FT%
1st Half	13-27	48%	3-7	43%	1-1	100%
Game	29-59	49.2%	4-16	25.0%	7-9	77.8%

Deadball Rebounds: 1,1

Last FG Half: ECU 2nd-00:12

Wichita St. 37

No.	Player	S	Pts	FG	3FG	FT	OR	DR	TR	PF	A	TO	Blk	Stl	Min	+/-
01	ETIENNE, TYSON	G	2	1-5	0-3	0-0	1	2	3	0	0	1	0	1	15	5
02	BURTON, JAMARIUS	G	12	4-5	2-2	2-6	0	2	2	0	2	2	0	1	16	3
05	WADE, TREY	F	4	1-4	1-2	1-2	1	2	3	0	2	1	0	0	18	6
10	STEVENSON, ERIK	G	7	2-7	1-5	2-2	1	4	5	1	2	1	1	3	19	7
21	ECHENIQUE, JAIME	C	0	0-0	0-0	0-0	0	0	0	2	0	0	0	1	5	6
03	GORDON, DEANTONI	F	0	0-0	0-0	0-0	0	0	0	0	0	0	0	0	2	1
24	UDEZE, MORRIS	C	9	4-4	0-0	1-1	0	1	1	1	0	1	0	0	11	3
33	MIDTGAARD, ASBJORN	C	0	0-0	0-0	0-0	0	0	0	0	1	1	0	1	4	-2
52	SHERFIELD, GRANT	G	3	1-2	0-1	1-2	1	1	2	0	0	1	0	1	11	6
TEAM							0	0	0	0		0				
TOTALS			37	13-27	4-13	7-13	4	12	16	4	7	8	1	8	100	

Shooting By Period

Period	FG	FG%	3FG	3FG%	FT	FT%
1st Half	13-27	48%	4-13	31%	7-13	54%
Game	25-57	43.9%	9-27	33.3%	16-29	55.2%

Deadball Rebounds: 6,0

Last FG Half: WSU 2nd-03:14

Game Notes:

Officials: **Terry Oglesby, Michael Roberts, Owen Shortt**
Attendance: **10506**

Start Time: **03:01 PM ET**
End Time: **05:05 PM ET**
Game Duration: **2:03**
Conference Game;

Score	1st	2nd	TOT
ECU	30	39	69
WSU	37	38	75

Points from (This Period)	ECU	WSU
In the Paint	10	16
Off Turns	4	9
2nd Chance	3	1
Fast Break	6	7
Bench	10	12

Official Play-By-Play
East Carolina vs Wichita St.
First Half

January 01, 2020 at Charles Koch Arena - Wichita, Kan.



Period 1

Starters:

East Carolina: 1 GARDNER, JAYDEN (F); 4 SUGGS, BRANDON (G); 10 JACKSON, TYRIE (G); 12 ROBINSON-WHITE, TREMONT (G); 32 COLEMAN, CHARLES (C);

Wichita St.: 1 ETIENNE, TYSON (G); 2 BURTON, JAMARIUS (G); 5 WADE, TREY (F); 10 STEVENSON, ERIK (G); 21 ECHENIQUE, JAIME (C);

Time	VISITORS: East Carolina	Score	Margin	HOME: Wichita St.
19:31		3-0	H 3	GOOD! 3PTR by WADE, TREY
19:31				ASSIST by STEVENSON, ERIK
19:07	MISSED 3PTR by SUGGS, BRANDON			
19:07				BLOCK by STEVENSON, ERIK
19:07	REBOUND (OFF) by TEAM			
19:03	MISSED JUMPER by ROBINSON-WHITE, TREMONT			
19:00				REBOUND (DEF) by ETIENNE, TYSON
18:49		6-0	H 6	GOOD! 3PTR by BURTON, JAMARIUS
18:49				ASSIST by WADE, TREY
18:34	TURNOVER (BADPASS) by ROBINSON-WHITE, TREMONT			
18:34				STEAL by STEVENSON, ERIK
18:29		8-0	H 8	GOOD! LAYUP by STEVENSON, ERIK [FB]
18:07	FOUL (OFF) by JACKSON, TYRIE			
18:07	TURNOVER (OFFENSIVE) by JACKSON, TYRIE			
17:49				MISSED 3PTR by ETIENNE, TYSON
17:46	REBOUND (DEF) by SUGGS, BRANDON			
17:37	TURNOVER (BADPASS) by JACKSON, TYRIE			
17:37				STEAL by ECHENIQUE, JAIME
17:32	FOUL (PERSONAL) by JACKSON, TYRIE			
17:32		9-0	H 9	GOOD! FT by BURTON, JAMARIUS [FB]
17:32	SUB OUT: JACKSON, TYRIE			
17:32	SUB IN: MILES, JJ			
17:32				MISSED FT by BURTON, JAMARIUS
17:32	REBOUND (DEF) by MILES, JJ			
17:17	GOOD! LAYUP by ROBINSON-WHITE, TREMONT	9-2	H 7	
17:04				MISSED JUMPER by BURTON, JAMARIUS
17:01				REBOUND (OFF) by STEVENSON, ERIK
17:00				MISSED 3PTR by STEVENSON, ERIK
16:57				REBOUND (OFF) by ETIENNE, TYSON
16:50				MISSED 3PTR by WADE, TREY
16:50	REBOUND (DEF) by TEAM			
16:50				FOUL (PERSONAL) by ECHENIQUE, JAIME
16:50				SUB OUT: ECHENIQUE, JAIME
16:50				SUB IN: UDEZE, MORRIS
16:48	TURNOVER (BADPASS) by SUGGS, BRANDON			
16:48				STEAL by STEVENSON, ERIK
16:44				MISSED LAYUP by STEVENSON, ERIK
16:39	REBOUND (DEF) by GARDNER, JAYDEN			
16:25	GOOD! JUMPER by GARDNER, JAYDEN	9-4	H 5	
16:09		11-4	H 7	GOOD! LAYUP by ETIENNE, TYSON
15:54	MISSED 3PTR by SUGGS, BRANDON			
15:51				REBOUND (DEF) by BURTON, JAMARIUS
15:45		13-4	H 9	GOOD! LAYUP by BURTON, JAMARIUS
15:22	GOOD! 3PTR by MILES, JJ	13-7	H 6	
15:22	ASSIST by ROBINSON-WHITE, TREMONT			
15:07		15-7	H 8	GOOD! JUMPER by UDEZE, MORRIS
14:52				
14:52	SUB OUT: SUGGS, BRANDON			
14:52	SUB OUT: COLEMAN, CHARLES			
14:52	SUB IN: NEWTON, TRISTEN			
14:52	SUB IN: BARUTI, BITUMBA			
14:42	GOOD! LAYUP by GARDNER, JAYDEN	15-9	H 6	
14:42	ASSIST by MILES, JJ			
14:42				FOUL (PERSONAL) by STEVENSON, ERIK
14:42	GOOD! FT by GARDNER, JAYDEN	15-10	H 5	
14:42	SUB OUT: ROBINSON-WHITE, TREMONT			
14:42	SUB IN: SUGGS, BRANDON			
14:17		17-10	H 7	GOOD! DUNK by UDEZE, MORRIS
14:17				ASSIST by WADE, TREY
14:03	GOOD! JUMPER by GARDNER, JAYDEN	17-12	H 5	
14:03	ASSIST by SUGGS, BRANDON			
13:43				TURNOVER (BADPASS) by SHERFIELD, GRANT
13:43	STEAL by GARDNER, JAYDEN			
13:34	MISSED JUMPER by SUGGS, BRANDON			
13:30				REBOUND (DEF) by WADE, TREY
13:26				SUB OUT: ETIENNE, TYSON
13:26				SUB IN: SHERFIELD, GRANT
13:22				MISSED 3PTR by STEVENSON, ERIK
13:19	REBOUND (DEF) by BARUTI, BITUMBA			
13:15	GOOD! JUMPER by MILES, JJ [FB]	17-14	H 3	

Time	VISITORS: East Carolina	Score	Margin	HOME: Wichita St.
13:15	FOUL (PERSONAL) by BARUTI, BITUMBA			
13:15				SUB OUT: WADE, TREY
13:15				SUB IN: GORDON, DEANTONI
12:50				MISSED 3PTR by STEVENSON, ERIK
12:46	REBOUND (DEF) by BARUTI, BITUMBA			
12:30	MISSED JUMPER by MILES, JJ			
12:26				REBOUND (DEF) by STEVENSON, ERIK
12:03		19-14	H 5	GOOD! JUMPER by BURTON, JAMARIUS
12:03				ASSIST by STEVENSON, ERIK
11:38	GOOD! 3PTR by MILES, JJ	19-17	H 2	
11:38	ASSIST by COLEMAN, CHARLES			
11:22	SUB OUT: GARDNER, JAYDEN			
11:22	SUB IN: COLEMAN, CHARLES			
11:22		21-17	H 4	GOOD! LAYUP by UDEZE, MORRIS
11:22				ASSIST by BURTON, JAMARIUS
11:22				
11:22				SUB OUT: GORDON, DEANTONI
11:22				SUB OUT: STEVENSON, ERIK
11:22				SUB IN: ETIENNE, TYSON
11:22				SUB IN: WADE, TREY
11:22	SUB OUT: MILES, JJ			
11:22	SUB OUT: COLEMAN, CHARLES			
11:22	SUB IN: GARDNER, JAYDEN			
11:22	SUB IN: ROBINSON-WHITE, TREMONT			
11:22	FOUL (PERSONAL) by COLEMAN, CHARLES			
11:22		22-17	H 5	GOOD! FT by UDEZE, MORRIS [FB]
11:22				SUB OUT: UDEZE, MORRIS
11:22				SUB IN: ECHENIQUE, JAIME
11:22	FOUL (OFF) by BARUTI, BITUMBA			
11:22	TURNOVER (OFFENSIVE) by BARUTI, BITUMBA			
11:22	SUB OUT: BARUTI, BITUMBA			
11:22	SUB IN: LUSTER, EDRA			
11:17		24-17	H 7	GOOD! LAYUP by SHERFIELD, GRANT
10:59	TURNOVER (LOSTBALL) by ROBINSON-WHITE, TREMONT			
10:59				STEAL by BURTON, JAMARIUS
10:44	FOUL (PERSONAL) by GARDNER, JAYDEN			
10:44		25-17	H 8	GOOD! FT by BURTON, JAMARIUS
10:44				MISSED FT by BURTON, JAMARIUS
10:44	REBOUND (DEF) by GARDNER, JAYDEN			
10:34	GOOD! LAYUP by SUGGS, BRANDON	25-19	H 6	
10:34	ASSIST by LUSTER, EDRA			
10:14				MISSED JUMPER by WADE, TREY
10:14	BLOCK by SUGGS, BRANDON			
10:09	REBOUND (DEF) by ROBINSON-WHITE, TREMONT			
10:06	GOOD! LAYUP by GARDNER, JAYDEN [FB]	25-21	H 4	
09:54				TURNOVER (BADPASS) by WADE, TREY
09:54	STEAL by GARDNER, JAYDEN			
09:53	FOUL (OFF) by ROBINSON-WHITE, TREMONT			
09:53	TURNOVER (OFFENSIVE) by ROBINSON-WHITE, TREMONT			
09:53				SUB OUT: BURTON, JAMARIUS
09:53				SUB IN: STEVENSON, ERIK
09:42	SUB OUT: SUGGS, BRANDON			
09:42	SUB IN: MILES, JJ			
09:39				TURNOVER (LOSTBALL) by ETIENNE, TYSON
09:39				FOUL (PERSONAL) by ECHENIQUE, JAIME
09:39				SUB OUT: ECHENIQUE, JAIME
09:39				SUB IN: UDEZE, MORRIS
09:25	MISSED 3PTR by MILES, JJ			
09:22				REBOUND (DEF) by SHERFIELD, GRANT
08:54				MISSED 3PTR by SHERFIELD, GRANT
08:51				REBOUND (OFF) by SHERFIELD, GRANT
08:49				MISSED JUMPER by WADE, TREY
08:45	REBOUND (DEF) by LUSTER, EDRA			
08:43	TURNOVER (BADPASS) by NEWTON, TRISTEN			
08:43				STEAL by STEVENSON, ERIK
08:39	FOUL (PERSONAL) by ROBINSON-WHITE, TREMONT			
08:39		26-21	H 5	GOOD! FT by STEVENSON, ERIK [FB]
08:39	SUB OUT: ROBINSON-WHITE, TREMONT			
08:39	SUB OUT: LUSTER, EDRA			
08:39	SUB IN: SUGGS, BRANDON			
08:39	SUB IN: COLEMAN, CHARLES			
08:39		27-21	H 6	GOOD! FT by STEVENSON, ERIK [FB]
08:23	TURNOVER (BADPASS) by NEWTON, TRISTEN			
08:13				MISSED 3PTR by ETIENNE, TYSON
08:12	REBOUND (DEF) by TEAM			
07:49	MISSED JUMPER by COLEMAN, CHARLES			
07:45				REBOUND (DEF) by ETIENNE, TYSON
07:43				FOUL (OFF) by UDEZE, MORRIS
07:43				TURNOVER (OFFENSIVE) by UDEZE, MORRIS
07:43				

Time	VISITORS: East Carolina	Score	Margin	HOME: Wichita St.
07:43				SUB OUT: ETIENNE, TYSON
07:43				SUB OUT: UDEZE, MORRIS
07:43				SUB IN: BURTON, JAMARIUS
07:43				SUB IN: MIDTGAARD, ASBJORN
07:26	MISSED JUMPER by GARDNER, JAYDEN			
07:22				REBOUND (DEF) by STEVENSON, ERIK
06:58				TURNOVER (TRAVEL) by MIDTGAARD, ASBJORN
06:36	TURNOVER (LOSTBALL) by GARDNER, JAYDEN			
06:36				STEAL by MIDTGAARD, ASBJORN
06:11	FOUL (PERSONAL) by MILES, JJ			
06:11				MISSED FT by BURTON, JAMARIUS
06:11				REBOUND (OFF) by TEAM
06:11				MISSED FT by BURTON, JAMARIUS
06:09	REBOUND (DEF) by MILES, JJ			
05:50	MISSED LAYUP by MILES, JJ			
05:46				REBOUND (DEF) by WADE, TREY
05:41		30-21	H 9	GOOD! 3PTR by BURTON, JAMARIUS
05:41				ASSIST by MIDTGAARD, ASBJORN
05:38	TIMEOUT 30SEC			
05:38				SUB OUT: SHERFIELD, GRANT
05:38				SUB IN: ETIENNE, TYSON
05:29	MISSED JUMPER by GARDNER, JAYDEN			
05:27	REBOUND (OFF) by TEAM			
05:15	GOOD! 3PTR by SUGGS, BRANDON	30-24	H 6	
05:15	ASSIST by NEWTON, TRISTEN			
04:56				TURNOVER (TRAVEL) by BURTON, JAMARIUS
04:35	GOOD! JUMPER by MILES, JJ	30-26	H 4	
04:16				MISSED JUMPER by ETIENNE, TYSON
04:13	REBOUND (DEF) by NEWTON, TRISTEN			
04:03	MISSED JUMPER by GARDNER, JAYDEN			
03:59				REBOUND (DEF) by BURTON, JAMARIUS
03:56				TURNOVER (OTHER) by STEVENSON, ERIK
03:56				
03:56				SUB OUT: MIDTGAARD, ASBJORN
03:56				SUB IN: UDEZE, MORRIS
03:56	SUB OUT: GARDNER, JAYDEN			
03:56	SUB IN: STRICKLAND, SAMSON			
03:32	MISSED JUMPER by COLEMAN, CHARLES			
03:28				REBOUND (DEF) by STEVENSON, ERIK
03:04		33-26	H 7	GOOD! 3PTR by STEVENSON, ERIK
03:04				ASSIST by BURTON, JAMARIUS
02:36	TURNOVER (LOSTBALL) by SUGGS, BRANDON			
02:36				STEAL by ETIENNE, TYSON
02:30				TURNOVER (LOSTBALL) by BURTON, JAMARIUS
02:30	STEAL by STRICKLAND, SAMSON			
02:26	GOOD! DUNK by SUGGS, BRANDON [FB]	33-28	H 5	
02:26	ASSIST by NEWTON, TRISTEN			
01:56				MISSED 3PTR by STEVENSON, ERIK
01:52	REBOUND (DEF) by MILES, JJ			
01:41	MISSED JUMPER by NEWTON, TRISTEN			
01:37				REBOUND (DEF) by STEVENSON, ERIK
01:33				MISSED 3PTR by ETIENNE, TYSON
01:32				REBOUND (OFF) by WADE, TREY
01:32	FOUL (PERSONAL) by COLEMAN, CHARLES			
01:32				MISSED FT by WADE, TREY
01:32				REBOUND (OFF) by TEAM
01:32				SUB OUT: BURTON, JAMARIUS
01:32				SUB IN: SHERFIELD, GRANT
01:32	SUB OUT: STRICKLAND, SAMSON			
01:32	SUB OUT: COLEMAN, CHARLES			
01:32	SUB IN: GARDNER, JAYDEN			
01:32	SUB IN: LUSTER, EDRA			
01:32		34-28	H 6	GOOD! FT by WADE, TREY
01:17	TURNOVER (BADPASS) by NEWTON, TRISTEN			
01:17				STEAL by SHERFIELD, GRANT
01:16	FOUL (PERSONAL) by SUGGS, BRANDON			
01:16				MISSED FT by SHERFIELD, GRANT
01:16				REBOUND (OFF) by TEAM
01:16		35-28	H 7	GOOD! FT by SHERFIELD, GRANT [FB]
00:50	GOOD! JUMPER by SUGGS, BRANDON	35-30	H 5	
00:22		37-30	H 7	GOOD! LAYUP by UDEZE, MORRIS
00:00	MISSED 3PTR by MILES, JJ			
00:00				REBOUND (DEF) by UDEZE, MORRIS

East Carolina 30, Wichita St. 37

Points from (This Period)	ECU	WSU
In the Paint	10	16
Off Turns	4	9
2nd Chance	3	1
Fast Break	6	7
Bench	10	12

Official Box Score
East Carolina vs Wichita St.
Second Half Statistics Only
January 01, 2020 at Charles Koch Arena - Wichita, Kan.



East Carolina 39

No.	Player	S	Pts	FG	3FG	FT	OR	DR	TR	PF	A	TO	Blk	Stl	Min	+/-
01	GARDNER, JAYDEN	F	20	8-13	1-2	3-4	4	4	8	3	0	1	1	0	18	1
04	SUGGS, BRANDON	G	0	0-1	0-1	0-0	0	0	0	0	1	0	1	0	11	-1
10	JACKSON, TYRIE	G	0	0-2	0-2	0-0	0	3	3	2	0	0	0	0	10	-5
12	ROBINSON-WHITE, TREMONT	G	9	3-6	0-0	3-4	1	1	2	1	2	4	0	0	16	-1
32	COLEMAN, CHARLES	C	4	2-2	0-0	0-0	1	0	1	2	0	0	1	0	10	2
02	NEWTON, TRISTEN	G	2	1-1	0-0	0-0	0	2	2	0	3	0	0	0	7	9
11	MILES, JJ	G	2	1-5	0-3	0-0	1	1	2	2	1	0	0	0	16	1
20	BARUTI, BITUMBA	G	2	1-2	0-1	0-0	0	2	2	2	0	0	0	0	12	-1
25	STRICKLAND, SAMSON	F	0	0-0	0-0	0-0	0	0	0	0	0	0	0	0	0	0
44	LUSTER, EDRA	C	0	0-0	0-0	0-0	0	0	0	0	0	0	0	0	0	0
	TEAM						0	1	1	0		0				
TOTALS			39	16-32	1-9	6-8	7	14	21	12	7	5	3	0	100	

Shooting By Period

Period	FG	FG%	3FG	3FG%	FT	FT%
2nd Half	16-32	50%	1-9	11%	6-8	75%
Game	29-59	49.2%	4-16	25.0%	7-9	77.8%

Deadball Rebounds: 1,1

Last FG Half: ECU -

Wichita St. 38

No.	Player	S	Pts	FG	3FG	FT	OR	DR	TR	PF	A	TO	Blk	Stl	Min	+/-
01	ETIENNE, TYSON	G	9	3-7	3-7	0-0	1	2	3	1	1	0	0	0	19	1
02	BURTON, JAMARIUS	G	3	0-1	0-1	3-4	0	1	1	1	1	2	1	0	14	-5
05	WADE, TREY	F	7	3-7	0-2	1-4	2	1	3	0	0	0	0	0	16	0
10	STEVENSON, ERIK	G	10	2-5	2-3	4-6	0	4	4	2	3	0	0	2	17	-2
21	ECHENIQUE, JAIME	C	7	3-5	0-0	1-2	2	0	2	2	0	0	0	0	11	5
03	GORDON, DEANTONI	F	0	0-0	0-0	0-0	0	0	0	0	0	0	0	0	0	0
24	UDEZE, MORRIS	C	0	0-1	0-0	0-0	2	1	3	1	1	0	1	1	9	-6
33	MIDTGAARD, ASBJORN	C	0	0-0	0-0	0-0	0	0	0	0	0	0	0	0	0	0
52	SHERFIELD, GRANT	G	2	1-4	0-1	0-0	0	1	1	0	2	1	0	1	14	2
	TEAM						0	0	0	0		0				
TOTALS			38	12-30	5-14	9-16	7	10	17	7	8	3	2	4	100	

Shooting By Period

Period	FG	FG%	3FG	3FG%	FT	FT%
2nd Half	12-30	40%	5-14	36%	9-16	56%
Game	25-57	43.9%	9-27	33.3%	16-29	55.2%

Deadball Rebounds: 6,0

Last FG Half: WSU -

Game Notes:

Officials: Terry Oglesby, Michael Roberts, Owen Shortt
Attendance: 10506

Start Time: 03:01 PM ET
End Time: 05:05 PM ET
Game Duration: 2:03
Conference Game;

Score	1st	2nd	TOT
ECU	30	39	69
WSU	37	38	75

Points from (This Period)	ECU	WSU
In the Paint	20	12
Off Turns	2	4
2nd Chance	10	10
Fast Break	0	4
Bench	6	2

Official Play-By-Play
East Carolina vs Wichita St.
Second Half
January 01, 2020 at Charles Koch Arena - Wichita, Kan.



Period 2

Starters:

East Carolina: 1 GARDNER, JAYDEN (F); 4 SUGGS, BRANDON (G); 10 JACKSON, TYRIE (G); 12 ROBINSON-WHITE, TREMONT (G); 32 COLEMAN, CHARLES (C);
Wichita St.: 1 ETIENNE, TYSON (G); 2 BURTON, JAMARIUS (G); 5 WADE, TREY (F); 10 STEVENSON, ERIK (G); 21 ECHENIQUE, JAIME (C);

Time	VISITORS: East Carolina	Score	Margin	HOME: Wichita St.
20:00				SUB OUT: SHERFIELD, GRANT
20:00				SUB IN: BURTON, JAMARIUS
20:00	SUB OUT: NEWTON, TRISTEN			
20:00	SUB OUT: MILES, JJ			
20:00	SUB OUT: LUSTER, EDRA			
20:00	SUB IN: JACKSON, TYRIE			
20:00	SUB IN: ROBINSON-WHITE, TREMONT			
20:00	SUB IN: COLEMAN, CHARLES			
19:51				MISSED 3PTR by WADE, TREY
19:48	REBOUND (DEF) by JACKSON, TYRIE			
19:39	MISSED 3PTR by JACKSON, TYRIE			
19:39				BLOCK by BURTON, JAMARIUS
19:34	REBOUND (OFF) by GARDNER, JAYDEN			
19:24	GOOD! JUMPER by ROBINSON-WHITE, TREMONT	37-32	H 5	
19:09	FOUL (PERSONAL) by JACKSON, TYRIE			
18:50		40-32	H 8	GOOD! 3PTR by ETIENNE, TYSON
18:50				ASSIST by STEVENSON, ERIK
18:34	MISSED JUMPER by GARDNER, JAYDEN			
18:28	REBOUND (OFF) by COLEMAN, CHARLES			
18:28	GOOD! LAYUP by COLEMAN, CHARLES	40-34	H 6	
18:09				MISSED LAYUP by STEVENSON, ERIK
18:06				REBOUND (OFF) by UDEZE, MORRIS
17:58		42-34	H 8	GOOD! LAYUP by WADE, TREY
17:58				ASSIST by STEVENSON, ERIK
17:45	MISSED LAYUP by ROBINSON-WHITE, TREMONT			
17:42				REBOUND (DEF) by UDEZE, MORRIS
17:33				MISSED JUMPER by WADE, TREY
17:29				REBOUND (OFF) by UDEZE, MORRIS
17:28				MISSED LAYUP by UDEZE, MORRIS
17:28	BLOCK by SUGGS, BRANDON			
17:22	REBOUND (DEF) by JACKSON, TYRIE			
17:22	TURNOVER (LOSTBALL) by GARDNER, JAYDEN			
17:22	SUB OUT: JACKSON, TYRIE			
17:22	SUB IN: MILES, JJ			
17:13	SUB OUT: SUGGS, BRANDON			
17:13	SUB IN: NEWTON, TRISTEN			
17:07				MISSED 3PTR by BURTON, JAMARIUS
17:04	REBOUND (DEF) by GARDNER, JAYDEN			
16:46	GOOD! JUMPER by ROBINSON-WHITE, TREMONT [PNT]	42-36	H 6	
16:34		44-36	H 8	GOOD! JUMPER by WADE, TREY
16:34				ASSIST by UDEZE, MORRIS
16:16	GOOD! 3PTR by GARDNER, JAYDEN	44-39	H 5	
16:16	ASSIST by ROBINSON-WHITE, TREMONT			
15:55				MISSED 3PTR by WADE, TREY
15:52	REBOUND (DEF) by ROBINSON-WHITE, TREMONT			
15:45	GOOD! LAYUP by GARDNER, JAYDEN	44-41	H 3	
15:45	ASSIST by NEWTON, TRISTEN			
15:27				TURNOVER (OTHER) by BURTON, JAMARIUS
15:27				
15:27				SUB OUT: BURTON, JAMARIUS
15:27				SUB OUT: UDEZE, MORRIS
15:27				SUB IN: ECHENIQUE, JAIME
15:27				SUB IN: SHERFIELD, GRANT
15:27	SUB OUT: COLEMAN, CHARLES			
15:27	SUB IN: BARUTI, BITUMBA			
15:22	MISSED JUMPER by GARDNER, JAYDEN			
15:19				REBOUND (DEF) by SHERFIELD, GRANT
14:51				MISSED 3PTR by ETIENNE, TYSON
14:48	REBOUND (DEF) by MILES, JJ			
14:29	GOOD! LAYUP by NEWTON, TRISTEN	44-43	H 1	
14:15	FOUL (PERSONAL) by MILES, JJ			
14:15				SUB OUT: WADE, TREY
14:15				SUB IN: BURTON, JAMARIUS
14:15	SUB OUT: GARDNER, JAYDEN			
14:15	SUB OUT: ROBINSON-WHITE, TREMONT			
14:15	SUB IN: JACKSON, TYRIE			
14:15	SUB IN: COLEMAN, CHARLES			
13:55				TURNOVER (LOSTBALL) by BURTON, JAMARIUS
13:38	MISSED JUMPER by MILES, JJ			
13:34				REBOUND (DEF) by ETIENNE, TYSON

Time	VISITORS: East Carolina	Score	Margin	HOME: Wichita St.
13:28				MISSED JUMPER by ECHENIQUE, JAIME
13:24	REBOUND (DEF) by NEWTON, TRISTEN			
13:11	MISSED 3PTR by BARUTI, BITUMBA			
13:08				REBOUND (DEF) by STEVENSON, ERIK
12:57				MISSED LAYUP by ECHENIQUE, JAIME
12:57	BLOCK by COLEMAN, CHARLES			
12:51	REBOUND (DEF) by NEWTON, TRISTEN			
12:46	GOOD! LAYUP by BARUTI, BITUMBA	44-45	V 1	
12:22		46-45	H 1	GOOD! LAYUP by ECHENIQUE, JAIME
12:22	FOUL (PERSONAL) by COLEMAN, CHARLES			
12:22				SUB OUT: BURTON, JAMARIUS
12:22				SUB IN: WADE, TREY
12:22	SUB OUT: NEWTON, TRISTEN			
12:22	SUB OUT: COLEMAN, CHARLES			
12:22	SUB IN: GARDNER, JAYDEN			
12:22	SUB IN: ROBINSON-WHITE, TREMONT			
12:22				MISSED FT by ECHENIQUE, JAIME
12:21	REBOUND (DEF) by BARUTI, BITUMBA			
11:55	MISSED LAYUP by ROBINSON-WHITE, TREMONT			
11:52				REBOUND (DEF) by ETIENNE, TYSON
11:42		49-45	H 4	GOOD! 3PTR by STEVENSON, ERIK
11:42				ASSIST by SHERFIELD, GRANT
11:20	MISSED 3PTR by JACKSON, TYRIE			
11:17	REBOUND (OFF) by GARDNER, JAYDEN			
11:12	TURNOVER (LOSTBALL) by ROBINSON-WHITE, TREMONT			
11:12				STEAL by STEVENSON, ERIK
11:08	FOUL (PERSONAL) by JACKSON, TYRIE			
11:08				
11:08	SUB OUT: JACKSON, TYRIE			
11:08	SUB IN: SUGGS, BRANDON			
11:08				MISSED FT by STEVENSON, ERIK
11:08				REBOUND (OFF) by TEAM
11:08		50-45	H 5	GOOD! FT by STEVENSON, ERIK [FB]
10:56				FOUL (PERSONAL) by STEVENSON, ERIK
10:49	MISSED 3PTR by GARDNER, JAYDEN			
10:46				REBOUND (DEF) by STEVENSON, ERIK
10:43				MISSED JUMPER by STEVENSON, ERIK
10:38	REBOUND (DEF) by GARDNER, JAYDEN			
10:34				FOUL (PERSONAL) by STEVENSON, ERIK
10:34	GOOD! FT by GARDNER, JAYDEN	50-46	H 4	
10:34	GOOD! FT by GARDNER, JAYDEN	50-47	H 3	
10:19				MISSED 3PTR by ETIENNE, TYSON
10:15				REBOUND (OFF) by WADE, TREY
10:14				MISSED LAYUP by WADE, TREY
10:14	BLOCK by GARDNER, JAYDEN			
10:09				REBOUND (OFF) by ETIENNE, TYSON
10:06		53-47	H 6	GOOD! 3PTR by STEVENSON, ERIK
10:06				ASSIST by ETIENNE, TYSON
09:51	MISSED JUMPER by GARDNER, JAYDEN			
09:46	REBOUND (OFF) by ROBINSON-WHITE, TREMONT			
09:46	GOOD! LAYUP by ROBINSON-WHITE, TREMONT	53-49	H 4	
09:31				MISSED 3PTR by ETIENNE, TYSON
09:27	REBOUND (DEF) by GARDNER, JAYDEN			
09:14	GOOD! JUMPER by MILES, JJ	53-51	H 2	
08:42				MISSED JUMPER by SHERFIELD, GRANT
08:37				REBOUND (OFF) by ECHENIQUE, JAIME
08:37		55-51	H 4	GOOD! DUNK by ECHENIQUE, JAIME
08:23	GOOD! JUMPER by GARDNER, JAYDEN	55-53	H 2	
08:23	ASSIST by MILES, JJ			
08:04		58-53	H 5	GOOD! 3PTR by ETIENNE, TYSON
08:04				ASSIST by STEVENSON, ERIK
07:46	MISSED 3PTR by MILES, JJ			
07:42	REBOUND (OFF) by MILES, JJ			
07:39	MISSED 3PTR by SUGGS, BRANDON			
07:39				REBOUND (DEF) by STEVENSON, ERIK
07:39	FOUL (PERSONAL) by BARUTI, BITUMBA			
07:39				
07:39	SUB OUT: SUGGS, BRANDON			
07:39	SUB OUT: BARUTI, BITUMBA			
07:39	SUB IN: JACKSON, TYRIE			
07:39	SUB IN: COLEMAN, CHARLES			
07:30				SUB OUT: STEVENSON, ERIK
07:30				SUB IN: BURTON, JAMARIUS
07:27		61-53	H 8	GOOD! 3PTR by ETIENNE, TYSON
07:27				ASSIST by SHERFIELD, GRANT
07:14	TURNOVER (BADPASS) by ROBINSON-WHITE, TREMONT			
07:14				STEAL by SHERFIELD, GRANT
07:12	FOUL (PERSONAL) by ROBINSON-WHITE, TREMONT			
07:12		62-53	H 9	GOOD! FT by BURTON, JAMARIUS [FB]
07:12		63-53	H 10	GOOD! FT by BURTON, JAMARIUS [FB]

Time	VISITORS: East Carolina	Score	Margin	HOME: Wichita St.
06:52				FOUL (PERSONAL) by ETIENNE, TYSON
06:52	MISSED FT by ROBINSON-WHITE, TREMONT			
06:52	REBOUND (OFF) by TEAM			
06:52				SUB OUT: ECHENIQUE, JAIME
06:52				SUB IN: UDEZE, MORRIS
06:52	GOOD! FT by ROBINSON-WHITE, TREMONT	63-54	H 9	
06:52	SUB OUT: ROBINSON-WHITE, TREMONT			
06:52	SUB IN: NEWTON, TRISTEN			
06:38		65-54	H 11	GOOD! DUNK by WADE, TREY
06:38				ASSIST by BURTON, JAMARIUS
06:11	GOOD! DUNK by COLEMAN, CHARLES	65-56	H 9	
06:11	ASSIST by NEWTON, TRISTEN			
05:38				TURNOVER (BADPASS) by SHERFIELD, GRANT
05:22	GOOD! JUMPER by GARDNER, JAYDEN	65-58	H 7	
05:22	ASSIST by NEWTON, TRISTEN			
05:03				MISSED 3PTR by ETIENNE, TYSON
05:01				REBOUND (OFF) by WADE, TREY
05:01	FOUL (PERSONAL) by GARDNER, JAYDEN			
05:01				MISSED FT by WADE, TREY
05:01				REBOUND (OFF) by TEAM
05:01				SUB OUT: UDEZE, MORRIS
05:01				SUB IN: ECHENIQUE, JAIME
05:01	SUB OUT: NEWTON, TRISTEN			
05:01	SUB OUT: MILES, JJ			
05:01	SUB IN: SUGGS, BRANDON			
05:01	SUB IN: ROBINSON-WHITE, TREMONT			
05:01				MISSED FT by WADE, TREY
05:00	REBOUND (DEF) by JACKSON, TYRIE			
04:29				FOUL (PERSONAL) by ECHENIQUE, JAIME
04:29	GOOD! FT by ROBINSON-WHITE, TREMONT	65-59	H 6	
04:29				SUB OUT: WADE, TREY
04:29				SUB IN: STEVENSON, ERIK
04:29	GOOD! FT by ROBINSON-WHITE, TREMONT	65-60	H 5	
04:01				MISSED 3PTR by SHERFIELD, GRANT
03:59				REBOUND (OFF) by ECHENIQUE, JAIME
03:59		67-60	H 7	GOOD! LAYUP by ECHENIQUE, JAIME
03:59	FOUL (PERSONAL) by COLEMAN, CHARLES			
03:59				
03:59	SUB OUT: COLEMAN, CHARLES			
03:59	SUB IN: BARUTI, BITUMBA			
03:59		68-60	H 8	GOOD! FT by ECHENIQUE, JAIME
03:40	GOOD! LAYUP by GARDNER, JAYDEN	68-62	H 6	
03:40	ASSIST by ROBINSON-WHITE, TREMONT			
03:40				FOUL (PERSONAL) by BURTON, JAMARIUS
03:40	SUB OUT: JACKSON, TYRIE			
03:40	SUB IN: MILES, JJ			
03:40	GOOD! FT by GARDNER, JAYDEN	68-63	H 5	
03:14		70-63	H 7	GOOD! JUMPER by SHERFIELD, GRANT [PNT]
02:54	GOOD! JUMPER by GARDNER, JAYDEN	70-65	H 5	
02:54	ASSIST by SUGGS, BRANDON			
02:54	TIMEOUT TEAM			
02:27				MISSED JUMPER by SHERFIELD, GRANT
02:27	REBOUND (DEF) by TEAM			
02:27				FOUL (PERSONAL) by ECHENIQUE, JAIME
02:27				SUB OUT: ETIENNE, TYSON
02:27				SUB OUT: ECHENIQUE, JAIME
02:27				SUB IN: WADE, TREY
02:27				SUB IN: UDEZE, MORRIS
01:59	MISSED LAYUP by GARDNER, JAYDEN			
01:54	REBOUND (OFF) by GARDNER, JAYDEN			
01:54	GOOD! LAYUP by GARDNER, JAYDEN	70-67	H 3	
01:25				MISSED 3PTR by STEVENSON, ERIK
01:23	REBOUND (DEF) by TEAM			
01:23				SUB OUT: SHERFIELD, GRANT
01:23				SUB IN: ETIENNE, TYSON
01:16	TIMEOUT TEAM			
01:06	TURNOVER (BADPASS) by ROBINSON-WHITE, TREMONT			
01:06				STEAL by UDEZE, MORRIS
00:41	FOUL (PERSONAL) by BARUTI, BITUMBA			
00:41				MISSED FT by STEVENSON, ERIK
00:41				REBOUND (OFF) by TEAM
00:41		71-67	H 4	GOOD! FT by STEVENSON, ERIK
00:33	MISSED LAYUP by ROBINSON-WHITE, TREMONT			
00:33				BLOCK by UDEZE, MORRIS
00:28				REBOUND (DEF) by BURTON, JAMARIUS
00:27	FOUL (PERSONAL) by MILES, JJ			
00:27		72-67	H 5	GOOD! FT by BURTON, JAMARIUS [FB]
00:27				MISSED FT by BURTON, JAMARIUS
00:26	REBOUND (DEF) by BARUTI, BITUMBA			
00:21	MISSED 3PTR by MILES, JJ			

Time	VISITORS: East Carolina	Score	Margin	HOME: Wichita St.
00:20				REBOUND (DEF) by WADE, TREY
00:20	FOUL (PERSONAL) by GARDNER, JAYDEN			
00:20		73-67	H 6	GOOD! FT by WADE, TREY
00:20				MISSED FT by WADE, TREY
00:20	REBOUND (DEF) by GARDNER, JAYDEN			
00:12	MISSED 3PTR by MILES, JJ			
00:12	REBOUND (OFF) by GARDNER, JAYDEN			
00:12	GOOD! JUMPER by GARDNER, JAYDEN	73-69	H 4	
00:12				FOUL (PERSONAL) by UDEZE, MORRIS
00:12				SUB OUT: BURTON, JAMARIUS
00:12				SUB IN: SHERFIELD, GRANT
00:12	MISSED FT by GARDNER, JAYDEN			
00:12				REBOUND (DEF) by STEVENSON, ERIK
00:12	FOUL (PERSONAL) by GARDNER, JAYDEN			
00:12		74-69	H 5	GOOD! FT by STEVENSON, ERIK
00:12		75-69	H 6	GOOD! FT by STEVENSON, ERIK
00:08	TURNOVER (LOSTBALL) by ROBINSON-WHITE, TREMONT			
00:08				STEAL by STEVENSON, ERIK

East Carolina 69, Wichita St. 75

Points from (This Period)	ECU	WSU
In the Paint	20	12
Off Turns	2	4
2nd Chance	10	10
Fast Break	0	4
Bench	6	2

**Official Scoring/Possession Reference Chart
East Carolina vs Wichita St.**

Period 1

January 01, 2020 at Charles Koch Arena - Wichita, Kan.



Period 1

Starters:

East Carolina: 1 GARDNER, JAYDEN (F); 4 SUGGS, BRANDON (G); 10 JACKSON, TYRIE (G); 12 ROBINSON-WHITE, TREMONT (G); 32 COLEMAN, CHARLES (C);

Wichita St.: 1 ETIENNE, TYSON (G); 2 BURTON, JAMARIUS (G); 5 WADE, TREY (F); 10 STEVENSON, ERIK (G); 21 ECHENIQUE, JAIME (C);

Time	VISITORS: East Carolina	Score	Margin	HOME: Wichita St.
19:31		3-0	H 3	GOOD! 3PTR by WADE, TREY
18:49		6-0	H 6	GOOD! 3PTR by BURTON, JAMARIUS
18:29		8-0	H 8	GOOD! LAYUP by STEVENSON, ERIK [FB]
17:32		9-0	H 9	GOOD! FT by BURTON, JAMARIUS [FB]
17:17	GOOD! LAYUP by ROBINSON-WHITE, TREMONT	9-2	H 7	
16:25	GOOD! JUMPER by GARDNER, JAYDEN	9-4	H 5	
16:09		11-4	H 7	GOOD! LAYUP by ETIENNE, TYSON
15:45		13-4	H 9	GOOD! LAYUP by BURTON, JAMARIUS
15:22	GOOD! 3PTR by MILES, JJ	13-7	H 6	
15:07		15-7	H 8	GOOD! JUMPER by UDEZE, MORRIS
14:42	GOOD! LAYUP by GARDNER, JAYDEN	15-9	H 6	
14:42	GOOD! FT by GARDNER, JAYDEN	15-10	H 5	
14:17		17-10	H 7	GOOD! DUNK by UDEZE, MORRIS
14:03	GOOD! JUMPER by GARDNER, JAYDEN	17-12	H 5	
13:15	GOOD! JUMPER by MILES, JJ [FB]	17-14	H 3	
12:03		19-14	H 5	GOOD! JUMPER by BURTON, JAMARIUS
11:38	GOOD! 3PTR by MILES, JJ	19-17	H 2	
11:22		21-17	H 4	GOOD! LAYUP by UDEZE, MORRIS
11:22		22-17	H 5	GOOD! FT by UDEZE, MORRIS [FB]
11:17		24-17	H 7	GOOD! LAYUP by SHERFIELD, GRANT
10:44		25-17	H 8	GOOD! FT by BURTON, JAMARIUS
10:34	GOOD! LAYUP by SUGGS, BRANDON	25-19	H 6	
10:06	GOOD! LAYUP by GARDNER, JAYDEN [FB]	25-21	H 4	
08:39		26-21	H 5	GOOD! FT by STEVENSON, ERIK [FB]
08:39		27-21	H 6	GOOD! FT by STEVENSON, ERIK [FB]
05:41		30-21	H 9	GOOD! 3PTR by BURTON, JAMARIUS
05:15	GOOD! 3PTR by SUGGS, BRANDON	30-24	H 6	
04:35	GOOD! JUMPER by MILES, JJ	30-26	H 4	
03:04		33-26	H 7	GOOD! 3PTR by STEVENSON, ERIK
02:26	GOOD! DUNK by SUGGS, BRANDON [FB]	33-28	H 5	
01:32		34-28	H 6	GOOD! FT by WADE, TREY
01:16		35-28	H 7	GOOD! FT by SHERFIELD, GRANT [FB]
00:50	GOOD! JUMPER by SUGGS, BRANDON	35-30	H 5	
00:22		37-30	H 7	GOOD! LAYUP by UDEZE, MORRIS

East Carolina 30, Wichita St. 37

Official Scoring/Possession Reference Chart
East Carolina vs Wichita St.
Period 2
January 01, 2020 at Charles Koch Arena - Wichita, Kan.



Period 2

Starters:

East Carolina: 1 GARDNER, JAYDEN (F); 4 SUGGS, BRANDON (G); 10 JACKSON, TYRIE (G); 12 ROBINSON-WHITE, TREMONT (G); 32 COLEMAN, CHARLES (C);

Wichita St.: 1 ETIENNE, TYSON (G); 2 BURTON, JAMARIUS (G); 5 WADE, TREY (F); 10 STEVENSON, ERIK (G); 21 ECHENIQUE, JAIME (C);

Time	VISITORS: East Carolina	Score	Margin	HOME: Wichita St.
19:24	GOOD! JUMPER by ROBINSON-WHITE, TREMONT	37-32	H 5	
18:50		40-32	H 8	GOOD! 3PTR by ETIENNE, TYSON
18:28	GOOD! LAYUP by COLEMAN, CHARLES	40-34	H 6	
17:58		42-34	H 8	GOOD! LAYUP by WADE, TREY
16:46	GOOD! JUMPER by ROBINSON-WHITE, TREMONT [PNT]	42-36	H 6	
16:34		44-36	H 8	GOOD! JUMPER by WADE, TREY
16:16	GOOD! 3PTR by GARDNER, JAYDEN	44-39	H 5	
15:45	GOOD! LAYUP by GARDNER, JAYDEN	44-41	H 3	
14:29	GOOD! LAYUP by NEWTON, TRISTEN	44-43	H 1	
12:46	GOOD! LAYUP by BARUTI, BITUMBA	44-45	V 1	
12:22		46-45	H 1	GOOD! LAYUP by ECHENIQUE, JAIME
11:42		49-45	H 4	GOOD! 3PTR by STEVENSON, ERIK
11:08		50-45	H 5	GOOD! FT by STEVENSON, ERIK [FB]
10:34	GOOD! FT by GARDNER, JAYDEN	50-46	H 4	
10:34	GOOD! FT by GARDNER, JAYDEN	50-47	H 3	
10:06		53-47	H 6	GOOD! 3PTR by STEVENSON, ERIK
09:46	GOOD! LAYUP by ROBINSON-WHITE, TREMONT	53-49	H 4	
09:14	GOOD! JUMPER by MILES, JJ	53-51	H 2	
08:37		55-51	H 4	GOOD! DUNK by ECHENIQUE, JAIME
08:23	GOOD! JUMPER by GARDNER, JAYDEN	55-53	H 2	
08:04		58-53	H 5	GOOD! 3PTR by ETIENNE, TYSON
07:27		61-53	H 8	GOOD! 3PTR by ETIENNE, TYSON
07:12		62-53	H 9	GOOD! FT by BURTON, JAMARIUS [FB]
07:12		63-53	H 10	GOOD! FT by BURTON, JAMARIUS [FB]
06:52	GOOD! FT by ROBINSON-WHITE, TREMONT	63-54	H 9	
06:38		65-54	H 11	GOOD! DUNK by WADE, TREY
06:11	GOOD! DUNK by COLEMAN, CHARLES	65-56	H 9	
05:22	GOOD! JUMPER by GARDNER, JAYDEN	65-58	H 7	
04:29	GOOD! FT by ROBINSON-WHITE, TREMONT	65-59	H 6	
04:29	GOOD! FT by ROBINSON-WHITE, TREMONT	65-60	H 5	
03:59		67-60	H 7	GOOD! LAYUP by ECHENIQUE, JAIME
03:59		68-60	H 8	GOOD! FT by ECHENIQUE, JAIME
03:40	GOOD! LAYUP by GARDNER, JAYDEN	68-62	H 6	
03:40	GOOD! FT by GARDNER, JAYDEN	68-63	H 5	
03:14		70-63	H 7	GOOD! JUMPER by SHERFIELD, GRANT [PNT]
02:54	GOOD! JUMPER by GARDNER, JAYDEN	70-65	H 5	
01:54	GOOD! LAYUP by GARDNER, JAYDEN	70-67	H 3	
00:41		71-67	H 4	GOOD! FT by STEVENSON, ERIK
00:27		72-67	H 5	GOOD! FT by BURTON, JAMARIUS [FB]
00:20		73-67	H 6	GOOD! FT by WADE, TREY
00:12	GOOD! JUMPER by GARDNER, JAYDEN	73-69	H 4	
00:12		74-69	H 5	GOOD! FT by STEVENSON, ERIK
00:12		75-69	H 6	GOOD! FT by STEVENSON, ERIK

East Carolina 69, Wichita St. 75

**Official Substitutions Log
East Carolina vs Wichita St.
Period 1**

January 01, 2020 at Charles Koch Arena - Wichita, Kan.



VISITORS: East Carolina	Time	Score	HOME: Wichita St.
1 GARDNER, JAYDEN			1 ETIENNE, TYSON
4 SUGGS, BRANDON			2 BURTON, JAMARIUS
10 JACKSON, TYRIE			5 WADE, TREY
12 ROBINSON-WHITE, TREMONT			10 STEVENSON, ERIK
32 COLEMAN, CHARLES			21 ECHENIQUE, JAIME
SUB OUT: 10 JACKSON, TYRIE	17:32	0-9	
SUB IN: 11 MILES, JJ	17:32		
	16:50	2-9	SUB OUT: ECHENIQUE, JAIME
	16:50		SUB IN: UDEZE, MORRIS
SUB OUT: 4 SUGGS, BRANDON	14:52	7-15	
SUB OUT: 32 COLEMAN, CHARLES	14:52		
SUB IN: 2 NEWTON, TRISTEN	14:52		
SUB IN: 20 BARUTI, BITUMBA	14:52		
SUB OUT: 12 ROBINSON-WHITE, TREMONT	14:42	10-15	
SUB IN: 4 SUGGS, BRANDON	14:42		
	13:26	12-17	SUB OUT: ETIENNE, TYSON
	13:26		SUB IN: SHERFIELD, GRANT
	13:15	14-17	SUB OUT: WADE, TREY
	13:15		SUB IN: GORDON, DEANTONI
SUB OUT: 1 GARDNER, JAYDEN	11:22	17-19	
SUB IN: 32 COLEMAN, CHARLES	11:22		
	11:22		SUB OUT: GORDON, DEANTONI
	11:22		SUB OUT: STEVENSON, ERIK
	11:22		SUB IN: ETIENNE, TYSON
	11:22		SUB IN: WADE, TREY
SUB OUT: 11 MILES, JJ	11:22		
SUB OUT: 32 COLEMAN, CHARLES	11:22		
SUB IN: 1 GARDNER, JAYDEN	11:22		
SUB IN: 12 ROBINSON-WHITE, TREMONT	11:22		
	11:22		SUB OUT: UDEZE, MORRIS
	11:22		SUB IN: ECHENIQUE, JAIME
SUB OUT: 20 BARUTI, BITUMBA	11:22		
SUB IN: 44 LUSTER, EDRA	11:22		
	09:53	21-25	SUB OUT: BURTON, JAMARIUS
	09:53		SUB IN: STEVENSON, ERIK
SUB OUT: 4 SUGGS, BRANDON	09:42	21-25	
SUB IN: 11 MILES, JJ	09:42		
	09:39	21-25	SUB OUT: ECHENIQUE, JAIME
	09:39		SUB IN: UDEZE, MORRIS
SUB OUT: 12 ROBINSON-WHITE, TREMONT	08:39	21-26	
SUB OUT: 44 LUSTER, EDRA	08:39		
SUB IN: 4 SUGGS, BRANDON	08:39		
SUB IN: 32 COLEMAN, CHARLES	08:39		
	07:43	21-27	SUB OUT: ETIENNE, TYSON
	07:43		SUB OUT: UDEZE, MORRIS
	07:43		SUB IN: BURTON, JAMARIUS
	07:43		SUB IN: MIDTGAARD, ASBJORN
	05:38	21-30	SUB OUT: SHERFIELD, GRANT
	05:38		SUB IN: ETIENNE, TYSON
	03:56	26-30	SUB OUT: MIDTGAARD, ASBJORN
	03:56		SUB IN: UDEZE, MORRIS
SUB OUT: 1 GARDNER, JAYDEN	03:56		
SUB IN: 25 STRICKLAND, SAMSON	03:56		
	01:32	28-33	SUB OUT: BURTON, JAMARIUS
	01:32		SUB IN: SHERFIELD, GRANT
SUB OUT: 25 STRICKLAND, SAMSON	01:32		
SUB OUT: 32 COLEMAN, CHARLES	01:32		
SUB IN: 1 GARDNER, JAYDEN	01:32		
SUB IN: 44 LUSTER, EDRA	01:32		

East Carolina 30, Wichita St. 37

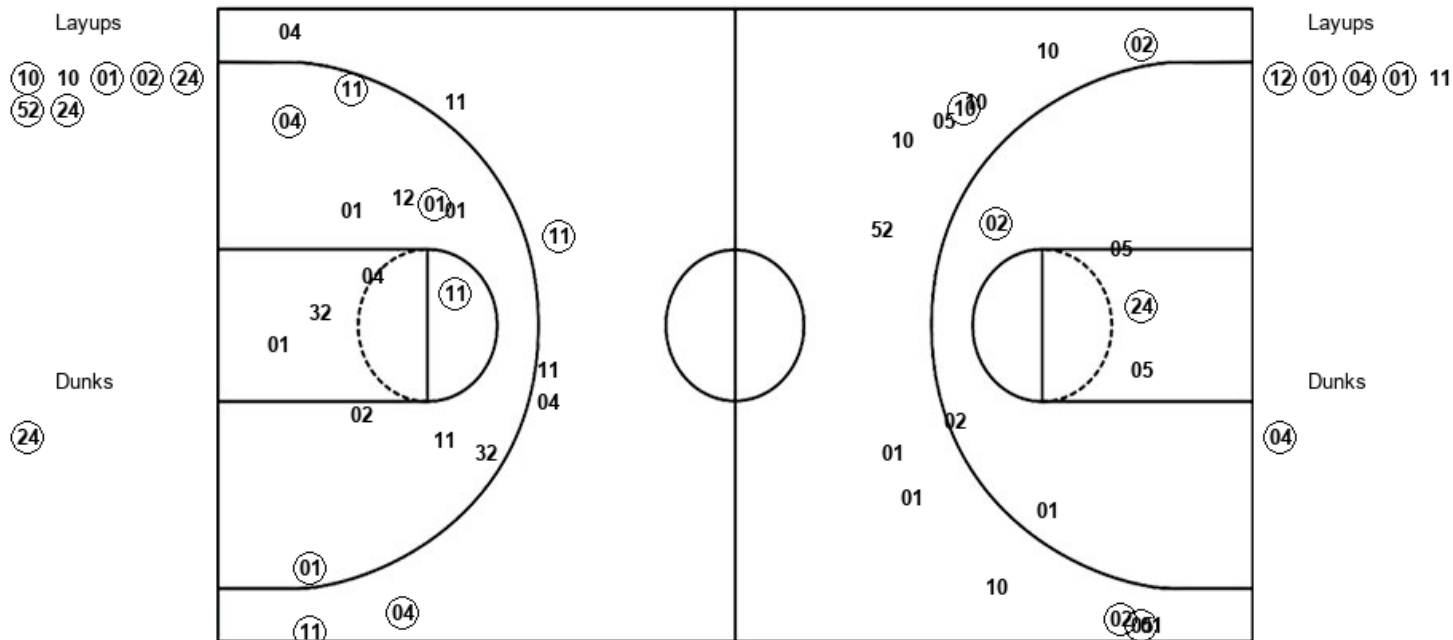
Official Substitutions Log
East Carolina vs Wichita St.
Period 2
January 01, 2020 at Charles Koch Arena - Wichita, Kan.



VISITORS: East Carolina	Time	Score	HOME: Wichita St.
1 GARDNER, JAYDEN			1 ETIENNE, TYSON
4 SUGGS, BRANDON			2 BURTON, JAMARIUS
10 JACKSON, TYRIE			5 WADE, TREY
12 ROBINSON-WHITE, TREMONT			10 STEVENSON, ERIK
32 COLEMAN, CHARLES			21 ECHENIQUE, JAIME
	20:00	-	SUB OUT: SHERFIELD, GRANT
	20:00		SUB IN: BURTON, JAMARIUS
SUB OUT: 2 NEWTON, TRISTEN	20:00		
SUB OUT: 11 MILES, JJ	20:00		
SUB OUT: 44 LUSTER, EDRA	20:00		
SUB IN: 10 JACKSON, TYRIE	20:00		
SUB IN: 12 ROBINSON-WHITE, TREMONT	20:00		
SUB IN: 32 COLEMAN, CHARLES	20:00		
SUB OUT: 10 JACKSON, TYRIE	17:22	34-42	
SUB IN: 11 MILES, JJ	17:22		
SUB OUT: 4 SUGGS, BRANDON	17:13	34-42	
SUB IN: 2 NEWTON, TRISTEN	17:13		
	15:27	41-44	SUB OUT: BURTON, JAMARIUS
	15:27		SUB OUT: UDEZE, MORRIS
	15:27		SUB IN: ECHENIQUE, JAIME
	15:27		SUB IN: SHERFIELD, GRANT
SUB OUT: 32 COLEMAN, CHARLES	15:27		
SUB IN: 20 BARUTI, BITUMBA	15:27		
	14:15	43-44	SUB OUT: WADE, TREY
	14:15		SUB IN: BURTON, JAMARIUS
SUB OUT: 1 GARDNER, JAYDEN	14:15		
SUB OUT: 12 ROBINSON-WHITE, TREMONT	14:15		
SUB IN: 10 JACKSON, TYRIE	14:15		
SUB IN: 32 COLEMAN, CHARLES	14:15		
	12:22	45-46	SUB OUT: BURTON, JAMARIUS
	12:22		SUB IN: WADE, TREY
SUB OUT: 2 NEWTON, TRISTEN	12:22		
SUB OUT: 32 COLEMAN, CHARLES	12:22		
SUB IN: 1 GARDNER, JAYDEN	12:22		
SUB IN: 12 ROBINSON-WHITE, TREMONT	12:22		
SUB OUT: 10 JACKSON, TYRIE	11:08	45-49	
SUB IN: 4 SUGGS, BRANDON	11:08		
SUB OUT: 4 SUGGS, BRANDON	07:39	53-58	
SUB OUT: 20 BARUTI, BITUMBA	07:39		
SUB IN: 10 JACKSON, TYRIE	07:39		
SUB IN: 32 COLEMAN, CHARLES	07:39		
	07:30	53-58	SUB OUT: STEVENSON, ERIK
	07:30		SUB IN: BURTON, JAMARIUS
	06:52	53-63	SUB OUT: ECHENIQUE, JAIME
	06:52		SUB IN: UDEZE, MORRIS
SUB OUT: 12 ROBINSON-WHITE, TREMONT	06:52		
SUB IN: 2 NEWTON, TRISTEN	06:52		
	05:01	58-65	SUB OUT: UDEZE, MORRIS
	05:01		SUB IN: ECHENIQUE, JAIME
SUB OUT: 2 NEWTON, TRISTEN	05:01		
SUB OUT: 11 MILES, JJ	05:01		
SUB IN: 4 SUGGS, BRANDON	05:01		
SUB IN: 12 ROBINSON-WHITE, TREMONT	05:01		
	04:29	59-65	SUB OUT: WADE, TREY
	04:29		SUB IN: STEVENSON, ERIK
SUB OUT: 32 COLEMAN, CHARLES	03:59	60-67	
SUB IN: 20 BARUTI, BITUMBA	03:59		
SUB OUT: 10 JACKSON, TYRIE	03:40	62-68	
SUB IN: 11 MILES, JJ	03:40		
	02:27	65-70	SUB OUT: ETIENNE, TYSON
	02:27		SUB OUT: ECHENIQUE, JAIME
	02:27		SUB IN: WADE, TREY
	02:27		SUB IN: UDEZE, MORRIS
	01:23	67-70	SUB OUT: SHERFIELD, GRANT
	01:23		SUB IN: ETIENNE, TYSON
	00:12	69-73	SUB OUT: BURTON, JAMARIUS
	00:12		SUB IN: SHERFIELD, GRANT

East Carolina 69, Wichita St. 75

East Carolina



WSU : Period 1	Made	Att	Pct
Layups	6	7	85.7
Dunks	1	1	100.0
2PT Field Goals	9	14	64.3
3PT Field Goals	4	13	30.8
Total Field Goals	13	27	48.1

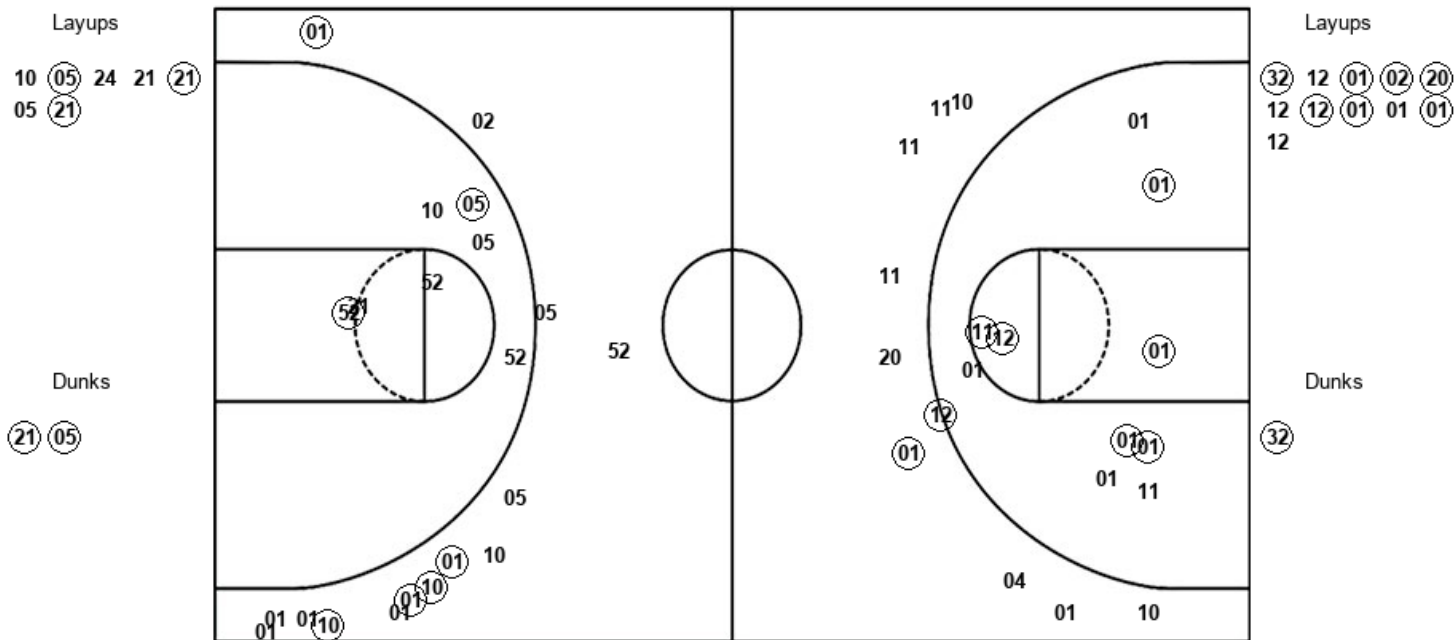
ECU : Period 1	Made	Att	Pct
Layups	4	5	80.0
Dunks	1	1	100.0
2PT Field Goals	10	20	50.0
3PT Field Goals	3	7	42.9
Total Field Goals	13	27	48.1

Official Shot Chart
East Carolina vs Wichita St.
 PERIOD 2 Shots
 January 01, 2020 at Charles Koch Arena - Wichita, Kan.



Wichita St.

East Carolina



WSU : Period 2	Made	Att	Pct
Layups	3	7	42.9
Dunks	2	2	100.0
2PT Field Goals	7	16	43.8
3PT Field Goals	5	14	35.7
Total Field Goals	12	30	40.0

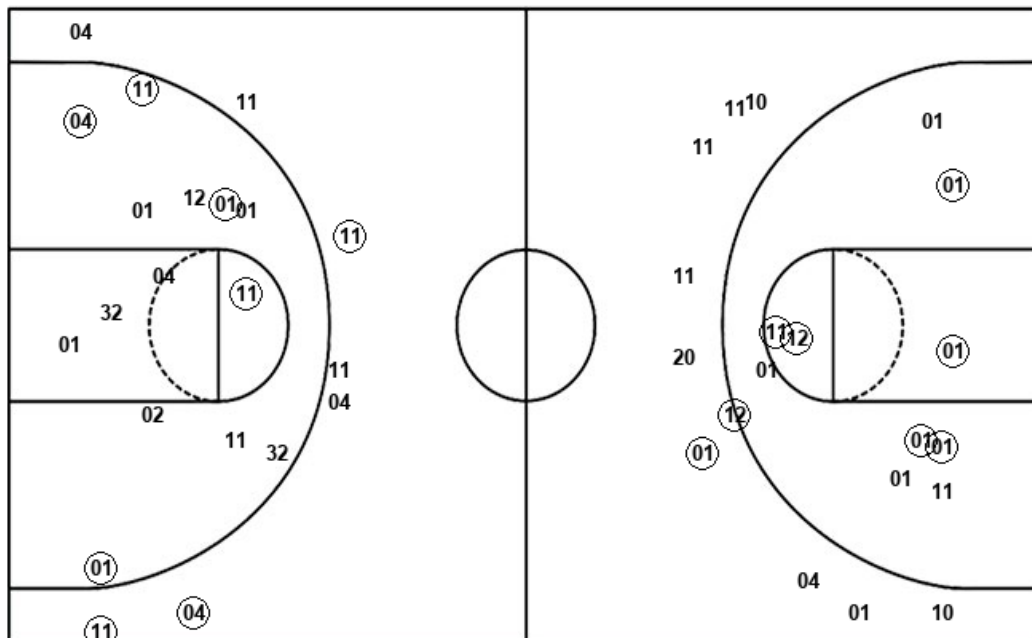
ECU : Period 2	Made	Att	Pct
Layups	7	11	63.6
Dunks	1	1	100.0
2PT Field Goals	15	23	65.2
3PT Field Goals	1	9	11.1
Total Field Goals	16	32	50.0

Official Shot Chart
East Carolina vs Wichita St.
 East Carolina Team Shots
 January 01, 2020 at Charles Koch Arena - Wichita, Kan.



Layups

Dunks



Layups

Dunks

ECU : Period 1	Made	Att	Pct
Layups	4	5	80.0
Dunks	1	1	100.0
2PT Field Goals	10	20	50.0
3PT Field Goals	3	7	42.9
Total Field Goals	13	27	48.1

ECU : Period 2	Made	Att	Pct
Layups	7	11	63.6
Dunks	1	1	100.0
2PT Field Goals	15	23	65.2
3PT Field Goals	1	9	11.1
Total Field Goals	16	32	50.0

Dunks

WSU : Period 2	Made	Att	Pct
Layups	3	7	42.9
Dunks	2	2	100.0
2PT Field Goals	7	16	43.8
3PT Field Goals	5	14	35.7
Total Field Goals	12	30	40.0