

FINAL SCORE



Central Ark.

69



Wichita St.

95

December 05, 2019 • Charles Koch Arena - Wichita, Kan.

FINAL STATISTICS

Official Box Score
Central Ark. vs Wichita St.
Game Totals -- Final Statistics
December 05, 2019 at Charles Koch Arena - Wichita, Kan.



Central Ark. 69

No.	Player	S	Pts	FG	3FG	FT	OR	DR	TR	PF	A	TO	Blk	Stl	Min	+/-
01	BERGERSEN, RYLAN	G	14	4-8	0-3	6-12	0	3	3	4	2	2	0	1	31	-15
13	KAYOULOU, EDDY	F	23	8-12	3-5	4-5	1	7	8	4	2	5	0	0	23	1
14	COOPER, COLLIN	G	0	0-3	0-2	0-0	0	4	4	3	2	5	0	0	27	-5
15	KOVAL, HAYDEN	C	9	3-7	1-4	2-3	0	2	2	1	3	3	4	0	28	-20
34	BAKER, JAXSON	G	6	2-5	2-4	0-0	1	3	4	0	0	2	1	0	19	-29
00	SHITTU, SK	F	0	0-3	0-1	0-0	0	0	0	2	1	2	1	0	13	-9
02	MCDANIEL, LEWIS	G	3	1-2	1-1	0-1	0	0	0	2	0	4	0	0	16	-22
03	WEIDENAAR, AARON	F	0	0-0	0-0	0-0	0	2	2	1	0	1	0	1	7	-9
05	OLOWOKERE, MASAI	G	5	2-2	1-1	0-0	0	1	1	0	2	1	0	0	9	-4
24	CHATHAM, JARED	F	9	4-7	0-0	1-3	1	1	2	3	1	5	0	0	27	-18
35	VANOVER, BRANDON	C	0	0-0	0-0	0-0	0	0	0	0	0	0	0	0	0	0
TEAM							0	4	4	0		0				
TOTALS			69	24-49	8-21	13-24	3	27	30	20	13	30	6	2	200	

Shooting By Period

Period	FG	FG%	3FG	3FG%	FT	FT%
1st Half	10-22	45%	2-11	18%	6-11	55%
2nd Half	14-27	52%	6-10	60%	7-13	54%
Game	24-49	49.0%	8-21	38.1%	13-24	54.2%

Deadball Rebounds: 6,2
Last FG: 2nd-02:56
Biggest Run: 5-0
Largest lead: By 4 at 1-19
Technical Fouls: None.

Wichita St. 95

No.	Player	S	Pts	FG	3FG	FT	OR	DR	TR	PF	A	TO	Blk	Stl	Min	+/-
01	ETIENNE, TYSON	G	13	5-8	3-5	0-0	0	2	2	3	3	1	0	1	19	9
02	BURTON, JAMARIUS	G	13	5-11	1-3	2-2	2	1	3	1	3	2	0	2	22	25
05	WADE, TREY	F	4	2-4	0-1	0-0	1	1	2	0	1	1	0	1	10	6
10	STEVENSON, ERIK	G	13	5-10	3-6	0-0	0	5	5	3	4	1	0	2	18	29
21	ECHENIQUE, JAIME	C	13	4-6	0-0	5-6	0	3	3	2	0	1	1	1	15	12
00	DENNIS, DEXTER	G	3	1-8	1-5	0-0	0	4	4	2	2	0	0	2	22	17
03	GORDON, DEANTONI	F	4	2-3	0-0	0-0	0	1	1	0	0	1	0	1	14	6
11	FERNANDES, NOAH	G	0	0-3	0-2	0-0	0	2	2	2	3	3	0	2	15	3
14	HERRS, JACOB	G	0	0-0	0-0	0-0	0	0	0	0	0	0	0	0	2	-1
15	BUSH, BRYCEN	G	0	0-0	0-0	0-0	0	0	0	1	0	2	0	0	1	1
24	UDEZE, MORRIS	C	8	3-5	0-0	2-4	4	2	6	1	0	1	0	0	11	4
32	BUSSE, TATE	G	2	1-1	0-0	0-0	0	2	2	0	0	0	0	0	2	-1
33	MIDTGAARD, ASBJORN	C	4	1-1	0-0	2-2	1	0	1	4	1	0	1	0	12	4
44	POOR BEAR-CHANDLER, ISA	C	3	1-3	0-1	1-2	1	1	2	2	0	2	0	1	14	12
52	SHERFIELD, GRANT	G	15	5-11	3-5	2-2	0	1	1	1	5	1	0	3	24	4
TEAM							1	0	1	0		0				
TOTALS			95	35-74	11-28	14-18	10	25	35	22	22	16	2	16	200	

Shooting By Period

Period	FG	FG%	3FG	3FG%	FT	FT%
1st Half	20-40	50%	4-14	29%	9-11	82%
2nd Half	15-34	44%	7-14	50%	5-7	71%
Game	35-74	47.3%	11-28	39.3%	14-18	77.8%

Deadball Rebounds: 4,2
Last FG: 2nd-00:55
Biggest Run: 14-0
Largest lead: By 30 at 2-08
Technical Fouls: None.

Game Notes:

Officials: Michael Roberts, Wil Howard, Rodrick Dixon
 Attendance: 10018

Start Time: 08:04 PM ET
 End Time: 10:03 PM ET
 Game Duration: 1:58

Score	1st	2nd	TOT
UCA	28	41	69
WSU	53	42	95

UCA led for 2:05. WSU led for 36:40.
 Game was tied for 1:16.
 Times tied: 1 Lead Changes: 1

Points from	UCA	WSU
In the Paint	24	42
Off Turns	12	39
2nd Chance	1	17
Fast Break	23	20
Bench	17	39

Official Box Score
Central Ark. vs Wichita St.
First Half Statistics Only
December 05, 2019 at Charles Koch Arena - Wichita, Kan.



Central Ark. 28

No.	Player	S	Pts	FG	3FG	FT	OR	DR	TR	PF	A	TO	Blk	Stl	Min	+/-
01	BERGERSEN, RYLAN	G	11	3-5	0-2	5-8	0	2	2	1	1	1	0	0	19	-20
13	KAYOULOU, EDDY	F	3	1-2	0-1	1-2	1	1	2	1	0	3	0	0	9	-8
14	COOPER, COLLIN	G	0	0-2	0-1	0-0	0	2	2	1	1	3	0	0	14	-12
15	KOVAL, HAYDEN	C	7	3-6	1-4	0-0	0	2	2	1	0	1	1	0	16	-19
34	BAKER, JAXSON	G	3	1-4	1-3	0-0	0	2	2	0	0	0	0	0	11	-20
00	SHITTU, SK	F	0	0-0	0-0	0-0	0	0	0	2	0	1	0	0	4	-9
02	MCDANIEL, LEWIS	G	0	0-0	0-0	0-1	0	0	0	2	0	2	0	0	6	-13
03	WEIDENAAR, AARON	F	0	0-0	0-0	0-0	0	0	0	0	0	0	0	0	1	-5
05	OLOWOKERE, MASAI	G	0	0-0	0-0	0-0	0	1	1	0	2	1	0	0	5	-1
24	CHATHAM, JARED	F	4	2-3	0-0	0-0	0	0	0	3	0	5	0	0	14	-18
35	VANOVER, BRANDON	C	0	0-0	0-0	0-0	0	0	0	0	0	0	0	0	0	0
	TEAM						0	3	3	0		0				
TOTALS			28	10-22	2-11	6-11	1	13	14	11	4	17	1	0	100	

Shooting By Period

Period	FG	FG%	3FG	3FG%	FT	FT%
1st Half	10-22	45%	2-11	18%	6-11	55%
Game	24-49	49.0%	8-21	38.1%	13-24	54.2%

Deadball Rebounds: 6,2
 Last FG Half: UCA 2nd-02:56

Wichita St. 53

No.	Player	S	Pts	FG	3FG	FT	OR	DR	TR	PF	A	TO	Blk	Stl	Min	+/-
01	ETIENNE, TYSON	G	3	1-2	1-2	0-0	0	0	0	2	1	0	0	0	7	15
02	BURTON, JAMARIUS	G	8	3-6	0-2	2-2	1	1	2	1	1	1	0	1	10	23
05	WADE, TREY	F	0	0-1	0-0	0-0	0	1	1	0	0	0	0	1	6	8
10	STEVENSON, ERIK	G	4	2-4	0-0	0-0	0	1	1	2	2	0	0	2	9	19
21	ECHENIQUE, JAIME	C	13	4-6	0-0	5-6	0	2	2	2	0	1	1	1	9	18
00	DENNIS, DEXTER	G	0	0-3	0-3	0-0	0	3	3	1	1	0	0	0	13	11
03	GORDON, DEANTONI	F	2	1-2	0-0	0-0	0	0	0	0	0	0	0	1	5	9
11	FERNANDES, NOAH	G	0	0-2	0-1	0-0	0	1	1	1	2	1	0	1	8	-3
14	HERRS, JACOB	G	0	0-0	0-0	0-0	0	0	0	0	0	0	0	0	0	0
15	BUSH, BRYCEN	G	0	0-0	0-0	0-0	0	0	0	0	0	0	0	0	0	0
24	UDEZE, MORRIS	C	7	3-4	0-0	1-2	3	2	5	0	0	1	0	0	8	2
32	BUSSE, TATE	G	0	0-0	0-0	0-0	0	0	0	0	0	0	0	0	0	0
33	MIDTGAARD, ASBJORN	C	0	0-0	0-0	0-0	0	0	0	0	1	0	0	0	3	5
44	POOR BEAR-CHANDLER, ISA	C	2	1-2	0-1	0-0	1	1	2	1	0	1	0	1	9	8
52	SHERFIELD, GRANT	G	14	5-8	3-5	1-1	0	0	0	1	3	1	0	2	13	10
	TEAM						1	0	1	0		0				
TOTALS			53	20-40	4-14	9-11	6	12	18	11	11	6	1	10	100	

Shooting By Period

Period	FG	FG%	3FG	3FG%	FT	FT%
1st Half	20-40	50%	4-14	29%	9-11	82%
Game	35-74	47.3%	11-28	39.3%	14-18	77.8%

Deadball Rebounds: 4,2
 Last FG Half: WSU 2nd-00:55

Game Notes:

Officials: Michael Roberts, Wil Howard, Rodrick Dixon
 Attendance: 10018

Start Time: 08:04 PM ET
 End Time: 10:03 PM ET
 Game Duration: 1:58

Score	1st	2nd	TOT
UCA	28	41	69
WSU	53	42	95

Points from (This Period)	UCA	WSU
In the Paint	12	26
Off Turns	4	26
2nd Chance	1	9
Fast Break	8	13
Bench	4	25

**Official Play-By-Play
Central Ark. vs Wichita St.
First Half**

December 05, 2019 at Charles Koch Arena - Wichita, Kan.



Period 1

Starters:

Central Ark.: 1 BERGERSEN, RYLAN (G); 13 KAYOULOU, EDDY (F); 14 COOPER, COLLIN (G); 15 KOVAL, HAYDEN (C); 34 BAKER, JAXSON (G);
Wichita St.: 1 ETIENNE, TYSON (G); 2 BURTON, JAMARIUS (G); 5 WADE, TREY (F); 10 STEVENSON, ERIK (G); 21 ECHENIQUE, JAIME (C);

Time	VISITORS: Central Ark.	Score	Margin	HOME: Wichita St.
19:43	GOOD! JUMPER by BERGERSEN, RYLAN	0-2	V 2	
19:29				MISSED JUMPER by ECHENIQUE, JAIME
19:23	REBOUND (DEF) by KOVAL, HAYDEN			
19:14	GOOD! LAYUP by KAYOULOU, EDDY	0-4	V 4	
19:03		2-4	V 2	GOOD! JUMPER by BURTON, JAMARIUS
18:52				FOUL (PERSONAL) by ETIENNE, TYSON
18:40	TURNOVER (TRAVEL) by KAYOULOU, EDDY			
18:28				MISSED DUNK by ECHENIQUE, JAIME
18:21	REBOUND (DEF) by COOPER, COLLIN			
18:13	FOUL (OFF) by BERGERSEN, RYLAN			
18:13	TURNOVER (OFFENSIVE) by BERGERSEN, RYLAN			
18:01	FOUL (PERSONAL) by COOPER, COLLIN			
18:01				MISSED FT by ECHENIQUE, JAIME
18:01				REBOUND (OFF) by TEAM
18:01		3-4	V 1	GOOD! FT by ECHENIQUE, JAIME
17:53	MISSED DUNK by BAKER, JAXSON			
17:53				BLOCK by ECHENIQUE, JAIME
17:53	REBOUND (OFF) by KAYOULOU, EDDY			
17:53				FOUL (PERSONAL) by BURTON, JAMARIUS
17:53	MISSED FT by KAYOULOU, EDDY			
17:53	REBOUND (OFF) by TEAM			
17:53	GOOD! FT by KAYOULOU, EDDY [FB]	3-5	V 2	
17:39		5-5	T	GOOD! JUMPER by STEVENSON, ERIK
17:31	TURNOVER (BADPASS) by KOVAL, HAYDEN			
17:31				STEAL by BURTON, JAMARIUS
17:26				MISSED LAYUP by WADE, TREY
17:26				REBOUND (OFF) by TEAM
17:11				MISSED LAYUP by STEVENSON, ERIK
17:11	BLOCK by KOVAL, HAYDEN			
17:05	REBOUND (DEF) by KAYOULOU, EDDY			
17:03	TURNOVER (LOSTBALL) by KAYOULOU, EDDY			
17:03				STEAL by WADE, TREY
17:03				SUB OUT: ETIENNE, TYSON
17:03				SUB OUT: STEVENSON, ERIK
17:03				SUB IN: DENNIS, DEXTER
17:03				SUB IN: SHERFIELD, GRANT
16:40		7-5	H 2	GOOD! JUMPER by ECHENIQUE, JAIME
16:23	MISSED 3PTR by KAYOULOU, EDDY			
16:19				REBOUND (DEF) by DENNIS, DEXTER
16:08				MISSED 3PTR by DENNIS, DEXTER
16:08	REBOUND (DEF) by TEAM			
16:08				FOUL (PERSONAL) by ECHENIQUE, JAIME
16:07				SUB OUT: ECHENIQUE, JAIME
16:07				SUB IN: UDEZE, MORRIS
16:07	SUB OUT: KAYOULOU, EDDY			
16:07	SUB IN: CHATHAM, JARED			
16:00	MISSED 3PTR by KOVAL, HAYDEN			
15:56				REBOUND (DEF) by WADE, TREY
15:47				TURNOVER (TRAVEL) by UDEZE, MORRIS
15:47				
15:47				SUB OUT: WADE, TREY
15:47				SUB IN: POOR BEAR-CHANDLER, ISAIAH
15:47	SUB OUT: COOPER, COLLIN			
15:47	SUB IN: MCDANIEL, LEWIS			
15:23	MISSED JUMPER by CHATHAM, JARED			
15:19				REBOUND (DEF) by DENNIS, DEXTER
15:10		9-5	H 4	GOOD! LAYUP by UDEZE, MORRIS
15:10				ASSIST by SHERFIELD, GRANT
15:02	MISSED 3PTR by BAKER, JAXSON			
14:58				REBOUND (DEF) by DENNIS, DEXTER
14:40		11-5	H 6	GOOD! LAYUP by UDEZE, MORRIS
14:23	MISSED 3PTR by BERGERSEN, RYLAN			
14:19				REBOUND (DEF) by UDEZE, MORRIS
14:15				MISSED 3PTR by BURTON, JAMARIUS
14:11	REBOUND (DEF) by KOVAL, HAYDEN			
13:57	TURNOVER (BADPASS) by CHATHAM, JARED			
13:57				STEAL by SHERFIELD, GRANT
13:51		14-5	H 9	GOOD! 3PTR by SHERFIELD, GRANT [FB]
13:51	FOUL (PERSONAL) by MCDANIEL, LEWIS			
13:51				SUB OUT: BURTON, JAMARIUS

Time	VISITORS: Central Ark.	Score	Margin	HOME: Wichita St.
13:51				SUB IN: FERNANDES, NOAH
13:51	SUB OUT: BAKER, JAXSON			
13:51	SUB IN: KAYOULOU, EDDY			
13:51		15-5	H 10	GOOD! FT by SHERFIELD, GRANT [FB]
13:29	GOOD! LAYUP by BERGERSEN, RYLAN	15-7	H 8	
13:29				FOUL (PERSONAL) by POOR BEAR-CHANDLER, ISAIAH
13:29	SUB OUT: KOVAL, HAYDEN			
13:29	SUB IN: SHITTU, SK			
13:29	GOOD! FT by BERGERSEN, RYLAN	15-8	H 7	
12:59				MISSED JUMPER by FERNANDES, NOAH
12:58	REBOUND (DEF) by TEAM			
12:54	TURNOVER (LOSTBALL) by CHATHAM, JARED			
12:54				STEAL by POOR BEAR-CHANDLER, ISAIAH
12:54				TURNOVER (TRAVEL) by POOR BEAR-CHANDLER, ISAIAH
12:50	GOOD! DUNK by CHATHAM, JARED [FB]	15-10	H 5	
12:34				MISSED 3PTR by DENNIS, DEXTER
12:30				REBOUND (OFF) by UDEZE, MORRIS
12:29				MISSED LAYUP by UDEZE, MORRIS
12:26				REBOUND (OFF) by UDEZE, MORRIS
12:26				TIMEOUT 30SEC
12:26				SUB OUT: UDEZE, MORRIS
12:26				SUB IN: MIDTGAARD, ASBJORN
12:15		17-10	H 7	GOOD! LAYUP by POOR BEAR-CHANDLER, ISAIAH
12:15				ASSIST by SHERFIELD, GRANT
11:42	TURNOVER (TRAVEL) by CHATHAM, JARED			
11:21				MISSED 3PTR by SHERFIELD, GRANT
11:18				REBOUND (OFF) by POOR BEAR-CHANDLER, ISAIAH
11:15		20-10	H 10	GOOD! 3PTR by SHERFIELD, GRANT
11:15				ASSIST by FERNANDES, NOAH
10:56	TURNOVER (LOSTBALL) by CHATHAM, JARED			
10:56				SUB OUT: POOR BEAR-CHANDLER, ISAIAH
10:56				SUB IN: GORDON, DEANTONI
10:56	SUB OUT: MCDANIEL, LEWIS			
10:56	SUB OUT: KAYOULOU, EDDY			
10:56	SUB IN: COOPER, COLLIN			
10:56	SUB IN: KOVAL, HAYDEN			
10:56				STEAL by SHERFIELD, GRANT
10:38		23-10	H 13	GOOD! 3PTR by SHERFIELD, GRANT
10:38				ASSIST by MIDTGAARD, ASBJORN
10:21				FOUL (PERSONAL) by SHERFIELD, GRANT
10:13	FOUL (OFF) by SHITTU, SK			
10:13	TURNOVER (OFFENSIVE) by SHITTU, SK			
10:13	SUB OUT: SHITTU, SK			
10:13	SUB IN: BAKER, JAXSON			
10:03				MISSED 3PTR by SHERFIELD, GRANT
09:59	REBOUND (DEF) by BAKER, JAXSON			
09:50	GOOD! 3PTR by BAKER, JAXSON	23-13	H 10	
09:50	ASSIST by COOPER, COLLIN			
09:30				FOUL (OFF) by FERNANDES, NOAH
09:30				TURNOVER (OFFENSIVE) by FERNANDES, NOAH
09:30				SUB OUT: FERNANDES, NOAH
09:30				SUB OUT: MIDTGAARD, ASBJORN
09:30				SUB IN: STEVENSON, ERIK
09:30				SUB IN: ECHENIQUE, JAIME
09:14	TURNOVER (BADPASS) by COOPER, COLLIN			
09:14				SUB OUT: SHERFIELD, GRANT
09:14				SUB IN: ETIENNE, TYSON
08:51		25-13	H 12	GOOD! LAYUP by ECHENIQUE, JAIME
08:51				ASSIST by STEVENSON, ERIK
08:43	GOOD! JUMPER by KOVAL, HAYDEN [FB]	25-15	H 10	
08:43	ASSIST by BERGERSEN, RYLAN			
08:26	FOUL (PERSONAL) by CHATHAM, JARED			
08:26		26-15	H 11	GOOD! FT by ECHENIQUE, JAIME
08:26				SUB OUT: DENNIS, DEXTER
08:26				SUB IN: BURTON, JAMARIUS
08:26		27-15	H 12	GOOD! FT by ECHENIQUE, JAIME
08:16	MISSED 3PTR by COOPER, COLLIN			
08:12				REBOUND (DEF) by ECHENIQUE, JAIME
08:05		30-15	H 15	GOOD! 3PTR by ETIENNE, TYSON
08:05				ASSIST by BURTON, JAMARIUS
07:56	MISSED 3PTR by KOVAL, HAYDEN			
07:52				REBOUND (DEF) by BURTON, JAMARIUS
07:36				TURNOVER (TRAVEL) by BURTON, JAMARIUS
07:36	SUB OUT: CHATHAM, JARED			
07:36	SUB IN: WEIDENAAR, AARON			
07:18	TURNOVER (BADPASS) by COOPER, COLLIN			
07:18				STEAL by GORDON, DEANTONI
07:14		32-15	H 17	GOOD! DUNK by GORDON, DEANTONI [FB]
07:02	TURNOVER (BADPASS) by COOPER, COLLIN			

Time	VISITORS: Central Ark.	Score	Margin	HOME: Wichita St.
07:02				STEAL by STEVENSON, ERIK
06:56				MISSED JUMPER by GORDON, DEANTONI
06:52	REBOUND (DEF) by COOPER, COLLIN			
06:47	MISSED 3PTR by BAKER, JAXSON			
06:43				REBOUND (DEF) by STEVENSON, ERIK
06:40				MISSED JUMPER by STEVENSON, ERIK
06:36				REBOUND (OFF) by BURTON, JAMARIUS
06:36		34-15	H 19	GOOD! LAYUP by BURTON, JAMARIUS
06:36	FOUL (PERSONAL) by KOVAL, HAYDEN			
06:36				SUB OUT: GORDON, DEANTONI
06:36				SUB IN: WADE, TREY
06:36	SUB OUT: BERGERSEN, RYLAN			
06:36	SUB OUT: COOPER, COLLIN			
06:36	SUB IN: MCDANIEL, LEWIS			
06:36	SUB IN: KAYOULOU, EDDY			
06:36		35-15	H 20	GOOD! FT by BURTON, JAMARIUS
06:27	TURNOVER (BADPASS) by MCDANIEL, LEWIS			
06:27				STEAL by ECHENIQUE, JAIME
06:22				MISSED 3PTR by ETIENNE, TYSON
06:22	REBOUND (DEF) by TEAM			
06:21				FOUL (PERSONAL) by STEVENSON, ERIK
06:21	SUB OUT: WEIDENAAR, AARON			
06:21	SUB OUT: KOVAL, HAYDEN			
06:21	SUB IN: SHITTU, SK			
06:21	SUB IN: CHATHAM, JARED			
06:21	MISSED FT by MCDANIEL, LEWIS			
06:21				REBOUND (DEF) by ECHENIQUE, JAIME
06:21	FOUL (PERSONAL) by SHITTU, SK			
06:21		36-15	H 21	GOOD! FT by ECHENIQUE, JAIME [FB]
06:21		37-15	H 22	GOOD! FT by ECHENIQUE, JAIME [FB]
06:15	FOUL (OFF) by MCDANIEL, LEWIS			
06:15	TURNOVER (OFFENSIVE) by MCDANIEL, LEWIS			
06:06		39-15	H 24	GOOD! DUNK by ECHENIQUE, JAIME
06:06				ASSIST by ETIENNE, TYSON
06:06	TIMEOUT 30SEC			
05:43	GOOD! JUMPER by CHATHAM, JARED [PNT]	39-17	H 22	
05:34				MISSED 3PTR by BURTON, JAMARIUS
05:30	REBOUND (DEF) by BAKER, JAXSON			
05:19	TURNOVER (BADPASS) by KAYOULOU, EDDY			
05:19				STEAL by STEVENSON, ERIK
05:16		41-17	H 24	GOOD! LAYUP by BURTON, JAMARIUS [FB]
05:16				ASSIST by STEVENSON, ERIK
05:16	FOUL (PERSONAL) by KAYOULOU, EDDY			
05:16	SUB OUT: SHITTU, SK			
05:16	SUB OUT: MCDANIEL, LEWIS			
05:16	SUB OUT: KAYOULOU, EDDY			
05:16	SUB OUT: BAKER, JAXSON			
05:16	SUB IN: BERGERSEN, RYLAN			
05:16	SUB IN: OLOWOKERE, MASAI			
05:16	SUB IN: COOPER, COLLIN			
05:16	SUB IN: KOVAL, HAYDEN			
05:16		42-17	H 25	GOOD! FT by BURTON, JAMARIUS [FB]
05:08	MISSED 3PTR by BERGERSEN, RYLAN			
05:04				REBOUND (DEF) by TEAM
04:53				MISSED JUMPER by BURTON, JAMARIUS
04:50	REBOUND (DEF) by BERGERSEN, RYLAN			
04:48				FOUL (PERSONAL) by ETIENNE, TYSON
04:48	MISSED FT by BERGERSEN, RYLAN			
04:48	REBOUND (OFF) by TEAM			
04:48				SUB OUT: ETIENNE, TYSON
04:48				SUB OUT: BURTON, JAMARIUS
04:48				SUB OUT: WADE, TREY
04:48				SUB IN: DENNIS, DEXTER
04:48				SUB IN: POOR BEAR-CHANDLER, ISAIAH
04:48				SUB IN: SHERFIELD, GRANT
04:48	GOOD! FT by BERGERSEN, RYLAN [FB]	42-18	H 24	
04:36		44-18	H 26	GOOD! LAYUP by ECHENIQUE, JAIME
04:36				ASSIST by DENNIS, DEXTER
04:15	MISSED 3PTR by KOVAL, HAYDEN			
04:10				REBOUND (DEF) by POOR BEAR-CHANDLER, ISAIAH
04:07				TURNOVER (LOSTBALL) by ECHENIQUE, JAIME
04:07				FOUL (PERSONAL) by ECHENIQUE, JAIME
04:07	MISSED FT by BERGERSEN, RYLAN			
04:07				REBOUND (DEF) by UDEZE, MORRIS
04:02		46-18	H 28	GOOD! JUMPER by SHERFIELD, GRANT
03:52				SUB OUT: ECHENIQUE, JAIME
03:52				SUB IN: UDEZE, MORRIS
03:37	FOUL (OFF) by CHATHAM, JARED			
03:37	TURNOVER (OFFENSIVE) by CHATHAM, JARED			
03:37				

Time	VISITORS: Central Ark.	Score	Margin	HOME: Wichita St.
03:25		48-18	H 30	GOOD! LAYUP by STEVENSON, ERIK
03:09				FOUL (PERSONAL) by STEVENSON, ERIK
03:09	GOOD! FT by BERGERSEN, RYLAN	48-19	H 29	
03:09				SUB OUT: STEVENSON, ERIK
03:09				SUB IN: FERNANDES, NOAH
03:09	GOOD! FT by BERGERSEN, RYLAN	48-20	H 28	
02:56				TURNOVER (LOSTBALL) by SHERFIELD, GRANT
02:36	GOOD! JUMPER by KOVAL, HAYDEN	48-22	H 26	
02:29				MISSED 3PTR by POOR BEAR-CHANDLER, ISAIAH
02:26	REBOUND (DEF) by OLOWOKERE, MASAI			
02:14	MISSED JUMPER by COOPER, COLLIN			
02:11				REBOUND (DEF) by FERNANDES, NOAH
02:06				MISSED 3PTR by DENNIS, DEXTER
02:02	REBOUND (DEF) by BERGERSEN, RYLAN			
01:56	TURNOVER (BADPASS) by OLOWOKERE, MASAI			
01:56				STEAL by FERNANDES, NOAH
01:51		50-22	H 28	GOOD! LAYUP by SHERFIELD, GRANT [FB]
01:51				ASSIST by FERNANDES, NOAH
01:21	GOOD! 3PTR by KOVAL, HAYDEN	50-25	H 25	
01:21	ASSIST by OLOWOKERE, MASAI			
00:49				MISSED LAYUP by SHERFIELD, GRANT
00:46				REBOUND (OFF) by UDEZE, MORRIS
00:46	FOUL (PERSONAL) by CHATHAM, JARED			
00:46				MISSED FT by UDEZE, MORRIS
00:46				REBOUND (OFF) by TEAM
00:46				SUB OUT: POOR BEAR-CHANDLER, ISAIAH
00:46				SUB IN: GORDON, DEANTONI
00:46	SUB OUT: CHATHAM, JARED			
00:46	SUB IN: KAYOULLOUD, EDDY			
00:46		51-25	H 26	GOOD! FT by UDEZE, MORRIS
00:39	GOOD! LAYUP by BERGERSEN, RYLAN [FB]	51-27	H 24	
00:39	ASSIST by OLOWOKERE, MASAI			
00:21		53-27	H 26	GOOD! LAYUP by UDEZE, MORRIS
00:21				ASSIST by SHERFIELD, GRANT
00:03				FOUL (PERSONAL) by DENNIS, DEXTER
00:03	MISSED FT by BERGERSEN, RYLAN			
00:03	REBOUND (OFF) by TEAM			
00:03	GOOD! FT by BERGERSEN, RYLAN	53-28	H 25	
00:00				MISSED 3PTR by FERNANDES, NOAH
00:00	REBOUND (DEF) by TEAM			

Central Ark. 28, Wichita St. 53

Points from (This Period)	UCA	WSU
In the Paint	12	26
Off Turns	4	26
2nd Chance	1	9
Fast Break	8	13
Bench	4	25

Official Box Score
Central Ark. vs Wichita St.
Second Half Statistics Only
December 05, 2019 at Charles Koch Arena - Wichita, Kan.



Central Ark. 41

No.	Player	S	Pts	FG	3FG	FT	OR	DR	TR	PF	A	TO	Blk	Stl	Min	+/-
01	BERGERSEN, RYLAN	G	3	1-3	0-1	1-4	0	1	1	3	1	1	0	1	13	5
13	KAYOULOU, EDDY	F	20	7-10	3-4	3-3	0	6	6	3	2	2	0	0	14	9
14	COOPER, COLLIN	G	0	0-1	0-1	0-0	0	2	2	2	1	2	0	0	13	7
15	KOVAL, HAYDEN	C	2	0-1	0-0	2-3	0	0	0	0	3	2	3	0	11	-1
34	BAKER, JAXSON	G	3	1-1	1-1	0-0	1	1	2	0	0	2	1	0	8	-9
00	SHITTU, SK	F	0	0-3	0-1	0-0	0	0	0	0	1	1	1	0	9	0
02	MCDANIEL, LEWIS	G	3	1-2	1-1	0-0	0	0	0	0	0	2	0	0	10	-9
03	WEIDENAAR, AARON	F	0	0-0	0-0	0-0	0	2	2	1	0	1	0	1	6	-4
05	OLWOKERE, MASAI	G	5	2-2	1-1	0-0	0	0	0	0	0	0	0	0	4	-3
24	CHATHAM, JARED	F	5	2-4	0-0	1-3	1	1	2	0	1	0	0	0	13	0
35	VANOVER, BRANDON	C	0	0-0	0-0	0-0	0	0	0	0	0	0	0	0	0	0
	TEAM						0	1	1	0		0				
TOTALS			41	14-27	6-10	7-13	2	14	16	9	9	13	5	2	100	

Shooting By Period

Period	FG	FG%	3FG	3FG%	FT	FT%
2nd Half	14-27	52%	6-10	60%	7-13	54%
Game	24-49	49.0%	8-21	38.1%	13-24	54.2%

Deadball Rebounds: 6,2
Last FG Half: UCA -

Wichita St. 42

No.	Player	S	Pts	FG	3FG	FT	OR	DR	TR	PF	A	TO	Blk	Stl	Min	+/-
01	ETIENNE, TYSON	G	10	4-6	2-3	0-0	0	2	2	1	2	1	0	1	12	-6
02	BURTON, JAMARIUS	G	5	2-5	1-1	0-0	1	0	1	0	2	1	0	1	12	2
05	WADE, TREY	F	4	2-3	0-1	0-0	1	0	1	0	1	1	0	0	4	-2
10	STEVENSON, ERIK	G	9	3-6	3-6	0-0	0	4	4	1	2	1	0	0	9	10
21	ECHENIQUE, JAIME	C	0	0-0	0-0	0-0	0	1	1	0	0	0	0	0	5	-6
00	DENNIS, DEXTER	G	3	1-5	1-2	0-0	0	1	1	1	1	0	0	2	9	6
03	GORDON, DEANTONI	F	2	1-1	0-0	0-0	0	1	1	0	0	1	0	0	8	-3
11	FERNANDES, NOAH	G	0	0-1	0-1	0-0	0	1	1	1	1	2	0	1	8	6
14	HERRS, JACOB	G	0	0-0	0-0	0-0	0	0	0	0	0	0	0	0	2	-1
15	BUSH, BRYCEN	G	0	0-0	0-0	0-0	0	0	0	1	0	2	0	0	1	1
24	UDEZE, MORRIS	C	1	0-1	0-0	1-2	1	0	1	1	0	0	0	0	3	2
32	BUSSE, TATE	G	2	1-1	0-0	0-0	0	2	2	0	0	0	0	0	2	-1
33	MIDTGAARD, ASBJORN	C	4	1-1	0-0	2-2	1	0	1	4	0	0	1	0	9	-1
44	POOR BEAR-CHANDLER, ISA	C	1	0-1	0-0	1-2	0	0	0	1	0	1	0	0	5	4
52	SHERFIELD, GRANT	G	1	0-3	0-0	1-1	0	1	1	0	2	0	0	1	11	-6
	TEAM						0	0	0	0		0				
TOTALS			42	15-34	7-14	5-7	4	13	17	11	11	10	1	6	100	

Shooting By Period

Period	FG	FG%	3FG	3FG%	FT	FT%
2nd Half	15-34	44%	7-14	50%	5-7	71%
Game	35-74	47.3%	11-28	39.3%	14-18	77.8%

Deadball Rebounds: 4,2
Last FG Half: WSU -

Game Notes:

Officials: Michael Roberts,Wil Howard,Rodrick Dixon
Attendance: 10018

Start Time: 08:04 PM ET
End Time: 10:03 PM ET
Game Duration: 1:58

Score	1st	2nd	TOT
UCA	28	41	69
WSU	53	42	95

Points from (This Period)	UCA	WSU
In the Paint	12	16
Off Turns	8	13
2nd Chance	0	8
Fast Break	15	7
Bench	13	14

Official Play-By-Play
Central Ark. vs Wichita St.
Second Half
December 05, 2019 at Charles Koch Arena - Wichita, Kan.



Period 2

Starters:

Central Ark.: 1 BERGERSEN, RYLAN (G); 13 KAYOULOU, EDDY (F); 14 COOPER, COLLIN (G); 15 KOVAL, HAYDEN (C); 34 BAKER, JAXSON (G);
Wichita St.: 1 ETIENNE, TYSON (G); 2 BURTON, JAMARIUS (G); 5 WADE, TREY (F); 10 STEVENSON, ERIK (G); 21 ECHENIQUE, JAIME (C);

Time	VISITORS: Central Ark.	Score	Margin	HOME: Wichita St.
20:00				SUB OUT: DENNIS, DEXTER
20:00				SUB OUT: GORDON, DEANTONI
20:00				SUB OUT: FERNANDES, NOAH
20:00				SUB OUT: UDEZE, MORRIS
20:00				SUB IN: BURTON, JAMARIUS
20:00				SUB IN: WADE, TREY
20:00				SUB IN: STEVENSON, ERIK
20:00				SUB IN: POOR BEAR-CHANDLER, ISAIAH
20:00	SUB OUT: OLOWOKERE, MASAI			
20:00	SUB IN: BAKER, JAXSON			
19:46	MISSED LAYUP by BERGERSEN, RYLAN			
19:43				REBOUND (DEF) by STEVENSON, ERIK
19:30				TURNOVER (LOSTBALL) by POOR BEAR-CHANDLER, ISAIAH
19:26				FOUL (PERSONAL) by POOR BEAR-CHANDLER, ISAIAH
19:10	GOOD! DUNK by KAYOULOU, EDDY	53-30	H 23	
18:52				MISSED 3PTR by WADE, TREY
18:47	REBOUND (DEF) by BERGERSEN, RYLAN			
18:24	MISSED JUMPER by KOVAL, HAYDEN			
18:23				REBOUND (DEF) by TEAM
17:58		56-30	H 26	GOOD! 3PTR by STEVENSON, ERIK
17:58				ASSIST by WADE, TREY
17:52				FOUL (PERSONAL) by STEVENSON, ERIK
17:52	GOOD! FT by KAYOULOU, EDDY [FB]	56-31	H 25	
17:52				SUB OUT: STEVENSON, ERIK
17:52				SUB OUT: POOR BEAR-CHANDLER, ISAIAH
17:52				SUB IN: ETIENNE, TYSON
17:52				SUB IN: ECHENIQUE, JAIME
17:52	SUB OUT: BAKER, JAXSON			
17:52	SUB IN: CHATHAM, JARED			
17:52				SUB OUT: WADE, TREY
17:52				SUB IN: POOR BEAR-CHANDLER, ISAIAH
17:52	GOOD! FT by KAYOULOU, EDDY [FB]	56-32	H 24	
17:37	FOUL (PERSONAL) by BERGERSEN, RYLAN			
17:37				MISSED FT by POOR BEAR-CHANDLER, ISAIAH
17:37				REBOUND (OFF) by TEAM
17:37		57-32	H 25	GOOD! FT by POOR BEAR-CHANDLER, ISAIAH
17:29	FOUL (OFF) by BERGERSEN, RYLAN			
17:29	TURNOVER (OFFENSIVE) by BERGERSEN, RYLAN			
17:18				MISSED JUMPER by BURTON, JAMARIUS
17:15	REBOUND (DEF) by KAYOULOU, EDDY			
17:12	GOOD! LAYUP by KAYOULOU, EDDY [FB]	57-34	H 23	
16:57				MISSED JUMPER by POOR BEAR-CHANDLER, ISAIAH
16:57	BLOCK by KOVAL, HAYDEN			
16:57	REBOUND (DEF) by TEAM			
16:57				SUB OUT: POOR BEAR-CHANDLER, ISAIAH
16:57				SUB IN: GORDON, DEANTONI
16:34	GOOD! 3PTR by KAYOULOU, EDDY	57-37	H 20	
16:34	ASSIST by KOVAL, HAYDEN			
16:14		60-37	H 23	GOOD! 3PTR by ETIENNE, TYSON
16:14				ASSIST by SHERFIELD, GRANT
16:01	GOOD! DUNK by KAYOULOU, EDDY	60-39	H 21	
16:01	ASSIST by KOVAL, HAYDEN			
15:43				MISSED JUMPER by SHERFIELD, GRANT
15:40	REBOUND (DEF) by CHATHAM, JARED			
15:29	MISSED 3PTR by KAYOULOU, EDDY			
15:26				REBOUND (DEF) by SHERFIELD, GRANT
15:21				MISSED LAYUP by SHERFIELD, GRANT
15:21	BLOCK by KOVAL, HAYDEN			
15:16	REBOUND (DEF) by KAYOULOU, EDDY			
15:15	GOOD! LAYUP by CHATHAM, JARED [FB]	60-41	H 19	
15:15				FOUL (PERSONAL) by ETIENNE, TYSON
15:15				
15:15				SUB OUT: BURTON, JAMARIUS
15:15				SUB OUT: GORDON, DEANTONI
15:15				SUB OUT: ECHENIQUE, JAIME
15:15				SUB OUT: SHERFIELD, GRANT
15:15				SUB IN: DENNIS, DEXTER
15:15				SUB IN: STEVENSON, ERIK
15:15				SUB IN: FERNANDES, NOAH
15:15				SUB IN: UDEZE, MORRIS

Time	VISITORS: Central Ark.	Score	Margin	HOME: Wichita St.
15:15	SUB OUT: COOPER, COLLIN			
15:15	SUB IN: MCDANIEL, LEWIS			
15:15	MISSED FT by CHATHAM, JARED			
15:14				REBOUND (DEF) by STEVENSON, ERIK
14:59				MISSED LAYUP by UDEZE, MORRIS
14:58				REBOUND (OFF) by UDEZE, MORRIS
14:58	FOUL (PERSONAL) by KAYOULOU, EDDY			
14:58				MISSED FT by UDEZE, MORRIS
14:58				REBOUND (OFF) by TEAM
14:58		61-41	H 20	GOOD! FT by UDEZE, MORRIS
14:58	TURNOVER (BADPASS) by MCDANIEL, LEWIS			
14:58				STEAL by DENNIS, DEXTER
14:52	FOUL (PERSONAL) by BERGERSEN, RYLAN			
14:52	SUB OUT: BERGERSEN, RYLAN			
14:52	SUB IN: COOPER, COLLIN			
14:44	FOUL (PERSONAL) by COOPER, COLLIN			
14:39				MISSED JUMPER by ETIENNE, TYSON
14:36	REBOUND (DEF) by KAYOULOU, EDDY			
14:25				FOUL (PERSONAL) by FERNANDES, NOAH
14:12	MISSED JUMPER by CHATHAM, JARED			
14:07	REBOUND (OFF) by CHATHAM, JARED			
14:06	MISSED JUMPER by CHATHAM, JARED			
14:03				REBOUND (DEF) by FERNANDES, NOAH
13:58				MISSED JUMPER by DENNIS, DEXTER
13:55	REBOUND (DEF) by KAYOULOU, EDDY			
13:52	TURNOVER (LOSTBALL) by KAYOULOU, EDDY			
13:52				STEAL by FERNANDES, NOAH
13:52	FOUL (PERSONAL) by KAYOULOU, EDDY			
13:52	SUB OUT: KOVAL, HAYDEN			
13:52	SUB IN: SHITTU, SK			
13:35		64-41	H 23	GOOD! 3PTR by STEVENSON, ERIK
13:35				ASSIST by DENNIS, DEXTER
13:27				FOUL (PERSONAL) by UDEZE, MORRIS
13:27	GOOD! DUNK by CHATHAM, JARED	64-43	H 21	
13:27	ASSIST by KAYOULOU, EDDY			
13:11				MISSED 3PTR by STEVENSON, ERIK
13:10	REBOUND (DEF) by TEAM			
13:06	TURNOVER (LOSTBALL) by SHITTU, SK			
12:50				MISSED 3PTR by DENNIS, DEXTER
12:46	REBOUND (DEF) by COOPER, COLLIN			
12:42	TURNOVER (BADPASS) by COOPER, COLLIN			
12:30				TURNOVER (TRAVEL) by ETIENNE, TYSON
12:30				SUB OUT: ETIENNE, TYSON
12:30				SUB OUT: UDEZE, MORRIS
12:30				SUB IN: BURTON, JAMARIUS
12:30				SUB IN: ECHENIQUE, JAIME
12:30	SUB OUT: COOPER, COLLIN			
12:30	SUB IN: BAKER, JAXSON			
12:03	GOOD! 3PTR by BAKER, JAXSON	64-46	H 18	
12:03	ASSIST by CHATHAM, JARED			
11:56				MISSED LAYUP by BURTON, JAMARIUS
11:56	BLOCK by BAKER, JAXSON			
11:51				REBOUND (OFF) by BURTON, JAMARIUS
11:39		67-46	H 21	GOOD! 3PTR by BURTON, JAMARIUS
11:39				ASSIST by STEVENSON, ERIK
11:18	MISSED JUMPER by SHITTU, SK			
11:15				REBOUND (DEF) by DENNIS, DEXTER
11:10				MISSED 3PTR by FERNANDES, NOAH
11:07	REBOUND (DEF) by KAYOULOU, EDDY			
11:00	MISSED JUMPER by KAYOULOU, EDDY			
10:58				REBOUND (DEF) by STEVENSON, ERIK
10:55				TURNOVER (BADPASS) by STEVENSON, ERIK
10:55				
10:55				SUB OUT: ECHENIQUE, JAIME
10:55				SUB IN: POOR BEAR-CHANDLER, ISAIAH
10:55	SUB OUT: SHITTU, SK			
10:55	SUB OUT: KAYOULOU, EDDY			
10:55	SUB IN: WEIDENAAR, AARON			
10:55	SUB IN: KOVAL, HAYDEN			
10:45	TURNOVER (LOSTBALL) by BAKER, JAXSON			
10:45				STEAL by BURTON, JAMARIUS
10:39		70-46	H 24	GOOD! 3PTR by STEVENSON, ERIK [FB]
10:39				ASSIST by FERNANDES, NOAH
10:19	TURNOVER (BADPASS) by KOVAL, HAYDEN			
10:19				STEAL by DENNIS, DEXTER
10:13				MISSED 3PTR by STEVENSON, ERIK
10:10	REBOUND (DEF) by BAKER, JAXSON			
10:06	TURNOVER (TRAVEL) by MCDANIEL, LEWIS			
10:06	SUB OUT: CHATHAM, JARED			
10:06	SUB IN: BERGERSEN, RYLAN			

Time	VISITORS: Central Ark.	Score	Margin	HOME: Wichita St.
09:40		73-46	H 27	GOOD! 3PTR by DENNIS, DEXTER
09:40				ASSIST by STEVENSON, ERIK
09:24	MISSED LAYUP by MCDANIEL, LEWIS			
09:21				REBOUND (DEF) by STEVENSON, ERIK
09:14				TURNOVER (OTHER) by BURTON, JAMARIUS
09:14				SUB OUT: FERNANDES, NOAH
09:14				SUB OUT: POOR BEAR-CHANDLER, ISAIAH
09:14				SUB IN: MIDTGAARD, ASBJORN
09:14				SUB IN: SHERFIELD, GRANT
09:14	SUB OUT: MCDANIEL, LEWIS			
09:14	SUB IN: COOPER, COLLIN			
09:05	TURNOVER (BADPASS) by COOPER, COLLIN			
09:05				STEAL by SHERFIELD, GRANT
09:00				MISSED LAYUP by BURTON, JAMARIUS
08:57	REBOUND (DEF) by WEIDENAAR, AARON			
08:49	FOUL (OFF) by WEIDENAAR, AARON			
08:49	TURNOVER (OFFENSIVE) by WEIDENAAR, AARON			
08:49				SUB OUT: BURTON, JAMARIUS
08:49				SUB IN: WADE, TREY
08:49	SUB OUT: COOPER, COLLIN			
08:49	SUB IN: MCDANIEL, LEWIS			
08:31				MISSED 3PTR by STEVENSON, ERIK
08:31	BLOCK by KOVAL, HAYDEN			
08:26				REBOUND (OFF) by WADE, TREY
08:26		75-46	H 29	GOOD! LAYUP by WADE, TREY
08:26				SUB OUT: STEVENSON, ERIK
08:26				SUB IN: ETIENNE, TYSON
08:26	SUB OUT: MCDANIEL, LEWIS			
08:26	SUB IN: COOPER, COLLIN			
08:13				FOUL (PERSONAL) by DENNIS, DEXTER
08:13	MISSED FT by BERGERSEN, RYLAN			
08:13	REBOUND (OFF) by TEAM			
08:13	GOOD! FT by BERGERSEN, RYLAN	75-47	H 28	
08:02		77-47	H 30	GOOD! DUNK by WADE, TREY
08:02				ASSIST by ETIENNE, TYSON
07:50	TURNOVER (TRAVEL) by KOVAL, HAYDEN			
07:50				
07:50	SUB OUT: KOVAL, HAYDEN			
07:50	SUB OUT: BAKER, JAXSON			
07:50	SUB IN: SHITTU, SK			
07:50	SUB IN: KAYOULOU, EDDY			
07:38				MISSED DUNK by DENNIS, DEXTER
07:33	REBOUND (DEF) by WEIDENAAR, AARON			
07:31	GOOD! 3PTR by KAYOULOU, EDDY [FB]	77-50	H 27	
07:31	ASSIST by BERGERSEN, RYLAN			
07:02				MISSED JUMPER by DENNIS, DEXTER
06:59	REBOUND (DEF) by KAYOULOU, EDDY			
06:54	GOOD! JUMPER by BERGERSEN, RYLAN [FB]	77-52	H 25	
06:54	ASSIST by KAYOULOU, EDDY			
06:49				TURNOVER (LOSTBALL) by WADE, TREY
06:49	STEAL by WEIDENAAR, AARON			
06:44	MISSED 3PTR by COOPER, COLLIN			
06:41				REBOUND (DEF) by ETIENNE, TYSON
06:41				SUB OUT: DENNIS, DEXTER
06:41				SUB OUT: WADE, TREY
06:41				SUB IN: GORDON, DEANTONI
06:41				SUB IN: ECHENIQUE, JAIME
06:31	FOUL (PERSONAL) by COOPER, COLLIN			
06:31		78-52	H 26	GOOD! FT by SHERFIELD, GRANT
06:31				TURNOVER (LANEVIOLATION) by GORDON, DEANTONI
06:10	MISSED LAYUP by KAYOULOU, EDDY			
06:07				REBOUND (DEF) by ECHENIQUE, JAIME
06:05		80-52	H 28	GOOD! DUNK by MIDTGAARD, ASBJORN [FB]
06:05				ASSIST by SHERFIELD, GRANT
05:49	GOOD! 3PTR by KAYOULOU, EDDY	80-55	H 25	
05:36		82-55	H 27	GOOD! LAYUP by ETIENNE, TYSON
05:27	GOOD! LAYUP by KAYOULOU, EDDY	82-57	H 25	
05:27				FOUL (PERSONAL) by MIDTGAARD, ASBJORN
05:27				SUB OUT: ECHENIQUE, JAIME
05:27				SUB IN: BURTON, JAMARIUS
05:27	SUB OUT: BERGERSEN, RYLAN			
05:27	SUB OUT: WEIDENAAR, AARON			
05:27	SUB IN: OLOWOKERE, MASAI			
05:27	SUB IN: CHATHAM, JARED			
05:27	GOOD! FT by KAYOULOU, EDDY	82-58	H 24	
05:10				MISSED 3PTR by ETIENNE, TYSON
05:09				REBOUND (OFF) by MIDTGAARD, ASBJORN
05:09	FOUL (PERSONAL) by KAYOULOU, EDDY			
05:09		83-58	H 25	GOOD! FT by MIDTGAARD, ASBJORN
05:09		84-58	H 26	GOOD! FT by MIDTGAARD, ASBJORN

Time	VISITORS: Central Ark.	Score	Margin	HOME: Wichita St.
04:58	TURNOVER (LOSTBALL) by KAYOULOU, EDDY			
04:58				STEAL by ETIENNE, TYSON
04:53		86-58	H 28	GOOD! LAYUP by BURTON, JAMARIUS
04:53				ASSIST by ETIENNE, TYSON
04:24	GOOD! JUMPER by OLOWOKERE, MASAI	86-60	H 26	
04:24	ASSIST by SHITTU, SK			
04:11				MISSED LAYUP by SHERFIELD, GRANT
04:11	BLOCK by SHITTU, SK			
04:06	REBOUND (DEF) by COOPER, COLLIN			
04:03	GOOD! 3PTR by OLOWOKERE, MASAI [FB]	86-63	H 23	
04:03	ASSIST by COOPER, COLLIN			
03:44		88-63	H 25	GOOD! LAYUP by ETIENNE, TYSON
03:23	MISSED JUMPER by SHITTU, SK			
03:23				BLOCK by MIDTGAARD, ASBJORN
03:17				REBOUND (DEF) by ETIENNE, TYSON
03:15		90-63	H 27	GOOD! LAYUP by GORDON, DEANTONI [FB]
03:15				ASSIST by BURTON, JAMARIUS
03:15	TIMEOUT 30SEC			
03:15	SUB OUT: SHITTU, SK			
03:15	SUB OUT: OLOWOKERE, MASAI			
03:15	SUB OUT: KAYOULOU, EDDY			
03:15	SUB OUT: COOPER, COLLIN			
03:15	SUB IN: BERGERSEN, RYLAN			
03:15	SUB IN: MCDANIEL, LEWIS			
03:15	SUB IN: KOVAL, HAYDEN			
03:15	SUB IN: BAKER, JAXSON			
03:02				SUB OUT: SHERFIELD, GRANT
03:02				SUB IN: FERNANDES, NOAH
02:56	GOOD! 3PTR by MCDANIEL, LEWIS	90-66	H 24	
02:56	ASSIST by KOVAL, HAYDEN			
02:20		93-66	H 27	GOOD! 3PTR by ETIENNE, TYSON
02:20				ASSIST by BURTON, JAMARIUS
02:09				FOUL (PERSONAL) by MIDTGAARD, ASBJORN
02:09	MISSED FT by KOVAL, HAYDEN			
02:08	REBOUND (OFF) by BAKER, JAXSON			
02:08	TURNOVER (DRIBBLING) by BAKER, JAXSON			
02:00				TURNOVER (TRAVEL) by FERNANDES, NOAH
02:00	SUB OUT: BAKER, JAXSON			
02:00	SUB IN: KAYOULOU, EDDY			
01:49				FOUL (PERSONAL) by MIDTGAARD, ASBJORN
01:49				SUB OUT: ETIENNE, TYSON
01:49				SUB OUT: BURTON, JAMARIUS
01:49				SUB IN: HERRS, JACOB
01:49				SUB IN: BUSSE, TATE
01:49	GOOD! FT by KOVAL, HAYDEN	93-67	H 26	
01:49	GOOD! FT by KOVAL, HAYDEN	93-68	H 25	
01:27				TURNOVER (BADPASS) by FERNANDES, NOAH
01:27	STEAL by BERGERSEN, RYLAN			
01:22				FOUL (PERSONAL) by MIDTGAARD, ASBJORN
01:22	MISSED FT by CHATHAM, JARED			
01:22	REBOUND (OFF) by TEAM			
01:22				SUB OUT: FERNANDES, NOAH
01:22				SUB IN: BUSH, BRYCEN
01:22	SUB OUT: KAYOULOU, EDDY			
01:22	SUB IN: OLOWOKERE, MASAI			
01:22	GOOD! FT by CHATHAM, JARED [FB]	93-69	H 24	
01:16				TURNOVER (BADPASS) by BUSH, BRYCEN
01:04				FOUL (PERSONAL) by BUSH, BRYCEN
01:04	MISSED FT by BERGERSEN, RYLAN			
01:04	REBOUND (OFF) by TEAM			
01:04	SUB OUT: KOVAL, HAYDEN			
01:04	SUB IN: SHITTU, SK			
01:04	MISSED FT by BERGERSEN, RYLAN			
01:03				REBOUND (DEF) by BUSSE, TATE
00:55		95-69	H 26	GOOD! LAYUP by BUSSE, TATE
00:46	MISSED 3PTR by BERGERSEN, RYLAN			
00:42				REBOUND (DEF) by GORDON, DEANTONI
00:23				TURNOVER (OTHER) by BUSH, BRYCEN
00:23	SUB OUT: BERGERSEN, RYLAN			
00:23	SUB OUT: CHATHAM, JARED			
00:23	SUB IN: WEIDENAAR, AARON			
00:23	SUB IN: VANOVER, BRANDON			
00:03	MISSED 3PTR by SHITTU, SK			
00:00				REBOUND (DEF) by BUSSE, TATE

Central Ark. 69, Wichita St. 95

Points from (This Period)	UCA	WSU
In the Paint	12	16
Off Turns	8	13
2nd Chance	0	8
Fast Break	15	7
Bench	13	14

**Official Scoring/Possession Reference Chart
Central Ark. vs Wichita St.**

Period 1

December 05, 2019 at Charles Koch Arena - Wichita, Kan.



Period 1

Starters:

Central Ark.: 1 BERGERSEN,RYLAN (G); 13 KAYOULLOUD,EDDY (F); 14 COOPER,COLLIN (G); 15 KOVAL,HAYDEN (C); 34 BAKER,JAXSON (G);

Wichita St.: 1 ETIENNE,TYSON (G); 2 BURTON,JAMARIUS (G); 5 WADE,TREY (F); 10 STEVENSON,ERIK (G); 21 ECHENIQUE,JAIME (C);

Time	VISITORS: Central Ark.	Score	Margin	HOME: Wichita St.
19:43	GOOD! JUMPER by BERGERSEN, RYLAN	0-2	V 2	
19:14	GOOD! LAYUP by KAYOULLOUD, EDDY	0-4	V 4	
19:03		2-4	V 2	GOOD! JUMPER by BURTON, JAMARIUS
18:01		3-4	V 1	GOOD! FT by ECHENIQUE, JAIME
17:53	GOOD! FT by KAYOULLOUD, EDDY [FB]	3-5	V 2	
17:39		5-5	T	GOOD! JUMPER by STEVENSON, ERIK
16:40		7-5	H 2	GOOD! JUMPER by ECHENIQUE, JAIME
15:10		9-5	H 4	GOOD! LAYUP by UDEZE, MORRIS
14:40		11-5	H 6	GOOD! LAYUP by UDEZE, MORRIS
13:51		14-5	H 9	GOOD! 3PTR by SHERFIELD, GRANT [FB]
13:51		15-5	H 10	GOOD! FT by SHERFIELD, GRANT [FB]
13:29	GOOD! LAYUP by BERGERSEN, RYLAN	15-7	H 8	
13:29	GOOD! FT by BERGERSEN, RYLAN	15-8	H 7	
12:50	GOOD! DUNK by CHATHAM, JARED [FB]	15-10	H 5	
12:15		17-10	H 7	GOOD! LAYUP by POOR BEAR-CHANDLER, ISAIAH
11:15		20-10	H 10	GOOD! 3PTR by SHERFIELD, GRANT
10:38		23-10	H 13	GOOD! 3PTR by SHERFIELD, GRANT
09:50	GOOD! 3PTR by BAKER, JAXSON	23-13	H 10	
08:51		25-13	H 12	GOOD! LAYUP by ECHENIQUE, JAIME
08:43	GOOD! JUMPER by KOVAL, HAYDEN [FB]	25-15	H 10	
08:26		26-15	H 11	GOOD! FT by ECHENIQUE, JAIME
08:26		27-15	H 12	GOOD! FT by ECHENIQUE, JAIME
08:05		30-15	H 15	GOOD! 3PTR by ETIENNE, TYSON
07:14		32-15	H 17	GOOD! DUNK by GORDON, DEANTONI [FB]
06:36		34-15	H 19	GOOD! LAYUP by BURTON, JAMARIUS
06:36		35-15	H 20	GOOD! FT by BURTON, JAMARIUS
06:21		36-15	H 21	GOOD! FT by ECHENIQUE, JAIME [FB]
06:21		37-15	H 22	GOOD! FT by ECHENIQUE, JAIME [FB]
06:06		39-15	H 24	GOOD! DUNK by ECHENIQUE, JAIME
05:43	GOOD! JUMPER by CHATHAM, JARED [PNT]	39-17	H 22	
05:16		41-17	H 24	GOOD! LAYUP by BURTON, JAMARIUS [FB]
05:16		42-17	H 25	GOOD! FT by BURTON, JAMARIUS [FB]
04:48	GOOD! FT by BERGERSEN, RYLAN [FB]	42-18	H 24	
04:36		44-18	H 26	GOOD! LAYUP by ECHENIQUE, JAIME
04:02		46-18	H 28	GOOD! JUMPER by SHERFIELD, GRANT
03:25		48-18	H 30	GOOD! LAYUP by STEVENSON, ERIK
03:09	GOOD! FT by BERGERSEN, RYLAN	48-19	H 29	
03:09	GOOD! FT by BERGERSEN, RYLAN	48-20	H 28	
02:36	GOOD! JUMPER by KOVAL, HAYDEN	48-22	H 26	
01:51		50-22	H 28	GOOD! LAYUP by SHERFIELD, GRANT [FB]
01:21	GOOD! 3PTR by KOVAL, HAYDEN	50-25	H 25	
00:46		51-25	H 26	GOOD! FT by UDEZE, MORRIS
00:39	GOOD! LAYUP by BERGERSEN, RYLAN [FB]	51-27	H 24	
00:21		53-27	H 26	GOOD! LAYUP by UDEZE, MORRIS
00:03	GOOD! FT by BERGERSEN, RYLAN	53-28	H 25	

Central Ark. 28, Wichita St. 53

Official Scoring/Possession Reference Chart
Central Ark. vs Wichita St.
Period 2
December 05, 2019 at Charles Koch Arena - Wichita, Kan.



Period 2

Starters:

Central Ark.: 1 BERGERSEN,RYLAN (G); 13 KAYOULOU,EDDY (F); 14 COOPER,COLLIN (G); 15 KOVAL,HAYDEN (C); 34 BAKER,JAXSON (G);
Wichita St.: 1 ETIENNE,TYSON (G); 2 BURTON,JAMARIUS (G); 5 WADE,TREY (F); 10 STEVENSON,ERIK (G); 21 ECHENIQUE,JAIME (C);

Time	VISITORS: Central Ark.	Score	Margin	HOME: Wichita St.
19:10	GOOD! DUNK by KAYOULOU, EDDY	53-30	H 23	
17:58		56-30	H 26	GOOD! 3PTR by STEVENSON, ERIK
17:52	GOOD! FT by KAYOULOU, EDDY [FB]	56-31	H 25	
17:52	GOOD! FT by KAYOULOU, EDDY [FB]	56-32	H 24	
17:37		57-32	H 25	GOOD! FT by POOR BEAR-CHANDLER, ISAIAH
17:12	GOOD! LAYUP by KAYOULOU, EDDY [FB]	57-34	H 23	
16:34	GOOD! 3PTR by KAYOULOU, EDDY	57-37	H 20	
16:14		60-37	H 23	GOOD! 3PTR by ETIENNE, TYSON
16:01	GOOD! DUNK by KAYOULOU, EDDY	60-39	H 21	
15:15	GOOD! LAYUP by CHATHAM, JARED [FB]	60-41	H 19	
14:58		61-41	H 20	GOOD! FT by UDEZE, MORRIS
13:35		64-41	H 23	GOOD! 3PTR by STEVENSON, ERIK
13:27	GOOD! DUNK by CHATHAM, JARED	64-43	H 21	
12:03	GOOD! 3PTR by BAKER, JAXSON	64-46	H 18	
11:39		67-46	H 21	GOOD! 3PTR by BURTON, JAMARIUS
10:39		70-46	H 24	GOOD! 3PTR by STEVENSON, ERIK [FB]
09:40		73-46	H 27	GOOD! 3PTR by DENNIS, DEXTER
08:26		75-46	H 29	GOOD! LAYUP by WADE, TREY
08:13	GOOD! FT by BERGERSEN, RYLAN	75-47	H 28	
08:02		77-47	H 30	GOOD! DUNK by WADE, TREY
07:31	GOOD! 3PTR by KAYOULOU, EDDY [FB]	77-50	H 27	
06:54	GOOD! JUMPER by BERGERSEN, RYLAN [FB]	77-52	H 25	
06:31		78-52	H 26	GOOD! FT by SHERFIELD, GRANT
06:05		80-52	H 28	GOOD! DUNK by MIDTGAARD, ASBJORN [FB]
05:49	GOOD! 3PTR by KAYOULOU, EDDY	80-55	H 25	
05:36		82-55	H 27	GOOD! LAYUP by ETIENNE, TYSON
05:27	GOOD! LAYUP by KAYOULOU, EDDY	82-57	H 25	
05:27	GOOD! FT by KAYOULOU, EDDY	82-58	H 24	
05:09		83-58	H 25	GOOD! FT by MIDTGAARD, ASBJORN
05:09		84-58	H 26	GOOD! FT by MIDTGAARD, ASBJORN
04:53		86-58	H 28	GOOD! LAYUP by BURTON, JAMARIUS
04:24	GOOD! JUMPER by OLOWOKERE, MASAI	86-60	H 26	
04:03	GOOD! 3PTR by OLOWOKERE, MASAI [FB]	86-63	H 23	
03:44		88-63	H 25	GOOD! LAYUP by ETIENNE, TYSON
03:15		90-63	H 27	GOOD! LAYUP by GORDON, DEANTONI [FB]
02:56	GOOD! 3PTR by MCDANIEL, LEWIS	90-66	H 24	
02:20		93-66	H 27	GOOD! 3PTR by ETIENNE, TYSON
01:49	GOOD! FT by KOVAL, HAYDEN	93-67	H 26	
01:49	GOOD! FT by KOVAL, HAYDEN	93-68	H 25	
01:22	GOOD! FT by CHATHAM, JARED [FB]	93-69	H 24	
00:55		95-69	H 26	GOOD! LAYUP by BUSSE, TATE

Central Ark. 69, Wichita St. 95

**Official Substitutions Log
Central Ark. vs Wichita St.
Period 1**

December 05, 2019 at Charles Koch Arena - Wichita, Kan.



VISITORS: Central Ark.	Time	Score	HOME: Wichita St.
1 BERGERSEN,RYLAN			1 ETIENNE,TYSON
13 KAYOULOU,EDDY			2 BURTON,JAMARIUS
14 COOPER,COLLIN			5 WADE,TREY
15 KOVAL,HAYDEN			10 STEVENSON,ERIK
34 BAKER,JAXSON			21 ECHENIQUE,JAIME
	17:03	5-5	SUB OUT: ETIENNE,TYSON
	17:03		SUB OUT: STEVENSON,ERIK
	17:03		SUB IN: DENNIS,DEXTER
	17:03		SUB IN: SHERFIELD,GRANT
	16:07	5-7	SUB OUT: ECHENIQUE,JAIME
	16:07		SUB IN: UDEZE,MORRIS
SUB OUT: 13 KAYOULOU,EDDY	16:07		
SUB IN: 24 CHATHAM,JARED	16:07		
	15:47	5-7	SUB OUT: WADE,TREY
	15:47		SUB IN: POOR BEAR-CHANDLER,ISAIAH
SUB OUT: 14 COOPER,COLLIN	15:47		
SUB IN: 2 MCDANIEL,LEWIS	15:47		
	13:51	5-14	SUB OUT: BURTON,JAMARIUS
	13:51		SUB IN: FERNANDES,NOAH
SUB OUT: 34 BAKER,JAXSON	13:51		
SUB IN: 13 KAYOULOU,EDDY	13:51		
SUB OUT: 15 KOVAL,HAYDEN	13:29	7-15	
SUB IN: 00 SHITTU,SK	13:29		
	12:26	10-15	SUB OUT: UDEZE,MORRIS
	12:26		SUB IN: MIDTGAARD,ASBJORN
	10:56	10-20	SUB OUT: POOR BEAR-CHANDLER,ISAIAH
	10:56		SUB IN: GORDON,DEANTONI
SUB OUT: 2 MCDANIEL,LEWIS	10:56		
SUB OUT: 13 KAYOULOU,EDDY	10:56		
SUB IN: 14 COOPER,COLLIN	10:56		
SUB IN: 15 KOVAL,HAYDEN	10:56		
SUB OUT: 00 SHITTU,SK	10:13	10-23	
SUB IN: 34 BAKER,JAXSON	10:13		
	09:30	13-23	SUB OUT: FERNANDES,NOAH
	09:30		SUB OUT: MIDTGAARD,ASBJORN
	09:30		SUB IN: STEVENSON,ERIK
	09:30		SUB IN: ECHENIQUE,JAIME
	09:14	13-23	SUB OUT: SHERFIELD,GRANT
	09:14		SUB IN: ETIENNE,TYSON
	08:26	15-26	SUB OUT: DENNIS,DEXTER
	08:26		SUB IN: BURTON,JAMARIUS
SUB OUT: 24 CHATHAM,JARED	07:36	15-30	
SUB IN: 3 WEIDENAAR,AARON	07:36		
	06:36	15-34	SUB OUT: GORDON,DEANTONI
	06:36		SUB IN: WADE,TREY
SUB OUT: 1 BERGERSEN,RYLAN	06:36		
SUB OUT: 14 COOPER,COLLIN	06:36		
SUB IN: 2 MCDANIEL,LEWIS	06:36		
SUB IN: 13 KAYOULOU,EDDY	06:36		
SUB OUT: 3 WEIDENAAR,AARON	06:21	15-35	
SUB OUT: 15 KOVAL,HAYDEN	06:21		
SUB IN: 00 SHITTU,SK	06:21		
SUB IN: 24 CHATHAM,JARED	06:21		
SUB OUT: 00 SHITTU,SK	05:16	17-41	
SUB OUT: 2 MCDANIEL,LEWIS	05:16		
SUB OUT: 13 KAYOULOU,EDDY	05:16		
SUB OUT: 34 BAKER,JAXSON	05:16		
SUB IN: 1 BERGERSEN,RYLAN	05:16		
SUB IN: 5 OLOWOKERE,MASAI	05:16		
SUB IN: 14 COOPER,COLLIN	05:16		
SUB IN: 15 KOVAL,HAYDEN	05:16		
	04:48	17-42	SUB OUT: ETIENNE,TYSON
	04:48		SUB OUT: BURTON,JAMARIUS
	04:48		SUB OUT: WADE,TREY
	04:48		SUB IN: DENNIS,DEXTER
	04:48		SUB IN: POOR BEAR-CHANDLER,ISAIAH
	04:48		SUB IN: SHERFIELD,GRANT
	03:52	18-46	SUB OUT: ECHENIQUE,JAIME
	03:52		SUB IN: UDEZE,MORRIS
	03:09	19-48	SUB OUT: STEVENSON,ERIK
	03:09		SUB IN: FERNANDES,NOAH
	00:46	25-50	SUB OUT: POOR BEAR-CHANDLER,ISAIAH
	00:46		SUB IN: GORDON,DEANTONI
SUB OUT: 24 CHATHAM,JARED	00:46		
SUB IN: 13 KAYOULOU,EDDY	00:46		

Official Substitutions Log
Central Ark. vs Wichita St.
Period 2
December 05, 2019 at Charles Koch Arena - Wichita, Kan.



VISITORS: Central Ark.	Time	Score	HOME: Wichita St.
1 BERGERSEN,RYLAN			1 ETIENNE, TYSON
13 KAYOULOU,EDDY			2 BURTON, JAMARIUS
14 COOPER, COLLIN			5 WADE, TREY
15 KOVAL, HAYDEN			10 STEVENSON, ERIK
34 BAKER, JAXSON			21 ECHENIQUE, JAIME
	20:00	-	SUB OUT: DENNIS, DEXTER
	20:00		SUB OUT: GORDON, DEANTONI
	20:00		SUB OUT: FERNANDES, NOAH
	20:00		SUB OUT: UDEZE, MORRIS
	20:00		SUB IN: BURTON, JAMARIUS
	20:00		SUB IN: WADE, TREY
	20:00		SUB IN: STEVENSON, ERIK
	20:00		SUB IN: POOR BEAR-CHANDLER, ISAIAH
SUB OUT: 5 OLOWOKERE, MASAI	20:00		
SUB IN: 34 BAKER, JAXSON	20:00		
	17:52	31-56	SUB OUT: STEVENSON, ERIK
	17:52		SUB OUT: POOR BEAR-CHANDLER, ISAIAH
	17:52		SUB IN: ETIENNE, TYSON
	17:52		SUB IN: ECHENIQUE, JAIME
SUB OUT: 34 BAKER, JAXSON	17:52		
SUB IN: 24 CHATHAM, JARED	17:52		
	17:52		SUB OUT: WADE, TREY
	17:52		SUB IN: POOR BEAR-CHANDLER, ISAIAH
	16:57	34-57	SUB OUT: POOR BEAR-CHANDLER, ISAIAH
	16:57		SUB IN: GORDON, DEANTONI
	15:15	41-60	SUB OUT: BURTON, JAMARIUS
	15:15		SUB OUT: GORDON, DEANTONI
	15:15		SUB OUT: ECHENIQUE, JAIME
	15:15		SUB OUT: SHERFIELD, GRANT
	15:15		SUB IN: DENNIS, DEXTER
	15:15		SUB IN: STEVENSON, ERIK
	15:15		SUB IN: FERNANDES, NOAH
	15:15		SUB IN: UDEZE, MORRIS
SUB OUT: 14 COOPER, COLLIN	15:15		
SUB IN: 2 MCDANIEL, LEWIS	15:15		
SUB OUT: 1 BERGERSEN, RYLAN	14:52	41-61	
SUB IN: 14 COOPER, COLLIN	14:52		
SUB OUT: 15 KOVAL, HAYDEN	13:52	41-61	
SUB IN: 00 SHITTU, SK	13:52		
	12:30	43-64	SUB OUT: ETIENNE, TYSON
	12:30		SUB OUT: UDEZE, MORRIS
	12:30		SUB IN: BURTON, JAMARIUS
	12:30		SUB IN: ECHENIQUE, JAIME
SUB OUT: 14 COOPER, COLLIN	12:30		
SUB IN: 34 BAKER, JAXSON	12:30		
	10:55	46-67	SUB OUT: ECHENIQUE, JAIME
	10:55		SUB IN: POOR BEAR-CHANDLER, ISAIAH
SUB OUT: 00 SHITTU, SK	10:55		
SUB OUT: 13 KAYOULOU, EDDY	10:55		
SUB IN: 3 WEIDENAAR, AARON	10:55		
SUB IN: 15 KOVAL, HAYDEN	10:55		
SUB OUT: 24 CHATHAM, JARED	10:06	46-70	
SUB IN: 1 BERGERSEN, RYLAN	10:06		
	09:14	46-73	SUB OUT: FERNANDES, NOAH
	09:14		SUB OUT: POOR BEAR-CHANDLER, ISAIAH
	09:14		SUB IN: MIDTGAARD, ASBJORN
	09:14		SUB IN: SHERFIELD, GRANT
SUB OUT: 2 MCDANIEL, LEWIS	09:14		
SUB IN: 14 COOPER, COLLIN	09:14		
	08:49	46-73	SUB OUT: BURTON, JAMARIUS
	08:49		SUB IN: WADE, TREY
SUB OUT: 14 COOPER, COLLIN	08:49		
SUB IN: 2 MCDANIEL, LEWIS	08:49		
	08:26	46-75	SUB OUT: STEVENSON, ERIK
	08:26		SUB IN: ETIENNE, TYSON
SUB OUT: 2 MCDANIEL, LEWIS	08:26		
SUB IN: 14 COOPER, COLLIN	08:26		
SUB OUT: 15 KOVAL, HAYDEN	07:50	47-77	
SUB OUT: 34 BAKER, JAXSON	07:50		
SUB IN: 00 SHITTU, SK	07:50		
SUB IN: 13 KAYOULOU, EDDY	07:50		
	06:41	52-77	SUB OUT: DENNIS, DEXTER
	06:41		SUB OUT: WADE, TREY
	06:41		SUB IN: GORDON, DEANTONI
	06:41		SUB IN: ECHENIQUE, JAIME

VISITORS: Central Ark.	Time	Score	HOME: Wichita St.
	05:27	57-82	SUB OUT: ECHENIQUE, JAIME
	05:27		SUB IN: BURTON, JAMARIUS
SUB OUT: 1 BERGERSEN, RYLAN	05:27		
SUB OUT: 3 WEIDENAAR, AARON	05:27		
SUB IN: 5 OLOWOKERE, MASAI	05:27		
SUB IN: 24 CHATHAM, JARED	05:27		
SUB OUT: 00 SHITTU, SK	03:15	63-90	
SUB OUT: 5 OLOWOKERE, MASAI	03:15		
SUB OUT: 13 KAYOULOU, EDDY	03:15		
SUB OUT: 14 COOPER, COLLIN	03:15		
SUB IN: 1 BERGERSEN, RYLAN	03:15		
SUB IN: 2 MCDANIEL, LEWIS	03:15		
SUB IN: 15 KOVAL, HAYDEN	03:15		
SUB IN: 34 BAKER, JAXSON	03:15		
	03:02	63-90	SUB OUT: SHERFIELD, GRANT
	03:02		SUB IN: FERNANDES, NOAH
SUB OUT: 34 BAKER, JAXSON	02:00	66-93	
SUB IN: 13 KAYOULOU, EDDY	02:00		
	01:49	66-93	SUB OUT: ETIENNE, TYSON
	01:49		SUB OUT: BURTON, JAMARIUS
	01:49		SUB IN: HERRS, JACOB
	01:49		SUB IN: BUSSE, TATE
	01:22	68-93	SUB OUT: FERNANDES, NOAH
	01:22		SUB IN: BUSH, BRYCEN
SUB OUT: 13 KAYOULOU, EDDY	01:22		
SUB IN: 5 OLOWOKERE, MASAI	01:22		
SUB OUT: 15 KOVAL, HAYDEN	01:04	69-93	
SUB IN: 00 SHITTU, SK	01:04		
SUB OUT: 1 BERGERSEN, RYLAN	00:23	69-95	
SUB OUT: 24 CHATHAM, JARED	00:23		
SUB IN: 3 WEIDENAAR, AARON	00:23		
SUB IN: 35 VANOVER, BRANDON	00:23		

Central Ark. 69, Wichita St. 95

Official Shot Chart
Central Ark. vs Wichita St.
PERIOD 1 Shots
 December 05, 2019 at Charles Koch Arena - Wichita, Kan.

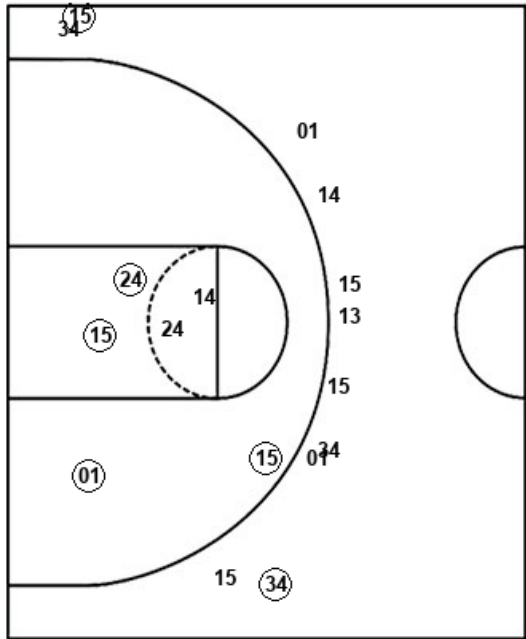


Wichita St.

Central Ark.

Layups
 05 10 (24) (24) 24
 (44) (21) (02) (02) (21)
 (10) (52) 52 (24)

Dunks
 21 (03) (21)



Layups
 (13) (01) (01)

Dunks
 34 (24)



WSU : Period 1	Made	Att	Pct
Layups	10	14	71.4
Dunks	2	3	66.7
2PT Field Goals	16	26	61.5
3PT Field Goals	4	14	28.6
Total Field Goals	20	40	50.0

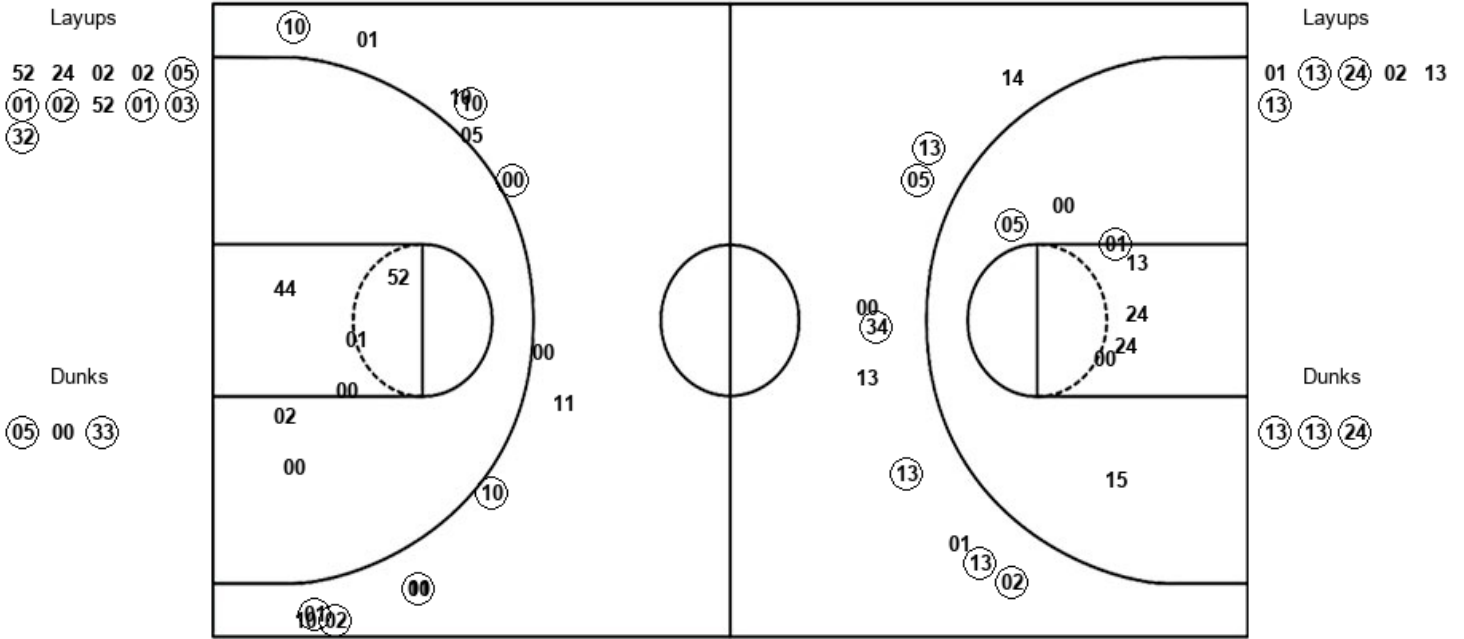
UCA : Period 1	Made	Att	Pct
Layups	3	3	100.0
Dunks	1	2	50.0
2PT Field Goals	8	11	72.7
3PT Field Goals	2	11	18.2
Total Field Goals	10	22	45.5

Official Shot Chart
Central Ark. vs Wichita St.
PERIOD 2 Shots
 December 05, 2019 at Charles Koch Arena - Wichita, Kan.



Wichita St.

Central Ark.



WSU : Period 2	Made	Att	Pct
Layups	6	11	54.5
Dunks	2	3	66.7
2PT Field Goals	8	20	40.0
3PT Field Goals	7	14	50.0
Total Field Goals	15	34	44.1

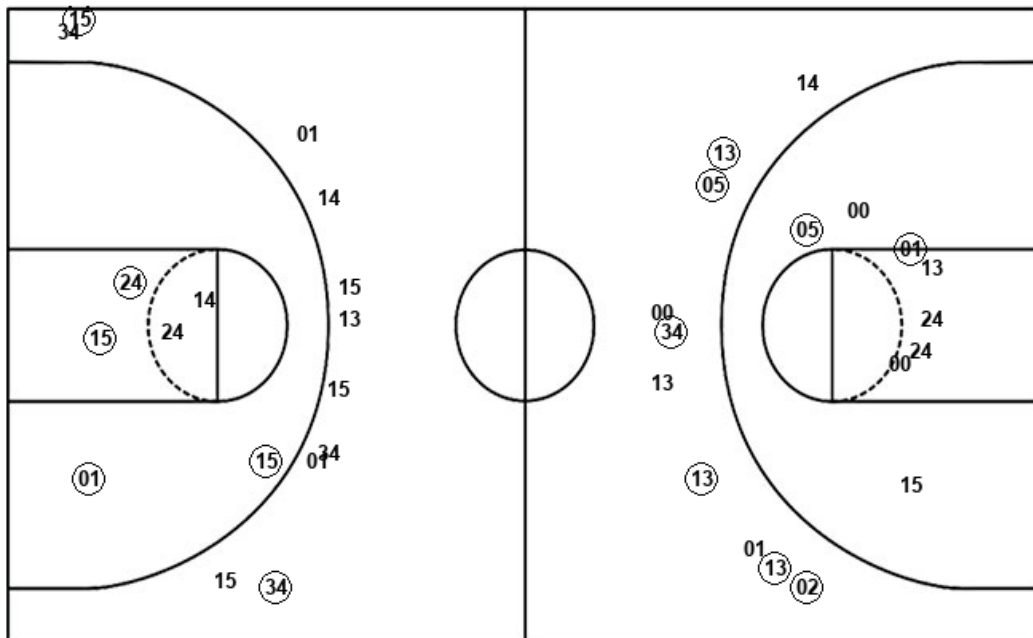
UCA : Period 2	Made	Att	Pct
Layups	3	6	50.0
Dunks	3	3	100.0
2PT Field Goals	8	17	47.1
3PT Field Goals	6	10	60.0
Total Field Goals	14	27	51.9

Official Shot Chart
Central Ark. vs Wichita St.
Central Ark. Team Shots
December 05, 2019 at Charles Koch Arena - Wichita, Kan.



Layups

Dunks



Layups

Dunks

13 01 01 01 13
 24 02 13 13

34 24 13 13 24

UCA : Period 1	Made	Att	Pct
Layups	3	3	100.0
Dunks	1	2	50.0
2PT Field Goals	8	11	72.7
3PT Field Goals	2	11	18.2
Total Field Goals	10	22	45.5

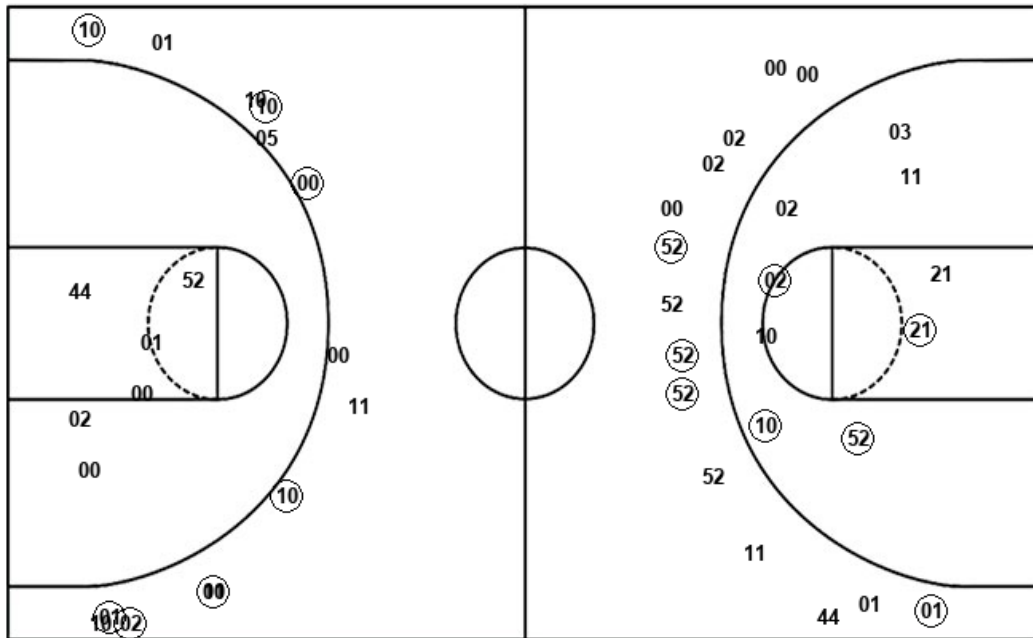
UCA : Period 2	Made	Att	Pct
Layups	3	6	50.0
Dunks	3	3	100.0
2PT Field Goals	8	17	47.1
3PT Field Goals	6	10	60.0
Total Field Goals	14	27	51.9

Official Shot Chart
Central Ark. vs Wichita St.
Wichita St. Team Shots
 December 05, 2019 at Charles Koch Arena - Wichita, Kan.



Layups

Dunks



Layups

Dunks

05 10 (24) (24) 24
 (44) (21) (02) (02) (21)
 (10) (52) 52 (24) 52
 24 02 02 (05) (01)
 (02) 52 (01) (03) (32)

21 (03) (21) (05) 00
 (33)

WSU : Period 1	Made	Att	Pct
Layups	10	14	71.4
Dunks	2	3	66.7
2PT Field Goals	16	26	61.5
3PT Field Goals	4	14	28.6
Total Field Goals	20	40	50.0

WSU : Period 2	Made	Att	Pct
Layups	6	11	54.5
Dunks	2	3	66.7
2PT Field Goals	8	20	40.0
3PT Field Goals	7	14	50.0
Total Field Goals	15	34	44.1