

FINAL SCORE



UT Martin

62



Wichita St.

103

November 16, 2019 • Charles Koch Arena - Wichita, Kan.

FINAL STATISTICS

Official Box Score
UT Martin vs Wichita St.
Game Totals -- Final Statistics
November 16, 2019 at Charles Koch Arena - Wichita, Kan.



UT Martin 62

No.	Player	S	Pts	FG	3FG	FT	OR	DR	TR	PF	A	TO	Blk	Stl	Min	+/-
01	STEWART, PARKER	G	9	3-11	1-6	2-2	0	2	2	0	5	4	0	1	31	-33
02	RANDALL II, CRAIG	G	6	2-8	2-8	0-0	0	3	3	3	0	1	0	0	26	-29
05	HAWTHORNE, JR.,DEREK	G	11	4-9	2-5	1-1	0	4	4	0	1	3	0	1	32	-31
13	THOMAS, MILES	F	15	6-11	3-5	0-3	3	1	4	4	1	5	0	2	31	-28
22	DOVE, QUINTIN	F	13	4-9	2-4	3-4	2	3	5	4	0	2	0	0	27	-32
00	HARRIS, JA'DARIUS	G	0	0-1	0-0	0-0	0	1	1	0	1	2	0	0	10	-18
03	SERTOVIC, EMAN	G	6	2-3	2-3	0-0	0	0	0	0	0	0	0	0	10	-15
10	RUSTIN, ERIC	C	2	1-2	0-0	0-0	0	2	2	0	0	0	1	0	11	-8
11	RILEY, JALEN	G	0	0-2	0-0	0-0	1	1	2	0	2	0	0	0	11	-2
24	AGUIAR, ISAAC	F	0	0-1	0-0	0-0	1	1	2	1	0	0	0	0	9	-9
TEAM							0	2	2	0		1				
TOTALS			62	22-57	12-31	6-10	7	20	27	12	10	18	1	4	198	

Shooting By Period

Period	FG	FG%	3FG	3FG%	FT	FT%
1st Half	10-28	36%	5-16	31%	5-8	63%
2nd Half	12-29	41%	7-15	47%	1-2	50%
Game	22-57	38.6%	12-31	38.7%	6-10	60.0%

Deadball Rebounds: 1,0
Last FG: 2nd-01:31
Biggest Run: 6-0
Largest lead: By 2 at -
Technical Fouls: #0 TEAM @ 1st - 13:04;

Wichita St. 103

No.	Player	S	Pts	FG	3FG	FT	OR	DR	TR	PF	A	TO	Blk	Stl	Min	+/-
00	DENNIS, DEXTER	G	7	3-7	1-4	0-0	1	4	5	2	1	1	0	0	22	16
05	WADE, TREY	F	10	3-7	2-3	2-2	1	7	8	0	4	0	1	1	24	28
10	STEVENSON, ERIK	G	10	4-7	2-3	0-0	0	3	3	0	1	0	0	1	17	18
24	UDEZE, MORRIS	C	14	6-8	0-0	2-4	2	0	2	4	0	1	0	1	18	23
52	SHERFIELD, GRANT	G	6	2-5	0-3	2-2	0	2	2	1	6	5	0	1	28	22
01	ETIENNE, TYSON	G	21	7-10	5-8	2-2	0	1	1	3	3	0	0	2	17	27
02	BURTON, JAMARIUS	G	18	7-12	4-5	0-0	2	4	6	0	5	0	0	1	22	35
03	GORDON, DEANTONI	F	2	1-4	0-0	0-0	0	2	2	2	0	0	0	0	13	1
11	FERNANDES, NOAH	G	3	1-3	1-2	0-0	0	2	2	1	6	1	0	0	21	16
14	HERRS, JACOB	G	0	0-0	0-0	0-0	0	0	0	0	0	0	0	1	3	2
15	BUSH, BRYCEN	G	0	0-0	0-0	0-0	0	0	0	0	1	0	0	0	2	-2
32	BUSSE, TATE	G	0	0-0	0-0	0-0	0	0	0	0	0	0	0	0	2	-3
33	MIDTGAARD, ASBJORN	C	4	2-4	0-0	0-0	3	2	5	0	1	0	0	0	13	11
44	POOR BEAR-CHANDLER, ISA	C	8	4-4	0-0	0-0	2	2	4	2	1	0	1	0	22	19
TEAM							1	2	3	0		1				
TOTALS			103	40-71	15-28	8-10	12	31	43	15	29	9	2	8	223	

Shooting By Period

Period	FG	FG%	3FG	3FG%	FT	FT%
1st Half	22-32	69%	10-15	67%	3-3	100%
2nd Half	18-39	46%	5-13	38%	5-7	71%
Game	40-71	56.3%	15-28	53.6%	8-10	80.0%

Deadball Rebounds: 1,0
Last FG: 2nd-01:08
Biggest Run: 14-0
Largest lead: By 44 at -
Technical Fouls: None.

Game Notes:

Officials: Terry Oglesby, Owen Shortt, R.B. Clyburn
Attendance: 10123

Start Time: 03:05 PM ET
End Time: 04:58 PM ET
Game Duration: 1:52

Score	1st	2nd	TOT
UTM	30	32	62
WSU	57	46	103

UTM led for 0:25. WSU led for 38:39.
Game was tied for 5:32.
Times tied: 76 Lead Changes: 0

Points from	UTM	WSU
In the Paint	16	40
Off Turns	10	21
2nd Chance	4	15
Fast Break	10	22
Bench	8	56

Official Box Score
UT Martin vs Wichita St.
First Half Statistics Only
November 16, 2019 at Charles Koch Arena - Wichita, Kan.



UT Martin 30

No.	Player	S	Pts	FG	3FG	FT	OR	DR	TR	PF	A	TO	Blk	Stl	Min	+/-
01	STEWART, PARKER	G	7	2-8	1-4	2-2	0	1	1	0	0	2	0	0	19	-29
02	RANDALL II, CRAIG	G	3	1-5	1-5	0-0	0	2	2	1	0	0	0	0	18	-24
05	HAWTHORNE, JR.,DEREK	G	6	2-5	1-4	1-1	0	1	1	0	1	2	0	1	17	-19
13	THOMAS, MILES	F	12	5-7	2-3	0-3	2	1	3	1	0	3	0	2	16	-15
22	DOVE, QUINTIN	F	2	0-2	0-0	2-2	1	1	2	0	0	0	0	0	14	-26
00	HARRIS, JA'DARIUS	G	0	0-0	0-0	0-0	0	0	0	0	0	1	0	0	3	-10
03	SERTOVIC, EMAN	G	0	0-0	0-0	0-0	0	0	0	0	0	0	0	0	1	-3
10	RUSTIN, ERIC	C	0	0-1	0-0	0-0	0	1	1	0	0	0	0	0	4	-8
11	RILEY, JALEN	G	0	0-0	0-0	0-0	0	0	0	0	1	0	0	0	5	0
24	AGUIAR, ISAAC	F	0	0-0	0-0	0-0	0	0	0	0	0	0	0	0	2	-1
TEAM							0	1	1	0		1				
TOTALS			30	10-28	5-16	5-8	3	8	11	2	2	9	0	3	100	

Shooting By Period

Period	FG	FG%	3FG	3FG%	FT	FT%
1st Half	10-28	36%	5-16	31%	5-8	63%
Game	22-57	38.6%	12-31	38.7%	6-10	60.0%

Deadball Rebounds: 1,0
Last FG Half: UTM 2nd-01:31

Wichita St. 57

No.	Player	S	Pts	FG	3FG	FT	OR	DR	TR	PF	A	TO	Blk	Stl	Min	+/-
00	DENNIS, DEXTER	G	3	1-3	1-3	0-0	0	2	2	2	1	1	0	0	10	12
05	WADE, TREY	F	5	2-3	1-1	0-0	1	5	6	0	3	0	1	0	13	25
10	STEVENSON, ERIK	G	5	2-4	1-2	0-0	0	2	2	0	1	0	0	0	11	16
24	UDEZE, MORRIS	C	7	3-3	0-0	1-1	0	0	0	2	0	1	0	0	7	12
52	SHERFIELD, GRANT	G	4	1-2	0-1	2-2	0	1	1	1	4	4	0	1	13	13
01	ETIENNE, TYSON	G	9	3-3	3-3	0-0	0	1	1	1	3	0	0	1	10	11
02	BURTON, JAMARIUS	G	13	5-8	3-4	0-0	0	2	2	0	3	0	0	1	12	25
03	GORDON, DEANTONI	F	0	0-1	0-0	0-0	0	0	0	1	0	0	0	0	3	-2
11	FERNANDES, NOAH	G	3	1-1	1-1	0-0	0	1	1	1	3	0	0	0	7	8
14	HERRS, JACOB	G	0	0-0	0-0	0-0	0	0	0	0	0	0	0	0	0	0
15	BUSH, BRYCEN	G	0	0-0	0-0	0-0	0	0	0	0	0	0	0	0	0	0
32	BUSSE, TATE	G	0	0-0	0-0	0-0	0	0	0	0	0	0	0	0	0	0
33	MIDTGAARD, ASBJORN	C	2	1-1	0-0	0-0	1	0	1	0	1	0	0	0	5	3
44	POOR BEAR-CHANDLER, ISA	C	6	3-3	0-0	0-0	0	1	1	1	0	0	0	0	8	12
TEAM							0	2	2	0		0				
TOTALS			57	22-32	10-15	3-3	2	17	19	9	19	6	1	3	100	

Shooting By Period

Period	FG	FG%	3FG	3FG%	FT	FT%
1st Half	22-32	69%	10-15	67%	3-3	100%
Game	40-71	56.3%	15-28	53.6%	8-10	80.0%

Deadball Rebounds: 1,0
Last FG Half: WSU 2nd-01:08

Game Notes:

Officials: Terry Oglesby, Owen Shortt, R.B. Clyburn
Attendance: 10123

Start Time: 03:05 PM ET
End Time: 04:58 PM ET
Game Duration: 1:52

Score	1st	2nd	TOT
UTM	30	32	62
WSU	57	46	103

Points from (This Period)	UTM	WSU
In the Paint	10	18
Off Turns	7	11
2nd Chance	2	5
Fast Break	6	13
Bench	0	33

**Official Play-By-Play
UT Martin vs Wichita St.
First Half**

November 16, 2019 at Charles Koch Arena - Wichita, Kan.



Period 1

Starters:

UT Martin: 1 STEWART, PARKER (G); 2 RANDALL II, CRAIG (G); 5 HAWTHORNE, JR., DEREK (G); 13 THOMAS, MILES (F); 22 DOVE, QUINTIN (F);
Wichita St.: 0 DENNIS, DEXTER (G); 5 WADE, TREY (F); 10 STEVENSON, ERIK (G); 24 UDEZE, MORRIS (C); 52 SHERFIELD, GRANT (G);

Time	VISITORS: UT Martin	Score	Margin	HOME: Wichita St.
19:32				TURNOVER (BADPASS) by SHERFIELD, GRANT
19:32	STEAL by THOMAS, MILES			
19:28	GOOD! DUNK by THOMAS, MILES [FB]	0-2	V 2	
19:03		2-2	T	GOOD! LAYUP by UDEZE, MORRIS [PNT]
19:03				ASSIST by SHERFIELD, GRANT
19:03	FOUL (PERSONAL) by THOMAS, MILES			
19:03				SUB OUT: SHERFIELD, GRANT
19:03				SUB IN: BURTON, JAMARIUS
19:03		3-2	H 1	GOOD! FT by UDEZE, MORRIS
18:47	MISSED LAYUP by DOVE, QUINTIN			
18:43				REBOUND (DEF) by WADE, TREY
18:38		6-2	H 4	GOOD! 3PTR by BURTON, JAMARIUS
18:20	MISSED 3PTR by RANDALL II, CRAIG			
18:15				REBOUND (DEF) by BURTON, JAMARIUS
18:13				TURNOVER (TRAVEL) by UDEZE, MORRIS
17:53	MISSED 3PTR by RANDALL II, CRAIG			
17:49				REBOUND (DEF) by WADE, TREY
17:42		9-2	H 7	GOOD! 3PTR by STEVENSON, ERIK
17:42				ASSIST by DENNIS, DEXTER
17:12	MISSED LAYUP by DOVE, QUINTIN			
17:09				REBOUND (DEF) by STEVENSON, ERIK
16:53		11-2	H 9	GOOD! LAYUP by UDEZE, MORRIS
16:53				ASSIST by STEVENSON, ERIK
16:36				FOUL (PERSONAL) by DENNIS, DEXTER
16:36				SUB OUT: DENNIS, DEXTER
16:36				SUB OUT: UDEZE, MORRIS
16:36				SUB IN: POOR BEAR-CHANDLER, ISAIAH
16:36				SUB IN: SHERFIELD, GRANT
16:36	SUB OUT: RANDALL II, CRAIG			
16:36	SUB IN: SERTOVIC, EMAN			
16:18	MISSED 3PTR by STEWART, PARKER			
16:15				REBOUND (DEF) by WADE, TREY
16:11		14-2	H 12	GOOD! 3PTR by BURTON, JAMARIUS [FB]
16:11				ASSIST by SHERFIELD, GRANT
16:09	TIMEOUT TEAM			
15:41	TURNOVER (LOSTBALL) by HAWTHORNE, JR., DEREK			
15:41	SUB OUT: HAWTHORNE, JR., DEREK			
15:41	SUB IN: RANDALL II, CRAIG			
15:41	SUB OUT: SERTOVIC, EMAN			
15:41	SUB IN: HARRIS, JA'DARIUS			
15:13				MISSED JUMPER by STEVENSON, ERIK
15:08	REBOUND (DEF) by RANDALL II, CRAIG			
15:06				FOUL (PERSONAL) by SHERFIELD, GRANT
15:06	GOOD! FT by STEWART, PARKER [FB]	14-3	H 11	
15:06				SUB OUT: STEVENSON, ERIK
15:06				SUB IN: ETIENNE, TYSON
15:06	GOOD! FT by STEWART, PARKER [FB]	14-4	H 10	
14:46		16-4	H 12	GOOD! LAYUP by POOR BEAR-CHANDLER, ISAIAH
14:46				ASSIST by SHERFIELD, GRANT
14:29	TURNOVER (BADPASS) by THOMAS, MILES			
14:29	SUB OUT: THOMAS, MILES			
14:29	SUB IN: RUSTIN, ERIC			
14:08		19-4	H 15	GOOD! 3PTR by WADE, TREY
14:08				ASSIST by SHERFIELD, GRANT
13:38	MISSED 3PTR by RANDALL II, CRAIG			
13:33				REBOUND (DEF) by BURTON, JAMARIUS
13:28		21-4	H 17	GOOD! LAYUP by POOR BEAR-CHANDLER, ISAIAH
13:28				ASSIST by WADE, TREY
13:13	MISSED JUMPER by STEWART, PARKER			
13:10				REBOUND (DEF) by POOR BEAR-CHANDLER, ISAIAH
13:07		24-4	H 20	GOOD! 3PTR by ETIENNE, TYSON [FB]
13:07				ASSIST by BURTON, JAMARIUS
13:05	TIMEOUT 30SEC			
13:04				SUB OUT: BURTON, JAMARIUS
13:04				SUB OUT: WADE, TREY
13:04				SUB IN: DENNIS, DEXTER
13:04				SUB IN: GORDON, DEANTONI
13:04	SUB OUT: DOVE, QUINTIN			
13:04	SUB IN: AGUIAR, ISAAC			
13:04	SUB OUT: RUSTIN, ERIC			

Time	VISITORS: UT Martin	Score	Margin	HOME: Wichita St.
13:04	SUB IN: HAWTHORNE, JR.,DEREK			
13:04	FOUL (TECH) by TEAM			
13:04	TURNOVER (OFFENSIVE) by TEAM			
13:04		25-4	H 21	GOOD! FT by SHERFIELD, GRANT [FB]
13:04		26-4	H 22	GOOD! FT by SHERFIELD, GRANT [FB]
12:58	TURNOVER (LOSTBALL) by HARRIS, JA'DARIUS			
12:58				STEAL by ETIENNE, TYSON
12:52		28-4	H 24	GOOD! LAYUP by SHERFIELD, GRANT
12:52				ASSIST by ETIENNE, TYSON
12:25	GOOD! LAYUP by HAWTHORNE, JR.,DEREK [PNT]	28-6	H 22	
12:25				FOUL (PERSONAL) by GORDON, DEANTONI
12:25	SUB OUT: HARRIS, JA'DARIUS			
12:25	SUB IN: RILEY, JALEN			
12:25	GOOD! FT by HAWTHORNE, JR.,DEREK	28-7	H 21	
12:00				MISSED JUMPER by GORDON, DEANTONI
11:57	REBOUND (DEF) by HAWTHORNE, JR.,DEREK			
11:52				FOUL (PERSONAL) by ETIENNE, TYSON
11:52				
11:51				SUB OUT: POOR BEAR-CHANDLER, ISAIAH
11:51				SUB IN: UDEZE, MORRIS
11:48	GOOD! 3PTR by RANDALL II, CRAIG	28-10	H 18	
11:48	ASSIST by RILEY, JALEN			
11:20		31-10	H 21	GOOD! 3PTR by DENNIS, DEXTER
11:20				ASSIST by FERNANDES, NOAH
11:11				SUB OUT: GORDON, DEANTONI
11:11				SUB IN: FERNANDES, NOAH
11:08	MISSED 3PTR by HAWTHORNE, JR.,DEREK			
11:05				REBOUND (DEF) by DENNIS, DEXTER
10:54				MISSED 3PTR by DENNIS, DEXTER
10:50	REBOUND (DEF) by STEWART, PARKER			
10:40	MISSED JUMPER by STEWART, PARKER			
10:37				REBOUND (DEF) by TEAM
10:37	SUB OUT: AGUIAR, ISAAC			
10:37	SUB IN: DOVE, QUINTIN			
10:24				SUB OUT: SHERFIELD, GRANT
10:24				SUB IN: WADE, TREY
10:24	FOUL (PERSONAL) by RANDALL II, CRAIG			
10:18		34-10	H 24	GOOD! 3PTR by FERNANDES, NOAH
09:59	GOOD! JUMPER by THOMAS, MILES [PNT]	34-12	H 22	
09:59				FOUL (PERSONAL) by UDEZE, MORRIS
09:59	SUB OUT: STEWART, PARKER			
09:59	SUB IN: THOMAS, MILES			
09:59	MISSED FT by THOMAS, MILES			
09:49				MISSED LAYUP by WADE, TREY
09:45	REBOUND (DEF) by DOVE, QUINTIN			
09:45	TURNOVER (TRAVEL) by THOMAS, MILES			
09:45				SUB OUT: ETIENNE, TYSON
09:45				SUB IN: STEVENSON, ERIK
09:18				MISSED 3PTR by DENNIS, DEXTER
09:14	REBOUND (DEF) by TEAM			
09:09				SUB OUT: DENNIS, DEXTER
09:09				SUB IN: BURTON, JAMARIUS
08:53	TURNOVER (LOSTBALL) by HAWTHORNE, JR.,DEREK			
08:53	SUB OUT: RILEY, JALEN			
08:53	SUB IN: STEWART, PARKER			
08:35		36-12	H 24	GOOD! LAYUP by UDEZE, MORRIS
08:35				ASSIST by WADE, TREY
08:27				FOUL (PERSONAL) by FERNANDES, NOAH
08:27				SUB OUT: UDEZE, MORRIS
08:27				SUB IN: MIDTGAARD, ASBJORN
08:19	TURNOVER (BADPASS) by STEWART, PARKER			
08:19				STEAL by BURTON, JAMARIUS
08:13		38-12	H 26	GOOD! JUMPER by WADE, TREY [FB]
08:13				ASSIST by BURTON, JAMARIUS
08:01	GOOD! LAYUP by STEWART, PARKER [PNT]	38-14	H 24	
07:49				MISSED JUMPER by BURTON, JAMARIUS
07:46				REBOUND (OFF) by WADE, TREY
07:44		40-14	H 26	GOOD! JUMPER by STEVENSON, ERIK
07:44				ASSIST by WADE, TREY
07:44				SUB OUT: WADE, TREY
07:44				SUB OUT: FERNANDES, NOAH
07:44				SUB IN: DENNIS, DEXTER
07:44				SUB IN: SHERFIELD, GRANT
07:44				
09:59				REBOUND (DEF) by WADE, TREY
07:25	GOOD! 3PTR by HAWTHORNE, JR.,DEREK	40-17	H 23	
06:52		42-17	H 25	GOOD! JUMPER by BURTON, JAMARIUS
06:35	MISSED 3PTR by RANDALL II, CRAIG			
06:30				REBOUND (DEF) by SHERFIELD, GRANT
06:28				MISSED 3PTR by STEVENSON, ERIK

Time	VISITORS: UT Martin	Score	Margin	HOME: Wichita St.
06:24				REBOUND (OFF) by MIDTGAARD, ASBJORN
06:22		45-17	H 28	GOOD! 3PTR by BURTON, JAMARIUS
06:22				ASSIST by MIDTGAARD, ASBJORN
06:07	MISSED JUMPER by STEWART, PARKER			
06:01				REBOUND (DEF) by STEVENSON, ERIK
05:49		47-17	H 30	GOOD! LAYUP by MIDTGAARD, ASBJORN
05:49				ASSIST by BURTON, JAMARIUS
05:28	GOOD! 3PTR by THOMAS, MILES	47-20	H 27	
05:14				MISSED 3PTR by BURTON, JAMARIUS
05:10	REBOUND (DEF) by RANDALL II, CRAIG			
05:05	TURNOVER (LOSTBALL) by STEWART, PARKER			
05:05				STEAL by SHERFIELD, GRANT
04:59				TURNOVER (BADPASS) by SHERFIELD, GRANT
04:59	STEAL by HAWTHORNE, JR.,DEREK			
04:53	MISSED 3PTR by STEWART, PARKER			
04:50				REBOUND (DEF) by DENNIS, DEXTER
04:38				FOUL (OFF) by DENNIS, DEXTER
04:38				TURNOVER (OFFENSIVE) by DENNIS, DEXTER
04:38				SUB OUT: DENNIS, DEXTER
04:38				SUB OUT: STEVENSON, ERIK
04:38				SUB OUT: SHERFIELD, GRANT
04:38				SUB IN: ETIENNE, TYSON
04:38				SUB IN: WADE, TREY
04:38				SUB IN: FERNANDES, NOAH
04:25				SUB OUT: BURTON, JAMARIUS
04:25				SUB OUT: MIDTGAARD, ASBJORN
04:25				SUB IN: SHERFIELD, GRANT
04:25	SUB OUT: DOVE, QUINTIN			
04:25	SUB IN: RILEY, JALEN			
04:23				SUB OUT: BUSH, BRYCEN
04:23				SUB IN: POOR BEAR-CHANDLER, ISAIAH
04:09	MISSED 3PTR by HAWTHORNE, JR.,DEREK			
04:04	REBOUND (OFF) by THOMAS, MILES			
04:03				FOUL (PERSONAL) by POOR BEAR-CHANDLER, ISAIAH
04:03	SUB OUT: STEWART, PARKER			
04:03	SUB IN: SERTOVIC, EMAN			
04:03	MISSED FT by THOMAS, MILES			
04:03	REBOUND (OFF) by TEAM			
04:03	SUB OUT: RANDALL II, CRAIG			
04:03	SUB IN: RUSTIN, ERIC			
04:03	MISSED FT by THOMAS, MILES			
04:03				REBOUND (DEF) by WADE, TREY
03:49				TURNOVER (LOSTBALL) by SHERFIELD, GRANT
04:03	MISSED LAYUP by THOMAS, MILES			
04:03				BLOCK by WADE, TREY
04:03	REBOUND (OFF) by THOMAS, MILES			
03:44				
03:44	SUB OUT: SERTOVIC, EMAN			
03:44	SUB OUT: RILEY, JALEN			
03:44	SUB IN: STEWART, PARKER			
03:44	SUB IN: RANDALL II, CRAIG			
03:35	GOOD! 3PTR by THOMAS, MILES	47-23	H 24	
03:19		50-23	H 27	GOOD! 3PTR by ETIENNE, TYSON
03:19				ASSIST by FERNANDES, NOAH
03:04	GOOD! 3PTR by STEWART, PARKER	50-26	H 24	
03:04	ASSIST by HAWTHORNE, JR.,DEREK			
02:43				TURNOVER (BADPASS) by SHERFIELD, GRANT
02:43	STEAL by THOMAS, MILES			
02:38	GOOD! LAYUP by THOMAS, MILES [FB]	50-28	H 22	
02:14				MISSED 3PTR by SHERFIELD, GRANT
02:09	REBOUND (DEF) by RUSTIN, ERIC			
02:00	MISSED 3PTR by THOMAS, MILES			
01:56				REBOUND (DEF) by FERNANDES, NOAH
01:53		53-28	H 25	GOOD! 3PTR by ETIENNE, TYSON [FB]
01:53				ASSIST by FERNANDES, NOAH
01:36	MISSED JUMPER by RUSTIN, ERIC			
01:33				REBOUND (DEF) by ETIENNE, TYSON
01:27		55-28	H 27	GOOD! LAYUP by POOR BEAR-CHANDLER, ISAIAH
01:27				ASSIST by ETIENNE, TYSON
01:14	TURNOVER (LOSTBALL) by THOMAS, MILES			
01:14				SUB OUT: WADE, TREY
01:14				SUB OUT: FERNANDES, NOAH
01:14				SUB OUT: POOR BEAR-CHANDLER, ISAIAH
01:14				SUB OUT: SHERFIELD, GRANT
01:14				SUB IN: BURTON, JAMARIUS
01:14				SUB IN: GORDON, DEANTONI
01:14				SUB IN: STEVENSON, ERIK
01:14				SUB IN: UDEZE, MORRIS
01:14	SUB OUT: RUSTIN, ERIC			
01:14	SUB IN: DOVE, QUINTIN			

Time	VISITORS: UT Martin	Score	Margin	HOME: Wichita St.
01:14	SUB OUT: HAWTHORNE, JR.,DEREK			
01:14	SUB IN: RILEY, JALEN			
00:48				MISSED JUMPER by BURTON, JAMARIUS
00:45	REBOUND (DEF) by THOMAS, MILES			
00:41	MISSED 3PTR by STEWART, PARKER			
00:38	REBOUND (OFF) by DOVE, QUINTIN			
00:38				FOUL (PERSONAL) by UDEZE, MORRIS
00:38				SUB OUT: UDEZE, MORRIS
00:38				SUB IN: MIDTGAARD, ASBJORN
00:38	SUB OUT: RANDALL II, CRAIG			
00:38	SUB IN: HAWTHORNE, JR.,DEREK			
00:38	GOOD! FT by DOVE, QUINTIN	55-29	H 26	
00:38	GOOD! FT by DOVE, QUINTIN	55-30	H 25	
00:17		57-30	H 27	GOOD! JUMPER by BURTON, JAMARIUS
00:01	MISSED 3PTR by HAWTHORNE, JR.,DEREK			
00:01				REBOUND (DEF) by TEAM
10:18				ASSIST by ETIENNE, TYSON

UT Martin 30, Wichita St. 57

Points from (This Period)	UTM	WSU
In the Paint	10	18
Off Turns	7	11
2nd Chance	2	5
Fast Break	6	13
Bench	0	33

Official Box Score
UT Martin vs Wichita St.
Second Half Statistics Only
November 16, 2019 at Charles Koch Arena - Wichita, Kan.



UT Martin 32

No.	Player	S	Pts	FG	3FG	FT	OR	DR	TR	PF	A	TO	Blk	Stl	Min	+/-
01	STEWART, PARKER	G	2	1-3	0-2	0-0	0	1	1	0	5	2	0	1	13	-4
02	RANDALL II, CRAIG	G	3	1-3	1-3	0-0	0	1	1	2	0	1	0	0	8	-5
05	HAWTHORNE, JR.,DEREK	G	5	2-4	1-1	0-0	0	3	3	0	0	1	0	0	15	-12
13	THOMAS, MILES	F	3	1-4	1-2	0-0	1	0	1	3	1	2	0	0	16	-13
22	DOVE, QUINTIN	F	11	4-7	2-4	1-2	1	2	3	4	0	2	0	0	13	-6
00	HARRIS, JA'DARIUS	G	0	0-1	0-0	0-0	0	1	1	0	1	1	0	0	7	-8
03	SERTOVIC, EMAN	G	6	2-3	2-3	0-0	0	0	0	0	0	0	0	0	9	-12
10	RUSTIN, ERIC	C	2	1-1	0-0	0-0	0	1	1	0	0	0	1	0	7	0
11	RILEY, JALEN	G	0	0-2	0-0	0-0	1	1	2	0	1	0	0	0	5	-2
24	AGUIAR, ISAAC	F	0	0-1	0-0	0-0	1	1	2	1	0	0	0	0	7	-8
	TEAM						0	1	1	0		0				
TOTALS			32	12-29	7-15	1-2	4	12	16	10	8	9	1	1	98	

Shooting By Period

Period	FG	FG%	3FG	3FG%	FT	FT%
2nd Half	12-29	41%	7-15	47%	1-2	50%
Game	22-57	38.6%	12-31	38.7%	6-10	60.0%

Deadball Rebounds: 1,0

Last FG Half: UTM -

Wichita St. 46

No.	Player	S	Pts	FG	3FG	FT	OR	DR	TR	PF	A	TO	Blk	Stl	Min	+/-
00	DENNIS, DEXTER	G	4	2-4	0-1	0-0	1	2	3	0	0	0	0	0	11	4
05	WADE, TREY	F	5	1-4	1-2	2-2	0	2	2	0	1	0	0	1	11	3
10	STEVENSON, ERIK	G	5	2-3	1-1	0-0	0	1	1	0	0	0	0	1	5	2
24	UDEZE, MORRIS	C	7	3-5	0-0	1-3	2	0	2	2	0	0	0	1	10	11
52	SHERFIELD, GRANT	G	2	1-3	0-2	0-0	0	1	1	0	2	1	0	0	15	9
01	ETIENNE, TYSON	G	12	4-7	2-5	2-2	0	0	0	2	0	0	0	1	7	16
02	BURTON, JAMARIUS	G	5	2-4	1-1	0-0	2	2	4	0	2	0	0	0	10	10
03	GORDON, DEANTONI	F	2	1-3	0-0	0-0	0	2	2	1	0	0	0	0	10	3
11	FERNANDES, NOAH	G	0	0-2	0-1	0-0	0	1	1	0	3	1	0	0	14	8
14	HERRS, JACOB	G	0	0-0	0-0	0-0	0	0	0	0	0	0	0	1	3	2
15	BUSH, BRYCEN	G	0	0-0	0-0	0-0	0	0	0	0	1	0	0	0	2	-2
32	BUSSE, TATE	G	0	0-0	0-0	0-0	0	0	0	0	0	0	0	0	2	-3
33	MIDTGAARD, ASBJORN	C	2	1-3	0-0	0-0	2	2	4	0	0	0	0	0	8	8
44	POOR BEAR-CHANDLER, ISA	C	2	1-1	0-0	0-0	2	1	3	1	1	0	1	0	14	7
	TEAM						1	0	1	0		1				
TOTALS			46	18-39	5-13	5-7	10	14	24	6	10	3	1	5	123	

Shooting By Period

Period	FG	FG%	3FG	3FG%	FT	FT%
2nd Half	18-39	46%	5-13	38%	5-7	71%
Game	40-71	56.3%	15-28	53.6%	8-10	80.0%

Deadball Rebounds: 1,0

Last FG Half: WSU -

Game Notes:

Officials: Terry Oglesby, Owen Shortt, R.B. Clyburn
Attendance: 10123

Start Time: 03:05 PM ET

End Time: 04:58 PM ET

Game Duration: 1:52

Score	1st	2nd	TOT
UTM	30	32	62
WSU	57	46	103

Points from (This Period)	UTM	WSU
In the Paint	6	22
Off Turns	3	10
2nd Chance	2	10
Fast Break	4	9
Bench	8	23

**Official By-By-Play
UT Martin vs Wichita St.
Second Half**

November 16, 2019 at Charles Koch Arena - Wichita, Kan.



Period 2

Starters:

UT Martin: 1 STEWART, PARKER (G); 2 RANDALL II, CRAIG (G); 5 HAWTHORNE, JR., DEREK (G); 13 THOMAS, MILES (F); 22 DOVE, QUINTIN (F);
Wichita St.: 0 DENNIS, DEXTER (G); 5 WADE, TREY (F); 10 STEVENSON, ERIK (G); 24 UDEZE, MORRIS (C); 52 SHERFIELD, GRANT (G);

Time	VISITORS: UT Martin	Score	Margin	HOME: Wichita St.
04:25				SUB IN: POOR BEAR-CHANDLER, ISAIAH
19:46	MISSED 3PTR by STEWART, PARKER			
19:42				REBOUND (DEF) by POOR BEAR-CHANDLER, ISAIAH
19:32		60-30	H 30	GOOD! 3PTR by WADE, TREY
19:32				ASSIST by BURTON, JAMARIUS
19:17				SUB OUT: ETIENNE, TYSON
19:17				SUB OUT: BURTON, JAMARIUS
19:17				SUB OUT: MIDTGAARD, ASBJORN
19:17				SUB IN: WADE, TREY
19:17				SUB IN: POOR BEAR-CHANDLER, ISAIAH
19:17				SUB IN: SHERFIELD, GRANT
19:08	MISSED 3PTR by DOVE, QUINTIN			
19:08				REBOUND (DEF) by WADE, TREY
19:08	FOUL (PERSONAL) by RANDALL II, CRAIG			
19:08		61-30	H 31	GOOD! FT by WADE, TREY [FB]
19:08		62-30	H 32	GOOD! FT by WADE, TREY [FB]
18:56	GOOD! JUMPER by DOVE, QUINTIN	62-32	H 30	
18:56	ASSIST by STEWART, PARKER			
18:34	FOUL (PERSONAL) by THOMAS, MILES			
18:30	SUB OUT: RILEY, JALEN			
18:30	SUB IN: RUSTIN, ERIC			
18:28		65-32	H 33	GOOD! 3PTR by STEVENSON, ERIK
18:28				ASSIST by SHERFIELD, GRANT
18:19	GOOD! 3PTR by DOVE, QUINTIN	65-35	H 30	
18:19	ASSIST by STEWART, PARKER			
18:07				SUB OUT: GORDON, DEANTONI
18:07				SUB IN: BURTON, JAMARIUS
18:00				MISSED JUMPER by WADE, TREY
17:56	REBOUND (DEF) by RUSTIN, ERIC			
17:47	MISSED 3PTR by STEWART, PARKER			
17:43				REBOUND (DEF) by BURTON, JAMARIUS
17:34		67-35	H 32	GOOD! LAYUP by POOR BEAR-CHANDLER, ISAIAH
17:34				ASSIST by WADE, TREY
17:17	GOOD! 3PTR by DOVE, QUINTIN	67-38	H 29	
17:17	ASSIST by STEWART, PARKER			
17:07		69-38	H 31	GOOD! JUMPER by SHERFIELD, GRANT
16:49	TURNOVER (LOSTBALL) by DOVE, QUINTIN			
16:49				STEAL by WADE, TREY
16:44				TURNOVER (BADPASS) by SHERFIELD, GRANT
16:44	STEAL by STEWART, PARKER			
16:38	GOOD! 3PTR by HAWTHORNE, JR., DEREK [FB]	69-41	H 28	
16:38	ASSIST by STEWART, PARKER			
16:26				MISSED 3PTR by WADE, TREY
16:21				REBOUND (OFF) by BURTON, JAMARIUS
16:19				MISSED 3PTR by SHERFIELD, GRANT
16:16				REBOUND (OFF) by POOR BEAR-CHANDLER, ISAIAH
16:16				SUB OUT: WADE, TREY
16:16				SUB OUT: STEVENSON, ERIK
16:16				SUB OUT: POOR BEAR-CHANDLER, ISAIAH
16:16				SUB OUT: SHERFIELD, GRANT
16:16				SUB IN: DENNIS, DEXTER
16:16				SUB IN: ETIENNE, TYSON
16:16				SUB IN: FERNANDES, NOAH
16:16				SUB IN: UDEZE, MORRIS
16:16	SUB OUT: RUSTIN, ERIC			
16:16	SUB IN: RANDALL II, CRAIG			
16:05				MISSED 3PTR by DENNIS, DEXTER
16:01	REBOUND (DEF) by DOVE, QUINTIN			
15:54	TURNOVER (LOSTBALL) by STEWART, PARKER			
15:54				STEAL by UDEZE, MORRIS
15:49				MISSED DUNK by UDEZE, MORRIS
15:46	REBOUND (DEF) by HAWTHORNE, JR., DEREK			
15:40	TURNOVER (LOSTBALL) by THOMAS, MILES			
15:40				
15:19		71-41	H 30	GOOD! JUMPER by UDEZE, MORRIS [PNT]
15:06	TURNOVER (LOSTBALL) by STEWART, PARKER			
15:06				STEAL by ETIENNE, TYSON
15:01		73-41	H 32	GOOD! LAYUP by ETIENNE, TYSON [FB]
15:01				ASSIST by BURTON, JAMARIUS
14:36	MISSED LAYUP by HAWTHORNE, JR., DEREK			

Time	VISITORS: UT Martin	Score	Margin	HOME: Wichita St.
14:32				REBOUND (DEF) by DENNIS, DEXTER
14:31	FOUL (PERSONAL) by DOVE, QUINTIN			
14:25				MISSED 3PTR by ETIENNE, TYSON
14:22	REBOUND (DEF) by HAWTHORNE, JR.,DEREK			
14:14	GOOD! 3PTR by RANDALL II, CRAIG	73-44	H 29	
14:14	ASSIST by THOMAS, MILES			
14:00	FOUL (PERSONAL) by RANDALL II, CRAIG			
14:00				SUB OUT: BURTON, JAMARIUS
14:00				SUB IN: STEVENSON, ERIK
14:00	SUB OUT: THOMAS, MILES			
14:00	SUB IN: SERTOVIC, EMAN			
13:45				TURNOVER (TRAVEL) by FERNANDES, NOAH
13:45	MISSED 3PTR by DOVE, QUINTIN			
13:45				REBOUND (DEF) by STEVENSON, ERIK
13:45		75-44	H 31	GOOD! JUMPER by ETIENNE, TYSON
13:43				FOUL (PERSONAL) by ETIENNE, TYSON
13:11	TURNOVER (OTHER) by RANDALL II, CRAIG			
12:58		77-44	H 33	GOOD! LAYUP by STEVENSON, ERIK [PNT]
12:49				FOUL (PERSONAL) by ETIENNE, TYSON
12:49				SUB OUT: ETIENNE, TYSON
12:49				SUB IN: GORDON, DEANTONI
12:46	MISSED 3PTR by RANDALL II, CRAIG			
12:43	REBOUND (OFF) by DOVE, QUINTIN			
12:40	GOOD! LAYUP by DOVE, QUINTIN	77-46	H 31	
12:27	SUB OUT: SERTOVIC, EMAN			
12:27	SUB IN: THOMAS, MILES			
12:21				MISSED LAYUP by UDEZE, MORRIS
12:20	REBOUND (DEF) by DOVE, QUINTIN			
12:12	MISSED LAYUP by THOMAS, MILES			
12:09				REBOUND (DEF) by GORDON, DEANTONI
12:05		79-46	H 33	GOOD! DUNK by UDEZE, MORRIS
12:05				ASSIST by FERNANDES, NOAH
11:54				FOUL (PERSONAL) by UDEZE, MORRIS
11:54				
11:54				SUB OUT: UDEZE, MORRIS
11:54				SUB IN: MIDTGAARD, ASBJORN
11:48	GOOD! LAYUP by HAWTHORNE, JR.,DEREK [PNT]	79-48	H 31	
11:20				MISSED JUMPER by GORDON, DEANTONI
11:16				REBOUND (OFF) by MIDTGAARD, ASBJORN
11:16				TURNOVER (SHOTCLOCK) by TEAM
11:04	TURNOVER (LOSTBALL) by HAWTHORNE, JR.,DEREK			
11:04				STEAL by STEVENSON, ERIK
10:54				MISSED 3PTR by FERNANDES, NOAH
10:52				REBOUND (OFF) by TEAM
10:52	FOUL (PERSONAL) by DOVE, QUINTIN			
10:47				MISSED JUMPER by STEVENSON, ERIK
10:44	REBOUND (DEF) by RANDALL II, CRAIG			
10:40	MISSED 3PTR by RANDALL II, CRAIG			
10:34				REBOUND (DEF) by DENNIS, DEXTER
10:30		81-48	H 33	GOOD! LAYUP by DENNIS, DEXTER
10:27	TIMEOUT TEAM			
10:27				SUB OUT: MIDTGAARD, ASBJORN
10:27				SUB IN: POOR BEAR-CHANDLER, ISAIAH
10:01	MISSED LAYUP by DOVE, QUINTIN			
09:56				REBOUND (DEF) by GORDON, DEANTONI
09:36				MISSED JUMPER by DENNIS, DEXTER
09:33				REBOUND (OFF) by DENNIS, DEXTER
09:32		83-48	H 35	GOOD! LAYUP by DENNIS, DEXTER
09:15	GOOD! 3PTR by THOMAS, MILES	83-51	H 32	
09:15	ASSIST by STEWART, PARKER			
08:46				MISSED JUMPER by FERNANDES, NOAH
08:42	REBOUND (DEF) by STEWART, PARKER			
08:39				FOUL (PERSONAL) by POOR BEAR-CHANDLER, ISAIAH
08:39	GOOD! FT by DOVE, QUINTIN [FB]	83-52	H 31	
08:39				SUB OUT: DENNIS, DEXTER
08:39				SUB OUT: GORDON, DEANTONI
08:39				SUB OUT: STEVENSON, ERIK
08:39				SUB OUT: FERNANDES, NOAH
08:39				SUB OUT: POOR BEAR-CHANDLER, ISAIAH
08:39				SUB IN: ETIENNE, TYSON
08:39				SUB IN: BURTON, JAMARIUS
08:39				SUB IN: WADE, TREY
08:39				SUB IN: UDEZE, MORRIS
08:39				SUB IN: SHERFIELD, GRANT
08:39	SUB OUT: STEWART, PARKER			
08:39	SUB IN: SERTOVIC, EMAN			
08:39	MISSED FT by DOVE, QUINTIN			
08:13				MISSED JUMPER by WADE, TREY
08:12				REBOUND (OFF) by UDEZE, MORRIS
08:12		85-52	H 33	GOOD! LAYUP by UDEZE, MORRIS

Time	VISITORS: UT Martin	Score	Margin	HOME: Wichita St.
08:12	FOUL (PERSONAL) by DOVE, QUINTIN			
08:12	SUB OUT: RANDALL II, CRAIG			
08:12	SUB OUT: DOVE, QUINTIN			
08:12	SUB IN: HARRIS, JA'DARIUS			
08:12	SUB IN: AGUIAR, ISAAC			
08:12				MISSED FT by UDEZE, MORRIS
08:10	REBOUND (DEF) by HAWTHORNE, JR.,DEREK			
07:59	FOUL (OFF) by THOMAS, MILES			
07:59	TURNOVER (OFFENSIVE) by THOMAS, MILES			
07:59				
08:39				REBOUND (DEF) by WADE, TREY
07:51				SUB OUT: WADE, TREY
07:51				SUB IN: POOR BEAR-CHANDLER, ISIAIAH
07:32				MISSED JUMPER by BURTON, JAMARIUS
07:29	REBOUND (DEF) by HARRIS, JA'DARIUS			
07:18	MISSED LAYUP by HAWTHORNE, JR.,DEREK			
07:14	REBOUND (OFF) by AGUIAR, ISAAC			
07:12	MISSED LAYUP by AGUIAR, ISAAC			
07:12				BLOCK by POOR BEAR-CHANDLER, ISIAIAH
07:02				REBOUND (DEF) by BURTON, JAMARIUS
07:01				MISSED 3PTR by ETIENNE, TYSON
07:01				REBOUND (OFF) by UDEZE, MORRIS
07:01	FOUL (PERSONAL) by THOMAS, MILES			
07:01		86-52	H 34	GOOD! FT by UDEZE, MORRIS
07:01	SUB OUT: HARRIS, JA'DARIUS			
07:01	SUB OUT: SERTOVIC, EMAN			
07:01	SUB OUT: AGUIAR, ISAAC			
07:01	SUB IN: STEWART, PARKER			
07:01	SUB IN: RILEY, JALEN			
07:01	SUB IN: DOVE, QUINTIN			
07:01				MISSED FT by UDEZE, MORRIS
07:00				REBOUND (OFF) by POOR BEAR-CHANDLER, ISIAIAH
06:45		88-52	H 36	GOOD! LAYUP by BURTON, JAMARIUS
06:35				FOUL (PERSONAL) by UDEZE, MORRIS
06:35				SUB OUT: UDEZE, MORRIS
06:35				SUB IN: MIDTGAARD, ASBJORN
06:35	GOOD! LAYUP by STEWART, PARKER [PNT]	88-54	H 34	
06:35				MISSED LAYUP by MIDTGAARD, ASBJORN
06:35				REBOUND (OFF) by BURTON, JAMARIUS
06:26				MISSED 3PTR by SHERFIELD, GRANT
06:22	REBOUND (DEF) by RILEY, JALEN			
05:55	FOUL (OFF) by DOVE, QUINTIN			
05:55	TURNOVER (OFFENSIVE) by DOVE, QUINTIN			
05:49	SUB OUT: STEWART, PARKER			
05:49	SUB OUT: RILEY, JALEN			
05:49	SUB OUT: DOVE, QUINTIN			
05:49	SUB IN: HARRIS, JA'DARIUS			
05:49	SUB IN: SERTOVIC, EMAN			
05:49	SUB IN: AGUIAR, ISAAC			
05:42		90-54	H 36	GOOD! DUNK by MIDTGAARD, ASBJORN
05:42				ASSIST by SHERFIELD, GRANT
05:28	MISSED 3PTR by THOMAS, MILES			
05:24				REBOUND (DEF) by SHERFIELD, GRANT
05:16		93-54	H 39	GOOD! 3PTR by ETIENNE, TYSON
05:16				ASSIST by POOR BEAR-CHANDLER, ISIAIAH
04:49	MISSED JUMPER by THOMAS, MILES			
04:47	REBOUND (OFF) by THOMAS, MILES			
04:47				SUB OUT: POOR BEAR-CHANDLER, ISIAIAH
04:47				SUB OUT: SHERFIELD, GRANT
04:47				SUB IN: GORDON, DEANTONI
04:47				SUB IN: FERNANDES, NOAH
04:47	SUB OUT: HAWTHORNE, JR.,DEREK			
04:47	SUB IN: RUSTIN, ERIC			
04:38	MISSED 3PTR by SERTOVIC, EMAN			
04:35				REBOUND (DEF) by FERNANDES, NOAH
04:32		96-54	H 42	GOOD! 3PTR by BURTON, JAMARIUS [FB]
04:32				ASSIST by FERNANDES, NOAH
04:17	GOOD! 3PTR by SERTOVIC, EMAN	96-57	H 39	
04:17	ASSIST by HARRIS, JA'DARIUS			
03:41				MISSED JUMPER by BURTON, JAMARIUS
03:35				REBOUND (OFF) by MIDTGAARD, ASBJORN
03:35				MISSED LAYUP by MIDTGAARD, ASBJORN
03:34	REBOUND (DEF) by AGUIAR, ISAAC			
03:30	MISSED LAYUP by HARRIS, JA'DARIUS			
03:27				REBOUND (DEF) by MIDTGAARD, ASBJORN
03:20				MISSED 3PTR by ETIENNE, TYSON
03:20	BLOCK by RUSTIN, ERIC			
03:18				REBOUND (OFF) by TEAM
03:18				SUB OUT: BURTON, JAMARIUS
03:18				SUB IN: HERRS, JACOB

Time	VISITORS: UT Martin	Score	Margin	HOME: Wichita St.
03:08		99-57	H 42	GOOD! 3PTR by ETIENNE, TYSON
03:08				ASSIST by FERNANDES, NOAH
02:46	SUB OUT: THOMAS, MILES			
02:46	SUB IN: RILEY, JALEN			
02:38	TURNOVER (LOSTBALL) by HARRIS, JA'DARIUS			
02:38				STEAL by HERRS, JACOB
02:31	FOUL (PERSONAL) by AGUIAR, ISAAC			
02:31		100-57	H 43	GOOD! FT by ETIENNE, TYSON [FB]
02:31				SUB OUT: FERNANDES, NOAH
02:31				SUB IN: BUSH, BRYCEN
02:31		101-57	H 44	GOOD! FT by ETIENNE, TYSON [FB]
02:31				SUB OUT: ETIENNE, TYSON
02:31				SUB IN: BUSSE, TATE
02:17	GOOD! 3PTR by SERTOVIC, EMAN	101-60	H 41	
02:17	ASSIST by RILEY, JALEN			
01:48				MISSED JUMPER by GORDON, DEANTONI
01:45	REBOUND (DEF) by TEAM			
01:31	GOOD! JUMPER by RUSTIN, ERIC	101-62	H 39	
01:08		103-62	H 41	GOOD! JUMPER by GORDON, DEANTONI [PNT]
01:08				ASSIST by BUSH, BRYCEN
00:49				FOUL (PERSONAL) by GORDON, DEANTONI
00:34	MISSED LAYUP by RILEY, JALEN			
00:30	REBOUND (OFF) by RILEY, JALEN			
00:28	MISSED JUMPER by RILEY, JALEN			
00:25				REBOUND (DEF) by MIDTGAARD, ASBJORN

UT Martin 62, Wichita St. 103

Points from (This Period)	UTM	WSU
In the Paint	6	22
Off Turns	3	10
2nd Chance	2	10
Fast Break	4	9
Bench	8	23

**Official Scoring/Possession Reference Chart
UT Martin vs Wichita St.**

Period 1

November 16, 2019 at Charles Koch Arena - Wichita, Kan.



Period 1

Starters:

UT Martin: 1 STEWART,PARKER (G); 2 RANDALL II,CRAIG (G); 5 HAWTHORNE, JR.,DEREK (G); 13 THOMAS,MILES (F); 22 DOVE,QUINTIN (F);

Wichita St.: 0 DENNIS,DEXTER (G); 5 WADE,TREY (F); 10 STEVENSON,ERIK (G); 24 UDEZE,MORRIS (C); 52 SHERFIELD,GRANT (G);

Time	VISITORS: UT Martin	Score	Margin	HOME: Wichita St.
19:28	GOOD! DUNK by THOMAS, MILES [FB]	0-2	V 2	
19:03		2-2	T	GOOD! LAYUP by UDEZE, MORRIS [PNT]
19:03		3-2	H 1	GOOD! FT by UDEZE, MORRIS
18:38		6-2	H 4	GOOD! 3PTR by BURTON, JAMARIUS
17:42		9-2	H 7	GOOD! 3PTR by STEVENSON, ERIK
16:53		11-2	H 9	GOOD! LAYUP by UDEZE, MORRIS
16:11		14-2	H 12	GOOD! 3PTR by BURTON, JAMARIUS [FB]
15:06	GOOD! FT by STEWART, PARKER [FB]	14-3	H 11	
15:06	GOOD! FT by STEWART, PARKER [FB]	14-4	H 10	
14:46		16-4	H 12	GOOD! LAYUP by POOR BEAR-CHANDLER, ISAIAH
14:08		19-4	H 15	GOOD! 3PTR by WADE, TREY
13:28		21-4	H 17	GOOD! LAYUP by POOR BEAR-CHANDLER, ISAIAH
13:07		24-4	H 20	GOOD! 3PTR by ETIENNE, TYSON [FB]
13:04		25-4	H 21	GOOD! FT by SHERFIELD, GRANT [FB]
13:04		26-4	H 22	GOOD! FT by SHERFIELD, GRANT [FB]
12:52		28-4	H 24	GOOD! LAYUP by SHERFIELD, GRANT
12:25	GOOD! LAYUP by HAWTHORNE, JR.,DEREK [PNT]	28-6	H 22	
12:25	GOOD! FT by HAWTHORNE, JR.,DEREK	28-7	H 21	
11:48	GOOD! 3PTR by RANDALL II, CRAIG	28-10	H 18	
11:20		31-10	H 21	GOOD! 3PTR by DENNIS, DEXTER
10:18		34-10	H 24	GOOD! 3PTR by FERNANDES, NOAH
09:59	GOOD! JUMPER by THOMAS, MILES [PNT]	34-12	H 22	
08:35		36-12	H 24	GOOD! LAYUP by UDEZE, MORRIS
08:13		38-12	H 26	GOOD! JUMPER by WADE, TREY [FB]
08:01	GOOD! LAYUP by STEWART, PARKER [PNT]	38-14	H 24	
07:44		40-14	H 26	GOOD! JUMPER by STEVENSON, ERIK
07:25	GOOD! 3PTR by HAWTHORNE, JR.,DEREK	40-17	H 23	
06:52		42-17	H 25	GOOD! JUMPER by BURTON, JAMARIUS
06:22		45-17	H 28	GOOD! 3PTR by BURTON, JAMARIUS
05:49		47-17	H 30	GOOD! LAYUP by MIDTGAARD, ASBJORN
05:28	GOOD! 3PTR by THOMAS, MILES	47-20	H 27	
03:35	GOOD! 3PTR by THOMAS, MILES	47-23	H 24	
03:19		50-23	H 27	GOOD! 3PTR by ETIENNE, TYSON
03:04	GOOD! 3PTR by STEWART, PARKER	50-26	H 24	
02:38	GOOD! LAYUP by THOMAS, MILES [FB]	50-28	H 22	
01:53		53-28	H 25	GOOD! 3PTR by ETIENNE, TYSON [FB]
01:27		55-28	H 27	GOOD! LAYUP by POOR BEAR-CHANDLER, ISAIAH
00:38	GOOD! FT by DOVE, QUINTIN	55-29	H 26	
00:38	GOOD! FT by DOVE, QUINTIN	55-30	H 25	
00:17		57-30	H 27	GOOD! JUMPER by BURTON, JAMARIUS

UT Martin 30, Wichita St. 57

Official Scoring/Possession Reference Chart
UT Martin vs Wichita St.
Period 2
November 16, 2019 at Charles Koch Arena - Wichita, Kan.



Period 2

Starters:

UT Martin: 1 STEWART,PARKER (G); 2 RANDALL II,CRAIG (G); 5 HAWTHORNE, JR.,DEREK (G); 13 THOMAS,MILES (F); 22 DOVE,QUINTIN (F);

Wichita St.: 0 DENNIS,DEXTER (G); 5 WADE,TREY (F); 10 STEVENSON,ERIK (G); 24 UDEZE,MORRIS (C); 52 SHERFIELD,GRANT (G);

Time	VISITORS: UT Martin	Score	Margin	HOME: Wichita St.
19:32		60-30	H 30	GOOD! 3PTR by WADE, TREY
19:08		61-30	H 31	GOOD! FT by WADE, TREY [FB]
19:08		62-30	H 32	GOOD! FT by WADE, TREY [FB]
18:56	GOOD! JUMPER by DOVE, QUINTIN	62-32	H 30	
18:28		65-32	H 33	GOOD! 3PTR by STEVENSON, ERIK
18:19	GOOD! 3PTR by DOVE, QUINTIN	65-35	H 30	
17:34		67-35	H 32	GOOD! LAYUP by POOR BEAR-CHANDLER, ISAIAH
17:17	GOOD! 3PTR by DOVE, QUINTIN	67-38	H 29	
17:07		69-38	H 31	GOOD! JUMPER by SHERFIELD, GRANT
16:38	GOOD! 3PTR by HAWTHORNE, JR.,DEREK [FB]	69-41	H 28	
15:19		71-41	H 30	GOOD! JUMPER by UDEZE, MORRIS [PNT]
15:01		73-41	H 32	GOOD! LAYUP by ETIENNE, TYSON [FB]
14:14	GOOD! 3PTR by RANDALL II, CRAIG	73-44	H 29	
13:45		75-44	H 31	GOOD! JUMPER by ETIENNE, TYSON
12:58		77-44	H 33	GOOD! LAYUP by STEVENSON, ERIK [PNT]
12:40	GOOD! LAYUP by DOVE, QUINTIN	77-46	H 31	
12:05		79-46	H 33	GOOD! DUNK by UDEZE, MORRIS
11:48	GOOD! LAYUP by HAWTHORNE, JR.,DEREK [PNT]	79-48	H 31	
10:30		81-48	H 33	GOOD! LAYUP by DENNIS, DEXTER
09:32		83-48	H 35	GOOD! LAYUP by DENNIS, DEXTER
09:15	GOOD! 3PTR by THOMAS, MILES	83-51	H 32	
08:39	GOOD! FT by DOVE, QUINTIN [FB]	83-52	H 31	
08:12		85-52	H 33	GOOD! LAYUP by UDEZE, MORRIS
07:01		86-52	H 34	GOOD! FT by UDEZE, MORRIS
06:45		88-52	H 36	GOOD! LAYUP by BURTON, JAMARIUS
06:35	GOOD! LAYUP by STEWART, PARKER [PNT]	88-54	H 34	
05:42		90-54	H 36	GOOD! DUNK by MIDTGAARD, ASBJORN
05:16		93-54	H 39	GOOD! 3PTR by ETIENNE, TYSON
04:32		96-54	H 42	GOOD! 3PTR by BURTON, JAMARIUS [FB]
04:17	GOOD! 3PTR by SERTOVIC, EMAN	96-57	H 39	
03:08		99-57	H 42	GOOD! 3PTR by ETIENNE, TYSON
02:31		100-57	H 43	GOOD! FT by ETIENNE, TYSON [FB]
02:31		101-57	H 44	GOOD! FT by ETIENNE, TYSON [FB]
02:17	GOOD! 3PTR by SERTOVIC, EMAN	101-60	H 41	
01:31	GOOD! JUMPER by RUSTIN, ERIC	101-62	H 39	
01:08		103-62	H 41	GOOD! JUMPER by GORDON, DEANTONI [PNT]

UT Martin 62, Wichita St. 103

**Official Substitutions Log
UT Martin vs Wichita St.
Period 1**

November 16, 2019 at Charles Koch Arena - Wichita, Kan.



VISITORS: UT Martin	Time	Score	HOME: Wichita St.
1 STEWART,PARKER			0 DENNIS,DEXTER
2 RANDALL II,CRAIG			5 WADE,TREY
5 HAWTHORNE, JR.,DEREK			10 STEVENSON,ERIK
13 THOMAS,MILES			24 UDEZE,MORRIS
22 DOVE,QUINTIN			52 SHERFIELD,GRANT
	19:03	2-2	SUB OUT: SHERFIELD,GRANT
	19:03		SUB IN: BURTON,JAMARIUS
	16:36	2-11	SUB OUT: DENNIS,DEXTER
	16:36		SUB OUT: UDEZE,MORRIS
	16:36		SUB IN: POOR BEAR-CHANDLER,ISAIAH
	16:36		SUB IN: SHERFIELD,GRANT
SUB OUT: 2 RANDALL II,CRAIG	16:36		
SUB IN: 3 SERTOVIC,EMAN	16:36		
SUB OUT: 5 HAWTHORNE, JR.,DEREK	15:41	2-14	
SUB IN: 2 RANDALL II,CRAIG	15:41		
SUB OUT: 3 SERTOVIC,EMAN	15:41		
SUB IN: 0 HARRIS,JA'DARIUS	15:41		
	15:06	3-14	SUB OUT: STEVENSON,ERIK
	15:06		SUB IN: ETIENNE,TYSON
SUB OUT: 13 THOMAS,MILES	14:29	4-16	
SUB IN: 10 RUSTIN,ERIC	14:29		
	13:04	4-24	SUB OUT: BURTON,JAMARIUS
	13:04		SUB OUT: WADE,TREY
	13:04		SUB IN: DENNIS,DEXTER
	13:04		SUB IN: GORDON,DEANTONI
SUB OUT: 22 DOVE,QUINTIN	13:04		
SUB IN: 24 AGUIAR,ISAAC	13:04		
SUB OUT: 10 RUSTIN,ERIC	13:04		
SUB IN: 5 HAWTHORNE, JR.,DEREK	13:04		
SUB OUT: 0 HARRIS,JA'DARIUS	12:25	6-28	
SUB IN: 11 RILEY,JALEN	12:25		
	11:51	7-28	SUB OUT: POOR BEAR-CHANDLER,ISAIAH
	11:51		SUB IN: UDEZE,MORRIS
	11:11	10-31	SUB OUT: GORDON,DEANTONI
	11:11		SUB IN: FERNANDES,NOAH
SUB OUT: 24 AGUIAR,ISAAC	10:37	10-31	
SUB IN: 22 DOVE,QUINTIN	10:37		
	10:24	10-31	SUB OUT: SHERFIELD,GRANT
	10:24		SUB IN: WADE,TREY
SUB OUT: 1 STEWART,PARKER	09:59	12-34	
SUB IN: 13 THOMAS,MILES	09:59		
	09:45	12-34	SUB OUT: ETIENNE,TYSON
	09:45		SUB IN: STEVENSON,ERIK
	09:09	12-34	SUB OUT: DENNIS,DEXTER
	09:09		SUB IN: BURTON,JAMARIUS
SUB OUT: 11 RILEY,JALEN	08:53	12-34	
SUB IN: 1 STEWART,PARKER	08:53		
	08:27	12-36	SUB OUT: UDEZE,MORRIS
	08:27		SUB IN: MIDTGAARD,ASBJORN
	07:44	14-40	SUB OUT: WADE,TREY
	07:44		SUB OUT: FERNANDES,NOAH
	07:44		SUB IN: DENNIS,DEXTER
	07:44		SUB IN: SHERFIELD,GRANT
	04:38	20-47	SUB OUT: DENNIS,DEXTER
	04:38		SUB OUT: STEVENSON,ERIK
	04:38		SUB OUT: SHERFIELD,GRANT
	04:38		SUB IN: ETIENNE,TYSON
	04:38		SUB IN: WADE,TREY
	04:38		SUB IN: FERNANDES,NOAH
	04:25	20-47	SUB OUT: BURTON,JAMARIUS
	04:25		SUB OUT: MIDTGAARD,ASBJORN
	04:25		SUB IN: SHERFIELD,GRANT
SUB OUT: 22 DOVE,QUINTIN	04:25		
SUB IN: 11 RILEY,JALEN	04:25		
	04:23	20-47	SUB OUT: BUSH,BRYCEN
	04:23		SUB IN: POOR BEAR-CHANDLER,ISAIAH
SUB OUT: 1 STEWART,PARKER	04:03	20-47	
SUB IN: 3 SERTOVIC,EMAN	04:03		
SUB OUT: 2 RANDALL II,CRAIG	04:03		
SUB IN: 10 RUSTIN,ERIC	04:03		
SUB OUT: 3 SERTOVIC,EMAN	03:44	20-47	
SUB OUT: 11 RILEY,JALEN	03:44		
SUB IN: 1 STEWART,PARKER	03:44		
SUB IN: 2 RANDALL II,CRAIG	03:44		
	01:14	28-55	SUB OUT: WADE,TREY

VISITORS: UT Martin	Time	Score	HOME: Wichita St.
	01:14		SUB OUT: FERNANDES, NOAH
	01:14		SUB OUT: POOR BEAR-CHANDLER, ISAIAH
	01:14		SUB OUT: SHERFIELD, GRANT
	01:14		SUB IN: BURTON, JAMARIUS
	01:14		SUB IN: GORDON, DEANTONI
	01:14		SUB IN: STEVENSON, ERIK
	01:14		SUB IN: UDEZE, MORRIS
SUB OUT: 10 RUSTIN, ERIC	01:14		
SUB IN: 22 DOVE, QUINTIN	01:14		
SUB OUT: 5 HAWTHORNE, JR., DEREK	01:14		
SUB IN: 11 RILEY, JALEN	01:14		
	00:38	28-55	SUB OUT: UDEZE, MORRIS
	00:38		SUB IN: MIDTGAARD, ASBJORN
SUB OUT: 2 RANDALL II, CRAIG	00:38		
SUB IN: 5 HAWTHORNE, JR., DEREK	00:38		

UT Martin 30, Wichita St. 57

Official Substitutions Log
UT Martin vs Wichita St.
Period 2
November 16, 2019 at Charles Koch Arena - Wichita, Kan.



VISITORS: UT Martin	Time	Score	HOME: Wichita St.
1 STEWART,PARKER			0 DENNIS,DEXTER
2 RANDALL II,CRAIG			5 WADE,TREY
5 HAWTHORNE, JR.,DEREK			10 STEVENSON,ERIK
13 THOMAS,MILES			24 UDEZE,MORRIS
22 DOVE,QUINTIN			52 SHERFIELD,GRANT
	04:25	-	SUB IN: POOR BEAR-CHANDLER,ISAIHAH
	19:17	30-60	SUB OUT: ETIENNE,TYSON
	19:17		SUB OUT: BURTON,JAMARIUS
	19:17		SUB OUT: MIDTGAARD,ASBJORN
	19:17		SUB IN: WADE,TREY
	19:17		SUB IN: POOR BEAR-CHANDLER,ISAIHAH
	19:17		SUB IN: SHERFIELD,GRANT
SUB OUT: 11 RILEY,JALEN	18:30	32-62	
SUB IN: 10 RUSTIN,ERIC	18:30		
	18:07	35-65	SUB OUT: GORDON,DEANTONI
	18:07		SUB IN: BURTON,JAMARIUS
	16:16	41-69	SUB OUT: WADE,TREY
	16:16		SUB OUT: STEVENSON,ERIK
	16:16		SUB OUT: POOR BEAR-CHANDLER,ISAIHAH
	16:16		SUB OUT: SHERFIELD,GRANT
	16:16		SUB IN: DENNIS,DEXTER
	16:16		SUB IN: ETIENNE,TYSON
	16:16		SUB IN: FERNANDES,NOAH
	16:16		SUB IN: UDEZE,MORRIS
SUB OUT: 10 RUSTIN,ERIC	16:16		
SUB IN: 2 RANDALL II,CRAIG	16:16		
	14:00	44-73	SUB OUT: BURTON,JAMARIUS
	14:00		SUB IN: STEVENSON,ERIK
SUB OUT: 13 THOMAS,MILES	14:00		
SUB IN: 3 SERTOVIC,EMAN	14:00		
	12:49	44-77	SUB OUT: ETIENNE,TYSON
	12:49		SUB IN: GORDON,DEANTONI
SUB OUT: 3 SERTOVIC,EMAN	12:27	46-77	
SUB IN: 13 THOMAS,MILES	12:27		
	11:54	46-79	SUB OUT: UDEZE,MORRIS
	11:54		SUB IN: MIDTGAARD,ASBJORN
	10:27	48-81	SUB OUT: MIDTGAARD,ASBJORN
	10:27		SUB IN: POOR BEAR-CHANDLER,ISAIHAH
	08:39	52-83	SUB OUT: DENNIS,DEXTER
	08:39		SUB OUT: GORDON,DEANTONI
	08:39		SUB OUT: STEVENSON,ERIK
	08:39		SUB OUT: FERNANDES,NOAH
	08:39		SUB OUT: POOR BEAR-CHANDLER,ISAIHAH
	08:39		SUB IN: ETIENNE,TYSON
	08:39		SUB IN: BURTON,JAMARIUS
	08:39		SUB IN: WADE,TREY
	08:39		SUB IN: UDEZE,MORRIS
	08:39		SUB IN: SHERFIELD,GRANT
SUB OUT: 1 STEWART,PARKER	08:39		
SUB IN: 3 SERTOVIC,EMAN	08:39		
SUB OUT: 2 RANDALL II,CRAIG	08:12	52-85	
SUB OUT: 22 DOVE,QUINTIN	08:12		
SUB IN: 0 HARRIS,JA'DARIUS	08:12		
SUB IN: 24 AGUIAR,ISAAC	08:12		
	07:51	52-85	SUB OUT: WADE,TREY
	07:51		SUB IN: POOR BEAR-CHANDLER,ISAIHAH
SUB OUT: 0 HARRIS,JA'DARIUS	07:01	52-86	
SUB OUT: 3 SERTOVIC,EMAN	07:01		
SUB OUT: 24 AGUIAR,ISAAC	07:01		
SUB IN: 1 STEWART,PARKER	07:01		
SUB IN: 11 RILEY,JALEN	07:01		
SUB IN: 22 DOVE,QUINTIN	07:01		
	06:35	52-88	SUB OUT: UDEZE,MORRIS
	06:35		SUB IN: MIDTGAARD,ASBJORN
SUB OUT: 1 STEWART,PARKER	05:49	54-88	
SUB OUT: 11 RILEY,JALEN	05:49		
SUB OUT: 22 DOVE,QUINTIN	05:49		
SUB IN: 0 HARRIS,JA'DARIUS	05:49		
SUB IN: 3 SERTOVIC,EMAN	05:49		
SUB IN: 24 AGUIAR,ISAAC	05:49		
	04:47	54-93	SUB OUT: POOR BEAR-CHANDLER,ISAIHAH
	04:47		SUB OUT: SHERFIELD,GRANT
	04:47		SUB IN: GORDON,DEANTONI
	04:47		SUB IN: FERNANDES,NOAH
SUB OUT: 5 HAWTHORNE, JR.,DEREK	04:47		

VISITORS: UT Martin	Time	Score	HOME: Wichita St.
SUB IN: 10 RUSTIN,ERIC	04:47		
	03:18	57-96	SUB OUT: BURTON,JAMARIUS
	03:18		SUB IN: HERRS,JACOB
SUB OUT: 13 THOMAS,MILES	02:46	57-99	
SUB IN: 11 RILEY,JALEN	02:46		
	02:31	57-100	SUB OUT: FERNANDES,NOAH
	02:31		SUB IN: BUSH,BRYCEN
	02:31		SUB OUT: ETIENNE,TYSON
	02:31		SUB IN: BUSSE,TATE

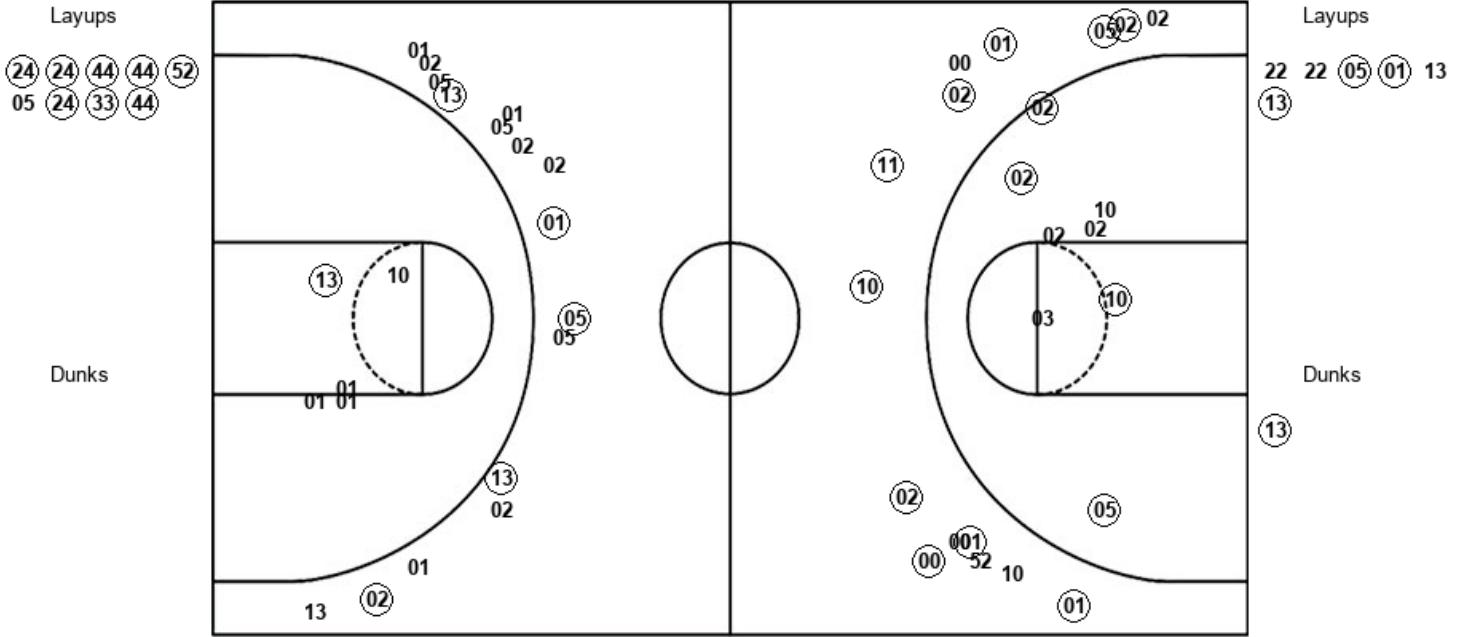
UT Martin 62, Wichita St. 103

Official Shot Chart
UT Martin vs Wichita St.
PERIOD 1 Shots
 November 16, 2019 at Charles Koch Arena - Wichita, Kan.



Wichita St.

UT Martin



WSU : Period 1	Made	Att	Pct
Layups	8	9	88.9
Dunks	0	0	0
2PT Field Goals	12	17	70.6
3PT Field Goals	10	15	66.7
Total Field Goals	22	32	68.8

UTM : Period 1	Made	Att	Pct
Layups	3	6	50.0
Dunks	1	1	100.0
2PT Field Goals	5	12	41.7
3PT Field Goals	5	16	31.3
Total Field Goals	10	28	35.7

Official Shot Chart
UT Martin vs Wichita St.
PERIOD 2 Shots
 November 16, 2019 at Charles Koch Arena - Wichita, Kan.

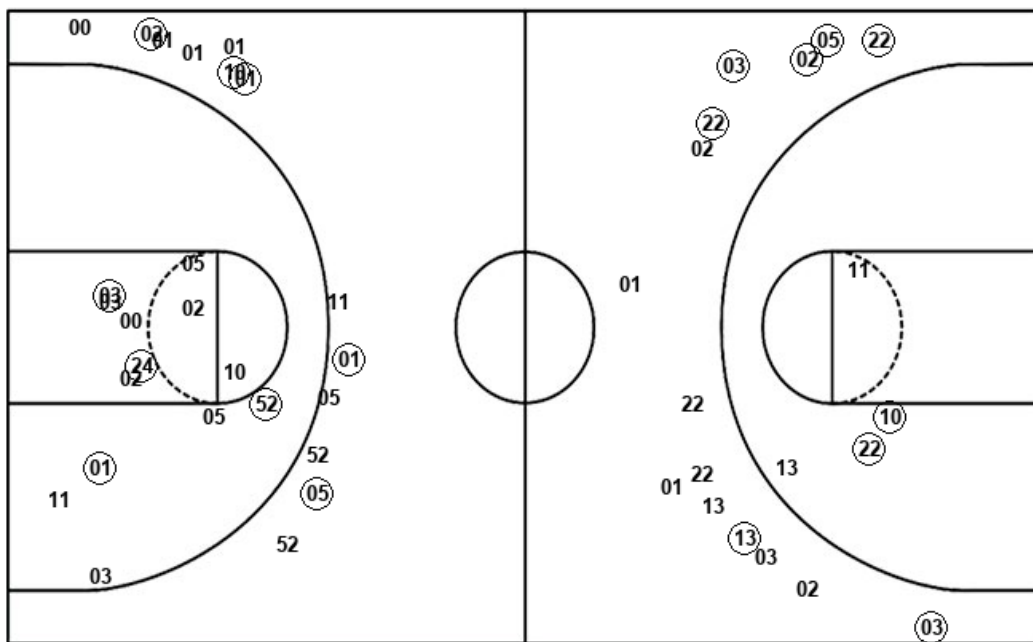


Wichita St.

UT Martin

Layups
 (44) (01) (10) 24 (00)
 (00) (24) (02) 33 33

Dunks
 24 (24) (33)



Layups
 05 (22) 13 (05) 22
 05 24 (01) 00 11

Dunks

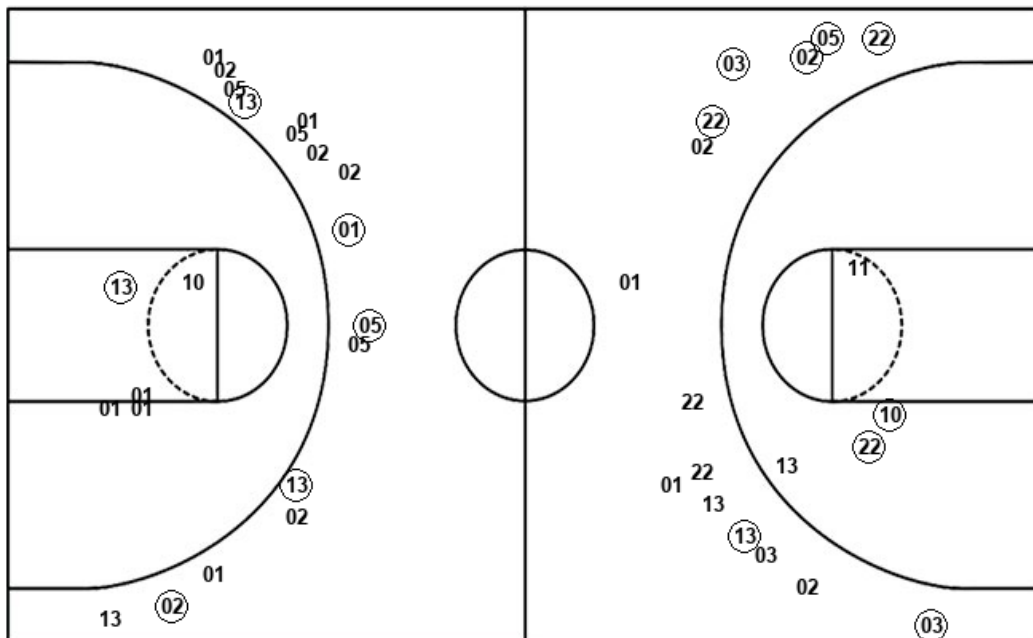
WSU : Period 2	Made	Att	Pct
Layups	7	10	70.0
Dunks	2	3	66.7
2PT Field Goals	13	26	50.0
3PT Field Goals	5	13	38.5
Total Field Goals	18	39	46.2

UTM : Period 2	Made	Att	Pct
Layups	3	10	30.0
Dunks	0	0	0
2PT Field Goals	5	14	35.7
3PT Field Goals	7	15	46.7
Total Field Goals	12	29	41.4

Official Shot Chart
UT Martin vs Wichita St.
UT Martin Team Shots
November 16, 2019 at Charles Koch Arena - Wichita, Kan.



Layups



Layups

22 22 (05) (01) 13
 (13) 05 (22) 13 (05)
 22 05 24 (01) 00
 11

Dunks

Dunks

(13)

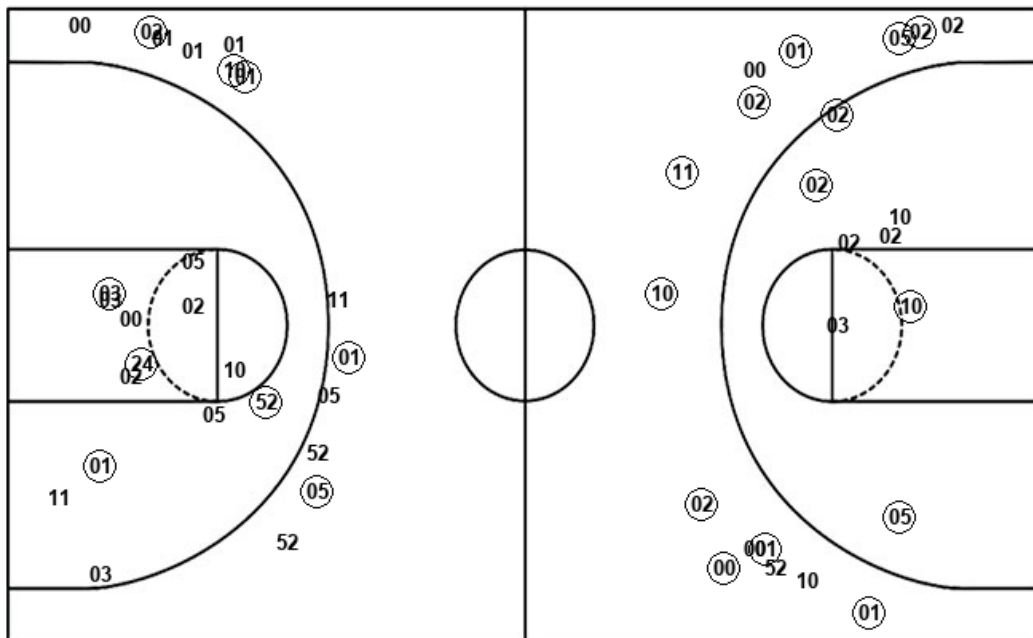
UTM : Period 1	Made	Att	Pct
Layups	3	6	50.0
Dunks	1	1	100.0
2PT Field Goals	5	12	41.7
3PT Field Goals	5	16	31.3
Total Field Goals	10	28	35.7

UTM : Period 2	Made	Att	Pct
Layups	3	10	30.0
Dunks	0	0	0
2PT Field Goals	5	14	35.7
3PT Field Goals	7	15	46.7
Total Field Goals	12	29	41.4

Official Shot Chart
UT Martin vs Wichita St.
Wichita St. Team Shots
 November 16, 2019 at Charles Koch Arena - Wichita, Kan.



Layups



Layups

(24)	(24)	(44)	(44)	(52)
05	24	(33)	(44)	(44)
(01)	(10)	24	(00)	(00)
(24)	(02)	33	33	

Dunks

Dunks

24	(24)	(33)
----	------	------

WSU : Period 1	Made	Att	Pct
Layups	8	9	88.9
Dunks	0	0	0
2PT Field Goals	12	17	70.6
3PT Field Goals	10	15	66.7
Total Field Goals	22	32	68.8

WSU : Period 2	Made	Att	Pct
Layups	7	10	70.0
Dunks	2	3	66.7
2PT Field Goals	13	26	50.0
3PT Field Goals	5	13	38.5
Total Field Goals	18	39	46.2