

FINAL SCORE



Texas Southern

63



Wichita St.

69

November 09, 2019 • Charles Koch Arena - Wichita

FINAL STATISTICS

Official Box Score
Texas Southern vs Wichita St.
Game Totals -- Final Statistics
November 09, 2019 at Charles Koch Arena - Wichita



Texas Southern 63

No.	Player	S	Pts	FG	3FG	FT	OR	DR	TR	PF	A	TO	Blk	Stl	Min	+/-
03	EWING, EDEN	F	18	6-9	0-0	6-8	5	1	6	3	0	4	1	0	24	-1
04	ETIENNE, BRYSON	G	6	3-10	0-3	0-0	1	4	5	2	1	2	0	1	22	-4
12	JONES, JOHN	G	11	4-9	3-6	0-1	0	4	4	2	0	0	0	0	25	-3
20	ARMSTRONG, TYRIK	G	11	4-9	1-2	2-2	0	1	1	4	3	2	0	1	23	-5
24	WALKER III, JOHN	F	3	1-4	0-0	1-2	0	3	3	5	0	0	2	1	23	3
00	RASAS, YAHUZA	F	3	1-3	0-0	1-3	1	0	1	1	1	1	0	0	10	-9
02	REDUS, JA'MARE	G	2	0-1	0-0	2-2	0	2	2	0	1	3	0	0	7	5
13	BRIGHAM, QUINTON	G	0	0-1	0-1	0-0	0	0	0	2	0	0	0	0	4	-3
14	BALDWIN, CHRIS	F	3	0-1	0-1	3-4	0	3	3	1	0	1	1	0	9	-3
15	HOPKINS, JUSTIN	G	6	2-5	0-0	2-3	0	5	5	3	0	3	0	1	26	-7
25	ANDREWS, JORDAN	G	0	0-2	0-2	0-0	0	0	0	0	0	2	1	0	13	-1
42	TSHISUMPA, JETHRO	F	0	0-1	0-0	0-2	1	1	2	5	1	1	3	0	14	-2
TEAM							1	6	7	0		1				
TOTALS			63	21-55	4-15	17-27	9	30	39	28	7	20	8	4	200	

Shooting By Period

Period	FG	FG%	3FG	3FG%	FT	FT%
1st Half	8-28	29%	1-7	14%	7-11	64%
2nd Half	13-27	48%	3-8	38%	10-16	63%
Game	21-55	38.2%	4-15	26.7%	17-27	63.0%

Deadball Rebounds: 4,5

Last FG: 2nd-00:04

Biggest Run: 6-0

Largest lead: By 7 at -

Technical Fouls: None.

Wichita St. 69

No.	Player	S	Pts	FG	3FG	FT	OR	DR	TR	PF	A	TO	Blk	Stl	Min	+/-
00	DENNIS, DEXTER	G	19	5-11	2-5	7-8	3	4	7	2	1	1	2	1	39	9
05	WADE, TREY	F	6	1-11	0-2	4-6	2	8	10	1	2	1	1	1	32	10
10	STEVENSON, ERIK	G	22	6-18	1-7	9-9	1	4	5	2	0	0	1	0	31	10
44	POOR BEAR-CHANDLER, ISAI	C	2	1-4	0-0	0-1	4	3	7	4	0	1	2	2	23	3
52	SHERFIELD, GRANT	G	13	1-10	0-0	11-14	0	1	1	2	0	3	0	2	32	10
01	ETIENNE, TYSON	G	1	0-3	0-2	1-2	0	1	1	1	1	1	0	2	11	-7
03	GORDON, DEANTONI	F	0	0-2	0-0	0-0	0	2	2	2	0	0	0	1	8	-4
11	FERNANDES, NOAH	G	0	0-1	0-0	0-0	0	1	1	1	1	0	0	0	8	-4
24	UDEZE, MORRIS	C	4	1-4	0-0	2-2	3	3	6	4	1	0	1	1	11	6
33	MIDTGAARD, ASBJORN	C	2	1-2	0-0	0-0	0	1	1	4	0	1	0	0	6	-3
TEAM							5	1	6	0		0				
TOTALS			69	16-66	3-16	34-42	18	29	47	23	6	8	7	10	200	

Shooting By Period

Period	FG	FG%	3FG	3FG%	FT	FT%
1st Half	5-37	14%	1-10	10%	12-15	80%
2nd Half	11-29	38%	2-6	33%	22-27	81%
Game	16-66	24.2%	3-16	18.8%	34-42	81.0%

Deadball Rebounds: 5,2

Last FG: 2nd-04:57

Biggest Run: 5-0

Largest lead: By 6 at -

Technical Fouls: None.

Game Notes:

Officials: Don Daily, Byron Jarrett, Bill Jacobson
Attendance: 10108

Start Time: 03:05 PM ET

End Time: 05:25 PM ET

Game Duration: 2:19

Score	1st	2nd	TOT
TSU	24	39	63
WSU	23	46	69

TSU led for 26:04. WSU led for 8:12.

Game was tied for 5:44.

Times tied: 88 Lead Changes: 0

Points from	TSU	WSU
In the Paint	30	24
Off Turns	8	9
2nd Chance	7	19
Fast Break	10	18
Bench	14	7

Official Box Score
Texas Southern vs Wichita St.
First Half Statistics Only
November 09, 2019 at Charles Koch Arena - Wichita



Texas Southern 24

No.	Player	S	Pts	FG	3FG	FT	OR	DR	TR	PF	A	TO	Blk	Stl	Min	+/-
03	EWING, EDEN	F	7	3-5	0-0	1-1	4	1	5	1	0	2	1	0	11	5
04	ETIENNE, BRYSON	G	6	3-9	0-3	0-0	1	4	5	1	0	2	0	1	15	-3
12	JONES, JOHN	G	3	1-3	1-2	0-1	0	3	3	0	0	0	0	0	11	4
20	ARMSTRONG, TYRIK	G	0	0-1	0-0	0-0	0	1	1	2	1	1	0	0	3	2
24	WALKER III, JOHN	F	0	0-2	0-0	0-0	0	0	0	1	0	0	1	1	13	1
00	RASAS, YAHUZA	F	2	1-2	0-0	0-1	0	0	0	0	0	0	0	0	3	1
02	REDUS, JA'MARE	G	2	0-1	0-0	2-2	0	2	2	0	1	3	0	0	7	5
13	BRIGHAM, QUINTON	G	0	0-1	0-1	0-0	0	0	0	2	0	0	0	0	3	0
14	BALDWIN, CHRIS	F	3	0-0	0-0	3-4	0	2	2	1	0	1	1	0	7	-4
15	HOPKINS, JUSTIN	G	1	0-3	0-0	1-2	0	5	5	1	0	2	0	0	14	-1
25	ANDREWS, JORDAN	G	0	0-1	0-1	0-0	0	0	0	0	0	2	1	0	6	-4
42	TSHISUMPA, JETHRO	F	0	0-0	0-0	0-0	0	0	0	2	0	0	0	0	5	-1
TEAM							1	4	5	0		0				
TOTALS			24	8-28	1-7	7-11	6	22	28	11	2	13	4	2	100	

Shooting By Period

Period	FG	FG%	3FG	3FG%	FT	FT%
1st Half	8-28	29%	1-7	14%	7-11	64%
Game	21-55	38.2%	4-15	26.7%	17-27	63.0%

Deadball Rebounds: 4,5

Last FG Half: TSU 2nd-00:04

Wichita St. 23

No.	Player	S	Pts	FG	3FG	FT	OR	DR	TR	PF	A	TO	Blk	Stl	Min	+/-
00	DENNIS, DEXTER	G	7	1-6	1-4	4-4	1	2	3	1	1	0	1	1	19	1
05	WADE, TREY	F	2	0-6	0-1	2-2	1	6	7	1	0	1	1	1	16	1
10	STEVENSON, ERIK	G	4	1-7	0-3	2-2	0	2	2	0	0	0	1	0	13	1
44	POOR BEAR-CHANDLER, ISAI	C	2	1-4	0-0	0-1	3	1	4	1	0	0	1	1	12	3
52	SHERFIELD, GRANT	G	5	1-6	0-0	3-4	0	1	1	1	0	2	0	1	14	0
01	ETIENNE, TYSON	G	1	0-3	0-2	1-2	0	1	1	0	1	0	0	2	8	-4
03	GORDON, DEANTONI	F	0	0-1	0-0	0-0	0	1	1	0	0	0	0	1	4	-2
11	FERNANDES, NOAH	G	0	0-1	0-0	0-0	0	1	1	1	1	0	0	0	6	-1
24	UDEZE, MORRIS	C	0	0-1	0-0	0-0	1	0	1	2	0	0	0	1	3	-1
33	MIDTGAARD, ASBJORN	C	2	1-2	0-0	0-0	0	1	1	3	0	0	0	0	5	-3
TEAM							2	0	2	0		0				
TOTALS			23	5-37	1-10	12-15	8	16	24	10	3	3	4	8	100	

Shooting By Period

Period	FG	FG%	3FG	3FG%	FT	FT%
1st Half	5-37	14%	1-10	10%	12-15	80%
Game	16-66	24.2%	3-16	18.8%	34-42	81.0%

Deadball Rebounds: 5,2

Last FG Half: WSU 2nd-04:57

Game Notes:

Officials: **Don Daily, Byron Jarrett, Bill Jacobson**
Attendance: **10108**

Start Time: **03:05 PM ET**
End Time: **05:25 PM ET**
Game Duration: **2:19**

Score	1st	2nd	TOT
TSU	24	39	63
WSU	23	46	69

Points from (This Period)	TSU	WSU
In the Paint	12	6
Off Turns	2	5
2nd Chance	5	4
Fast Break	5	8
Bench	8	3

Official Play-By-Play
Texas Southern vs Wichita St.
First Half
November 09, 2019 at Charles Koch Arena - Wichita



Period 1

Starters:

Texas Southern: 3 EWING, EDEN (F); 4 ETIENNE, BRYSON (G); 12 JONES, JOHN (G); 20 ARMSTRONG, TYRIK (G); 24 WALKER III, JOHN (F);

Wichita St.: 0 DENNIS, DEXTER (G); 5 WADE, TREY (F); 10 STEVENSON, ERIK (G); 44 POOR BEAR-CHANDLER, ISAIAH (C); 52 SHERFIELD, GRANT (G);

Time	VISITORS: Texas Southern	Score	Margin	HOME: Wichita St.
19:45	GOOD! JUMPER by EWING, EDEN	0-2	V 2	
19:45	ASSIST by ARMSTRONG, TYRIK			
19:22				MISSED JUMPER by WADE, TREY
19:22	REBOUND (DEF) by TEAM			
19:10	MISSED JUMPER by ARMSTRONG, TYRIK			
19:06				REBOUND (DEF) by POOR BEAR-CHANDLER, ISAIAH
18:48				MISSED LAYUP by DENNIS, DEXTER
18:42				REBOUND (OFF) by POOR BEAR-CHANDLER, ISAIAH
18:42		2-2	T	GOOD! LAYUP by POOR BEAR-CHANDLER, ISAIAH
18:27	MISSED 3PTR by ETIENNE, BRYSON			
18:21	REBOUND (OFF) by EWING, EDEN			
18:21	TURNOVER (BADPASS) by EWING, EDEN			
18:21				STEAL by DENNIS, DEXTER
18:00				TURNOVER (BADPASS) by SHERFIELD, GRANT
18:00	STEAL by ETIENNE, BRYSON			
17:56	GOOD! LAYUP by ETIENNE, BRYSON [FB]	2-4	V 2	
17:48	FOUL (PERSONAL) by ARMSTRONG, TYRIK			
17:37				TURNOVER (LOSTBALL) by WADE, TREY
17:37	STEAL by WALKER III, JOHN			
17:33	TURNOVER (BADPASS) by ETIENNE, BRYSON			
17:14				MISSED 3PTR by DENNIS, DEXTER
17:11	REBOUND (DEF) by ARMSTRONG, TYRIK			
17:05	TURNOVER (BADPASS) by ARMSTRONG, TYRIK			
17:05				STEAL by SHERFIELD, GRANT
17:05	FOUL (PERSONAL) by ARMSTRONG, TYRIK			
17:05	SUB OUT: ARMSTRONG, TYRIK			
17:05	SUB IN: BRIGHAM, QUINTON			
16:52				MISSED JUMPER by DENNIS, DEXTER
16:51	REBOUND (DEF) by TEAM			
16:28	MISSED JUMPER by EWING, EDEN			
16:25				REBOUND (DEF) by WADE, TREY
16:22	FOUL (PERSONAL) by EWING, EDEN			
16:22		3-4	V 1	GOOD! FT by DENNIS, DEXTER [FB]
16:22		4-4	T	GOOD! FT by DENNIS, DEXTER [FB]
16:05	MISSED JUMPER by JONES, JOHN			
16:02				REBOUND (DEF) by WADE, TREY
15:58	FOUL (PERSONAL) by BRIGHAM, QUINTON			
15:58		5-4	H 1	GOOD! FT by DENNIS, DEXTER [FB]
15:58		6-4	H 2	GOOD! FT by DENNIS, DEXTER [FB]
15:49	MISSED 3PTR by BRIGHAM, QUINTON			
15:41	REBOUND (OFF) by EWING, EDEN			
15:41	GOOD! LAYUP by EWING, EDEN	6-6	T	
15:22				MISSED JUMPER by SHERFIELD, GRANT
15:18	REBOUND (DEF) by ETIENNE, BRYSON			
15:14	GOOD! LAYUP by ETIENNE, BRYSON [PNT]	6-8	V 2	
14:52				MISSED 3PTR by DENNIS, DEXTER
14:49	REBOUND (DEF) by JONES, JOHN			
14:39	MISSED 3PTR by JONES, JOHN			
14:34				REBOUND (DEF) by DENNIS, DEXTER
14:24				MISSED 3PTR by STEVENSON, ERIK
14:23	REBOUND (DEF) by TEAM			
14:23				FOUL (PERSONAL) by WADE, TREY
14:23				SUB OUT: STEVENSON, ERIK
14:23				SUB OUT: POOR BEAR-CHANDLER, ISAIAH
14:23				SUB OUT: SHERFIELD, GRANT
14:23				SUB IN: ETIENNE, TYSON
14:23				SUB IN: FERNANDES, NOAH
14:23				SUB IN: UDEZE, MORRIS
14:23	SUB OUT: EWING, EDEN			
14:23	SUB OUT: JONES, JOHN			
14:23	SUB OUT: WALKER III, JOHN			
14:23	SUB IN: RASAS, YAHUZA			
14:23	SUB IN: ANDREWS, JORDAN			
14:23	SUB IN: TSHISUMPA, JETHRO			
14:11	TURNOVER (LOSTBALL) by ANDREWS, JORDAN			
14:11				STEAL by UDEZE, MORRIS
13:55				MISSED JUMPER by WADE, TREY
13:52	REBOUND (DEF) by ETIENNE, BRYSON			
13:48	TURNOVER (LOSTBALL) by ETIENNE, BRYSON			

Time	VISITORS: Texas Southern	Score	Margin	HOME: Wichita St.
13:48				STEAL by ETIENNE, TYSON
13:43	FOUL (PERSONAL) by BRIGHAM, QUINTON			
13:43				MISSED FT by ETIENNE, TYSON
13:43				REBOUND (OFF) by TEAM
13:43				SUB OUT: WADE, TREY
13:43				SUB IN: GORDON, DEANTONI
13:43	SUB OUT: ETIENNE, BRYSON			
13:43	SUB OUT: BRIGHAM, QUINTON			
13:43	SUB IN: REDUS, JA'MARE			
13:43	SUB IN: HOPKINS, JUSTIN			
13:43		7-8	V 1	GOOD! FT by ETIENNE, TYSON [FB]
13:26	TURNOVER (TRAVEL) by ANDREWS, JORDAN			
13:00				MISSED LAYUP by FERNANDES, NOAH
12:56	REBOUND (DEF) by HOPKINS, JUSTIN			
12:37	TURNOVER (DRIBBLING) by REDUS, JA'MARE			
12:37				SUB OUT: DENNIS, DEXTER
12:37				SUB IN: STEVENSON, ERIK
12:15				MISSED 3PTR by ETIENNE, TYSON
12:14				REBOUND (OFF) by TEAM
12:14	FOUL (PERSONAL) by TSHISUMPA, JETHRO			
12:14				SUB OUT: FERNANDES, NOAH
12:14				SUB IN: SHERFIELD, GRANT
12:03				MISSED JUMPER by STEVENSON, ERIK
12:00				REBOUND (OFF) by UDEZE, MORRIS
11:59				MISSED LAYUP by UDEZE, MORRIS
11:56	REBOUND (DEF) by HOPKINS, JUSTIN			
11:36				FOUL (PERSONAL) by UDEZE, MORRIS
11:36				
11:36				SUB OUT: GORDON, DEANTONI
11:36				SUB IN: WADE, TREY
11:36	SUB OUT: ANDREWS, JORDAN			
11:36	SUB IN: ETIENNE, BRYSON			
11:33	GOOD! JUMPER by RASAS, YAHUZA [PNT]	7-10	V 3	
11:33				FOUL (PERSONAL) by UDEZE, MORRIS
11:33				SUB OUT: UDEZE, MORRIS
11:33				SUB IN: MIDTGAARD, ASBJORN
11:33	MISSED FT by RASAS, YAHUZA			
11:33				REBOUND (DEF) by STEVENSON, ERIK
11:24				TURNOVER (BADPASS) by SHERFIELD, GRANT
11:24				SUB OUT: ETIENNE, TYSON
11:24				SUB IN: DENNIS, DEXTER
11:24	TURNOVER (BADPASS) by REDUS, JA'MARE			
11:24				STEAL by WADE, TREY
11:16				MISSED JUMPER by WADE, TREY
11:13	REBOUND (DEF) by REDUS, JA'MARE			
11:06	MISSED JUMPER by ETIENNE, BRYSON			
11:03	REBOUND (OFF) by ETIENNE, BRYSON			
10:58	MISSED JUMPER by RASAS, YAHUZA			
10:57				REBOUND (DEF) by MIDTGAARD, ASBJORN
10:57	FOUL (PERSONAL) by TSHISUMPA, JETHRO			
10:57				SUB OUT: MIDTGAARD, ASBJORN
10:57				SUB IN: POOR BEAR-CHANDLER, ISAIAH
10:57	SUB OUT: RASAS, YAHUZA			
10:57	SUB OUT: TSHISUMPA, JETHRO			
10:57	SUB IN: EWING, EDEN			
10:57	SUB IN: BALDWIN, CHRIS			
10:57				MISSED FT by POOR BEAR-CHANDLER, ISAIAH
10:57	REBOUND (DEF) by TEAM			
10:50	MISSED LAYUP by EWING, EDEN			
10:50				BLOCK by STEVENSON, ERIK
10:44				REBOUND (DEF) by WADE, TREY
10:32				MISSED LAYUP by POOR BEAR-CHANDLER, ISAIAH
10:30	REBOUND (DEF) by TEAM			
10:12	MISSED LAYUP by ETIENNE, BRYSON			
10:12				BLOCK by DENNIS, DEXTER
10:06	REBOUND (OFF) by EWING, EDEN			
10:04	MISSED JUMPER by REDUS, JA'MARE			
10:04				BLOCK by WADE, TREY
10:00				REBOUND (DEF) by STEVENSON, ERIK
09:55				MISSED JUMPER by STEVENSON, ERIK
09:51	REBOUND (DEF) by ETIENNE, BRYSON			
09:38	TURNOVER (BADPASS) by BALDWIN, CHRIS			
09:38				STEAL by POOR BEAR-CHANDLER, ISAIAH
09:30				MISSED JUMPER by SHERFIELD, GRANT
09:28				REBOUND (OFF) by POOR BEAR-CHANDLER, ISAIAH
09:28				MISSED LAYUP by POOR BEAR-CHANDLER, ISAIAH
09:28				REBOUND (OFF) by WADE, TREY
09:28	FOUL (PERSONAL) by ETIENNE, BRYSON			
09:28		8-10	V 2	GOOD! FT by WADE, TREY
09:28	SUB OUT: ETIENNE, BRYSON			

Time	VISITORS: Texas Southern	Score	Margin	HOME: Wichita St.
09:28	SUB IN: JONES, JOHN			
09:28		9-10	V 1	GOOD! FT by WADE, TREY
09:07	MISSED LAYUP by HOPKINS, JUSTIN			
09:07				BLOCK by POOR BEAR-CHANDLER, ISAIAH
09:03				REBOUND (DEF) by WADE, TREY
09:00				MISSED LAYUP by STEVENSON, ERIK
09:00	BLOCK by BALDWIN, CHRIS			
09:00	REBOUND (DEF) by HOPKINS, JUSTIN			
09:00				SUB OUT: STEVENSON, ERIK
09:00				SUB IN: ETIENNE, TYSON
08:54				FOUL (PERSONAL) by SHERFIELD, GRANT
08:51				FOUL (PERSONAL) by DENNIS, DEXTER
08:51	GOOD! FT by HOPKINS, JUSTIN	9-11	V 2	
08:51	MISSED FT by HOPKINS, JUSTIN			
08:50				REBOUND (DEF) by WADE, TREY
08:27				MISSED JUMPER by WADE, TREY
08:23	REBOUND (DEF) by HOPKINS, JUSTIN			
08:22	TURNOVER (BADPASS) by REDUS, JA'MARE			
08:22				STEAL by ETIENNE, TYSON
08:03				MISSED LAYUP by ETIENNE, TYSON
07:59				REBOUND (OFF) by POOR BEAR-CHANDLER, ISAIAH
07:59				MISSED LAYUP by POOR BEAR-CHANDLER, ISAIAH
07:59	BLOCK by EWING, EDEN			
07:59				REBOUND (OFF) by TEAM
07:59				
07:59				SUB OUT: WADE, TREY
07:59				SUB IN: GORDON, DEANTONI
07:59				TIMEOUT 30SEC
07:41				MISSED JUMPER by SHERFIELD, GRANT
07:37	REBOUND (DEF) by REDUS, JA'MARE			
07:32	MISSED LAYUP by HOPKINS, JUSTIN			
07:32	REBOUND (OFF) by TEAM			
07:32				SUB OUT: POOR BEAR-CHANDLER, ISAIAH
07:32				SUB OUT: SHERFIELD, GRANT
07:32				SUB IN: FERNANDES, NOAH
07:32				SUB IN: MIDTGAARD, ASBJORN
07:32	SUB OUT: BALDWIN, CHRIS			
07:32	SUB IN: WALKER III, JOHN			
07:12	GOOD! 3PTR by JONES, JOHN	9-14	V 5	
07:12	ASSIST by REDUS, JA'MARE			
06:40				MISSED JUMPER by MIDTGAARD, ASBJORN
06:35	REBOUND (DEF) by EWING, EDEN			
06:29				FOUL (PERSONAL) by FERNANDES, NOAH
06:29	GOOD! FT by REDUS, JA'MARE	9-15	V 6	
06:29	GOOD! FT by REDUS, JA'MARE	9-16	V 7	
06:29				SUB OUT: ETIENNE, TYSON
06:29				SUB IN: STEVENSON, ERIK
06:29	SUB OUT: REDUS, JA'MARE			
06:29	SUB IN: ETIENNE, BRYSON			
06:29				SUB OUT: GORDON, DEANTONI
06:29				SUB IN: WADE, TREY
06:22	FOUL (PERSONAL) by HOPKINS, JUSTIN			
06:22		10-16	V 6	GOOD! FT by STEVENSON, ERIK [FB]
06:22		11-16	V 5	GOOD! FT by STEVENSON, ERIK [FB]
06:08	MISSED JUMPER by WALKER III, JOHN			
06:04	REBOUND (OFF) by EWING, EDEN			
06:03	TURNOVER (OTHER) by EWING, EDEN			
05:49		13-16	V 3	GOOD! JUMPER by STEVENSON, ERIK
05:49				ASSIST by DENNIS, DEXTER
05:27	GOOD! LAYUP by EWING, EDEN [PNT]	13-18	V 5	
05:27				FOUL (PERSONAL) by MIDTGAARD, ASBJORN
05:27	GOOD! FT by EWING, EDEN	13-19	V 6	
05:27	SUB OUT: EWING, EDEN			
05:27	SUB IN: TSHISUMPA, JETHRO			
05:18		15-19	V 4	GOOD! LAYUP by MIDTGAARD, ASBJORN [PNT]
05:18				ASSIST by FERNANDES, NOAH
04:55	MISSED 3PTR by ETIENNE, BRYSON			
04:50				REBOUND (DEF) by WADE, TREY
04:44				MISSED 3PTR by STEVENSON, ERIK
04:43	REBOUND (DEF) by JONES, JOHN			
04:43				FOUL (PERSONAL) by MIDTGAARD, ASBJORN
04:43				SUB OUT: STEVENSON, ERIK
04:43				SUB OUT: MIDTGAARD, ASBJORN
04:43				SUB IN: ETIENNE, TYSON
04:43				SUB IN: POOR BEAR-CHANDLER, ISAIAH
04:43	MISSED FT by JONES, JOHN			
04:43				REBOUND (DEF) by DENNIS, DEXTER
04:31				MISSED 3PTR by ETIENNE, TYSON
04:28				REBOUND (OFF) by DENNIS, DEXTER
04:17				MISSED 3PTR by WADE, TREY

Time	VISITORS: Texas Southern	Score	Margin	HOME: Wichita St.
04:13	REBOUND (DEF) by JONES, JOHN			
04:11	MISSED 3PTR by ETIENNE, BRYSON			
04:07				REBOUND (DEF) by FERNANDES, NOAH
03:41				
03:41				SUB OUT: FERNANDES, NOAH
03:41				SUB IN: SHERFIELD, GRANT
03:41	SUB OUT: JONES, JOHN			
03:41	SUB OUT: TSHISUMPA, JETHRO			
03:41	SUB IN: BALDWIN, CHRIS			
03:41	SUB IN: ANDREWS, JORDAN			
03:38				MISSED LAYUP by SHERFIELD, GRANT
03:38	BLOCK by WALKER III, JOHN			
03:33	REBOUND (DEF) by BALDWIN, CHRIS			
03:23	MISSED LAYUP by HOPKINS, JUSTIN			
03:20				REBOUND (DEF) by ETIENNE, TYSON
03:11		17-19	V 2	GOOD! LAYUP by SHERFIELD, GRANT
02:52	MISSED JUMPER by WALKER III, JOHN			
02:48				REBOUND (DEF) by SHERFIELD, GRANT
02:44				MISSED 3PTR by DENNIS, DEXTER
02:39	REBOUND (DEF) by ETIENNE, BRYSON			
02:36	MISSED 3PTR by ANDREWS, JORDAN			
02:35				REBOUND (DEF) by TEAM
02:22				MISSED JUMPER by SHERFIELD, GRANT
02:22	REBOUND (DEF) by TEAM			
02:22				FOUL (PERSONAL) by POOR BEAR-CHANDLER, ISAIAH
02:22				SUB OUT: POOR BEAR-CHANDLER, ISAIAH
02:22				SUB IN: MIDTGAARD, ASBJORN
02:22	GOOD! FT by BALDWIN, CHRIS [FB]	17-20	V 3	
02:22	GOOD! FT by BALDWIN, CHRIS [FB]	17-21	V 4	
02:09		20-21	V 1	GOOD! 3PTR by DENNIS, DEXTER
02:09				ASSIST by ETIENNE, TYSON
01:51	TURNOVER (OTHER) by HOPKINS, JUSTIN			
01:51				SUB OUT: ETIENNE, TYSON
01:51				SUB IN: STEVENSON, ERIK
01:40				MISSED LAYUP by WADE, TREY
01:36	REBOUND (DEF) by BALDWIN, CHRIS			
01:20	GOOD! JUMPER by ETIENNE, BRYSON	20-23	V 3	
00:52				MISSED 3PTR by STEVENSON, ERIK
00:52	REBOUND (DEF) by TEAM			
00:52				FOUL (PERSONAL) by MIDTGAARD, ASBJORN
00:52	MISSED FT by BALDWIN, CHRIS			
00:52	REBOUND (OFF) by TEAM			
00:52				SUB OUT: MIDTGAARD, ASBJORN
00:52				SUB IN: POOR BEAR-CHANDLER, ISAIAH
00:52	GOOD! FT by BALDWIN, CHRIS [FB]	20-24	V 4	
00:43	FOUL (PERSONAL) by BALDWIN, CHRIS			
00:43		21-24	V 3	GOOD! FT by SHERFIELD, GRANT
00:43				SUB OUT: WADE, TREY
00:43				SUB IN: GORDON, DEANTONI
00:43		22-24	V 2	GOOD! FT by SHERFIELD, GRANT
00:43	TIMEOUT 30SEC			
00:35	TURNOVER (LOSTBALL) by HOPKINS, JUSTIN			
00:35				STEAL by GORDON, DEANTONI
00:30				MISSED LAYUP by GORDON, DEANTONI
00:30	BLOCK by ANDREWS, JORDAN			
00:25	REBOUND (DEF) by HOPKINS, JUSTIN			
00:23	MISSED LAYUP by ETIENNE, BRYSON			
00:18				REBOUND (DEF) by GORDON, DEANTONI
00:18	FOUL (PERSONAL) by WALKER III, JOHN			
00:18				MISSED FT by SHERFIELD, GRANT
00:18				REBOUND (OFF) by TEAM
00:18		23-24	V 1	GOOD! FT by SHERFIELD, GRANT [FB]

Texas Southern 24, Wichita St. 23

Points from (This Period)	TSU	WSU
In the Paint	12	6
Off Turns	2	5
2nd Chance	5	4
Fast Break	5	8
Bench	8	3

Official Box Score
Texas Southern vs Wichita St.
Second Half Statistics Only
November 09, 2019 at Charles Koch Arena - Wichita



Texas Southern 39

No.	Player	S	Pts	FG	3FG	FT	OR	DR	TR	PF	A	TO	Blk	Stl	Min	+/-
03	EWING, EDEN	F	11	3-4	0-0	5-7	1	0	1	2	0	2	0	0	13	-6
04	ETIENNE, BRYSON	G	0	0-1	0-0	0-0	0	0	0	1	1	0	0	0	7	-1
12	JONES, JOHN	G	8	3-6	2-4	0-0	0	1	1	2	0	0	0	0	13	-7
20	ARMSTRONG, TYRIK	G	11	4-8	1-2	2-2	0	0	0	2	2	1	0	1	20	-7
24	WALKER III, JOHN	F	3	1-2	0-0	1-2	0	3	3	4	0	0	1	0	10	2
00	RASAS, YAHUZA	F	1	0-1	0-0	1-2	1	0	1	1	1	1	0	0	6	-10
02	REDUS, JA'MARE	G	0	0-0	0-0	0-0	0	0	0	0	0	0	0	0	0	0
13	BRIGHAM, QUINTON	G	0	0-0	0-0	0-0	0	0	0	0	0	0	0	0	0	-3
14	BALDWIN, CHRIS	F	0	0-1	0-1	0-0	0	1	1	0	0	0	0	0	1	1
15	HOPKINS, JUSTIN	G	5	2-2	0-0	1-1	0	0	0	2	0	1	0	1	13	-6
25	ANDREWS, JORDAN	G	0	0-1	0-1	0-0	0	0	0	0	0	0	0	0	7	3
42	TSHISUMPA, JETHRO	F	0	0-1	0-0	0-2	1	1	2	3	1	1	3	0	9	-1
TEAM							0	2	2	0		1				
TOTALS			39	13-27	3-8	10-16	3	8	11	17	5	7	4	2	100	

Shooting By Period

Period	FG	FG%	3FG	3FG%	FT	FT%
2nd Half	13-27	48%	3-8	38%	10-16	63%
Game	21-55	38.2%	4-15	26.7%	17-27	63.0%

Deadball Rebounds: 4,5

Last FG Half: TSU -

Wichita St. 46

No.	Player	S	Pts	FG	3FG	FT	OR	DR	TR	PF	A	TO	Blk	Stl	Min	+/-
00	DENNIS, DEXTER	G	12	4-5	1-1	3-4	2	2	4	1	0	1	1	0	20	8
05	WADE, TREY	F	4	1-5	0-1	2-4	1	2	3	0	2	0	0	0	16	9
10	STEVENSON, ERIK	G	18	5-11	1-4	7-7	1	2	3	2	0	0	0	0	18	9
44	POOR BEAR-CHANDLER, ISAI	C	0	0-0	0-0	0-0	1	2	3	3	0	1	1	1	11	0
52	SHERFIELD, GRANT	G	8	0-4	0-0	8-10	0	0	0	1	0	1	0	1	18	10
01	ETIENNE, TYSON	G	0	0-0	0-0	0-0	0	0	0	1	0	1	0	0	2	-3
03	GORDON, DEANTONI	F	0	0-1	0-0	0-0	0	1	1	2	0	0	0	0	4	-2
11	FERNANDES, NOAH	G	0	0-0	0-0	0-0	0	0	0	0	0	0	0	0	2	-3
24	UDEZE, MORRIS	C	4	1-3	0-0	2-2	2	3	5	2	1	0	1	0	8	7
33	MIDTGAARD, ASBJORN	C	0	0-0	0-0	0-0	0	0	0	1	0	1	0	0	1	0
TEAM							3	1	4	0		0				
TOTALS			46	11-29	2-6	22-27	10	13	23	13	3	5	3	2	100	

Shooting By Period

Period	FG	FG%	3FG	3FG%	FT	FT%
2nd Half	11-29	38%	2-6	33%	22-27	81%
Game	16-66	24.2%	3-16	18.8%	34-42	81.0%

Deadball Rebounds: 5,2

Last FG Half: WSU -

Game Notes:

Officials: Don Daily, Byron Jarrett, Bill Jacobson

Attendance: 10108

Start Time: 03:05 PM ET

End Time: 05:25 PM ET

Game Duration: 2:19

Score	1st	2nd	TOT
TSU	24	39	63
WSU	23	46	69

Points from (This Period)	TSU	WSU
In the Paint	18	18
Off Turns	6	4
2nd Chance	2	15
Fast Break	5	10
Bench	6	4

Official Play-By-Play
Texas Southern vs Wichita St.
Second Half
November 09, 2019 at Charles Koch Arena - Wichita



Period 2

Starters:

Texas Southern: 3 EWING, EDEN (F); 4 ETIENNE, BRYSON (G); 12 JONES, JOHN (G); 20 ARMSTRONG, TYRIK (G); 24 WALKER III, JOHN (F);

Wichita St.: 0 DENNIS, DEXTER (G); 5 WADE, TREY (F); 10 STEVENSON, ERIK (G); 44 POOR BEAR-CHANDLER, ISAIAH (C); 52 SHERFIELD, GRANT (G);

Time	VISITORS: Texas Southern	Score	Margin	HOME: Wichita St.
20:00				SUB OUT: GORDON, DEANTONI
20:00				SUB IN: WADE, TREY
20:00	SUB OUT: BALDWIN, CHRIS			
20:00	SUB OUT: HOPKINS, JUSTIN			
20:00	SUB OUT: ANDREWS, JORDAN			
20:00	SUB IN: EWING, EDEN			
20:00	SUB IN: JONES, JOHN			
20:00	SUB IN: ARMSTRONG, TYRIK			
19:42				FOUL (PERSONAL) by POOR BEAR-CHANDLER, ISAIAH
19:42	GOOD! FT by EWING, EDEN	23-25	V 2	
19:42	GOOD! FT by EWING, EDEN	23-26	V 3	
19:20	FOUL (PERSONAL) by WALKER III, JOHN			
19:20				MISSED FT by WADE, TREY
19:20				REBOUND (OFF) by TEAM
19:20				MISSED FT by WADE, TREY
19:20	REBOUND (DEF) by TEAM			
19:12				FOUL (PERSONAL) by STEVENSON, ERIK
19:12	GOOD! FT by WALKER III, JOHN [FB]	23-27	V 4	
19:12	MISSED FT by WALKER III, JOHN			
19:11				REBOUND (DEF) by POOR BEAR-CHANDLER, ISAIAH
19:00	FOUL (PERSONAL) by ARMSTRONG, TYRIK			
18:50		25-27	V 2	GOOD! DUNK by DENNIS, DEXTER
18:50				ASSIST by WADE, TREY
18:35	TURNOVER (LOSTBALL) by EWING, EDEN			
18:35				STEAL by POOR BEAR-CHANDLER, ISAIAH
18:30	FOUL (PERSONAL) by ETIENNE, BRYSON			
18:30		26-27	V 1	GOOD! FT by DENNIS, DEXTER [FB]
18:30		27-27	T	GOOD! FT by DENNIS, DEXTER [FB]
18:15	GOOD! 3PTR by JONES, JOHN	27-30	V 3	
18:15	ASSIST by ETIENNE, BRYSON			
17:57	FOUL (PERSONAL) by WALKER III, JOHN			
17:57				MISSED FT by SHERFIELD, GRANT
17:57				REBOUND (OFF) by TEAM
17:57				SUB OUT: POOR BEAR-CHANDLER, ISAIAH
17:57				SUB IN: UDEZE, MORRIS
17:57				MISSED FT by SHERFIELD, GRANT
17:57				REBOUND (OFF) by DENNIS, DEXTER
17:56		29-30	V 1	GOOD! LAYUP by DENNIS, DEXTER
17:39				FOUL (PERSONAL) by STEVENSON, ERIK
17:39	GOOD! FT by ARMSTRONG, TYRIK	29-31	V 2	
17:39	GOOD! FT by ARMSTRONG, TYRIK	29-32	V 3	
17:25				MISSED LAYUP by WADE, TREY
17:19				REBOUND (OFF) by WADE, TREY
17:19		31-32	V 1	GOOD! LAYUP by WADE, TREY
17:13				FOUL (PERSONAL) by DENNIS, DEXTER
17:13	GOOD! FT by EWING, EDEN [FB]	31-33	V 2	
17:13	MISSED FT by EWING, EDEN			
17:12				REBOUND (DEF) by STEVENSON, ERIK
16:51				MISSED JUMPER by WADE, TREY
16:51	BLOCK by WALKER III, JOHN			
16:51				REBOUND (OFF) by TEAM
16:44				MISSED LAYUP by UDEZE, MORRIS
16:40				REBOUND (OFF) by UDEZE, MORRIS
16:37		33-33	T	GOOD! JUMPER by STEVENSON, ERIK [PNT]
16:37	FOUL (PERSONAL) by JONES, JOHN			
16:37	SUB OUT: EWING, EDEN			
16:37	SUB IN: TSHISUMPA, JETHRO			
16:37		34-33	H 1	GOOD! FT by STEVENSON, ERIK
16:30	MISSED JUMPER by JONES, JOHN			
16:30				REBOUND (DEF) by TEAM
16:37				ASSIST by UDEZE, MORRIS
16:15				MISSED JUMPER by UDEZE, MORRIS
16:15	BLOCK by TSHISUMPA, JETHRO			
16:10				REBOUND (OFF) by STEVENSON, ERIK
16:08				MISSED LAYUP by STEVENSON, ERIK
16:08				REBOUND (OFF) by TEAM
16:08	SUB OUT: JONES, JOHN			
16:08	SUB IN: ANDREWS, JORDAN			
16:04		36-33	H 3	GOOD! JUMPER by STEVENSON, ERIK [PNT]
15:48				FOUL (PERSONAL) by SHERFIELD, GRANT

Time	VISITORS: Texas Southern	Score	Margin	HOME: Wichita St.
15:48				
15:28	TURNOVER (SHOTCLOCK) by TEAM			
15:05				MISSED JUMPER by SHERFIELD, GRANT
15:03	REBOUND (DEF) by TEAM			
14:33	GOOD! 3PTR by ARMSTRONG, TYRIK	36-36	T	
14:16				MISSED 3PTR by STEVENSON, ERIK
14:16	BLOCK by TSHISUMPA, JETHRO			
14:11	REBOUND (DEF) by WALKER III, JOHN			
14:03	MISSED JUMPER by WALKER III, JOHN			
14:03				BLOCK by UDEZE, MORRIS
14:03	REBOUND (OFF) by TSHISUMPA, JETHRO			
14:03				FOUL (PERSONAL) by UDEZE, MORRIS
14:03	MISSED FT by TSHISUMPA, JETHRO			
14:03	REBOUND (OFF) by TEAM			
14:03				SUB OUT: STEVENSON, ERIK
14:03				SUB OUT: UDEZE, MORRIS
14:03				SUB OUT: SHERFIELD, GRANT
14:03				SUB IN: ETIENNE, TYSON
14:03				SUB IN: FERNANDES, NOAH
14:03				SUB IN: MIDTGAARD, ASBJORN
14:03	MISSED FT by TSHISUMPA, JETHRO			
14:02				REBOUND (DEF) by DENNIS, DEXTER
13:39				MISSED LAYUP by DENNIS, DEXTER
13:39	BLOCK by TSHISUMPA, JETHRO			
13:39				REBOUND (OFF) by TEAM
13:39	SUB OUT: WALKER III, JOHN			
13:39	SUB IN: EWING, EDEN			
13:36	FOUL (PERSONAL) by TSHISUMPA, JETHRO			
13:36		37-36	H 1	GOOD! FT by WADE, TREY
13:36		38-36	H 2	GOOD! FT by WADE, TREY
13:18	MISSED 3PTR by ANDREWS, JORDAN			
13:14	REBOUND (OFF) by EWING, EDEN			
13:12	GOOD! LAYUP by EWING, EDEN	38-38	T	
12:58				FOUL (OFF) by MIDTGAARD, ASBJORN
12:58				TURNOVER (OFFENSIVE) by MIDTGAARD, ASBJORN
12:58				SUB OUT: WADE, TREY
12:58				SUB OUT: MIDTGAARD, ASBJORN
12:58				SUB IN: GORDON, DEANTONI
12:58				SUB IN: POOR BEAR-CHANDLER, ISAIAH
12:43	MISSED LAYUP by ETIENNE, BRYSON			
12:43				BLOCK by DENNIS, DEXTER
12:43	REBOUND (OFF) by TEAM			
12:43	SUB OUT: ETIENNE, BRYSON			
12:43	SUB IN: HOPKINS, JUSTIN			
12:32	TURNOVER (OFFENSIVEGOALTENDING) by TSHISUMPA, JETHRO			
12:18				TURNOVER (BADPASS) by DENNIS, DEXTER
12:18	STEAL by HOPKINS, JUSTIN			
12:05	GOOD! LAYUP by HOPKINS, JUSTIN	38-40	V 2	
12:05				FOUL (PERSONAL) by GORDON, DEANTONI
12:05				
12:05				SUB OUT: DENNIS, DEXTER
12:05				SUB IN: STEVENSON, ERIK
12:05	GOOD! FT by HOPKINS, JUSTIN	38-41	V 3	
11:50				FOUL (OFF) by ETIENNE, TYSON
11:50				TURNOVER (OFFENSIVE) by ETIENNE, TYSON
11:50				SUB OUT: ETIENNE, TYSON
11:50				SUB OUT: FERNANDES, NOAH
11:50				SUB IN: DENNIS, DEXTER
11:50				SUB IN: SHERFIELD, GRANT
11:27	MISSED JUMPER by ARMSTRONG, TYRIK			
11:23				REBOUND (DEF) by DENNIS, DEXTER
11:06		41-41	T	GOOD! 3PTR by STEVENSON, ERIK
10:42	GOOD! LAYUP by ARMSTRONG, TYRIK	41-43	V 2	
10:23				MISSED JUMPER by GORDON, DEANTONI
10:18	REBOUND (DEF) by TSHISUMPA, JETHRO			
10:06	MISSED LAYUP by EWING, EDEN			
10:06				BLOCK by POOR BEAR-CHANDLER, ISAIAH
10:02				REBOUND (DEF) by GORDON, DEANTONI
09:44		43-43	T	GOOD! JUMPER by STEVENSON, ERIK [PNT]
09:25	GOOD! LAYUP by EWING, EDEN [PNT]	43-45	V 2	
09:25	ASSIST by TSHISUMPA, JETHRO			
09:25				FOUL (PERSONAL) by GORDON, DEANTONI
09:25				SUB OUT: GORDON, DEANTONI
09:25				SUB OUT: POOR BEAR-CHANDLER, ISAIAH
09:25				SUB IN: WADE, TREY
09:25				SUB IN: UDEZE, MORRIS
09:25	SUB OUT: ANDREWS, JORDAN			
09:25	SUB OUT: TSHISUMPA, JETHRO			
09:25	SUB IN: JONES, JOHN			
09:25	SUB IN: BALDWIN, CHRIS			

Time	VISITORS: Texas Southern	Score	Margin	HOME: Wichita St.
09:25	MISSED FT by EWING, EDEN			
09:25				REBOUND (DEF) by UDEZE, MORRIS
09:05				MISSED JUMPER by STEVENSON, ERIK
08:59				REBOUND (OFF) by UDEZE, MORRIS
08:59		45-45	T	GOOD! LAYUP by UDEZE, MORRIS
08:45	GOOD! 3PTR by JONES, JOHN	45-48	V 3	
08:45	ASSIST by ARMSTRONG, TYRIK			
08:23				MISSED LAYUP by STEVENSON, ERIK
08:19	REBOUND (DEF) by BALDWIN, CHRIS			
08:14	MISSED 3PTR by BALDWIN, CHRIS			
08:10				REBOUND (DEF) by TEAM
07:56	FOUL (PERSONAL) by JONES, JOHN			
07:56				
07:56	SUB OUT: EWING, EDEN			
07:56	SUB OUT: BALDWIN, CHRIS			
07:56	SUB IN: RASAS, YAHUZA			
07:56	SUB IN: TSHISUMPA, JETHRO			
07:56		46-48	V 2	GOOD! FT by STEVENSON, ERIK
07:56		47-48	V 1	GOOD! FT by STEVENSON, ERIK
07:47	GOOD! JUMPER by JONES, JOHN	47-50	V 3	
07:47	ASSIST by RASAS, YAHUZA			
07:29				MISSED JUMPER by WADE, TREY
07:28	REBOUND (DEF) by TEAM			
07:19	MISSED LAYUP by TSHISUMPA, JETHRO			
07:16	REBOUND (OFF) by RASAS, YAHUZA			
07:16	TURNOVER (OTHER) by RASAS, YAHUZA			
07:04		49-50	V 1	GOOD! LAYUP by STEVENSON, ERIK
06:42	MISSED JUMPER by ARMSTRONG, TYRIK			
06:38				REBOUND (DEF) by UDEZE, MORRIS
06:33				MISSED 3PTR by STEVENSON, ERIK
06:30	REBOUND (DEF) by JONES, JOHN			
06:13	MISSED 3PTR by ARMSTRONG, TYRIK			
06:09				REBOUND (DEF) by STEVENSON, ERIK
06:03	FOUL (PERSONAL) by TSHISUMPA, JETHRO			
06:03		50-50	T	GOOD! FT by UDEZE, MORRIS
06:03	SUB OUT: TSHISUMPA, JETHRO			
06:03	SUB IN: EWING, EDEN			
06:03		51-50	H 1	GOOD! FT by UDEZE, MORRIS
05:52	TURNOVER (LOSTBALL) by ARMSTRONG, TYRIK			
05:52				STEAL by SHERFIELD, GRANT
05:48				TURNOVER (LOSTBALL) by SHERFIELD, GRANT
05:48	STEAL by ARMSTRONG, TYRIK			
05:43				FOUL (PERSONAL) by UDEZE, MORRIS
05:43	MISSED FT by RASAS, YAHUZA			
05:43	REBOUND (OFF) by TEAM			
05:43				SUB OUT: UDEZE, MORRIS
05:43				SUB IN: POOR BEAR-CHANDLER, ISAIAH
05:43	GOOD! FT by RASAS, YAHUZA [FB]	51-51	T	
05:29		53-51	H 2	GOOD! JUMPER by DENNIS, DEXTER
05:19	GOOD! LAYUP by HOPKINS, JUSTIN	53-53	T	
05:05				MISSED 3PTR by WADE, TREY
05:01				REBOUND (OFF) by POOR BEAR-CHANDLER, ISAIAH
04:57		56-53	H 3	GOOD! 3PTR by DENNIS, DEXTER
04:57				ASSIST by WADE, TREY
04:43	MISSED 3PTR by JONES, JOHN			
04:39				REBOUND (DEF) by WADE, TREY
04:30	FOUL (PERSONAL) by RASAS, YAHUZA			
04:30		57-53	H 4	GOOD! FT by SHERFIELD, GRANT
04:30		58-53	H 5	GOOD! FT by SHERFIELD, GRANT
04:30	SUB OUT: RASAS, YAHUZA			
04:30	SUB IN: WALKER III, JOHN			
04:14	GOOD! JUMPER by WALKER III, JOHN [PNT]	58-55	H 3	
04:05	FOUL (PERSONAL) by EWING, EDEN			
04:05		59-55	H 4	GOOD! FT by SHERFIELD, GRANT
04:05		60-55	H 5	GOOD! FT by SHERFIELD, GRANT
03:55	MISSED JUMPER by ARMSTRONG, TYRIK			
03:51				REBOUND (DEF) by WADE, TREY
03:47				MISSED LAYUP by SHERFIELD, GRANT
03:47	REBOUND (DEF) by TEAM			
03:47				FOUL (PERSONAL) by POOR BEAR-CHANDLER, ISAIAH
03:47				
03:47	GOOD! FT by EWING, EDEN	60-56	H 4	
03:47	GOOD! FT by EWING, EDEN	60-57	H 3	
03:34	FOUL (PERSONAL) by WALKER III, JOHN			
03:34		61-57	H 4	GOOD! FT by SHERFIELD, GRANT [FB]
03:34		62-57	H 5	GOOD! FT by SHERFIELD, GRANT [FB]
03:23	FOUL (OFF) by EWING, EDEN			
03:23	TURNOVER (OFFENSIVE) by EWING, EDEN			
03:23	SUB OUT: EWING, EDEN			
03:23	SUB IN: RASAS, YAHUZA			

Time	VISITORS: Texas Southern	Score	Margin	HOME: Wichita St.
02:54				MISSED 3PTR by STEVENSON, ERIK
02:51	REBOUND (DEF) by WALKER III, JOHN			
02:47	FOUL (OFF) by HOPKINS, JUSTIN			
02:47	TURNOVER (OFFENSIVE) by HOPKINS, JUSTIN			
02:26				FOUL (OFF) by POOR BEAR-CHANDLER, ISAIAH
02:26				TURNOVER (OFFENSIVE) by POOR BEAR-CHANDLER, ISAIAH
02:13	GOOD! LAYUP by ARMSTRONG, TYRIK [PNT]	62-59	H 3	
01:46				MISSED JUMPER by SHERFIELD, GRANT
01:42				REBOUND (OFF) by DENNIS, DEXTER
01:24				MISSED LAYUP by SHERFIELD, GRANT
01:20	REBOUND (DEF) by WALKER III, JOHN			
01:05	MISSED LAYUP by RASAS, YAHUZA			
01:02				REBOUND (DEF) by POOR BEAR-CHANDLER, ISAIAH
00:52				TIMEOUT 30SEC
00:52	SUB OUT: RASAS, YAHUZA			
00:52	SUB OUT: WALKER III, JOHN			
00:52	SUB IN: EWING, EDEN			
00:52	SUB IN: TSHISUMPA, JETHRO			
00:43	FOUL (PERSONAL) by TSHISUMPA, JETHRO			
00:43				SUB OUT: POOR BEAR-CHANDLER, ISAIAH
00:43				SUB IN: UDEZE, MORRIS
00:43	SUB OUT: TSHISUMPA, JETHRO			
00:43	SUB IN: RASAS, YAHUZA			
00:43				MISSED FT by DENNIS, DEXTER
00:43				REBOUND (OFF) by TEAM
00:43		63-59	H 4	GOOD! FT by DENNIS, DEXTER
00:27	MISSED 3PTR by JONES, JOHN			
00:23				REBOUND (DEF) by UDEZE, MORRIS
00:22	FOUL (PERSONAL) by ARMSTRONG, TYRIK			
00:22		64-59	H 5	GOOD! FT by SHERFIELD, GRANT [FB]
00:22	SUB OUT: RASAS, YAHUZA			
00:22	SUB IN: WALKER III, JOHN			
00:22		65-59	H 6	GOOD! FT by SHERFIELD, GRANT [FB]
00:13	GOOD! LAYUP by EWING, EDEN	65-61	H 4	
00:13	ASSIST by ARMSTRONG, TYRIK			
00:13	TIMEOUT TEAM			
00:13				SUB OUT: UDEZE, MORRIS
00:13				SUB IN: POOR BEAR-CHANDLER, ISAIAH
00:13	SUB OUT: JONES, JOHN			
00:13	SUB IN: BRIGHAM, QUINTON			
00:10	FOUL (PERSONAL) by HOPKINS, JUSTIN			
00:10		66-61	H 5	GOOD! FT by STEVENSON, ERIK [FB]
00:10	SUB OUT: BRIGHAM, QUINTON			
00:10	SUB IN: JONES, JOHN			
00:10		67-61	H 6	GOOD! FT by STEVENSON, ERIK [FB]
00:04	GOOD! LAYUP by ARMSTRONG, TYRIK [FB]	67-63	H 4	
00:04	TIMEOUT 30SEC			
00:04	SUB OUT: JONES, JOHN			
00:04	SUB IN: BRIGHAM, QUINTON			
00:02	FOUL (PERSONAL) by WALKER III, JOHN			
00:02	SUB OUT: WALKER III, JOHN			
00:02	SUB IN: RASAS, YAHUZA			
00:02		68-63	H 5	GOOD! FT by STEVENSON, ERIK [FB]
00:02		69-63	H 6	GOOD! FT by STEVENSON, ERIK [FB]

Texas Southern 63, Wichita St. 69

Points from (This Period)	TSU	WSU
In the Paint	18	18
Off Turns	6	4
2nd Chance	2	15
Fast Break	5	10
Bench	6	4

Official Scoring/Possession Reference Chart
Texas Southern vs Wichita St.
Period 1
November 09, 2019 at Charles Koch Arena - Wichita



Period 1

Starters:

Texas Southern: 3 EWING, EDEN (F); 4 ETIENNE, BRYSON (G); 12 JONES, JOHN (G); 20 ARMSTRONG, TYRIK (G); 24 WALKER III, JOHN (F);

Wichita St.: 0 DENNIS, DEXTER (G); 5 WADE, TREY (F); 10 STEVENSON, ERIK (G); 44 POOR BEAR-CHANDLER, ISAIAH (C); 52 SHERFIELD, GRANT (G);

Time	VISITORS: Texas Southern	Score	Margin	HOME: Wichita St.
19:45	GOOD! JUMPER by EWING, EDEN	0-2	V 2	
18:42		2-2	T	GOOD! LAYUP by POOR BEAR-CHANDLER, ISAIAH
17:56	GOOD! LAYUP by ETIENNE, BRYSON [FB]	2-4	V 2	
16:22		3-4	V 1	GOOD! FT by DENNIS, DEXTER [FB]
16:22		4-4	T	GOOD! FT by DENNIS, DEXTER [FB]
15:58		5-4	H 1	GOOD! FT by DENNIS, DEXTER [FB]
15:58		6-4	H 2	GOOD! FT by DENNIS, DEXTER [FB]
15:41	GOOD! LAYUP by EWING, EDEN	6-6	T	
15:14	GOOD! LAYUP by ETIENNE, BRYSON [PNT]	6-8	V 2	
13:43		7-8	V 1	GOOD! FT by ETIENNE, TYSON [FB]
11:33	GOOD! JUMPER by RASAS, YAHUZA [PNT]	7-10	V 3	
09:28		8-10	V 2	GOOD! FT by WADE, TREY
09:28		9-10	V 1	GOOD! FT by WADE, TREY
08:51	GOOD! FT by HOPKINS, JUSTIN	9-11	V 2	
07:12	GOOD! 3PTR by JONES, JOHN	9-14	V 5	
06:29	GOOD! FT by REDUS, JA'MARE	9-15	V 6	
06:29	GOOD! FT by REDUS, JA'MARE	9-16	V 7	
06:22		10-16	V 6	GOOD! FT by STEVENSON, ERIK [FB]
06:22		11-16	V 5	GOOD! FT by STEVENSON, ERIK [FB]
05:49		13-16	V 3	GOOD! JUMPER by STEVENSON, ERIK
05:27	GOOD! LAYUP by EWING, EDEN [PNT]	13-18	V 5	
05:27	GOOD! FT by EWING, EDEN	13-19	V 6	
05:18		15-19	V 4	GOOD! LAYUP by MIDTGAARD, ASBJORN [PNT]
03:11		17-19	V 2	GOOD! LAYUP by SHERFIELD, GRANT
02:22	GOOD! FT by BALDWIN, CHRIS [FB]	17-20	V 3	
02:22	GOOD! FT by BALDWIN, CHRIS [FB]	17-21	V 4	
02:09		20-21	V 1	GOOD! 3PTR by DENNIS, DEXTER
01:20	GOOD! JUMPER by ETIENNE, BRYSON	20-23	V 3	
00:52	GOOD! FT by BALDWIN, CHRIS [FB]	20-24	V 4	
00:43		21-24	V 3	GOOD! FT by SHERFIELD, GRANT
00:43		22-24	V 2	GOOD! FT by SHERFIELD, GRANT
00:18		23-24	V 1	GOOD! FT by SHERFIELD, GRANT [FB]

Texas Southern 24, Wichita St. 23

Official Scoring/Possession Reference Chart
Texas Southern vs Wichita St.
Period 2
November 09, 2019 at Charles Koch Arena - Wichita



Period 2

Starters:

Texas Southern: 3 EWING, EDEN (F); 4 ETIENNE, BRYSON (G); 12 JONES, JOHN (G); 20 ARMSTRONG, TYRIK (G); 24 WALKER III, JOHN (F);

Wichita St.: 0 DENNIS, DEXTER (G); 5 WADE, TREY (F); 10 STEVENSON, ERIK (G); 44 POOR BEAR-CHANDLER, ISAIAH (C); 52 SHERFIELD, GRANT (G);

Time	VISITORS: Texas Southern	Score	Margin	HOME: Wichita St.
19:42	GOOD! FT by EWING, EDEN	23-25	V 2	
19:42	GOOD! FT by EWING, EDEN	23-26	V 3	
19:12	GOOD! FT by WALKER III, JOHN [FB]	23-27	V 4	
18:50		25-27	V 2	GOOD! DUNK by DENNIS, DEXTER
18:30		26-27	V 1	GOOD! FT by DENNIS, DEXTER [FB]
18:30		27-27	T	GOOD! FT by DENNIS, DEXTER [FB]
18:15	GOOD! 3PTR by JONES, JOHN	27-30	V 3	
17:56		29-30	V 1	GOOD! LAYUP by DENNIS, DEXTER
17:39	GOOD! FT by ARMSTRONG, TYRIK	29-31	V 2	
17:39	GOOD! FT by ARMSTRONG, TYRIK	29-32	V 3	
17:19		31-32	V 1	GOOD! LAYUP by WADE, TREY
17:13	GOOD! FT by EWING, EDEN [FB]	31-33	V 2	
16:37		33-33	T	GOOD! JUMPER by STEVENSON, ERIK [PNT]
16:37		34-33	H 1	GOOD! FT by STEVENSON, ERIK
16:04		36-33	H 3	GOOD! JUMPER by STEVENSON, ERIK [PNT]
14:33	GOOD! 3PTR by ARMSTRONG, TYRIK	36-36	T	
13:36		37-36	H 1	GOOD! FT by WADE, TREY
13:36		38-36	H 2	GOOD! FT by WADE, TREY
13:12	GOOD! LAYUP by EWING, EDEN	38-38	T	
12:05	GOOD! LAYUP by HOPKINS, JUSTIN	38-40	V 2	
12:05	GOOD! FT by HOPKINS, JUSTIN	38-41	V 3	
11:06		41-41	T	GOOD! 3PTR by STEVENSON, ERIK
10:42	GOOD! LAYUP by ARMSTRONG, TYRIK	41-43	V 2	
09:44		43-43	T	GOOD! JUMPER by STEVENSON, ERIK [PNT]
09:25	GOOD! LAYUP by EWING, EDEN [PNT]	43-45	V 2	
08:59		45-45	T	GOOD! LAYUP by UDEZE, MORRIS
08:45	GOOD! 3PTR by JONES, JOHN	45-48	V 3	
07:56		46-48	V 2	GOOD! FT by STEVENSON, ERIK
07:56		47-48	V 1	GOOD! FT by STEVENSON, ERIK
07:47	GOOD! JUMPER by JONES, JOHN	47-50	V 3	
07:04		49-50	V 1	GOOD! LAYUP by STEVENSON, ERIK
06:03		50-50	T	GOOD! FT by UDEZE, MORRIS
06:03		51-50	H 1	GOOD! FT by UDEZE, MORRIS
05:43	GOOD! FT by RASAS, YAHUZA [FB]	51-51	T	
05:29		53-51	H 2	GOOD! JUMPER by DENNIS, DEXTER
05:19	GOOD! LAYUP by HOPKINS, JUSTIN	53-53	T	
04:57		56-53	H 3	GOOD! 3PTR by DENNIS, DEXTER
04:30		57-53	H 4	GOOD! FT by SHERFIELD, GRANT
04:30		58-53	H 5	GOOD! FT by SHERFIELD, GRANT
04:14	GOOD! JUMPER by WALKER III, JOHN [PNT]	58-55	H 3	
04:05		59-55	H 4	GOOD! FT by SHERFIELD, GRANT
04:05		60-55	H 5	GOOD! FT by SHERFIELD, GRANT
03:47	GOOD! FT by EWING, EDEN	60-56	H 4	
03:47	GOOD! FT by EWING, EDEN	60-57	H 3	
03:34		61-57	H 4	GOOD! FT by SHERFIELD, GRANT [FB]
03:34		62-57	H 5	GOOD! FT by SHERFIELD, GRANT [FB]
02:13	GOOD! LAYUP by ARMSTRONG, TYRIK [PNT]	62-59	H 3	
00:43		63-59	H 4	GOOD! FT by DENNIS, DEXTER
00:22		64-59	H 5	GOOD! FT by SHERFIELD, GRANT [FB]
00:22		65-59	H 6	GOOD! FT by SHERFIELD, GRANT [FB]
00:13	GOOD! LAYUP by EWING, EDEN	65-61	H 4	
00:10		66-61	H 5	GOOD! FT by STEVENSON, ERIK [FB]

Time	VISITORS: Texas Southern	Score	Margin	HOME: Wichita St.
00:10		67-61	H 6	GOOD! FT by STEVENSON, ERIK [FB]
00:04	GOOD! LAYUP by ARMSTRONG, TYRIK [FB]	67-63	H 4	
00:02		68-63	H 5	GOOD! FT by STEVENSON, ERIK [FB]
00:02		69-63	H 6	GOOD! FT by STEVENSON, ERIK [FB]

Texas Southern 63, Wichita St. 69

Official Substitutions Log
Texas Southern vs Wichita St.
Period 1
November 09, 2019 at Charles Koch Arena - Wichita



VISITORS: Texas Southern	Time	Score	HOME: Wichita St.
3 EWING, EDEN			0 DENNIS, DEXTER
4 ETIENNE, BRYSON			5 WADE, TREY
12 JONES, JOHN			10 STEVENSON, ERIK
20 ARMSTRONG, TYRIK			44 POOR BEAR-CHANDLER, ISAI AH
24 WALKER III, JOHN			52 SHERFIELD, GRANT
SUB OUT: 20 ARMSTRONG, TYRIK	17:05	4-2	
SUB IN: 13 BRIGHAM, QUINTON	17:05		
	14:23	8-6	SUB OUT: STEVENSON, ERIK
	14:23		SUB OUT: POOR BEAR-CHANDLER, ISAI AH
	14:23		SUB OUT: SHERFIELD, GRANT
	14:23		SUB IN: ETIENNE, TYSON
	14:23		SUB IN: FERNANDES, NOAH
	14:23		SUB IN: UDEZE, MORRIS
SUB OUT: 3 EWING, EDEN	14:23		
SUB OUT: 12 JONES, JOHN	14:23		
SUB OUT: 24 WALKER III, JOHN	14:23		
SUB IN: 0 RASAS, YAHUZA	14:23		
SUB IN: 25 ANDREWS, JORDAN	14:23		
SUB IN: 42 TSHISUMPA, JETHRO	14:23		
	13:43	8-6	SUB OUT: WADE, TREY
	13:43		SUB IN: GORDON, DEANTONI
SUB OUT: 4 ETIENNE, BRYSON	13:43		
SUB OUT: 13 BRIGHAM, QUINTON	13:43		
SUB IN: 2 REDUS, JA'MARE	13:43		
SUB IN: 15 HOPKINS, JUSTIN	13:43		
	12:37	8-7	SUB OUT: DENNIS, DEXTER
	12:37		SUB IN: STEVENSON, ERIK
	12:14	8-7	SUB OUT: FERNANDES, NOAH
	12:14		SUB IN: SHERFIELD, GRANT
	11:36	8-7	SUB OUT: GORDON, DEANTONI
	11:36		SUB IN: WADE, TREY
SUB OUT: 25 ANDREWS, JORDAN	11:36		
SUB IN: 4 ETIENNE, BRYSON	11:36		
	11:33	10-7	SUB OUT: UDEZE, MORRIS
	11:33		SUB IN: MIDTGAARD, ASBJORN
	11:24	10-7	SUB OUT: ETIENNE, TYSON
	11:24		SUB IN: DENNIS, DEXTER
	10:57	10-7	SUB OUT: MIDTGAARD, ASBJORN
	10:57		SUB IN: POOR BEAR-CHANDLER, ISAI AH
SUB OUT: 0 RASAS, YAHUZA	10:57		
SUB OUT: 42 TSHISUMPA, JETHRO	10:57		
SUB IN: 3 EWING, EDEN	10:57		
SUB IN: 14 BALDWIN, CHRIS	10:57		
SUB OUT: 4 ETIENNE, BRYSON	09:28	10-8	
SUB IN: 12 JONES, JOHN	09:28		
	09:00	10-9	SUB OUT: STEVENSON, ERIK
	09:00		SUB IN: ETIENNE, TYSON
	07:59	11-9	SUB OUT: WADE, TREY
	07:59		SUB IN: GORDON, DEANTONI
	07:32	11-9	SUB OUT: POOR BEAR-CHANDLER, ISAI AH
	07:32		SUB OUT: SHERFIELD, GRANT
	07:32		SUB IN: FERNANDES, NOAH
	07:32		SUB IN: MIDTGAARD, ASBJORN
SUB OUT: 14 BALDWIN, CHRIS	07:32		
SUB IN: 24 WALKER III, JOHN	07:32		
	06:29	16-9	SUB OUT: ETIENNE, TYSON
	06:29		SUB IN: STEVENSON, ERIK
SUB OUT: 2 REDUS, JA'MARE	06:29		
SUB IN: 4 ETIENNE, BRYSON	06:29		
	06:29		SUB OUT: GORDON, DEANTONI
	06:29		SUB IN: WADE, TREY
SUB OUT: 3 EWING, EDEN	05:27	19-13	
SUB IN: 42 TSHISUMPA, JETHRO	05:27		
	04:43	19-15	SUB OUT: STEVENSON, ERIK
	04:43		SUB OUT: MIDTGAARD, ASBJORN
	04:43		SUB IN: ETIENNE, TYSON
	04:43		SUB IN: POOR BEAR-CHANDLER, ISAI AH
	03:41	19-15	SUB OUT: FERNANDES, NOAH
	03:41		SUB IN: SHERFIELD, GRANT
SUB OUT: 12 JONES, JOHN	03:41		
SUB OUT: 42 TSHISUMPA, JETHRO	03:41		
SUB IN: 14 BALDWIN, CHRIS	03:41		
SUB IN: 25 ANDREWS, JORDAN	03:41		
	02:22	19-17	SUB OUT: POOR BEAR-CHANDLER, ISAI AH
	02:22		SUB IN: MIDTGAARD, ASBJORN

VISITORS: Texas Southern	Time	Score	HOME: Wichita St.
	01:51	21-20	SUB OUT: ETIENNE, TYSON
	01:51		SUB IN: STEVENSON, ERIK
	00:52	23-20	SUB OUT: MIDTGAARD, ASBJORN
	00:52		SUB IN: POOR BEAR-CHANDLER, ISAIAH
	00:43	24-21	SUB OUT: WADE, TREY
	00:43		SUB IN: GORDON, DEANTONI

Texas Southern 24, Wichita St. 23

Official Substitutions Log
Texas Southern vs Wichita St.
Period 2
November 09, 2019 at Charles Koch Arena - Wichita



VISITORS: Texas Southern	Time	Score	HOME: Wichita St.
3 EWING, EDEN			0 DENNIS, DEXTER
4 ETIENNE, BRYSON			5 WADE, TREY
12 JONES, JOHN			10 STEVENSON, ERIK
20 ARMSTRONG, TYRIK			44 POOR BEAR-CHANDLER, ISAIAH
24 WALKER III, JOHN			52 SHERFIELD, GRANT
	20:00	-	SUB OUT: GORDON, DEANTONI
	20:00		SUB IN: WADE, TREY
SUB OUT: 14 BALDWIN, CHRIS	20:00		
SUB OUT: 15 HOPKINS, JUSTIN	20:00		
SUB OUT: 25 ANDREWS, JORDAN	20:00		
SUB IN: 3 EWING, EDEN	20:00		
SUB IN: 12 JONES, JOHN	20:00		
SUB IN: 20 ARMSTRONG, TYRIK	20:00		
	17:57	30-27	SUB OUT: POOR BEAR-CHANDLER, ISAIAH
	17:57		SUB IN: UDEZE, MORRIS
SUB OUT: 3 EWING, EDEN	16:37	33-33	
SUB IN: 42 TSHISUMPA, JETHRO	16:37		
SUB OUT: 12 JONES, JOHN	16:08	33-34	
SUB IN: 25 ANDREWS, JORDAN	16:08		
	14:03	36-36	SUB OUT: STEVENSON, ERIK
	14:03		SUB OUT: UDEZE, MORRIS
	14:03		SUB OUT: SHERFIELD, GRANT
	14:03		SUB IN: ETIENNE, TYSON
	14:03		SUB IN: FERNANDES, NOAH
	14:03		SUB IN: MIDTGAARD, ASBJORN
SUB OUT: 24 WALKER III, JOHN	13:39	36-36	
SUB IN: 3 EWING, EDEN	13:39		
	12:58	38-38	SUB OUT: WADE, TREY
	12:58		SUB OUT: MIDTGAARD, ASBJORN
	12:58		SUB IN: GORDON, DEANTONI
	12:58		SUB IN: POOR BEAR-CHANDLER, ISAIAH
SUB OUT: 4 ETIENNE, BRYSON	12:43	38-38	
SUB IN: 15 HOPKINS, JUSTIN	12:43		
	12:05	40-38	SUB OUT: DENNIS, DEXTER
	12:05		SUB IN: STEVENSON, ERIK
	11:50	41-38	SUB OUT: ETIENNE, TYSON
	11:50		SUB OUT: FERNANDES, NOAH
	11:50		SUB IN: DENNIS, DEXTER
	11:50		SUB IN: SHERFIELD, GRANT
	09:25	45-43	SUB OUT: GORDON, DEANTONI
	09:25		SUB OUT: POOR BEAR-CHANDLER, ISAIAH
	09:25		SUB IN: WADE, TREY
	09:25		SUB IN: UDEZE, MORRIS
SUB OUT: 25 ANDREWS, JORDAN	09:25		
SUB OUT: 42 TSHISUMPA, JETHRO	09:25		
SUB IN: 12 JONES, JOHN	09:25		
SUB IN: 14 BALDWIN, CHRIS	09:25		
SUB OUT: 3 EWING, EDEN	07:56	48-45	
SUB OUT: 14 BALDWIN, CHRIS	07:56		
SUB IN: 0 RASAS, YAHUZA	07:56		
SUB IN: 42 TSHISUMPA, JETHRO	07:56		
SUB OUT: 42 TSHISUMPA, JETHRO	06:03	50-50	
SUB IN: 3 EWING, EDEN	06:03		
	05:43	50-51	SUB OUT: UDEZE, MORRIS
	05:43		SUB IN: POOR BEAR-CHANDLER, ISAIAH
SUB OUT: 0 RASAS, YAHUZA	04:30	53-58	
SUB IN: 24 WALKER III, JOHN	04:30		
SUB OUT: 3 EWING, EDEN	03:23	57-62	
SUB IN: 0 RASAS, YAHUZA	03:23		
SUB OUT: 0 RASAS, YAHUZA	00:52	59-62	
SUB OUT: 24 WALKER III, JOHN	00:52		
SUB IN: 3 EWING, EDEN	00:52		
SUB IN: 42 TSHISUMPA, JETHRO	00:52		
	00:43	59-62	SUB OUT: POOR BEAR-CHANDLER, ISAIAH
	00:43		SUB IN: UDEZE, MORRIS
SUB OUT: 42 TSHISUMPA, JETHRO	00:43		
SUB IN: 0 RASAS, YAHUZA	00:43		
SUB OUT: 0 RASAS, YAHUZA	00:22	59-64	
SUB IN: 24 WALKER III, JOHN	00:22		
	00:13	61-65	SUB OUT: UDEZE, MORRIS
	00:13		SUB IN: POOR BEAR-CHANDLER, ISAIAH
SUB OUT: 12 JONES, JOHN	00:13		
SUB IN: 13 BRIGHAM, QUINTON	00:13		
SUB OUT: 13 BRIGHAM, QUINTON	00:10	61-66	
SUB IN: 12 JONES, JOHN	00:10		

VISITORS: Texas Southern		Time	Score	HOME: Wichita St.
SUB OUT: 12 JONES,JOHN		00:04	63-67	
SUB IN: 13 BRIGHAM,QUINTON		00:04		
SUB OUT: 24 WALKER III,JOHN		00:02	63-67	
SUB IN: 0 RASAS,YAHUZA		00:02		

Texas Southern 63, Wichita St. 69

Official Shot Chart
Texas Southern vs Wichita St.
 PERIOD 1 Shots
 November 09, 2019 at Charles Koch Arena - Wichita

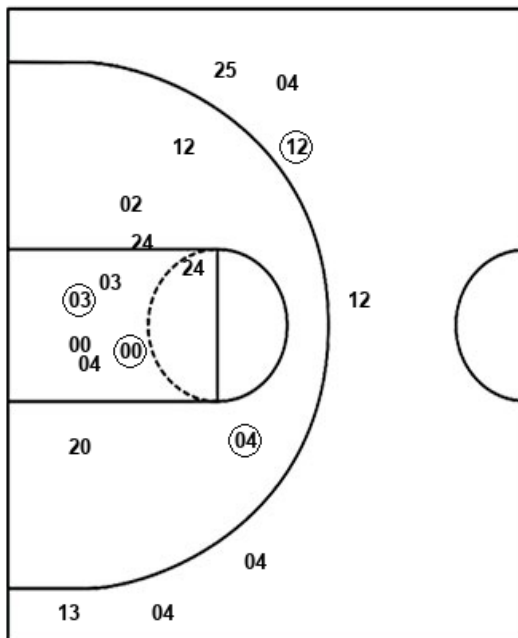


Wichita St.

Texas Southern

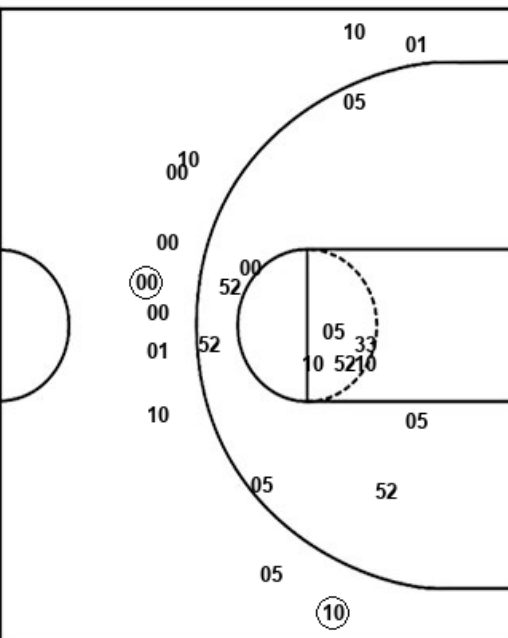
Layups
 00 (44) 11 24 44
 44 10 01 44 (33)
 52 (52) 05 03

Dunks



Layups
 (04) (03) (04) 03 04
 15 15 (03) 15 04

Dunks



WSU : Period 1	Made	Att	Pct
Layups	3	14	21.4
Dunks	0	0	0
2PT Field Goals	4	27	14.8
3PT Field Goals	1	10	10.0
Total Field Goals	5	37	13.5

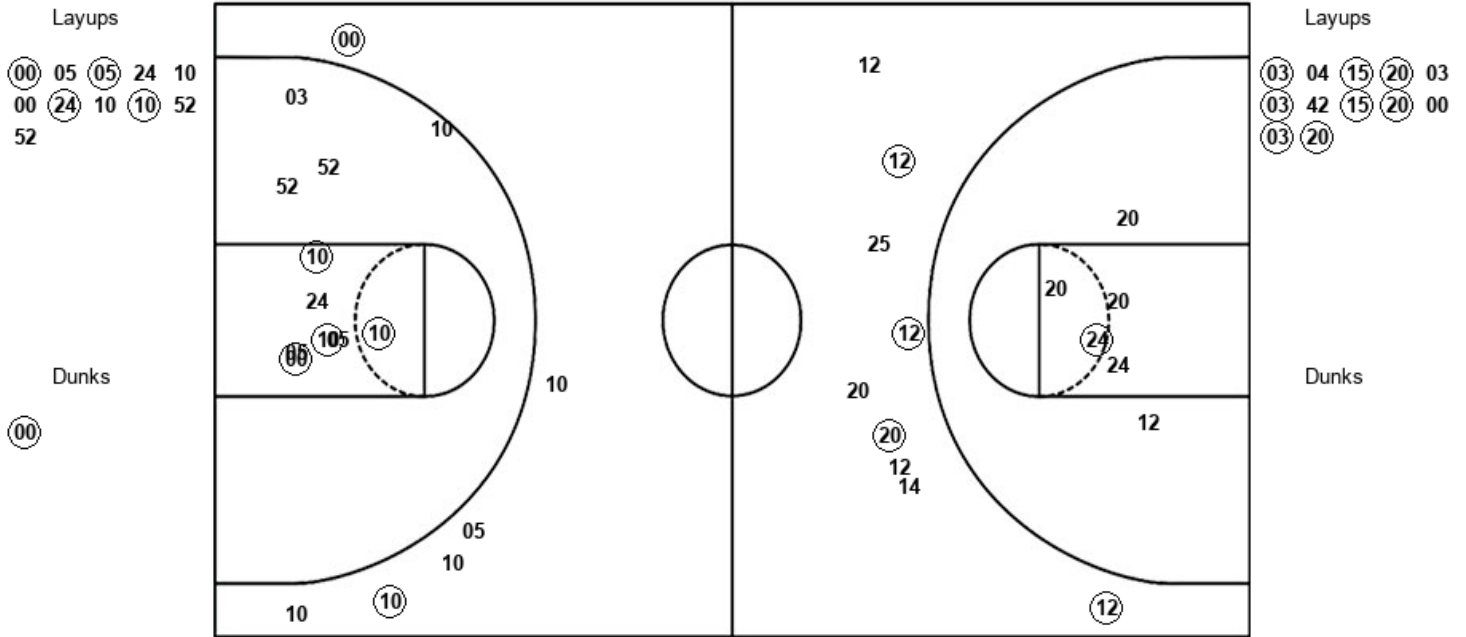
TSU : Period 1	Made	Att	Pct
Layups	4	10	40.0
Dunks	0	0	0
2PT Field Goals	7	21	33.3
3PT Field Goals	1	7	14.3
Total Field Goals	8	28	28.6

Official Shot Chart
Texas Southern vs Wichita St.
 PERIOD 2 Shots
 November 09, 2019 at Charles Koch Arena - Wichita



Wichita St.

Texas Southern



WSU : Period 2	Made	Att	Pct
Layups	4	11	36.4
Dunks	1	1	100.0
2PT Field Goals	9	23	39.1
3PT Field Goals	2	6	33.3
Total Field Goals	11	29	37.9

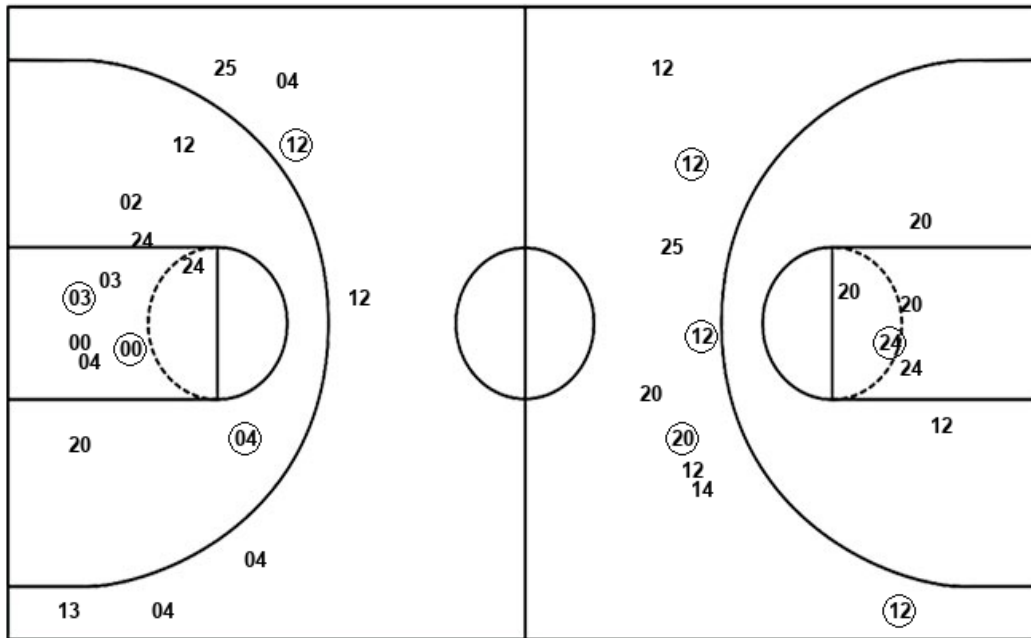
TSU : Period 2	Made	Att	Pct
Layups	8	12	66.7
Dunks	0	0	0
2PT Field Goals	10	19	52.6
3PT Field Goals	3	8	37.5
Total Field Goals	13	27	48.1

Official Shot Chart
Texas Southern vs Wichita St.
 Texas Southern Team Shots
 November 09, 2019 at Charles Koch Arena - Wichita



Layups

Dunks



Layups

Dunks

(04) (03) (04) 03 04
 15 15 (03) 15 04
 (03) 04 (15) (20) 03
 (03) 42 (15) (20) 00
 (03) (20)

TSU : Period 1	Made	Att	Pct
Layups	4	10	40.0
Dunks	0	0	0
2PT Field Goals	7	21	33.3
3PT Field Goals	1	7	14.3
Total Field Goals	8	28	28.6

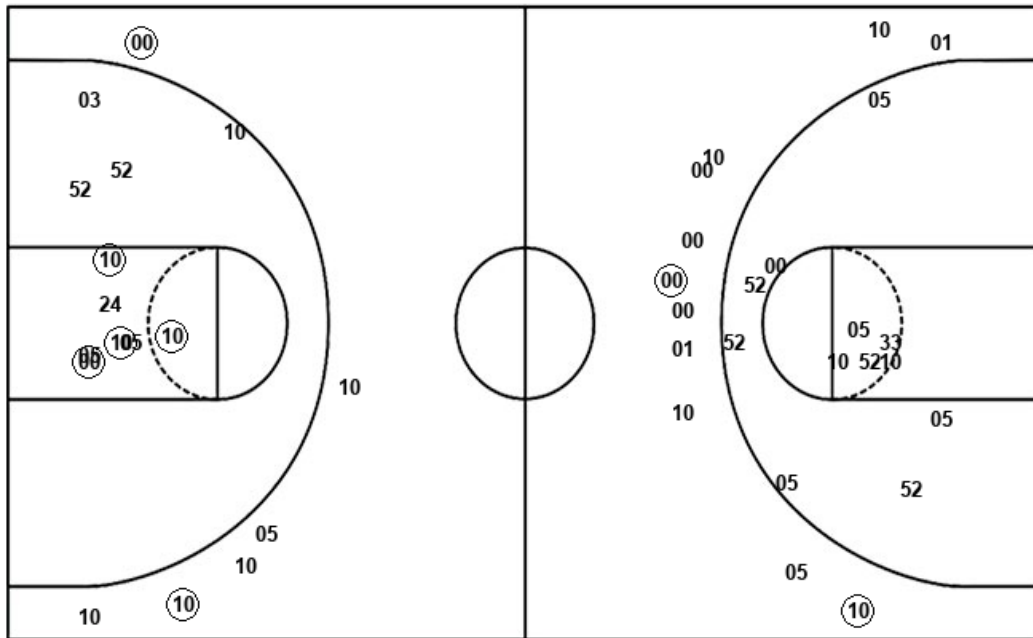
TSU : Period 2	Made	Att	Pct
Layups	8	12	66.7
Dunks	0	0	0
2PT Field Goals	10	19	52.6
3PT Field Goals	3	8	37.5
Total Field Goals	13	27	48.1

Official Shot Chart
Texas Southern vs Wichita St.
 Wichita St. Team Shots
 November 09, 2019 at Charles Koch Arena - Wichita



Layups

Dunks



Layups

Dunks

00 (44) 11 24 44
 44 10 01 44 (33)
 52 (52) 05 03 (00)
 05 (05) 24 10 00
 (24) 10 (10) 52 52

WSU : Period 1	Made	Att	Pct
Layups	3	14	21.4
Dunks	0	0	0
2PT Field Goals	4	27	14.8
3PT Field Goals	1	10	10.0
Total Field Goals	5	37	13.5

WSU : Period 2	Made	Att	Pct
Layups	4	11	36.4
Dunks	1	1	100.0
2PT Field Goals	9	23	39.1
3PT Field Goals	2	6	33.3
Total Field Goals	11	29	37.9