

FINAL SCORE



Penn

69



Villanova

80

December 04, 2019 • Finneran Pavilion - Bryn Mawr

FINAL STATISTICS

Official Box Score
Penn vs Villanova
Game Totals -- Final Statistics
December 04, 2019 at Finneran Pavilion - Bryn Mawr



Penn 69

| No. | Player | S | Pts | FG | 3FG | FT | OR | DR | TR | PF | A | TO | Blk | Stl | Min | +/- |
|---------------|-----------------|---|-----------|--------------|-------------|------------|----------|-----------|-----------|-----------|-----------|-----------|----------|----------|------------|-----|
| 00 | BETLEY, RYAN | G | 13 | 6-15 | 1-5 | 0-1 | 0 | 3 | 3 | 2 | 4 | 2 | 1 | 2 | 38 | -7 |
| 03 | DINGLE, JORDAN | G | 18 | 6-14 | 4-9 | 2-5 | 0 | 1 | 1 | 4 | 2 | 5 | 0 | 0 | 33 | -15 |
| 12 | GOODMAN, DEVON | G | 16 | 7-13 | 1-3 | 1-1 | 1 | 2 | 3 | 3 | 5 | 2 | 0 | 1 | 37 | -6 |
| 13 | SCOTT, EDDIE | G | 0 | 0-1 | 0-0 | 0-0 | 0 | 1 | 1 | 3 | 0 | 1 | 0 | 0 | 9 | -10 |
| 25 | BRODEUR, AJ | F | 18 | 8-13 | 1-2 | 1-2 | 3 | 11 | 14 | 3 | 6 | 2 | 3 | 1 | 38 | -15 |
| 11 | MONROE, LUCAS | F | 4 | 2-4 | 0-0 | 0-0 | 0 | 1 | 1 | 0 | 0 | 0 | 0 | 0 | 11 | -5 |
| 14 | MARTZ, MAX | F | 0 | 0-0 | 0-0 | 0-0 | 1 | 1 | 2 | 1 | 2 | 1 | 0 | 1 | 30 | -1 |
| 24 | SIMMONS, JARROD | F | 0 | 0-0 | 0-0 | 0-0 | 0 | 1 | 1 | 0 | 1 | 0 | 0 | 0 | 2 | 4 |
| TEAM | | | | | | | 1 | 2 | 3 | 0 | | | | | | |
| TOTALS | | | 69 | 29-60 | 7-19 | 4-9 | 6 | 23 | 29 | 16 | 20 | 13 | 4 | 5 | 198 | |

Shooting By Period

| Period | FG | FG% | 3FG | 3FG% | FT | FT% |
|-------------|--------------|--------------|-------------|--------------|------------|--------------|
| 1st Half | 13-29 | 45% | 3-6 | 50% | 1-3 | 33% |
| 2nd Half | 16-31 | 52% | 4-13 | 31% | 3-6 | 50% |
| Game | 29-60 | 48.3% | 7-19 | 36.8% | 4-9 | 44.4% |

Deadball Rebounds: 2,0
Last FG: 2nd-01:04
Biggest Run: 8-0
Largest lead: By 4 at 1-09
Technical Fouls: None.

Villanova 80

| No. | Player | S | Pts | FG | 3FG | FT | OR | DR | TR | PF | A | TO | Blk | Stl | Min | +/- |
|---------------|-------------------------|---|-----------|--------------|-------------|--------------|----------|-----------|-----------|-----------|-----------|-----------|----------|----------|------------|-----|
| 02 | GILLESPIE, COLLIN | G | 11 | 2-6 | 1-2 | 6-6 | 0 | 2 | 2 | 3 | 6 | 3 | 0 | 2 | 23 | 9 |
| 10 | SWIDER, COLE | F | 7 | 3-6 | 1-3 | 0-0 | 1 | 6 | 7 | 1 | 0 | 0 | 0 | 0 | 25 | 8 |
| 23 | SAMUELS, JERMAINE | F | 2 | 1-2 | 0-0 | 0-2 | 1 | 3 | 4 | 1 | 2 | 1 | 1 | 3 | 28 | 10 |
| 24 | ROBINSON-EARL, JEREMIAH | F | 13 | 6-11 | 1-2 | 0-0 | 2 | 10 | 12 | 2 | 3 | 3 | 0 | 3 | 31 | 18 |
| 41 | BEY, SADDIQ | F | 27 | 10-18 | 1-2 | 6-7 | 3 | 3 | 6 | 4 | 2 | 3 | 0 | 0 | 33 | 5 |
| 01 | ANTOINE, BRYAN | G | 0 | 0-1 | 0-1 | 0-0 | 0 | 0 | 0 | 0 | 0 | 0 | 0 | 0 | 2 | 2 |
| 03 | SLATER, BRANDON | F | 3 | 1-1 | 0-0 | 1-2 | 2 | 1 | 3 | 2 | 2 | 0 | 0 | 1 | 20 | -2 |
| 05 | MOORE, JUSTIN | G | 17 | 7-13 | 0-0 | 3-4 | 0 | 1 | 1 | 2 | 1 | 1 | 0 | 0 | 35 | 5 |
| 21 | COSBY-ROUNDTREE, DHAMIF | F | 0 | 0-1 | 0-0 | 0-0 | 0 | 1 | 1 | 1 | 0 | 0 | 0 | 0 | 3 | 0 |
| TEAM | | | | | | | 0 | 1 | 1 | 0 | | | | | | |
| TOTALS | | | 80 | 30-59 | 4-10 | 16-21 | 9 | 28 | 37 | 16 | 16 | 11 | 1 | 9 | 198 | |

Shooting By Period

| Period | FG | FG% | 3FG | 3FG% | FT | FT% |
|-------------|--------------|--------------|-------------|--------------|--------------|--------------|
| 1st Half | 14-30 | 47% | 3-8 | 38% | 5-6 | 83% |
| 2nd Half | 16-29 | 55% | 1-2 | 50% | 11-15 | 73% |
| Game | 30-59 | 50.8% | 4-10 | 40.0% | 16-21 | 76.2% |

Deadball Rebounds: 2,0
Last FG: 2nd-02:39
Biggest Run: 11-0
Largest lead: By 11 at 2-00
Technical Fouls: None.

Game Notes:

Officials: Brian O'Connell, Tony Chiazza, Evon Burroughs
 Attendance: 6501

Start Time: 06:31 PM ET
 End Time: 08:30 PM ET
 Game Duration: 1:59

| Score | 1st | 2nd | TOT |
|-------|-----|-----|-----------|
| PEN | 30 | 39 | 69 |
| VIL | 36 | 44 | 80 |

PEN led for 5:46. VIL led for 30:21.
 Game was tied for 3:34.
 Times tied: 7 Lead Changes: 6

| Points from | PEN | VIL |
|--------------|-----|-----|
| In the Paint | 44 | 48 |
| Off Turns | 5 | 19 |
| 2nd Chance | 8 | 14 |
| Fast Break | 2 | 8 |
| Bench | 4 | 20 |

Official Box Score
Penn vs Villanova
First Half Statistics Only
December 04, 2019 at Finneran Pavilion - Bryn Mawr



Penn 30

| No. | Player | S | Pts | FG | 3FG | FT | OR | DR | TR | PF | A | TO | Blk | Stl | Min | +/- |
|---------------|-----------------|---|-----------|--------------|------------|------------|----------|-----------|-----------|----------|----------|----------|----------|----------|------------|-----|
| 00 | BETLEY, RYAN | G | 9 | 4-9 | 1-2 | 0-1 | 0 | 1 | 1 | 0 | 1 | 1 | 0 | 2 | 19 | -4 |
| 03 | DINGLE, JORDAN | G | 3 | 1-4 | 1-2 | 0-0 | 0 | 1 | 1 | 1 | 1 | 1 | 0 | 0 | 13 | -10 |
| 12 | GOODMAN, DEVON | G | 2 | 1-4 | 0-1 | 0-0 | 1 | 1 | 2 | 0 | 3 | 1 | 0 | 0 | 17 | -1 |
| 13 | SCOTT, EDDIE | G | 0 | 0-1 | 0-0 | 0-0 | 0 | 1 | 1 | 2 | 0 | 1 | 0 | 0 | 8 | -8 |
| 25 | BRODEUR, AJ | F | 12 | 5-7 | 1-1 | 1-2 | 1 | 4 | 5 | 1 | 2 | 2 | 0 | 1 | 18 | -10 |
| 11 | MONROE, LUCAS | F | 4 | 2-4 | 0-0 | 0-0 | 0 | 1 | 1 | 0 | 0 | 0 | 0 | 0 | 10 | -3 |
| 14 | MARTZ, MAX | F | 0 | 0-0 | 0-0 | 0-0 | 0 | 1 | 1 | 1 | 1 | 1 | 0 | 0 | 12 | 2 |
| 24 | SIMMONS, JARROD | F | 0 | 0-0 | 0-0 | 0-0 | 0 | 1 | 1 | 0 | 1 | 0 | 0 | 0 | 2 | 4 |
| | TEAM | | | | | | 0 | 2 | 2 | 0 | | 0 | | | | |
| TOTALS | | | 30 | 13-29 | 3-6 | 1-3 | 2 | 13 | 15 | 5 | 9 | 7 | 0 | 3 | 100 | |

Shooting By Period

| Period | FG | FG% | 3FG | 3FG% | FT | FT% |
|----------|-------|-------|------|-------|-----|-------|
| 1st Half | 13-29 | 45% | 3-6 | 50% | 1-3 | 33% |
| Game | 29-60 | 48.3% | 7-19 | 36.8% | 4-9 | 44.4% |

Deadball Rebounds: 2,0
 Last FG Half: PEN 2nd-01:04

Villanova 36

| No. | Player | S | Pts | FG | 3FG | FT | OR | DR | TR | PF | A | TO | Blk | Stl | Min | +/- |
|---------------|-------------------------|---|-----------|--------------|------------|------------|----------|-----------|-----------|----------|-----------|----------|----------|----------|------------|-----|
| 02 | GILLESPIE, COLLIN | G | 2 | 1-5 | 0-1 | 0-0 | 0 | 1 | 1 | 3 | 5 | 2 | 0 | 2 | 12 | 3 |
| 10 | SWIDER, COLE | F | 5 | 2-3 | 1-2 | 0-0 | 0 | 3 | 3 | 1 | 0 | 0 | 0 | 0 | 15 | 4 |
| 23 | SAMUELS, JERMAINE | F | 0 | 0-0 | 0-0 | 0-0 | 1 | 1 | 2 | 1 | 1 | 1 | 0 | 2 | 11 | 4 |
| 24 | ROBINSON-EARL, JEREMIAH | F | 5 | 2-4 | 1-2 | 0-0 | 0 | 4 | 4 | 0 | 3 | 1 | 0 | 0 | 14 | 12 |
| 41 | BEY, SADDIQ | F | 16 | 5-9 | 1-2 | 5-6 | 1 | 3 | 4 | 0 | 1 | 2 | 0 | 0 | 18 | 4 |
| 01 | ANTOINE, BRYAN | G | 0 | 0-1 | 0-1 | 0-0 | 0 | 0 | 0 | 0 | 0 | 0 | 0 | 0 | 2 | 2 |
| 03 | SLATER, BRANDON | F | 2 | 1-1 | 0-0 | 0-0 | 1 | 0 | 1 | 1 | 1 | 0 | 0 | 1 | 9 | 1 |
| 05 | MOORE, JUSTIN | G | 6 | 3-6 | 0-0 | 0-0 | 0 | 1 | 1 | 0 | 0 | 0 | 0 | 0 | 16 | 0 |
| 21 | COSBY-ROUNDTREE, DHAMIF | F | 0 | 0-1 | 0-0 | 0-0 | 0 | 1 | 1 | 1 | 0 | 0 | 0 | 0 | 3 | 0 |
| | TEAM | | | | | | 0 | 1 | 1 | 0 | | 0 | | | | |
| TOTALS | | | 36 | 14-30 | 3-8 | 5-6 | 3 | 15 | 18 | 7 | 11 | 6 | 0 | 5 | 100 | |

Shooting By Period

| Period | FG | FG% | 3FG | 3FG% | FT | FT% |
|----------|-------|-------|------|-------|-------|-------|
| 1st Half | 14-30 | 47% | 3-8 | 38% | 5-6 | 83% |
| Game | 30-59 | 50.8% | 4-10 | 40.0% | 16-21 | 76.2% |

Deadball Rebounds: 2,0
 Last FG Half: VIL 2nd-02:39

Game Notes:

Officials: Brian O'Connell, Tony Chiazza, Evon Burroughs
 Attendance: 6501

Start Time: 06:31 PM ET
 End Time: 08:30 PM ET
 Game Duration: 1:59

| Score | 1st | 2nd | TOT |
|-------|-----|-----|-----|
| PEN | 30 | 39 | 69 |
| VIL | 36 | 44 | 80 |

| Points from (This Period) | PEN | VIL |
|---------------------------|-----|-----|
| In the Paint | 20 | 20 |
| Off Turns | 0 | 9 |
| 2nd Chance | 1 | 7 |
| Fast Break | 0 | 6 |
| Bench | 4 | 8 |

Official Play-By-Play
Penn vs Villanova
First Half
December 04, 2019 at Finneran Pavilion - Bryn Mawr



Period 1

Starters:

Penn: 00 BETLEY, RYAN (G); 3 DINGLE, JORDAN (G); 12 GOODMAN, DEVON (G); 13 SCOTT, EDDIE (G); 25 BRODEUR, AJ (F);

Villanova: 2 GILLESPIE, COLLIN (G); 10 SWIDER, COLE (F); 23 SAMUELS, JERMAINE (F); 24 ROBINSON-EARL, JEREMIAH (F); 41 BEY, SADDIQ (F);

| Time | VISITORS: Penn | Score | Margin | HOME: Villanova |
|-------|--------------------------------------|-------|--------|--|
| 19:44 | | 2-0 | H 2 | GOOD! LAYUP by BEY, SADDIQ |
| 19:44 | | | | ASSIST by GILLESPIE, COLLIN |
| 19:23 | TURNOVER (BADPASS) by SCOTT, EDDIE | | | |
| 19:23 | | | | STEAL by SAMUELS, JERMAINE |
| 19:17 | | | | MISSED JUMPER by GILLESPIE, COLLIN |
| 19:11 | REBOUND (DEF) by SCOTT, EDDIE | | | |
| 19:10 | MISSED 3PTR by DINGLE, JORDAN | | | |
| 19:06 | | | | REBOUND (DEF) by SWIDER, COLE |
| 19:01 | | | | MISSED JUMPER by BEY, SADDIQ |
| 18:54 | REBOUND (DEF) by BRODEUR, AJ | | | |
| 18:51 | GOOD! 3PTR by BETLEY, RYAN | 2-3 | V 1 | |
| 18:51 | ASSIST by DINGLE, JORDAN | | | |
| 18:20 | FOUL (PERSONAL) by SCOTT, EDDIE | | | |
| 18:20 | | 3-3 | T | GOOD! FT by BEY, SADDIQ |
| 18:20 | | 4-3 | H 1 | GOOD! FT by BEY, SADDIQ |
| 17:59 | MISSED JUMPER by DINGLE, JORDAN | | | |
| 17:55 | | | | REBOUND (DEF) by BEY, SADDIQ |
| 17:45 | | | | MISSED 3PTR by ROBINSON-EARL, JEREMIAH |
| 17:42 | | | | REBOUND (OFF) by BEY, SADDIQ |
| 17:42 | FOUL (PERSONAL) by DINGLE, JORDAN | | | |
| 17:42 | | 5-3 | H 2 | GOOD! FT by BEY, SADDIQ |
| 17:42 | | | | SUB OUT: SAMUELS, JERMAINE |
| 17:42 | | | | SUB IN: MOORE, JUSTIN |
| 17:42 | | 6-3 | H 3 | GOOD! FT by BEY, SADDIQ |
| 17:19 | GOOD! LAYUP by BRODEUR, AJ [PNT] | 6-5 | H 1 | |
| 17:19 | ASSIST by GOODMAN, DEVON | | | |
| 16:56 | | | | TURNOVER (LOSTBALL) by ROBINSON-EARL, JEREMIAH |
| 16:56 | STEAL by BRODEUR, AJ | | | |
| 16:40 | MISSED LAYUP by BETLEY, RYAN | | | |
| 16:37 | | | | REBOUND (DEF) by SWIDER, COLE |
| 16:32 | | | | MISSED 3PTR by SWIDER, COLE |
| 16:29 | REBOUND (DEF) by TEAM | | | |
| 16:29 | SUB OUT: SCOTT, EDDIE | | | |
| 16:29 | SUB IN: MARTZ, MAX | | | |
| 16:17 | GOOD! LAYUP by GOODMAN, DEVON | 6-7 | V 1 | |
| 15:56 | | | | MISSED LAYUP by BEY, SADDIQ |
| 15:50 | REBOUND (DEF) by DINGLE, JORDAN | | | |
| 15:42 | | | | |
| 15:29 | GOOD! LAYUP by BETLEY, RYAN | 6-9 | V 3 | |
| 15:29 | ASSIST by BRODEUR, AJ | | | |
| 14:59 | | 8-9 | V 1 | GOOD! LAYUP by MOORE, JUSTIN |
| 14:30 | MISSED LAYUP by GOODMAN, DEVON | | | |
| 14:27 | | | | REBOUND (DEF) by ROBINSON-EARL, JEREMIAH |
| 14:21 | | 11-9 | H 2 | GOOD! 3PTR by ROBINSON-EARL, JEREMIAH |
| 14:21 | | | | ASSIST by GILLESPIE, COLLIN |
| 13:57 | MISSED JUMPER by BRODEUR, AJ | | | |
| 13:52 | | | | REBOUND (DEF) by ROBINSON-EARL, JEREMIAH |
| 13:49 | | | | MISSED LAYUP by GILLESPIE, COLLIN |
| 13:48 | REBOUND (DEF) by TEAM | | | |
| 13:48 | | | | SUB OUT: GILLESPIE, COLLIN |
| 13:48 | | | | SUB OUT: ROBINSON-EARL, JEREMIAH |
| 13:48 | | | | SUB IN: SLATER, BRANDON |
| 13:48 | | | | SUB IN: SAMUELS, JERMAINE |
| 13:31 | TURNOVER (BADPASS) by GOODMAN, DEVON | | | |
| 13:31 | | | | STEAL by SAMUELS, JERMAINE |
| 13:24 | | 13-9 | H 4 | GOOD! LAYUP by SWIDER, COLE [FB] |
| 13:24 | | | | ASSIST by SLATER, BRANDON |
| 13:08 | GOOD! 3PTR by DINGLE, JORDAN | 13-12 | H 1 | |
| 12:44 | | | | MISSED JUMPER by MOORE, JUSTIN |
| 12:40 | REBOUND (DEF) by BETLEY, RYAN | | | |
| 12:28 | MISSED LAYUP by BETLEY, RYAN | | | |
| 12:27 | REBOUND (OFF) by BRODEUR, AJ | | | |
| 12:27 | | | | FOUL (PERSONAL) by SWIDER, COLE |
| 12:27 | MISSED FT by BRODEUR, AJ | | | |
| 12:27 | REBOUND (OFF) by TEAM | | | |
| 12:27 | | | | SUB OUT: SWIDER, COLE |
| 12:27 | | | | SUB IN: GILLESPIE, COLLIN |
| 12:27 | SUB OUT: DINGLE, JORDAN | | | |
| 12:27 | SUB IN: MONROE, LUCAS | | | |
| 12:27 | GOOD! FT by BRODEUR, AJ | 13-13 | T | |

| Time | VISITORS: Penn | Score | Margin | HOME: Villanova |
|-------|---------------------------------------|-------|--------|--|
| 12:27 | SUB OUT: BRODEUR, AJ | | | |
| 12:27 | SUB IN: SIMMONS, JARROD | | | |
| 12:15 | | | | MISSED LAYUP by MOORE , JUSTIN |
| 12:11 | REBOUND (DEF) by GOODMAN, DEVON | | | |
| 11:54 | GOOD! LAYUP by MONROE, LUCAS | 13-15 | V 2 | |
| 11:32 | | | | MISSED 3PTR by GILLESPIE, COLLIN |
| 11:27 | REBOUND (DEF) by SIMMONS, JARROD | | | |
| 11:18 | GOOD! LAYUP by BETLEY, RYAN | 13-17 | V 4 | |
| 11:18 | ASSIST by SIMMONS, JARROD | | | |
| 11:05 | | | | FOUL (OFF) by SAMUELS, JERMAINE |
| 11:05 | | | | TURNOVER (OFFENSIVE) by SAMUELS, JERMAINE |
| 11:05 | | | | |
| 11:05 | SUB OUT: GOODMAN, DEVON | | | |
| 11:05 | SUB IN: DINGLE, JORDAN | | | |
| 11:05 | | | | SUB OUT: MOORE , JUSTIN |
| 11:05 | | | | SUB OUT: BEY, SADDIQ |
| 11:05 | | | | SUB IN: ANTOINE, BRYAN |
| 11:05 | | | | SUB IN: ROBINSON-EARL, JEREMIAH |
| 11:05 | SUB OUT: SIMMONS, JARROD | | | |
| 11:05 | SUB IN: BRODEUR, AJ | | | |
| 10:52 | FOUL (OFF) by BRODEUR, AJ | | | |
| 10:52 | TURNOVER (OFFENSIVE) by BRODEUR, AJ | | | |
| 10:39 | | | | MISSED 3PTR by ANTOINE, BRYAN |
| 10:35 | REBOUND (DEF) by MONROE, LUCAS | | | |
| 10:27 | MISSED LAYUP by MONROE, LUCAS | | | |
| 10:24 | | | | REBOUND (DEF) by ROBINSON-EARL, JEREMIAH |
| 10:17 | | 15-17 | V 2 | GOOD! LAYUP by GILLESPIE, COLLIN |
| 10:17 | | | | ASSIST by ROBINSON-EARL, JEREMIAH |
| 09:53 | GOOD! LAYUP by BRODEUR, AJ [PNT] | 15-19 | V 4 | |
| 09:36 | | | | MISSED JUMPER by GILLESPIE, COLLIN |
| 09:31 | | | | REBOUND (OFF) by SLATER, BRANDON |
| 09:30 | | 17-19 | V 2 | GOOD! LAYUP by SLATER, BRANDON |
| 09:17 | | | | FOUL (PERSONAL) by SLATER, BRANDON |
| 09:17 | | | | SUB OUT: ANTOINE, BRYAN |
| 09:17 | | | | SUB OUT: SAMUELS, JERMAINE |
| 09:17 | | | | SUB IN: SWIDER, COLE |
| 09:17 | | | | SUB IN: BEY, SADDIQ |
| 09:17 | SUB OUT: BETLEY, RYAN | | | |
| 09:17 | SUB OUT: MARTZ, MAX | | | |
| 09:17 | SUB IN: GOODMAN, DEVON | | | |
| 09:17 | SUB IN: SCOTT, EDDIE | | | |
| 09:08 | TURNOVER (LOSTBALL) by DINGLE, JORDAN | | | |
| 09:08 | | | | STEAL by SLATER, BRANDON |
| 09:03 | | 19-19 | T | GOOD! DUNK by BEY, SADDIQ [FB] |
| 09:03 | | | | ASSIST by ROBINSON-EARL, JEREMIAH |
| 09:02 | TIMEOUT 30SEC | | | |
| 09:02 | | | | SUB OUT: ROBINSON-EARL, JEREMIAH |
| 09:02 | | | | SUB IN: MOORE , JUSTIN |
| 08:44 | | | | SUB OUT: SLATER, BRANDON |
| 08:44 | | | | SUB IN: ROBINSON-EARL, JEREMIAH |
| 08:44 | SUB OUT: MONROE, LUCAS | | | |
| 08:44 | SUB IN: BETLEY, RYAN | | | |
| 08:31 | GOOD! LAYUP by BETLEY, RYAN [PNT] | 19-21 | V 2 | |
| 08:31 | ASSIST by BRODEUR, AJ | | | |
| 08:31 | | | | FOUL (PERSONAL) by GILLESPIE, COLLIN |
| 08:31 | MISSED FT by BETLEY, RYAN | | | |
| 08:31 | | | | REBOUND (DEF) by ROBINSON-EARL, JEREMIAH |
| 08:18 | | 21-21 | T | GOOD! LAYUP by BEY, SADDIQ [PNT] |
| 08:18 | | | | ASSIST by GILLESPIE, COLLIN |
| 07:57 | GOOD! JUMPER by BRODEUR, AJ [PNT] | 21-23 | V 2 | |
| 07:57 | ASSIST by GOODMAN, DEVON | | | |
| 07:42 | | 23-23 | T | GOOD! LAYUP by MOORE , JUSTIN |
| 07:42 | | | | ASSIST by GILLESPIE, COLLIN |
| 07:29 | | | | |
| 07:29 | | | | SUB OUT: ROBINSON-EARL, JEREMIAH |
| 07:29 | | | | SUB IN: COSBY-ROUNDTREE, DHAMIR |
| 07:28 | | | | SUB OUT: SWIDER, COLE |
| 07:28 | | | | SUB IN: SLATER, BRANDON |
| 07:28 | | | | FOUL (PERSONAL) by COSBY-ROUNDTREE, DHAMIR |
| 07:16 | TURNOVER (BADPASS) by BRODEUR, AJ | | | |
| 07:16 | | | | STEAL by GILLESPIE, COLLIN |
| 07:09 | | 25-23 | H 2 | GOOD! LAYUP by MOORE , JUSTIN [FB/PNT] |
| 07:09 | | | | ASSIST by GILLESPIE, COLLIN |
| 06:49 | MISSED LAYUP by SCOTT, EDDIE | | | |
| 06:44 | REBOUND (OFF) by GOODMAN, DEVON | | | |
| 06:44 | MISSED LAYUP by GOODMAN, DEVON | | | |
| 06:44 | | | | REBOUND (DEF) by GILLESPIE, COLLIN |
| 06:44 | | | | FOUL (OFF) by GILLESPIE, COLLIN |
| 06:44 | | | | TURNOVER (OFFENSIVE) by GILLESPIE, COLLIN |
| 06:30 | MISSED LAYUP by DINGLE, JORDAN | | | |

| Time | VISITORS: Penn | Score | Margin | HOME: Villanova |
|-------|------------------------------------|-------|--------|---|
| 06:26 | | | | REBOUND (DEF) by COSBY-ROUNDTREE, DHAMIR |
| 06:24 | | | | TURNOVER (BADPASS) by BEY, SADDIQ |
| 06:24 | STEAL by BETLEY, RYAN | | | |
| 06:19 | TURNOVER (BADPASS) by BETLEY, RYAN | | | |
| 06:19 | | | | STEAL by GILLESPIE, COLLIN |
| 06:19 | | | | SUB OUT: GILLESPIE, COLLIN |
| 06:19 | | | | SUB IN: SWIDER, COLE |
| 06:19 | SUB OUT: DINGLE, JORDAN | | | |
| 06:19 | SUB OUT: SCOTT, EDDIE | | | |
| 06:19 | SUB IN: MONROE, LUCAS | | | |
| 06:19 | SUB IN: MARTZ, MAX | | | |
| 06:10 | | | | MISSED JUMPER by MOORE , JUSTIN |
| 06:06 | REBOUND (DEF) by BRODEUR, AJ | | | |
| 06:02 | MISSED LAYUP by BETLEY, RYAN | | | |
| 05:59 | | | | REBOUND (DEF) by SWIDER, COLE |
| 05:40 | | 27-23 | H 4 | GOOD! JUMPER by BEY, SADDIQ |
| 05:20 | GOOD! LAYUP by BRODEUR, AJ [PNT] | 27-25 | H 2 | |
| 05:20 | ASSIST by BETLEY, RYAN | | | |
| 04:51 | | | | MISSED LAYUP by COSBY-ROUNDTREE, DHAMIR |
| 04:47 | REBOUND (DEF) by MARTZ, MAX | | | |
| 04:31 | GOOD! LAYUP by MONROE, LUCAS | 27-27 | T | |
| 04:31 | ASSIST by MARTZ, MAX | | | |
| 04:28 | | | | TIMEOUT 30SEC |
| 04:28 | | | | SUB OUT: MOORE , JUSTIN |
| 04:28 | | | | SUB OUT: COSBY-ROUNDTREE, DHAMIR |
| 04:28 | | | | SUB IN: SAMUELS, JERMAINE |
| 04:28 | | | | SUB IN: ROBINSON-EARL, JEREMIAH |
| 04:28 | SUB OUT: BRODEUR, AJ | | | |
| 04:28 | SUB IN: SIMMONS, JARROD | | | |
| 04:28 | | | | SUB OUT: SLATER, BRANDON |
| 04:28 | | | | SUB OUT: SAMUELS, JERMAINE |
| 04:28 | | | | SUB IN: GILLESPIE, COLLIN |
| 04:28 | | | | SUB IN: MOORE , JUSTIN |
| 04:25 | | | | FOUL (OFF) by GILLESPIE, COLLIN |
| 04:25 | | | | TURNOVER (OFFENSIVE) by GILLESPIE, COLLIN |
| 04:25 | | | | SUB OUT: GILLESPIE, COLLIN |
| 04:25 | | | | SUB IN: SAMUELS, JERMAINE |
| 03:53 | MISSED JUMPER by BETLEY, RYAN | | | |
| 03:48 | | | | REBOUND (DEF) by MOORE , JUSTIN |
| 03:41 | | 30-27 | H 3 | GOOD! 3PTR by BEY, SADDIQ |
| 03:41 | | | | ASSIST by ROBINSON-EARL, JEREMIAH |
| 03:24 | GOOD! 3PTR by BRODEUR, AJ | 30-30 | T | |
| 03:24 | ASSIST by GOODMAN, DEVON | | | |
| 02:55 | FOUL (PERSONAL) by MARTZ, MAX | | | |
| 02:55 | | | | |
| 03:53 | SUB OUT: SIMMONS, JARROD | | | |
| 03:53 | SUB IN: BRODEUR, AJ | | | |
| 02:55 | | | | SUB OUT: SWIDER, COLE |
| 02:55 | | | | SUB IN: SLATER, BRANDON |
| 02:55 | SUB OUT: GOODMAN, DEVON | | | |
| 02:55 | SUB IN: DINGLE, JORDAN | | | |
| 02:55 | | | | MISSED FT by BEY, SADDIQ |
| 02:55 | | | | REBOUND (OFF) by TEAM |
| 02:55 | | 31-30 | H 1 | GOOD! FT by BEY, SADDIQ |
| 02:25 | MISSED JUMPER by MONROE, LUCAS | | | |
| 02:21 | | | | REBOUND (DEF) by BEY, SADDIQ |
| 02:13 | | 33-30 | H 3 | GOOD! LAYUP by ROBINSON-EARL, JEREMIAH |
| 02:13 | | | | ASSIST by BEY, SADDIQ |
| 01:57 | SUB OUT: MONROE, LUCAS | | | |
| 01:57 | SUB IN: GOODMAN, DEVON | | | |
| 01:50 | TURNOVER (TRAVEL) by MARTZ, MAX | | | |
| 01:49 | | | | SUB OUT: SLATER, BRANDON |
| 01:49 | | | | SUB IN: SWIDER, COLE |
| 01:49 | SUB OUT: DINGLE, JORDAN | | | |
| 01:49 | SUB OUT: MARTZ, MAX | | | |
| 01:49 | SUB IN: MONROE, LUCAS | | | |
| 01:49 | SUB IN: SCOTT, EDDIE | | | |
| 01:37 | | | | MISSED 3PTR by BEY, SADDIQ |
| 01:33 | | | | REBOUND (OFF) by SAMUELS, JERMAINE |
| 01:31 | | 36-30 | H 6 | GOOD! 3PTR by SWIDER, COLE |
| 01:31 | | | | ASSIST by SAMUELS, JERMAINE |
| 01:07 | MISSED JUMPER by BRODEUR, AJ | | | |
| 01:02 | | | | REBOUND (DEF) by BEY, SADDIQ |
| 00:48 | | | | MISSED LAYUP by BEY, SADDIQ |
| 00:44 | REBOUND (DEF) by BRODEUR, AJ | | | |
| 00:40 | MISSED 3PTR by GOODMAN, DEVON | | | |
| 00:36 | | | | REBOUND (DEF) by SAMUELS, JERMAINE |
| 00:10 | | | | MISSED LAYUP by ROBINSON-EARL, JEREMIAH |
| 00:06 | REBOUND (DEF) by BRODEUR, AJ | | | |
| 00:03 | MISSED 3PTR by BETLEY, RYAN | | | |

| Time | VISITORS: Penn | Score | Margin | HOME: Villanova |
|-------|---------------------------------|-------|--------|-----------------------------------|
| 00:02 | | | | REBOUND (DEF) by TEAM |
| 00:02 | FOUL (PERSONAL) by SCOTT, EDDIE | | | |
| 00:01 | | | | TURNOVER (BADPASS) by BEY, SADDIQ |
| 00:01 | STEAL by BETLEY, RYAN | | | |

Penn 30, Villanova 36

| Points from (This Period) | PEN | VIL |
|---------------------------|-----|-----|
| In the Paint | 20 | 20 |
| Off Turns | 0 | 9 |
| 2nd Chance | 1 | 7 |
| Fast Break | 0 | 6 |
| Bench | 4 | 8 |

Official Box Score
Penn vs Villanova
Second Half Statistics Only
December 04, 2019 at Finneran Pavilion - Bryn Mawr



Penn 39

| No. | Player | S | Pts | FG | 3FG | FT | OR | DR | TR | PF | A | TO | Blk | Stl | Min | +/- |
|---------------|-----------------|---|-----------|--------------|-------------|------------|----------|-----------|-----------|-----------|-----------|----------|----------|----------|-----------|-----|
| 00 | BETLEY, RYAN | G | 4 | 2-6 | 0-3 | 0-0 | 0 | 2 | 2 | 2 | 3 | 1 | 1 | 0 | 18 | -3 |
| 03 | DINGLE, JORDAN | G | 15 | 5-10 | 3-7 | 2-5 | 0 | 0 | 0 | 3 | 1 | 4 | 0 | 0 | 20 | -5 |
| 12 | GOODMAN, DEVON | G | 14 | 6-9 | 1-2 | 1-1 | 0 | 1 | 1 | 3 | 2 | 1 | 0 | 1 | 20 | -5 |
| 13 | SCOTT, EDDIE | G | 0 | 0-0 | 0-0 | 0-0 | 0 | 0 | 0 | 1 | 0 | 0 | 0 | 0 | 1 | -2 |
| 25 | BRODEUR, AJ | F | 6 | 3-6 | 0-1 | 0-0 | 2 | 7 | 9 | 2 | 4 | 0 | 3 | 0 | 20 | -5 |
| 11 | MONROE, LUCAS | F | 0 | 0-0 | 0-0 | 0-0 | 0 | 0 | 0 | 0 | 0 | 0 | 0 | 0 | 1 | -2 |
| 14 | MARTZ, MAX | F | 0 | 0-0 | 0-0 | 0-0 | 1 | 0 | 1 | 0 | 1 | 0 | 0 | 1 | 19 | -3 |
| 24 | SIMMONS, JARROD | F | 0 | 0-0 | 0-0 | 0-0 | 0 | 0 | 0 | 0 | 0 | 0 | 0 | 0 | 0 | 0 |
| TEAM | | | | | | | 1 | 0 | 1 | 0 | | | | | | |
| TOTALS | | | 39 | 16-31 | 4-13 | 3-6 | 4 | 10 | 14 | 11 | 11 | 6 | 4 | 2 | 98 | |

Shooting By Period

| Period | FG | FG% | 3FG | 3FG% | FT | FT% |
|----------|-------|-------|------|-------|-----|-------|
| 2nd Half | 16-31 | 52% | 4-13 | 31% | 3-6 | 50% |
| Game | 29-60 | 48.3% | 7-19 | 36.8% | 4-9 | 44.4% |

Deadball Rebounds: 2,0
Last FG Half: PEN -

Villanova 44

| No. | Player | S | Pts | FG | 3FG | FT | OR | DR | TR | PF | A | TO | Blk | Stl | Min | +/- |
|---------------|-------------------------|---|-----------|--------------|------------|--------------|----------|-----------|-----------|----------|----------|----------|----------|----------|-----------|-----|
| 02 | GILLESPIE, COLLIN | G | 9 | 1-1 | 1-1 | 6-6 | 0 | 1 | 1 | 0 | 1 | 1 | 0 | 0 | 10 | 6 |
| 10 | SWIDER, COLE | F | 2 | 1-3 | 0-1 | 0-0 | 1 | 3 | 4 | 0 | 0 | 0 | 0 | 0 | 10 | 4 |
| 23 | SAMUELS, JERMAINE | F | 2 | 1-2 | 0-0 | 0-2 | 0 | 2 | 2 | 0 | 1 | 0 | 1 | 1 | 16 | 6 |
| 24 | ROBINSON-EARL, JEREMIAH | F | 8 | 4-7 | 0-0 | 0-0 | 2 | 6 | 8 | 2 | 0 | 2 | 0 | 3 | 17 | 6 |
| 41 | BEY, SADDIQ | F | 11 | 5-9 | 0-0 | 1-1 | 2 | 0 | 2 | 4 | 1 | 1 | 0 | 0 | 15 | 1 |
| 01 | ANTOINE, BRYAN | G | 0 | 0-0 | 0-0 | 0-0 | 0 | 0 | 0 | 0 | 0 | 0 | 0 | 0 | 0 | 0 |
| 03 | SLATER, BRANDON | F | 1 | 0-0 | 0-0 | 1-2 | 1 | 1 | 2 | 1 | 1 | 0 | 0 | 0 | 11 | -3 |
| 05 | MOORE, JUSTIN | G | 11 | 4-7 | 0-0 | 3-4 | 0 | 0 | 0 | 2 | 1 | 1 | 0 | 0 | 19 | 5 |
| 21 | COSBY-ROUNDTREE, DHAMIF | F | 0 | 0-0 | 0-0 | 0-0 | 0 | 0 | 0 | 0 | 0 | 0 | 0 | 0 | 0 | 0 |
| TEAM | | | | | | | 0 | 0 | 0 | 0 | | | | | | |
| TOTALS | | | 44 | 16-29 | 1-2 | 11-15 | 6 | 13 | 19 | 9 | 5 | 5 | 1 | 4 | 98 | |

Shooting By Period

| Period | FG | FG% | 3FG | 3FG% | FT | FT% |
|----------|-------|-------|------|-------|-------|-------|
| 2nd Half | 16-29 | 55% | 1-2 | 50% | 11-15 | 73% |
| Game | 30-59 | 50.8% | 4-10 | 40.0% | 16-21 | 76.2% |

Deadball Rebounds: 2,0
Last FG Half: VIL -

Game Notes:

Officials: Brian O'Connell, Tony Chiazza, Evon Burroughs
 Attendance: 6501

Start Time: 06:31 PM ET
 End Time: 08:30 PM ET
 Game Duration: 1:59

| Score | 1st | 2nd | TOT |
|-------|-----|-----|-----------|
| PEN | 30 | 39 | 69 |
| VIL | 36 | 44 | 80 |

| Points from (This Period) | PEN | VIL |
|---------------------------|-----|-----|
| In the Paint | 24 | 28 |
| Off Turns | 5 | 10 |
| 2nd Chance | 7 | 7 |
| Fast Break | 2 | 2 |
| Bench | 0 | 12 |

**Official Play-By-Play
Penn vs Villanova
Second Half
December 04, 2019 at Finneran Pavilion - Bryn Mawr**



Period 2

Starters:

Penn: 00 BETLEY, RYAN (G); 3 DINGLE, JORDAN (G); 12 GOODMAN, DEVON (G); 13 SCOTT, EDDIE (G); 25 BRODEUR, AJ (F);

Villanova: 2 GILLESPIE, COLLIN (G); 10 SWIDER, COLE (F); 23 SAMUELS, JERMAINE (F); 24 ROBINSON-EARL, JEREMIAH (F); 41 BEY, SADDIQ (F);

| Time | VISITORS: Penn | Score | Margin | HOME: Villanova |
|-------|--------------------------------------|-------|--------|---|
| 20:00 | SUB OUT: MONROE, LUCAS | | | |
| 20:00 | SUB IN: DINGLE, JORDAN | | | |
| 19:52 | TURNOVER (BADPASS) by BETLEY, RYAN | | | |
| 19:52 | | | | STEAL by ROBINSON-EARL, JEREMIAH |
| 19:47 | FOUL (PERSONAL) by SCOTT, EDDIE | | | |
| 19:31 | | 38-30 | H 8 | GOOD! LAYUP by BEY, SADDIQ |
| 19:31 | FOUL (PERSONAL) by BRODEUR, AJ | | | |
| 19:31 | | 39-30 | H 9 | GOOD! FT by BEY, SADDIQ |
| 19:15 | | | | FOUL (PERSONAL) by MOORE, JUSTIN |
| 19:15 | MISSED FT by DINGLE, JORDAN | | | |
| 19:15 | REBOUND (OFF) by TEAM | | | |
| 19:15 | SUB OUT: SCOTT, EDDIE | | | |
| 19:15 | SUB IN: MARTZ, MAX | | | |
| 19:15 | MISSED FT by DINGLE, JORDAN | | | |
| 19:15 | | | | REBOUND (DEF) by SAMUELS, JERMAINE |
| 18:59 | | 41-30 | H 11 | GOOD! LAYUP by BEY, SADDIQ |
| 18:42 | GOOD! 3PTR by DINGLE, JORDAN | 41-33 | H 8 | |
| 18:42 | ASSIST by GOODMAN, DEVON | | | |
| 18:18 | | | | MISSED LAYUP by BEY, SADDIQ |
| 18:18 | BLOCK by BRODEUR, AJ | | | |
| 18:13 | REBOUND (DEF) by BETLEY, RYAN | | | |
| 18:11 | MISSED 3PTR by DINGLE, JORDAN | | | |
| 18:07 | | | | REBOUND (DEF) by ROBINSON-EARL, JEREMIAH |
| 18:02 | | | | TURNOVER (LOSTBALL) by MOORE, JUSTIN |
| 18:02 | STEAL by MARTZ, MAX | | | |
| 17:56 | MISSED LAYUP by GOODMAN, DEVON | | | |
| 17:56 | | | | BLOCK by SAMUELS, JERMAINE |
| 17:51 | | | | REBOUND (DEF) by SWIDER, COLE |
| 17:45 | | 43-33 | H 10 | GOOD! DUNK by BEY, SADDIQ |
| 17:45 | | | | ASSIST by SAMUELS, JERMAINE |
| 17:31 | | | | FOUL (PERSONAL) by ROBINSON-EARL, JEREMIAH |
| 17:31 | | | | SUB OUT: BEY, SADDIQ |
| 17:31 | | | | SUB IN: SLATER, BRANDON |
| 17:19 | MISSED LAYUP by BRODEUR, AJ | | | |
| 17:12 | REBOUND (OFF) by BRODEUR, AJ | | | |
| 17:12 | GOOD! LAYUP by BRODEUR, AJ | 43-35 | H 8 | |
| 16:58 | FOUL (PERSONAL) by GOODMAN, DEVON | | | |
| 16:58 | | 44-35 | H 9 | GOOD! FT by MOORE, JUSTIN |
| 16:41 | TURNOVER (BADPASS) by DINGLE, JORDAN | | | |
| 16:41 | | | | SUB OUT: SAMUELS, JERMAINE |
| 16:41 | | | | SUB IN: BEY, SADDIQ |
| 16:26 | | | | MISSED 3PTR by SWIDER, COLE |
| 16:26 | BLOCK by BETLEY, RYAN | | | |
| 16:20 | REBOUND (DEF) by BRODEUR, AJ | | | |
| 16:15 | MISSED 3PTR by DINGLE, JORDAN | | | |
| 16:11 | | | | REBOUND (DEF) by ROBINSON-EARL, JEREMIAH |
| 16:04 | | | | MISSED JUMPER by MOORE, JUSTIN |
| 16:03 | | | | REBOUND (OFF) by SLATER, BRANDON |
| 16:03 | FOUL (PERSONAL) by DINGLE, JORDAN | | | |
| 16:03 | | | | SUB OUT: SWIDER, COLE |
| 16:03 | | | | SUB IN: SAMUELS, JERMAINE |
| 15:52 | | | | MISSED JUMPER by ROBINSON-EARL, JEREMIAH |
| 15:47 | REBOUND (DEF) by BETLEY, RYAN | | | |
| 15:42 | GOOD! LAYUP by BETLEY, RYAN | 44-37 | H 7 | |
| 15:42 | ASSIST by BRODEUR, AJ | | | |
| 15:17 | | | | MISSED JUMPER by BEY, SADDIQ |
| 15:14 | REBOUND (DEF) by BRODEUR, AJ | | | |
| 15:01 | MISSED LAYUP by GOODMAN, DEVON | | | |
| 14:57 | | | | REBOUND (DEF) by SAMUELS, JERMAINE |
| 14:52 | | 46-37 | H 9 | GOOD! LAYUP by MOORE, JUSTIN |
| 14:52 | | | | ASSIST by SLATER, BRANDON |
| 14:38 | GOOD! 3PTR by GOODMAN, DEVON | 46-40 | H 6 | |
| 14:38 | ASSIST by DINGLE, JORDAN | | | |
| 14:15 | | | | MISSED LAYUP by MOORE, JUSTIN |
| 14:08 | | | | REBOUND (OFF) by ROBINSON-EARL, JEREMIAH |
| 14:08 | | 48-40 | H 8 | GOOD! LAYUP by ROBINSON-EARL, JEREMIAH |
| 13:52 | GOOD! LAYUP by BRODEUR, AJ | 48-42 | H 6 | |
| 13:52 | ASSIST by GOODMAN, DEVON | | | |
| 13:28 | | | | TURNOVER (BADPASS) by ROBINSON-EARL, JEREMIAH |
| 13:28 | STEAL by GOODMAN, DEVON | | | |

| Time | VISITORS: Penn | Score | Margin | HOME: Villanova |
|-------|--------------------------------------|-------|--------|--|
| 13:24 | GOOD! DUNK by GOODMAN, DEVON [FB] | 48-44 | H 4 | |
| 13:24 | | | | TIMEOUT 30SEC |
| 13:24 | | | | SUB OUT: MOORE , JUSTIN |
| 13:24 | | | | SUB OUT: ROBINSON-EARL, JEREMIAH |
| 13:24 | | | | SUB IN: GILLESPIE, COLLIN |
| 13:24 | | | | SUB IN: SWIDER, COLE |
| 13:07 | | | | TURNOVER (TRAVEL) by BEY, SADDIQ |
| 13:07 | | | | |
| 13:07 | | | | SUB OUT: SWIDER, COLE |
| 13:07 | | | | SUB IN: MOORE , JUSTIN |
| 12:54 | GOOD! 3PTR by DINGLE, JORDAN | 48-47 | H 1 | |
| 12:35 | | 51-47 | H 4 | GOOD! 3PTR by GILLESPIE, COLLIN |
| 12:35 | | | | ASSIST by BEY, SADDIQ |
| 12:19 | GOOD! JUMPER by GOODMAN, DEVON [PNT] | 51-49 | H 2 | |
| 12:00 | | | | TURNOVER (LOSTBALL) by GILLESPIE, COLLIN |
| 11:58 | | | | |
| 11:58 | | | | SUB OUT: SLATER, BRANDON |
| 11:58 | | | | SUB IN: ROBINSON-EARL, JEREMIAH |
| 11:47 | MISSED 3PTR by DINGLE, JORDAN | | | |
| 11:43 | | | | REBOUND (DEF) by ROBINSON-EARL, JEREMIAH |
| 11:30 | | 53-49 | H 4 | GOOD! LAYUP by SAMUELS, JERMAINE |
| 11:12 | MISSED JUMPER by BRODEUR, AJ | | | |
| 11:08 | REBOUND (OFF) by BRODEUR, AJ | | | |
| 11:03 | GOOD! LAYUP by DINGLE, JORDAN | 53-51 | H 2 | |
| 11:03 | ASSIST by BETLEY, RYAN | | | |
| 10:38 | | 55-51 | H 4 | GOOD! JUMPER by ROBINSON-EARL, JEREMIAH |
| 10:38 | | | | ASSIST by MOORE , JUSTIN |
| 10:20 | GOOD! JUMPER by BRODEUR, AJ | 55-53 | H 2 | |
| 10:20 | ASSIST by BETLEY, RYAN | | | |
| 09:51 | | | | MISSED LAYUP by BEY, SADDIQ |
| 09:46 | | | | REBOUND (OFF) by BEY, SADDIQ |
| 09:46 | | 57-53 | H 4 | GOOD! LAYUP by BEY, SADDIQ |
| 09:29 | | | | FOUL (PERSONAL) by BEY, SADDIQ |
| 09:29 | GOOD! FT by DINGLE, JORDAN | 57-54 | H 3 | |
| 09:29 | | | | SUB OUT: GILLESPIE, COLLIN |
| 09:29 | | | | SUB IN: SWIDER, COLE |
| 09:29 | SUB OUT: BETLEY, RYAN | | | |
| 09:29 | SUB IN: MONROE, LUCAS | | | |
| 09:29 | GOOD! FT by DINGLE, JORDAN | 57-55 | H 2 | |
| 09:09 | | | | MISSED LAYUP by MOORE , JUSTIN |
| 09:05 | REBOUND (DEF) by BRODEUR, AJ | | | |
| 09:02 | | | | FOUL (PERSONAL) by BEY, SADDIQ |
| 09:02 | TURNOVER (BADPASS) by DINGLE, JORDAN | | | |
| 09:02 | | | | STEAL by ROBINSON-EARL, JEREMIAH |
| 08:52 | | 59-55 | H 4 | GOOD! JUMPER by SWIDER, COLE [PNT] |
| 08:41 | | | | FOUL (PERSONAL) by BEY, SADDIQ |
| 08:41 | SUB OUT: MONROE, LUCAS | | | |
| 08:41 | SUB IN: BETLEY, RYAN | | | |
| 08:30 | GOOD! LAYUP by BETLEY, RYAN | 59-57 | H 2 | |
| 08:30 | ASSIST by BRODEUR, AJ | | | |
| 08:05 | | | | MISSED JUMPER by ROBINSON-EARL, JEREMIAH |
| 07:59 | | | | REBOUND (OFF) by SWIDER, COLE |
| 07:54 | | | | MISSED LAYUP by SWIDER, COLE |
| 07:49 | | | | REBOUND (OFF) by ROBINSON-EARL, JEREMIAH |
| 07:49 | | 61-57 | H 4 | GOOD! LAYUP by ROBINSON-EARL, JEREMIAH |
| 07:39 | MISSED 3PTR by BETLEY, RYAN | | | |
| 07:35 | | | | REBOUND (DEF) by SWIDER, COLE |
| 07:29 | | | | MISSED LAYUP by SAMUELS, JERMAINE |
| 07:25 | REBOUND (DEF) by BRODEUR, AJ | | | |
| 07:22 | GOOD! DUNK by DINGLE, JORDAN | 61-59 | H 2 | |
| 06:58 | | 63-59 | H 4 | GOOD! LAYUP by BEY, SADDIQ |
| 06:41 | TURNOVER (BADPASS) by GOODMAN, DEVON | | | |
| 06:41 | | | | STEAL by SAMUELS, JERMAINE |
| 06:36 | FOUL (PERSONAL) by BRODEUR, AJ | | | |
| 06:36 | | | | |
| 06:36 | | | | SUB OUT: ROBINSON-EARL, JEREMIAH |
| 06:36 | | | | SUB IN: GILLESPIE, COLLIN |
| 06:36 | | | | MISSED FT by SAMUELS, JERMAINE |
| 06:36 | | | | REBOUND (OFF) by TEAM |
| 06:36 | | | | MISSED FT by SAMUELS, JERMAINE |
| 06:36 | | | | REBOUND (OFF) by BEY, SADDIQ |
| 06:31 | FOUL (PERSONAL) by DINGLE, JORDAN | | | |
| 06:31 | | 64-59 | H 5 | GOOD! FT by MOORE , JUSTIN |
| 06:31 | | | | SUB OUT: SAMUELS, JERMAINE |
| 06:31 | | | | SUB IN: SLATER, BRANDON |
| 06:31 | | | | MISSED FT by MOORE , JUSTIN |
| 06:30 | REBOUND (DEF) by BRODEUR, AJ | | | |
| 06:03 | MISSED 3PTR by BETLEY, RYAN | | | |
| 05:59 | | | | REBOUND (DEF) by SWIDER, COLE |
| 05:45 | | | | MISSED JUMPER by BEY, SADDIQ |

| Time | VISITORS: Penn | Score | Margin | HOME: Villanova |
|-------|--------------------------------------|-------|--------|---|
| 05:45 | BLOCK by BRODEUR, AJ | | | |
| 05:41 | REBOUND (DEF) by BRODEUR, AJ | | | |
| 05:41 | | | | FOUL (PERSONAL) by BEY, SADDIQ |
| 05:41 | | | | SUB OUT: BEY, SADDIQ |
| 05:41 | | | | SUB IN: ROBINSON-EARL, JEREMIAH |
| 05:35 | TURNOVER (OTHER) by DINGLE, JORDAN | | | |
| 05:26 | | 66-59 | H 7 | GOOD! JUMPER by ROBINSON-EARL, JEREMIAH |
| 05:26 | | | | ASSIST by GILLESPIE, COLLIN |
| 05:02 | GOOD! LAYUP by GOODMAN, DEVON | 66-61 | H 5 | |
| 05:02 | ASSIST by BETLEY, RYAN | | | |
| 04:39 | | 68-61 | H 7 | GOOD! LAYUP by MOORE , JUSTIN |
| 04:24 | MISSED 3PTR by BRODEUR, AJ | | | |
| 04:19 | REBOUND (OFF) by MARTZ, MAX | | | |
| 04:17 | GOOD! 3PTR by DINGLE, JORDAN | 68-64 | H 4 | |
| 04:17 | ASSIST by MARTZ, MAX | | | |
| 03:49 | | | | FOUL (OFF) by ROBINSON-EARL, JEREMIAH |
| 03:49 | | | | TURNOVER (OFFENSIVE) by ROBINSON-EARL, JEREMIAH |
| 03:48 | | | | |
| 03:48 | | | | SUB OUT: SWIDER, COLE |
| 03:48 | | | | SUB IN: SAMUELS, JERMAINE |
| 03:44 | | | | FOUL (PERSONAL) by SLATER, BRANDON |
| 03:44 | | | | SUB OUT: SLATER, BRANDON |
| 03:44 | | | | SUB IN: BEY, SADDIQ |
| 03:44 | MISSED FT by DINGLE, JORDAN | | | |
| 03:44 | REBOUND (OFF) by TEAM | | | |
| 03:32 | TURNOVER (BADPASS) by DINGLE, JORDAN | | | |
| 03:32 | | | | STEAL by ROBINSON-EARL, JEREMIAH |
| 03:17 | | 70-64 | H 6 | GOOD! LAYUP by MOORE , JUSTIN |
| 02:55 | GOOD! LAYUP by GOODMAN, DEVON | 70-66 | H 4 | |
| 02:55 | ASSIST by BRODEUR, AJ | | | |
| 02:55 | TIMEOUT 30SEC | | | |
| 02:55 | SUB OUT: BETLEY, RYAN | | | |
| 02:55 | SUB IN: MONROE, LUCAS | | | |
| 02:39 | | 72-66 | H 6 | GOOD! LAYUP by MOORE , JUSTIN |
| 02:39 | FOUL (PERSONAL) by DINGLE, JORDAN | | | |
| 02:39 | | | | SUB OUT: BEY, SADDIQ |
| 02:39 | | | | SUB IN: SLATER, BRANDON |
| 02:39 | SUB OUT: MONROE, LUCAS | | | |
| 02:39 | SUB IN: BETLEY, RYAN | | | |
| 02:39 | | 73-66 | H 7 | GOOD! FT by MOORE , JUSTIN |
| 02:12 | MISSED 3PTR by DINGLE, JORDAN | | | |
| 02:07 | | | | REBOUND (DEF) by SLATER, BRANDON |
| 01:40 | | | | MISSED JUMPER by ROBINSON-EARL, JEREMIAH |
| 01:40 | BLOCK by BRODEUR, AJ | | | |
| 01:33 | REBOUND (DEF) by BRODEUR, AJ | | | |
| 01:30 | MISSED LAYUP by BETLEY, RYAN | | | |
| 01:26 | | | | REBOUND (DEF) by ROBINSON-EARL, JEREMIAH |
| 01:17 | FOUL (PERSONAL) by GOODMAN, DEVON | | | |
| 01:17 | | 74-66 | H 8 | GOOD! FT by GILLESPIE, COLLIN |
| 01:17 | | 75-66 | H 9 | GOOD! FT by GILLESPIE, COLLIN |
| 01:04 | GOOD! LAYUP by GOODMAN, DEVON | 75-68 | H 7 | |
| 01:04 | ASSIST by BRODEUR, AJ | | | |
| 01:04 | | | | FOUL (PERSONAL) by MOORE , JUSTIN |
| 01:04 | | | | SUB OUT: SLATER, BRANDON |
| 01:04 | | | | SUB IN: BEY, SADDIQ |
| 01:04 | SUB OUT: BETLEY, RYAN | | | |
| 01:04 | SUB OUT: MARTZ, MAX | | | |
| 01:04 | SUB IN: MONROE, LUCAS | | | |
| 01:04 | SUB IN: SCOTT, EDDIE | | | |
| 01:04 | GOOD! FT by GOODMAN, DEVON | 75-69 | H 6 | |
| 00:55 | FOUL (PERSONAL) by GOODMAN, DEVON | | | |
| 00:55 | | | | SUB OUT: BEY, SADDIQ |
| 00:55 | | | | SUB IN: SLATER, BRANDON |
| 00:55 | SUB OUT: MONROE, LUCAS | | | |
| 00:55 | SUB OUT: SCOTT, EDDIE | | | |
| 00:55 | SUB IN: BETLEY, RYAN | | | |
| 00:55 | SUB IN: MARTZ, MAX | | | |
| 00:55 | | 76-69 | H 7 | GOOD! FT by GILLESPIE, COLLIN |
| 00:55 | | 77-69 | H 8 | GOOD! FT by GILLESPIE, COLLIN |
| 00:47 | MISSED LAYUP by DINGLE, JORDAN | | | |
| 00:45 | | | | REBOUND (DEF) by GILLESPIE, COLLIN |
| 00:44 | FOUL (PERSONAL) by BETLEY, RYAN | | | |
| 00:44 | | 78-69 | H 9 | GOOD! FT by GILLESPIE, COLLIN [FB] |
| 00:44 | | 79-69 | H 10 | GOOD! FT by GILLESPIE, COLLIN [FB] |
| 00:39 | MISSED 3PTR by GOODMAN, DEVON | | | |
| 00:34 | | | | REBOUND (DEF) by ROBINSON-EARL, JEREMIAH |
| 00:29 | FOUL (PERSONAL) by BETLEY, RYAN | | | |
| 00:29 | | 80-69 | H 11 | GOOD! FT by SLATER, BRANDON |
| 00:29 | | | | MISSED FT by SLATER, BRANDON |
| 00:29 | REBOUND (DEF) by GOODMAN, DEVON | | | |

| Time | VISITORS: Penn | Score | Margin | HOME: Villanova |
|-------|-----------------------------|-------|--------|--|
| 00:23 | MISSED 3PTR by BETLEY, RYAN | | | |
| 00:19 | | | | REBOUND (DEF) by ROBINSON-EARL, JEREMIAH |

Penn 69, Villanova 80

| Points from (This Period) | PEN | VIL |
|---------------------------|-----|-----|
| In the Paint | 24 | 28 |
| Off Turns | 5 | 10 |
| 2nd Chance | 7 | 7 |
| Fast Break | 2 | 2 |
| Bench | 0 | 12 |

**Official Scoring/Possession Reference Chart
Penn vs Villanova
Period 1
December 04, 2019 at Finneran Pavilion - Bryn Mawr**



Period 1

Starters:

Penn: 00 BETLEY, RYAN (G); 3 DINGLE, JORDAN (G); 12 GOODMAN, DEVON (G); 13 SCOTT, EDDIE (G); 25 BRODEUR, AJ (F);

Villanova: 2 GILLESPIE, COLLIN (G); 10 SWIDER, COLE (F); 23 SAMUELS, JERMAINE (F); 24 ROBINSON-EARL, JEREMIAH (F); 41 BEY, SADDIQ (F);

| Time | VISITORS: Penn | Score | Margin | HOME: Villanova |
|-------|-----------------------------------|-------|--------|--|
| 19:44 | | 2-0 | H 2 | GOOD! LAYUP by BEY, SADDIQ |
| 18:51 | GOOD! 3PTR by BETLEY, RYAN | 2-3 | V 1 | |
| 18:20 | | 3-3 | T | GOOD! FT by BEY, SADDIQ |
| 18:20 | | 4-3 | H 1 | GOOD! FT by BEY, SADDIQ |
| 17:42 | | 5-3 | H 2 | GOOD! FT by BEY, SADDIQ |
| 17:42 | | 6-3 | H 3 | GOOD! FT by BEY, SADDIQ |
| 17:19 | GOOD! LAYUP by BRODEUR, AJ [PNT] | 6-5 | H 1 | |
| 16:17 | GOOD! LAYUP by GOODMAN, DEVON | 6-7 | V 1 | |
| 15:29 | GOOD! LAYUP by BETLEY, RYAN | 6-9 | V 3 | |
| 14:59 | | 8-9 | V 1 | GOOD! LAYUP by MOORE , JUSTIN |
| 14:21 | | 11-9 | H 2 | GOOD! 3PTR by ROBINSON-EARL, JEREMIAH |
| 13:24 | | 13-9 | H 4 | GOOD! LAYUP by SWIDER, COLE [FB] |
| 13:08 | GOOD! 3PTR by DINGLE, JORDAN | 13-12 | H 1 | |
| 12:27 | GOOD! FT by BRODEUR, AJ | 13-13 | T | |
| 11:54 | GOOD! LAYUP by MONROE, LUCAS | 13-15 | V 2 | |
| 11:18 | GOOD! LAYUP by BETLEY, RYAN | 13-17 | V 4 | |
| 10:17 | | 15-17 | V 2 | GOOD! LAYUP by GILLESPIE, COLLIN |
| 09:53 | GOOD! LAYUP by BRODEUR, AJ [PNT] | 15-19 | V 4 | |
| 09:30 | | 17-19 | V 2 | GOOD! LAYUP by SLATER, BRANDON |
| 09:03 | | 19-19 | T | GOOD! DUNK by BEY, SADDIQ [FB] |
| 08:31 | GOOD! LAYUP by BETLEY, RYAN [PNT] | 19-21 | V 2 | |
| 08:18 | | 21-21 | T | GOOD! LAYUP by BEY, SADDIQ [PNT] |
| 07:57 | GOOD! JUMPER by BRODEUR, AJ [PNT] | 21-23 | V 2 | |
| 07:42 | | 23-23 | T | GOOD! LAYUP by MOORE , JUSTIN |
| 07:09 | | 25-23 | H 2 | GOOD! LAYUP by MOORE , JUSTIN [FB/PNT] |
| 05:40 | | 27-23 | H 4 | GOOD! JUMPER by BEY, SADDIQ |
| 05:20 | GOOD! LAYUP by BRODEUR, AJ [PNT] | 27-25 | H 2 | |
| 04:31 | GOOD! LAYUP by MONROE, LUCAS | 27-27 | T | |
| 03:41 | | 30-27 | H 3 | GOOD! 3PTR by BEY, SADDIQ |
| 03:24 | GOOD! 3PTR by BRODEUR, AJ | 30-30 | T | |
| 02:55 | | 31-30 | H 1 | GOOD! FT by BEY, SADDIQ |
| 02:13 | | 33-30 | H 3 | GOOD! LAYUP by ROBINSON-EARL, JEREMIAH |
| 01:31 | | 36-30 | H 6 | GOOD! 3PTR by SWIDER, COLE |

Penn 30, Villanova 36

Official Scoring/Possession Reference Chart
Penn vs Villanova
Period 2
December 04, 2019 at Finneran Pavilion - Bryn Mawr



Period 2

Starters:

Penn: 00 BETLEY, RYAN (G); 3 DINGLE, JORDAN (G); 12 GOODMAN, DEVON (G); 13 SCOTT, EDDIE (G); 25 BRODEUR, AJ (F);

Villanova: 2 GILLESPIE, COLLIN (G); 10 SWIDER, COLE (F); 23 SAMUELS, JERMAINE (F); 24 ROBINSON-EARL, JEREMIAH (F); 41 BEY, SADDIQ (F);

| Time | VISITORS: Penn | Score | Margin | HOME: Villanova |
|-------|--------------------------------------|-------|--------|---|
| 19:31 | | 38-30 | H 8 | GOOD! LAYUP by BEY, SADDIQ |
| 19:31 | | 39-30 | H 9 | GOOD! FT by BEY, SADDIQ |
| 18:59 | | 41-30 | H 11 | GOOD! LAYUP by BEY, SADDIQ |
| 18:42 | GOOD! 3PTR by DINGLE, JORDAN | 41-33 | H 8 | |
| 17:45 | | 43-33 | H 10 | GOOD! DUNK by BEY, SADDIQ |
| 17:12 | GOOD! LAYUP by BRODEUR, AJ | 43-35 | H 8 | |
| 16:58 | | 44-35 | H 9 | GOOD! FT by MOORE, JUSTIN |
| 15:42 | GOOD! LAYUP by BETLEY, RYAN | 44-37 | H 7 | |
| 14:52 | | 46-37 | H 9 | GOOD! LAYUP by MOORE, JUSTIN |
| 14:38 | GOOD! 3PTR by GOODMAN, DEVON | 46-40 | H 6 | |
| 14:08 | | 48-40 | H 8 | GOOD! LAYUP by ROBINSON-EARL, JEREMIAH |
| 13:52 | GOOD! LAYUP by BRODEUR, AJ | 48-42 | H 6 | |
| 13:24 | GOOD! DUNK by GOODMAN, DEVON [FB] | 48-44 | H 4 | |
| 12:54 | GOOD! 3PTR by DINGLE, JORDAN | 48-47 | H 1 | |
| 12:35 | | 51-47 | H 4 | GOOD! 3PTR by GILLESPIE, COLLIN |
| 12:19 | GOOD! JUMPER by GOODMAN, DEVON [PNT] | 51-49 | H 2 | |
| 11:30 | | 53-49 | H 4 | GOOD! LAYUP by SAMUELS, JERMAINE |
| 11:03 | GOOD! LAYUP by DINGLE, JORDAN | 53-51 | H 2 | |
| 10:38 | | 55-51 | H 4 | GOOD! JUMPER by ROBINSON-EARL, JEREMIAH |
| 10:20 | GOOD! JUMPER by BRODEUR, AJ | 55-53 | H 2 | |
| 09:46 | | 57-53 | H 4 | GOOD! LAYUP by BEY, SADDIQ |
| 09:29 | GOOD! FT by DINGLE, JORDAN | 57-54 | H 3 | |
| 09:29 | GOOD! FT by DINGLE, JORDAN | 57-55 | H 2 | |
| 08:52 | | 59-55 | H 4 | GOOD! JUMPER by SWIDER, COLE [PNT] |
| 08:30 | GOOD! LAYUP by BETLEY, RYAN | 59-57 | H 2 | |
| 07:49 | | 61-57 | H 4 | GOOD! LAYUP by ROBINSON-EARL, JEREMIAH |
| 07:22 | GOOD! DUNK by DINGLE, JORDAN | 61-59 | H 2 | |
| 06:58 | | 63-59 | H 4 | GOOD! LAYUP by BEY, SADDIQ |
| 06:31 | | 64-59 | H 5 | GOOD! FT by MOORE, JUSTIN |
| 05:26 | | 66-59 | H 7 | GOOD! JUMPER by ROBINSON-EARL, JEREMIAH |
| 05:02 | GOOD! LAYUP by GOODMAN, DEVON | 66-61 | H 5 | |
| 04:39 | | 68-61 | H 7 | GOOD! LAYUP by MOORE, JUSTIN |
| 04:17 | GOOD! 3PTR by DINGLE, JORDAN | 68-64 | H 4 | |
| 03:17 | | 70-64 | H 6 | GOOD! LAYUP by MOORE, JUSTIN |
| 02:55 | GOOD! LAYUP by GOODMAN, DEVON | 70-66 | H 4 | |
| 02:39 | | 72-66 | H 6 | GOOD! LAYUP by MOORE, JUSTIN |
| 02:39 | | 73-66 | H 7 | GOOD! FT by MOORE, JUSTIN |
| 01:17 | | 74-66 | H 8 | GOOD! FT by GILLESPIE, COLLIN |
| 01:17 | | 75-66 | H 9 | GOOD! FT by GILLESPIE, COLLIN |
| 01:04 | GOOD! LAYUP by GOODMAN, DEVON | 75-68 | H 7 | |
| 01:04 | GOOD! FT by GOODMAN, DEVON | 75-69 | H 6 | |
| 00:55 | | 76-69 | H 7 | GOOD! FT by GILLESPIE, COLLIN |
| 00:55 | | 77-69 | H 8 | GOOD! FT by GILLESPIE, COLLIN |
| 00:44 | | 78-69 | H 9 | GOOD! FT by GILLESPIE, COLLIN [FB] |
| 00:44 | | 79-69 | H 10 | GOOD! FT by GILLESPIE, COLLIN [FB] |
| 00:29 | | 80-69 | H 11 | GOOD! FT by SLATER, BRANDON |

Penn 69, Villanova 80

**Official Substitutions Log
Penn vs Villanova
Period 1
December 04, 2019 at Finneran Pavilion - Bryn Mawr**



| VISITORS: Penn | Time | Score | HOME: Villanova |
|-----------------------------|-------|-------|----------------------------------|
| 00 BETLEY, RYAN | | | 2 GILLESPIE, COLLIN |
| 3 DINGLE, JORDAN | | | 10 SWIDER, COLE |
| 12 GOODMAN, DEVON | | | 23 SAMUELS, JERMAINE |
| 13 SCOTT, EDDIE | | | 24 ROBINSON-EARL, JEREMIAH |
| 25 BRODEUR, AJ | | | 41 BEY, SADDIQ |
| | 17:42 | 3-5 | SUB OUT: SAMUELS, JERMAINE |
| | 17:42 | | SUB IN: MOORE, JUSTIN |
| SUB OUT: 13 SCOTT, EDDIE | 16:29 | 5-6 | |
| SUB IN: 14 MARTZ, MAX | 16:29 | | |
| | 13:48 | 9-11 | SUB OUT: GILLESPIE, COLLIN |
| | 13:48 | | SUB OUT: ROBINSON-EARL, JEREMIAH |
| | 13:48 | | SUB IN: SLATER, BRANDON |
| | 13:48 | | SUB IN: SAMUELS, JERMAINE |
| | 12:27 | 12-13 | SUB OUT: SWIDER, COLE |
| | 12:27 | | SUB IN: GILLESPIE, COLLIN |
| SUB OUT: 3 DINGLE, JORDAN | 12:27 | | |
| SUB IN: 11 MONROE, LUCAS | 12:27 | | |
| SUB OUT: 25 BRODEUR, AJ | 12:27 | | |
| SUB IN: 24 SIMMONS, JARROD | 12:27 | | |
| SUB OUT: 12 GOODMAN, DEVON | 11:05 | 17-13 | |
| SUB IN: 3 DINGLE, JORDAN | 11:05 | | |
| | 11:05 | | SUB OUT: MOORE, JUSTIN |
| | 11:05 | | SUB OUT: BEY, SADDIQ |
| | 11:05 | | SUB IN: ANTOINE, BRYAN |
| | 11:05 | | SUB IN: ROBINSON-EARL, JEREMIAH |
| SUB OUT: 24 SIMMONS, JARROD | 11:05 | | |
| SUB IN: 25 BRODEUR, AJ | 11:05 | | |
| | 09:17 | 19-17 | SUB OUT: ANTOINE, BRYAN |
| | 09:17 | | SUB OUT: SAMUELS, JERMAINE |
| | 09:17 | | SUB IN: SWIDER, COLE |
| | 09:17 | | SUB IN: BEY, SADDIQ |
| SUB OUT: 00 BETLEY, RYAN | 09:17 | | |
| SUB OUT: 14 MARTZ, MAX | 09:17 | | |
| SUB IN: 12 GOODMAN, DEVON | 09:17 | | |
| SUB IN: 13 SCOTT, EDDIE | 09:17 | | |
| | 09:02 | 19-19 | SUB OUT: ROBINSON-EARL, JEREMIAH |
| | 09:02 | | SUB IN: MOORE, JUSTIN |
| | 08:44 | 19-19 | SUB OUT: SLATER, BRANDON |
| | 08:44 | | SUB IN: ROBINSON-EARL, JEREMIAH |
| SUB OUT: 11 MONROE, LUCAS | 08:44 | | |
| SUB IN: 00 BETLEY, RYAN | 08:44 | | |
| | 07:29 | 23-23 | SUB OUT: ROBINSON-EARL, JEREMIAH |
| | 07:29 | | SUB IN: COSBY-ROUNDTREE, DHAMIR |
| | 07:28 | 23-23 | SUB OUT: SWIDER, COLE |
| | 07:28 | | SUB IN: SLATER, BRANDON |
| | 06:19 | 23-25 | SUB OUT: GILLESPIE, COLLIN |
| | 06:19 | | SUB IN: SWIDER, COLE |
| SUB OUT: 3 DINGLE, JORDAN | 06:19 | | |
| SUB OUT: 13 SCOTT, EDDIE | 06:19 | | |
| SUB IN: 11 MONROE, LUCAS | 06:19 | | |
| SUB IN: 14 MARTZ, MAX | 06:19 | | |
| | 04:28 | 27-27 | SUB OUT: MOORE, JUSTIN |
| | 04:28 | | SUB OUT: COSBY-ROUNDTREE, DHAMIR |
| | 04:28 | | SUB IN: SAMUELS, JERMAINE |
| | 04:28 | | SUB IN: ROBINSON-EARL, JEREMIAH |
| SUB OUT: 25 BRODEUR, AJ | 04:28 | | |
| SUB IN: 24 SIMMONS, JARROD | 04:28 | | |
| | 04:28 | | SUB OUT: SLATER, BRANDON |
| | 04:28 | | SUB OUT: SAMUELS, JERMAINE |
| | 04:28 | | SUB IN: GILLESPIE, COLLIN |
| | 04:28 | | SUB IN: MOORE, JUSTIN |
| | 04:25 | 27-27 | SUB OUT: GILLESPIE, COLLIN |
| | 04:25 | | SUB IN: SAMUELS, JERMAINE |
| SUB OUT: 24 SIMMONS, JARROD | 03:53 | 30-30 | |
| SUB IN: 25 BRODEUR, AJ | 03:53 | | |
| | 02:55 | 30-30 | SUB OUT: SWIDER, COLE |
| | 02:55 | | SUB IN: SLATER, BRANDON |
| SUB OUT: 12 GOODMAN, DEVON | 02:55 | | |
| SUB IN: 3 DINGLE, JORDAN | 02:55 | | |
| SUB OUT: 11 MONROE, LUCAS | 01:57 | 30-33 | |
| SUB IN: 12 GOODMAN, DEVON | 01:57 | | |
| | 01:49 | 30-33 | SUB OUT: SLATER, BRANDON |
| | 01:49 | | SUB IN: SWIDER, COLE |
| SUB OUT: 3 DINGLE, JORDAN | 01:49 | | |
| SUB OUT: 14 MARTZ, MAX | 01:49 | | |

| VISITORS: Penn | Time | Score | HOME: Villanova |
|--------------------------|-------------|--------------|------------------------|
| SUB IN: 11 MONROE, LUCAS | 01:49 | | |
| SUB IN: 13 SCOTT, EDDIE | 01:49 | | |

Penn 30, Villanova 36

Official Substitutions Log
Penn vs Villanova
Period 2
December 04, 2019 at Finneran Pavilion - Bryn Mawr



| VISITORS: Penn | Time | Score | HOME: Villanova |
|--------------------------|-------|-------|---------------------------------|
| 00 BETLEY,RYAN | | | 2 GILLESPIE,COLLIN |
| 3 DINGLE,JORDAN | | | 10 SWIDER,COLE |
| 12 GOODMAN,DEVON | | | 23 SAMUELS,JERMAINE |
| 13 SCOTT,EDDIE | | | 24 ROBINSON-EARL,JEREMIAH |
| 25 BRODEUR,AJ | | | 41 BEY,SADDIQ |
| SUB OUT: 11 MONROE,LUCAS | 20:00 | - | |
| SUB IN: 3 DINGLE,JORDAN | 20:00 | | |
| SUB OUT: 13 SCOTT,EDDIE | 19:15 | 30-39 | |
| SUB IN: 14 MARTZ,MAX | 19:15 | | |
| | 17:31 | 33-43 | SUB OUT: BEY,SADDIQ |
| | 17:31 | | SUB IN: SLATER,BRANDON |
| | 16:41 | 35-44 | SUB OUT: SAMUELS,JERMAINE |
| | 16:41 | | SUB IN: BEY,SADDIQ |
| | 16:03 | 35-44 | SUB OUT: SWIDER,COLE |
| | 16:03 | | SUB IN: SAMUELS,JERMAINE |
| | 13:24 | 44-48 | SUB OUT: MOORE ,JUSTIN |
| | 13:24 | | SUB OUT: ROBINSON-EARL,JEREMIAH |
| | 13:24 | | SUB IN: GILLESPIE,COLLIN |
| | 13:24 | | SUB IN: SWIDER,COLE |
| | 13:07 | 44-48 | SUB OUT: SWIDER,COLE |
| | 13:07 | | SUB IN: MOORE ,JUSTIN |
| | 11:58 | 49-51 | SUB OUT: SLATER,BRANDON |
| | 11:58 | | SUB IN: ROBINSON-EARL,JEREMIAH |
| | 09:29 | 54-57 | SUB OUT: GILLESPIE,COLLIN |
| | 09:29 | | SUB IN: SWIDER,COLE |
| SUB OUT: 00 BETLEY,RYAN | 09:29 | | |
| SUB IN: 11 MONROE,LUCAS | 09:29 | | |
| SUB OUT: 11 MONROE,LUCAS | 08:41 | 55-59 | |
| SUB IN: 00 BETLEY,RYAN | 08:41 | | |
| | 06:36 | 59-63 | SUB OUT: ROBINSON-EARL,JEREMIAH |
| | 06:36 | | SUB IN: GILLESPIE,COLLIN |
| | 06:31 | 59-64 | SUB OUT: SAMUELS,JERMAINE |
| | 06:31 | | SUB IN: SLATER,BRANDON |
| | 05:41 | 59-64 | SUB OUT: BEY,SADDIQ |
| | 05:41 | | SUB IN: ROBINSON-EARL,JEREMIAH |
| | 03:48 | 64-68 | SUB OUT: SWIDER,COLE |
| | 03:48 | | SUB IN: SAMUELS,JERMAINE |
| | 03:44 | 64-68 | SUB OUT: SLATER,BRANDON |
| | 03:44 | | SUB IN: BEY,SADDIQ |
| SUB OUT: 00 BETLEY,RYAN | 02:55 | 66-70 | |
| SUB IN: 11 MONROE,LUCAS | 02:55 | | |
| | 02:39 | 66-72 | SUB OUT: BEY,SADDIQ |
| | 02:39 | | SUB IN: SLATER,BRANDON |
| SUB OUT: 11 MONROE,LUCAS | 02:39 | | |
| SUB IN: 00 BETLEY,RYAN | 02:39 | | |
| | 01:04 | 68-75 | SUB OUT: SLATER,BRANDON |
| | 01:04 | | SUB IN: BEY,SADDIQ |
| SUB OUT: 00 BETLEY,RYAN | 01:04 | | |
| SUB OUT: 14 MARTZ,MAX | 01:04 | | |
| SUB IN: 11 MONROE,LUCAS | 01:04 | | |
| SUB IN: 13 SCOTT,EDDIE | 01:04 | | |
| | 00:55 | 69-75 | SUB OUT: BEY,SADDIQ |
| | 00:55 | | SUB IN: SLATER,BRANDON |
| SUB OUT: 11 MONROE,LUCAS | 00:55 | | |
| SUB OUT: 13 SCOTT,EDDIE | 00:55 | | |
| SUB IN: 00 BETLEY,RYAN | 00:55 | | |
| SUB IN: 14 MARTZ,MAX | 00:55 | | |

Penn 69, Villanova 80

Official Shot Chart
Penn vs Villanova
PERIOD 1 Shots
 December 04, 2019 at Finneran Pavilion - Bryn Mawr

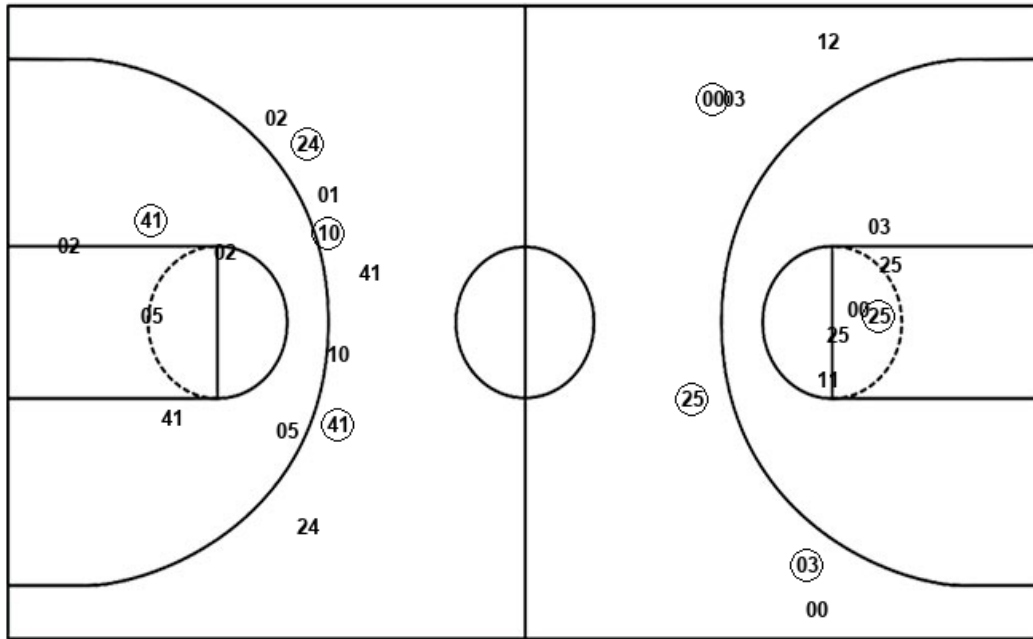


Villanova

Penn

Layups
 (41) 41 (05) 02 (10)
 05 (02) (03) (41) (05)
 (05) 21 (24) 41 24

Dunks
 (41)



Layups
 (25) 00 (12) (00) 12
 00 (11) (00) 11 (25)
 (00) 13 12 03 00
 (25) (11)

Dunks

| VIL : Period 1 | Made | Att | Pct |
|--------------------------|-----------|-----------|-------------|
| Layups | 9 | 15 | 60.0 |
| Dunks | 1 | 1 | 100.0 |
| 2PT Field Goals | 11 | 22 | 50.0 |
| 3PT Field Goals | 3 | 8 | 37.5 |
| Total Field Goals | 14 | 30 | 46.7 |

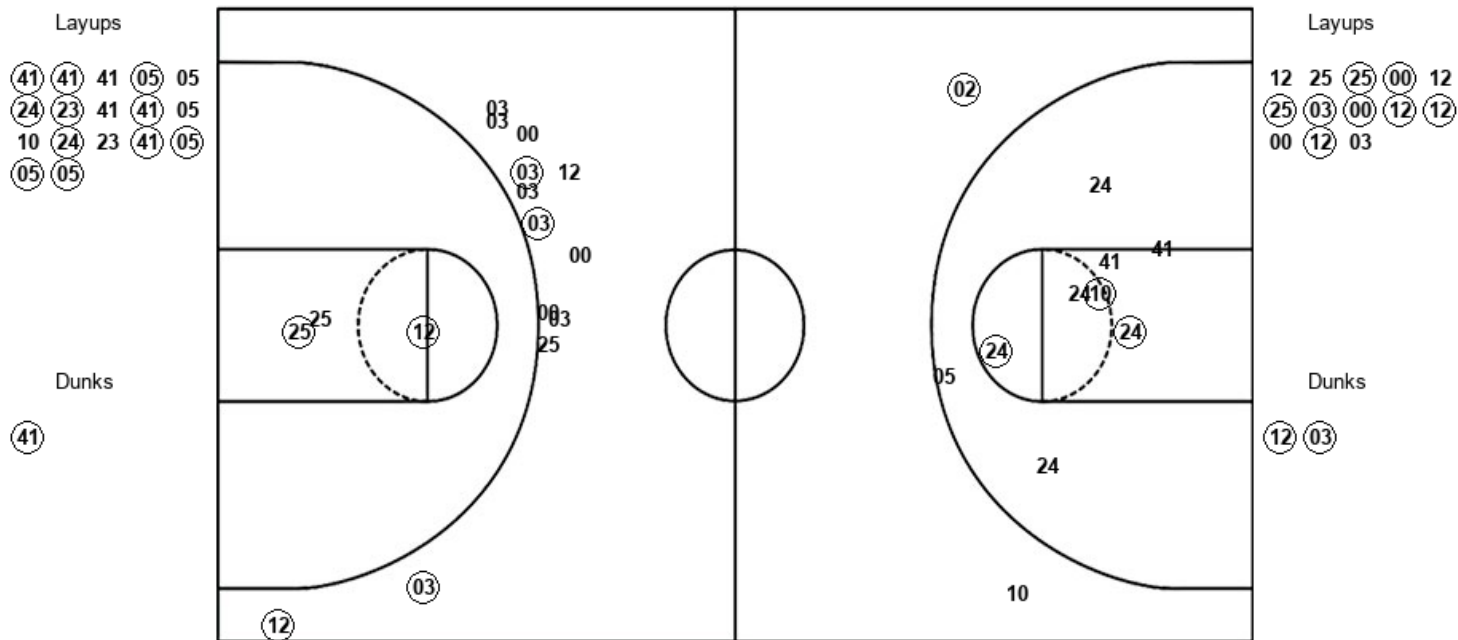
| PEN : Period 1 | Made | Att | Pct |
|--------------------------|-----------|-----------|-------------|
| Layups | 9 | 17 | 52.9 |
| Dunks | 0 | 0 | 0 |
| 2PT Field Goals | 10 | 23 | 43.5 |
| 3PT Field Goals | 3 | 6 | 50.0 |
| Total Field Goals | 13 | 29 | 44.8 |

Official Shot Chart
Penn vs Villanova
PERIOD 2 Shots
 December 04, 2019 at Finneran Pavilion - Bryn Mawr



Villanova

Penn



| VIL : Period 2 | Made | Att | Pct |
|--------------------------|-------------|------------|-------------|
| Layups | 11 | 17 | 64.7 |
| Dunks | 1 | 1 | 100.0 |
| 2PT Field Goals | 15 | 27 | 55.6 |
| 3PT Field Goals | 1 | 2 | 50.0 |
| Total Field Goals | 16 | 29 | 55.2 |

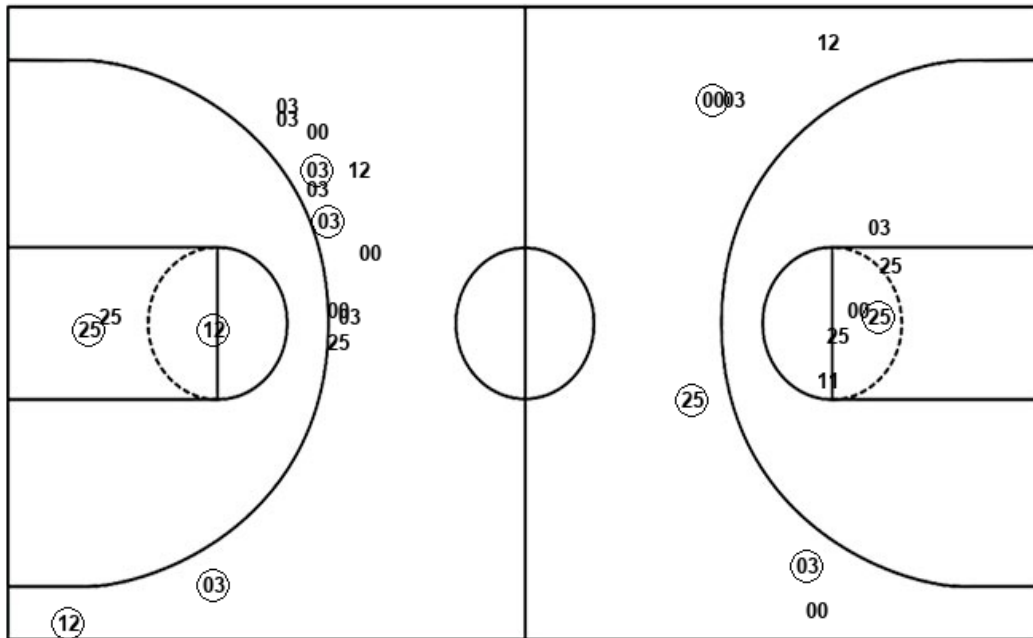
| PEN : Period 2 | Made | Att | Pct |
|--------------------------|-------------|------------|-------------|
| Layups | 8 | 13 | 61.5 |
| Dunks | 2 | 2 | 100.0 |
| 2PT Field Goals | 12 | 18 | 66.7 |
| 3PT Field Goals | 4 | 13 | 30.8 |
| Total Field Goals | 16 | 31 | 51.6 |

Official Shot Chart
Penn vs Villanova
Penn Team Shots
 December 04, 2019 at Finneran Pavilion - Bryn Mawr



Layups

Dunks



Layups

Dunks

(25) 00 (12) (00) 12
 00 (11) (00) 11 (25)
 (00) 13 12 03 00
 (25) (11) 12 25 (25)
 (00) 12 (25) (03) (00)
 (12) (12) 00 (12) 03

(12) (03)

| PEN : Period 1 | Made | Att | Pct |
|--------------------------|-----------|-----------|-------------|
| Layups | 9 | 17 | 52.9 |
| Dunks | 0 | 0 | 0 |
| 2PT Field Goals | 10 | 23 | 43.5 |
| 3PT Field Goals | 3 | 6 | 50.0 |
| Total Field Goals | 13 | 29 | 44.8 |

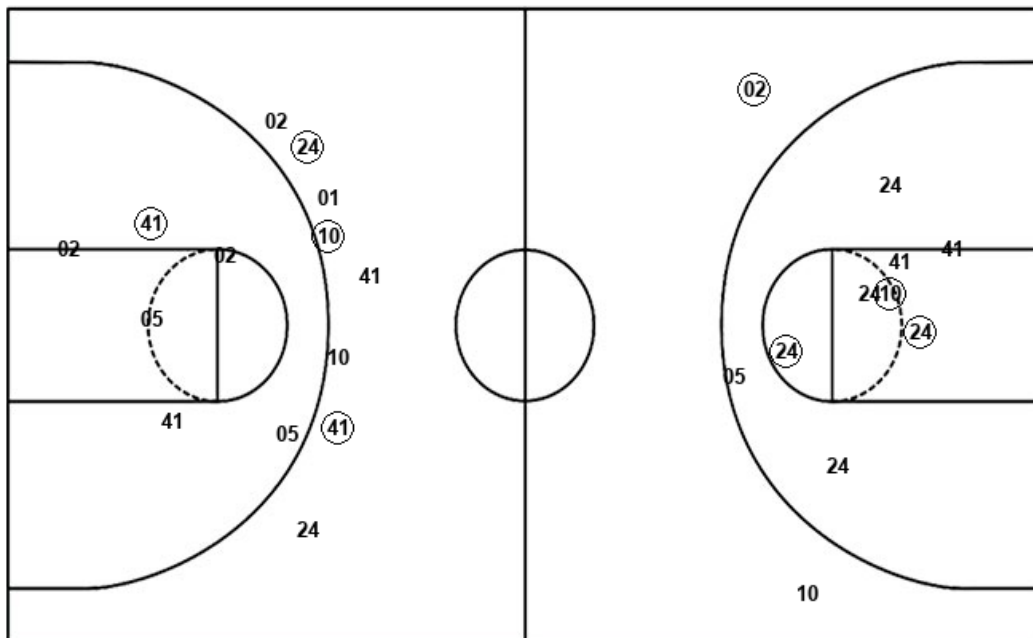
| PEN : Period 2 | Made | Att | Pct |
|--------------------------|-----------|-----------|-------------|
| Layups | 8 | 13 | 61.5 |
| Dunks | 2 | 2 | 100.0 |
| 2PT Field Goals | 12 | 18 | 66.7 |
| 3PT Field Goals | 4 | 13 | 30.8 |
| Total Field Goals | 16 | 31 | 51.6 |

Official Shot Chart
Penn vs Villanova
Villanova Team Shots
 December 04, 2019 at Finneran Pavilion - Bryn Mawr



Layups

Dunks



Layups

Dunks

(41) 41 (05) 02 (10)
 05 (02) (03) (41) (05)
 (05) 21 (24) 41 24
 (41) (41) 41 (05) 05
 (24) (23) 41 (41) 05
 10 (24) 23 (41) (05)
 (05) (05)

(41) (41)

| VIL : Period 1 | Made | Att | Pct |
|--------------------------|-----------|-----------|-------------|
| Layups | 9 | 15 | 60.0 |
| Dunks | 1 | 1 | 100.0 |
| 2PT Field Goals | 11 | 22 | 50.0 |
| 3PT Field Goals | 3 | 8 | 37.5 |
| Total Field Goals | 14 | 30 | 46.7 |

| VIL : Period 2 | Made | Att | Pct |
|--------------------------|-----------|-----------|-------------|
| Layups | 11 | 17 | 64.7 |
| Dunks | 1 | 1 | 100.0 |
| 2PT Field Goals | 15 | 27 | 55.6 |
| 3PT Field Goals | 1 | 2 | 50.0 |
| Total Field Goals | 16 | 29 | 55.2 |