

FINAL SCORE

La Salle

72



Villanova

83



December 01, 2019 • Finneran Pavilion - Bryn Mawr

FINAL STATISTICS

Official Box Score
La Salle vs Villanova
Game Totals -- Final Statistics
December 01, 2019 at Finneran Pavilion - Bryn Mawr



La Salle 72

No.	Player	S	Pts	FG	3FG	FT	OR	DR	TR	PF	A	TO	Blk	Stl	Min	+/-
01	BEATTY, DAVID	G	12	4-14	3-8	1-2	1	1	2	5	0	2	0	1	33	-3
02	SPENCER, SCOTT	G	8	3-6	2-4	0-0	2	3	5	1	1	2	0	0	24	-8
10	DEAS, ISIAH	G	6	3-9	0-2	0-0	0	2	2	0	2	2	0	0	18	-6
11	CROSWELL, ED	F	14	6-9	0-0	2-3	4	6	10	3	0	0	0	1	28	-7
13	PHIRI, SAUL	G	9	3-10	3-6	0-0	0	4	4	3	4	4	2	3	35	-12
00	HIKIM, AYINDE	G	9	2-5	1-3	4-4	0	0	0	5	5	2	0	0	11	-2
03	RAY, CHRISTIAN	G	5	2-4	1-1	0-1	1	2	3	3	0	1	1	1	18	-7
04	KENNEY, SHERIF	G	7	2-7	1-2	2-3	0	1	1	1	4	3	0	2	23	-5
14	LAFOND, ANDREW	G	0	0-0	0-0	0-0	0	0	0	0	0	0	0	0	0	-2
23	STONE, BRANDON	F	0	0-0	0-0	0-0	1	0	1	1	0	1	2	0	7	-2
24	KIMBROUGH, JARED	F	2	1-2	0-0	0-0	0	0	0	2	0	0	1	0	4	-1
TEAM							7	0	7	0		1				
TOTALS			72	26-66	11-26	9-13	16	19	35	24	16	18	6	8	200	

Shooting By Period

Period	FG	FG%	3FG	3FG%	FT	FT%
1st Half	11-30	37%	5-12	42%	1-3	33%
2nd Half	15-36	42%	6-14	43%	8-10	80%
Game	26-66	39.4%	11-26	42.3%	9-13	69.2%

Deadball Rebounds: 1,0

Last FG: 2nd-00:07

Biggest Run: 10-0

Largest lead: By 6 at 1-14

Technical Fouls: #01 BEATTY (Class A) @ 2nd - 04:59;

Villanova 83

No.	Player	S	Pts	FG	3FG	FT	OR	DR	TR	PF	A	TO	Blk	Stl	Min	+/-
02	GILLESPIE, COLLIN	G	14	3-9	2-4	6-8	1	2	3	3	3	0	0	1	32	4
10	SWIDER, COLE	F	5	2-2	1-1	0-0	0	0	0	4	0	1	0	1	12	13
23	SAMUELS, JERMAINE	F	6	1-6	0-3	4-6	1	3	4	0	5	5	1	2	25	-4
24	ROBINSON-EARL, JEREMIAH	F	8	3-6	0-0	2-2	1	9	10	1	1	3	3	1	30	21
41	BEY, SADDIQ	F	19	6-12	1-3	6-7	4	6	10	2	2	2	3	1	34	8
01	ANTOINE, BRYAN	G	2	1-2	0-1	0-0	0	0	0	2	1	0	0	1	12	-1
03	SLATER, BRANDON	F	2	1-1	0-0	0-0	0	2	2	2	1	1	1	0	17	0
05	MOORE, JUSTIN	G	25	9-15	2-4	5-7	1	2	3	1	3	5	0	5	31	21
21	COSBY-ROUNDTREE, DHAMIF	F	2	1-2	0-0	0-0	2	1	3	1	0	1	0	0	7	-7
TEAM							2	2	4	0		2				
TOTALS			83	27-55	6-16	23-30	12	27	39	16	16	20	8	12	200	

Shooting By Period

Period	FG	FG%	3FG	3FG%	FT	FT%
1st Half	15-29	52%	4-9	44%	14-15	93%
2nd Half	12-26	46%	2-7	29%	9-15	60%
Game	27-55	49.1%	6-16	37.5%	23-30	76.7%

Deadball Rebounds: 4,0

Last FG: 2nd-00:32

Biggest Run: 14-0

Largest lead: By 20 at 2-18

Technical Fouls: None.

Game Notes:

Officials: Mike Stephens, Mike Roberts, Matt Potter
Attendance: 6501

Start Time: 06:31 PM ET
End Time: 08:51 PM ET
Game Duration: 2:20

Score	1st	2nd	TOT
LAS	28	44	72
VIL	48	35	83

LAS led for 5:23. VIL led for 32:06.

Game was tied for 2:32.

Times tied: 3 Lead Changes: 1

Points from	LAS	VIL
In the Paint	30	40
Off Turns	18	21
2nd Chance	16	10
Fast Break	16	22
Bench	23	31

Official Box Score
La Salle vs Villanova
First Half Statistics Only
December 01, 2019 at Finneran Pavilion - Bryn Mawr



La Salle 28

No.	Player	S	Pts	FG	3FG	FT	OR	DR	TR	PF	A	TO	Blk	Stl	Min	+/-
01	BEATTY, DAVID	G	7	2-6	2-4	1-2	0	1	1	1	0	2	0	0	17	-13
02	SPENCER, SCOTT	G	5	2-4	1-2	0-0	0	1	1	0	1	0	0	0	13	-15
10	DEAS, ISIAH	G	4	2-6	0-1	0-0	0	2	2	0	2	2	0	0	13	-5
11	CROSWELL, ED	F	4	2-3	0-0	0-1	1	2	3	2	0	0	0	0	11	-8
13	PHIRI, SAUL	G	6	2-5	2-4	0-0	0	3	3	2	1	1	2	0	19	-17
00	HIKIM, AYINDE	G	0	0-1	0-0	0-0	0	0	0	1	2	0	0	0	4	-8
03	RAY, CHRISTIAN	G	0	0-0	0-0	0-0	0	1	1	0	0	0	0	0	4	-10
04	KENNEY, SHERIF	G	0	0-4	0-1	0-0	0	0	0	1	1	2	0	1	12	-13
14	LAFOND, ANDREW	G	0	0-0	0-0	0-0	0	0	0	0	0	0	0	0	0	0
23	STONE, BRANDON	F	0	0-0	0-0	0-0	1	0	1	1	0	1	2	0	5	-6
24	KIMBROUGH, JARED	F	2	1-1	0-0	0-0	0	0	0	2	0	0	0	0	2	-5
	TEAM						3	0	3	0		1				
TOTALS			28	11-30	5-12	1-3	5	10	15	10	7	9	4	1	100	

Shooting By Period

Period	FG	FG%	3FG	3FG%	FT	FT%
1st Half	11-30	37%	5-12	42%	1-3	33%
Game	26-66	39.4%	11-26	42.3%	9-13	69.2%

Deadball Rebounds: 1,0
 Last FG Half: LAS 2nd-00:07

Villanova 48

No.	Player	S	Pts	FG	3FG	FT	OR	DR	TR	PF	A	TO	Blk	Stl	Min	+/-
02	GILLESPIE, COLLIN	G	8	2-5	2-3	2-2	1	1	2	1	1	0	0	0	15	5
10	SWIDER, COLE	F	5	2-2	1-1	0-0	0	0	0	2	0	0	0	1	9	10
23	SAMUELS, JERMAINE	F	5	1-3	0-2	3-3	0	3	3	0	2	1	0	0	12	6
24	ROBINSON-EARL, JEREMIAH	F	6	2-3	0-0	2-2	0	4	4	1	1	1	2	1	15	25
41	BEY, SADDIQ	F	7	1-4	0-1	5-5	0	2	2	1	1	1	2	1	16	12
01	ANTOINE, BRYAN	G	2	1-1	0-0	0-0	0	0	0	2	1	0	0	1	6	6
03	SLATER, BRANDON	F	0	0-0	0-0	0-0	0	1	1	0	0	0	1	0	8	12
05	MOORE, JUSTIN	G	15	6-10	1-2	2-3	1	1	2	0	2	2	0	3	16	27
21	COSBY-ROUNDTREE, DHAMIF	F	0	0-1	0-0	0-0	2	1	3	0	0	1	0	0	3	-3
	TEAM						1	2	3	0		0				
TOTALS			48	15-29	4-9	14-15	5	15	20	7	8	6	5	7	100	

Shooting By Period

Period	FG	FG%	3FG	3FG%	FT	FT%
1st Half	15-29	52%	4-9	44%	14-15	93%
Game	27-55	49.1%	6-16	37.5%	23-30	76.7%

Deadball Rebounds: 4,0
 Last FG Half: VIL 2nd-00:32

Game Notes:

Officials: Mike Stephens, Mike Roberts, Matt Potter
 Attendance: 6501

Start Time: 06:31 PM ET
 End Time: 08:51 PM ET
 Game Duration: 2:20

Score	1st	2nd	TOT
LAS	28	44	72
VIL	48	35	83

Points from (This Period)	LAS	VIL
In the Paint	12	20
Off Turns	4	14
2nd Chance	7	4
Fast Break	5	14
Bench	2	17

Official Play-By-Play
La Salle vs Villanova
First Half
December 01, 2019 at Finneran Pavilion - Bryn Mawr



Period 1

Starters:

La Salle: 1 BEATTY, DAVID (G); 2 SPENCER, SCOTT (G); 10 DEAS, ISIAH (G); 11 CROSWELL, ED (F); 13 PHIRI, SAUL (G);

Villanova: 2 GILLESPIE, COLLIN (G); 10 SWIDER, COLE (F); 23 SAMUELS, JERMAINE (F); 24 ROBINSON-EARL, JEREMIAH (F); 41 BEY, SADDIQ (F);

Time	VISITORS: La Salle	Score	Margin	HOME: Villanova
19:45	MISSED 3PTR by SPENCER, SCOTT			
19:41				REBOUND (DEF) by ROBINSON-EARL, JEREMIAH
19:21				MISSED 3PTR by GILLESPIE, COLLIN
19:17	REBOUND (DEF) by SPENCER, SCOTT			
19:08	GOOD! 3PTR by PHIRI, SAUL	0-3	V 3	
19:08	ASSIST by DEAS, ISIAH			
18:50				TURNOVER (LOSTBALL) by SAMUELS, JERMAINE
18:27	MISSED JUMPER by BEATTY, DAVID			
18:19	REBOUND (OFF) by CROSWELL, ED			
18:19	GOOD! LAYUP by CROSWELL, ED	0-5	V 5	
18:01				MISSED JUMPER by BEY, SADDIQ
17:58	REBOUND (DEF) by DEAS, ISIAH			
17:51	MISSED LAYUP by DEAS, ISIAH			
17:49				REBOUND (DEF) by TEAM
17:49				SUB OUT: SAMUELS, JERMAINE
17:49				SUB IN: MOORE, JUSTIN
17:49	SUB OUT: CROSWELL, ED			
17:49	SUB IN: KIMBROUGH, JARED			
17:47	FOUL (PERSONAL) by KIMBROUGH, JARED			
17:36		3-5	V 2	GOOD! 3PTR by GILLESPIE, COLLIN
17:36				ASSIST by BEY, SADDIQ
17:01	MISSED JUMPER by SPENCER, SCOTT			
16:57				REBOUND (DEF) by ROBINSON-EARL, JEREMIAH
16:51				MISSED LAYUP by BEY, SADDIQ
16:47	REBOUND (DEF) by BEATTY, DAVID			
16:42	TURNOVER (LOSTBALL) by DEAS, ISIAH			
16:42				STEAL by BEY, SADDIQ
16:42	SUB OUT: SPENCER, SCOTT			
16:42	SUB IN: KENNEY, SHERIF			
16:33		5-5	T	GOOD! LAYUP by MOORE, JUSTIN
16:08	MISSED 3PTR by BEATTY, DAVID			
16:04	REBOUND (OFF) by TEAM			
16:04				SUB OUT: ROBINSON-EARL, JEREMIAH
16:04				SUB IN: COSBY-ROUNDTREE, DHAMIR
15:52	GOOD! LAYUP by KIMBROUGH, JARED	5-7	V 2	
15:38				MISSED LAYUP by MOORE, JUSTIN
15:36				REBOUND (OFF) by MOORE, JUSTIN
15:36		7-7	T	GOOD! JUMPER by MOORE, JUSTIN
15:36	FOUL (PERSONAL) by KIMBROUGH, JARED			
15:36				SUB OUT: SWIDER, COLE
15:36				SUB IN: SAMUELS, JERMAINE
15:36	SUB OUT: KIMBROUGH, JARED			
15:36	SUB IN: STONE, BRANDON			
15:36				MISSED FT by MOORE, JUSTIN
15:36	REBOUND (DEF) by DEAS, ISIAH			
15:12	TURNOVER (BADPASS) by KENNEY, SHERIF			
15:12				STEAL by MOORE, JUSTIN
15:06				MISSED 3PTR by SAMUELS, JERMAINE
15:01	REBOUND (DEF) by PHIRI, SAUL			
14:59	GOOD! 3PTR by BEATTY, DAVID [FB]	7-10	V 3	
14:59	ASSIST by DEAS, ISIAH			
14:39				MISSED LAYUP by MOORE, JUSTIN
14:36				REBOUND (OFF) by COSBY-ROUNDTREE, DHAMIR
14:36				MISSED LAYUP by COSBY-ROUNDTREE, DHAMIR
14:36	BLOCK by STONE, BRANDON			
14:36				REBOUND (OFF) by COSBY-ROUNDTREE, DHAMIR
14:36	FOUL (PERSONAL) by PHIRI, SAUL			
14:36				SUB OUT: COSBY-ROUNDTREE, DHAMIR
14:36				SUB IN: ROBINSON-EARL, JEREMIAH
14:36	SUB OUT: DEAS, ISIAH			
14:36	SUB IN: SPENCER, SCOTT			
14:28				MISSED DUNK by ROBINSON-EARL, JEREMIAH
14:28	BLOCK by STONE, BRANDON			
14:23	REBOUND (DEF) by PHIRI, SAUL			
14:19	GOOD! 3PTR by BEATTY, DAVID	7-13	V 6	
14:19	ASSIST by SPENCER, SCOTT			
14:02				TURNOVER (TRAVEL) by ROBINSON-EARL, JEREMIAH
13:37	MISSED LAYUP by KENNEY, SHERIF			
13:34				REBOUND (DEF) by MOORE, JUSTIN

Time	VISITORS: La Salle	Score	Margin	HOME: Villanova
13:29		10-13	V 3	GOOD! 3PTR by MOORE , JUSTIN
13:29				ASSIST by SAMUELS, JERMAINE
13:09				FOUL (PERSONAL) by ROBINSON-EARL, JEREMIAH
13:09	MISSED FT by BEATTY, DAVID			
13:09	REBOUND (OFF) by TEAM			
13:09				SUB OUT: MOORE , JUSTIN
13:09				SUB OUT: ROBINSON-EARL, JEREMIAH
13:09				SUB IN: SLATER, BRANDON
13:09				SUB IN: SWIDER, COLE
13:09	SUB OUT: PHIRI, SAUL			
13:09	SUB OUT: STONE, BRANDON			
13:09	SUB IN: RAY, CHRISTIAN			
13:09	SUB IN: DEAS, ISIAH			
13:09	GOOD! FT by BEATTY, DAVID	10-14	V 4	
13:09	SUB OUT: BEATTY, DAVID			
13:09	SUB IN: CROSWELL, ED			
12:57				MISSED 3PTR by BEY, SADDIQ
12:54	REBOUND (DEF) by RAY, CHRISTIAN			
12:50	MISSED 3PTR by KENNEY, SHERIF			
12:46				REBOUND (DEF) by GILLESPIE, COLLIN
12:40	FOUL (PERSONAL) by CROSWELL, ED			
12:40		11-14	V 3	GOOD! FT by SAMUELS, JERMAINE
12:40				SUB OUT: GILLESPIE, COLLIN
12:40				SUB OUT: BEY, SADDIQ
12:40				SUB IN: MOORE , JUSTIN
12:40				SUB IN: ROBINSON-EARL, JEREMIAH
12:40	SUB OUT: SPENCER, SCOTT			
12:40	SUB IN: PHIRI, SAUL			
12:40		12-14	V 2	GOOD! FT by SAMUELS, JERMAINE
12:31	TURNOVER (BADPASS) by DEAS, ISIAH			
12:31				STEAL by MOORE , JUSTIN
12:27		14-14	T	GOOD! DUNK by MOORE , JUSTIN [FB]
12:15	MISSED 3PTR by PHIRI, SAUL			
12:11				REBOUND (DEF) by SAMUELS, JERMAINE
12:05		17-14	H 3	GOOD! 3PTR by SWIDER, COLE
12:05				ASSIST by SAMUELS, JERMAINE
11:50				
11:50	SUB OUT: DEAS, ISIAH			
11:50	SUB IN: BEATTY, DAVID			
11:31	MISSED 3PTR by PHIRI, SAUL			
11:27				REBOUND (DEF) by SAMUELS, JERMAINE
11:22	FOUL (PERSONAL) by KENNEY, SHERIF			
11:22		18-14	H 4	GOOD! FT by MOORE , JUSTIN
11:22	SUB OUT: RAY, CHRISTIAN			
11:22	SUB IN: SPENCER, SCOTT			
11:22		19-14	H 5	GOOD! FT by MOORE , JUSTIN
11:06				FOUL (PERSONAL) by SWIDER, COLE
11:06				SUB OUT: SLATER, BRANDON
11:06				SUB OUT: SWIDER, COLE
11:06				SUB IN: GILLESPIE, COLLIN
11:06				SUB IN: BEY, SADDIQ
10:48	MISSED LAYUP by KENNEY, SHERIF			
10:48				BLOCK by ROBINSON-EARL, JEREMIAH
10:44				REBOUND (DEF) by ROBINSON-EARL, JEREMIAH
10:44		21-14	H 7	GOOD! LAYUP by SAMUELS, JERMAINE [FB]
10:44				ASSIST by MOORE , JUSTIN
10:44	FOUL (PERSONAL) by BEATTY, DAVID			
10:44		22-14	H 8	GOOD! FT by SAMUELS, JERMAINE [FB]
10:44				SUB OUT: MOORE , JUSTIN
10:44				SUB IN: ANTOINE, BRYAN
10:21	MISSED LAYUP by BEATTY, DAVID			
10:21				BLOCK by BEY, SADDIQ
10:17				REBOUND (DEF) by BEY, SADDIQ
10:10				MISSED 3PTR by SAMUELS, JERMAINE
10:06	REBOUND (DEF) by PHIRI, SAUL			
09:54	TURNOVER (LOSTBALL) by PHIRI, SAUL			
09:54				STEAL by ANTOINE, BRYAN
09:54	SUB OUT: BEATTY, DAVID			
09:54	SUB OUT: PHIRI, SAUL			
09:54	SUB IN: HIKIM, AYINDE			
09:54	SUB IN: DEAS, ISIAH			
09:54				SUB OUT: SAMUELS, JERMAINE
09:54				SUB IN: MOORE , JUSTIN
09:34		24-14	H 10	GOOD! LAYUP by ANTOINE, BRYAN
09:34				ASSIST by ROBINSON-EARL, JEREMIAH
09:32	TIMEOUT 30SEC			
09:32	SUB OUT: SPENCER, SCOTT			
09:32	SUB IN: PHIRI, SAUL			
09:32	SUB OUT: KENNEY, SHERIF			
09:32	SUB IN: SPENCER, SCOTT			

Time	VISITORS: La Salle	Score	Margin	HOME: Villanova
09:22	GOOD! 3PTR by PHIRI, SAUL	24-17	H 7	
09:22	ASSIST by HIKIM, AYINDE			
09:03				MISSED LAYUP by MOORE , JUSTIN
09:03	BLOCK by PHIRI, SAUL			
09:02				REBOUND (OFF) by TEAM
09:02	SUB OUT: CROSWELL, ED			
09:02	SUB IN: STONE, BRANDON			
08:57	FOUL (PERSONAL) by STONE, BRANDON			
08:57		25-17	H 8	GOOD! FT by BEY, SADDIQ
08:57				SUB OUT: ROBINSON-EARL, JEREMIAH
08:57				SUB IN: COSBY-ROUNDTREE, DHAMIR
08:57		26-17	H 9	GOOD! FT by BEY, SADDIQ
08:42	MISSED 3PTR by DEAS, ISIAH			
08:39	REBOUND (OFF) by STONE, BRANDON			
08:39				SUB OUT: COSBY-ROUNDTREE, DHAMIR
08:39				SUB IN: SAMUELS, JERMAINE
08:24	GOOD! 3PTR by SPENCER, SCOTT	26-20	H 6	
08:24	ASSIST by HIKIM, AYINDE			
08:02		28-20	H 8	GOOD! LAYUP by MOORE , JUSTIN
07:44	TURNOVER (LOSTBALL) by STONE, BRANDON			
07:44				
07:44	SUB OUT: DEAS, ISIAH			
07:44	SUB IN: BEATTY, DAVID			
07:44				SUB OUT: ANTOINE, BRYAN
07:44				SUB IN: ROBINSON-EARL, JEREMIAH
07:30		30-20	H 10	GOOD! DUNK by ROBINSON-EARL, JEREMIAH
07:30				ASSIST by GILLESPIE, COLLIN
07:06	MISSED 3PTR by BEATTY, DAVID			
07:02				REBOUND (DEF) by SAMUELS, JERMAINE
06:59	FOUL (PERSONAL) by HIKIM, AYINDE			
06:59		31-20	H 11	GOOD! FT by GILLESPIE, COLLIN [FB]
06:59				SUB OUT: SAMUELS, JERMAINE
06:59				SUB IN: SLATER, BRANDON
06:59		32-20	H 12	GOOD! FT by GILLESPIE, COLLIN [FB]
06:59				SUB OUT: GILLESPIE, COLLIN
06:59				SUB IN: ANTOINE, BRYAN
06:56				FOUL (PERSONAL) by ANTOINE, BRYAN
06:49	TURNOVER (BADPASS) by BEATTY, DAVID			
06:49				STEAL by ROBINSON-EARL, JEREMIAH
06:45		34-20	H 14	GOOD! DUNK by ROBINSON-EARL, JEREMIAH [FB]
06:18	MISSED JUMPER by HIKIM, AYINDE			
06:15				REBOUND (DEF) by BEY, SADDIQ
06:08		36-20	H 16	GOOD! DUNK by BEY, SADDIQ
06:08				ASSIST by ANTOINE, BRYAN
06:07	TIMEOUT 30SEC			
06:07	SUB OUT: HIKIM, AYINDE			
06:07	SUB OUT: STONE, BRANDON			
06:07	SUB IN: RAY, CHRISTIAN			
06:07	SUB IN: KENNEY, SHERIF			
05:40	MISSED JUMPER by KENNEY, SHERIF			
05:36				REBOUND (DEF) by SLATER, BRANDON
05:34				FOUL (OFF) by BEY, SADDIQ
05:34				TURNOVER (OFFENSIVE) by BEY, SADDIQ
05:34				SUB OUT: BEY, SADDIQ
05:34				SUB IN: SWIDER, COLE
05:34	SUB OUT: RAY, CHRISTIAN			
05:34	SUB IN: CROSWELL, ED			
05:14	TURNOVER (BADPASS) by KENNEY, SHERIF			
05:14				STEAL by SWIDER, COLE
05:01		38-20	H 18	GOOD! LAYUP by SWIDER, COLE
04:29				FOUL (PERSONAL) by ANTOINE, BRYAN
04:29				SUB OUT: ANTOINE, BRYAN
04:29				SUB OUT: ROBINSON-EARL, JEREMIAH
04:29				SUB IN: GILLESPIE, COLLIN
04:29				SUB IN: COSBY-ROUNDTREE, DHAMIR
04:29	SUB OUT: SPENCER, SCOTT			
04:29	SUB IN: RAY, CHRISTIAN			
04:19	MISSED DUNK by CROSWELL, ED			
04:19				BLOCK by SLATER, BRANDON
04:15				REBOUND (DEF) by COSBY-ROUNDTREE, DHAMIR
04:10				MISSED JUMPER by GILLESPIE, COLLIN
04:10	BLOCK by PHIRI, SAUL			
04:04				REBOUND (OFF) by GILLESPIE, COLLIN
03:52				MISSED 3PTR by MOORE , JUSTIN
03:50	REBOUND (DEF) by CROSWELL, ED			
03:49				FOUL (PERSONAL) by SWIDER, COLE
03:49				
03:49				SUB OUT: MOORE , JUSTIN
03:49				SUB IN: SAMUELS, JERMAINE
03:49	SUB OUT: RAY, CHRISTIAN			

Time	VISITORS: La Salle	Score	Margin	HOME: Villanova
03:49	SUB IN: DEAS, ISIAH			
03:31	GOOD! JUMPER by DEAS, ISIAH	38-22	H 16	
03:15				TURNOVER (TRAVEL) by COSBY-ROUNDTREE, DHAMIR
02:56	MISSED JUMPER by PHIRI, SAUL			
02:56	REBOUND (OFF) by TEAM			
02:56				SUB OUT: SLATER, BRANDON
02:56				SUB OUT: SWIDER, COLE
02:56				SUB OUT: COSBY-ROUNDTREE, DHAMIR
02:56				SUB IN: MOORE, JUSTIN
02:56				SUB IN: ROBINSON-EARL, JEREMIAH
02:56				SUB IN: BEY, SADDIQ
02:53	TURNOVER (LOSTBALL) by BEATTY, DAVID			
02:53				STEAL by MOORE, JUSTIN
02:46		40-22	H 18	GOOD! LAYUP by MOORE, JUSTIN [FB]
02:27	GOOD! JUMPER by CROSWELL, ED [PNT]	40-24	H 16	
02:27	ASSIST by PHIRI, SAUL			
02:13		43-24	H 19	GOOD! 3PTR by GILLESPIE, COLLIN
02:13				ASSIST by MOORE, JUSTIN
01:51	MISSED LAYUP by DEAS, ISIAH			
01:51				BLOCK by ROBINSON-EARL, JEREMIAH
01:51	REBOUND (OFF) by TEAM			
01:37	TURNOVER (SHOTCLOCK) by TEAM			
01:37				SUB OUT: SAMUELS, JERMAINE
01:37				SUB IN: SLATER, BRANDON
01:18				TURNOVER (LOSTBALL) by MOORE, JUSTIN
01:18	STEAL by KENNEY, SHERIF			
01:13	GOOD! LAYUP by DEAS, ISIAH [FB]	43-26	H 17	
01:13	ASSIST by KENNEY, SHERIF			
01:01				MISSED JUMPER by GILLESPIE, COLLIN
00:58	REBOUND (DEF) by CROSWELL, ED			
00:58				FOUL (PERSONAL) by GILLESPIE, COLLIN
00:58				SUB OUT: GILLESPIE, COLLIN
00:58				SUB IN: ANTOINE, BRYAN
00:58	SUB OUT: KENNEY, SHERIF			
00:58	SUB OUT: DEAS, ISIAH			
00:58	SUB IN: SPENCER, SCOTT			
00:58	SUB IN: RAY, CHRISTIAN			
00:58	MISSED FT by CROSWELL, ED			
00:57				REBOUND (DEF) by ROBINSON-EARL, JEREMIAH
00:46	FOUL (PERSONAL) by CROSWELL, ED			
00:46	SUB OUT: CROSWELL, ED			
00:46	SUB IN: DEAS, ISIAH			
00:46		44-26	H 18	GOOD! FT by ROBINSON-EARL, JEREMIAH
00:46		45-26	H 19	GOOD! FT by ROBINSON-EARL, JEREMIAH
00:30	GOOD! JUMPER by SPENCER, SCOTT [PNT]	45-28	H 17	
00:19				TURNOVER (TRAVEL) by MOORE, JUSTIN
00:09	MISSED LAYUP by DEAS, ISIAH			
00:09				BLOCK by BEY, SADDIQ
00:06				REBOUND (DEF) by TEAM
00:06				TIMEOUT 30SEC
00:06				SUB OUT: SLATER, BRANDON
00:06				SUB IN: SWIDER, COLE
00:06				SUB OUT: ANTOINE, BRYAN
00:06				SUB IN: GILLESPIE, COLLIN
00:01	FOUL (PERSONAL) by PHIRI, SAUL			
00:01		46-28	H 18	GOOD! FT by BEY, SADDIQ [FB]
00:01		47-28	H 19	GOOD! FT by BEY, SADDIQ [FB]
00:01				SUB OUT: GILLESPIE, COLLIN
00:01				SUB OUT: SWIDER, COLE
00:01				SUB IN: SLATER, BRANDON
00:01				SUB IN: COSBY-ROUNDTREE, DHAMIR
00:01	SUB OUT: PHIRI, SAUL			
00:01	SUB IN: CROSWELL, ED			
00:01		48-28	H 20	GOOD! FT by BEY, SADDIQ [FB]
00:01				SUB OUT: BEY, SADDIQ
00:01				SUB IN: ANTOINE, BRYAN

La Salle 28, Villanova 48

Points from (This Period)	LAS	VIL
In the Paint	12	20
Off Turns	4	14
2nd Chance	7	4
Fast Break	5	14
Bench	2	17

Official Box Score
La Salle vs Villanova
Second Half Statistics Only
December 01, 2019 at Finneran Pavilion - Bryn Mawr



La Salle 44

No.	Player	S	Pts	FG	3FG	FT	OR	DR	TR	PF	A	TO	Blk	Stl	Min	+/-
01	BEATTY, DAVID	G	5	2-8	1-4	0-0	1	0	1	4	0	0	0	1	17	10
02	SPENCER, SCOTT	G	3	1-2	1-2	0-0	2	2	4	1	0	2	0	0	10	7
10	DEAS, ISIAH	G	2	1-3	0-1	0-0	0	0	0	0	0	0	0	0	6	-1
11	CROSWELL, ED	F	10	4-6	0-0	2-2	3	4	7	1	0	0	0	1	17	1
13	PHIRI, SAUL	G	3	1-5	1-2	0-0	0	1	1	1	3	3	0	3	15	5
00	HIKIM, AYINDE	G	9	2-4	1-3	4-4	0	0	0	4	3	2	0	0	7	6
03	RAY, CHRISTIAN	G	5	2-4	1-1	0-1	1	1	2	3	0	1	1	1	14	3
04	KENNEY, SHERIF	G	7	2-3	1-1	2-3	0	1	1	0	3	1	0	1	10	8
14	LAFOND, ANDREW	G	0	0-0	0-0	0-0	0	0	0	0	0	0	0	0	0	-2
23	STONE, BRANDON	F	0	0-0	0-0	0-0	0	0	0	0	0	0	0	0	1	4
24	KIMBROUGH, JARED	F	0	0-1	0-0	0-0	0	0	0	0	0	0	1	0	2	4
	TEAM						4	0	4	0		0				
TOTALS			44	15-36	6-14	8-10	11	9	20	14	9	9	2	7	100	

Shooting By Period

Period	FG	FG%	3FG	3FG%	FT	FT%
2nd Half	15-36	42%	6-14	43%	8-10	80%
Game	26-66	39.4%	11-26	42.3%	9-13	69.2%

Deadball Rebounds: 1,0
Last FG Half: LAS -

Villanova 35

No.	Player	S	Pts	FG	3FG	FT	OR	DR	TR	PF	A	TO	Blk	Stl	Min	+/-
02	GILLESPIE, COLLIN	G	6	1-4	0-1	4-6	0	1	1	2	2	0	0	1	17	-1
10	SWIDER, COLE	F	0	0-0	0-0	0-0	0	0	0	2	0	1	0	0	3	3
23	SAMUELS, JERMAINE	F	1	0-3	0-1	1-3	1	0	1	0	3	4	1	2	13	-10
24	ROBINSON-EARL, JEREMIAH	F	2	1-3	0-0	0-0	1	5	6	0	0	2	1	0	15	-4
41	BEY, SADDIQ	F	12	5-8	1-2	1-2	4	4	8	1	1	1	1	0	18	-4
01	ANTOINE, BRYAN	G	0	0-1	0-1	0-0	0	0	0	0	0	0	0	0	6	-7
03	SLATER, BRANDON	F	2	1-1	0-0	0-0	0	1	1	2	1	1	0	0	9	-12
05	MOORE, JUSTIN	G	10	3-5	1-2	3-4	0	1	1	1	1	3	0	2	15	-6
21	COSBY-ROUNDTREE, DHAMIF	F	2	1-1	0-0	0-0	0	0	0	1	0	0	0	0	4	-4
	TEAM						1	0	1	0		2				
TOTALS			35	12-26	2-7	9-15	7	12	19	9	8	14	3	5	100	

Shooting By Period

Period	FG	FG%	3FG	3FG%	FT	FT%
2nd Half	12-26	46%	2-7	29%	9-15	60%
Game	27-55	49.1%	6-16	37.5%	23-30	76.7%

Deadball Rebounds: 4,0
Last FG Half: VIL -

Game Notes:

Officials: Mike Stephens, Mike Roberts, Matt Potter
 Attendance: 6501

Start Time: 06:31 PM ET
 End Time: 08:51 PM ET
 Game Duration: 2:20

Score	1st	2nd	TOT
LAS	28	44	72
VIL	48	35	83

Points from (This Period)	LAS	VIL
In the Paint	18	20
Off Turns	14	7
2nd Chance	9	6
Fast Break	11	8
Bench	21	14

Official Play-By-Play
La Salle vs Villanova
Second Half
December 01, 2019 at Finneran Pavilion - Bryn Mawr



Period 2

Starters:

La Salle: 1 BEATTY, DAVID (G); 2 SPENCER, SCOTT (G); 10 DEAS, ISIAH (G); 11 CROSWELL, ED (F); 13 PHIRI, SAUL (G);
Villanova: 2 GILLESPIE, COLLIN (G); 10 SWIDER, COLE (F); 23 SAMUELS, JERMAINE (F); 24 ROBINSON-EARL, JEREMIAH (F); 41 BEY, SADDIQ (F);

Time	VISITORS: La Salle	Score	Margin	HOME: Villanova
20:00				SUB OUT: ANTOINE, BRYAN
20:00				SUB OUT: SLATER, BRANDON
20:00				SUB OUT: COSBY-ROUNDTREE, DHAMIR
20:00				SUB IN: GILLESPIE, COLLIN
20:00				SUB IN: SAMUELS, JERMAINE
20:00				SUB IN: BEY, SADDIQ
20:00	SUB OUT: RAY, CHRISTIAN			
20:00	SUB IN: PHIRI, SAUL			
19:36	GOOD! LAYUP by DEAS, ISIAH	48-30	H 18	
19:12				TURNOVER (LOSTBALL) by SAMUELS, JERMAINE
19:12	STEAL by PHIRI, SAUL			
18:55	MISSED LAYUP by BEATTY, DAVID			
18:52	REBOUND (OFF) by CROSWELL, ED			
18:46	MISSED 3PTR by DEAS, ISIAH			
18:42				REBOUND (DEF) by ROBINSON-EARL, JEREMIAH
18:36				MISSED JUMPER by ROBINSON-EARL, JEREMIAH
18:32				REBOUND (OFF) by ROBINSON-EARL, JEREMIAH
18:24		50-30	H 20	GOOD! LAYUP by GILLESPIE, COLLIN
18:24				ASSIST by SAMUELS, JERMAINE
17:55	GOOD! LAYUP by CROSWELL, ED	50-32	H 18	
17:41				MISSED 3PTR by GILLESPIE, COLLIN
17:37	REBOUND (DEF) by CROSWELL, ED			
17:18	MISSED LAYUP by DEAS, ISIAH			
17:15				REBOUND (DEF) by BEY, SADDIQ
17:10				MISSED LAYUP by GILLESPIE, COLLIN
17:07	REBOUND (DEF) by CROSWELL, ED			
16:53	TURNOVER (BADPASS) by PHIRI, SAUL			
16:53				STEAL by MOORE, JUSTIN
16:47				MISSED JUMPER by MOORE, JUSTIN
16:44	REBOUND (DEF) by CROSWELL, ED			
16:41	MISSED 3PTR by SPENCER, SCOTT			
16:36				REBOUND (DEF) by ROBINSON-EARL, JEREMIAH
16:16				TURNOVER (BADPASS) by ROBINSON-EARL, JEREMIAH
16:16				FOUL (PERSONAL) by GILLESPIE, COLLIN
16:16				SUB OUT: GILLESPIE, COLLIN
16:16				SUB OUT: SAMUELS, JERMAINE
16:16				SUB IN: ANTOINE, BRYAN
16:16				SUB IN: SWIDER, COLE
16:16	SUB OUT: SPENCER, SCOTT			
16:16	SUB OUT: DEAS, ISIAH			
16:16	SUB IN: RAY, CHRISTIAN			
16:16	SUB IN: KENNEY, SHERIF			
15:58	MISSED LAYUP by CROSWELL, ED			
15:58				BLOCK by ROBINSON-EARL, JEREMIAH
15:57	REBOUND (OFF) by TEAM			
15:56				
16:16	STEAL by BEATTY, DAVID			
15:56				SUB OUT: SWIDER, COLE
15:56				SUB IN: SLATER, BRANDON
15:54	GOOD! LAYUP by RAY, CHRISTIAN	50-34	H 16	
15:54	ASSIST by KENNEY, SHERIF			
15:31				TURNOVER (TRAVEL) by MOORE, JUSTIN
15:31				SUB OUT: MOORE, JUSTIN
15:31				SUB IN: GILLESPIE, COLLIN
15:07	GOOD! JUMPER by CROSWELL, ED	50-36	H 14	
15:07	ASSIST by PHIRI, SAUL			
14:35				TURNOVER (BADPASS) by SLATER, BRANDON
14:35				SUB OUT: ANTOINE, BRYAN
14:35				SUB OUT: SLATER, BRANDON
14:35				SUB IN: SWIDER, COLE
14:35				SUB IN: SAMUELS, JERMAINE
14:24				FOUL (PERSONAL) by SWIDER, COLE
14:18	MISSED LAYUP by PHIRI, SAUL			
14:17				REBOUND (DEF) by ROBINSON-EARL, JEREMIAH
14:17	FOUL (PERSONAL) by CROSWELL, ED			
14:07				MISSED JUMPER by GILLESPIE, COLLIN
14:04	REBOUND (DEF) by RAY, CHRISTIAN			
13:59	MISSED 3PTR by BEATTY, DAVID			
13:57	REBOUND (OFF) by CROSWELL, ED			
13:57				FOUL (PERSONAL) by SWIDER, COLE

Time	VISITORS: La Salle	Score	Margin	HOME: Villanova
13:57				SUB OUT: SWIDER, COLE
13:57				SUB IN: MOORE , JUSTIN
13:57	SUB OUT: CROSWELL, ED			
13:57	SUB IN: KIMBROUGH, JARED			
13:47	GOOD! JUMPER by KENNEY, SHERIF [PNT]	50-38	H 12	
13:32				TURNOVER (TRAVEL) by ROBINSON-EARL, JEREMIAH
13:17	MISSED LAYUP by KENNEY, SHERIF			
13:17				BLOCK by SAMUELS, JERMAINE
13:13				REBOUND (DEF) by ROBINSON-EARL, JEREMIAH
13:11				MISSED LAYUP by SAMUELS, JERMAINE
13:11	BLOCK by KIMBROUGH, JARED			
13:07	REBOUND (DEF) by PHIRI, SAUL			
13:05	GOOD! DUNK by BEATTY, DAVID [FB]	50-40	H 10	
13:05	ASSIST by PHIRI, SAUL			
13:05				TIMEOUT 30SEC
12:42				MISSED 3PTR by SAMUELS, JERMAINE
12:38				REBOUND (OFF) by SAMUELS, JERMAINE
12:35				MISSED LAYUP by SAMUELS, JERMAINE
12:35	BLOCK by RAY, CHRISTIAN			
12:33				REBOUND (OFF) by TEAM
12:33				TURNOVER (5SEC) by TEAM
12:05	MISSED LAYUP by KIMBROUGH, JARED			
12:02				REBOUND (DEF) by BEY, SADDIQ
11:53	FOUL (PERSONAL) by RAY, CHRISTIAN			
11:53				
11:53	SUB OUT: KIMBROUGH, JARED			
11:53	SUB IN: CROSWELL, ED			
11:48		53-40	H 13	GOOD! 3PTR by MOORE , JUSTIN
11:48				ASSIST by BEY, SADDIQ
11:20	MISSED LAYUP by BEATTY, DAVID			
11:18	REBOUND (OFF) by BEATTY, DAVID			
11:16	MISSED LAYUP by BEATTY, DAVID			
11:13	REBOUND (OFF) by RAY, CHRISTIAN			
11:13	MISSED LAYUP by RAY, CHRISTIAN			
11:13	REBOUND (OFF) by TEAM			
11:10	MISSED 3PTR by BEATTY, DAVID			
11:06				REBOUND (DEF) by MOORE , JUSTIN
10:57		55-40	H 15	GOOD! LAYUP by MOORE , JUSTIN
10:24	MISSED LAYUP by PHIRI, SAUL			
10:21				REBOUND (DEF) by BEY, SADDIQ
10:18				TURNOVER (BADPASS) by BEY, SADDIQ
10:18				SUB OUT: SAMUELS, JERMAINE
10:18				SUB IN: SLATER, BRANDON
10:18	SUB OUT: KENNEY, SHERIF			
10:18	SUB OUT: PHIRI, SAUL			
10:18	SUB IN: HIKIM, AYINDE			
10:18	SUB IN: DEAS, ISIAH			
10:18				SUB OUT: MOORE , JUSTIN
10:18				SUB OUT: ROBINSON-EARL, JEREMIAH
10:18				SUB IN: ANTOINE, BRYAN
10:18				SUB IN: COSBY-ROUNDTREE, DHAMIR
10:04	GOOD! LAYUP by CROSWELL, ED	55-42	H 13	
10:04	ASSIST by HIKIM, AYINDE			
09:37				MISSED 3PTR by ANTOINE, BRYAN
09:33				REBOUND (OFF) by BEY, SADDIQ
09:29		57-42	H 15	GOOD! LAYUP by BEY, SADDIQ
09:13	GOOD! LAYUP by CROSWELL, ED	57-44	H 13	
09:13	ASSIST by HIKIM, AYINDE			
08:55		60-44	H 16	GOOD! 3PTR by BEY, SADDIQ
08:55				ASSIST by GILLESPIE, COLLIN
08:42	TURNOVER (BADPASS) by HIKIM, AYINDE			
08:42				SUB OUT: COSBY-ROUNDTREE, DHAMIR
08:42				SUB IN: SAMUELS, JERMAINE
08:42	SUB OUT: BEATTY, DAVID			
08:42	SUB IN: PHIRI, SAUL			
08:23		62-44	H 18	GOOD! LAYUP by BEY, SADDIQ
08:10	MISSED LAYUP by RAY, CHRISTIAN			
08:08	REBOUND (OFF) by CROSWELL, ED			
08:07	MISSED LAYUP by CROSWELL, ED			
08:05				REBOUND (DEF) by GILLESPIE, COLLIN
08:05	FOUL (PERSONAL) by HIKIM, AYINDE			
08:05				SUB OUT: GILLESPIE, COLLIN
08:05				SUB IN: MOORE , JUSTIN
08:05	SUB OUT: RAY, CHRISTIAN			
08:05	SUB OUT: DEAS, ISIAH			
08:05	SUB IN: BEATTY, DAVID			
08:05	SUB IN: SPENCER, SCOTT			
07:52				TURNOVER (LOSTBALL) by MOORE , JUSTIN
07:52	STEAL by PHIRI, SAUL			
07:44				

Time	VISITORS: La Salle	Score	Margin	HOME: Villanova
07:44	SUB OUT: PHIRI, SAUL			
07:44	SUB IN: KENNEY, SHERIF			
07:32	GOOD! 3PTR by SPENCER, SCOTT	62-47	H 15	
07:32	ASSIST by HIKIM, AYINDE			
07:24				TURNOVER (5SEC) by TEAM
07:24				SUB OUT: ANTOINE, BRYAN
07:24				SUB OUT: BEY, SADDIQ
07:24				SUB IN: GILLESPIE, COLLIN
07:24				SUB IN: ROBINSON-EARL, JEREMIAH
07:14				FOUL (PERSONAL) by SLATER, BRANDON
07:14	GOOD! FT by KENNEY, SHERIF	62-48	H 14	
07:14	GOOD! FT by KENNEY, SHERIF	62-49	H 13	
07:00	FOUL (PERSONAL) by SPENCER, SCOTT			
07:00				MISSED FT by GILLESPIE, COLLIN
07:00				REBOUND (OFF) by TEAM
07:00		63-49	H 14	GOOD! FT by GILLESPIE, COLLIN
06:52	TURNOVER (LOSTBALL) by KENNEY, SHERIF			
06:52				STEAL by SAMUELS, JERMAINE
06:48		65-49	H 16	GOOD! LAYUP by SLATER, BRANDON [FB]
06:48				ASSIST by SAMUELS, JERMAINE
06:48	SUB OUT: KENNEY, SHERIF			
06:48	SUB IN: PHIRI, SAUL			
06:36				FOUL (PERSONAL) by GILLESPIE, COLLIN
06:36	GOOD! FT by HIKIM, AYINDE	65-50	H 15	
06:36	GOOD! FT by HIKIM, AYINDE	65-51	H 14	
06:36				SUB OUT: SLATER, BRANDON
06:36				SUB IN: BEY, SADDIQ
06:29		67-51	H 16	GOOD! LAYUP by ROBINSON-EARL, JEREMIAH [FB]
06:29				ASSIST by GILLESPIE, COLLIN
06:02				FOUL (PERSONAL) by MOORE , JUSTIN
06:02	GOOD! FT by HIKIM, AYINDE	67-52	H 15	
06:02				SUB OUT: MOORE , JUSTIN
06:02				SUB IN: SLATER, BRANDON
06:02	GOOD! FT by HIKIM, AYINDE	67-53	H 14	
05:57	FOUL (PERSONAL) by BEATTY, DAVID			
05:57	FOUL (PERSONAL) by HIKIM, AYINDE			
05:41	FOUL (PERSONAL) by HIKIM, AYINDE			
05:41	SUB OUT: HIKIM, AYINDE			
05:41	SUB IN: RAY, CHRISTIAN			
05:41				MISSED FT by SAMUELS, JERMAINE
05:39	REBOUND (DEF) by CROSWELL, ED			
05:34	GOOD! 3PTR by PHIRI, SAUL	67-56	H 11	
05:17				TURNOVER (BADPASS) by SAMUELS, JERMAINE
05:17	STEAL by CROSWELL, ED			
05:10	MISSED 3PTR by BEATTY, DAVID			
05:06				REBOUND (DEF) by SLATER, BRANDON
04:59	FOUL (PERSONAL) by BEATTY, DAVID			
04:59				SUB OUT: SAMUELS, JERMAINE
04:59				SUB IN: MOORE , JUSTIN
04:59	FOUL (TECH) by BEATTY, DAVID			
04:59	SUB OUT: BEATTY, DAVID			
04:59	SUB IN: KENNEY, SHERIF			
04:59				MISSED FT by GILLESPIE, COLLIN
04:59				REBOUND (OFF) by TEAM
04:59		68-56	H 12	GOOD! FT by GILLESPIE, COLLIN
04:59		69-56	H 13	GOOD! FT by GILLESPIE, COLLIN
04:59		70-56	H 14	GOOD! FT by GILLESPIE, COLLIN
04:46	MISSED 3PTR by PHIRI, SAUL			
04:43	REBOUND (OFF) by SPENCER, SCOTT			
04:41	TURNOVER (BADPASS) by SPENCER, SCOTT			
04:41				STEAL by GILLESPIE, COLLIN
04:34				MISSED 3PTR by BEY, SADDIQ
04:29	REBOUND (DEF) by SPENCER, SCOTT			
04:26	GOOD! 3PTR by KENNEY, SHERIF [FB]	70-59	H 11	
04:26	ASSIST by PHIRI, SAUL			
03:55				MISSED 3PTR by MOORE , JUSTIN
03:49				REBOUND (OFF) by BEY, SADDIQ
03:49				MISSED LAYUP by BEY, SADDIQ
03:49				REBOUND (OFF) by BEY, SADDIQ
03:47				MISSED LAYUP by BEY, SADDIQ
03:44	REBOUND (DEF) by SPENCER, SCOTT			
03:42				
03:42				SUB OUT: SLATER, BRANDON
03:42				SUB OUT: ROBINSON-EARL, JEREMIAH
03:42				SUB IN: SWIDER, COLE
03:42				SUB IN: COSBY-ROUNDTREE, DHAMIR
03:42	SUB OUT: SPENCER, SCOTT			
03:42	SUB IN: HIKIM, AYINDE			
03:31				FOUL (PERSONAL) by BEY, SADDIQ
03:31	MISSED FT by KENNEY, SHERIF			

Time	VISITORS: La Salle	Score	Margin	HOME: Villanova
03:30				REBOUND (DEF) by BEY, SADDIQ
03:10	FOUL (PERSONAL) by RAY, CHRISTIAN			
03:10				MISSED FT by MOORE , JUSTIN
03:10				REBOUND (OFF) by TEAM
03:10		71-59	H 12	GOOD! FT by MOORE , JUSTIN
03:01	MISSED 3PTR by HIKIM, AYINDE			
03:01				BLOCK by BEY, SADDIQ
02:59	REBOUND (OFF) by TEAM			
02:56				FOUL (PERSONAL) by COSBY-ROUNDTREE, DHAMIR
02:56	GOOD! FT by CROSWELL, ED	71-60	H 11	
02:56	SUB OUT: HIKIM, AYINDE			
02:56	SUB OUT: KENNEY, SHERIF			
02:56	SUB IN: BEATTY, DAVID			
02:56	SUB IN: SPENCER, SCOTT			
02:56	GOOD! FT by CROSWELL, ED	71-61	H 10	
02:56				SUB OUT: COSBY-ROUNDTREE, DHAMIR
02:56				SUB IN: ROBINSON-EARL, JEREMIAH
02:55				TURNOVER (BADPASS) by MOORE , JUSTIN
02:55	STEAL by PHIRI, SAUL			
02:45	TURNOVER (TRAVEL) by PHIRI, SAUL			
02:45				TIMEOUT 30SEC
02:36		73-61	H 12	GOOD! DUNK by BEY, SADDIQ
02:36				ASSIST by MOORE , JUSTIN
02:24	MISSED JUMPER by PHIRI, SAUL			
02:21				REBOUND (DEF) by ROBINSON-EARL, JEREMIAH
02:11				MISSED JUMPER by ROBINSON-EARL, JEREMIAH
02:01				REBOUND (OFF) by BEY, SADDIQ
02:01		75-61	H 14	GOOD! LAYUP by BEY, SADDIQ
02:00	SUB OUT: PHIRI, SAUL			
02:00	SUB IN: HIKIM, AYINDE			
01:44				TURNOVER (TRAVEL) by SWIDER, COLE
01:44				SUB OUT: SWIDER, COLE
01:44				SUB IN: SLATER, BRANDON
01:34	MISSED 3PTR by HIKIM, AYINDE			
01:31	REBOUND (OFF) by SPENCER, SCOTT			
01:24	TURNOVER (OTHER) by SPENCER, SCOTT			
01:24				SUB OUT: GILLESPIE, COLLIN
01:24				SUB IN: ANTOINE, BRYAN
01:24	SUB OUT: SPENCER, SCOTT			
01:24	SUB IN: KENNEY, SHERIF			
01:22	FOUL (PERSONAL) by RAY, CHRISTIAN			
01:22				MISSED FT by BEY, SADDIQ
01:22				REBOUND (OFF) by TEAM
01:22		76-61	H 15	GOOD! FT by BEY, SADDIQ [FB]
01:16				FOUL (PERSONAL) by SLATER, BRANDON
01:16				SUB OUT: BEY, SADDIQ
01:16				SUB IN: SAMUELS, JERMAINE
01:16	MISSED FT by RAY, CHRISTIAN			
01:15	REBOUND (OFF) by TEAM			
01:15				SUB OUT: ROBINSON-EARL, JEREMIAH
01:15				SUB IN: COSBY-ROUNDTREE, DHAMIR
01:15	SUB OUT: CROSWELL, ED			
01:15	SUB IN: STONE, BRANDON			
01:11	GOOD! 3PTR by BEATTY, DAVID	76-64	H 12	
00:56		78-64	H 14	GOOD! DUNK by COSBY-ROUNDTREE, DHAMIR
00:56				ASSIST by SLATER, BRANDON
00:49	GOOD! LAYUP by HIKIM, AYINDE	78-66	H 12	
00:48	FOUL (PERSONAL) by BEATTY, DAVID			
00:48	SUB OUT: BEATTY, DAVID			
00:48	SUB IN: SPENCER, SCOTT			
00:48		79-66	H 13	GOOD! FT by SAMUELS, JERMAINE [FB]
00:48				MISSED FT by SAMUELS, JERMAINE
00:47	REBOUND (DEF) by KENNEY, SHERIF			
00:43	GOOD! 3PTR by RAY, CHRISTIAN [FB]	79-69	H 10	
00:43	ASSIST by KENNEY, SHERIF			
00:32		81-69	H 12	GOOD! LAYUP by MOORE , JUSTIN
00:32				ASSIST by SAMUELS, JERMAINE
00:27	TURNOVER (LOSTBALL) by HIKIM, AYINDE			
00:27				STEAL by SAMUELS, JERMAINE
00:22				TURNOVER (BADPASS) by SAMUELS, JERMAINE
00:22	STEAL by RAY, CHRISTIAN			
00:16	TURNOVER (LOSTBALL) by RAY, CHRISTIAN			
00:16				STEAL by MOORE , JUSTIN
00:12				TURNOVER (LOSTBALL) by SAMUELS, JERMAINE
00:12	STEAL by KENNEY, SHERIF			
00:07	GOOD! 3PTR by HIKIM, AYINDE [FB]	81-72	H 9	
00:07	ASSIST by KENNEY, SHERIF			
00:06	FOUL (PERSONAL) by HIKIM, AYINDE			
00:06	SUB OUT: HIKIM, AYINDE			
00:06	SUB IN: LAFOND, ANDREW			

Time	VISITORS: La Salle	Score	Margin	HOME: Villanova
00:06		82-72	H 10	GOOD! FT by MOORE , JUSTIN [FB]
00:06		83-72	H 11	GOOD! FT by MOORE , JUSTIN [FB]
02:11	FOUL (OFF) by PHIRI, SAUL			
02:11	TURNOVER (OFFENSIVE) by PHIRI, SAUL			

La Salle 72, Villanova 83

Points from (This Period)	LAS	VIL
In the Paint	18	20
Off Turns	14	7
2nd Chance	9	6
Fast Break	11	8
Bench	21	14

Official Scoring/Possession Reference Chart
La Salle vs Villanova
Period 1
December 01, 2019 at Finneran Pavilion - Bryn Mawr



Period 1

Starters:

La Salle: 1 BEATTY, DAVID (G); 2 SPENCER, SCOTT (G); 10 DEAS, ISIAH (G); 11 CROSWELL, ED (F); 13 PHIRI, SAUL (G);
Villanova: 2 GILLESPIE, COLLIN (G); 10 SWIDER, COLE (F); 23 SAMUELS, JERMAINE (F); 24 ROBINSON-EARL, JEREMIAH (F); 41 BEY, SADDIQ (F);

Time	VISITORS: La Salle	Score	Margin	HOME: Villanova
19:08	GOOD! 3PTR by PHIRI, SAUL	0-3	V 3	
18:19	GOOD! LAYUP by CROSWELL, ED	0-5	V 5	
17:36		3-5	V 2	GOOD! 3PTR by GILLESPIE, COLLIN
16:33		5-5	T	GOOD! LAYUP by MOORE, JUSTIN
15:52	GOOD! LAYUP by KIMBROUGH, JARED	5-7	V 2	
15:36		7-7	T	GOOD! JUMPER by MOORE, JUSTIN
14:59	GOOD! 3PTR by BEATTY, DAVID [FB]	7-10	V 3	
14:19	GOOD! 3PTR by BEATTY, DAVID	7-13	V 6	
13:29		10-13	V 3	GOOD! 3PTR by MOORE, JUSTIN
13:09	GOOD! FT by BEATTY, DAVID	10-14	V 4	
12:40		11-14	V 3	GOOD! FT by SAMUELS, JERMAINE
12:40		12-14	V 2	GOOD! FT by SAMUELS, JERMAINE
12:27		14-14	T	GOOD! DUNK by MOORE, JUSTIN [FB]
12:05		17-14	H 3	GOOD! 3PTR by SWIDER, COLE
11:22		18-14	H 4	GOOD! FT by MOORE, JUSTIN
11:22		19-14	H 5	GOOD! FT by MOORE, JUSTIN
10:44		21-14	H 7	GOOD! LAYUP by SAMUELS, JERMAINE [FB]
10:44		22-14	H 8	GOOD! FT by SAMUELS, JERMAINE [FB]
09:34		24-14	H 10	GOOD! LAYUP by ANTOINE, BRYAN
09:22	GOOD! 3PTR by PHIRI, SAUL	24-17	H 7	
08:57		25-17	H 8	GOOD! FT by BEY, SADDIQ
08:57		26-17	H 9	GOOD! FT by BEY, SADDIQ
08:24	GOOD! 3PTR by SPENCER, SCOTT	26-20	H 6	
08:02		28-20	H 8	GOOD! LAYUP by MOORE, JUSTIN
07:30		30-20	H 10	GOOD! DUNK by ROBINSON-EARL, JEREMIAH
06:59		31-20	H 11	GOOD! FT by GILLESPIE, COLLIN [FB]
06:59		32-20	H 12	GOOD! FT by GILLESPIE, COLLIN [FB]
06:45		34-20	H 14	GOOD! DUNK by ROBINSON-EARL, JEREMIAH [FB]
06:08		36-20	H 16	GOOD! DUNK by BEY, SADDIQ
05:01		38-20	H 18	GOOD! LAYUP by SWIDER, COLE
03:31	GOOD! JUMPER by DEAS, ISIAH	38-22	H 16	
02:46		40-22	H 18	GOOD! LAYUP by MOORE, JUSTIN [FB]
02:27	GOOD! JUMPER by CROSWELL, ED [PNT]	40-24	H 16	
02:13		43-24	H 19	GOOD! 3PTR by GILLESPIE, COLLIN
01:13	GOOD! LAYUP by DEAS, ISIAH [FB]	43-26	H 17	
00:46		44-26	H 18	GOOD! FT by ROBINSON-EARL, JEREMIAH
00:46		45-26	H 19	GOOD! FT by ROBINSON-EARL, JEREMIAH
00:30	GOOD! JUMPER by SPENCER, SCOTT [PNT]	45-28	H 17	
00:01		46-28	H 18	GOOD! FT by BEY, SADDIQ [FB]
00:01		47-28	H 19	GOOD! FT by BEY, SADDIQ [FB]
00:01		48-28	H 20	GOOD! FT by BEY, SADDIQ [FB]

La Salle 28, Villanova 48

Official Scoring/Possession Reference Chart
La Salle vs Villanova
Period 2
December 01, 2019 at Finneran Pavilion - Bryn Mawr



Period 2

Starters:

La Salle: 1 BEATTY, DAVID (G); 2 SPENCER, SCOTT (G); 10 DEAS, ISIAH (G); 11 CROSWELL, ED (F); 13 PHIRI, SAUL (G);
Villanova: 2 GILLESPIE, COLLIN (G); 10 SWIDER, COLE (F); 23 SAMUELS, JERMAINE (F); 24 ROBINSON-EARL, JEREMIAH (F); 41 BEY, SADDIQ (F);

Time	VISITORS: La Salle	Score	Margin	HOME: Villanova
19:36	GOOD! LAYUP by DEAS, ISIAH	48-30	H 18	
18:24		50-30	H 20	GOOD! LAYUP by GILLESPIE, COLLIN
17:55	GOOD! LAYUP by CROSWELL, ED	50-32	H 18	
15:54	GOOD! LAYUP by RAY, CHRISTIAN	50-34	H 16	
15:07	GOOD! JUMPER by CROSWELL, ED	50-36	H 14	
13:47	GOOD! JUMPER by KENNEY, SHERIF [PNT]	50-38	H 12	
13:05	GOOD! DUNK by BEATTY, DAVID [FB]	50-40	H 10	
11:48		53-40	H 13	GOOD! 3PTR by MOORE, JUSTIN
10:57		55-40	H 15	GOOD! LAYUP by MOORE, JUSTIN
10:04	GOOD! LAYUP by CROSWELL, ED	55-42	H 13	
09:29		57-42	H 15	GOOD! LAYUP by BEY, SADDIQ
09:13	GOOD! LAYUP by CROSWELL, ED	57-44	H 13	
08:55		60-44	H 16	GOOD! 3PTR by BEY, SADDIQ
08:23		62-44	H 18	GOOD! LAYUP by BEY, SADDIQ
07:32	GOOD! 3PTR by SPENCER, SCOTT	62-47	H 15	
07:14	GOOD! FT by KENNEY, SHERIF	62-48	H 14	
07:14	GOOD! FT by KENNEY, SHERIF	62-49	H 13	
07:00		63-49	H 14	GOOD! FT by GILLESPIE, COLLIN
06:48		65-49	H 16	GOOD! LAYUP by SLATER, BRANDON [FB]
06:36	GOOD! FT by HIKIM, AYINDE	65-50	H 15	
06:36	GOOD! FT by HIKIM, AYINDE	65-51	H 14	
06:29		67-51	H 16	GOOD! LAYUP by ROBINSON-EARL, JEREMIAH [FB]
06:02	GOOD! FT by HIKIM, AYINDE	67-52	H 15	
06:02	GOOD! FT by HIKIM, AYINDE	67-53	H 14	
05:34	GOOD! 3PTR by PHIRI, SAUL	67-56	H 11	
04:59		68-56	H 12	GOOD! FT by GILLESPIE, COLLIN
04:59		69-56	H 13	GOOD! FT by GILLESPIE, COLLIN
04:59		70-56	H 14	GOOD! FT by GILLESPIE, COLLIN
04:26	GOOD! 3PTR by KENNEY, SHERIF [FB]	70-59	H 11	
03:10		71-59	H 12	GOOD! FT by MOORE, JUSTIN
02:56	GOOD! FT by CROSWELL, ED	71-60	H 11	
02:56	GOOD! FT by CROSWELL, ED	71-61	H 10	
02:36		73-61	H 12	GOOD! DUNK by BEY, SADDIQ
02:01		75-61	H 14	GOOD! LAYUP by BEY, SADDIQ
01:22		76-61	H 15	GOOD! FT by BEY, SADDIQ [FB]
01:11	GOOD! 3PTR by BEATTY, DAVID	76-64	H 12	
00:56		78-64	H 14	GOOD! DUNK by COSBY-ROUNDTREE, DHAMIR
00:49	GOOD! LAYUP by HIKIM, AYINDE	78-66	H 12	
00:48		79-66	H 13	GOOD! FT by SAMUELS, JERMAINE [FB]
00:43	GOOD! 3PTR by RAY, CHRISTIAN [FB]	79-69	H 10	
00:32		81-69	H 12	GOOD! LAYUP by MOORE, JUSTIN
00:07	GOOD! 3PTR by HIKIM, AYINDE [FB]	81-72	H 9	
00:06		82-72	H 10	GOOD! FT by MOORE, JUSTIN [FB]
00:06		83-72	H 11	GOOD! FT by MOORE, JUSTIN [FB]

La Salle 72, Villanova 83

Official Substitutions Log
La Salle vs Villanova
Period 1
December 01, 2019 at Finneran Pavilion - Bryn Mawr



VISITORS: La Salle	Time	Score	HOME: Villanova
1 BEATTY, DAVID			2 GILLESPIE, COLLIN
2 SPENCER, SCOTT			10 SWIDER, COLE
10 DEAS, ISIAH			23 SAMUELS, JERMAINE
11 CROSWELL, ED			24 ROBINSON-EARL, JEREMIAH
13 PHIRI, SAUL			41 BEY, SADDIQ
	17:49	5-0	SUB OUT: SAMUELS, JERMAINE
	17:49		SUB IN: MOORE, JUSTIN
SUB OUT: 11 CROSWELL, ED	17:49		
SUB IN: 24 KIMBROUGH, JARED	17:49		
SUB OUT: 2 SPENCER, SCOTT	16:42	5-3	
SUB IN: 4 KENNEY, SHERIF	16:42		
	16:04	5-5	SUB OUT: ROBINSON-EARL, JEREMIAH
	16:04		SUB IN: COSBY-ROUNDTREE, DHAMIR
	15:36	7-7	SUB OUT: SWIDER, COLE
	15:36		SUB IN: SAMUELS, JERMAINE
SUB OUT: 24 KIMBROUGH, JARED	15:36		
SUB IN: 23 STONE, BRANDON	15:36		
	14:36	10-7	SUB OUT: COSBY-ROUNDTREE, DHAMIR
	14:36		SUB IN: ROBINSON-EARL, JEREMIAH
SUB OUT: 10 DEAS, ISIAH	14:36		
SUB IN: 2 SPENCER, SCOTT	14:36		
	13:09	13-10	SUB OUT: MOORE, JUSTIN
	13:09		SUB OUT: ROBINSON-EARL, JEREMIAH
	13:09		SUB IN: SLATER, BRANDON
	13:09		SUB IN: SWIDER, COLE
SUB OUT: 13 PHIRI, SAUL	13:09		
SUB OUT: 23 STONE, BRANDON	13:09		
SUB IN: 3 RAY, CHRISTIAN	13:09		
SUB IN: 10 DEAS, ISIAH	13:09		
SUB OUT: 1 BEATTY, DAVID	13:09		
SUB IN: 11 CROSWELL, ED	13:09		
	12:40	14-11	SUB OUT: GILLESPIE, COLLIN
	12:40		SUB OUT: BEY, SADDIQ
	12:40		SUB IN: MOORE, JUSTIN
	12:40		SUB IN: ROBINSON-EARL, JEREMIAH
SUB OUT: 2 SPENCER, SCOTT	12:40		
SUB IN: 13 PHIRI, SAUL	12:40		
SUB OUT: 10 DEAS, ISIAH	11:50	14-17	
SUB IN: 1 BEATTY, DAVID	11:50		
SUB OUT: 3 RAY, CHRISTIAN	11:22	14-18	
SUB IN: 2 SPENCER, SCOTT	11:22		
	11:06	14-19	SUB OUT: SLATER, BRANDON
	11:06		SUB OUT: SWIDER, COLE
	11:06		SUB IN: GILLESPIE, COLLIN
	11:06		SUB IN: BEY, SADDIQ
	10:44	14-22	SUB OUT: MOORE, JUSTIN
	10:44		SUB IN: ANTOINE, BRYAN
SUB OUT: 1 BEATTY, DAVID	09:54	14-22	
SUB OUT: 13 PHIRI, SAUL	09:54		
SUB IN: 00 HIKIM, AYINDE	09:54		
SUB IN: 10 DEAS, ISIAH	09:54		
	09:54		SUB OUT: SAMUELS, JERMAINE
	09:54		SUB IN: MOORE, JUSTIN
SUB OUT: 2 SPENCER, SCOTT	09:32	14-24	
SUB IN: 13 PHIRI, SAUL	09:32		
SUB OUT: 4 KENNEY, SHERIF	09:32		
SUB IN: 2 SPENCER, SCOTT	09:32		
SUB OUT: 11 CROSWELL, ED	09:02	17-24	
SUB IN: 23 STONE, BRANDON	09:02		
	08:57	17-25	SUB OUT: ROBINSON-EARL, JEREMIAH
	08:57		SUB IN: COSBY-ROUNDTREE, DHAMIR
	08:39	17-26	SUB OUT: COSBY-ROUNDTREE, DHAMIR
	08:39		SUB IN: SAMUELS, JERMAINE
SUB OUT: 10 DEAS, ISIAH	07:44	20-28	
SUB IN: 1 BEATTY, DAVID	07:44		
	07:44		SUB OUT: ANTOINE, BRYAN
	07:44		SUB IN: ROBINSON-EARL, JEREMIAH
	06:59	20-31	SUB OUT: SAMUELS, JERMAINE
	06:59		SUB IN: SLATER, BRANDON
	06:59		SUB OUT: GILLESPIE, COLLIN
	06:59		SUB IN: ANTOINE, BRYAN
SUB OUT: 00 HIKIM, AYINDE	06:07	20-36	
SUB OUT: 23 STONE, BRANDON	06:07		
SUB IN: 3 RAY, CHRISTIAN	06:07		
SUB IN: 4 KENNEY, SHERIF	06:07		

VISITORS: La Salle	Time	Score	HOME: Villanova
	05:34	20-36	SUB OUT: BEY,SADDIQ
	05:34		SUB IN: SWIDER,COLE
SUB OUT: 3 RAY,CHRISTIAN	05:34		
SUB IN: 11 CROSWELL,ED	05:34		
	04:29	20-38	SUB OUT: ANTOINE,BRYAN
	04:29		SUB OUT: ROBINSON-EARL,JEREMIAH
	04:29		SUB IN: GILLESPIE,COLLIN
	04:29		SUB IN: COSBY-ROUNDTREE,DHAMIR
SUB OUT: 2 SPENCER,SCOTT	04:29		
SUB IN: 3 RAY,CHRISTIAN	04:29		
	03:49	20-38	SUB OUT: MOORE ,JUSTIN
	03:49		SUB IN: SAMUELS,JERMAINE
SUB OUT: 3 RAY,CHRISTIAN	03:49		
SUB IN: 10 DEAS,ISIAH	03:49		
	02:56	22-38	SUB OUT: SLATER,BRANDON
	02:56		SUB OUT: SWIDER,COLE
	02:56		SUB OUT: COSBY-ROUNDTREE,DHAMIR
	02:56		SUB IN: MOORE ,JUSTIN
	02:56		SUB IN: ROBINSON-EARL,JEREMIAH
	02:56		SUB IN: BEY,SADDIQ
	01:37	24-43	SUB OUT: SAMUELS,JERMAINE
	01:37		SUB IN: SLATER,BRANDON
	00:58	26-43	SUB OUT: GILLESPIE,COLLIN
	00:58		SUB IN: ANTOINE,BRYAN
SUB OUT: 4 KENNEY,SHERIF	00:58		
SUB OUT: 10 DEAS,ISIAH	00:58		
SUB IN: 2 SPENCER,SCOTT	00:58		
SUB IN: 3 RAY,CHRISTIAN	00:58		
SUB OUT: 11 CROSWELL,ED	00:46	26-43	
SUB IN: 10 DEAS,ISIAH	00:46		
	00:06	28-45	SUB OUT: SLATER,BRANDON
	00:06		SUB IN: SWIDER,COLE
	00:06		SUB OUT: ANTOINE,BRYAN
	00:06		SUB IN: GILLESPIE,COLLIN
	00:01	28-47	SUB OUT: GILLESPIE,COLLIN
	00:01		SUB OUT: SWIDER,COLE
	00:01		SUB IN: SLATER,BRANDON
	00:01		SUB IN: COSBY-ROUNDTREE,DHAMIR
SUB OUT: 13 PHIRI,SAUL	00:01		
SUB IN: 11 CROSWELL,ED	00:01		
	00:01		SUB OUT: BEY,SADDIQ
	00:01		SUB IN: ANTOINE,BRYAN

La Salle 28, Villanova 48

Official Substitutions Log
La Salle vs Villanova
Period 2
December 01, 2019 at Finneran Pavilion - Bryn Mawr



VISITORS: La Salle	Time	Score	HOME: Villanova
1 BEATTY, DAVID			2 GILLESPIE, COLLIN
2 SPENCER, SCOTT			10 SWIDER, COLE
10 DEAS, ISIAH			23 SAMUELS, JERMAINE
11 CROSWELL, ED			24 ROBINSON-EARL, JEREMIAH
13 PHIRI, SAUL			41 BEY, SADDIQ
	20:00	-	SUB OUT: ANTOINE, BRYAN
	20:00		SUB OUT: SLATER, BRANDON
	20:00		SUB OUT: COSBY-ROUNDTREE, DHAMIR
	20:00		SUB IN: GILLESPIE, COLLIN
	20:00		SUB IN: SAMUELS, JERMAINE
	20:00		SUB IN: BEY, SADDIQ
SUB OUT: 3 RAY, CHRISTIAN	20:00		
SUB IN: 13 PHIRI, SAUL	20:00		
	16:16	32-50	SUB OUT: GILLESPIE, COLLIN
	16:16		SUB OUT: SAMUELS, JERMAINE
	16:16		SUB IN: ANTOINE, BRYAN
	16:16		SUB IN: SWIDER, COLE
SUB OUT: 2 SPENCER, SCOTT	16:16		
SUB OUT: 10 DEAS, ISIAH	16:16		
SUB IN: 3 RAY, CHRISTIAN	16:16		
SUB IN: 4 KENNEY, SHERIF	16:16		
	15:56	32-50	SUB OUT: SWIDER, COLE
	15:56		SUB IN: SLATER, BRANDON
	15:31	34-50	SUB OUT: MOORE, JUSTIN
	15:31		SUB IN: GILLESPIE, COLLIN
	14:35	36-50	SUB OUT: ANTOINE, BRYAN
	14:35		SUB OUT: SLATER, BRANDON
	14:35		SUB IN: SWIDER, COLE
	14:35		SUB IN: SAMUELS, JERMAINE
	13:57	36-50	SUB OUT: SWIDER, COLE
	13:57		SUB IN: MOORE, JUSTIN
SUB OUT: 11 CROSWELL, ED	13:57		
SUB IN: 24 KIMBROUGH, JARED	13:57		
SUB OUT: 24 KIMBROUGH, JARED	11:53	40-50	
SUB IN: 11 CROSWELL, ED	11:53		
	10:18	40-55	SUB OUT: SAMUELS, JERMAINE
	10:18		SUB IN: SLATER, BRANDON
SUB OUT: 4 KENNEY, SHERIF	10:18		
SUB OUT: 13 PHIRI, SAUL	10:18		
SUB IN: 00 HIKIM, AYINDE	10:18		
SUB IN: 10 DEAS, ISIAH	10:18		
	10:18		SUB OUT: MOORE, JUSTIN
	10:18		SUB OUT: ROBINSON-EARL, JEREMIAH
	10:18		SUB IN: ANTOINE, BRYAN
	10:18		SUB IN: COSBY-ROUNDTREE, DHAMIR
	08:42	44-60	SUB OUT: COSBY-ROUNDTREE, DHAMIR
	08:42		SUB IN: SAMUELS, JERMAINE
SUB OUT: 1 BEATTY, DAVID	08:42		
SUB IN: 13 PHIRI, SAUL	08:42		
	08:05	44-62	SUB OUT: GILLESPIE, COLLIN
	08:05		SUB IN: MOORE, JUSTIN
SUB OUT: 3 RAY, CHRISTIAN	08:05		
SUB OUT: 10 DEAS, ISIAH	08:05		
SUB IN: 1 BEATTY, DAVID	08:05		
SUB IN: 2 SPENCER, SCOTT	08:05		
SUB OUT: 13 PHIRI, SAUL	07:44	44-62	
SUB IN: 4 KENNEY, SHERIF	07:44		
	07:24	47-62	SUB OUT: ANTOINE, BRYAN
	07:24		SUB OUT: BEY, SADDIQ
	07:24		SUB IN: GILLESPIE, COLLIN
	07:24		SUB IN: ROBINSON-EARL, JEREMIAH
SUB OUT: 4 KENNEY, SHERIF	06:48	49-65	
SUB IN: 13 PHIRI, SAUL	06:48		
	06:36	51-65	SUB OUT: SLATER, BRANDON
	06:36		SUB IN: BEY, SADDIQ
	06:02	52-67	SUB OUT: MOORE, JUSTIN
	06:02		SUB IN: SLATER, BRANDON
SUB OUT: 00 HIKIM, AYINDE	05:41	53-67	
SUB IN: 3 RAY, CHRISTIAN	05:41		
	04:59	56-67	SUB OUT: SAMUELS, JERMAINE
	04:59		SUB IN: MOORE, JUSTIN
SUB OUT: 1 BEATTY, DAVID	04:59		
SUB IN: 4 KENNEY, SHERIF	04:59		
	03:42	59-70	SUB OUT: SLATER, BRANDON
	03:42		SUB OUT: ROBINSON-EARL, JEREMIAH

VISITORS: La Salle	Time	Score	HOME: Villanova
	03:42		SUB IN: SWIDER, COLE
	03:42		SUB IN: COSBY-ROUNDTREE, DHAMIR
SUB OUT: 2 SPENCER, SCOTT	03:42		
SUB IN: 00 HIKIM, AYINDE	03:42		
SUB OUT: 00 HIKIM, AYINDE	02:56	60-71	
SUB OUT: 4 KENNEY, SHERIF	02:56		
SUB IN: 1 BEATTY, DAVID	02:56		
SUB IN: 2 SPENCER, SCOTT	02:56		
	02:56		SUB OUT: COSBY-ROUNDTREE, DHAMIR
	02:56		SUB IN: ROBINSON-EARL, JEREMIAH
SUB OUT: 13 PHIRI, SAUL	02:00	61-75	
SUB IN: 00 HIKIM, AYINDE	02:00		
	01:44	61-75	SUB OUT: SWIDER, COLE
	01:44		SUB IN: SLATER, BRANDON
	01:24	61-75	SUB OUT: GILLESPIE, COLLIN
	01:24		SUB IN: ANTOINE, BRYAN
SUB OUT: 2 SPENCER, SCOTT	01:24		
SUB IN: 4 KENNEY, SHERIF	01:24		
	01:16	61-76	SUB OUT: BEY, SADDIQ
	01:16		SUB IN: SAMUELS, JERMAINE
	01:15	61-76	SUB OUT: ROBINSON-EARL, JEREMIAH
	01:15		SUB IN: COSBY-ROUNDTREE, DHAMIR
SUB OUT: 11 CROSWELL, ED	01:15		
SUB IN: 23 STONE, BRANDON	01:15		
SUB OUT: 1 BEATTY, DAVID	00:48	66-78	
SUB IN: 2 SPENCER, SCOTT	00:48		
SUB OUT: 00 HIKIM, AYINDE	00:06	72-81	
SUB IN: 14 LAFOND, ANDREW	00:06		

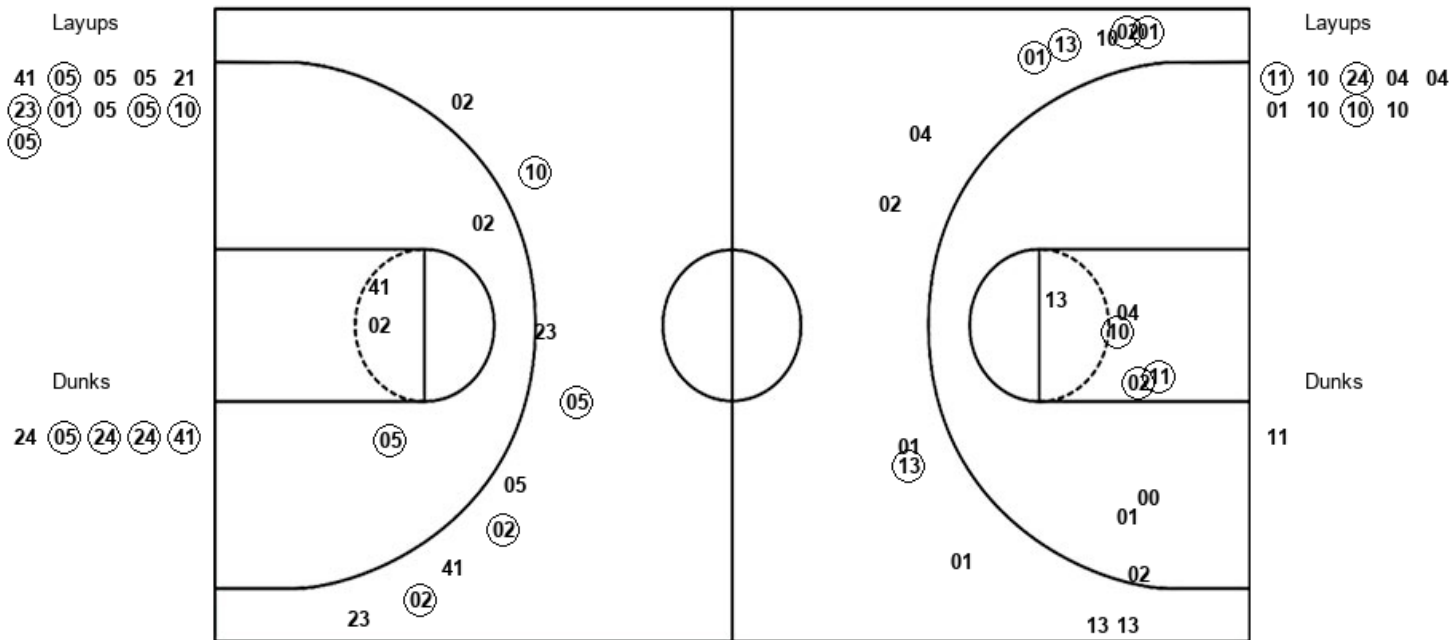
La Salle 72, Villanova 83

Official Shot Chart
La Salle vs Villanova
PERIOD 1 Shots
 December 01, 2019 at Finneran Pavilion - Bryn Mawr



Villanova

La Salle



VIL : Period 1	Made	Att	Pct
Layups	6	11	54.5
Dunks	4	5	80.0
2PT Field Goals	11	20	55.0
3PT Field Goals	4	9	44.4
Total Field Goals	15	29	51.7

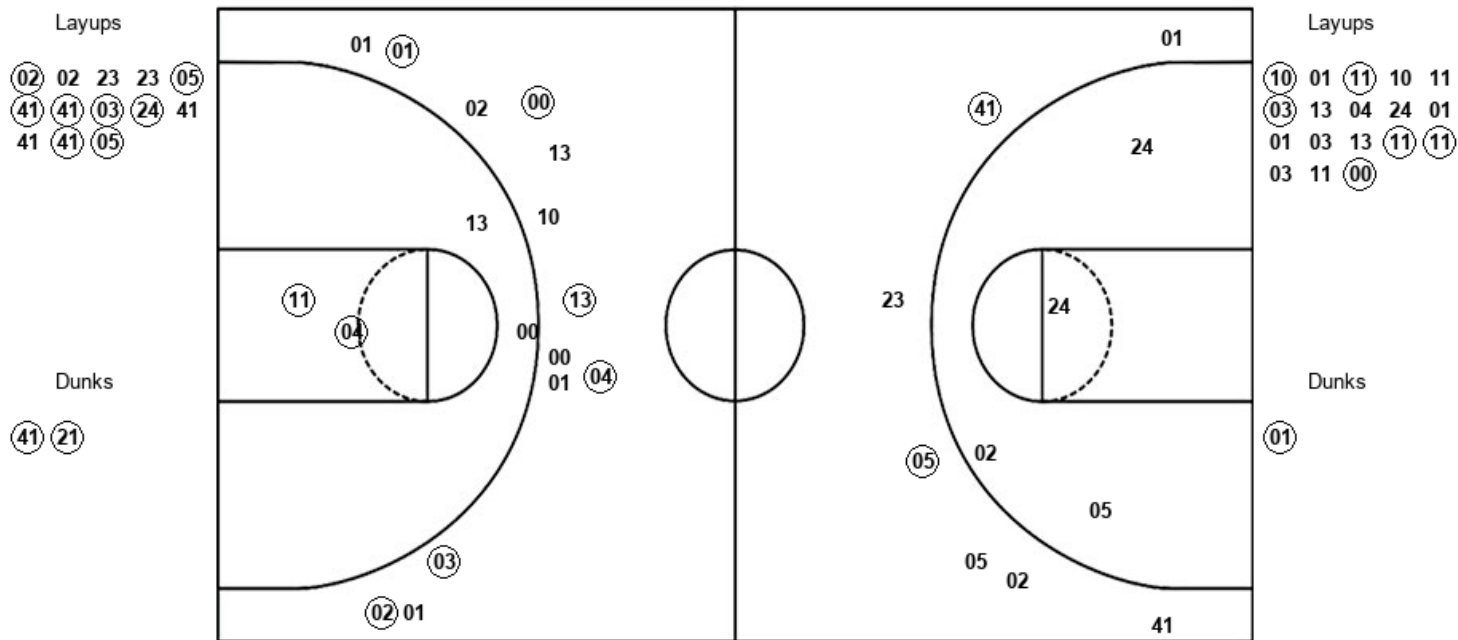
LAS : Period 1	Made	Att	Pct
Layups	3	9	33.3
Dunks	0	1	00.0
2PT Field Goals	6	18	33.3
3PT Field Goals	5	12	41.7
Total Field Goals	11	30	36.7

Official Shot Chart
La Salle vs Villanova
PERIOD 2 Shots
 December 01, 2019 at Finneran Pavilion - Bryn Mawr



Villanova

La Salle



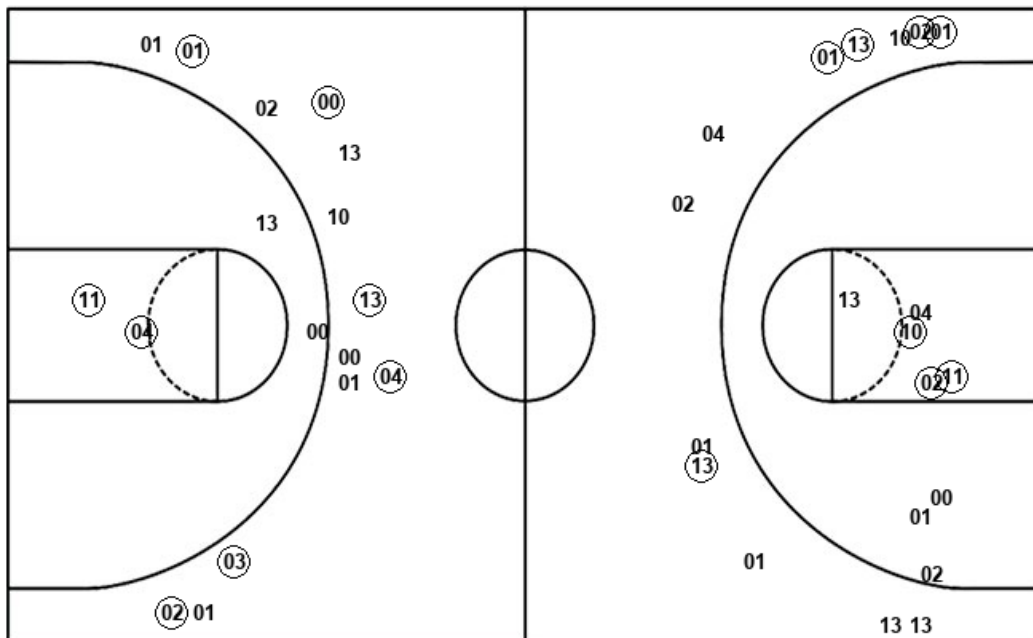
VIL : Period 2	Made	Att	Pct
Layups	8	13	61.5
Dunks	2	2	100.0
2PT Field Goals	10	19	52.6
3PT Field Goals	2	7	28.6
Total Field Goals	12	26	46.2

LAS : Period 2	Made	Att	Pct
Layups	6	18	33.3
Dunks	1	1	100.0
2PT Field Goals	9	22	40.9
3PT Field Goals	6	14	42.9
Total Field Goals	15	36	41.7

Official Shot Chart
La Salle vs Villanova
La Salle Team Shots
December 01, 2019 at Finneran Pavilion - Bryn Mawr



Layups



Dunks

Layups

11	10	24	04	04
01	10	10	10	10
01	11	10	11	03
13	04	24	01	01
03	13	11	11	03
11	00			

Dunks

11	01
----	----

LAS : Period 1	Made	Att	Pct
Layups	3	9	33.3
Dunks	0	1	00.0
2PT Field Goals	6	18	33.3
3PT Field Goals	5	12	41.7
Total Field Goals	11	30	36.7

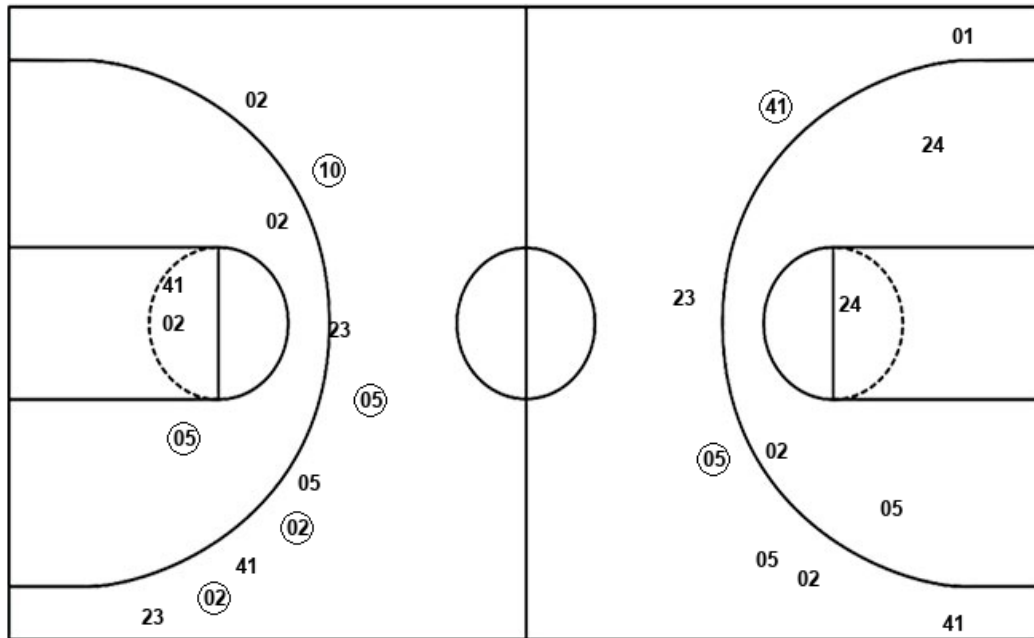
LAS : Period 2	Made	Att	Pct
Layups	6	18	33.3
Dunks	1	1	100.0
2PT Field Goals	9	22	40.9
3PT Field Goals	6	14	42.9
Total Field Goals	15	36	41.7

Official Shot Chart
La Salle vs Villanova
Villanova Team Shots
 December 01, 2019 at Finneran Pavilion - Bryn Mawr



Layups

Dunks



Layups

Dunks

41 (05) 05 05 21
 (23) (01) 05 (05) (10)
 (05) (02) 02 23 23
 (05) (41) (41) (03) (24)
 41 41 (41) (05)

24 (05) (24) (24) (41)
 (41) (21)

VIL : Period 1	Made	Att	Pct
Layups	6	11	54.5
Dunks	4	5	80.0
2PT Field Goals	11	20	55.0
3PT Field Goals	4	9	44.4
Total Field Goals	15	29	51.7

VIL : Period 2	Made	Att	Pct
Layups	8	13	61.5
Dunks	2	2	100.0
2PT Field Goals	10	19	52.6
3PT Field Goals	2	7	28.6
Total Field Goals	12	26	46.2