

FINAL SCORE



Penn

58



Villanova

70

January 15, 2020 • Finneran Pavilion - Villanova, Pa.

FINAL STATISTICS

Official Box Score
Penn vs Villanova
Game Totals -- Final Statistics
January 15, 2020 at Finneran Pavilion - Villanova, Pa.



Penn 58

No.	Player	S	Pts	FG	3FG	FT	OR	DR	TR	PF	A	TO	Blk	Stl	Min	+/-
04	SUTTLE, KENNEDY	F	2	1-3	0-0	0-0	2	1	3	2	1	0	0	0	8	-3
11	GRASELA, KENDALL	G	2	1-3	0-1	0-0	0	0	0	1	5	3	0	3	34	-11
31	PARKER, ELEAH	C	10	5-11	0-0	0-3	1	3	4	4	0	2	3	0	30	-17
33	STERBA, PHOEBE	G	9	3-8	3-7	0-0	3	2	5	1	2	2	0	2	35	-9
45	PADILLA, KAYLA	G	23	9-19	3-7	2-2	0	4	4	0	3	2	0	0	39	-10
02	KINUM, KATIE	G	0	0-2	0-2	0-0	0	1	1	0	0	0	0	0	4	-3
03	JONES, MICHAEL	G	0	0-3	0-2	0-0	0	1	1	0	0	0	0	0	5	-1
21	LAKSTIGALA, MIA	G	0	0-0	0-0	0-0	0	0	0	0	0	0	0	0	1	-2
24	CRAWFORD, TORI	F	7	3-8	0-2	1-2	2	7	9	2	3	1	1	1	31	-9
40	ANDERSON, EMILY	C	5	2-2	0-0	1-2	2	0	2	2	0	2	1	0	10	5
TEAM							2	0	2	0		1				
TOTALS			58	24-59	6-21	4-9	12	19	31	12	14	13	5	6	198	

Shooting By Period

Period	FG	FG%	3FG	3FG%	FT	FT%
1st Qtr	9-18	50%	2-3	67%	1-2	50%
2nd Qtr	7-15	47%	1-4	25%	0-2	00%
3rd Qtr	3-10	30%	0-5	00%	2-3	67%
4th Qtr	5-16	31%	3-9	33%	1-2	50%
1st Half	16-33	48%	3-7	43%	1-4	25%
2nd Half	8-26	31%	3-14	21%	3-5	60%
Game	24-59	40.7%	6-21	28.6%	4-9	44.4%

Deadball Rebounds: 3,0
Last FG: 4th-00:29
Biggest Run: 7-0
Largest lead: By 11 at 2nd-07:05
Technical Fouls: None.

Villanova 70

No.	Player	S	Pts	FG	3FG	FT	OR	DR	TR	PF	A	TO	Blk	Stl	Min	+/-
00	ONKEN, CAMERON	G	0	0-3	0-2	0-0	2	10	12	2	4	2	0	2	37	15
01	HERLIHY, BRIDGET	F	13	5-10	3-5	0-0	1	2	3	4	3	5	0	0	22	4
10	JAMES, RAVEN	G	6	2-5	2-5	0-0	0	4	4	0	3	2	0	1	34	21
20	SIEGRIST, MADISON	F	27	11-17	5-8	0-0	3	3	6	2	3	3	2	2	37	12
30	GEDAKA, MARY	G	21	7-19	0-6	7-10	6	3	9	0	4	2	1	2	40	12
03	LANGE, GRACE	F	0	0-0	0-0	0-0	0	0	0	0	0	0	0	0	0	0
04	GARDLER, MACKENZIE	G	0	0-0	0-0	0-0	0	0	0	0	0	0	0	1	2	0
13	CARANGI, SAMANTHA	G	3	1-2	1-1	0-0	0	0	0	3	3	1	0	0	20	3
15	MULLIN, BROOKE	G	0	0-1	0-0	0-0	0	0	0	0	0	0	0	0	6	-7
TEAM							2	2	4	0		3				
TOTALS			70	26-57	11-27	7-10	14	24	38	11	20	18	3	8	198	

Shooting By Period

Period	FG	FG%	3FG	3FG%	FT	FT%
1st Qtr	7-16	44%	3-8	38%	0-0	0%
2nd Qtr	5-13	38%	3-8	38%	2-2	100%
3rd Qtr	5-17	29%	2-7	29%	2-3	67%
4th Qtr	9-11	82%	3-4	75%	3-5	60%
1st Half	12-29	41%	6-16	38%	2-2	100%
2nd Half	14-28	50%	5-11	45%	5-8	63%
Game	26-57	45.6%	11-27	40.7%	7-10	70.0%

Deadball Rebounds: 1,1
Last FG: 4th-00:53
Biggest Run: 10-0
Largest lead: By 16 at 4th-01:50
Technical Fouls: None.

Game Notes:

Officials: Bryan Brunette, Fatou Cissoko-Stephens, Karen Preato
Attendance: 501

Start Time: 07:03 PM ET
End Time: 08:43 PM ET
Game Duration: 1:39

Score	1st	2nd	3rd	4th	TOT
PEN	21	15	8	14	58
VIL	17	15	14	24	70

PEN led for 18:59. VIL led for 18:29.
Game was tied for 2:05.
Times tied: 4 Lead Changes: 6

Points from	PEN	VIL
In the Paint	34	24
Off Turns	18	17
2nd Chance	13	10
Fast Break	6	6
Bench	12	3

Official Box Score
Penn vs Villanova
First Half Statistics Only
January 15, 2020 at Finneran Pavilion - Villanova, Pa.



Penn 36

No.	Player	S	Pts	FG	3FG	FT	OR	DR	TR	PF	A	TO	Blk	Stl	Min	+/-
02	KINUM, KATIE	G	0	0-0	0-0	0-0	0	0	0	0	0	0	0	0	0	0
03	JONES, MICHAEL	G	0	0-1	0-1	0-0	0	1	1	0	0	0	0	0	4	1
11	GRASELA, KENDALL	G	2	1-1	0-0	0-0	0	0	0	0	2	0	0	2	16	3
21	LAKSTIGALA, MIA	G	0	0-0	0-0	0-0	0	0	0	0	0	0	0	0	1	-2
24	CRAWFORD, TORI	F	6	3-7	0-1	0-0	1	5	6	0	2	0	1	0	14	11
31	PARKER, ELEAH	C	6	3-6	0-0	0-2	0	1	1	0	0	0	1	0	13	-5
33	STERBA, PHOEBE	G	6	2-4	2-4	0-0	0	1	1	0	1	1	0	2	19	4
40	ANDERSON, EMILY	C	5	2-2	0-0	1-2	2	0	2	1	0	1	1	0	7	9
45	PADILLA, KAYLA	G	9	4-9	1-1	0-0	0	1	1	0	3	1	0	0	19	6
04	SUTTLE, KENNEDY	F	2	1-3	0-0	0-0	2	1	3	1	0	0	0	0	6	-7
	TEAM		0	0-0	0-0	0-0	1	0	1	0	0	1	0	0	0	0
TOTALS			36	16-33	3-7	1-4	6	10	16	2	8	4	3	4	100	

Shooting By Period

Period	FG	FG%	3FG	3FG%	FT	FT%
1st Qtr	9-18	50%	2-3	67%	1-2	50%
2nd Qtr	7-15	47%	1-4	25%	0-2	00%
1st Half	16-33	48%	3-7	43%	1-4	25%
Game	24-59	40.7%	6-21	28.6%	4-9	44.4%

Deadball Rebounds: 3,0
 Last FG Half: PEN 2nd-02:00

Villanova 32

No.	Player	S	Pts	FG	3FG	FT	OR	DR	TR	PF	A	TO	Blk	Stl	Min	+/-
00	ONKEN, CAMERON	G	0	0-2	0-2	0-0	1	4	5	1	2	1	0	1	17	-1
01	HERLIHY, BRIDGET	F	13	5-9	3-5	0-0	1	1	2	2	3	4	0	0	17	0
03	LANGE, GRACE	F	0	0-0	0-0	0-0	0	0	0	0	0	0	0	0	0	0
04	GARDLER, MACKENZIE	G	0	0-0	0-0	0-0	0	0	0	0	0	0	0	1	2	0
10	JAMES, RAVEN	G	3	1-3	1-3	0-0	0	2	2	0	2	1	0	0	14	5
13	CARANGI, SAMANTHA	G	0	0-1	0-0	0-0	0	0	0	1	1	0	0	0	6	-9
15	MULLIN, BROOKE	G	0	0-1	0-0	0-0	0	0	0	0	0	0	0	0	5	-7
20	SIEGRIST, MADISON	F	10	4-7	2-3	0-0	2	2	4	1	1	2	0	0	17	-4
30	GEDAKA, MARY	G	6	2-6	0-3	2-2	2	1	3	0	1	1	1	0	20	-4
	TEAM		0	0-0	0-0	0-0	1	1	2	0	0	2	0	0	0	0
TOTALS			32	12-29	6-16	2-2	7	11	18	5	10	11	1	2	100	

Shooting By Period

Period	FG	FG%	3FG	3FG%	FT	FT%
1st Qtr	7-16	44%	3-8	38%	0-0	0%
2nd Qtr	5-13	38%	3-8	38%	2-2	100%
1st Half	12-29	41%	6-16	38%	2-2	100%
Game	26-57	45.6%	11-27	40.7%	7-10	70.0%

Deadball Rebounds: 1,1
 Last FG Half: VIL 2nd-02:55

Game Notes:

Officials: Bryan Brunette, Fatou Cissoko-Stephens, Karen Preato
 Attendance: 501

Start Time: 07:03 PM ET
 End Time: 08:43 PM ET
 Game Duration: 1:39

Score	1st	2nd	3rd	4th	TOT
PEN	21	15	8	14	58
VIL	17	15	14	24	70

Points from (This Period)	PEN	VIL
In the Paint	26	10
Off Turns	9	0
2nd Chance	12	5
Fast Break	4	0
Bench	11	0

Official Box Score
Penn vs Villanova
First Quarter Statistics Only
January 15, 2020 at Finneran Pavilion - Villanova, Pa.



Penn 21

No.	Player	S	Pts	FG	3FG	FT	OR	DR	TR	PF	A	TO	Blk	Stl	Min	+/-
04	SUTTLE, KENNEDY	F	2	1-3	0-0	0-0	2	1	3	1	0	0	0	0	5	-5
11	GRASELA, KENDALL	G	0	0-0	0-0	0-0	0	0	0	0	2	0	0	1	6	3
31	PARKER, ELEAH	C	4	2-4	0-0	0-0	0	1	1	0	0	0	0	0	7	0
33	STERBA, PHOEBE	G	3	1-1	1-1	0-0	0	0	0	0	1	0	0	0	10	4
45	PADILLA, KAYLA	G	9	4-7	1-1	0-0	0	0	0	0	1	0	0	0	10	4
02	KINUM, KATIE	G	0	0-0	0-0	0-0	0	0	0	0	0	0	0	0	0	0
03	JONES, MICHAEL	G	0	0-1	0-1	0-0	0	1	1	0	0	0	0	0	4	1
21	LAKSTIGALA, MIA	G	0	0-0	0-0	0-0	0	0	0	0	0	0	0	0	0	0
24	CRAWFORD, TORI	F	0	0-1	0-0	0-0	0	3	3	0	1	0	0	0	5	9
40	ANDERSON, EMILY	C	3	1-1	0-0	1-2	1	0	1	0	0	0	0	0	3	4
TEAM							0	0	0	0	0					
TOTALS			21	9-18	2-3	1-2	3	6	9	1	5	0	0	1	50	

Shooting By Period

Period	FG	FG%	3FG	3FG%	FT	FT%
1st Qtr	9-18	50%	2-3	67%	1-2	50%
2nd Qtr	7-15	47%	1-4	25%	0-2	00%
1st Half	9-18	50%	2-3	67%	1-2	50%
1st Half	16-33	48%	3-7	43%	1-4	25%
Game	24-59	40.7%	6-21	28.6%	4-9	44.4%

Deadball Rebounds: 3,0

Villanova 17

No.	Player	S	Pts	FG	3FG	FT	OR	DR	TR	PF	A	TO	Blk	Stl	Min	+/-
00	ONKEN, CAMERON	G	0	0-1	0-1	0-0	1	1	2	1	1	1	0	0	10	-4
01	HERLIHY, BRIDGET	F	5	2-4	1-2	0-0	1	0	1	0	1	2	0	0	8	0
10	JAMES, RAVEN	G	0	0-1	0-1	0-0	0	2	2	0	2	0	0	0	7	0
20	SIEGRIST, MADISON	F	10	4-7	2-3	0-0	1	2	3	0	0	1	0	0	10	-4
30	GEDAKA, MARY	G	2	1-2	0-1	0-0	0	0	0	0	1	0	0	0	10	-4
03	LANGE, GRACE	F	0	0-0	0-0	0-0	0	0	0	0	0	0	0	0	0	0
04	GARDLER, MACKENZIE	G	0	0-0	0-0	0-0	0	0	0	0	0	0	0	0	0	0
13	CARANGI, SAMANTHA	G	0	0-1	0-0	0-0	0	0	0	1	1	0	0	0	3	-4
15	MULLIN, BROOKE	G	0	0-0	0-0	0-0	0	0	0	0	0	0	0	0	2	-4
TEAM							0	1	1	0	0					
TOTALS			17	7-16	3-8	0-0	3	6	9	2	6	4	0	0	50	

Shooting By Period

Period	FG	FG%	3FG	3FG%	FT	FT%
1st Qtr	7-16	44%	3-8	38%	0-0	0%
2nd Qtr	5-13	38%	3-8	38%	2-2	100%
1st Half	7-16	44%	3-8	38%	0-0	0%
1st Half	12-29	41%	6-16	38%	2-2	100%
Game	26-57	45.6%	11-27	40.7%	7-10	70.0%

Deadball Rebounds: 1,1

Game Notes:

Officials: Bryan Brunette, Fatou Cissoko-Stephens, Karen Preato
 Attendance: 501

Start Time: 07:03 PM ET
 End Time: 08:43 PM ET
 Game Duration: 1:39

Score	1st	2nd	3rd	4th	TOT
PEN	21	15	8	14	58
VIL	17	15	14	24	70

Points from (This Period)	PEN	VIL
In the Paint	14	6
Off Turns	5	0
2nd Chance	6	2
Fast Break	2	0
Bench	3	0

Official Play-By-Play
Penn vs Villanova
First Quarter
January 15, 2020 at Finneran Pavilion - Villanova, Pa.



Period 1

Starters:

Penn: 11 GRASELA, KENDALL (G); 31 PARKER, ELEAH (C); 33 STERBA, PHOEBE (G); 45 PADILLA, KAYLA (G); 4 SUTTLE, KENNEDY (F);
Villanova: 0 ONKEN, CAMERON (G); 1 HERLIHY, BRIDGET (F); 10 JAMES, RAVEN (G); 20 SIEGRIST, MADISON (F); 30 GEDAKA, MARY (G);

Time	VISITORS: Penn	Score	Margin	HOME: Villanova
09:45		3-0	H 3	GOOD! 3PTR by HERLIHY, BRIDGET
09:45				ASSIST by ONKEN, CAMERON
09:30	MISSED LAYUP by SUTTLE, KENNEDY			
09:27				REBOUND (DEF) by SIEGRIST, MADISON
09:16	FOUL (PERSONAL) by SUTTLE, KENNEDY			
09:04		6-0	H 6	GOOD! 3PTR by SIEGRIST, MADISON
09:04				ASSIST by HERLIHY, BRIDGET
08:43	MISSED LAYUP by PARKER, ELEAH			
08:40	REBOUND (OFF) by SUTTLE, KENNEDY			
08:36	SUB OUT: GRASELA, KENDALL			
08:36	SUB IN: JONES, MICHAEL			
08:28	GOOD! JUMPER by PARKER, ELEAH	6-2	H 4	
08:28	ASSIST by PADILLA, KAYLA			
08:20				TURNOVER (TRAVEL) by HERLIHY, BRIDGET
08:11	MISSED JUMPER by PARKER, ELEAH			
08:09				REBOUND (DEF) by TEAM
07:53				MISSED 3PTR by JAMES, RAVEN
07:47	REBOUND (DEF) by JONES, MICHAEL			
07:35	GOOD! LAYUP by PADILLA, KAYLA [PNT]	6-4	H 2	
07:20		9-4	H 5	GOOD! 3PTR by SIEGRIST, MADISON
07:20				ASSIST by JAMES, RAVEN
07:03	MISSED LAYUP by SUTTLE, KENNEDY			
07:00	REBOUND (OFF) by SUTTLE, KENNEDY			
06:59	GOOD! LAYUP by SUTTLE, KENNEDY	9-6	H 3	
06:41				MISSED LAYUP by SIEGRIST, MADISON
06:39	REBOUND (DEF) by PARKER, ELEAH			
06:28	MISSED JUMPER by PADILLA, KAYLA			
06:26				REBOUND (DEF) by JAMES, RAVEN
06:13		11-6	H 5	GOOD! LAYUP by GEDAKA, MARY
06:13				ASSIST by JAMES, RAVEN
05:55	GOOD! JUMPER by PARKER, ELEAH	11-8	H 3	
05:31				MISSED JUMPER by HERLIHY, BRIDGET
05:28				REBOUND (OFF) by HERLIHY, BRIDGET
05:27		13-8	H 5	GOOD! LAYUP by HERLIHY, BRIDGET
05:15	MISSED 3PTR by JONES, MICHAEL			
05:09				REBOUND (DEF) by ONKEN, CAMERON
05:04				MISSED 3PTR by GEDAKA, MARY
05:00	REBOUND (DEF) by SUTTLE, KENNEDY			
04:59	TIMEOUT 30SEC			
04:59				
04:59	SUB OUT: JONES, MICHAEL			
04:59	SUB OUT: SUTTLE, KENNEDY			
04:59	SUB IN: GRASELA, KENDALL			
04:59	SUB IN: CRAWFORD, TORI			
04:47	MISSED JUMPER by PADILLA, KAYLA			
04:44				REBOUND (DEF) by JAMES, RAVEN
04:24				MISSED JUMPER by SIEGRIST, MADISON
04:21	REBOUND (DEF) by CRAWFORD, TORI			
04:16	GOOD! 3PTR by STERBA, PHOEBE	13-11	H 2	
04:16	ASSIST by GRASELA, KENDALL			
03:50				MISSED 3PTR by ONKEN, CAMERON
03:46	REBOUND (DEF) by CRAWFORD, TORI			
03:31	MISSED LAYUP by CRAWFORD, TORI			
03:28				REBOUND (DEF) by SIEGRIST, MADISON
03:13				MISSED 3PTR by HERLIHY, BRIDGET
03:10				REBOUND (OFF) by SIEGRIST, MADISON
03:09				TURNOVER (LOSTBALL) by SIEGRIST, MADISON
03:09	STEAL by GRASELA, KENDALL			
03:04	GOOD! LAYUP by PADILLA, KAYLA [FB]	13-13	T	
03:04	ASSIST by GRASELA, KENDALL			
02:46				TURNOVER (TRAVEL) by HERLIHY, BRIDGET
02:46				SUB OUT: JAMES, RAVEN
02:46				SUB IN: CARANGI, SAMANTHA
02:46	SUB OUT: PARKER, ELEAH			
02:46	SUB IN: ANDERSON, EMILY			
02:20				FOUL (PERSONAL) by CARANGI, SAMANTHA
02:20				SUB OUT: HERLIHY, BRIDGET
02:20				SUB IN: MULLIN, BROOKE
02:20	MISSED FT by ANDERSON, EMILY			
02:20	REBOUND (OFF) by TEAM			

Time	VISITORS: Penn	Score	Margin	HOME: Villanova
02:20	GOOD! FT by ANDERSON, EMILY	13-14	V 1	
02:09		15-14	H 1	GOOD! JUMPER by SIEGRIST, MADISON
02:09				ASSIST by GEDAKA, MARY
01:58	GOOD! 3PTR by PADILLA, KAYLA	15-17	V 2	
01:58	ASSIST by STERBA, PHOEBE			
01:37				MISSED 3PTR by SIEGRIST, MADISON
01:33				REBOUND (OFF) by ONKEN, CAMERON
01:20				FOUL (OFF) by ONKEN, CAMERON
01:20				TURNOVER (OFFENSIVE) by ONKEN, CAMERON
01:10	GOOD! LAYUP by PADILLA, KAYLA	15-19	V 4	
01:10	ASSIST by CRAWFORD, TORI			
00:46		17-19	V 2	GOOD! JUMPER by SIEGRIST, MADISON [PNT]
00:46				ASSIST by CARANGI, SAMANTHA
00:26	MISSED LAYUP by PADILLA, KAYLA			
00:23	REBOUND (OFF) by ANDERSON, EMILY			
00:22	GOOD! LAYUP by ANDERSON, EMILY	17-21	V 4	
00:00				MISSED JUMPER by CARANGI, SAMANTHA
00:00	REBOUND (DEF) by CRAWFORD, TORI			

Penn 21, Villanova 17

Points from (This Period)	PEN	VIL
In the Paint	14	6
Off Turns	5	0
2nd Chance	6	2
Fast Break	2	0
Bench	3	0

Official Box Score
Penn vs Villanova
Second Quarter Statistics Only
January 15, 2020 at Finneran Pavilion - Villanova, Pa.



Penn 15

No.	Player	S	Pts	FG	3FG	FT	OR	DR	TR	PF	A	TO	Blk	Stl	Min	+/-
04	SUTTLE, KENNEDY	F	0	0-0	0-0	0-0	0	0	0	0	0	0	0	0	1	-2
11	GRASELA, KENDALL	G	2	1-1	0-0	0-0	0	0	0	0	0	0	0	1	10	0
31	PARKER, ELEAH	C	2	1-2	0-0	0-2	0	0	0	0	0	0	1	0	6	-5
33	STERBA, PHOEBE	G	3	1-3	1-3	0-0	0	1	1	0	0	1	0	2	9	0
45	PADILLA, KAYLA	G	0	0-2	0-0	0-0	0	1	1	0	2	1	0	0	9	2
02	KINUM, KATIE	G	0	0-0	0-0	0-0	0	0	0	0	0	0	0	0	0	0
03	JONES, MICHAEL	G	0	0-0	0-0	0-0	0	0	0	0	0	0	0	0	0	0
21	LAKSTIGALA, MIA	G	0	0-0	0-0	0-0	0	0	0	0	0	0	0	0	1	-2
24	CRAWFORD, TORI	F	6	3-6	0-1	0-0	1	2	3	0	1	0	1	0	9	2
40	ANDERSON, EMILY	C	2	1-1	0-0	0-0	1	0	1	1	0	1	1	0	4	5
TEAM							1	0	1	0		1				
TOTALS			15	7-15	1-4	0-2	3	4	7	1	3	4	3	3	50	

Shooting By Period

Period	FG	FG%	3FG	3FG%	FT	FT%
3rd Qtr	3-10	30%	0-5	00%	2-3	67%
4th Qtr	5-16	31%	3-9	33%	1-2	50%
2nd Half	7-15	47%	1-4	25%	0-2	00%
2nd Half	8-26	31%	3-14	21%	3-5	60%
Game	24-59	40.7%	6-21	28.6%	4-9	44.4%

Deadball Rebounds: 3,0

Villanova 15

No.	Player	S	Pts	FG	3FG	FT	OR	DR	TR	PF	A	TO	Blk	Stl	Min	+/-
00	ONKEN, CAMERON	G	0	0-1	0-1	0-0	0	3	3	0	1	0	0	1	7	3
01	HERLIHY, BRIDGET	F	8	3-5	2-3	0-0	0	1	1	2	2	2	0	0	9	0
10	JAMES, RAVEN	G	3	1-2	1-2	0-0	0	0	0	0	0	1	0	0	7	5
20	SIEGRIST, MADISON	F	0	0-0	0-0	0-0	1	0	1	1	1	1	0	0	7	0
30	GEDAKA, MARY	G	4	1-4	0-2	2-2	2	1	3	0	0	1	1	0	10	0
03	LANGE, GRACE	F	0	0-0	0-0	0-0	0	0	0	0	0	0	0	0	0	0
04	GARDLER, MACKENZIE	G	0	0-0	0-0	0-0	0	0	0	0	0	0	0	1	2	0
13	CARANGI, SAMANTHA	G	0	0-0	0-0	0-0	0	0	0	0	0	0	0	0	3	-5
15	MULLIN, BROOKE	G	0	0-1	0-0	0-0	0	0	0	0	0	0	0	0	3	-3
TEAM							1	0	1	0		2				
TOTALS			15	5-13	3-8	2-2	4	5	9	3	4	7	1	2	50	

Shooting By Period

Period	FG	FG%	3FG	3FG%	FT	FT%
3rd Qtr	5-17	29%	2-7	29%	2-3	67%
4th Qtr	9-11	82%	3-4	75%	3-5	60%
2nd Half	5-13	38%	3-8	38%	2-2	100%
2nd Half	14-28	50%	5-11	45%	5-8	63%
Game	26-57	45.6%	11-27	40.7%	7-10	70.0%

Deadball Rebounds: 1,1

Game Notes:

Officials: Bryan Brunette, Fatou Cissoko-Stephens, Karen Preato
 Attendance: 501

Start Time: 07:03 PM ET
 End Time: 08:43 PM ET
 Game Duration: 1:39

Score	1st	2nd	3rd	4th	TOT
PEN	21	15	8	14	58
VIL	17	15	14	24	70

Points from (This Period)	PEN	VIL
In the Paint	12	4
Off Turns	4	0
2nd Chance	6	3
Fast Break	2	0
Bench	8	0

Official Play-By-Play
Penn vs Villanova
Second Quarter
January 15, 2020 at Finneran Pavilion - Villanova, Pa.



Period 2

Starters:

Penn: 11 GRASELA, KENDALL (G); 31 PARKER, ELEAH (C); 33 STERBA, PHOEBE (G); 45 PADILLA, KAYLA (G); 4 SUTTLE, KENNEDY (F);
Villanova: 0 ONKEN, CAMERON (G); 1 HERLIHY, BRIDGET (F); 10 JAMES, RAVEN (G); 20 SIEGRIST, MADISON (F); 30 GEDAKA, MARY (G);

Time	VISITORS: Penn	Score	Margin	HOME: Villanova
09:35				MISSED 3PTR by ONKEN, CAMERON
09:35	BLOCK by CRAWFORD, TORI			
09:29				REBOUND (OFF) by SIEGRIST, MADISON
09:29				MISSED 3PTR by GEDAKA, MARY
09:29				REBOUND (OFF) by TEAM
09:29				TURNOVER (SHOTCLOCK) by TEAM
09:29				SUB OUT: ONKEN, CAMERON
09:29				SUB IN: HERLIHY, BRIDGET
09:14	MISSED 3PTR by CRAWFORD, TORI			
09:12	REBOUND (OFF) by ANDERSON, EMILY			
09:11	GOOD! LAYUP by ANDERSON, EMILY	17-23	V 6	
08:46		19-23	V 4	GOOD! LAYUP by GEDAKA, MARY
08:46				ASSIST by HERLIHY, BRIDGET
08:37	GOOD! JUMPER by GRASELA, KENDALL [PNT]	19-25	V 6	
08:10				MISSED JUMPER by MULLIN, BROOKE
08:10	BLOCK by ANDERSON, EMILY			
08:05	REBOUND (DEF) by CRAWFORD, TORI			
07:59	GOOD! 3PTR by STERBA, PHOEBE	19-28	V 9	
07:59	ASSIST by CRAWFORD, TORI			
07:55				TIMEOUT 30SEC
07:55				SUB OUT: MULLIN, BROOKE
07:55				SUB IN: ONKEN, CAMERON
07:28				TURNOVER (TRAVEL) by GEDAKA, MARY
07:09	MISSED LAYUP by PADILLA, KAYLA			
07:09	REBOUND (OFF) by TEAM			
07:09				SUB OUT: CARANGI, SAMANTHA
07:09				SUB IN: JAMES, RAVEN
07:05	GOOD! JUMPER by CRAWFORD, TORI [PNT]	19-30	V 11	
06:56	SUB OUT: ANDERSON, EMILY			
06:56	SUB IN: PARKER, ELEAH			
06:44				MISSED 3PTR by JAMES, RAVEN
06:40				REBOUND (OFF) by GEDAKA, MARY
06:34		22-30	V 8	GOOD! 3PTR by HERLIHY, BRIDGET
06:34				ASSIST by SIEGRIST, MADISON
06:19	TURNOVER (BADPASS) by STERBA, PHOEBE			
05:56				MISSED LAYUP by HERLIHY, BRIDGET
05:56	BLOCK by PARKER, ELEAH			
05:53	REBOUND (DEF) by CRAWFORD, TORI			
05:51	MISSED 3PTR by STERBA, PHOEBE			
05:47				REBOUND (DEF) by ONKEN, CAMERON
05:40		25-30	V 5	GOOD! 3PTR by HERLIHY, BRIDGET
05:40				ASSIST by ONKEN, CAMERON
05:12	MISSED LAYUP by CRAWFORD, TORI			
05:09				REBOUND (DEF) by ONKEN, CAMERON
05:02				MISSED LAYUP by GEDAKA, MARY
05:00				REBOUND (OFF) by GEDAKA, MARY
04:57				MISSED 3PTR by HERLIHY, BRIDGET
04:54	REBOUND (DEF) by STERBA, PHOEBE			
04:38	GOOD! LAYUP by PARKER, ELEAH	25-32	V 7	
04:38	ASSIST by PADILLA, KAYLA			
04:20		28-32	V 4	GOOD! 3PTR by JAMES, RAVEN
04:20				ASSIST by HERLIHY, BRIDGET
03:57	MISSED LAYUP by PARKER, ELEAH			
03:55	REBOUND (OFF) by CRAWFORD, TORI			
03:54	GOOD! LAYUP by CRAWFORD, TORI	28-34	V 6	
03:48				TURNOVER (BADPASS) by HERLIHY, BRIDGET
03:48	STEAL by GRASELA, KENDALL			
03:48				SUB OUT: ONKEN, CAMERON
03:48				SUB IN: GARDLER, MACKENZIE
03:48	SUB OUT: STERBA, PHOEBE			
03:48	SUB IN: LAKSTIGALA, MIA			
03:48				FOUL (PERSONAL) by SIEGRIST, MADISON
03:27	TURNOVER (BADPASS) by PADILLA, KAYLA			
03:27				STEAL by GARDLER, MACKENZIE
03:26				TURNOVER (OTHER) by SIEGRIST, MADISON
03:14				FOUL (PERSONAL) by HERLIHY, BRIDGET
03:14	SUB OUT: PADILLA, KAYLA			
03:14	SUB IN: STERBA, PHOEBE			
03:14	MISSED FT by PARKER, ELEAH			

Time	VISITORS: Penn	Score	Margin	HOME: Villanova
03:14	REBOUND (OFF) by TEAM			
03:14	MISSED FT by PARKER, ELEAH			
03:13				REBOUND (DEF) by HERLIHY, BRIDGET
02:55		30-34	V 4	GOOD! LAYUP by HERLIHY, BRIDGET
02:41				SUB OUT: SIEGRIST, MADISON
02:41				SUB IN: ONKEN, CAMERON
02:41	SUB OUT: LAKSTIGALA, MIA			
02:41	SUB IN: PADILLA, KAYLA			
02:41	TURNOVER (5SEC) by TEAM			
02:26				TURNOVER (LOSTBALL) by HERLIHY, BRIDGET
02:26	STEAL by STERBA, PHOEBE			
02:19	MISSED JUMPER by CRAWFORD, TORI			
02:19				BLOCK by GEDAKA, MARY
02:13				REBOUND (DEF) by GEDAKA, MARY
02:07				MISSED 3PTR by GEDAKA, MARY
02:03	REBOUND (DEF) by PADILLA, KAYLA			
02:00	GOOD! LAYUP by CRAWFORD, TORI [FB]	30-36	V 6	
02:00	ASSIST by PADILLA, KAYLA			
01:24				TURNOVER (SHOTCLOCK) by TEAM
01:24	SUB OUT: CRAWFORD, TORI			
01:24	SUB OUT: PARKER, ELEAH			
01:24	SUB IN: SUTTLE, KENNEDY			
01:24	SUB IN: ANDERSON, EMILY			
01:24				SUB OUT: GARDLER, MACKENZIE
01:24				SUB IN: MULLIN, BROOKE
01:13	MISSED 3PTR by STERBA, PHOEBE			
01:10				REBOUND (DEF) by ONKEN, CAMERON
00:53	FOUL (PERSONAL) by ANDERSON, EMILY			
00:53		31-36	V 5	GOOD! FT by GEDAKA, MARY
00:53		32-36	V 4	GOOD! FT by GEDAKA, MARY
00:35	TURNOVER (LOSTBALL) by ANDERSON, EMILY			
00:35				STEAL by ONKEN, CAMERON
00:35	SUB OUT: SUTTLE, KENNEDY			
00:35	SUB OUT: ANDERSON, EMILY			
00:35	SUB IN: CRAWFORD, TORI			
00:35	SUB IN: PARKER, ELEAH			
00:11				TURNOVER (BADPASS) by JAMES, RAVEN
00:11	STEAL by STERBA, PHOEBE			
00:04				FOUL (PERSONAL) by HERLIHY, BRIDGET
00:04				SUB OUT: HERLIHY, BRIDGET
00:04				SUB IN: LANGE, GRACE
00:03	MISSED LAYUP by PADILLA, KAYLA			
00:00				REBOUND (DEF) by TEAM

Penn 36, Villanova 32

Points from (This Period)	PEN	VIL
In the Paint	12	4
Off Turns	4	0
2nd Chance	6	3
Fast Break	2	0
Bench	8	0

Official Box Score
Penn vs Villanova
Second Half Statistics Only
January 15, 2020 at Finneran Pavilion - Villanova, Pa.



Penn 22

No.	Player	S	Pts	FG	3FG	FT	OR	DR	TR	PF	A	TO	Blk	Stl	Min	+/-
02	KINUM, KATIE	G	0	0-2	0-2	0-0	0	1	1	0	0	0	0	0	4	-3
03	JONES, MICHAEL	G	0	0-2	0-1	0-0	0	0	0	0	0	0	0	0	2	-2
11	GRASELA, KENDALL	G	0	0-2	0-1	0-0	0	0	0	1	3	3	0	1	18	-14
21	LAKSTIGALA, MIA	G	0	0-0	0-0	0-0	0	0	0	0	0	0	0	0	0	0
24	CRAWFORD, TORI	F	1	0-1	0-1	1-2	1	2	3	2	1	1	0	1	18	-20
31	PARKER, ELEAH	C	4	2-5	0-0	0-1	1	2	3	4	0	2	2	0	16	-12
33	STERBA, PHOEBE	G	3	1-4	1-3	0-0	3	1	4	1	1	1	0	0	16	-13
40	ANDERSON, EMILY	C	0	0-0	0-0	0-0	0	0	0	1	0	1	0	0	3	-4
45	PADILLA, KAYLA	G	14	5-10	2-6	2-2	0	3	3	0	0	1	0	0	20	-16
04	SUTTLE, KENNEDY	F	0	0-0	0-0	0-0	0	0	0	1	1	0	0	0	2	4
	TEAM		0	0-0	0-0	0-0	1	0	1	0	0	0	0	0	0	0
	TOTALS		22	8-26	3-14	3-5	6	9	15	10	6	9	2	2	98	

Shooting By Period

Period	FG	FG%	3FG	3FG%	FT	FT%
3rd Qtr	3-10	30%	0-5	00%	2-3	67%
4th Qtr	5-16	31%	3-9	33%	1-2	50%
2nd Half	8-26	31%	3-14	21%	3-5	60%
Game	24-59	40.7%	6-21	28.6%	4-9	44.4%

Deadball Rebounds: 3,0
Last FG Half: PEN 4th-00:29

Villanova 38

No.	Player	S	Pts	FG	3FG	FT	OR	DR	TR	PF	A	TO	Blk	Stl	Min	+/-
00	ONKEN, CAMERON	G	0	0-1	0-0	0-0	1	6	7	1	2	1	0	1	20	16
01	HERLIHY, BRIDGET	F	0	0-1	0-0	0-0	0	1	1	2	0	1	0	0	5	4
03	LANGE, GRACE	F	0	0-0	0-0	0-0	0	0	0	0	0	0	0	0	0	0
04	GARDLER, MACKENZIE	G	0	0-0	0-0	0-0	0	0	0	0	0	0	0	0	0	0
10	JAMES, RAVEN	G	3	1-2	1-2	0-0	0	2	2	0	1	1	0	1	20	16
13	CARANGI, SAMANTHA	G	3	1-1	1-1	0-0	0	0	0	2	2	1	0	0	15	12
15	MULLIN, BROOKE	G	0	0-0	0-0	0-0	0	0	0	0	0	0	0	0	0	0
20	SIEGRIST, MADISON	F	17	7-10	3-5	0-0	1	1	2	1	2	1	2	2	20	16
30	GEDAKA, MARY	G	15	5-13	0-3	5-8	4	2	6	0	3	1	0	2	20	16
	TEAM		0	0-0	0-0	0-0	1	1	2	0	0	1	0	0	0	0
	TOTALS		38	14-28	5-11	5-8	7	13	20	6	10	7	2	6	98	

Shooting By Period

Period	FG	FG%	3FG	3FG%	FT	FT%
3rd Qtr	5-17	29%	2-7	29%	2-3	67%
4th Qtr	9-11	82%	3-4	75%	3-5	60%
2nd Half	14-28	50%	5-11	45%	5-8	63%
Game	26-57	45.6%	11-27	40.7%	7-10	70.0%

Deadball Rebounds: 1,1
Last FG Half: VIL 4th-00:53

Game Notes:

Officials: Bryan Brunette, Fatou Cissoko-Stephens, Karen Preato
 Attendance: 501

Start Time: 07:03 PM ET
 End Time: 08:43 PM ET
 Game Duration: 1:39

Score	1st	2nd	3rd	4th	TOT
PEN	21	15	8	14	58
VIL	17	15	14	24	70

Points from (This Period)	PEN	VIL
In the Paint	8	14
Off Turns	9	17
2nd Chance	1	5
Fast Break	2	6
Bench	1	3

Official Box Score
Penn vs Villanova
Third Quarter Statistics Only
January 15, 2020 at Finneran Pavilion - Villanova, Pa.



Penn 22

No.	Player	S	Pts	FG	3FG	FT	OR	DR	TR	PF	A	TO	Blk	Stl	Min	+/-
04	SUTTLE, KENNEDY	F	0	0-0	0-0	0-0	0	0	0	1	1	0	0	0	2	4
11	GRASELA, KENDALL	G	0	0-1	0-0	0-0	0	0	0	0	1	1	0	1	10	-6
31	PARKER, ELEAH	C	4	2-3	0-0	0-1	0	1	1	3	0	2	2	0	8	-3
33	STERBA, PHOEBE	G	0	0-0	0-0	0-0	0	1	1	1	1	1	0	0	6	-3
45	PADILLA, KAYLA	G	4	1-4	0-3	2-2	0	2	2	0	0	0	0	0	10	-6
02	KINUM, KATIE	G	0	0-2	0-2	0-0	0	1	1	0	0	0	0	0	4	-3
03	JONES, MICHAEL	G	0	0-0	0-0	0-0	0	0	0	0	0	0	0	0	0	0
21	LAKSTIGALA, MIA	G	0	0-0	0-0	0-0	0	0	0	0	0	0	0	0	0	0
24	CRAWFORD, TORI	F	0	0-0	0-0	0-0	0	0	0	0	0	1	0	0	8	-10
40	ANDERSON, EMILY	C	0	0-0	0-0	0-0	0	0	0	0	0	1	0	0	2	-3
TEAM							0	0	0	0	0	0				
TOTALS			8	3-10	0-5	2-3	0	5	5	5	3	6	2	1	50	

Shooting By Period

Period	FG	FG%	3FG	3FG%	FT	FT%
2nd Half	0-0	0%	0-0	0%	0-0	0%
Game	24-59	40.7%	6-21	28.6%	4-9	44.4%

Deadball Rebounds: 3,0

Villanova 38

No.	Player	S	Pts	FG	3FG	FT	OR	DR	TR	PF	A	TO	Blk	Stl	Min	+/-
00	ONKEN, CAMERON	G	0	0-1	0-0	0-0	1	3	4	1	1	0	0	0	10	6
01	HERLIHY, BRIDGET	F	0	0-1	0-0	0-0	0	1	1	2	0	1	0	0	5	4
10	JAMES, RAVEN	G	3	1-2	1-2	0-0	0	0	0	0	1	1	0	0	10	6
20	SIEGRIST, MADISON	F	7	3-6	1-3	0-0	1	1	2	1	0	1	1	1	10	6
30	GEDAKA, MARY	G	4	1-7	0-2	2-3	4	1	5	0	1	1	0	2	10	6
03	LANGE, GRACE	F	0	0-0	0-0	0-0	0	0	0	0	0	0	0	0	0	0
04	GARDLER, MACKENZIE	G	0	0-0	0-0	0-0	0	0	0	0	0	0	0	0	0	0
13	CARANGI, SAMANTHA	G	0	0-0	0-0	0-0	0	0	0	1	0	0	0	0	5	2
15	MULLIN, BROOKE	G	0	0-0	0-0	0-0	0	0	0	0	0	0	0	0	0	0
TEAM							1	1	2	0	1					
TOTALS			14	5-17	2-7	2-3	7	7	14	5	3	5	1	3	50	

Shooting By Period

Period	FG	FG%	3FG	3FG%	FT	FT%
2nd Half	0-0	0%	0-0	0%	0-0	0%
Game	26-57	45.6%	11-27	40.7%	7-10	70.0%

Deadball Rebounds: 1,1

Game Notes:

Officials: **Bryan Brunette, Fatou Cissoko-Stephens, Karen Preato**
 Attendance: **501**

Start Time: **07:03 PM ET**
 End Time: **08:43 PM ET**
 Game Duration: **1:39**

Score	1st	2nd	3rd	4th	TOT
PEN	21	15	8	14	58
VIL	17	15	14	24	70

Points from (This Period)	PEN	VIL
In the Paint	4	4
Off Turns	4	9
2nd Chance	0	5
Fast Break	0	2
Bench	0	0

Official Play-By-Play
Penn vs Villanova
Third Quarter
January 15, 2020 at Finneran Pavilion - Villanova, Pa.



Period 3

Starters:

Penn: 11 GRASELA, KENDALL (G); 31 PARKER, ELEAH (C); 33 STERBA, PHOEBE (G); 45 PADILLA, KAYLA (G); 4 SUTTLE, KENNEDY (F);
Villanova: 0 ONKEN, CAMERON (G); 1 HERLIHY, BRIDGET (F); 10 JAMES, RAVEN (G); 20 SIEGRIST, MADISON (F); 30 GEDAKA, MARY (G);

Time	VISITORS: Penn	Score	Margin	HOME: Villanova
10:00				SUB OUT: LANGE, GRACE
10:00				SUB OUT: MULLIN, BROOKE
10:00				SUB IN: HERLIHY, BRIDGET
10:00				SUB IN: SIEGRIST, MADISON
10:00	SUB OUT: CRAWFORD, TORI			
10:00	SUB IN: SUTTLE, KENNEDY			
09:51	GOOD! JUMPER by PARKER, ELEAH [PNT]	32-38	V 6	
09:51	ASSIST by STERBA, PHOEBE			
09:51				FOUL (PERSONAL) by HERLIHY, BRIDGET
09:51	MISSED FT by PARKER, ELEAH			
09:50				REBOUND (DEF) by GEDAKA, MARY
09:36				MISSED 3PTR by SIEGRIST, MADISON
09:32	REBOUND (DEF) by PADILLA, KAYLA			
09:18	MISSED JUMPER by PARKER, ELEAH			
09:15				REBOUND (DEF) by HERLIHY, BRIDGET
09:04				TURNOVER (3SEC) by GEDAKA, MARY
08:50	GOOD! JUMPER by PADILLA, KAYLA	32-40	V 8	
08:50	ASSIST by SUTTLE, KENNEDY			
08:33				MISSED JUMPER by SIEGRIST, MADISON
08:29	REBOUND (DEF) by STERBA, PHOEBE			
08:08	TURNOVER (TRAVEL) by GRASELA, KENDALL			
07:42				MISSED JUMPER by HERLIHY, BRIDGET
07:42				REBOUND (OFF) by GEDAKA, MARY
07:42	FOUL (PERSONAL) by SUTTLE, KENNEDY			
07:42	SUB OUT: SUTTLE, KENNEDY			
07:42	SUB IN: CRAWFORD, TORI			
07:21				MISSED JUMPER by ONKEN, CAMERON
07:21				REBOUND (OFF) by TEAM
07:09		35-40	V 5	GOOD! 3PTR by JAMES, RAVEN
07:09				ASSIST by GEDAKA, MARY
06:43	TURNOVER (BADPASS) by STERBA, PHOEBE			
06:43				STEAL by SIEGRIST, MADISON
06:39		37-40	V 3	GOOD! LAYUP by SIEGRIST, MADISON [FB]
06:23	FOUL (OFF) by PARKER, ELEAH			
06:23	TURNOVER (OFFENSIVE) by PARKER, ELEAH			
06:23	SUB OUT: PARKER, ELEAH			
06:23	SUB OUT: STERBA, PHOEBE			
06:23	SUB IN: KINUM, KATIE			
06:23	SUB IN: ANDERSON, EMILY			
06:03				TURNOVER (BADPASS) by HERLIHY, BRIDGET
05:49	MISSED LAYUP by GRASELA, KENDALL			
05:49				BLOCK by SIEGRIST, MADISON
05:45				REBOUND (DEF) by SIEGRIST, MADISON
05:43				TURNOVER (LOSTBALL) by JAMES, RAVEN
05:43	STEAL by GRASELA, KENDALL			
05:39	TURNOVER (LOSTBALL) by ANDERSON, EMILY			
05:39				STEAL by GEDAKA, MARY
05:26		40-40	T	GOOD! 3PTR by SIEGRIST, MADISON
05:26				ASSIST by ONKEN, CAMERON
05:11				FOUL (PERSONAL) by HERLIHY, BRIDGET
05:11				SUB OUT: HERLIHY, BRIDGET
05:11				SUB IN: CARANGI, SAMANTHA
05:07	MISSED 3PTR by PADILLA, KAYLA			
05:03				REBOUND (DEF) by ONKEN, CAMERON
04:51				MISSED JUMPER by GEDAKA, MARY
04:47	REBOUND (DEF) by PADILLA, KAYLA			
04:42	MISSED 3PTR by KINUM, KATIE			
04:39				REBOUND (DEF) by ONKEN, CAMERON
04:37				FOUL (OFF) by SIEGRIST, MADISON
04:37				TURNOVER (OFFENSIVE) by SIEGRIST, MADISON
04:36				
04:36	SUB OUT: ANDERSON, EMILY			
04:36	SUB IN: PARKER, ELEAH			
04:23				FOUL (PERSONAL) by ONKEN, CAMERON
04:20	GOOD! LAYUP by PARKER, ELEAH	40-42	V 2	
04:20	ASSIST by GRASELA, KENDALL			
04:01				MISSED 3PTR by SIEGRIST, MADISON
03:57	REBOUND (DEF) by KINUM, KATIE			
03:50	MISSED 3PTR by PADILLA, KAYLA			
03:46				REBOUND (DEF) by ONKEN, CAMERON

Time	VISITORS: Penn	Score	Margin	HOME: Villanova
03:32	FOUL (PERSONAL) by PARKER, ELEAH			
03:15				MISSED 3PTR by JAMES, RAVEN
03:11	REBOUND (DEF) by PARKER, ELEAH			
03:01	MISSED 3PTR by KINUM, KATIE			
03:00				REBOUND (DEF) by TEAM
02:35		42-42	T	GOOD! LAYUP by GEDAKA, MARY
02:35	FOUL (PERSONAL) by PARKER, ELEAH			
02:35	SUB OUT: KINUM, KATIE			
02:35	SUB IN: STERBA, PHOEBE			
02:35		43-42	H 1	GOOD! FT by GEDAKA, MARY
02:25				FOUL (PERSONAL) by CARANGI, SAMANTHA
02:25	GOOD! FT by PADILLA, KAYLA	43-43	T	
02:25	GOOD! FT by PADILLA, KAYLA	43-44	V 1	
02:12				MISSED JUMPER by GEDAKA, MARY
02:09				REBOUND (OFF) by GEDAKA, MARY
01:54		45-44	H 1	GOOD! JUMPER by SIEGRIST, MADISON
01:54				ASSIST by JAMES, RAVEN
01:38	TURNOVER (OTHER) by CRAWFORD, TORI			
01:23	FOUL (PERSONAL) by STERBA, PHOEBE			
01:23				MISSED FT by GEDAKA, MARY
01:23				REBOUND (OFF) by TEAM
01:23		46-44	H 2	GOOD! FT by GEDAKA, MARY
00:58	TURNOVER (BADPASS) by PARKER, ELEAH			
00:58				STEAL by GEDAKA, MARY
00:38				MISSED 3PTR by GEDAKA, MARY
00:31				REBOUND (OFF) by ONKEN, CAMERON
00:27				MISSED 3PTR by GEDAKA, MARY
00:23				REBOUND (OFF) by SIEGRIST, MADISON
00:06				MISSED LAYUP by GEDAKA, MARY
00:06	BLOCK by PARKER, ELEAH			
00:03				REBOUND (OFF) by GEDAKA, MARY
00:03				MISSED LAYUP by GEDAKA, MARY
00:03	BLOCK by PARKER, ELEAH			
00:03				REBOUND (OFF) by GEDAKA, MARY
00:03				TURNOVER (SHOTCLOCK) by TEAM
00:00	MISSED 3PTR by PADILLA, KAYLA			
00:00	REBOUND (OFF) by TEAM			

Penn 44, Villanova 46

Points from (This Period)	PEN	VIL
In the Paint	4	4
Off Turns	4	9
2nd Chance	0	5
Fast Break	0	2
Bench	0	0

Official Box Score
Penn vs Villanova
Fourth Quarter Statistics Only
January 15, 2020 at Finneran Pavilion - Villanova, Pa.



Penn 14

No.	Player	S	Pts	FG	3FG	FT	OR	DR	TR	PF	A	TO	Blk	Stl	Min	+/-
04	SUTTLE, KENNEDY	F	0	0-0	0-0	0-0	0	0	0	0	0	0	0	0	0	0
11	GRASELA, KENDALL	G	0	0-1	0-1	0-0	0	0	0	1	2	2	0	0	8	-8
31	PARKER, ELEAH	C	0	0-2	0-0	0-0	1	1	2	1	0	0	0	0	8	-9
33	STERBA, PHOEBE	G	3	1-4	1-3	0-0	3	0	3	0	0	0	0	0	10	-10
45	PADILLA, KAYLA	G	10	4-6	2-3	0-0	0	1	1	0	0	1	0	0	10	-10
02	KINUM, KATIE	G	0	0-0	0-0	0-0	0	0	0	0	0	0	0	0	0	0
03	JONES, MICHAEL	G	0	0-2	0-1	0-0	0	0	0	0	0	0	0	0	2	-2
21	LAKSTIGALA, MIA	G	0	0-0	0-0	0-0	0	0	0	0	0	0	0	0	0	0
24	CRAWFORD, TORI	F	1	0-1	0-1	1-2	1	2	3	2	1	0	0	1	10	-10
40	ANDERSON, EMILY	C	0	0-0	0-0	0-0	0	0	0	1	0	0	0	0	1	-1
TEAM							1	0	1	0						
TOTALS			14	5-16	3-9	1-2	6	4	10	5	3	3	0	1	48	

Shooting By Period

Period	FG	FG%	3FG	3FG%	FT	FT%
Game	24-59	40.7%	6-21	28.6%	4-9	44.4%

Deadball Rebounds: 3,0

Villanova 24

No.	Player	S	Pts	FG	3FG	FT	OR	DR	TR	PF	A	TO	Blk	Stl	Min	+/-
00	ONKEN, CAMERON	G	0	0-0	0-0	0-0	0	3	3	0	1	1	0	1	10	10
01	HERLIHY, BRIDGET	F	0	0-0	0-0	0-0	0	0	0	0	0	0	0	0	0	0
10	JAMES, RAVEN	G	0	0-0	0-0	0-0	0	2	2	0	0	0	0	1	10	10
20	SIEGRIST, MADISON	F	10	4-4	2-2	0-0	0	0	0	0	2	0	1	1	10	10
30	GEDAKA, MARY	G	11	4-6	0-1	3-5	0	1	1	0	2	0	0	0	10	10
03	LANGE, GRACE	F	0	0-0	0-0	0-0	0	0	0	0	0	0	0	0	0	0
04	GARDLER, MACKENZIE	G	0	0-0	0-0	0-0	0	0	0	0	0	0	0	0	0	0
13	CARANGI, SAMANTHA	G	3	1-1	1-1	0-0	0	0	0	1	2	1	0	0	10	10
15	MULLIN, BROOKE	G	0	0-0	0-0	0-0	0	0	0	0	0	0	0	0	0	0
TEAM							0	0	0	0						
TOTALS			24	9-11	3-4	3-5	0	6	6	1	7	2	1	3	48	

Shooting By Period

Period	FG	FG%	3FG	3FG%	FT	FT%
Game	26-57	45.6%	11-27	40.7%	7-10	70.0%

Deadball Rebounds: 1,1

Game Notes:

Officials: Bryan Brunette, Fatou Cissoko-Stephens, Karen Preato
 Attendance: 501

Start Time: 07:03 PM ET
 End Time: 08:43 PM ET
 Game Duration: 1:39

Score	1st	2nd	3rd	4th	TOT
PEN	21	15	8	14	58
VIL	17	15	14	24	70

Points from (This Period)	PEN	VIL
In the Paint	4	10
Off Turns	5	8
2nd Chance	1	0
Fast Break	2	4
Bench	1	3

Official Play-By-Play
Penn vs Villanova
Fourth Quarter
January 15, 2020 at Finneran Pavilion - Villanova, Pa.



Period 4

Starters:

Penn: 11 GRASELA, KENDALL (G); 31 PARKER, ELEAH (C); 33 STERBA, PHOEBE (G); 45 PADILLA, KAYLA (G); 4 SUTTLE, KENNEDY (F);
Villanova: 0 ONKEN, CAMERON (G); 1 HERLIHY, BRIDGET (F); 10 JAMES, RAVEN (G); 20 SIEGRIST, MADISON (F); 30 GEDAKA, MARY (G);

Time	VISITORS: Penn	Score	Margin	HOME: Villanova
09:34		48-44	H 4	GOOD! JUMPER by SIEGRIST, MADISON
09:34				ASSIST by CARANGI, SAMANTHA
09:04	MISSED JUMPER by PARKER, ELEAH			
09:03	REBOUND (OFF) by CRAWFORD, TORI			
09:03				FOUL (PERSONAL) by CARANGI, SAMANTHA
09:03	GOOD! FT by CRAWFORD, TORI	48-45	H 3	
09:03	MISSED FT by CRAWFORD, TORI			
09:01				REBOUND (DEF) by JAMES, RAVEN
08:50				MISSED 3PTR by GEDAKA, MARY
08:47	REBOUND (DEF) by CRAWFORD, TORI			
08:40	TURNOVER (BADPASS) by GRASELA, KENDALL			
08:40				STEAL by JAMES, RAVEN
08:19	FOUL (PERSONAL) by GRASELA, KENDALL			
08:06		51-45	H 6	GOOD! 3PTR by CARANGI, SAMANTHA
08:06				ASSIST by GEDAKA, MARY
07:59	TIMEOUT 30SEC			
07:59				
07:54	MISSED 3PTR by STERBA, PHOEBE			
07:50				REBOUND (DEF) by ONKEN, CAMERON
07:33		53-45	H 8	GOOD! LAYUP by GEDAKA, MARY
07:33				ASSIST by SIEGRIST, MADISON
07:26	FOUL (PERSONAL) by CRAWFORD, TORI			
07:14	SUB OUT: GRASELA, KENDALL			
07:14	SUB IN: JONES, MICHAEL			
07:09				MISSED FT by GEDAKA, MARY
07:08	REBOUND (DEF) by CRAWFORD, TORI			
06:50	MISSED 3PTR by STERBA, PHOEBE			
06:50	REBOUND (OFF) by STERBA, PHOEBE			
06:50	MISSED LAYUP by STERBA, PHOEBE			
06:50	REBOUND (OFF) by STERBA, PHOEBE			
06:50	MISSED 3PTR by JONES, MICHAEL			
06:50				REBOUND (DEF) by ONKEN, CAMERON
06:31		55-45	H 10	GOOD! LAYUP by GEDAKA, MARY
06:31				ASSIST by CARANGI, SAMANTHA
06:14	MISSED JUMPER by PADILLA, KAYLA			
06:11	REBOUND (OFF) by PARKER, ELEAH			
05:59	MISSED JUMPER by JONES, MICHAEL			
05:55	REBOUND (OFF) by STERBA, PHOEBE			
05:38	MISSED JUMPER by PARKER, ELEAH			
05:38				BLOCK by SIEGRIST, MADISON
05:38	REBOUND (OFF) by TEAM			
05:38	SUB OUT: JONES, MICHAEL			
05:38	SUB IN: GRASELA, KENDALL			
05:37	TURNOVER (BADPASS) by GRASELA, KENDALL			
05:37				STEAL by ONKEN, CAMERON
05:18				TIMEOUT 30SEC
05:18				
05:18	SUB OUT: PARKER, ELEAH			
05:18	SUB IN: ANDERSON, EMILY			
05:10		58-45	H 13	GOOD! 3PTR by SIEGRIST, MADISON
05:10				ASSIST by ONKEN, CAMERON
04:54	GOOD! JUMPER by PADILLA, KAYLA [PNT]	58-47	H 11	
04:27				TURNOVER (TRAVEL) by CARANGI, SAMANTHA
04:19	GOOD! LAYUP by PADILLA, KAYLA [FB]	58-49	H 9	
03:52		60-49	H 11	GOOD! LAYUP by GEDAKA, MARY
03:52				ASSIST by SIEGRIST, MADISON
03:52	FOUL (PERSONAL) by ANDERSON, EMILY			
03:52	SUB OUT: ANDERSON, EMILY			
03:52	SUB IN: PARKER, ELEAH			
03:52		61-49	H 12	GOOD! FT by GEDAKA, MARY
03:43	MISSED 3PTR by PADILLA, KAYLA			
03:38				REBOUND (DEF) by JAMES, RAVEN
03:26		63-49	H 14	GOOD! LAYUP by GEDAKA, MARY
03:26	FOUL (PERSONAL) by PARKER, ELEAH			
03:26	TIMEOUT 30SEC			
03:25				MISSED FT by GEDAKA, MARY
03:24	REBOUND (DEF) by PARKER, ELEAH			
03:12	MISSED 3PTR by GRASELA, KENDALL			
03:07				REBOUND (DEF) by ONKEN, CAMERON
03:05				TURNOVER (LOSTBALL) by ONKEN, CAMERON

Time	VISITORS: Penn	Score	Margin	HOME: Villanova
03:05	STEAL by CRAWFORD, TORI			
02:59	GOOD! 3PTR by PADILLA, KAYLA	63-52	H 11	
02:59	ASSIST by GRASELA, KENDALL			
02:30	FOUL (PERSONAL) by CRAWFORD, TORI			
02:29		64-52	H 12	GOOD! FT by GEDAKA, MARY [FB]
02:29		65-52	H 13	GOOD! FT by GEDAKA, MARY [FB]
02:17	MISSED 3PTR by CRAWFORD, TORI			
02:14				REBOUND (DEF) by GEDAKA, MARY
01:50		68-52	H 16	GOOD! 3PTR by SIEGRIST, MADISON
01:50				ASSIST by GEDAKA, MARY
01:43	TIMEOUT TEAM			
01:38	GOOD! 3PTR by STERBA, PHOEBE	68-55	H 13	
01:38	ASSIST by GRASELA, KENDALL			
01:10				MISSED JUMPER by GEDAKA, MARY
01:06	REBOUND (DEF) by PADILLA, KAYLA			
00:56	TURNOVER (BADPASS) by PADILLA, KAYLA			
00:56				STEAL by SIEGRIST, MADISON
00:53		70-55	H 15	GOOD! LAYUP by SIEGRIST, MADISON [FB]
00:29	GOOD! 3PTR by PADILLA, KAYLA	70-58	H 12	
00:29	ASSIST by CRAWFORD, TORI			

Penn 58, Villanova 70

Points from (This Period)	PEN	VIL
In the Paint	4	10
Off Turns	5	8
2nd Chance	1	0
Fast Break	2	4
Bench	1	3

Official Scoring/Possession Reference Chart
Penn vs Villanova
Period 1
January 15, 2020 at Finneran Pavilion - Villanova, Pa.



Period 1

Starters:

Penn: 11 GRASELA, KENDALL (G); 31 PARKER, ELEAH (C); 33 STERBA, PHOEBE (G); 45 PADILLA, KAYLA (G); 4 SUTTLE, KENNEDY (F);
Villanova: 0 ONKEN, CAMERON (G); 1 HERLIHY, BRIDGET (F); 10 JAMES, RAVEN (G); 20 SIEGRIST, MADISON (F); 30 GEDAKA, MARY (G);

Time	VISITORS: Penn	Score	Margin	HOME: Villanova
09:45		3-0	H 3	GOOD! 3PTR by HERLIHY, BRIDGET
09:04		6-0	H 6	GOOD! 3PTR by SIEGRIST, MADISON
08:28	GOOD! JUMPER by PARKER, ELEAH	6-2	H 4	
07:35	GOOD! LAYUP by PADILLA, KAYLA [PNT]	6-4	H 2	
07:20		9-4	H 5	GOOD! 3PTR by SIEGRIST, MADISON
06:59	GOOD! LAYUP by SUTTLE, KENNEDY	9-6	H 3	
06:13		11-6	H 5	GOOD! LAYUP by GEDAKA, MARY
05:55	GOOD! JUMPER by PARKER, ELEAH	11-8	H 3	
05:27		13-8	H 5	GOOD! LAYUP by HERLIHY, BRIDGET
04:16	GOOD! 3PTR by STERBA, PHOEBE	13-11	H 2	
03:04	GOOD! LAYUP by PADILLA, KAYLA [FB]	13-13	T	
02:20	GOOD! FT by ANDERSON, EMILY	13-14	V 1	
02:09		15-14	H 1	GOOD! JUMPER by SIEGRIST, MADISON
01:58	GOOD! 3PTR by PADILLA, KAYLA	15-17	V 2	
01:10	GOOD! LAYUP by PADILLA, KAYLA	15-19	V 4	
00:46		17-19	V 2	GOOD! JUMPER by SIEGRIST, MADISON [PNT]
00:22	GOOD! LAYUP by ANDERSON, EMILY	17-21	V 4	

Penn 21, Villanova 17

Official Scoring/Possession Reference Chart
Penn vs Villanova
Period 2
January 15, 2020 at Finneran Pavilion - Villanova, Pa.



Period 2

Starters:

Penn: 11 GRASELA, KENDALL (G); 31 PARKER, ELEAH (C); 33 STERBA, PHOEBE (G); 45 PADILLA, KAYLA (G); 4 SUTTLE, KENNEDY (F);
Villanova: 0 ONKEN, CAMERON (G); 1 HERLIHY, BRIDGET (F); 10 JAMES, RAVEN (G); 20 SIEGRIST, MADISON (F); 30 GEDAKA, MARY (G);

Time	VISITORS: Penn	Score	Margin	HOME: Villanova
09:11	GOOD! LAYUP by ANDERSON, EMILY	17-23	V 6	
08:46		19-23	V 4	GOOD! LAYUP by GEDAKA, MARY
08:37	GOOD! JUMPER by GRASELA, KENDALL [PNT]	19-25	V 6	
07:59	GOOD! 3PTR by STERBA, PHOEBE	19-28	V 9	
07:05	GOOD! JUMPER by CRAWFORD, TORI [PNT]	19-30	V 11	
06:34		22-30	V 8	GOOD! 3PTR by HERLIHY, BRIDGET
05:40		25-30	V 5	GOOD! 3PTR by HERLIHY, BRIDGET
04:38	GOOD! LAYUP by PARKER, ELEAH	25-32	V 7	
04:20		28-32	V 4	GOOD! 3PTR by JAMES, RAVEN
03:54	GOOD! LAYUP by CRAWFORD, TORI	28-34	V 6	
02:55		30-34	V 4	GOOD! LAYUP by HERLIHY, BRIDGET
02:00	GOOD! LAYUP by CRAWFORD, TORI [FB]	30-36	V 6	
00:53		31-36	V 5	GOOD! FT by GEDAKA, MARY
00:53		32-36	V 4	GOOD! FT by GEDAKA, MARY

Penn 36, Villanova 32

Official Scoring/Possession Reference Chart
Penn vs Villanova
Period 3
January 15, 2020 at Finneran Pavilion - Villanova, Pa.



Period 3

Starters:

Penn: 11 GRASELA, KENDALL (G); 31 PARKER, ELEAH (C); 33 STERBA, PHOEBE (G); 45 PADILLA, KAYLA (G); 4 SUTTLE, KENNEDY (F);
Villanova: 0 ONKEN, CAMERON (G); 1 HERLIHY, BRIDGET (F); 10 JAMES, RAVEN (G); 20 SIEGRIST, MADISON (F); 30 GEDAKA, MARY (G);

Time	VISITORS: Penn	Score	Margin	HOME: Villanova
09:51	GOOD! JUMPER by PARKER, ELEAH [PNT]	32-38	V 6	
08:50	GOOD! JUMPER by PADILLA, KAYLA	32-40	V 8	
07:09		35-40	V 5	GOOD! 3PTR by JAMES, RAVEN
06:39		37-40	V 3	GOOD! LAYUP by SIEGRIST, MADISON [FB]
05:26		40-40	T	GOOD! 3PTR by SIEGRIST, MADISON
04:20	GOOD! LAYUP by PARKER, ELEAH	40-42	V 2	
02:35		42-42	T	GOOD! LAYUP by GEDAKA, MARY
02:35		43-42	H 1	GOOD! FT by GEDAKA, MARY
02:25	GOOD! FT by PADILLA, KAYLA	43-43	T	
02:25	GOOD! FT by PADILLA, KAYLA	43-44	V 1	
01:54		45-44	H 1	GOOD! JUMPER by SIEGRIST, MADISON
01:23		46-44	H 2	GOOD! FT by GEDAKA, MARY

Penn 44, Villanova 46

Official Scoring/Possession Reference Chart
Penn vs Villanova
Period 4
January 15, 2020 at Finneran Pavilion - Villanova, Pa.



Period 4

Starters:

Penn: 11 GRASELA, KENDALL (G); 31 PARKER, ELEAH (C); 33 STERBA, PHOEBE (G); 45 PADILLA, KAYLA (G); 4 SUTTLE, KENNEDY (F);
Villanova: 0 ONKEN, CAMERON (G); 1 HERLIHY, BRIDGET (F); 10 JAMES, RAVEN (G); 20 SIEGRIST, MADISON (F); 30 GEDAKA, MARY (G);

Time	VISITORS: Penn	Score	Margin	HOME: Villanova
09:34		48-44	H 4	GOOD! JUMPER by SIEGRIST, MADISON
09:03	GOOD! FT by CRAWFORD, TORI	48-45	H 3	
08:06		51-45	H 6	GOOD! 3PTR by CARANGI, SAMANTHA
07:33		53-45	H 8	GOOD! LAYUP by GEDAKA, MARY
06:31		55-45	H 10	GOOD! LAYUP by GEDAKA, MARY
05:10		58-45	H 13	GOOD! 3PTR by SIEGRIST, MADISON
04:54	GOOD! JUMPER by PADILLA, KAYLA [PNT]	58-47	H 11	
04:19	GOOD! LAYUP by PADILLA, KAYLA [FB]	58-49	H 9	
03:52		60-49	H 11	GOOD! LAYUP by GEDAKA, MARY
03:52		61-49	H 12	GOOD! FT by GEDAKA, MARY
03:26		63-49	H 14	GOOD! LAYUP by GEDAKA, MARY
02:59	GOOD! 3PTR by PADILLA, KAYLA	63-52	H 11	
02:29		64-52	H 12	GOOD! FT by GEDAKA, MARY [FB]
02:29		65-52	H 13	GOOD! FT by GEDAKA, MARY [FB]
01:50		68-52	H 16	GOOD! 3PTR by SIEGRIST, MADISON
01:38	GOOD! 3PTR by STERBA, PHOEBE	68-55	H 13	
00:53		70-55	H 15	GOOD! LAYUP by SIEGRIST, MADISON [FB]
00:29	GOOD! 3PTR by PADILLA, KAYLA	70-58	H 12	

Penn 58, Villanova 70

Official Substitutions Log
Penn vs Villanova
Period 1
January 15, 2020 at Finneran Pavilion - Villanova, Pa.



VISITORS: Penn	Time	Score	HOME: Villanova
11 GRASELA, KENDALL			0 ONKEN, CAMERON
31 PARKER, ELEAH			1 HERLIHY, BRIDGET
33 STERBA, PHOEBE			10 JAMES, RAVEN
45 PADILLA, KAYLA			20 SIEGRIST, MADISON
4 SUTTLE, KENNEDY			30 GEDAKA, MARY
SUB OUT: 11 GRASELA, KENDALL	08:36	0-6	
SUB IN: 3 JONES, MICHAEL	08:36		
SUB OUT: 3 JONES, MICHAEL	04:59	8-13	
SUB OUT: 4 SUTTLE, KENNEDY	04:59		
SUB IN: 11 GRASELA, KENDALL	04:59		
SUB IN: 24 CRAWFORD, TORI	04:59		
	02:46	13-13	SUB OUT: JAMES, RAVEN
	02:46		SUB IN: CARANGI, SAMANTHA
SUB OUT: 31 PARKER, ELEAH	02:46		
SUB IN: 40 ANDERSON, EMILY	02:46		
	02:20	13-13	SUB OUT: HERLIHY, BRIDGET
	02:20		SUB IN: MULLIN, BROOKE

Penn 21, Villanova 17

**Official Substitutions Log
Penn vs Villanova
Period 2
January 15, 2020 at Finneran Pavilion - Villanova, Pa.**



VISITORS: Penn	Time	Score	HOME: Villanova
11 GRASELA, KENDALL			0 ONKEN, CAMERON
31 PARKER, ELEAH			1 HERLIHY, BRIDGET
33 STERBA, PHOEBE			10 JAMES, RAVEN
45 PADILLA, KAYLA			20 SIEGRIST, MADISON
4 SUTTLE, KENNEDY			30 GEDAKA, MARY
	09:29	-	SUB OUT: ONKEN, CAMERON
	09:29		SUB IN: HERLIHY, BRIDGET
	07:55	28-19	SUB OUT: MULLIN, BROOKE
	07:55		SUB IN: ONKEN, CAMERON
	07:09	28-19	SUB OUT: CARANGI, SAMANTHA
	07:09		SUB IN: JAMES, RAVEN
SUB OUT: 40 ANDERSON, EMILY	06:56	30-19	
SUB IN: 31 PARKER, ELEAH	06:56		
	03:48	34-28	SUB OUT: ONKEN, CAMERON
	03:48		SUB IN: GARDLER, MACKENZIE
SUB OUT: 33 STERBA, PHOEBE	03:48		
SUB IN: 21 LAKSTIGALA, MIA	03:48		
SUB OUT: 45 PADILLA, KAYLA	03:14	34-28	
SUB IN: 33 STERBA, PHOEBE	03:14		
	02:41	34-30	SUB OUT: SIEGRIST, MADISON
	02:41		SUB IN: ONKEN, CAMERON
SUB OUT: 21 LAKSTIGALA, MIA	02:41		
SUB IN: 45 PADILLA, KAYLA	02:41		
SUB OUT: 24 CRAWFORD, TORI	01:24	36-30	
SUB OUT: 31 PARKER, ELEAH	01:24		
SUB IN: 4 SUTTLE, KENNEDY	01:24		
SUB IN: 40 ANDERSON, EMILY	01:24		
	01:24		SUB OUT: GARDLER, MACKENZIE
	01:24		SUB IN: MULLIN, BROOKE
SUB OUT: 4 SUTTLE, KENNEDY	00:35	36-32	
SUB OUT: 40 ANDERSON, EMILY	00:35		
SUB IN: 24 CRAWFORD, TORI	00:35		
SUB IN: 31 PARKER, ELEAH	00:35		
	00:04	36-32	SUB OUT: HERLIHY, BRIDGET
	00:04		SUB IN: LANGE, GRACE

Penn 36, Villanova 32

Official Substitutions Log
Penn vs Villanova
Period 3
January 15, 2020 at Finneran Pavilion - Villanova, Pa.



VISITORS: Penn	Time	Score	HOME: Villanova
11 GRASELA, KENDALL			0 ONKEN, CAMERON
31 PARKER, ELEAH			1 HERLIHY, BRIDGET
33 STERBA, PHOEBE			10 JAMES, RAVEN
45 PADILLA, KAYLA			20 SIEGRIST, MADISON
4 SUTTLE, KENNEDY			30 GEDAKA, MARY
	10:00	-	SUB OUT: LANGE, GRACE
	10:00		SUB OUT: MULLIN, BROOKE
	10:00		SUB IN: HERLIHY, BRIDGET
	10:00		SUB IN: SIEGRIST, MADISON
SUB OUT: 24 CRAWFORD, TORI	10:00		
SUB IN: 4 SUTTLE, KENNEDY	10:00		
SUB OUT: 4 SUTTLE, KENNEDY	07:42	40-32	
SUB IN: 24 CRAWFORD, TORI	07:42		
SUB OUT: 31 PARKER, ELEAH	06:23	40-37	
SUB OUT: 33 STERBA, PHOEBE	06:23		
SUB IN: 2 KINUM, KATIE	06:23		
SUB IN: 40 ANDERSON, EMILY	06:23		
	05:11	40-40	SUB OUT: HERLIHY, BRIDGET
	05:11		SUB IN: CARANGI, SAMANTHA
SUB OUT: 40 ANDERSON, EMILY	04:36	40-40	
SUB IN: 31 PARKER, ELEAH	04:36		
SUB OUT: 2 KINUM, KATIE	02:35	42-42	
SUB IN: 33 STERBA, PHOEBE	02:35		

Penn 44, Villanova 46

Official Substitutions Log
Penn vs Villanova
Period 4
January 15, 2020 at Finneran Pavilion - Villanova, Pa.



VISITORS: Penn	Time	Score	HOME: Villanova
11 GRASELA, KENDALL			0 ONKEN, CAMERON
31 PARKER, ELEAH			1 HERLIHY, BRIDGET
33 STERBA, PHOEBE			10 JAMES, RAVEN
45 PADILLA, KAYLA			20 SIEGRIST, MADISON
4 SUTTLE, KENNEDY			30 GEDAKA, MARY
SUB OUT: 11 GRASELA, KENDALL	07:14	45-53	
SUB IN: 3 JONES, MICHAEL	07:14		
SUB OUT: 3 JONES, MICHAEL	05:38	45-55	
SUB IN: 11 GRASELA, KENDALL	05:38		
SUB OUT: 31 PARKER, ELEAH	05:18	45-55	
SUB IN: 40 ANDERSON, EMILY	05:18		
SUB OUT: 40 ANDERSON, EMILY	03:52	49-60	
SUB IN: 31 PARKER, ELEAH	03:52		

Penn 58, Villanova 70

Official Shot Chart
Penn vs Villanova
PERIOD 1 Shots
 January 15, 2020 at Finneran Pavilion - Villanova, Pa.



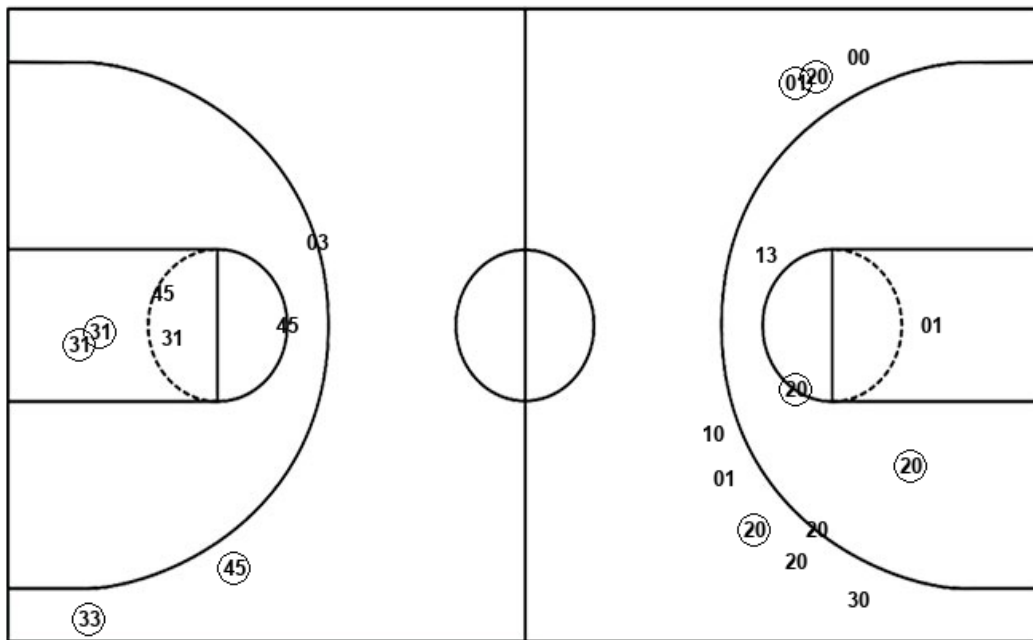
Villanova

Penn

Layups

20 (30) (01)

Dunks



Layups

04 31 (45) 04 (04)
 24 (45) (45) 45 (40)

Dunks

VIL : Period 1	Made	Att	Pct
Layups	2	3	66.7
Dunks	0	0	0
2PT Field Goals	4	8	50.0
3PT Field Goals	3	8	37.5
Total Field Goals	7	16	43.8

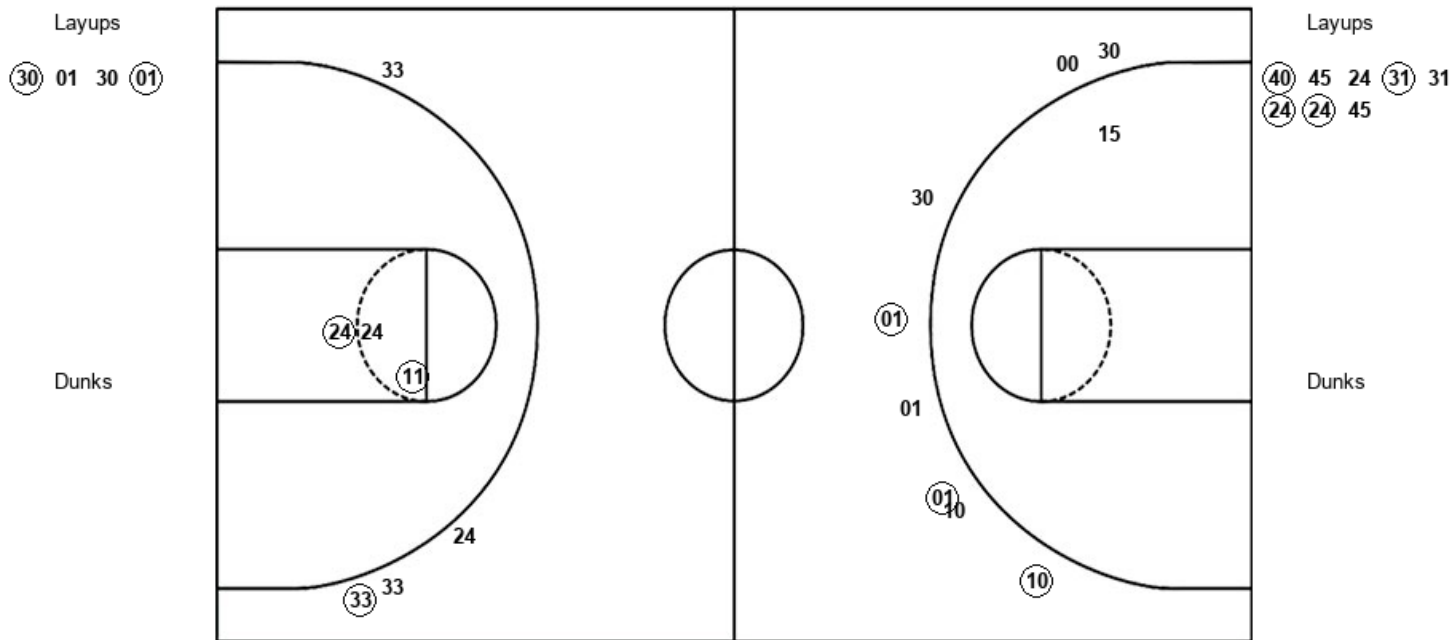
PEN : Period 1	Made	Att	Pct
Layups	5	10	50.0
Dunks	0	0	0
2PT Field Goals	7	15	46.7
3PT Field Goals	2	3	66.7
Total Field Goals	9	18	50.0

Official Shot Chart
Penn vs Villanova
PERIOD 2 Shots
 January 15, 2020 at Finneran Pavilion - Villanova, Pa.



Villanova

Penn



VIL : Period 2	Made	Att	Pct
Layups	2	4	50.0
Dunks	0	0	0
2PT Field Goals	2	5	40.0
3PT Field Goals	3	8	37.5
Total Field Goals	5	13	38.5

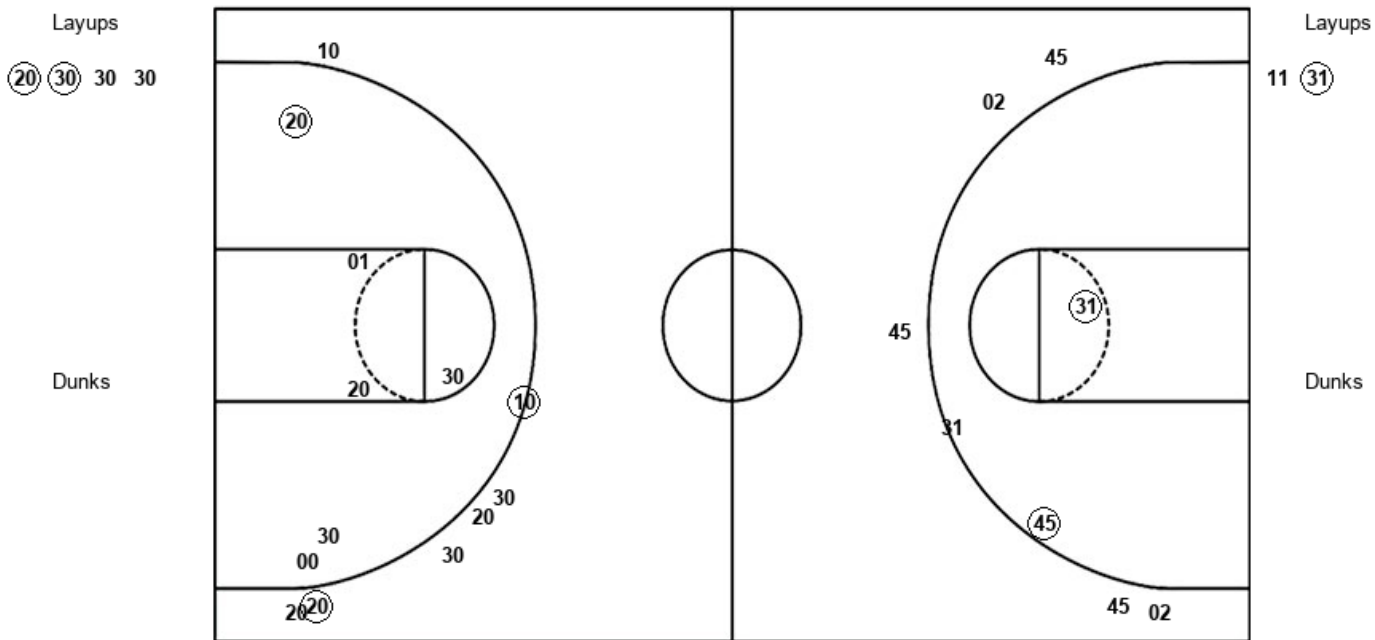
PEN : Period 2	Made	Att	Pct
Layups	4	8	50.0
Dunks	0	0	0
2PT Field Goals	6	11	54.5
3PT Field Goals	1	4	25.0
Total Field Goals	7	15	46.7

Official Shot Chart
Penn vs Villanova
PERIOD 3 Shots
 January 15, 2020 at Finneran Pavilion - Villanova, Pa.



Villanova

Penn



VIL : Period 3	Made	Att	Pct
Layups	2	4	50.0
Dunks	0	0	0
2PT Field Goals	3	10	30.0
3PT Field Goals	2	7	28.6
Total Field Goals	5	17	29.4

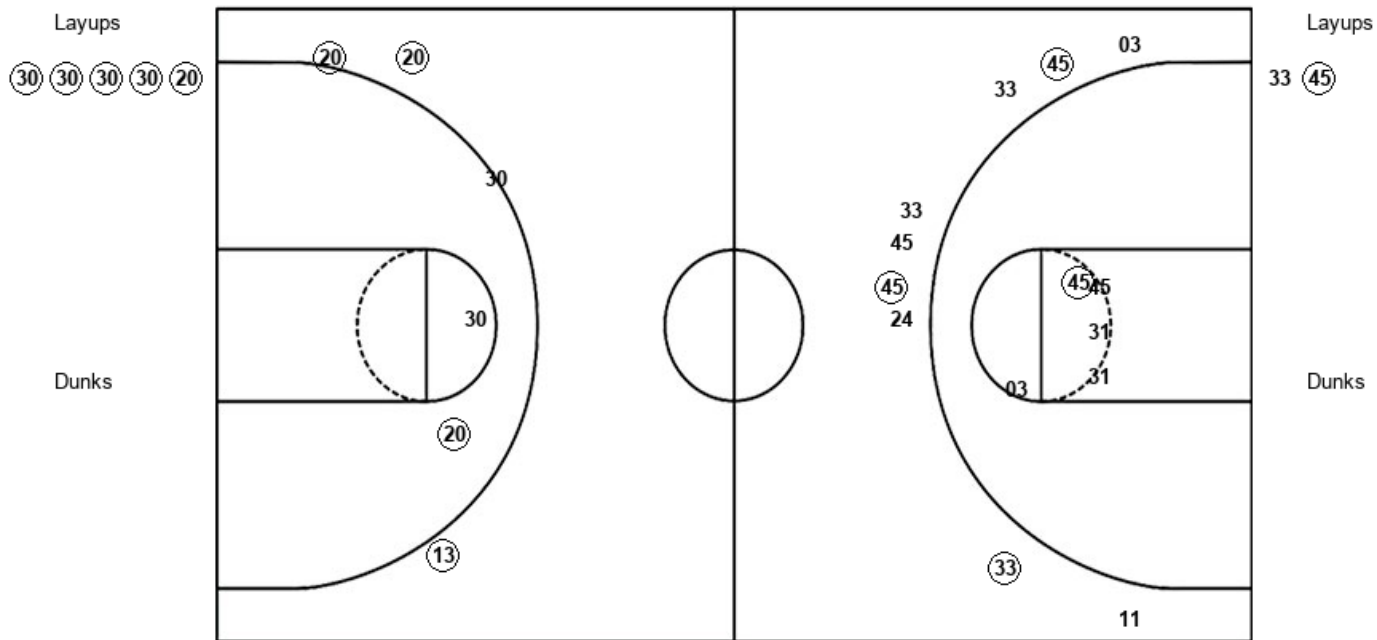
PEN : Period 3	Made	Att	Pct
Layups	1	2	50.0
Dunks	0	0	0
2PT Field Goals	3	5	60.0
3PT Field Goals	0	5	00.0
Total Field Goals	3	10	30.0

Official Shot Chart
Penn vs Villanova
PERIOD 4 Shots
 January 15, 2020 at Finneran Pavilion - Villanova, Pa.



Villanova

Penn



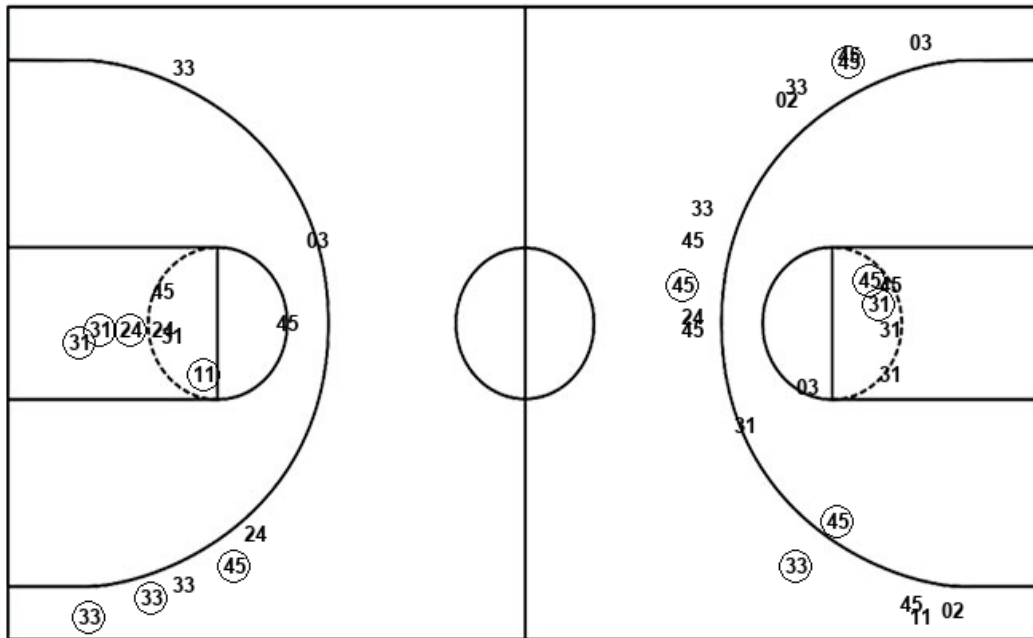
VIL : Period 4	Made	Att	Pct
Layups	5	5	100.0
Dunks	0	0	0
2PT Field Goals	6	7	85.7
3PT Field Goals	3	4	75.0
Total Field Goals	9	11	81.8

PEN : Period 4	Made	Att	Pct
Layups	1	2	50.0
Dunks	0	0	0
2PT Field Goals	2	7	28.6
3PT Field Goals	3	9	33.3
Total Field Goals	5	16	31.3

Official Shot Chart
Penn vs Villanova
Penn Team Shots
January 15, 2020 at Finneran Pavilion - Villanova, Pa.



Layups



Layups

04 31 (45) 04 (04)
 24 (45) (45) 45 (40)
 (40) 45 24 (31) 31
 (24) (24) 45 11 (31)
 33 (45)

Dunks

Dunks

PEN : Period 1	Made	Att	Pct
Layups	5	10	50.0
Dunks	0	0	0
2PT Field Goals	7	15	46.7
3PT Field Goals	2	3	66.7
Total Field Goals	9	18	50.0

PEN : Period 2	Made	Att	Pct
Layups	4	8	50.0
Dunks	0	0	0
2PT Field Goals	6	11	54.5
3PT Field Goals	1	4	25.0
Total Field Goals	7	15	46.7

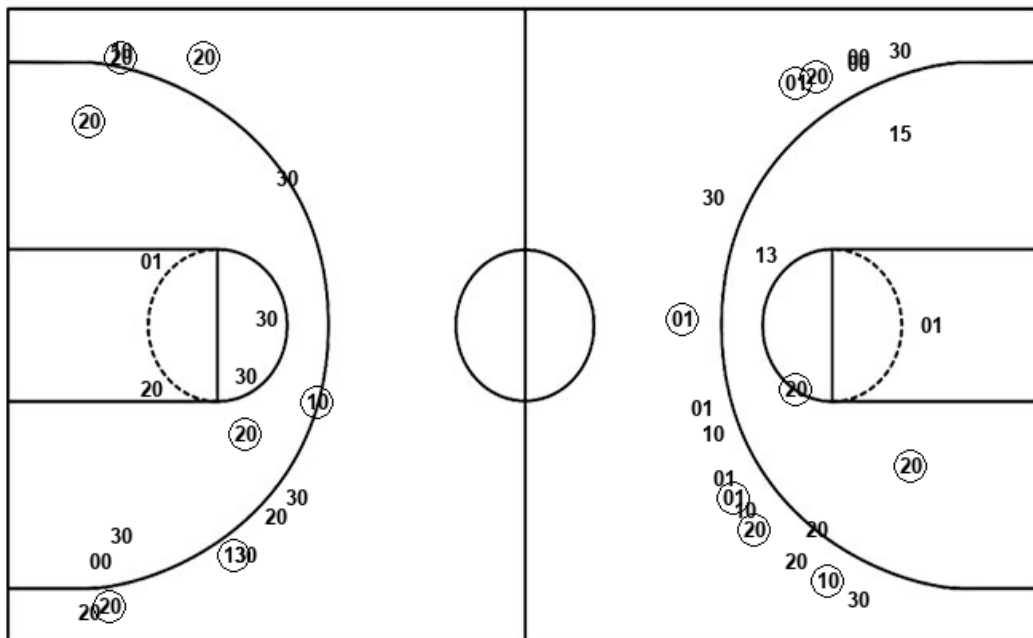
PEN : Period 3	Made	Att	Pct
Layups	1	2	50.0
Dunks	0	0	0
2PT Field Goals	3	5	60.0
3PT Field Goals	0	5	00.0
Total Field Goals	3	10	30.0

PEN : Period 4	Made	Att	Pct
Layups	1	2	50.0
Dunks	0	0	0
2PT Field Goals	2	7	28.6
3PT Field Goals	3	9	33.3
Total Field Goals	5	16	31.3

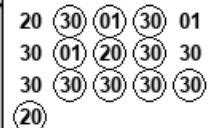
Official Shot Chart
Penn vs Villanova
Villanova Team Shots
 January 15, 2020 at Finneran Pavilion - Villanova, Pa.



Layups



Layups



Dunks

Dunks

VIL : Period 1	Made	Att	Pct
Layups	2	3	66.7
Dunks	0	0	0
2PT Field Goals	4	8	50.0
3PT Field Goals	3	8	37.5
Total Field Goals	7	16	43.8

VIL : Period 2	Made	Att	Pct
Layups	2	4	50.0
Dunks	0	0	0
2PT Field Goals	2	5	40.0
3PT Field Goals	3	8	37.5
Total Field Goals	5	13	38.5

VIL : Period 3	Made	Att	Pct
Layups	2	4	50.0
Dunks	0	0	0
2PT Field Goals	3	10	30.0
3PT Field Goals	2	7	28.6
Total Field Goals	5	17	29.4

VIL : Period 4	Made	Att	Pct
Layups	5	5	100.0
Dunks	0	0	0
2PT Field Goals	6	7	85.7
3PT Field Goals	3	4	75.0
Total Field Goals	9	11	81.8