

FINAL SCORE



Stanford

97



San Francisco

71

November 09, 2019 • Chase Center - San Francisco

FINAL STATISTICS

Official Box Score
Stanford vs San Francisco
Game Totals -- Final Statistics
November 09, 2019 at Chase Center - San Francisco



Stanford 97

No.	Player	S	Pts	FG	3FG	FT	OR	DR	TR	PF	A	TO	Blk	Stl	Min	+/-
05	BELIBI, FRANCESCA	F	5	2-3	0-0	1-1	1	0	1	1	2	2	0	1	9	1
10	JEROME, ALYSSA	F	11	3-6	3-6	2-2	1	2	3	3	3	0	0	0	15	11
12	HULL, LEXIE	G	27	10-12	5-7	2-3	2	6	8	1	3	2	1	0	35	28
21	CARRINGTON, DIJONAI	G	16	7-14	2-3	0-0	2	6	8	2	2	4	1	0	25	20
23	WILLIAMS, KIANA	G	4	2-12	0-4	0-0	0	3	3	0	7	0	0	1	29	18
03	WILSON, ANNA	G	4	1-2	1-1	1-2	2	0	2	2	1	0	0	1	15	10
04	FINGALL, NADIA	F	2	1-2	0-0	0-0	1	0	1	2	1	0	0	0	7	8
11	PRECHTEL, ASHTEN	F	8	4-8	0-1	0-0	2	7	9	1	1	1	0	0	15	15
20	MOSCHKAU, ESTELLA	G	2	1-1	0-0	0-0	1	0	1	0	0	0	0	0	2	-1
24	HULL, LACIE	G	8	3-5	2-3	0-0	0	1	1	0	1	0	0	0	17	8
30	JONES, HALEY	G	8	3-7	1-1	1-2	0	2	2	2	1	4	1	2	15	5
33	JUMP, HANNAH	G	0	0-3	0-3	0-0	1	2	3	0	0	0	0	0	11	6
54	BROWN, JENNA	G	2	1-3	0-0	0-0	0	0	0	0	0	0	0	0	4	1
	TEAM						2	5	7	0		2				
TOTALS			97	38-78	14-29	7-10	15	34	49	14	22	15	3	5	200	

Shooting By Period

Period	FG	FG%	3FG	3FG%	FT	FT%
1st Qtr	10-17	59%	2-6	33%	0-0	0%
2nd Qtr	8-19	42%	4-8	50%	2-4	50%
3rd Qtr	12-19	63%	5-7	71%	2-2	100%
4th Qtr	8-23	35%	3-8	38%	3-4	75%
1st Half	18-36	50%	6-14	43%	2-4	50%
2nd Half	20-42	48%	8-15	53%	5-6	83%
Game	38-78	48.7%	14-29	48.3%	7-10	70.0%

Deadball Rebounds: 3,0
Last FG: 4th-00:11
Biggest Run: 12-0
Largest lead: By 28 at -
Technical Fouls: None.

San Francisco 71

No.	Player	S	Pts	FG	3FG	FT	OR	DR	TR	PF	A	TO	Blk	Stl	Min	+/-
00	WILLIAMS, MIKAYLA	F	14	6-11	0-0	2-2	4	3	7	0	0	2	0	1	22	-6
13	HOSKOVA, LUCIE	G	10	4-10	2-4	0-0	1	6	7	2	0	1	1	0	32	-30
21	KRIMILI, IOANNA	G	17	7-15	2-3	1-2	3	3	6	0	1	2	0	2	29	-16
25	BALOGUN, DOLAPO	F	2	0-6	0-4	2-2	0	1	1	2	1	1	0	0	22	-14
55	RATHBUN, ABBY	F	6	1-7	0-2	4-6	0	2	2	1	0	3	0	2	30	-27
02	VAALAVIRTA, KIA	G	3	1-9	1-6	0-0	0	4	4	1	2	1	0	0	31	-11
32	NIELACNA, JULIA	F	10	4-11	1-3	1-1	1	3	4	1	0	1	0	0	22	-9
34	VIGIL, LEILAH	F	9	3-5	0-0	3-4	2	2	4	4	0	1	0	0	13	-17
	TEAM						4	0	4	0		0				
TOTALS			71	26-74	6-22	13-17	15	24	39	11	4	12	1	5	200	

Shooting By Period

Period	FG	FG%	3FG	3FG%	FT	FT%
1st Qtr	5-18	28%	1-5	20%	2-2	100%
2nd Qtr	7-19	37%	4-9	44%	1-2	50%
3rd Qtr	7-17	41%	1-3	33%	5-7	71%
4th Qtr	7-20	35%	0-5	00%	5-6	83%
1st Half	12-37	32%	5-14	36%	3-4	75%
2nd Half	14-37	38%	1-8	13%	10-13	77%
Game	26-74	35.1%	6-22	27.3%	13-17	76.5%

Deadball Rebounds: 3,1
Last FG: 4th-00:25
Biggest Run: 8-0
Largest lead: By 1 at -
Technical Fouls: None.

Game Notes:

Officials: Charles Gonzalez, Kenneth Nash, Nicole Leon
Attendance: 3025

Start Time: 06:09 PM ET
End Time: 07:49 PM ET
Game Duration: 1:40

Score	1st	2nd	3rd	4th	TOT
STA	22	22	31	22	97
USF	13	19	20	19	71

STA led for 38:39. USF led for 0:58.
Game was tied for 0:24.
Times tied: 84 Lead Changes: 0

Points from	STA	USF
In the Paint	40	36
Off Turns	18	17
2nd Chance	13	14
Fast Break	6	4
Bench	34	22

Official Box Score
Stanford vs San Francisco
First Half Statistics Only
November 09, 2019 at Chase Center - San Francisco



Stanford 44

No.	Player	S	Pts	FG	3FG	FT	OR	DR	TR	PF	A	TO	Blk	Stl	Min	+/-
10	JEROME, ALYSSA	F	6	2-4	2-4	0-0	0	0	0	2	0	0	0	0	7	-1
11	PRECHTEL, ASHTEN	F	4	2-4	0-1	0-0	1	4	5	0	0	1	0	0	9	10
12	HULL, LEXIE	G	12	5-6	1-2	1-2	0	3	3	0	3	1	0	0	19	16
20	MOSCHKAU, ESTELLA	G	0	0-0	0-0	0-0	0	0	0	0	0	0	0	0	0	0
21	CARRINGTON, DIJONAI	G	12	5-9	2-2	0-0	1	3	4	0	1	0	1	0	15	7
23	WILLIAMS, KIANA	G	2	1-7	0-3	0-0	0	2	2	0	5	0	0	1	20	13
24	HULL, LACIE	G	2	1-1	0-0	0-0	0	0	0	0	1	0	0	0	8	6
30	JONES, HALEY	G	3	1-1	1-1	0-0	0	0	0	0	0	2	0	0	4	3
33	JUMP, HANNAH	G	0	0-1	0-1	0-0	0	0	0	0	0	0	0	0	5	3
54	BROWN, JENNA	G	0	0-0	0-0	0-0	0	0	0	0	0	0	0	0	0	-1
03	WILSON, ANNA	G	1	0-0	0-0	1-2	0	0	0	0	0	0	0	0	5	1
04	FINGALL, NADIA	F	0	0-1	0-0	0-0	0	0	0	1	0	0	0	0	3	1
05	BELIBI, FRANCESCA	F	2	1-2	0-0	0-0	0	0	0	0	2	1	0	1	7	2
	TEAM		0	0-0	0-0	0-0	2	4	6	0	0	1	0	0	0	0
TOTALS			44	18-36	6-14	2-4	4	16	20	3	12	6	1	2	100	

Shooting By Period

Period	FG	FG%	3FG	3FG%	FT	FT%
1st Qtr	10-17	59%	2-6	33%	0-0	0%
2nd Qtr	8-19	42%	4-8	50%	2-4	50%
1st Half	18-36	50%	6-14	43%	2-4	50%
Game	38-78	48.7%	14-29	48.3%	7-10	70.0%

Deadball Rebounds: 3,0
Last FG Half: STA 2nd-01:29

San Francisco 32

No.	Player	S	Pts	FG	3FG	FT	OR	DR	TR	PF	A	TO	Blk	Stl	Min	+/-
00	WILLIAMS, MIKAYLA	F	6	3-8	0-0	0-0	4	3	7	0	0	2	0	0	11	-2
02	VAALAVIRTA, KIA	G	3	1-5	1-3	0-0	0	1	1	0	2	0	0	0	14	-3
13	HOSKOVA, LUCIE	G	10	4-8	2-3	0-0	1	2	3	2	0	0	0	0	15	-12
21	KRIMILI, IOANNA	G	11	4-8	2-3	1-2	2	2	4	0	1	1	0	1	17	-10
25	BALOGUN, DOLAPO	F	2	0-2	0-2	2-2	0	1	1	1	1	1	0	0	13	-12
32	NIELACNA, JULIA	F	0	0-3	0-1	0-0	1	1	2	0	0	0	0	0	10	-4
34	VIGIL, LEILAH	F	0	0-0	0-0	0-0	0	2	2	2	0	1	0	0	4	-8
55	RATHBUN, ABBY	F	0	0-3	0-2	0-0	0	1	1	0	0	2	0	0	15	-9
	TEAM		0	0-0	0-0	0-0	1	0	1	0	0	0	0	0	0	0
TOTALS			32	12-37	5-14	3-4	9	13	22	5	4	7	0	1	100	

Shooting By Period

Period	FG	FG%	3FG	3FG%	FT	FT%
1st Qtr	5-18	28%	1-5	20%	2-2	100%
2nd Qtr	7-19	37%	4-9	44%	1-2	50%
1st Half	12-37	32%	5-14	36%	3-4	75%
Game	26-74	35.1%	6-22	27.3%	13-17	76.5%

Deadball Rebounds: 3,1
Last FG Half: USF 2nd-01:50

Game Notes:

Officials: Charles Gonzalez, Kenneth Nash, Nicole Leon
 Attendance: 3025

Start Time: 06:09 PM ET
 End Time: 07:49 PM ET
 Game Duration: 1:40

Score	1st	2nd	3rd	4th	TOT
STA	22	22	31	22	97
USF	13	19	20	19	71

Points from (This Period)	STA	USF
In the Paint	18	14
Off Turns	7	4
2nd Chance	5	5
Fast Break	3	2
Bench	10	3

Official Box Score
Stanford vs San Francisco
First Quarter Statistics Only
November 09, 2019 at Chase Center - San Francisco



Stanford 22

No.	Player	S	Pts	FG	3FG	FT	OR	DR	TR	PF	A	TO	Blk	Stl	Min	+/-
05	BELIBI, FRANCESCA	F	2	1-1	0-0	0-0	0	0	0	0	2	1	0	1	5	4
10	JEROME, ALYSSA	F	0	0-1	0-1	0-0	0	0	0	1	0	0	0	0	1	1
12	HULL, LEXIE	G	6	3-3	0-0	0-0	0	2	2	0	1	0	0	0	10	9
21	CARRINGTON, DIJONAI	G	7	3-4	1-1	0-0	0	1	1	0	1	0	0	0	5	4
23	WILLIAMS, KIANA	G	2	1-4	0-2	0-0	0	2	2	0	0	0	0	1	10	9
03	WILSON, ANNA	G	0	0-0	0-0	0-0	0	0	0	0	0	0	0	0	0	0
04	FINGALL, NADIA	F	0	0-0	0-0	0-0	0	0	0	1	0	0	0	0	1	2
11	PRECHTEL, ASHTEN	F	0	0-1	0-0	0-0	1	3	4	0	0	1	0	0	5	5
20	MOSCHKAU, ESTELLA	G	0	0-0	0-0	0-0	0	0	0	0	0	0	0	0	0	0
24	HULL, LACIE	G	2	1-1	0-0	0-0	0	0	0	0	0	0	0	0	5	5
30	JONES, HALEY	G	3	1-1	1-1	0-0	0	0	0	0	0	2	0	0	4	3
33	JUMP, HANNAH	G	0	0-1	0-1	0-0	0	0	0	0	0	0	0	0	5	3
54	BROWN, JENNA	G	0	0-0	0-0	0-0	0	0	0	0	0	0	0	0	0	0
TEAM							0	2	2	0		1				
TOTALS			22	10-17	2-6	0-0	1	10	11	2	4	5	0	2	50	

Shooting By Period

Period	FG	FG%	3FG	3FG%	FT	FT%
1st Qtr	10-17	59%	2-6	33%	0-0	0%
2nd Qtr	8-19	42%	4-8	50%	2-4	50%
1st Half	10-17	59%	2-6	33%	0-0	0%
1st Half	18-36	50%	6-14	43%	2-4	50%
Game	38-78	48.7%	14-29	48.3%	7-10	70.0%

Deadball Rebounds: 3,0

San Francisco 13

No.	Player	S	Pts	FG	3FG	FT	OR	DR	TR	PF	A	TO	Blk	Stl	Min	+/-
00	WILLIAMS, MIKAYLA	F	4	2-5	0-0	0-0	2	1	3	0	0	1	0	0	8	-8
13	HOSKOVA, LUCIE	G	4	2-5	0-1	0-0	1	0	1	0	0	0	0	0	7	-7
21	KRIMILI, IOANNA	G	3	1-3	1-1	0-0	0	1	1	0	0	1	0	1	10	-9
25	BALOGUN, DOLAPO	F	2	0-1	0-1	2-2	0	1	1	0	1	1	0	0	7	-6
55	RATHBUN, ABBY	F	0	0-2	0-1	0-0	0	1	1	0	0	2	0	0	8	-7
02	VAALAVIRTA, KIA	G	0	0-2	0-1	0-0	0	0	0	0	1	0	0	0	5	-3
32	NIELACNA, JULIA	F	0	0-0	0-0	0-0	0	0	0	0	0	0	0	0	3	-2
34	VIGIL, LEILAH	F	0	0-0	0-0	0-0	0	2	2	0	0	0	0	0	3	-3
TEAM							0	0	0	0		0				
TOTALS			13	5-18	1-5	2-2	3	6	9	0	2	5	0	1	50	

Shooting By Period

Period	FG	FG%	3FG	3FG%	FT	FT%
1st Qtr	5-18	28%	1-5	20%	2-2	100%
2nd Qtr	7-19	37%	4-9	44%	1-2	50%
1st Half	5-18	28%	1-5	20%	2-2	100%
1st Half	12-37	32%	5-14	36%	3-4	75%
Game	26-74	35.1%	6-22	27.3%	13-17	76.5%

Deadball Rebounds: 3,1

Game Notes:

Officials: Charles Gonzalez, Kenneth Nash, Nicole Leon
Attendance: 3025

Start Time: 06:09 PM ET
End Time: 07:49 PM ET
Game Duration: 1:40

Score	1st	2nd	3rd	4th	TOT
STA	22	22	31	22	97
USF	13	19	20	19	71

Points from (This Period)	STA	USF
In the Paint	12	8
Off Turns	7	4
2nd Chance	0	2
Fast Break	0	2
Bench	5	0

Official Play-By-Play
Stanford vs San Francisco
First Quarter
November 09, 2019 at Chase Center - San Francisco



Period 1

Starters:

Stanford: 10 JEROME,ALYSSA (F); 12 HULL,LEXIE (G); 21 CARRINGTON,DIJONAI (G); 23 WILLIAMS,KIANA (G); 5 BELIBI,FRANCESCA (F);

San Francisco: 0 WILLIAMS,MIKAYLA (F); 13 HOSKOVA,LUCIE (G); 21 KRIMILI,IOANNA (G); 25 BALOGUN,DOLAPO (F); 55 RATHBUN,ABBY (F);

Time	VISITORS: Stanford	Score	Margin	HOME: San Francisco
09:53				TURNOVER (LOSTBALL) by BALOGUN, DOLAPO
09:36	GOOD! 3PTR by CARRINGTON, DIJONAI	0-3	V 3	
09:17		2-3	V 1	GOOD! LAYUP by HOSKOVA, LUCIE
08:57	FOUL (PERSONAL) by JEROME, ALYSSA			
08:57	SUB OUT: JEROME, ALYSSA			
08:57	SUB IN: JONES, HALEY			
08:57		3-3	T	GOOD! FT by BALOGUN, DOLAPO [FB]
08:57		4-3	H 1	GOOD! FT by BALOGUN, DOLAPO [FB]
08:42	MISSED 3PTR by WILLIAMS, KIANA			
08:42				REBOUND (DEF) by BALOGUN, DOLAPO
08:28				MISSED LAYUP by HOSKOVA, LUCIE
08:24	REBOUND (DEF) by HULL, LEXIE			
08:15	GOOD! LAYUP by HULL, LEXIE	4-5	V 1	
08:15	ASSIST by CARRINGTON, DIJONAI			
07:56				MISSED 3PTR by HOSKOVA, LUCIE
07:52	REBOUND (DEF) by WILLIAMS, KIANA			
07:47	GOOD! JUMPER by BELIBI, FRANCESCA	4-7	V 3	
07:28		6-7	V 1	GOOD! JUMPER by HOSKOVA, LUCIE [PNT]
06:58	TURNOVER (LOSTBALL) by JONES, HALEY			
06:41		8-7	H 1	GOOD! JUMPER by WILLIAMS, MIKAYLA [PNT]
06:41				ASSIST by BALOGUN, DOLAPO
06:26	GOOD! 3PTR by JONES, HALEY	8-10	V 2	
06:26	ASSIST by BELIBI, FRANCESCA			
06:17				TURNOVER (LOSTBALL) by RATHBUN, ABBY
06:17	STEAL by BELIBI, FRANCESCA			
06:07	GOOD! JUMPER by HULL, LEXIE	8-12	V 4	
06:07	ASSIST by BELIBI, FRANCESCA			
05:51				MISSED JUMPER by WILLIAMS, MIKAYLA
05:47	REBOUND (DEF) by HULL, LEXIE			
05:43	GOOD! LAYUP by CARRINGTON, DIJONAI	8-14	V 6	
05:35				MISSED 3PTR by BALOGUN, DOLAPO
05:30				REBOUND (OFF) by WILLIAMS, MIKAYLA
05:29		10-14	V 4	GOOD! LAYUP by WILLIAMS, MIKAYLA
05:18	TURNOVER (TRAVEL) by JONES, HALEY			
05:18				SUB OUT: BALOGUN, DOLAPO
05:18				SUB IN: VIGIL, LEILAH
05:14				MISSED JUMPER by KRIMILI, IOANNA
05:12				REBOUND (OFF) by HOSKOVA, LUCIE
05:12				TURNOVER (TRAVEL) by RATHBUN, ABBY
05:12	SUB OUT: BELIBI, FRANCESCA			
05:12	SUB OUT: CARRINGTON, DIJONAI			
05:12	SUB OUT: JONES, HALEY			
05:12	SUB IN: FINGALL, NADIA			
05:12	SUB IN: PRECHTEL, ASHTEN			
05:12	SUB IN: HULL, LACIE			
04:53	GOOD! LAYUP by WILLIAMS, KIANA	10-16	V 6	
04:46	FOUL (PERSONAL) by FINGALL, NADIA			
04:46				
04:40				SUB OUT: WILLIAMS, MIKAYLA
04:40				SUB IN: VAALAVIRTA, KIA
04:35	SUB OUT: FINGALL, NADIA			
04:35	SUB IN: JUMP, HANNAH			
04:33				TURNOVER (BADPASS) by KRIMILI, IOANNA
04:33	STEAL by WILLIAMS, KIANA			
04:27	MISSED LAYUP by WILLIAMS, KIANA			
04:23				REBOUND (DEF) by VIGIL, LEILAH
04:15				MISSED 3PTR by RATHBUN, ABBY
04:11	REBOUND (DEF) by WILLIAMS, KIANA			
04:08	MISSED 3PTR by JUMP, HANNAH			
04:04				REBOUND (DEF) by VIGIL, LEILAH
03:54		13-16	V 3	GOOD! 3PTR by KRIMILI, IOANNA
03:54				ASSIST by VAALAVIRTA, KIA
03:30	GOOD! LAYUP by HULL, LACIE	13-18	V 5	
03:30	ASSIST by HULL, LEXIE			
03:15				MISSED JUMPER by HOSKOVA, LUCIE
03:10	REBOUND (DEF) by PRECHTEL, ASHTEN			
03:05	GOOD! JUMPER by HULL, LEXIE	13-20	V 7	
02:45				MISSED JUMPER by RATHBUN, ABBY
02:43	REBOUND (DEF) by TEAM			
02:30				SUB OUT: RATHBUN, ABBY

Time	VISITORS: Stanford	Score	Margin	HOME: San Francisco
02:30	MISSED LAYUP by CARRINGTON, DIJONAI			
02:30	REBOUND (OFF) by PRECHTEL, ASHTEN			
02:30	MISSED LAYUP by PRECHTEL, ASHTEN			
02:30				REBOUND (DEF) by KRIMILI, IOANNA
02:28				MISSED JUMPER by WILLIAMS, MIKAYLA
02:24	REBOUND (DEF) by PRECHTEL, ASHTEN			
02:21	TURNOVER (LOSTBALL) by PRECHTEL, ASHTEN			
02:15				MISSED LAYUP by VAALAVIRTA, KIA
02:09				REBOUND (OFF) by WILLIAMS, MIKAYLA
02:08				MISSED JUMPER by KRIMILI, IOANNA
02:05	REBOUND (DEF) by TEAM			
02:04				SUB OUT: KRIMILI, IOANNA
02:04	SUB OUT: HULL, LEXIE			
02:04	SUB OUT: HULL, LACIE			
02:04	SUB OUT: JUMP, HANNAH			
02:04	SUB IN: WILSON, ANNA			
02:04	SUB IN: JEROME, ALYSSA			
02:04	SUB IN: CARRINGTON, DIJONAI			
01:44	GOOD! LAYUP by CARRINGTON, DIJONAI	13-22	V 9	
01:28				MISSED 3PTR by VAALAVIRTA, KIA
01:25	REBOUND (DEF) by PRECHTEL, ASHTEN			
01:14	MISSED 3PTR by WILLIAMS, KIANA			
01:10				REBOUND (DEF) by WILLIAMS, MIKAYLA
00:59				MISSED JUMPER by WILLIAMS, MIKAYLA
00:54	REBOUND (DEF) by CARRINGTON, DIJONAI			
00:49	MISSED 3PTR by JEROME, ALYSSA			
00:45				REBOUND (DEF) by RATHBUN, ABBY
00:41				TURNOVER (BADPASS) by WILLIAMS, MIKAYLA
00:01	TURNOVER (SHOTCLOCK) by TEAM			

Stanford 22, San Francisco 13

Points from (This Period)	STA	USF
In the Paint	12	8
Off Turns	7	4
2nd Chance	0	2
Fast Break	0	2
Bench	5	0

Official Box Score
Stanford vs San Francisco
Second Quarter Statistics Only
November 09, 2019 at Chase Center - San Francisco



Stanford 22

No.	Player	S	Pts	FG	3FG	FT	OR	DR	TR	PF	A	TO	Blk	Stl	Min	+/-
05	BELIBI, FRANCESCA	F	0	0-1	0-0	0-0	0	0	0	0	0	0	0	0	2	-2
10	JEROME, ALYSSA	F	6	2-3	2-3	0-0	0	0	0	1	0	0	0	0	6	-2
12	HULL, LEXIE	G	6	2-3	1-2	1-2	0	1	1	0	2	1	0	0	9	7
21	CARRINGTON, DIJONAI	G	5	2-5	1-1	0-0	1	2	3	0	0	0	1	0	10	3
23	WILLIAMS, KIANA	G	0	0-3	0-1	0-0	0	0	0	0	5	0	0	0	10	4
03	WILSON, ANNA	G	1	0-0	0-0	1-2	0	0	0	0	0	0	0	0	5	1
04	FINGALL, NADIA	F	0	0-1	0-0	0-0	0	0	0	0	0	0	0	0	2	-1
11	PRECHTEL, ASHTEN	F	4	2-3	0-1	0-0	0	1	1	0	0	0	0	0	4	5
20	MOSCHKAU, ESTELLA	G	0	0-0	0-0	0-0	0	0	0	0	0	0	0	0	0	0
24	HULL, LACIE	G	0	0-0	0-0	0-0	0	0	0	0	1	0	0	0	3	1
30	JONES, HALEY	G	0	0-0	0-0	0-0	0	0	0	0	0	0	0	0	0	0
33	JUMP, HANNAH	G	0	0-0	0-0	0-0	0	0	0	0	0	0	0	0	0	0
54	BROWN, JENNA	G	0	0-0	0-0	0-0	0	0	0	0	0	0	0	0	0	-1
TEAM							2	2	4	0		0				
TOTALS			22	8-19	4-8	2-4	3	6	9	1	8	1	1	0	50	

Shooting By Period

Period	FG	FG%	3FG	3FG%	FT	FT%
3rd Qtr	12-19	63%	5-7	71%	2-2	100%
4th Qtr	8-23	35%	3-8	38%	3-4	75%
2nd Half	8-19	42%	4-8	50%	2-4	50%
2nd Half	20-42	48%	8-15	53%	5-6	83%
Game	38-78	48.7%	14-29	48.3%	7-10	70.0%

Deadball Rebounds: 3,0

San Francisco 19

No.	Player	S	Pts	FG	3FG	FT	OR	DR	TR	PF	A	TO	Blk	Stl	Min	+/-
00	WILLIAMS, MIKAYLA	F	2	1-3	0-0	0-0	2	2	4	0	0	1	0	0	3	6
13	HOSKOVA, LUCIE	G	6	2-3	2-2	0-0	0	2	2	2	0	0	0	0	8	-5
21	KRIMILI, IOANNA	G	8	3-5	1-2	1-2	2	1	3	0	1	0	0	0	7	-1
25	BALOGUN, DOLAPO	F	0	0-1	0-1	0-0	0	0	0	1	0	0	0	0	6	-6
55	RATHBUN, ABBY	F	0	0-1	0-1	0-0	0	0	0	0	0	0	0	0	7	-2
02	VAALAVIRTA, KIA	G	3	1-3	1-2	0-0	0	1	1	0	1	0	0	0	9	0
32	NIELACNA, JULIA	F	0	0-3	0-1	0-0	1	1	2	0	0	0	0	0	7	-2
34	VIGIL, LEILAH	F	0	0-0	0-0	0-0	0	0	0	2	0	1	0	0	1	-5
TEAM							1	0	1	0		0				
TOTALS			19	7-19	4-9	1-2	6	7	13	5	2	2	0	0	50	

Shooting By Period

Period	FG	FG%	3FG	3FG%	FT	FT%
3rd Qtr	7-17	41%	1-3	33%	5-7	71%
4th Qtr	7-20	35%	0-5	00%	5-6	83%
2nd Half	7-19	37%	4-9	44%	1-2	50%
2nd Half	14-37	38%	1-8	13%	10-13	77%
Game	26-74	35.1%	6-22	27.3%	13-17	76.5%

Deadball Rebounds: 3,1

Game Notes:

Officials: Charles Gonzalez, Kenneth Nash, Nicole Leon
Attendance: 3025

Start Time: 06:09 PM ET
End Time: 07:49 PM ET
Game Duration: 1:40

Score	1st	2nd	3rd	4th	TOT
STA	22	22	31	22	97
USF	13	19	20	19	71

Points from (This Period)	STA	USF
In the Paint	6	6
Off Turns	0	0
2nd Chance	5	3
Fast Break	3	0
Bench	5	3

Official Play-By-Play
Stanford vs San Francisco
Second Quarter
November 09, 2019 at Chase Center - San Francisco



Period 2

Starters:

Stanford: 10 JEROME,ALYSSA (F); 12 HULL,LEXIE (G); 21 CARRINGTON,DIJONAI (G); 23 WILLIAMS,KIANA (G); 5 BELIBI,FRANCESCA (F);

San Francisco: 0 WILLIAMS,MIKAYLA (F); 13 HOSKOVA,LUCIE (G); 21 KRIMILI,IOANNA (G); 25 BALOGUN,DOLAPO (F); 55 RATHBUN,ABBY (F);

Time	VISITORS: Stanford	Score	Margin	HOME: San Francisco
10:00				SUB OUT: BALOGUN, DOLAPO
10:00				SUB IN: RATHBUN, ABBY
10:00	SUB OUT: PRECHTEL, ASHTEN			
10:00	SUB OUT: HULL, LACIE			
10:00	SUB OUT: JUMP, HANNAH			
10:00	SUB IN: BELIBI, FRANCESCA			
10:00	SUB IN: JEROME, ALYSSA			
10:00	SUB IN: CARRINGTON, DIJONAI			
09:36	GOOD! 3PTR by HULL, LEXIE	13-25	V 12	
09:36	ASSIST by WILLIAMS, KIANA			
09:13				MISSED LAYUP by WILLIAMS, MIKAYLA
09:09				REBOUND (OFF) by WILLIAMS, MIKAYLA
09:07		15-25	V 10	GOOD! LAYUP by WILLIAMS, MIKAYLA
08:56	MISSED LAYUP by BELIBI, FRANCESCA			
08:52				REBOUND (DEF) by VAALAVIRTA, KIA
08:50		18-25	V 7	GOOD! 3PTR by VAALAVIRTA, KIA
08:23	MISSED 3PTR by JEROME, ALYSSA			
08:20	REBOUND (OFF) by TEAM			
08:20	SUB OUT: BELIBI, FRANCESCA			
08:20	SUB IN: FINGALL, NADIA			
08:20				SUB OUT: WILLIAMS, MIKAYLA
08:20				SUB IN: HOSKOVA, LUCIE
08:06	GOOD! 3PTR by JEROME, ALYSSA	18-28	V 10	
08:06	ASSIST by WILLIAMS, KIANA			
07:50		21-28	V 7	GOOD! 3PTR by HOSKOVA, LUCIE
07:50				ASSIST by KRIMILI, IOANNA
07:34	MISSED 3PTR by WILLIAMS, KIANA			
07:28				REBOUND (DEF) by KRIMILI, IOANNA
07:14		23-28	V 5	GOOD! JUMPER by KRIMILI, IOANNA [PNT]
06:59	GOOD! 3PTR by JEROME, ALYSSA	23-31	V 8	
06:59	ASSIST by WILLIAMS, KIANA			
06:45		25-31	V 6	GOOD! JUMPER by KRIMILI, IOANNA [PNT]
06:36	MISSED LAYUP by FINGALL, NADIA			
06:32				REBOUND (DEF) by NIELACNA, JULIA
06:27				MISSED 3PTR by NIELACNA, JULIA
06:24	REBOUND (DEF) by TEAM			
06:24				SUB OUT: NIELACNA, JULIA
06:24				SUB OUT: RATHBUN, ABBY
06:24				SUB IN: BALOGUN, DOLAPO
06:24				SUB IN: VIGIL, LEILAH
06:24	SUB OUT: FINGALL, NADIA			
06:24	SUB IN: HULL, LACIE			
06:10	GOOD! 3PTR by CARRINGTON, DIJONAI	25-34	V 9	
06:10	ASSIST by HULL, LEXIE			
05:57				MISSED 3PTR by BALOGUN, DOLAPO
05:54	REBOUND (DEF) by TEAM			
05:54				FOUL (PERSONAL) by VIGIL, LEILAH
05:46	GOOD! LAYUP by HULL, LEXIE	25-36	V 11	
05:46	ASSIST by HULL, LACIE			
05:31				FOUL (OFF) by VIGIL, LEILAH
05:31				TURNOVER (OFFENSIVE) by VIGIL, LEILAH
05:31				SUB OUT: VIGIL, LEILAH
05:31				SUB IN: WILLIAMS, MIKAYLA
05:19	TURNOVER (LOSTBALL) by HULL, LEXIE			
05:03				TURNOVER (TRAVEL) by WILLIAMS, MIKAYLA
05:03	SUB OUT: HULL, LEXIE			
05:03	SUB IN: WILSON, ANNA			
04:48	MISSED JUMPER by CARRINGTON, DIJONAI			
04:44				REBOUND (DEF) by WILLIAMS, MIKAYLA
04:40		28-36	V 8	GOOD! 3PTR by KRIMILI, IOANNA
04:40				ASSIST by VAALAVIRTA, KIA
04:22	MISSED LAYUP by CARRINGTON, DIJONAI			
04:20				REBOUND (DEF) by WILLIAMS, MIKAYLA
04:14				MISSED JUMPER by WILLIAMS, MIKAYLA
04:10	REBOUND (DEF) by CARRINGTON, DIJONAI			
04:05				FOUL (PERSONAL) by BALOGUN, DOLAPO
04:05				
04:05	SUB OUT: WILLIAMS, KIANA			
04:05	SUB IN: BROWN, JENNA			
03:56	MISSED JUMPER by CARRINGTON, DIJONAI			

Time	VISITORS: Stanford	Score	Margin	HOME: San Francisco
03:52				REBOUND (DEF) by HOSKOVA, LUCIE
03:46				MISSED JUMPER by KRIMILI, IOANNA
03:46				REBOUND (OFF) by KRIMILI, IOANNA
03:46	FOUL (PERSONAL) by JEROME, ALYSSA			
03:46				SUB OUT: WILLIAMS, MIKAYLA
03:46				SUB OUT: VAALAVIRTA, KIA
03:46				SUB IN: NIELACNA, JULIA
03:46				SUB IN: RATHBUN, ABBY
03:46	SUB OUT: JEROME, ALYSSA			
03:46	SUB OUT: HULL, LACIE			
03:46	SUB OUT: BROWN, JENNA			
03:46	SUB IN: PRECHTEL, ASHTEN			
03:46	SUB IN: HULL, LEXIE			
03:46	SUB IN: WILLIAMS, KIANA			
03:46				MISSED FT by KRIMILI, IOANNA
03:46				REBOUND (OFF) by TEAM
03:46		29-36	V 7	GOOD! FT by KRIMILI, IOANNA
03:34				FOUL (PERSONAL) by HOSKOVA, LUCIE
03:34	GOOD! FT by WILSON, ANNA [FB]	29-37	V 8	
03:32	MISSED FT by WILSON, ANNA			
03:30	REBOUND (OFF) by CARRINGTON, DIJONAI			
03:27	GOOD! LAYUP by CARRINGTON, DIJONAI	29-39	V 10	
03:27	ASSIST by HULL, LEXIE			
03:16				MISSED 3PTR by KRIMILI, IOANNA
03:12				REBOUND (OFF) by KRIMILI, IOANNA
03:11				MISSED JUMPER by NIELACNA, JULIA
03:06	REBOUND (DEF) by PRECHTEL, ASHTEN			
03:03	MISSED 3PTR by HULL, LEXIE			
03:01	REBOUND (OFF) by TEAM			
02:51				SUB OUT: KRIMILI, IOANNA
02:51				SUB IN: VAALAVIRTA, KIA
02:34	MISSED JUMPER by WILLIAMS, KIANA			
02:32				REBOUND (DEF) by HOSKOVA, LUCIE
02:20				MISSED 3PTR by RATHBUN, ABBY
02:16				REBOUND (OFF) by NIELACNA, JULIA
02:15				MISSED LAYUP by NIELACNA, JULIA
02:12	REBOUND (DEF) by HULL, LEXIE			
02:08	GOOD! LAYUP by PRECHTEL, ASHTEN [FB]	29-41	V 12	
02:08	ASSIST by WILLIAMS, KIANA			
01:50		32-41	V 9	GOOD! 3PTR by HOSKOVA, LUCIE
01:29	GOOD! JUMPER by PRECHTEL, ASHTEN	32-43	V 11	
01:29	ASSIST by WILLIAMS, KIANA			
01:10				MISSED LAYUP by VAALAVIRTA, KIA
01:08				REBOUND (OFF) by TEAM
01:08				FOUL (PERSONAL) by HOSKOVA, LUCIE
01:08	MISSED FT by HULL, LEXIE			
01:08	REBOUND (OFF) by TEAM			
01:08	GOOD! FT by HULL, LEXIE	32-44	V 12	
00:43				MISSED 3PTR by VAALAVIRTA, KIA
00:36				REBOUND (OFF) by WILLIAMS, MIKAYLA
00:25				MISSED LAYUP by HOSKOVA, LUCIE
00:25	BLOCK by CARRINGTON, DIJONAI			
00:16	REBOUND (DEF) by CARRINGTON, DIJONAI			
00:02	MISSED LAYUP by WILLIAMS, KIANA			
00:01	REBOUND (OFF) by TEAM			
00:00	MISSED 3PTR by PRECHTEL, ASHTEN			
00:00				REBOUND (DEF) by TEAM

Stanford 44, San Francisco 32

Points from (This Period)	STA	USF
In the Paint	6	6
Off Turns	0	0
2nd Chance	5	3
Fast Break	3	0
Bench	5	3

Official Box Score
Stanford vs San Francisco
Second Half Statistics Only
November 09, 2019 at Chase Center - San Francisco



Stanford 53

No.	Player	S	Pts	FG	3FG	FT	OR	DR	TR	PF	A	TO	Blk	Stl	Min	+/-
10	JEROME, ALYSSA	F	5	1-2	1-2	2-2	1	2	3	1	3	0	0	0	8	12
11	PRECHTEL, ASHTEN	F	4	2-4	0-0	0-0	1	3	4	1	1	0	0	0	5	5
12	HULL, LEXIE	G	15	5-6	4-5	1-1	2	3	5	1	0	1	1	0	16	12
20	MOSCHKAU, ESTELLA	G	2	1-1	0-0	0-0	1	0	1	0	0	0	0	0	2	-1
21	CARRINGTON, DIJONAI	G	4	2-5	0-1	0-0	1	3	4	2	1	4	0	0	10	13
23	WILLIAMS, KIANA	G	2	1-5	0-1	0-0	0	1	1	0	2	0	0	0	10	5
24	HULL, LACIE	G	6	2-4	2-3	0-0	0	1	1	0	0	0	0	0	9	2
30	JONES, HALEY	G	5	2-6	0-0	1-2	0	2	2	2	1	2	1	2	11	2
33	JUMP, HANNAH	G	0	0-2	0-2	0-0	1	2	3	0	0	0	0	0	7	3
54	BROWN, JENNA	G	2	1-3	0-0	0-0	0	0	0	0	0	0	0	0	4	2
03	WILSON, ANNA	G	3	1-2	1-1	0-0	2	0	2	2	1	0	0	1	10	9
04	FINGALL, NADIA	F	2	1-1	0-0	0-0	1	0	1	1	1	0	0	0	5	7
05	BELIBI, FRANCESCA	F	3	1-1	0-0	1-1	1	0	1	1	0	1	0	0	3	-1
	TEAM		0	0-0	0-0	0-0	0	1	1	0	0	1	0	0	0	0
	TOTALS		53	20-42	8-15	5-6	11	18	29	11	10	9	2	3	100	

Shooting By Period

Period	FG	FG%	3FG	3FG%	FT	FT%
3rd Qtr	12-19	63%	5-7	71%	2-2	100%
4th Qtr	8-23	35%	3-8	38%	3-4	75%
2nd Half	20-42	48%	8-15	53%	5-6	83%
Game	38-78	48.7%	14-29	48.3%	7-10	70.0%

Deadball Rebounds: 3,0
Last FG Half: STA 4th-00:11

San Francisco 39

No.	Player	S	Pts	FG	3FG	FT	OR	DR	TR	PF	A	TO	Blk	Stl	Min	+/-
00	WILLIAMS, MIKAYLA	F	8	3-3	0-0	2-2	0	0	0	0	0	0	0	1	11	-4
02	VAALAVIRTA, KIA	G	0	0-4	0-3	0-0	0	3	3	1	0	1	0	0	17	-8
13	HOSKOVA, LUCIE	G	0	0-2	0-1	0-0	0	4	4	0	0	1	1	0	16	-18
21	KRIMILI, IOANNA	G	6	3-7	0-0	0-0	1	1	2	0	0	1	0	1	12	-6
25	BALOGUN, DOLAPO	F	0	0-4	0-2	0-0	0	0	0	1	0	0	0	0	9	-2
32	NIELACNA, JULIA	F	10	4-8	1-2	1-1	0	2	2	1	0	1	0	0	13	-5
34	VIGIL, LEILAH	F	9	3-5	0-0	3-4	2	0	2	2	0	0	0	0	9	-9
55	RATHBUN, ABBY	F	6	1-4	0-0	4-6	0	1	1	1	0	1	0	2	15	-18
	TEAM		0	0-0	0-0	0-0	3	0	3	0	0	0	0	0	0	0
	TOTALS		39	14-37	1-8	10-13	6	11	17	6	0	5	1	4	100	

Shooting By Period

Period	FG	FG%	3FG	3FG%	FT	FT%
3rd Qtr	7-17	41%	1-3	33%	5-7	71%
4th Qtr	7-20	35%	0-5	00%	5-6	83%
2nd Half	14-37	38%	1-8	13%	10-13	77%
Game	26-74	35.1%	6-22	27.3%	13-17	76.5%

Deadball Rebounds: 3,1
Last FG Half: USF 4th-00:25

Game Notes:

Officials: Charles Gonzalez, Kenneth Nash, Nicole Leon
Attendance: 3025

Start Time: 06:09 PM ET
End Time: 07:49 PM ET
Game Duration: 1:40

Score	1st	2nd	3rd	4th	TOT
STA	22	22	31	22	97
USF	13	19	20	19	71

Points from (This Period)	STA	USF
In the Paint	22	22
Off Turns	11	13
2nd Chance	8	9
Fast Break	3	2
Bench	24	19

Official Box Score
Stanford vs San Francisco
Third Quarter Statistics Only
November 09, 2019 at Chase Center - San Francisco



Stanford 53

No.	Player	S	Pts	FG	3FG	FT	OR	DR	TR	PF	A	TO	Blk	Stl	Min	+/-
05	BELIBI, FRANCESCA	F	3	1-1	0-0	1-1	1	0	1	1	0	1	0	0	3	-1
10	JEROME, ALYSSA	F	0	0-0	0-0	0-0	0	1	1	1	1	0	0	0	2	5
12	HULL, LEXIE	G	12	4-5	3-4	1-1	0	2	2	1	0	1	1	0	10	11
21	CARRINGTON, DIJONAI	G	4	2-5	0-1	0-0	1	2	3	0	1	2	0	0	8	16
23	WILLIAMS, KIANA	G	2	1-3	0-0	0-0	0	1	1	0	2	0	0	0	7	4
03	WILSON, ANNA	G	3	1-1	1-1	0-0	1	0	1	0	1	0	0	1	3	7
04	FINGALL, NADIA	F	2	1-1	0-0	0-0	1	0	1	1	1	0	0	0	5	7
11	PRECHTEL, ASHTEN	F	2	1-1	0-0	0-0	0	2	2	0	0	0	0	0	2	5
20	MOSCHKAU, ESTELLA	G	0	0-0	0-0	0-0	0	0	0	0	0	0	0	0	0	0
24	HULL, LACIE	G	3	1-1	1-1	0-0	0	0	0	0	0	0	0	0	6	2
30	JONES, HALEY	G	0	0-1	0-0	0-0	0	0	0	2	1	1	0	1	4	-1
33	JUMP, HANNAH	G	0	0-0	0-0	0-0	0	0	0	0	0	0	0	0	0	0
54	BROWN, JENNA	G	0	0-0	0-0	0-0	0	0	0	0	0	0	0	0	0	0
	TEAM						0	0	0	0		1				
TOTALS			31	12-19	5-7	2-2	4	8	12	6	7	6	1	2	50	

Shooting By Period

Period	FG	FG%	3FG	3FG%	FT	FT%
2nd Half	0-0	0%	0-0	0%	0-0	0%
Game	38-78	48.7%	14-29	48.3%	7-10	70.0%

Deadball Rebounds: 3,0

San Francisco 39

No.	Player	S	Pts	FG	3FG	FT	OR	DR	TR	PF	A	TO	Blk	Stl	Min	+/-
00	WILLIAMS, MIKAYLA	F	2	0-0	0-0	2-2	0	0	0	0	0	0	0	0	5	-4
13	HOSKOVA, LUCIE	G	0	0-2	0-1	0-0	0	2	2	0	0	0	0	0	9	-16
21	KRIMILI, IOANNA	G	6	3-5	0-0	0-0	1	0	1	0	0	0	0	1	5	-4
25	BALOGUN, DOLAPO	F	0	0-1	0-0	0-0	0	0	0	1	0	0	0	0	5	0
55	RATHBUN, ABBY	F	0	0-2	0-0	0-2	0	1	1	1	0	1	0	1	8	-16
02	VAALAVIRTA, KIA	G	0	0-1	0-1	0-0	0	0	0	1	0	1	0	0	8	-6
32	NIELACNA, JULIA	F	6	2-3	1-1	1-1	0	0	0	0	0	1	0	0	6	-2
34	VIGIL, LEILAH	F	6	2-3	0-0	2-2	1	0	1	0	0	0	0	0	5	-7
	TEAM						1	0	1	0		0				
TOTALS			20	7-17	1-3	5-7	3	3	6	3	0	3	0	2	50	

Shooting By Period

Period	FG	FG%	3FG	3FG%	FT	FT%
2nd Half	0-0	0%	0-0	0%	0-0	0%
Game	26-74	35.1%	6-22	27.3%	13-17	76.5%

Deadball Rebounds: 3,1

Game Notes:

Officials: Charles Gonzalez, Kenneth Nash, Nicole Leon
Attendance: 3025

Start Time: 06:09 PM ET
End Time: 07:49 PM ET
Game Duration: 1:40

Score	1st	2nd	3rd	4th	TOT
STA	22	22	31	22	97
USF	13	19	20	19	71

Points from (This Period)	STA	USF
In the Paint	12	10
Off Turns	7	7
2nd Chance	2	6
Fast Break	3	0
Bench	10	12

Official Play-By-Play
Stanford vs San Francisco
Third Quarter
November 09, 2019 at Chase Center - San Francisco



Period 3

Starters:

Stanford: 10 JEROME,ALYSSA (F); 12 HULL,LEXIE (G); 21 CARRINGTON,DIJONAI (G); 23 WILLIAMS,KIANA (G); 5 BELIBI,FRANCESCA (F);

San Francisco: 0 WILLIAMS,MIKAYLA (F); 13 HOSKOVA,LUCIE (G); 21 KRIMILI,IOANNA (G); 25 BALOGUN,DOLAPO (F); 55 RATHBUN,ABBY (F);

Time	VISITORS: Stanford	Score	Margin	HOME: San Francisco
08:57	TURNOVER (LOSTBALL) by BELIBI, FRANCESCA			
08:57				STEAL by KRIMILI, IOANNA
02:31				SUB OUT: HOSKOVA, LUCIE
02:31				SUB OUT: VIGIL, LEILAH
02:31				SUB IN: WILLIAMS, MIKAYLA
02:31				SUB IN: BALOGUN, DOLAPO
02:31				SUB IN: NIELACNA, JULIA
10:00				SUB OUT: VAALAVIRTA, KIA
10:00				SUB OUT: NIELACNA, JULIA
10:00				SUB IN: WILLIAMS, MIKAYLA
10:00				SUB IN: KRIMILI, IOANNA
10:00	SUB OUT: WILSON, ANNA			
10:00	SUB IN: JEROME, ALYSSA			
09:57	GOOD! JUMPER by HULL, LEXIE [PNT]	32-46	V 14	
09:51				FOUL (PERSONAL) by RATHBUN, ABBY
09:45	GOOD! FT by HULL, LEXIE	32-47	V 15	
09:41	FOUL (PERSONAL) by HULL, LEXIE			
09:40				TURNOVER (BADPASS) by RATHBUN, ABBY
09:28	GOOD! LAYUP by CARRINGTON, DIJONAI [PNT]	32-49	V 17	
09:09				MISSED LAYUP by RATHBUN, ABBY
09:06	REBOUND (DEF) by JEROME, ALYSSA			
08:55	GOOD! JUMPER by PRECHTEL, ASHTEN [PNT]	32-51	V 19	
08:55	ASSIST by JEROME, ALYSSA			
08:49				TIMEOUT 30SEC
08:49				
08:45				MISSED 3PTR by HOSKOVA, LUCIE
08:43				REBOUND (OFF) by TEAM
08:35		34-51	V 17	GOOD! LAYUP by KRIMILI, IOANNA
08:26	TURNOVER (LOSTBALL) by CARRINGTON, DIJONAI			
08:26				STEAL by KRIMILI, IOANNA
08:21				MISSED LAYUP by BALOGUN, DOLAPO
08:14	REBOUND (DEF) by PRECHTEL, ASHTEN			
08:11	MISSED 3PTR by HULL, LEXIE			
08:06				REBOUND (DEF) by HOSKOVA, LUCIE
07:57				MISSED LAYUP by KRIMILI, IOANNA
07:52	REBOUND (DEF) by PRECHTEL, ASHTEN			
07:51	TURNOVER (LOSTBALL) by HULL, LEXIE			
07:51				STEAL by RATHBUN, ABBY
07:47	FOUL (PERSONAL) by JEROME, ALYSSA			
07:47				SUB OUT: BALOGUN, DOLAPO
07:47				SUB IN: VAALAVIRTA, KIA
07:47	SUB OUT: JEROME, ALYSSA			
07:47	SUB OUT: PRECHTEL, ASHTEN			
07:47	SUB IN: BELIBI, FRANCESCA			
07:47	SUB IN: JONES, HALEY			
07:47				MISSED FT by RATHBUN, ABBY
07:47				REBOUND (OFF) by TEAM
07:47				MISSED FT by RATHBUN, ABBY
07:44	REBOUND (DEF) by HULL, LEXIE			
07:28	MISSED JUMPER by JONES, HALEY			
07:25				REBOUND (DEF) by HOSKOVA, LUCIE
07:21		36-51	V 15	GOOD! JUMPER by KRIMILI, IOANNA
07:02	GOOD! LAYUP by BELIBI, FRANCESCA	36-53	V 17	
07:02	ASSIST by JONES, HALEY			
07:02				FOUL (PERSONAL) by VAALAVIRTA, KIA
07:02	GOOD! FT by BELIBI, FRANCESCA	36-54	V 18	
06:55				MISSED LAYUP by RATHBUN, ABBY
06:50	REBOUND (DEF) by WILLIAMS, KIANA			
06:48	GOOD! 3PTR by HULL, LEXIE	36-57	V 21	
06:48	ASSIST by WILLIAMS, KIANA			
06:27				MISSED LAYUP by KRIMILI, IOANNA
06:27	BLOCK by HULL, LEXIE			
06:15				REBOUND (OFF) by KRIMILI, IOANNA
06:15		38-57	V 19	GOOD! LAYUP by KRIMILI, IOANNA
06:08	MISSED LAYUP by CARRINGTON, DIJONAI			
06:04	REBOUND (OFF) by CARRINGTON, DIJONAI			
06:04	GOOD! LAYUP by CARRINGTON, DIJONAI	38-59	V 21	
05:51				MISSED JUMPER by HOSKOVA, LUCIE
05:46	REBOUND (DEF) by CARRINGTON, DIJONAI			
05:45	TURNOVER (DRIBBLING) by CARRINGTON, DIJONAI			

Time	VISITORS: Stanford	Score	Margin	HOME: San Francisco
05:45				SUB OUT: WILLIAMS, MIKAYLA
05:45				SUB OUT: HOSKOVA, LUCIE
05:45				SUB IN: BALOGUN, DOLAPO
05:45				SUB IN: NIELACNA, JULIA
05:45	SUB OUT: CARRINGTON, DIJONAI			
05:45	SUB IN: HULL, LACIE			
05:45				SUB OUT: RATHBUN, ABBY
05:45				SUB IN: WILLIAMS, MIKAYLA
05:27	FOUL (PERSONAL) by JONES, HALEY			
05:27		39-59	V 20	GOOD! FT by WILLIAMS, MIKAYLA
05:27		40-59	V 19	GOOD! FT by WILLIAMS, MIKAYLA
05:12	MISSED LAYUP by WILLIAMS, KIANA			
05:10	REBOUND (OFF) by BELIBI, FRANCESCA			
05:10	TURNOVER (LOSTBALL) by BELIBI, FRANCESCA			
05:00		42-59	V 17	GOOD! LAYUP by NIELACNA, JULIA
05:00	FOUL (PERSONAL) by BELIBI, FRANCESCA			
05:00				
04:58		43-59	V 16	GOOD! FT by NIELACNA, JULIA
04:54				SUB OUT: WILLIAMS, MIKAYLA
04:54				SUB OUT: KRIMILI, IOANNA
04:54				SUB IN: HOSKOVA, LUCIE
04:54				SUB IN: VIGIL, LEILAH
04:54	SUB OUT: WILLIAMS, KIANA			
04:54	SUB IN: FINGALL, NADIA			
04:49	GOOD! 3PTR by HULL, LEXIE	43-62	V 19	
04:49	ASSIST by WILLIAMS, KIANA			
04:33				TURNOVER (LOSTBALL) by NIELACNA, JULIA
04:33	STEAL by JONES, HALEY			
04:21	GOOD! JUMPER by WILLIAMS, KIANA	43-64	V 21	
04:05	SUB OUT: BELIBI, FRANCESCA			
04:05	SUB IN: WILLIAMS, KIANA			
03:59		46-64	V 18	GOOD! 3PTR by NIELACNA, JULIA
03:41	FOUL (OFF) by JONES, HALEY			
03:41	TURNOVER (OFFENSIVE) by JONES, HALEY			
03:32	FOUL (PERSONAL) by FINGALL, NADIA			
03:32		47-64	V 17	GOOD! FT by VIGIL, LEILAH
03:32		48-64	V 16	GOOD! FT by VIGIL, LEILAH
03:32	SUB OUT: JONES, HALEY			
03:32	SUB IN: CARRINGTON, DIJONAI			
03:23				FOUL (PERSONAL) by BALOGUN, DOLAPO
03:23				SUB OUT: BALOGUN, DOLAPO
03:23				SUB IN: RATHBUN, ABBY
03:19	MISSED JUMPER by WILLIAMS, KIANA			
03:14				REBOUND (DEF) by RATHBUN, ABBY
03:07	SUB OUT: WILLIAMS, KIANA			
03:07	SUB IN: WILSON, ANNA			
03:01				MISSED LAYUP by VIGIL, LEILAH
02:58				REBOUND (OFF) by VIGIL, LEILAH
02:58		50-64	V 14	GOOD! LAYUP by VIGIL, LEILAH
02:41	MISSED 3PTR by CARRINGTON, DIJONAI			
02:37	REBOUND (OFF) by WILSON, ANNA			
02:35	MISSED JUMPER by CARRINGTON, DIJONAI			
02:32	REBOUND (OFF) by FINGALL, NADIA			
02:30	GOOD! LAYUP by FINGALL, NADIA	50-66	V 16	
02:16		52-66	V 14	GOOD! LAYUP by VIGIL, LEILAH
01:58	GOOD! 3PTR by WILSON, ANNA	52-69	V 17	
01:58	ASSIST by CARRINGTON, DIJONAI			
01:42				TURNOVER (BADPASS) by VAALAVIRTA, KIA
01:42	STEAL by WILSON, ANNA			
01:35	GOOD! 3PTR by HULL, LEXIE [FB]	52-72	V 20	
01:35	ASSIST by WILSON, ANNA			
01:21				MISSED 3PTR by VAALAVIRTA, KIA
01:18	REBOUND (DEF) by HULL, LEXIE			
01:07	GOOD! 3PTR by HULL, LACIE	52-75	V 23	
01:07	ASSIST by FINGALL, NADIA			
00:44				MISSED JUMPER by NIELACNA, JULIA
00:41	REBOUND (DEF) by CARRINGTON, DIJONAI			
00:02	TURNOVER (SHOTCLOCK) by TEAM			
00:02				SUB OUT: VAALAVIRTA, KIA
00:02				SUB IN: KRIMILI, IOANNA
00:02	SUB OUT: FINGALL, NADIA			
00:02	SUB IN: PRECHTEL, ASHTEN			

Stanford 75, San Francisco 52

Points from (This Period)	STA	USF
In the Paint	12	10
Off Turns	7	7
2nd Chance	2	6
Fast Break	3	0
Bench	10	12

Official Box Score
Stanford vs San Francisco
Fourth Quarter Statistics Only
November 09, 2019 at Chase Center - San Francisco



Stanford 22

No.	Player	S	Pts	FG	3FG	FT	OR	DR	TR	PF	A	TO	Blk	Stl	Min	+/-
05	BELIBI, FRANCESCA	F	0	0-0	0-0	0-0	0	0	0	0	0	0	0	0	0	0
10	JEROME, ALYSSA	F	5	1-2	1-2	2-2	1	1	2	0	2	0	0	0	6	7
12	HULL, LEXIE	G	3	1-1	1-1	0-0	2	1	3	0	0	0	0	0	6	1
21	CARRINGTON, DIJONAI	G	0	0-0	0-0	0-0	0	1	1	2	0	2	0	0	2	-3
23	WILLIAMS, KIANA	G	0	0-2	0-1	0-0	0	0	0	0	0	0	0	0	3	1
03	WILSON, ANNA	G	0	0-1	0-0	0-0	1	0	1	2	0	0	0	0	7	2
04	FINGALL, NADIA	F	0	0-0	0-0	0-0	0	0	0	0	0	0	0	0	0	0
11	PRECHTEL, ASHTEN	F	2	1-3	0-0	0-0	1	1	2	1	1	0	0	0	3	0
20	MOSCHKAU, ESTELLA	G	2	1-1	0-0	0-0	1	0	1	0	0	0	0	0	2	-1
24	HULL, LACIE	G	3	1-3	1-2	0-0	0	1	1	0	0	0	0	0	3	0
30	JONES, HALEY	G	5	2-5	0-0	1-2	0	2	2	0	0	1	1	1	7	3
33	JUMP, HANNAH	G	0	0-2	0-2	0-0	1	2	3	0	0	0	0	0	7	3
54	BROWN, JENNA	G	2	1-3	0-0	0-0	0	0	0	0	0	0	0	0	4	2
TEAM							0	1	1	0		0				
TOTALS			22	8-23	3-8	3-4	7	10	17	5	3	3	1	1	50	

Shooting By Period

Period	FG	FG%	3FG	3FG%	FT	FT%
Game	38-78	48.7%	14-29	48.3%	7-10	70.0%

Deadball Rebounds: 3,0

San Francisco 19

No.	Player	S	Pts	FG	3FG	FT	OR	DR	TR	PF	A	TO	Blk	Stl	Min	+/-
00	WILLIAMS, MIKAYLA	F	6	3-3	0-0	0-0	0	0	0	0	0	0	0	1	6	0
13	HOSKOVA, LUCIE	G	0	0-0	0-0	0-0	0	2	2	0	0	1	1	0	7	-2
21	KRIMILI, IOANNA	G	0	0-2	0-0	0-0	0	1	1	0	0	1	0	0	7	-2
25	BALOGUN, DOLAPO	F	0	0-3	0-2	0-0	0	0	0	0	0	0	0	0	4	-2
55	RATHBUN, ABBY	F	6	1-2	0-0	4-4	0	0	0	0	0	0	0	1	7	-2
02	VAALAVIRTA, KIA	G	0	0-3	0-2	0-0	0	3	3	0	0	0	0	0	9	-2
32	NIELACNA, JULIA	F	4	2-5	0-1	0-0	0	2	2	1	0	0	0	0	7	-3
34	VIGIL, LEILAH	F	3	1-2	0-0	1-2	1	0	1	2	0	0	0	0	4	-2
TEAM							2	0	2	0		0				
TOTALS			19	7-20	0-5	5-6	3	8	11	3	0	2	1	2	50	

Shooting By Period

Period	FG	FG%	3FG	3FG%	FT	FT%
Game	26-74	35.1%	6-22	27.3%	13-17	76.5%

Deadball Rebounds: 3,1

Game Notes:

Officials: Charles Gonzalez, Kenneth Nash, Nicole Leon
 Attendance: 3025

Start Time: 06:09 PM ET
 End Time: 07:49 PM ET
 Game Duration: 1:40

Score	1st	2nd	3rd	4th	TOT
STA	22	22	31	22	97
USF	13	19	20	19	71

Points from (This Period)	STA	USF
In the Paint	10	12
Off Turns	4	6
2nd Chance	6	3
Fast Break	0	2
Bench	14	7

Official Play-By-Play
Stanford vs San Francisco
Fourth Quarter
November 09, 2019 at Chase Center - San Francisco



Period 4

Starters:

Stanford: 10 JEROME,ALYSSA (F); 12 HULL,LEXIE (G); 21 CARRINGTON,DIJONAI (G); 23 WILLIAMS,KIANA (G); 5 BELIBI,FRANCESCA (F);

San Francisco: 0 WILLIAMS,MIKAYLA (F); 13 HOSKOVA,LUCIE (G); 21 KRIMILI,IOANNA (G); 25 BALOGUN,DOLAPO (F); 55 RATHBUN,ABBY (F);

Time	VISITORS: Stanford	Score	Margin	HOME: San Francisco
09:52				SUB OUT: NIELACNA, JULIA
09:52				SUB OUT: VIGIL, LEILAH
09:52				SUB IN: WILLIAMS, MIKAYLA
09:52				SUB IN: BALOGUN, DOLAPO
09:48				MISSED JUMPER by KRIMILI, IOANNA
09:45	REBOUND (DEF) by HULL, LACIE			
09:41	GOOD! 3PTR by HULL, LACIE	52-78	V 26	
09:27				MISSED 3PTR by BALOGUN, DOLAPO
09:24				REBOUND (OFF) by TEAM
09:23		54-78	V 24	GOOD! LAYUP by WILLIAMS, MIKAYLA
09:10	TURNOVER (BADPASS) by CARRINGTON, DIJONAI			
09:10				STEAL by RATHBUN, ABBY
09:05	FOUL (PERSONAL) by CARRINGTON, DIJONAI			
09:05				SUB OUT: BALOGUN, DOLAPO
09:05				SUB IN: VAALAVIRTA, KIA
09:05		55-78	V 23	GOOD! FT by RATHBUN, ABBY [FB]
09:05		56-78	V 22	GOOD! FT by RATHBUN, ABBY [FB]
08:59	MISSED LAYUP by PRECHTEL, ASHTEN			
08:56				REBOUND (DEF) by KRIMILI, IOANNA
08:48				MISSED 3PTR by VAALAVIRTA, KIA
08:45	REBOUND (DEF) by CARRINGTON, DIJONAI			
08:40	MISSED 3PTR by HULL, LACIE			
08:36				REBOUND (DEF) by HOSKOVA, LUCIE
08:27		58-78	V 20	GOOD! JUMPER by RATHBUN, ABBY
07:54	FOUL (OFF) by CARRINGTON, DIJONAI			
07:54	TURNOVER (OFFENSIVE) by CARRINGTON, DIJONAI			
07:54	SUB OUT: CARRINGTON, DIJONAI			
07:54	SUB IN: JEROME, ALYSSA			
07:42		60-78	V 18	GOOD! JUMPER by WILLIAMS, MIKAYLA
07:29	GOOD! 3PTR by JEROME, ALYSSA	60-81	V 21	
07:29	ASSIST by PRECHTEL, ASHTEN			
07:16				MISSED LAYUP by RATHBUN, ABBY
07:14	REBOUND (DEF) by PRECHTEL, ASHTEN			
07:05	MISSED JUMPER by PRECHTEL, ASHTEN			
07:01	REBOUND (OFF) by HULL, LEXIE			
07:00	MISSED JUMPER by HULL, LACIE			
06:52	REBOUND (OFF) by PRECHTEL, ASHTEN			
06:52	GOOD! LAYUP by PRECHTEL, ASHTEN	60-83	V 23	
06:41	FOUL (PERSONAL) by WILSON, ANNA			
06:41				SUB OUT: WILLIAMS, MIKAYLA
06:41				SUB OUT: HOSKOVA, LUCIE
06:41				SUB IN: BALOGUN, DOLAPO
06:41				SUB IN: NIELACNA, JULIA
06:41	SUB OUT: WILSON, ANNA			
06:41	SUB OUT: HULL, LACIE			
06:41	SUB IN: WILLIAMS, KIANA			
06:41	SUB IN: JUMP, HANNAH			
06:37	FOUL (PERSONAL) by PRECHTEL, ASHTEN			
06:37	SUB OUT: PRECHTEL, ASHTEN			
06:37	SUB IN: JONES, HALEY			
06:37		61-83	V 22	GOOD! FT by RATHBUN, ABBY
06:37		62-83	V 21	GOOD! FT by RATHBUN, ABBY
06:28	MISSED 3PTR by JUMP, HANNAH			
06:24	REBOUND (OFF) by HULL, LEXIE			
06:12	MISSED LAYUP by JONES, HALEY			
06:09				REBOUND (DEF) by NIELACNA, JULIA
06:05				MISSED LAYUP by VAALAVIRTA, KIA
06:01	REBOUND (DEF) by JONES, HALEY			
05:55	MISSED 3PTR by JEROME, ALYSSA			
05:53				REBOUND (DEF) by VAALAVIRTA, KIA
05:38		64-83	V 19	GOOD! LAYUP by NIELACNA, JULIA
05:25	GOOD! LAYUP by JONES, HALEY	64-85	V 21	
05:25	ASSIST by JEROME, ALYSSA			
05:08				MISSED JUMPER by BALOGUN, DOLAPO
05:05	REBOUND (DEF) by JEROME, ALYSSA			
04:57	MISSED 3PTR by WILLIAMS, KIANA			
04:55				REBOUND (DEF) by VAALAVIRTA, KIA
04:50				MISSED LAYUP by NIELACNA, JULIA
04:47	REBOUND (DEF) by JUMP, HANNAH			
04:21	MISSED LAYUP by WILLIAMS, KIANA			

Time	VISITORS: Stanford	Score	Margin	HOME: San Francisco
04:18				REBOUND (DEF) by NIELACNA, JULIA
04:11				MISSED 3PTR by BALOGUN, DOLAPO
04:08	REBOUND (DEF) by HULL, LEXIE			
03:57	GOOD! 3PTR by HULL, LEXIE	64-88	V 24	
03:57	ASSIST by JEROME, ALYSSA			
03:51				TIMEOUT 30SEC
03:51				
03:51				SUB OUT: KRIMILI, IOANNA
03:51				SUB OUT: BALOGUN, DOLAPO
03:51				SUB IN: HOSKOVA, LUCIE
03:51				SUB IN: VIGIL, LEILAH
03:51	SUB OUT: HULL, LEXIE			
03:51	SUB OUT: WILLIAMS, KIANA			
03:51	SUB IN: WILSON, ANNA			
03:51	SUB IN: BROWN, JENNA			
03:42		66-88	V 22	GOOD! JUMPER by NIELACNA, JULIA
03:30				FOUL (PERSONAL) by NIELACNA, JULIA
03:30	MISSED FT by JONES, HALEY			
03:30	REBOUND (OFF) by TEAM			
03:30	GOOD! FT by JONES, HALEY	66-89	V 23	
03:17				MISSED JUMPER by NIELACNA, JULIA
03:17	BLOCK by JONES, HALEY			
03:16				REBOUND (OFF) by TEAM
03:13				MISSED 3PTR by NIELACNA, JULIA
03:07	REBOUND (DEF) by JONES, HALEY			
03:06	MISSED JUMPER by BROWN, JENNA			
03:02	REBOUND (OFF) by WILSON, ANNA			
03:00	MISSED JUMPER by WILSON, ANNA			
02:58	REBOUND (OFF) by JUMP, HANNAH			
02:50	MISSED 3PTR by JUMP, HANNAH			
02:47	REBOUND (OFF) by JEROME, ALYSSA			
02:47				FOUL (PERSONAL) by VIGIL, LEILAH
02:47	GOOD! FT by JEROME, ALYSSA	66-90	V 24	
02:47	GOOD! FT by JEROME, ALYSSA	66-91	V 25	
02:47				SUB OUT: RATHBUN, ABBY
02:47				SUB IN: KRIMILI, IOANNA
02:39				TURNOVER (BADPASS) by KRIMILI, IOANNA
02:39	STEAL by JONES, HALEY			
02:34	GOOD! LAYUP by JONES, HALEY	66-93	V 27	
02:23				MISSED JUMPER by KRIMILI, IOANNA
02:22				REBOUND (OFF) by VIGIL, LEILAH
02:22	FOUL (PERSONAL) by WILSON, ANNA			
02:22	SUB OUT: JEROME, ALYSSA			
02:22	SUB IN: MOSCHKAU, ESTELLA			
02:22				MISSED FT by VIGIL, LEILAH
02:22				REBOUND (OFF) by TEAM
02:22		67-93	V 26	GOOD! FT by VIGIL, LEILAH
02:22				SUB OUT: KRIMILI, IOANNA
02:22				SUB IN: WILLIAMS, MIKAYLA
01:57	MISSED JUMPER by BROWN, JENNA			
01:57				BLOCK by HOSKOVA, LUCIE
01:51				REBOUND (DEF) by HOSKOVA, LUCIE
01:51				TURNOVER (LOSTBALL) by HOSKOVA, LUCIE
01:47				FOUL (PERSONAL) by VIGIL, LEILAH
01:41	GOOD! LAYUP by BROWN, JENNA	67-95	V 28	
01:15				MISSED LAYUP by VIGIL, LEILAH
01:12	REBOUND (DEF) by JUMP, HANNAH			
01:07	MISSED JUMPER by JONES, HALEY			
01:03				REBOUND (DEF) by VAALAVIRTA, KIA
00:54		69-95	V 26	GOOD! LAYUP by VIGIL, LEILAH
00:36	TURNOVER (BADPASS) by JONES, HALEY			
00:36				STEAL by WILLIAMS, MIKAYLA
00:25		71-95	V 24	GOOD! JUMPER by WILLIAMS, MIKAYLA [PNT]
00:15	MISSED LAYUP by JONES, HALEY			
00:11	REBOUND (OFF) by MOSCHKAU, ESTELLA			
00:11	GOOD! LAYUP by MOSCHKAU, ESTELLA	71-97	V 26	
00:03				MISSED 3PTR by VAALAVIRTA, KIA
00:03	REBOUND (DEF) by TEAM			
02:30				SUB IN: KRIMILI, IOANNA
02:30	SUB OUT: WILSON, ANNA			
02:30	SUB OUT: JEROME, ALYSSA			
02:30	SUB OUT: CARRINGTON, DIJONAI			
02:30	SUB IN: HULL, LEXIE			
02:30	SUB IN: HULL, LACIE			
02:30	SUB IN: JUMP, HANNAH			

Stanford 97, San Francisco 71

Points from (This Period)	STA	USF
In the Paint	10	12
Off Turns	4	6
2nd Chance	6	3
Fast Break	0	2
Bench	14	7

**Official Scoring/Possession Reference Chart
Stanford vs San Francisco
Period 1
November 09, 2019 at Chase Center - San Francisco**



Period 1

Starters:

Stanford: 10 JEROME,ALYSSA (F); 12 HULL,LEXIE (G); 21 CARRINGTON,DIJONAI (G); 23 WILLIAMS,KIANA (G); 5 BELIBI,FRANCESCA (F);

San Francisco: 0 WILLIAMS,MIKAYLA (F); 13 HOSKOVA,LUCIE (G); 21 KRIMILI,IOANNA (G); 25 BALOGUN,DOLAPO (F); 55 RATHBUN,ABBY (F);

Time	VISITORS: Stanford	Score	Margin	HOME: San Francisco
09:36	GOOD! 3PTR by CARRINGTON, DIJONAI	0-3	V 3	
09:17		2-3	V 1	GOOD! LAYUP by HOSKOVA, LUCIE
08:57		3-3	T	GOOD! FT by BALOGUN, DOLAPO [FB]
08:57		4-3	H 1	GOOD! FT by BALOGUN, DOLAPO [FB]
08:15	GOOD! LAYUP by HULL, LEXIE	4-5	V 1	
07:47	GOOD! JUMPER by BELIBI, FRANCESCA	4-7	V 3	
07:28		6-7	V 1	GOOD! JUMPER by HOSKOVA, LUCIE [PNT]
06:41		8-7	H 1	GOOD! JUMPER by WILLIAMS, MIKAYLA [PNT]
06:26	GOOD! 3PTR by JONES, HALEY	8-10	V 2	
06:07	GOOD! JUMPER by HULL, LEXIE	8-12	V 4	
05:43	GOOD! LAYUP by CARRINGTON, DIJONAI	8-14	V 6	
05:29		10-14	V 4	GOOD! LAYUP by WILLIAMS, MIKAYLA
04:53	GOOD! LAYUP by WILLIAMS, KIANA	10-16	V 6	
03:54		13-16	V 3	GOOD! 3PTR by KRIMILI, IOANNA
03:30	GOOD! LAYUP by HULL, LACIE	13-18	V 5	
03:05	GOOD! JUMPER by HULL, LEXIE	13-20	V 7	
01:44	GOOD! LAYUP by CARRINGTON, DIJONAI	13-22	V 9	

Stanford 22, San Francisco 13

Official Scoring/Possession Reference Chart
Stanford vs San Francisco
Period 2
November 09, 2019 at Chase Center - San Francisco



Period 2

Starters:

Stanford: 10 JEROME,ALYSSA (F); 12 HULL,LEXIE (G); 21 CARRINGTON,DIJONAI (G); 23 WILLIAMS,KIANA (G); 5 BELIBI,FRANCESCA (F);

San Francisco: 0 WILLIAMS,MIKAYLA (F); 13 HOSKOVA,LUCIE (G); 21 KRIMILI,IOANNA (G); 25 BALOGUN,DOLAPO (F); 55 RATHBUN,ABBY (F);

Time	VISITORS: Stanford	Score	Margin	HOME: San Francisco
09:36	GOOD! 3PTR by HULL, LEXIE	13-25	V 12	
09:07		15-25	V 10	GOOD! LAYUP by WILLIAMS, MIKAYLA
08:50		18-25	V 7	GOOD! 3PTR by VAALAVIRTA, KIA
08:06	GOOD! 3PTR by JEROME, ALYSSA	18-28	V 10	
07:50		21-28	V 7	GOOD! 3PTR by HOSKOVA, LUCIE
07:14		23-28	V 5	GOOD! JUMPER by KRIMILI, IOANNA [PNT]
06:59	GOOD! 3PTR by JEROME, ALYSSA	23-31	V 8	
06:45		25-31	V 6	GOOD! JUMPER by KRIMILI, IOANNA [PNT]
06:10	GOOD! 3PTR by CARRINGTON, DIJONAI	25-34	V 9	
05:46	GOOD! LAYUP by HULL, LEXIE	25-36	V 11	
04:40		28-36	V 8	GOOD! 3PTR by KRIMILI, IOANNA
03:46		29-36	V 7	GOOD! FT by KRIMILI, IOANNA
03:34	GOOD! FT by WILSON, ANNA [FB]	29-37	V 8	
03:27	GOOD! LAYUP by CARRINGTON, DIJONAI	29-39	V 10	
02:08	GOOD! LAYUP by PRECHTEL, ASHTEN [FB]	29-41	V 12	
01:50		32-41	V 9	GOOD! 3PTR by HOSKOVA, LUCIE
01:29	GOOD! JUMPER by PRECHTEL, ASHTEN	32-43	V 11	
01:08	GOOD! FT by HULL, LEXIE	32-44	V 12	

Stanford 44, San Francisco 32

Official Scoring/Possession Reference Chart
Stanford vs San Francisco
Period 3
November 09, 2019 at Chase Center - San Francisco



Period 3

Starters:

Stanford: 10 JEROME,ALYSSA (F); 12 HULL,LEXIE (G); 21 CARRINGTON,DIJONAI (G); 23 WILLIAMS,KIANA (G); 5 BELIBI,FRANCESCA (F);

San Francisco: 0 WILLIAMS,MIKAYLA (F); 13 HOSKOVA,LUCIE (G); 21 KRIMILI,IOANNA (G); 25 BALOGUN,DOLAPO (F); 55 RATHBUN,ABBY (F);

Time	VISITORS: Stanford	Score	Margin	HOME: San Francisco
09:57	GOOD! JUMPER by HULL, LEXIE [PNT]	32-46	V 14	
09:45	GOOD! FT by HULL, LEXIE	32-47	V 15	
09:28	GOOD! LAYUP by CARRINGTON, DIJONAI [PNT]	32-49	V 17	
08:55	GOOD! JUMPER by PRECHTEL, ASHTEN [PNT]	32-51	V 19	
08:35		34-51	V 17	GOOD! LAYUP by KRIMILI, IOANNA
07:21		36-51	V 15	GOOD! JUMPER by KRIMILI, IOANNA
07:02	GOOD! LAYUP by BELIBI, FRANCESCA	36-53	V 17	
07:02	GOOD! FT by BELIBI, FRANCESCA	36-54	V 18	
06:48	GOOD! 3PTR by HULL, LEXIE	36-57	V 21	
06:15		38-57	V 19	GOOD! LAYUP by KRIMILI, IOANNA
06:04	GOOD! LAYUP by CARRINGTON, DIJONAI	38-59	V 21	
05:27		39-59	V 20	GOOD! FT by WILLIAMS, MIKAYLA
05:27		40-59	V 19	GOOD! FT by WILLIAMS, MIKAYLA
05:00		42-59	V 17	GOOD! LAYUP by NIELACNA, JULIA
04:58		43-59	V 16	GOOD! FT by NIELACNA, JULIA
04:49	GOOD! 3PTR by HULL, LEXIE	43-62	V 19	
04:21	GOOD! JUMPER by WILLIAMS, KIANA	43-64	V 21	
03:59		46-64	V 18	GOOD! 3PTR by NIELACNA, JULIA
03:32		47-64	V 17	GOOD! FT by VIGIL, LEILAH
03:32		48-64	V 16	GOOD! FT by VIGIL, LEILAH
02:58		50-64	V 14	GOOD! LAYUP by VIGIL, LEILAH
02:30	GOOD! LAYUP by FINGALL, NADIA	50-66	V 16	
02:16		52-66	V 14	GOOD! LAYUP by VIGIL, LEILAH
01:58	GOOD! 3PTR by WILSON, ANNA	52-69	V 17	
01:35	GOOD! 3PTR by HULL, LEXIE [FB]	52-72	V 20	
01:07	GOOD! 3PTR by HULL, LACIE	52-75	V 23	

Stanford 75, San Francisco 52

Official Scoring/Possession Reference Chart
Stanford vs San Francisco
Period 4
November 09, 2019 at Chase Center - San Francisco



Period 4

Starters:

Stanford: 10 JEROME,ALYSSA (F); 12 HULL,LEXIE (G); 21 CARRINGTON,DIJONAI (G); 23 WILLIAMS,KIANA (G); 5 BELIBI,FRANCESCA (F);

San Francisco: 0 WILLIAMS,MIKAYLA (F); 13 HOSKOVA,LUCIE (G); 21 KRIMILI,IOANNA (G); 25 BALOGUN,DOLAPO (F); 55 RATHBUN,ABBY (F);

Time	VISITORS: Stanford	Score	Margin	HOME: San Francisco
09:41	GOOD! 3PTR by HULL, LACIE	52-78	V 26	
09:23		54-78	V 24	GOOD! LAYUP by WILLIAMS, MIKAYLA
09:05		55-78	V 23	GOOD! FT by RATHBUN, ABBY [FB]
09:05		56-78	V 22	GOOD! FT by RATHBUN, ABBY [FB]
08:27		58-78	V 20	GOOD! JUMPER by RATHBUN, ABBY
07:42		60-78	V 18	GOOD! JUMPER by WILLIAMS, MIKAYLA
07:29	GOOD! 3PTR by JEROME, ALYSSA	60-81	V 21	
06:52	GOOD! LAYUP by PRECHTEL, ASHTEN	60-83	V 23	
06:37		61-83	V 22	GOOD! FT by RATHBUN, ABBY
06:37		62-83	V 21	GOOD! FT by RATHBUN, ABBY
05:38		64-83	V 19	GOOD! LAYUP by NIELACNA, JULIA
05:25	GOOD! LAYUP by JONES, HALEY	64-85	V 21	
03:57	GOOD! 3PTR by HULL, LEXIE	64-88	V 24	
03:42		66-88	V 22	GOOD! JUMPER by NIELACNA, JULIA
03:30	GOOD! FT by JONES, HALEY	66-89	V 23	
02:47	GOOD! FT by JEROME, ALYSSA	66-90	V 24	
02:47	GOOD! FT by JEROME, ALYSSA	66-91	V 25	
02:34	GOOD! LAYUP by JONES, HALEY	66-93	V 27	
02:22		67-93	V 26	GOOD! FT by VIGIL, LEILAH
01:41	GOOD! LAYUP by BROWN, JENNA	67-95	V 28	
00:54		69-95	V 26	GOOD! LAYUP by VIGIL, LEILAH
00:25		71-95	V 24	GOOD! JUMPER by WILLIAMS, MIKAYLA [PNT]
00:11	GOOD! LAYUP by MOSCHKAU, ESTELLA	71-97	V 26	

Stanford 97, San Francisco 71

Official Substitutions Log
Stanford vs San Francisco
Period 1
November 09, 2019 at Chase Center - San Francisco



VISITORS: Stanford	Time	Score	HOME: San Francisco
10 JEROME,ALYSSA			0 WILLIAMS,MIKAYLA
12 HULL,LEXIE			13 HOSKOVA,LUCIE
21 CARRINGTON,DIJONAI			21 KRIMILI,IOANNA
23 WILLIAMS,KIANA			25 BALOGUN,DOLAPO
5 BELIBI,FRANCESCA			55 RATHBUN,ABBY
SUB OUT: 10 JEROME,ALYSSA	08:57	3-2	
SUB IN: 30 JONES,HALEY	08:57		
	05:18	14-10	SUB OUT: BALOGUN,DOLAPO
	05:18		SUB IN: VIGIL,LEILAH
SUB OUT: 5 BELIBI,FRANCESCA	05:12	14-10	
SUB OUT: 21 CARRINGTON,DIJONAI	05:12		
SUB OUT: 30 JONES,HALEY	05:12		
SUB IN: 4 FINGALL,NADIA	05:12		
SUB IN: 11 PRECHTEL,ASHTEN	05:12		
SUB IN: 24 HULL,LACIE	05:12		
	04:40	16-10	SUB OUT: WILLIAMS,MIKAYLA
	04:40		SUB IN: VAALAVIRTA,KIA
SUB OUT: 4 FINGALL,NADIA	04:35	16-10	
SUB IN: 33 JUMP,HANNAH	04:35		
	02:30	20-13	SUB OUT: RATHBUN,ABBY
	02:04	20-13	SUB OUT: KRIMILI,IOANNA
SUB OUT: 12 HULL,LEXIE	02:04		
SUB OUT: 24 HULL,LACIE	02:04		
SUB OUT: 33 JUMP,HANNAH	02:04		
SUB IN: 3 WILSON,ANNA	02:04		
SUB IN: 10 JEROME,ALYSSA	02:04		
SUB IN: 21 CARRINGTON,DIJONAI	02:04		

Stanford 22, San Francisco 13

Official Substitutions Log
Stanford vs San Francisco
Period 2
November 09, 2019 at Chase Center - San Francisco



VISITORS: Stanford	Time	Score	HOME: San Francisco
10 JEROME,ALYSSA			0 WILLIAMS,MIKAYLA
12 HULL,LEXIE			13 HOSKOVA,LUCIE
21 CARRINGTON,DIJONAI			21 KRIMILI,IOANNA
23 WILLIAMS,KIANA			25 BALOGUN,DOLAPO
5 BELIBI,FRANCESCA			55 RATHBUN,ABBY
	10:00	-	SUB OUT: BALOGUN,DOLAPO
	10:00		SUB IN: RATHBUN,ABBY
SUB OUT: 11 PRECHTEL,ASHTEN	10:00		
SUB OUT: 24 HULL,LACIE	10:00		
SUB OUT: 33 JUMP,HANNAH	10:00		
SUB IN: 5 BELIBI,FRANCESCA	10:00		
SUB IN: 10 JEROME,ALYSSA	10:00		
SUB IN: 21 CARRINGTON,DIJONAI	10:00		
SUB OUT: 5 BELIBI,FRANCESCA	08:20	25-18	
SUB IN: 4 FINGALL,NADIA	08:20		
	08:20		SUB OUT: WILLIAMS,MIKAYLA
	08:20		SUB IN: HOSKOVA,LUCIE
	06:24	31-25	SUB OUT: NIELACNA,JULIA
	06:24		SUB OUT: RATHBUN,ABBY
	06:24		SUB IN: BALOGUN,DOLAPO
	06:24		SUB IN: VIGIL,LEILAH
SUB OUT: 4 FINGALL,NADIA	06:24		
SUB IN: 24 HULL,LACIE	06:24		
	05:31	36-25	SUB OUT: VIGIL,LEILAH
	05:31		SUB IN: WILLIAMS,MIKAYLA
SUB OUT: 12 HULL,LEXIE	05:03	36-25	
SUB IN: 3 WILSON,ANNA	05:03		
SUB OUT: 23 WILLIAMS,KIANA	04:05	36-28	
SUB IN: 54 BROWN,JENNA	04:05		
	03:46	36-28	SUB OUT: WILLIAMS,MIKAYLA
	03:46		SUB OUT: VAALAVIRTA,KIA
	03:46		SUB IN: NIELACNA,JULIA
	03:46		SUB IN: RATHBUN,ABBY
SUB OUT: 10 JEROME,ALYSSA	03:46		
SUB OUT: 24 HULL,LACIE	03:46		
SUB OUT: 54 BROWN,JENNA	03:46		
SUB IN: 11 PRECHTEL,ASHTEN	03:46		
SUB IN: 12 HULL,LEXIE	03:46		
SUB IN: 23 WILLIAMS,KIANA	03:46		
	02:51	39-29	SUB OUT: KRIMILI,IOANNA
	02:51		SUB IN: VAALAVIRTA,KIA

Stanford 44, San Francisco 32

**Official Substitutions Log
Stanford vs San Francisco
Period 3
November 09, 2019 at Chase Center - San Francisco**



VISITORS: Stanford	Time	Score	HOME: San Francisco
10 JEROME,ALYSSA			0 WILLIAMS,MIKAYLA
12 HULL,LEXIE			13 HOSKOVA,LUCIE
21 CARRINGTON,DIJONAI			21 KRIMILI,IOANNA
23 WILLIAMS,KIANA			25 BALOGUN,DOLAPO
5 BELIBI,FRANCESCA			55 RATHBUN,ABBY
	02:31	-	SUB OUT: HOSKOVA,LUCIE
	02:31		SUB OUT: VIGIL,LEILAH
	02:31		SUB IN: WILLIAMS,MIKAYLA
	02:31		SUB IN: BALOGUN,DOLAPO
	02:31		SUB IN: NIELACNA,JULIA
	10:00	-	SUB OUT: VAALAVIRTA,KIA
	10:00		SUB OUT: NIELACNA,JULIA
	10:00		SUB IN: WILLIAMS,MIKAYLA
	10:00		SUB IN: KRIMILI,IOANNA
SUB OUT: 3 WILSON,ANNA	10:00		
SUB IN: 10 JEROME,ALYSSA	10:00		
	07:47	51-34	SUB OUT: BALOGUN,DOLAPO
	07:47		SUB IN: VAALAVIRTA,KIA
SUB OUT: 10 JEROME,ALYSSA	07:47		
SUB OUT: 11 PRECHTEL,ASHTEN	07:47		
SUB IN: 5 BELIBI,FRANCESCA	07:47		
SUB IN: 30 JONES,HALEY	07:47		
	05:45	59-38	SUB OUT: WILLIAMS,MIKAYLA
	05:45		SUB OUT: HOSKOVA,LUCIE
	05:45		SUB IN: BALOGUN,DOLAPO
	05:45		SUB IN: NIELACNA,JULIA
SUB OUT: 21 CARRINGTON,DIJONAI	05:45		
SUB IN: 24 HULL,LACIE	05:45		
	05:45		SUB OUT: RATHBUN,ABBY
	05:45		SUB IN: WILLIAMS,MIKAYLA
	04:54	59-43	SUB OUT: WILLIAMS,MIKAYLA
	04:54		SUB OUT: KRIMILI,IOANNA
	04:54		SUB IN: HOSKOVA,LUCIE
	04:54		SUB IN: VIGIL,LEILAH
SUB OUT: 23 WILLIAMS,KIANA	04:54		
SUB IN: 4 FINGALL,NADIA	04:54		
SUB OUT: 5 BELIBI,FRANCESCA	04:05	64-43	
SUB IN: 23 WILLIAMS,KIANA	04:05		
SUB OUT: 30 JONES,HALEY	03:32	64-48	
SUB IN: 21 CARRINGTON,DIJONAI	03:32		
	03:23	64-48	SUB OUT: BALOGUN,DOLAPO
	03:23		SUB IN: RATHBUN,ABBY
SUB OUT: 23 WILLIAMS,KIANA	03:07	64-48	
SUB IN: 3 WILSON,ANNA	03:07		
	00:02	75-52	SUB OUT: VAALAVIRTA,KIA
	00:02		SUB IN: KRIMILI,IOANNA
SUB OUT: 4 FINGALL,NADIA	00:02		
SUB IN: 11 PRECHTEL,ASHTEN	00:02		

Stanford 75, San Francisco 52

Official Substitutions Log
Stanford vs San Francisco
Period 4
November 09, 2019 at Chase Center - San Francisco



VISITORS: Stanford	Time	Score	HOME: San Francisco
10 JEROME,ALYSSA			0 WILLIAMS,MIKAYLA
12 HULL,LEXIE			13 HOSKOVA,LUCIE
21 CARRINGTON,DIJONAI			21 KRIMILI,IOANNA
23 WILLIAMS,KIANA			25 BALOGUN,DOLAPO
5 BELIBI,FRANCESCA			55 RATHBUN,ABBY
	09:52	-	SUB OUT: NIELACNA,JULIA
	09:52		SUB OUT: VIGIL,LEILAH
	09:52		SUB IN: WILLIAMS,MIKAYLA
	09:52		SUB IN: BALOGUN,DOLAPO
	09:05	78-54	SUB OUT: BALOGUN,DOLAPO
	09:05		SUB IN: VAALAVIRTA,KIA
SUB OUT: 21 CARRINGTON,DIJONAI	07:54	78-58	
SUB IN: 10 JEROME,ALYSSA	07:54		
	06:41	83-60	SUB OUT: WILLIAMS,MIKAYLA
	06:41		SUB OUT: HOSKOVA,LUCIE
	06:41		SUB IN: BALOGUN,DOLAPO
	06:41		SUB IN: NIELACNA,JULIA
SUB OUT: 3 WILSON,ANNA	06:41		
SUB OUT: 24 HULL, LACIE	06:41		
SUB IN: 23 WILLIAMS,KIANA	06:41		
SUB IN: 33 JUMP, HANNAH	06:41		
SUB OUT: 11 PRECHTEL, ASHTEN	06:37	83-60	
SUB IN: 30 JONES,HALEY	06:37		
	03:51	88-64	SUB OUT: KRIMILI,IOANNA
	03:51		SUB OUT: BALOGUN,DOLAPO
	03:51		SUB IN: HOSKOVA,LUCIE
	03:51		SUB IN: VIGIL,LEILAH
SUB OUT: 12 HULL,LEXIE	03:51		
SUB OUT: 23 WILLIAMS,KIANA	03:51		
SUB IN: 3 WILSON,ANNA	03:51		
SUB IN: 54 BROWN,JENNA	03:51		
	02:47	91-66	SUB OUT: RATHBUN,ABBY
	02:47		SUB IN: KRIMILI,IOANNA
SUB OUT: 10 JEROME,ALYSSA	02:22	93-66	
SUB IN: 20 MOSCHKAU,ESTELLA	02:22		
	02:22		SUB OUT: KRIMILI,IOANNA
	02:22		SUB IN: WILLIAMS,MIKAYLA
	02:30	97-71	SUB IN: KRIMILI,IOANNA
SUB OUT: 3 WILSON,ANNA	02:30		
SUB OUT: 10 JEROME,ALYSSA	02:30		
SUB OUT: 21 CARRINGTON,DIJONAI	02:30		
SUB IN: 12 HULL,LEXIE	02:30		
SUB IN: 24 HULL, LACIE	02:30		
SUB IN: 33 JUMP, HANNAH	02:30		

Stanford 97, San Francisco 71

Official Shot Chart
Stanford vs San Francisco
PERIOD 1 Shots
 November 09, 2019 at Chase Center - San Francisco

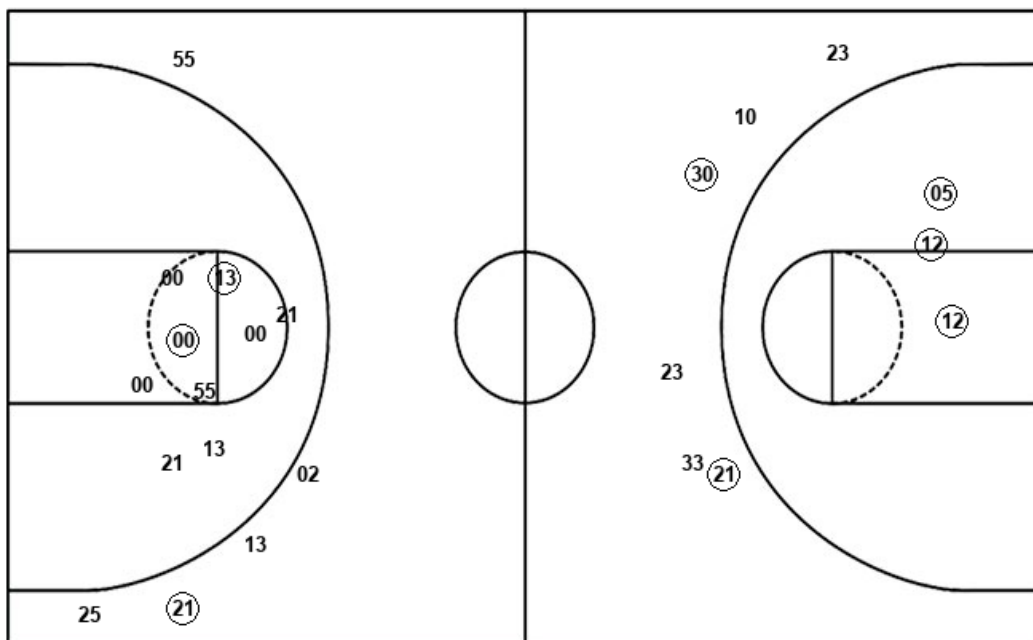


San Francisco

Stanford

Layups
 13 13 00 02

Dunks



Layups
 12 21 23 23 24
 21 11 21

Dunks

USF : Period 1	Made	Att	Pct
Layups	2	4	50.0
Dunks	0	0	0
2PT Field Goals	4	13	30.8
3PT Field Goals	1	5	20.0
Total Field Goals	5	18	27.8

STA : Period 1	Made	Att	Pct
Layups	5	8	62.5
Dunks	0	0	0
2PT Field Goals	8	11	72.7
3PT Field Goals	2	6	33.3
Total Field Goals	10	17	58.8

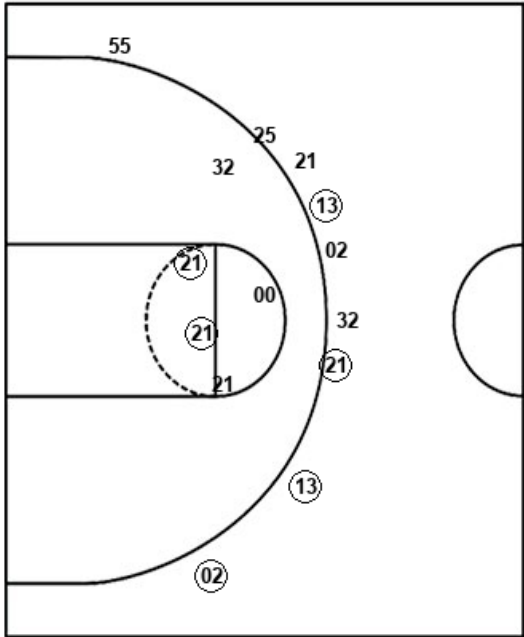
Official Shot Chart
Stanford vs San Francisco
PERIOD 2 Shots
 November 09, 2019 at Chase Center - San Francisco



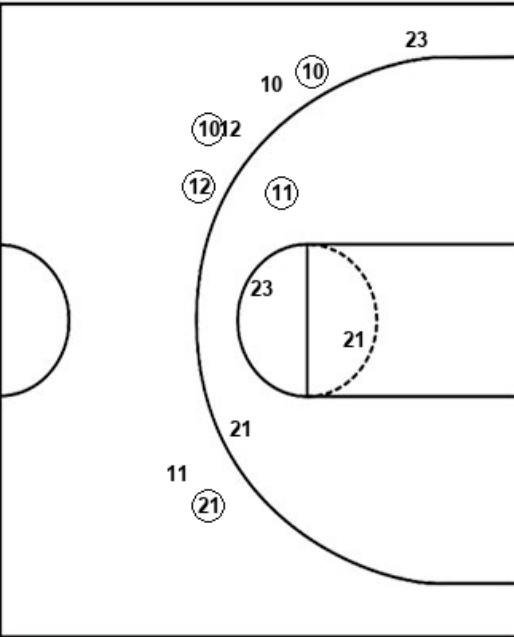
San Francisco

Stanford

Layups
 00 (00) 32 02 13



Layups
 05 04 (12) 21 (21)
 (11) 23



Dunks

Dunks

USF : Period 2	Made	Att	Pct
Layups	1	5	20.0
Dunks	0	0	0
2PT Field Goals	3	10	30.0
3PT Field Goals	4	9	44.4
Total Field Goals	7	19	36.8

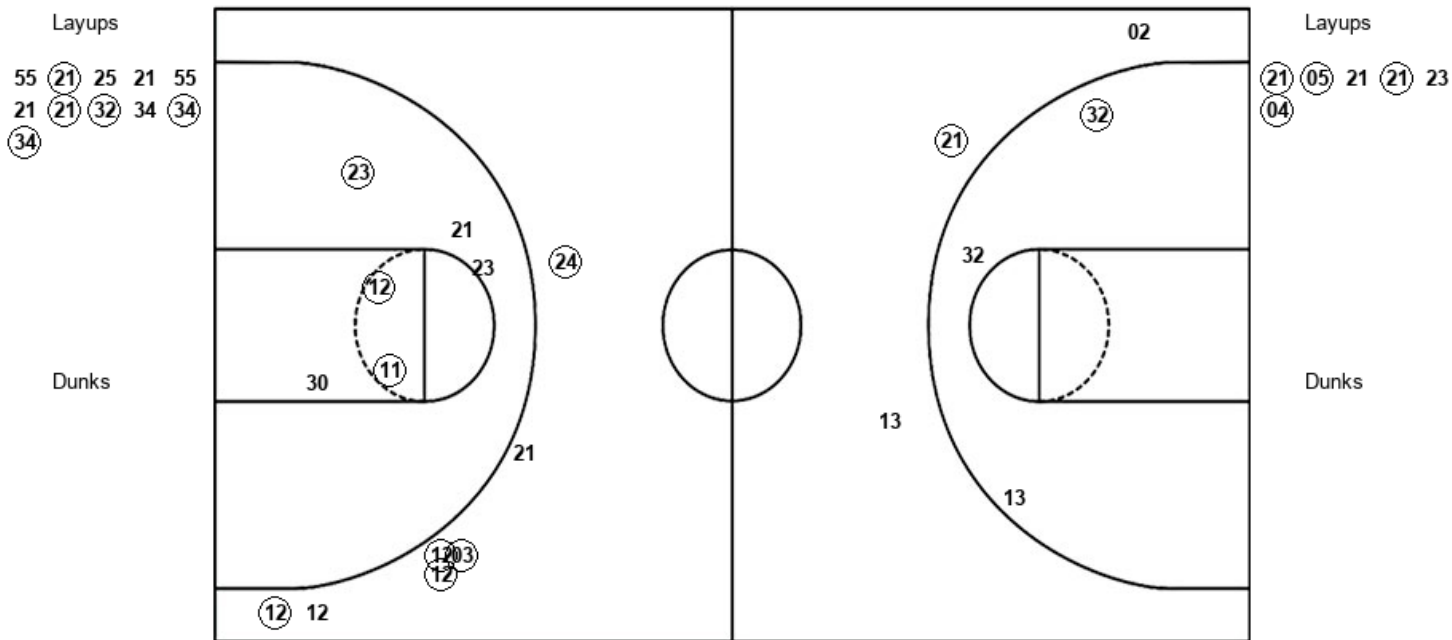
STA : Period 2	Made	Att	Pct
Layups	3	7	42.9
Dunks	0	0	0
2PT Field Goals	4	11	36.4
3PT Field Goals	4	8	50.0
Total Field Goals	8	19	42.1

Official Shot Chart
Stanford vs San Francisco
 PERIOD 3 Shots
 November 09, 2019 at Chase Center - San Francisco



San Francisco

Stanford



USF : Period 3	Made	Att	Pct
Layups	5	11	45.5
Dunks	0	0	0
2PT Field Goals	6	14	42.9
3PT Field Goals	1	3	33.3
Total Field Goals	7	17	41.2

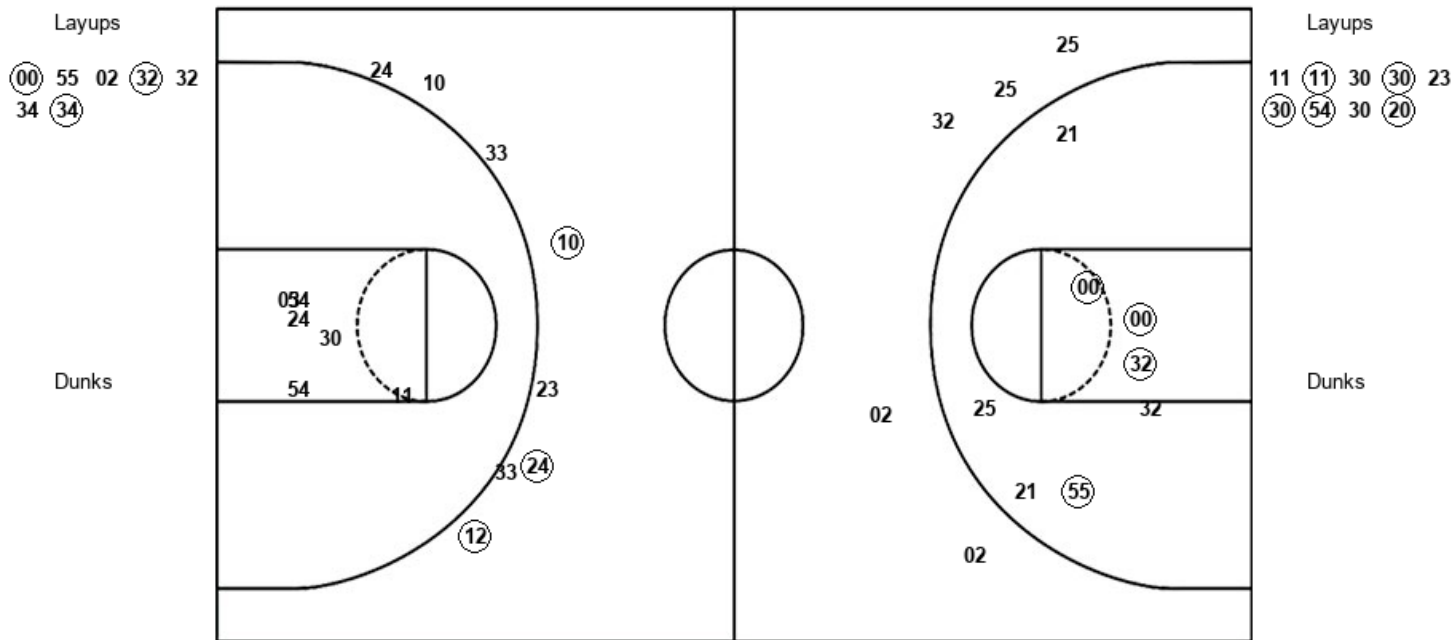
STA : Period 3	Made	Att	Pct
Layups	4	6	66.7
Dunks	0	0	0
2PT Field Goals	7	12	58.3
3PT Field Goals	5	7	71.4
Total Field Goals	12	19	63.2

Official Shot Chart
Stanford vs San Francisco
PERIOD 4 Shots
 November 09, 2019 at Chase Center - San Francisco



San Francisco

Stanford



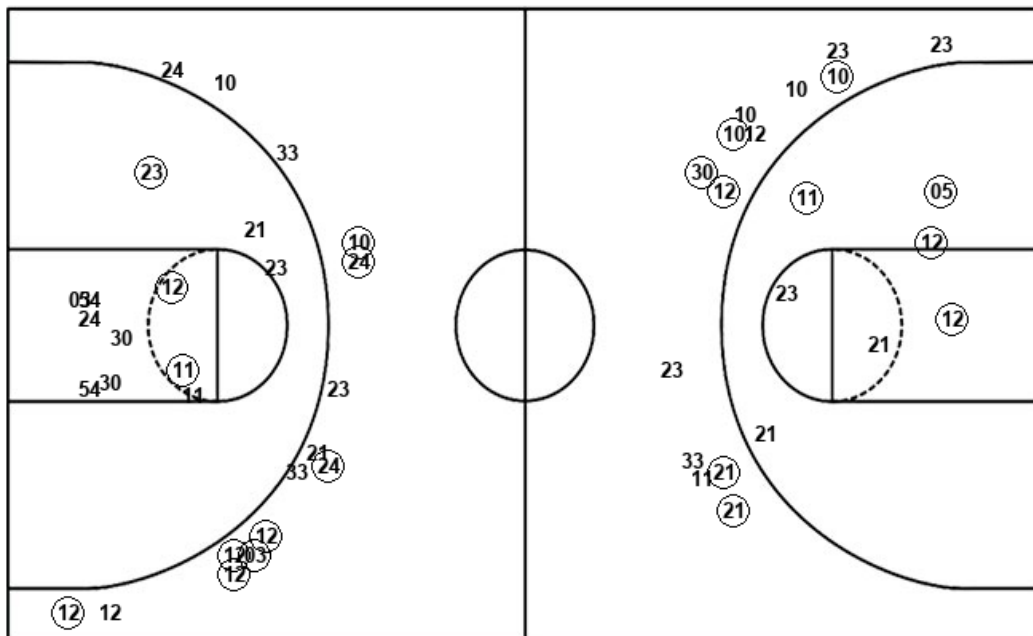
USF : Period 4	Made	Att	Pct
Layups	3	7	42.9
Dunks	0	0	0
2PT Field Goals	7	15	46.7
3PT Field Goals	0	5	00.0
Total Field Goals	7	20	35.0

STA : Period 4	Made	Att	Pct
Layups	5	9	55.6
Dunks	0	0	0
2PT Field Goals	5	15	33.3
3PT Field Goals	3	8	37.5
Total Field Goals	8	23	34.8

Official Shot Chart
Stanford vs San Francisco
Stanford Team Shots
 November 09, 2019 at Chase Center - San Francisco



Layups



Layups



Dunks

Dunks

STA : Period 1	Made	Att	Pct
Layups	5	8	62.5
Dunks	0	0	0
2PT Field Goals	8	11	72.7
3PT Field Goals	2	6	33.3
Total Field Goals	10	17	58.8

STA : Period 2	Made	Att	Pct
Layups	3	7	42.9
Dunks	0	0	0
2PT Field Goals	4	11	36.4
3PT Field Goals	4	8	50.0
Total Field Goals	8	19	42.1

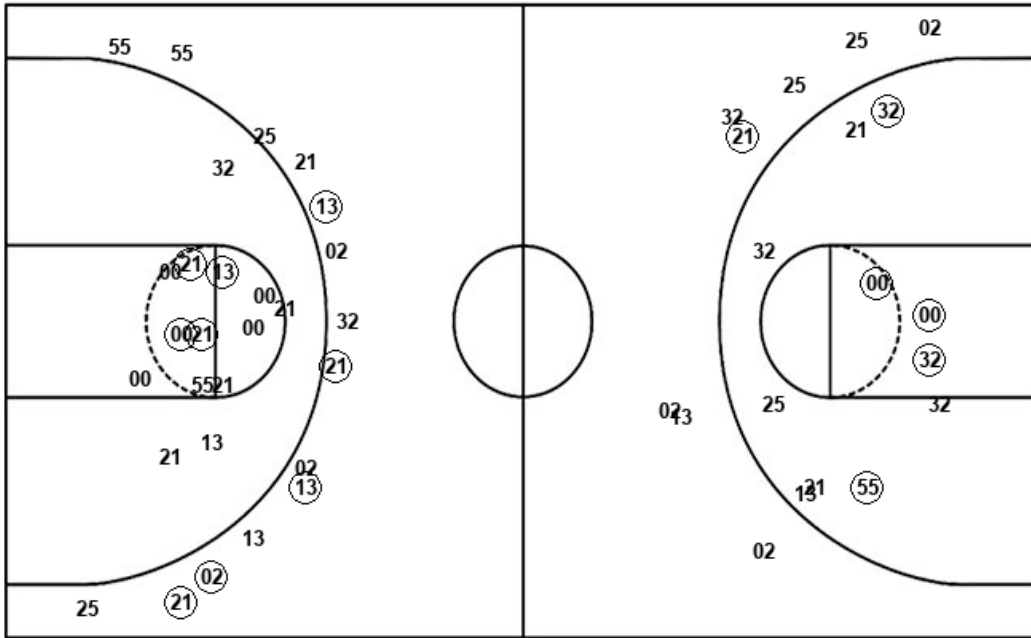
STA : Period 3	Made	Att	Pct
Layups	4	6	66.7
Dunks	0	0	0
2PT Field Goals	7	12	58.3
3PT Field Goals	5	7	71.4
Total Field Goals	12	19	63.2

STA : Period 4	Made	Att	Pct
Layups	5	9	55.6
Dunks	0	0	0
2PT Field Goals	5	15	33.3
3PT Field Goals	3	8	37.5
Total Field Goals	8	23	34.8

Official Shot Chart
Stanford vs San Francisco
San Francisco Team Shots
November 09, 2019 at Chase Center - San Francisco



Layups



Layups

(13) 13 (00) 02 00
 (00) 32 02 13 55
 (21) 25 21 55 21
 (21) (32) 34 (34) (34)
 (00) 55 02 (32) 32
 34 (34)

Dunks

Dunks

USF : Period 1	Made	Att	Pct
Layups	2	4	50.0
Dunks	0	0	0
2PT Field Goals	4	13	30.8
3PT Field Goals	1	5	20.0
Total Field Goals	5	18	27.8

USF : Period 2	Made	Att	Pct
Layups	1	5	20.0
Dunks	0	0	0
2PT Field Goals	3	10	30.0
3PT Field Goals	4	9	44.4
Total Field Goals	7	19	36.8

USF : Period 3	Made	Att	Pct
Layups	5	11	45.5
Dunks	0	0	0
2PT Field Goals	6	14	42.9
3PT Field Goals	1	3	33.3
Total Field Goals	7	17	41.2

USF : Period 4	Made	Att	Pct
Layups	3	7	42.9
Dunks	0	0	0
2PT Field Goals	7	15	46.7
3PT Field Goals	0	5	00.0
Total Field Goals	7	20	35.0