

FINAL SCORE



Carson-Newman

78



Newberry

59

January 18, 2020 • Eleazer Arena - Newberry

FINAL STATISTICS

Official Box Score
Carson-Newman vs Newberry
Game Totals -- Final Statistics
January 18, 2020 at Eleazer Arena - Newberry



Carson-Newman 78

No.	Player	S	Pts	FG	3FG	FT	OR	DR	TR	PF	A	TO	Blk	Stl	Min	+/-
00	SMITH, HARLI	G	15	7-11	0-0	1-2	3	5	8	4	4	3	1	0	27	22
01	MAROSITES, KAYLA	G	15	5-11	1-5	4-4	4	9	13	3	0	4	1	1	34	24
11	WYKLE, BRAELYN	G	24	6-15	5-10	7-8	0	3	3	1	2	3	0	1	38	23
12	HINES, QUA	F	6	2-5	0-3	2-4	2	3	5	1	6	1	0	1	30	22
33	BUNCH, MADISON	G	12	4-7	4-7	0-0	2	3	5	0	0	1	0	0	28	17
03	BYRD, ADDISON	G	4	1-3	0-1	2-2	0	4	4	3	1	5	1	0	20	-3
04	MAROSITES, KELCI	G	0	0-1	0-1	0-0	0	2	2	2	0	0	0	0	10	-3
22	WILSON, ABBY	G	0	0-1	0-0	0-0	0	0	0	0	0	0	0	0	2	-4
23	GRIFFIN, TORI	G	2	1-5	0-2	0-0	1	1	2	3	0	0	0	0	10	-3
TEAM							1	3	4	0		0				
TOTALS			78	26-59	10-29	16-20	13	33	46	17	13	17	3	3	199	

Shooting By Period

Period	FG	FG%	3FG	3FG%	FT	FT%
1st Qtr	6-18	33%	4-11	36%	0-0	0%
2nd Qtr	7-17	41%	2-7	29%	5-6	83%
3rd Qtr	5-12	42%	2-6	33%	3-4	75%
4th Qtr	8-12	67%	2-5	40%	8-10	80%
1st Half	13-35	37%	6-18	33%	5-6	83%
2nd Half	13-24	54%	4-11	36%	11-14	79%
Game	26-59	44.1%	10-29	34.5%	16-20	80.0%

Deadball Rebounds: 5,2

Last FG: 4th-01:54

Biggest Run: 11-0

Largest lead: By 21 at 4th-03:06

Technical Fouls: None.

Newberry 59

No.	Player	S	Pts	FG	3FG	FT	OR	DR	TR	PF	A	TO	Blk	Stl	Min	+/-
02	MCDERMOTT, KELSEY	G	6	3-8	0-1	0-0	1	3	4	3	5	3	0	0	29	-18
04	ROMAS, KELI	G	21	8-15	3-4	2-2	0	2	2	2	1	1	0	1	35	-13
11	BRETT, KELSEY	F	9	3-7	0-1	3-4	2	1	3	2	0	0	0	3	27	-17
12	VIRGO, COURTNEY	G	10	4-12	2-7	0-0	0	4	4	0	0	1	0	1	31	-26
35	WISELEY, ERICKA	C	2	0-1	0-0	2-2	1	3	4	3	0	1	2	0	9	-6
00	ADAMS, ZHAYLA	G	0	0-0	0-0	0-0	0	0	0	1	1	1	0	1	2	-2
01	CAMPBELL, TAYLOR	G	0	0-0	0-0	0-0	0	0	0	0	0	0	0	0	1	-1
03	WHITE, KE'SHAUN	G	0	0-2	0-0	0-2	1	0	1	2	1	1	0	2	18	2
05	ROBERTS, TALIA	G	0	0-8	0-4	0-2	0	1	1	1	1	0	0	0	14	-10
10	KINARD, JULIE	G	5	2-7	0-3	1-2	1	1	2	2	1	1	0	0	18	-3
25	PETKOVSKA, DRAGANA	C	6	2-4	0-0	2-2	1	4	5	2	1	3	0	0	15	-1
TEAM							2	0	2	0		2				
TOTALS			59	22-64	5-20	10-16	9	19	28	18	11	14	2	8	199	

Shooting By Period

Period	FG	FG%	3FG	3FG%	FT	FT%
1st Qtr	4-18	22%	2-9	22%	0-0	0%
2nd Qtr	5-14	36%	1-2	50%	2-2	100%
3rd Qtr	5-14	36%	0-3	00%	6-10	60%
4th Qtr	8-18	44%	2-6	33%	2-4	50%
1st Half	9-32	28%	3-11	27%	2-2	100%
2nd Half	13-32	41%	2-9	22%	8-14	57%
Game	22-64	34.4%	5-20	25.0%	10-16	62.5%

Deadball Rebounds: 4,0

Last FG: 4th-01:00

Biggest Run: 6-0

Largest lead: By 2 at 1st-09:34

Technical Fouls: None.

Game Notes:

Officials: **Ryan Freeman, Mike Temnick, Crista Couch**

Attendance: **439**

Start Time: **01:55 PM ET**

End Time: **03:32 PM ET**

Game Duration: **1:36**

Conference Game;

Score	1st	2nd	3rd	4th	TOT
CNU	16	21	15	26	78
NBY	10	13	16	20	59

CNU led for 38:47. NBY led for 0:30.

Game was tied for 0:26.

Times tied: 0 Lead Changes: 1

Points from	CNU	NBY
In the Paint	28	24
Off Turns	19	18
2nd Chance	18	10
Fast Break	12	2
Bench	6	11

Official Box Score
Carson-Newman vs Newberry
First Half Statistics Only
January 18, 2020 at Eleazer Arena - Newberry



Carson-Newman 37

No.	Player	S	Pts	FG	3FG	FT	OR	DR	TR	PF	A	TO	Blk	Stl	Min	+/-
00	SMITH, HARLI	G	3	1-4	0-0	1-2	3	2	5	2	2	1	0	0	10	15
01	MAROSITES, KAYLA	G	8	3-7	0-3	2-2	2	5	7	1	0	2	1	1	18	18
03	BYRD, ADDISON	G	4	1-3	0-1	2-2	0	3	3	1	0	3	0	0	10	-1
04	MAROSITES, KELCI	G	0	0-1	0-1	0-0	0	2	2	1	0	0	0	0	9	-2
11	WYKLE, BRAELYN	G	14	5-9	4-6	0-0	0	2	2	0	0	0	0	1	18	18
12	HINES, QUA	F	0	0-2	0-2	0-0	1	1	2	1	1	0	0	0	11	16
22	WILSON, ABBY	G	0	0-1	0-0	0-0	0	0	0	0	0	0	0	0	2	-4
23	GRIFFIN, TORI	G	2	1-5	0-2	0-0	1	1	2	0	0	0	0	0	9	-2
33	BUNCH, MADISON	G	6	2-3	2-3	0-0	2	2	4	0	0	1	0	0	13	12
	TEAM		0	0-0	0-0	0-0	0	1	1	0	0	0	0	0	0	
TOTALS			37	13-35	6-18	5-6	9	19	28	6	3	7	1	2	100	

Shooting By Period

Period	FG	FG%	3FG	3FG%	FT	FT%
1st Qtr	6-18	33%	4-11	36%	0-0	0%
2nd Qtr	7-17	41%	2-7	29%	5-6	83%
1st Half	13-35	37%	6-18	33%	5-6	83%
Game	26-59	44.1%	10-29	34.5%	16-20	80.0%

Deadball Rebounds: 5,2

Last FG Half: CNU 2nd-00:12

Newberry 23

No.	Player	S	Pts	FG	3FG	FT	OR	DR	TR	PF	A	TO	Blk	Stl	Min	+/-
00	ADAMS, ZHAYLA	G	0	0-0	0-0	0-0	0	0	0	0	0	0	0	0	0	0
01	CAMPBELL, TAYLOR	G	0	0-0	0-0	0-0	0	0	0	0	0	0	0	0	0	0
02	MCDERMOTT, KELSEY	G	0	0-3	0-1	0-0	0	2	2	2	3	2	0	0	14	-11
03	WHITE, KE'SHAUN	G	0	0-1	0-0	0-0	0	0	0	0	0	0	0	1	7	4
04	ROMAS, KELI	G	13	5-9	3-3	0-0	0	2	2	0	0	0	0	1	18	-11
05	ROBERTS, TALIA	G	0	0-5	0-3	0-0	0	0	0	1	0	0	0	0	11	-7
10	KINARD, JULIE	G	0	0-2	0-1	0-0	0	1	1	0	0	1	0	0	7	-1
11	BRETT, KELSEY	F	6	2-5	0-1	2-2	1	1	2	0	0	0	0	2	13	-16
12	VIRGO, COURTNEY	G	4	2-6	0-2	0-0	0	4	4	0	0	1	0	1	17	-20
25	PETKOVSKA, DRAGANA	C	0	0-1	0-0	0-0	0	1	1	2	1	1	0	0	8	-3
35	WISELEY, ERICKA	C	0	0-0	0-0	0-0	0	2	2	2	0	1	2	0	6	-5
	TEAM		0	0-0	0-0	0-0	1	0	1	0	0	1	0	0	0	
TOTALS			23	9-32	3-11	2-2	2	13	15	7	4	7	2	5	100	

Shooting By Period

Period	FG	FG%	3FG	3FG%	FT	FT%
1st Qtr	4-18	22%	2-9	22%	0-0	0%
2nd Qtr	5-14	36%	1-2	50%	2-2	100%
1st Half	9-32	28%	3-11	27%	2-2	100%
Game	22-64	34.4%	5-20	25.0%	10-16	62.5%

Deadball Rebounds: 4,0

Last FG Half: NBY 2nd-02:19

Game Notes:

Officials: **Ryan Freeman, Mike Temnick, Crista Couch**
Attendance: **439**

Start Time: **01:55 PM ET**

End Time: **03:32 PM ET**

Game Duration: **1:36**

Conference Game;

Score	1st	2nd	3rd	4th	TOT
CNU	16	21	15	26	78
NBY	10	13	16	20	59

Points from (This Period)	CNU	NBY
In the Paint	12	8
Off Turns	11	5
2nd Chance	10	2
Fast Break	6	0
Bench	6	0

Official Box Score
Carson-Newman vs Newberry
 First Quarter Statistics Only
 January 18, 2020 at Eleazer Arena - Newberry



Carson-Newman 16

No.	Player	S	Pts	FG	3FG	FT	OR	DR	TR	PF	A	TO	Blk	Stl	Min	+/-
00	SMITH, HARLI	G	0	0-3	0-0	0-0	2	1	3	1	1	0	0	0	5	9
01	MAROSITES, KAYLA	G	2	1-3	0-1	0-0	2	3	5	0	0	1	0	1	10	6
11	WYKLE, BRAELYN	G	6	2-5	2-4	0-0	0	1	1	0	0	0	0	0	10	6
12	HINES, QUA	F	0	0-2	0-2	0-0	1	1	2	0	1	0	0	0	6	6
33	BUNCH, MADISON	G	6	2-2	2-2	0-0	0	2	2	0	0	0	0	0	6	6
03	BYRD, ADDISON	G	2	1-2	0-1	0-0	0	1	1	0	0	3	0	0	5	-3
04	MAROSITES, KELCI	G	0	0-0	0-0	0-0	0	1	1	0	0	0	0	0	4	0
22	WILSON, ABBY	G	0	0-0	0-0	0-0	0	0	0	0	0	0	0	0	0	0
23	GRIFFIN, TORI	G	0	0-1	0-1	0-0	0	1	1	0	0	0	0	0	4	0
	TEAM						0	1	1	0		0				
TOTALS			16	6-18	4-11	0-0	5	12	17	1	2	4	0	1	50	

Shooting By Period

Period	FG	FG%	3FG	3FG%	FT	FT%
1st Qtr	6-18	33%	4-11	36%	0-0	0%
2nd Qtr	7-17	41%	2-7	29%	5-6	83%
1st Half	6-18	33%	4-11	36%	0-0	0%
1st Half	13-35	37%	6-18	33%	5-6	83%
Game	26-59	44.1%	10-29	34.5%	16-20	80.0%

Deadball Rebounds: 5,2

Newberry 10

No.	Player	S	Pts	FG	3FG	FT	OR	DR	TR	PF	A	TO	Blk	Stl	Min	+/-
02	MCDERMOTT, KELSEY	G	0	0-2	0-1	0-0	0	2	2	0	2	1	0	0	8	-9
04	ROMAS, KELI	G	6	2-4	2-2	0-0	0	1	1	0	0	0	0	1	8	-3
11	BRETT, KELSEY	F	2	1-2	0-0	0-0	0	1	1	0	0	0	0	0	6	-6
12	VIRGO, COURTNEY	G	2	1-3	0-2	0-0	0	0	0	0	0	0	0	1	7	-12
35	WISELEY, ERICKA	C	0	0-0	0-0	0-0	0	2	2	0	0	1	2	0	5	-1
00	ADAMS, ZHAYLA	G	0	0-0	0-0	0-0	0	0	0	0	0	0	0	0	0	0
01	CAMPBELL, TAYLOR	G	0	0-0	0-0	0-0	0	0	0	0	0	0	0	0	0	0
03	WHITE, KE'SHAUN	G	0	0-1	0-0	0-0	0	0	0	0	0	0	0	1	3	6
05	ROBERTS, TALIA	G	0	0-4	0-3	0-0	0	0	0	1	0	0	0	0	5	3
10	KINARD, JULIE	G	0	0-1	0-1	0-0	0	1	1	0	0	0	0	0	3	-3
25	PETKOVSKA, DRAGANA	C	0	0-1	0-0	0-0	0	0	0	0	0	0	0	0	5	-5
	TEAM						1	0	1	0		0				
TOTALS			10	4-18	2-9	0-0	1	7	8	1	2	2	2	3	50	

Shooting By Period

Period	FG	FG%	3FG	3FG%	FT	FT%
1st Qtr	4-18	22%	2-9	22%	0-0	0%
2nd Qtr	5-14	36%	1-2	50%	2-2	100%
1st Half	4-18	22%	2-9	22%	0-0	0%
1st Half	9-32	28%	3-11	27%	2-2	100%
Game	22-64	34.4%	5-20	25.0%	10-16	62.5%

Deadball Rebounds: 4,0

Game Notes:

Officials: Ryan Freeman, Mike Temnick, Crista Couch
 Attendance: 439

Start Time: 01:55 PM ET
 End Time: 03:32 PM ET
 Game Duration: 1:36
 Conference Game;

Score	1st	2nd	3rd	4th	TOT
CNU	16	21	15	26	78
NBY	10	13	16	20	59

Points from (This Period)	CNU	NBY
In the Paint	2	4
Off Turns	5	5
2nd Chance	6	0
Fast Break	0	0
Bench	2	0

Official Play-By-Play
Carson-Newman vs Newberry
First Quarter
January 18, 2020 at Eleazer Arena - Newberry



Period 1

Starters:

Carson-Newman: 00 SMITH, HARLI (G); 1 MAROSITES, KAYLA (G); 11 WYKLE, BRAELYN (G); 12 HINES, QUA (F); 33 BUNCH, MADISON (G);

Newberry: 2 MCDERMOTT, KELSEY (G); 4 ROMAS, KELI (G); 11 BRETT, KELSEY (F); 12 VIRGO, COURTNEY (G); 35 WISELEY, ERICKA (C);

Time	VISITORS: Carson-Newman	Score	Margin	HOME: Newberry
09:43	MISSED LAYUP by SMITH, HARLI			
09:43				BLOCK by WISELEY, ERICKA
09:36				REBOUND (DEF) by WISELEY, ERICKA
09:34		2-0	H 2	GOOD! JUMPER by BRETT, KELSEY [PNT]
09:34				ASSIST by MCDERMOTT, KELSEY
09:12	MISSED 3PTR by HINES, QUA			
09:09	REBOUND (OFF) by SMITH, HARLI			
09:04	GOOD! 3PTR by BUNCH, MADISON	2-3	V 1	
09:04	ASSIST by SMITH, HARLI			
08:43				MISSED 3PTR by VIRGO, COURTNEY
08:39	REBOUND (DEF) by SMITH, HARLI			
08:34	MISSED 3PTR by HINES, QUA			
08:31	REBOUND (OFF) by MAROSITES, KAYLA			
08:23	MISSED LAYUP by SMITH, HARLI			
08:20				REBOUND (DEF) by WISELEY, ERICKA
08:12				MISSED LAYUP by BRETT, KELSEY
08:08				REBOUND (OFF) by TEAM
08:08				SUB OUT: WISELEY, ERICKA
08:08				SUB IN: PETKOVSKA, DRAGANA
08:08				MISSED JUMPER by MCDERMOTT, KELSEY
08:08	REBOUND (DEF) by MAROSITES, KAYLA			
08:03	TURNOVER (TRAVEL) by MAROSITES, KAYLA			
07:42				MISSED 3PTR by MCDERMOTT, KELSEY
07:42				REBOUND (OFF) by TEAM
07:42	FOUL (PERSONAL) by SMITH, HARLI			
07:30				MISSED LAYUP by ROMAS, KELI
07:26	REBOUND (DEF) by BUNCH, MADISON			
07:15	MISSED LAYUP by SMITH, HARLI			
07:10				REBOUND (DEF) by MCDERMOTT, KELSEY
07:09				TURNOVER (BADPASS) by MCDERMOTT, KELSEY
07:09	STEAL by MAROSITES, KAYLA			
06:49	MISSED 3PTR by MAROSITES, KAYLA			
06:46	REBOUND (OFF) by SMITH, HARLI			
06:37	MISSED 3PTR by WYKLE, BRAELYN			
06:33	REBOUND (OFF) by HINES, QUA			
06:29	GOOD! 3PTR by WYKLE, BRAELYN	2-6	V 4	
06:11				MISSED JUMPER by PETKOVSKA, DRAGANA
06:08	REBOUND (DEF) by HINES, QUA			
05:59	GOOD! 3PTR by BUNCH, MADISON	2-9	V 7	
05:59	ASSIST by HINES, QUA			
05:39				MISSED 3PTR by VIRGO, COURTNEY
05:35	REBOUND (DEF) by BUNCH, MADISON			
05:22	GOOD! LAYUP by MAROSITES, KAYLA	2-11	V 9	
05:22				TIMEOUT 30SEC
05:19				SUB OUT: MCDERMOTT, KELSEY
05:19				SUB OUT: VIRGO, COURTNEY
05:19				SUB IN: WHITE, KE'SHAUN
05:19				SUB IN: ROBERTS, TALIA
05:19	SUB OUT: SMITH, HARLI			
05:19	SUB IN: BYRD, ADDISON			
05:12				MISSED LAYUP by WHITE, KE'SHAUN
05:08	REBOUND (DEF) by WYKLE, BRAELYN			
05:03				MISSED 3PTR by ROBERTS, TALIA
05:00	REBOUND (DEF) by MAROSITES, KAYLA			
04:50	TURNOVER (BADPASS) by BYRD, ADDISON			
04:50				STEAL by WHITE, KE'SHAUN
04:32		5-11	V 6	GOOD! 3PTR by ROMAS, KELI
04:11	MISSED JUMPER by WYKLE, BRAELYN			
04:08				REBOUND (DEF) by BRETT, KELSEY
03:50				MISSED 3PTR by ROBERTS, TALIA
03:50	REBOUND (DEF) by TEAM			
03:44				SUB OUT: BRETT, KELSEY
03:44				SUB OUT: PETKOVSKA, DRAGANA
03:44				SUB IN: MCDERMOTT, KELSEY
03:44				SUB IN: WISELEY, ERICKA
03:44	SUB OUT: HINES, QUA			
03:44	SUB OUT: BUNCH, MADISON			
03:44	SUB IN: MAROSITES, KELCI			
03:44	SUB IN: GRIFFIN, TORI			
03:26	MISSED 3PTR by BYRD, ADDISON			

Time	VISITORS: Carson-Newman	Score	Margin	HOME: Newberry
03:23				REBOUND (DEF) by MCDERMOTT, KELSEY
03:11		8-11	V 3	GOOD! 3PTR by ROMAS, KELI
03:11				ASSIST by MCDERMOTT, KELSEY
03:02	MISSED 3PTR by GRIFFIN, TORI			
02:58				REBOUND (DEF) by ROMAS, KELI
02:44				TURNOVER (3SEC) by WISELEY, ERICKA
02:44				SUB OUT: WHITE, KE'SHAUN
02:44				SUB OUT: ROMAS, KELI
02:44				SUB IN: KINARD, JULIE
02:44				SUB IN: VIRGO, COURTNEY
02:31	GOOD! JUMPER by BYRD, ADDISON	8-13	V 5	
02:20				MISSED LAYUP by ROBERTS, TALIA
02:17	REBOUND (DEF) by MAROSITES, KAYLA			
01:59	GOOD! 3PTR by WYKLE, BRAELYN	8-16	V 8	
01:33				MISSED 3PTR by KINARD, JULIE
01:30	REBOUND (DEF) by MAROSITES, KELCI			
01:25	MISSED 3PTR by WYKLE, BRAELYN			
01:21	REBOUND (OFF) by MAROSITES, KAYLA			
01:19	MISSED JUMPER by MAROSITES, KAYLA			
01:19				BLOCK by WISELEY, ERICKA
01:14				REBOUND (DEF) by KINARD, JULIE
01:02				MISSED 3PTR by ROBERTS, TALIA
00:57	REBOUND (DEF) by BYRD, ADDISON			
00:56	TURNOVER (LOSTBALL) by BYRD, ADDISON			
00:56				STEAL by VIRGO, COURTNEY
00:50		10-16	V 6	GOOD! LAYUP by VIRGO, COURTNEY
00:42				FOUL (PERSONAL) by ROBERTS, TALIA
00:42				SUB OUT: ROBERTS, TALIA
00:42				SUB OUT: WISELEY, ERICKA
00:42				SUB IN: ROMAS, KELI
00:42				SUB IN: PETKOVSKA, DRAGANA
00:30	TURNOVER (LOSTBALL) by BYRD, ADDISON			
00:30				STEAL by ROMAS, KELI
00:13				MISSED LAYUP by ROMAS, KELI
00:06	REBOUND (DEF) by GRIFFIN, TORI			

Carson-Newman 16, Newberry 10

Points from (This Period)	CNU	NBY
In the Paint	2	4
Off Turns	5	5
2nd Chance	6	0
Fast Break	0	0
Bench	2	0

Official Box Score
Carson-Newman vs Newberry
 Second Quarter Statistics Only
 January 18, 2020 at Eleazer Arena - Newberry



Carson-Newman 21

No.	Player	S	Pts	FG	3FG	FT	OR	DR	TR	PF	A	TO	Blk	Stl	Min	+/-
00	SMITH, HARLI	G	3	1-1	0-0	1-2	1	1	2	1	1	1	0	0	5	6
01	MAROSITES, KAYLA	G	6	2-4	0-2	2-2	0	2	2	1	0	1	1	0	8	12
11	WYKLE, BRAELYN	G	8	3-4	2-2	0-0	0	1	1	0	0	0	0	1	8	12
12	HINES, QUA	F	0	0-0	0-0	0-0	0	0	0	1	0	0	0	0	5	10
33	BUNCH, MADISON	G	0	0-1	0-1	0-0	2	0	2	0	0	1	0	0	7	6
03	BYRD, ADDISON	G	2	0-1	0-0	2-2	0	2	2	1	0	0	0	0	5	2
04	MAROSITES, KELCI	G	0	0-1	0-1	0-0	0	1	1	1	0	0	0	0	5	-2
22	WILSON, ABBY	G	0	0-1	0-0	0-0	0	0	0	0	0	0	0	0	2	-4
23	GRIFFIN, TORI	G	2	1-4	0-1	0-0	1	0	1	0	0	0	0	0	5	-2
	TEAM						0	0	0	0		0				
TOTALS			21	7-17	2-7	5-6	4	7	11	5	1	3	1	1	50	

Shooting By Period

Period	FG	FG%	3FG	3FG%	FT	FT%
3rd Qtr	5-12	42%	2-6	33%	3-4	75%
4th Qtr	8-12	67%	2-5	40%	8-10	80%
2nd Half	7-17	41%	2-7	29%	5-6	83%
2nd Half	13-24	54%	4-11	36%	11-14	79%
Game	26-59	44.1%	10-29	34.5%	16-20	80.0%

Deadball Rebounds: 5,2

Newberry 13

No.	Player	S	Pts	FG	3FG	FT	OR	DR	TR	PF	A	TO	Blk	Stl	Min	+/-
02	MCDERMOTT, KELSEY	G	0	0-1	0-0	0-0	0	0	0	2	1	1	0	0	6	-2
04	ROMAS, KELI	G	7	3-5	1-1	0-0	0	1	1	0	0	0	0	0	10	-8
11	BRETT, KELSEY	F	4	1-3	0-1	2-2	1	0	1	0	0	0	0	2	7	-10
12	VIRGO, COURTNEY	G	2	1-3	0-0	0-0	0	4	4	0	0	1	0	0	10	-8
35	WISELEY, ERICKA	C	0	0-0	0-0	0-0	0	0	0	2	0	0	0	0	1	-4
00	ADAMS, ZHAYLA	G	0	0-0	0-0	0-0	0	0	0	0	0	0	0	0	0	0
01	CAMPBELL, TAYLOR	G	0	0-0	0-0	0-0	0	0	0	0	0	0	0	0	0	0
03	WHITE, KE'SHAUN	G	0	0-0	0-0	0-0	0	0	0	0	0	0	0	0	4	-2
05	ROBERTS, TALIA	G	0	0-1	0-0	0-0	0	0	0	0	0	0	0	0	6	-10
10	KINARD, JULIE	G	0	0-1	0-0	0-0	0	0	0	0	0	1	0	0	4	2
25	PETKOVSKA, DRAGANA	C	0	0-0	0-0	0-0	0	1	1	2	1	1	0	0	3	2
	TEAM						0	0	0	0		1				
TOTALS			13	5-14	1-2	2-2	1	6	7	6	2	5	0	2	50	

Shooting By Period

Period	FG	FG%	3FG	3FG%	FT	FT%
3rd Qtr	5-14	36%	0-3	00%	6-10	60%
4th Qtr	8-18	44%	2-6	33%	2-4	50%
2nd Half	5-14	36%	1-2	50%	2-2	100%
2nd Half	13-32	41%	2-9	22%	8-14	57%
Game	22-64	34.4%	5-20	25.0%	10-16	62.5%

Deadball Rebounds: 4,0

Game Notes:

Officials: Ryan Freeman, Mike Temnick, Crista Couch
 Attendance: 439

Start Time: 01:55 PM ET
 End Time: 03:32 PM ET
 Game Duration: 1:36
 Conference Game;

Score	1st	2nd	3rd	4th	TOT
CNU	16	21	15	26	78
NBY	10	13	16	20	59

Points from (This Period)	CNU	NBY
In the Paint	10	4
Off Turns	6	0
2nd Chance	4	2
Fast Break	6	0
Bench	4	0

Official Play-By-Play
Carson-Newman vs Newberry
Second Quarter
January 18, 2020 at Eleazer Arena - Newberry



Period 2

Starters:

Carson-Newman: 00 SMITH, HARLI (G); 1 MAROSITES, KAYLA (G); 11 WYKLE, BRAELYN (G); 12 HINES, QUA (F); 33 BUNCH, MADISON (G);

Newberry: 2 MCDERMOTT, KELSEY (G); 4 ROMAS, KELI (G); 11 BRETT, KELSEY (F); 12 VIRGO, COURTNEY (G); 35 WISELEY, ERICKA (C);

Time	VISITORS: Carson-Newman	Score	Margin	HOME: Newberry
09:53	SUB OUT: MAROSITES, KAYLA			
09:53	SUB OUT: BYRD, ADDISON			
09:53	SUB OUT: WYKLE, BRAELYN			
09:53	SUB IN: SMITH, HARLI			
09:53	SUB IN: WILSON, ABBY			
09:53	SUB IN: BUNCH, MADISON			
09:51	MISSED JUMPER by WILSON, ABBY			
09:48	REBOUND (OFF) by GRIFFIN, TORI			
09:47	MISSED LAYUP by GRIFFIN, TORI			
09:47	REBOUND (OFF) by SMITH, HARLI			
09:27		12-16	V 4	GOOD! JUMPER by ROMAS, KELI
09:08	MISSED 3PTR by MAROSITES, KELCI			
09:05				REBOUND (DEF) by ROMAS, KELI
09:04				SUB OUT: KINARD, JULIE
09:04				SUB IN: BRETT, KELSEY
08:59				MISSED LAYUP by MCDERMOTT, KELSEY
08:56	REBOUND (DEF) by MAROSITES, KELCI			
08:47	MISSED JUMPER by GRIFFIN, TORI			
08:43				REBOUND (DEF) by PETKOVSKA, DRAGANA
08:32		14-16	V 2	GOOD! JUMPER by VIRGO, COURTNEY
08:32				ASSIST by PETKOVSKA, DRAGANA
08:24	MISSED 3PTR by GRIFFIN, TORI			
08:20				REBOUND (DEF) by VIRGO, COURTNEY
08:11				TURNOVER (TRAVEL) by VIRGO, COURTNEY
08:05	SUB OUT: MAROSITES, KELCI			
08:05	SUB OUT: WILSON, ABBY			
08:05	SUB OUT: GRIFFIN, TORI			
08:05	SUB IN: MAROSITES, KAYLA			
08:05	SUB IN: WYKLE, BRAELYN			
08:05	SUB IN: HINES, QUA			
08:02	MISSED 3PTR by MAROSITES, KAYLA			
07:59				REBOUND (DEF) by VIRGO, COURTNEY
07:49				FOUL (OFF) by PETKOVSKA, DRAGANA
07:49				TURNOVER (OFFENSIVE) by PETKOVSKA, DRAGANA
07:49				SUB OUT: MCDERMOTT, KELSEY
07:49				SUB OUT: PETKOVSKA, DRAGANA
07:49				SUB IN: ROBERTS, TALIA
07:49				SUB IN: WISELEY, ERICKA
07:36	GOOD! LAYUP by WYKLE, BRAELYN	14-18	V 4	
07:15				MISSED JUMPER by VIRGO, COURTNEY
07:15	BLOCK by MAROSITES, KAYLA			
07:09	REBOUND (DEF) by MAROSITES, KAYLA			
07:06				FOUL (PERSONAL) by WISELEY, ERICKA
07:06	GOOD! FT by MAROSITES, KAYLA	14-19	V 5	
07:06	GOOD! FT by MAROSITES, KAYLA	14-20	V 6	
06:52				MISSED LAYUP by ROBERTS, TALIA
06:48	REBOUND (DEF) by WYKLE, BRAELYN			
06:43	MISSED LAYUP by WYKLE, BRAELYN			
06:40	REBOUND (OFF) by BUNCH, MADISON			
06:40				FOUL (PERSONAL) by WISELEY, ERICKA
06:40				SUB OUT: WISELEY, ERICKA
06:40				SUB IN: PETKOVSKA, DRAGANA
06:20	GOOD! LAYUP by SMITH, HARLI	14-22	V 8	
06:13				TURNOVER (OTHER) by TEAM
06:13				SUB OUT: BRETT, KELSEY
06:13				SUB IN: MCDERMOTT, KELSEY
06:03				FOUL (PERSONAL) by PETKOVSKA, DRAGANA
06:03				SUB OUT: PETKOVSKA, DRAGANA
06:03				SUB IN: BRETT, KELSEY
06:03	GOOD! FT by SMITH, HARLI	14-23	V 9	
06:03	MISSED FT by SMITH, HARLI			
06:03	REBOUND (OFF) by BUNCH, MADISON			
06:01	TURNOVER (LOSTBALL) by BUNCH, MADISON			
06:01				STEAL by BRETT, KELSEY
05:52				FOUL (OFF) by MCDERMOTT, KELSEY
05:52				TURNOVER (OFFENSIVE) by MCDERMOTT, KELSEY
05:28	TURNOVER (LOSTBALL) by SMITH, HARLI			
05:28				STEAL by BRETT, KELSEY
05:08				MISSED 3PTR by BRETT, KELSEY
05:05	REBOUND (DEF) by SMITH, HARLI			

Time	VISITORS: Carson-Newman	Score	Margin	HOME: Newberry
05:00	GOOD! 3PTR by WYKLE, BRAELYN [FB]	14-26	V 12	
05:00	ASSIST by SMITH, HARLI			
05:00				TIMEOUT 30SEC
05:00				SUB OUT: ROBERTS, TALIA
05:00				SUB OUT: BRETT, KELSEY
05:00				SUB IN: WHITE, KE'SHAUN
05:00				SUB IN: KINARD, JULIE
04:41	FOUL (PERSONAL) by HINES, QUA			
04:33	FOUL (PERSONAL) by SMITH, HARLI			
04:33	SUB OUT: SMITH, HARLI			
04:33	SUB IN: BYRD, ADDISON			
04:25		17-26	V 9	GOOD! 3PTR by ROMAS, KELI
04:25				ASSIST by MCDERMOTT, KELSEY
04:09	GOOD! LAYUP by MAROSITES, KAYLA	17-28	V 11	
03:47				MISSED JUMPER by ROMAS, KELI
03:44	REBOUND (DEF) by BYRD, ADDISON			
03:34	FOUL (OFF) by MAROSITES, KAYLA			
03:34	TURNOVER (OFFENSIVE) by MAROSITES, KAYLA			
03:19				TURNOVER (LOSTBALL) by KINARD, JULIE
03:19	STEAL by WYKLE, BRAELYN			
03:13	GOOD! 3PTR by WYKLE, BRAELYN [FB]	17-31	V 14	
02:57		19-31	V 12	GOOD! LAYUP by ROMAS, KELI
02:43	MISSED 3PTR by BUNCH, MADISON			
02:43	REBOUND (OFF) by TEAM			
02:43				FOUL (PERSONAL) by MCDERMOTT, KELSEY
02:43				SUB OUT: KINARD, JULIE
02:43				SUB IN: BRETT, KELSEY
02:43	SUB OUT: HINES, QUA			
02:43	SUB OUT: BUNCH, MADISON			
02:43	SUB IN: MAROSITES, KELCI			
02:43	SUB IN: GRIFFIN, TORI			
02:43	GOOD! FT by BYRD, ADDISON	19-32	V 13	
02:43	GOOD! FT by BYRD, ADDISON	19-33	V 14	
02:42				SUB OUT: MCDERMOTT, KELSEY
02:42				SUB IN: ROBERTS, TALIA
02:24	FOUL (PERSONAL) by MAROSITES, KELCI			
02:19		21-33	V 12	GOOD! LAYUP by BRETT, KELSEY
02:04	MISSED 3PTR by MAROSITES, KAYLA			
02:00				REBOUND (DEF) by VIRGO, COURTNEY
01:53				MISSED JUMPER by ROMAS, KELI
01:49	REBOUND (DEF) by MAROSITES, KAYLA			
01:40	MISSED JUMPER by BYRD, ADDISON			
01:36				REBOUND (DEF) by VIRGO, COURTNEY
01:25				MISSED JUMPER by BRETT, KELSEY
01:22	REBOUND (DEF) by BYRD, ADDISON			
01:01	GOOD! LAYUP by GRIFFIN, TORI	21-35	V 14	
00:39				MISSED JUMPER by VIRGO, COURTNEY
00:39				REBOUND (OFF) by BRETT, KELSEY
00:39	FOUL (PERSONAL) by BYRD, ADDISON			
00:39				SUB OUT: WHITE, KE'SHAUN
00:39				SUB IN: KINARD, JULIE
00:39		22-35	V 13	GOOD! FT by BRETT, KELSEY
00:39		23-35	V 12	GOOD! FT by BRETT, KELSEY
00:12	GOOD! LAYUP by MAROSITES, KAYLA	23-37	V 14	
00:04				MISSED JUMPER by KINARD, JULIE
00:00	REBOUND (DEF) by TEAM			

Carson-Newman 37, Newberry 23

Points from (This Period)	CNU	NBY
In the Paint	10	4
Off Turns	6	0
2nd Chance	4	2
Fast Break	6	0
Bench	4	0

Official Box Score
Carson-Newman vs Newberry
Second Half Statistics Only
January 18, 2020 at Eleazer Arena - Newberry



Carson-Newman 41

No.	Player	S	Pts	FG	3FG	FT	OR	DR	TR	PF	A	TO	Blk	Stl	Min	+/-
00	SMITH, HARLI	G	12	6-7	0-0	0-0	0	3	3	2	2	2	1	0	17	7
01	MAROSITES, KAYLA	G	7	2-4	1-2	2-2	2	4	6	2	0	2	0	0	16	6
03	BYRD, ADDISON	G	0	0-0	0-0	0-0	0	1	1	2	1	2	1	0	10	-2
04	MAROSITES, KELCI	G	0	0-0	0-0	0-0	0	0	0	1	0	0	0	0	2	-1
11	WYKLE, BRAELYN	G	10	1-6	1-4	7-8	0	1	1	1	2	3	0	0	20	5
12	HINES, QUA	F	6	2-3	0-1	2-4	1	2	3	0	5	1	0	1	18	6
22	WILSON, ABBY	G	0	0-0	0-0	0-0	0	0	0	0	0	0	0	0	0	0
23	GRIFFIN, TORI	G	0	0-0	0-0	0-0	0	0	0	3	0	0	0	0	2	-1
33	BUNCH, MADISON	G	6	2-4	2-4	0-0	0	1	1	0	0	0	0	0	14	5
	TEAM		0	0-0	0-0	0-0	1	2	3	0	0	0	0	0	0	
TOTALS			41	13-24	4-11	11-14	4	14	18	11	10	10	2	1	99	

Shooting By Period

Period	FG	FG%	3FG	3FG%	FT	FT%
3rd Qtr	5-12	42%	2-6	33%	3-4	75%
4th Qtr	8-12	67%	2-5	40%	8-10	80%
2nd Half	13-24	54%	4-11	36%	11-14	79%
Game	26-59	44.1%	10-29	34.5%	16-20	80.0%

Deadball Rebounds: 5,2

Last FG Half: CNU 4th-01:54

Newberry 36

No.	Player	S	Pts	FG	3FG	FT	OR	DR	TR	PF	A	TO	Blk	Stl	Min	+/-
00	ADAMS, ZHAYLA	G	0	0-0	0-0	0-0	0	0	0	1	1	1	0	1	2	-2
01	CAMPBELL, TAYLOR	G	0	0-0	0-0	0-0	0	0	0	0	0	0	0	0	1	-1
02	MCDERMOTT, KELSEY	G	6	3-5	0-0	0-0	1	1	2	1	2	1	0	0	15	-7
03	WHITE, KE'SHAUN	G	0	0-1	0-0	0-2	1	0	1	2	1	1	0	1	11	-2
04	ROMAS, KELI	G	8	3-6	0-1	2-2	0	0	0	2	1	1	0	0	17	-2
05	ROBERTS, TALIA	G	0	0-3	0-1	0-2	0	1	1	0	1	0	0	0	4	-3
10	KINARD, JULIE	G	5	2-5	0-2	1-2	1	0	1	2	1	0	0	0	12	-2
11	BRETT, KELSEY	F	3	1-2	0-0	1-2	1	0	1	2	0	0	0	1	15	-1
12	VIRGO, COURTNEY	G	6	2-6	2-5	0-0	0	0	0	0	0	0	0	0	14	-6
25	PETKOVSKA, DRAGANA	C	6	2-3	0-0	2-2	1	3	4	0	0	2	0	0	7	2
35	WISELEY, ERICKA	C	2	0-1	0-0	2-2	1	1	2	1	0	0	0	0	3	-1
	TEAM		0	0-0	0-0	0-0	1	0	1	0	0	1	0	0	0	
TOTALS			36	13-32	2-9	8-14	7	6	13	11	7	7	0	3	99	

Shooting By Period

Period	FG	FG%	3FG	3FG%	FT	FT%
3rd Qtr	5-14	36%	0-3	00%	6-10	60%
4th Qtr	8-18	44%	2-6	33%	2-4	50%
2nd Half	13-32	41%	2-9	22%	8-14	57%
Game	22-64	34.4%	5-20	25.0%	10-16	62.5%

Deadball Rebounds: 4,0

Last FG Half: NBY 4th-01:00

Game Notes:

Officials: Ryan Freeman, Mike Temnick, Crista Couch

Attendance: 439

Start Time: 01:55 PM ET

End Time: 03:32 PM ET

Game Duration: 1:36

Conference Game;

Score	1st	2nd	3rd	4th	TOT
CNU	16	21	15	26	78
NBY	10	13	16	20	59

Points from (This Period)	CNU	NBY
In the Paint	16	16
Off Turns	8	13
2nd Chance	8	8
Fast Break	6	2
Bench	0	11

Official Box Score
Carson-Newman vs Newberry
 Third Quarter Statistics Only
 January 18, 2020 at Eleazer Arena - Newberry



Carson-Newman 41

No.	Player	S	Pts	FG	3FG	FT	OR	DR	TR	PF	A	TO	Blk	Stl	Min	+/-
00	SMITH, HARLI	G	2	1-2	0-0	0-0	0	1	1	1	1	1	0	0	7	1
01	MAROSITES, KAYLA	G	5	2-2	1-1	0-0	1	1	2	2	0	1	0	0	6	0
11	WYKLE, BRAELYN	G	2	0-3	0-1	2-2	0	0	0	0	1	1	0	0	10	-1
12	HINES, QUA	F	3	1-2	0-1	1-2	0	1	1	0	1	0	0	1	8	0
33	BUNCH, MADISON	G	3	1-3	1-3	0-0	0	1	1	0	0	0	0	0	8	0
03	BYRD, ADDISON	G	0	0-0	0-0	0-0	0	0	0	2	1	1	1	0	7	-3
04	MAROSITES, KELCI	G	0	0-0	0-0	0-0	0	0	0	1	0	0	0	0	2	-1
22	WILSON, ABBY	G	0	0-0	0-0	0-0	0	0	0	0	0	0	0	0	0	0
23	GRIFFIN, TORI	G	0	0-0	0-0	0-0	0	0	0	3	0	0	0	0	2	-1
	TEAM						0	1	1	0		0				
TOTALS			15	5-12	2-6	3-4	1	5	6	9	4	4	1	1	50	

Shooting By Period

Period	FG	FG%	3FG	3FG%	FT	FT%
2nd Half	0-0	0%	0-0	0%	0-0	0%
Game	26-59	44.1%	10-29	34.5%	16-20	80.0%

Deadball Rebounds: 5,2

Newberry 36

No.	Player	S	Pts	FG	3FG	FT	OR	DR	TR	PF	A	TO	Blk	Stl	Min	+/-
02	MCDERMOTT, KELSEY	G	4	2-2	0-0	0-0	1	1	2	0	2	0	0	0	8	-3
04	ROMAS, KELI	G	2	1-3	0-1	0-0	0	0	0	1	1	1	0	0	10	1
11	BRETT, KELSEY	F	1	0-1	0-0	1-2	0	0	0	0	0	0	0	0	8	2
12	VIRGO, COURTNEY	G	0	0-3	0-2	0-0	0	0	0	0	0	0	0	0	6	0
35	WISELEY, ERICKA	C	2	0-1	0-0	2-2	1	1	2	1	0	0	0	0	3	-1
00	ADAMS, ZHAYLA	G	0	0-0	0-0	0-0	0	0	0	0	0	0	0	0	0	0
01	CAMPBELL, TAYLOR	G	0	0-0	0-0	0-0	0	0	0	0	0	0	0	0	0	0
03	WHITE, KE'SHAUN	G	0	0-0	0-0	0-2	1	0	1	1	0	0	0	0	4	1
05	ROBERTS, TALIA	G	0	0-0	0-0	0-0	0	0	0	0	0	0	0	0	0	0
10	KINARD, JULIE	G	1	0-1	0-0	1-2	1	0	1	0	0	0	0	0	5	3
25	PETKOVSKA, DRAGANA	C	6	2-3	0-0	2-2	1	3	4	0	0	2	0	0	7	2
	TEAM						1	0	1	0		1				
TOTALS			16	5-14	0-3	6-10	6	5	11	3	3	4	0	0	50	

Shooting By Period

Period	FG	FG%	3FG	3FG%	FT	FT%
2nd Half	0-0	0%	0-0	0%	0-0	0%
Game	22-64	34.4%	5-20	25.0%	10-16	62.5%

Deadball Rebounds: 4,0

Game Notes:

Officials: **Ryan Freeman, Mike Temnick, Crista Couch**
 Attendance: **439**

Start Time: **01:55 PM ET**

End Time: **03:32 PM ET**

Game Duration: **1:36**

Conference Game;

Score	1st	2nd	3rd	4th	TOT
CNU	16	21	15	26	78
NBY	10	13	16	20	59

Points from (This Period)	CNU	NBY
In the Paint	4	8
Off Turns	3	4
2nd Chance	3	6
Fast Break	0	2
Bench	0	7

Official Play-By-Play
Carson-Newman vs Newberry
Third Quarter
January 18, 2020 at Eleazer Arena - Newberry



Period 3

Starters:

Carson-Newman: 00 SMITH, HARLI (G); 1 MAROSITES, KAYLA (G); 11 WYKLE, BRAELYN (G); 12 HINES, QUA (F); 33 BUNCH, MADISON (G);

Newberry: 2 MCDERMOTT, KELSEY (G); 4 ROMAS, KELI (G); 11 BRETT, KELSEY (F); 12 VIRGO, COURTNEY (G); 35 WISELEY, ERICKA (C);

Time	VISITORS: Carson-Newman	Score	Margin	HOME: Newberry
10:00				SUB OUT: KINARD, JULIE
10:00				SUB OUT: VIRGO, COURTNEY
10:00				SUB IN: MCDERMOTT, KELSEY
10:00				SUB IN: WISELEY, ERICKA
10:00	SUB OUT: BYRD, ADDISON			
10:00	SUB OUT: MAROSITES, KELCI			
10:00	SUB OUT: GRIFFIN, TORI			
10:00	SUB IN: SMITH, HARLI			
10:00	SUB IN: HINES, QUA			
10:00	SUB IN: BUNCH, MADISON			
10:00				SUB OUT: ROBERTS, TALIA
10:00				SUB IN: VIRGO, COURTNEY
09:50	MISSED 3PTR by BUNCH, MADISON			
09:50	REBOUND (OFF) by TEAM			
09:50				FOUL (PERSONAL) by ROMAS, KELI
09:37	MISSED LAYUP by SMITH, HARLI			
09:37				REBOUND (DEF) by WISELEY, ERICKA
09:37	FOUL (PERSONAL) by MAROSITES, KAYLA			
09:21				TURNOVER (DRIBBLING) by ROMAS, KELI
09:10				FOUL (PERSONAL) by WISELEY, ERICKA
09:10				SUB OUT: WISELEY, ERICKA
09:10				SUB IN: PETKOVSKA, DRAGANA
09:10	MISSED FT by HINES, QUA			
09:10	REBOUND (OFF) by TEAM			
09:10	GOOD! FT by HINES, QUA	23-38	V 15	
08:40				MISSED 3PTR by VIRGO, COURTNEY
08:37	REBOUND (DEF) by HINES, QUA			
08:23	MISSED 3PTR by BUNCH, MADISON			
08:20	REBOUND (OFF) by MAROSITES, KAYLA			
08:06	GOOD! 3PTR by MAROSITES, KAYLA	23-41	V 18	
08:06	ASSIST by SMITH, HARLI			
07:44				MISSED 3PTR by VIRGO, COURTNEY
07:40	REBOUND (DEF) by SMITH, HARLI			
07:34	MISSED 3PTR by WYKLE, BRAELYN			
07:30				REBOUND (DEF) by PETKOVSKA, DRAGANA
07:29				TURNOVER (LOSTBALL) by PETKOVSKA, DRAGANA
07:29	STEAL by HINES, QUA			
07:23	MISSED LAYUP by WYKLE, BRAELYN			
07:19				REBOUND (DEF) by MCDERMOTT, KELSEY
07:18		25-41	V 16	GOOD! LAYUP by PETKOVSKA, DRAGANA [FB]
07:18				ASSIST by MCDERMOTT, KELSEY
07:05	FOUL (OFF) by MAROSITES, KAYLA			
07:05	TURNOVER (OFFENSIVE) by MAROSITES, KAYLA			
07:05				SUB OUT: VIRGO, COURTNEY
07:05				SUB IN: WHITE, KE'SHAUN
07:05	SUB OUT: MAROSITES, KAYLA			
07:05	SUB IN: BYRD, ADDISON			
06:54				TURNOVER (LOSTBALL) by PETKOVSKA, DRAGANA
06:37				FOUL (PERSONAL) by WHITE, KE'SHAUN
06:37	GOOD! FT by WYKLE, BRAELYN	25-42	V 17	
06:37	GOOD! FT by WYKLE, BRAELYN	25-43	V 18	
06:16		27-43	V 16	GOOD! JUMPER by PETKOVSKA, DRAGANA
06:16				ASSIST by MCDERMOTT, KELSEY
05:59	MISSED 3PTR by HINES, QUA			
05:55				REBOUND (DEF) by PETKOVSKA, DRAGANA
05:30				MISSED JUMPER by PETKOVSKA, DRAGANA
05:27	REBOUND (DEF) by BUNCH, MADISON			
05:13	GOOD! LAYUP by SMITH, HARLI	27-45	V 18	
05:13	ASSIST by WYKLE, BRAELYN			
05:02		29-45	V 16	GOOD! LAYUP by MCDERMOTT, KELSEY
05:02				ASSIST by ROMAS, KELI
04:51	TURNOVER (TRAVEL) by BYRD, ADDISON			
04:51				
04:36				SUB OUT: MCDERMOTT, KELSEY
04:36				SUB IN: KINARD, JULIE
04:36	SUB OUT: HINES, QUA			
04:36	SUB OUT: BUNCH, MADISON			
04:36	SUB IN: MAROSITES, KELCI			
04:36	SUB IN: GRIFFIN, TORI			
04:36	FOUL (PERSONAL) by MAROSITES, KELCI			

Time	VISITORS: Carson-Newman	Score	Margin	HOME: Newberry
04:36				MISSED FT by WHITE, KE'SHAUN
04:36				REBOUND (OFF) by TEAM
04:36				MISSED FT by WHITE, KE'SHAUN
04:36				REBOUND (OFF) by TEAM
04:36	FOUL (PERSONAL) by GRIFFIN, TORI			
04:21	FOUL (PERSONAL) by GRIFFIN, TORI			
04:21		30-45	V 15	GOOD! FT by KINARD, JULIE
04:21				MISSED FT by KINARD, JULIE
04:21	REBOUND (DEF) by TEAM			
04:05	MISSED LAYUP by WYKLE, BRAELYN			
04:01				REBOUND (DEF) by PETKOVSKA, DRAGANA
03:50				MISSED JUMPER by ROMAS, KELI
03:46				REBOUND (OFF) by WHITE, KE'SHAUN
03:28				MISSED LAYUP by BRETT, KELSEY
03:28	BLOCK by BYRD, ADDISON			
03:28				REBOUND (OFF) by TEAM
03:23				TURNOVER (SHOTCLOCK) by TEAM
03:08	FOUL (OFF) by SMITH, HARLI			
03:08	TURNOVER (OFFENSIVE) by SMITH, HARLI			
02:55				MISSED 3PTR by ROMAS, KELI
02:52				REBOUND (OFF) by KINARD, JULIE
02:46	FOUL (PERSONAL) by GRIFFIN, TORI			
02:46				SUB OUT: WHITE, KE'SHAUN
02:46				SUB IN: VIRGO, COURTNEY
02:46	SUB OUT: SMITH, HARLI			
02:46	SUB OUT: MAROSITES, KELCI			
02:46	SUB OUT: GRIFFIN, TORI			
02:46	SUB IN: MAROSITES, KAYLA			
02:46	SUB IN: HINES, QUA			
02:46	SUB IN: BUNCH, MADISON			
02:46		31-45	V 14	GOOD! FT by BRETT, KELSEY
02:46				MISSED FT by BRETT, KELSEY
02:46				REBOUND (OFF) by PETKOVSKA, DRAGANA
02:36		33-45	V 12	GOOD! LAYUP by ROMAS, KELI
02:31	TIMEOUT TEAM			
02:18				SUB OUT: BRETT, KELSEY
02:18				SUB IN: MCDERMOTT, KELSEY
02:05	GOOD! LAYUP by MAROSITES, KAYLA	33-47	V 14	
02:05	ASSIST by BYRD, ADDISON			
01:45	FOUL (PERSONAL) by BYRD, ADDISON			
01:45		34-47	V 13	GOOD! FT by PETKOVSKA, DRAGANA
01:45		35-47	V 12	GOOD! FT by PETKOVSKA, DRAGANA
01:45				SUB OUT: PETKOVSKA, DRAGANA
01:45				SUB IN: WISELEY, ERICKA
01:24	GOOD! 3PTR by BUNCH, MADISON	35-50	V 15	
01:24	ASSIST by HINES, QUA			
01:08				MISSED JUMPER by VIRGO, COURTNEY
01:04	REBOUND (DEF) by MAROSITES, KAYLA			
01:02	TURNOVER (TRAVEL) by WYKLE, BRAELYN			
00:49	FOUL (PERSONAL) by BYRD, ADDISON			
00:49		36-50	V 14	GOOD! FT by WISELEY, ERICKA
00:49		37-50	V 13	GOOD! FT by WISELEY, ERICKA
00:29	GOOD! JUMPER by HINES, QUA	37-52	V 15	
00:05				MISSED JUMPER by KINARD, JULIE
00:01				REBOUND (OFF) by WISELEY, ERICKA
00:00				MISSED LAYUP by WISELEY, ERICKA
00:00		39-52	V 13	GOOD! LAYUP by MCDERMOTT, KELSEY
00:00				REBOUND (OFF) by MCDERMOTT, KELSEY

Carson-Newman 52, Newberry 39

Points from (This Period)	CNU	NBY
In the Paint	4	8
Off Turns	3	4
2nd Chance	3	6
Fast Break	0	2
Bench	0	7

Official Box Score
Carson-Newman vs Newberry
 Fourth Quarter Statistics Only
 January 18, 2020 at Eleazer Arena - Newberry



Carson-Newman 26

No.	Player	S	Pts	FG	3FG	FT	OR	DR	TR	PF	A	TO	Blk	Stl	Min	+/-
00	SMITH, HARLI	G	10	5-5	0-0	0-0	0	2	2	1	1	1	1	0	10	6
01	MAROSITES, KAYLA	G	2	0-2	0-1	2-2	1	3	4	0	0	1	0	0	10	6
11	WYKLE, BRAELYN	G	8	1-3	1-3	5-6	0	1	1	1	1	2	0	0	10	6
12	HINES, QUA	F	3	1-1	0-0	1-2	1	1	2	0	4	1	0	0	10	6
33	BUNCH, MADISON	G	3	1-1	1-1	0-0	0	0	0	0	0	0	0	0	6	5
03	BYRD, ADDISON	G	0	0-0	0-0	0-0	0	1	1	0	0	1	0	0	3	1
04	MAROSITES, KELCI	G	0	0-0	0-0	0-0	0	0	0	0	0	0	0	0	0	0
22	WILSON, ABBY	G	0	0-0	0-0	0-0	0	0	0	0	0	0	0	0	0	0
23	GRIFFIN, TORI	G	0	0-0	0-0	0-0	0	0	0	0	0	0	0	0	0	0
	TEAM						1	1	2	0		0				
TOTALS			26	8-12	2-5	8-10	3	9	12	2	6	6	1	0	49	

Shooting By Period

Period	FG	FG%	3FG	3FG%	FT	FT%
Game	26-59	44.1%	10-29	34.5%	16-20	80.0%

Deadball Rebounds: 5,2

Newberry 20

No.	Player	S	Pts	FG	3FG	FT	OR	DR	TR	PF	A	TO	Blk	Stl	Min	+/-
02	MCDERMOTT, KELSEY	G	2	1-3	0-0	0-0	0	0	0	1	0	1	0	0	7	-4
04	ROMAS, KELI	G	6	2-3	0-0	2-2	0	0	0	1	0	0	0	0	7	-3
11	BRETT, KELSEY	F	2	1-1	0-0	0-0	1	0	1	2	0	0	0	1	7	-3
12	VIRGO, COURTNEY	G	6	2-3	2-3	0-0	0	0	0	0	0	0	0	0	8	-6
35	WISELEY, ERICKA	C	0	0-0	0-0	0-0	0	0	0	0	0	0	0	0	0	0
00	ADAMS, ZHAYLA	G	0	0-0	0-0	0-0	0	0	0	1	1	1	0	1	2	-2
01	CAMPBELL, TAYLOR	G	0	0-0	0-0	0-0	0	0	0	0	0	0	0	0	1	-1
03	WHITE, KE'SHAUN	G	0	0-1	0-0	0-0	0	0	0	1	1	1	0	1	7	-3
05	ROBERTS, TALIA	G	0	0-3	0-1	0-2	0	1	1	0	1	0	0	0	4	-3
10	KINARD, JULIE	G	4	2-4	0-2	0-0	0	0	0	2	1	0	0	0	7	-5
25	PETKOVSKA, DRAGANA	C	0	0-0	0-0	0-0	0	0	0	0	0	0	0	0	0	0
	TEAM						0	0	0	0		0				
TOTALS			20	8-18	2-6	2-4	1	1	2	8	4	3	0	3	49	

Shooting By Period

Period	FG	FG%	3FG	3FG%	FT	FT%
Game	22-64	34.4%	5-20	25.0%	10-16	62.5%

Deadball Rebounds: 4,0

Game Notes:

Officials: **Ryan Freeman, Mike Temnick, Crista Couch**
 Attendance: **439**

Start Time: **01:55 PM ET**

End Time: **03:32 PM ET**

Game Duration: **1:36**

Conference Game;

Score	1st	2nd	3rd	4th	TOT
CNU	16	21	15	26	78
NBY	10	13	16	20	59

Points from (This Period)	CNU	NBY
In the Paint	12	8
Off Turns	5	9
2nd Chance	5	2
Fast Break	6	0
Bench	0	4

Official Play-By-Play
Carson-Newman vs Newberry
Fourth Quarter
January 18, 2020 at Eleazer Arena - Newberry



Period 4

Starters:

Carson-Newman: 00 SMITH, HARLI (G); 1 MAROSITES, KAYLA (G); 11 WYKLE, BRAELYN (G); 12 HINES, QUA (F); 33 BUNCH, MADISON (G);

Newberry: 2 MCDERMOTT, KELSEY (G); 4 ROMAS, KELI (G); 11 BRETT, KELSEY (F); 12 VIRGO, COURTNEY (G); 35 WISELEY, ERICKA (C);

Time	VISITORS: Carson-Newman	Score	Margin	HOME: Newberry
10:00				SUB OUT: ROMAS, KELI
10:00				SUB OUT: WISELEY, ERICKA
10:00				SUB IN: WHITE, KE'SHAUN
10:00				SUB IN: ROBERTS, TALIA
09:51				MISSED LAYUP by MCDERMOTT, KELSEY
09:51	REBOUND (DEF) by TEAM			
09:51	SUB OUT: BYRD, ADDISON			
09:51	SUB IN: SMITH, HARLI			
09:36	TURNOVER (BADPASS) by SMITH, HARLI			
09:25		42-52	V 10	GOOD! 3PTR by VIRGO, COURTNEY
09:25				ASSIST by ROBERTS, TALIA
09:03	MISSED 3PTR by WYKLE, BRAELYN			
08:59	REBOUND (OFF) by HINES, QUA			
08:58	GOOD! 3PTR by BUNCH, MADISON	42-55	V 13	
08:58	ASSIST by HINES, QUA			
08:48				MISSED 3PTR by KINARD, JULIE
08:44	REBOUND (DEF) by MAROSITES, KAYLA			
08:31	GOOD! LAYUP by SMITH, HARLI	42-57	V 15	
08:31	ASSIST by WYKLE, BRAELYN			
08:15				MISSED LAYUP by WHITE, KE'SHAUN
08:15	REBOUND (DEF) by MAROSITES, KAYLA			
08:15	BLOCK by SMITH, HARLI			
07:50	MISSED 3PTR by MAROSITES, KAYLA			
07:47				REBOUND (DEF) by ROBERTS, TALIA
07:43	FOUL (PERSONAL) by SMITH, HARLI			
07:43				SUB OUT: MCDERMOTT, KELSEY
07:43				SUB OUT: KINARD, JULIE
07:43				SUB IN: ROMAS, KELI
07:43				SUB IN: BRETT, KELSEY
07:43				MISSED FT by ROBERTS, TALIA
07:43				REBOUND (OFF) by TEAM
07:43				MISSED FT by ROBERTS, TALIA
07:43	REBOUND (DEF) by TEAM			
07:32	TURNOVER (TRAVEL) by WYKLE, BRAELYN			
07:17				MISSED LAYUP by ROMAS, KELI
07:14	REBOUND (DEF) by SMITH, HARLI			
07:14				FOUL (PERSONAL) by WHITE, KE'SHAUN
07:03	TURNOVER (LOSTBALL) by WYKLE, BRAELYN			
06:51				MISSED LAYUP by ROBERTS, TALIA
06:46				REBOUND (OFF) by BRETT, KELSEY
06:44		44-57	V 13	GOOD! LAYUP by BRETT, KELSEY
06:38	GOOD! LAYUP by SMITH, HARLI [FB]	44-59	V 15	
06:38	ASSIST by HINES, QUA			
06:37	TIMEOUT 30SEC			
06:37				SUB OUT: ROBERTS, TALIA
06:37				SUB IN: MCDERMOTT, KELSEY
06:23		46-59	V 13	GOOD! LAYUP by ROMAS, KELI
06:07	MISSED JUMPER by MAROSITES, KAYLA			
06:07	REBOUND (OFF) by TEAM			
05:55	GOOD! LAYUP by SMITH, HARLI	46-61	V 15	
05:55	ASSIST by HINES, QUA			
05:49				TURNOVER (TRAVEL) by WHITE, KE'SHAUN
05:49				SUB OUT: WHITE, KE'SHAUN
05:49				SUB IN: KINARD, JULIE
05:35				FOUL (PERSONAL) by MCDERMOTT, KELSEY
05:30				FOUL (PERSONAL) by BRETT, KELSEY
05:30	GOOD! FT by MAROSITES, KAYLA	46-62	V 16	
05:30	GOOD! FT by MAROSITES, KAYLA	46-63	V 17	
05:10		48-63	V 15	GOOD! LAYUP by ROMAS, KELI
05:01				FOUL (PERSONAL) by KINARD, JULIE
04:37	GOOD! LAYUP by HINES, QUA	48-65	V 17	
04:17		50-65	V 15	GOOD! JUMPER by MCDERMOTT, KELSEY
04:17				ASSIST by KINARD, JULIE
04:02	GOOD! LAYUP by SMITH, HARLI	50-67	V 17	
03:49				MISSED LAYUP by MCDERMOTT, KELSEY
03:48	REBOUND (DEF) by HINES, QUA			
03:48				FOUL (PERSONAL) by BRETT, KELSEY
03:48	MISSED FT by HINES, QUA			
03:48	REBOUND (OFF) by TEAM			
03:48				SUB OUT: VIRGO, COURTNEY

Time	VISITORS: Carson-Newman	Score	Margin	HOME: Newberry
03:48				SUB IN: WHITE, KE'SHAUN
03:48	GOOD! FT by HINES, QUA [FB]	50-68	V 18	
03:32				TURNOVER (LOSTBALL) by MCDERMOTT, KELSEY
03:32	SUB OUT: BUNCH, MADISON			
03:32	SUB IN: BYRD, ADDISON			
03:12	TIMEOUT 30SEC			
03:06	GOOD! 3PTR by WYKLE, BRAELYN	50-71	V 21	
03:06	ASSIST by SMITH, HARLI			
02:49	FOUL (PERSONAL) by WYKLE, BRAELYN			
02:49		51-71	V 20	GOOD! FT by ROMAS, KELI
02:49		52-71	V 19	GOOD! FT by ROMAS, KELI
02:40	TURNOVER (BADPASS) by HINES, QUA			
02:40				STEAL by BRETT, KELSEY
02:33				MISSED 3PTR by KINARD, JULIE
02:29	REBOUND (DEF) by SMITH, HARLI			
02:21	TURNOVER (LOSTBALL) by BYRD, ADDISON			
02:21				STEAL by WHITE, KE'SHAUN
02:12		54-71	V 17	GOOD! LAYUP by KINARD, JULIE
02:12				ASSIST by WHITE, KE'SHAUN
02:11				TIMEOUT 30SEC
02:11				SUB OUT: MCDERMOTT, KELSEY
02:11				SUB OUT: KINARD, JULIE
02:11				SUB IN: ADAMS, ZHAYLA
02:11				SUB IN: VIRGO, COURTNEY
01:54	GOOD! LAYUP by SMITH, HARLI	54-73	V 19	
01:54	ASSIST by HINES, QUA			
01:44		57-73	V 16	GOOD! 3PTR by VIRGO, COURTNEY
01:44				ASSIST by ADAMS, ZHAYLA
01:36				FOUL (PERSONAL) by ROMAS, KELI
01:36	GOOD! FT by WYKLE, BRAELYN [FB]	57-74	V 17	
01:36	GOOD! FT by WYKLE, BRAELYN [FB]	57-75	V 18	
01:24				MISSED 3PTR by VIRGO, COURTNEY
01:20	REBOUND (DEF) by BYRD, ADDISON			
01:12	MISSED 3PTR by WYKLE, BRAELYN			
01:11	REBOUND (OFF) by MAROSITES, KAYLA			
01:11	TURNOVER (LOSTBALL) by MAROSITES, KAYLA			
01:11				STEAL by ADAMS, ZHAYLA
01:11				SUB OUT: WHITE, KE'SHAUN
01:11				SUB OUT: ROMAS, KELI
01:11				SUB OUT: BRETT, KELSEY
01:11				SUB IN: CAMPBELL, TAYLOR
01:11				SUB IN: ROBERTS, TALIA
01:11				SUB IN: KINARD, JULIE
01:00		59-75	V 16	GOOD! JUMPER by KINARD, JULIE
00:43	GOOD! FT by WYKLE, BRAELYN	59-76	V 17	
00:43	GOOD! FT by WYKLE, BRAELYN	59-77	V 18	
00:42				FOUL (PERSONAL) by ADAMS, ZHAYLA
00:34				MISSED LAYUP by ROBERTS, TALIA
00:33	REBOUND (DEF) by WYKLE, BRAELYN			
00:33				FOUL (PERSONAL) by KINARD, JULIE
00:33	MISSED FT by WYKLE, BRAELYN			
00:33	REBOUND (OFF) by TEAM			
00:33	GOOD! FT by WYKLE, BRAELYN [FB]	59-78	V 19	
00:22				MISSED 3PTR by ROBERTS, TALIA
00:17	REBOUND (DEF) by MAROSITES, KAYLA			
00:17				TURNOVER (LOSTBALL) by ADAMS, ZHAYLA

Carson-Newman 78, Newberry 59

Points from (This Period)	CNU	NBY
In the Paint	12	8
Off Turns	5	9
2nd Chance	5	2
Fast Break	6	0
Bench	0	4

Official Scoring/Possession Reference Chart
Carson-Newman vs Newberry
Period 1
January 18, 2020 at Eleazer Arena - Newberry



Period 1

Starters:

Carson-Newman: 00 SMITH, HARLI (G); 1 MAROSITES, KAYLA (G); 11 WYKLE, BRAELYN (G); 12 HINES, QUA (F); 33 BUNCH, MADISON (G);
Newberry: 2 MCDERMOTT, KELSEY (G); 4 ROMAS, KELI (G); 11 BRETT, KELSEY (F); 12 VIRGO, COURTNEY (G); 35 WISELEY, ERICKA (C);

Time	VISITORS: Carson-Newman	Score	Margin	HOME: Newberry
09:34		2-0	H 2	GOOD! JUMPER by BRETT, KELSEY [PNT]
09:04	GOOD! 3PTR by BUNCH, MADISON	2-3	V 1	
06:29	GOOD! 3PTR by WYKLE, BRAELYN	2-6	V 4	
05:59	GOOD! 3PTR by BUNCH, MADISON	2-9	V 7	
05:22	GOOD! LAYUP by MAROSITES, KAYLA	2-11	V 9	
04:32		5-11	V 6	GOOD! 3PTR by ROMAS, KELI
03:11		8-11	V 3	GOOD! 3PTR by ROMAS, KELI
02:31	GOOD! JUMPER by BYRD, ADDISON	8-13	V 5	
01:59	GOOD! 3PTR by WYKLE, BRAELYN	8-16	V 8	
00:50		10-16	V 6	GOOD! LAYUP by VIRGO, COURTNEY

Carson-Newman 16, Newberry 10

Official Scoring/Possession Reference Chart
Carson-Newman vs Newberry
Period 2
January 18, 2020 at Eleazer Arena - Newberry



Period 2

Starters:

Carson-Newman: 00 SMITH, HARLI (G); 1 MAROSITES, KAYLA (G); 11 WYKLE, BRAELYN (G); 12 HINES, QUA (F); 33 BUNCH, MADISON (G);
Newberry: 2 MCDERMOTT, KELSEY (G); 4 ROMAS, KELI (G); 11 BRETT, KELSEY (F); 12 VIRGO, COURTNEY (G); 35 WISELEY, ERICKA (C);

Time	VISITORS: Carson-Newman	Score	Margin	HOME: Newberry
09:27		12-16	V 4	GOOD! JUMPER by ROMAS, KELI
08:32		14-16	V 2	GOOD! JUMPER by VIRGO, COURTNEY
07:36	GOOD! LAYUP by WYKLE, BRAELYN	14-18	V 4	
07:06	GOOD! FT by MAROSITES, KAYLA	14-19	V 5	
07:06	GOOD! FT by MAROSITES, KAYLA	14-20	V 6	
06:20	GOOD! LAYUP by SMITH, HARLI	14-22	V 8	
06:03	GOOD! FT by SMITH, HARLI	14-23	V 9	
05:00	GOOD! 3PTR by WYKLE, BRAELYN [FB]	14-26	V 12	
04:25		17-26	V 9	GOOD! 3PTR by ROMAS, KELI
04:09	GOOD! LAYUP by MAROSITES, KAYLA	17-28	V 11	
03:13	GOOD! 3PTR by WYKLE, BRAELYN [FB]	17-31	V 14	
02:57		19-31	V 12	GOOD! LAYUP by ROMAS, KELI
02:43	GOOD! FT by BYRD, ADDISON	19-32	V 13	
02:43	GOOD! FT by BYRD, ADDISON	19-33	V 14	
02:19		21-33	V 12	GOOD! LAYUP by BRETT, KELSEY
01:01	GOOD! LAYUP by GRIFFIN, TORI	21-35	V 14	
00:39		22-35	V 13	GOOD! FT by BRETT, KELSEY
00:39		23-35	V 12	GOOD! FT by BRETT, KELSEY
00:12	GOOD! LAYUP by MAROSITES, KAYLA	23-37	V 14	

Carson-Newman 37, Newberry 23

Official Scoring/Possession Reference Chart
Carson-Newman vs Newberry
Period 3
January 18, 2020 at Eleazer Arena - Newberry



Period 3

Starters:

Carson-Newman: 00 SMITH, HARLI (G); 1 MAROSITES, KAYLA (G); 11 WYKLE, BRAELYN (G); 12 HINES, QUA (F); 33 BUNCH, MADISON (G);
Newberry: 2 MCDERMOTT, KELSEY (G); 4 ROMAS, KELI (G); 11 BRETT, KELSEY (F); 12 VIRGO, COURTNEY (G); 35 WISELEY, ERICKA (C);

Time	VISITORS: Carson-Newman	Score	Margin	HOME: Newberry
09:10	GOOD! FT by HINES, QUA	23-38	V 15	
08:06	GOOD! 3PTR by MAROSITES, KAYLA	23-41	V 18	
07:18		25-41	V 16	GOOD! LAYUP by PETKOVSKA, DRAGANA [FB]
06:37	GOOD! FT by WYKLE, BRAELYN	25-42	V 17	
06:37	GOOD! FT by WYKLE, BRAELYN	25-43	V 18	
06:16		27-43	V 16	GOOD! JUMPER by PETKOVSKA, DRAGANA
05:13	GOOD! LAYUP by SMITH, HARLI	27-45	V 18	
05:02		29-45	V 16	GOOD! LAYUP by MCDERMOTT, KELSEY
04:21		30-45	V 15	GOOD! FT by KINARD, JULIE
02:46		31-45	V 14	GOOD! FT by BRETT, KELSEY
02:36		33-45	V 12	GOOD! LAYUP by ROMAS, KELI
02:05	GOOD! LAYUP by MAROSITES, KAYLA	33-47	V 14	
01:45		34-47	V 13	GOOD! FT by PETKOVSKA, DRAGANA
01:45		35-47	V 12	GOOD! FT by PETKOVSKA, DRAGANA
01:24	GOOD! 3PTR by BUNCH, MADISON	35-50	V 15	
00:49		36-50	V 14	GOOD! FT by WISELEY, ERICKA
00:49		37-50	V 13	GOOD! FT by WISELEY, ERICKA
00:29	GOOD! JUMPER by HINES, QUA	37-52	V 15	
00:00		39-52	V 13	GOOD! LAYUP by MCDERMOTT, KELSEY

Carson-Newman 52, Newberry 39

Official Scoring/Possession Reference Chart
Carson-Newman vs Newberry
Period 4
January 18, 2020 at Eleazer Arena - Newberry



Period 4

Starters:

Carson-Newman: 00 SMITH, HARLI (G); 1 MAROSITES, KAYLA (G); 11 WYKLE, BRAELYN (G); 12 HINES, QUA (F); 33 BUNCH, MADISON (G);
Newberry: 2 MCDERMOTT, KELSEY (G); 4 ROMAS, KELI (G); 11 BRETT, KELSEY (F); 12 VIRGO, COURTNEY (G); 35 WISELEY, ERICKA (C);

Time	VISITORS: Carson-Newman	Score	Margin	HOME: Newberry
09:25		42-52	V 10	GOOD! 3PTR by VIRGO, COURTNEY
08:58	GOOD! 3PTR by BUNCH, MADISON	42-55	V 13	
08:31	GOOD! LAYUP by SMITH, HARLI	42-57	V 15	
06:44		44-57	V 13	GOOD! LAYUP by BRETT, KELSEY
06:38	GOOD! LAYUP by SMITH, HARLI [FB]	44-59	V 15	
06:23		46-59	V 13	GOOD! LAYUP by ROMAS, KELI
05:55	GOOD! LAYUP by SMITH, HARLI	46-61	V 15	
05:30	GOOD! FT by MAROSITES, KAYLA	46-62	V 16	
05:30	GOOD! FT by MAROSITES, KAYLA	46-63	V 17	
05:10		48-63	V 15	GOOD! LAYUP by ROMAS, KELI
04:37	GOOD! LAYUP by HINES, QUA	48-65	V 17	
04:17		50-65	V 15	GOOD! JUMPER by MCDERMOTT, KELSEY
04:02	GOOD! LAYUP by SMITH, HARLI	50-67	V 17	
03:48	GOOD! FT by HINES, QUA [FB]	50-68	V 18	
03:06	GOOD! 3PTR by WYKLE, BRAELYN	50-71	V 21	
02:49		51-71	V 20	GOOD! FT by ROMAS, KELI
02:49		52-71	V 19	GOOD! FT by ROMAS, KELI
02:12		54-71	V 17	GOOD! LAYUP by KINARD, JULIE
01:54	GOOD! LAYUP by SMITH, HARLI	54-73	V 19	
01:44		57-73	V 16	GOOD! 3PTR by VIRGO, COURTNEY
01:36	GOOD! FT by WYKLE, BRAELYN [FB]	57-74	V 17	
01:36	GOOD! FT by WYKLE, BRAELYN [FB]	57-75	V 18	
01:00		59-75	V 16	GOOD! JUMPER by KINARD, JULIE
00:43	GOOD! FT by WYKLE, BRAELYN	59-76	V 17	
00:43	GOOD! FT by WYKLE, BRAELYN	59-77	V 18	
00:33	GOOD! FT by WYKLE, BRAELYN [FB]	59-78	V 19	

Carson-Newman 78, Newberry 59

Official Substitutions Log
Carson-Newman vs Newberry
Period 1
January 18, 2020 at Eleazer Arena - Newberry



VISITORS: Carson-Newman	Time	Score	HOME: Newberry
00 SMITH, HARLI			2 MCDERMOTT, KELSEY
1 MAROSITES, KAYLA			4 ROMAS, KELI
11 WYKLE, BRAELYN			11 BRETT, KELSEY
12 HINES, QUA			12 VIRGO, COURTNEY
33 BUNCH, MADISON			35 WISELEY, ERICKA
	08:08	3-2	SUB OUT: WISELEY, ERICKA
	08:08		SUB IN: PETKOVSKA, DRAGANA
	05:19	11-2	SUB OUT: MCDERMOTT, KELSEY
	05:19		SUB OUT: VIRGO, COURTNEY
	05:19		SUB IN: WHITE, KE'SHAUN
	05:19		SUB IN: ROBERTS, TALIA
SUB OUT: 00 SMITH, HARLI	05:19		
SUB IN: 3 BYRD, ADDISON	05:19		
	03:44	11-5	SUB OUT: BRETT, KELSEY
	03:44		SUB OUT: PETKOVSKA, DRAGANA
	03:44		SUB IN: MCDERMOTT, KELSEY
	03:44		SUB IN: WISELEY, ERICKA
SUB OUT: 12 HINES, QUA	03:44		
SUB OUT: 33 BUNCH, MADISON	03:44		
SUB IN: 4 MAROSITES, KELCI	03:44		
SUB IN: 23 GRIFFIN, TORI	03:44		
	02:44	11-8	SUB OUT: WHITE, KE'SHAUN
	02:44		SUB OUT: ROMAS, KELI
	02:44		SUB IN: KINARD, JULIE
	02:44		SUB IN: VIRGO, COURTNEY
	00:42	16-10	SUB OUT: ROBERTS, TALIA
	00:42		SUB OUT: WISELEY, ERICKA
	00:42		SUB IN: ROMAS, KELI
	00:42		SUB IN: PETKOVSKA, DRAGANA

Carson-Newman 16, Newberry 10

Official Substitutions Log
Carson-Newman vs Newberry
Period 2
January 18, 2020 at Eleazer Arena - Newberry



VISITORS: Carson-Newman	Time	Score	HOME: Newberry
00 SMITH, HARLI			2 MCDERMOTT, KELSEY
1 MAROSITES, KAYLA			4 ROMAS, KELI
11 WYKLE, BRAELYN			11 BRETT, KELSEY
12 HINES, QUA			12 VIRGO, COURTNEY
33 BUNCH, MADISON			35 WISELEY, ERICKA
SUB OUT: 1 MAROSITES, KAYLA	09:53	-	
SUB OUT: 3 BYRD, ADDISON	09:53		
SUB OUT: 11 WYKLE, BRAELYN	09:53		
SUB IN: 00 SMITH, HARLI	09:53		
SUB IN: 22 WILSON, ABBY	09:53		
SUB IN: 33 BUNCH, MADISON	09:53		
	09:04	16-12	SUB OUT: KINARD, JULIE
	09:04		SUB IN: BRETT, KELSEY
SUB OUT: 4 MAROSITES, KELCI	08:05	16-14	
SUB OUT: 22 WILSON, ABBY	08:05		
SUB OUT: 23 GRIFFIN, TORI	08:05		
SUB IN: 1 MAROSITES, KAYLA	08:05		
SUB IN: 11 WYKLE, BRAELYN	08:05		
SUB IN: 12 HINES, QUA	08:05		
	07:49	16-14	SUB OUT: MCDERMOTT, KELSEY
	07:49		SUB OUT: PETKOVSKA, DRAGANA
	07:49		SUB IN: ROBERTS, TALIA
	07:49		SUB IN: WISELEY, ERICKA
	06:40	20-14	SUB OUT: WISELEY, ERICKA
	06:40		SUB IN: PETKOVSKA, DRAGANA
	06:13	22-14	SUB OUT: BRETT, KELSEY
	06:13		SUB IN: MCDERMOTT, KELSEY
	06:03	22-14	SUB OUT: PETKOVSKA, DRAGANA
	06:03		SUB IN: BRETT, KELSEY
	05:00	26-14	SUB OUT: ROBERTS, TALIA
	05:00		SUB OUT: BRETT, KELSEY
	05:00		SUB IN: WHITE, KE'SHAUN
	05:00		SUB IN: KINARD, JULIE
SUB OUT: 00 SMITH, HARLI	04:33	26-14	
SUB IN: 3 BYRD, ADDISON	04:33		
	02:43	31-19	SUB OUT: KINARD, JULIE
	02:43		SUB IN: BRETT, KELSEY
SUB OUT: 12 HINES, QUA	02:43		
SUB OUT: 33 BUNCH, MADISON	02:43		
SUB IN: 4 MAROSITES, KELCI	02:43		
SUB IN: 23 GRIFFIN, TORI	02:43		
	02:42	33-19	SUB OUT: MCDERMOTT, KELSEY
	02:42		SUB IN: ROBERTS, TALIA
	00:39	35-21	SUB OUT: WHITE, KE'SHAUN
	00:39		SUB IN: KINARD, JULIE

Carson-Newman 37, Newberry 23

Official Substitutions Log
Carson-Newman vs Newberry
Period 3
January 18, 2020 at Eleazer Arena - Newberry



VISITORS: Carson-Newman	Time	Score	HOME: Newberry
00 SMITH, HARLI			2 MCDERMOTT, KELSEY
1 MAROSITES, KAYLA			4 ROMAS, KELI
11 WYKLE, BRAELYN			11 BRETT, KELSEY
12 HINES, QUA			12 VIRGO, COURTNEY
33 BUNCH, MADISON			35 WISELEY, ERICKA
	10:00	-	SUB OUT: KINARD, JULIE
	10:00		SUB OUT: VIRGO, COURTNEY
	10:00		SUB IN: MCDERMOTT, KELSEY
	10:00		SUB IN: WISELEY, ERICKA
SUB OUT: 3 BYRD, ADDISON	10:00		
SUB OUT: 4 MAROSITES, KELCI	10:00		
SUB OUT: 23 GRIFFIN, TORI	10:00		
SUB IN: 00 SMITH, HARLI	10:00		
SUB IN: 12 HINES, QUA	10:00		
SUB IN: 33 BUNCH, MADISON	10:00		
	10:00		SUB OUT: ROBERTS, TALIA
	10:00		SUB IN: VIRGO, COURTNEY
	09:10	-	SUB OUT: WISELEY, ERICKA
	09:10		SUB IN: PETKOVSKA, DRAGANA
	07:05	41-25	SUB OUT: VIRGO, COURTNEY
	07:05		SUB IN: WHITE, KE'SHAUN
SUB OUT: 1 MAROSITES, KAYLA	07:05		
SUB IN: 3 BYRD, ADDISON	07:05		
	04:36	45-29	SUB OUT: MCDERMOTT, KELSEY
	04:36		SUB IN: KINARD, JULIE
SUB OUT: 12 HINES, QUA	04:36		
SUB OUT: 33 BUNCH, MADISON	04:36		
SUB IN: 4 MAROSITES, KELCI	04:36		
SUB IN: 23 GRIFFIN, TORI	04:36		
	02:46	45-30	SUB OUT: WHITE, KE'SHAUN
	02:46		SUB IN: VIRGO, COURTNEY
SUB OUT: 00 SMITH, HARLI	02:46		
SUB OUT: 4 MAROSITES, KELCI	02:46		
SUB OUT: 23 GRIFFIN, TORI	02:46		
SUB IN: 1 MAROSITES, KAYLA	02:46		
SUB IN: 12 HINES, QUA	02:46		
SUB IN: 33 BUNCH, MADISON	02:46		
	02:18	45-33	SUB OUT: BRETT, KELSEY
	02:18		SUB IN: MCDERMOTT, KELSEY
	01:45	47-35	SUB OUT: PETKOVSKA, DRAGANA
	01:45		SUB IN: WISELEY, ERICKA

Carson-Newman 52, Newberry 39

Official Substitutions Log
Carson-Newman vs Newberry
Period 4
January 18, 2020 at Eleazer Arena - Newberry



VISITORS: Carson-Newman	Time	Score	HOME: Newberry
00 SMITH, HARLI			2 MCDERMOTT, KELSEY
1 MAROSITES, KAYLA			4 ROMAS, KELI
11 WYKLE, BRAELYN			11 BRETT, KELSEY
12 HINES, QUA			12 VIRGO, COURTNEY
33 BUNCH, MADISON			35 WISELEY, ERICKA
	10:00	-	SUB OUT: ROMAS, KELI
	10:00		SUB OUT: WISELEY, ERICKA
	10:00		SUB IN: WHITE, KE'SHAUN
	10:00		SUB IN: ROBERTS, TALIA
SUB OUT: 3 BYRD, ADDISON	09:51	-	
SUB IN: 00 SMITH, HARLI	09:51		
	07:43	57-42	SUB OUT: MCDERMOTT, KELSEY
	07:43		SUB OUT: KINARD, JULIE
	07:43		SUB IN: ROMAS, KELI
	07:43		SUB IN: BRETT, KELSEY
	06:37	59-44	SUB OUT: ROBERTS, TALIA
	06:37		SUB IN: MCDERMOTT, KELSEY
	05:49	61-46	SUB OUT: WHITE, KE'SHAUN
	05:49		SUB IN: KINARD, JULIE
	03:48	67-50	SUB OUT: VIRGO, COURTNEY
	03:48		SUB IN: WHITE, KE'SHAUN
SUB OUT: 33 BUNCH, MADISON	03:32	68-50	
SUB IN: 3 BYRD, ADDISON	03:32		
	02:11	71-54	SUB OUT: MCDERMOTT, KELSEY
	02:11		SUB OUT: KINARD, JULIE
	02:11		SUB IN: ADAMS, ZHAYLA
	02:11		SUB IN: VIRGO, COURTNEY
	01:11	75-57	SUB OUT: WHITE, KE'SHAUN
	01:11		SUB OUT: ROMAS, KELI
	01:11		SUB OUT: BRETT, KELSEY
	01:11		SUB IN: CAMPBELL, TAYLOR
	01:11		SUB IN: ROBERTS, TALIA
	01:11		SUB IN: KINARD, JULIE

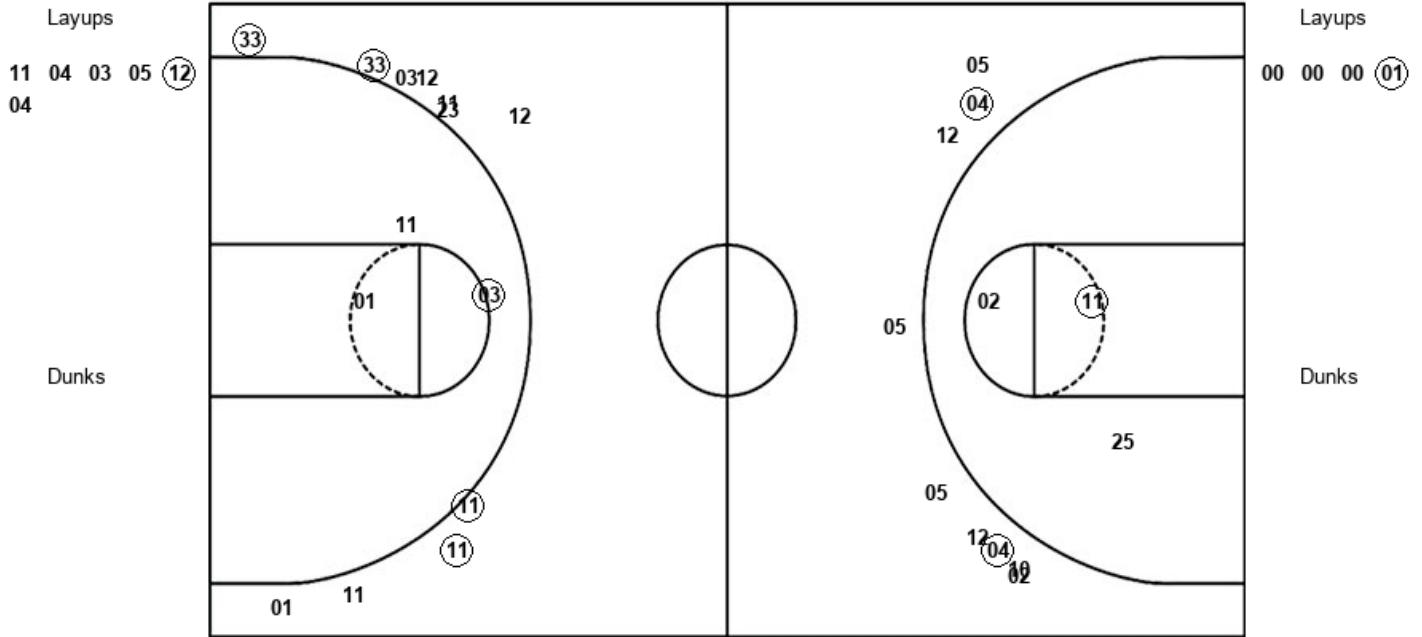
Carson-Newman 78, Newberry 59

Official Shot Chart
Carson-Newman vs Newberry
 PERIOD 1 Shots
 January 18, 2020 at Eleazer Arena - Newberry



Newberry

Carson-Newman



NBY : Period 1	Made	Att	Pct
Layups	1	6	16.7
Dunks	0	0	0
2PT Field Goals	2	9	22.2
3PT Field Goals	2	9	22.2
Total Field Goals	4	18	22.2

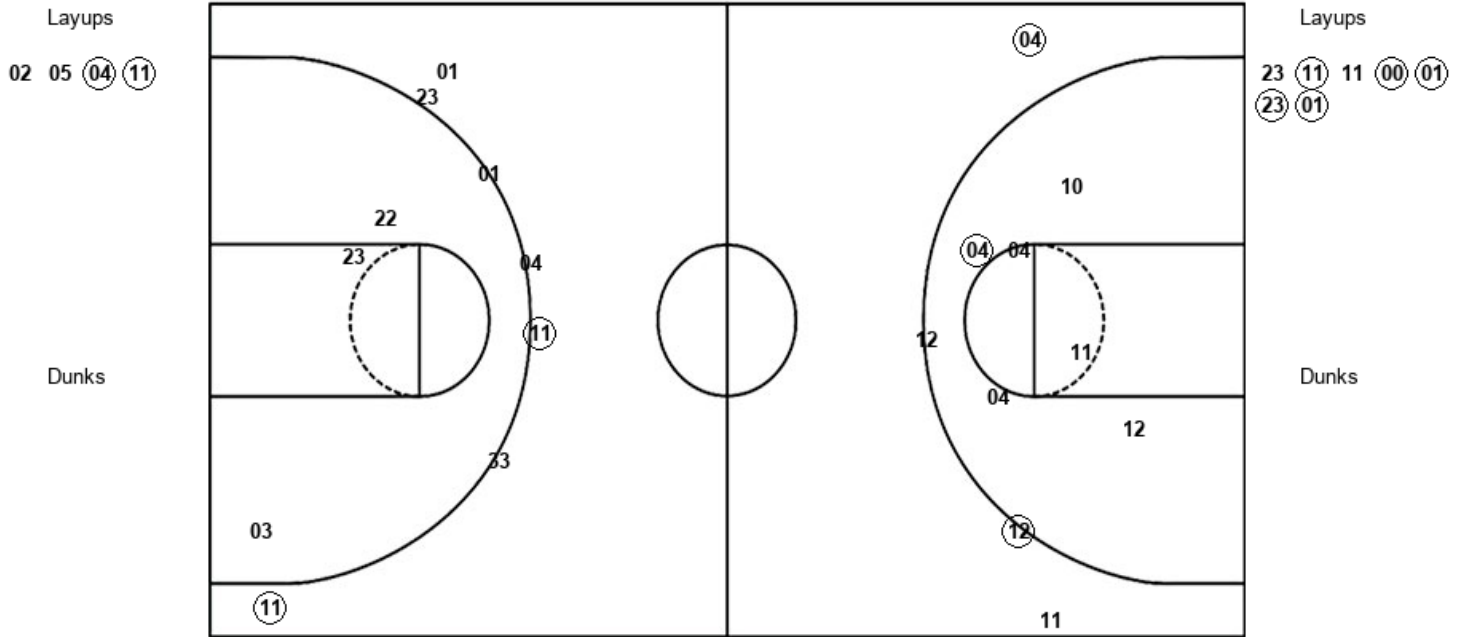
CNU : Period 1	Made	Att	Pct
Layups	1	4	25.0
Dunks	0	0	0
2PT Field Goals	2	7	28.6
3PT Field Goals	4	11	36.4
Total Field Goals	6	18	33.3

Official Shot Chart
Carson-Newman vs Newberry
 PERIOD 2 Shots
 January 18, 2020 at Eleazer Arena - Newberry



Newberry

Carson-Newman



NBY : Period 2	Made	Att	Pct
Layups	2	4	50.0
Dunks	0	0	0
2PT Field Goals	4	12	33.3
3PT Field Goals	1	2	50.0
Total Field Goals	5	14	35.7

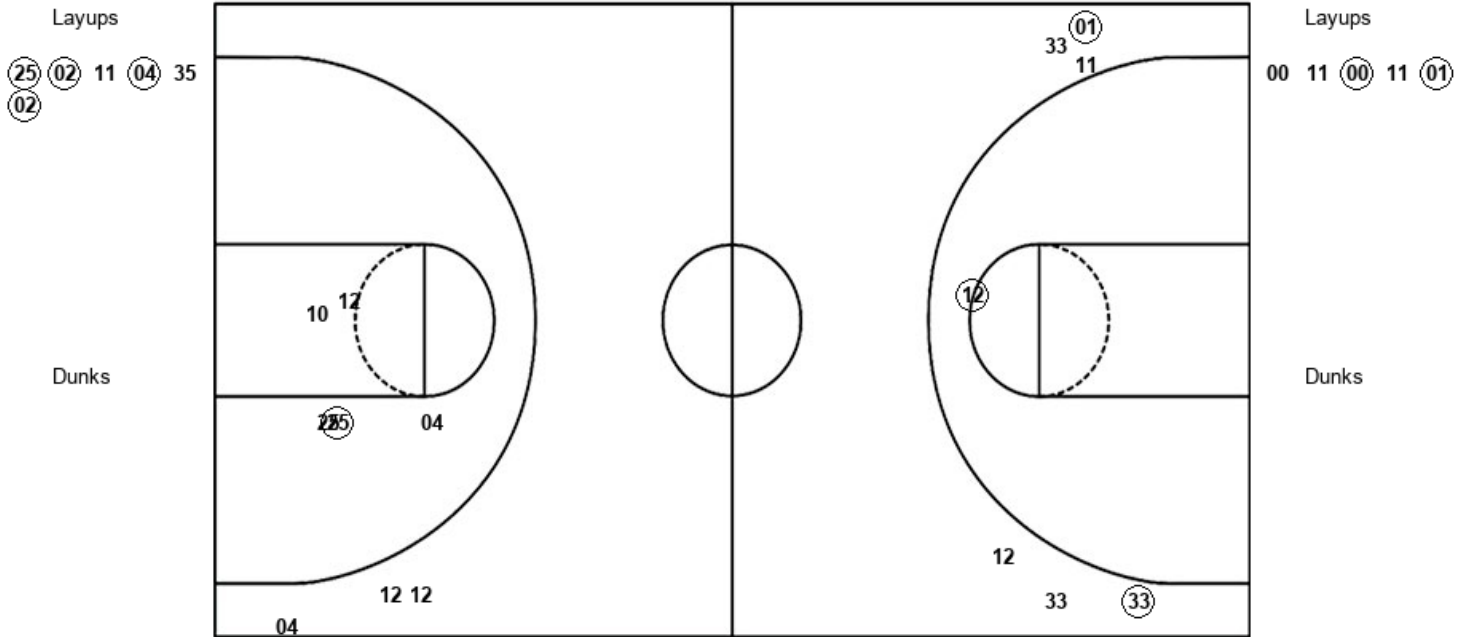
CNU : Period 2	Made	Att	Pct
Layups	5	7	71.4
Dunks	0	0	0
2PT Field Goals	5	10	50.0
3PT Field Goals	2	7	28.6
Total Field Goals	7	17	41.2

Official Shot Chart
Carson-Newman vs Newberry
 PERIOD 3 Shots
 January 18, 2020 at Eleazer Arena - Newberry



Newberry

Carson-Newman



NBY : Period 3	Made	Att	Pct
Layups	4	6	66.7
Dunks	0	0	0
2PT Field Goals	5	11	45.5
3PT Field Goals	0	3	00.0
Total Field Goals	5	14	35.7

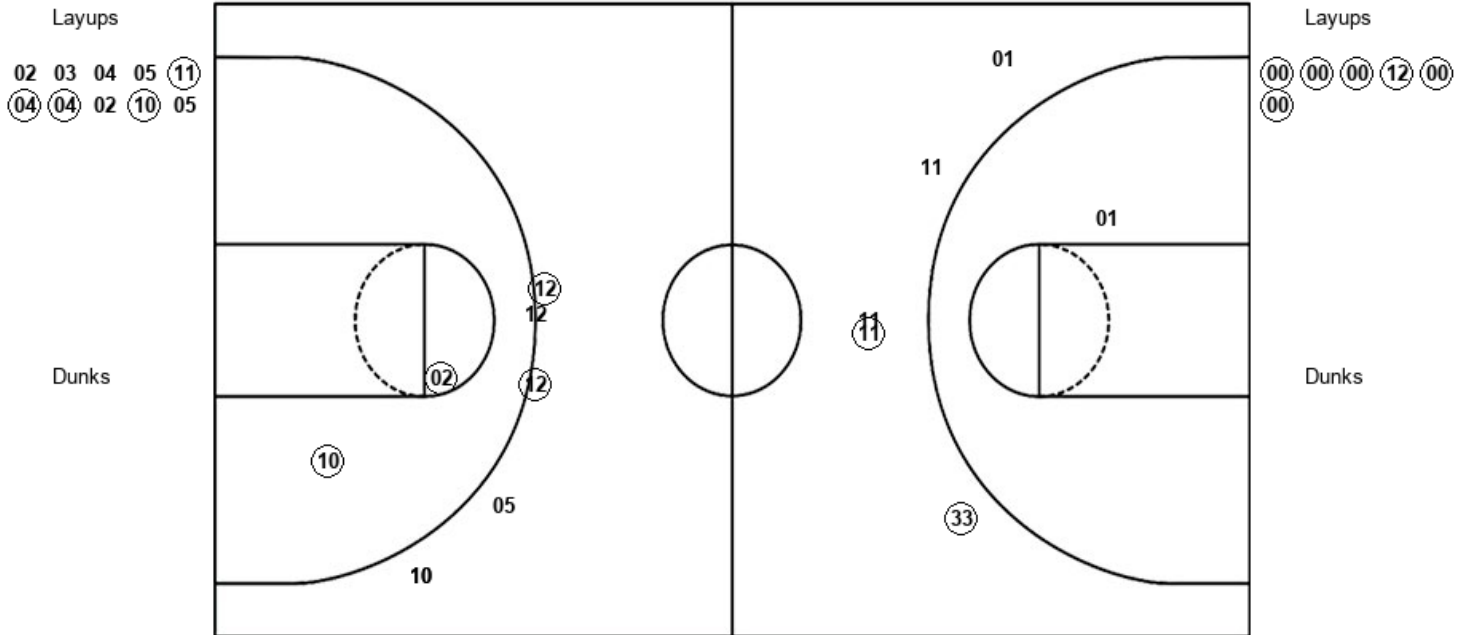
CNU : Period 3	Made	Att	Pct
Layups	2	5	40.0
Dunks	0	0	0
2PT Field Goals	3	6	50.0
3PT Field Goals	2	6	33.3
Total Field Goals	5	12	41.7

Official Shot Chart
Carson-Newman vs Newberry
 PERIOD 4 Shots
 January 18, 2020 at Eleazer Arena - Newberry



Newberry

Carson-Newman



NBY : Period 4	Made	Att	Pct
Layups	4	10	40.0
Dunks	0	0	0
2PT Field Goals	6	12	50.0
3PT Field Goals	2	6	33.3
Total Field Goals	8	18	44.4

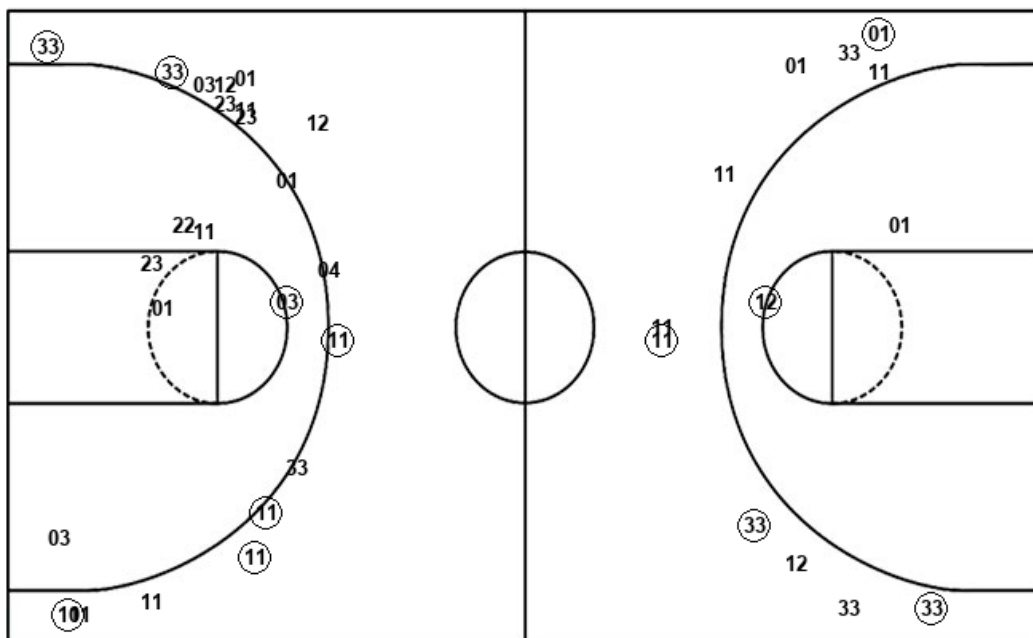
CNU : Period 4	Made	Att	Pct
Layups	6	6	100.0
Dunks	0	0	0
2PT Field Goals	6	7	85.7
3PT Field Goals	2	5	40.0
Total Field Goals	8	12	66.7

Official Shot Chart
Carson-Newman vs Newberry
 Carson-Newman Team Shots
 January 18, 2020 at Eleazer Arena - Newberry



Layups

Dunks



Layups

Dunks

00 00 00 01 23
 11 11 00 01 23
 01 00 11 00 11
 01 00 00 00 12
 00 00

CNU : Period 1	Made	Att	Pct
Layups	1	4	25.0
Dunks	0	0	0
2PT Field Goals	2	7	28.6
3PT Field Goals	4	11	36.4
Total Field Goals	6	18	33.3

CNU : Period 3	Made	Att	Pct
Layups	2	5	40.0
Dunks	0	0	0
2PT Field Goals	3	6	50.0
3PT Field Goals	2	6	33.3
Total Field Goals	5	12	41.7

CNU : Period 2	Made	Att	Pct
Layups	5	7	71.4
Dunks	0	0	0
2PT Field Goals	5	10	50.0
3PT Field Goals	2	7	28.6
Total Field Goals	7	17	41.2

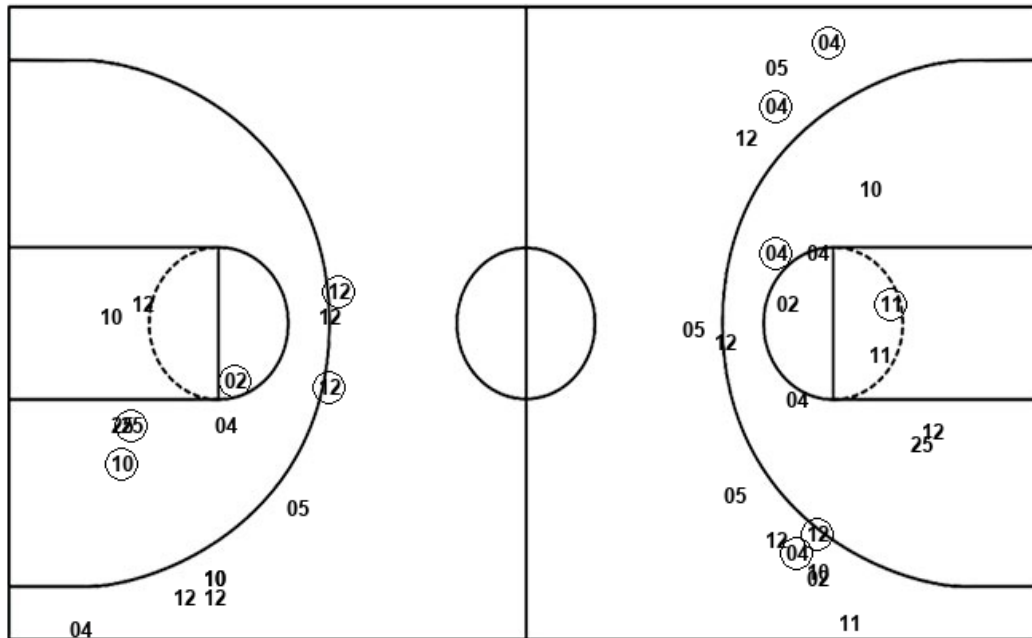
CNU : Period 4	Made	Att	Pct
Layups	6	6	100.0
Dunks	0	0	0
2PT Field Goals	6	7	85.7
3PT Field Goals	2	5	40.0
Total Field Goals	8	12	66.7

Official Shot Chart
Carson-Newman vs Newberry
 Newberry Team Shots
 January 18, 2020 at Eleazer Arena - Newberry



Layups

Dunks



Layups

Dunks

11 04 03 05 (12)
 04 02 05 (04) (11)
 (25) (02) 11 (04) 35
 (02) 02 03 04 05
 (11) (04) (04) 02 (10)
 05

NBY : Period 1	Made	Att	Pct
Layups	1	6	16.7
Dunks	0	0	0
2PT Field Goals	2	9	22.2
3PT Field Goals	2	9	22.2
Total Field Goals	4	18	22.2

NBY : Period 3	Made	Att	Pct
Layups	4	6	66.7
Dunks	0	0	0
2PT Field Goals	5	11	45.5
3PT Field Goals	0	3	00.0
Total Field Goals	5	14	35.7

NBY : Period 2	Made	Att	Pct
Layups	2	4	50.0
Dunks	0	0	0
2PT Field Goals	4	12	33.3
3PT Field Goals	1	2	50.0
Total Field Goals	5	14	35.7

NBY : Period 4	Made	Att	Pct
Layups	4	10	40.0
Dunks	0	0	0
2PT Field Goals	6	12	50.0
3PT Field Goals	2	6	33.3
Total Field Goals	8	18	44.4