

**FINAL SCORE**

**Queens (NC)**

**52**

**Lincoln Memorial**

**58**



December 07, 2019 • B. Frank Turner Arena - Harrogate, TN

**FINAL STATISTICS**

**Official Box Score**  
**Queens (NC) vs Lincoln Memorial**  
**Game Totals -- Final Statistics**  
**December 07, 2019 at B. Frank Turner Arena - Harrogate, TN**



**Queens (NC) 52**

No.	Player	S	Pts	FG	3FG	FT	OR	DR	TR	PF	A	TO	Blk	Stl	Min	+/-
10	MOORE, CAITLYN	G	0	0-6	0-3	0-0	1	4	5	5	2	3	0	2	33	-3
11	RAFLUND, JULIA	C	15	4-6	0-0	7-10	4	5	9	2	3	4	1	2	31	-6
12	EANES, KRISTIAN	G	16	7-16	0-2	2-3	1	3	4	2	1	2	0	3	37	-1
24	LEEDLE, KELSEY	G	2	1-5	0-4	0-0	1	1	2	3	1	2	0	1	28	-5
32	GOLDEN, JAYMI	G	9	4-16	1-6	0-0	0	4	4	3	2	7	0	1	29	-6
01	STEVENS, TAYLOR	G	6	2-6	1-4	1-2	2	2	4	5	3	4	0	0	26	-3
03	MCMILLIAN, TIA	G	0	0-1	0-1	0-0	0	2	2	1	0	0	0	0	7	-6
15	SUHONEN, ANNIKA	F	2	1-2	0-1	0-0	1	0	1	0	0	0	0	0	4	1
20	SEXTON, MADISON	F	2	1-1	0-0	0-0	1	1	2	1	0	0	0	0	5	-1
<b>TEAM</b>							3	2	5	0		0				
<b>TOTALS</b>			<b>52</b>	<b>20-59</b>	<b>2-21</b>	<b>10-15</b>	<b>14</b>	<b>24</b>	<b>38</b>	<b>22</b>	<b>12</b>	<b>22</b>	<b>1</b>	<b>9</b>	<b>200</b>	

*Shooting By Period*

Period	FG	FG%	3FG	3FG%	FT	FT%
1st Qtr	5-13	38%	0-5	00%	2-3	67%
2nd Qtr	3-13	23%	0-4	00%	1-2	50%
3rd Qtr	4-16	25%	1-4	25%	5-5	100%
4th Qtr	8-17	47%	1-8	13%	2-5	40%
1st Half	8-26	31%	0-9	00%	3-5	60%
2nd Half	12-33	36%	2-12	17%	7-10	70%
<b>Game</b>	<b>20-59</b>	<b>33.9%</b>	<b>2-21</b>	<b>09.5%</b>	<b>10-15</b>	<b>66.7%</b>

Deadball Rebounds: 2.0  
 Last FG: 4th-00:06  
 Biggest Run: 8-0  
 Largest lead: By 8 at 1-05  
 Technical Fouls: None.

**Lincoln Memorial 58**

No.	Player	S	Pts	FG	3FG	FT	OR	DR	TR	PF	A	TO	Blk	Stl	Min	+/-
02	OGBURN, SEMAJIA	F	0	0-1	0-0	0-0	0	1	1	1	0	0	0	0	3	-3
04	KISER, LEXI	G	0	0-2	0-2	0-0	0	0	0	0	1	2	0	0	14	-5
20	FLOWERS, LAUREN	G	14	4-10	2-3	4-8	1	2	3	3	3	4	1	2	31	3
34	JACHIMCZUK, MAGGIE	F	0	0-1	0-0	0-0	0	2	2	5	0	0	0	1	9	0
35	PROFFITT, LINDSAY	G	8	2-6	2-5	2-2	1	3	4	0	0	2	0	3	23	-1
00	CAUDLE, KYNDALL	G	12	4-5	2-2	2-2	0	1	1	1	0	1	0	0	17	9
15	MANEY, JORDAN	F	0	0-1	0-0	0-0	0	2	2	1	0	1	0	0	4	7
21	NEWSOME, SYDNEY	F	5	1-3	0-0	3-6	1	2	3	1	2	1	0	0	20	-3
23	MCCOMBS, TONI	G	11	4-10	0-2	3-6	0	4	4	2	8	3	0	3	36	11
24	COTNER-BRABSON, TAYLOR	G	0	0-0	0-0	0-0	1	1	2	0	0	1	0	1	7	4
25	SPIKES, TYTIAIRA	G	0	0-1	0-0	0-0	0	1	1	0	0	1	0	0	8	4
30	QUARLES, SHERMERIA	F	8	3-7	0-0	2-2	6	6	12	4	1	5	1	2	28	4
<b>TEAM</b>							0	3	3	0		0				
<b>TOTALS</b>			<b>58</b>	<b>18-47</b>	<b>6-14</b>	<b>16-26</b>	<b>10</b>	<b>28</b>	<b>38</b>	<b>18</b>	<b>15</b>	<b>21</b>	<b>2</b>	<b>12</b>	<b>200</b>	

*Shooting By Period*

Period	FG	FG%	3FG	3FG%	FT	FT%
1st Qtr	3-10	30%	2-3	67%	0-2	00%
2nd Qtr	3-12	25%	1-5	20%	6-8	75%
3rd Qtr	7-16	44%	2-3	67%	1-4	25%
4th Qtr	5-9	56%	1-3	33%	9-12	75%
1st Half	6-22	27%	3-8	38%	6-10	60%
2nd Half	12-25	48%	3-6	50%	10-16	63%
<b>Game</b>	<b>18-47</b>	<b>38.3%</b>	<b>6-14</b>	<b>42.9%</b>	<b>16-26</b>	<b>61.5%</b>

Deadball Rebounds: 5.0  
 Last FG: 4th-02:37  
 Biggest Run: 9-0  
 Largest lead: By 11 at 3-05  
 Technical Fouls: None.

Game Notes:

Officials: Lee Hughes, Chris Tate, Christopher Klicko  
 Attendance: 667

Start Time: 01:59 PM ET  
 End Time: 03:44 PM ET  
 Game Duration: 1:45  
 Conference Game;

Score	1st	2nd	3rd	4th	TOT
QUC	12	7	14	19	<b>52</b>
LMU	8	13	17	20	<b>58</b>

QUC led for 13:45. LMU led for 24:40.  
 Game was tied for 1:37.  
 Times tied: 1      Lead Changes: 1

Points from	QUC	LMU
In the Paint	30	18
Off Turns	14	23
2nd Chance	20	5
Fast Break	9	10
Bench	10	36

**Official Box Score**  
**Queens (NC) vs Lincoln Memorial**  
**First Half Statistics Only**  
**December 07, 2019 at B. Frank Turner Arena - Harrogate, TN**



**Queens (NC) 19**

No.	Player	S	Pts	FG	3FG	FT	OR	DR	TR	PF	A	TO	Blk	Stl	Min	+/-
01	STEVENS, TAYLOR	G	0	0-2	0-1	0-0	0	1	1	2	1	2	0	0	11	-2
03	MCMILLIAN, TIA	G	0	0-1	0-1	0-0	0	2	2	1	0	0	0	0	5	-5
10	MOORE, CAITLYN	G	0	0-1	0-1	0-0	0	1	1	3	1	1	0	1	13	3
11	RAFLUND, JULIA	C	4	1-3	0-0	2-3	2	1	3	1	0	3	0	0	14	-4
12	EANES, KRISTIAN	G	5	2-7	0-2	1-2	0	2	2	0	0	1	0	0	18	1
15	SUHONEN, ANNIKA	F	2	1-1	0-0	0-0	1	0	1	0	0	0	0	0	1	3
20	SEXTON, MADISON	F	2	1-1	0-0	0-0	1	1	2	1	0	0	0	0	5	-1
24	LEEDLE, KELSEY	G	2	1-3	0-2	0-0	1	0	1	0	1	1	0	1	15	-4
32	GOLDEN, JAYMI	G	4	2-7	0-2	0-0	0	4	4	1	0	5	0	1	17	-1
	TEAM		0	0-0	0-0	0-0	2	1	3	0	0	0	0	0	0	0
<b>TOTALS</b>			<b>19</b>	<b>8-26</b>	<b>0-9</b>	<b>3-5</b>	<b>7</b>	<b>13</b>	<b>20</b>	<b>9</b>	<b>3</b>	<b>13</b>	<b>0</b>	<b>3</b>	<b>100</b>	

*Shooting By Period*

Period	FG	FG%	3FG	3FG%	FT	FT%
1st Qtr	5-13	38%	0-5	00%	2-3	67%
2nd Qtr	3-13	23%	0-4	00%	1-2	50%
1st Half	8-26	31%	0-9	00%	3-5	60%
Game	20-59	33.9%	2-21	09.5%	10-15	66.7%

*Deadball Rebounds: 2,0*  
*Last FG Half: QUC 2nd-00:33*

**Lincoln Memorial 21**

No.	Player	S	Pts	FG	3FG	FT	OR	DR	TR	PF	A	TO	Blk	Stl	Min	+/-
00	CAUDLE, KYNDALL	G	3	1-2	1-1	0-0	0	0	0	1	0	0	0	0	8	6
02	OGBURN, SEMAJIA	F	0	0-1	0-0	0-0	0	1	1	1	0	0	0	0	3	-3
04	KISER, LEXI	G	0	0-2	0-2	0-0	0	0	0	0	1	2	0	0	14	-5
15	MANEY, JORDAN	F	0	0-0	0-0	0-0	0	0	0	0	0	0	0	0	0	0
20	FLOWERS, LAUREN	G	1	0-2	0-0	1-4	0	0	0	2	1	0	0	1	11	-1
21	NEWSOME, SYDNEY	F	2	1-2	0-0	0-0	1	0	1	0	0	0	0	0	5	0
23	MCCOMBS, TONI	G	3	1-4	0-1	1-2	0	2	2	1	3	0	0	2	16	7
24	COTNER-BRABSON, TAYLOR	G	0	0-0	0-0	0-0	1	1	2	0	0	1	0	1	7	4
25	SPIKES, TYTIAIRA	G	0	0-0	0-0	0-0	0	0	0	0	0	1	0	0	1	0
30	QUARLES, SHERMERIA	F	4	1-3	0-0	2-2	3	2	5	1	1	4	1	2	13	5
34	JACHIMCZUK, MAGGIE	F	0	0-1	0-0	0-0	0	0	0	1	0	0	0	1	4	-5
35	PROFFITT, LINDSAY	G	8	2-5	2-4	2-2	0	3	3	0	0	2	0	3	19	2
	TEAM		0	0-0	0-0	0-0	0	2	2	0	0	0	0	0	0	0
<b>TOTALS</b>			<b>21</b>	<b>6-22</b>	<b>3-8</b>	<b>6-10</b>	<b>5</b>	<b>11</b>	<b>16</b>	<b>7</b>	<b>6</b>	<b>10</b>	<b>1</b>	<b>10</b>	<b>100</b>	

*Shooting By Period*

Period	FG	FG%	3FG	3FG%	FT	FT%
1st Qtr	3-10	30%	2-3	67%	0-2	00%
2nd Qtr	3-12	25%	1-5	20%	6-8	75%
1st Half	6-22	27%	3-8	38%	6-10	60%
Game	18-47	38.3%	6-14	42.9%	16-26	61.5%

*Deadball Rebounds: 5,0*  
*Last FG Half: LMU 2nd-03:49*

*Game Notes:*

Officials: Lee Hughes, Chris Tate, Christopher Klicko  
 Attendance: 667

Start Time: 01:59 PM ET  
 End Time: 03:44 PM ET  
 Game Duration: 1:45  
 Conference Game;

Score	1st	2nd	3rd	4th	TOT
QUC	12	7	14	19	<b>52</b>
LMU	8	13	17	20	<b>58</b>

Points from (This Period)	QUC	LMU
In the Paint	10	4
Off Turns	7	14
2nd Chance	9	2
Fast Break	1	4
Bench	4	12

**Official Box Score**  
**Queens (NC) vs Lincoln Memorial**  
**First Quarter Statistics Only**  
**December 07, 2019 at B. Frank Turner Arena - Harrogate, TN**



**Queens (NC) 12**

No.	Player	S	Pts	FG	3FG	FT	OR	DR	TR	PF	A	TO	Blk	Stl	Min	+/-
10	MOORE, CAITLYN	G	0	0-1	0-1	0-0	0	1	1	1	1	1	0	1	10	4
11	RAFLUND, JULIA	C	4	1-1	0-0	2-3	2	1	3	1	0	3	0	0	9	0
12	EANES, KRISTIAN	G	2	1-4	0-1	0-0	0	0	0	0	0	1	0	0	10	4
24	LEEDLE, KELSEY	G	2	1-3	0-2	0-0	1	0	1	0	0	1	0	0	9	0
32	GOLDEN, JAYMI	G	2	1-3	0-1	0-0	0	4	4	1	0	2	0	1	10	4
01	STEVENS, TAYLOR	G	0	0-0	0-0	0-0	0	0	0	0	0	0	0	0	1	4
03	MCMILLIAN, TIA	G	0	0-0	0-0	0-0	0	0	0	0	0	0	0	0	0	0
15	SUHONEN, ANNIKA	F	2	1-1	0-0	0-0	1	0	1	0	0	0	0	0	1	4
20	SEXTON, MADISON	F	0	0-0	0-0	0-0	0	0	0	0	0	0	0	0	0	0
TEAM							0	1	1	0		0				
<b>TOTALS</b>			<b>12</b>	<b>5-13</b>	<b>0-5</b>	<b>2-3</b>	<b>4</b>	<b>7</b>	<b>11</b>	<b>3</b>	<b>1</b>	<b>8</b>	<b>0</b>	<b>2</b>	<b>50</b>	

*Shooting By Period*

Period	FG	FG%	3FG	3FG%	FT	FT%
1st Qtr	5-13	38%	0-5	00%	2-3	67%
2nd Qtr	3-13	23%	0-4	00%	1-2	50%
1st Half	5-13	38%	0-5	00%	2-3	67%
1st Half	8-26	31%	0-9	00%	3-5	60%
Game	20-59	33.9%	2-21	09.5%	10-15	66.7%

*Deadball Rebounds: 2.0*

**Lincoln Memorial 8**

No.	Player	S	Pts	FG	3FG	FT	OR	DR	TR	PF	A	TO	Blk	Stl	Min	+/-
02	OGBURN, SEMAJIA	F	0	0-1	0-0	0-0	0	1	1	1	0	0	0	0	3	-3
04	KISER, LEXI	G	0	0-0	0-0	0-0	0	0	0	0	0	2	0	0	5	-8
20	FLOWERS, LAUREN	G	0	0-2	0-0	0-2	0	0	0	1	0	0	0	1	10	-4
34	JACHIMCZUK, MAGGIE	F	0	0-1	0-0	0-0	0	0	0	1	0	0	0	1	4	-5
35	PROFFITT, LINDSAY	G	3	1-2	1-2	0-0	0	2	2	0	0	2	0	1	10	-4
00	CAUDLE, KYNDALL	G	3	1-1	1-1	0-0	0	0	0	0	0	0	0	0	5	4
15	MANEY, JORDAN	F	0	0-0	0-0	0-0	0	0	0	0	0	0	0	0	0	0
21	NEWSOME, SYDNEY	F	0	0-0	0-0	0-0	0	0	0	0	0	0	0	0	1	-2
23	MCCOMBS, TONI	G	0	0-0	0-0	0-0	0	0	0	0	2	0	0	1	6	1
24	COTNER-BRABSON, TAYLOR	G	0	0-0	0-0	0-0	0	0	0	0	0	0	0	0	0	0
25	SPIKES, TYTIAIRA	G	0	0-0	0-0	0-0	0	0	0	0	0	0	0	0	0	0
30	QUARLES, SHERMERIA	F	2	1-3	0-0	0-0	1	1	2	1	1	2	1	2	7	1
TEAM							0	0	0	0		0				
<b>TOTALS</b>			<b>8</b>	<b>3-10</b>	<b>2-3</b>	<b>0-2</b>	<b>1</b>	<b>4</b>	<b>5</b>	<b>4</b>	<b>3</b>	<b>6</b>	<b>1</b>	<b>6</b>	<b>50</b>	

*Shooting By Period*

Period	FG	FG%	3FG	3FG%	FT	FT%
1st Qtr	3-10	30%	2-3	67%	0-2	00%
2nd Qtr	3-12	25%	1-5	20%	6-8	75%
1st Half	3-10	30%	2-3	67%	0-2	00%
1st Half	6-22	27%	3-8	38%	6-10	60%
Game	18-47	38.3%	6-14	42.9%	16-26	61.5%

*Deadball Rebounds: 5.0*

*Game Notes:*

Officials: Lee Hughes, Chris Tate, Christopher Klicko  
 Attendance: 667

Start Time: 01:59 PM ET

End Time: 03:44 PM ET

Game Duration: 1:45

Conference Game:

Score	1st	2nd	3rd	4th	TOT
QUC	12	7	14	19	<b>52</b>
LMU	8	13	17	20	<b>58</b>

Points from (This Period)	QUC	LMU
In the Paint	8	2
Off Turns	5	8
2nd Chance	6	0
Fast Break	0	3
Bench	2	5

**Official Play-By-Play**  
**Queens (NC) vs Lincoln Memorial**  
**First Quarter**  
**December 07, 2019 at B. Frank Turner Arena - Harrogate, TN**



**Period 1**

**Starters:**

**Queens (NC):** 10 MOORE, CAITLYN (G); 11 RAFLUND, JULIA (C); 12 EANES, KRISTIAN (G); 24 LEEDLE, KELSEY (G); 32 GOLDEN, JAYMI (G);  
**Lincoln Memorial:** 2 OGBURN, SEMAJIA (F); 4 KISER, LEXI (G); 20 FLOWERS, LAUREN (G); 34 JACHIMCZUK, MAGGIE (F); 35 PROFFITT, LINDSAY (G);

Time	VISITORS: Queens (NC)	Score	Margin	HOME: Lincoln Memorial
09:52	MISSED 3PTR by EANES, KRISTIAN			
09:47	REBOUND (OFF) by LEEDLE, KELSEY			
09:36	MISSED LAYUP by EANES, KRISTIAN			
09:32				REBOUND (DEF) by OGBURN, SEMAJIA
09:26				MISSED JUMPER by FLOWERS, LAUREN
09:22	REBOUND (DEF) by GOLDEN, JAYMI			
09:16	GOOD! JUMPER by GOLDEN, JAYMI	0-2	V 2	
08:42				MISSED LAYUP by FLOWERS, LAUREN
08:39	REBOUND (DEF) by GOLDEN, JAYMI			
08:36	FOUL (OFF) by GOLDEN, JAYMI			
08:36	TURNOVER (OFFENSIVE) by GOLDEN, JAYMI			
08:20	FOUL (PERSONAL) by MOORE, CAITLYN			
08:20				MISSED FT by FLOWERS, LAUREN
08:20				REBOUND (OFF) by TEAM
08:20				MISSED FT by FLOWERS, LAUREN
08:16	REBOUND (DEF) by RAFLUND, JULIA			
08:05				FOUL (PERSONAL) by FLOWERS, LAUREN
07:54	TURNOVER (BADPASS) by EANES, KRISTIAN			
07:54				STEAL by PROFFITT, LINDSAY
07:25				MISSED JUMPER by OGBURN, SEMAJIA
07:20	REBOUND (DEF) by MOORE, CAITLYN			
07:16	MISSED 3PTR by LEEDLE, KELSEY			
07:15	REBOUND (OFF) by RAFLUND, JULIA			
07:15				FOUL (PERSONAL) by OGBURN, SEMAJIA
07:15	MISSED FT by RAFLUND, JULIA			
07:15	REBOUND (OFF) by TEAM			
07:15	GOOD! FT by RAFLUND, JULIA	0-3	V 3	
07:15				SUB OUT: OGBURN, SEMAJIA
07:15				SUB IN: QUARLES, SHERMERIA
06:52				MISSED JUMPER by JACHIMCZUK, MAGGIE
06:50				REBOUND (OFF) by QUARLES, SHERMERIA
06:50				TURNOVER (TRAVEL) by QUARLES, SHERMERIA
06:35	TURNOVER (LOSTBALL) by RAFLUND, JULIA			
06:35				STEAL by JACHIMCZUK, MAGGIE
06:21				TURNOVER (TRAVEL) by KISER, LEXI
06:01	MISSED LAYUP by EANES, KRISTIAN			
06:00	REBOUND (OFF) by RAFLUND, JULIA			
06:00	GOOD! LAYUP by RAFLUND, JULIA	0-5	V 5	
06:00				FOUL (PERSONAL) by JACHIMCZUK, MAGGIE
06:00				SUB OUT: JACHIMCZUK, MAGGIE
06:00				SUB IN: MCCOMBS, TONI
06:00	GOOD! FT by RAFLUND, JULIA	0-6	V 6	
05:41				MISSED JUMPER by QUARLES, SHERMERIA
05:37	REBOUND (DEF) by GOLDEN, JAYMI			
05:29	GOOD! LAYUP by LEEDLE, KELSEY [PNT]	0-8	V 8	
05:01				TURNOVER (LOSTBALL) by KISER, LEXI
05:01	STEAL by GOLDEN, JAYMI			
04:56	TURNOVER (TRAVEL) by GOLDEN, JAYMI			
04:56				
04:56				SUB OUT: KISER, LEXI
04:56				SUB IN: CAUDLE, KYNDALL
04:42				TURNOVER (OTHER) by PROFFITT, LINDSAY
04:23	TURNOVER (LOSTBALL) by MOORE, CAITLYN			
04:23				STEAL by QUARLES, SHERMERIA
03:56		3-8	V 5	GOOD! 3PTR by PROFFITT, LINDSAY
03:56				ASSIST by QUARLES, SHERMERIA
03:33	TURNOVER (LOSTBALL) by RAFLUND, JULIA			
03:33				STEAL by QUARLES, SHERMERIA
03:26		6-8	V 2	GOOD! 3PTR by CAUDLE, KYNDALL [FB]
03:26				ASSIST by MCCOMBS, TONI
03:05	TURNOVER (LOSTBALL) by RAFLUND, JULIA			
03:05				STEAL by FLOWERS, LAUREN
02:43				MISSED JUMPER by QUARLES, SHERMERIA
02:39	REBOUND (DEF) by GOLDEN, JAYMI			
02:32	MISSED 3PTR by GOLDEN, JAYMI			
02:28				REBOUND (DEF) by PROFFITT, LINDSAY
02:12				MISSED 3PTR by PROFFITT, LINDSAY
02:08	REBOUND (DEF) by TEAM			
01:54	TURNOVER (LOSTBALL) by LEEDLE, KELSEY			
01:54				STEAL by MCCOMBS, TONI

Time	VISITORS: Queens (NC)	Score	Margin	HOME: Lincoln Memorial
01:37		8-8	T	GOOD! LAYUP by QUARLES, SHERMERIA
01:37				ASSIST by MCCOMBS, TONI
01:19	MISSED 3PTR by LEEDLE, KELSEY			
01:18				REBOUND (DEF) by QUARLES, SHERMERIA
01:18	FOUL (PERSONAL) by RAFLUND, JULIA			
01:18	SUB OUT: RAFLUND, JULIA			
01:18	SUB OUT: LEEDLE, KELSEY			
01:18	SUB IN: STEVENS, TAYLOR			
01:18	SUB IN: SUHONEN, ANNIKA			
00:55				TURNOVER (LOSTBALL) by QUARLES, SHERMERIA
00:55	STEAL by MOORE, CAITLYN			
00:48	MISSED JUMPER by GOLDEN, JAYMI			
00:48				BLOCK by QUARLES, SHERMERIA
00:44	REBOUND (OFF) by SUHONEN, ANNIKA			
00:44	GOOD! JUMPER by SUHONEN, ANNIKA	8-10	V 2	
00:44				FOUL (PERSONAL) by QUARLES, SHERMERIA
00:44				SUB OUT: QUARLES, SHERMERIA
00:44				SUB IN: NEWSOME, SYDNEY
00:30	GOOD! LAYUP by EANES, KRISTIAN	8-12	V 4	
00:30	ASSIST by MOORE, CAITLYN			
00:09				TURNOVER (BADPASS) by PROFFITT, LINDSAY
00:00	MISSED 3PTR by MOORE, CAITLYN			
00:00				REBOUND (DEF) by PROFFITT, LINDSAY

### Queens (NC) 12, Lincoln Memorial 8

Points from (This Period)	QUC	LMU
In the Paint	8	2
Off Turns	5	8
2nd Chance	6	0
Fast Break	0	3
Bench	2	5

**Official Box Score**  
**Queens (NC) vs Lincoln Memorial**  
**Second Quarter Statistics Only**  
**December 07, 2019 at B. Frank Turner Arena - Harrogate, TN**



### Queens (NC) 7

No.	Player	S	Pts	FG	3FG	FT	OR	DR	TR	PF	A	TO	Blk	Stl	Min	+/-
10	MOORE, CAITLYN	G	0	0-0	0-0	0-0	0	0	0	2	0	0	0	0	3	-1
11	RAFLUND, JULIA	C	0	0-2	0-0	0-0	0	0	0	0	0	0	0	0	5	-4
12	EANES, KRISTIAN	G	3	1-3	0-1	1-2	0	2	2	0	0	0	0	0	8	-3
24	LEEDLE, KELSEY	G	0	0-0	0-0	0-0	0	0	0	0	1	0	0	1	6	-4
32	GOLDEN, JAYMI	G	2	1-4	0-1	0-0	0	0	0	0	0	3	0	0	7	-5
01	STEVENS, TAYLOR	G	0	0-2	0-1	0-0	0	1	1	2	1	2	0	0	10	-6
03	MCMILLIAN, TIA	G	0	0-1	0-1	0-0	0	2	2	1	0	0	0	0	5	-5
15	SUHONEN, ANNIKA	F	0	0-0	0-0	0-0	0	0	0	0	0	0	0	0	0	-1
20	SEXTON, MADISON	F	2	1-1	0-0	0-0	1	1	2	1	0	0	0	0	5	-1
TEAM							2	0	2	0		0				
<b>TOTALS</b>			<b>7</b>	<b>3-13</b>	<b>0-4</b>	<b>1-2</b>	<b>3</b>	<b>6</b>	<b>9</b>	<b>6</b>	<b>2</b>	<b>5</b>	<b>0</b>	<b>1</b>	<b>50</b>	

*Shooting By Period*

Period	FG	FG%	3FG	3FG%	FT	FT%
3rd Qtr	4-16	25%	1-4	25%	5-5	100%
4th Qtr	8-17	47%	1-8	13%	2-5	40%
2nd Half	3-13	23%	0-4	00%	1-2	50%
2nd Half	12-33	36%	2-12	17%	7-10	70%
Game	20-59	33.9%	2-21	09.5%	10-15	66.7%

Deadball Rebounds: 2.0

### Lincoln Memorial 13

No.	Player	S	Pts	FG	3FG	FT	OR	DR	TR	PF	A	TO	Blk	Stl	Min	+/-
02	OGBURN, SEMAJIA	F	0	0-0	0-0	0-0	0	0	0	0	0	0	0	0	0	0
04	KISER, LEXI	G	0	0-2	0-2	0-0	0	0	0	0	1	0	0	0	9	3
20	FLOWERS, LAUREN	G	1	0-0	0-0	1-2	0	0	0	1	1	0	0	0	1	3
34	JACHIMCZUK, MAGGIE	F	0	0-0	0-0	0-0	0	0	0	0	0	0	0	0	0	0
35	PROFFITT, LINDSAY	G	5	1-3	1-2	2-2	0	1	1	0	0	0	0	2	9	6
00	CAUDLE, KYNDALL	G	0	0-1	0-0	0-0	0	0	0	1	0	0	0	0	3	2
15	MANEY, JORDAN	F	0	0-0	0-0	0-0	0	0	0	0	0	0	0	0	0	0
21	NEWSOME, SYDNEY	F	2	1-2	0-0	0-0	1	0	1	0	0	0	0	0	4	2
23	MCCOMBS, TONI	G	3	1-4	0-1	1-2	0	2	2	1	1	0	0	1	10	6
24	COTNER-BRABSON, TAYLOR	G	0	0-0	0-0	0-0	1	1	2	0	0	1	0	1	7	4
25	SPIKES, TYTIAIRA	G	0	0-0	0-0	0-0	0	0	0	0	0	1	0	0	1	0
30	QUARLES, SHERMERIA	F	2	0-0	0-0	2-2	2	1	3	0	0	2	0	0	6	4
TEAM							0	2	2	0		0				
<b>TOTALS</b>			<b>13</b>	<b>3-12</b>	<b>1-5</b>	<b>6-8</b>	<b>4</b>	<b>7</b>	<b>11</b>	<b>3</b>	<b>3</b>	<b>4</b>	<b>0</b>	<b>4</b>	<b>50</b>	

*Shooting By Period*

Period	FG	FG%	3FG	3FG%	FT	FT%
3rd Qtr	7-16	44%	2-3	67%	1-4	25%
4th Qtr	5-9	56%	1-3	33%	9-12	75%
2nd Half	3-12	25%	1-5	20%	6-8	75%
2nd Half	12-25	48%	3-6	50%	10-16	63%
Game	18-47	38.3%	6-14	42.9%	16-26	61.5%

Deadball Rebounds: 5.0

*Game Notes:*

Officials: Lee Hughes, Chris Tate, Christopher Klicko  
 Attendance: 667

Start Time: 01:59 PM ET  
 End Time: 03:44 PM ET  
 Game Duration: 1:45  
 Conference Game;

Score	1st	2nd	3rd	4th	TOT
QUC	12	7	14	19	<b>52</b>
LMU	8	13	17	20	<b>58</b>

Points from (This Period)	QUC	LMU
In the Paint	2	2
Off Turns	2	6
2nd Chance	3	2
Fast Break	1	1
Bench	2	7

**Official By-By-Play**  
**Queens (NC) vs Lincoln Memorial**  
**Second Quarter**  
**December 07, 2019 at B. Frank Turner Arena - Harrogate, TN**



**Period 2**

**Starters:**

**Queens (NC):** 10 MOORE, CAITLYN (G); 11 RAFLUND, JULIA (C); 12 EANES, KRISTIAN (G); 24 LEEDLE, KELSEY (G); 32 GOLDEN, JAYMI (G);

**Lincoln Memorial:** 2 OGBURN, SEMAJIA (F); 4 KISER, LEXI (G); 20 FLOWERS, LAUREN (G); 34 JACHIMCZUK, MAGGIE (F); 35 PROFFITT, LINDSAY (G);

Time	VISITORS: Queens (NC)	Score	Margin	HOME: Lincoln Memorial
09:44	TURNOVER (BADPASS) by GOLDEN, JAYMI			
09:44				STEAL by PROFFITT, LINDSAY
09:40	FOUL (PERSONAL) by MOORE, CAITLYN			
09:40	SUB OUT: MOORE, CAITLYN			
09:40	SUB IN: MCMILLIAN, TIA			
09:40		9-12	V 3	GOOD! FT by FLOWERS, LAUREN [FB]
09:40				MISSED FT by FLOWERS, LAUREN
09:38				REBOUND (OFF) by NEWSOME, SYDNEY
09:38	SUB OUT: SUHONEN, ANNIKA			
09:38	SUB IN: SEXTON, MADISON			
09:31		11-12	V 1	GOOD! LAYUP by NEWSOME, SYDNEY
09:31				ASSIST by FLOWERS, LAUREN
09:08				FOUL (PERSONAL) by FLOWERS, LAUREN
09:08				SUB OUT: FLOWERS, LAUREN
09:08				SUB IN: KISER, LEXI
08:55	MISSED JUMPER by GOLDEN, JAYMI			
08:54	REBOUND (OFF) by SEXTON, MADISON			
08:54				FOUL (PERSONAL) by CAUDLE, KYNDALL
08:45	GOOD! JUMPER by SEXTON, MADISON	11-14	V 3	
08:45	ASSIST by STEVENS, TAYLOR			
08:34				MISSED 3PTR by PROFFITT, LINDSAY
08:30	REBOUND (DEF) by EANES, KRISTIAN			
08:19	MISSED 3PTR by MCMILLIAN, TIA			
08:18				REBOUND (DEF) by TEAM
07:52				MISSED LAYUP by NEWSOME, SYDNEY
07:46	REBOUND (DEF) by EANES, KRISTIAN			
07:40	MISSED LAYUP by GOLDEN, JAYMI			
07:39	REBOUND (OFF) by TEAM			
07:36				FOUL (PERSONAL) by MCCOMBS, TONI
07:36	MISSED FT by EANES, KRISTIAN			
07:36	REBOUND (OFF) by TEAM			
07:36	GOOD! FT by EANES, KRISTIAN [FB]	11-15	V 4	
07:18				MISSED LAYUP by CAUDLE, KYNDALL
07:14	REBOUND (DEF) by STEVENS, TAYLOR			
07:07	TURNOVER (LOSTBALL) by GOLDEN, JAYMI			
07:07				STEAL by MCCOMBS, TONI
06:58	FOUL (PERSONAL) by STEVENS, TAYLOR			
06:58		12-15	V 3	GOOD! FT by PROFFITT, LINDSAY
06:58		13-15	V 2	GOOD! FT by PROFFITT, LINDSAY
06:58				SUB OUT: CAUDLE, KYNDALL
06:58				SUB IN: COTNER-BRABSON, TAYLOR
06:39	MISSED LAYUP by EANES, KRISTIAN			
06:35				REBOUND (DEF) by MCCOMBS, TONI
06:31				MISSED JUMPER by MCCOMBS, TONI
06:29				REBOUND (OFF) by COTNER-BRABSON, TAYLOR
06:29	FOUL (PERSONAL) by SEXTON, MADISON			
06:29				SUB OUT: NEWSOME, SYDNEY
06:29				SUB IN: QUARLES, SHERMERIA
06:29	SUB OUT: EANES, KRISTIAN			
06:29	SUB OUT: SEXTON, MADISON			
06:29	SUB IN: RAFLUND, JULIA			
06:29	SUB IN: LEEDLE, KELSEY			
06:17				MISSED 3PTR by KISER, LEXI
06:14	REBOUND (DEF) by MCMILLIAN, TIA			
05:47	MISSED 3PTR by GOLDEN, JAYMI			
05:43				REBOUND (DEF) by COTNER-BRABSON, TAYLOR
05:21	FOUL (PERSONAL) by MCMILLIAN, TIA			
05:07				MISSED 3PTR by KISER, LEXI
05:03	REBOUND (DEF) by MCMILLIAN, TIA			
04:52	MISSED 3PTR by STEVENS, TAYLOR			
04:49				REBOUND (DEF) by PROFFITT, LINDSAY
04:39		16-15	H 1	GOOD! 3PTR by PROFFITT, LINDSAY
04:39				ASSIST by MCCOMBS, TONI
04:22	TURNOVER (BADPASS) by GOLDEN, JAYMI			
04:22				STEAL by PROFFITT, LINDSAY
04:18				MISSED LAYUP by PROFFITT, LINDSAY
04:17				REBOUND (OFF) by QUARLES, SHERMERIA
04:17				TURNOVER (TRAVEL) by QUARLES, SHERMERIA
04:17				
04:17	SUB OUT: MCMILLIAN, TIA			



Time	VISITORS: Queens (NC)	Score	Margin	HOME: Lincoln Memorial
04:17	SUB OUT: GOLDEN, JAYMI			
04:17	SUB IN: MOORE, CAITLYN			
04:17	SUB IN: EANES, KRISTIAN			
04:00	MISSED LAYUP by RAFLUND, JULIA			
03:57				REBOUND (DEF) by MCCOMBS, TONI
03:49		18-15	H 3	GOOD! JUMPER by MCCOMBS, TONI
03:49				ASSIST by KISER, LEXI
03:34	MISSED 3PTR by EANES, KRISTIAN			
03:32				REBOUND (DEF) by TEAM
03:17				TURNOVER (TRAVEL) by QUARLES, SHERMERIA
03:05	MISSED LAYUP by RAFLUND, JULIA			
03:04	REBOUND (OFF) by TEAM			
02:57	TURNOVER (LOSTBALL) by STEVENS, TAYLOR			
02:57				STEAL by COTNER-BRABSON, TAYLOR
02:33	FOUL (PERSONAL) by STEVENS, TAYLOR			
02:33				MISSED FT by MCCOMBS, TONI
02:33				REBOUND (OFF) by TEAM
02:33		19-15	H 4	GOOD! FT by MCCOMBS, TONI
02:33	SUB OUT: RAFLUND, JULIA			
02:33	SUB IN: SEXTON, MADISON			
02:16	GOOD! JUMPER by EANES, KRISTIAN	19-17	H 2	
02:16	ASSIST by LEEDLE, KELSEY			
01:53				MISSED 3PTR by MCCOMBS, TONI
01:49	REBOUND (DEF) by SEXTON, MADISON			
01:47	TURNOVER (BADPASS) by STEVENS, TAYLOR			
01:22				MISSED JUMPER by MCCOMBS, TONI
01:22				REBOUND (OFF) by QUARLES, SHERMERIA
01:22	FOUL (PERSONAL) by MOORE, CAITLYN			
01:22				SUB OUT: PROFFITT, LINDSAY
01:22				SUB IN: SPIKES, TYTIAIRA
01:22	SUB OUT: MOORE, CAITLYN			
01:22	SUB IN: GOLDEN, JAYMI			
01:22		20-17	H 3	GOOD! FT by QUARLES, SHERMERIA
01:22		21-17	H 4	GOOD! FT by QUARLES, SHERMERIA
00:56	MISSED LAYUP by STEVENS, TAYLOR			
00:47				REBOUND (DEF) by QUARLES, SHERMERIA
00:45				TURNOVER (LOSTBALL) by SPIKES, TYTIAIRA
00:45	STEAL by LEEDLE, KELSEY			
00:45	SUB OUT: SEXTON, MADISON			
00:45	SUB IN: RAFLUND, JULIA			
00:33	GOOD! JUMPER by GOLDEN, JAYMI	21-19	H 2	
00:01				TURNOVER (TRAVEL) by COTNER-BRABSON, TAYLOR

### Queens (NC) 19, Lincoln Memorial 21

Points from (This Period)	QUC	LMU
In the Paint	2	2
Off Turns	2	6
2nd Chance	3	2
Fast Break	1	1
Bench	2	7

**Official Box Score**  
**Queens (NC) vs Lincoln Memorial**  
**Second Half Statistics Only**  
**December 07, 2019 at B. Frank Turner Arena - Harrogate, TN**



**Queens (NC) 33**

No.	Player	S	Pts	FG	3FG	FT	OR	DR	TR	PF	A	TO	Blk	Stl	Min	+/-
01	STEVENS, TAYLOR	G	6	2-4	1-3	1-2	2	1	3	3	2	2	0	0	15	-1
03	MCMILLIAN, TIA	G	0	0-0	0-0	0-0	0	0	0	0	0	0	0	0	2	-1
10	MOORE, CAITLYN	G	0	0-5	0-2	0-0	1	3	4	2	1	2	0	1	19	-6
11	RAFLUND, JULIA	C	11	3-3	0-0	5-7	2	4	6	1	3	1	1	2	18	-2
12	EANES, KRISTIAN	G	11	5-9	0-0	1-1	1	1	2	2	1	1	0	3	19	-2
15	SUHONEN, ANNIKA	F	0	0-1	0-1	0-0	0	0	0	0	0	0	0	0	2	-2
20	SEXTON, MADISON	F	0	0-0	0-0	0-0	0	0	0	0	0	0	0	0	0	0
24	LEEDLE, KELSEY	G	0	0-2	0-2	0-0	0	1	1	3	0	1	0	0	13	-1
32	GOLDEN, JAYMI	G	5	2-9	1-4	0-0	0	0	0	2	2	2	0	0	12	-5
	TEAM		0	0-0	0-0	0-0	1	1	2	0	0	0	0	0	0	0
<b>TOTALS</b>			<b>33</b>	<b>12-33</b>	<b>2-12</b>	<b>7-10</b>	<b>7</b>	<b>11</b>	<b>18</b>	<b>13</b>	<b>9</b>	<b>9</b>	<b>1</b>	<b>6</b>	<b>100</b>	

*Shooting By Period*

Period	FG	FG%	3FG	3FG%	FT	FT%
3rd Qtr	4-16	25%	1-4	25%	5-5	100%
4th Qtr	8-17	47%	1-8	13%	2-5	40%
2nd Half	12-33	36%	2-12	17%	7-10	70%
Game	20-59	33.9%	2-21	09.5%	10-15	66.7%

*Deadball Rebounds: 2,0*  
*Last FG Half: QUC 4th-00:06*

**Lincoln Memorial 37**

No.	Player	S	Pts	FG	3FG	FT	OR	DR	TR	PF	A	TO	Blk	Stl	Min	+/-
00	CAUDLE, KYNDALL	G	9	3-3	1-1	2-2	0	1	1	0	0	1	0	0	9	3
02	OGBURN, SEMAJIA	F	0	0-0	0-0	0-0	0	0	0	0	0	0	0	0	0	0
04	KISER, LEXI	G	0	0-0	0-0	0-0	0	0	0	0	0	0	0	0	0	0
15	MANEY, JORDAN	F	0	0-1	0-0	0-0	0	2	2	1	0	1	0	0	4	7
20	FLOWERS, LAUREN	G	13	4-8	2-3	3-4	1	2	3	1	2	4	1	1	20	4
21	NEWSOME, SYDNEY	F	3	0-1	0-0	3-6	0	2	2	1	2	1	0	0	16	-3
23	MCCOMBS, TONI	G	8	3-6	0-1	2-4	0	2	2	1	5	3	0	1	20	4
24	COTNER-BRABSON, TAYLOR	G	0	0-0	0-0	0-0	0	0	0	0	0	0	0	0	0	0
25	SPIKES, TYTIAIRA	G	0	0-1	0-0	0-0	0	1	1	0	0	0	0	0	6	4
30	QUARLES, SHERMERIA	F	4	2-4	0-0	0-0	3	4	7	3	0	1	0	0	15	-1
34	JACHIMCZUK, MAGGIE	F	0	0-0	0-0	0-0	0	2	2	4	0	0	0	0	5	5
35	PROFFITT, LINDSAY	G	0	0-1	0-1	0-0	1	0	1	0	0	0	0	0	5	-3
	TEAM		0	0-0	0-0	0-0	0	1	1	0	0	0	0	0	0	0
<b>TOTALS</b>			<b>37</b>	<b>12-25</b>	<b>3-6</b>	<b>10-16</b>	<b>5</b>	<b>17</b>	<b>22</b>	<b>11</b>	<b>9</b>	<b>11</b>	<b>1</b>	<b>2</b>	<b>100</b>	

*Shooting By Period*

Period	FG	FG%	3FG	3FG%	FT	FT%
3rd Qtr	7-16	44%	2-3	67%	1-4	25%
4th Qtr	5-9	56%	1-3	33%	9-12	75%
2nd Half	12-25	48%	3-6	50%	10-16	63%
Game	18-47	38.3%	6-14	42.9%	16-26	61.5%

*Deadball Rebounds: 5,0*  
*Last FG Half: LMU 4th-02:37*

Game Notes:

Officials: Lee Hughes, Chris Tate, Christopher Klicko  
 Attendance: 667

Start Time: 01:59 PM ET  
 End Time: 03:44 PM ET  
 Game Duration: 1:45  
 Conference Game;

Score	1st	2nd	3rd	4th	TOT
QUC	12	7	14	19	52
LMU	8	13	17	20	58

Points from (This Period)	QUC	LMU
In the Paint	20	14
Off Turns	7	9
2nd Chance	11	3
Fast Break	8	6
Bench	6	24

**Official Box Score**  
**Queens (NC) vs Lincoln Memorial**  
**Third Quarter Statistics Only**  
**December 07, 2019 at B. Frank Turner Arena - Harrogate, TN**



**Queens (NC) 33**

No.	Player	S	Pts	FG	3FG	FT	OR	DR	TR	PF	A	TO	Blk	Stl	Min	+/-
10	MOORE, CAITLYN	G	0	0-3	0-0	0-0	0	3	3	0	0	1	0	1	10	-3
11	RAFLUND, JULIA	C	4	0-0	0-0	4-4	1	2	3	1	1	0	1	0	9	-2
12	EANES, KRISTIAN	G	5	2-5	0-0	1-1	1	1	2	0	0	1	0	2	10	-3
24	LEEDLE, KELSEY	G	0	0-1	0-1	0-0	0	1	1	2	0	1	0	0	10	-3
32	GOLDEN, JAYMI	G	0	0-3	0-0	0-0	0	0	0	2	0	1	0	0	3	-5
01	STEVENS, TAYLOR	G	5	2-4	1-3	0-0	1	0	1	0	1	2	0	0	7	2
03	MCMILLIAN, TIA	G	0	0-0	0-0	0-0	0	0	0	0	0	0	0	0	0	0
15	SUHONEN, ANNIKA	F	0	0-0	0-0	0-0	0	0	0	0	0	0	0	0	1	-1
20	SEXTON, MADISON	F	0	0-0	0-0	0-0	0	0	0	0	0	0	0	0	0	0
TEAM							0	1	1	0		0				
<b>TOTALS</b>			<b>14</b>	<b>4-16</b>	<b>1-4</b>	<b>5-5</b>	<b>3</b>	<b>8</b>	<b>11</b>	<b>5</b>	<b>2</b>	<b>6</b>	<b>1</b>	<b>3</b>	<b>50</b>	

*Shooting By Period*

Period	FG	FG%	3FG	3FG%	FT	FT%
2nd Half	0-0	0%	0-0	0%	0-0	0%
Game	20-59	33.9%	2-21	09.5%	10-15	66.7%

*Deadball Rebounds: 2,0*

**Lincoln Memorial 37**

No.	Player	S	Pts	FG	3FG	FT	OR	DR	TR	PF	A	TO	Blk	Stl	Min	+/-
02	OGBURN, SEMAJIA	F	0	0-0	0-0	0-0	0	0	0	0	0	0	0	0	0	0
04	KISER, LEXI	G	0	0-0	0-0	0-0	0	0	0	0	0	0	0	0	0	0
20	FLOWERS, LAUREN	G	9	3-6	2-2	1-2	1	1	2	1	1	2	1	0	10	3
34	JACHIMCZUK, MAGGIE	F	0	0-0	0-0	0-0	0	2	2	2	0	0	0	0	3	5
35	PROFFITT, LINDSAY	G	0	0-0	0-0	0-0	1	0	1	0	0	0	0	0	4	-1
00	CAUDLE, KYNDALL	G	0	0-0	0-0	0-0	0	0	0	0	0	0	0	0	0	0
15	MANEY, JORDAN	F	0	0-1	0-0	0-0	0	2	2	1	0	1	0	0	4	7
21	NEWSOME, SYDNEY	F	0	0-1	0-0	0-0	0	1	1	1	1	1	0	0	6	-4
23	MCCOMBS, TONI	G	6	3-5	0-1	0-2	0	2	2	0	2	2	0	1	10	3
24	COTNER-BRABSON, TAYLOR	G	0	0-0	0-0	0-0	0	0	0	0	0	0	0	0	0	0
25	SPIKES, TYTIAIRA	G	0	0-1	0-0	0-0	0	1	1	0	0	0	0	0	6	4
30	QUARLES, SHERMERIA	F	2	1-2	0-0	0-0	1	0	1	1	0	1	0	0	7	-2
TEAM							0	0	0	0		0				
<b>TOTALS</b>			<b>17</b>	<b>7-16</b>	<b>2-3</b>	<b>1-4</b>	<b>3</b>	<b>9</b>	<b>12</b>	<b>6</b>	<b>4</b>	<b>7</b>	<b>1</b>	<b>1</b>	<b>50</b>	

*Shooting By Period*

Period	FG	FG%	3FG	3FG%	FT	FT%
2nd Half	0-0	0%	0-0	0%	0-0	0%
Game	18-47	38.3%	6-14	42.9%	16-26	61.5%

*Deadball Rebounds: 5,0*

*Game Notes:*

Officials: Lee Hughes, Chris Tate, Christopher Klicko  
 Attendance: 667

Start Time: 01:59 PM ET  
 End Time: 03:44 PM ET  
 Game Duration: 1:45  
 Conference Game;

Score	1st	2nd	3rd	4th	TOT
QUC	12	7	14	19	<b>52</b>
LMU	8	13	17	20	<b>58</b>

Points from (This Period)	QUC	LMU
In the Paint	6	6
Off Turns	5	3
2nd Chance	5	3
Fast Break	4	2
Bench	5	8

**Official Play-By-Play**  
**Queens (NC) vs Lincoln Memorial**  
**Third Quarter**  
**December 07, 2019 at B. Frank Turner Arena - Harrogate, TN**



**Period 3**

**Starters:**

**Queens (NC):** 10 MOORE, CAITLYN (G); 11 RAFLUND, JULIA (C); 12 EANES, KRISTIAN (G); 24 LEEDLE, KELSEY (G); 32 GOLDEN, JAYMI (G);

**Lincoln Memorial:** 2 OGBURN, SEMAJIA (F); 4 KISER, LEXI (G); 20 FLOWERS, LAUREN (G); 34 JACHIMCZUK, MAGGIE (F); 35 PROFFITT, LINDSAY (G);

Time	VISITORS: Queens (NC)	Score	Margin	HOME: Lincoln Memorial
10:00				SUB OUT: KISER, LEXI
10:00				SUB OUT: COTNER-BRABSON, TAYLOR
10:00				SUB OUT: QUARLES, SHERMERIA
10:00				SUB IN: MANEY, JORDAN
10:00				SUB IN: FLOWERS, LAUREN
10:00				SUB IN: JACHIMCZUK, MAGGIE
10:00	SUB OUT: STEVENS, TAYLOR			
10:00	SUB IN: MOORE, CAITLYN			
09:51		23-19	H 4	GOOD! JUMPER by MCCOMBS, TONI
09:32	MISSED JUMPER by GOLDEN, JAYMI			
09:27				REBOUND (DEF) by MANEY, JORDAN
09:14				MISSED JUMPER by FLOWERS, LAUREN
09:10	REBOUND (DEF) by MOORE, CAITLYN			
09:05	FOUL (OFF) by GOLDEN, JAYMI			
09:05	TURNOVER (OFFENSIVE) by GOLDEN, JAYMI			
08:53				MISSED JUMPER by MANEY, JORDAN
08:49	REBOUND (DEF) by MOORE, CAITLYN			
08:38	MISSED JUMPER by MOORE, CAITLYN			
08:34				REBOUND (DEF) by JACHIMCZUK, MAGGIE
08:21	FOUL (PERSONAL) by GOLDEN, JAYMI			
08:11				MISSED LAYUP by FLOWERS, LAUREN
08:07	REBOUND (DEF) by EANES, KRISTIAN			
07:57				FOUL (PERSONAL) by JACHIMCZUK, MAGGIE
07:57	GOOD! FT by RAFLUND, JULIA	23-20	H 3	
07:57	GOOD! FT by RAFLUND, JULIA	23-21	H 2	
07:44				MISSED JUMPER by SPIKES, TYTIAIRA
07:42	REBOUND (DEF) by TEAM			
07:25	MISSED JUMPER by EANES, KRISTIAN			
07:21				REBOUND (DEF) by JACHIMCZUK, MAGGIE
07:16		25-21	H 4	GOOD! LAYUP by FLOWERS, LAUREN
07:07	MISSED JUMPER by GOLDEN, JAYMI			
07:03				REBOUND (DEF) by MCCOMBS, TONI
06:56		28-21	H 7	GOOD! 3PTR by FLOWERS, LAUREN
06:56				ASSIST by MCCOMBS, TONI
06:41	MISSED JUMPER by GOLDEN, JAYMI			
06:39	REBOUND (OFF) by RAFLUND, JULIA			
06:39				FOUL (PERSONAL) by JACHIMCZUK, MAGGIE
06:39				SUB OUT: JACHIMCZUK, MAGGIE
06:39				SUB IN: QUARLES, SHERMERIA
06:39	SUB OUT: GOLDEN, JAYMI			
06:39	SUB IN: STEVENS, TAYLOR			
06:39				FOUL (PERSONAL) by QUARLES, SHERMERIA
06:34	MISSED 3PTR by LEEDLE, KELSEY			
06:31				REBOUND (DEF) by MANEY, JORDAN
06:23		30-21	H 9	GOOD! JUMPER by MCCOMBS, TONI
06:17	TURNOVER (BADPASS) by MOORE, CAITLYN			
06:17				STEAL by MCCOMBS, TONI
06:12				FOUL (OFF) by MANEY, JORDAN
06:12				TURNOVER (OFFENSIVE) by MANEY, JORDAN
05:57	TURNOVER (TRAVEL) by STEVENS, TAYLOR			
05:57				SUB OUT: MANEY, JORDAN
05:57				SUB IN: NEWSOME, SYDNEY
05:43				MISSED LAYUP by FLOWERS, LAUREN
05:43	BLOCK by RAFLUND, JULIA			
05:42				REBOUND (OFF) by FLOWERS, LAUREN
05:42				TURNOVER (OTHER) by FLOWERS, LAUREN
05:32	FOUL (OFF) by LEEDLE, KELSEY			
05:32	TURNOVER (OFFENSIVE) by LEEDLE, KELSEY			
05:18		32-21	H 11	GOOD! LAYUP by MCCOMBS, TONI
05:18				ASSIST by FLOWERS, LAUREN
04:59	GOOD! 3PTR by STEVENS, TAYLOR	32-24	H 8	
04:59	ASSIST by RAFLUND, JULIA			
04:59	TIMEOUT 30SEC			
04:34				MISSED JUMPER by MCCOMBS, TONI
04:30	REBOUND (DEF) by RAFLUND, JULIA			
04:21	MISSED JUMPER by MOORE, CAITLYN			
04:16	REBOUND (OFF) by STEVENS, TAYLOR			
04:16	GOOD! LAYUP by STEVENS, TAYLOR	32-26	H 6	
03:51				TURNOVER (LOSTBALL) by FLOWERS, LAUREN
03:51	STEAL by EANES, KRISTIAN			

Time	VISITORS: Queens (NC)	Score	Margin	HOME: Lincoln Memorial
03:44	MISSED LAYUP by EANES, KRISTIAN			
03:41				REBOUND (DEF) by SPIKES, TYTIAIRA
03:40				TURNOVER (BADPASS) by NEWSOME, SYDNEY
03:40	STEAL by MOORE, CAITLYN			
03:35	TURNOVER (TRAVEL) by EANES, KRISTIAN			
03:35				SUB OUT: SPIKES, TYTIAIRA
03:35				SUB IN: PROFFITT, LINDSAY
03:25	FOUL (PERSONAL) by LEEDLE, KELSEY			
03:25		33-26	H 7	GOOD! FT by FLOWERS, LAUREN
03:24				MISSED FT by FLOWERS, LAUREN
03:23	REBOUND (DEF) by MOORE, CAITLYN			
03:14	MISSED 3PTR by STEVENS, TAYLOR			
03:10				REBOUND (DEF) by MCCOMBS, TONI
02:55				MISSED 3PTR by MCCOMBS, TONI
02:50				REBOUND (OFF) by PROFFITT, LINDSAY
02:39		36-26	H 10	GOOD! 3PTR by FLOWERS, LAUREN
02:39				ASSIST by MCCOMBS, TONI
02:16	MISSED JUMPER by MOORE, CAITLYN			
02:13				REBOUND (DEF) by FLOWERS, LAUREN
02:07				MISSED LAYUP by NEWSOME, SYDNEY
02:04				REBOUND (OFF) by QUARLES, SHERMERIA
02:03				MISSED JUMPER by QUARLES, SHERMERIA
02:02	REBOUND (DEF) by RAFLUND, JULIA			
02:02				FOUL (PERSONAL) by NEWSOME, SYDNEY
02:02	GOOD! FT by RAFLUND, JULIA [FB]	36-27	H 9	
02:02	GOOD! FT by RAFLUND, JULIA [FB]	36-28	H 8	
01:53				TURNOVER (LOSTBALL) by MCCOMBS, TONI
01:53	STEAL by EANES, KRISTIAN			
01:47	GOOD! LAYUP by EANES, KRISTIAN [FB]	36-30	H 6	
01:47	ASSIST by STEVENS, TAYLOR			
01:28	FOUL (PERSONAL) by RAFLUND, JULIA			
01:28				MISSED FT by MCCOMBS, TONI
01:28				REBOUND (OFF) by TEAM
01:28				MISSED FT by MCCOMBS, TONI
01:26	REBOUND (DEF) by LEEDLE, KELSEY			
01:12	TURNOVER (LOSTBALL) by STEVENS, TAYLOR			
00:53				TURNOVER (BADPASS) by MCCOMBS, TONI
00:40	MISSED LAYUP by EANES, KRISTIAN			
00:40				BLOCK by FLOWERS, LAUREN
00:40	REBOUND (OFF) by EANES, KRISTIAN			
00:40	GOOD! JUMPER by EANES, KRISTIAN	36-32	H 4	
00:40				FOUL (PERSONAL) by FLOWERS, LAUREN
00:40	SUB OUT: RAFLUND, JULIA			
00:40	SUB IN: SUHONEN, ANNIKA			
00:40	GOOD! FT by EANES, KRISTIAN	36-33	H 3	
00:22				TURNOVER (TRAVEL) by QUARLES, SHERMERIA
00:05	MISSED 3PTR by STEVENS, TAYLOR			
00:02				REBOUND (DEF) by NEWSOME, SYDNEY
00:00		38-33	H 5	GOOD! LAYUP by QUARLES, SHERMERIA [FB]
00:00				ASSIST by NEWSOME, SYDNEY

### Queens (NC) 33, Lincoln Memorial 38

Points from (This Period)	QUC	LMU
In the Paint	6	6
Off Turns	5	3
2nd Chance	5	3
Fast Break	4	2
Bench	5	8

**Official Box Score**  
**Queens (NC) vs Lincoln Memorial**  
**Fourth Quarter Statistics Only**  
**December 07, 2019 at B. Frank Turner Arena - Harrogate, TN**



**Queens (NC) 19**

No.	Player	S	Pts	FG	3FG	FT	OR	DR	TR	PF	A	TO	Blk	Stl	Min	+/-
10	MOORE, CAITLYN	G	0	0-2	0-2	0-0	1	0	1	2	1	1	0	0	9	-3
11	RAFLUND, JULIA	C	7	3-3	0-0	1-3	1	2	3	0	2	1	0	2	9	0
12	EANES, KRISTIAN	G	6	3-4	0-0	0-0	0	0	0	2	1	0	0	1	9	1
24	LEEDLE, KELSEY	G	0	0-1	0-1	0-0	0	0	0	1	0	0	0	0	3	2
32	GOLDEN, JAYMI	G	5	2-6	1-4	0-0	0	0	0	0	2	1	0	0	9	0
01	STEVENS, TAYLOR	G	1	0-0	0-0	1-2	1	1	2	3	1	0	0	0	8	-3
03	MCMILLIAN, TIA	G	0	0-0	0-0	0-0	0	0	0	0	0	0	0	0	2	-1
15	SUHONEN, ANNIKA	F	0	0-1	0-1	0-0	0	0	0	0	0	0	0	0	1	-1
20	SEXTON, MADISON	F	0	0-0	0-0	0-0	0	0	0	0	0	0	0	0	0	0
	TEAM						1	0	1	0		0				
<b>TOTALS</b>			<b>19</b>	<b>8-17</b>	<b>1-8</b>	<b>2-5</b>	<b>4</b>	<b>3</b>	<b>7</b>	<b>8</b>	<b>7</b>	<b>3</b>	<b>0</b>	<b>3</b>	<b>50</b>	

*Shooting By Period*

Period	FG	FG%	3FG	3FG%	FT	FT%
Game	20-59	33.9%	2-21	09.5%	10-15	66.7%

*Deadball Rebounds: 2,0*

**Lincoln Memorial 20**

No.	Player	S	Pts	FG	3FG	FT	OR	DR	TR	PF	A	TO	Blk	Stl	Min	+/-
02	OGBURN, SEMAJIA	F	0	0-0	0-0	0-0	0	0	0	0	0	0	0	0	0	0
04	KISER, LEXI	G	0	0-0	0-0	0-0	0	0	0	0	0	0	0	0	0	0
20	FLOWERS, LAUREN	G	4	1-2	0-1	2-2	0	1	1	0	1	2	0	1	10	1
34	JACHIMCZUK, MAGGIE	F	0	0-0	0-0	0-0	0	0	0	2	0	0	0	0	2	0
35	PROFFITT, LINDSAY	G	0	0-1	0-1	0-0	0	0	0	0	0	0	0	0	1	-2
00	CAUDLE, KYNDALL	G	9	3-3	1-1	2-2	0	1	1	0	0	1	0	0	9	3
15	MANEY, JORDAN	F	0	0-0	0-0	0-0	0	0	0	0	0	0	0	0	0	0
21	NEWSOME, SYDNEY	F	3	0-0	0-0	3-6	0	1	1	0	1	0	0	0	10	1
23	MCCOMBS, TONI	G	2	0-1	0-0	2-2	0	0	0	1	3	1	0	0	10	1
24	COTNER-BRABSON, TAYLOR	G	0	0-0	0-0	0-0	0	0	0	0	0	0	0	0	0	0
25	SPIKES, TYTIAIRA	G	0	0-0	0-0	0-0	0	0	0	0	0	0	0	0	0	0
30	QUARLES, SHERMERIA	F	2	1-2	0-0	0-0	2	4	6	2	0	0	0	0	8	1
	TEAM						0	1	1	0		0				
<b>TOTALS</b>			<b>20</b>	<b>5-9</b>	<b>1-3</b>	<b>9-12</b>	<b>2</b>	<b>8</b>	<b>10</b>	<b>5</b>	<b>5</b>	<b>4</b>	<b>0</b>	<b>1</b>	<b>50</b>	

*Shooting By Period*

Period	FG	FG%	3FG	3FG%	FT	FT%
Game	18-47	38.3%	6-14	42.9%	16-26	61.5%

*Deadball Rebounds: 5,0*

Game Notes:

Officials: Lee Hughes, Chris Tate, Christopher Klicko  
 Attendance: 667

Start Time: 01:59 PM ET  
 End Time: 03:44 PM ET  
 Game Duration: 1:45  
 Conference Game;

Score	1st	2nd	3rd	4th	TOT
QUC	12	7	14	19	<b>52</b>
LMU	8	13	17	20	<b>58</b>

Points from (This Period)	QUC	LMU
In the Paint	14	8
Off Turns	2	6
2nd Chance	6	0
Fast Break	4	4
Bench	1	16

**Official Play-By-Play**  
**Queens (NC) vs Lincoln Memorial**  
**Fourth Quarter**  
**December 07, 2019 at B. Frank Turner Arena - Harrogate, TN**



**Period 4**

**Starters:**

**Queens (NC):** 10 MOORE, CAITLYN (G); 11 RAFLUND, JULIA (C); 12 EANES, KRISTIAN (G); 24 LEEDLE, KELSEY (G); 32 GOLDEN, JAYMI (G);  
**Lincoln Memorial:** 2 OGBURN, SEMAJIA (F); 4 KISER, LEXI (G); 20 FLOWERS, LAUREN (G); 34 JACHIMCZUK, MAGGIE (F); 35 PROFFITT, LINDSAY (G);

Time	VISITORS: Queens (NC)	Score	Margin	HOME: Lincoln Memorial
09:49	MISSED 3PTR by LEEDLE, KELSEY			
09:46				REBOUND (DEF) by TEAM
09:37				MISSED 3PTR by PROFFITT, LINDSAY
09:33	REBOUND (DEF) by STEVENS, TAYLOR			
09:06	MISSED 3PTR by SUHONEN, ANNIKA			
09:06	REBOUND (OFF) by MOORE, CAITLYN			
09:06				FOUL (PERSONAL) by QUARLES, SHERMERIA
09:06	SUB OUT: SUHONEN, ANNIKA			
09:06	SUB OUT: LEEDLE, KELSEY			
09:06	SUB IN: RAFLUND, JULIA			
09:06	SUB IN: GOLDEN, JAYMI			
08:59	GOOD! LAYUP by EANES, KRISTIAN	38-35	H 3	
08:59	ASSIST by RAFLUND, JULIA			
08:49	FOUL (PERSONAL) by EANES, KRISTIAN			
08:49				SUB OUT: PROFFITT, LINDSAY
08:49				SUB IN: CAUDLE, KYNDALL
08:34		40-35	H 5	GOOD! JUMPER by CAUDLE, KYNDALL [PNT]
08:34				ASSIST by MCCOMBS, TONI
08:19	MISSED JUMPER by EANES, KRISTIAN			
08:15				REBOUND (DEF) by QUARLES, SHERMERIA
08:01				TURNOVER (LOSTBALL) by CAUDLE, KYNDALL
08:01	STEAL by EANES, KRISTIAN			
07:56	TURNOVER (TRAVEL) by GOLDEN, JAYMI			
07:32	FOUL (PERSONAL) by STEVENS, TAYLOR			
07:32		41-35	H 6	GOOD! FT by NEWSOME, SYDNEY
07:32		42-35	H 7	GOOD! FT by NEWSOME, SYDNEY
07:11	GOOD! JUMPER by EANES, KRISTIAN [PNT]	42-37	H 5	
07:11	ASSIST by MOORE, CAITLYN			
06:51		44-37	H 7	GOOD! JUMPER by QUARLES, SHERMERIA
06:51				ASSIST by NEWSOME, SYDNEY
06:39	GOOD! 3PTR by GOLDEN, JAYMI	44-40	H 4	
06:39	ASSIST by STEVENS, TAYLOR			
06:34				TIMEOUT 30SEC
06:08				MISSED 3PTR by FLOWERS, LAUREN
06:05				REBOUND (OFF) by QUARLES, SHERMERIA
06:03				MISSED JUMPER by QUARLES, SHERMERIA
06:00	REBOUND (DEF) by RAFLUND, JULIA			
05:58				SUB OUT: QUARLES, SHERMERIA
05:58				SUB IN: JACHIMCZUK, MAGGIE
05:58	SUB OUT: EANES, KRISTIAN			
05:58	SUB IN: MCMILLIAN, TIA			
05:53	TURNOVER (LOSTBALL) by MOORE, CAITLYN			
05:33		46-40	H 6	GOOD! LAYUP by FLOWERS, LAUREN
05:33				ASSIST by MCCOMBS, TONI
05:15	MISSED 3PTR by MOORE, CAITLYN			
05:14	REBOUND (OFF) by TEAM			
05:14				FOUL (PERSONAL) by JACHIMCZUK, MAGGIE
05:14	SUB OUT: MCMILLIAN, TIA			
05:14	SUB IN: EANES, KRISTIAN			
05:12	GOOD! JUMPER by RAFLUND, JULIA	46-42	H 4	
05:12	ASSIST by GOLDEN, JAYMI			
05:01				TURNOVER (BADPASS) by FLOWERS, LAUREN
04:36	MISSED 3PTR by GOLDEN, JAYMI			
04:32				REBOUND (DEF) by NEWSOME, SYDNEY
04:11	FOUL (PERSONAL) by STEVENS, TAYLOR			
04:11		47-42	H 5	GOOD! FT by MCCOMBS, TONI
04:11		48-42	H 6	GOOD! FT by MCCOMBS, TONI
04:05	GOOD! JUMPER by RAFLUND, JULIA [FB]	48-44	H 4	
04:05	ASSIST by GOLDEN, JAYMI			
04:05				FOUL (PERSONAL) by JACHIMCZUK, MAGGIE
04:05				SUB OUT: JACHIMCZUK, MAGGIE
04:05				SUB IN: QUARLES, SHERMERIA
04:05	MISSED FT by RAFLUND, JULIA			
04:04				REBOUND (DEF) by QUARLES, SHERMERIA
03:50		51-44	H 7	GOOD! 3PTR by CAUDLE, KYNDALL
03:50				ASSIST by MCCOMBS, TONI
03:27	MISSED JUMPER by GOLDEN, JAYMI			
03:23				REBOUND (DEF) by FLOWERS, LAUREN
03:09				MISSED JUMPER by MCCOMBS, TONI
03:06	REBOUND (DEF) by RAFLUND, JULIA			

Time	VISITORS: Queens (NC)	Score	Margin	HOME: Lincoln Memorial
03:02	MISSED 3PTR by GOLDEN, JAYMI			
02:58	REBOUND (OFF) by STEVENS, TAYLOR			
02:58				FOUL (PERSONAL) by MCCOMBS, TONI
02:58	GOOD! FT by STEVENS, TAYLOR	51-45	H 6	
02:58	MISSED FT by STEVENS, TAYLOR			
02:55				REBOUND (DEF) by QUARLES, SHERMERIA
02:53	FOUL (PERSONAL) by EANES, KRISTIAN			
02:37		53-45	H 8	GOOD! LAYUP by CAUDLE, KYNDALL
02:37				ASSIST by FLOWERS, LAUREN
02:13	MISSED 3PTR by MOORE, CAITLYN			
02:11				REBOUND (DEF) by CAUDLE, KYNDALL
02:11	FOUL (PERSONAL) by STEVENS, TAYLOR			
02:11	SUB OUT: STEVENS, TAYLOR			
02:11	SUB IN: LEEDLE, KELSEY			
02:11		54-45	H 9	GOOD! FT by CAUDLE, KYNDALL [FB]
02:11		55-45	H 10	GOOD! FT by CAUDLE, KYNDALL [FB]
01:57	GOOD! LAYUP by RAFLUND, JULIA	55-47	H 8	
01:57	ASSIST by EANES, KRISTIAN			
01:57	TIMEOUT 30SEC			
01:38				TURNOVER (BADPASS) by MCCOMBS, TONI
01:38	STEAL by RAFLUND, JULIA			
01:32	TURNOVER (BADPASS) by RAFLUND, JULIA			
01:32				STEAL by FLOWERS, LAUREN
01:26	FOUL (PERSONAL) by LEEDLE, KELSEY			
01:26		56-47	H 9	GOOD! FT by FLOWERS, LAUREN [FB]
01:26		57-47	H 10	GOOD! FT by FLOWERS, LAUREN [FB]
01:16	GOOD! LAYUP by GOLDEN, JAYMI	57-49	H 8	
01:15	TIMEOUT 30SEC			
01:15	SUB OUT: RAFLUND, JULIA			
01:15	SUB OUT: GOLDEN, JAYMI			
01:15	SUB IN: MCMILLIAN, TIA			
01:15	SUB IN: SUHONEN, ANNIKA			
00:47	FOUL (PERSONAL) by MOORE, CAITLYN			
00:47				MISSED FT by NEWSOME, SYDNEY
00:47				REBOUND (OFF) by TEAM
00:47		58-49	H 9	GOOD! FT by NEWSOME, SYDNEY
00:47	TIMEOUT TEAM			
00:47	SUB OUT: MCMILLIAN, TIA			
00:47	SUB OUT: SUHONEN, ANNIKA			
00:47	SUB IN: RAFLUND, JULIA			
00:47	SUB IN: GOLDEN, JAYMI			
00:37	MISSED 3PTR by GOLDEN, JAYMI			
00:35	REBOUND (OFF) by RAFLUND, JULIA			
00:35				FOUL (PERSONAL) by QUARLES, SHERMERIA
00:35	GOOD! FT by RAFLUND, JULIA	58-50	H 8	
00:35	MISSED FT by RAFLUND, JULIA			
00:35				REBOUND (DEF) by QUARLES, SHERMERIA
00:33				TIMEOUT 30SEC
00:30	FOUL (PERSONAL) by MOORE, CAITLYN			
00:30	SUB OUT: MOORE, CAITLYN			
00:30	SUB IN: MCMILLIAN, TIA			
00:30				MISSED FT by NEWSOME, SYDNEY
00:30				REBOUND (OFF) by TEAM
00:30				MISSED FT by NEWSOME, SYDNEY
00:29				REBOUND (OFF) by QUARLES, SHERMERIA
00:10				TURNOVER (LOSTBALL) by FLOWERS, LAUREN
00:10	STEAL by RAFLUND, JULIA			
00:06	GOOD! LAYUP by EANES, KRISTIAN [FB]	58-52	H 6	
00:06	ASSIST by RAFLUND, JULIA			

### Queens (NC) 52, Lincoln Memorial 58

Points from (This Period)	QUC	LMU
In the Paint	14	8
Off Turns	2	6
2nd Chance	6	0
Fast Break	4	4
Bench	1	16



**Official Scoring/Possession Reference Chart**  
**Queens (NC) vs Lincoln Memorial**  
**Period 1**  
**December 07, 2019 at B. Frank Turner Arena - Harrogate, TN**



**Period 1**

**Starters:**

**Queens (NC):** 10 MOORE, CAITLYN (G); 11 RAFLUND, JULIA (C); 12 EANES, KRISTIAN (G); 24 LEEDLE, KELSEY (G); 32 GOLDEN, JAYMI (G);

**Lincoln Memorial:** 2 OGBURN, SEMAJIA (F); 4 KISER, LEXI (G); 20 FLOWERS, LAUREN (G); 34 JACHIMCZUK, MAGGIE (F); 35 PROFFITT, LINDSAY (G);

Time	VISITORS: Queens (NC)	Score	Margin	HOME: Lincoln Memorial
09:16	GOOD! JUMPER by GOLDEN, JAYMI	0-2	V 2	
07:15	GOOD! FT by RAFLUND, JULIA	0-3	V 3	
06:00	GOOD! LAYUP by RAFLUND, JULIA	0-5	V 5	
06:00	GOOD! FT by RAFLUND, JULIA	0-6	V 6	
05:29	GOOD! LAYUP by LEEDLE, KELSEY [PNT]	0-8	V 8	
03:56		3-8	V 5	GOOD! 3PTR by PROFFITT, LINDSAY
03:26		6-8	V 2	GOOD! 3PTR by CAUDLE, KYNDALL [FB]
01:37		8-8	T	GOOD! LAYUP by QUARLES, SHERMERIA
00:44	GOOD! JUMPER by SUHONEN, ANNIKA	8-10	V 2	
00:30	GOOD! LAYUP by EANES, KRISTIAN	8-12	V 4	

**Queens (NC) 12, Lincoln Memorial 8**

**Official Scoring/Possession Reference Chart**  
**Queens (NC) vs Lincoln Memorial**  
**Period 2**  
**December 07, 2019 at B. Frank Turner Arena - Harrogate, TN**



**Period 2**

**Starters:**

**Queens (NC):** 10 MOORE, CAITLYN (G); 11 RAFLUND, JULIA (C); 12 EANES, KRISTIAN (G); 24 LEEDLE, KELSEY (G); 32 GOLDEN, JAYMI (G);

**Lincoln Memorial:** 2 OGBURN, SEMAJIA (F); 4 KISER, LEXI (G); 20 FLOWERS, LAUREN (G); 34 JACHIMCZUK, MAGGIE (F); 35 PROFFITT, LINDSAY (G);

Time	VISITORS: Queens (NC)	Score	Margin	HOME: Lincoln Memorial
09:40		9-12	V 3	GOOD! FT by FLOWERS, LAUREN [FB]
09:31		11-12	V 1	GOOD! LAYUP by NEWSOME, SYDNEY
08:45	GOOD! JUMPER by SEXTON, MADISON	11-14	V 3	
07:36	GOOD! FT by EANES, KRISTIAN [FB]	11-15	V 4	
06:58		12-15	V 3	GOOD! FT by PROFFITT, LINDSAY
06:58		13-15	V 2	GOOD! FT by PROFFITT, LINDSAY
04:39		16-15	H 1	GOOD! 3PTR by PROFFITT, LINDSAY
03:49		18-15	H 3	GOOD! JUMPER by MCCOMBS, TONI
02:33		19-15	H 4	GOOD! FT by MCCOMBS, TONI
02:16	GOOD! JUMPER by EANES, KRISTIAN	19-17	H 2	
01:22		20-17	H 3	GOOD! FT by QUARLES, SHERMERIA
01:22		21-17	H 4	GOOD! FT by QUARLES, SHERMERIA
00:33	GOOD! JUMPER by GOLDEN, JAYMI	21-19	H 2	

**Queens (NC) 19, Lincoln Memorial 21**

**Official Scoring/Possession Reference Chart**  
**Queens (NC) vs Lincoln Memorial**  
**Period 3**  
**December 07, 2019 at B. Frank Turner Arena - Harrogate, TN**



**Period 3**

**Starters:**

**Queens (NC):** 10 MOORE, CAITLYN (G); 11 RAFLUND, JULIA (C); 12 EANES, KRISTIAN (G); 24 LEEDLE, KELSEY (G); 32 GOLDEN, JAYMI (G);

**Lincoln Memorial:** 2 OGBURN, SEMAJIA (F); 4 KISER, LEXI (G); 20 FLOWERS, LAUREN (G); 34 JACHIMCZUK, MAGGIE (F); 35 PROFFITT, LINDSAY (G);

Time	VISITORS: Queens (NC)	Score	Margin	HOME: Lincoln Memorial
09:51		23-19	H 4	GOOD! JUMPER by MCCOMBS, TONI
07:57	GOOD! FT by RAFLUND, JULIA	23-20	H 3	
07:57	GOOD! FT by RAFLUND, JULIA	23-21	H 2	
07:16		25-21	H 4	GOOD! LAYUP by FLOWERS, LAUREN
06:56		28-21	H 7	GOOD! 3PTR by FLOWERS, LAUREN
06:23		30-21	H 9	GOOD! JUMPER by MCCOMBS, TONI
05:18		32-21	H 11	GOOD! LAYUP by MCCOMBS, TONI
04:59	GOOD! 3PTR by STEVENS, TAYLOR	32-24	H 8	
04:16	GOOD! LAYUP by STEVENS, TAYLOR	32-26	H 6	
03:25		33-26	H 7	GOOD! FT by FLOWERS, LAUREN
02:39		36-26	H 10	GOOD! 3PTR by FLOWERS, LAUREN
02:02	GOOD! FT by RAFLUND, JULIA [FB]	36-27	H 9	
02:02	GOOD! FT by RAFLUND, JULIA [FB]	36-28	H 8	
01:47	GOOD! LAYUP by EANES, KRISTIAN [FB]	36-30	H 6	
00:40	GOOD! JUMPER by EANES, KRISTIAN	36-32	H 4	
00:40	GOOD! FT by EANES, KRISTIAN	36-33	H 3	
00:00		38-33	H 5	GOOD! LAYUP by QUARLES, SHERMERIA [FB]

**Queens (NC) 33, Lincoln Memorial 38**

**Official Scoring/Possession Reference Chart**  
**Queens (NC) vs Lincoln Memorial**  
**Period 4**  
**December 07, 2019 at B. Frank Turner Arena - Harrogate, TN**



**Period 4**

**Starters:**

**Queens (NC):** 10 MOORE, CAITLYN (G); 11 RAFLUND, JULIA (C); 12 EANES, KRISTIAN (G); 24 LEEDLE, KELSEY (G); 32 GOLDEN, JAYMI (G);

**Lincoln Memorial:** 2 OGBURN, SEMAJIA (F); 4 KISER, LEXI (G); 20 FLOWERS, LAUREN (G); 34 JACHIMCZUK, MAGGIE (F); 35 PROFFITT, LINDSAY (G);

Time	VISITORS: Queens (NC)	Score	Margin	HOME: Lincoln Memorial
08:59	GOOD! LAYUP by EANES, KRISTIAN	38-35	H 3	
08:34		40-35	H 5	GOOD! JUMPER by CAUDLE, KYNDALL [PNT]
07:32		41-35	H 6	GOOD! FT by NEWSOME, SYDNEY
07:32		42-35	H 7	GOOD! FT by NEWSOME, SYDNEY
07:11	GOOD! JUMPER by EANES, KRISTIAN [PNT]	42-37	H 5	
06:51		44-37	H 7	GOOD! JUMPER by QUARLES, SHERMERIA
06:39	GOOD! 3PTR by GOLDEN, JAYMI	44-40	H 4	
05:33		46-40	H 6	GOOD! LAYUP by FLOWERS, LAUREN
05:12	GOOD! JUMPER by RAFLUND, JULIA	46-42	H 4	
04:11		47-42	H 5	GOOD! FT by MCCOMBS, TONI
04:11		48-42	H 6	GOOD! FT by MCCOMBS, TONI
04:05	GOOD! JUMPER by RAFLUND, JULIA [FB]	48-44	H 4	
03:50		51-44	H 7	GOOD! 3PTR by CAUDLE, KYNDALL
02:58	GOOD! FT by STEVENS, TAYLOR	51-45	H 6	
02:37		53-45	H 8	GOOD! LAYUP by CAUDLE, KYNDALL
02:11		54-45	H 9	GOOD! FT by CAUDLE, KYNDALL [FB]
02:11		55-45	H 10	GOOD! FT by CAUDLE, KYNDALL [FB]
01:57	GOOD! LAYUP by RAFLUND, JULIA	55-47	H 8	
01:26		56-47	H 9	GOOD! FT by FLOWERS, LAUREN [FB]
01:26		57-47	H 10	GOOD! FT by FLOWERS, LAUREN [FB]
01:16	GOOD! LAYUP by GOLDEN, JAYMI	57-49	H 8	
00:47		58-49	H 9	GOOD! FT by NEWSOME, SYDNEY
00:35	GOOD! FT by RAFLUND, JULIA	58-50	H 8	
00:06	GOOD! LAYUP by EANES, KRISTIAN [FB]	58-52	H 6	

**Queens (NC) 52, Lincoln Memorial 58**

**Official Substitutions Log**  
**Queens (NC) vs Lincoln Memorial**  
**Period 1**  
**December 07, 2019 at B. Frank Turner Arena - Harrogate, TN**



<b>VISITORS: Queens (NC)</b>	<b>Time</b>	<b>Score</b>	<b>HOME: Lincoln Memorial</b>
10 MOORE, CAITLYN			2 OGBURN, SEMAJIA
11 RAFLUND, JULIA			4 KISER, LEXI
12 EANES, KRISTIAN			20 FLOWERS, LAUREN
24 LEEDLE, KELSEY			34 JACHIMCZUK, MAGGIE
32 GOLDEN, JAYMI			35 PROFFITT, LINDSAY
	07:15	3-0	SUB OUT: OGBURN, SEMAJIA
	07:15		SUB IN: QUARLES, SHERMERIA
	06:00	5-0	SUB OUT: JACHIMCZUK, MAGGIE
	06:00		SUB IN: MCCOMBS, TONI
	04:56	8-0	SUB OUT: KISER, LEXI
	04:56		SUB IN: CAUDLE, KYNDALL
SUB OUT: 11 RAFLUND, JULIA	01:18	8-8	
SUB OUT: 24 LEEDLE, KELSEY	01:18		
SUB IN: 1 STEVENS, TAYLOR	01:18		
SUB IN: 15 SUHONEN, ANNIKA	01:18		
	00:44	10-8	SUB OUT: QUARLES, SHERMERIA
	00:44		SUB IN: NEWSOME, SYDNEY

**Queens (NC) 12, Lincoln Memorial 8**

**Official Substitutions Log**  
**Queens (NC) vs Lincoln Memorial**  
**Period 2**  
**December 07, 2019 at B. Frank Turner Arena - Harrogate, TN**



VISITORS: Queens (NC)	Time	Score	HOME: Lincoln Memorial
10 MOORE, CAITLYN			2 OGBURN, SEMAJIA
11 RAFLUND, JULIA			4 KISER, LEXI
12 EANES, KRISTIAN			20 FLOWERS, LAUREN
24 LEEDLE, KELSEY			34 JACHIMCZUK, MAGGIE
32 GOLDEN, JAYMI			35 PROFFITT, LINDSAY
SUB OUT: 10 MOORE, CAITLYN	09:40	-	
SUB IN: 3 MCMILLIAN, TIA	09:40		
SUB OUT: 15 SUHONEN, ANNIKA	09:38	12-9	
SUB IN: 20 SEXTON, MADISON	09:38		
	09:08	12-11	SUB OUT: FLOWERS, LAUREN
	09:08		SUB IN: KISER, LEXI
	06:58	15-13	SUB OUT: CAUDLE, KYNDALL
	06:58		SUB IN: COTNER-BRABSON, TAYLOR
	06:29	15-13	SUB OUT: NEWSOME, SYDNEY
	06:29		SUB IN: QUARLES, SHERMERIA
SUB OUT: 12 EANES, KRISTIAN	06:29		
SUB OUT: 20 SEXTON, MADISON	06:29		
SUB IN: 11 RAFLUND, JULIA	06:29		
SUB IN: 24 LEEDLE, KELSEY	06:29		
SUB OUT: 3 MCMILLIAN, TIA	04:17	15-16	
SUB OUT: 32 GOLDEN, JAYMI	04:17		
SUB IN: 10 MOORE, CAITLYN	04:17		
SUB IN: 12 EANES, KRISTIAN	04:17		
SUB OUT: 11 RAFLUND, JULIA	02:33	15-19	
SUB IN: 20 SEXTON, MADISON	02:33		
	01:22	17-19	SUB OUT: PROFFITT, LINDSAY
	01:22		SUB IN: SPIKES, TYTIAIRA
SUB OUT: 10 MOORE, CAITLYN	01:22		
SUB IN: 32 GOLDEN, JAYMI	01:22		
SUB OUT: 20 SEXTON, MADISON	00:45	17-21	
SUB IN: 11 RAFLUND, JULIA	00:45		

**Queens (NC) 19, Lincoln Memorial 21**

**Official Substitutions Log**  
**Queens (NC) vs Lincoln Memorial**  
**Period 3**  
**December 07, 2019 at B. Frank Turner Arena - Harrogate, TN**



VISITORS: Queens (NC)	Time	Score	HOME: Lincoln Memorial
10 MOORE, CAITLYN			2 OGBURN, SEMAJIA
11 RAFLUND, JULIA			4 KISER, LEXI
12 EANES, KRISTIAN			20 FLOWERS, LAUREN
24 LEEDLE, KELSEY			34 JACHIMCZUK, MAGGIE
32 GOLDEN, JAYMI			35 PROFFITT, LINDSAY
	10:00	-	SUB OUT: KISER, LEXI
	10:00		SUB OUT: COTNER-BRABSON, TAYLOR
	10:00		SUB OUT: QUARLES, SHERMERIA
	10:00		SUB IN: MANEY, JORDAN
	10:00		SUB IN: FLOWERS, LAUREN
	10:00		SUB IN: JACHIMCZUK, MAGGIE
SUB OUT: 1 STEVENS, TAYLOR	10:00		
SUB IN: 10 MOORE, CAITLYN	10:00		
	06:39	21-28	SUB OUT: JACHIMCZUK, MAGGIE
	06:39		SUB IN: QUARLES, SHERMERIA
SUB OUT: 32 GOLDEN, JAYMI	06:39		
SUB IN: 1 STEVENS, TAYLOR	06:39		
	05:57	21-30	SUB OUT: MANEY, JORDAN
	05:57		SUB IN: NEWSOME, SYDNEY
	03:35	26-32	SUB OUT: SPIKES, TYTIAIRA
	03:35		SUB IN: PROFFITT, LINDSAY
SUB OUT: 11 RAFLUND, JULIA	00:40	32-36	
SUB IN: 15 SUHONEN, ANNIKA	00:40		

**Queens (NC) 33, Lincoln Memorial 38**

**Official Substitutions Log**  
**Queens (NC) vs Lincoln Memorial**  
**Period 4**  
**December 07, 2019 at B. Frank Turner Arena - Harrogate, TN**



VISITORS: Queens (NC)	Time	Score	HOME: Lincoln Memorial
10 MOORE, CAITLYN			2 OGBURN, SEMAJIA
11 RAFLUND, JULIA			4 KISER, LEXI
12 EANES, KRISTIAN			20 FLOWERS, LAUREN
24 LEEDLE, KELSEY			34 JACHIMCZUK, MAGGIE
32 GOLDEN, JAYMI			35 PROFFITT, LINDSAY
SUB OUT: 15 SUHONEN, ANNIKA	09:06	-	
SUB OUT: 24 LEEDLE, KELSEY	09:06		
SUB IN: 11 RAFLUND, JULIA	09:06		
SUB IN: 32 GOLDEN, JAYMI	09:06		
	08:49	35-38	SUB OUT: PROFFITT, LINDSAY
	08:49		SUB IN: CAUDLE, KYNDALL
	05:58	40-44	SUB OUT: QUARLES, SHERMERIA
	05:58		SUB IN: JACHIMCZUK, MAGGIE
SUB OUT: 12 EANES, KRISTIAN	05:58		
SUB IN: 3 MCMILLIAN, TIA	05:58		
SUB OUT: 3 MCMILLIAN, TIA	05:14	40-46	
SUB IN: 12 EANES, KRISTIAN	05:14		
	04:05	44-48	SUB OUT: JACHIMCZUK, MAGGIE
	04:05		SUB IN: QUARLES, SHERMERIA
SUB OUT: 1 STEVENS, TAYLOR	02:11	45-53	
SUB IN: 24 LEEDLE, KELSEY	02:11		
SUB OUT: 11 RAFLUND, JULIA	01:15	49-57	
SUB OUT: 32 GOLDEN, JAYMI	01:15		
SUB IN: 3 MCMILLIAN, TIA	01:15		
SUB IN: 15 SUHONEN, ANNIKA	01:15		
SUB OUT: 3 MCMILLIAN, TIA	00:47	49-58	
SUB OUT: 15 SUHONEN, ANNIKA	00:47		
SUB IN: 11 RAFLUND, JULIA	00:47		
SUB IN: 32 GOLDEN, JAYMI	00:47		
SUB OUT: 10 MOORE, CAITLYN	00:30	50-58	
SUB IN: 3 MCMILLIAN, TIA	00:30		

**Queens (NC) 52, Lincoln Memorial 58**

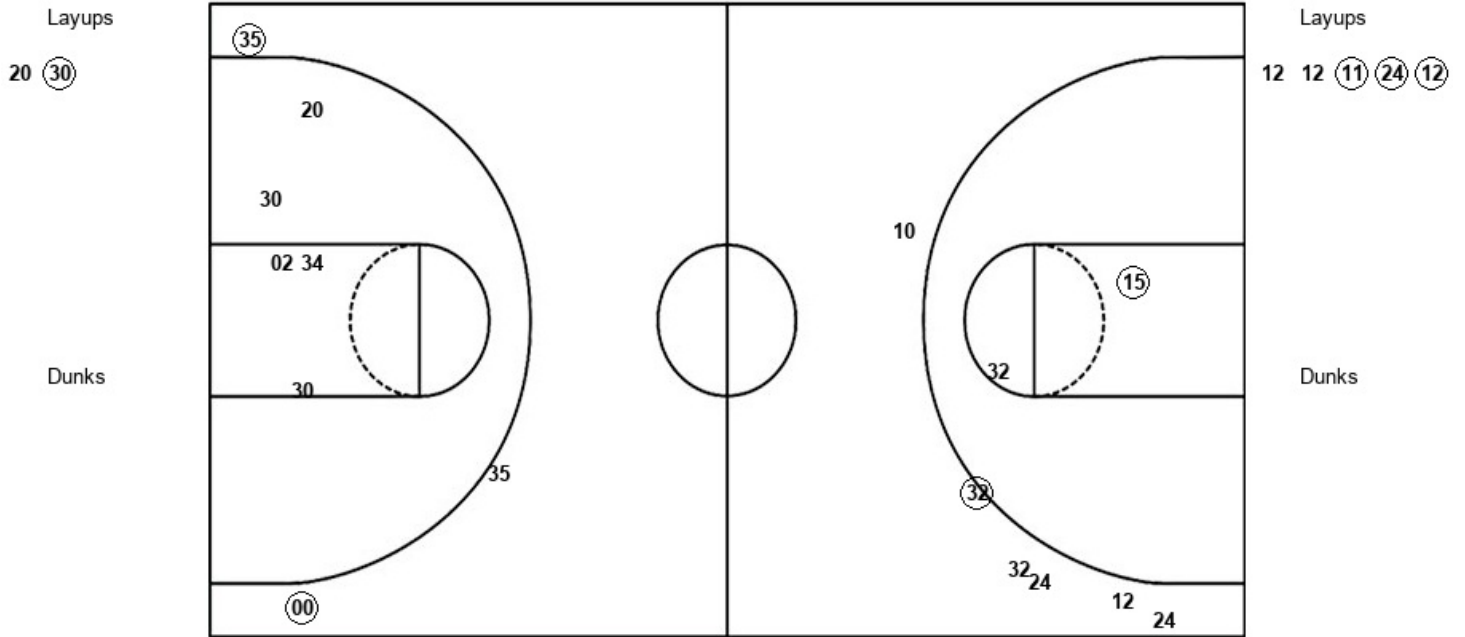


**Official Shot Chart**  
**Queens (NC) vs Lincoln Memorial**  
**PERIOD 1 Shots**  
 December 07, 2019 at B. Frank Turner Arena - Harrogate, TN



**Lincoln Memorial**

**Queens (NC)**



LMU : Period 1	Made	Att	Pct
Layups	1	2	50.0
Dunks	0	0	0
2PT Field Goals	1	7	14.3
3PT Field Goals	2	3	66.7
<b>Total Field Goals</b>	<b>3</b>	<b>10</b>	<b>30.0</b>

QUC : Period 1	Made	Att	Pct
Layups	3	5	60.0
Dunks	0	0	0
2PT Field Goals	5	8	62.5
3PT Field Goals	0	5	00.0
<b>Total Field Goals</b>	<b>5</b>	<b>13</b>	<b>38.5</b>

**Official Shot Chart**  
**Queens (NC) vs Lincoln Memorial**  
**PERIOD 2 Shots**  
 December 07, 2019 at B. Frank Turner Arena - Harrogate, TN



**Lincoln Memorial**

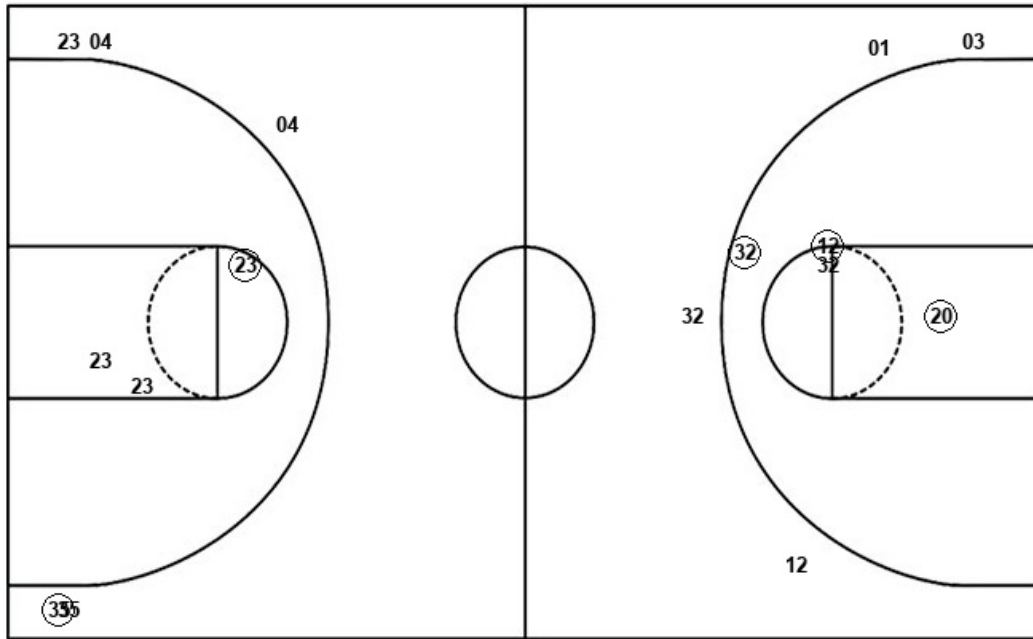
**Queens (NC)**

Layups  
 (21) 21 00 35

Layups  
 32 12 11 11 01

Dunks

Dunks



LMU : Period 2	Made	Att	Pct
Layups	1	4	25.0
Dunks	0	0	0
2PT Field Goals	2	7	28.6
3PT Field Goals	1	5	20.0
<b>Total Field Goals</b>	<b>3</b>	<b>12</b>	<b>25.0</b>

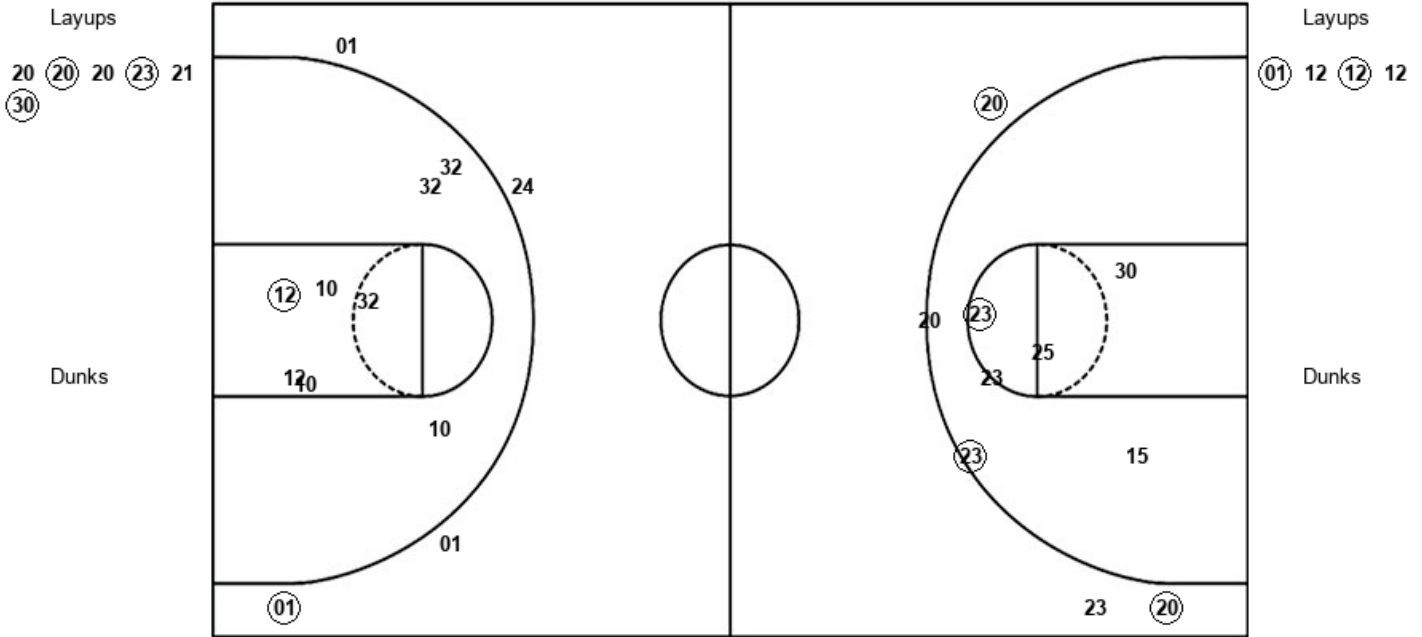
QUC : Period 2	Made	Att	Pct
Layups	0	5	00.0
Dunks	0	0	0
2PT Field Goals	3	9	33.3
3PT Field Goals	0	4	00.0
<b>Total Field Goals</b>	<b>3</b>	<b>13</b>	<b>23.1</b>

**Official Shot Chart**  
**Queens (NC) vs Lincoln Memorial**  
**PERIOD 3 Shots**  
 December 07, 2019 at B. Frank Turner Arena - Harrogate, TN



**Lincoln Memorial**

**Queens (NC)**



LMU : Period 3	Made	Att	Pct
Layups	3	6	50.0
Dunks	0	0	0
2PT Field Goals	5	13	38.5
3PT Field Goals	2	3	66.7
<b>Total Field Goals</b>	<b>7</b>	<b>16</b>	<b>43.8</b>

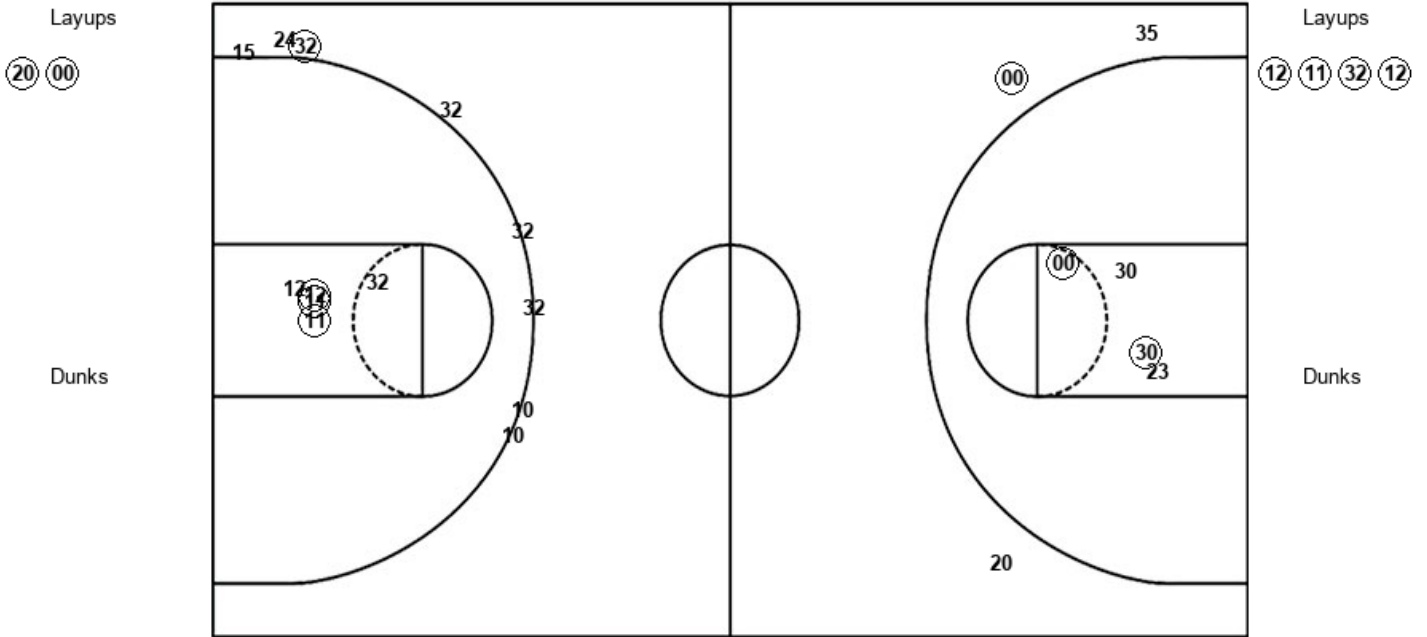
QUC : Period 3	Made	Att	Pct
Layups	2	4	50.0
Dunks	0	0	0
2PT Field Goals	3	12	25.0
3PT Field Goals	1	4	25.0
<b>Total Field Goals</b>	<b>4</b>	<b>16</b>	<b>25.0</b>

**Official Shot Chart**  
**Queens (NC) vs Lincoln Memorial**  
**PERIOD 4 Shots**  
 December 07, 2019 at B. Frank Turner Arena - Harrogate, TN



**Lincoln Memorial**

**Queens (NC)**



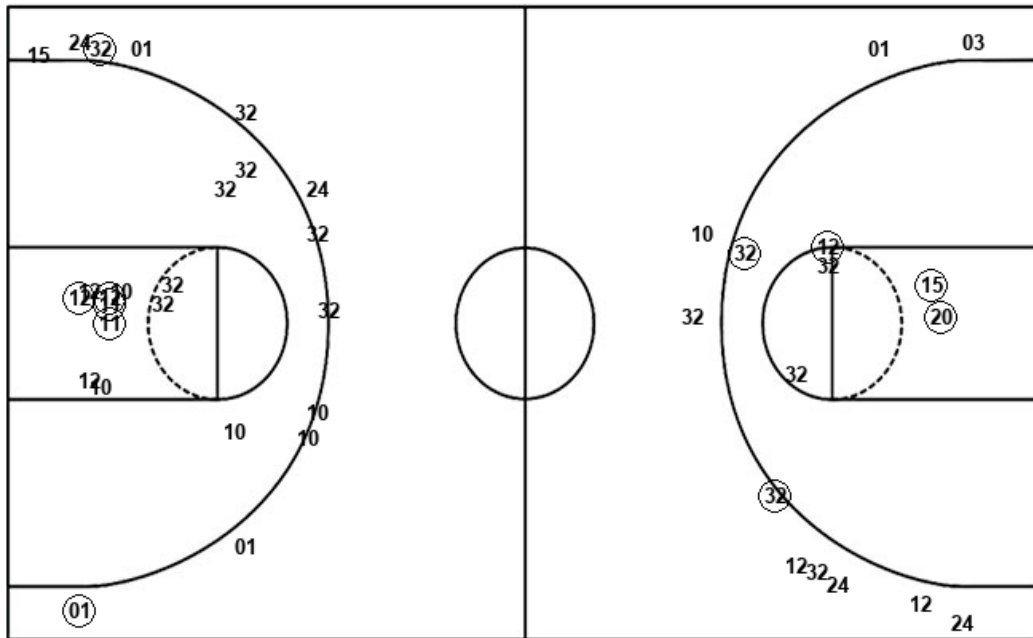
LMU : Period 4	Made	Att	Pct
Layups	2	2	100.0
Dunks	0	0	0
2PT Field Goals	4	6	66.7
3PT Field Goals	1	3	33.3
<b>Total Field Goals</b>	<b>5</b>	<b>9</b>	<b>55.6</b>

QUC : Period 4	Made	Att	Pct
Layups	4	4	100.0
Dunks	0	0	0
2PT Field Goals	7	9	77.8
3PT Field Goals	1	8	12.5
<b>Total Field Goals</b>	<b>8</b>	<b>17</b>	<b>47.1</b>

**Official Shot Chart**  
**Queens (NC) vs Lincoln Memorial**  
**Queens (NC) Team Shots**  
 December 07, 2019 at B. Frank Turner Arena - Harrogate, TN



Layups



Layups

12 12 (11) (24) (12)  
 32 12 11 11 01  
 (01) 12 (12) 12 (12)  
 (11) (32) (12)

Dunks

Dunks

QUC : Period 1	Made	Att	Pct
Layups	3	5	60.0
Dunks	0	0	0
2PT Field Goals	5	8	62.5
3PT Field Goals	0	5	00.0
<b>Total Field Goals</b>	<b>5</b>	<b>13</b>	<b>38.5</b>

QUC : Period 3	Made	Att	Pct
Layups	2	4	50.0
Dunks	0	0	0
2PT Field Goals	3	12	25.0
3PT Field Goals	1	4	25.0
<b>Total Field Goals</b>	<b>4</b>	<b>16</b>	<b>25.0</b>

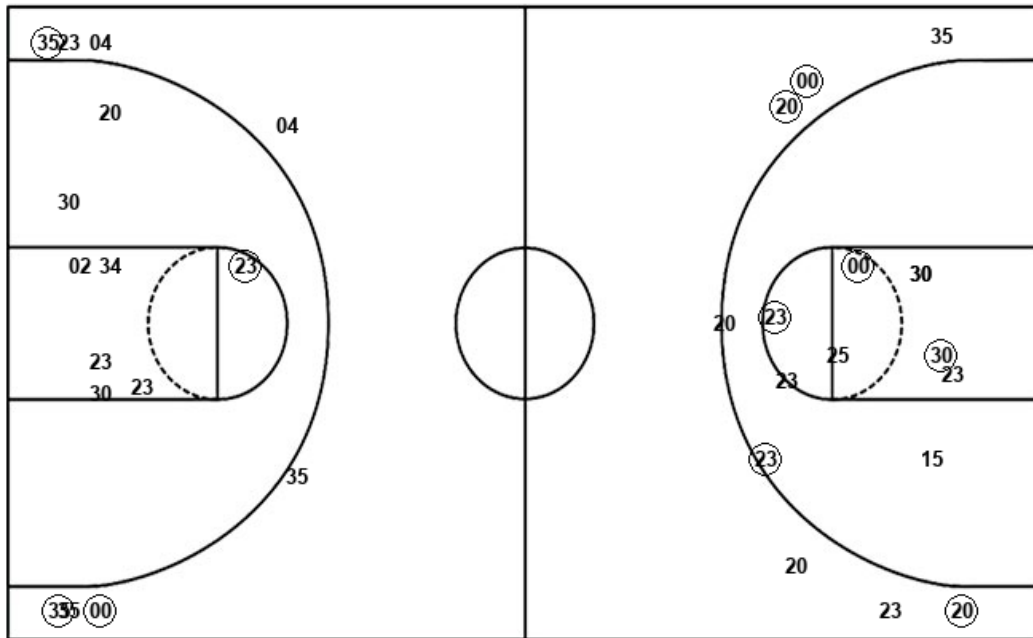
QUC : Period 2	Made	Att	Pct
Layups	0	5	00.0
Dunks	0	0	0
2PT Field Goals	3	9	33.3
3PT Field Goals	0	4	00.0
<b>Total Field Goals</b>	<b>3</b>	<b>13</b>	<b>23.1</b>

QUC : Period 4	Made	Att	Pct
Layups	4	4	100.0
Dunks	0	0	0
2PT Field Goals	7	9	77.8
3PT Field Goals	1	8	12.5
<b>Total Field Goals</b>	<b>8</b>	<b>17</b>	<b>47.1</b>

**Official Shot Chart**  
**Queens (NC) vs Lincoln Memorial**  
**Lincoln Memorial Team Shots**  
**December 07, 2019 at B. Frank Turner Arena - Harrogate, TN**



Layups



Layups

20 (30) (21) 21 00  
 35 20 (20) 20 (23)  
 21 (30) (20) (00)

Dunks

Dunks

LMU : Period 1	Made	Att	Pct
Layups	1	2	50.0
Dunks	0	0	0
2PT Field Goals	1	7	14.3
3PT Field Goals	2	3	66.7
<b>Total Field Goals</b>	<b>3</b>	<b>10</b>	<b>30.0</b>

LMU : Period 3	Made	Att	Pct
Layups	3	6	50.0
Dunks	0	0	0
2PT Field Goals	5	13	38.5
3PT Field Goals	2	3	66.7
<b>Total Field Goals</b>	<b>7</b>	<b>16</b>	<b>43.8</b>

LMU : Period 2	Made	Att	Pct
Layups	1	4	25.0
Dunks	0	0	0
2PT Field Goals	2	7	28.6
3PT Field Goals	1	5	20.0
<b>Total Field Goals</b>	<b>3</b>	<b>12</b>	<b>25.0</b>

LMU : Period 4	Made	Att	Pct
Layups	2	2	100.0
Dunks	0	0	0
2PT Field Goals	4	6	66.7
3PT Field Goals	1	3	33.3
<b>Total Field Goals</b>	<b>5</b>	<b>9</b>	<b>55.6</b>