

**FINAL SCORE**

**Tenn. Wesleyan**

**54**

**Lincoln Memorial**

**68**



December 03, 2019 • Tex Turner Arena - Harrogate, TN

**FINAL STATISTICS**

**Official Box Score**  
**Tenn. Wesleyan vs Lincoln Memorial**  
**Game Totals -- Final Statistics**  
**December 03, 2019 at Tex Turner Arena - Harrogate, TN**



**Tenn. Wesleyan 54**

No.	Player	S	Pts	FG	3FG	FT	OR	DR	TR	PF	A	TO	Blk	Stl	Min	+/-
12	MCCLURG, MADISON	F	4	1-2	0-0	2-2	1	2	3	3	0	1	0	1	21	-4
14	TROUTT, HANNAH	G	4	2-5	0-3	0-0	1	1	2	0	0	0	0	1	19	-13
15	CONN, KENZIE	F	2	1-5	0-4	0-0	2	5	7	0	2	3	0	2	19	-13
21	CHERRY, HANNAH	F	3	1-8	0-1	1-2	1	2	3	3	0	2	0	0	17	-22
23	WRIGHT, JORDAN	G	11	4-11	1-3	2-2	1	0	1	1	4	3	0	2	22	-7
02	COLEMAN, JORDAN	F	0	0-0	0-0	0-0	0	1	1	0	0	1	0	0	4	2
03	RUNYAN, CARLIE	G	3	0-5	0-1	3-4	0	1	1	2	1	0	0	1	22	-9
05	YEARWOOD, CHLOE	G	5	2-4	1-3	0-0	0	4	4	2	2	0	0	3	19	3
10	STRANGE, KAITLYN	G	2	1-3	0-2	0-0	1	1	2	1	0	0	0	0	8	8
11	BURNS, HANNAH	G	0	0-0	0-0	0-0	0	0	0	0	0	1	0	0	4	4
22	LINER, EMILY	G	5	1-1	1-1	2-4	1	0	1	1	3	5	0	2	13	-2
25	CROWDER, ALYSON	G	2	0-2	0-2	2-2	0	3	3	3	1	0	0	1	13	-14
35	ATKINS, SAVANNAH	F	13	4-13	3-10	2-2	0	5	5	3	0	1	3	0	19	-3
<b>TEAM</b>							1	2	3	0		1				
<b>TOTALS</b>			<b>54</b>	<b>17-59</b>	<b>6-30</b>	<b>14-18</b>	<b>9</b>	<b>27</b>	<b>36</b>	<b>19</b>	<b>13</b>	<b>18</b>	<b>3</b>	<b>13</b>	<b>200</b>	

*Shooting By Period*

Period	FG	FG%	3FG	3FG%	FT	FT%
1st Qtr	3-17	18%	2-7	29%	0-0	0%
2nd Qtr	4-19	21%	2-12	17%	0-0	0%
3rd Qtr	8-13	62%	1-4	25%	6-10	60%
4th Qtr	2-10	20%	1-7	14%	8-8	100%
1st Half	7-36	19%	4-19	21%	0-0	0%
2nd Half	10-23	43%	2-11	18%	14-18	78%
<b>Game</b>	<b>17-59</b>	<b>28.8%</b>	<b>6-30</b>	<b>20.0%</b>	<b>14-18</b>	<b>77.8%</b>

*Deadball Rebounds: 4.0*  
*Last FG: 4th-04:44*  
*Biggest Run: 10-0*  
*Largest lead: By 0 at -*  
*Technical Fouls: None.*

**Lincoln Memorial 68**

No.	Player	S	Pts	FG	3FG	FT	OR	DR	TR	PF	A	TO	Blk	Stl	Min	+/-
02	OGBURN, SEMAJIA	F	4	2-5	0-0	0-0	2	6	8	4	2	2	0	0	16	11
20	FLOWERS, LAUREN	G	8	3-7	0-1	2-2	0	3	3	2	3	0	1	2	21	6
23	MCCOMBS, TONI	G	3	1-2	0-0	1-4	1	2	3	2	1	5	1	1	23	7
30	QUARLES, SHERMERIA	F	12	4-10	0-0	4-6	3	1	4	1	1	0	1	2	22	11
35	PROFFITT, LINDSAY	G	9	3-12	3-10	0-0	1	3	4	0	3	3	0	3	31	23
00	CAUDLE, KYNDALL	G	5	2-5	1-1	0-0	0	3	3	1	0	3	0	0	10	1
03	RUSSELL, HARPER	F	0	0-1	0-1	0-0	0	0	0	0	0	0	0	0	6	-8
04	KISER, LEXI	G	6	1-2	0-1	4-4	0	2	2	0	3	2	0	1	17	3
14	KIRKPATRICK, ADDI	F	0	0-2	0-0	0-0	0	1	1	0	0	1	0	0	5	-6
24	COTNER-BRABSON, TAYLOR	G	2	1-1	0-0	0-0	0	7	7	2	0	1	0	1	15	6
25	SPIKES, TYTIAIRA	G	2	1-1	0-0	0-0	1	0	1	0	0	0	0	0	4	-4
34	JACHIMCZUK, MAGGIE	F	17	6-11	2-3	3-4	2	1	3	2	2	2	1	2	29	20
<b>TEAM</b>							1	4	5	0		1				
<b>TOTALS</b>			<b>68</b>	<b>24-59</b>	<b>6-17</b>	<b>14-20</b>	<b>11</b>	<b>33</b>	<b>44</b>	<b>14</b>	<b>15</b>	<b>20</b>	<b>4</b>	<b>12</b>	<b>200</b>	

*Shooting By Period*

Period	FG	FG%	3FG	3FG%	FT	FT%
1st Qtr	7-17	41%	2-2	100%	3-3	100%
2nd Qtr	5-15	33%	2-7	29%	5-6	83%
3rd Qtr	6-15	40%	1-4	25%	3-4	75%
4th Qtr	6-12	50%	1-4	25%	3-7	43%
1st Half	12-32	38%	4-9	44%	8-9	89%
2nd Half	12-27	44%	2-8	25%	6-11	55%
<b>Game</b>	<b>24-59</b>	<b>40.7%</b>	<b>6-17</b>	<b>35.3%</b>	<b>14-20</b>	<b>70.0%</b>

*Deadball Rebounds: 3.0*  
*Last FG: 4th-02:03*  
*Biggest Run: 13-0*  
*Largest lead: By 22 at 2:05*  
*Technical Fouls: None.*

Game Notes:

Officials: Chris Collins, Jonathan Brown, Timothy Ward  
Attendance: 525

Start Time: 05:59 PM ET  
End Time: 07:48 PM ET  
Game Duration: 1:49

Score	1st	2nd	3rd	4th	TOT
TWU	8	10	23	13	<b>54</b>
LMU	19	17	16	16	<b>68</b>

TWU led for 0:00. LMU led for 38:05.  
Game was tied for 1:55.  
Times tied: 0      Lead Changes: 0

Points from	TWU	LMU
In the Paint	14	32
Off Turns	16	16
2nd Chance	4	18
Fast Break	9	24
Bench	30	32

**Official Box Score**  
**Tenn. Wesleyan vs Lincoln Memorial**  
**First Half Statistics Only**  
**December 03, 2019 at Tex Turner Arena - Harrogate, TN**



**Tenn. Wesleyan 18**

No.	Player	S	Pts	FG	3FG	FT	OR	DR	TR	PF	A	TO	Blk	Stl	Min	+/-
02	COLEMAN, JORDAN	F	0	0-0	0-0	0-0	0	0	0	0	0	0	0	0	0	0
03	RUNYAN, CARLIE	G	0	0-3	0-0	0-0	0	0	0	1	0	0	0	1	10	-19
05	YEARWOOD, CHLOE	G	3	1-2	1-2	0-0	0	3	3	1	1	0	0	0	8	2
10	STRANGE, KAITLYN	G	2	1-2	0-1	0-0	0	1	1	1	0	0	0	0	4	4
11	BURNS, HANNAH	G	0	0-0	0-0	0-0	0	0	0	0	0	0	0	0	0	0
12	MCCLURG, MADISON	F	2	1-2	0-0	0-0	1	0	1	2	0	1	0	0	8	-8
14	TROUTT, HANNAH	G	0	0-1	0-1	0-0	1	1	2	0	0	0	0	1	10	-13
15	CONN, KENZIE	F	0	0-3	0-3	0-0	0	3	3	0	0	2	0	0	10	-13
21	CHERRY, HANNAH	F	2	1-8	0-1	0-0	1	2	3	2	0	1	0	0	12	-21
22	LINER, EMILY	G	3	1-1	1-1	0-0	0	0	0	1	2	2	0	1	8	3
23	WRIGHT, JORDAN	G	0	0-3	0-1	0-0	0	0	0	1	3	1	0	1	12	-6
25	CROWDER, ALYSON	G	0	0-2	0-2	0-0	0	2	2	0	0	0	0	0	8	-14
35	ATKINS, SAVANNAH	F	6	2-9	2-7	0-0	0	1	1	1	0	1	3	0	10	-5
	TEAM		0	0-0	0-0	0-0	1	2	3	0	0	0	0	0	0	0
<b>TOTALS</b>			<b>18</b>	<b>7-36</b>	<b>4-19</b>	<b>0-0</b>	<b>4</b>	<b>15</b>	<b>19</b>	<b>10</b>	<b>6</b>	<b>8</b>	<b>3</b>	<b>4</b>	<b>100</b>	

*Shooting By Period*

Period	FG	FG%	3FG	3FG%	FT	FT%
1st Qtr	3-17	18%	2-7	29%	0-0	0%
2nd Qtr	4-19	21%	2-12	17%	0-0	0%
1st Half	7-36	19%	4-19	21%	0-0	0%
Game	17-59	28.8%	6-30	20.0%	14-18	77.8%

*Deadball Rebounds: 4,0*  
*Last FG Half: TWU 2nd-00:42*

**Lincoln Memorial 36**

No.	Player	S	Pts	FG	3FG	FT	OR	DR	TR	PF	A	TO	Blk	Stl	Min	+/-
00	CAUDLE, KYNDALL	G	3	1-4	1-1	0-0	0	2	2	0	0	2	0	0	5	6
02	OGBURN, SEMAJIA	F	2	1-4	0-0	0-0	1	5	6	0	1	1	0	0	12	12
03	RUSSELL, HARPER	F	0	0-1	0-1	0-0	0	0	0	0	0	0	0	0	4	-4
04	KISER, LEXI	G	2	0-1	0-1	2-2	0	1	1	0	1	0	0	0	6	2
14	KIRKPATRICK, ADDI	F	0	0-2	0-0	0-0	0	0	0	0	0	1	0	0	4	-4
20	FLOWERS, LAUREN	G	6	2-4	0-0	2-2	0	3	3	0	3	0	1	0	13	11
23	MCCOMBS, TONI	G	0	0-1	0-0	0-0	0	1	1	0	0	2	1	0	5	7
24	COTNER-BRABSON, TAYLOR	G	0	0-0	0-0	0-0	0	6	6	1	0	1	0	1	11	10
25	SPIKES, TYTIAIRA	G	0	0-0	0-0	0-0	0	0	0	0	0	0	0	0	0	0
30	QUARLES, SHERMERIA	F	9	3-6	0-0	3-4	1	1	2	0	1	0	0	0	12	8
34	JACHIMCZUK, MAGGIE	F	11	4-5	2-3	1-1	1	1	2	1	0	1	1	1	12	20
35	PROFFITT, LINDSAY	G	3	1-4	1-3	0-0	1	3	4	0	3	0	0	2	16	22
	TEAM		0	0-0	0-0	0-0	1	2	3	0	0	0	0	0	0	0
<b>TOTALS</b>			<b>36</b>	<b>12-32</b>	<b>4-9</b>	<b>8-9</b>	<b>5</b>	<b>25</b>	<b>30</b>	<b>2</b>	<b>9</b>	<b>8</b>	<b>3</b>	<b>4</b>	<b>100</b>	

*Shooting By Period*

Period	FG	FG%	3FG	3FG%	FT	FT%
1st Qtr	7-17	41%	2-2	100%	3-3	100%
2nd Qtr	5-15	33%	2-7	29%	5-6	83%
1st Half	12-32	38%	4-9	44%	8-9	89%
Game	24-59	40.7%	6-17	35.3%	14-20	70.0%

*Deadball Rebounds: 3,0*  
*Last FG Half: LMU 2nd-05:02*

*Game Notes:*

Officials: Chris Collins, Jonathan Brown, Timothy Ward  
 Attendance: 525

Start Time: 05:59 PM ET  
 End Time: 07:48 PM ET  
 Game Duration: 1:49

Score	1st	2nd	3rd	4th	TOT
TWU	8	10	23	13	54
LMU	19	17	16	16	68

Points from (This Period)	TWU	LMU
In the Paint	4	12
Off Turns	7	2
2nd Chance	2	9
Fast Break	3	11
Bench	14	16

**Official Box Score**  
**Tenn. Wesleyan vs Lincoln Memorial**  
**First Quarter Statistics Only**  
**December 03, 2019 at Tex Turner Arena - Harrogate, TN**



### Tenn. Wesleyan 8

No.	Player	S	Pts	FG	3FG	FT	OR	DR	TR	PF	A	TO	Blk	Stl	Min	+/-
12	MCCLURG, MADISON	F	0	0-1	0-0	0-0	0	0	0	0	0	1	0	0	6	-7
14	TROUTT, HANNAH	G	0	0-0	0-0	0-0	1	0	1	0	0	0	0	1	4	-2
15	CONN, KENZIE	F	0	0-1	0-1	0-0	0	3	3	0	0	1	0	0	4	-2
21	CHERRY, HANNAH	F	2	1-5	0-1	0-0	1	1	2	1	0	1	0	0	6	-10
23	WRIGHT, JORDAN	G	0	0-2	0-0	0-0	0	0	0	0	1	0	0	0	6	-9
02	COLEMAN, JORDAN	F	0	0-0	0-0	0-0	0	0	0	0	0	0	0	0	0	0
03	RUNYAN, CARLIE	G	0	0-2	0-0	0-0	0	0	0	1	0	0	0	1	6	-9
05	YEARWOOD, CHLOE	G	0	0-1	0-1	0-0	0	1	1	0	1	0	0	0	4	-2
10	STRANGE, KAITLYN	G	0	0-0	0-0	0-0	0	0	0	0	0	0	0	0	0	0
11	BURNS, HANNAH	G	0	0-0	0-0	0-0	0	0	0	0	0	0	0	0	0	0
22	LINER, EMILY	G	3	1-1	1-1	0-0	0	0	0	1	0	2	0	0	4	-1
25	CROWDER, ALYSON	G	0	0-0	0-0	0-0	0	0	0	0	0	0	0	0	4	-4
35	ATKINS, SAVANNAH	F	3	1-4	1-3	0-0	0	1	1	1	0	1	3	0	6	-9
<b>TEAM</b>							1	1	2	0		0				
<b>TOTALS</b>			<b>8</b>	<b>3-17</b>	<b>2-7</b>	<b>0-0</b>	<b>3</b>	<b>7</b>	<b>10</b>	<b>4</b>	<b>2</b>	<b>6</b>	<b>3</b>	<b>2</b>	<b>50</b>	

*Shooting By Period*

Period	FG	FG%	3FG	3FG%	FT	FT%
1st Qtr	3-17	18%	2-7	29%	0-0	0%
2nd Qtr	4-19	21%	2-12	17%	0-0	0%
1st Half	3-17	18%	2-7	29%	0-0	0%
1st Half	7-36	19%	4-19	21%	0-0	0%
Game	17-59	28.8%	6-30	20.0%	14-18	77.8%

*Deadball Rebounds: 4,0*

### Lincoln Memorial 19

No.	Player	S	Pts	FG	3FG	FT	OR	DR	TR	PF	A	TO	Blk	Stl	Min	+/-
02	OGBURN, SEMAJIA	F	2	1-4	0-0	0-0	1	3	4	0	1	0	0	0	10	11
20	FLOWERS, LAUREN	G	2	1-2	0-0	0-0	0	1	1	0	1	0	1	0	4	2
23	MCCOMBS, TONI	G	0	0-1	0-0	0-0	0	1	1	0	0	2	1	0	5	7
30	QUARLES, SHERMERIA	F	2	1-2	0-0	0-0	0	0	0	0	0	0	0	0	4	2
35	PROFFITT, LINDSAY	G	3	1-2	1-1	0-0	1	1	2	0	2	0	0	2	10	11
00	CAUDLE, KYNDALL	G	3	1-4	1-1	0-0	0	2	2	0	0	2	0	0	5	6
03	RUSSELL, HARPER	F	0	0-0	0-0	0-0	0	0	0	0	0	0	0	0	0	0
04	KISER, LEXI	G	2	0-0	0-0	2-2	0	1	1	0	1	0	0	0	5	4
14	KIRKPATRICK, ADDI	F	0	0-0	0-0	0-0	0	0	0	0	0	0	0	0	0	0
24	COTNER-BRABSON, TAYLOR	G	0	0-0	0-0	0-0	0	0	0	1	0	0	0	0	1	3
25	SPIKES, TYTIAIRA	G	0	0-0	0-0	0-0	0	0	0	0	0	0	0	0	0	0
34	JACHIMCZUK, MAGGIE	F	5	2-2	0-0	1-1	0	1	1	0	0	1	1	1	6	9
<b>TEAM</b>							1	1	2	0		0				
<b>TOTALS</b>			<b>19</b>	<b>7-17</b>	<b>2-2</b>	<b>3-3</b>	<b>3</b>	<b>11</b>	<b>14</b>	<b>1</b>	<b>5</b>	<b>5</b>	<b>3</b>	<b>3</b>	<b>50</b>	

*Shooting By Period*

Period	FG	FG%	3FG	3FG%	FT	FT%
1st Qtr	7-17	41%	2-2	100%	3-3	100%
2nd Qtr	5-15	33%	2-7	29%	5-6	83%
1st Half	7-17	41%	2-2	100%	3-3	100%
1st Half	12-32	38%	4-9	44%	8-9	89%
Game	24-59	40.7%	6-17	35.3%	14-20	70.0%

*Deadball Rebounds: 3,0*

Game Notes:

Officials: Chris Collins, Jonathan Brown, Timothy Ward  
Attendance: 525

Start Time: 05:59 PM ET  
End Time: 07:48 PM ET  
Game Duration: 1:49

Score	1st	2nd	3rd	4th	TOT
TWU	8	10	23	13	<b>54</b>
LMU	19	17	16	16	<b>68</b>

Points from (This Period)	TWU	LMU
In the Paint	2	8
Off Turns	5	2
2nd Chance	2	5
Fast Break	3	9
Bench	6	10

**Official Play-By-Play**  
**Tenn. Wesleyan vs Lincoln Memorial**  
**First Quarter**  
**December 03, 2019 at Tex Turner Arena - Harrogate, TN**



**Period 1**

**Starters:**

**Tenn. Wesleyan:** 12 MCCLURG, MADISON (F); 14 TROUTT, HANNAH (G); 15 CONN, KENZIE (F); 21 CHERRY, HANNAH (F); 23 WRIGHT, JORDAN (G);

**Lincoln Memorial:** 2 OGBURN, SEMAJIA (F); 20 FLOWERS, LAUREN (G); 23 MCCOMBS, TONI (G); 30 QUARLES, SHERMERIA (F); 35 PROFFITT, LINDSAY (G);

Time	VISITORS: Tenn. Wesleyan	Score	Margin	HOME: Lincoln Memorial
09:42	MISSED 3PTR by CONN, KENZIE			
09:36				REBOUND (DEF) by FLOWERS, LAUREN
09:34				MISSED JUMPER by MCCOMBS, TONI
09:31	REBOUND (DEF) by CHERRY, HANNAH			
09:26	TURNOVER (BADPASS) by CHERRY, HANNAH			
09:26				STEAL by PROFFITT, LINDSAY
08:59				MISSED JUMPER by OGBURN, SEMAJIA
08:56	REBOUND (DEF) by CONN, KENZIE			
08:41	MISSED JUMPER by WRIGHT, JORDAN			
08:35				REBOUND (DEF) by MCCOMBS, TONI
08:33				MISSED JUMPER by FLOWERS, LAUREN
08:29	REBOUND (DEF) by CONN, KENZIE			
08:17	MISSED 3PTR by CHERRY, HANNAH			
08:17				BLOCK by MCCOMBS, TONI
08:08	REBOUND (OFF) by TROUTT, HANNAH			
08:08	MISSED JUMPER by CHERRY, HANNAH			
08:08				REBOUND (DEF) by TEAM
08:05		2-0	H 2	GOOD! LAYUP by QUARLES, SHERMERIA [FB]
08:05				ASSIST by FLOWERS, LAUREN
07:38	TURNOVER (BADPASS) by MCCLURG, MADISON			
07:38				STEAL by PROFFITT, LINDSAY
07:33		4-0	H 4	GOOD! LAYUP by FLOWERS, LAUREN [FB]
07:33				ASSIST by PROFFITT, LINDSAY
07:15	MISSED JUMPER by WRIGHT, JORDAN			
07:11				REBOUND (DEF) by OGBURN, SEMAJIA
06:56				MISSED JUMPER by OGBURN, SEMAJIA
06:51	REBOUND (DEF) by CONN, KENZIE			
06:39	TURNOVER (TRAVEL) by CONN, KENZIE			
06:31				TURNOVER (LOSTBALL) by MCCOMBS, TONI
06:31	STEAL by TROUTT, HANNAH			
06:25	MISSED LAYUP by CHERRY, HANNAH			
06:25				BLOCK by FLOWERS, LAUREN
06:17	REBOUND (OFF) by CHERRY, HANNAH			
06:02				MISSED JUMPER by QUARLES, SHERMERIA
06:00				REBOUND (OFF) by TEAM
06:00				SUB OUT: FLOWERS, LAUREN
06:00				SUB OUT: QUARLES, SHERMERIA
06:00				SUB IN: CAUDLE, KYNDALL
06:00				SUB IN: JACHIMCZUK, MAGGIE
06:00	SUB OUT: CONN, KENZIE			
06:00	SUB OUT: WRIGHT, JORDAN			
06:00	SUB IN: RUNYAN, CARLIE			
06:00	SUB IN: YEARWOOD, CHLOE			
05:56		7-2	H 5	GOOD! 3PTR by PROFFITT, LINDSAY [FB]
05:56				ASSIST by OGBURN, SEMAJIA
05:43	MISSED 3PTR by ATKINS, SAVANNAH			
05:32				REBOUND (DEF) by OGBURN, SEMAJIA
05:25		9-2	H 7	GOOD! JUMPER by JACHIMCZUK, MAGGIE
05:25				ASSIST by PROFFITT, LINDSAY
05:07	MISSED JUMPER by MCCLURG, MADISON			
05:02				REBOUND (DEF) by CAUDLE, KYNDALL
05:00				MISSED JUMPER by CAUDLE, KYNDALL
05:00	BLOCK by ATKINS, SAVANNAH			
04:53	REBOUND (DEF) by ATKINS, SAVANNAH			
04:50	MISSED LAYUP by RUNYAN, CARLIE			
04:50				REBOUND (DEF) by OGBURN, SEMAJIA
04:50	FOUL (PERSONAL) by RUNYAN, CARLIE			
06:00	SUB OUT: TROUTT, HANNAH			
06:00	SUB IN: ATKINS, SAVANNAH			
04:46				
04:42				TURNOVER (LOSTBALL) by MCCOMBS, TONI
04:42				SUB OUT: MCCOMBS, TONI
04:42				SUB IN: KISER, LEXI
04:28	FOUL (OFF) by ATKINS, SAVANNAH			
04:28	TURNOVER (OFFENSIVE) by ATKINS, SAVANNAH			
04:04				MISSED LAYUP by CAUDLE, KYNDALL
04:04	BLOCK by ATKINS, SAVANNAH			
04:04	REBOUND (DEF) by TEAM			
04:04	SUB OUT: CHERRY, HANNAH			
04:04	SUB IN: LINER, EMILY			

Time	VISITORS: Tenn. Wesleyan	Score	Margin	HOME: Lincoln Memorial
03:54	TURNOVER (TRAVEL) by LINER, EMILY			
03:54	SUB OUT: MCCLURG, MADISON			
03:54	SUB IN: CROWDER, ALYSON			
03:28				TURNOVER (TRAVEL) by CAUDLE, KYNDALL
03:20	MISSED 3PTR by YEARWOOD, CHLOE			
03:16				REBOUND (DEF) by CAUDLE, KYNDALL
02:52				MISSED JUMPER by OGBURN, SEMAJIA
02:48	REBOUND (DEF) by YEARWOOD, CHLOE			
02:31	GOOD! 3PTR by LINER, EMILY	9-5	H 4	
02:31	ASSIST by YEARWOOD, CHLOE			
02:22				MISSED JUMPER by CAUDLE, KYNDALL
02:21				REBOUND (OFF) by PROFFITT, LINDSAY
02:21	SUB OUT: YEARWOOD, CHLOE			
02:21	SUB IN: WRIGHT, JORDAN			
02:11				MISSED LAYUP by PROFFITT, LINDSAY
02:11	BLOCK by ATKINS, SAVANNAH			
02:02				REBOUND (OFF) by OGBURN, SEMAJIA
02:02		11-5	H 6	GOOD! LAYUP by OGBURN, SEMAJIA
01:54	MISSED JUMPER by ATKINS, SAVANNAH			
01:51				REBOUND (DEF) by KISER, LEXI
01:46	FOUL (PERSONAL) by LINER, EMILY			
01:46		12-5	H 7	GOOD! FT by KISER, LEXI [FB]
01:46		13-5	H 8	GOOD! FT by KISER, LEXI [FB]
01:34	TURNOVER (BADPASS) by LINER, EMILY			
01:34				STEAL by JACHIMCZUK, MAGGIE
01:34				TURNOVER (LOSTBALL) by JACHIMCZUK, MAGGIE
01:29	GOOD! 3PTR by ATKINS, SAVANNAH [FB]	13-8	H 5	
01:29	ASSIST by WRIGHT, JORDAN			
01:11				TURNOVER (BADPASS) by CAUDLE, KYNDALL
01:11	STEAL by RUNYAN, CARLIE			
01:05	MISSED JUMPER by RUNYAN, CARLIE			
01:01				REBOUND (DEF) by PROFFITT, LINDSAY
00:55		16-8	H 8	GOOD! 3PTR by CAUDLE, KYNDALL
00:52	TIMEOUT 30SEC			
06:15	GOOD! LAYUP by CHERRY, HANNAH	4-2	H 2	
00:52				SUB OUT: CAUDLE, KYNDALL
00:52				SUB IN: COTNER-BRABSON, TAYLOR
00:42				FOUL (PERSONAL) by COTNER-BRABSON, TAYLOR
00:35	MISSED 3PTR by ATKINS, SAVANNAH			
00:35				BLOCK by JACHIMCZUK, MAGGIE
00:33	REBOUND (OFF) by TEAM			
00:33	SUB OUT: LINER, EMILY			
00:33	SUB IN: CHERRY, HANNAH			
00:30	MISSED JUMPER by CHERRY, HANNAH			
00:26				REBOUND (DEF) by JACHIMCZUK, MAGGIE
00:04		18-8	H 10	GOOD! JUMPER by JACHIMCZUK, MAGGIE
00:04				ASSIST by KISER, LEXI
00:04	FOUL (PERSONAL) by CHERRY, HANNAH			
00:04		19-8	H 11	GOOD! FT by JACHIMCZUK, MAGGIE

### Tenn. Wesleyan 8, Lincoln Memorial 19

Points from (This Period)	TWU	LMU
In the Paint	2	8
Off Turns	5	2
2nd Chance	2	5
Fast Break	3	9
Bench	6	10

**Official Box Score**  
**Tenn. Wesleyan vs Lincoln Memorial**  
**Second Quarter Statistics Only**  
**December 03, 2019 at Tex Turner Arena - Harrogate, TN**



### Tenn. Wesleyan 10

No.	Player	S	Pts	FG	3FG	FT	OR	DR	TR	PF	A	TO	Blk	Stl	Min	+/-
12	MCCLURG, MADISON	F	2	1-1	0-0	0-0	1	0	1	2	0	0	0	0	2	-1
14	TROUTT, HANNAH	G	0	0-1	0-1	0-0	0	1	1	0	0	0	0	0	6	-11
15	CONN, KENZIE	F	0	0-2	0-2	0-0	0	0	0	0	0	1	0	0	6	-11
21	CHERRY, HANNAH	F	0	0-3	0-0	0-0	0	1	1	1	0	0	0	0	6	-11
23	WRIGHT, JORDAN	G	0	0-1	0-1	0-0	0	0	0	1	2	1	0	1	6	3
02	COLEMAN, JORDAN	F	0	0-0	0-0	0-0	0	0	0	0	0	0	0	0	0	0
03	RUNYAN, CARLIE	G	0	0-1	0-0	0-0	0	0	0	0	0	0	0	0	4	-10
05	YEARWOOD, CHLOE	G	3	1-1	1-1	0-0	0	2	2	1	0	0	0	0	4	4
10	STRANGE, KAITLYN	G	2	1-2	0-1	0-0	0	1	1	1	0	0	0	0	4	4
11	BURNS, HANNAH	G	0	0-0	0-0	0-0	0	0	0	0	0	0	0	0	0	0
22	LINER, EMILY	G	0	0-0	0-0	0-0	0	0	0	0	2	0	0	1	4	4
25	CROWDER, ALYSON	G	0	0-2	0-2	0-0	0	2	2	0	0	0	0	0	4	-10
35	ATKINS, SAVANNAH	F	3	1-5	1-4	0-0	0	0	0	0	0	0	0	0	4	4
	TEAM						0	1	1	0		0				
<b>TOTALS</b>			<b>10</b>	<b>4-19</b>	<b>2-12</b>	<b>0-0</b>	<b>1</b>	<b>8</b>	<b>9</b>	<b>6</b>	<b>4</b>	<b>2</b>	<b>0</b>	<b>2</b>	<b>50</b>	

*Shooting By Period*

Period	FG	FG%	3FG	3FG%	FT	FT%
3rd Qtr	8-13	62%	1-4	25%	6-10	60%
4th Qtr	2-10	20%	1-7	14%	8-8	100%
2nd Half	4-19	21%	2-12	17%	0-0	0%
2nd Half	10-23	43%	2-11	18%	14-18	78%
Game	17-59	28.8%	6-30	20.0%	14-18	77.8%

Deadball Rebounds: 4,0

### Lincoln Memorial 17

No.	Player	S	Pts	FG	3FG	FT	OR	DR	TR	PF	A	TO	Blk	Stl	Min	+/-
02	OGBURN, SEMAJIA	F	0	0-0	0-0	0-0	0	2	2	0	0	1	0	0	2	1
20	FLOWERS, LAUREN	G	4	1-2	0-0	2-2	0	2	2	0	2	0	0	0	9	9
23	MCCOMBS, TONI	G	0	0-0	0-0	0-0	0	0	0	0	0	0	0	0	0	0
30	QUARLES, SHERMERIA	F	7	2-4	0-0	3-4	1	1	2	0	1	0	0	0	8	6
35	PROFFITT, LINDSAY	G	0	0-2	0-2	0-0	0	2	2	0	1	0	0	0	6	11
00	CAUDLE, KYNDALL	G	0	0-0	0-0	0-0	0	0	0	0	0	0	0	0	0	0
03	RUSSELL, HARPER	F	0	0-1	0-1	0-0	0	0	0	0	0	0	0	0	4	-4
04	KISER, LEXI	G	0	0-1	0-1	0-0	0	0	0	0	0	0	0	0	1	-2
14	KIRKPATRICK, ADDI	F	0	0-2	0-0	0-0	0	0	0	0	0	1	0	0	4	-4
24	COTNER-BRABSON, TAYLOR	G	0	0-0	0-0	0-0	0	6	6	0	0	1	0	1	10	7
25	SPIKES, TYTIAIRA	G	0	0-0	0-0	0-0	0	0	0	0	0	0	0	0	0	0
34	JACHIMCZUK, MAGGIE	F	6	2-3	2-3	0-0	1	0	1	1	0	0	0	0	6	11
	TEAM						0	1	1	0		0				
<b>TOTALS</b>			<b>17</b>	<b>5-15</b>	<b>2-7</b>	<b>5-6</b>	<b>2</b>	<b>14</b>	<b>16</b>	<b>1</b>	<b>4</b>	<b>3</b>	<b>0</b>	<b>1</b>	<b>50</b>	

*Shooting By Period*

Period	FG	FG%	3FG	3FG%	FT	FT%
3rd Qtr	6-15	40%	1-4	25%	3-4	75%
4th Qtr	6-12	50%	1-4	25%	3-7	43%
2nd Half	5-15	33%	2-7	29%	5-6	83%
2nd Half	12-27	44%	2-8	25%	6-11	55%
Game	24-59	40.7%	6-17	35.3%	14-20	70.0%

Deadball Rebounds: 3,0

Game Notes:

Officials: Chris Collins, Jonathan Brown, Timothy Ward  
Attendance: 525

Start Time: 05:59 PM ET  
End Time: 07:48 PM ET  
Game Duration: 1:49

Score	1st	2nd	3rd	4th	TOT
TWU	8	10	23	13	<b>54</b>
LMU	19	17	16	16	<b>68</b>

Points from (This Period)	TWU	LMU
In the Paint	2	4
Off Turns	2	0
2nd Chance	0	4
Fast Break	0	2
Bench	8	6

**Official Play-By-Play**  
**Tenn. Wesleyan vs Lincoln Memorial**  
**Second Quarter**  
**December 03, 2019 at Tex Turner Arena - Harrogate, TN**



**Period 2**

**Starters:**

**Tenn. Wesleyan:** 12 MCCLURG, MADISON (F); 14 TROUTT, HANNAH (G); 15 CONN, KENZIE (F); 21 CHERRY, HANNAH (F); 23 WRIGHT, JORDAN (G);

**Lincoln Memorial:** 2 OGBURN, SEMAJIA (F); 20 FLOWERS, LAUREN (G); 23 MCCOMBS, TONI (G); 30 QUARLES, SHERMERIA (F); 35 PROFFITT, LINDSAY (G);

Time	VISITORS: Tenn. Wesleyan	Score	Margin	HOME: Lincoln Memorial
10:00	SUB OUT: RUNYAN, CARLIE			
10:00	SUB OUT: CROWDER, ALYSON			
10:00	SUB OUT: ATKINS, SAVANNAH			
10:00	SUB IN: MCCLURG, MADISON			
10:00	SUB IN: TROUTT, HANNAH			
10:00	SUB IN: CONN, KENZIE			
09:47	TURNOVER (TRAVEL) by CONN, KENZIE			
09:42				TURNOVER (BADPASS) by OGBURN, SEMAJIA
09:42	STEAL by WRIGHT, JORDAN			
09:33	GOOD! LAYUP by MCCLURG, MADISON	19-10	H 9	
09:33	ASSIST by WRIGHT, JORDAN			
09:21				MISSED 3PTR by KISER, LEXI
09:18	REBOUND (DEF) by TROUTT, HANNAH			
09:02	MISSED 3PTR by WRIGHT, JORDAN			
08:59				REBOUND (DEF) by COTNER-BRABSON, TAYLOR
08:56				MISSED 3PTR by PROFFITT, LINDSAY
08:50	REBOUND (DEF) by CHERRY, HANNAH			
08:47	MISSED LAYUP by CHERRY, HANNAH			
08:45				REBOUND (DEF) by OGBURN, SEMAJIA
08:45	FOUL (PERSONAL) by CHERRY, HANNAH			
08:45				SUB OUT: KISER, LEXI
08:45				SUB IN: FLOWERS, LAUREN
08:37		22-10	H 12	GOOD! 3PTR by JACHIMCZUK, MAGGIE
08:37				ASSIST by FLOWERS, LAUREN
08:11	MISSED JUMPER by CHERRY, HANNAH			
08:06	REBOUND (OFF) by MCCLURG, MADISON			
07:59	MISSED 3PTR by CONN, KENZIE			
07:59				REBOUND (DEF) by OGBURN, SEMAJIA
07:59	FOUL (PERSONAL) by MCCLURG, MADISON			
07:59	SUB OUT: WRIGHT, JORDAN			
07:59	SUB IN: RUNYAN, CARLIE			
07:59				SUB OUT: OGBURN, SEMAJIA
07:59				SUB IN: QUARLES, SHERMERIA
07:35	FOUL (PERSONAL) by MCCLURG, MADISON			
07:35	SUB OUT: MCCLURG, MADISON			
07:35	SUB IN: CROWDER, ALYSON			
07:35				MISSED FT by QUARLES, SHERMERIA
07:35				REBOUND (OFF) by TEAM
07:35		23-10	H 13	GOOD! FT by QUARLES, SHERMERIA
07:20	MISSED 3PTR by CONN, KENZIE			
07:15				REBOUND (DEF) by COTNER-BRABSON, TAYLOR
07:07		26-10	H 16	GOOD! 3PTR by JACHIMCZUK, MAGGIE
07:07				ASSIST by QUARLES, SHERMERIA
06:48	MISSED JUMPER by RUNYAN, CARLIE			
06:45				REBOUND (DEF) by PROFFITT, LINDSAY
06:43		28-10	H 18	GOOD! LAYUP by QUARLES, SHERMERIA [FB]
06:43				ASSIST by FLOWERS, LAUREN
06:28	MISSED 3PTR by CROWDER, ALYSON			
06:24				REBOUND (DEF) by COTNER-BRABSON, TAYLOR
06:18				MISSED 3PTR by PROFFITT, LINDSAY
06:10				REBOUND (OFF) by JACHIMCZUK, MAGGIE
05:57		30-10	H 20	GOOD! JUMPER by QUARLES, SHERMERIA
05:57				ASSIST by PROFFITT, LINDSAY
05:25	MISSED JUMPER by CHERRY, HANNAH			
05:21				REBOUND (DEF) by COTNER-BRABSON, TAYLOR
05:02		32-10	H 22	GOOD! LAYUP by FLOWERS, LAUREN [PNT]
04:53	MISSED 3PTR by CROWDER, ALYSON			
04:47				REBOUND (DEF) by PROFFITT, LINDSAY
04:44				MISSED 3PTR by JACHIMCZUK, MAGGIE
04:39	REBOUND (DEF) by CROWDER, ALYSON			
04:30	MISSED 3PTR by TROUTT, HANNAH			
04:25				REBOUND (DEF) by QUARLES, SHERMERIA
04:06				MISSED LAYUP by FLOWERS, LAUREN
04:02	REBOUND (DEF) by CROWDER, ALYSON			
04:01				FOUL (PERSONAL) by JACHIMCZUK, MAGGIE
04:01				
04:01				SUB OUT: JACHIMCZUK, MAGGIE
04:01				SUB OUT: PROFFITT, LINDSAY
04:01				SUB IN: RUSSELL, HARPER
04:01				SUB IN: KIRKPATRICK, ADDI



Time	VISITORS: Tenn. Wesleyan	Score	Margin	HOME: Lincoln Memorial
04:01	SUB OUT: RUNYAN, CARLIE			
04:01	SUB OUT: TROUTT, HANNAH			
04:01	SUB OUT: CONN, KENZIE			
04:01	SUB OUT: CHERRY, HANNAH			
04:01	SUB OUT: CROWDER, ALYSON			
04:01	SUB IN: YEARWOOD, CHLOE			
04:01	SUB IN: STRANGE, KAITLYN			
04:01	SUB IN: LINER, EMILY			
04:01	SUB IN: WRIGHT, JORDAN			
04:01	SUB IN: ATKINS, SAVANNAH			
03:41	MISSED 3PTR by ATKINS, SAVANNAH			
03:38				REBOUND (DEF) by FLOWERS, LAUREN
03:31				MISSED JUMPER by QUARLES, SHERMERIA
03:31	REBOUND (DEF) by TEAM			
03:17	GOOD! 3PTR by ATKINS, SAVANNAH	32-13	H 19	
03:17	ASSIST by LINER, EMILY			
03:04				MISSED 3PTR by RUSSELL, HARPER
03:00	REBOUND (DEF) by YEARWOOD, CHLOE			
02:49	GOOD! JUMPER by STRANGE, KAITLYN	32-15	H 17	
02:49	ASSIST by WRIGHT, JORDAN			
02:47				TIMEOUT 30SEC
02:40	FOUL (PERSONAL) by YEARWOOD, CHLOE			
02:29				MISSED JUMPER by QUARLES, SHERMERIA
02:26				REBOUND (OFF) by QUARLES, SHERMERIA
02:26	FOUL (PERSONAL) by WRIGHT, JORDAN			
02:26		33-15	H 18	GOOD! FT by QUARLES, SHERMERIA
02:26		34-15	H 19	GOOD! FT by QUARLES, SHERMERIA
02:11	MISSED 3PTR by ATKINS, SAVANNAH			
02:08				REBOUND (DEF) by COTNER-BRABSON, TAYLOR
01:55				MISSED JUMPER by KIRKPATRICK, ADDI
01:50	REBOUND (DEF) by YEARWOOD, CHLOE			
01:45	MISSED 3PTR by STRANGE, KAITLYN			
01:40				REBOUND (DEF) by FLOWERS, LAUREN
01:32				TURNOVER (3SEC) by KIRKPATRICK, ADDI
01:10	MISSED JUMPER by ATKINS, SAVANNAH			
01:06				REBOUND (DEF) by COTNER-BRABSON, TAYLOR
00:52				MISSED JUMPER by KIRKPATRICK, ADDI
00:48	REBOUND (DEF) by STRANGE, KAITLYN			
00:42	GOOD! 3PTR by YEARWOOD, CHLOE	34-18	H 16	
00:42	ASSIST by LINER, EMILY			
00:33	FOUL (PERSONAL) by STRANGE, KAITLYN			
00:33		35-18	H 17	GOOD! FT by FLOWERS, LAUREN
00:33		36-18	H 18	GOOD! FT by FLOWERS, LAUREN
00:13	TURNOVER (LOSTBALL) by WRIGHT, JORDAN			
00:13				STEAL by COTNER-BRABSON, TAYLOR
00:05				TURNOVER (BADPASS) by COTNER-BRABSON, TAYLOR
00:05	STEAL by LINER, EMILY			
00:01	MISSED 3PTR by ATKINS, SAVANNAH			
00:01				REBOUND (DEF) by TEAM

### Tenn. Wesleyan 18, Lincoln Memorial 36

Points from (This Period)	TWU	LMU
In the Paint	2	4
Off Turns	2	0
2nd Chance	0	4
Fast Break	0	2
Bench	8	6

**Official Box Score**  
**Tenn. Wesleyan vs Lincoln Memorial**  
**Second Half Statistics Only**  
**December 03, 2019 at Tex Turner Arena - Harrogate, TN**



**Tenn. Wesleyan 36**

No.	Player	S	Pts	FG	3FG	FT	OR	DR	TR	PF	A	TO	Blk	Stl	Min	+/-
02	COLEMAN, JORDAN	F	0	0-0	0-0	0-0	0	1	1	0	0	1	0	0	4	2
03	RUNYAN, CARLIE	G	3	0-2	0-1	3-4	0	1	1	1	1	0	0	0	11	10
05	YEARWOOD, CHLOE	G	2	1-2	0-1	0-0	0	1	1	1	1	0	0	3	12	1
10	STRANGE, KAITLYN	G	0	0-1	0-1	0-0	1	0	1	0	0	0	0	0	4	4
11	BURNS, HANNAH	G	0	0-0	0-0	0-0	0	0	0	0	0	1	0	0	4	4
12	MCCLURG, MADISON	F	2	0-0	0-0	2-2	0	2	2	1	0	0	0	1	13	4
14	TROUTT, HANNAH	G	4	2-4	0-2	0-0	0	0	0	0	0	0	0	0	9	0
15	CONN, KENZIE	F	2	1-2	0-1	0-0	2	2	4	0	2	1	0	2	9	0
21	CHERRY, HANNAH	F	1	0-0	0-0	1-2	0	0	0	1	0	1	0	0	5	-1
22	LINER, EMILY	G	2	0-0	0-0	2-4	1	0	1	0	1	3	0	1	6	-5
23	WRIGHT, JORDAN	G	11	4-8	1-2	2-2	1	0	1	0	1	2	0	1	10	-1
25	CROWDER, ALYSON	G	2	0-0	0-0	2-2	0	1	1	3	1	0	0	1	6	0
35	ATKINS, SAVANNAH	F	7	2-4	1-3	2-2	0	4	4	2	0	0	0	0	9	2
	TEAM		0	0-0	0-0	0-0	0	0	0	0	0	1	0	0	0	0
	<b>TOTALS</b>		<b>36</b>	<b>10-23</b>	<b>2-11</b>	<b>14-18</b>	<b>5</b>	<b>12</b>	<b>17</b>	<b>9</b>	<b>7</b>	<b>10</b>	<b>0</b>	<b>9</b>	<b>100</b>	

*Shooting By Period*

Period	FG	FG%	3FG	3FG%	FT	FT%
3rd Qtr	8-13	62%	1-4	25%	6-10	60%
4th Qtr	2-10	20%	1-7	14%	8-8	100%
2nd Half	10-23	43%	2-11	18%	14-18	78%
Game	17-59	28.8%	6-30	20.0%	14-18	77.8%

Deadball Rebounds: 4,0  
 Last FG Half: TWU 4th-04:44

**Lincoln Memorial 32**

No.	Player	S	Pts	FG	3FG	FT	OR	DR	TR	PF	A	TO	Blk	Stl	Min	+/-
00	CAUDLE, KYNDALL	G	2	1-1	0-0	0-0	0	1	1	1	0	1	0	0	5	-5
02	OGBURN, SEMAJIA	F	2	1-1	0-0	0-0	1	1	2	4	1	1	0	0	4	-1
03	RUSSELL, HARPER	F	0	0-0	0-0	0-0	0	0	0	0	0	0	0	0	2	-4
04	KISER, LEXI	G	4	1-1	0-0	2-2	0	1	1	0	2	2	0	1	11	1
14	KIRKPATRICK, ADDI	F	0	0-0	0-0	0-0	0	1	1	0	0	0	0	0	1	-2
20	FLOWERS, LAUREN	G	2	1-3	0-1	0-0	0	0	0	2	0	0	0	2	9	-5
23	MCCOMBS, TONI	G	3	1-1	0-0	1-4	1	1	2	2	1	3	0	1	18	0
24	COTNER-BRABSON, TAYLOR	G	2	1-1	0-0	0-0	0	1	1	1	0	0	0	0	4	-4
25	SPIKES, TYTIAIRA	G	2	1-1	0-0	0-0	1	0	1	0	0	0	0	0	4	-4
30	QUARLES, SHERMERIA	F	3	1-4	0-0	1-2	2	0	2	1	0	0	1	2	10	3
34	JACHIMCZUK, MAGGIE	F	6	2-6	0-0	2-3	1	0	1	1	2	1	0	1	17	0
35	PROFFITT, LINDSAY	G	6	2-8	2-7	0-0	0	0	0	0	0	3	0	1	15	1
	TEAM		0	0-0	0-0	0-0	0	2	2	0	0	1	0	0	0	0
	<b>TOTALS</b>		<b>32</b>	<b>12-27</b>	<b>2-8</b>	<b>6-11</b>	<b>6</b>	<b>8</b>	<b>14</b>	<b>12</b>	<b>6</b>	<b>12</b>	<b>1</b>	<b>8</b>	<b>100</b>	

*Shooting By Period*

Period	FG	FG%	3FG	3FG%	FT	FT%
3rd Qtr	6-15	40%	1-4	25%	3-4	75%
4th Qtr	6-12	50%	1-4	25%	3-7	43%
2nd Half	12-27	44%	2-8	25%	6-11	55%
Game	24-59	40.7%	6-17	35.3%	14-20	70.0%

Deadball Rebounds: 3,0  
 Last FG Half: LMU 4th-02:03

Game Notes:

Officials: Chris Collins, Jonathan Brown, Timothy Ward  
 Attendance: 525

Start Time: 05:59 PM ET  
 End Time: 07:48 PM ET  
 Game Duration: 1:49

Score	1st	2nd	3rd	4th	TOT
TWU	8	10	23	13	<b>54</b>
LMU	19	17	16	16	<b>68</b>

Points from (This Period)	TWU	LMU
In the Paint	10	20
Off Turns	9	14
2nd Chance	2	9
Fast Break	6	13
Bench	16	16

**Official Box Score**  
**Tenn. Wesleyan vs Lincoln Memorial**  
**Third Quarter Statistics Only**  
**December 03, 2019 at Tex Turner Arena - Harrogate, TN**



**Tenn. Wesleyan 36**

No.	Player	S	Pts	FG	3FG	FT	OR	DR	TR	PF	A	TO	Blk	Stl	Min	+/-
12	MCCLURG, MADISON	F	2	0-0	0-0	2-2	0	2	2	0	0	0	0	0	6	8
14	TROUTT, HANNAH	G	4	2-2	0-0	0-0	0	0	0	0	0	0	0	0	5	3
15	CONN, KENZIE	F	2	1-2	0-1	0-0	0	1	1	0	2	0	0	1	5	3
21	CHERRY, HANNAH	F	1	0-0	0-0	1-2	0	0	0	0	0	0	0	0	3	2
23	WRIGHT, JORDAN	G	7	3-6	1-2	0-0	1	0	1	0	1	1	0	0	7	2
02	COLEMAN, JORDAN	F	0	0-0	0-0	0-0	0	0	0	0	0	0	0	0	0	0
03	RUNYAN, CARLIE	G	1	0-0	0-0	1-2	0	0	0	0	1	0	0	0	4	10
05	YEARWOOD, CHLOE	G	2	1-1	0-0	0-0	0	1	1	1	0	0	0	2	7	5
10	STRANGE, KAITLYN	G	0	0-0	0-0	0-0	0	0	0	0	0	0	0	0	0	0
11	BURNS, HANNAH	G	0	0-0	0-0	0-0	0	0	0	0	0	0	0	0	0	0
22	LINER, EMILY	G	2	0-0	0-0	2-4	1	0	1	0	0	2	0	1	4	-1
25	CROWDER, ALYSON	G	0	0-0	0-0	0-0	0	1	1	3	1	0	0	0	4	-1
35	ATKINS, SAVANNAH	F	2	1-2	0-1	0-0	0	2	2	1	0	0	0	0	5	4
<b>TEAM</b>							0	0	0	0		0				
<b>TOTALS</b>			<b>23</b>	<b>8-13</b>	<b>1-4</b>	<b>6-10</b>	<b>2</b>	<b>7</b>	<b>9</b>	<b>5</b>	<b>5</b>	<b>3</b>	<b>0</b>	<b>4</b>	<b>50</b>	

*Shooting By Period*

Period	FG	FG%	3FG	3FG%	FT	FT%
2nd Half	0-0	0%	0-0	0%	0-0	0%
Game	17-59	28.8%	6-30	20.0%	14-18	77.8%

*Deadball Rebounds: 4,0*

**Lincoln Memorial 32**

No.	Player	S	Pts	FG	3FG	FT	OR	DR	TR	PF	A	TO	Blk	Stl	Min	+/-
02	OGBURN, SEMAJIA	F	2	1-1	0-0	0-0	1	0	1	3	1	1	0	0	3	-4
20	FLOWERS, LAUREN	G	2	1-2	0-1	0-0	0	0	0	1	0	0	0	1	4	-4
23	MCCOMBS, TONI	G	0	0-0	0-0	0-0	1	0	1	1	0	1	0	0	8	-3
30	QUARLES, SHERMERIA	F	1	0-3	0-0	1-2	0	0	0	0	0	0	0	2	5	-1
35	PROFFITT, LINDSAY	G	3	1-4	1-3	0-0	0	0	0	0	0	1	0	0	5	-2
00	CAUDLE, KYNDALL	G	2	1-1	0-0	0-0	0	1	1	1	0	1	0	0	5	-5
03	RUSSELL, HARPER	F	0	0-0	0-0	0-0	0	0	0	0	0	0	0	0	2	-4
04	KISER, LEXI	G	2	0-0	0-0	2-2	0	1	1	0	1	0	0	0	6	-3
14	KIRKPATRICK, ADDI	F	0	0-0	0-0	0-0	0	0	0	0	0	0	0	0	0	0
24	COTNER-BRABSON, TAYLOR	G	0	0-0	0-0	0-0	0	0	0	0	0	0	0	0	0	0
25	SPIKES, TYTIAIRA	G	2	1-1	0-0	0-0	1	0	1	0	0	0	0	0	4	-4
34	JACHIMCZUK, MAGGIE	F	2	1-3	0-0	0-0	0	0	0	1	1	1	0	0	8	-5
<b>TEAM</b>							0	1	1	0		1				
<b>TOTALS</b>			<b>16</b>	<b>6-15</b>	<b>1-4</b>	<b>3-4</b>	<b>3</b>	<b>3</b>	<b>6</b>	<b>7</b>	<b>3</b>	<b>6</b>	<b>0</b>	<b>3</b>	<b>50</b>	

*Shooting By Period*

Period	FG	FG%	3FG	3FG%	FT	FT%
2nd Half	0-0	0%	0-0	0%	0-0	0%
Game	24-59	40.7%	6-17	35.3%	14-20	70.0%

*Deadball Rebounds: 3,0*

*Game Notes:*

Officials: Chris Collins, Jonathan Brown, Timothy Ward  
 Attendance: 525

Start Time: 05:59 PM ET  
 End Time: 07:48 PM ET  
 Game Duration: 1:49

Score	1st	2nd	3rd	4th	TOT
TWU	8	10	23	13	<b>54</b>
LMU	19	17	16	16	<b>68</b>

Points from (This Period)	TWU	LMU
In the Paint	8	10
Off Turns	5	4
2nd Chance	2	4
Fast Break	4	5
Bench	7	8

**Official Play-By-Play**  
**Tenn. Wesleyan vs Lincoln Memorial**  
**Third Quarter**  
**December 03, 2019 at Tex Turner Arena - Harrogate, TN**



**Period 3**

**Starters:**

**Tenn. Wesleyan:** 12 MCCLURG, MADISON (F); 14 TROUTT, HANNAH (G); 15 CONN, KENZIE (F); 21 CHERRY, HANNAH (F); 23 WRIGHT, JORDAN (G);

**Lincoln Memorial:** 2 OGBURN, SEMAJIA (F); 20 FLOWERS, LAUREN (G); 23 MCCOMBS, TONI (G); 30 QUARLES, SHERMERIA (F); 35 PROFFITT, LINDSAY (G);

Time	VISITORS: Tenn. Wesleyan	Score	Margin	HOME: Lincoln Memorial
10:00				SUB OUT: RUSSELL, HARPER
10:00				SUB OUT: KIRKPATRICK, ADDI
10:00				SUB OUT: COTNER-BRABSON, TAYLOR
10:00				SUB OUT: QUARLES, SHERMERIA
10:00				SUB IN: MCCOMBS, TONI
10:00				SUB IN: SPIKES, TYTIAIRA
10:00				SUB IN: JACHIMCZUK, MAGGIE
10:00				SUB IN: PROFFITT, LINDSAY
10:00	SUB OUT: YEARWOOD, CHLOE			
10:00	SUB OUT: STRANGE, KAITLYN			
10:00	SUB OUT: LINER, EMILY			
10:00	SUB OUT: ATKINS, SAVANNAH			
10:00	SUB IN: MCCLURG, MADISON			
10:00	SUB IN: TROUTT, HANNAH			
10:00	SUB IN: CONN, KENZIE			
10:00	SUB IN: CHERRY, HANNAH			
09:47				MISSED JUMPER by JACHIMCZUK, MAGGIE
09:42				REBOUND (OFF) by MCCOMBS, TONI
09:32				MISSED 3PTR by PROFFITT, LINDSAY
09:27	REBOUND (DEF) by MCCLURG, MADISON			
09:12	MISSED JUMPER by WRIGHT, JORDAN			
09:08	REBOUND (OFF) by WRIGHT, JORDAN			
09:06	GOOD! LAYUP by WRIGHT, JORDAN	36-20	H 16	
08:58		39-20	H 19	GOOD! 3PTR by PROFFITT, LINDSAY [FB]
08:58				ASSIST by JACHIMCZUK, MAGGIE
08:37	MISSED 3PTR by CONN, KENZIE			
08:37				REBOUND (DEF) by TEAM
08:37				TURNOVER (5SEC) by TEAM
08:34	TURNOVER (BADPASS) by WRIGHT, JORDAN			
08:34				STEAL by FLOWERS, LAUREN
08:28		41-20	H 21	GOOD! LAYUP by FLOWERS, LAUREN [FB]
08:05				FOUL (PERSONAL) by MCCOMBS, TONI
08:05	MISSED FT by CHERRY, HANNAH			
08:05	REBOUND (OFF) by TEAM			
08:05	GOOD! FT by CHERRY, HANNAH	41-21	H 20	
08:05	SUB OUT: WRIGHT, JORDAN			
08:05	SUB IN: RUNYAN, CARLIE			
07:55				TURNOVER (LOSTBALL) by PROFFITT, LINDSAY
07:55	STEAL by CONN, KENZIE			
07:38				FOUL (PERSONAL) by JACHIMCZUK, MAGGIE
07:29	GOOD! JUMPER by TROUTT, HANNAH	41-23	H 18	
07:29	ASSIST by CONN, KENZIE			
07:07				MISSED 3PTR by PROFFITT, LINDSAY
07:04	REBOUND (DEF) by MCCLURG, MADISON			
07:04				FOUL (PERSONAL) by FLOWERS, LAUREN
07:04	GOOD! FT by MCCLURG, MADISON [FB]	41-24	H 17	
07:04	GOOD! FT by MCCLURG, MADISON [FB]	41-25	H 16	
07:04	SUB OUT: CHERRY, HANNAH			
07:04	SUB IN: YEARWOOD, CHLOE			
06:56				MISSED LAYUP by PROFFITT, LINDSAY
06:53	REBOUND (DEF) by CONN, KENZIE			
06:40	GOOD! JUMPER by TROUTT, HANNAH	41-27	H 14	
06:40	ASSIST by CONN, KENZIE			
06:25				MISSED 3PTR by FLOWERS, LAUREN
06:18				REBOUND (OFF) by SPIKES, TYTIAIRA
06:18		43-27	H 16	GOOD! LAYUP by SPIKES, TYTIAIRA
06:01	GOOD! JUMPER by CONN, KENZIE [PNT]	43-29	H 14	
06:00				TIMEOUT 30SEC
05:36		45-29	H 16	GOOD! LAYUP by CAUDLE, KYNDALL
05:36				ASSIST by OGBURN, SEMAJIA
05:25				FOUL (PERSONAL) by OGBURN, SEMAJIA
05:22				FOUL (PERSONAL) by OGBURN, SEMAJIA
05:22	MISSED FT by RUNYAN, CARLIE			
05:22	REBOUND (OFF) by TEAM			
05:22	GOOD! FT by RUNYAN, CARLIE [FB]	45-30	H 15	
05:22	SUB OUT: TROUTT, HANNAH			
05:22	SUB OUT: CONN, KENZIE			
05:22	SUB IN: WRIGHT, JORDAN			
05:22	SUB IN: ATKINS, SAVANNAH			
05:36				SUB OUT: FLOWERS, LAUREN

Time	VISITORS: Tenn. Wesleyan	Score	Margin	HOME: Lincoln Memorial
05:36				SUB OUT: MCCOMBS, TONI
05:36				SUB OUT: SPIKES, TYTIAIRA
05:36				SUB OUT: JACHIMCZUK, MAGGIE
05:36				SUB OUT: PROFFITT, LINDSAY
05:36				SUB IN: CAUDLE, KYNDALL
05:36				SUB IN: OGBURN, SEMAJIA
05:36				SUB IN: RUSSELL, HARPER
05:36				SUB IN: KISER, LEXI
05:36				SUB IN: QUARLES, SHERMERIA
05:14				MISSED LAYUP by QUARLES, SHERMERIA
05:06				REBOUND (OFF) by OGBURN, SEMAJIA
05:06		47-30	H 17	GOOD! LAYUP by OGBURN, SEMAJIA
04:48	GOOD! LAYUP by WRIGHT, JORDAN	47-32	H 15	
04:33				MISSED JUMPER by QUARLES, SHERMERIA
04:27	REBOUND (DEF) by ATKINS, SAVANNAH			
04:20	GOOD! 3PTR by WRIGHT, JORDAN	47-35	H 12	
04:20	ASSIST by RUNYAN, CARLIE			
04:15				TURNOVER (OTHER) by OGBURN, SEMAJIA
04:01	GOOD! JUMPER by YEARWOOD, CHLOE [PNT]	47-37	H 10	
04:01	ASSIST by WRIGHT, JORDAN			
03:56				TURNOVER (BADPASS) by JACHIMCZUK, MAGGIE
03:56	STEAL by YEARWOOD, CHLOE			
03:45	MISSED 3PTR by WRIGHT, JORDAN			
03:43				REBOUND (DEF) by CAUDLE, KYNDALL
03:43				TURNOVER (LOSTBALL) by CAUDLE, KYNDALL
03:43	STEAL by YEARWOOD, CHLOE			
03:42				
03:42	SUB OUT: RUNYAN, CARLIE			
03:42	SUB OUT: MCCLURG, MADISON			
03:42	SUB IN: LINER, EMILY			
03:42	SUB IN: CROWDER, ALYSON			
03:31	MISSED 3PTR by ATKINS, SAVANNAH			
03:27	REBOUND (OFF) by LINER, EMILY			
03:19	MISSED JUMPER by WRIGHT, JORDAN			
03:14				REBOUND (DEF) by KISER, LEXI
03:13	FOUL (PERSONAL) by CROWDER, ALYSON			
03:09				TURNOVER (BADPASS) by MCCOMBS, TONI
03:09	STEAL by LINER, EMILY			
03:09				FOUL (PERSONAL) by OGBURN, SEMAJIA
03:09				SUB OUT: OGBURN, SEMAJIA
03:09				SUB IN: QUARLES, SHERMERIA
03:09	MISSED FT by LINER, EMILY			
03:09	REBOUND (OFF) by TEAM			
03:09	GOOD! FT by LINER, EMILY [FB]	47-38	H 9	
02:39				MISSED LAYUP by JACHIMCZUK, MAGGIE
02:33	REBOUND (DEF) by ATKINS, SAVANNAH			
02:20	GOOD! JUMPER by ATKINS, SAVANNAH	47-40	H 7	
02:20	ASSIST by CROWDER, ALYSON			
01:48		49-40	H 9	GOOD! JUMPER by JACHIMCZUK, MAGGIE [PNT]
01:48				ASSIST by KISER, LEXI
01:27				FOUL (PERSONAL) by CAUDLE, KYNDALL
01:27				SUB OUT: CAUDLE, KYNDALL
01:27				SUB IN: PROFFITT, LINDSAY
01:27	MISSED FT by LINER, EMILY			
01:27	REBOUND (OFF) by TEAM			
01:27	GOOD! FT by LINER, EMILY	49-41	H 8	
01:03	FOUL (PERSONAL) by CROWDER, ALYSON			
01:03		50-41	H 9	GOOD! FT by QUARLES, SHERMERIA
01:02				MISSED FT by QUARLES, SHERMERIA
01:01	REBOUND (DEF) by CROWDER, ALYSON			
00:41	TURNOVER (BADPASS) by LINER, EMILY			
00:41				STEAL by QUARLES, SHERMERIA
00:41	FOUL (PERSONAL) by CROWDER, ALYSON			
00:35	FOUL (PERSONAL) by YEARWOOD, CHLOE			
00:12	FOUL (PERSONAL) by ATKINS, SAVANNAH			
00:12		51-41	H 10	GOOD! FT by KISER, LEXI
00:12		52-41	H 11	GOOD! FT by KISER, LEXI
00:09	TURNOVER (BADPASS) by LINER, EMILY			
00:09				STEAL by QUARLES, SHERMERIA
00:02				MISSED LAYUP by QUARLES, SHERMERIA
00:00	REBOUND (DEF) by YEARWOOD, CHLOE			

Tenn. Wesleyan 41, Lincoln Memorial 52

Points from (This Period)	TWU	LMU
In the Paint	8	10
Off Turns	5	4
2nd Chance	2	4
Fast Break	4	5
Bench	7	8



**Official Box Score**  
**Tenn. Wesleyan vs Lincoln Memorial**  
**Fourth Quarter Statistics Only**  
**December 03, 2019 at Tex Turner Arena - Harrogate, TN**



**Tenn. Wesleyan 13**

No.	Player	S	Pts	FG	3FG	FT	OR	DR	TR	PF	A	TO	Blk	Stl	Min	+/-
12	MCCLURG, MADISON	F	0	0-0	0-0	0-0	0	0	0	1	0	0	0	1	7	-4
14	TROUTT, HANNAH	G	0	0-2	0-2	0-0	0	0	0	0	0	0	0	0	4	-3
15	CONN, KENZIE	F	0	0-0	0-0	0-0	2	1	3	0	0	1	0	1	4	-3
21	CHERRY, HANNAH	F	0	0-0	0-0	0-0	0	0	0	1	0	1	0	0	2	-3
23	WRIGHT, JORDAN	G	4	1-2	0-0	2-2	0	0	0	0	0	1	0	1	3	-3
02	COLEMAN, JORDAN	F	0	0-0	0-0	0-0	0	1	1	0	0	1	0	0	4	2
03	RUNYAN, CARLIE	G	2	0-2	0-1	2-2	0	1	1	1	0	0	0	0	7	0
05	YEARWOOD, CHLOE	G	0	0-1	0-1	0-0	0	0	0	0	1	0	0	1	5	-4
10	STRANGE, KAITLYN	G	0	0-1	0-1	0-0	1	0	1	0	0	0	0	0	4	4
11	BURNS, HANNAH	G	0	0-0	0-0	0-0	0	0	0	0	0	1	0	0	4	4
22	LINER, EMILY	G	0	0-0	0-0	0-0	0	0	0	0	1	1	0	0	2	-4
25	CROWDER, ALYSON	G	2	0-0	0-0	2-2	0	0	0	0	0	0	0	1	2	1
35	ATKINS, SAVANNAH	F	5	1-2	1-2	2-2	0	2	2	1	0	0	0	0	4	-2
<b>TEAM</b>							0	0	0	0		1				
<b>TOTALS</b>			<b>13</b>	<b>2-10</b>	<b>1-7</b>	<b>8-8</b>	<b>3</b>	<b>5</b>	<b>8</b>	<b>4</b>	<b>2</b>	<b>7</b>	<b>0</b>	<b>5</b>	<b>50</b>	

*Shooting By Period*

Period	FG	FG%	3FG	3FG%	FT	FT%
Game	17-59	28.8%	6-30	20.0%	14-18	77.8%

*Deadball Rebounds: 4,0*

**Lincoln Memorial 16**

No.	Player	S	Pts	FG	3FG	FT	OR	DR	TR	PF	A	TO	Blk	Stl	Min	+/-
02	OGBURN, SEMAJIA	F	0	0-0	0-0	0-0	0	1	1	1	0	0	0	0	1	3
20	FLOWERS, LAUREN	G	0	0-1	0-0	0-0	0	0	0	1	0	0	0	1	5	-1
23	MCCOMBS, TONI	G	3	1-1	0-0	1-4	0	1	1	1	1	2	0	1	10	3
30	QUARLES, SHERMERIA	F	2	1-1	0-0	0-0	2	0	2	1	0	0	1	0	5	4
35	PROFFITT, LINDSAY	G	3	1-4	1-4	0-0	0	0	0	0	0	2	0	1	10	3
00	CAUDLE, KYNDALL	G	0	0-0	0-0	0-0	0	0	0	0	0	0	0	0	0	0
03	RUSSELL, HARPER	F	0	0-0	0-0	0-0	0	0	0	0	0	0	0	0	0	0
04	KISER, LEXI	G	2	1-1	0-0	0-0	0	0	0	0	1	2	0	1	5	4
14	KIRKPATRICK, ADDI	F	0	0-0	0-0	0-0	0	1	1	0	0	0	0	0	1	-2
24	COTNER-BRABSON, TAYLOR	G	2	1-1	0-0	0-0	0	1	1	1	0	0	0	0	4	-4
25	SPIKES, TYTIAIRA	G	0	0-0	0-0	0-0	0	0	0	0	0	0	0	0	0	0
34	JACHIMCZUK, MAGGIE	F	4	1-3	0-0	2-3	1	0	1	0	1	0	0	1	9	5
<b>TEAM</b>							0	1	1	0		0				
<b>TOTALS</b>			<b>16</b>	<b>6-12</b>	<b>1-4</b>	<b>3-7</b>	<b>3</b>	<b>5</b>	<b>8</b>	<b>5</b>	<b>3</b>	<b>6</b>	<b>1</b>	<b>5</b>	<b>50</b>	

*Shooting By Period*

Period	FG	FG%	3FG	3FG%	FT	FT%
Game	24-59	40.7%	6-17	35.3%	14-20	70.0%

*Deadball Rebounds: 3,0*

Game Notes:

Officials: **Chris Collins, Jonathan Brown, Timothy Ward**  
 Attendance: **525**

Start Time: **05:59 PM ET**  
 End Time: **07:48 PM ET**  
 Game Duration: **1:49**

Score	1st	2nd	3rd	4th	TOT
TWU	8	10	23	13	<b>54</b>
LMU	19	17	16	16	<b>68</b>

Points from (This Period)	TWU	LMU
In the Paint	2	10
Off Turns	4	10
2nd Chance	0	5
Fast Break	2	8
Bench	9	8

**Official Play-By-Play**  
**Tenn. Wesleyan vs Lincoln Memorial**  
**Fourth Quarter**  
**December 03, 2019 at Tex Turner Arena - Harrogate, TN**



**Period 4**

**Starters:**

**Tenn. Wesleyan:** 12 MCCLURG, MADISON (F); 14 TROUTT, HANNAH (G); 15 CONN, KENZIE (F); 21 CHERRY, HANNAH (F); 23 WRIGHT, JORDAN (G);

**Lincoln Memorial:** 2 OGBURN, SEMAJIA (F); 20 FLOWERS, LAUREN (G); 23 MCCOMBS, TONI (G); 30 QUARLES, SHERMERIA (F); 35 PROFFITT, LINDSAY (G);

Time	VISITORS: Tenn. Wesleyan	Score	Margin	HOME: Lincoln Memorial
03:13				SUB OUT: RUSSELL, HARPER
03:13				SUB IN: MCCOMBS, TONI
05:22				SUB OUT: CAUDLE, KYNDALL
05:22				SUB OUT: OGBURN, SEMAJIA
05:22				SUB OUT: RUSSELL, HARPER
05:22				SUB OUT: KISER, LEXI
05:22				SUB OUT: QUARLES, SHERMERIA
05:22				SUB IN: FLOWERS, LAUREN
05:22				SUB IN: MCCOMBS, TONI
05:22				SUB IN: SPIKES, TYTIAIRA
05:22				SUB IN: JACHIMCZUK, MAGGIE
05:22				SUB IN: PROFFITT, LINDSAY
10:00	SUB OUT: YEARWOOD, CHLOE			
10:00	SUB OUT: LINER, EMILY			
10:00	SUB OUT: CROWDER, ALYSON			
10:00	SUB OUT: ATKINS, SAVANNAH			
10:00	SUB IN: MCCLURG, MADISON			
10:00	SUB IN: TROUTT, HANNAH			
10:00	SUB IN: CONN, KENZIE			
10:00	SUB IN: CHERRY, HANNAH			
09:41				TURNOVER (LOSTBALL) by KISER, LEXI
09:41	STEAL by WRIGHT, JORDAN			
09:33				FOUL (PERSONAL) by MCCOMBS, TONI
09:33	GOOD! FT by WRIGHT, JORDAN [FB]	52-42	H 10	
09:33	GOOD! FT by WRIGHT, JORDAN [FB]	52-43	H 9	
09:22	FOUL (PERSONAL) by CHERRY, HANNAH			
09:21				MISSED FT by MCCOMBS, TONI
09:21				REBOUND (OFF) by TEAM
09:19				MISSED FT by MCCOMBS, TONI
09:15				REBOUND (OFF) by QUARLES, SHERMERIA
09:15		54-43	H 11	GOOD! LAYUP by QUARLES, SHERMERIA
08:50	MISSED 3PTR by TROUTT, HANNAH			
08:45	REBOUND (OFF) by CONN, KENZIE			
08:42	TURNOVER (BADPASS) by CONN, KENZIE			
08:42				STEAL by JACHIMCZUK, MAGGIE
08:36		57-43	H 14	GOOD! 3PTR by PROFFITT, LINDSAY [FB]
08:36				ASSIST by KISER, LEXI
08:16				FOUL (PERSONAL) by QUARLES, SHERMERIA
08:08	TURNOVER (TRAVEL) by CHERRY, HANNAH			
08:08	SUB OUT: CHERRY, HANNAH			
08:08	SUB IN: YEARWOOD, CHLOE			
07:55				TURNOVER (TRAVEL) by PROFFITT, LINDSAY
07:46	TURNOVER (LOSTBALL) by WRIGHT, JORDAN			
07:46				STEAL by KISER, LEXI
07:39		59-43	H 16	GOOD! LAYUP by KISER, LEXI [FB]
07:31	MISSED LAYUP by WRIGHT, JORDAN			
07:31				BLOCK by QUARLES, SHERMERIA
07:25				REBOUND (DEF) by MCCOMBS, TONI
07:24				TURNOVER (BADPASS) by MCCOMBS, TONI
07:24	STEAL by YEARWOOD, CHLOE			
07:14	GOOD! JUMPER by WRIGHT, JORDAN [PNT]	59-45	H 14	
07:14	ASSIST by YEARWOOD, CHLOE			
07:14	SUB OUT: WRIGHT, JORDAN			
07:14	SUB IN: RUNYAN, CARLIE			
06:54				MISSED 3PTR by PROFFITT, LINDSAY
06:49				REBOUND (OFF) by QUARLES, SHERMERIA
06:45				MISSED 3PTR by PROFFITT, LINDSAY
06:42	REBOUND (DEF) by CONN, KENZIE			
06:24	MISSED 3PTR by YEARWOOD, CHLOE			
06:21				REBOUND (DEF) by TEAM
06:02				TURNOVER (BADPASS) by PROFFITT, LINDSAY
06:02	STEAL by CONN, KENZIE			
05:37	MISSED 3PTR by TROUTT, HANNAH			
05:32	REBOUND (OFF) by CONN, KENZIE			
05:31	TURNOVER (SHOTCLOCK) by TEAM			
05:31	SUB OUT: TROUTT, HANNAH			
05:31	SUB OUT: CONN, KENZIE			
05:31	SUB IN: LINER, EMILY			
05:31	SUB IN: ATKINS, SAVANNAH			
05:23	FOUL (PERSONAL) by RUNYAN, CARLIE			



Time	VISITORS: Tenn. Wesleyan	Score	Margin	HOME: Lincoln Memorial
05:23		60-45	H 15	GOOD! FT by MCCOMBS, TONI [FB]
05:23				MISSED FT by MCCOMBS, TONI
05:22				REBOUND (OFF) by JACHIMCZUK, MAGGIE
05:10		62-45	H 17	GOOD! JUMPER by JACHIMCZUK, MAGGIE
05:10				ASSIST by MCCOMBS, TONI
05:10	FOUL (PERSONAL) by MCCLURG, MADISON			
05:10	SUB OUT: MCCLURG, MADISON			
05:10	SUB IN: CROWDER, ALYSON			
05:10		63-45	H 18	GOOD! FT by JACHIMCZUK, MAGGIE
04:44	GOOD! 3PTR by ATKINS, SAVANNAH	63-48	H 15	
04:44	ASSIST by LINER, EMILY			
04:32				TURNOVER (BADPASS) by KISER, LEXI
04:32	STEAL by CROWDER, ALYSON			
04:32				
04:32				SUB OUT: KISER, LEXI
04:32				SUB OUT: QUARLES, SHERMERIA
04:32				SUB IN: OGBURN, SEMAJIA
04:32				SUB IN: FLOWERS, LAUREN
04:25	TURNOVER (BADPASS) by LINER, EMILY			
04:25				STEAL by MCCOMBS, TONI
04:20		65-48	H 17	GOOD! LAYUP by MCCOMBS, TONI [FB]
04:12	MISSED 3PTR by RUNYAN, CARLIE			
04:08				REBOUND (DEF) by OGBURN, SEMAJIA
04:03	FOUL (PERSONAL) by ATKINS, SAVANNAH			
04:03				MISSED FT by JACHIMCZUK, MAGGIE
04:03				REBOUND (OFF) by TEAM
04:03		66-48	H 18	GOOD! FT by JACHIMCZUK, MAGGIE
03:37				FOUL (PERSONAL) by OGBURN, SEMAJIA
03:37				SUB OUT: OGBURN, SEMAJIA
03:37				SUB IN: COTNER-BRABSON, TAYLOR
03:37	SUB OUT: YEARWOOD, CHLOE			
03:37	SUB OUT: LINER, EMILY			
03:37	SUB IN: STRANGE, KAITLYN			
03:37	SUB IN: BURNS, HANNAH			
03:37	GOOD! FT by CROWDER, ALYSON	66-49	H 17	
03:37	GOOD! FT by CROWDER, ALYSON	66-50	H 16	
03:37	SUB OUT: CROWDER, ALYSON			
03:37	SUB IN: COLEMAN, JORDAN			
03:31				MISSED LAYUP by JACHIMCZUK, MAGGIE
03:27	REBOUND (DEF) by ATKINS, SAVANNAH			
03:15	MISSED 3PTR by ATKINS, SAVANNAH			
03:10	REBOUND (OFF) by STRANGE, KAITLYN			
03:09	TIMEOUT 30SEC			
03:07	MISSED 3PTR by STRANGE, KAITLYN			
03:01				REBOUND (DEF) by COTNER-BRABSON, TAYLOR
02:52				MISSED JUMPER by JACHIMCZUK, MAGGIE
02:48	REBOUND (DEF) by ATKINS, SAVANNAH			
02:25	TURNOVER (BADPASS) by BURNS, HANNAH			
02:25				STEAL by PROFFITT, LINDSAY
02:03		68-50	H 18	GOOD! JUMPER by COTNER-BRABSON, TAYLOR [PNT]
02:03				ASSIST by JACHIMCZUK, MAGGIE
01:45				FOUL (PERSONAL) by COTNER-BRABSON, TAYLOR
01:45	GOOD! FT by ATKINS, SAVANNAH	68-51	H 17	
01:45	GOOD! FT by ATKINS, SAVANNAH	68-52	H 16	
01:45	SUB OUT: ATKINS, SAVANNAH			
01:45	SUB IN: MCCLURG, MADISON			
01:32				MISSED 3PTR by PROFFITT, LINDSAY
01:27	REBOUND (DEF) by COLEMAN, JORDAN			
01:18	TURNOVER (BADPASS) by COLEMAN, JORDAN			
01:18				STEAL by FLOWERS, LAUREN
01:14				MISSED LAYUP by FLOWERS, LAUREN
01:10	REBOUND (DEF) by RUNYAN, CARLIE			
00:55				FOUL (PERSONAL) by FLOWERS, LAUREN
00:55				SUB OUT: JACHIMCZUK, MAGGIE
00:55				SUB IN: KIRKPATRICK, ADDI
00:55	GOOD! FT by RUNYAN, CARLIE	68-53	H 15	
00:55	GOOD! FT by RUNYAN, CARLIE	68-54	H 14	
00:42				TURNOVER (BADPASS) by MCCOMBS, TONI
00:42	STEAL by MCCLURG, MADISON			
00:20	MISSED JUMPER by RUNYAN, CARLIE			
00:15				REBOUND (DEF) by KIRKPATRICK, ADDI

Tenn. Wesleyan 54, Lincoln Memorial 68

Points from (This Period)	TWU	LMU
In the Paint	2	10
Off Turns	4	10
2nd Chance	0	5
Fast Break	2	8
Bench	9	8



**Official Scoring/Possession Reference Chart**  
**Tenn. Wesleyan vs Lincoln Memorial**  
**Period 1**  
**December 03, 2019 at Tex Turner Arena - Harrogate, TN**



**Period 1**

**Starters:**

**Tenn. Wesleyan:** 12 MCCLURG, MADISON (F); 14 TROUTT, HANNAH (G); 15 CONN, KENZIE (F); 21 CHERRY, HANNAH (F); 23 WRIGHT, JORDAN (G);

**Lincoln Memorial:** 2 OGBURN, SEMAJIA (F); 20 FLOWERS, LAUREN (G); 23 MCCOMBS, TONI (G); 30 QUARLES, SHERMERIA (F); 35 PROFFITT, LINDSAY (G);

Time	VISITORS: Tenn. Wesleyan	Score	Margin	HOME: Lincoln Memorial
08:05		2-0	H 2	GOOD! LAYUP by QUARLES, SHERMERIA [FB]
07:33		4-0	H 4	GOOD! LAYUP by FLOWERS, LAUREN [FB]
05:56		7-2	H 5	GOOD! 3PTR by PROFFITT, LINDSAY [FB]
05:25		9-2	H 7	GOOD! JUMPER by JACHIMCZUK, MAGGIE
02:31	GOOD! 3PTR by LINER, EMILY	9-5	H 4	
02:02		11-5	H 6	GOOD! LAYUP by OGBURN, SEMAJIA
01:46		12-5	H 7	GOOD! FT by KISER, LEXI [FB]
01:46		13-5	H 8	GOOD! FT by KISER, LEXI [FB]
01:29	GOOD! 3PTR by ATKINS, SAVANNAH [FB]	13-8	H 5	
00:55		16-8	H 8	GOOD! 3PTR by CAUDLE, KYNDALL
06:15	GOOD! LAYUP by CHERRY, HANNAH	4-2	H 2	
00:04		18-8	H 10	GOOD! JUMPER by JACHIMCZUK, MAGGIE
00:04		19-8	H 11	GOOD! FT by JACHIMCZUK, MAGGIE

**Tenn. Wesleyan 8, Lincoln Memorial 19**

**Official Scoring/Possession Reference Chart**  
**Tenn. Wesleyan vs Lincoln Memorial**  
**Period 2**  
**December 03, 2019 at Tex Turner Arena - Harrogate, TN**



**Period 2**

**Starters:**

**Tenn. Wesleyan:** 12 MCCLURG, MADISON (F); 14 TROUTT, HANNAH (G); 15 CONN, KENZIE (F); 21 CHERRY, HANNAH (F); 23 WRIGHT, JORDAN (G);

**Lincoln Memorial:** 2 OGBURN, SEMAJIA (F); 20 FLOWERS, LAUREN (G); 23 MCCOMBS, TONI (G); 30 QUARLES, SHERMERIA (F); 35 PROFFITT, LINDSAY (G);

Time	VISITORS: Tenn. Wesleyan	Score	Margin	HOME: Lincoln Memorial
09:33	GOOD! LAYUP by MCCLURG, MADISON	19-10	H 9	
08:37		22-10	H 12	GOOD! 3PTR by JACHIMCZUK, MAGGIE
07:35		23-10	H 13	GOOD! FT by QUARLES, SHERMERIA
07:07		26-10	H 16	GOOD! 3PTR by JACHIMCZUK, MAGGIE
06:43		28-10	H 18	GOOD! LAYUP by QUARLES, SHERMERIA [FB]
05:57		30-10	H 20	GOOD! JUMPER by QUARLES, SHERMERIA
05:02		32-10	H 22	GOOD! LAYUP by FLOWERS, LAUREN [PNT]
03:17	GOOD! 3PTR by ATKINS, SAVANNAH	32-13	H 19	
02:49	GOOD! JUMPER by STRANGE, KAITLYN	32-15	H 17	
02:26		33-15	H 18	GOOD! FT by QUARLES, SHERMERIA
02:26		34-15	H 19	GOOD! FT by QUARLES, SHERMERIA
00:42	GOOD! 3PTR by YEARWOOD, CHLOE	34-18	H 16	
00:33		35-18	H 17	GOOD! FT by FLOWERS, LAUREN
00:33		36-18	H 18	GOOD! FT by FLOWERS, LAUREN

**Tenn. Wesleyan 18, Lincoln Memorial 36**

**Official Scoring/Possession Reference Chart**  
**Tenn. Wesleyan vs Lincoln Memorial**  
**Period 3**  
**December 03, 2019 at Tex Turner Arena - Harrogate, TN**



**Period 3**

**Starters:**

**Tenn. Wesleyan:** 12 MCCLURG, MADISON (F); 14 TROUTT, HANNAH (G); 15 CONN, KENZIE (F); 21 CHERRY, HANNAH (F); 23 WRIGHT, JORDAN (G);

**Lincoln Memorial:** 2 OGBURN, SEMAJIA (F); 20 FLOWERS, LAUREN (G); 23 MCCOMBS, TONI (G); 30 QUARLES, SHERMERIA (F); 35 PROFFITT, LINDSAY (G);

Time	VISITORS: Tenn. Wesleyan	Score	Margin	HOME: Lincoln Memorial
09:06	GOOD! LAYUP by WRIGHT, JORDAN	36-20	H 16	
08:58		39-20	H 19	GOOD! 3PTR by PROFFITT, LINDSAY [FB]
08:28		41-20	H 21	GOOD! LAYUP by FLOWERS, LAUREN [FB]
08:05	GOOD! FT by CHERRY, HANNAH	41-21	H 20	
07:29	GOOD! JUMPER by TROUTT, HANNAH	41-23	H 18	
07:04	GOOD! FT by MCCLURG, MADISON [FB]	41-24	H 17	
07:04	GOOD! FT by MCCLURG, MADISON [FB]	41-25	H 16	
06:40	GOOD! JUMPER by TROUTT, HANNAH	41-27	H 14	
06:18		43-27	H 16	GOOD! LAYUP by SPIKES, TYTIAIRA
06:01	GOOD! JUMPER by CONN, KENZIE [PNT]	43-29	H 14	
05:36		45-29	H 16	GOOD! LAYUP by CAUDLE, KYNDALL
05:22	GOOD! FT by RUNYAN, CARLIE [FB]	45-30	H 15	
05:06		47-30	H 17	GOOD! LAYUP by OGBURN, SEMAJIA
04:48	GOOD! LAYUP by WRIGHT, JORDAN	47-32	H 15	
04:20	GOOD! 3PTR by WRIGHT, JORDAN	47-35	H 12	
04:01	GOOD! JUMPER by YEARWOOD, CHLOE [PNT]	47-37	H 10	
03:09	GOOD! FT by LINER, EMILY [FB]	47-38	H 9	
02:20	GOOD! JUMPER by ATKINS, SAVANNAH	47-40	H 7	
01:48		49-40	H 9	GOOD! JUMPER by JACHIMCZUK, MAGGIE [PNT]
01:27	GOOD! FT by LINER, EMILY	49-41	H 8	
01:03		50-41	H 9	GOOD! FT by QUARLES, SHERMERIA
00:12		51-41	H 10	GOOD! FT by KISER, LEXI
00:12		52-41	H 11	GOOD! FT by KISER, LEXI

**Tenn. Wesleyan 41, Lincoln Memorial 52**

**Official Scoring/Possession Reference Chart**  
**Tenn. Wesleyan vs Lincoln Memorial**  
**Period 4**  
**December 03, 2019 at Tex Turner Arena - Harrogate, TN**



**Period 4**

**Starters:**

**Tenn. Wesleyan:** 12 MCCLURG, MADISON (F); 14 TROUTT, HANNAH (G); 15 CONN, KENZIE (F); 21 CHERRY, HANNAH (F); 23 WRIGHT, JORDAN (G);

**Lincoln Memorial:** 2 OGBURN, SEMAJIA (F); 20 FLOWERS, LAUREN (G); 23 MCCOMBS, TONI (G); 30 QUARLES, SHERMERIA (F); 35 PROFFITT, LINDSAY (G);

Time	VISITORS: Tenn. Wesleyan	Score	Margin	HOME: Lincoln Memorial
09:33	GOOD! FT by WRIGHT, JORDAN [FB]	52-42	H 10	
09:33	GOOD! FT by WRIGHT, JORDAN [FB]	52-43	H 9	
09:15		54-43	H 11	GOOD! LAYUP by QUARLES, SHERMERIA
08:36		57-43	H 14	GOOD! 3PTR by PROFFITT, LINDSAY [FB]
07:39		59-43	H 16	GOOD! LAYUP by KISER, LEXI [FB]
07:14	GOOD! JUMPER by WRIGHT, JORDAN [PNT]	59-45	H 14	
05:23		60-45	H 15	GOOD! FT by MCCOMBS, TONI [FB]
05:10		62-45	H 17	GOOD! JUMPER by JACHIMCZUK, MAGGIE
05:10		63-45	H 18	GOOD! FT by JACHIMCZUK, MAGGIE
04:44	GOOD! 3PTR by ATKINS, SAVANNAH	63-48	H 15	
04:20		65-48	H 17	GOOD! LAYUP by MCCOMBS, TONI [FB]
04:03		66-48	H 18	GOOD! FT by JACHIMCZUK, MAGGIE
03:37	GOOD! FT by CROWDER, ALYSON	66-49	H 17	
03:37	GOOD! FT by CROWDER, ALYSON	66-50	H 16	
02:03		68-50	H 18	GOOD! JUMPER by COTNER-BRABSON, TAYLOR [PNT]
01:45	GOOD! FT by ATKINS, SAVANNAH	68-51	H 17	
01:45	GOOD! FT by ATKINS, SAVANNAH	68-52	H 16	
00:55	GOOD! FT by RUNYAN, CARLIE	68-53	H 15	
00:55	GOOD! FT by RUNYAN, CARLIE	68-54	H 14	

**Tenn. Wesleyan 54, Lincoln Memorial 68**

**Official Substitutions Log**  
**Tenn. Wesleyan vs Lincoln Memorial**  
**Period 1**  
**December 03, 2019 at Tex Turner Arena - Harrogate, TN**



VISITORS: Tenn. Wesleyan	Time	Score	HOME: Lincoln Memorial
12 MCCLURG, MADISON			2 OGBURN, SEMAJIA
14 TROUTT, HANNAH			20 FLOWERS, LAUREN
15 CONN, KENZIE			23 MCCOMBS, TONI
21 CHERRY, HANNAH			30 QUARLES, SHERMERIA
23 WRIGHT, JORDAN			35 PROFFITT, LINDSAY
	06:00	0-4	SUB OUT: FLOWERS, LAUREN
	06:00		SUB OUT: QUARLES, SHERMERIA
	06:00		SUB IN: CAUDLE, KYNDALL
	06:00		SUB IN: JACHIMCZUK, MAGGIE
SUB OUT: 15 CONN, KENZIE	06:00		
SUB OUT: 23 WRIGHT, JORDAN	06:00		
SUB IN: 3 RUNYAN, CARLIE	06:00		
SUB IN: 5 YEARWOOD, CHLOE	06:00		
SUB OUT: 14 TROUTT, HANNAH	06:00		
SUB IN: 35 ATKINS, SAVANNAH	06:00		
	04:42	2-9	SUB OUT: MCCOMBS, TONI
	04:42		SUB IN: KISER, LEXI
SUB OUT: 21 CHERRY, HANNAH	04:04	2-9	
SUB IN: 22 LINER, EMILY	04:04		
SUB OUT: 12 MCCLURG, MADISON	03:54	2-9	
SUB IN: 25 CROWDER, ALYSON	03:54		
SUB OUT: 5 YEARWOOD, CHLOE	02:21	5-9	
SUB IN: 23 WRIGHT, JORDAN	02:21		
	00:52	2-4	SUB OUT: CAUDLE, KYNDALL
	00:52		SUB IN: COTNER-BRABSON, TAYLOR
SUB OUT: 22 LINER, EMILY	00:33	2-4	
SUB IN: 21 CHERRY, HANNAH	00:33		

**Tenn. Wesleyan 8, Lincoln Memorial 19**

**Official Substitutions Log**  
**Tenn. Wesleyan vs Lincoln Memorial**  
**Period 2**  
**December 03, 2019 at Tex Turner Arena - Harrogate, TN**



VISITORS: Tenn. Wesleyan	Time	Score	HOME: Lincoln Memorial
12 MCCLURG, MADISON			2 OGBURN, SEMAJIA
14 TROUTT, HANNAH			20 FLOWERS, LAUREN
15 CONN, KENZIE			23 MCCOMBS, TONI
21 CHERRY, HANNAH			30 QUARLES, SHERMERIA
23 WRIGHT, JORDAN			35 PROFFITT, LINDSAY
SUB OUT: 3 RUNYAN, CARLIE	10:00	-	
SUB OUT: 25 CROWDER, ALYSON	10:00		
SUB OUT: 35 ATKINS, SAVANNAH	10:00		
SUB IN: 12 MCCLURG, MADISON	10:00		
SUB IN: 14 TROUTT, HANNAH	10:00		
SUB IN: 15 CONN, KENZIE	10:00		
	08:45	10-19	SUB OUT: KISER, LEXI
	08:45		SUB IN: FLOWERS, LAUREN
SUB OUT: 23 WRIGHT, JORDAN	07:59	10-22	
SUB IN: 3 RUNYAN, CARLIE	07:59		
	07:59		SUB OUT: OGBURN, SEMAJIA
	07:59		SUB IN: QUARLES, SHERMERIA
SUB OUT: 12 MCCLURG, MADISON	07:35	10-22	
SUB IN: 25 CROWDER, ALYSON	07:35		
	04:01	10-32	SUB OUT: JACHIMCZUK, MAGGIE
	04:01		SUB OUT: PROFFITT, LINDSAY
	04:01		SUB IN: RUSSELL, HARPER
	04:01		SUB IN: KIRKPATRICK, ADDI
SUB OUT: 3 RUNYAN, CARLIE	04:01		
SUB OUT: 14 TROUTT, HANNAH	04:01		
SUB OUT: 15 CONN, KENZIE	04:01		
SUB OUT: 21 CHERRY, HANNAH	04:01		
SUB OUT: 25 CROWDER, ALYSON	04:01		
SUB IN: 5 YEARWOOD, CHLOE	04:01		
SUB IN: 10 STRANGE, KAITLYN	04:01		
SUB IN: 22 LINER, EMILY	04:01		
SUB IN: 23 WRIGHT, JORDAN	04:01		
SUB IN: 35 ATKINS, SAVANNAH	04:01		

**Tenn. Wesleyan 18, Lincoln Memorial 36**



**Official Substitutions Log**  
**Tenn. Wesleyan vs Lincoln Memorial**  
**Period 3**  
**December 03, 2019 at Tex Turner Arena - Harrogate, TN**



VISITORS: Tenn. Wesleyan	Time	Score	HOME: Lincoln Memorial
12 MCCLURG, MADISON			2 OGBURN, SEMAJIA
14 TROUTT, HANNAH			20 FLOWERS, LAUREN
15 CONN, KENZIE			23 MCCOMBS, TONI
21 CHERRY, HANNAH			30 QUARLES, SHERMERIA
23 WRIGHT, JORDAN			35 PROFFITT, LINDSAY
	10:00	-	SUB OUT: RUSSELL, HARPER
	10:00		SUB OUT: KIRKPATRICK, ADDI
	10:00		SUB OUT: COTNER-BRABSON, TAYLOR
	10:00		SUB OUT: QUARLES, SHERMERIA
	10:00		SUB IN: MCCOMBS, TONI
	10:00		SUB IN: SPIKES, TYTIAIRA
	10:00		SUB IN: JACHIMCZUK, MAGGIE
	10:00		SUB IN: PROFFITT, LINDSAY
SUB OUT: 5 YEARWOOD, CHLOE	10:00		
SUB OUT: 10 STRANGE, KAITLYN	10:00		
SUB OUT: 22 LINER, EMILY	10:00		
SUB OUT: 35 ATKINS, SAVANNAH	10:00		
SUB IN: 12 MCCLURG, MADISON	10:00		
SUB IN: 14 TROUTT, HANNAH	10:00		
SUB IN: 15 CONN, KENZIE	10:00		
SUB IN: 21 CHERRY, HANNAH	10:00		
SUB OUT: 23 WRIGHT, JORDAN	08:05	21-41	
SUB IN: 3 RUNYAN, CARLIE	08:05		
SUB OUT: 21 CHERRY, HANNAH	07:04	25-41	
SUB IN: 5 YEARWOOD, CHLOE	07:04		
SUB OUT: 14 TROUTT, HANNAH	05:22	30-45	
SUB OUT: 15 CONN, KENZIE	05:22		
SUB IN: 23 WRIGHT, JORDAN	05:22		
SUB IN: 35 ATKINS, SAVANNAH	05:22		
	05:36	30-45	SUB OUT: FLOWERS, LAUREN
	05:36		SUB OUT: MCCOMBS, TONI
	05:36		SUB OUT: SPIKES, TYTIAIRA
	05:36		SUB OUT: JACHIMCZUK, MAGGIE
	05:36		SUB OUT: PROFFITT, LINDSAY
	05:36		SUB IN: CAUDLE, KYNDALL
	05:36		SUB IN: OGBURN, SEMAJIA
	05:36		SUB IN: RUSSELL, HARPER
	05:36		SUB IN: KISER, LEXI
	05:36		SUB IN: QUARLES, SHERMERIA
SUB OUT: 3 RUNYAN, CARLIE	03:42	37-47	
SUB OUT: 12 MCCLURG, MADISON	03:42		
SUB IN: 22 LINER, EMILY	03:42		
SUB IN: 25 CROWDER, ALYSON	03:42		
	03:09	37-47	SUB OUT: OGBURN, SEMAJIA
	03:09		SUB IN: QUARLES, SHERMERIA
	01:27	40-49	SUB OUT: CAUDLE, KYNDALL
	01:27		SUB IN: PROFFITT, LINDSAY

**Tenn. Wesleyan 41, Lincoln Memorial 52**

**Official Substitutions Log**  
**Tenn. Wesleyan vs Lincoln Memorial**  
**Period 4**  
**December 03, 2019 at Tex Turner Arena - Harrogate, TN**



VISITORS: Tenn. Wesleyan	Time	Score	HOME: Lincoln Memorial
12 MCCLURG, MADISON			2 OGBURN, SEMAJIA
14 TROUTT, HANNAH			20 FLOWERS, LAUREN
15 CONN, KENZIE			23 MCCOMBS, TONI
21 CHERRY, HANNAH			30 QUARLES, SHERMERIA
23 WRIGHT, JORDAN			35 PROFFITT, LINDSAY
	03:13	-	SUB OUT: RUSSELL, HARPER
	03:13		SUB IN: MCCOMBS, TONI
	05:22	-	SUB OUT: CAUDLE, KYNDALL
	05:22		SUB OUT: OGBURN, SEMAJIA
	05:22		SUB OUT: RUSSELL, HARPER
	05:22		SUB OUT: KISER, LEXI
	05:22		SUB OUT: QUARLES, SHERMERIA
	05:22		SUB IN: FLOWERS, LAUREN
	05:22		SUB IN: MCCOMBS, TONI
	05:22		SUB IN: SPIKES, TYTIAIRA
	05:22		SUB IN: JACHIMCZUK, MAGGIE
	05:22		SUB IN: PROFFITT, LINDSAY
SUB OUT: 5 YEARWOOD, CHLOE	10:00	-	
SUB OUT: 22 LINER, EMILY	10:00		
SUB OUT: 25 CROWDER, ALYSON	10:00		
SUB OUT: 35 ATKINS, SAVANNAH	10:00		
SUB IN: 12 MCCLURG, MADISON	10:00		
SUB IN: 14 TROUTT, HANNAH	10:00		
SUB IN: 15 CONN, KENZIE	10:00		
SUB IN: 21 CHERRY, HANNAH	10:00		
SUB OUT: 21 CHERRY, HANNAH	08:08	43-57	
SUB IN: 5 YEARWOOD, CHLOE	08:08		
SUB OUT: 23 WRIGHT, JORDAN	07:14	45-59	
SUB IN: 3 RUNYAN, CARLIE	07:14		
SUB OUT: 14 TROUTT, HANNAH	05:31	45-59	
SUB OUT: 15 CONN, KENZIE	05:31		
SUB IN: 22 LINER, EMILY	05:31		
SUB IN: 35 ATKINS, SAVANNAH	05:31		
SUB OUT: 12 MCCLURG, MADISON	05:10	45-62	
SUB IN: 25 CROWDER, ALYSON	05:10		
	04:32	48-63	SUB OUT: KISER, LEXI
	04:32		SUB OUT: QUARLES, SHERMERIA
	04:32		SUB IN: OGBURN, SEMAJIA
	04:32		SUB IN: FLOWERS, LAUREN
	03:37	48-66	SUB OUT: OGBURN, SEMAJIA
	03:37		SUB IN: COTNER-BRABSON, TAYLOR
SUB OUT: 5 YEARWOOD, CHLOE	03:37		
SUB OUT: 22 LINER, EMILY	03:37		
SUB IN: 10 STRANGE, KAITLYN	03:37		
SUB IN: 11 BURNS, HANNAH	03:37		
SUB OUT: 25 CROWDER, ALYSON	03:37		
SUB IN: 2 COLEMAN, JORDAN	03:37		
SUB OUT: 35 ATKINS, SAVANNAH	01:45	52-68	
SUB IN: 12 MCCLURG, MADISON	01:45		
	00:55	52-68	SUB OUT: JACHIMCZUK, MAGGIE
	00:55		SUB IN: KIRKPATRICK, ADDI

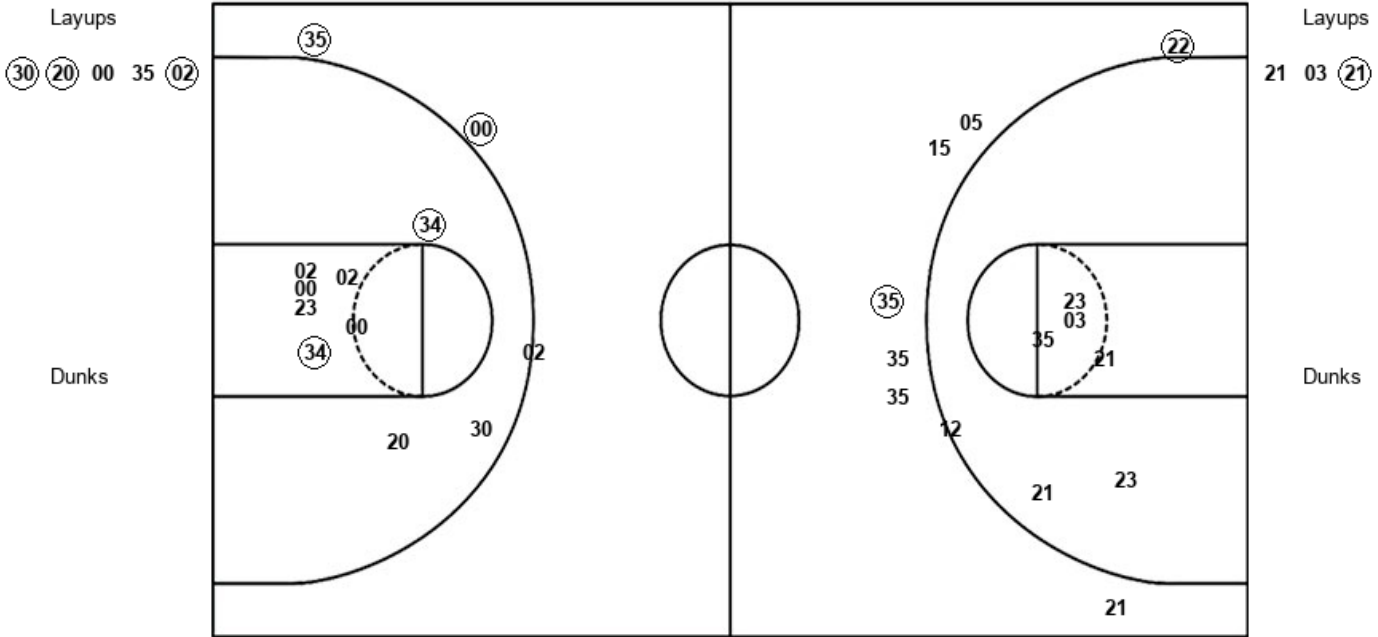
**Tenn. Wesleyan 54, Lincoln Memorial 68**

**Official Shot Chart**  
**Tenn. Wesleyan vs Lincoln Memorial**  
**PERIOD 1 Shots**  
 December 03, 2019 at Tex Turner Arena - Harrogate, TN



**Lincoln Memorial**

**Tenn. Wesleyan**



LMU : Period 1	Made	Att	Pct
Layups	3	5	60.0
Dunks	0	0	0
2PT Field Goals	5	15	33.3
3PT Field Goals	2	2	100.0
<b>Total Field Goals</b>	<b>7</b>	<b>17</b>	<b>41.2</b>

TWU : Period 1	Made	Att	Pct
Layups	1	3	33.3
Dunks	0	0	0
2PT Field Goals	1	10	10.0
3PT Field Goals	2	7	28.6
<b>Total Field Goals</b>	<b>3</b>	<b>17</b>	<b>17.6</b>

**Official Shot Chart**  
**Tenn. Wesleyan vs Lincoln Memorial**  
**PERIOD 2 Shots**  
 December 03, 2019 at Tex Turner Arena - Harrogate, TN

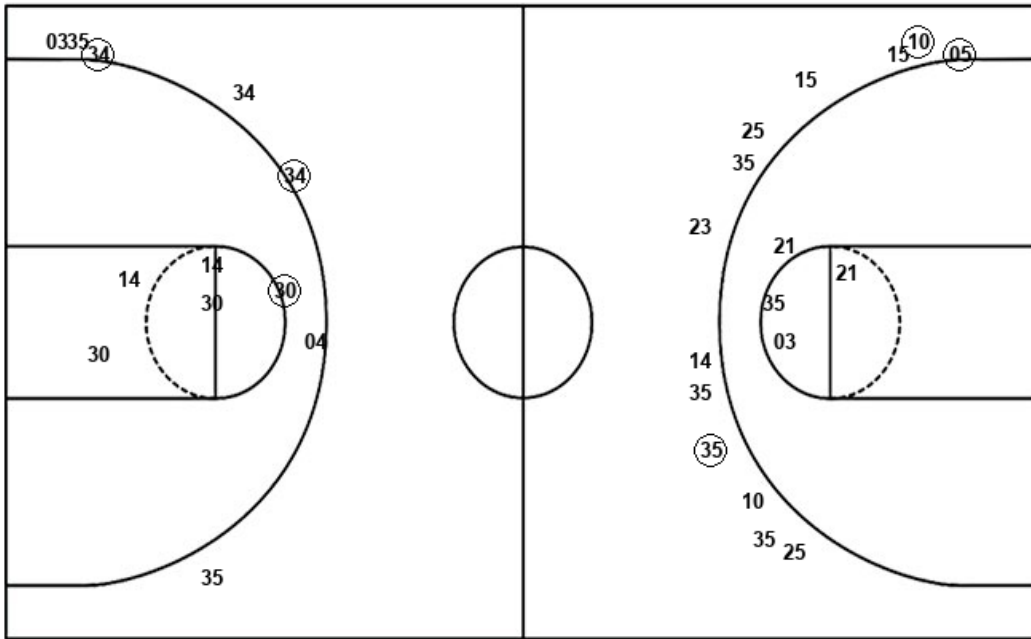


**Lincoln Memorial**

**Tenn. Wesleyan**

Layups  
 (30) (20) 20

Layups



(12) 21

Dunks

Dunks

LMU : Period 2	Made	Att	Pct
Layups	2	3	66.7
Dunks	0	0	0
2PT Field Goals	3	8	37.5
3PT Field Goals	2	7	28.6
<b>Total Field Goals</b>	<b>5</b>	<b>15</b>	<b>33.3</b>

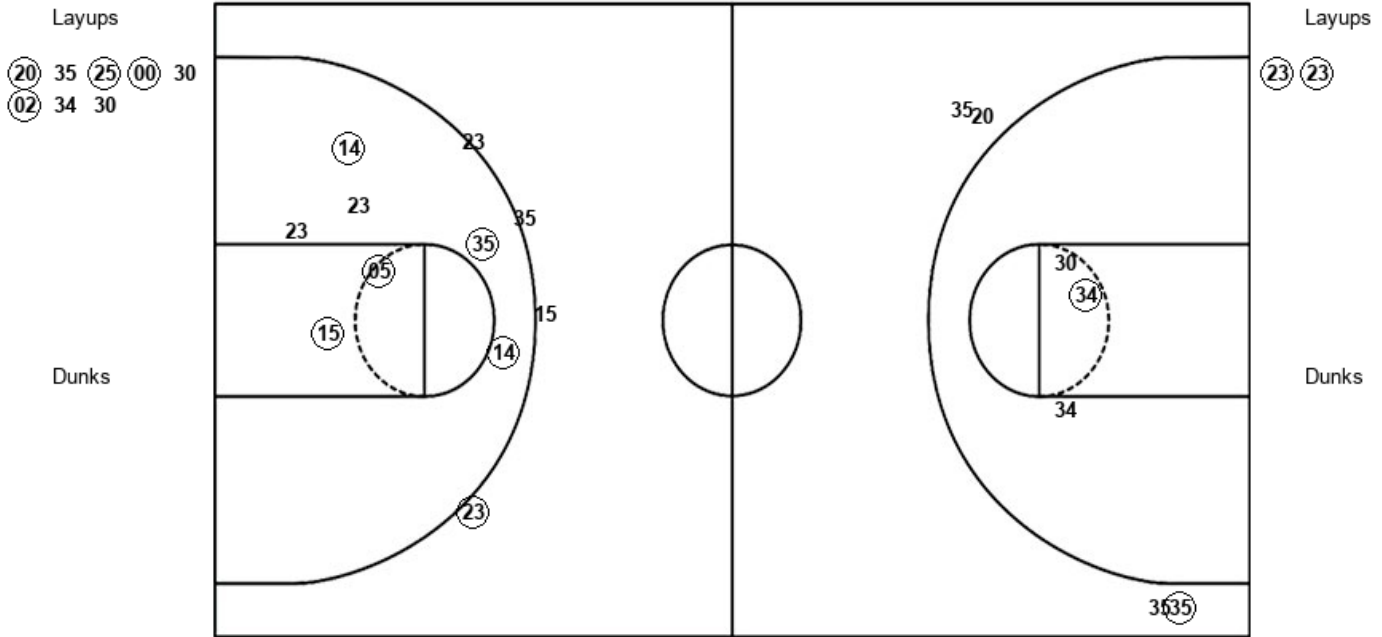
TWU : Period 2	Made	Att	Pct
Layups	1	2	50.0
Dunks	0	0	0
2PT Field Goals	2	7	28.6
3PT Field Goals	2	12	16.7
<b>Total Field Goals</b>	<b>4</b>	<b>19</b>	<b>21.1</b>

**Official Shot Chart**  
**Tenn. Wesleyan vs Lincoln Memorial**  
**PERIOD 3 Shots**  
 December 03, 2019 at Tex Turner Arena - Harrogate, TN



**Lincoln Memorial**

**Tenn. Wesleyan**



LMU : Period 3	Made	Att	Pct
Layups	4	8	50.0
Dunks	0	0	0
2PT Field Goals	5	11	45.5
3PT Field Goals	1	4	25.0
<b>Total Field Goals</b>	<b>6</b>	<b>15</b>	<b>40.0</b>

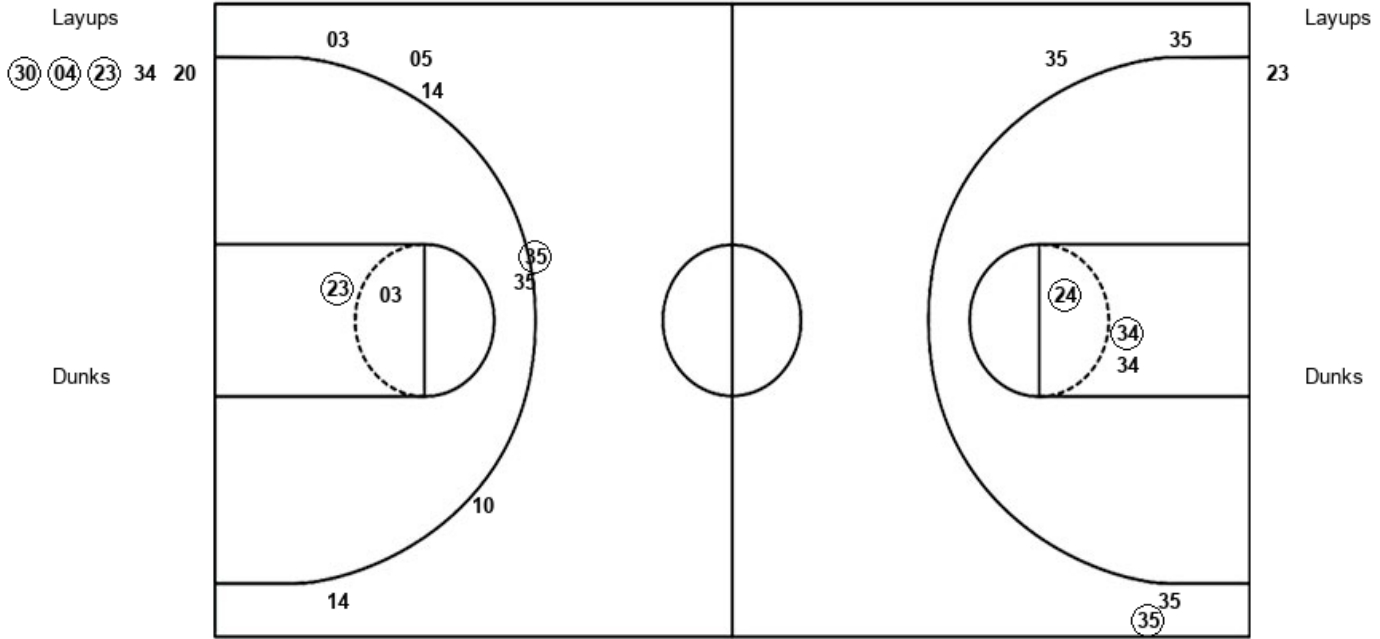
TWU : Period 3	Made	Att	Pct
Layups	2	2	100.0
Dunks	0	0	0
2PT Field Goals	7	9	77.8
3PT Field Goals	1	4	25.0
<b>Total Field Goals</b>	<b>8</b>	<b>13</b>	<b>61.5</b>

**Official Shot Chart**  
**Tenn. Wesleyan vs Lincoln Memorial**  
**PERIOD 4 Shots**  
 December 03, 2019 at Tex Turner Arena - Harrogate, TN



**Lincoln Memorial**

**Tenn. Wesleyan**



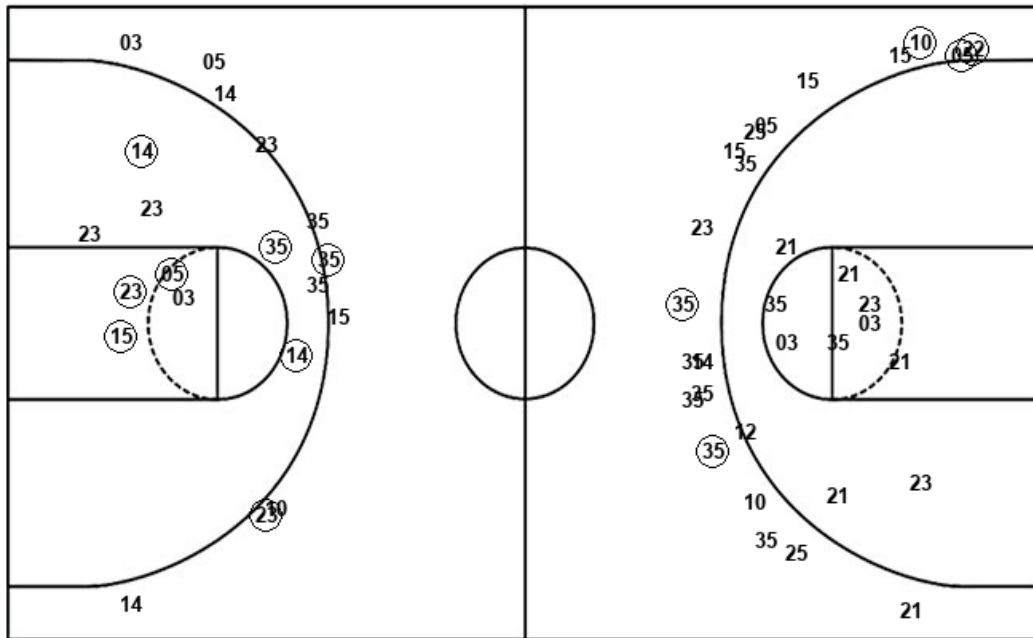
LMU : Period 4	Made	Att	Pct
Layups	3	5	60.0
Dunks	0	0	0
2PT Field Goals	5	8	62.5
3PT Field Goals	1	4	25.0
<b>Total Field Goals</b>	<b>6</b>	<b>12</b>	<b>50.0</b>

TWU : Period 4	Made	Att	Pct
Layups	0	1	00.0
Dunks	0	0	0
2PT Field Goals	1	3	33.3
3PT Field Goals	1	7	14.3
<b>Total Field Goals</b>	<b>2</b>	<b>10</b>	<b>20.0</b>

**Official Shot Chart**  
**Tenn. Wesleyan vs Lincoln Memorial**  
**Tenn. Wesleyan Team Shots**  
**December 03, 2019 at Tex Turner Arena - Harrogate, TN**



Layups



Layups

21 03 (21) (12) 21  
 (23) (23) 23

Dunks

Dunks

TWU : Period 1	Made	Att	Pct
Layups	1	3	33.3
Dunks	0	0	0
2PT Field Goals	1	10	10.0
3PT Field Goals	2	7	28.6
<b>Total Field Goals</b>	<b>3</b>	<b>17</b>	<b>17.6</b>

TWU : Period 3	Made	Att	Pct
Layups	2	2	100.0
Dunks	0	0	0
2PT Field Goals	7	9	77.8
3PT Field Goals	1	4	25.0
<b>Total Field Goals</b>	<b>8</b>	<b>13</b>	<b>61.5</b>

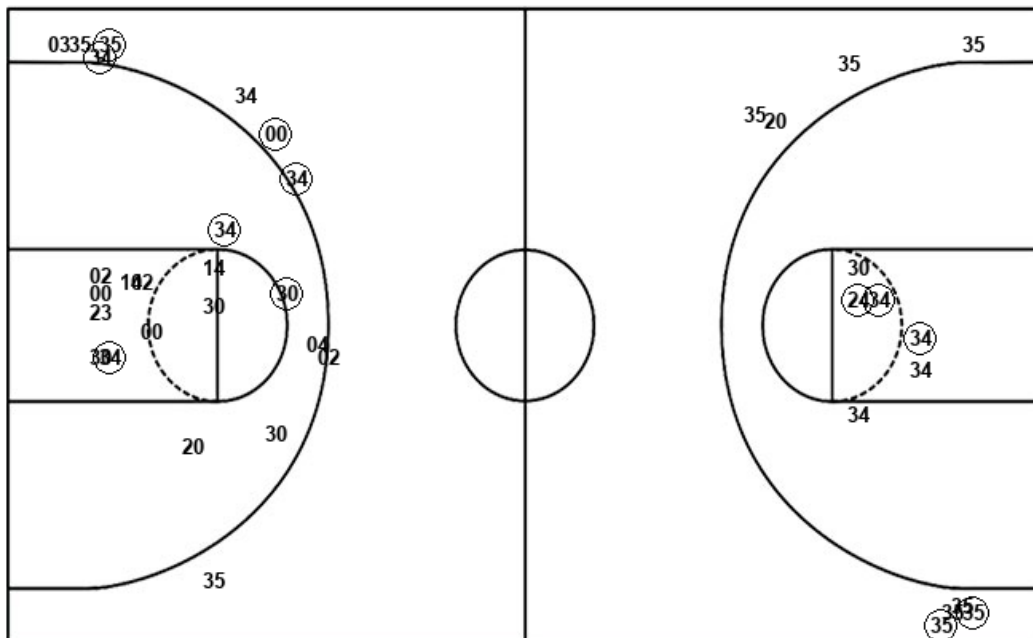
TWU : Period 2	Made	Att	Pct
Layups	1	2	50.0
Dunks	0	0	0
2PT Field Goals	2	7	28.6
3PT Field Goals	2	12	16.7
<b>Total Field Goals</b>	<b>4</b>	<b>19</b>	<b>21.1</b>

TWU : Period 4	Made	Att	Pct
Layups	0	1	00.0
Dunks	0	0	0
2PT Field Goals	1	3	33.3
3PT Field Goals	1	7	14.3
<b>Total Field Goals</b>	<b>2</b>	<b>10</b>	<b>20.0</b>

**Official Shot Chart**  
**Tenn. Wesleyan vs Lincoln Memorial**  
**Lincoln Memorial Team Shots**  
**December 03, 2019 at Tex Turner Arena - Harrogate, TN**



Layups



Layups

(30) (20) 00 35 (02)  
 (30) (20) 20 (20) 35  
 (25) 00 30 (02) 34  
 30 (30) (04) (23) 34  
 20

Dunks

Dunks

LMU : Period 1	Made	Att	Pct
Layups	3	5	60.0
Dunks	0	0	0
2PT Field Goals	5	15	33.3
3PT Field Goals	2	2	100.0
<b>Total Field Goals</b>	<b>7</b>	<b>17</b>	<b>41.2</b>

LMU : Period 2	Made	Att	Pct
Layups	2	3	66.7
Dunks	0	0	0
2PT Field Goals	3	8	37.5
3PT Field Goals	2	7	28.6
<b>Total Field Goals</b>	<b>5</b>	<b>15</b>	<b>33.3</b>

LMU : Period 3	Made	Att	Pct
Layups	4	8	50.0
Dunks	0	0	0
2PT Field Goals	5	11	45.5
3PT Field Goals	1	4	25.0
<b>Total Field Goals</b>	<b>6</b>	<b>15</b>	<b>40.0</b>

LMU : Period 4	Made	Att	Pct
Layups	3	5	60.0
Dunks	0	0	0
2PT Field Goals	5	8	62.5
3PT Field Goals	1	4	25.0
<b>Total Field Goals</b>	<b>6</b>	<b>12</b>	<b>50.0</b>