

## FINAL SCORE



**Northwestern**

**42**



**Arizona**

**56**

April 06, 2019 • McKale Center (Lute & Bobbi Olson Court) - Tucson, Ariz.

## FINAL STATISTICS

**Official Box Score**  
**Northwestern vs Arizona**  
**Game Totals -- Final Statistics**  
**April 06, 2019 at McKale Center (Lute & Bobbi Olson Court) - Tucson, Ariz.**



**Northwestern 42**

No.	Player	S	Pts	FG	3FG	FT	OR	DR	TR	PF	A	TO	Blk	Stl	Min	+/-
10	PULLIAM, LINDSEY	G	14	5-19	0-1	4-5	3	7	10	4	0	3	0	0	40	-15
12	BURTON, VERONICA	G	16	5-11	3-7	3-4	1	2	3	3	2	3	0	4	37	-14
14	KUNAIYI-AKPANAH, PALLAS	F	4	0-2	0-0	4-8	2	9	11	3	1	4	2	1	30	-16
24	HAMILTON, JORDAN	G	3	1-6	1-2	0-0	0	0	0	4	2	2	0	2	27	-19
44	SCHEID, ABI	C	2	1-7	0-5	0-0	1	5	6	2	2	3	0	0	38	-10
03	WOOD, SYDNEY	G	0	0-0	0-0	0-0	0	0	0	0	0	1	0	2	15	3
04	HOPKINS, BRYANA	F	0	0-0	0-0	0-0	0	0	0	0	0	0	0	0	1	-4
21	WOLF, ABBIE	C	3	1-4	0-0	1-2	0	1	1	0	0	1	2	0	10	2
22	GALERNIK, BYRDY	G	0	0-0	0-0	0-0	0	0	0	1	0	1	0	0	1	1
	TEAM						1	0	1	0		0				
<b>TOTALS</b>			<b>42</b>	<b>13-49</b>	<b>4-15</b>	<b>12-19</b>	<b>8</b>	<b>24</b>	<b>32</b>	<b>17</b>	<b>7</b>	<b>18</b>	<b>4</b>	<b>9</b>	<b>198</b>	

*Shooting By Period*

Period	FG	FG%	3FG	3FG%	FT	FT%
1st Qtr	4-17	24%	2-6	33%	2-2	100%
2nd Qtr	2-10	20%	1-2	50%	0-2	00%
3rd Qtr	5-11	45%	1-2	50%	5-7	71%
4th Qtr	2-11	18%	0-5	00%	5-8	63%
1st Half	6-27	22%	3-8	38%	2-4	50%
2nd Half	7-22	32%	1-7	14%	10-15	67%
<b>Game</b>	<b>13-49</b>	<b>26.5%</b>	<b>4-15</b>	<b>26.7%</b>	<b>12-19</b>	<b>63.2%</b>

Deadball Rebounds: 4,0  
 Last FG: 4th-02:26  
 Biggest Run: 6-0  
 Largest lead: By 3 at 1-07:34  
 Technical Fouls: None.

**Arizona 56**

No.	Player	S	Pts	FG	3FG	FT	OR	DR	TR	PF	A	TO	Blk	Stl	Min	+/-
02	MCDONALD, AARI	G	19	8-17	1-6	2-4	1	6	7	1	3	7	0	6	38	15
10	STARKS, TEE TEE	F	12	5-7	2-4	0-0	1	4	5	3	1	1	0	0	26	20
14	THOMAS, SAM	F	5	2-7	1-3	0-0	1	6	7	3	4	0	1	2	35	13
20	MCBRYDE, DOMINIQUE	F	2	1-4	0-1	0-0	1	3	4	3	2	2	0	2	25	17
25	REESE, CATE	F	13	6-13	0-1	1-1	3	6	9	2	1	3	1	2	27	18
04	ALONSO, LUCIA	G	0	0-2	0-2	0-0	0	0	0	0	2	0	0	0	19	-5
21	GRAHAM, DESTINY	F	3	0-3	0-1	3-4	0	1	1	0	0	3	0	0	15	-2
22	MALECHA, LINDSEY	G	0	0-1	0-0	0-0	0	0	0	0	0	0	0	0	1	0
24	NIXON, BRYCE	G	0	0-1	0-0	0-0	0	0	0	0	0	0	0	0	1	-1
34	SMITH, SEMAJ	C	2	1-4	0-1	0-0	1	2	3	2	0	2	2	0	13	-5
	TEAM						6	3	9	0		1				
<b>TOTALS</b>			<b>56</b>	<b>23-59</b>	<b>4-19</b>	<b>6-9</b>	<b>14</b>	<b>31</b>	<b>45</b>	<b>14</b>	<b>13</b>	<b>19</b>	<b>4</b>	<b>12</b>	<b>198</b>	

*Shooting By Period*

Period	FG	FG%	3FG	3FG%	FT	FT%
1st Qtr	7-15	47%	1-5	20%	1-1	100%
2nd Qtr	6-14	43%	1-6	17%	1-2	50%
3rd Qtr	7-16	44%	1-3	33%	4-6	67%
4th Qtr	3-14	21%	1-5	20%	0-0	0%
1st Half	13-29	45%	2-11	18%	2-3	67%
2nd Half	10-30	33%	2-8	25%	4-6	67%
<b>Game</b>	<b>23-59</b>	<b>39.0%</b>	<b>4-19</b>	<b>21.1%</b>	<b>6-9</b>	<b>66.7%</b>

Deadball Rebounds: 1,0  
 Last FG: 4th-04:33  
 Biggest Run: 7-0  
 Largest lead: By 19 at 3-02:52  
 Technical Fouls: None.

Game Notes:

Officials: Michael Price, Tiffany Reed, Anita Ortega  
 Attendance: 14644

Start Time: 2019-04-06 19:06:53  
 End Time: 2019-04-06 20:57:38  
 Game Duration: 1:50

Score	1st	2nd	3rd	4th	TOT
NOR	12	5	16	9	<b>42</b>
ARI	16	14	19	7	<b>56</b>

NOR led for 2:32. ARI led for 36:38.  
 Game was tied for 0:30.  
 Times tied: 0      Lead Changes: 1

Points from	NOR	ARI
In the Paint	10	32
Off Turns	14	18
2nd Chance	5	14
Fast Break	6	19
Bench	3	5

**Official Box Score**  
**Northwestern vs Arizona**  
**First Half Statistics Only**  
**April 06, 2019 at McKale Center (Lute & Bobbi Olson Court) - Tucson, Ariz.**



**Northwestern 17**

No.	Player	S	Pts	FG	3FG	FT	OR	DR	TR	PF	A	TO	Blk	Stl	Min	+/-
03	WOOD, SYDNEY	G	0	0-0	0-0	0-0	0	0	0	0	0	1	0	1	8	1
04	HOPKINS, BRYANA	F	0	0-0	0-0	0-0	0	0	0	0	0	0	0	0	0	0
10	PULLIAM, LINDSEY	G	8	3-12	0-0	2-2	1	3	4	1	0	1	0	0	20	-13
12	BURTON, VERONICA	G	6	2-4	2-4	0-0	1	0	1	2	1	3	0	3	17	-12
14	KUNAIYI-AKPANAH, PALLAS	F	0	0-1	0-0	0-2	0	5	5	1	0	3	0	0	14	-16
21	WOLF, ABBIE	C	0	0-2	0-0	0-0	0	1	1	0	0	1	1	0	6	3
22	GALERNIK, BYRDY	G	0	0-0	0-0	0-0	0	0	0	0	0	0	0	0	0	0
24	HAMILTON, JORDAN	G	3	1-5	1-2	0-0	0	0	0	3	1	0	0	2	15	-15
44	SCHEID, ABI	C	0	0-3	0-2	0-0	0	3	3	1	2	2	0	0	20	-13
	TEAM		0	0-0	0-0	0-0	1	0	1	0	0	0	0	0	0	0
<b>TOTALS</b>			<b>17</b>	<b>6-27</b>	<b>3-8</b>	<b>2-4</b>	<b>3</b>	<b>12</b>	<b>15</b>	<b>8</b>	<b>4</b>	<b>11</b>	<b>1</b>	<b>6</b>	<b>100</b>	

*Shooting By Period*

Period	FG	FG%	3FG	3FG%	FT	FT%
1st Qtr	4-17	24%	2-6	33%	2-2	100%
2nd Qtr	2-10	20%	1-2	50%	0-2	00%
1st Half	6-27	22%	3-8	38%	2-4	50%
Game	13-49	26.5%	4-15	26.7%	12-19	63.2%

*Deadball Rebounds: 4,0*  
*Last FG Half: NOR 2nd-05:45*

**Arizona 30**

No.	Player	S	Pts	FG	3FG	FT	OR	DR	TR	PF	A	TO	Blk	Stl	Min	+/-
10	STARKS, TEE TEE	F	8	3-4	2-3	0-0	1	2	3	1	0	0	0	0	13	15
14	THOMAS, SAM	F	2	1-3	0-2	0-0	0	5	5	0	2	0	1	1	18	12
20	MCBRYDE, DOMINIQUE	F	0	0-2	0-1	0-0	0	2	2	2	2	0	0	0	13	14
21	GRAHAM, DESTINY	F	1	0-1	0-0	1-2	0	1	1	0	0	3	0	0	7	-1
22	MALECHA, LINDSEY	G	0	0-0	0-0	0-0	0	0	0	0	0	0	0	0	0	0
24	NIXON, BRYCE	G	0	0-0	0-0	0-0	0	0	0	0	0	0	0	0	0	0
25	REESE, CATE	F	9	4-8	0-1	1-1	2	2	4	1	0	2	1	1	14	14
34	SMITH, SEMAJ	C	0	0-1	0-0	0-0	0	1	1	0	0	0	1	0	6	-1
02	MCDONALD, AARI	G	10	5-9	0-3	0-0	0	4	4	0	2	6	0	5	20	13
04	ALONSO, LUCIA	G	0	0-1	0-1	0-0	0	0	0	0	1	0	0	0	9	-1
	TEAM		0	0-0	0-0	0-0	1	2	3	0	0	1	0	0	0	0
<b>TOTALS</b>			<b>30</b>	<b>13-29</b>	<b>2-11</b>	<b>2-3</b>	<b>4</b>	<b>19</b>	<b>23</b>	<b>4</b>	<b>7</b>	<b>12</b>	<b>3</b>	<b>7</b>	<b>100</b>	

*Shooting By Period*

Period	FG	FG%	3FG	3FG%	FT	FT%
1st Qtr	7-15	47%	1-5	20%	1-1	100%
2nd Qtr	6-14	43%	1-6	17%	1-2	50%
1st Half	13-29	45%	2-11	18%	2-3	67%
Game	23-59	39.0%	4-19	21.1%	6-9	66.7%

*Deadball Rebounds: 1,0*  
*Last FG Half: ARI 2nd-01:33*

*Game Notes:*

Officials: Michael Price, Tiffany Reed, Anita Ortega  
 Attendance: 14644

Start Time: 2019-04-06 19:06:53  
 End Time: 2019-04-06 20:57:38  
 Game Duration: 1:50

Score	1st	2nd	3rd	4th	TOT
NOR	12	5	16	9	<b>42</b>
ARI	16	14	19	7	<b>56</b>

Points from (This Period)	NOR	ARI
In the Paint	2	18
Off Turns	7	12
2nd Chance	2	3
Fast Break	4	14
Bench	0	1

**Official Box Score**  
**Northwestern vs Arizona**  
**First Quarter Statistics Only**  
**April 06, 2019 at McKale Center (Lute & Bobbi Olson Court) - Tucson, Ariz.**



### Northwestern 12

No.	Player	S	Pts	FG	3FG	FT	OR	DR	TR	PF	A	TO	Blk	Stl	Min	+/-
10	PULLIAM, LINDSEY	G	6	2-7	0-0	2-2	1	3	4	1	0	0	0	0	10	-4
12	BURTON, VERONICA	G	3	1-2	1-2	0-0	0	0	0	2	1	2	0	3	9	-4
14	KUNAIYI-AKPANAH, PALLAS	F	0	0-1	0-0	0-0	0	1	1	0	0	1	0	0	6	-8
24	HAMILTON, JORDAN	G	3	1-2	1-2	0-0	0	0	0	1	0	0	0	1	6	-6
44	SCHEID, ABI	C	0	0-3	0-2	0-0	0	2	2	0	2	1	0	0	10	-4
03	WOOD, SYDNEY	G	0	0-0	0-0	0-0	0	0	0	0	0	0	0	1	5	2
04	HOPKINS, BRYANA	F	0	0-0	0-0	0-0	0	0	0	0	0	0	0	0	0	0
21	WOLF, ABBIE	C	0	0-2	0-0	0-0	0	0	0	0	0	1	1	0	4	4
22	GALERNIK, BYRDY	G	0	0-0	0-0	0-0	0	0	0	0	0	0	0	0	0	0
<b>TEAM</b>							1	0	1	0	0					
<b>TOTALS</b>			<b>12</b>	<b>4-17</b>	<b>2-6</b>	<b>2-2</b>	<b>2</b>	<b>6</b>	<b>8</b>	<b>4</b>	<b>3</b>	<b>5</b>	<b>1</b>	<b>5</b>	<b>50</b>	

*Shooting By Period*

Period	FG	FG%	3FG	3FG%	FT	FT%
1st Qtr	4-17	24%	2-6	33%	2-2	100%
2nd Qtr	2-10	20%	1-2	50%	0-2	00%
1st Half	4-17	24%	2-6	33%	2-2	100%
1st Half	6-27	22%	3-8	38%	2-4	50%
Game	13-49	26.5%	4-15	26.7%	12-19	63.2%

Deadball Rebounds: 4,0

### Arizona 16

No.	Player	S	Pts	FG	3FG	FT	OR	DR	TR	PF	A	TO	Blk	Stl	Min	+/-
02	MCDONALD, AARI	G	6	3-6	0-2	0-0	0	3	3	0	1	5	0	3	10	4
10	STARKS, TEE TEE	F	5	2-3	1-2	0-0	0	1	1	1	0	0	0	0	9	7
14	THOMAS, SAM	F	2	1-2	0-1	0-0	0	3	3	0	0	0	1	1	10	4
20	MCBRYDE, DOMINIQUE	F	0	0-0	0-0	0-0	0	1	1	0	1	0	0	0	7	8
25	REESE, CATE	F	3	1-3	0-0	1-1	2	1	3	0	0	0	1	0	7	8
04	ALONSO, LUCIA	G	0	0-0	0-0	0-0	0	0	0	0	0	0	0	0	1	-3
21	GRAHAM, DESTINY	F	0	0-1	0-0	0-0	0	1	1	0	0	2	0	0	3	-4
22	MALECHA, LINDSEY	G	0	0-0	0-0	0-0	0	0	0	0	0	0	0	0	0	0
24	NIXON, BRYCE	G	0	0-0	0-0	0-0	0	0	0	0	0	0	0	0	0	0
34	SMITH, SEMAJ	C	0	0-0	0-0	0-0	0	1	1	0	0	0	1	0	3	-4
<b>TEAM</b>							0	0	0	0	1					
<b>TOTALS</b>			<b>16</b>	<b>7-15</b>	<b>1-5</b>	<b>1-1</b>	<b>2</b>	<b>11</b>	<b>13</b>	<b>1</b>	<b>2</b>	<b>8</b>	<b>3</b>	<b>4</b>	<b>50</b>	

*Shooting By Period*

Period	FG	FG%	3FG	3FG%	FT	FT%
1st Qtr	7-15	47%	1-5	20%	1-1	100%
2nd Qtr	6-14	43%	1-6	17%	1-2	50%
1st Half	7-15	47%	1-5	20%	1-1	100%
1st Half	13-29	45%	2-11	18%	2-3	67%
Game	23-59	39.0%	4-19	21.1%	6-9	66.7%

Deadball Rebounds: 1,0

Game Notes:

Officials: Michael Price, Tiffany Reed, Anita Ortega  
 Attendance: 14644

Start Time: 2019-04-06 19:06:53  
 End Time: 2019-04-06 20:57:38  
 Game Duration: 1:50

Score	1st	2nd	3rd	4th	TOT
NOR	12	5	16	9	<b>42</b>
ARI	16	14	19	7	<b>56</b>

Points from (This Period)	NOR	ARI
In the Paint	2	10
Off Turns	7	4
2nd Chance	2	3
Fast Break	4	7
Bench	0	0

**Official Play-By-Play  
Northwestern vs Arizona  
First Quarter**

**April 06, 2019 at McKale Center (Lute & Bobbi Olson Court) - Tucson, Ariz.**



**Period 1**

**Starters:**

**Northwestern:** 10 PULLIAM,LINDSEY (G); 12 BURTON,VERONICA (G); 14 KUNAIYI-AKPANAH,PALLAS (F); 24 HAMILTON,JORDAN (G); 44 SCHEID,ABI (C);

**Arizona:** 10 STARKS,TEE TEE (F); 14 THOMAS,SAM (F); 20 MCBRYDE,DOMINIQUE (F); 25 REESE,CATE (F); 2 MCDONALD,AARI (G);

Time	VISITORS: Northwestern	Score	Margin	HOME: Arizona
09:30	GOOD! 3PTR by BURTON, VERONICA	0-3	V 3	
09:19				MISSED LAYUP by REESE, CATE
09:16	REBOUND (DEF) by SCHEID, ABI			
09:10	MISSED 3PTR by SCHEID, ABI			
09:07				REBOUND (DEF) by MCDONALD, AARI
09:02				TURNOVER (TRAVEL) by MCDONALD, AARI
08:55	MISSED JUMPER by PULLIAM, LINDSEY			
08:52				REBOUND (DEF) by STARKS, TEE TEE
08:44		2-3	V 1	GOOD! JUMPER by MCDONALD, AARI
08:20	MISSED LAYUP by KUNAIYI-AKPANAH, PALLAS			
08:17				REBOUND (DEF) by THOMAS, SAM
07:53				MISSED 3PTR by MCDONALD, AARI
07:49				REBOUND (OFF) by REESE, CATE
07:49				TURNOVER (SHOTCLOCK) by
07:34	GOOD! JUMPER by PULLIAM, LINDSEY [PNT]	2-5	V 3	
07:34	ASSIST by SCHEID, ABI			
07:21		4-5	V 1	GOOD! JUMPER by MCDONALD, AARI [PNT]
07:05	MISSED JUMPER by PULLIAM, LINDSEY			
07:05				BLOCK by THOMAS, SAM
07:04				REBOUND (DEF) by THOMAS, SAM
07:04	FOUL (PERSONAL) by PULLIAM, LINDSEY			
06:58		7-5	H 2	GOOD! 3PTR by STARKS, TEE TEE [FB]
06:58				ASSIST by MCDONALD, AARI
06:41	TURNOVER (LOSTBALL) by BURTON, VERONICA			
06:41				STEAL by THOMAS, SAM
06:37		9-5	H 4	GOOD! LAYUP by MCDONALD, AARI [FB]
06:37	TIMEOUT 30SEC			
06:37				
06:32	TURNOVER (BADPASS) by SCHEID, ABI			
06:32				STEAL by MCDONALD, AARI
06:26				TURNOVER (BADPASS) by MCDONALD, AARI
06:26	STEAL by BURTON, VERONICA			
06:20	GOOD! 3PTR by HAMILTON, JORDAN	9-8	H 1	
06:20	ASSIST by SCHEID, ABI			
06:07				MISSED 3PTR by THOMAS, SAM
06:03				REBOUND (OFF) by REESE, CATE
06:03		11-8	H 3	GOOD! LAYUP by REESE, CATE
06:03	FOUL (PERSONAL) by HAMILTON, JORDAN			
06:03		12-8	H 4	GOOD! FT by REESE, CATE
05:36	MISSED 3PTR by BURTON, VERONICA			
05:32				REBOUND (DEF) by MCBRYDE, DOMINIQUE
05:24				MISSED 3PTR by MCDONALD, AARI
05:20	REBOUND (DEF) by KUNAIYI-AKPANAH, PALLAS			
05:15	MISSED 3PTR by HAMILTON, JORDAN			
05:13				REBOUND (DEF) by THOMAS, SAM
05:12	FOUL (PERSONAL) by BURTON, VERONICA			
04:53		14-8	H 6	GOOD! JUMPER by THOMAS, SAM [PNT]
04:33	MISSED JUMPER by PULLIAM, LINDSEY			
04:31				REBOUND (DEF) by MCDONALD, AARI
04:30				TURNOVER (TRAVEL) by MCDONALD, AARI
04:30	SUB OUT: HAMILTON, JORDAN			
04:30	SUB IN: WOOD, SYDNEY			
04:27	TURNOVER (LOSTBALL) by KUNAIYI-AKPANAH, PALLAS			
04:27				STEAL by MCDONALD, AARI
04:18		16-8	H 8	GOOD! LAYUP by STARKS, TEE TEE [FB]
04:18				ASSIST by MCBRYDE, DOMINIQUE
03:52	MISSED LAYUP by SCHEID, ABI			
03:52				BLOCK by REESE, CATE
03:52	REBOUND (OFF) by TEAM			
03:51	SUB OUT: KUNAIYI-AKPANAH, PALLAS			
03:51	SUB IN: WOLF, ABBIE			
03:50	MISSED JUMPER by PULLIAM, LINDSEY			
03:49				REBOUND (DEF) by REESE, CATE
03:38				MISSED JUMPER by REESE, CATE
03:35	REBOUND (DEF) by PULLIAM, LINDSEY			
03:14	TURNOVER (TRAVEL) by WOLF, ABBIE			
03:14				SUB OUT: REESE, CATE
03:14				SUB IN: SMITH, SEMAJ
03:14				SUB OUT: MCBRYDE, DOMINIQUE
03:14				SUB IN: GRAHAM, DESTINY

Time	VISITORS: Northwestern	Score	Margin	HOME: Arizona
03:04				TURNOVER (BADPASS) by MCDONALD, AARI
03:04	STEAL by BURTON, VERONICA			
02:56	TURNOVER (BADPASS) by BURTON, VERONICA			
02:56				STEAL by MCDONALD, AARI
02:51				TURNOVER (BADPASS) by MCDONALD, AARI
02:51	STEAL by WOOD, SYDNEY			
02:28	MISSED JUMPER by WOLF, ABBIE			
02:24				REBOUND (DEF) by GRAHAM, DESTINY
02:12				MISSED 3PTR by STARKS, TEE TEE
02:08	REBOUND (DEF) by SCHEID, ABI			
01:48	MISSED 3PTR by SCHEID, ABI			
01:45				REBOUND (DEF) by MCDONALD, AARI
01:22				MISSED JUMPER by MCDONALD, AARI
01:19	REBOUND (DEF) by PULLIAM, LINDSEY			
01:04	MISSED JUMPER by WOLF, ABBIE			
01:03	REBOUND (OFF) by PULLIAM, LINDSEY			
01:02				FOUL (PERSONAL) by STARKS, TEE TEE
01:02	GOOD! FT by PULLIAM, LINDSEY [FB]	16-9	H 7	
01:02				SUB OUT: STARKS, TEE TEE
01:02				SUB IN: ALONSO, LUCIA
01:02	GOOD! FT by PULLIAM, LINDSEY [FB]	16-10	H 6	
00:45				TURNOVER (LOSTBALL) by GRAHAM, DESTINY
00:45	STEAL by BURTON, VERONICA			
00:40	GOOD! JUMPER by PULLIAM, LINDSEY [FB]	16-12	H 4	
00:40	ASSIST by BURTON, VERONICA			
00:33	FOUL (PERSONAL) by BURTON, VERONICA			
00:33	SUB OUT: BURTON, VERONICA			
00:33	SUB IN: HAMILTON, JORDAN			
00:25				TURNOVER (BADPASS) by GRAHAM, DESTINY
00:25	STEAL by HAMILTON, JORDAN			
00:18	MISSED JUMPER by PULLIAM, LINDSEY			
00:18				BLOCK by SMITH, SEMAJ
00:13				REBOUND (DEF) by SMITH, SEMAJ
00:01				MISSED LAYUP by GRAHAM, DESTINY
00:01	BLOCK by WOLF, ABBIE			
00:00	REBOUND (DEF) by PULLIAM, LINDSEY			

### Northwestern 12, Arizona 16

Points from (This Period)	NOR	ARI
In the Paint	2	10
Off Turns	7	4
2nd Chance	2	3
Fast Break	4	7
Bench	0	0

**Official Box Score**  
**Northwestern vs Arizona**  
**Second Quarter Statistics Only**  
**April 06, 2019 at McKale Center (Lute & Bobbi Olson Court) - Tucson, Ariz.**



### Northwestern 5

No.	Player	S	Pts	FG	3FG	FT	OR	DR	TR	PF	A	TO	Blk	Stl	Min	+/-
10	PULLIAM, LINDSEY	G	2	1-5	0-0	0-0	0	0	0	0	0	1	0	0	10	-9
12	BURTON, VERONICA	G	3	1-2	1-2	0-0	1	0	1	0	0	1	0	0	8	-8
14	KUNAIYI-AKPANAH, PALLAS	F	0	0-0	0-0	0-2	0	4	4	1	0	2	0	0	8	-8
24	HAMILTON, JORDAN	G	0	0-3	0-0	0-0	0	0	0	2	1	0	0	1	9	-9
44	SCHEID, ABI	C	0	0-0	0-0	0-0	0	1	1	1	0	1	0	0	10	-9
03	WOOD, SYDNEY	G	0	0-0	0-0	0-0	0	0	0	0	0	1	0	0	3	-1
04	HOPKINS, BRYANA	F	0	0-0	0-0	0-0	0	0	0	0	0	0	0	0	0	0
21	WOLF, ABBIE	C	0	0-0	0-0	0-0	0	1	1	0	0	0	0	0	2	-1
22	GALERNIK, BYRDY	G	0	0-0	0-0	0-0	0	0	0	0	0	0	0	0	0	0
TEAM							0	0	0	0	0	0	0	0	0	0
<b>TOTALS</b>			<b>5</b>	<b>2-10</b>	<b>1-2</b>	<b>0-2</b>	<b>1</b>	<b>6</b>	<b>7</b>	<b>4</b>	<b>1</b>	<b>6</b>	<b>0</b>	<b>1</b>	<b>50</b>	

*Shooting By Period*

Period	FG	FG%	3FG	3FG%	FT	FT%
3rd Qtr	5-11	45%	1-2	50%	5-7	71%
4th Qtr	2-11	18%	0-5	00%	5-8	63%
2nd Half	2-10	20%	1-2	50%	0-2	00%
2nd Half	7-22	32%	1-7	14%	10-15	67%
Game	13-49	26.5%	4-15	26.7%	12-19	63.2%

Deadball Rebounds: 4,0

### Arizona 14

No.	Player	S	Pts	FG	3FG	FT	OR	DR	TR	PF	A	TO	Blk	Stl	Min	+/-
02	MCDONALD, AARI	G	4	2-3	0-1	0-0	0	1	1	0	1	1	0	2	10	9
10	STARKS, TEE TEE	F	3	1-1	1-1	0-0	1	1	2	0	0	0	0	0	4	8
14	THOMAS, SAM	F	0	0-1	0-1	0-0	0	2	2	0	2	0	0	0	8	8
20	MCBRYDE, DOMINIQUE	F	0	0-2	0-1	0-0	0	1	1	2	1	0	0	0	6	6
25	REESE, CATE	F	6	3-5	0-1	0-0	0	1	1	1	0	2	0	1	7	6
04	ALONSO, LUCIA	G	0	0-1	0-1	0-0	0	0	0	0	1	0	0	0	8	2
21	GRAHAM, DESTINY	F	1	0-0	0-0	1-2	0	0	0	0	0	1	0	0	4	3
22	MALECHA, LINDSEY	G	0	0-0	0-0	0-0	0	0	0	0	0	0	0	0	0	0
24	NIXON, BRYCE	G	0	0-0	0-0	0-0	0	0	0	0	0	0	0	0	0	0
34	SMITH, SEMAJ	C	0	0-1	0-0	0-0	0	0	0	0	0	0	0	0	3	3
TEAM							1	2	3	0	0	0	0	0	0	
<b>TOTALS</b>			<b>14</b>	<b>6-14</b>	<b>1-6</b>	<b>1-2</b>	<b>2</b>	<b>8</b>	<b>10</b>	<b>3</b>	<b>5</b>	<b>4</b>	<b>0</b>	<b>3</b>	<b>50</b>	

*Shooting By Period*

Period	FG	FG%	3FG	3FG%	FT	FT%
3rd Qtr	7-16	44%	1-3	33%	4-6	67%
4th Qtr	3-14	21%	1-5	20%	0-0	0%
2nd Half	6-14	43%	1-6	17%	1-2	50%
2nd Half	10-30	33%	2-8	25%	4-6	67%
Game	23-59	39.0%	4-19	21.1%	6-9	66.7%

Deadball Rebounds: 1,0

Game Notes:

Officials: Michael Price, Tiffany Reed, Anita Ortega  
 Attendance: 14644

Start Time: 2019-04-06 19:06:53  
 End Time: 2019-04-06 20:57:38  
 Game Duration: 1:50

Score	1st	2nd	3rd	4th	TOT
NOR	12	5	16	9	<b>42</b>
ARI	16	14	19	7	<b>56</b>

Points from (This Period)	NOR	ARI
In the Paint	0	8
Off Turns	0	8
2nd Chance	0	0
Fast Break	0	7
Bench	0	1

**Official Play-By-Play  
Northwestern vs Arizona  
Second Quarter**

**April 06, 2019 at McKale Center (Lute & Bobbi Olson Court) - Tucson, Ariz.**



**Period 2**

**Starters:**

**Northwestern:** 10 PULLIAM,LINDSEY (G); 12 BURTON,VERONICA (G); 14 KUNAIYI-AKPANAH,PALLAS (F); 24 HAMILTON,JORDAN (G); 44 SCHEID,ABI (C);

**Arizona:** 10 STARKS,TEE TEE (F); 14 THOMAS,SAM (F); 20 MCBRYDE,DOMINIQUE (F); 25 REESE,CATE (F); 2 MCDONALD,AARI (G);

Time	VISITORS: Northwestern	Score	Margin	HOME: Arizona
09:45				MISSED 3PTR by ALONSO, LUCIA
09:42	REBOUND (DEF) by KUNAIYI-AKPANAH, PALLAS			
09:26				FOUL (PERSONAL) by MCBRYDE, DOMINIQUE
09:26	MISSED FT by KUNAIYI-AKPANAH, PALLAS			
09:26	REBOUND (OFF) by TEAM			
09:26	MISSED FT by KUNAIYI-AKPANAH, PALLAS			
09:25				REBOUND (DEF) by REESE, CATE
09:15				MISSED 3PTR by MCBRYDE, DOMINIQUE
09:11	REBOUND (DEF) by KUNAIYI-AKPANAH, PALLAS			
08:58	GOOD! JUMPER by PULLIAM, LINDSEY	16-14	H 2	
08:35				MISSED 3PTR by THOMAS, SAM
08:33				REBOUND (OFF) by TEAM
08:32				SUB OUT: ALONSO, LUCIA
08:32				SUB IN: STARKS, TEE TEE
08:24				MISSED LAYUP by REESE, CATE
08:21	REBOUND (DEF) by KUNAIYI-AKPANAH, PALLAS			
08:11	TURNOVER (LOSTBALL) by WOOD, SYDNEY			
08:11				STEAL by MCDONALD, AARI
08:04		19-14	H 5	GOOD! 3PTR by STARKS, TEE TEE [FB]
08:04				ASSIST by MCBRYDE, DOMINIQUE
07:49	SUB OUT: WOOD, SYDNEY			
07:49	SUB IN: BURTON, VERONICA			
07:48	TURNOVER (BADPASS) by PULLIAM, LINDSEY			
07:48				STEAL by MCDONALD, AARI
07:40		21-14	H 7	GOOD! LAYUP by REESE, CATE [FB]
07:40				ASSIST by THOMAS, SAM
07:15	MISSED JUMPER by PULLIAM, LINDSEY			
07:12				REBOUND (DEF) by THOMAS, SAM
07:00	FOUL (PERSONAL) by HAMILTON, JORDAN			
06:43		23-14	H 9	GOOD! LAYUP by REESE, CATE
06:43				ASSIST by THOMAS, SAM
06:40	TIMEOUT 30SEC			
06:40				SUB OUT: THOMAS, SAM
06:40				SUB IN: ALONSO, LUCIA
06:40	SUB OUT: KUNAIYI-AKPANAH, PALLAS			
06:40	SUB IN: WOLF, ABBIE			
06:34	MISSED JUMPER by PULLIAM, LINDSEY			
06:32				REBOUND (DEF) by STARKS, TEE TEE
06:05				MISSED LAYUP by MCBRYDE, DOMINIQUE
06:02	REBOUND (DEF) by WOLF, ABBIE			
05:45	GOOD! 3PTR by BURTON, VERONICA	23-17	H 6	
05:45	ASSIST by HAMILTON, JORDAN			
05:28		25-17	H 8	GOOD! LAYUP by REESE, CATE
05:28				ASSIST by MCDONALD, AARI
05:11	MISSED JUMPER by HAMILTON, JORDAN			
05:08				REBOUND (DEF) by MCBRYDE, DOMINIQUE
05:02		27-17	H 10	GOOD! JUMPER by MCDONALD, AARI [FB/PNT]
04:44	MISSED LAYUP by PULLIAM, LINDSEY			
04:41				REBOUND (DEF) by MCDONALD, AARI
04:35				MISSED 3PTR by REESE, CATE
04:32				REBOUND (OFF) by STARKS, TEE TEE
04:31				TURNOVER (DRIBBLING) by REESE, CATE
04:31				SUB OUT: STARKS, TEE TEE
04:31				SUB IN: THOMAS, SAM
04:31	SUB OUT: WOLF, ABBIE			
04:31	SUB IN: KUNAIYI-AKPANAH, PALLAS			
04:05	TURNOVER (BADPASS) by BURTON, VERONICA			
03:54				MISSED 3PTR by MCDONALD, AARI
03:51	REBOUND (DEF) by KUNAIYI-AKPANAH, PALLAS			
03:43				FOUL (PERSONAL) by MCBRYDE, DOMINIQUE
03:34	MISSED JUMPER by HAMILTON, JORDAN			
03:33				REBOUND (DEF) by TEAM
03:33				SUB OUT: MCBRYDE, DOMINIQUE
03:33				SUB IN: GRAHAM, DESTINY
03:15				FOUL (OFF) by REESE, CATE
03:15				TURNOVER (OFFENSIVE) by REESE, CATE
03:01	TURNOVER (BADPASS) by SCHEID, ABI			
03:01				STEAL by REESE, CATE
02:44	FOUL (PERSONAL) by SCHEID, ABI			



Time	VISITORS: Northwestern	Score	Margin	HOME: Arizona
02:44				MISSED FT by GRAHAM, DESTINY
02:44				REBOUND (OFF) by TEAM
02:44				SUB OUT: REESE, CATE
02:44				SUB IN: SMITH, SEMAJ
02:44		28-17	H 11	GOOD! FT by GRAHAM, DESTINY
02:28	FOUL (OFF) by KUNAIYI-AKPANAH, PALLAS			
02:28	TURNOVER (OFFENSIVE) by KUNAIYI-AKPANAH, PALLAS			
02:07				TURNOVER (LOSTBALL) by MCDONALD, AARI
02:07	STEAL by HAMILTON, JORDAN			
02:02	MISSED LAYUP by HAMILTON, JORDAN			
01:59	REBOUND (OFF) by BURTON, VERONICA			
01:46	TURNOVER (TRAVEL) by KUNAIYI-AKPANAH, PALLAS			
01:33		30-17	H 13	GOOD! JUMPER by MCDONALD, AARI
01:33				ASSIST by ALONSO, LUCIA
01:12	MISSED 3PTR by BURTON, VERONICA			
01:10				REBOUND (DEF) by TEAM
01:09	SUB OUT: BURTON, VERONICA			
01:09	SUB IN: WOOD, SYDNEY			
00:56	FOUL (PERSONAL) by HAMILTON, JORDAN			
00:56	SUB OUT: HAMILTON, JORDAN			
00:56	SUB IN: BURTON, VERONICA			
00:51				TURNOVER (BADPASS) by GRAHAM, DESTINY
00:21	MISSED JUMPER by PULLIAM, LINDSEY			
00:18				REBOUND (DEF) by THOMAS, SAM
00:01				MISSED JUMPER by SMITH, SEMAJ
00:01	REBOUND (DEF) by SCHEID, ABI			

### Northwestern 17, Arizona 30

Points from (This Period)	NOR	ARI
In the Paint	0	8
Off Turns	0	8
2nd Chance	0	0
Fast Break	0	7
Bench	0	1

**Official Box Score**  
**Northwestern vs Arizona**  
**Second Half Statistics Only**  
**April 06, 2019 at McKale Center (Lute & Bobbi Olson Court) - Tucson, Ariz.**



**Northwestern 25**

No.	Player	S	Pts	FG	3FG	FT	OR	DR	TR	PF	A	TO	Blk	Stl	Min	+/-
03	WOOD, SYDNEY	G	0	0-0	0-0	0-0	0	0	0	0	0	0	0	1	7	2
04	HOPKINS, BRYANA	F	0	0-0	0-0	0-0	0	0	0	0	0	0	0	0	1	-4
10	PULLIAM, LINDSEY	G	6	2-7	0-1	2-3	2	4	6	3	0	2	0	0	20	-2
12	BURTON, VERONICA	G	10	3-7	1-3	3-4	0	2	2	1	1	0	0	1	20	-2
14	KUNAIYI-AKPANAH, PALLAS	F	4	0-1	0-0	4-6	2	4	6	2	1	1	2	1	16	0
21	WOLF, ABBIE	C	3	1-2	0-0	1-2	0	0	0	0	0	0	1	0	4	-1
22	GALERNIK, BYRDY	G	0	0-0	0-0	0-0	0	0	0	1	0	1	0	0	1	1
24	HAMILTON, JORDAN	G	0	0-1	0-0	0-0	0	0	0	1	1	2	0	0	12	-4
44	SCHEID, ABI	C	2	1-4	0-3	0-0	1	2	3	1	0	1	0	0	18	3
	TEAM		0	0-0	0-0	0-0	0	0	0	0	0	0	0	0	0	0
	<b>TOTALS</b>		<b>25</b>	<b>7-22</b>	<b>1-7</b>	<b>10-15</b>	<b>5</b>	<b>12</b>	<b>17</b>	<b>9</b>	<b>3</b>	<b>7</b>	<b>3</b>	<b>3</b>	<b>98</b>	

*Shooting By Period*

Period	FG	FG%	3FG	3FG%	FT	FT%
3rd Qtr	5-11	45%	1-2	50%	5-7	71%
4th Qtr	2-11	18%	0-5	00%	5-8	63%
2nd Half	7-22	32%	1-7	14%	10-15	67%
Game	13-49	26.5%	4-15	26.7%	12-19	63.2%

Deadball Rebounds: 4,0  
 Last FG Half: NOR 4th-02:26

**Arizona 26**

No.	Player	S	Pts	FG	3FG	FT	OR	DR	TR	PF	A	TO	Blk	Stl	Min	+/-
10	STARKS, TEE TEE	F	4	2-3	0-1	0-0	0	2	2	2	1	1	0	0	13	5
14	THOMAS, SAM	F	3	1-4	1-1	0-0	1	1	2	3	2	0	0	1	17	1
20	MCBRYDE, DOMINIQUE	F	2	1-2	0-0	0-0	1	1	2	1	0	2	0	2	12	3
21	GRAHAM, DESTINY	F	2	0-2	0-1	2-2	0	0	0	0	0	0	0	0	8	-1
22	MALECHA, LINDSEY	G	0	0-1	0-0	0-0	0	0	0	0	0	0	0	0	1	0
24	NIXON, BRYCE	G	0	0-1	0-0	0-0	0	0	0	0	0	0	0	0	1	-1
25	REESE, CATE	F	4	2-5	0-0	0-0	1	4	5	1	1	1	0	1	13	4
34	SMITH, SEMAJ	C	2	1-3	0-1	0-0	1	1	2	2	0	2	1	0	6	-4
02	MCDONALD, AARI	G	9	3-8	1-3	2-4	1	2	3	1	1	1	0	1	18	2
04	ALONSO, LUCIA	G	0	0-1	0-1	0-0	0	0	0	0	1	0	0	0	9	-4
	TEAM		0	0-0	0-0	0-0	5	1	6	0	0	0	0	0	0	0
	<b>TOTALS</b>		<b>26</b>	<b>10-30</b>	<b>2-8</b>	<b>4-6</b>	<b>10</b>	<b>12</b>	<b>22</b>	<b>10</b>	<b>6</b>	<b>7</b>	<b>1</b>	<b>5</b>	<b>98</b>	

*Shooting By Period*

Period	FG	FG%	3FG	3FG%	FT	FT%
3rd Qtr	7-16	44%	1-3	33%	4-6	67%
4th Qtr	3-14	21%	1-5	20%	0-0	0%
2nd Half	10-30	33%	2-8	25%	4-6	67%
Game	23-59	39.0%	4-19	21.1%	6-9	66.7%

Deadball Rebounds: 1,0  
 Last FG Half: ARI 4th-04:33

Game Notes:

Officials: Michael Price, Tiffany Reed, Anita Ortega  
 Attendance: 14644

Start Time: 2019-04-06 19:06:53  
 End Time: 2019-04-06 20:57:38  
 Game Duration: 1:50

Score	1st	2nd	3rd	4th	TOT
NOR	12	5	16	9	<b>42</b>
ARI	16	14	19	7	<b>56</b>

Points from (This Period)	NOR	ARI
In the Paint	8	14
Off Turns	7	6
2nd Chance	3	11
Fast Break	2	5
Bench	3	4

**Official Box Score**  
**Northwestern vs Arizona**  
**Third Quarter Statistics Only**  
**April 06, 2019 at McKale Center (Lute & Bobbi Olson Court) - Tucson, Ariz.**



**Northwestern 25**

No.	Player	S	Pts	FG	3FG	FT	OR	DR	TR	PF	A	TO	Blk	Stl	Min	+/-
10	PULLIAM, LINDSEY	G	6	2-3	0-0	2-3	0	2	2	2	0	2	0	0	10	-3
12	BURTON, VERONICA	G	5	2-3	1-1	0-0	0	0	0	1	1	0	0	1	10	-3
14	KUNAIYI-AKPANAH, PALLAS	F	2	0-1	0-0	2-2	1	1	2	2	1	1	0	1	6	-2
24	HAMILTON, JORDAN	G	0	0-1	0-0	0-0	0	0	0	0	1	0	0	0	8	-6
44	SCHEID, ABI	C	0	0-1	0-1	0-0	0	2	2	0	0	0	0	0	9	2
03	WOOD, SYDNEY	G	0	0-0	0-0	0-0	0	0	0	0	0	0	0	0	2	3
04	HOPKINS, BRYANA	F	0	0-0	0-0	0-0	0	0	0	0	0	0	0	0	1	-5
21	WOLF, ABBIE	C	3	1-2	0-0	1-2	0	0	0	0	0	0	1	0	4	-1
22	GALERNIK, BYRDY	G	0	0-0	0-0	0-0	0	0	0	0	0	0	0	0	0	0
<b>TEAM</b>							0	0	0	0	0	0	0	0	0	0
<b>TOTALS</b>			<b>16</b>	<b>5-11</b>	<b>1-2</b>	<b>5-7</b>	<b>1</b>	<b>5</b>	<b>6</b>	<b>5</b>	<b>3</b>	<b>3</b>	<b>1</b>	<b>2</b>	<b>50</b>	

*Shooting By Period*

Period	FG	FG%	3FG	3FG%	FT	FT%
2nd Half	0-0	0%	0-0	0%	0-0	0%
Game	13-49	26.5%	4-15	26.7%	12-19	63.2%

*Deadball Rebounds: 4.0*

**Arizona 26**

No.	Player	S	Pts	FG	3FG	FT	OR	DR	TR	PF	A	TO	Blk	Stl	Min	+/-
02	MCDONALD, AARI	G	9	3-5	1-2	2-4	1	0	1	0	0	0	0	0	9	3
10	STARKS, TEE TEE	F	2	1-1	0-0	0-0	0	1	1	1	0	0	0	0	8	4
14	THOMAS, SAM	F	0	0-2	0-0	0-0	0	1	1	3	2	0	0	0	9	3
20	MCBRYDE, DOMINIQUE	F	2	1-2	0-0	0-0	1	0	1	1	0	0	0	1	4	4
25	REESE, CATE	F	2	1-2	0-0	0-0	1	3	4	0	1	1	0	1	6	3
04	ALONSO, LUCIA	G	0	0-1	0-1	0-0	0	0	0	0	0	0	0	0	3	-1
21	GRAHAM, DESTINY	F	2	0-1	0-0	2-2	0	0	0	0	0	0	0	0	6	-1
22	MALECHA, LINDSEY	G	0	0-0	0-0	0-0	0	0	0	0	0	0	0	0	0	0
24	NIXON, BRYCE	G	0	0-0	0-0	0-0	0	0	0	0	0	0	0	0	0	0
34	SMITH, SEMAJ	C	2	1-2	0-0	0-0	1	0	1	1	0	2	1	0	4	0
<b>TEAM</b>							2	1	3	0	0	0	0	0	0	
<b>TOTALS</b>			<b>19</b>	<b>7-16</b>	<b>1-3</b>	<b>4-6</b>	<b>6</b>	<b>6</b>	<b>12</b>	<b>6</b>	<b>3</b>	<b>3</b>	<b>1</b>	<b>2</b>	<b>50</b>	

*Shooting By Period*

Period	FG	FG%	3FG	3FG%	FT	FT%
2nd Half	0-0	0%	0-0	0%	0-0	0%
Game	23-59	39.0%	4-19	21.1%	6-9	66.7%

*Deadball Rebounds: 1.0*

Game Notes:

Officials: Michael Price, Tiffany Reed, Anita Ortega  
 Attendance: 14644

Start Time: 2019-04-06 19:06:53  
 End Time: 2019-04-06 20:57:38  
 Game Duration: 1:50

Score	1st	2nd	3rd	4th	TOT
NOR	12	5	16	9	<b>42</b>
ARI	16	14	19	7	<b>56</b>

Points from (This Period)	NOR	ARI
In the Paint	4	10
Off Turns	2	4
2nd Chance	0	8
Fast Break	2	3
Bench	3	4

**Official Play-By-Play  
Northwestern vs Arizona  
Third Quarter**

**April 06, 2019 at McKale Center (Lute & Bobbi Olson Court) - Tucson, Ariz.**



**Period 3**

**Starters:**

**Northwestern:** 10 PULLIAM, LINDSEY (G); 12 BURTON, VERONICA (G); 14 KUNAIYI-AKPANAH, PALLAS (F); 24 HAMILTON, JORDAN (G); 44 SCHEID, ABI (C);

**Arizona:** 10 STARKS, TEE TEE (F); 14 THOMAS, SAM (F); 20 MCBRYDE, DOMINIQUE (F); 25 REESE, CATE (F); 2 MCDONALD, AARI (G);

Time	VISITORS: Northwestern	Score	Margin	HOME: Arizona
09:48	GOOD! JUMPER by PULLIAM, LINDSEY	30-19	H 11	
09:48	ASSIST by BURTON, VERONICA			
09:48				FOUL (PERSONAL) by THOMAS, SAM
09:47	MISSED FT by PULLIAM, LINDSEY			
09:46				REBOUND (DEF) by REESE, CATE
09:22		33-19	H 14	GOOD! 3PTR by MCDONALD, AARI
09:22				ASSIST by THOMAS, SAM
09:05	TURNOVER (BADPASS) by PULLIAM, LINDSEY			
09:05				STEAL by REESE, CATE
08:58				MISSED LAYUP by MCBRYDE, DOMINIQUE
08:54				REBOUND (OFF) by MCBRYDE, DOMINIQUE
08:54		35-19	H 16	GOOD! LAYUP by MCBRYDE, DOMINIQUE
08:42				FOUL (PERSONAL) by THOMAS, SAM
08:25	MISSED 3PTR by SCHEID, ABI			
08:22				REBOUND (DEF) by REESE, CATE
08:04				MISSED 3PTR by MCDONALD, AARI
08:01	REBOUND (DEF) by SCHEID, ABI			
07:50	MISSED LAYUP by KUNAIYI-AKPANAH, PALLAS			
07:47				REBOUND (DEF) by REESE, CATE
07:42		37-19	H 18	GOOD! LAYUP by MCDONALD, AARI [FB]
07:42				ASSIST by REESE, CATE
07:27	GOOD! LAYUP by BURTON, VERONICA	37-21	H 16	
07:08				TURNOVER (LOSTBALL) by REESE, CATE
07:08	STEAL by KUNAIYI-AKPANAH, PALLAS			
07:01	MISSED LAYUP by BURTON, VERONICA			
06:57	REBOUND (OFF) by KUNAIYI-AKPANAH, PALLAS			
06:56	TURNOVER (LOSTBALL) by KUNAIYI-AKPANAH, PALLAS			
06:56				STEAL by MCBRYDE, DOMINIQUE
06:56	FOUL (PERSONAL) by PULLIAM, LINDSEY			
06:43				MISSED JUMPER by THOMAS, SAM
06:40				REBOUND (OFF) by REESE, CATE
06:39		39-21	H 18	GOOD! LAYUP by REESE, CATE
06:15				FOUL (PERSONAL) by MCBRYDE, DOMINIQUE
06:15	GOOD! FT by PULLIAM, LINDSEY	39-22	H 17	
06:15				SUB OUT: MCBRYDE, DOMINIQUE
06:15				SUB IN: SMITH, SEMAJ
06:15				SUB OUT: REESE, CATE
06:15				SUB IN: GRAHAM, DESTINY
06:15	SUB OUT: KUNAIYI-AKPANAH, PALLAS			
06:15	SUB IN: WOLF, ABBIE			
06:15	GOOD! FT by PULLIAM, LINDSEY	39-23	H 16	
05:58				TURNOVER (BADPASS) by SMITH, SEMAJ
05:58	STEAL by BURTON, VERONICA			
05:58				FOUL (PERSONAL) by THOMAS, SAM
05:40	FOUL (OFF) by PULLIAM, LINDSEY			
05:40	TURNOVER (OFFENSIVE) by PULLIAM, LINDSEY			
05:21				MISSED LAYUP by GRAHAM, DESTINY
05:17				REBOUND (OFF) by SMITH, SEMAJ
05:15		41-23	H 18	GOOD! LAYUP by SMITH, SEMAJ
04:53	MISSED LAYUP by WOLF, ABBIE			
04:53				BLOCK by SMITH, SEMAJ
04:47				REBOUND (DEF) by THOMAS, SAM
04:37				MISSED JUMPER by THOMAS, SAM
04:34	REBOUND (DEF) by SCHEID, ABI			
04:29	GOOD! LAYUP by WOLF, ABBIE [FB]	41-25	H 16	
04:29	ASSIST by HAMILTON, JORDAN			
04:11				MISSED JUMPER by SMITH, SEMAJ
04:06	REBOUND (DEF) by PULLIAM, LINDSEY			
03:57	GOOD! JUMPER by PULLIAM, LINDSEY	41-27	H 14	
03:40				MISSED JUMPER by MCDONALD, AARI
03:40	BLOCK by WOLF, ABBIE			
03:40				REBOUND (OFF) by TEAM
03:40				
03:40	SUB OUT: SCHEID, ABI			
03:40	SUB IN: HOPKINS, BRYANA			
03:38		43-27	H 16	GOOD! LAYUP by MCDONALD, AARI
03:38				ASSIST by THOMAS, SAM
03:18	MISSED JUMPER by HAMILTON, JORDAN			
03:15				REBOUND (DEF) by STARKS, TEE TEE
03:14	FOUL (PERSONAL) by BURTON, VERONICA			

Time	VISITORS: Northwestern	Score	Margin	HOME: Arizona
03:14		44-27	H 17	GOOD! FT by MCDONALD, AARI [FB]
03:14				MISSED FT by MCDONALD, AARI
03:13				REBOUND (OFF) by MCDONALD, AARI
03:12				SUB OUT: MCDONALD, AARI
03:12				SUB IN: ALONSO, LUCIA
02:52		46-27	H 19	GOOD! JUMPER by STARKS, TEE TEE
02:27				FOUL (PERSONAL) by STARKS, TEE TEE
02:27	MISSED FT by WOLF, ABBIE			
02:27	REBOUND (OFF) by TEAM			
02:27	SUB OUT: HOPKINS, BRYANA			
02:27	SUB IN: SCHEID, ABI			
02:27	SUB OUT: HAMILTON, JORDAN			
02:27	SUB IN: WOOD, SYDNEY			
02:27	GOOD! FT by WOLF, ABBIE	46-28	H 18	
02:27	SUB OUT: WOLF, ABBIE			
02:27	SUB IN: KUNAIYI-AKPANAH, PALLAS			
02:19				TURNOVER (LOSTBALL) by SMITH, SEMAJ
02:07				FOUL (PERSONAL) by SMITH, SEMAJ
02:07	GOOD! FT by KUNAIYI-AKPANAH, PALLAS	46-29	H 17	
02:07				SUB OUT: STARKS, TEE TEE
02:07				SUB IN: MCDONALD, AARI
02:07				SUB OUT: SMITH, SEMAJ
02:07				SUB IN: REESE, CATE
02:07	GOOD! FT by KUNAIYI-AKPANAH, PALLAS	46-30	H 16	
01:54				MISSED JUMPER by REESE, CATE
01:52				REBOUND (OFF) by TEAM
01:52				MISSED 3PTR by ALONSO, LUCIA
01:52	REBOUND (DEF) by PULLIAM, LINDSEY			
01:22	GOOD! 3PTR by BURTON, VERONICA	46-33	H 13	
01:22	ASSIST by KUNAIYI-AKPANAH, PALLAS			
01:05	FOUL (PERSONAL) by KUNAIYI-AKPANAH, PALLAS			
01:05		47-33	H 14	GOOD! FT by GRAHAM, DESTINY
01:05		48-33	H 15	GOOD! FT by GRAHAM, DESTINY
00:48	MISSED JUMPER by PULLIAM, LINDSEY			
00:46				REBOUND (DEF) by TEAM
00:32	FOUL (PERSONAL) by KUNAIYI-AKPANAH, PALLAS			
00:32		49-33	H 16	GOOD! FT by MCDONALD, AARI
00:32				SUB OUT: THOMAS, SAM
00:32				SUB IN: STARKS, TEE TEE
00:32				MISSED FT by MCDONALD, AARI
00:32	REBOUND (DEF) by KUNAIYI-AKPANAH, PALLAS			

### Northwestern 33, Arizona 49

Points from (This Period)	NOR	ARI
In the Paint	4	10
Off Turns	2	4
2nd Chance	0	8
Fast Break	2	3
Bench	3	4

**Official Box Score**  
**Northwestern vs Arizona**  
**Fourth Quarter Statistics Only**  
**April 06, 2019 at McKale Center (Lute & Bobbi Olson Court) - Tucson, Ariz.**



**Northwestern 9**

No.	Player	S	Pts	FG	3FG	FT	OR	DR	TR	PF	A	TO	Blk	Stl	Min	+/-
10	PULLIAM, LINDSEY	G	0	0-4	0-1	0-0	2	2	4	1	0	0	0	0	10	1
12	BURTON, VERONICA	G	5	1-4	0-2	3-4	0	2	2	0	0	0	0	0	10	1
14	KUNAIYI-AKPANAH, PALLAS	F	2	0-0	0-0	2-4	1	3	4	0	0	0	2	0	10	2
24	HAMILTON, JORDAN	G	0	0-0	0-0	0-0	0	0	0	1	0	2	0	0	4	2
44	SCHEID, ABI	C	2	1-3	0-2	0-0	1	0	1	1	0	1	0	0	9	1
03	WOOD, SYDNEY	G	0	0-0	0-0	0-0	0	0	0	0	0	0	0	1	5	-1
04	HOPKINS, BRYANA	F	0	0-0	0-0	0-0	0	0	0	0	0	0	0	0	0	1
21	WOLF, ABBIE	C	0	0-0	0-0	0-0	0	0	0	0	0	0	0	0	0	0
22	GALERNIK, BYRDY	G	0	0-0	0-0	0-0	0	0	0	1	0	1	0	0	1	1
TEAM							0	0	0	0	0	0	0	0	0	0
<b>TOTALS</b>			<b>9</b>	<b>2-11</b>	<b>0-5</b>	<b>5-8</b>	<b>4</b>	<b>7</b>	<b>11</b>	<b>4</b>	<b>0</b>	<b>4</b>	<b>2</b>	<b>1</b>	<b>48</b>	

*Shooting By Period*

Period	FG	FG%	3FG	3FG%	FT	FT%
Game	13-49	26.5%	4-15	26.7%	12-19	63.2%

*Deadball Rebounds: 4,0*

**Arizona 7**

No.	Player	S	Pts	FG	3FG	FT	OR	DR	TR	PF	A	TO	Blk	Stl	Min	+/-
02	MCDONALD, AARI	G	0	0-3	0-1	0-0	0	2	2	1	1	1	0	1	9	-1
10	STARKS, TEE TEE	F	2	1-2	0-1	0-0	0	1	1	1	1	1	0	0	5	1
14	THOMAS, SAM	F	3	1-2	1-1	0-0	1	0	1	0	0	0	0	1	8	-2
20	MCBRYDE, DOMINIQUE	F	0	0-0	0-0	0-0	0	1	1	0	0	2	0	1	8	-1
25	REESE, CATE	F	2	1-3	0-0	0-0	0	1	1	1	0	0	0	0	7	1
04	ALONSO, LUCIA	G	0	0-0	0-0	0-0	0	0	0	0	1	0	0	0	6	-3
21	GRAHAM, DESTINY	F	0	0-1	0-1	0-0	0	0	0	0	0	0	0	0	2	0
22	MALECHA, LINDSEY	G	0	0-1	0-0	0-0	0	0	0	0	0	0	0	0	1	0
24	NIXON, BRYCE	G	0	0-1	0-0	0-0	0	0	0	0	0	0	0	0	1	-1
34	SMITH, SEMAJ	C	0	0-1	0-1	0-0	0	1	1	1	0	0	0	0	2	-4
TEAM							3	0	3	0	0	0	0	0	0	
<b>TOTALS</b>			<b>7</b>	<b>3-14</b>	<b>1-5</b>	<b>0-0</b>	<b>4</b>	<b>6</b>	<b>10</b>	<b>4</b>	<b>3</b>	<b>4</b>	<b>0</b>	<b>3</b>	<b>48</b>	

*Shooting By Period*

Period	FG	FG%	3FG	3FG%	FT	FT%
Game	23-59	39.0%	4-19	21.1%	6-9	66.7%

*Deadball Rebounds: 1,0*

*Game Notes:*

Officials: Michael Price, Tiffany Reed, Anita Ortega  
 Attendance: 14644

Start Time: 2019-04-06 19:06:53  
 End Time: 2019-04-06 20:57:38  
 Game Duration: 1:50

Score	1st	2nd	3rd	4th	TOT
NOR	12	5	16	9	<b>42</b>
ARI	16	14	19	7	<b>56</b>

Points from (This Period)	NOR	ARI
In the Paint	4	4
Off Turns	5	2
2nd Chance	3	3
Fast Break	0	2
Bench	0	0

**Official Play-By-Play  
Northwestern vs Arizona  
Fourth Quarter**

**April 06, 2019 at McKale Center (Lute & Bobbi Olson Court) - Tucson, Ariz.**



**Period 4**

**Starters:**

**Northwestern:** 10 PULLIAM,LINDSEY (G); 12 BURTON,VERONICA (G); 14 KUNAIYI-AKPANAH,PALLAS (F); 24 HAMILTON,JORDAN (G); 44 SCHEID,ABI (C);

**Arizona:** 10 STARKS,TEE TEE (F); 14 THOMAS,SAM (F); 20 MCBRYDE,DOMINIQUE (F); 25 REESE,CATE (F); 2 MCDONALD,AARI (G);

Time	VISITORS: Northwestern	Score	Margin	HOME: Arizona
09:49	MISSED 3PTR by SCHEID, ABI			
09:45				REBOUND (DEF) by STARKS, TEE TEE
09:38				MISSED JUMPER by REESE, CATE
09:38	BLOCK by KUNAIYI-AKPANAH, PALLAS			
09:36				REBOUND (OFF) by TEAM
09:19				MISSED 3PTR by GRAHAM, DESTINY
09:15	REBOUND (DEF) by BURTON, VERONICA			
08:54				FOUL (PERSONAL) by MCDONALD, AARI
08:54	MISSED FT by BURTON, VERONICA			
08:54	REBOUND (OFF) by TEAM			
08:54				SUB OUT: GRAHAM, DESTINY
08:54				SUB IN: MCBRYDE, DOMINIQUE
08:54				SUB OUT: ALONSO, LUCIA
08:54				SUB IN: THOMAS, SAM
08:54	GOOD! FT by BURTON, VERONICA	49-34	H 15	
08:40				MISSED JUMPER by REESE, CATE
08:40	BLOCK by KUNAIYI-AKPANAH, PALLAS			
08:33	REBOUND (DEF) by BURTON, VERONICA			
08:26	TURNOVER (BADPASS) by HAMILTON, JORDAN			
08:26				STEAL by THOMAS, SAM
08:21				MISSED LAYUP by THOMAS, SAM
08:21				REBOUND (OFF) by TEAM
08:13	FOUL (PERSONAL) by SCHEID, ABI			
08:09				TURNOVER (BADPASS) by MCDONALD, AARI
07:51	MISSED 3PTR by PULLIAM, LINDSEY			
07:46	REBOUND (OFF) by SCHEID, ABI			
07:45	GOOD! LAYUP by SCHEID, ABI	49-36	H 13	
07:43	TIMEOUT 30SEC			
07:43				
07:43	SUB OUT: HAMILTON, JORDAN			
07:43	SUB IN: WOOD, SYDNEY			
07:18				MISSED 3PTR by STARKS, TEE TEE
07:15				REBOUND (OFF) by THOMAS, SAM
06:59		52-36	H 16	GOOD! 3PTR by THOMAS, SAM
06:59				ASSIST by STARKS, TEE TEE
06:26	MISSED JUMPER by BURTON, VERONICA			
06:24	REBOUND (OFF) by PULLIAM, LINDSEY			
06:22	MISSED JUMPER by PULLIAM, LINDSEY			
06:19				REBOUND (DEF) by MCDONALD, AARI
06:17		54-36	H 18	GOOD! LAYUP by STARKS, TEE TEE [FB]
06:17				ASSIST by MCDONALD, AARI
06:01	MISSED 3PTR by BURTON, VERONICA			
05:56	REBOUND (OFF) by PULLIAM, LINDSEY			
05:55	MISSED LAYUP by PULLIAM, LINDSEY			
05:53				REBOUND (DEF) by MCBRYDE, DOMINIQUE
05:49				TURNOVER (BADPASS) by STARKS, TEE TEE
05:31				FOUL (PERSONAL) by STARKS, TEE TEE
05:31	GOOD! FT by BURTON, VERONICA	54-37	H 17	
05:31				SUB OUT: STARKS, TEE TEE
05:31				SUB IN: ALONSO, LUCIA
05:31	SUB OUT: WOOD, SYDNEY			
05:31	SUB IN: HAMILTON, JORDAN			
05:31	GOOD! FT by BURTON, VERONICA	54-38	H 16	
05:04				MISSED 3PTR by MCDONALD, AARI
05:01	REBOUND (DEF) by KUNAIYI-AKPANAH, PALLAS			
04:51	TURNOVER (BADPASS) by HAMILTON, JORDAN			
04:51				STEAL by MCBRYDE, DOMINIQUE
04:33		56-38	H 18	GOOD! LAYUP by REESE, CATE
04:33				ASSIST by ALONSO, LUCIA
04:10	TURNOVER (BADPASS) by SCHEID, ABI			
04:10				
04:10				SUB OUT: REESE, CATE
04:10				SUB IN: SMITH, SEMAJ
04:10	SUB OUT: HAMILTON, JORDAN			
04:10	SUB IN: WOOD, SYDNEY			
04:05				TURNOVER (BADPASS) by MCBRYDE, DOMINIQUE
04:05	STEAL by WOOD, SYDNEY			
03:55	MISSED 3PTR by SCHEID, ABI			
03:52				REBOUND (DEF) by SMITH, SEMAJ
03:33				MISSED 3PTR by SMITH, SEMAJ

Time	VISITORS: Northwestern	Score	Margin	HOME: Arizona
03:29	REBOUND (DEF) by PULLIAM, LINDSEY			
03:16	MISSED 3PTR by BURTON, VERONICA			
03:12				REBOUND (DEF) by MCDONALD, AARI
02:51				MISSED JUMPER by MCDONALD, AARI
02:47	REBOUND (DEF) by KUNAIYI-AKPANAH, PALLAS			
02:26	GOOD! JUMPER by BURTON, VERONICA [PNT]	56-40	H 16	
01:55				TURNOVER (BADPASS) by MCBRYDE, DOMINIQUE
01:42				FOUL (PERSONAL) by SMITH, SEMAJ
01:42	GOOD! FT by KUNAIYI-AKPANAH, PALLAS	56-41	H 15	
01:42				SUB OUT: SMITH, SEMAJ
01:42				SUB IN: REESE, CATE
01:42				SUB OUT: ALONSO, LUCIA
01:42				SUB IN: STARKS, TEE TEE
01:42	SUB OUT: SCHEID, ABI			
01:42	SUB IN: GALERNIK, BYRDY			
01:42	SUB OUT: WOOD, SYDNEY			
01:42	SUB IN: HAMILTON, JORDAN			
01:37	MISSED FT by KUNAIYI-AKPANAH, PALLAS			
01:37				REBOUND (DEF) by REESE, CATE
01:37	FOUL (PERSONAL) by HAMILTON, JORDAN			
01:35	FOUL (PERSONAL) by GALERNIK, BYRDY			
01:35				SUB OUT: STARKS, TEE TEE
01:35				SUB IN: ALONSO, LUCIA
01:33	FOUL (PERSONAL) by PULLIAM, LINDSEY			
01:18				TIMEOUT 30SEC
01:18	SUB OUT: HAMILTON, JORDAN			
01:18	SUB IN: SCHEID, ABI			
01:08				MISSED LAYUP by MCDONALD, AARI
01:05	REBOUND (DEF) by KUNAIYI-AKPANAH, PALLAS			
00:59	TURNOVER (LOSTBALL) by GALERNIK, BYRDY			
00:59				STEAL by MCDONALD, AARI
00:59				SUB OUT: MCDONALD, AARI
00:59				SUB IN: NIXON, BRYCE
00:59				SUB OUT: THOMAS, SAM
00:59				SUB IN: MALECHA, LINDSEY
00:59				SUB OUT: MCBRYDE, DOMINIQUE
00:59				SUB IN: GRAHAM, DESTINY
00:42				MISSED LAYUP by MALECHA, LINDSEY
00:42				REBOUND (OFF) by TEAM
00:33				MISSED JUMPER by NIXON, BRYCE
00:30	REBOUND (DEF) by PULLIAM, LINDSEY			
00:23	MISSED JUMPER by PULLIAM, LINDSEY			
00:20	REBOUND (OFF) by KUNAIYI-AKPANAH, PALLAS			
00:20				FOUL (PERSONAL) by REESE, CATE
00:20	MISSED FT by KUNAIYI-AKPANAH, PALLAS			
00:20	REBOUND (OFF) by TEAM			
00:20				SUB OUT: GRAHAM, DESTINY
00:20				SUB IN: THOMAS, SAM
00:20				SUB OUT: MALECHA, LINDSEY
00:20				SUB IN: SMITH, SEMAJ
00:20	SUB OUT: PULLIAM, LINDSEY			
00:20	SUB IN: SANCATALDO, JESS			
00:20	SUB OUT: BURTON, VERONICA			
00:20	SUB IN: JAMISON, AMBER			
00:20	SUB OUT: SCHEID, ABI			
00:20	SUB IN: HOPKINS, BRYANA			
00:20	GOOD! FT by KUNAIYI-AKPANAH, PALLAS	56-42	H 14	
00:20	SUB OUT: KUNAIYI-AKPANAH, PALLAS			
00:20	SUB IN: WOLF, ABBIE			

### Northwestern 42, Arizona 56

Points from (This Period)	NOR	ARI
In the Paint	4	4
Off Turns	5	2
2nd Chance	3	3
Fast Break	0	2
Bench	0	0



**Official Scoring/Possession Reference Chart  
Northwestern vs Arizona  
Period 1**

**April 06, 2019 at McKale Center (Lute & Bobbi Olson Court) - Tucson, Ariz.**



**Period 1**

**Starters:**

**Northwestern:** 10 PULLIAM, LINDSEY (G); 12 BURTON, VERONICA (G); 14 KUNAIYI-AKPANAH, PALLAS (F); 24 HAMILTON, JORDAN (G); 44 SCHEID, ABI (C);

**Arizona:** 10 STARKS, TEE TEE (F); 14 THOMAS, SAM (F); 20 MCBRYDE, DOMINIQUE (F); 25 REESE, CATE (F); 2 MCDONALD, AARI (G);

Time	VISITORS: Northwestern	Score	Margin	HOME: Arizona
09:30	GOOD! 3PTR by BURTON, VERONICA	0-3	V 3	
08:44		2-3	V 1	GOOD! JUMPER by MCDONALD, AARI
07:34	GOOD! JUMPER by PULLIAM, LINDSEY [PNT]	2-5	V 3	
07:21		4-5	V 1	GOOD! JUMPER by MCDONALD, AARI [PNT]
06:58		7-5	H 2	GOOD! 3PTR by STARKS, TEE TEE [FB]
06:37		9-5	H 4	GOOD! LAYUP by MCDONALD, AARI [FB]
06:20	GOOD! 3PTR by HAMILTON, JORDAN	9-8	H 1	
06:03		11-8	H 3	GOOD! LAYUP by REESE, CATE
06:03		12-8	H 4	GOOD! FT by REESE, CATE
04:53		14-8	H 6	GOOD! JUMPER by THOMAS, SAM [PNT]
04:18		16-8	H 8	GOOD! LAYUP by STARKS, TEE TEE [FB]
01:02	GOOD! FT by PULLIAM, LINDSEY [FB]	16-9	H 7	
01:02	GOOD! FT by PULLIAM, LINDSEY [FB]	16-10	H 6	
00:40	GOOD! JUMPER by PULLIAM, LINDSEY [FB]	16-12	H 4	

**Northwestern 12, Arizona 16**

**Official Scoring/Possession Reference Chart  
Northwestern vs Arizona  
Period 2**

**April 06, 2019 at McKale Center (Lute & Bobbi Olson Court) - Tucson, Ariz.**



**Period 2**

**Starters:**

**Northwestern:** 10 PULLIAM, LINDSEY (G); 12 BURTON, VERONICA (G); 14 KUNAIYI-AKPANAH, PALLAS (F); 24 HAMILTON, JORDAN (G); 44 SCHEID, ABI (C);

**Arizona:** 10 STARKS, TEE TEE (F); 14 THOMAS, SAM (F); 20 MCBRYDE, DOMINIQUE (F); 25 REESE, CATE (F); 2 MCDONALD, AARI (G);

Time	VISITORS: Northwestern	Score	Margin	HOME: Arizona
08:58	GOOD! JUMPER by PULLIAM, LINDSEY	16-14	H 2	
08:04		19-14	H 5	GOOD! 3PTR by STARKS, TEE TEE [FB]
07:40		21-14	H 7	GOOD! LAYUP by REESE, CATE [FB]
06:43		23-14	H 9	GOOD! LAYUP by REESE, CATE
05:45	GOOD! 3PTR by BURTON, VERONICA	23-17	H 6	
05:28		25-17	H 8	GOOD! LAYUP by REESE, CATE
05:02		27-17	H 10	GOOD! JUMPER by MCDONALD, AARI [FB/PNT]
02:44		28-17	H 11	GOOD! FT by GRAHAM, DESTINY
01:33		30-17	H 13	GOOD! JUMPER by MCDONALD, AARI

**Northwestern 17, Arizona 30**

**Official Scoring/Possession Reference Chart  
Northwestern vs Arizona  
Period 3**

**April 06, 2019 at McKale Center (Lute & Bobbi Olson Court) - Tucson, Ariz.**



**Period 3**

**Starters:**

**Northwestern:** 10 PULLIAM, LINDSEY (G); 12 BURTON, VERONICA (G); 14 KUNAIYI-AKPANA, PALLAS (F); 24 HAMILTON, JORDAN (G); 44 SCHEID, ABI (C);

**Arizona:** 10 STARKS, TEE TEE (F); 14 THOMAS, SAM (F); 20 MCBRYDE, DOMINIQUE (F); 25 REESE, CATE (F); 2 MCDONALD, AARI (G);

Time	VISITORS: Northwestern	Score	Margin	HOME: Arizona
09:48	GOOD! JUMPER by PULLIAM, LINDSEY	30-19	H 11	
09:22		33-19	H 14	GOOD! 3PTR by MCDONALD, AARI
08:54		35-19	H 16	GOOD! LAYUP by MCBRYDE, DOMINIQUE
07:42		37-19	H 18	GOOD! LAYUP by MCDONALD, AARI [FB]
07:27	GOOD! LAYUP by BURTON, VERONICA	37-21	H 16	
06:39		39-21	H 18	GOOD! LAYUP by REESE, CATE
06:15	GOOD! FT by PULLIAM, LINDSEY	39-22	H 17	
06:15	GOOD! FT by PULLIAM, LINDSEY	39-23	H 16	
05:15		41-23	H 18	GOOD! LAYUP by SMITH, SEMAJ
04:29	GOOD! LAYUP by WOLF, ABBIE [FB]	41-25	H 16	
03:57	GOOD! JUMPER by PULLIAM, LINDSEY	41-27	H 14	
03:38		43-27	H 16	GOOD! LAYUP by MCDONALD, AARI
03:14		44-27	H 17	GOOD! FT by MCDONALD, AARI [FB]
02:52		46-27	H 19	GOOD! JUMPER by STARKS, TEE TEE
02:27	GOOD! FT by WOLF, ABBIE	46-28	H 18	
02:07	GOOD! FT by KUNAIYI-AKPANA, PALLAS	46-29	H 17	
02:07	GOOD! FT by KUNAIYI-AKPANA, PALLAS	46-30	H 16	
01:22	GOOD! 3PTR by BURTON, VERONICA	46-33	H 13	
01:05		47-33	H 14	GOOD! FT by GRAHAM, DESTINY
01:05		48-33	H 15	GOOD! FT by GRAHAM, DESTINY
00:32		49-33	H 16	GOOD! FT by MCDONALD, AARI

**Northwestern 33, Arizona 49**

**Official Scoring/Possession Reference Chart  
Northwestern vs Arizona  
Period 4**

**April 06, 2019 at McKale Center (Lute & Bobbi Olson Court) - Tucson, Ariz.**



**Period 4**

**Starters:**

**Northwestern:** 10 PULLIAM,LINDSEY (G); 12 BURTON,VERONICA (G); 14 KUNAIYI-AKPANAH,PALLAS (F); 24 HAMILTON,JORDAN (G); 44 SCHEID,ABI (C);

**Arizona:** 10 STARKS,TEE TEE (F); 14 THOMAS,SAM (F); 20 MCBRYDE,DOMINIQUE (F); 25 REESE,CATE (F); 2 MCDONALD,AARI (G);

Time	VISITORS: Northwestern	Score	Margin	HOME: Arizona
08:54	GOOD! FT by BURTON, VERONICA	49-34	H 15	
07:45	GOOD! LAYUP by SCHEID, ABI	49-36	H 13	
06:59		52-36	H 16	GOOD! 3PTR by THOMAS, SAM
06:17		54-36	H 18	GOOD! LAYUP by STARKS, TEE TEE [FB]
05:31	GOOD! FT by BURTON, VERONICA	54-37	H 17	
05:31	GOOD! FT by BURTON, VERONICA	54-38	H 16	
04:33		56-38	H 18	GOOD! LAYUP by REESE, CATE
02:26	GOOD! JUMPER by BURTON, VERONICA [PNT]	56-40	H 16	
01:42	GOOD! FT by KUNAIYI-AKPANAH, PALLAS	56-41	H 15	
00:20	GOOD! FT by KUNAIYI-AKPANAH, PALLAS	56-42	H 14	

**Northwestern 42, Arizona 56**

**Official Substitutions Log  
Northwestern vs Arizona  
Period 1**

**April 06, 2019 at McKale Center (Lute & Bobbi Olson Court) - Tucson, Ariz.**



<b>VISITORS: Northwestern</b>	<b>Time</b>	<b>Score</b>	<b>HOME: Arizona</b>
10 PULLIAM,LINDSEY			10 STARKS,TEE TEE
12 BURTON,VERONICA			14 THOMAS,SAM
14 KUNAIYI-AKPANAH,PALLAS			20 MCBRYDE,DOMINIQUE
24 HAMILTON,JORDAN			25 REESE,CATE
44 SCHEID,ABI			2 MCDONALD,AARI
SUB OUT: 24 HAMILTON,JORDAN	04:30	8-14	
SUB IN: 3 WOOD,SYDNEY	04:30		
SUB OUT: 14 KUNAIYI-AKPANAH,PALLAS	03:51	8-16	
SUB IN: 21 WOLF,ABBIE	03:51		
	03:14	8-16	SUB OUT: REESE,CATE
	03:14		SUB IN: SMITH,SEMAJ
	03:14		SUB OUT: MCBRYDE,DOMINIQUE
	03:14		SUB IN: GRAHAM,DESTINY
	01:02	9-16	SUB OUT: STARKS,TEE TEE
	01:02		SUB IN: ALONSO,LUCIA
SUB OUT: 12 BURTON,VERONICA	00:33	12-16	
SUB IN: 24 HAMILTON,JORDAN	00:33		

**Northwestern 12, Arizona 16**

**Official Substitutions Log  
Northwestern vs Arizona  
Period 2**

**April 06, 2019 at McKale Center (Lute & Bobbi Olson Court) - Tucson, Ariz.**



<b>VISITORS: Northwestern</b>	<b>Time</b>	<b>Score</b>	<b>HOME: Arizona</b>
10 PULLIAM,LINDSEY			10 STARKS,TEE TEE
12 BURTON,VERONICA			14 THOMAS,SAM
14 KUNAIYI-AKPANAH,PALLAS			20 MCBRYDE,DOMINIQUE
24 HAMILTON,JORDAN			25 REESE,CATE
44 SCHEID,ABI			2 MCDONALD,AARI
	08:32	14-16	SUB OUT: ALONSO,LUCIA
	08:32		SUB IN: STARKS,TEE TEE
SUB OUT: 3 WOOD,SYDNEY	07:49	14-19	
SUB IN: 12 BURTON,VERONICA	07:49		
	06:40	14-23	SUB OUT: THOMAS,SAM
	06:40		SUB IN: ALONSO,LUCIA
SUB OUT: 14 KUNAIYI-AKPANAH,PALLAS	06:40		
SUB IN: 21 WOLF,ABBIE	06:40		
	04:31	17-27	SUB OUT: STARKS,TEE TEE
	04:31		SUB IN: THOMAS,SAM
SUB OUT: 21 WOLF,ABBIE	04:31		
SUB IN: 14 KUNAIYI-AKPANAH,PALLAS	04:31		
	03:33	17-27	SUB OUT: MCBRYDE,DOMINIQUE
	03:33		SUB IN: GRAHAM,DESTINY
	02:44	17-27	SUB OUT: REESE,CATE
	02:44		SUB IN: SMITH,SEMAJ
SUB OUT: 12 BURTON,VERONICA	01:09	17-30	
SUB IN: 3 WOOD,SYDNEY	01:09		
SUB OUT: 24 HAMILTON,JORDAN	00:56	17-30	
SUB IN: 12 BURTON,VERONICA	00:56		

**Northwestern 17, Arizona 30**

**Official Substitutions Log  
Northwestern vs Arizona  
Period 3**

**April 06, 2019 at McKale Center (Lute & Bobbi Olson Court) - Tucson, Ariz.**



<b>VISITORS: Northwestern</b>	<b>Time</b>	<b>Score</b>	<b>HOME: Arizona</b>
10 PULLIAM,LINDSEY			10 STARKS,TEE TEE
12 BURTON,VERONICA			14 THOMAS,SAM
14 KUNAIYI-AKPANAH,PALLAS			20 MCBRYDE,DOMINIQUE
24 HAMILTON,JORDAN			25 REESE,CATE
44 SCHEID,ABI			2 MCDONALD,AARI
	06:15	22-39	SUB OUT: MCBRYDE,DOMINIQUE
	06:15		SUB IN: SMITH,SEMAJ
	06:15		SUB OUT: REESE,CATE
	06:15		SUB IN: GRAHAM,DESTINY
SUB OUT: 14 KUNAIYI-AKPANAH,PALLAS	06:15		
SUB IN: 21 WOLF,ABBIE	06:15		
SUB OUT: 44 SCHEID,ABI	03:40	27-41	
SUB IN: 4 HOPKINS,BRYANA	03:40		
	03:12	27-44	SUB OUT: MCDONALD,AARI
	03:12		SUB IN: ALONSO,LUCIA
SUB OUT: 4 HOPKINS,BRYANA	02:27	27-46	
SUB IN: 44 SCHEID,ABI	02:27		
SUB OUT: 24 HAMILTON,JORDAN	02:27		
SUB IN: 3 WOOD,SYDNEY	02:27		
SUB OUT: 21 WOLF,ABBIE	02:27		
SUB IN: 14 KUNAIYI-AKPANAH,PALLAS	02:27		
	02:07	29-46	SUB OUT: STARKS,TEE TEE
	02:07		SUB IN: MCDONALD,AARI
	02:07		SUB OUT: SMITH,SEMAJ
	02:07		SUB IN: REESE,CATE
	00:32	33-49	SUB OUT: THOMAS,SAM
	00:32		SUB IN: STARKS,TEE TEE

**Northwestern 33, Arizona 49**

**Official Substitutions Log  
Northwestern vs Arizona  
Period 4**

**April 06, 2019 at McKale Center (Lute & Bobbi Olson Court) - Tucson, Ariz.**



VISITORS: Northwestern	Time	Score	HOME: Arizona
10 PULLIAM,LINDSEY			10 STARKS,TEE TEE
12 BURTON,VERONICA			14 THOMAS,SAM
14 KUNAIYI-AKPANAH,PALLAS			20 MCBRYDE,DOMINIQUE
24 HAMILTON,JORDAN			25 REESE,CATE
44 SCHEID,ABI			2 MCDONALD,AARI
	08:54	-	SUB OUT: GRAHAM,DESTINY
	08:54		SUB IN: MCBRYDE,DOMINIQUE
	08:54		SUB OUT: ALONSO,LUCIA
	08:54		SUB IN: THOMAS,SAM
SUB OUT: 24 HAMILTON,JORDAN	07:43	36-49	
SUB IN: 3 WOOD,SYDNEY	07:43		
	05:31	37-54	SUB OUT: STARKS,TEE TEE
	05:31		SUB IN: ALONSO,LUCIA
SUB OUT: 3 WOOD,SYDNEY	05:31		
SUB IN: 24 HAMILTON,JORDAN	05:31		
	04:10	38-56	SUB OUT: REESE,CATE
	04:10		SUB IN: SMITH,SEMAJ
SUB OUT: 24 HAMILTON,JORDAN	04:10		
SUB IN: 3 WOOD,SYDNEY	04:10		
	01:42	41-56	SUB OUT: SMITH,SEMAJ
	01:42		SUB IN: REESE,CATE
	01:42		SUB OUT: ALONSO,LUCIA
	01:42		SUB IN: STARKS,TEE TEE
SUB OUT: 44 SCHEID,ABI	01:42		
SUB IN: 22 GALERNIK,BYRDY	01:42		
SUB OUT: 3 WOOD,SYDNEY	01:42		
SUB IN: 24 HAMILTON,JORDAN	01:42		
	01:35	41-56	SUB OUT: STARKS,TEE TEE
	01:35		SUB IN: ALONSO,LUCIA
SUB OUT: 24 HAMILTON,JORDAN	01:18	41-56	
SUB IN: 44 SCHEID,ABI	01:18		
	00:59	41-56	SUB OUT: MCDONALD,AARI
	00:59		SUB IN: NIXON,BRYCE
	00:59		SUB OUT: THOMAS,SAM
	00:59		SUB IN: MALECHA,LINDSEY
	00:59		SUB OUT: MCBRYDE,DOMINIQUE
	00:59		SUB IN: GRAHAM,DESTINY
	00:20	41-56	SUB OUT: GRAHAM,DESTINY
	00:20		SUB IN: THOMAS,SAM
	00:20		SUB OUT: MALECHA,LINDSEY
	00:20		SUB IN: SMITH,SEMAJ
SUB OUT: 10 PULLIAM,LINDSEY	00:20		
SUB IN: 0 SANCATALDO,JESS	00:20		
SUB OUT: 12 BURTON,VERONICA	00:20		
SUB IN: 32 JAMISON,AMBER	00:20		
SUB OUT: 44 SCHEID,ABI	00:20		
SUB IN: 4 HOPKINS,BRYANA	00:20		
SUB OUT: 14 KUNAIYI-AKPANAH,PALLAS	00:20		
SUB IN: 21 WOLF,ABBIE	00:20		

**Northwestern 42, Arizona 56**

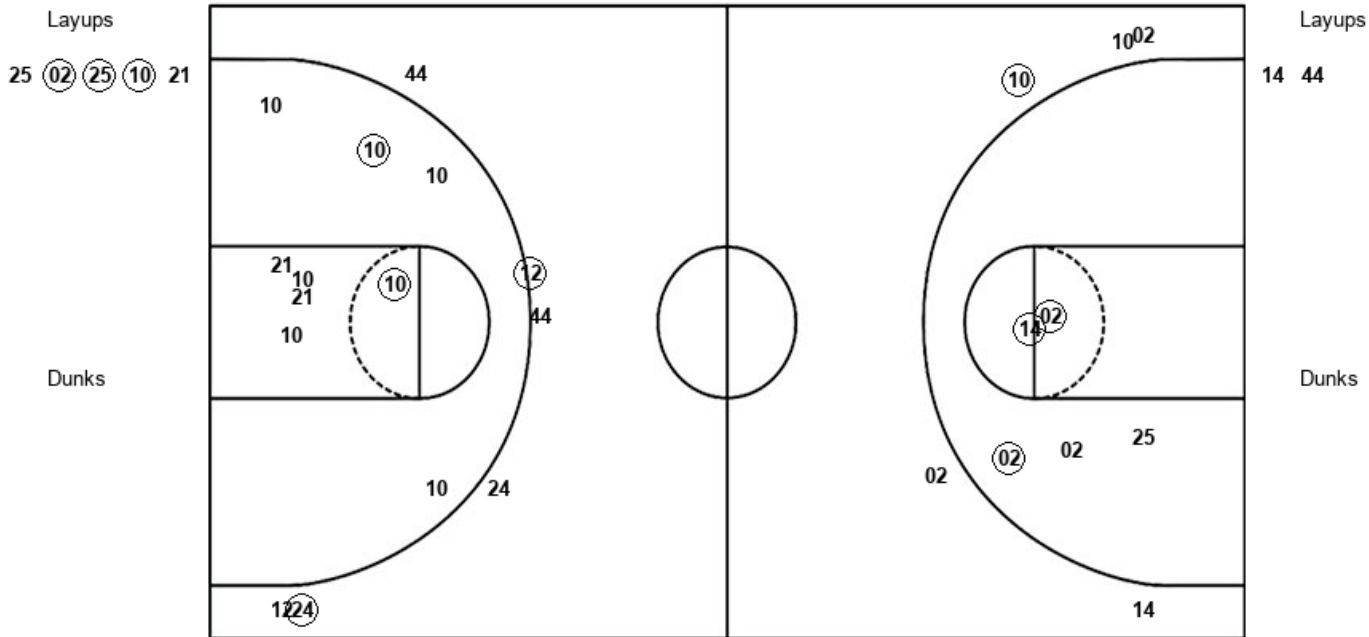


**Official Shot Chart**  
**Northwestern vs Arizona**  
**PERIOD 1 Shots**  
 April 06, 2019 at McKale Center (Lute & Bobbi Olson Court) - Tucson, Ariz.



**Arizona**

**Northwestern**



ARI : Period 1	Made	Att	Pct
Layups	3	5	60.0
Dunks	0	0	0
2PT Field Goals	6	10	60.0
3PT Field Goals	1	5	20.0
<b>Total Field Goals</b>	<b>7</b>	<b>15</b>	<b>46.7</b>

NOR : Period 1	Made	Att	Pct
Layups	0	2	00.0
Dunks	0	0	0
2PT Field Goals	2	11	18.2
3PT Field Goals	2	6	33.3
<b>Total Field Goals</b>	<b>4</b>	<b>17</b>	<b>23.5</b>

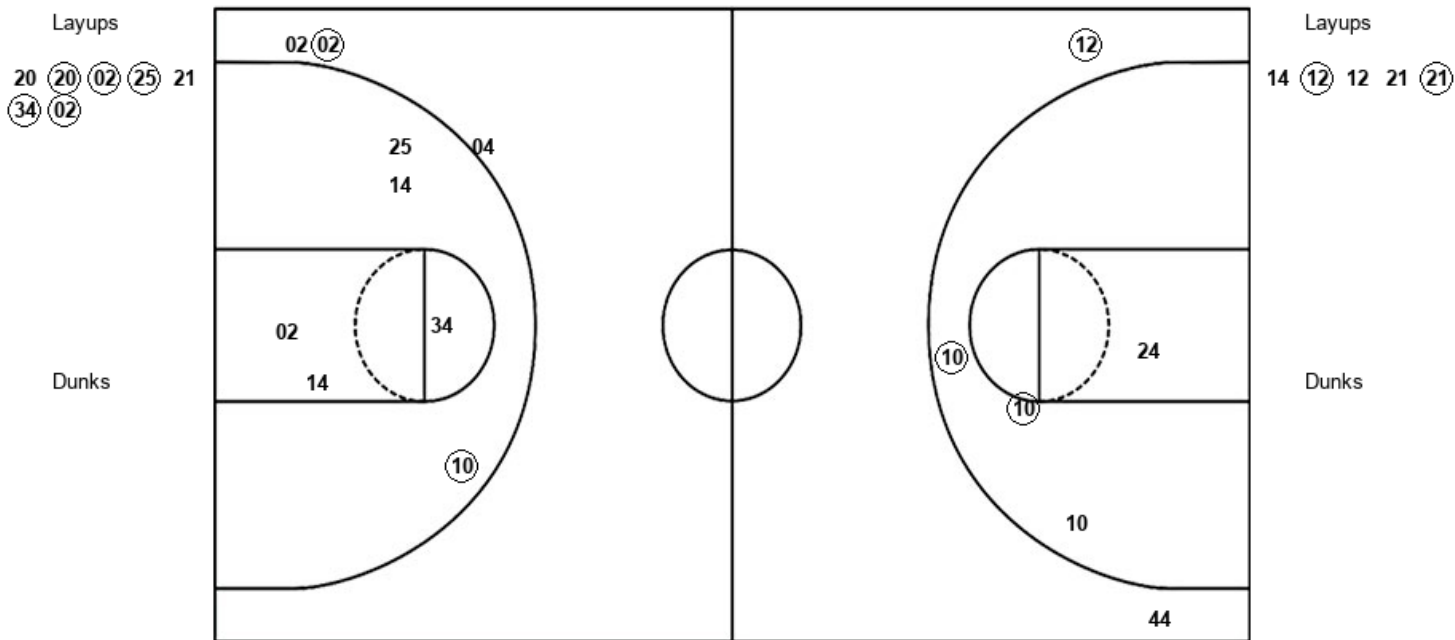


**Official Shot Chart**  
**Northwestern vs Arizona**  
**PERIOD 3 Shots**  
**April 06, 2019 at McKale Center (Lute & Bobbi Olson Court) - Tucson, Ariz.**



**Arizona**

**Northwestern**



ARI : Period 3	Made	Att	Pct
Layups	5	7	71.4
Dunks	0	0	0
2PT Field Goals	6	13	46.2
3PT Field Goals	1	3	33.3
<b>Total Field Goals</b>	<b>7</b>	<b>16</b>	<b>43.8</b>

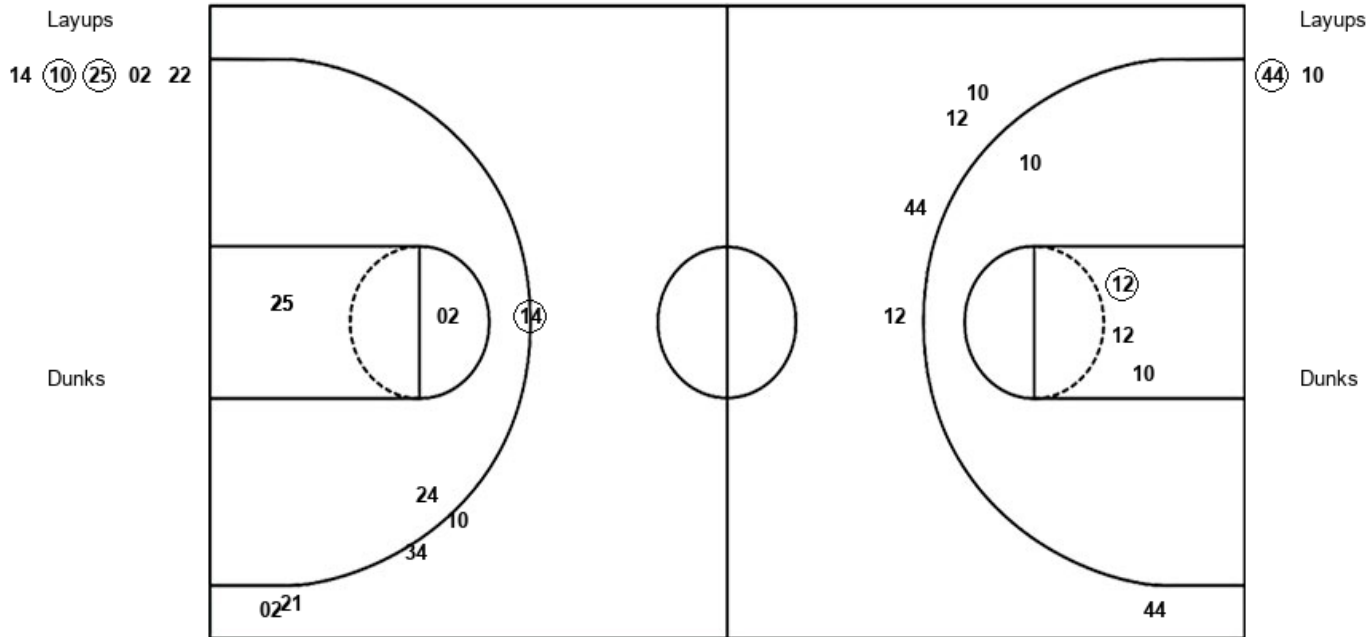
NOR : Period 3	Made	Att	Pct
Layups	2	5	40.0
Dunks	0	0	0
2PT Field Goals	4	9	44.4
3PT Field Goals	1	2	50.0
<b>Total Field Goals</b>	<b>5</b>	<b>11</b>	<b>45.5</b>

**Official Shot Chart**  
**Northwestern vs Arizona**  
**PERIOD 4 Shots**  
**April 06, 2019 at McKale Center (Lute & Bobbi Olson Court) - Tucson, Ariz.**



**Arizona**

**Northwestern**



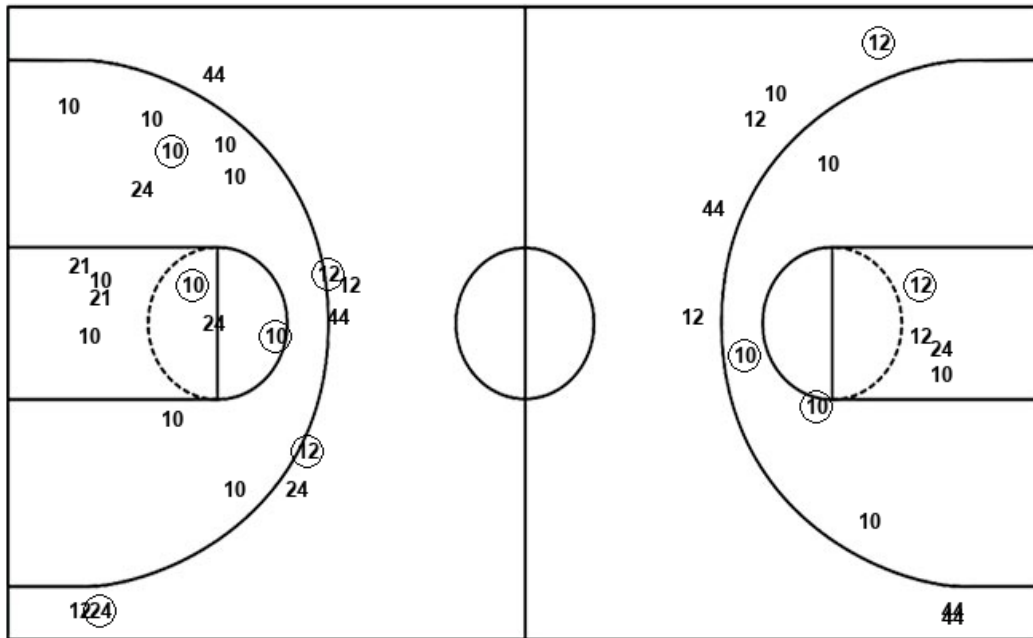
ARI : Period 4	Made	Att	Pct
Layups	2	5	40.0
Dunks	0	0	0
2PT Field Goals	2	9	22.2
3PT Field Goals	1	5	20.0
<b>Total Field Goals</b>	<b>3</b>	<b>14</b>	<b>21.4</b>

NOR : Period 4	Made	Att	Pct
Layups	1	2	50.0
Dunks	0	0	0
2PT Field Goals	2	6	33.3
3PT Field Goals	0	5	00.0
<b>Total Field Goals</b>	<b>2</b>	<b>11</b>	<b>18.2</b>

**Official Shot Chart**  
**Northwestern vs Arizona**  
**Northwestern Team Shots**  
 April 06, 2019 at McKale Center (Lute & Bobbi Olson Court) - Tucson, Ariz.



Layups



Layups

14 44 10 24 14  
 (12) 12 21 (21) (44)  
 10

Dunks

Dunks

NOR : Period 1	Made	Att	Pct
Layups	0	2	00.0
Dunks	0	0	0
2PT Field Goals	2	11	18.2
3PT Field Goals	2	6	33.3
<b>Total Field Goals</b>	<b>4</b>	<b>17</b>	<b>23.5</b>

NOR : Period 3	Made	Att	Pct
Layups	2	5	40.0
Dunks	0	0	0
2PT Field Goals	4	9	44.4
3PT Field Goals	1	2	50.0
<b>Total Field Goals</b>	<b>5</b>	<b>11</b>	<b>45.5</b>

NOR : Period 2	Made	Att	Pct
Layups	0	2	00.0
Dunks	0	0	0
2PT Field Goals	1	8	12.5
3PT Field Goals	1	2	50.0
<b>Total Field Goals</b>	<b>2</b>	<b>10</b>	<b>20.0</b>

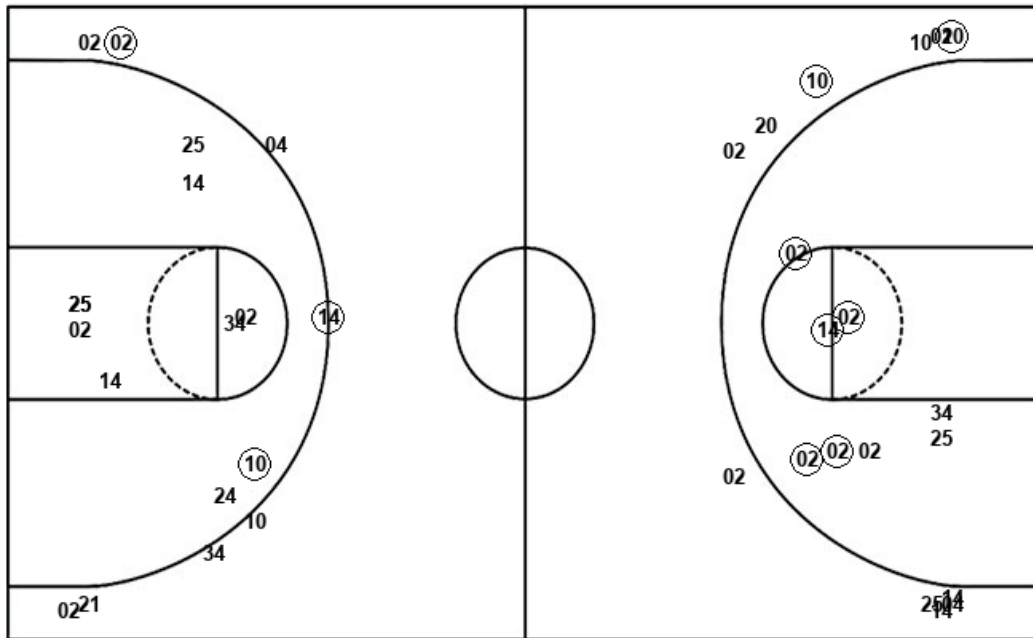
NOR : Period 4	Made	Att	Pct
Layups	1	2	50.0
Dunks	0	0	0
2PT Field Goals	2	6	33.3
3PT Field Goals	0	5	00.0
<b>Total Field Goals</b>	<b>2</b>	<b>11</b>	<b>18.2</b>

Official Shot Chart  
 Northwestern vs Arizona  
 Arizona Team Shots

April 06, 2019 at McKale Center (Lute & Bobbi Olson Court) - Tucson, Ariz.



Layups



Layups

- 25 (02) (25) (10) 21
- 25 (25) (25) 20 (25)
- 20 (20) (02) (25) 21
- (34) (02) 14 (10) (25)
- 02 22

Dunks

Dunks

ARI : Period 1	Made	Att	Pct
Layups	3	5	60.0
Dunks	0	0	0
2PT Field Goals	6	10	60.0
3PT Field Goals	1	5	20.0
<b>Total Field Goals</b>	<b>7</b>	<b>15</b>	<b>46.7</b>

ARI : Period 2	Made	Att	Pct
Layups	3	5	60.0
Dunks	0	0	0
2PT Field Goals	5	8	62.5
3PT Field Goals	1	6	16.7
<b>Total Field Goals</b>	<b>6</b>	<b>14</b>	<b>42.9</b>

ARI : Period 3	Made	Att	Pct
Layups	5	7	71.4
Dunks	0	0	0
2PT Field Goals	6	13	46.2
3PT Field Goals	1	3	33.3
<b>Total Field Goals</b>	<b>7</b>	<b>16</b>	<b>43.8</b>

ARI : Period 4	Made	Att	Pct
Layups	2	5	40.0
Dunks	0	0	0
2PT Field Goals	2	9	22.2
3PT Field Goals	1	5	20.0
<b>Total Field Goals</b>	<b>3</b>	<b>14</b>	<b>21.4</b>