

FINAL SCORE



Coastal Caro.

87



DePaul

92

Roman College Basketball Invitational Semifinals

March 28, 2019 • McGrath-Phillips Arena (Doug Bruno Court) - Chicago, IL

FINAL STATISTICS

Official Box Score
Coastal Caro. vs DePaul
Game Totals -- Final Statistics
 March 28, 2019 at McGrath-Phillips Arena (Doug Bruno Court) - Chicago, IL



Coastal Caro. 87

| No. | Player | S | Pts | FG | 3FG | FT | OR | DR | TR | PF | A | TO | Blk | Stl | Min | +/- | | | |
|---------------|----------------------|---|-----|------|-----|-----|-----------|--------------|--------------|--------------|-----------|-----------|-----------|-----------|-----------|----------|----------|----------|------------|
| 00 | DIBBA, EBRIMA | G | 14 | 6-15 | 2-6 | 0-0 | 1 | 1 | 2 | 2 | 3 | 2 | 0 | 0 | 33 | -7 | | | |
| 03 | JONES, DEVANTE | G | 16 | 6-16 | 2-9 | 2-3 | 0 | 3 | 3 | 4 | 7 | 2 | 0 | 2 | 36 | -3 | | | |
| 04 | SANDERS, AJAY | G | 9 | 3-5 | 2-4 | 1-1 | 1 | 1 | 2 | 2 | 1 | 0 | 0 | 0 | 23 | -11 | | | |
| 33 | BURTON, TOMMY | F | 5 | 1-2 | 0-0 | 3-4 | 1 | 3 | 4 | 3 | 0 | 1 | 0 | 1 | 18 | -4 | | | |
| 40 | CUTHBERTSON, ZAC | F | 21 | 7-13 | 3-5 | 4-5 | 0 | 3 | 3 | 3 | 0 | 2 | 0 | 2 | 37 | 3 | | | |
| 10 | GUMBS-FRATER, TYRELL | G | 13 | 5-12 | 3-7 | 0-0 | 1 | 1 | 2 | 3 | 0 | 1 | 0 | 0 | 25 | 9 | | | |
| 11 | BAMBA, AMIDOU | F | 2 | 1-1 | 0-0 | 0-0 | 1 | 0 | 1 | 0 | 0 | 0 | 0 | 1 | 11 | -3 | | | |
| 14 | BROWN, TREVION | G | 0 | 0-0 | 0-0 | 0-0 | 0 | 0 | 0 | 0 | 0 | 0 | 0 | 0 | 2 | -2 | | | |
| 15 | HIPPOLYTE, ISAAC | F | 0 | 0-0 | 0-0 | 0-0 | 0 | 0 | 0 | 0 | 0 | 0 | 0 | 0 | 5 | -9 | | | |
| 30 | COLEMAN, JOSH | C | 7 | 3-4 | 0-0 | 1-2 | 1 | 1 | 2 | 2 | 0 | 0 | 0 | 0 | 11 | 2 | | | |
| TEAM | | | | | | | | | | | | | | | | | | | |
| TOTALS | | | | | | | 87 | 32-68 | 12-31 | 11-15 | 10 | 14 | 24 | 19 | 11 | 8 | 0 | 6 | 200 |

Shooting By Period

| Period | FG | FG% | 3FG | 3FG% | FT | FT% |
|-------------|--------------|--------------|--------------|--------------|--------------|--------------|
| 1st Half | 16-33 | 48% | 3-10 | 30% | 3-3 | 100% |
| 2nd Half | 16-35 | 46% | 9-21 | 43% | 8-12 | 67% |
| Game | 32-68 | 47.1% | 12-31 | 38.7% | 11-15 | 73.3% |

Deadball Rebounds: 3,0
Last FG: 2nd-00:04
Biggest Run: 7-0
Largest lead: By 4 at 1-08:24
Technical Fouls: None.

DePaul 92

| No. | Player | S | Pts | FG | 3FG | FT | OR | DR | TR | PF | A | TO | Blk | Stl | Min | +/- | | | |
|---------------|-----------------|---|-----|-------|-----|-------|-----------|--------------|-------------|--------------|----------|-----------|-----------|-----------|-----------|-----------|----------|----------|------------|
| 00 | SHREINER, LYRIK | G | 3 | 1-2 | 0-0 | 1-1 | 0 | 4 | 4 | 1 | 6 | 3 | 0 | 1 | 36 | 5 | | | |
| 04 | REED, PAUL | F | 24 | 11-14 | 1-1 | 1-1 | 3 | 1 | 4 | 4 | 1 | 4 | 3 | 1 | 24 | 9 | | | |
| 11 | CAIN, ELI | G | 12 | 4-11 | 2-7 | 2-2 | 0 | 5 | 5 | 1 | 1 | 4 | 1 | 1 | 40 | 7 | | | |
| 25 | OLUJOBI, FEMI | F | 18 | 8-11 | 0-1 | 2-2 | 2 | 6 | 8 | 3 | 1 | 0 | 0 | 0 | 33 | 5 | | | |
| 31 | STRUS, MAX | G | 24 | 6-14 | 1-8 | 11-11 | 0 | 7 | 7 | 3 | 2 | 1 | 1 | 2 | 40 | 5 | | | |
| 02 | BUTZ, JAYLEN | F | 11 | 3-4 | 0-0 | 5-6 | 1 | 3 | 4 | 1 | 0 | 1 | 0 | 0 | 23 | -4 | | | |
| 21 | CAMERON, FLYNN | G | 0 | 0-0 | 0-0 | 0-0 | 1 | 0 | 1 | 1 | 1 | 1 | 0 | 0 | 4 | -2 | | | |
| TEAM | | | | | | | | | | | | | | | | | | | |
| TOTALS | | | | | | | 92 | 33-56 | 4-17 | 22-23 | 9 | 27 | 36 | 14 | 12 | 15 | 5 | 5 | 200 |

Shooting By Period

| Period | FG | FG% | 3FG | 3FG% | FT | FT% |
|-------------|--------------|--------------|-------------|--------------|--------------|--------------|
| 1st Half | 15-30 | 50% | 2-10 | 20% | 4-5 | 80% |
| 2nd Half | 18-26 | 69% | 2-7 | 29% | 18-18 | 100% |
| Game | 33-56 | 58.9% | 4-17 | 23.5% | 22-23 | 95.7% |

Deadball Rebounds: 1,0
Last FG: 2nd-00:31
Biggest Run: 9-0
Largest lead: By 11 at 2-06:38
Technical Fouls: None.

Game Notes:

Officials: Steve McJunkins, Alfred Smith, John Floyd
 Attendance: 939

Start Time: 2019-03-28 00:03:53
 End Time: 2019-03-28 02:00:14
 Game Duration: 1:56

| Score | 1st | 2nd | TOT |
|-------|-----|-----|-----------|
| CCU | 38 | 49 | 87 |
| DPU | 36 | 56 | 92 |

CCU led for 7:10. DPU led for 27:10.
 Game was tied for 5:40.
 Times tied: 15 Lead Changes: 13

| Points from | CCU | DPU |
|--------------|-----|-----|
| In the Paint | 28 | 56 |
| Off Turns | 12 | 14 |
| 2nd Chance | 10 | 12 |
| Fast Break | 12 | 17 |
| Bench | 22 | 11 |

Official Box Score
Coastal Caro. vs DePaul
First Half Statistics Only
March 28, 2019 at McGrath-Phillips Arena (Doug Bruno Court) - Chicago, IL



Coastal Caro. 38

| No. | Player | S | Pts | FG | 3FG | FT | OR | DR | TR | PF | A | TO | Blk | Stl | Min | +/- |
|---------------|----------------------|---|-----------|--------------|-------------|------------|----------|----------|-----------|----------|----------|----------|----------|----------|------------|-----|
| 00 | DIBBA, EBRIMA | G | 4 | 2-6 | 0-2 | 0-0 | 0 | 1 | 1 | 0 | 2 | 1 | 0 | 0 | 14 | 3 |
| 03 | JONES, DEVANTE | G | 12 | 5-11 | 1-4 | 1-1 | 0 | 2 | 2 | 2 | 1 | 2 | 0 | 2 | 18 | 2 |
| 04 | SANDERS, AJAY | G | 3 | 1-2 | 0-1 | 1-1 | 0 | 1 | 1 | 1 | 0 | 0 | 0 | 0 | 13 | -2 |
| 33 | BURTON, TOMMY | F | 0 | 0-0 | 0-0 | 0-0 | 0 | 1 | 1 | 2 | 0 | 0 | 0 | 0 | 5 | 1 |
| 40 | CUTHBERTSON, ZAC | F | 15 | 6-8 | 2-2 | 1-1 | 0 | 3 | 3 | 0 | 0 | 2 | 0 | 2 | 18 | 6 |
| 10 | GUMBS-FRATER, TYRELL | G | 2 | 1-4 | 0-1 | 0-0 | 0 | 1 | 1 | 0 | 0 | 1 | 0 | 0 | 11 | 5 |
| 11 | BAMBA, AMIDOU | F | 2 | 1-1 | 0-0 | 0-0 | 1 | 0 | 1 | 0 | 0 | 0 | 0 | 1 | 10 | 3 |
| 14 | BROWN, TREVION | G | 0 | 0-0 | 0-0 | 0-0 | 0 | 0 | 0 | 0 | 0 | 0 | 0 | 0 | 2 | -2 |
| 15 | HIPPOLYTE, ISAAC | F | 0 | 0-0 | 0-0 | 0-0 | 0 | 0 | 0 | 0 | 0 | 0 | 0 | 0 | 4 | -4 |
| 30 | COLEMAN, JOSH | C | 0 | 0-1 | 0-0 | 0-0 | 0 | 0 | 0 | 2 | 0 | 0 | 0 | 0 | 5 | -2 |
| TEAM | | | | | | | | 1 | 0 | 1 | 0 | 0 | | | | |
| TOTALS | | | 38 | 16-33 | 3-10 | 3-3 | 2 | 9 | 11 | 7 | 3 | 6 | 0 | 5 | 100 | |

Shooting By Period

| Period | FG | FG% | 3FG | 3FG% | FT | FT% |
|----------|-------|-------|-------|-------|-------|-------|
| 1st Half | 16-33 | 48% | 3-10 | 30% | 3-3 | 100% |
| Game | 32-68 | 47.1% | 12-31 | 38.7% | 11-15 | 73.3% |

Deadball Rebounds: 3,0
 Last FG Half: CCU 2nd-00:04

DePaul 36

| No. | Player | S | Pts | FG | 3FG | FT | OR | DR | TR | PF | A | TO | Blk | Stl | Min | +/- |
|---------------|-----------------|---|-----------|--------------|-------------|------------|----------|-----------|-----------|----------|----------|-----------|----------|----------|------------|-----|
| 00 | SHREINER, LYRIK | G | 0 | 0-1 | 0-0 | 0-0 | 0 | 3 | 3 | 0 | 5 | 2 | 0 | 1 | 16 | -2 |
| 04 | REED, PAUL | F | 10 | 5-8 | 0-0 | 0-0 | 2 | 1 | 3 | 2 | 0 | 1 | 0 | 1 | 10 | 0 |
| 11 | CAIN, ELI | G | 5 | 2-5 | 1-3 | 0-0 | 0 | 3 | 3 | 1 | 0 | 4 | 0 | 1 | 20 | 0 |
| 25 | OLUJOBI, FEMI | F | 8 | 4-6 | 0-1 | 0-0 | 1 | 3 | 4 | 0 | 0 | 0 | 0 | 0 | 19 | -4 |
| 31 | STRUS, MAX | G | 10 | 3-9 | 1-6 | 3-3 | 0 | 4 | 4 | 1 | 0 | 1 | 1 | 1 | 20 | -2 |
| 02 | BUTZ, JAYLEN | F | 3 | 1-1 | 0-0 | 1-2 | 1 | 0 | 1 | 0 | 0 | 1 | 0 | 0 | 12 | 0 |
| 21 | CAMERON, FLYNN | G | 0 | 0-0 | 0-0 | 0-0 | 1 | 0 | 1 | 1 | 1 | 1 | 0 | 0 | 4 | -2 |
| TEAM | | | | | | | | 1 | 1 | 2 | 0 | 0 | | | | |
| TOTALS | | | 36 | 15-30 | 2-10 | 4-5 | 6 | 15 | 21 | 5 | 6 | 10 | 1 | 4 | 100 | |

Shooting By Period

| Period | FG | FG% | 3FG | 3FG% | FT | FT% |
|----------|-------|-------|------|-------|-------|-------|
| 1st Half | 15-30 | 50% | 2-10 | 20% | 4-5 | 80% |
| Game | 33-56 | 58.9% | 4-17 | 23.5% | 22-23 | 95.7% |

Deadball Rebounds: 1,0
 Last FG Half: DPU 2nd-00:31

Game Notes:

Officials: Steve McJunkins, Alfred Smith, John Floyd
 Attendance: 939

Start Time: 2019-03-28 00:03:53
 End Time: 2019-03-28 02:00:14
 Game Duration: 1:56

| Score | 1st | 2nd | TOT |
|-------|-----|-----|-----------|
| CCU | 38 | 49 | 87 |
| DPU | 36 | 56 | 92 |

| Points from (This Period) | CCU | DPU |
|---------------------------|-----|-----|
| In the Paint | 18 | 26 |
| Off Turns | 11 | 9 |
| 2nd Chance | 2 | 8 |
| Fast Break | 8 | 4 |
| Bench | 4 | 3 |

**Official Play-By-Play
Coastal Caro. vs DePaul
First Half**

March 28, 2019 at McGrath-Phillips Arena (Doug Bruno Court) - Chicago, IL



Period 1

Starters:

Coastal Caro.: 0 DIBBA,EBRIMA (G); 3 JONES,DEVANTE (G); 4 SANDERS,AJAY (G); 33 BURTON,TOMMY (F); 40 CUTHBERTSON,ZAC (F);

DePaul: 0 SHREINER,LYRIK (G); 4 REED,PAUL (F); 11 CAIN,ELI (G); 25 OLUJOBI,FEMI (F); 31 STRUS,MAX (G);

| Time | VISITORS: Coastal Caro. | Score | Margin | HOME: DePaul |
|-------|--|-------|--------|-------------------------------------|
| 19:31 | GOOD! JUMPER by CUTHBERTSON, ZAC | 0-2 | V 2 | |
| 19:11 | | 2-2 | T | GOOD! DUNK by REED, PAUL |
| 19:11 | | | | ASSIST by SHREINER, LYRIK |
| 18:50 | GOOD! JUMPER by JONES, DEVANTE [PNT] | 2-4 | V 2 | |
| 18:32 | | 5-4 | H 1 | GOOD! 3PTR by CAIN, ELI |
| 18:32 | | | | ASSIST by SHREINER, LYRIK |
| 18:11 | MISSED 3PTR by JONES, DEVANTE | | | |
| 18:09 | | | | REBOUND (DEF) by STRUS, MAX |
| 18:09 | FOUL (PERSONAL) by BURTON, TOMMY | | | |
| 17:52 | | 7-4 | H 3 | GOOD! LAYUP by CAIN, ELI |
| 17:33 | MISSED 3PTR by DIBBA, EBRIMA | | | |
| 17:27 | | | | REBOUND (DEF) by OLUJOBI, FEMI |
| 17:13 | | | | MISSED 3PTR by CAIN, ELI |
| 17:08 | REBOUND (DEF) by CUTHBERTSON, ZAC | | | |
| 17:06 | TURNOVER (BADPASS) by CUTHBERTSON, ZAC | | | |
| 16:46 | | | | MISSED LAYUP by REED, PAUL |
| 16:39 | | 9-4 | H 5 | GOOD! LAYUP by OLUJOBI, FEMI |
| 16:39 | | | | REBOUND (OFF) by OLUJOBI, FEMI |
| 16:29 | MISSED 3PTR by DIBBA, EBRIMA | | | |
| 16:25 | | | | REBOUND (DEF) by STRUS, MAX |
| 16:21 | | | | TURNOVER (BADPASS) by CAIN, ELI |
| 16:21 | STEAL by CUTHBERTSON, ZAC | | | |
| 16:14 | MISSED JUMPER by JONES, DEVANTE | | | |
| 16:14 | | | | REBOUND (DEF) by TEAM |
| 16:12 | | | | MISSED 3PTR by STRUS, MAX |
| 16:12 | REBOUND (DEF) by JONES, DEVANTE | | | |
| 15:47 | GOOD! JUMPER by JONES, DEVANTE | 9-6 | H 3 | |
| 15:23 | | | | MISSED LAYUP by SHREINER, LYRIK |
| 15:19 | REBOUND (DEF) by BURTON, TOMMY | | | |
| 15:16 | GOOD! LAYUP by CUTHBERTSON, ZAC [FB] | 9-8 | H 1 | |
| 15:16 | | | | FOUL (PERSONAL) by REED, PAUL |
| 15:16 | SUB OUT: DIBBA, EBRIMA | | | |
| 15:16 | SUB IN: GUMBS-FRATER, TYRELL | | | |
| 15:16 | SUB OUT: BURTON, TOMMY | | | |
| 15:16 | SUB IN: COLEMAN, JOSH | | | |
| 15:16 | GOOD! FT by CUTHBERTSON, ZAC | 9-9 | T | |
| 14:58 | | | | MISSED JUMPER by OLUJOBI, FEMI |
| 14:52 | | | | MISSED LAYUP by REED, PAUL |
| 14:52 | | | | REBOUND (OFF) by REED, PAUL |
| 14:49 | | | | REBOUND (OFF) by REED, PAUL |
| 14:49 | | 11-9 | H 2 | GOOD! LAYUP by REED, PAUL |
| 14:34 | TURNOVER (BADPASS) by JONES, DEVANTE | | | |
| 14:34 | | | | STEAL by REED, PAUL |
| 14:34 | FOUL (PERSONAL) by COLEMAN, JOSH | | | |
| 14:22 | | | | MISSED 3PTR by STRUS, MAX |
| 14:18 | REBOUND (DEF) by SANDERS, AJAY | | | |
| 14:01 | MISSED LAYUP by COLEMAN, JOSH | | | |
| 13:58 | | | | REBOUND (DEF) by CAIN, ELI |
| 13:54 | | | | TURNOVER (LOSTBALL) by BUTZ, JAYLEN |
| 13:54 | STEAL by CUTHBERTSON, ZAC | | | |
| 13:36 | GOOD! LAYUP by SANDERS, AJAY [PNT] | 11-11 | T | |
| 13:36 | | | | FOUL (PERSONAL) by CAIN, ELI |
| 13:36 | | | | SUB OUT: SHREINER, LYRIK |
| 13:36 | | | | SUB IN: BUTZ, JAYLEN |
| 13:36 | | | | SUB OUT: REED, PAUL |
| 13:36 | | | | SUB IN: CAMERON, FLYNN |
| 13:36 | GOOD! FT by SANDERS, AJAY | 11-12 | V 1 | |
| 13:21 | SUB OUT: COLEMAN, JOSH | | | |
| 13:21 | SUB IN: BURTON, TOMMY | | | |
| 13:17 | | | | TURNOVER (BADPASS) by STRUS, MAX |
| 13:00 | MISSED 3PTR by GUMBS-FRATER, TYRELL | | | |
| 12:57 | | | | REBOUND (DEF) by STRUS, MAX |
| 12:57 | FOUL (PERSONAL) by SANDERS, AJAY | | | |
| 12:48 | SUB OUT: GUMBS-FRATER, TYRELL | | | |
| 12:48 | SUB IN: DIBBA, EBRIMA | | | |
| 12:48 | | 13-12 | H 1 | GOOD! DUNK by OLUJOBI, FEMI |
| 12:48 | GOOD! 3PTR by CUTHBERTSON, ZAC [FB] | 13-15 | V 2 | |
| 12:46 | SUB OUT: JONES, DEVANTE | | | |
| 12:46 | SUB IN: GUMBS-FRATER, TYRELL | | | |
| 12:46 | FOUL (PERSONAL) by BURTON, TOMMY | | | |

| Time | VISITORS: Coastal Caro. | Score | Margin | HOME: DePaul |
|-------|---|-------|--------|--|
| 12:46 | | | | MISSED FT by BUTZ, JAYLEN |
| 12:46 | | | | REBOUND (OFF) by TEAM |
| 12:46 | SUB OUT: CUTHBERTSON, ZAC | | | |
| 12:46 | SUB IN: JONES, DEVANTE | | | |
| 12:46 | SUB OUT: BURTON, TOMMY | | | |
| 12:46 | SUB IN: HIPPOLYTE, ISAAC | | | |
| 12:46 | SUB OUT: SANDERS, AJAY | | | |
| 12:46 | SUB IN: COLEMAN, JOSH | | | |
| 12:41 | | 14-15 | V 1 | GOOD! FT by BUTZ, JAYLEN [FB] |
| 11:54 | MISSED JUMPER by GUMBS-FRATER, TYRELL | | | |
| 11:51 | | | | REBOUND (DEF) by OLUJOBI, FEMI |
| 11:45 | | | | FOUL (OFF) by CAMERON, FLYNN |
| 11:45 | | | | TURNOVER (OFFENSIVE) by CAMERON, FLYNN |
| 11:45 | | | | SUB OUT: CAMERON, FLYNN |
| 11:45 | | | | SUB IN: SHREINER, LYRIK |
| 11:33 | TURNOVER (BADPASS) by DIBBA, EBRIMA | | | |
| 11:33 | | | | STEAL by CAIN, ELI |
| 11:28 | | 16-15 | H 1 | GOOD! LAYUP by STRUS, MAX [FB] |
| 11:28 | FOUL (PERSONAL) by COLEMAN, JOSH | | | |
| 11:28 | | | | SUB OUT: BUTZ, JAYLEN |
| 11:28 | | | | SUB IN: REED, PAUL |
| 11:28 | SUB OUT: COLEMAN, JOSH | | | |
| 11:28 | SUB IN: BAMBA, AMIDOU | | | |
| 11:28 | | 17-15 | H 2 | GOOD! FT by STRUS, MAX [FB] |
| 10:59 | MISSED JUMPER by GUMBS-FRATER, TYRELL | | | |
| 10:55 | | | | REBOUND (DEF) by CAIN, ELI |
| 10:51 | | | | MISSED 3PTR by STRUS, MAX |
| 10:46 | REBOUND (DEF) by GUMBS-FRATER, TYRELL | | | |
| 10:42 | TURNOVER (LOSTBALL) by GUMBS-FRATER, TYRELL | | | |
| 10:42 | | | | STEAL by SHREINER, LYRIK |
| 10:36 | | | | TURNOVER (TRAVEL) by REED, PAUL |
| 10:36 | SUB OUT: HIPPOLYTE, ISAAC | | | |
| 10:36 | SUB IN: CUTHBERTSON, ZAC | | | |
| 10:23 | MISSED JUMPER by DIBBA, EBRIMA | | | |
| 10:19 | REBOUND (OFF) by BAMBA, AMIDOU | | | |
| 10:14 | GOOD! LAYUP by DIBBA, EBRIMA [PNT] | 17-17 | T | |
| 10:02 | | 19-17 | H 2 | GOOD! LAYUP by REED, PAUL |
| 09:53 | GOOD! 3PTR by JONES, DEVANTE | 19-20 | V 1 | |
| 09:35 | | | | MISSED 3PTR by STRUS, MAX |
| 09:34 | REBOUND (DEF) by DIBBA, EBRIMA | | | |
| 09:34 | | | | FOUL (PERSONAL) by REED, PAUL |
| 09:29 | | | | SUB OUT: REED, PAUL |
| 09:29 | | | | SUB IN: BUTZ, JAYLEN |
| 09:29 | SUB OUT: DIBBA, EBRIMA | | | |
| 09:29 | SUB IN: HIPPOLYTE, ISAAC | | | |
| 09:21 | TURNOVER (BADPASS) by JONES, DEVANTE | | | |
| 09:21 | | | | STEAL by STRUS, MAX |
| 09:15 | | | | MISSED 3PTR by OLUJOBI, FEMI |
| 09:08 | | | | REBOUND (OFF) by BUTZ, JAYLEN |
| 09:08 | | 21-20 | H 1 | GOOD! LAYUP by BUTZ, JAYLEN |
| 08:43 | GOOD! LAYUP by BAMBA, AMIDOU | 21-22 | V 1 | |
| 08:43 | ASSIST by JONES, DEVANTE | | | |
| 08:32 | | | | MISSED 3PTR by CAIN, ELI |
| 08:26 | REBOUND (DEF) by CUTHBERTSON, ZAC | | | |
| 08:24 | GOOD! 3PTR by CUTHBERTSON, ZAC [FB] | 21-25 | V 4 | |
| 08:10 | | 24-25 | V 1 | GOOD! 3PTR by STRUS, MAX |
| 08:10 | | | | ASSIST by SHREINER, LYRIK |
| 07:53 | MISSED LAYUP by JONES, DEVANTE | | | |
| 07:53 | | | | BLOCK by STRUS, MAX |
| 07:53 | REBOUND (OFF) by TEAM | | | |
| 07:53 | | | | |
| 07:53 | SUB OUT: GUMBS-FRATER, TYRELL | | | |
| 07:53 | SUB IN: SANDERS, AJAY | | | |
| 07:53 | SUB OUT: HIPPOLYTE, ISAAC | | | |
| 07:53 | SUB IN: DIBBA, EBRIMA | | | |
| 07:45 | MISSED JUMPER by CUTHBERTSON, ZAC | | | |
| 07:41 | | | | REBOUND (DEF) by SHREINER, LYRIK |
| 07:37 | | | | TURNOVER (BADPASS) by SHREINER, LYRIK |
| 07:37 | STEAL by BAMBA, AMIDOU | | | |
| 07:27 | MISSED 3PTR by JONES, DEVANTE | | | |
| 07:23 | | | | REBOUND (DEF) by OLUJOBI, FEMI |
| 06:58 | | | | MISSED JUMPER by STRUS, MAX |
| 06:55 | REBOUND (DEF) by CUTHBERTSON, ZAC | | | |
| 06:52 | MISSED 3PTR by SANDERS, AJAY | | | |
| 06:47 | | | | REBOUND (DEF) by SHREINER, LYRIK |
| 06:25 | | 26-25 | H 1 | GOOD! LAYUP by OLUJOBI, FEMI |
| 06:25 | | | | ASSIST by SHREINER, LYRIK |
| 06:04 | MISSED JUMPER by JONES, DEVANTE | | | |
| 05:59 | | | | REBOUND (DEF) by SHREINER, LYRIK |
| 05:49 | | | | MISSED JUMPER by CAIN, ELI |

| Time | VISITORS: Coastal Caro. | Score | Margin | HOME: DePaul |
|-------|--|-------|--------|--|
| 05:47 | REBOUND (DEF) by JONES, DEVANTE | | | |
| 05:33 | | | | SUB OUT: SHREINER, LYRIK |
| 05:33 | | | | SUB IN: CAMERON, FLYNN |
| 05:21 | MISSED JUMPER by DIBBA, EBRIMA | | | |
| 05:20 | | | | REBOUND (DEF) by CAIN, ELI |
| 05:20 | FOUL (PERSONAL) by JONES, DEVANTE | | | |
| 05:20 | SUB OUT: DIBBA, EBRIMA | | | |
| 05:20 | SUB IN: BROWN, TREVION | | | |
| 05:01 | | | | MISSED JUMPER by REED, PAUL |
| 04:59 | | | | REBOUND (OFF) by CAMERON, FLYNN |
| 04:59 | | | | SUB OUT: OLUJOBI, FEMI |
| 04:59 | | | | SUB IN: REED, PAUL |
| 04:53 | | 28-25 | H 3 | GOOD! JUMPER by REED, PAUL [PNT] |
| 04:53 | | | | ASSIST by CAMERON, FLYNN |
| 04:41 | MISSED 3PTR by JONES, DEVANTE | | | |
| 04:36 | | | | REBOUND (DEF) by REED, PAUL |
| 04:21 | | | | TURNOVER (LOSTBALL) by CAIN, ELI |
| 04:21 | STEAL by JONES, DEVANTE | | | |
| 04:16 | TURNOVER (TRAVEL) by CUTHBERTSON, ZAC | | | |
| 03:58 | | 30-25 | H 5 | GOOD! JUMPER by REED, PAUL [PNT] |
| 03:41 | GOOD! LAYUP by JONES, DEVANTE | 30-27 | H 3 | |
| 03:41 | | | | FOUL (PERSONAL) by STRUS, MAX |
| 03:41 | | | | |
| 03:41 | | | | SUB OUT: REED, PAUL |
| 03:41 | | | | SUB IN: OLUJOBI, FEMI |
| 03:41 | SUB OUT: SANDERS, AJAY | | | |
| 03:41 | SUB IN: DIBBA, EBRIMA | | | |
| 03:41 | SUB OUT: BROWN, TREVION | | | |
| 03:41 | SUB IN: GUMBS-FRATER, TYRELL | | | |
| 03:41 | GOOD! FT by JONES, DEVANTE | 30-28 | H 2 | |
| 03:26 | | | | TURNOVER (BADPASS) by CAIN, ELI |
| 03:25 | | | | SUB OUT: CAIN, ELI |
| 03:25 | | | | SUB IN: SHREINER, LYRIK |
| 03:10 | GOOD! JUMPER by CUTHBERTSON, ZAC | 30-30 | T | |
| 03:10 | ASSIST by DIBBA, EBRIMA | | | |
| 02:58 | | | | MISSED 3PTR by STRUS, MAX |
| 02:55 | | | | REBOUND (OFF) by TEAM |
| 02:55 | | | | SUB OUT: CAMERON, FLYNN |
| 02:55 | | | | SUB IN: CAIN, ELI |
| 02:50 | | 32-30 | H 2 | GOOD! JUMPER by OLUJOBI, FEMI [PNT] |
| 02:50 | | | | ASSIST by SHREINER, LYRIK |
| 02:31 | GOOD! JUMPER by CUTHBERTSON, ZAC | 32-32 | T | |
| 02:31 | ASSIST by DIBBA, EBRIMA | | | |
| 02:22 | SUB OUT: BAMBA, AMIDOU | | | |
| 02:22 | SUB IN: COLEMAN, JOSH | | | |
| 02:10 | | | | TURNOVER (LOSTBALL) by SHREINER, LYRIK |
| 02:10 | STEAL by JONES, DEVANTE | | | |
| 01:44 | GOOD! LAYUP by JONES, DEVANTE [PNT] | 32-34 | V 2 | |
| 01:34 | FOUL (PERSONAL) by JONES, DEVANTE | | | |
| 01:34 | SUB OUT: JONES, DEVANTE | | | |
| 01:34 | SUB IN: SANDERS, AJAY | | | |
| 01:34 | | 33-34 | V 1 | GOOD! FT by STRUS, MAX |
| 01:34 | | 34-34 | T | GOOD! FT by STRUS, MAX |
| 01:02 | MISSED JUMPER by CUTHBERTSON, ZAC | | | |
| 00:58 | | | | REBOUND (DEF) by STRUS, MAX |
| 00:57 | | | | TURNOVER (TRAVEL) by CAIN, ELI |
| 00:57 | TIMEOUT 30SEC | | | |
| 00:54 | SUB OUT: COLEMAN, JOSH | | | |
| 00:54 | SUB IN: BAMBA, AMIDOU | | | |
| 00:43 | GOOD! LAYUP by DIBBA, EBRIMA [PNT] | 34-36 | V 2 | |
| 00:28 | | 36-36 | T | GOOD! LAYUP by STRUS, MAX [PNT] |
| 00:03 | GOOD! JUMPER by GUMBS-FRATER, TYRELL [PNT] | 36-38 | V 2 | |

Coastal Caro. 38, DePaul 36

| Points from (This Period) | CCU | DPU |
|---------------------------|-----|-----|
| In the Paint | 18 | 26 |
| Off Turns | 11 | 9 |
| 2nd Chance | 2 | 8 |
| Fast Break | 8 | 4 |
| Bench | 4 | 3 |

Official Box Score
Coastal Caro. vs DePaul
Second Half Statistics Only
 March 28, 2019 at McGrath-Phillips Arena (Doug Bruno Court) - Chicago, IL



Coastal Caro. 49

| No. | Player | S | Pts | FG | 3FG | FT | OR | DR | TR | PF | A | TO | Blk | Stl | Min | +/- | |
|---------------|----------------------|---|-----------|--------------|-------------|-------------|----------|----------|-----------|-----------|----------|----------|----------|----------|------------|-----|--|
| 00 | DIBBA, EBRIMA | G | 10 | 4-9 | 2-4 | 0-0 | 1 | 0 | 1 | 2 | 1 | 1 | 0 | 0 | 19 | -10 | |
| 03 | JONES, DEVANTE | G | 4 | 1-5 | 1-5 | 1-2 | 0 | 1 | 1 | 2 | 6 | 0 | 0 | 0 | 18 | -5 | |
| 04 | SANDERS, AJAY | G | 6 | 2-3 | 2-3 | 0-0 | 1 | 0 | 1 | 1 | 1 | 0 | 0 | 0 | 10 | -9 | |
| 33 | BURTON, TOMMY | F | 5 | 1-2 | 0-0 | 3-4 | 1 | 2 | 3 | 1 | 0 | 1 | 0 | 1 | 13 | -5 | |
| 40 | CUTHBERTSON, ZAC | F | 6 | 1-5 | 1-3 | 3-4 | 0 | 0 | 0 | 3 | 0 | 0 | 0 | 0 | 19 | -3 | |
| 10 | GUMBS-FRATER, TYRELL | G | 11 | 4-8 | 3-6 | 0-0 | 1 | 0 | 1 | 3 | 0 | 0 | 0 | 0 | 14 | 4 | |
| 11 | BAMBA, AMIDOU | F | 0 | 0-0 | 0-0 | 0-0 | 0 | 0 | 0 | 0 | 0 | 0 | 0 | 0 | 1 | -6 | |
| 14 | BROWN, TREVION | G | 0 | 0-0 | 0-0 | 0-0 | 0 | 0 | 0 | 0 | 0 | 0 | 0 | 0 | 0 | 0 | |
| 15 | HIPPOLYTE, ISAAC | F | 0 | 0-0 | 0-0 | 0-0 | 0 | 0 | 0 | 0 | 0 | 0 | 0 | 0 | 1 | -5 | |
| 30 | COLEMAN, JOSH | C | 7 | 3-3 | 0-0 | 1-2 | 1 | 1 | 2 | 0 | 0 | 0 | 0 | 0 | 6 | 4 | |
| TEAM | | | | | | | 3 | 1 | 4 | 0 | 0 | | | | | | |
| TOTALS | | | 49 | 16-35 | 9-21 | 8-12 | 8 | 5 | 13 | 12 | 8 | 2 | 0 | 1 | 100 | | |

Shooting By Period

| Period | FG | FG% | 3FG | 3FG% | FT | FT% |
|----------|-------|-------|-------|-------|-------|-------|
| 2nd Half | 16-35 | 46% | 9-21 | 43% | 8-12 | 67% |
| Game | 32-68 | 47.1% | 12-31 | 38.7% | 11-15 | 73.3% |

Deadball Rebounds: 3,0

Last FG Half: CCU -

DePaul 56

| No. | Player | S | Pts | FG | 3FG | FT | OR | DR | TR | PF | A | TO | Blk | Stl | Min | +/- | |
|---------------|-----------------|---|-----------|--------------|------------|--------------|----------|-----------|-----------|----------|----------|----------|----------|----------|------------|-----|--|
| 00 | SHREINER, LYRIK | G | 3 | 1-1 | 0-0 | 1-1 | 0 | 1 | 1 | 1 | 1 | 1 | 0 | 0 | 20 | 7 | |
| 04 | REED, PAUL | F | 14 | 6-6 | 1-1 | 1-1 | 1 | 0 | 1 | 2 | 1 | 3 | 3 | 0 | 14 | 9 | |
| 11 | CAIN, ELI | G | 7 | 2-6 | 1-4 | 2-2 | 0 | 2 | 2 | 0 | 1 | 0 | 1 | 0 | 20 | 7 | |
| 25 | OLUJOBI, FEMI | F | 10 | 4-5 | 0-0 | 2-2 | 1 | 3 | 4 | 3 | 1 | 0 | 0 | 0 | 14 | 9 | |
| 31 | STRUS, MAX | G | 14 | 3-5 | 0-2 | 8-8 | 0 | 3 | 3 | 2 | 2 | 0 | 0 | 1 | 20 | 7 | |
| 02 | BUTZ, JAYLEN | F | 8 | 2-3 | 0-0 | 4-4 | 0 | 3 | 3 | 1 | 0 | 0 | 0 | 0 | 11 | -4 | |
| 21 | CAMERON, FLYNN | G | 0 | 0-0 | 0-0 | 0-0 | 0 | 0 | 0 | 0 | 0 | 0 | 0 | 0 | 0 | 0 | |
| TEAM | | | | | | | 1 | 0 | 1 | 0 | 1 | | | | | | |
| TOTALS | | | 56 | 18-26 | 2-7 | 18-18 | 3 | 12 | 15 | 9 | 6 | 5 | 4 | 1 | 100 | | |

Shooting By Period

| Period | FG | FG% | 3FG | 3FG% | FT | FT% |
|----------|-------|-------|------|-------|-------|-------|
| 2nd Half | 18-26 | 69% | 2-7 | 29% | 18-18 | 100% |
| Game | 33-56 | 58.9% | 4-17 | 23.5% | 22-23 | 95.7% |

Deadball Rebounds: 1,0

Last FG Half: DPU -

Game Notes:

Officials: Steve McJunkins, Alfred Smith, John Floyd
 Attendance: 939

Start Time: 2019-03-28 00:03:53
 End Time: 2019-03-28 02:00:14
 Game Duration: 1:56

| Score | 1st | 2nd | TOT |
|-------|-----|-----|-----------|
| CCU | 38 | 49 | 87 |
| DPU | 36 | 56 | 92 |

| Points from (This Period) | CCU | DPU |
|---------------------------|-----|-----|
| In the Paint | 10 | 30 |
| Off Turns | 1 | 5 |
| 2nd Chance | 8 | 4 |
| Fast Break | 4 | 13 |
| Bench | 18 | 8 |

**Official Play-By-Play
Coastal Caro. vs DePaul
Second Half**

March 28, 2019 at McGrath-Phillips Arena (Doug Bruno Court) - Chicago, IL



Period 2

Starters:

Coastal Caro.: 0 DIBBA,EBRIMA (G); 3 JONES,DEVANTE (G); 4 SANDERS,AJAY (G); 33 BURTON,TOMMY (F); 40 CUTHBERTSON,ZAC (F);

DePaul: 0 SHREINER,LYRIK (G); 4 REED,PAUL (F); 11 CAIN,ELI (G); 25 OLUJOBI,FEMI (F); 31 STRUS,MAX (G);

| Time | VISITORS: Coastal Caro. | Score | Margin | HOME: DePaul |
|-------|---|-------|--------|-------------------------------------|
| 19:46 | | | | MISSED 3PTR by CAIN, ELI |
| 19:45 | | | | REBOUND (OFF) by OLUJOBI, FEMI |
| 19:45 | FOUL (PERSONAL) by BURTON, TOMMY | | | |
| 19:40 | | 38-38 | T | GOOD! LAYUP by OLUJOBI, FEMI |
| 19:23 | | | | FOUL (PERSONAL) by OLUJOBI, FEMI |
| 19:23 | GOOD! FT by BURTON, TOMMY | 38-39 | V 1 | |
| 19:23 | GOOD! FT by BURTON, TOMMY | 38-40 | V 2 | |
| 19:05 | | 40-40 | T | GOOD! JUMPER by OLUJOBI, FEMI [PNT] |
| 19:05 | | | | ASSIST by SHREINER, LYRIK |
| 18:49 | TURNOVER (LOSTBALL) by BURTON, TOMMY | | | |
| 18:49 | | | | STEAL by STRUS, MAX |
| 18:43 | | 42-40 | H 2 | GOOD! LAYUP by STRUS, MAX [FB] |
| 18:43 | FOUL (PERSONAL) by CUTHBERTSON, ZAC | | | |
| 18:43 | | 43-40 | H 3 | GOOD! FT by STRUS, MAX [FB] |
| 18:20 | GOOD! 3PTR by SANDERS, AJAY | 43-43 | T | |
| 18:20 | ASSIST by JONES, DEVANTE | | | |
| 18:03 | | 45-43 | H 2 | GOOD! LAYUP by OLUJOBI, FEMI |
| 17:49 | MISSED 3PTR by JONES, DEVANTE | | | |
| 17:44 | | | | REBOUND (DEF) by OLUJOBI, FEMI |
| 17:42 | | 47-43 | H 4 | GOOD! DUNK by REED, PAUL [FB] |
| 17:42 | | | | ASSIST by STRUS, MAX |
| 17:26 | MISSED LAYUP by BURTON, TOMMY | | | |
| 17:26 | | | | BLOCK by REED, PAUL |
| 17:25 | REBOUND (OFF) by TEAM | | | |
| 17:21 | SUB OUT: BURTON, TOMMY | | | |
| 17:21 | SUB IN: COLEMAN, JOSH | | | |
| 17:16 | MISSED LAYUP by CUTHBERTSON, ZAC | | | |
| 17:06 | REBOUND (OFF) by COLEMAN, JOSH | | | |
| 17:06 | GOOD! LAYUP by COLEMAN, JOSH | 47-45 | H 2 | |
| 17:05 | | 49-45 | H 4 | GOOD! LAYUP by REED, PAUL [FB] |
| 17:05 | FOUL (PERSONAL) by CUTHBERTSON, ZAC | | | |
| 17:05 | | 50-45 | H 5 | GOOD! FT by REED, PAUL [FB] |
| 16:49 | | | | FOUL (PERSONAL) by OLUJOBI, FEMI |
| 16:49 | MISSED FT by COLEMAN, JOSH | | | |
| 16:49 | REBOUND (OFF) by TEAM | | | |
| 16:49 | GOOD! FT by COLEMAN, JOSH | 50-46 | H 4 | |
| 16:46 | | 52-46 | H 6 | GOOD! DUNK by REED, PAUL |
| 16:46 | | | | ASSIST by CAIN, ELI |
| 16:24 | MISSED 3PTR by CUTHBERTSON, ZAC | | | |
| 16:20 | | | | REBOUND (DEF) by STRUS, MAX |
| 15:56 | | | | MISSED 3PTR by STRUS, MAX |
| 15:55 | REBOUND (DEF) by TEAM | | | |
| 15:55 | | | | |
| 15:34 | GOOD! 3PTR by DIBBA, EBRIMA | 52-49 | H 3 | |
| 15:34 | ASSIST by SANDERS, AJAY | | | |
| 15:16 | | 54-49 | H 5 | GOOD! DUNK by STRUS, MAX |
| 15:16 | | | | ASSIST by OLUJOBI, FEMI |
| 14:51 | MISSED LAYUP by DIBBA, EBRIMA | | | |
| 14:51 | | | | BLOCK by CAIN, ELI |
| 14:41 | REBOUND (OFF) by SANDERS, AJAY | | | |
| 14:41 | GOOD! LAYUP by COLEMAN, JOSH | 54-51 | H 3 | |
| 14:38 | FOUL (PERSONAL) by SANDERS, AJAY | | | |
| 14:38 | | | | SUB OUT: OLUJOBI, FEMI |
| 14:38 | | | | SUB IN: BUTZ, JAYLEN |
| 14:38 | SUB OUT: DIBBA, EBRIMA | | | |
| 14:38 | SUB IN: GUMBS-FRATER, TYRELL | | | |
| 14:24 | | | | MISSED JUMPER by BUTZ, JAYLEN |
| 14:20 | REBOUND (DEF) by COLEMAN, JOSH | | | |
| 14:18 | GOOD! 3PTR by GUMBS-FRATER, TYRELL [FB] | 54-54 | T | |
| 14:18 | ASSIST by JONES, DEVANTE | | | |
| 14:07 | | 56-54 | H 2 | GOOD! JUMPER by CAIN, ELI |
| 13:43 | GOOD! 3PTR by SANDERS, AJAY | 56-57 | V 1 | |
| 13:28 | FOUL (PERSONAL) by JONES, DEVANTE | | | |
| 13:28 | | 57-57 | T | GOOD! FT by BUTZ, JAYLEN |
| 13:28 | SUB OUT: SANDERS, AJAY | | | |
| 13:28 | SUB IN: DIBBA, EBRIMA | | | |
| 13:28 | | 58-57 | H 1 | GOOD! FT by BUTZ, JAYLEN |
| 13:08 | MISSED 3PTR by DIBBA, EBRIMA | | | |
| 13:03 | | | | REBOUND (DEF) by CAIN, ELI |
| 12:46 | | | | MISSED 3PTR by CAIN, ELI |

| Time | VISITORS: Coastal Caro. | Score | Margin | HOME: DePaul |
|-------|---|-------|--------|------------------------------------|
| 12:41 | | | | REBOUND (OFF) by REED, PAUL |
| 12:39 | | 60-57 | H 3 | GOOD! JUMPER by REED, PAUL [PNT] |
| 12:17 | GOOD! 3PTR by DIBBA, EBRIMA | 60-60 | T | |
| 12:17 | ASSIST by JONES, DEVANTE | | | |
| 11:51 | | 62-60 | H 2 | GOOD! LAYUP by BUTZ, JAYLEN [PNT] |
| 11:51 | | | | ASSIST by REED, PAUL |
| 11:34 | GOOD! LAYUP by COLEMAN, JOSH | 62-62 | T | |
| 11:34 | ASSIST by JONES, DEVANTE | | | |
| 11:19 | FOUL (PERSONAL) by DIBBA, EBRIMA | | | |
| 11:19 | | | | |
| 11:19 | SUB OUT: COLEMAN, JOSH | | | |
| 11:19 | SUB IN: BAMBA, AMIDOU | | | |
| 11:19 | SUB OUT: CUTHBERTSON, ZAC | | | |
| 11:19 | SUB IN: HIPPOLYTE, ISAAC | | | |
| 11:19 | | 63-62 | H 1 | GOOD! FT by BUTZ, JAYLEN |
| 11:19 | | 64-62 | H 2 | GOOD! FT by BUTZ, JAYLEN |
| 11:03 | MISSED 3PTR by GUMBS-FRATER, TYRELL | | | |
| 11:00 | | | | REBOUND (DEF) by BUTZ, JAYLEN |
| 10:51 | | 67-62 | H 5 | GOOD! 3PTR by CAIN, ELI |
| 10:51 | | | | ASSIST by STRUS, MAX |
| 10:38 | | | | FOUL (PERSONAL) by STRUS, MAX |
| 10:38 | MISSED FT by JONES, DEVANTE | | | |
| 10:38 | REBOUND (OFF) by TEAM | | | |
| 10:38 | | | | SUB OUT: REED, PAUL |
| 10:38 | | | | SUB IN: OLUJOBI, FEMI |
| 10:38 | GOOD! FT by JONES, DEVANTE | 67-63 | H 4 | |
| 10:28 | FOUL (PERSONAL) by GUMBS-FRATER, TYRELL | | | |
| 10:28 | | 68-63 | H 5 | GOOD! FT by CAIN, ELI |
| 10:28 | SUB OUT: HIPPOLYTE, ISAAC | | | |
| 10:28 | SUB IN: CUTHBERTSON, ZAC | | | |
| 10:28 | | 69-63 | H 6 | GOOD! FT by CAIN, ELI |
| 10:28 | SUB OUT: BAMBA, AMIDOU | | | |
| 10:28 | SUB IN: BURTON, TOMMY | | | |
| 10:15 | | | | FOUL (PERSONAL) by BUTZ, JAYLEN |
| 10:08 | MISSED 3PTR by JONES, DEVANTE | | | |
| 10:04 | | | | REBOUND (DEF) by SHREINER, LYRIK |
| 09:55 | | | | MISSED JUMPER by OLUJOBI, FEMI |
| 09:50 | REBOUND (DEF) by JONES, DEVANTE | | | |
| 09:47 | MISSED LAYUP by DIBBA, EBRIMA | | | |
| 09:40 | GOOD! LAYUP by DIBBA, EBRIMA | 69-65 | H 4 | |
| 09:40 | REBOUND (OFF) by DIBBA, EBRIMA | | | |
| 09:31 | FOUL (PERSONAL) by DIBBA, EBRIMA | | | |
| 09:31 | | 70-65 | H 5 | GOOD! FT by STRUS, MAX |
| 09:31 | | 71-65 | H 6 | GOOD! FT by STRUS, MAX |
| 09:31 | SUB OUT: JONES, DEVANTE | | | |
| 09:31 | SUB IN: SANDERS, AJAY | | | |
| 09:31 | | 72-65 | H 7 | GOOD! FT by STRUS, MAX |
| 09:03 | MISSED JUMPER by GUMBS-FRATER, TYRELL | | | |
| 09:03 | REBOUND (OFF) by BURTON, TOMMY | | | |
| 09:03 | | | | FOUL (PERSONAL) by STRUS, MAX |
| 09:03 | MISSED FT by BURTON, TOMMY | | | |
| 09:03 | REBOUND (OFF) by TEAM | | | |
| 09:03 | | | | SUB OUT: BUTZ, JAYLEN |
| 09:03 | | | | SUB IN: REED, PAUL |
| 09:03 | GOOD! FT by BURTON, TOMMY | 72-66 | H 6 | |
| 09:03 | TIMEOUT 30SEC | | | |
| 08:44 | | | | FOUL (OFF) by REED, PAUL |
| 08:44 | | | | TURNOVER (OFFENSIVE) by REED, PAUL |
| 08:25 | MISSED LAYUP by DIBBA, EBRIMA | | | |
| 08:18 | | | | REBOUND (DEF) by CAIN, ELI |
| 08:14 | | 75-66 | H 9 | GOOD! 3PTR by REED, PAUL [FB] |
| 07:57 | GOOD! 3PTR by CUTHBERTSON, ZAC | 75-69 | H 6 | |
| 07:38 | | 77-69 | H 8 | GOOD! LAYUP by STRUS, MAX |
| 07:30 | MISSED 3PTR by CUTHBERTSON, ZAC | | | |
| 07:24 | | | | REBOUND (DEF) by STRUS, MAX |
| 07:17 | | | | FOUL (OFF) by REED, PAUL |
| 07:17 | | | | TURNOVER (OFFENSIVE) by REED, PAUL |
| 07:17 | | | | |
| 07:17 | | | | SUB OUT: REED, PAUL |
| 07:17 | | | | SUB IN: BUTZ, JAYLEN |
| 07:17 | SUB OUT: GUMBS-FRATER, TYRELL | | | |
| 07:17 | SUB IN: JONES, DEVANTE | | | |
| 07:01 | MISSED 3PTR by SANDERS, AJAY | | | |
| 06:56 | | | | REBOUND (DEF) by BUTZ, JAYLEN |
| 06:38 | | 79-69 | H 10 | GOOD! LAYUP by SHREINER, LYRIK |
| 06:38 | FOUL (PERSONAL) by JONES, DEVANTE | | | |
| 06:38 | SUB OUT: SANDERS, AJAY | | | |
| 06:38 | SUB IN: GUMBS-FRATER, TYRELL | | | |
| 06:38 | | 80-69 | H 11 | GOOD! FT by SHREINER, LYRIK |
| 06:18 | GOOD! 3PTR by GUMBS-FRATER, TYRELL | 80-72 | H 8 | |

| Time | VISITORS: Coastal Caro. | Score | Margin | HOME: DePaul |
|-------|---|-------|--------|---------------------------------------|
| 06:18 | ASSIST by JONES, DEVANTE | | | |
| 05:54 | | | | TURNOVER (BADPASS) by SHREINER, LYRIK |
| 05:54 | STEAL by BURTON, TOMMY | | | |
| 05:51 | | | | FOUL (PERSONAL) by SHREINER, LYRIK |
| 05:51 | GOOD! FT by CUTHBERTSON, ZAC [FB] | 80-73 | H 7 | |
| 05:51 | MISSED FT by CUTHBERTSON, ZAC | | | |
| 05:47 | REBOUND (OFF) by GUMBS-FRATER, TYRELL | | | |
| 05:28 | GOOD! 3PTR by GUMBS-FRATER, TYRELL | 80-76 | H 4 | |
| 05:28 | ASSIST by DIBBA, EBRIMA | | | |
| 05:07 | | | | MISSED 3PTR by CAIN, ELI |
| 05:03 | REBOUND (DEF) by BURTON, TOMMY | | | |
| 04:47 | MISSED 3PTR by JONES, DEVANTE | | | |
| 04:41 | | | | REBOUND (DEF) by OLUJOBI, FEMI |
| 04:19 | | 82-76 | H 6 | GOOD! LAYUP by BUTZ, JAYLEN [PNT] |
| 03:56 | MISSED 3PTR by GUMBS-FRATER, TYRELL | | | |
| 03:52 | | | | REBOUND (DEF) by BUTZ, JAYLEN |
| 03:33 | | | | MISSED LAYUP by CAIN, ELI |
| 03:25 | REBOUND (DEF) by BURTON, TOMMY | | | |
| 03:17 | GOOD! JUMPER by DIBBA, EBRIMA | 82-78 | H 4 | |
| 03:16 | TIMEOUT 30SEC | | | |
| 03:16 | | | | SUB OUT: BUTZ, JAYLEN |
| 03:16 | | | | SUB IN: REED, PAUL |
| 02:58 | | 84-78 | H 6 | GOOD! LAYUP by OLUJOBI, FEMI |
| 02:39 | | | | FOUL (PERSONAL) by OLUJOBI, FEMI |
| 02:39 | GOOD! FT by CUTHBERTSON, ZAC | 84-79 | H 5 | |
| 02:39 | GOOD! FT by CUTHBERTSON, ZAC | 84-80 | H 4 | |
| 02:29 | FOUL (PERSONAL) by GUMBS-FRATER, TYRELL | | | |
| 02:29 | | 85-80 | H 5 | GOOD! FT by STRUS, MAX |
| 02:29 | | | | SUB OUT: OLUJOBI, FEMI |
| 02:29 | | | | SUB IN: BUTZ, JAYLEN |
| 02:29 | | 86-80 | H 6 | GOOD! FT by STRUS, MAX |
| 02:11 | GOOD! LAYUP by BURTON, TOMMY | 86-82 | H 4 | |
| 02:11 | ASSIST by JONES, DEVANTE | | | |
| 02:03 | | | | TIMEOUT 30SEC |
| 02:03 | | | | SUB OUT: BUTZ, JAYLEN |
| 02:03 | | | | SUB IN: OLUJOBI, FEMI |
| 01:44 | | | | TURNOVER (BADPASS) by REED, PAUL |
| 01:44 | | | | SUB OUT: OLUJOBI, FEMI |
| 01:44 | | | | SUB IN: BUTZ, JAYLEN |
| 01:27 | MISSED LAYUP by CUTHBERTSON, ZAC | | | |
| 01:27 | | | | BLOCK by REED, PAUL |
| 01:27 | REBOUND (OFF) by TEAM | | | |
| 01:24 | MISSED 3PTR by GUMBS-FRATER, TYRELL | | | |
| 01:20 | | | | REBOUND (DEF) by STRUS, MAX |
| 00:54 | | | | MISSED 3PTR by STRUS, MAX |
| 00:53 | | | | REBOUND (OFF) by TEAM |
| 00:53 | | | | TURNOVER (SHOTCLOCK) by |
| 00:41 | TURNOVER (BADPASS) by DIBBA, EBRIMA | | | |
| 00:41 | TIMEOUT TEAM | | | |
| 00:41 | | | | SUB OUT: BUTZ, JAYLEN |
| 00:41 | | | | SUB IN: OLUJOBI, FEMI |
| 00:41 | SUB OUT: GUMBS-FRATER, TYRELL | | | |
| 00:41 | SUB IN: SANDERS, AJAY | | | |
| 00:31 | | 88-82 | H 6 | GOOD! LAYUP by REED, PAUL [PNT] |
| 00:18 | MISSED 3PTR by JONES, DEVANTE | | | |
| 00:17 | | | | REBOUND (DEF) by OLUJOBI, FEMI |
| 00:17 | FOUL (PERSONAL) by CUTHBERTSON, ZAC | | | |
| 00:17 | | 89-82 | H 7 | GOOD! FT by OLUJOBI, FEMI |
| 00:17 | | 90-82 | H 8 | GOOD! FT by OLUJOBI, FEMI |
| 00:17 | | | | SUB OUT: OLUJOBI, FEMI |
| 00:17 | | | | SUB IN: BUTZ, JAYLEN |
| 00:17 | SUB OUT: SANDERS, AJAY | | | |
| 00:17 | SUB IN: GUMBS-FRATER, TYRELL | | | |
| 00:15 | GOOD! JUMPER by GUMBS-FRATER, TYRELL | 90-84 | H 6 | |
| 00:15 | | | | SUB OUT: BUTZ, JAYLEN |
| 00:15 | | | | SUB IN: OLUJOBI, FEMI |
| 00:15 | SUB OUT: CUTHBERTSON, ZAC | | | |
| 00:15 | SUB IN: SANDERS, AJAY | | | |
| 00:15 | | | | SUB OUT: OLUJOBI, FEMI |
| 00:15 | | | | SUB IN: BUTZ, JAYLEN |
| 00:12 | FOUL (PERSONAL) by GUMBS-FRATER, TYRELL | | | |
| 00:12 | | 91-84 | H 7 | GOOD! FT by STRUS, MAX [FB] |
| 00:12 | | 92-84 | H 8 | GOOD! FT by STRUS, MAX [FB] |
| 00:04 | MISSED 3PTR by DIBBA, EBRIMA | | | |
| 00:04 | | | | BLOCK by REED, PAUL |
| 00:04 | REBOUND (OFF) by TEAM | | | |
| 00:04 | GOOD! 3PTR by JONES, DEVANTE | 92-87 | H 5 | |

Coastal Caro. 87, DePaul 92

| Points from (This Period) | CCU | DPU |
|----------------------------------|------------|------------|
| In the Paint | 10 | 30 |
| Off Turns | 1 | 5 |
| 2nd Chance | 8 | 4 |
| Fast Break | 4 | 13 |
| Bench | 18 | 8 |

Official Scoring/Possession Reference Chart
Coastal Caro. vs DePaul
Period 1



March 28, 2019 at McGrath-Phillips Arena (Doug Bruno Court) - Chicago, IL

Period 1

Starters:

Coastal Caro.: 0 DIBBA, EBRIMA (G); 3 JONES, DEVANTE (G); 4 SANDERS, AJAY (G); 33 BURTON, TOMMY (F); 40 CUTHBERTSON, ZAC (F);
DePaul: 0 SHREINER, LYRIK (G); 4 REED, PAUL (F); 11 CAIN, ELI (G); 25 OLUJOBI, FEMI (F); 31 STRUS, MAX (G);

| Time | VISITORS: Coastal Caro. | Score | Margin | HOME: DePaul |
|-------|--|-------|--------|-------------------------------------|
| 19:31 | GOOD! JUMPER by CUTHBERTSON, ZAC | 0-2 | V 2 | |
| 19:11 | | 2-2 | T | GOOD! DUNK by REED, PAUL |
| 18:50 | GOOD! JUMPER by JONES, DEVANTE [PNT] | 2-4 | V 2 | |
| 18:32 | | 5-4 | H 1 | GOOD! 3PTR by CAIN, ELI |
| 17:52 | | 7-4 | H 3 | GOOD! LAYUP by CAIN, ELI |
| 16:39 | | 9-4 | H 5 | GOOD! LAYUP by OLUJOBI, FEMI |
| 15:47 | GOOD! JUMPER by JONES, DEVANTE | 9-6 | H 3 | |
| 15:16 | GOOD! LAYUP by CUTHBERTSON, ZAC [FB] | 9-8 | H 1 | |
| 15:16 | GOOD! FT by CUTHBERTSON, ZAC | 9-9 | T | |
| 14:49 | | 11-9 | H 2 | GOOD! LAYUP by REED, PAUL |
| 13:36 | GOOD! LAYUP by SANDERS, AJAY [PNT] | 11-11 | T | |
| 13:36 | GOOD! FT by SANDERS, AJAY | 11-12 | V 1 | |
| 12:48 | | 13-12 | H 1 | GOOD! DUNK by OLUJOBI, FEMI |
| 12:48 | GOOD! 3PTR by CUTHBERTSON, ZAC [FB] | 13-15 | V 2 | |
| 12:41 | | 14-15 | V 1 | GOOD! FT by BUTZ, JAYLEN [FB] |
| 11:28 | | 16-15 | H 1 | GOOD! LAYUP by STRUS, MAX [FB] |
| 11:28 | | 17-15 | H 2 | GOOD! FT by STRUS, MAX [FB] |
| 10:14 | GOOD! LAYUP by DIBBA, EBRIMA [PNT] | 17-17 | T | |
| 10:02 | | 19-17 | H 2 | GOOD! LAYUP by REED, PAUL |
| 09:53 | GOOD! 3PTR by JONES, DEVANTE | 19-20 | V 1 | |
| 09:08 | | 21-20 | H 1 | GOOD! LAYUP by BUTZ, JAYLEN |
| 08:43 | GOOD! LAYUP by BAMBA, AMIDOU | 21-22 | V 1 | |
| 08:24 | GOOD! 3PTR by CUTHBERTSON, ZAC [FB] | 21-25 | V 4 | |
| 08:10 | | 24-25 | V 1 | GOOD! 3PTR by STRUS, MAX |
| 06:25 | | 26-25 | H 1 | GOOD! LAYUP by OLUJOBI, FEMI |
| 04:53 | | 28-25 | H 3 | GOOD! JUMPER by REED, PAUL [PNT] |
| 03:58 | | 30-25 | H 5 | GOOD! JUMPER by REED, PAUL [PNT] |
| 03:41 | GOOD! LAYUP by JONES, DEVANTE | 30-27 | H 3 | |
| 03:41 | GOOD! FT by JONES, DEVANTE | 30-28 | H 2 | |
| 03:10 | GOOD! JUMPER by CUTHBERTSON, ZAC | 30-30 | T | |
| 02:50 | | 32-30 | H 2 | GOOD! JUMPER by OLUJOBI, FEMI [PNT] |
| 02:31 | GOOD! JUMPER by CUTHBERTSON, ZAC | 32-32 | T | |
| 01:44 | GOOD! LAYUP by JONES, DEVANTE [PNT] | 32-34 | V 2 | |
| 01:34 | | 33-34 | V 1 | GOOD! FT by STRUS, MAX |
| 01:34 | | 34-34 | T | GOOD! FT by STRUS, MAX |
| 00:43 | GOOD! LAYUP by DIBBA, EBRIMA [PNT] | 34-36 | V 2 | |
| 00:28 | | 36-36 | T | GOOD! LAYUP by STRUS, MAX [PNT] |
| 00:03 | GOOD! JUMPER by GUMBS-FRATER, TYRELL [PNT] | 36-38 | V 2 | |

Coastal Caro. 38, DePaul 36

Official Scoring/Possession Reference Chart
Coastal Caro. vs DePaul
Period 2



March 28, 2019 at McGrath-Phillips Arena (Doug Bruno Court) - Chicago, IL

Period 2

Starters:

Coastal Caro.: 0 DIBBA,EBRIMA (G); 3 JONES,DEVANTE (G); 4 SANDERS,AJAY (G); 33 BURTON,TOMMY (F); 40 CUTHBERTSON,ZAC (F);
DePaul: 0 SHREINER,LYRIK (G); 4 REED,PAUL (F); 11 CAIN,ELI (G); 25 OLUJOBI,FEMI (F); 31 STRUS,MAX (G);

| Time | VISITORS: Coastal Caro. | Score | Margin | HOME: DePaul |
|-------|---|-------|--------|-------------------------------------|
| 19:40 | | 38-38 | T | GOOD! LAYUP by OLUJOBI, FEMI |
| 19:23 | GOOD! FT by BURTON, TOMMY | 38-39 | V 1 | |
| 19:23 | GOOD! FT by BURTON, TOMMY | 38-40 | V 2 | |
| 19:05 | | 40-40 | T | GOOD! JUMPER by OLUJOBI, FEMI [PNT] |
| 18:43 | | 42-40 | H 2 | GOOD! LAYUP by STRUS, MAX [FB] |
| 18:43 | | 43-40 | H 3 | GOOD! FT by STRUS, MAX [FB] |
| 18:20 | GOOD! 3PTR by SANDERS, AJAY | 43-43 | T | |
| 18:03 | | 45-43 | H 2 | GOOD! LAYUP by OLUJOBI, FEMI |
| 17:42 | | 47-43 | H 4 | GOOD! DUNK by REED, PAUL [FB] |
| 17:06 | GOOD! LAYUP by COLEMAN, JOSH | 47-45 | H 2 | |
| 17:05 | | 49-45 | H 4 | GOOD! LAYUP by REED, PAUL [FB] |
| 17:05 | | 50-45 | H 5 | GOOD! FT by REED, PAUL [FB] |
| 16:49 | GOOD! FT by COLEMAN, JOSH | 50-46 | H 4 | |
| 16:46 | | 52-46 | H 6 | GOOD! DUNK by REED, PAUL |
| 15:34 | GOOD! 3PTR by DIBBA, EBRIMA | 52-49 | H 3 | |
| 15:16 | | 54-49 | H 5 | GOOD! DUNK by STRUS, MAX |
| 14:41 | GOOD! LAYUP by COLEMAN, JOSH | 54-51 | H 3 | |
| 14:18 | GOOD! 3PTR by GUMBS-FRATER, TYRELL [FB] | 54-54 | T | |
| 14:07 | | 56-54 | H 2 | GOOD! JUMPER by CAIN, ELI |
| 13:43 | GOOD! 3PTR by SANDERS, AJAY | 56-57 | V 1 | |
| 13:28 | | 57-57 | T | GOOD! FT by BUTZ, JAYLEN |
| 13:28 | | 58-57 | H 1 | GOOD! FT by BUTZ, JAYLEN |
| 12:39 | | 60-57 | H 3 | GOOD! JUMPER by REED, PAUL [PNT] |
| 12:17 | GOOD! 3PTR by DIBBA, EBRIMA | 60-60 | T | |
| 11:51 | | 62-60 | H 2 | GOOD! LAYUP by BUTZ, JAYLEN [PNT] |
| 11:34 | GOOD! LAYUP by COLEMAN, JOSH | 62-62 | T | |
| 11:19 | | 63-62 | H 1 | GOOD! FT by BUTZ, JAYLEN |
| 11:19 | | 64-62 | H 2 | GOOD! FT by BUTZ, JAYLEN |
| 10:51 | | 67-62 | H 5 | GOOD! 3PTR by CAIN, ELI |
| 10:38 | GOOD! FT by JONES, DEVANTE | 67-63 | H 4 | |
| 10:28 | | 68-63 | H 5 | GOOD! FT by CAIN, ELI |
| 10:28 | | 69-63 | H 6 | GOOD! FT by CAIN, ELI |
| 09:40 | GOOD! LAYUP by DIBBA, EBRIMA | 69-65 | H 4 | |
| 09:31 | | 70-65 | H 5 | GOOD! FT by STRUS, MAX |
| 09:31 | | 71-65 | H 6 | GOOD! FT by STRUS, MAX |
| 09:31 | | 72-65 | H 7 | GOOD! FT by STRUS, MAX |
| 09:03 | GOOD! FT by BURTON, TOMMY | 72-66 | H 6 | |
| 08:14 | | 75-66 | H 9 | GOOD! 3PTR by REED, PAUL [FB] |
| 07:57 | GOOD! 3PTR by CUTHBERTSON, ZAC | 75-69 | H 6 | |
| 07:38 | | 77-69 | H 8 | GOOD! LAYUP by STRUS, MAX |
| 06:38 | | 79-69 | H 10 | GOOD! LAYUP by SHREINER, LYRIK |
| 06:38 | | 80-69 | H 11 | GOOD! FT by SHREINER, LYRIK |
| 06:18 | GOOD! 3PTR by GUMBS-FRATER, TYRELL | 80-72 | H 8 | |
| 05:51 | GOOD! FT by CUTHBERTSON, ZAC [FB] | 80-73 | H 7 | |
| 05:28 | GOOD! 3PTR by GUMBS-FRATER, TYRELL | 80-76 | H 4 | |
| 04:19 | | 82-76 | H 6 | GOOD! LAYUP by BUTZ, JAYLEN [PNT] |
| 03:17 | GOOD! JUMPER by DIBBA, EBRIMA | 82-78 | H 4 | |
| 02:58 | | 84-78 | H 6 | GOOD! LAYUP by OLUJOBI, FEMI |
| 02:39 | GOOD! FT by CUTHBERTSON, ZAC | 84-79 | H 5 | |
| 02:39 | GOOD! FT by CUTHBERTSON, ZAC | 84-80 | H 4 | |
| 02:29 | | 85-80 | H 5 | GOOD! FT by STRUS, MAX |
| 02:29 | | 86-80 | H 6 | GOOD! FT by STRUS, MAX |

| Time | VISITORS: Coastal Caro. | Score | Margin | HOME: DePaul |
|-------|--------------------------------------|-------|--------|---------------------------------|
| 02:11 | GOOD! LAYUP by BURTON, TOMMY | 86-82 | H 4 | |
| 00:31 | | 88-82 | H 6 | GOOD! LAYUP by REED, PAUL [PNT] |
| 00:17 | | 89-82 | H 7 | GOOD! FT by OLUJOBI, FEMI |
| 00:17 | | 90-82 | H 8 | GOOD! FT by OLUJOBI, FEMI |
| 00:15 | GOOD! JUMPER by GUMBS-FRATER, TYRELL | 90-84 | H 6 | |
| 00:12 | | 91-84 | H 7 | GOOD! FT by STRUS, MAX [FB] |
| 00:12 | | 92-84 | H 8 | GOOD! FT by STRUS, MAX [FB] |
| 00:04 | GOOD! 3PTR by JONES, DEVANTE | 92-87 | H 5 | |

Coastal Caro. 87, DePaul 92

**Official Substitutions Log
Coastal Caro. vs DePaul
Period 1**

March 28, 2019 at McGrath-Phillips Arena (Doug Bruno Court) - Chicago, IL



| VISITORS: Coastal Caro. | Time | Score | HOME: DePaul |
|---------------------------------|-------|-------|-------------------------|
| 0 DIBBA,EBRIMA | | | 0 SHREINER,LYRIK |
| 3 JONES,DEVANTE | | | 4 REED,PAUL |
| 4 SANDERS,AJAY | | | 11 CAIN,ELI |
| 33 BURTON,TOMMY | | | 25 OLUJOBI,FEMI |
| 40 CUTHBERTSON,ZAC | | | 31 STRUS,MAX |
| SUB OUT: 0 DIBBA,EBRIMA | 15:16 | 8-9 | |
| SUB IN: 10 GUMBS-FRATER,TYRELL | 15:16 | | |
| SUB OUT: 33 BURTON,TOMMY | 15:16 | | |
| SUB IN: 30 COLEMAN,JOSH | 15:16 | | |
| | 13:36 | 11-11 | SUB OUT: SHREINER,LYRIK |
| | 13:36 | | SUB IN: BUTZ,JAYLEN |
| | 13:36 | | SUB OUT: REED,PAUL |
| | 13:36 | | SUB IN: CAMERON,FLYNN |
| SUB OUT: 30 COLEMAN,JOSH | 13:21 | 12-11 | |
| SUB IN: 33 BURTON,TOMMY | 13:21 | | |
| SUB OUT: 10 GUMBS-FRATER,TYRELL | 12:48 | 12-11 | |
| SUB IN: 0 DIBBA,EBRIMA | 12:48 | | |
| SUB OUT: 3 JONES,DEVANTE | 12:46 | 15-13 | |
| SUB IN: 10 GUMBS-FRATER,TYRELL | 12:46 | | |
| SUB OUT: 40 CUTHBERTSON,ZAC | 12:46 | | |
| SUB IN: 3 JONES,DEVANTE | 12:46 | | |
| SUB OUT: 33 BURTON,TOMMY | 12:46 | | |
| SUB IN: 15 HIPPOLYTE,ISAAC | 12:46 | | |
| SUB OUT: 4 SANDERS,AJAY | 12:46 | | |
| SUB IN: 30 COLEMAN,JOSH | 12:46 | | |
| | 11:45 | 15-14 | SUB OUT: CAMERON,FLYNN |
| | 11:45 | | SUB IN: SHREINER,LYRIK |
| | 11:28 | 15-16 | SUB OUT: BUTZ,JAYLEN |
| | 11:28 | | SUB IN: REED,PAUL |
| SUB OUT: 30 COLEMAN,JOSH | 11:28 | | |
| SUB IN: 11 BAMBA,AMIDOU | 11:28 | | |
| SUB OUT: 15 HIPPOLYTE,ISAAC | 10:36 | 15-17 | |
| SUB IN: 40 CUTHBERTSON,ZAC | 10:36 | | |
| | 09:29 | 20-19 | SUB OUT: REED,PAUL |
| | 09:29 | | SUB IN: BUTZ,JAYLEN |
| SUB OUT: 0 DIBBA,EBRIMA | 09:29 | | |
| SUB IN: 15 HIPPOLYTE,ISAAC | 09:29 | | |
| SUB OUT: 10 GUMBS-FRATER,TYRELL | 07:53 | 25-24 | |
| SUB IN: 4 SANDERS,AJAY | 07:53 | | |
| SUB OUT: 15 HIPPOLYTE,ISAAC | 07:53 | | |
| SUB IN: 0 DIBBA,EBRIMA | 07:53 | | |
| | 05:33 | 25-26 | SUB OUT: SHREINER,LYRIK |
| | 05:33 | | SUB IN: CAMERON,FLYNN |
| SUB OUT: 0 DIBBA,EBRIMA | 05:20 | 25-26 | |
| SUB IN: 14 BROWN,TREVION | 05:20 | | |
| | 04:59 | 25-26 | SUB OUT: OLUJOBI,FEMI |
| | 04:59 | | SUB IN: REED,PAUL |
| | 03:41 | 27-30 | SUB OUT: REED,PAUL |
| | 03:41 | | SUB IN: OLUJOBI,FEMI |
| SUB OUT: 4 SANDERS,AJAY | 03:41 | | |
| SUB IN: 0 DIBBA,EBRIMA | 03:41 | | |
| SUB OUT: 14 BROWN,TREVION | 03:41 | | |
| SUB IN: 10 GUMBS-FRATER,TYRELL | 03:41 | | |
| | 03:25 | 28-30 | SUB OUT: CAIN,ELI |
| | 03:25 | | SUB IN: SHREINER,LYRIK |
| | 02:55 | 30-30 | SUB OUT: CAMERON,FLYNN |
| | 02:55 | | SUB IN: CAIN,ELI |
| SUB OUT: 11 BAMBA,AMIDOU | 02:22 | 32-32 | |
| SUB IN: 30 COLEMAN,JOSH | 02:22 | | |
| SUB OUT: 3 JONES,DEVANTE | 01:34 | 34-32 | |
| SUB IN: 4 SANDERS,AJAY | 01:34 | | |
| SUB OUT: 30 COLEMAN,JOSH | 00:54 | 34-34 | |
| SUB IN: 11 BAMBA,AMIDOU | 00:54 | | |

Coastal Caro. 38, DePaul 36

**Official Substitutions Log
Coastal Caro. vs DePaul
Period 2**

March 28, 2019 at McGrath-Phillips Arena (Doug Bruno Court) - Chicago, IL



| VISITORS: Coastal Caro. | Time | Score | HOME: DePaul |
|---------------------------------|-------|-------|-----------------------|
| 0 DIBBA,EBRIMA | | | 0 SHREINER,LYRIK |
| 3 JONES,DEVANTE | | | 4 REED,PAUL |
| 4 SANDERS,AJAY | | | 11 CAIN,ELI |
| 33 BURTON,TOMMY | | | 25 OLUJOBI,FEMI |
| 40 CUTHBERTSON,ZAC | | | 31 STRUS,MAX |
| SUB OUT: 33 BURTON,TOMMY | 17:21 | 43-47 | |
| SUB IN: 30 COLEMAN,JOSH | 17:21 | | |
| | 14:38 | 51-54 | SUB OUT: OLUJOBI,FEMI |
| | 14:38 | | SUB IN: BUTZ,JAYLEN |
| SUB OUT: 0 DIBBA,EBRIMA | 14:38 | | |
| SUB IN: 10 GUMBS-FRATER,TYRELL | 14:38 | | |
| SUB OUT: 4 SANDERS,AJAY | 13:28 | 57-57 | |
| SUB IN: 0 DIBBA,EBRIMA | 13:28 | | |
| SUB OUT: 30 COLEMAN,JOSH | 11:19 | 62-62 | |
| SUB IN: 11 BAMBA,AMIDOU | 11:19 | | |
| SUB OUT: 40 CUTHBERTSON,ZAC | 11:19 | | |
| SUB IN: 15 HIPPOLYTE,ISAAC | 11:19 | | |
| | 10:38 | 62-67 | SUB OUT: REED,PAUL |
| | 10:38 | | SUB IN: OLUJOBI,FEMI |
| SUB OUT: 15 HIPPOLYTE,ISAAC | 10:28 | 63-68 | |
| SUB IN: 40 CUTHBERTSON,ZAC | 10:28 | | |
| SUB OUT: 11 BAMBA,AMIDOU | 10:28 | | |
| SUB IN: 33 BURTON,TOMMY | 10:28 | | |
| SUB OUT: 3 JONES,DEVANTE | 09:31 | 65-71 | |
| SUB IN: 4 SANDERS,AJAY | 09:31 | | |
| | 09:03 | 65-72 | SUB OUT: BUTZ,JAYLEN |
| | 09:03 | | SUB IN: REED,PAUL |
| | 07:17 | 69-77 | SUB OUT: REED,PAUL |
| | 07:17 | | SUB IN: BUTZ,JAYLEN |
| SUB OUT: 10 GUMBS-FRATER,TYRELL | 07:17 | | |
| SUB IN: 3 JONES,DEVANTE | 07:17 | | |
| SUB OUT: 4 SANDERS,AJAY | 06:38 | 69-79 | |
| SUB IN: 10 GUMBS-FRATER,TYRELL | 06:38 | | |
| | 03:16 | 78-82 | SUB OUT: BUTZ,JAYLEN |
| | 03:16 | | SUB IN: REED,PAUL |
| | 02:29 | 80-85 | SUB OUT: OLUJOBI,FEMI |
| | 02:29 | | SUB IN: BUTZ,JAYLEN |
| | 02:03 | 82-86 | SUB OUT: BUTZ,JAYLEN |
| | 02:03 | | SUB IN: OLUJOBI,FEMI |
| | 01:44 | 82-86 | SUB OUT: OLUJOBI,FEMI |
| | 01:44 | | SUB IN: BUTZ,JAYLEN |
| | 00:41 | 82-86 | SUB OUT: BUTZ,JAYLEN |
| | 00:41 | | SUB IN: OLUJOBI,FEMI |
| SUB OUT: 10 GUMBS-FRATER,TYRELL | 00:41 | | |
| SUB IN: 4 SANDERS,AJAY | 00:41 | | |
| | 00:17 | 82-90 | SUB OUT: OLUJOBI,FEMI |
| | 00:17 | | SUB IN: BUTZ,JAYLEN |
| SUB OUT: 4 SANDERS,AJAY | 00:17 | | |
| SUB IN: 10 GUMBS-FRATER,TYRELL | 00:17 | | |
| | 00:15 | 84-90 | SUB OUT: BUTZ,JAYLEN |
| | 00:15 | | SUB IN: OLUJOBI,FEMI |
| SUB OUT: 40 CUTHBERTSON,ZAC | 00:15 | | |
| SUB IN: 4 SANDERS,AJAY | 00:15 | | |
| | 00:15 | | SUB OUT: OLUJOBI,FEMI |
| | 00:15 | | SUB IN: BUTZ,JAYLEN |

Coastal Caro. 87, DePaul 92

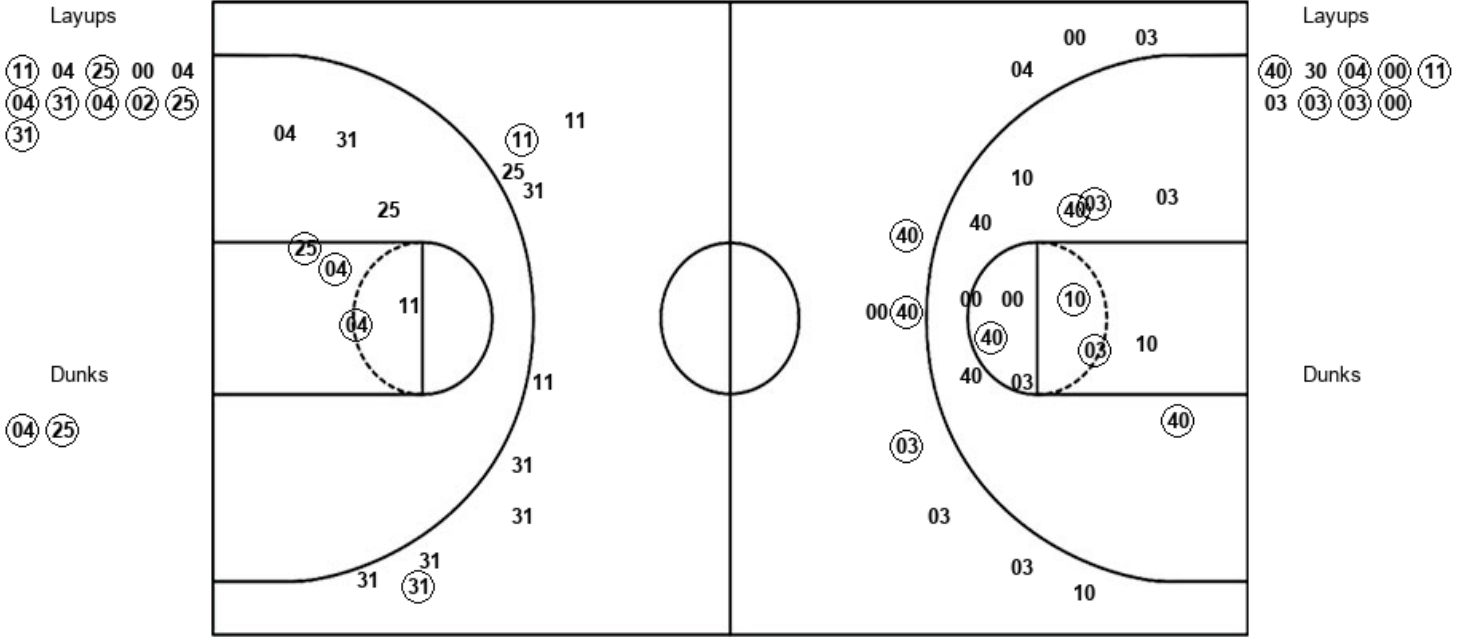
Official Shot Chart
 Coastal Caro. vs DePaul
 PERIOD 1 Shots

March 28, 2019 at McGrath-Phillips Arena (Doug Bruno Court) - Chicago, IL



DePaul

Coastal Caro.



| DPU : Period 1 | Made | Att | Pct |
|--------------------------|-----------|-----------|-------------|
| Layups | 8 | 11 | 72.7 |
| Dunks | 2 | 2 | 100.0 |
| 2PT Field Goals | 13 | 20 | 65.0 |
| 3PT Field Goals | 2 | 10 | 20.0 |
| Total Field Goals | 15 | 30 | 50.0 |

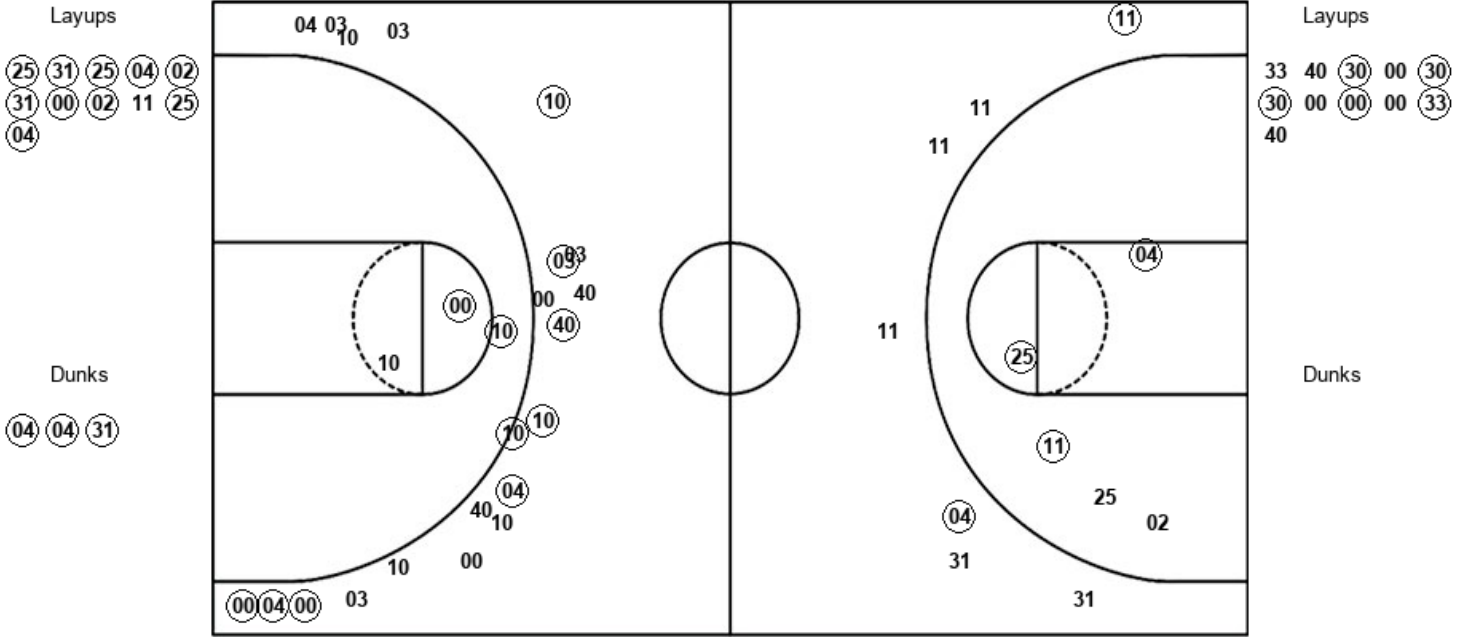
| CCU : Period 1 | Made | Att | Pct |
|--------------------------|-----------|-----------|-------------|
| Layups | 7 | 9 | 77.8 |
| Dunks | 0 | 0 | 0 |
| 2PT Field Goals | 13 | 23 | 56.5 |
| 3PT Field Goals | 3 | 10 | 30.0 |
| Total Field Goals | 16 | 33 | 48.5 |

Official Shot Chart
Coastal Caro. vs DePaul
PERIOD 2 Shots
 March 28, 2019 at McGrath-Phillips Arena (Doug Bruno Court) - Chicago, IL



DePaul

Coastal Caro.



| DPU : Period 2 | Made | Att | Pct |
|--------------------------|-----------|-----------|-------------|
| Layups | 10 | 11 | 90.9 |
| Dunks | 3 | 3 | 100.0 |
| 2PT Field Goals | 16 | 19 | 84.2 |
| 3PT Field Goals | 2 | 7 | 28.6 |
| Total Field Goals | 18 | 26 | 69.2 |

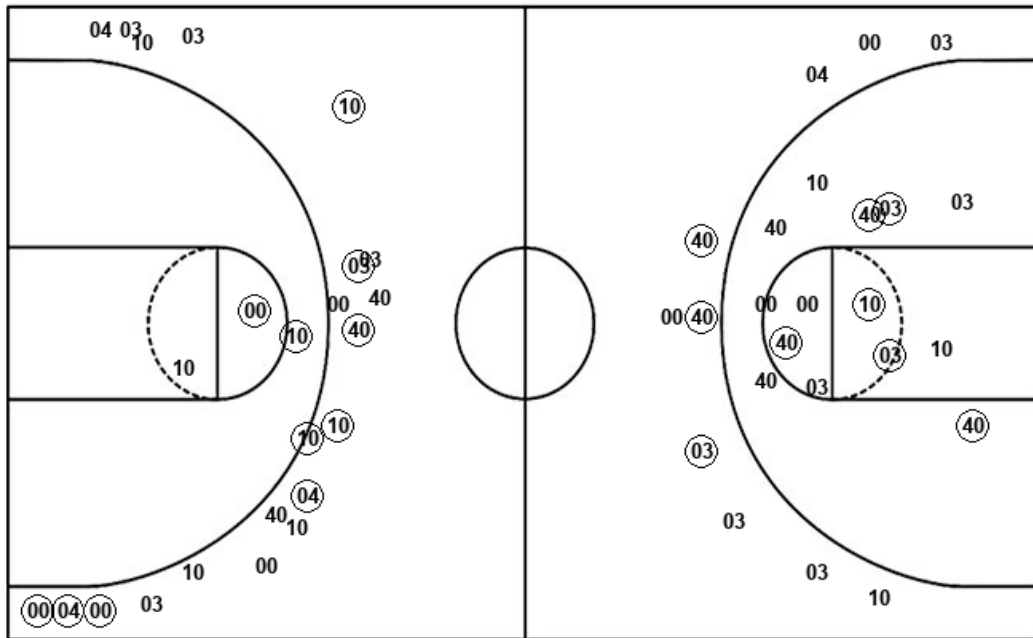
| CCU : Period 2 | Made | Att | Pct |
|--------------------------|-----------|-----------|-------------|
| Layups | 5 | 11 | 45.5 |
| Dunks | 0 | 0 | 0 |
| 2PT Field Goals | 7 | 14 | 50.0 |
| 3PT Field Goals | 9 | 21 | 42.9 |
| Total Field Goals | 16 | 35 | 45.7 |

Official Shot Chart
Coastal Caro. vs DePaul
 Coastal Caro. Team Shots
 March 28, 2019 at McGrath-Phillips Arena (Doug Bruno Court) - Chicago, IL



Layups

Dunks



Layups

Dunks

(40) 30 (04) (00) (11)
 03 (03) (03) (00) 33
 40 (30) 00 (30) (30)
 00 (00) 00 (33) 40

| CCU : Period 1 | Made | Att | Pct |
|--------------------------|-----------|-----------|-------------|
| Layups | 7 | 9 | 77.8 |
| Dunks | 0 | 0 | 0 |
| 2PT Field Goals | 13 | 23 | 56.5 |
| 3PT Field Goals | 3 | 10 | 30.0 |
| Total Field Goals | 16 | 33 | 48.5 |

| CCU : Period 2 | Made | Att | Pct |
|--------------------------|-----------|-----------|-------------|
| Layups | 5 | 11 | 45.5 |
| Dunks | 0 | 0 | 0 |
| 2PT Field Goals | 7 | 14 | 50.0 |
| 3PT Field Goals | 9 | 21 | 42.9 |
| Total Field Goals | 16 | 35 | 45.7 |

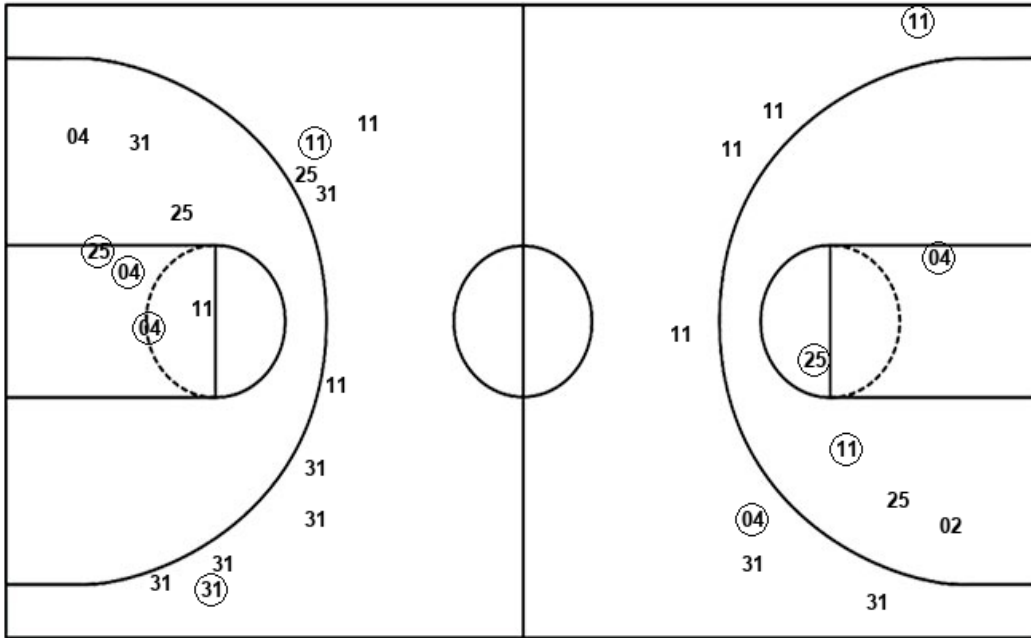
Official Shot Chart
 Coastal Caro. vs DePaul
 DePaul Team Shots

March 28, 2019 at McGrath-Phillips Arena (Doug Bruno Court) - Chicago, IL



Layups

Dunks



Layups

| | | | | |
|----|----|----|----|----|
| 11 | 04 | 25 | 00 | 04 |
| 04 | 31 | 04 | 02 | 25 |
| 31 | 25 | 31 | 25 | 04 |
| 02 | 31 | 00 | 02 | 11 |
| 25 | 04 | | | |

Dunks

| | | | | |
|----|----|----|----|----|
| 04 | 25 | 04 | 04 | 31 |
|----|----|----|----|----|

| DPU : Period 1 | Made | Att | Pct |
|--------------------------|-----------|-----------|-------------|
| Layups | 8 | 11 | 72.7 |
| Dunks | 2 | 2 | 100.0 |
| 2PT Field Goals | 13 | 20 | 65.0 |
| 3PT Field Goals | 2 | 10 | 20.0 |
| Total Field Goals | 15 | 30 | 50.0 |

| DPU : Period 2 | Made | Att | Pct |
|--------------------------|-----------|-----------|-------------|
| Layups | 10 | 11 | 90.9 |
| Dunks | 3 | 3 | 100.0 |
| 2PT Field Goals | 16 | 19 | 84.2 |
| 3PT Field Goals | 2 | 7 | 28.6 |
| Total Field Goals | 18 | 26 | 69.2 |