

FINAL SCORE**Idaho State****56****Arizona****66**

March 22, 2019 • McKale Center (Lute & Bobbi Olson Court) - Tucson, Ariz.

FINAL STATISTICS

Official Box Score
Idaho State vs Arizona
Game Totals -- Final Statistics
March 22, 2019 at McKale Center (Lute & Bobbi Olson Court) - Tucson, Ariz.



Idaho State 56

No.	Player	S	Pts	FG	3FG	FT	OR	DR	TR	PF	A	TO	Blk	Stl	Min	+/-
03	GRANDON, SAYLAIR		22	8-19	5-7	1-2	1	3	4	3	3	8	0	1	35	-9
04	HINRICHS, MADISON		1	0-6	0-2	1-2	0	4	4	4	6	5	0	1	36	-11
11	TAPASA, SAI		12	4-9	0-1	4-4	2	2	4	4	1	0	0	1	31	1
12	BOURNE, CALLIE		3	1-2	0-0	1-2	0	1	1	5	0	1	0	0	21	-21
14	ORS, ESTEFANIA		12	5-12	2-7	0-0	1	3	4	2	3	4	0	0	35	-7
13	SMITH, ELLIE		0	0-0	0-0	0-0	3	0	3	2	0	1	0	0	8	-10
22	MOORE, DELANEY		4	1-2	0-0	2-2	2	6	8	4	0	1	1	1	27	9
25	OLTROGGE, MONTANA		2	1-4	0-1	0-0	1	0	1	1	0	0	0	0	6	-2
TEAM							2	2	4	0		0				
TOTALS			56	20-54	7-18	9-12	12	21	33	25	13	20	1	4	199	

Shooting By Period

Period	FG	FG%	3FG	3FG%	FT	FT%
1st Qtr	3-14	21%	1-4	25%	0-0	0%
2nd Qtr	5-16	31%	2-5	40%	1-3	33%
3rd Qtr	8-13	62%	2-5	40%	3-3	100%
4th Qtr	4-11	36%	2-4	50%	5-6	83%
1st Half	8-30	27%	3-9	33%	1-3	33%
2nd Half	12-24	50%	4-9	44%	8-9	89%
Game	20-54	37.0%	7-18	38.9%	9-12	75.0%

Last FG: 4th-00:15
Biggest Run: 13-0
Largest lead: By 0 at 1-08:17
Technical Fouls: None.

Arizona 66

No.	Player	S	Pts	FG	3FG	FT	OR	DR	TR	PF	A	TO	Blk	Stl	Min	+/-
02	MCDONALD, AARI		15	4-12	2-4	5-8	0	5	5	1	5	4	0	3	36	15
10	STARKS, TEE TEE		3	0-3	0-1	3-6	3	2	5	2	3	2	0	5	30	3
14	THOMAS, SAM		5	2-5	1-2	0-0	1	0	1	3	0	4	0	1	24	-4
21	GRAHAM, DESTINY		10	0-6	0-1	10-10	0	3	3	2	0	1	0	1	32	11
25	REESE, CATE		20	6-10	0-1	8-8	2	8	10	2	0	3	1	1	32	-1
04	ALONSO, LUCIA		6	2-5	2-4	0-0	0	0	0	2	4	1	0	2	25	10
22	MALECHA, LINDSEY		0	0-0	0-0	0-0	0	0	0	0	0	0	0	0	0	-3
24	NIXON, BRYCE		3	1-3	1-3	0-0	0	0	0	0	1	1	0	0	13	10
34	SMITH, SEMAJ		4	2-2	0-0	0-0	0	4	4	2	0	0	0	1	6	9
TEAM							2	1	3	0		0				
TOTALS			66	17-46	6-16	26-32	8	23	31	14	13	16	1	14	199	

Shooting By Period

Period	FG	FG%	3FG	3FG%	FT	FT%
1st Qtr	6-15	40%	1-3	33%	5-8	63%
2nd Qtr	6-12	50%	3-6	50%	5-6	83%
3rd Qtr	2-8	25%	1-3	33%	8-8	100%
4th Qtr	3-11	27%	1-4	25%	8-10	80%
1st Half	12-27	44%	4-9	44%	10-14	71%
2nd Half	5-19	26%	2-7	29%	16-18	89%
Game	17-46	37.0%	6-16	37.5%	26-32	81.3%

Last FG: 4th-02:59
Biggest Run: 14-0
Largest lead: By 21 at 2-02:20
Technical Fouls: None.

Game Notes:

Officials: **Michael Price, Bob Scofield, Kyle Bacon**
 Attendance: **3265**

Start Time: **2019-03-22 01:31:11**
 End Time: **2019-03-22 03:16:53**
 Game Duration: **105**

Score	1st	2nd	3rd	4th	TOT
ISU	7	13	21	15	56
ARI	18	20	13	15	66

ISU led for 0:00. ARI led for 39:15.
 Game was tied for 0:31.
 Times tied: 1 Lead Changes: 0

Points from	ISU	ARI
In the Paint	22	20
Off Turns	7	24
2nd Chance	11	7
Fast Break	2	9
Bench	6	13

Official Box Score
Idaho State vs Arizona
First Half Statistics Only
March 22, 2019 at McKale Center (Lute & Bobbi Olson Court) - Tucson, Ariz.



Idaho State 20

No.	Player	S	Pts	FG	3FG	FT	OR	DR	TR	PF	A	TO	Blk	Stl	Min	+/-
11	TAPASA, SAI		2	1-4	0-0	0-0	0	2	2	2	1	0	0	1	15	-9
12	BOURNE, CALLIE		3	1-2	0-0	1-2	0	1	1	2	0	1	0	0	16	-22
13	SMITH, ELLIE		0	0-0	0-0	0-0	2	0	2	1	0	0	0	0	5	-7
14	ORS, ESTEFANIA		8	3-7	2-4	0-0	1	0	1	1	0	2	0	0	16	-15
22	MOORE, DELANEY		2	1-2	0-0	0-0	2	3	5	1	0	0	0	0	9	2
25	OLTROGGE, MONTANA		0	0-1	0-1	0-0	0	0	0	0	0	0	0	0	4	-1
03	GRANDON, SAYLAIR		5	2-10	1-2	0-1	1	2	3	2	2	5	0	0	18	-19
04	HINRICHS, MADISON		0	0-4	0-2	0-0	0	3	3	1	2	1	0	1	18	-19
	TEAM		0	0-0	0-0	0-0	0	2	2	0	0	0	0	0	0	0
TOTALS			20	8-30	3-9	1-3	6	13	19	10	5	9	0	2	100	

Shooting By Period

Period	FG	FG%	3FG	3FG%	FT	FT%
1st Qtr	3-14	21%	1-4	25%	0-0	0%
2nd Qtr	5-16	31%	2-5	40%	1-3	33%
1st Half	8-30	27%	3-9	33%	1-3	33%
Game	20-54	37.0%	7-18	38.9%	9-12	75.0%

Last FG Half: ISU 2nd-01:13

Arizona 38

No.	Player	S	Pts	FG	3FG	FT	OR	DR	TR	PF	A	TO	Blk	Stl	Min	+/-
10	STARKS, TEE TEE		1	0-0	0-0	1-4	2	0	2	0	1	1	0	1	11	5
14	THOMAS, SAM		0	0-1	0-0	0-0	0	0	0	2	0	0	0	1	6	4
21	GRAHAM, DESTINY		4	0-4	0-0	4-4	0	1	1	0	0	0	0	0	15	14
22	MALECHA, LINDSEY		0	0-0	0-0	0-0	0	0	0	0	0	0	0	0	0	0
24	NIXON, BRYCE		3	1-2	1-2	0-0	0	0	0	0	1	1	0	0	12	16
25	REESE, CATE		14	5-6	0-1	4-4	0	7	7	0	0	1	0	0	17	10
34	SMITH, SEMAJ		4	2-2	0-0	0-0	0	4	4	2	0	0	0	1	6	9
02	MCDONALD, AARI		6	2-8	1-2	1-2	0	5	5	0	4	2	0	2	19	18
04	ALONSO, LUCIA		6	2-4	2-4	0-0	0	0	0	0	4	1	0	2	15	14
	TEAM		0	0-0	0-0	0-0	1	1	2	0	0	0	0	0	0	0
TOTALS			38	12-27	4-9	10-14	3	18	21	4	10	6	0	7	100	

Shooting By Period

Period	FG	FG%	3FG	3FG%	FT	FT%
1st Qtr	6-15	40%	1-3	33%	5-8	63%
2nd Qtr	6-12	50%	3-6	50%	5-6	83%
1st Half	12-27	44%	4-9	44%	10-14	71%
Game	17-46	37.0%	6-16	37.5%	26-32	81.3%

Last FG Half: ARI 2nd-03:41

Game Notes:

Officials: Michael Price, Bob Scofield, Kyle Bacon
 Attendance: 3265

Start Time: 2019-03-22 01:31:11
 End Time: 2019-03-22 03:16:53
 Game Duration: 105

Score	1st	2nd	3rd	4th	TOT
ISU	7	13	21	15	56
ARI	18	20	13	15	66

Points from (This Period)	ISU	ARI
In the Paint	10	14
Off Turns	0	10
2nd Chance	2	2
Fast Break	0	6
Bench	2	13

Official Box Score
Idaho State vs Arizona
First Quarter Statistics Only
March 22, 2019 at McKale Center (Lute & Bobbi Olson Court) - Tucson, Ariz.



Idaho State 7

No.	Player	S	Pts	FG	3FG	FT	OR	DR	TR	PF	A	TO	Blk	Stl	Min	+/-
03	GRANDON, SAYLAIR		0	0-4	0-1	0-0	0	2	2	1	1	5	0	0	9	-10
04	HINRICHS, MADISON		0	0-2	0-1	0-0	0	0	0	1	1	0	0	1	9	-11
11	TAPASA, SAI		2	1-2	0-0	0-0	0	1	1	2	0	0	0	0	8	-7
12	BOURNE, CALLIE		0	0-1	0-0	0-0	0	1	1	1	0	1	0	0	8	-14
14	ORS, ESTEFANIA		5	2-5	1-2	0-0	1	0	1	0	0	2	0	0	9	-11
13	SMITH, ELLIE		0	0-0	0-0	0-0	2	0	2	1	0	0	0	0	2	-4
22	MOORE, DELANEY		0	0-0	0-0	0-0	0	3	3	0	0	0	0	0	6	2
25	OLTROGGE, MONTANA		0	0-0	0-0	0-0	0	0	0	0	0	0	0	0	0	0
	TEAM						0	2	2	0		0				
TOTALS			7	3-14	1-4	0-0	3	9	12	6	2	8	0	1	50	

Shooting By Period

Period	FG	FG%	3FG	3FG%	FT	FT%
1st Qtr	3-14	21%	1-4	25%	0-0	0%
2nd Qtr	5-16	31%	2-5	40%	1-3	33%
1st Half	3-14	21%	1-4	25%	0-0	0%
1st Half	8-30	27%	3-9	33%	1-3	33%
Game	20-54	37.0%	7-18	38.9%	9-12	75.0%

Arizona 18

No.	Player	S	Pts	FG	3FG	FT	OR	DR	TR	PF	A	TO	Blk	Stl	Min	+/-
02	MCDONALD, AARI		3	1-4	0-1	1-2	0	4	4	0	2	2	0	2	9	11
10	STARKS, TEE TEE		0	0-0	0-0	0-2	0	0	0	0	1	0	0	0	6	4
14	THOMAS, SAM		0	0-1	0-0	0-0	0	0	0	2	0	0	0	1	6	4
21	GRAHAM, DESTINY		2	0-4	0-0	2-2	0	1	1	0	0	0	0	0	10	11
25	REESE, CATE		10	4-4	0-0	2-2	0	3	3	0	0	0	0	0	9	8
04	ALONSO, LUCIA		3	1-2	1-2	0-0	0	0	0	0	0	1	0	2	5	7
22	MALECHA, LINDSEY		0	0-0	0-0	0-0	0	0	0	0	0	0	0	0	0	0
24	NIXON, BRYCE		0	0-0	0-0	0-0	0	0	0	0	1	0	0	0	4	7
34	SMITH, SEMAJ		0	0-0	0-0	0-0	0	0	0	0	0	0	0	1	1	3
	TEAM						1	0	1	0		0				
TOTALS			18	6-15	1-3	5-8	1	8	9	2	4	3	0	6	50	

Shooting By Period

Period	FG	FG%	3FG	3FG%	FT	FT%
1st Qtr	6-15	40%	1-3	33%	5-8	63%
2nd Qtr	6-12	50%	3-6	50%	5-6	83%
1st Half	6-15	40%	1-3	33%	5-8	63%
1st Half	12-27	44%	4-9	44%	10-14	71%
Game	17-46	37.0%	6-16	37.5%	26-32	81.3%

Game Notes:

Officials: Michael Price, Bob Scofield, Kyle Bacon
Attendance: 3265

Start Time: 2019-03-22 01:31:11
End Time: 2019-03-22 03:16:53
Game Duration: 105

Score	1st	2nd	3rd	4th	TOT
ISU	7	13	21	15	56
ARI	18	20	13	15	66

Points from (This Period)	ISU	ARI
In the Paint	4	8
Off Turns	0	8
2nd Chance	0	0
Fast Break	0	6
Bench	0	3

**Official Play-By-Play
Idaho State vs Arizona
First Quarter**

March 22, 2019 at McKale Center (Lute & Bobbi Olson Court) - Tucson, Ariz.



Period 1

Starters:

Idaho State: 11 TAPASA, SAI; 12 BOURNE, CALLIE; 14 ORS, ESTEFANIA; 3 GRANDON, SAYLAIR; 4 HINRICHS, MADISON;

Arizona: 10 STARKS, TEE TEE; 14 THOMAS, SAM; 21 GRAHAM, DESTINY; 25 REESE, CATE; 2 MCDONALD, AARI;

Time	VISITORS: Idaho State	Score	Margin	HOME: Arizona
09:42	FOUL (PERSONAL) by BOURNE, CALLIE			
09:42		1-0	H 1	GOOD! FT by GRAHAM, DESTINY
09:42		2-0	H 2	GOOD! FT by GRAHAM, DESTINY
09:26	MISSED LAYUP by BOURNE, CALLIE			
09:17				REBOUND (DEF) by REESE, CATE
09:14				MISSED JUMPER by MCDONALD, AARI
09:11	REBOUND (DEF) by GRANDON, SAYLAIR			
09:07	MISSED LAYUP by ORS, ESTEFANIA			
09:04	REBOUND (OFF) by ORS, ESTEFANIA			
08:53	MISSED JUMPER by TAPASA, SAI			
08:47				REBOUND (DEF) by REESE, CATE
08:34	FOUL (PERSONAL) by GRANDON, SAYLAIR			
08:34				MISSED FT by STARKS, TEE TEE
08:34				REBOUND (OFF) by TEAM
08:34				MISSED FT by STARKS, TEE TEE
08:31	REBOUND (DEF) by TAPASA, SAI			
08:17	GOOD! LAYUP by ORS, ESTEFANIA	2-2	T	
08:04		4-2	H 2	GOOD! LAYUP by REESE, CATE
08:04				ASSIST by MCDONALD, AARI
08:04	FOUL (PERSONAL) by TAPASA, SAI			
08:04		5-2	H 3	GOOD! FT by REESE, CATE
07:53	TURNOVER (BADPASS) by GRANDON, SAYLAIR			
07:53				STEAL by MCDONALD, AARI
07:44		7-2	H 5	GOOD! JUMPER by REESE, CATE
07:44				ASSIST by MCDONALD, AARI
07:38				FOUL (PERSONAL) by THOMAS, SAM
07:26	MISSED JUMPER by GRANDON, SAYLAIR			
07:23				REBOUND (DEF) by REESE, CATE
07:16		9-2	H 7	GOOD! LAYUP by REESE, CATE [FB]
07:16				ASSIST by STARKS, TEE TEE
07:14	TIMEOUT 30SEC			
07:14				
07:14	SUB OUT: BOURNE, CALLIE			
07:14	SUB IN: MOORE, DELANEY			
06:59	MISSED 3PTR by GRANDON, SAYLAIR			
06:56				REBOUND (DEF) by MCDONALD, AARI
06:49				MISSED LAYUP by MCDONALD, AARI
06:46	REBOUND (DEF) by MOORE, DELANEY			
06:37	GOOD! 3PTR by ORS, ESTEFANIA	9-5	H 4	
06:37	ASSIST by GRANDON, SAYLAIR			
06:15				MISSED 3PTR by MCDONALD, AARI
06:12	REBOUND (DEF) by MOORE, DELANEY			
06:03	TURNOVER (BADPASS) by GRANDON, SAYLAIR			
06:03				STEAL by THOMAS, SAM
05:45				MISSED LAYUP by GRAHAM, DESTINY
05:41	REBOUND (DEF) by MOORE, DELANEY			
05:27	MISSED 3PTR by ORS, ESTEFANIA			
05:24				REBOUND (DEF) by GRAHAM, DESTINY
05:10				MISSED JUMPER by THOMAS, SAM
05:09				REBOUND (OFF) by TEAM
05:09	FOUL (PERSONAL) by HINRICHS, MADISON			
05:09				SUB OUT: MCDONALD, AARI
05:09				SUB IN: ALONSO, LUCIA
05:09	SUB OUT: HINRICHS, MADISON			
05:09	SUB IN: BOURNE, CALLIE			
05:09	SUB OUT: TAPASA, SAI			
05:09	SUB IN: SMITH, ELLIE			
05:09				TURNOVER (BADPASS) by ALONSO, LUCIA
04:47	MISSED LAYUP by GRANDON, SAYLAIR			
04:47	REBOUND (OFF) by SMITH, ELLIE			
04:42	MISSED JUMPER by ORS, ESTEFANIA			
04:42	REBOUND (OFF) by SMITH, ELLIE			
04:42				FOUL (PERSONAL) by THOMAS, SAM
04:25				SUB OUT: THOMAS, SAM
04:25				SUB IN: MCDONALD, AARI
04:16	TURNOVER (TRAVEL) by BOURNE, CALLIE			
04:16	SUB OUT: ORS, ESTEFANIA			
04:16	SUB IN: HINRICHS, MADISON			
03:55				TURNOVER (BADPASS) by MCDONALD, AARI
03:55				SUB OUT: STARKS, TEE TEE

Time	VISITORS: Idaho State	Score	Margin	HOME: Arizona
03:55				SUB IN: NIXON, BRYCE
03:55	SUB OUT: SMITH, ELLIE			
03:55	SUB IN: TAPASA, SAI			
03:35	MISSED JUMPER by GRANDON, SAYLAIR			
03:32				REBOUND (DEF) by MCDONALD, AARI
03:20				TURNOVER (BADPASS) by MCDONALD, AARI
03:20	STEAL by HINRICHs, MADISON			
03:11	MISSED JUMPER by HINRICHs, MADISON			
03:08				REBOUND (DEF) by MCDONALD, AARI
02:56	SUB OUT: GRANDON, SAYLAIR			
02:56	SUB IN: ORS, ESTEFANIA			
02:56				MISSED JUMPER by GRAHAM, DESTINY
02:56	REBOUND (DEF) by BOURNE, CALLIE			
02:25	GOOD! JUMPER by TAPASA, SAI [PNT]	9-7	H 2	
02:25	ASSIST by HINRICHs, MADISON			
01:58		12-7	H 5	GOOD! 3PTR by ALONSO, LUCIA
01:45	MISSED 3PTR by HINRICHs, MADISON			
01:41				REBOUND (DEF) by MCDONALD, AARI
01:34				MISSED LAYUP by GRAHAM, DESTINY
01:32	REBOUND (DEF) by TEAM			
01:32	SUB OUT: MOORE, DELANEY			
01:32	SUB IN: GRANDON, SAYLAIR			
01:17	TURNOVER (LOSTBALL) by GRANDON, SAYLAIR			
01:13		14-7	H 7	GOOD! LAYUP by REESE, CATE [FB]
01:13				ASSIST by NIXON, BRYCE
01:13	FOUL (PERSONAL) by TAPASA, SAI			
01:13	SUB OUT: TAPASA, SAI			
01:13	SUB IN: SMITH, ELLIE			
01:13		15-7	H 8	GOOD! FT by REESE, CATE [FB]
01:13				SUB OUT: REESE, CATE
01:13				SUB IN: SMITH, SEMAJ
00:58	TURNOVER (BADPASS) by ORS, ESTEFANIA			
00:58				STEAL by ALONSO, LUCIA
00:35				MISSED LAYUP by GRAHAM, DESTINY
00:31	REBOUND (DEF) by GRANDON, SAYLAIR			
00:26	TURNOVER (BADPASS) by GRANDON, SAYLAIR			
00:26				STEAL by SMITH, SEMAJ
00:21	FOUL (PERSONAL) by SMITH, ELLIE			
00:21		16-7	H 9	GOOD! FT by MCDONALD, AARI [FB]
00:21				MISSED FT by MCDONALD, AARI
00:20	REBOUND (DEF) by TEAM			
00:07	TURNOVER (LOSTBALL) by GRANDON, SAYLAIR			
00:07				STEAL by MCDONALD, AARI
00:01		18-7	H 11	GOOD! LAYUP by MCDONALD, AARI
00:00	TURNOVER (LOSTBALL) by ORS, ESTEFANIA			
00:00				STEAL by ALONSO, LUCIA
00:00				MISSED 3PTR by ALONSO, LUCIA
00:00	REBOUND (DEF) by TEAM			

Idaho State 7, Arizona 18

Points from (This Period)	ISU	ARI
In the Paint	4	8
Off Turns	0	8
2nd Chance	0	0
Fast Break	0	6
Bench	0	3

Official Box Score
Idaho State vs Arizona
Second Quarter Statistics Only
March 22, 2019 at McKale Center (Lute & Bobbi Olson Court) - Tucson, Ariz.



Idaho State 13

No.	Player	S	Pts	FG	3FG	FT	OR	DR	TR	PF	A	TO	Blk	Stl	Min	+/-
03	GRANDON, SAYLAIR		5	2-6	1-1	0-1	1	0	1	1	1	0	0	0	9	-9
04	HINRICHS, MADISON		0	0-2	0-1	0-0	0	3	3	0	1	1	0	0	9	-8
11	TAPASA, SAI		0	0-2	0-0	0-0	0	1	1	0	1	0	0	1	7	-2
12	BOURNE, CALLIE		3	1-1	0-0	1-2	0	0	0	1	0	0	0	0	8	-8
14	ORS, ESTEFANIA		3	1-2	1-2	0-0	0	0	0	1	0	0	0	0	7	-4
13	SMITH, ELLIE		0	0-0	0-0	0-0	0	0	0	0	0	0	0	0	3	-3
22	MOORE, DELANEY		2	1-2	0-0	0-0	2	0	2	1	0	0	0	0	3	0
25	OLTROGGE, MONTANA		0	0-1	0-1	0-0	0	0	0	0	0	0	0	0	4	-1
	TEAM						0	0	0	0		0				
TOTALS			13	5-16	2-5	1-3	3	4	7	4	3	1	0	1	50	

Shooting By Period

Period	FG	FG%	3FG	3FG%	FT	FT%
3rd Qtr	8-13	62%	2-5	40%	3-3	100%
4th Qtr	4-11	36%	2-4	50%	5-6	83%
2nd Half	5-16	31%	2-5	40%	1-3	33%
2nd Half	12-24	50%	4-9	44%	8-9	89%
Game	20-54	37.0%	7-18	38.9%	9-12	75.0%

Arizona 20

No.	Player	S	Pts	FG	3FG	FT	OR	DR	TR	PF	A	TO	Blk	Stl	Min	+/-
02	MCDONALD, AARI		3	1-4	1-1	0-0	0	1	1	0	2	0	0	0	10	7
10	STARKS, TEE TEE		1	0-0	0-0	1-2	2	0	2	0	0	1	0	1	5	1
14	THOMAS, SAM		0	0-0	0-0	0-0	0	0	0	0	0	0	0	0	0	0
21	GRAHAM, DESTINY		2	0-0	0-0	2-2	0	0	0	0	0	0	0	0	5	3
25	REESE, CATE		4	1-2	0-1	2-2	0	4	4	0	0	1	0	0	8	2
04	ALONSO, LUCIA		3	1-2	1-2	0-0	0	0	0	0	4	0	0	0	10	7
22	MALECHA, LINDSEY		0	0-0	0-0	0-0	0	0	0	0	0	0	0	0	0	0
24	NIXON, BRYCE		3	1-2	1-2	0-0	0	0	0	0	0	1	0	0	8	9
34	SMITH, SEMAJ		4	2-2	0-0	0-0	0	4	4	2	0	0	0	0	5	6
	TEAM						0	1	1	0		0				
TOTALS			20	6-12	3-6	5-6	2	10	12	2	6	3	0	1	50	

Shooting By Period

Period	FG	FG%	3FG	3FG%	FT	FT%
3rd Qtr	2-8	25%	1-3	33%	8-8	100%
4th Qtr	3-11	27%	1-4	25%	8-10	80%
2nd Half	6-12	50%	3-6	50%	5-6	83%
2nd Half	5-19	26%	2-7	29%	16-18	89%
Game	17-46	37.0%	6-16	37.5%	26-32	81.3%

Game Notes:

Officials: Michael Price, Bob Scofield, Kyle Bacon
 Attendance: 3265

Start Time: 2019-03-22 01:31:11
 End Time: 2019-03-22 03:16:53
 Game Duration: 105

Score	1st	2nd	3rd	4th	TOT
ISU	7	13	21	15	56
ARI	18	20	13	15	66

Points from (This Period)	ISU	ARI
In the Paint	6	6
Off Turns	0	2
2nd Chance	2	2
Fast Break	0	0
Bench	2	10

**Official Play-By-Play
Idaho State vs Arizona
Second Quarter**

March 22, 2019 at McKale Center (Lute & Bobbi Olson Court) - Tucson, Ariz.



Period 2

Starters:

Idaho State: 11 TAPASA, SAI; 12 BOURNE, CALLIE; 14 ORS, ESTEFANIA; 3 GRANDON, SAYLAIR; 4 HINRICHS, MADISON;

Arizona: 10 STARKS, TEE TEE; 14 THOMAS, SAM; 21 GRAHAM, DESTINY; 25 REESE, CATE; 2 MCDONALD, AARI;

Time	VISITORS: Idaho State	Score	Margin	HOME: Arizona
09:36	FOUL (PERSONAL) by MOORE, DELANEY			
09:36		19-7	H 12	GOOD! FT by GRAHAM, DESTINY
09:36		20-7	H 13	GOOD! FT by GRAHAM, DESTINY
09:17	MISSED LAYUP by MOORE, DELANEY			
09:14				REBOUND (DEF) by SMITH, SEMAJ
09:10	FOUL (PERSONAL) by BOURNE, CALLIE			
09:10	SUB OUT: MOORE, DELANEY			
09:10	SUB IN: TAPASA, SAI			
09:08		23-7	H 16	GOOD! 3PTR by ALONSO, LUCIA
09:08				ASSIST by MCDONALD, AARI
08:44	GOOD! 3PTR by ORS, ESTEFANIA	23-10	H 13	
08:44	ASSIST by GRANDON, SAYLAIR			
08:18		26-10	H 16	GOOD! 3PTR by NIXON, BRYCE
08:18				ASSIST by ALONSO, LUCIA
07:57	GOOD! LAYUP by GRANDON, SAYLAIR	26-12	H 14	
07:57				FOUL (PERSONAL) by SMITH, SEMAJ
07:57	MISSED FT by GRANDON, SAYLAIR			
07:56				REBOUND (DEF) by SMITH, SEMAJ
07:44		28-12	H 16	GOOD! LAYUP by SMITH, SEMAJ
07:44				ASSIST by ALONSO, LUCIA
07:43	TIMEOUT 30SEC			
07:43				
07:43				SUB OUT: GRAHAM, DESTINY
07:43				SUB IN: REESE, CATE
07:34	MISSED JUMPER by GRANDON, SAYLAIR			
07:30				REBOUND (DEF) by SMITH, SEMAJ
07:08				TURNOVER (BADPASS) by NIXON, BRYCE
07:08	STEAL by TAPASA, SAI			
06:49	MISSED JUMPER by GRANDON, SAYLAIR			
06:45				REBOUND (DEF) by SMITH, SEMAJ
06:34				MISSED LAYUP by MCDONALD, AARI
06:31	REBOUND (DEF) by HINRICHS, MADISON			
06:22	MISSED 3PTR by HINRICHS, MADISON			
06:18				REBOUND (DEF) by REESE, CATE
06:00		30-12	H 18	GOOD! LAYUP by SMITH, SEMAJ
06:00				ASSIST by MCDONALD, AARI
05:40	MISSED JUMPER by TAPASA, SAI			
05:34	REBOUND (OFF) by GRANDON, SAYLAIR			
05:33	MISSED LAYUP by GRANDON, SAYLAIR			
05:29				REBOUND (DEF) by REESE, CATE
05:13				MISSED 3PTR by REESE, CATE
05:10	REBOUND (DEF) by TAPASA, SAI			
04:59				FOUL (PERSONAL) by SMITH, SEMAJ
04:59	GOOD! FT by BOURNE, CALLIE	30-13	H 17	
04:59				SUB OUT: SMITH, SEMAJ
04:59				SUB IN: STARKS, TEE TEE
04:59	SUB OUT: TAPASA, SAI			
04:59	SUB IN: OLTROGGE, MONTANA			
04:59	SUB OUT: ORS, ESTEFANIA			
04:59	SUB IN: SMITH, ELLIE			
04:59	MISSED FT by BOURNE, CALLIE			
04:58				REBOUND (DEF) by REESE, CATE
04:46				MISSED 3PTR by NIXON, BRYCE
04:42	REBOUND (DEF) by HINRICHS, MADISON			
04:30	TURNOVER (BADPASS) by HINRICHS, MADISON			
04:30				STEAL by STARKS, TEE TEE
04:18		32-13	H 19	GOOD! LAYUP by REESE, CATE
04:18				ASSIST by ALONSO, LUCIA
04:03	GOOD! 3PTR by GRANDON, SAYLAIR	32-16	H 16	
04:03	ASSIST by HINRICHS, MADISON			
03:41		35-16	H 19	GOOD! 3PTR by MCDONALD, AARI
03:41				ASSIST by ALONSO, LUCIA
03:20	MISSED LAYUP by GRANDON, SAYLAIR			
03:17				REBOUND (DEF) by REESE, CATE
02:54				MISSED JUMPER by MCDONALD, AARI
02:51				REBOUND (OFF) by STARKS, TEE TEE
02:38				MISSED JUMPER by MCDONALD, AARI
02:34				REBOUND (OFF) by STARKS, TEE TEE
02:20	FOUL (PERSONAL) by GRANDON, SAYLAIR			
02:20		36-16	H 20	GOOD! FT by REESE, CATE

Time	VISITORS: Idaho State	Score	Margin	HOME: Arizona
02:20				SUB OUT: NIXON, BRYCE
02:20				SUB IN: GRAHAM, DESTINY
02:20	SUB OUT: SMITH, ELLIE			
02:20	SUB IN: TAPASA, SAI			
02:20	SUB OUT: HINRICHS, MADISON			
02:20	SUB IN: ORS, ESTEFANIA			
02:20	SUB OUT: GRANDON, SAYLAIR			
02:20	SUB IN: MOORE, DELANEY			
02:20		37-16	H 21	GOOD! FT by REESE, CATE
02:01	MISSED 3PTR by ORS, ESTEFANIA			
01:57	REBOUND (OFF) by MOORE, DELANEY			
01:53	GOOD! LAYUP by BOURNE, CALLIE	37-18	H 19	
01:53	ASSIST by TAPASA, SAI			
01:32	FOUL (PERSONAL) by ORS, ESTEFANIA			
01:32				MISSED FT by STARKS, TEE TEE
01:32				REBOUND (OFF) by TEAM
01:32	SUB OUT: BOURNE, CALLIE			
01:32	SUB IN: HINRICHS, MADISON			
01:32		38-18	H 20	GOOD! FT by STARKS, TEE TEE
01:20	MISSED 3PTR by OLTROGGE, MONTANA			
01:13	GOOD! LAYUP by MOORE, DELANEY	38-20	H 18	
01:13	REBOUND (OFF) by MOORE, DELANEY			
01:02				TURNOVER (3SEC) by STARKS, TEE TEE
01:02	SUB OUT: OLTROGGE, MONTANA			
01:02	SUB IN: GRANDON, SAYLAIR			
00:44	MISSED JUMPER by TAPASA, SAI			
00:42				REBOUND (DEF) by TEAM
00:27				TURNOVER (LOSTBALL) by REESE, CATE
00:21	MISSED LAYUP by HINRICHS, MADISON			
00:17				REBOUND (DEF) by MCDONALD, AARI
00:02				MISSED 3PTR by ALONSO, LUCIA
00:00	REBOUND (DEF) by HINRICHS, MADISON			

Idaho State 20, Arizona 38

Points from (This Period)	ISU	ARI
In the Paint	6	6
Off Turns	0	2
2nd Chance	2	2
Fast Break	0	0
Bench	2	10

Official Box Score
Idaho State vs Arizona
Second Half Statistics Only
March 22, 2019 at McKale Center (Lute & Bobbi Olson Court) - Tucson, Ariz.



Idaho State 36

No.	Player	S	Pts	FG	3FG	FT	OR	DR	TR	PF	A	TO	Blk	Stl	Min	+/-
11	TAPASA, SAI		10	3-5	0-1	4-4	2	0	2	2	0	0	0	0	16	10
12	BOURNE, CALLIE		0	0-0	0-0	0-0	0	0	0	3	0	0	0	0	5	1
13	SMITH, ELLIE		0	0-0	0-0	0-0	1	0	1	1	0	1	0	0	3	-3
14	ORS, ESTEFANIA		4	2-5	0-3	0-0	0	3	3	1	3	2	0	0	19	8
22	MOORE, DELANEY		2	0-0	0-0	2-2	0	3	3	3	0	1	1	1	18	7
25	OLTROGGE, MONTANA		2	1-3	0-0	0-0	1	0	1	1	0	0	0	0	3	-1
03	GRANDON, SAYLAIR		17	6-9	4-5	1-1	0	1	1	1	1	3	0	1	18	10
04	HINRICHS, MADISON		1	0-2	0-0	1-2	0	1	1	3	4	4	0	0	17	8
	TEAM		0	0-0	0-0	0-0	2	0	2	0	0	0	0	0	0	0
TOTALS			36	12-24	4-9	8-9	6	8	14	15	8	11	1	2	99	

Shooting By Period

Period	FG	FG%	3FG	3FG%	FT	FT%
3rd Qtr	8-13	62%	2-5	40%	3-3	100%
4th Qtr	4-11	36%	2-4	50%	5-6	83%
2nd Half	12-24	50%	4-9	44%	8-9	89%
Game	20-54	37.0%	7-18	38.9%	9-12	75.0%

Last FG Half: ISU 4th-00:15

Arizona 28

No.	Player	S	Pts	FG	3FG	FT	OR	DR	TR	PF	A	TO	Blk	Stl	Min	+/-
10	STARKS, TEE TEE		2	0-3	0-1	2-2	1	2	3	2	2	1	0	4	19	-2
14	THOMAS, SAM		5	2-4	1-2	0-0	1	0	1	1	0	4	0	0	19	-8
21	GRAHAM, DESTINY		6	0-2	0-1	6-6	0	2	2	2	0	1	0	1	18	-3
22	MALECHA, LINDSEY		0	0-0	0-0	0-0	0	0	0	0	0	0	0	0	0	-3
24	NIXON, BRYCE		0	0-1	0-1	0-0	0	0	0	0	0	0	0	0	1	-6
25	REESE, CATE		6	1-4	0-0	4-4	2	1	3	2	0	2	1	1	16	-11
34	SMITH, SEMAJ		0	0-0	0-0	0-0	0	0	0	0	0	0	0	0	0	0
02	MCDONALD, AARI		9	2-4	1-2	4-6	0	0	0	1	1	2	0	1	17	-3
04	ALONSO, LUCIA		0	0-1	0-0	0-0	0	0	0	2	0	0	0	0	10	-4
	TEAM		0	0-0	0-0	0-0	1	0	1	0	0	0	0	0	0	0
TOTALS			28	5-19	2-7	16-18	5	5	10	10	3	10	1	7	99	

Shooting By Period

Period	FG	FG%	3FG	3FG%	FT	FT%
3rd Qtr	2-8	25%	1-3	33%	8-8	100%
4th Qtr	3-11	27%	1-4	25%	8-10	80%
2nd Half	5-19	26%	2-7	29%	16-18	89%
Game	17-46	37.0%	6-16	37.5%	26-32	81.3%

Last FG Half: ARI 4th-02:59

Game Notes:

Officials: **Michael Price, Bob Scofield, Kyle Bacon**
 Attendance: **3265**

Start Time: **2019-03-22 01:31:11**
 End Time: **2019-03-22 03:16:53**
 Game Duration: **105**

Score	1st	2nd	3rd	4th	TOT
ISU	7	13	21	15	56
ARI	18	20	13	15	66

Points from (This Period)	ISU	ARI
In the Paint	12	6
Off Turns	7	14
2nd Chance	9	5
Fast Break	2	3
Bench	4	0

Official Box Score
Idaho State vs Arizona
Third Quarter Statistics Only
March 22, 2019 at McKale Center (Lute & Bobbi Olson Court) - Tucson, Ariz.



Idaho State 36

No.	Player	S	Pts	FG	3FG	FT	OR	DR	TR	PF	A	TO	Blk	Stl	Min	+/-
03	GRANDON, SAYLAIR		9	3-4	2-2	1-1	0	1	1	0	0	0	0	0	9	8
04	HINRICHS, MADISON		0	0-0	0-0	0-0	0	0	0	1	3	2	0	0	9	8
11	TAPASA, SAI		8	3-3	0-0	2-2	1	0	1	2	0	0	0	0	8	8
12	BOURNE, CALLIE		0	0-0	0-0	0-0	0	0	0	2	0	0	0	0	4	0
14	ORS, ESTEFANIA		2	1-4	0-3	0-0	0	0	0	1	2	1	0	0	10	8
13	SMITH, ELLIE		0	0-0	0-0	0-0	0	0	0	0	0	0	0	0	1	0
22	MOORE, DELANEY		0	0-0	0-0	0-0	0	2	2	1	0	0	1	1	8	7
25	OLTROGGE, MONTANA		2	1-2	0-0	0-0	1	0	1	0	0	0	0	0	1	1
	TEAM						1	0	1	0		0				
TOTALS			21	8-13	2-5	3-3	3	3	6	7	5	3	1	1	50	

Shooting By Period

Period	FG	FG%	3FG	3FG%	FT	FT%
2nd Half	0-0	0%	0-0	0%	0-0	0%
Game	20-54	37.0%	7-18	38.9%	9-12	75.0%

Arizona 28

No.	Player	S	Pts	FG	3FG	FT	OR	DR	TR	PF	A	TO	Blk	Stl	Min	+/-
02	MCDONALD, AARI		5	1-3	1-2	2-2	0	0	0	0	0	0	0	1	10	-8
10	STARKS, TEE TEE		0	0-1	0-0	0-0	0	1	1	2	2	1	0	2	10	-8
14	THOMAS, SAM		0	0-1	0-1	0-0	0	0	0	0	0	2	0	0	9	-8
21	GRAHAM, DESTINY		4	0-1	0-0	4-4	0	1	1	1	0	0	0	0	8	-3
25	REESE, CATE		4	1-2	0-0	2-2	1	0	1	0	0	1	0	0	6	-11
04	ALONSO, LUCIA		0	0-0	0-0	0-0	0	0	0	1	0	0	0	0	7	-2
22	MALECHA, LINDSEY		0	0-0	0-0	0-0	0	0	0	0	0	0	0	0	0	0
24	NIXON, BRYCE		0	0-0	0-0	0-0	0	0	0	0	0	0	0	0	0	0
34	SMITH, SEMAJ		0	0-0	0-0	0-0	0	0	0	0	0	0	0	0	0	0
	TEAM						0	0	0	0		0				
TOTALS			13	2-8	1-3	8-8	1	2	3	4	2	4	0	3	50	

Shooting By Period

Period	FG	FG%	3FG	3FG%	FT	FT%
2nd Half	0-0	0%	0-0	0%	0-0	0%
Game	17-46	37.0%	6-16	37.5%	26-32	81.3%

Game Notes:

Officials: Michael Price, Bob Scofield, Kyle Bacon
 Attendance: 3265

Start Time: 2019-03-22 01:31:11
 End Time: 2019-03-22 03:16:53
 Game Duration: 105

Score	1st	2nd	3rd	4th	TOT
ISU	7	13	21	15	56
ARI	18	20	13	15	66

Points from (This Period)	ISU	ARI
In the Paint	8	2
Off Turns	5	7
2nd Chance	5	4
Fast Break	2	2
Bench	2	0

**Official Play-By-Play
Idaho State vs Arizona
Third Quarter**

March 22, 2019 at McKale Center (Lute & Bobbi Olson Court) - Tucson, Ariz.



Period 3

Starters:

Idaho State: 11 TAPASA, SAI; 12 BOURNE, CALLIE; 14 ORS, ESTEFANIA; 3 GRANDON, SAYLAIR; 4 HINRICHS, MADISON;

Arizona: 10 STARKS, TEE TEE; 14 THOMAS, SAM; 21 GRAHAM, DESTINY; 25 REESE, CATE; 2 MCDONALD, AARI;

Time	VISITORS: Idaho State	Score	Margin	HOME: Arizona
09:51	MISSED 3PTR by ORS, ESTEFANIA			
09:49	REBOUND (OFF) by TEAM			
09:38	TURNOVER (LOSTBALL) by HINRICHS, MADISON			
09:38				STEAL by STARKS, TEE TEE
09:21		40-20	H 20	GOOD! LAYUP by REESE, CATE
09:21				ASSIST by STARKS, TEE TEE
08:52	GOOD! JUMPER by TAPASA, SAI	40-22	H 18	
08:52	ASSIST by ORS, ESTEFANIA			
08:39	FOUL (PERSONAL) by BOURNE, CALLIE			
08:39	SUB OUT: BOURNE, CALLIE			
08:39	SUB IN: MOORE, DELANEY			
08:26				MISSED LAYUP by GRAHAM, DESTINY
08:26	BLOCK by MOORE, DELANEY			
08:18	REBOUND (DEF) by MOORE, DELANEY			
08:14	MISSED JUMPER by GRANDON, SAYLAIR			
08:11	REBOUND (OFF) by TAPASA, SAI			
08:07	GOOD! 3PTR by GRANDON, SAYLAIR	40-25	H 15	
08:07	ASSIST by ORS, ESTEFANIA			
07:39				TURNOVER (BADPASS) by THOMAS, SAM
07:39	STEAL by MOORE, DELANEY			
07:27	GOOD! 3PTR by GRANDON, SAYLAIR	40-28	H 12	
07:27	ASSIST by HINRICHS, MADISON			
07:17				TIMEOUT 30SEC
07:17				SUB OUT: GRAHAM, DESTINY
07:17				SUB IN: ALONSO, LUCIA
06:56				TURNOVER (LOSTBALL) by THOMAS, SAM
06:30	GOOD! JUMPER by TAPASA, SAI [PNT]	40-30	H 10	
06:05	FOUL (PERSONAL) by TAPASA, SAI			
06:05				MISSED JUMPER by REESE, CATE
06:05	REBOUND (DEF) by MOORE, DELANEY			
05:44	GOOD! LAYUP by GRANDON, SAYLAIR	40-32	H 8	
05:44				FOUL (PERSONAL) by ALONSO, LUCIA
05:44	GOOD! FT by GRANDON, SAYLAIR	40-33	H 7	
05:14				MISSED 3PTR by THOMAS, SAM
05:13				REBOUND (OFF) by REESE, CATE
05:13	FOUL (PERSONAL) by TAPASA, SAI			
05:13				SUB OUT: THOMAS, SAM
05:13				SUB IN: GRAHAM, DESTINY
05:13	SUB OUT: TAPASA, SAI			
05:13	SUB IN: BOURNE, CALLIE			
05:03	FOUL (PERSONAL) by MOORE, DELANEY			
05:03		41-33	H 8	GOOD! FT by REESE, CATE
05:03		42-33	H 9	GOOD! FT by REESE, CATE
04:53	GOOD! LAYUP by ORS, ESTEFANIA [FB]	42-35	H 7	
04:53	ASSIST by HINRICHS, MADISON			
04:39	FOUL (PERSONAL) by BOURNE, CALLIE			
04:39	SUB OUT: BOURNE, CALLIE			
04:39	SUB IN: TAPASA, SAI			
04:39		43-35	H 8	GOOD! FT by GRAHAM, DESTINY
04:39		44-35	H 9	GOOD! FT by GRAHAM, DESTINY
04:39				
04:24	GOOD! JUMPER by TAPASA, SAI	44-37	H 7	
04:24	ASSIST by HINRICHS, MADISON			
04:01				TURNOVER (3SEC) by REESE, CATE
04:01				SUB OUT: REESE, CATE
04:01				SUB IN: THOMAS, SAM
03:41	TURNOVER (BADPASS) by ORS, ESTEFANIA			
03:41				STEAL by MCDONALD, AARI
03:34	FOUL (PERSONAL) by ORS, ESTEFANIA			
03:34		45-37	H 8	GOOD! FT by MCDONALD, AARI [FB]
03:34		46-37	H 9	GOOD! FT by MCDONALD, AARI [FB]
03:05	TURNOVER (BADPASS) by HINRICHS, MADISON			
03:05				STEAL by STARKS, TEE TEE
02:41		49-37	H 12	GOOD! 3PTR by MCDONALD, AARI
02:41				ASSIST by STARKS, TEE TEE
02:26				FOUL (PERSONAL) by GRAHAM, DESTINY
02:16				FOUL (PERSONAL) by STARKS, TEE TEE
02:16	GOOD! FT by TAPASA, SAI	49-38	H 11	
02:16	GOOD! FT by TAPASA, SAI	49-39	H 10	

Time	VISITORS: Idaho State	Score	Margin	HOME: Arizona
02:05				FOUL (OFF) by STARKS, TEE TEE
02:05				TURNOVER (OFFENSIVE) by STARKS, TEE TEE
02:05	SUB OUT: HINRICHS, MADISON			
02:05	SUB IN: BOURNE, CALLIE			
01:38	MISSED 3PTR by ORS, ESTEFANIA			
01:36				REBOUND (DEF) by STARKS, TEE TEE
01:18				MISSED LAYUP by STARKS, TEE TEE
01:14	REBOUND (DEF) by GRANDON, SAYLAIR			
00:59	SUB OUT: TAPASA, SAI			
00:59	SUB IN: HINRICHS, MADISON			
00:59	SUB OUT: GRANDON, SAYLAIR			
00:59	SUB IN: SMITH, ELLIE			
00:51	MISSED 3PTR by ORS, ESTEFANIA			
00:48				REBOUND (DEF) by GRAHAM, DESTINY
00:33				MISSED JUMPER by MCDONALD, AARI
00:32				REBOUND (OFF) by TEAM
00:32	FOUL (PERSONAL) by HINRICHS, MADISON			
00:32		50-39	H 11	GOOD! FT by GRAHAM, DESTINY
00:32	SUB OUT: MOORE, DELANEY			
00:32	SUB IN: OLTROGGE, MONTANA			
00:32		51-39	H 12	GOOD! FT by GRAHAM, DESTINY
00:11	MISSED LAYUP by OLTROGGE, MONTANA			
00:06	REBOUND (OFF) by OLTROGGE, MONTANA			
00:06	GOOD! LAYUP by OLTROGGE, MONTANA	51-41	H 10	
00:01				MISSED 3PTR by MCDONALD, AARI
00:00	REBOUND (DEF) by TEAM			

Idaho State 41, Arizona 51

Points from (This Period)	ISU	ARI
In the Paint	8	2
Off Turns	5	7
2nd Chance	5	4
Fast Break	2	2
Bench	2	0

Official Box Score
Idaho State vs Arizona
Fourth Quarter Statistics Only
March 22, 2019 at McKale Center (Lute & Bobbi Olson Court) - Tucson, Ariz.



Idaho State 15

No.	Player	S	Pts	FG	3FG	FT	OR	DR	TR	PF	A	TO	Blk	Stl	Min	+/-
03	GRANDON, SAYLAIR		8	3-5	2-3	0-0	0	0	0	1	1	3	0	1	9	2
04	HINRICHS, MADISON		1	0-2	0-0	1-2	0	1	1	2	1	2	0	0	8	0
11	TAPASA, SAI		2	0-2	0-1	2-2	1	0	1	0	0	0	0	0	8	2
12	BOURNE, CALLIE		0	0-0	0-0	0-0	0	0	0	1	0	0	0	0	1	1
14	ORS, ESTEFANIA		2	1-1	0-0	0-0	0	3	3	0	1	1	0	0	9	0
13	SMITH, ELLIE		0	0-0	0-0	0-0	1	0	1	1	0	1	0	0	2	-3
22	MOORE, DELANEY		2	0-0	0-0	2-2	0	1	1	2	0	1	0	0	10	0
25	OLTROGGE, MONTANA		0	0-1	0-0	0-0	0	0	0	1	0	0	0	0	2	-2
	TEAM						1	0	1	0		0				
TOTALS			15	4-11	2-4	5-6	3	5	8	8	3	8	0	1	49	

Shooting By Period

Period	FG	FG%	3FG	3FG%	FT	FT%
Game	20-54	37.0%	7-18	38.9%	9-12	75.0%

Arizona 15

No.	Player	S	Pts	FG	3FG	FT	OR	DR	TR	PF	A	TO	Blk	Stl	Min	+/-
02	MCDONALD, AARI		4	1-1	0-0	2-4	0	0	0	1	1	2	0	0	7	5
10	STARKS, TEE TEE		2	0-2	0-1	2-2	1	1	2	0	0	0	0	2	9	6
14	THOMAS, SAM		5	2-3	1-1	0-0	1	0	1	1	0	2	0	0	10	0
21	GRAHAM, DESTINY		2	0-1	0-1	2-2	0	1	1	1	0	1	0	1	10	0
25	REESE, CATE		2	0-2	0-0	2-2	1	1	2	2	0	1	1	1	10	0
04	ALONSO, LUCIA		0	0-1	0-0	0-0	0	0	0	1	0	0	0	0	3	-2
22	MALECHA, LINDSEY		0	0-0	0-0	0-0	0	0	0	0	0	0	0	0	0	-3
24	NIXON, BRYCE		0	0-1	0-1	0-0	0	0	0	0	0	0	0	0	1	-6
34	SMITH, SEMAJ		0	0-0	0-0	0-0	0	0	0	0	0	0	0	0	0	0
	TEAM						1	0	1	0		0				
TOTALS			15	3-11	1-4	8-10	4	3	7	6	1	6	1	4	49	

Shooting By Period

Period	FG	FG%	3FG	3FG%	FT	FT%
Game	17-46	37.0%	6-16	37.5%	26-32	81.3%

Game Notes:

Officials: Michael Price, Bob Scofield, Kyle Bacon
 Attendance: 3265

Start Time: 2019-03-22 01:31:11
 End Time: 2019-03-22 03:16:53
 Game Duration: 105

Score	1st	2nd	3rd	4th	TOT
ISU	7	13	21	15	56
ARI	18	20	13	15	66

Points from (This Period)	ISU	ARI
In the Paint	4	4
Off Turns	2	7
2nd Chance	4	1
Fast Break	0	1
Bench	2	0

**Official Play-By-Play
Idaho State vs Arizona
Fourth Quarter**

March 22, 2019 at McKale Center (Lute & Bobbi Olson Court) - Tucson, Ariz.



Period 4

Starters:

Idaho State: 11 TAPASA, SAI; 12 BOURNE, CALLIE; 14 ORS, ESTEFANIA; 3 GRANDON, SAYLAIR; 4 HINRICHS, MADISON;

Arizona: 10 STARKS, TEE TEE; 14 THOMAS, SAM; 21 GRAHAM, DESTINY; 25 REESE, CATE; 2 MCDONALD, AARI;

Time	VISITORS: Idaho State	Score	Margin	HOME: Arizona
09:35				MISSED LAYUP by THOMAS, SAM
09:31	REBOUND (DEF) by ORS, ESTEFANIA			
09:25	TURNOVER (LOSTBALL) by HINRICHS, MADISON			
09:25				STEAL by STARKS, TEE TEE
09:15				TURNOVER (BADPASS) by MCDONALD, AARI
09:15				SUB OUT: MCDONALD, AARI
09:15				SUB IN: ALONSO, LUCIA
09:01	MISSED LAYUP by HINRICHS, MADISON			
09:01				BLOCK by REESE, CATE
09:01	REBOUND (OFF) by TEAM			
09:00				FOUL (PERSONAL) by ALONSO, LUCIA
08:52	MISSED JUMPER by HINRICHS, MADISON			
08:49	REBOUND (OFF) by TAPASA, SAI			
08:41	GOOD! LAYUP by ORS, ESTEFANIA	51-43	H 8	
08:41	ASSIST by GRANDON, SAYLAIR			
08:22				TURNOVER (BADPASS) by GRAHAM, DESTINY
08:09	MISSED JUMPER by GRANDON, SAYLAIR			
08:06				REBOUND (DEF) by GRAHAM, DESTINY
07:58		53-43	H 10	GOOD! LAYUP by THOMAS, SAM
07:40	TURNOVER (BADPASS) by GRANDON, SAYLAIR			
07:40				STEAL by GRAHAM, DESTINY
07:28				MISSED 3PTR by GRAHAM, DESTINY
07:24	REBOUND (DEF) by ORS, ESTEFANIA			
07:11	GOOD! LAYUP by GRANDON, SAYLAIR	53-45	H 8	
07:11	ASSIST by ORS, ESTEFANIA			
06:41	FOUL (PERSONAL) by MOORE, DELANEY			
06:41	SUB OUT: HINRICHS, MADISON			
06:41	SUB IN: SMITH, ELLIE			
06:30				MISSED JUMPER by ALONSO, LUCIA
06:30				REBOUND (OFF) by TEAM
06:30	FOUL (PERSONAL) by MOORE, DELANEY			
06:30				SUB OUT: ALONSO, LUCIA
06:30				SUB IN: MCDONALD, AARI
06:30	FOUL (PERSONAL) by SMITH, ELLIE			
06:17				TURNOVER (BADPASS) by MCDONALD, AARI
06:17	SUB OUT: ORS, ESTEFANIA			
06:17	SUB IN: OLTROGGE, MONTANA			
05:56	TURNOVER (BADPASS) by MOORE, DELANEY			
05:56				STEAL by REESE, CATE
05:46				FOUL (OFF) by THOMAS, SAM
05:46				TURNOVER (OFFENSIVE) by THOMAS, SAM
05:20	MISSED LAYUP by OLTROGGE, MONTANA			
05:19	REBOUND (OFF) by SMITH, ELLIE			
05:19	TURNOVER (DRIBBLING) by SMITH, ELLIE			
05:19	SUB OUT: GRANDON, SAYLAIR			
05:19	SUB IN: HINRICHS, MADISON			
05:19	SUB OUT: TAPASA, SAI			
05:19	SUB IN: ORS, ESTEFANIA			
05:03	FOUL (PERSONAL) by OLTROGGE, MONTANA			
05:03		54-45	H 9	GOOD! FT by REESE, CATE
05:03		55-45	H 10	GOOD! FT by REESE, CATE
04:39	TURNOVER (BADPASS) by ORS, ESTEFANIA			
04:39				
04:39	SUB OUT: SMITH, ELLIE			
04:39	SUB IN: GRANDON, SAYLAIR			
04:39	SUB OUT: OLTROGGE, MONTANA			
04:39	SUB IN: TAPASA, SAI			
04:25				MISSED JUMPER by REESE, CATE
04:21	REBOUND (DEF) by ORS, ESTEFANIA			
04:12	TURNOVER (LOSTBALL) by GRANDON, SAYLAIR			
04:02				MISSED LAYUP by REESE, CATE
03:58	REBOUND (DEF) by MOORE, DELANEY			
03:48	MISSED 3PTR by GRANDON, SAYLAIR			
03:44				REBOUND (DEF) by REESE, CATE
03:33		57-45	H 12	GOOD! LAYUP by MCDONALD, AARI
03:10	TURNOVER (BADPASS) by GRANDON, SAYLAIR			
02:59		60-45	H 15	GOOD! 3PTR by THOMAS, SAM
02:59				ASSIST by MCDONALD, AARI
02:43				FOUL (PERSONAL) by MCDONALD, AARI
02:38				FOUL (PERSONAL) by REESE, CATE

Time	VISITORS: Idaho State	Score	Margin	HOME: Arizona
02:38	GOOD! FT by TAPASA, SAI	60-46	H 14	
02:38	GOOD! FT by TAPASA, SAI	60-47	H 13	
02:38	TIMEOUT 30SEC			
02:15				TURNOVER (TRAVEL) by REESE, CATE
02:06	MISSED JUMPER by TAPASA, SAI			
02:03				REBOUND (DEF) by STARKS, TEE TEE
01:53				MISSED LAYUP by STARKS, TEE TEE
01:51				REBOUND (OFF) by STARKS, TEE TEE
01:47	FOUL (PERSONAL) by GRANDON, SAYLAIR			
01:47		61-47	H 14	GOOD! FT by MCDONALD, AARI
01:47				MISSED FT by MCDONALD, AARI
01:45				REBOUND (OFF) by REESE, CATE
01:33				MISSED 3PTR by STARKS, TEE TEE
01:27	REBOUND (DEF) by HINRICHS, MADISON			
01:26	TURNOVER (BADPASS) by HINRICHS, MADISON			
01:26				STEAL by STARKS, TEE TEE
01:26	FOUL (PERSONAL) by HINRICHS, MADISON			
01:26		62-47	H 15	GOOD! FT by STARKS, TEE TEE
01:26		63-47	H 16	GOOD! FT by STARKS, TEE TEE
01:26				SUB OUT: STARKS, TEE TEE
01:26				SUB IN: NIXON, BRYCE
01:20	GOOD! 3PTR by GRANDON, SAYLAIR	63-50	H 13	
01:20	ASSIST by HINRICHS, MADISON			
01:18	TIMEOUT 30SEC			
01:18	SUB OUT: TAPASA, SAI			
01:18	SUB IN: BOURNE, CALLIE			
00:52				MISSED 3PTR by NIXON, BRYCE
00:48				REBOUND (OFF) by THOMAS, SAM
00:48				TURNOVER (LOSTBALL) by THOMAS, SAM
00:48	STEAL by GRANDON, SAYLAIR			
00:48	SUB OUT: BOURNE, CALLIE			
00:48	SUB IN: TAPASA, SAI			
00:36				FOUL (PERSONAL) by REESE, CATE
00:36	MISSED FT by HINRICHS, MADISON			
00:36	REBOUND (OFF) by TEAM			
00:36	SUB OUT: TAPASA, SAI			
00:36	SUB IN: BOURNE, CALLIE			
00:36	GOOD! FT by HINRICHS, MADISON	63-51	H 12	
00:36				TIMEOUT 30SEC
00:32	FOUL (PERSONAL) by BOURNE, CALLIE			
00:32	SUB OUT: BOURNE, CALLIE			
00:32	SUB IN: TAPASA, SAI			
00:32				MISSED FT by MCDONALD, AARI
00:32				REBOUND (OFF) by TEAM
00:32		64-51	H 13	GOOD! FT by MCDONALD, AARI [FB]
00:32				SUB OUT: MCDONALD, AARI
00:32				SUB IN: MALECHA, LINDSEY
00:23	MISSED 3PTR by TAPASA, SAI			
00:23	REBOUND (OFF) by TEAM			
00:23				FOUL (PERSONAL) by GRAHAM, DESTINY
00:23	GOOD! FT by MOORE, DELANEY	64-52	H 12	
00:23	SUB OUT: TAPASA, SAI			
00:23	SUB IN: SMITH, ELLIE			
00:23	GOOD! FT by MOORE, DELANEY	64-53	H 11	
00:17	FOUL (PERSONAL) by HINRICHS, MADISON			
00:17		65-53	H 12	GOOD! FT by GRAHAM, DESTINY
00:17		66-53	H 13	GOOD! FT by GRAHAM, DESTINY
00:17	SUB OUT: SMITH, ELLIE			
00:17	SUB IN: TAPASA, SAI			
00:15	GOOD! 3PTR by GRANDON, SAYLAIR	66-56	H 10	

Idaho State 56, Arizona 66

Points from (This Period)	ISU	ARI
In the Paint	4	4
Off Turns	2	7
2nd Chance	4	1
Fast Break	0	1
Bench	2	0

**Official Scoring/Possession Reference Chart
Idaho State vs Arizona**

Period 1

March 22, 2019 at McKale Center (Lute & Bobbi Olson Court) - Tucson, Ariz.



Period 1

Starters:

Idaho State: 11 TAPASA, SAI; 12 BOURNE, CALLIE; 14 ORS, ESTEFANIA; 3 GRANDON, SAYLAIR; 4 HINRICHS, MADISON;

Arizona: 10 STARKS, TEE TEE; 14 THOMAS, SAM; 21 GRAHAM, DESTINY; 25 REESE, CATE; 2 MCDONALD, AARI;

Time	VISITORS: Idaho State	Score	Margin	HOME: Arizona
09:42		1-0	H 1	GOOD! FT by GRAHAM, DESTINY
09:42		2-0	H 2	GOOD! FT by GRAHAM, DESTINY
08:17	GOOD! LAYUP by ORS, ESTEFANIA	2-2	T	
08:04		4-2	H 2	GOOD! LAYUP by REESE, CATE
08:04		5-2	H 3	GOOD! FT by REESE, CATE
07:44		7-2	H 5	GOOD! JUMPER by REESE, CATE
07:16		9-2	H 7	GOOD! LAYUP by REESE, CATE [FB]
06:37	GOOD! 3PTR by ORS, ESTEFANIA	9-5	H 4	
02:25	GOOD! JUMPER by TAPASA, SAI [PNT]	9-7	H 2	
01:58		12-7	H 5	GOOD! 3PTR by ALONSO, LUCIA
01:13		14-7	H 7	GOOD! LAYUP by REESE, CATE [FB]
01:13		15-7	H 8	GOOD! FT by REESE, CATE [FB]
00:21		16-7	H 9	GOOD! FT by MCDONALD, AARI [FB]
00:01		18-7	H 11	GOOD! LAYUP by MCDONALD, AARI

Idaho State 7, Arizona 18

**Official Scoring/Possession Reference Chart
Idaho State vs Arizona
Period 2**

March 22, 2019 at McKale Center (Lute & Bobbi Olson Court) - Tucson, Ariz.



Period 2

Starters:

Idaho State: 11 TAPASA, SAI; 12 BOURNE, CALLIE; 14 ORS, ESTEFANIA; 3 GRANDON, SAYLAIR; 4 HINRICH, MADISON;

Arizona: 10 STARKS, TEE TEE; 14 THOMAS, SAM; 21 GRAHAM, DESTINY; 25 REESE, CATE; 2 MCDONALD, AARI;

Time	VISITORS: Idaho State	Score	Margin	HOME: Arizona
09:36		19-7	H 12	GOOD! FT by GRAHAM, DESTINY
09:36		20-7	H 13	GOOD! FT by GRAHAM, DESTINY
09:08		23-7	H 16	GOOD! 3PTR by ALONSO, LUCIA
08:44	GOOD! 3PTR by ORS, ESTEFANIA	23-10	H 13	
08:18		26-10	H 16	GOOD! 3PTR by NIXON, BRYCE
07:57	GOOD! LAYUP by GRANDON, SAYLAIR	26-12	H 14	
07:44		28-12	H 16	GOOD! LAYUP by SMITH, SEMAJ
06:00		30-12	H 18	GOOD! LAYUP by SMITH, SEMAJ
04:59	GOOD! FT by BOURNE, CALLIE	30-13	H 17	
04:18		32-13	H 19	GOOD! LAYUP by REESE, CATE
04:03	GOOD! 3PTR by GRANDON, SAYLAIR	32-16	H 16	
03:41		35-16	H 19	GOOD! 3PTR by MCDONALD, AARI
02:20		36-16	H 20	GOOD! FT by REESE, CATE
02:20		37-16	H 21	GOOD! FT by REESE, CATE
01:53	GOOD! LAYUP by BOURNE, CALLIE	37-18	H 19	
01:32		38-18	H 20	GOOD! FT by STARKS, TEE TEE
01:13	GOOD! LAYUP by MOORE, DELANEY	38-20	H 18	

Idaho State 20, Arizona 38

**Official Scoring/Possession Reference Chart
Idaho State vs Arizona
Period 3**

March 22, 2019 at McKale Center (Lute & Bobbi Olson Court) - Tucson, Ariz.



Period 3

Starters:

Idaho State: 11 TAPASA, SAI; 12 BOURNE, CALLIE; 14 ORS, ESTEFANIA; 3 GRANDON, SAYLAIR; 4 HINRICHS, MADISON;

Arizona: 10 STARKS, TEE TEE; 14 THOMAS, SAM; 21 GRAHAM, DESTINY; 25 REESE, CATE; 2 MCDONALD, AARI;

Time	VISITORS: Idaho State	Score	Margin	HOME: Arizona
09:21		40-20	H 20	GOOD! LAYUP by REESE, CATE
08:52	GOOD! JUMPER by TAPASA, SAI	40-22	H 18	
08:07	GOOD! 3PTR by GRANDON, SAYLAIR	40-25	H 15	
07:27	GOOD! 3PTR by GRANDON, SAYLAIR	40-28	H 12	
06:30	GOOD! JUMPER by TAPASA, SAI [PNT]	40-30	H 10	
05:44	GOOD! LAYUP by GRANDON, SAYLAIR	40-32	H 8	
05:44	GOOD! FT by GRANDON, SAYLAIR	40-33	H 7	
05:03		41-33	H 8	GOOD! FT by REESE, CATE
05:03		42-33	H 9	GOOD! FT by REESE, CATE
04:53	GOOD! LAYUP by ORS, ESTEFANIA [FB]	42-35	H 7	
04:39		43-35	H 8	GOOD! FT by GRAHAM, DESTINY
04:39		44-35	H 9	GOOD! FT by GRAHAM, DESTINY
04:24	GOOD! JUMPER by TAPASA, SAI	44-37	H 7	
03:34		45-37	H 8	GOOD! FT by MCDONALD, AARI [FB]
03:34		46-37	H 9	GOOD! FT by MCDONALD, AARI [FB]
02:41		49-37	H 12	GOOD! 3PTR by MCDONALD, AARI
02:16	GOOD! FT by TAPASA, SAI	49-38	H 11	
02:16	GOOD! FT by TAPASA, SAI	49-39	H 10	
00:32		50-39	H 11	GOOD! FT by GRAHAM, DESTINY
00:32		51-39	H 12	GOOD! FT by GRAHAM, DESTINY
00:06	GOOD! LAYUP by OLTROGGE, MONTANA	51-41	H 10	

Idaho State 41, Arizona 51

**Official Scoring/Possession Reference Chart
Idaho State vs Arizona
Period 4**

March 22, 2019 at McKale Center (Lute & Bobbi Olson Court) - Tucson, Ariz.



Period 4

Starters:

Idaho State: 11 TAPASA, SAI; 12 BOURNE, CALLIE; 14 ORS, ESTEFANIA; 3 GRANDON, SAYLAIR; 4 HINRICHS, MADISON;
Arizona: 10 STARKS, TEE TEE; 14 THOMAS, SAM; 21 GRAHAM, DESTINY; 25 REESE, CATE; 2 MCDONALD, AARI;

Time	VISITORS: Idaho State	Score	Margin	HOME: Arizona
08:41	GOOD! LAYUP by ORS, ESTEFANIA	51-43	H 8	
07:58		53-43	H 10	GOOD! LAYUP by THOMAS, SAM
07:11	GOOD! LAYUP by GRANDON, SAYLAIR	53-45	H 8	
05:03		54-45	H 9	GOOD! FT by REESE, CATE
05:03		55-45	H 10	GOOD! FT by REESE, CATE
03:33		57-45	H 12	GOOD! LAYUP by MCDONALD, AARI
02:59		60-45	H 15	GOOD! 3PTR by THOMAS, SAM
02:38	GOOD! FT by TAPASA, SAI	60-46	H 14	
02:38	GOOD! FT by TAPASA, SAI	60-47	H 13	
01:47		61-47	H 14	GOOD! FT by MCDONALD, AARI
01:26		62-47	H 15	GOOD! FT by STARKS, TEE TEE
01:26		63-47	H 16	GOOD! FT by STARKS, TEE TEE
01:20	GOOD! 3PTR by GRANDON, SAYLAIR	63-50	H 13	
00:36	GOOD! FT by HINRICHS, MADISON	63-51	H 12	
00:32		64-51	H 13	GOOD! FT by MCDONALD, AARI [FB]
00:23	GOOD! FT by MOORE, DELANEY	64-52	H 12	
00:23	GOOD! FT by MOORE, DELANEY	64-53	H 11	
00:17		65-53	H 12	GOOD! FT by GRAHAM, DESTINY
00:17		66-53	H 13	GOOD! FT by GRAHAM, DESTINY
00:15	GOOD! 3PTR by GRANDON, SAYLAIR	66-56	H 10	

Idaho State 56, Arizona 66

**Official Substitutions Log
Idaho State vs Arizona
Period 1**

March 22, 2019 at McKale Center (Lute & Bobbi Olson Court) - Tucson, Ariz.



VISITORS: Idaho State	Time	Score	HOME: Arizona
11 TAPASA,SAI			10 STARKS,TEE TEE
12 BOURNE,CALLIE			14 THOMAS,SAM
14 ORS,ESTEFANIA			21 GRAHAM,DESTINY
3 GRANDON,SAYLAIR			25 REESE,CATE
4 HINRICHS,MADISON			2 MCDONALD,AARI
SUB OUT: 12 BOURNE,CALLIE	07:14	2-9	
SUB IN: 22 MOORE,DELANEY	07:14		
	05:09	5-9	SUB OUT: MCDONALD,AARI
	05:09		SUB IN: ALONSO,LUCIA
SUB OUT: 4 HINRICHS,MADISON	05:09		
SUB IN: 12 BOURNE,CALLIE	05:09		
SUB OUT: 11 TAPASA,SAI	05:09		
SUB IN: 13 SMITH,ELLIE	05:09		
	04:25	5-9	SUB OUT: THOMAS,SAM
	04:25		SUB IN: MCDONALD,AARI
SUB OUT: 14 ORS,ESTEFANIA	04:16	5-9	
SUB IN: 4 HINRICHS,MADISON	04:16		
	03:55	5-9	SUB OUT: STARKS,TEE TEE
	03:55		SUB IN: NIXON,BRYCE
SUB OUT: 13 SMITH,ELLIE	03:55		
SUB IN: 11 TAPASA,SAI	03:55		
SUB OUT: 3 GRANDON,SAYLAIR	02:56	5-9	
SUB IN: 14 ORS,ESTEFANIA	02:56		
SUB OUT: 22 MOORE,DELANEY	01:32	7-12	
SUB IN: 3 GRANDON,SAYLAIR	01:32		
SUB OUT: 11 TAPASA,SAI	01:13	7-14	
SUB IN: 13 SMITH,ELLIE	01:13		
	01:13		SUB OUT: REESE,CATE
	01:13		SUB IN: SMITH,SEMAJ

Idaho State 7, Arizona 18

**Official Substitutions Log
Idaho State vs Arizona
Period 2**

March 22, 2019 at McKale Center (Lute & Bobbi Olson Court) - Tucson, Ariz.



VISITORS: Idaho State	Time	Score	HOME: Arizona
11 TAPASA, SAI			10 STARKS, TEE TEE
12 BOURNE, CALLIE			14 THOMAS, SAM
14 ORS, ESTEFANIA			21 GRAHAM, DESTINY
3 GRANDON, SAYLAIR			25 REESE, CATE
4 HINRICHS, MADISON			2 MCDONALD, AARI
SUB OUT: 22 MOORE, DELANEY	09:10	7-20	
SUB IN: 11 TAPASA, SAI	09:10		
	07:43	12-28	SUB OUT: GRAHAM, DESTINY
	07:43		SUB IN: REESE, CATE
	04:59	13-30	SUB OUT: SMITH, SEMAJ
	04:59		SUB IN: STARKS, TEE TEE
SUB OUT: 11 TAPASA, SAI	04:59		
SUB IN: 25 OLTROGGE, MONTANA	04:59		
SUB OUT: 14 ORS, ESTEFANIA	04:59		
SUB IN: 13 SMITH, ELLIE	04:59		
	02:20	16-36	SUB OUT: NIXON, BRYCE
	02:20		SUB IN: GRAHAM, DESTINY
SUB OUT: 13 SMITH, ELLIE	02:20		
SUB IN: 11 TAPASA, SAI	02:20		
SUB OUT: 4 HINRICHS, MADISON	02:20		
SUB IN: 14 ORS, ESTEFANIA	02:20		
SUB OUT: 3 GRANDON, SAYLAIR	02:20		
SUB IN: 22 MOORE, DELANEY	02:20		
SUB OUT: 12 BOURNE, CALLIE	01:32	18-37	
SUB IN: 4 HINRICHS, MADISON	01:32		
SUB OUT: 25 OLTROGGE, MONTANA	01:02	20-38	
SUB IN: 3 GRANDON, SAYLAIR	01:02		

Idaho State 20, Arizona 38

**Official Substitutions Log
Idaho State vs Arizona
Period 3**

March 22, 2019 at McKale Center (Lute & Bobbi Olson Court) - Tucson, Ariz.



VISITORS: Idaho State	Time	Score	HOME: Arizona
11 TAPASA, SAI			10 STARKS, TEE TEE
12 BOURNE, CALLIE			14 THOMAS, SAM
14 ORS, ESTEFANIA			21 GRAHAM, DESTINY
3 GRANDON, SAYLAIR			25 REESE, CATE
4 HINRICHS, MADISON			2 MCDONALD, AARI
SUB OUT: 12 BOURNE, CALLIE	08:39	22-40	
SUB IN: 22 MOORE, DELANEY	08:39		
	07:17	28-40	SUB OUT: GRAHAM, DESTINY
	07:17		SUB IN: ALONSO, LUCIA
	05:13	33-40	SUB OUT: THOMAS, SAM
	05:13		SUB IN: GRAHAM, DESTINY
SUB OUT: 11 TAPASA, SAI	05:13		
SUB IN: 12 BOURNE, CALLIE	05:13		
SUB OUT: 12 BOURNE, CALLIE	04:39	35-42	
SUB IN: 11 TAPASA, SAI	04:39		
	04:01	37-44	SUB OUT: REESE, CATE
	04:01		SUB IN: THOMAS, SAM
SUB OUT: 4 HINRICHS, MADISON	02:05	39-49	
SUB IN: 12 BOURNE, CALLIE	02:05		
SUB OUT: 11 TAPASA, SAI	00:59	39-49	
SUB IN: 4 HINRICHS, MADISON	00:59		
SUB OUT: 3 GRANDON, SAYLAIR	00:59		
SUB IN: 13 SMITH, ELLIE	00:59		
SUB OUT: 22 MOORE, DELANEY	00:32	39-50	
SUB IN: 25 OLTROGGE, MONTANA	00:32		

Idaho State 41, Arizona 51

**Official Substitutions Log
Idaho State vs Arizona
Period 4**

March 22, 2019 at McKale Center (Lute & Bobbi Olson Court) - Tucson, Ariz.



VISITORS: Idaho State	Time	Score	HOME: Arizona
11 TAPASA, SAI			10 STARKS, TEE TEE
12 BOURNE, CALLIE			14 THOMAS, SAM
14 ORS, ESTEFANIA			21 GRAHAM, DESTINY
3 GRANDON, SAYLAIR			25 REESE, CATE
4 HINRICHS, MADISON			2 MCDONALD, AARI
	09:15	-	SUB OUT: MCDONALD, AARI
	09:15		SUB IN: ALONSO, LUCIA
SUB OUT: 4 HINRICHS, MADISON	06:41	45-53	
SUB IN: 13 SMITH, ELLIE	06:41		
	06:30	45-53	SUB OUT: ALONSO, LUCIA
	06:30		SUB IN: MCDONALD, AARI
SUB OUT: 14 ORS, ESTEFANIA	06:17	45-53	
SUB IN: 25 OLTROGGE, MONTANA	06:17		
SUB OUT: 3 GRANDON, SAYLAIR	05:19	45-53	
SUB IN: 4 HINRICHS, MADISON	05:19		
SUB OUT: 11 TAPASA, SAI	05:19		
SUB IN: 14 ORS, ESTEFANIA	05:19		
SUB OUT: 13 SMITH, ELLIE	04:39	45-55	
SUB IN: 3 GRANDON, SAYLAIR	04:39		
SUB OUT: 25 OLTROGGE, MONTANA	04:39		
SUB IN: 11 TAPASA, SAI	04:39		
	01:26	47-63	SUB OUT: STARKS, TEE TEE
	01:26		SUB IN: NIXON, BRYCE
SUB OUT: 11 TAPASA, SAI	01:18	50-63	
SUB IN: 12 BOURNE, CALLIE	01:18		
SUB OUT: 12 BOURNE, CALLIE	00:48	50-63	
SUB IN: 11 TAPASA, SAI	00:48		
SUB OUT: 11 TAPASA, SAI	00:36	50-63	
SUB IN: 12 BOURNE, CALLIE	00:36		
SUB OUT: 12 BOURNE, CALLIE	00:32	51-63	
SUB IN: 11 TAPASA, SAI	00:32		
	00:32		SUB OUT: MCDONALD, AARI
	00:32		SUB IN: MALECHA, LINDSEY
SUB OUT: 11 TAPASA, SAI	00:23	52-64	
SUB IN: 13 SMITH, ELLIE	00:23		
SUB OUT: 13 SMITH, ELLIE	00:17	53-66	
SUB IN: 11 TAPASA, SAI	00:17		

Idaho State 56, Arizona 66

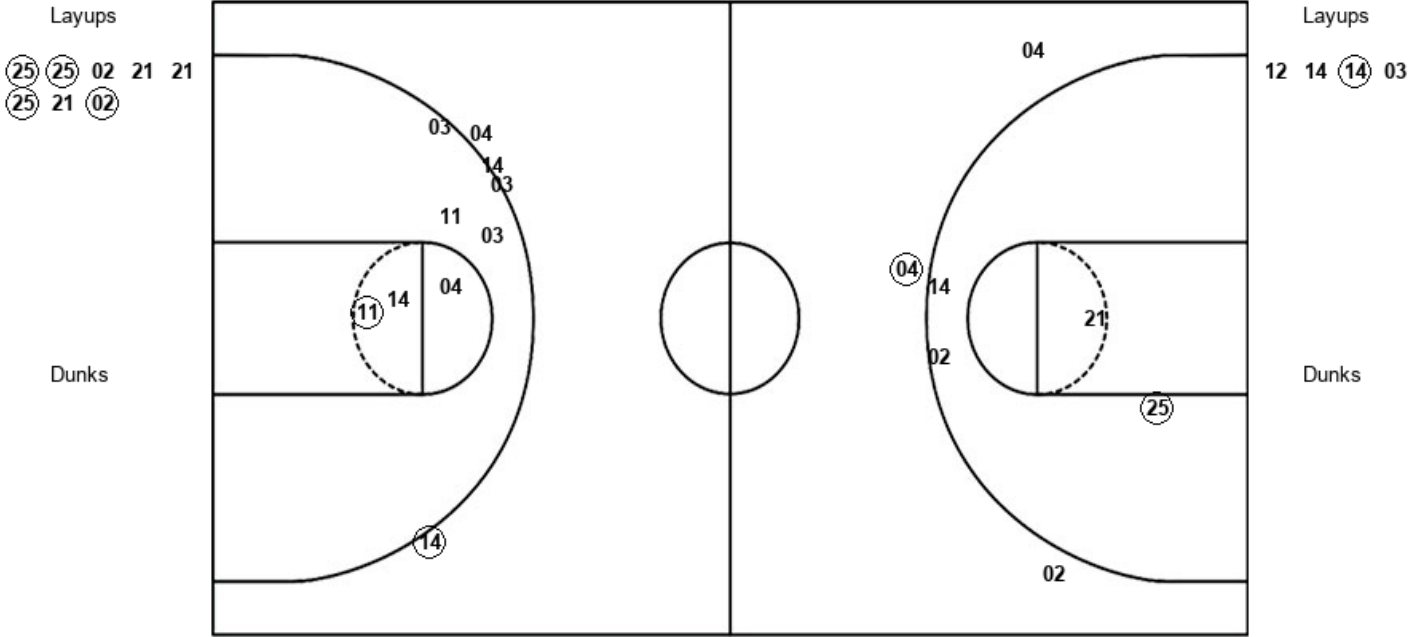
Official Shot Chart
 Idaho State vs Arizona
 PERIOD 1 Shots

March 22, 2019 at McKale Center (Lute & Bobbi Olson Court) - Tucson, Ariz.



Arizona

Idaho State



ARI : Period 1	Made	Att	Pct
Layups	4	8	50.0
Dunks	0	0	0
2PT Field Goals	5	12	41.7
3PT Field Goals	1	3	33.3
Total Field Goals	6	15	40.0

ISU : Period 1	Made	Att	Pct
Layups	1	4	25.0
Dunks	0	0	0
2PT Field Goals	2	10	20.0
3PT Field Goals	1	4	25.0
Total Field Goals	3	14	21.4

Official Shot Chart
 Idaho State vs Arizona
 PERIOD 2 Shots

March 22, 2019 at McKale Center (Lute & Bobbi Olson Court) - Tucson, Ariz.

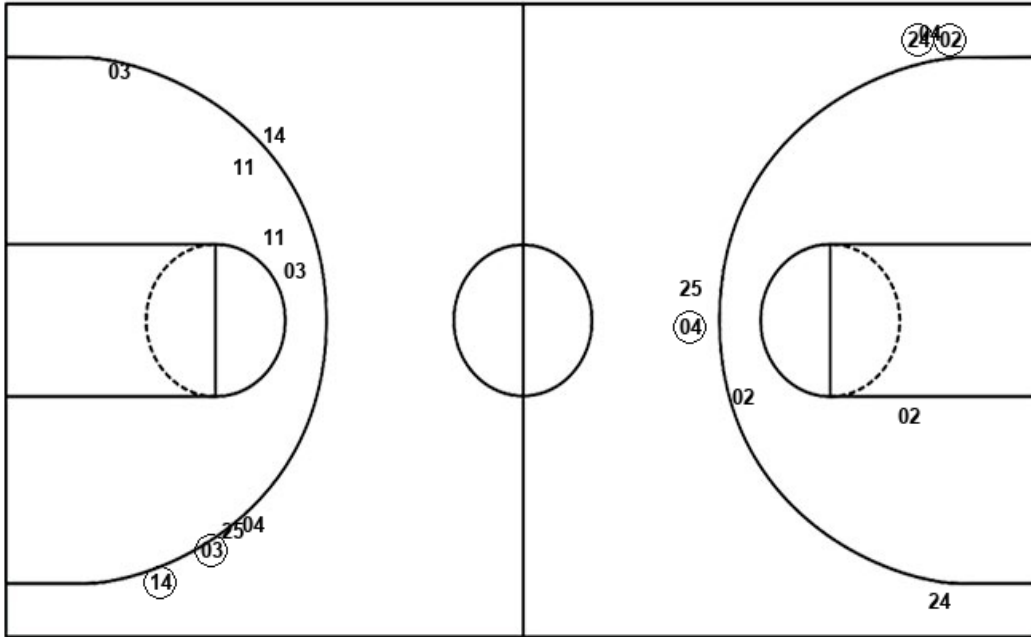


Arizona

Idaho State

Layups
 (34) 02 (34) (25)

Layups
 22 (03) 03 03 (12)
 (22) 04



Dunks

Dunks

ARI : Period 2	Made	Att	Pct
Layups	3	4	75.0
Dunks	0	0	0
2PT Field Goals	3	6	50.0
3PT Field Goals	3	6	50.0
Total Field Goals	6	12	50.0

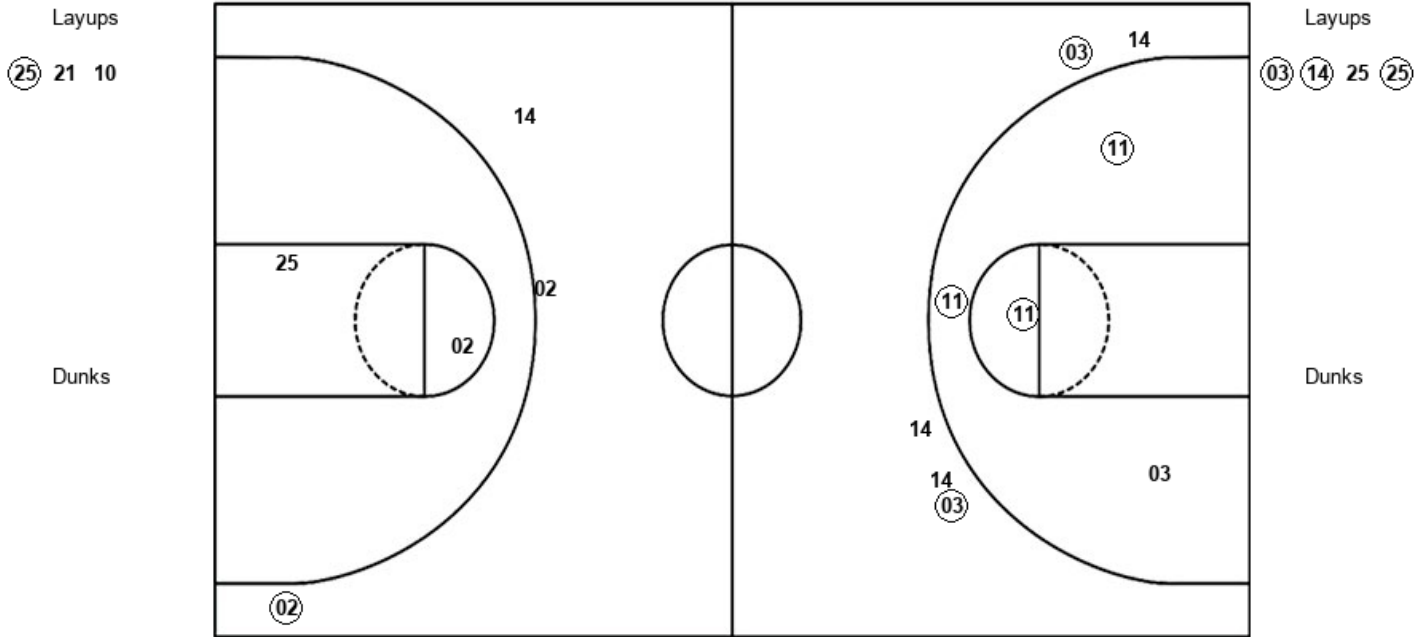
ISU : Period 2	Made	Att	Pct
Layups	3	7	42.9
Dunks	0	0	0
2PT Field Goals	3	11	27.3
3PT Field Goals	2	5	40.0
Total Field Goals	5	16	31.3

Official Shot Chart
Idaho State vs Arizona
PERIOD 3 Shots
 March 22, 2019 at McKale Center (Lute & Bobbi Olson Court) - Tucson, Ariz.



Arizona

Idaho State



ARI : Period 3	Made	Att	Pct
Layups	1	3	33.3
Dunks	0	0	0
2PT Field Goals	1	5	20.0
3PT Field Goals	1	3	33.3
Total Field Goals	2	8	25.0

ISU : Period 3	Made	Att	Pct
Layups	3	4	75.0
Dunks	0	0	0
2PT Field Goals	6	8	75.0
3PT Field Goals	2	5	40.0
Total Field Goals	8	13	61.5

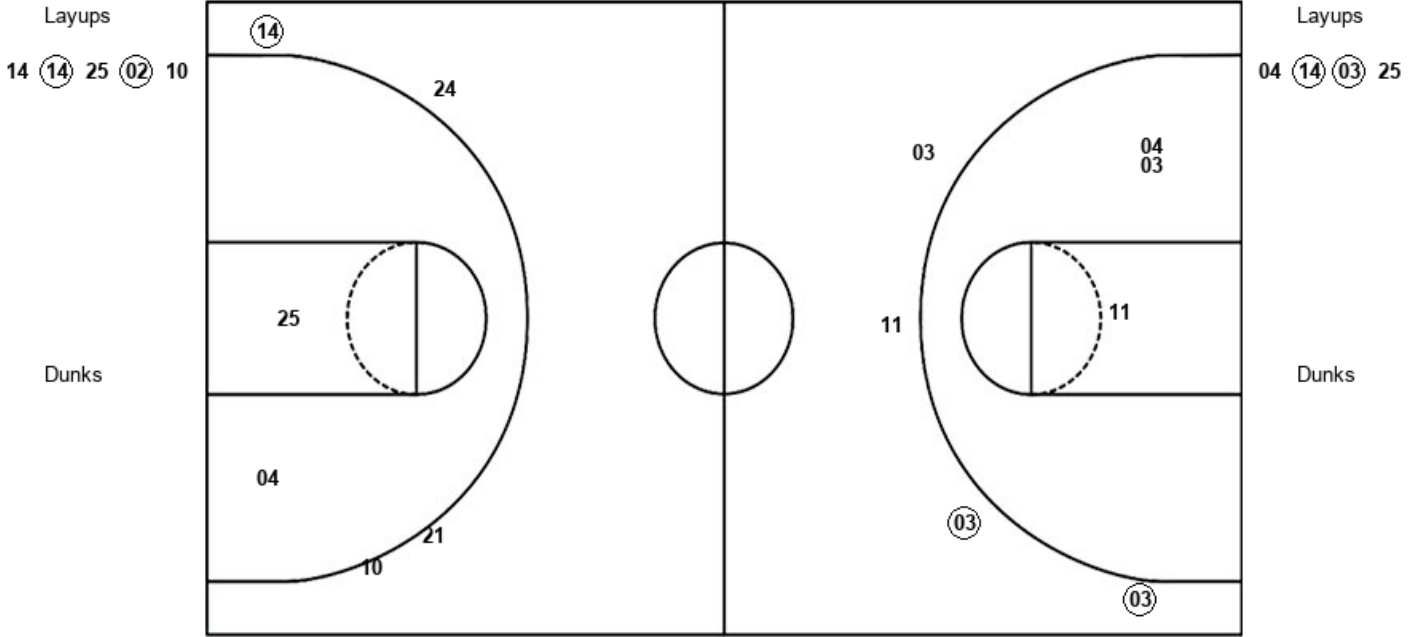
Official Shot Chart
 Idaho State vs Arizona
 PERIOD 4 Shots

March 22, 2019 at McKale Center (Lute & Bobbi Olson Court) - Tucson, Ariz.



Arizona

Idaho State



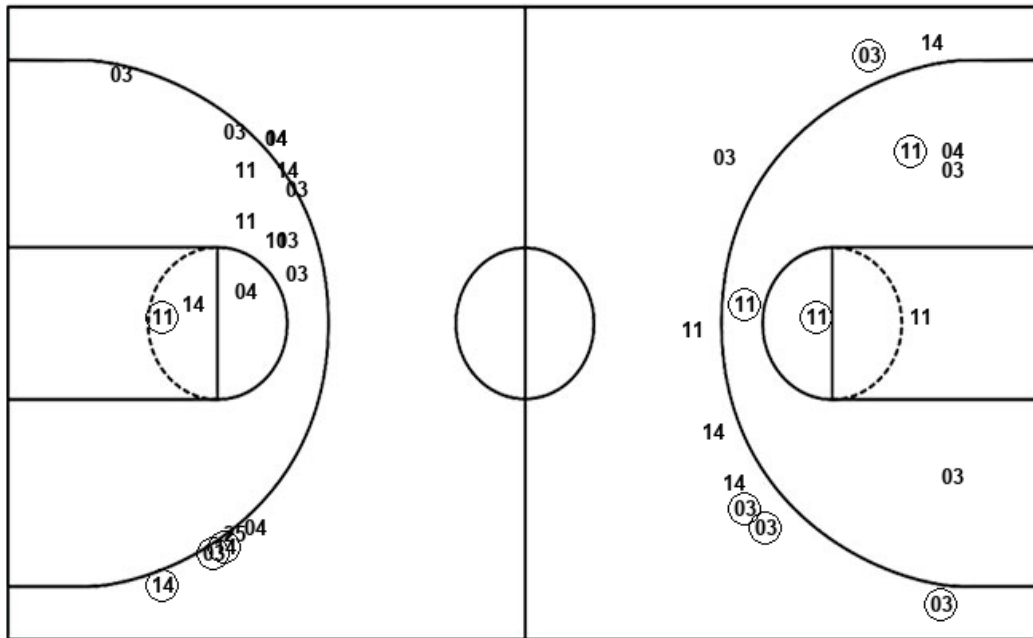
ARI : Period 4	Made	Att	Pct
Layups	2	5	40.0
Dunks	0	0	0
2PT Field Goals	2	7	28.6
3PT Field Goals	1	4	25.0
Total Field Goals	3	11	27.3

ISU : Period 4	Made	Att	Pct
Layups	2	4	50.0
Dunks	0	0	0
2PT Field Goals	2	7	28.6
3PT Field Goals	2	4	50.0
Total Field Goals	4	11	36.4

Official Shot Chart
Idaho State vs Arizona
Idaho State Team Shots
 March 22, 2019 at McKale Center (Lute & Bobbi Olson Court) - Tucson, Ariz.



Layups



Layups

12 14 (14) 03 22
 (03) 03 03 (12) (22)
 04 (03) (14) 25 (25)
 04 (14) (03) 25

Dunks

Dunks

ISU : Period 1	Made	Att	Pct
Layups	1	4	25.0
Dunks	0	0	0
2PT Field Goals	2	10	20.0
3PT Field Goals	1	4	25.0
Total Field Goals	3	14	21.4

ISU : Period 2	Made	Att	Pct
Layups	3	7	42.9
Dunks	0	0	0
2PT Field Goals	3	11	27.3
3PT Field Goals	2	5	40.0
Total Field Goals	5	16	31.3

ISU : Period 3	Made	Att	Pct
Layups	3	4	75.0
Dunks	0	0	0
2PT Field Goals	6	8	75.0
3PT Field Goals	2	5	40.0
Total Field Goals	8	13	61.5

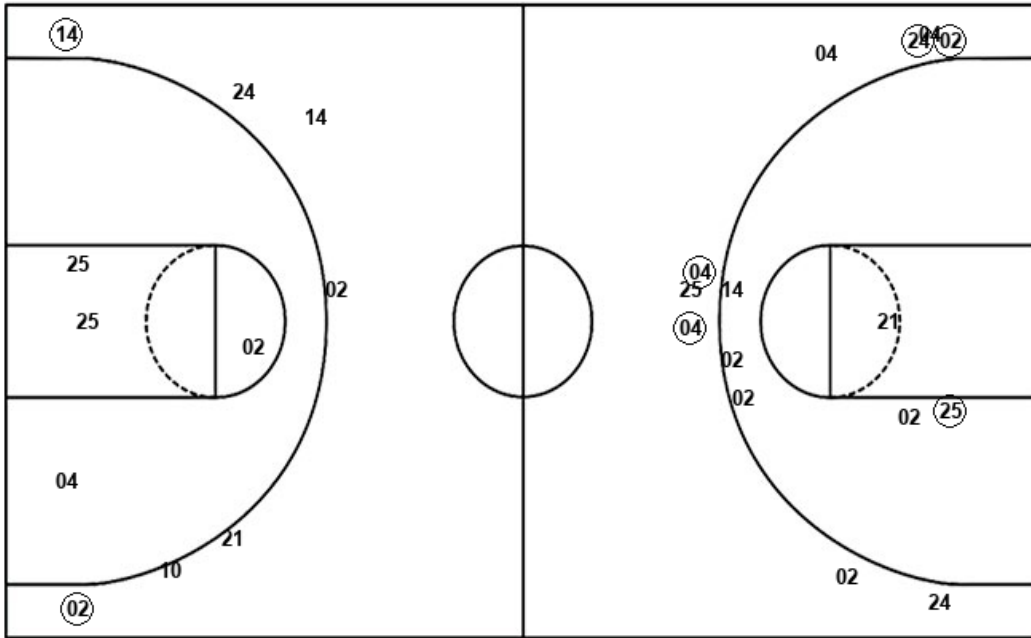
ISU : Period 4	Made	Att	Pct
Layups	2	4	50.0
Dunks	0	0	0
2PT Field Goals	2	7	28.6
3PT Field Goals	2	4	50.0
Total Field Goals	4	11	36.4

Official Shot Chart
Idaho State vs Arizona
Arizona Team Shots

March 22, 2019 at McKale Center (Lute & Bobbi Olson Court) - Tucson, Ariz.



Layups



Layups

(25)	(25)	02	21	21
(25)	21	(02)	(34)	02
(34)	(25)	(25)	21	10
14	(14)	25	(02)	10

Dunks

Dunks

ARI : Period 1	Made	Att	Pct
Layups	4	8	50.0
Dunks	0	0	0
2PT Field Goals	5	12	41.7
3PT Field Goals	1	3	33.3
Total Field Goals	6	15	40.0

ARI : Period 2	Made	Att	Pct
Layups	3	4	75.0
Dunks	0	0	0
2PT Field Goals	3	6	50.0
3PT Field Goals	3	6	50.0
Total Field Goals	6	12	50.0

ARI : Period 3	Made	Att	Pct
Layups	1	3	33.3
Dunks	0	0	0
2PT Field Goals	1	5	20.0
3PT Field Goals	1	3	33.3
Total Field Goals	2	8	25.0

ARI : Period 4	Made	Att	Pct
Layups	2	5	40.0
Dunks	0	0	0
2PT Field Goals	2	7	28.6
3PT Field Goals	1	4	25.0
Total Field Goals	3	11	27.3