

FINAL SCORE



Oregon

88



Mississippi St.

84

March 31, 2019 • Moda Center - Portland, Ore.

FINAL STATISTICS

Official Box Score
Oregon vs Mississippi St.
Game Totals -- Final Statistics
March 31, 2019 at Moda Center - Portland, Ore.

Oregon 88

| No. | Player | S | Pts | FG | 3FG | FT | OR | DR | TR | PF | A | TO | Blk | Stl | Min | +/- |
|---------------|------------------|---|-----------|--------------|--------------|--------------|-----------|-----------|-----------|-----------|-----------|----------|----------|----------|------------|-----|
| 00 | SABALLY, SATOU | F | 22 | 7-15 | 3-8 | 5-6 | 1 | 6 | 7 | 4 | 3 | 3 | 3 | 0 | 40 | 4 |
| 05 | CAZORLA, MAITE | G | 11 | 4-9 | 3-4 | 0-0 | 0 | 1 | 1 | 1 | 6 | 1 | 0 | 0 | 40 | 4 |
| 20 | IONESCU, SABRINA | G | 31 | 12-20 | 5-8 | 2-2 | 3 | 4 | 7 | 1 | 8 | 2 | 0 | 1 | 40 | 4 |
| 21 | BOLEY, ERIN | F | 8 | 2-6 | 2-6 | 2-2 | 0 | 2 | 2 | 1 | 0 | 1 | 0 | 1 | 29 | 4 |
| 24 | HEBARD, RUTHY | F | 14 | 6-8 | 0-0 | 2-4 | 3 | 2 | 5 | 3 | 1 | 1 | 2 | 0 | 32 | 4 |
| 14 | GIOMI, LYDIA | F | 0 | 0-0 | 0-0 | 0-0 | 1 | 0 | 1 | 2 | 0 | 0 | 0 | 0 | 6 | -4 |
| 32 | GILDON, OTI | F | 2 | 1-1 | 0-0 | 0-0 | 0 | 1 | 1 | 2 | 0 | 0 | 0 | 0 | 13 | 4 |
| TEAM | | | | | | | 5 | 3 | 8 | 0 | | 0 | | | | |
| TOTALS | | | 88 | 32-59 | 13-26 | 11-14 | 13 | 19 | 32 | 14 | 18 | 8 | 5 | 2 | 200 | |

Shooting By Period

| Period | FG | FG% | 3FG | 3FG% | FT | FT% |
|-------------|--------------|--------------|--------------|--------------|--------------|--------------|
| 1st Qtr | 7-14 | 50% | 5-8 | 63% | 0-0 | 0% |
| 2nd Qtr | 9-15 | 60% | 3-7 | 43% | 0-0 | 0% |
| 3rd Qtr | 6-16 | 38% | 0-4 | 00% | 7-10 | 70% |
| 4th Qtr | 10-14 | 71% | 5-7 | 71% | 4-4 | 100% |
| 1st Half | 16-29 | 55% | 8-15 | 53% | 0-0 | 0% |
| 2nd Half | 16-30 | 53% | 5-11 | 45% | 11-14 | 79% |
| Game | 32-59 | 54.2% | 13-26 | 50.0% | 11-14 | 78.6% |

Deadball Rebounds: 2,0
 Last FG: 4th-00:35
 Biggest Run: 9-0
 Largest lead: By 7 at 4-00:19
 Technical Fouls: None.

Mississippi St. 84

| No. | Player | S | Pts | FG | 3FG | FT | OR | DR | TR | PF | A | TO | Blk | Stl | Min | +/- |
|---------------|------------------------|---|-----------|--------------|-------------|--------------|-----------|-----------|-----------|-----------|-----------|----------|----------|----------|------------|-----|
| 02 | ESPINOZA-HUNTER, ANDRA | G | 12 | 4-9 | 4-7 | 0-0 | 0 | 0 | 0 | 1 | 0 | 1 | 0 | 0 | 38 | -4 |
| 05 | HOWARD, ANRIEL | F | 18 | 7-14 | 2-4 | 2-4 | 4 | 2 | 6 | 3 | 3 | 1 | 0 | 1 | 39 | 0 |
| 10 | HOLMES, JAZZMUN | G | 15 | 6-14 | 0-0 | 3-3 | 1 | 2 | 3 | 3 | 13 | 0 | 1 | 2 | 39 | 0 |
| 15 | MCCOWAN, TEAIRA | C | 19 | 6-10 | 0-0 | 7-8 | 7 | 8 | 15 | 3 | 2 | 1 | 4 | 0 | 39 | -3 |
| 24 | DANBERRY, JORDAN | G | 12 | 5-11 | 0-0 | 2-2 | 1 | 2 | 3 | 2 | 2 | 1 | 1 | 0 | 28 | -12 |
| 04 | CARTER, JESSIKA | F | 0 | 0-0 | 0-0 | 0-0 | 0 | 0 | 0 | 2 | 0 | 0 | 0 | 0 | 2 | -5 |
| 23 | SCOTT, BRE'AMBER | G | 8 | 3-6 | 2-3 | 0-2 | 0 | 1 | 1 | 1 | 1 | 0 | 0 | 1 | 15 | 4 |
| TEAM | | | | | | | 3 | 0 | 3 | 0 | | 2 | | | | |
| TOTALS | | | 84 | 31-64 | 8-14 | 14-19 | 16 | 15 | 31 | 15 | 21 | 6 | 6 | 4 | 200 | |

Shooting By Period

| Period | FG | FG% | 3FG | 3FG% | FT | FT% |
|-------------|--------------|--------------|-------------|--------------|--------------|--------------|
| 1st Qtr | 8-15 | 53% | 2-3 | 67% | 3-6 | 50% |
| 2nd Qtr | 6-16 | 38% | 2-4 | 50% | 3-3 | 100% |
| 3rd Qtr | 8-14 | 57% | 2-4 | 50% | 3-3 | 100% |
| 4th Qtr | 9-19 | 47% | 2-3 | 67% | 5-7 | 71% |
| 1st Half | 14-31 | 45% | 4-7 | 57% | 6-9 | 67% |
| 2nd Half | 17-33 | 52% | 4-7 | 57% | 8-10 | 80% |
| Game | 31-64 | 48.4% | 8-14 | 57.1% | 14-19 | 73.7% |

Deadball Rebounds: 3,0
 Last FG: 4th-00:00
 Biggest Run: 8-0
 Largest lead: By 7 at 1-03:27
 Technical Fouls: None.

Game Notes:

Officials: Michol Murray, Mark Zentz, Pualani Spurlock
 Attendance: 11538

Start Time: 2019-03-31 18:08:36
 End Time: 2019-03-31 20:04:56
 Game Duration: 1:56
 Neutral Court;

| Score | 1st | 2nd | 3rd | 4th | TOT |
|-------|-----|-----|-----|-----|-----------|
| ORE | 19 | 21 | 19 | 29 | 88 |
| MSU | 21 | 17 | 21 | 25 | 84 |

ORE led for 21:13. MSU led for 12:34.
 Game was tied for 6:13.
 Times tied: 11 Lead Changes: 15

| Points from | ORE | MSU |
|--------------|-----|-----|
| In the Paint | 30 | 30 |
| Off Turns | 7 | 6 |
| 2nd Chance | 15 | 17 |
| Fast Break | 0 | 2 |
| Bench | 2 | 8 |

Official Box Score
Oregon vs Mississippi St.
First Half Statistics Only
March 31, 2019 at Moda Center - Portland, Ore.



Oregon 40

| No. | Player | S | Pts | FG | 3FG | FT | OR | DR | TR | PF | A | TO | Blk | Stl | Min | +/- |
|---------------|------------------|---|-----------|--------------|-------------|------------|----------|----------|-----------|----------|-----------|----------|----------|----------|------------|-----|
| 00 | SABALLY, SATOU | F | 10 | 4-8 | 2-4 | 0-0 | 0 | 2 | 2 | 1 | 2 | 1 | 1 | 0 | 20 | 2 |
| 14 | GIOMI, LYDIA | F | 0 | 0-0 | 0-0 | 0-0 | 1 | 0 | 1 | 2 | 0 | 0 | 0 | 0 | 6 | -4 |
| 20 | IONESCU, SABRINA | G | 15 | 6-9 | 3-5 | 0-0 | 1 | 2 | 3 | 0 | 3 | 1 | 0 | 0 | 20 | 2 |
| 21 | BOLEY, ERIN | F | 3 | 1-3 | 1-3 | 0-0 | 0 | 2 | 2 | 1 | 0 | 1 | 0 | 0 | 12 | -2 |
| 24 | HEBARD, RUTHY | F | 4 | 2-3 | 0-0 | 0-0 | 0 | 0 | 0 | 2 | 1 | 0 | 0 | 0 | 13 | 2 |
| 32 | GILDON, OTI | F | 2 | 1-1 | 0-0 | 0-0 | 0 | 1 | 1 | 1 | 0 | 0 | 0 | 0 | 10 | 8 |
| 05 | CAZORLA, MAITE | G | 6 | 2-5 | 2-3 | 0-0 | 0 | 1 | 1 | 0 | 4 | 1 | 0 | 0 | 20 | 2 |
| | TEAM | | 0 | 0-0 | 0-0 | 0-0 | 4 | 1 | 5 | 0 | 0 | 0 | 0 | 0 | 0 | 0 |
| TOTALS | | | 40 | 16-29 | 8-15 | 0-0 | 6 | 9 | 15 | 7 | 10 | 4 | 1 | 0 | 100 | |

Shooting By Period

| Period | FG | FG% | 3FG | 3FG% | FT | FT% |
|----------|-------|-------|-------|-------|-------|-------|
| 1st Qtr | 7-14 | 50% | 5-8 | 63% | 0-0 | 0% |
| 2nd Qtr | 9-15 | 60% | 3-7 | 43% | 0-0 | 0% |
| 1st Half | 16-29 | 55% | 8-15 | 53% | 0-0 | 0% |
| Game | 32-59 | 54.2% | 13-26 | 50.0% | 11-14 | 78.6% |

Deadball Rebounds: 2,0

Last FG Half: ORE 2nd-00:59

Mississippi St. 38

| No. | Player | S | Pts | FG | 3FG | FT | OR | DR | TR | PF | A | TO | Blk | Stl | Min | +/- |
|---------------|------------------------|---|-----------|--------------|------------|------------|----------|----------|-----------|----------|----------|----------|----------|----------|------------|-----|
| 02 | ESPINOZA-HUNTER, ANDRA | G | 6 | 2-5 | 2-3 | 0-0 | 0 | 0 | 0 | 0 | 0 | 0 | 0 | 0 | 20 | -4 |
| 04 | CARTER, JESSIKA | F | 0 | 0-0 | 0-0 | 0-0 | 0 | 0 | 0 | 0 | 0 | 0 | 0 | 0 | 1 | -2 |
| 05 | HOWARD, ANRIEL | F | 9 | 4-8 | 1-2 | 0-2 | 2 | 1 | 3 | 0 | 2 | 1 | 0 | 0 | 19 | 0 |
| 10 | HOLMES, JAZZMUN | G | 2 | 1-7 | 0-0 | 0-0 | 0 | 0 | 0 | 0 | 4 | 0 | 0 | 1 | 20 | -2 |
| 15 | MCCOWAN, TEAIRA | C | 12 | 4-5 | 0-0 | 4-5 | 6 | 4 | 10 | 0 | 2 | 0 | 2 | 0 | 20 | -2 |
| 23 | SCOTT, BRE'AMBER | G | 3 | 1-3 | 1-2 | 0-0 | 0 | 1 | 1 | 1 | 0 | 0 | 0 | 0 | 9 | 6 |
| 24 | DANBERRY, JORDAN | G | 6 | 2-3 | 0-0 | 2-2 | 0 | 1 | 1 | 0 | 1 | 0 | 1 | 0 | 11 | -6 |
| | TEAM | | 0 | 0-0 | 0-0 | 0-0 | 1 | 0 | 1 | 0 | 0 | 1 | 0 | 0 | 0 | 0 |
| TOTALS | | | 38 | 14-31 | 4-7 | 6-9 | 9 | 7 | 16 | 1 | 9 | 2 | 3 | 1 | 100 | |

Shooting By Period

| Period | FG | FG% | 3FG | 3FG% | FT | FT% |
|----------|-------|-------|------|-------|-------|-------|
| 1st Qtr | 8-15 | 53% | 2-3 | 67% | 3-6 | 50% |
| 2nd Qtr | 6-16 | 38% | 2-4 | 50% | 3-3 | 100% |
| 1st Half | 14-31 | 45% | 4-7 | 57% | 6-9 | 67% |
| Game | 31-64 | 48.4% | 8-14 | 57.1% | 14-19 | 73.7% |

Deadball Rebounds: 3,0

Last FG Half: MSU 2nd-03:27

Game Notes:

Officials: Michol Murray, Mark Zentz, Pualani Spurlock

Attendance: 11538

Start Time: 2019-03-31 18:08:36

End Time: 2019-03-31 20:04:56

Game Duration: 1:56

Neutral Court;

| Score | 1st | 2nd | 3rd | 4th | TOT |
|-------|-----|-----|-----|-----|-----------|
| ORE | 19 | 21 | 19 | 29 | 88 |
| MSU | 21 | 17 | 21 | 25 | 84 |

| Points from (This Period) | ORE | MSU |
|---------------------------|-----|-----|
| In the Paint | 10 | 14 |
| Off Turns | 2 | 4 |
| 2nd Chance | 4 | 9 |
| Fast Break | 0 | 0 |
| Bench | 2 | 3 |

Official Box Score
Oregon vs Mississippi St.
First Quarter Statistics Only
March 31, 2019 at Moda Center - Portland, Ore.



Oregon 19

| No. | Player | S | Pts | FG | 3FG | FT | OR | DR | TR | PF | A | TO | Blk | Stl | Min | +/- |
|---------------|------------------|---|-----------|-------------|------------|------------|----------|----------|----------|----------|----------|----------|----------|----------|-----------|-----|
| 00 | SABALLY, SATOU | F | 6 | 2-2 | 2-2 | 0-0 | 0 | 0 | 0 | 1 | 2 | 0 | 0 | 0 | 10 | -2 |
| 05 | CAZORLA, MAITE | G | 3 | 1-4 | 1-2 | 0-0 | 0 | 1 | 1 | 0 | 3 | 1 | 0 | 0 | 10 | -2 |
| 20 | IONESCU, SABRINA | G | 6 | 2-4 | 2-3 | 0-0 | 0 | 2 | 2 | 0 | 1 | 1 | 0 | 0 | 10 | -2 |
| 21 | BOLEY, ERIN | F | 0 | 0-1 | 0-1 | 0-0 | 0 | 0 | 0 | 1 | 0 | 1 | 0 | 0 | 6 | -4 |
| 24 | HEBARD, RUTHY | F | 4 | 2-3 | 0-0 | 0-0 | 0 | 0 | 0 | 1 | 1 | 0 | 0 | 0 | 10 | -1 |
| 14 | GIOMI, LYDIA | F | 0 | 0-0 | 0-0 | 0-0 | 0 | 0 | 0 | 0 | 0 | 0 | 0 | 0 | 0 | -1 |
| 32 | GILDON, OTI | F | 0 | 0-0 | 0-0 | 0-0 | 0 | 1 | 1 | 1 | 0 | 0 | 0 | 0 | 4 | 2 |
| TEAM | | | | | | | 3 | 0 | 3 | 0 | | | | | | |
| TOTALS | | | 19 | 7-14 | 5-8 | 0-0 | 3 | 4 | 7 | 4 | 7 | 3 | 0 | 0 | 50 | |

Shooting By Period

| Period | FG | FG% | 3FG | 3FG% | FT | FT% |
|----------|-------|-------|-------|-------|-------|-------|
| 1st Qtr | 7-14 | 50% | 5-8 | 63% | 0-0 | 0% |
| 2nd Qtr | 9-15 | 60% | 3-7 | 43% | 0-0 | 0% |
| 1st Half | 7-14 | 50% | 5-8 | 63% | 0-0 | 0% |
| 1st Half | 16-29 | 55% | 8-15 | 53% | 0-0 | 0% |
| Game | 32-59 | 54.2% | 13-26 | 50.0% | 11-14 | 78.6% |

Deadball Rebounds: 2,0

Mississippi St. 21

| No. | Player | S | Pts | FG | 3FG | FT | OR | DR | TR | PF | A | TO | Blk | Stl | Min | +/- |
|---------------|------------------------|---|-----------|-------------|------------|------------|----------|----------|----------|----------|----------|----------|----------|----------|-----------|-----|
| 02 | ESPINOZA-HUNTER, ANDRA | G | 3 | 1-2 | 1-1 | 0-0 | 0 | 0 | 0 | 0 | 0 | 0 | 0 | 0 | 10 | 0 |
| 05 | HOWARD, ANRIEL | F | 9 | 4-6 | 1-1 | 0-2 | 1 | 0 | 1 | 0 | 0 | 0 | 0 | 0 | 10 | 2 |
| 10 | HOLMES, JAZZMUN | G | 0 | 0-2 | 0-0 | 0-0 | 0 | 0 | 0 | 0 | 2 | 0 | 0 | 1 | 10 | 2 |
| 15 | MCCOWAN, TEAIRA | C | 5 | 2-2 | 0-0 | 1-2 | 3 | 2 | 5 | 0 | 1 | 0 | 2 | 0 | 10 | 2 |
| 24 | DANBERRY, JORDAN | G | 4 | 1-2 | 0-0 | 2-2 | 0 | 1 | 1 | 0 | 0 | 0 | 1 | 0 | 6 | -3 |
| 04 | CARTER, JESSIKA | F | 0 | 0-0 | 0-0 | 0-0 | 0 | 0 | 0 | 0 | 0 | 0 | 0 | 0 | 0 | 0 |
| 23 | SCOTT, BRE'AMBER | G | 0 | 0-1 | 0-1 | 0-0 | 0 | 1 | 1 | 1 | 0 | 0 | 0 | 0 | 4 | 7 |
| TEAM | | | | | | | 0 | 0 | 0 | 0 | 1 | | | | | |
| TOTALS | | | 21 | 8-15 | 2-3 | 3-6 | 4 | 4 | 8 | 1 | 3 | 1 | 3 | 1 | 50 | |

Shooting By Period

| Period | FG | FG% | 3FG | 3FG% | FT | FT% |
|----------|-------|-------|------|-------|-------|-------|
| 1st Qtr | 8-15 | 53% | 2-3 | 67% | 3-6 | 50% |
| 2nd Qtr | 6-16 | 38% | 2-4 | 50% | 3-3 | 100% |
| 1st Half | 8-15 | 53% | 2-3 | 67% | 3-6 | 50% |
| 1st Half | 14-31 | 45% | 4-7 | 57% | 6-9 | 67% |
| Game | 31-64 | 48.4% | 8-14 | 57.1% | 14-19 | 73.7% |

Deadball Rebounds: 3,0

Game Notes:

Officials: Michol Murray, Mark Zentz, Pualani Spurlock
 Attendance: 11538

Start Time: 2019-03-31 18:08:36
 End Time: 2019-03-31 20:04:56
 Game Duration: 1:56
 Neutral Court;

| Score | 1st | 2nd | 3rd | 4th | TOT |
|-------|-----|-----|-----|-----|-----------|
| ORE | 19 | 21 | 19 | 29 | 88 |
| MSU | 21 | 17 | 21 | 25 | 84 |

| Points from (This Period) | ORE | MSU |
|---------------------------|-----|-----|
| In the Paint | 4 | 10 |
| Off Turns | 0 | 4 |
| 2nd Chance | 0 | 7 |
| Fast Break | 0 | 0 |
| Bench | 0 | 0 |

Official Play-By-Play
Oregon vs Mississippi St.
First Quarter
March 31, 2019 at Moda Center - Portland, Ore.



Period 1

Starters:

Oregon: 0 SABALLY,SATOU (F); 20 IONESCU,SABRINA (G); 21 BOLEY,ERIN (F); 24 HEBARD,RUTHY (F); 5 CAZORLA,MAITE (G);

Mississippi St.: 2 ESPINOZA-HUNTER,ANDRA (G); 5 HOWARD,ANRIEL (F); 10 HOLMES,JAZZMUN (G); 15 MCCOWAN,TEAIRA (C); 24 DANBERRY,JORDAN (G);

| Time | VISITORS: Oregon | Score | Margin | HOME: Mississippi St. |
|-------|--|-------|--------|--|
| 09:45 | | | | MISSED LAYUP by DANBERRY, JORDAN |
| 09:42 | | | | REBOUND (OFF) by MCCOWAN, TEAIRA |
| 09:40 | | 2-0 | H 2 | GOOD! LAYUP by MCCOWAN, TEAIRA |
| 09:25 | GOOD! 3PTR by CAZORLA, MAITE | 2-3 | V 1 | |
| 09:25 | ASSIST by SABALLY, SATOU | | | |
| 08:51 | | | | MISSED JUMPER by HOLMES, JAZZMUN |
| 08:47 | REBOUND (DEF) by CAZORLA, MAITE | | | |
| 08:40 | MISSED JUMPER by IONESCU, SABRINA | | | |
| 08:40 | | | | BLOCK by DANBERRY, JORDAN |
| 08:24 | | | | REBOUND (DEF) by DANBERRY, JORDAN |
| 08:16 | | | | MISSED LAYUP by ESPINOZA-HUNTER, ANDRA |
| 08:12 | | | | REBOUND (OFF) by HOWARD, ANRIEL |
| 08:11 | | 4-3 | H 1 | GOOD! LAYUP by HOWARD, ANRIEL |
| 07:52 | GOOD! 3PTR by SABALLY, SATOU | 4-6 | V 2 | |
| 07:52 | ASSIST by CAZORLA, MAITE | | | |
| 07:34 | | 7-6 | H 1 | GOOD! 3PTR by HOWARD, ANRIEL |
| 07:34 | | | | ASSIST by HOLMES, JAZZMUN |
| 07:08 | GOOD! LAYUP by HEBARD, RUTHY | 7-8 | V 1 | |
| 07:08 | ASSIST by SABALLY, SATOU | | | |
| 06:34 | | | | TURNOVER (SHOTCLOCK) by |
| 06:34 | | | | SUB OUT: DANBERRY, JORDAN |
| 06:34 | | | | SUB IN: SCOTT, BRE'AMBER |
| 06:06 | FOUL (OFF) by BOLEY, ERIN | | | |
| 06:06 | TURNOVER (OFFENSIVE) by BOLEY, ERIN | | | |
| 05:49 | | 9-8 | H 1 | GOOD! JUMPER by HOWARD, ANRIEL |
| 05:37 | MISSED LAYUP by CAZORLA, MAITE | | | |
| 05:37 | | | | BLOCK by MCCOWAN, TEAIRA |
| 05:37 | REBOUND (OFF) by TEAM | | | |
| 05:28 | MISSED LAYUP by CAZORLA, MAITE | | | |
| 05:28 | | | | BLOCK by MCCOWAN, TEAIRA |
| 05:28 | REBOUND (OFF) by TEAM | | | |
| 05:25 | MISSED JUMPER by HEBARD, RUTHY | | | |
| 05:21 | | | | REBOUND (DEF) by SCOTT, BRE'AMBER |
| 05:08 | | 12-8 | H 4 | GOOD! 3PTR by ESPINOZA-HUNTER, ANDRA |
| 05:08 | | | | ASSIST by HOLMES, JAZZMUN |
| 04:48 | MISSED 3PTR by BOLEY, ERIN | | | |
| 04:44 | | | | REBOUND (DEF) by MCCOWAN, TEAIRA |
| 04:27 | | | | MISSED 3PTR by SCOTT, BRE'AMBER |
| 04:25 | | | | REBOUND (OFF) by MCCOWAN, TEAIRA |
| 04:25 | FOUL (PERSONAL) by HEBARD, RUTHY | | | |
| 04:25 | SUB OUT: BOLEY, ERIN | | | |
| 04:25 | SUB IN: GILDON, OTI | | | |
| 04:25 | | | | MISSED FT by MCCOWAN, TEAIRA |
| 04:25 | | | | REBOUND (OFF) by TEAM |
| 04:25 | | 13-8 | H 5 | GOOD! FT by MCCOWAN, TEAIRA |
| 04:11 | TURNOVER (BADPASS) by CAZORLA, MAITE | | | |
| 04:11 | | | | STEAL by HOLMES, JAZZMUN |
| 04:01 | | | | MISSED JUMPER by HOWARD, ANRIEL |
| 03:58 | REBOUND (DEF) by GILDON, OTI | | | |
| 03:53 | TURNOVER (BADPASS) by IONESCU, SABRINA | | | |
| 03:27 | | 15-8 | H 7 | GOOD! LAYUP by HOWARD, ANRIEL |
| 03:09 | MISSED 3PTR by CAZORLA, MAITE | | | |
| 03:06 | | | | REBOUND (DEF) by MCCOWAN, TEAIRA |
| 03:00 | | | | MISSED JUMPER by HOLMES, JAZZMUN |
| 02:56 | REBOUND (DEF) by IONESCU, SABRINA | | | |
| 02:48 | GOOD! 3PTR by SABALLY, SATOU | 15-11 | H 4 | |
| 02:48 | ASSIST by IONESCU, SABRINA | | | |
| 02:27 | FOUL (PERSONAL) by GILDON, OTI | | | |
| 02:27 | | | | MISSED FT by HOWARD, ANRIEL |
| 02:27 | | | | REBOUND (OFF) by TEAM |
| 02:27 | | | | SUB OUT: ESPINOZA-HUNTER, ANDRA |
| 02:27 | | | | SUB IN: DANBERRY, JORDAN |
| 02:27 | | | | MISSED FT by HOWARD, ANRIEL |
| 02:25 | | | | REBOUND (OFF) by MCCOWAN, TEAIRA |
| 02:24 | | 17-11 | H 6 | GOOD! JUMPER by MCCOWAN, TEAIRA |
| 02:08 | | | | FOUL (PERSONAL) by SCOTT, BRE'AMBER |
| 02:08 | | | | SUB OUT: SCOTT, BRE'AMBER |
| 02:08 | | | | SUB IN: ESPINOZA-HUNTER, ANDRA |
| 02:04 | GOOD! 3PTR by IONESCU, SABRINA | 17-14 | H 3 | |
| 02:04 | ASSIST by CAZORLA, MAITE | | | |

| Time | VISITORS: Oregon | Score | Margin | HOME: Mississippi St. |
|-------|-----------------------------------|-------|--------|---------------------------------|
| 01:40 | | 19-14 | H 5 | GOOD! LAYUP by DANBERRY, JORDAN |
| 01:40 | | | | ASSIST by MCCOWAN, TEAIRA |
| 01:20 | GOOD! LAYUP by HEBARD, RUTHY | 19-16 | H 3 | |
| 01:20 | ASSIST by CAZORLA, MAITE | | | |
| 00:58 | | | | MISSED JUMPER by HOWARD, ANRIEL |
| 00:54 | REBOUND (DEF) by IONESCU, SABRINA | | | |
| 00:35 | GOOD! 3PTR by IONESCU, SABRINA | 19-19 | T | |
| 00:35 | ASSIST by HEBARD, RUTHY | | | |
| 00:04 | FOUL (PERSONAL) by SABALLY, SATOU | | | |
| 00:04 | | 20-19 | H 1 | GOOD! FT by DANBERRY, JORDAN |
| 00:04 | SUB OUT: HEBARD, RUTHY | | | |
| 00:04 | SUB IN: GIOMI, LYDIA | | | |
| 00:04 | | 21-19 | H 2 | GOOD! FT by DANBERRY, JORDAN |
| 00:00 | MISSED 3PTR by IONESCU, SABRINA | | | |
| 00:00 | REBOUND (OFF) by TEAM | | | |

Oregon 19, Mississippi St. 21

| Points from (This Period) | ORE | MSU |
|---------------------------|-----|-----|
| In the Paint | 4 | 10 |
| Off Turns | 0 | 4 |
| 2nd Chance | 0 | 7 |
| Fast Break | 0 | 0 |
| Bench | 0 | 0 |

Official Box Score
Oregon vs Mississippi St.
Second Quarter Statistics Only
March 31, 2019 at Moda Center - Portland, Ore.



Oregon 21

| No. | Player | S | Pts | FG | 3FG | FT | OR | DR | TR | PF | A | TO | Blk | Stl | Min | +/- |
|---------------|------------------|---|-----------|-------------|------------|------------|----------|----------|----------|----------|----------|----------|----------|----------|-----------|-----|
| 00 | SABALLY, SATOU | F | 4 | 2-6 | 0-2 | 0-0 | 0 | 2 | 2 | 0 | 0 | 1 | 1 | 0 | 10 | 4 |
| 05 | CAZORLA, MAITE | G | 3 | 1-1 | 1-1 | 0-0 | 0 | 0 | 0 | 0 | 1 | 0 | 0 | 0 | 10 | 4 |
| 20 | IONESCU, SABRINA | G | 9 | 4-5 | 1-2 | 0-0 | 1 | 0 | 1 | 0 | 2 | 0 | 0 | 0 | 10 | 4 |
| 21 | BOLEY, ERIN | F | 3 | 1-2 | 1-2 | 0-0 | 0 | 2 | 2 | 0 | 0 | 0 | 0 | 0 | 6 | 2 |
| 24 | HEBARD, RUTHY | F | 0 | 0-0 | 0-0 | 0-0 | 0 | 0 | 0 | 1 | 0 | 0 | 0 | 0 | 3 | 3 |
| 14 | GIOMI, LYDIA | F | 0 | 0-0 | 0-0 | 0-0 | 1 | 0 | 1 | 2 | 0 | 0 | 0 | 0 | 6 | -3 |
| 32 | GILDON, OTI | F | 2 | 1-1 | 0-0 | 0-0 | 0 | 0 | 0 | 0 | 0 | 0 | 0 | 0 | 6 | 6 |
| TEAM | | | | | | | 1 | 1 | 2 | 0 | | | | | | |
| TOTALS | | | 21 | 9-15 | 3-7 | 0-0 | 3 | 5 | 8 | 3 | 3 | 1 | 1 | 0 | 50 | |

Shooting By Period

| Period | FG | FG% | 3FG | 3FG% | FT | FT% |
|----------|-------|-------|-------|-------|-------|-------|
| 3rd Qtr | 6-16 | 38% | 0-4 | 00% | 7-10 | 70% |
| 4th Qtr | 10-14 | 71% | 5-7 | 71% | 4-4 | 100% |
| 2nd Half | 9-15 | 60% | 3-7 | 43% | 0-0 | 0% |
| 2nd Half | 16-30 | 53% | 5-11 | 45% | 11-14 | 79% |
| Game | 32-59 | 54.2% | 13-26 | 50.0% | 11-14 | 78.6% |

Deadball Rebounds: 2,0

Mississippi St. 17

| No. | Player | S | Pts | FG | 3FG | FT | OR | DR | TR | PF | A | TO | Blk | Stl | Min | +/- |
|---------------|------------------------|---|-----------|-------------|------------|------------|----------|----------|----------|----------|----------|----------|----------|----------|-----------|-----|
| 02 | ESPINOZA-HUNTER, ANDRA | G | 3 | 1-3 | 1-2 | 0-0 | 0 | 0 | 0 | 0 | 0 | 0 | 0 | 0 | 10 | -4 |
| 05 | HOWARD, ANRIEL | F | 0 | 0-2 | 0-1 | 0-0 | 1 | 1 | 2 | 0 | 2 | 1 | 0 | 0 | 9 | -2 |
| 10 | HOLMES, JAZZMUN | G | 2 | 1-5 | 0-0 | 0-0 | 0 | 0 | 0 | 0 | 2 | 0 | 0 | 0 | 10 | -4 |
| 15 | MCCOWAN, TEAIRA | C | 7 | 2-3 | 0-0 | 3-3 | 3 | 2 | 5 | 0 | 1 | 0 | 0 | 0 | 10 | -4 |
| 24 | DANBERRY, JORDAN | G | 2 | 1-1 | 0-0 | 0-0 | 0 | 0 | 0 | 0 | 1 | 0 | 0 | 0 | 5 | -3 |
| 04 | CARTER, JESSIKA | F | 0 | 0-0 | 0-0 | 0-0 | 0 | 0 | 0 | 0 | 0 | 0 | 0 | 0 | 1 | -2 |
| 23 | SCOTT, BRE'AMBER | G | 3 | 1-2 | 1-1 | 0-0 | 0 | 0 | 0 | 0 | 0 | 0 | 0 | 0 | 5 | -1 |
| TEAM | | | | | | | 1 | 0 | 1 | 0 | | | | | | |
| TOTALS | | | 17 | 6-16 | 2-4 | 3-3 | 5 | 3 | 8 | 0 | 6 | 1 | 0 | 0 | 50 | |

Shooting By Period

| Period | FG | FG% | 3FG | 3FG% | FT | FT% |
|----------|-------|-------|------|-------|-------|-------|
| 3rd Qtr | 8-14 | 57% | 2-4 | 50% | 3-3 | 100% |
| 4th Qtr | 9-19 | 47% | 2-3 | 67% | 5-7 | 71% |
| 2nd Half | 6-16 | 38% | 2-4 | 50% | 3-3 | 100% |
| 2nd Half | 17-33 | 52% | 4-7 | 57% | 8-10 | 80% |
| Game | 31-64 | 48.4% | 8-14 | 57.1% | 14-19 | 73.7% |

Deadball Rebounds: 3,0

Game Notes:

Officials: Michol Murray, Mark Zentz, Pualani Spurlock
 Attendance: 11538

Start Time: 2019-03-31 18:08:36
 End Time: 2019-03-31 20:04:56
 Game Duration: 1:56
 Neutral Court;

| Score | 1st | 2nd | 3rd | 4th | TOT |
|-------|-----|-----|-----|-----|-----------|
| ORE | 19 | 21 | 19 | 29 | 88 |
| MSU | 21 | 17 | 21 | 25 | 84 |

| Points from (This Period) | ORE | MSU |
|---------------------------|-----|-----|
| In the Paint | 6 | 4 |
| Off Turns | 2 | 0 |
| 2nd Chance | 4 | 2 |
| Fast Break | 0 | 0 |
| Bench | 2 | 3 |

Official Play-By-Play
Oregon vs Mississippi St.
Second Quarter
March 31, 2019 at Moda Center - Portland, Ore.



Period 2

Starters:

Oregon: 0 SABALLY, SATOU (F); 20 IONESCU, SABRINA (G); 21 BOLEY, ERIN (F); 24 HEBARD, RUTHY (F); 5 CAZORLA, MAITE (G);

Mississippi St.: 2 ESPINOZA-HUNTER, ANDRA (G); 5 HOWARD, ANRIEL (F); 10 HOLMES, JAZZMUN (G); 15 MCCOWAN, TEAIRA (C); 24 DANBERRY, JORDAN (G);

| Time | VISITORS: Oregon | Score | Margin | HOME: Mississippi St. |
|-------|--|-------|--------|---------------------------------------|
| 09:41 | MISSED 3PTR by IONESCU, SABRINA | | | |
| 09:38 | REBOUND (OFF) by IONESCU, SABRINA | | | |
| 09:26 | GOOD! JUMPER by IONESCU, SABRINA | 21-21 | T | |
| 09:03 | | 23-21 | H 2 | GOOD! LAYUP by MCCOWAN, TEAIRA |
| 09:03 | | | | ASSIST by DANBERRY, JORDAN |
| 08:44 | GOOD! JUMPER by SABALLY, SATOU [PNT] | 23-23 | T | |
| 08:24 | | 25-23 | H 2 | GOOD! JUMPER by DANBERRY, JORDAN |
| 08:24 | | | | ASSIST by HOLMES, JAZZMUN |
| 08:02 | TURNOVER (3SEC) by SABALLY, SATOU | | | |
| 08:02 | SUB OUT: GIOMI, LYDIA | | | |
| 08:02 | SUB IN: HEBARD, RUTHY | | | |
| 07:44 | | | | TURNOVER (TRAVEL) by HOWARD, ANRIEL |
| 07:44 | | | | SUB OUT: HOWARD, ANRIEL |
| 07:44 | | | | SUB IN: CARTER, JESSIKA |
| 07:31 | GOOD! JUMPER by SABALLY, SATOU | 25-25 | T | |
| 07:01 | | 27-25 | H 2 | GOOD! JUMPER by HOLMES, JAZZMUN |
| 07:01 | | | | ASSIST by MCCOWAN, TEAIRA |
| 06:45 | GOOD! JUMPER by IONESCU, SABRINA | 27-27 | T | |
| 06:24 | | | | MISSED JUMPER by HOLMES, JAZZMUN |
| 06:21 | | | | REBOUND (OFF) by TEAM |
| 06:21 | | | | SUB OUT: CARTER, JESSIKA |
| 06:21 | | | | SUB IN: HOWARD, ANRIEL |
| 06:21 | SUB OUT: GILDON, OTI | | | |
| 06:21 | SUB IN: BOLEY, ERIN | | | |
| 06:16 | | | | MISSED 3PTR by ESPINOZA-HUNTER, ANDRA |
| 06:12 | REBOUND (DEF) by SABALLY, SATOU | | | |
| 05:56 | GOOD! 3PTR by CAZORLA, MAITE | 27-30 | V 3 | |
| 05:56 | ASSIST by IONESCU, SABRINA | | | |
| 05:29 | | 29-30 | V 1 | GOOD! LAYUP by MCCOWAN, TEAIRA |
| 05:29 | | | | ASSIST by HOWARD, ANRIEL |
| 05:29 | FOUL (PERSONAL) by HEBARD, RUTHY | | | |
| 05:29 | SUB OUT: HEBARD, RUTHY | | | |
| 05:29 | SUB IN: GIOMI, LYDIA | | | |
| 05:29 | | 30-30 | T | GOOD! FT by MCCOWAN, TEAIRA |
| 05:29 | | | | SUB OUT: DANBERRY, JORDAN |
| 05:29 | | | | SUB IN: SCOTT, BRE'AMBER |
| 05:20 | MISSED 3PTR by SABALLY, SATOU | | | |
| 05:16 | | | | REBOUND (DEF) by MCCOWAN, TEAIRA |
| 05:04 | | 33-30 | H 3 | GOOD! 3PTR by SCOTT, BRE'AMBER |
| 05:04 | | | | ASSIST by HOWARD, ANRIEL |
| 04:43 | GOOD! 3PTR by BOLEY, ERIN | 33-33 | T | |
| 04:43 | ASSIST by CAZORLA, MAITE | | | |
| 04:17 | | | | MISSED 3PTR by HOWARD, ANRIEL |
| 04:13 | REBOUND (DEF) by BOLEY, ERIN | | | |
| 03:53 | MISSED LAYUP by SABALLY, SATOU | | | |
| 03:50 | REBOUND (OFF) by GIOMI, LYDIA | | | |
| 03:46 | GOOD! JUMPER by IONESCU, SABRINA [PNT] | 33-35 | V 2 | |
| 03:29 | FOUL (PERSONAL) by GIOMI, LYDIA | | | |
| 03:29 | | | | |
| 03:27 | | 36-35 | H 1 | GOOD! 3PTR by ESPINOZA-HUNTER, ANDRA |
| 03:27 | | | | ASSIST by HOLMES, JAZZMUN |
| 03:05 | MISSED JUMPER by SABALLY, SATOU | | | |
| 03:01 | | | | REBOUND (DEF) by MCCOWAN, TEAIRA |
| 02:40 | | | | MISSED LAYUP by HOWARD, ANRIEL |
| 02:40 | BLOCK by SABALLY, SATOU | | | |
| 02:34 | REBOUND (DEF) by BOLEY, ERIN | | | |
| 02:27 | MISSED 3PTR by SABALLY, SATOU | | | |
| 02:22 | | | | REBOUND (DEF) by HOWARD, ANRIEL |
| 01:58 | | | | MISSED JUMPER by HOLMES, JAZZMUN |
| 01:53 | | | | REBOUND (OFF) by MCCOWAN, TEAIRA |
| 01:53 | | | | MISSED LAYUP by MCCOWAN, TEAIRA |
| 01:53 | | | | REBOUND (OFF) by MCCOWAN, TEAIRA |
| 01:53 | FOUL (PERSONAL) by GIOMI, LYDIA | | | |
| 01:53 | | 37-35 | H 2 | GOOD! FT by MCCOWAN, TEAIRA |
| 01:53 | SUB OUT: GIOMI, LYDIA | | | |
| 01:53 | SUB IN: GILDON, OTI | | | |
| 01:53 | | 38-35 | H 3 | GOOD! FT by MCCOWAN, TEAIRA |
| 01:40 | GOOD! LAYUP by GILDON, OTI | 38-37 | H 1 | |
| 01:40 | ASSIST by IONESCU, SABRINA | | | |
| 01:17 | | | | MISSED JUMPER by HOLMES, JAZZMUN |

| Time | VISITORS: Oregon | Score | Margin | HOME: Mississippi St. |
|-------|---------------------------------|-------|--------|---|
| 01:14 | REBOUND (DEF) by TEAM | | | |
| 00:59 | GOOD! 3PTR by IONESCU, SABRINA | 38-40 | V 2 | |
| 00:38 | | | | MISSED LAYUP by HOLMES, JAZZMUN |
| 00:36 | | | | REBOUND (OFF) by MCCOWAN, TEAIRA |
| 00:32 | | | | MISSED LAYUP by SCOTT, BRE'AMBER |
| 00:29 | | | | REBOUND (OFF) by HOWARD, ANRIEL |
| 00:26 | | | | MISSED JUMPER by ESPINOZA-HUNTER, ANDRA |
| 00:23 | REBOUND (DEF) by SABALLY, SATOU | | | |
| 00:01 | MISSED 3PTR by BOLEY, ERIN | | | |
| 00:01 | REBOUND (OFF) by TEAM | | | |

Oregon 40, Mississippi St. 38

| Points from (This Period) | ORE | MSU |
|---------------------------|-----|-----|
| In the Paint | 6 | 4 |
| Off Turns | 2 | 0 |
| 2nd Chance | 4 | 2 |
| Fast Break | 0 | 0 |
| Bench | 2 | 3 |

Official Box Score
Oregon vs Mississippi St.
Second Half Statistics Only
March 31, 2019 at Moda Center - Portland, Ore.



Oregon 48

| No. | Player | S | Pts | FG | 3FG | FT | OR | DR | TR | PF | A | TO | Blk | Stl | Min | +/- |
|---------------|------------------|---|-----------|--------------|-------------|--------------|----------|-----------|-----------|----------|----------|----------|----------|----------|------------|-----|
| 00 | SABALLY, SATOU | F | 12 | 3-7 | 1-4 | 5-6 | 1 | 4 | 5 | 3 | 1 | 2 | 2 | 0 | 20 | 2 |
| 14 | GIOMI, LYDIA | F | 0 | 0-0 | 0-0 | 0-0 | 0 | 0 | 0 | 0 | 0 | 0 | 0 | 0 | 0 | 0 |
| 20 | IONESCU, SABRINA | G | 16 | 6-11 | 2-3 | 2-2 | 2 | 2 | 4 | 1 | 5 | 1 | 0 | 1 | 20 | 2 |
| 21 | BOLEY, ERIN | F | 5 | 1-3 | 1-3 | 2-2 | 0 | 0 | 0 | 0 | 0 | 0 | 0 | 1 | 17 | 6 |
| 24 | HEBARD, RUTHY | F | 10 | 4-5 | 0-0 | 2-4 | 3 | 2 | 5 | 1 | 0 | 1 | 2 | 0 | 20 | 2 |
| 32 | GILDON, OTI | F | 0 | 0-0 | 0-0 | 0-0 | 0 | 0 | 0 | 1 | 0 | 0 | 0 | 0 | 3 | -4 |
| 05 | CAZORLA, MAITE | G | 5 | 2-4 | 1-1 | 0-0 | 0 | 0 | 0 | 1 | 2 | 0 | 0 | 0 | 20 | 2 |
| | TEAM | | 0 | 0-0 | 0-0 | 0-0 | 1 | 2 | 3 | 0 | 0 | 0 | 0 | 0 | 0 | 0 |
| TOTALS | | | 48 | 16-30 | 5-11 | 11-14 | 7 | 10 | 17 | 7 | 8 | 4 | 4 | 2 | 100 | |

Shooting By Period

| Period | FG | FG% | 3FG | 3FG% | FT | FT% |
|----------|-------|-------|-------|-------|-------|-------|
| 3rd Qtr | 6-16 | 38% | 0-4 | 00% | 7-10 | 70% |
| 4th Qtr | 10-14 | 71% | 5-7 | 71% | 4-4 | 100% |
| 2nd Half | 16-30 | 53% | 5-11 | 45% | 11-14 | 79% |
| Game | 32-59 | 54.2% | 13-26 | 50.0% | 11-14 | 78.6% |

Deadball Rebounds: 2,0
Last FG Half: ORE 4th-00:35

Mississippi St. 46

| No. | Player | S | Pts | FG | 3FG | FT | OR | DR | TR | PF | A | TO | Blk | Stl | Min | +/- |
|---------------|------------------------|---|-----------|--------------|------------|-------------|----------|----------|-----------|-----------|-----------|----------|----------|----------|------------|-----|
| 02 | ESPINOZA-HUNTER, ANDRA | G | 6 | 2-4 | 2-4 | 0-0 | 0 | 0 | 0 | 1 | 0 | 1 | 0 | 0 | 18 | 0 |
| 04 | CARTER, JESSIKA | F | 0 | 0-0 | 0-0 | 0-0 | 0 | 0 | 0 | 2 | 0 | 0 | 0 | 0 | 1 | -3 |
| 05 | HOWARD, ANRIEL | F | 9 | 3-6 | 1-2 | 2-2 | 2 | 1 | 3 | 3 | 1 | 0 | 0 | 1 | 20 | 0 |
| 10 | HOLMES, JAZZMUN | G | 13 | 5-7 | 0-0 | 3-3 | 1 | 2 | 3 | 3 | 9 | 0 | 1 | 1 | 19 | 2 |
| 15 | MCCOWAN, TEAIRA | C | 7 | 2-5 | 0-0 | 3-3 | 1 | 4 | 5 | 3 | 0 | 1 | 2 | 0 | 19 | -1 |
| 23 | SCOTT, BRE'AMBER | G | 5 | 2-3 | 1-1 | 0-2 | 0 | 0 | 0 | 0 | 1 | 0 | 0 | 1 | 5 | -2 |
| 24 | DANBERRY, JORDAN | G | 6 | 3-8 | 0-0 | 0-0 | 1 | 1 | 2 | 2 | 1 | 1 | 0 | 0 | 18 | -6 |
| | TEAM | | 0 | 0-0 | 0-0 | 0-0 | 2 | 0 | 2 | 0 | 0 | 1 | 0 | 0 | 0 | 0 |
| TOTALS | | | 46 | 17-33 | 4-7 | 8-10 | 7 | 8 | 15 | 14 | 12 | 4 | 3 | 3 | 100 | |

Shooting By Period

| Period | FG | FG% | 3FG | 3FG% | FT | FT% |
|----------|-------|-------|------|-------|-------|-------|
| 3rd Qtr | 8-14 | 57% | 2-4 | 50% | 3-3 | 100% |
| 4th Qtr | 9-19 | 47% | 2-3 | 67% | 5-7 | 71% |
| 2nd Half | 17-33 | 52% | 4-7 | 57% | 8-10 | 80% |
| Game | 31-64 | 48.4% | 8-14 | 57.1% | 14-19 | 73.7% |

Deadball Rebounds: 3,0
Last FG Half: MSU 4th-00:00

Game Notes:

Officials: Michol Murray, Mark Zentz, Pualani Spurlock
Attendance: 11538

Start Time: 2019-03-31 18:08:36
End Time: 2019-03-31 20:04:56
Game Duration: 1:56
Neutral Court;

| Score | 1st | 2nd | 3rd | 4th | TOT |
|-------|-----|-----|-----|-----|-----------|
| ORE | 19 | 21 | 19 | 29 | 88 |
| MSU | 21 | 17 | 21 | 25 | 84 |

| Points from (This Period) | ORE | MSU |
|---------------------------|-----|-----|
| In the Paint | 20 | 16 |
| Off Turns | 5 | 2 |
| 2nd Chance | 11 | 8 |
| Fast Break | 0 | 2 |
| Bench | 0 | 5 |

Official Box Score
Oregon vs Mississippi St.
Third Quarter Statistics Only
March 31, 2019 at Moda Center - Portland, Ore.



Oregon 48

| No. | Player | S | Pts | FG | 3FG | FT | OR | DR | TR | PF | A | TO | Blk | Stl | Min | +/- |
|---------------|------------------|---|-----------|-------------|------------|-------------|----------|----------|-----------|----------|----------|----------|----------|----------|-----------|-----|
| 00 | SABALLY, SATOU | F | 7 | 1-4 | 0-3 | 5-6 | 1 | 2 | 3 | 0 | 1 | 1 | 1 | 0 | 10 | -2 |
| 05 | CAZORLA, MAITE | G | 0 | 0-2 | 0-0 | 0-0 | 0 | 0 | 0 | 0 | 0 | 0 | 0 | 0 | 10 | -2 |
| 20 | IONESCU, SABRINA | G | 2 | 1-5 | 0-1 | 0-0 | 2 | 1 | 3 | 0 | 3 | 0 | 0 | 0 | 10 | -2 |
| 21 | BOLEY, ERIN | F | 0 | 0-0 | 0-0 | 0-0 | 0 | 0 | 0 | 0 | 0 | 0 | 0 | 0 | 8 | -3 |
| 24 | HEBARD, RUTHY | F | 10 | 4-5 | 0-0 | 2-4 | 2 | 0 | 2 | 1 | 0 | 0 | 0 | 0 | 10 | -2 |
| 14 | GIOMI, LYDIA | F | 0 | 0-0 | 0-0 | 0-0 | 0 | 0 | 0 | 0 | 0 | 0 | 0 | 0 | 0 | 0 |
| 32 | GILDON, OTI | F | 0 | 0-0 | 0-0 | 0-0 | 0 | 0 | 0 | 1 | 0 | 0 | 0 | 0 | 2 | 1 |
| TEAM | | | | | | | 0 | 2 | 2 | 0 | 0 | | | | | |
| TOTALS | | | 19 | 6-16 | 0-4 | 7-10 | 5 | 5 | 10 | 2 | 4 | 1 | 1 | 0 | 50 | |

Shooting By Period

| Period | FG | FG% | 3FG | 3FG% | FT | FT% |
|----------|-------|-------|-------|-------|-------|-------|
| 2nd Half | 0-0 | 0% | 0-0 | 0% | 0-0 | 0% |
| Game | 32-59 | 54.2% | 13-26 | 50.0% | 11-14 | 78.6% |

Deadball Rebounds: 2,0

Mississippi St. 46

| No. | Player | S | Pts | FG | 3FG | FT | OR | DR | TR | PF | A | TO | Blk | Stl | Min | +/- |
|---------------|------------------------|---|-----------|-------------|------------|------------|----------|----------|----------|----------|----------|----------|----------|----------|-----------|-----|
| 02 | ESPINOZA-HUNTER, ANDRA | G | 3 | 1-2 | 1-2 | 0-0 | 0 | 0 | 0 | 0 | 0 | 0 | 0 | 0 | 10 | 2 |
| 05 | HOWARD, ANRIEL | F | 5 | 2-3 | 1-2 | 0-0 | 0 | 0 | 0 | 2 | 1 | 0 | 0 | 0 | 10 | 2 |
| 10 | HOLMES, JAZZMUN | G | 6 | 2-2 | 0-0 | 2-2 | 0 | 2 | 2 | 1 | 5 | 0 | 1 | 1 | 10 | 2 |
| 15 | MCCOWAN, TEAIRA | C | 3 | 1-2 | 0-0 | 1-1 | 0 | 3 | 3 | 3 | 0 | 1 | 1 | 0 | 9 | 3 |
| 24 | DANBERRY, JORDAN | G | 4 | 2-5 | 0-0 | 0-0 | 1 | 1 | 2 | 1 | 1 | 0 | 0 | 0 | 10 | 2 |
| 04 | CARTER, JESSIKA | F | 0 | 0-0 | 0-0 | 0-0 | 0 | 0 | 0 | 1 | 0 | 0 | 0 | 0 | 1 | -1 |
| 23 | SCOTT, BRE'AMBER | G | 0 | 0-0 | 0-0 | 0-0 | 0 | 0 | 0 | 0 | 0 | 0 | 0 | 0 | 0 | 0 |
| TEAM | | | | | | | 0 | 0 | 0 | 0 | 1 | | | | | |
| TOTALS | | | 21 | 8-14 | 2-4 | 3-3 | 1 | 6 | 7 | 8 | 7 | 2 | 2 | 1 | 50 | |

Shooting By Period

| Period | FG | FG% | 3FG | 3FG% | FT | FT% |
|----------|-------|-------|------|-------|-------|-------|
| 2nd Half | 0-0 | 0% | 0-0 | 0% | 0-0 | 0% |
| Game | 31-64 | 48.4% | 8-14 | 57.1% | 14-19 | 73.7% |

Deadball Rebounds: 3,0

Game Notes:

Officials: Michol Murray, Mark Zentz, Pualani Spurlock
 Attendance: 11538

Start Time: 2019-03-31 18:08:36
 End Time: 2019-03-31 20:04:56
 Game Duration: 1:56
 Neutral Court;

| Score | 1st | 2nd | 3rd | 4th | TOT |
|-------|-----|-----|-----|-----|-----------|
| ORE | 19 | 21 | 19 | 29 | 88 |
| MSU | 21 | 17 | 21 | 25 | 84 |

| Points from (This Period) | ORE | MSU |
|---------------------------|-----|-----|
| In the Paint | 12 | 6 |
| Off Turns | 0 | 0 |
| 2nd Chance | 6 | 2 |
| Fast Break | 0 | 0 |
| Bench | 0 | 0 |

Official Play-By-Play
Oregon vs Mississippi St.
Third Quarter
March 31, 2019 at Moda Center - Portland, Ore.



Period 3

Starters:

Oregon: 0 SABALLY, SATOU (F); 20 IONESCU, SABRINA (G); 21 BOLEY, ERIN (F); 24 HEBARD, RUTHY (F); 5 CAZORLA, MAITE (G);

Mississippi St.: 2 ESPINOZA-HUNTER, ANDRA (G); 5 HOWARD, ANRIEL (F); 10 HOLMES, JAZZMUN (G); 15 MCCOWAN, TEAIRA (C); 24 DANBERRY, JORDAN (G);

| Time | VISITORS: Oregon | Score | Margin | HOME: Mississippi St. |
|-------|---------------------------------------|-------|--------|--|
| 09:51 | | | | FOUL (PERSONAL) by HOLMES, JAZZMUN |
| 09:50 | TURNOVER (BADPASS) by SABALLY, SATOU | | | |
| 09:50 | | | | STEAL by HOLMES, JAZZMUN |
| 09:25 | | | | MISSED 3PTR by ESPINOZA-HUNTER, ANDRA |
| 09:20 | REBOUND (DEF) by SABALLY, SATOU | | | |
| 08:58 | MISSED 3PTR by SABALLY, SATOU | | | |
| 08:55 | REBOUND (OFF) by HEBARD, RUTHY | | | |
| 08:47 | MISSED JUMPER by IONESCU, SABRINA | | | |
| 08:43 | REBOUND (OFF) by IONESCU, SABRINA | | | |
| 08:24 | GOOD! LAYUP by HEBARD, RUTHY | 38-42 | V 4 | |
| 08:24 | ASSIST by SABALLY, SATOU | | | |
| 08:00 | | | | MISSED JUMPER by MCCOWAN, TEAIRA |
| 07:59 | REBOUND (DEF) by TEAM | | | |
| 07:59 | | | | FOUL (PERSONAL) by HOWARD, ANRIEL |
| 07:50 | GOOD! LAYUP by IONESCU, SABRINA [PNT] | 38-44 | V 6 | |
| 07:40 | | | | TIMEOUT 30SEC |
| 07:25 | | | | MISSED JUMPER by DANBERRY, JORDAN |
| 07:20 | REBOUND (DEF) by IONESCU, SABRINA | | | |
| 07:15 | MISSED 3PTR by SABALLY, SATOU | | | |
| 07:11 | | | | REBOUND (DEF) by DANBERRY, JORDAN |
| 06:43 | | | | TURNOVER (SHOTCLOCK) by |
| 06:26 | MISSED LAYUP by HEBARD, RUTHY | | | |
| 06:26 | | | | BLOCK by MCCOWAN, TEAIRA |
| 06:22 | | | | REBOUND (DEF) by HOLMES, JAZZMUN |
| 06:18 | | 41-44 | V 3 | GOOD! 3PTR by ESPINOZA-HUNTER, ANDRA |
| 06:18 | | | | ASSIST by HOLMES, JAZZMUN |
| 05:56 | MISSED LAYUP by CAZORLA, MAITE | | | |
| 05:55 | REBOUND (OFF) by HEBARD, RUTHY | | | |
| 05:55 | | | | FOUL (PERSONAL) by MCCOWAN, TEAIRA |
| 05:55 | GOOD! FT by HEBARD, RUTHY | 41-45 | V 4 | |
| 05:55 | MISSED FT by HEBARD, RUTHY | | | |
| 05:53 | | | | REBOUND (DEF) by MCCOWAN, TEAIRA |
| 05:46 | | 43-45 | V 2 | GOOD! JUMPER by DANBERRY, JORDAN |
| 05:46 | | | | ASSIST by HOLMES, JAZZMUN |
| 05:28 | GOOD! LAYUP by HEBARD, RUTHY [PNT] | 43-47 | V 4 | |
| 05:28 | ASSIST by IONESCU, SABRINA | | | |
| 05:16 | | 46-47 | V 1 | GOOD! 3PTR by HOWARD, ANRIEL |
| 05:16 | | | | ASSIST by DANBERRY, JORDAN |
| 04:57 | GOOD! LAYUP by SABALLY, SATOU | 46-49 | V 3 | |
| 04:57 | ASSIST by IONESCU, SABRINA | | | |
| 04:38 | | 48-49 | V 1 | GOOD! JUMPER by HOLMES, JAZZMUN |
| 04:18 | MISSED LAYUP by CAZORLA, MAITE | | | |
| 04:18 | REBOUND (OFF) by SABALLY, SATOU | | | |
| 04:18 | | | | FOUL (PERSONAL) by DANBERRY, JORDAN |
| 04:18 | | | | |
| 04:18 | | | | SUB OUT: MCCOWAN, TEAIRA |
| 04:18 | | | | SUB IN: CARTER, JESSIKA |
| 04:18 | MISSED FT by SABALLY, SATOU | | | |
| 04:18 | REBOUND (OFF) by TEAM | | | |
| 04:18 | GOOD! FT by SABALLY, SATOU | 48-50 | V 2 | |
| 04:07 | | 50-50 | T | GOOD! JUMPER by DANBERRY, JORDAN [PNT] |
| 04:07 | | | | ASSIST by HOLMES, JAZZMUN |
| 03:55 | GOOD! LAYUP by HEBARD, RUTHY | 50-52 | V 2 | |
| 03:55 | ASSIST by IONESCU, SABRINA | | | |
| 03:42 | | | | MISSED JUMPER by DANBERRY, JORDAN |
| 03:41 | REBOUND (DEF) by TEAM | | | |
| 03:41 | | | | FOUL (PERSONAL) by CARTER, JESSIKA |
| 03:41 | MISSED FT by HEBARD, RUTHY | | | |
| 03:41 | REBOUND (OFF) by TEAM | | | |
| 03:41 | | | | SUB OUT: CARTER, JESSIKA |
| 03:41 | | | | SUB IN: MCCOWAN, TEAIRA |
| 03:41 | GOOD! FT by HEBARD, RUTHY | 50-53 | V 3 | |
| 03:21 | | 52-53 | V 1 | GOOD! JUMPER by HOLMES, JAZZMUN |
| 03:21 | | | | ASSIST by HOWARD, ANRIEL |
| 03:07 | MISSED LAYUP by IONESCU, SABRINA | | | |
| 03:07 | | | | BLOCK by HOLMES, JAZZMUN |
| 03:01 | | | | REBOUND (DEF) by MCCOWAN, TEAIRA |
| 02:42 | | 54-53 | H 1 | GOOD! LAYUP by HOWARD, ANRIEL |
| 02:42 | | | | ASSIST by HOLMES, JAZZMUN |
| 02:35 | TIMEOUT 30SEC | | | |

| Time | VISITORS: Oregon | Score | Margin | HOME: Mississippi St. |
|-------|------------------------------------|-------|--------|---|
| 02:29 | MISSED 3PTR by SABALLY, SATOU | | | |
| 02:26 | REBOUND (OFF) by IONESCU, SABRINA | | | |
| 02:13 | | | | FOUL (PERSONAL) by MCCOWAN, TEAIRA |
| 02:13 | GOOD! FT by SABALLY, SATOU | 54-54 | T | |
| 02:13 | GOOD! FT by SABALLY, SATOU | 54-55 | V 1 | |
| 02:00 | | 56-55 | H 1 | GOOD! JUMPER by MCCOWAN, TEAIRA |
| 02:00 | | | | ASSIST by HOLMES, JAZZMUN |
| 02:00 | FOUL (PERSONAL) by HEBARD, RUTHY | | | |
| 02:00 | SUB OUT: BOLEY, ERIN | | | |
| 02:00 | SUB IN: GILDON, OTI | | | |
| 02:00 | | 57-55 | H 2 | GOOD! FT by MCCOWAN, TEAIRA |
| 01:43 | MISSED 3PTR by IONESCU, SABRINA | | | |
| 01:39 | | | | REBOUND (DEF) by MCCOWAN, TEAIRA |
| 01:34 | | | | MISSED 3PTR by HOWARD, ANRIEL |
| 01:31 | REBOUND (DEF) by SABALLY, SATOU | | | |
| 01:31 | | | | FOUL (PERSONAL) by HOWARD, ANRIEL |
| 01:31 | GOOD! FT by SABALLY, SATOU | 57-56 | H 1 | |
| 01:31 | GOOD! FT by SABALLY, SATOU | 57-57 | T | |
| 01:14 | | | | MISSED LAYUP by DANBERRY, JORDAN |
| 01:14 | BLOCK by SABALLY, SATOU | | | |
| 01:09 | | | | REBOUND (OFF) by DANBERRY, JORDAN |
| 01:04 | FOUL (PERSONAL) by GILDON, OTI | | | |
| 01:04 | | 58-57 | H 1 | GOOD! FT by HOLMES, JAZZMUN |
| 01:04 | | 59-57 | H 2 | GOOD! FT by HOLMES, JAZZMUN |
| 00:37 | GOOD! LAYUP by HEBARD, RUTHY [PNT] | 59-59 | T | |
| 00:10 | | | | FOUL (OFF) by MCCOWAN, TEAIRA |
| 00:10 | SUB OUT: GILDON, OTI | | | |
| 00:10 | SUB IN: BOLEY, ERIN | | | |
| 00:10 | | | | SUB OUT: MCCOWAN, TEAIRA |
| 00:10 | | | | SUB IN: CARTER, JESSIKA |
| 00:10 | | | | TURNOVER (OFFENSIVE) by MCCOWAN, TEAIRA |
| 00:02 | MISSED JUMPER by IONESCU, SABRINA | | | |
| 00:00 | | | | REBOUND (DEF) by HOLMES, JAZZMUN |

Oregon 59, Mississippi St. 59

| Points from (This Period) | ORE | MSU |
|---------------------------|-----|-----|
| In the Paint | 12 | 6 |
| Off Turns | 0 | 0 |
| 2nd Chance | 6 | 2 |
| Fast Break | 0 | 0 |
| Bench | 0 | 0 |

Official Box Score
Oregon vs Mississippi St.
Fourth Quarter Statistics Only
March 31, 2019 at Moda Center - Portland, Ore.



Oregon 29

| No. | Player | S | Pts | FG | 3FG | FT | OR | DR | TR | PF | A | TO | Blk | Stl | Min | +/- |
|---------------|------------------|---|-----------|--------------|------------|------------|----------|----------|----------|----------|----------|----------|----------|----------|-----------|-----|
| 00 | SABALLY, SATOU | F | 5 | 2-3 | 1-1 | 0-0 | 0 | 2 | 2 | 3 | 0 | 1 | 1 | 0 | 10 | 4 |
| 05 | CAZORLA, MAITE | G | 5 | 2-2 | 1-1 | 0-0 | 0 | 0 | 0 | 1 | 2 | 0 | 0 | 0 | 10 | 4 |
| 20 | IONESCU, SABRINA | G | 14 | 5-6 | 2-2 | 2-2 | 0 | 1 | 1 | 1 | 2 | 1 | 0 | 1 | 10 | 4 |
| 21 | BOLEY, ERIN | F | 5 | 1-3 | 1-3 | 2-2 | 0 | 0 | 0 | 0 | 0 | 0 | 0 | 1 | 9 | 9 |
| 24 | HEBARD, RUTHY | F | 0 | 0-0 | 0-0 | 0-0 | 1 | 2 | 3 | 0 | 0 | 1 | 2 | 0 | 10 | 4 |
| 14 | GIOMI, LYDIA | F | 0 | 0-0 | 0-0 | 0-0 | 0 | 0 | 0 | 0 | 0 | 0 | 0 | 0 | 0 | 0 |
| 32 | GILDON, OTI | F | 0 | 0-0 | 0-0 | 0-0 | 0 | 0 | 0 | 0 | 0 | 0 | 0 | 0 | 1 | -5 |
| TEAM | | | | | | | 1 | 0 | 1 | 0 | | | | | | |
| TOTALS | | | 29 | 10-14 | 5-7 | 4-4 | 2 | 5 | 7 | 5 | 4 | 3 | 3 | 2 | 50 | |

Shooting By Period

| Period | FG | FG% | 3FG | 3FG% | FT | FT% |
|--------|-------|-------|-------|-------|-------|-------|
| Game | 32-59 | 54.2% | 13-26 | 50.0% | 11-14 | 78.6% |

Deadball Rebounds: 2,0

Mississippi St. 25

| No. | Player | S | Pts | FG | 3FG | FT | OR | DR | TR | PF | A | TO | Blk | Stl | Min | +/- |
|---------------|------------------------|---|-----------|-------------|------------|------------|----------|----------|----------|----------|----------|----------|----------|----------|-----------|-----|
| 02 | ESPINOZA-HUNTER, ANDRA | G | 3 | 1-2 | 1-2 | 0-0 | 0 | 0 | 0 | 1 | 0 | 1 | 0 | 0 | 8 | -2 |
| 05 | HOWARD, ANRIEL | F | 4 | 1-3 | 0-0 | 2-2 | 2 | 1 | 3 | 1 | 0 | 0 | 0 | 1 | 10 | -2 |
| 10 | HOLMES, JAZZMUN | G | 7 | 3-5 | 0-0 | 1-1 | 1 | 0 | 1 | 2 | 4 | 0 | 0 | 0 | 9 | 0 |
| 15 | MCCOWAN, TEAIRA | C | 4 | 1-3 | 0-0 | 2-2 | 1 | 1 | 2 | 0 | 0 | 0 | 1 | 0 | 10 | -4 |
| 24 | DANBERRY, JORDAN | G | 2 | 1-3 | 0-0 | 0-0 | 0 | 0 | 0 | 1 | 0 | 1 | 0 | 0 | 8 | -8 |
| 04 | CARTER, JESSIKA | F | 0 | 0-0 | 0-0 | 0-0 | 0 | 0 | 0 | 1 | 0 | 0 | 0 | 0 | 0 | -2 |
| 23 | SCOTT, BRE'AMBER | G | 5 | 2-3 | 1-1 | 0-2 | 0 | 0 | 0 | 0 | 1 | 0 | 0 | 1 | 5 | -2 |
| TEAM | | | | | | | 2 | 0 | 2 | 0 | | | | | | |
| TOTALS | | | 25 | 9-19 | 2-3 | 5-7 | 6 | 2 | 8 | 6 | 5 | 2 | 1 | 2 | 50 | |

Shooting By Period

| Period | FG | FG% | 3FG | 3FG% | FT | FT% |
|--------|-------|-------|------|-------|-------|-------|
| Game | 31-64 | 48.4% | 8-14 | 57.1% | 14-19 | 73.7% |

Deadball Rebounds: 3,0

Game Notes:

Officials: Michol Murray, Mark Zentz, Pualani Spurlock
 Attendance: 11538

Start Time: 2019-03-31 18:08:36
 End Time: 2019-03-31 20:04:56
 Game Duration: 1:56
 Neutral Court;

| Score | 1st | 2nd | 3rd | 4th | TOT |
|-------|-----|-----|-----|-----|-----------|
| ORE | 19 | 21 | 19 | 29 | 88 |
| MSU | 21 | 17 | 21 | 25 | 84 |

| Points from (This Period) | ORE | MSU |
|---------------------------|-----|-----|
| In the Paint | 8 | 10 |
| Off Turns | 5 | 2 |
| 2nd Chance | 5 | 6 |
| Fast Break | 0 | 2 |
| Bench | 0 | 5 |

Official Play-By-Play
Oregon vs Mississippi St.
Fourth Quarter
March 31, 2019 at Moda Center - Portland, Ore.



Period 4

Starters:

Oregon: 0 SABALLY,SATOU (F); 20 IONESCU,SABRINA (G); 21 BOLEY,ERIN (F); 24 HEBARD,RUTHY (F); 5 CAZORLA,MAITE (G);

Mississippi St.: 2 ESPINOZA-HUNTER,ANDRA (G); 5 HOWARD,ANRIEL (F); 10 HOLMES,JAZZMUN (G); 15 MCCOWAN,TEAIRA (C); 24 DANBERRY,JORDAN (G);

| Time | VISITORS: Oregon | Score | Margin | HOME: Mississippi St. |
|-------|---|-------|--------|---|
| 09:48 | | | | TURNOVER (LOSTBALL) by DANBERRY, JORDAN |
| 09:48 | STEAL by BOLEY, ERIN | | | |
| 09:35 | MISSED LAYUP by IONESCU, SABRINA | | | |
| 09:35 | | | | BLOCK by MCCOWAN, TEAIRA |
| 09:35 | REBOUND (OFF) by TEAM | | | |
| 09:18 | GOOD! LAYUP by IONESCU, SABRINA | 59-61 | V 2 | |
| 08:52 | | | | MISSED LAYUP by HOLMES, JAZZMUN |
| 08:49 | | | | REBOUND (OFF) by HOWARD, ANRIEL |
| 08:33 | | | | MISSED LAYUP by DANBERRY, JORDAN |
| 08:33 | BLOCK by SABALLY, SATOU | | | |
| 08:29 | REBOUND (DEF) by SABALLY, SATOU | | | |
| 08:22 | GOOD! 3PTR by BOLEY, ERIN | 59-64 | V 5 | |
| 08:22 | ASSIST by IONESCU, SABRINA | | | |
| 07:57 | | | | MISSED JUMPER by HOWARD, ANRIEL |
| 07:55 | REBOUND (DEF) by SABALLY, SATOU | | | |
| 07:51 | MISSED 3PTR by BOLEY, ERIN | | | |
| 07:47 | | | | REBOUND (DEF) by HOWARD, ANRIEL |
| 07:42 | | 61-64 | V 3 | GOOD! JUMPER by HOWARD, ANRIEL [FB/PNT] |
| 07:23 | MISSED JUMPER by SABALLY, SATOU | | | |
| 07:19 | | | | REBOUND (DEF) by MCCOWAN, TEAIRA |
| 07:14 | | | | SUB OUT: DANBERRY, JORDAN |
| 07:14 | | | | SUB IN: SCOTT, BRE'AMBER |
| 07:11 | FOUL (PERSONAL) by SABALLY, SATOU | | | |
| 07:11 | | | | MISSED FT by SCOTT, BRE'AMBER |
| 07:11 | | | | REBOUND (OFF) by TEAM |
| 07:10 | | | | MISSED FT by SCOTT, BRE'AMBER |
| 07:09 | | | | REBOUND (OFF) by HOWARD, ANRIEL |
| 06:58 | FOUL (PERSONAL) by SABALLY, SATOU | | | |
| 06:58 | | 62-64 | V 2 | GOOD! FT by HOWARD, ANRIEL |
| 06:58 | | 63-64 | V 1 | GOOD! FT by HOWARD, ANRIEL |
| 06:56 | TURNOVER (LOSTBALL) by IONESCU, SABRINA | | | |
| 06:56 | | | | STEAL by HOWARD, ANRIEL |
| 06:38 | | | | TURNOVER (LOSTBALL) by ESPINOZA-HUNTER, ANDRA |
| 06:38 | STEAL by IONESCU, SABRINA | | | |
| 06:24 | GOOD! 3PTR by SABALLY, SATOU | 63-67 | V 4 | |
| 06:24 | ASSIST by CAZORLA, MAITE | | | |
| 06:06 | | 66-67 | V 1 | GOOD! 3PTR by SCOTT, BRE'AMBER |
| 06:06 | | | | ASSIST by HOLMES, JAZZMUN |
| 05:49 | MISSED 3PTR by BOLEY, ERIN | | | |
| 05:45 | REBOUND (OFF) by HEBARD, RUTHY | | | |
| 05:33 | GOOD! 3PTR by IONESCU, SABRINA | 66-70 | V 4 | |
| 05:33 | ASSIST by CAZORLA, MAITE | | | |
| 05:06 | | 68-70 | V 2 | GOOD! LAYUP by HOLMES, JAZZMUN |
| 05:06 | | | | ASSIST by SCOTT, BRE'AMBER |
| 05:06 | FOUL (PERSONAL) by CAZORLA, MAITE | | | |
| 05:06 | | 69-70 | V 1 | GOOD! FT by HOLMES, JAZZMUN |
| 05:06 | | | | SUB OUT: HOLMES, JAZZMUN |
| 05:06 | | | | SUB IN: DANBERRY, JORDAN |
| 04:43 | GOOD! LAYUP by SABALLY, SATOU | 69-72 | V 3 | |
| 04:24 | | | | MISSED JUMPER by HOWARD, ANRIEL |
| 04:20 | REBOUND (DEF) by IONESCU, SABRINA | | | |
| 04:07 | GOOD! LAYUP by IONESCU, SABRINA | 69-74 | V 5 | |
| 04:01 | | | | TIMEOUT 30SEC |
| 04:01 | | | | |
| 04:01 | | | | SUB OUT: SCOTT, BRE'AMBER |
| 04:01 | | | | SUB IN: HOLMES, JAZZMUN |
| 03:51 | | 71-74 | V 3 | GOOD! LAYUP by MCCOWAN, TEAIRA |
| 03:51 | | | | ASSIST by HOLMES, JAZZMUN |
| 03:35 | GOOD! LAYUP by CAZORLA, MAITE | 71-76 | V 5 | |
| 03:16 | | 73-76 | V 3 | GOOD! JUMPER by DANBERRY, JORDAN |
| 03:16 | | | | ASSIST by HOLMES, JAZZMUN |
| 02:53 | GOOD! JUMPER by IONESCU, SABRINA | 73-78 | V 5 | |
| 02:32 | | | | MISSED JUMPER by DANBERRY, JORDAN |
| 02:28 | | | | REBOUND (OFF) by MCCOWAN, TEAIRA |
| 02:28 | FOUL (PERSONAL) by IONESCU, SABRINA | | | |
| 02:28 | | 74-78 | V 4 | GOOD! FT by MCCOWAN, TEAIRA |
| 02:28 | | | | SUB OUT: ESPINOZA-HUNTER, ANDRA |
| 02:28 | | | | SUB IN: SCOTT, BRE'AMBER |
| 02:28 | | 75-78 | V 3 | GOOD! FT by MCCOWAN, TEAIRA |
| 02:08 | FOUL (OFF) by SABALLY, SATOU | | | |

| Time | VISITORS: Oregon | Score | Margin | HOME: Mississippi St. |
|-------|--|-------|--------|---|
| 02:08 | TURNOVER (OFFENSIVE) by SABALLY, SATOU | | | |
| 01:52 | | | | MISSED LAYUP by MCCOWAN, TEAIRA |
| 01:52 | BLOCK by HEBARD, RUTHY | | | |
| 01:51 | | | | REBOUND (OFF) by TEAM |
| 01:40 | | | | MISSED LAYUP by SCOTT, BRE'AMBER |
| 01:40 | BLOCK by HEBARD, RUTHY | | | |
| 01:40 | REBOUND (DEF) by HEBARD, RUTHY | | | |
| 01:40 | | | | FOUL (PERSONAL) by HOWARD, ANRIEL |
| 01:13 | GOOD! 3PTR by IONESCU, SABRINA | 75-81 | V 6 | |
| 01:01 | | | | MISSED LAYUP by HOLMES, JAZZMUN |
| 01:01 | | | | REBOUND (OFF) by TEAM |
| 01:01 | | | | TIMEOUT 30SEC |
| 01:01 | SUB OUT: BOLEY, ERIN | | | |
| 01:01 | SUB IN: GILDON, OTI | | | |
| 00:57 | | | | MISSED LAYUP by MCCOWAN, TEAIRA |
| 00:55 | TURNOVER (LOSTBALL) by HEBARD, RUTHY | | | |
| 00:55 | | | | STEAL by SCOTT, BRE'AMBER |
| 00:55 | REBOUND (DEF) by HEBARD, RUTHY | | | |
| 00:54 | | 77-81 | V 4 | GOOD! LAYUP by SCOTT, BRE'AMBER |
| 00:54 | TIMEOUT 30SEC | | | |
| 00:35 | GOOD! 3PTR by CAZORLA, MAITE | 77-84 | V 7 | |
| 00:35 | ASSIST by IONESCU, SABRINA | | | |
| 00:26 | | 79-84 | V 5 | GOOD! JUMPER by HOLMES, JAZZMUN |
| 00:26 | | | | TIMEOUT TEAM |
| 00:26 | TIMEOUT 30SEC | | | |
| 00:26 | | | | SUB OUT: SCOTT, BRE'AMBER |
| 00:26 | | | | SUB IN: CARTER, JESSIKA |
| 00:26 | SUB OUT: GILDON, OTI | | | |
| 00:26 | SUB IN: BOLEY, ERIN | | | |
| 00:25 | | | | FOUL (PERSONAL) by HOLMES, JAZZMUN |
| 00:25 | | | | SUB OUT: HOWARD, ANRIEL |
| 00:25 | | | | SUB IN: SCOTT, BRE'AMBER |
| 00:23 | | | | FOUL (PERSONAL) by HOLMES, JAZZMUN |
| 00:21 | | | | FOUL (PERSONAL) by CARTER, JESSIKA |
| 00:19 | | | | FOUL (PERSONAL) by DANBERRY, JORDAN |
| 00:19 | GOOD! FT by BOLEY, ERIN | 79-85 | V 6 | |
| 00:19 | | | | SUB OUT: DANBERRY, JORDAN |
| 00:19 | | | | SUB IN: ESPINOZA-HUNTER, ANDRA |
| 00:19 | | | | SUB OUT: CARTER, JESSIKA |
| 00:19 | | | | SUB IN: HOWARD, ANRIEL |
| 00:19 | GOOD! FT by BOLEY, ERIN | 79-86 | V 7 | |
| 00:19 | SUB OUT: BOLEY, ERIN | | | |
| 00:19 | SUB IN: GILDON, OTI | | | |
| 00:13 | | 82-86 | V 4 | GOOD! 3PTR by ESPINOZA-HUNTER, ANDRA |
| 00:13 | | | | ASSIST by HOLMES, JAZZMUN |
| 00:13 | TIMEOUT TEAM | | | |
| 00:13 | | | | SUB OUT: HOWARD, ANRIEL |
| 00:13 | | | | SUB IN: CARTER, JESSIKA |
| 00:13 | | | | SUB OUT: SCOTT, BRE'AMBER |
| 00:13 | | | | SUB IN: DANBERRY, JORDAN |
| 00:13 | SUB OUT: GILDON, OTI | | | |
| 00:13 | SUB IN: BOLEY, ERIN | | | |
| 00:11 | | | | FOUL (PERSONAL) by ESPINOZA-HUNTER, ANDRA |
| 00:11 | GOOD! FT by IONESCU, SABRINA | 82-87 | V 5 | |
| 00:11 | | | | SUB OUT: CARTER, JESSIKA |
| 00:11 | | | | SUB IN: HOWARD, ANRIEL |
| 00:11 | SUB OUT: BOLEY, ERIN | | | |
| 00:11 | SUB IN: GILDON, OTI | | | |
| 00:11 | GOOD! FT by IONESCU, SABRINA | 82-88 | V 6 | |
| 00:03 | | | | MISSED 3PTR by ESPINOZA-HUNTER, ANDRA |
| 00:00 | | | | REBOUND (OFF) by HOLMES, JAZZMUN |
| 00:00 | | 84-88 | V 4 | GOOD! LAYUP by HOLMES, JAZZMUN |

Oregon 88, Mississippi St. 84

| Points from (This Period) | ORE | MSU |
|---------------------------|-----|-----|
| In the Paint | 8 | 10 |
| Off Turns | 5 | 2 |
| 2nd Chance | 5 | 6 |
| Fast Break | 0 | 2 |
| Bench | 0 | 5 |

Official Scoring/Possession Reference Chart
Oregon vs Mississippi St.
Period 1
March 31, 2019 at Moda Center - Portland, Ore.



Period 1

Starters:

Oregon: 0 SABALLY,SATOU (F); 20 IONESCU,SABRINA (G); 21 BOLEY,ERIN (F); 24 HEBARD,RUTHY (F); 5 CAZORLA,MAITE (G);

Mississippi St.: 2 ESPINOZA-HUNTER,ANDRA (G); 5 HOWARD,ANRIEL (F); 10 HOLMES,JAZZMUN (G); 15 MCCOWAN,TEAIRA (C); 24 DANBERRY,JORDAN (G);

| Time | VISITORS: Oregon | Score | Margin | HOME: Mississippi St. |
|-------|--------------------------------|-------|--------|--------------------------------------|
| 09:40 | | 2-0 | H 2 | GOOD! LAYUP by MCCOWAN, TEAIRA |
| 09:25 | GOOD! 3PTR by CAZORLA, MAITE | 2-3 | V 1 | |
| 08:11 | | 4-3 | H 1 | GOOD! LAYUP by HOWARD, ANRIEL |
| 07:52 | GOOD! 3PTR by SABALLY, SATOU | 4-6 | V 2 | |
| 07:34 | | 7-6 | H 1 | GOOD! 3PTR by HOWARD, ANRIEL |
| 07:08 | GOOD! LAYUP by HEBARD, RUTHY | 7-8 | V 1 | |
| 05:49 | | 9-8 | H 1 | GOOD! JUMPER by HOWARD, ANRIEL |
| 05:08 | | 12-8 | H 4 | GOOD! 3PTR by ESPINOZA-HUNTER, ANDRA |
| 04:25 | | 13-8 | H 5 | GOOD! FT by MCCOWAN, TEAIRA |
| 03:27 | | 15-8 | H 7 | GOOD! LAYUP by HOWARD, ANRIEL |
| 02:48 | GOOD! 3PTR by SABALLY, SATOU | 15-11 | H 4 | |
| 02:24 | | 17-11 | H 6 | GOOD! JUMPER by MCCOWAN, TEAIRA |
| 02:04 | GOOD! 3PTR by IONESCU, SABRINA | 17-14 | H 3 | |
| 01:40 | | 19-14 | H 5 | GOOD! LAYUP by DANBERRY, JORDAN |
| 01:20 | GOOD! LAYUP by HEBARD, RUTHY | 19-16 | H 3 | |
| 00:35 | GOOD! 3PTR by IONESCU, SABRINA | 19-19 | T | |
| 00:04 | | 20-19 | H 1 | GOOD! FT by DANBERRY, JORDAN |
| 00:04 | | 21-19 | H 2 | GOOD! FT by DANBERRY, JORDAN |

Oregon 19, Mississippi St. 21

**Official Scoring/Possession Reference Chart
Oregon vs Mississippi St.
Period 2
March 31, 2019 at Moda Center - Portland, Ore.**



Period 2

Starters:

Oregon: 0 SABALLY,SATOU (F); 20 IONESCU,SABRINA (G); 21 BOLEY,ERIN (F); 24 HEBARD,RUTHY (F); 5 CAZORLA,MAITE (G);

Mississippi St.: 2 ESPINOZA-HUNTER,ANDRA (G); 5 HOWARD,ANRIEL (F); 10 HOLMES,JAZZMUN (G); 15 MCCOWAN,TEAIRA (C); 24 DANBERRY,JORDAN (G);

| Time | VISITORS: Oregon | Score | Margin | HOME: Mississippi St. |
|-------|--|-------|--------|--------------------------------------|
| 09:26 | GOOD! JUMPER by IONESCU, SABRINA | 21-21 | T | |
| 09:03 | | 23-21 | H 2 | GOOD! LAYUP by MCCOWAN, TEAIRA |
| 08:44 | GOOD! JUMPER by SABALLY, SATOU [PNT] | 23-23 | T | |
| 08:24 | | 25-23 | H 2 | GOOD! JUMPER by DANBERRY, JORDAN |
| 07:31 | GOOD! JUMPER by SABALLY, SATOU | 25-25 | T | |
| 07:01 | | 27-25 | H 2 | GOOD! JUMPER by HOLMES, JAZZMUN |
| 06:45 | GOOD! JUMPER by IONESCU, SABRINA | 27-27 | T | |
| 05:56 | GOOD! 3PTR by CAZORLA, MAITE | 27-30 | V 3 | |
| 05:29 | | 29-30 | V 1 | GOOD! LAYUP by MCCOWAN, TEAIRA |
| 05:29 | | 30-30 | T | GOOD! FT by MCCOWAN, TEAIRA |
| 05:04 | | 33-30 | H 3 | GOOD! 3PTR by SCOTT, BRE'AMBER |
| 04:43 | GOOD! 3PTR by BOLEY, ERIN | 33-33 | T | |
| 03:46 | GOOD! JUMPER by IONESCU, SABRINA [PNT] | 33-35 | V 2 | |
| 03:27 | | 36-35 | H 1 | GOOD! 3PTR by ESPINOZA-HUNTER, ANDRA |
| 01:53 | | 37-35 | H 2 | GOOD! FT by MCCOWAN, TEAIRA |
| 01:53 | | 38-35 | H 3 | GOOD! FT by MCCOWAN, TEAIRA |
| 01:40 | GOOD! LAYUP by GILDON, OTI | 38-37 | H 1 | |
| 00:59 | GOOD! 3PTR by IONESCU, SABRINA | 38-40 | V 2 | |

Oregon 40, Mississippi St. 38

**Official Scoring/Possession Reference Chart
Oregon vs Mississippi St.
Period 3
March 31, 2019 at Moda Center - Portland, Ore.**



Period 3

Starters:

Oregon: 0 SABALLY, SATOU (F); 20 IONESCU, SABRINA (G); 21 BOLEY, ERIN (F); 24 HEBARD, RUTHY (F); 5 CAZORLA, MAITE (G);

Mississippi St.: 2 ESPINOZA-HUNTER, ANDRA (G); 5 HOWARD, ANRIEL (F); 10 HOLMES, JAZZMUN (G); 15 MCCOWAN, TEAIRA (C); 24 DANBERRY, JORDAN (G);

| Time | VISITORS: Oregon | Score | Margin | HOME: Mississippi St. |
|-------|---------------------------------------|-------|--------|--|
| 08:24 | GOOD! LAYUP by HEBARD, RUTHY | 38-42 | V 4 | |
| 07:50 | GOOD! LAYUP by IONESCU, SABRINA [PNT] | 38-44 | V 6 | |
| 06:18 | | 41-44 | V 3 | GOOD! 3PTR by ESPINOZA-HUNTER, ANDRA |
| 05:55 | GOOD! FT by HEBARD, RUTHY | 41-45 | V 4 | |
| 05:46 | | 43-45 | V 2 | GOOD! JUMPER by DANBERRY, JORDAN |
| 05:28 | GOOD! LAYUP by HEBARD, RUTHY [PNT] | 43-47 | V 4 | |
| 05:16 | | 46-47 | V 1 | GOOD! 3PTR by HOWARD, ANRIEL |
| 04:57 | GOOD! LAYUP by SABALLY, SATOU | 46-49 | V 3 | |
| 04:38 | | 48-49 | V 1 | GOOD! JUMPER by HOLMES, JAZZMUN |
| 04:18 | GOOD! FT by SABALLY, SATOU | 48-50 | V 2 | |
| 04:07 | | 50-50 | T | GOOD! JUMPER by DANBERRY, JORDAN [PNT] |
| 03:55 | GOOD! LAYUP by HEBARD, RUTHY | 50-52 | V 2 | |
| 03:41 | GOOD! FT by HEBARD, RUTHY | 50-53 | V 3 | |
| 03:21 | | 52-53 | V 1 | GOOD! JUMPER by HOLMES, JAZZMUN |
| 02:42 | | 54-53 | H 1 | GOOD! LAYUP by HOWARD, ANRIEL |
| 02:13 | GOOD! FT by SABALLY, SATOU | 54-54 | T | |
| 02:13 | GOOD! FT by SABALLY, SATOU | 54-55 | V 1 | |
| 02:00 | | 56-55 | H 1 | GOOD! JUMPER by MCCOWAN, TEAIRA |
| 02:00 | | 57-55 | H 2 | GOOD! FT by MCCOWAN, TEAIRA |
| 01:31 | GOOD! FT by SABALLY, SATOU | 57-56 | H 1 | |
| 01:31 | GOOD! FT by SABALLY, SATOU | 57-57 | T | |
| 01:04 | | 58-57 | H 1 | GOOD! FT by HOLMES, JAZZMUN |
| 01:04 | | 59-57 | H 2 | GOOD! FT by HOLMES, JAZZMUN |
| 00:37 | GOOD! LAYUP by HEBARD, RUTHY [PNT] | 59-59 | T | |

Oregon 59, Mississippi St. 59

**Official Scoring/Possession Reference Chart
Oregon vs Mississippi St.
Period 4
March 31, 2019 at Moda Center - Portland, Ore.**



Period 4

Starters:

Oregon: 0 SABALLY,SATOU (F); 20 IONESCU,SABRINA (G); 21 BOLEY,ERIN (F); 24 HEBARD,RUTHY (F); 5 CAZORLA,MAITE (G);

Mississippi St.: 2 ESPINOZA-HUNTER,ANDRA (G); 5 HOWARD,ANRIEL (F); 10 HOLMES,JAZZMUN (G); 15 MCCOWAN,TEAIRA (C); 24 DANBERRY,JORDAN (G);

| Time | VISITORS: Oregon | Score | Margin | HOME: Mississippi St. |
|-------|----------------------------------|-------|--------|---|
| 09:18 | GOOD! LAYUP by IONESCU, SABRINA | 59-61 | V 2 | |
| 08:22 | GOOD! 3PTR by BOLEY, ERIN | 59-64 | V 5 | |
| 07:42 | | 61-64 | V 3 | GOOD! JUMPER by HOWARD, ANRIEL [FB/PNT] |
| 06:58 | | 62-64 | V 2 | GOOD! FT by HOWARD, ANRIEL |
| 06:58 | | 63-64 | V 1 | GOOD! FT by HOWARD, ANRIEL |
| 06:24 | GOOD! 3PTR by SABALLY, SATOU | 63-67 | V 4 | |
| 06:06 | | 66-67 | V 1 | GOOD! 3PTR by SCOTT, BRE'AMBER |
| 05:33 | GOOD! 3PTR by IONESCU, SABRINA | 66-70 | V 4 | |
| 05:06 | | 68-70 | V 2 | GOOD! LAYUP by HOLMES, JAZZMUN |
| 05:06 | | 69-70 | V 1 | GOOD! FT by HOLMES, JAZZMUN |
| 04:43 | GOOD! LAYUP by SABALLY, SATOU | 69-72 | V 3 | |
| 04:07 | GOOD! LAYUP by IONESCU, SABRINA | 69-74 | V 5 | |
| 03:51 | | 71-74 | V 3 | GOOD! LAYUP by MCCOWAN, TEAIRA |
| 03:35 | GOOD! LAYUP by CAZORLA, MAITE | 71-76 | V 5 | |
| 03:16 | | 73-76 | V 3 | GOOD! JUMPER by DANBERRY, JORDAN |
| 02:53 | GOOD! JUMPER by IONESCU, SABRINA | 73-78 | V 5 | |
| 02:28 | | 74-78 | V 4 | GOOD! FT by MCCOWAN, TEAIRA |
| 02:28 | | 75-78 | V 3 | GOOD! FT by MCCOWAN, TEAIRA |
| 01:13 | GOOD! 3PTR by IONESCU, SABRINA | 75-81 | V 6 | |
| 00:54 | | 77-81 | V 4 | GOOD! LAYUP by SCOTT, BRE'AMBER |
| 00:35 | GOOD! 3PTR by CAZORLA, MAITE | 77-84 | V 7 | |
| 00:26 | | 79-84 | V 5 | GOOD! JUMPER by HOLMES, JAZZMUN |
| 00:19 | GOOD! FT by BOLEY, ERIN | 79-85 | V 6 | |
| 00:19 | GOOD! FT by BOLEY, ERIN | 79-86 | V 7 | |
| 00:13 | | 82-86 | V 4 | GOOD! 3PTR by ESPINOZA-HUNTER, ANDRA |
| 00:11 | GOOD! FT by IONESCU, SABRINA | 82-87 | V 5 | |
| 00:11 | GOOD! FT by IONESCU, SABRINA | 82-88 | V 6 | |
| 00:00 | | 84-88 | V 4 | GOOD! LAYUP by HOLMES, JAZZMUN |

Oregon 88, Mississippi St. 84

**Official Substitutions Log
Oregon vs Mississippi St.
Period 1
March 31, 2019 at Moda Center - Portland, Ore.**

| VISITORS: Oregon | Time | Score | HOME: Mississippi St. |
|--------------------------|-------|-------|--------------------------------|
| 0 SABALLY,SATOU | | | 2 ESPINOZA-HUNTER,ANDRA |
| 20 IONESCU,SABRINA | | | 5 HOWARD,ANRIEL |
| 21 BOLEY,ERIN | | | 10 HOLMES,JAZZMUN |
| 24 HEBARD,RUTHY | | | 15 MCCOWAN,TEAIRA |
| 5 CAZORLA,MAITE | | | 24 DANBERRY,JORDAN |
| | 06:34 | 8-7 | SUB OUT: DANBERRY,JORDAN |
| | 06:34 | | SUB IN: SCOTT,BRE'AMBER |
| SUB OUT: 21 BOLEY,ERIN | 04:25 | 8-12 | |
| SUB IN: 32 GILDON,OTI | 04:25 | | |
| | 02:27 | 11-15 | SUB OUT: ESPINOZA-HUNTER,ANDRA |
| | 02:27 | | SUB IN: DANBERRY,JORDAN |
| | 02:08 | 11-17 | SUB OUT: SCOTT,BRE'AMBER |
| | 02:08 | | SUB IN: ESPINOZA-HUNTER,ANDRA |
| SUB OUT: 24 HEBARD,RUTHY | 00:04 | 19-20 | |
| SUB IN: 14 GIOMI,LYDIA | 00:04 | | |

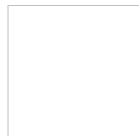
Oregon 19, Mississippi St. 21

**Official Substitutions Log
Oregon vs Mississippi St.
Period 2
March 31, 2019 at Moda Center - Portland, Ore.**

| VISITORS: Oregon | Time | Score | HOME: Mississippi St. |
|--------------------------|-------------|--------------|------------------------------|
| 0 SABALLY,SATOU | | | 2 ESPINOZA-HUNTER,ANDRA |
| 20 IONESCU,SABRINA | | | 5 HOWARD,ANRIEL |
| 21 BOLEY,ERIN | | | 10 HOLMES,JAZZMUN |
| 24 HEBARD,RUTHY | | | 15 MCCOWAN,TEAIRA |
| 5 CAZORLA,MAITE | | | 24 DANBERRY,JORDAN |
| SUB OUT: 14 GIOMI,LYDIA | 08:02 | 23-25 | |
| SUB IN: 24 HEBARD,RUTHY | 08:02 | | |
| | 07:44 | 23-25 | SUB OUT: HOWARD,ANRIEL |
| | 07:44 | | SUB IN: CARTER,JESSIKA |
| | 06:21 | 27-27 | SUB OUT: CARTER,JESSIKA |
| | 06:21 | | SUB IN: HOWARD,ANRIEL |
| SUB OUT: 32 GILDON,OTI | 06:21 | | |
| SUB IN: 21 BOLEY,ERIN | 06:21 | | |
| SUB OUT: 24 HEBARD,RUTHY | 05:29 | 30-29 | |
| SUB IN: 14 GIOMI,LYDIA | 05:29 | | |
| | 05:29 | | SUB OUT: DANBERRY,JORDAN |
| | 05:29 | | SUB IN: SCOTT,BRE'AMBER |
| SUB OUT: 14 GIOMI,LYDIA | 01:53 | 35-37 | |
| SUB IN: 32 GILDON,OTI | 01:53 | | |

Oregon 40, Mississippi St. 38

Official Substitutions Log
Oregon vs Mississippi St.
Period 3
March 31, 2019 at Moda Center - Portland, Ore.



| VISITORS: Oregon | Time | Score | HOME: Mississippi St. |
|-------------------------|-------------|--------------|------------------------------|
| 0 SABALLY,SATOU | | | 2 ESPINOZA-HUNTER,ANDRA |
| 20 IONESCU,SABRINA | | | 5 HOWARD,ANRIEL |
| 21 BOLEY,ERIN | | | 10 HOLMES,JAZZMUN |
| 24 HEBARD,RUTHY | | | 15 MCCOWAN,TEAIRA |
| 5 CAZORLA,MAITE | | | 24 DANBERRY,JORDAN |
| | 04:18 | 49-48 | SUB OUT: MCCOWAN,TEAIRA |
| | 04:18 | | SUB IN: CARTER,JESSIKA |
| | 03:41 | 52-50 | SUB OUT: CARTER,JESSIKA |
| | 03:41 | | SUB IN: MCCOWAN,TEAIRA |
| SUB OUT: 21 BOLEY,ERIN | 02:00 | 55-56 | |
| SUB IN: 32 GILDON,OTI | 02:00 | | |
| SUB OUT: 32 GILDON,OTI | 00:10 | 59-59 | |
| SUB IN: 21 BOLEY,ERIN | 00:10 | | |
| | 00:10 | | SUB OUT: MCCOWAN,TEAIRA |
| | 00:10 | | SUB IN: CARTER,JESSIKA |

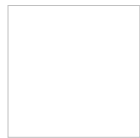
Oregon 59, Mississippi St. 59

Official Substitutions Log
Oregon vs Mississippi St.
Period 4
March 31, 2019 at Moda Center - Portland, Ore.

| VISITORS: Oregon | Time | Score | HOME: Mississippi St. |
|------------------------|-------|-------|--------------------------------|
| 0 SABALLY,SATOU | | | 2 ESPINOZA-HUNTER,ANDRA |
| 20 IONESCU,SABRINA | | | 5 HOWARD,ANRIEL |
| 21 BOLEY,ERIN | | | 10 HOLMES,JAZZMUN |
| 24 HEBARD,RUTHY | | | 15 MCCOWAN,TEAIRA |
| 5 CAZORLA,MAITE | | | 24 DANBERRY,JORDAN |
| | 07:14 | 64-61 | SUB OUT: DANBERRY,JORDAN |
| | 07:14 | | SUB IN: SCOTT,BRE'AMBER |
| | 05:06 | 70-69 | SUB OUT: HOLMES,JAZZMUN |
| | 05:06 | | SUB IN: DANBERRY,JORDAN |
| | 04:01 | 74-69 | SUB OUT: SCOTT,BRE'AMBER |
| | 04:01 | | SUB IN: HOLMES,JAZZMUN |
| | 02:28 | 78-74 | SUB OUT: ESPINOZA-HUNTER,ANDRA |
| | 02:28 | | SUB IN: SCOTT,BRE'AMBER |
| SUB OUT: 21 BOLEY,ERIN | 01:01 | 81-75 | |
| SUB IN: 32 GILDON,OTI | 01:01 | | |
| | 00:26 | 84-79 | SUB OUT: SCOTT,BRE'AMBER |
| | 00:26 | | SUB IN: CARTER,JESSIKA |
| SUB OUT: 32 GILDON,OTI | 00:26 | | |
| SUB IN: 21 BOLEY,ERIN | 00:26 | | |
| | 00:25 | 84-79 | SUB OUT: HOWARD,ANRIEL |
| | 00:25 | | SUB IN: SCOTT,BRE'AMBER |
| | 00:19 | 85-79 | SUB OUT: DANBERRY,JORDAN |
| | 00:19 | | SUB IN: ESPINOZA-HUNTER,ANDRA |
| | 00:19 | | SUB OUT: CARTER,JESSIKA |
| | 00:19 | | SUB IN: HOWARD,ANRIEL |
| SUB OUT: 21 BOLEY,ERIN | 00:19 | | |
| SUB IN: 32 GILDON,OTI | 00:19 | | |
| | 00:13 | 86-82 | SUB OUT: HOWARD,ANRIEL |
| | 00:13 | | SUB IN: CARTER,JESSIKA |
| | 00:13 | | SUB OUT: SCOTT,BRE'AMBER |
| | 00:13 | | SUB IN: DANBERRY,JORDAN |
| SUB OUT: 32 GILDON,OTI | 00:13 | | |
| SUB IN: 21 BOLEY,ERIN | 00:13 | | |
| | 00:11 | 87-82 | SUB OUT: CARTER,JESSIKA |
| | 00:11 | | SUB IN: HOWARD,ANRIEL |
| SUB OUT: 21 BOLEY,ERIN | 00:11 | | |
| SUB IN: 32 GILDON,OTI | 00:11 | | |

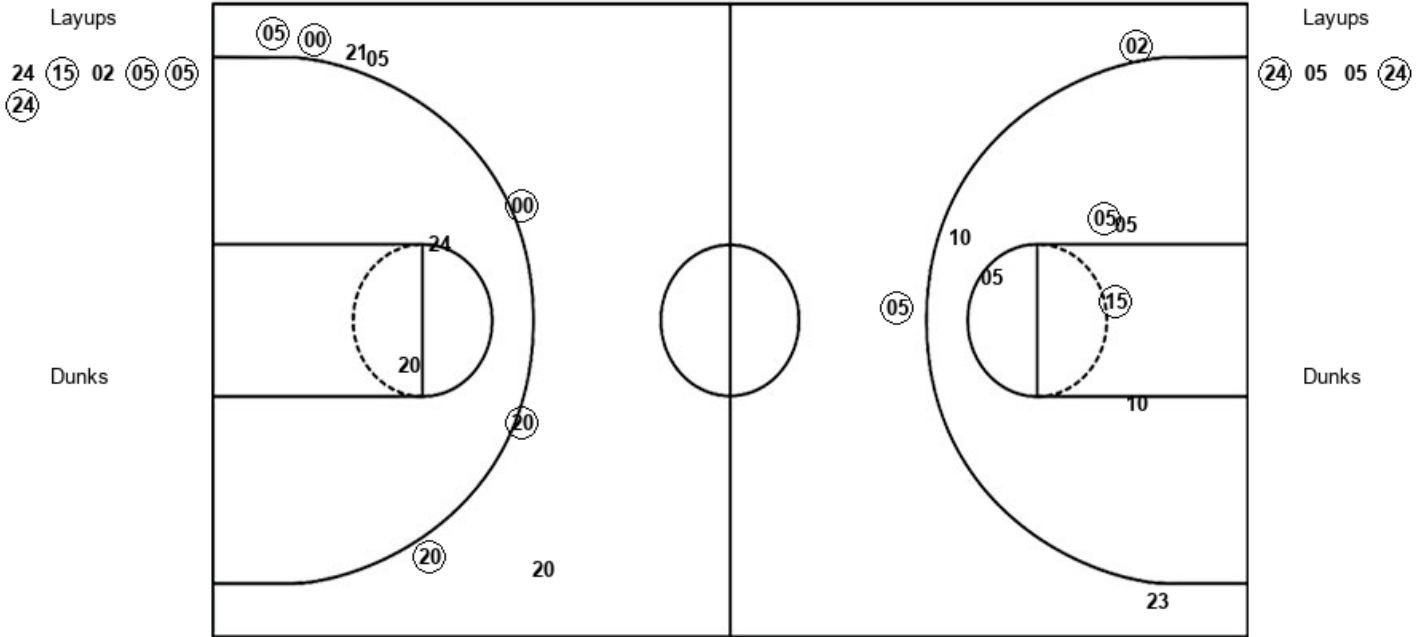
Oregon 88, Mississippi St. 84

Official Shot Chart
Oregon vs Mississippi St.
PERIOD 1 Shots
 March 31, 2019 at Moda Center - Portland, Ore.



Mississippi St.

Oregon



| MSU : Period 1 | Made | Att | Pct |
|--------------------------|-------------|------------|-------------|
| Layups | 4 | 6 | 66.7 |
| Dunks | 0 | 0 | 0 |
| 2PT Field Goals | 6 | 12 | 50.0 |
| 3PT Field Goals | 2 | 3 | 66.7 |
| Total Field Goals | 8 | 15 | 53.3 |

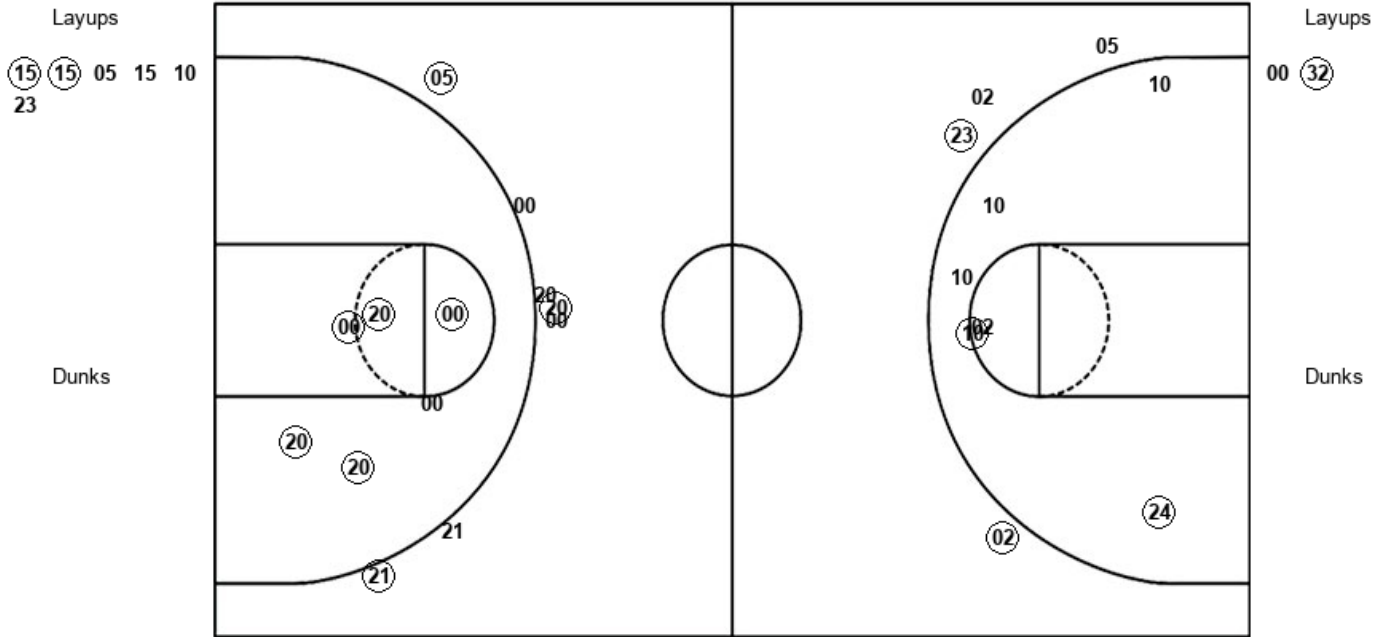
| ORE : Period 1 | Made | Att | Pct |
|--------------------------|-------------|------------|-------------|
| Layups | 2 | 4 | 50.0 |
| Dunks | 0 | 0 | 0 |
| 2PT Field Goals | 2 | 6 | 33.3 |
| 3PT Field Goals | 5 | 8 | 62.5 |
| Total Field Goals | 7 | 14 | 50.0 |

Official Shot Chart
Oregon vs Mississippi St.
PERIOD 2 Shots
 March 31, 2019 at Moda Center - Portland, Ore.



Mississippi St.

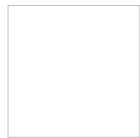
Oregon



| MSU : Period 2 | Made | Att | Pct |
|--------------------------|-------------|------------|-------------|
| Layups | 2 | 6 | 33.3 |
| Dunks | 0 | 0 | 0 |
| 2PT Field Goals | 4 | 12 | 33.3 |
| 3PT Field Goals | 2 | 4 | 50.0 |
| Total Field Goals | 6 | 16 | 37.5 |

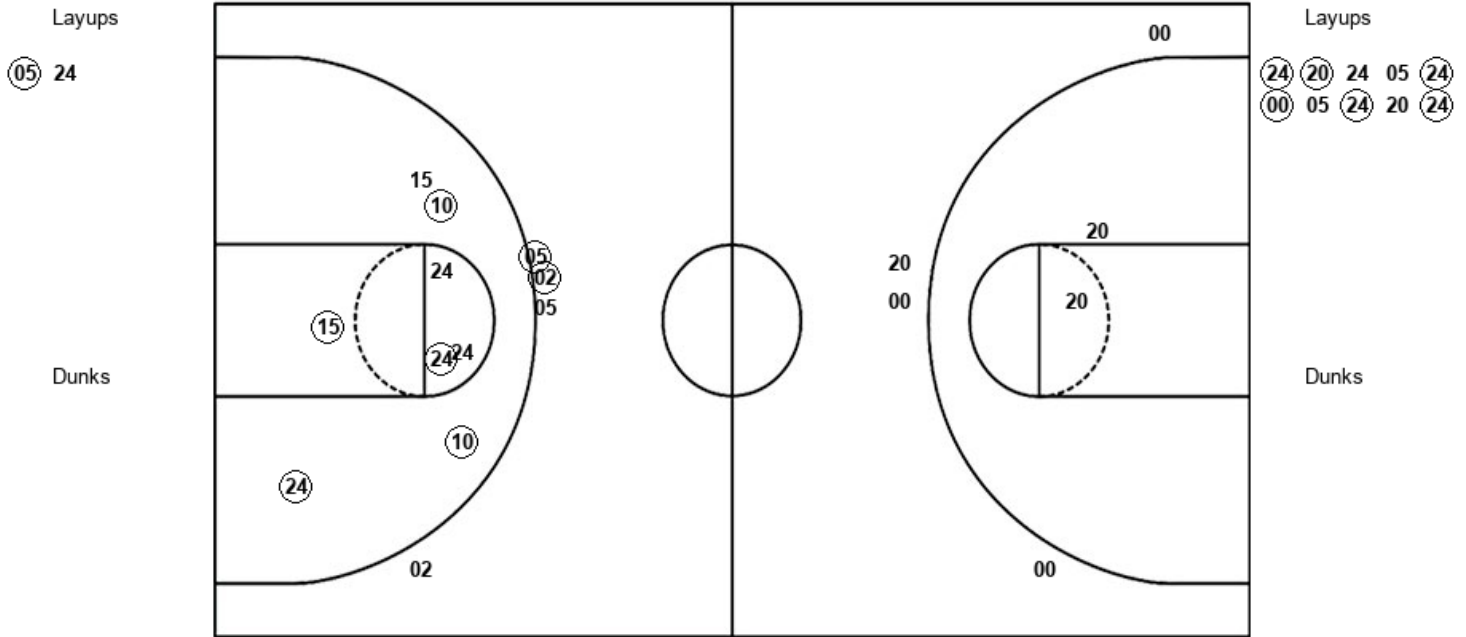
| ORE : Period 2 | Made | Att | Pct |
|--------------------------|-------------|------------|-------------|
| Layups | 1 | 2 | 50.0 |
| Dunks | 0 | 0 | 0 |
| 2PT Field Goals | 6 | 8 | 75.0 |
| 3PT Field Goals | 3 | 7 | 42.9 |
| Total Field Goals | 9 | 15 | 60.0 |

Official Shot Chart
Oregon vs Mississippi St.
PERIOD 3 Shots
 March 31, 2019 at Moda Center - Portland, Ore.



Mississippi St.

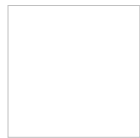
Oregon



| MSU : Period 3 | Made | Att | Pct |
|--------------------------|-------------|------------|-------------|
| Layups | 1 | 2 | 50.0 |
| Dunks | 0 | 0 | 0 |
| 2PT Field Goals | 6 | 10 | 60.0 |
| 3PT Field Goals | 2 | 4 | 50.0 |
| Total Field Goals | 8 | 14 | 57.1 |

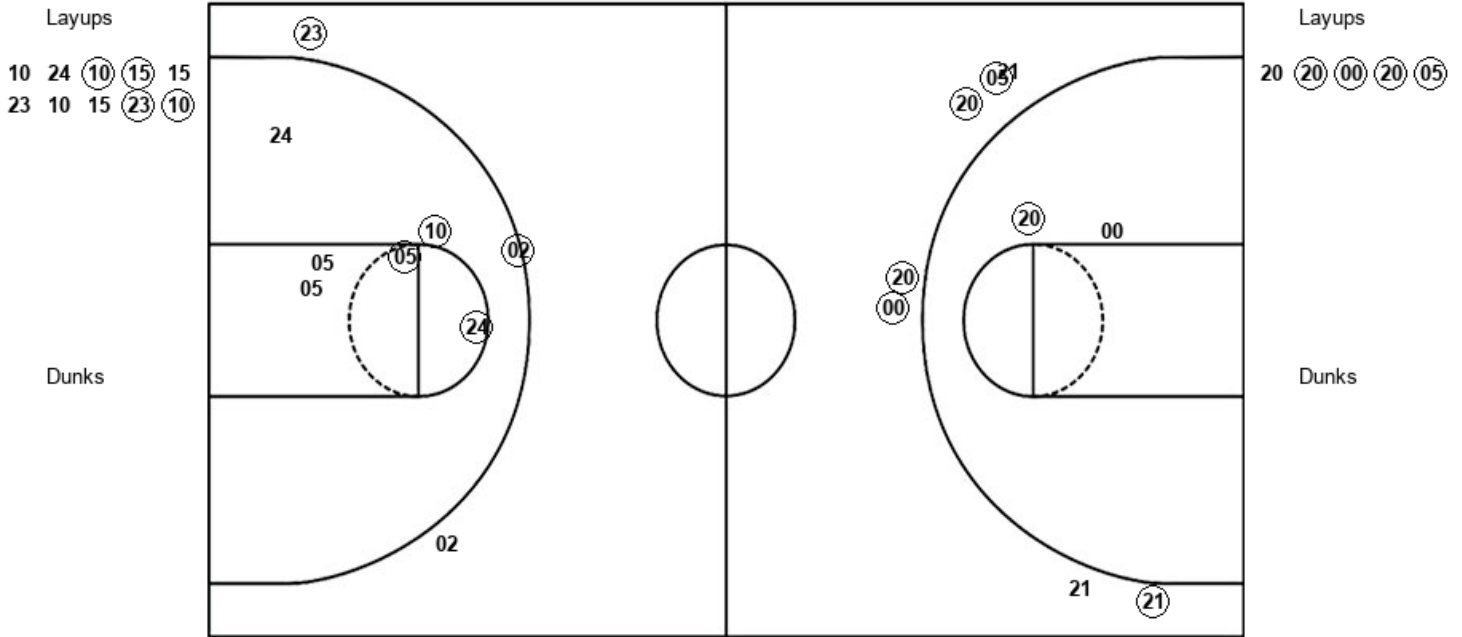
| ORE : Period 3 | Made | Att | Pct |
|--------------------------|-------------|------------|-------------|
| Layups | 6 | 10 | 60.0 |
| Dunks | 0 | 0 | 0 |
| 2PT Field Goals | 6 | 12 | 50.0 |
| 3PT Field Goals | 0 | 4 | 00.0 |
| Total Field Goals | 6 | 16 | 37.5 |

Official Shot Chart
Oregon vs Mississippi St.
PERIOD 4 Shots
 March 31, 2019 at Moda Center - Portland, Ore.



Mississippi St.

Oregon



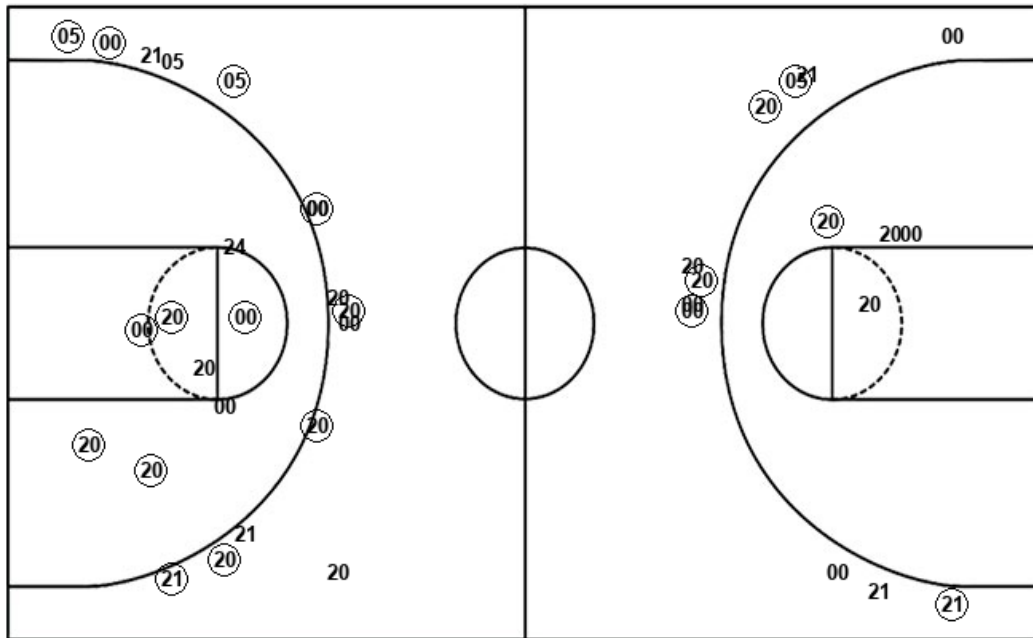
| MSU : Period 4 | Made | Att | Pct |
|--------------------------|-------------|------------|-------------|
| Layups | 4 | 10 | 40.0 |
| Dunks | 0 | 0 | 0 |
| 2PT Field Goals | 7 | 16 | 43.8 |
| 3PT Field Goals | 2 | 3 | 66.7 |
| Total Field Goals | 9 | 19 | 47.4 |

| ORE : Period 4 | Made | Att | Pct |
|--------------------------|-------------|------------|-------------|
| Layups | 4 | 5 | 80.0 |
| Dunks | 0 | 0 | 0 |
| 2PT Field Goals | 5 | 7 | 71.4 |
| 3PT Field Goals | 5 | 7 | 71.4 |
| Total Field Goals | 10 | 14 | 71.4 |

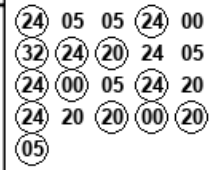
Official Shot Chart
Oregon vs Mississippi St.
Oregon Team Shots
March 31, 2019 at Moda Center - Portland, Ore.



Layups



Layups



Dunks

Dunks

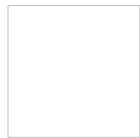
| ORE : Period 1 | Made | Att | Pct |
|--------------------------|----------|-----------|-------------|
| Layups | 2 | 4 | 50.0 |
| Dunks | 0 | 0 | 0 |
| 2PT Field Goals | 2 | 6 | 33.3 |
| 3PT Field Goals | 5 | 8 | 62.5 |
| Total Field Goals | 7 | 14 | 50.0 |

| ORE : Period 2 | Made | Att | Pct |
|--------------------------|----------|-----------|-------------|
| Layups | 1 | 2 | 50.0 |
| Dunks | 0 | 0 | 0 |
| 2PT Field Goals | 6 | 8 | 75.0 |
| 3PT Field Goals | 3 | 7 | 42.9 |
| Total Field Goals | 9 | 15 | 60.0 |

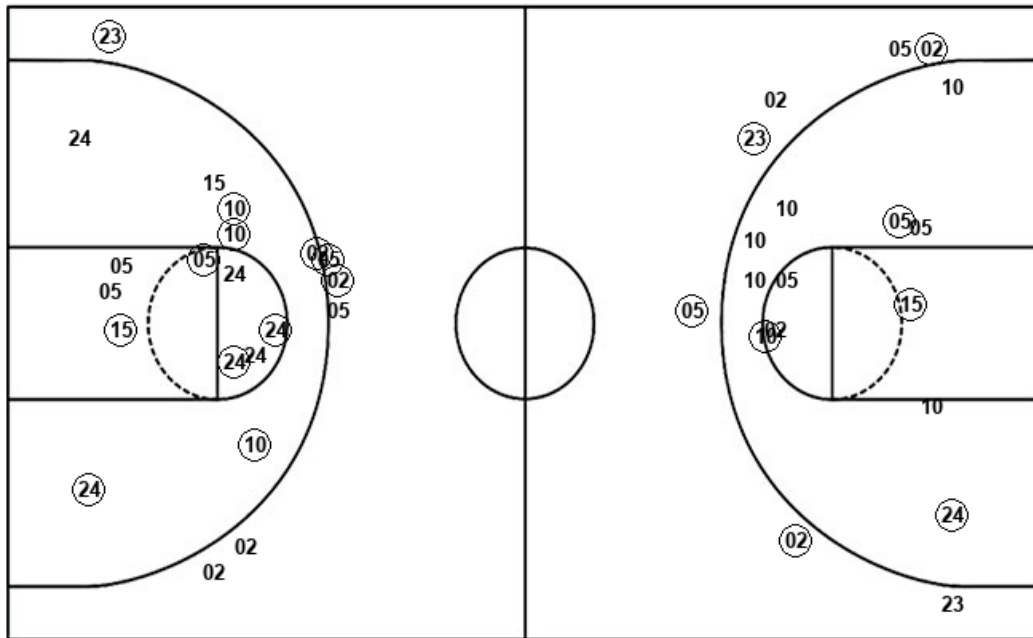
| ORE : Period 3 | Made | Att | Pct |
|--------------------------|----------|-----------|-------------|
| Layups | 6 | 10 | 60.0 |
| Dunks | 0 | 0 | 0 |
| 2PT Field Goals | 6 | 12 | 50.0 |
| 3PT Field Goals | 0 | 4 | 00.0 |
| Total Field Goals | 6 | 16 | 37.5 |

| ORE : Period 4 | Made | Att | Pct |
|--------------------------|-----------|-----------|-------------|
| Layups | 4 | 5 | 80.0 |
| Dunks | 0 | 0 | 0 |
| 2PT Field Goals | 5 | 7 | 71.4 |
| 3PT Field Goals | 5 | 7 | 71.4 |
| Total Field Goals | 10 | 14 | 71.4 |

Official Shot Chart
Oregon vs Mississippi St.
Mississippi St. Team Shots
 March 31, 2019 at Moda Center - Portland, Ore.



Layups



Layups

24 (15) 02 (05) (05)
 (24) (15) (15) 05 15
 10 23 (05) 24 10
 24 (10) (15) 15 23
 10 15 (23) (10)

Dunks

Dunks

| MSU : Period 1 | Made | Att | Pct |
|--------------------------|----------|-----------|-------------|
| Layups | 4 | 6 | 66.7 |
| Dunks | 0 | 0 | 0 |
| 2PT Field Goals | 6 | 12 | 50.0 |
| 3PT Field Goals | 2 | 3 | 66.7 |
| Total Field Goals | 8 | 15 | 53.3 |

| MSU : Period 3 | Made | Att | Pct |
|--------------------------|----------|-----------|-------------|
| Layups | 1 | 2 | 50.0 |
| Dunks | 0 | 0 | 0 |
| 2PT Field Goals | 6 | 10 | 60.0 |
| 3PT Field Goals | 2 | 4 | 50.0 |
| Total Field Goals | 8 | 14 | 57.1 |

| MSU : Period 2 | Made | Att | Pct |
|--------------------------|----------|-----------|-------------|
| Layups | 2 | 6 | 33.3 |
| Dunks | 0 | 0 | 0 |
| 2PT Field Goals | 4 | 12 | 33.3 |
| 3PT Field Goals | 2 | 4 | 50.0 |
| Total Field Goals | 6 | 16 | 37.5 |

| MSU : Period 4 | Made | Att | Pct |
|--------------------------|----------|-----------|-------------|
| Layups | 4 | 10 | 40.0 |
| Dunks | 0 | 0 | 0 |
| 2PT Field Goals | 7 | 16 | 43.8 |
| 3PT Field Goals | 2 | 3 | 66.7 |
| Total Field Goals | 9 | 19 | 47.4 |