

FINAL SCORE



American

45



Penn

64

WNIT First Round

March 22, 2019 • The Palestra (MacQuarie Court) - Philadelphia, Pa.

FINAL STATISTICS

Official Box Score
American vs Penn
Game Totals -- Final Statistics
March 22, 2019 at The Palestra (MacQuarie Court) - Philadelphia, Pa.



American 45

No.	Player	S	Pts	FG	3FG	FT	OR	DR	TR	PF	A	TO	Blk	Stl	Min	+/-
03	LEWIS,KAITLYN		3	1-5	0-2	1-2	0	3	3	2	2	2	0	1	33	-21
10	EDWARDS,JADE		14	5-9	0-1	4-5	6	3	9	4	2	1	0	1	30	-8
22	MARENYI,KAITLYN		2	1-6	0-1	0-0	0	0	0	2	0	2	0	2	23	-14
23	KOSKIMIES,ELINA		3	1-4	1-4	0-0	1	0	1	2	4	1	0	1	33	-7
44	CARL,CECILY		16	6-18	4-10	0-0	0	6	6	0	0	2	0	0	38	-21
02	BARTNER,MORGAN		2	1-1	0-0	0-0	0	0	0	0	0	0	0	0	4	-1
04	FISHER,EMILY		4	2-8	0-1	0-0	1	2	3	2	2	4	0	0	22	-8
11	CLEVELAND,TAEKENYA		1	0-1	0-0	1-2	1	1	2	0	0	0	0	0	5	-7
12	SANDERS,INDEYA		0	0-2	0-2	0-0	0	1	1	0	0	1	0	1	7	-10
14	BROWN,TAYLOR		0	0-0	0-0	0-0	0	0	0	0	0	0	0	0	1	0
21	DORING,MADDIE		0	0-0	0-0	0-0	0	0	0	1	0	0	0	0	3	0
24	GRAYTOK,LAURA		0	0-0	0-0	0-0	0	0	0	0	0	0	0	0	1	2
	TEAM						2	1	3	0		2				
TOTALS			45	17-54	5-21	6-9	11	17	28	13	10	15	0	6	200	

Shooting By Period

Period	FG	FG%	3FG	3FG%	FT	FT%
1st Qtr	2-11	18%	0-5	00%	1-2	50%
2nd Qtr	4-13	31%	3-8	38%	1-2	50%
3rd Qtr	7-14	50%	1-2	50%	3-4	75%
4th Qtr	4-16	25%	1-6	17%	1-1	100%
1st Half	6-24	25%	3-13	23%	2-4	50%
2nd Half	11-30	37%	2-8	25%	4-5	80%
Game	17-54	31.5%	5-21	23.8%	6-9	66.7%

Last FG: 4th-03:05
 Biggest Run: 9-0
 Largest lead: By 0 at -
 Technical Fouls: None.

Penn 64

No.	Player	S	Pts	FG	3FG	FT	OR	DR	TR	PF	A	TO	Blk	Stl	Min	+/-
11	GRASELA,KENDALL		2	1-3	0-0	0-0	0	0	0	2	7	3	1	1	34	18
25	RUSSELL,ASHLEY		18	5-12	4-8	4-4	2	2	4	0	5	3	1	1	39	19
31	PARKER,ELEAH		16	7-12	0-0	2-2	5	12	17	3	0	2	2	1	34	17
33	STERBA,PHOEBE		15	5-11	3-7	2-3	3	3	6	2	1	1	1	1	32	15
50	AGHAYERE,PRINCESS		9	3-9	1-4	2-2	1	3	4	1	2	2	1	1	33	15
02	KINUM,KATIE		3	1-1	1-1	0-0	1	1	2	1	0	2	0	0	8	4
03	JONES,MICHAEL		0	0-3	0-1	0-0	0	0	0	0	0	0	0	0	5	1
22	JACKSON,DEJA		0	0-0	0-0	0-0	0	0	0	0	0	0	0	0	1	0
23	DALEY,KRISTEN		0	0-0	0-0	0-0	0	1	1	0	0	0	0	0	1	0
24	CRAWFORD,TORI		1	0-2	0-0	1-2	1	2	3	1	0	2	0	1	9	5
40	ANDERSON,EMILY		0	0-0	0-0	0-0	1	0	1	0	0	1	0	0	3	1
	TEAM						1	3	4	0		2				
TOTALS			64	22-53	9-21	11-13	15	27	42	10	15	18	6	6	200	

Shooting By Period

Period	FG	FG%	3FG	3FG%	FT	FT%
1st Qtr	5-17	29%	2-5	40%	4-4	100%
2nd Qtr	8-11	73%	4-5	80%	2-2	100%
3rd Qtr	6-15	40%	2-5	40%	2-2	100%
4th Qtr	3-10	30%	1-6	17%	3-5	60%
1st Half	13-28	46%	6-10	60%	6-6	100%
2nd Half	9-25	36%	3-11	27%	5-7	71%
Game	22-53	41.5%	9-21	42.9%	11-13	84.6%

Last FG: 4th-01:24
 Biggest Run: 10-0
 Largest lead: By 23 at 2-00:58
 Technical Fouls: None.

Game Notes:

Officials: Dom Cummisky, Scott Berkins, Kelsey Reynolds
 Attendance: 817

Start Time: 2019-03-22 23:03:05
 End Time: 2019-03-23 00:49:57
 Game Duration: 106

Score	1st	2nd	3rd	4th	TOT
AME	5	12	18	10	45
PEN	16	22	16	10	64

AME led for 0:00. PEN led for 39:35.
 Game was tied for 0:25.
 Times tied: 0 Lead Changes: 0

Points from	AME	PEN
In the Paint	18	26
Off Turns	4	12
2nd Chance	15	18
Fast Break	0	7
Bench	7	4

Official Box Score
American vs Penn
First Half Statistics Only
March 22, 2019 at The Palestra (MacQuarie Court) - Philadelphia, Pa.



American 17

No.	Player	S	Pts	FG	3FG	FT	OR	DR	TR	PF	A	TO	Blk	Stl	Min	+/-
10	EDWARDS, JADE		3	1-3	0-1	1-2	2	1	3	2	1	0	0	0	13	-11
11	CLEVELAND, TAEKENYA		1	0-1	0-0	1-2	1	1	2	0	0	0	0	0	3	-9
12	SANDERS, INDEYA		0	0-2	0-2	0-0	0	1	1	0	0	1	0	1	7	-10
14	BROWN, TAYLOR		0	0-0	0-0	0-0	0	0	0	0	0	0	0	0	0	0
21	DORING, MADDIE		0	0-0	0-0	0-0	0	0	0	1	0	0	0	0	3	0
22	MARENYI, KAITLYN		2	1-4	0-0	0-0	0	0	0	1	0	1	0	0	14	-14
23	KOSKIMIES, ELINA		0	0-3	0-3	0-0	1	0	1	1	3	0	0	1	17	-12
24	GRAYTOK, LAURA		0	0-0	0-0	0-0	0	0	0	0	0	0	0	0	0	0
44	CARL, CECILY		11	4-7	3-5	0-0	0	1	1	0	0	2	0	0	20	-21
02	BARTNER, MORGAN		0	0-0	0-0	0-0	0	0	0	0	0	0	0	0	0	0
03	LEWIS, KAITLYN		0	0-2	0-1	0-0	0	1	1	1	0	0	0	0	15	-21
04	FISHER, EMILY		0	0-2	0-1	0-0	0	0	0	0	1	1	0	0	8	-7
	TEAM		0	0-0	0-0	0-0	0	1	1	0	0	1	0	0	0	0
TOTALS			17	6-24	3-13	2-4	4	6	10	6	5	6	0	2	100	

Shooting By Period

Period	FG	FG%	3FG	3FG%	FT	FT%
1st Qtr	2-11	18%	0-5	00%	1-2	50%
2nd Qtr	4-13	31%	3-8	38%	1-2	50%
1st Half	6-24	25%	3-13	23%	2-4	50%
Game	17-54	31.5%	5-21	23.8%	6-9	66.7%

Last FG Half: AME 2nd-00:31

Penn 38

No.	Player	S	Pts	FG	3FG	FT	OR	DR	TR	PF	A	TO	Blk	Stl	Min	+/-
02	KINUM, KATIE		3	1-1	1-1	0-0	0	1	1	1	0	1	0	0	5	3
03	JONES, MICHAEL		0	0-1	0-0	0-0	0	0	0	0	0	0	0	0	1	2
11	GRASELA, KENDALL		2	1-3	0-0	0-0	0	0	0	1	4	1	1	1	19	19
22	JACKSON, DEJA		0	0-0	0-0	0-0	0	0	0	0	0	0	0	0	0	0
23	DALEY, KRISTEN		0	0-0	0-0	0-0	0	0	0	0	0	0	0	0	0	0
24	CRAWFORD, TORI		0	0-1	0-0	0-0	0	0	0	1	0	0	0	0	2	3
25	RUSSELL, ASHLEY		13	4-8	3-5	2-2	2	2	4	0	3	1	1	0	20	21
31	PARKER, ELEAH		10	4-7	0-0	2-2	3	4	7	0	0	1	0	0	17	20
33	STERBA, PHOEBE		3	1-3	1-3	0-0	1	1	2	1	1	1	1	1	15	18
40	ANDERSON, EMILY		0	0-0	0-0	0-0	1	0	1	0	0	1	0	0	2	1
50	AGHAYERE, PRINCESS		7	2-4	1-1	2-2	1	3	4	1	1	1	1	1	18	18
	TEAM		0	0-0	0-0	0-0	1	3	4	0	0	1	0	0	0	0
TOTALS			38	13-28	6-10	6-6	9	14	23	5	9	8	4	3	100	

Shooting By Period

Period	FG	FG%	3FG	3FG%	FT	FT%
1st Qtr	5-17	29%	2-5	40%	4-4	100%
2nd Qtr	8-11	73%	4-5	80%	2-2	100%
1st Half	13-28	46%	6-10	60%	6-6	100%
Game	22-53	41.5%	9-21	42.9%	11-13	84.6%

Last FG Half: PEN 2nd-00:58

Game Notes:

Officials: Dom Cummysky, Scott Berkins, Kelsey Reynolds
 Attendance: 817

Start Time: 2019-03-22 23:03:05
 End Time: 2019-03-23 00:49:57
 Game Duration: 106

Score	1st	2nd	3rd	4th	TOT
AME	5	12	18	10	45
PEN	16	22	16	10	64

Points from (This Period)	AME	PEN
In the Paint	2	14
Off Turns	4	5
2nd Chance	6	11
Fast Break	0	7
Bench	1	3

Official Box Score
American vs Penn
First Quarter Statistics Only
March 22, 2019 at The Palestra (MacQuarie Court) - Philadelphia, Pa.



American 5

No.	Player	S	Pts	FG	3FG	FT	OR	DR	TR	PF	A	TO	Blk	Stl	Min	+/-
03	LEWIS,KAITLYN		0	0-2	0-1	0-0	0	1	1	0	0	0	0	0	10	-11
10	EDWARDS,JADE		0	0-2	0-1	0-0	0	1	1	1	0	0	0	0	6	-8
22	MARENYI,KAITLYN		2	1-2	0-0	0-0	0	0	0	1	0	1	0	0	10	-12
23	KOSKIMIES,ELINA		0	0-1	0-1	0-0	1	0	1	0	2	0	0	0	8	-9
44	CARL,CECILY		2	1-2	0-1	0-0	0	1	1	0	0	2	0	0	10	-11
02	BARTNER,MORGAN		0	0-0	0-0	0-0	0	0	0	0	0	0	0	0	0	0
04	FISHER,EMILY		0	0-0	0-0	0-0	0	0	0	0	0	0	0	0	0	1
11	CLEVELAND,TAKENYA		1	0-1	0-0	1-2	1	1	2	0	0	0	0	0	2	-2
12	SANDERS,INDEYA		0	0-1	0-1	0-0	0	1	1	0	0	0	0	1	4	-3
14	BROWN,TAYLOR		0	0-0	0-0	0-0	0	0	0	0	0	0	0	0	0	0
21	DORING,MADDIE		0	0-0	0-0	0-0	0	0	0	0	0	0	0	0	0	0
24	GRAYTOK,LAURA		0	0-0	0-0	0-0	0	0	0	0	0	0	0	0	0	0
	TEAM						0	1	1	0		1				
TOTALS			5	2-11	0-5	1-2	2	6	8	2	2	4	0	1	50	

Shooting By Period

Period	FG	FG%	3FG	3FG%	FT	FT%
1st Qtr	2-11	18%	0-5	00%	1-2	50%
2nd Qtr	4-13	31%	3-8	38%	1-2	50%
1st Half	2-11	18%	0-5	00%	1-2	50%
1st Half	6-24	25%	3-13	23%	2-4	50%
Game	17-54	31.5%	5-21	23.8%	6-9	66.7%

Penn 16

No.	Player	S	Pts	FG	3FG	FT	OR	DR	TR	PF	A	TO	Blk	Stl	Min	+/-
11	GRASELA,KENDALL		0	0-1	0-0	0-0	0	0	0	0	1	1	0	0	9	9
25	RUSSELL,ASHLEY		3	1-4	1-2	0-0	2	1	3	0	1	1	1	0	10	11
31	PARKER,ELEAH		6	2-5	0-0	2-2	3	1	4	0	0	0	0	0	9	11
33	STERBA,PHOEBE		3	1-3	1-3	0-0	0	1	1	0	0	0	1	0	10	11
50	AGHAYERE,PRINCESS		4	1-2	0-0	2-2	0	1	1	0	0	0	1	1	8	8
02	KINUM,KATIE		0	0-0	0-0	0-0	0	0	0	0	0	0	0	0	0	0
03	JONES,MICHAEL		0	0-1	0-0	0-0	0	0	0	0	0	0	0	0	1	2
22	JACKSON,DEJA		0	0-0	0-0	0-0	0	0	0	0	0	0	0	0	0	0
23	DALEY,KRISTEN		0	0-0	0-0	0-0	0	0	0	0	0	0	0	0	0	0
24	CRAWFORD,TORI		0	0-1	0-0	0-0	0	0	0	1	0	0	0	0	2	3
40	ANDERSON,EMILY		0	0-0	0-0	0-0	0	0	0	0	0	0	0	0	0	0
	TEAM						1	3	4	0		0				
TOTALS			16	5-17	2-5	4-4	6	7	13	1	2	2	3	1	50	

Shooting By Period

Period	FG	FG%	3FG	3FG%	FT	FT%
1st Qtr	5-17	29%	2-5	40%	4-4	100%
2nd Qtr	8-11	73%	4-5	80%	2-2	100%
1st Half	5-17	29%	2-5	40%	4-4	100%
1st Half	13-28	46%	6-10	60%	6-6	100%
Game	22-53	41.5%	9-21	42.9%	11-13	84.6%

Game Notes:

Officials: Dom Cummisky, Scott Berkins, Kelsey Reynolds
Attendance: 817

Start Time: 2019-03-22 23:03:05
End Time: 2019-03-23 00:49:57
Game Duration: 106

Score	1st	2nd	3rd	4th	TOT
AME	5	12	18	10	45
PEN	16	22	16	10	64

Points from (This Period)	AME	PEN
In the Paint	0	6
Off Turns	0	3
2nd Chance	1	6
Fast Break	0	3
Bench	1	0

**Official Play-By-Play
American vs Penn
First Quarter**

March 22, 2019 at The Palestra (MacQuarie Court) - Philadelphia, Pa.



Period 1

Starters:

American: 10 EDWARDS, JADE; 22 MARENYI, KAITLYN; 23 KOSKIMIES, ELINA; 44 CARL, CECILY; 3 LEWIS, KAITLYN;

Penn: 11 GRASELA, KENDALL; 25 RUSSELL, ASHLEY; 31 PARKER, ELEAH; 33 STERBA, PHOEBE; 50 AGHAYERE, PRINCESS;

Time	VISITORS: American	Score	Margin	HOME: Penn
09:35		2-0	H 2	GOOD! LAYUP by AGHAYERE, PRINCESS
09:35				ASSIST by RUSSELL, ASHLEY
09:02	MISSED 3PTR by CARL, CECILY			
09:00				REBOUND (DEF) by AGHAYERE, PRINCESS
08:54		5-0	H 5	GOOD! 3PTR by RUSSELL, ASHLEY [FB]
08:54				ASSIST by GRASELA, KENDALL
08:15	GOOD! JUMPER by MARENYI, KAITLYN	5-2	H 3	
08:15	ASSIST by KOSKIMIES, ELINA			
07:48				MISSED 3PTR by STERBA, PHOEBE
07:45				REBOUND (OFF) by RUSSELL, ASHLEY
07:43				MISSED JUMPER by GRASELA, KENDALL
07:32				REBOUND (OFF) by PARKER, ELEAH
07:31				MISSED LAYUP by PARKER, ELEAH
07:27				REBOUND (OFF) by PARKER, ELEAH
07:27		7-2	H 5	GOOD! LAYUP by PARKER, ELEAH
07:15	MISSED JUMPER by LEWIS, KAITLYN			
07:15				BLOCK by AGHAYERE, PRINCESS
07:11				REBOUND (DEF) by RUSSELL, ASHLEY
07:05				MISSED JUMPER by RUSSELL, ASHLEY
07:05	REBOUND (DEF) by TEAM			
06:44	TURNOVER (BADPASS) by CARL, CECILY			
06:23				MISSED JUMPER by PARKER, ELEAH
06:21	REBOUND (DEF) by EDWARDS, JADE			
06:13	TURNOVER (LOSTBALL) by CARL, CECILY			
06:13				STEAL by AGHAYERE, PRINCESS
06:05				MISSED 3PTR by STERBA, PHOEBE
06:03				REBOUND (OFF) by RUSSELL, ASHLEY
05:41				MISSED JUMPER by PARKER, ELEAH
05:38	REBOUND (DEF) by LEWIS, KAITLYN			
05:16	MISSED JUMPER by EDWARDS, JADE			
05:16				BLOCK by STERBA, PHOEBE
05:11	REBOUND (OFF) by KOSKIMIES, ELINA			
05:07	MISSED 3PTR by LEWIS, KAITLYN			
05:07				BLOCK by RUSSELL, ASHLEY
05:04				REBOUND (DEF) by TEAM
04:55				MISSED JUMPER by RUSSELL, ASHLEY
04:51				REBOUND (OFF) by PARKER, ELEAH
04:51		9-2	H 7	GOOD! LAYUP by PARKER, ELEAH
04:33	GOOD! JUMPER by CARL, CECILY	9-4	H 5	
04:33	ASSIST by KOSKIMIES, ELINA			
04:20				MISSED 3PTR by RUSSELL, ASHLEY
04:18				REBOUND (OFF) by TEAM
04:15	FOUL (PERSONAL) by MARENYI, KAITLYN			
04:15		10-4	H 6	GOOD! FT by PARKER, ELEAH
04:15		11-4	H 7	GOOD! FT by PARKER, ELEAH
03:57	MISSED 3PTR by EDWARDS, JADE			
03:57				REBOUND (DEF) by TEAM
03:40	FOUL (PERSONAL) by EDWARDS, JADE			
03:40		12-4	H 8	GOOD! FT by AGHAYERE, PRINCESS
03:40	SUB OUT: EDWARDS, JADE			
03:40	SUB IN: SANDERS, INDEYA			
03:40		13-4	H 9	GOOD! FT by AGHAYERE, PRINCESS
03:20	MISSED JUMPER by MARENYI, KAITLYN			
03:17				REBOUND (DEF) by STERBA, PHOEBE
03:11				TURNOVER (BADPASS) by GRASELA, KENDALL
03:11	STEAL by SANDERS, INDEYA			
03:07	TURNOVER (TRAVEL) by MARENYI, KAITLYN			
02:45				MISSED LAYUP by AGHAYERE, PRINCESS
02:38	REBOUND (DEF) by SANDERS, INDEYA			
02:32	MISSED 3PTR by KOSKIMIES, ELINA			
02:32				REBOUND (DEF) by TEAM
02:32				SUB OUT: AGHAYERE, PRINCESS
02:32				SUB IN: CRAWFORD, TORI
02:13				TURNOVER (OTHER) by RUSSELL, ASHLEY
01:50	SUB OUT: KOSKIMIES, ELINA			
01:50	SUB IN: CLEVELAND, TAEKENYA			
01:42	TURNOVER (SHOTCLOCK) by			
01:23				SUB OUT: GRASELA, KENDALL
01:23				SUB IN: JONES, MICHAEL
01:16		16-4	H 12	GOOD! 3PTR by STERBA, PHOEBE

Time	VISITORS: American	Score	Margin	HOME: Penn
00:55	MISSED JUMPER by CLEVELAND, TAEKENYA			
00:52				REBOUND (DEF) by PARKER, ELEAH
00:47				SUB OUT: PARKER, ELEAH
00:47				SUB IN: AGHAYERE, PRINCESS
00:26				MISSED LAYUP by CRAWFORD, TORI
00:23	REBOUND (DEF) by CARL, CECILY			
00:15	MISSED 3PTR by SANDERS, INDEYA			
00:13	REBOUND (OFF) by CLEVELAND, TAEKENYA			
00:13				FOUL (PERSONAL) by CRAWFORD, TORI
00:13	MISSED FT by CLEVELAND, TAEKENYA			
00:13	REBOUND (OFF) by TEAM			
00:13				SUB OUT: CRAWFORD, TORI
00:13				SUB IN: PARKER, ELEAH
00:13	SUB OUT: MARENYI, KAITLYN			
00:13	SUB IN: FISHER, EMILY			
00:13	GOOD! FT by CLEVELAND, TAEKENYA	16-5	H 11	
00:03				MISSED LAYUP by JONES, MICHAEL
00:01	REBOUND (DEF) by CLEVELAND, TAEKENYA			

American 5, Penn 16

Points from (This Period)	AME	PEN
In the Paint	0	6
Off Turns	0	3
2nd Chance	1	6
Fast Break	0	3
Bench	1	0

Official Box Score
American vs Penn
Second Quarter Statistics Only
March 22, 2019 at The Palestra (MacQuarie Court) - Philadelphia, Pa.



American 12

No.	Player	S	Pts	FG	3FG	FT	OR	DR	TR	PF	A	TO	Blk	Stl	Min	+/-
03	LEWIS,KAITLYN		0	0-0	0-0	0-0	0	0	0	1	0	0	0	0	5	-10
10	EDWARDS,JADE		3	1-1	0-0	1-2	2	0	2	1	1	0	0	0	7	-3
22	MARENYI,KAITLYN		0	0-2	0-0	0-0	0	0	0	0	0	0	0	0	4	-2
23	KOSKIMIES,ELINA		0	0-2	0-2	0-0	0	0	0	1	1	0	0	1	9	-3
44	CARL,CECILY		9	3-5	3-4	0-0	0	0	0	0	0	0	0	0	10	-10
02	BARTNER,MORGAN		0	0-0	0-0	0-0	0	0	0	0	0	0	0	0	0	0
04	FISHER,EMILY		0	0-2	0-1	0-0	0	0	0	0	1	1	0	0	8	-8
11	CLEVELAND,TAKENYA		0	0-0	0-0	0-0	0	0	0	0	0	0	0	0	1	-7
12	SANDERS,INDEYA		0	0-1	0-1	0-0	0	0	0	0	0	1	0	0	3	-7
14	BROWN,TAYLOR		0	0-0	0-0	0-0	0	0	0	0	0	0	0	0	0	0
21	DORING,MADDIE		0	0-0	0-0	0-0	0	0	0	1	0	0	0	0	3	0
24	GRAYTOK,LAURA		0	0-0	0-0	0-0	0	0	0	0	0	0	0	0	0	0
	TEAM						0	0	0	0		0				
TOTALS			12	4-13	3-8	1-2	2	0	2	4	3	2	0	1	50	

Shooting By Period

Period	FG	FG%	3FG	3FG%	FT	FT%
3rd Qtr	7-14	50%	1-2	50%	3-4	75%
4th Qtr	4-16	25%	1-6	17%	1-1	100%
2nd Half	4-13	31%	3-8	38%	1-2	50%
2nd Half	11-30	37%	2-8	25%	4-5	80%
Game	17-54	31.5%	5-21	23.8%	6-9	66.7%

Penn 22

No.	Player	S	Pts	FG	3FG	FT	OR	DR	TR	PF	A	TO	Blk	Stl	Min	+/-
11	GRASELA,KENDALL		2	1-2	0-0	0-0	0	0	0	1	3	0	1	1	10	10
25	RUSSELL,ASHLEY		10	3-4	2-3	2-2	0	1	1	0	2	0	0	0	10	10
31	PARKER,ELEAH		4	2-2	0-0	0-0	0	3	3	0	0	1	0	0	8	9
33	STERBA,PHOEBE		0	0-0	0-0	0-0	1	0	1	1	1	1	0	1	5	7
50	AGHAYERE,PRINCESS		3	1-2	1-1	0-0	1	2	3	1	1	1	0	0	10	10
02	KINUM,KATIE		3	1-1	1-1	0-0	0	1	1	1	0	1	0	0	5	3
03	JONES,MICHAEL		0	0-0	0-0	0-0	0	0	0	0	0	0	0	0	0	0
22	JACKSON,DEJA		0	0-0	0-0	0-0	0	0	0	0	0	0	0	0	0	0
23	DALEY,KRISTEN		0	0-0	0-0	0-0	0	0	0	0	0	0	0	0	0	0
24	CRAWFORD,TORI		0	0-0	0-0	0-0	0	0	0	0	0	0	0	0	0	0
40	ANDERSON,EMILY		0	0-0	0-0	0-0	1	0	1	0	0	1	0	0	2	1
	TEAM						0	0	0	0		1				
TOTALS			22	8-11	4-5	2-2	3	7	10	4	7	6	1	2	50	

Shooting By Period

Period	FG	FG%	3FG	3FG%	FT	FT%
3rd Qtr	6-15	40%	2-5	40%	2-2	100%
4th Qtr	3-10	30%	1-6	17%	3-5	60%
2nd Half	8-11	73%	4-5	80%	2-2	100%
2nd Half	9-25	36%	3-11	27%	5-7	71%
Game	22-53	41.5%	9-21	42.9%	11-13	84.6%

Game Notes:

Officials: Dom Cummisky, Scott Berkins, Kelsey Reynolds
Attendance: 817

Start Time: 2019-03-22 23:03:05
End Time: 2019-03-23 00:49:57
Game Duration: 106

Score	1st	2nd	3rd	4th	TOT
AME	5	12	18	10	45
PEN	16	22	16	10	64

Points from (This Period)	AME	PEN
In the Paint	2	8
Off Turns	4	2
2nd Chance	5	5
Fast Break	0	4
Bench	0	3

**Official Play-By-Play
American vs Penn
Second Quarter**

March 22, 2019 at The Palestra (MacQuarie Court) - Philadelphia, Pa.



Period 2

Starters:

American: 10 EDWARDS, JADE; 22 MARENYI, KAITLYN; 23 KOSKIMIES, ELINA; 44 CARL, CECILY; 3 LEWIS, KAITLYN;

Penn: 11 GRASELA, KENDALL; 25 RUSSELL, ASHLEY; 31 PARKER, ELEAH; 33 STERBA, PHOEBE; 50 AGHAYERE, PRINCESS;

Time	VISITORS: American	Score	Margin	HOME: Penn
09:58				SUB OUT: JONES, MICHAEL
09:58				SUB IN: GRASELA, KENDALL
09:39		18-5	H 13	GOOD! JUMPER by GRASELA, KENDALL [PNT]
09:09	MISSED JUMPER by FISHER, EMILY			
09:07				REBOUND (DEF) by PARKER, ELEAH
08:59		21-5	H 16	GOOD! 3PTR by RUSSELL, ASHLEY
08:59				ASSIST by STERBA, PHOEBE
08:45	TURNOVER (BADPASS) by FISHER, EMILY			
08:45				STEAL by STERBA, PHOEBE
08:39		23-5	H 18	GOOD! LAYUP by PARKER, ELEAH [FB]
08:39				ASSIST by RUSSELL, ASHLEY
08:37	TIMEOUT 30SEC			
08:37				
08:37	SUB OUT: LEWIS, KAITLYN			
08:37	SUB IN: MARENYI, KAITLYN			
08:37	SUB OUT: CLEVELAND, TAEKENYA			
08:37	SUB IN: KOSKIMIES, ELINA			
08:31				FOUL (PERSONAL) by GRASELA, KENDALL
08:13	MISSED 3PTR by SANDERS, INDEYA			
08:10				REBOUND (DEF) by AGHAYERE, PRINCESS
07:55		26-5	H 21	GOOD! 3PTR by AGHAYERE, PRINCESS
07:55				ASSIST by GRASELA, KENDALL
07:24	TURNOVER (BADPASS) by SANDERS, INDEYA			
07:24				STEAL by GRASELA, KENDALL
07:18				TURNOVER (LOSTBALL) by PARKER, ELEAH
07:18	STEAL by KOSKIMIES, ELINA			
07:07	GOOD! 3PTR by CARL, CECILY	26-8	H 18	
07:07	ASSIST by FISHER, EMILY			
06:49				TURNOVER (BADPASS) by STERBA, PHOEBE
06:49				SUB OUT: STERBA, PHOEBE
06:49				SUB IN: KINUM, KATIE
06:49	SUB OUT: SANDERS, INDEYA			
06:49	SUB IN: EDWARDS, JADE			
06:49	SUB OUT: FISHER, EMILY			
06:49	SUB IN: DORING, MADDIE			
06:46	MISSED JUMPER by CARL, CECILY			
06:46				BLOCK by GRASELA, KENDALL
06:42				REBOUND (DEF) by PARKER, ELEAH
06:39		28-8	H 20	GOOD! LAYUP by RUSSELL, ASHLEY [FB]
06:39				ASSIST by GRASELA, KENDALL
06:17	MISSED JUMPER by MARENYI, KAITLYN			
06:14	REBOUND (OFF) by EDWARDS, JADE			
06:12	GOOD! 3PTR by CARL, CECILY	28-11	H 17	
06:12	ASSIST by EDWARDS, JADE			
05:57				FOUL (OFF) by AGHAYERE, PRINCESS
05:57				TURNOVER (OFFENSIVE) by AGHAYERE, PRINCESS
05:38	MISSED 3PTR by KOSKIMIES, ELINA			
05:36				REBOUND (DEF) by PARKER, ELEAH
05:20	FOUL (PERSONAL) by DORING, MADDIE			
05:08		30-11	H 19	GOOD! LAYUP by PARKER, ELEAH
05:08				ASSIST by AGHAYERE, PRINCESS
04:35	MISSED JUMPER by MARENYI, KAITLYN			
04:33				REBOUND (DEF) by AGHAYERE, PRINCESS
04:23				MISSED 3PTR by RUSSELL, ASHLEY
04:21				REBOUND (OFF) by AGHAYERE, PRINCESS
04:21	FOUL (PERSONAL) by EDWARDS, JADE			
04:21		31-11	H 20	GOOD! FT by RUSSELL, ASHLEY
04:21				SUB OUT: PARKER, ELEAH
04:21				SUB IN: ANDERSON, EMILY
04:21	SUB OUT: MARENYI, KAITLYN			
04:21	SUB IN: FISHER, EMILY			
04:21		32-11	H 21	GOOD! FT by RUSSELL, ASHLEY
04:00	GOOD! 3PTR by CARL, CECILY	32-14	H 18	
04:00	ASSIST by KOSKIMIES, ELINA			
03:44	SUB OUT: DORING, MADDIE			
03:44	SUB IN: LEWIS, KAITLYN			
03:33		35-14	H 21	GOOD! 3PTR by KINUM, KATIE
03:33				ASSIST by RUSSELL, ASHLEY
03:07	MISSED 3PTR by FISHER, EMILY			
03:04				REBOUND (DEF) by KINUM, KATIE

Time	VISITORS: American	Score	Margin	HOME: Penn
02:34				MISSED JUMPER by GRASELA,KENDALL
02:32				REBOUND (OFF) by ANDERSON,EMILY
02:32				TURNOVER (DRIBBLING) by ANDERSON,EMILY
02:18	MISSED 3PTR by KOSKIMIES,ELINA			
02:16				REBOUND (DEF) by RUSSELL,ASHLEY
02:01				FOUL (OFF) by KINUM,KATIE
02:01				TURNOVER (OFFENSIVE) by KINUM,KATIE
02:01				SUB OUT: KINUM,KATIE
02:01				SUB IN: PARKER,ELEAH
02:01				SUB OUT: ANDERSON,EMILY
02:01				SUB IN: STERBA,PHOEBE
01:42				FOUL (PERSONAL) by STERBA,PHOEBE
01:42	MISSED FT by EDWARDS,JADE			
01:42	REBOUND (OFF) by TEAM			
01:42	GOOD! FT by EDWARDS,JADE	35-15	H 20	
01:32	FOUL (PERSONAL) by LEWIS,KAITLYN			
01:26	FOUL (PERSONAL) by KOSKIMIES,ELINA			
01:15				MISSED JUMPER by AGHAYERE,PRINCESS
01:12				REBOUND (OFF) by STERBA,PHOEBE
00:58		38-15	H 23	GOOD! 3PTR by RUSSELL,ASHLEY
00:58				ASSIST by GRASELA,KENDALL
00:34	MISSED 3PTR by CARL,CECILY			
00:31	REBOUND (OFF) by EDWARDS,JADE			
00:31	GOOD! LAYUP by EDWARDS,JADE	38-17	H 21	
00:14				SUB OUT: GRASELA,KENDALL
00:14				SUB IN: JONES,MICHAEL
00:00				TURNOVER (SHOTCLOCK) by

American 17, Penn 38

Points from (This Period)	AME	PEN
In the Paint	2	8
Off Turns	4	2
2nd Chance	5	5
Fast Break	0	4
Bench	0	3

Official Box Score
American vs Penn
Second Half Statistics Only
March 22, 2019 at The Palestra (MacQuarie Court) - Philadelphia, Pa.



American 28

No.	Player	S	Pts	FG	3FG	FT	OR	DR	TR	PF	A	TO	Blk	Stl	Min	+/-
10	EDWARDS, JADE		11	4-6	0-0	3-3	4	2	6	2	1	1	0	1	17	3
11	CLEVELAND, TAEKENYA		0	0-0	0-0	0-0	0	0	0	0	0	0	0	0	1	2
12	SANDERS, INDEYA		0	0-0	0-0	0-0	0	0	0	0	0	0	0	0	0	0
14	BROWN, TAYLOR		0	0-0	0-0	0-0	0	0	0	0	0	0	0	0	1	0
21	DORING, MADDIE		0	0-0	0-0	0-0	0	0	0	0	0	0	0	0	0	0
22	MARENYI, KAITLYN		0	0-2	0-1	0-0	0	0	0	1	0	1	0	2	9	0
23	KOSKIMIES, ELINA		3	1-1	1-1	0-0	0	0	0	1	1	1	0	0	16	5
24	GRAYTOK, LAURA		0	0-0	0-0	0-0	0	0	0	0	0	0	0	0	1	2
44	CARL, CECILY		5	2-11	1-5	0-0	0	5	5	0	0	0	0	0	18	0
02	BARTNER, MORGAN		2	1-1	0-0	0-0	0	0	0	0	0	0	0	0	4	-1
03	LEWIS, KAITLYN		3	1-3	0-1	1-2	0	2	2	1	2	2	0	1	18	0
04	FISHER, EMILY		4	2-6	0-0	0-0	1	2	3	2	1	3	0	0	15	-1
	TEAM		0	0-0	0-0	0-0	2	0	2	0	0	1	0	0	0	0
TOTALS			28	11-30	2-8	4-5	7	11	18	7	5	9	0	4	100	

Shooting By Period

Period	FG	FG%	3FG	3FG%	FT	FT%
3rd Qtr	7-14	50%	1-2	50%	3-4	75%
4th Qtr	4-16	25%	1-6	17%	1-1	100%
2nd Half	11-30	37%	2-8	25%	4-5	80%
Game	17-54	31.5%	5-21	23.8%	6-9	66.7%

Last FG Half: AME 4th-03:05

Penn 26

No.	Player	S	Pts	FG	3FG	FT	OR	DR	TR	PF	A	TO	Blk	Stl	Min	+/-
02	KINUM, KATIE		0	0-0	0-0	0-0	1	0	1	0	0	1	0	0	3	1
03	JONES, MICHAEL		0	0-2	0-1	0-0	0	0	0	0	0	0	0	0	3	-1
11	GRASELA, KENDALL		0	0-0	0-0	0-0	0	0	0	1	3	2	0	0	16	-1
22	JACKSON, DEJA		0	0-0	0-0	0-0	0	0	0	0	0	0	0	0	1	0
23	DALEY, KRISTEN		0	0-0	0-0	0-0	0	1	1	0	0	0	0	0	1	0
24	CRAWFORD, TORI		1	0-1	0-0	1-2	1	2	3	0	0	2	0	1	7	2
25	RUSSELL, ASHLEY		5	1-4	1-3	2-2	0	0	0	0	2	2	0	1	19	-2
31	PARKER, ELEAH		6	3-5	0-0	0-0	2	8	10	3	0	1	2	1	17	-3
33	STERBA, PHOEBE		12	4-8	2-4	2-3	2	2	4	1	0	0	0	0	17	-3
40	ANDERSON, EMILY		0	0-0	0-0	0-0	0	0	0	0	0	0	0	0	1	0
50	AGHAYERE, PRINCESS		2	1-5	0-3	0-0	0	0	0	0	1	1	0	0	15	-3
	TEAM		0	0-0	0-0	0-0	0	0	0	0	0	1	0	0	0	0
TOTALS			26	9-25	3-11	5-7	6	13	19	5	6	10	2	3	100	

Shooting By Period

Period	FG	FG%	3FG	3FG%	FT	FT%
3rd Qtr	6-15	40%	2-5	40%	2-2	100%
4th Qtr	3-10	30%	1-6	17%	3-5	60%
2nd Half	9-25	36%	3-11	27%	5-7	71%
Game	22-53	41.5%	9-21	42.9%	11-13	84.6%

Last FG Half: PEN 4th-01:24

Game Notes:

Officials: Dom Cummisky, Scott Berkins, Kelsey Reynolds
 Attendance: 817

Start Time: 2019-03-22 23:03:05
 End Time: 2019-03-23 00:49:57
 Game Duration: 106

Score	1st	2nd	3rd	4th	TOT
AME	5	12	18	10	45
PEN	16	22	16	10	64

Points from (This Period)	AME	PEN
In the Paint	16	12
Off Turns	0	7
2nd Chance	9	7
Fast Break	0	0
Bench	6	1

Official Box Score
American vs Penn
Third Quarter Statistics Only
March 22, 2019 at The Palestra (MacQuarie Court) - Philadelphia, Pa.



American 28

No.	Player	S	Pts	FG	3FG	FT	OR	DR	TR	PF	A	TO	Blk	Stl	Min	+/-
03	LEWIS,KAITLYN		3	1-2	0-0	1-2	0	1	1	0	1	1	0	0	9	0
10	EDWARDS,JADE		6	2-2	0-0	2-2	2	1	3	0	0	0	0	0	7	3
22	MARENYI,KAITLYN		0	0-0	0-0	0-0	0	0	0	1	0	1	0	0	5	3
23	KOSKIMIES,ELINA		0	0-0	0-0	0-0	0	0	0	1	1	0	0	0	10	2
44	CARL,CECILY		5	2-7	1-2	0-0	0	3	3	0	0	0	0	0	9	0
02	BARTNER,MORGAN		2	1-1	0-0	0-0	0	0	0	0	0	0	0	0	3	-1
04	FISHER,EMILY		2	1-2	0-0	0-0	0	1	1	0	1	1	0	0	5	-1
11	CLEVELAND,TAKENYA		0	0-0	0-0	0-0	0	0	0	0	0	0	0	0	1	2
12	SANDERS,INDEYA		0	0-0	0-0	0-0	0	0	0	0	0	0	0	0	0	0
14	BROWN,TAYLOR		0	0-0	0-0	0-0	0	0	0	0	0	0	0	0	0	0
21	DORING,MADDIE		0	0-0	0-0	0-0	0	0	0	0	0	0	0	0	0	0
24	GRAYTOK,LAURA		0	0-0	0-0	0-0	0	0	0	0	0	0	0	0	1	2
	TEAM						1	0	1	0		1				
TOTALS			18	7-14	1-2	3-4	3	6	9	2	3	4	0	0	50	

Shooting By Period

Period	FG	FG%	3FG	3FG%	FT	FT%
2nd Half	0-0	0%	0-0	0%	0-0	0%
Game	17-54	31.5%	5-21	23.8%	6-9	66.7%

Penn 26

No.	Player	S	Pts	FG	3FG	FT	OR	DR	TR	PF	A	TO	Blk	Stl	Min	+/-
11	GRASELA,KENDALL		0	0-0	0-0	0-0	0	0	0	1	1	0	0	0	7	-1
25	RUSSELL,ASHLEY		2	0-1	0-1	2-2	0	0	0	0	2	0	0	0	10	-2
31	PARKER,ELEAH		2	1-2	0-0	0-0	1	3	4	2	0	0	1	0	8	-3
33	STERBA,PHOEBE		10	4-7	2-3	0-0	1	1	2	0	0	0	0	0	10	-2
50	AGHAYERE,PRINCESS		2	1-2	0-0	0-0	0	0	0	0	1	1	0	0	8	-2
02	KINUM,KATIE		0	0-0	0-0	0-0	0	0	0	0	0	0	0	0	0	0
03	JONES,MICHAEL		0	0-2	0-1	0-0	0	0	0	0	0	0	0	0	3	-1
22	JACKSON,DEJA		0	0-0	0-0	0-0	0	0	0	0	0	0	0	0	0	0
23	DALEY,KRISTEN		0	0-0	0-0	0-0	0	0	0	0	0	0	0	0	0	0
24	CRAWFORD,TORI		0	0-1	0-0	0-0	1	1	2	0	0	1	0	0	4	1
40	ANDERSON,EMILY		0	0-0	0-0	0-0	0	0	0	0	0	0	0	0	0	0
	TEAM						0	0	0	0		0				
TOTALS			16	6-15	2-5	2-2	3	5	8	3	4	2	1	0	50	

Shooting By Period

Period	FG	FG%	3FG	3FG%	FT	FT%
2nd Half	0-0	0%	0-0	0%	0-0	0%
Game	22-53	41.5%	9-21	42.9%	11-13	84.6%

Game Notes:

Officials: Dom Cummisky, Scott Berkins, Kelsey Reynolds
Attendance: 817

Start Time: 2019-03-22 23:03:05
End Time: 2019-03-23 00:49:57
Game Duration: 106

Score	1st	2nd	3rd	4th	TOT
AME	5	12	18	10	45
PEN	16	22	16	10	64

Points from (This Period)	AME	PEN
In the Paint	10	8
Off Turns	0	2
2nd Chance	4	3
Fast Break	0	0
Bench	4	0

**Official Play-By-Play
American vs Penn
Third Quarter**

March 22, 2019 at The Palestra (MacQuarie Court) - Philadelphia, Pa.



Period 3

Starters:

American: 10 EDWARDS, JADE; 22 MARENYI, KAITLYN; 23 KOSKIMIES, ELINA; 44 CARL, CECILY; 3 LEWIS, KAITLYN;

Penn: 11 GRASELA, KENDALL; 25 RUSSELL, ASHLEY; 31 PARKER, ELEAH; 33 STERBA, PHOEBE; 50 AGHAYERE, PRINCESS;

Time	VISITORS: American	Score	Margin	HOME: Penn
09:49	GOOD! LAYUP by CARL, CECILY	38-19	H 19	
09:49	ASSIST by LEWIS, KAITLYN			
09:35				MISSED JUMPER by AGHAYERE, PRINCESS
09:32	REBOUND (DEF) by CARL, CECILY			
09:29	TURNOVER (TRAVEL) by MARENYI, KAITLYN			
09:06				MISSED JUMPER by STERBA, PHOEBE
09:02	REBOUND (DEF) by CARL, CECILY			
08:56	GOOD! 3PTR by CARL, CECILY	38-22	H 16	
08:56	ASSIST by KOSKIMIES, ELINA			
08:36				MISSED 3PTR by RUSSELL, ASHLEY
08:33	REBOUND (DEF) by EDWARDS, JADE			
08:25	GOOD! JUMPER by LEWIS, KAITLYN	38-24	H 14	
08:20				TIMEOUT 30SEC
08:20				
08:01		41-24	H 17	GOOD! 3PTR by STERBA, PHOEBE
08:01				ASSIST by RUSSELL, ASHLEY
07:43	MISSED JUMPER by CARL, CECILY			
07:43				BLOCK by PARKER, ELEAH
07:40	REBOUND (OFF) by EDWARDS, JADE			
07:40				FOUL (PERSONAL) by PARKER, ELEAH
07:40	GOOD! FT by EDWARDS, JADE	41-25	H 16	
07:40	GOOD! FT by EDWARDS, JADE	41-26	H 15	
07:26	FOUL (PERSONAL) by MARENYI, KAITLYN			
07:17		43-26	H 17	GOOD! JUMPER by AGHAYERE, PRINCESS
07:03				FOUL (PERSONAL) by PARKER, ELEAH
07:03	GOOD! FT by LEWIS, KAITLYN	43-27	H 16	
07:03	MISSED FT by LEWIS, KAITLYN			
07:02				REBOUND (DEF) by PARKER, ELEAH
06:39		45-27	H 18	GOOD! JUMPER by PARKER, ELEAH
06:39				ASSIST by GRASELA, KENDALL
06:23	MISSED LAYUP by CARL, CECILY			
06:20				REBOUND (DEF) by PARKER, ELEAH
06:12				MISSED 3PTR by STERBA, PHOEBE
06:10	REBOUND (DEF) by CARL, CECILY			
05:52	MISSED 3PTR by CARL, CECILY			
05:50				REBOUND (DEF) by PARKER, ELEAH
05:29		47-27	H 20	GOOD! JUMPER by STERBA, PHOEBE [PNT]
05:06	MISSED JUMPER by LEWIS, KAITLYN			
05:02	REBOUND (OFF) by EDWARDS, JADE			
05:02	GOOD! LAYUP by EDWARDS, JADE	47-29	H 18	
04:40				TURNOVER (3SEC) by AGHAYERE, PRINCESS
04:40				SUB OUT: AGHAYERE, PRINCESS
04:40				SUB IN: CRAWFORD, TORI
04:40	SUB OUT: MARENYI, KAITLYN			
04:40	SUB IN: FISHER, EMILY			
04:36	TURNOVER (OTHER) by FISHER, EMILY			
04:13		49-29	H 20	GOOD! LAYUP by STERBA, PHOEBE
04:13				ASSIST by RUSSELL, ASHLEY
03:46	MISSED JUMPER by CARL, CECILY			
03:44				REBOUND (DEF) by STERBA, PHOEBE
03:37				FOUL (PERSONAL) by GRASELA, KENDALL
03:37				SUB OUT: GRASELA, KENDALL
03:37				SUB IN: JONES, MICHAEL
03:19	GOOD! LAYUP by EDWARDS, JADE	49-31	H 18	
02:54				MISSED JUMPER by PARKER, ELEAH
02:52				REBOUND (OFF) by STERBA, PHOEBE
02:47				MISSED JUMPER by STERBA, PHOEBE
02:44				REBOUND (OFF) by PARKER, ELEAH
02:42				SUB OUT: PARKER, ELEAH
02:42				SUB IN: AGHAYERE, PRINCESS
02:42	SUB OUT: EDWARDS, JADE			
02:42	SUB IN: BARTNER, MORGAN			
02:33		52-31	H 21	GOOD! 3PTR by STERBA, PHOEBE
02:33				ASSIST by AGHAYERE, PRINCESS
02:14	GOOD! LAYUP by BARTNER, MORGAN	52-33	H 19	
02:14	ASSIST by FISHER, EMILY			
01:59	FOUL (PERSONAL) by KOSKIMIES, ELINA			
01:59		53-33	H 20	GOOD! FT by RUSSELL, ASHLEY
01:59		54-33	H 21	GOOD! FT by RUSSELL, ASHLEY

Time	VISITORS: American	Score	Margin	HOME: Penn
01:42	MISSED JUMPER by CARL, CECILY			
01:39				REBOUND (DEF) by CRAWFORD, TORI
01:31				MISSED LAYUP by CRAWFORD, TORI
01:28				REBOUND (OFF) by CRAWFORD, TORI
01:26				MISSED 3PTR by JONES, MICHAEL
01:24	REBOUND (DEF) by LEWIS, KAITLYN			
01:19	TURNOVER (TRAVEL) by LEWIS, KAITLYN			
01:19	SUB OUT: CARL, CECILY			
01:19	SUB IN: CLEVELAND, TAEKENYA			
01:19	SUB OUT: LEWIS, KAITLYN			
01:19	SUB IN: GRAYTOK, LAURA			
00:58				MISSED JUMPER by JONES, MICHAEL
00:54	REBOUND (DEF) by FISHER, EMILY			
00:48	GOOD! JUMPER by FISHER, EMILY [PNT]	54-35	H 19	
00:35				TURNOVER (TRAVEL) by CRAWFORD, TORI
00:35				SUB OUT: CRAWFORD, TORI
00:35				SUB IN: PARKER, ELEAH
00:35				SUB OUT: JONES, MICHAEL
00:35				SUB IN: GRASELA, KENDALL
00:04	MISSED JUMPER by FISHER, EMILY			
00:04	REBOUND (OFF) by TEAM			
00:01	TURNOVER (SHOTCLOCK) by			

American 35, Penn 54

Points from (This Period)	AME	PEN
In the Paint	10	8
Off Turns	0	2
2nd Chance	4	3
Fast Break	0	0
Bench	4	0

Official Box Score
American vs Penn
Fourth Quarter Statistics Only
March 22, 2019 at The Palestra (MacQuarie Court) - Philadelphia, Pa.



American 10

No.	Player	S	Pts	FG	3FG	FT	OR	DR	TR	PF	A	TO	Blk	Stl	Min	+/-
03	LEWIS,KAITLYN		0	0-1	0-1	0-0	0	1	1	1	1	1	0	1	9	0
10	EDWARDS,JADE		5	2-4	0-0	1-1	2	1	3	2	1	1	0	1	10	0
22	MARENYI,KAITLYN		0	0-2	0-1	0-0	0	0	0	0	0	0	0	2	4	-3
23	KOSKIMIES,ELINA		3	1-1	1-1	0-0	0	0	0	0	0	1	0	0	6	3
44	CARL,CECILY		0	0-4	0-3	0-0	0	2	2	0	0	0	0	0	9	0
02	BARTNER,MORGAN		0	0-0	0-0	0-0	0	0	0	0	0	0	0	0	1	0
04	FISHER,EMILY		2	1-4	0-0	0-0	1	1	2	2	0	2	0	0	10	0
11	CLEVELAND,TAKENYA		0	0-0	0-0	0-0	0	0	0	0	0	0	0	0	0	0
12	SANDERS,INDEYA		0	0-0	0-0	0-0	0	0	0	0	0	0	0	0	0	0
14	BROWN,TAYLOR		0	0-0	0-0	0-0	0	0	0	0	0	0	0	0	1	0
21	DORING,MADDIE		0	0-0	0-0	0-0	0	0	0	0	0	0	0	0	0	0
24	GRAYTOK,LAURA		0	0-0	0-0	0-0	0	0	0	0	0	0	0	0	0	0
	TEAM						1	0	1	0		0				
	TOTALS		10	4-16	1-6	1-1	4	5	9	5	2	5	0	4	50	

Shooting By Period

Period	FG	FG%	3FG	3FG%	FT	FT%
Game	17-54	31.5%	5-21	23.8%	6-9	66.7%

Penn 10

No.	Player	S	Pts	FG	3FG	FT	OR	DR	TR	PF	A	TO	Blk	Stl	Min	+/-
11	GRASELA,KENDALL		0	0-0	0-0	0-0	0	0	0	0	2	2	0	0	9	0
25	RUSSELL,ASHLEY		3	1-3	1-2	0-0	0	0	0	0	0	2	0	1	9	0
31	PARKER,ELEAH		4	2-3	0-0	0-0	1	5	6	1	0	1	1	1	9	0
33	STERBA,PHOEBE		2	0-1	0-1	2-3	1	1	2	1	0	0	0	0	7	-1
50	AGHAYERE,PRINCESS		0	0-3	0-3	0-0	0	0	0	0	0	0	0	0	7	-1
02	KINUM,KATIE		0	0-0	0-0	0-0	1	0	1	0	0	1	0	0	3	1
03	JONES,MICHAEL		0	0-0	0-0	0-0	0	0	0	0	0	0	0	0	0	0
22	JACKSON,DEJA		0	0-0	0-0	0-0	0	0	0	0	0	0	0	0	1	0
23	DALEY,KRISTEN		0	0-0	0-0	0-0	0	1	1	0	0	0	0	0	1	0
24	CRAWFORD,TORI		1	0-0	0-0	1-2	0	1	1	0	0	1	0	1	3	1
40	ANDERSON,EMILY		0	0-0	0-0	0-0	0	0	0	0	0	0	0	0	1	0
	TEAM						0	0	0	0		1				
	TOTALS		10	3-10	1-6	3-5	3	8	11	2	2	8	1	3	50	

Shooting By Period

Period	FG	FG%	3FG	3FG%	FT	FT%
Game	22-53	41.5%	9-21	42.9%	11-13	84.6%

Game Notes:

Officials: Dom Cummisky, Scott Berkins, Kelsey Reynolds
 Attendance: 817

Start Time: 2019-03-22 23:03:05
 End Time: 2019-03-23 00:49:57
 Game Duration: 106

Score	1st	2nd	3rd	4th	TOT
AME	5	12	18	10	45
PEN	16	22	16	10	64

Points from (This Period)	AME	PEN
In the Paint	6	4
Off Turns	0	5
2nd Chance	5	4
Fast Break	0	0
Bench	2	1

**Official Play-By-Play
American vs Penn
Fourth Quarter**

March 22, 2019 at The Palestra (MacQuarie Court) - Philadelphia, Pa.



Period 4

Starters:

American: 10 EDWARDS, JADE; 22 MARENYI, KAITLYN; 23 KOSKIMIES, ELINA; 44 CARL, CECILY; 3 LEWIS, KAITLYN;

Penn: 11 GRASELA, KENDALL; 25 RUSSELL, ASHLEY; 31 PARKER, ELEAH; 33 STERBA, PHOEBE; 50 AGHAYERE, PRINCESS;

Time	VISITORS: American	Score	Margin	HOME: Penn
10:00	SUB OUT: BARTNER, MORGAN			
10:00	SUB IN: LEWIS, KAITLYN			
10:00	SUB OUT: CLEVELAND, TAEKENYA			
10:00	SUB IN: EDWARDS, JADE			
10:00	SUB OUT: GRAYTOK, LAURA			
10:00	SUB IN: CARL, CECILY			
09:55	MISSED 3PTR by CARL, CECILY			
09:49	REBOUND (OFF) by EDWARDS, JADE			
09:38	GOOD! 3PTR by KOSKIMIES, ELINA	54-38	H 16	
09:38	ASSIST by EDWARDS, JADE			
09:18				MISSED LAYUP by PARKER, ELEAH
09:15	REBOUND (DEF) by EDWARDS, JADE			
09:08	MISSED JUMPER by FISHER, EMILY			
09:06				REBOUND (DEF) by PARKER, ELEAH
08:43				MISSED 3PTR by AGHAYERE, PRINCESS
08:41	REBOUND (DEF) by CARL, CECILY			
08:34	GOOD! LAYUP by EDWARDS, JADE	54-40	H 14	
08:34	ASSIST by LEWIS, KAITLYN			
08:26	FOUL (PERSONAL) by FISHER, EMILY			
08:21				TURNOVER (BADPASS) by GRASELA, KENDALL
08:21	STEAL by LEWIS, KAITLYN			
08:16	TURNOVER (TRAVEL) by EDWARDS, JADE			
07:59				MISSED 3PTR by STERBA, PHOEBE
07:57				REBOUND (OFF) by PARKER, ELEAH
07:54				MISSED JUMPER by RUSSELL, ASHLEY
07:52	REBOUND (DEF) by LEWIS, KAITLYN			
07:45				FOUL (PERSONAL) by STERBA, PHOEBE
07:45				SUB OUT: AGHAYERE, PRINCESS
07:45				SUB IN: CRAWFORD, TORI
07:42	TURNOVER (BADPASS) by KOSKIMIES, ELINA			
07:42				STEAL by CRAWFORD, TORI
07:26				TURNOVER (BADPASS) by RUSSELL, ASHLEY
07:26	SUB OUT: KOSKIMIES, ELINA			
07:26	SUB IN: MARENYI, KAITLYN			
07:09	MISSED JUMPER by FISHER, EMILY			
07:06				REBOUND (DEF) by PARKER, ELEAH
06:51				TURNOVER (BADPASS) by GRASELA, KENDALL
06:51	STEAL by MARENYI, KAITLYN			
06:46	MISSED LAYUP by MARENYI, KAITLYN			
06:43				REBOUND (DEF) by STERBA, PHOEBE
06:26	FOUL (PERSONAL) by LEWIS, KAITLYN			
06:26				MISSED FT by CRAWFORD, TORI
06:26				REBOUND (OFF) by TEAM
06:26		55-40	H 15	GOOD! FT by CRAWFORD, TORI
06:04	MISSED JUMPER by CARL, CECILY			
06:04				BLOCK by PARKER, ELEAH
05:59				REBOUND (DEF) by CRAWFORD, TORI
05:51				TURNOVER (LOSTBALL) by CRAWFORD, TORI
05:51	STEAL by MARENYI, KAITLYN			
05:51				SUB OUT: CRAWFORD, TORI
05:51				SUB IN: AGHAYERE, PRINCESS
05:38	MISSED 3PTR by LEWIS, KAITLYN			
05:35				REBOUND (DEF) by PARKER, ELEAH
05:24				MISSED 3PTR by AGHAYERE, PRINCESS
05:22				REBOUND (OFF) by STERBA, PHOEBE
05:15		57-40	H 17	GOOD! LAYUP by PARKER, ELEAH
05:15				ASSIST by GRASELA, KENDALL
04:52	MISSED 3PTR by CARL, CECILY			
04:50				REBOUND (DEF) by PARKER, ELEAH
04:47				TURNOVER (TRAVEL) by PARKER, ELEAH
04:47	SUB OUT: EDWARDS, JADE			
04:47	SUB IN: KOSKIMIES, ELINA			
04:47				
04:47	SUB OUT: MARENYI, KAITLYN			
04:47	SUB IN: EDWARDS, JADE			
04:39	TURNOVER (LOSTBALL) by LEWIS, KAITLYN			
04:39				STEAL by PARKER, ELEAH
04:32	FOUL (PERSONAL) by FISHER, EMILY			
04:16		60-40	H 20	GOOD! 3PTR by RUSSELL, ASHLEY
04:16				ASSIST by GRASELA, KENDALL

Time	VISITORS: American	Score	Margin	HOME: Penn
03:57	MISSED JUMPER by EDWARDS, JADE			
03:53	REBOUND (OFF) by EDWARDS, JADE			
03:50	GOOD! LAYUP by FISHER, EMILY	60-42	H 18	
03:34	FOUL (PERSONAL) by EDWARDS, JADE			
03:18	FOUL (PERSONAL) by EDWARDS, JADE			
03:18		61-42	H 19	GOOD! FT by STERBA, PHOEBE
03:18		62-42	H 20	GOOD! FT by STERBA, PHOEBE
03:18				MISSED FT by STERBA, PHOEBE
03:17	REBOUND (DEF) by CARL, CECILY			
03:05	GOOD! LAYUP by EDWARDS, JADE	62-44	H 18	
03:05				FOUL (PERSONAL) by PARKER, ELEAH
03:05				SUB OUT: STERBA, PHOEBE
03:05				SUB IN: KINUM, KATIE
03:05	GOOD! FT by EDWARDS, JADE	62-45	H 17	
02:49				MISSED 3PTR by AGHAYERE, PRINCESS
02:46	REBOUND (DEF) by FISHER, EMILY			
02:42	MISSED LAYUP by EDWARDS, JADE			
02:39				REBOUND (DEF) by PARKER, ELEAH
02:13				TURNOVER (BADPASS) by RUSSELL, ASHLEY
02:13	STEAL by EDWARDS, JADE			
02:08	TURNOVER (LOSTBALL) by FISHER, EMILY			
02:08				STEAL by RUSSELL, ASHLEY
02:05				TIMEOUT 30SEC
01:38				MISSED 3PTR by RUSSELL, ASHLEY
01:36				REBOUND (OFF) by KINUM, KATIE
01:24		64-45	H 19	GOOD! LAYUP by PARKER, ELEAH
01:08	MISSED 3PTR by CARL, CECILY			
01:07	REBOUND (OFF) by TEAM			
01:07				SUB OUT: GRASELA, KENDALL
01:07				SUB IN: DALEY, KRISTEN
01:07				SUB OUT: RUSSELL, ASHLEY
01:07				SUB IN: CRAWFORD, TORI
01:07				SUB OUT: PARKER, ELEAH
01:07				SUB IN: JACKSON, DEJA
01:07				SUB OUT: AGHAYERE, PRINCESS
01:07				SUB IN: ANDERSON, EMILY
01:07	SUB OUT: LEWIS, KAITLYN			
01:07	SUB IN: BARTNER, MORGAN			
01:07	SUB OUT: KOSKIMIES, ELINA			
01:07	SUB IN: MARENYI, KAITLYN			
01:07	SUB OUT: CARL, CECILY			
01:07	SUB IN: BROWN, TAYLOR			
01:03	MISSED 3PTR by MARENYI, KAITLYN			
01:01	REBOUND (OFF) by FISHER, EMILY			
00:59	MISSED JUMPER by FISHER, EMILY			
00:57				REBOUND (DEF) by DALEY, KRISTEN
00:51				TURNOVER (TRAVEL) by KINUM, KATIE
00:32	TURNOVER (BADPASS) by FISHER, EMILY			
00:00				TURNOVER (SHOTCLOCK) by

American 45, Penn 64

Points from (This Period)	AME	PEN
In the Paint	6	4
Off Turns	0	5
2nd Chance	5	4
Fast Break	0	0
Bench	2	1

**Official Scoring/Possession Reference Chart
American vs Penn
Period 1**

March 22, 2019 at The Palestra (MacQuarie Court) - Philadelphia, Pa.



Period 1

Starters:

American: 10 EDWARDS, JADE; 22 MARENYI, KAITLYN; 23 KOSKIMIES, ELINA; 44 CARL, CECILY; 3 LEWIS, KAITLYN;

Penn: 11 GRASELA, KENDALL; 25 RUSSELL, ASHLEY; 31 PARKER, ELEAH; 33 STERBA, PHOEBE; 50 AGHAYERE, PRINCESS;

Time	VISITORS: American	Score	Margin	HOME: Penn
09:35		2-0	H 2	GOOD! LAYUP by AGHAYERE, PRINCESS
08:54		5-0	H 5	GOOD! 3PTR by RUSSELL, ASHLEY [FB]
08:15	GOOD! JUMPER by MARENYI, KAITLYN	5-2	H 3	
07:27		7-2	H 5	GOOD! LAYUP by PARKER, ELEAH
04:51		9-2	H 7	GOOD! LAYUP by PARKER, ELEAH
04:33	GOOD! JUMPER by CARL, CECILY	9-4	H 5	
04:15		10-4	H 6	GOOD! FT by PARKER, ELEAH
04:15		11-4	H 7	GOOD! FT by PARKER, ELEAH
03:40		12-4	H 8	GOOD! FT by AGHAYERE, PRINCESS
03:40		13-4	H 9	GOOD! FT by AGHAYERE, PRINCESS
01:16		16-4	H 12	GOOD! 3PTR by STERBA, PHOEBE
00:13	GOOD! FT by CLEVELAND, TAEKENYA	16-5	H 11	

American 5, Penn 16

**Official Scoring/Possession Reference Chart
American vs Penn
Period 2**

March 22, 2019 at The Palestra (MacQuarie Court) - Philadelphia, Pa.



Period 2

Starters:

American: 10 EDWARDS, JADE; 22 MARENYI, KAITLYN; 23 KOSKIMIES, ELINA; 44 CARL, CECILY; 3 LEWIS, KAITLYN;

Penn: 11 GRASELA, KENDALL; 25 RUSSELL, ASHLEY; 31 PARKER, ELEAH; 33 STERBA, PHOEBE; 50 AGHAYERE, PRINCESS;

Time	VISITORS: American	Score	Margin	HOME: Penn
09:39		18-5	H 13	GOOD! JUMPER by GRASELA, KENDALL [PNT]
08:59		21-5	H 16	GOOD! 3PTR by RUSSELL, ASHLEY
08:39		23-5	H 18	GOOD! LAYUP by PARKER, ELEAH [FB]
07:55		26-5	H 21	GOOD! 3PTR by AGHAYERE, PRINCESS
07:07	GOOD! 3PTR by CARL, CECILY	26-8	H 18	
06:39		28-8	H 20	GOOD! LAYUP by RUSSELL, ASHLEY [FB]
06:12	GOOD! 3PTR by CARL, CECILY	28-11	H 17	
05:08		30-11	H 19	GOOD! LAYUP by PARKER, ELEAH
04:21		31-11	H 20	GOOD! FT by RUSSELL, ASHLEY
04:21		32-11	H 21	GOOD! FT by RUSSELL, ASHLEY
04:00	GOOD! 3PTR by CARL, CECILY	32-14	H 18	
03:33		35-14	H 21	GOOD! 3PTR by KINUM, KATIE
01:42	GOOD! FT by EDWARDS, JADE	35-15	H 20	
00:58		38-15	H 23	GOOD! 3PTR by RUSSELL, ASHLEY
00:31	GOOD! LAYUP by EDWARDS, JADE	38-17	H 21	

American 17, Penn 38

**Official Scoring/Possession Reference Chart
American vs Penn
Period 3**

March 22, 2019 at The Palestra (MacQuarie Court) - Philadelphia, Pa.



Period 3

Starters:

American: 10 EDWARDS, JADE; 22 MARENYI, KAITLYN; 23 KOSKIMIES, ELINA; 44 CARL, CECILY; 3 LEWIS, KAITLYN;

Penn: 11 GRASELA, KENDALL; 25 RUSSELL, ASHLEY; 31 PARKER, ELEAH; 33 STERBA, PHOEBE; 50 AGHAYERE, PRINCESS;

Time	VISITORS: American	Score	Margin	HOME: Penn
09:49	GOOD! LAYUP by CARL, CECILY	38-19	H 19	
08:56	GOOD! 3PTR by CARL, CECILY	38-22	H 16	
08:25	GOOD! JUMPER by LEWIS, KAITLYN	38-24	H 14	
08:01		41-24	H 17	GOOD! 3PTR by STERBA, PHOEBE
07:40	GOOD! FT by EDWARDS, JADE	41-25	H 16	
07:40	GOOD! FT by EDWARDS, JADE	41-26	H 15	
07:17		43-26	H 17	GOOD! JUMPER by AGHAYERE, PRINCESS
07:03	GOOD! FT by LEWIS, KAITLYN	43-27	H 16	
06:39		45-27	H 18	GOOD! JUMPER by PARKER, ELEAH
05:29		47-27	H 20	GOOD! JUMPER by STERBA, PHOEBE [PNT]
05:02	GOOD! LAYUP by EDWARDS, JADE	47-29	H 18	
04:13		49-29	H 20	GOOD! LAYUP by STERBA, PHOEBE
03:19	GOOD! LAYUP by EDWARDS, JADE	49-31	H 18	
02:33		52-31	H 21	GOOD! 3PTR by STERBA, PHOEBE
02:14	GOOD! LAYUP by BARTNER, MORGAN	52-33	H 19	
01:59		53-33	H 20	GOOD! FT by RUSSELL, ASHLEY
01:59		54-33	H 21	GOOD! FT by RUSSELL, ASHLEY
00:48	GOOD! JUMPER by FISHER, EMILY [PNT]	54-35	H 19	

American 35, Penn 54

**Official Scoring/Possession Reference Chart
American vs Penn
Period 4**

March 22, 2019 at The Palestra (MacQuarie Court) - Philadelphia, Pa.



Period 4

Starters:

American: 10 EDWARDS, JADE; 22 MARENYI, KAITLYN; 23 KOSKIMIES, ELINA; 44 CARL, CECILY; 3 LEWIS, KAITLYN;

Penn: 11 GRASELA, KENDALL; 25 RUSSELL, ASHLEY; 31 PARKER, ELEAH; 33 STERBA, PHOEBE; 50 AGHAYERE, PRINCESS;

Time	VISITORS: American	Score	Margin	HOME: Penn
09:38	GOOD! 3PTR by KOSKIMIES, ELINA	54-38	H 16	
08:34	GOOD! LAYUP by EDWARDS, JADE	54-40	H 14	
06:26		55-40	H 15	GOOD! FT by CRAWFORD, TORI
05:15		57-40	H 17	GOOD! LAYUP by PARKER, ELEAH
04:16		60-40	H 20	GOOD! 3PTR by RUSSELL, ASHLEY
03:50	GOOD! LAYUP by FISHER, EMILY	60-42	H 18	
03:18		61-42	H 19	GOOD! FT by STERBA, PHOEBE
03:18		62-42	H 20	GOOD! FT by STERBA, PHOEBE
03:05	GOOD! LAYUP by EDWARDS, JADE	62-44	H 18	
03:05	GOOD! FT by EDWARDS, JADE	62-45	H 17	
01:24		64-45	H 19	GOOD! LAYUP by PARKER, ELEAH

American 45, Penn 64

**Official Substitutions Log
American vs Penn
Period 1**

March 22, 2019 at The Palestra (MacQuarie Court) - Philadelphia, Pa.



VISITORS: American	Time	Score	HOME: Penn
10 EDWARDS, JADE			11 GRASELA, KENDALL
22 MARENYI, KAITLYN			25 RUSSELL, ASHLEY
23 KOSKIMIES, ELINA			31 PARKER, ELEAH
44 CARL, CECILY			33 STERBA, PHOEBE
3 LEWIS, KAITLYN			50 AGHAYERE, PRINCESS
SUB OUT: 10 EDWARDS, JADE	03:40	4-12	
SUB IN: 12 SANDERS, INDEYA	03:40		
	02:32	4-13	SUB OUT: AGHAYERE, PRINCESS
	02:32		SUB IN: CRAWFORD, TORI
SUB OUT: 23 KOSKIMIES, ELINA	01:50	4-13	
SUB IN: 11 CLEVELAND, TAEKENYA	01:50		
	01:23	4-13	SUB OUT: GRASELA, KENDALL
	01:23		SUB IN: JONES, MICHAEL
	00:47	4-16	SUB OUT: PARKER, ELEAH
	00:47		SUB IN: AGHAYERE, PRINCESS
	00:13	4-16	SUB OUT: CRAWFORD, TORI
	00:13		SUB IN: PARKER, ELEAH
SUB OUT: 22 MARENYI, KAITLYN	00:13		
SUB IN: 4 FISHER, EMILY	00:13		

American 5, Penn 16

**Official Substitutions Log
American vs Penn
Period 2**

March 22, 2019 at The Palestra (MacQuarie Court) - Philadelphia, Pa.



VISITORS: American	Time	Score	HOME: Penn
10 EDWARDS, JADE			11 GRASELA, KENDALL
22 MARENYI, KAITLYN			25 RUSSELL, ASHLEY
23 KOSKIMIES, ELINA			31 PARKER, ELEAH
44 CARL, CECILY			33 STERBA, PHOEBE
3 LEWIS, KAITLYN			50 AGHAYERE, PRINCESS
	09:58	-	SUB OUT: JONES, MICHAEL
	09:58		SUB IN: GRASELA, KENDALL
SUB OUT: 3 LEWIS, KAITLYN	08:37	5-23	
SUB IN: 22 MARENYI, KAITLYN	08:37		
SUB OUT: 11 CLEVELAND, TAEKENYA	08:37		
SUB IN: 23 KOSKIMIES, ELINA	08:37		
	06:49	8-26	SUB OUT: STERBA, PHOEBE
	06:49		SUB IN: KINUM, KATIE
SUB OUT: 12 SANDERS, INDEYA	06:49		
SUB IN: 10 EDWARDS, JADE	06:49		
SUB OUT: 4 FISHER, EMILY	06:49		
SUB IN: 21 DORING, MADDIE	06:49		
	04:21	11-31	SUB OUT: PARKER, ELEAH
	04:21		SUB IN: ANDERSON, EMILY
SUB OUT: 22 MARENYI, KAITLYN	04:21		
SUB IN: 4 FISHER, EMILY	04:21		
SUB OUT: 21 DORING, MADDIE	03:44	14-32	
SUB IN: 3 LEWIS, KAITLYN	03:44		
	02:01	14-35	SUB OUT: KINUM, KATIE
	02:01		SUB IN: PARKER, ELEAH
	02:01		SUB OUT: ANDERSON, EMILY
	02:01		SUB IN: STERBA, PHOEBE
	00:14	17-38	SUB OUT: GRASELA, KENDALL
	00:14		SUB IN: JONES, MICHAEL

American 17, Penn 38

**Official Substitutions Log
American vs Penn
Period 3**

March 22, 2019 at The Palestra (MacQuarie Court) - Philadelphia, Pa.



VISITORS: American	Time	Score	HOME: Penn
10 EDWARDS, JADE			11 GRASELA, KENDALL
22 MARENYI, KAITLYN			25 RUSSELL, ASHLEY
23 KOSKIMIES, ELINA			31 PARKER, ELEAH
44 CARL, CECILY			33 STERBA, PHOEBE
3 LEWIS, KAITLYN			50 AGHAYERE, PRINCESS
	04:40	29-47	SUB OUT: AGHAYERE, PRINCESS
	04:40		SUB IN: CRAWFORD, TORI
SUB OUT: 22 MARENYI, KAITLYN	04:40		
SUB IN: 4 FISHER, EMILY	04:40		
		29-49	SUB OUT: GRASELA, KENDALL
	03:37		SUB IN: JONES, MICHAEL
		31-49	SUB OUT: PARKER, ELEAH
	02:42		SUB IN: AGHAYERE, PRINCESS
SUB OUT: 10 EDWARDS, JADE	02:42		
SUB IN: 2 BARTNER, MORGAN	02:42		
SUB OUT: 44 CARL, CECILY	01:19	33-54	
SUB IN: 11 CLEVELAND, TAEKENYA	01:19		
SUB OUT: 3 LEWIS, KAITLYN	01:19		
SUB IN: 24 GRAYTOK, LAURA	01:19		
	00:35	35-54	SUB OUT: CRAWFORD, TORI
	00:35		SUB IN: PARKER, ELEAH
	00:35		SUB OUT: JONES, MICHAEL
	00:35		SUB IN: GRASELA, KENDALL

American 35, Penn 54

**Official Substitutions Log
American vs Penn
Period 4**

March 22, 2019 at The Palestra (MacQuarie Court) - Philadelphia, Pa.



VISITORS: American	Time	Score	HOME: Penn
10 EDWARDS, JADE			11 GRASELA, KENDALL
22 MARENYI, KAITLYN			25 RUSSELL, ASHLEY
23 KOSKIMIES, ELINA			31 PARKER, ELEAH
44 CARL, CECILY			33 STERBA, PHOEBE
3 LEWIS, KAITLYN			50 AGHAYERE, PRINCESS
SUB OUT: 2 BARTNER, MORGAN	10:00	-	
SUB IN: 3 LEWIS, KAITLYN	10:00		
SUB OUT: 11 CLEVELAND, TAEKENYA	10:00		
SUB IN: 10 EDWARDS, JADE	10:00		
SUB OUT: 24 GRAYTOK, LAURA	10:00		
SUB IN: 44 CARL, CECILY	10:00		
	07:45	40-54	SUB OUT: AGHAYERE, PRINCESS
	07:45		SUB IN: CRAWFORD, TORI
SUB OUT: 23 KOSKIMIES, ELINA	07:26	40-54	
SUB IN: 22 MARENYI, KAITLYN	07:26		
	05:51	40-55	SUB OUT: CRAWFORD, TORI
	05:51		SUB IN: AGHAYERE, PRINCESS
SUB OUT: 10 EDWARDS, JADE	04:47	40-57	
SUB IN: 23 KOSKIMIES, ELINA	04:47		
SUB OUT: 22 MARENYI, KAITLYN	04:47		
SUB IN: 10 EDWARDS, JADE	04:47		
	03:05	44-62	SUB OUT: STERBA, PHOEBE
	03:05		SUB IN: KINUM, KATIE
	01:07	45-64	SUB OUT: GRASELA, KENDALL
	01:07		SUB IN: DALEY, KRISTEN
	01:07		SUB OUT: RUSSELL, ASHLEY
	01:07		SUB IN: CRAWFORD, TORI
	01:07		SUB OUT: PARKER, ELEAH
	01:07		SUB IN: JACKSON, DEJA
	01:07		SUB OUT: AGHAYERE, PRINCESS
	01:07		SUB IN: ANDERSON, EMILY
SUB OUT: 3 LEWIS, KAITLYN	01:07		
SUB IN: 2 BARTNER, MORGAN	01:07		
SUB OUT: 23 KOSKIMIES, ELINA	01:07		
SUB IN: 22 MARENYI, KAITLYN	01:07		
SUB OUT: 44 CARL, CECILY	01:07		
SUB IN: 14 BROWN, TAYLOR	01:07		

American 45, Penn 64

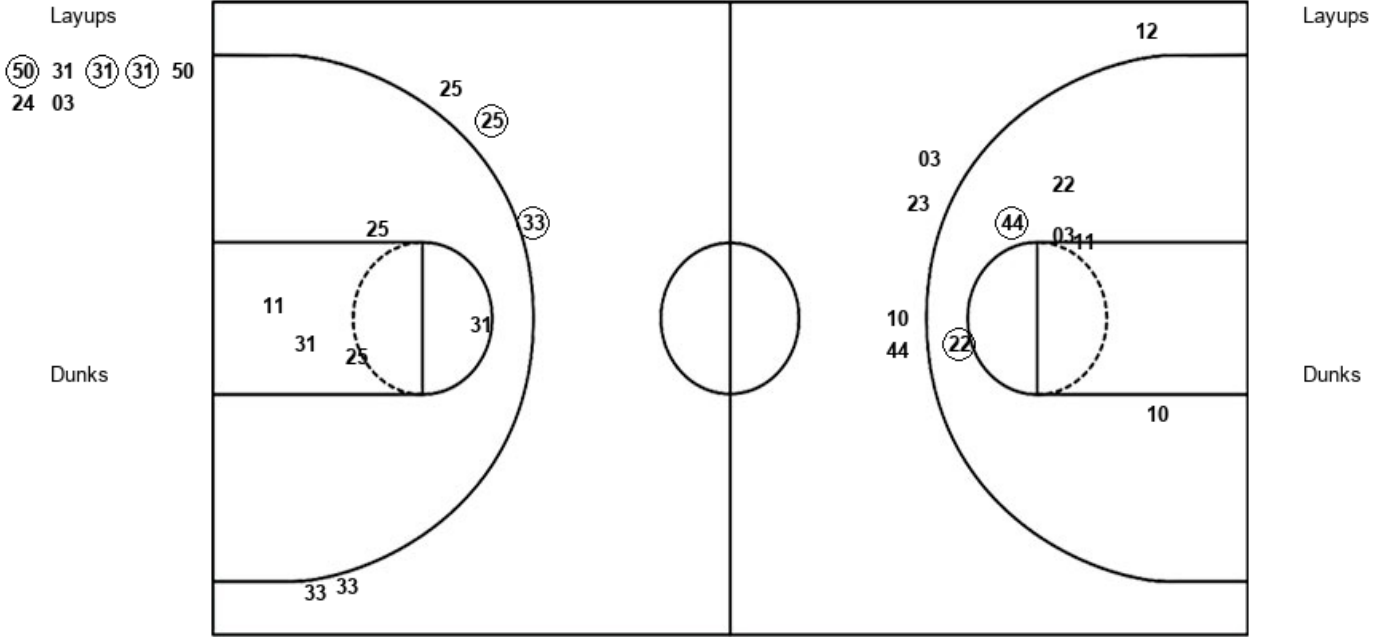
Official Shot Chart
 American vs Penn
 PERIOD 1 Shots

March 22, 2019 at The Palestra (MacQuarie Court) - Philadelphia, Pa.



Penn

American



PEN : Period 1	Made	Att	Pct
Layups	3	7	42.9
Dunks	0	0	0
2PT Field Goals	3	12	25.0
3PT Field Goals	2	5	40.0
Total Field Goals	5	17	29.4

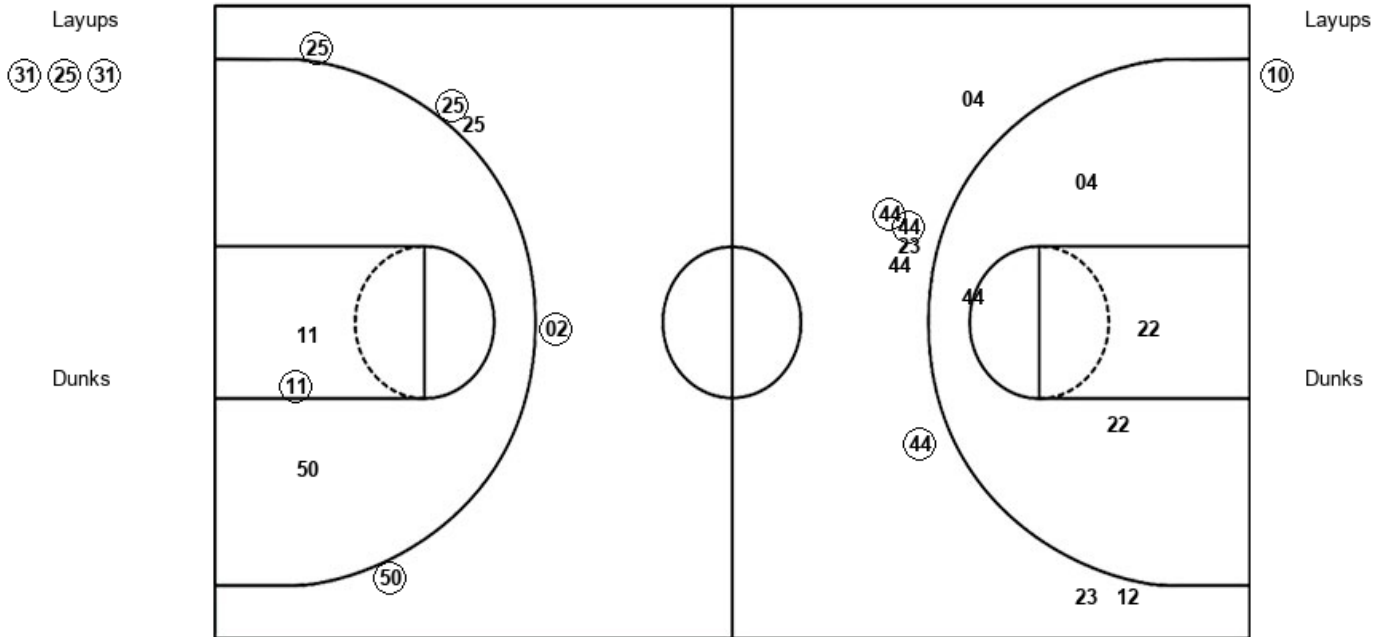
AME : Period 1	Made	Att	Pct
Layups	0	0	0
Dunks	0	0	0
2PT Field Goals	2	6	33.3
3PT Field Goals	0	5	00.0
Total Field Goals	2	11	18.2

Official Shot Chart
American vs Penn
PERIOD 2 Shots
 March 22, 2019 at The Palestra (MacQuarie Court) - Philadelphia, Pa.



Penn

American



PEN : Period 2	Made	Att	Pct
Layups	3	3	100.0
Dunks	0	0	0
2PT Field Goals	4	6	66.7
3PT Field Goals	4	5	80.0
Total Field Goals	8	11	72.7

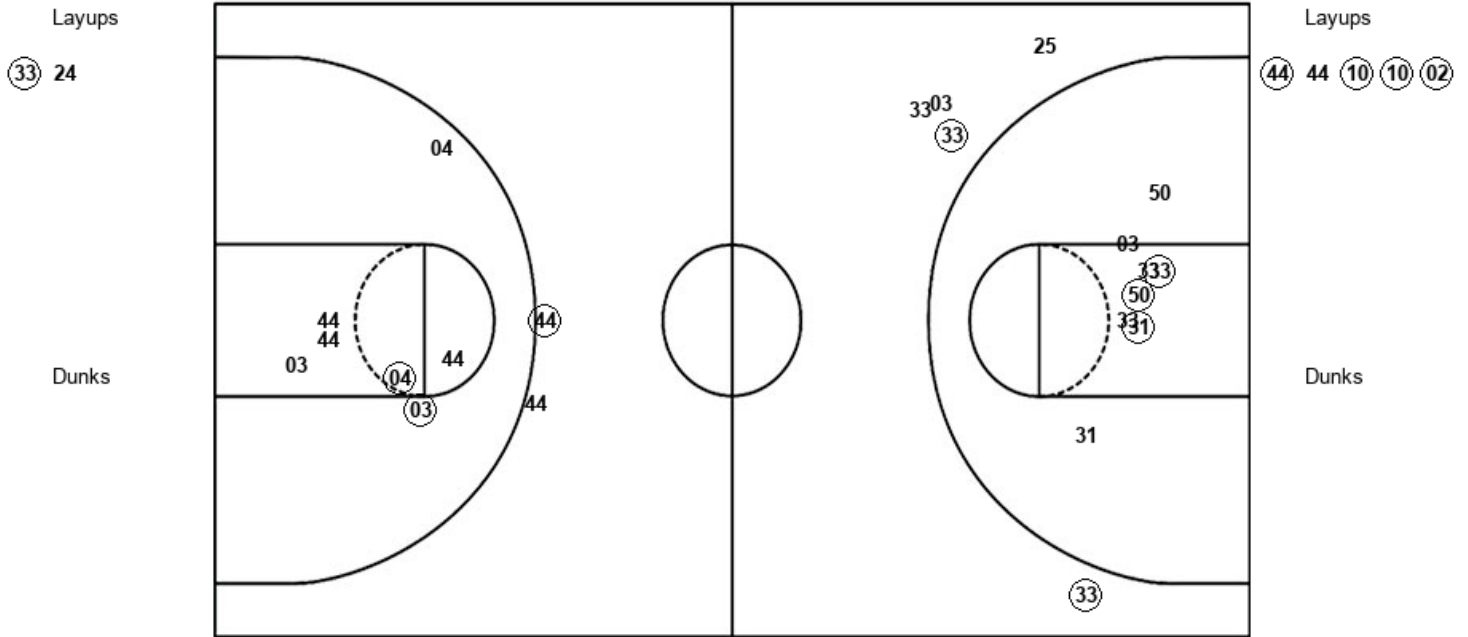
AME : Period 2	Made	Att	Pct
Layups	1	1	100.0
Dunks	0	0	0
2PT Field Goals	1	5	20.0
3PT Field Goals	3	8	37.5
Total Field Goals	4	13	30.8

Official Shot Chart
American vs Penn
PERIOD 3 Shots
 March 22, 2019 at The Palestra (MacQuarie Court) - Philadelphia, Pa.



Penn

American



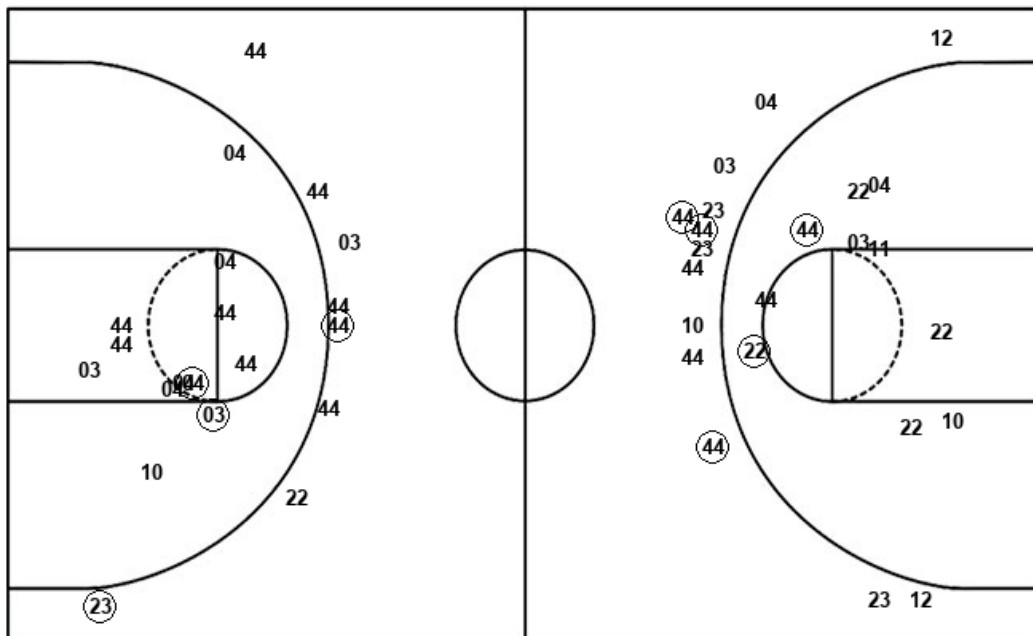
PEN : Period 3	Made	Att	Pct
Layups	1	2	50.0
Dunks	0	0	0
2PT Field Goals	4	10	40.0
3PT Field Goals	2	5	40.0
Total Field Goals	6	15	40.0

AME : Period 3	Made	Att	Pct
Layups	4	5	80.0
Dunks	0	0	0
2PT Field Goals	6	12	50.0
3PT Field Goals	1	2	50.0
Total Field Goals	7	14	50.0

**Official Shot Chart
American vs Penn
American Team Shots**
March 22, 2019 at The Palestra (MacQuarie Court) - Philadelphia, Pa.



Layups



Layups

Dunks

Dunks

AME : Period 1	Made	Att	Pct
Layups	0	0	0
Dunks	0	0	0
2PT Field Goals	2	6	33.3
3PT Field Goals	0	5	00.0
Total Field Goals	2	11	18.2

AME : Period 2	Made	Att	Pct
Layups	1	1	100.0
Dunks	0	0	0
2PT Field Goals	1	5	20.0
3PT Field Goals	3	8	37.5
Total Field Goals	4	13	30.8

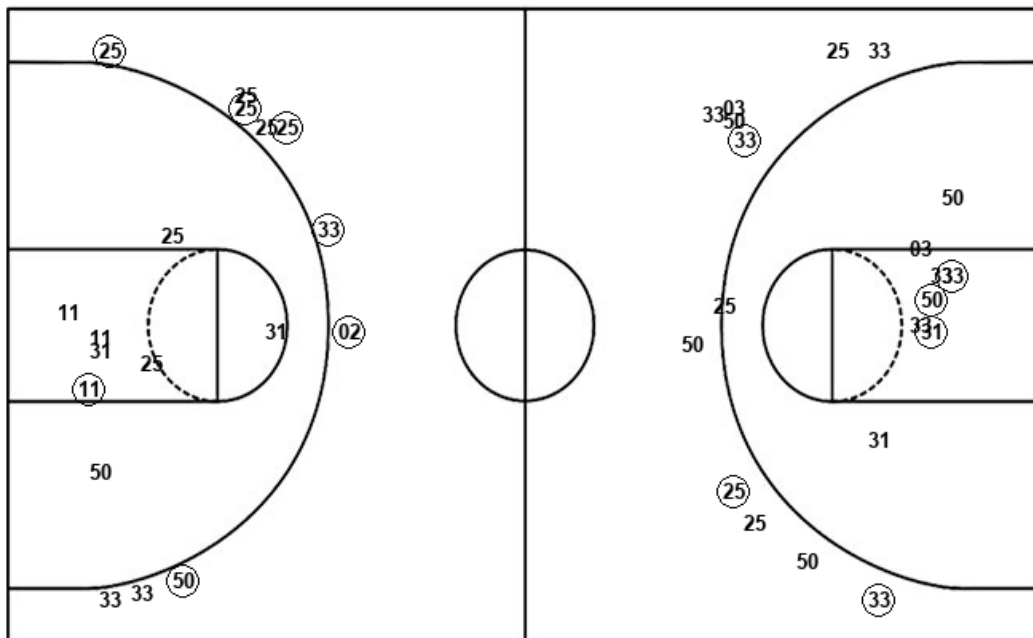
AME : Period 3	Made	Att	Pct
Layups	4	5	80.0
Dunks	0	0	0
2PT Field Goals	6	12	50.0
3PT Field Goals	1	2	50.0
Total Field Goals	7	14	50.0

AME : Period 4	Made	Att	Pct
Layups	3	5	60.0
Dunks	0	0	0
2PT Field Goals	3	10	30.0
3PT Field Goals	1	6	16.7
Total Field Goals	4	16	25.0

**Official Shot Chart
American vs Penn
Penn Team Shots
March 22, 2019 at The Palestra (MacQuarie Court) - Philadelphia, Pa.**



Layups



Layups

(50) 31 (31) (31) 50
24 03 (31) (25) (31)
(33) 24 31 (31) (31)

Dunks

Dunks

PEN : Period 1	Made	Att	Pct
Layups	3	7	42.9
Dunks	0	0	0
2PT Field Goals	3	12	25.0
3PT Field Goals	2	5	40.0
Total Field Goals	5	17	29.4

PEN : Period 2	Made	Att	Pct
Layups	3	3	100.0
Dunks	0	0	0
2PT Field Goals	4	6	66.7
3PT Field Goals	4	5	80.0
Total Field Goals	8	11	72.7

PEN : Period 3	Made	Att	Pct
Layups	1	2	50.0
Dunks	0	0	0
2PT Field Goals	4	10	40.0
3PT Field Goals	2	5	40.0
Total Field Goals	6	15	40.0

PEN : Period 4	Made	Att	Pct
Layups	2	3	66.7
Dunks	0	0	0
2PT Field Goals	2	4	50.0
3PT Field Goals	1	6	16.7
Total Field Goals	3	10	30.0