

## FINAL SCORE



**Portland St.**

**40**



**Oregon**

**78**

March 23, 2019 • Matthew Knight Arena - Eugene, Ore.

## FINAL STATISTICS

**Official Box Score**  
**Portland St. vs Oregon**  
**Game Totals -- Final Statistics**  
**March 23, 2019 at Matthew Knight Arena - Eugene, Ore.**



**Portland St. 40**

No.	Player	S	Pts	FG	3FG	FT	OR	DR	TR	PF	A	TO	Blk	Stl	Min	+/-
00	BOLSTON, ASHLEY	19	5-11	5-9	4-4	0	3	3	0	2	3	1	1	38	-36	
02	RIELLY, SIDNEY	2	1-5	0-2	0-0	0	0	0	3	1	3	0	1	23	-31	
10	WEST, COURTNEY	5	1-4	0-0	3-4	3	1	4	3	0	4	0	0	29	-33	
11	STOTLER, JORDAN	0	0-6	0-2	0-0	0	2	2	1	2	1	1	0	20	-22	
23	JIMENEZ, KYLIE	7	2-9	2-8	1-3	0	2	2	0	4	2	0	2	38	-34	
01	DENSON, LABREA	0	0-0	0-0	0-0	0	0	0	0	0	0	0	0	1	0	
04	JURHAR, PIA	2	1-2	0-0	0-0	0	1	1	0	1	0	0	0	9	-3	
20	TAINTA, ANA	2	1-4	0-1	0-0	2	0	2	2	0	2	0	1	13	-7	
53	HANSEN, DESIRAE	3	1-8	1-6	0-0	1	4	5	2	0	2	0	0	28	-24	
	TEAM						2	2	4	0		0				
<b>TOTALS</b>		<b>40</b>	<b>12-49</b>	<b>8-28</b>	<b>8-11</b>	<b>8</b>	<b>15</b>	<b>23</b>	<b>11</b>	<b>10</b>	<b>17</b>	<b>2</b>	<b>5</b>	<b>199</b>		

*Shooting By Period*

Period	FG	FG%	3FG	3FG%	FT	FT%
1st Qtr	4-11	36%	3-8	38%	4-4	100%
2nd Qtr	3-12	25%	1-6	17%	1-3	33%
3rd Qtr	4-15	27%	3-8	38%	0-0	0%
4th Qtr	1-11	09%	1-6	17%	3-4	75%
1st Half	7-23	30%	4-14	29%	5-7	71%
2nd Half	5-26	19%	4-14	29%	3-4	75%
<b>Game</b>	<b>12-49</b>	<b>24.5%</b>	<b>8-28</b>	<b>28.6%</b>	<b>8-11</b>	<b>72.7%</b>

*Last FG: 4th-06:07*  
*Biggest Run: 4-0*  
*Largest lead: By 1 at 1-09:13*  
*Technical Fouls: None.*

**Oregon 78**

No.	Player	S	Pts	FG	3FG	FT	OR	DR	TR	PF	A	TO	Blk	Stl	Min	+/-
00	SABALLY, SATOU	21	8-12	4-8	1-3	5	11	16	0	1	1	0	3	31	38	
05	CAZORLA, MAITE	7	3-6	1-3	0-0	0	2	2	0	4	3	1	4	33	33	
20	IONESCU, SABRINA	12	5-9	2-5	0-0	2	3	5	2	8	4	0	0	33	39	
21	BOLEY, ERIN	7	2-9	1-6	2-2	2	1	3	2	2	0	0	1	26	28	
24	HEBARD, RUTHY	22	9-13	0-0	4-4	3	8	11	3	0	1	0	4	27	37	
02	YAEGER, MORGAN	0	0-1	0-1	0-0	0	2	2	1	1	1	0	1	17	6	
14	GIOMI, LYDIA	7	2-7	0-0	3-4	4	0	4	0	0	0	1	0	16	4	
32	GILDON, OTI	2	0-6	0-0	2-2	3	1	4	0	1	1	0	3	16	5	
	TEAM						1	2	3	0		1				
<b>TOTALS</b>		<b>78</b>	<b>29-63</b>	<b>8-23</b>	<b>12-15</b>	<b>20</b>	<b>30</b>	<b>50</b>	<b>8</b>	<b>17</b>	<b>12</b>	<b>2</b>	<b>16</b>	<b>199</b>		

*Shooting By Period*

Period	FG	FG%	3FG	3FG%	FT	FT%
1st Qtr	9-14	64%	2-3	67%	2-2	100%
2nd Qtr	9-16	56%	1-5	20%	2-3	67%
3rd Qtr	6-15	40%	3-7	43%	5-6	83%
4th Qtr	5-18	28%	2-8	25%	3-4	75%
1st Half	18-30	60%	3-8	38%	4-5	80%
2nd Half	11-33	33%	5-15	33%	8-10	80%
<b>Game</b>	<b>29-63</b>	<b>46.0%</b>	<b>8-23</b>	<b>34.8%</b>	<b>12-15</b>	<b>80.0%</b>

*Last FG: 4th-04:46*  
*Biggest Run: 14-0*  
*Largest lead: By 40 at 4-02:55*  
*Technical Fouls: #20 IONESCU @ 4th - 00:52;*

*Game Notes:*

Officials: *Infini Robinson, Cathi Cornell, Angela Stanton*  
 Attendance: *6523*

Start Time: *2019-03-23 01:41:41*  
 End Time: *2019-03-23 03:20:00*  
 Game Duration: *98*

Score	1st	2nd	3rd	4th	TOT
PSU	15	8	11	6	<b>40</b>
Ore	22	21	20	15	<b>78</b>

PSU led for 0:26. Ore led for 36:38.  
 Game was tied for 2:46.  
 Times tied: 2      Lead Changes: 2

Points from	PSU	Ore
In the Paint	8	38
Off Turns	5	15
2nd Chance	0	18
Fast Break	0	6
Bench	7	9

**Official Box Score**  
**Portland St. vs Oregon**  
**First Half Statistics Only**  
**March 23, 2019 at Matthew Knight Arena - Eugene, Ore.**



**Portland St. 23**

No.	Player	S	Pts	FG	3FG	FT	OR	DR	TR	PF	A	TO	Blk	Stl	Min	+/-
00	BOLSTON, ASHLEY		8	2-5	2-4	2-2	0	0	0	0	2	2	0	1	19	-18
02	RIELLY, SIDNEY		2	1-2	0-1	0-0	0	0	0	2	0	2	0	0	10	-13
04	JURHAR, PIA		2	1-1	0-0	0-0	0	0	0	0	0	0	0	0	4	0
10	WEST, COURTNEY		4	1-2	0-0	2-2	2	1	3	1	0	2	0	0	19	-18
11	STOTLER, JORDAN		0	0-4	0-2	0-0	0	1	1	0	1	1	0	0	13	-16
20	TAINTA, ANA		0	0-1	0-0	0-0	1	0	1	0	0	0	0	0	4	-5
23	JIMENEZ, KYLIE		4	1-4	1-3	1-3	0	0	0	0	2	1	0	2	18	-16
53	HANSEN, DESIRAE		3	1-4	1-4	0-0	1	2	3	1	0	2	0	0	13	-14
01	DENSON, LABREA		0	0-0	0-0	0-0	0	0	0	0	0	0	0	0	0	0
	TEAM		0	0-0	0-0	0-0	2	1	3	0	0	0	0	0	0	0
<b>TOTALS</b>			<b>23</b>	<b>7-23</b>	<b>4-14</b>	<b>5-7</b>	<b>6</b>	<b>5</b>	<b>11</b>	<b>4</b>	<b>5</b>	<b>10</b>	<b>0</b>	<b>3</b>	<b>100</b>	

*Shooting By Period*

Period	FG	FG%	3FG	3FG%	FT	FT%
1st Qtr	4-11	36%	3-8	38%	4-4	100%
2nd Qtr	3-12	25%	1-6	17%	1-3	33%
1st Half	7-23	30%	4-14	29%	5-7	71%
Game	12-49	24.5%	8-28	28.6%	8-11	72.7%

*Last FG Half: PSU 2nd-01:56*

**Oregon 43**

No.	Player	S	Pts	FG	3FG	FT	OR	DR	TR	PF	A	TO	Blk	Stl	Min	+/-
00	SABALLY, SATOU		14	6-8	2-4	0-1	1	5	6	0	1	1	0	2	17	15
02	YAEGER, MORGAN		0	0-0	0-0	0-0	0	2	2	1	0	0	0	0	9	9
05	CAZORLA, MAITE		4	2-2	0-0	0-0	0	0	0	0	2	1	0	2	17	17
14	GIOMI, LYDIA		2	0-0	0-0	2-2	2	0	2	0	0	0	0	0	4	5
20	IONESCU, SABRINA		5	2-4	1-2	0-0	2	1	3	0	4	2	0	0	19	18
21	BOLEY, ERIN		4	1-4	0-2	2-2	1	0	1	2	0	0	0	0	8	10
24	HEBARD, RUTHY		14	7-10	0-0	0-0	2	3	5	1	0	1	0	4	19	18
32	GILDON, OTI		0	0-2	0-0	0-0	0	0	0	0	1	0	0	1	7	8
	TEAM		0	0-0	0-0	0-0	0	0	0	0	0	1	0	0	0	0
<b>TOTALS</b>			<b>43</b>	<b>18-30</b>	<b>3-8</b>	<b>4-5</b>	<b>8</b>	<b>11</b>	<b>19</b>	<b>4</b>	<b>8</b>	<b>6</b>	<b>0</b>	<b>9</b>	<b>100</b>	

*Shooting By Period*

Period	FG	FG%	3FG	3FG%	FT	FT%
1st Qtr	9-14	64%	2-3	67%	2-2	100%
2nd Qtr	9-16	56%	1-5	20%	2-3	67%
1st Half	18-30	60%	3-8	38%	4-5	80%
Game	29-63	46.0%	8-23	34.8%	12-15	80.0%

*Last FG Half: Ore 2nd-00:42*

Game Notes:

Officials: **Infini Robinson, Cathi Cornell, Angela Stanton**  
 Attendance: 6523

Start Time: 2019-03-23 01:41:41  
 End Time: 2019-03-23 03:20:00  
 Game Duration: 98

Score	1st	2nd	3rd	4th	TOT
PSU	15	8	11	6	<b>40</b>
Ore	22	21	20	15	<b>78</b>

Points from (This Period)	PSU	Ore
In the Paint	6	26
Off Turns	3	10
2nd Chance	0	11
Fast Break	0	2
Bench	5	2

**Official Box Score**  
**Portland St. vs Oregon**  
**First Quarter Statistics Only**  
**March 23, 2019 at Matthew Knight Arena - Eugene, Ore.**



**Portland St. 15**

No.	Player	S	Pts	FG	3FG	FT	OR	DR	TR	PF	A	TO	Blk	Stl	Min	+/-
00	BOLSTON, ASHLEY		5	1-3	1-2	2-2	0	0	0	0	1	0	0	1	9	-5
02	RIELLY, SIDNEY		2	1-2	0-1	0-0	0	0	0	1	0	1	0	0	8	-7
10	WEST, COURTNEY		2	0-0	0-0	2-2	1	1	2	0	0	1	0	0	9	-5
11	STOTLER, JORDAN		0	0-0	0-0	0-0	0	1	1	0	0	1	0	0	6	-2
23	JIMENEZ, KYLIE		3	1-3	1-2	0-0	0	0	0	0	1	1	0	0	10	-7
01	DENSON, LABREA		0	0-0	0-0	0-0	0	0	0	0	0	0	0	0	0	0
04	JURHAR, PIA		0	0-0	0-0	0-0	0	0	0	0	0	0	0	0	1	-1
20	TAINTA, ANA		0	0-0	0-0	0-0	1	0	1	0	0	0	0	0	1	-2
53	HANSEN, DESIRAE		3	1-3	1-3	0-0	0	0	0	1	0	1	0	0	6	-6
	TEAM						0	0	0	0		0				
<b>TOTALS</b>			<b>15</b>	<b>4-11</b>	<b>3-8</b>	<b>4-4</b>	<b>2</b>	<b>2</b>	<b>4</b>	<b>2</b>	<b>2</b>	<b>5</b>	<b>0</b>	<b>1</b>	<b>50</b>	

*Shooting By Period*

Period	FG	FG%	3FG	3FG%	FT	FT%
1st Qtr	4-11	36%	3-8	38%	4-4	100%
2nd Qtr	3-12	25%	1-6	17%	1-3	33%
1st Half	4-11	36%	3-8	38%	4-4	100%
1st Half	7-23	30%	4-14	29%	5-7	71%
Game	12-49	24.5%	8-28	28.6%	8-11	72.7%

**Oregon 22**

No.	Player	S	Pts	FG	3FG	FT	OR	DR	TR	PF	A	TO	Blk	Stl	Min	+/-
00	SABALLY, SATOU		7	3-4	1-2	0-0	0	2	2	0	1	1	0	1	10	7
05	CAZORLA, MAITE		0	0-0	0-0	0-0	0	0	0	0	1	0	0	1	7	4
20	IONESCU, SABRINA		5	2-2	1-1	0-0	1	0	1	0	1	1	0	0	9	5
21	BOLEY, ERIN		0	0-1	0-0	0-0	0	0	0	2	0	0	0	0	4	1
24	HEBARD, RUTHY		8	4-5	0-0	0-0	1	2	3	0	0	1	0	1	9	5
02	YAEGER, MORGAN		0	0-0	0-0	0-0	0	1	1	1	0	0	0	0	4	5
14	GIOMI, LYDIA		2	0-0	0-0	2-2	1	0	1	0	0	0	0	0	1	2
32	GILDON, OTI		0	0-2	0-0	0-0	0	0	0	0	1	0	0	1	6	6
	TEAM						0	0	0	0		1				
<b>TOTALS</b>			<b>22</b>	<b>9-14</b>	<b>2-3</b>	<b>2-2</b>	<b>3</b>	<b>5</b>	<b>8</b>	<b>3</b>	<b>4</b>	<b>4</b>	<b>0</b>	<b>4</b>	<b>50</b>	

*Shooting By Period*

Period	FG	FG%	3FG	3FG%	FT	FT%
1st Qtr	9-14	64%	2-3	67%	2-2	100%
2nd Qtr	9-16	56%	1-5	20%	2-3	67%
1st Half	9-14	64%	2-3	67%	2-2	100%
1st Half	18-30	60%	3-8	38%	4-5	80%
Game	29-63	46.0%	8-23	34.8%	12-15	80.0%

Game Notes:

Officials: Infini Robinson, Cathi Cornell, Angela Stanton  
Attendance: 6523

Start Time: 2019-03-23 01:41:41  
End Time: 2019-03-23 03:20:00  
Game Duration: 98

Score	1st	2nd	3rd	4th	TOT
PSU	15	8	11	6	<b>40</b>
Ore	22	21	20	15	<b>78</b>

Points from (This Period)	PSU	Ore
In the Paint	2	14
Off Turns	2	6
2nd Chance	0	2
Fast Break	0	2
Bench	3	2

**Official Play-By-Play**  
**Portland St. vs Oregon**  
**First Quarter**  
**March 23, 2019 at Matthew Knight Arena - Eugene, Ore.**



**Period 1**

**Starters:**

**Portland St.:** 0 BOLSTON, ASHLEY; 2 RIELLY, SIDNEY; 10 WEST, COURTNEY; 11 STOTLER, JORDAN; 23 JIMENEZ, KYLIE;

**Oregon:** 0 SABALLY, SATOU; 5 CAZORLA, MAITE; 20 IONESCU, SABRINA; 21 BOLEY, ERIN; 24 HEBARD, RUTHY;

Time	VISITORS: Portland St.	Score	Margin	HOME: Oregon
09:43	MISSED LAYUP by BOLSTON, ASHLEY			
09:41	REBOUND (OFF) by WEST, COURTNEY			
09:41	TURNOVER (TRAVEL) by WEST, COURTNEY			
09:29		2-0	H 2	GOOD! JUMPER by IONESCU, SABRINA [PNT]
09:13	GOOD! 3PTR by BOLSTON, ASHLEY	2-3	V 1	
08:47		5-3	H 2	GOOD! 3PTR by IONESCU, SABRINA
08:47				ASSIST by CAZORLA, MAITE
08:23	TURNOVER (LOSTBALL) by JIMENEZ, KYLIE			
08:23				STEAL by HEBARD, RUTHY
07:59		7-3	H 4	GOOD! LAYUP by SABALLY, SATOU
07:32				FOUL (PERSONAL) by BOLEY, ERIN
07:32	GOOD! FT by WEST, COURTNEY	7-4	H 3	
07:32	GOOD! FT by WEST, COURTNEY	7-5	H 2	
07:14				MISSED JUMPER by BOLEY, ERIN
07:10	REBOUND (DEF) by STOTLER, JORDAN			
07:04	MISSED 3PTR by JIMENEZ, KYLIE			
07:01				REBOUND (DEF) by HEBARD, RUTHY
06:41				MISSED LAYUP by HEBARD, RUTHY
06:39	REBOUND (DEF) by WEST, COURTNEY			
06:33	MISSED 3PTR by RIELLY, SIDNEY			
06:28				REBOUND (DEF) by SABALLY, SATOU
06:17				TURNOVER (TRAVEL) by HEBARD, RUTHY
06:02				FOUL (PERSONAL) by BOLEY, ERIN
06:02	GOOD! FT by BOLSTON, ASHLEY	7-6	H 1	
06:02				SUB OUT: BOLEY, ERIN
06:02				SUB IN: GILDON, OTI
06:02	SUB OUT: RIELLY, SIDNEY			
06:02	SUB IN: HANSEN, DESIRAE			
06:02	GOOD! FT by BOLSTON, ASHLEY	7-7	T	
05:26				MISSED JUMPER by GILDON, OTI
05:23				REBOUND (OFF) by HEBARD, RUTHY
05:20				MISSED 3PTR by SABALLY, SATOU
05:16				REBOUND (OFF) by IONESCU, SABRINA
05:13				TURNOVER (BADPASS) by SABALLY, SATOU
04:54	TURNOVER (BADPASS) by STOTLER, JORDAN			
04:54				STEAL by CAZORLA, MAITE
04:45				TURNOVER (BADPASS) by IONESCU, SABRINA
04:45	STEAL by BOLSTON, ASHLEY			
04:45				
04:45	SUB OUT: STOTLER, JORDAN			
04:45	SUB IN: RIELLY, SIDNEY			
04:21	MISSED JUMPER by JIMENEZ, KYLIE			
04:17				REBOUND (DEF) by HEBARD, RUTHY
04:01		9-7	H 2	GOOD! LAYUP by HEBARD, RUTHY [PNT]
04:01				ASSIST by SABALLY, SATOU
03:43				SUB OUT: CAZORLA, MAITE
03:43				SUB IN: YAEGER, MORGAN
03:33	MISSED 3PTR by BOLSTON, ASHLEY			
03:30				REBOUND (DEF) by SABALLY, SATOU
03:21		11-7	H 4	GOOD! LAYUP by HEBARD, RUTHY
03:21				ASSIST by GILDON, OTI
03:04	GOOD! 3PTR by HANSEN, DESIRAE	11-10	H 1	
03:04	ASSIST by JIMENEZ, KYLIE			
02:42		13-10	H 3	GOOD! JUMPER by HEBARD, RUTHY [PNT]
02:42				ASSIST by IONESCU, SABRINA
02:26	GOOD! 3PTR by JIMENEZ, KYLIE	13-13	T	
02:12		16-13	H 3	GOOD! 3PTR by SABALLY, SATOU
01:56	TURNOVER (BADPASS) by RIELLY, SIDNEY			
01:56				STEAL by SABALLY, SATOU
01:51		18-13	H 5	GOOD! LAYUP by SABALLY, SATOU [FB]
01:37	GOOD! LAYUP by RIELLY, SIDNEY	18-15	H 3	
01:37	ASSIST by BOLSTON, ASHLEY			
01:21		20-15	H 5	GOOD! LAYUP by HEBARD, RUTHY
01:10				SUB OUT: IONESCU, SABRINA
01:10				SUB IN: GIOMI, LYDIA
01:10				SUB OUT: HEBARD, RUTHY
01:10				SUB IN: CAZORLA, MAITE
01:10	SUB OUT: WEST, COURTNEY			
01:10	SUB IN: STOTLER, JORDAN			
01:10	SUB OUT: BOLSTON, ASHLEY			

Time	VISITORS: Portland St.	Score	Margin	HOME: Oregon
01:10	SUB IN: TAINTA, ANA			
01:10				FOUL (PERSONAL) by YAEGER, MORGAN
01:00	MISSED 3PTR by HANSEN, DESIRAE			
00:56	REBOUND (OFF) by TAINTA, ANA			
00:52	MISSED 3PTR by HANSEN, DESIRAE			
00:49				REBOUND (DEF) by YAEGER, MORGAN
00:35				MISSED LAYUP by GILDON, OTI
00:33				REBOUND (OFF) by GIOMI, LYDIA
00:33	FOUL (PERSONAL) by RIELLY, SIDNEY			
00:33		21-15	H 6	GOOD! FT by GIOMI, LYDIA
00:33	SUB OUT: RIELLY, SIDNEY			
00:33	SUB IN: JURHAR, PIA			
00:33		22-15	H 7	GOOD! FT by GIOMI, LYDIA
00:17	TURNOVER (BADPASS) by HANSEN, DESIRAE			
00:17				STEAL by GILDON, OTI
00:15	FOUL (PERSONAL) by HANSEN, DESIRAE			
00:15	SUB OUT: JIMENEZ, KYLIE			
00:15	SUB IN: BOLSTON, ASHLEY			
00:15				TURNOVER (BADPASS) by CAZORLA, MAITE

**Portland St. 15, Oregon 22**

Points from (This Period)	PSU	Ore
In the Paint	2	14
Off Turns	2	6
2nd Chance	0	2
Fast Break	0	2
Bench	3	2

**Official Box Score**  
**Portland St. vs Oregon**  
**Second Quarter Statistics Only**  
**March 23, 2019 at Matthew Knight Arena - Eugene, Ore.**



**Portland St. 8**

No.	Player	S	Pts	FG	3FG	FT	OR	DR	TR	PF	A	TO	Blk	Stl	Min	+/-
00	BOLSTON, ASHLEY		3	1-2	1-2	0-0	0	0	0	0	1	2	0	0	10	-13
02	RIELLY, SIDNEY		0	0-0	0-0	0-0	0	0	0	1	0	1	0	0	2	-6
10	WEST, COURTNEY		2	1-2	0-0	0-0	1	0	1	1	0	1	0	0	10	-13
11	STOTLER, JORDAN		0	0-4	0-2	0-0	0	0	0	0	1	0	0	0	7	-14
23	JIMENEZ, KYLIE		1	0-1	0-1	1-3	0	0	0	0	1	0	0	2	8	-9
01	DENSON, LABREA		0	0-0	0-0	0-0	0	0	0	0	0	0	0	0	0	0
04	JURHAR, PIA		2	1-1	0-0	0-0	0	0	0	0	0	0	0	0	3	1
20	TAINTA, ANA		0	0-1	0-0	0-0	0	0	0	0	0	0	0	0	3	-3
53	HANSEN, DESIRAE		0	0-1	0-1	0-0	1	2	3	0	0	1	0	0	7	-8
	TEAM						2	1	3	0		0				
<b>TOTALS</b>			<b>8</b>	<b>3-12</b>	<b>1-6</b>	<b>1-3</b>	<b>4</b>	<b>3</b>	<b>7</b>	<b>2</b>	<b>3</b>	<b>5</b>	<b>0</b>	<b>2</b>	<b>50</b>	

*Shooting By Period*

Period	FG	FG%	3FG	3FG%	FT	FT%
3rd Qtr	4-15	27%	3-8	38%	0-0	0%
4th Qtr	1-11	09%	1-6	17%	3-4	75%
2nd Half	3-12	25%	1-6	17%	1-3	33%
2nd Half	5-26	19%	4-14	29%	3-4	75%
Game	12-49	24.5%	8-28	28.6%	8-11	72.7%

**Oregon 21**

No.	Player	S	Pts	FG	3FG	FT	OR	DR	TR	PF	A	TO	Blk	Stl	Min	+/-
00	SABALLY, SATOU		7	3-4	1-2	0-1	1	3	4	0	0	0	0	1	7	8
05	CAZORLA, MAITE		4	2-2	0-0	0-0	0	0	0	0	1	1	0	1	10	13
20	IONESCU, SABRINA		0	0-2	0-1	0-0	1	1	2	0	3	1	0	0	10	13
21	BOLEY, ERIN		4	1-3	0-2	2-2	1	0	1	0	0	0	0	0	4	9
24	HEBARD, RUTHY		6	3-5	0-0	0-0	1	1	2	1	0	0	0	3	10	13
02	YAEGER, MORGAN		0	0-0	0-0	0-0	0	1	1	0	0	0	0	0	5	4
14	GIOMI, LYDIA		0	0-0	0-0	0-0	1	0	1	0	0	0	0	0	3	3
32	GILDON, OTI		0	0-0	0-0	0-0	0	0	0	0	0	0	0	0	1	2
	TEAM						0	0	0	0		0				
<b>TOTALS</b>			<b>21</b>	<b>9-16</b>	<b>1-5</b>	<b>2-3</b>	<b>5</b>	<b>6</b>	<b>11</b>	<b>1</b>	<b>4</b>	<b>2</b>	<b>0</b>	<b>5</b>	<b>50</b>	

*Shooting By Period*

Period	FG	FG%	3FG	3FG%	FT	FT%
3rd Qtr	6-15	40%	3-7	43%	5-6	83%
4th Qtr	5-18	28%	2-8	25%	3-4	75%
2nd Half	9-16	56%	1-5	20%	2-3	67%
2nd Half	11-33	33%	5-15	33%	8-10	80%
Game	29-63	46.0%	8-23	34.8%	12-15	80.0%

Game Notes:

Officials: Infini Robinson, Cathi Cornell, Angela Stanton  
 Attendance: 6523

Start Time: 2019-03-23 01:41:41  
 End Time: 2019-03-23 03:20:00  
 Game Duration: 98

Score	1st	2nd	3rd	4th	TOT
PSU	15	8	11	6	<b>40</b>
Ore	22	21	20	15	<b>78</b>

Points from (This Period)	PSU	Ore
In the Paint	4	12
Off Turns	1	4
2nd Chance	0	9
Fast Break	0	0
Bench	2	0

**Official Play-By-Play**  
**Portland St. vs Oregon**  
**Second Quarter**  
**March 23, 2019 at Matthew Knight Arena - Eugene, Ore.**



**Period 2**

**Starters:**

**Portland St.:** 0 BOLSTON,ASHLEY; 2 RIELLY,SIDNEY; 10 WEST,COURTNEY; 11 STOTLER,JORDAN; 23 JIMENEZ,KYLIE;

**Oregon:** 0 SABALLY,SATOU; 5 CAZORLA,MAITE; 20 IONESCU,SABRINA; 21 BOLEY,ERIN; 24 HEBARD,RUTHY;

Time	VISITORS: Portland St.	Score	Margin	HOME: Oregon
09:52		24-15	H 9	GOOD! JUMPER by CAZORLA, MAITE
09:31	MISSED JUMPER by TAINTA, ANA			
09:29	REBOUND (OFF) by TEAM			
09:15	MISSED 3PTR by STOTLER, JORDAN			
09:11				REBOUND (DEF) by SABALLY, SATOU
08:59				MISSED JUMPER by HEBARD, RUTHY
08:54				REBOUND (OFF) by GIOMI, LYDIA
08:41		26-15	H 11	GOOD! LAYUP by HEBARD, RUTHY
08:41				ASSIST by IONESCU, SABRINA
08:18	SUB OUT: HANSEN, DESIRAE			
08:18	SUB IN: JIMENEZ, KYLIE			
08:11	GOOD! 3PTR by BOLSTON, ASHLEY	26-18	H 8	
08:11	ASSIST by JIMENEZ, KYLIE			
07:51		28-18	H 10	GOOD! LAYUP by SABALLY, SATOU
07:28	GOOD! LAYUP by WEST, COURTNEY	28-20	H 8	
07:28	ASSIST by STOTLER, JORDAN			
07:01		30-20	H 10	GOOD! LAYUP by SABALLY, SATOU [PNT]
07:01	FOUL (PERSONAL) by WEST, COURTNEY			
07:01				SUB OUT: GIOMI, LYDIA
07:01				SUB IN: BOLEY, ERIN
07:01	SUB OUT: TAINTA, ANA			
07:01	SUB IN: RIELLY, SIDNEY			
07:01				MISSED FT by SABALLY, SATOU
06:58				REBOUND (OFF) by BOLEY, ERIN
06:53				MISSED 3PTR by BOLEY, ERIN
06:49				REBOUND (OFF) by SABALLY, SATOU
06:47		33-20	H 13	GOOD! 3PTR by SABALLY, SATOU
06:47				ASSIST by IONESCU, SABRINA
06:17	TURNOVER (LOSTBALL) by BOLSTON, ASHLEY			
06:17				STEAL by SABALLY, SATOU
05:56				MISSED JUMPER by HEBARD, RUTHY
05:53				REBOUND (OFF) by IONESCU, SABRINA
05:52	FOUL (PERSONAL) by RIELLY, SIDNEY			
05:52		34-20	H 14	GOOD! FT by BOLEY, ERIN
05:52				SUB OUT: SABALLY, SATOU
05:52				SUB IN: YAEGER, MORGAN
05:52	SUB OUT: RIELLY, SIDNEY			
05:52	SUB IN: HANSEN, DESIRAE			
05:52		35-20	H 15	GOOD! FT by BOLEY, ERIN
05:39	MISSED 3PTR by BOLSTON, ASHLEY			
05:34	REBOUND (OFF) by WEST, COURTNEY			
05:28	MISSED 3PTR by JIMENEZ, KYLIE			
05:25	REBOUND (OFF) by TEAM			
05:11	MISSED JUMPER by STOTLER, JORDAN			
05:09	REBOUND (OFF) by HANSEN, DESIRAE			
04:54	TURNOVER (BADPASS) by HANSEN, DESIRAE			
04:54				STEAL by HEBARD, RUTHY
04:47				MISSED 3PTR by BOLEY, ERIN
04:44	REBOUND (DEF) by HANSEN, DESIRAE			
04:30	MISSED 3PTR by STOTLER, JORDAN			
04:26				REBOUND (DEF) by YAEGER, MORGAN
04:16		37-20	H 17	GOOD! LAYUP by HEBARD, RUTHY
04:16				ASSIST by CAZORLA, MAITE
04:01	TURNOVER (BADPASS) by WEST, COURTNEY			
04:01				STEAL by HEBARD, RUTHY
03:45		39-20	H 19	GOOD! JUMPER by BOLEY, ERIN
03:45				ASSIST by IONESCU, SABRINA
03:42	TIMEOUT 30SEC			
03:42				
03:42	SUB OUT: STOTLER, JORDAN			
03:42	SUB IN: JURHAR, PIA			
03:14	TURNOVER (BADPASS) by BOLSTON, ASHLEY			
03:14				STEAL by HEBARD, RUTHY
02:45				MISSED 3PTR by IONESCU, SABRINA
02:42	REBOUND (DEF) by TEAM			
02:42				SUB OUT: BOLEY, ERIN
02:42				SUB IN: SABALLY, SATOU
02:23	MISSED 3PTR by HANSEN, DESIRAE			
02:20				REBOUND (DEF) by IONESCU, SABRINA
02:16				MISSED 3PTR by SABALLY, SATOU



Time	VISITORS: Portland St.	Score	Margin	HOME: Oregon
02:13	REBOUND (DEF) by HANSEN, DESIRAE			
01:56	GOOD! JUMPER by JURHAR, PIA [PNT]	39-22	H 17	
01:56	ASSIST by BOLSTON, ASHLEY			
01:39				MISSED JUMPER by IONESCU, SABRINA
01:33				REBOUND (OFF) by HEBARD, RUTHY
01:33		41-22	H 19	GOOD! LAYUP by HEBARD, RUTHY
01:20	MISSED JUMPER by WEST, COURTNEY			
01:17				REBOUND (DEF) by SABALLY, SATOU
01:07				TURNOVER (BADPASS) by IONESCU, SABRINA
01:07	STEAL by JIMENEZ, KYLIE			
00:58				FOUL (PERSONAL) by HEBARD, RUTHY
00:58	GOOD! FT by JIMENEZ, KYLIE	41-23	H 18	
00:58	MISSED FT by JIMENEZ, KYLIE			
00:58	REBOUND (OFF) by TEAM			
00:58				SUB OUT: YAEGER, MORGAN
00:58				SUB IN: GILDON, OTI
00:58	SUB OUT: JURHAR, PIA			
00:58	SUB IN: STOTLER, JORDAN			
00:58	SUB OUT: HANSEN, DESIRAE			
00:58	SUB IN: RIELLY, SIDNEY			
00:58	MISSED FT by JIMENEZ, KYLIE			
00:55				REBOUND (DEF) by SABALLY, SATOU
00:42		43-23	H 20	GOOD! LAYUP by CAZORLA, MAITE
00:21	TURNOVER (BADPASS) by RIELLY, SIDNEY			
00:21				STEAL by CAZORLA, MAITE
00:16				TURNOVER (BADPASS) by CAZORLA, MAITE
00:16	STEAL by JIMENEZ, KYLIE			
00:01	MISSED JUMPER by STOTLER, JORDAN			
00:00				REBOUND (DEF) by HEBARD, RUTHY

### Portland St. 23, Oregon 43

Points from (This Period)	PSU	Ore
In the Paint	4	12
Off Turns	1	4
2nd Chance	0	9
Fast Break	0	0
Bench	2	0

**Official Box Score**  
**Portland St. vs Oregon**  
**Second Half Statistics Only**  
**March 23, 2019 at Matthew Knight Arena - Eugene, Ore.**



**Portland St. 17**

No.	Player	S	Pts	FG	3FG	FT	OR	DR	TR	PF	A	TO	Blk	Stl	Min	+/-
00	BOLSTON, ASHLEY		11	3-6	3-5	2-2	0	3	3	0	0	1	1	0	19	-18
02	RIELLY, SIDNEY		0	0-3	0-1	0-0	0	0	0	1	1	1	0	1	12	-18
04	JURHAR, PIA		0	0-1	0-0	0-0	0	1	1	0	1	0	0	0	6	-3
10	WEST, COURTNEY		1	0-2	0-0	1-2	1	0	1	2	0	2	0	0	10	-15
11	STOTLER, JORDAN		0	0-2	0-0	0-0	0	1	1	1	1	0	1	0	7	-6
20	TAINTA, ANA		2	1-3	0-1	0-0	1	0	1	2	0	2	0	1	9	-2
23	JIMENEZ, KYLIE		3	1-5	1-5	0-0	0	2	2	0	2	1	0	0	20	-18
53	HANSEN, DESIRAE		0	0-4	0-2	0-0	0	2	2	1	0	0	0	0	15	-10
01	DENSON, LABREA		0	0-0	0-0	0-0	0	0	0	0	0	0	0	0	1	0
	TEAM		0	0-0	0-0	0-0	0	1	1	0	0	0	0	0	0	0
<b>TOTALS</b>			<b>17</b>	<b>5-26</b>	<b>4-14</b>	<b>3-4</b>	<b>2</b>	<b>10</b>	<b>12</b>	<b>7</b>	<b>5</b>	<b>7</b>	<b>2</b>	<b>2</b>	<b>99</b>	

*Shooting By Period*

Period	FG	FG%	3FG	3FG%	FT	FT%
3rd Qtr	4-15	27%	3-8	38%	0-0	0%
4th Qtr	1-11	09%	1-6	17%	3-4	75%
2nd Half	5-26	19%	4-14	29%	3-4	75%
Game	12-49	24.5%	8-28	28.6%	8-11	72.7%

*Last FG Half: PSU 4th-06:07*

**Oregon 35**

No.	Player	S	Pts	FG	3FG	FT	OR	DR	TR	PF	A	TO	Blk	Stl	Min	+/-
00	SABALLY, SATOU		7	2-4	2-4	1-2	4	6	10	0	0	0	0	1	15	23
02	YAEGER, MORGAN		0	0-1	0-1	0-0	0	0	0	0	1	1	0	1	8	-3
05	CAZORLA, MAITE		3	1-4	1-3	0-0	0	2	2	0	2	2	1	2	16	16
14	GIOMI, LYDIA		5	2-7	0-0	1-2	2	0	2	0	0	0	1	0	12	-1
20	IONESCU, SABRINA		7	3-5	1-3	0-0	0	2	2	2	4	2	0	0	14	21
21	BOLEY, ERIN		3	1-5	1-4	0-0	1	1	2	0	2	0	0	1	18	18
24	HEBARD, RUTHY		8	2-3	0-0	4-4	1	5	6	2	0	0	0	0	8	19
32	GILDON, OTI		2	0-4	0-0	2-2	3	1	4	0	0	1	0	2	9	-3
	TEAM		0	0-0	0-0	0-0	1	2	3	0	0	0	0	0	0	0
<b>TOTALS</b>			<b>35</b>	<b>11-33</b>	<b>5-15</b>	<b>8-10</b>	<b>12</b>	<b>19</b>	<b>31</b>	<b>4</b>	<b>9</b>	<b>6</b>	<b>2</b>	<b>7</b>	<b>99</b>	

*Shooting By Period*

Period	FG	FG%	3FG	3FG%	FT	FT%
3rd Qtr	6-15	40%	3-7	43%	5-6	83%
4th Qtr	5-18	28%	2-8	25%	3-4	75%
2nd Half	11-33	33%	5-15	33%	8-10	80%
Game	29-63	46.0%	8-23	34.8%	12-15	80.0%

*Last FG Half: Ore 4th-04:46*

*Game Notes:*

Officials: *Infini Robinson, Cathi Cornell, Angela Stanton*  
 Attendance: *6523*

Start Time: *2019-03-23 01:41:41*  
 End Time: *2019-03-23 03:20:00*  
 Game Duration: *98*

Score	1st	2nd	3rd	4th	TOT
PSU	15	8	11	6	<b>40</b>
Ore	22	21	20	15	<b>78</b>

Points from (This Period)	PSU	Ore
In the Paint	2	12
Off Turns	2	5
2nd Chance	0	7
Fast Break	0	4
Bench	2	7

**Official Box Score**  
**Portland St. vs Oregon**  
**Third Quarter Statistics Only**  
**March 23, 2019 at Matthew Knight Arena - Eugene, Ore.**



**Portland St. 17**

No.	Player	S	Pts	FG	3FG	FT	OR	DR	TR	PF	A	TO	Blk	Stl	Min	+/-
00	BOLSTON, ASHLEY		6	2-3	2-3	0-0	0	2	2	0	0	0	0	0	10	-9
02	RIELLY, SIDNEY		0	0-2	0-1	0-0	0	0	0	0	1	0	0	0	5	-7
10	WEST, COURTNEY		0	0-1	0-0	0-0	1	0	1	2	0	1	0	0	4	-7
11	STOTLER, JORDAN		0	0-2	0-0	0-0	0	1	1	1	1	0	1	0	6	-6
23	JIMENEZ, KYLIE		3	1-3	1-3	0-0	0	2	2	0	1	1	0	0	10	-9
01	DENSON, LABREA		0	0-0	0-0	0-0	0	0	0	0	0	0	0	0	0	0
04	JURHAR, PIA		0	0-1	0-0	0-0	0	0	0	0	1	0	0	0	3	-2
20	TAINTA, ANA		2	1-2	0-0	0-0	1	0	1	0	0	2	0	0	5	-2
53	HANSEN, DESIRAE		0	0-1	0-1	0-0	0	1	1	1	0	0	0	0	7	-3
	TEAM						0	0	0	0		0				
<b>TOTALS</b>			<b>11</b>	<b>4-15</b>	<b>3-8</b>	<b>0-0</b>	<b>2</b>	<b>6</b>	<b>8</b>	<b>4</b>	<b>4</b>	<b>4</b>	<b>1</b>	<b>0</b>	<b>50</b>	

*Shooting By Period*

Period	FG	FG%	3FG	3FG%	FT	FT%
2nd Half	0-0	0%	0-0	0%	0-0	0%
Game	12-49	24.5%	8-28	28.6%	8-11	72.7%

**Oregon 35**

No.	Player	S	Pts	FG	3FG	FT	OR	DR	TR	PF	A	TO	Blk	Stl	Min	+/-
00	SABALLY, SATOU		0	0-1	0-1	0-0	3	2	5	0	0	0	0	0	7	12
05	CAZORLA, MAITE		3	1-3	1-2	0-0	0	2	2	0	2	1	1	2	7	9
20	IONESCU, SABRINA		5	2-2	1-1	0-0	0	2	2	1	2	1	0	0	9	12
21	BOLEY, ERIN		3	1-4	1-3	0-0	0	0	0	0	0	0	0	0	10	9
24	HEBARD, RUTHY		4	0-1	0-0	4-4	0	2	2	0	0	0	0	0	4	10
02	YAEGER, MORGAN		0	0-0	0-0	0-0	0	0	0	0	1	0	0	1	3	-3
14	GIOMI, LYDIA		5	2-2	0-0	1-2	0	0	0	0	0	0	1	0	6	-1
32	GILDON, OTI		0	0-2	0-0	0-0	0	0	0	0	0	0	0	1	3	-3
	TEAM						0	1	1	0		0				
<b>TOTALS</b>			<b>20</b>	<b>6-15</b>	<b>3-7</b>	<b>5-6</b>	<b>3</b>	<b>9</b>	<b>12</b>	<b>1</b>	<b>5</b>	<b>2</b>	<b>2</b>	<b>4</b>	<b>50</b>	

*Shooting By Period*

Period	FG	FG%	3FG	3FG%	FT	FT%
2nd Half	0-0	0%	0-0	0%	0-0	0%
Game	29-63	46.0%	8-23	34.8%	12-15	80.0%

Game Notes:

Officials: **Infini Robinson, Cathi Cornell, Angela Stanton**  
 Attendance: **6523**

Start Time: **2019-03-23 01:41:41**  
 End Time: **2019-03-23 03:20:00**  
 Game Duration: **98**

Score	1st	2nd	3rd	4th	TOT
PSU	15	8	11	6	<b>40</b>
Ore	22	21	20	15	<b>78</b>

Points from (This Period)	PSU	Ore
In the Paint	2	6
Off Turns	0	3
2nd Chance	0	2
Fast Break	0	2
Bench	2	5

**Official Play-By-Play**  
**Portland St. vs Oregon**  
**Third Quarter**  
**March 23, 2019 at Matthew Knight Arena - Eugene, Ore.**



**Period 3**

**Starters:**

**Portland St.:** 0 BOLSTON,ASHLEY; 2 RIELLY,SIDNEY; 10 WEST,COURTNEY; 11 STOTLER,JORDAN; 23 JIMENEZ,KYLIE;

**Oregon:** 0 SABALLY,SATOU; 5 CAZORLA,MAITE; 20 IONESCU,SABRINA; 21 BOLEY,ERIN; 24 HEBARD,RUTHY;

Time	VISITORS: Portland St.	Score	Margin	HOME: Oregon
09:47	MISSED 3PTR by JIMENEZ, KYLIE			
09:43				REBOUND (DEF) by SABALLY, SATOU
09:31				MISSED JUMPER by BOLEY, ERIN
09:28	REBOUND (DEF) by JIMENEZ, KYLIE			
09:20	MISSED 3PTR by RIELLY, SIDNEY			
09:17				REBOUND (DEF) by HEBARD, RUTHY
09:12		46-23	H 23	GOOD! 3PTR by CAZORLA, MAITE
09:12				ASSIST by IONESCU, SABRINA
08:57	MISSED JUMPER by STOTLER, JORDAN			
08:53				REBOUND (DEF) by IONESCU, SABRINA
08:23		49-23	H 26	GOOD! 3PTR by IONESCU, SABRINA
08:23				ASSIST by CAZORLA, MAITE
08:04	MISSED JUMPER by RIELLY, SIDNEY			
08:04				BLOCK by CAZORLA, MAITE
07:58				REBOUND (DEF) by CAZORLA, MAITE
07:50				MISSED LAYUP by HEBARD, RUTHY
07:47				REBOUND (OFF) by SABALLY, SATOU
07:33				MISSED 3PTR by SABALLY, SATOU
07:29	REBOUND (DEF) by BOLSTON, ASHLEY			
07:19	MISSED LAYUP by WEST, COURTNEY			
07:16	REBOUND (OFF) by WEST, COURTNEY			
07:06	MISSED 3PTR by JIMENEZ, KYLIE			
07:03				REBOUND (DEF) by TEAM
07:03	SUB OUT: STOTLER, JORDAN			
07:03	SUB IN: HANSEN, DESIRAE			
06:50	FOUL (PERSONAL) by WEST, COURTNEY			
06:50		50-23	H 27	GOOD! FT by HEBARD, RUTHY
06:50		51-23	H 28	GOOD! FT by HEBARD, RUTHY
06:29	TURNOVER (BADPASS) by WEST, COURTNEY			
06:29				STEAL by CAZORLA, MAITE
06:23				MISSED 3PTR by BOLEY, ERIN
06:18				REBOUND (OFF) by SABALLY, SATOU
06:14	FOUL (PERSONAL) by WEST, COURTNEY			
06:14		52-23	H 29	GOOD! FT by HEBARD, RUTHY
06:14		53-23	H 30	GOOD! FT by HEBARD, RUTHY
06:14	SUB OUT: WEST, COURTNEY			
06:14	SUB IN: JURHAR, PIA			
06:01	MISSED 3PTR by BOLSTON, ASHLEY			
05:58				REBOUND (DEF) by HEBARD, RUTHY
05:58	FOUL (PERSONAL) by HANSEN, DESIRAE			
05:58				SUB OUT: HEBARD, RUTHY
05:58				SUB IN: GIOMI, LYDIA
05:42				MISSED 3PTR by CAZORLA, MAITE
05:39	REBOUND (DEF) by JIMENEZ, KYLIE			
05:34	TURNOVER (BADPASS) by JIMENEZ, KYLIE			
05:34				STEAL by CAZORLA, MAITE
05:29				MISSED LAYUP by CAZORLA, MAITE
05:26				REBOUND (OFF) by SABALLY, SATOU
05:23				TURNOVER (TRAVEL) by IONESCU, SABRINA
05:23	SUB OUT: RIELLY, SIDNEY			
05:23	SUB IN: TAINTA, ANA			
04:55	MISSED LAYUP by JURHAR, PIA			
04:46	REBOUND (OFF) by TAINTA, ANA			
04:46	MISSED LAYUP by TAINTA, ANA			
04:46				BLOCK by GIOMI, LYDIA
04:43				REBOUND (DEF) by CAZORLA, MAITE
04:35		55-23	H 32	GOOD! LAYUP by GIOMI, LYDIA [FB]
04:35				ASSIST by IONESCU, SABRINA
04:22	GOOD! 3PTR by JIMENEZ, KYLIE	55-26	H 29	
04:22	ASSIST by JURHAR, PIA			
04:01		58-26	H 32	GOOD! 3PTR by BOLEY, ERIN
04:01				ASSIST by CAZORLA, MAITE
03:41	MISSED 3PTR by HANSEN, DESIRAE			
03:37				REBOUND (DEF) by SABALLY, SATOU
03:30				MISSED 3PTR by BOLEY, ERIN
03:27	REBOUND (DEF) by TEAM			
03:27				FOUL (PERSONAL) by IONESCU, SABRINA
03:27				SUB OUT: SABALLY, SATOU
03:27				SUB IN: GILDON, OTI

Time	VISITORS: Portland St.	Score	Margin	HOME: Oregon
03:27				SUB OUT: CAZORLA, MAITE
03:27				SUB IN: YAEGER, MORGAN
03:27	SUB OUT: JURHAR, PIA			
03:27	SUB IN: STOTLER, JORDAN			
03:15	TURNOVER (BADPASS) by TAINTA, ANA			
03:15				STEAL by GILDON, OTI
02:56				MISSED JUMPER by GILDON, OTI
02:53	REBOUND (DEF) by STOTLER, JORDAN			
02:37	GOOD! 3PTR by BOLSTON, ASHLEY	58-29	H 29	
02:37	ASSIST by JIMENEZ, KYLIE			
02:06		60-29	H 31	GOOD! LAYUP by IONESCU, SABRINA [PNT]
01:54	GOOD! LAYUP by TAINTA, ANA	60-31	H 29	
01:54	ASSIST by STOTLER, JORDAN			
01:41		62-31	H 31	GOOD! LAYUP by GIOMI, LYDIA
01:41				ASSIST by YAEGER, MORGAN
01:24	MISSED JUMPER by STOTLER, JORDAN			
01:22				REBOUND (DEF) by IONESCU, SABRINA
00:58				MISSED JUMPER by GILDON, OTI
00:58	BLOCK by STOTLER, JORDAN			
00:50	REBOUND (DEF) by BOLSTON, ASHLEY			
00:48	TURNOVER (BADPASS) by TAINTA, ANA			
00:48				STEAL by YAEGER, MORGAN
00:36	FOUL (PERSONAL) by STOTLER, JORDAN			
00:36		63-31	H 32	GOOD! FT by GIOMI, LYDIA
00:36				SUB OUT: IONESCU, SABRINA
00:36				SUB IN: CAZORLA, MAITE
00:36	SUB OUT: TAINTA, ANA			
00:36	SUB IN: WEST, COURTNEY			
00:36	SUB OUT: STOTLER, JORDAN			
00:36	SUB IN: RIELLY, SIDNEY			
00:36				MISSED FT by GIOMI, LYDIA
00:34	REBOUND (DEF) by HANSEN, DESIRAE			
00:20	GOOD! 3PTR by BOLSTON, ASHLEY	63-34	H 29	
00:20	ASSIST by RIELLY, SIDNEY			
00:05				TURNOVER (OTHER) by CAZORLA, MAITE

### Portland St. 34, Oregon 63

Points from (This Period)	PSU	Ore
In the Paint	2	6
Off Turns	0	3
2nd Chance	0	2
Fast Break	0	2
Bench	2	5

**Official Box Score**  
**Portland St. vs Oregon**  
**Fourth Quarter Statistics Only**  
**March 23, 2019 at Matthew Knight Arena - Eugene, Ore.**



**Portland St. 6**

No.	Player	S	Pts	FG	3FG	FT	OR	DR	TR	PF	A	TO	Blk	Stl	Min	+/-
00	BOLSTON, ASHLEY		5	1-3	1-2	2-2	0	1	1	0	0	1	1	0	9	-9
02	RIELLY, SIDNEY		0	0-1	0-0	0-0	0	0	0	1	0	1	0	1	7	-11
10	WEST, COURTNEY		1	0-1	0-0	1-2	0	0	0	0	0	1	0	0	6	-8
11	STOTLER, JORDAN		0	0-0	0-0	0-0	0	0	0	0	0	0	0	0	1	0
23	JIMENEZ, KYLIE		0	0-2	0-2	0-0	0	0	0	0	1	0	0	0	10	-9
01	DENSON, LABREA		0	0-0	0-0	0-0	0	0	0	0	0	0	0	0	1	0
04	JURHAR, PIA		0	0-0	0-0	0-0	0	1	1	0	0	0	0	0	3	-1
20	TAINTA, ANA		0	0-1	0-1	0-0	0	0	0	2	0	0	0	1	4	0
53	HANSEN, DESIRAE		0	0-3	0-1	0-0	0	1	1	0	0	0	0	0	8	-7
	TEAM						0	1	1	0		0				
<b>TOTALS</b>			<b>6</b>	<b>1-11</b>	<b>1-6</b>	<b>3-4</b>	<b>0</b>	<b>4</b>	<b>4</b>	<b>3</b>	<b>1</b>	<b>3</b>	<b>1</b>	<b>2</b>	<b>49</b>	

*Shooting By Period*

Period	FG	FG%	3FG	3FG%	FT	FT%
Game	12-49	24.5%	8-28	28.6%	8-11	72.7%

**Oregon 15**

No.	Player	S	Pts	FG	3FG	FT	OR	DR	TR	PF	A	TO	Blk	Stl	Min	+/-
00	SABALLY, SATOU		7	2-3	2-3	1-2	1	4	5	0	0	0	0	1	8	11
05	CAZORLA, MAITE		0	0-1	0-1	0-0	0	0	0	0	0	1	0	0	9	7
20	IONESCU, SABRINA		2	1-3	0-2	0-0	0	0	0	1	2	1	0	0	5	9
21	BOLEY, ERIN		0	0-1	0-1	0-0	1	1	2	0	2	0	0	1	8	9
24	HEBARD, RUTHY		4	2-2	0-0	0-0	1	3	4	2	0	0	0	0	4	9
02	YAEGER, MORGAN		0	0-1	0-1	0-0	0	0	0	0	0	1	0	0	5	0
14	GIOMI, LYDIA		0	0-5	0-0	0-0	2	0	2	0	0	0	0	0	6	0
32	GILDON, OTI		2	0-2	0-0	2-2	3	1	4	0	0	1	0	1	6	0
	TEAM						1	1	2	0		0				
<b>TOTALS</b>			<b>15</b>	<b>5-18</b>	<b>2-8</b>	<b>3-4</b>	<b>9</b>	<b>10</b>	<b>19</b>	<b>3</b>	<b>4</b>	<b>4</b>	<b>0</b>	<b>3</b>	<b>49</b>	

*Shooting By Period*

Period	FG	FG%	3FG	3FG%	FT	FT%
Game	29-63	46.0%	8-23	34.8%	12-15	80.0%

Game Notes:

Officials: **Infini Robinson, Cathi Cornell, Angela Stanton**  
Attendance: **6523**

Start Time: **2019-03-23 01:41:41**  
End Time: **2019-03-23 03:20:00**  
Game Duration: **98**

Score	1st	2nd	3rd	4th	TOT
PSU	15	8	11	6	<b>40</b>
Ore	22	21	20	15	<b>78</b>

Points from (This Period)	PSU	Ore
In the Paint	0	6
Off Turns	2	2
2nd Chance	0	5
Fast Break	0	2
Bench	0	2

**Official Play-By-Play**  
**Portland St. vs Oregon**  
**Fourth Quarter**  
**March 23, 2019 at Matthew Knight Arena - Eugene, Ore.**



**Period 4**

**Starters:**

**Portland St.:** 0 BOLSTON, ASHLEY; 2 RIELLY, SIDNEY; 10 WEST, COURTNEY; 11 STOTLER, JORDAN; 23 JIMENEZ, KYLIE;

**Oregon:** 0 SABALLY, SATOU; 5 CAZORLA, MAITE; 20 IONESCU, SABRINA; 21 BOLEY, ERIN; 24 HEBARD, RUTHY;

Time	VISITORS: Portland St.	Score	Margin	HOME: Oregon
09:43				MISSED LAYUP by GIOMI, LYDIA
09:42				REBOUND (OFF) by TEAM
09:42	FOUL (PERSONAL) by RIELLY, SIDNEY			
09:30				MISSED JUMPER by GIOMI, LYDIA
09:24				REBOUND (OFF) by GILDON, OTI
09:24				MISSED LAYUP by GILDON, OTI
09:24	BLOCK by BOLSTON, ASHLEY			
09:22	REBOUND (DEF) by HANSEN, DESIRAE			
09:17	TURNOVER (BADPASS) by RIELLY, SIDNEY			
09:17				STEAL by GILDON, OTI
08:47				TURNOVER (TRAVEL) by YAEGER, MORGAN
08:47				SUB OUT: YAEGER, MORGAN
08:47				SUB IN: HEBARD, RUTHY
08:47				SUB OUT: GIOMI, LYDIA
08:47				SUB IN: IONESCU, SABRINA
08:47				SUB OUT: GILDON, OTI
08:47				SUB IN: BOLEY, ERIN
08:35	MISSED JUMPER by HANSEN, DESIRAE			
08:31				REBOUND (DEF) by SABALLY, SATOU
08:27		66-34	H 32	GOOD! 3PTR by SABALLY, SATOU
08:27				ASSIST by IONESCU, SABRINA
08:07	MISSED LAYUP by RIELLY, SIDNEY			
08:03				REBOUND (DEF) by HEBARD, RUTHY
07:45				MISSED 3PTR by BOLEY, ERIN
07:41	REBOUND (DEF) by BOLSTON, ASHLEY			
07:20	MISSED 3PTR by HANSEN, DESIRAE			
07:17				REBOUND (DEF) by HEBARD, RUTHY
07:07		68-34	H 34	GOOD! LAYUP by HEBARD, RUTHY
07:07				ASSIST by BOLEY, ERIN
06:52	TURNOVER (BADPASS) by BOLSTON, ASHLEY			
06:52				STEAL by SABALLY, SATOU
06:46				MISSED 3PTR by SABALLY, SATOU
06:43	REBOUND (DEF) by TEAM			
06:32	MISSED JUMPER by WEST, COURTNEY			
06:29	REBOUND (OFF) by TEAM			
06:29				FOUL (PERSONAL) by HEBARD, RUTHY
06:27	TURNOVER (BADPASS) by WEST, COURTNEY			
06:27				STEAL by BOLEY, ERIN
06:22		70-34	H 36	GOOD! LAYUP by IONESCU, SABRINA [FB]
06:22				ASSIST by BOLEY, ERIN
06:07	GOOD! 3PTR by BOLSTON, ASHLEY	70-37	H 33	
06:07	ASSIST by JIMENEZ, KYLIE			
05:54		72-37	H 35	GOOD! LAYUP by HEBARD, RUTHY
05:41	MISSED 3PTR by BOLSTON, ASHLEY			
05:36				REBOUND (DEF) by SABALLY, SATOU
05:28				TURNOVER (BADPASS) by IONESCU, SABRINA
05:28	STEAL by RIELLY, SIDNEY			
05:17	MISSED JUMPER by BOLSTON, ASHLEY			
05:15				REBOUND (DEF) by HEBARD, RUTHY
05:01				MISSED 3PTR by IONESCU, SABRINA
04:58				REBOUND (OFF) by BOLEY, ERIN
04:51				MISSED 3PTR by CAZORLA, MAITE
04:48				REBOUND (OFF) by HEBARD, RUTHY
04:46		75-37	H 38	GOOD! 3PTR by SABALLY, SATOU
04:46				ASSIST by IONESCU, SABRINA
04:35				FOUL (PERSONAL) by HEBARD, RUTHY
04:35				
04:35				SUB OUT: BOLEY, ERIN
04:35				SUB IN: GIOMI, LYDIA
04:35				SUB OUT: HEBARD, RUTHY
04:35				SUB IN: GILDON, OTI
04:35	SUB OUT: HANSEN, DESIRAE			
04:35	SUB IN: TAINTA, ANA			
04:35	GOOD! FT by WEST, COURTNEY	75-38	H 37	
04:35	MISSED FT by WEST, COURTNEY			
04:33				REBOUND (DEF) by SABALLY, SATOU
04:06				MISSED 3PTR by IONESCU, SABRINA
04:02				REBOUND (OFF) by SABALLY, SATOU
03:53				MISSED LAYUP by GIOMI, LYDIA
03:51				REBOUND (OFF) by TEAM

Time	VISITORS: Portland St.	Score	Margin	HOME: Oregon
03:51	SUB OUT: WEST, COURTNEY			
03:51	SUB IN: JURHAR, PIA			
03:33				MISSED LAYUP by GIOMI, LYDIA
03:32				REBOUND (OFF) by GILDON, OTI
03:32	FOUL (PERSONAL) by TAINTA, ANA			
03:32		76-38	H 38	GOOD! FT by GILDON, OTI
03:32				SUB OUT: CAZORLA, MAITE
03:32				SUB IN: BOLEY, ERIN
03:32				SUB OUT: IONESCU, SABRINA
03:32				SUB IN: YAEGER, MORGAN
03:32		77-38	H 39	GOOD! FT by GILDON, OTI
03:09	MISSED 3PTR by JIMENEZ, KYLIE			
03:05				REBOUND (DEF) by SABALLY, SATOU
02:55	FOUL (PERSONAL) by TAINTA, ANA			
02:55		78-38	H 40	GOOD! FT by SABALLY, SATOU
02:55	SUB OUT: RIELLY, SIDNEY			
02:55	SUB IN: HANSEN, DESIRAE			
02:55				MISSED FT by SABALLY, SATOU
02:52	REBOUND (DEF) by JURHAR, PIA			
02:37	MISSED 3PTR by TAINTA, ANA			
02:33				REBOUND (DEF) by GILDON, OTI
02:25				TIMEOUT 30SEC
02:25				
02:25				SUB OUT: SABALLY, SATOU
02:25				SUB IN: CAZORLA, MAITE
02:16				MISSED JUMPER by GILDON, OTI
02:13				REBOUND (OFF) by GIOMI, LYDIA
02:05				TURNOVER (BADPASS) by CAZORLA, MAITE
02:05	STEAL by TAINTA, ANA			
01:36	MISSED JUMPER by HANSEN, DESIRAE			
01:31				REBOUND (DEF) by BOLEY, ERIN
01:15				MISSED LAYUP by GIOMI, LYDIA
01:13				REBOUND (OFF) by GILDON, OTI
00:52				TURNOVER (BADPASS) by GILDON, OTI
00:52				FOUL (TECH) by IONESCU, SABRINA
00:52	GOOD! FT by BOLSTON, ASHLEY	78-39	H 39	
00:52	GOOD! FT by BOLSTON, ASHLEY	78-40	H 38	
00:52	SUB OUT: JURHAR, PIA			
00:52	SUB IN: STOTLER, JORDAN			
00:45	MISSED 3PTR by JIMENEZ, KYLIE			
00:42				REBOUND (DEF) by TEAM
00:40	SUB OUT: BOLSTON, ASHLEY			
00:40	SUB IN: DENSON, LABREA			
00:37				MISSED 3PTR by YAEGER, MORGAN
00:29				REBOUND (OFF) by GIOMI, LYDIA

### Portland St. 40, Oregon 78

Points from (This Period)	PSU	Ore
In the Paint	0	6
Off Turns	2	2
2nd Chance	0	5
Fast Break	0	2
Bench	0	2



**Official Scoring/Possession Reference Chart**  
**Portland St. vs Oregon**  
**Period 1**  
**March 23, 2019 at Matthew Knight Arena - Eugene, Ore.**



**Period 1**

**Starters:**

**Portland St.:** 0 BOLSTON,ASHLEY; 2 RIELLY,SIDNEY; 10 WEST,COURTNEY; 11 STOTLER,JORDAN; 23 JIMENEZ,KYLIE;  
**Oregon:** 0 SABALLY,SATOU; 5 CAZORLA,MAITE; 20 IONESCU,SABRINA; 21 BOLEY,ERIN; 24 HEBARD,RUTHY;

Time	VISITORS: Portland St.	Score	Margin	HOME: Oregon
09:29		2-0	H 2	GOOD! JUMPER by IONESCU, SABRINA [PNT]
09:13	GOOD! 3PTR by BOLSTON, ASHLEY	2-3	V 1	
08:47		5-3	H 2	GOOD! 3PTR by IONESCU, SABRINA
07:59		7-3	H 4	GOOD! LAYUP by SABALLY, SATOU
07:32	GOOD! FT by WEST, COURTNEY	7-4	H 3	
07:32	GOOD! FT by WEST, COURTNEY	7-5	H 2	
06:02	GOOD! FT by BOLSTON, ASHLEY	7-6	H 1	
06:02	GOOD! FT by BOLSTON, ASHLEY	7-7	T	
04:01		9-7	H 2	GOOD! LAYUP by HEBARD, RUTHY [PNT]
03:21		11-7	H 4	GOOD! LAYUP by HEBARD, RUTHY
03:04	GOOD! 3PTR by HANSEN, DESIRAE	11-10	H 1	
02:42		13-10	H 3	GOOD! JUMPER by HEBARD, RUTHY [PNT]
02:26	GOOD! 3PTR by JIMENEZ, KYLIE	13-13	T	
02:12		16-13	H 3	GOOD! 3PTR by SABALLY, SATOU
01:51		18-13	H 5	GOOD! LAYUP by SABALLY, SATOU [FB]
01:37	GOOD! LAYUP by RIELLY, SIDNEY	18-15	H 3	
01:21		20-15	H 5	GOOD! LAYUP by HEBARD, RUTHY
00:33		21-15	H 6	GOOD! FT by GIOMI, LYDIA
00:33		22-15	H 7	GOOD! FT by GIOMI, LYDIA

**Portland St. 15, Oregon 22**

**Official Scoring/Possession Reference Chart**  
**Portland St. vs Oregon**  
**Period 2**  
**March 23, 2019 at Matthew Knight Arena - Eugene, Ore.**



**Period 2**

**Starters:**

**Portland St.:** 0 BOLSTON,ASHLEY; 2 RIELLY,SIDNEY; 10 WEST,COURTNEY; 11 STOTLER,JORDAN; 23 JIMENEZ,KYLIE;  
**Oregon:** 0 SABALLY,SATOU; 5 CAZORLA,MAITE; 20 IONESCU,SABRINA; 21 BOLEY,ERIN; 24 HEBARD,RUTHY;

Time	VISITORS: Portland St.	Score	Margin	HOME: Oregon
09:52		24-15	H 9	GOOD! JUMPER by CAZORLA, MAITE
08:41		26-15	H 11	GOOD! LAYUP by HEBARD, RUTHY
08:11	GOOD! 3PTR by BOLSTON, ASHLEY	26-18	H 8	
07:51		28-18	H 10	GOOD! LAYUP by SABALLY, SATOU
07:28	GOOD! LAYUP by WEST, COURTNEY	28-20	H 8	
07:01		30-20	H 10	GOOD! LAYUP by SABALLY, SATOU [PNT]
06:47		33-20	H 13	GOOD! 3PTR by SABALLY, SATOU
05:52		34-20	H 14	GOOD! FT by BOLEY, ERIN
05:52		35-20	H 15	GOOD! FT by BOLEY, ERIN
04:16		37-20	H 17	GOOD! LAYUP by HEBARD, RUTHY
03:45		39-20	H 19	GOOD! JUMPER by BOLEY, ERIN
01:56	GOOD! JUMPER by JURHAR, PIA [PNT]	39-22	H 17	
01:33		41-22	H 19	GOOD! LAYUP by HEBARD, RUTHY
00:58	GOOD! FT by JIMENEZ, KYLIE	41-23	H 18	
00:42		43-23	H 20	GOOD! LAYUP by CAZORLA, MAITE

**Portland St. 23, Oregon 43**

**Official Scoring/Possession Reference Chart**  
**Portland St. vs Oregon**  
**Period 3**  
**March 23, 2019 at Matthew Knight Arena - Eugene, Ore.**



**Period 3**

**Starters:**

**Portland St.:** 0 BOLSTON,ASHLEY; 2 RIELLY,SIDNEY; 10 WEST,COURTNEY; 11 STOTLER,JORDAN; 23 JIMENEZ,KYLIE;  
**Oregon:** 0 SABALLY,SATOU; 5 CAZORLA,MAITE; 20 IONESCU,SABRINA; 21 BOLEY,ERIN; 24 HEBARD,RUTHY;

Time	VISITORS: Portland St.	Score	Margin	HOME: Oregon
09:12		46-23	H 23	GOOD! 3PTR by CAZORLA, MAITE
08:23		49-23	H 26	GOOD! 3PTR by IONESCU, SABRINA
06:50		50-23	H 27	GOOD! FT by HEBARD, RUTHY
06:50		51-23	H 28	GOOD! FT by HEBARD, RUTHY
06:14		52-23	H 29	GOOD! FT by HEBARD, RUTHY
06:14		53-23	H 30	GOOD! FT by HEBARD, RUTHY
04:35		55-23	H 32	GOOD! LAYUP by GIOMI, LYDIA [FB]
04:22	GOOD! 3PTR by JIMENEZ, KYLIE	55-26	H 29	
04:01		58-26	H 32	GOOD! 3PTR by BOLEY, ERIN
02:37	GOOD! 3PTR by BOLSTON, ASHLEY	58-29	H 29	
02:06		60-29	H 31	GOOD! LAYUP by IONESCU, SABRINA [PNT]
01:54	GOOD! LAYUP by TAINTA, ANA	60-31	H 29	
01:41		62-31	H 31	GOOD! LAYUP by GIOMI, LYDIA
00:36		63-31	H 32	GOOD! FT by GIOMI, LYDIA
00:20	GOOD! 3PTR by BOLSTON, ASHLEY	63-34	H 29	

**Portland St. 34, Oregon 63**

**Official Scoring/Possession Reference Chart**  
**Portland St. vs Oregon**  
**Period 4**  
**March 23, 2019 at Matthew Knight Arena - Eugene, Ore.**



**Period 4**

**Starters:**

**Portland St.:** 0 BOLSTON,ASHLEY; 2 RIELLY,SIDNEY; 10 WEST,COURTNEY; 11 STOTLER,JORDAN; 23 JIMENEZ,KYLIE;  
**Oregon:** 0 SABALLY,SATOU; 5 CAZORLA,MAITE; 20 IONESCU,SABRINA; 21 BOLEY,ERIN; 24 HEBARD,RUTHY;

Time	VISITORS: Portland St.	Score	Margin	HOME: Oregon
08:27		66-34	H 32	GOOD! 3PTR by SABALLY, SATOU
07:07		68-34	H 34	GOOD! LAYUP by HEBARD, RUTHY
06:22		70-34	H 36	GOOD! LAYUP by IONESCU, SABRINA [FB]
06:07	GOOD! 3PTR by BOLSTON, ASHLEY	70-37	H 33	
05:54		72-37	H 35	GOOD! LAYUP by HEBARD, RUTHY
04:46		75-37	H 38	GOOD! 3PTR by SABALLY, SATOU
04:35	GOOD! FT by WEST, COURTNEY	75-38	H 37	
03:32		76-38	H 38	GOOD! FT by GILDON, OTI
03:32		77-38	H 39	GOOD! FT by GILDON, OTI
02:55		78-38	H 40	GOOD! FT by SABALLY, SATOU
00:52	GOOD! FT by BOLSTON, ASHLEY	78-39	H 39	
00:52	GOOD! FT by BOLSTON, ASHLEY	78-40	H 38	

**Portland St. 40, Oregon 78**

**Official Substitutions Log**  
**Portland St. vs Oregon**  
**Period 1**  
**March 23, 2019 at Matthew Knight Arena - Eugene, Ore.**



VISITORS: Portland St.	Time	Score	HOME: Oregon
0 BOLSTON,ASHLEY			0 SABALLY,SATOU
2 RIELLY,SIDNEY			5 CAZORLA,MAITE
10 WEST,COURTNEY			20 IONESCU,SABRINA
11 STOTLER,JORDAN			21 BOLEY,ERIN
23 JIMENEZ,KYLIE			24 HEBARD,RUTHY
	06:02	6-7	SUB OUT: BOLEY,ERIN
	06:02		SUB IN: GILDON,OTI
SUB OUT: 2 RIELLY,SIDNEY	06:02		
SUB IN: 53 HANSEN,DESIRAE	06:02		
SUB OUT: 11 STOTLER,JORDAN	04:45	7-7	
SUB IN: 2 RIELLY,SIDNEY	04:45		
	03:43	7-9	SUB OUT: CAZORLA,MAITE
	03:43		SUB IN: YAEGER,MORGAN
	01:10	15-20	SUB OUT: IONESCU,SABRINA
	01:10		SUB IN: GIOMI,LYDIA
	01:10		SUB OUT: HEBARD,RUTHY
	01:10		SUB IN: CAZORLA,MAITE
SUB OUT: 10 WEST,COURTNEY	01:10		
SUB IN: 11 STOTLER,JORDAN	01:10		
SUB OUT: 0 BOLSTON,ASHLEY	01:10		
SUB IN: 20 TAINTA,ANA	01:10		
SUB OUT: 2 RIELLY,SIDNEY	00:33	15-21	
SUB IN: 4 JURHAR,PIA	00:33		
SUB OUT: 23 JIMENEZ,KYLIE	00:15	15-22	
SUB IN: 0 BOLSTON,ASHLEY	00:15		

**Portland St. 15, Oregon 22**

**Official Substitutions Log**  
**Portland St. vs Oregon**  
**Period 2**  
**March 23, 2019 at Matthew Knight Arena - Eugene, Ore.**



<b>VISITORS: Portland St.</b>	<b>Time</b>	<b>Score</b>	<b>HOME: Oregon</b>
0 BOLSTON,ASHLEY			0 SABALLY,SATOU
2 RIELLY,SIDNEY			5 CAZORLA,MAITE
10 WEST,COURTNEY			20 IONESCU,SABRINA
11 STOTLER,JORDAN			21 BOLEY,ERIN
23 JIMENEZ,KYLIE			24 HEBARD,RUTHY
SUB OUT: 53 HANSEN,DESIRAE	08:18	15-26	
SUB IN: 23 JIMENEZ,KYLIE	08:18		
	07:01	20-30	SUB OUT: GIOMI,LYDIA
	07:01		SUB IN: BOLEY,ERIN
SUB OUT: 20 TAINTA,ANA	07:01		
SUB IN: 2 RIELLY,SIDNEY	07:01		
	05:52	20-34	SUB OUT: SABALLY,SATOU
	05:52		SUB IN: YAEGER,MORGAN
SUB OUT: 2 RIELLY,SIDNEY	05:52		
SUB IN: 53 HANSEN,DESIRAE	05:52		
SUB OUT: 11 STOTLER,JORDAN	03:42	20-39	
SUB IN: 4 JURHAR,PIA	03:42		
	02:42	20-39	SUB OUT: BOLEY,ERIN
	02:42		SUB IN: SABALLY,SATOU
	00:58	23-41	SUB OUT: YAEGER,MORGAN
	00:58		SUB IN: GILDON,OTI
SUB OUT: 4 JURHAR,PIA	00:58		
SUB IN: 11 STOTLER,JORDAN	00:58		
SUB OUT: 53 HANSEN,DESIRAE	00:58		
SUB IN: 2 RIELLY,SIDNEY	00:58		

**Portland St. 23, Oregon 43**

**Official Substitutions Log  
Portland St. vs Oregon  
Period 3  
March 23, 2019 at Matthew Knight Arena - Eugene, Ore.**



VISITORS: Portland St.	Time	Score	HOME: Oregon
0 BOLSTON,ASHLEY			0 SABALLY,SATOU
2 RIELLY,SIDNEY			5 CAZORLA,MAITE
10 WEST,COURTNEY			20 IONESCU,SABRINA
11 STOTLER,JORDAN			21 BOLEY,ERIN
23 JIMENEZ,KYLIE			24 HEBARD,RUTHY
SUB OUT: 11 STOTLER,JORDAN	07:03	23-49	
SUB IN: 53 HANSEN,DESIRAE	07:03		
SUB OUT: 10 WEST,COURTNEY	06:14	23-53	
SUB IN: 4 JURHAR,PIA	06:14		
	05:58	23-53	SUB OUT: HEBARD,RUTHY
	05:58		SUB IN: GIOMI,LYDIA
SUB OUT: 2 RIELLY,SIDNEY	05:23	23-53	
SUB IN: 20 TAINTA,ANA	05:23		
	03:27	26-58	SUB OUT: SABALLY,SATOU
	03:27		SUB IN: GILDON,OTI
	03:27		SUB OUT: CAZORLA,MAITE
	03:27		SUB IN: YAEGER,MORGAN
SUB OUT: 4 JURHAR,PIA	03:27		
SUB IN: 11 STOTLER,JORDAN	03:27		
	00:36	31-63	SUB OUT: IONESCU,SABRINA
	00:36		SUB IN: CAZORLA,MAITE
SUB OUT: 20 TAINTA,ANA	00:36		
SUB IN: 10 WEST,COURTNEY	00:36		
SUB OUT: 11 STOTLER,JORDAN	00:36		
SUB IN: 2 RIELLY,SIDNEY	00:36		

**Portland St. 34, Oregon 63**

**Official Substitutions Log**  
**Portland St. vs Oregon**  
**Period 4**  
**March 23, 2019 at Matthew Knight Arena - Eugene, Ore.**



VISITORS: Portland St.	Time	Score	HOME: Oregon
0 BOLSTON,ASHLEY			0 SABALLY,SATOU
2 RIELLY,SIDNEY			5 CAZORLA,MAITE
10 WEST,COURTNEY			20 IONESCU,SABRINA
11 STOTLER,JORDAN			21 BOLEY,ERIN
23 JIMENEZ,KYLIE			24 HEBARD,RUTHY
	08:47	-	SUB OUT: YAEGER,MORGAN
	08:47		SUB IN: HEBARD,RUTHY
	08:47		SUB OUT: GIOMI,LYDIA
	08:47		SUB IN: IONESCU,SABRINA
	08:47		SUB OUT: GILDON,OTI
	08:47		SUB IN: BOLEY,ERIN
	04:35	37-75	SUB OUT: BOLEY,ERIN
	04:35		SUB IN: GIOMI,LYDIA
	04:35		SUB OUT: HEBARD,RUTHY
	04:35		SUB IN: GILDON,OTI
SUB OUT: 53 HANSEN,DESIRAE	04:35		
SUB IN: 20 TAINTA,ANA	04:35		
SUB OUT: 10 WEST,COURTNEY	03:51	38-75	
SUB IN: 4 JURHAR,PIA	03:51		
	03:32	38-76	SUB OUT: CAZORLA,MAITE
	03:32		SUB IN: BOLEY,ERIN
	03:32		SUB OUT: IONESCU,SABRINA
	03:32		SUB IN: YAEGER,MORGAN
SUB OUT: 2 RIELLY,SIDNEY	02:55	38-78	
SUB IN: 53 HANSEN,DESIRAE	02:55		
	02:25	38-78	SUB OUT: SABALLY,SATOU
	02:25		SUB IN: CAZORLA,MAITE
SUB OUT: 4 JURHAR,PIA	00:52	40-78	
SUB IN: 11 STOTLER,JORDAN	00:52		
SUB OUT: 0 BOLSTON,ASHLEY	00:40	40-78	
SUB IN: 1 DENSON,LABREA	00:40		

**Portland St. 40, Oregon 78**

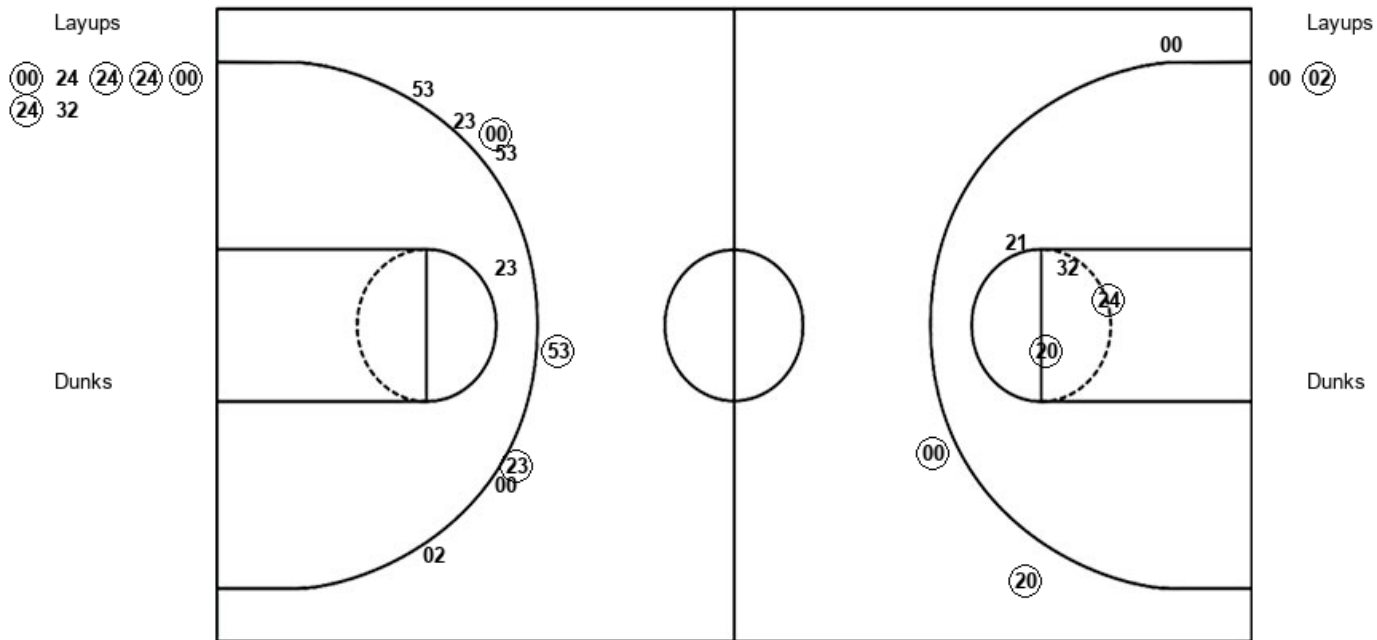


**Official Shot Chart**  
**Portland St. vs Oregon**  
**PERIOD 1 Shots**  
 March 23, 2019 at Matthew Knight Arena - Eugene, Ore.



**Oregon**

**Portland St.**



Ore : Period 1	Made	Att	Pct
Layups	5	7	71.4
Dunks	0	0	0
2PT Field Goals	7	11	63.6
3PT Field Goals	2	3	66.7
<b>Total Field Goals</b>	<b>9</b>	<b>14</b>	<b>64.3</b>

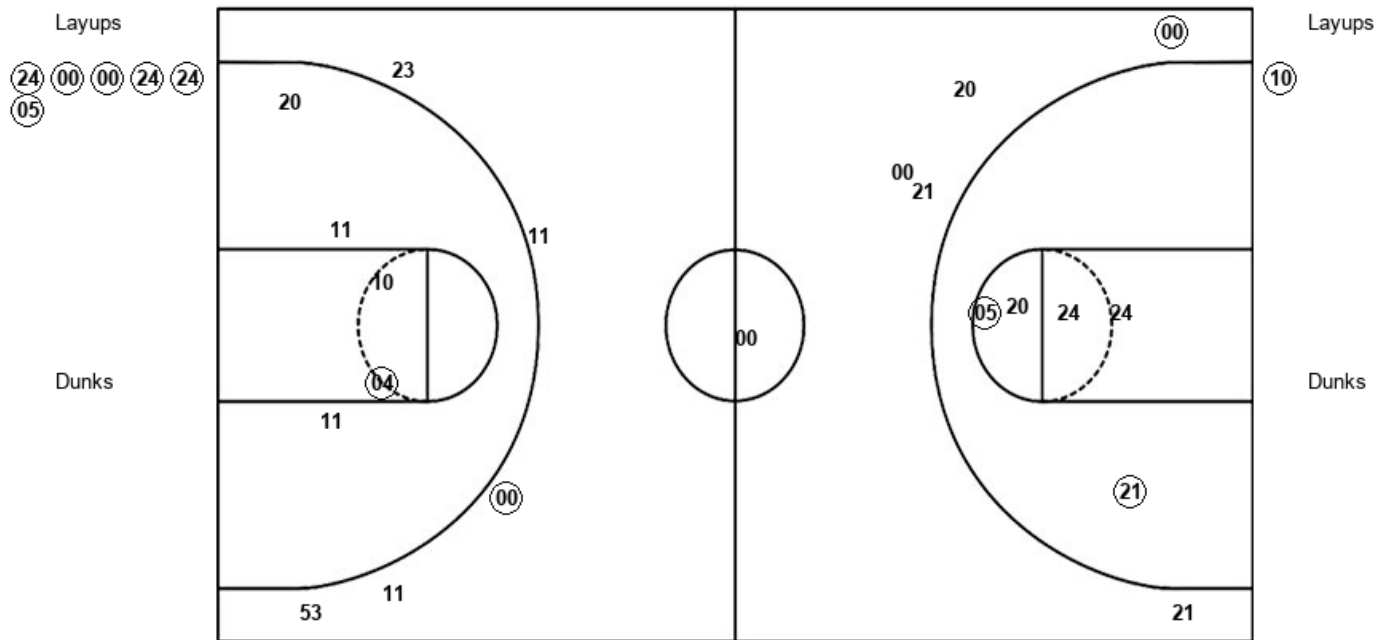
PSU : Period 1	Made	Att	Pct
Layups	1	2	50.0
Dunks	0	0	0
2PT Field Goals	1	3	33.3
3PT Field Goals	3	8	37.5
<b>Total Field Goals</b>	<b>4</b>	<b>11</b>	<b>36.4</b>

**Official Shot Chart**  
**Portland St. vs Oregon**  
**PERIOD 2 Shots**  
 March 23, 2019 at Matthew Knight Arena - Eugene, Ore.



**Oregon**

**Portland St.**



Ore : Period 2	Made	Att	Pct
Layups	6	6	100.0
Dunks	0	0	0
2PT Field Goals	8	11	72.7
3PT Field Goals	1	5	20.0
<b>Total Field Goals</b>	<b>9</b>	<b>16</b>	<b>56.3</b>

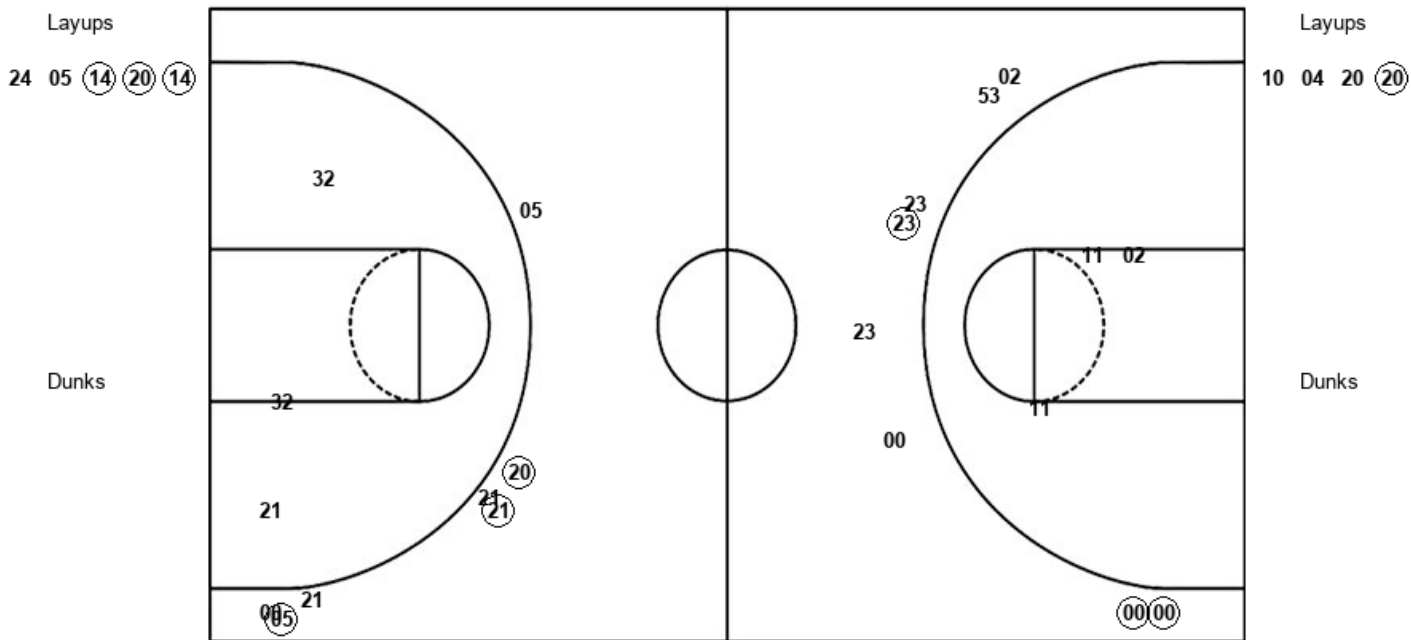
PSU : Period 2	Made	Att	Pct
Layups	1	1	100.0
Dunks	0	0	0
2PT Field Goals	2	6	33.3
3PT Field Goals	1	6	16.7
<b>Total Field Goals</b>	<b>3</b>	<b>12</b>	<b>25.0</b>

Official Shot Chart  
 Portland St. vs Oregon  
 PERIOD 3 Shots  
 March 23, 2019 at Matthew Knight Arena - Eugene, Ore.



Oregon

Portland St.



Ore : Period 3	Made	Att	Pct
Layups	3	5	60.0
Dunks	0	0	0
2PT Field Goals	3	8	37.5
3PT Field Goals	3	7	42.9
<b>Total Field Goals</b>	<b>6</b>	<b>15</b>	<b>40.0</b>

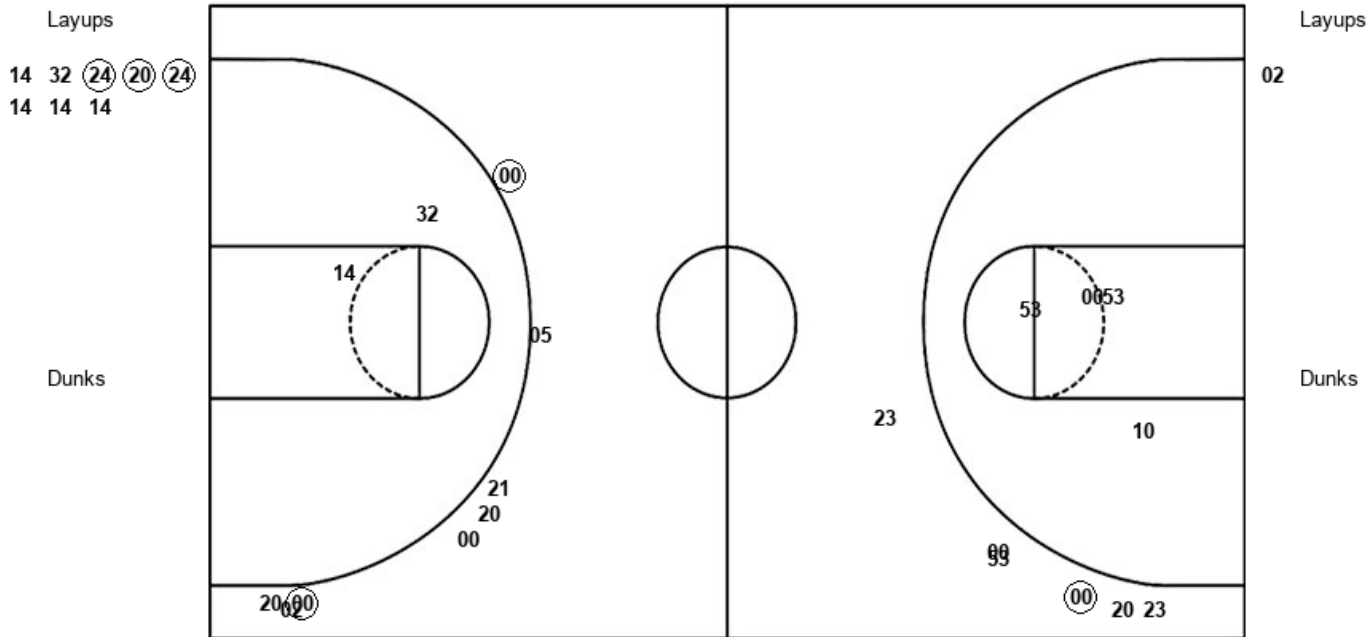
PSU : Period 3	Made	Att	Pct
Layups	1	4	25.0
Dunks	0	0	0
2PT Field Goals	1	7	14.3
3PT Field Goals	3	8	37.5
<b>Total Field Goals</b>	<b>4</b>	<b>15</b>	<b>26.7</b>

**Official Shot Chart**  
**Portland St. vs Oregon**  
**PERIOD 4 Shots**  
 March 23, 2019 at Matthew Knight Arena - Eugene, Ore.



**Oregon**

**Portland St.**



Ore : Period 4	Made	Att	Pct
Layups	3	8	37.5
Dunks	0	0	0
2PT Field Goals	3	10	30.0
3PT Field Goals	2	8	25.0
<b>Total Field Goals</b>	<b>5</b>	<b>18</b>	<b>27.8</b>

PSU : Period 4	Made	Att	Pct
Layups	0	1	00.0
Dunks	0	0	0
2PT Field Goals	0	5	00.0
3PT Field Goals	1	6	16.7
<b>Total Field Goals</b>	<b>1</b>	<b>11</b>	<b>09.1</b>

**Official Shot Chart**  
**Portland St. vs Oregon**  
**Portland St. Team Shots**  
**March 23, 2019 at Matthew Knight Arena - Eugene, Ore.**

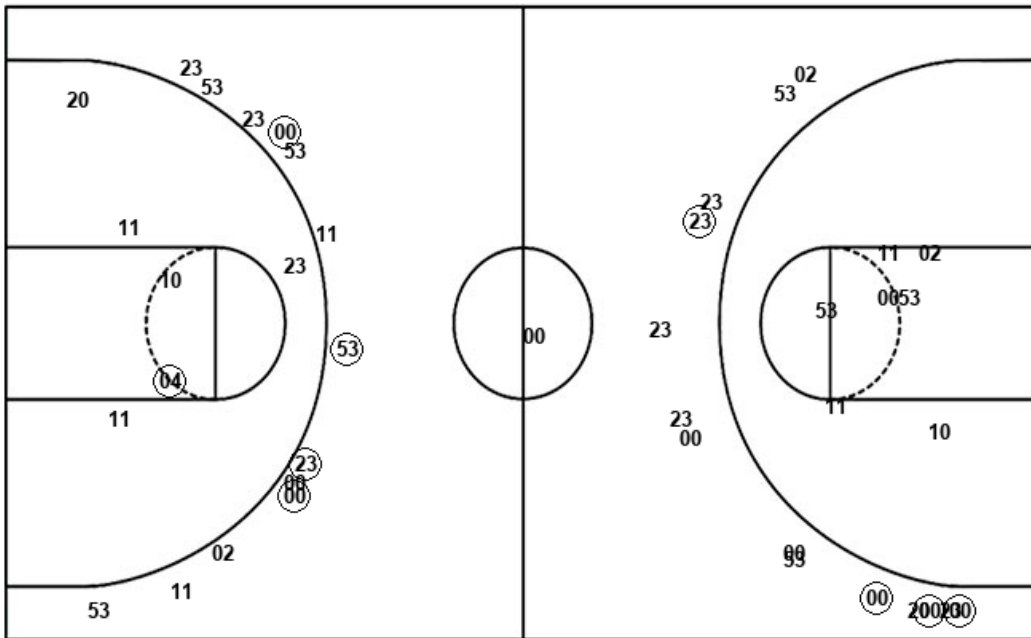


Layups

Layups

Dunks

Dunks



PSU : Period 1	Made	Att	Pct
Layups	1	2	50.0
Dunks	0	0	0
2PT Field Goals	1	3	33.3
3PT Field Goals	3	8	37.5
<b>Total Field Goals</b>	<b>4</b>	<b>11</b>	<b>36.4</b>

PSU : Period 2	Made	Att	Pct
Layups	1	1	100.0
Dunks	0	0	0
2PT Field Goals	2	6	33.3
3PT Field Goals	1	6	16.7
<b>Total Field Goals</b>	<b>3</b>	<b>12</b>	<b>25.0</b>

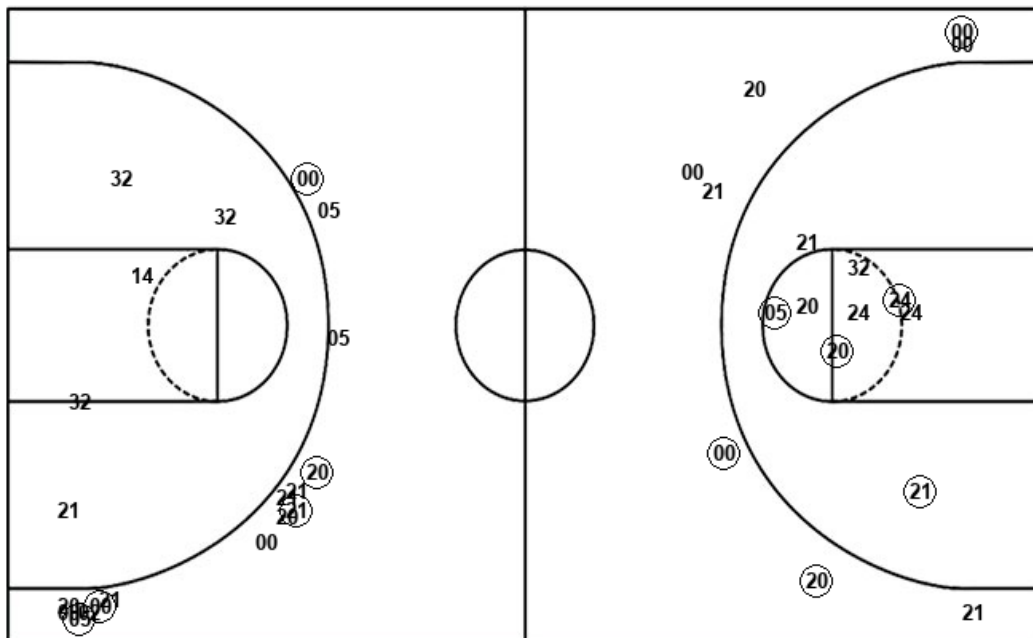
PSU : Period 3	Made	Att	Pct
Layups	1	4	25.0
Dunks	0	0	0
2PT Field Goals	1	7	14.3
3PT Field Goals	3	8	37.5
<b>Total Field Goals</b>	<b>4</b>	<b>15</b>	<b>26.7</b>

PSU : Period 4	Made	Att	Pct
Layups	0	1	00.0
Dunks	0	0	0
2PT Field Goals	0	5	00.0
3PT Field Goals	1	6	16.7
<b>Total Field Goals</b>	<b>1</b>	<b>11</b>	<b>09.1</b>

**Official Shot Chart**  
**Portland St. vs Oregon**  
**Oregon Team Shots**  
 March 23, 2019 at Matthew Knight Arena - Eugene, Ore.



Layups



Layups

Dunks

Dunks

Ore : Period 1	Made	Att	Pct
Layups	5	7	71.4
Dunks	0	0	0
2PT Field Goals	7	11	63.6
3PT Field Goals	2	3	66.7
<b>Total Field Goals</b>	<b>9</b>	<b>14</b>	<b>64.3</b>

Ore : Period 2	Made	Att	Pct
Layups	6	6	100.0
Dunks	0	0	0
2PT Field Goals	8	11	72.7
3PT Field Goals	1	5	20.0
<b>Total Field Goals</b>	<b>9</b>	<b>16</b>	<b>56.3</b>

Ore : Period 3	Made	Att	Pct
Layups	3	5	60.0
Dunks	0	0	0
2PT Field Goals	3	8	37.5
3PT Field Goals	3	7	42.9
<b>Total Field Goals</b>	<b>6</b>	<b>15</b>	<b>40.0</b>

Ore : Period 4	Made	Att	Pct
Layups	3	8	37.5
Dunks	0	0	0
2PT Field Goals	3	10	30.0
3PT Field Goals	2	8	25.0
<b>Total Field Goals</b>	<b>5</b>	<b>18</b>	<b>27.8</b>