

FINAL SCORE**Presbyterian****73****Seattle U****68****March 21, 2019 • Redhawk Center - Seattle, WA****FINAL STATISTICS**

Official Box Score
Presbyterian vs Seattle U
Game Totals -- Final Statistics
March 21, 2019 at Redhawk Center - Seattle, WA



Presbyterian 73

No.	Player	S	Pts	FG	3FG	FT	OR	DR	TR	PF	A	TO	Blk	Stl	Min	+/-
00	MARTIN, CHRIS		8	2-3	1-1	3-3	0	3	3	2	2	0	0	1	19	4
05	BELL, DAVON		17	7-13	3-6	0-0	1	2	3	3	8	4	0	1	37	8
10	FLAGLER, ADAM		15	5-9	2-4	3-4	0	1	1	1	1	0	0	1	34	13
12	HIGHTOWER, CORY		18	8-11	2-2	0-1	2	8	10	3	1	0	0	2	34	7
15	LEWIS, FRANCOIS		7	3-12	1-7	0-0	0	2	2	3	1	1	0	3	23	0
02	SHUBERT, KODY		0	0-2	0-1	0-0	0	2	2	0	1	0	0	0	10	-10
03	CROUCH, ROMEO		8	3-5	0-2	2-2	0	2	2	3	0	1	0	1	22	-2
04	DRAKE, BEN		0	0-2	0-0	0-0	0	0	0	1	0	0	0	0	1	-2
11	TETE, ARMEL		0	0-0	0-0	0-1	1	1	2	0	0	0	0	0	2	-1
20	YOUNGER, J.C.		0	0-2	0-1	0-0	1	1	2	4	0	0	0	0	18	8
	TEAM						1	2	3	0		0				
TOTALS			73	28-59	9-24	8-11	6	24	30	20	14	6	0	9	200	

Shooting By Period

Period	FG	FG%	3FG	3FG%	FT	FT%
1st Half	14-34	41%	4-14	29%	2-3	67%
2nd Half	14-25	56%	5-10	50%	6-8	75%
Game	28-59	47.5%	9-24	37.5%	8-11	72.7%

Last FG: 2nd-00:18
Biggest Run: 7-0
Largest lead: By 11 at 2-11:56
Technical Fouls: None.

Seattle U 68

No.	Player	S	Pts	FG	3FG	FT	OR	DR	TR	PF	A	TO	Blk	Stl	Min	+/-
01	CARTER, MYLES		9	3-11	0-2	3-4	1	4	5	4	2	3	1	0	30	-8
05	KAVAS, MATEJ		11	4-7	2-3	1-2	2	3	5	2	2	0	0	0	19	-5
12	DA CAMPO, MATTIA		4	1-3	0-0	2-3	4	5	9	2	2	2	0	1	36	-9
13	MEANS, MORGAN		9	2-9	1-7	4-5	0	4	4	4	3	0	0	0	35	-6
23	BROWN, TERRELL		19	9-21	0-1	1-3	5	5	10	2	4	4	0	1	39	-3
02	BURKE, IAN		1	0-1	0-1	1-2	0	3	3	1	1	0	0	0	5	4
10	NETTLES, AARON		0	0-0	0-0	0-0	0	0	0	0	0	0	0	0	1	-2
25	HUNDAL, ANAND		3	1-1	1-1	0-0	1	0	1	1	0	0	0	0	7	0
35	GRIGSBY, RILEY		12	5-7	2-3	0-0	2	1	3	1	0	3	1	0	27	4
	TEAM						2	3	5	0		1				
TOTALS			68	25-60	6-18	12-19	17	28	45	17	14	13	2	2	200	

Shooting By Period

Period	FG	FG%	3FG	3FG%	FT	FT%
1st Half	9-26	35%	3-8	38%	10-13	77%
2nd Half	16-34	47%	3-10	30%	2-6	33%
Game	25-60	41.7%	6-18	33.3%	12-19	63.2%

Last FG: 2nd-00:34
Biggest Run: 10-0
Largest lead: By 2 at 1-19:09
Technical Fouls: None.

Game Notes:

Officials: **Levon Zakarian, Jimmy Casas, Rick Batsell**
Attendance: **472**

Start Time: **2019-03-21 02:07:10**

End Time: **2019-03-21 04:08:11**

Game Duration: **121**

Score	1st	2nd	TOT
PRE	34	39	73
SEA	31	37	68

PRE led for 37:28. SEA led for 0:48.
Game was tied for 1:44.

Times tied: 2 Lead Changes: 3

Points from	PRE	SEA
In the Paint	36	36
Off Turns	9	8
2nd Chance	4	10
Fast Break	5	7
Bench	8	16

Official Box Score
Presbyterian vs Seattle U
First Half Statistics Only
March 21, 2019 at Redhawk Center - Seattle, WA



Presbyterian 34

No.	Player	S	Pts	FG	3FG	FT	OR	DR	TR	PF	A	TO	Blk	Stl	Min	+/-
00	MARTIN, CHRIS		3	1-2	0-0	1-1	0	2	2	0	2	0	0	1	10	1
05	BELL, DAVON		2	1-5	0-2	0-0	1	1	2	2	4	2	0	1	17	6
10	FLAGLER, ADAM		7	3-6	1-3	0-0	0	0	0	0	1	0	0	0	16	5
12	HIGHTOWER, CORY		12	5-6	2-2	0-0	1	6	7	2	1	0	0	2	17	3
15	LEWIS, FRANCOIS		7	3-8	1-5	0-0	0	2	2	2	1	1	0	1	13	4
02	SHUBERT, KODY		0	0-2	0-1	0-0	0	2	2	0	1	0	0	0	8	-4
03	CROUCH, ROMEO		3	1-1	0-0	1-1	0	0	0	2	0	0	0	1	10	3
04	DRAKE, BEN		0	0-2	0-0	0-0	0	0	0	1	0	0	0	0	1	-2
11	TETE, ARMEL		0	0-0	0-0	0-1	1	1	2	0	0	0	0	0	2	-1
20	YOUNGER, J.C.		0	0-2	0-1	0-0	0	0	0	2	0	0	0	0	7	0
	TEAM						1	2	3	0		0				
TOTALS			34	14-34	4-14	2-3	4	16	20	11	10	3	0	6	100	

Shooting By Period

Period	FG	FG%	3FG	3FG%	FT	FT%
1st Half	14-34	41%	4-14	29%	2-3	67%
Game	28-59	47.5%	9-24	37.5%	8-11	72.7%

Last FG Half: PRE 2nd-00:18

Seattle U 31

No.	Player	S	Pts	FG	3FG	FT	OR	DR	TR	PF	A	TO	Blk	Stl	Min	+/-
01	CARTER, MYLES		4	1-5	0-0	2-2	1	1	2	2	1	2	1	0	14	-7
05	KAVAS, MATEJ		9	3-4	2-2	1-2	0	3	3	1	1	0	0	0	12	-5
12	DA CAMPO, MATTIA		2	0-1	0-0	2-2	1	2	3	0	0	2	0	1	16	-7
13	MEANS, MORGAN		4	0-3	0-2	4-4	0	1	1	1	1	0	0	0	16	-7
23	BROWN, TERRELL		4	2-7	0-1	0-1	0	3	3	1	1	1	0	0	19	-1
02	BURKE, IAN		1	0-1	0-1	1-2	0	3	3	1	1	0	0	0	5	4
10	NETTLES, AARON		0	0-0	0-0	0-0	0	0	0	0	0	0	0	0	1	-2
25	HUNDAL, ANAND		3	1-1	1-1	0-0	1	0	1	1	0	0	0	0	6	3
35	GRIGSBY, RILEY		4	2-4	0-1	0-0	1	1	2	0	0	2	0	0	10	7
	TEAM						0	3	3	0		0				
TOTALS			31	9-26	3-8	10-13	4	17	21	7	5	7	1	1	100	

Shooting By Period

Period	FG	FG%	3FG	3FG%	FT	FT%
1st Half	9-26	35%	3-8	38%	10-13	77%
Game	25-60	41.7%	6-18	33.3%	12-19	63.2%

Last FG Half: SEA 2nd-00:34

Game Notes:

Officials: **Levon Zakarian, Jimmy Casas, Rick Batsell**
Attendance: 472

Start Time: 2019-03-21 02:07:10
End Time: 2019-03-21 04:08:11
Game Duration: 121

Score	1st	2nd	TOT
PRE	34	39	73
SEA	31	37	68

Points from (This Period)	PRE	SEA
In the Paint	20	12
Off Turns	4	4
2nd Chance	2	2
Fast Break	2	3
Bench	3	8

Official Play-By-Play
Presbyterian vs Seattle U
First Half
March 21, 2019 at Redhawk Center - Seattle, WA



Period 1

Starters:

Presbyterian: 00 MARTIN, CHRIS; 10 FLAGLER, ADAM; 12 HIGHTOWER, CORY; 15 LEWIS, FRANCOIS; 5 BELL, DAVON;

Seattle U: 1 CARTER, MYLES; 5 KAVAS, MATEJ; 12 DA CAMPO, MATTIA; 13 MEANS, MORGAN; 23 BROWN, TERRELL;

Time	VISITORS: Presbyterian	Score	Margin	HOME: Seattle U
19:40				TURNOVER (BADPASS) by CARTER, MYLES
19:40	STEAL by HIGHTOWER, CORY			
19:24	TURNOVER (BADPASS) by LEWIS, FRANCOIS			
19:09		2-0	H 2	GOOD! LAYUP by KAVAS, MATEJ
18:43	GOOD! 3PTR by HIGHTOWER, CORY	2-3	V 1	
18:43	ASSIST by FLAGLER, ADAM			
18:26				MISSED JUMPER by BROWN, TERRELL
18:23	REBOUND (DEF) by HIGHTOWER, CORY			
18:18				FOUL (PERSONAL) by MEANS, MORGAN
18:13	GOOD! LAYUP by FLAGLER, ADAM	2-5	V 3	
18:13	ASSIST by BELL, DAVON			
17:51		5-5	T	GOOD! 3PTR by KAVAS, MATEJ
17:51				ASSIST by CARTER, MYLES
17:24	GOOD! 3PTR by HIGHTOWER, CORY	5-8	V 3	
17:24	ASSIST by BELL, DAVON			
17:07	FOUL (PERSONAL) by LEWIS, FRANCOIS			
17:07		6-8	V 2	GOOD! FT by KAVAS, MATEJ
17:07	SUB OUT: LEWIS, FRANCOIS			
17:07	SUB IN: YOUNGER, J. C.			
17:07				MISSED FT by KAVAS, MATEJ
17:07	REBOUND (DEF) by HIGHTOWER, CORY			
16:55	MISSED 3PTR by BELL, DAVON			
16:53	REBOUND (OFF) by HIGHTOWER, CORY			
16:32	MISSED 3PTR by YOUNGER, J. C.			
16:29				REBOUND (DEF) by CARTER, MYLES
16:17				MISSED JUMPER by CARTER, MYLES
16:15	REBOUND (DEF) by MARTIN, CHRIS			
16:09	TURNOVER (BADPASS) by BELL, DAVON			
16:09	SUB OUT: MARTIN, CHRIS			
16:09	SUB IN: CROUCH, ROMEO			
15:56				TURNOVER (OTHER) by CARTER, MYLES
15:56				
15:40	MISSED JUMPER by BELL, DAVON			
15:40				BLOCK by CARTER, MYLES
15:39	REBOUND (OFF) by TEAM			
15:30	MISSED JUMPER by FLAGLER, ADAM			
15:27				REBOUND (DEF) by BROWN, TERRELL
15:22				TURNOVER (LOSTBALL) by BROWN, TERRELL
15:22	STEAL by HIGHTOWER, CORY			
15:17	GOOD! LAYUP by BELL, DAVON [FB]	6-10	V 4	
15:17	ASSIST by HIGHTOWER, CORY			
14:58				TURNOVER (BADPASS) by DA CAMPO, MATTIA
14:58	STEAL by CROUCH, ROMEO			
14:48	MISSED 3PTR by FLAGLER, ADAM			
14:43				REBOUND (DEF) by MEANS, MORGAN
14:35	FOUL (PERSONAL) by YOUNGER, J. C.			
14:35				SUB OUT: DA CAMPO, MATTIA
14:35				SUB IN: GRIGSBY, RILEY
14:35				SUB OUT: CARTER, MYLES
14:35				SUB IN: HUNDAL, ANAND
14:35	SUB OUT: HIGHTOWER, CORY			
14:35	SUB IN: SHUBERT, KODY			
14:35	SUB OUT: BELL, DAVON			
14:35	SUB IN: LEWIS, FRANCOIS			
14:32		8-10	V 2	GOOD! LAYUP by GRIGSBY, RILEY
14:18	GOOD! LAYUP by FLAGLER, ADAM	8-12	V 4	
14:18	ASSIST by LEWIS, FRANCOIS			
14:05				MISSED 3PTR by MEANS, MORGAN
14:03				REBOUND (OFF) by GRIGSBY, RILEY
14:03	FOUL (PERSONAL) by YOUNGER, J. C.			
14:03	SUB OUT: YOUNGER, J. C.			
14:03	SUB IN: MARTIN, CHRIS			
13:46				MISSED LAYUP by KAVAS, MATEJ
13:43	REBOUND (DEF) by MARTIN, CHRIS			
13:39	SUB OUT: FLAGLER, ADAM			
13:39	SUB IN: BELL, DAVON			
13:16				SUB OUT: KAVAS, MATEJ
13:16				SUB IN: DA CAMPO, MATTIA
13:16				SUB OUT: MEANS, MORGAN
13:16				SUB IN: BURKE, IAN

Time	VISITORS: Presbyterian	Score	Margin	HOME: Seattle U
13:16	MISSED 3PTR by LEWIS,FRANCOIS			
13:16				REBOUND (DEF) by BURKE,IAN
13:12	MISSED 3PTR by LEWIS,FRANCOIS			
13:12				MISSED 3PTR by BURKE,IAN
13:12	REBOUND (DEF) by SHUBERT,KODY			
13:11	REBOUND (OFF) by BELL,DAVON			
12:58	GOOD! LAYUP by LEWIS,FRANCOIS	8-14	V 6	
12:58	ASSIST by MARTIN,CHRIS			
12:47	FOUL (PERSONAL) by BELL,DAVON			
12:38	SUB OUT: MARTIN,CHRIS			
12:38	SUB IN: HIGHTOWER,CORY			
12:33				MISSED LAYUP by DA CAMPO,MATTIA
12:30	REBOUND (DEF) by LEWIS,FRANCOIS			
12:25	MISSED LAYUP by SHUBERT,KODY			
12:22				REBOUND (DEF) by GRIGSBY,RILEY
12:07				MISSED LAYUP by GRIGSBY,RILEY
12:03	REBOUND (DEF) by SHUBERT,KODY			
11:57	GOOD! 3PTR by LEWIS,FRANCOIS	8-17	V 9	
11:57	ASSIST by SHUBERT,KODY			
11:43		11-17	V 6	GOOD! 3PTR by HUNDAL,ANAND
11:43				ASSIST by BROWN,TERRELL
11:25	MISSED 3PTR by LEWIS,FRANCOIS			
11:21				REBOUND (DEF) by BROWN,TERRELL
11:15		13-17	V 4	GOOD! LAYUP by BROWN,TERRELL
10:45	MISSED JUMPER by HIGHTOWER,CORY			
10:41				REBOUND (DEF) by DA CAMPO,MATTIA
10:36		15-17	V 2	GOOD! LAYUP by BROWN,TERRELL
10:36				ASSIST by BURKE,IAN
10:35	FOUL (PERSONAL) by CROUCH,ROMEO			
10:35				
10:35				SUB OUT: BURKE,IAN
10:35				SUB IN: MEANS,MORGAN
10:35				SUB OUT: HUNDAL,ANAND
10:35				SUB IN: KAVAS,MATEJ
10:35				SUB OUT: GRIGSBY,RILEY
10:35				SUB IN: CARTER,MYLES
10:35	SUB OUT: SHUBERT,KODY			
10:35	SUB IN: FLAGLER,ADAM			
10:35				MISSED FT by BROWN,TERRELL
10:35	REBOUND (DEF) by HIGHTOWER,CORY			
10:22	GOOD! LAYUP by CROUCH,ROMEO	15-19	V 4	
10:22				FOUL (PERSONAL) by BROWN,TERRELL
10:22	GOOD! FT by CROUCH,ROMEO	15-20	V 5	
10:04				MISSED JUMPER by CARTER,MYLES
10:01				REBOUND (OFF) by DA CAMPO,MATTIA
09:54				MISSED JUMPER by MEANS,MORGAN
09:51	REBOUND (DEF) by HIGHTOWER,CORY			
09:43	MISSED 3PTR by LEWIS,FRANCOIS			
09:40				REBOUND (DEF) by TEAM
09:31	FOUL (PERSONAL) by HIGHTOWER,CORY			
09:20		18-20	V 2	GOOD! 3PTR by KAVAS,MATEJ
09:20				ASSIST by MEANS,MORGAN
08:54	GOOD! 3PTR by FLAGLER,ADAM	18-23	V 5	
08:54	ASSIST by BELL,DAVON			
08:34				MISSED LAYUP by CARTER,MYLES
08:32	REBOUND (DEF) by TEAM			
08:32				SUB OUT: BROWN,TERRELL
08:32				SUB IN: GRIGSBY,RILEY
08:21	GOOD! LAYUP by HIGHTOWER,CORY	18-25	V 7	
08:21	ASSIST by BELL,DAVON			
07:54				TURNOVER (LOSTBALL) by GRIGSBY,RILEY
07:54	STEAL by BELL,DAVON			
07:54				FOUL (PERSONAL) by KAVAS,MATEJ
07:54				
07:54				SUB OUT: MEANS,MORGAN
07:54				SUB IN: BROWN,TERRELL
07:54	SUB OUT: HIGHTOWER,CORY			
07:54	SUB IN: DRAKE,BEN			
07:45	MISSED JUMPER by LEWIS,FRANCOIS			
07:42				REBOUND (DEF) by KAVAS,MATEJ
07:34	FOUL (PERSONAL) by DRAKE,BEN			
07:34		19-25	V 6	GOOD! FT by CARTER,MYLES
07:34		20-25	V 5	GOOD! FT by CARTER,MYLES
07:23	MISSED JUMPER by DRAKE,BEN			
07:20				REBOUND (DEF) by TEAM
07:00				TURNOVER (LOSTBALL) by DA CAMPO,MATTIA
07:00	STEAL by LEWIS,FRANCOIS			
06:41	MISSED JUMPER by DRAKE,BEN			
06:39				REBOUND (DEF) by KAVAS,MATEJ
06:32				SUB OUT: DA CAMPO,MATTIA

Time	VISITORS: Presbyterian	Score	Margin	HOME: Seattle U
06:32				SUB IN: MEANS,MORGAN
06:32	SUB OUT: DRAKE,BEN			
06:32	SUB IN: HIGHTOWER,CORY			
06:32	SUB OUT: CROUCH,ROMEO			
06:32	SUB IN: MARTIN,CHRIS			
06:23				MISSED JUMPER by CARTER,MYLES
06:20	REBOUND (DEF) by HIGHTOWER,CORY			
06:14	SUB OUT: LEWIS,FRANCOIS			
06:14	SUB IN: YOUNGER,J.C.			
05:56	MISSED JUMPER by YOUNGER,J.C.			
05:54				REBOUND (DEF) by KAVAS,MATEJ
05:34		22-25	V 3	GOOD! JUMPER by GRIGSBY,RILEY [PNT]
05:34				ASSIST by KAVAS,MATEJ
05:06	MISSED 3PTR by BELL,DAVON			
05:04				REBOUND (DEF) by TEAM
05:03				SUB OUT: KAVAS,MATEJ
05:03				SUB IN: DA CAMPO,MATTIA
05:03	SUB OUT: BELL,DAVON			
05:03	SUB IN: SHUBERT,KODY			
04:50				TURNOVER (BADPASS) by GRIGSBY,RILEY
04:50	STEAL by MARTIN,CHRIS			
04:42	MISSED LAYUP by MARTIN,CHRIS			
04:39				REBOUND (DEF) by BROWN,TERRELL
04:35				MISSED LAYUP by BROWN,TERRELL
04:32				REBOUND (OFF) by CARTER,MYLES
04:31		24-25	V 1	GOOD! DUNK by CARTER,MYLES
04:10	GOOD! LAYUP by HIGHTOWER,CORY [PNT]	24-27	V 3	
03:55				MISSED 3PTR by BROWN,TERRELL
03:51	REBOUND (DEF) by TEAM			
03:49				
03:49				SUB OUT: GRIGSBY,RILEY
03:49				SUB IN: BURKE,IAN
03:49	SUB OUT: MARTIN,CHRIS			
03:49	SUB IN: LEWIS,FRANCOIS			
03:49	SUB OUT: FLAGLER,ADAM			
03:49	SUB IN: BELL,DAVON			
03:42	SUB OUT: YOUNGER,J.C.			
03:42	SUB IN: CROUCH,ROMEO			
03:32	MISSED 3PTR by SHUBERT,KODY			
03:29				REBOUND (DEF) by BURKE,IAN
03:28	FOUL (PERSONAL) by CROUCH,ROMEO			
03:28	SUB OUT: CROUCH,ROMEO			
03:28	SUB IN: YOUNGER,J.C.			
03:28		25-27	V 2	GOOD! FT by BURKE,IAN [FB]
03:28				MISSED FT by BURKE,IAN
03:28	REBOUND (DEF) by LEWIS,FRANCOIS			
03:19				FOUL (PERSONAL) by BURKE,IAN
03:07	GOOD! JUMPER by LEWIS,FRANCOIS [PNT]	25-29	V 4	
02:53				MISSED 3PTR by MEANS,MORGAN
02:50	REBOUND (DEF) by BELL,DAVON			
02:35	TURNOVER (BADPASS) by BELL,DAVON			
02:35				STEAL by DA CAMPO,MATTIA
02:32	FOUL (PERSONAL) by LEWIS,FRANCOIS			
02:32				SUB OUT: BURKE,IAN
02:32				SUB IN: NETTLES,AARON
02:32	SUB OUT: LEWIS,FRANCOIS			
02:32	SUB IN: TETE,ARMEL			
02:32	SUB OUT: SHUBERT,KODY			
02:32	SUB IN: MARTIN,CHRIS			
02:32		26-29	V 3	GOOD! FT by DA CAMPO,MATTIA [FB]
02:32	SUB OUT: YOUNGER,J.C.			
02:32	SUB IN: FLAGLER,ADAM			
02:32		27-29	V 2	GOOD! FT by DA CAMPO,MATTIA [FB]
02:32				TIMEOUT 30SEC
02:08	GOOD! LAYUP by MARTIN,CHRIS	27-31	V 4	
02:08				FOUL (PERSONAL) by CARTER,MYLES
02:08	GOOD! FT by MARTIN,CHRIS	27-32	V 5	
01:59				MISSED JUMPER by BROWN,TERRELL
01:57	REBOUND (DEF) by TETE,ARMEL			
01:57				FOUL (PERSONAL) by CARTER,MYLES
01:57				SUB OUT: CARTER,MYLES
01:57				SUB IN: HUNDAL,ANAND
01:46	MISSED JUMPER by BELL,DAVON			
01:43				REBOUND (DEF) by DA CAMPO,MATTIA
01:31				MISSED JUMPER by BROWN,TERRELL
01:29	REBOUND (DEF) by HIGHTOWER,CORY			
01:21	GOOD! LAYUP by HIGHTOWER,CORY	27-34	V 7	
01:21	ASSIST by MARTIN,CHRIS			
01:08	FOUL (PERSONAL) by BELL,DAVON			
01:08		28-34	V 6	GOOD! FT by MEANS,MORGAN

Time	VISITORS: Presbyterian	Score	Margin	HOME: Seattle U
01:08				SUB OUT: DA CAMPO,MATTIA
01:08				SUB IN: GRIGSBY,RILEY
01:08				SUB OUT: NETTLES,AARON
01:08				SUB IN: BURKE,IAN
01:08	SUB OUT: BELL,DAVON			
01:08	SUB IN: SHUBERT,KODY			
01:08		29-34	V 5	GOOD! FT by MEANS,MORGAN
00:54	MISSED 3PTR by FLAGLER,ADAM			
00:52	REBOUND (OFF) by TETE,ARMEL			
00:52				FOUL (PERSONAL) by HUNDAL,ANAND
00:52	MISSED FT by TETE,ARMEL			
00:52				REBOUND (DEF) by BURKE,IAN
00:25				MISSED 3PTR by GRIGSBY,RILEY
00:23				REBOUND (OFF) by HUNDAL,ANAND
00:06	FOUL (PERSONAL) by HIGHTOWER,CORY			
00:06		30-34	V 4	GOOD! FT by MEANS,MORGAN
00:06				SUB OUT: HUNDAL,ANAND
00:06				SUB IN: DA CAMPO,MATTIA
00:06		31-34	V 3	GOOD! FT by MEANS,MORGAN
00:06	TIMEOUT 30SEC			
00:06	SUB OUT: MARTIN,CHRIS			
00:06	SUB IN: YOUNGER,J. C.			
00:06	SUB OUT: SHUBERT,KODY			
00:06	SUB IN: BELL,DAVON			
00:06	SUB OUT: TETE,ARMEL			
00:06	SUB IN: LEWIS,FRANCOIS			

Presbyterian 34, Seattle U 31

Points from (This Period)	PRE	SEA
In the Paint	20	12
Off Turns	4	4
2nd Chance	2	2
Fast Break	2	3
Bench	3	8

Official Box Score
Presbyterian vs Seattle U
Second Half Statistics Only
March 21, 2019 at Redhawk Center - Seattle, WA



Presbyterian 39

No.	Player	S	Pts	FG	3FG	FT	OR	DR	TR	PF	A	TO	Blk	Stl	Min	+/-
00	MARTIN,CHRIS		5	1-1	1-1	2-2	0	1	1	2	0	0	0	0	9	3
05	BELL,DAVON		15	6-8	3-4	0-0	0	1	1	1	4	2	0	0	20	2
10	FLAGLER,ADAM		8	2-3	1-1	3-4	0	1	1	1	0	0	0	1	18	8
12	HIGHTOWER,CORY		6	3-5	0-0	0-1	1	2	3	1	0	0	0	0	17	4
15	LEWIS,FRANCOIS		0	0-4	0-2	0-0	0	0	0	1	0	0	0	2	10	-4
02	SHUBERT,KODY		0	0-0	0-0	0-0	0	0	0	0	0	0	0	0	2	-6
03	CROUCH,ROMEO		5	2-4	0-2	1-1	0	2	2	1	0	1	0	0	13	-5
04	DRAKE,BEN		0	0-0	0-0	0-0	0	0	0	0	0	0	0	0	0	0
11	TETE,ARMEL		0	0-0	0-0	0-0	0	0	0	0	0	0	0	0	0	0
20	YOUNGER,J.C.		0	0-0	0-0	0-0	1	1	2	2	0	0	0	0	11	8
	TEAM						0	0	0	0		0				
TOTALS			39	14-25	5-10	6-8	2	8	10	9	4	3	0	3	100	

Shooting By Period

Period	FG	FG%	3FG	3FG%	FT	FT%
2nd Half	14-25	56%	5-10	50%	6-8	75%
Game	28-59	47.5%	9-24	37.5%	8-11	72.7%

Last FG Half: PRE -

Seattle U 37

No.	Player	S	Pts	FG	3FG	FT	OR	DR	TR	PF	A	TO	Blk	Stl	Min	+/-
01	CARTER,MYLES		5	2-6	0-2	1-2	0	3	3	2	1	1	0	0	16	-1
05	KAVAS,MATEJ		2	1-3	0-1	0-0	2	0	2	1	1	0	0	0	7	0
12	DA CAMPO,MATTIA		2	1-2	0-0	0-1	3	3	6	2	2	0	0	0	20	-2
13	MEANS,MORGAN		5	2-6	1-5	0-1	0	3	3	3	2	0	0	0	19	1
23	BROWN,TERRELL		15	7-14	0-0	1-2	5	2	7	1	3	3	0	1	20	-2
02	BURKE,IAN		0	0-0	0-0	0-0	0	0	0	0	0	0	0	0	0	0
10	NETTLES,AARON		0	0-0	0-0	0-0	0	0	0	0	0	0	0	0	0	0
25	HUNDAL,ANAND		0	0-0	0-0	0-0	0	0	0	0	0	0	0	0	1	-3
35	GRIGSBY,RILEY		8	3-3	2-2	0-0	1	0	1	1	0	1	1	0	17	-3
	TEAM						2	0	2	0		1				
TOTALS			37	16-34	3-10	2-6	13	11	24	10	9	6	1	1	100	

Shooting By Period

Period	FG	FG%	3FG	3FG%	FT	FT%
2nd Half	16-34	47%	3-10	30%	2-6	33%
Game	25-60	41.7%	6-18	33.3%	12-19	63.2%

Last FG Half: SEA -

Game Notes:

Officials: **Levon Zakarian, Jimmy Casas, Rick Batsell**
Attendance: **472**

Start Time: **2019-03-21 02:07:10**
End Time: **2019-03-21 04:08:11**
Game Duration: **121**

Score	1st	2nd	TOT
PRE	34	39	73
SEA	31	37	68

Points from (This Period)	PRE	SEA
In the Paint	16	24
Off Turns	5	4
2nd Chance	2	8
Fast Break	3	4
Bench	5	8

Official Play-By-Play
Presbyterian vs Seattle U
Second Half
March 21, 2019 at Redhawk Center - Seattle, WA



Period 2

Starters:

Presbyterian: 00 MARTIN, CHRIS; 10 FLAGLER, ADAM; 12 HIGHTOWER, CORY; 15 LEWIS, FRANCOIS; 5 BELL, DAVON;
Seattle U: 1 CARTER, MYLES; 5 KAVAS, MATEJ; 12 DA CAMPO, MATTIA; 13 MEANS, MORGAN; 23 BROWN, TERRELL;

Time	VISITORS: Presbyterian	Score	Margin	HOME: Seattle U
19:51		33-34	V 1	GOOD! LAYUP by BROWN, TERRELL
19:30	GOOD! 3PTR by FLAGLER, ADAM	33-37	V 4	
19:30	ASSIST by BELL, DAVON			
19:16				TURNOVER (BADPASS) by BROWN, TERRELL
19:16	STEAL by LEWIS, FRANCOIS			
19:07	MISSED JUMPER by FLAGLER, ADAM			
19:03				REBOUND (DEF) by CARTER, MYLES
18:39				MISSED 3PTR by KAVAS, MATEJ
18:36				REBOUND (OFF) by DA CAMPO, MATTIA
18:35		35-37	V 2	GOOD! JUMPER by KAVAS, MATEJ [PNT]
18:35				ASSIST by DA CAMPO, MATTIA
18:17	MISSED 3PTR by CROUCH, ROMEO			
18:14				REBOUND (DEF) by CARTER, MYLES
18:07				MISSED JUMPER by KAVAS, MATEJ
18:04				REBOUND (OFF) by BROWN, TERRELL
18:04	FOUL (PERSONAL) by CROUCH, ROMEO			
18:04	SUB OUT: CROUCH, ROMEO			
18:04	SUB IN: MARTIN, CHRIS			
18:00				MISSED JUMPER by CARTER, MYLES
17:58				REBOUND (OFF) by KAVAS, MATEJ
17:34				MISSED 3PTR by MEANS, MORGAN
17:32				REBOUND (OFF) by KAVAS, MATEJ
17:28				MISSED 3PTR by MEANS, MORGAN
17:25	REBOUND (DEF) by MARTIN, CHRIS			
16:58				SUB OUT: KAVAS, MATEJ
16:58				SUB IN: GRIGSBY, RILEY
16:54	GOOD! JUMPER by BELL, DAVON	35-39	V 4	
16:41				MISSED LAYUP by BROWN, TERRELL
16:38				REBOUND (OFF) by BROWN, TERRELL
16:37	FOUL (PERSONAL) by MARTIN, CHRIS			
16:22				TURNOVER (LOSTBALL) by BROWN, TERRELL
16:22	STEAL by LEWIS, FRANCOIS			
16:04	GOOD! LAYUP by BELL, DAVON	35-41	V 6	
15:46		38-41	V 3	GOOD! 3PTR by GRIGSBY, RILEY
15:46				ASSIST by BROWN, TERRELL
15:27	GOOD! LAYUP by HIGHTOWER, CORY	38-43	V 5	
15:27	ASSIST by BELL, DAVON			
15:00				FOUL (OFF) by BROWN, TERRELL
15:00				TURNOVER (OFFENSIVE) by BROWN, TERRELL
15:00				
15:00				SUB OUT: MEANS, MORGAN
15:00				SUB IN: HUNDAL, ANAND
15:00	SUB OUT: HIGHTOWER, CORY			
15:00	SUB IN: YOUNGER, J. C.			
14:45	GOOD! 3PTR by BELL, DAVON	38-46	V 8	
14:21				MISSED 3PTR by CARTER, MYLES
14:19				REBOUND (OFF) by DA CAMPO, MATTIA
14:19	FOUL (PERSONAL) by FLAGLER, ADAM			
14:19				SUB OUT: HUNDAL, ANAND
14:19				SUB IN: MEANS, MORGAN
14:18				FOUL (OFF) by CARTER, MYLES
14:18				TURNOVER (OFFENSIVE) by CARTER, MYLES
14:18				SUB OUT: CARTER, MYLES
14:18				SUB IN: KAVAS, MATEJ
14:05	MISSED 3PTR by LEWIS, FRANCOIS			
14:02				REBOUND (DEF) by MEANS, MORGAN
13:59		40-46	V 6	GOOD! LAYUP by BROWN, TERRELL [FB]
13:59				ASSIST by MEANS, MORGAN
13:40	GOOD! LAYUP by BELL, DAVON	40-48	V 8	
13:29	FOUL (PERSONAL) by LEWIS, FRANCOIS			
13:29		41-48	V 7	GOOD! FT by BROWN, TERRELL
13:29	SUB OUT: LEWIS, FRANCOIS			
13:29	SUB IN: HIGHTOWER, CORY			
13:29				MISSED FT by BROWN, TERRELL
13:29				REBOUND (OFF) by GRIGSBY, RILEY
13:11				MISSED JUMPER by BROWN, TERRELL
13:10	REBOUND (DEF) by YOUNGER, J. C.			
13:10				FOUL (PERSONAL) by DA CAMPO, MATTIA
12:48	GOOD! 3PTR by MARTIN, CHRIS	41-51	V 10	
12:20	FOUL (PERSONAL) by YOUNGER, J. C.			

Time	VISITORS: Presbyterian	Score	Margin	HOME: Seattle U
12:13		43-51	V 8	GOOD! JUMPER by BROWN,TERRELL
11:56	GOOD! 3PTR by BELL,DAVON	43-54	V 11	
11:40	FOUL (PERSONAL) by MARTIN,CHRIS			
11:40				
11:30		46-54	V 8	GOOD! 3PTR by MEANS,MORGAN
11:30				ASSIST by KAVAS,MATEJ
11:10	MISSED LAYUP by HIGHTOWER,CORY			
11:10				BLOCK by GRIGSBY,RILEY
11:03	REBOUND (OFF) by HIGHTOWER,CORY			
11:02				FOUL (PERSONAL) by KAVAS,MATEJ
11:02	GOOD! FT by MARTIN,CHRIS	46-55	V 9	
11:02				SUB OUT: KAVAS,MATEJ
11:02				SUB IN: CARTER,MYLES
11:02	GOOD! FT by MARTIN,CHRIS	46-56	V 10	
10:41	FOUL (PERSONAL) by YOUNGER,J.C.			
10:41		47-56	V 9	GOOD! FT by CARTER,MYLES
10:41	SUB OUT: FLAGLER,ADAM			
10:41	SUB IN: LEWIS,FRANCOIS			
10:41	SUB OUT: HIGHTOWER,CORY			
10:41	SUB IN: SHUBERT,KODY			
10:41	SUB OUT: YOUNGER,J.C.			
10:41	SUB IN: CROUCH,ROMEO			
10:41				MISSED FT by CARTER,MYLES
10:41				REBOUND (OFF) by DA CAMPO,MATTIA
10:33				MISSED LAYUP by BROWN,TERRELL
10:28				REBOUND (OFF) by BROWN,TERRELL
10:28		49-56	V 7	GOOD! LAYUP by BROWN,TERRELL
10:26				TIMEOUT TEAM
09:59				FOUL (PERSONAL) by GRIGSBY,RILEY
09:45	MISSED 3PTR by LEWIS,FRANCOIS			
09:42				REBOUND (DEF) by BROWN,TERRELL
09:33		51-56	V 5	GOOD! LAYUP by MEANS,MORGAN
09:15	MISSED JUMPER by LEWIS,FRANCOIS			
09:13				REBOUND (DEF) by MEANS,MORGAN
09:07				MISSED JUMPER by BROWN,TERRELL
09:04				REBOUND (OFF) by TEAM
09:04	SUB OUT: MARTIN,CHRIS			
09:04	SUB IN: HIGHTOWER,CORY			
08:50		53-56	V 3	GOOD! LAYUP by DA CAMPO,MATTIA
08:50				ASSIST by CARTER,MYLES
08:50	FOUL (PERSONAL) by HIGHTOWER,CORY			
08:50				MISSED FT by DA CAMPO,MATTIA
08:50	REBOUND (DEF) by HIGHTOWER,CORY			
08:32				FOUL (PERSONAL) by MEANS,MORGAN
08:32	SUB OUT: SHUBERT,KODY			
08:32	SUB IN: FLAGLER,ADAM			
08:18	MISSED JUMPER by LEWIS,FRANCOIS			
08:14				REBOUND (DEF) by DA CAMPO,MATTIA
08:05	FOUL (PERSONAL) by BELL,DAVON			
08:05				MISSED FT by MEANS,MORGAN
08:05	REBOUND (DEF) by CROUCH,ROMEO			
07:50	MISSED 3PTR by CROUCH,ROMEO			
07:47				REBOUND (DEF) by CARTER,MYLES
07:40		56-56	T	GOOD! 3PTR by GRIGSBY,RILEY
07:40				ASSIST by BROWN,TERRELL
07:14				FOUL (PERSONAL) by DA CAMPO,MATTIA
07:14	GOOD! FT by FLAGLER,ADAM	56-57	V 1	
07:14	MISSED FT by FLAGLER,ADAM			
07:14				REBOUND (DEF) by BROWN,TERRELL
06:58	SUB OUT: LEWIS,FRANCOIS			
06:58	SUB IN: YOUNGER,J.C.			
06:55		58-57	H 1	GOOD! LAYUP by CARTER,MYLES
06:55				ASSIST by DA CAMPO,MATTIA
06:33	GOOD! LAYUP by HIGHTOWER,CORY	58-59	V 1	
06:33	ASSIST by BELL,DAVON			
06:33				FOUL (PERSONAL) by CARTER,MYLES
06:33				SUB OUT: CARTER,MYLES
06:33				SUB IN: KAVAS,MATEJ
06:33	MISSED FT by HIGHTOWER,CORY			
06:33				REBOUND (DEF) by DA CAMPO,MATTIA
06:05				MISSED LAYUP by DA CAMPO,MATTIA
06:05				REBOUND (OFF) by TEAM
06:05				TURNOVER (SHOTCLOCK) by
05:42	TURNOVER (BADPASS) by CROUCH,ROMEO			
05:42				SUB OUT: KAVAS,MATEJ
05:42				SUB IN: CARTER,MYLES
05:25				MISSED JUMPER by BROWN,TERRELL
05:23				REBOUND (OFF) by BROWN,TERRELL
05:22				MISSED LAYUP by BROWN,TERRELL
05:19	REBOUND (DEF) by BELL,DAVON			

Time	VISITORS: Presbyterian	Score	Margin	HOME: Seattle U
05:14	GOOD! LAYUP by CROUCH,ROMEO [FB]	58-61	V 3	
05:14	ASSIST by BELL,DAVON			
05:14				FOUL (PERSONAL) by MEANS,MORGAN
05:14	GOOD! FT by CROUCH,ROMEO [FB]	58-62	V 4	
04:56		60-62	V 2	GOOD! LAYUP by CARTER,MYLES
04:56				ASSIST by BROWN,TERRELL
04:36	GOOD! 3PTR by BELL,DAVON	60-65	V 5	
04:22		62-65	V 3	GOOD! JUMPER by BROWN,TERRELL [PNT]
04:18				TIMEOUT 30SEC
04:18				
04:03	MISSED LAYUP by BELL,DAVON			
04:01				REBOUND (DEF) by MEANS,MORGAN
03:56		64-65	V 1	GOOD! LAYUP by GRIGSBY,RILEY [FB]
03:56				ASSIST by MEANS,MORGAN
03:34	GOOD! JUMPER by FLAGLER,ADAM [PNT]	64-67	V 3	
03:15				TURNOVER (LOSTBALL) by GRIGSBY,RILEY
03:15	STEAL by FLAGLER,ADAM			
02:49	MISSED LAYUP by HIGHTOWER,CORY			
02:46				REBOUND (DEF) by DA CAMPO,MATTIA
02:26				MISSED JUMPER by CARTER,MYLES
02:23	REBOUND (DEF) by CROUCH,ROMEO			
02:00	GOOD! LAYUP by HIGHTOWER,CORY [PNT]	64-69	V 5	
01:59	TIMEOUT 30SEC			
01:47				MISSED 3PTR by MEANS,MORGAN
01:44	REBOUND (DEF) by HIGHTOWER,CORY			
01:21	TURNOVER (LOSTBALL) by BELL,DAVON			
01:21				STEAL by BROWN,TERRELL
01:14				MISSED LAYUP by BROWN,TERRELL
01:10				REBOUND (OFF) by BROWN,TERRELL
01:10		66-69	V 3	GOOD! JUMPER by BROWN,TERRELL [PNT]
01:10				TIMEOUT 30SEC
00:48	MISSED 3PTR by BELL,DAVON			
00:45	REBOUND (OFF) by YOUNGER,J.C.			
00:44	TIMEOUT 30SEC			
00:43	TURNOVER (BADPASS) by BELL,DAVON			
00:34		68-69	V 1	GOOD! JUMPER by BROWN,TERRELL [PNT]
00:18	GOOD! LAYUP by CROUCH,ROMEO	68-71	V 3	
00:06				MISSED 3PTR by CARTER,MYLES
00:06	REBOUND (DEF) by FLAGLER,ADAM			
00:06				FOUL (PERSONAL) by MEANS,MORGAN
00:06	GOOD! FT by FLAGLER,ADAM	68-72	V 4	
00:06	GOOD! FT by FLAGLER,ADAM	68-73	V 5	
00:01				MISSED 3PTR by MEANS,MORGAN
00:00				REBOUND (OFF) by TEAM

Presbyterian 73, Seattle U 68

Points from (This Period)	PRE	SEA
In the Paint	16	24
Off Turns	5	4
2nd Chance	2	8
Fast Break	3	4
Bench	5	8

Official Scoring/Possession Reference Chart
Presbyterian vs Seattle U
Period 1
March 21, 2019 at Redhawk Center - Seattle, WA



Period 1

Starters:

Presbyterian: 00 MARTIN, CHRIS; 10 FLAGLER, ADAM; 12 HIGHTOWER, CORY; 15 LEWIS, FRANCOIS; 5 BELL, DAVON;

Seattle U: 1 CARTER, MYLES; 5 KAVAS, MATEJ; 12 DA CAMPO, MATTIA; 13 MEANS, MORGAN; 23 BROWN, TERRELL;

Time	VISITORS: Presbyterian	Score	Margin	HOME: Seattle U
19:09		2-0	H 2	GOOD! LAYUP by KAVAS, MATEJ
18:43	GOOD! 3PTR by HIGHTOWER, CORY	2-3	V 1	
18:13	GOOD! LAYUP by FLAGLER, ADAM	2-5	V 3	
17:51		5-5	T	GOOD! 3PTR by KAVAS, MATEJ
17:24	GOOD! 3PTR by HIGHTOWER, CORY	5-8	V 3	
17:07		6-8	V 2	GOOD! FT by KAVAS, MATEJ
15:17	GOOD! LAYUP by BELL, DAVON [FB]	6-10	V 4	
14:32		8-10	V 2	GOOD! LAYUP by GRIGSBY, RILEY
14:18	GOOD! LAYUP by FLAGLER, ADAM	8-12	V 4	
12:58	GOOD! LAYUP by LEWIS, FRANCOIS	8-14	V 6	
11:57	GOOD! 3PTR by LEWIS, FRANCOIS	8-17	V 9	
11:43		11-17	V 6	GOOD! 3PTR by HUNDAL, ANAND
11:15		13-17	V 4	GOOD! LAYUP by BROWN, TERRELL
10:36		15-17	V 2	GOOD! LAYUP by BROWN, TERRELL
10:22	GOOD! LAYUP by CROUCH, ROMEO	15-19	V 4	
10:22	GOOD! FT by CROUCH, ROMEO	15-20	V 5	
09:20		18-20	V 2	GOOD! 3PTR by KAVAS, MATEJ
08:54	GOOD! 3PTR by FLAGLER, ADAM	18-23	V 5	
08:21	GOOD! LAYUP by HIGHTOWER, CORY	18-25	V 7	
07:34		19-25	V 6	GOOD! FT by CARTER, MYLES
07:34		20-25	V 5	GOOD! FT by CARTER, MYLES
05:34		22-25	V 3	GOOD! JUMPER by GRIGSBY, RILEY [PNT]
04:31		24-25	V 1	GOOD! DUNK by CARTER, MYLES
04:10	GOOD! LAYUP by HIGHTOWER, CORY [PNT]	24-27	V 3	
03:28		25-27	V 2	GOOD! FT by BURKE, IAN [FB]
03:07	GOOD! JUMPER by LEWIS, FRANCOIS [PNT]	25-29	V 4	
02:32		26-29	V 3	GOOD! FT by DA CAMPO, MATTIA [FB]
02:32		27-29	V 2	GOOD! FT by DA CAMPO, MATTIA [FB]
02:08	GOOD! LAYUP by MARTIN, CHRIS	27-31	V 4	
02:08	GOOD! FT by MARTIN, CHRIS	27-32	V 5	
01:21	GOOD! LAYUP by HIGHTOWER, CORY	27-34	V 7	
01:08		28-34	V 6	GOOD! FT by MEANS, MORGAN
01:08		29-34	V 5	GOOD! FT by MEANS, MORGAN
00:06		30-34	V 4	GOOD! FT by MEANS, MORGAN
00:06		31-34	V 3	GOOD! FT by MEANS, MORGAN

Presbyterian 34, Seattle U 31

Official Scoring/Possession Reference Chart
Presbyterian vs Seattle U
Period 2
March 21, 2019 at Redhawk Center - Seattle, WA



Period 2

Starters:

Presbyterian: 00 MARTIN, CHRIS; 10 FLAGLER, ADAM; 12 HIGHTOWER, CORY; 15 LEWIS, FRANCOIS; 5 BELL, DAVON;

Seattle U: 1 CARTER, MYLES; 5 KAVAS, MATEJ; 12 DA CAMPO, MATTIA; 13 MEANS, MORGAN; 23 BROWN, TERRELL;

Time	VISITORS: Presbyterian	Score	Margin	HOME: Seattle U
19:51		33-34	V 1	GOOD! LAYUP by BROWN, TERRELL
19:30	GOOD! 3PTR by FLAGLER, ADAM	33-37	V 4	
18:35		35-37	V 2	GOOD! JUMPER by KAVAS, MATEJ [PNT]
16:54	GOOD! JUMPER by BELL, DAVON	35-39	V 4	
16:04	GOOD! LAYUP by BELL, DAVON	35-41	V 6	
15:46		38-41	V 3	GOOD! 3PTR by GRIGSBY, RILEY
15:27	GOOD! LAYUP by HIGHTOWER, CORY	38-43	V 5	
14:45	GOOD! 3PTR by BELL, DAVON	38-46	V 8	
13:59		40-46	V 6	GOOD! LAYUP by BROWN, TERRELL [FB]
13:40	GOOD! LAYUP by BELL, DAVON	40-48	V 8	
13:29		41-48	V 7	GOOD! FT by BROWN, TERRELL
12:48	GOOD! 3PTR by MARTIN, CHRIS	41-51	V 10	
12:13		43-51	V 8	GOOD! JUMPER by BROWN, TERRELL
11:56	GOOD! 3PTR by BELL, DAVON	43-54	V 11	
11:30		46-54	V 8	GOOD! 3PTR by MEANS, MORGAN
11:02	GOOD! FT by MARTIN, CHRIS	46-55	V 9	
11:02	GOOD! FT by MARTIN, CHRIS	46-56	V 10	
10:41		47-56	V 9	GOOD! FT by CARTER, MYLES
10:28		49-56	V 7	GOOD! LAYUP by BROWN, TERRELL
09:33		51-56	V 5	GOOD! LAYUP by MEANS, MORGAN
08:50		53-56	V 3	GOOD! LAYUP by DA CAMPO, MATTIA
07:40		56-56	T	GOOD! 3PTR by GRIGSBY, RILEY
07:14	GOOD! FT by FLAGLER, ADAM	56-57	V 1	
06:55		58-57	H 1	GOOD! LAYUP by CARTER, MYLES
06:33	GOOD! LAYUP by HIGHTOWER, CORY	58-59	V 1	
05:14	GOOD! LAYUP by CROUCH, ROMEO [FB]	58-61	V 3	
05:14	GOOD! FT by CROUCH, ROMEO [FB]	58-62	V 4	
04:56		60-62	V 2	GOOD! LAYUP by CARTER, MYLES
04:36	GOOD! 3PTR by BELL, DAVON	60-65	V 5	
04:22		62-65	V 3	GOOD! JUMPER by BROWN, TERRELL [PNT]
03:56		64-65	V 1	GOOD! LAYUP by GRIGSBY, RILEY [FB]
03:34	GOOD! JUMPER by FLAGLER, ADAM [PNT]	64-67	V 3	
02:00	GOOD! LAYUP by HIGHTOWER, CORY [PNT]	64-69	V 5	
01:10		66-69	V 3	GOOD! JUMPER by BROWN, TERRELL [PNT]
00:34		68-69	V 1	GOOD! JUMPER by BROWN, TERRELL [PNT]
00:18	GOOD! LAYUP by CROUCH, ROMEO	68-71	V 3	
00:06	GOOD! FT by FLAGLER, ADAM	68-72	V 4	
00:06	GOOD! FT by FLAGLER, ADAM	68-73	V 5	

Presbyterian 73, Seattle U 68

Official Substitutions Log
Presbyterian vs Seattle U
Period 1
March 21, 2019 at Redhawk Center - Seattle, WA



VISITORS: Presbyterian	Time	Score	HOME: Seattle U
00 MARTIN, CHRIS			1 CARTER, MYLES
10 FLAGLER, ADAM			5 KAVAS, MATEJ
12 HIGHTOWER, CORY			12 DA CAMPO, MATTIA
15 LEWIS, FRANCOIS			13 MEANS, MORGAN
5 BELL, DAVON			23 BROWN, TERRELL
SUB OUT: 15 LEWIS, FRANCOIS	17:07	8-6	
SUB IN: 20 YOUNGER, J.C.	17:07		
SUB OUT: 00 MARTIN, CHRIS	16:09	8-6	
SUB IN: 3 CROUCH, ROMEO	16:09		
	14:35	10-6	SUB OUT: DA CAMPO, MATTIA
	14:35		SUB IN: GRIGSBY, RILEY
	14:35		SUB OUT: CARTER, MYLES
	14:35		SUB IN: HUNDAL, ANAND
SUB OUT: 12 HIGHTOWER, CORY	14:35		
SUB IN: 2 SHUBERT, KODY	14:35		
SUB OUT: 5 BELL, DAVON	14:35		
SUB IN: 15 LEWIS, FRANCOIS	14:35		
SUB OUT: 20 YOUNGER, J.C.	14:03	12-8	
SUB IN: 00 MARTIN, CHRIS	14:03		
SUB OUT: 10 FLAGLER, ADAM	13:39	12-8	
SUB IN: 5 BELL, DAVON	13:39		
	13:16	12-8	SUB OUT: KAVAS, MATEJ
	13:16		SUB IN: DA CAMPO, MATTIA
	13:16		SUB OUT: MEANS, MORGAN
	13:16		SUB IN: BURKE, IAN
SUB OUT: 00 MARTIN, CHRIS	12:38	14-8	
SUB IN: 12 HIGHTOWER, CORY	12:38		
	10:35	17-15	SUB OUT: BURKE, IAN
	10:35		SUB IN: MEANS, MORGAN
	10:35		SUB OUT: HUNDAL, ANAND
	10:35		SUB IN: KAVAS, MATEJ
	10:35		SUB OUT: GRIGSBY, RILEY
	10:35		SUB IN: CARTER, MYLES
SUB OUT: 2 SHUBERT, KODY	10:35		
SUB IN: 10 FLAGLER, ADAM	10:35		
	08:32	23-18	SUB OUT: BROWN, TERRELL
	08:32		SUB IN: GRIGSBY, RILEY
	07:54	25-18	SUB OUT: MEANS, MORGAN
	07:54		SUB IN: BROWN, TERRELL
SUB OUT: 12 HIGHTOWER, CORY	07:54		
SUB IN: 4 DRAKE, BEN	07:54		
	06:32	25-20	SUB OUT: DA CAMPO, MATTIA
	06:32		SUB IN: MEANS, MORGAN
SUB OUT: 4 DRAKE, BEN	06:32		
SUB IN: 12 HIGHTOWER, CORY	06:32		
SUB OUT: 3 CROUCH, ROMEO	06:32		
SUB IN: 00 MARTIN, CHRIS	06:32		
SUB OUT: 15 LEWIS, FRANCOIS	06:14	25-20	
SUB IN: 20 YOUNGER, J.C.	06:14		
	05:03	25-22	SUB OUT: KAVAS, MATEJ
	05:03		SUB IN: DA CAMPO, MATTIA
SUB OUT: 5 BELL, DAVON	05:03		
SUB IN: 2 SHUBERT, KODY	05:03		
	03:49	27-24	SUB OUT: GRIGSBY, RILEY
	03:49		SUB IN: BURKE, IAN
SUB OUT: 00 MARTIN, CHRIS	03:49		
SUB IN: 15 LEWIS, FRANCOIS	03:49		
SUB OUT: 10 FLAGLER, ADAM	03:49		
SUB IN: 5 BELL, DAVON	03:49		
SUB OUT: 20 YOUNGER, J.C.	03:42	27-24	
SUB IN: 3 CROUCH, ROMEO	03:42		
SUB OUT: 3 CROUCH, ROMEO	03:28	27-24	
SUB IN: 20 YOUNGER, J.C.	03:28		
	02:32	29-25	SUB OUT: BURKE, IAN
	02:32		SUB IN: NETTLES, AARON
SUB OUT: 15 LEWIS, FRANCOIS	02:32		
SUB IN: 11 TETE, ARMEL	02:32		
SUB OUT: 2 SHUBERT, KODY	02:32		
SUB IN: 00 MARTIN, CHRIS	02:32		
SUB OUT: 20 YOUNGER, J.C.	02:32		
SUB IN: 10 FLAGLER, ADAM	02:32		
	01:57	32-27	SUB OUT: CARTER, MYLES
	01:57		SUB IN: HUNDAL, ANAND
	01:08	34-28	SUB OUT: DA CAMPO, MATTIA
	01:08		SUB IN: GRIGSBY, RILEY

VISITORS: Presbyterian		Time	Score	HOME: Seattle U
		01:08		SUB OUT: NETTLES,AARON
		01:08		SUB IN: BURKE,IAN
SUB OUT: 5 BELL,DAVON		01:08		
SUB IN: 2 SHUBERT,KODY		01:08		
		00:06	34-30	SUB OUT: HUNDAL,ANAND
		00:06		SUB IN: DA CAMPO,MATTIA
SUB OUT: 00 MARTIN,CHRIS		00:06		
SUB IN: 20 YOUNGER,J.C.		00:06		
SUB OUT: 2 SHUBERT,KODY		00:06		
SUB IN: 5 BELL,DAVON		00:06		
SUB OUT: 11 TETE,ARMEL		00:06		
SUB IN: 15 LEWIS,FRANCOIS		00:06		

Presbyterian 34, Seattle U 31

Official Substitutions Log
Presbyterian vs Seattle U
Period 2
March 21, 2019 at Redhawk Center - Seattle, WA



VISITORS: Presbyterian	Time	Score	HOME: Seattle U
00 MARTIN, CHRIS			1 CARTER, MYLES
10 FLAGLER, ADAM			5 KAVAS, MATEJ
12 HIGHTOWER, CORY			12 DA CAMPO, MATTIA
15 LEWIS, FRANCOIS			13 MEANS, MORGAN
5 BELL, DAVON			23 BROWN, TERRELL
SUB OUT: 3 CROUCH, ROMEO	18:04	37-35	
SUB IN: 00 MARTIN, CHRIS	18:04		
	16:58	37-35	SUB OUT: KAVAS, MATEJ
	16:58		SUB IN: GRIGSBY, RILEY
	15:00	43-38	SUB OUT: MEANS, MORGAN
	15:00		SUB IN: HUNDAL, ANAND
SUB OUT: 12 HIGHTOWER, CORY	15:00		
SUB IN: 20 YOUNGER, J. C.	15:00		
	14:19	46-38	SUB OUT: HUNDAL, ANAND
	14:19		SUB IN: MEANS, MORGAN
	14:18	46-38	SUB OUT: CARTER, MYLES
	14:18		SUB IN: KAVAS, MATEJ
SUB OUT: 15 LEWIS, FRANCOIS	13:29	48-41	
SUB IN: 12 HIGHTOWER, CORY	13:29		
	11:02	55-46	SUB OUT: KAVAS, MATEJ
	11:02		SUB IN: CARTER, MYLES
SUB OUT: 10 FLAGLER, ADAM	10:41	56-47	
SUB IN: 15 LEWIS, FRANCOIS	10:41		
SUB OUT: 12 HIGHTOWER, CORY	10:41		
SUB IN: 2 SHUBERT, KODY	10:41		
SUB OUT: 20 YOUNGER, J. C.	10:41		
SUB IN: 3 CROUCH, ROMEO	10:41		
SUB OUT: 00 MARTIN, CHRIS	09:04	56-51	
SUB IN: 12 HIGHTOWER, CORY	09:04		
SUB OUT: 2 SHUBERT, KODY	08:32	56-53	
SUB IN: 10 FLAGLER, ADAM	08:32		
SUB OUT: 15 LEWIS, FRANCOIS	06:58	57-56	
SUB IN: 20 YOUNGER, J. C.	06:58		
	06:33	59-58	SUB OUT: CARTER, MYLES
	06:33		SUB IN: KAVAS, MATEJ
	05:42	59-58	SUB OUT: KAVAS, MATEJ
	05:42		SUB IN: CARTER, MYLES

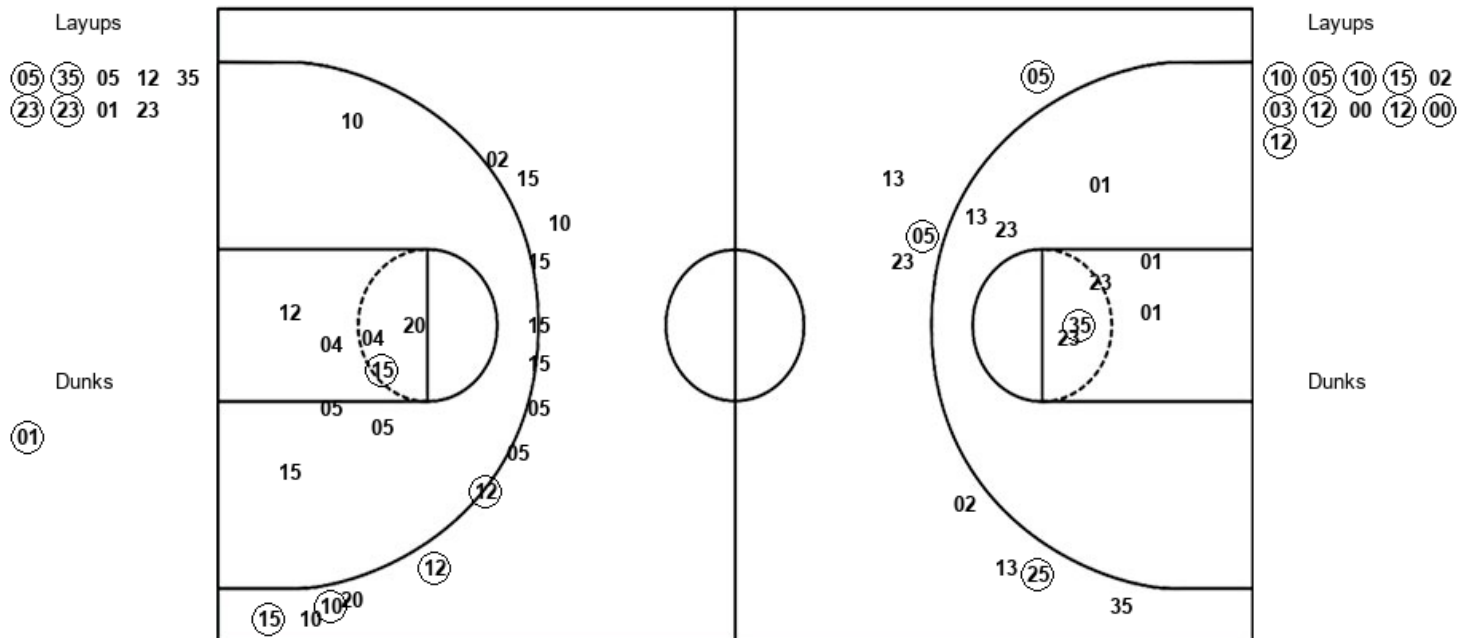
Presbyterian 73, Seattle U 68

Official Shot Chart
Presbyterian vs Seattle U
 PERIOD 1 Shots
 March 21, 2019 at Redhawk Center - Seattle, WA



Seattle U

Presbyterian



SEA : Period 1	Made	Att	Pct
Layups	4	9	44.4
Dunks	1	1	100.0
2PT Field Goals	6	18	33.3
3PT Field Goals	3	8	37.5
Total Field Goals	9	26	34.6

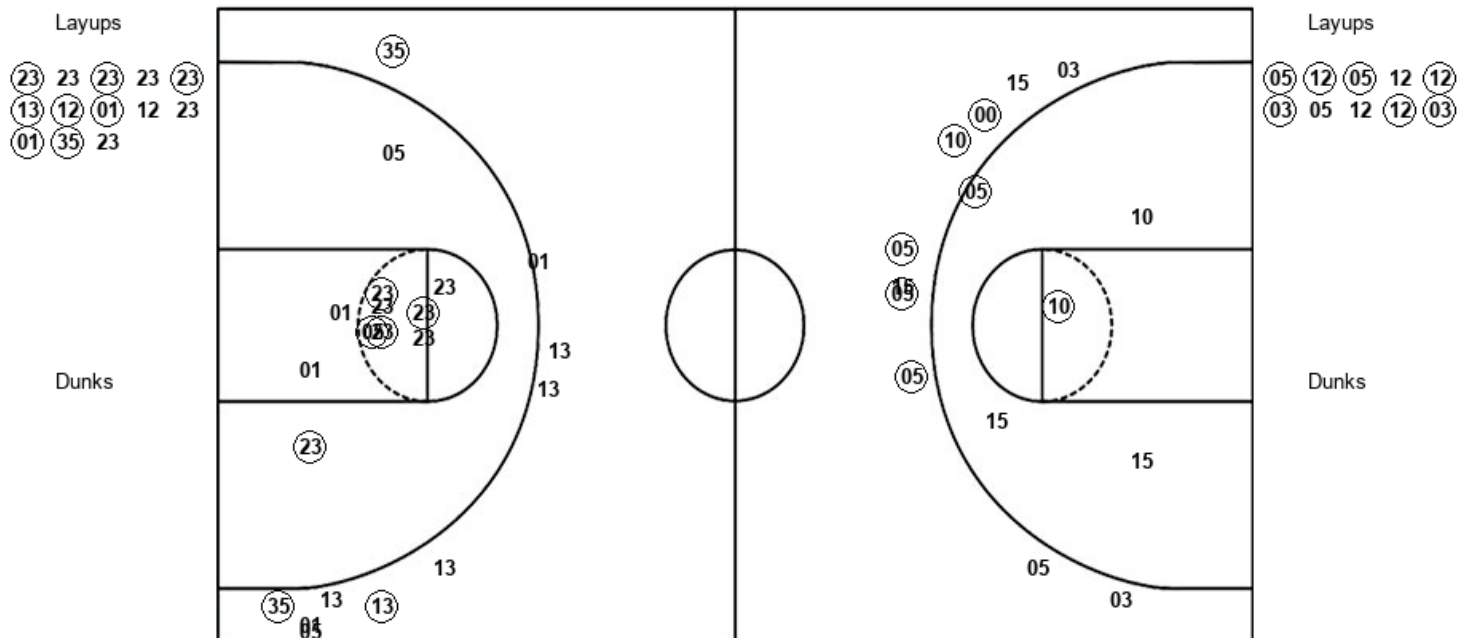
PRE : Period 1	Made	Att	Pct
Layups	9	11	81.8
Dunks	0	0	0
2PT Field Goals	10	20	50.0
3PT Field Goals	4	14	28.6
Total Field Goals	14	34	41.2

Official Shot Chart
Presbyterian vs Seattle U
 PERIOD 2 Shots
 March 21, 2019 at Redhawk Center - Seattle, WA



Seattle U

Presbyterian



SEA : Period 2	Made	Att	Pct
Layups	8	13	61.5
Dunks	0	0	0
2PT Field Goals	13	24	54.2
3PT Field Goals	3	10	30.0
Total Field Goals	16	34	47.1

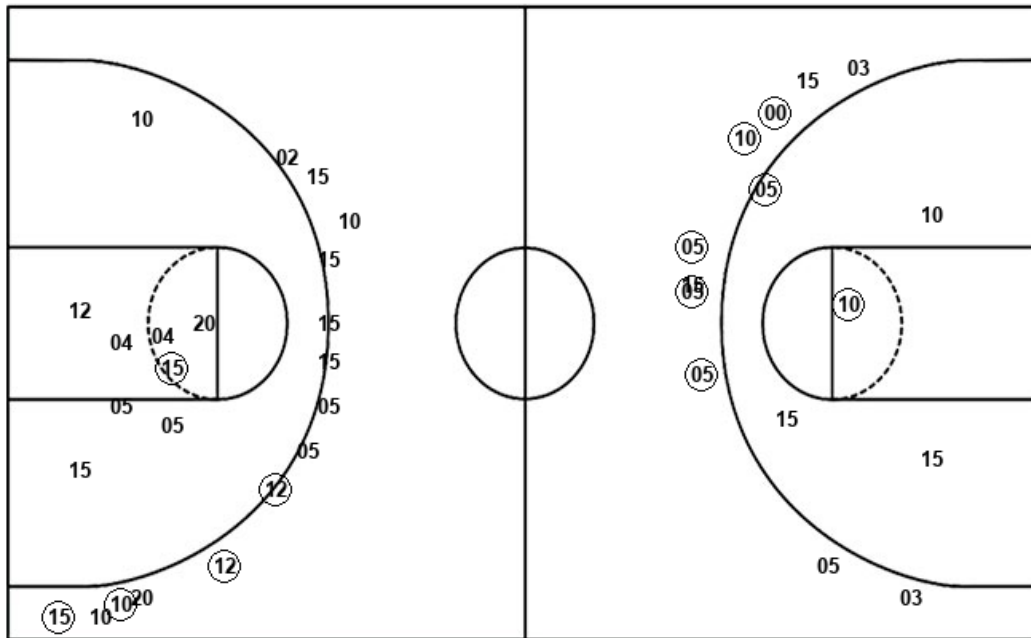
PRE : Period 2	Made	Att	Pct
Layups	7	10	70.0
Dunks	0	0	0
2PT Field Goals	9	15	60.0
3PT Field Goals	5	10	50.0
Total Field Goals	14	25	56.0

Official Shot Chart
Presbyterian vs Seattle U
 Presbyterian Team Shots
 March 21, 2019 at Redhawk Center - Seattle, WA



Layups

Dunks



Layups

Dunks

10	05	10	15	02
03	12	00	12	00
12	05	12	05	12
12	03	05	12	12
03				

PRE : Period 1	Made	Att	Pct
Layups	9	11	81.8
Dunks	0	0	0
2PT Field Goals	10	20	50.0
3PT Field Goals	4	14	28.6
Total Field Goals	14	34	41.2

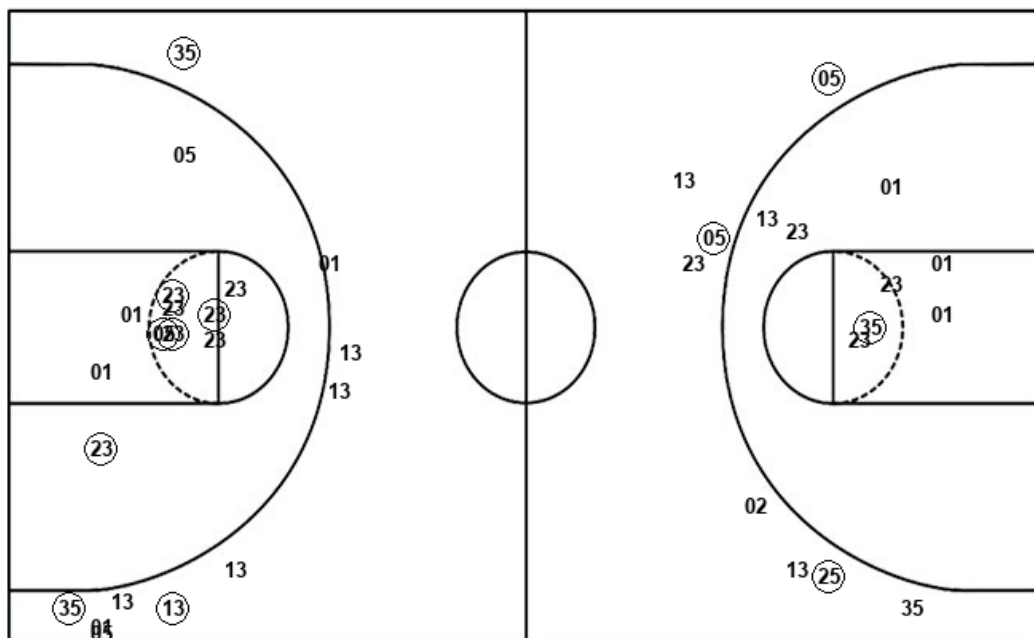
PRE : Period 2	Made	Att	Pct
Layups	7	10	70.0
Dunks	0	0	0
2PT Field Goals	9	15	60.0
3PT Field Goals	5	10	50.0
Total Field Goals	14	25	56.0

Official Shot Chart
Presbyterian vs Seattle U
Seattle U Team Shots
March 21, 2019 at Redhawk Center - Seattle, WA



Layups

Dunks



Layups

Dunks

05 35 05 12 35
 23 23 01 23 23
 23 23 23 23 13
 12 01 12 23 01
 35 23

01

SEA : Period 1	Made	Att	Pct
Layups	4	9	44.4
Dunks	1	1	100.0
2PT Field Goals	6	18	33.3
3PT Field Goals	3	8	37.5
Total Field Goals	9	26	34.6

SEA : Period 2	Made	Att	Pct
Layups	8	13	61.5
Dunks	0	0	0
2PT Field Goals	13	24	54.2
3PT Field Goals	3	10	30.0
Total Field Goals	16	34	47.1